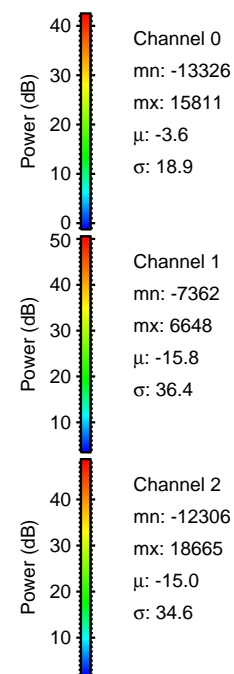
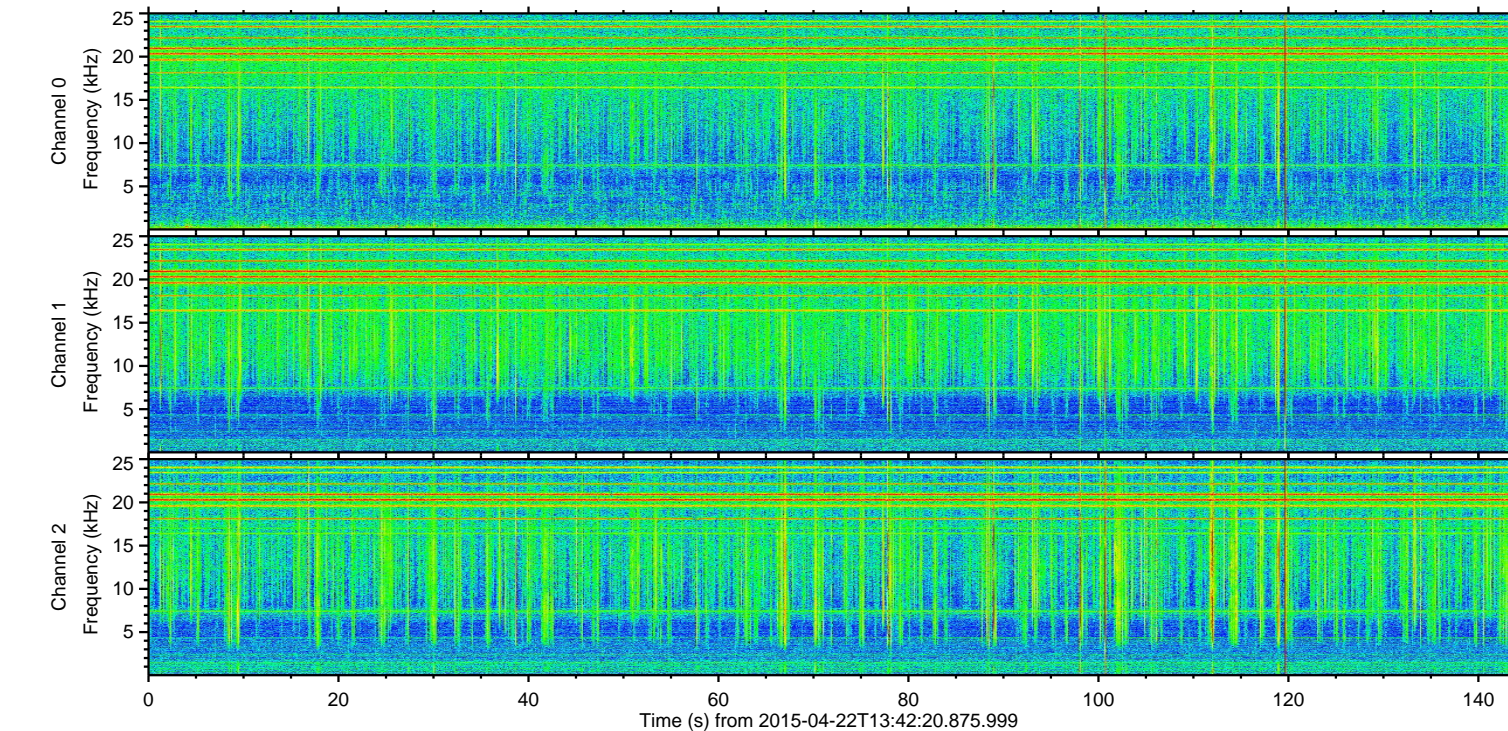
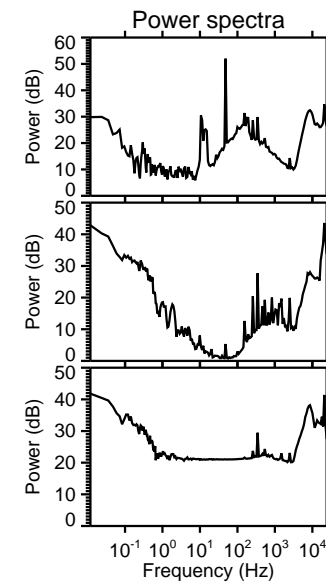
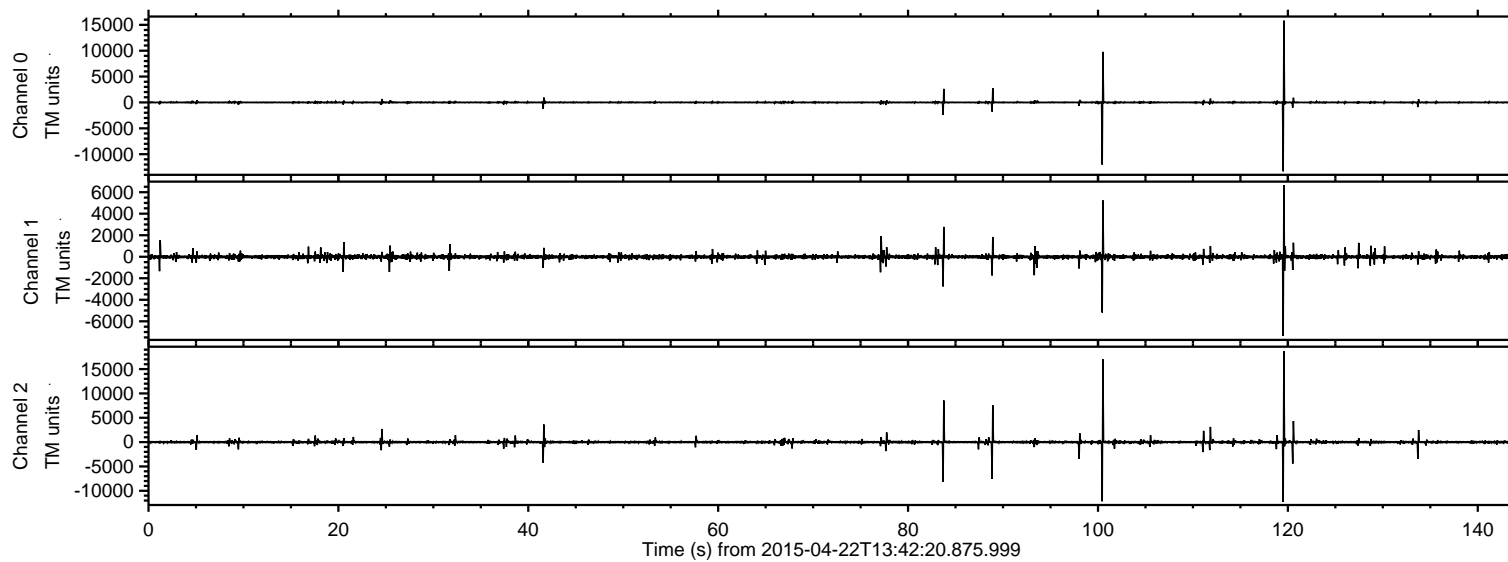


# ELMAVAN 3D WAVEFORMS (Measured data sampled at 50 kHz) 49759 packets of 144 samples from 2015-04-22T13:42:20.875.999.

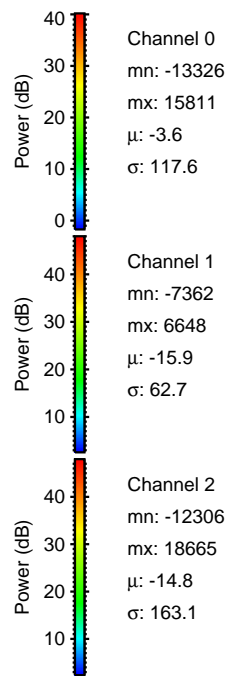
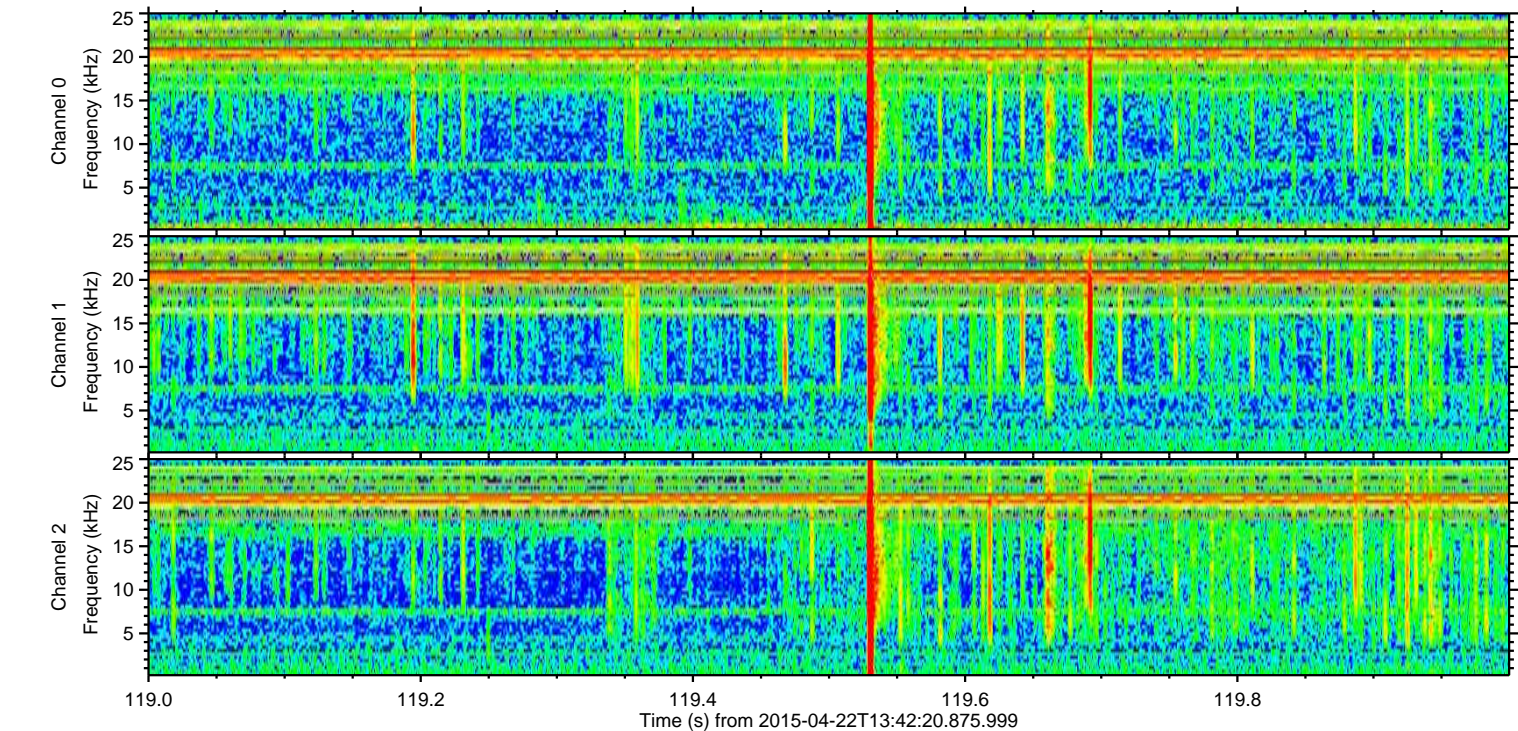
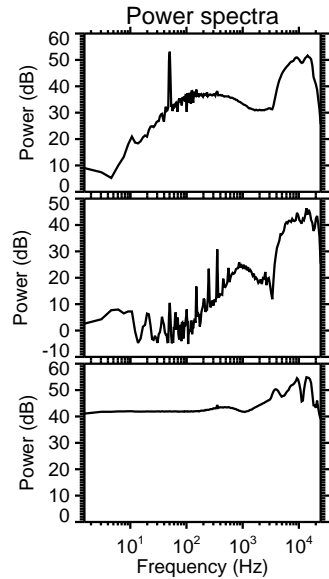
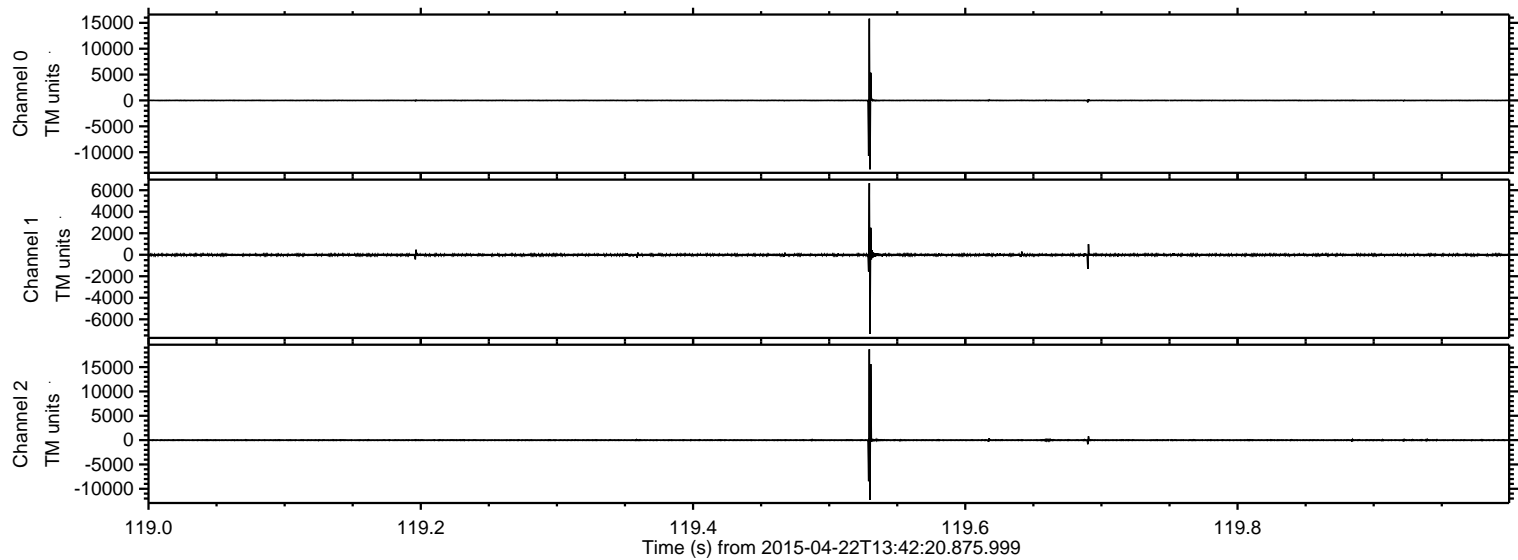
Processed Wed Apr 22 15:49:41 2015 by ELM ver.2012-10-06 from 001\_\_elm20150422\_134219\_\_dat00.bin





ELMAVAN 3D WAVEFORMS (Measured data sampled at 50 kHz) 49759 packets of 144 samples from 2015-04-22T13:42:20.875.999. Part 120/144

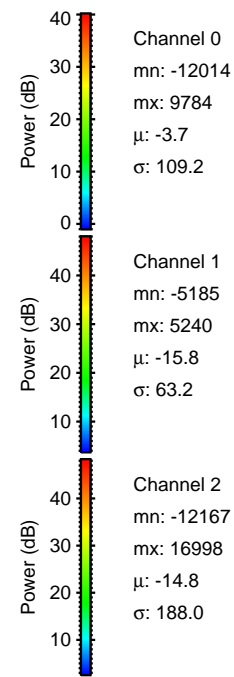
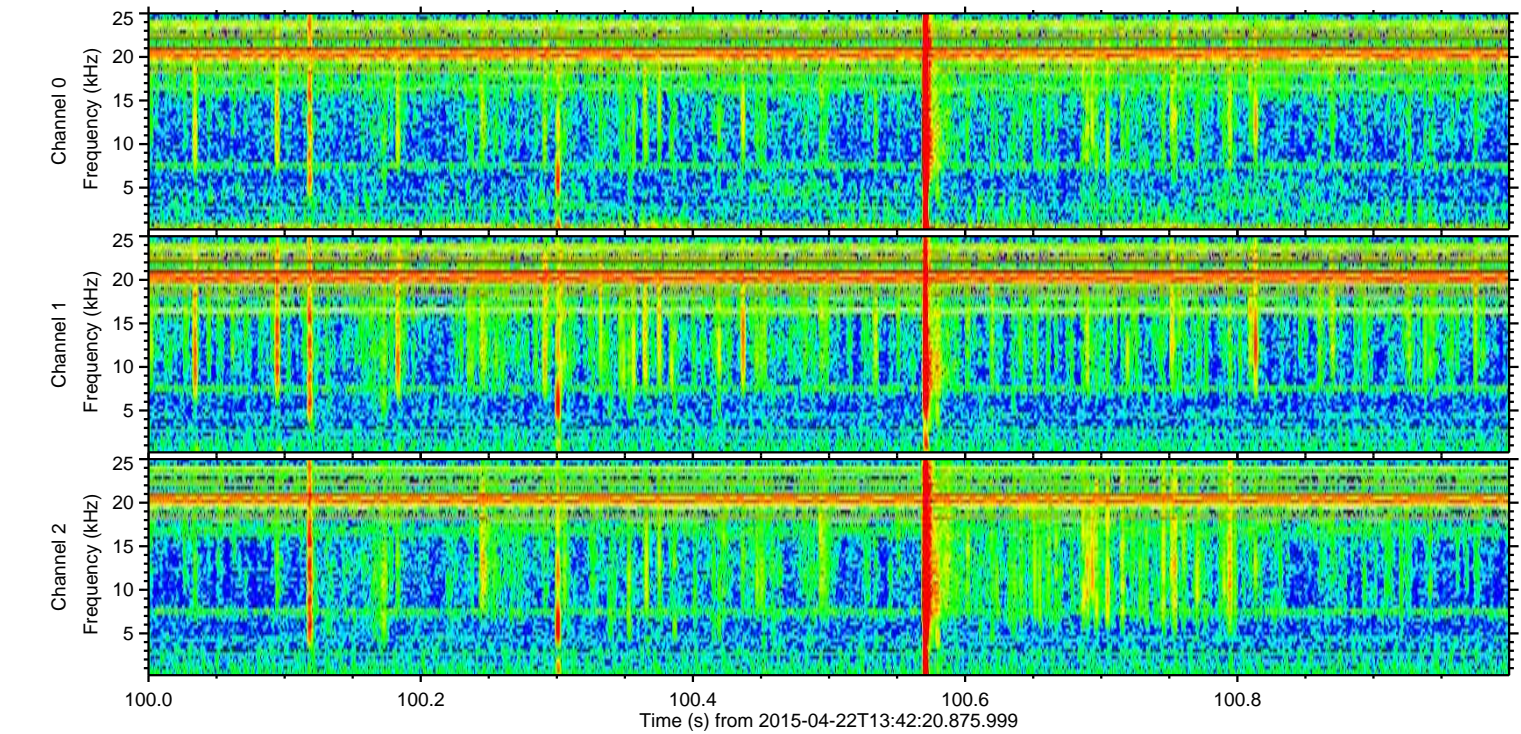
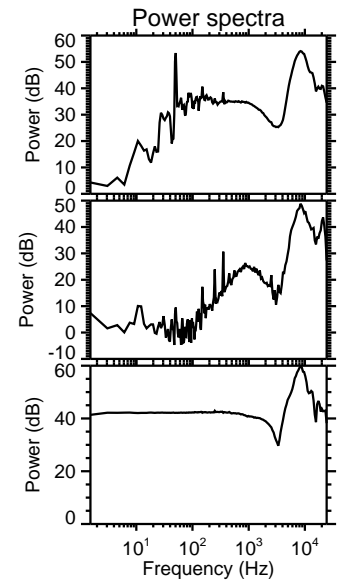
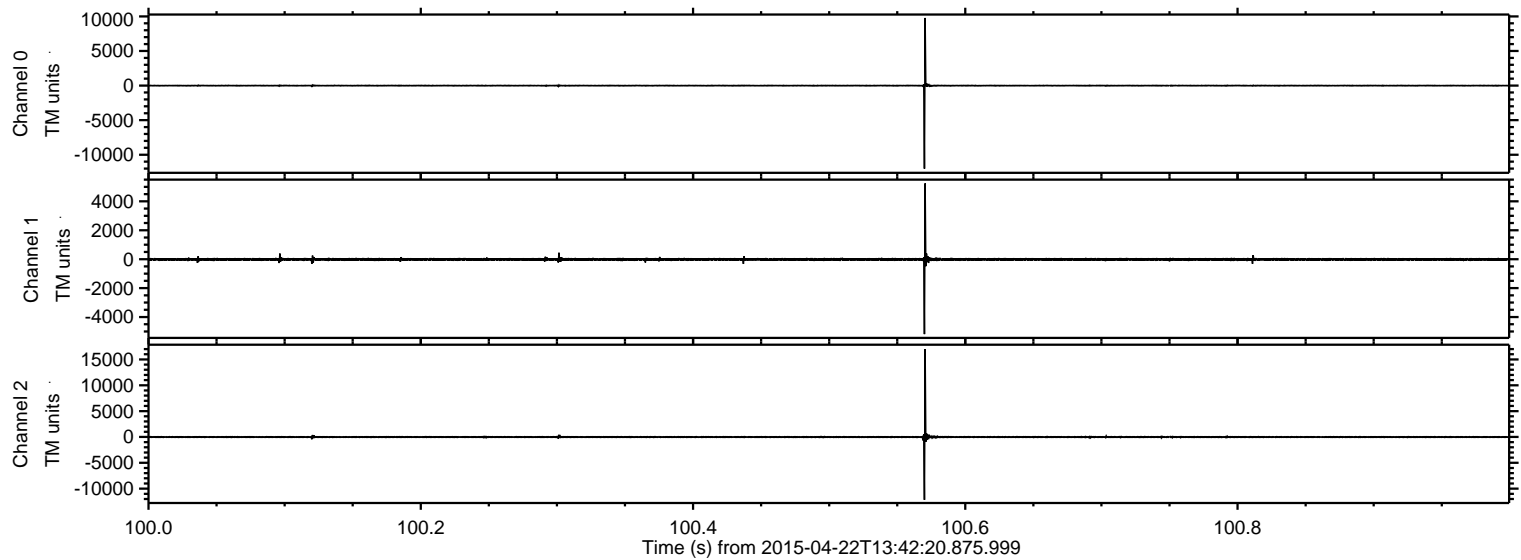
Processed Wed Apr 22 15:49:52 2015 by ELM ver.2012-10-06 from 001\_\_elm20150422\_134219\_\_dat00.bin





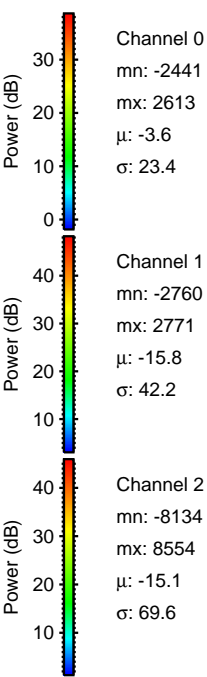
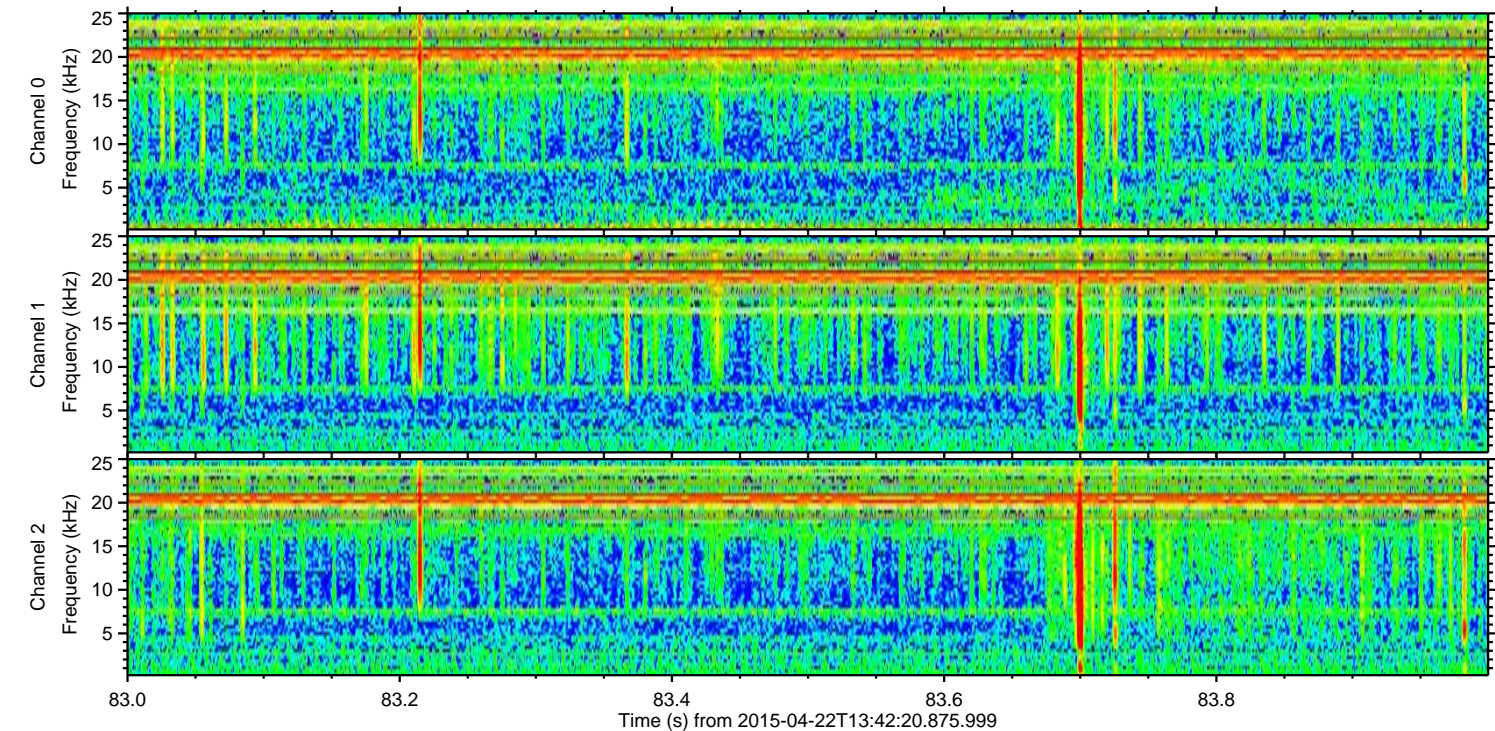
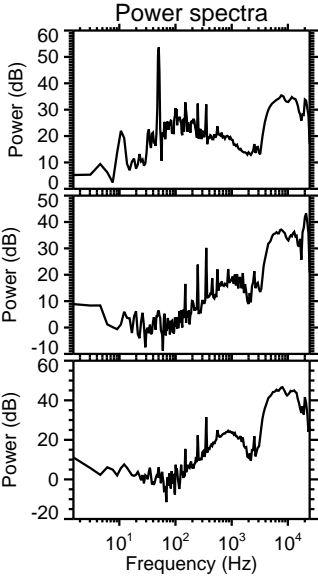
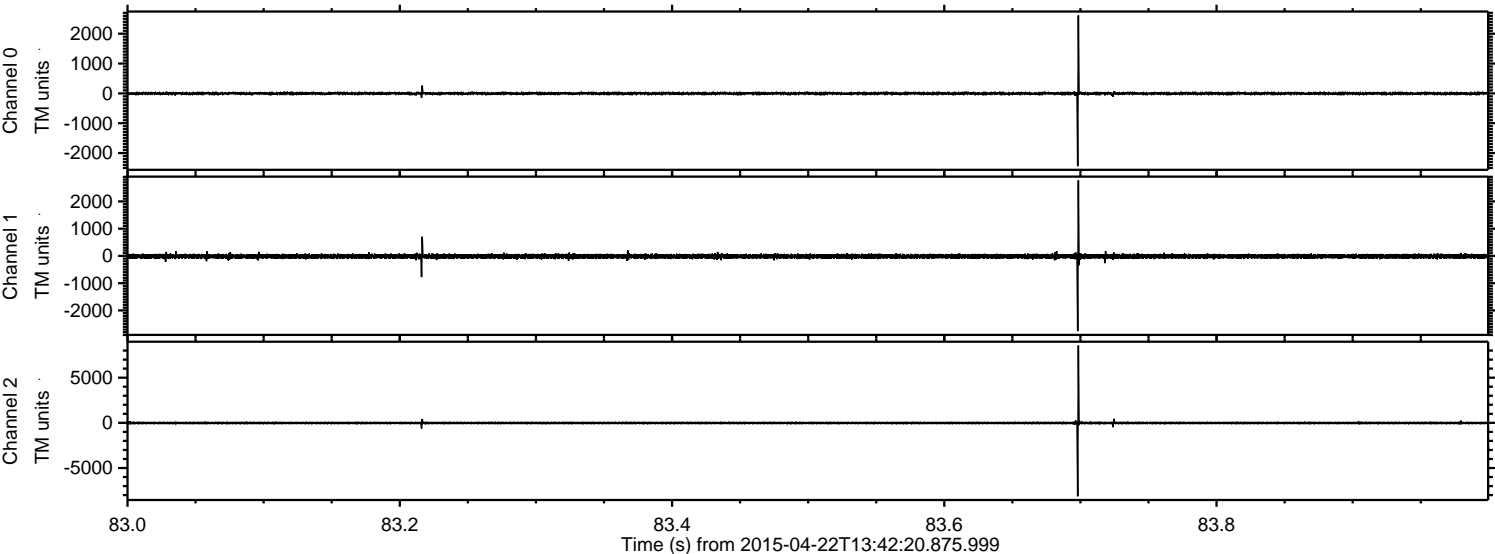
ELMAVAN 3D WAVEFORMS (Measured data sampled at 50 kHz) 49759 packets of 144 samples from 2015-04-22T13:42:20.875.999. Part 101/144

Processed Wed Apr 22 15:49:53 2015 by ELM ver.2012-10-06 from 001\_\_elm20150422\_134219\_\_dat00.bin



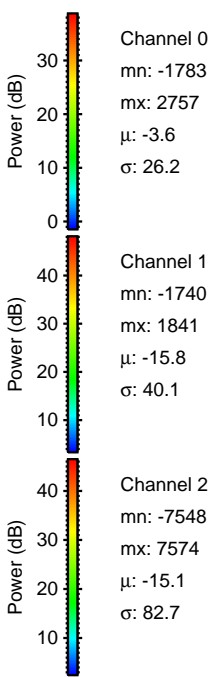
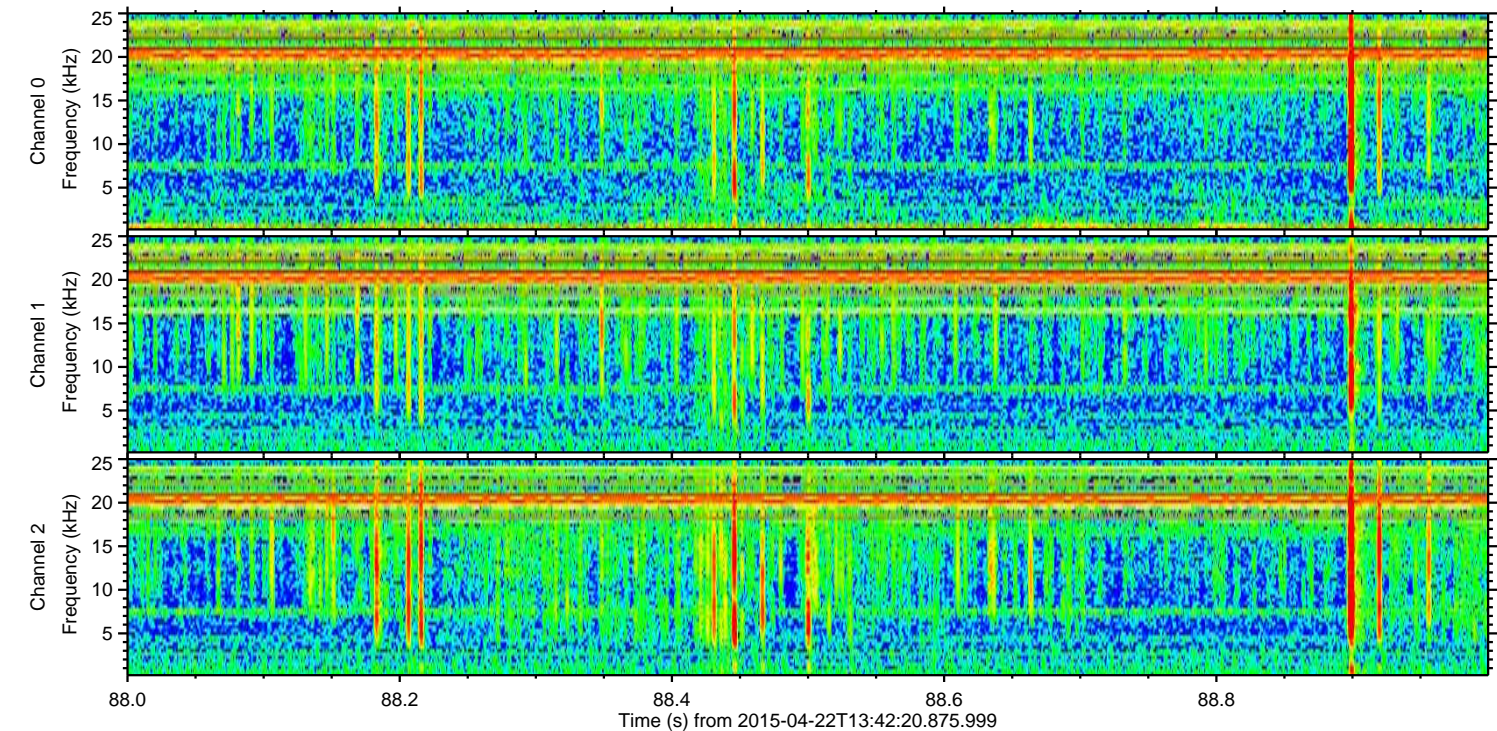
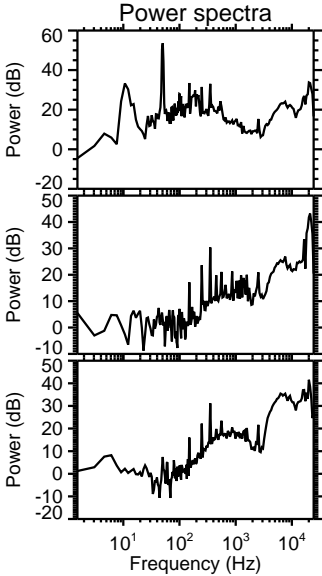
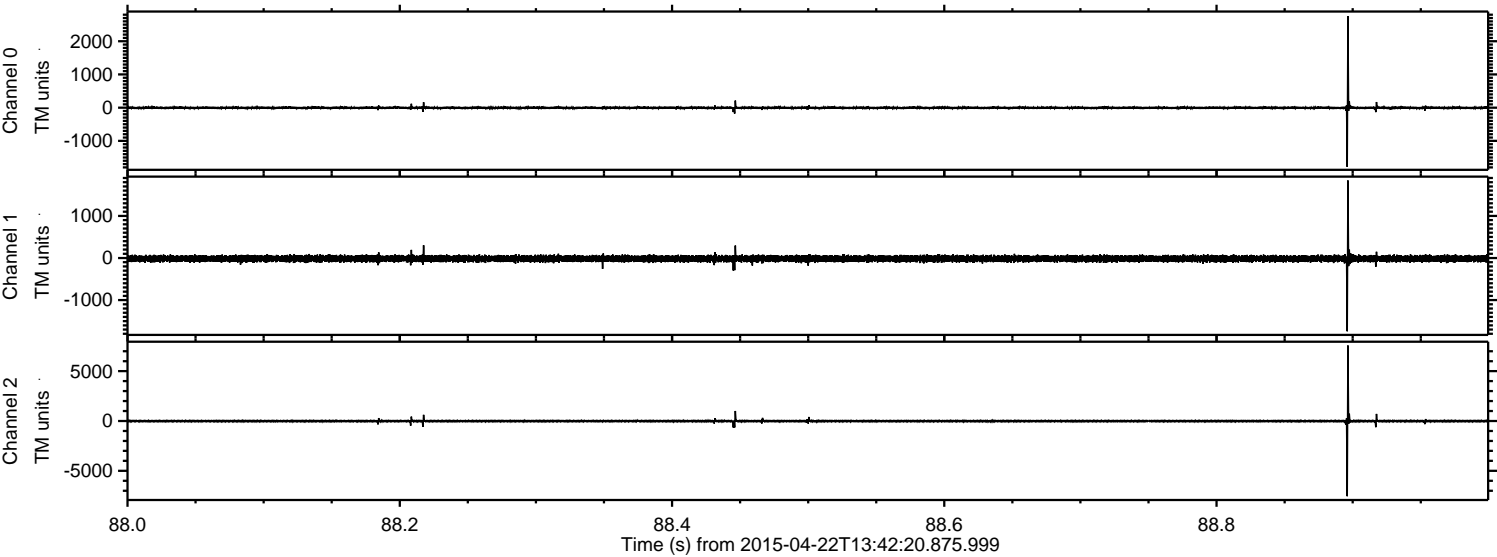


Processed Wed Apr 22 15:49:54 2015 by ELM ver.2012-10-06 from 001\_\_elm20150422\_134219\_\_dat00.bin





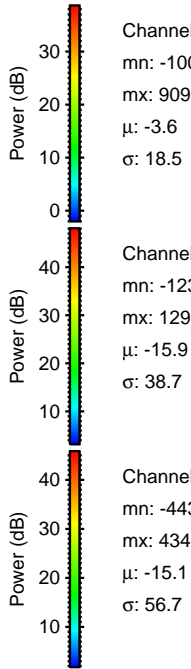
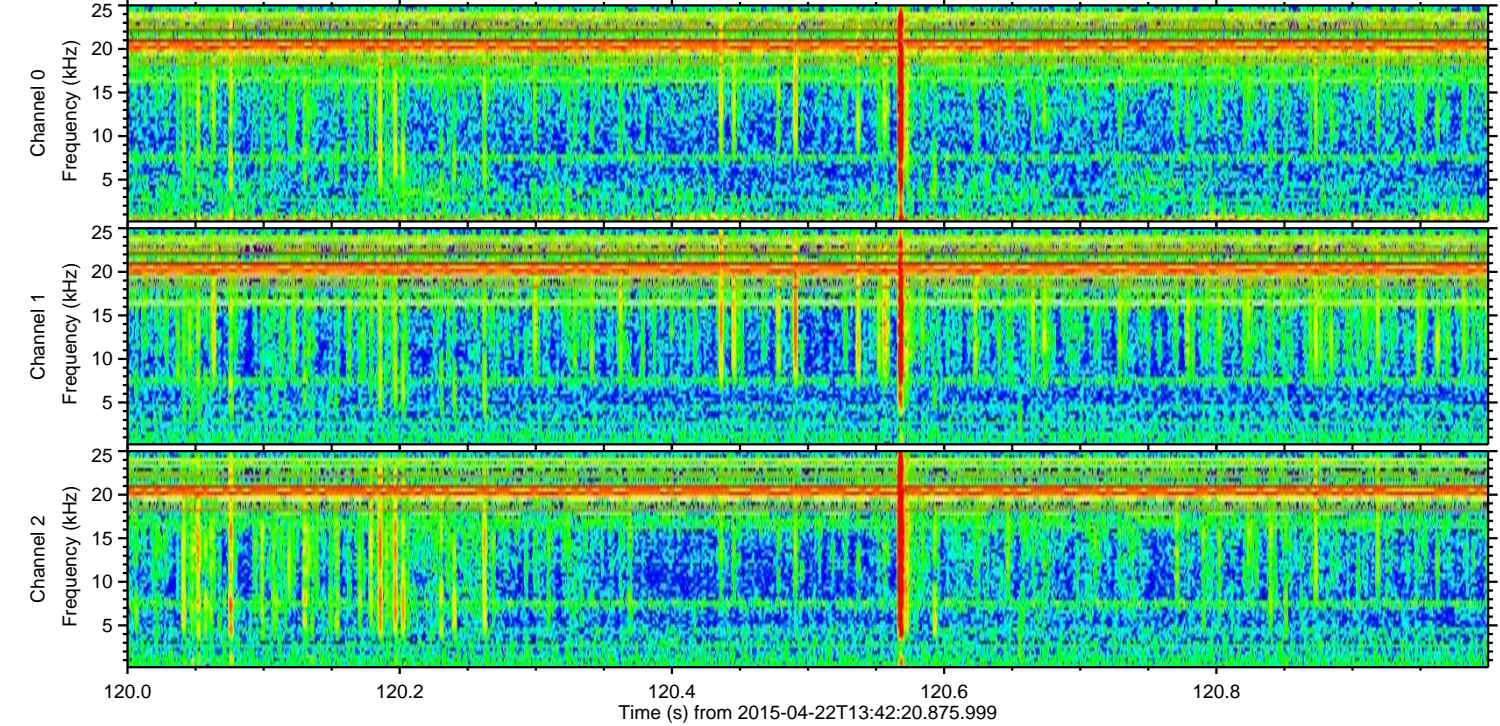
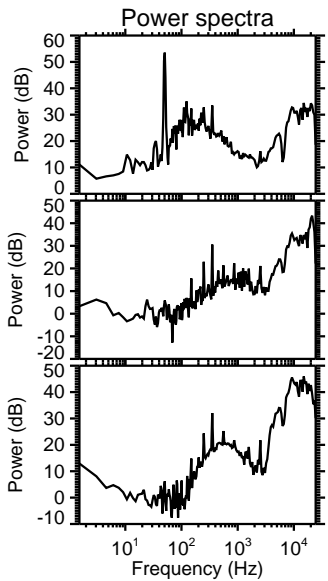
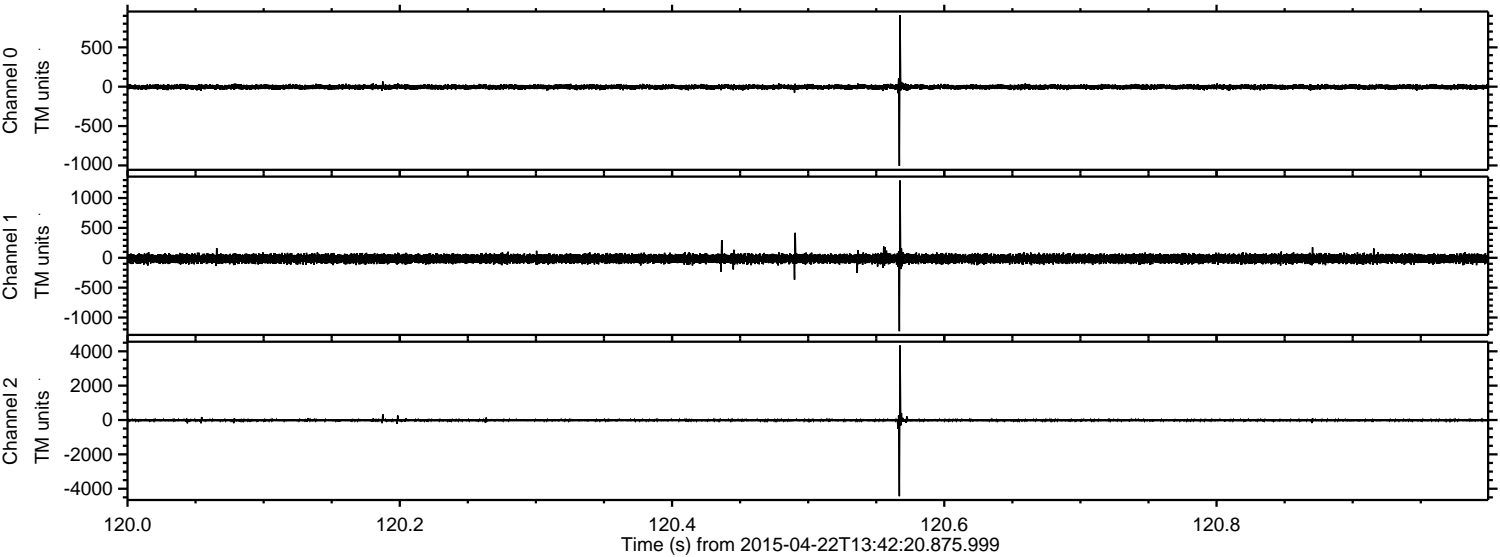
Processed Wed Apr 22 15:49:55 2015 by ELM ver.2012-10-06 from 001\_\_elm20150422\_134219\_\_dat00.bin





ELMAVAN 3D WAVEFORMS (Measured data sampled at 50 kHz) 49759 packets of 144 samples from 2015-04-22T13:42:20.875.999. Part 121/144

Processed Wed Apr 22 15:49:56 2015 by ELM ver.2012-10-06 from 001\_\_elm20150422\_134219\_\_dat00.bin



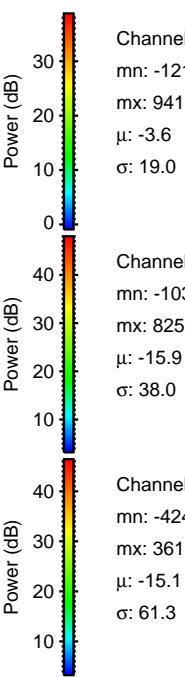
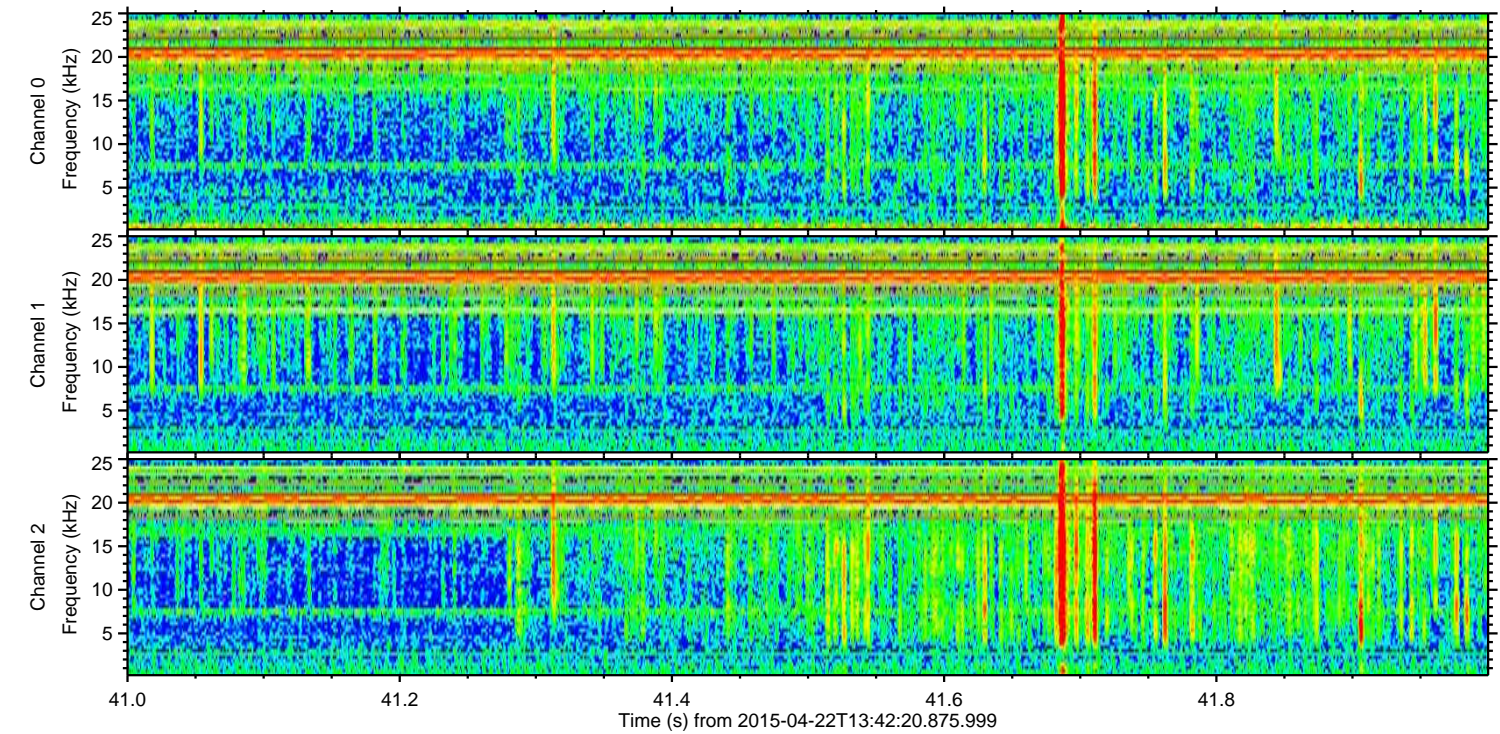
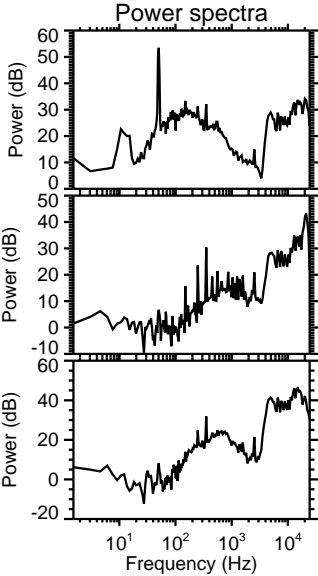
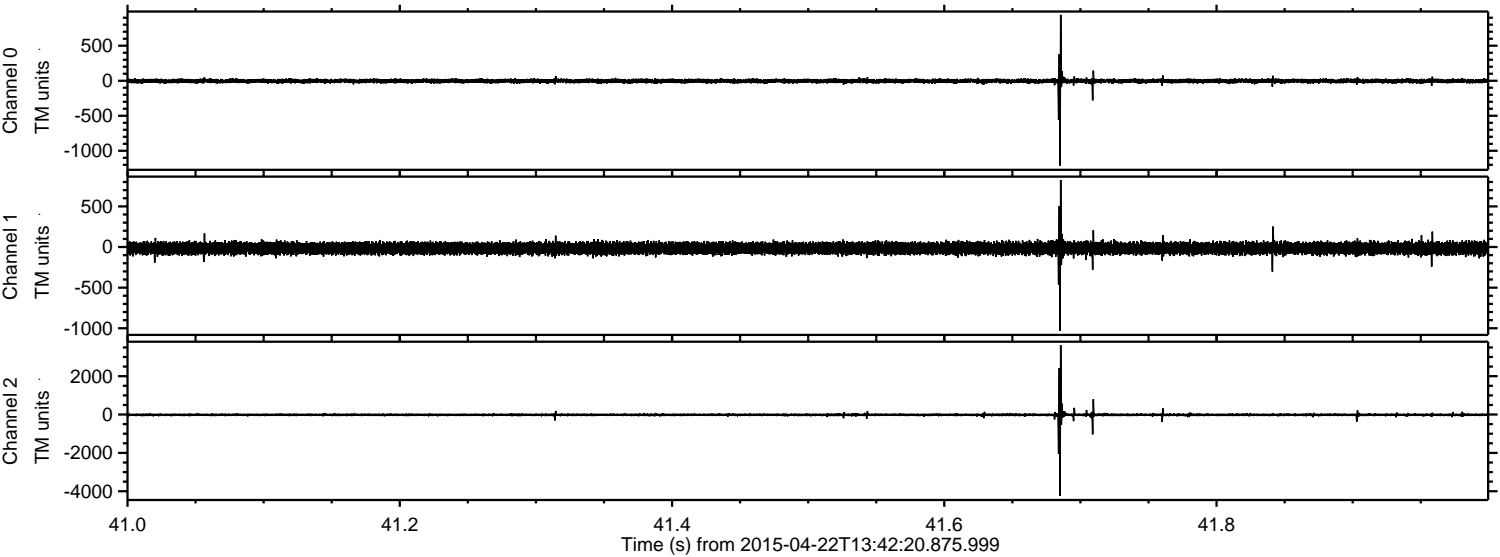
Channel 0  
mn: -1005  
mx: 909  
 $\mu$ : -3.6  
 $\sigma$ : 18.5

Channel 1  
mn: -1230  
mx: 1294  
 $\mu$ : -15.9  
 $\sigma$ : 38.7

Channel 2  
mn: -4434  
mx: 4340  
 $\mu$ : -15.1  
 $\sigma$ : 56.7



Processed Wed Apr 22 15:49:57 2015 by ELM ver.2012-10-06 from 001\_\_elm20150422\_134219\_\_dat00.bin



Channel 0  
mn: -1211  
mx: 941  
 $\mu$ : -3.6  
 $\sigma$ : 19.0

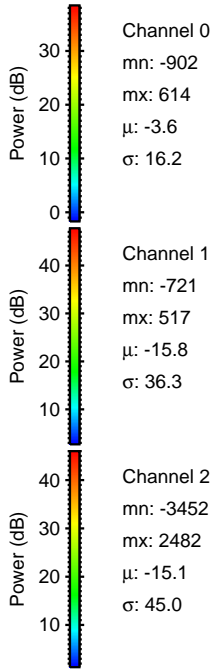
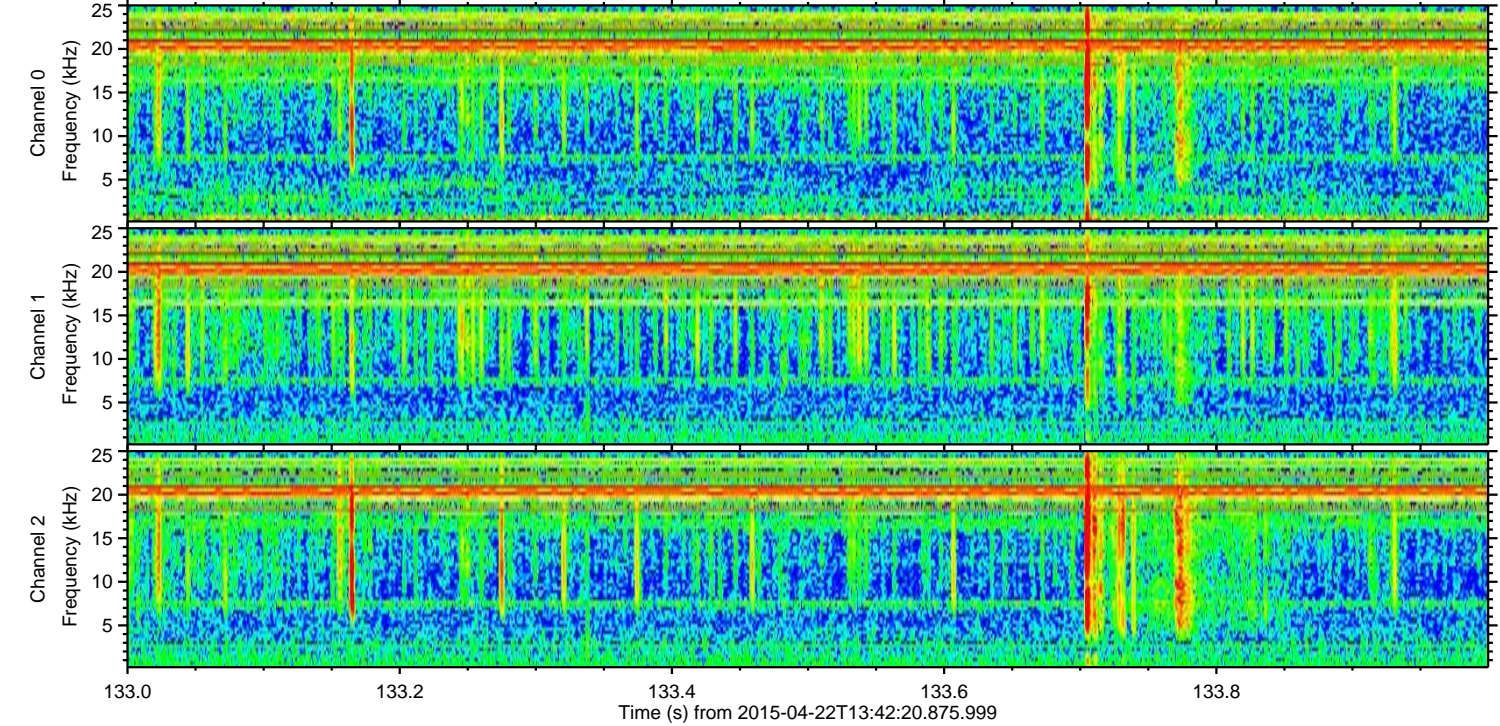
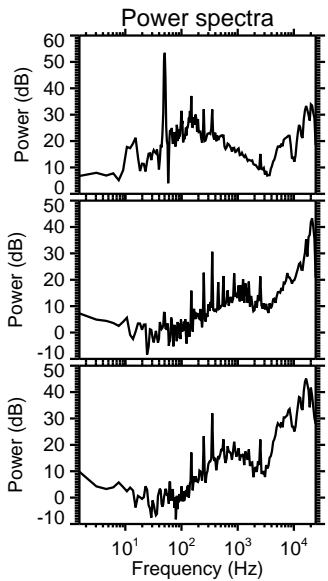
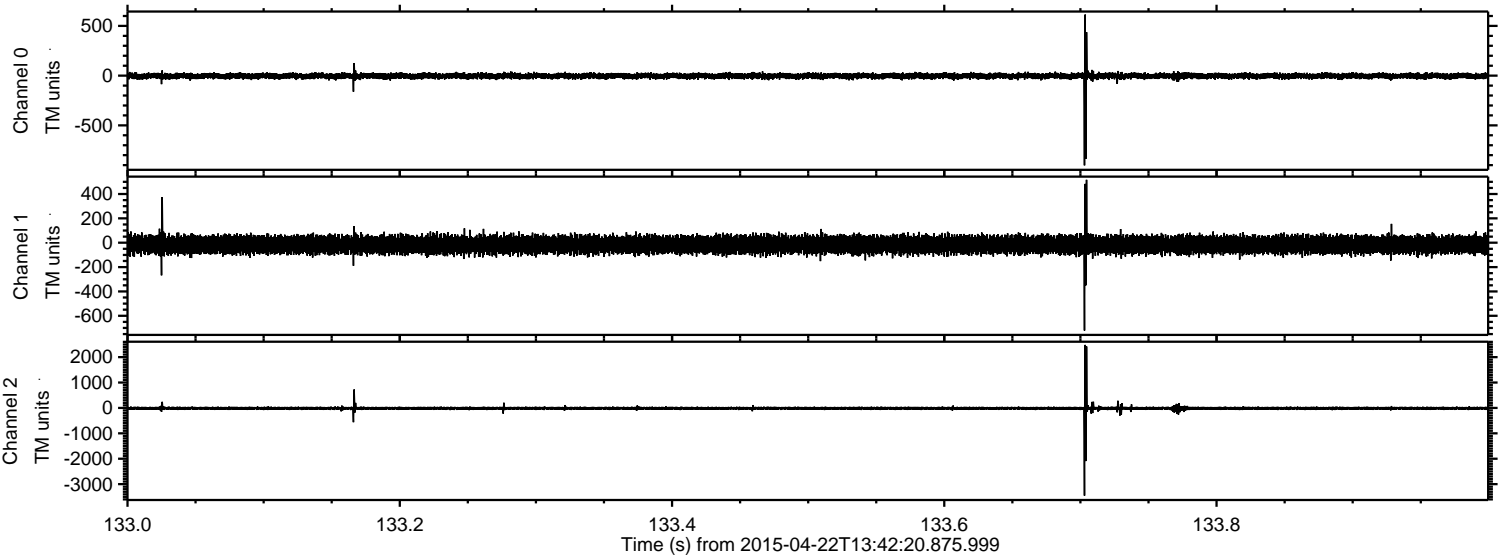
Channel 1  
mn: -1030  
mx: 825  
 $\mu$ : -15.9  
 $\sigma$ : 38.0

Channel 2  
mn: -4244  
mx: 3617  
 $\mu$ : -15.1  
 $\sigma$ : 61.3



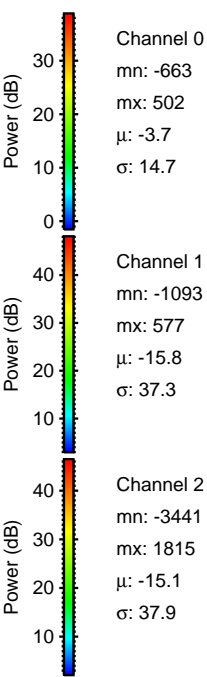
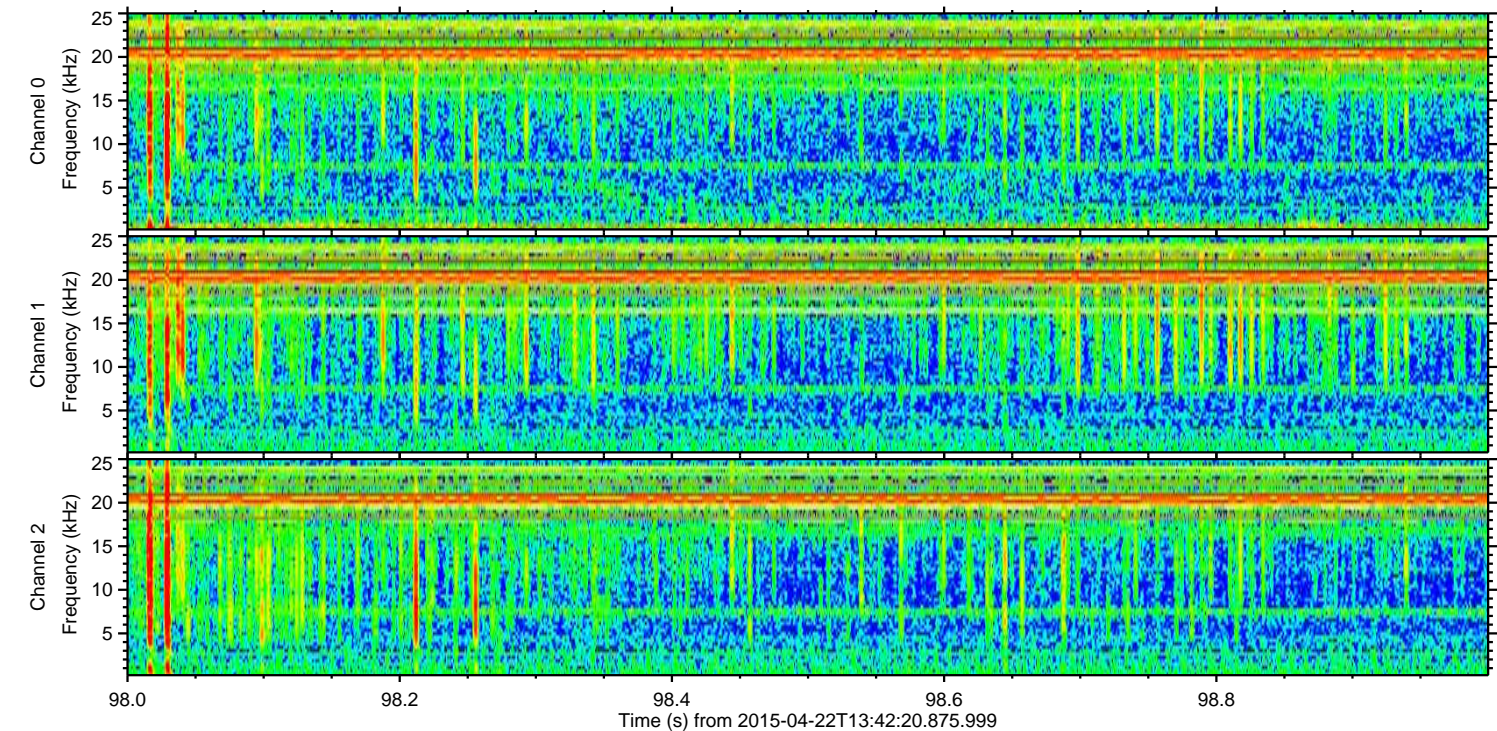
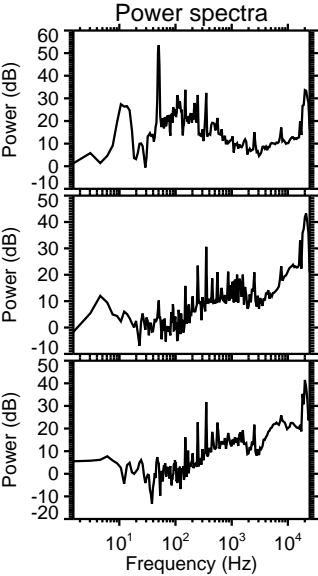
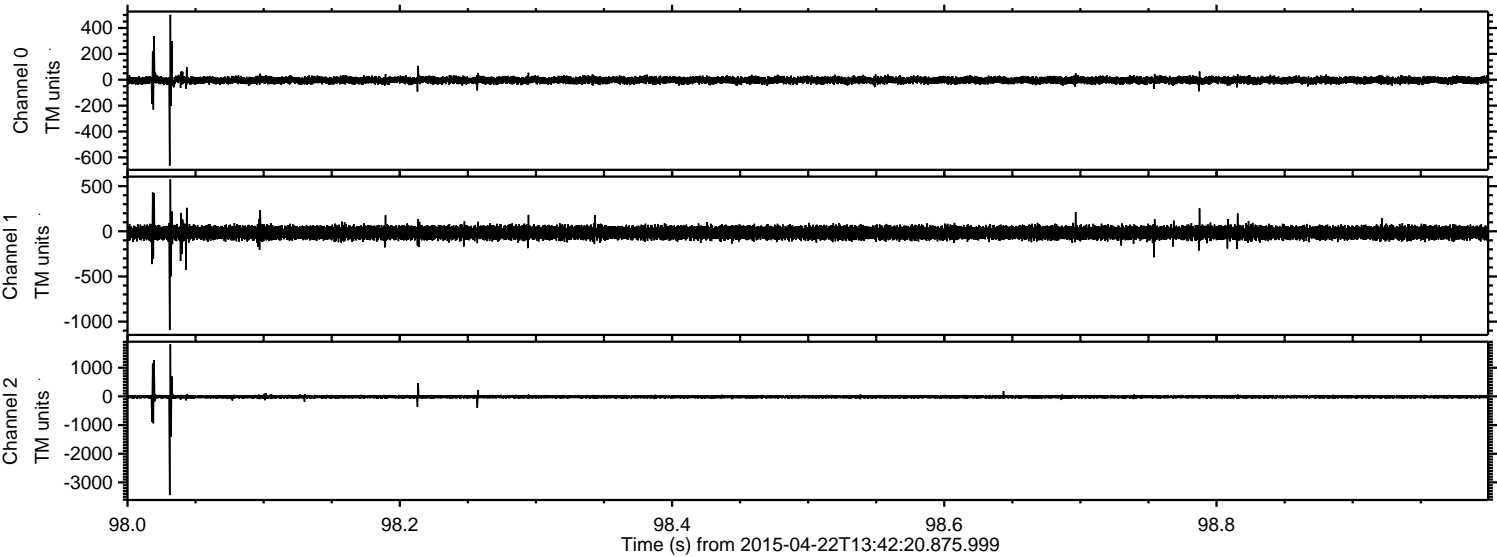
ELMAVAN 3D WAVEFORMS (Measured data sampled at 50 kHz) 49759 packets of 144 samples from 2015-04-22T13:42:20.875.999. Part 134/144

Processed Wed Apr 22 15:49:58 2015 by ELM ver.2012-10-06 from 001\_\_elm20150422\_134219\_\_dat00.bin





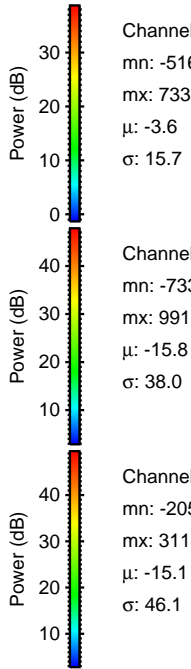
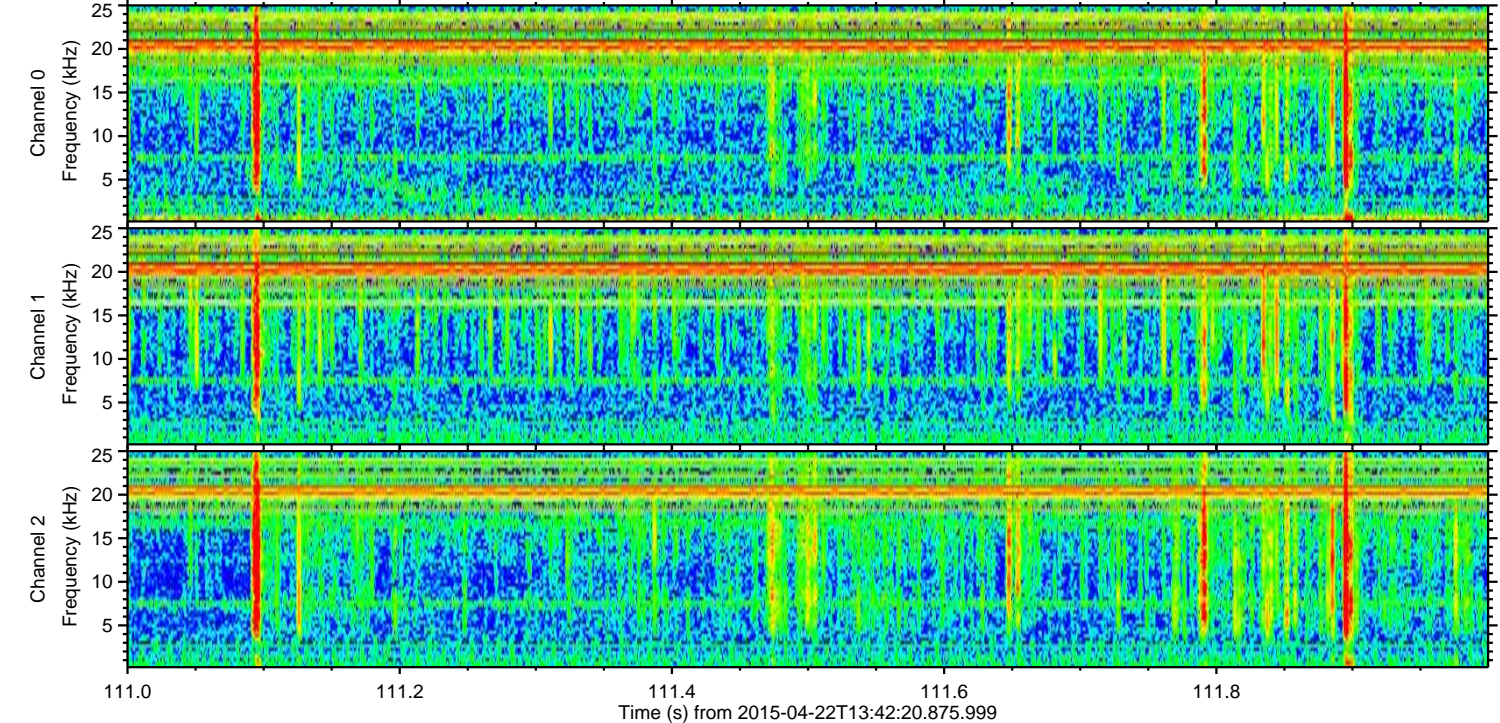
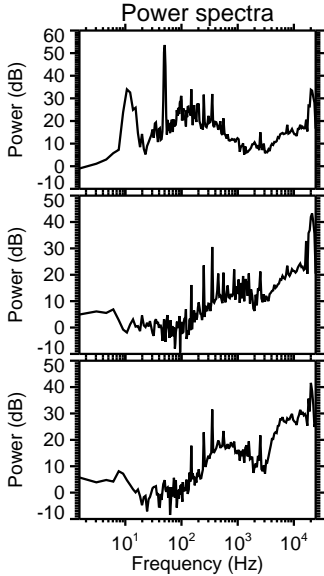
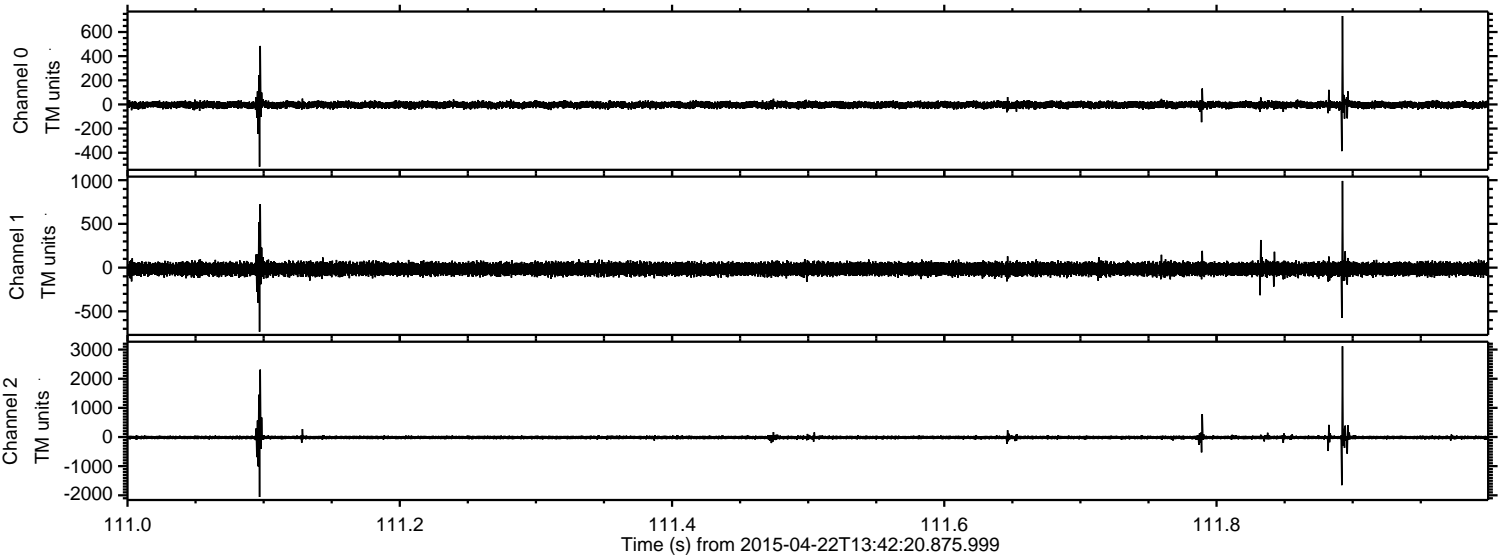
Processed Wed Apr 22 15:49:59 2015 by ELM ver.2012-10-06 from 001\_\_elm20150422\_134219\_\_dat00.bin





ELMAVAN 3D WAVEFORMS (Measured data sampled at 50 kHz) 49759 packets of 144 samples from 2015-04-22T13:42:20.875.999. Part 112/144

Processed Wed Apr 22 15:50:00 2015 by ELM ver.2012-10-06 from 001\_\_elm20150422\_134219\_\_dat00.bin



Channel 0  
mn: -516  
mx: 733  
 $\mu$ : -3.6  
 $\sigma$ : 15.7

Channel 1  
mn: -733  
mx: 991  
 $\mu$ : -15.8  
 $\sigma$ : 38.0

Channel 2  
mn: -2058  
mx: 3114  
 $\mu$ : -15.1  
 $\sigma$ : 46.1



Processed Wed Apr 22 15:50:01 2015 by ELM ver.2012-10-06 from 001\_\_elm20150422\_134219\_\_dat00.bin

