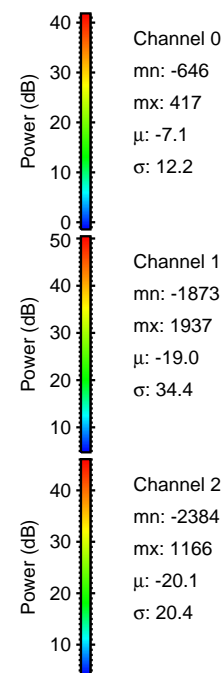
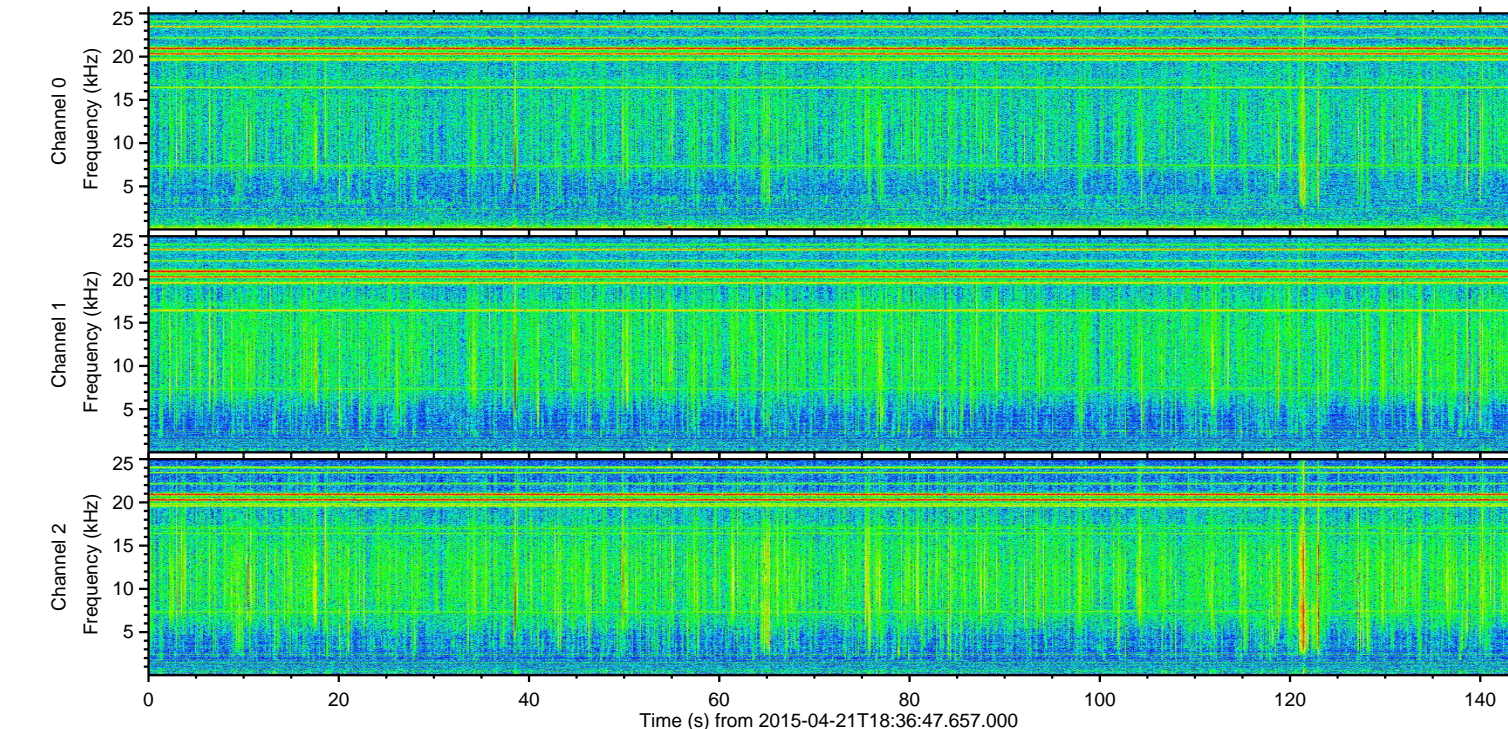
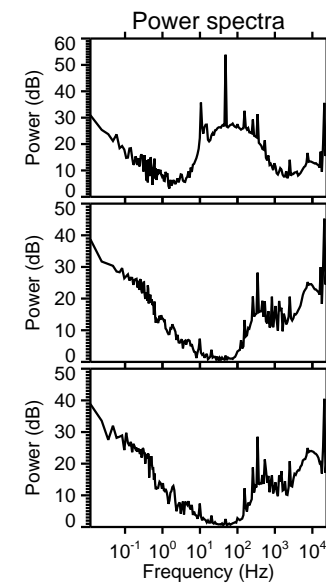
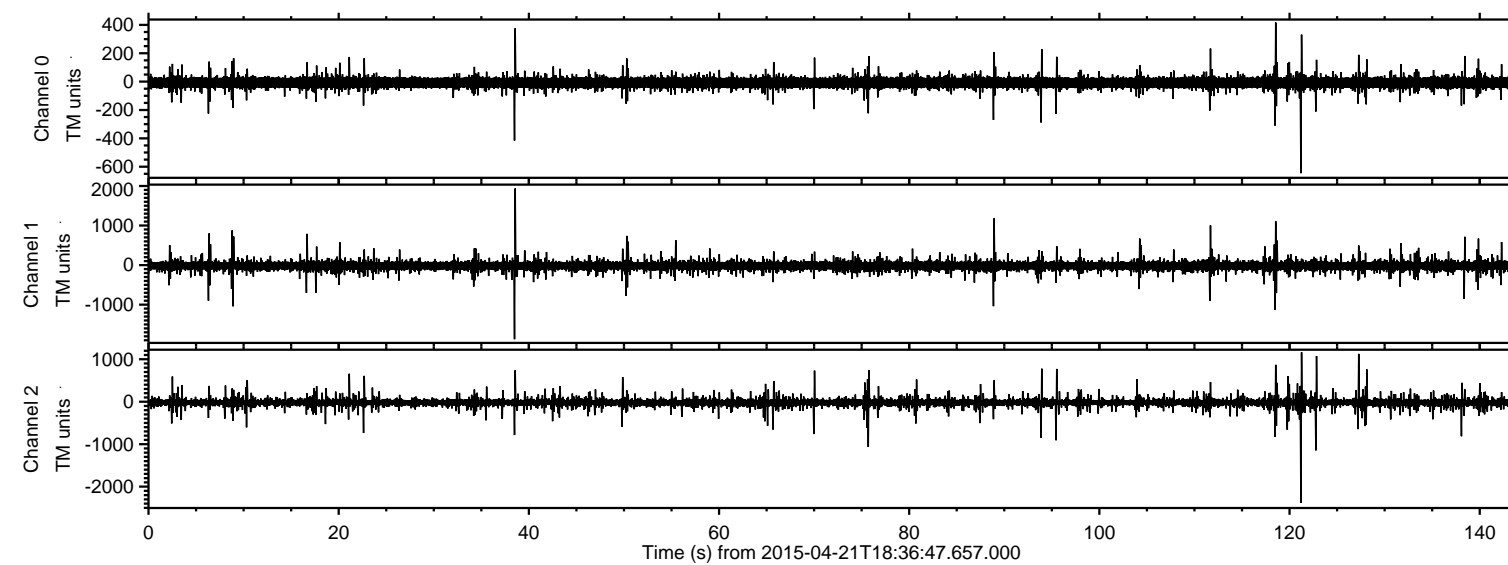
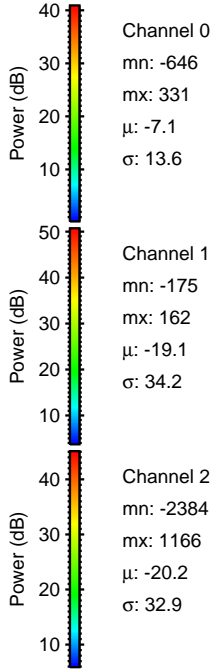
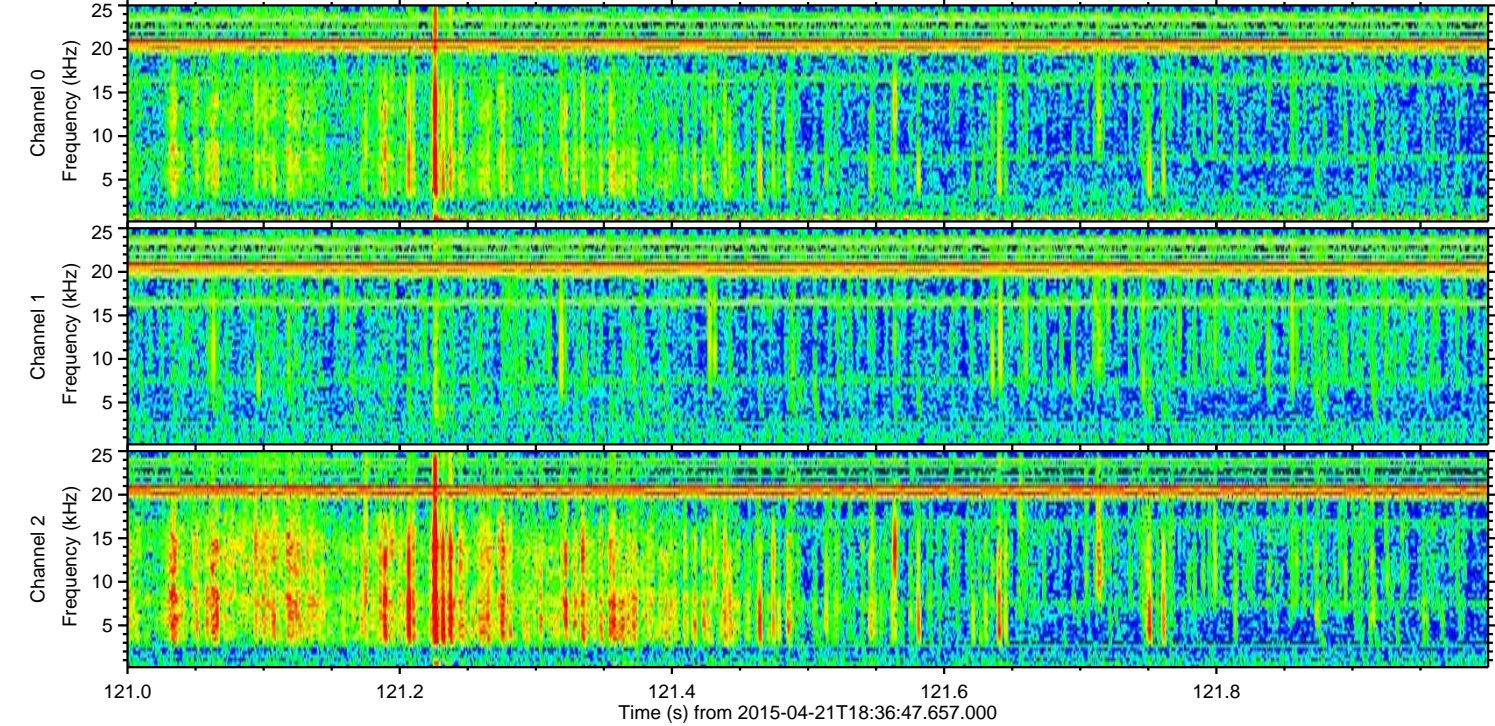
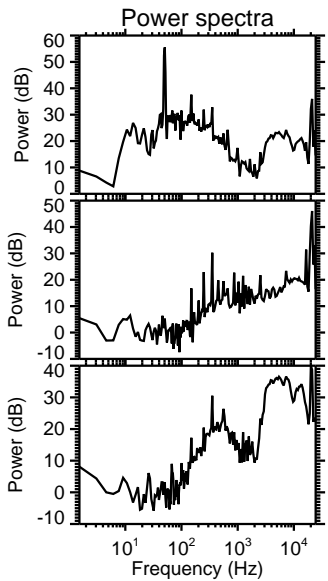
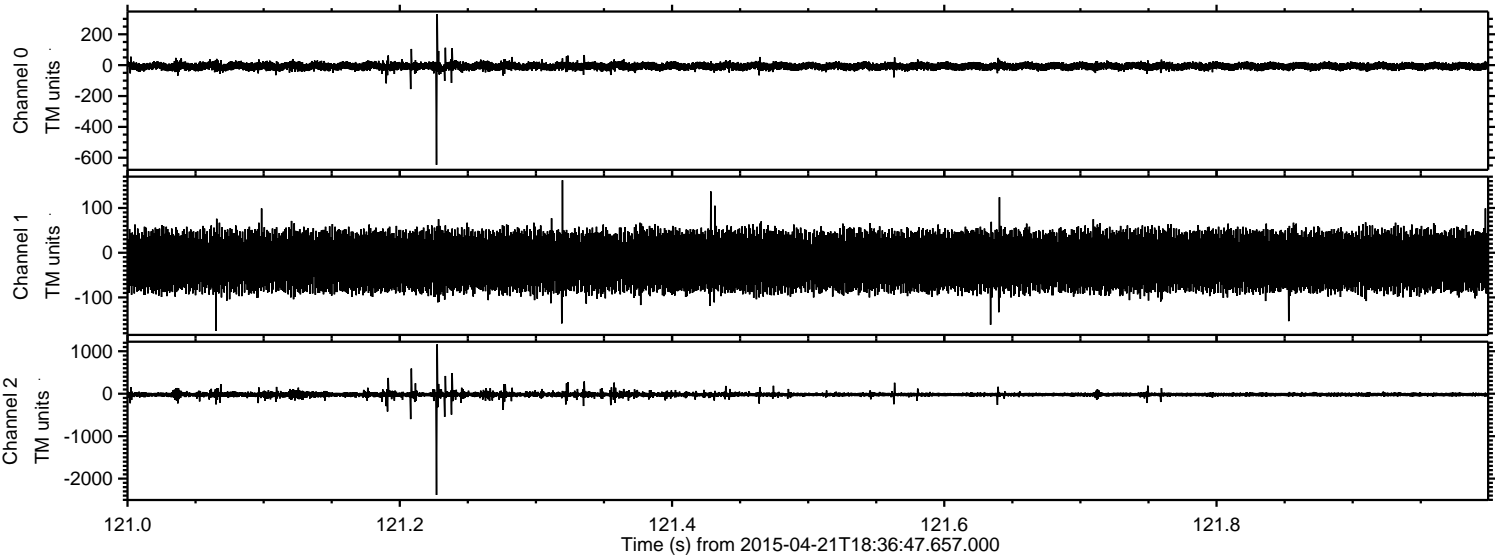


ELMAVAN 3D WAVEFORMS (Measured data sampled at 50 kHz) 49685 packets of 144 samples from 2015-04-21T18:36:47.657.000.

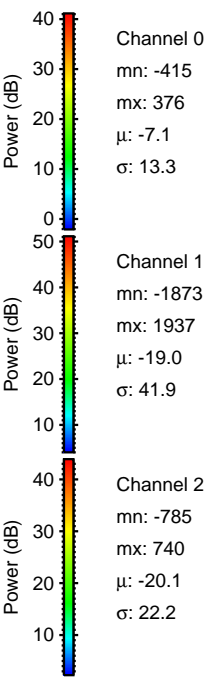
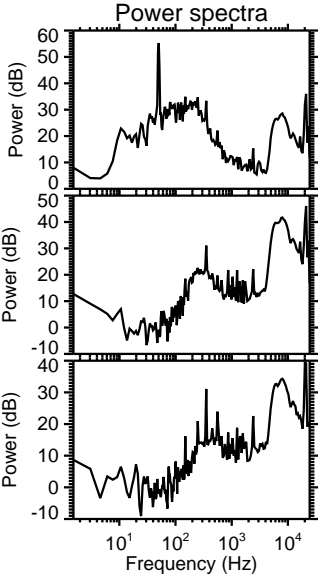
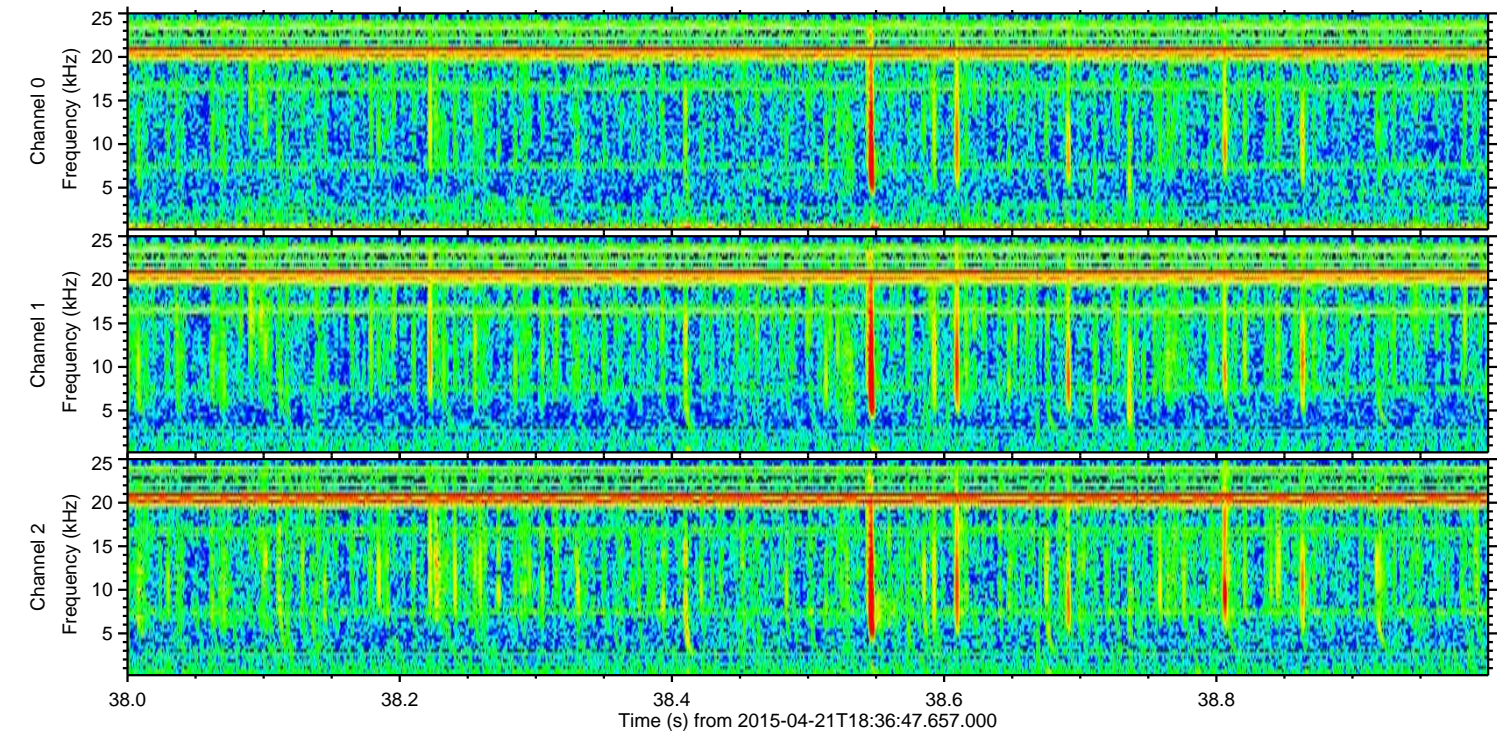
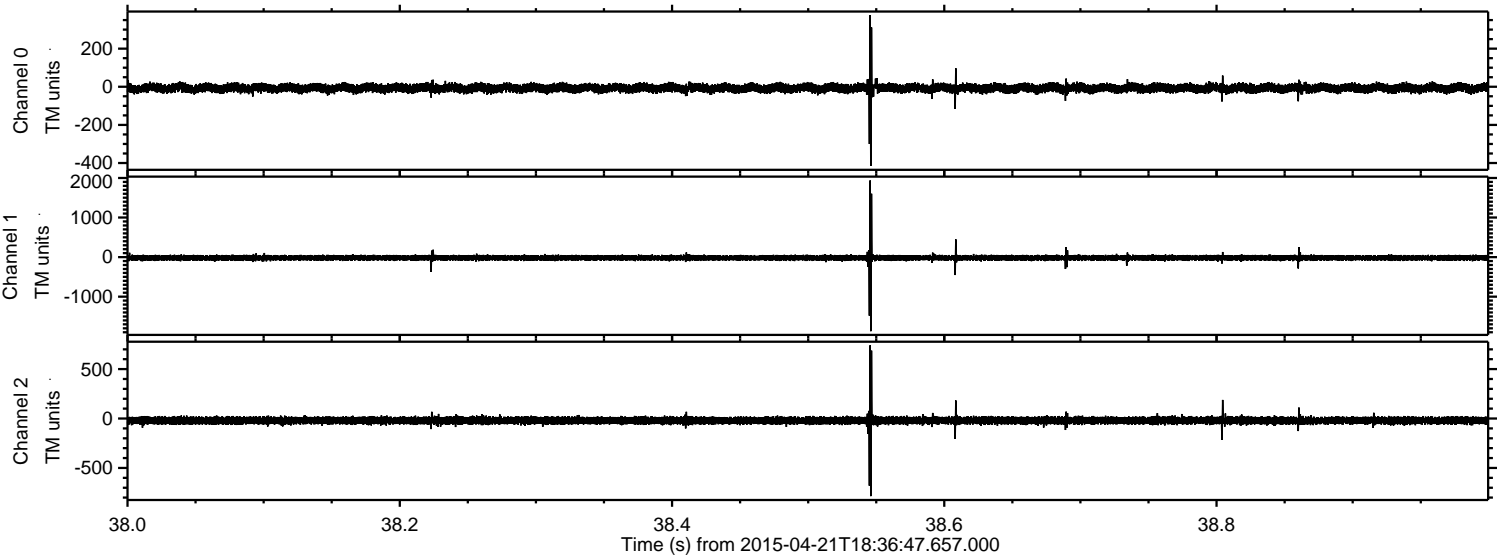
Processed Tue Apr 21 20:43:34 2015 by ELM ver.2012-10-06 from 001__elm20150421_183646__dat00.bin



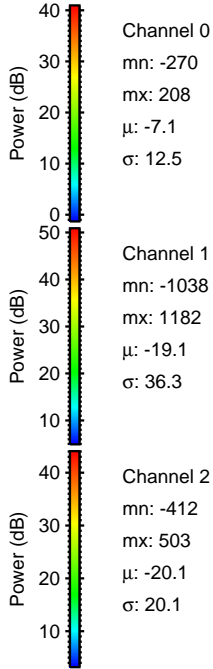
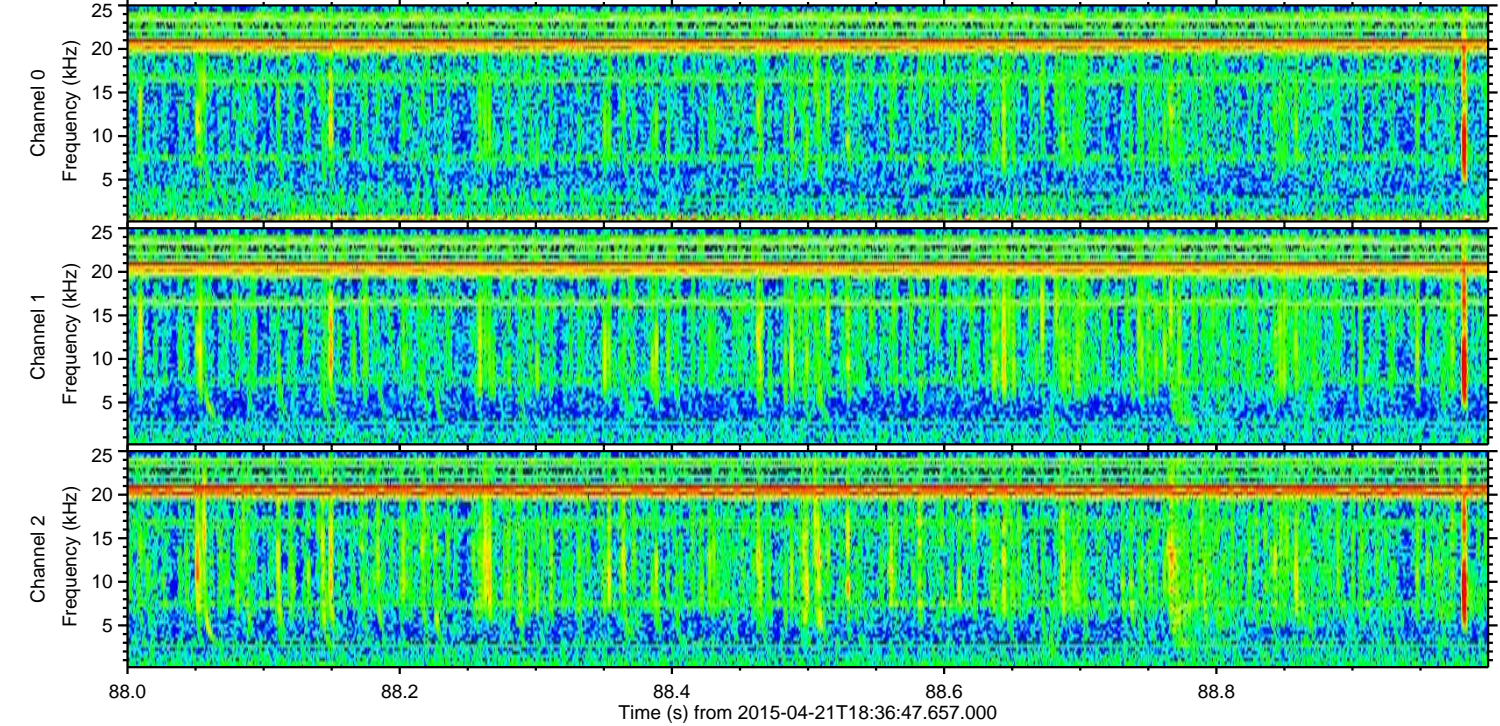
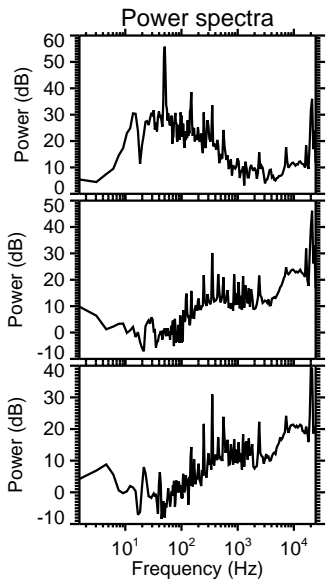
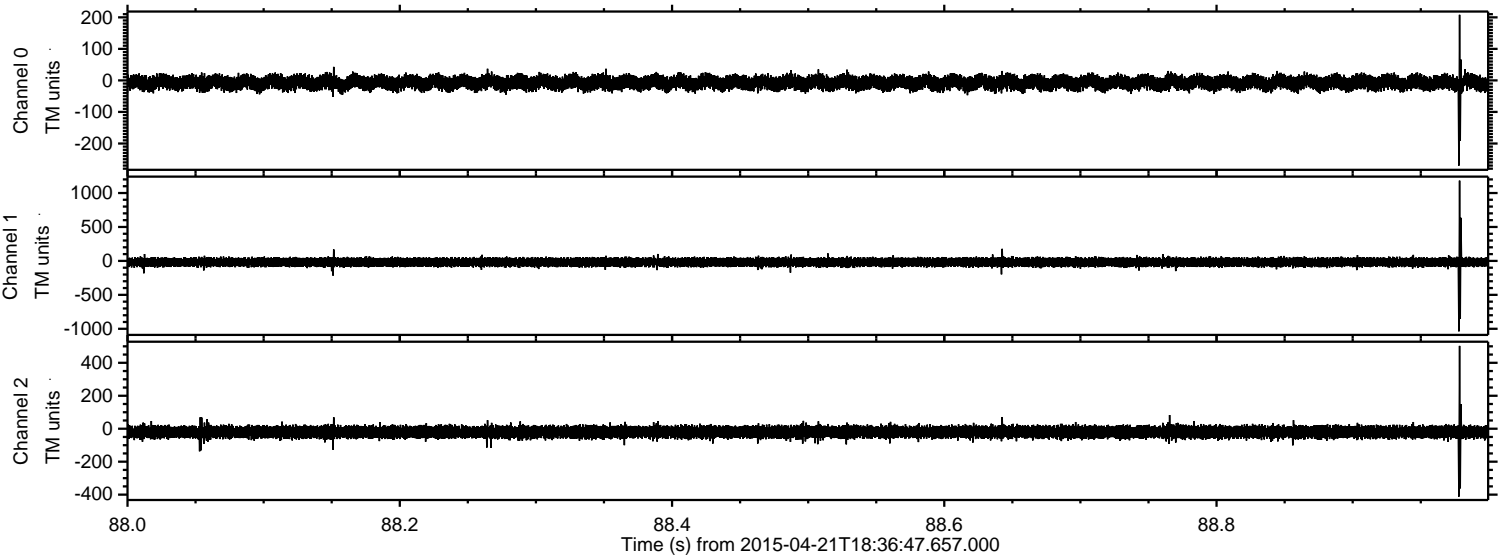
Processed Tue Apr 21 20:43:45 2015 by ELM ver.2012-10-06 from 001__elm20150421_183646__dat00.bin



Processed Tue Apr 21 20:43:46 2015 by ELM ver.2012-10-06 from 001__elm20150421_183646__dat00.bin

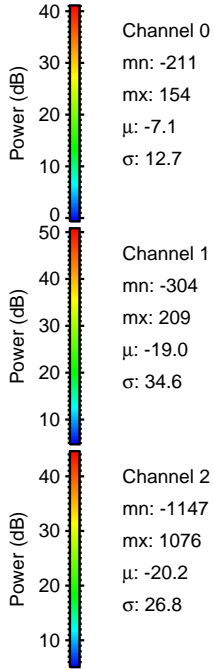
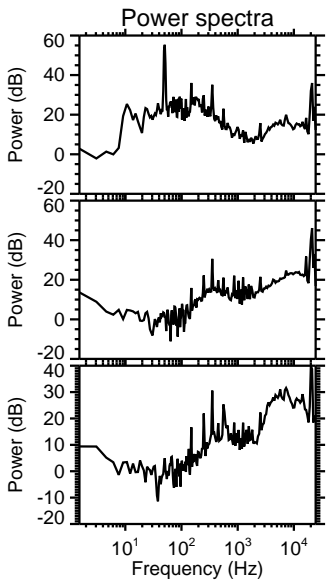
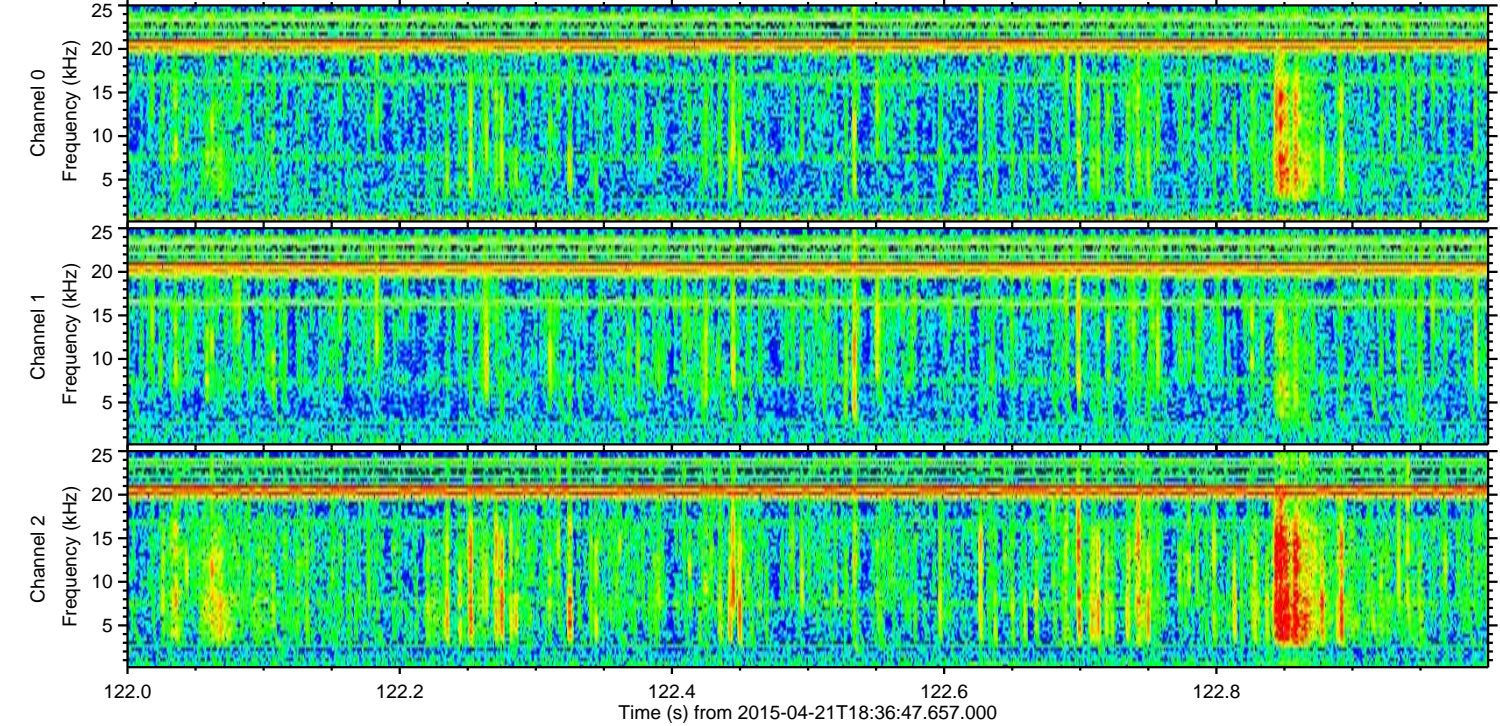
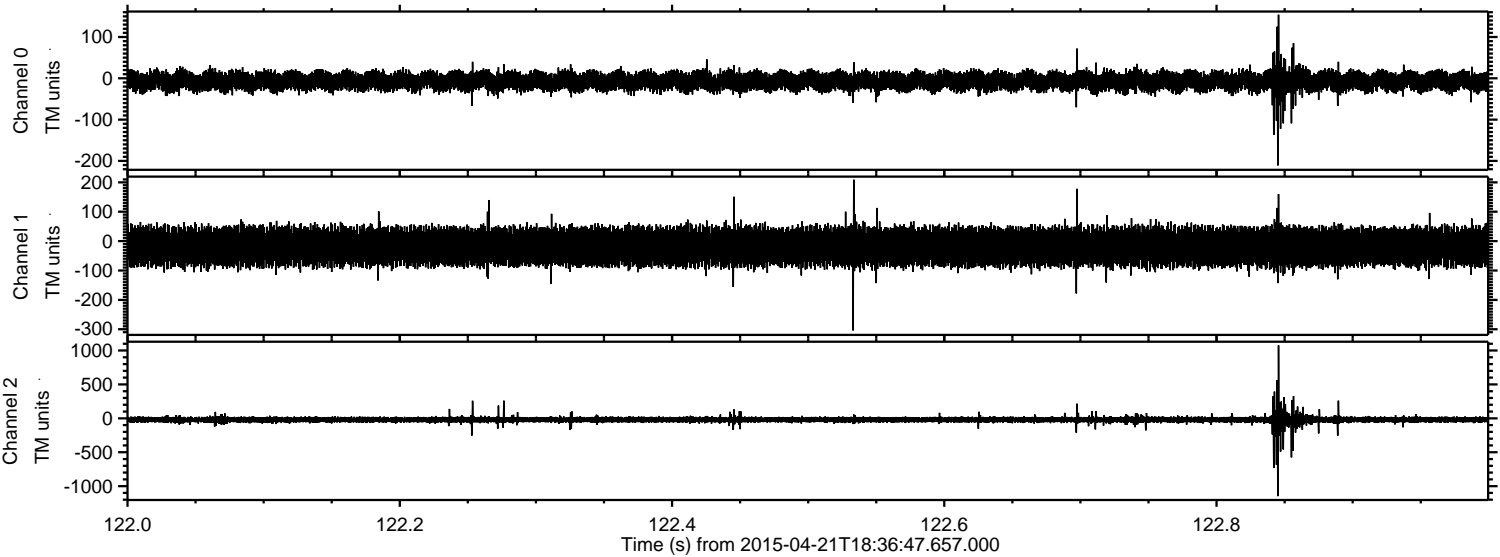


Processed Tue Apr 21 20:43:47 2015 by ELM ver.2012-10-06 from 001__elm20150421_183646__dat00.bin

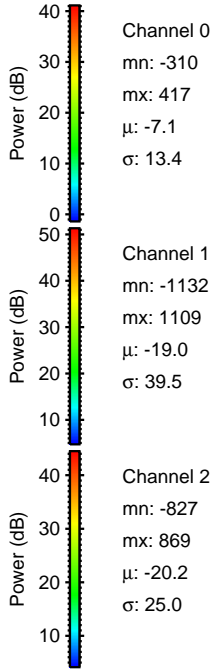
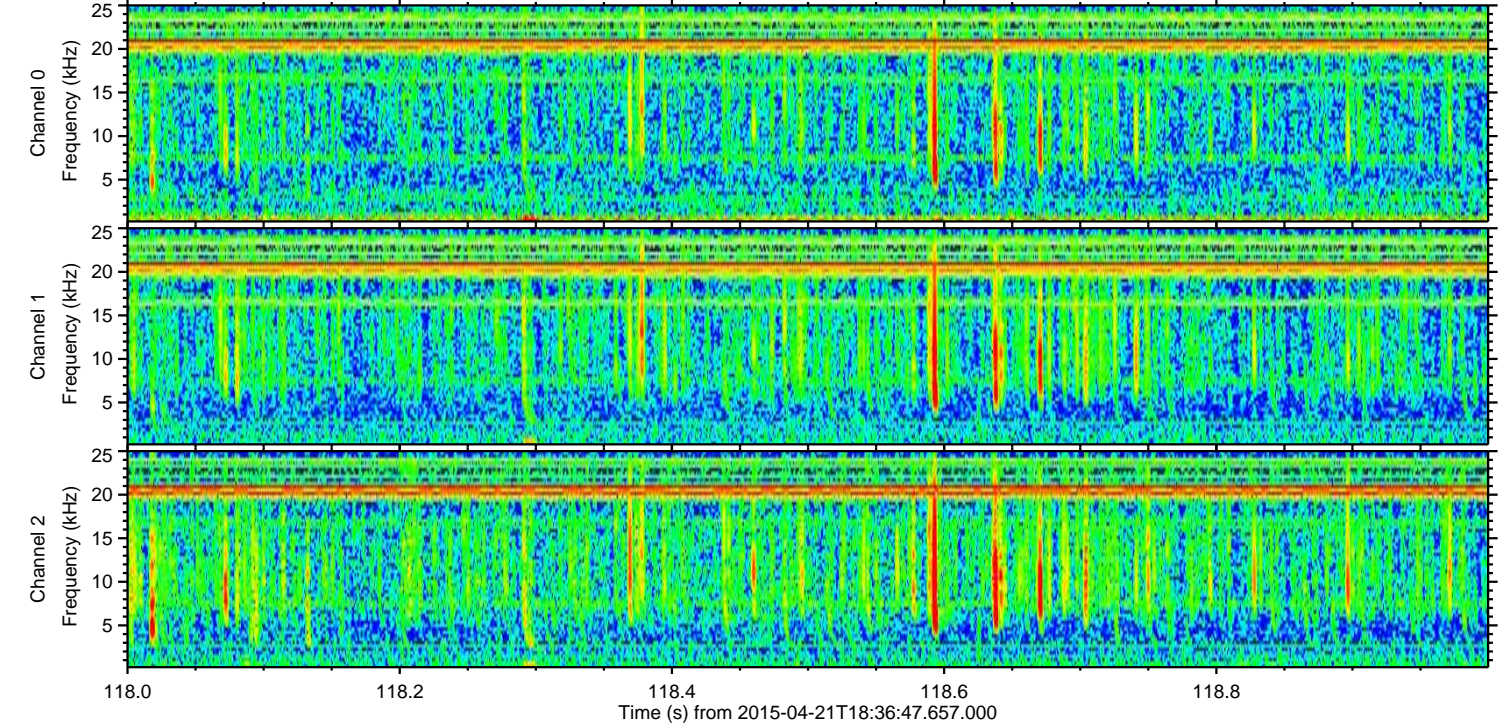
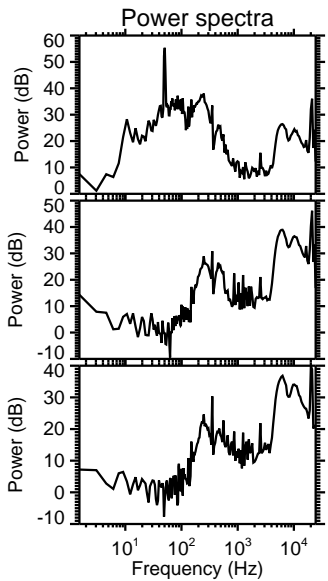
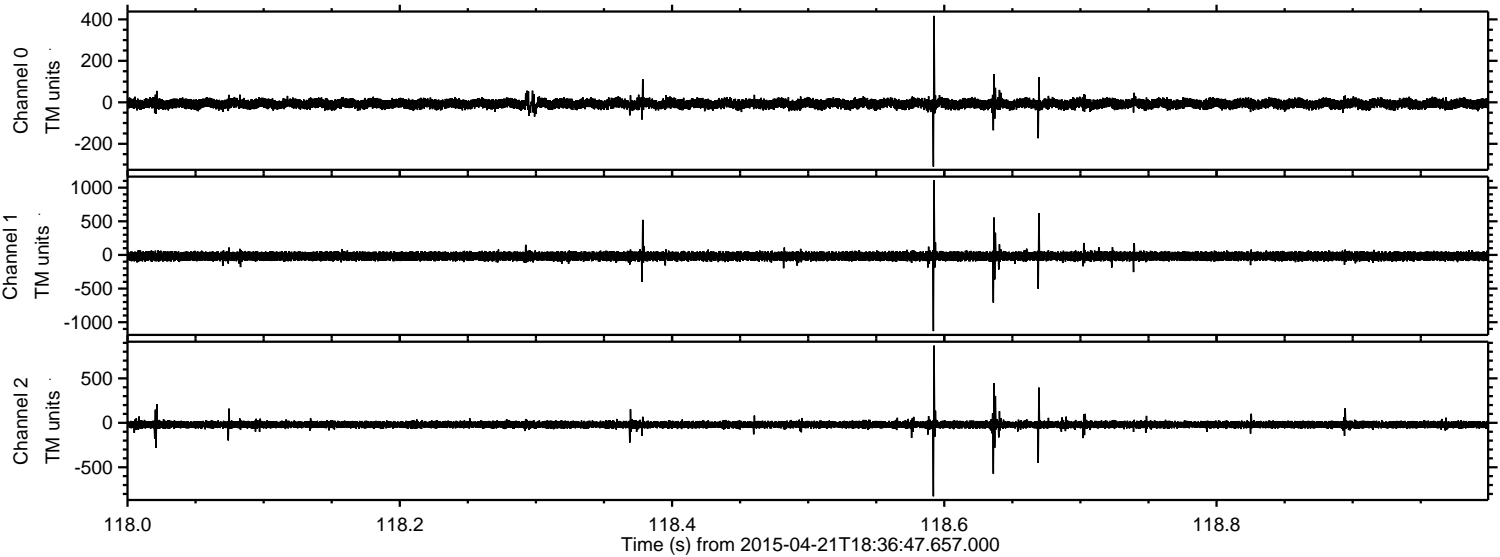


ELMAVAN 3D WAVEFORMS (Measured data sampled at 50 kHz) 49685 packets of 144 samples from 2015-04-21T18:36:47.657.000. Part 123/144

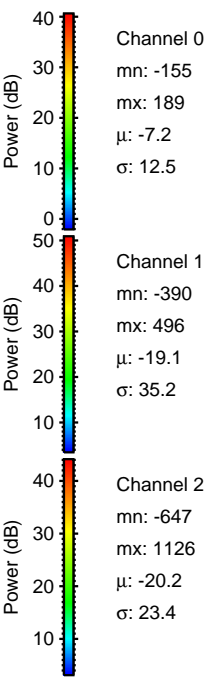
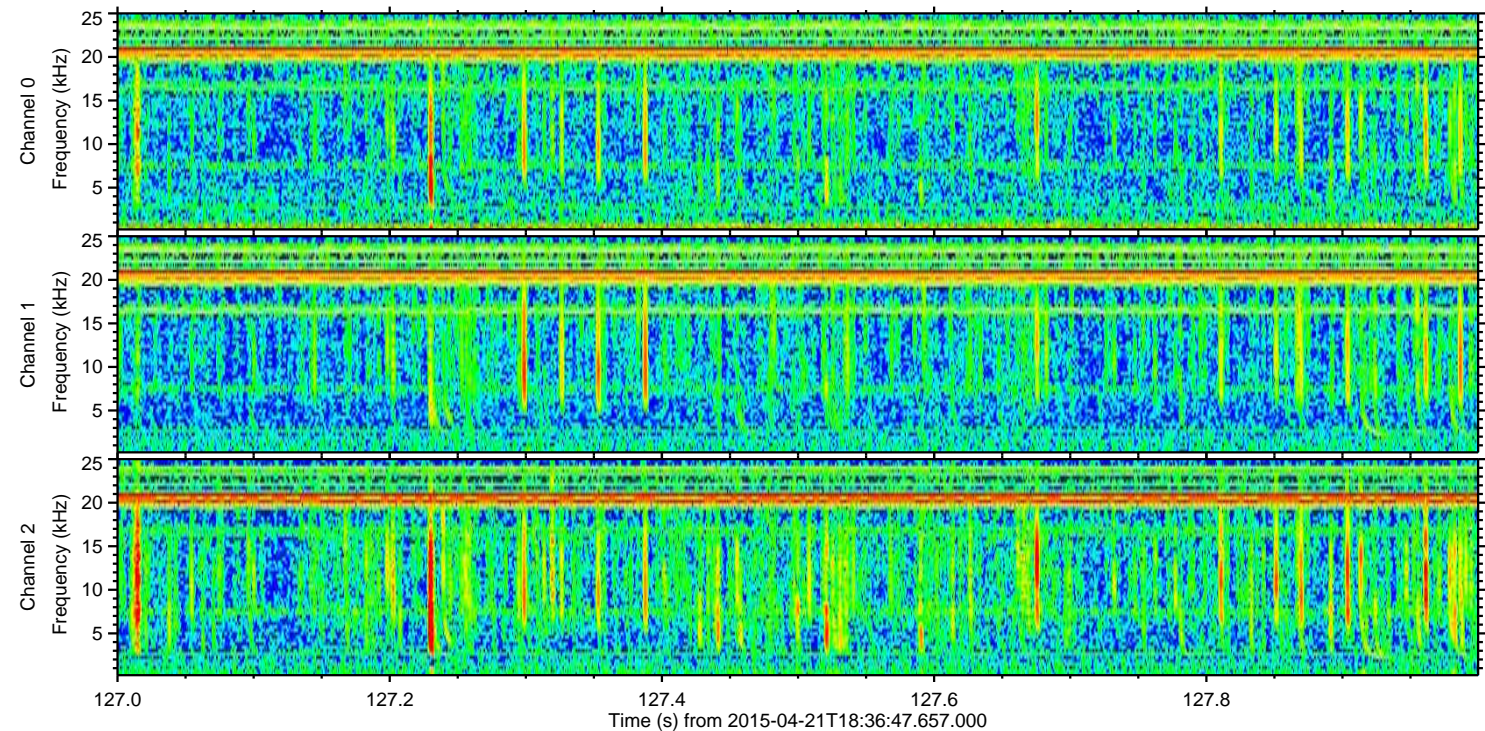
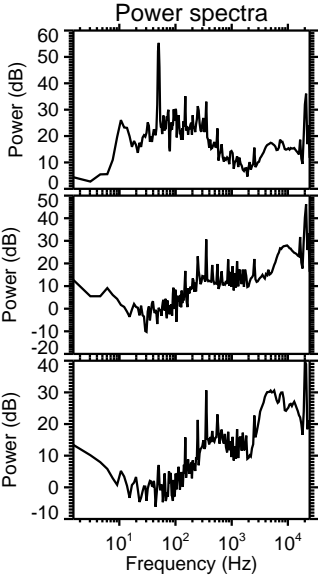
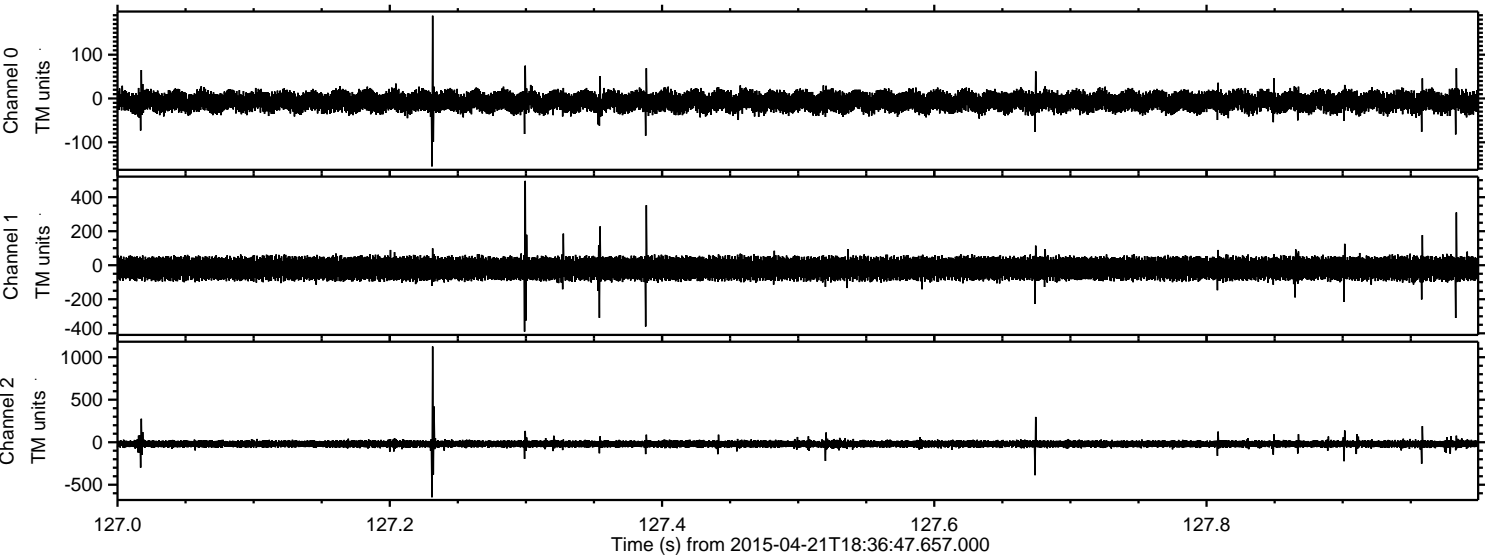
Processed Tue Apr 21 20:43:48 2015 by ELM ver.2012-10-06 from 001__elm20150421_183646__dat00.bin



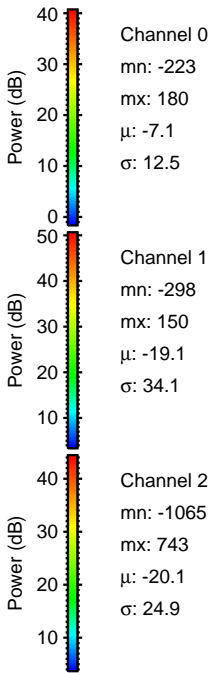
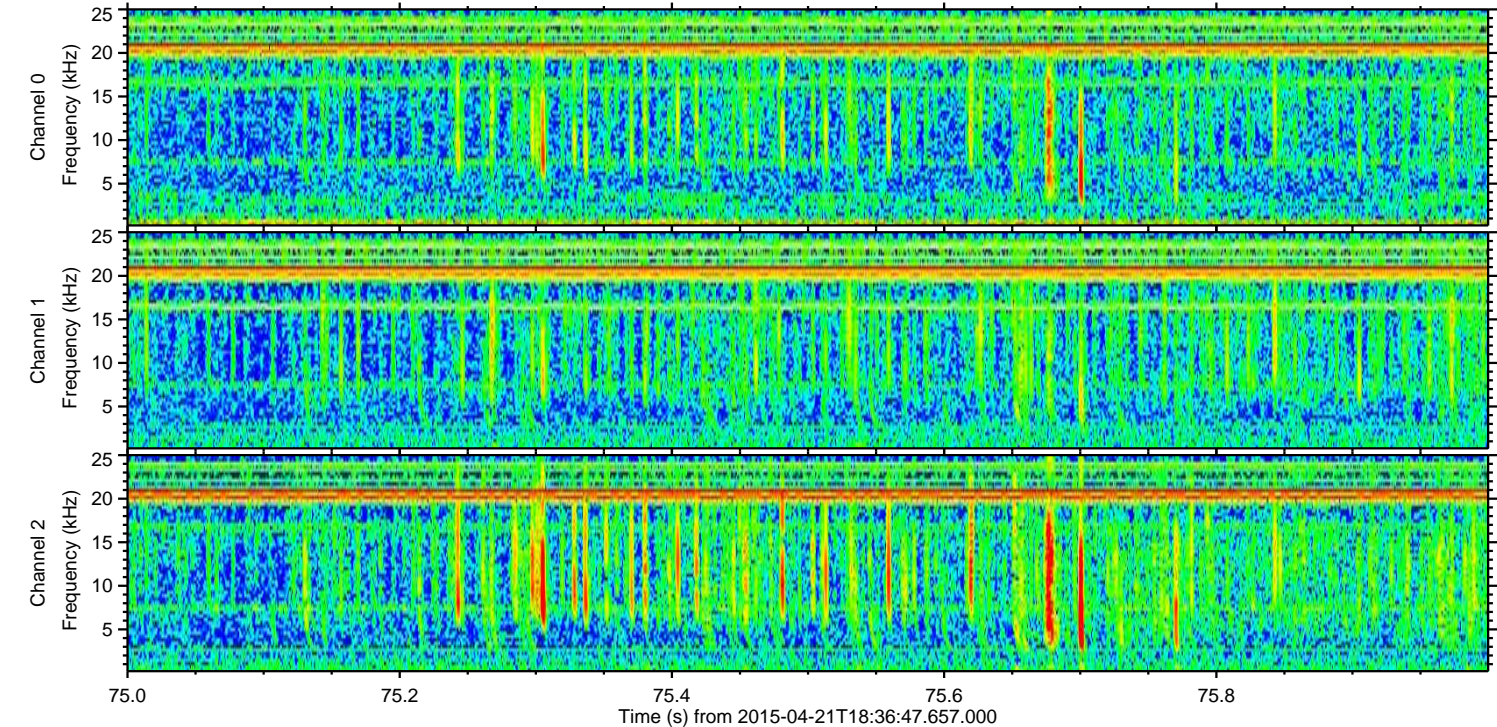
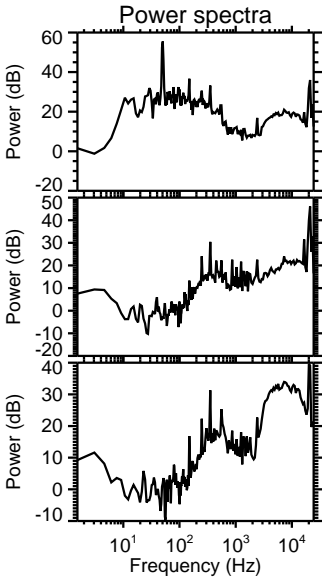
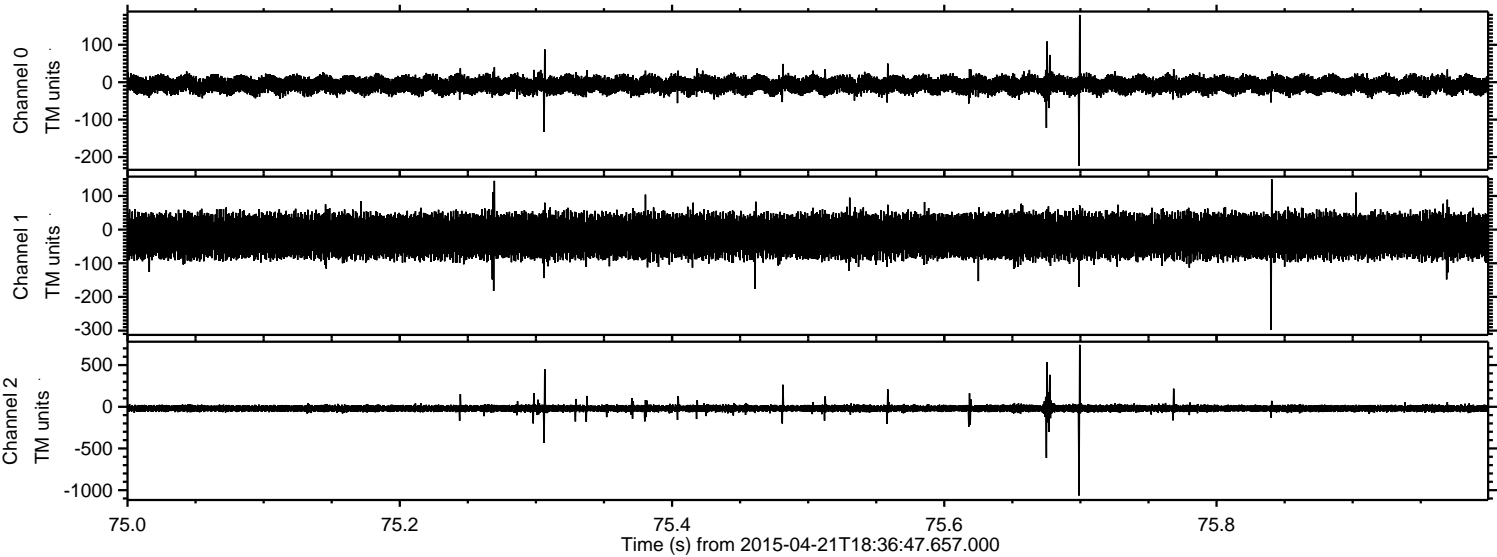
Processed Tue Apr 21 20:43:49 2015 by ELM ver.2012-10-06 from 001__elm20150421_183646__dat00.bin



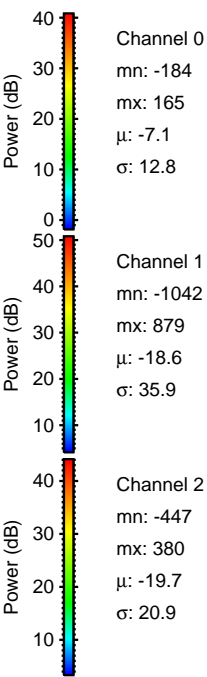
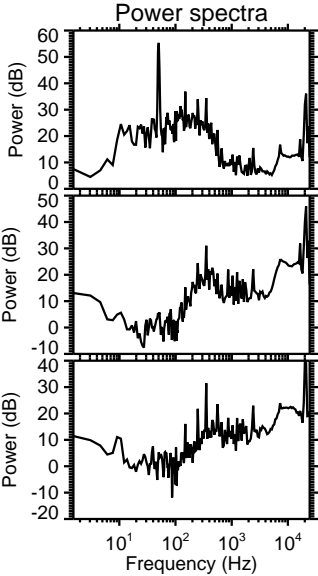
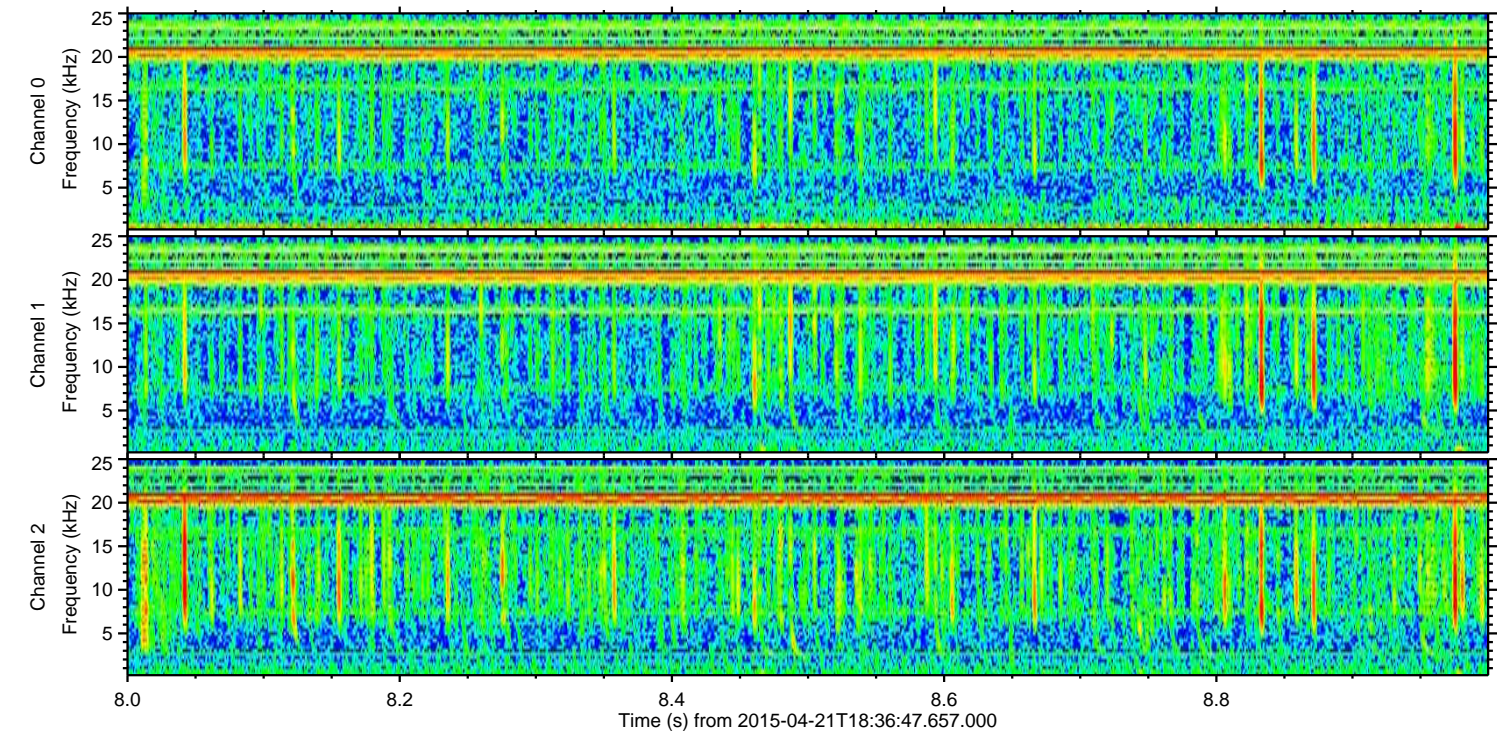
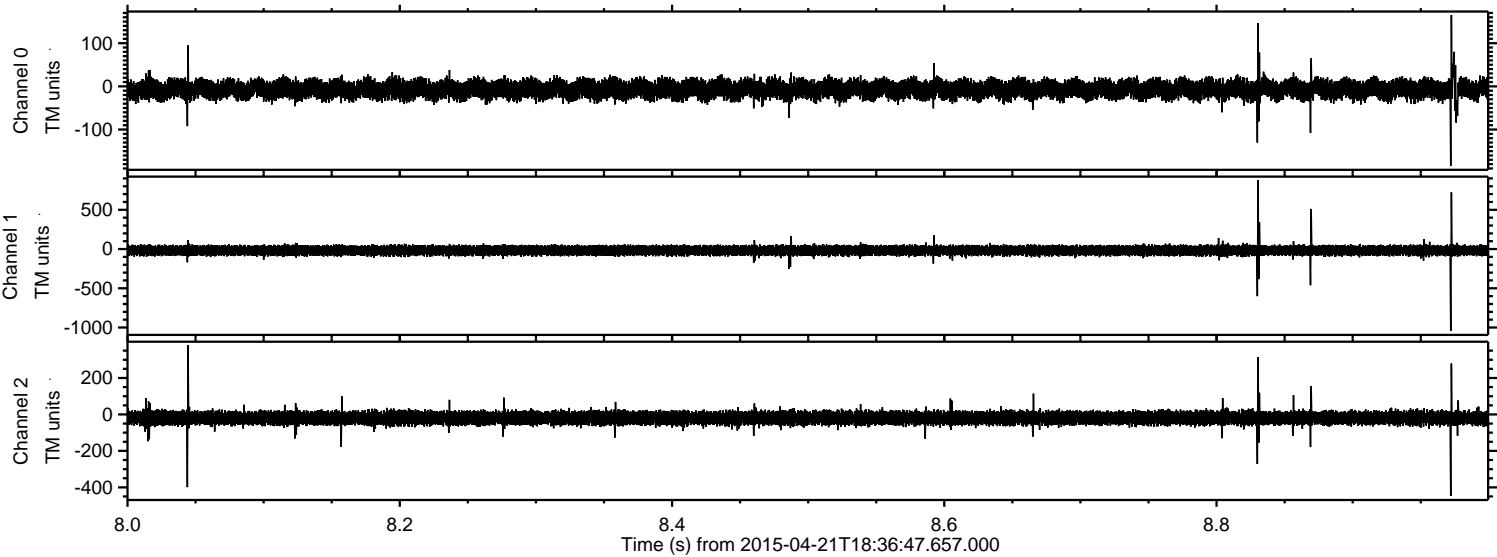
Processed Tue Apr 21 20:43:50 2015 by ELM ver.2012-10-06 from 001__elm20150421_183646__dat00.bin



Processed Tue Apr 21 20:43:51 2015 by ELM ver.2012-10-06 from 001__elm20150421_183646__dat00.bin

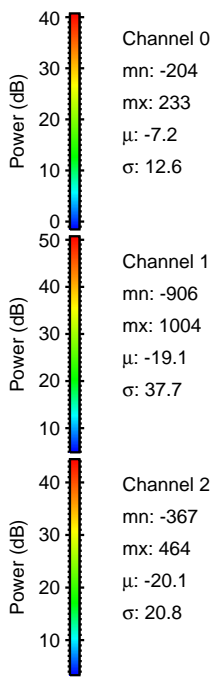
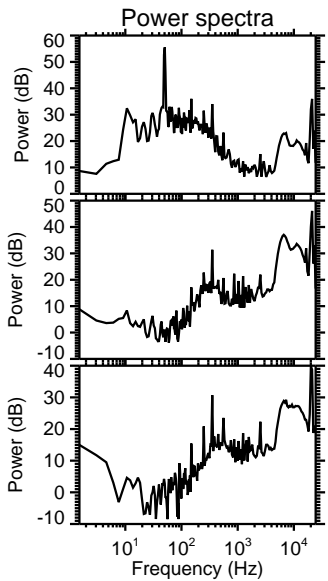
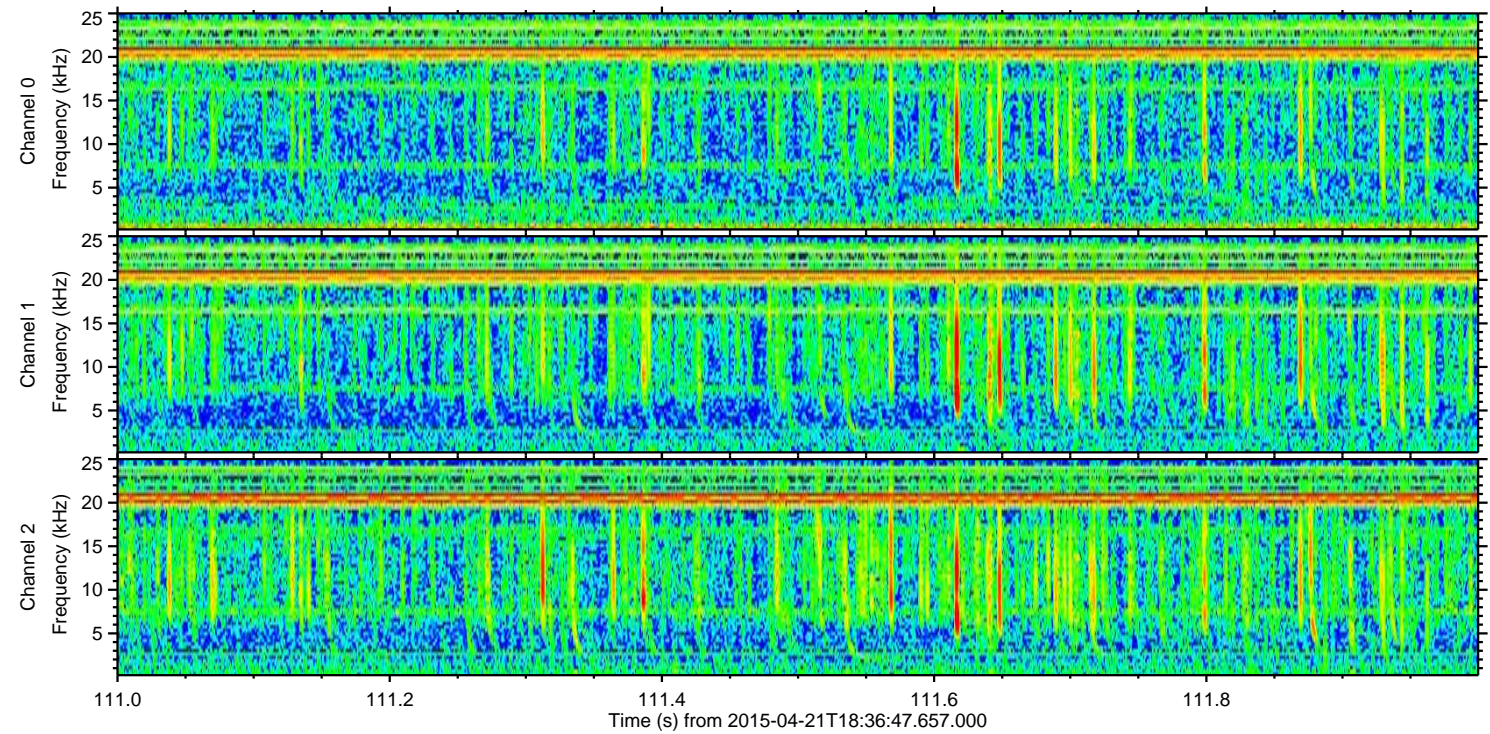
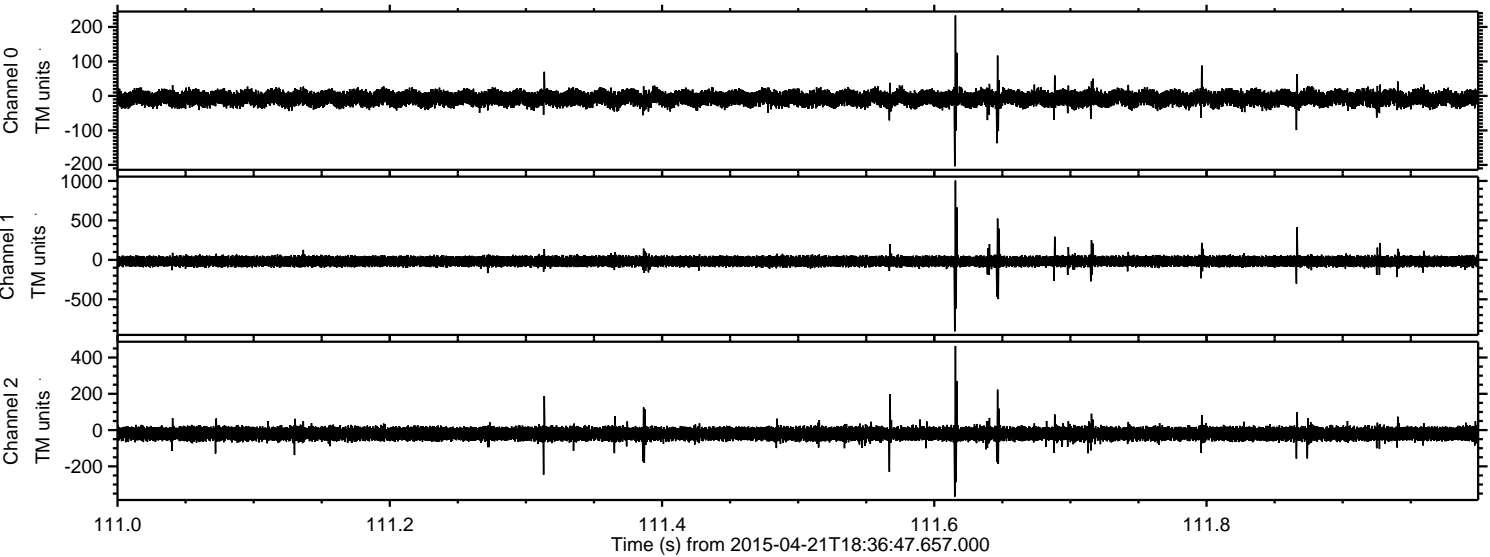


Processed Tue Apr 21 20:43:52 2015 by ELM ver.2012-10-06 from 001__elm20150421_183646__dat00.bin



ELMAVAN 3D WAVEFORMS (Measured data sampled at 50 kHz) 49685 packets of 144 samples from 2015-04-21T18:36:47.657.000. Part 112/144

Processed Tue Apr 21 20:43:53 2015 by ELM ver.2012-10-06 from 001__elm20150421_183646__dat00.bin



Channel 0
mn: -204
mx: 233
 μ : -7.2
 σ : 12.6

Channel 1
mn: -906
mx: 1004
 μ : -19.1
 σ : 37.7

Channel 2
mn: -367
mx: 464
 μ : -20.1
 σ : 20.8

Processed Tue Apr 21 20:43:54 2015 by ELM ver.2012-10-06 from 001__elm20150421_183646__dat00.bin

