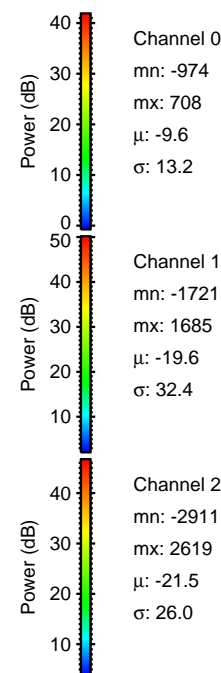
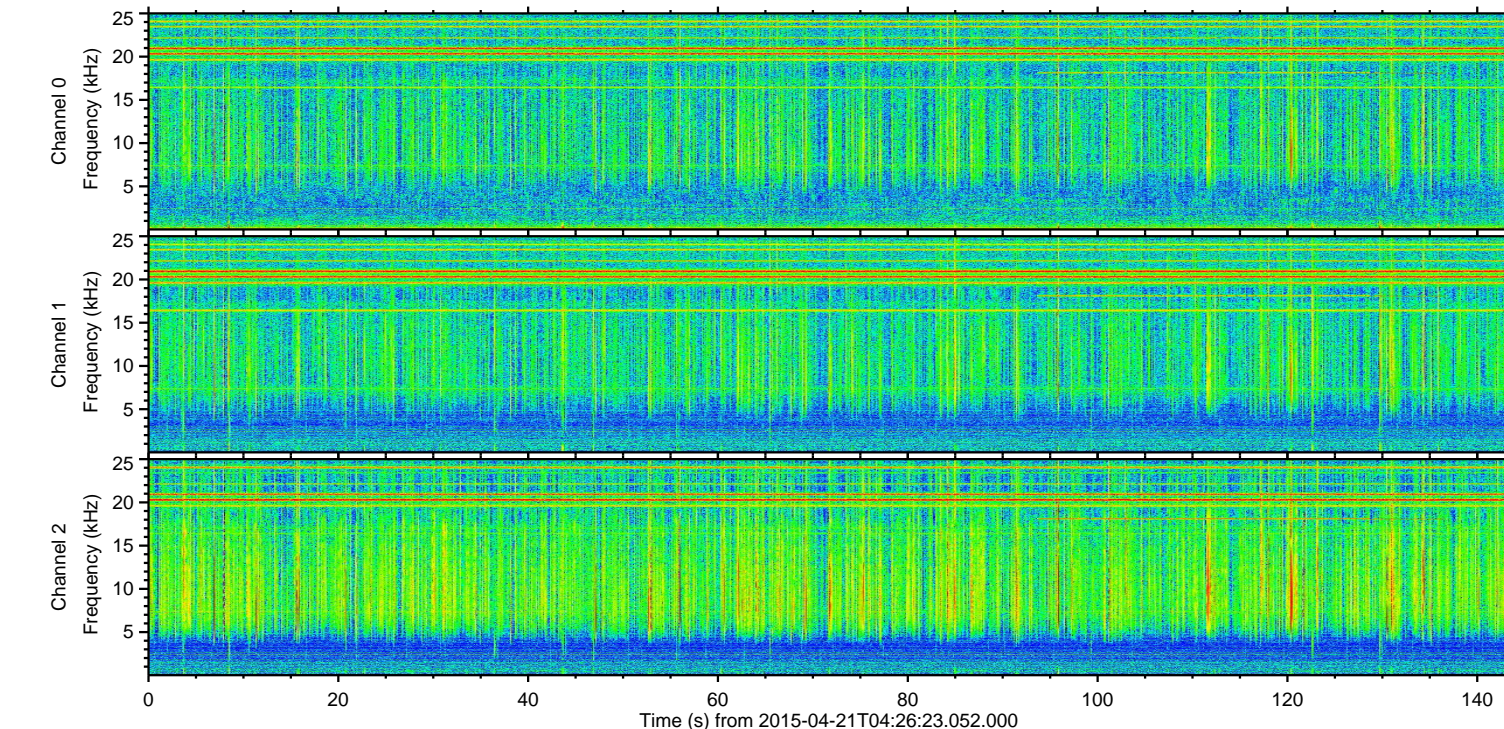
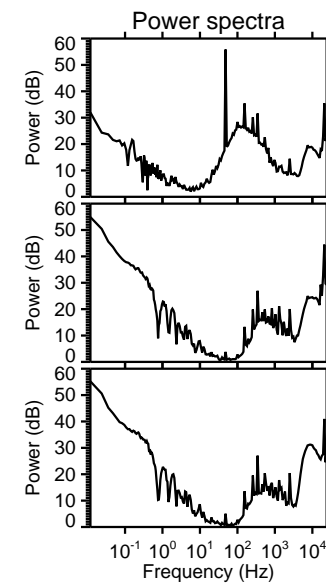
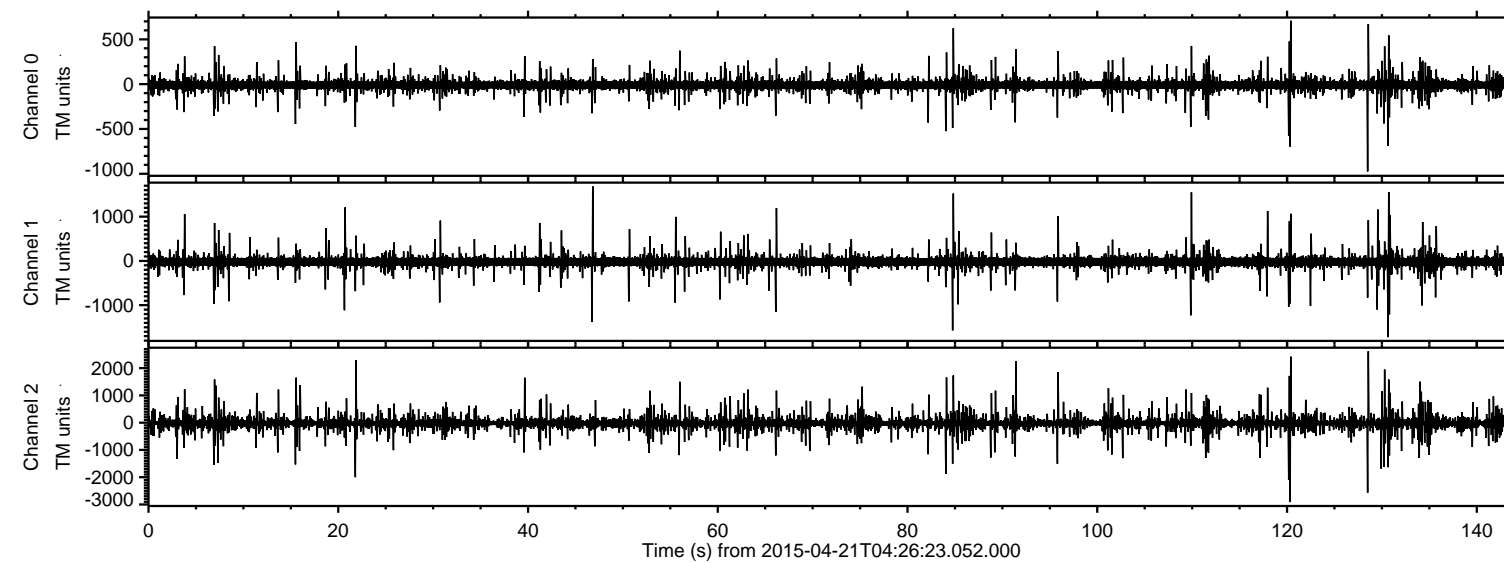


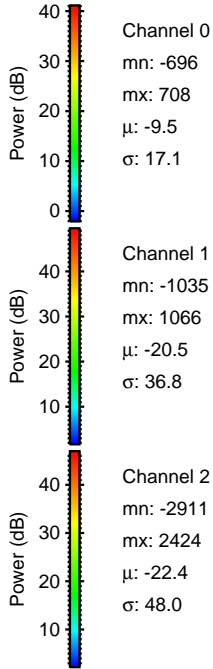
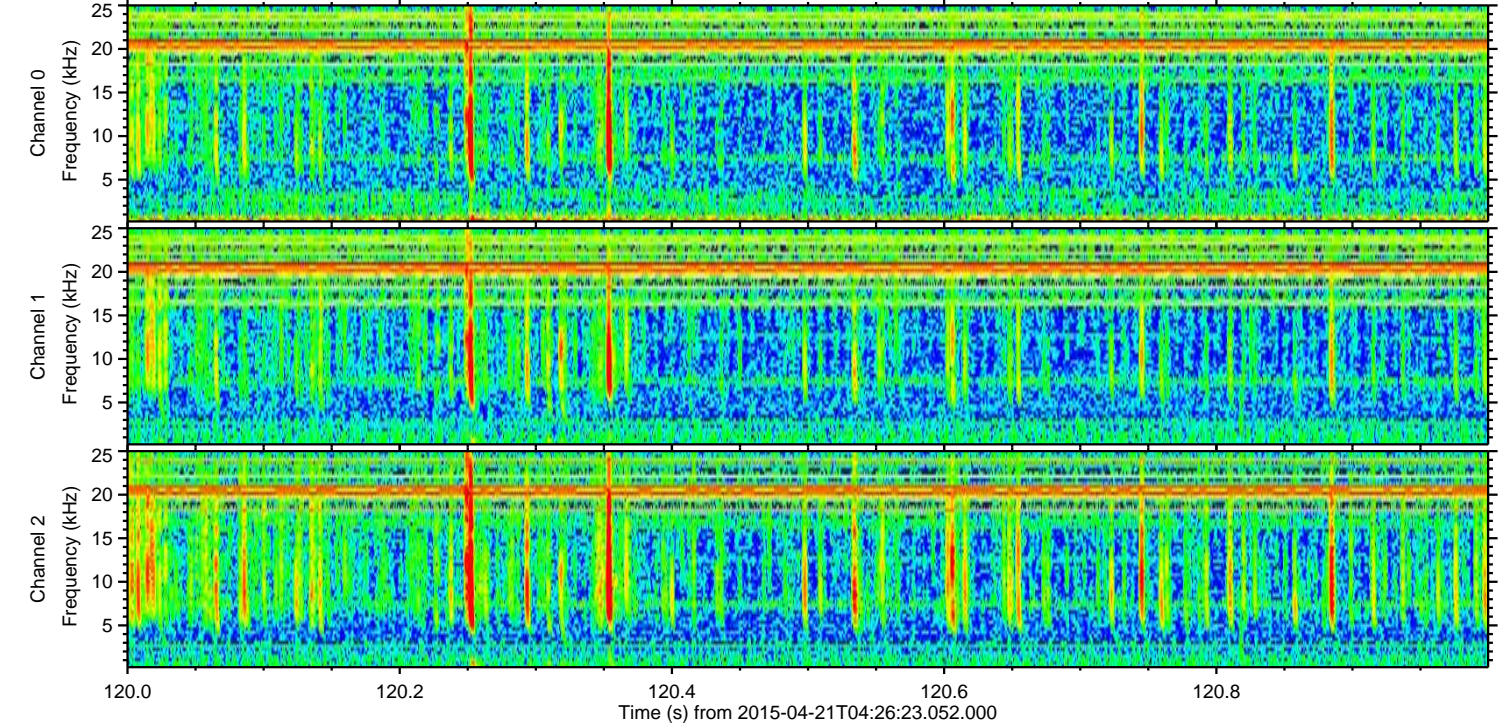
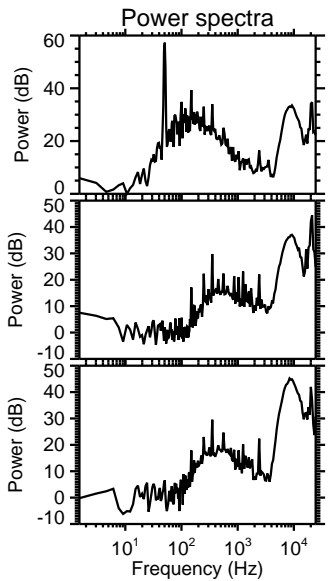
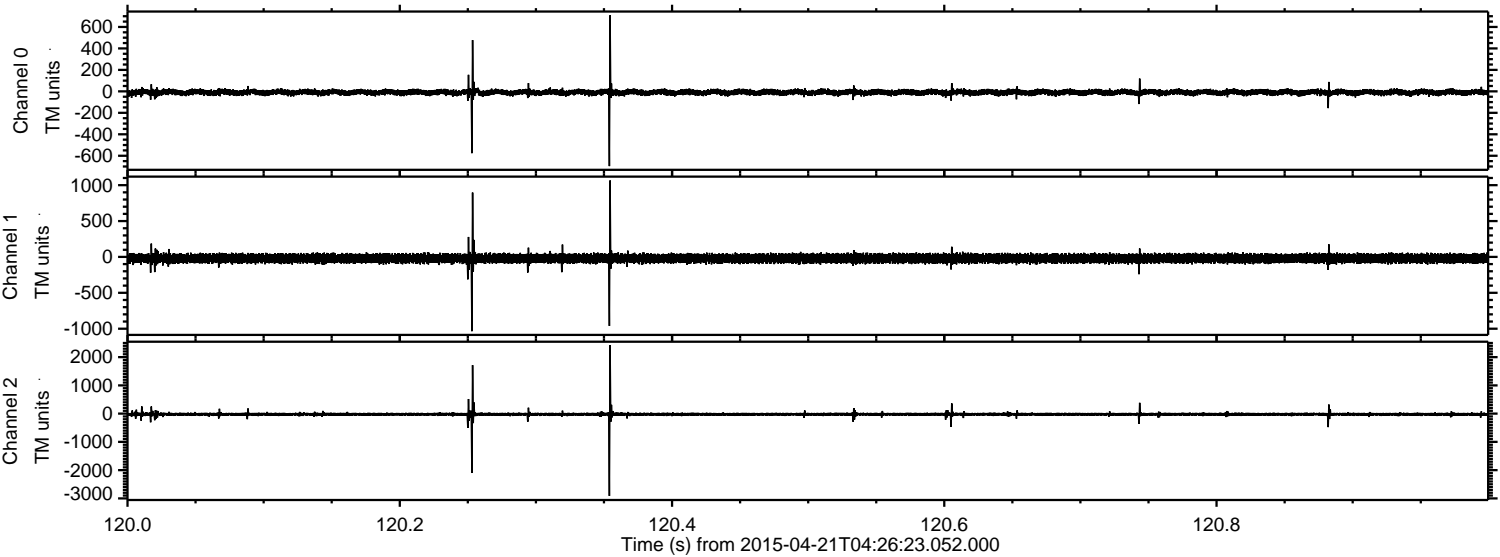
ELMAVAN 3D WAVEFORMS (Measured data sampled at 50 kHz) 49795 packets of 144 samples from 2015-04-21T04:26:23.052.000.

Processed Tue Apr 21 06:33:10 2015 by ELM ver.2012-10-06 from 001__elm20150421_042622__dat00.bin



ELMAVAN 3D WAVEFORMS (Measured data sampled at 50 kHz) 49795 packets of 144 samples from 2015-04-21T04:26:23.052.000. Part 121/144

Processed Tue Apr 21 06:33:22 2015 by ELM ver.2012-10-06 from 001__elm20150421_042622__dat00.bin



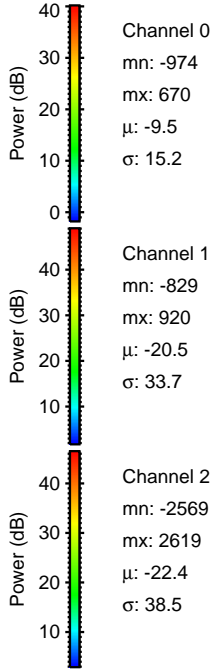
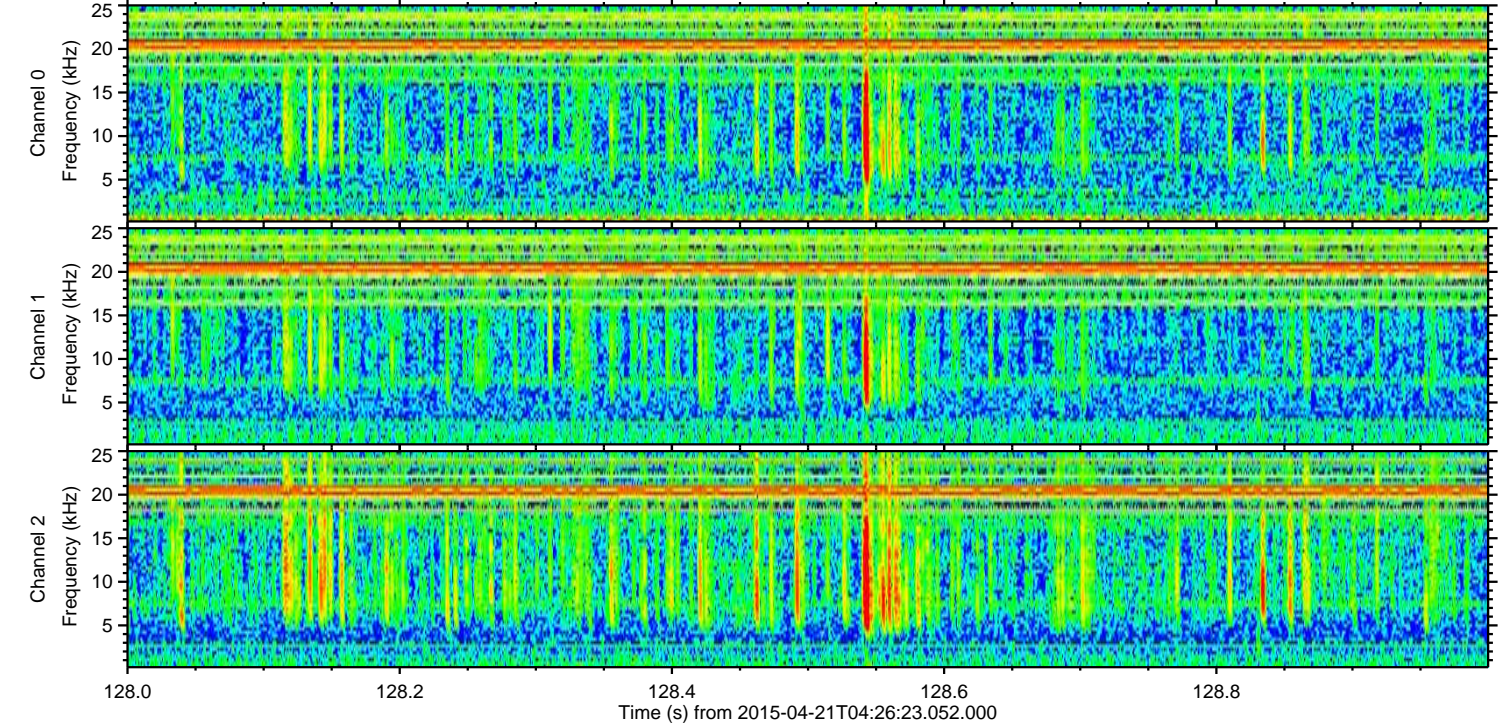
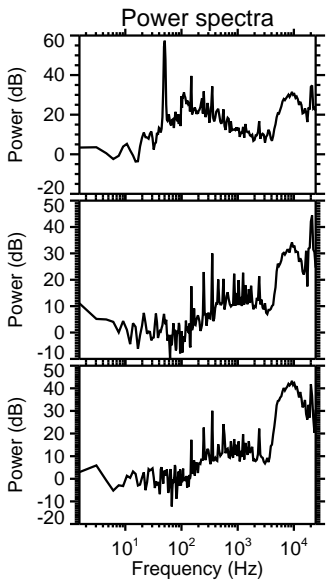
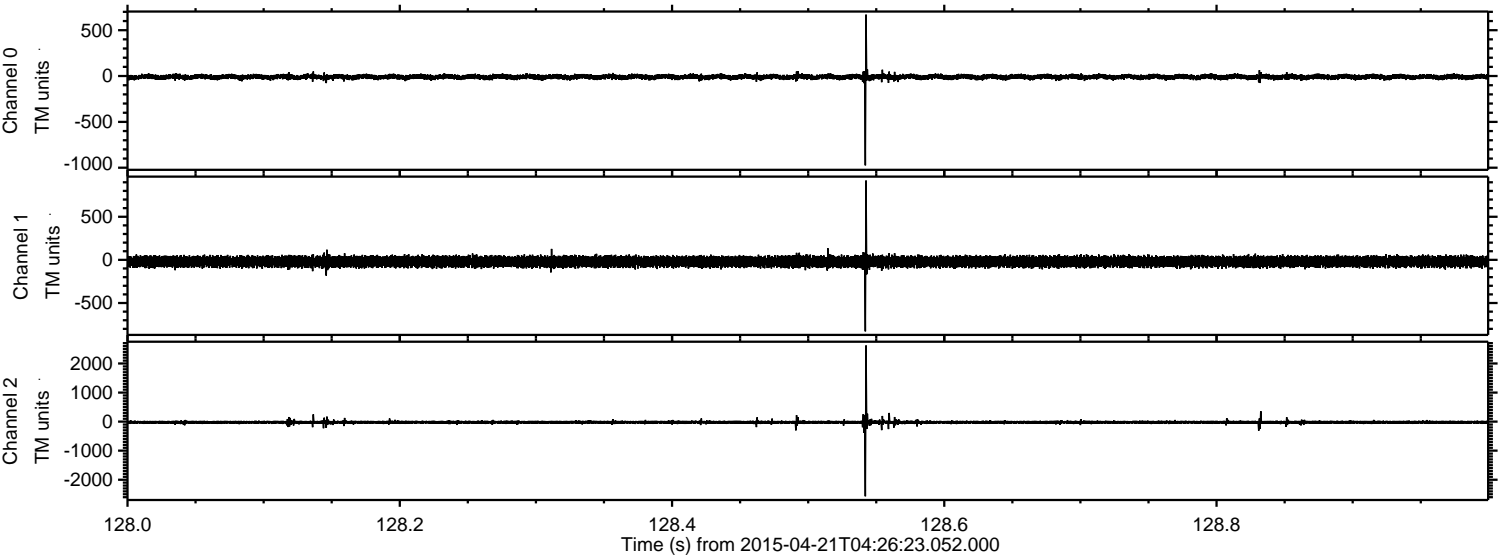
Channel 0
mn: -696
mx: 708
 μ : -9.5
 σ : 17.1

Channel 1
mn: -1035
mx: 1066
 μ : -20.5
 σ : 36.8

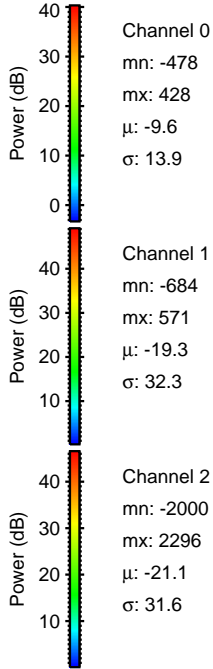
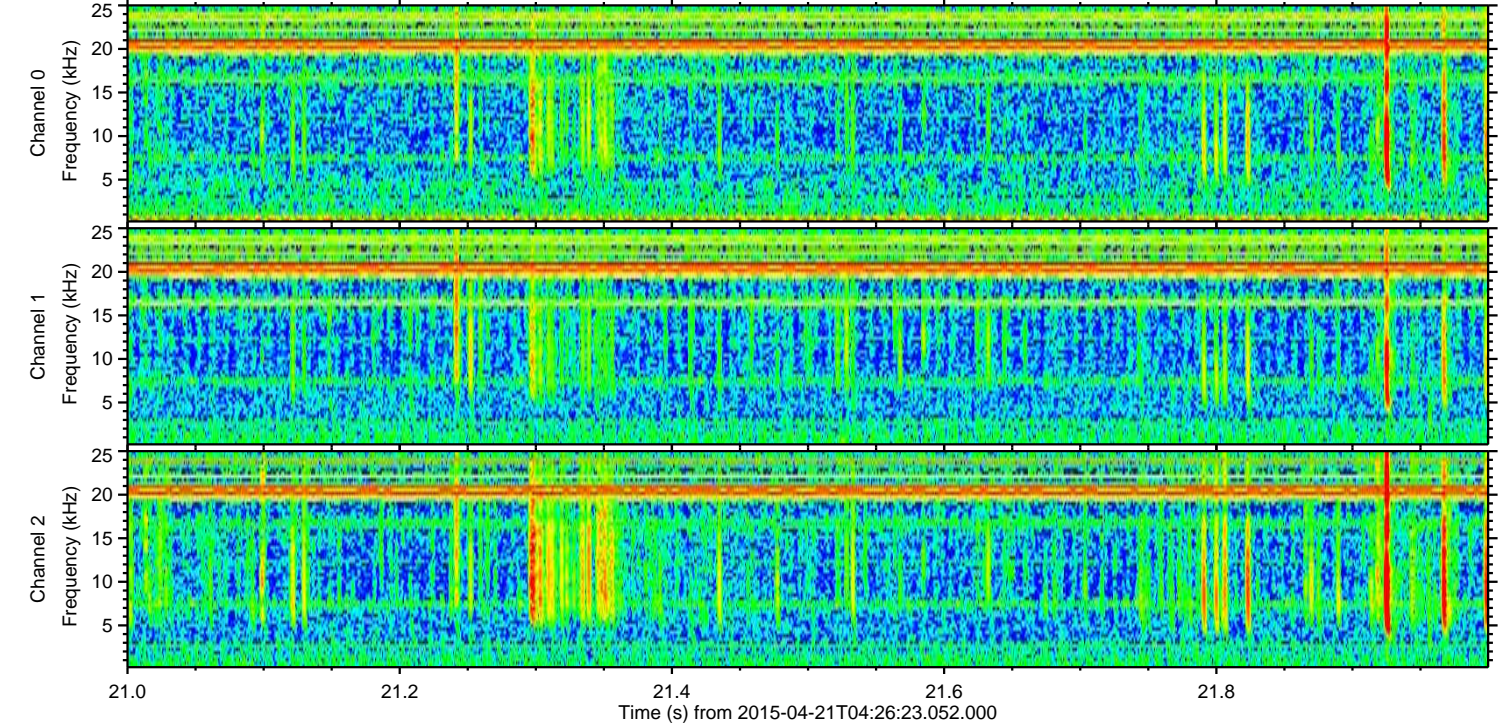
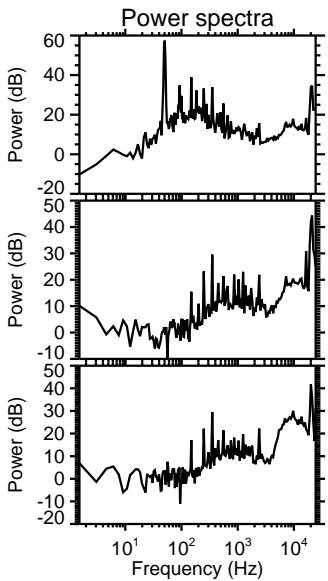
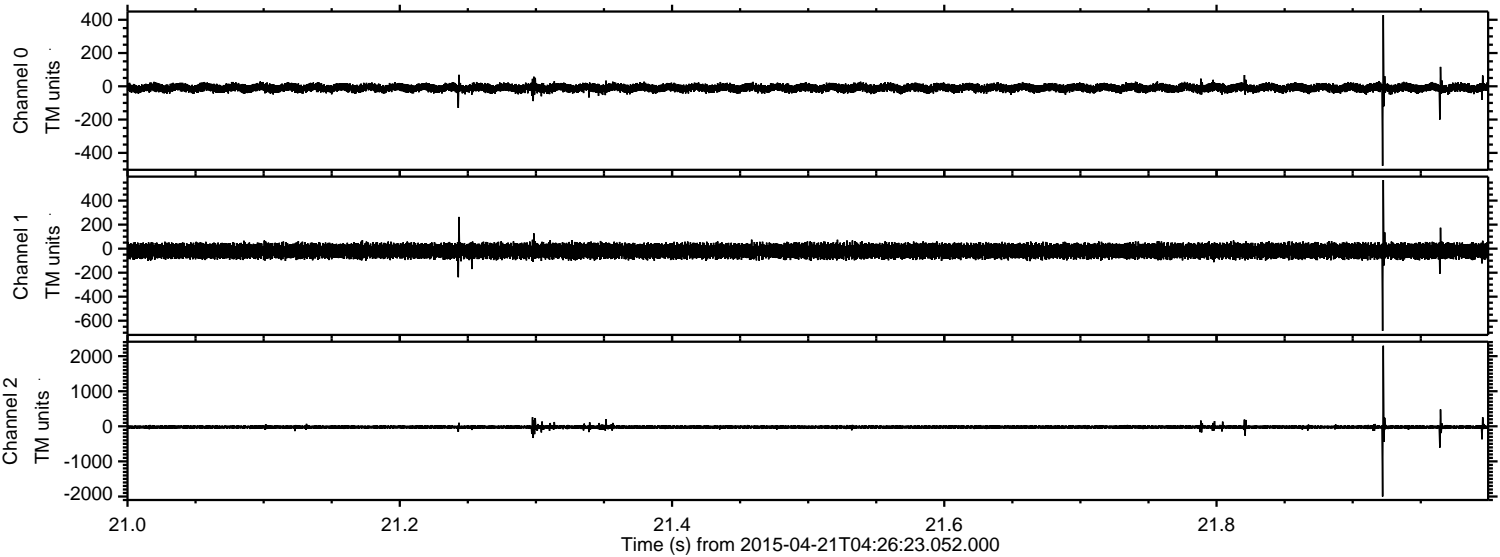
Channel 2
mn: -2911
mx: 2424
 μ : -22.4
 σ : 48.0

ELMAVAN 3D WAVEFORMS (Measured data sampled at 50 kHz) 49795 packets of 144 samples from 2015-04-21T04:26:23.052.000. Part 129/144

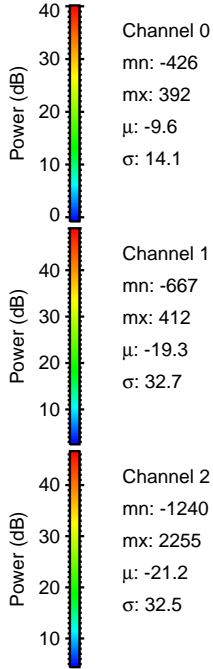
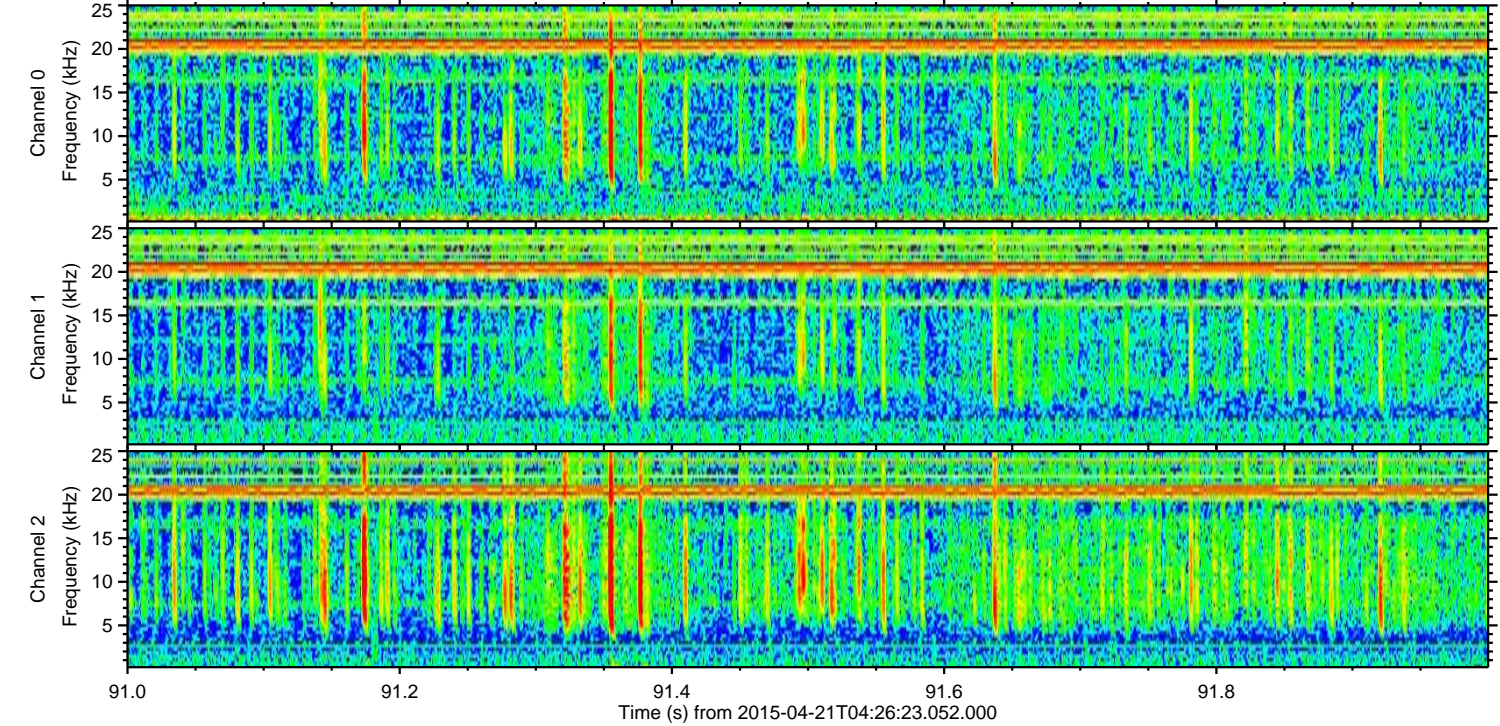
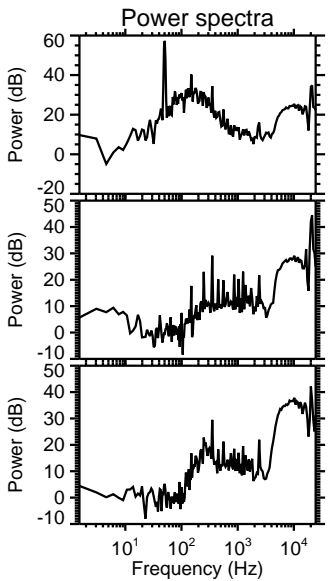
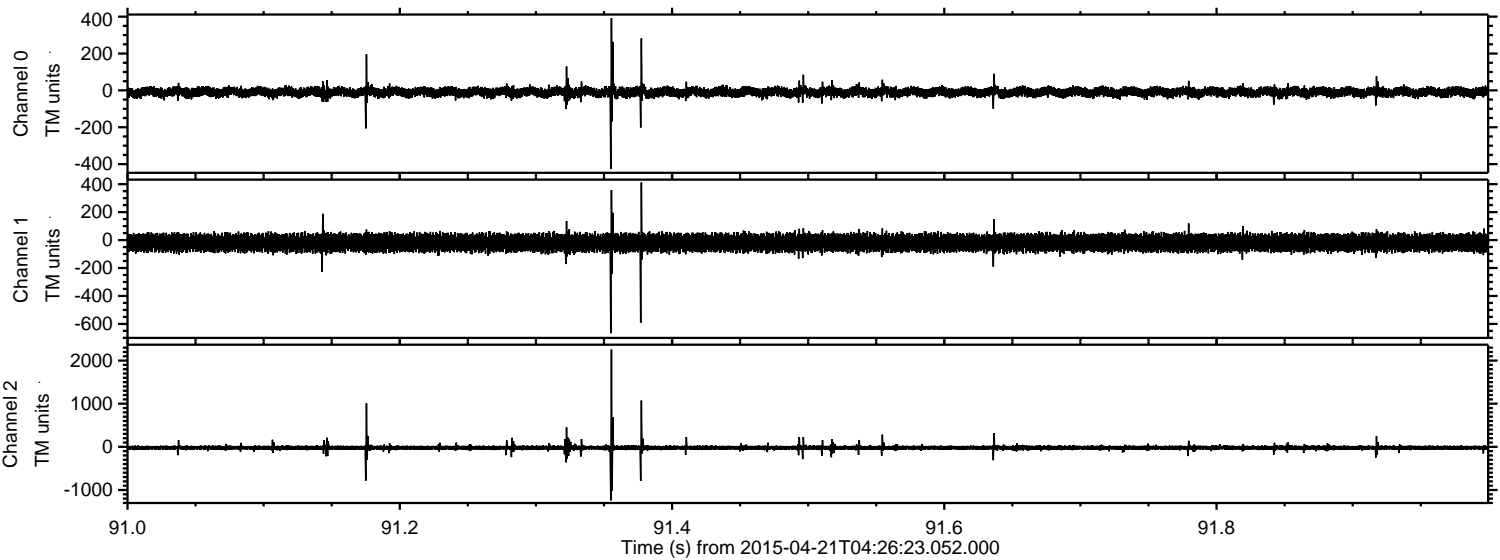
Processed Tue Apr 21 06:33:23 2015 by ELM ver.2012-10-06 from 001__elm20150421_042622__dat00.bin



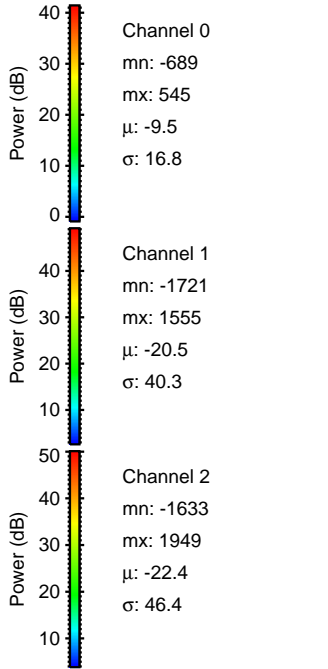
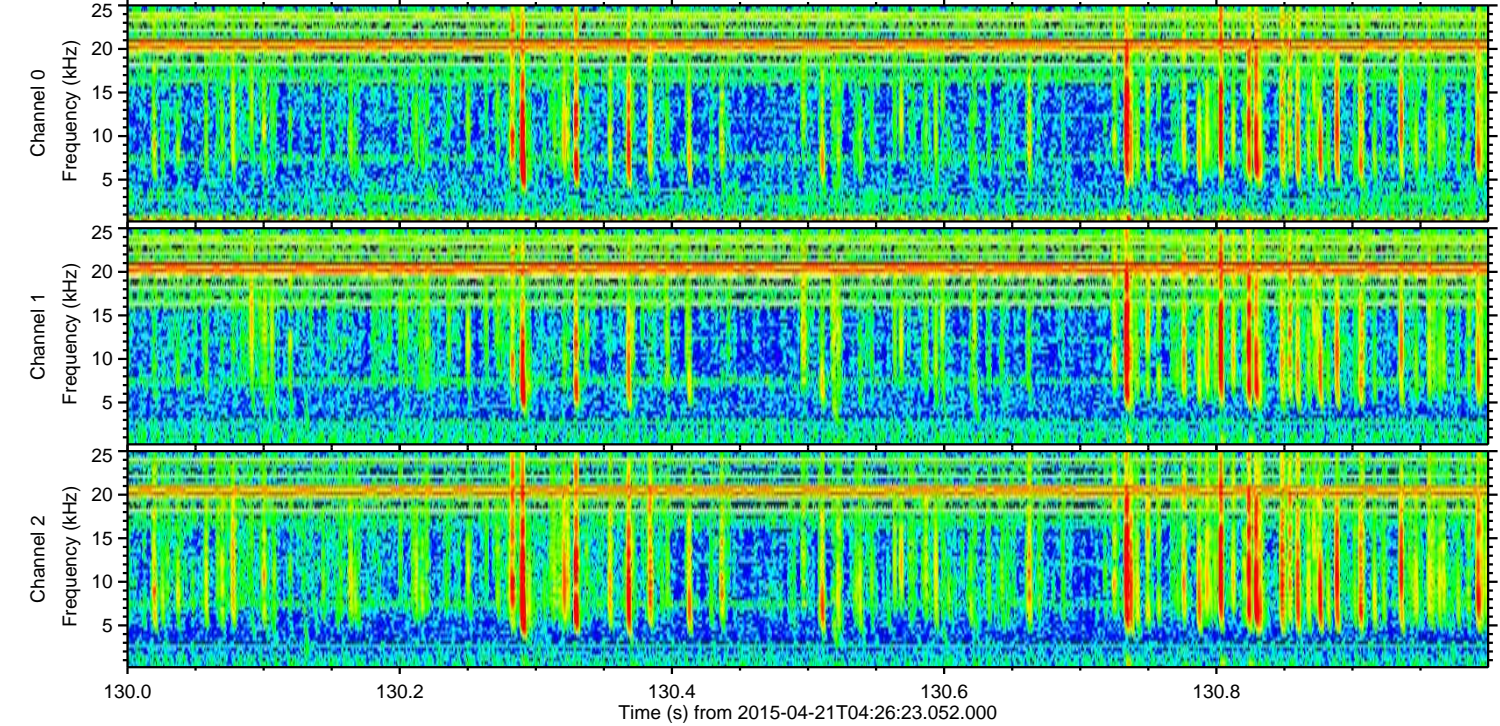
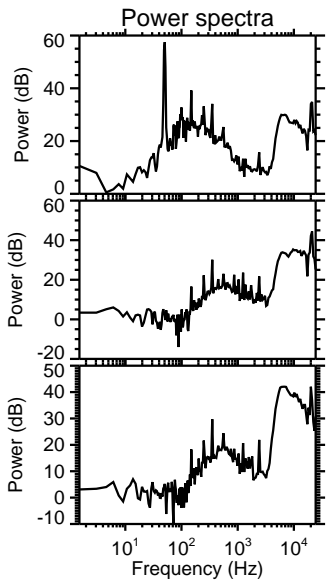
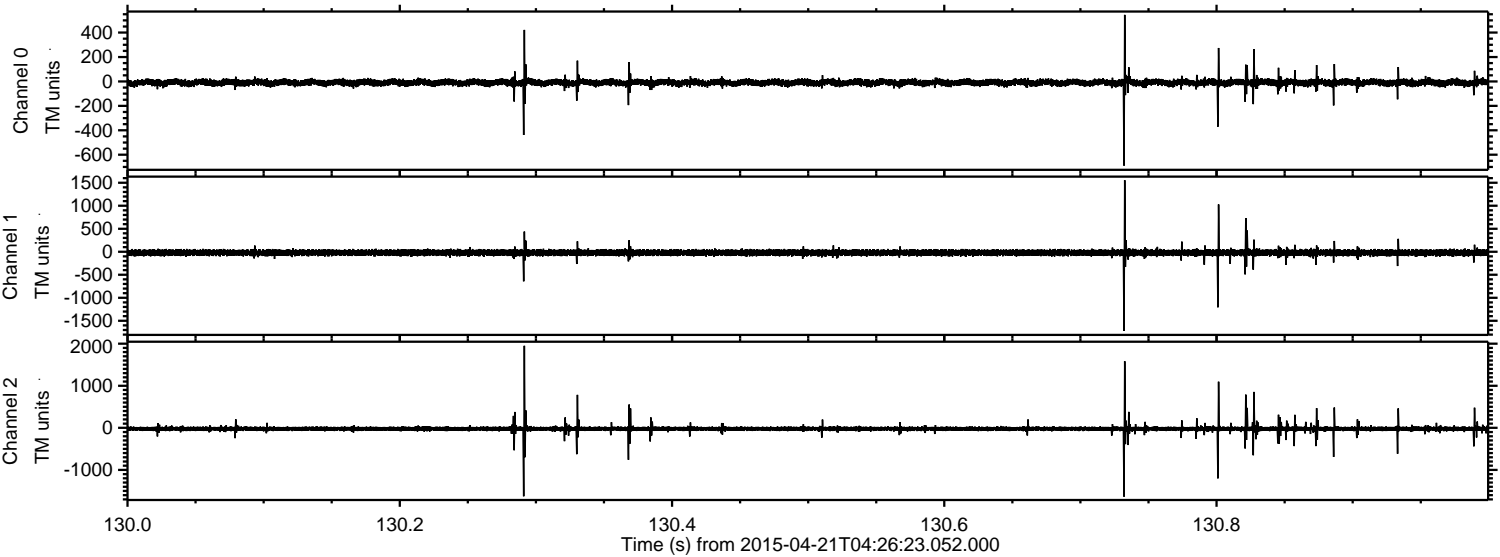
Processed Tue Apr 21 06:33:24 2015 by ELM ver.2012-10-06 from 001__elm20150421_042622__dat00.bin



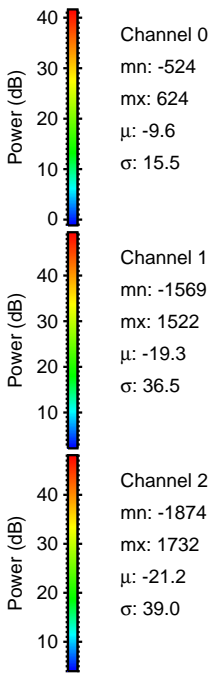
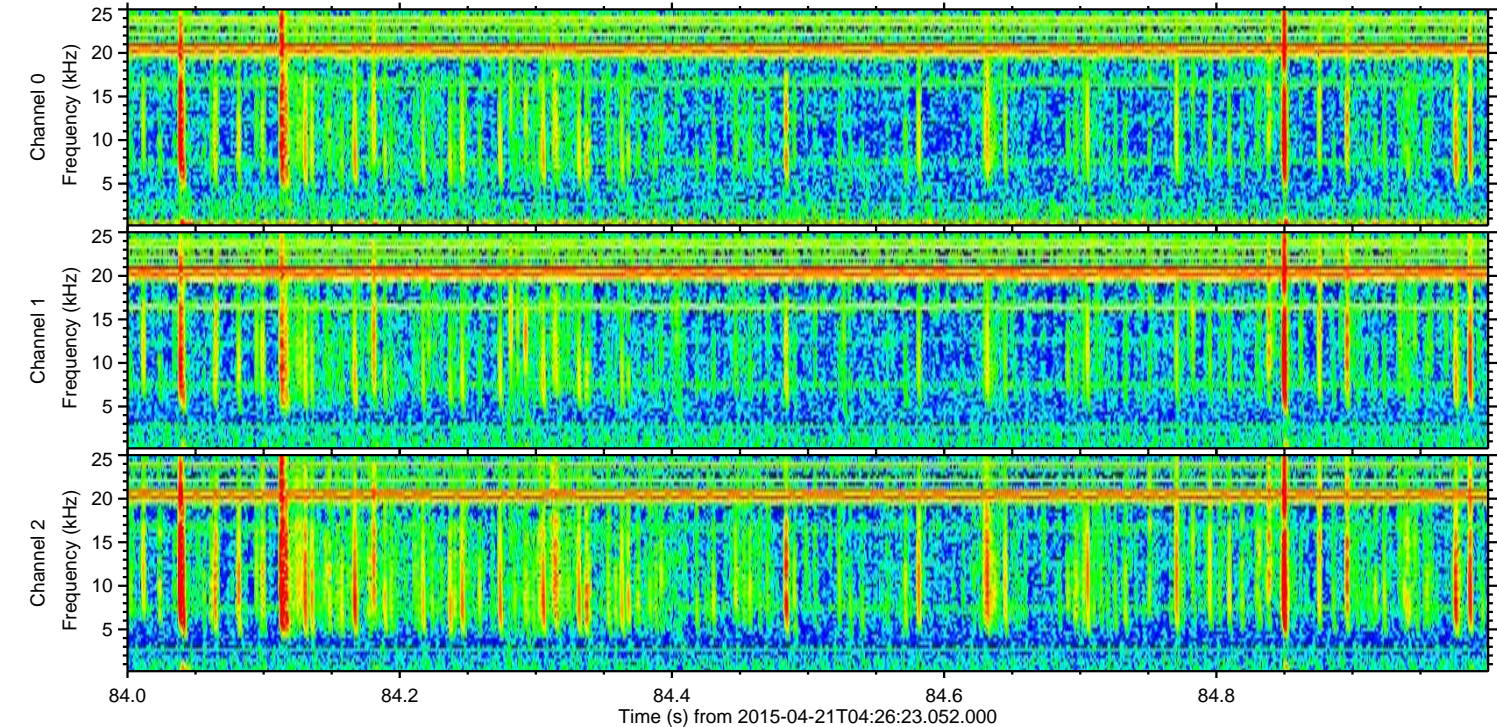
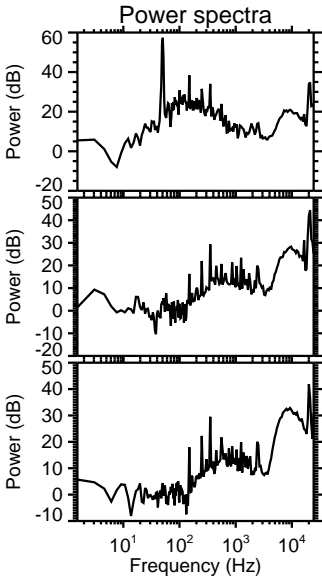
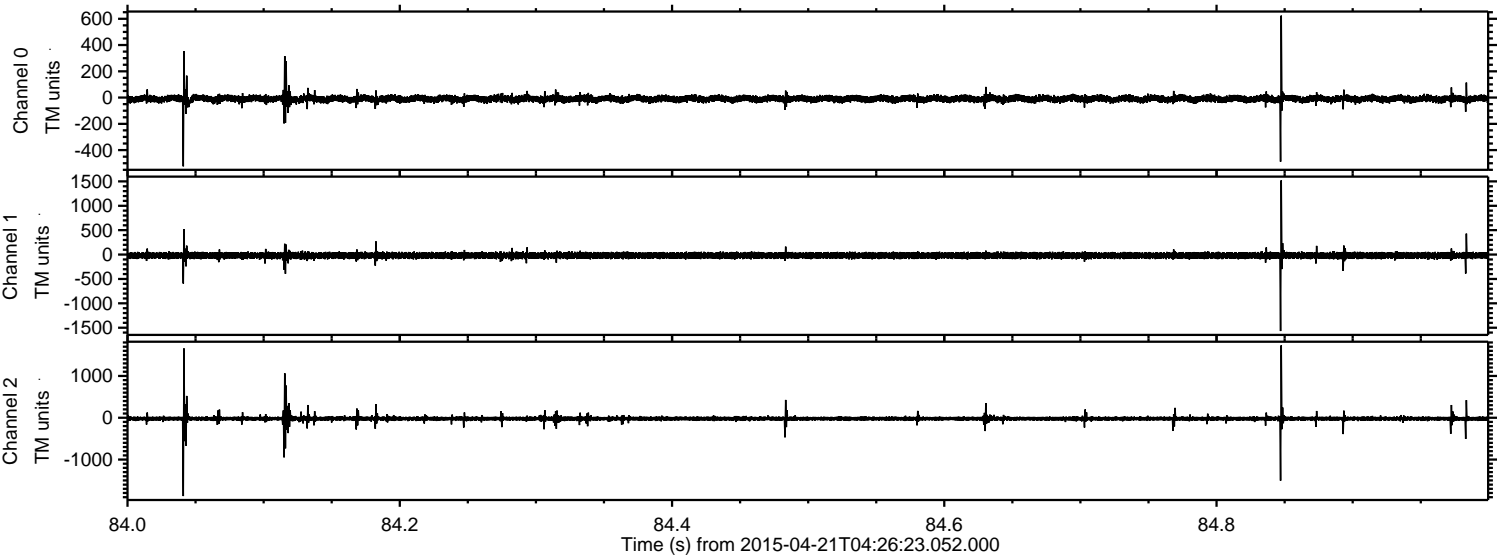
Processed Tue Apr 21 06:33:24 2015 by ELM ver.2012-10-06 from 001__elm20150421_042622__dat00.bin



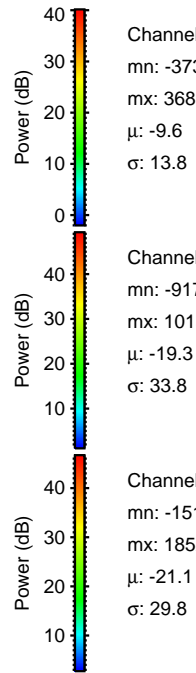
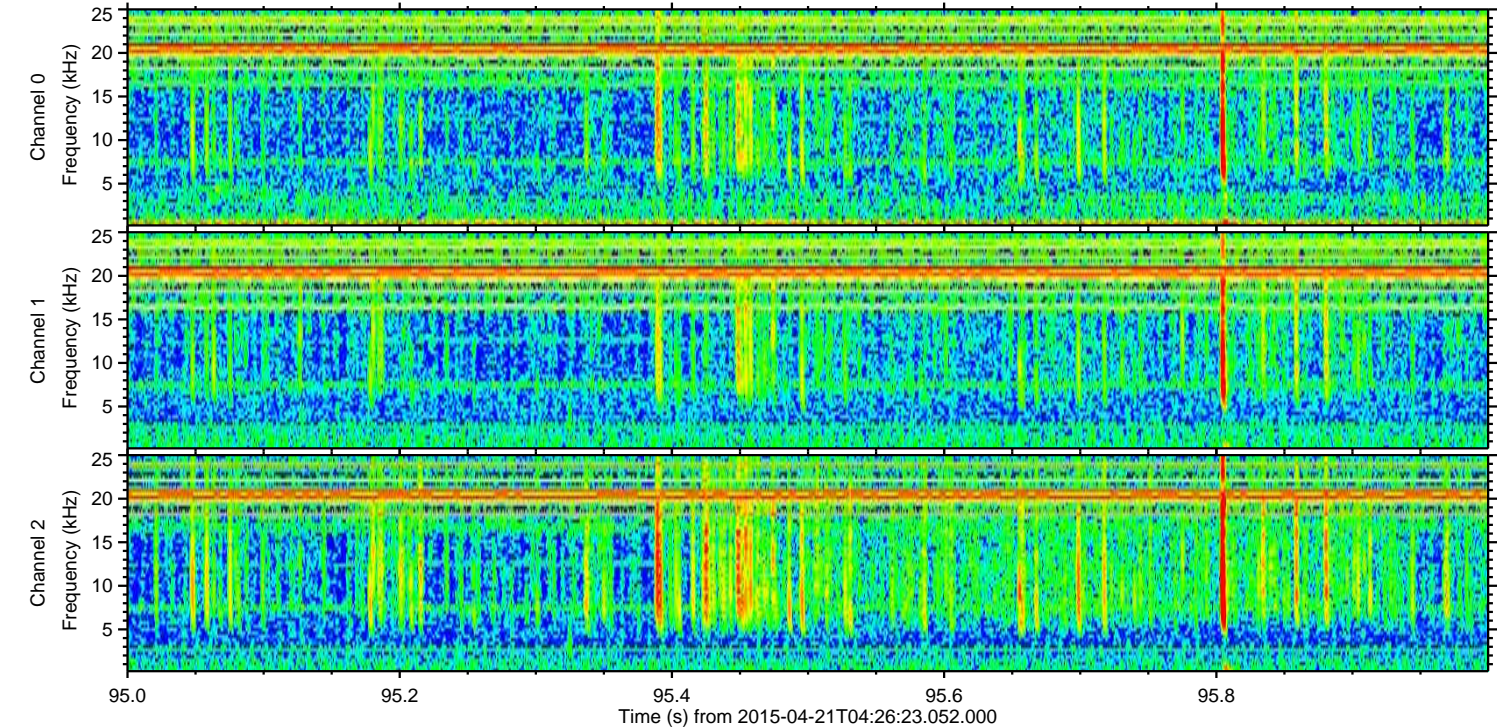
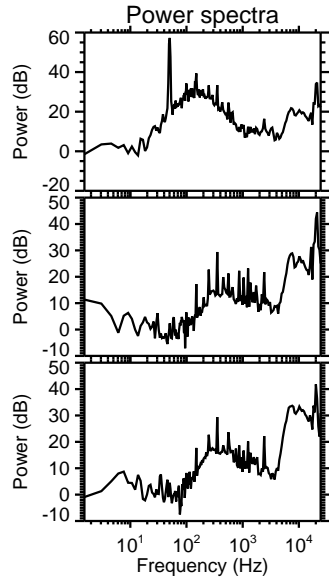
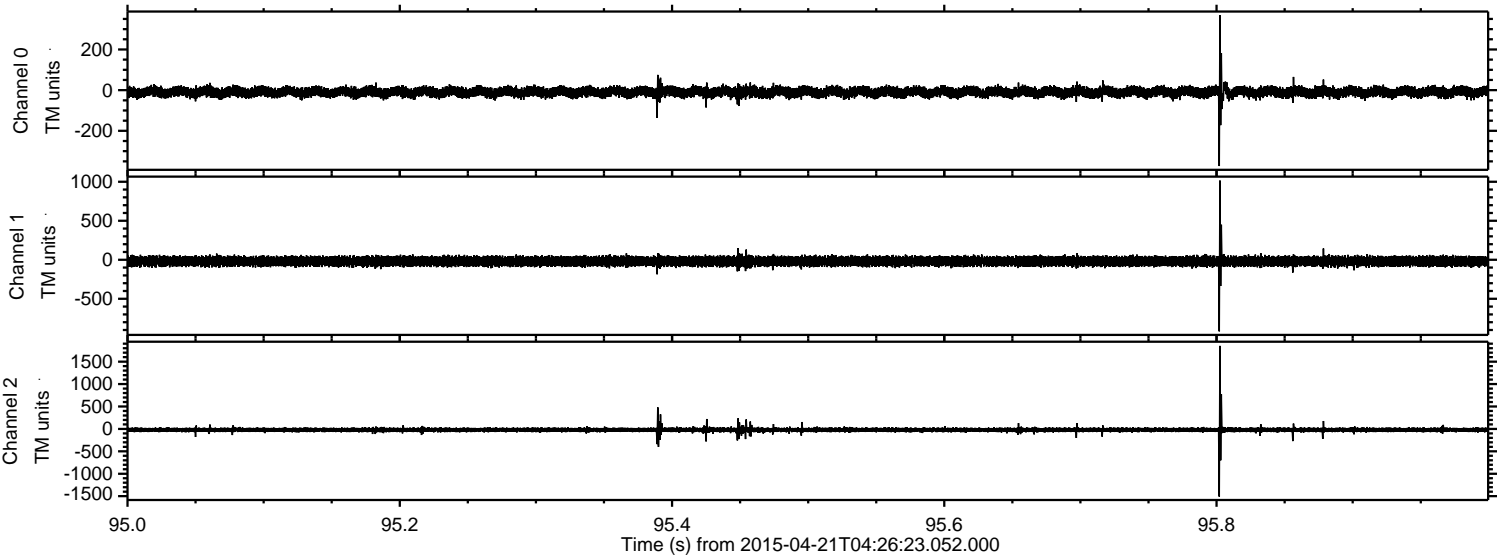
Processed Tue Apr 21 06:33:25 2015 by ELM ver.2012-10-06 from 001__elm20150421_042622__dat00.bin



Processed Tue Apr 21 06:33:26 2015 by ELM ver.2012-10-06 from 001__elm20150421_042622__dat00.bin

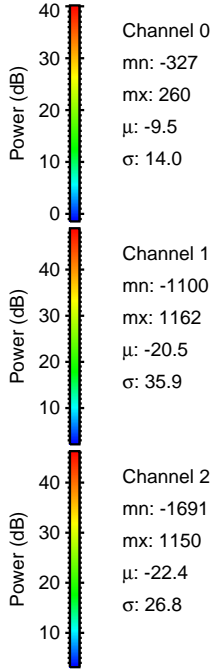
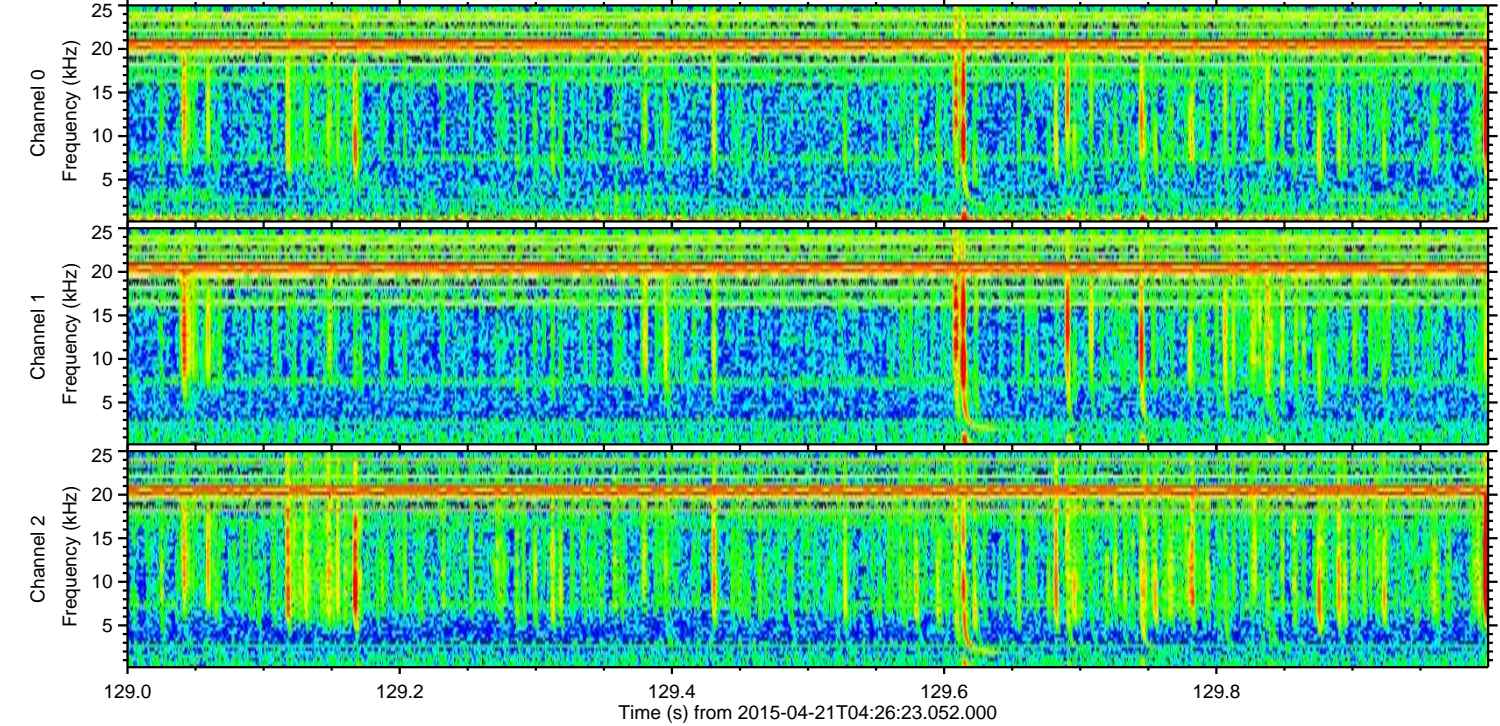
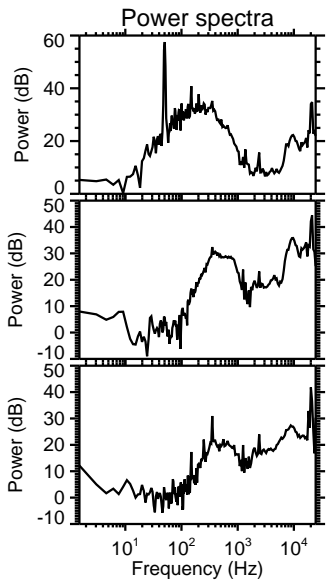
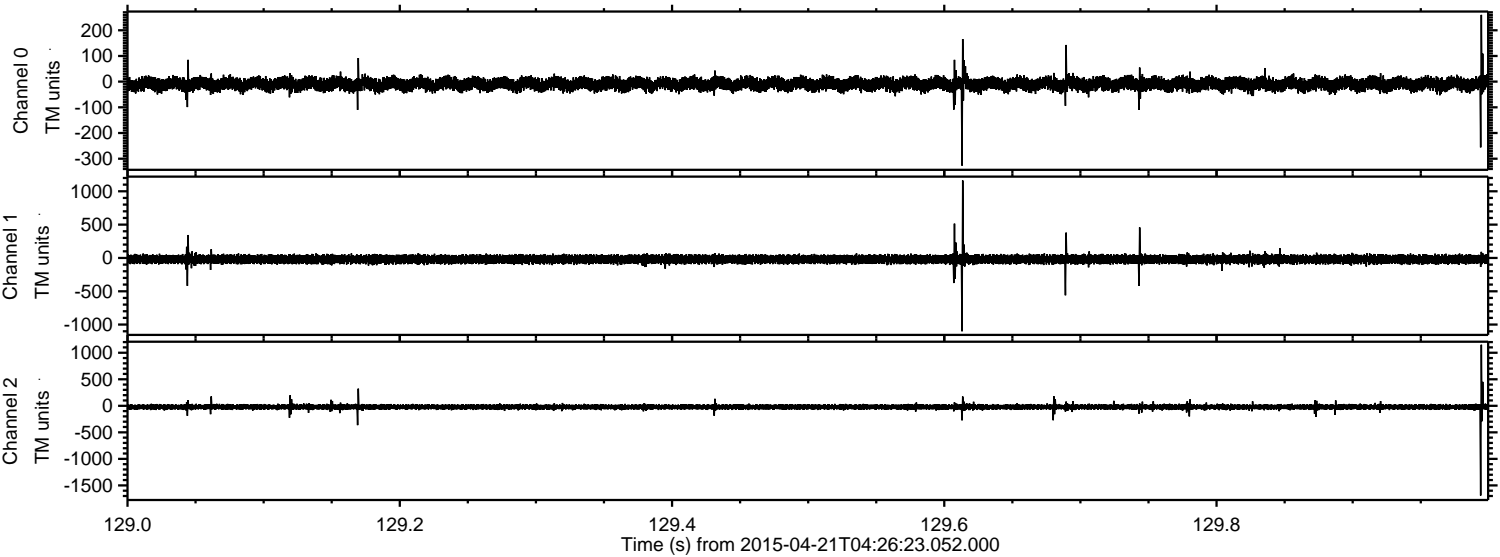


Processed Tue Apr 21 06:33:27 2015 by ELM ver.2012-10-06 from 001__elm20150421_042622__dat00.bin

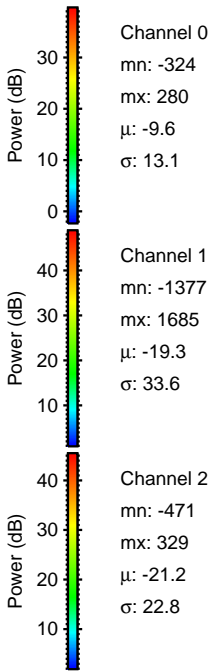
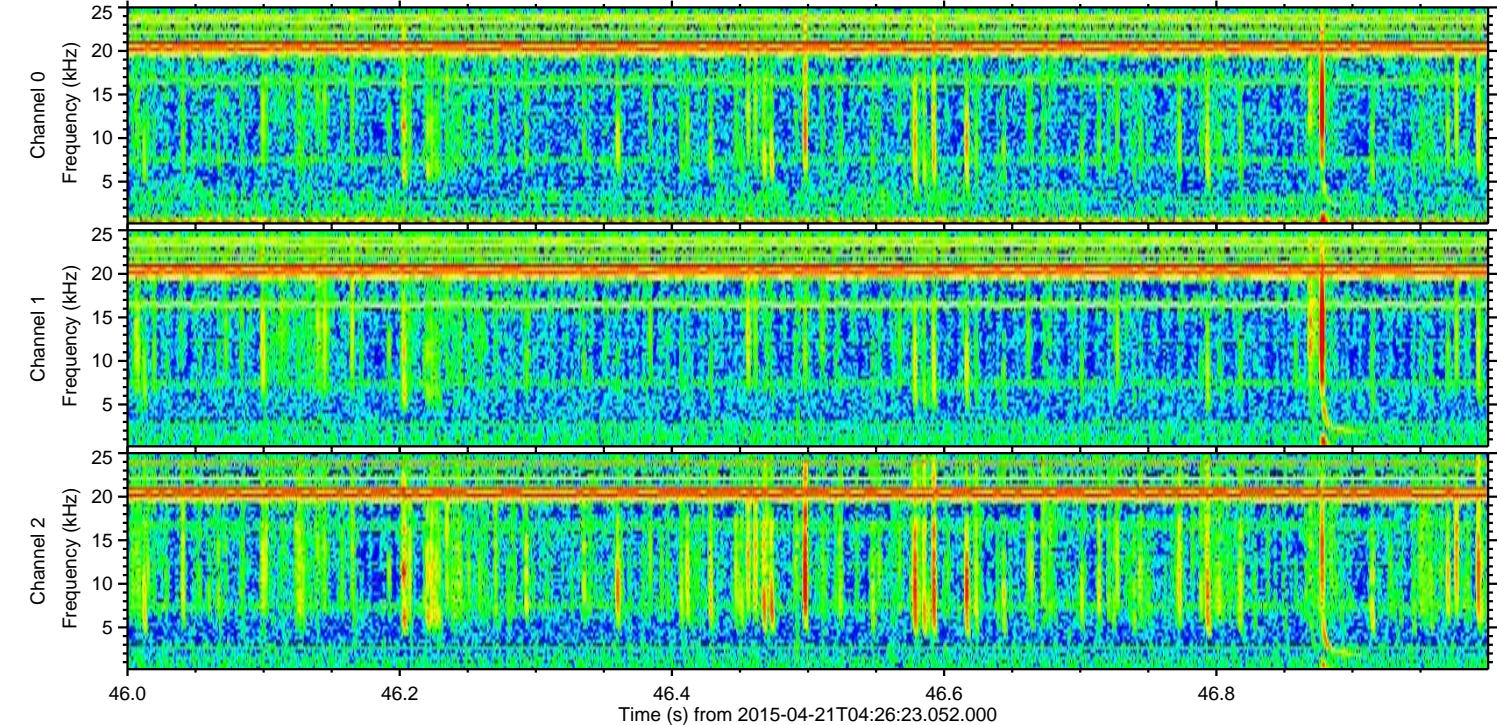
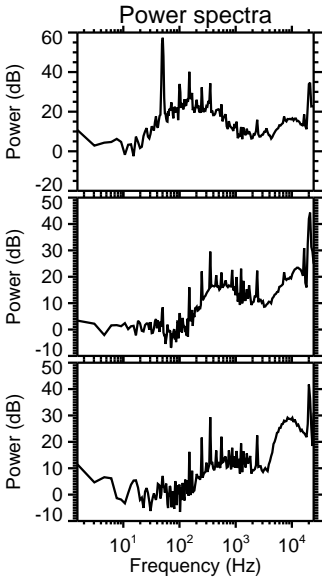
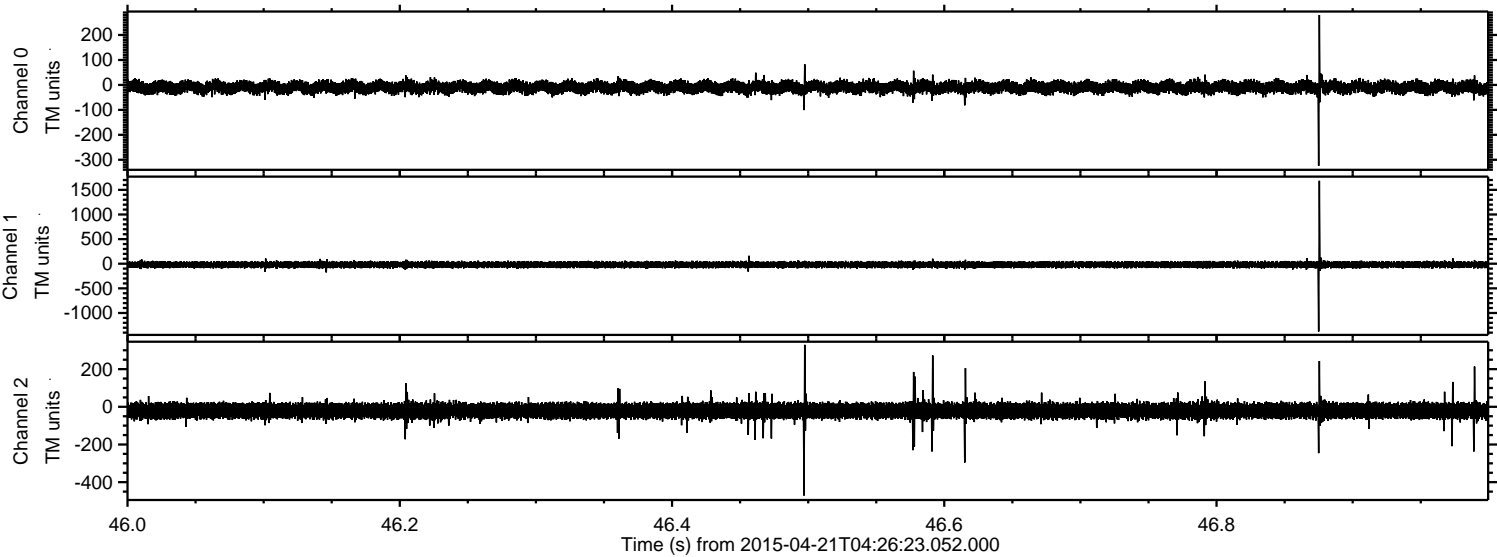


ELMAVAN 3D WAVEFORMS (Measured data sampled at 50 kHz) 49795 packets of 144 samples from 2015-04-21T04:26:23.052.000. Part 130/144

Processed Tue Apr 21 06:33:28 2015 by ELM ver.2012-10-06 from 001__elm20150421_042622__dat00.bin



Processed Tue Apr 21 06:33:29 2015 by ELM ver.2012-10-06 from 001__elm20150421_042622__dat00.bin



Channel 0
mn: -324
mx: 280
 μ : -9.6
 σ : 13.1

Channel 1
mn: -1377
mx: 1685
 μ : -19.3
 σ : 33.6

Channel 2
mn: -471
mx: 329
 μ : -21.2
 σ : 22.8

