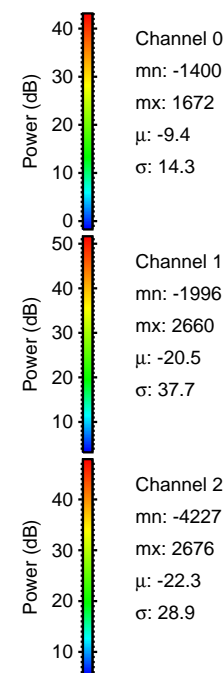
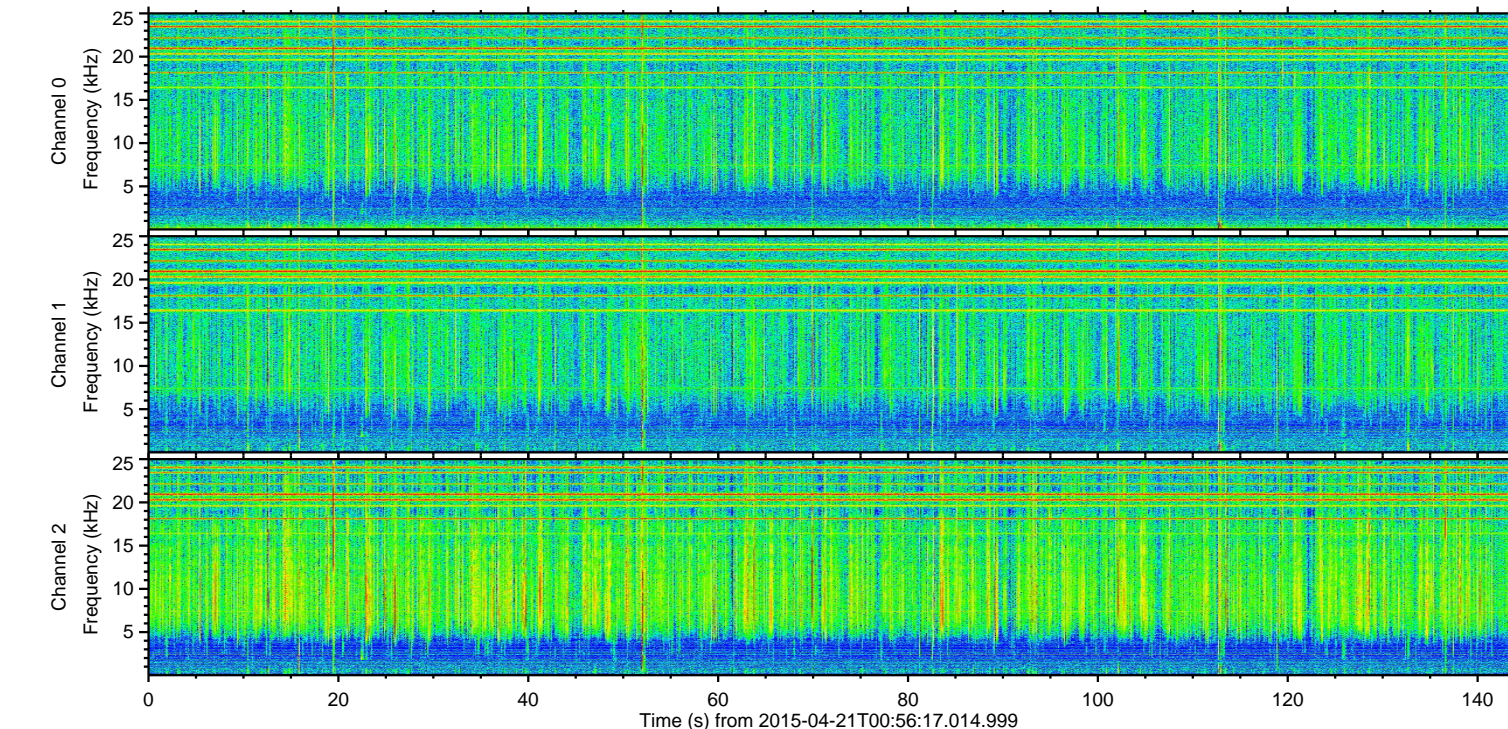
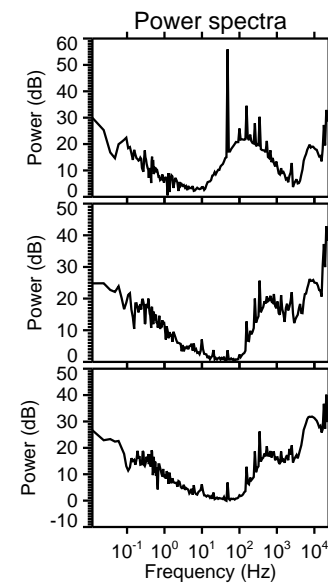
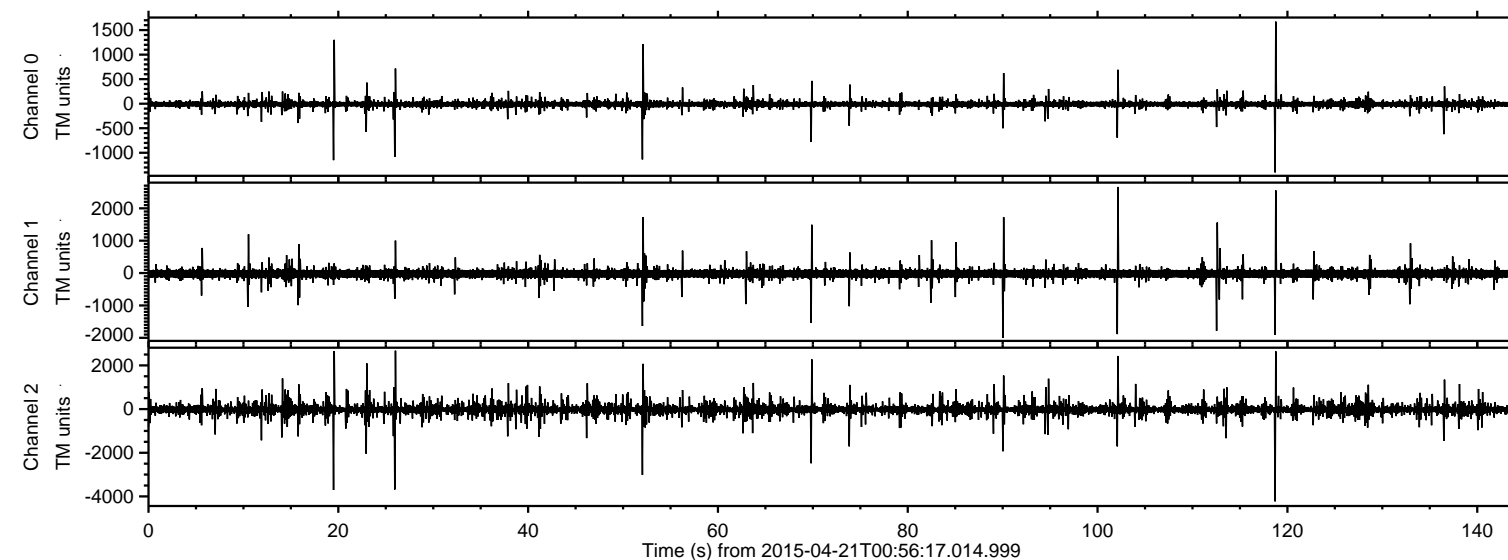


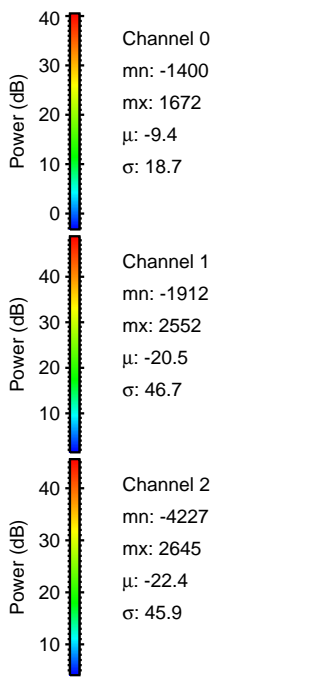
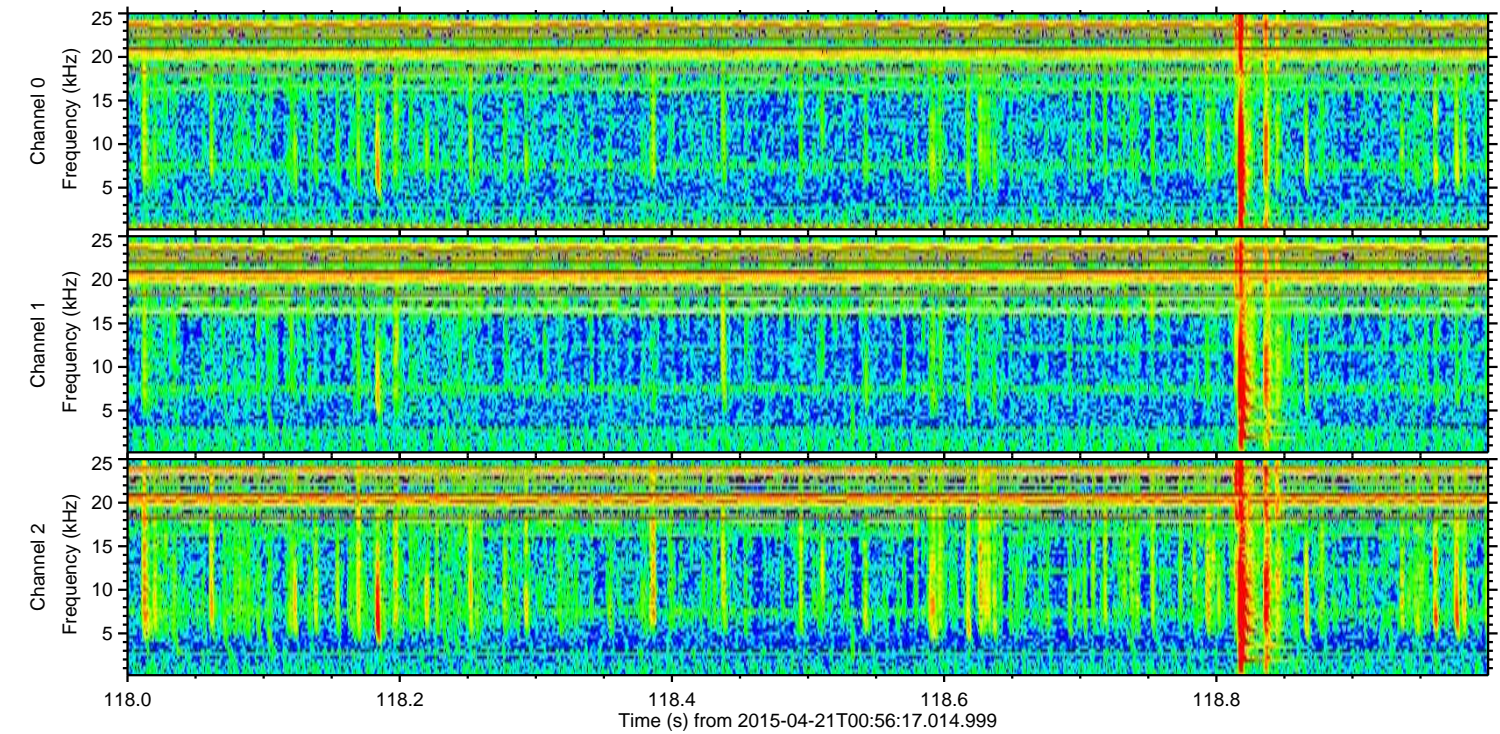
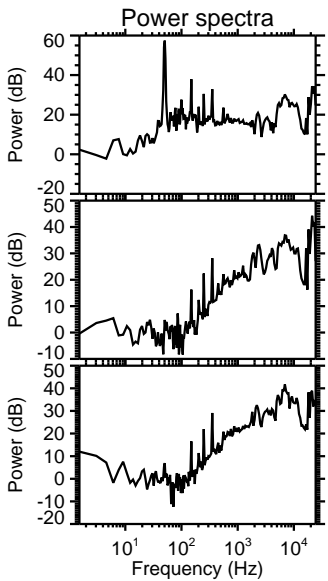
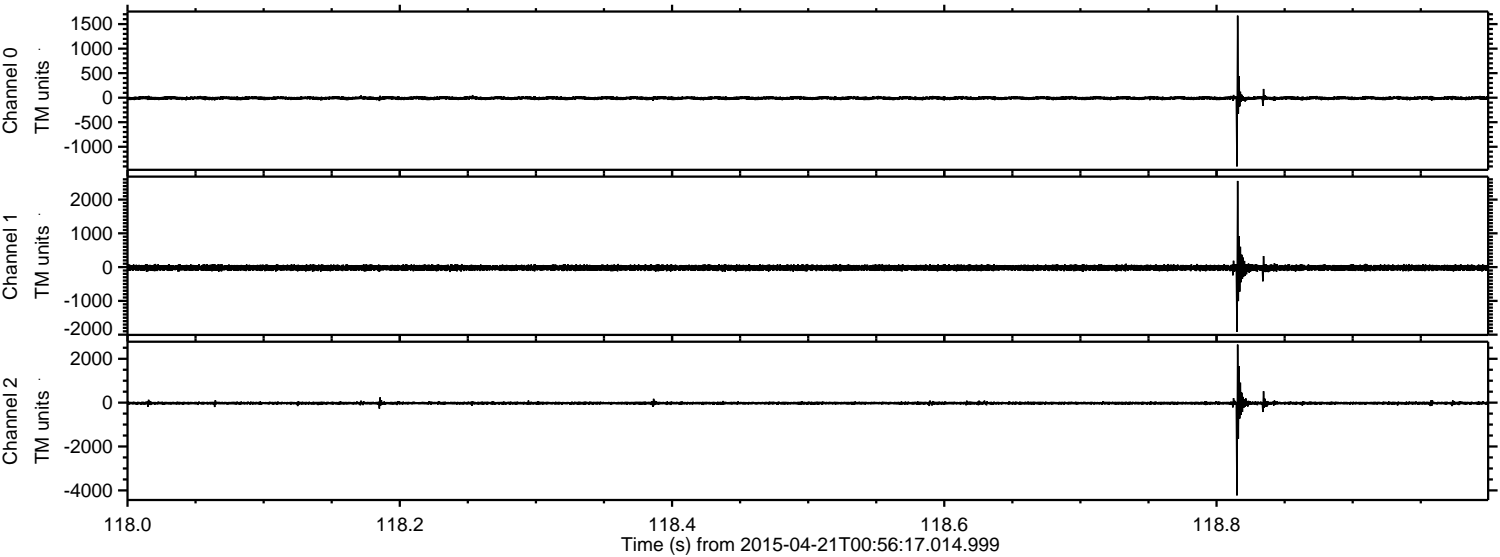
ELMAVAN 3D WAVEFORMS (Measured data sampled at 50 kHz) 49779 packets of 144 samples from 2015-04-21T00:56:17.014.999.

Processed Tue Apr 21 03:03:35 2015 by ELM ver.2012-10-06 from 001__elm20150421_005616__dat00.bin



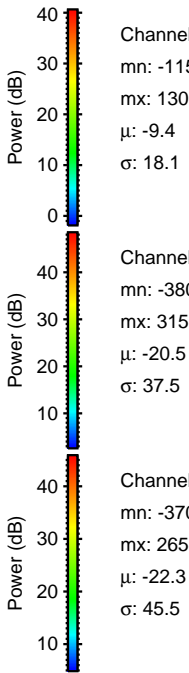
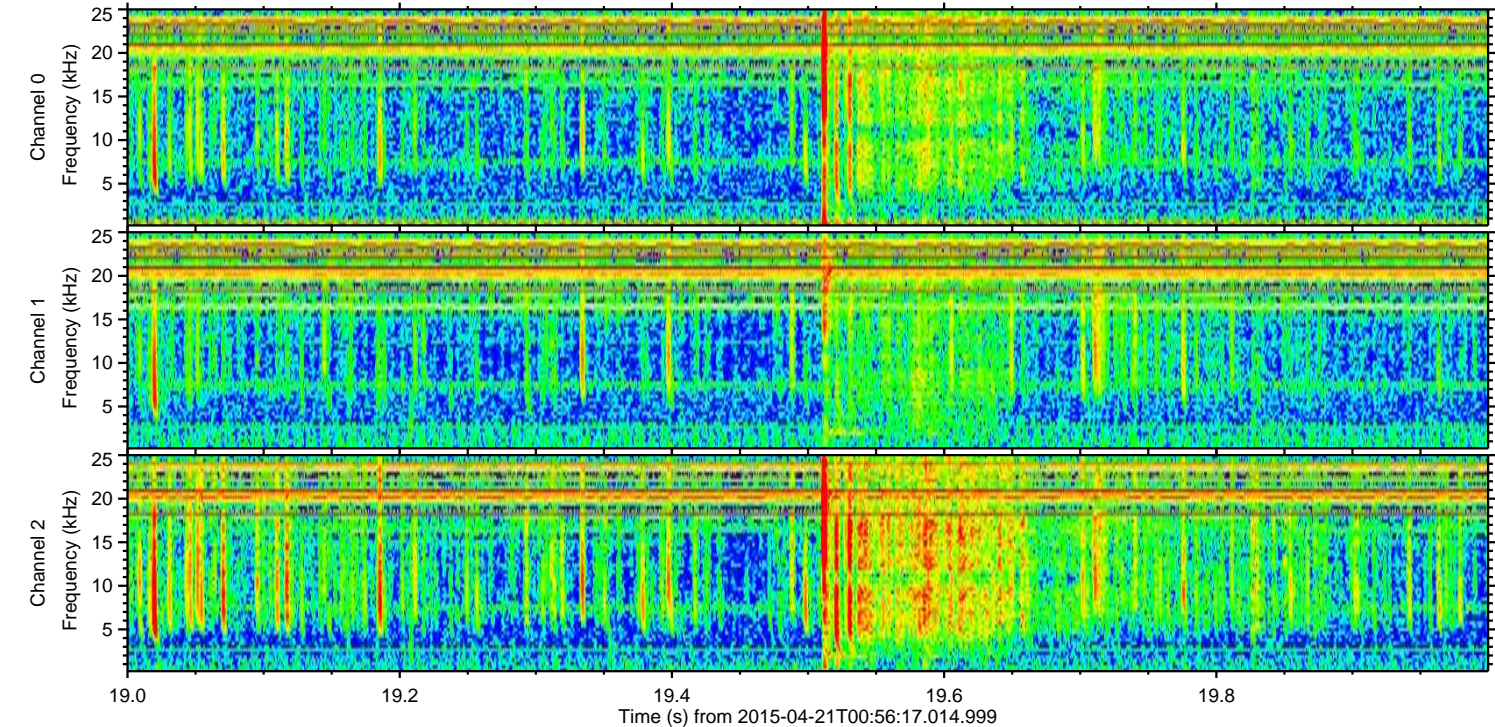
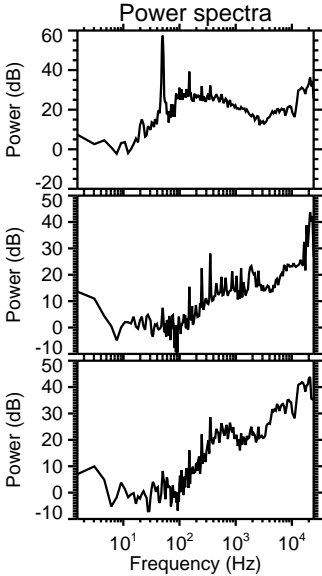
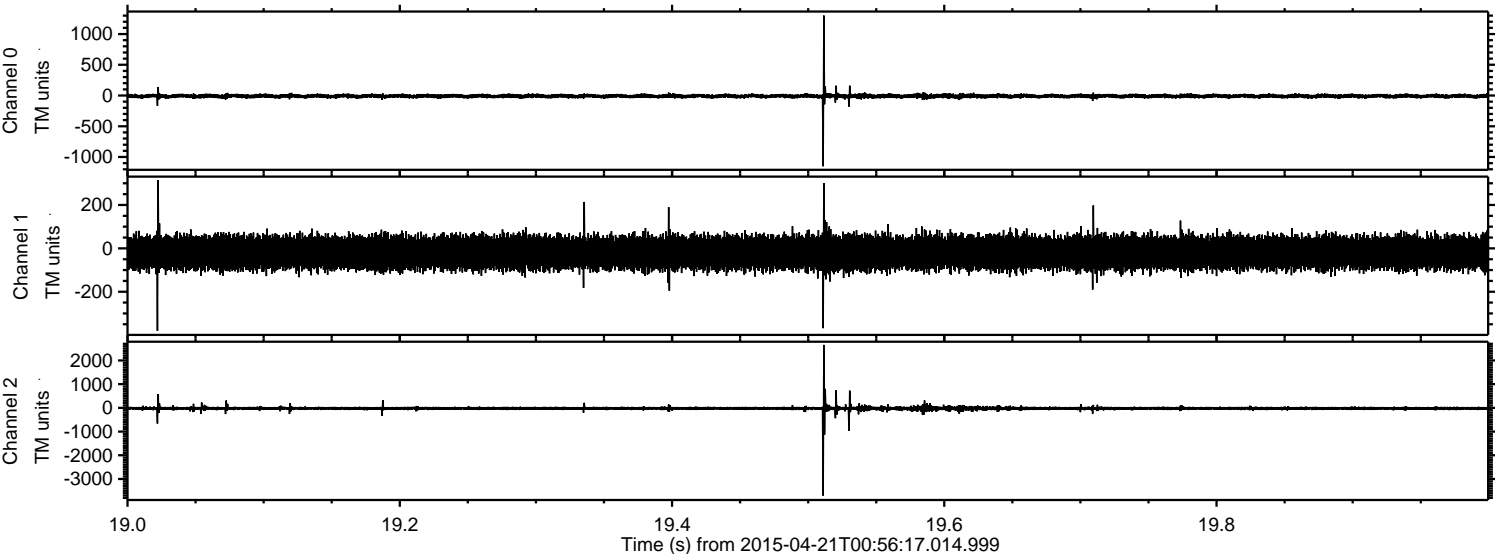
ELMAVAN 3D WAVEFORMS (Measured data sampled at 50 kHz) 49779 packets of 144 samples from 2015-04-21T00:56:17.014.999. Part 119/144

Processed Tue Apr 21 03:03:46 2015 by ELM ver.2012-10-06 from 001__elm20150421_005616__dat00.bin



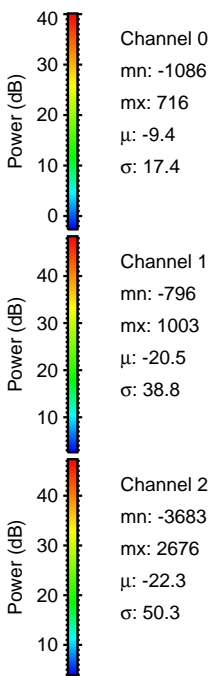
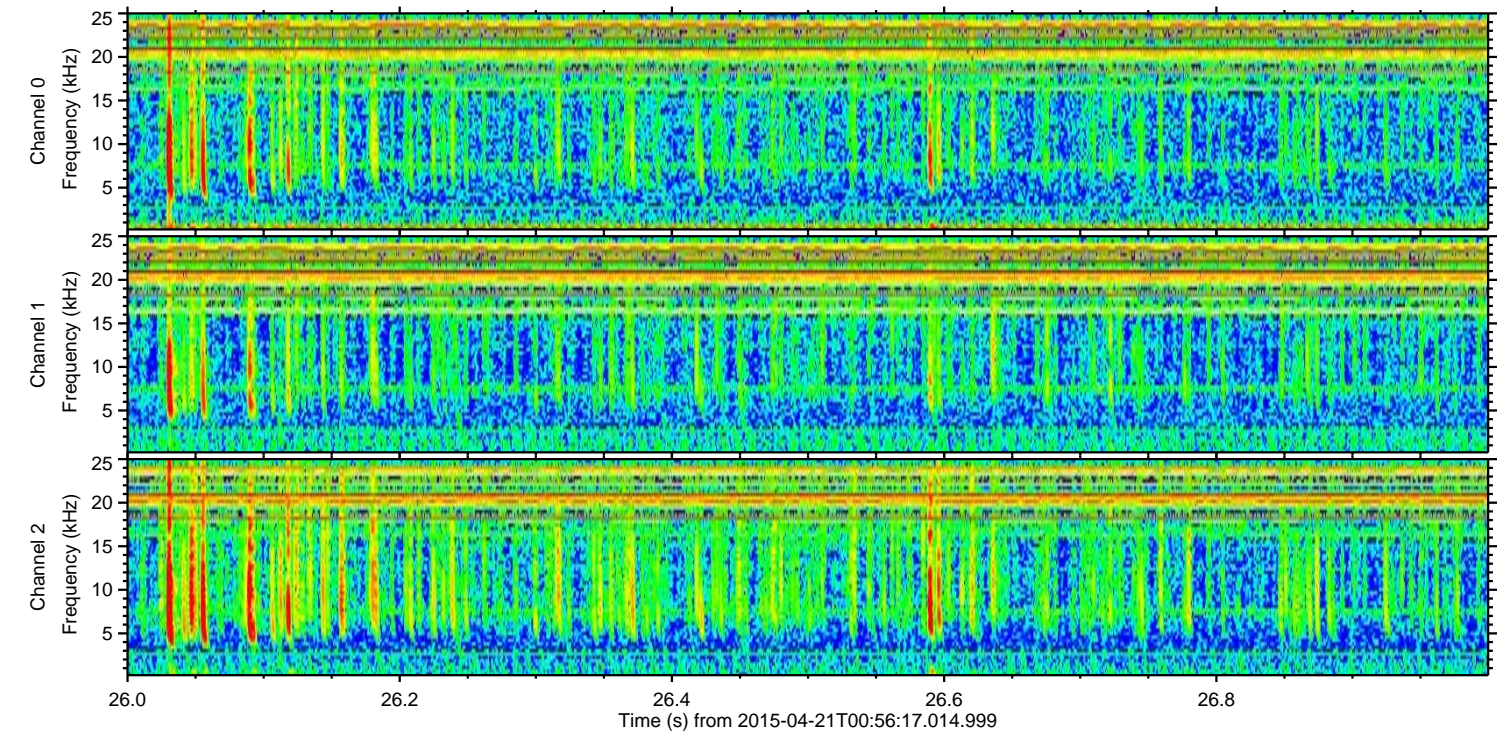
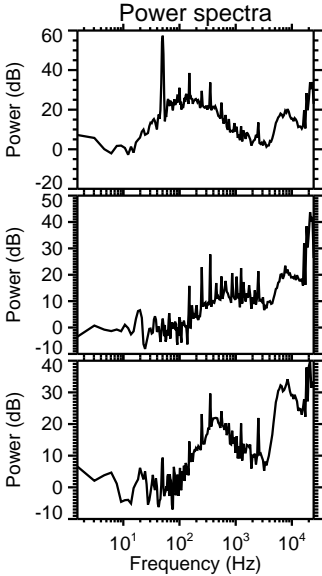
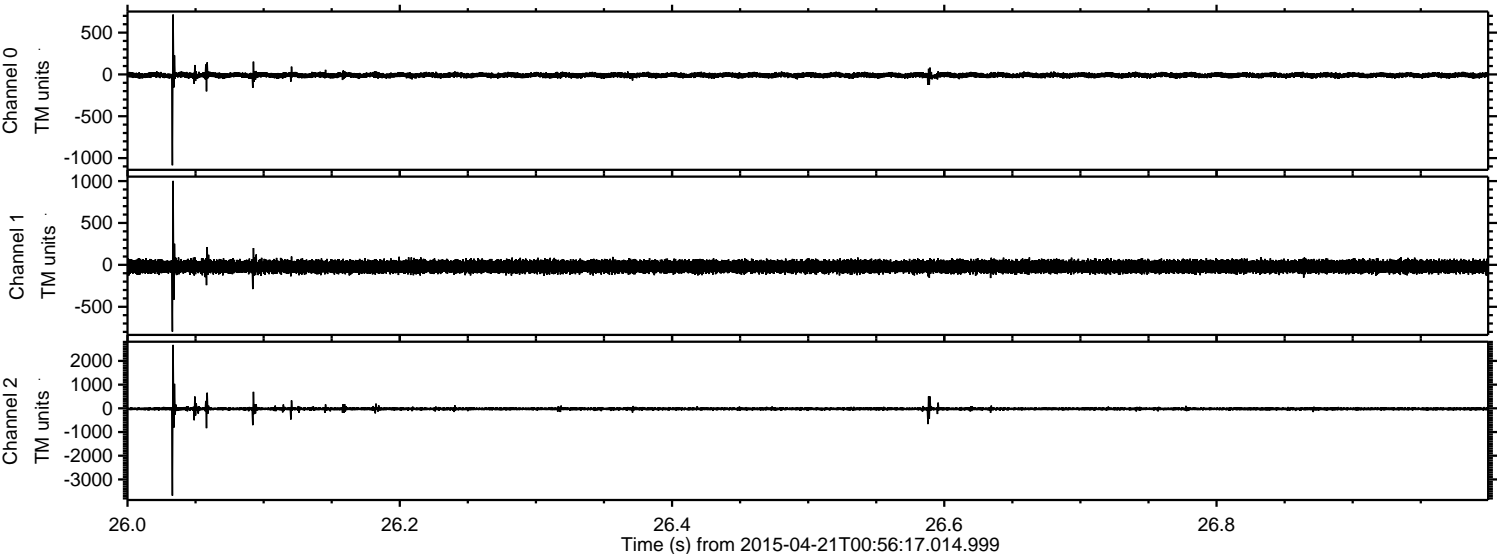
ELMAVAN 3D WAVEFORMS (Measured data sampled at 50 kHz) 49779 packets of 144 samples from 2015-04-21T00:56:17.014.999. Part 20/144

Processed Tue Apr 21 03:03:47 2015 by ELM ver.2012-10-06 from 001__elm20150421_005616__dat00.bin

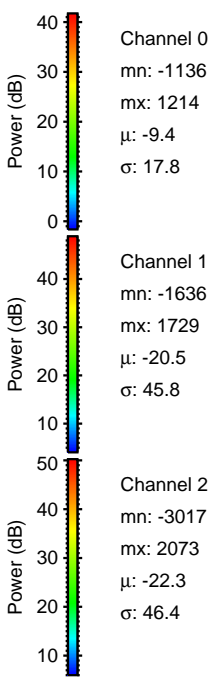
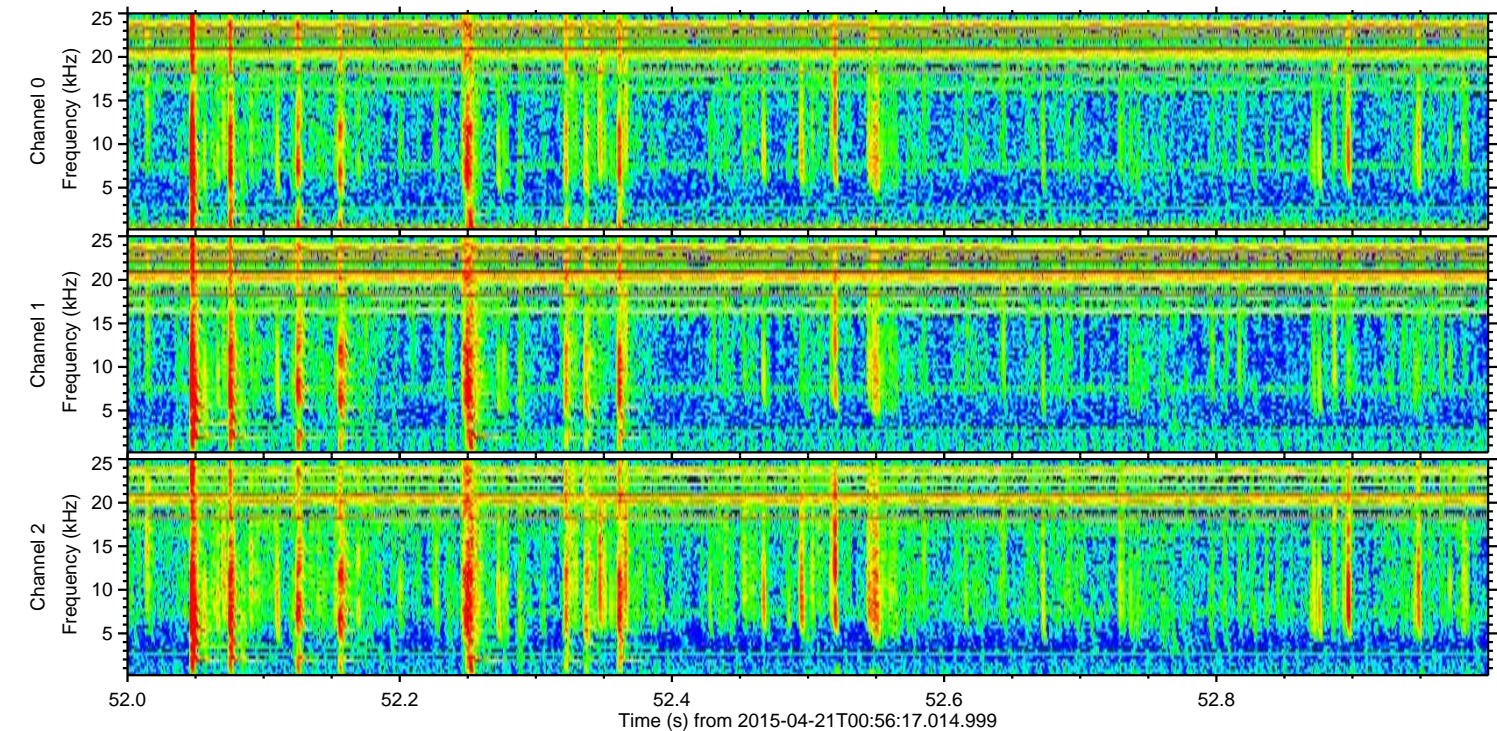
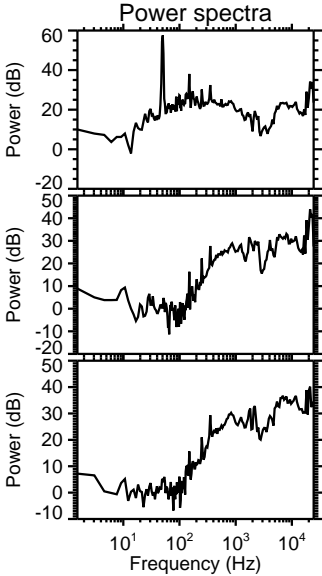
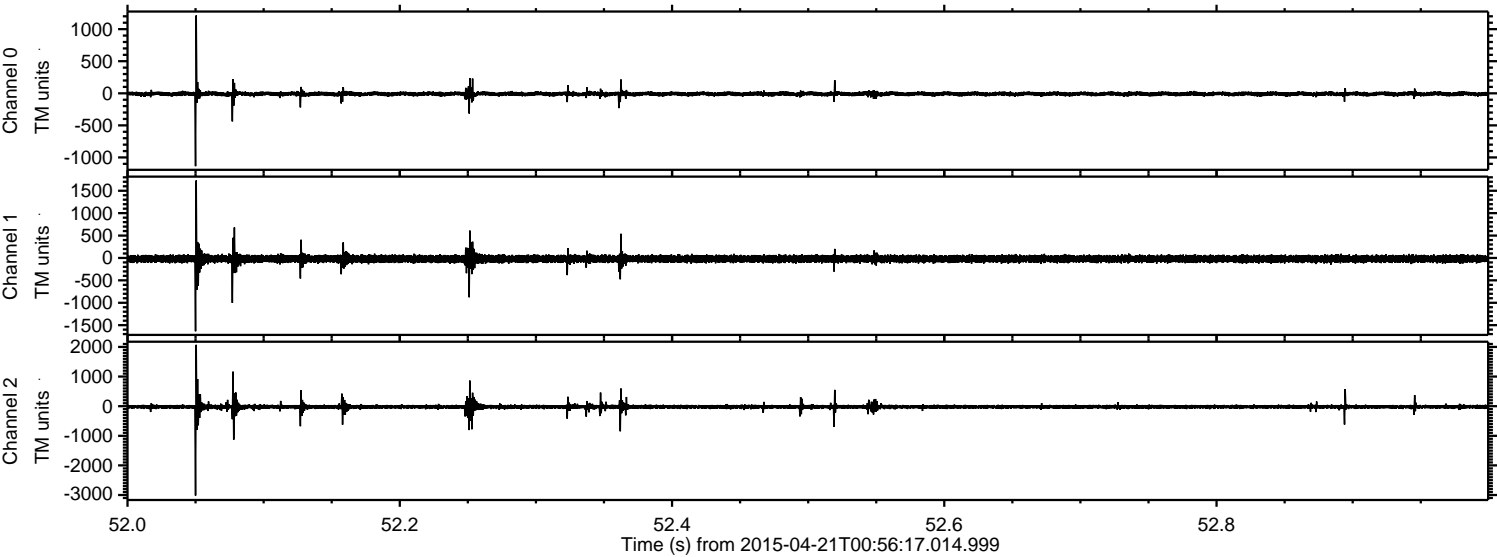


ELMAVAN 3D WAVEFORMS (Measured data sampled at 50 kHz) 49779 packets of 144 samples from 2015-04-21T00:56:17.014.999. Part 27/144

Processed Tue Apr 21 03:03:48 2015 by ELM ver.2012-10-06 from 001__elm20150421_005616__dat00.bin

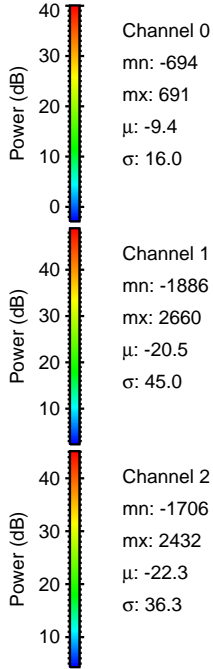
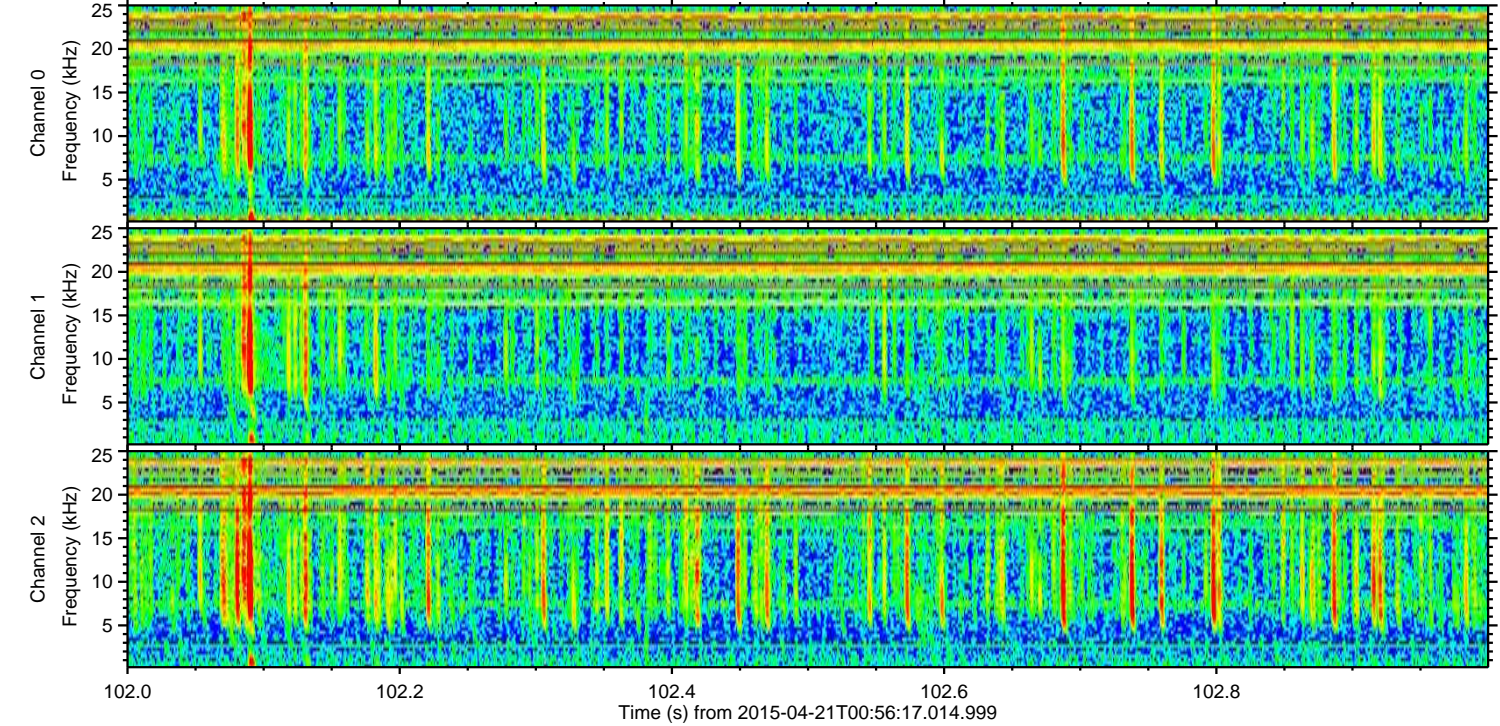
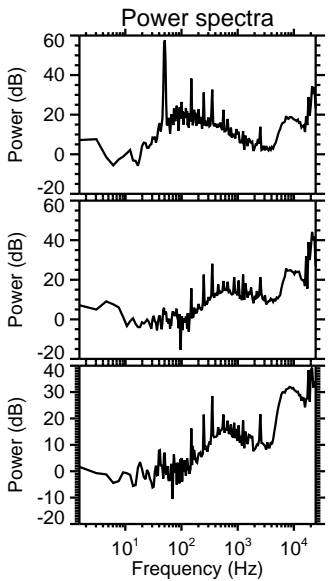
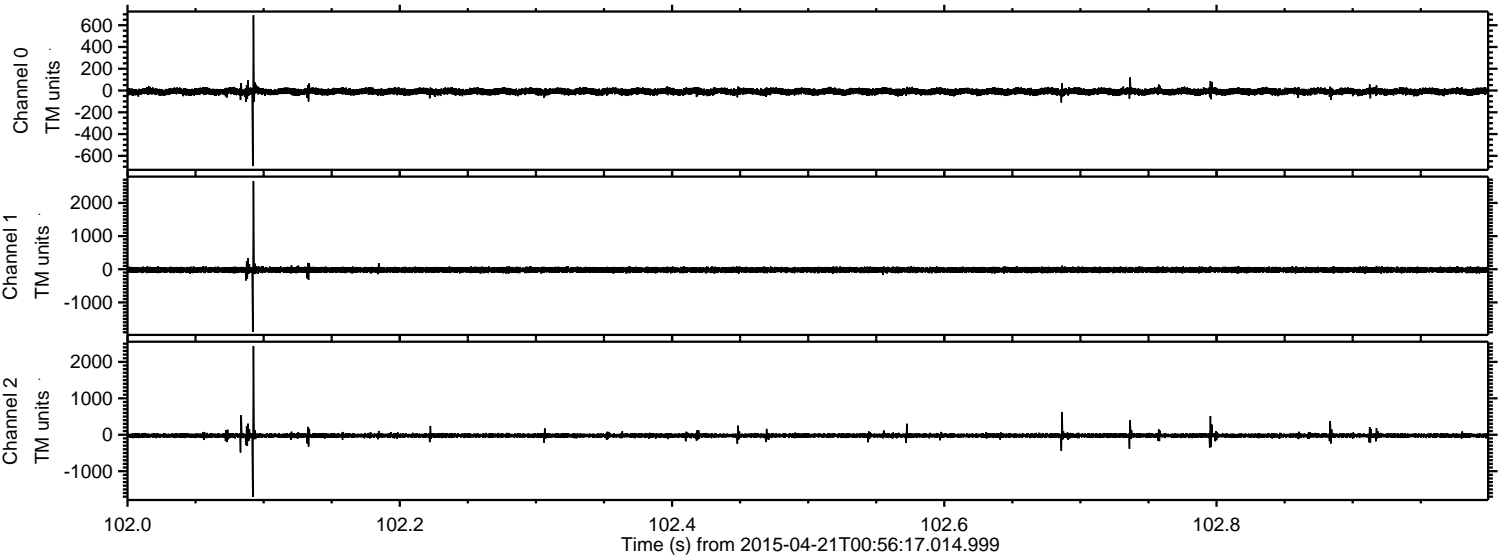


Processed Tue Apr 21 03:03:49 2015 by ELM ver.2012-10-06 from 001__elm20150421_005616__dat00.bin

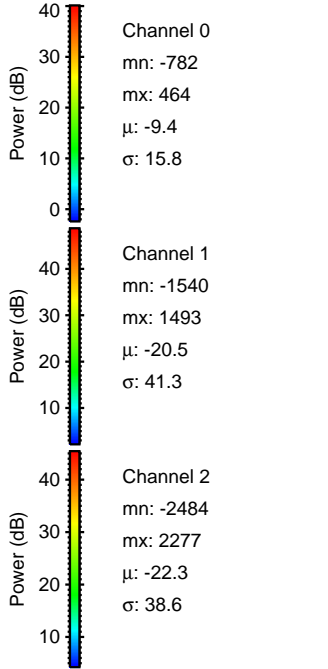
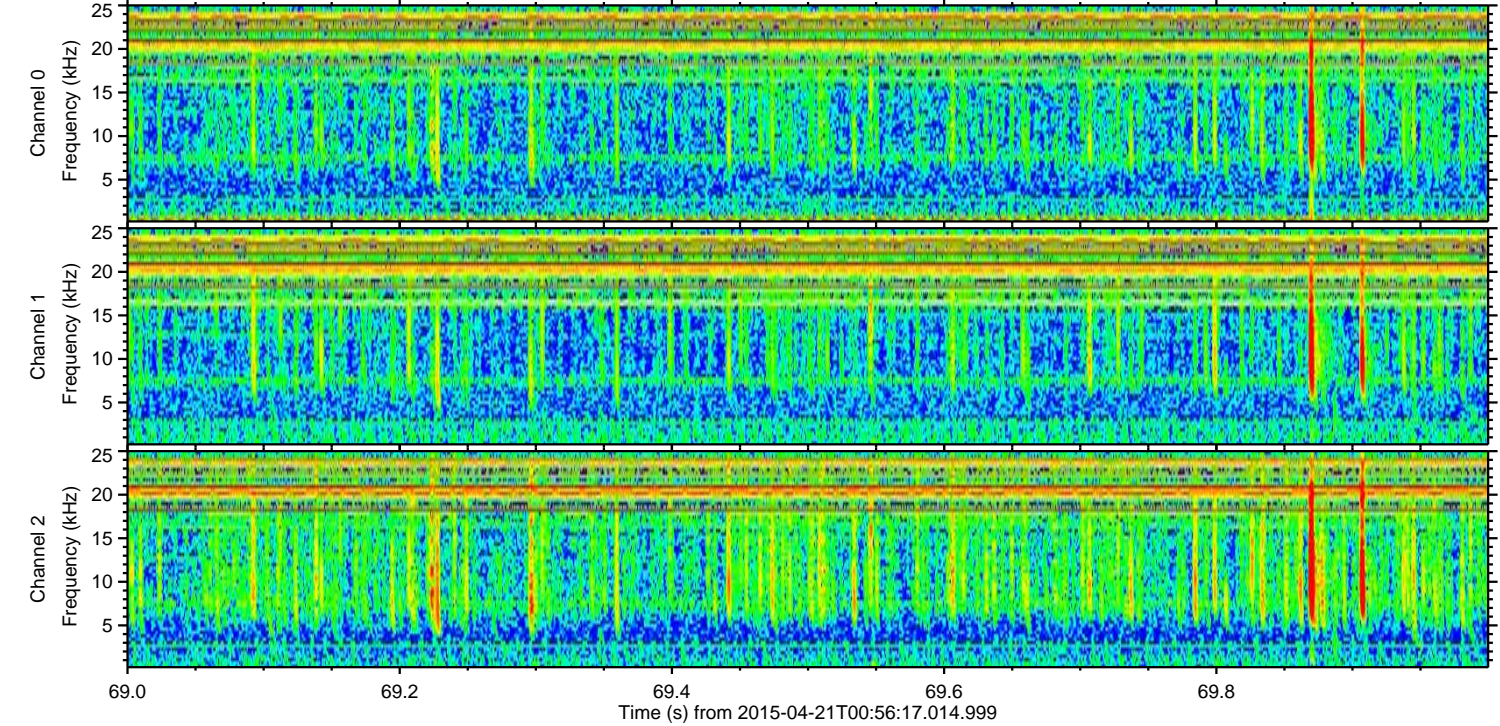
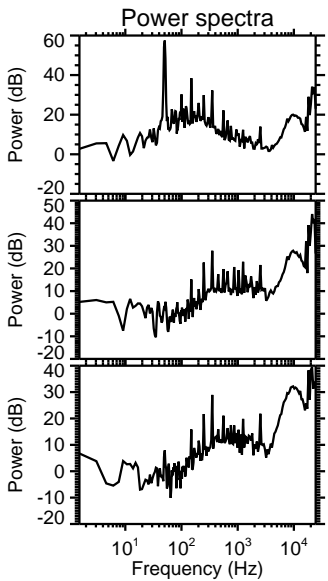
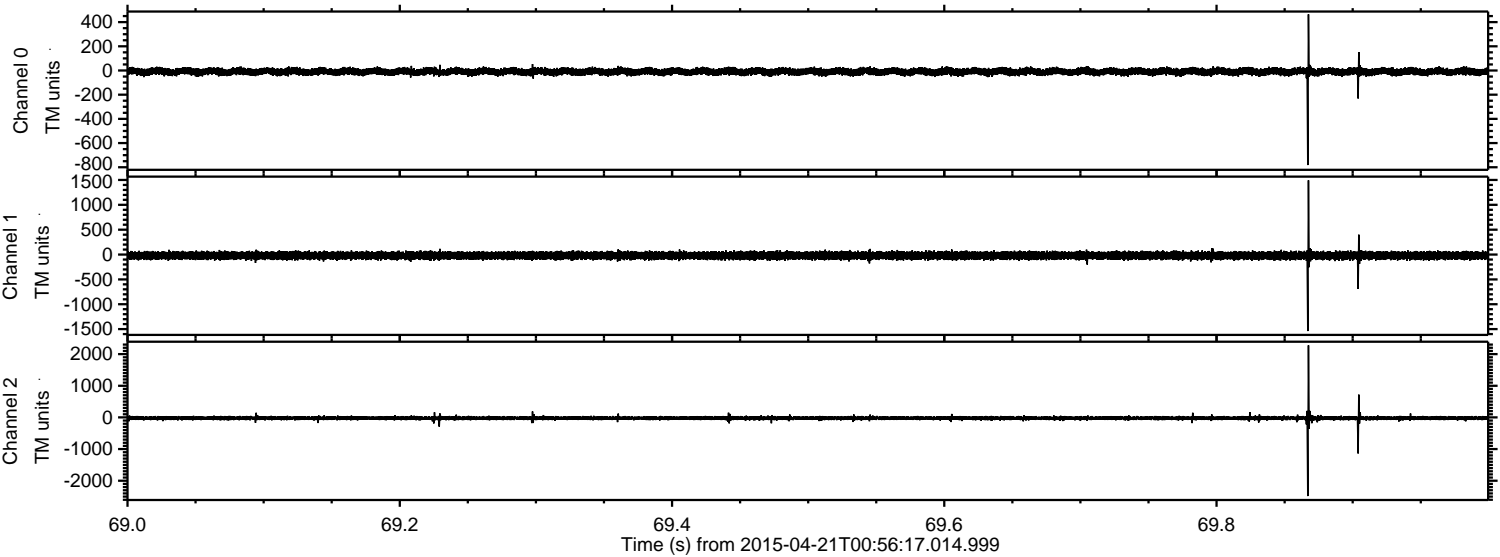


ELMAVAN 3D WAVEFORMS (Measured data sampled at 50 kHz) 49779 packets of 144 samples from 2015-04-21T00:56:17.014.999. Part 103/144

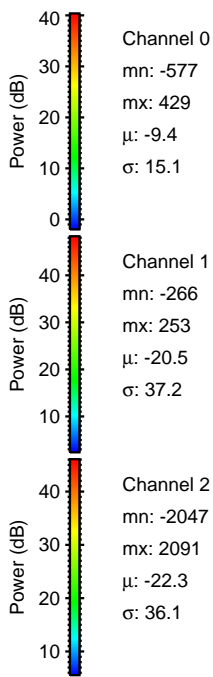
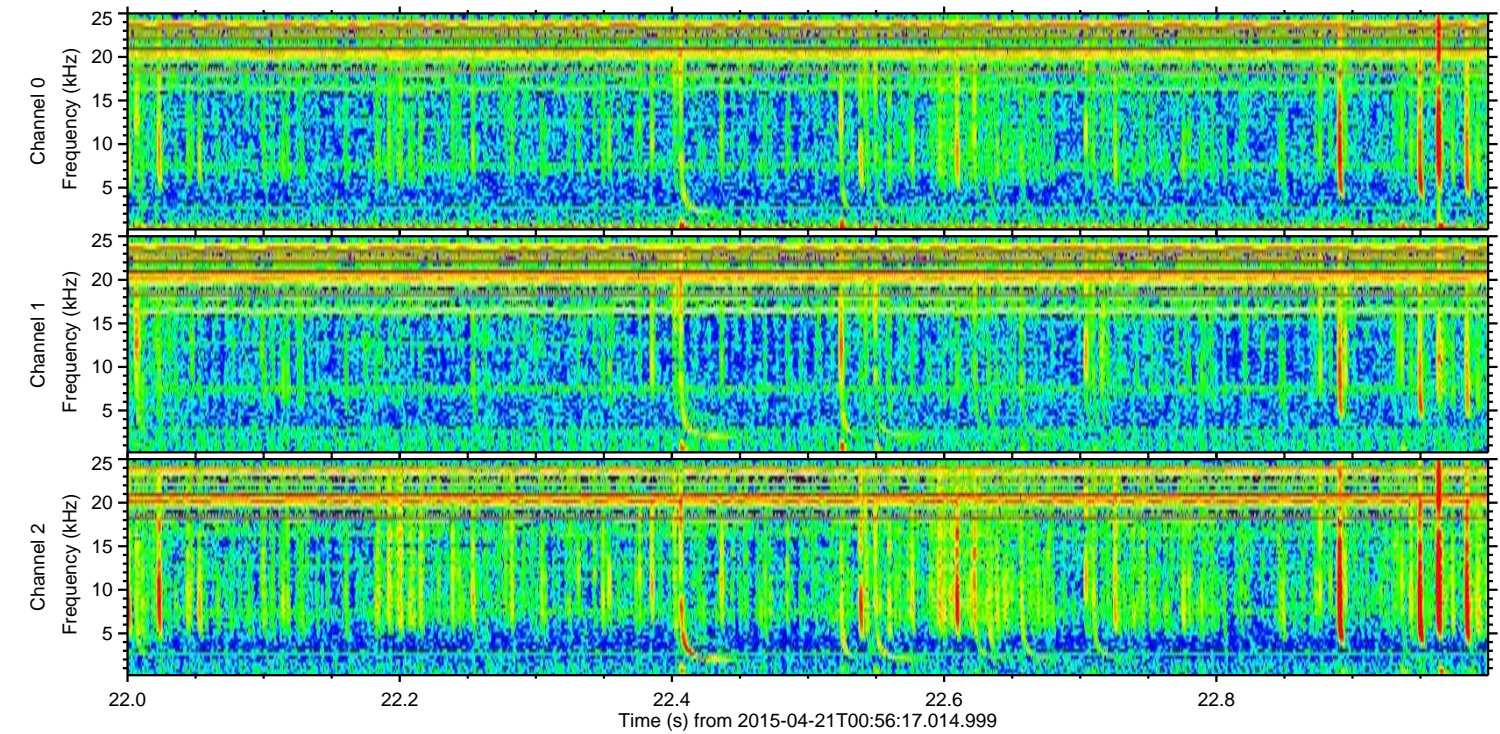
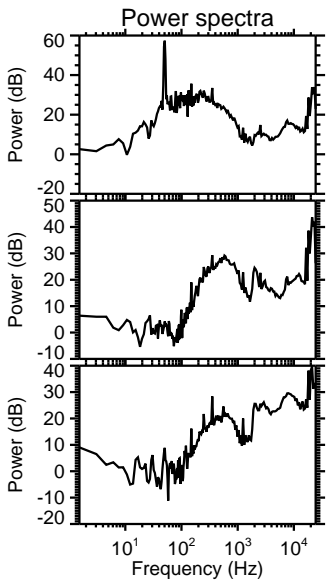
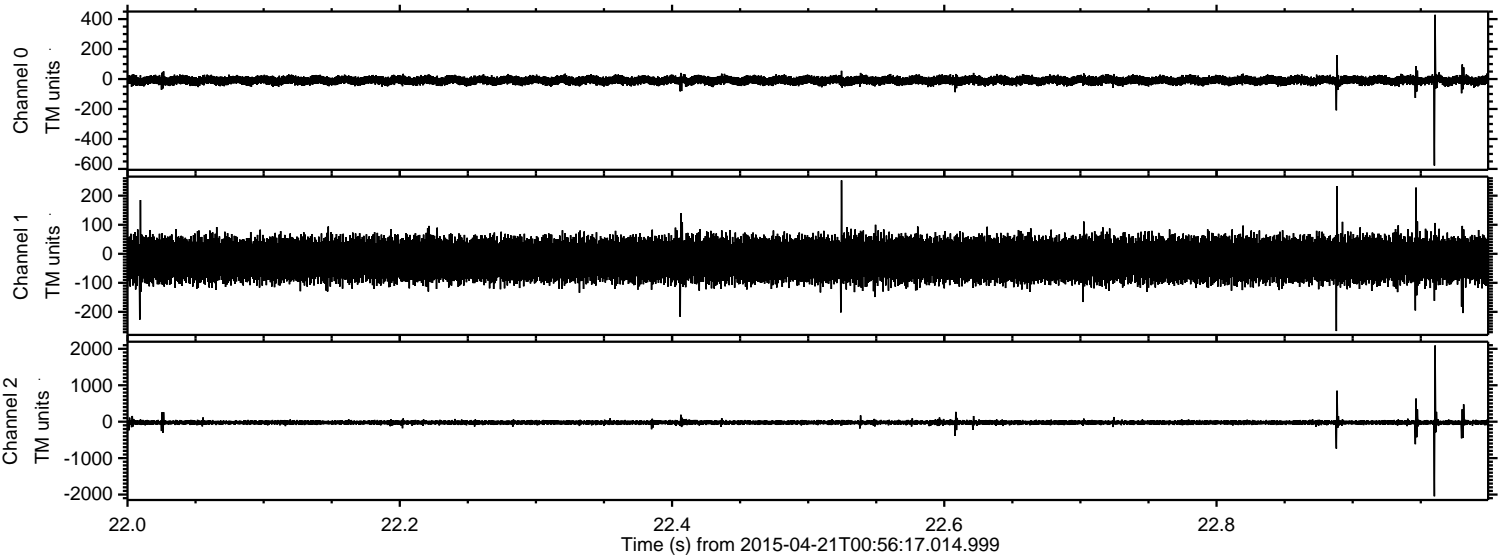
Processed Tue Apr 21 03:03:50 2015 by ELM ver.2012-10-06 from 001__elm20150421_005616__dat00.bin



Processed Tue Apr 21 03:03:51 2015 by ELM ver.2012-10-06 from 001__elm20150421_005616__dat00.bin



Processed Tue Apr 21 03:03:52 2015 by ELM ver.2012-10-06 from 001__elm20150421_005616__dat00.bin

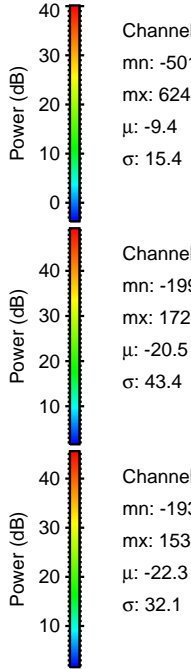
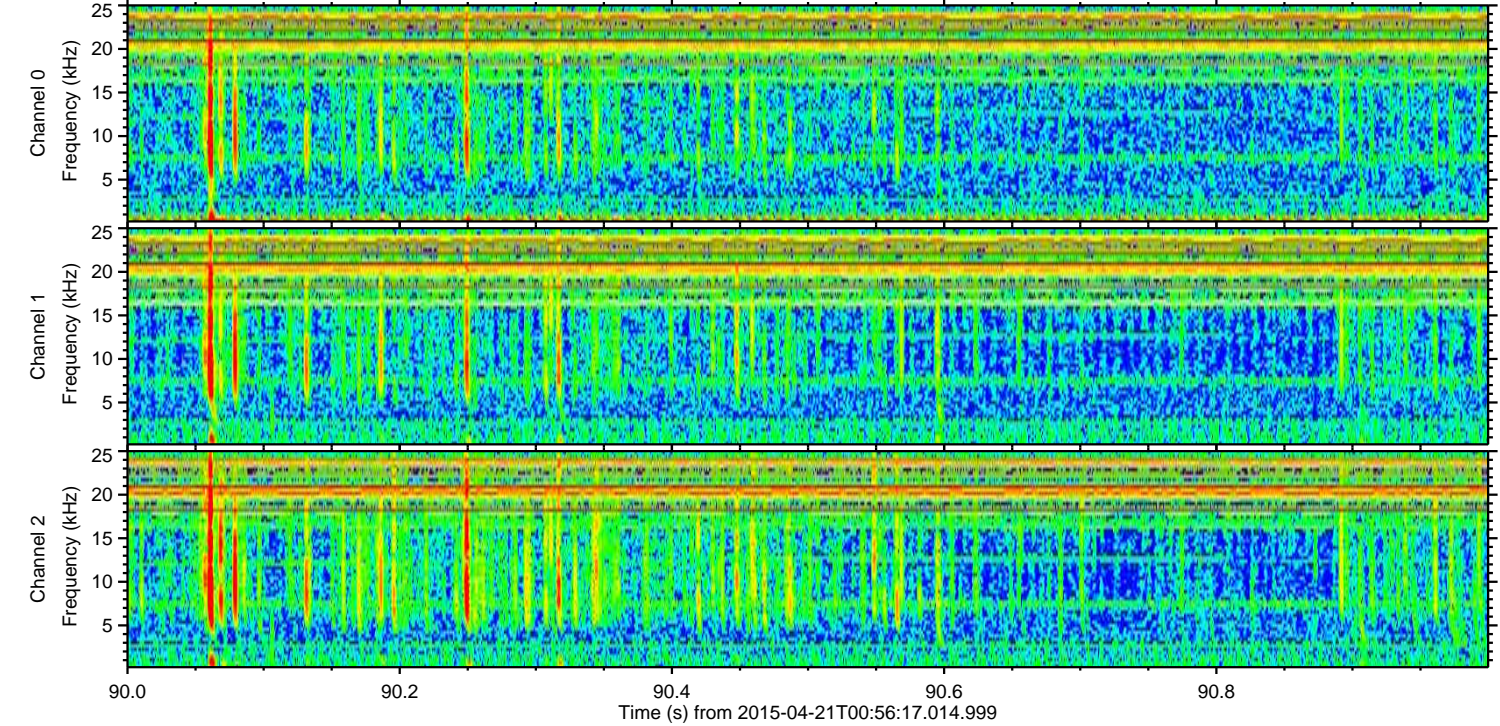
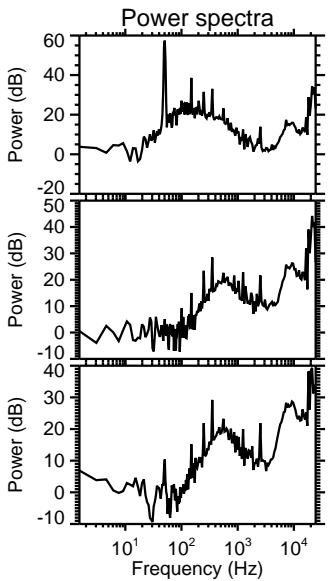
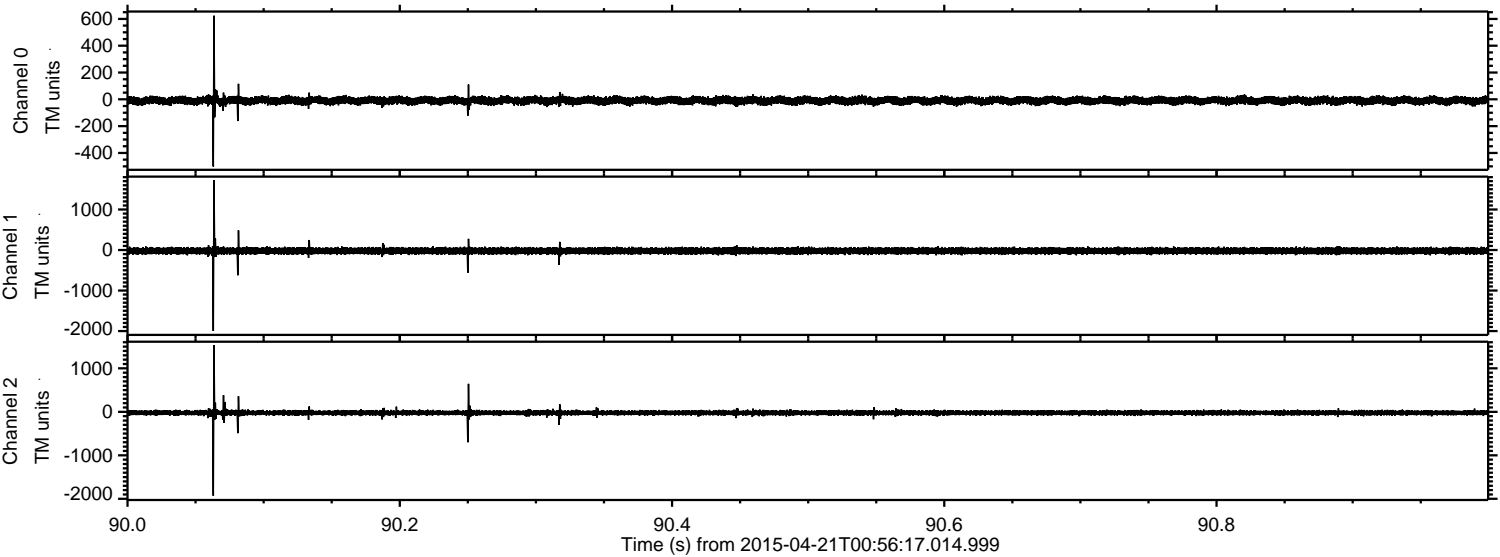


Channel 0
mn: -577
mx: 429
 μ : -9.4
 σ : 15.1

Channel 1
mn: -266
mx: 253
 μ : -20.5
 σ : 37.2

Channel 2
mn: -2047
mx: 2091
 μ : -22.3
 σ : 36.1

Processed Tue Apr 21 03:03:53 2015 by ELM ver.2012-10-06 from 001__elm20150421_005616__dat00.bin



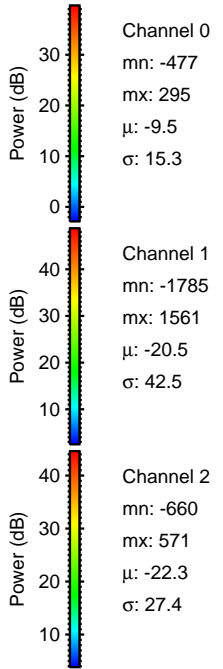
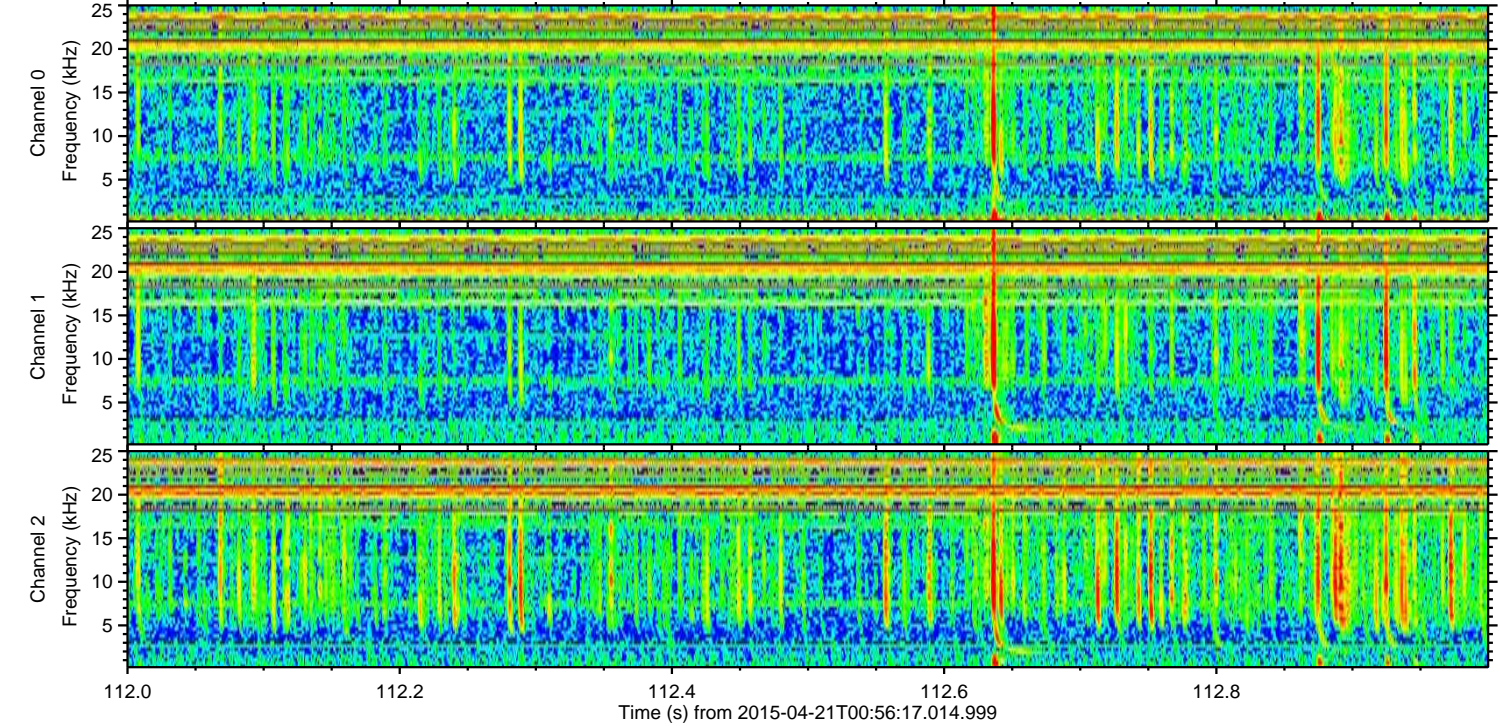
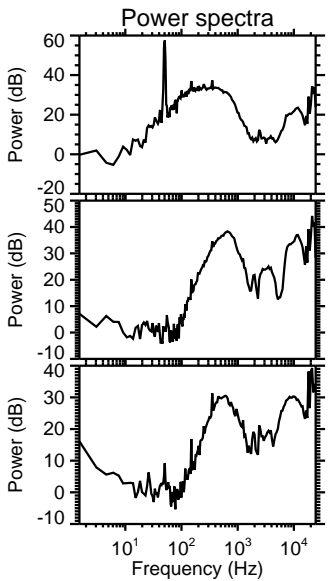
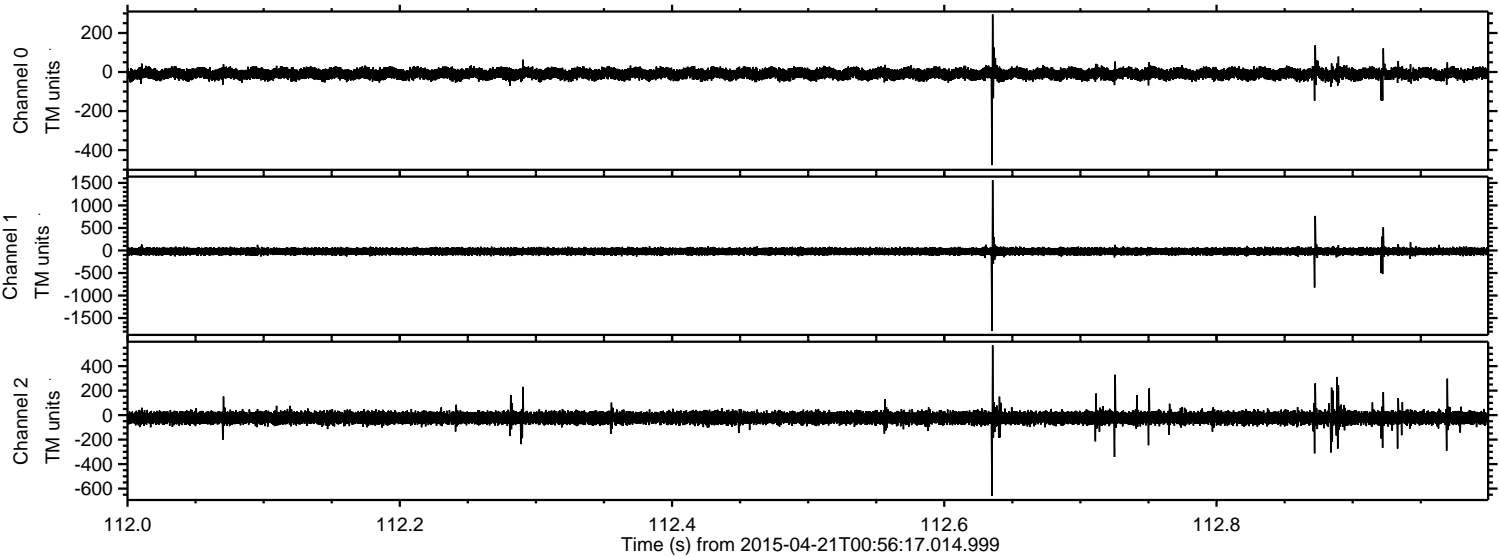
Channel 0
mn: -501
mx: 624
 μ : -9.4
 σ : 15.4

Channel 1
mn: -1996
mx: 1726
 μ : -20.5
 σ : 43.4

Channel 2
mn: -1931
mx: 1536
 μ : -22.3
 σ : 32.1

ELMAVAN 3D WAVEFORMS (Measured data sampled at 50 kHz) 49779 packets of 144 samples from 2015-04-21T00:56:17.014.999. Part 113/144

Processed Tue Apr 21 03:03:54 2015 by ELM ver.2012-10-06 from 001__elm20150421_005616__dat00.bin



ELMAVAN 3D WAVEFORMS (Measured data sampled at 50 kHz) 49779 packets of 144 samples from 2015-04-21T00:56:17.014.999. Part 109/144

Processed Tue Apr 21 03:03:55 2015 by ELM ver.2012-10-06 from 001__elm20150421_005616__dat00.bin

