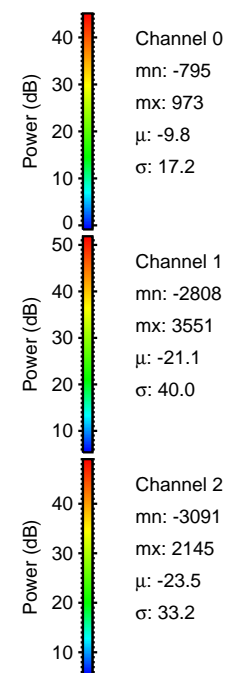
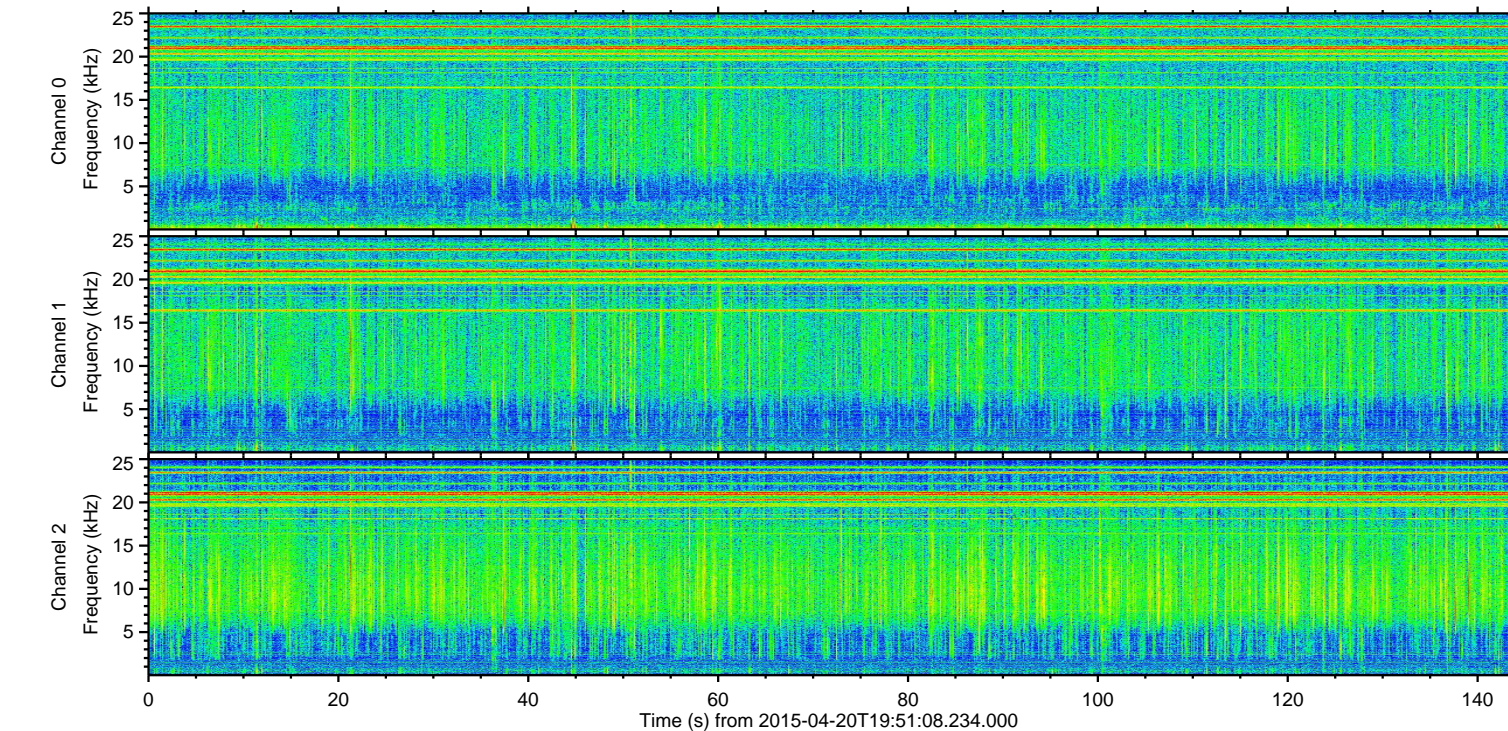
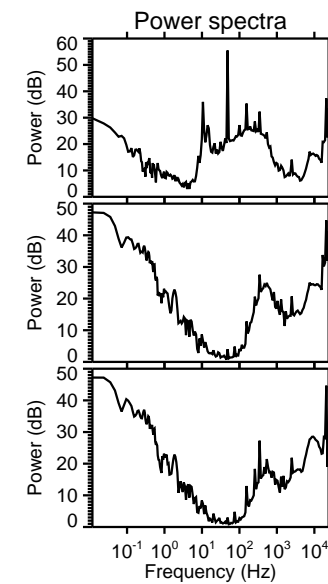
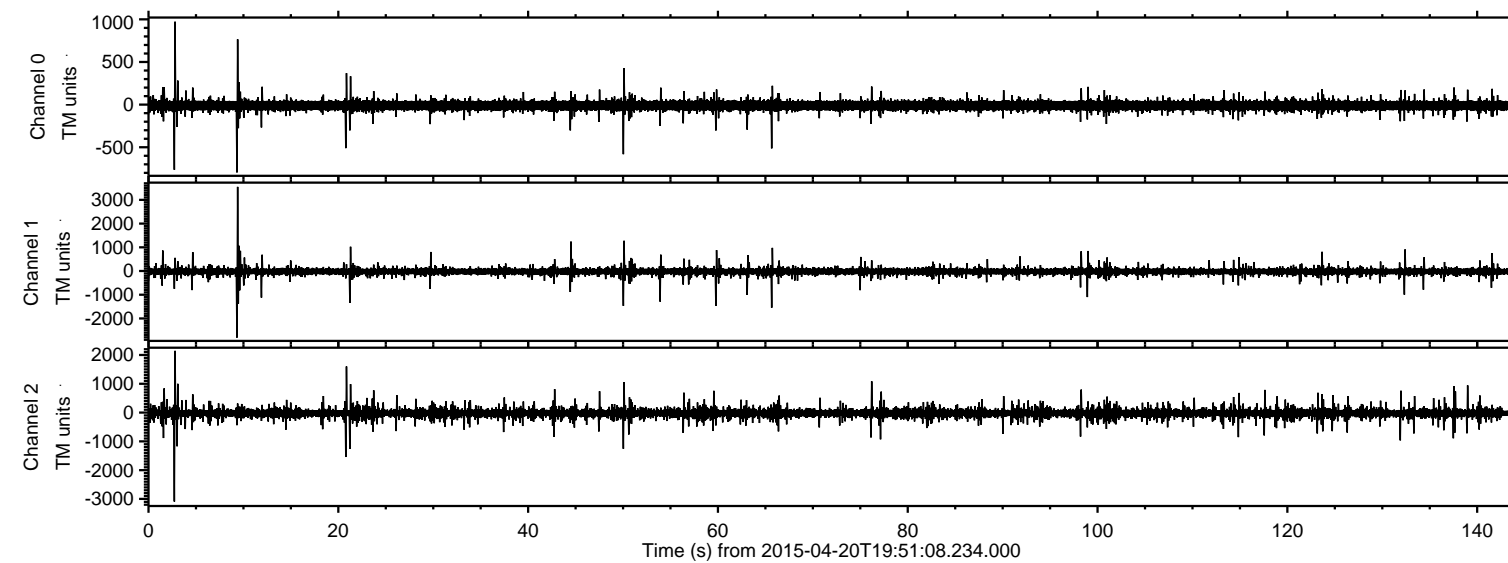


# ELMAVAN 3D WAVEFORMS (Measured data sampled at 50 kHz) 49780 packets of 144 samples from 2015-04-20T19:51:08.234.000.

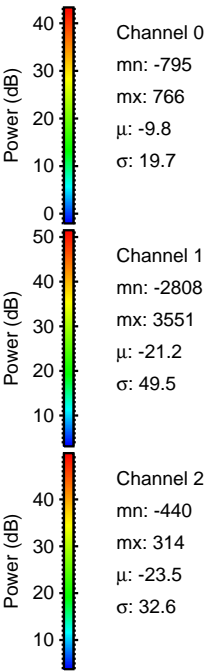
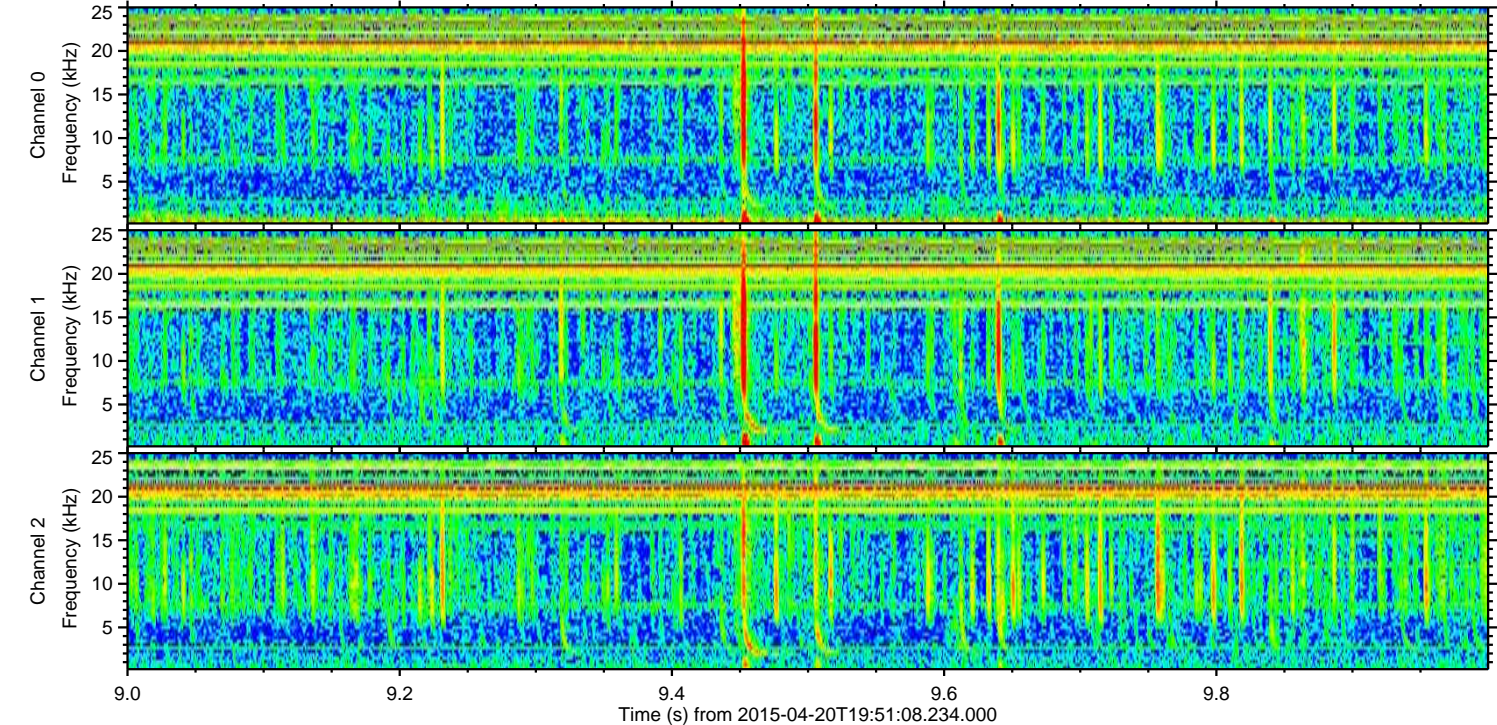
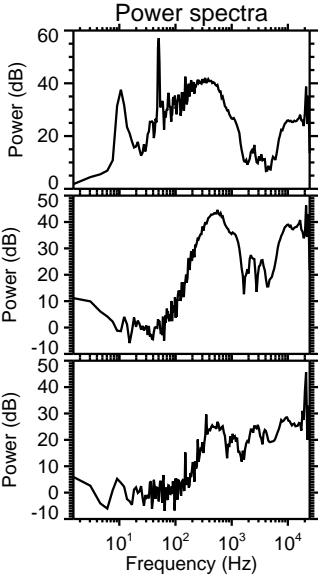
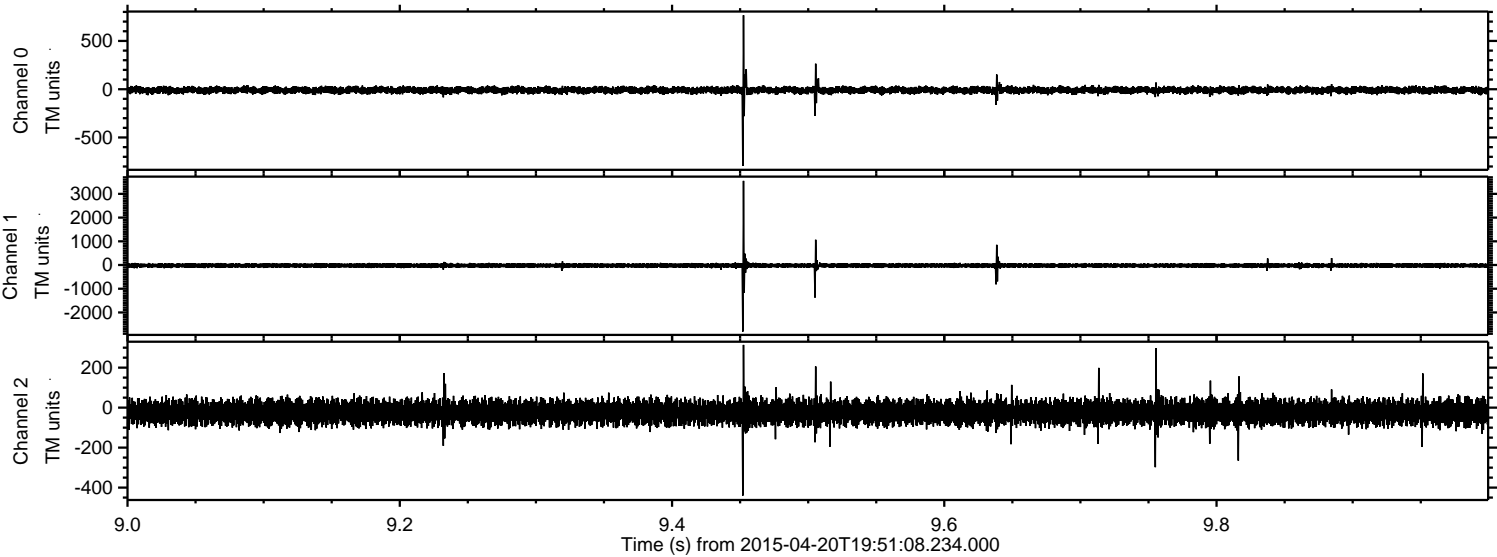
Processed Mon Apr 20 21:58:30 2015 by ELM ver.2012-10-06 from 001\_\_elm20150420\_195107\_\_dat00.bin





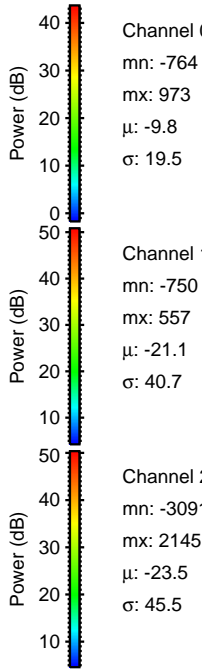
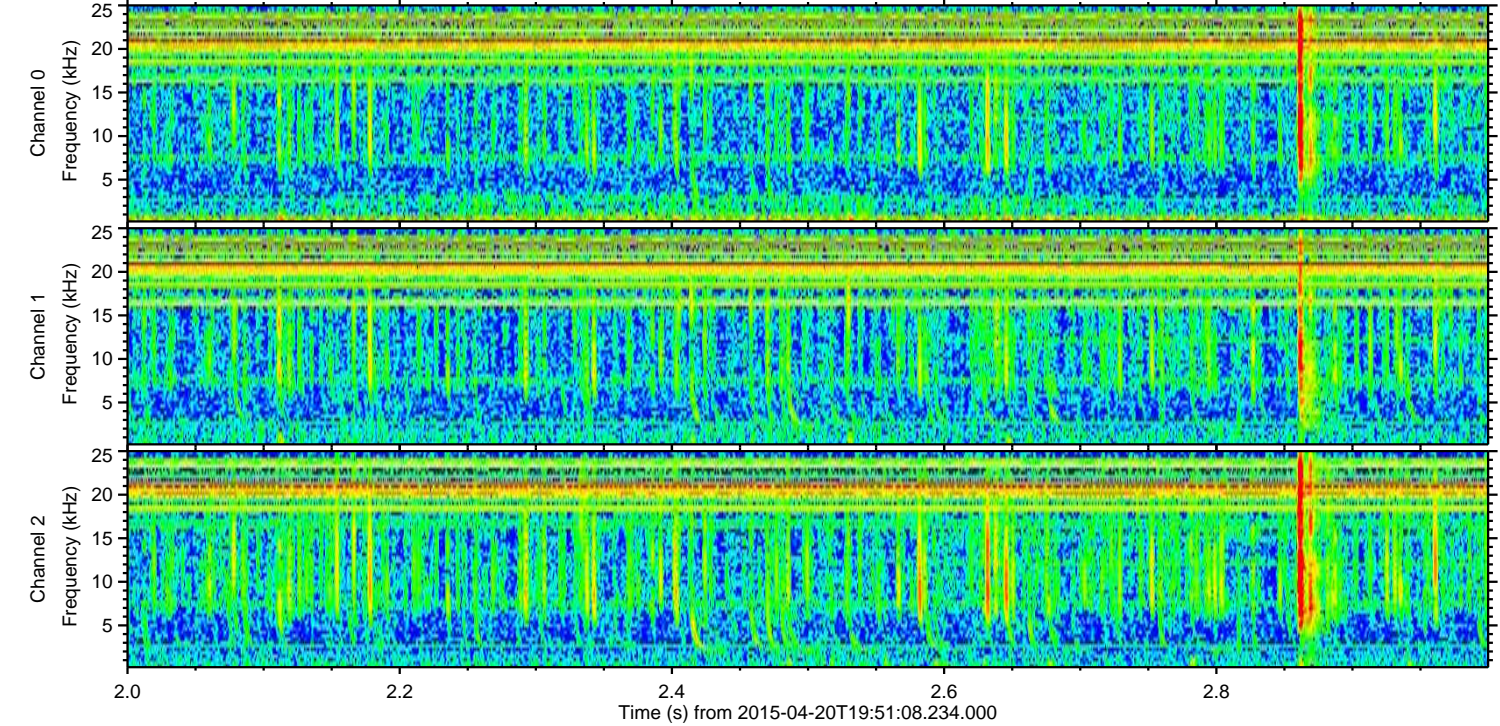
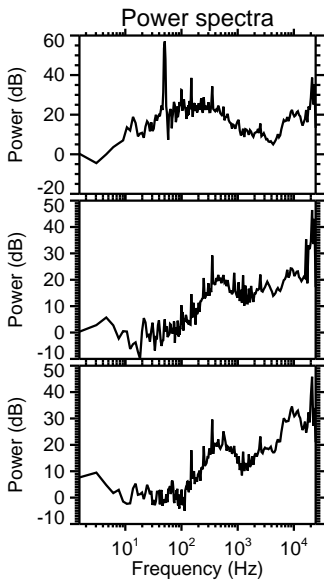
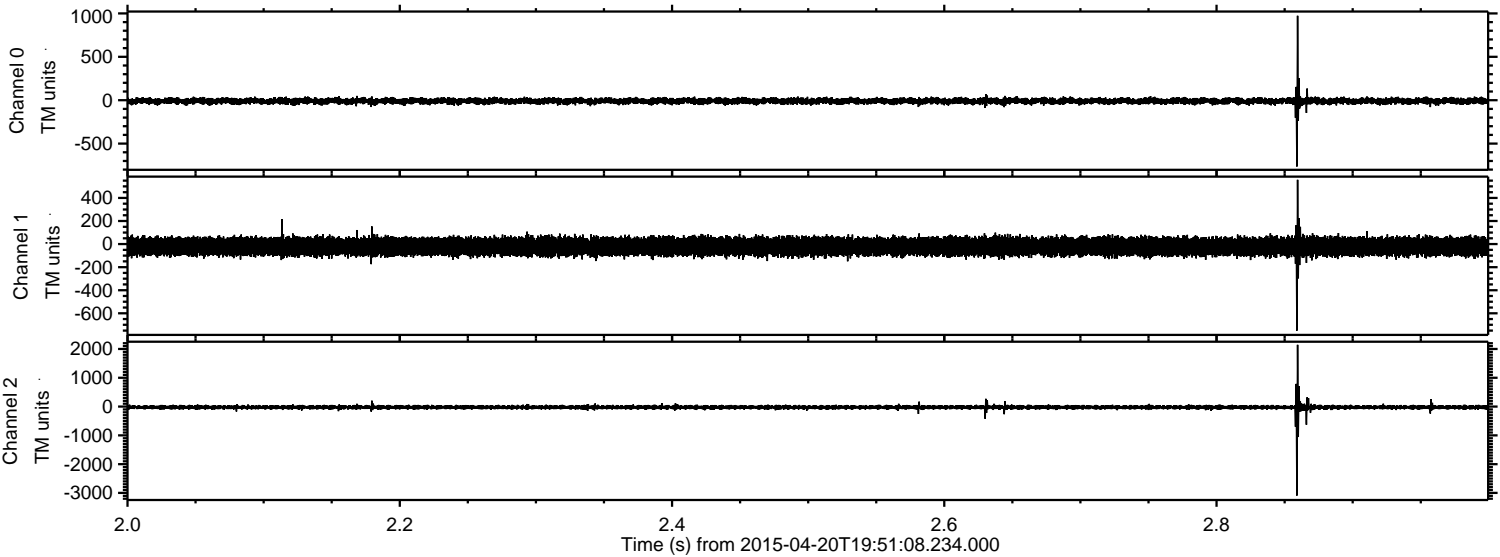
ELMAVAN 3D WAVEFORMS (Measured data sampled at 50 kHz) 49780 packets of 144 samples from 2015-04-20T19:51:08.234.000. Part 10/144

Processed Mon Apr 20 21:58:41 2015 by ELM ver.2012-10-06 from 001\_\_elm20150420\_195107\_\_dat00.bin





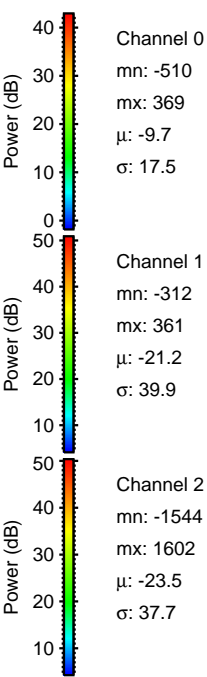
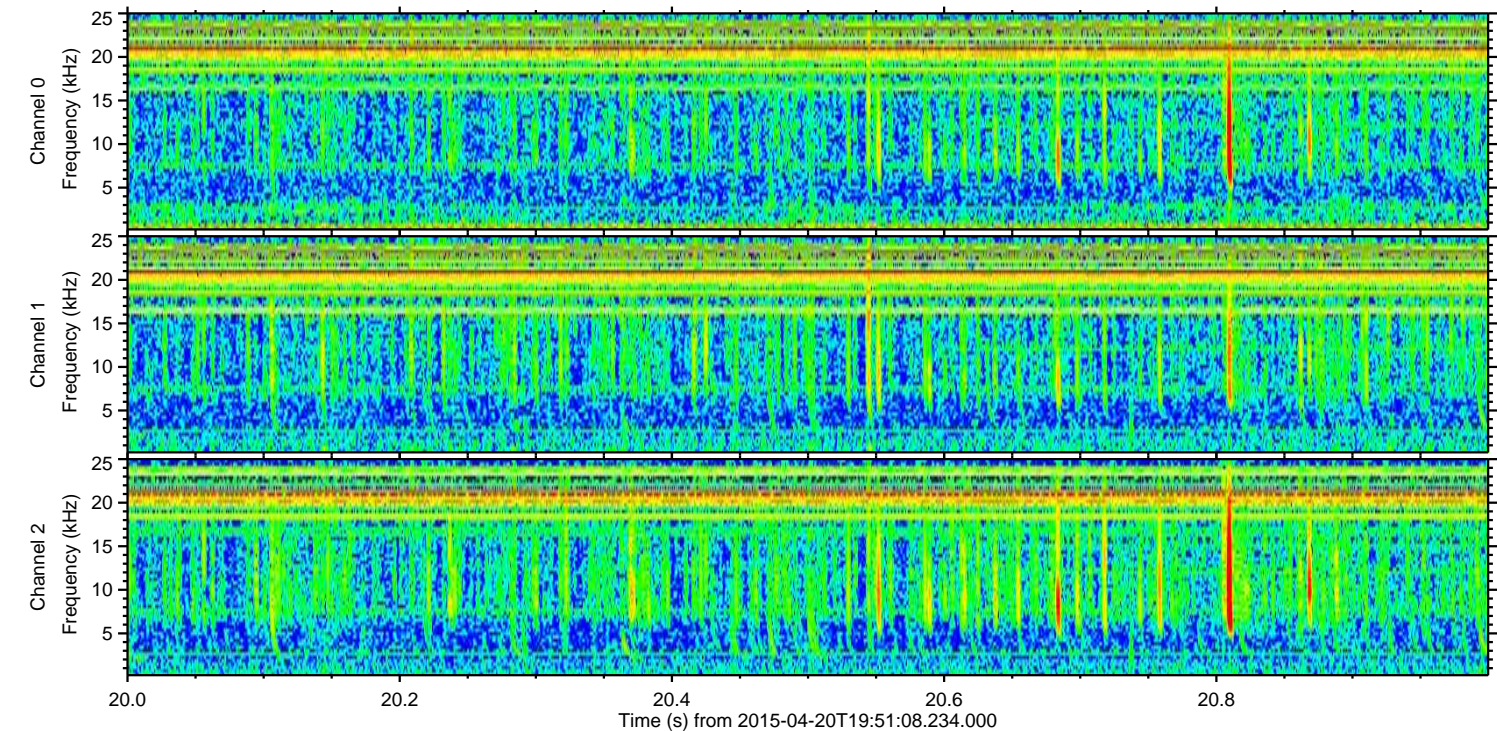
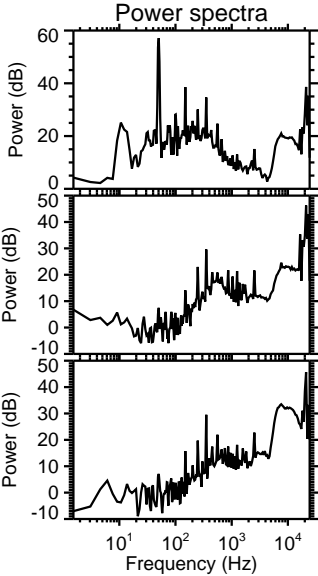
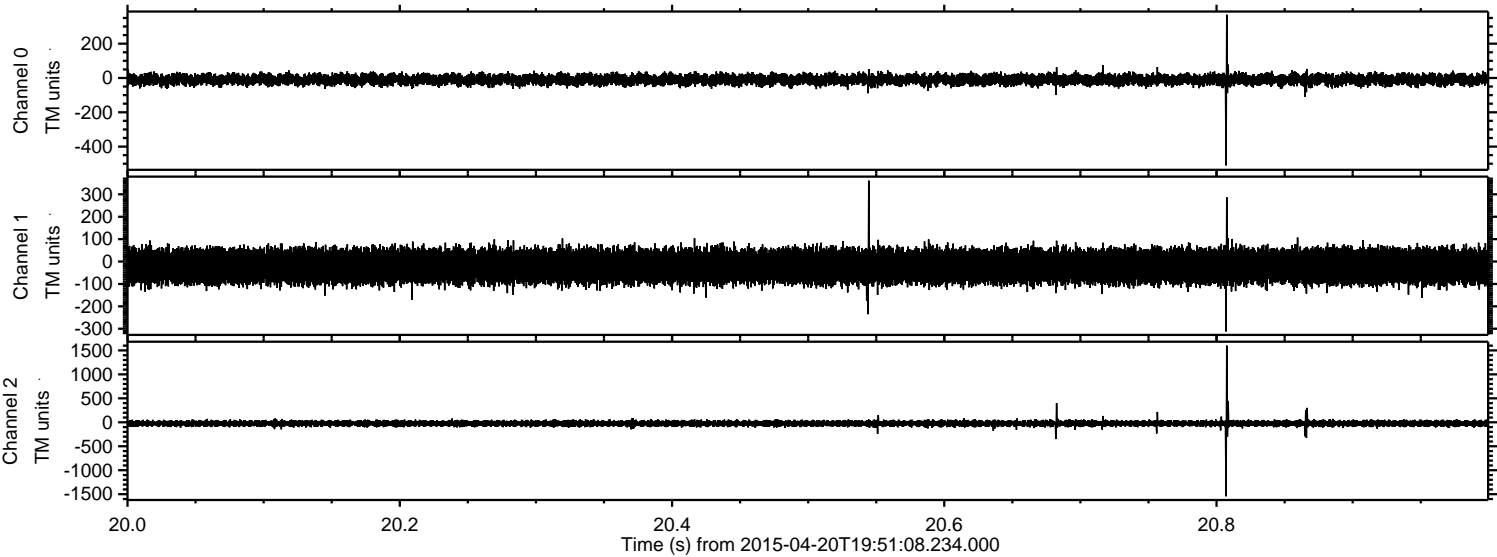
Processed Mon Apr 20 21:58:42 2015 by ELM ver.2012-10-06 from 001\_\_elm20150420\_195107\_\_dat00.bin





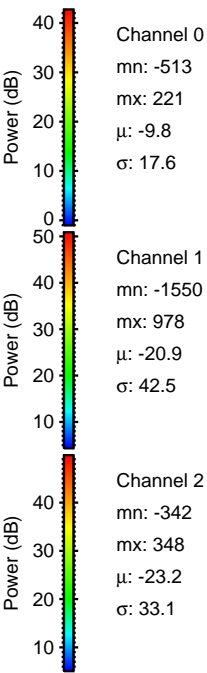
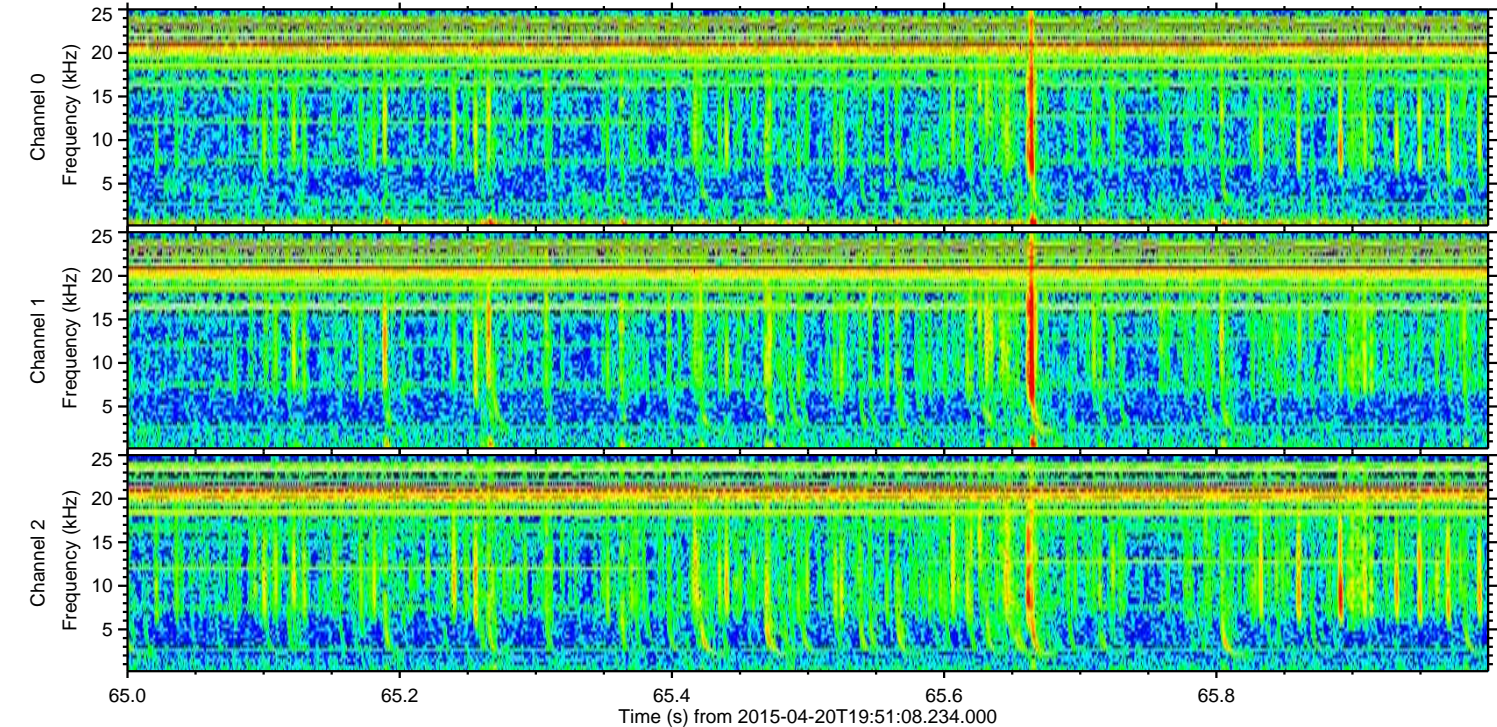
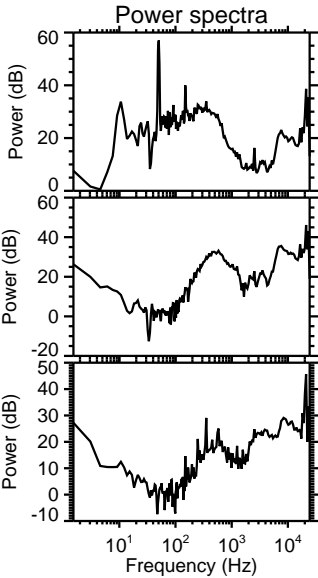
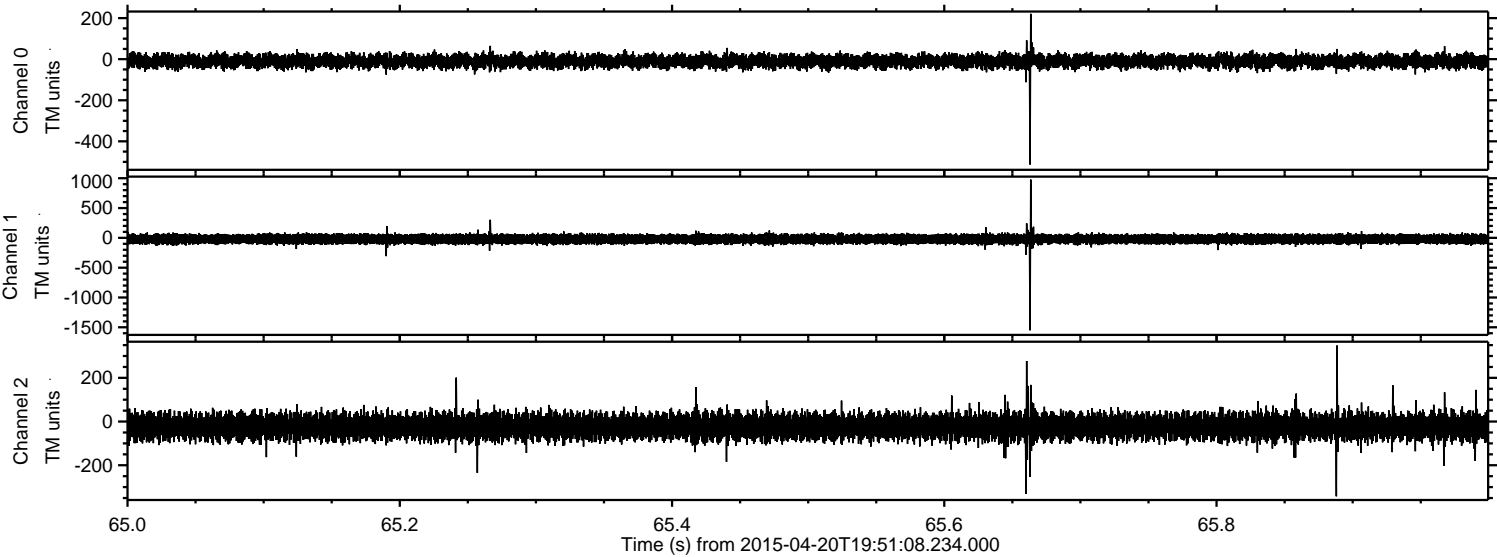
ELMAVAN 3D WAVEFORMS (Measured data sampled at 50 kHz) 49780 packets of 144 samples from 2015-04-20T19:51:08.234.000. Part 21/144

Processed Mon Apr 20 21:58:43 2015 by ELM ver.2012-10-06 from 001\_\_elm20150420\_195107\_\_dat00.bin



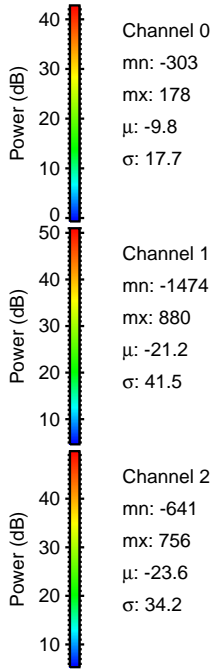
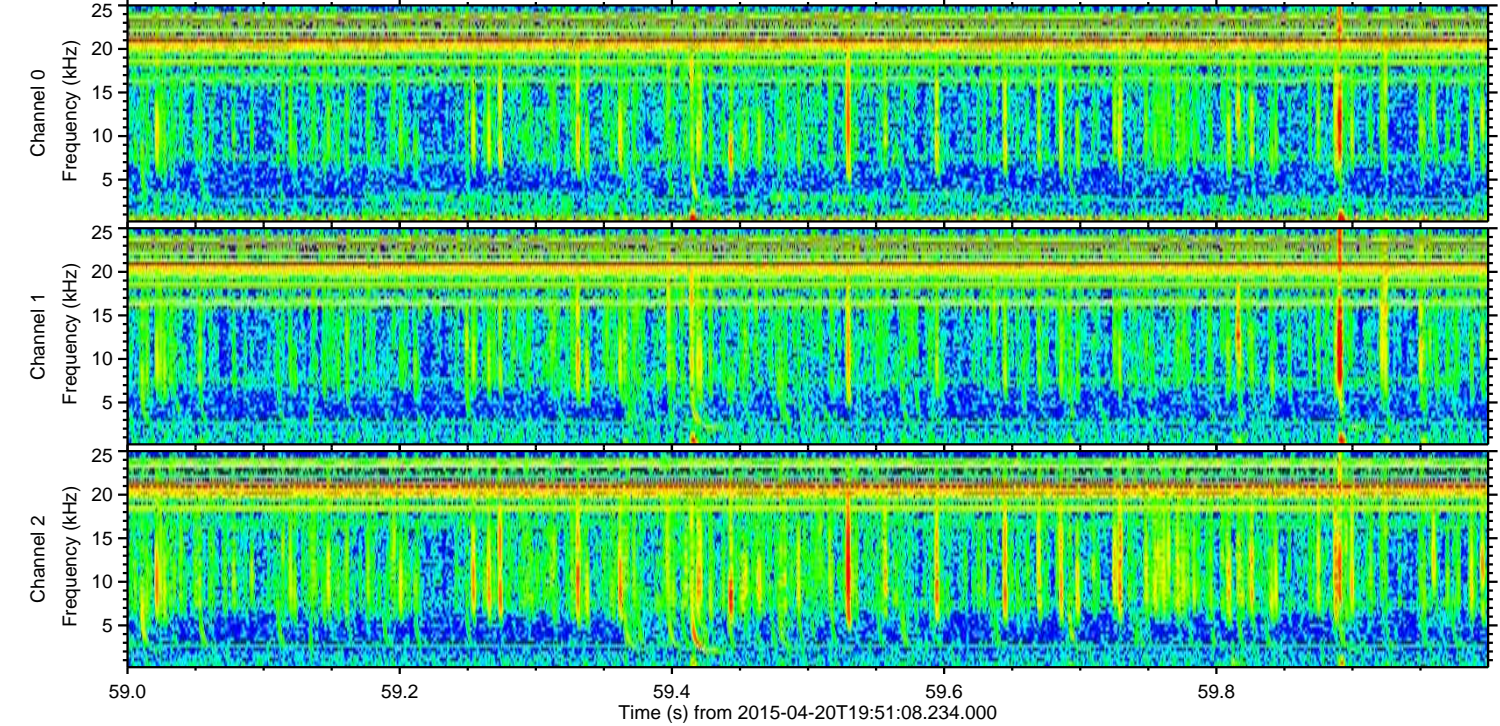
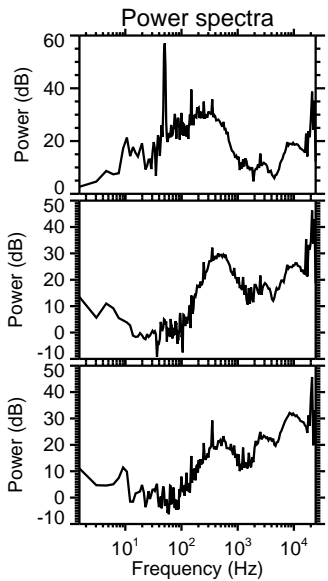
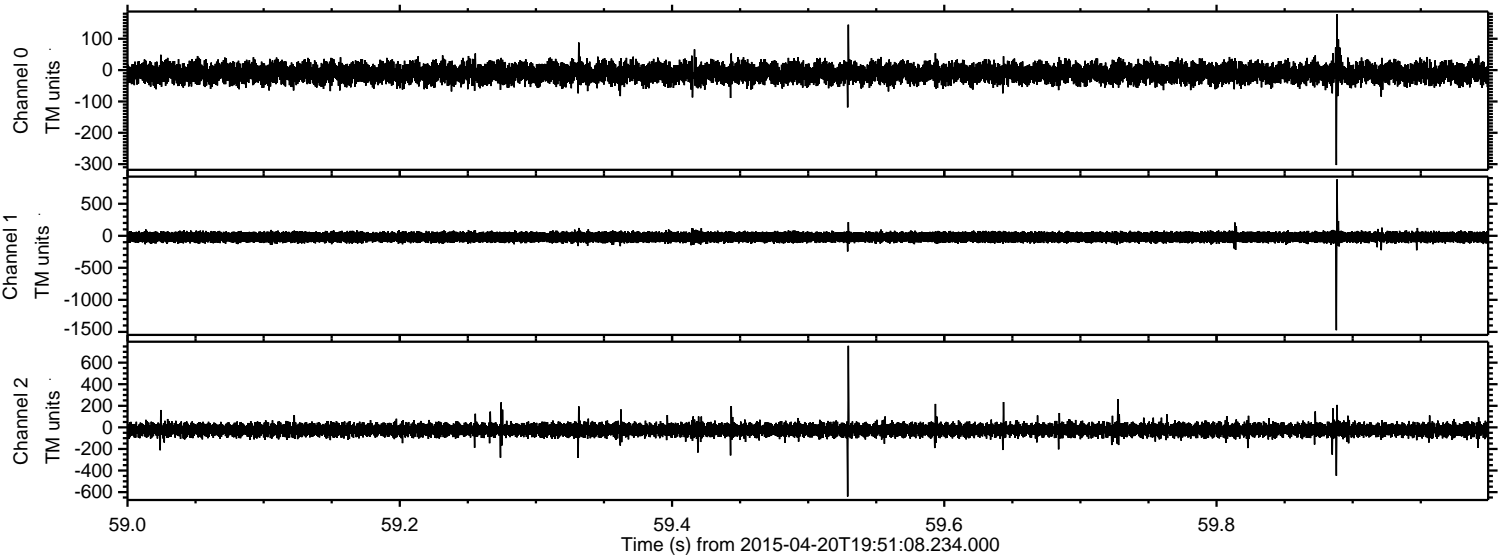


Processed Mon Apr 20 21:58:44 2015 by ELM ver.2012-10-06 from 001\_\_elm20150420\_195107\_\_dat00.bin





Processed Mon Apr 20 21:58:45 2015 by ELM ver.2012-10-06 from 001\_\_elm20150420\_195107\_\_dat00.bin



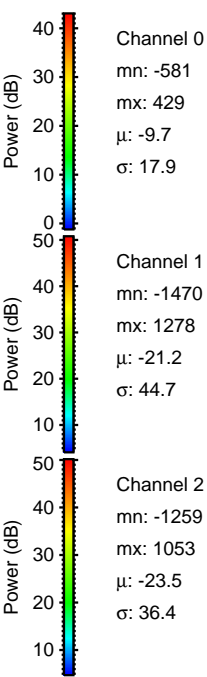
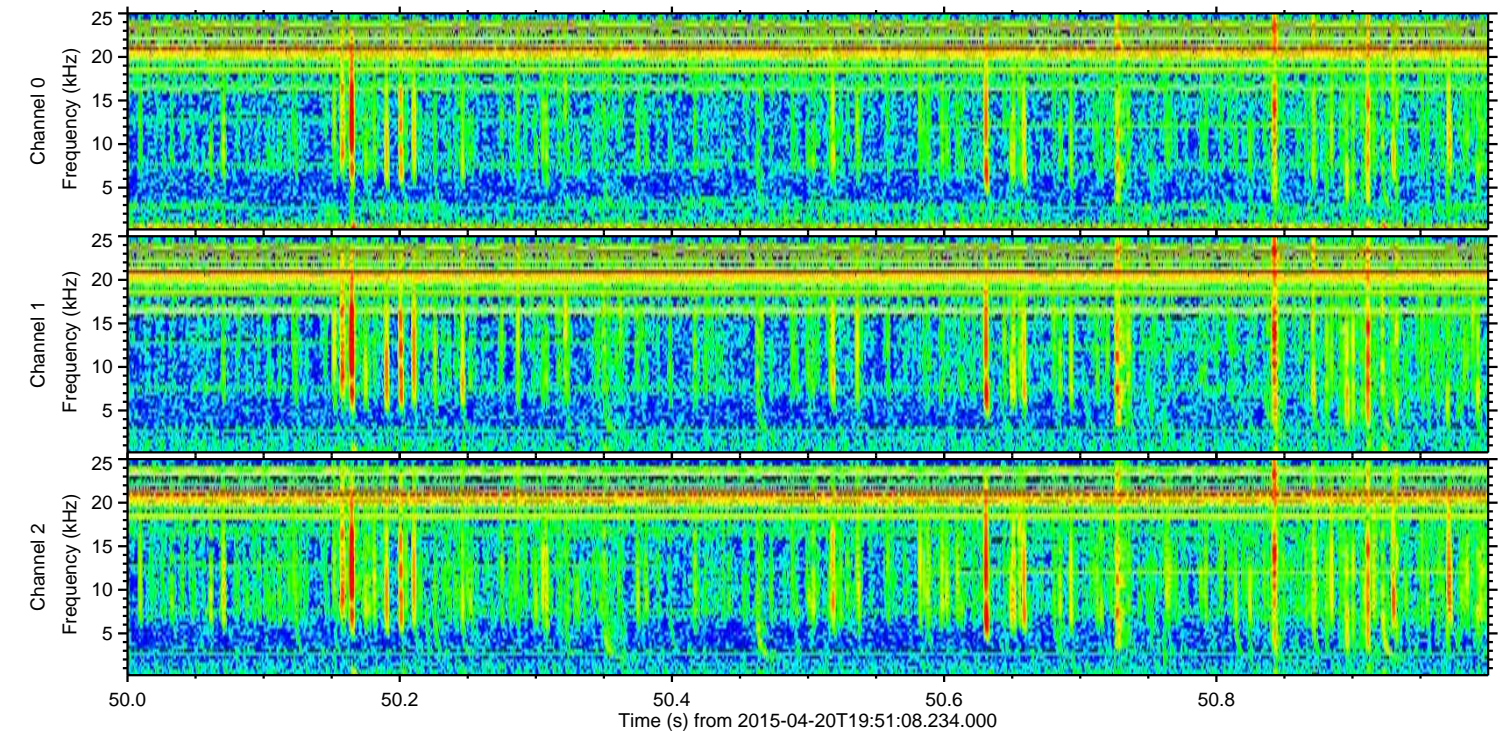
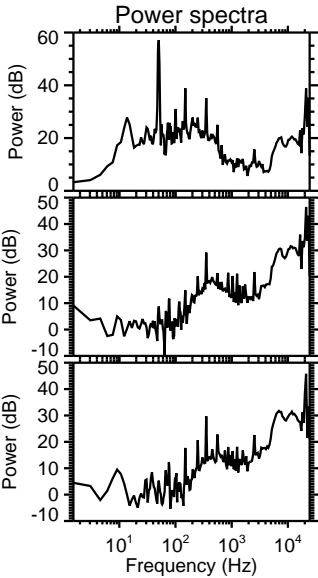
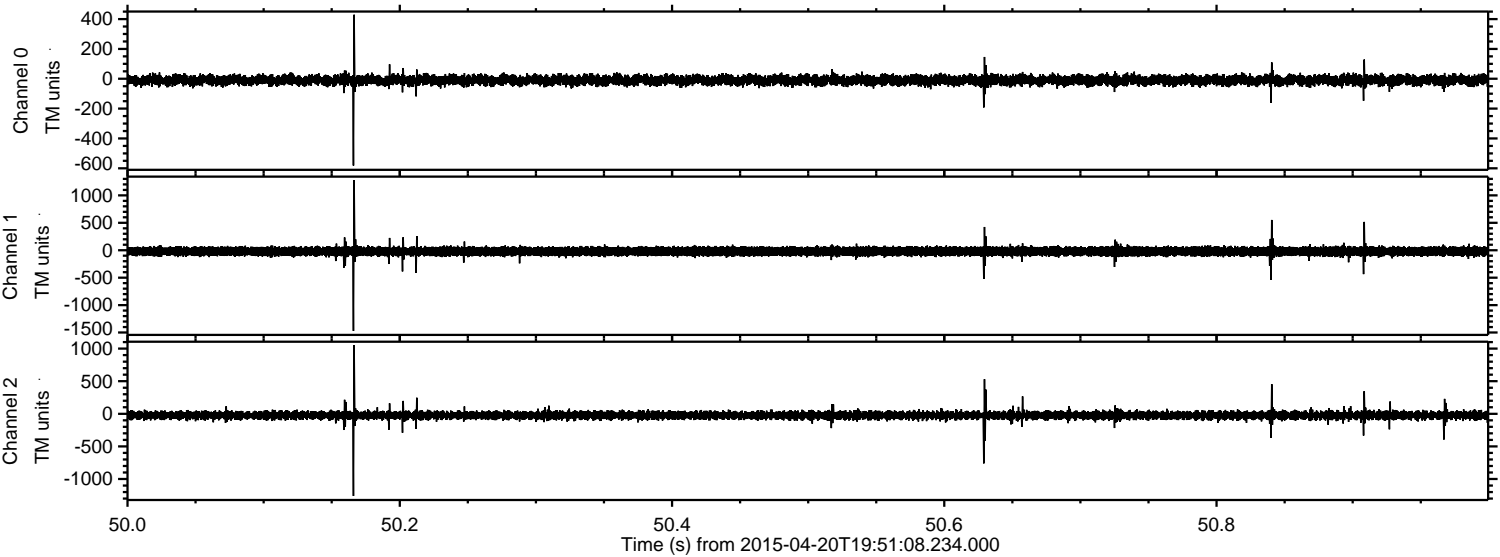
Channel 0  
mn: -303  
mx: 178  
 $\mu$ : -9.8  
 $\sigma$ : 17.7

Channel 1  
mn: -1474  
mx: 880  
 $\mu$ : -21.2  
 $\sigma$ : 41.5

Channel 2  
mn: -641  
mx: 756  
 $\mu$ : -23.6  
 $\sigma$ : 34.2

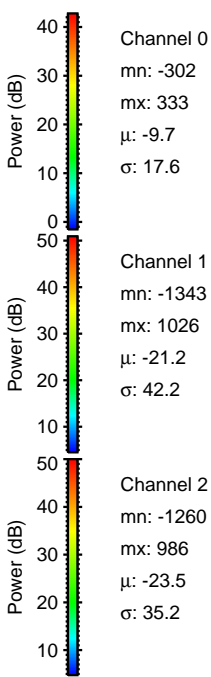
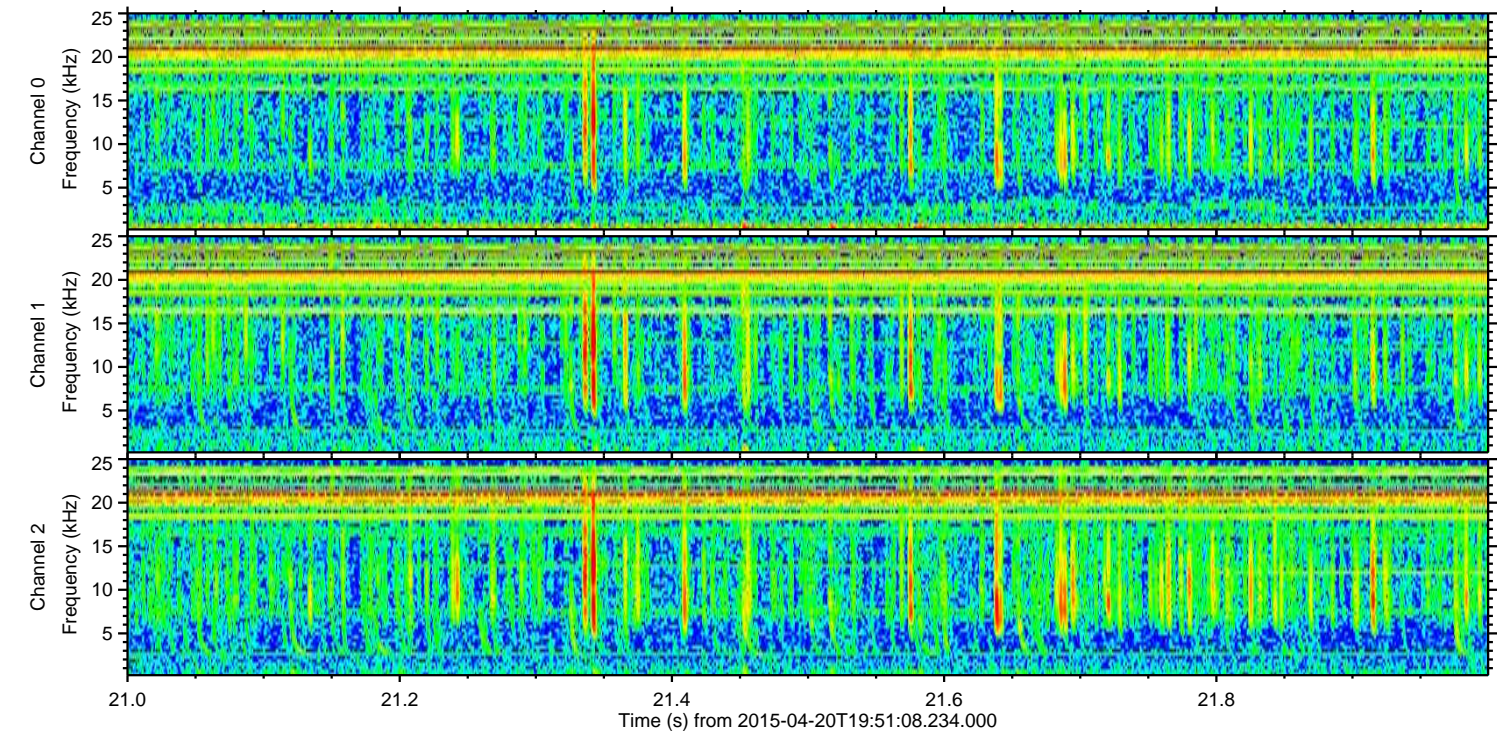
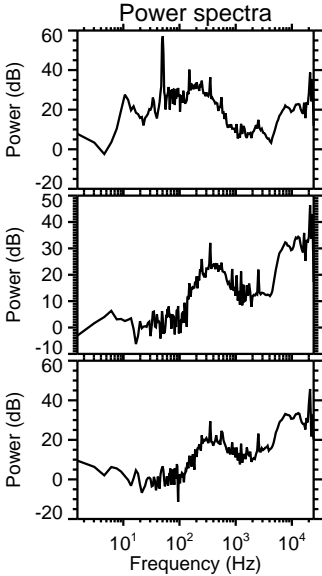
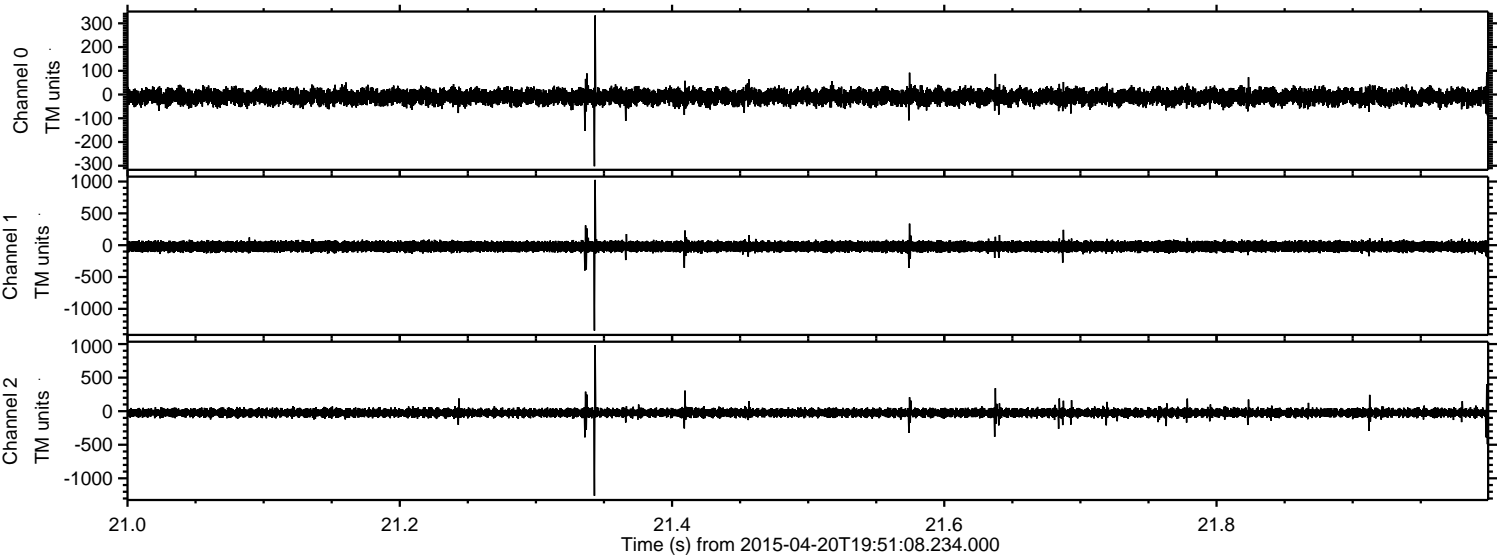


Processed Mon Apr 20 21:58:46 2015 by ELM ver.2012-10-06 from 001\_\_elm20150420\_195107\_\_dat00.bin





Processed Mon Apr 20 21:58:47 2015 by ELM ver.2012-10-06 from 001\_\_elm20150420\_195107\_\_dat00.bin



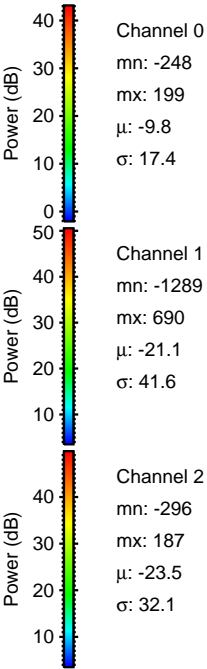
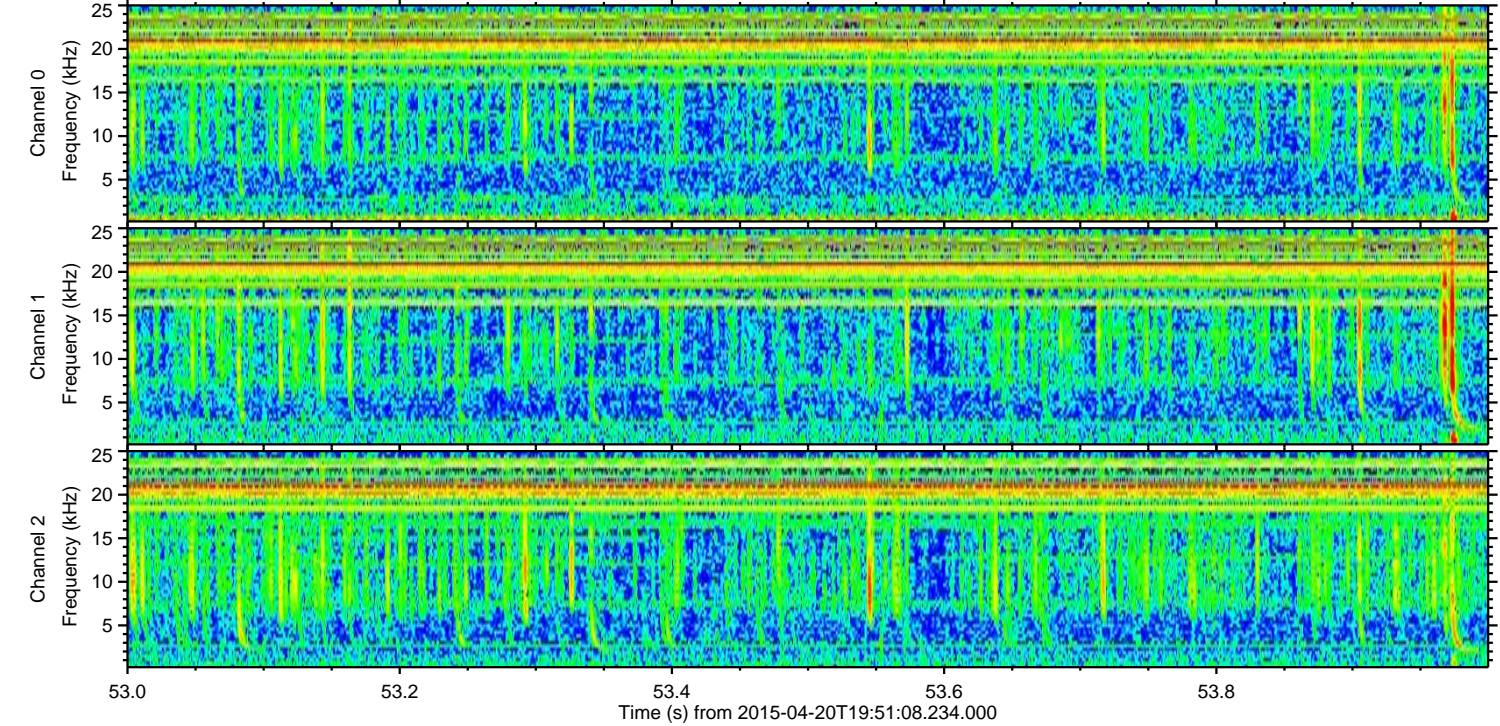
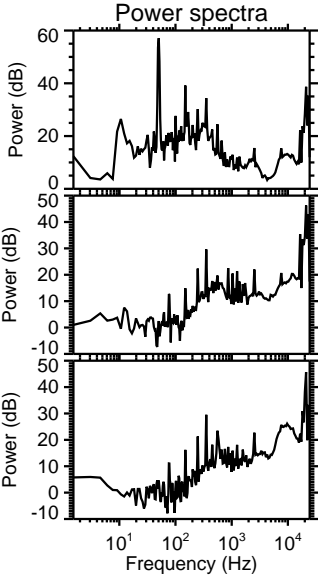
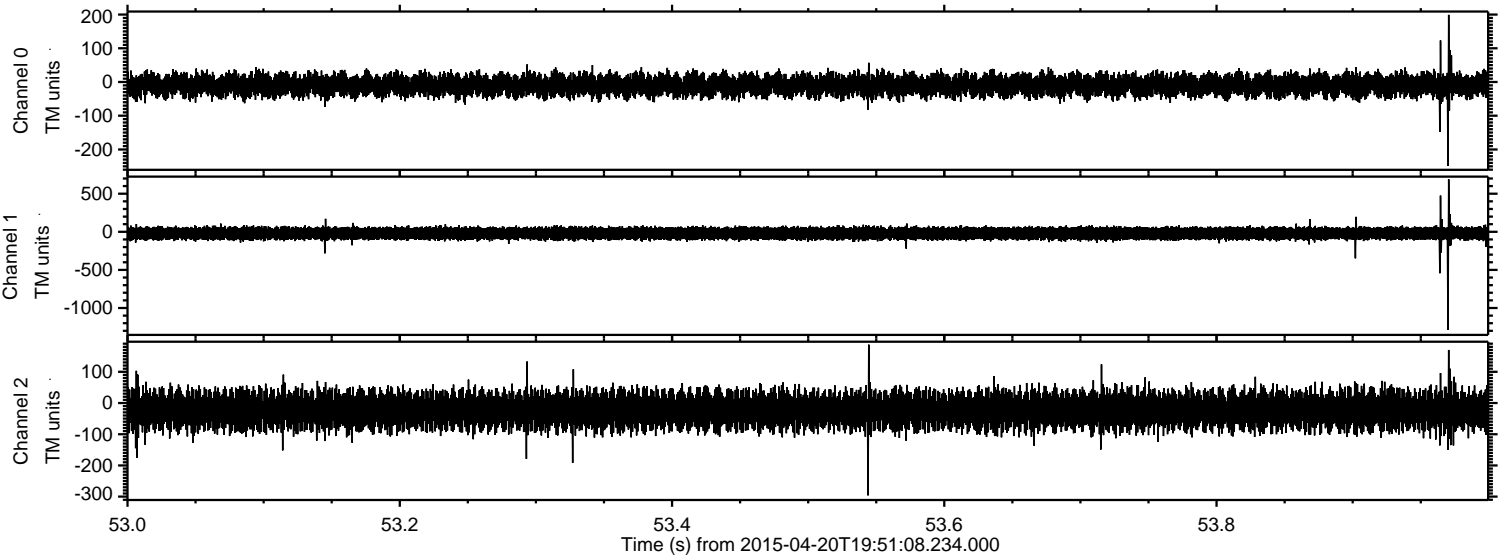
Channel 0  
mn: -302  
mx: 333  
 $\mu$ : -9.7  
 $\sigma$ : 17.6

Channel 1  
mn: -1343  
mx: 1026  
 $\mu$ : -21.2  
 $\sigma$ : 42.2

Channel 2  
mn: -1260  
mx: 986  
 $\mu$ : -23.5  
 $\sigma$ : 35.2

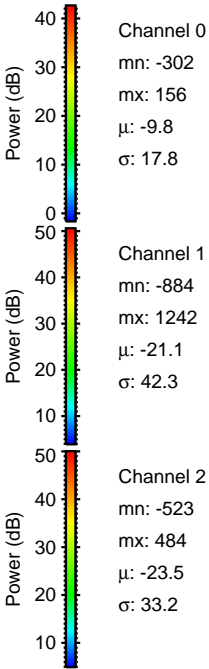
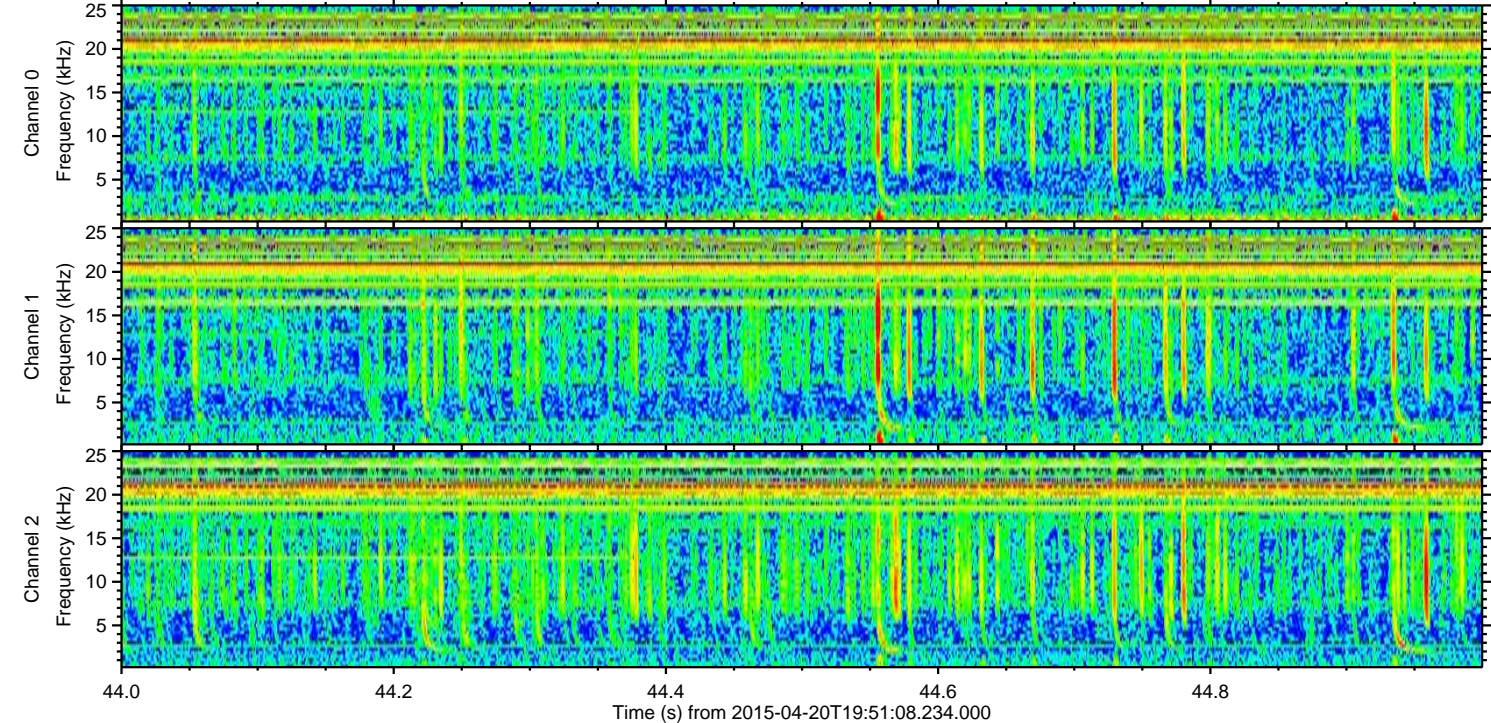
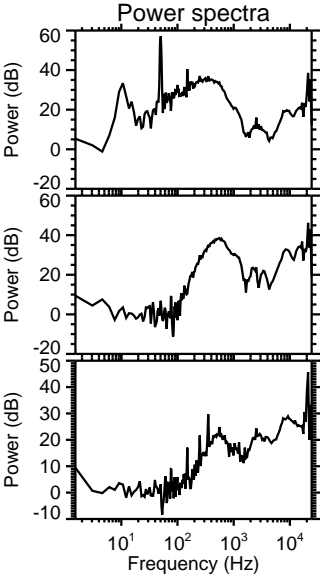
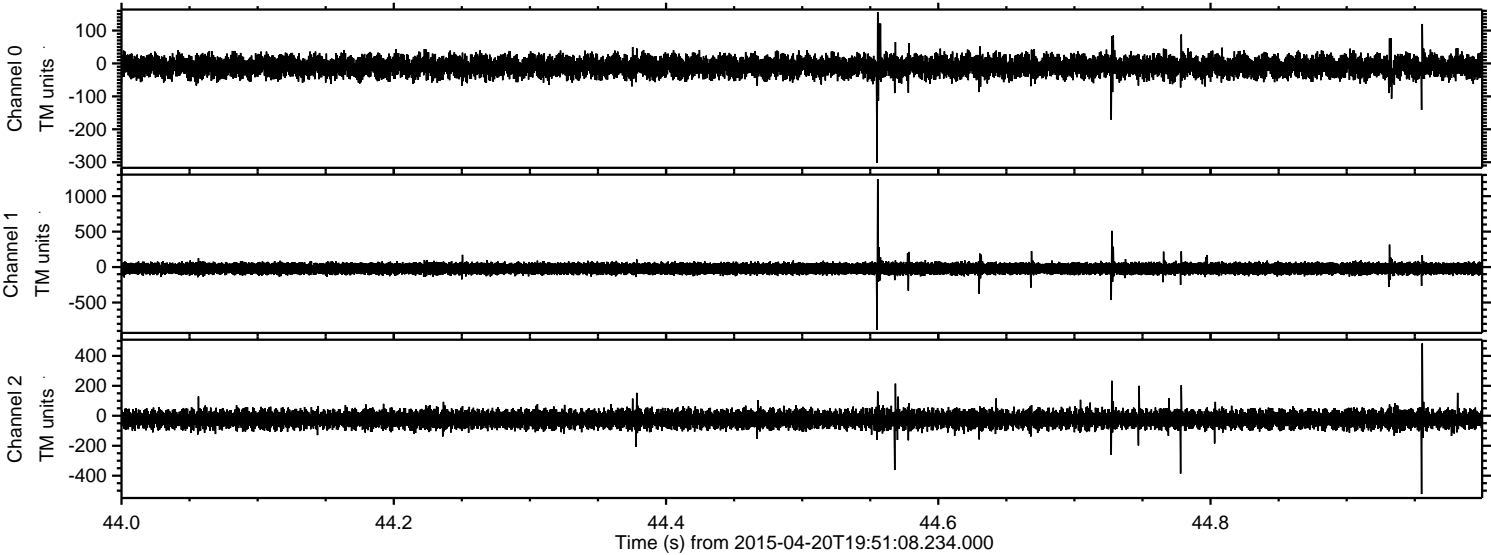


Processed Mon Apr 20 21:58:48 2015 by ELM ver.2012-10-06 from 001\_\_elm20150420\_195107\_\_dat00.bin





Processed Mon Apr 20 21:58:49 2015 by ELM ver.2012-10-06 from 001\_\_elm20150420\_195107\_\_dat00.bin





Processed Mon Apr 20 21:58:50 2015 by ELM ver.2012-10-06 from 001\_\_elm20150420\_195107\_\_dat00.bin

