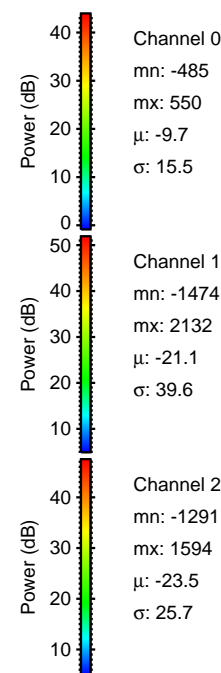
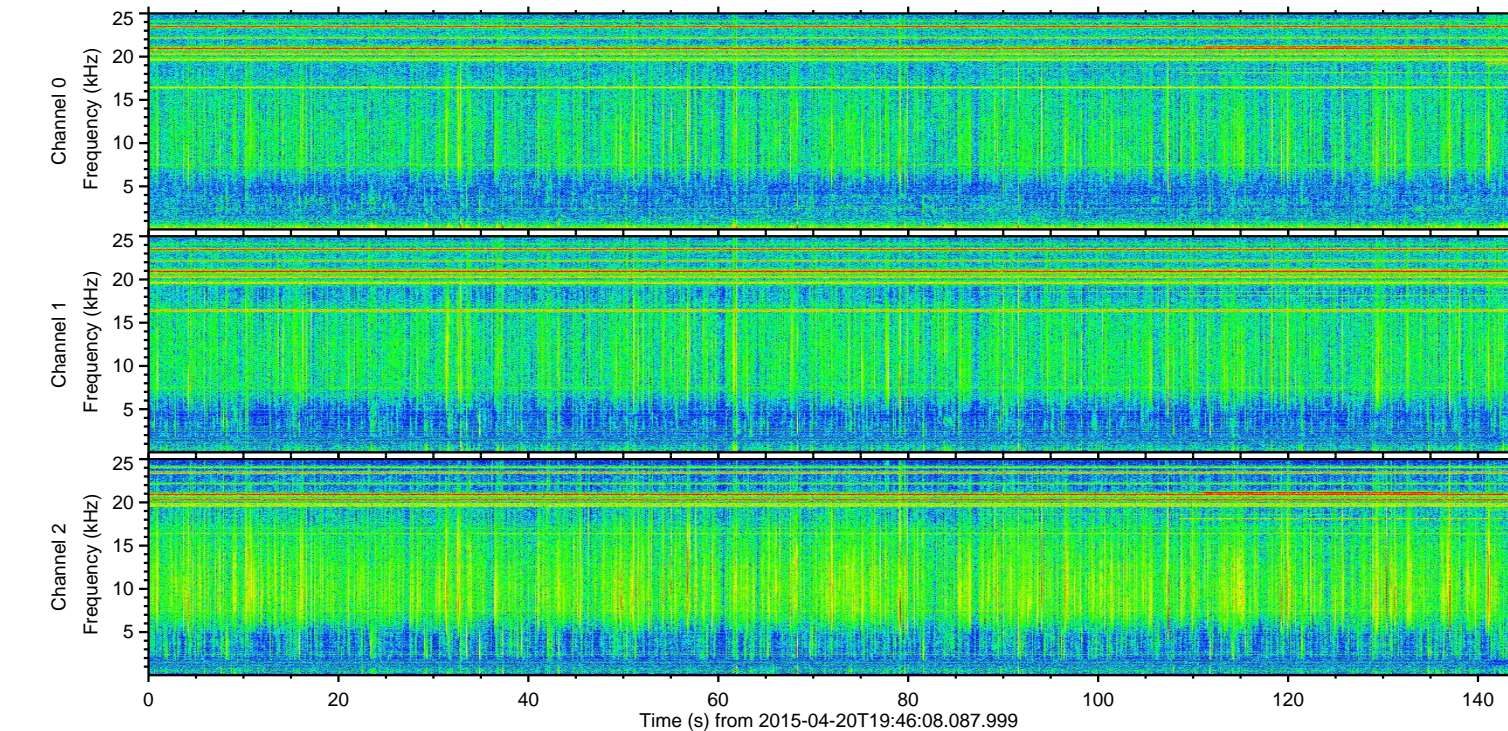
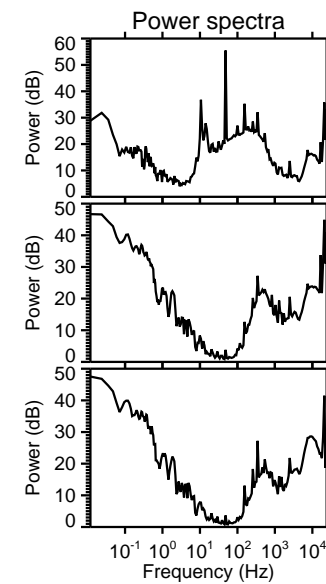
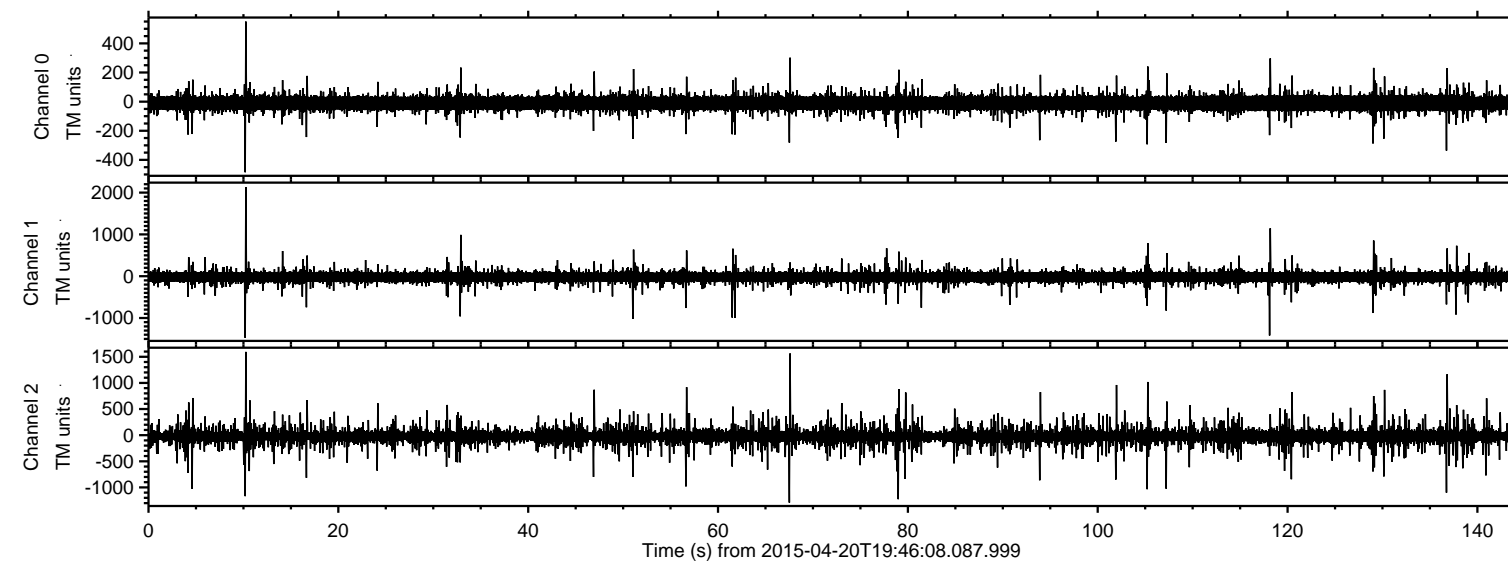
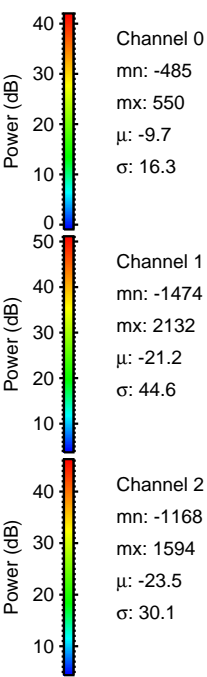
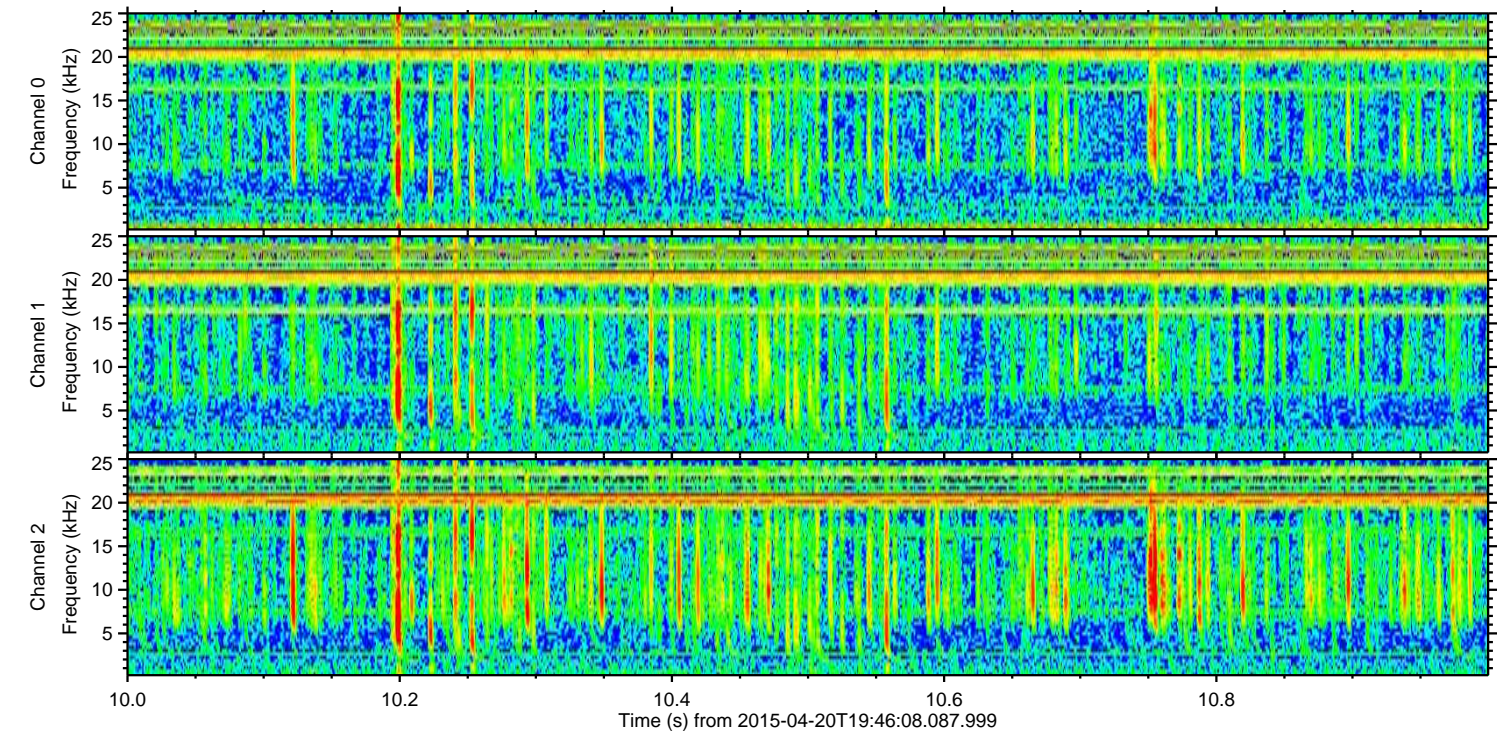
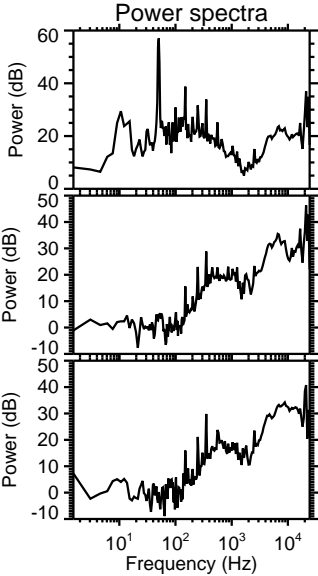
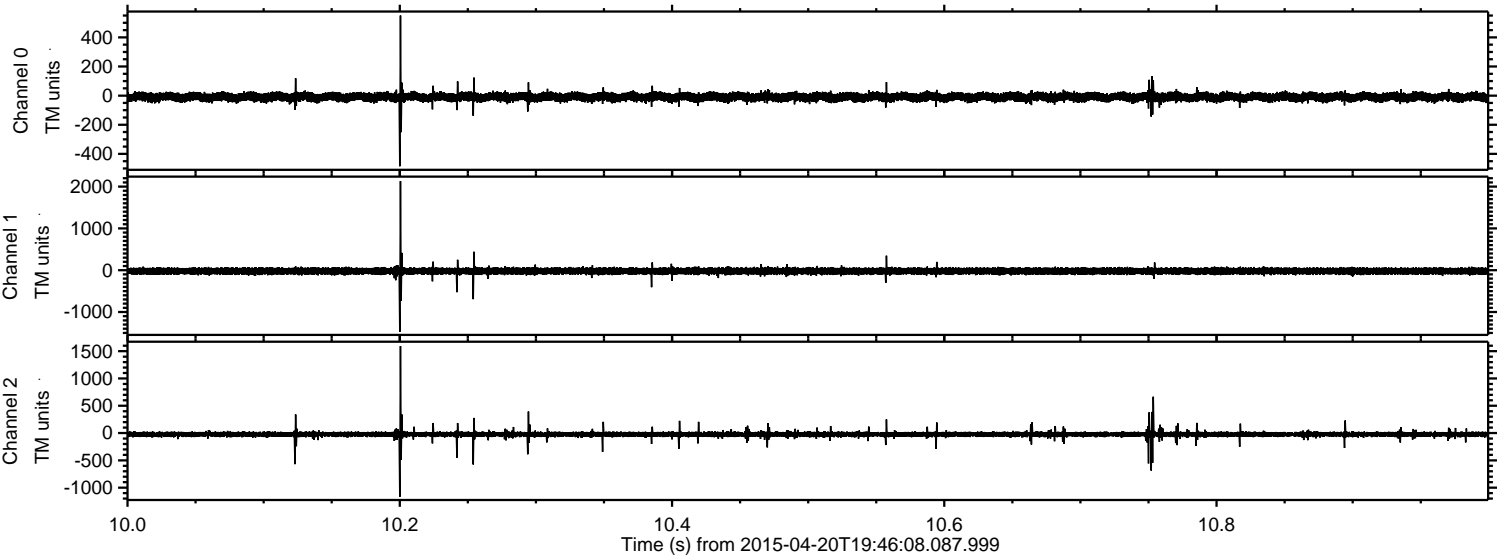


ELMAVAN 3D WAVEFORMS (Measured data sampled at 50 kHz) 49772 packets of 144 samples from 2015-04-20T19:46:08.087.999.

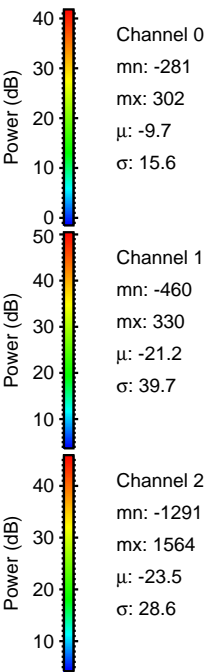
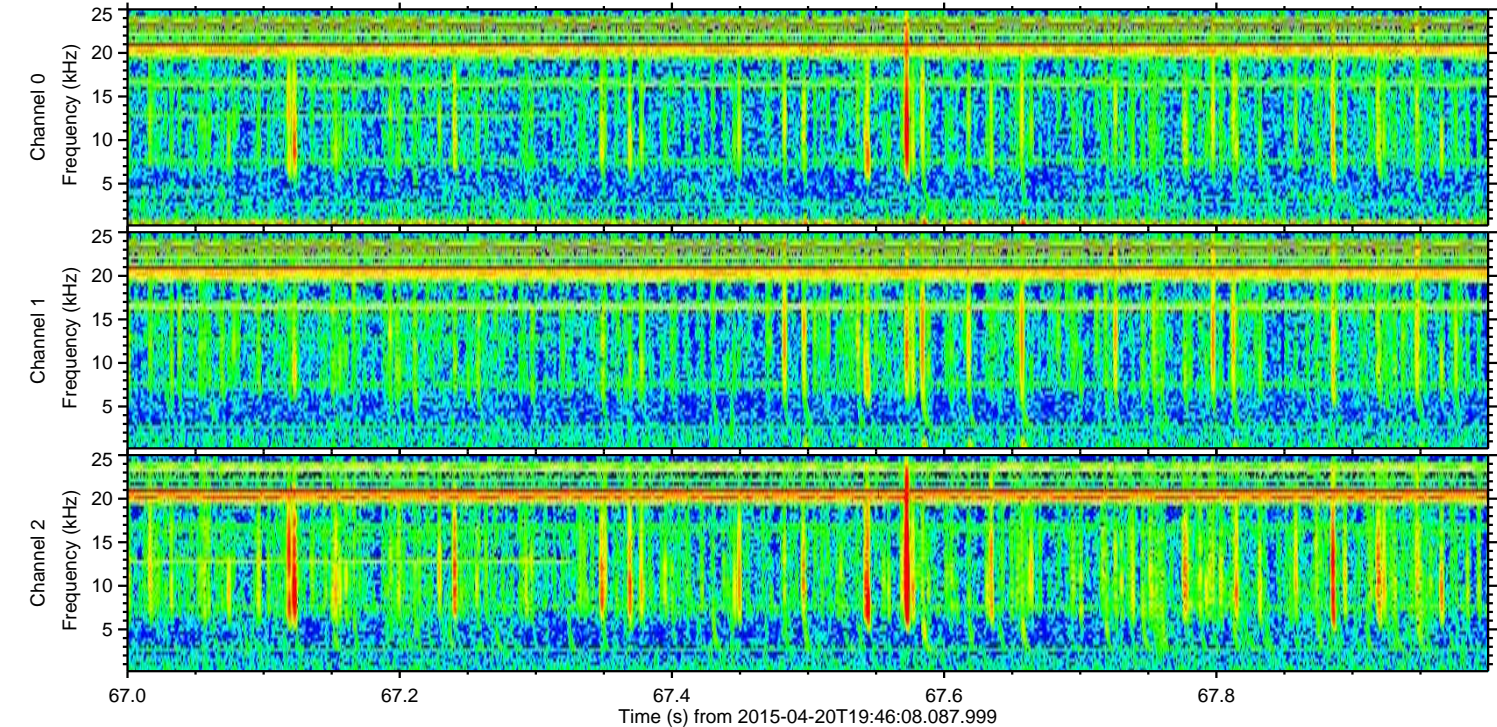
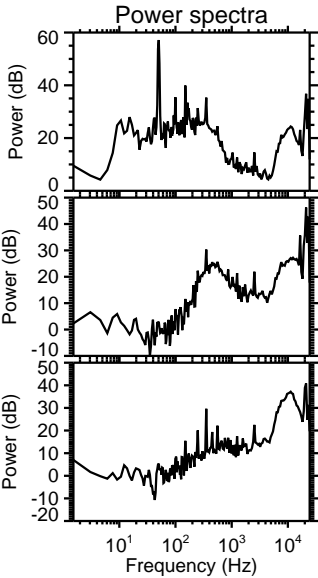
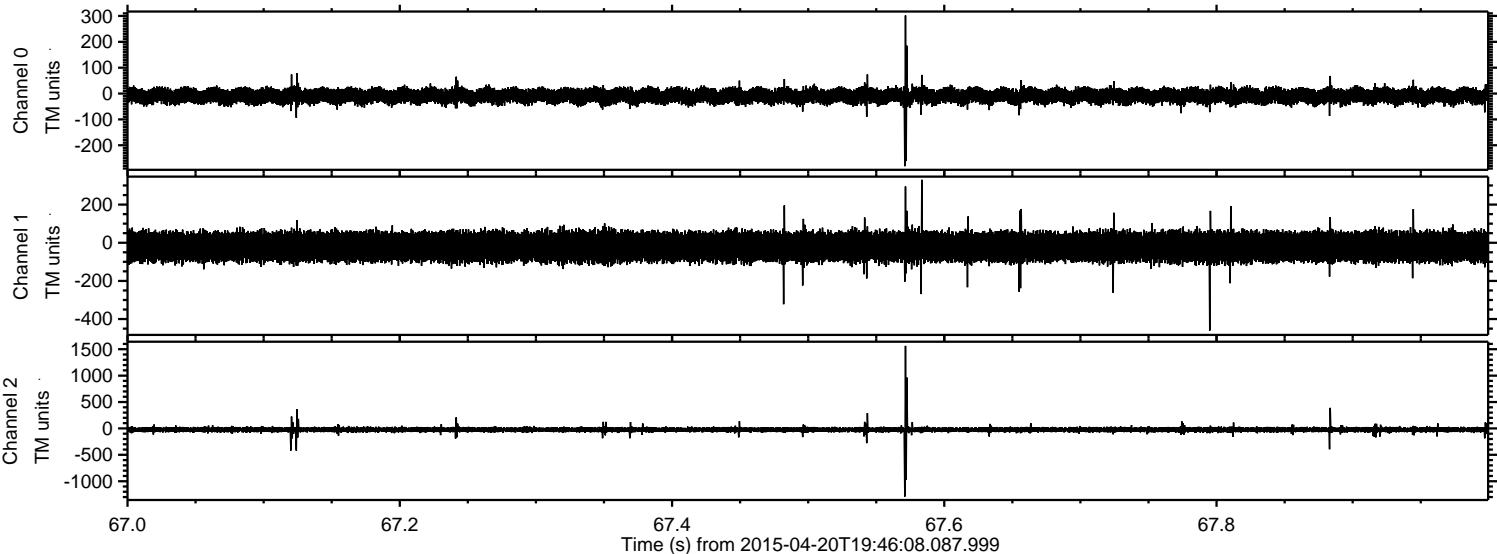
Processed Mon Apr 20 21:53:43 2015 by ELM ver.2012-10-06 from 001__elm20150420_194607__dat00.bin



Processed Mon Apr 20 21:53:54 2015 by ELM ver.2012-10-06 from 001__elm20150420_194607__dat00.bin

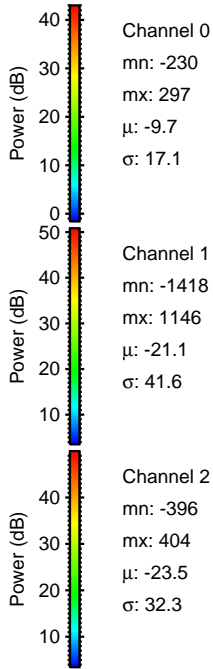
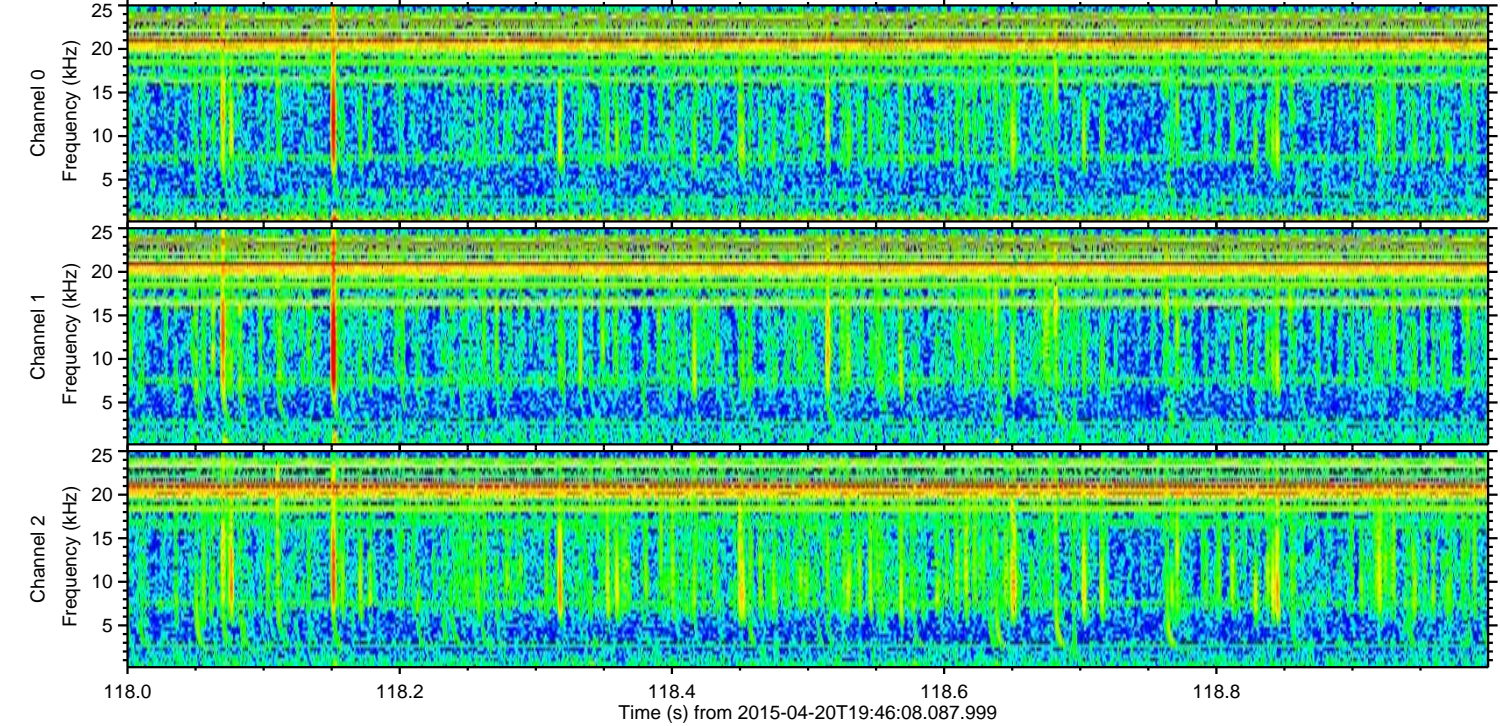
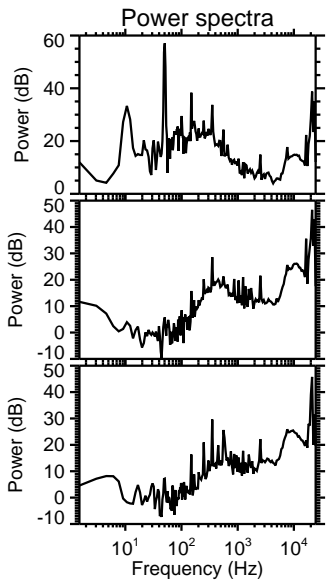
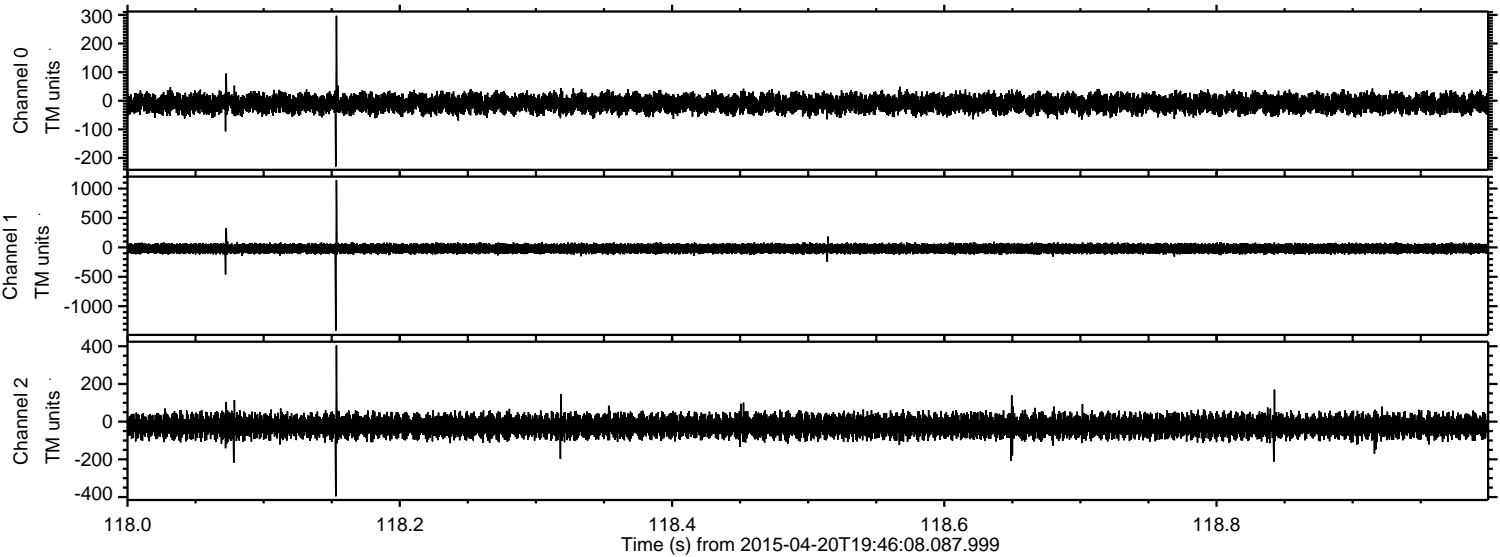


Processed Mon Apr 20 21:53:55 2015 by ELM ver.2012-10-06 from 001__elm20150420_194607__dat00.bin



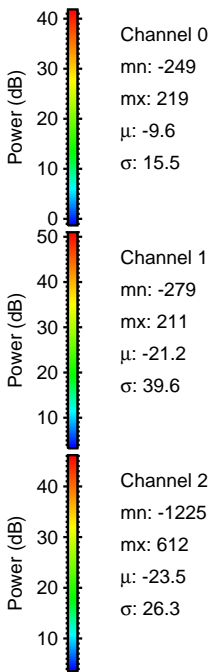
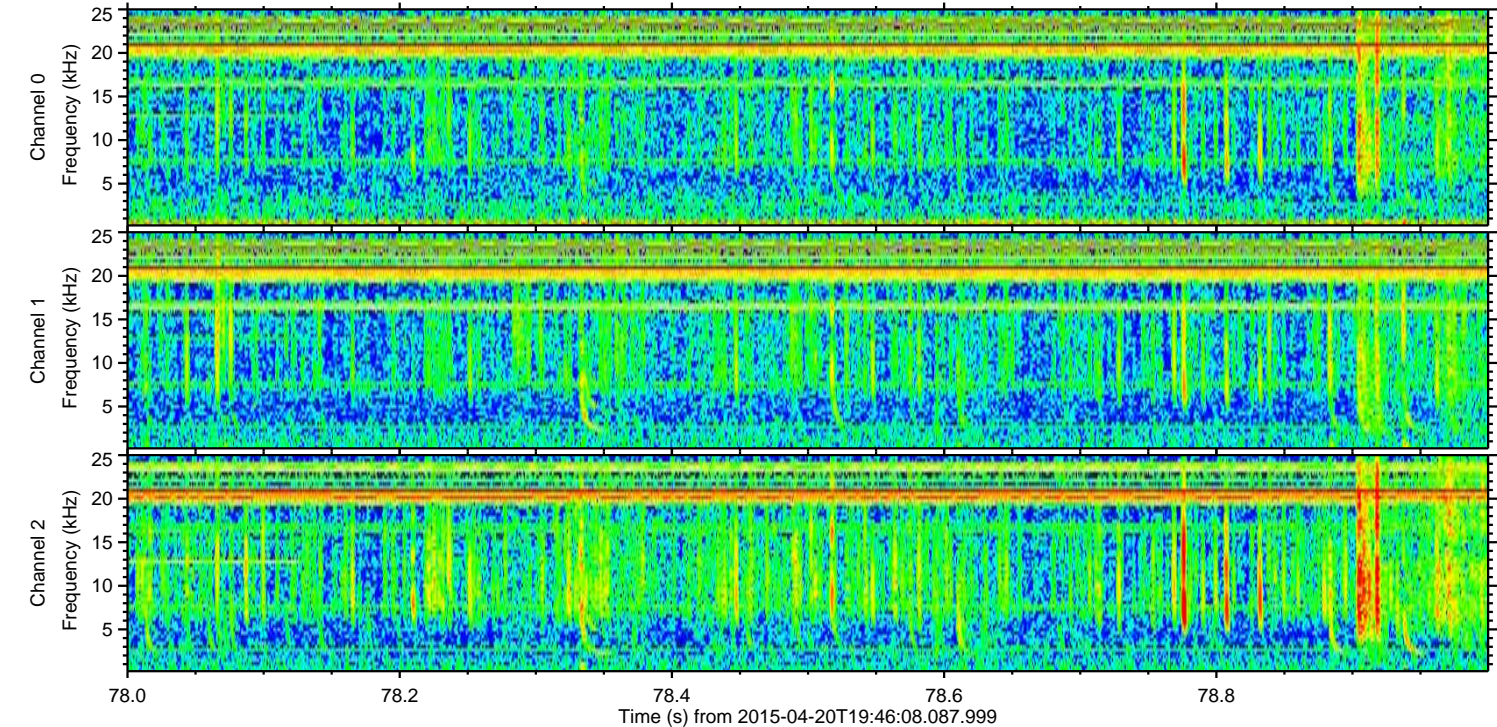
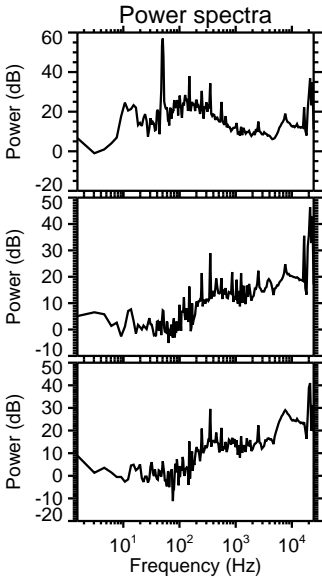
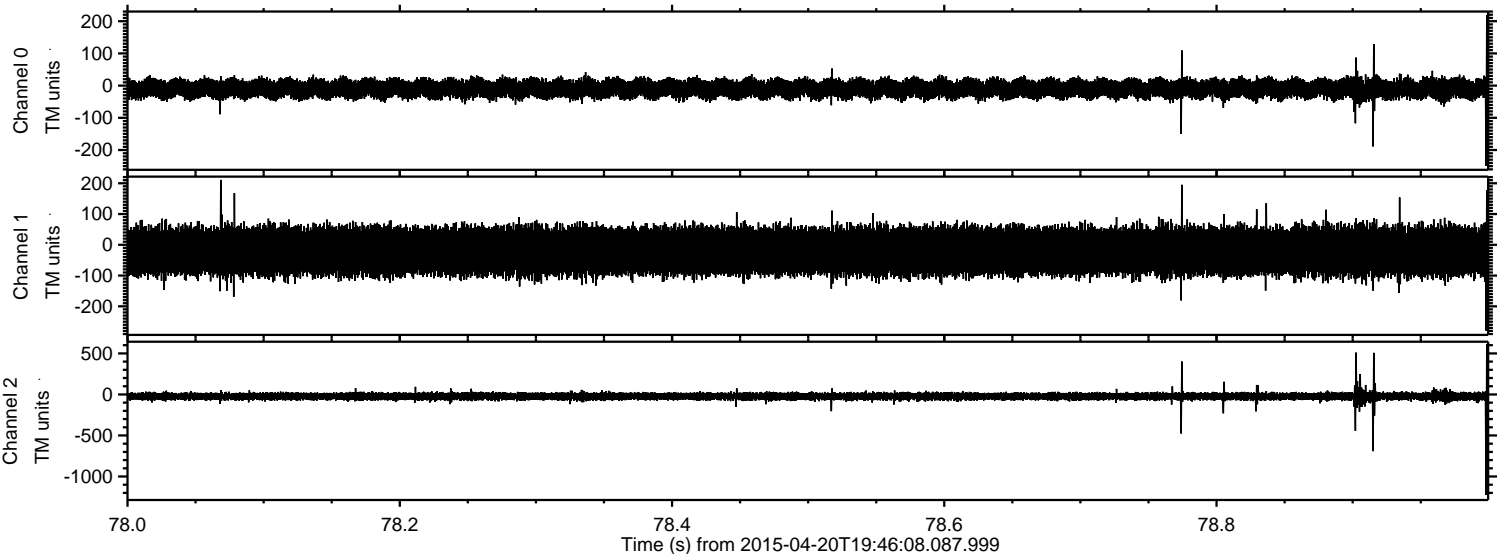
ELMAVAN 3D WAVEFORMS (Measured data sampled at 50 kHz) 49772 packets of 144 samples from 2015-04-20T19:46:08.087.999. Part 119/144

Processed Mon Apr 20 21:53:56 2015 by ELM ver.2012-10-06 from 001__elm20150420_194607__dat00.bin



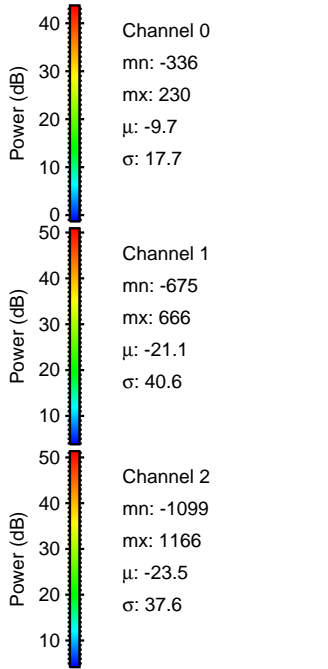
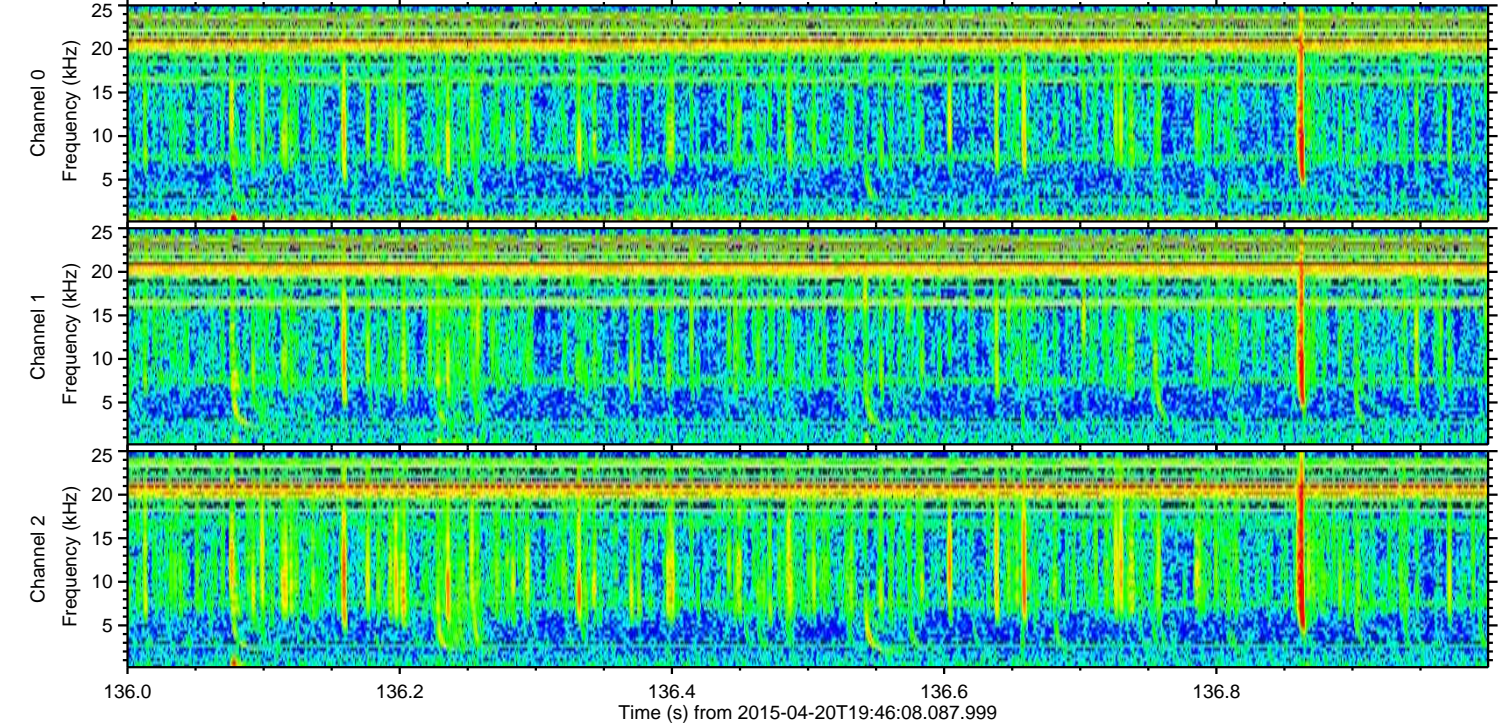
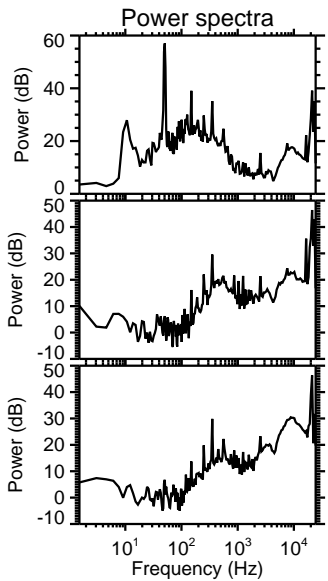
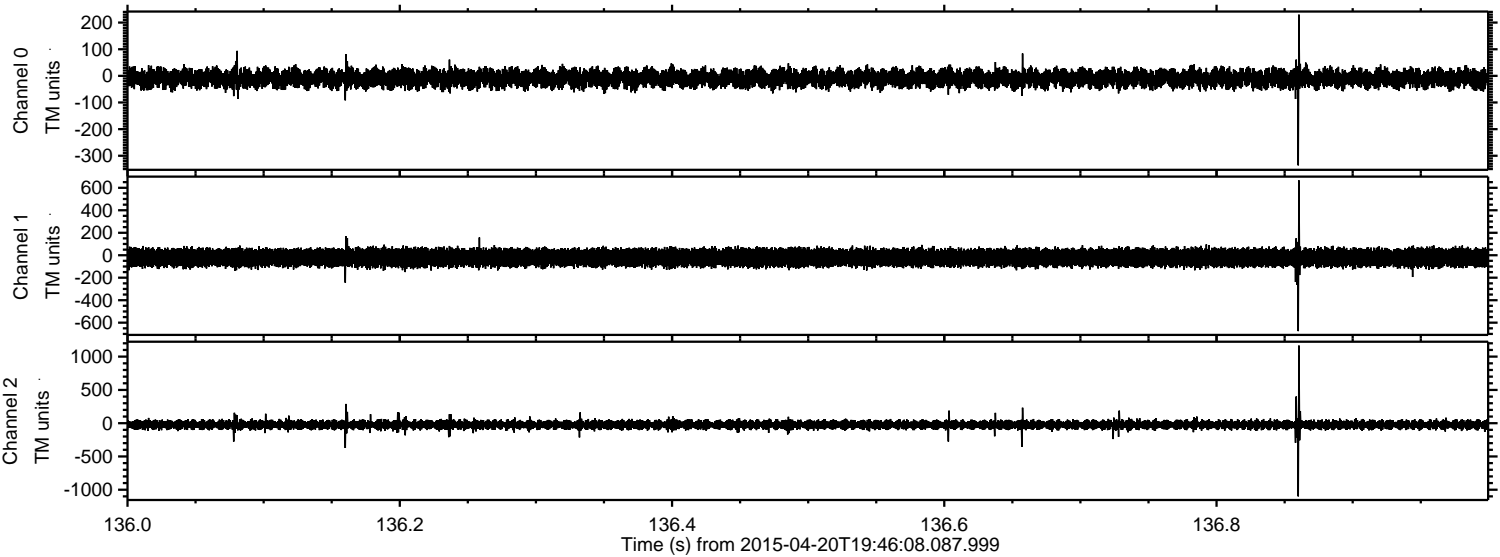
ELMAVAN 3D WAVEFORMS (Measured data sampled at 50 kHz) 49772 packets of 144 samples from 2015-04-20T19:46:08.087.999. Part 79/144

Processed Mon Apr 20 21:53:57 2015 by ELM ver.2012-10-06 from 001__elm20150420_194607__dat00.bin

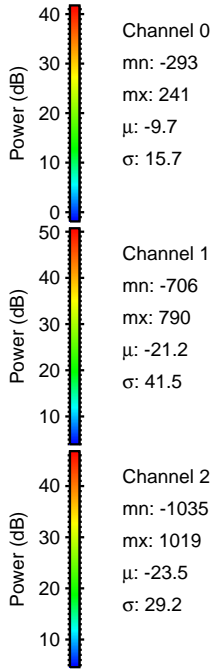
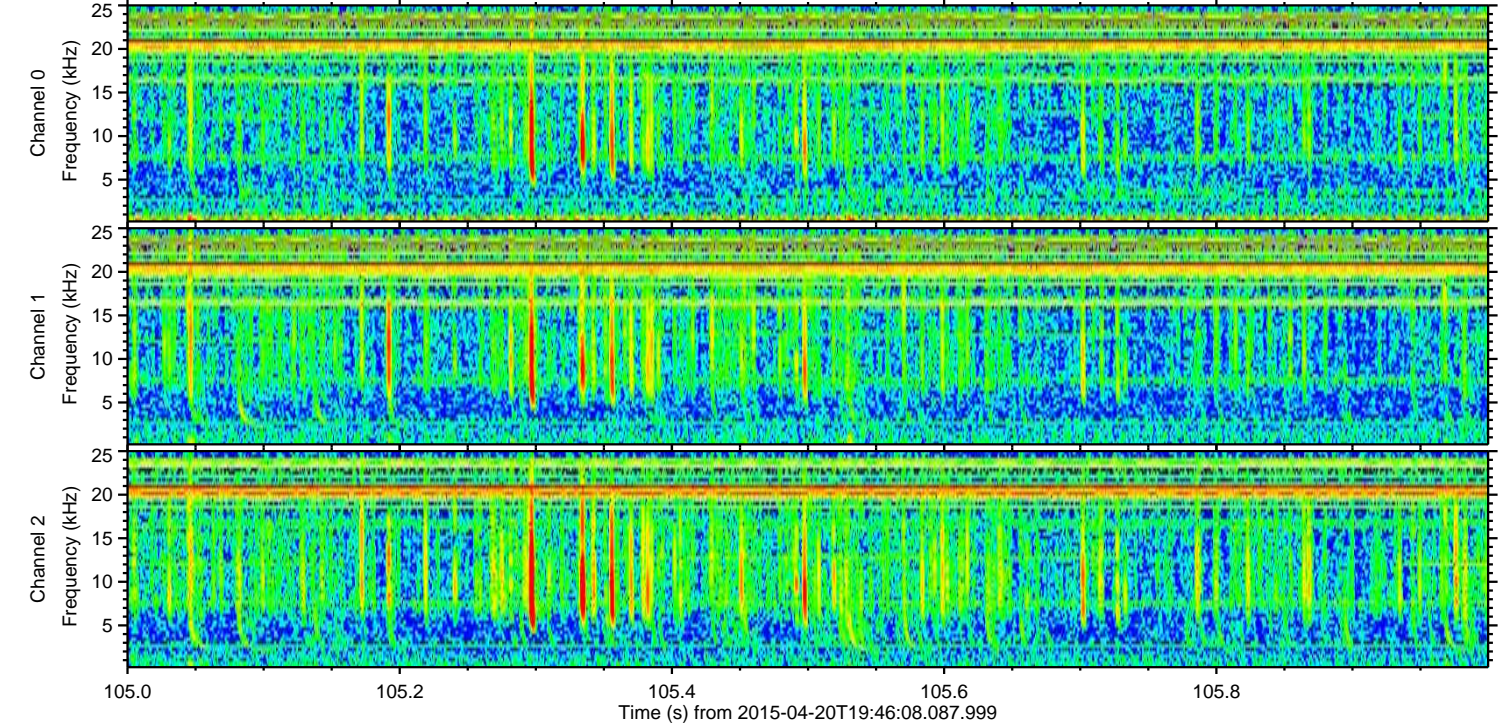
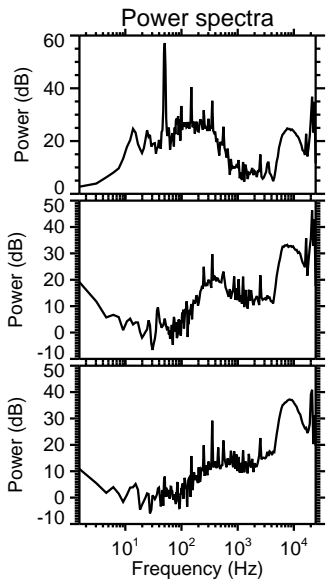
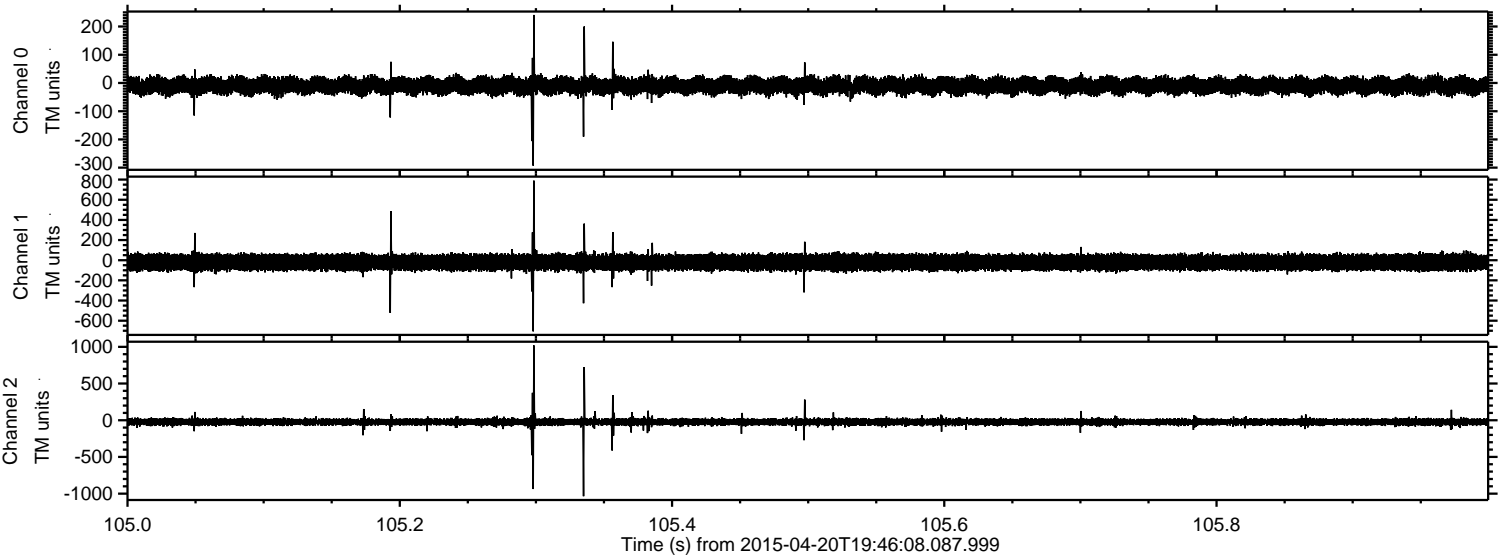


ELMAVAN 3D WAVEFORMS (Measured data sampled at 50 kHz) 49772 packets of 144 samples from 2015-04-20T19:46:08.087.999. Part 137/144

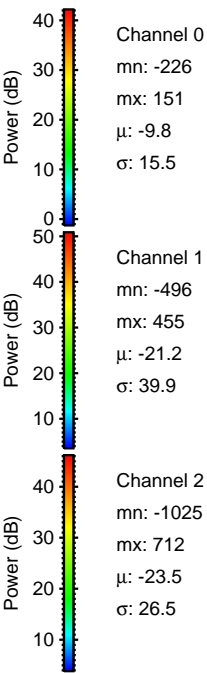
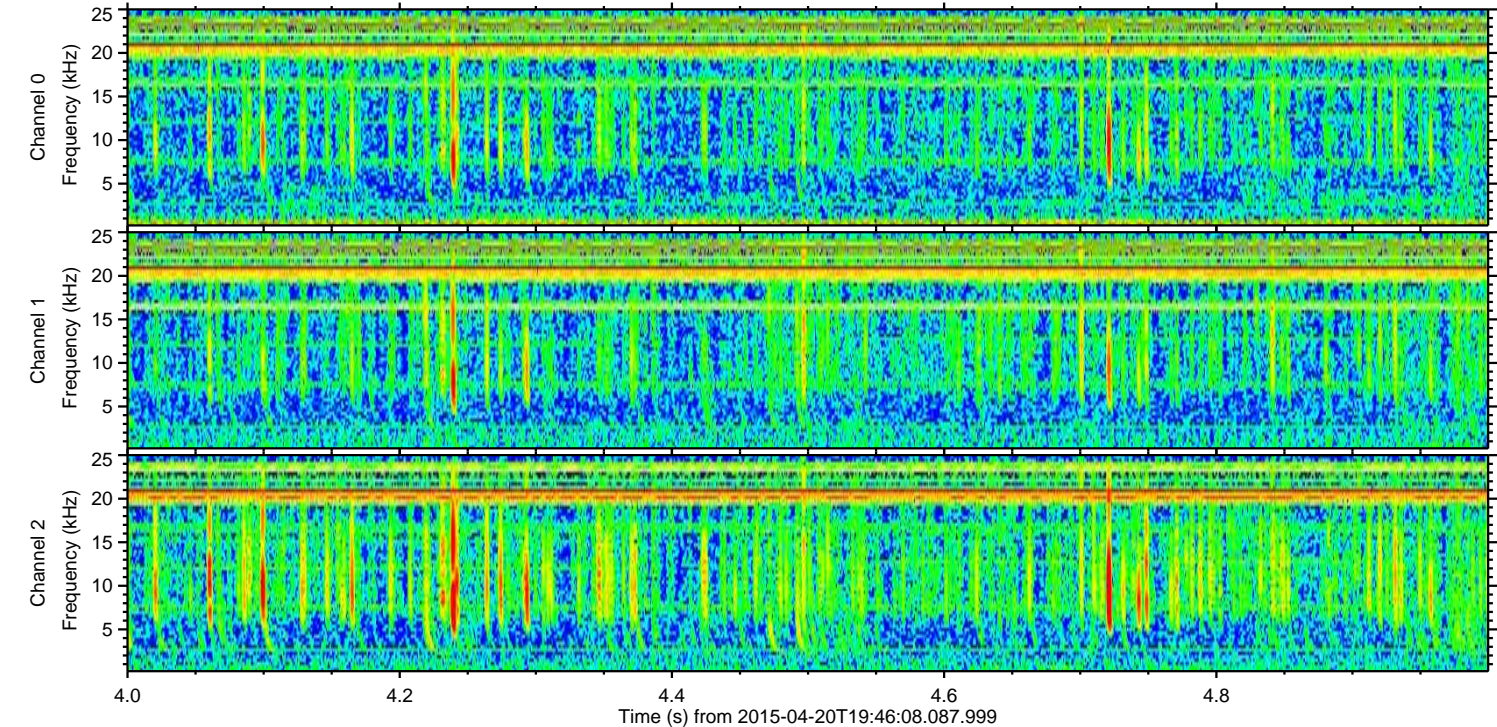
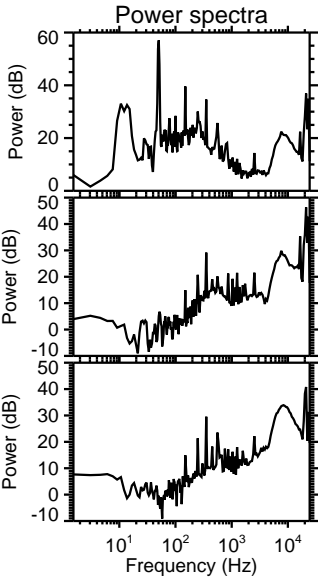
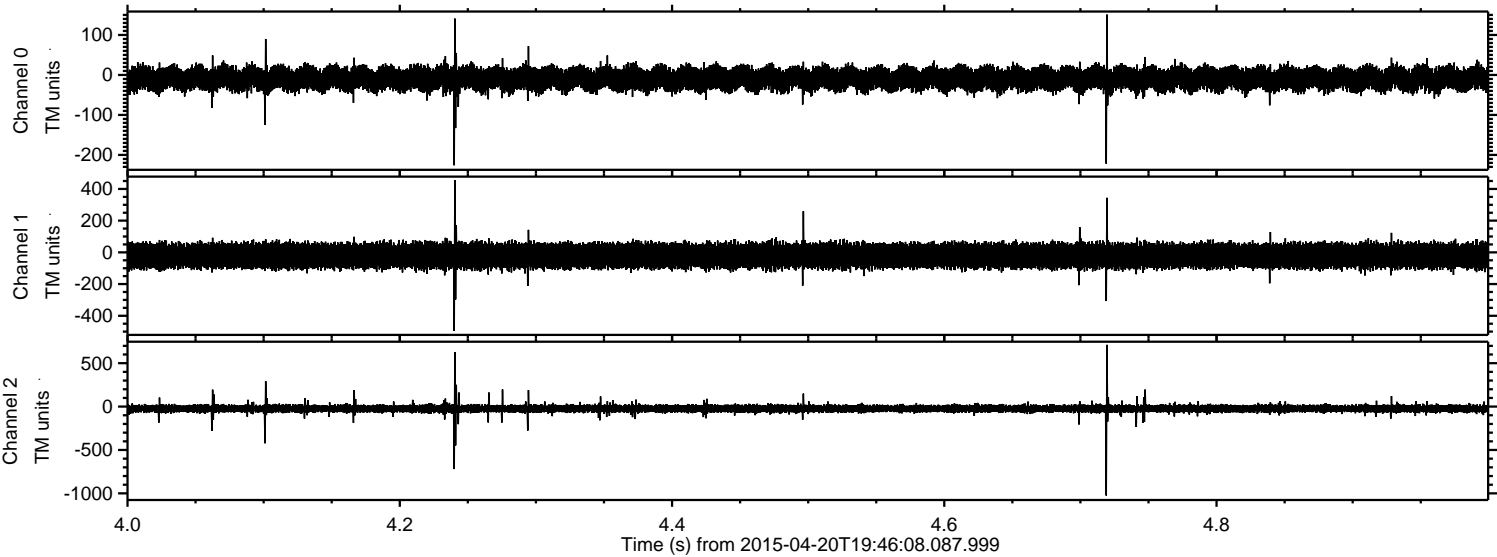
Processed Mon Apr 20 21:53:58 2015 by ELM ver.2012-10-06 from 001__elm20150420_194607__dat00.bin



Processed Mon Apr 20 21:53:59 2015 by ELM ver.2012-10-06 from 001__elm20150420_194607__dat00.bin

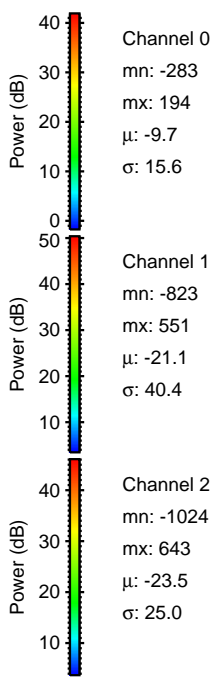
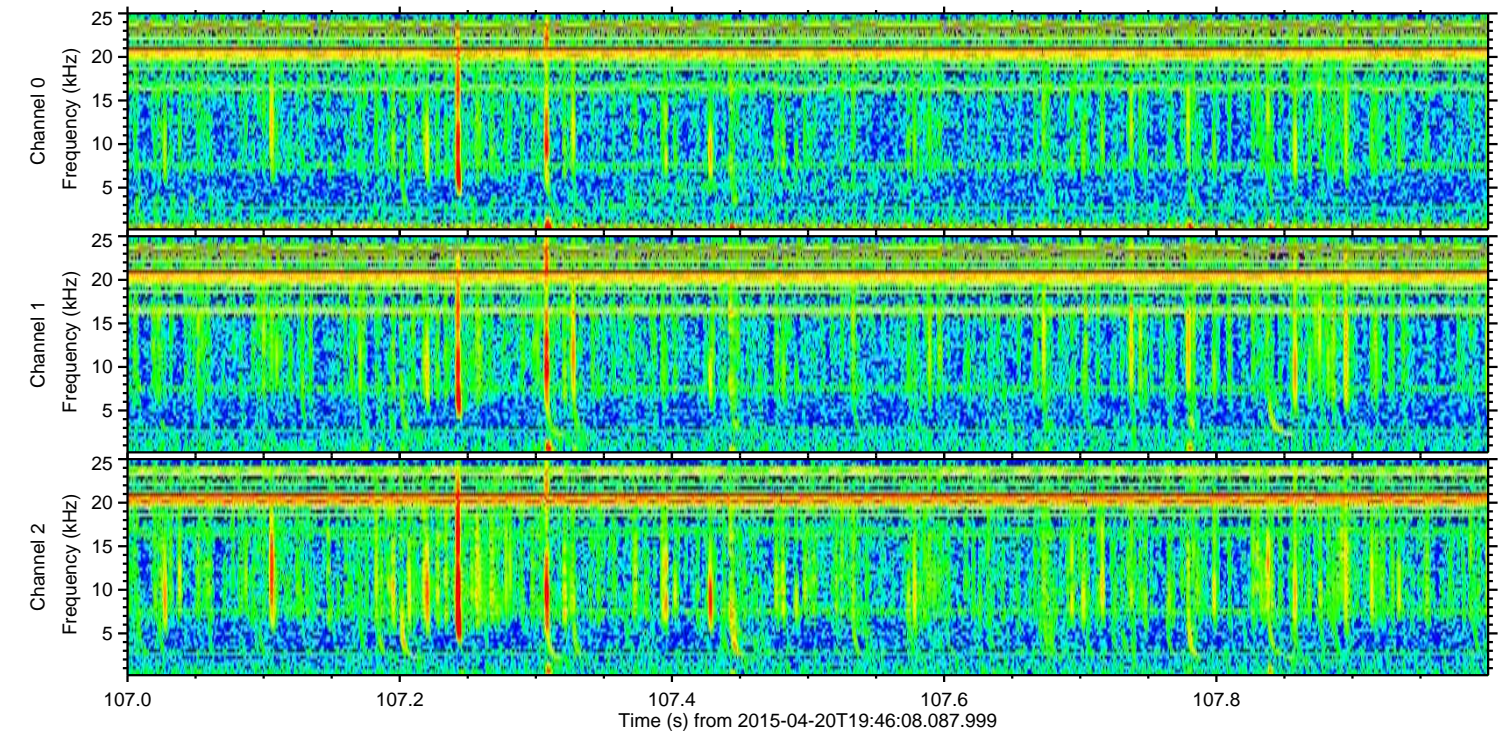
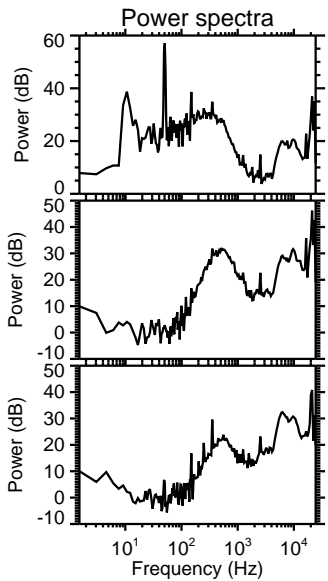
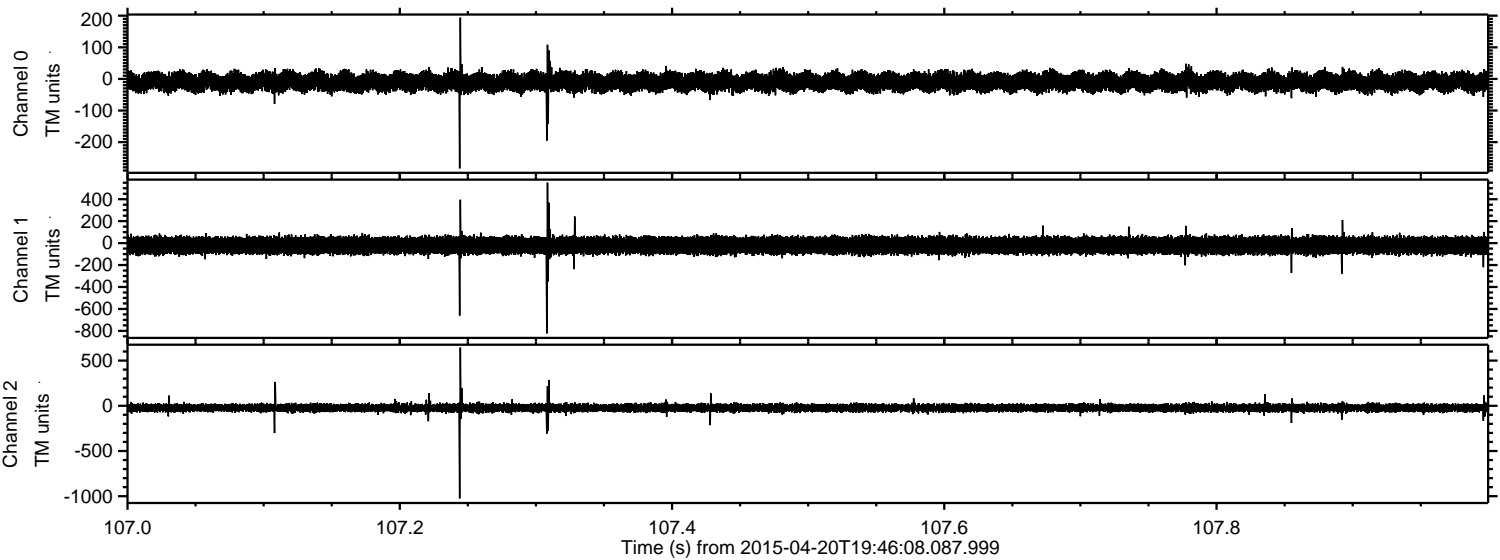


Processed Mon Apr 20 21:54:00 2015 by ELM ver.2012-10-06 from 001__elm20150420_194607__dat00.bin



ELMAVAN 3D WAVEFORMS (Measured data sampled at 50 kHz) 49772 packets of 144 samples from 2015-04-20T19:46:08.087.999. Part 108/144

Processed Mon Apr 20 21:54:01 2015 by ELM ver.2012-10-06 from 001__elm20150420_194607__dat00.bin

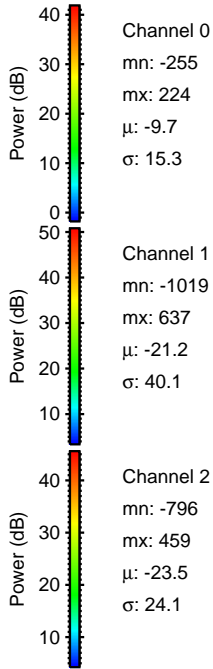
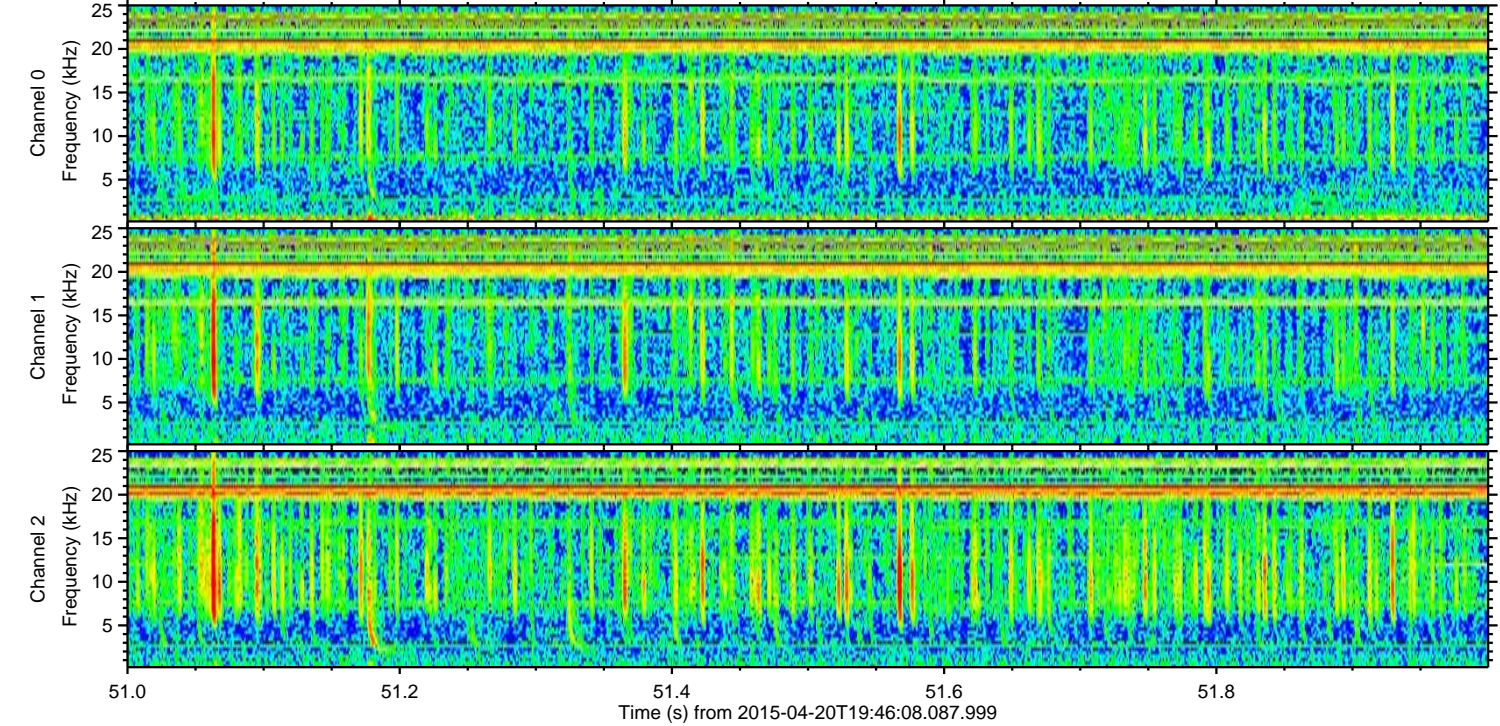
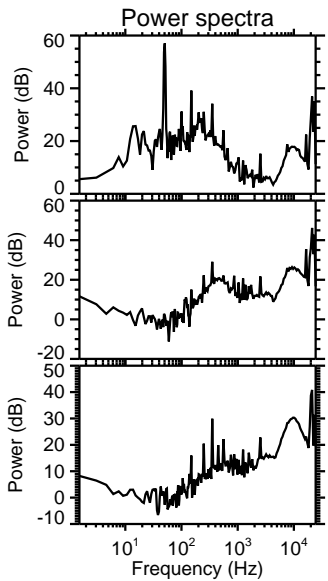
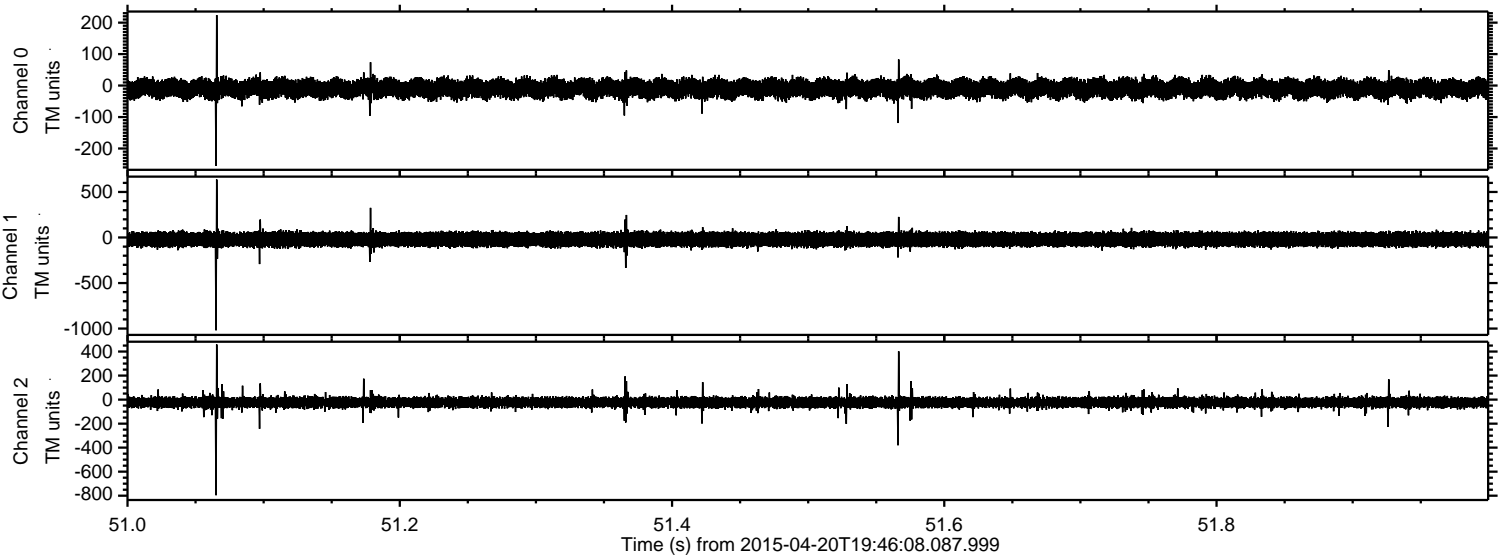


Channel 0
mn: -283
mx: 194
 μ : -9.7
 σ : 15.6

Channel 1
mn: -823
mx: 551
 μ : -21.1
 σ : 40.4

Channel 2
mn: -1024
mx: 643
 μ : -23.5
 σ : 25.0

Processed Mon Apr 20 21:54:02 2015 by ELM ver.2012-10-06 from 001__elm20150420_194607__dat00.bin



Channel 0
mn: -255
mx: 224
 μ : -9.7
 σ : 15.3

Channel 1
mn: -1019
mx: 637
 μ : -21.2
 σ : 40.1

Channel 2
mn: -796
mx: 459
 μ : -23.5
 σ : 24.1

Processed Mon Apr 20 21:54:03 2015 by ELM ver.2012-10-06 from 001__elm20150420_194607__dat00.bin

