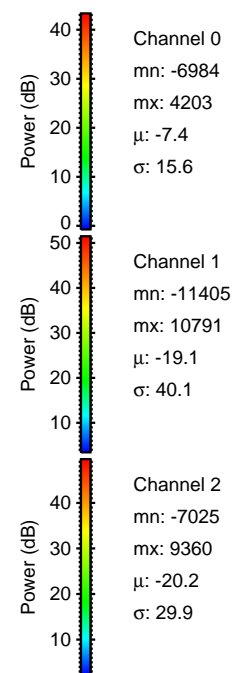
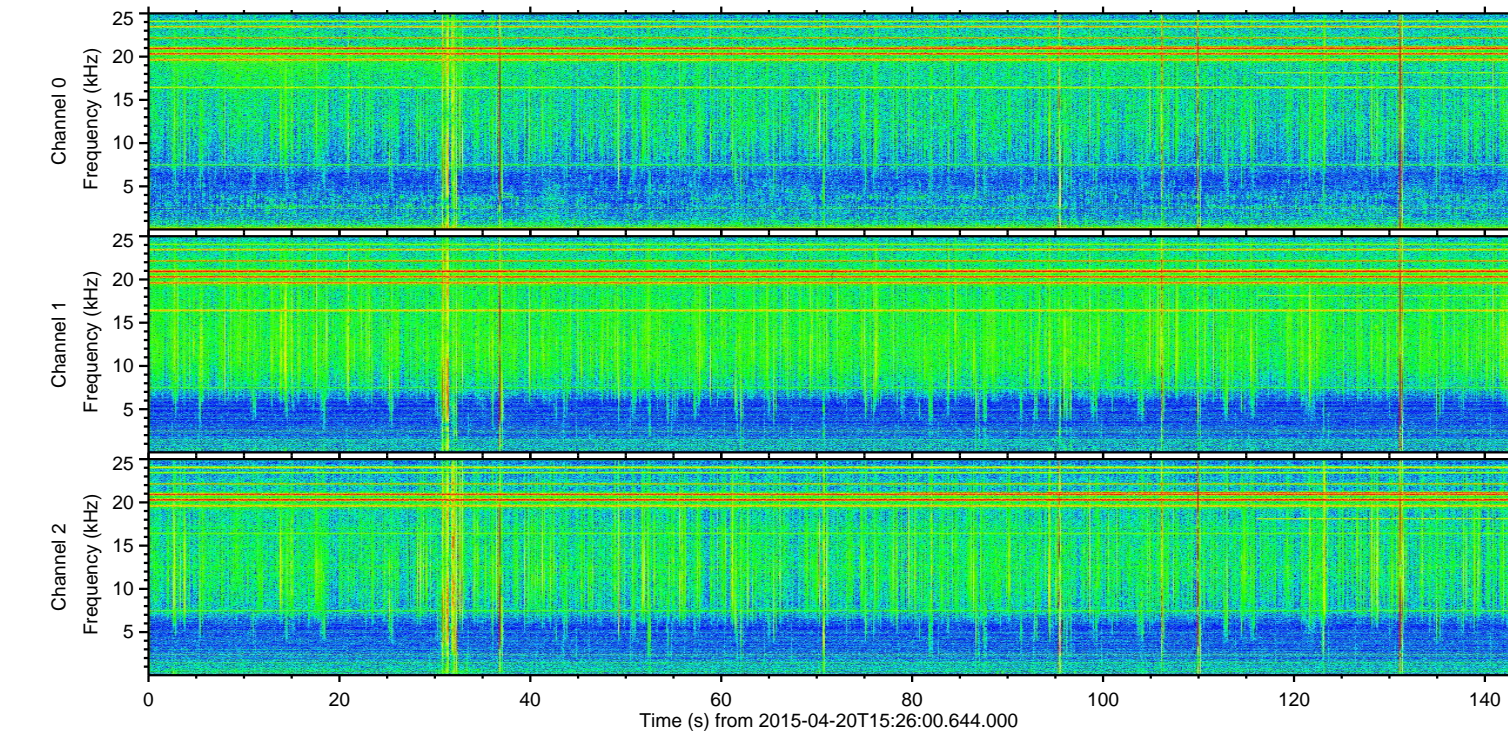
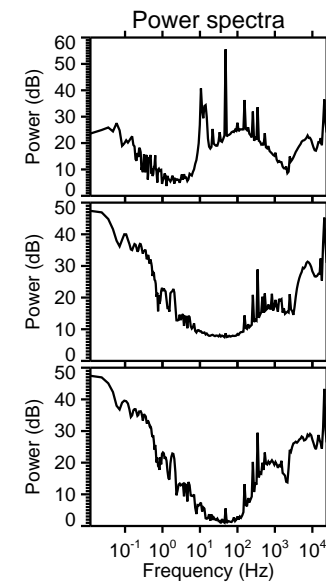
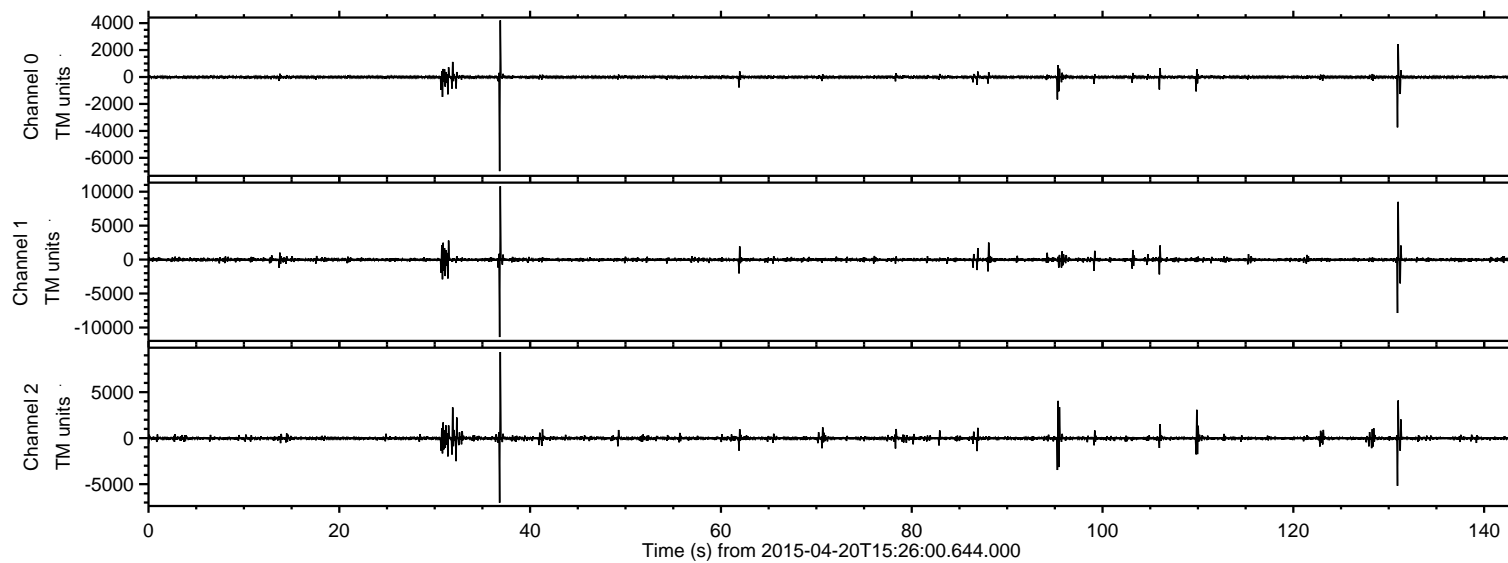


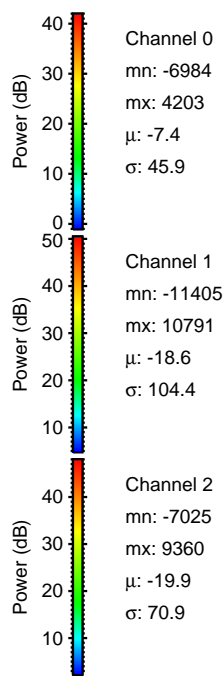
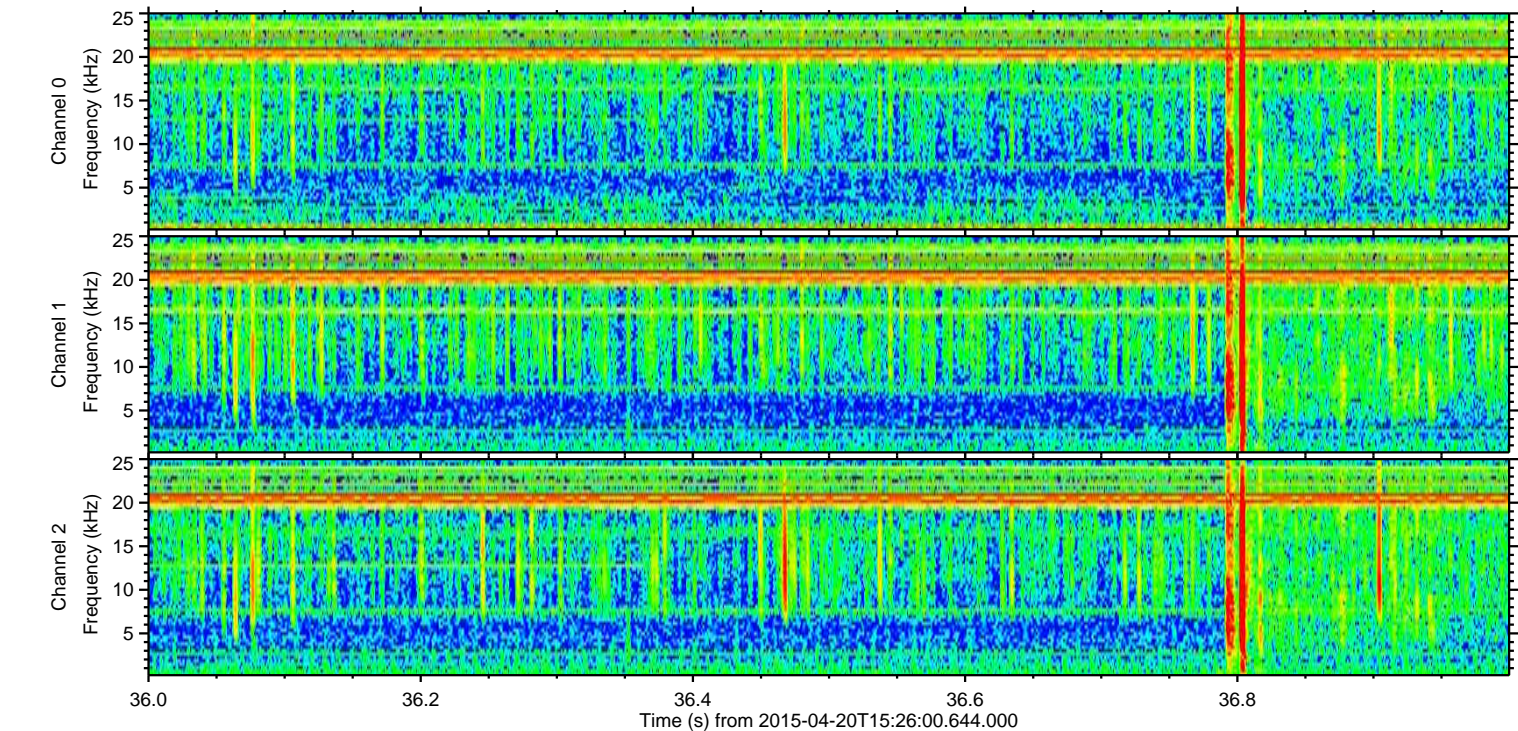
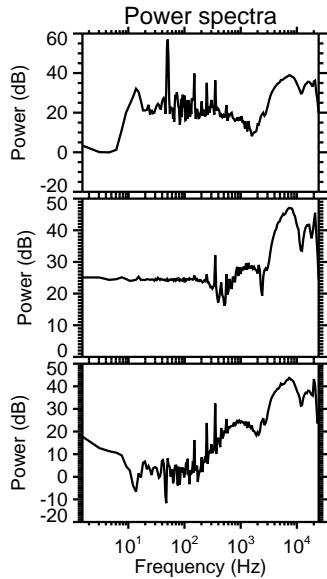
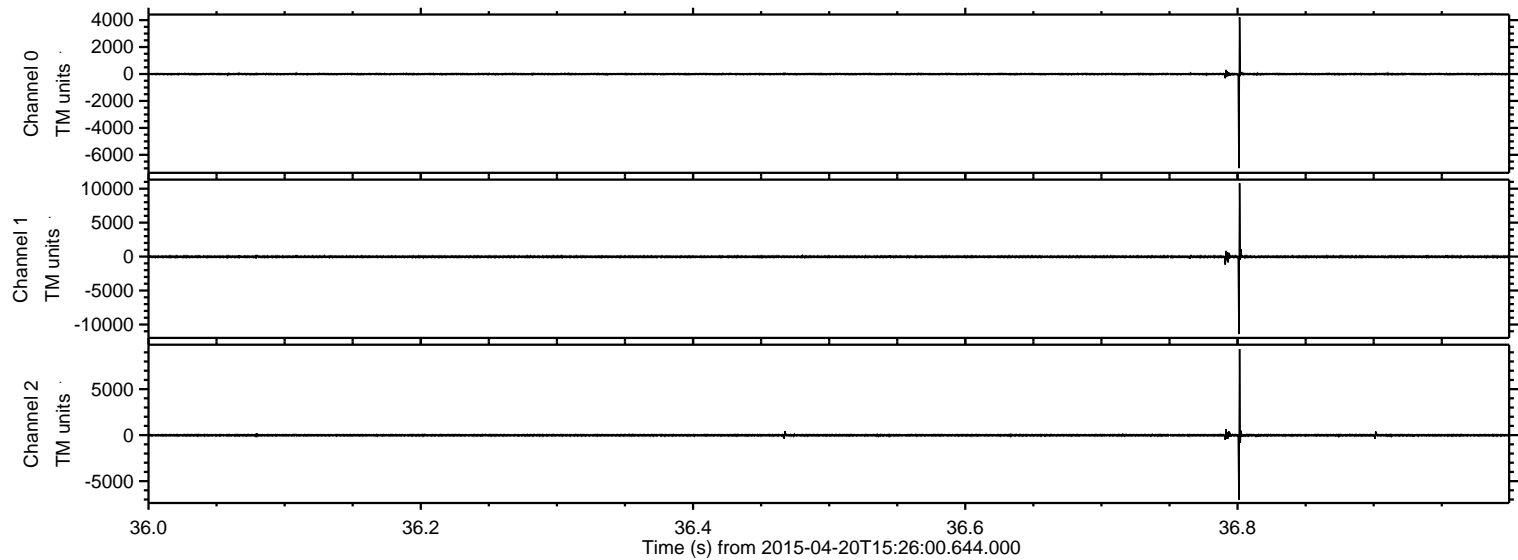
# ELMAVAN 3D WAVEFORMS (Measured data sampled at 50 kHz) 49521 packets of 144 samples from 2015-04-20T15:26:00.644.000.

Processed Mon Apr 20 17:34:13 2015 by ELM ver.2012-10-06 from 001\_\_elm20150420\_152559\_\_dat00.bin





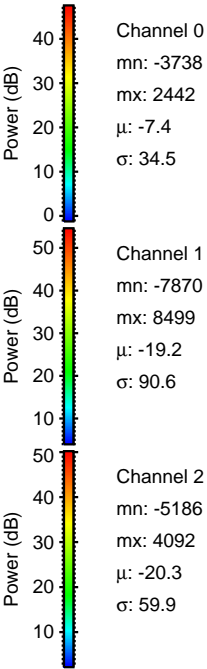
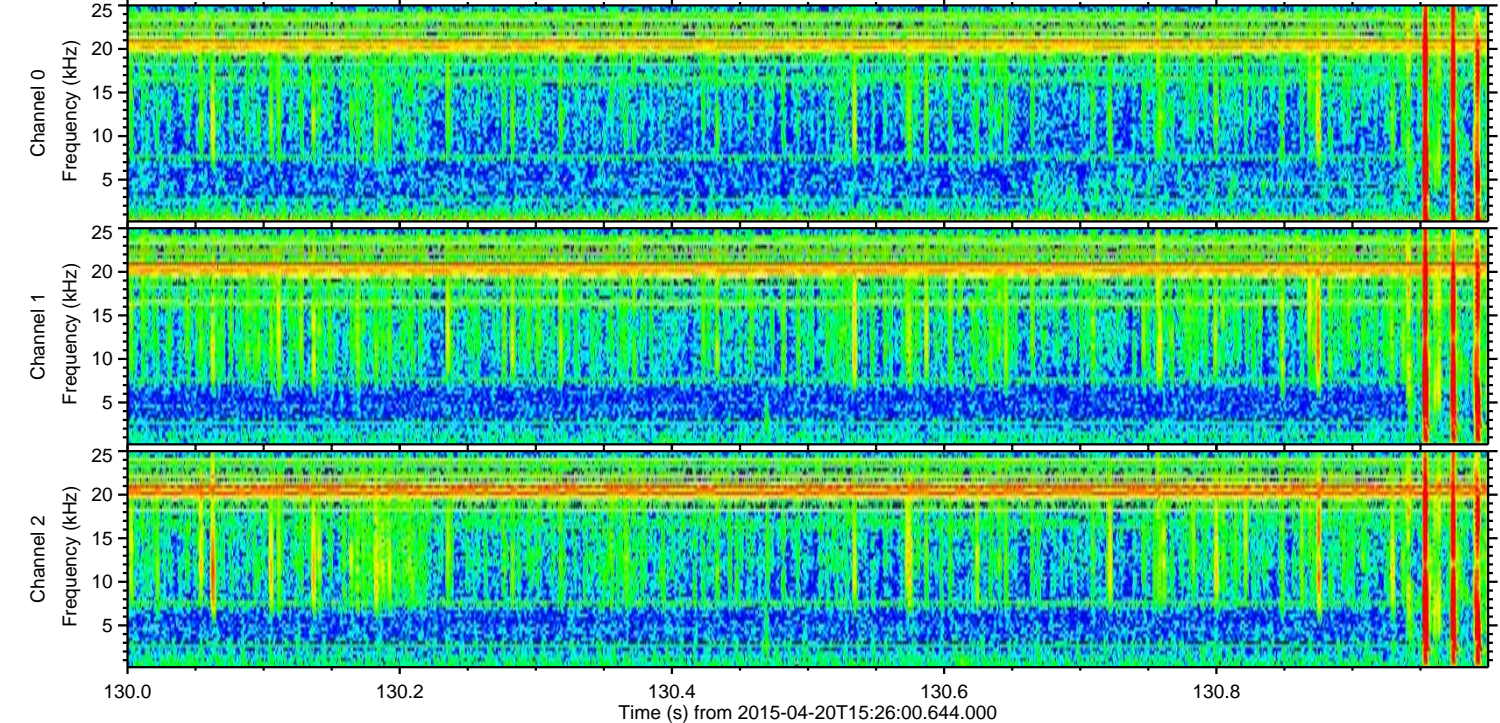
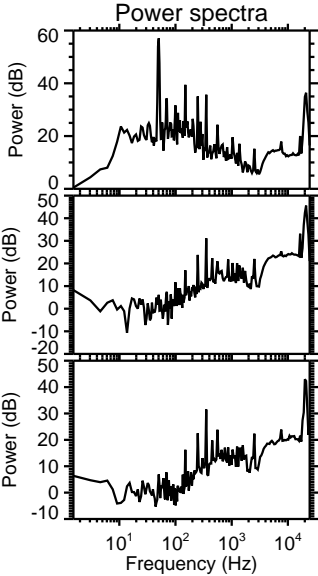
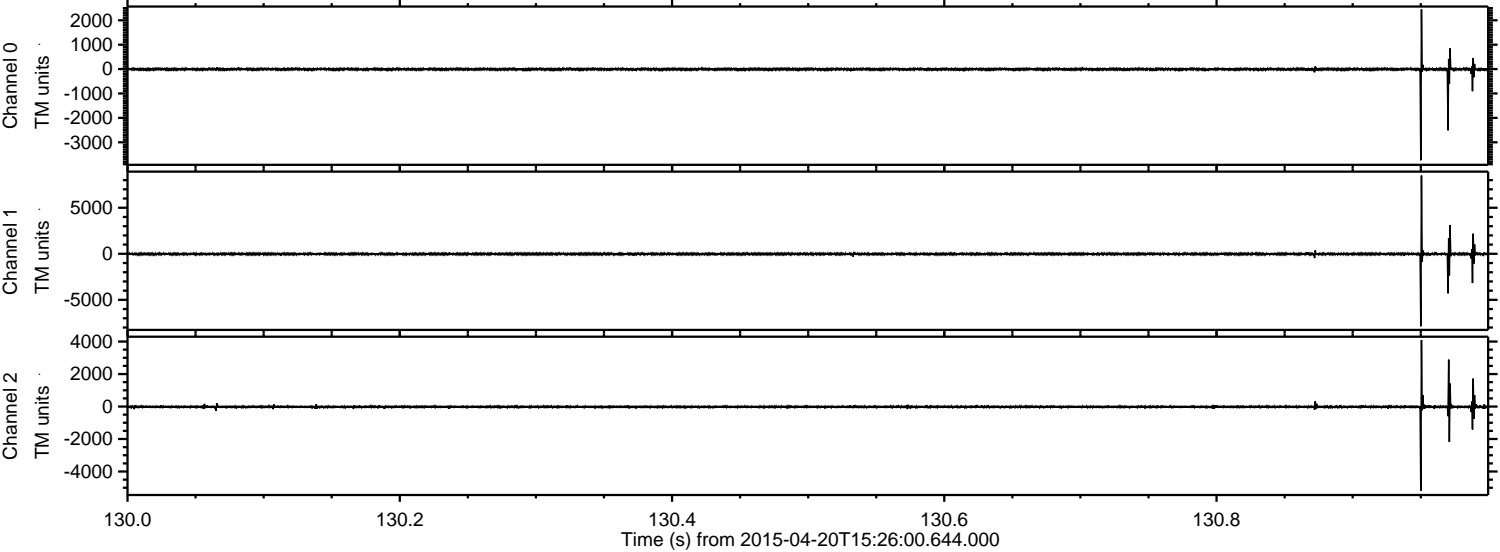
Processed Mon Apr 20 17:34:29 2015 by ELM ver.2012-10-06 from 001\_\_elm20150420\_152559\_\_dat00.bin





ELMAVAN 3D WAVEFORMS (Measured data sampled at 50 kHz) 49521 packets of 144 samples from 2015-04-20T15:26:00.644.000. Part 131/143

Processed Mon Apr 20 17:34:30 2015 by ELM ver.2012-10-06 from 001\_\_elm20150420\_152559\_\_dat00.bin



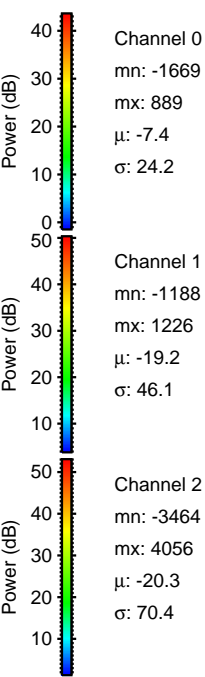
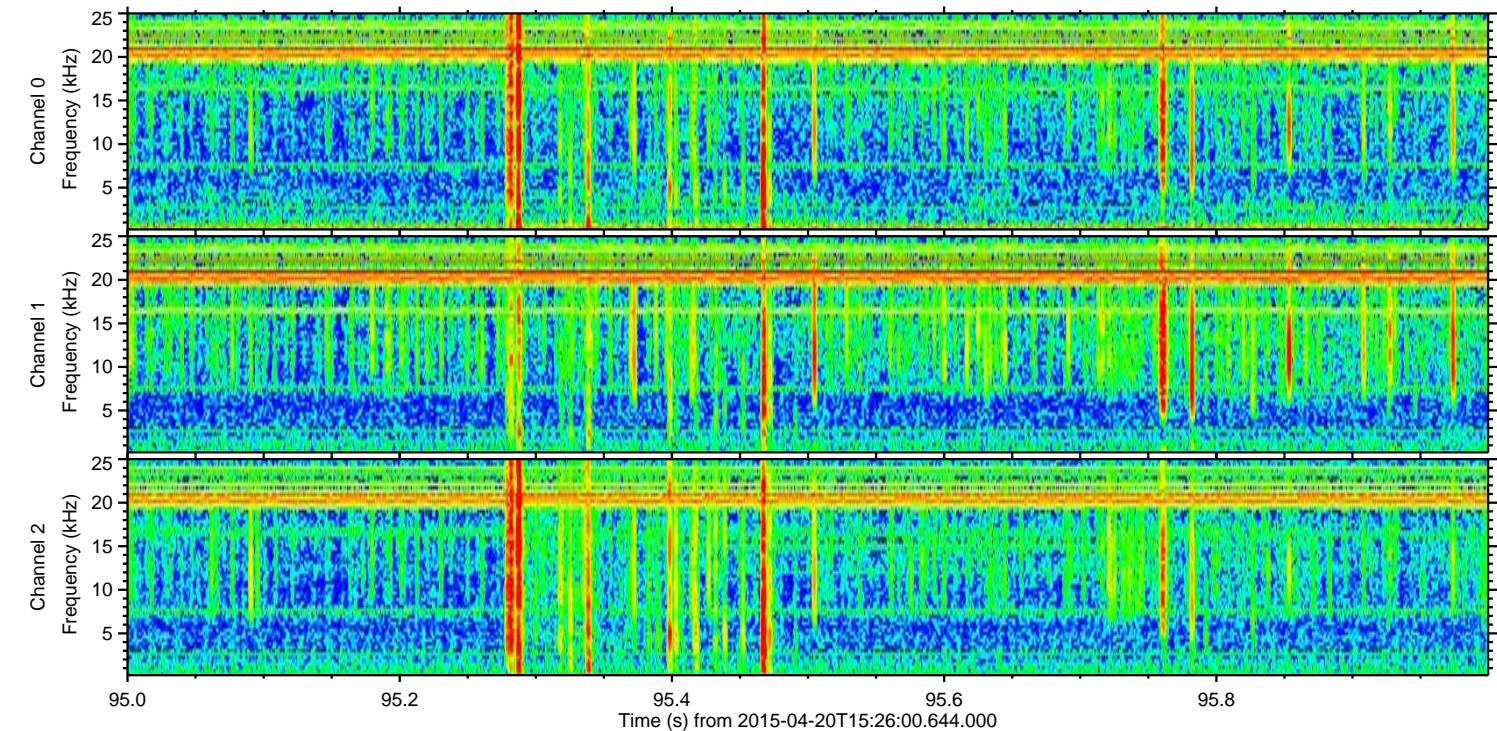
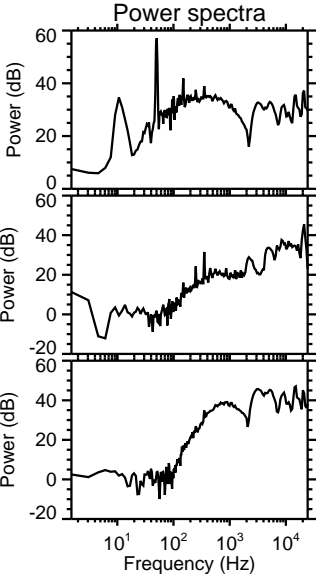
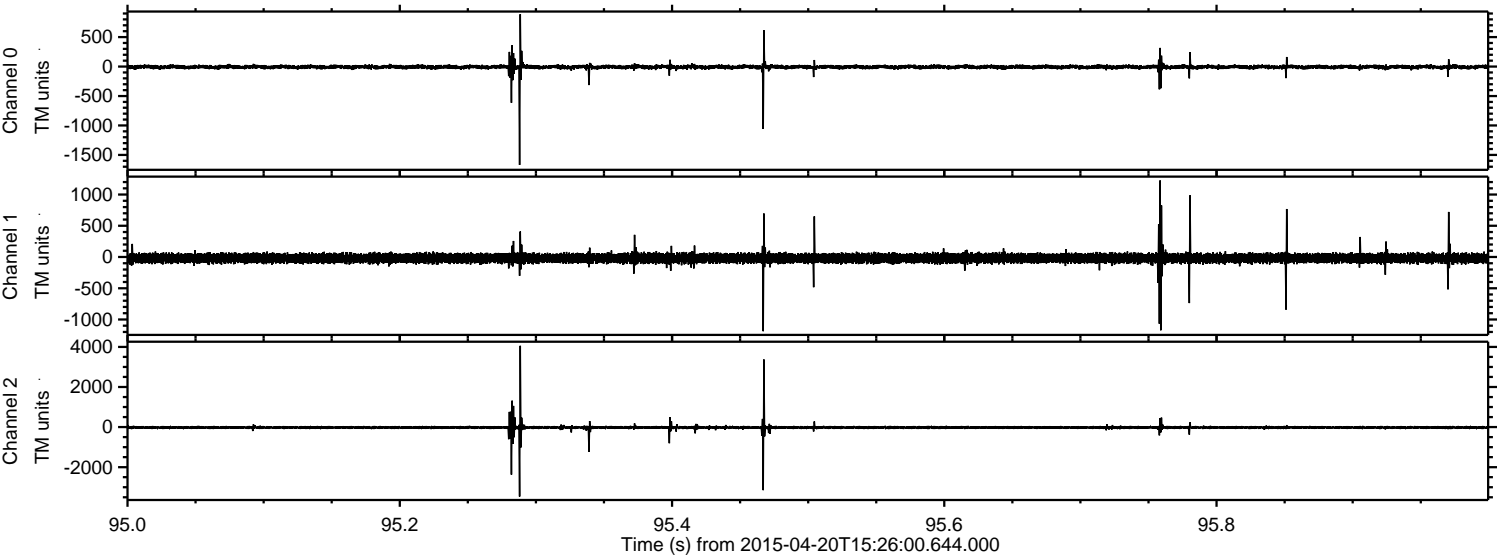
Channel 0  
mn: -37.38  
mx: 24.42  
 $\mu$ : -7.4  
 $\sigma$ : 34.5

Channel 1  
mn: -78.70  
mx: 84.99  
 $\mu$ : -19.2  
 $\sigma$ : 90.6

Channel 2  
mn: -51.86  
mx: 40.92  
 $\mu$ : -20.3  
 $\sigma$ : 59.9



Processed Mon Apr 20 17:34:31 2015 by ELM ver.2012-10-06 from 001\_\_elm20150420\_152559\_\_dat00.bin



Channel 0  
mn: -1669  
mx: 889  
 $\mu$ : -7.4  
 $\sigma$ : 24.2

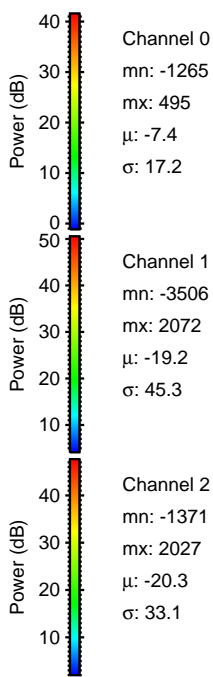
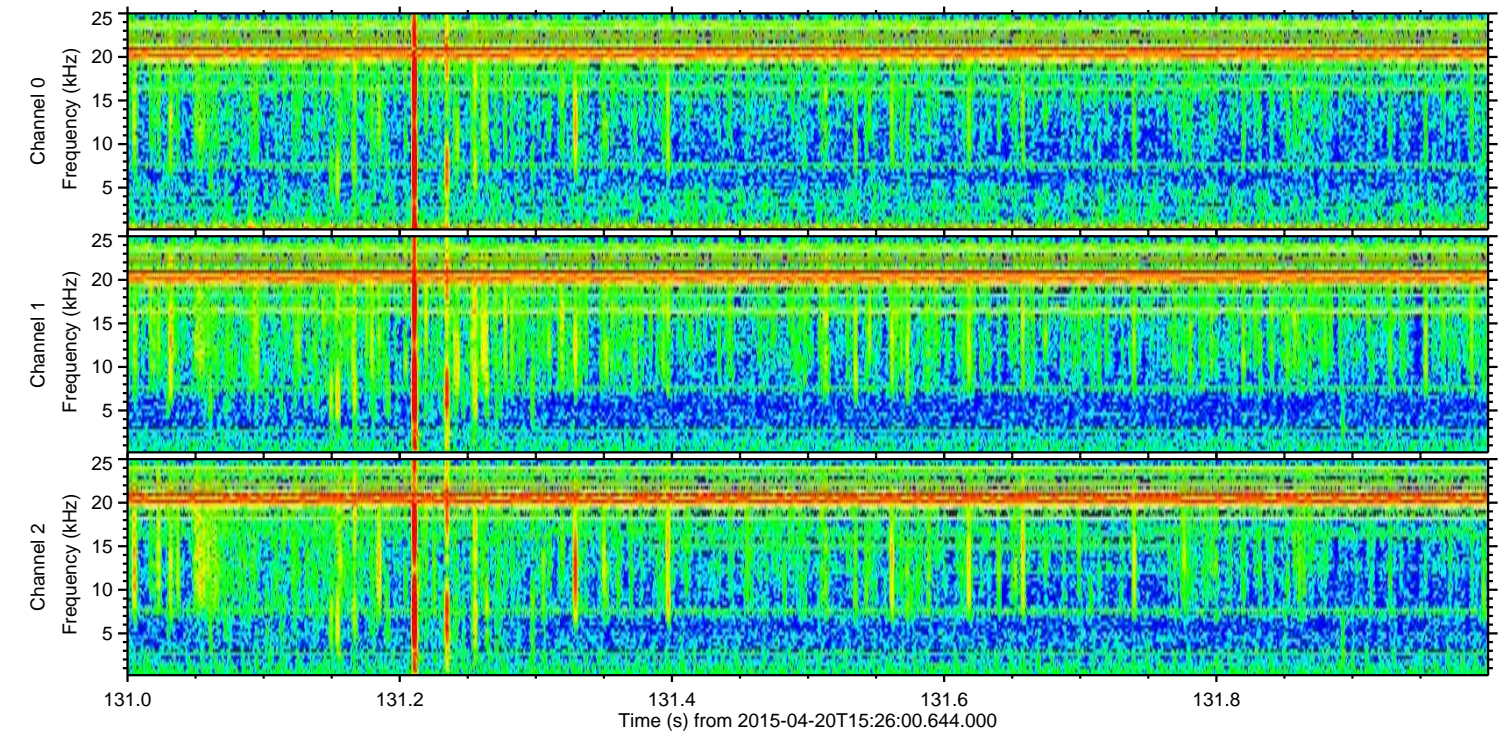
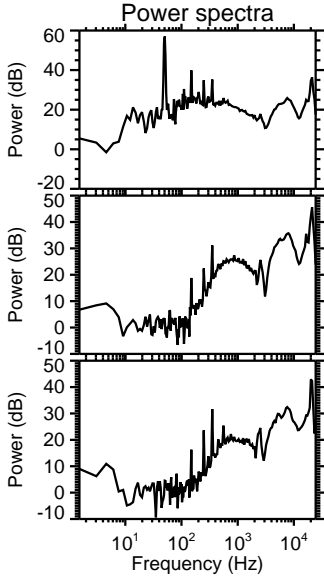
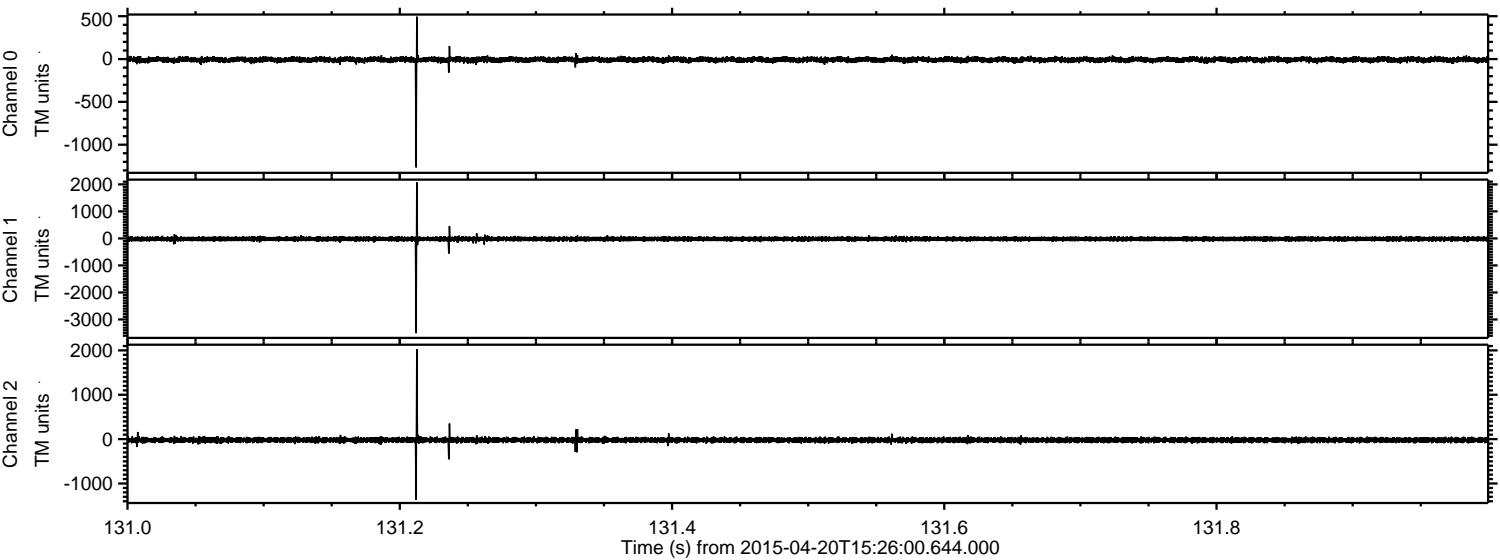
Channel 1  
mn: -1188  
mx: 1226  
 $\mu$ : -19.2  
 $\sigma$ : 46.1

Channel 2  
mn: -3464  
mx: 4056  
 $\mu$ : -20.3  
 $\sigma$ : 70.4



ELMAVAN 3D WAVEFORMS (Measured data sampled at 50 kHz) 49521 packets of 144 samples from 2015-04-20T15:26:00.644.000. Part 132/143

Processed Mon Apr 20 17:34:32 2015 by ELM ver.2012-10-06 from 001\_\_elm20150420\_152559\_\_dat00.bin



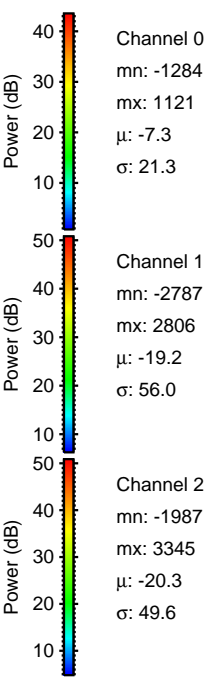
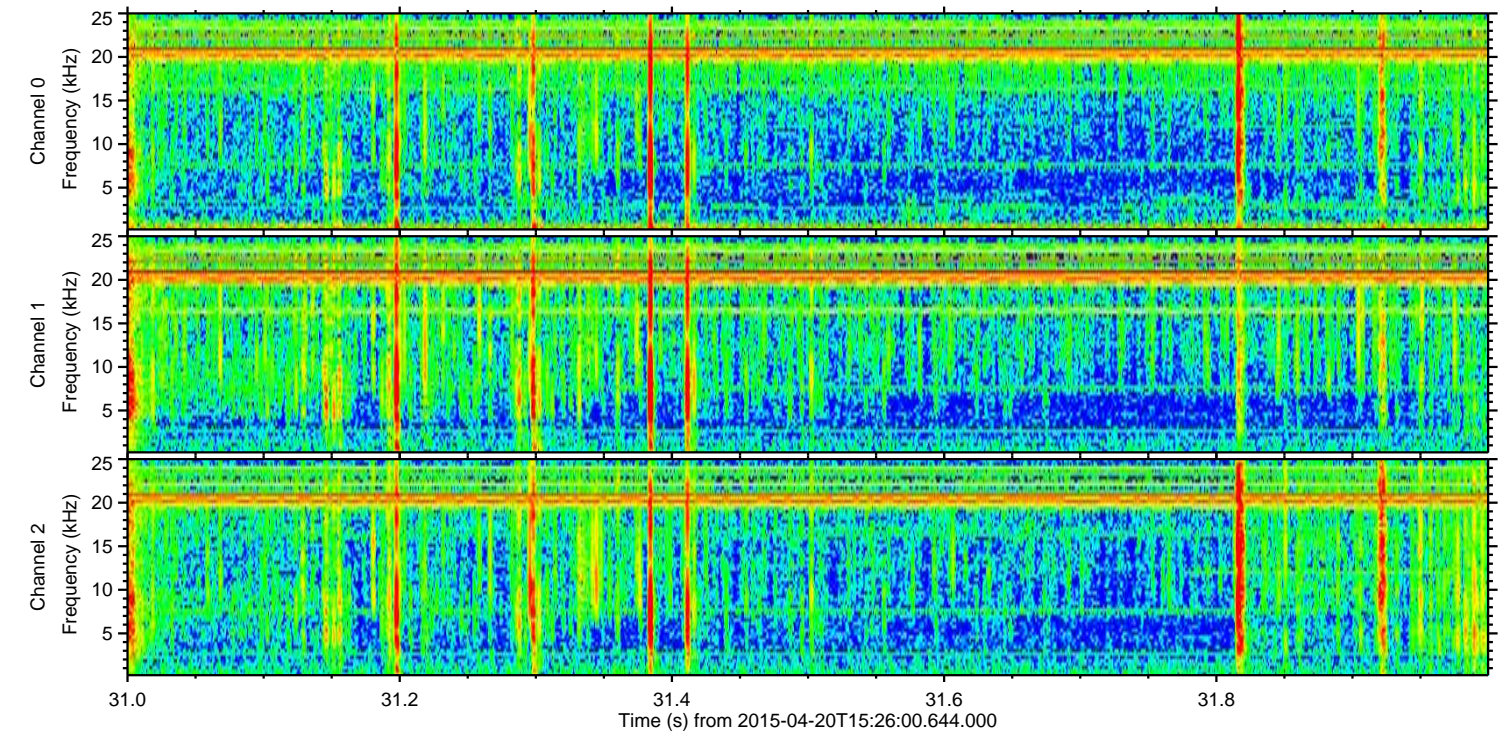
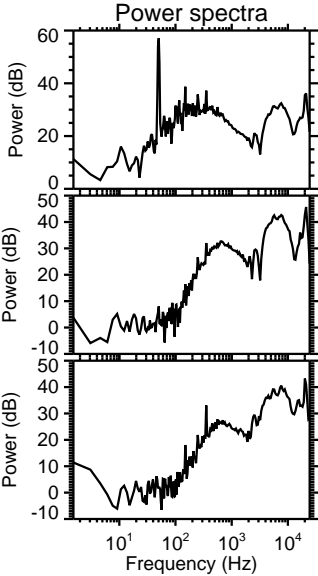
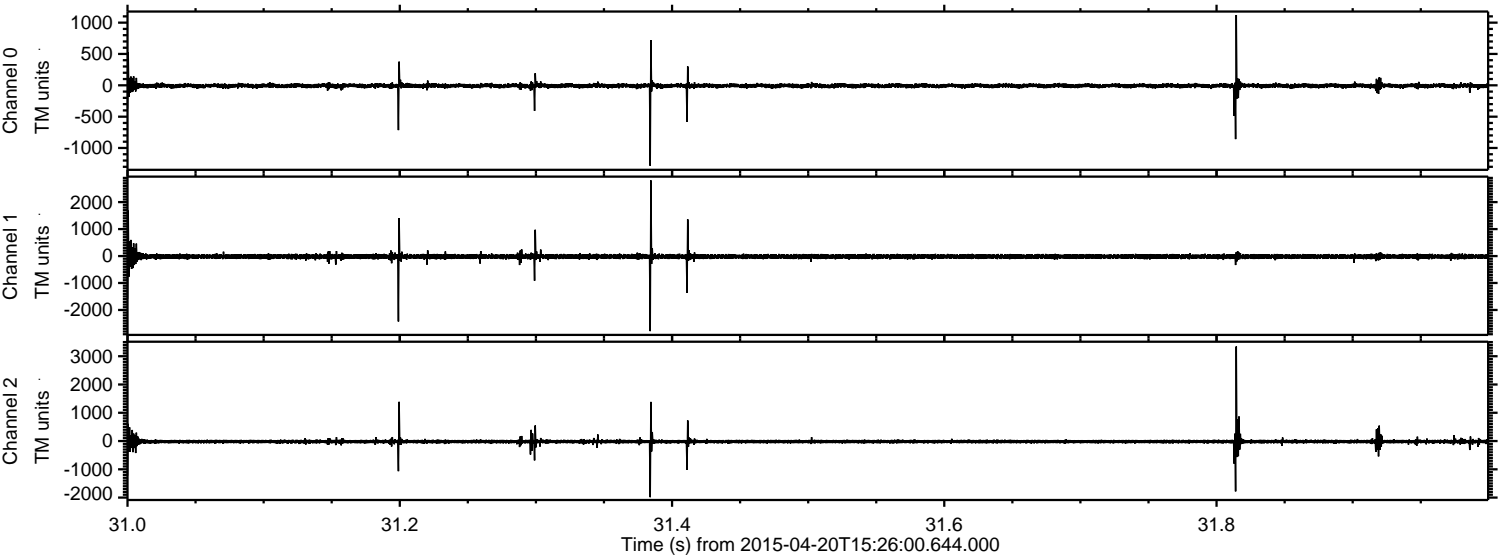
Channel 0  
mn: -1265  
mx: 495  
 $\mu$ : -7.4  
 $\sigma$ : 17.2

Channel 1  
mn: -3506  
mx: 2072  
 $\mu$ : -19.2  
 $\sigma$ : 45.3

Channel 2  
mn: -1371  
mx: 2027  
 $\mu$ : -20.3  
 $\sigma$ : 33.1



Processed Mon Apr 20 17:34:33 2015 by ELM ver.2012-10-06 from 001\_\_elm20150420\_152559\_\_dat00.bin



Channel 0  
mn: -1284  
mx: 1121  
 $\mu$ : -7.3  
 $\sigma$ : 21.3

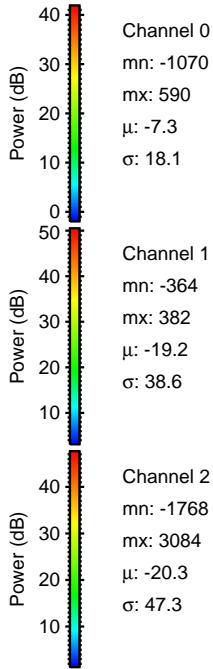
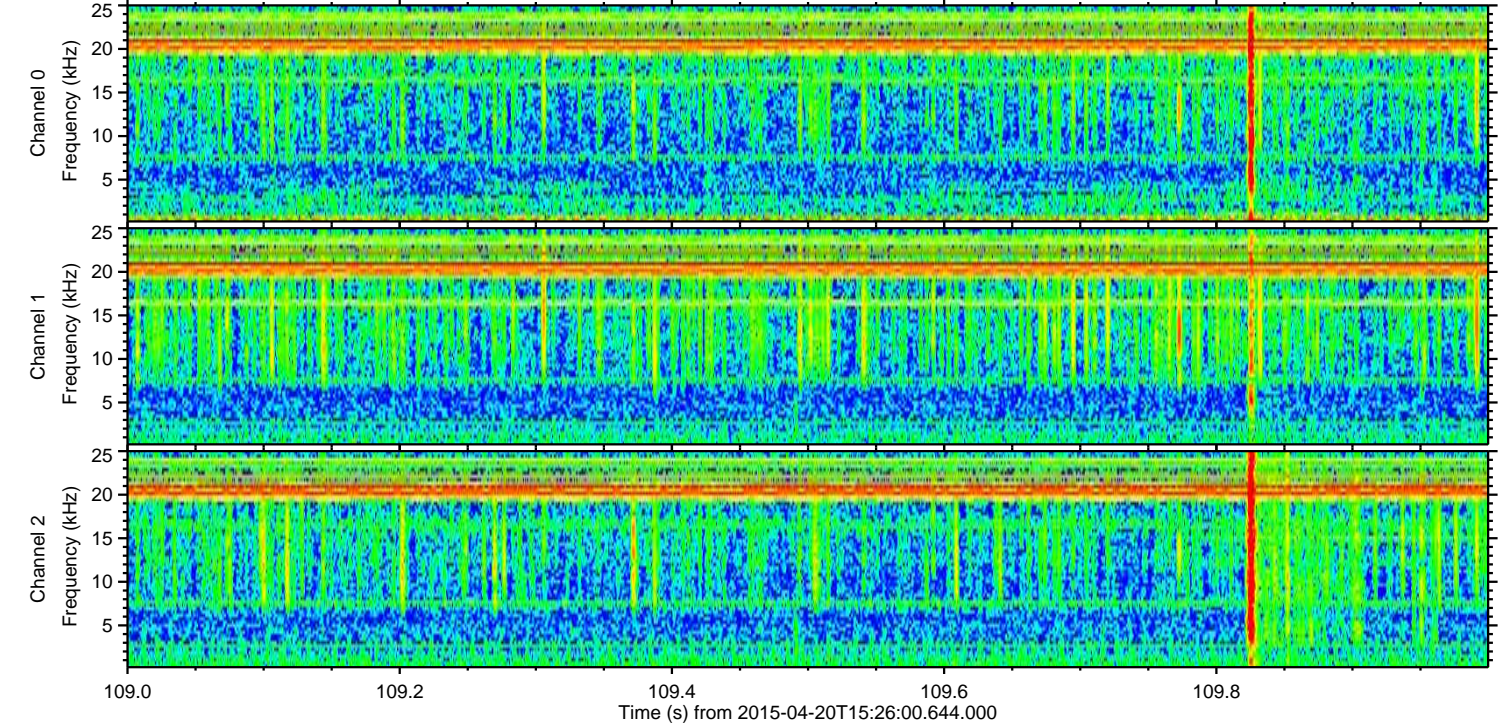
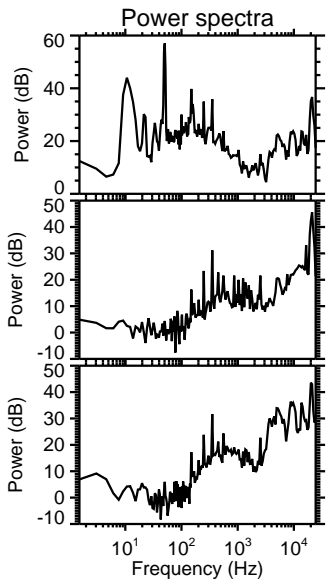
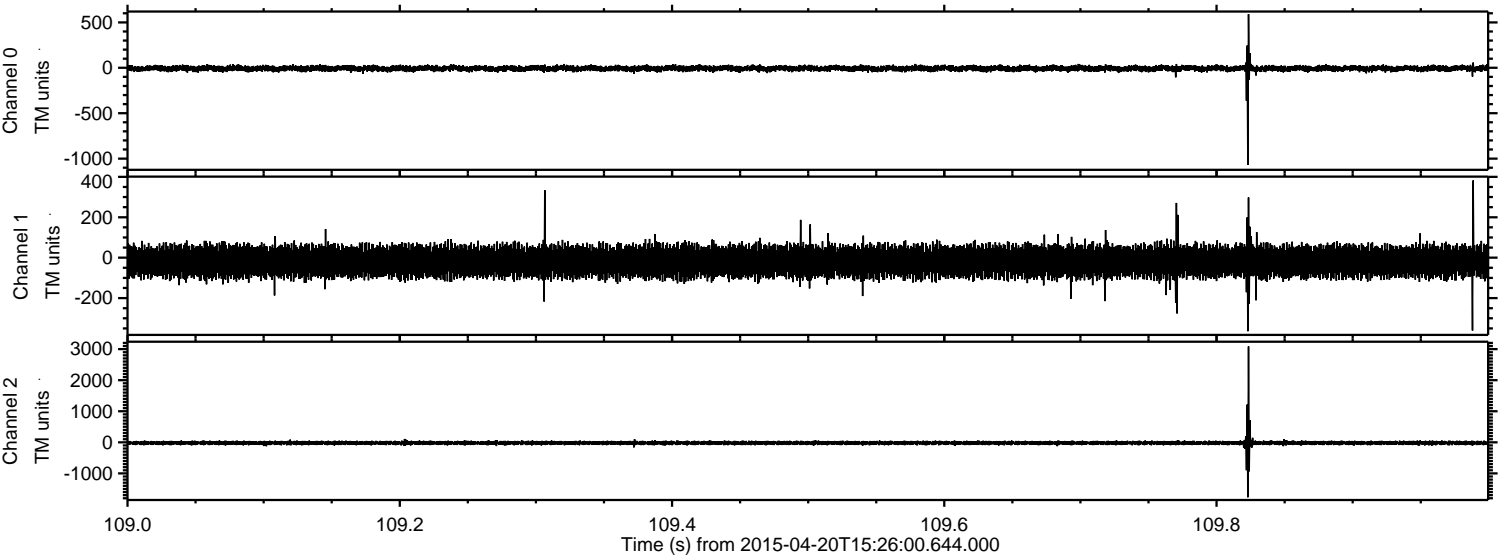
Channel 1  
mn: -2787  
mx: 2806  
 $\mu$ : -19.2  
 $\sigma$ : 56.0

Channel 2  
mn: -1987  
mx: 3345  
 $\mu$ : -20.3  
 $\sigma$ : 49.6



ELMAVAN 3D WAVEFORMS (Measured data sampled at 50 kHz) 49521 packets of 144 samples from 2015-04-20T15:26:00.644.000. Part 110/143

Processed Mon Apr 20 17:34:34 2015 by ELM ver.2012-10-06 from 001\_\_elm20150420\_152559\_\_dat00.bin



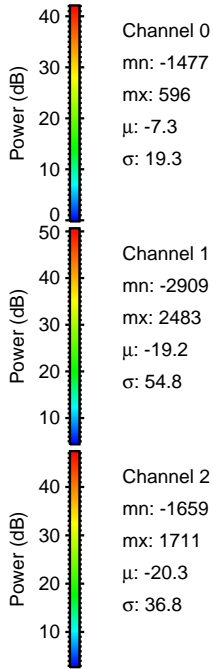
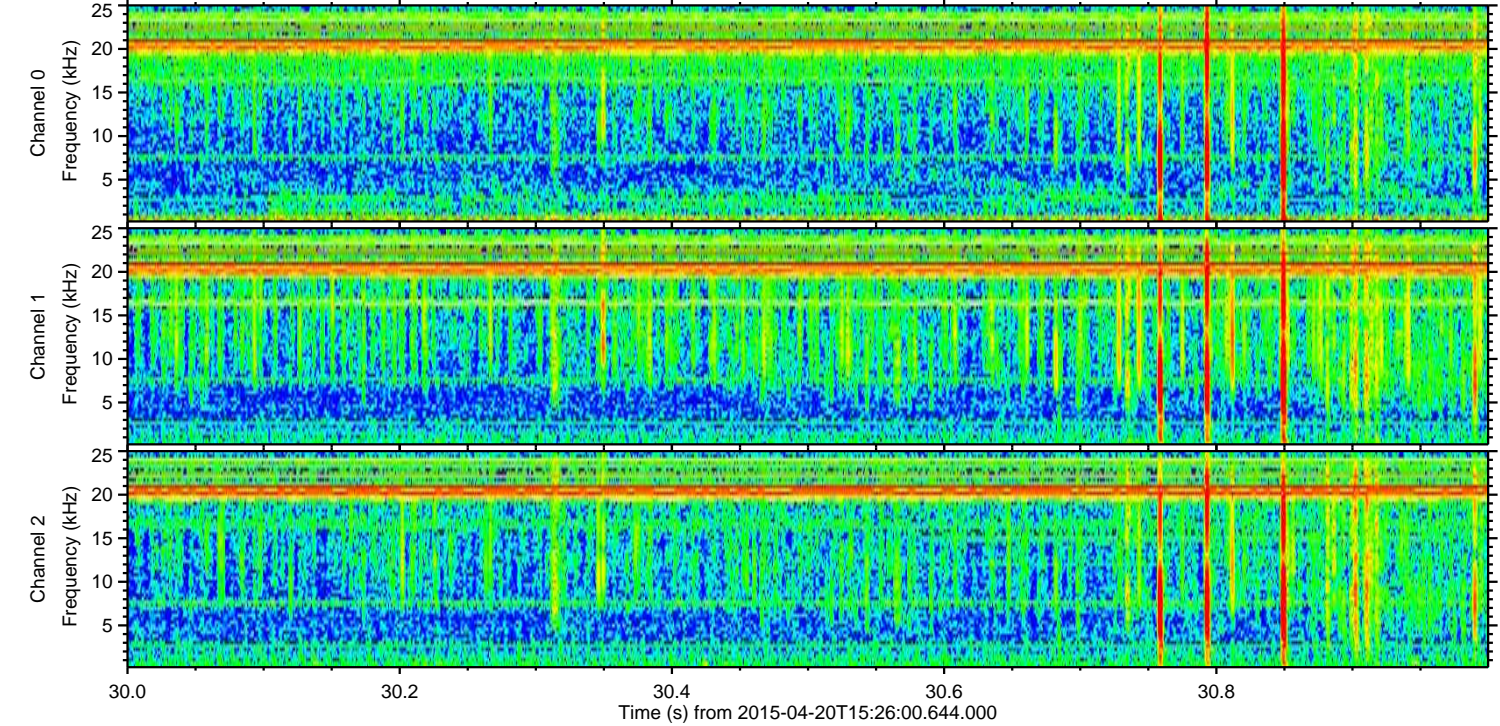
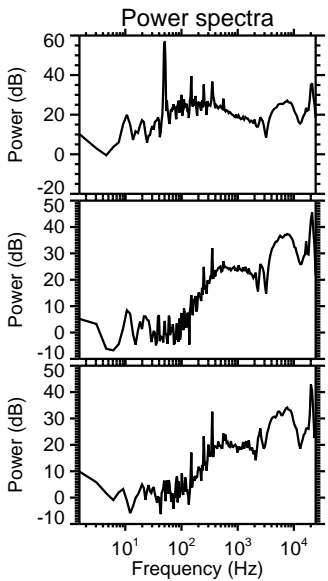
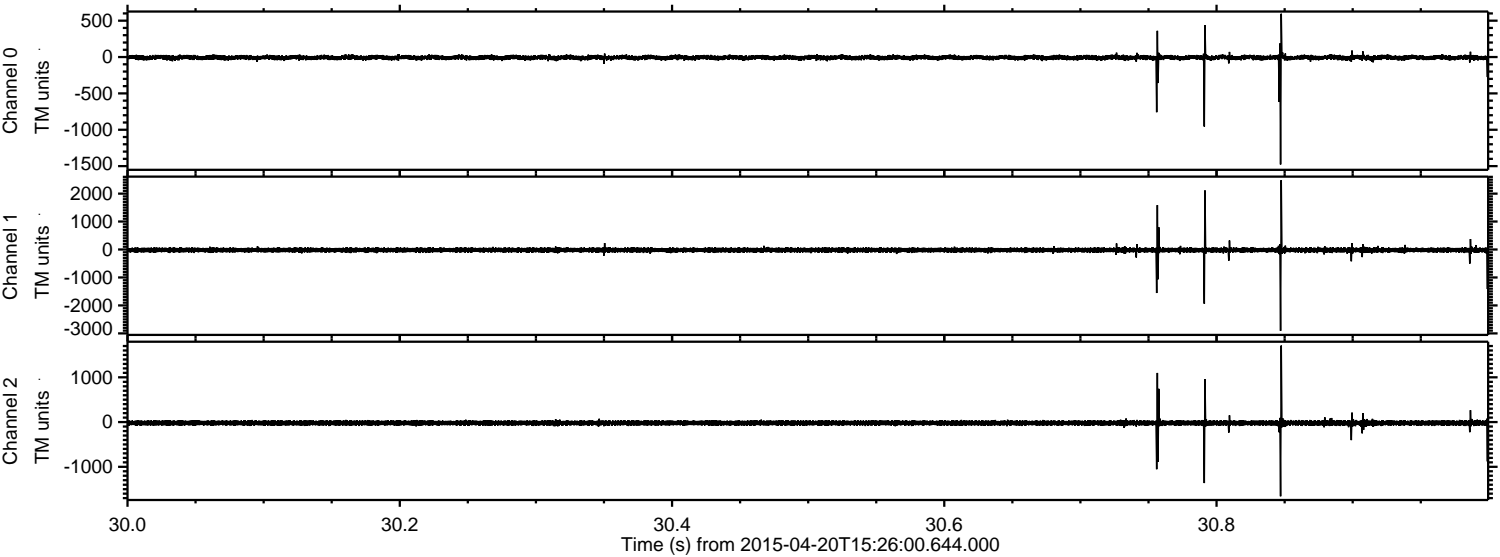
Channel 0  
mn: -1070  
mx: 590  
 $\mu$ : -7.3  
 $\sigma$ : 18.1

Channel 1  
mn: -364  
mx: 382  
 $\mu$ : -19.2  
 $\sigma$ : 38.6

Channel 2  
mn: -1768  
mx: 3084  
 $\mu$ : -20.3  
 $\sigma$ : 47.3

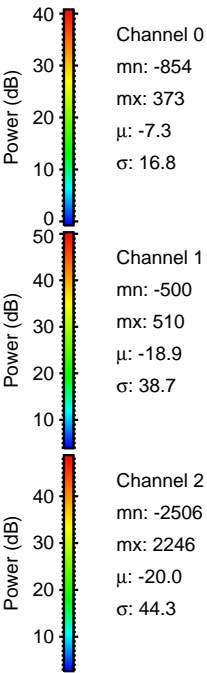
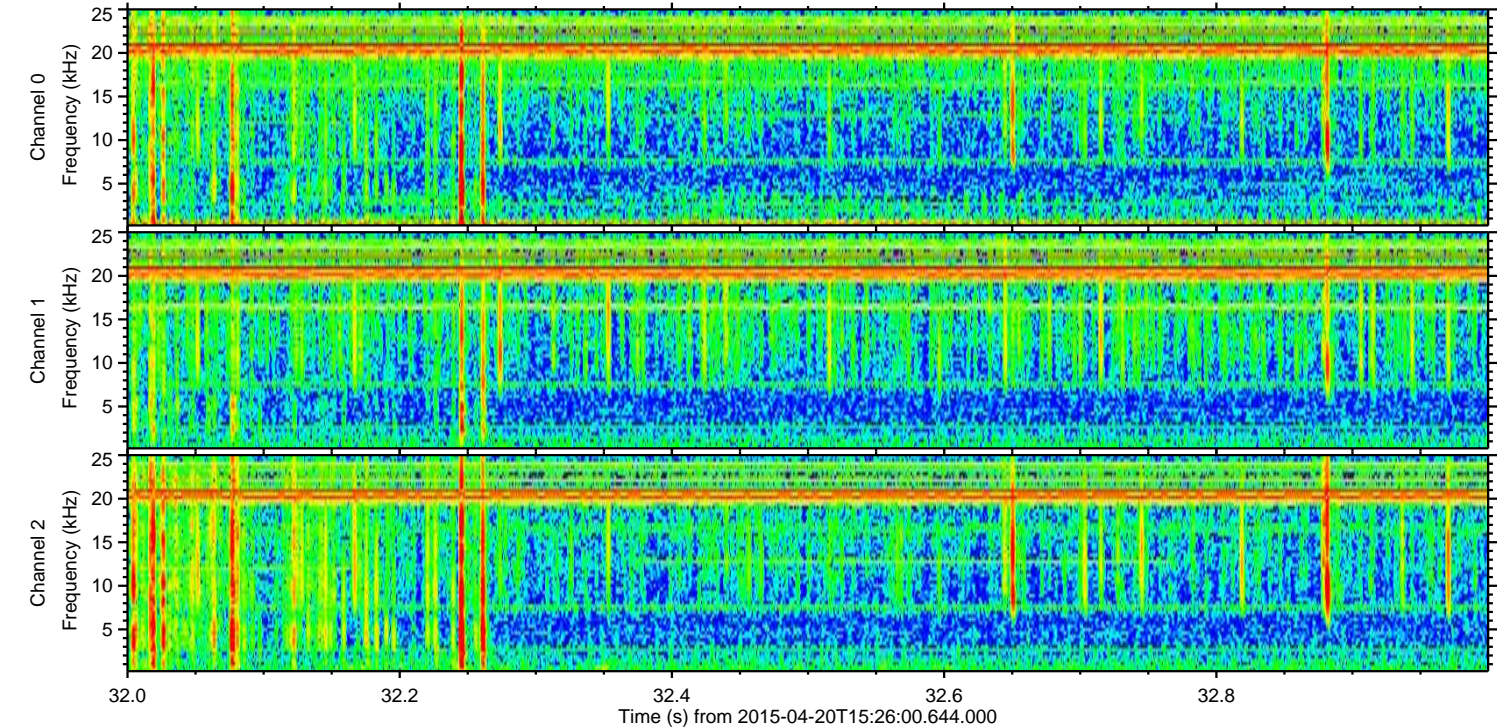
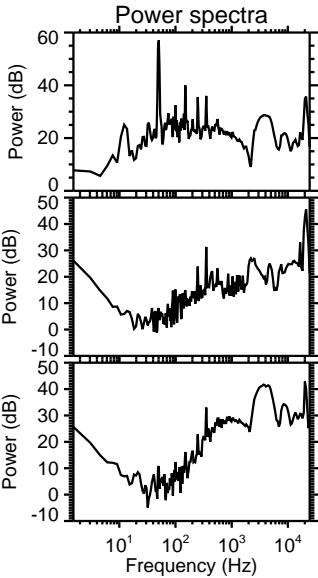
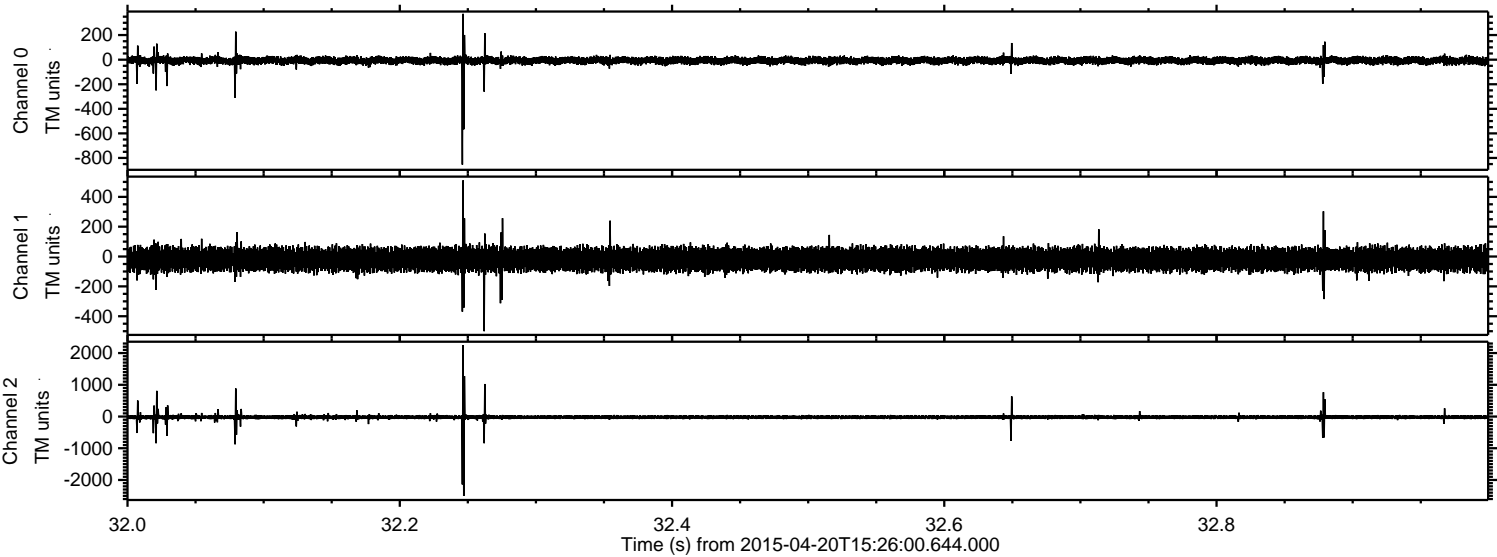


Processed Mon Apr 20 17:34:35 2015 by ELM ver.2012-10-06 from 001\_\_elm20150420\_152559\_\_dat00.bin



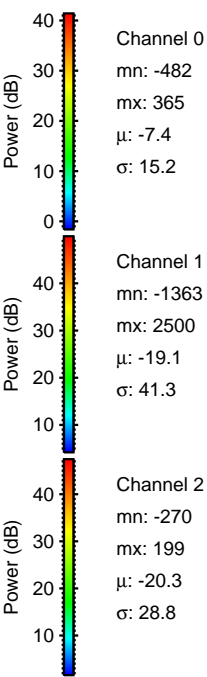
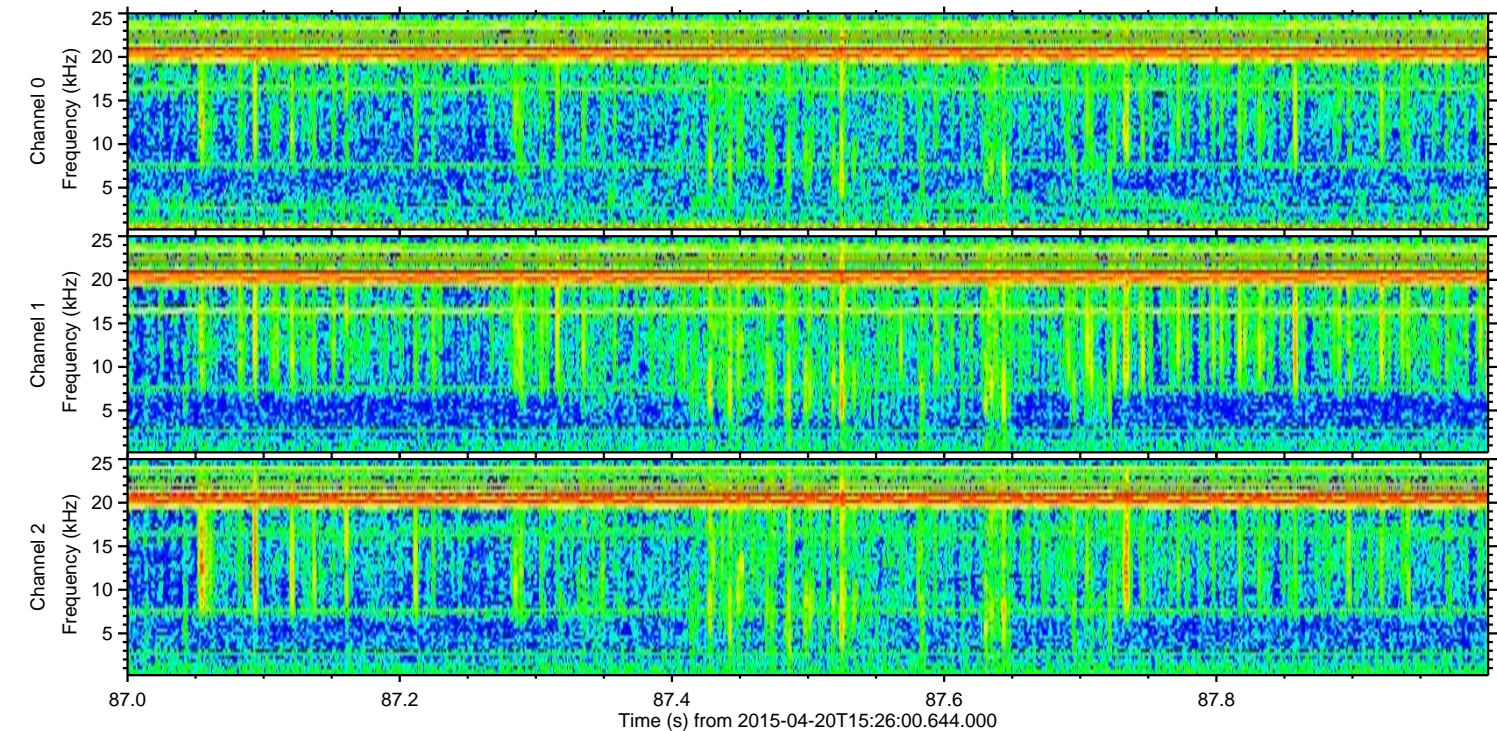
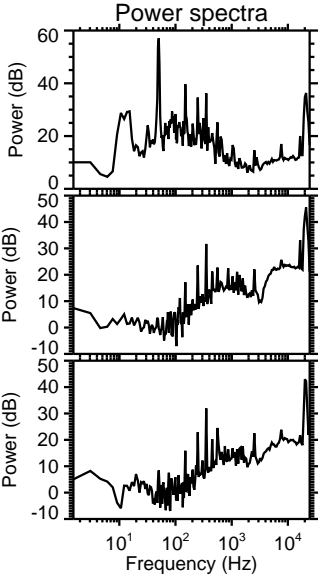
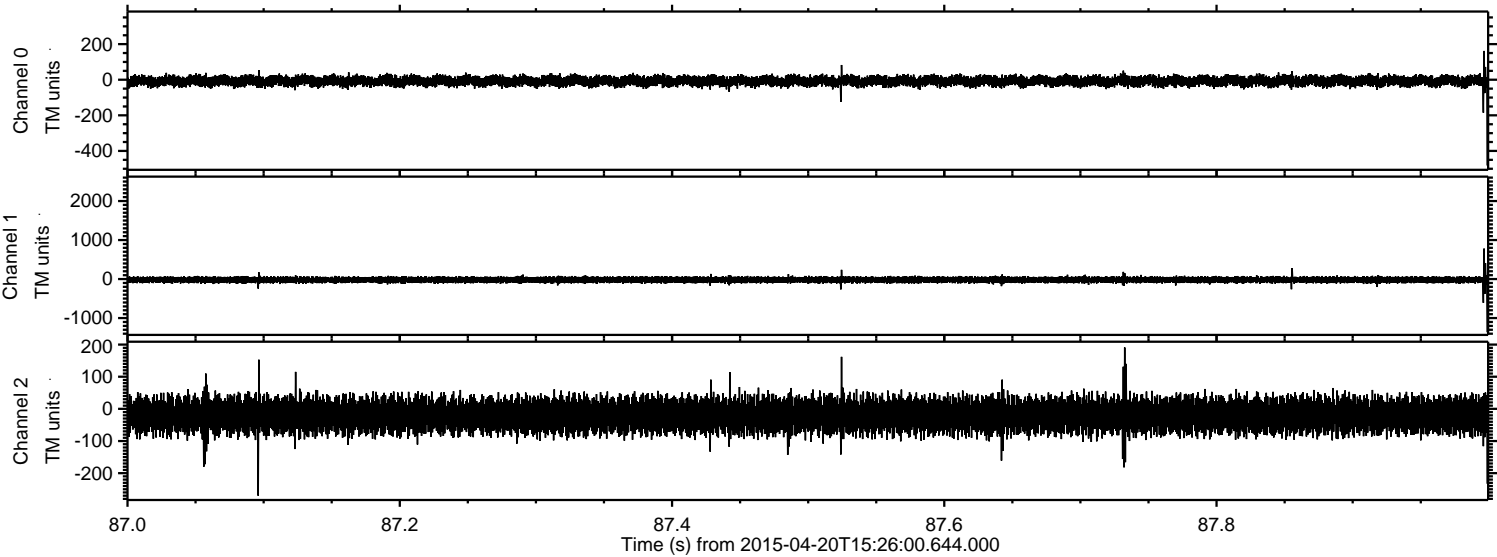


Processed Mon Apr 20 17:34:36 2015 by ELM ver.2012-10-06 from 001\_\_elm20150420\_152559\_\_dat00.bin





Processed Mon Apr 20 17:34:37 2015 by ELM ver.2012-10-06 from 001\_\_elm20150420\_152559\_\_dat00.bin





Processed Mon Apr 20 17:34:38 2015 by ELM ver.2012-10-06 from 001\_\_elm20150420\_152559\_\_dat00.bin

