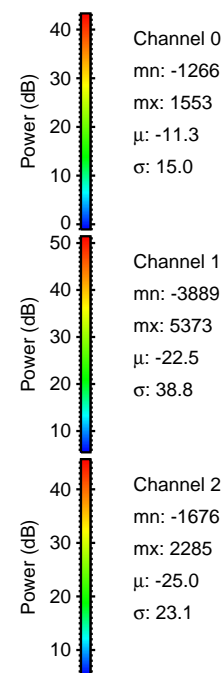
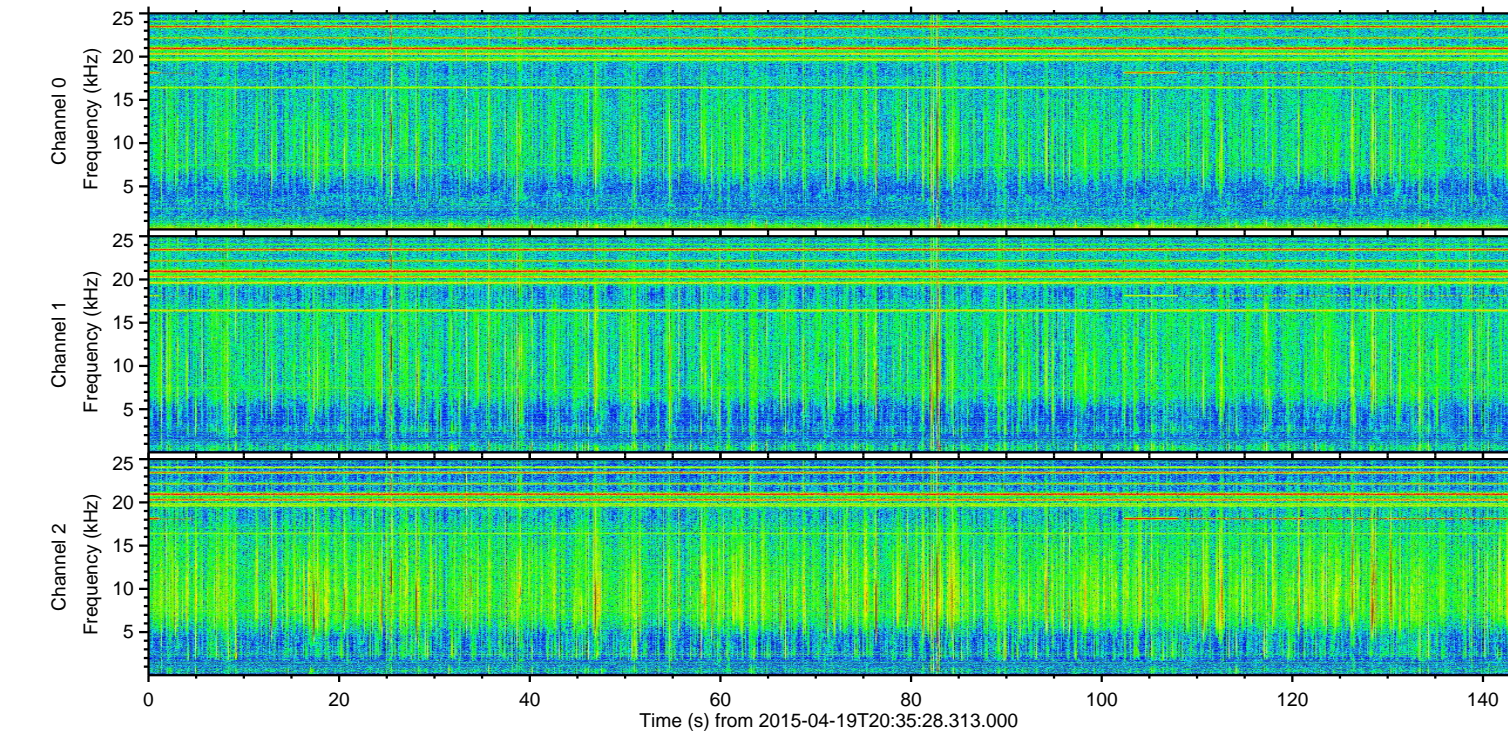
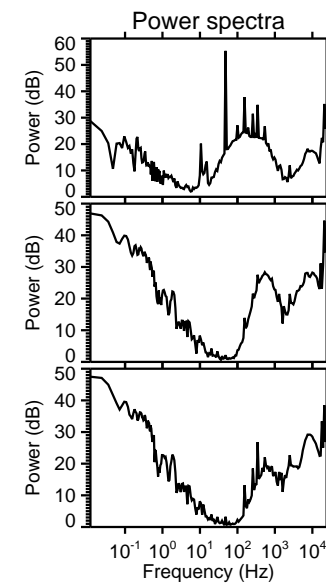
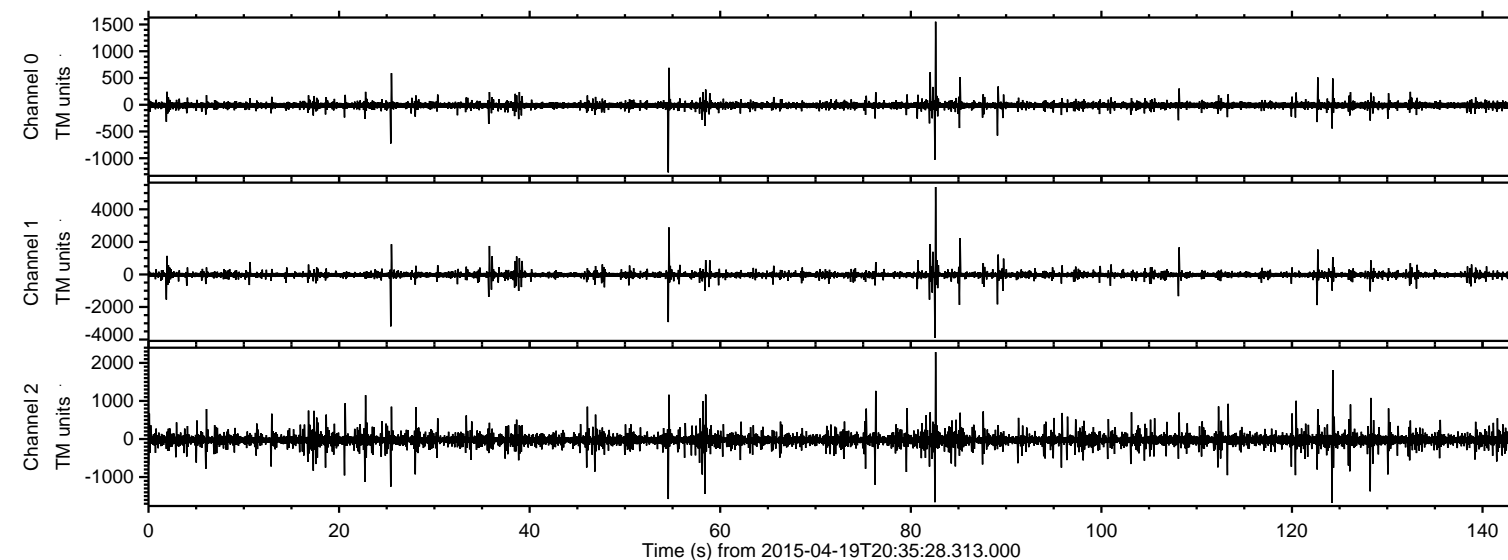


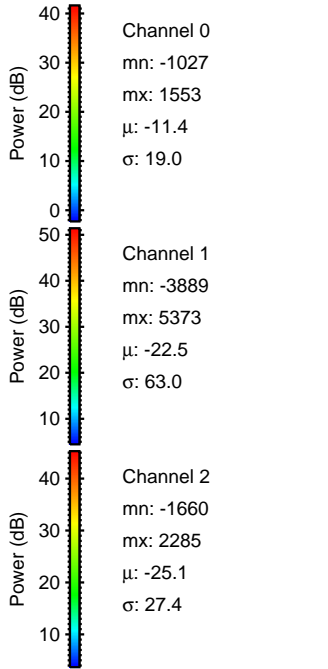
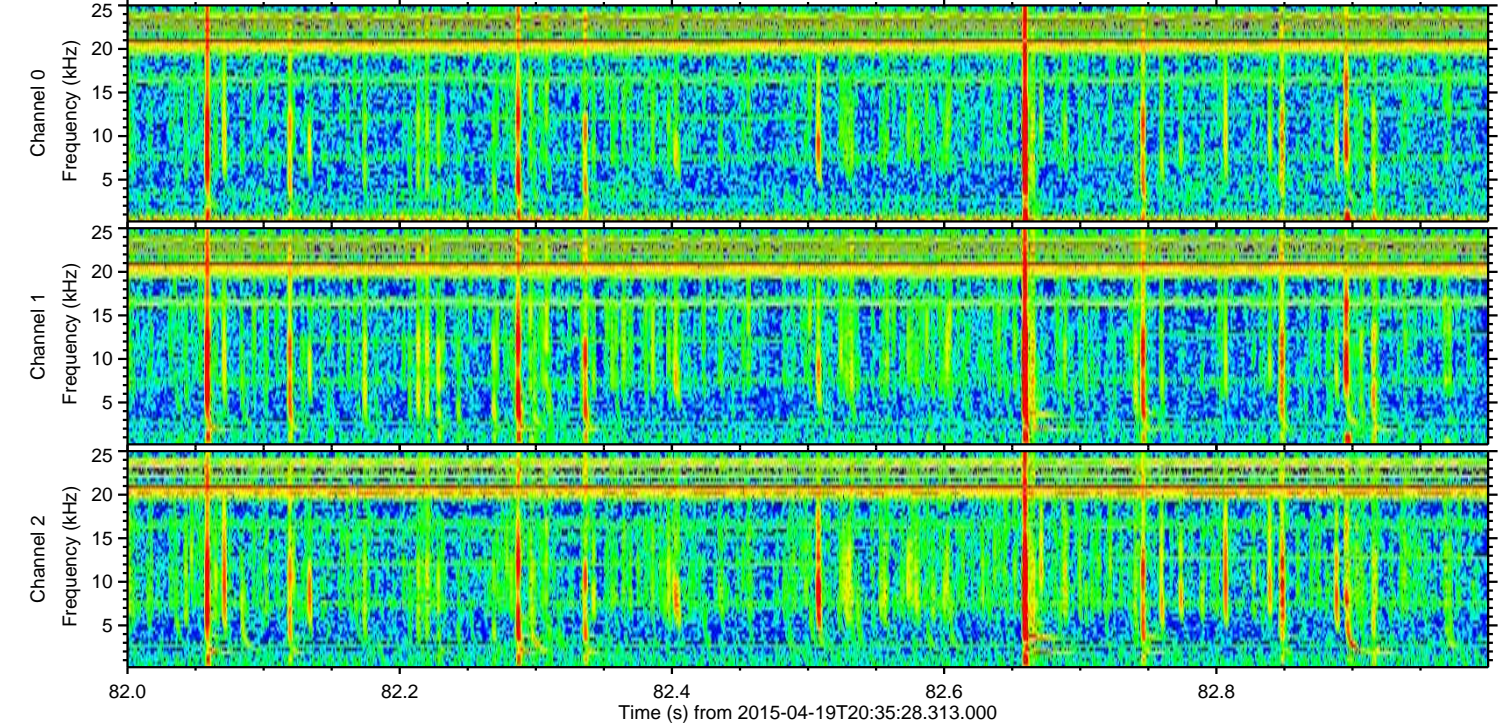
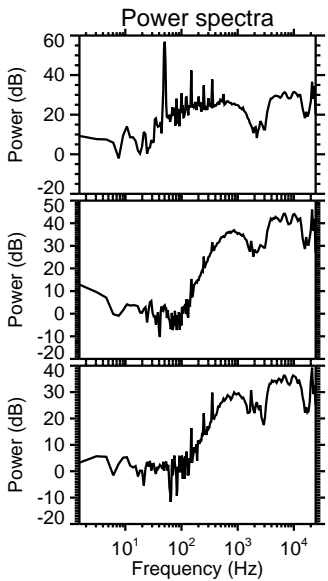
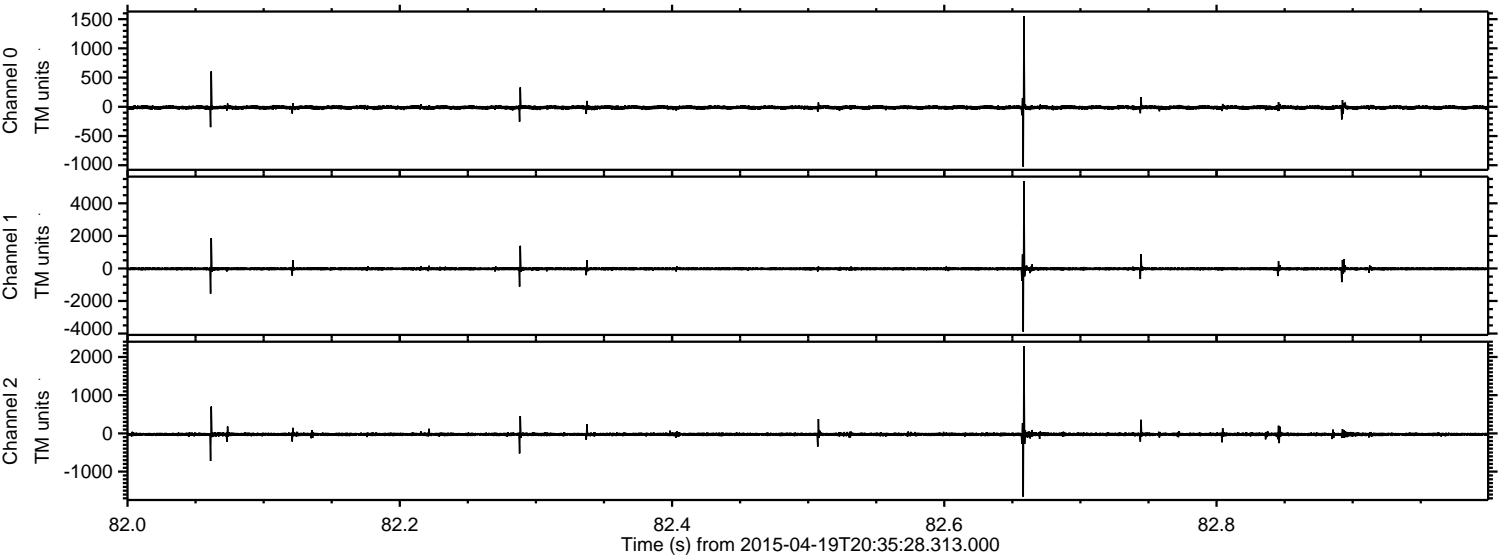
ELMAVAN 3D WAVEFORMS (Measured data sampled at 50 kHz) 49581 packets of 144 samples from 2015-04-19T20:35:28.313.000.

Processed Sun Apr 19 22:44:09 2015 by ELM ver.2012-10-06 from 001__elm20150419_203527__dat00.bin

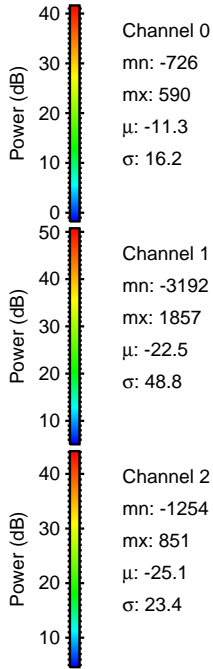
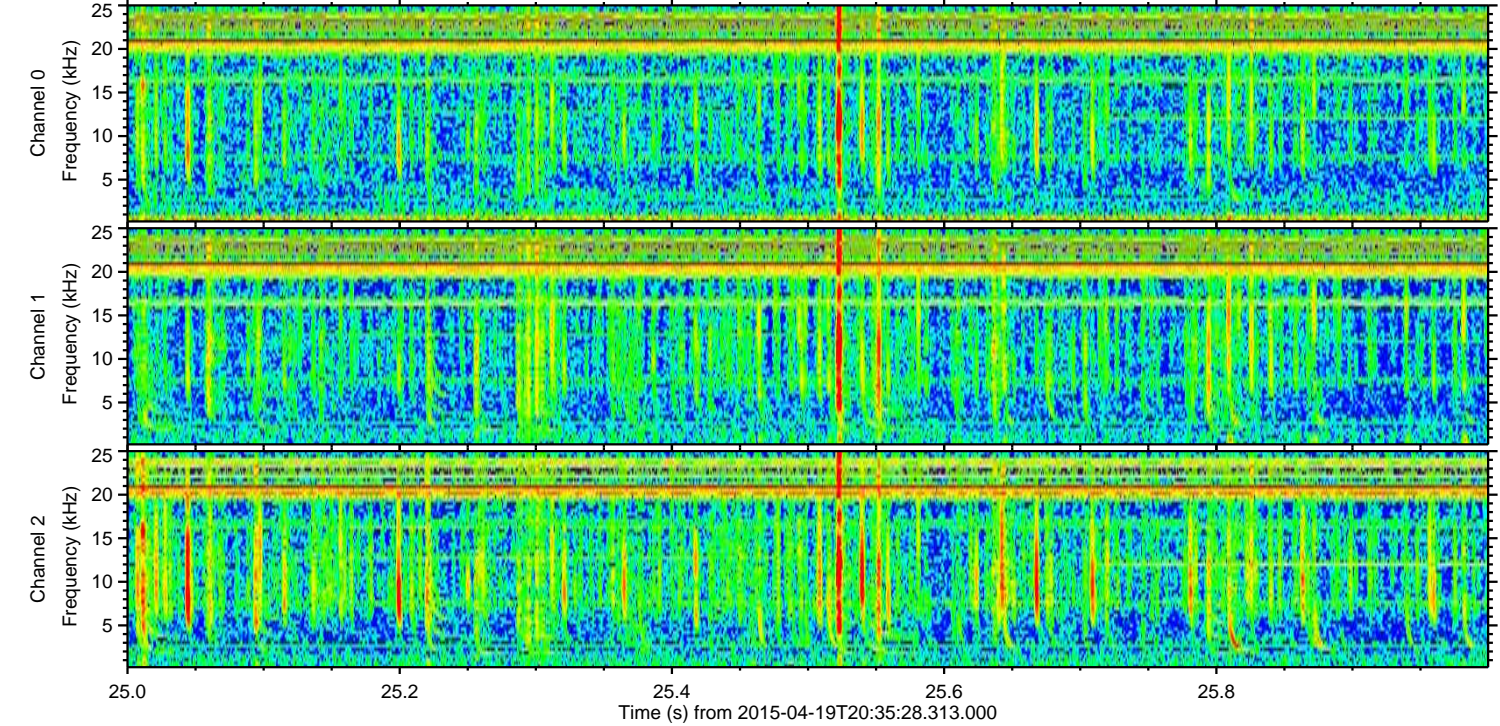
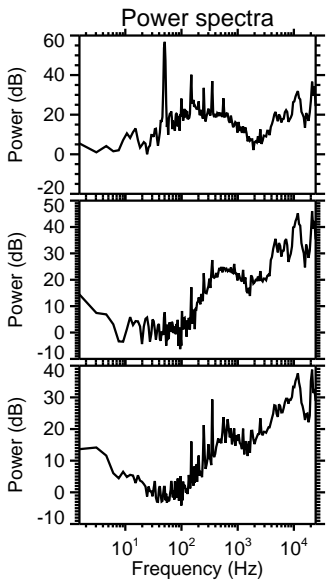
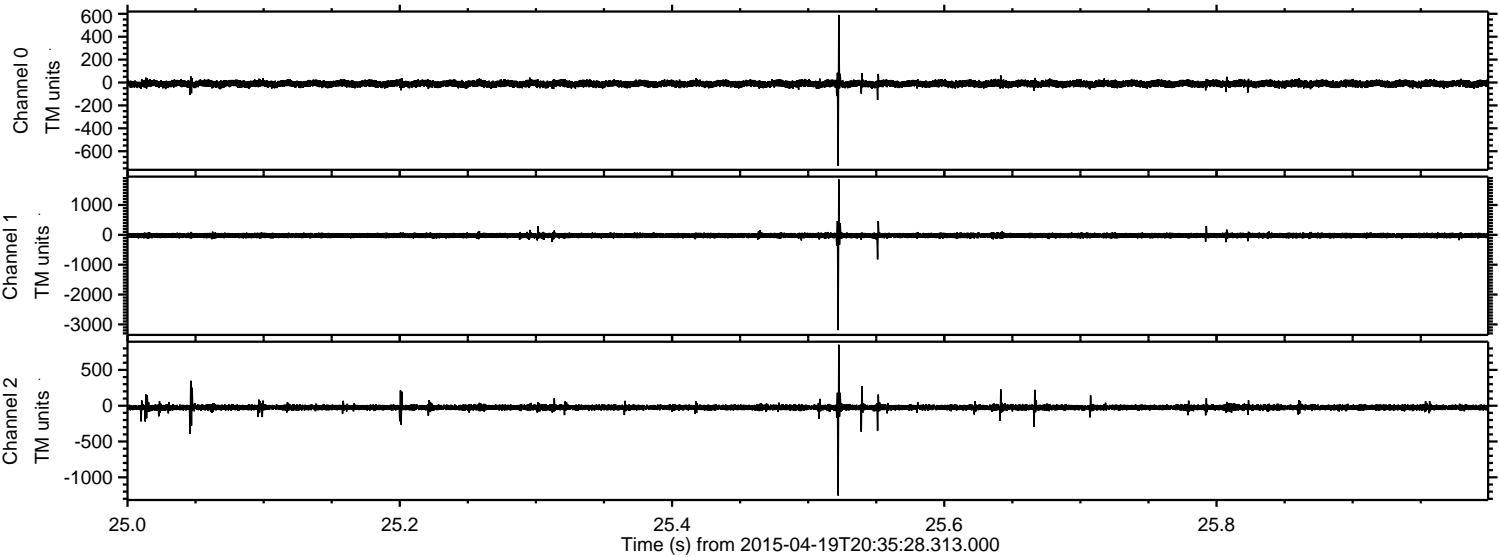


ELMAVAN 3D WAVEFORMS (Measured data sampled at 50 kHz) 49581 packets of 144 samples from 2015-04-19T20:35:28.313.000. Part 83/143

Processed Sun Apr 19 22:44:24 2015 by ELM ver.2012-10-06 from 001__elm20150419_203527__dat00.bin

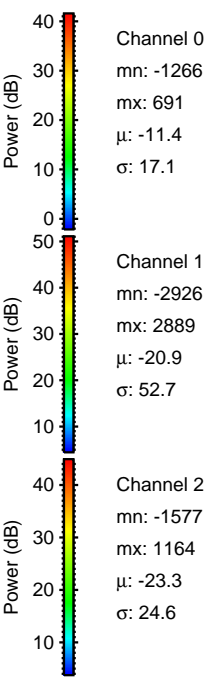
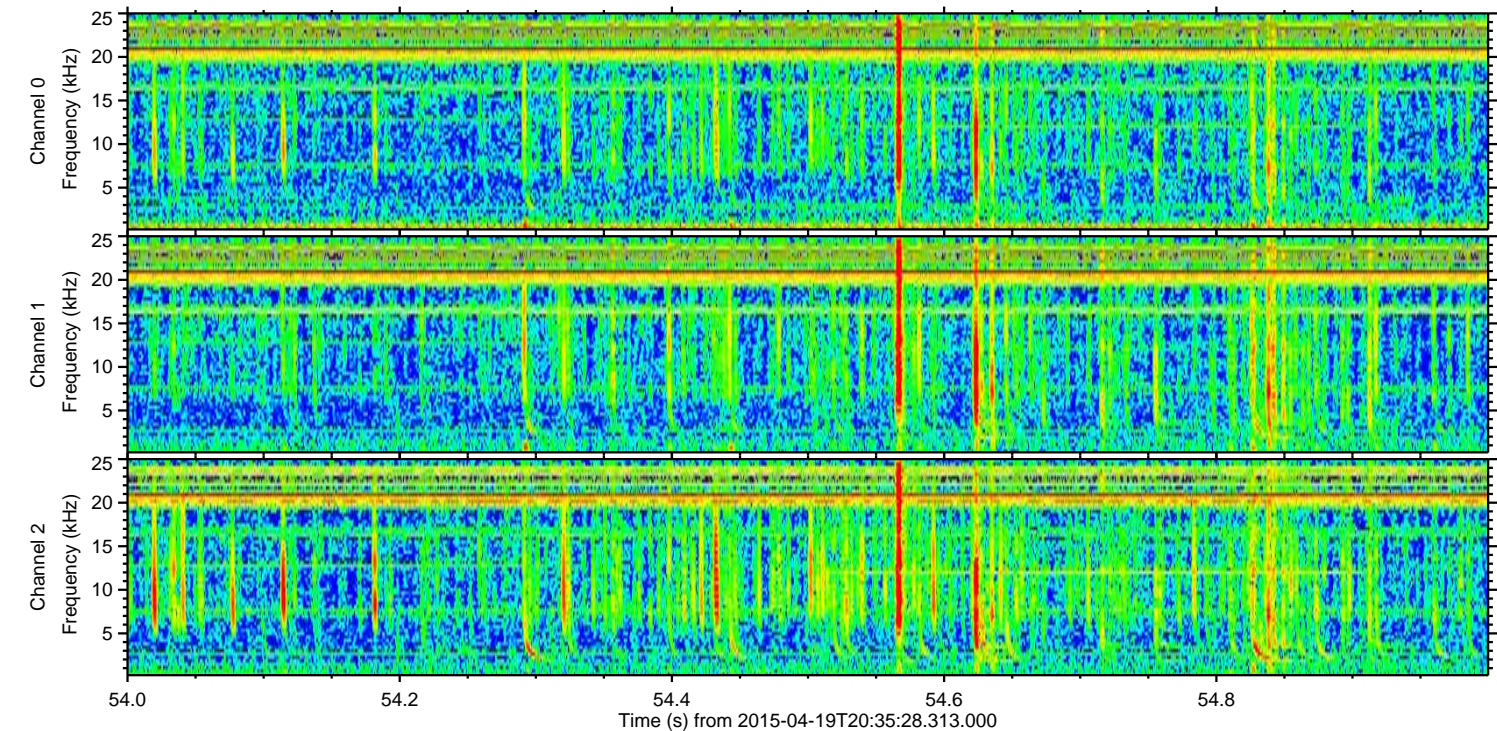
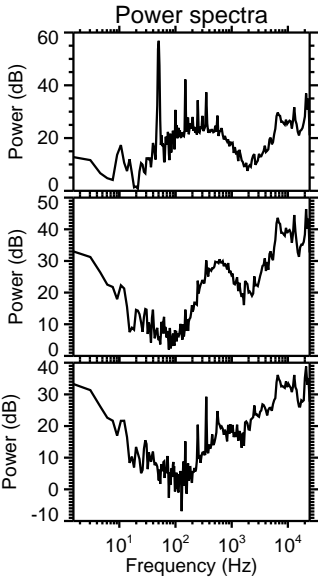
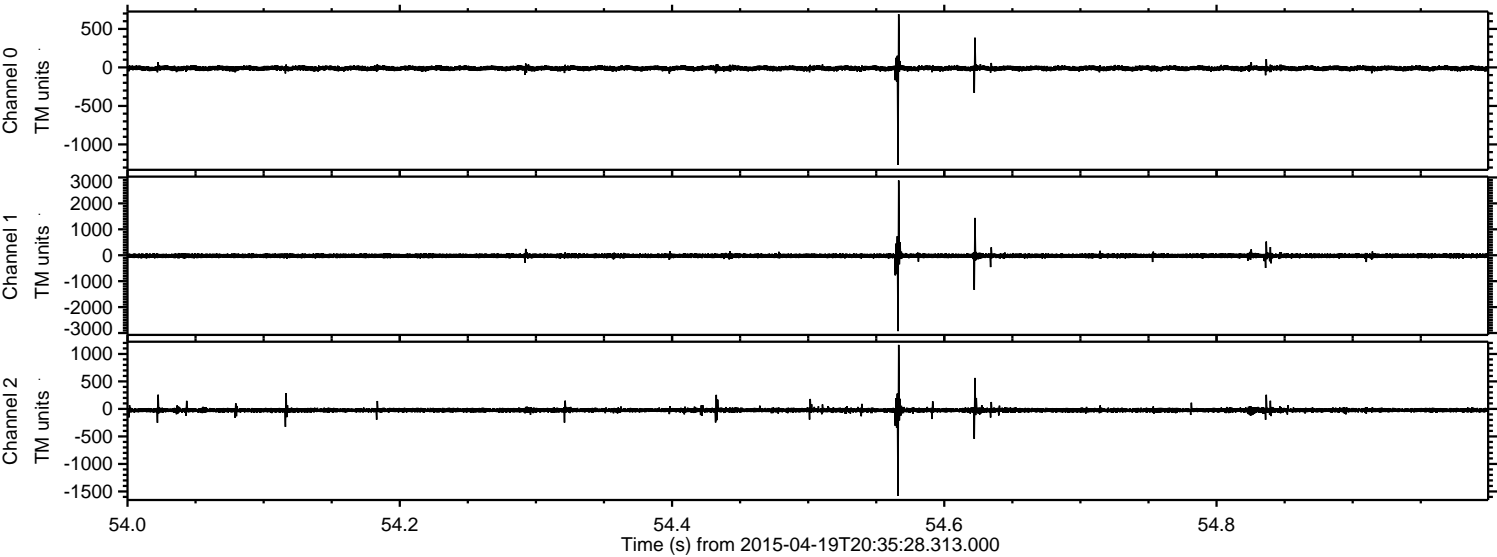


Processed Sun Apr 19 22:44:25 2015 by ELM ver.2012-10-06 from 001__elm20150419_203527__dat00.bin



ELMAVAN 3D WAVEFORMS (Measured data sampled at 50 kHz) 49581 packets of 144 samples from 2015-04-19T20:35:28.313.000. Part 55/143

Processed Sun Apr 19 22:44:26 2015 by ELM ver.2012-10-06 from 001__elm20150419_203527__dat00.bin

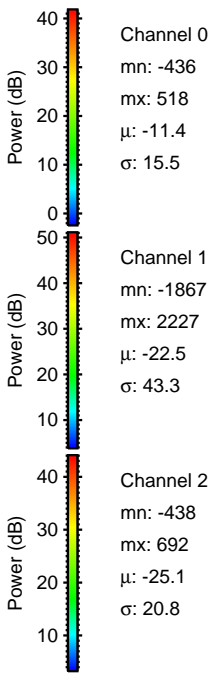
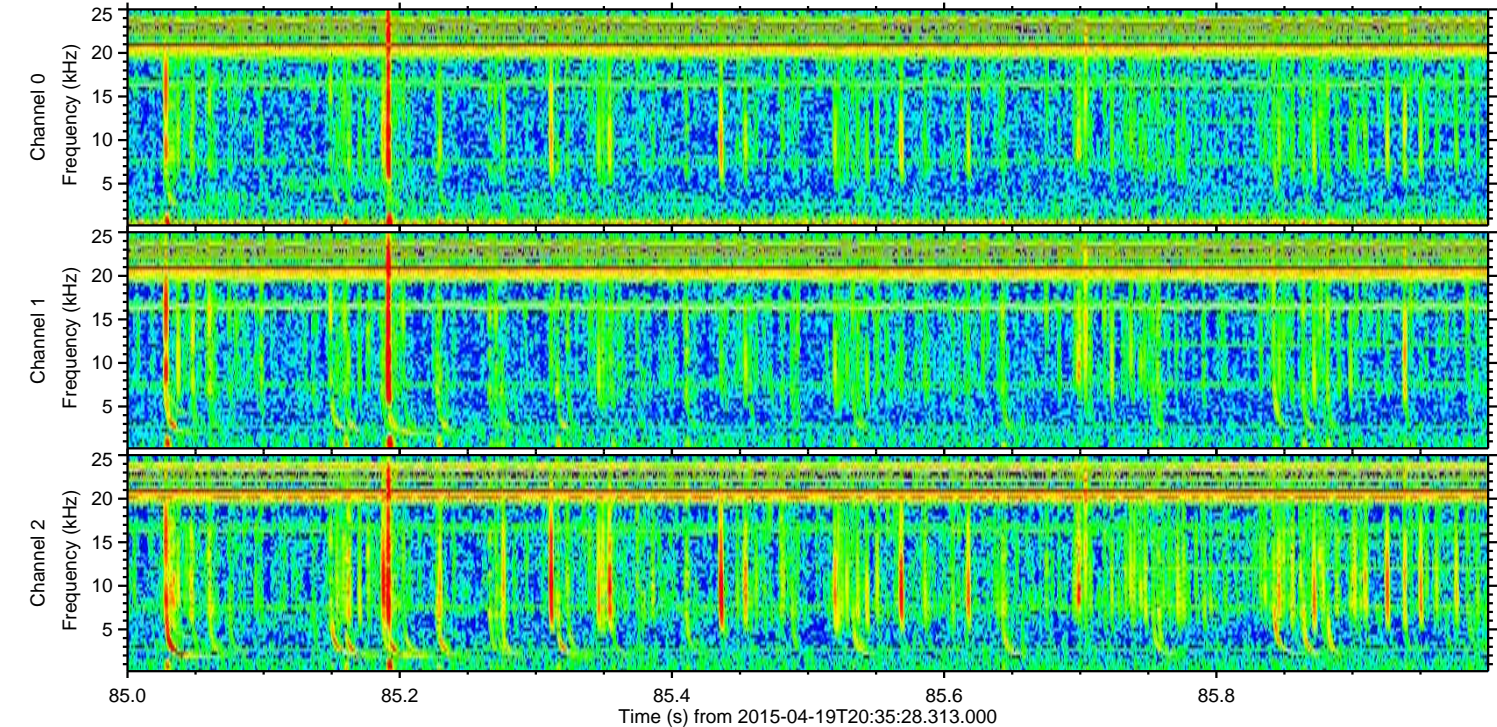
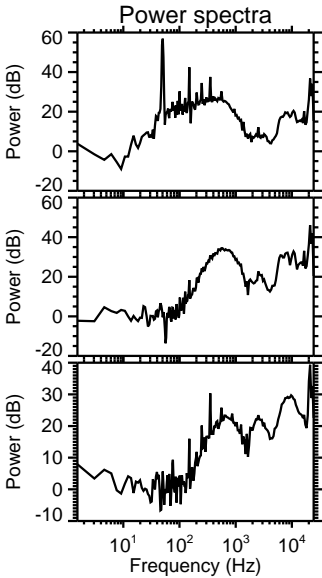
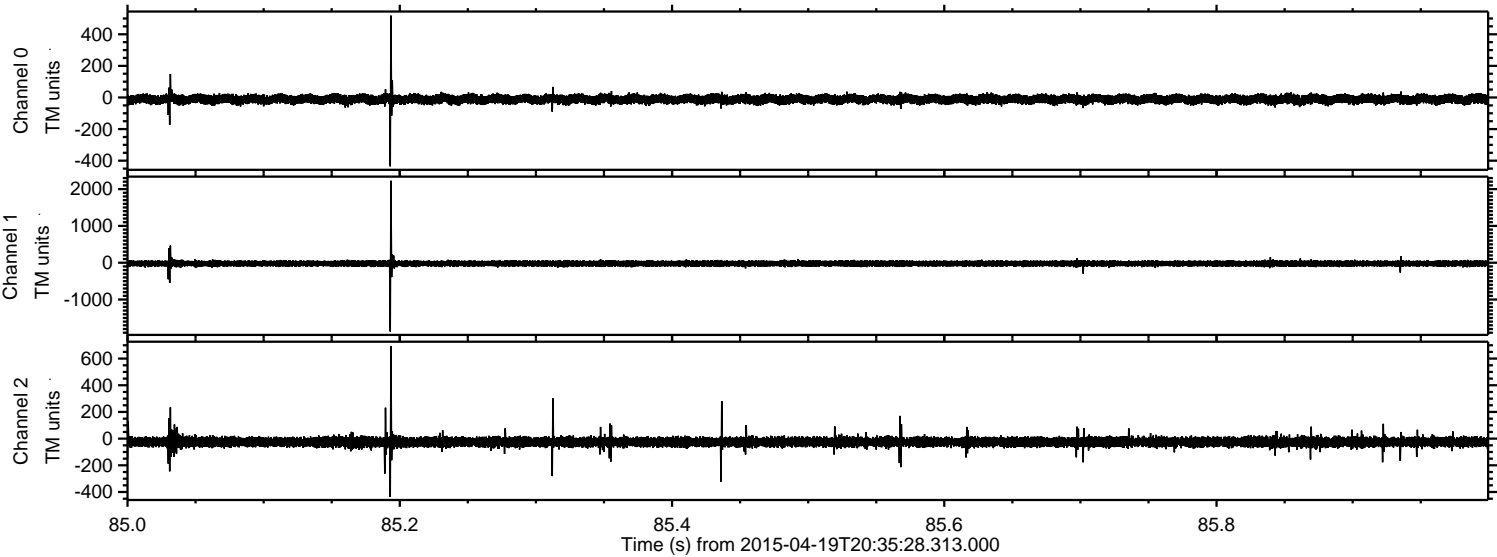


Channel 0
mn: -1266
mx: 691
 μ : -11.4
 σ : 17.1

Channel 1
mn: -2926
mx: 2889
 μ : -20.9
 σ : 52.7

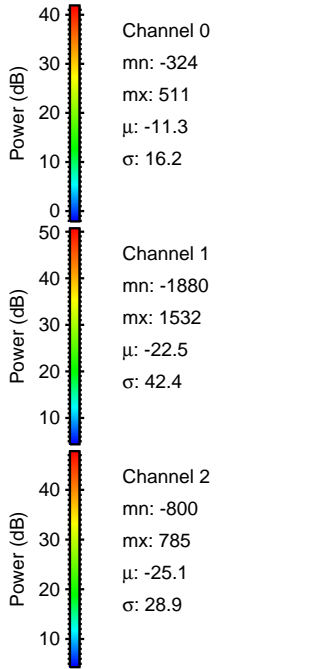
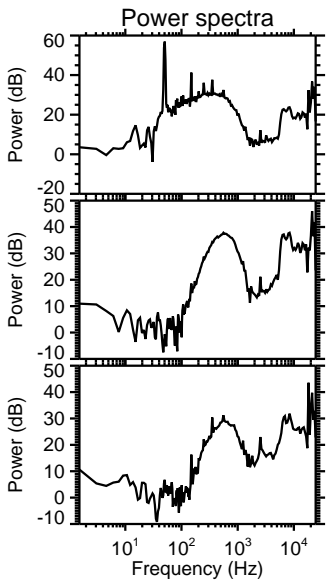
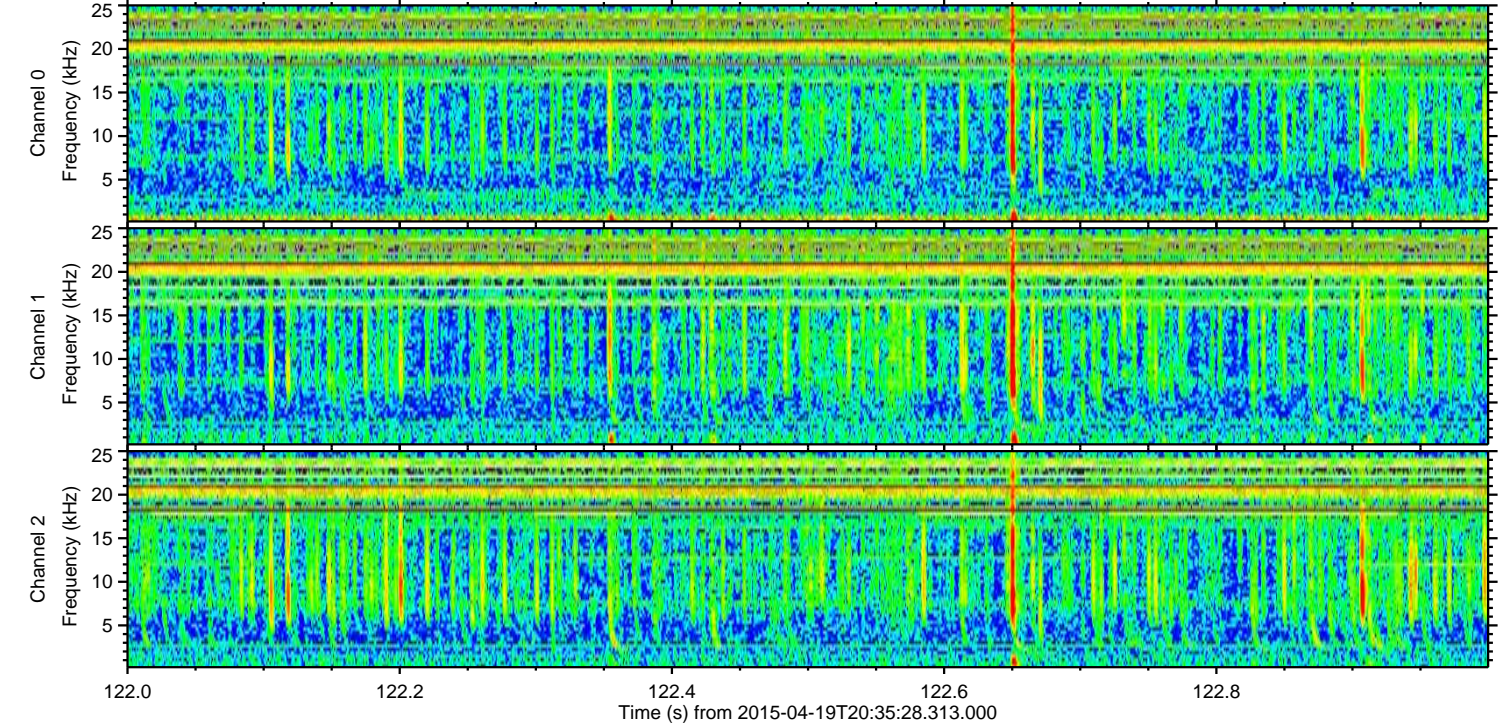
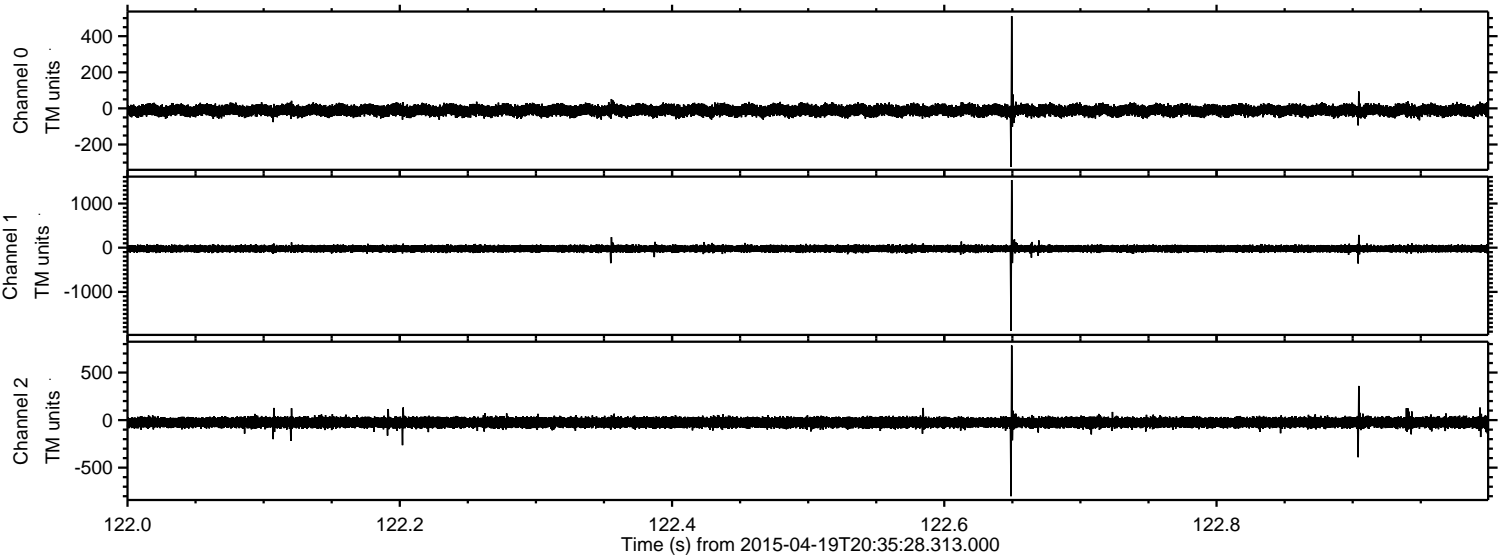
Channel 2
mn: -1577
mx: 1164
 μ : -23.3
 σ : 24.6

Processed Sun Apr 19 22:44:27 2015 by ELM ver.2012-10-06 from 001__elm20150419_203527__dat00.bin

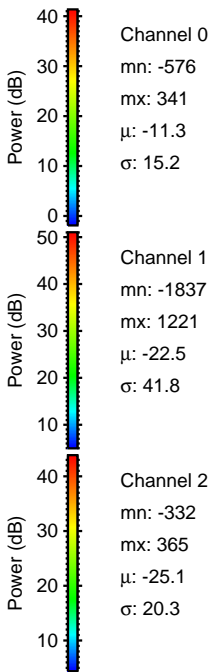
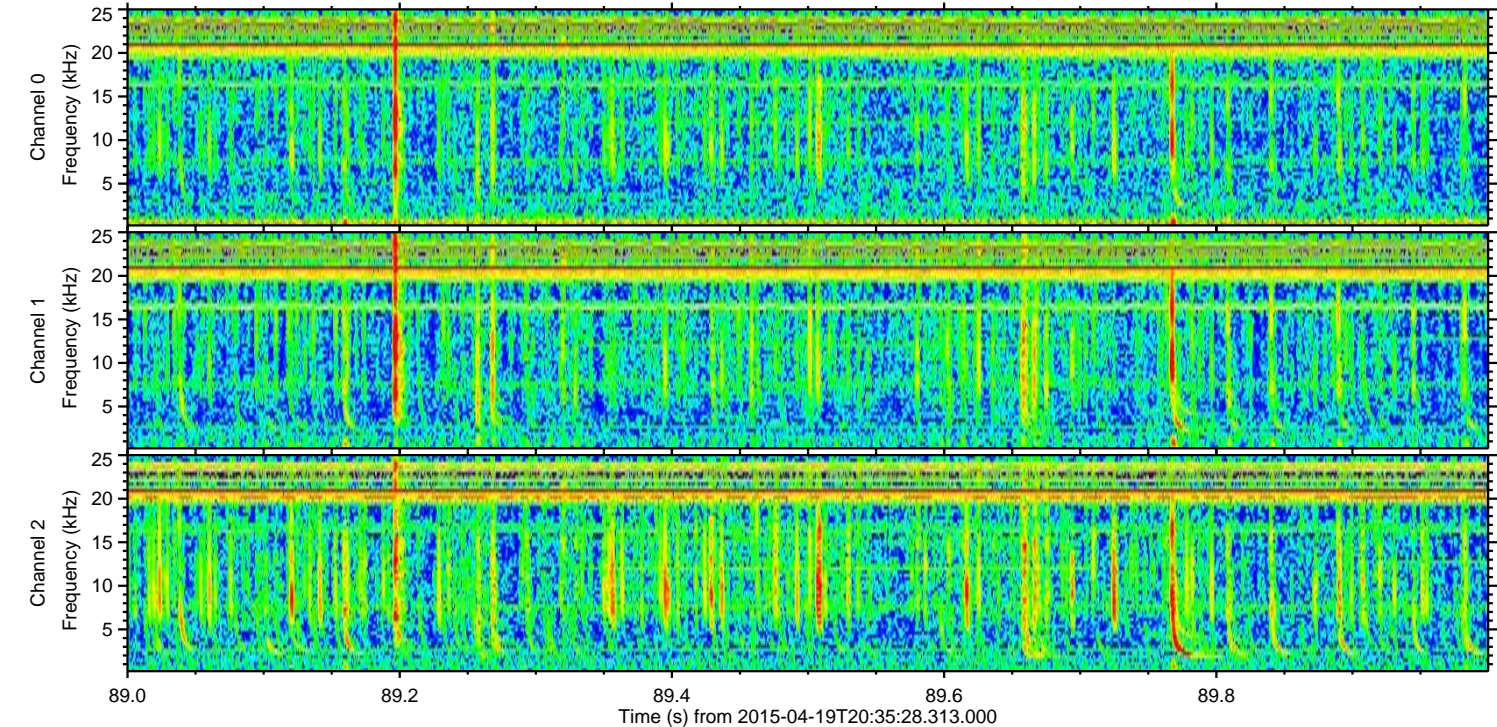
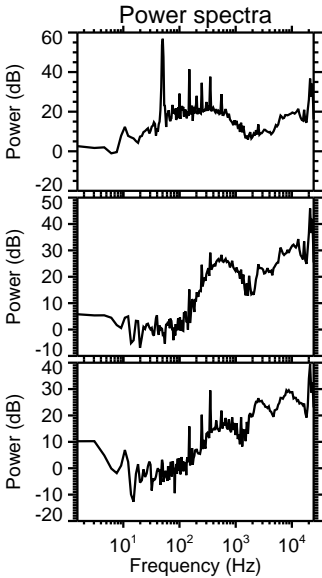
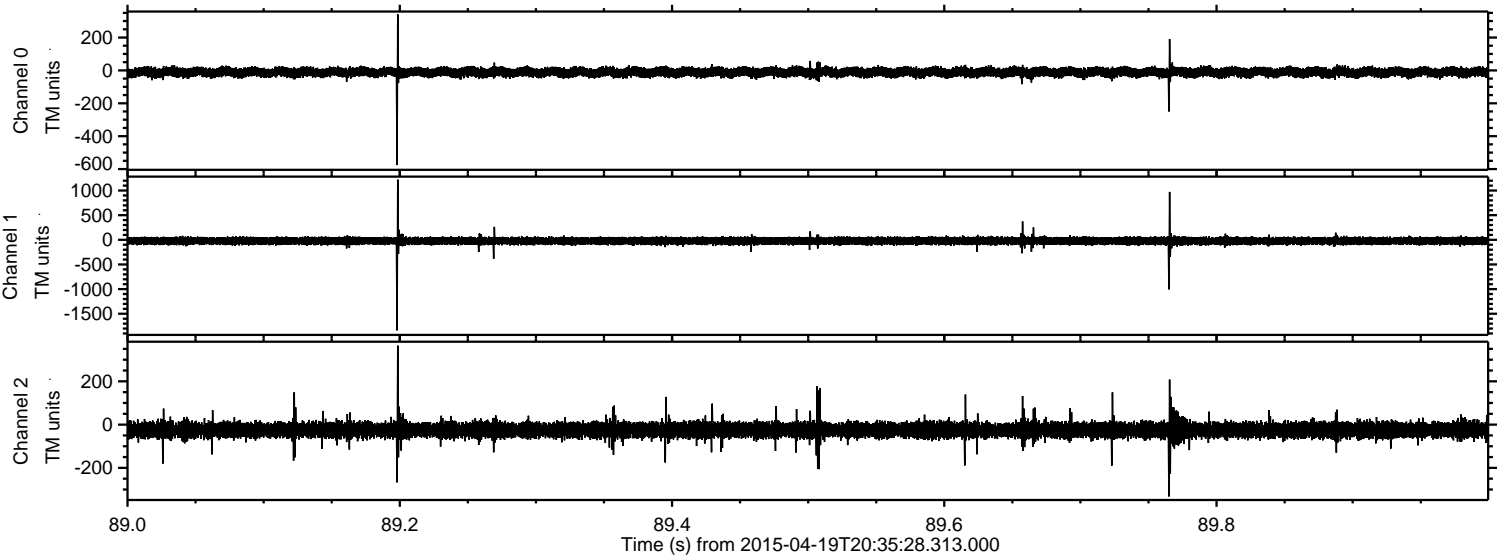


ELMAVAN 3D WAVEFORMS (Measured data sampled at 50 kHz) 49581 packets of 144 samples from 2015-04-19T20:35:28.313.000. Part 123/143

Processed Sun Apr 19 22:44:28 2015 by ELM ver.2012-10-06 from 001__elm20150419_203527__dat00.bin

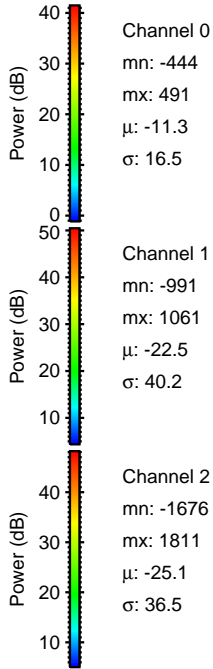
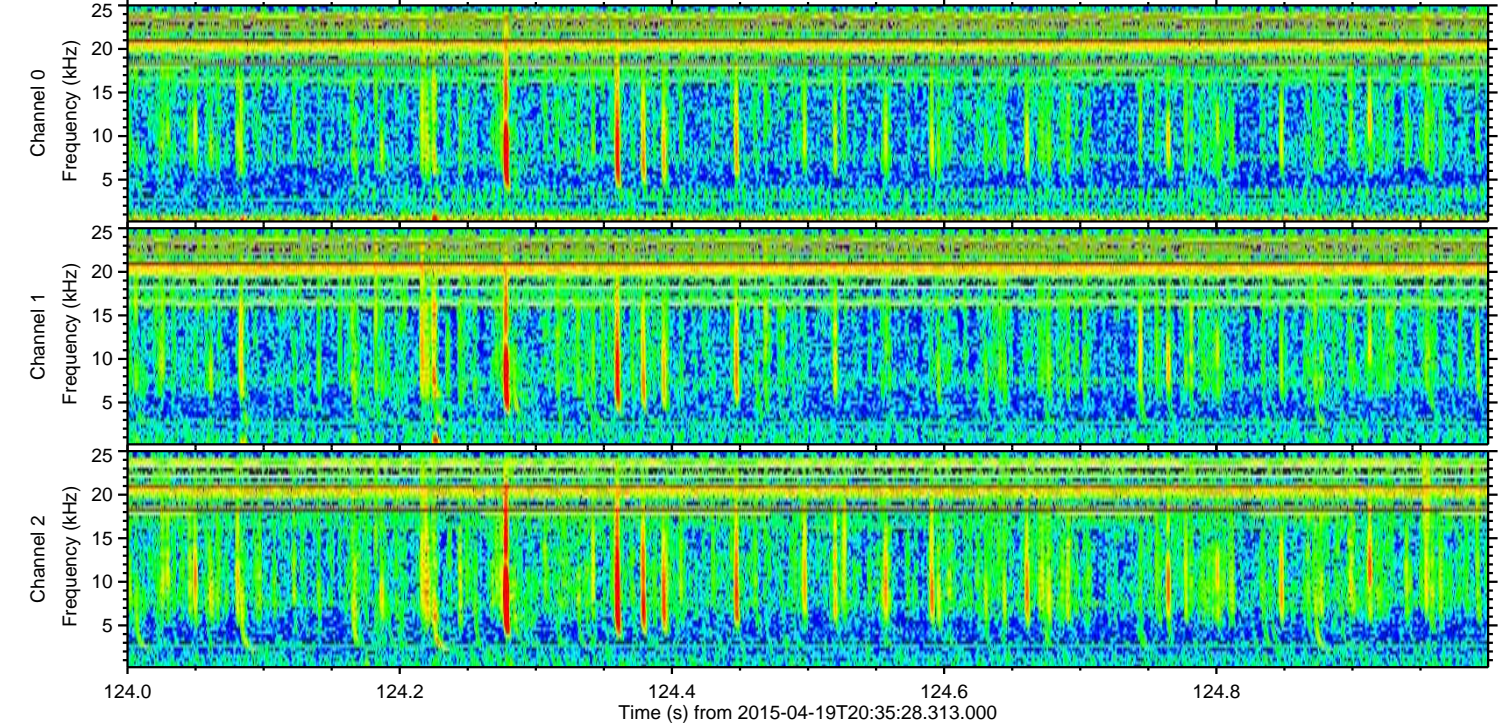
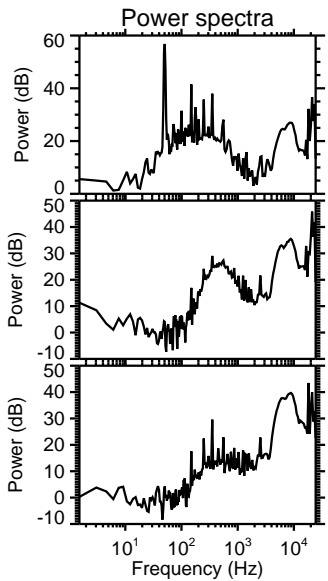
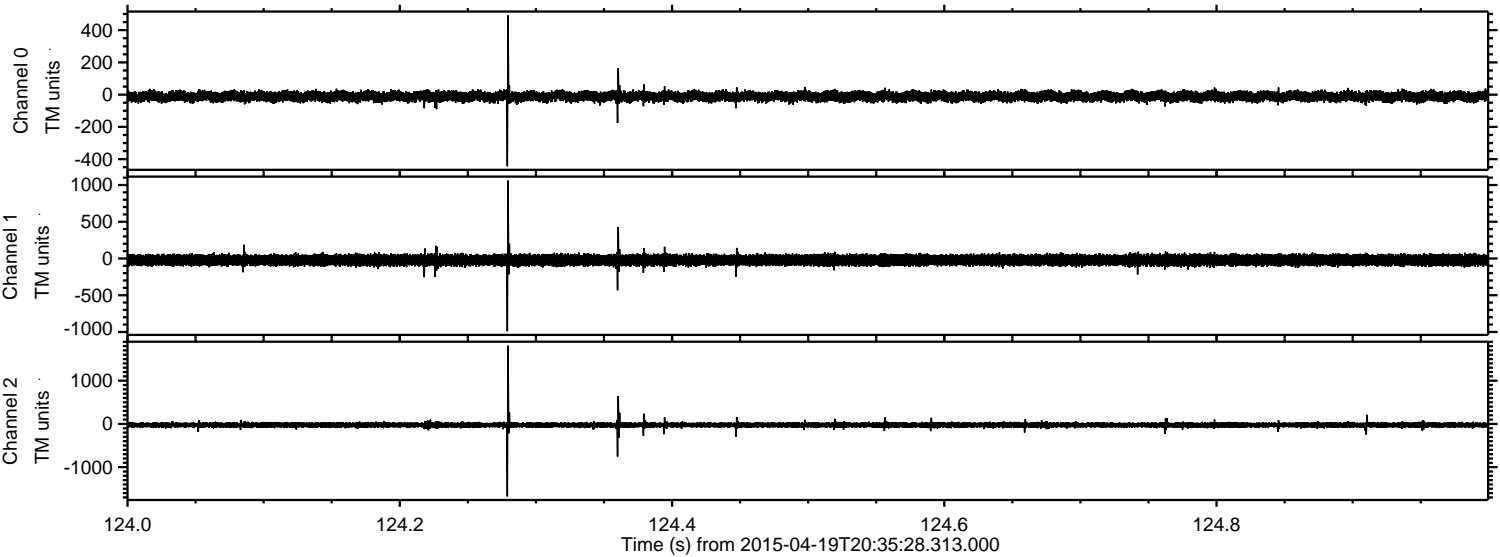


Processed Sun Apr 19 22:44:29 2015 by ELM ver.2012-10-06 from 001__elm20150419_203527__dat00.bin

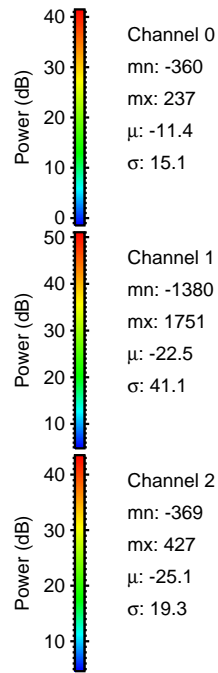
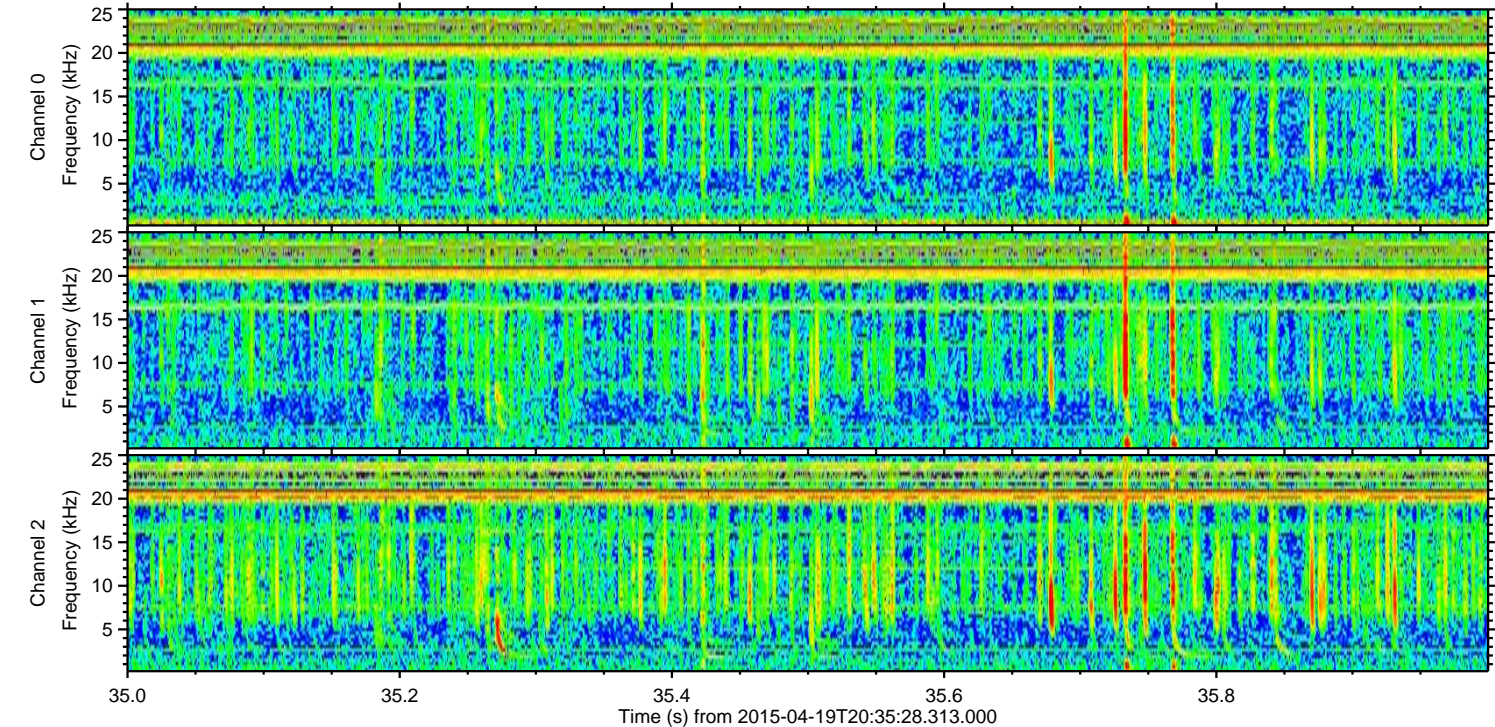
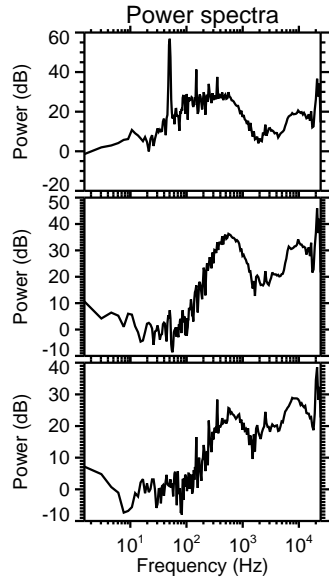
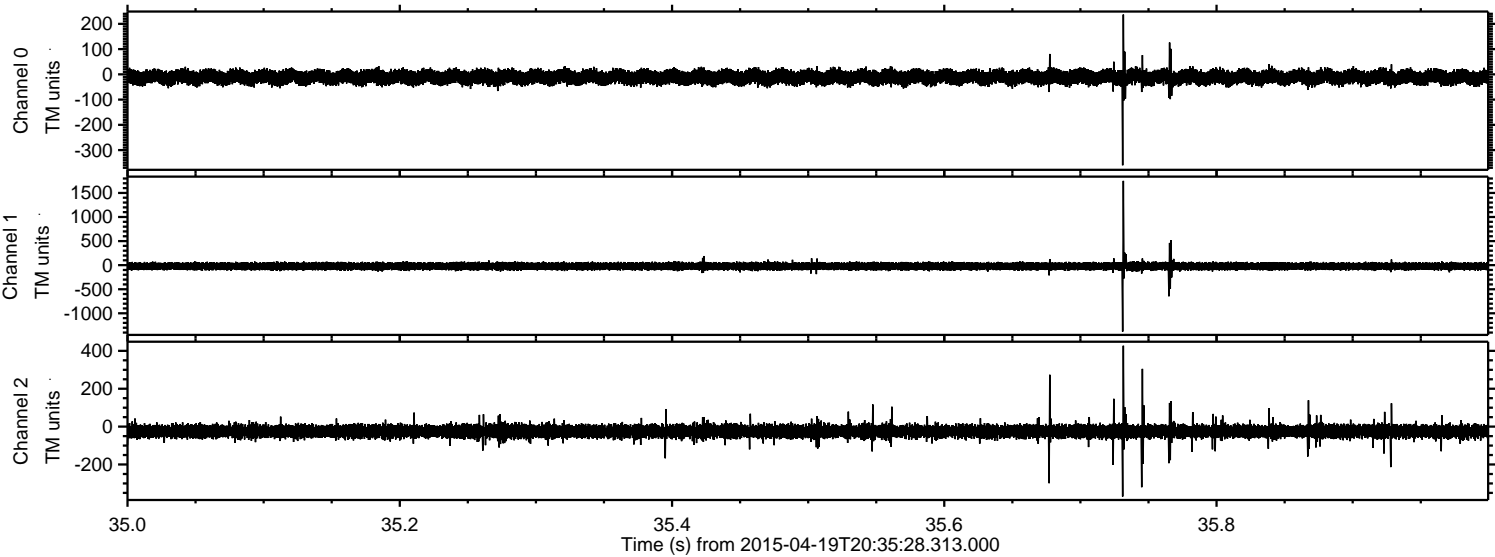


ELMAVAN 3D WAVEFORMS (Measured data sampled at 50 kHz) 49581 packets of 144 samples from 2015-04-19T20:35:28.313.000. Part 125/143

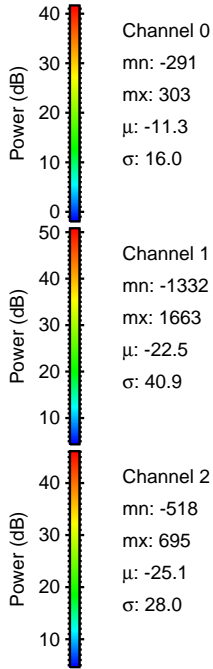
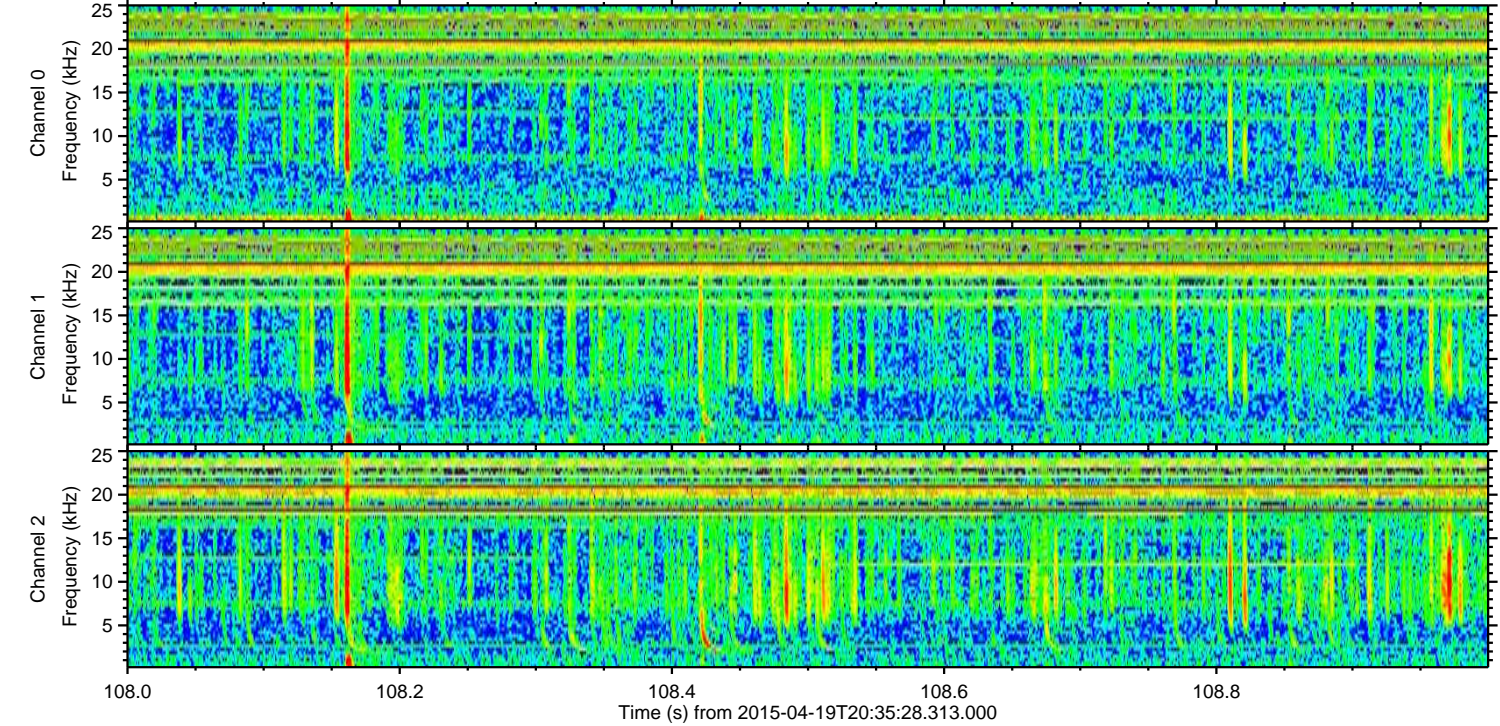
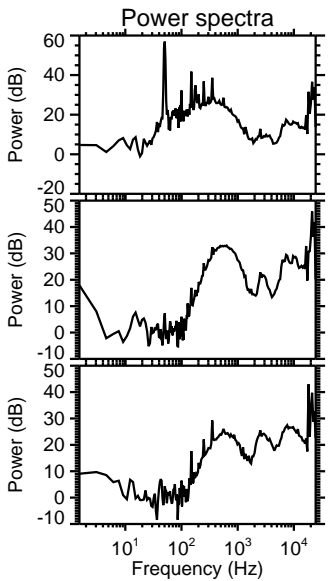
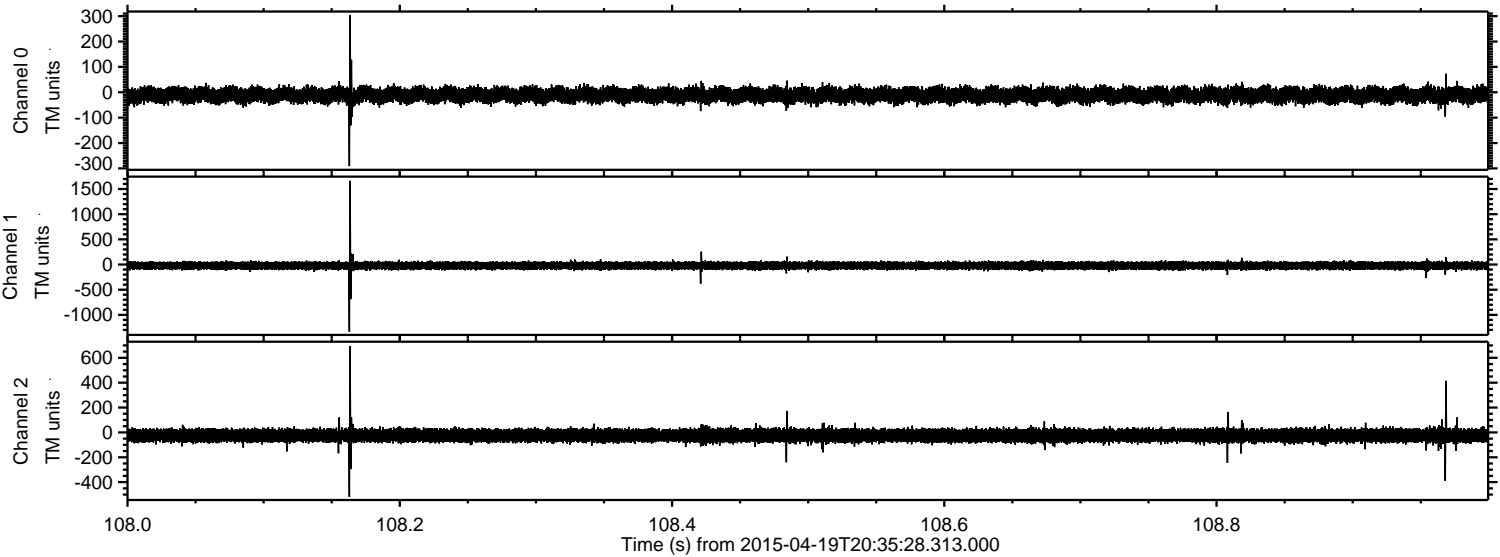
Processed Sun Apr 19 22:44:30 2015 by ELM ver.2012-10-06 from 001__elm20150419_203527__dat00.bin



Processed Sun Apr 19 22:44:31 2015 by ELM ver.2012-10-06 from 001__elm20150419_203527__dat00.bin



Processed Sun Apr 19 22:44:32 2015 by ELM ver.2012-10-06 from 001__elm20150419_203527__dat00.bin



Channel 0
mn: -291
mx: 303
 μ : -11.3
 σ : 16.0

Channel 1
mn: -1332
mx: 1663
 μ : -22.5
 σ : 40.9

Channel 2
mn: -518
mx: 695
 μ : -25.1
 σ : 28.0

Processed Sun Apr 19 22:44:33 2015 by ELM ver.2012-10-06 from 001__elm20150419_203527__dat00.bin

