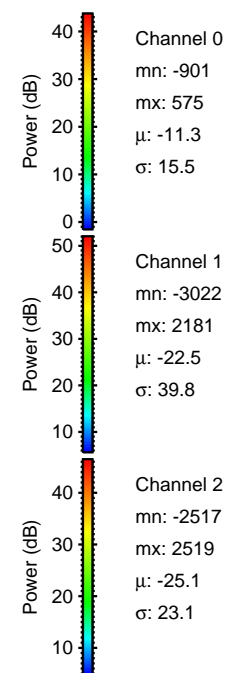
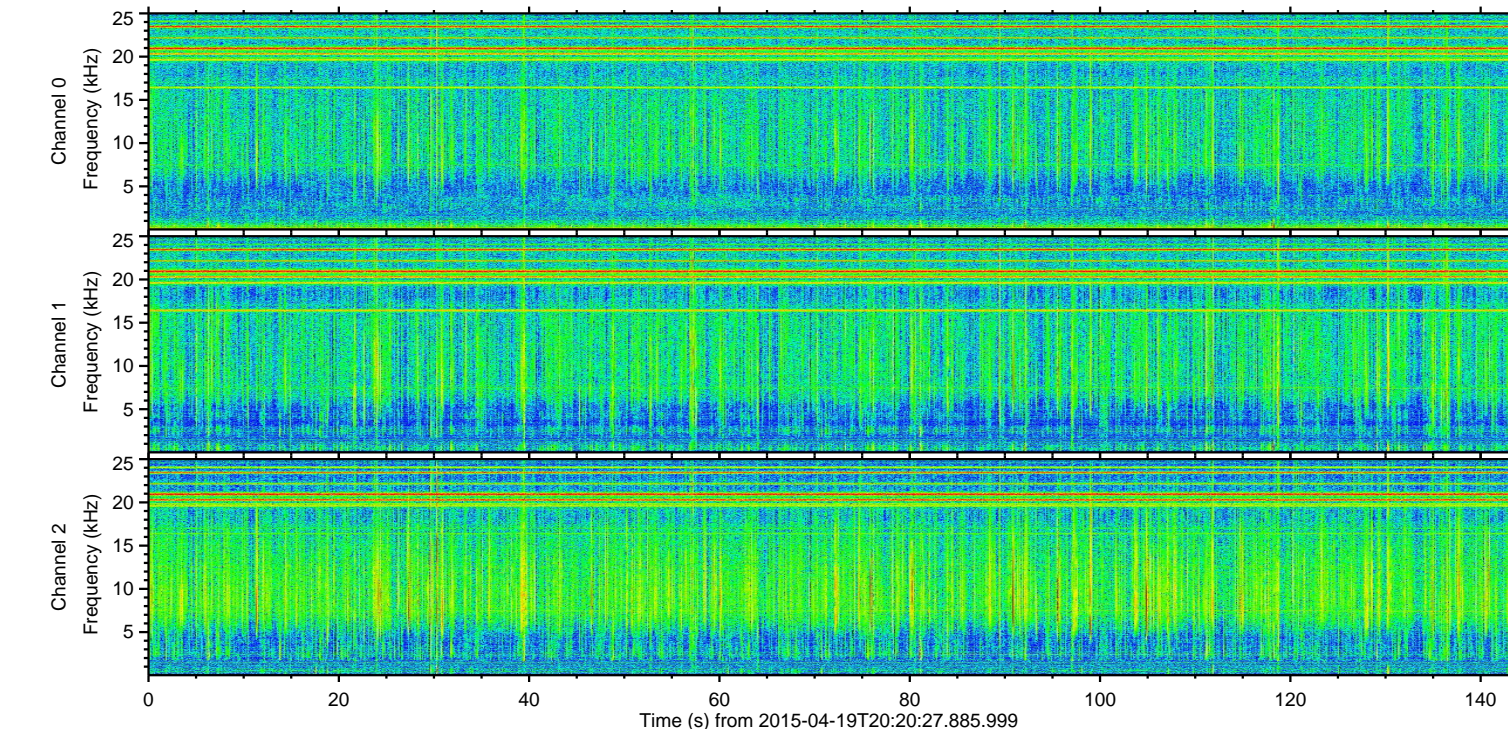
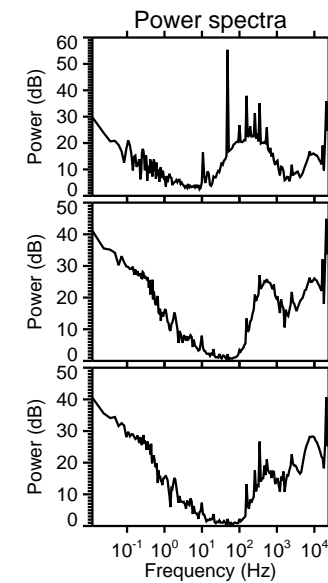
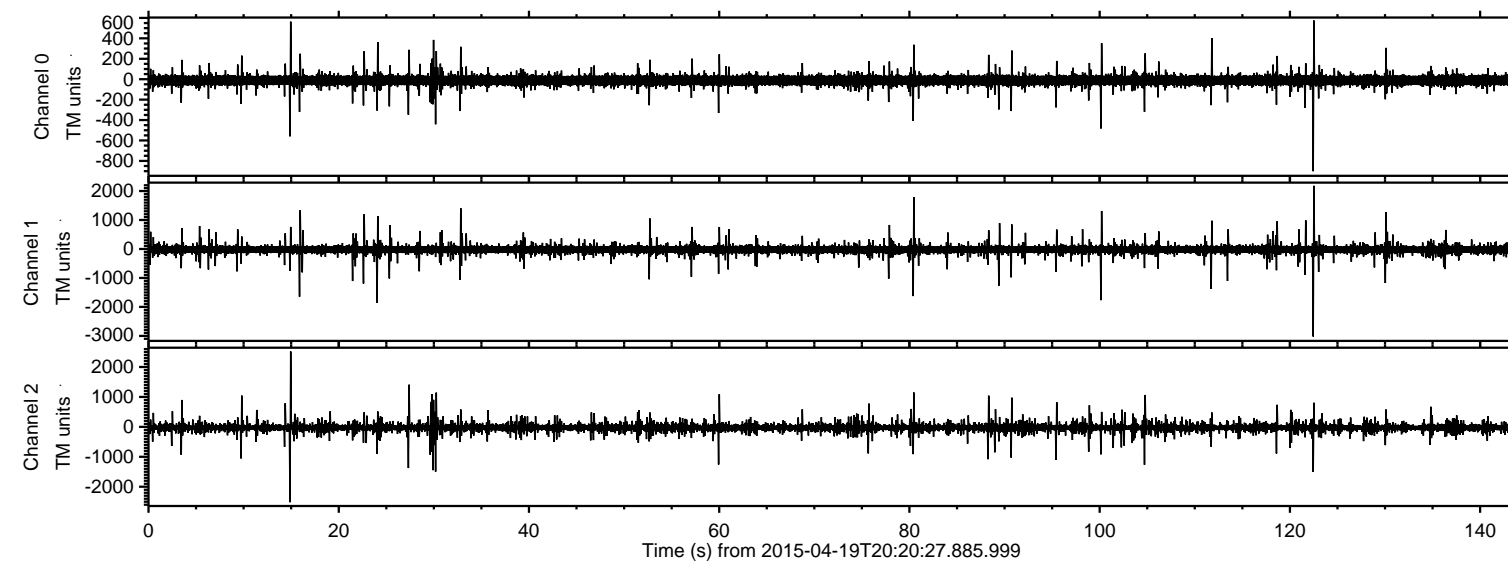


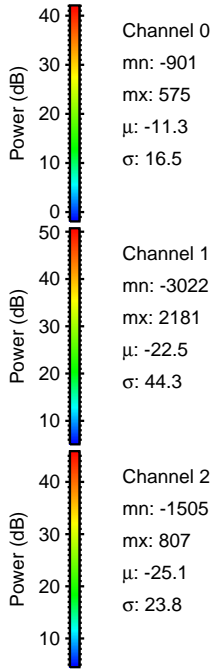
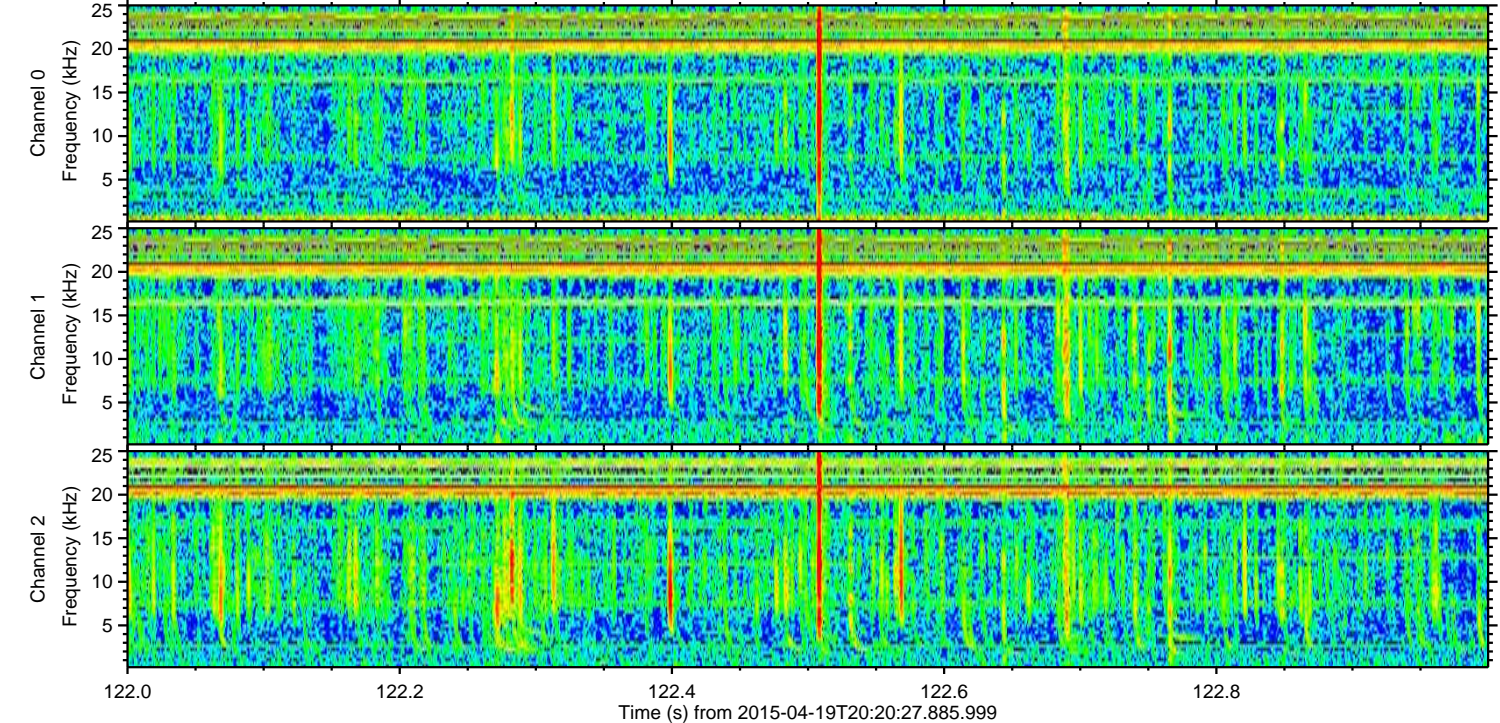
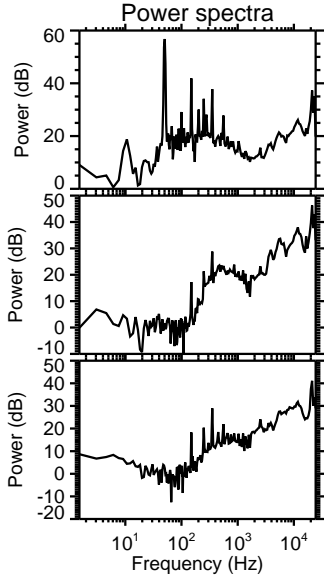
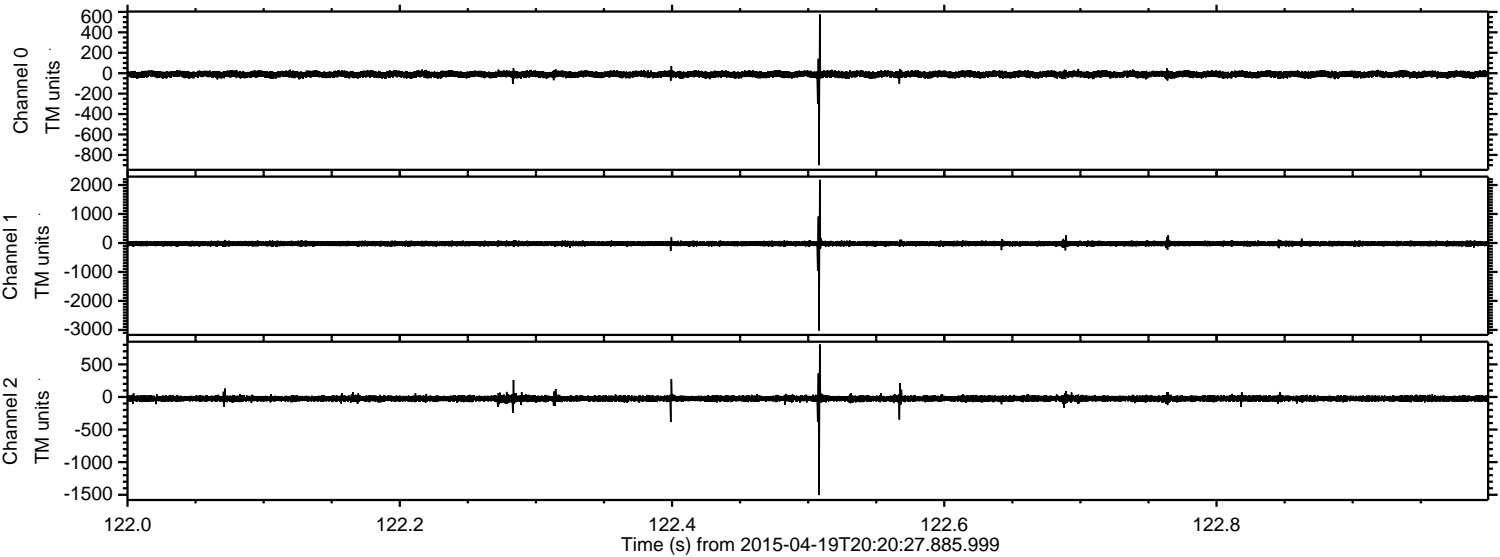
ELMAVAN 3D WAVEFORMS (Measured data sampled at 50 kHz) 49670 packets of 144 samples from 2015-04-19T20:20:27.885.999.

Processed Sun Apr 19 22:27:23 2015 by ELM ver.2012-10-06 from 001__elm20150419_202026__dat00.bin

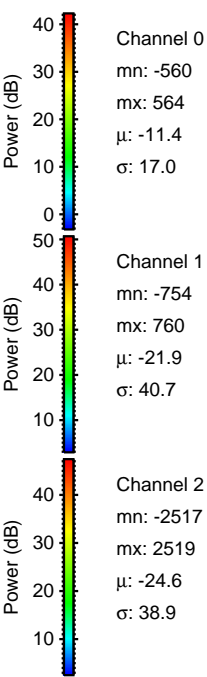
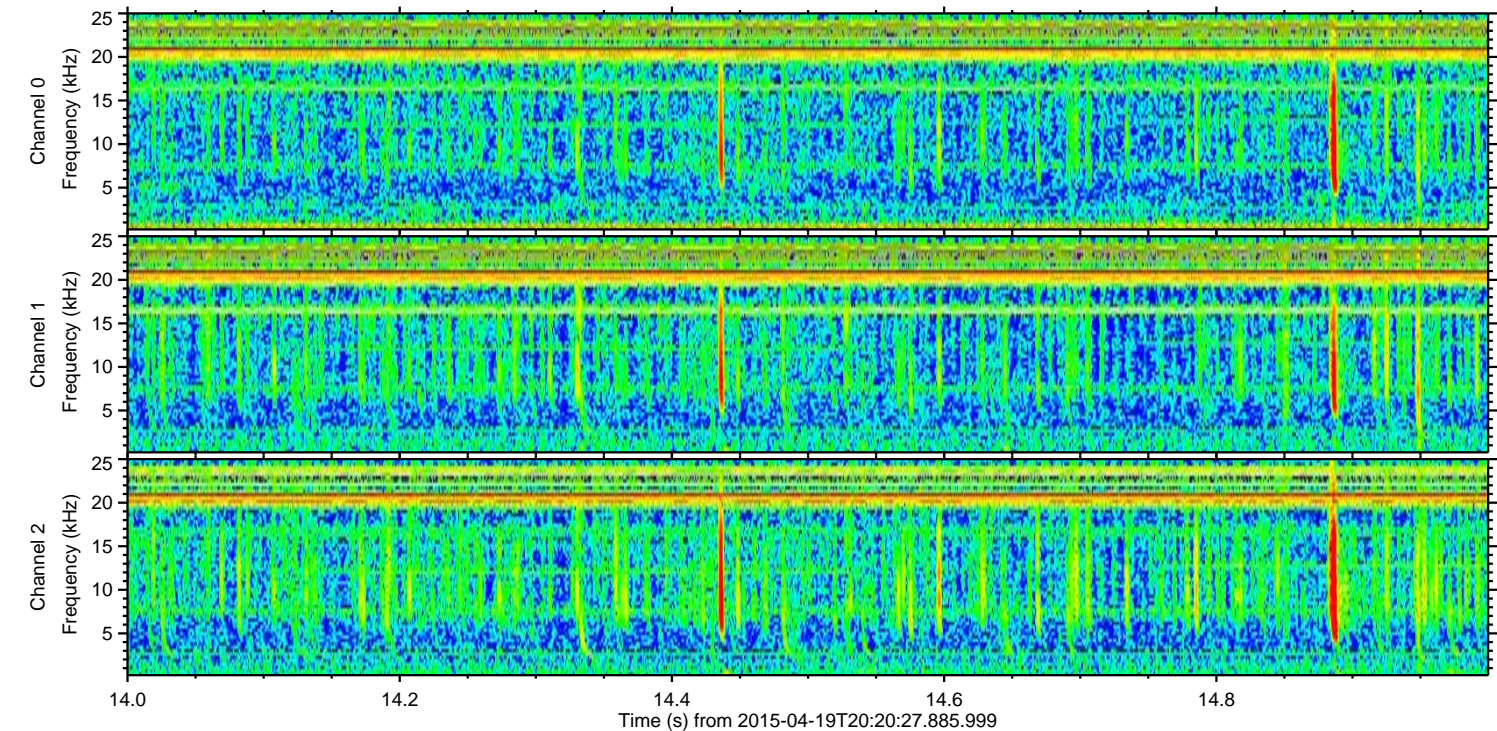
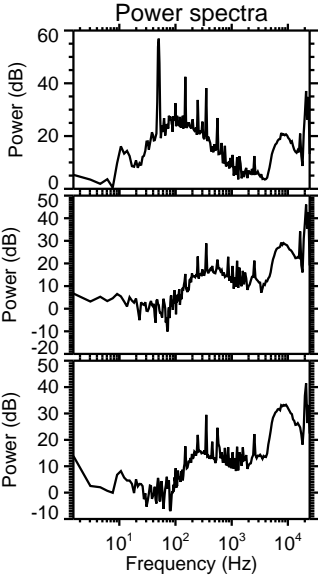
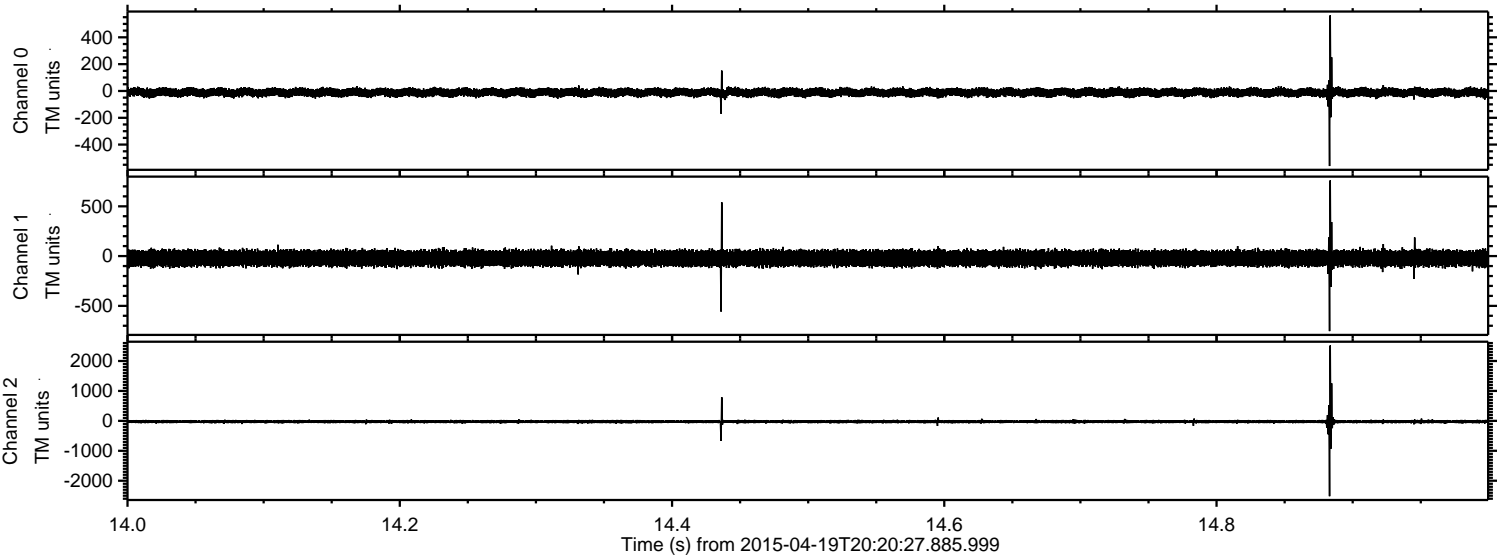


ELMAVAN 3D WAVEFORMS (Measured data sampled at 50 kHz) 49670 packets of 144 samples from 2015-04-19T20:20:27.885.999. Part 123/144

Processed Sun Apr 19 22:27:35 2015 by ELM ver.2012-10-06 from 001__elm20150419_202026__dat00.bin



Processed Sun Apr 19 22:27:35 2015 by ELM ver.2012-10-06 from 001__elm20150419_202026__dat00.bin

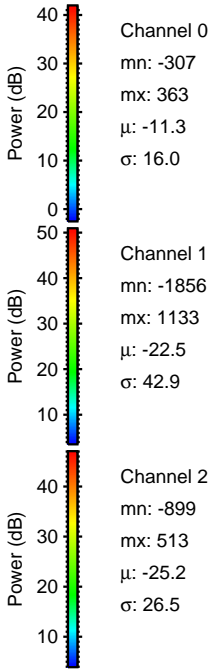
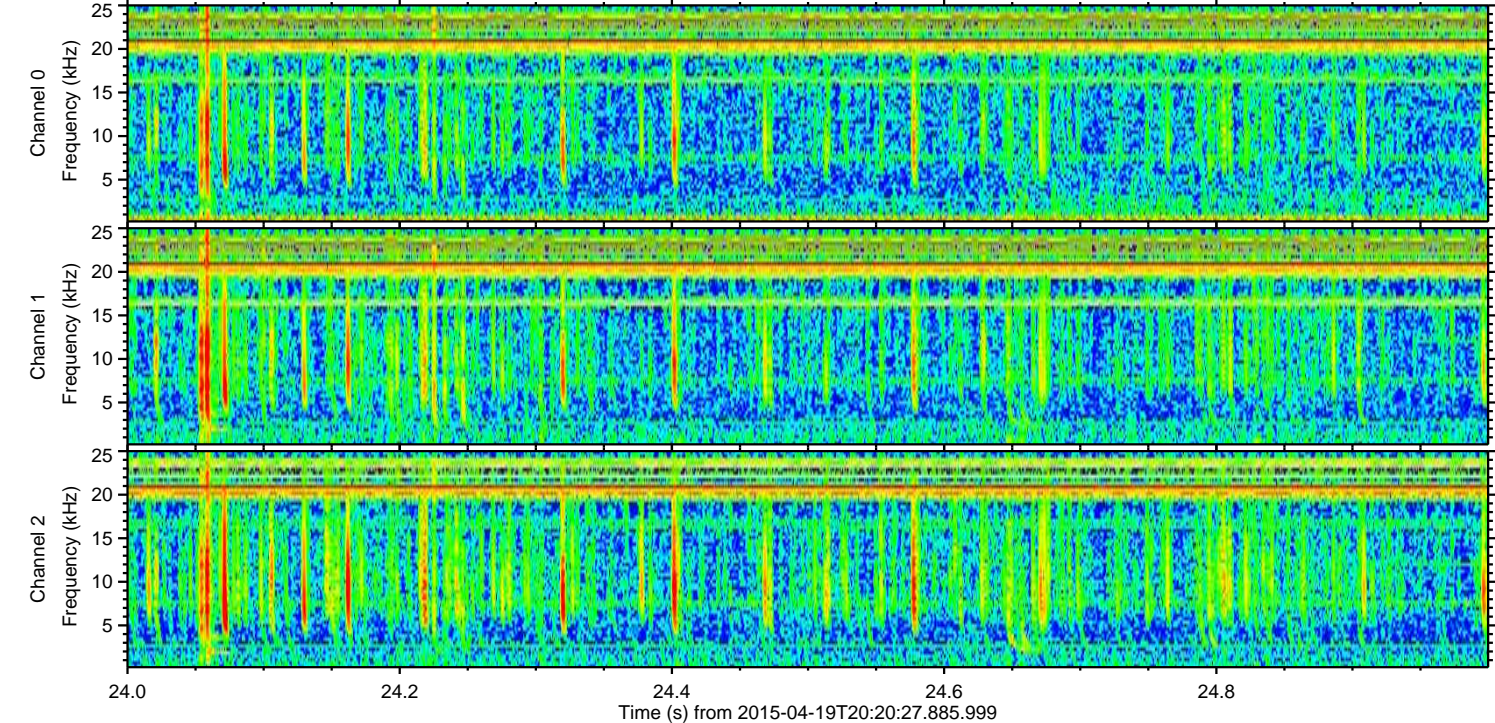
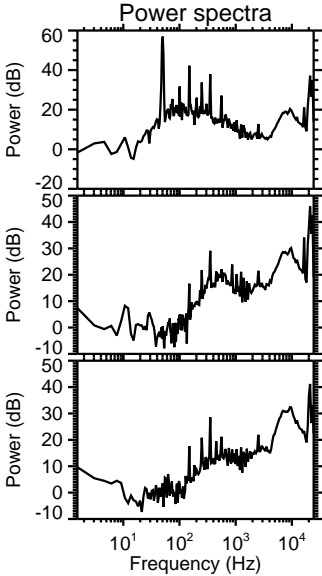
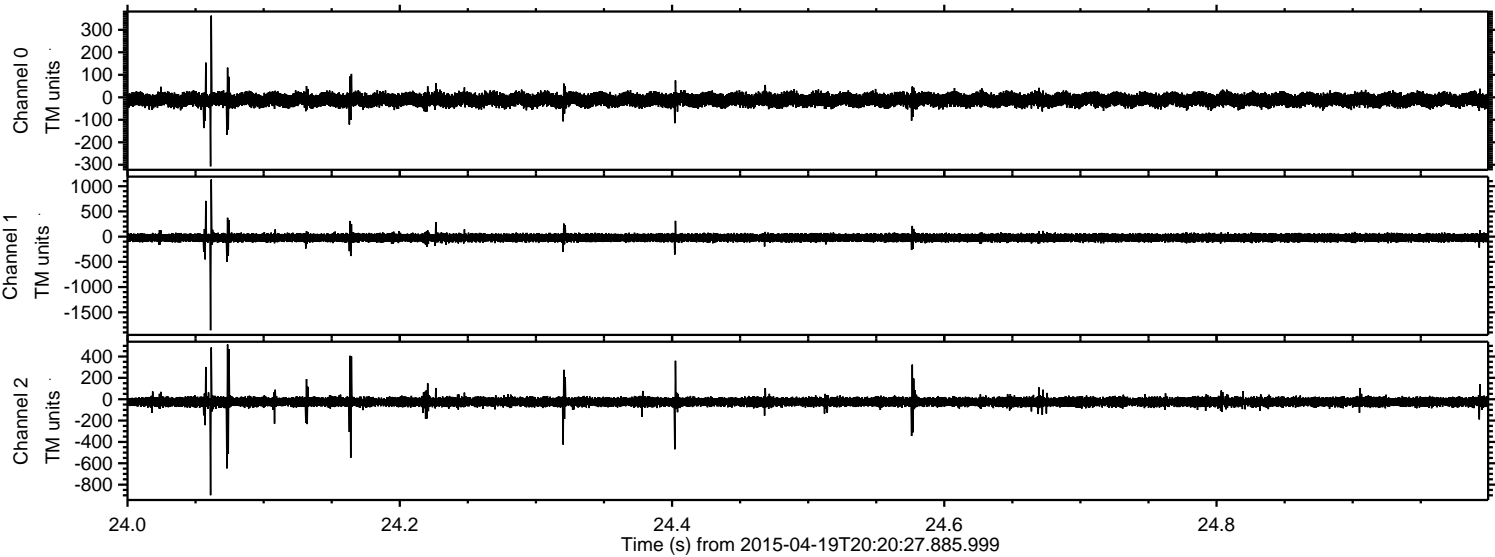


Channel 0
mn: -560
mx: 564
 μ : -11.4
 σ : 17.0

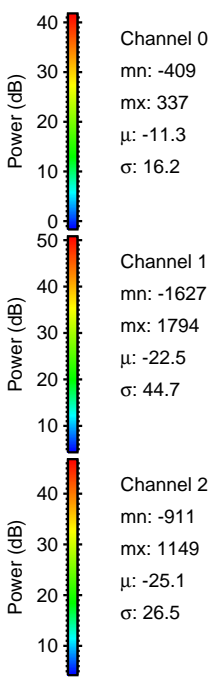
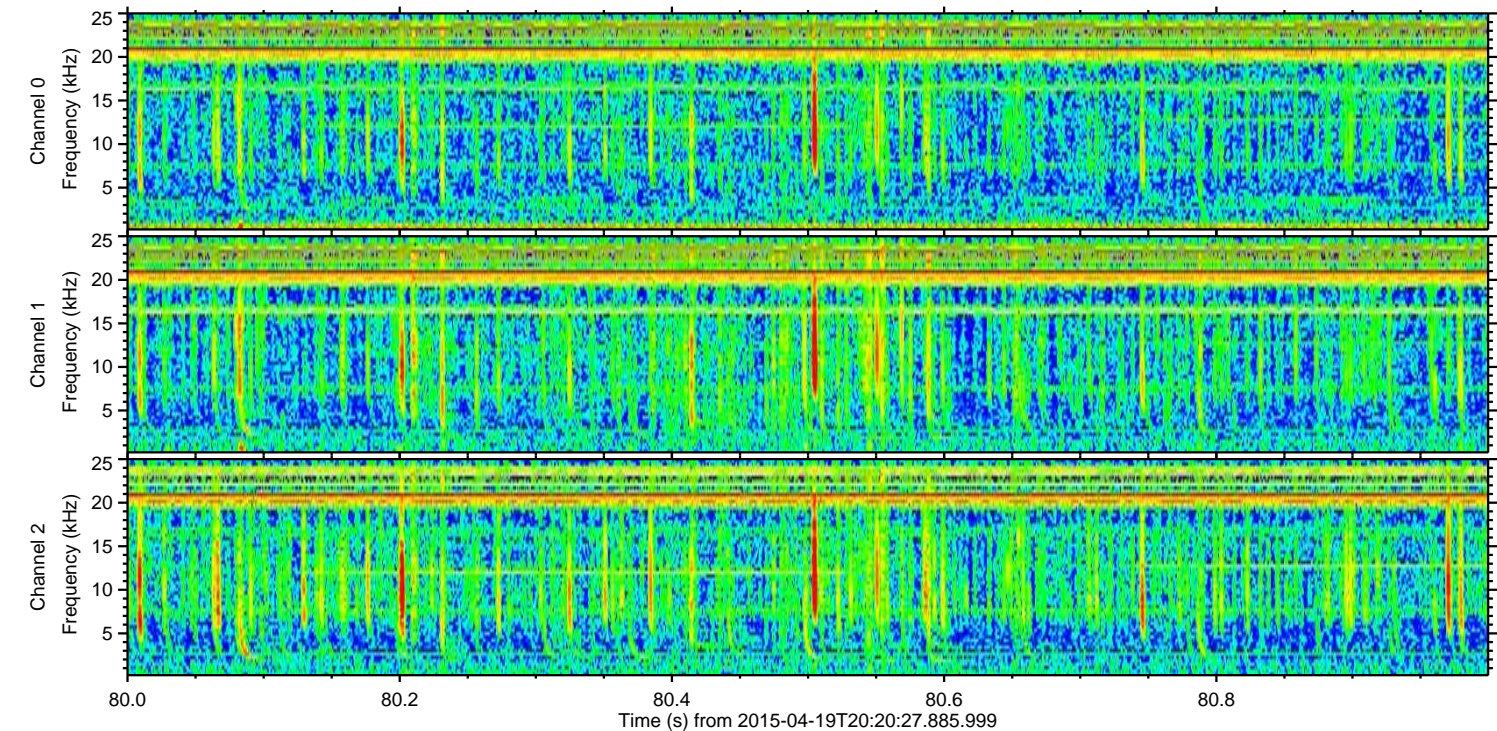
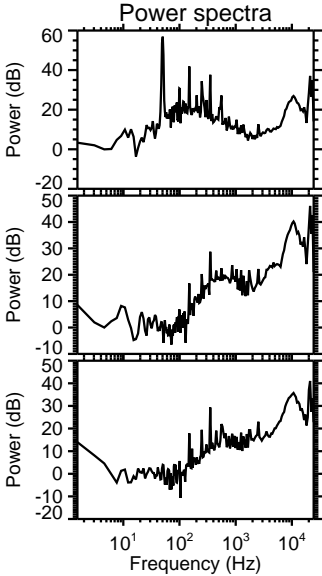
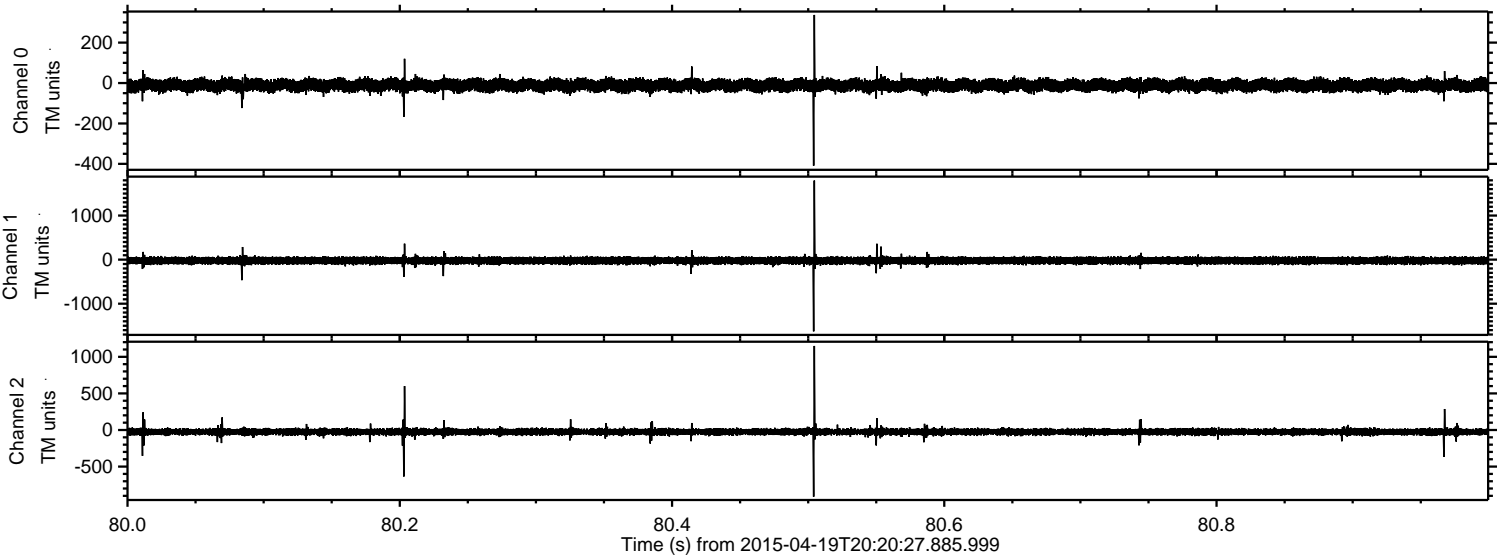
Channel 1
mn: -754
mx: 760
 μ : -21.9
 σ : 40.7

Channel 2
mn: -2517
mx: 2519
 μ : -24.6
 σ : 38.9

Processed Sun Apr 19 22:27:36 2015 by ELM ver.2012-10-06 from 001__elm20150419_202026__dat00.bin

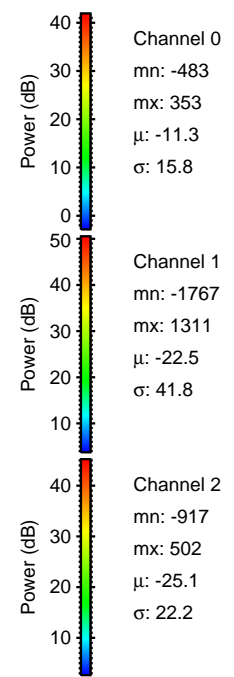
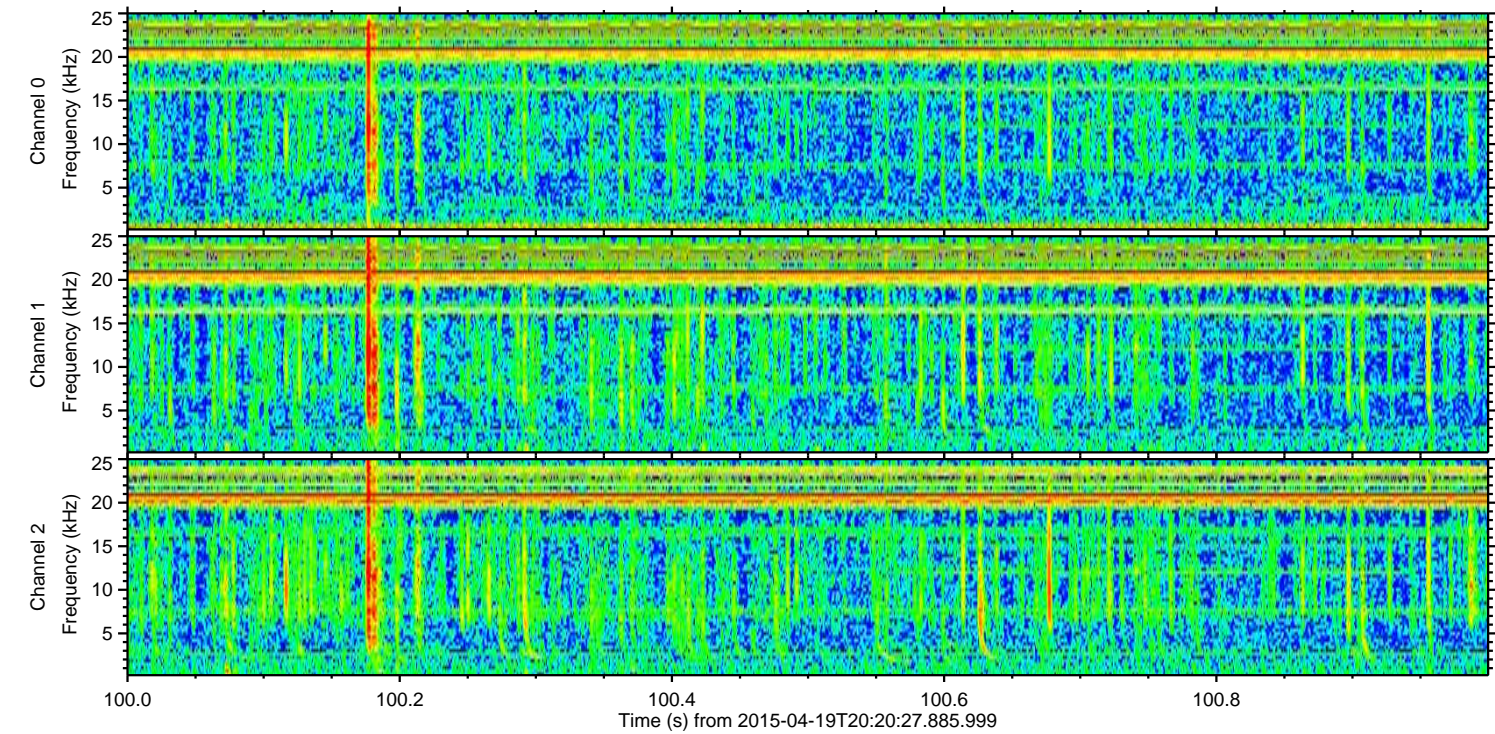
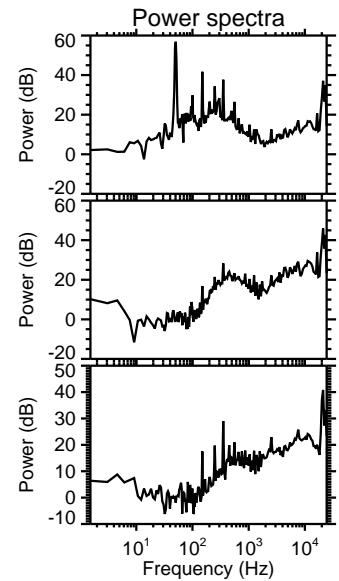
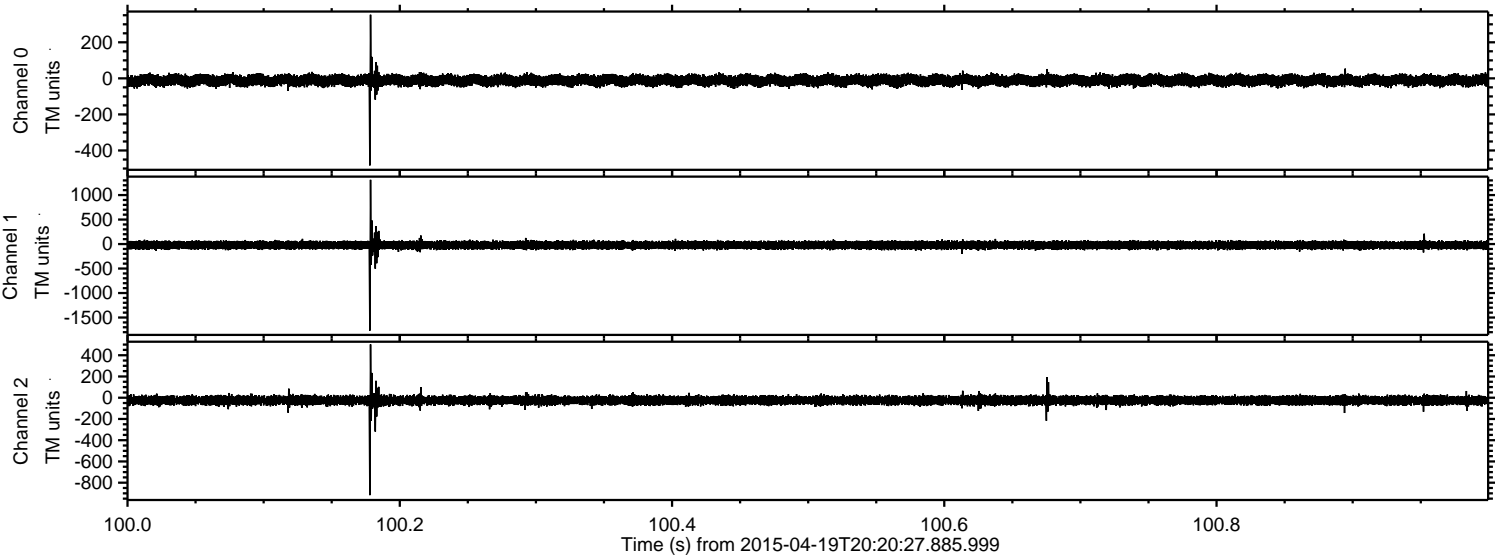


Processed Sun Apr 19 22:27:37 2015 by ELM ver.2012-10-06 from 001__elm20150419_202026__dat00.bin

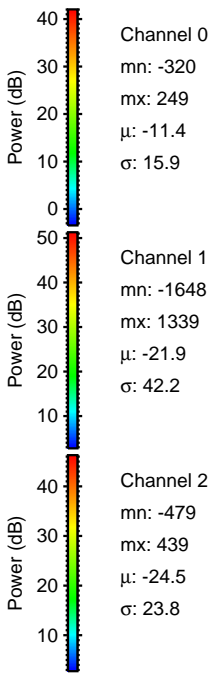
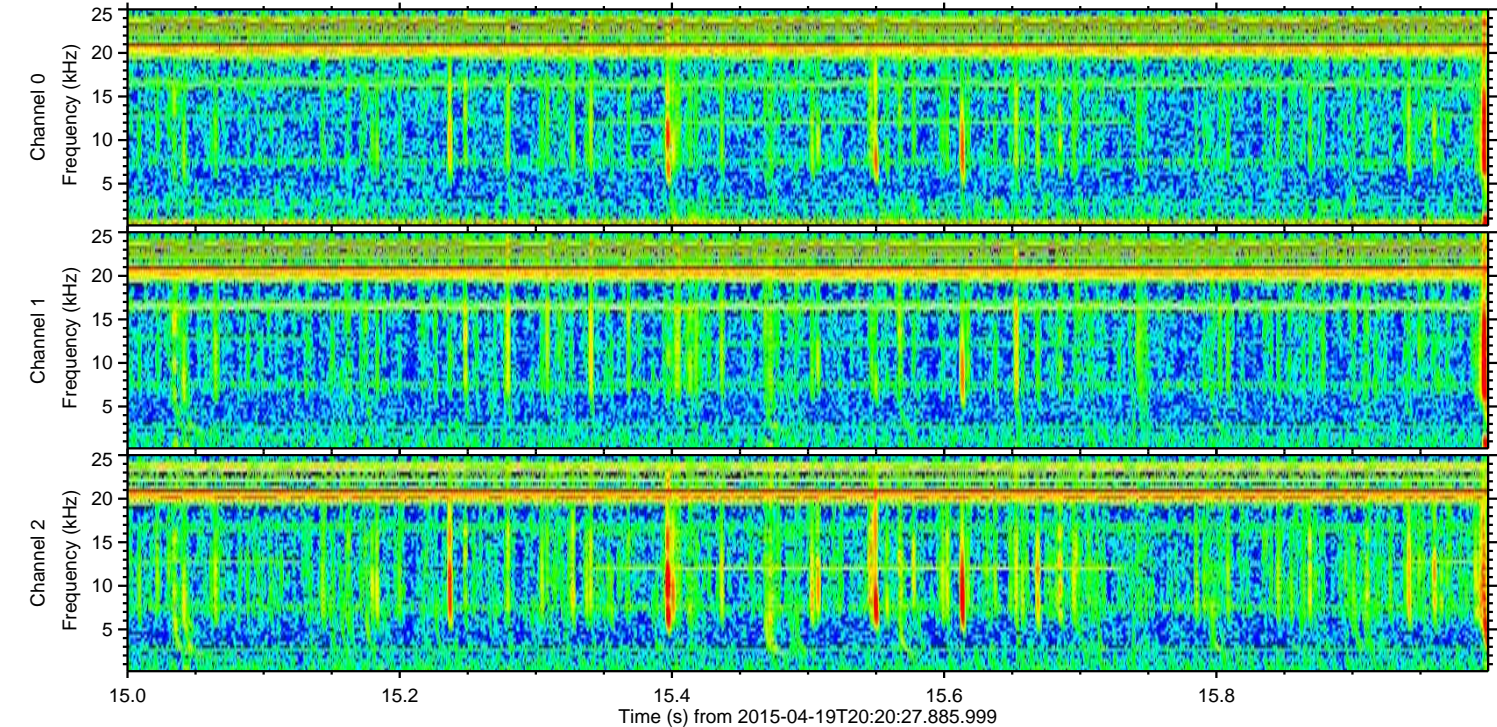
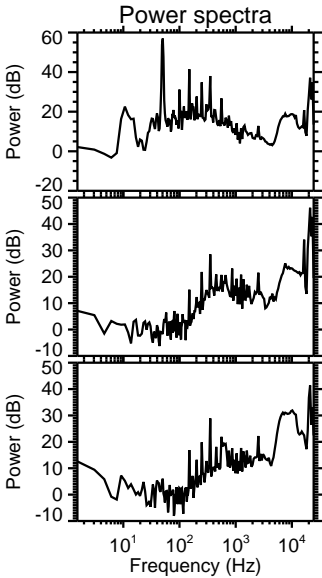
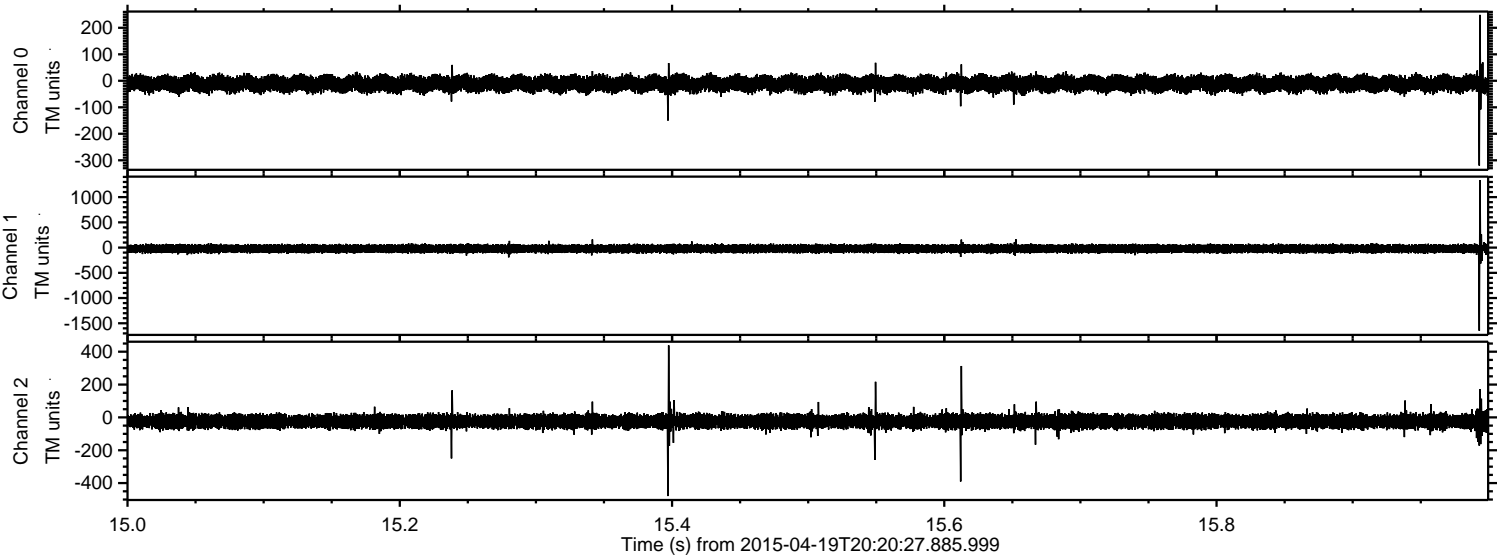


ELMAVAN 3D WAVEFORMS (Measured data sampled at 50 kHz) 49670 packets of 144 samples from 2015-04-19T20:20:27.885.999. Part 101/144

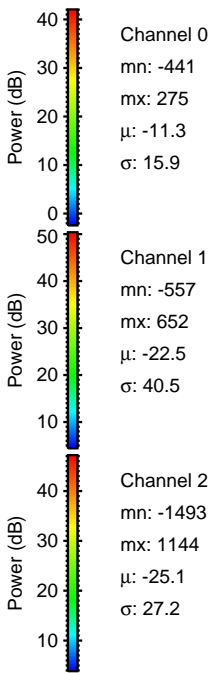
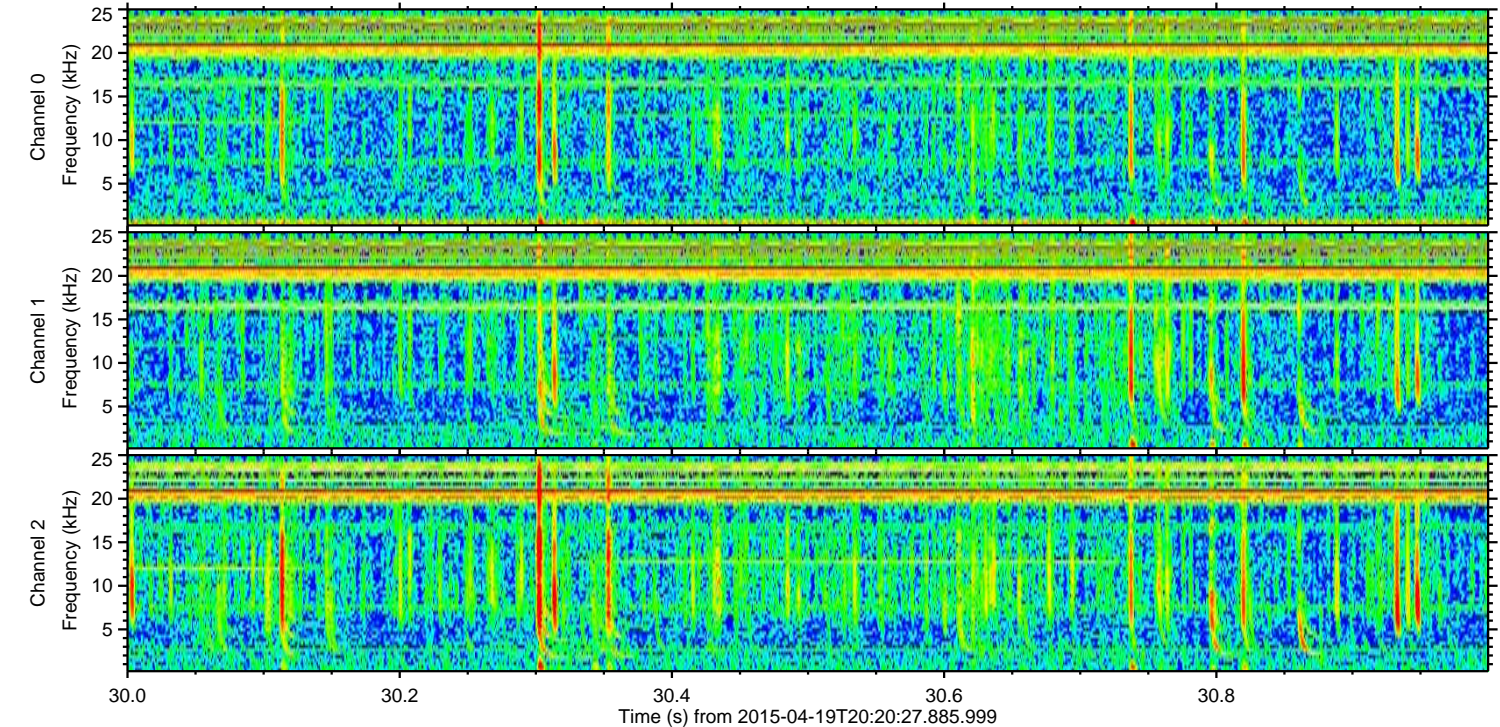
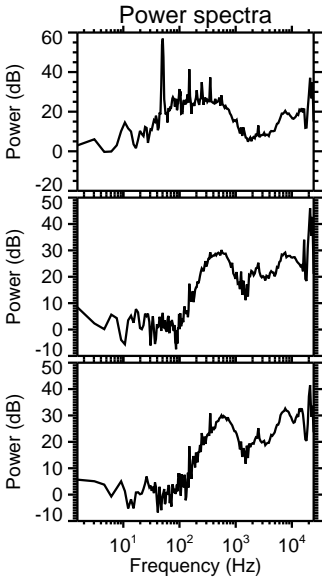
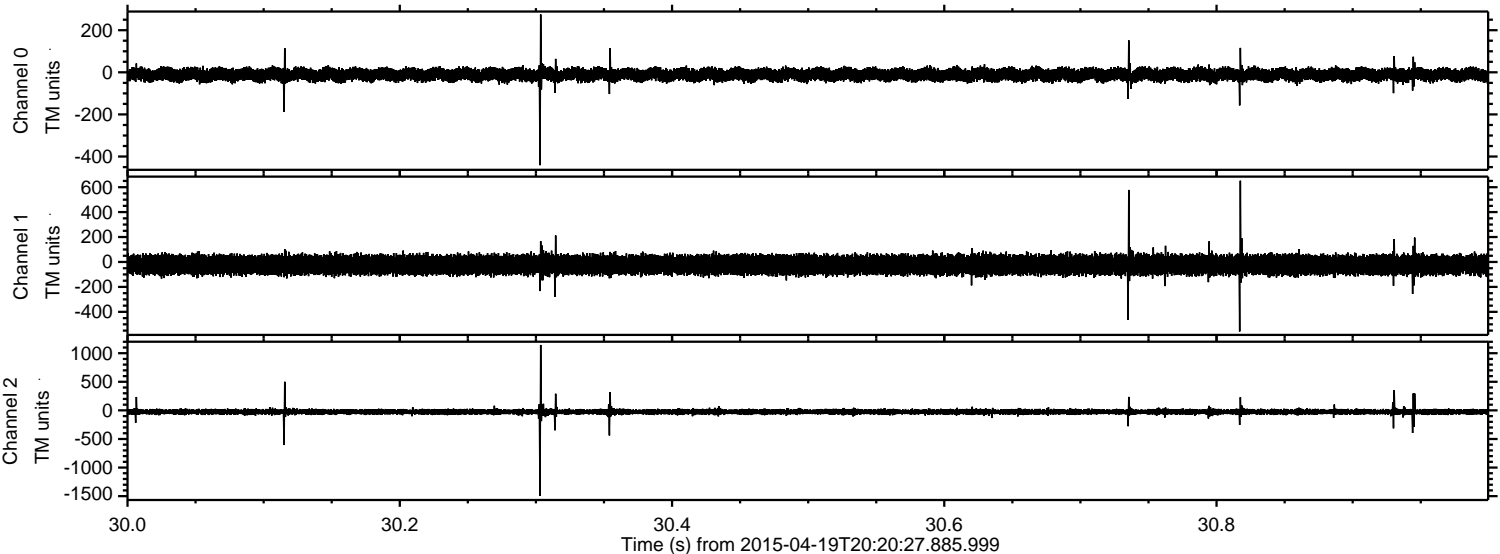
Processed Sun Apr 19 22:27:38 2015 by ELM ver.2012-10-06 from 001__elm20150419_202026__dat00.bin



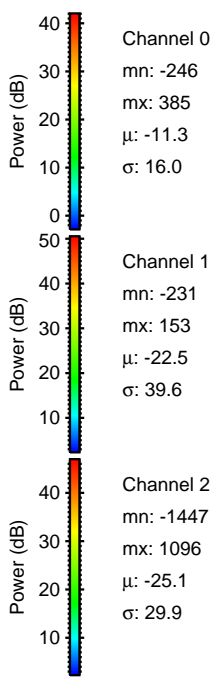
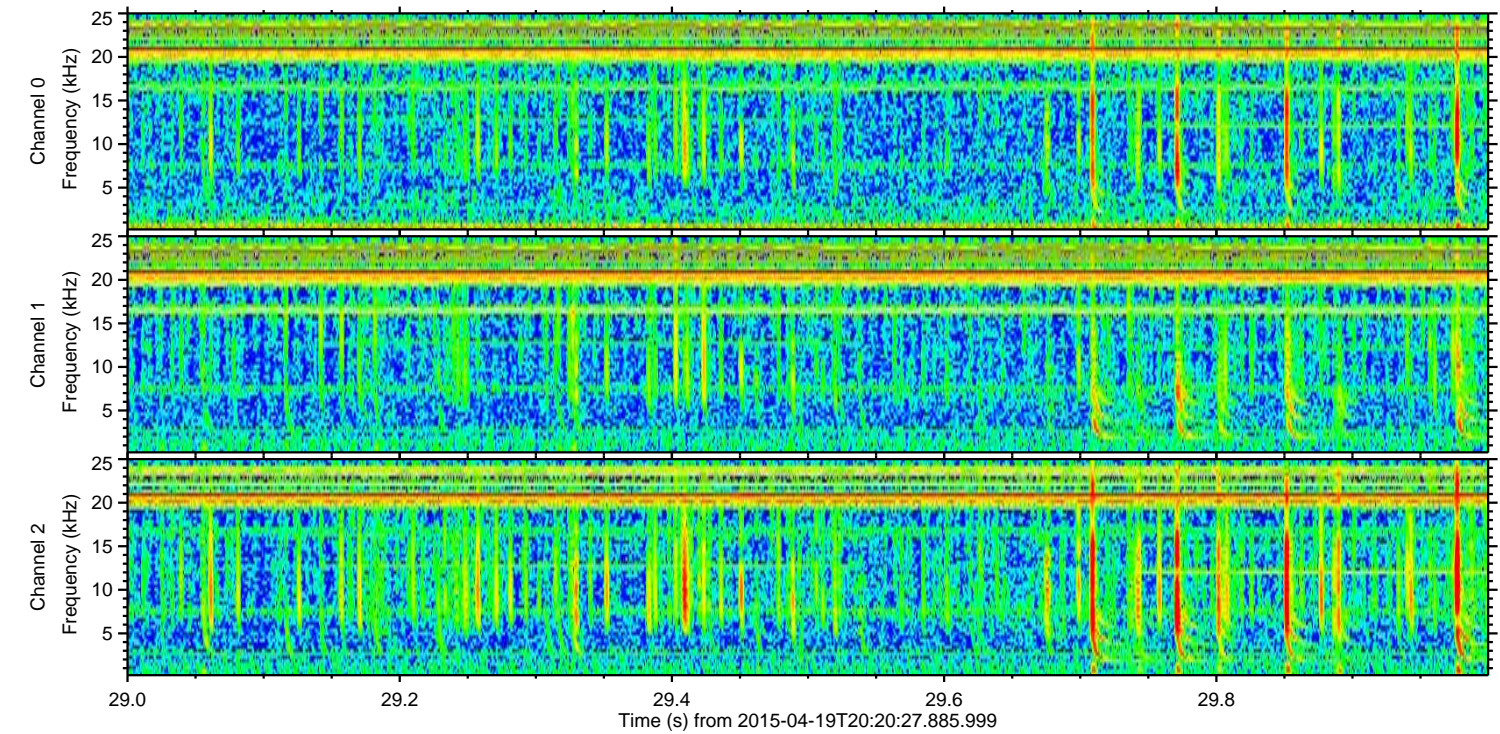
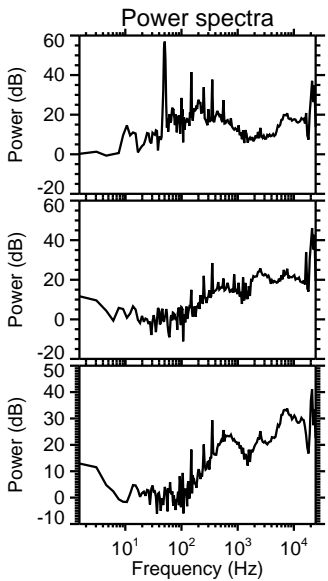
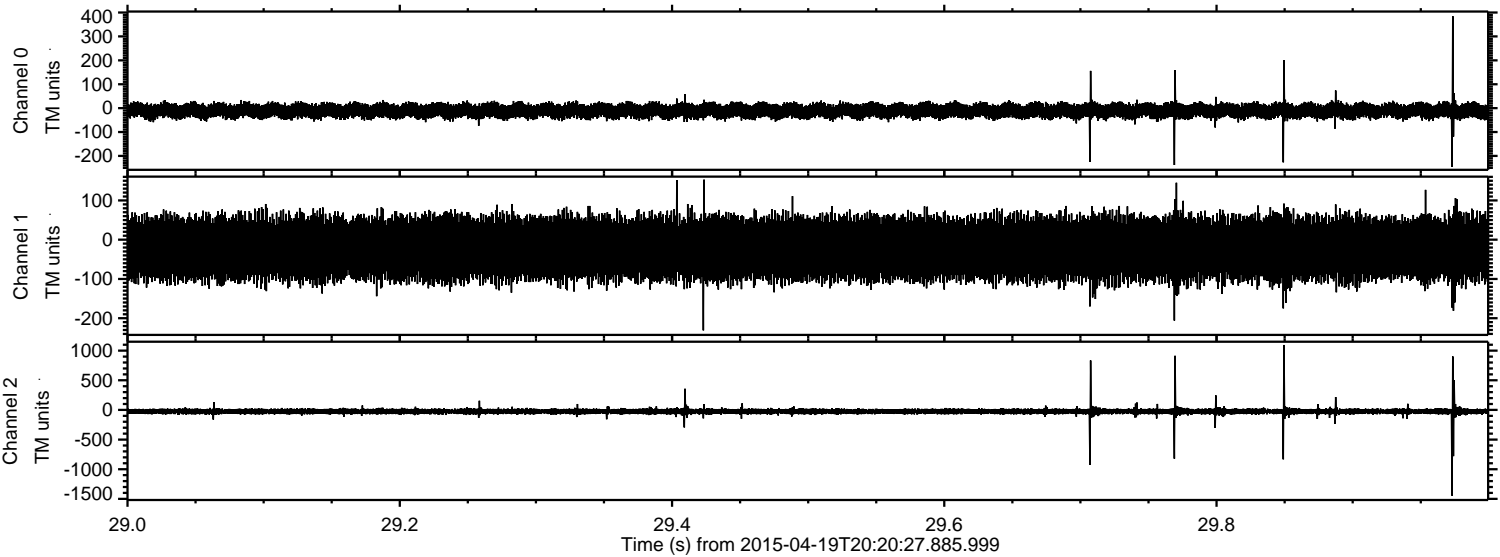
Processed Sun Apr 19 22:27:39 2015 by ELM ver.2012-10-06 from 001__elm20150419_202026__dat00.bin



Processed Sun Apr 19 22:27:40 2015 by ELM ver.2012-10-06 from 001__elm20150419_202026__dat00.bin



Processed Sun Apr 19 22:27:41 2015 by ELM ver.2012-10-06 from 001__elm20150419_202026__dat00.bin

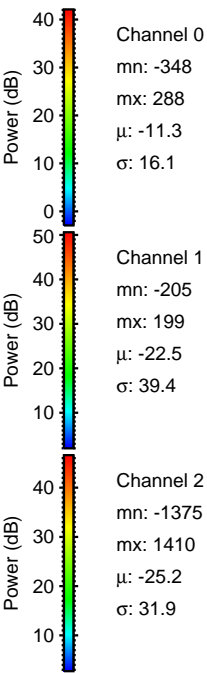
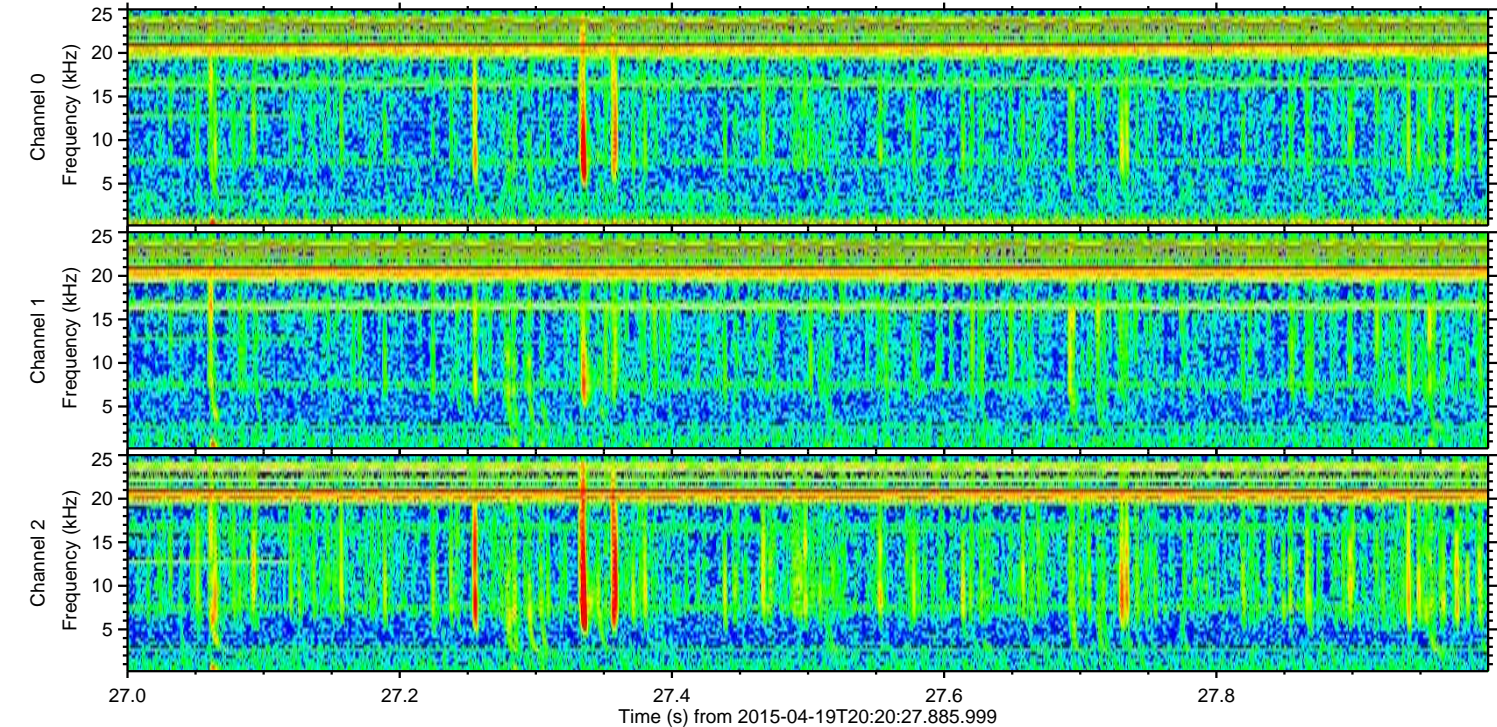
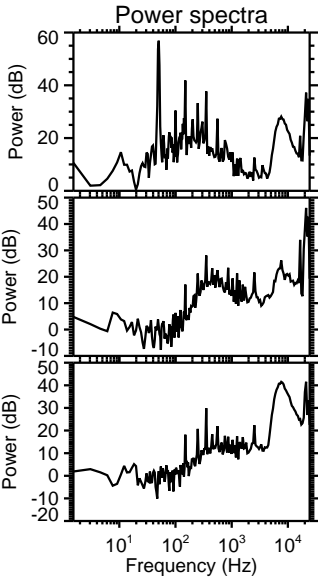
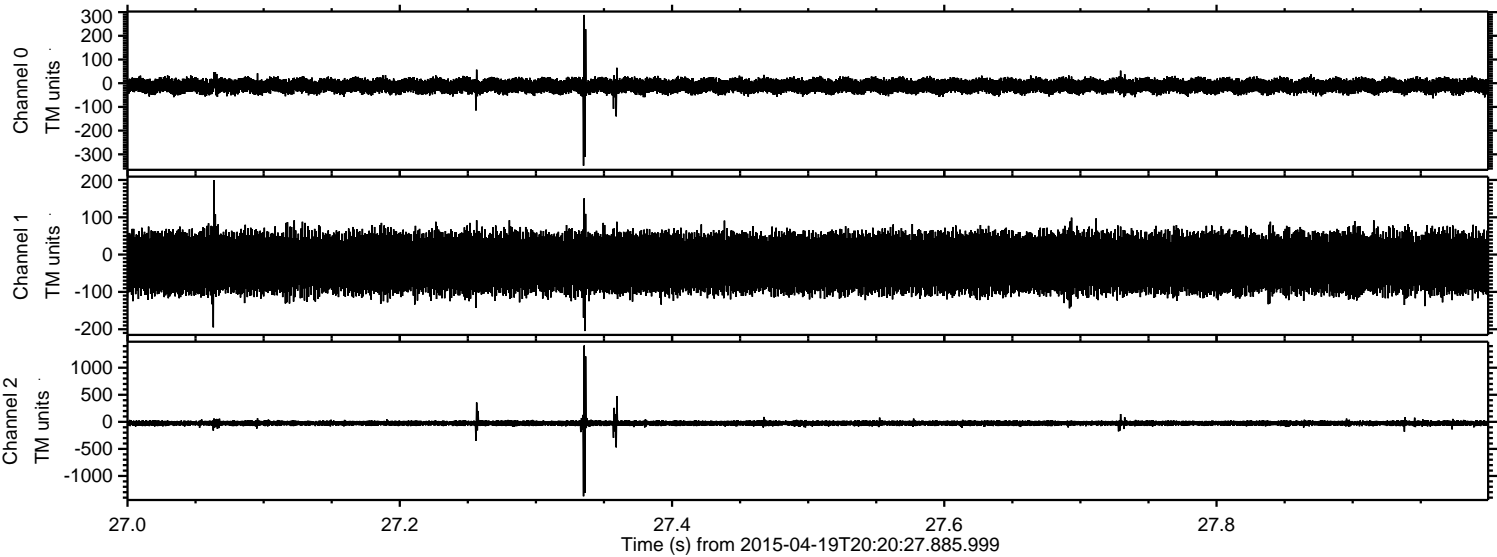


Channel 0
mn: -246
mx: 385
 μ : -11.3
 σ : 16.0

Channel 1
mn: -231
mx: 153
 μ : -22.5
 σ : 39.6

Channel 2
mn: -1447
mx: 1096
 μ : -25.1
 σ : 29.9

Processed Sun Apr 19 22:27:42 2015 by ELM ver.2012-10-06 from 001__elm20150419_202026__dat00.bin



Channel 0
mn: -348
mx: 288
 μ : -11.3
 σ : 16.1

Channel 1
mn: -205
mx: 199
 μ : -22.5
 σ : 39.4

Channel 2
mn: -1375
mx: 1410
 μ : -25.2
 σ : 31.9

Processed Sun Apr 19 22:27:43 2015 by ELM ver.2012-10-06 from 001__elm20150419_202026__dat00.bin

