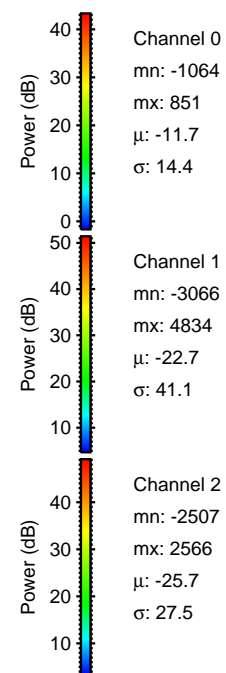
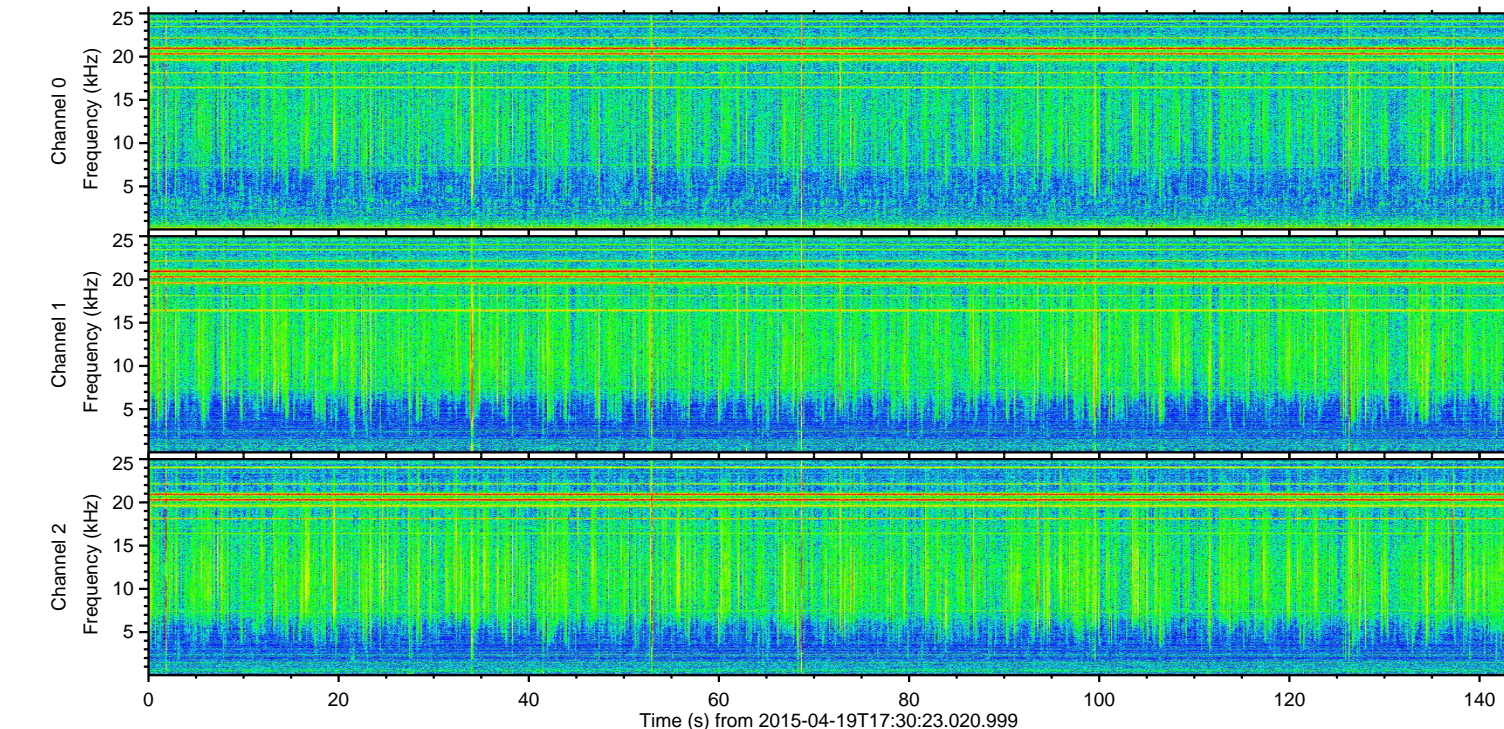
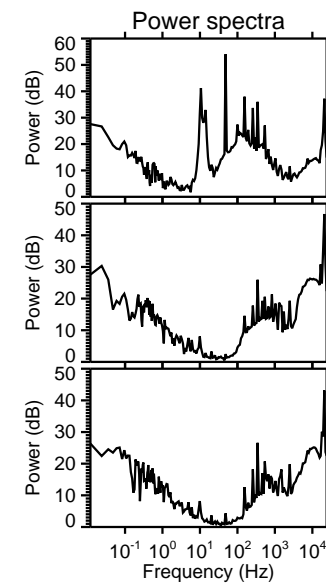
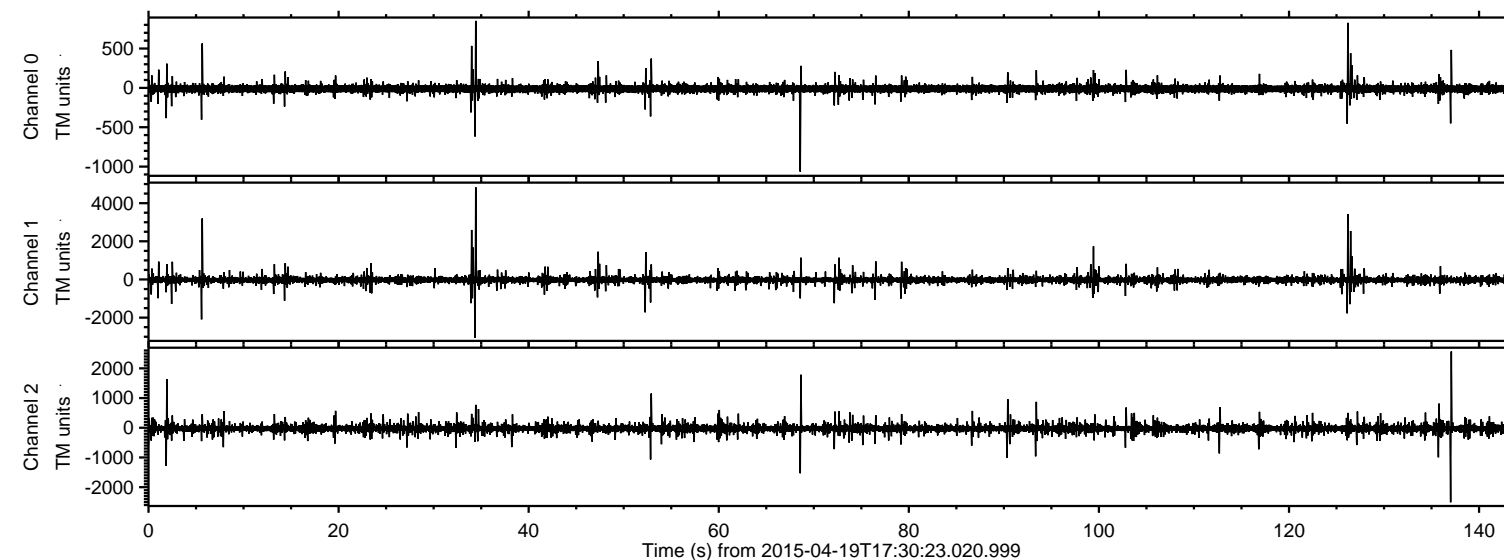


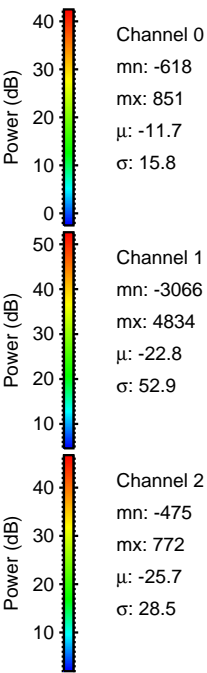
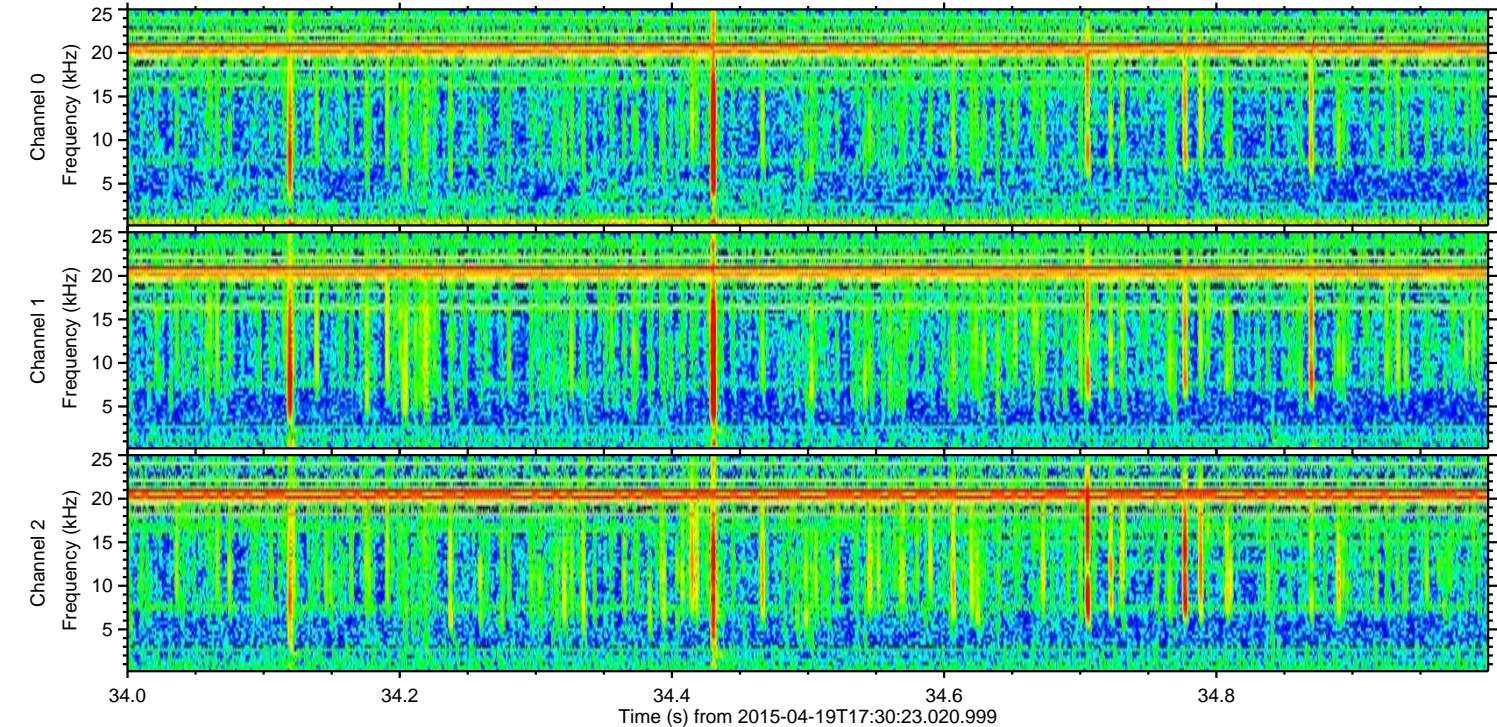
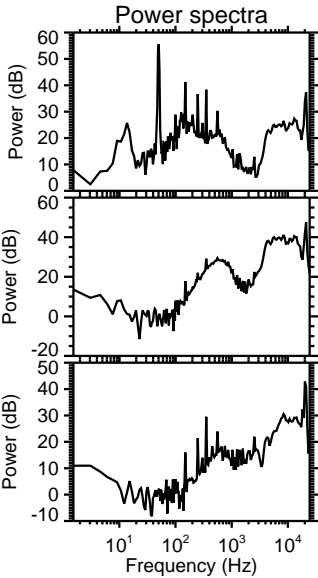
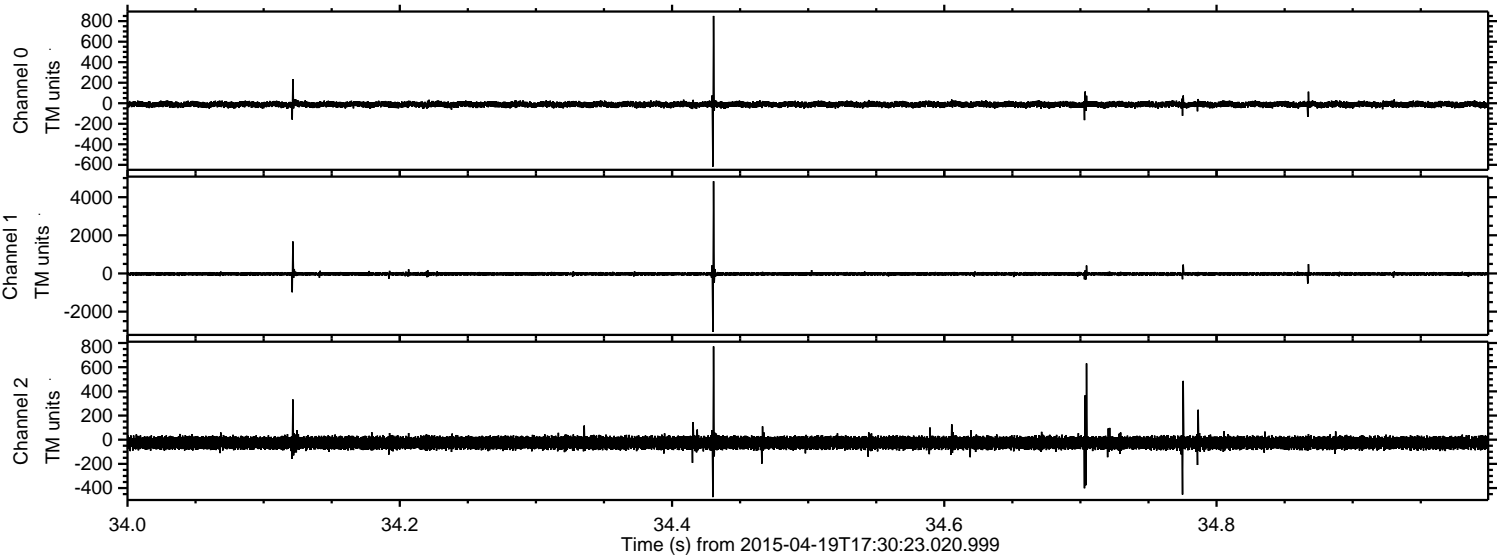
ELMAVAN 3D WAVEFORMS (Measured data sampled at 50 kHz) 49710 packets of 144 samples from 2015-04-19T17:30:23.020.999.

Processed Sun Apr 19 19:37:36 2015 by ELM ver.2012-10-06 from 001\_\_elm20150419\_173022\_\_dat00.bin





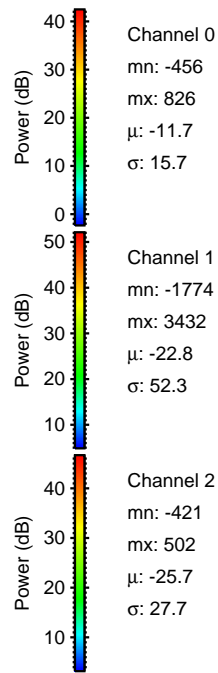
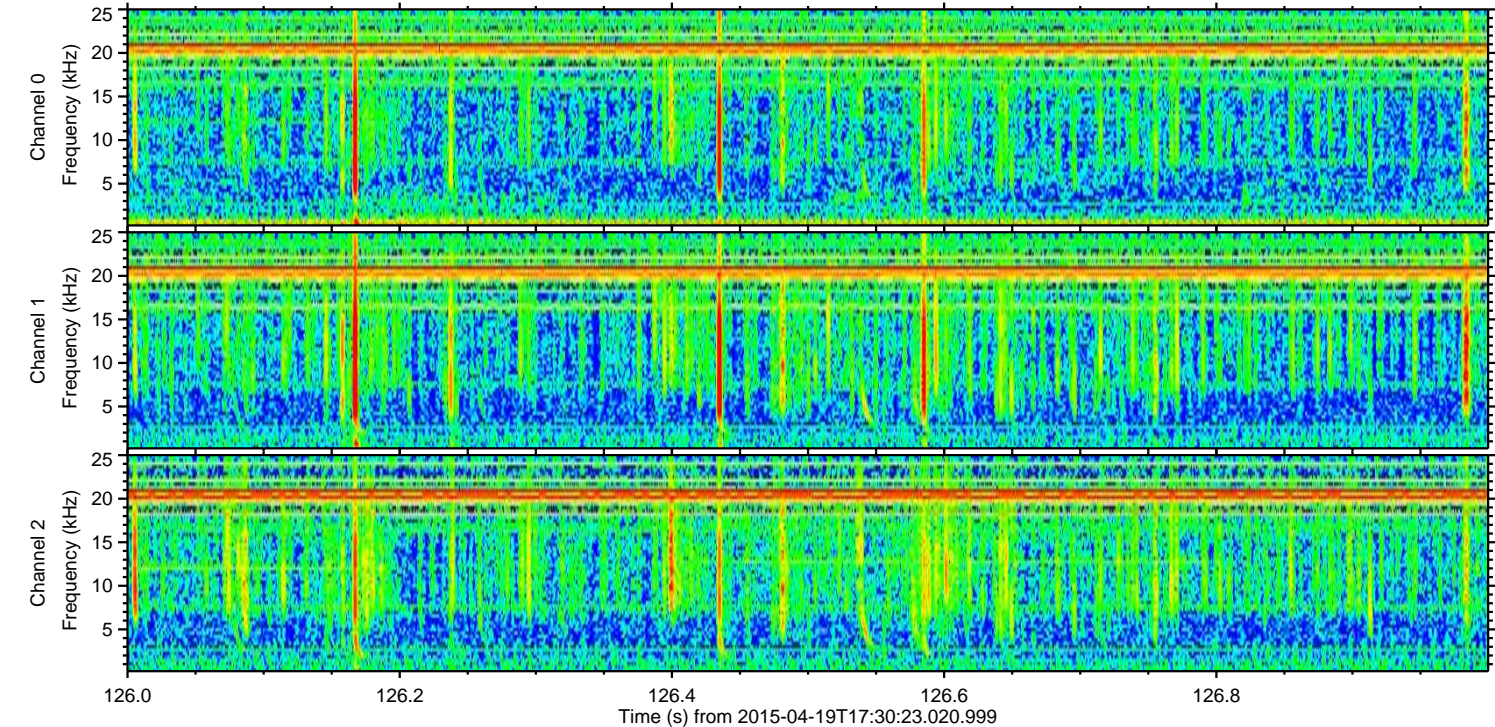
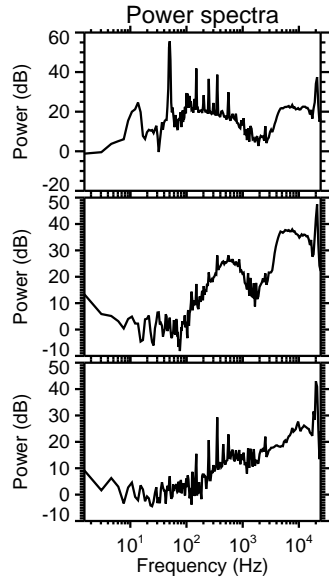
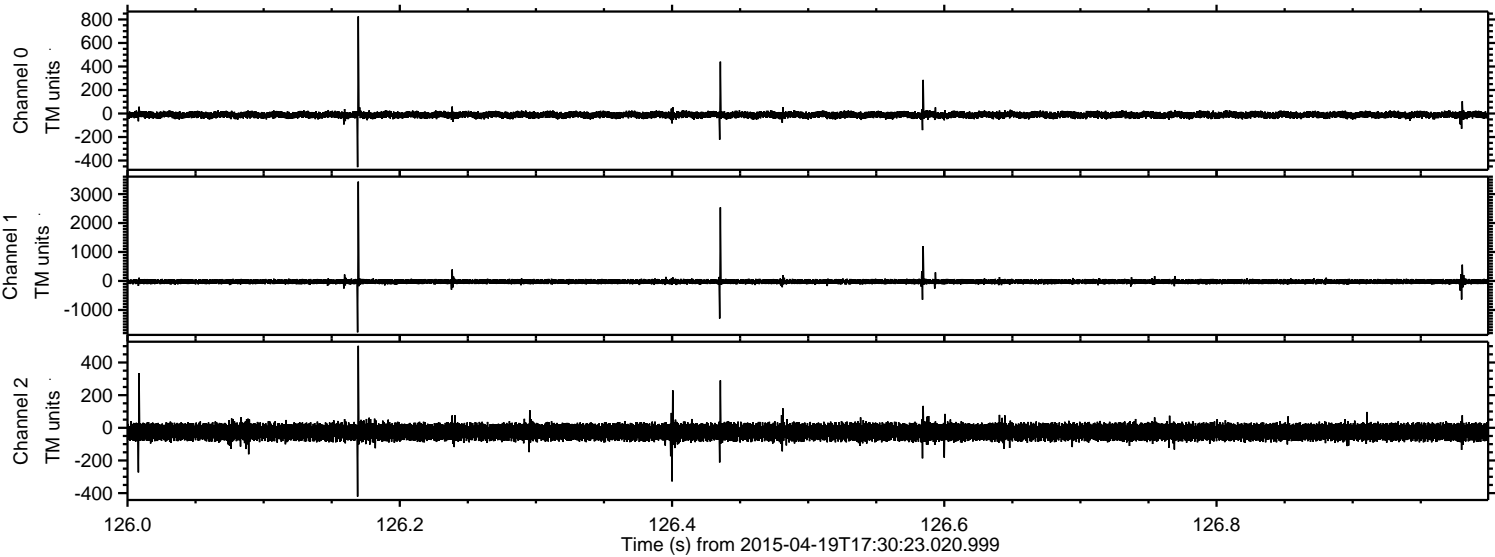
Processed Sun Apr 19 19:37:48 2015 by ELM ver.2012-10-06 from 001\_\_elm20150419\_173022\_\_dat00.bin





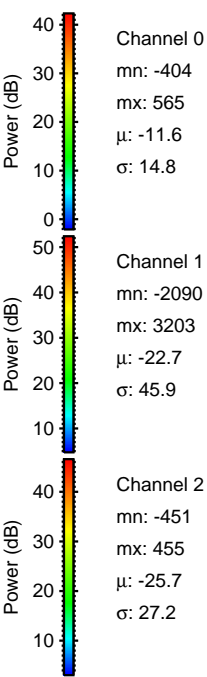
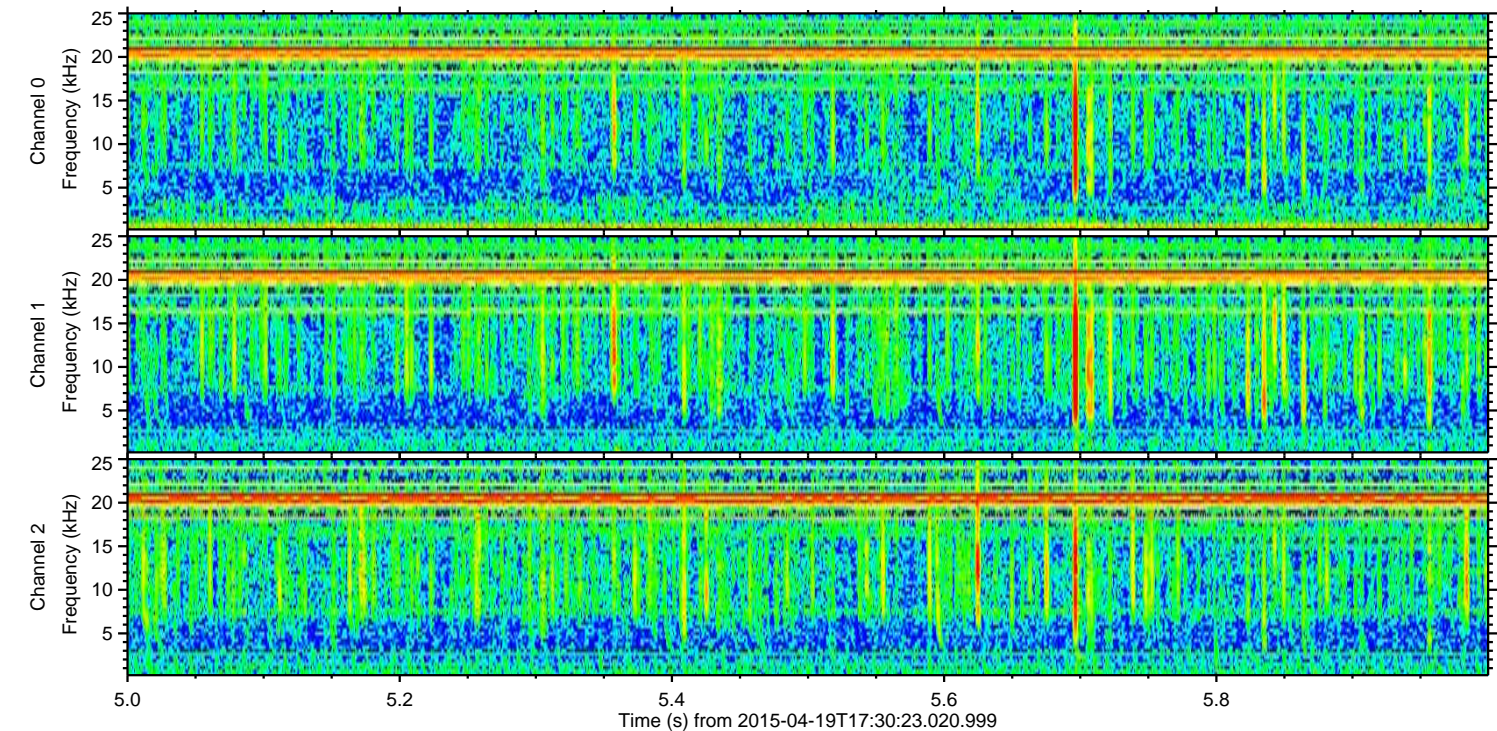
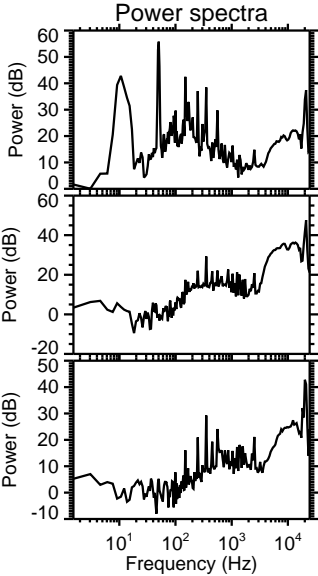
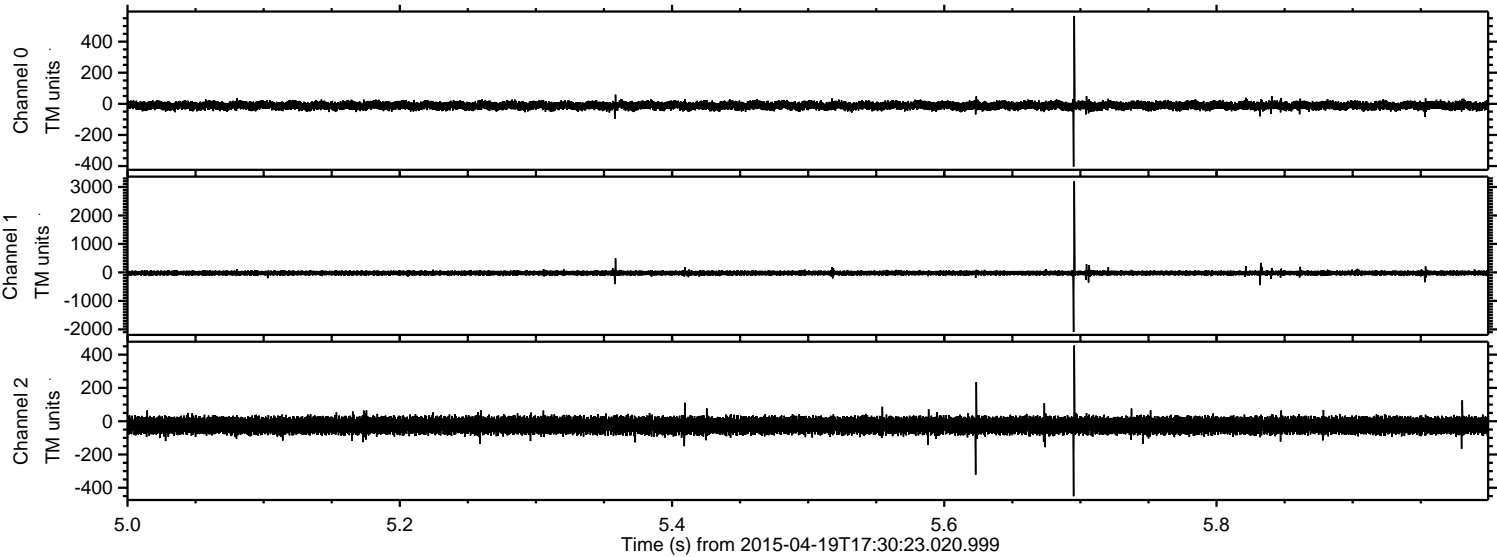
ELMAVAN 3D WAVEFORMS (Measured data sampled at 50 kHz) 49710 packets of 144 samples from 2015-04-19T17:30:23.020.999. Part 127/144

Processed Sun Apr 19 19:37:49 2015 by ELM ver.2012-10-06 from 001\_\_elm20150419\_173022\_\_dat00.bin



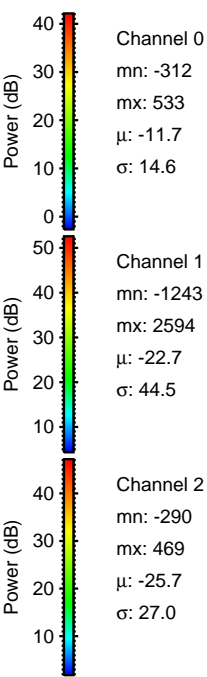
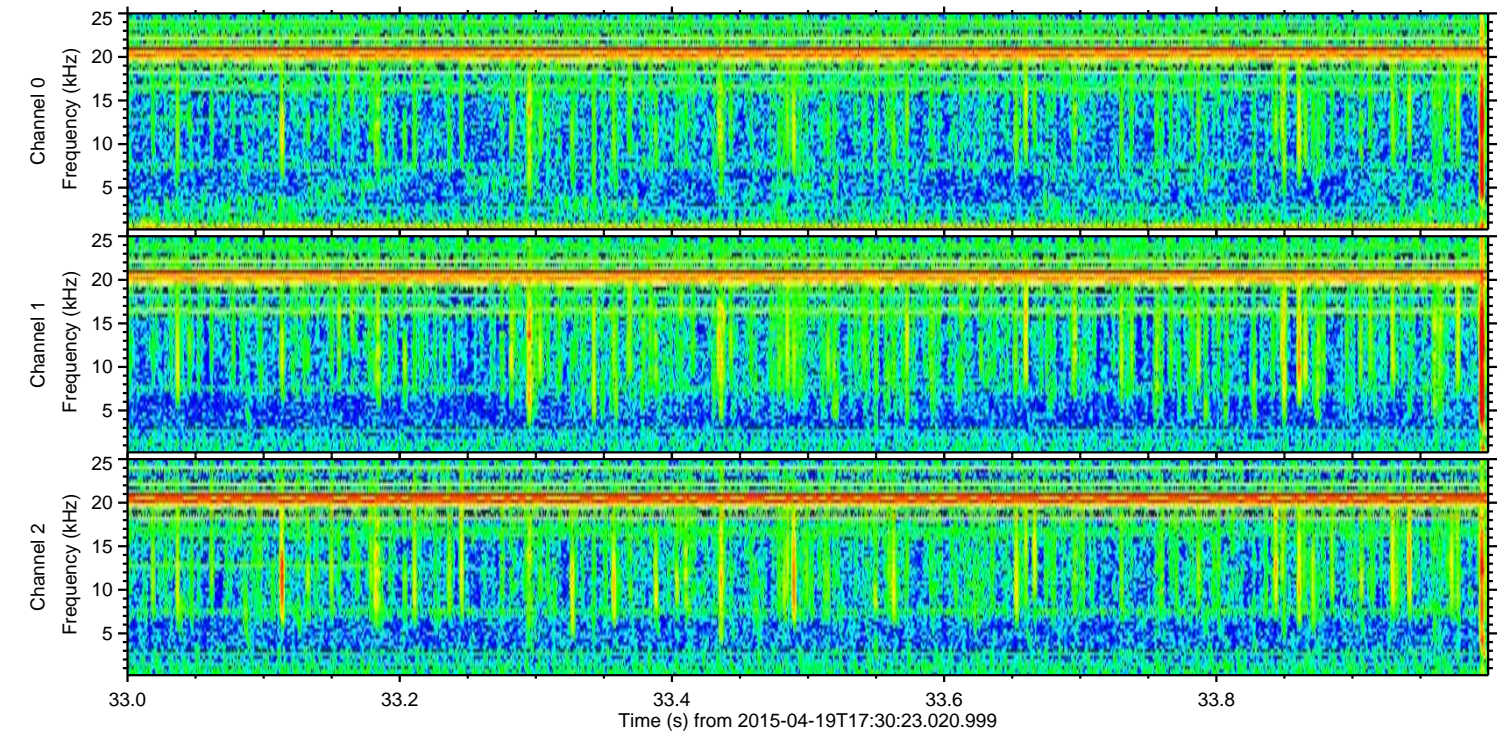
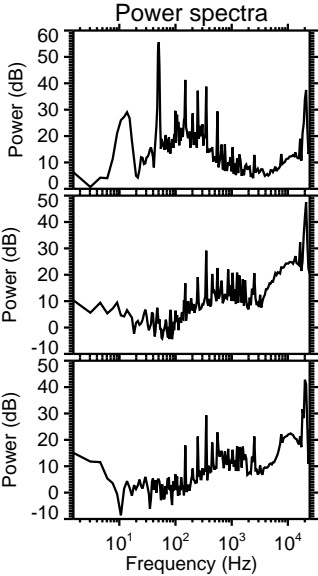
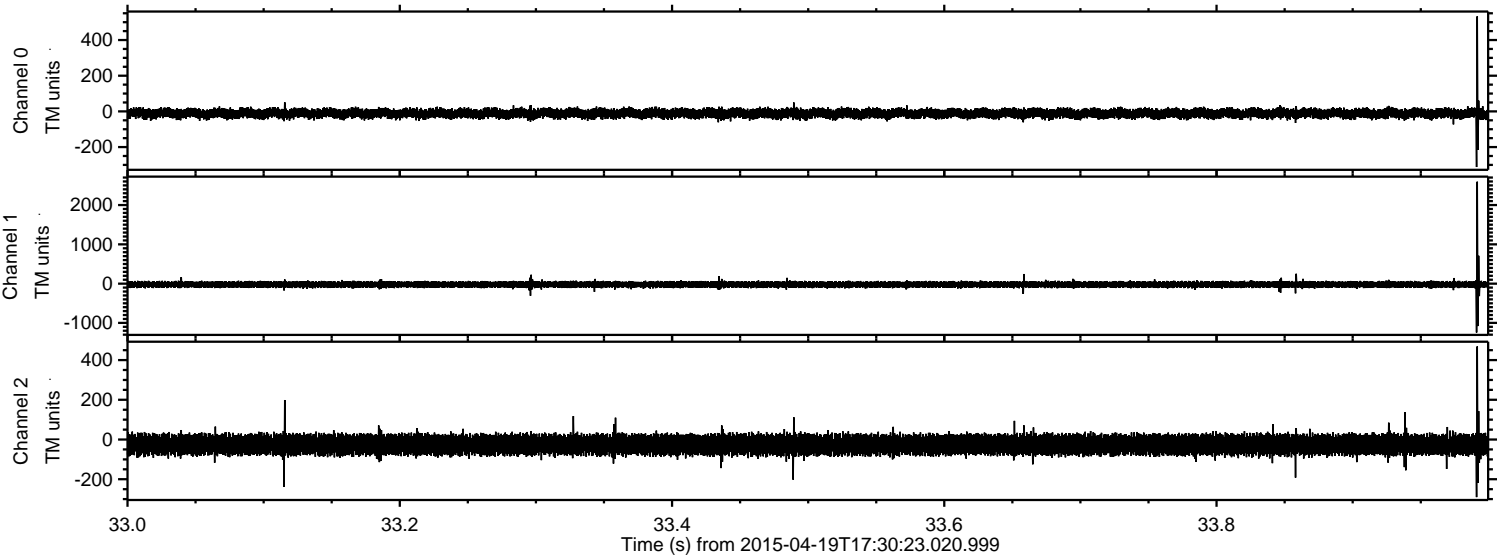


Processed Sun Apr 19 19:37:50 2015 by ELM ver.2012-10-06 from 001\_\_elm20150419\_173022\_\_dat00.bin





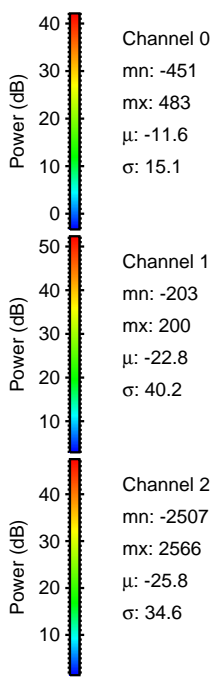
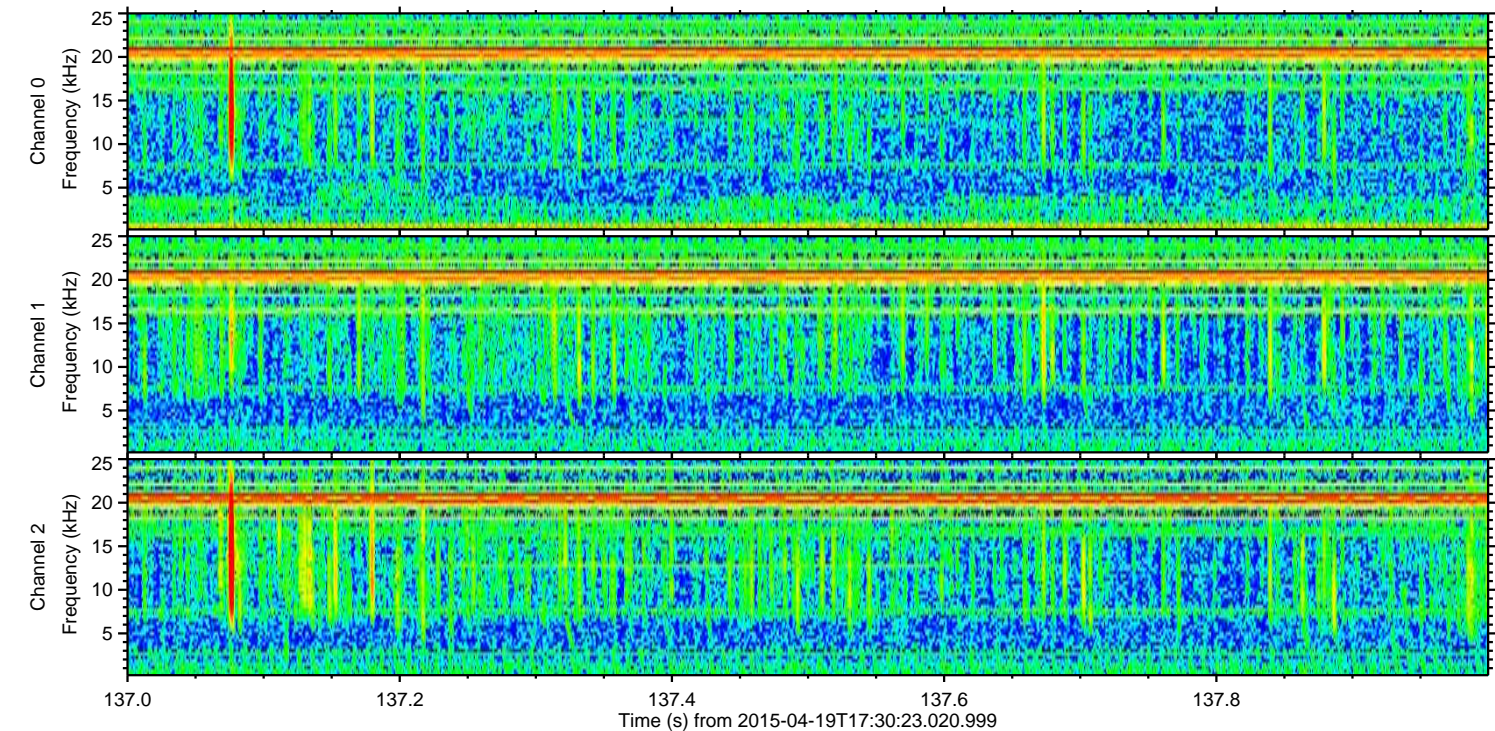
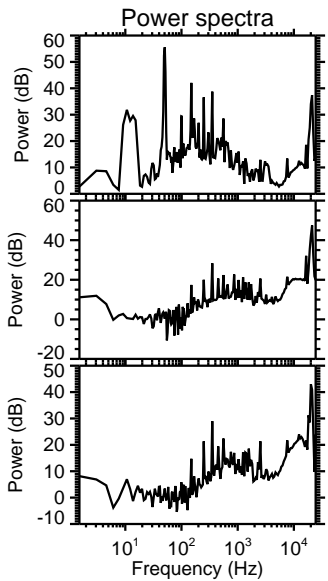
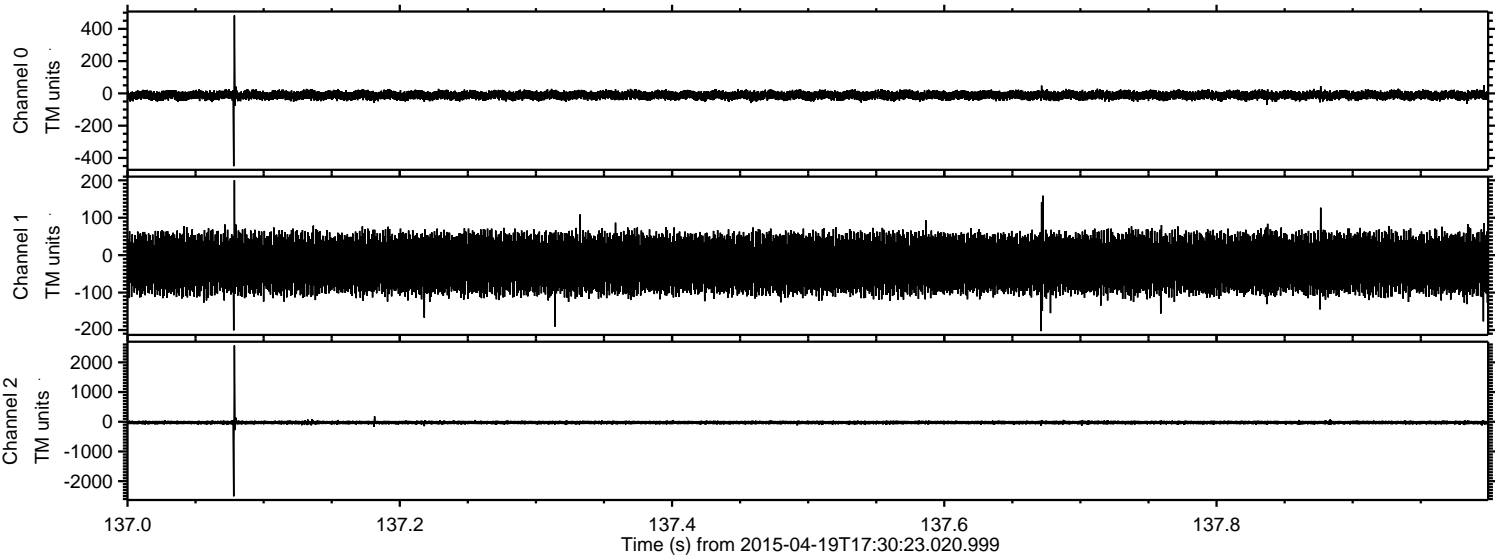
Processed Sun Apr 19 19:37:50 2015 by ELM ver.2012-10-06 from 001\_\_elm20150419\_173022\_\_dat00.bin





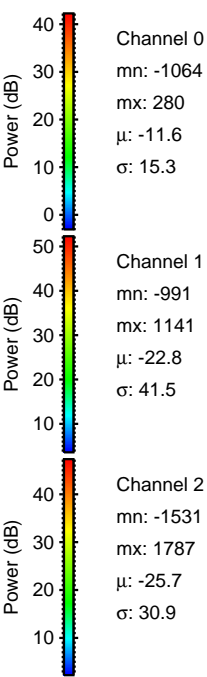
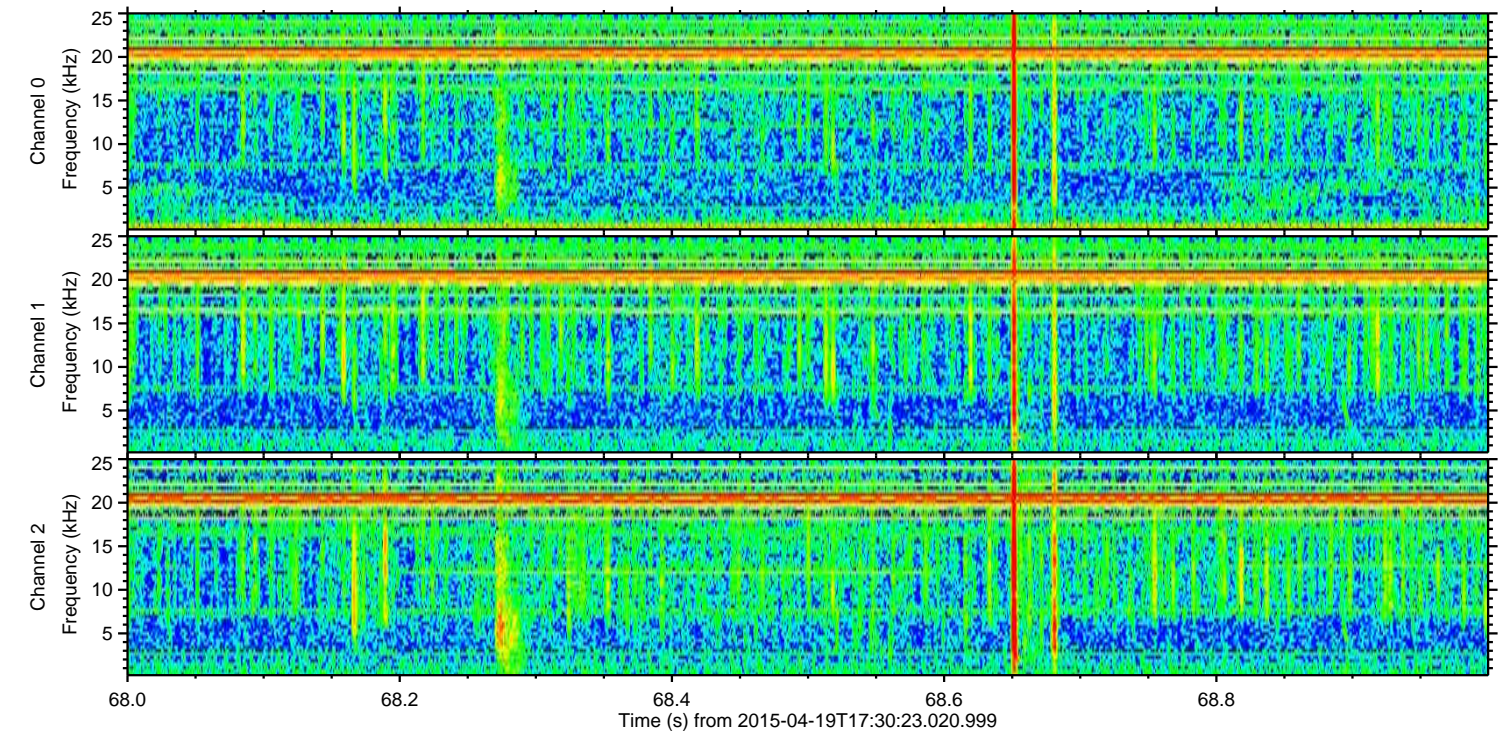
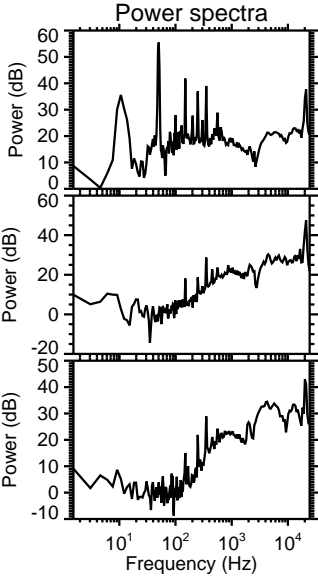
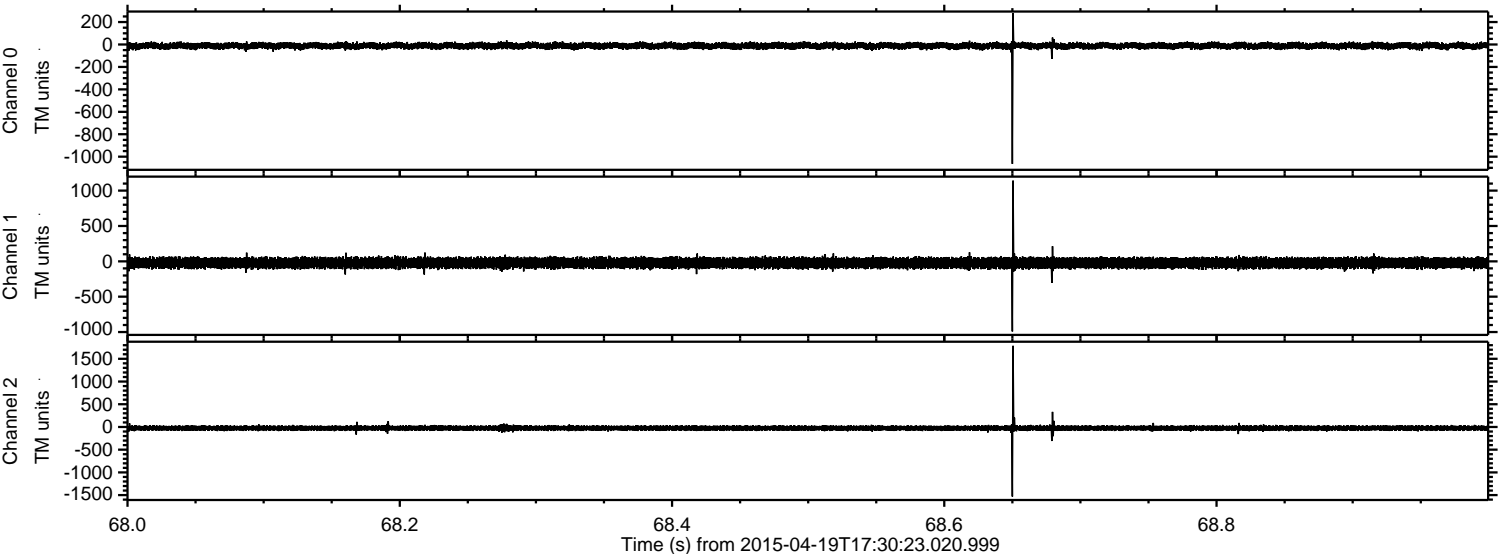
ELMAVAN 3D WAVEFORMS (Measured data sampled at 50 kHz) 49710 packets of 144 samples from 2015-04-19T17:30:23.020.999. Part 138/144

Processed Sun Apr 19 19:37:51 2015 by ELM ver.2012-10-06 from 001\_\_elm20150419\_173022\_\_dat00.bin





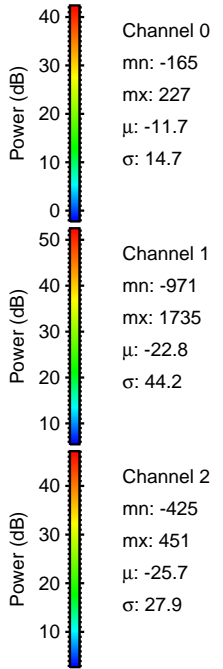
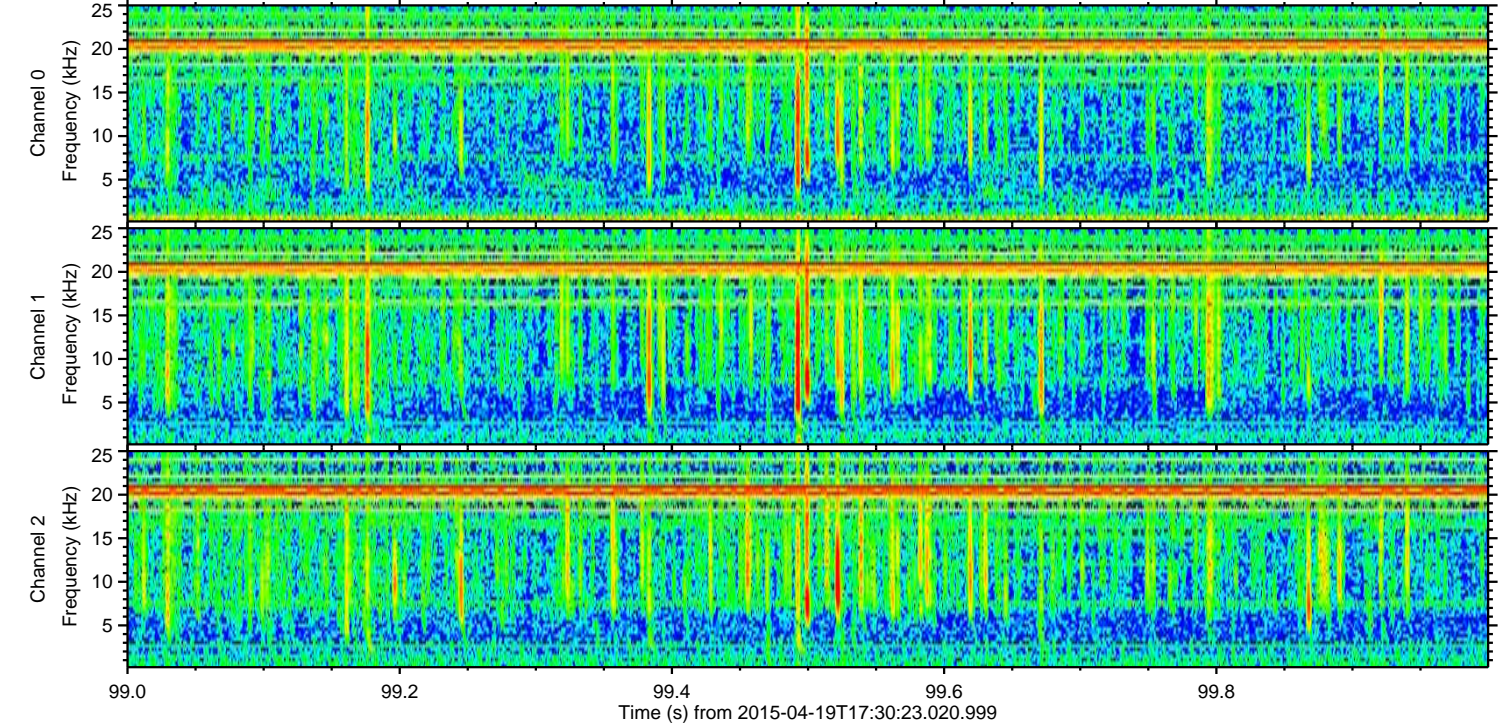
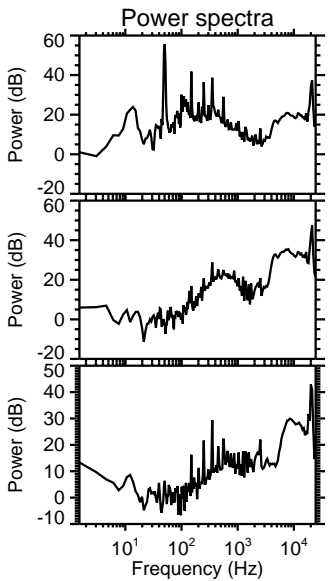
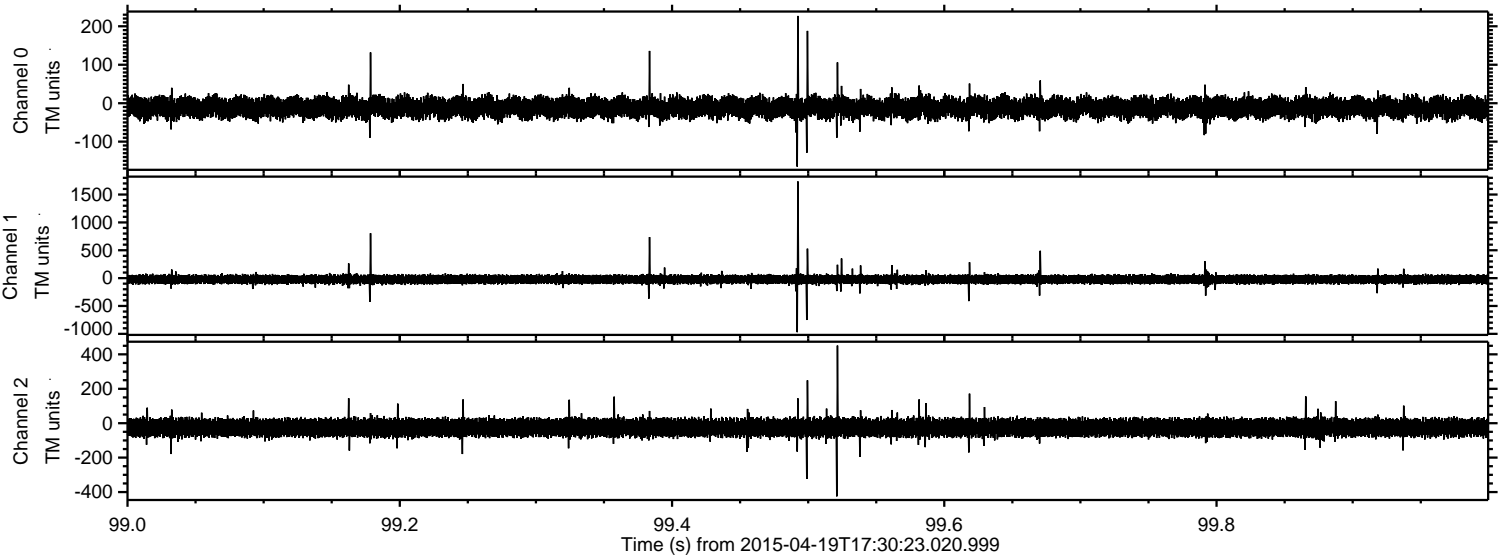
Processed Sun Apr 19 19:37:52 2015 by ELM ver.2012-10-06 from 001\_\_elm20150419\_173022\_\_dat00.bin





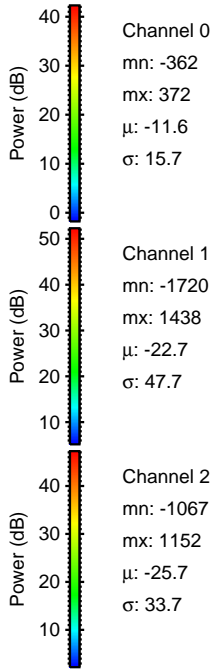
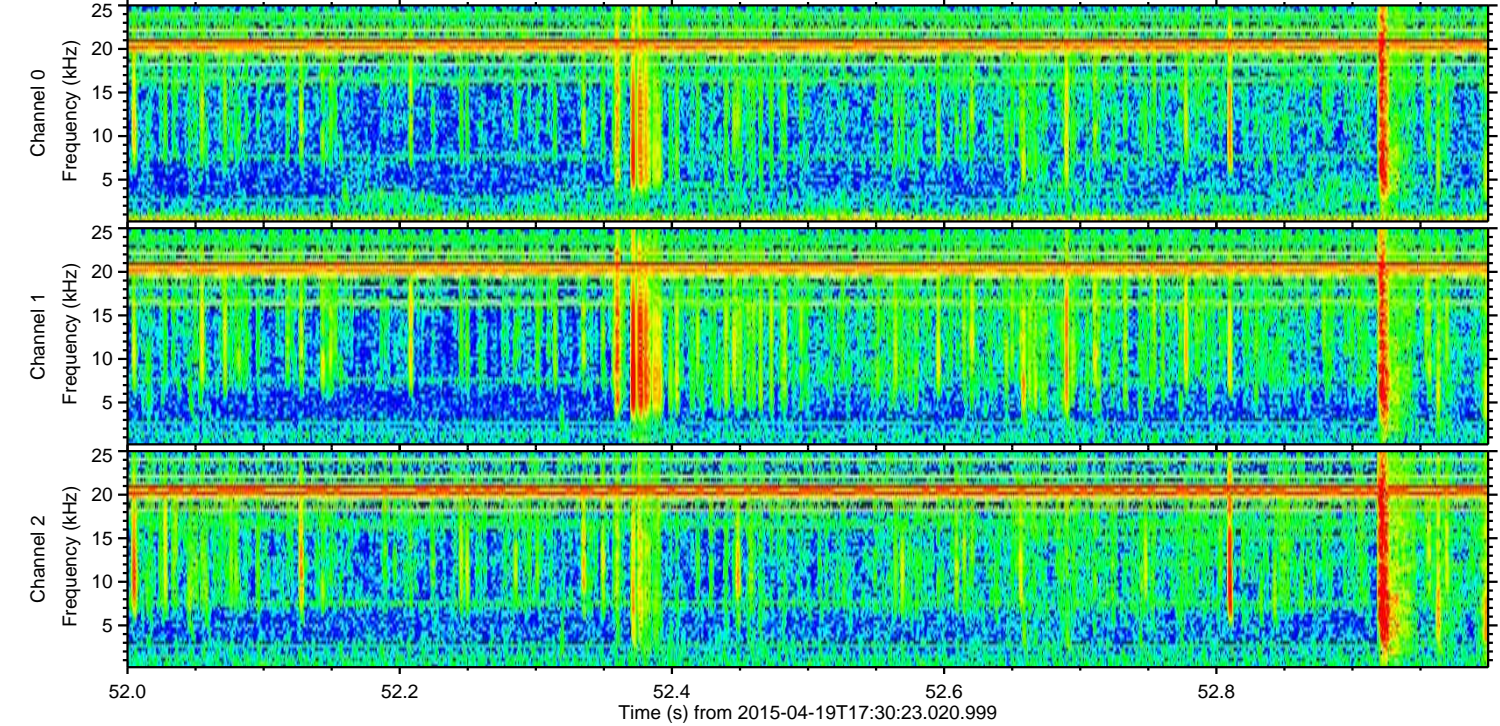
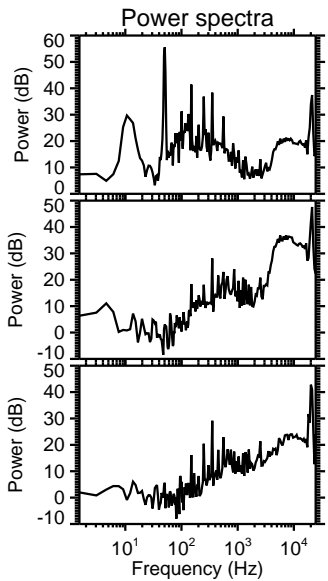
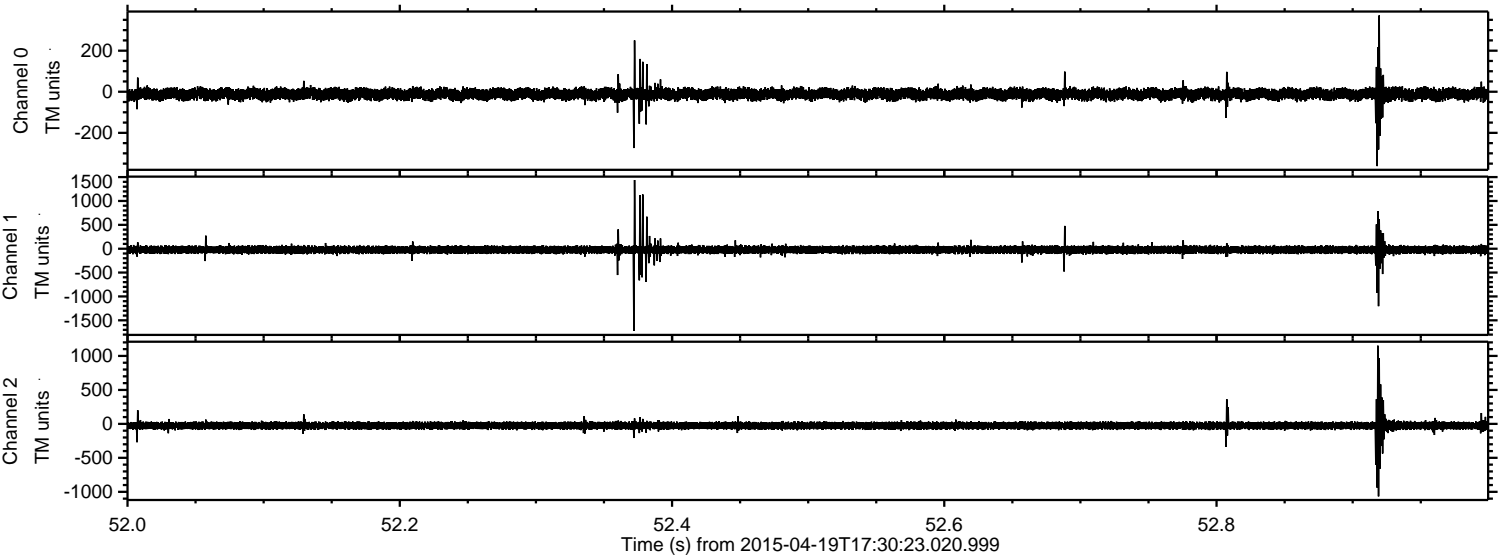
ELMAVAN 3D WAVEFORMS (Measured data sampled at 50 kHz) 49710 packets of 144 samples from 2015-04-19T17:30:23.020.999. Part 100/144

Processed Sun Apr 19 19:37:53 2015 by ELM ver.2012-10-06 from 001\_\_elm20150419\_173022\_\_dat00.bin



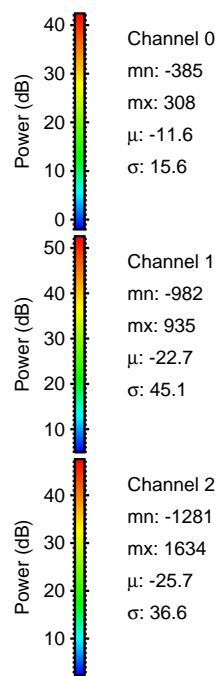
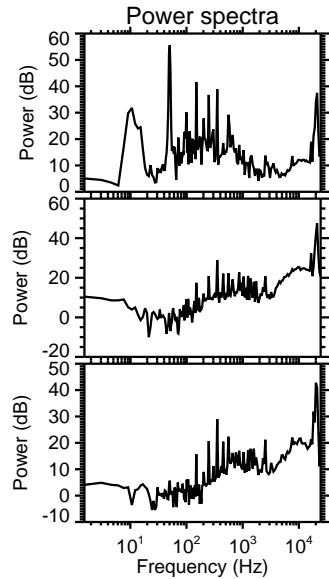
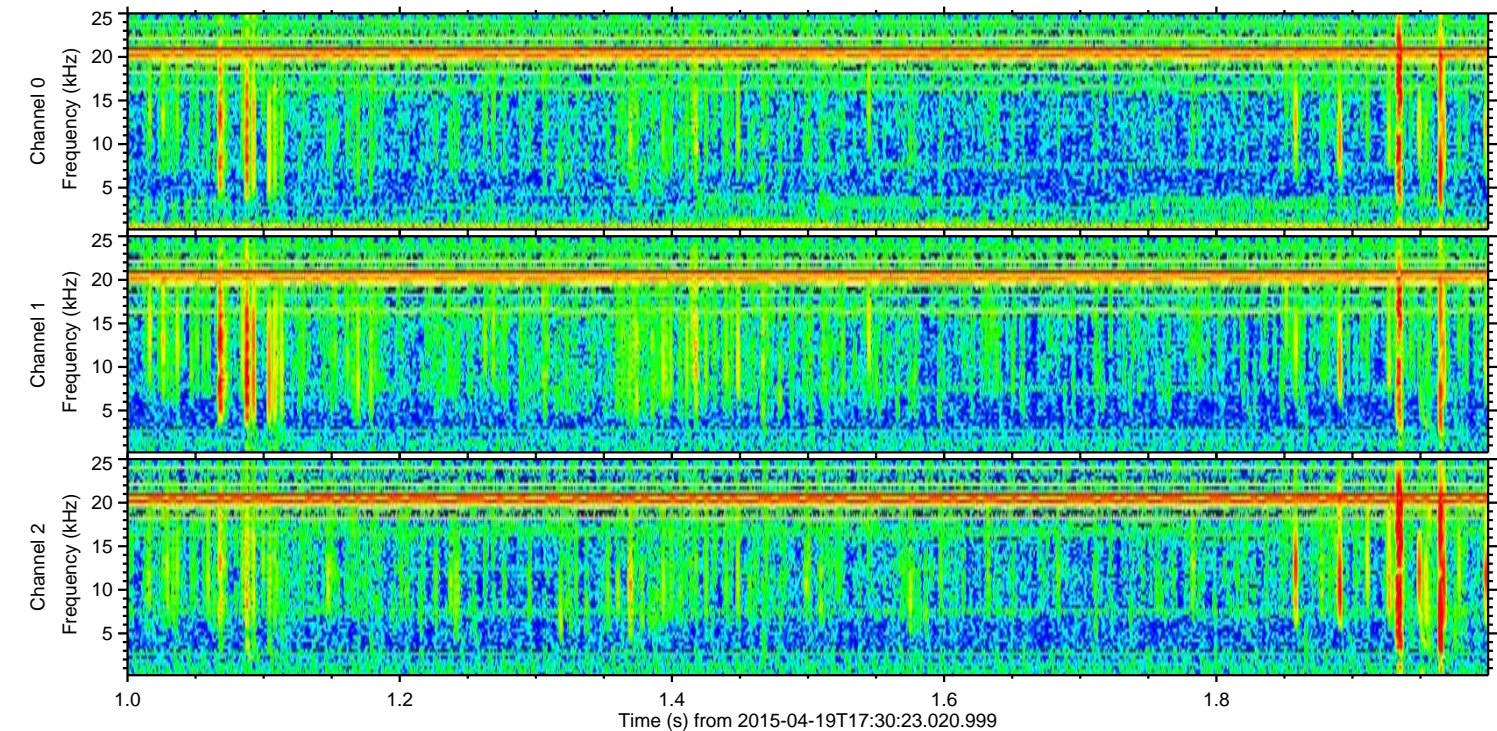
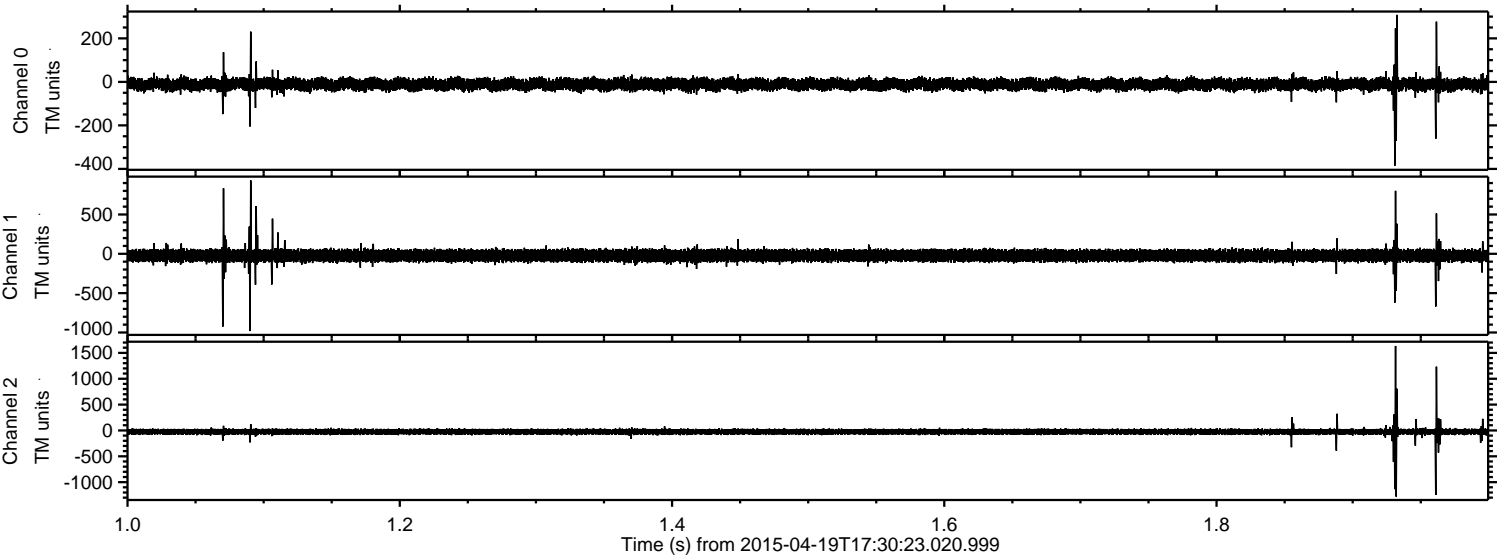


Processed Sun Apr 19 19:37:54 2015 by ELM ver.2012-10-06 from 001\_\_elm20150419\_173022\_\_dat00.bin





Processed Sun Apr 19 19:37:55 2015 by ELM ver.2012-10-06 from 001\_\_elm20150419\_173022\_\_dat00.bin



Channel 0  
mn: -385  
mx: 308  
 $\mu$ : -11.6  
 $\sigma$ : 15.6

Channel 1  
mn: -982  
mx: 935  
 $\mu$ : -22.7  
 $\sigma$ : 45.1

Channel 2  
mn: -1281  
mx: 1634  
 $\mu$ : -25.7  
 $\sigma$ : 36.6



Processed Sun Apr 19 19:37:56 2015 by ELM ver.2012-10-06 from 001\_\_elm20150419\_173022\_\_dat00.bin

