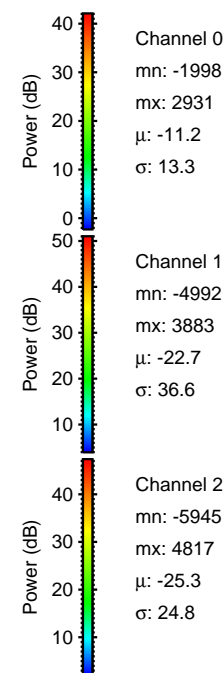
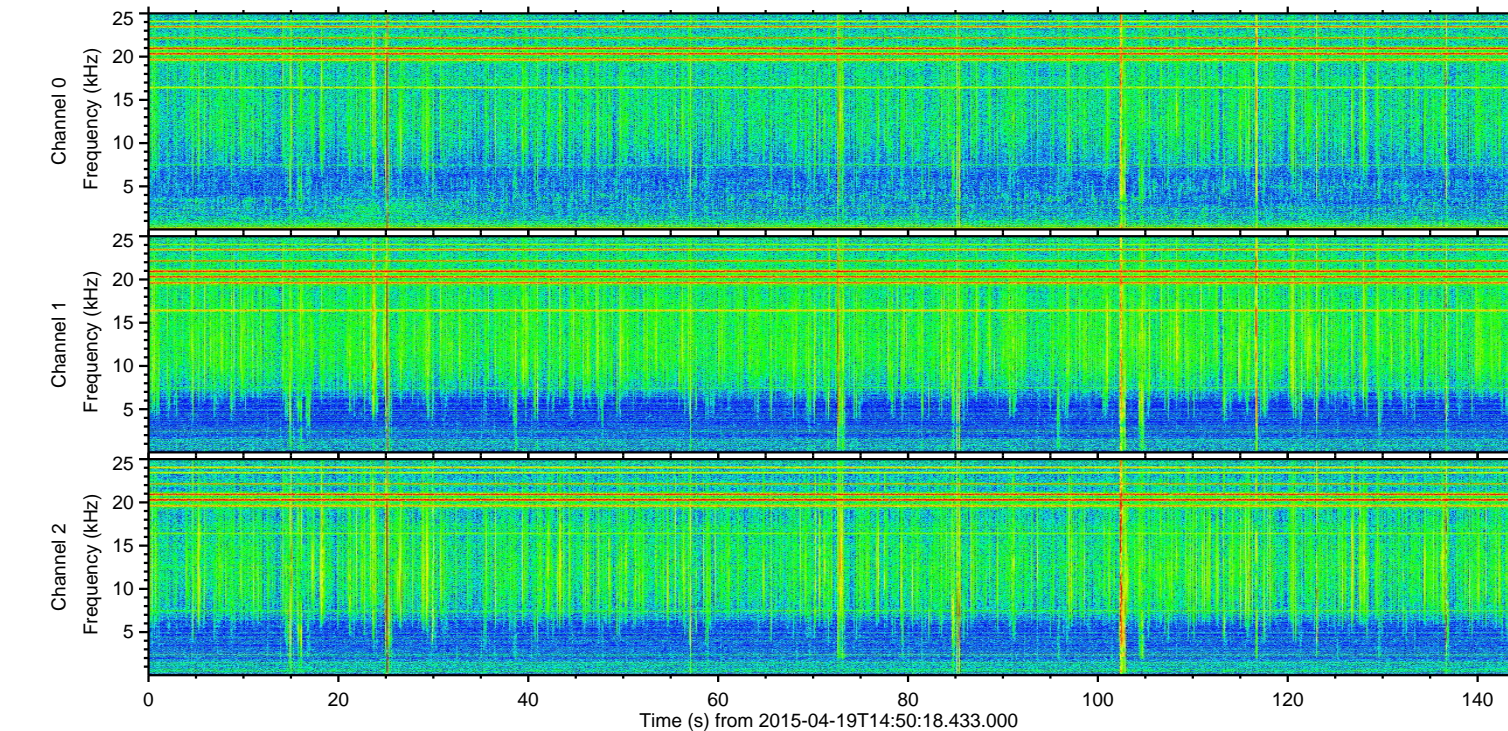
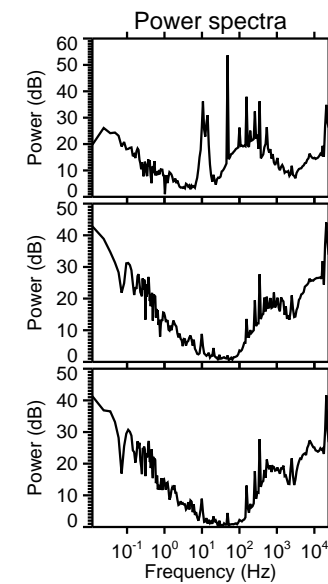
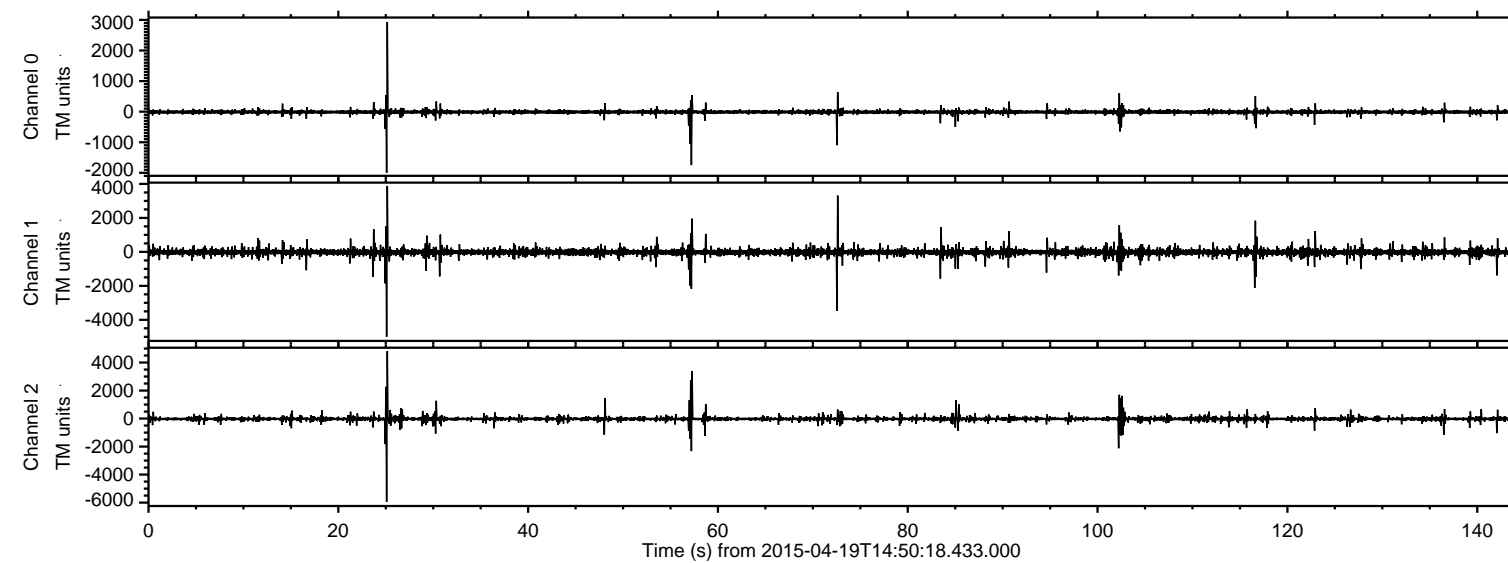


# ELMAVAN 3D WAVEFORMS (Measured data sampled at 50 kHz) 49779 packets of 144 samples from 2015-04-19T14:50:18.433.000.

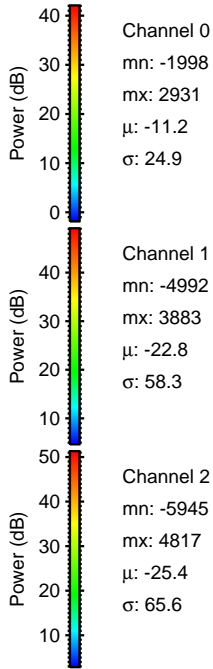
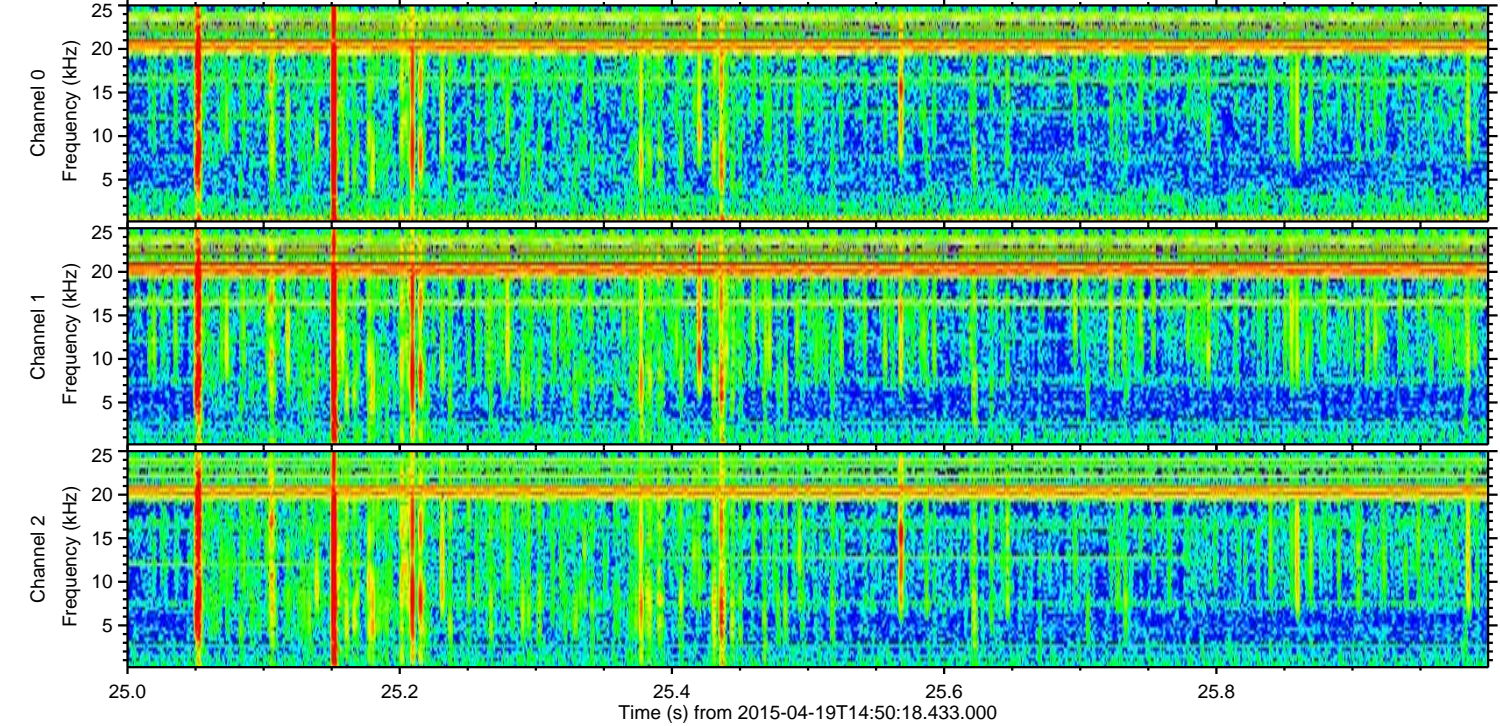
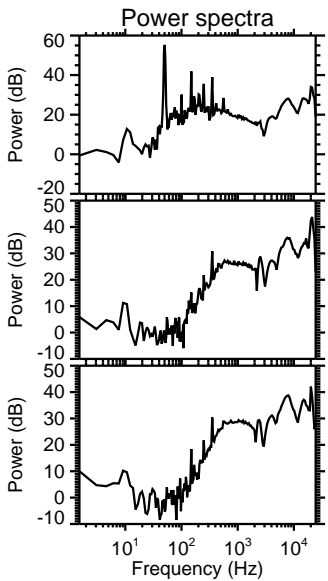
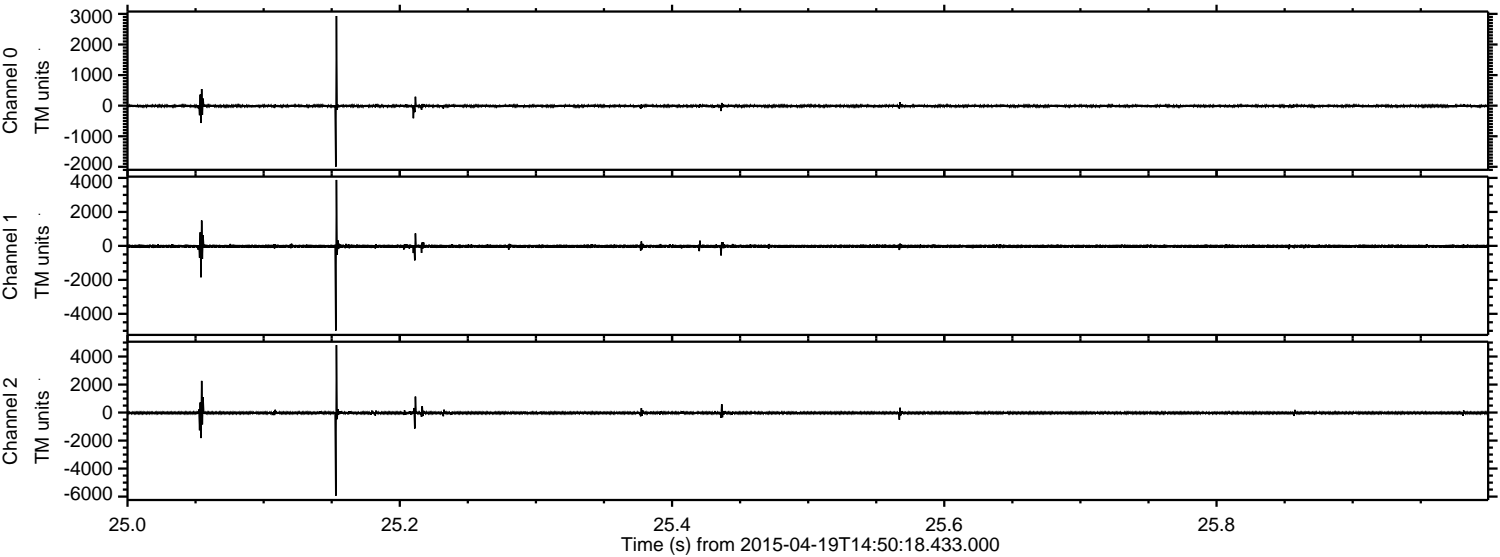
Processed Sun Apr 19 16:57:43 2015 by ELM ver.2012-10-06 from 001\_\_elm20150419\_145017\_\_dat00.bin





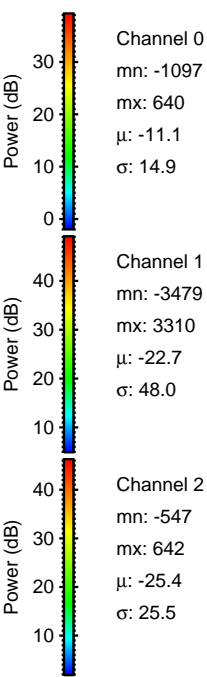
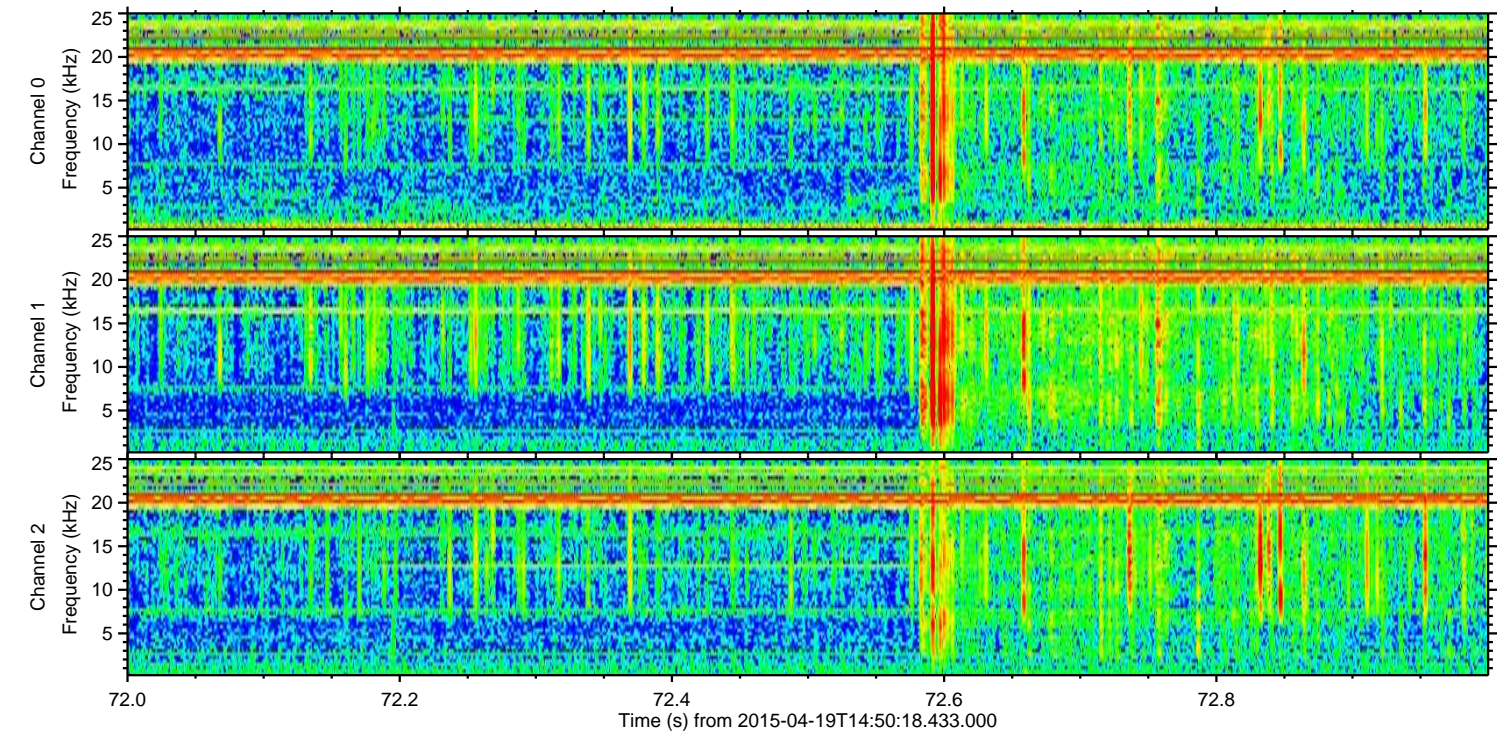
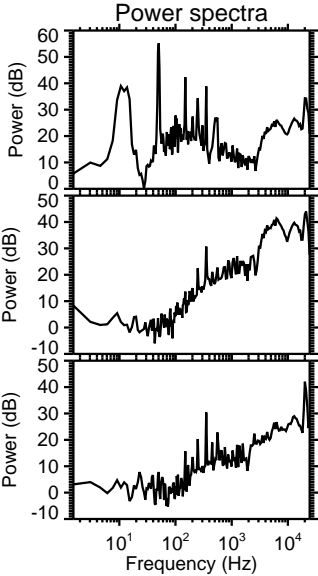
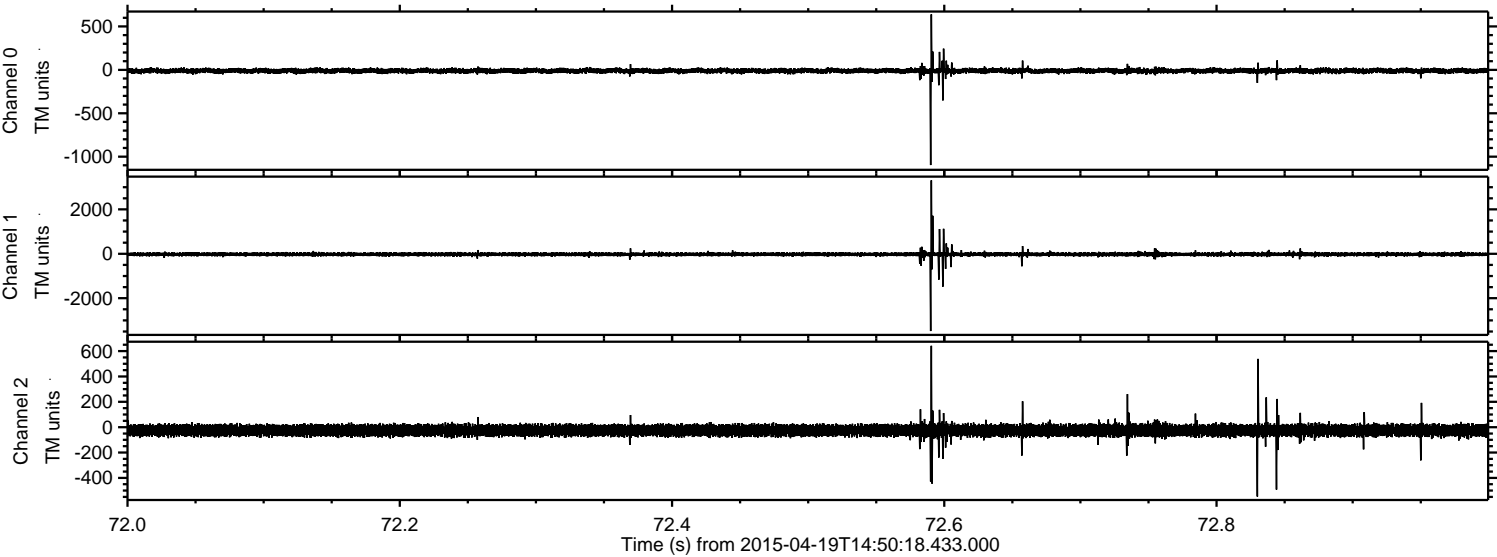
ELMAVAN 3D WAVEFORMS (Measured data sampled at 50 kHz) 49779 packets of 144 samples from 2015-04-19T14:50:18.433.000. Part 26/144

Processed Sun Apr 19 16:57:54 2015 by ELM ver.2012-10-06 from 001\_\_elm20150419\_145017\_\_dat00.bin



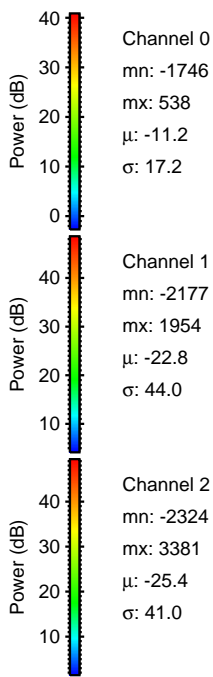
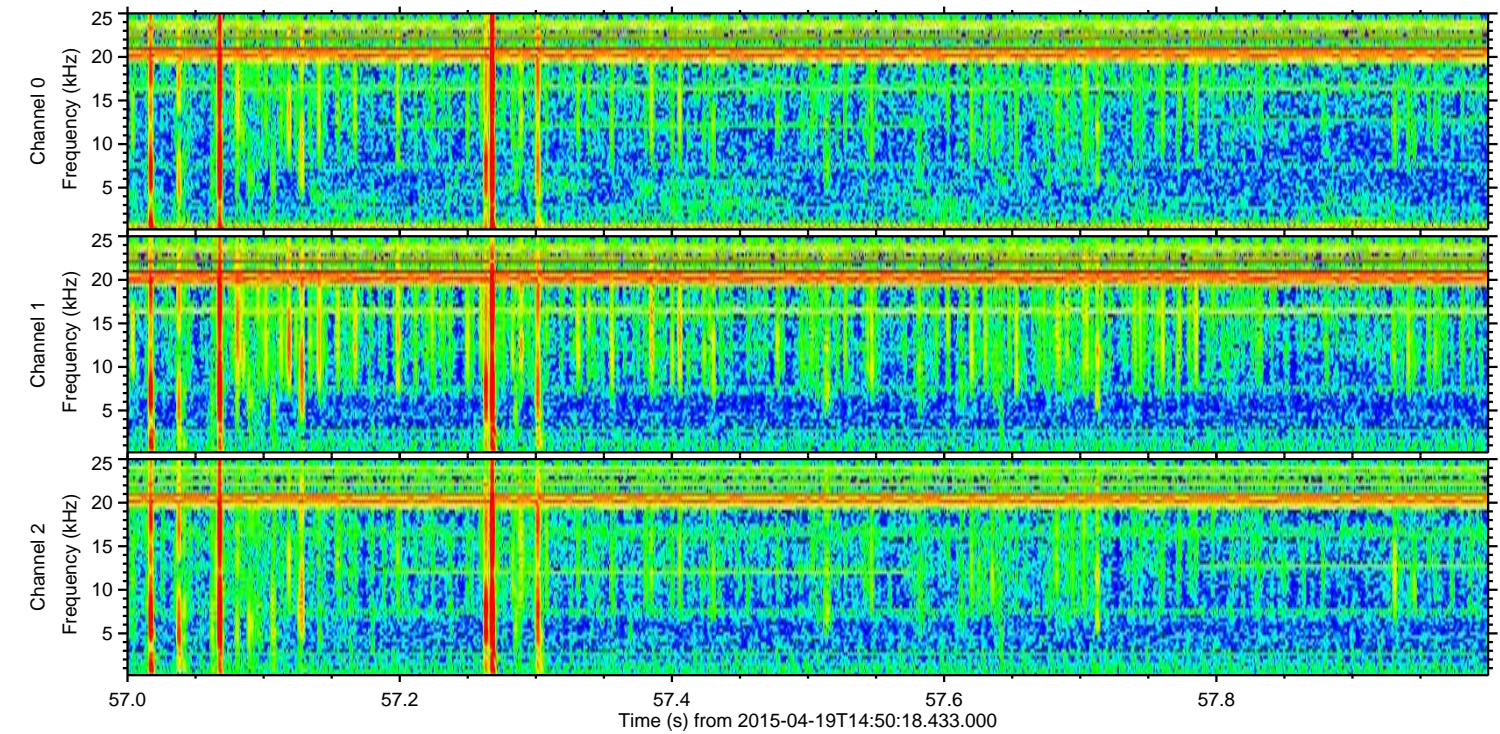
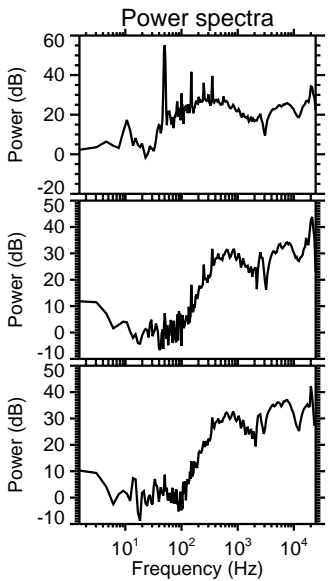
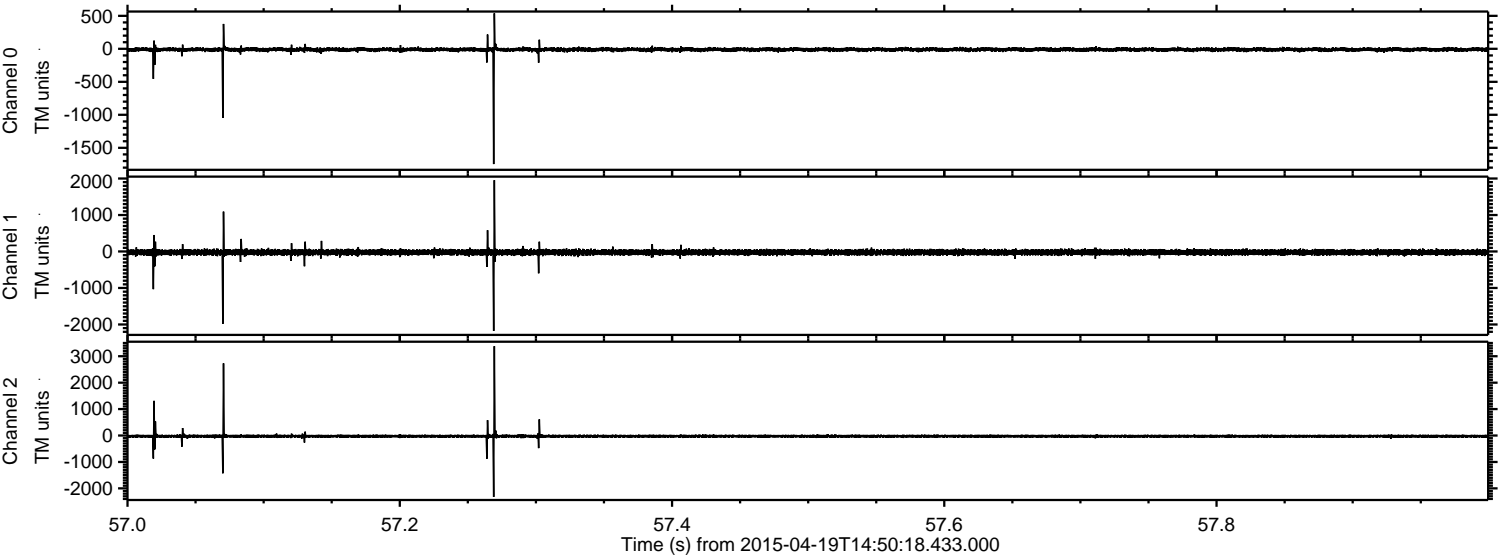


Processed Sun Apr 19 16:57:55 2015 by ELM ver.2012-10-06 from 001\_\_elm20150419\_145017\_\_dat00.bin





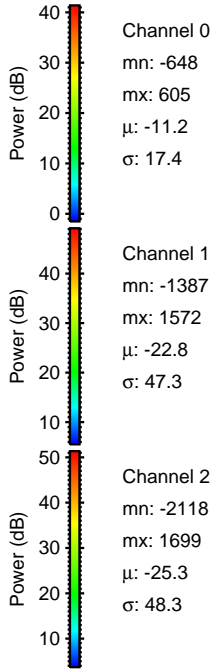
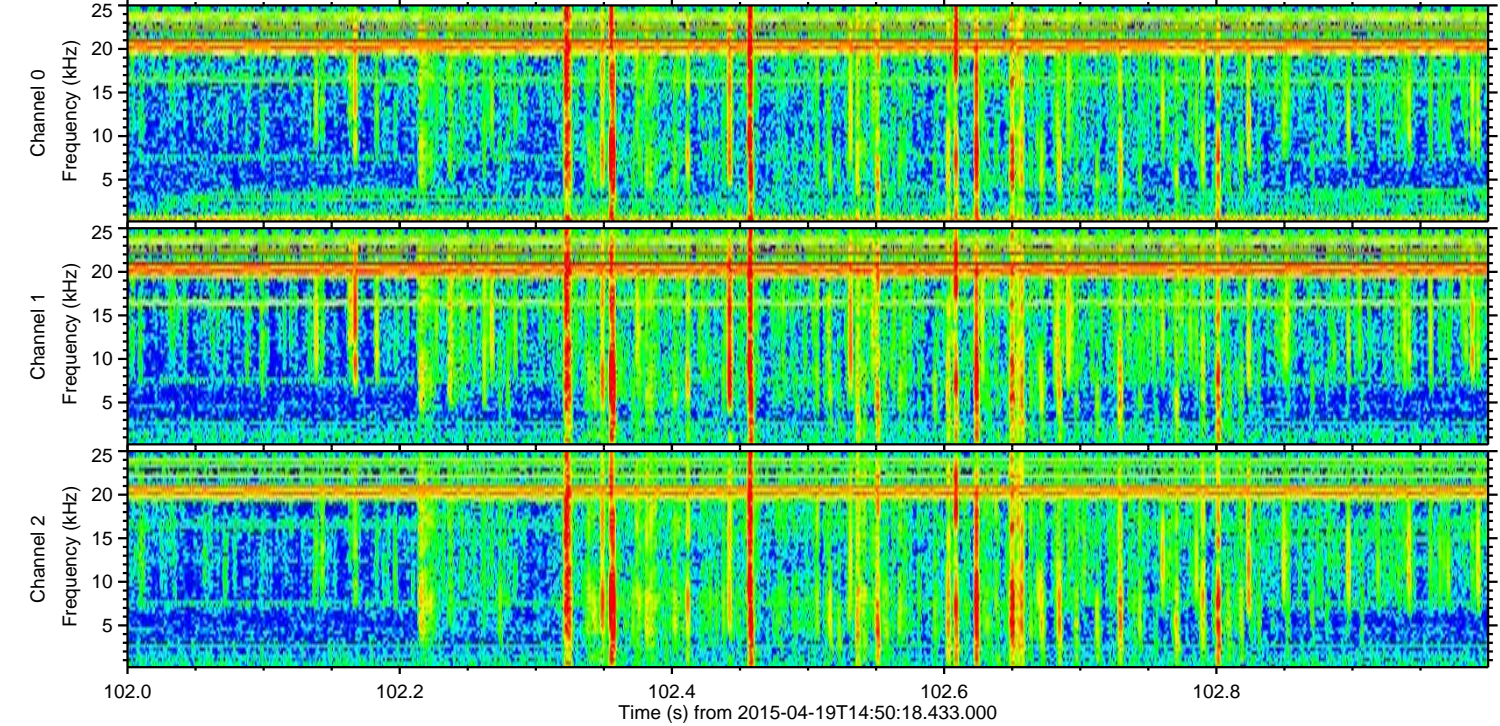
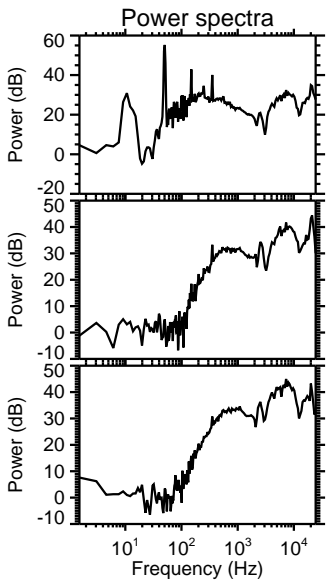
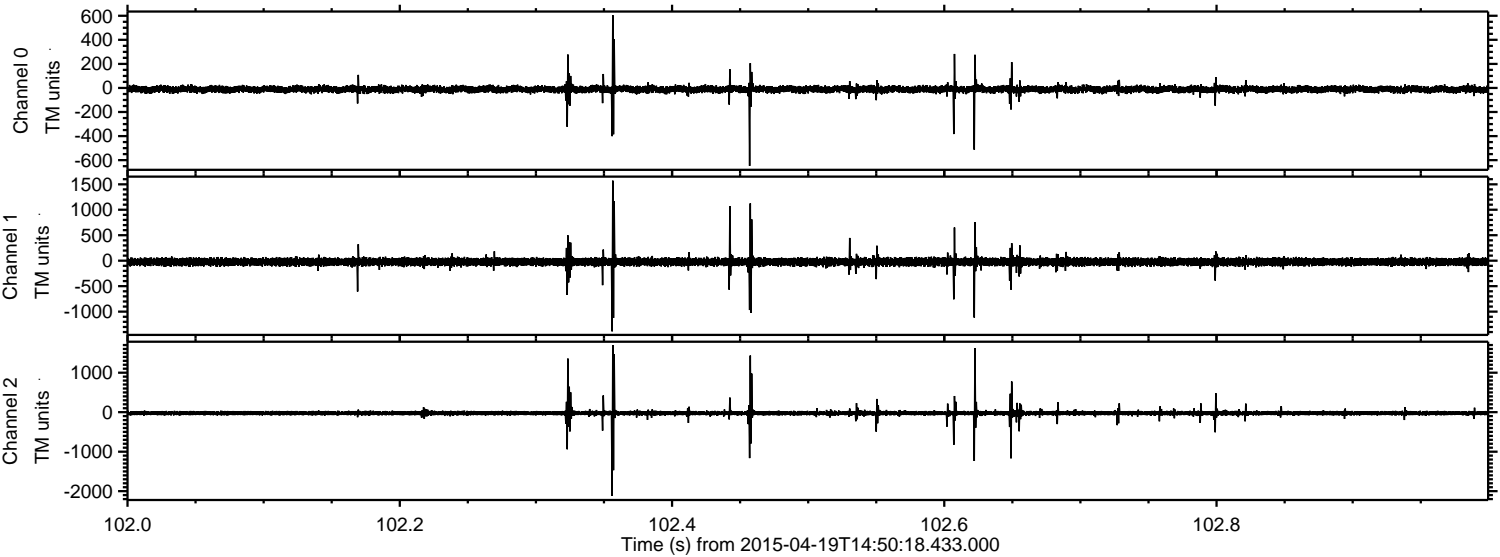
Processed Sun Apr 19 16:57:56 2015 by ELM ver.2012-10-06 from 001\_\_elm20150419\_145017\_\_dat00.bin





ELMAVAN 3D WAVEFORMS (Measured data sampled at 50 kHz) 49779 packets of 144 samples from 2015-04-19T14:50:18.433.000. Part 103/144

Processed Sun Apr 19 16:57:57 2015 by ELM ver.2012-10-06 from 001\_\_elm20150419\_145017\_\_dat00.bin



Channel 0  
mn: -648  
mx: 605  
 $\mu$ : -11.2  
 $\sigma$ : 17.4

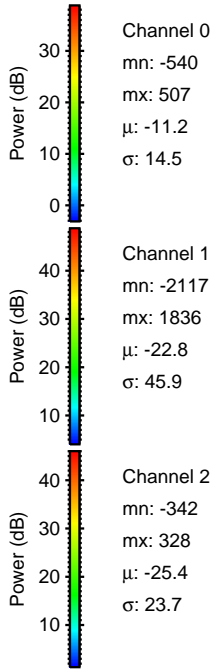
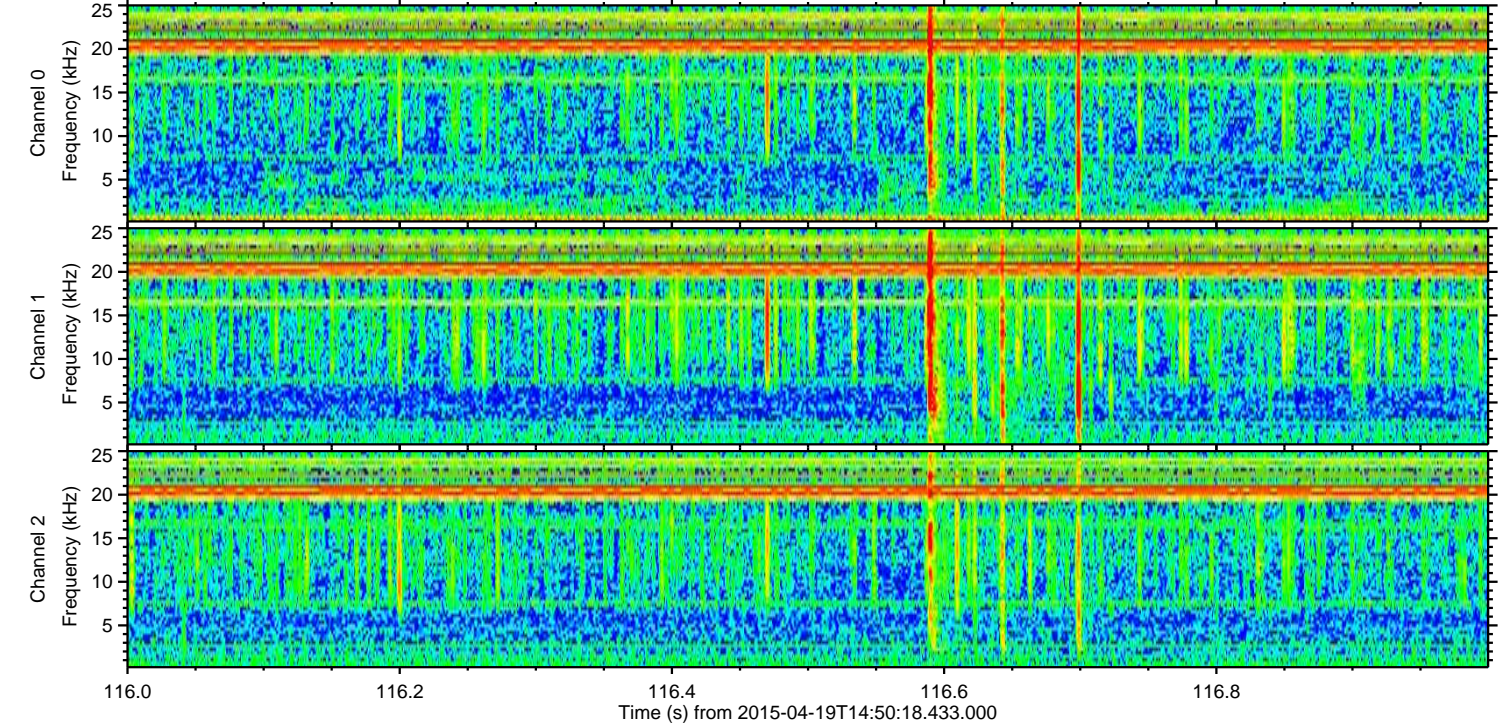
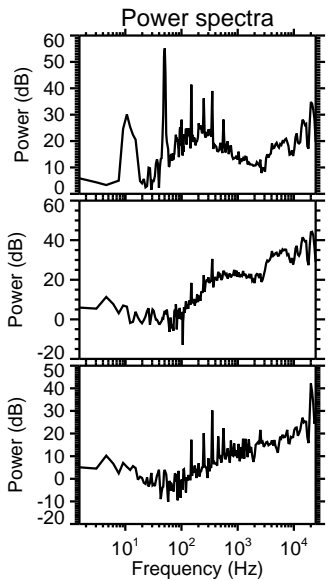
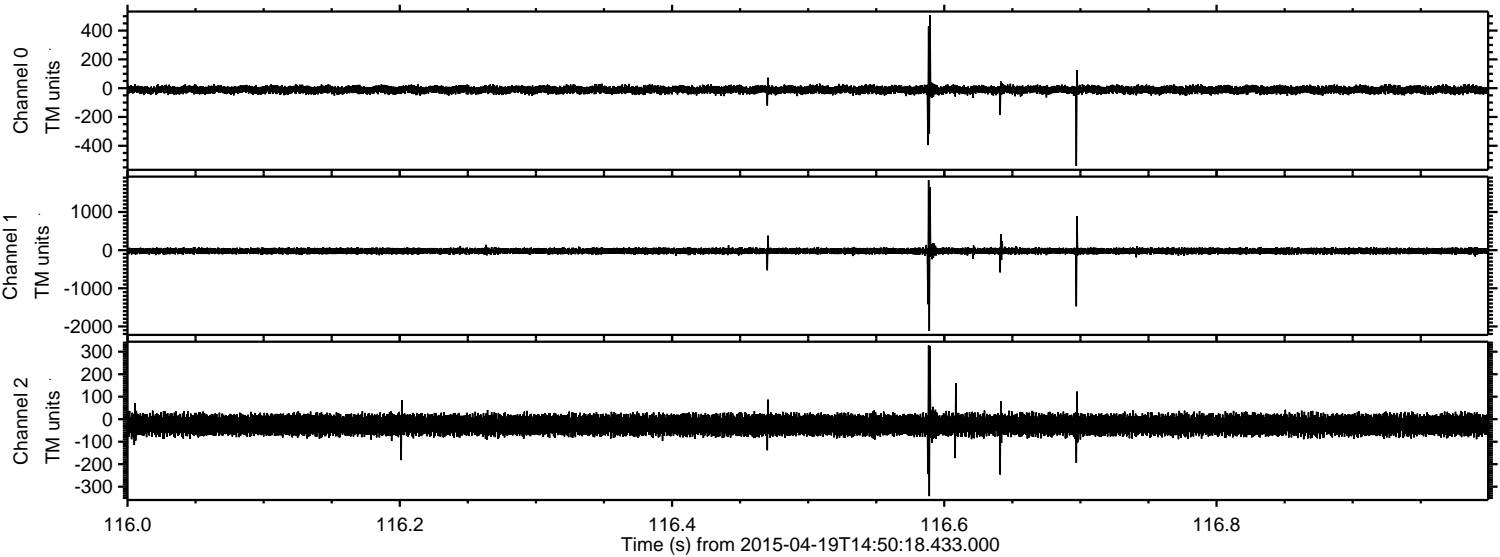
Channel 1  
mn: -1387  
mx: 1572  
 $\mu$ : -22.8  
 $\sigma$ : 47.3

Channel 2  
mn: -2118  
mx: 1699  
 $\mu$ : -25.3  
 $\sigma$ : 48.3



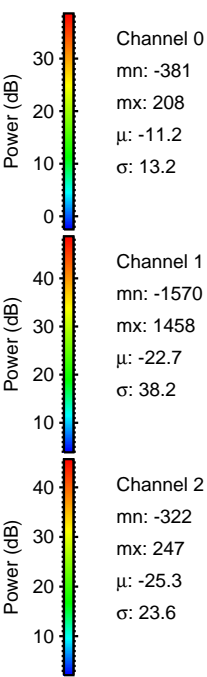
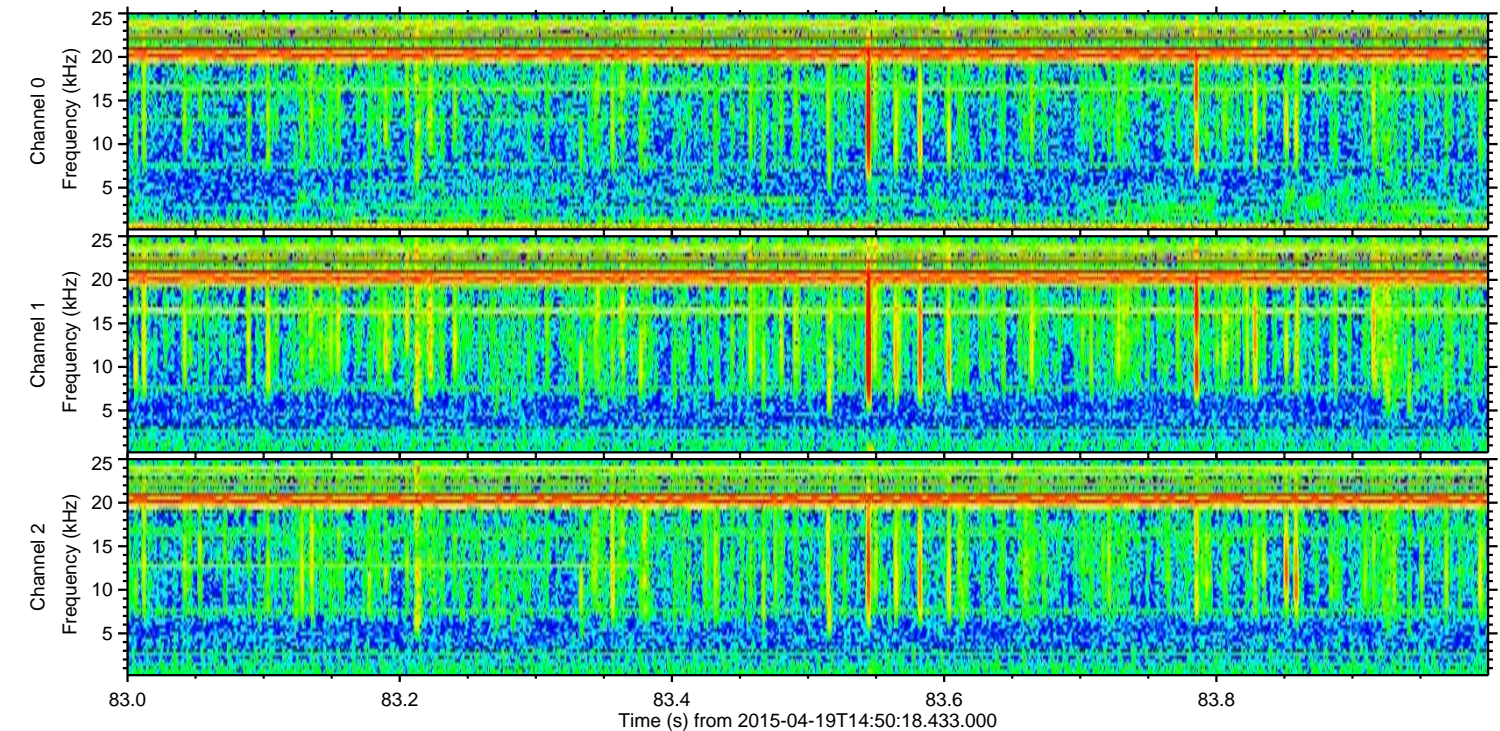
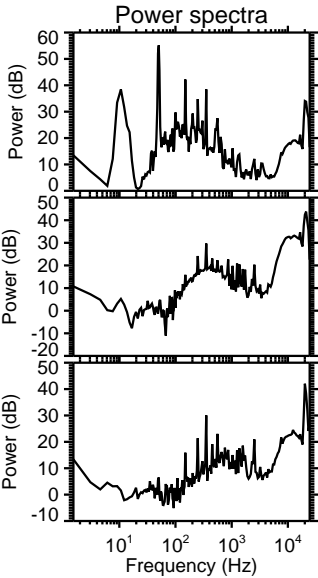
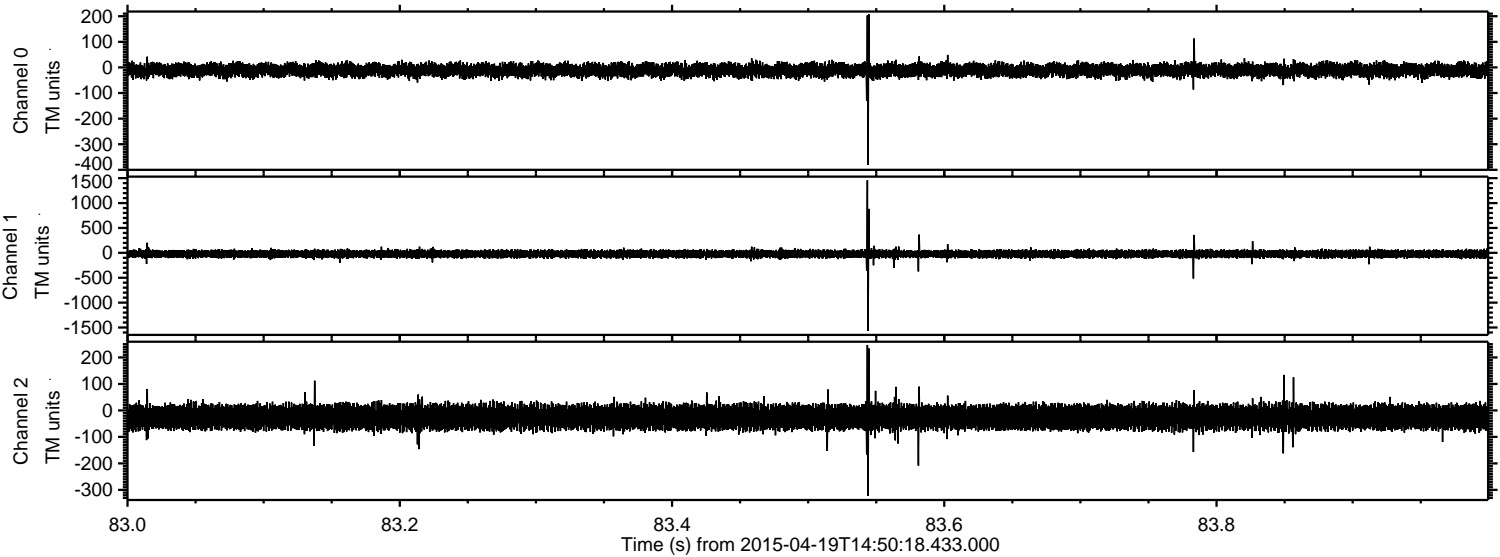
ELMAVAN 3D WAVEFORMS (Measured data sampled at 50 kHz) 49779 packets of 144 samples from 2015-04-19T14:50:18.433.000. Part 117/144

Processed Sun Apr 19 16:57:58 2015 by ELM ver.2012-10-06 from 001\_\_elm20150419\_145017\_\_dat00.bin



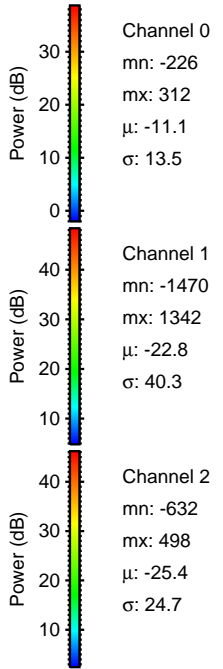
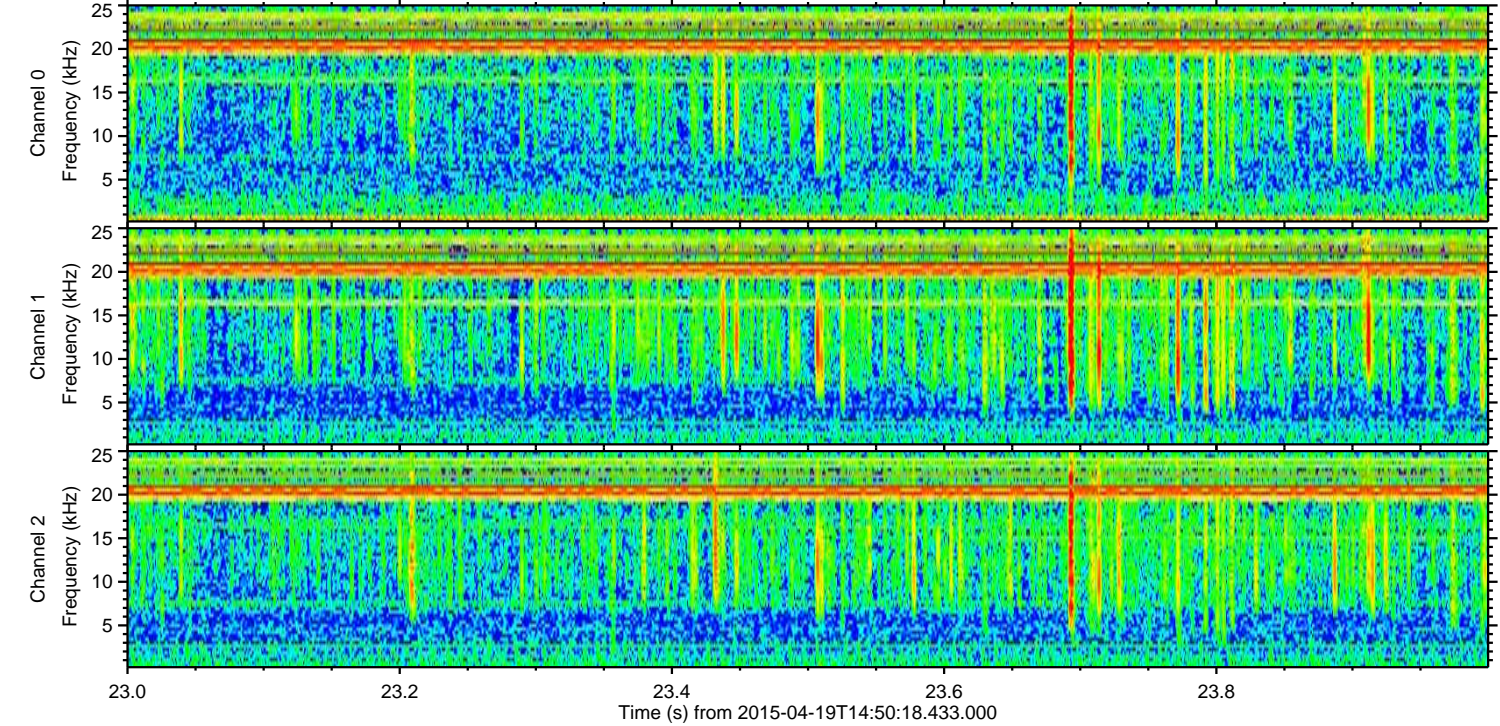
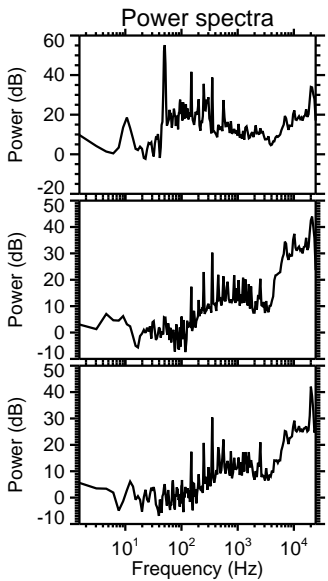
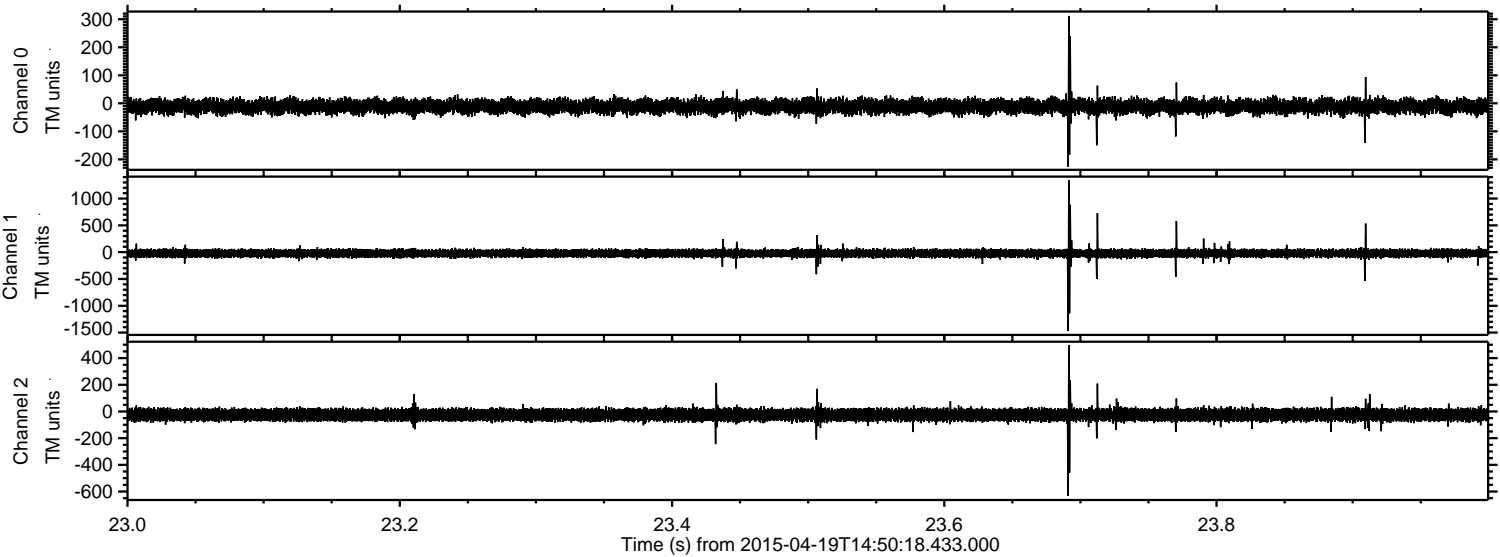


Processed Sun Apr 19 16:57:59 2015 by ELM ver.2012-10-06 from 001\_\_elm20150419\_145017\_\_dat00.bin



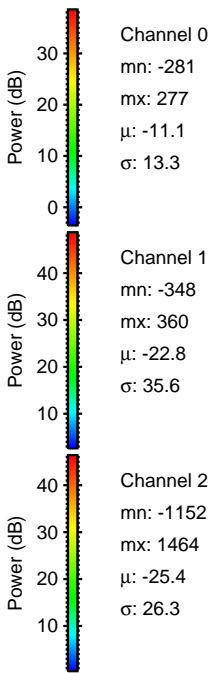
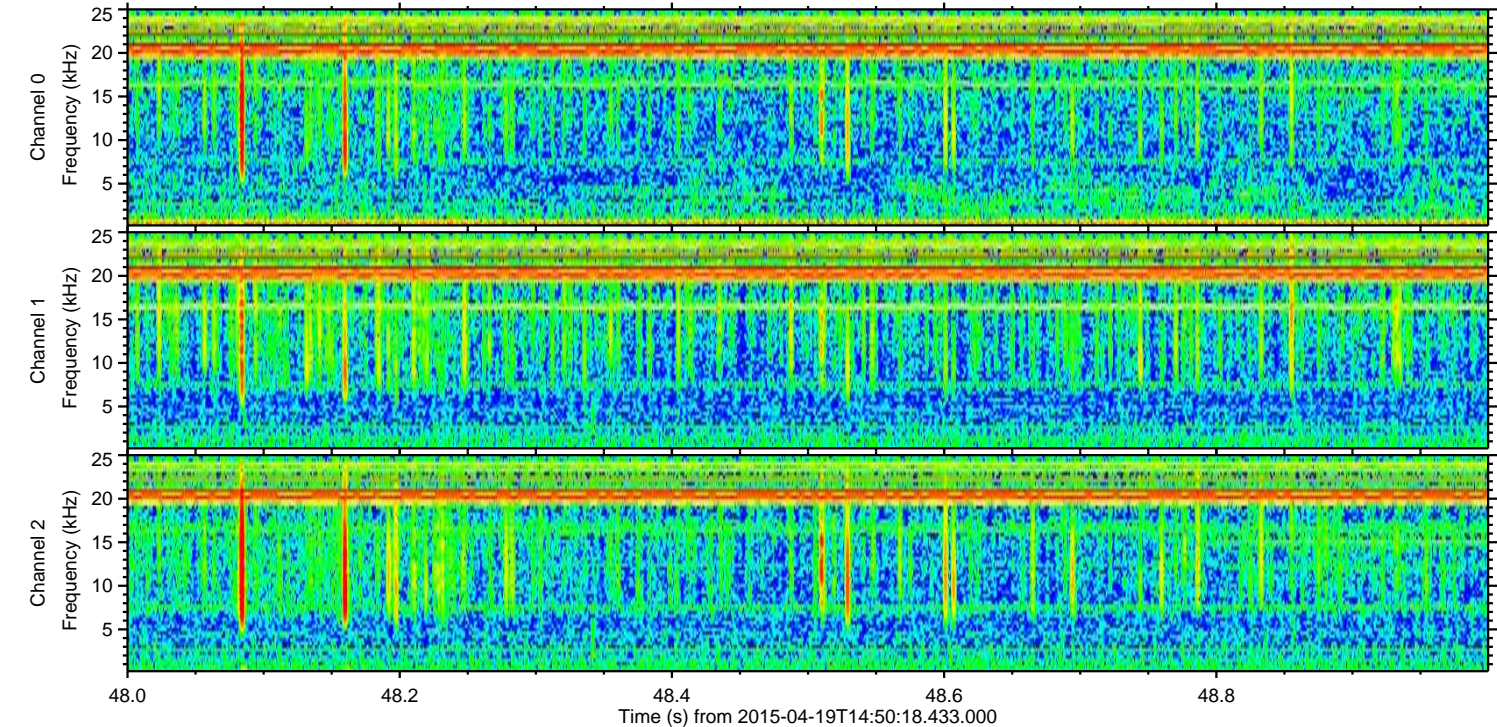
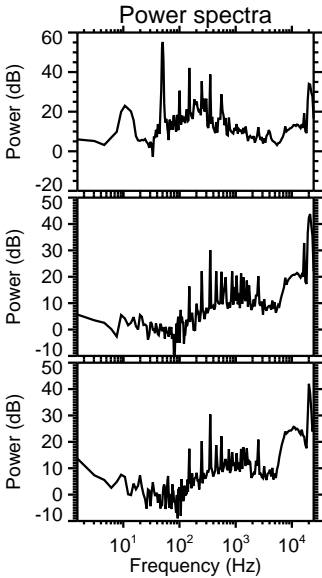
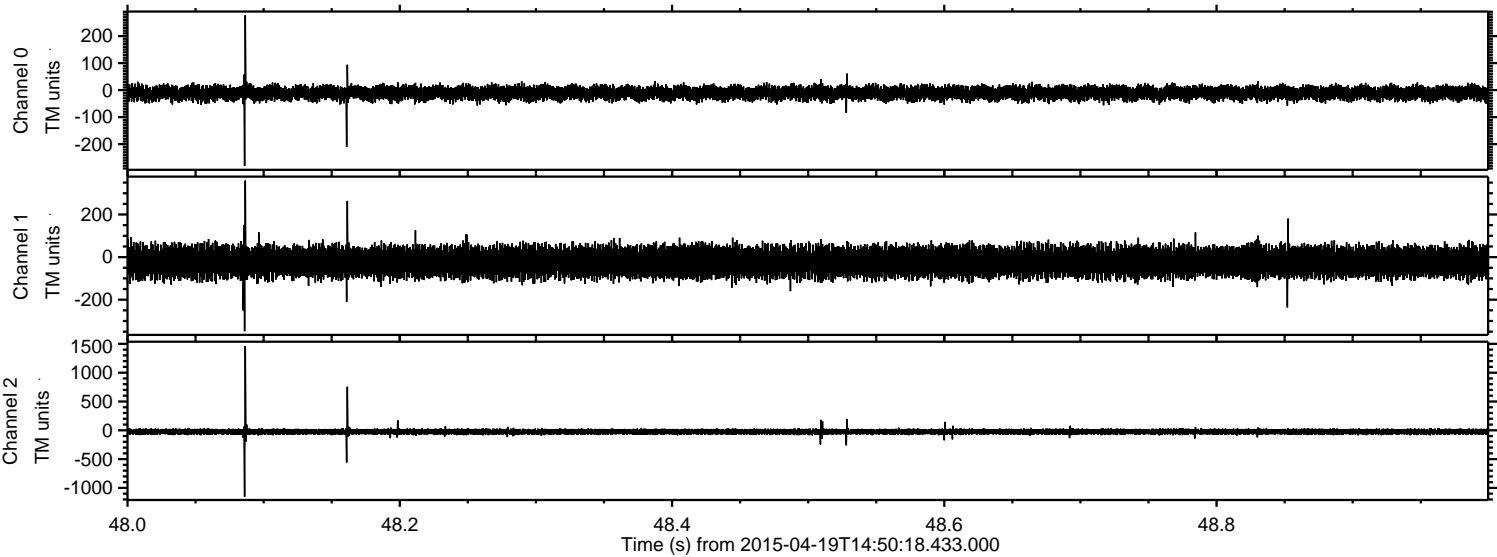


Processed Sun Apr 19 16:58:00 2015 by ELM ver.2012-10-06 from 001\_\_elm20150419\_145017\_\_dat00.bin





Processed Sun Apr 19 16:58:00 2015 by ELM ver.2012-10-06 from 001\_\_elm20150419\_145017\_\_dat00.bin





Processed Sun Apr 19 16:58:01 2015 by ELM ver.2012-10-06 from 001\_\_elm20150419\_145017\_\_dat00.bin

