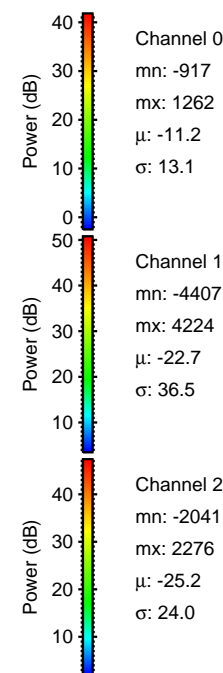
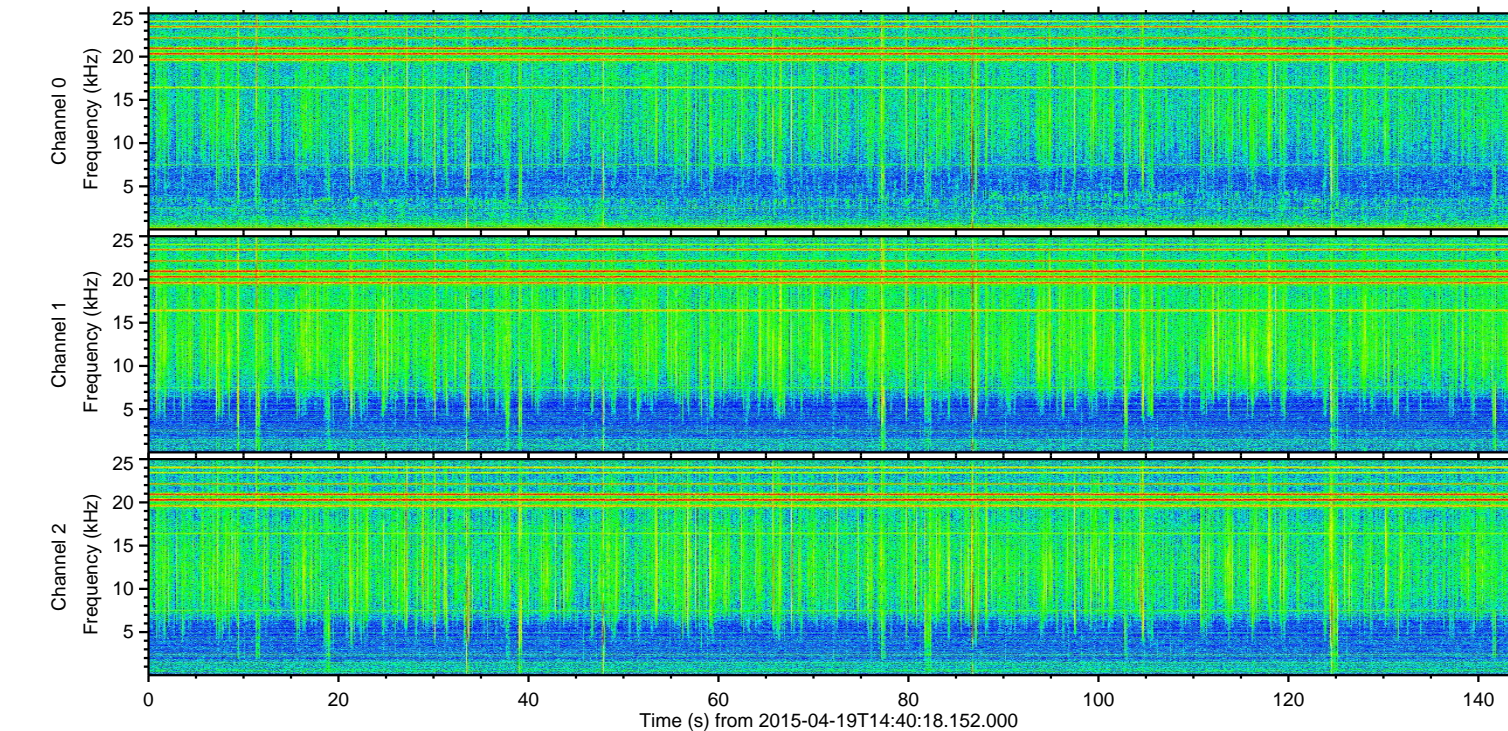
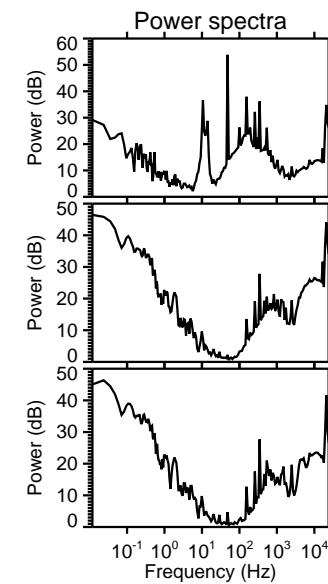
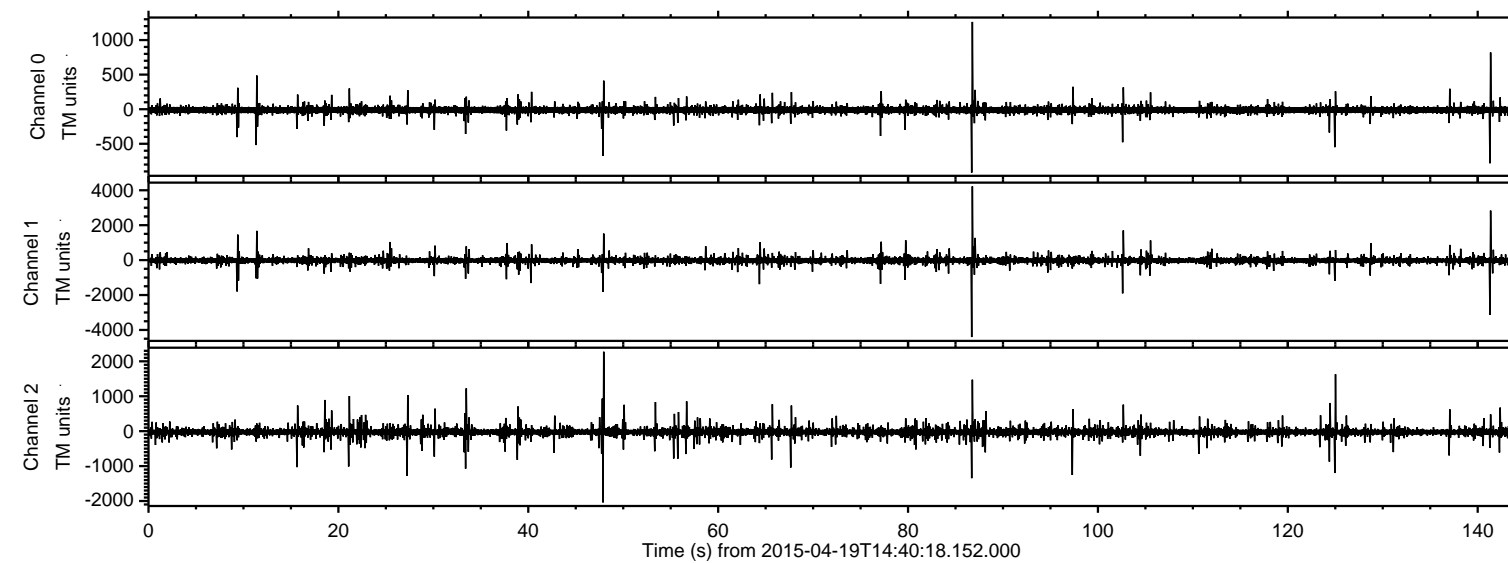
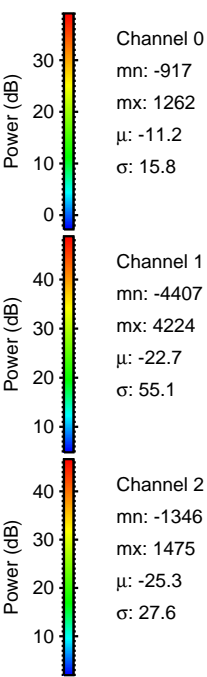
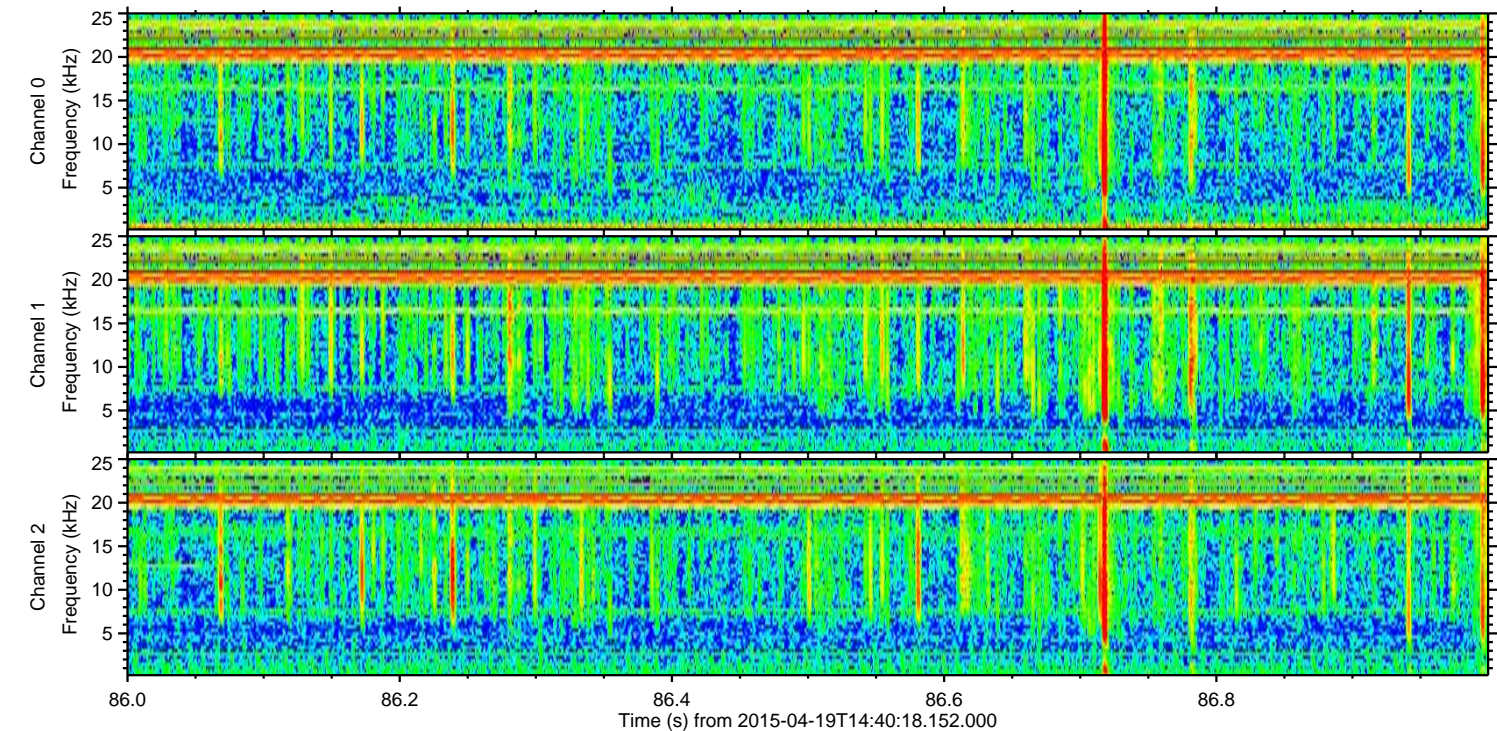
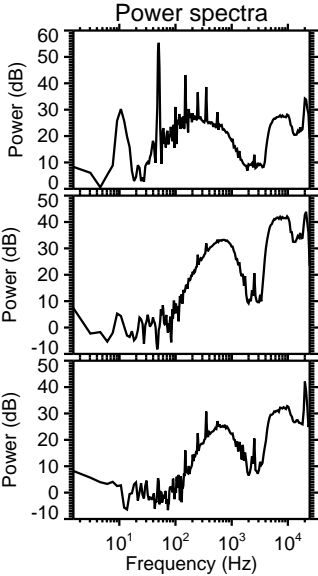
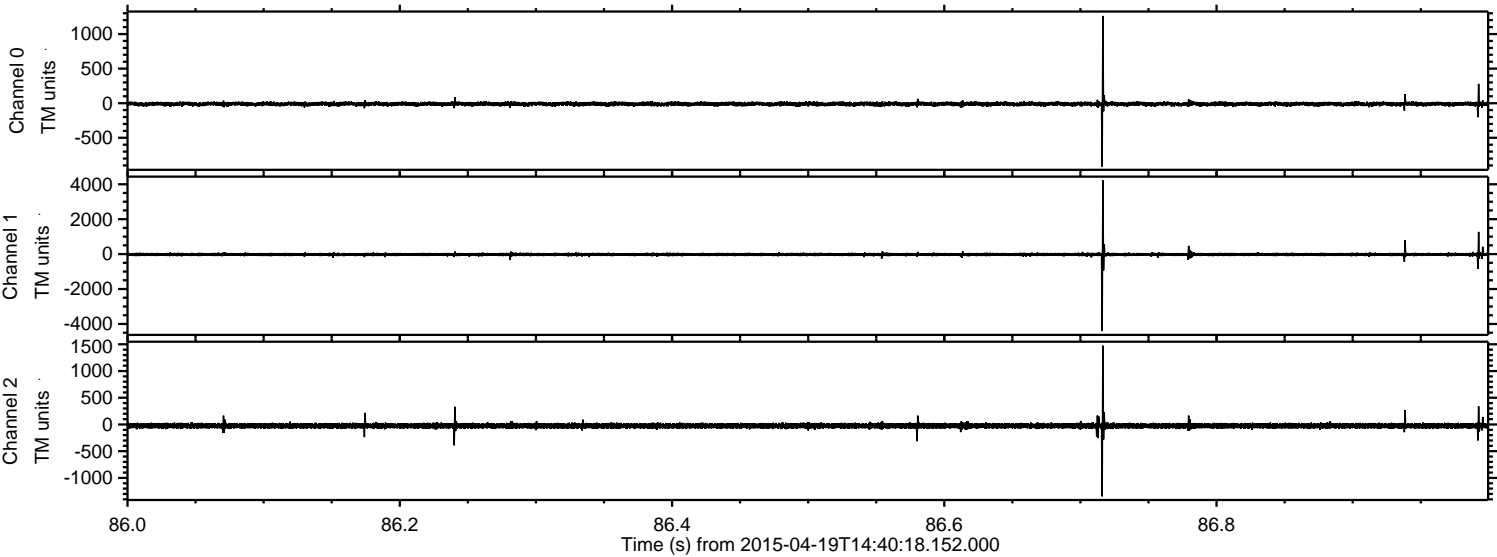


ELMAVAN 3D WAVEFORMS (Measured data sampled at 50 kHz) 49762 packets of 144 samples from 2015-04-19T14:40:18.152.000.

Processed Sun Apr 19 16:47:17 2015 by ELM ver.2012-10-06 from 001__elm20150419_144017__dat00.bin

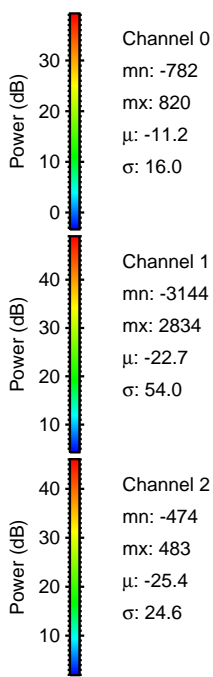
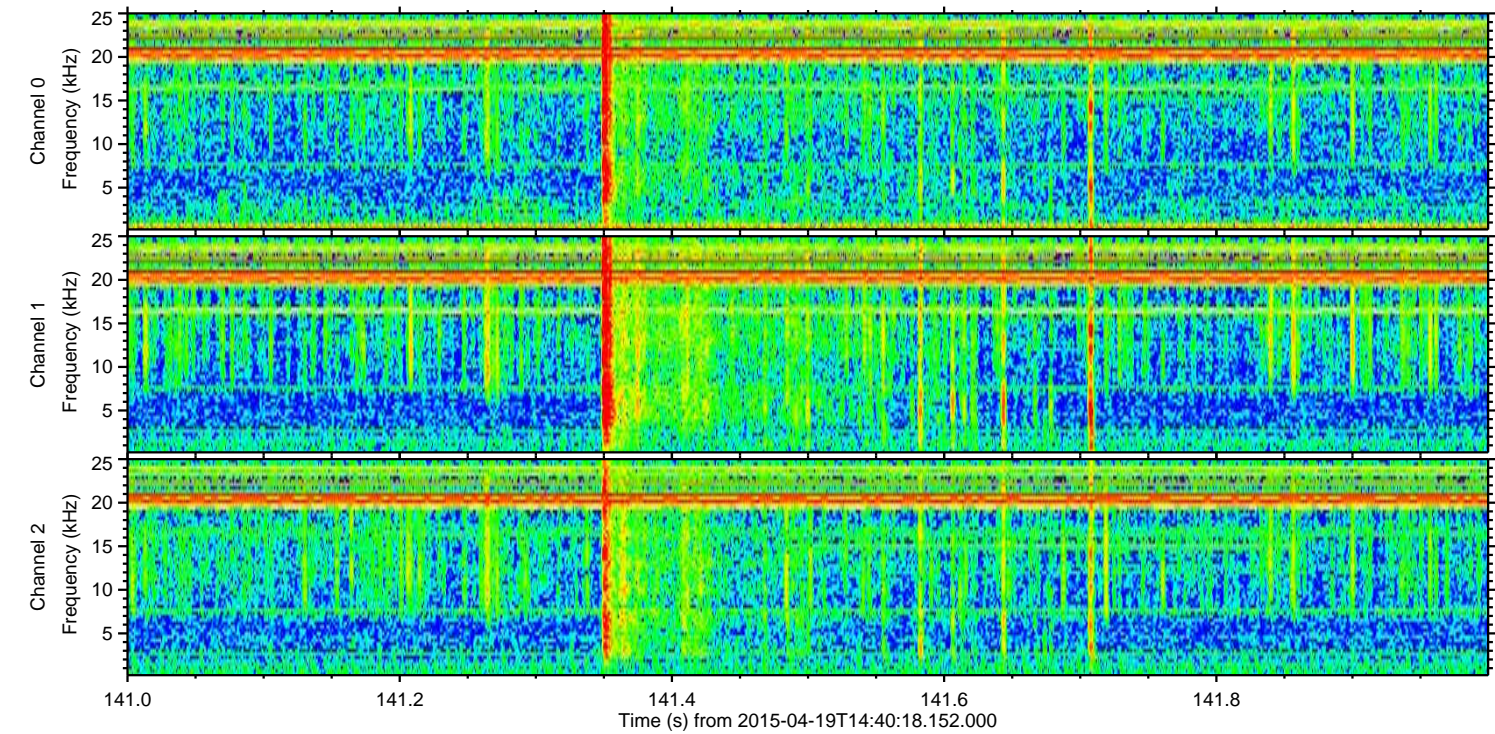
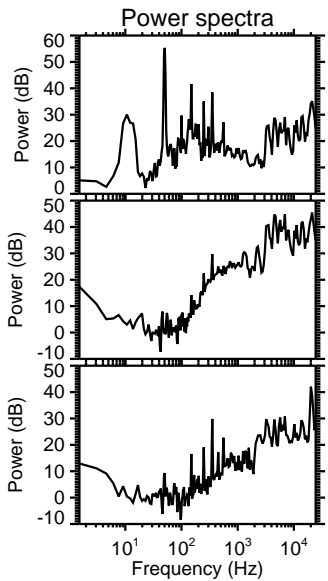
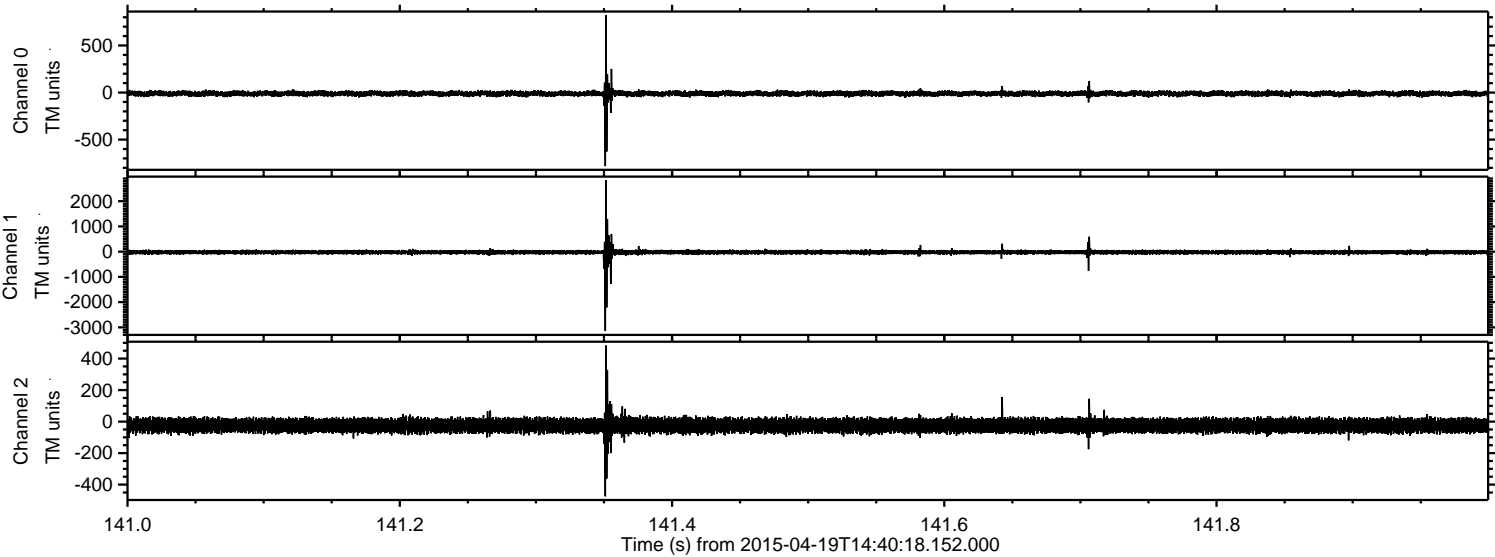


Processed Sun Apr 19 16:47:28 2015 by ELM ver.2012-10-06 from 001__elm20150419_144017__dat00.bin

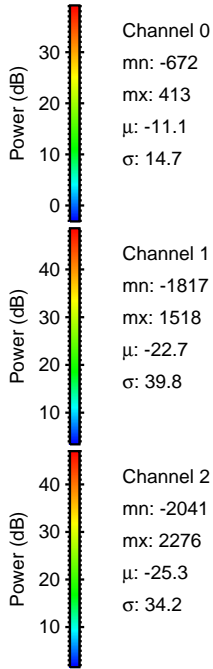
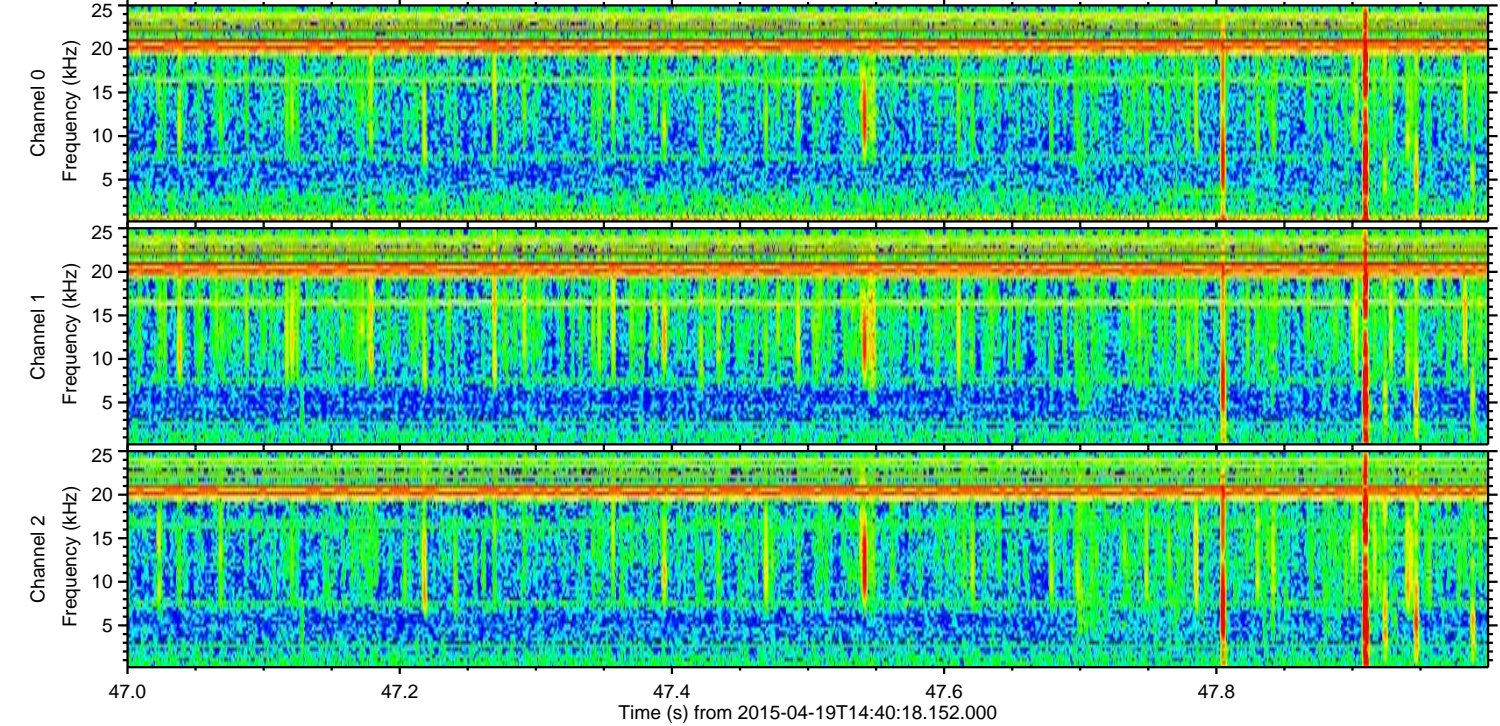
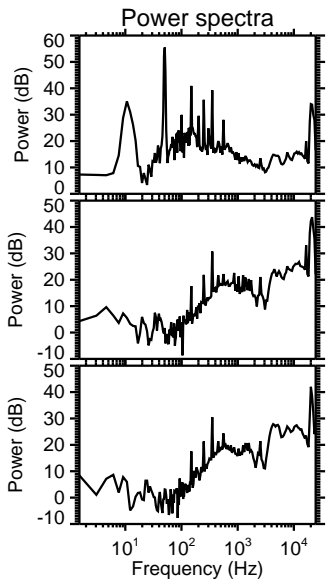
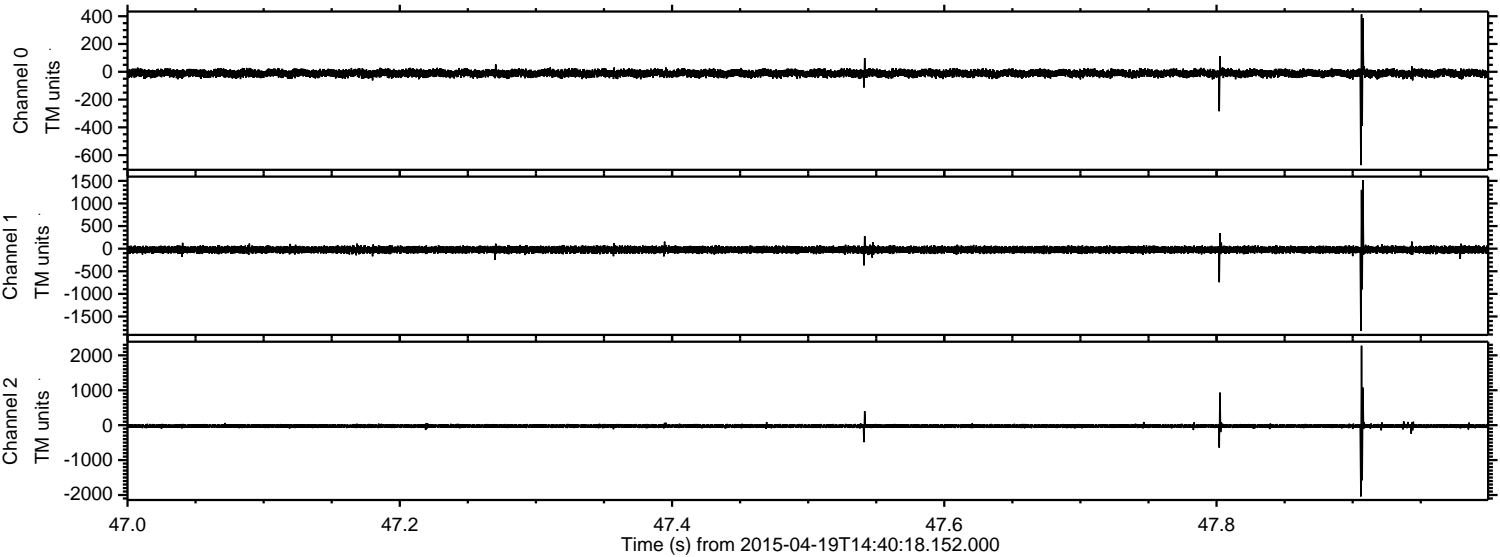


ELMAVAN 3D WAVEFORMS (Measured data sampled at 50 kHz) 49762 packets of 144 samples from 2015-04-19T14:40:18.152.000. Part 142/144

Processed Sun Apr 19 16:47:29 2015 by ELM ver.2012-10-06 from 001__elm20150419_144017__dat00.bin



Processed Sun Apr 19 16:47:30 2015 by ELM ver.2012-10-06 from 001__elm20150419_144017__dat00.bin

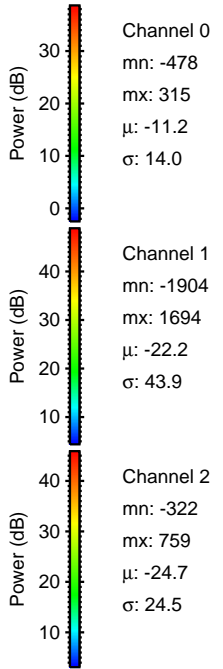
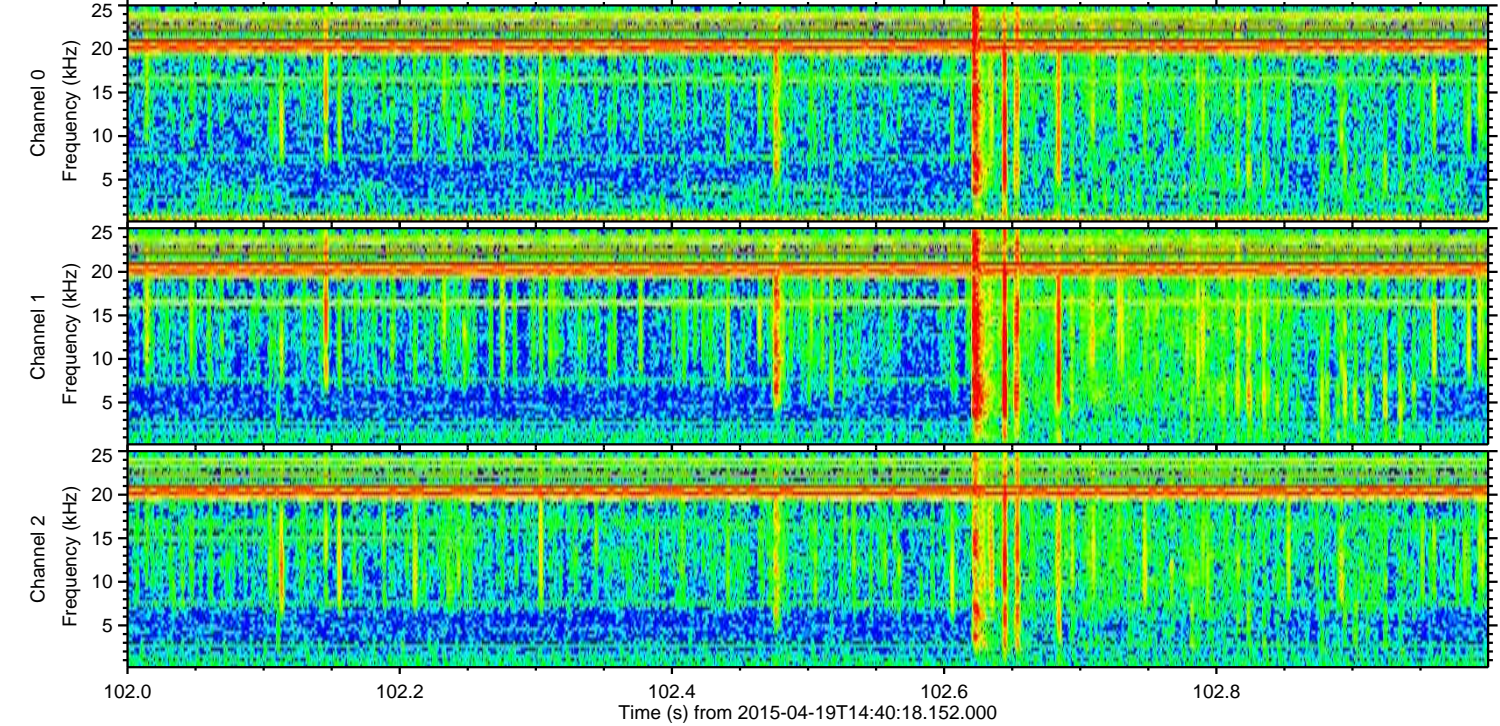
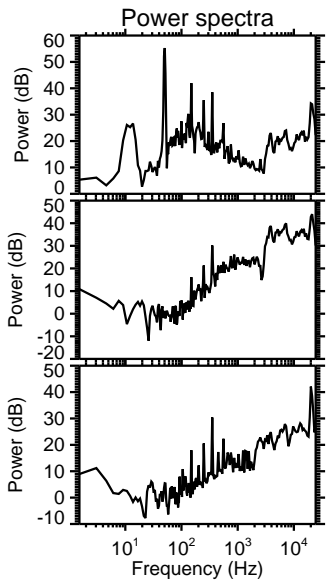
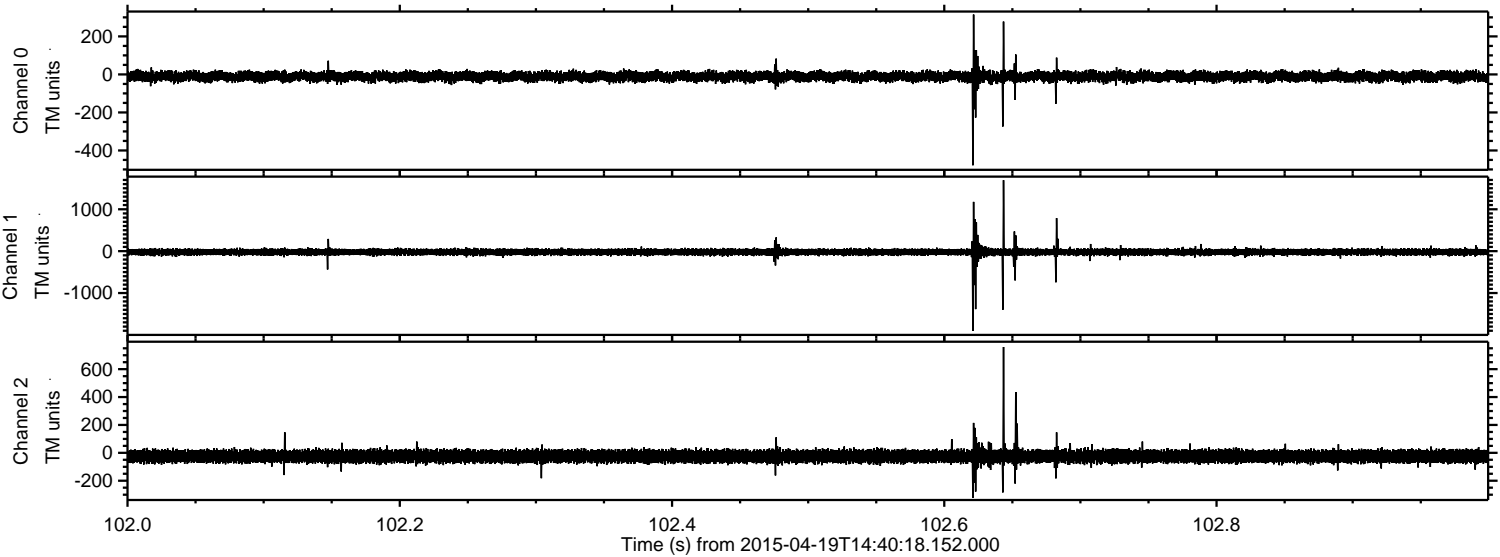


Channel 0
mn: -672
mx: 413
 μ : -11.1
 σ : 14.7

Channel 1
mn: -1817
mx: 1518
 μ : -22.7
 σ : 39.8

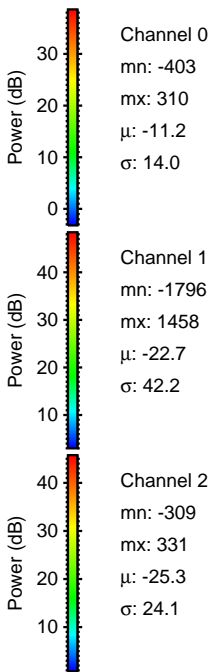
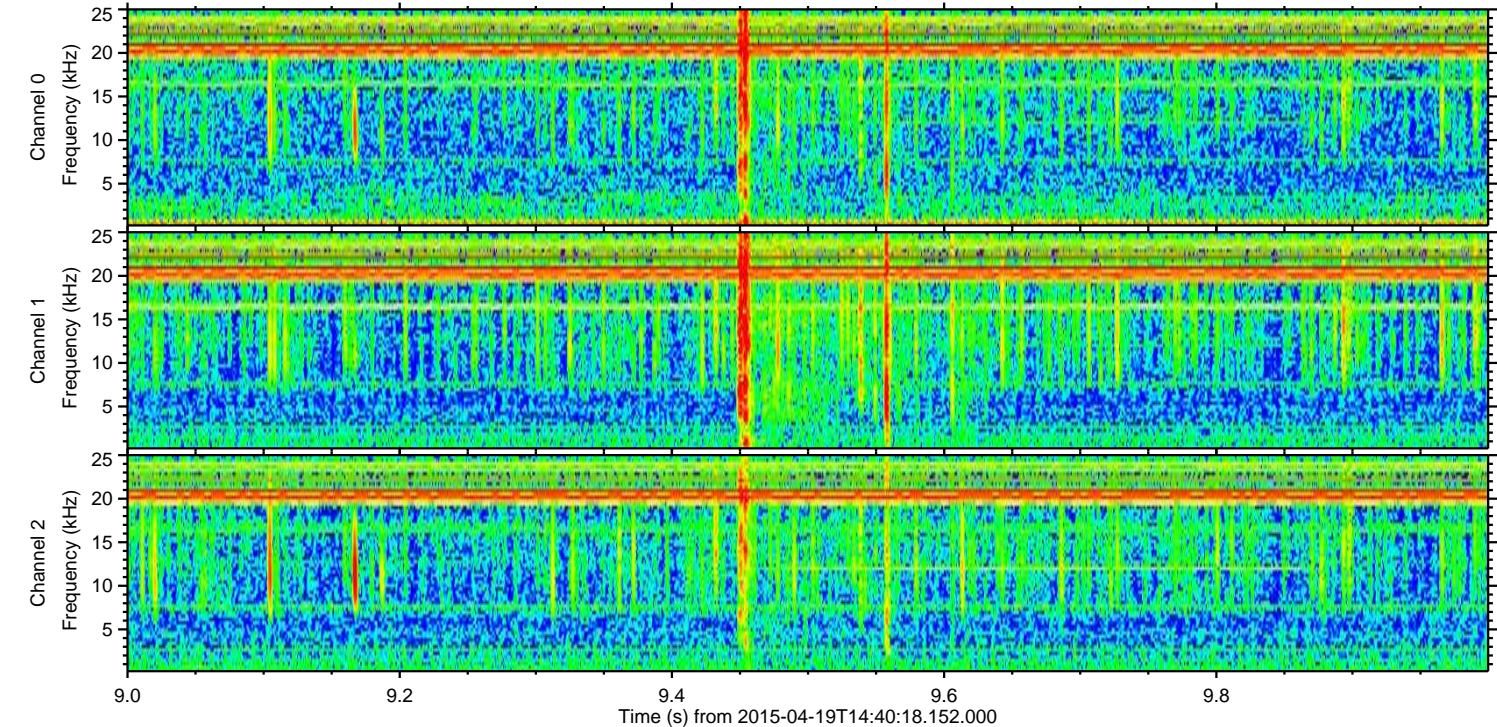
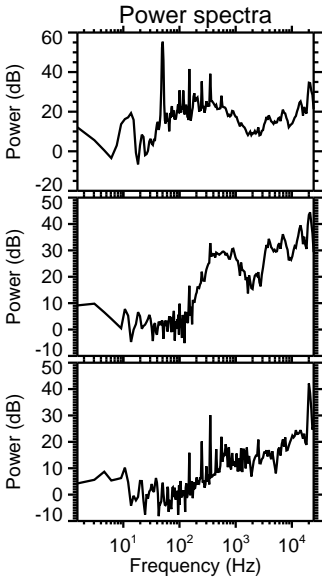
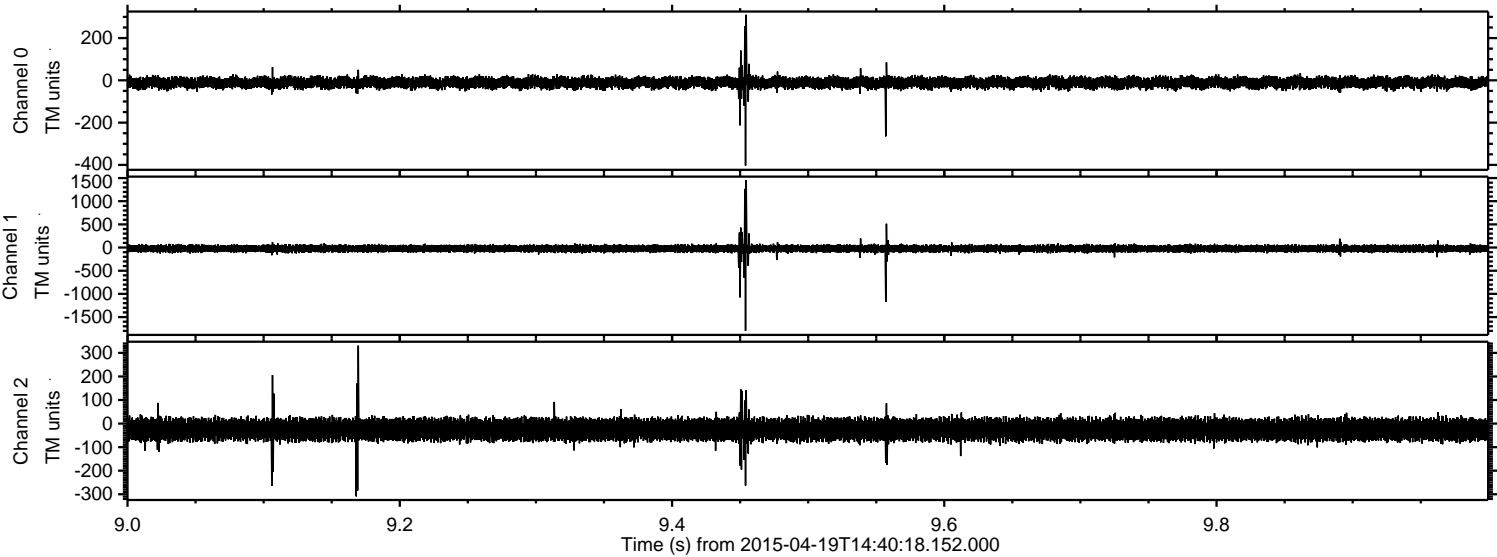
Channel 2
mn: -2041
mx: 2276
 μ : -25.3
 σ : 34.2

Processed Sun Apr 19 16:47:31 2015 by ELM ver.2012-10-06 from 001__elm20150419_144017__dat00.bin



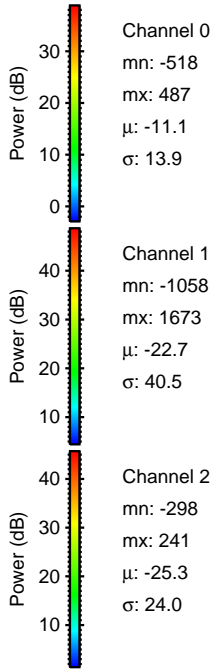
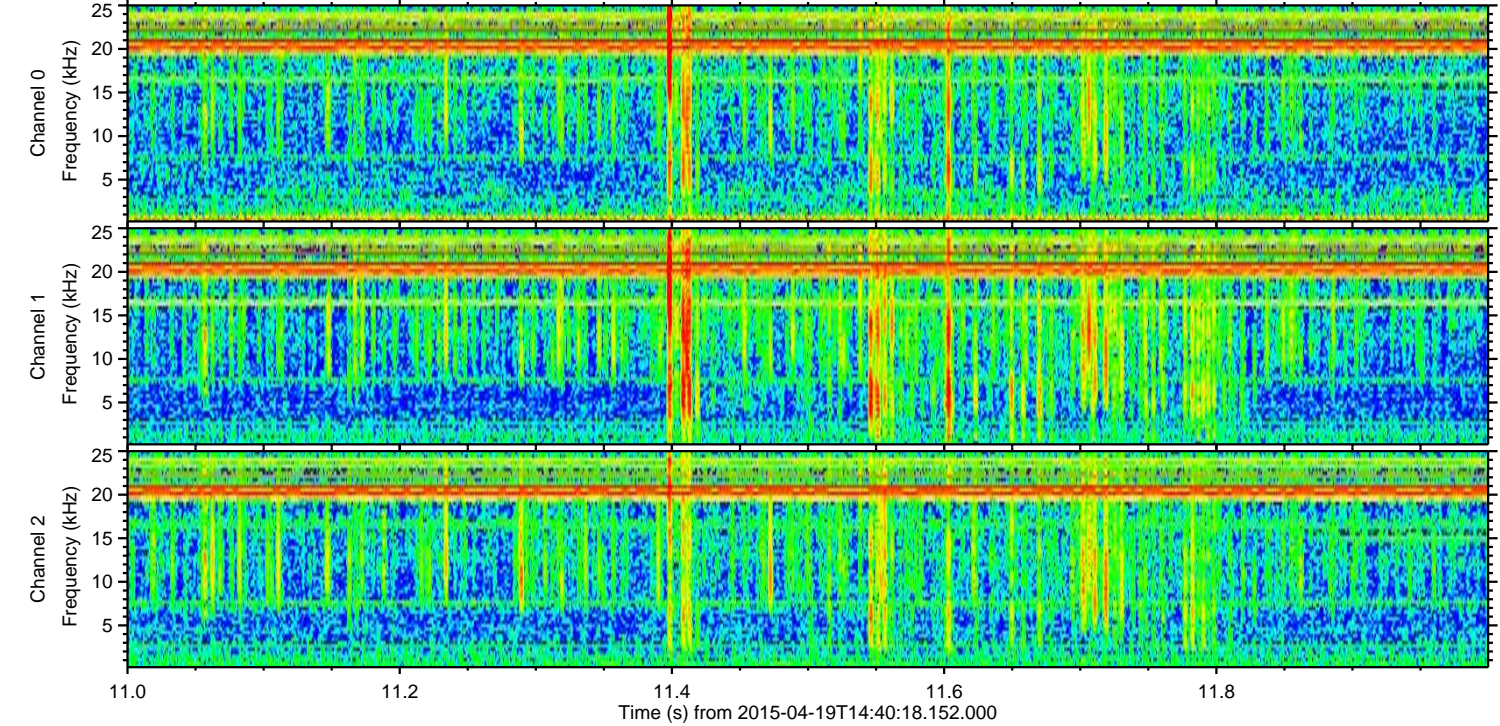
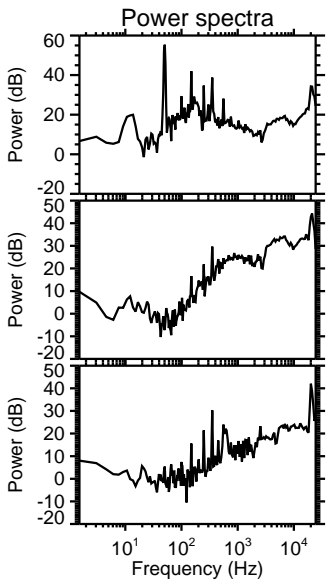
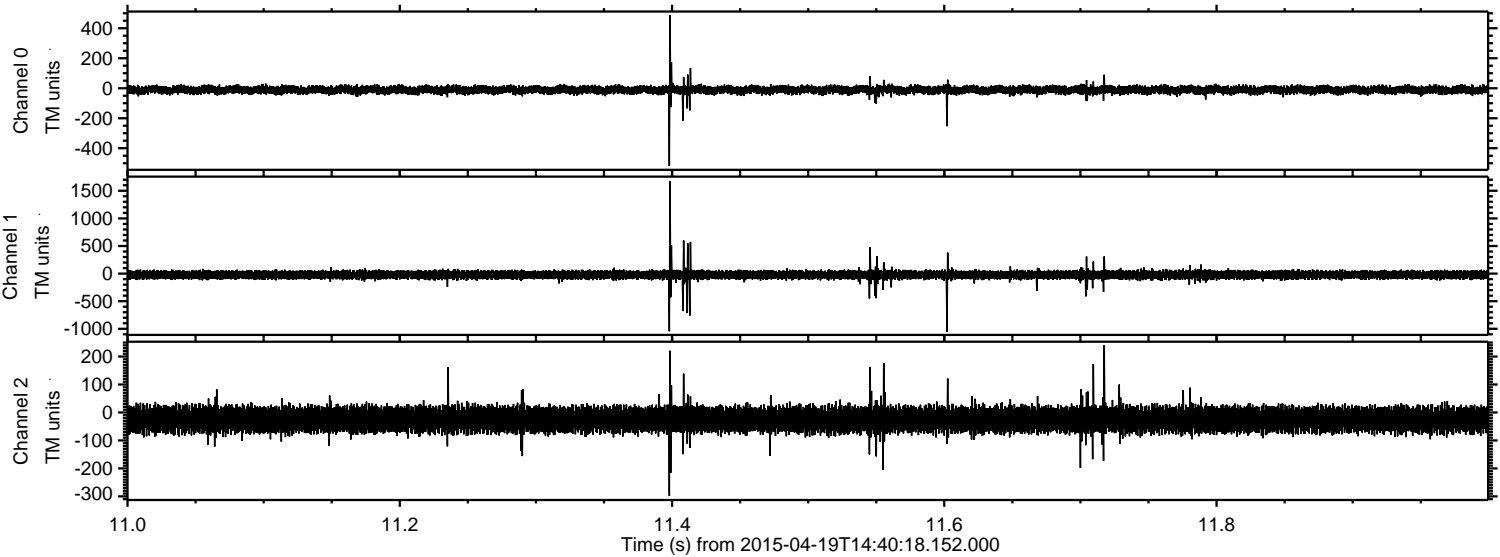
ELMAVAN 3D WAVEFORMS (Measured data sampled at 50 kHz) 49762 packets of 144 samples from 2015-04-19T14:40:18.152.000. Part 10/144

Processed Sun Apr 19 16:47:32 2015 by ELM ver.2012-10-06 from 001__elm20150419_144017__dat00.bin



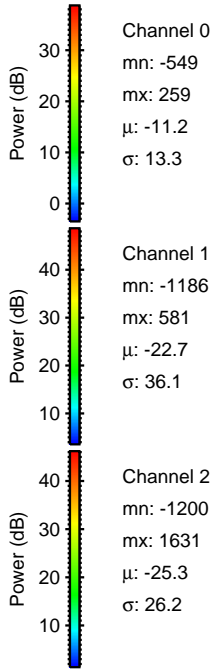
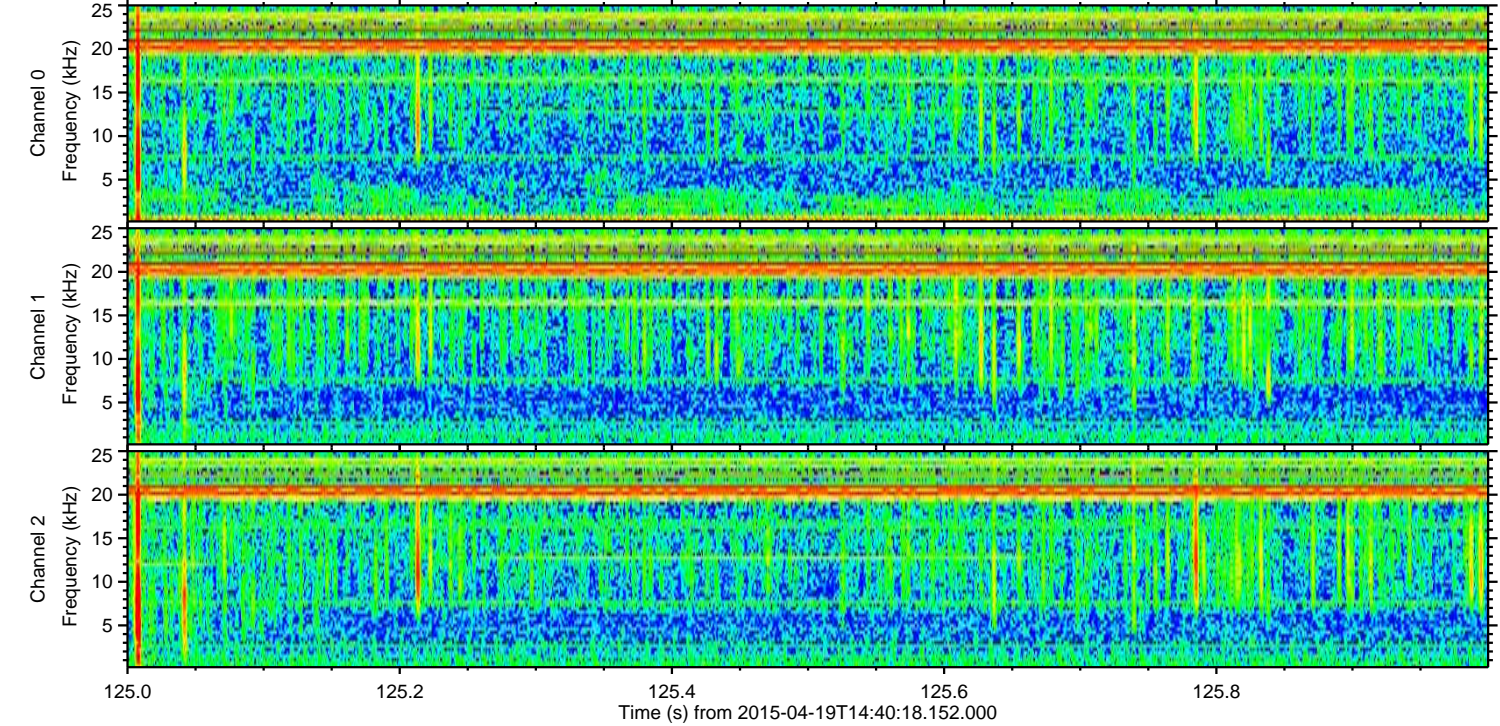
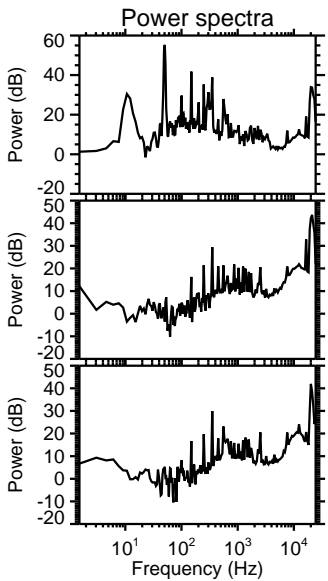
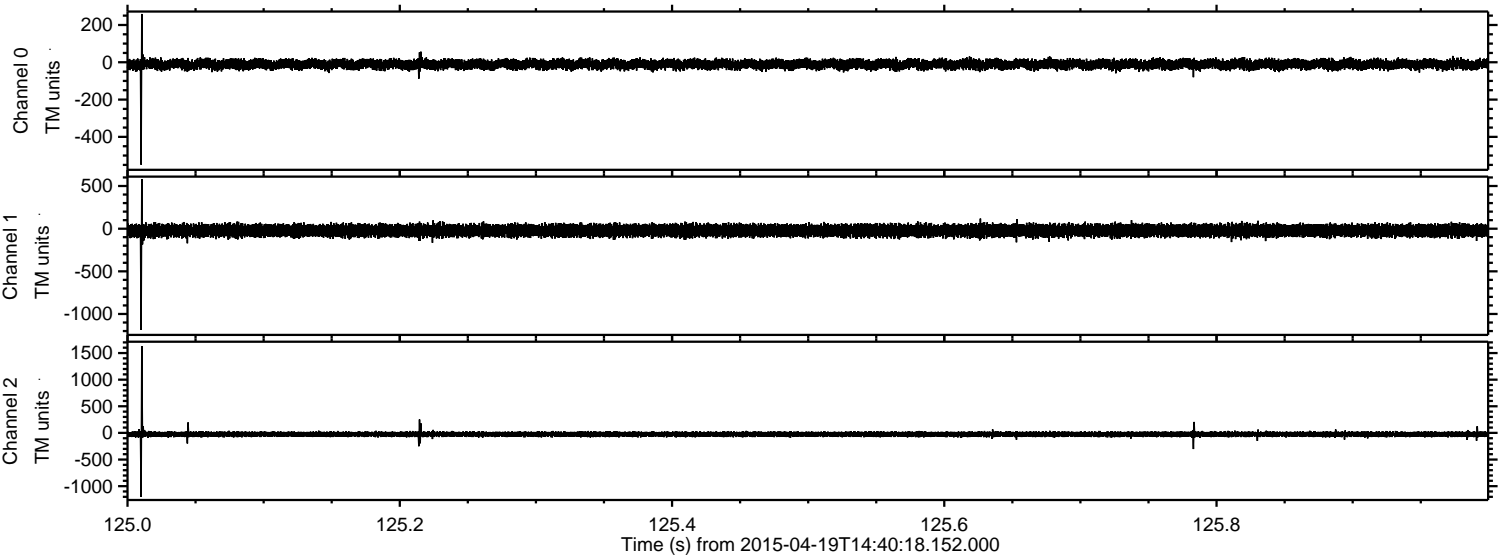
ELMAVAN 3D WAVEFORMS (Measured data sampled at 50 kHz) 49762 packets of 144 samples from 2015-04-19T14:40:18.152.000. Part 12/144

Processed Sun Apr 19 16:47:33 2015 by ELM ver.2012-10-06 from 001__elm20150419_144017__dat00.bin



ELMAVAN 3D WAVEFORMS (Measured data sampled at 50 kHz) 49762 packets of 144 samples from 2015-04-19T14:40:18.152.000. Part 126/144

Processed Sun Apr 19 16:47:34 2015 by ELM ver.2012-10-06 from 001__elm20150419_144017__dat00.bin

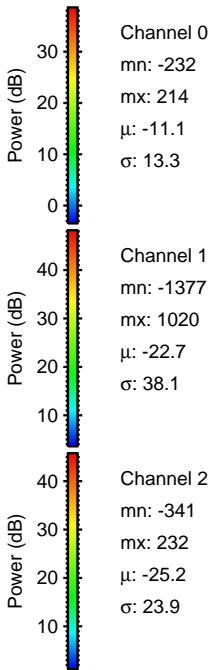
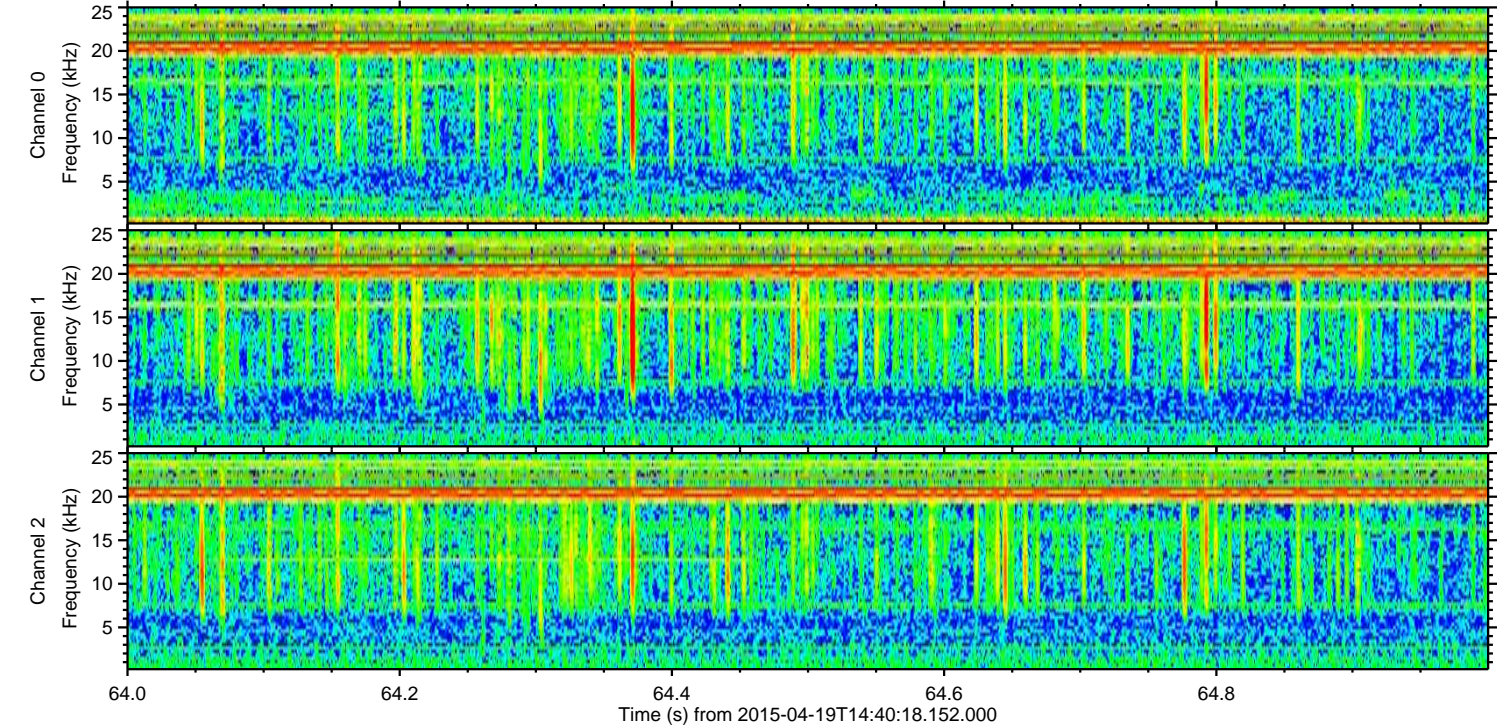
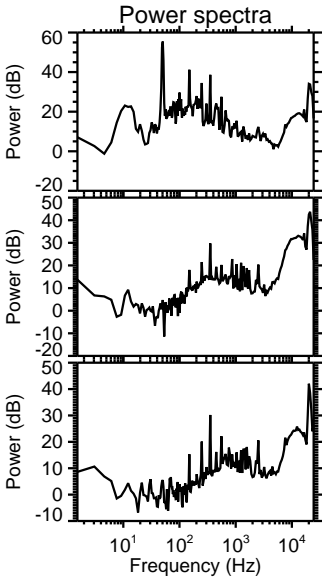
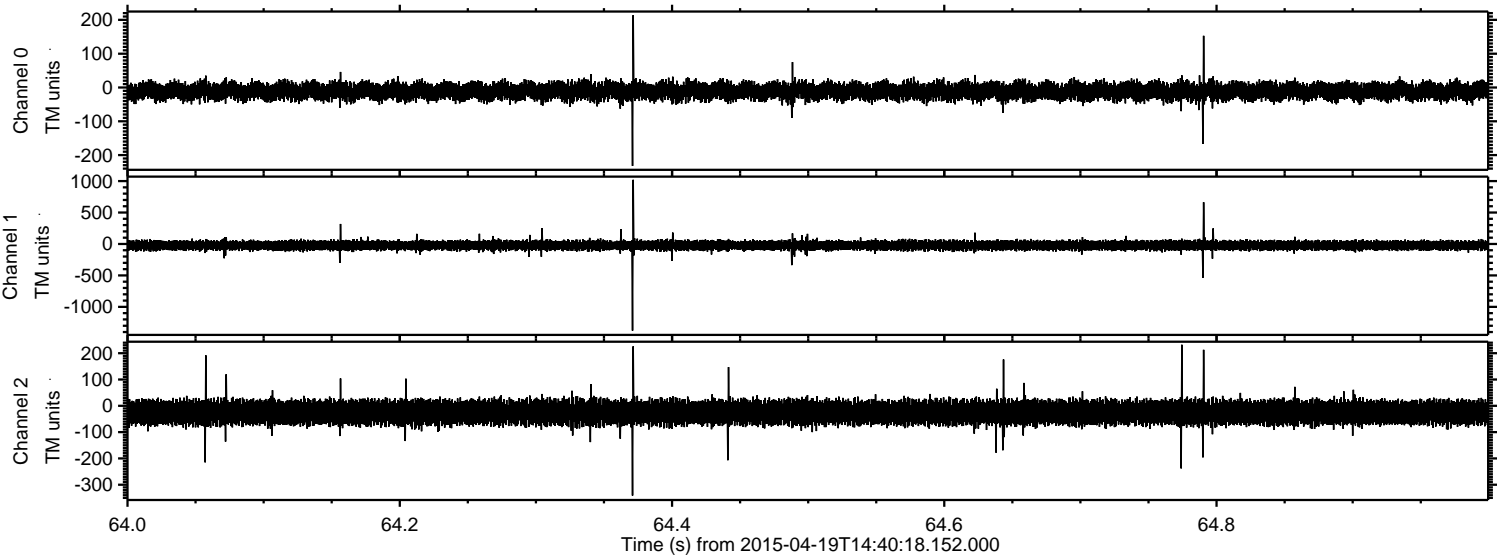


Channel 0
mn: -549
mx: 259
 μ : -11.2
 σ : 13.3

Channel 1
mn: -1186
mx: 581
 μ : -22.7
 σ : 36.1

Channel 2
mn: -1200
mx: 1631
 μ : -25.3
 σ : 26.2

Processed Sun Apr 19 16:47:35 2015 by ELM ver.2012-10-06 from 001__elm20150419_144017__dat00.bin



Channel 0
mn: -232
mx: 214
 μ : -11.1
 σ : 13.3

Channel 1
mn: -1377
mx: 1020
 μ : -22.7
 σ : 38.1

Channel 2
mn: -341
mx: 232
 μ : -25.2
 σ : 23.9

Processed Sun Apr 19 16:47:36 2015 by ELM ver.2012-10-06 from 001__elm20150419_144017__dat00.bin

