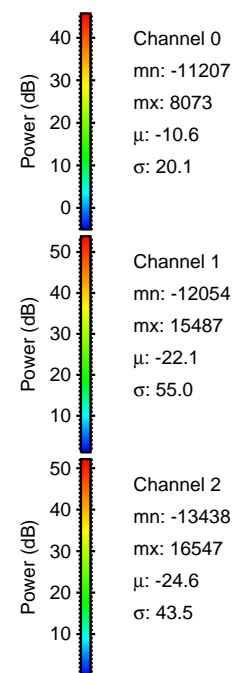
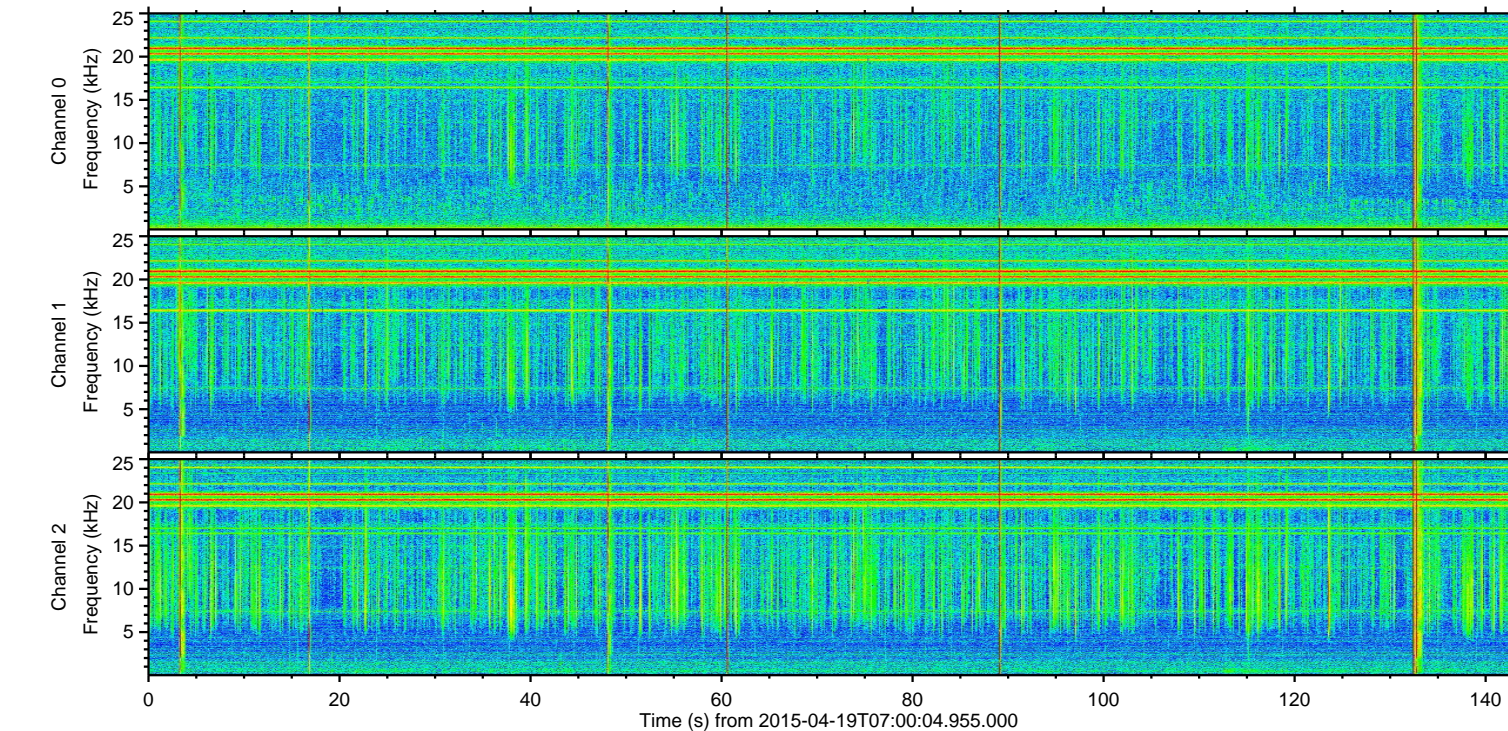
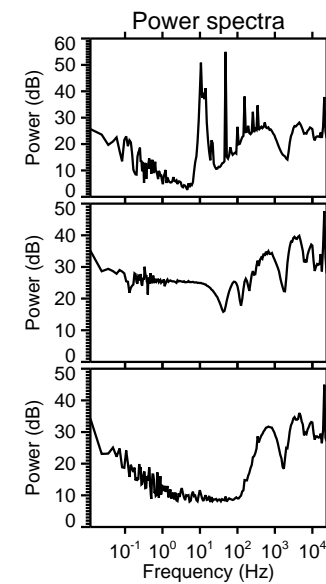
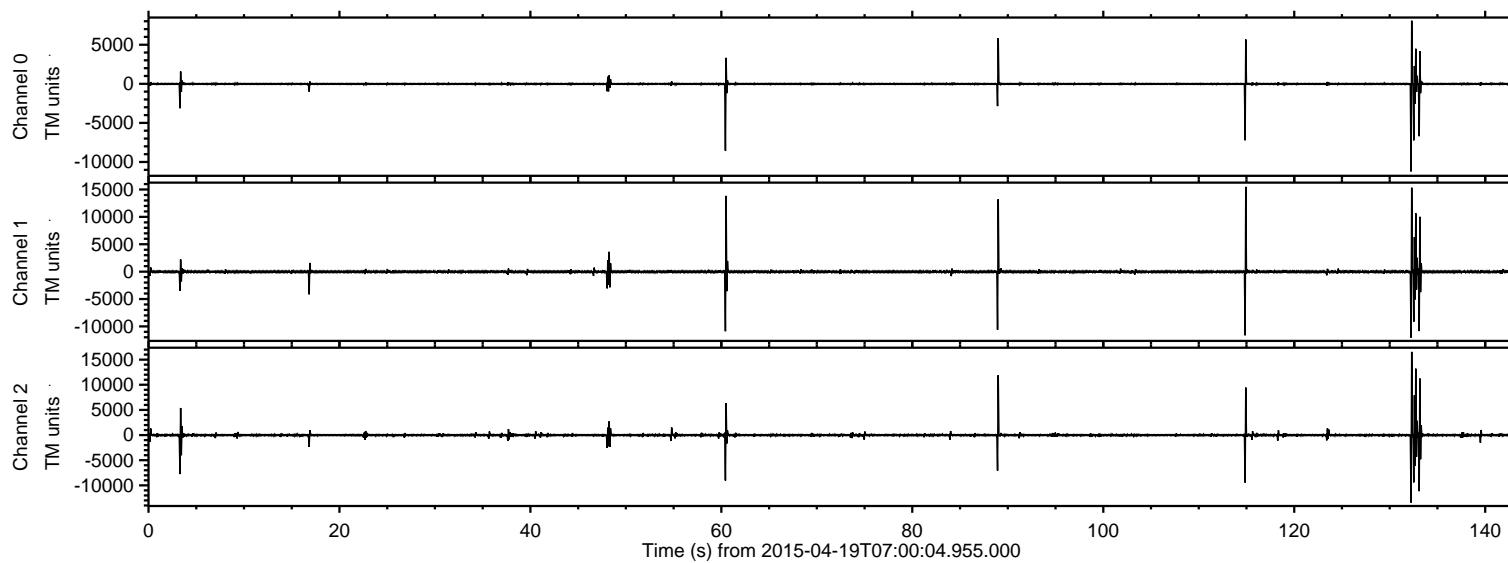


# ELMAVAN 3D WAVEFORMS (Measured data sampled at 50 kHz) 49483 packets of 144 samples from 2015-04-19T07:00:04.955.000.

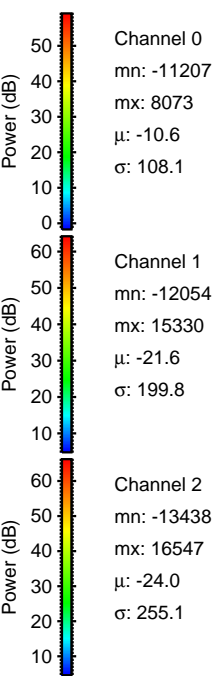
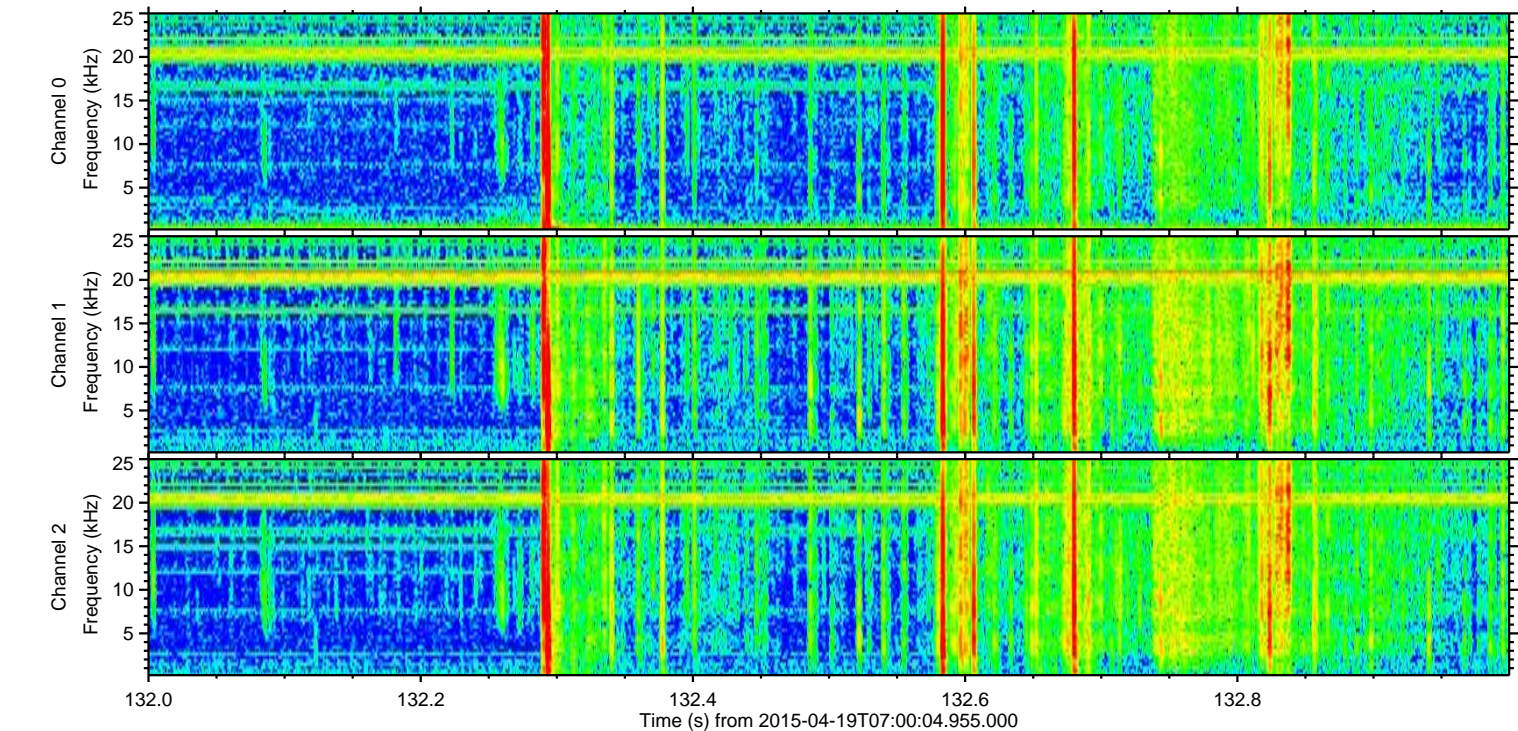
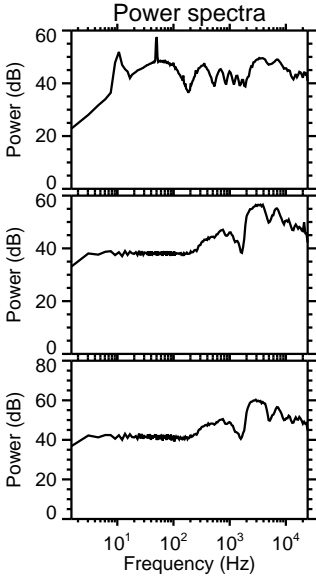
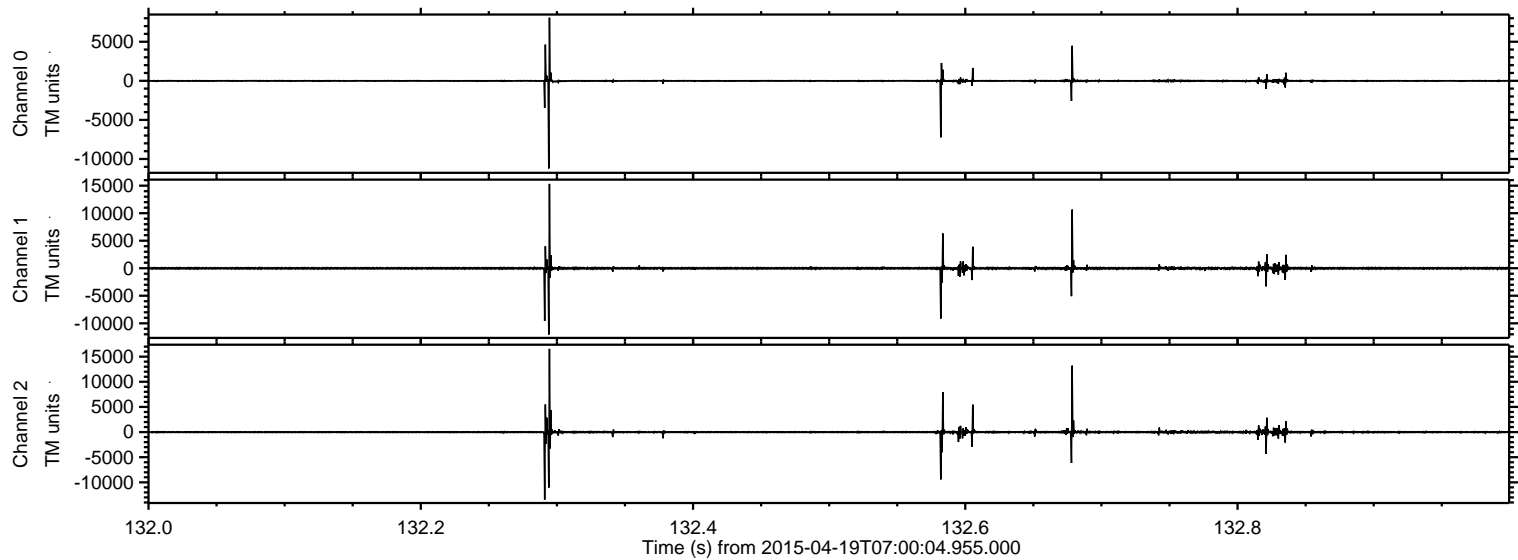
Processed Sun Apr 19 09:13:12 2015 by ELM ver.2012-10-06 from 001\_\_elm20150419\_070003\_\_dat00.bin





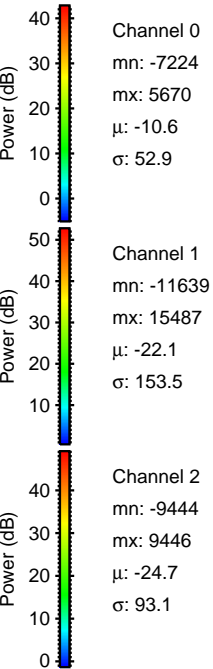
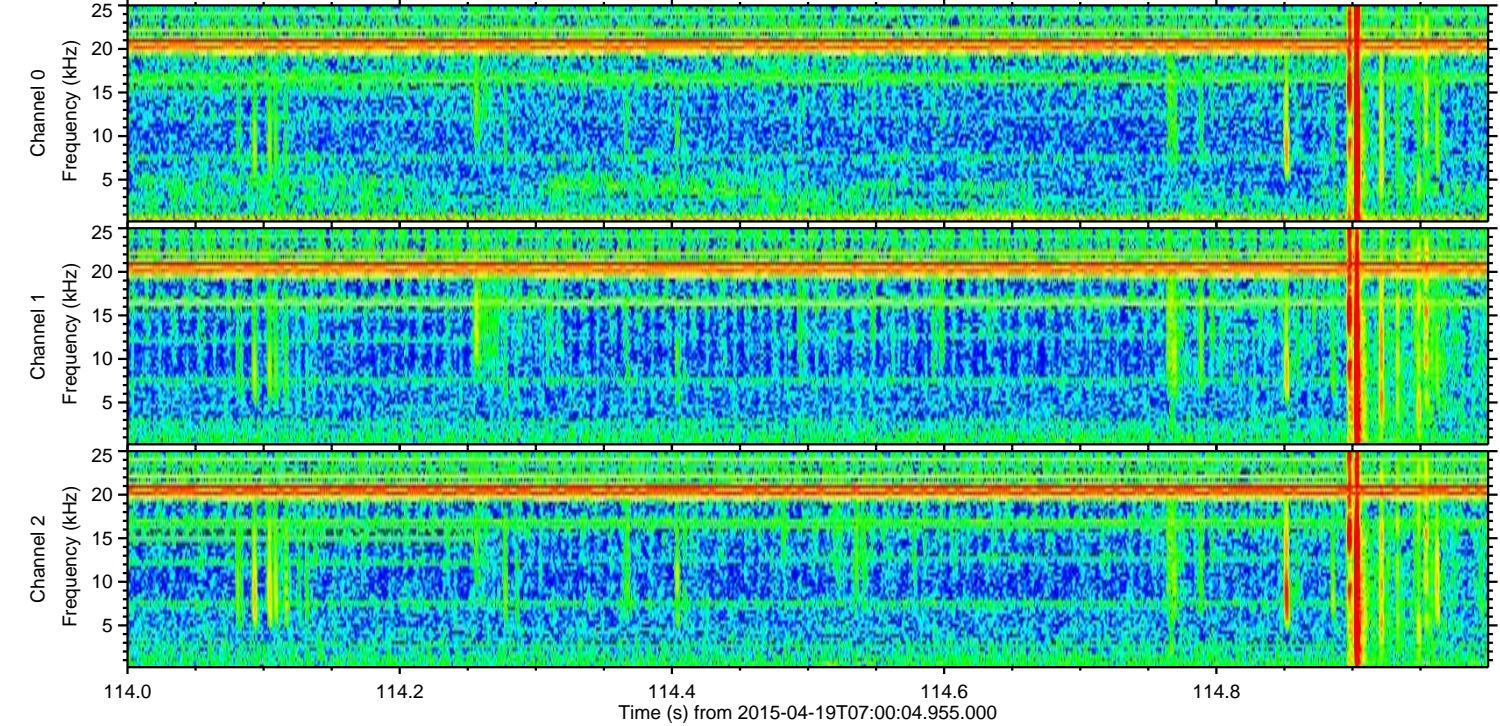
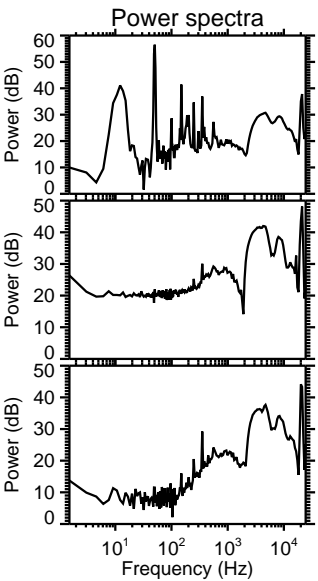
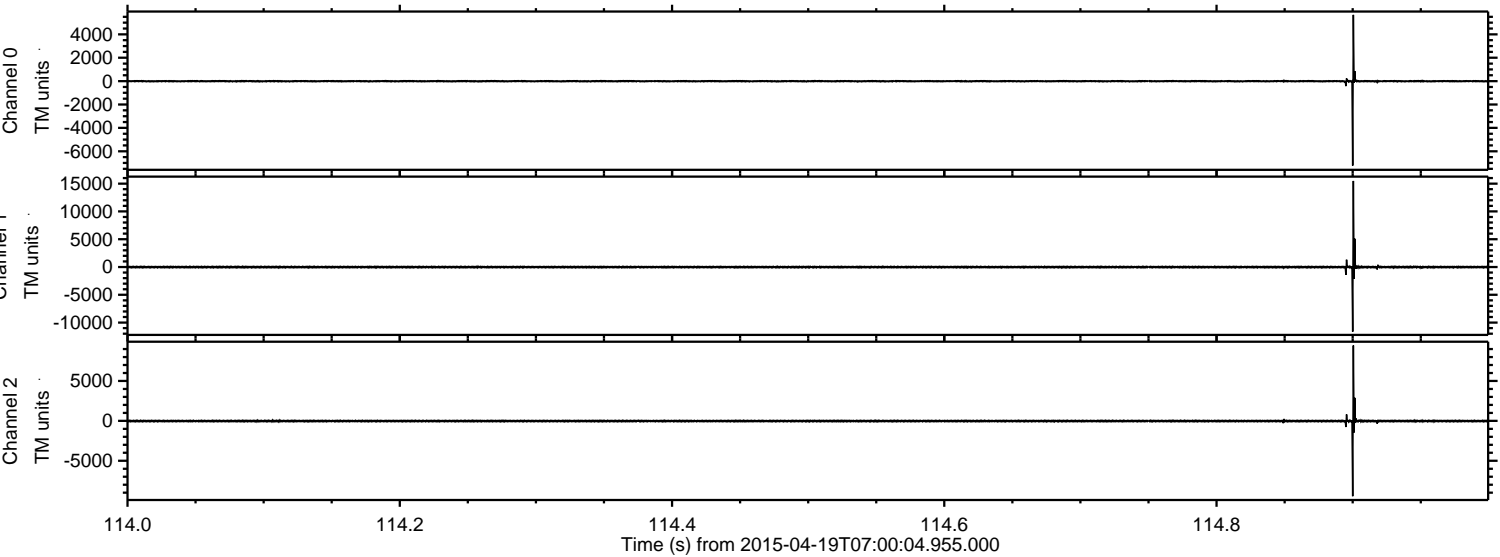
ELMAVAN 3D WAVEFORMS (Measured data sampled at 50 kHz) 49483 packets of 144 samples from 2015-04-19T07:00:04.955.000. Part 133/143

Processed Sun Apr 19 09:13:27 2015 by ELM ver.2012-10-06 from 001\_\_elm20150419\_070003\_\_dat00.bin



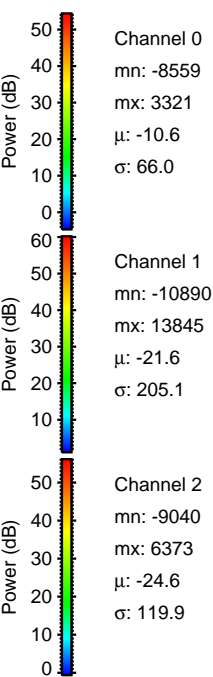
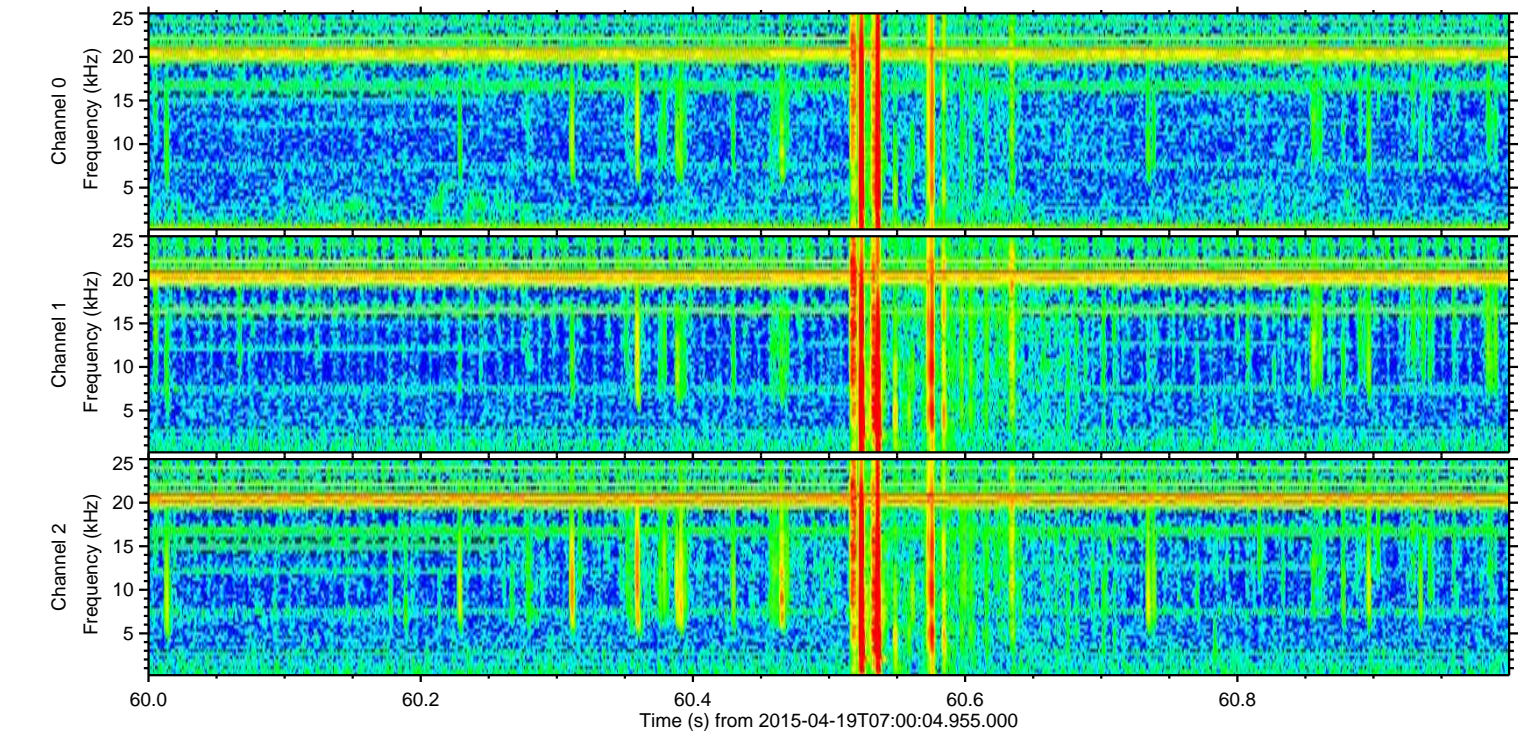
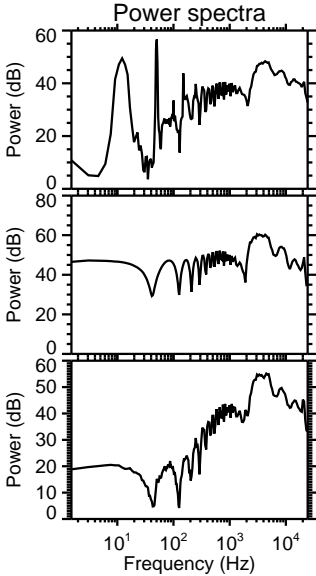
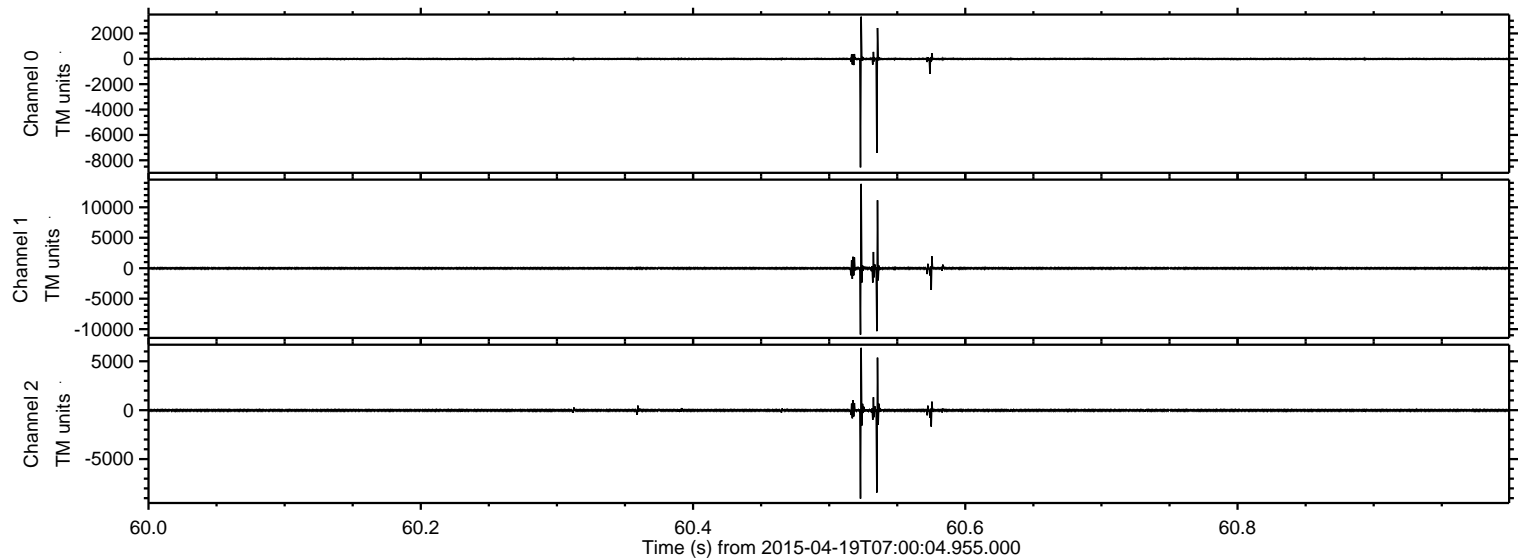
ELMAVAN 3D WAVEFORMS (Measured data sampled at 50 kHz) 49483 packets of 144 samples from 2015-04-19T07:00:04.955.000. Part 115/143

Processed Sun Apr 19 09:13:28 2015 by ELM ver.2012-10-06 from 001\_\_elm20150419\_070003\_\_dat00.bin



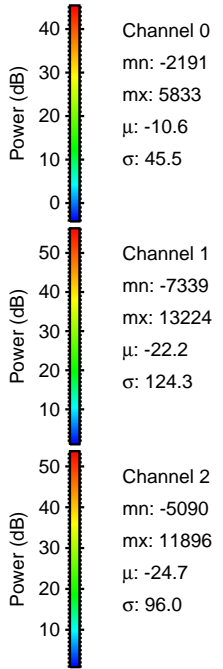
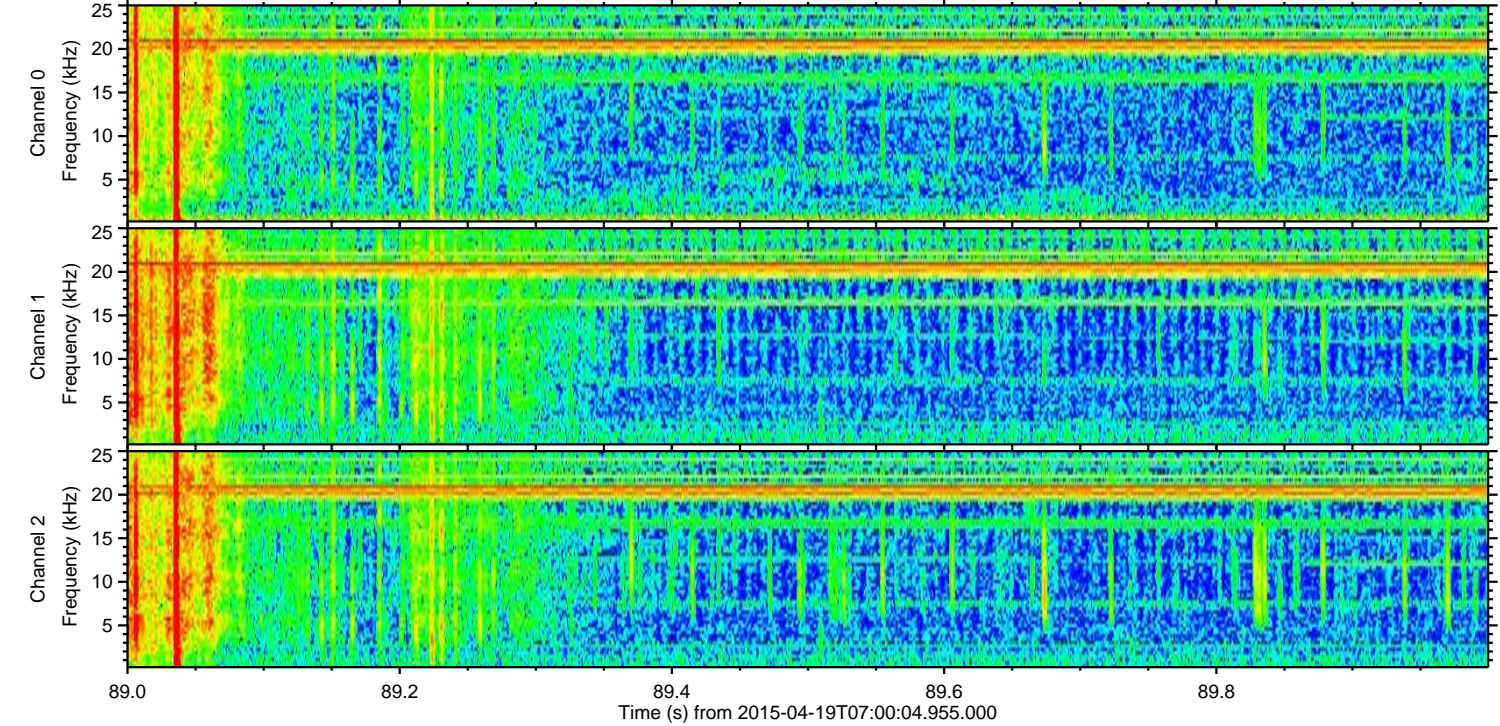
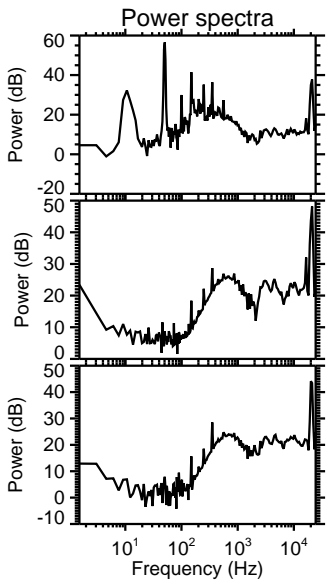
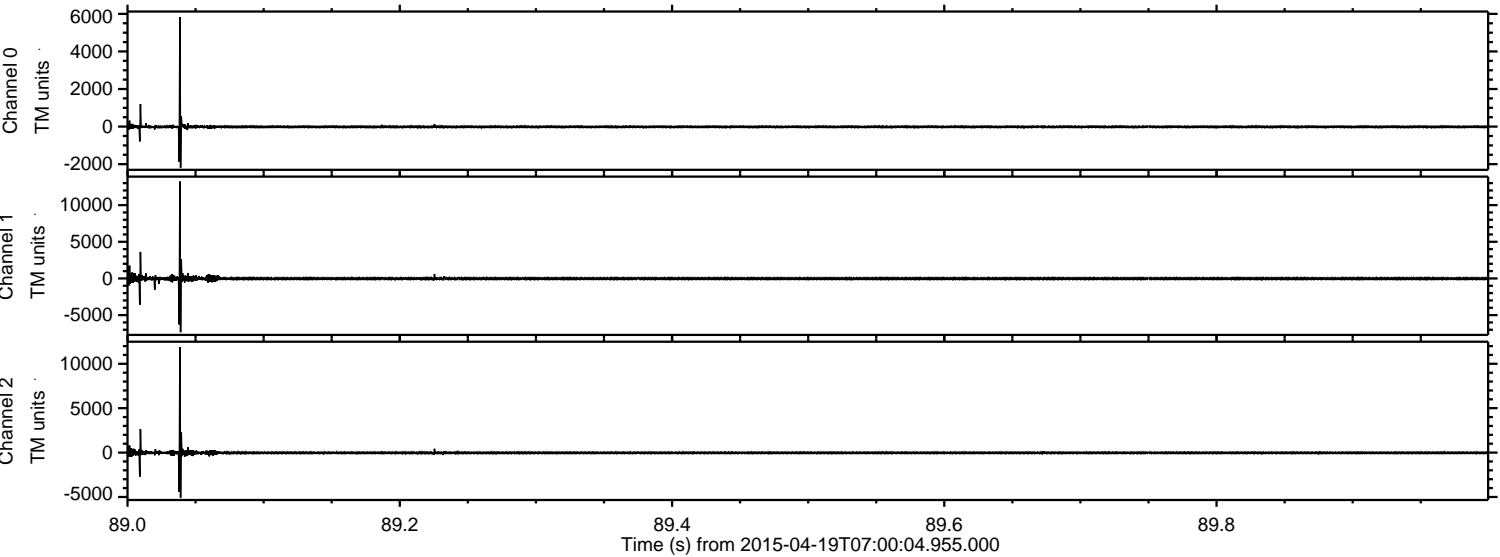


Processed Sun Apr 19 09:13:29 2015 by ELM ver.2012-10-06 from 001\_\_elm20150419\_070003\_\_dat00.bin





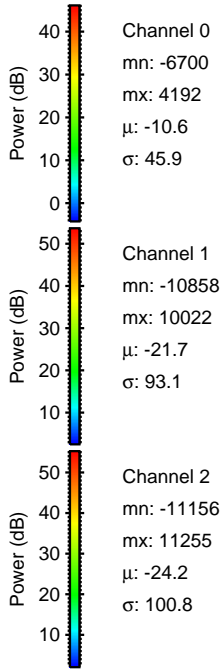
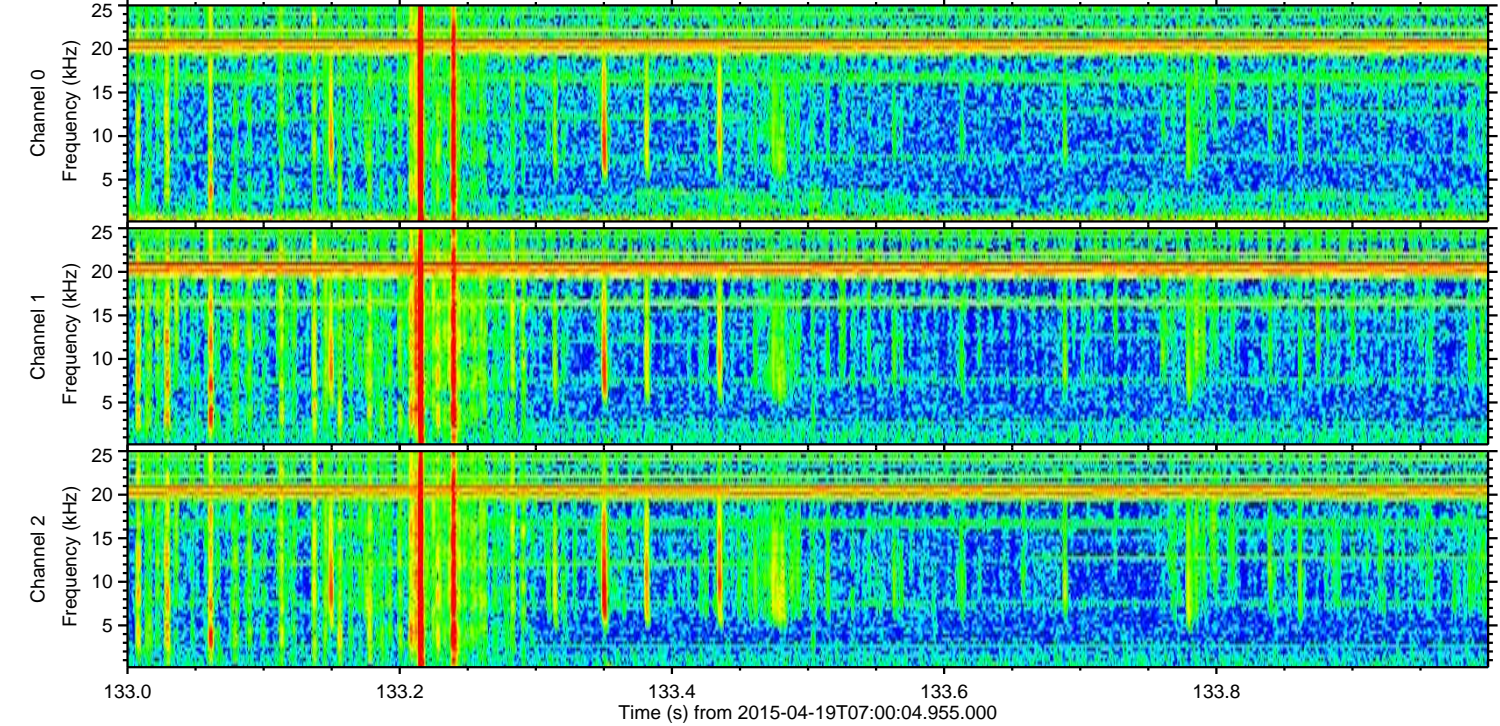
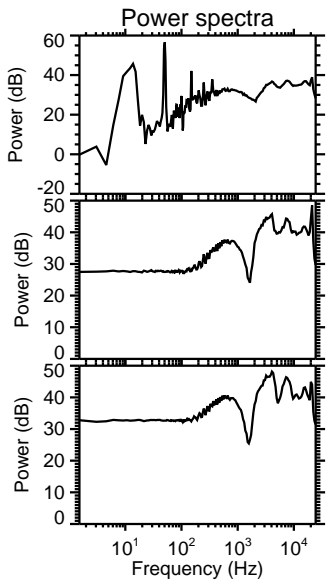
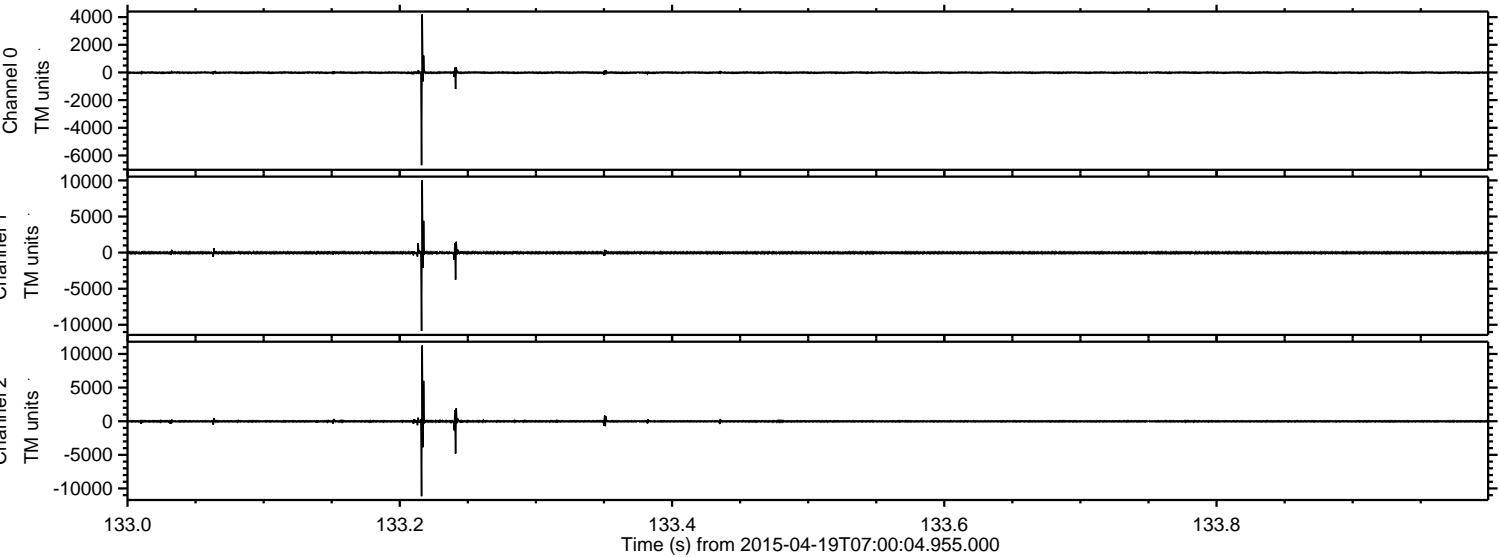
Processed Sun Apr 19 09:13:30 2015 by ELM ver.2012-10-06 from 001\_\_elm20150419\_070003\_\_dat00.bin





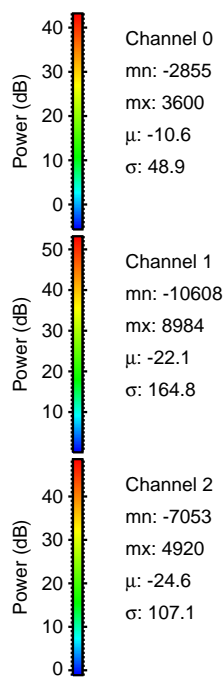
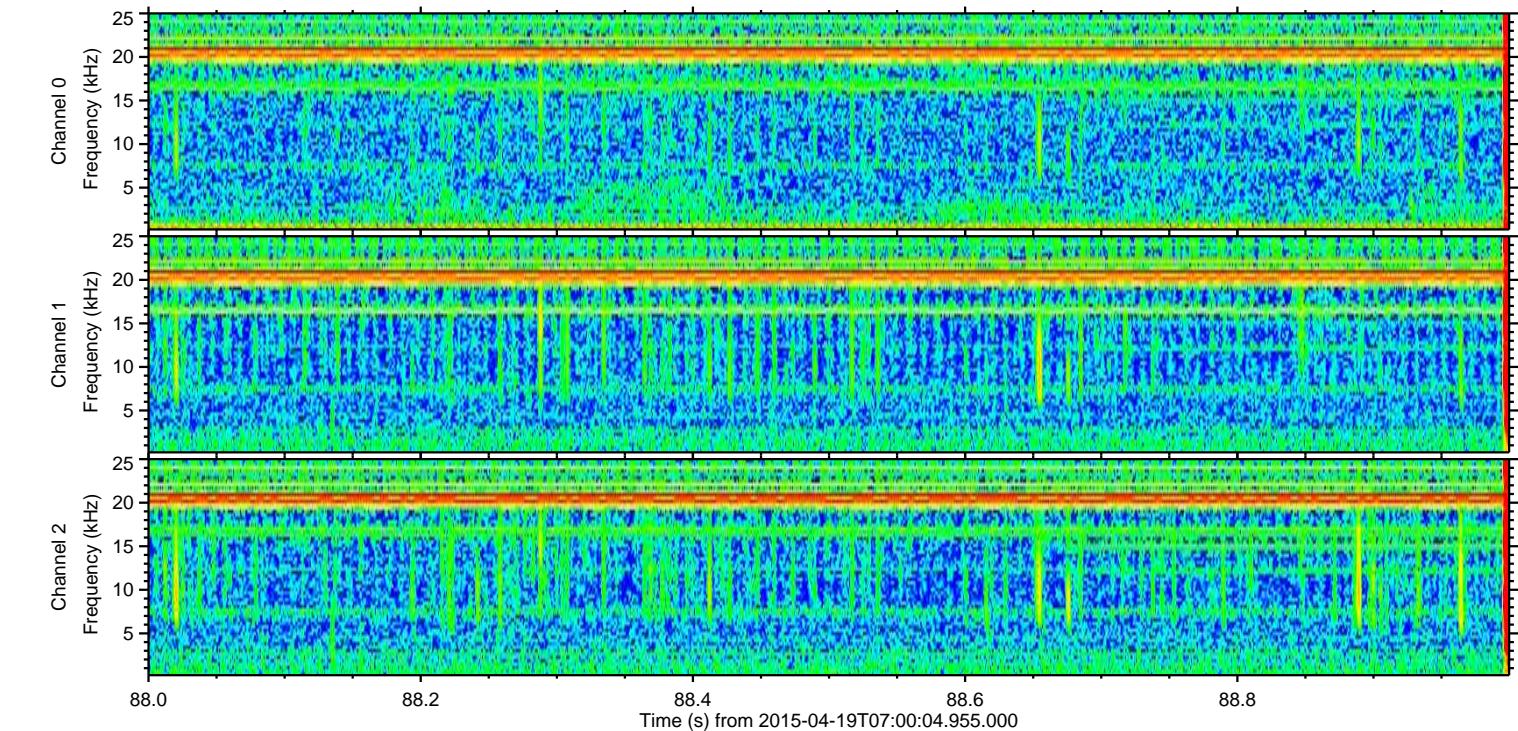
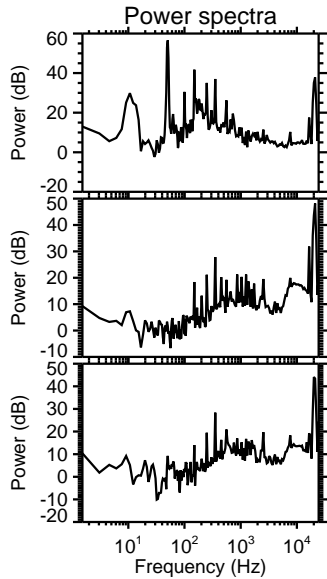
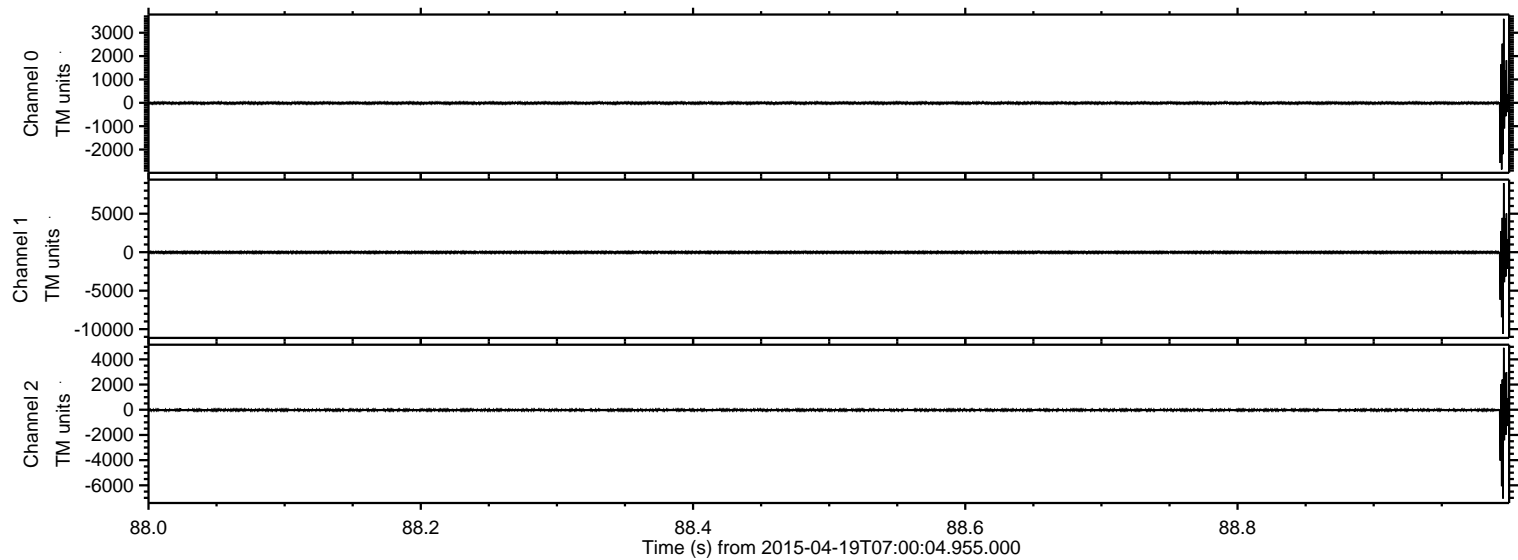
ELMAVAN 3D WAVEFORMS (Measured data sampled at 50 kHz) 49483 packets of 144 samples from 2015-04-19T07:00:04.955.000. Part 134/143

Processed Sun Apr 19 09:13:31 2015 by ELM ver.2012-10-06 from 001\_\_elm20150419\_070003\_\_dat00.bin



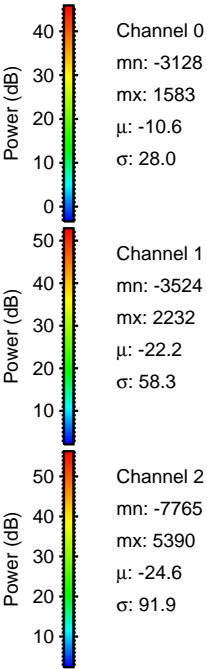
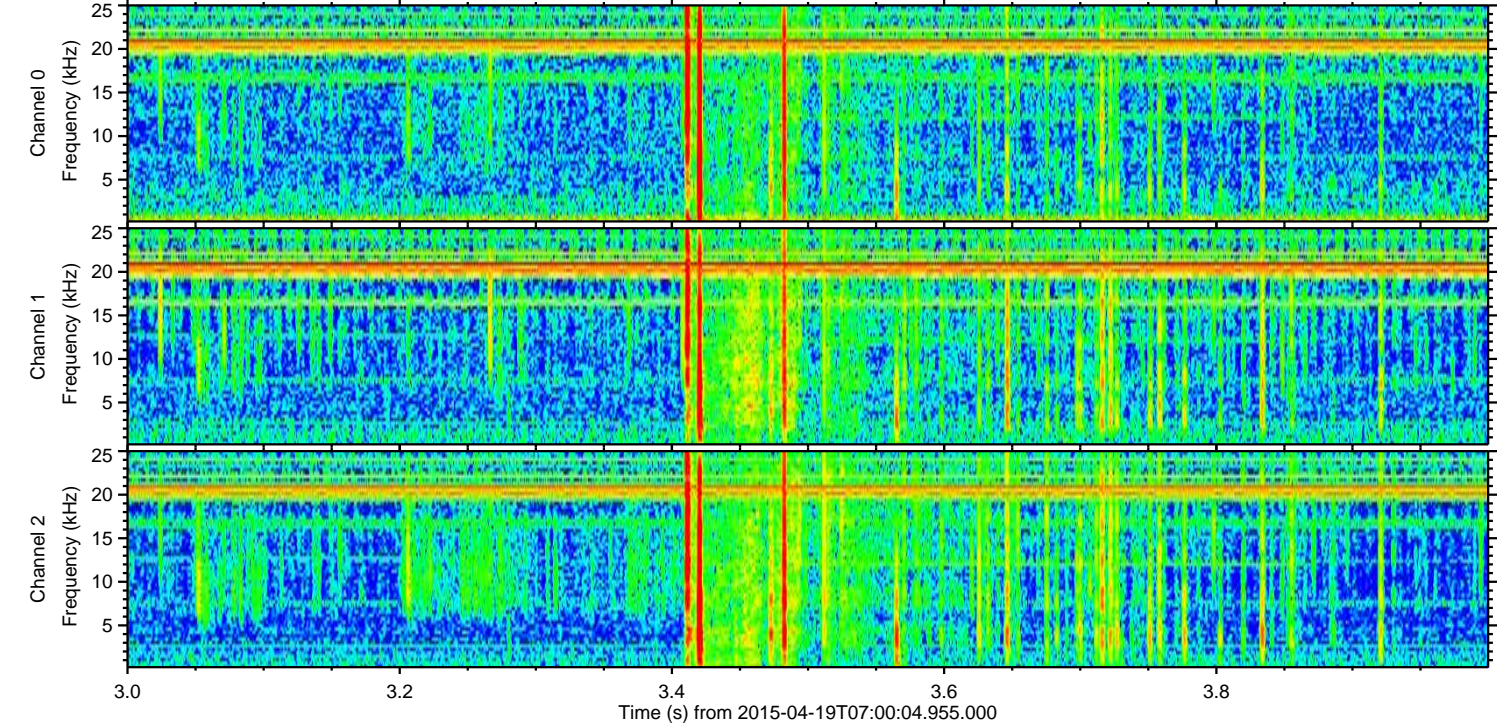
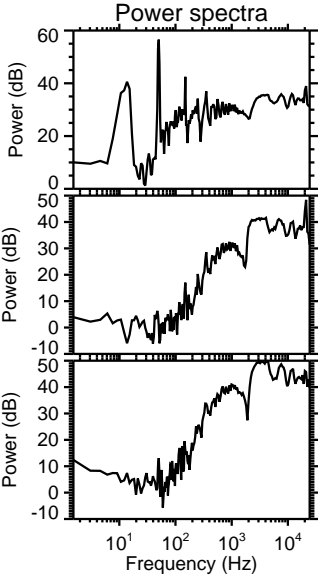
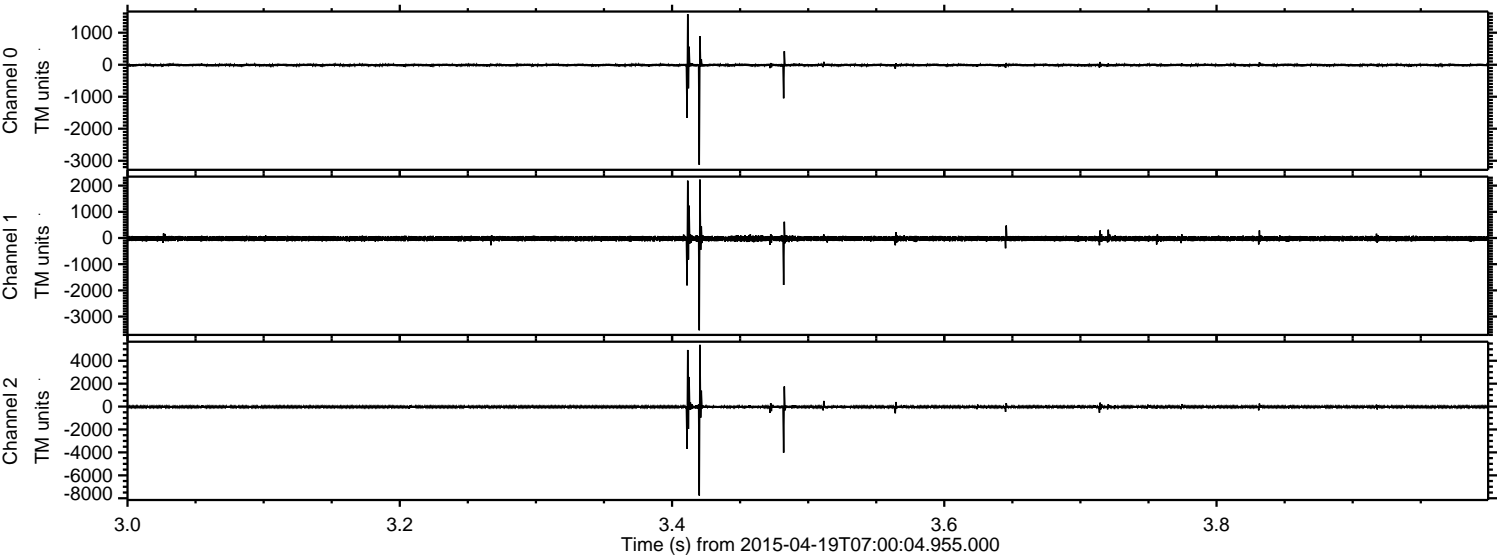


Processed Sun Apr 19 09:13:32 2015 by ELM ver.2012-10-06 from 001\_\_elm20150419\_070003\_\_dat00.bin



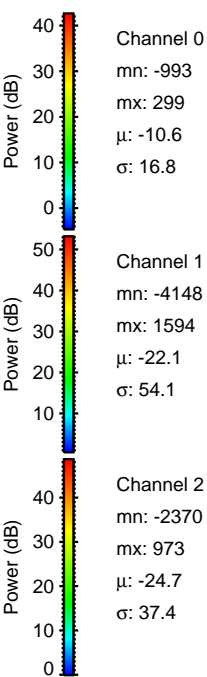
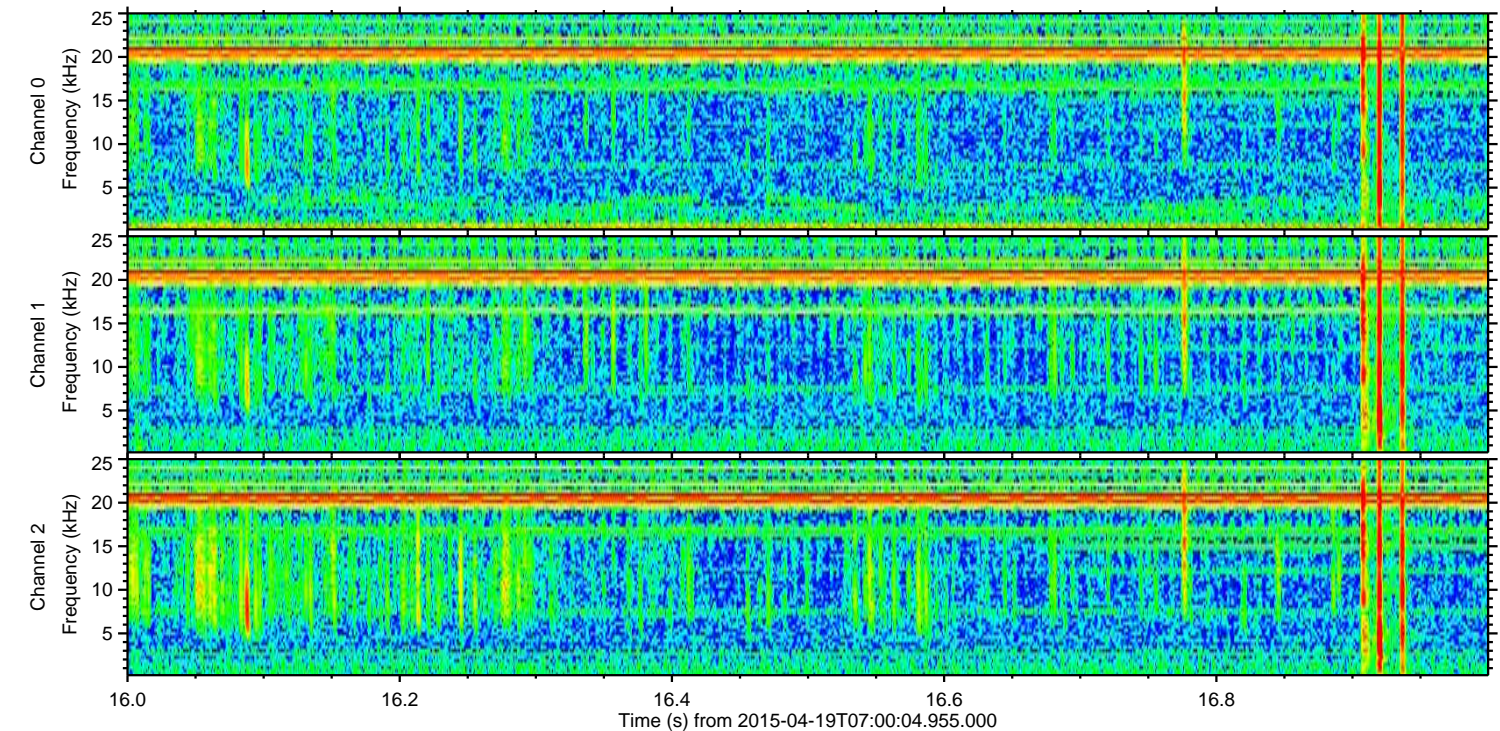
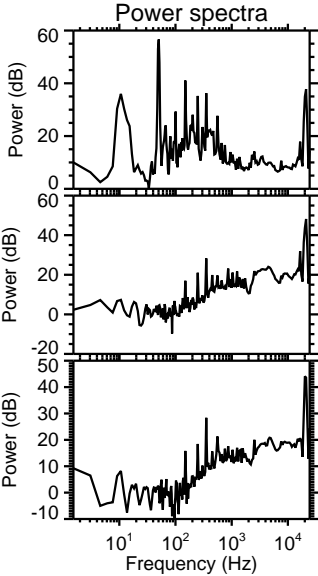
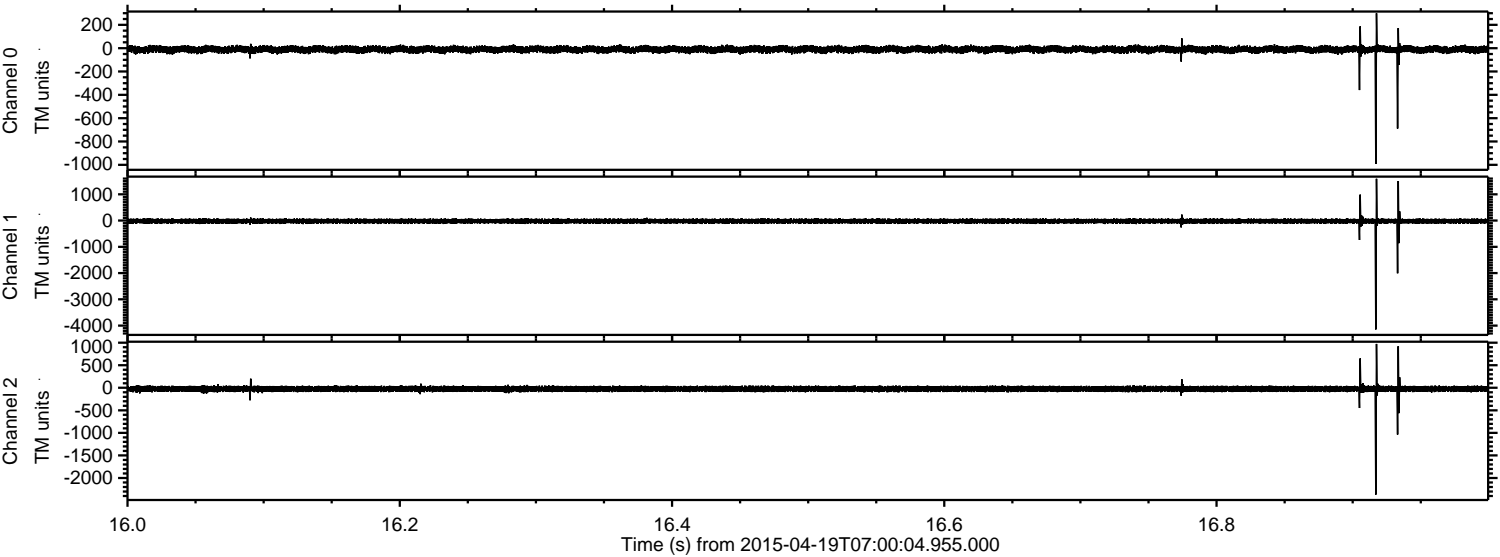


Processed Sun Apr 19 09:13:33 2015 by ELM ver.2012-10-06 from 001\_\_elm20150419\_070003\_\_dat00.bin



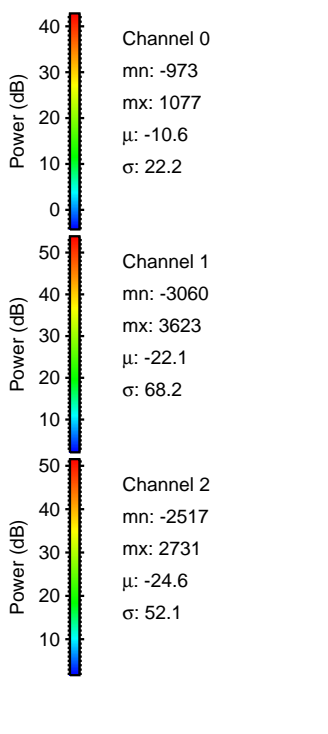
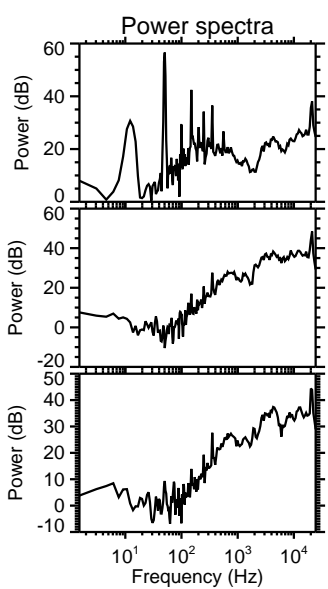
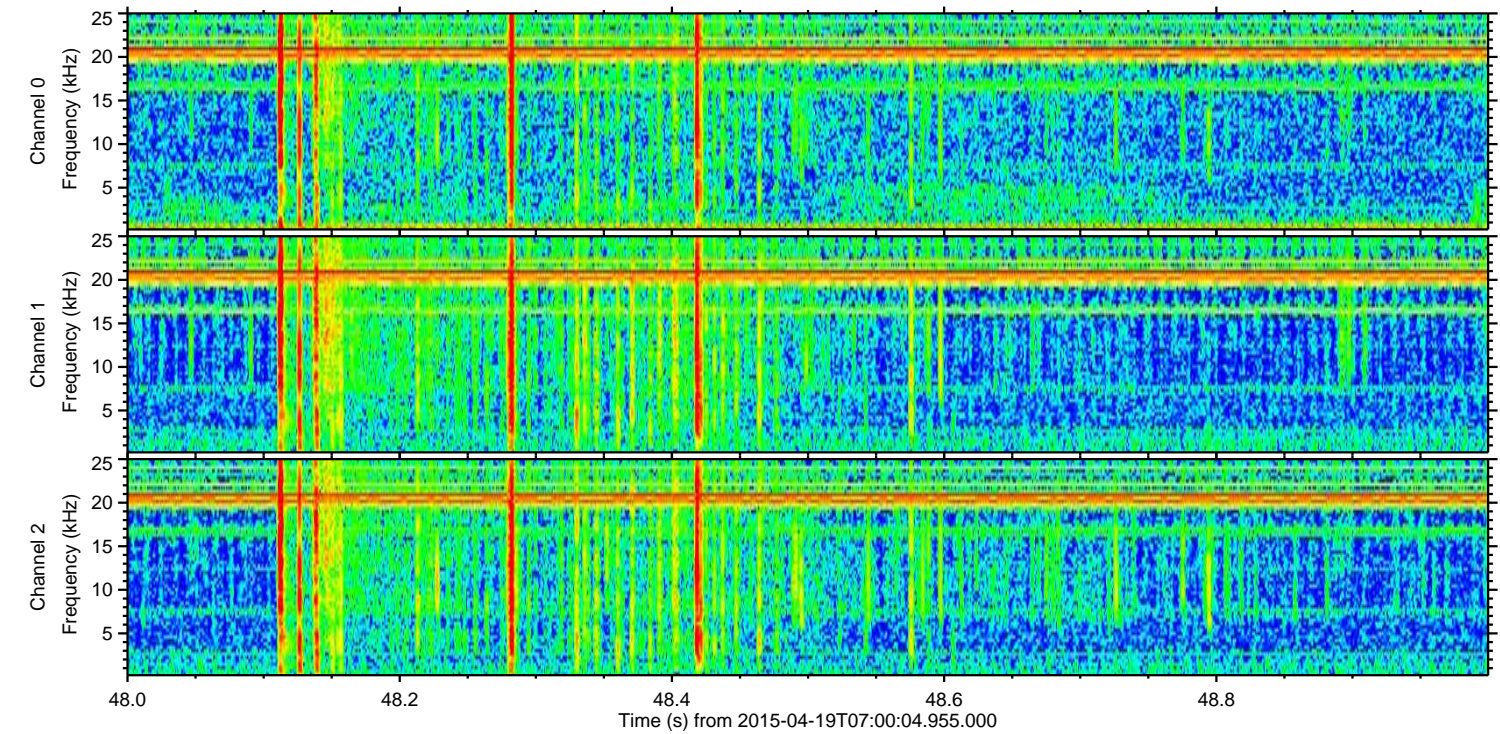
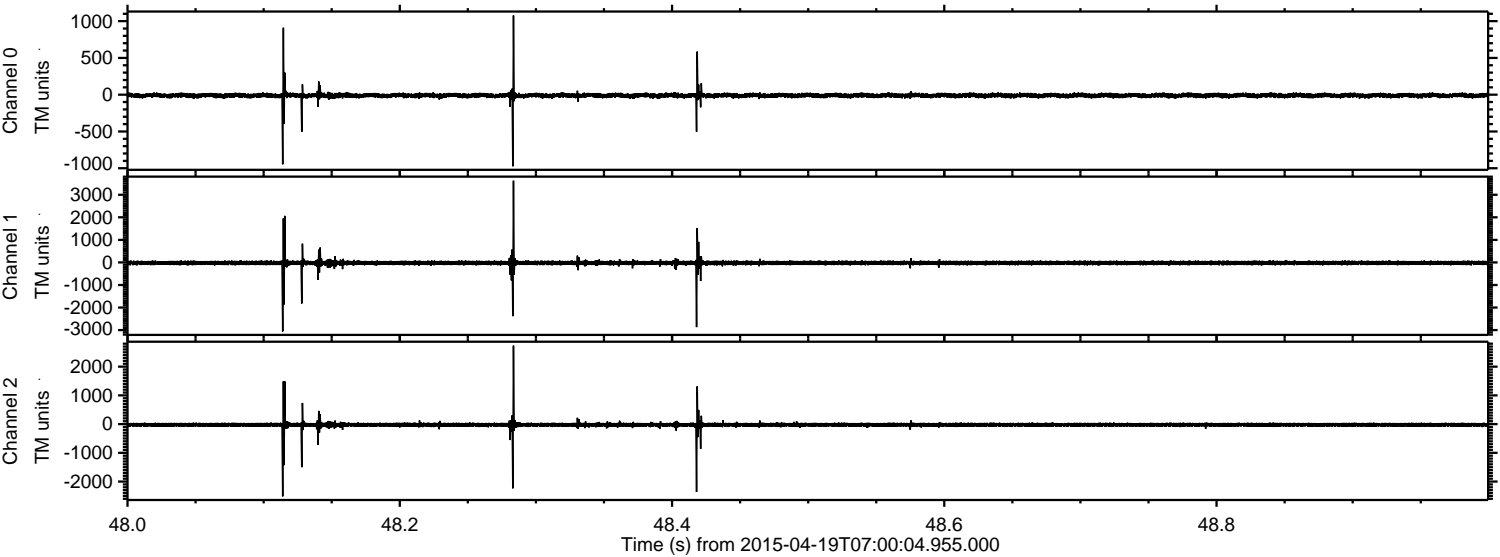


Processed Sun Apr 19 09:13:34 2015 by ELM ver.2012-10-06 from 001\_\_elm20150419\_070003\_\_dat00.bin





Processed Sun Apr 19 09:13:35 2015 by ELM ver.2012-10-06 from 001\_\_elm20150419\_070003\_\_dat00.bin





Processed Sun Apr 19 09:13:36 2015 by ELM ver.2012-10-06 from 001\_\_elm20150419\_070003\_\_dat00.bin

