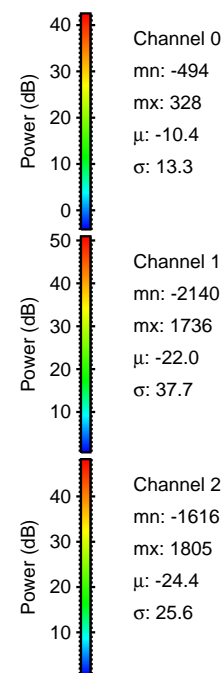
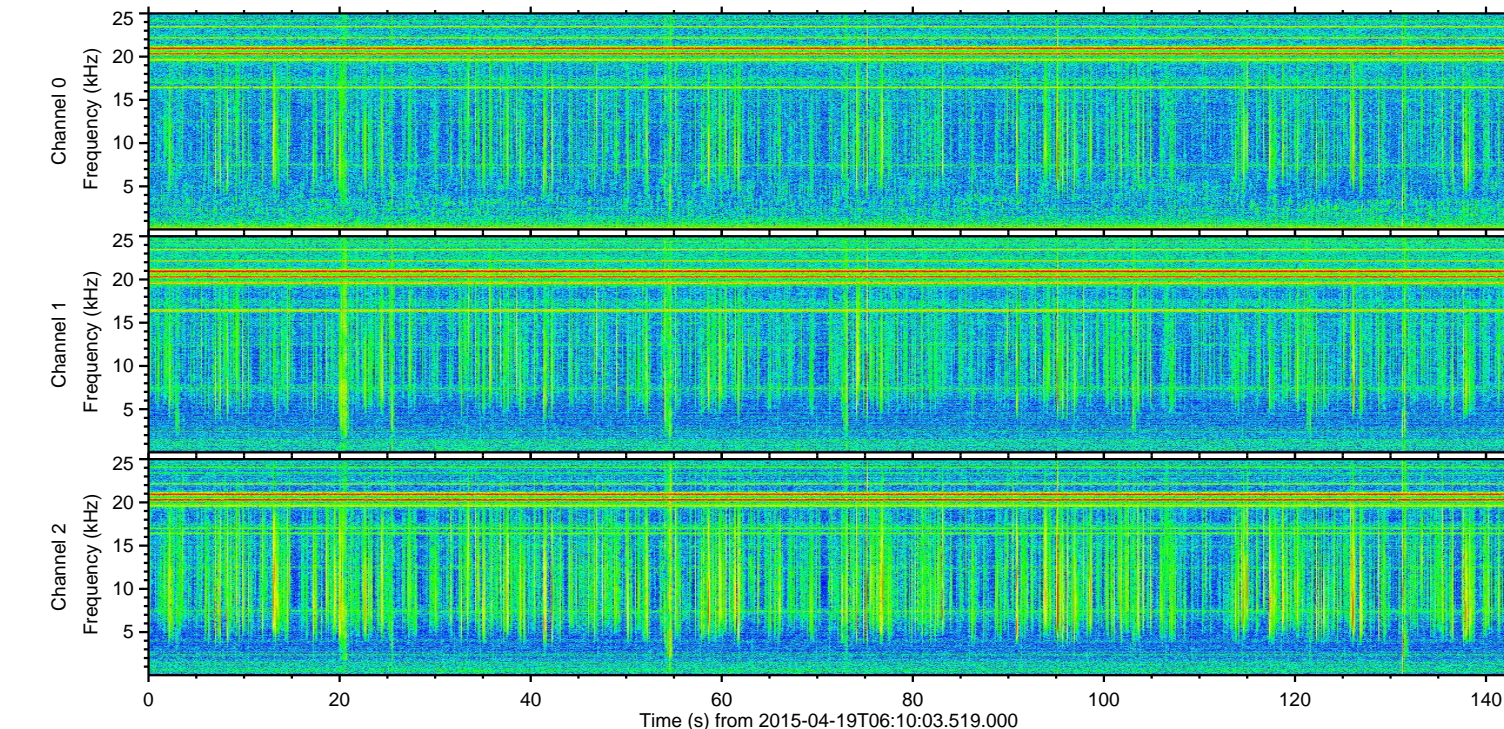
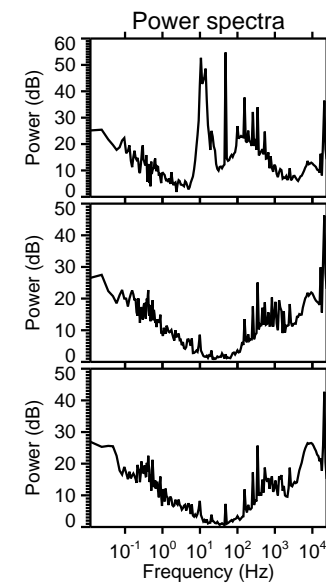
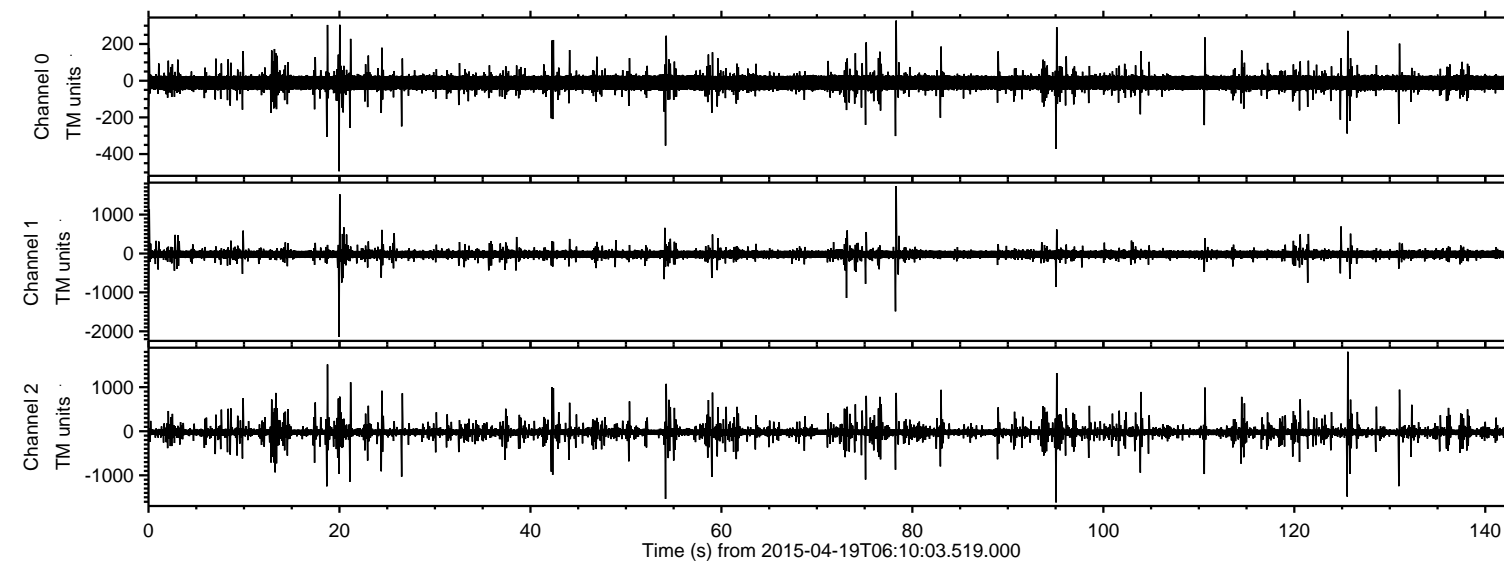
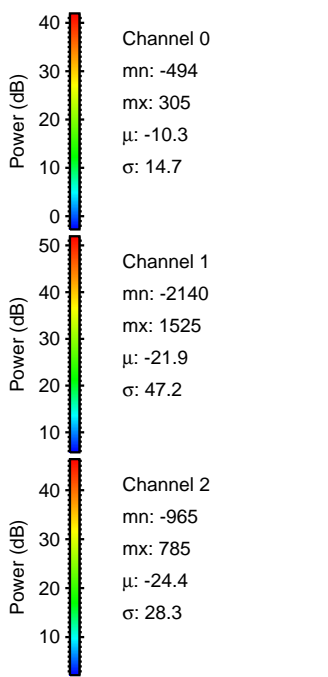
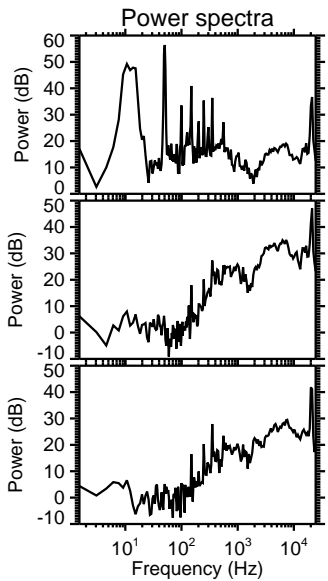
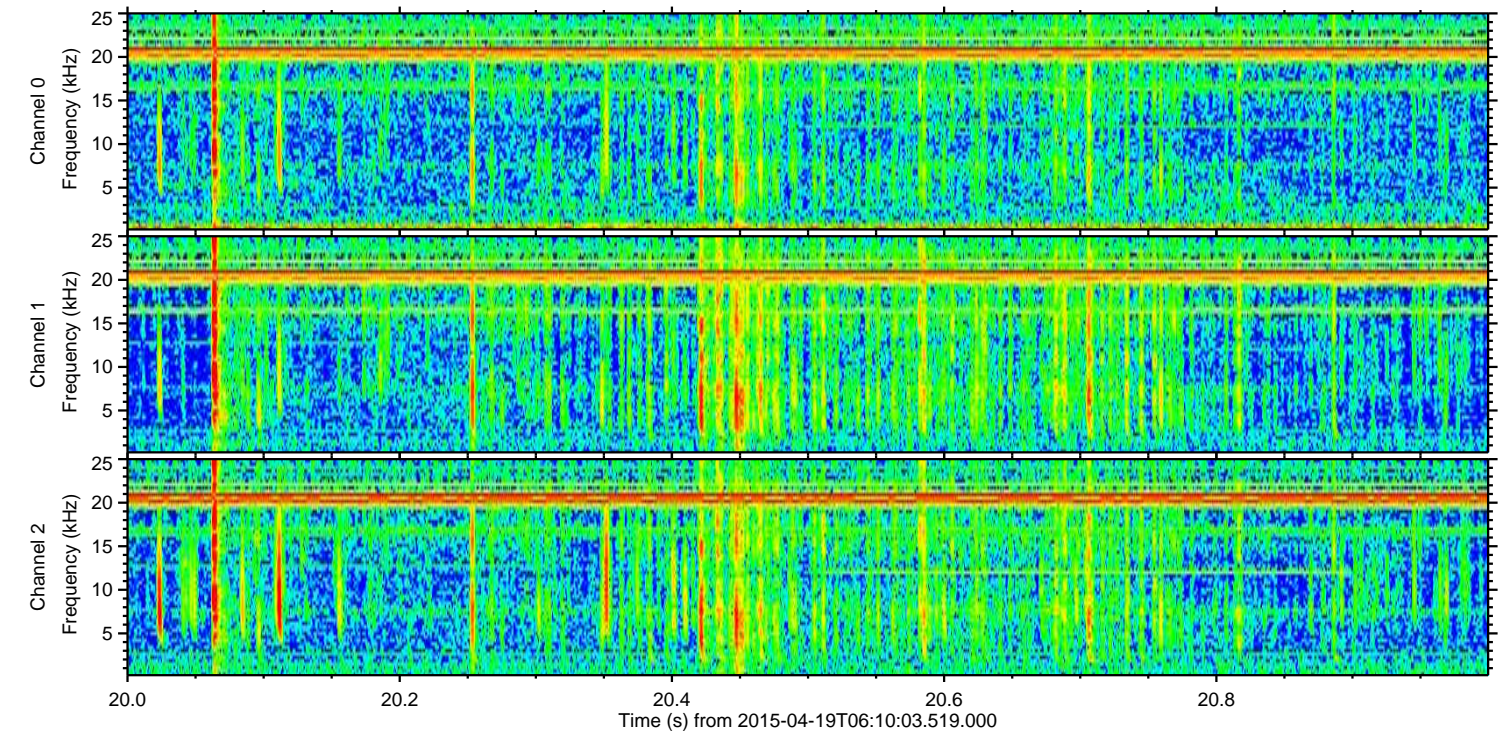
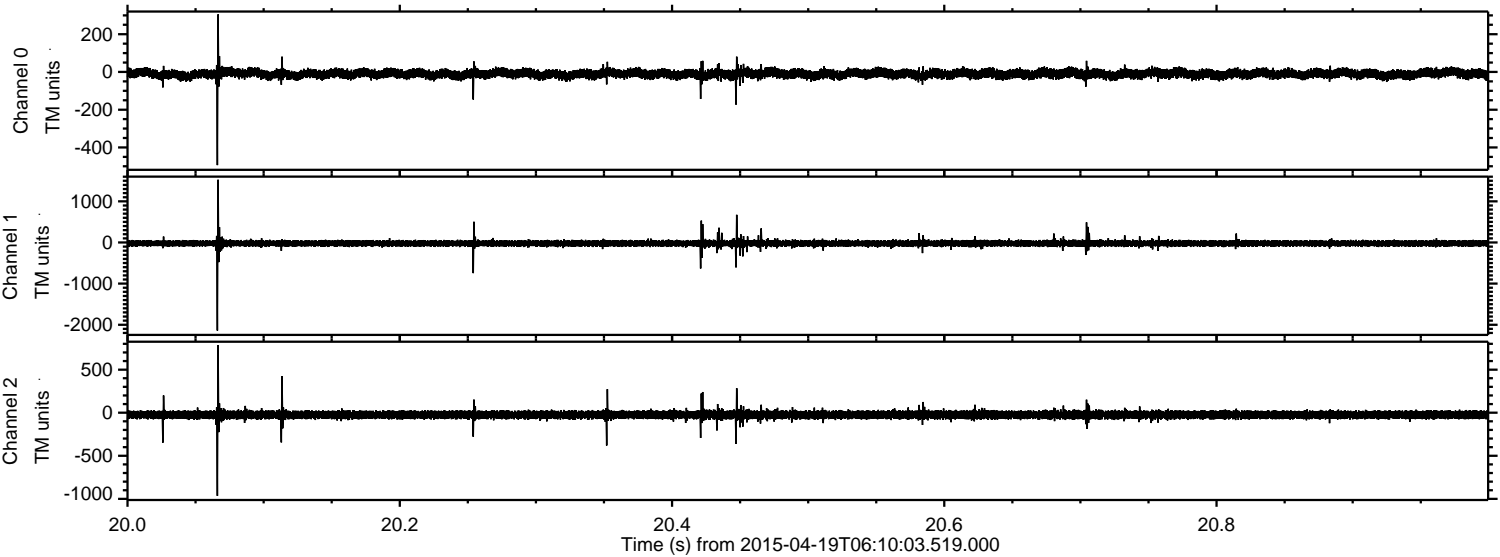


ELMAVAN 3D WAVEFORMS (Measured data sampled at 50 kHz) 49479 packets of 144 samples from 2015-04-19T06:10:03.519.000.

Processed Sun Apr 19 08:17:08 2015 by ELM ver.2012-10-06 from 001__elm20150419_061002__dat00.bin

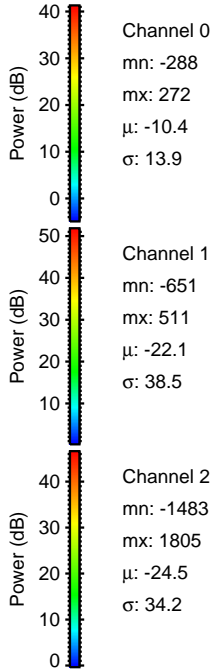
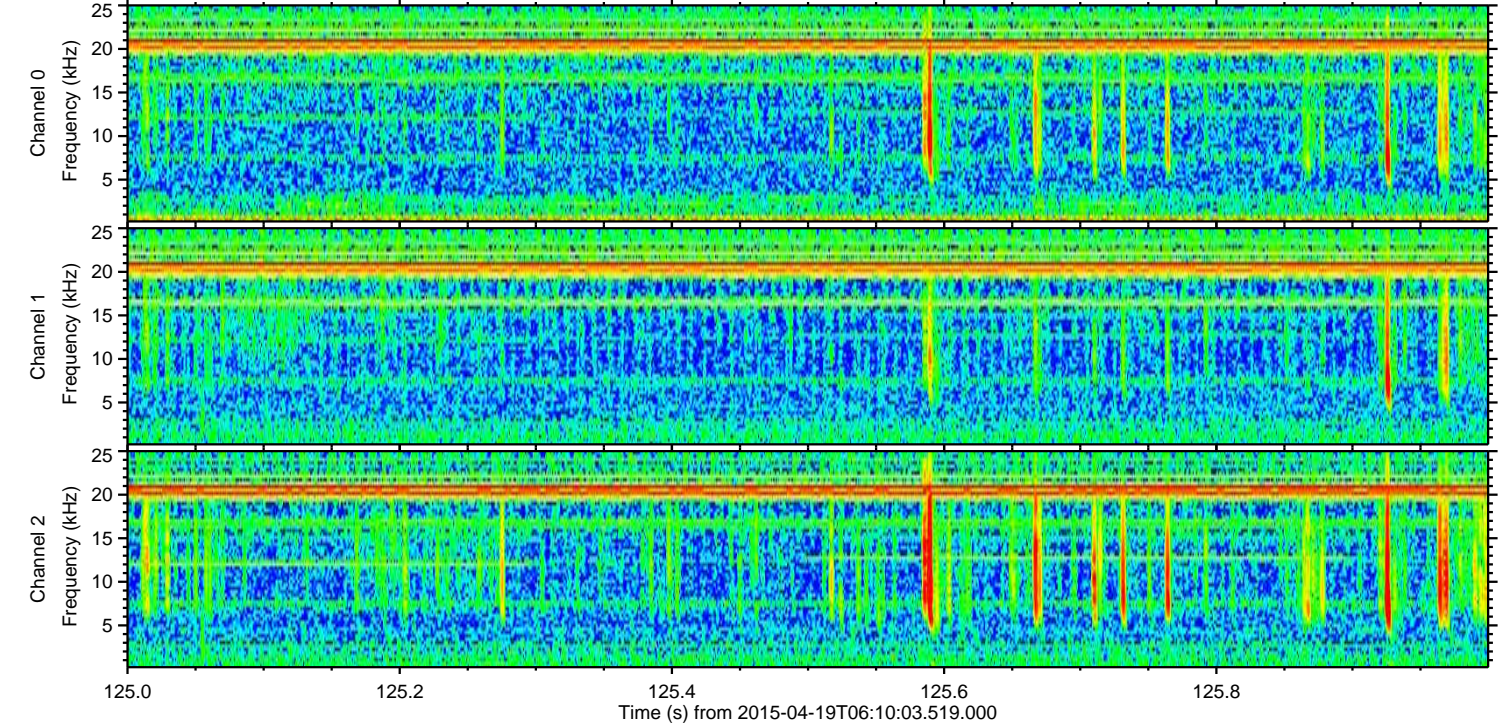
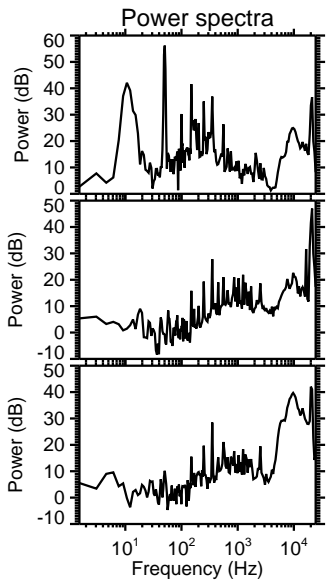
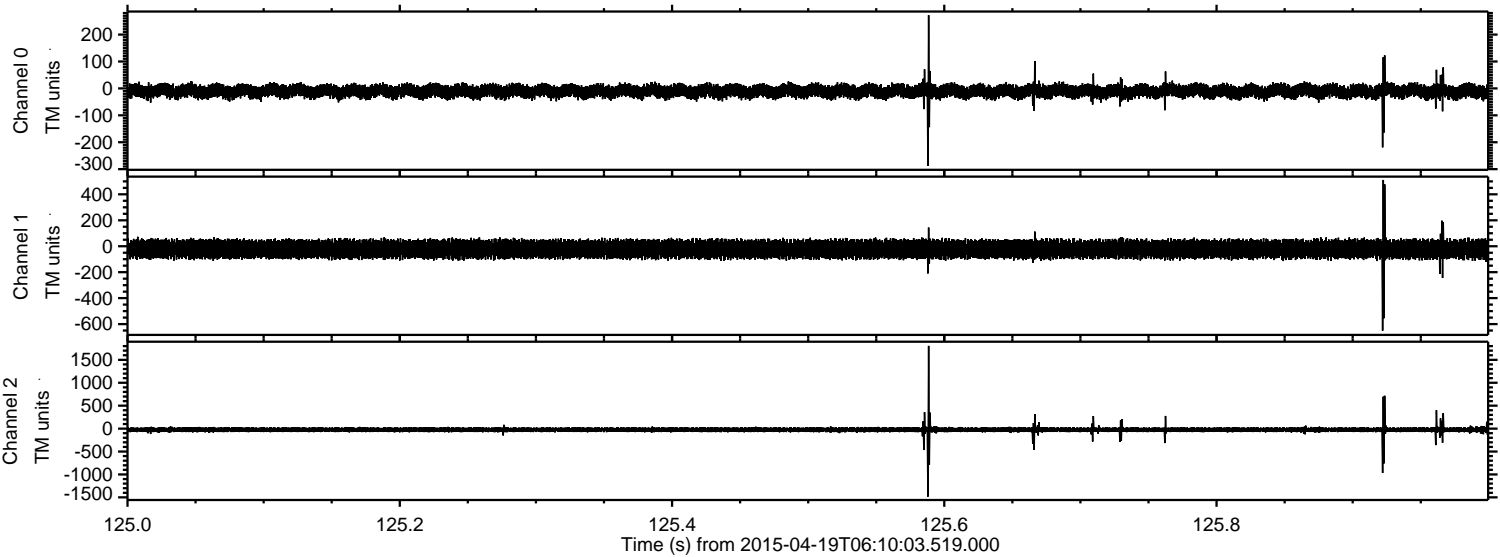


Processed Sun Apr 19 08:17:22 2015 by ELM ver.2012-10-06 from 001__elm20150419_061002__dat00.bin

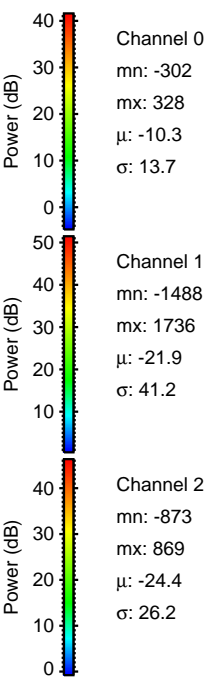
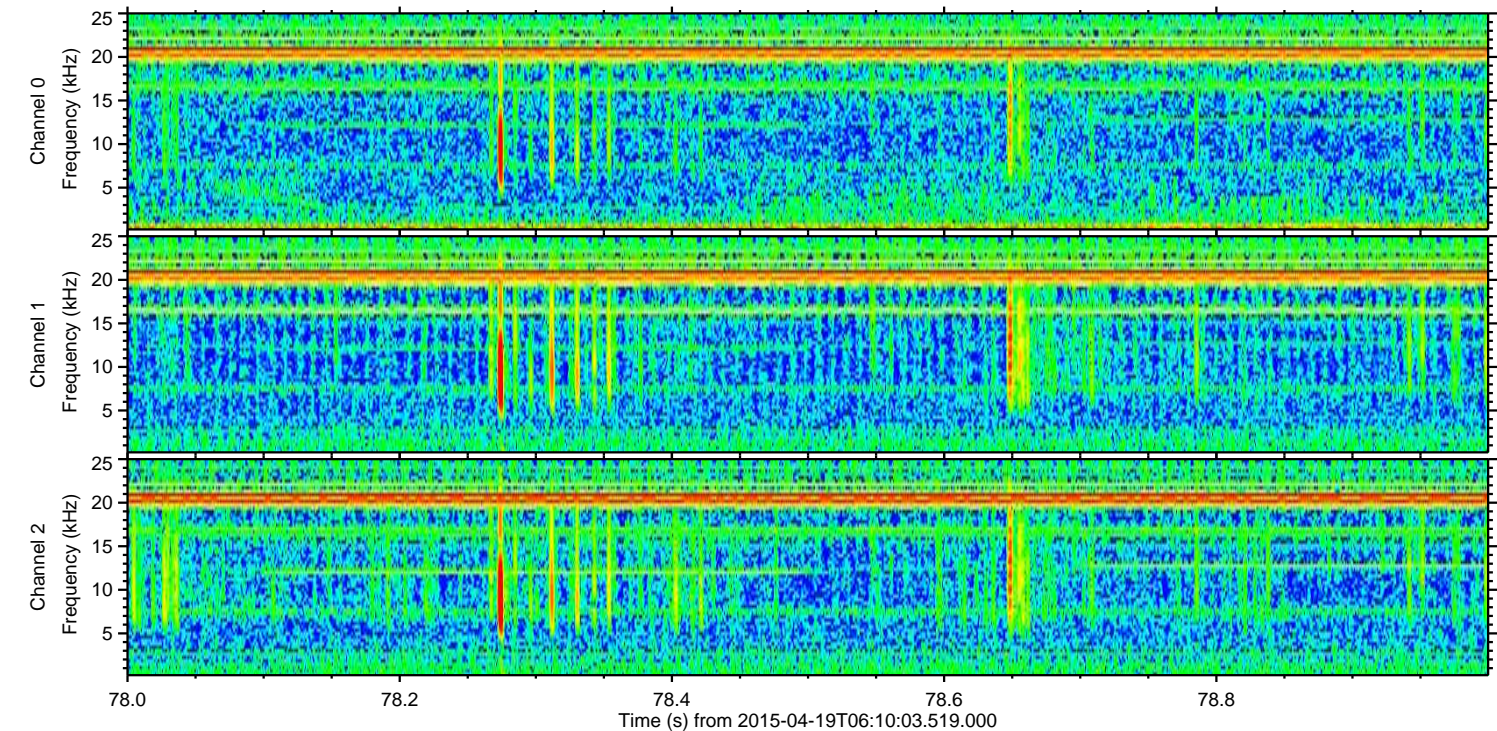
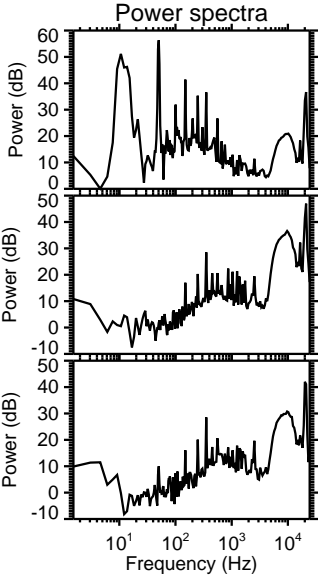
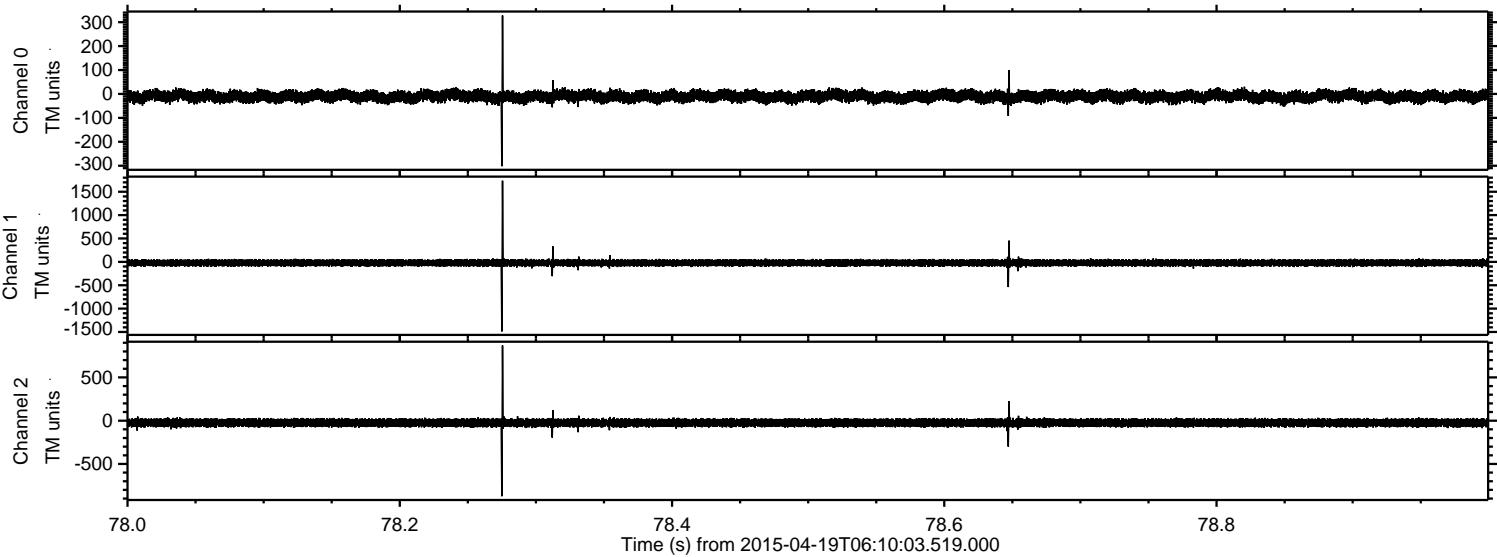


ELMAVAN 3D WAVEFORMS (Measured data sampled at 50 kHz) 49479 packets of 144 samples from 2015-04-19T06:10:03.519.000. Part 126/143

Processed Sun Apr 19 08:17:23 2015 by ELM ver.2012-10-06 from 001__elm20150419_061002__dat00.bin



Processed Sun Apr 19 08:17:24 2015 by ELM ver.2012-10-06 from 001__elm20150419_061002__dat00.bin

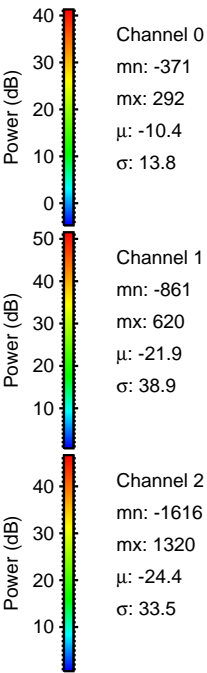
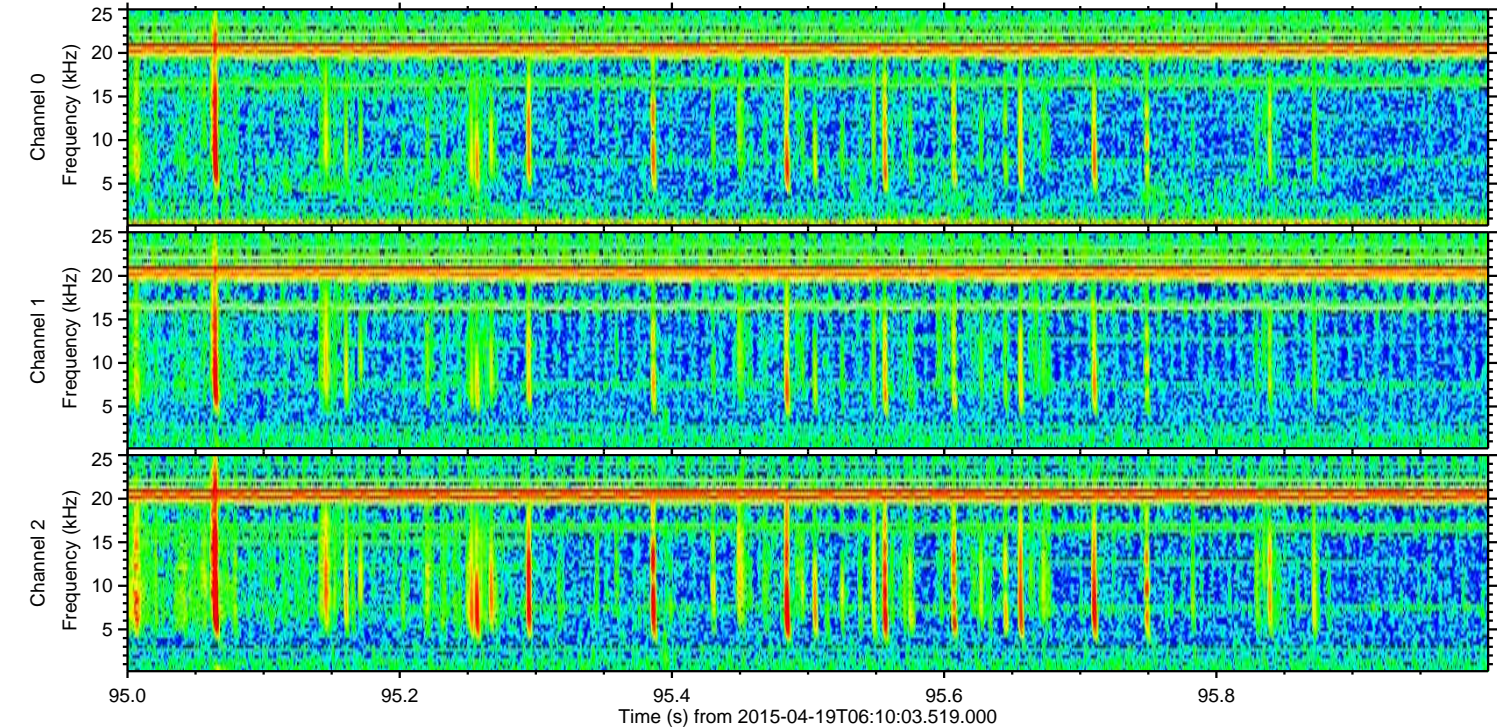
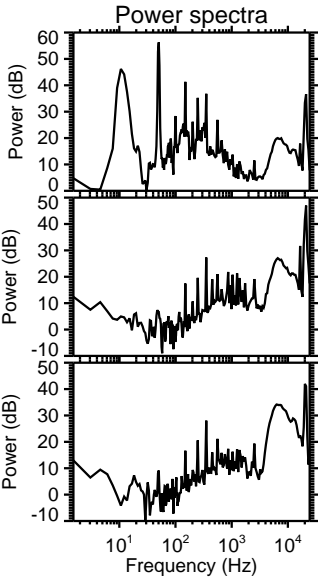
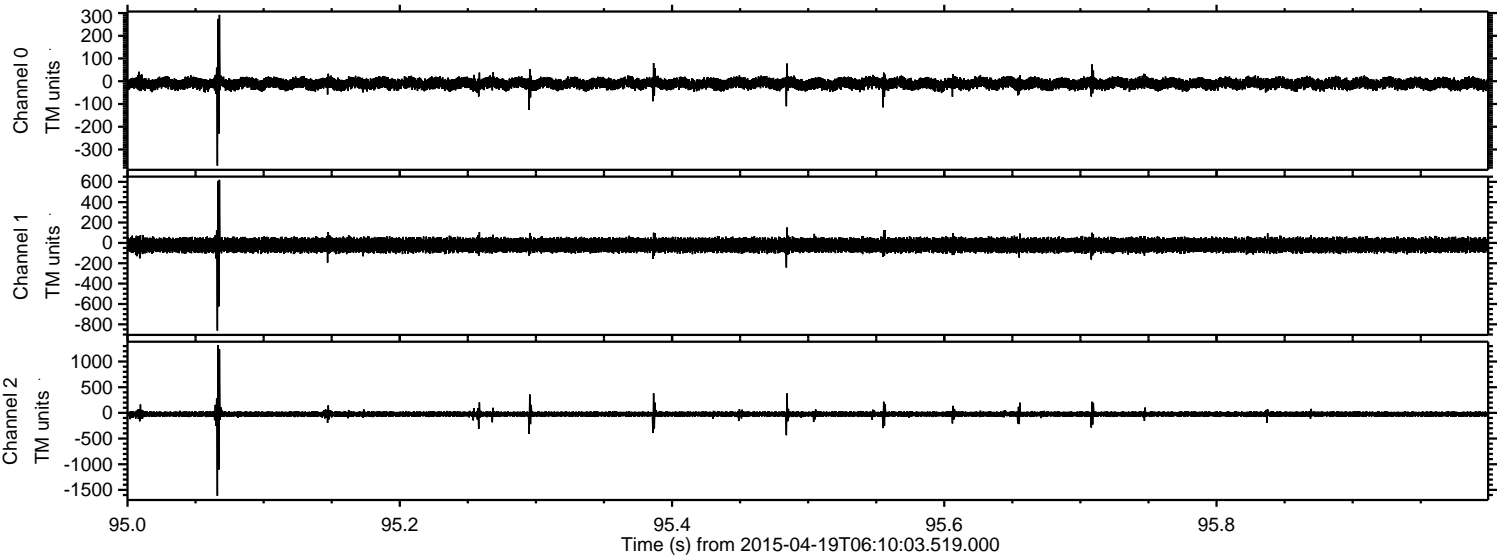


Channel 0
mn: -302
mx: 328
 μ : -10.3
 σ : 13.7

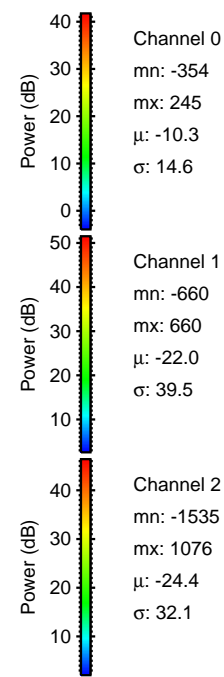
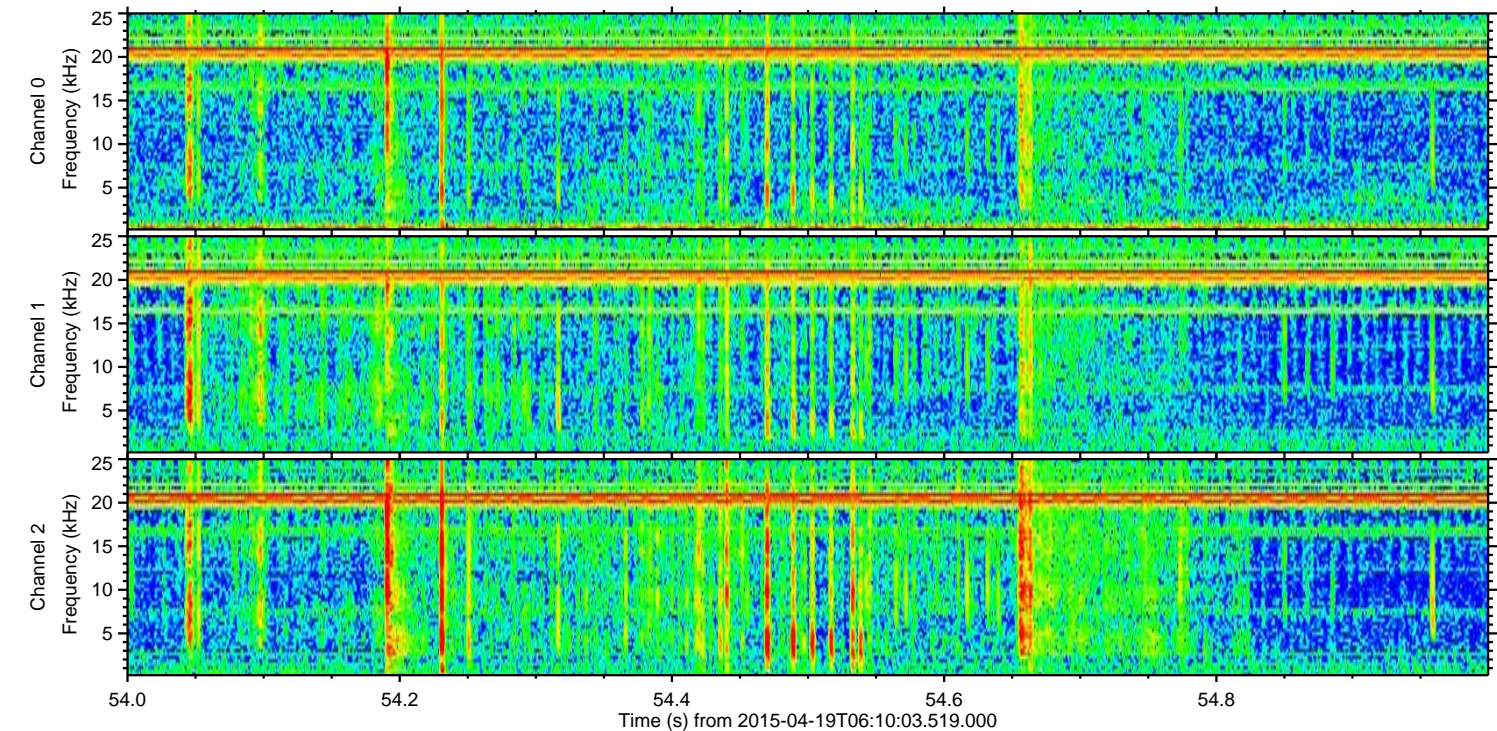
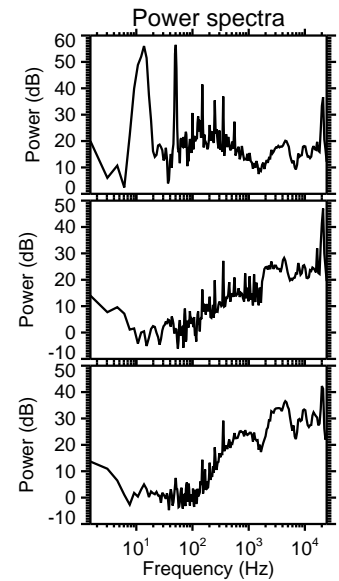
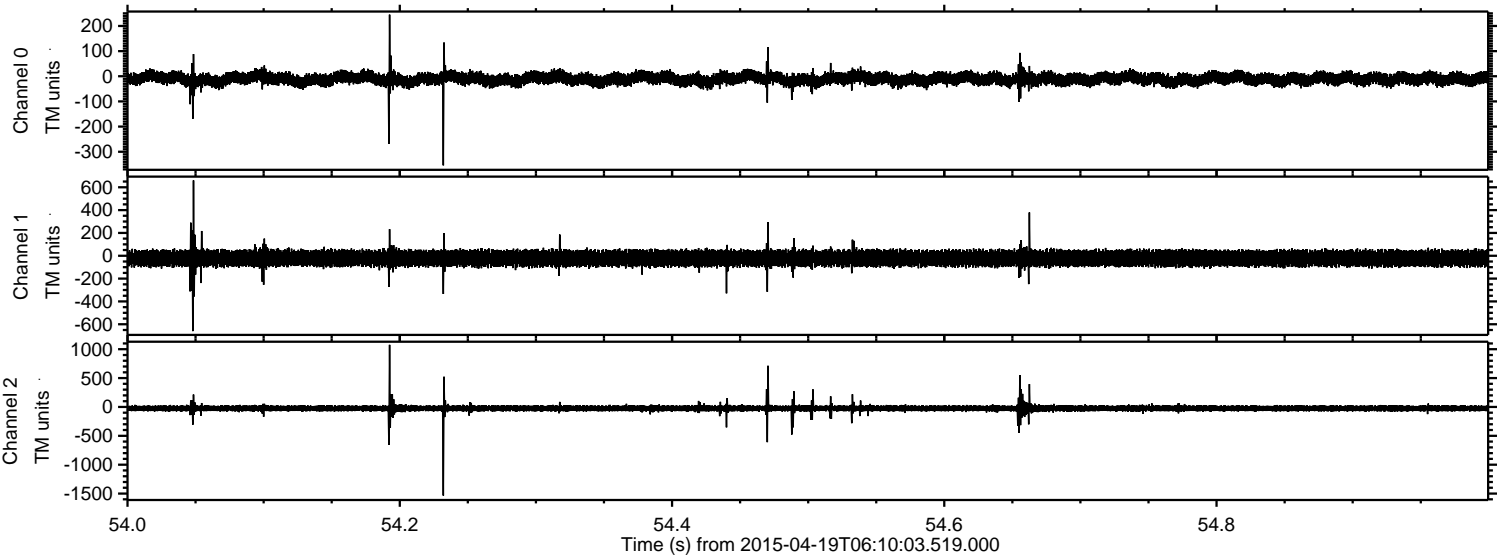
Channel 1
mn: -1488
mx: 1736
 μ : -21.9
 σ : 41.2

Channel 2
mn: -873
mx: 869
 μ : -24.4
 σ : 26.2

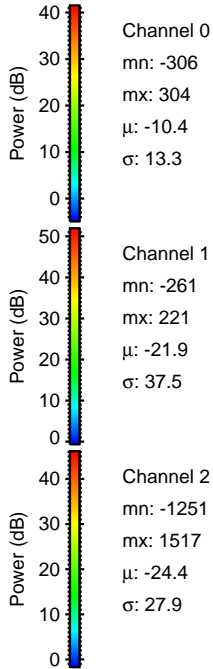
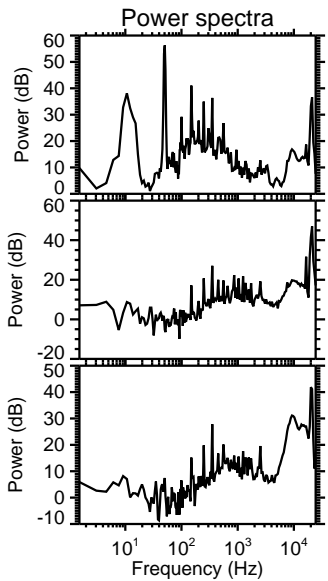
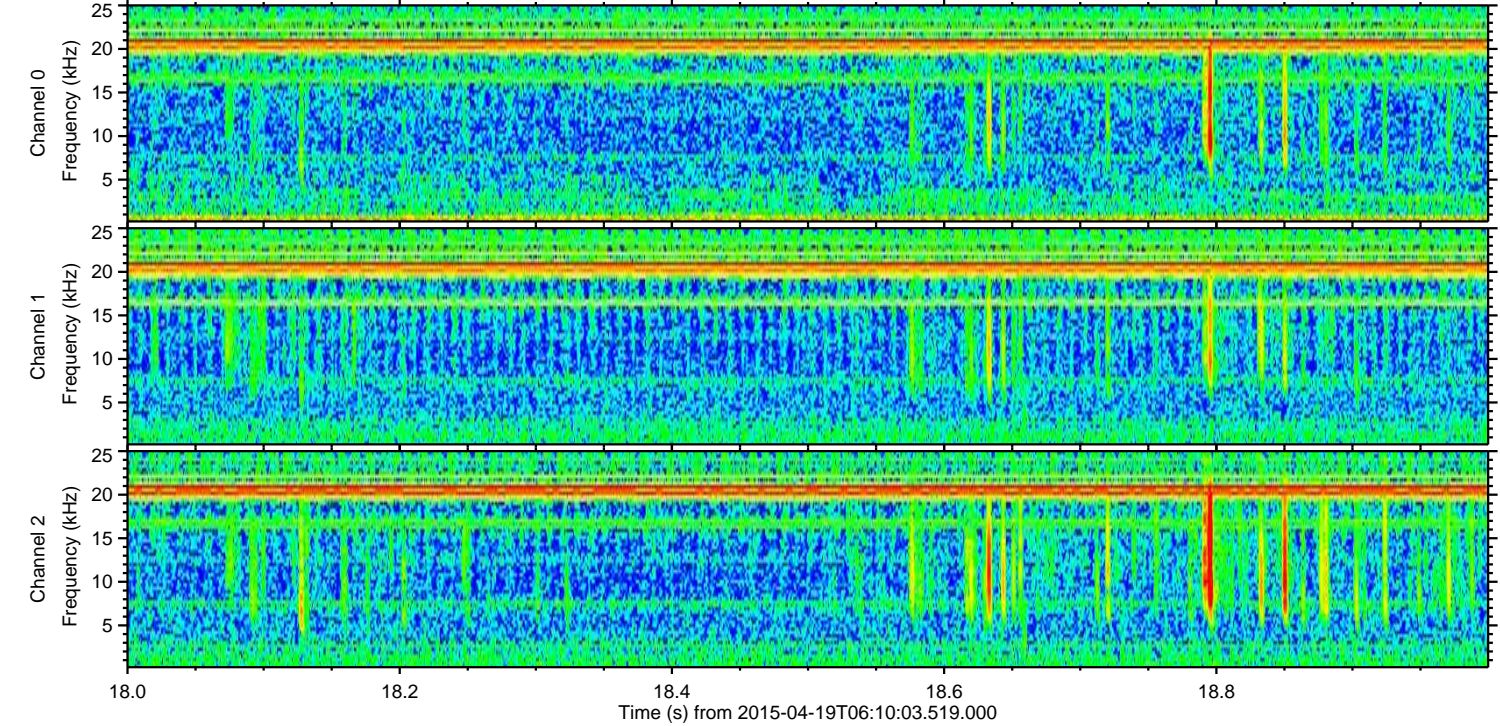
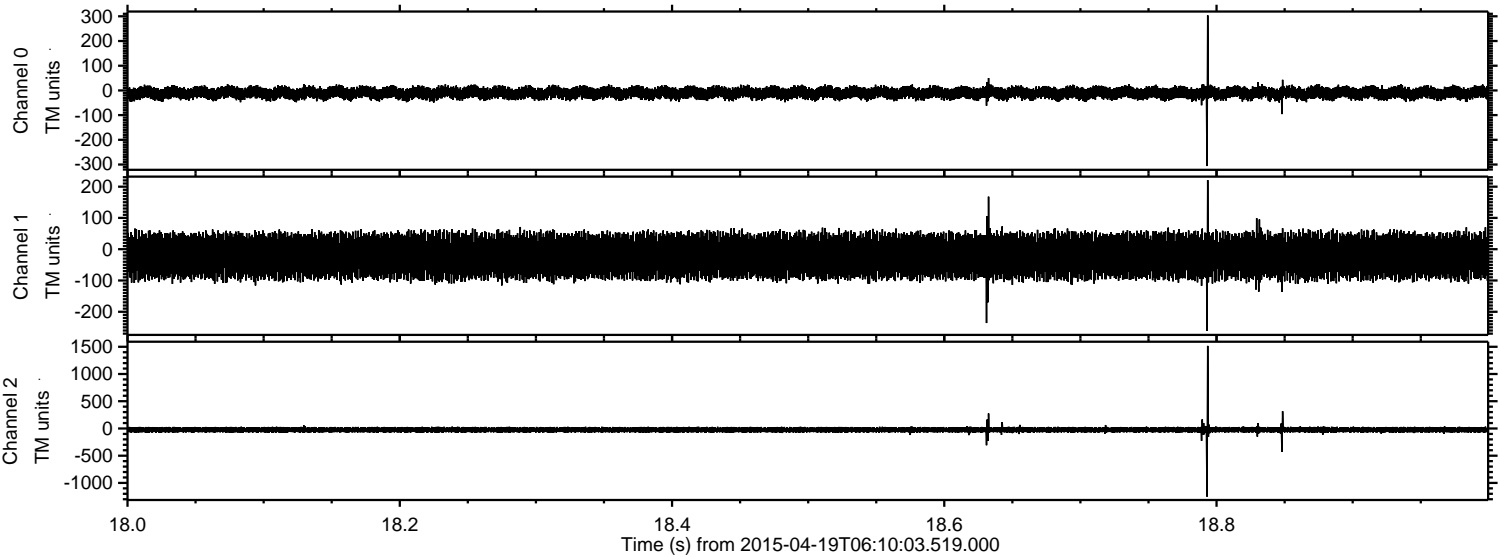
Processed Sun Apr 19 08:17:25 2015 by ELM ver.2012-10-06 from 001__elm20150419_061002__dat00.bin



Processed Sun Apr 19 08:17:26 2015 by ELM ver.2012-10-06 from 001__elm20150419_061002__dat00.bin

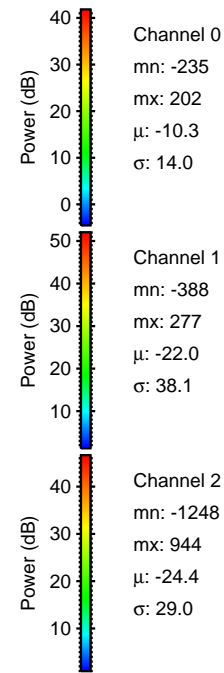
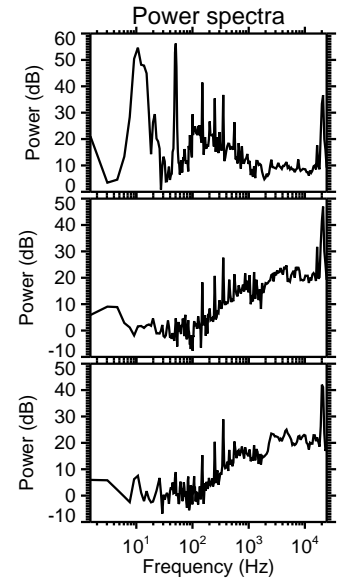
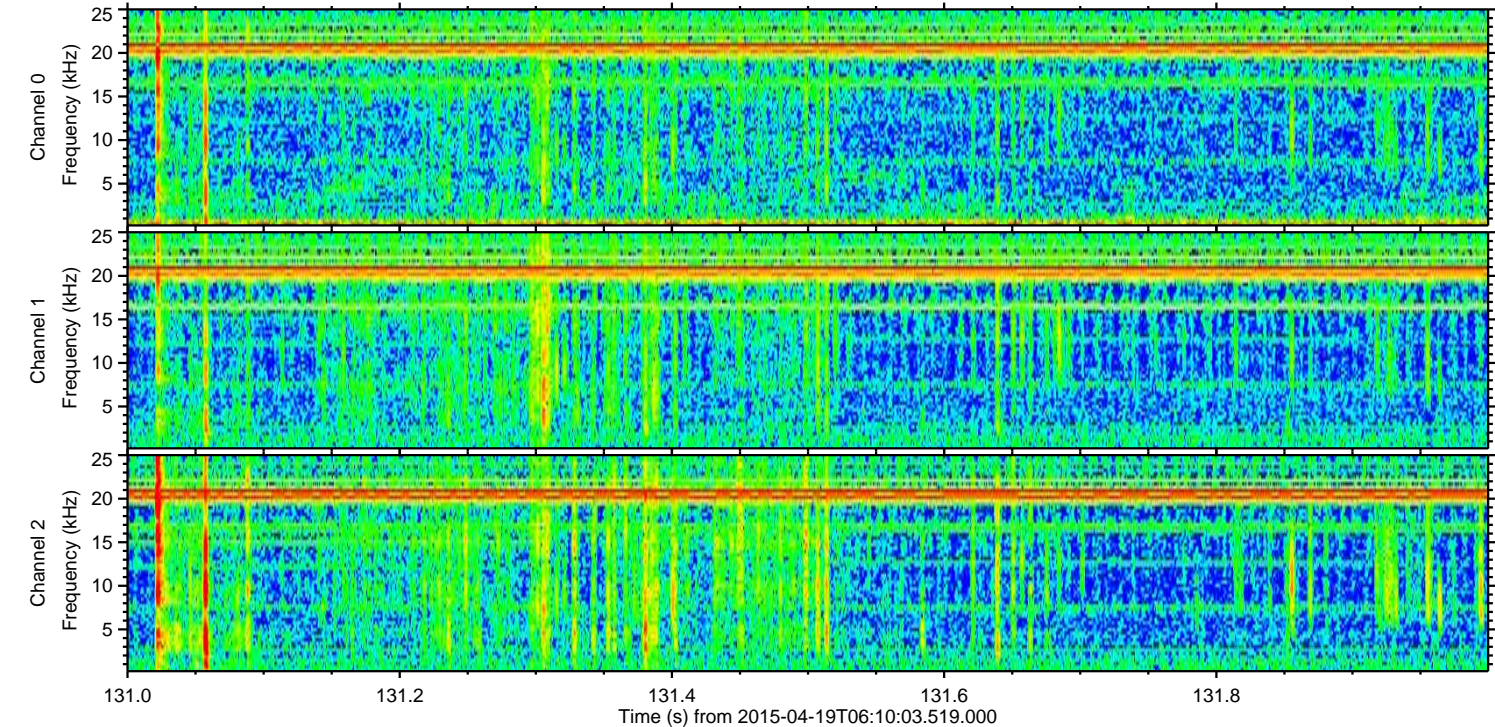
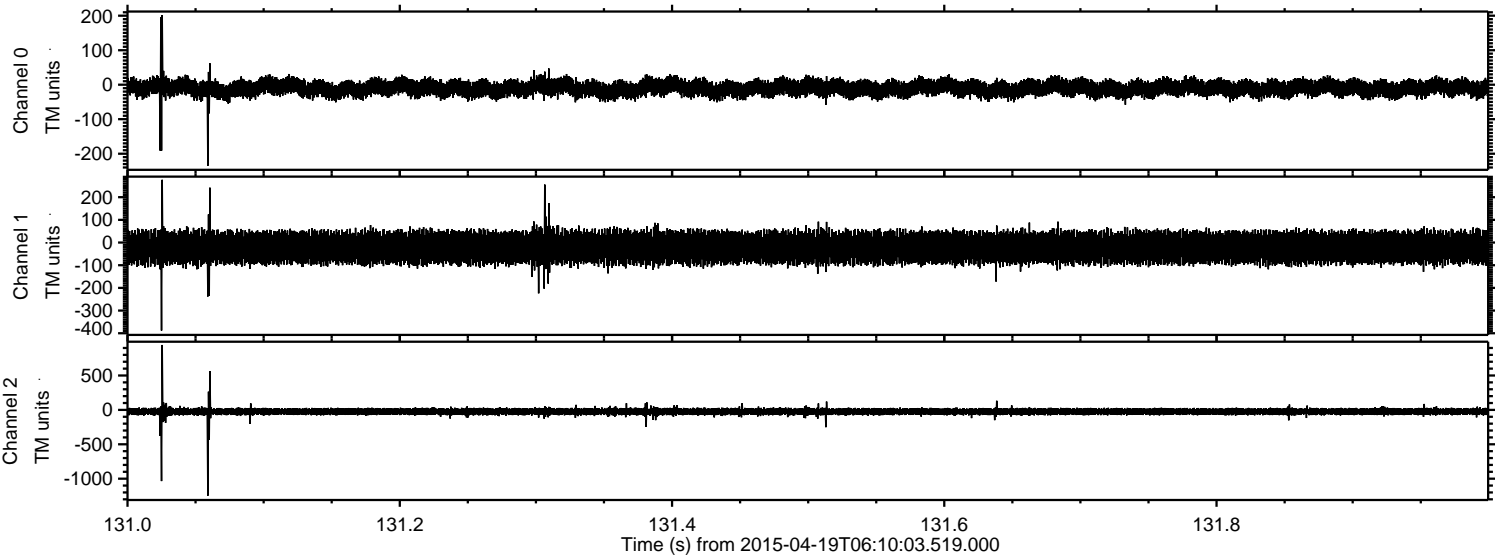


Processed Sun Apr 19 08:17:27 2015 by ELM ver.2012-10-06 from 001__elm20150419_061002__dat00.bin

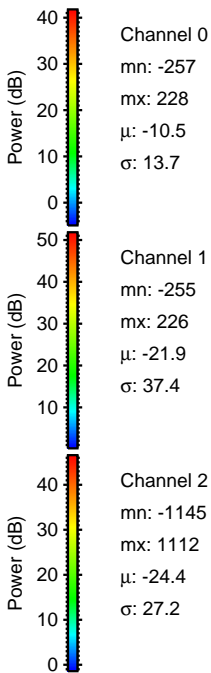
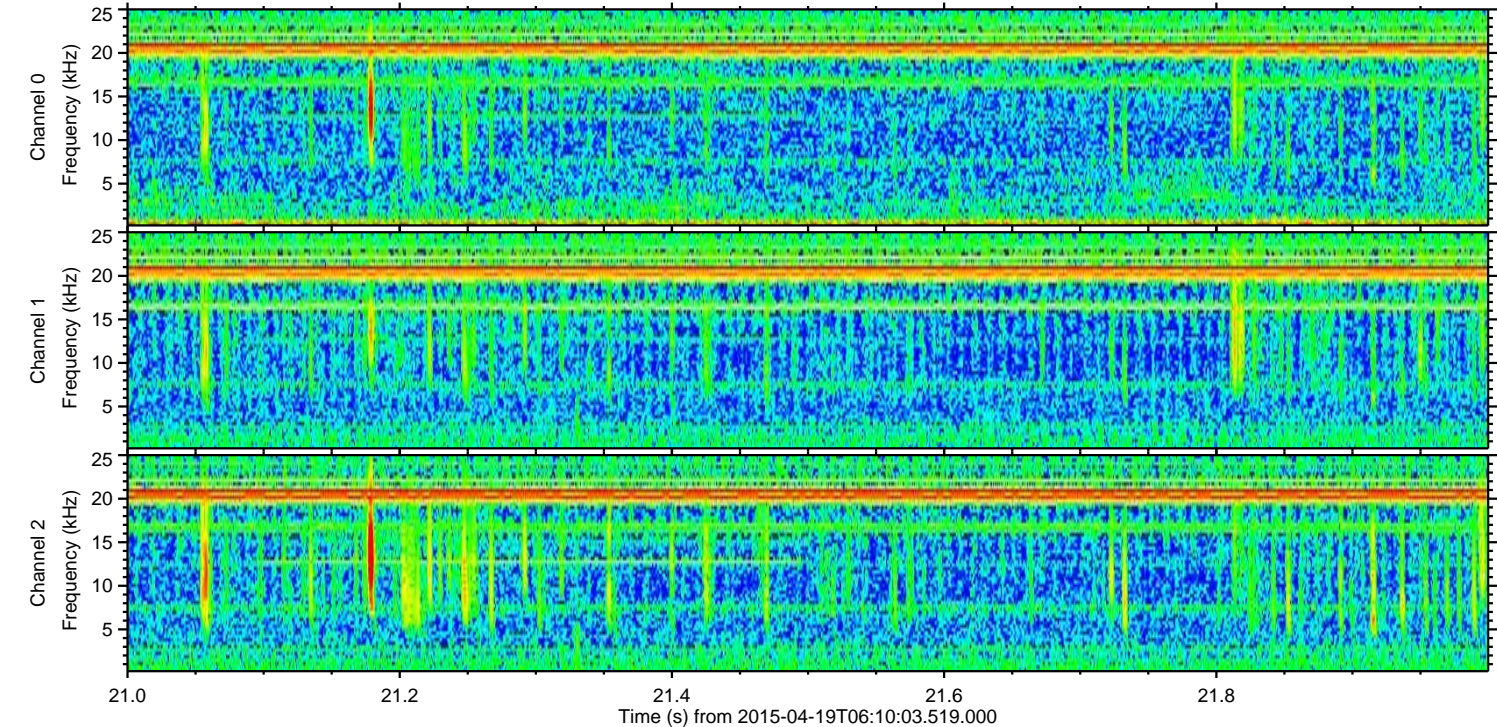
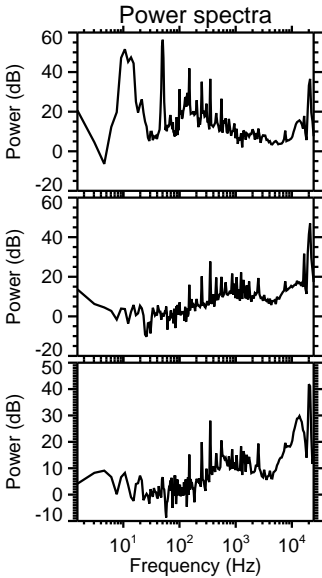
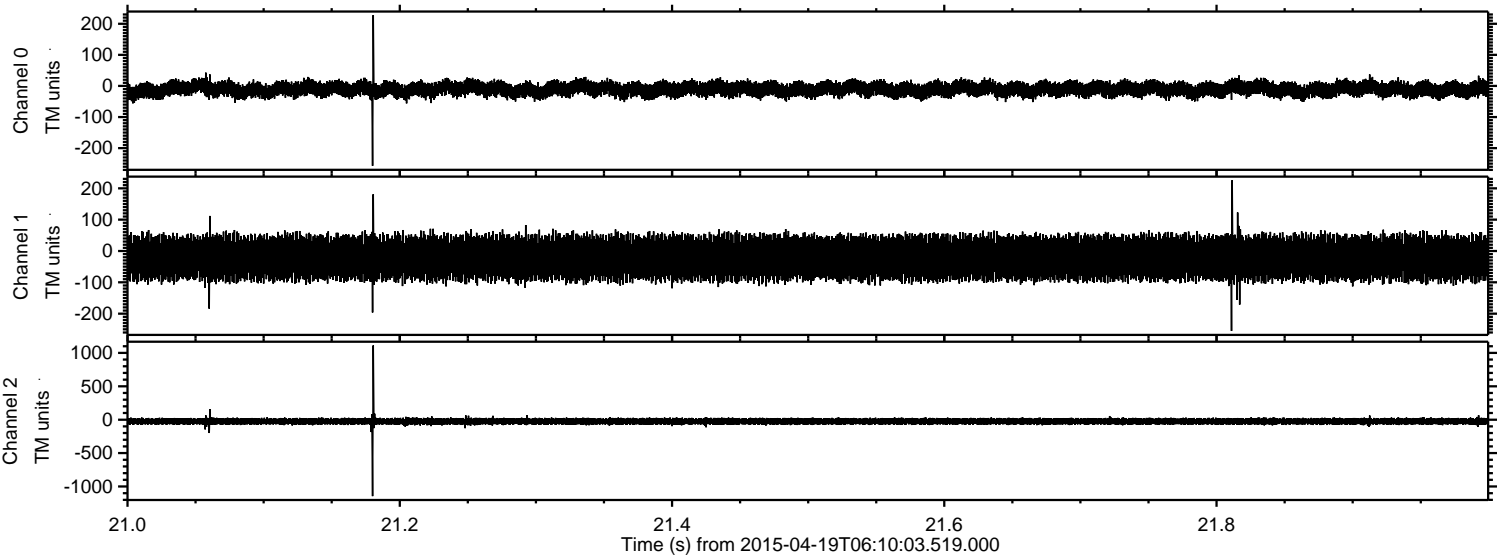


ELMAVAN 3D WAVEFORMS (Measured data sampled at 50 kHz) 49479 packets of 144 samples from 2015-04-19T06:10:03.519.000. Part 132/143

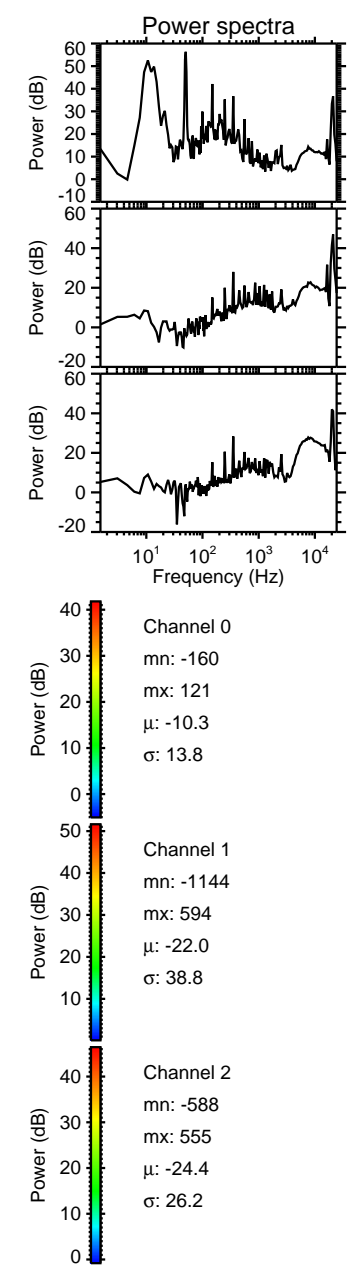
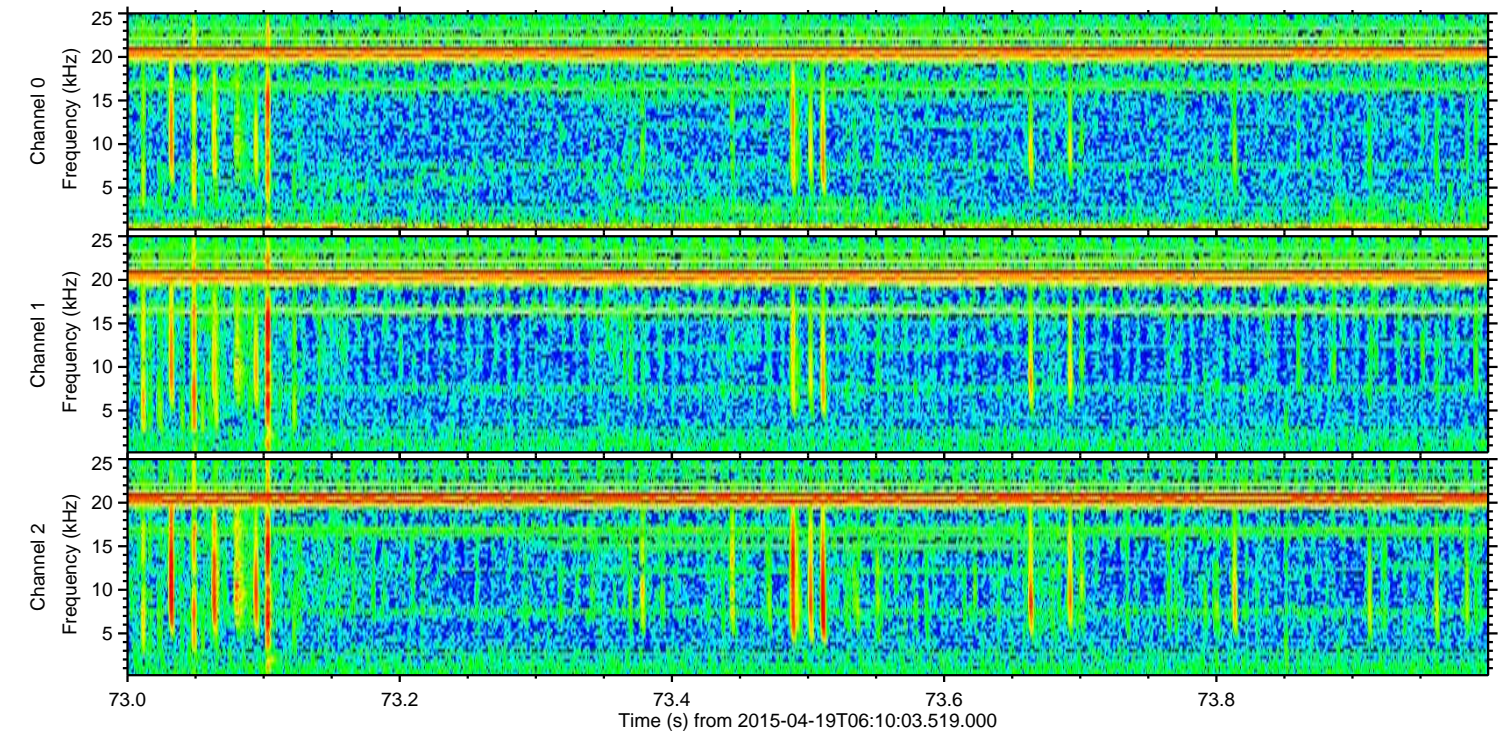
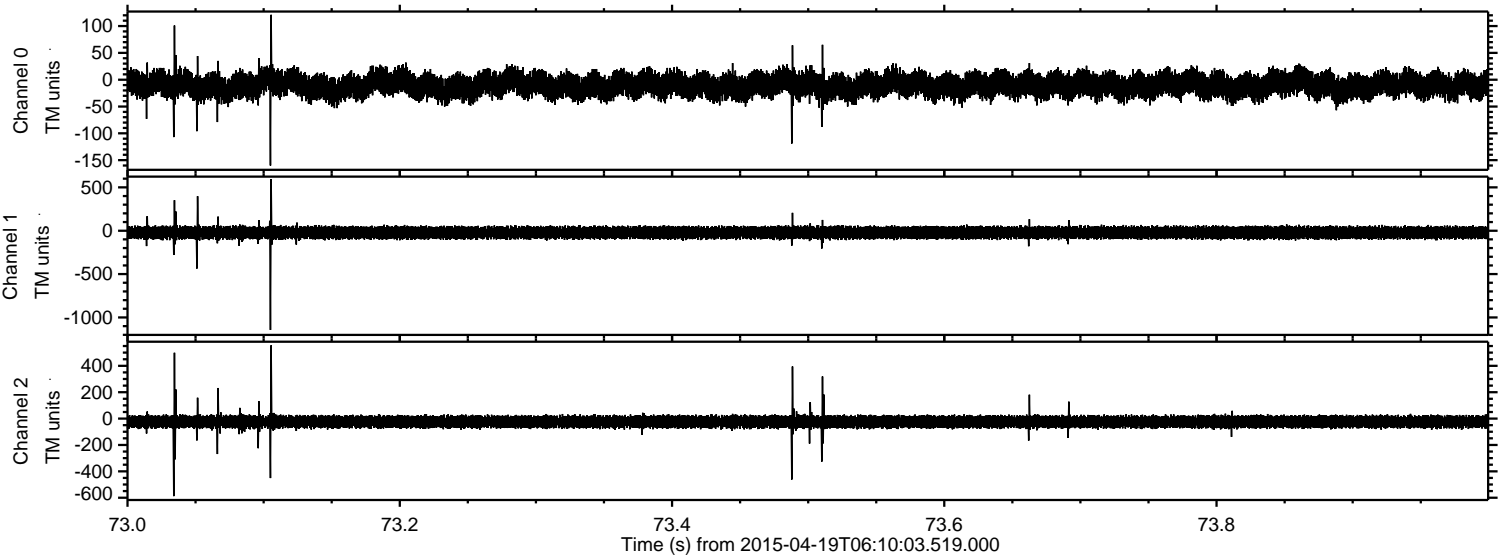
Processed Sun Apr 19 08:17:28 2015 by ELM ver.2012-10-06 from 001__elm20150419_061002__dat00.bin



Processed Sun Apr 19 08:17:29 2015 by ELM ver.2012-10-06 from 001__elm20150419_061002__dat00.bin



Processed Sun Apr 19 08:17:30 2015 by ELM ver.2012-10-06 from 001__elm20150419_061002__dat00.bin



Processed Sun Apr 19 08:17:31 2015 by ELM ver.2012-10-06 from 001__elm20150419_061002__dat00.bin

