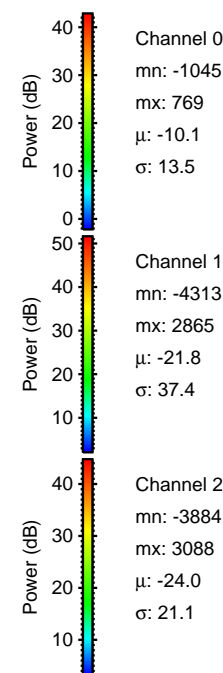
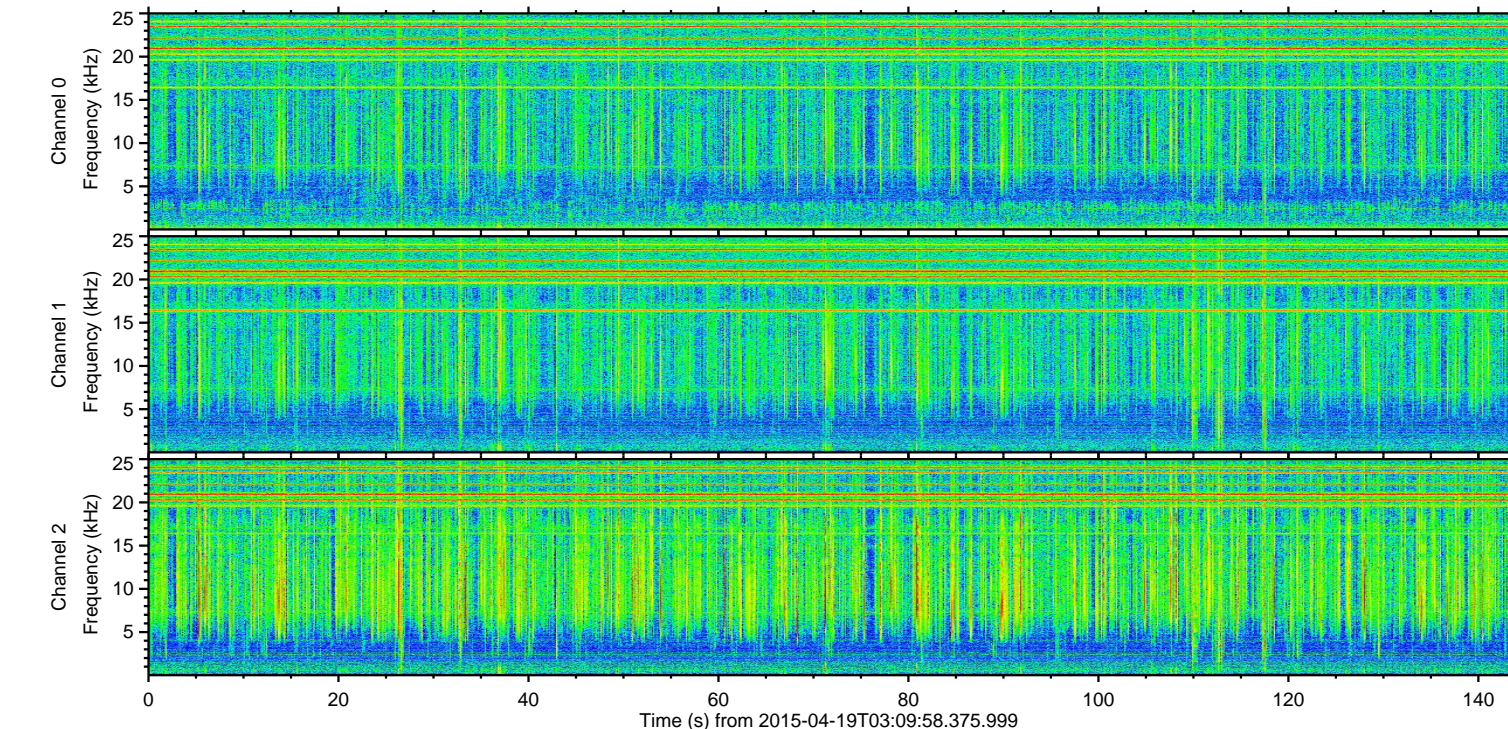
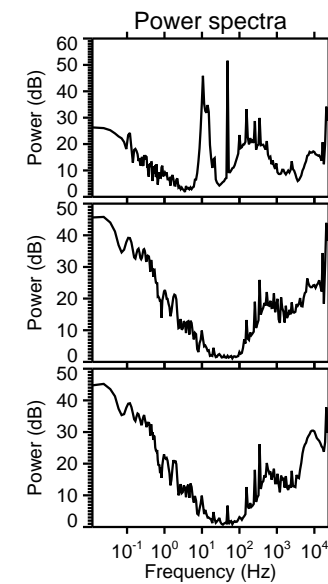
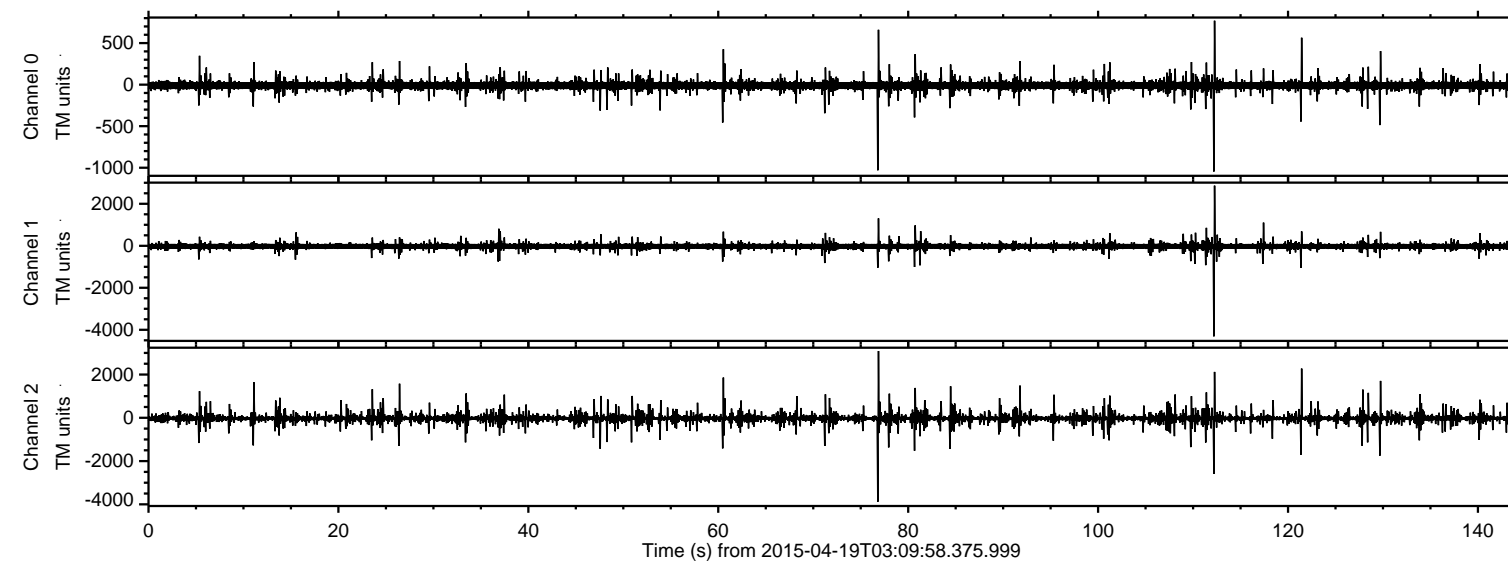


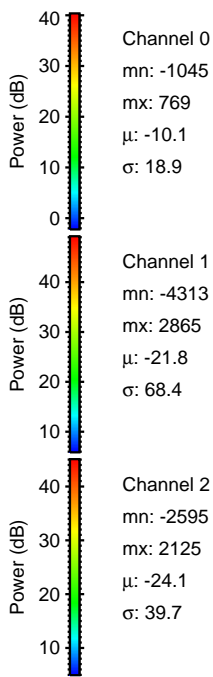
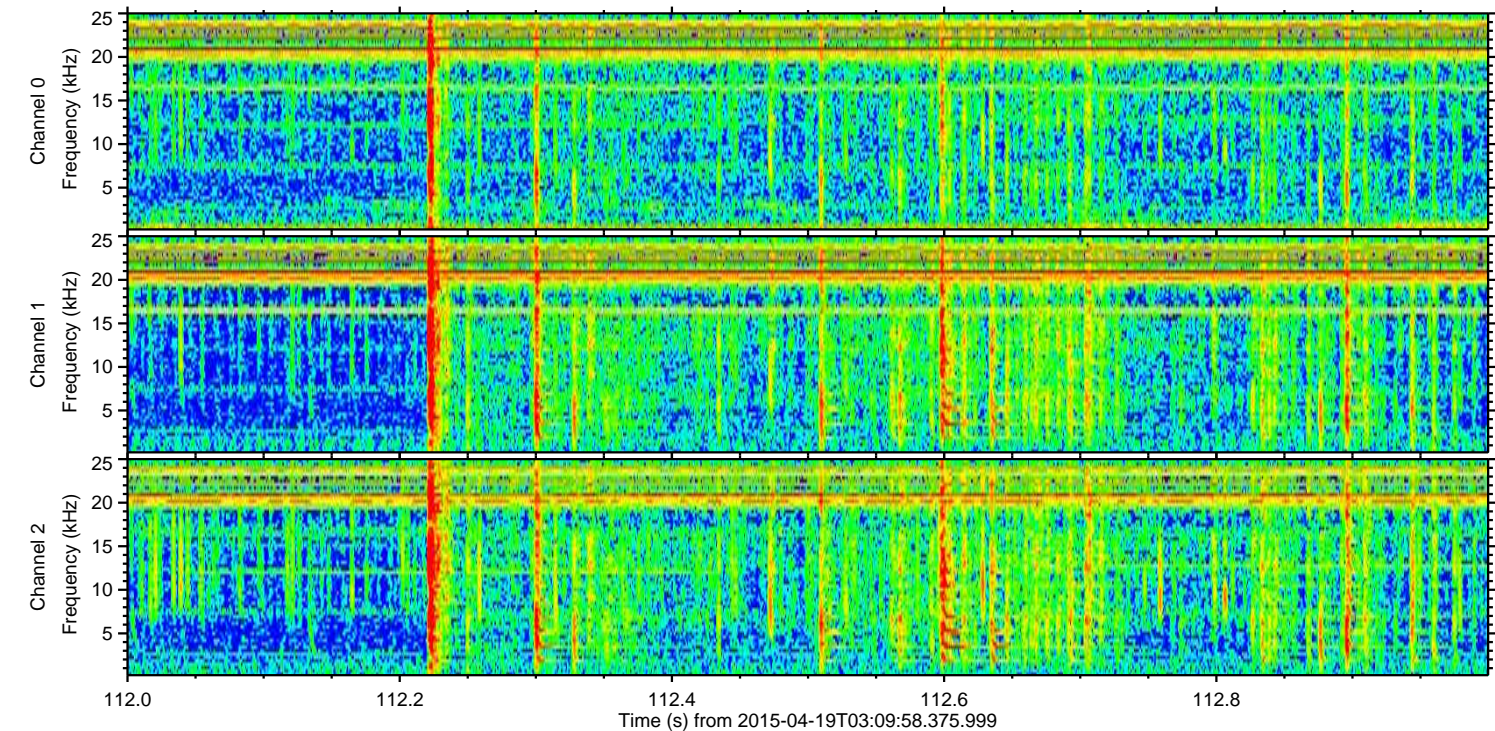
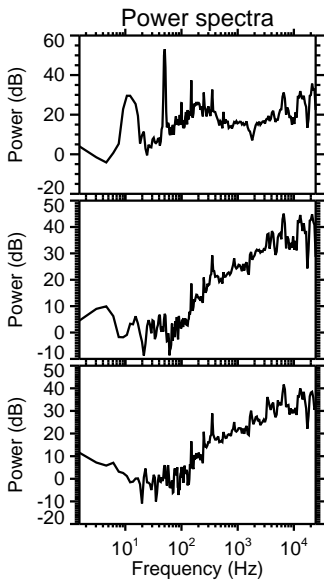
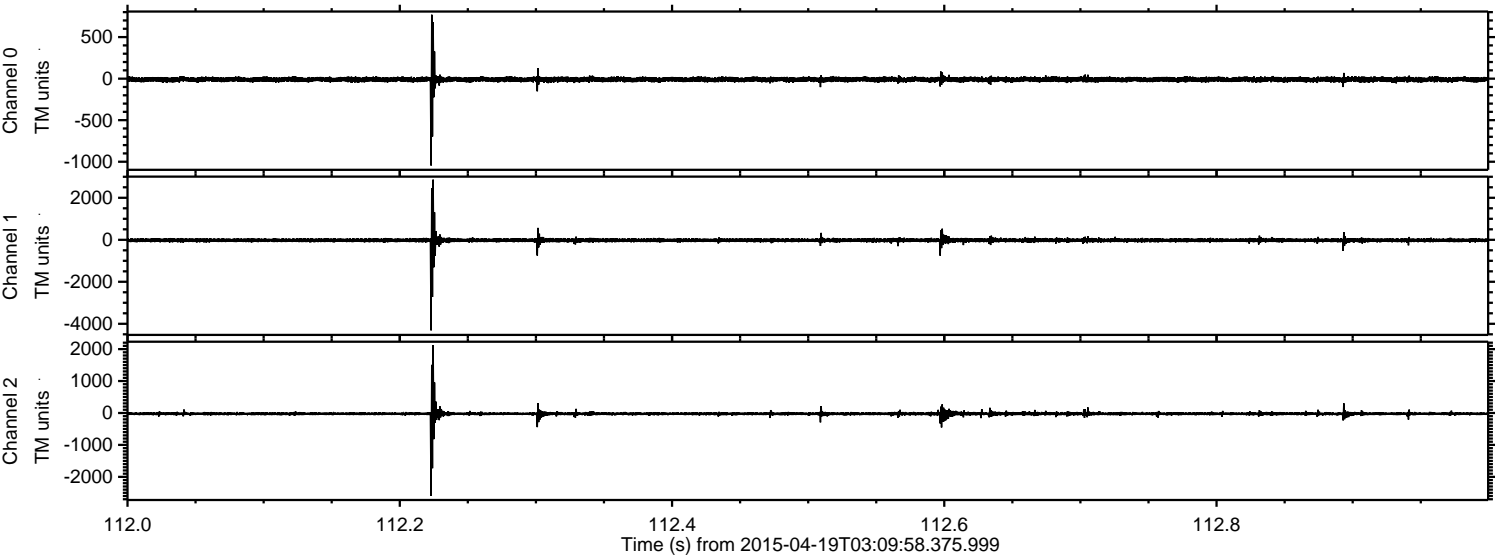
ELMAVAN 3D WAVEFORMS (Measured data sampled at 50 kHz) 49752 packets of 144 samples from 2015-04-19T03:09:58.375.999.

Processed Sun Apr 19 05:17:15 2015 by ELM ver.2012-10-06 from 001__elm20150419_030957__dat00.bin

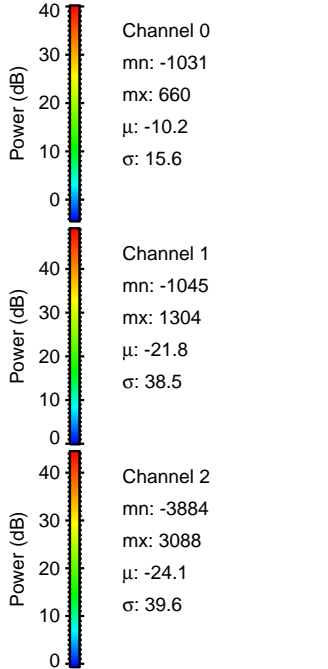
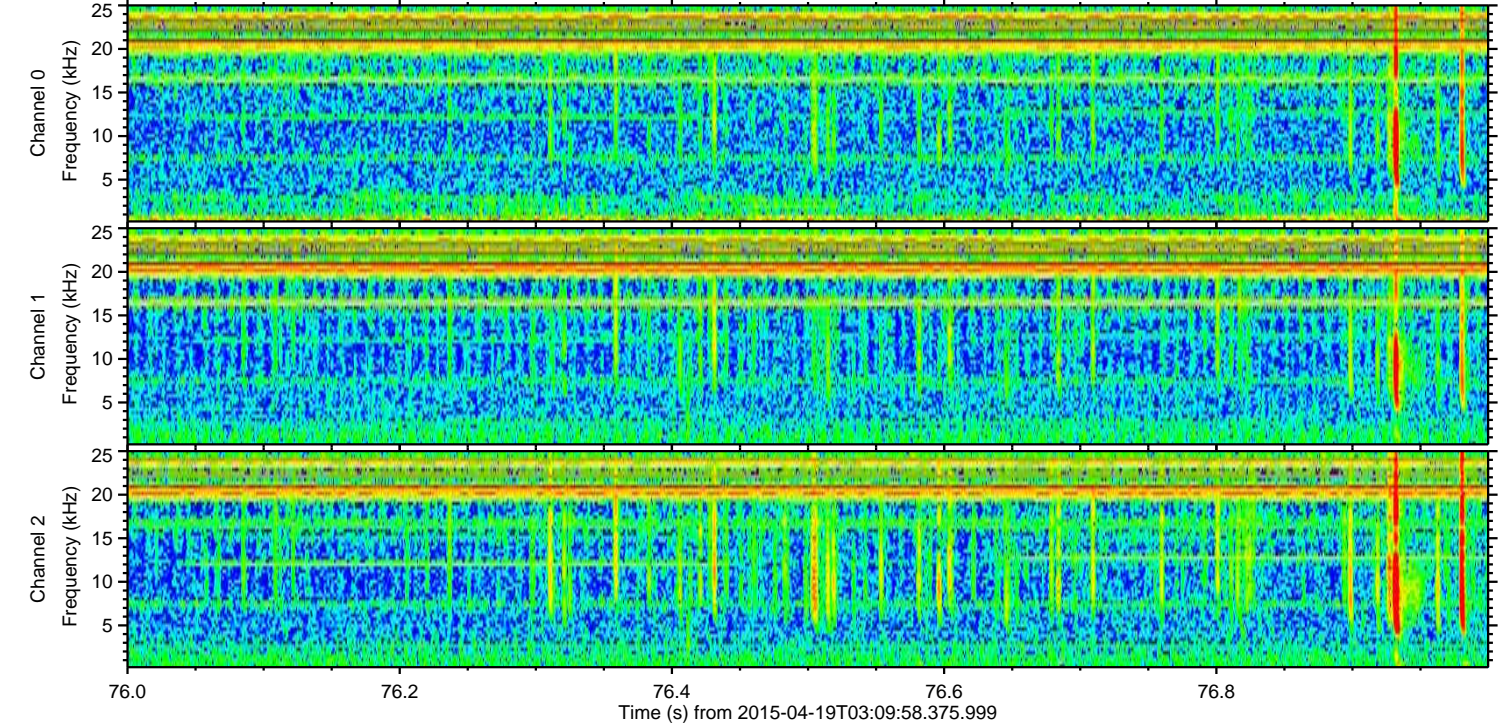
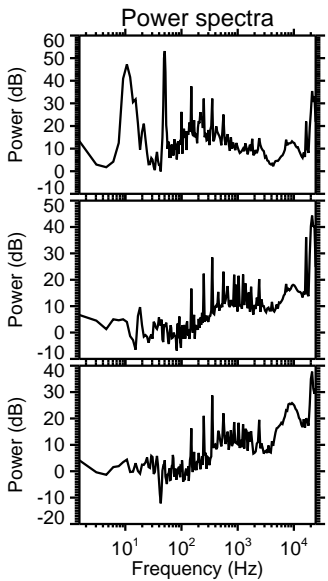
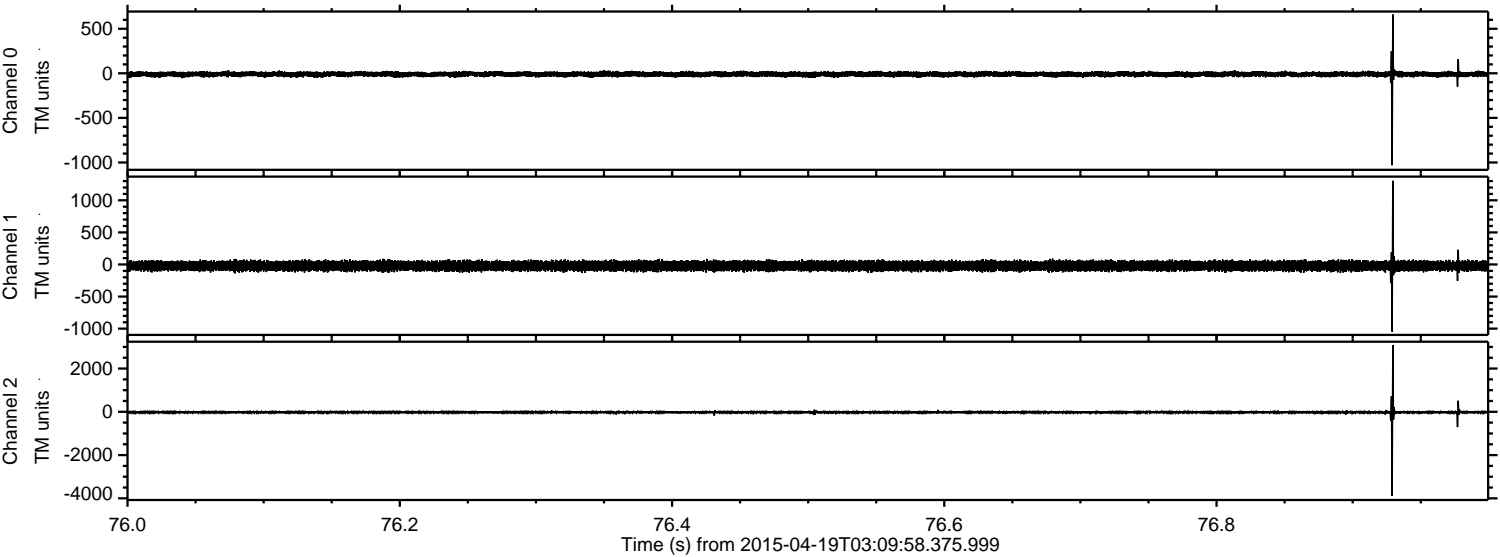


ELMAVAN 3D WAVEFORMS (Measured data sampled at 50 kHz) 49752 packets of 144 samples from 2015-04-19T03:09:58.375.999. Part 113/144

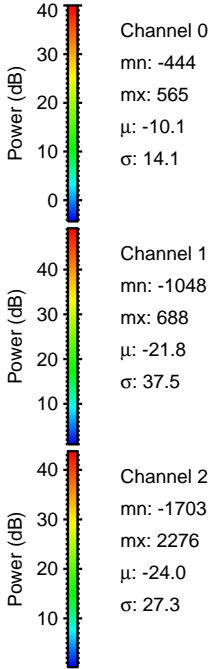
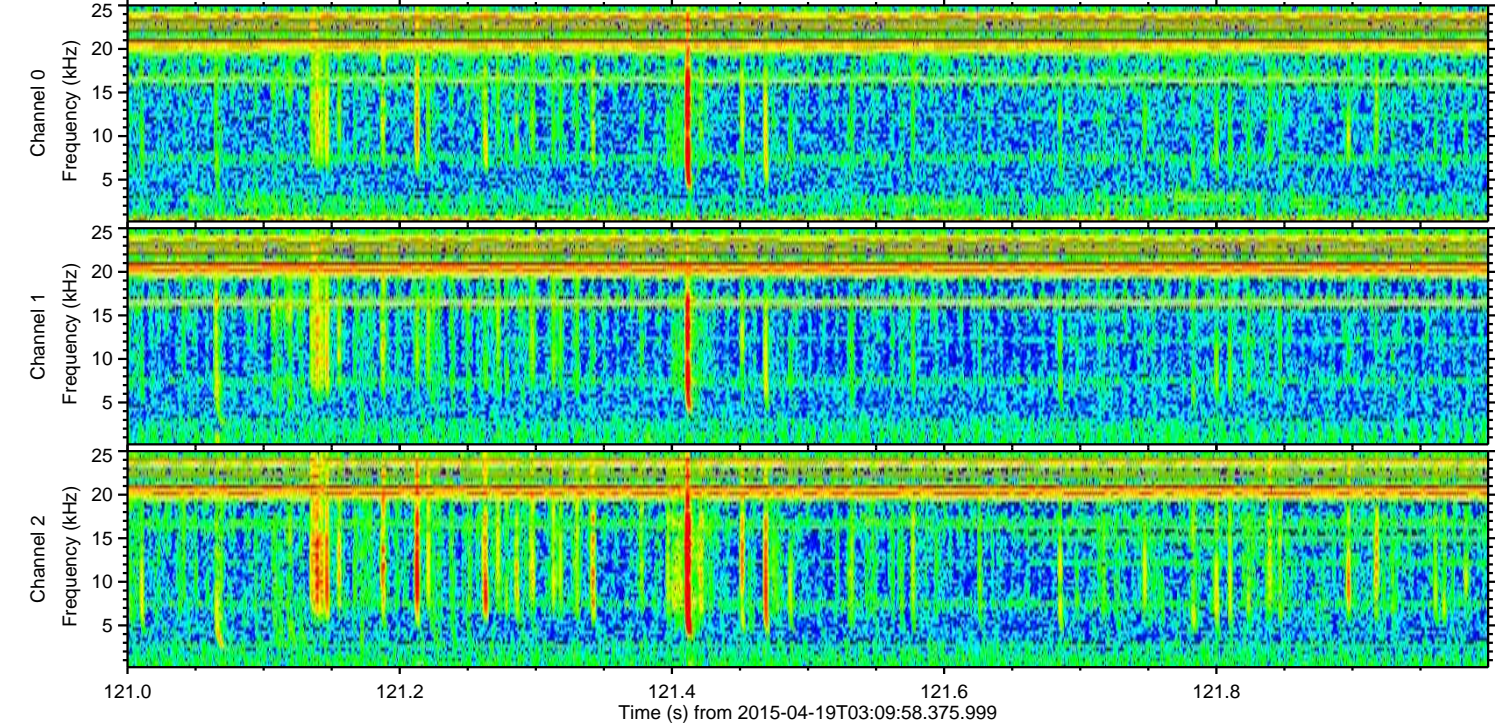
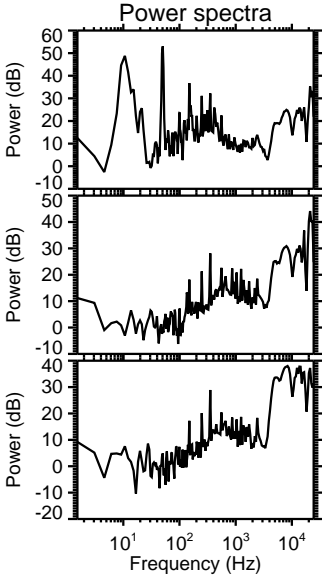
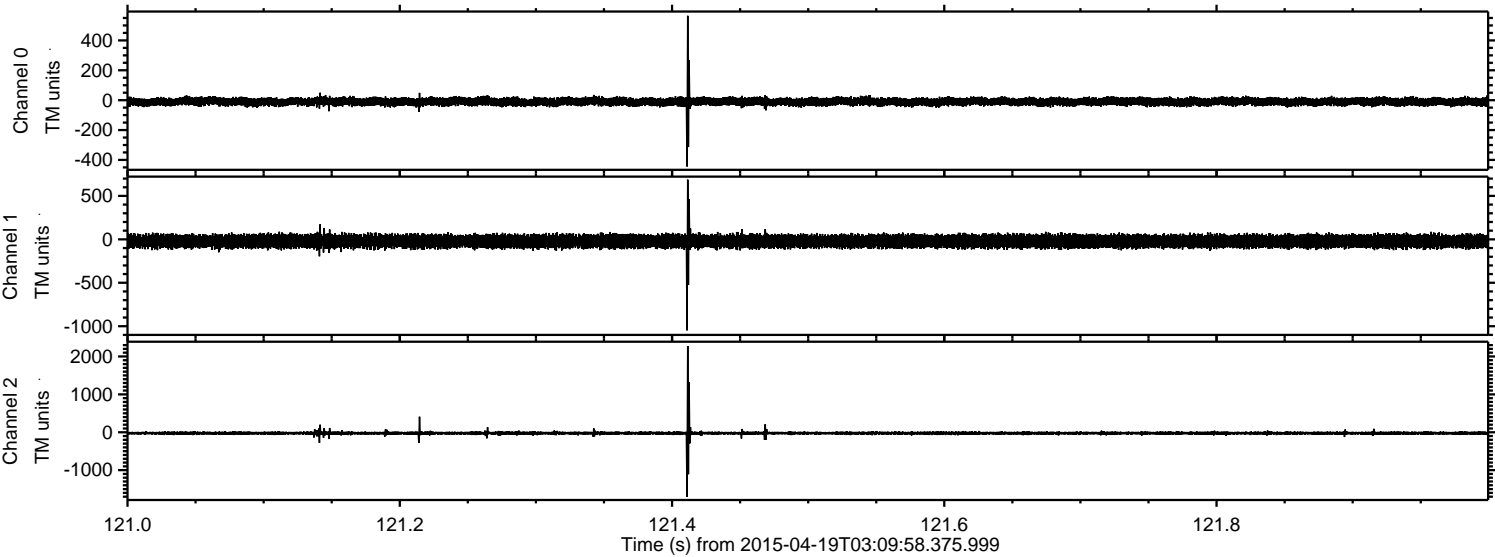
Processed Sun Apr 19 05:17:26 2015 by ELM ver.2012-10-06 from 001__elm20150419_030957__dat00.bin



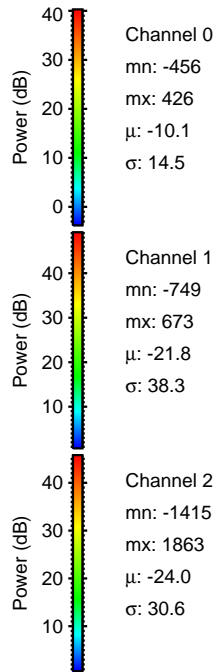
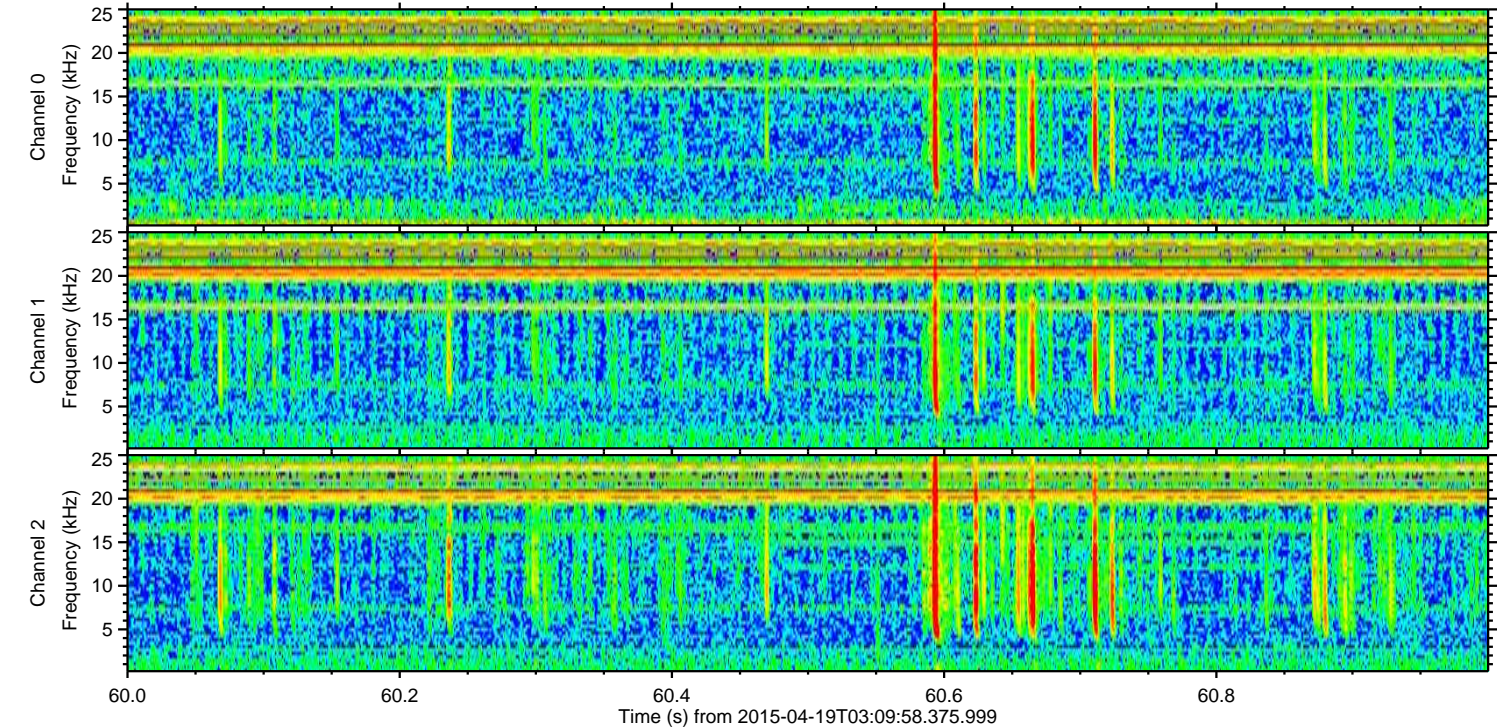
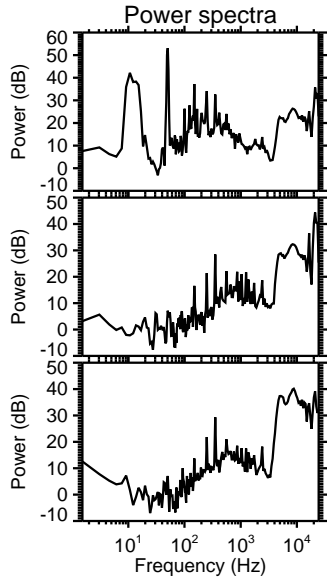
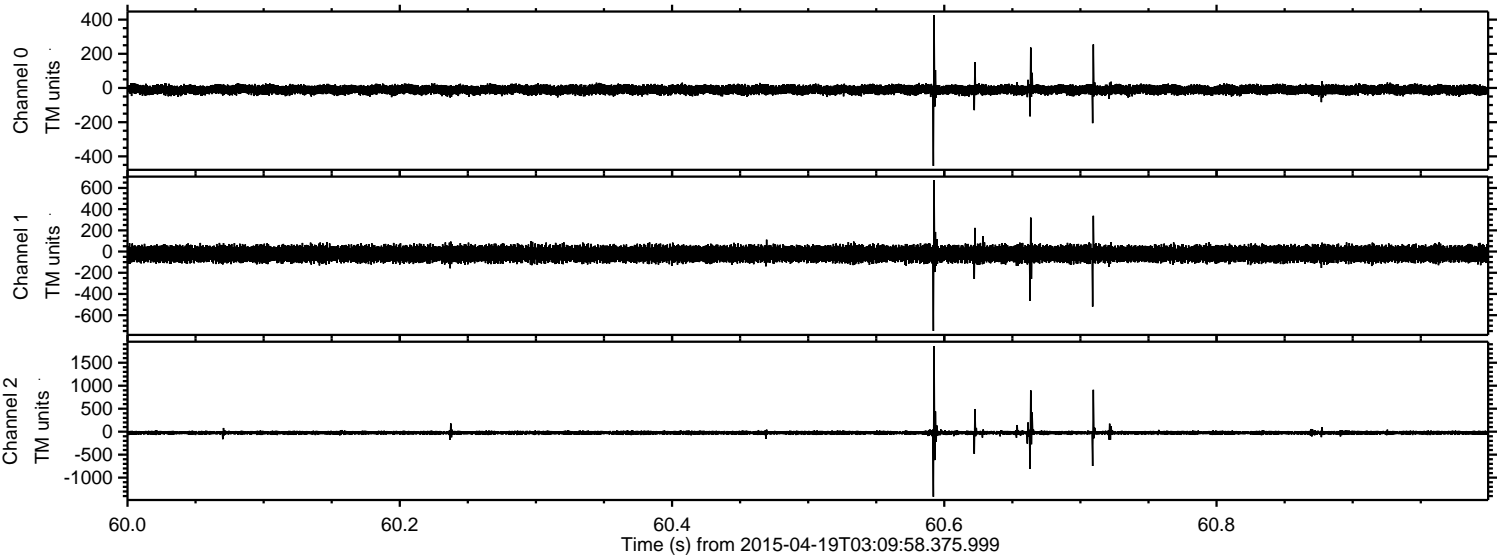
Processed Sun Apr 19 05:17:27 2015 by ELM ver.2012-10-06 from 001__elm20150419_030957__dat00.bin



Processed Sun Apr 19 05:17:28 2015 by ELM ver.2012-10-06 from 001__elm20150419_030957__dat00.bin

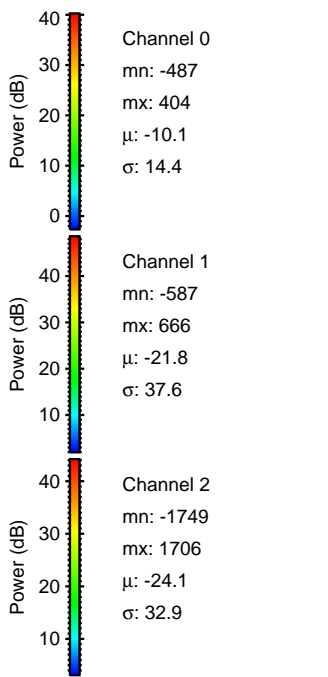
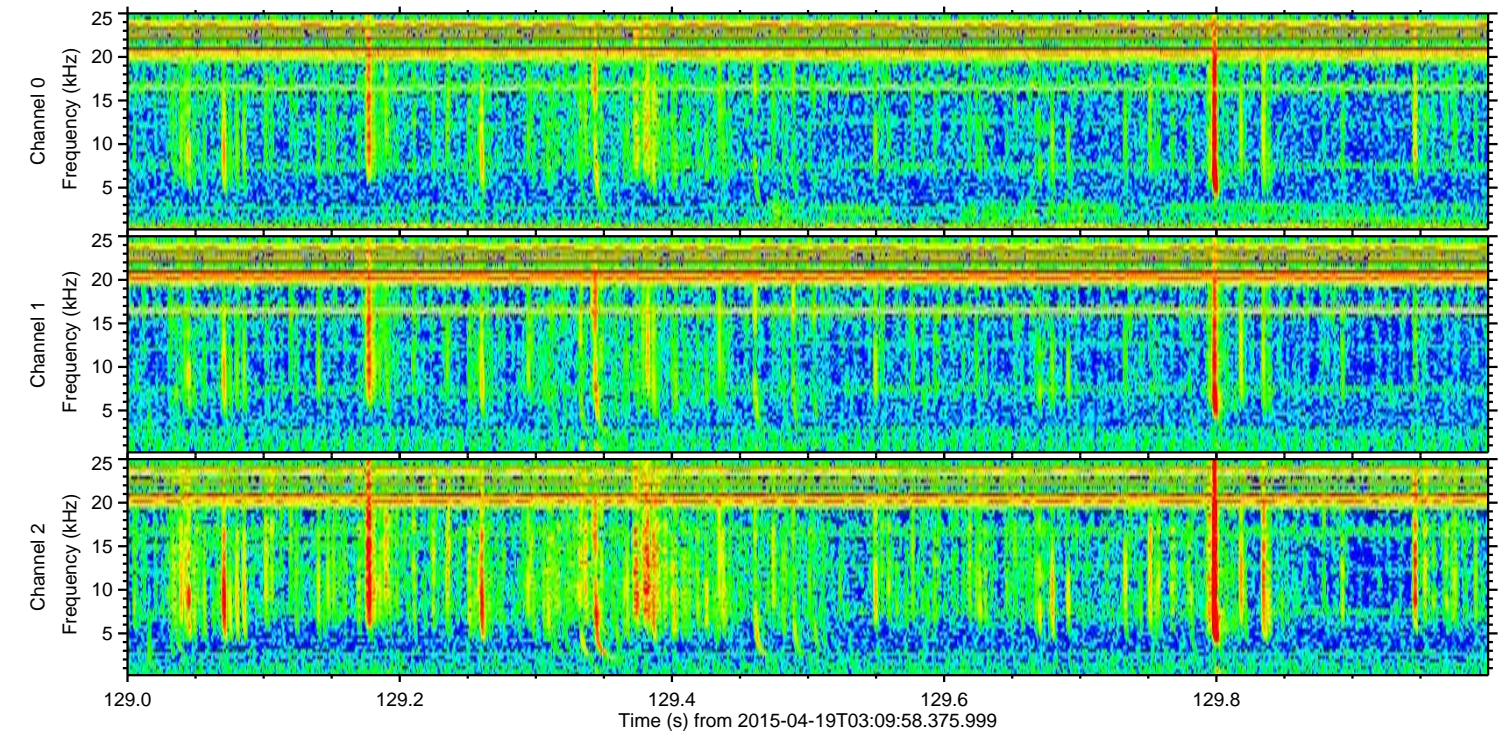
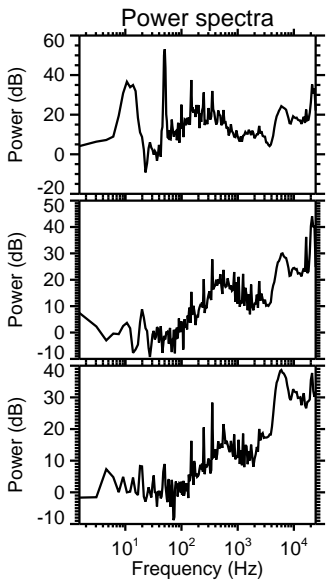
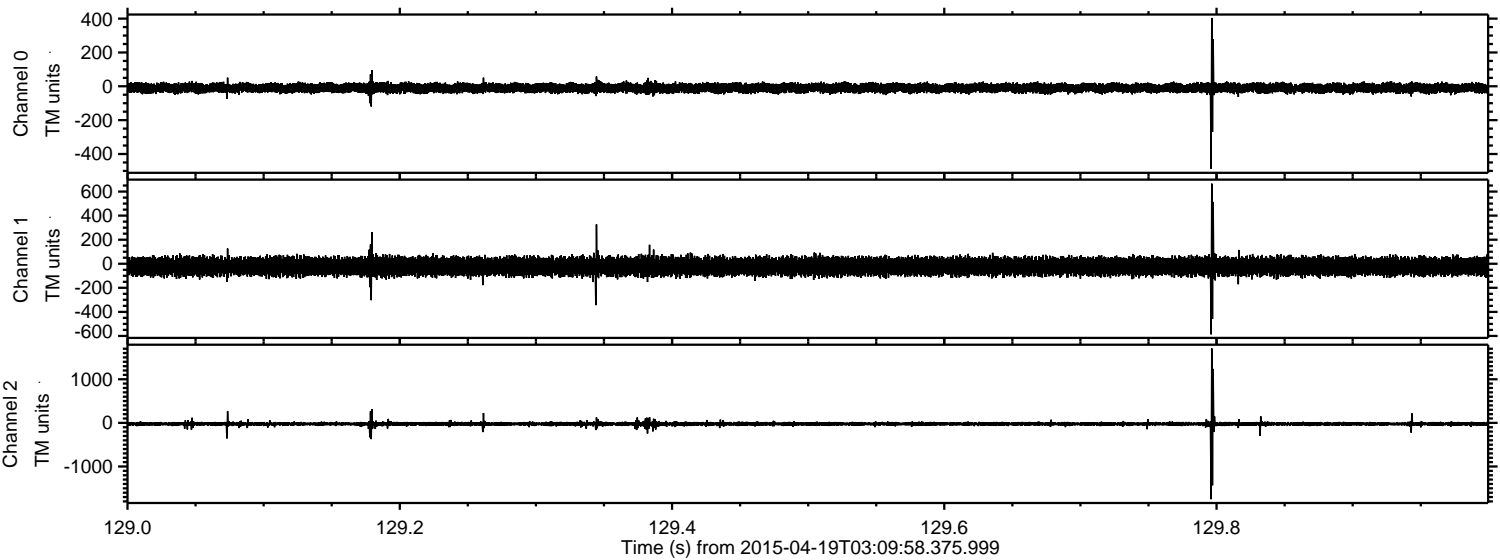


Processed Sun Apr 19 05:17:29 2015 by ELM ver.2012-10-06 from 001__elm20150419_030957__dat00.bin



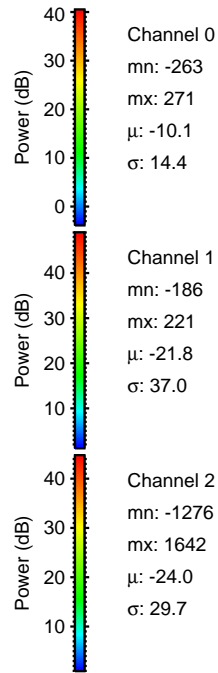
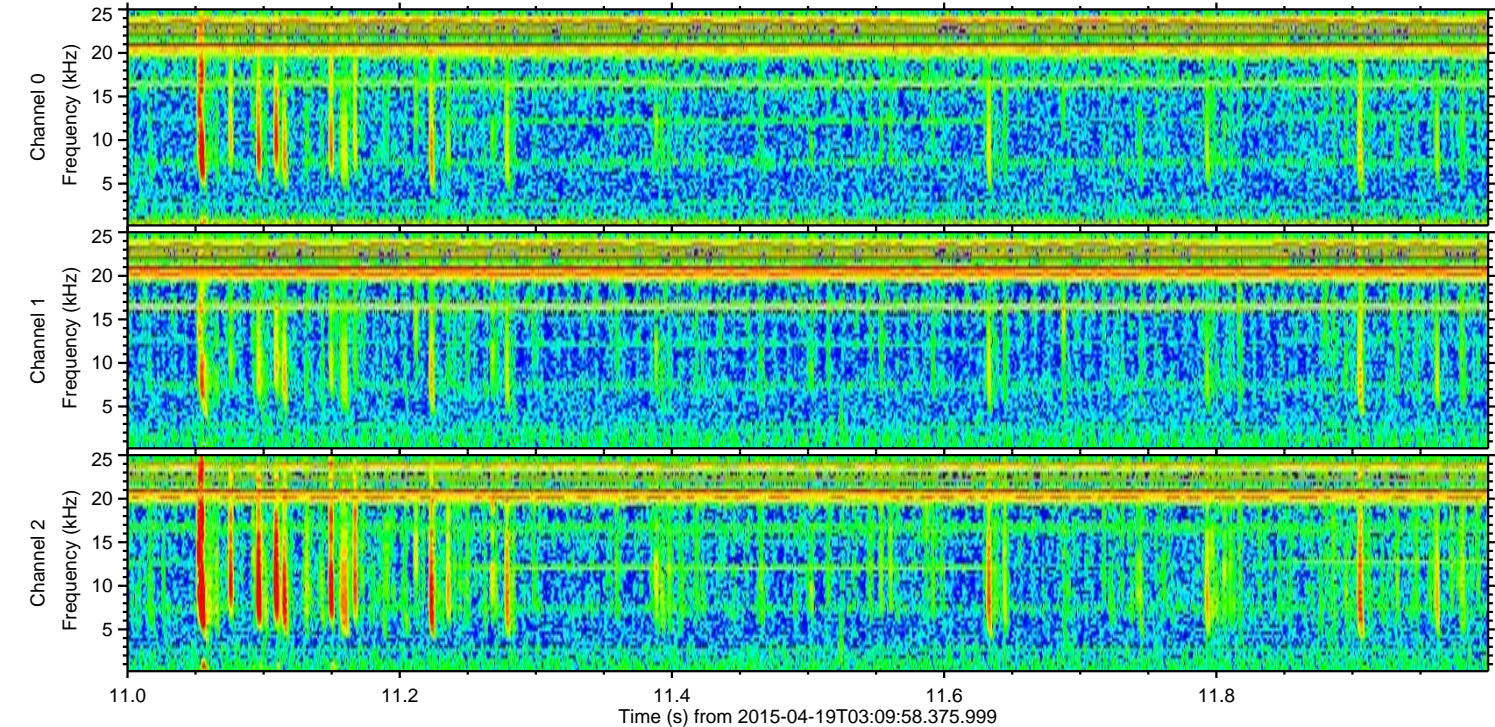
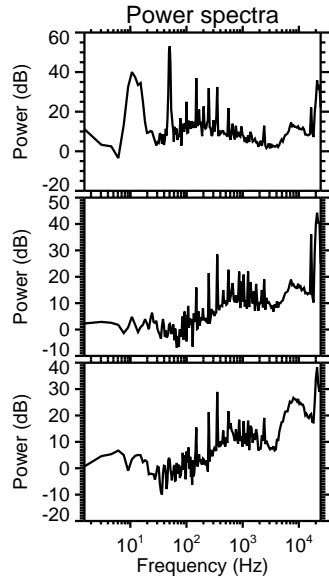
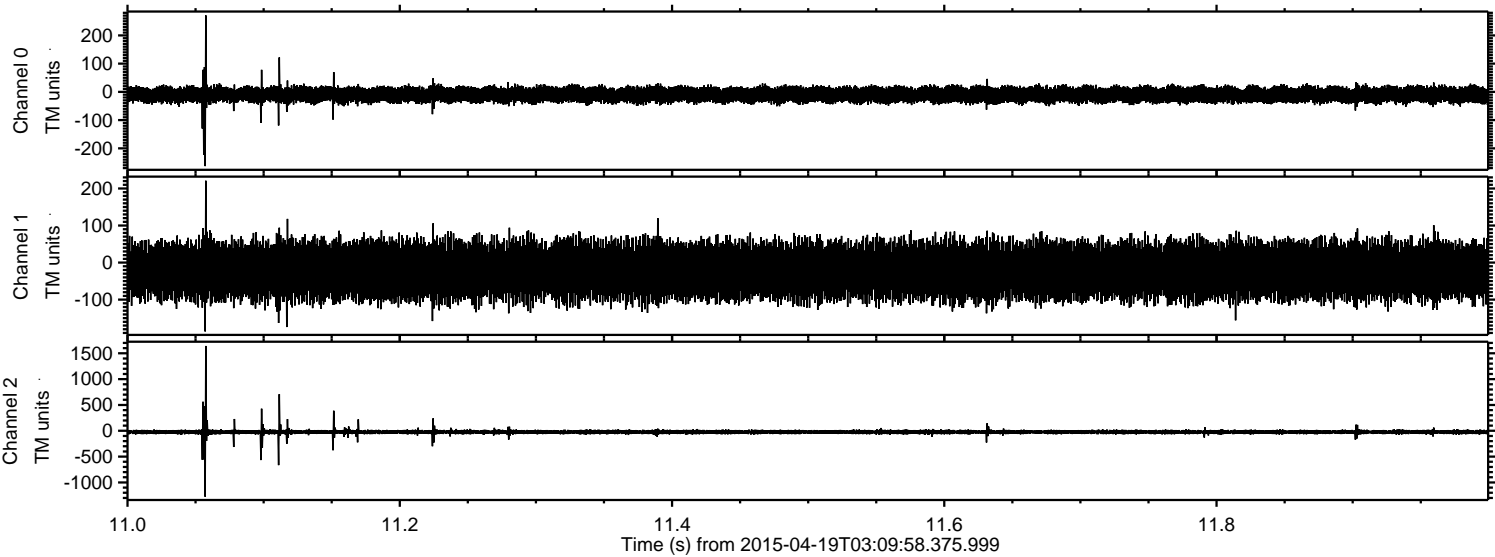
ELMAVAN 3D WAVEFORMS (Measured data sampled at 50 kHz) 49752 packets of 144 samples from 2015-04-19T03:09:58.375.999. Part 130/144

Processed Sun Apr 19 05:17:30 2015 by ELM ver.2012-10-06 from 001__elm20150419_030957__dat00.bin

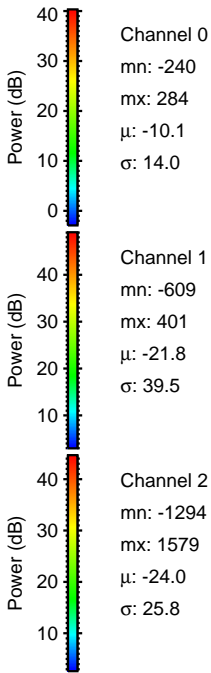
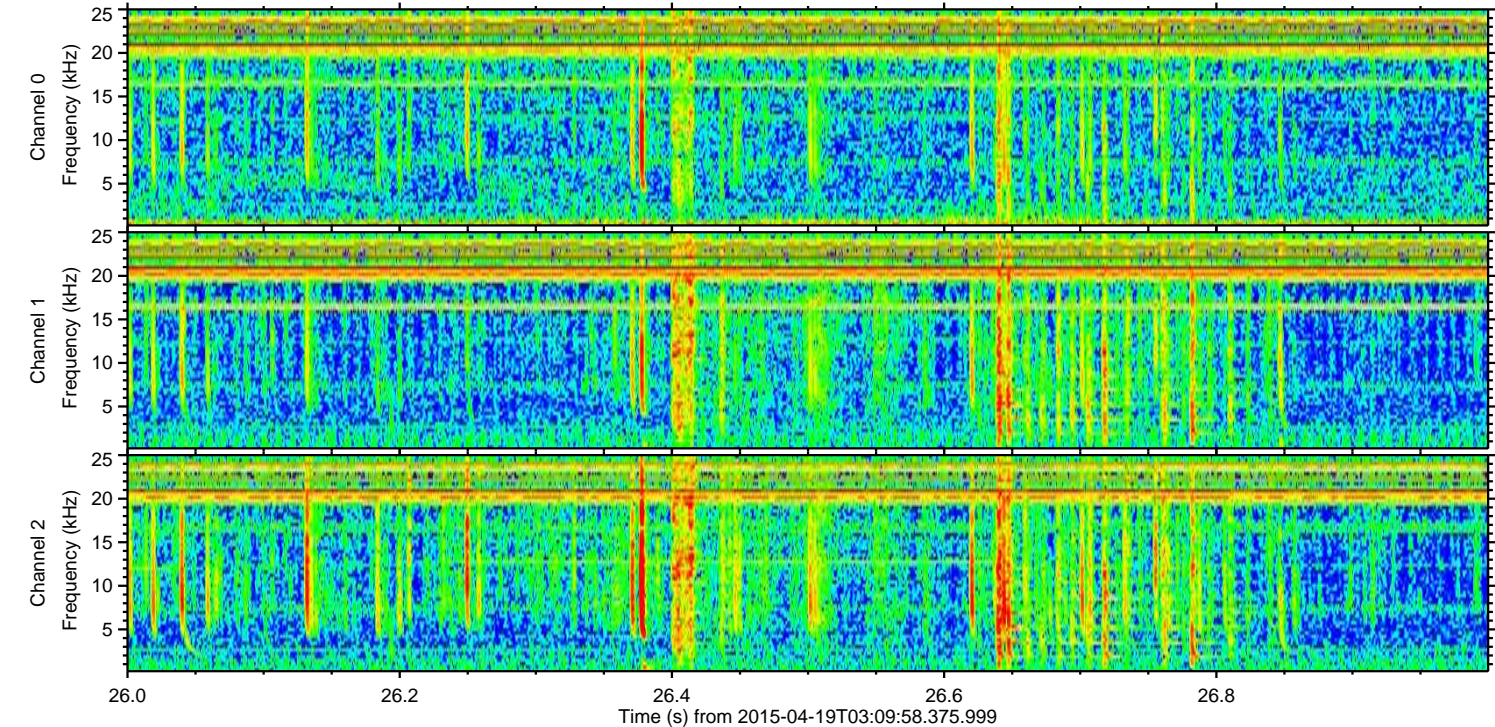
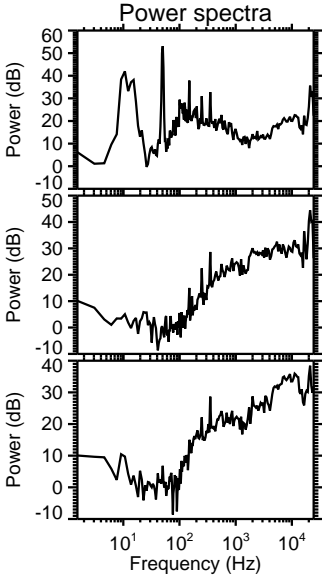
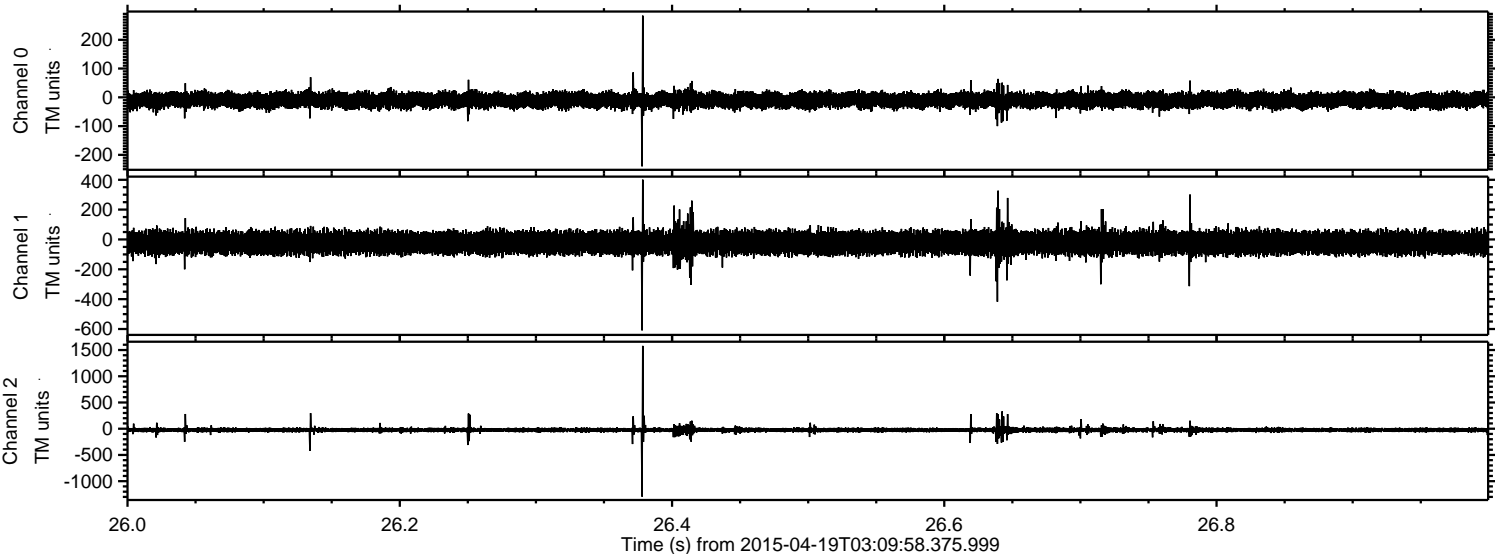


ELMAVAN 3D WAVEFORMS (Measured data sampled at 50 kHz) 49752 packets of 144 samples from 2015-04-19T03:09:58.375.999. Part 12/144

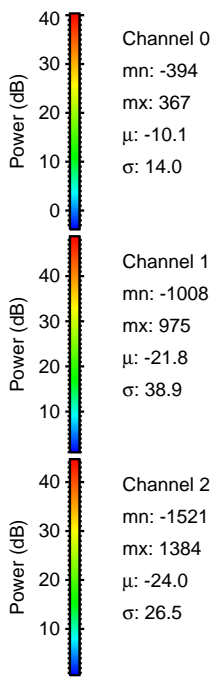
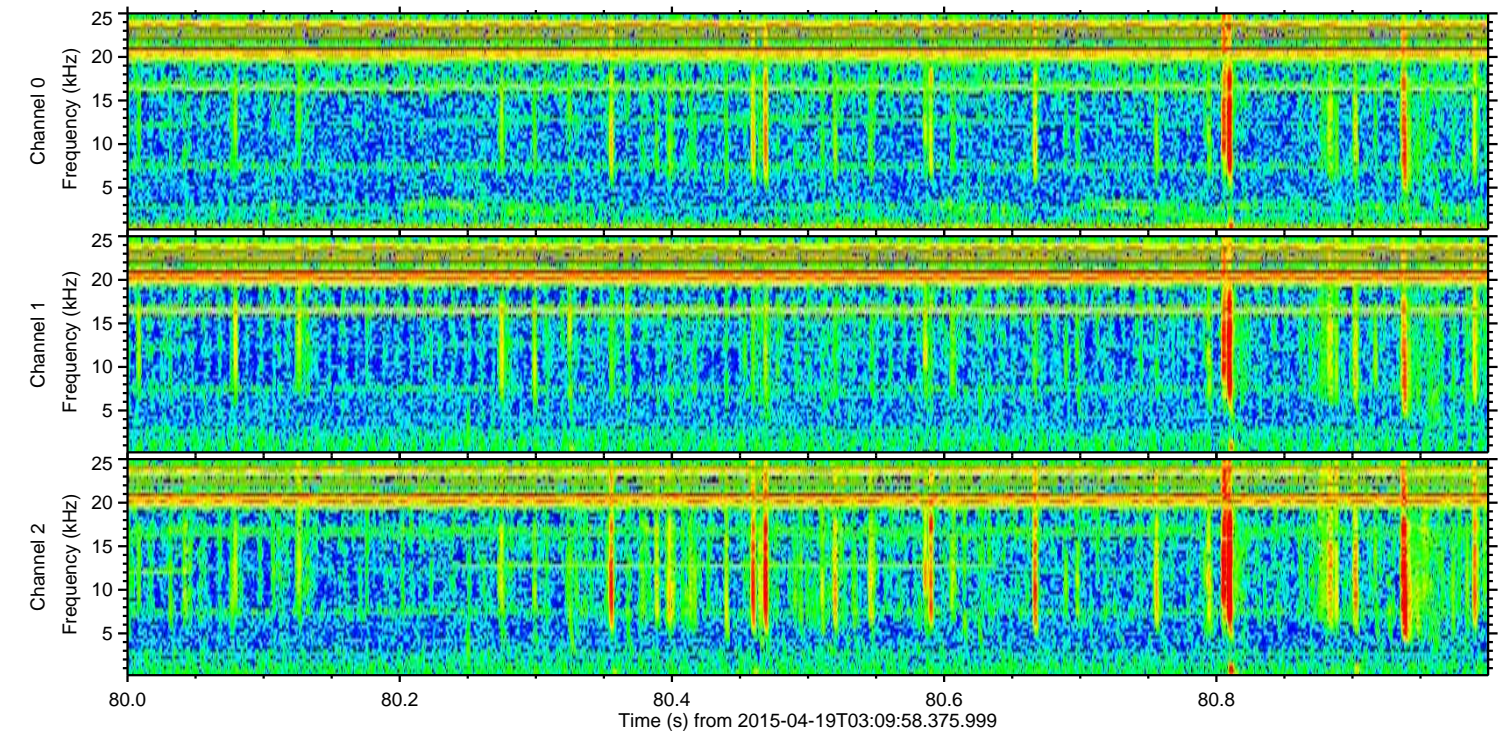
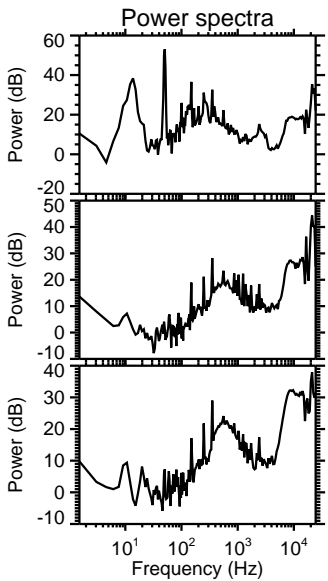
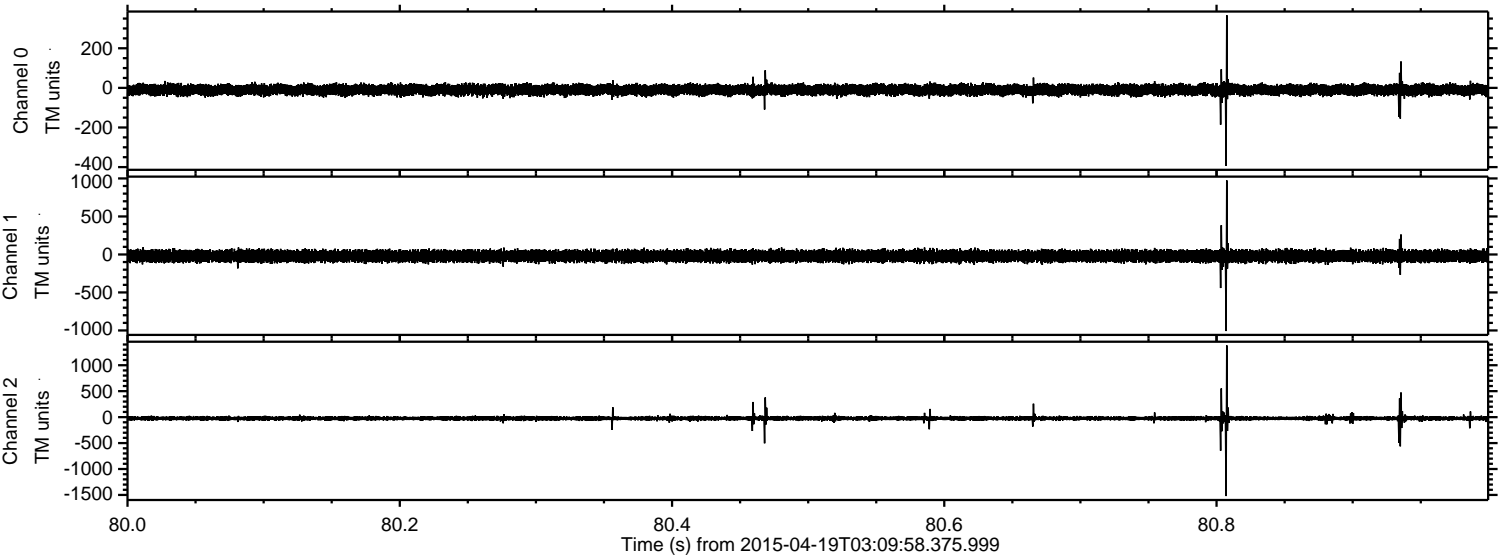
Processed Sun Apr 19 05:17:31 2015 by ELM ver.2012-10-06 from 001__elm20150419_030957__dat00.bin



Processed Sun Apr 19 05:17:32 2015 by ELM ver.2012-10-06 from 001__elm20150419_030957__dat00.bin



Processed Sun Apr 19 05:17:33 2015 by ELM ver.2012-10-06 from 001__elm20150419_030957__dat00.bin

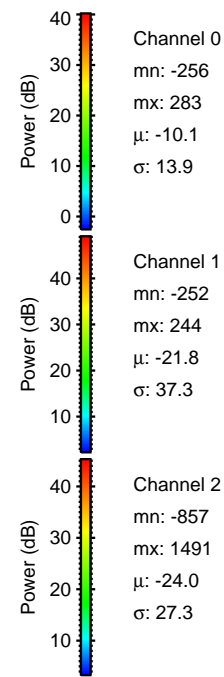
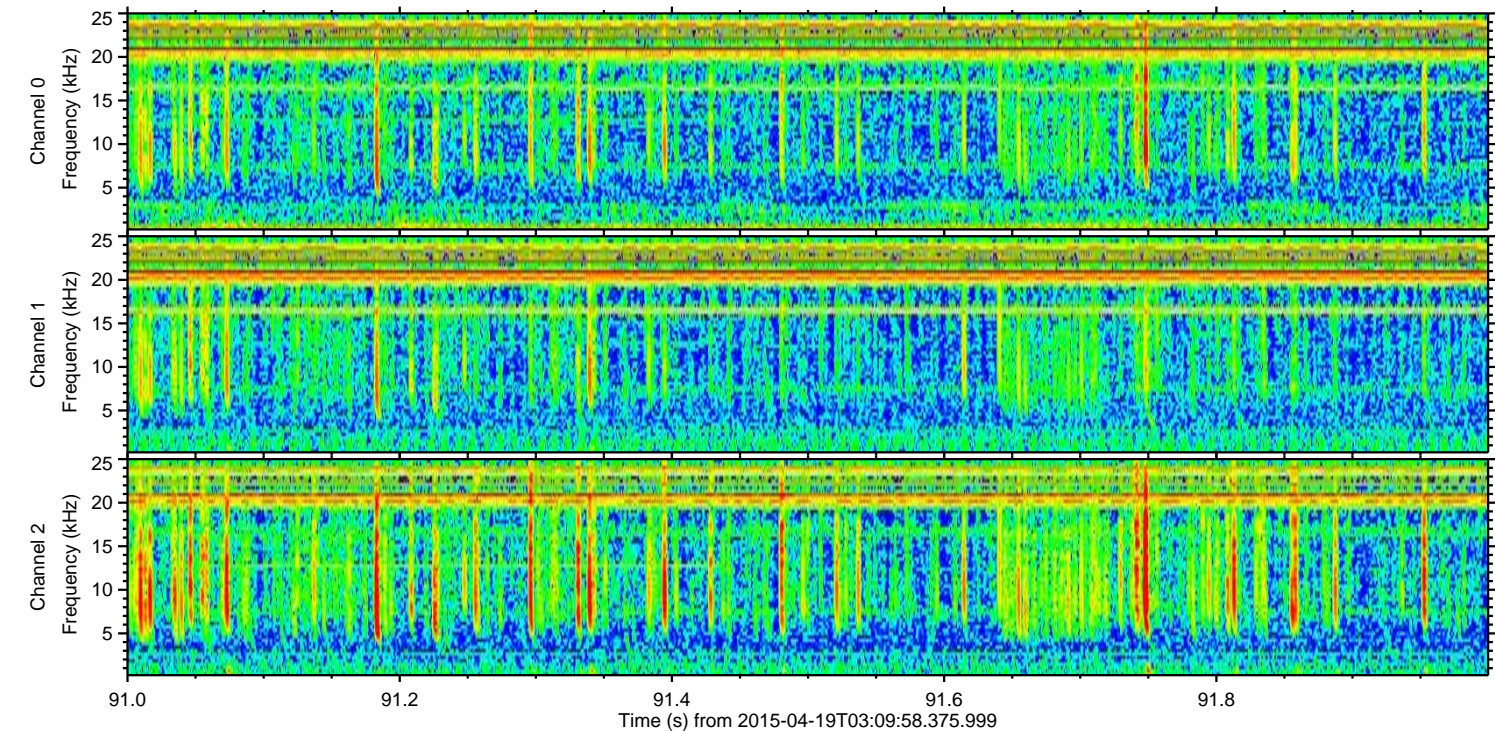
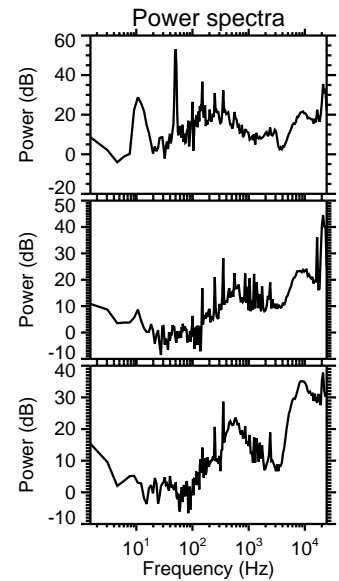
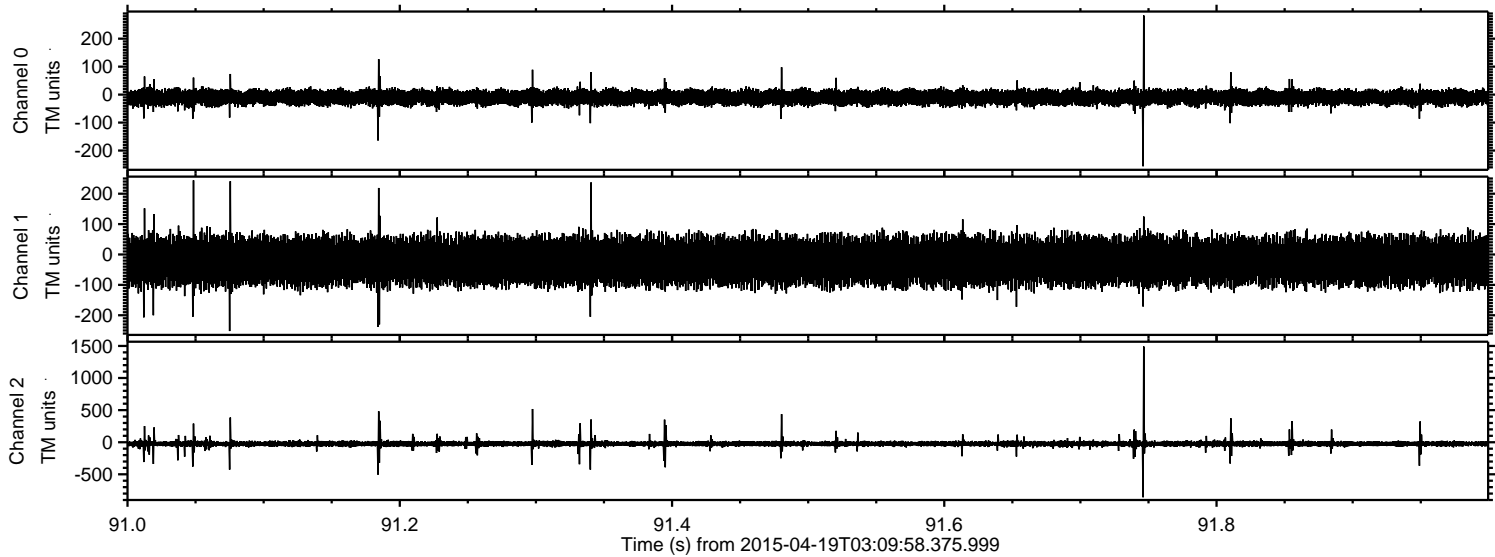


Channel 0
mn: -394
mx: 367
 μ : -10.1
 σ : 14.0

Channel 1
mn: -1008
mx: 975
 μ : -21.8
 σ : 38.9

Channel 2
mn: -1521
mx: 1384
 μ : -24.0
 σ : 26.5

Processed Sun Apr 19 05:17:34 2015 by ELM ver.2012-10-06 from 001__elm20150419_030957__dat00.bin



Processed Sun Apr 19 05:17:35 2015 by ELM ver.2012-10-06 from 001__elm20150419_030957__dat00.bin

