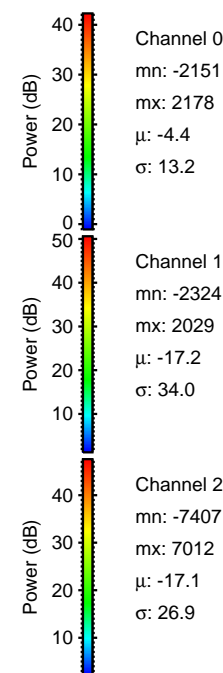
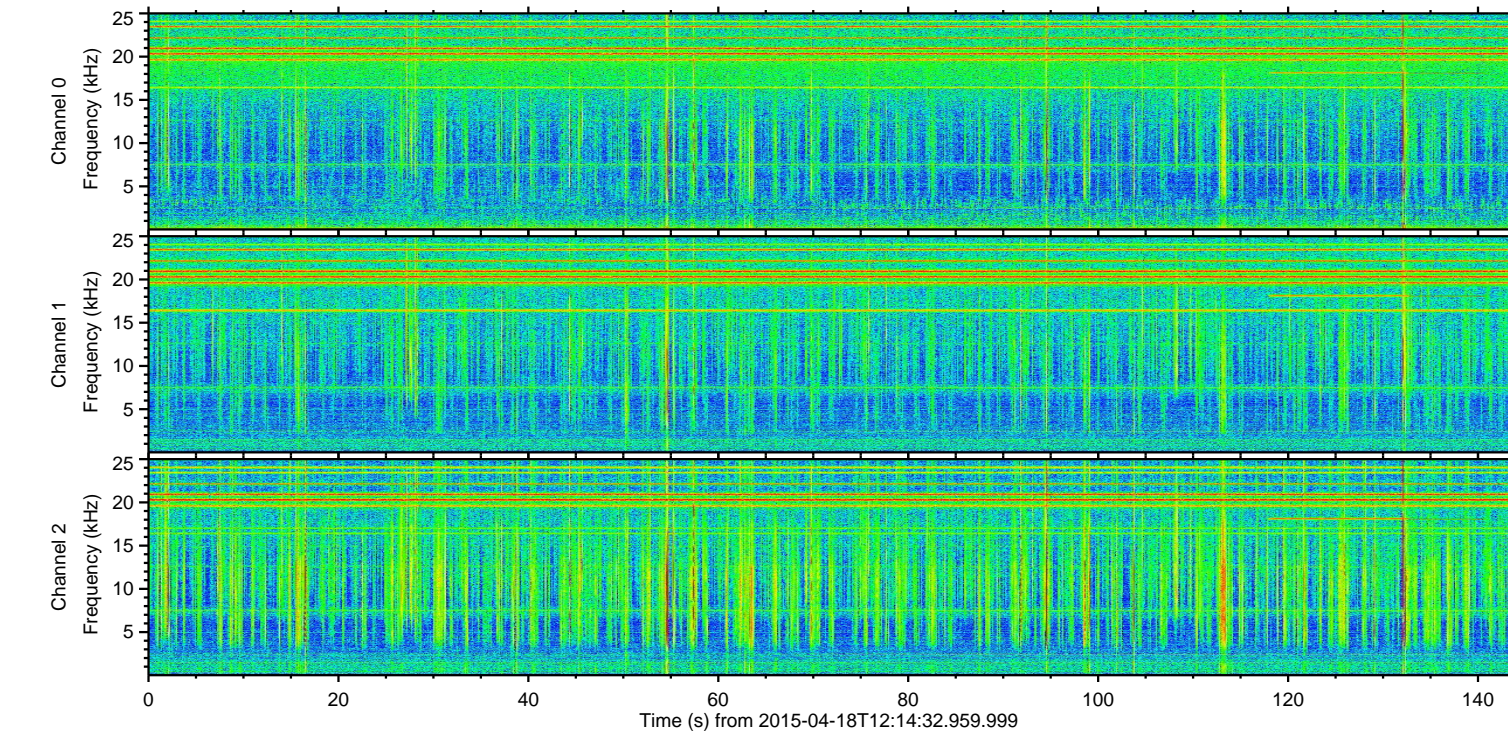
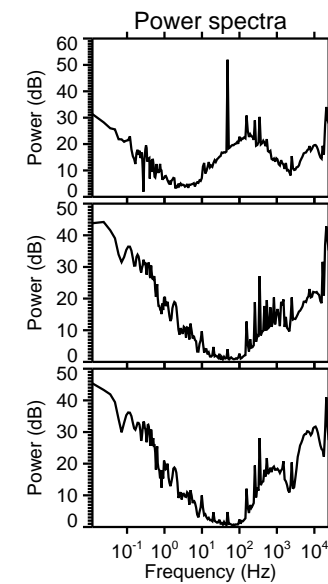
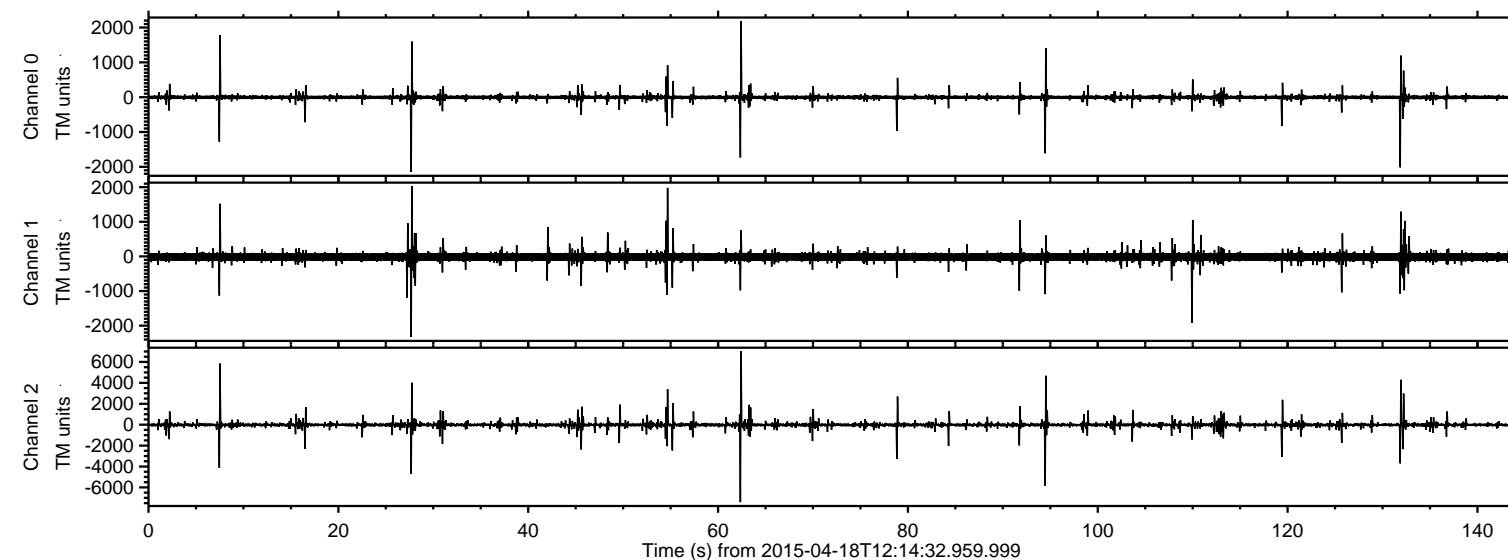


ELMAVAN 3D WAVEFORMS (Measured data sampled at 50 kHz) 49770 packets of 144 samples from 2015-04-18T12:14:32.959.999.

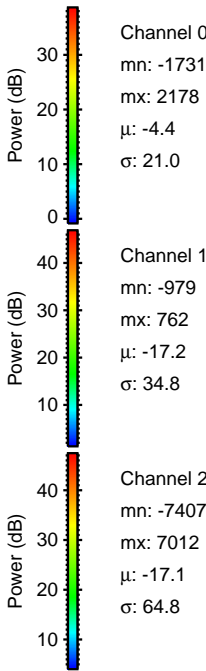
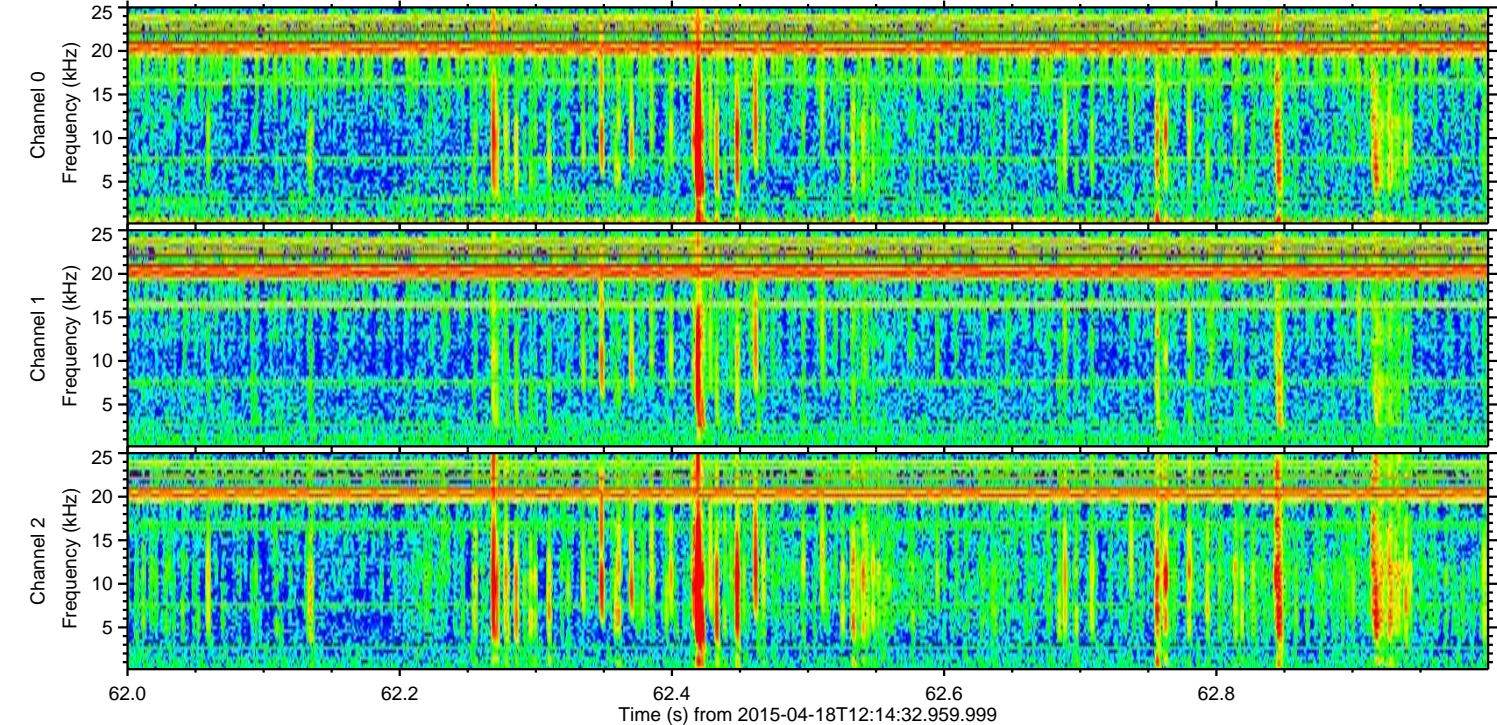
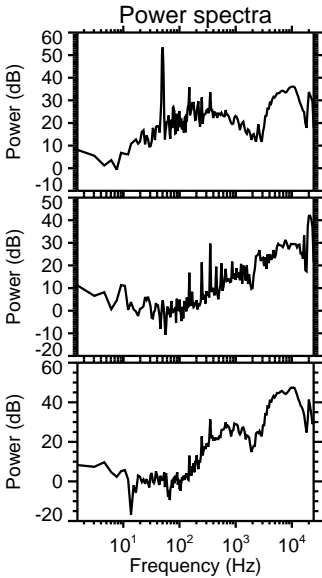
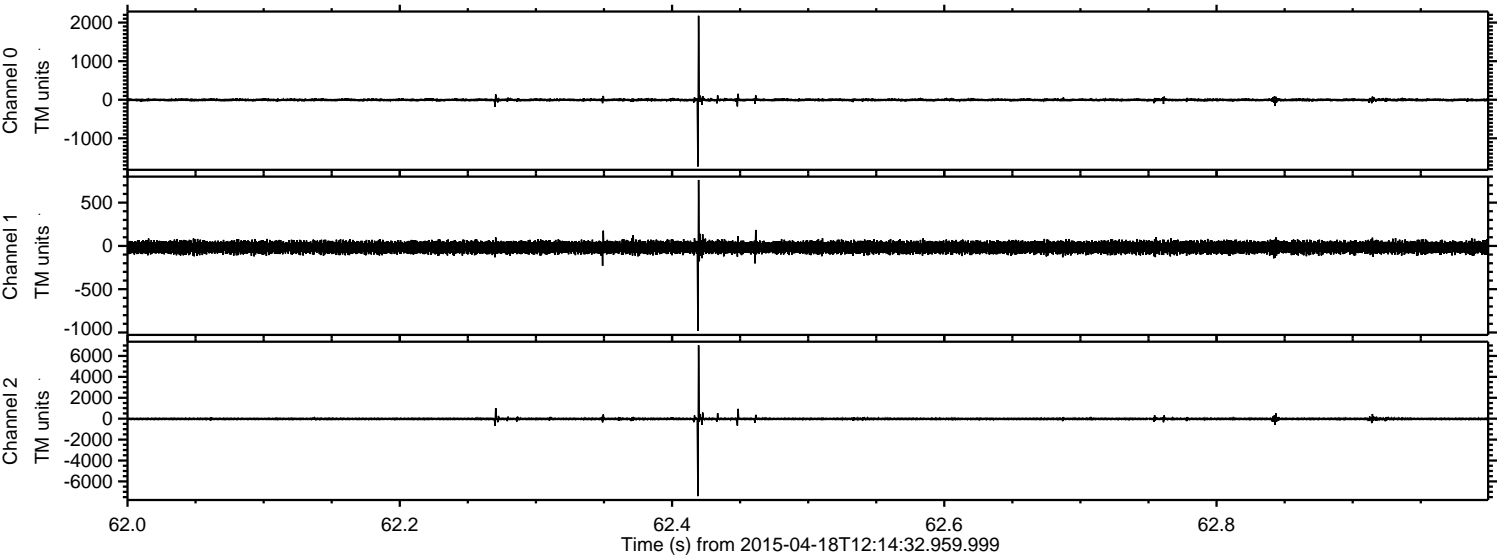
Processed Sat Apr 18 15:49:18 2015 by ELM ver.2012-10-06 from 001\_\_elm20150418\_121431\_\_dat00.bin





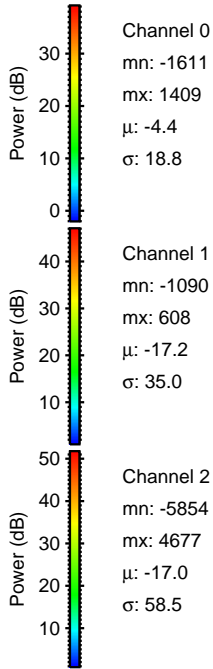
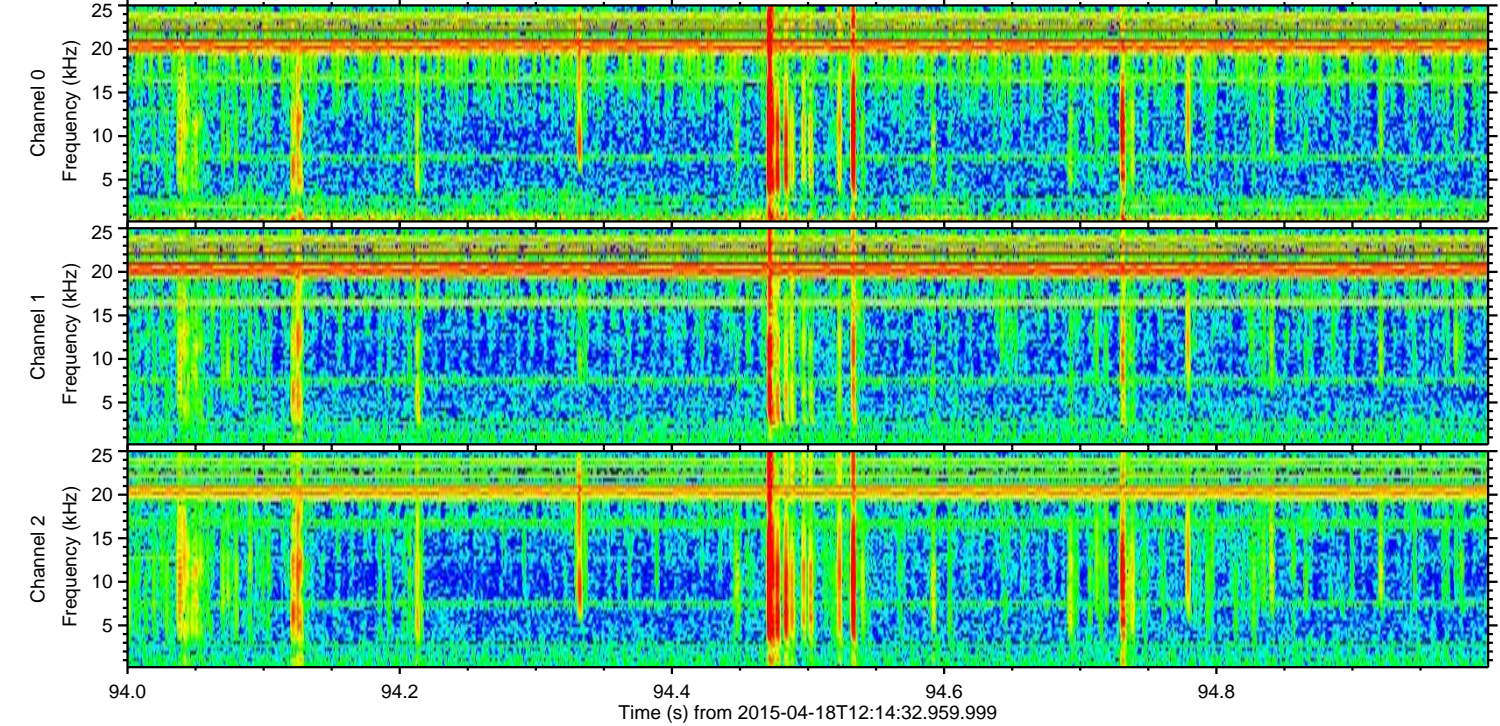
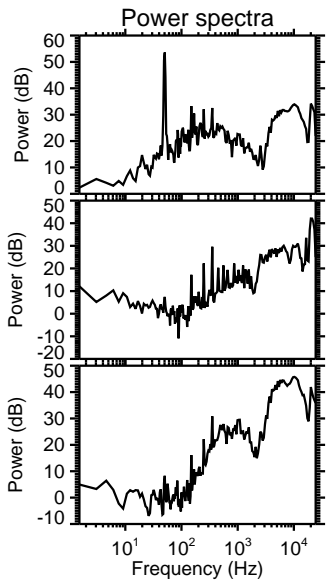
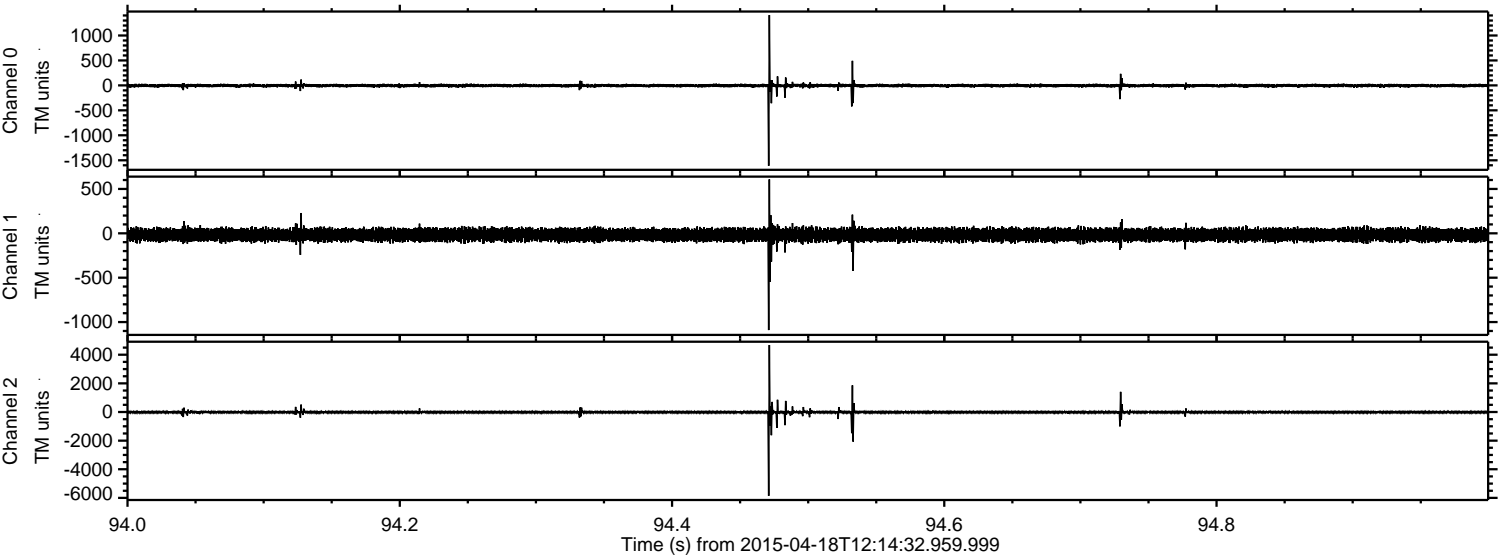
ELMAVAN 3D WAVEFORMS (Measured data sampled at 50 kHz) 49770 packets of 144 samples from 2015-04-18T12:14:32.959.999. Part 63/144

Processed Sat Apr 18 15:49:29 2015 by ELM ver.2012-10-06 from 001\_\_elm20150418\_121431\_\_dat00.bin





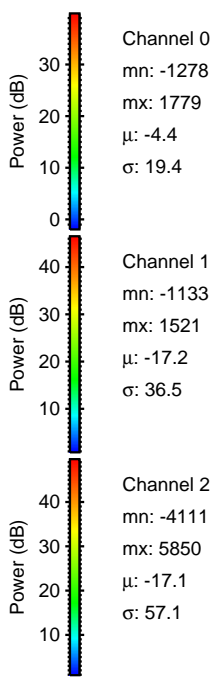
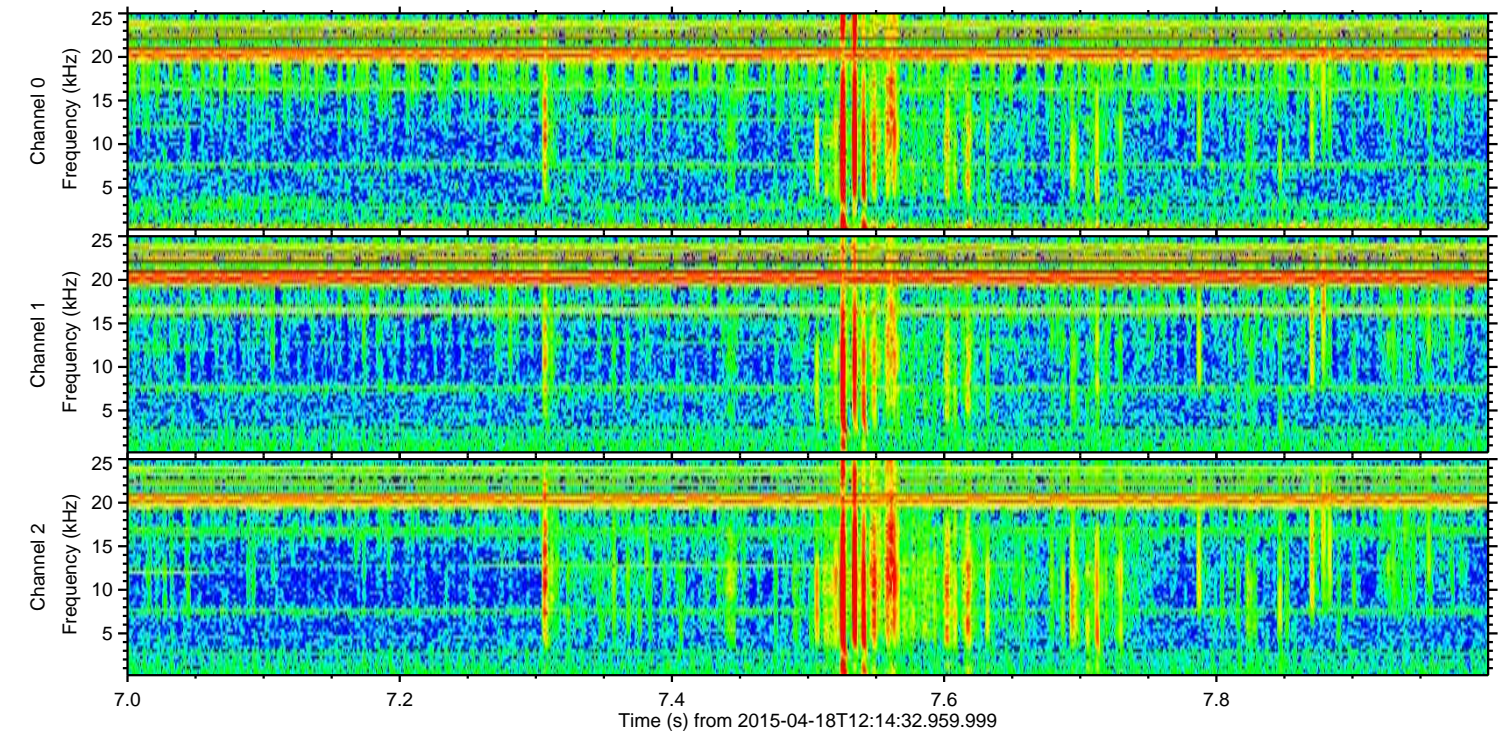
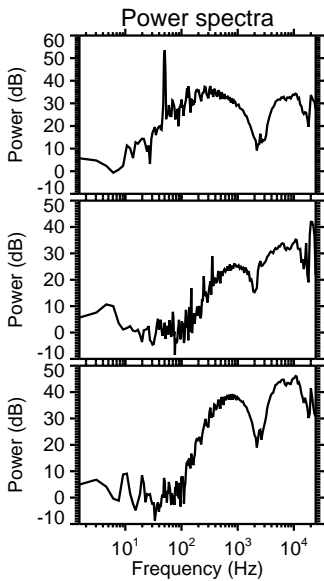
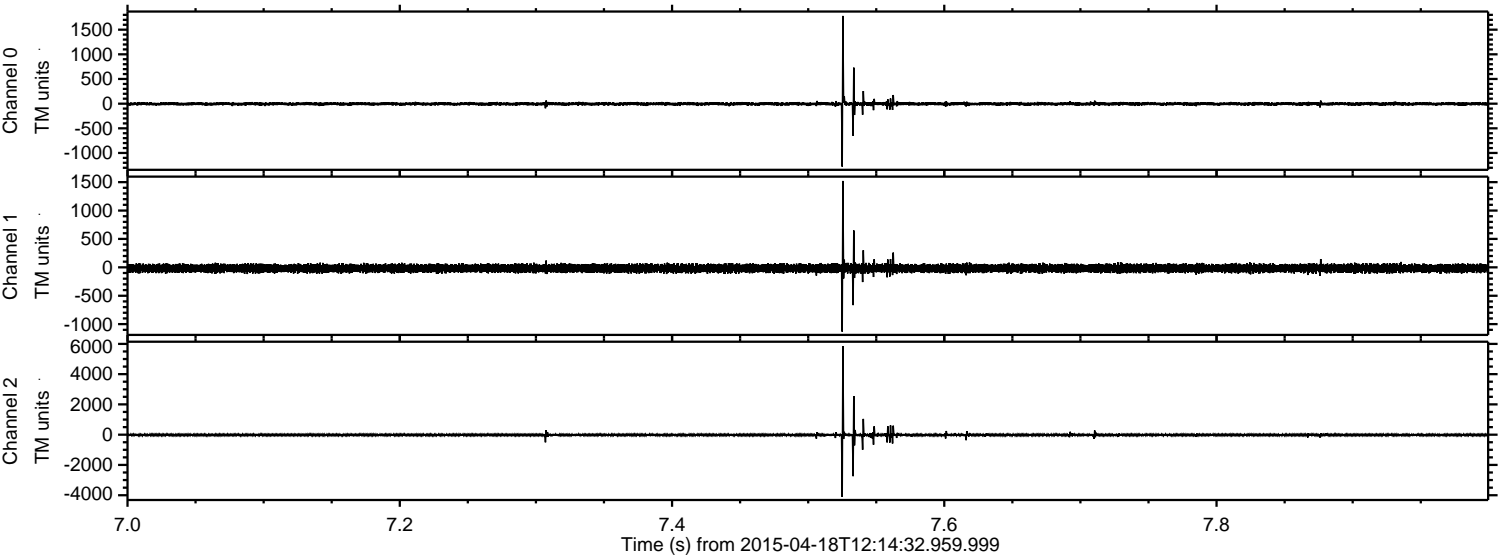
Processed Sat Apr 18 15:49:30 2015 by ELM ver.2012-10-06 from 001\_\_elm20150418\_121431\_\_dat00.bin





ELMAVAN 3D WAVEFORMS (Measured data sampled at 50 kHz) 49770 packets of 144 samples from 2015-04-18T12:14:32.959.999. Part 8/144

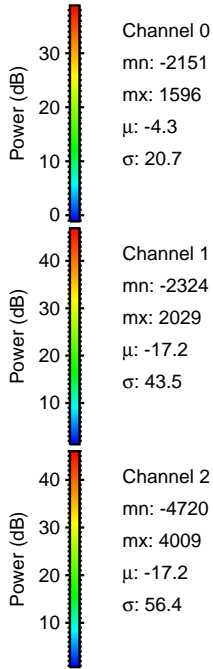
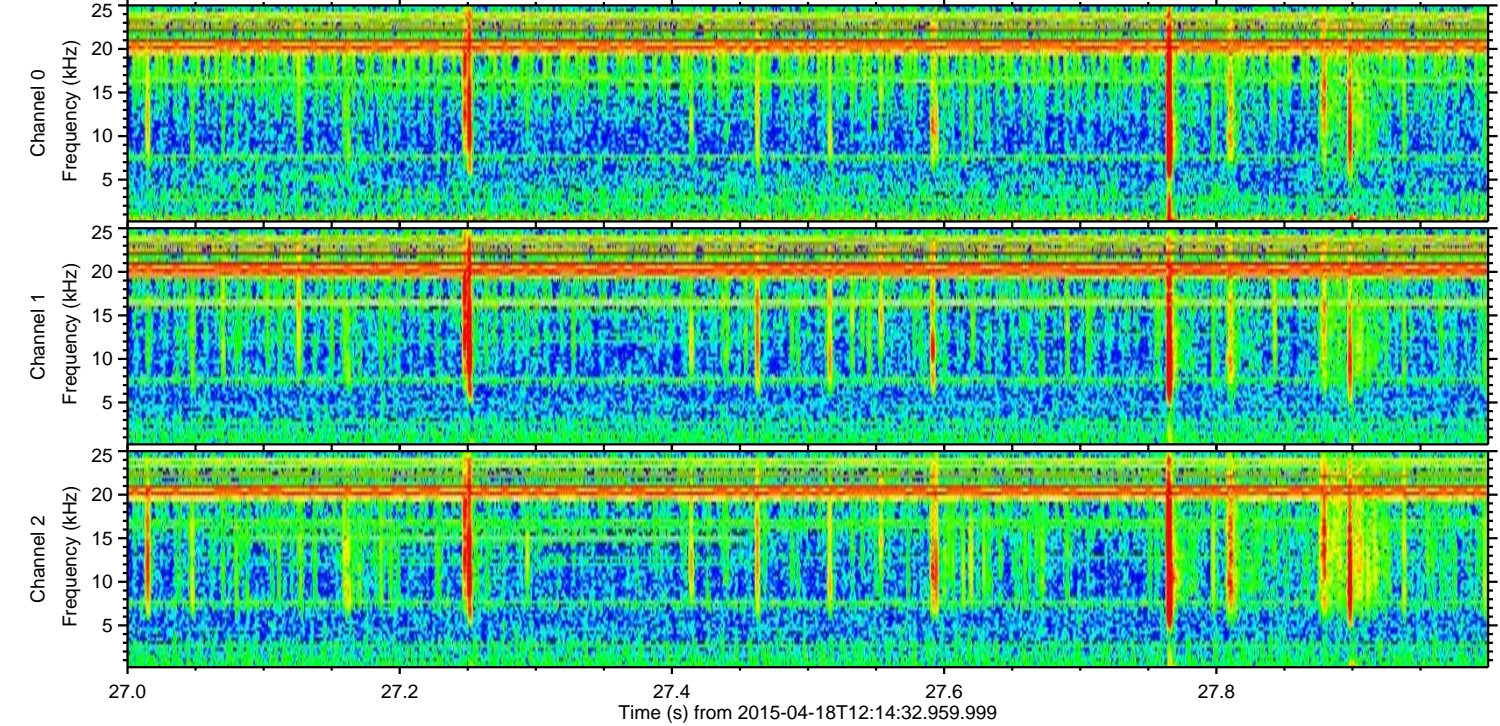
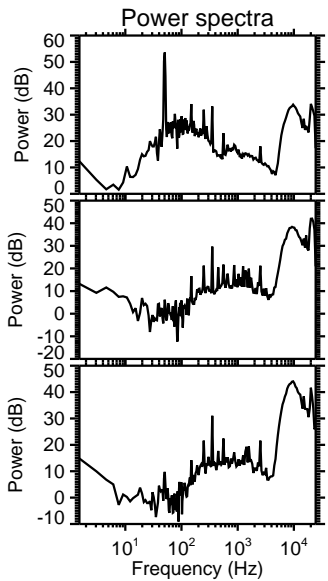
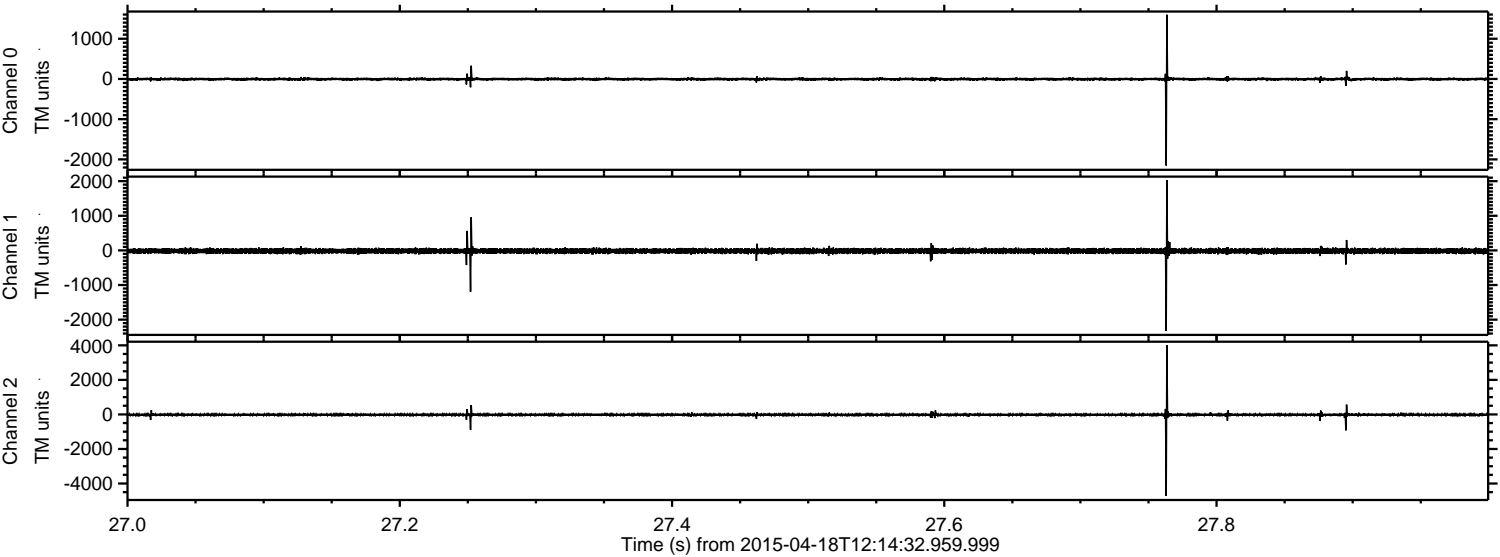
Processed Sat Apr 18 15:49:31 2015 by ELM ver.2012-10-06 from 001\_\_elm20150418\_121431\_\_dat00.bin





ELMAVAN 3D WAVEFORMS (Measured data sampled at 50 kHz) 49770 packets of 144 samples from 2015-04-18T12:14:32.959.999. Part 28/144

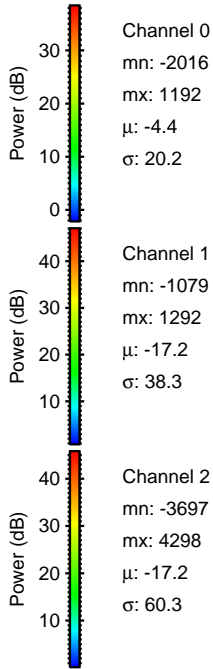
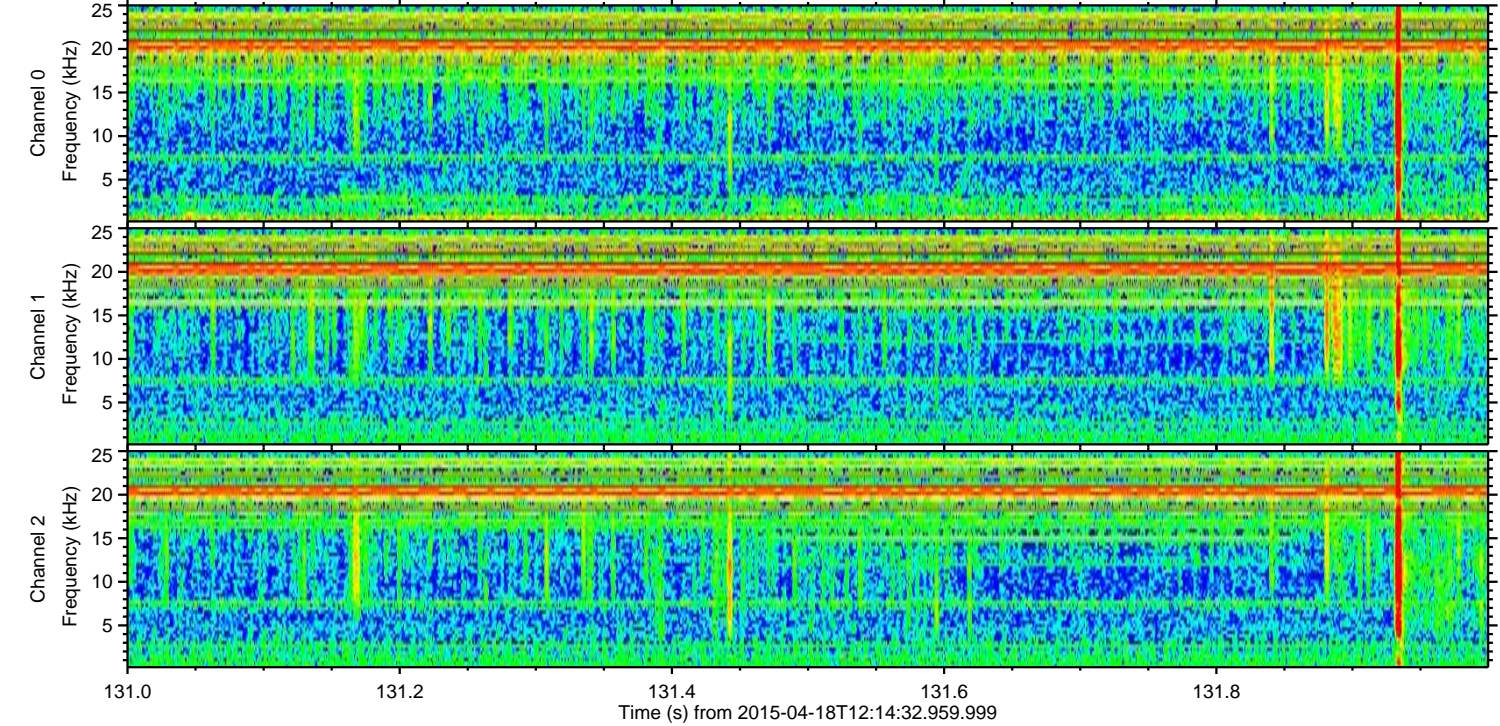
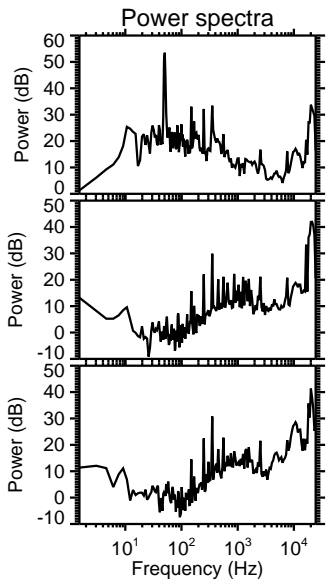
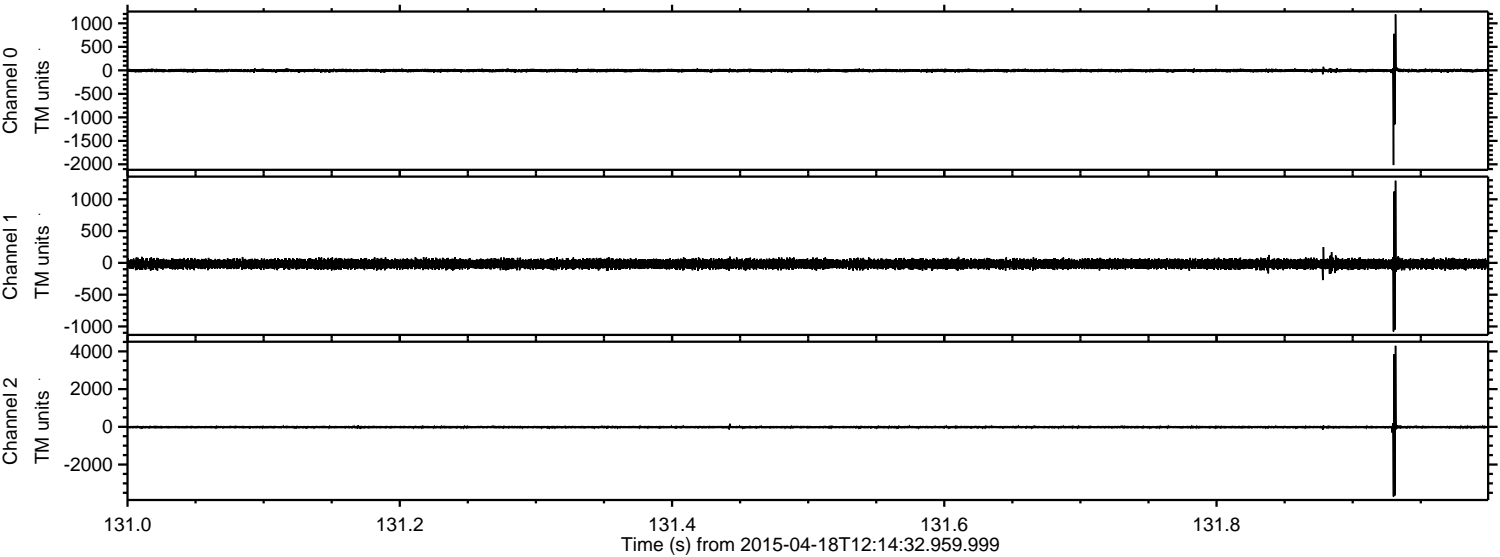
Processed Sat Apr 18 15:49:32 2015 by ELM ver.2012-10-06 from 001\_\_elm20150418\_121431\_\_dat00.bin





ELMAVAN 3D WAVEFORMS (Measured data sampled at 50 kHz) 49770 packets of 144 samples from 2015-04-18T12:14:32.959.999. Part 132/144

Processed Sat Apr 18 15:49:33 2015 by ELM ver.2012-10-06 from 001\_\_elm20150418\_121431\_\_dat00.bin



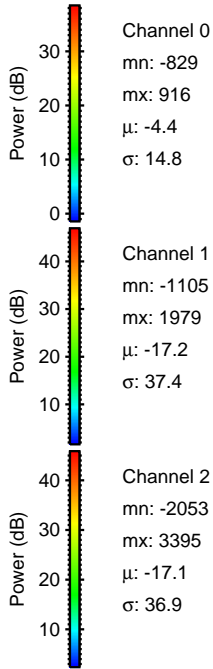
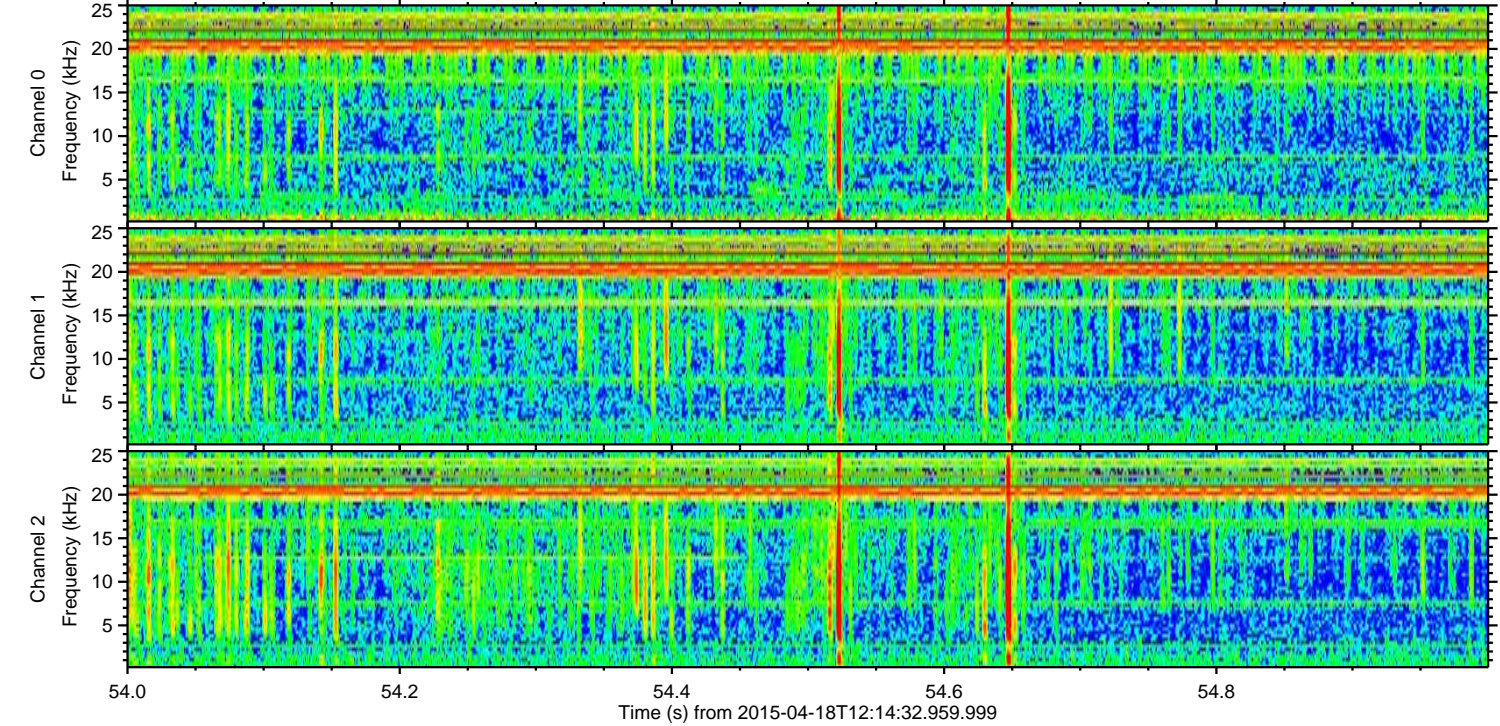
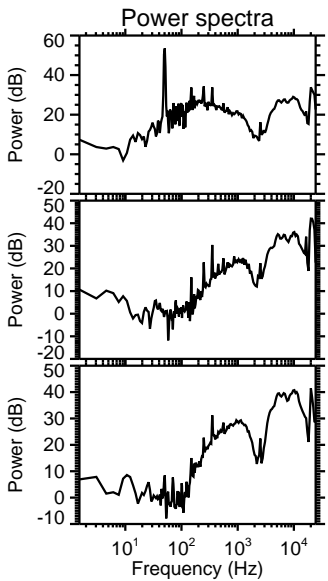
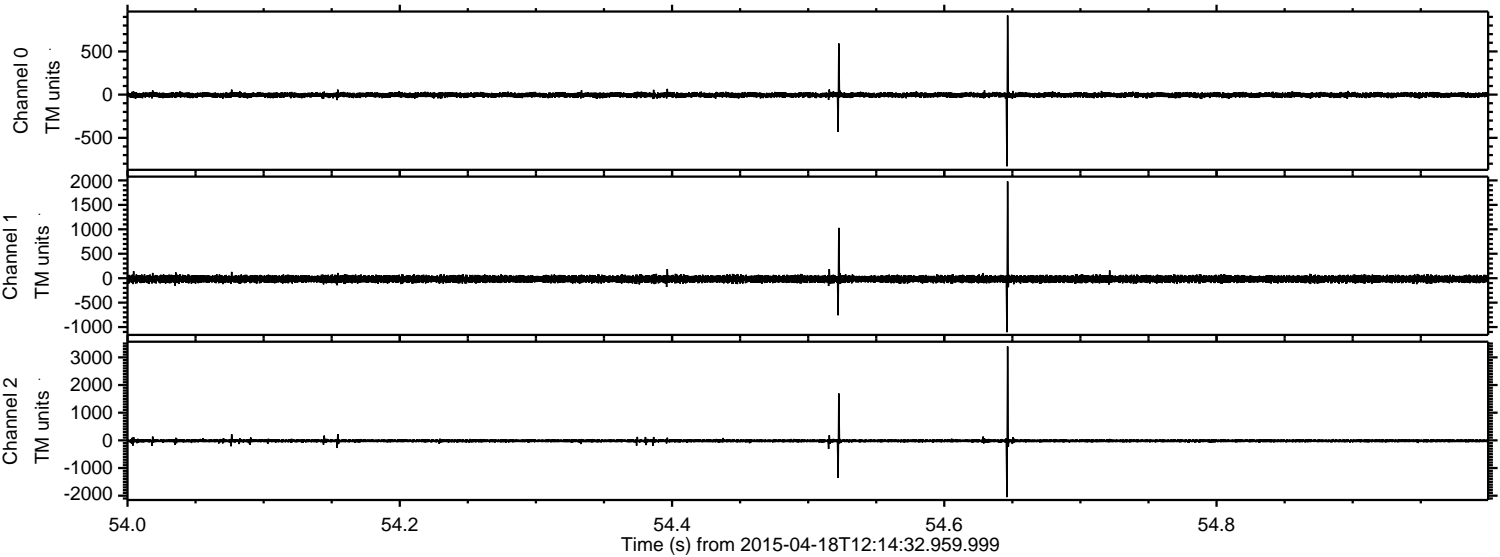
Channel 0  
mn: -2016  
mx: 1192  
 $\mu$ : -4.4  
 $\sigma$ : 20.2

Channel 1  
mn: -1079  
mx: 1292  
 $\mu$ : -17.2  
 $\sigma$ : 38.3

Channel 2  
mn: -3697  
mx: 4298  
 $\mu$ : -17.2  
 $\sigma$ : 60.3

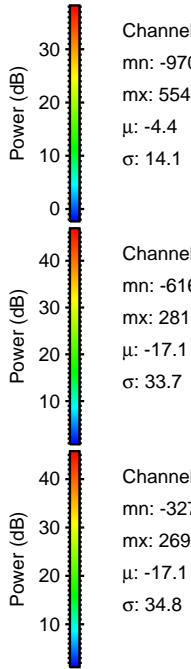
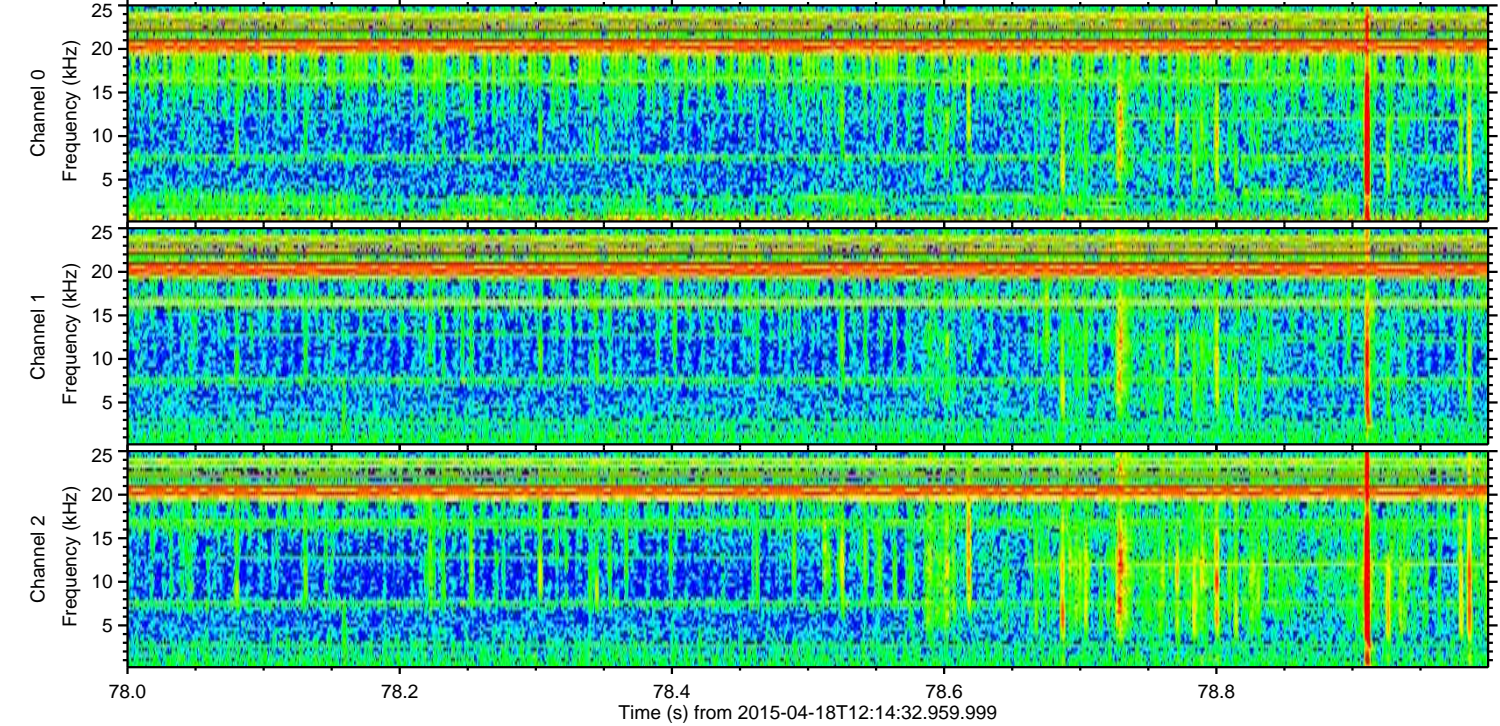
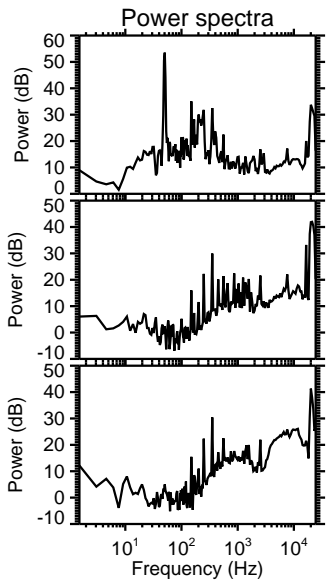
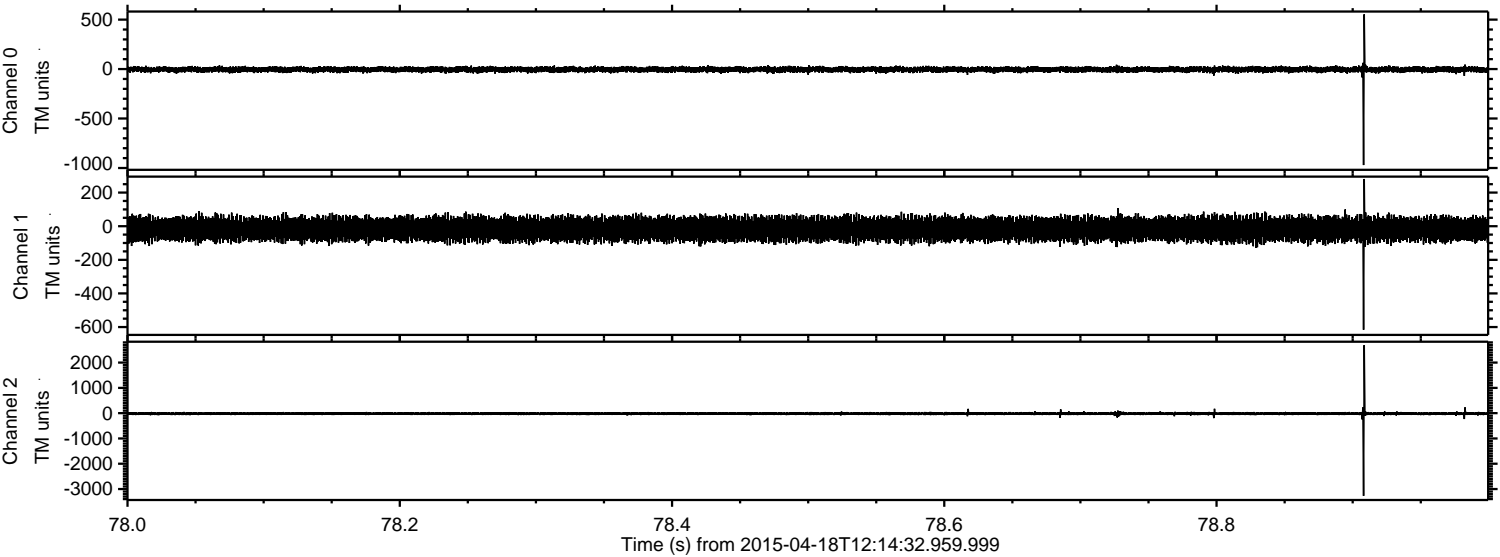


Processed Sat Apr 18 15:49:34 2015 by ELM ver.2012-10-06 from 001\_\_elm20150418\_121431\_\_dat00.bin





Processed Sat Apr 18 15:49:35 2015 by ELM ver.2012-10-06 from 001\_\_elm20150418\_121431\_\_dat00.bin



Channel 0  
mn: -970  
mx: 554  
 $\mu$ : -4.4  
 $\sigma$ : 14.1

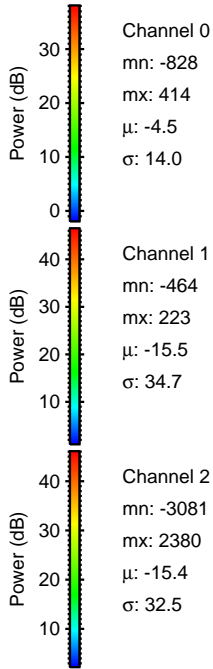
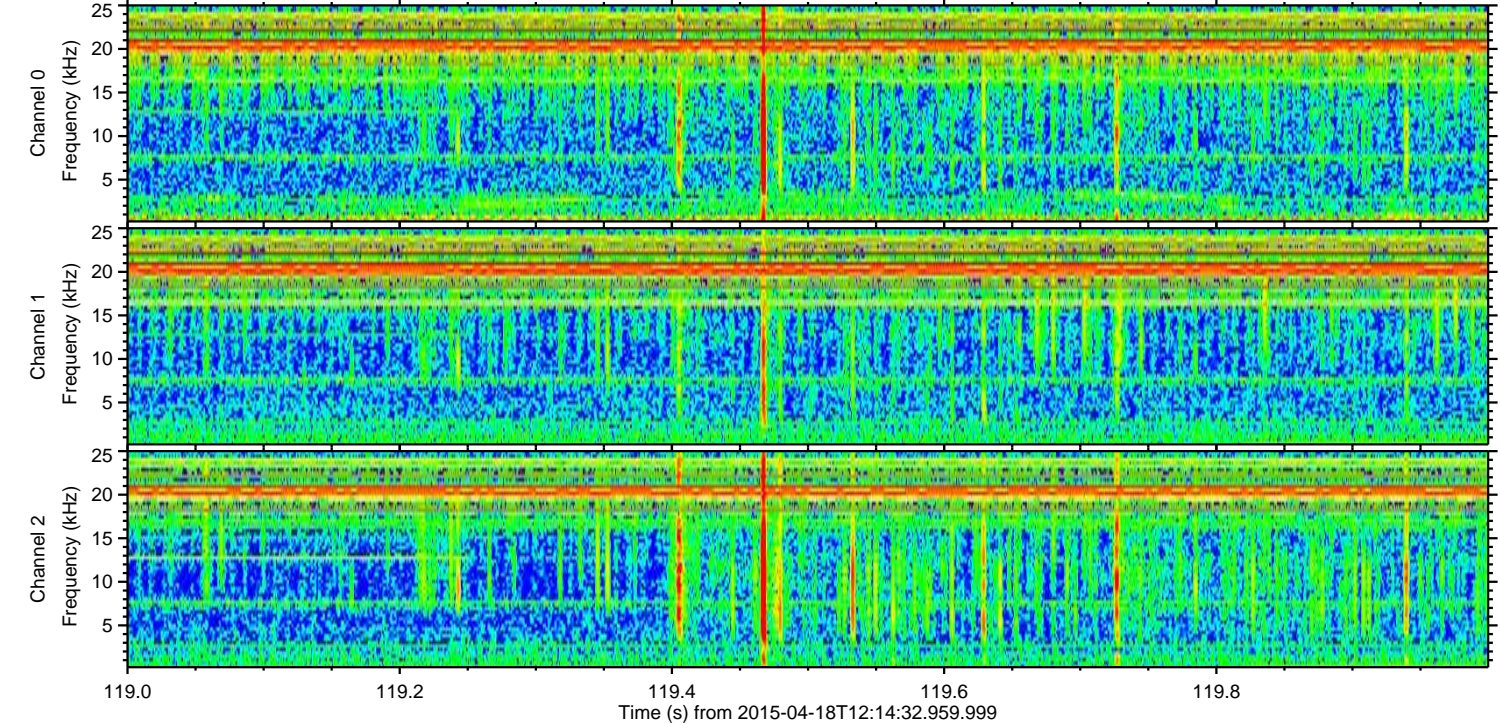
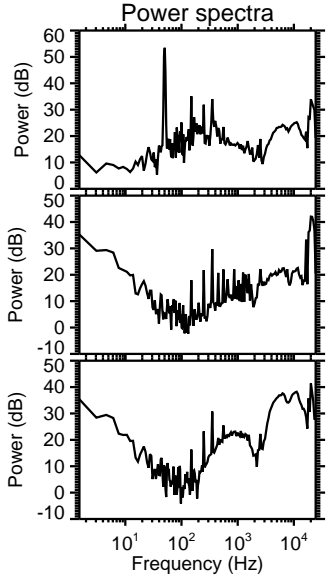
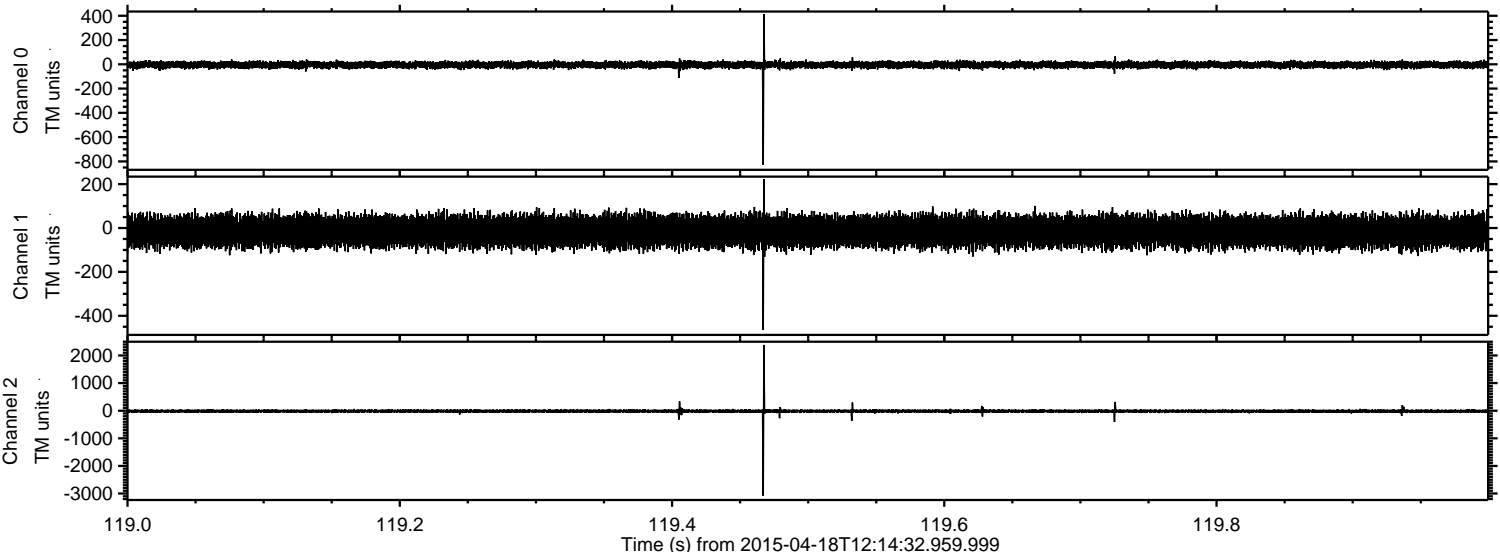
Channel 1  
mn: -616  
mx: 281  
 $\mu$ : -17.1  
 $\sigma$ : 33.7

Channel 2  
mn: -3271  
mx: 2692  
 $\mu$ : -17.1  
 $\sigma$ : 34.8



ELMAVAN 3D WAVEFORMS (Measured data sampled at 50 kHz) 49770 packets of 144 samples from 2015-04-18T12:14:32.959.999. Part 120/144

Processed Sat Apr 18 15:49:36 2015 by ELM ver.2012-10-06 from 001\_\_elm20150418\_121431\_\_dat00.bin





ELMAVAN 3D WAVEFORMS (Measured data sampled at 50 kHz) 49770 packets of 144 samples from 2015-04-18T12:14:32.959.999. Part 133/144

Processed Sat Apr 18 15:49:37 2015 by ELM ver.2012-10-06 from 001\_\_elm20150418\_121431\_\_dat00.bin

