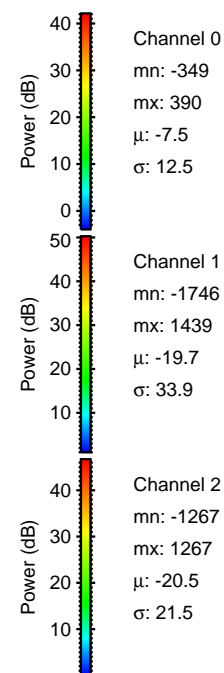
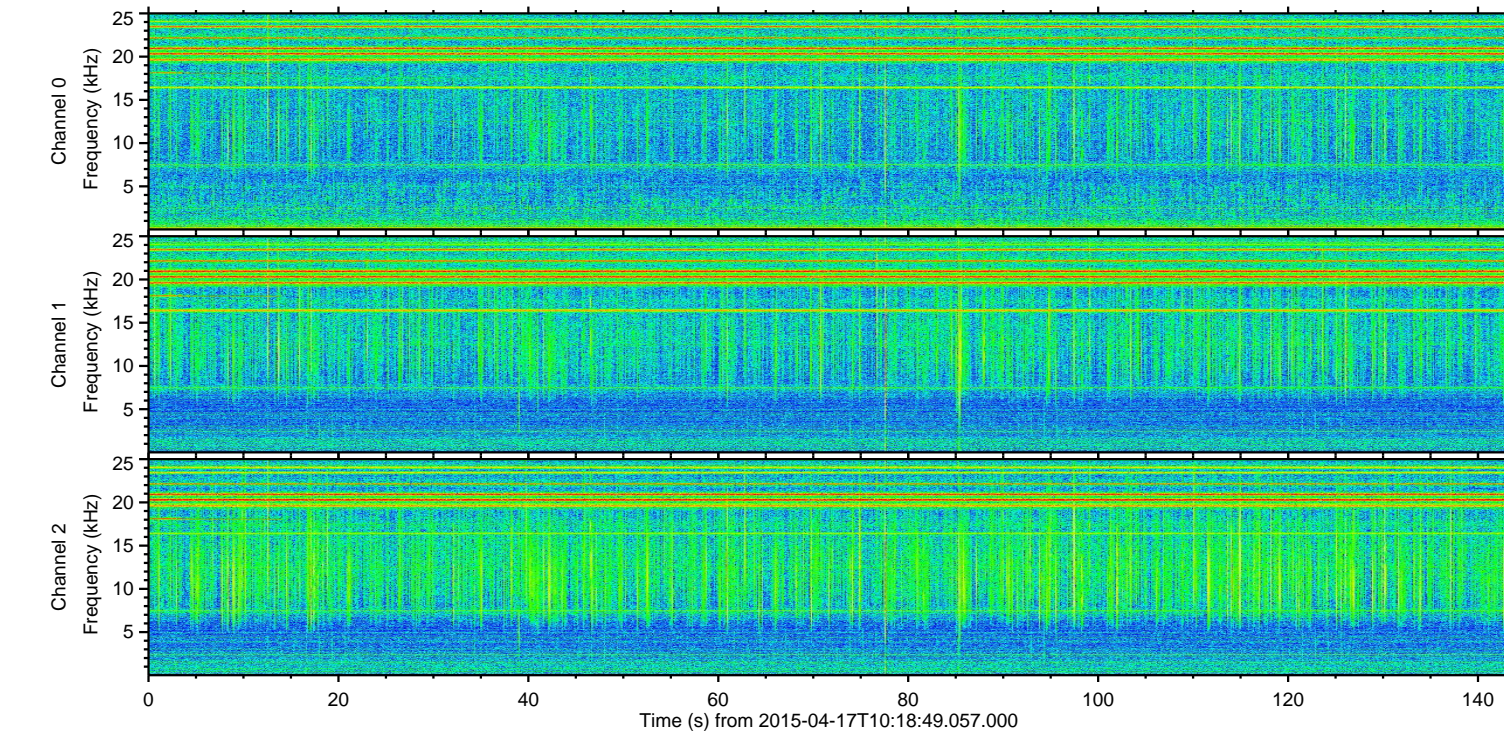
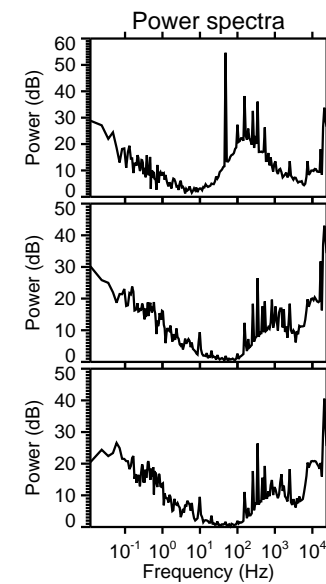
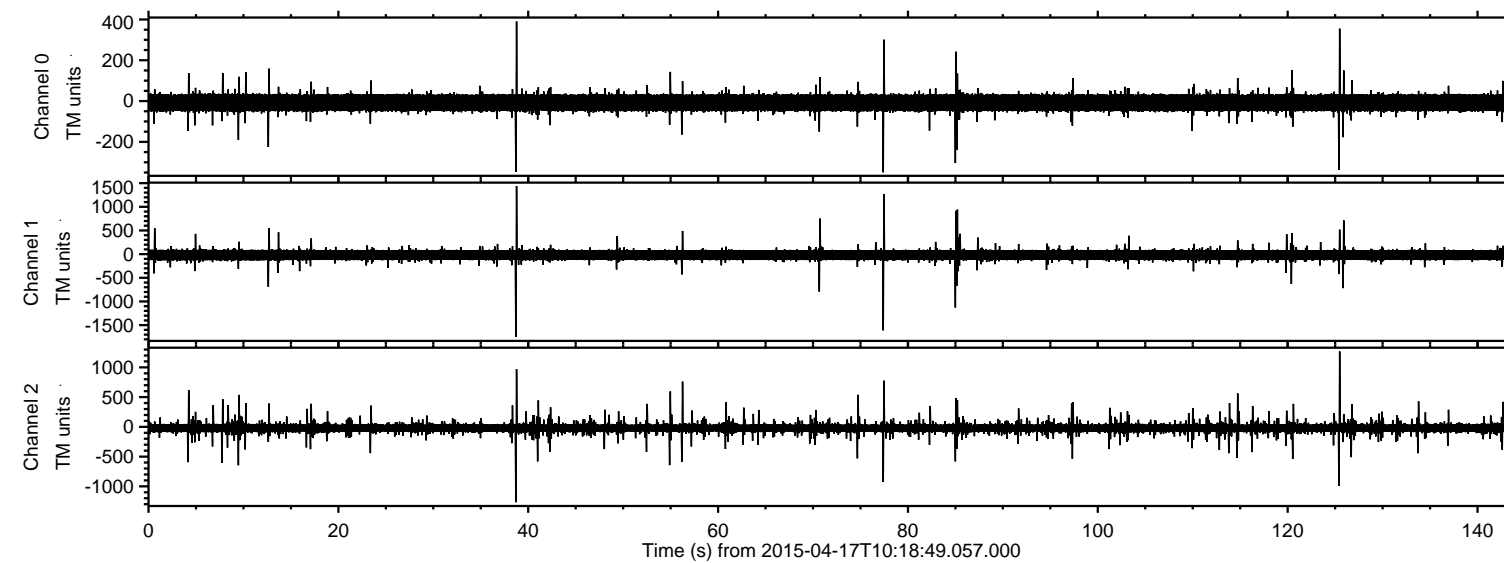
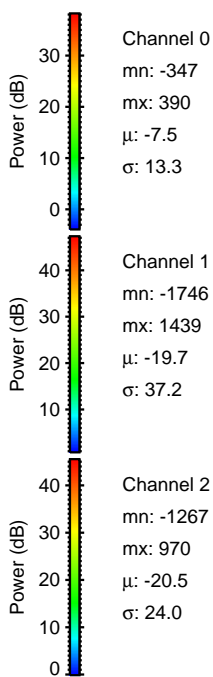
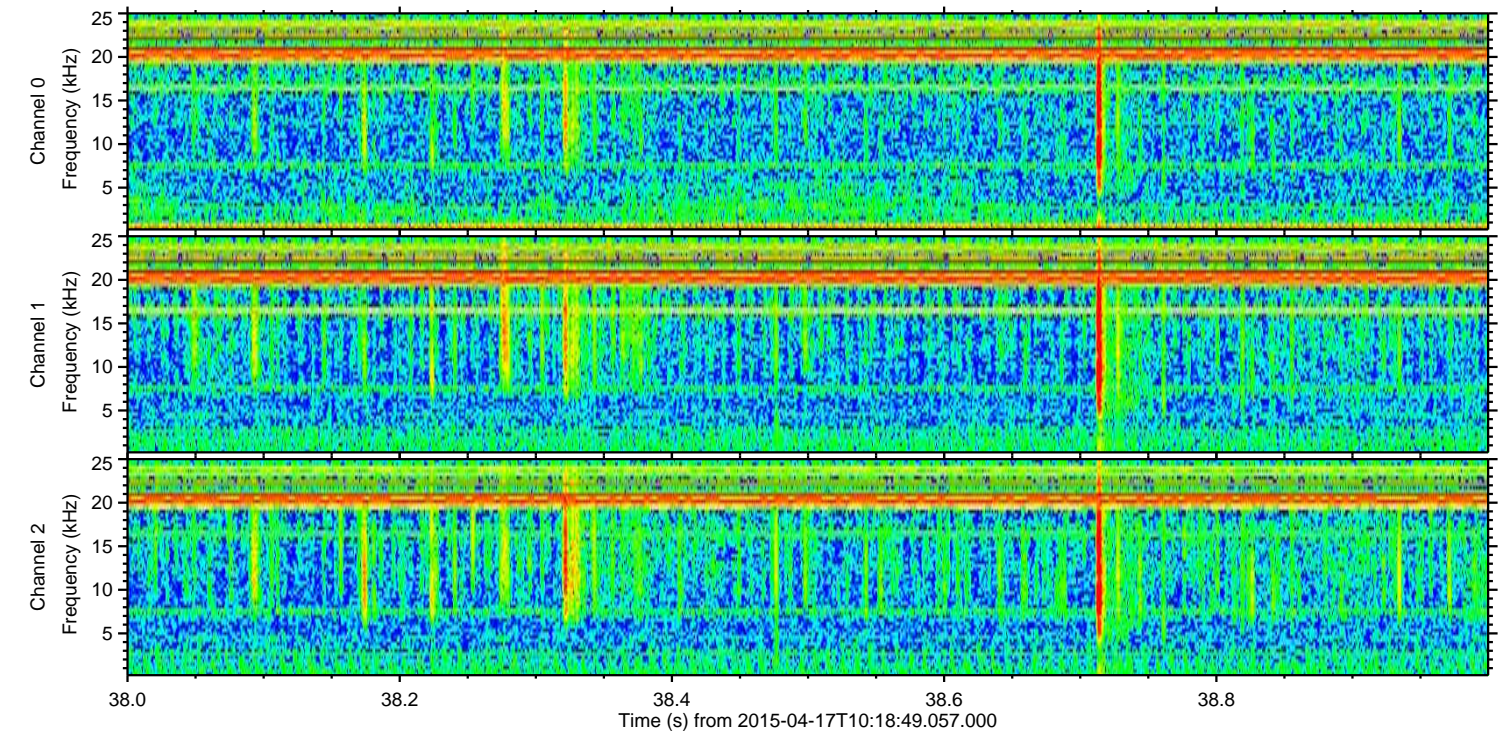
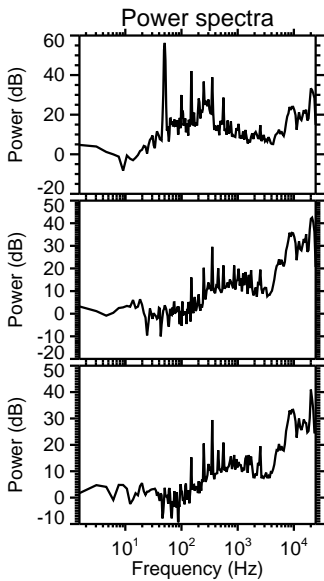
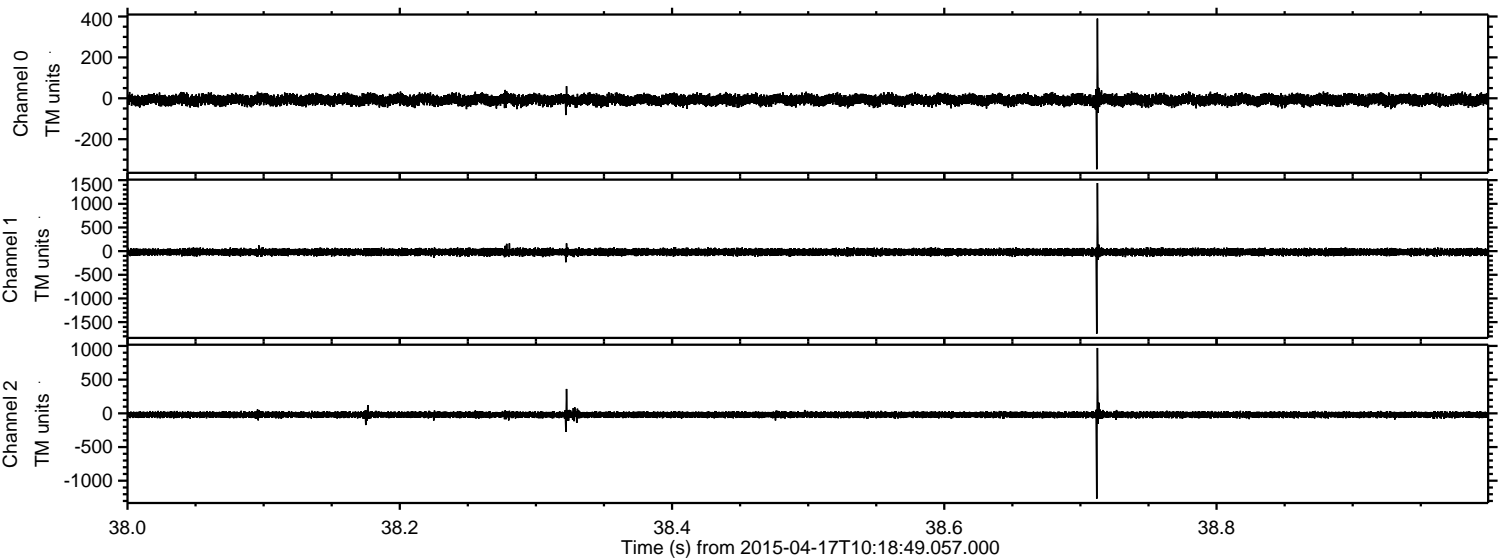


ELMAVAN 3D WAVEFORMS (Measured data sampled at 50 kHz) 49768 packets of 144 samples from 2015-04-17T10:18:49.057.000.

Processed Fri Apr 17 12:26:01 2015 by ELM ver.2012-10-06 from 001__elm20150417_101848__dat00.bin



Processed Fri Apr 17 12:26:13 2015 by ELM ver.2012-10-06 from 001__elm20150417_101848__dat00.bin

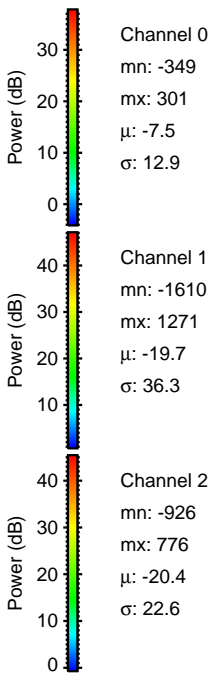
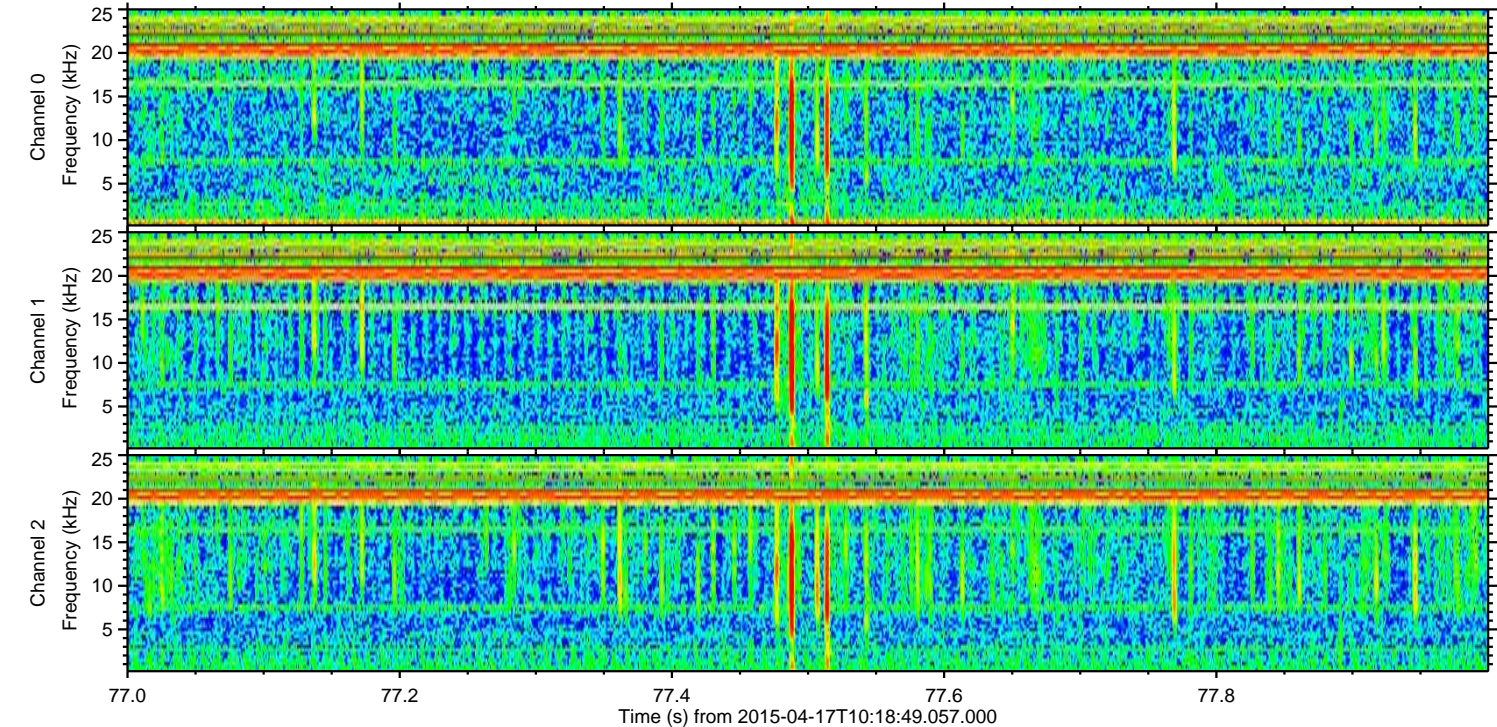
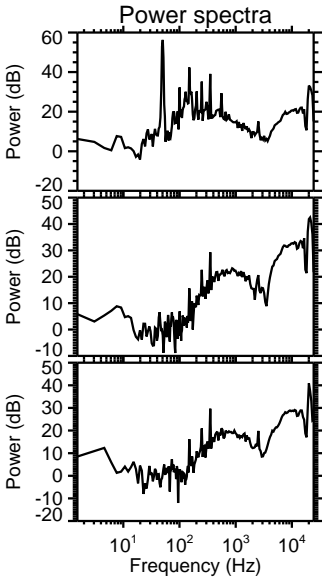
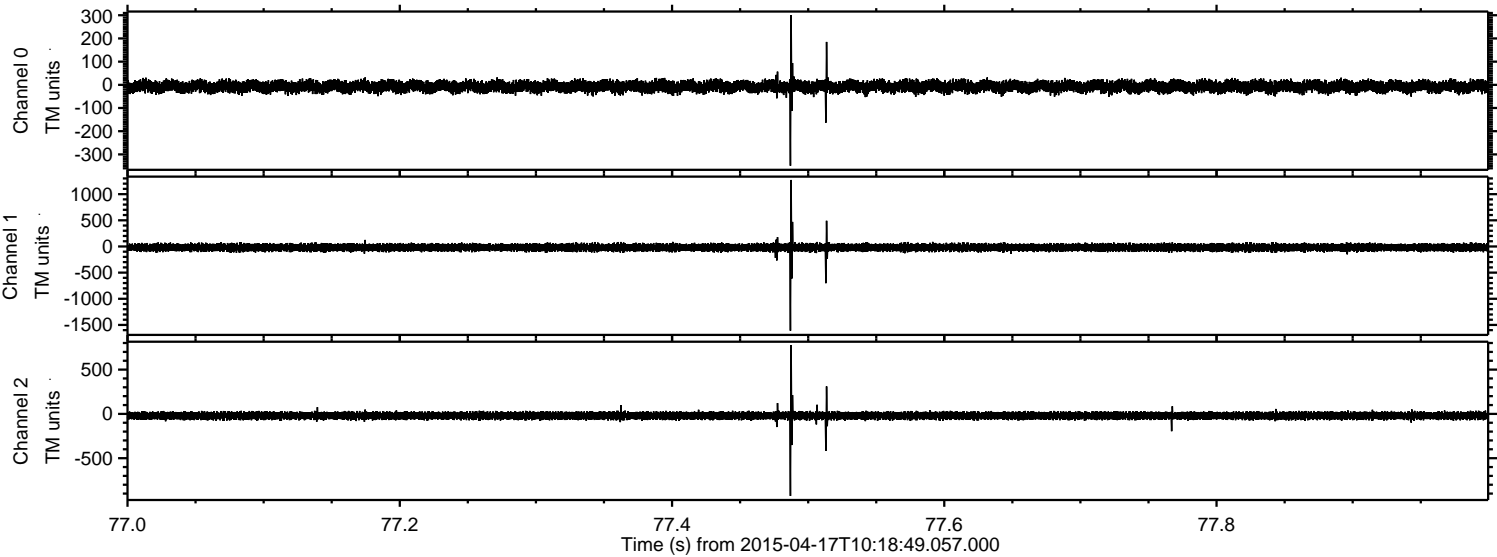


Channel 0
mn: -347
mx: 390
 μ : -7.5
 σ : 13.3

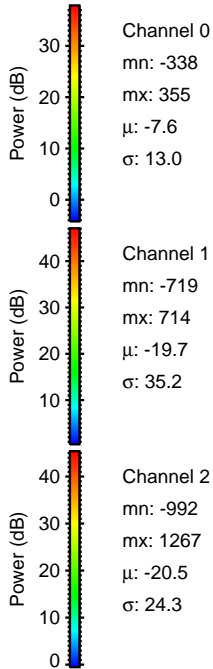
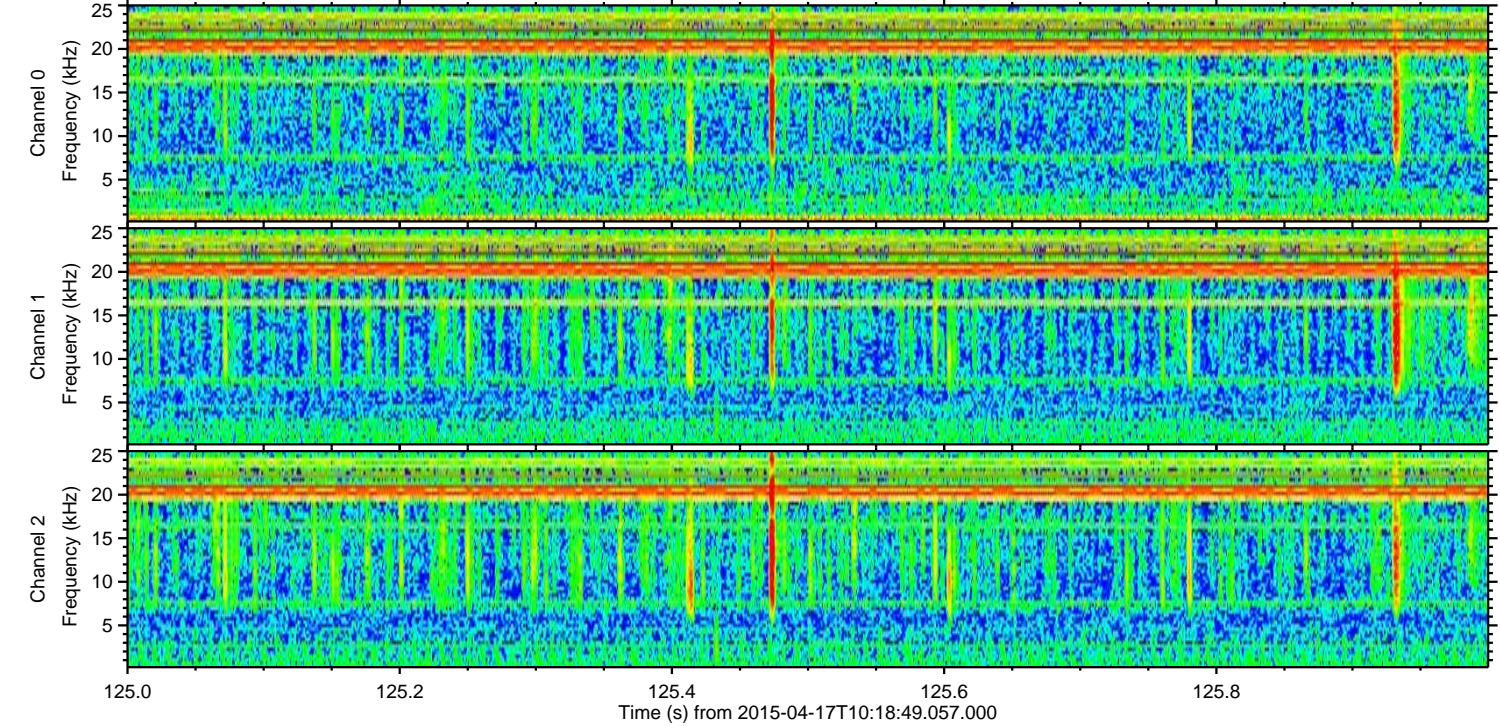
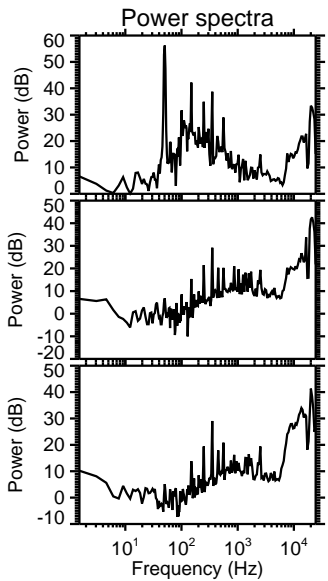
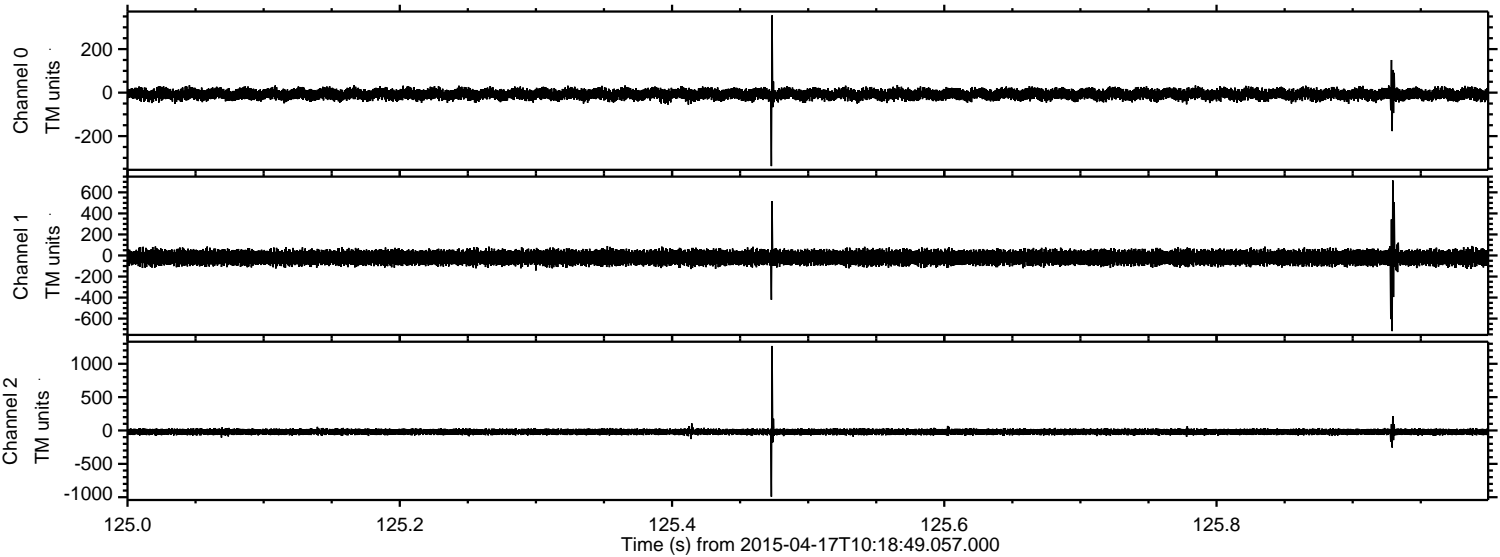
Channel 1
mn: -1746
mx: 1439
 μ : -19.7
 σ : 37.2

Channel 2
mn: -1267
mx: 970
 μ : -20.5
 σ : 24.0

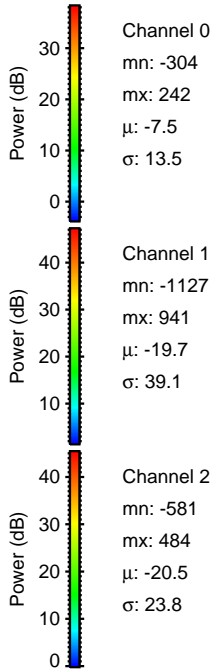
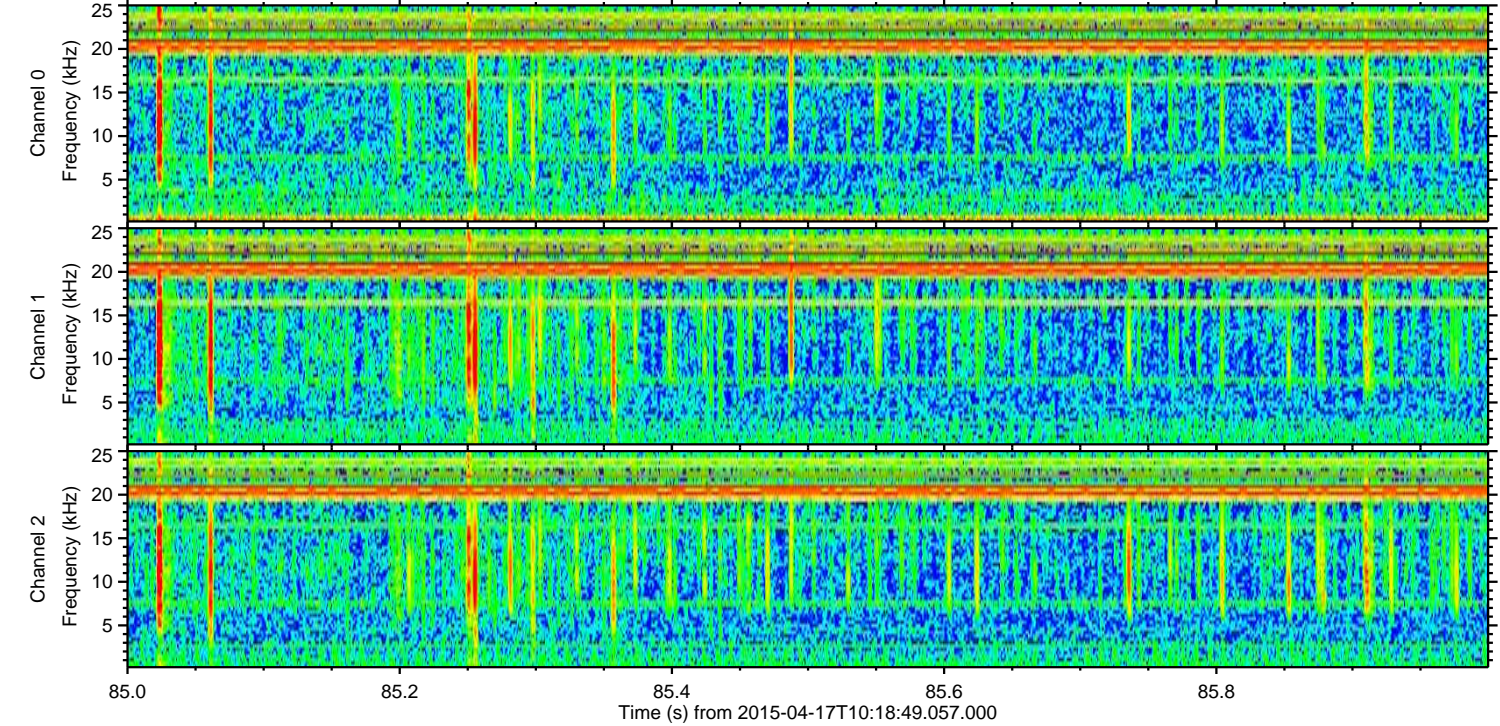
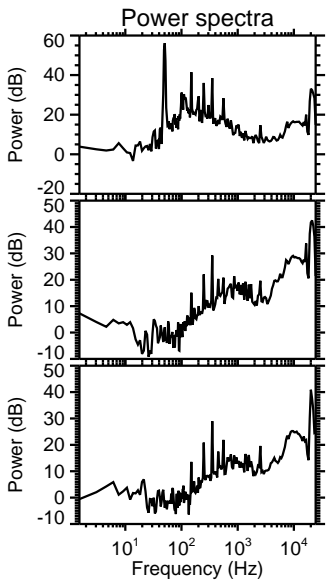
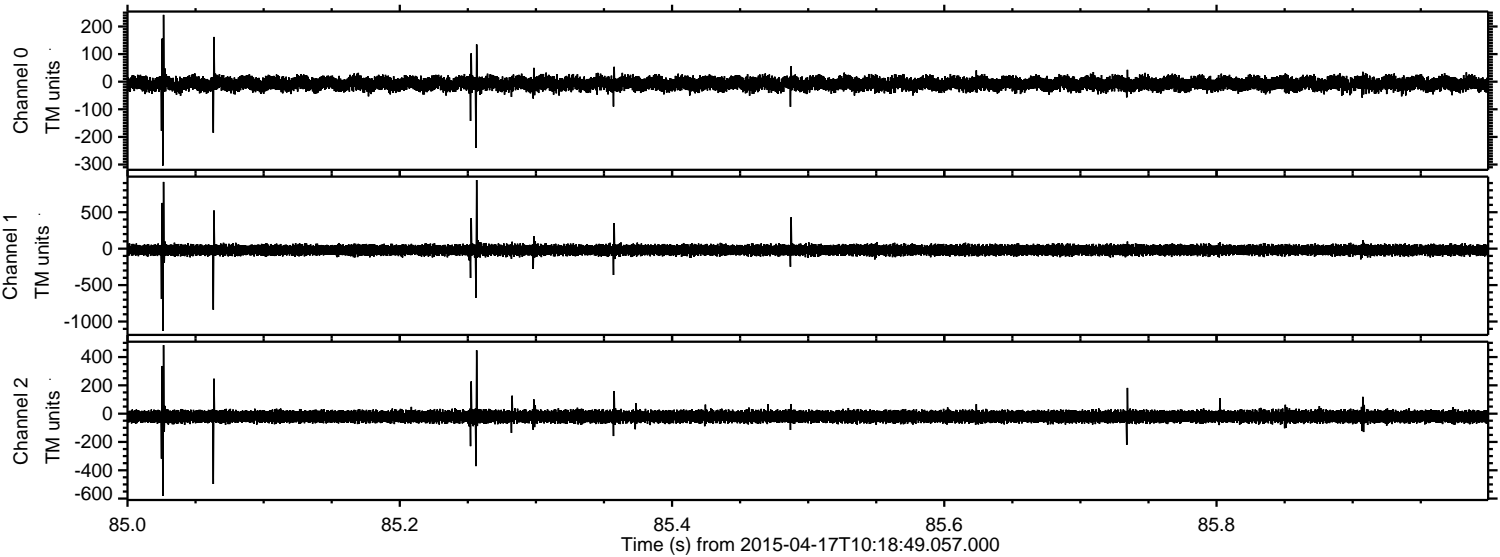
Processed Fri Apr 17 12:26:14 2015 by ELM ver.2012-10-06 from 001__elm20150417_101848__dat00.bin



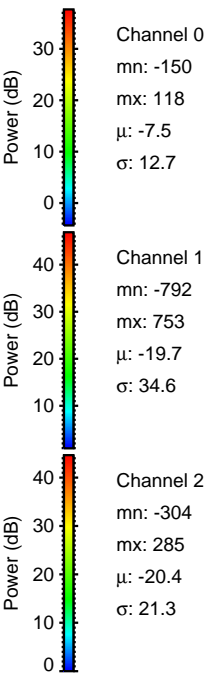
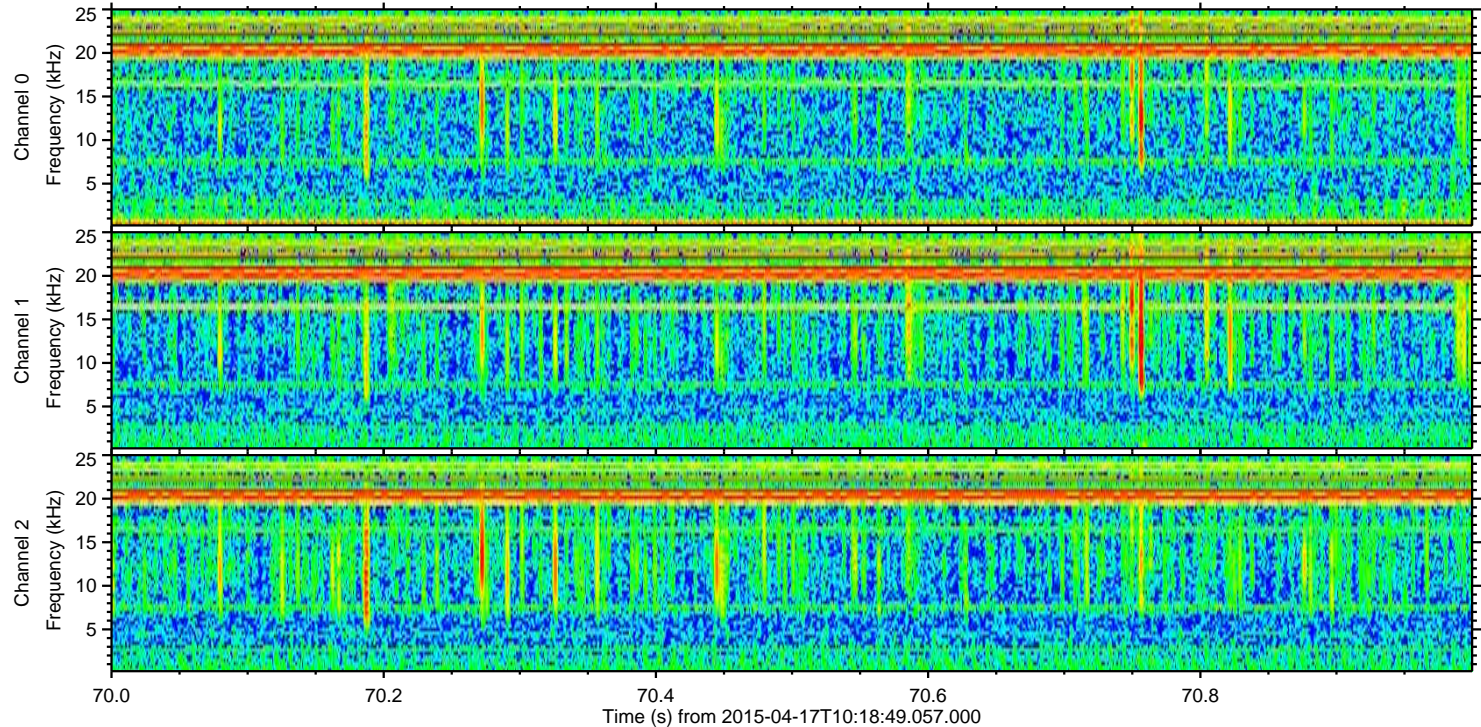
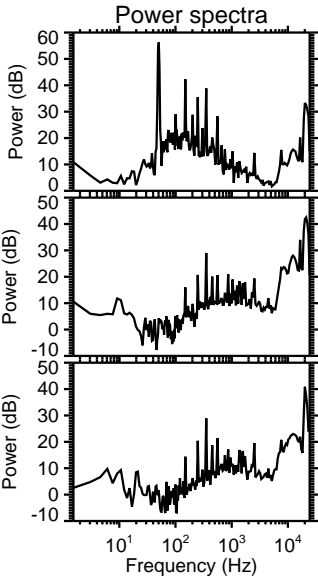
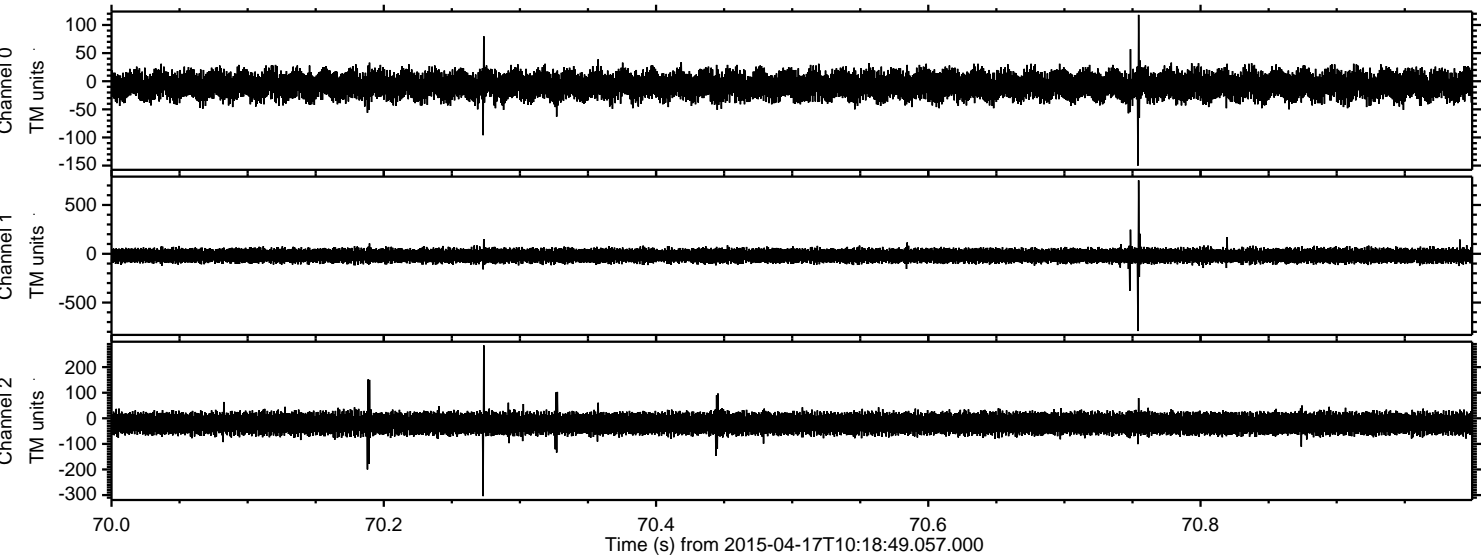
Processed Fri Apr 17 12:26:14 2015 by ELM ver.2012-10-06 from 001__elm20150417_101848__dat00.bin



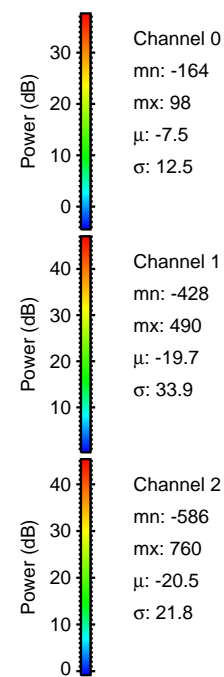
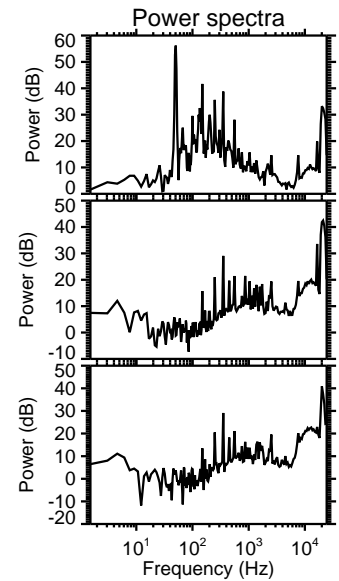
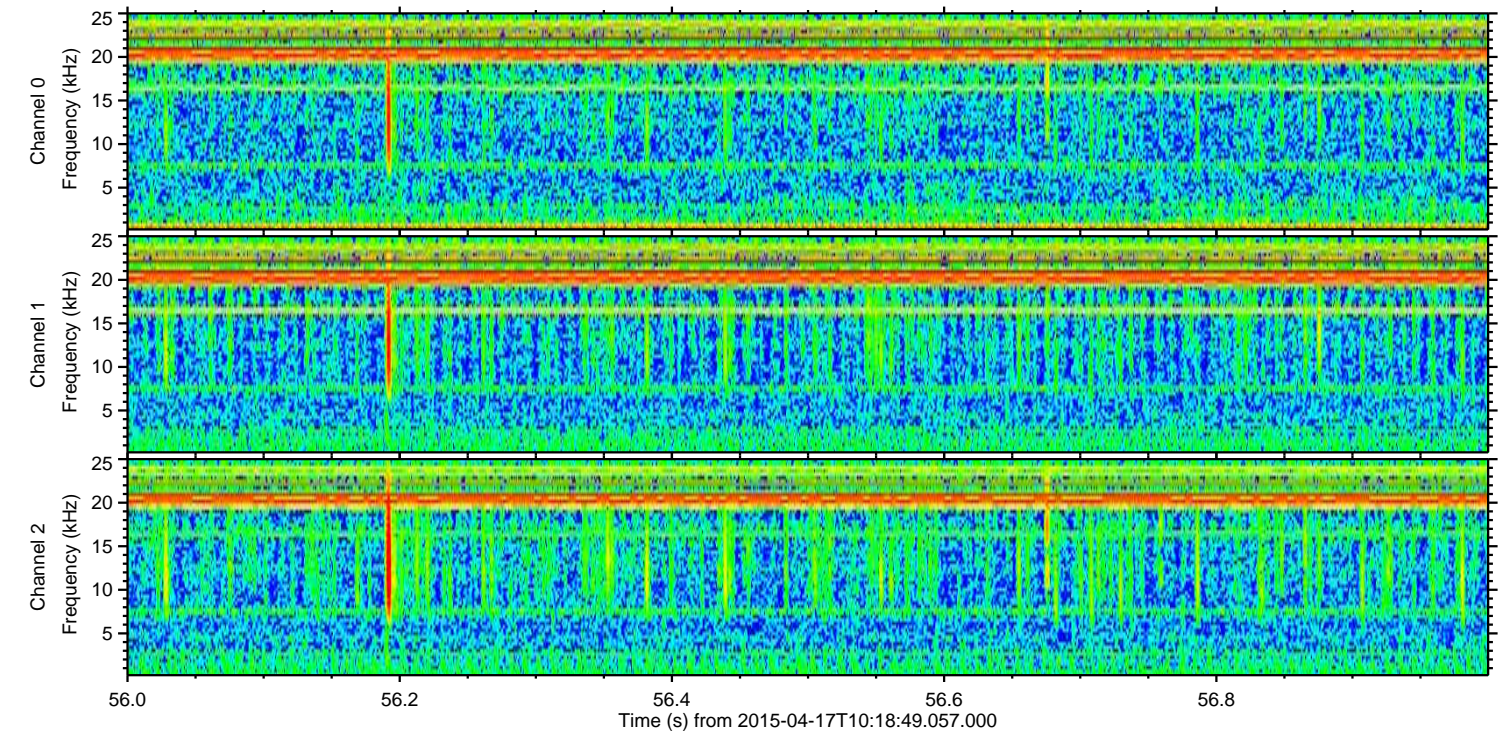
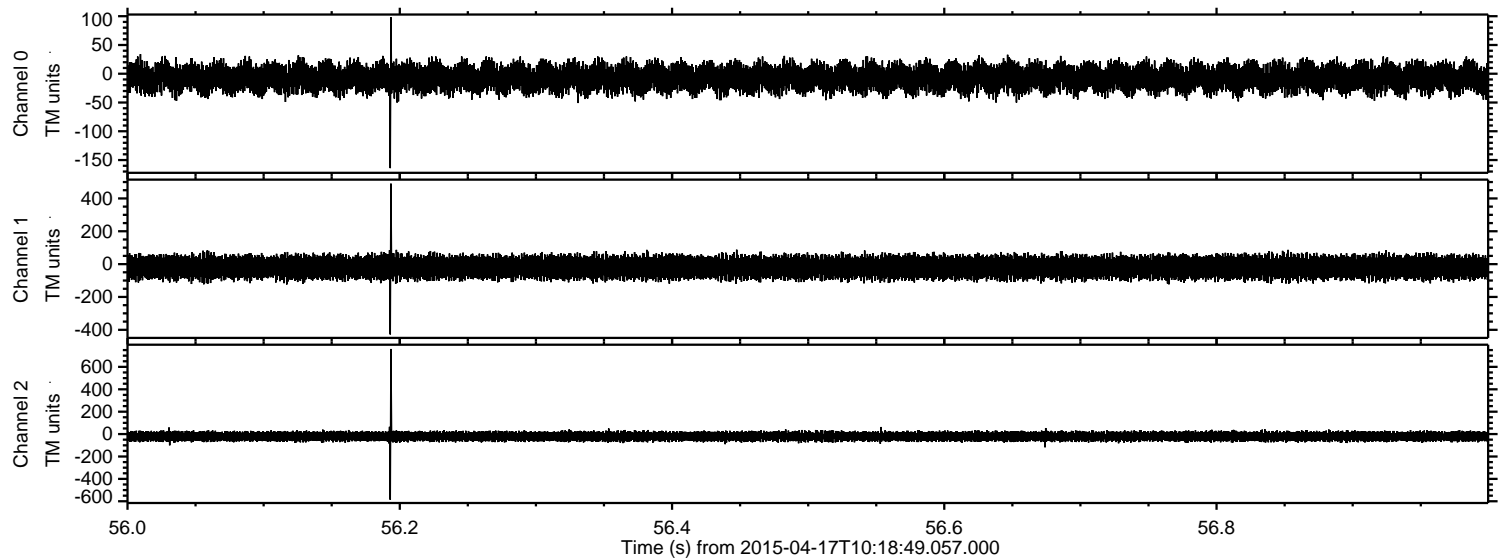
Processed Fri Apr 17 12:26:15 2015 by ELM ver.2012-10-06 from 001__elm20150417_101848__dat00.bin



Processed Fri Apr 17 12:26:16 2015 by ELM ver.2012-10-06 from 001__elm20150417_101848__dat00.bin



Processed Fri Apr 17 12:26:17 2015 by ELM ver.2012-10-06 from 001__elm20150417_101848__dat00.bin

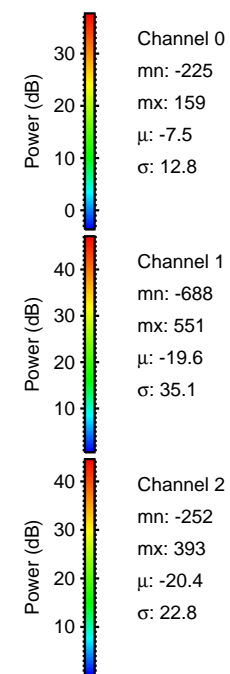
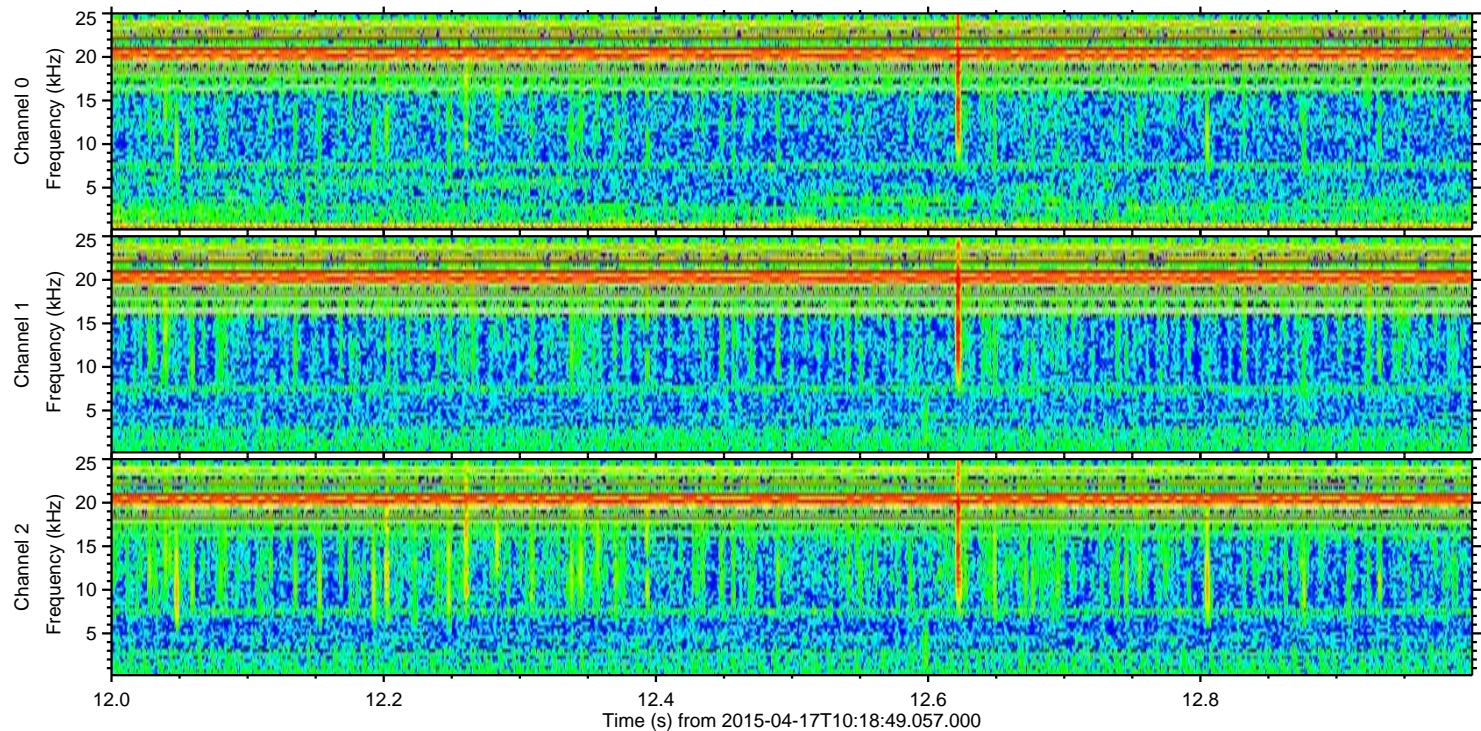
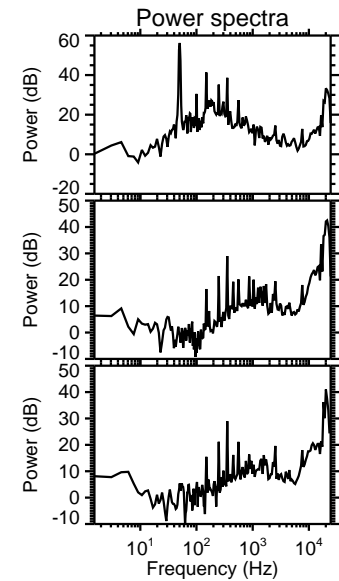
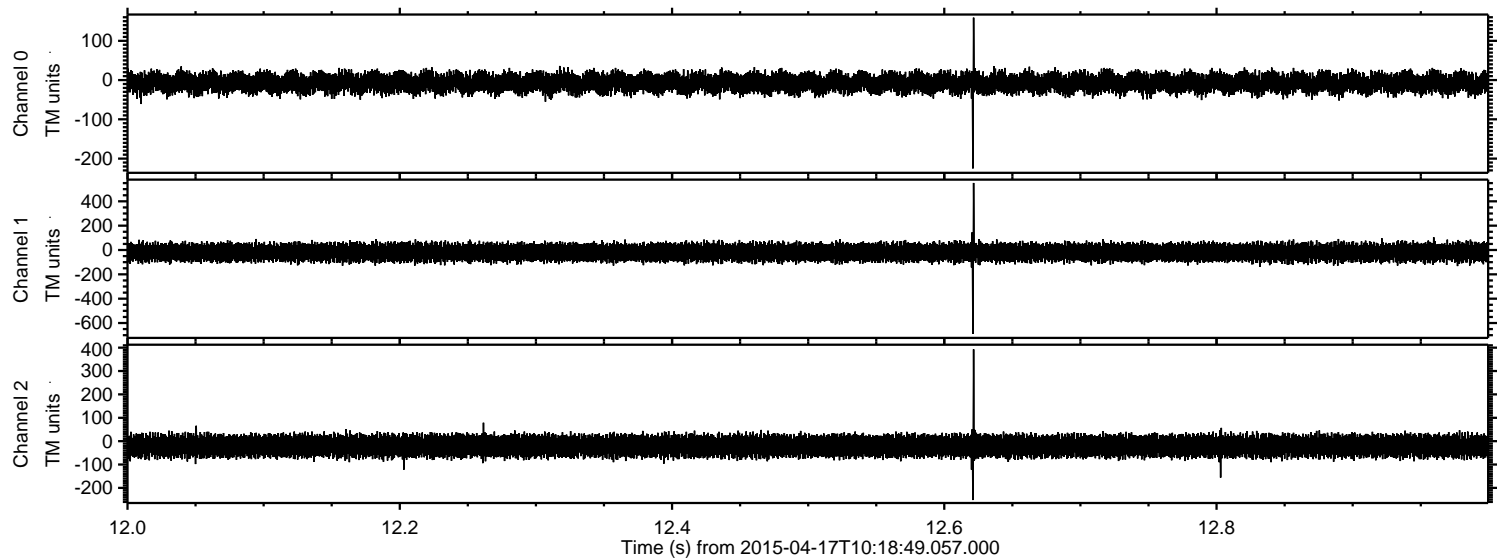


Channel 0
mn: -164
mx: 98
 μ : -7.5
 σ : 12.5

Channel 1
mn: -428
mx: 490
 μ : -19.7
 σ : 33.9

Channel 2
mn: -586
mx: 760
 μ : -20.5
 σ : 21.8

Processed Fri Apr 17 12:26:18 2015 by ELM ver.2012-10-06 from 001__elm20150417_101848__dat00.bin



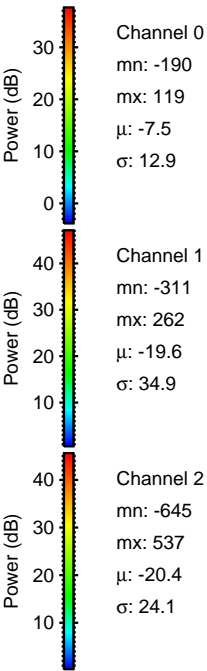
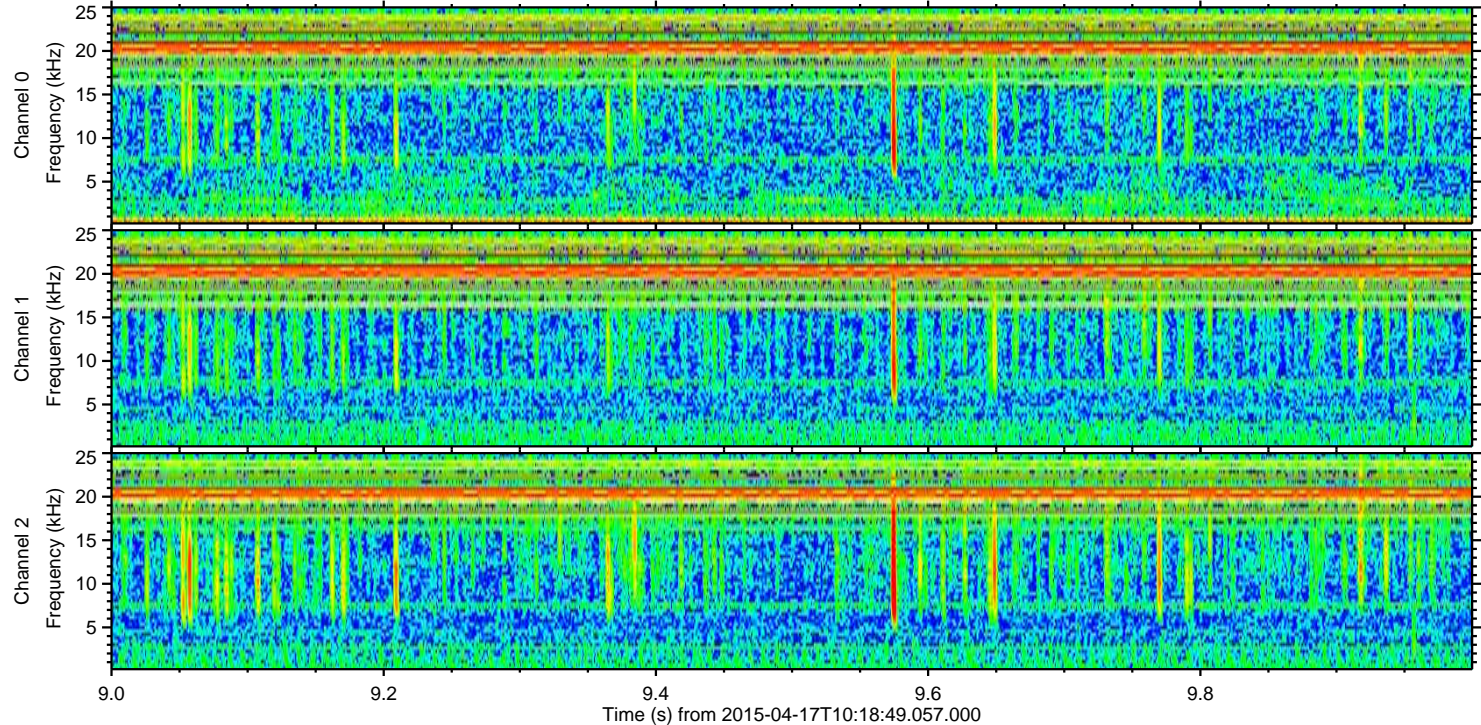
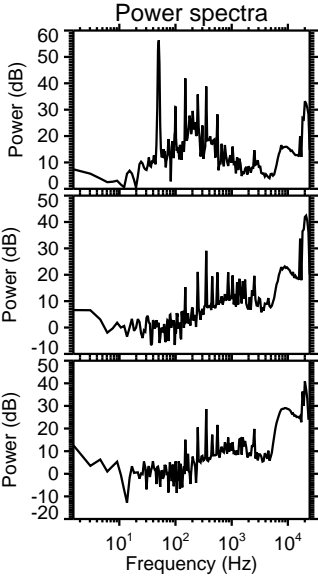
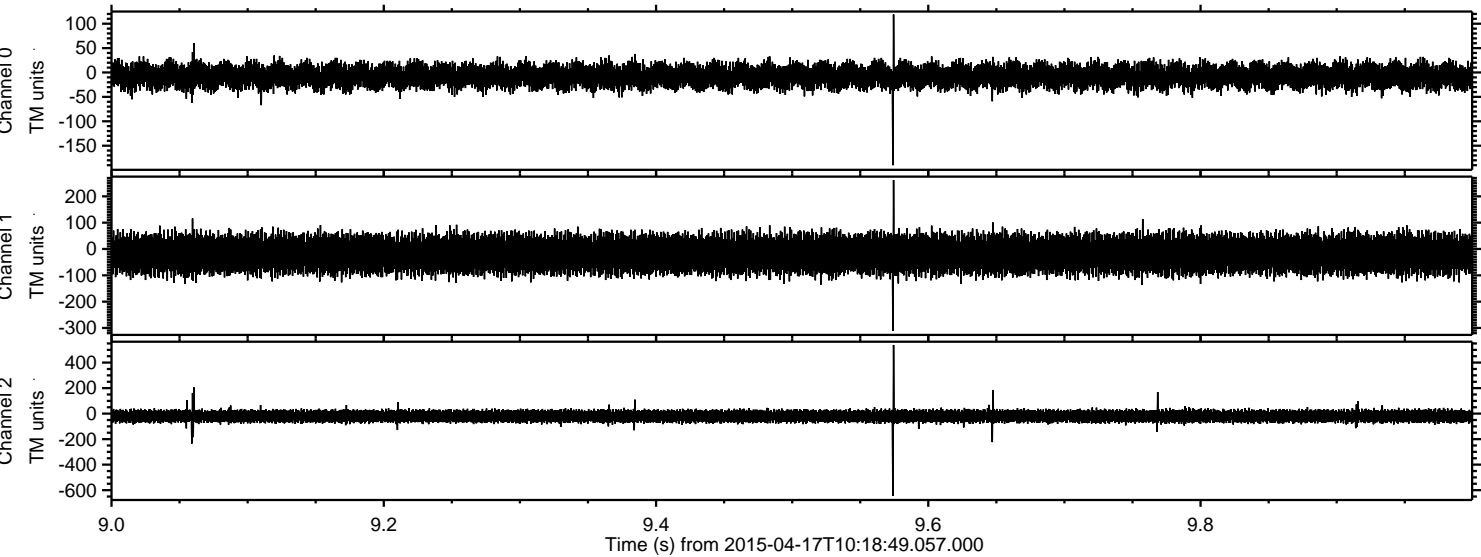
Channel 0
mn: -225
mx: 159
 μ : -7.5
 σ : 12.8

Channel 1
mn: -688
mx: 551
 μ : -19.6
 σ : 35.1

Channel 2
mn: -252
mx: 393
 μ : -20.4
 σ : 22.8

ELMAVAN 3D WAVEFORMS (Measured data sampled at 50 kHz) 49768 packets of 144 samples from 2015-04-17T10:18:49.057.000. Part 10/144

Processed Fri Apr 17 12:26:19 2015 by ELM ver.2012-10-06 from 001__elm20150417_101848__dat00.bin



Channel 0
mn: -190
mx: 119
 μ : -7.5
 σ : 12.9

Channel 1
mn: -311
mx: 262
 μ : -19.6
 σ : 34.9

Channel 2
mn: -645
mx: 537
 μ : -20.4
 σ : 24.1

Processed Fri Apr 17 12:26:20 2015 by ELM ver.2012-10-06 from 001__elm20150417_101848__dat00.bin

