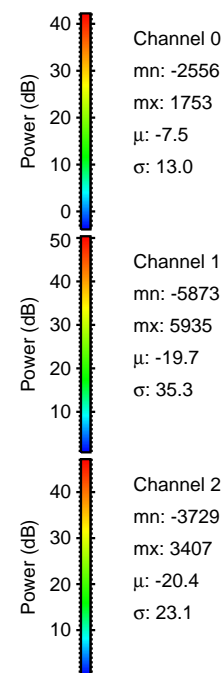
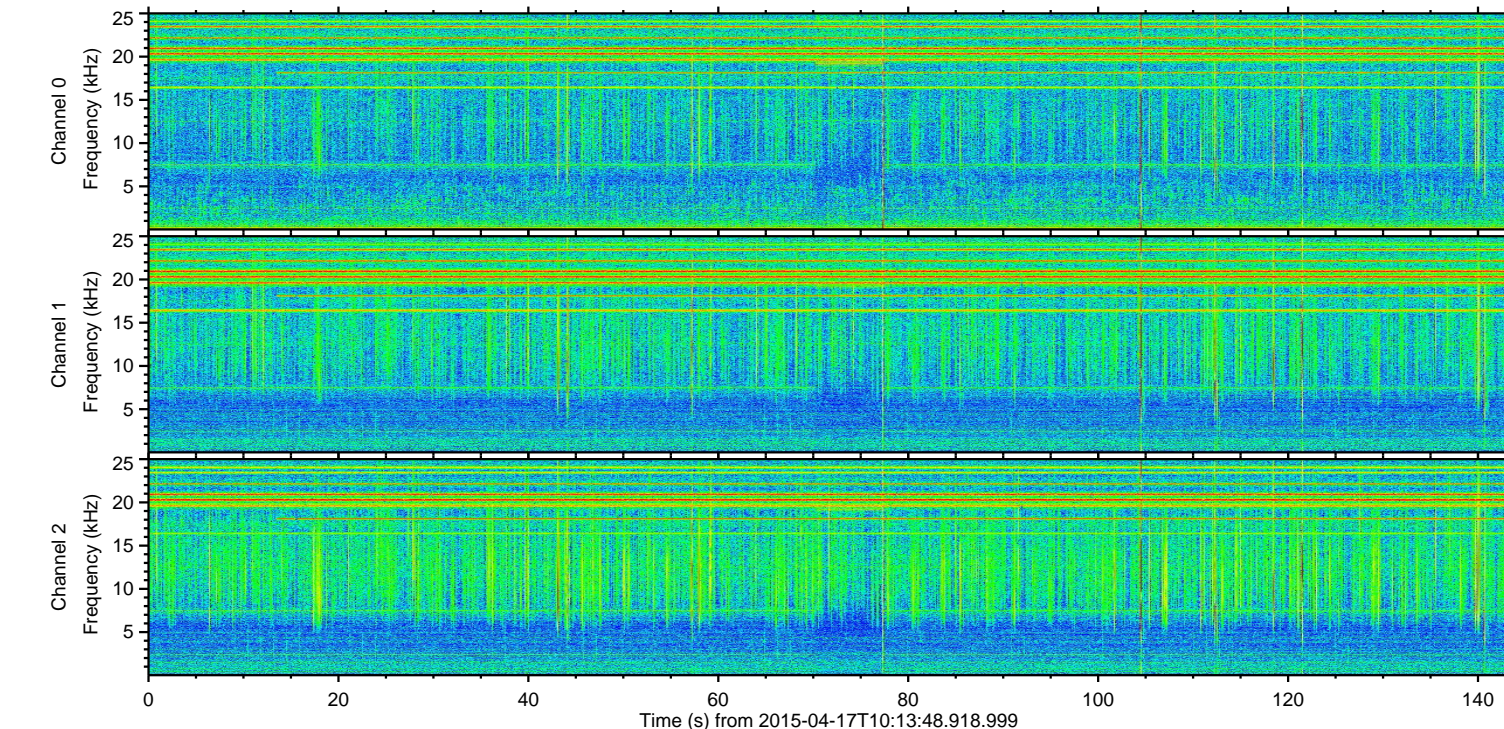
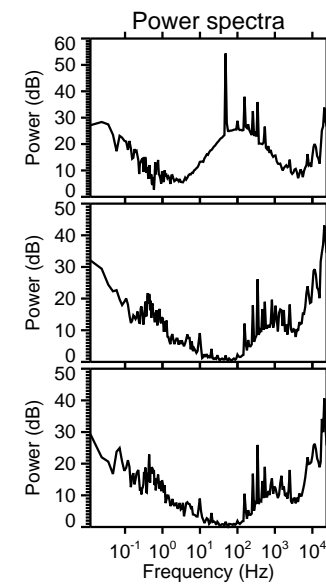
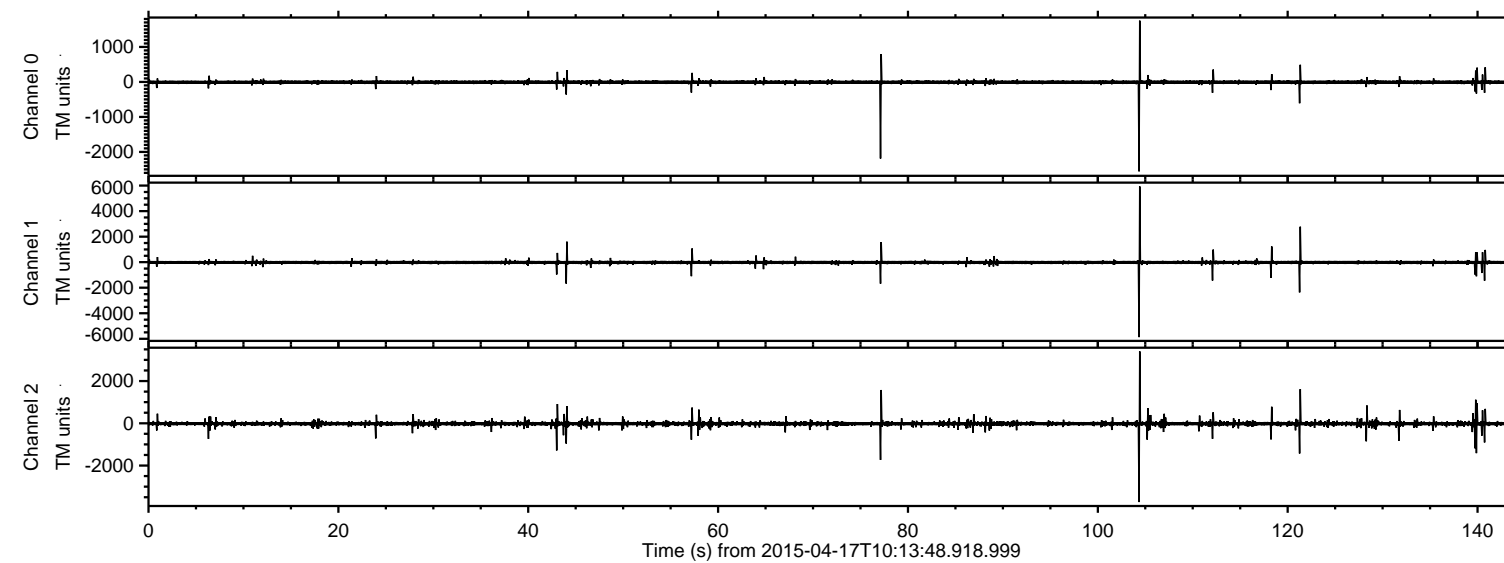


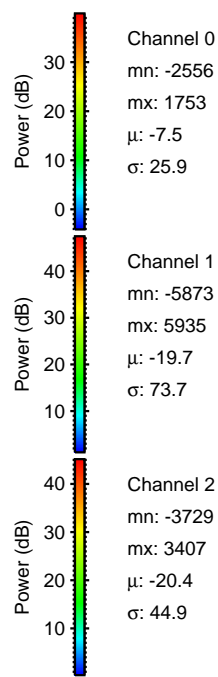
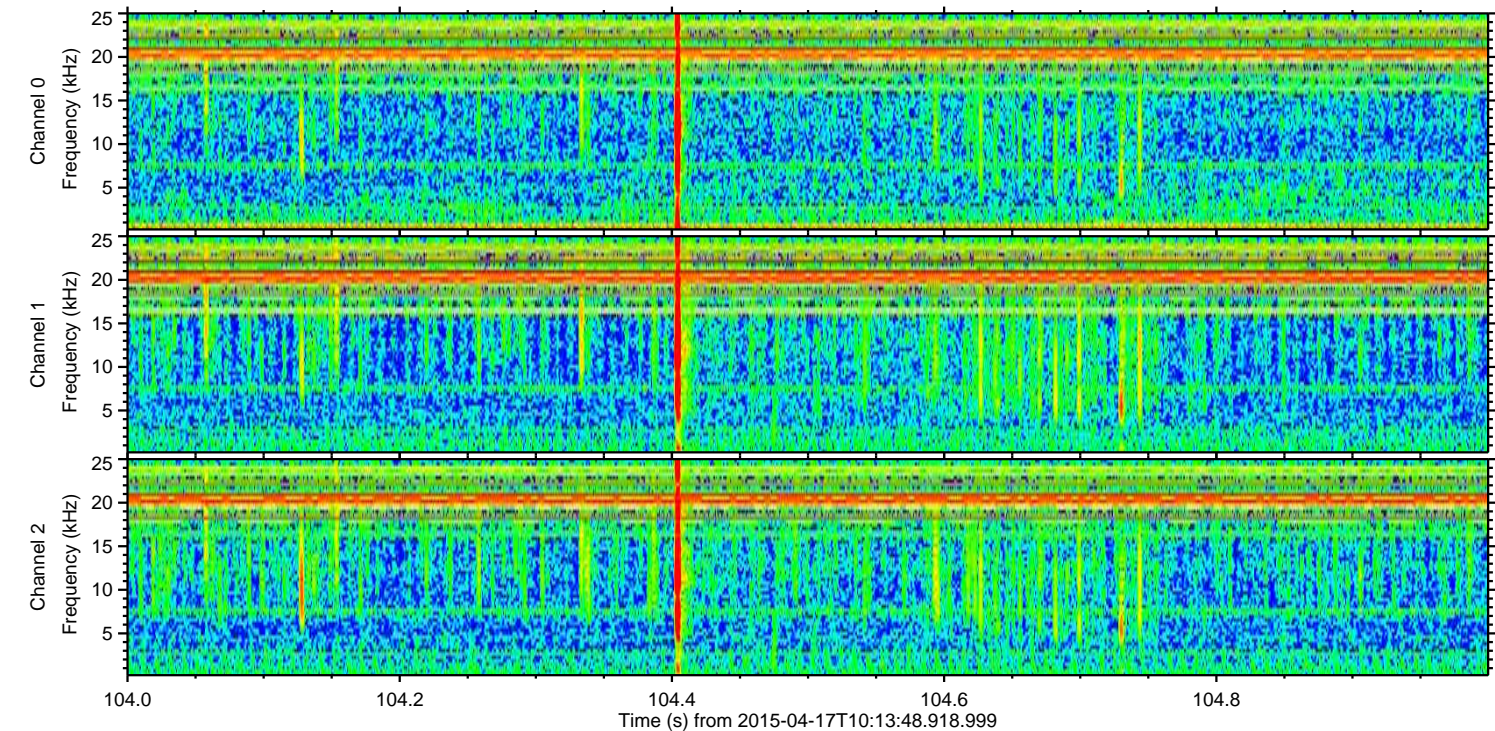
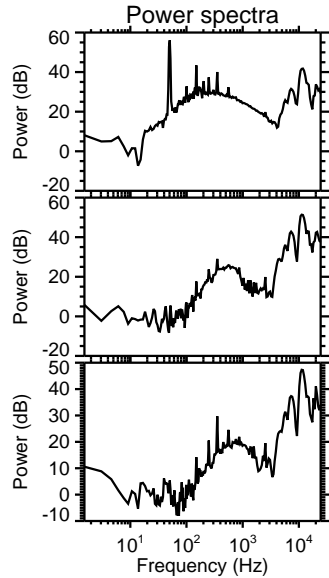
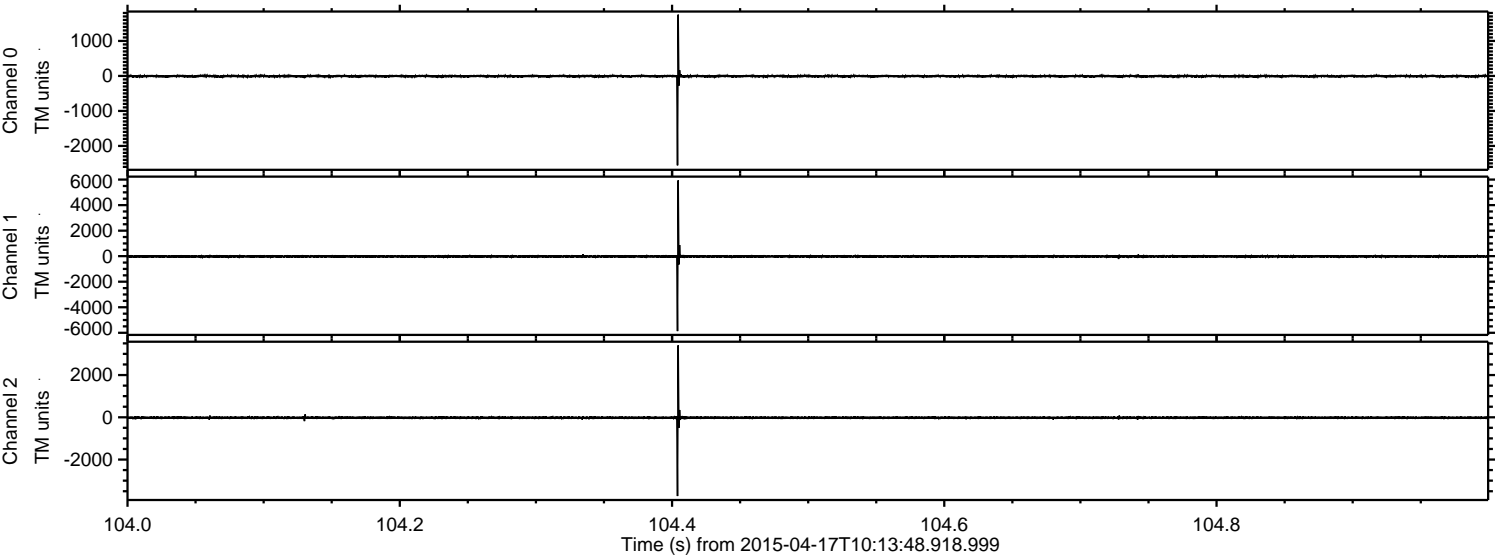
ELMAVAN 3D WAVEFORMS (Measured data sampled at 50 kHz) 49767 packets of 144 samples from 2015-04-17T10:13:48.918.999.

Processed Fri Apr 17 12:21:18 2015 by ELM ver.2012-10-06 from 001__elm20150417_101347__dat00.bin



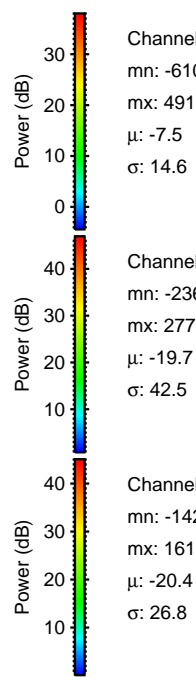
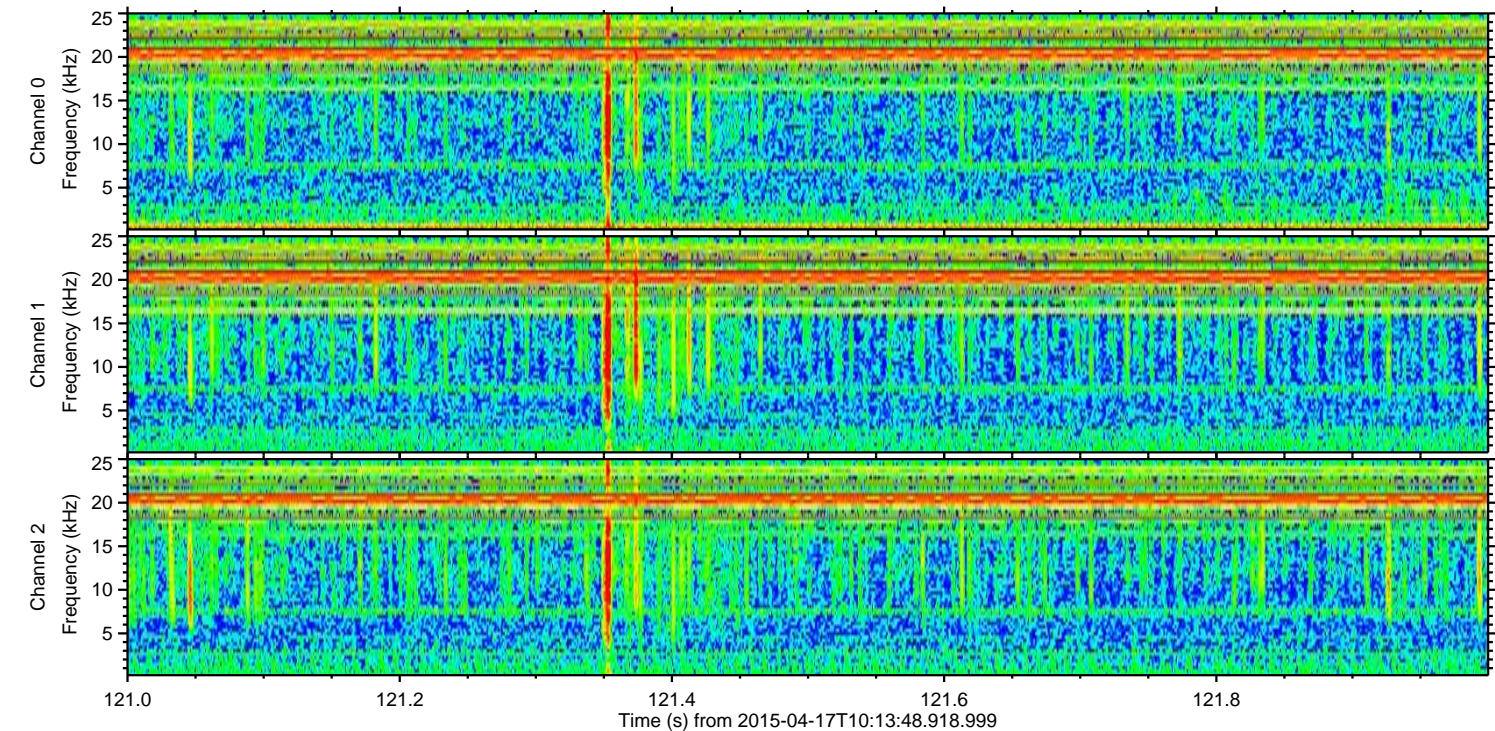
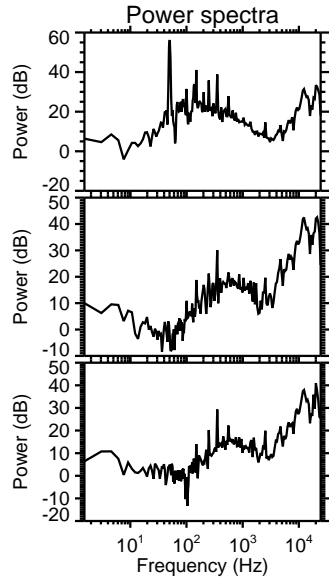
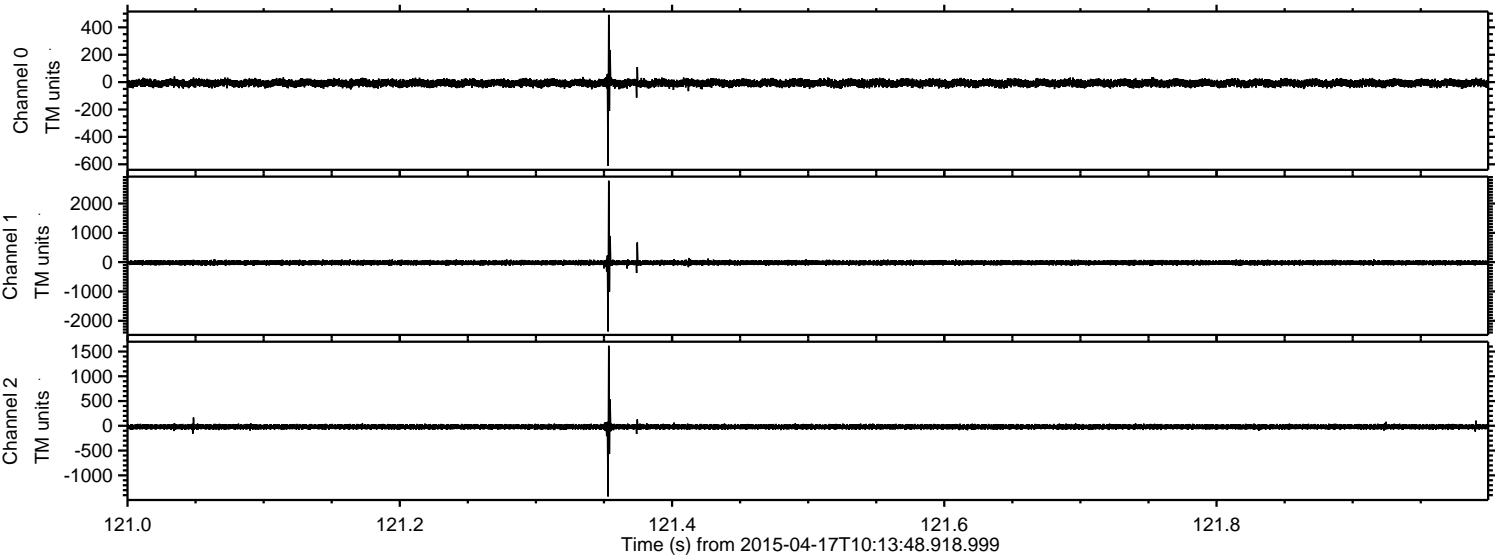
ELMAVAN 3D WAVEFORMS (Measured data sampled at 50 kHz) 49767 packets of 144 samples from 2015-04-17T10:13:48.918.999. Part 105/144

Processed Fri Apr 17 12:21:29 2015 by ELM ver.2012-10-06 from 001__elm20150417_101347__dat00.bin



ELMAVAN 3D WAVEFORMS (Measured data sampled at 50 kHz) 49767 packets of 144 samples from 2015-04-17T10:13:48.918.999. Part 122/144

Processed Fri Apr 17 12:21:30 2015 by ELM ver.2012-10-06 from 001__elm20150417_101347__dat00.bin

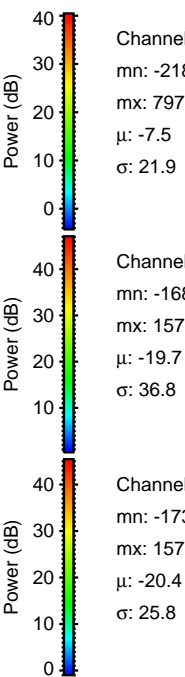
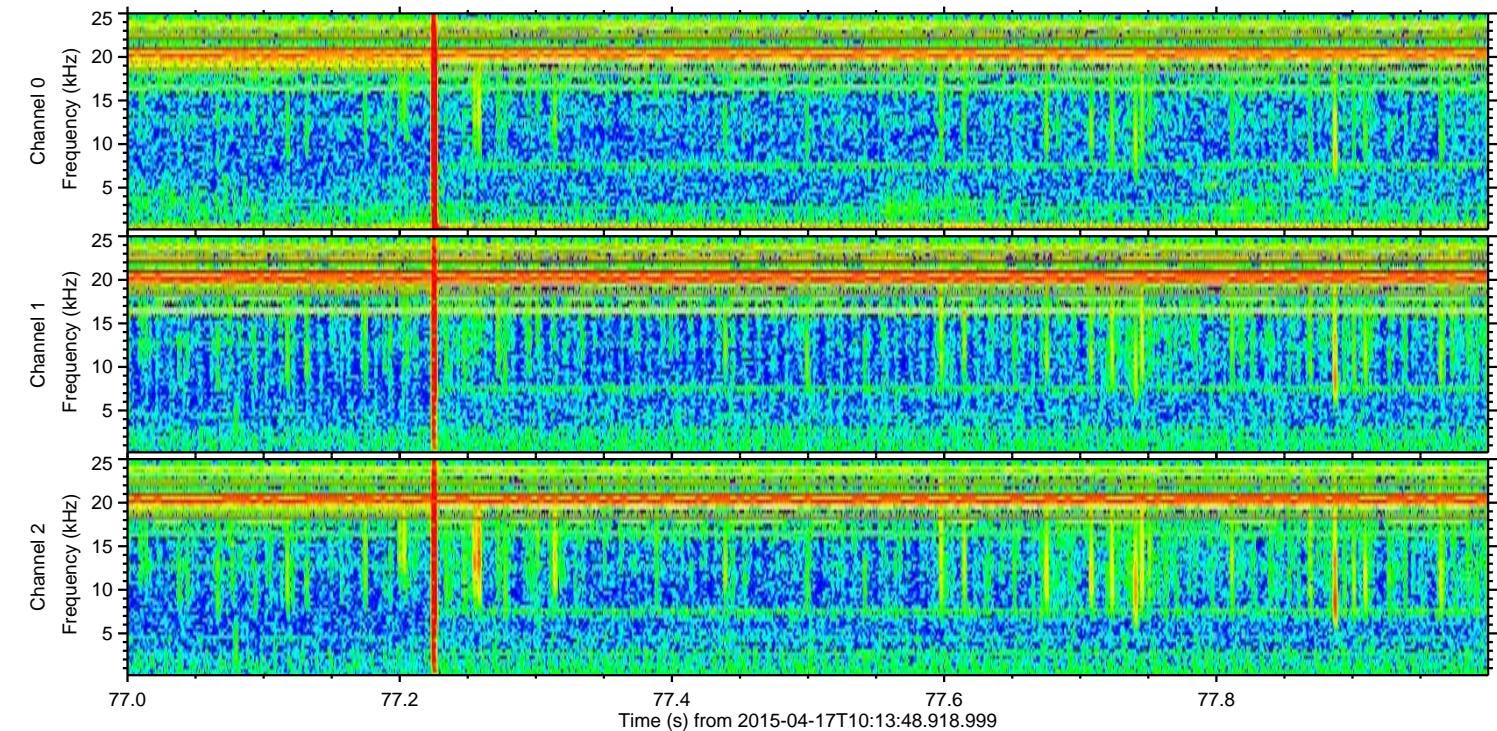
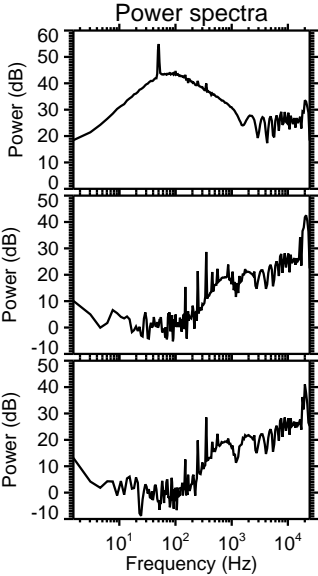
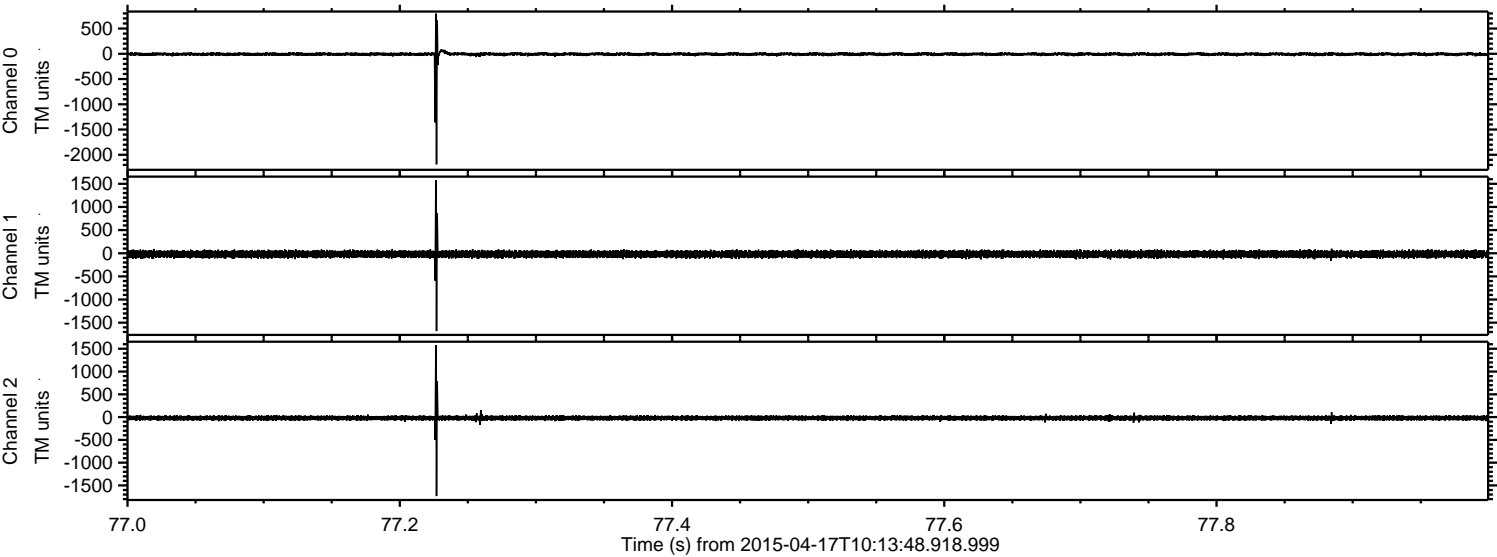


Channel 0
mn: -610
mx: 491
 μ : -7.5
 σ : 14.6

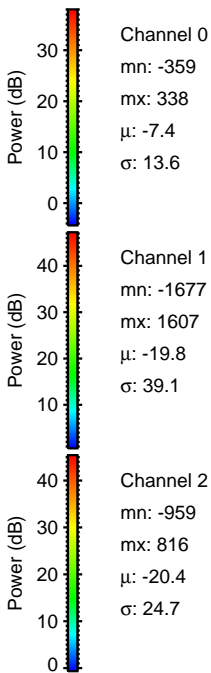
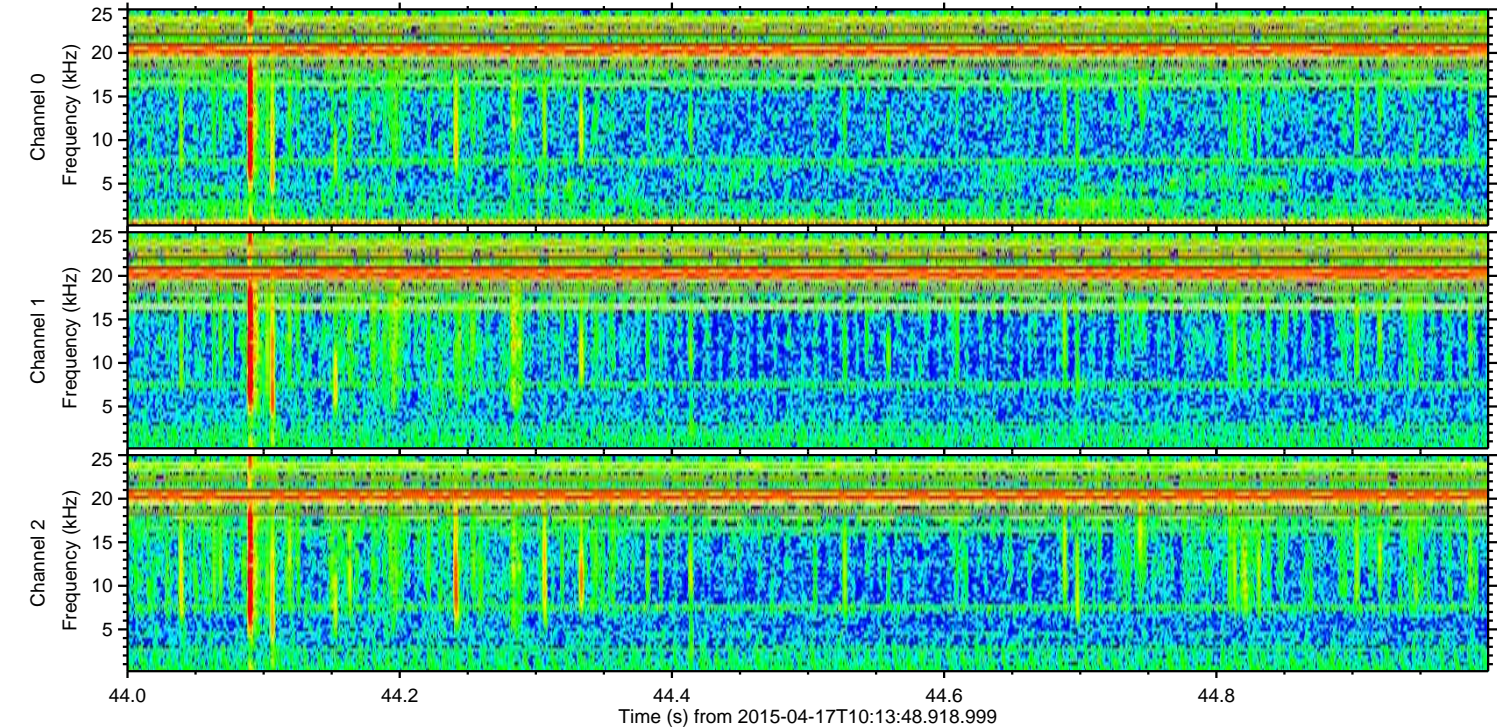
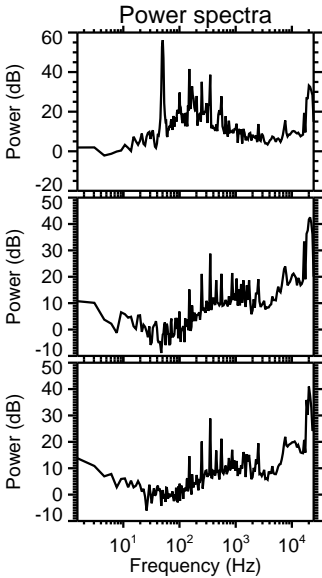
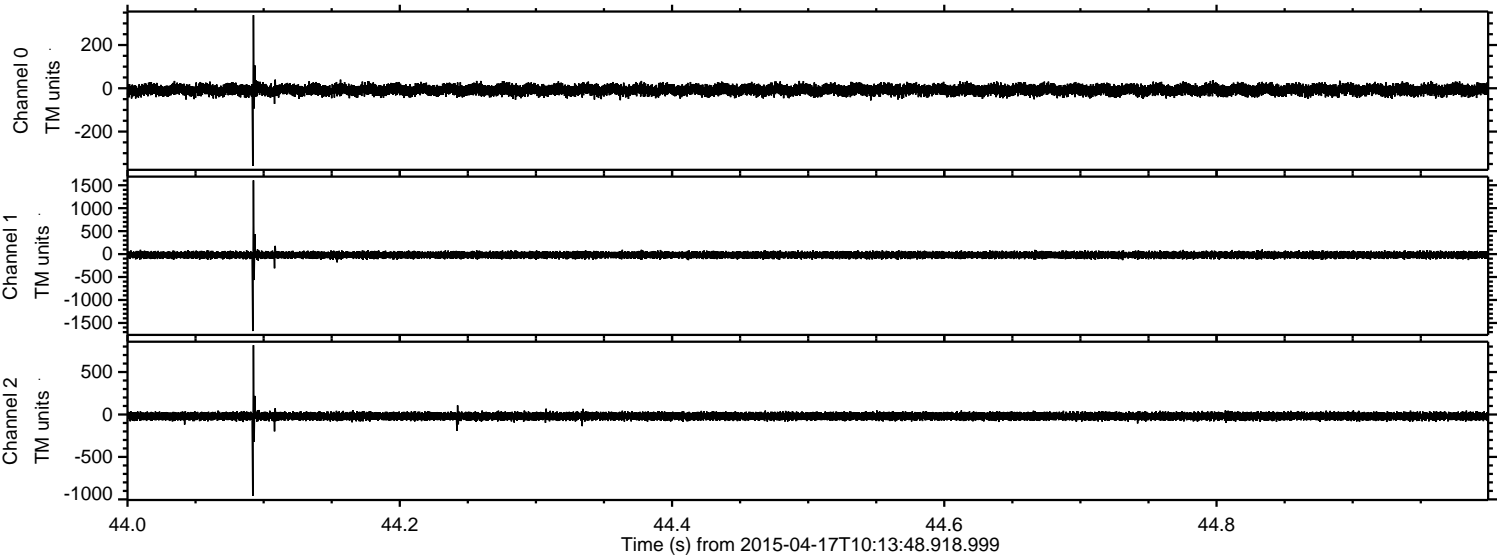
Channel 1
mn: -2365
mx: 2779
 μ : -19.7
 σ : 42.5

Channel 2
mn: -1427
mx: 1617
 μ : -20.4
 σ : 26.8

Processed Fri Apr 17 12:21:31 2015 by ELM ver.2012-10-06 from 001__elm20150417_101347__dat00.bin

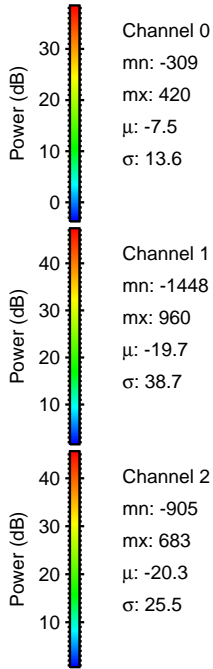
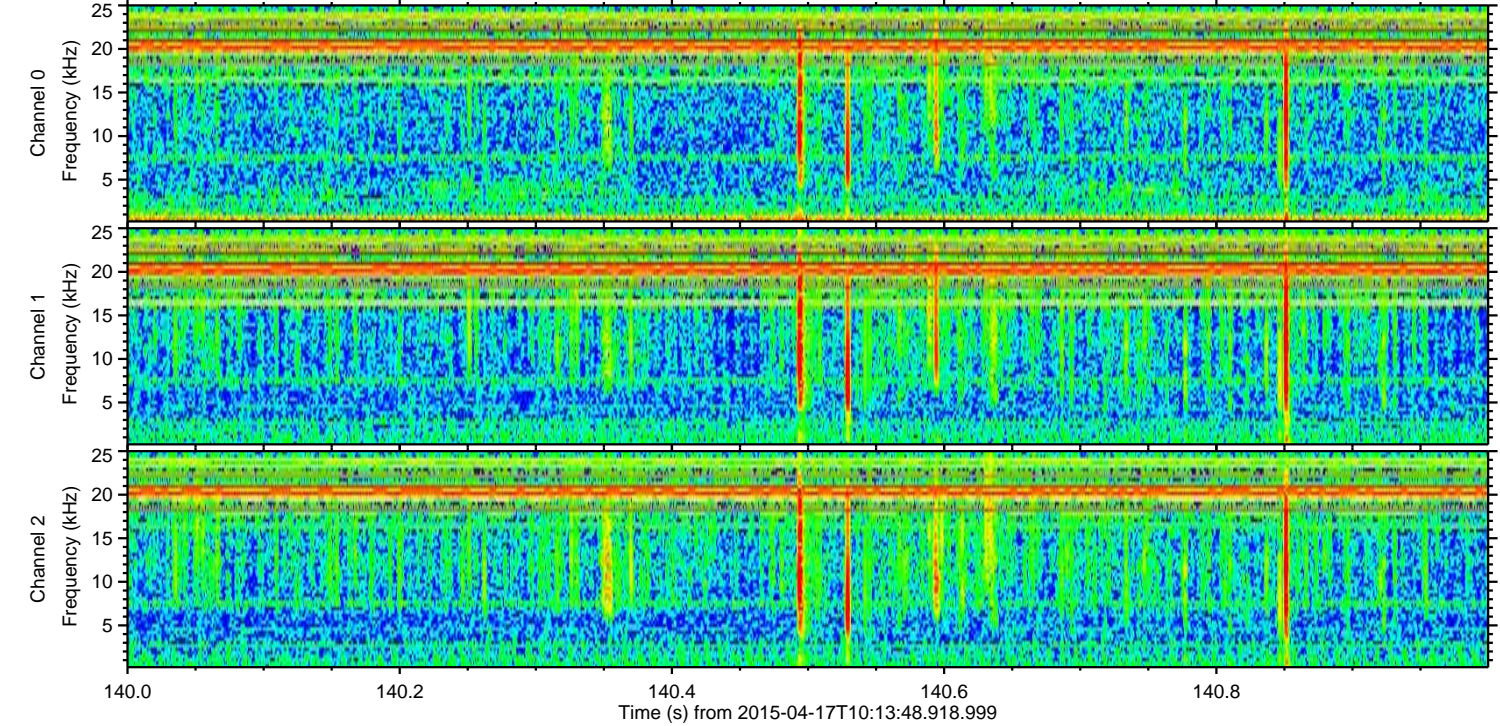
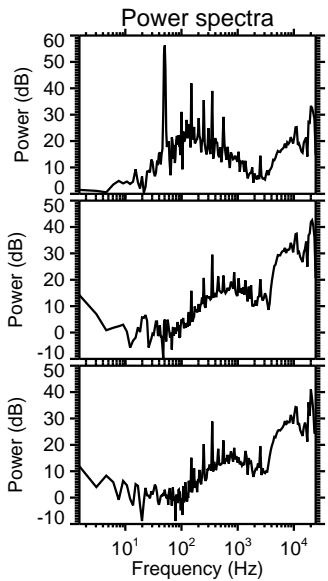
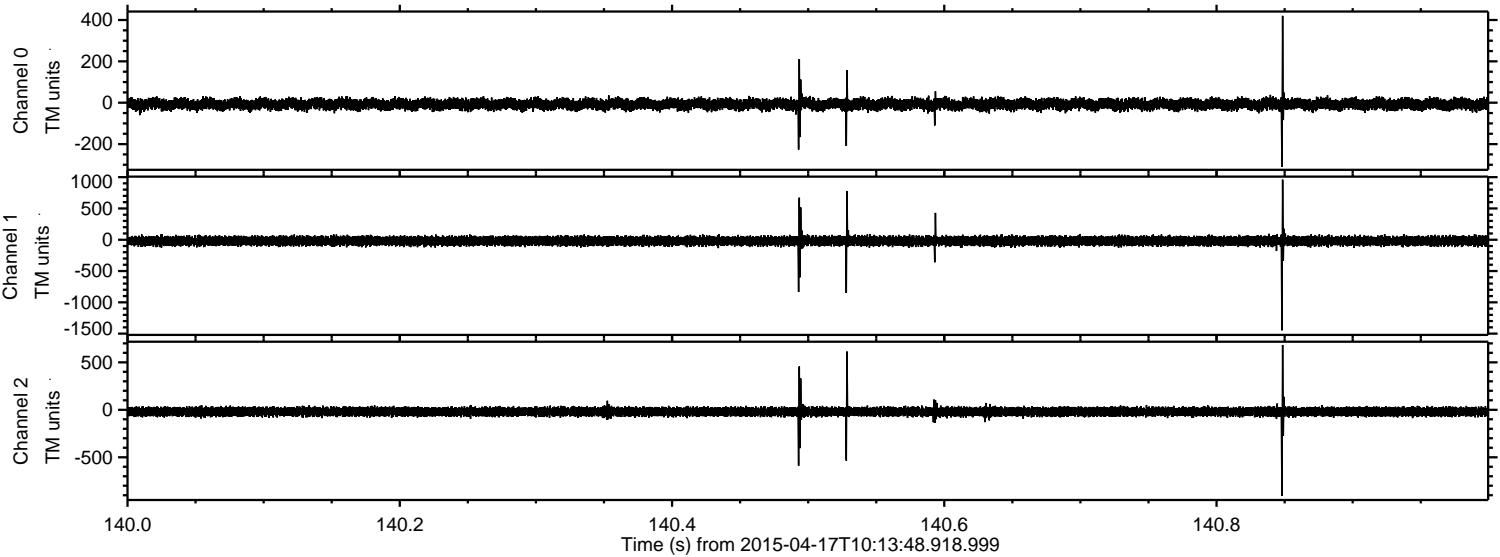


Processed Fri Apr 17 12:21:32 2015 by ELM ver.2012-10-06 from 001__elm20150417_101347__dat00.bin



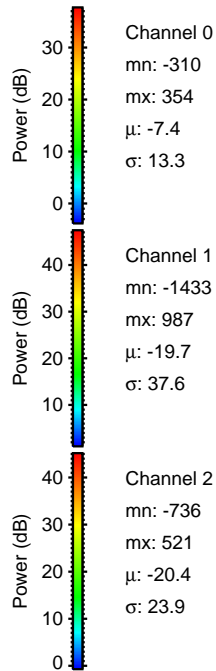
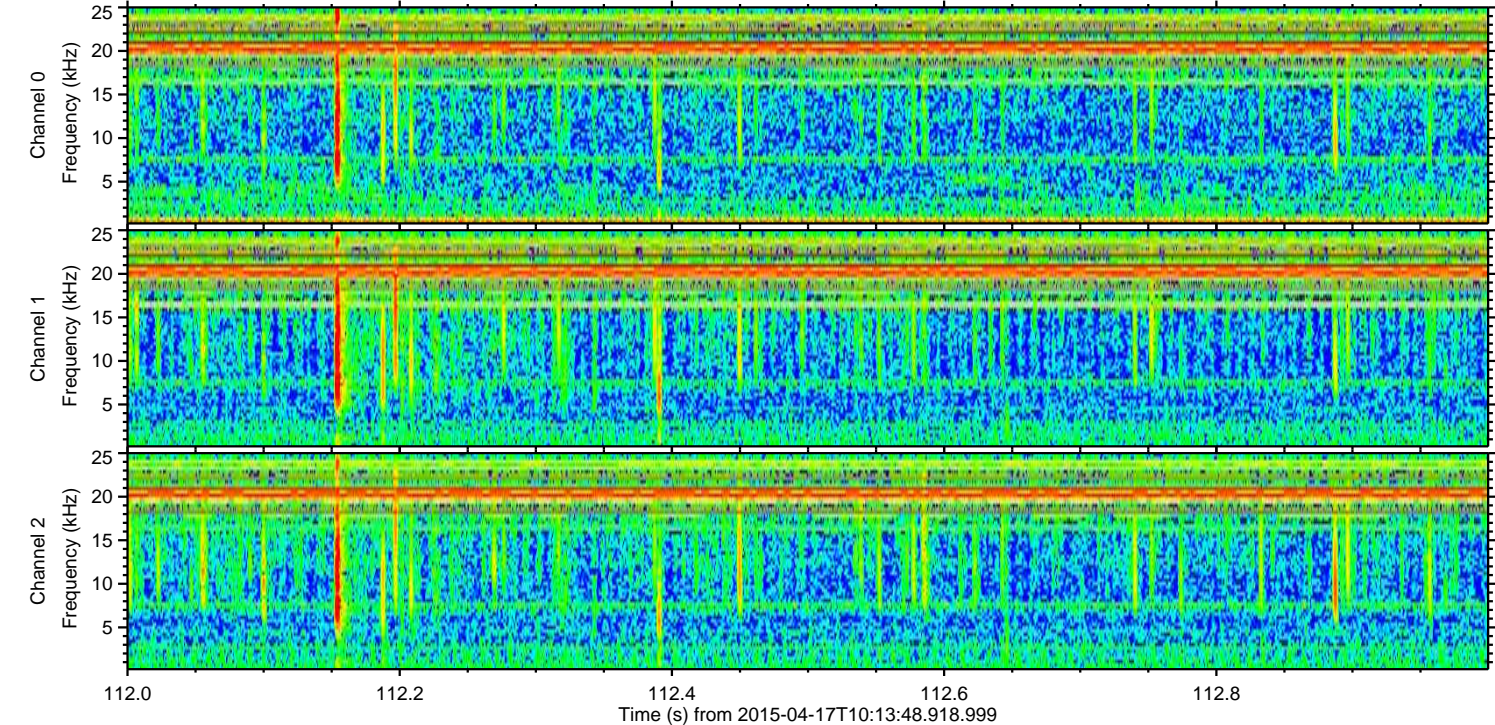
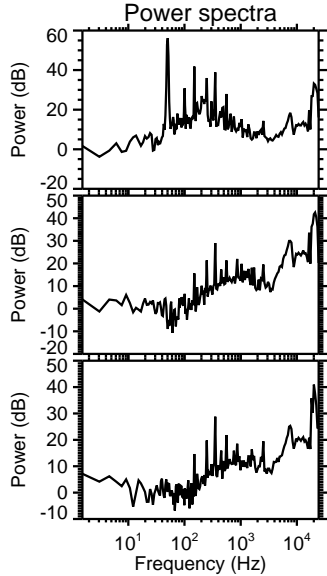
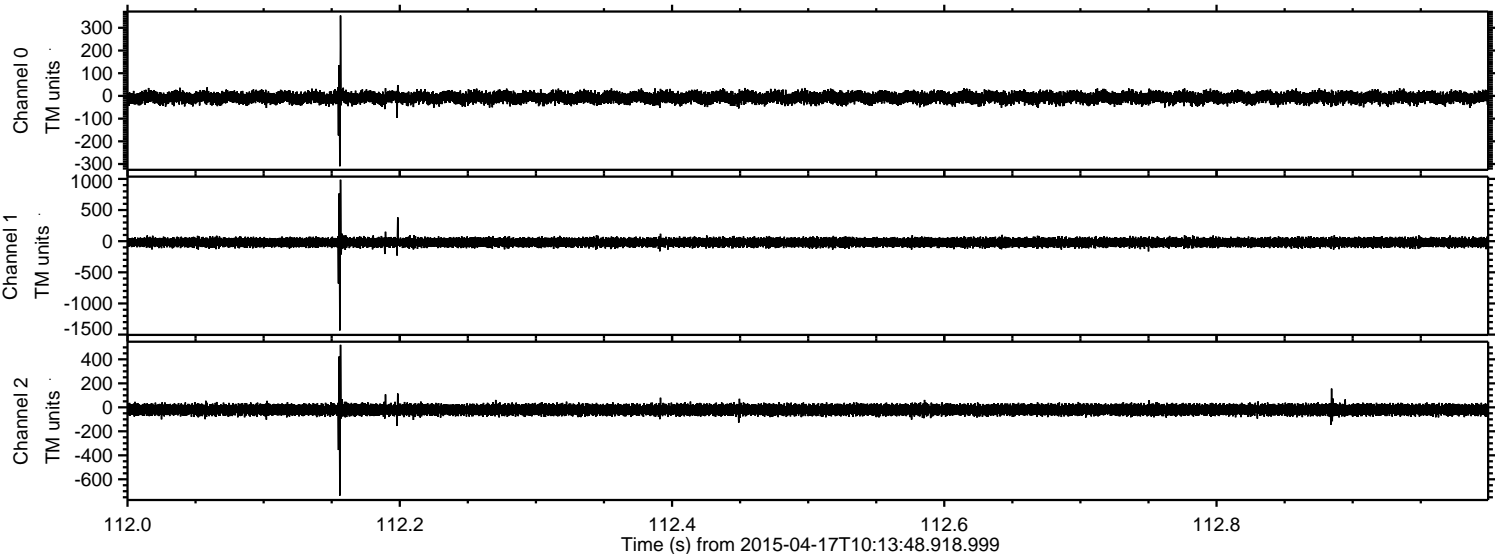
ELMAVAN 3D WAVEFORMS (Measured data sampled at 50 kHz) 49767 packets of 144 samples from 2015-04-17T10:13:48.918.999. Part 141/144

Processed Fri Apr 17 12:21:33 2015 by ELM ver.2012-10-06 from 001__elm20150417_101347__dat00.bin



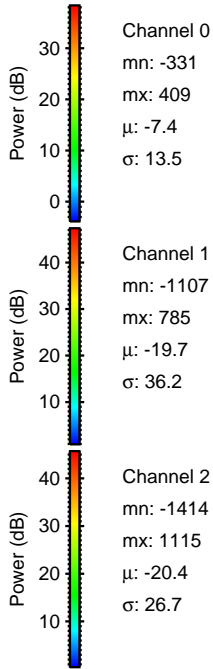
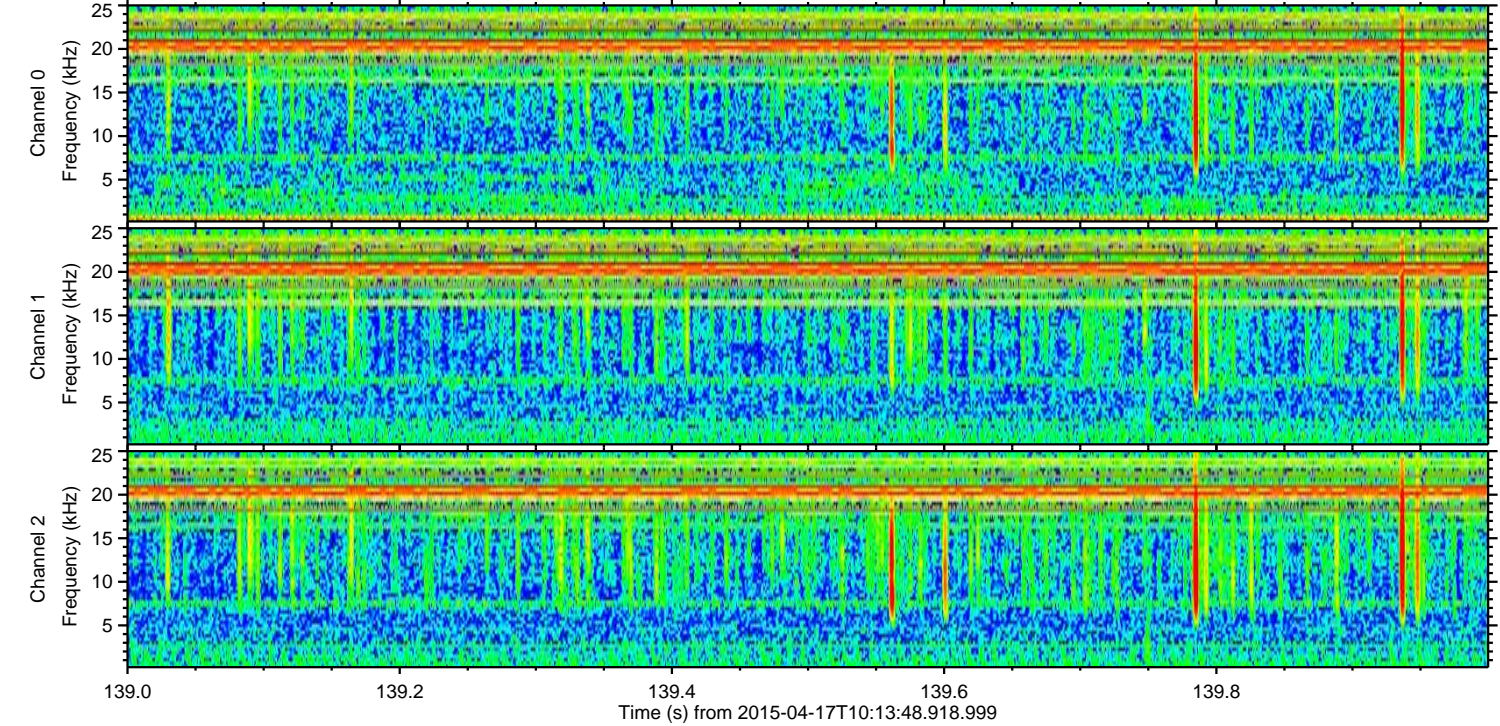
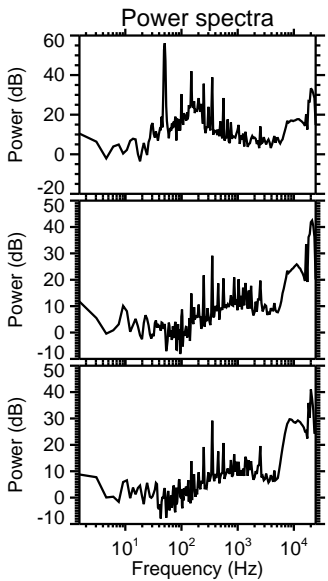
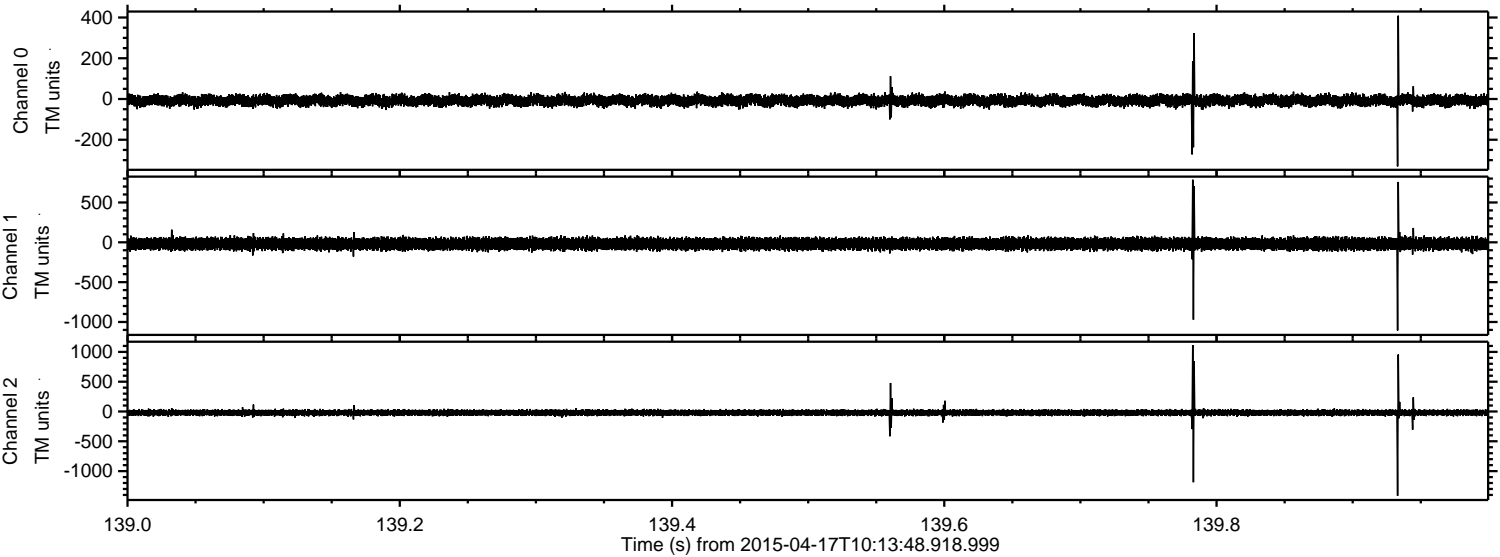
ELMAVAN 3D WAVEFORMS (Measured data sampled at 50 kHz) 49767 packets of 144 samples from 2015-04-17T10:13:48.918.999. Part 113/144

Processed Fri Apr 17 12:21:34 2015 by ELM ver.2012-10-06 from 001__elm20150417_101347__dat00.bin



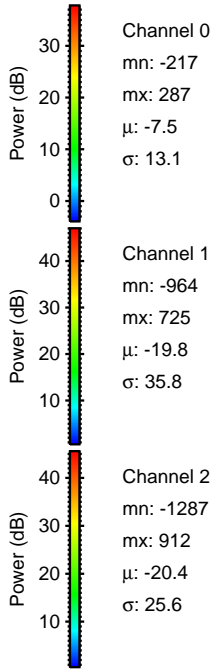
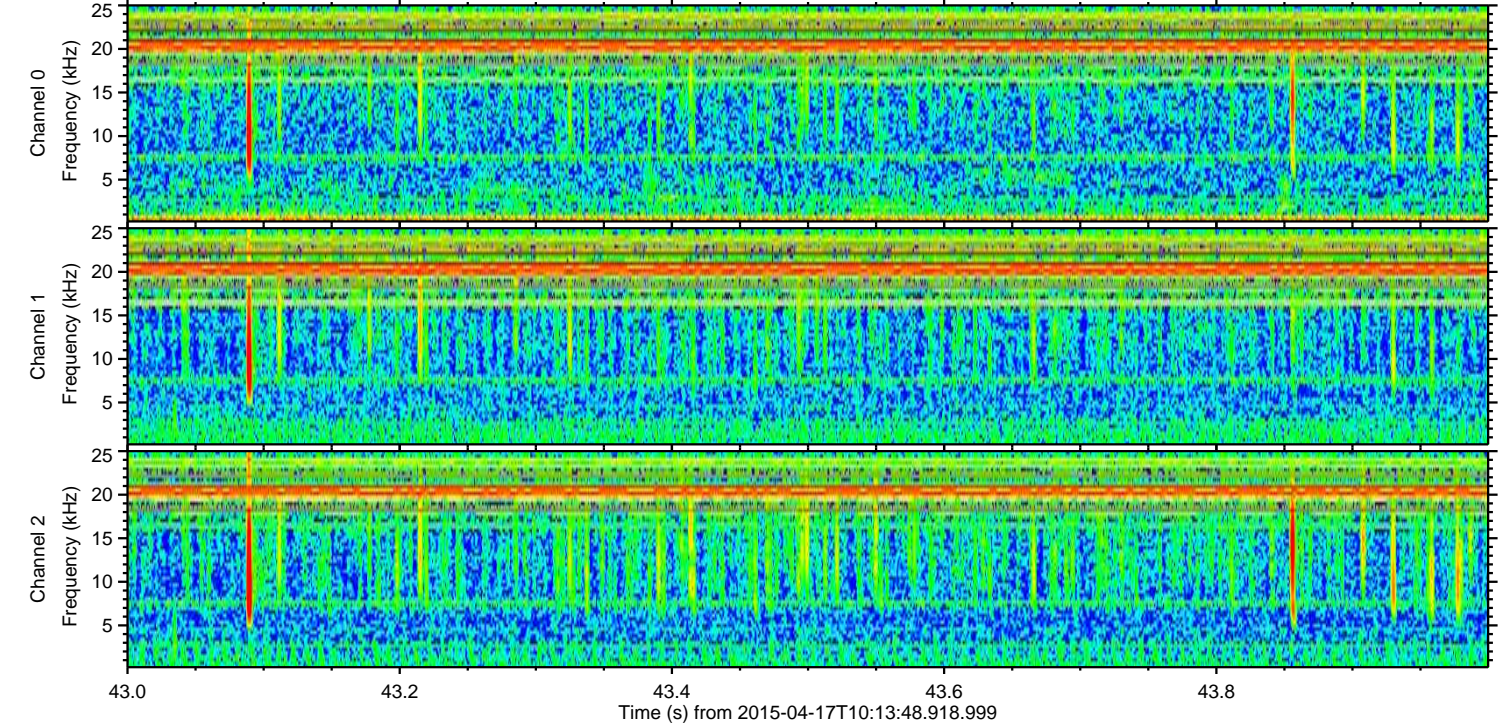
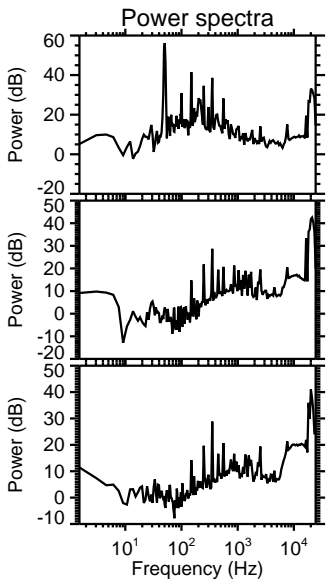
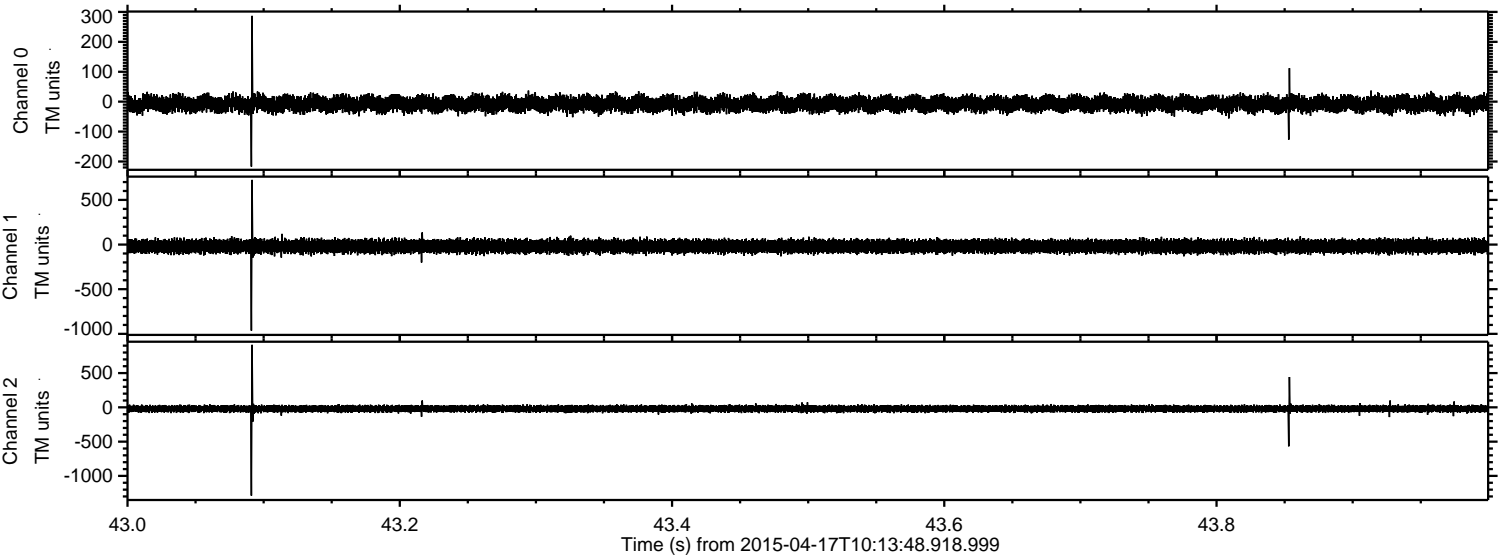
ELMAVAN 3D WAVEFORMS (Measured data sampled at 50 kHz) 49767 packets of 144 samples from 2015-04-17T10:13:48.918.999. Part 140/144

Processed Fri Apr 17 12:21:35 2015 by ELM ver.2012-10-06 from 001__elm20150417_101347__dat00.bin



ELMAVAN 3D WAVEFORMS (Measured data sampled at 50 kHz) 49767 packets of 144 samples from 2015-04-17T10:13:48.918.999. Part 44/144

Processed Fri Apr 17 12:21:36 2015 by ELM ver.2012-10-06 from 001__elm20150417_101347__dat00.bin



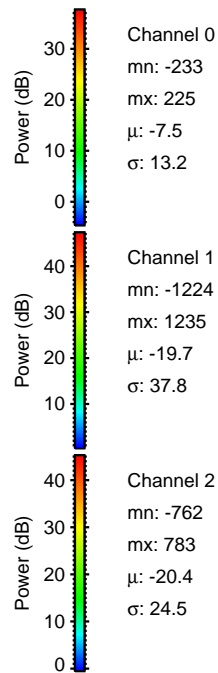
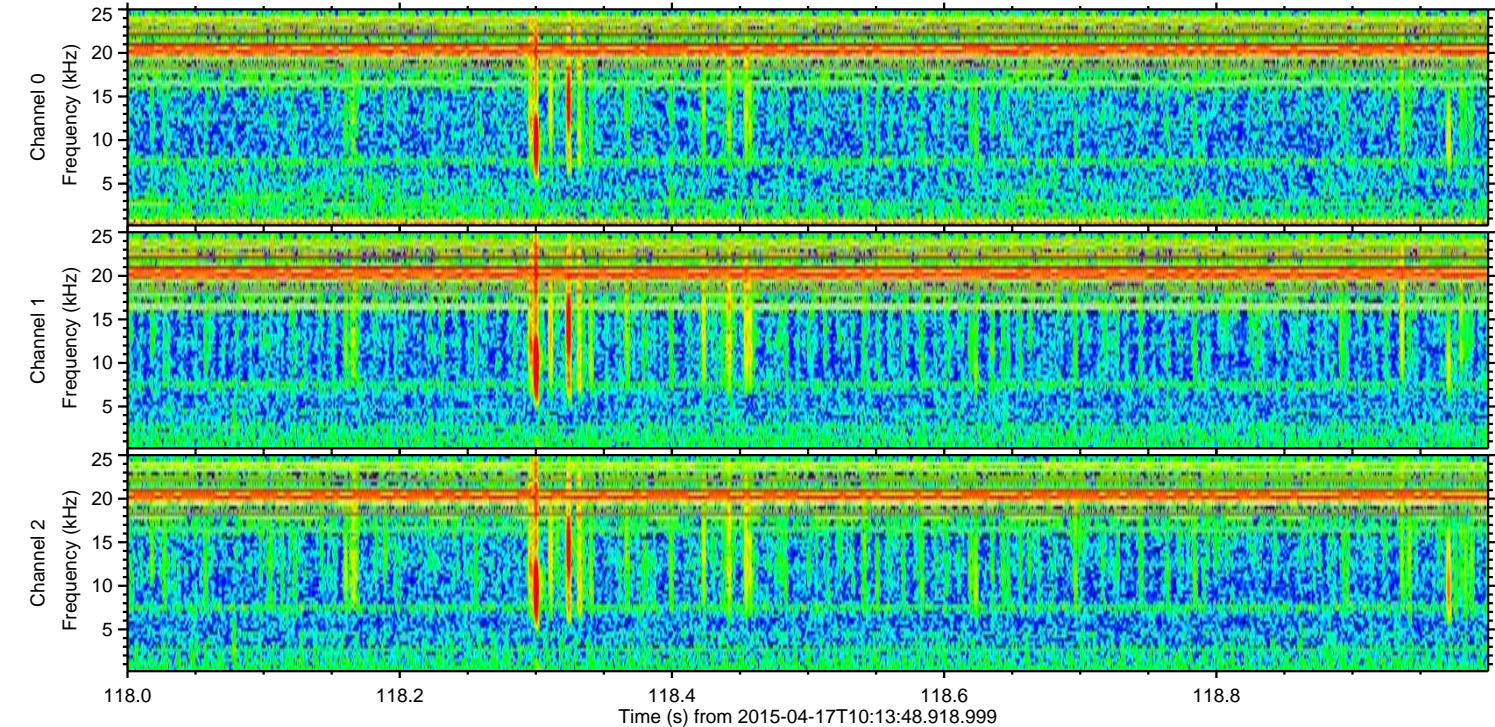
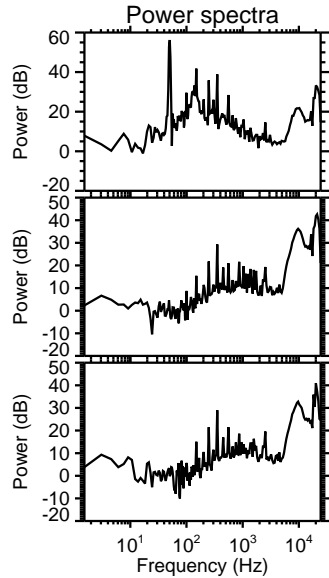
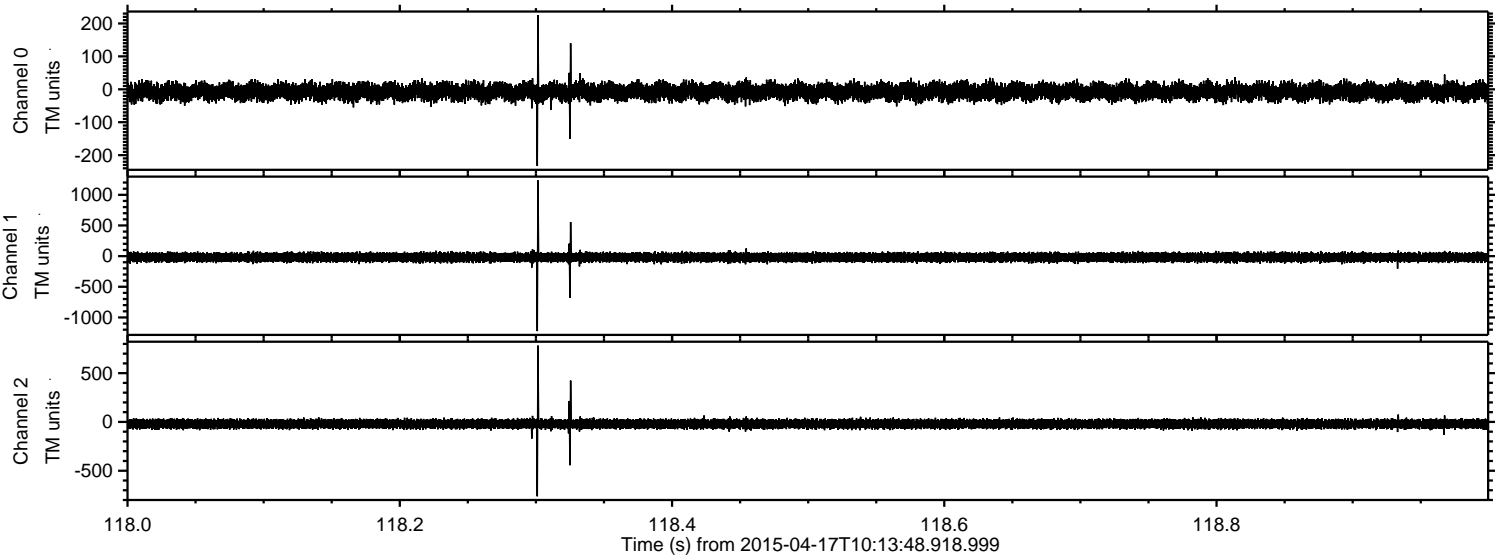
Channel 0
mn: -217
mx: 287
 μ : -7.5
 σ : 13.1

Channel 1
mn: -964
mx: 725
 μ : -19.8
 σ : 35.8

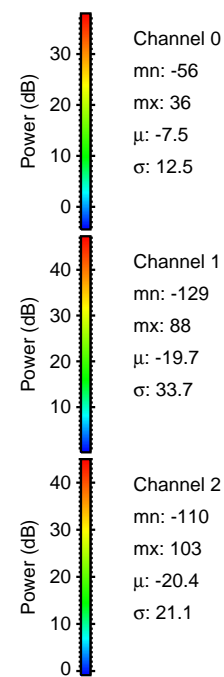
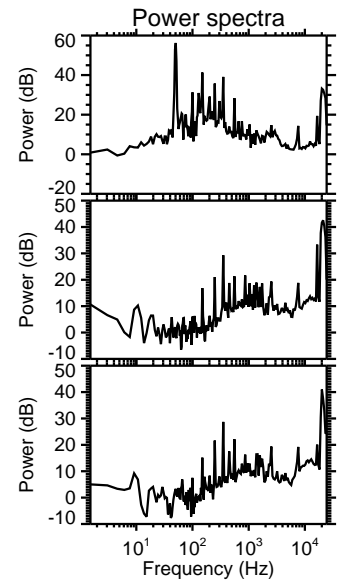
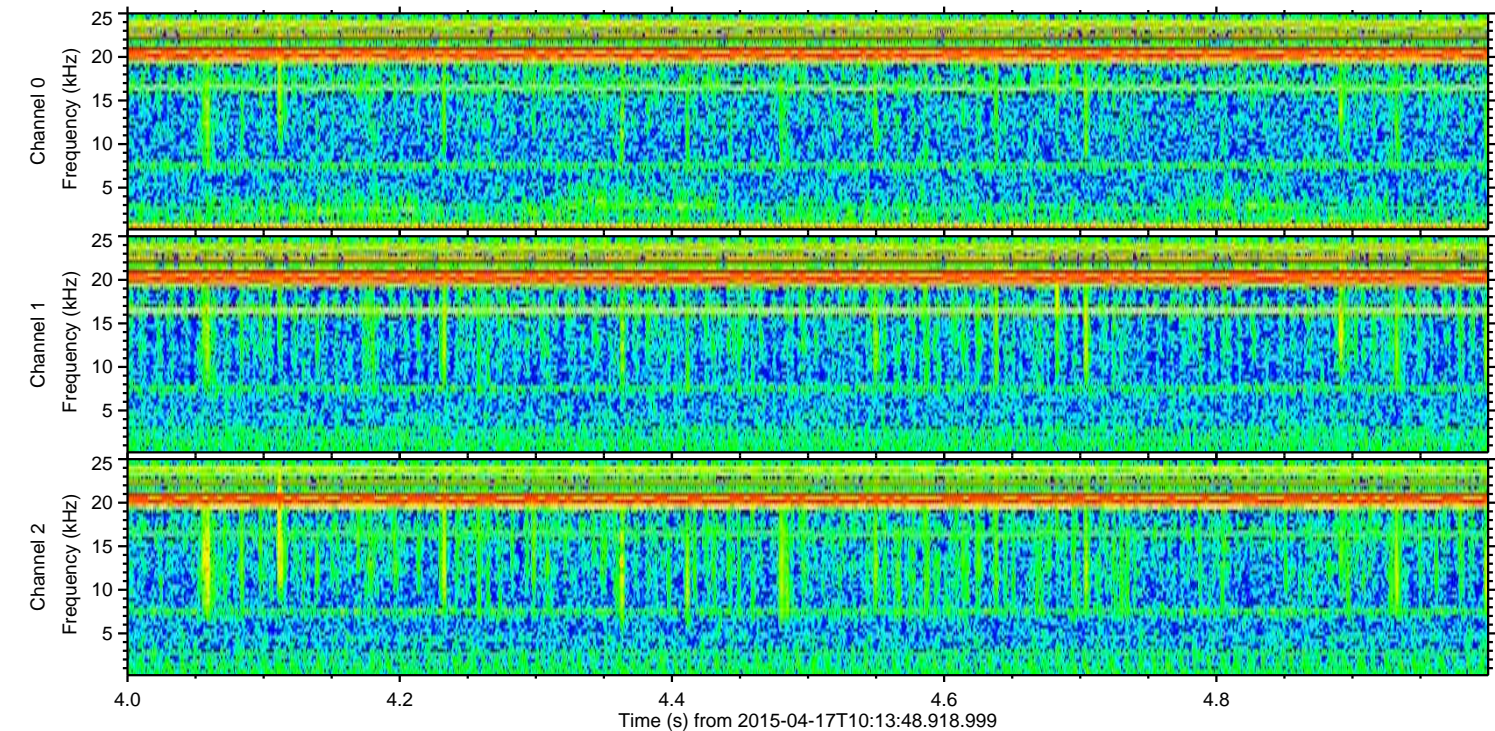
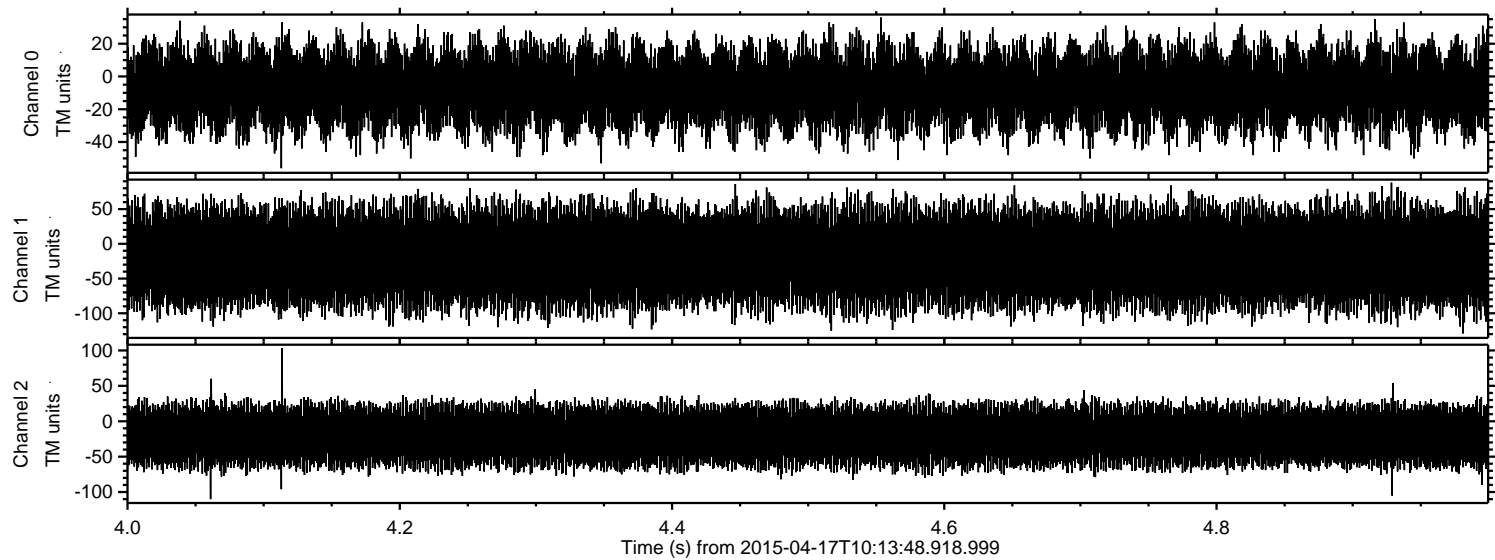
Channel 2
mn: -1287
mx: 912
 μ : -20.4
 σ : 25.6

ELMAVAN 3D WAVEFORMS (Measured data sampled at 50 kHz) 49767 packets of 144 samples from 2015-04-17T10:13:48.918.999. Part 119/144

Processed Fri Apr 17 12:21:37 2015 by ELM ver.2012-10-06 from 001__elm20150417_101347__dat00.bin



Processed Fri Apr 17 12:21:38 2015 by ELM ver.2012-10-06 from 001__elm20150417_101347__dat00.bin



Channel 0
mn: -56
mx: 36
 μ : -7.5
 σ : 12.5

Channel 1
mn: -129
mx: 88
 μ : -19.7
 σ : 33.7

Channel 2
mn: -110
mx: 103
 μ : -20.4
 σ : 21.1