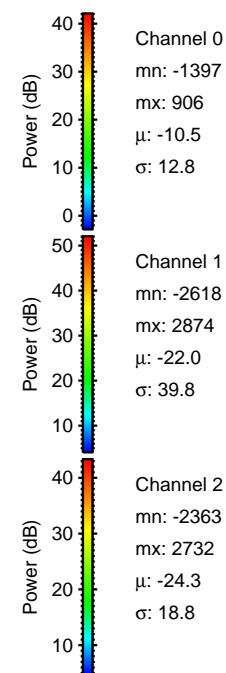
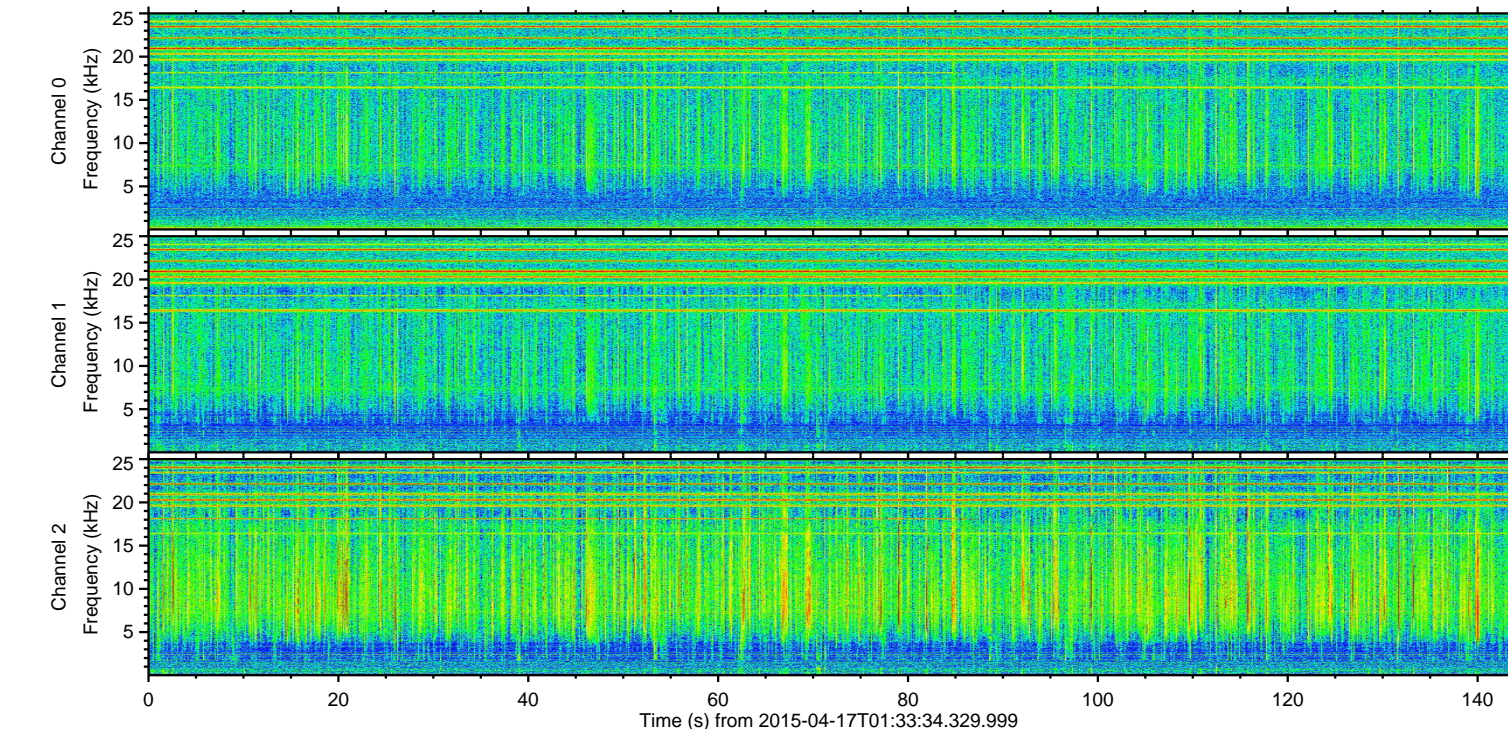
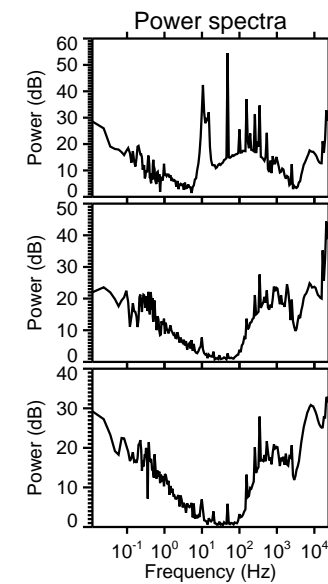
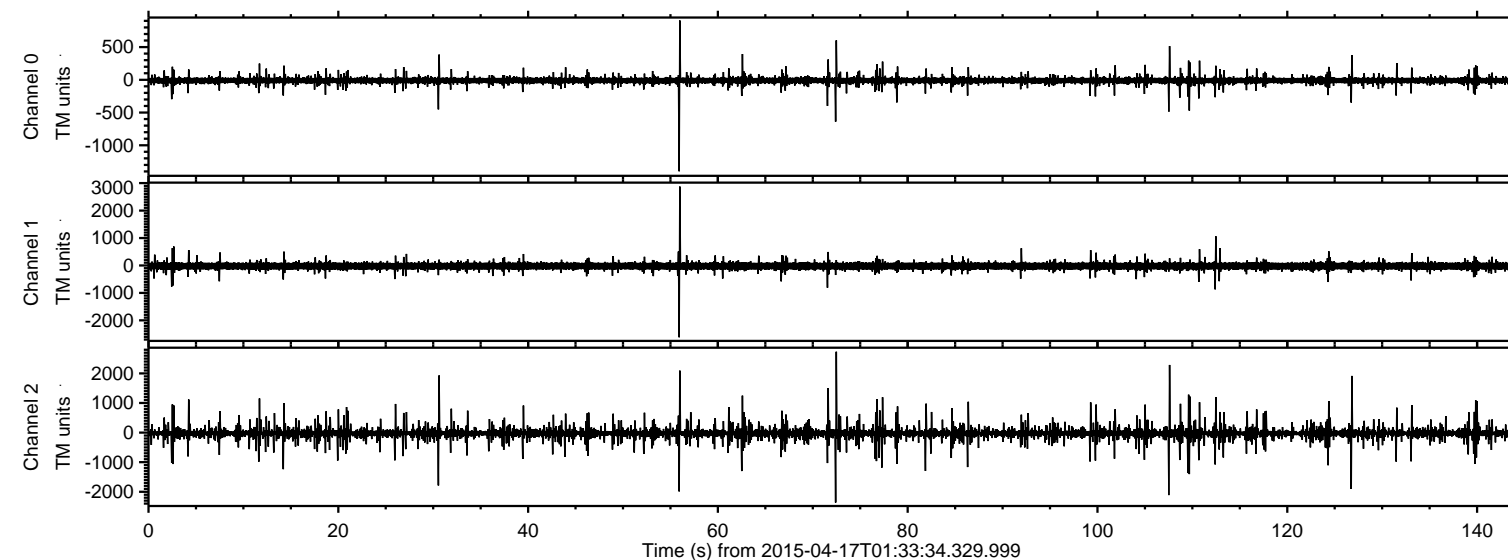


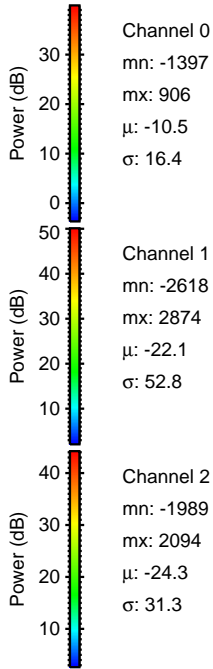
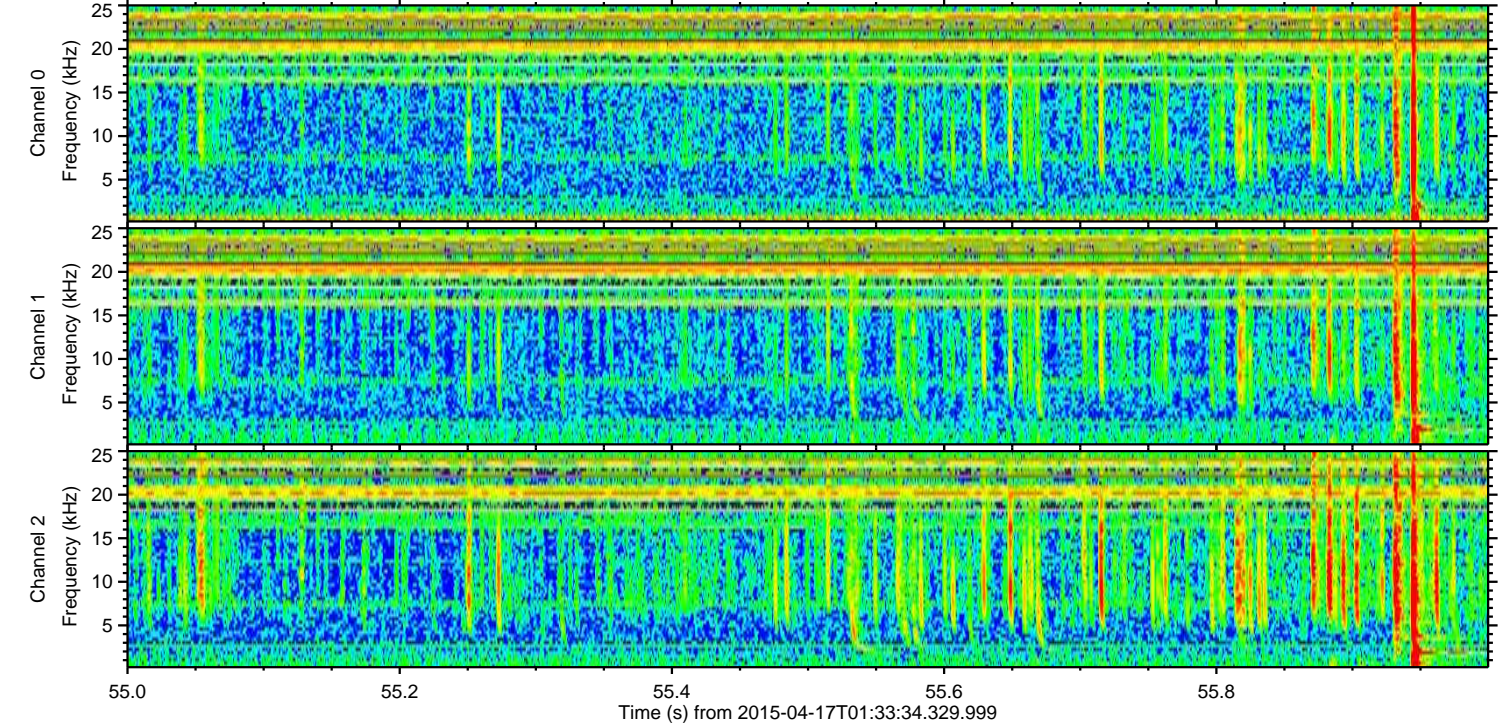
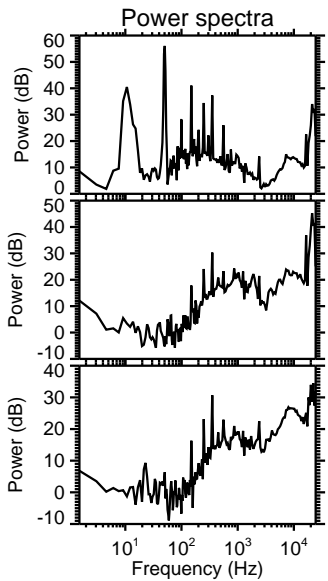
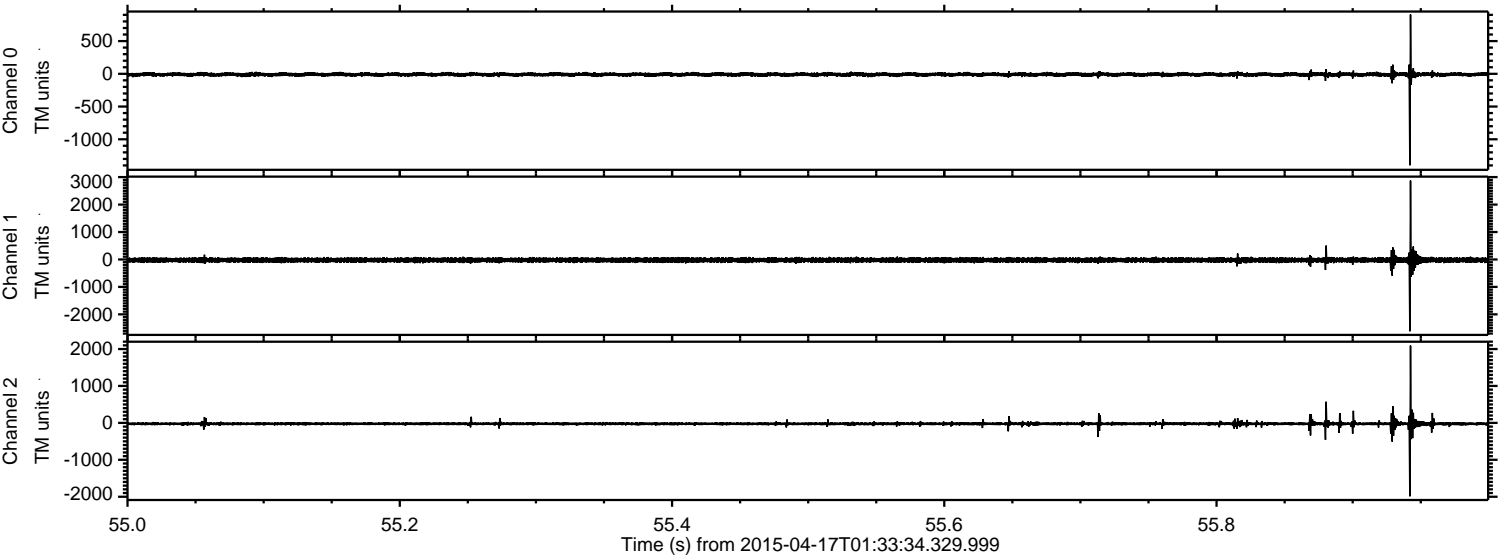
ELMAVAN 3D WAVEFORMS (Measured data sampled at 50 kHz) 49785 packets of 144 samples from 2015-04-17T01:33:34.329.999.

Processed Fri Apr 17 03:40:52 2015 by ELM ver.2012-10-06 from 001__elm20150417_013333__dat00.bin



ELMAVAN 3D WAVEFORMS (Measured data sampled at 50 kHz) 49785 packets of 144 samples from 2015-04-17T01:33:34.329.999. Part 56/144

Processed Fri Apr 17 03:41:03 2015 by ELM ver.2012-10-06 from 001__elm20150417_013333__dat00.bin



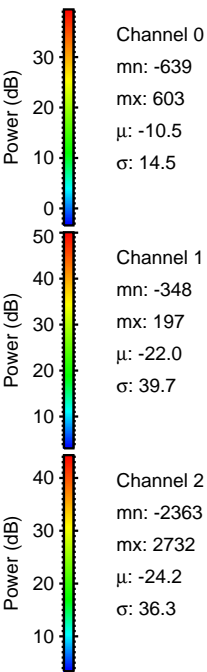
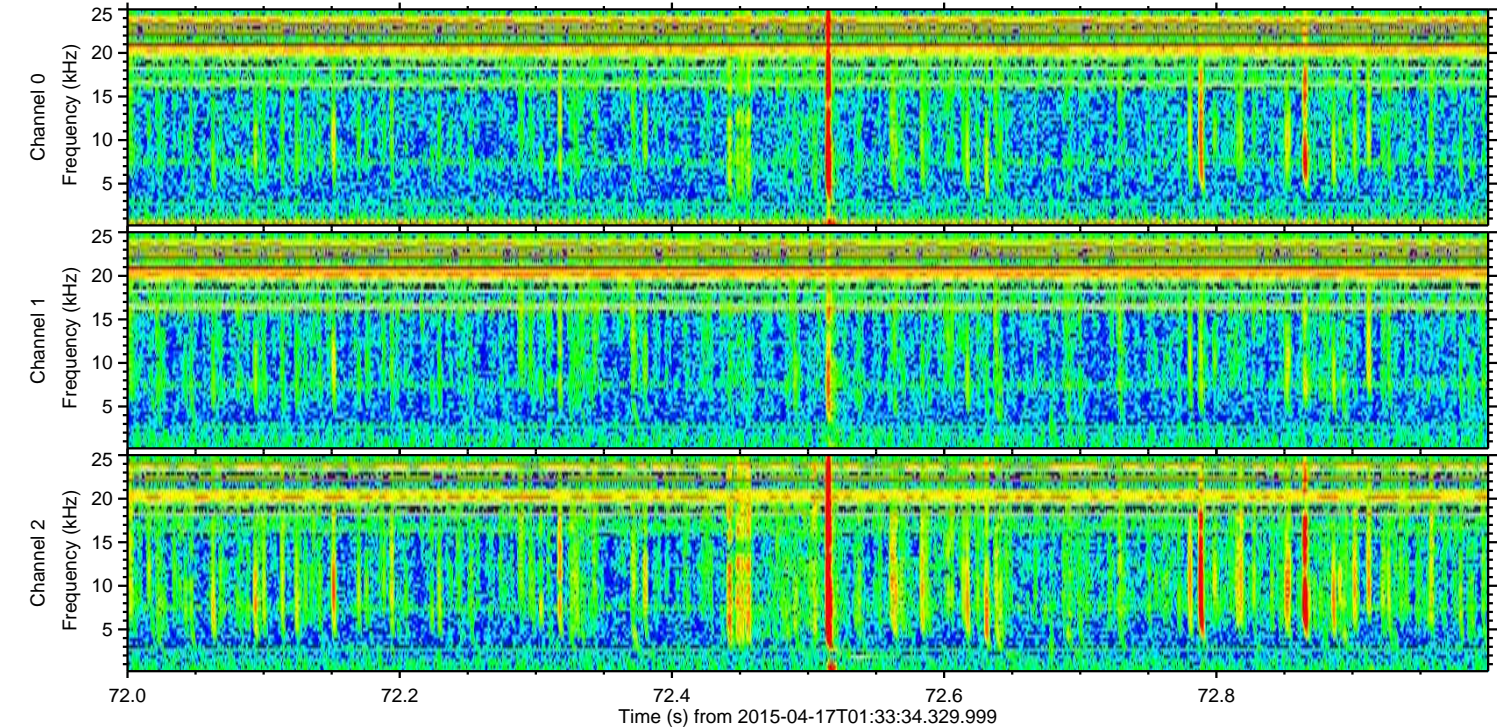
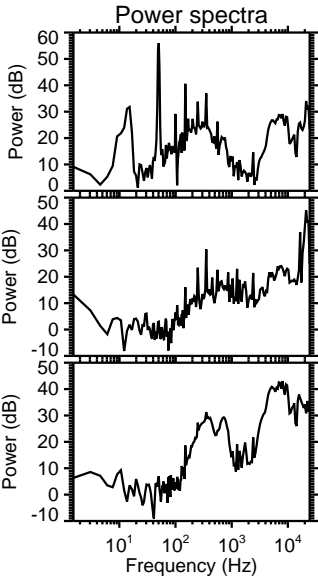
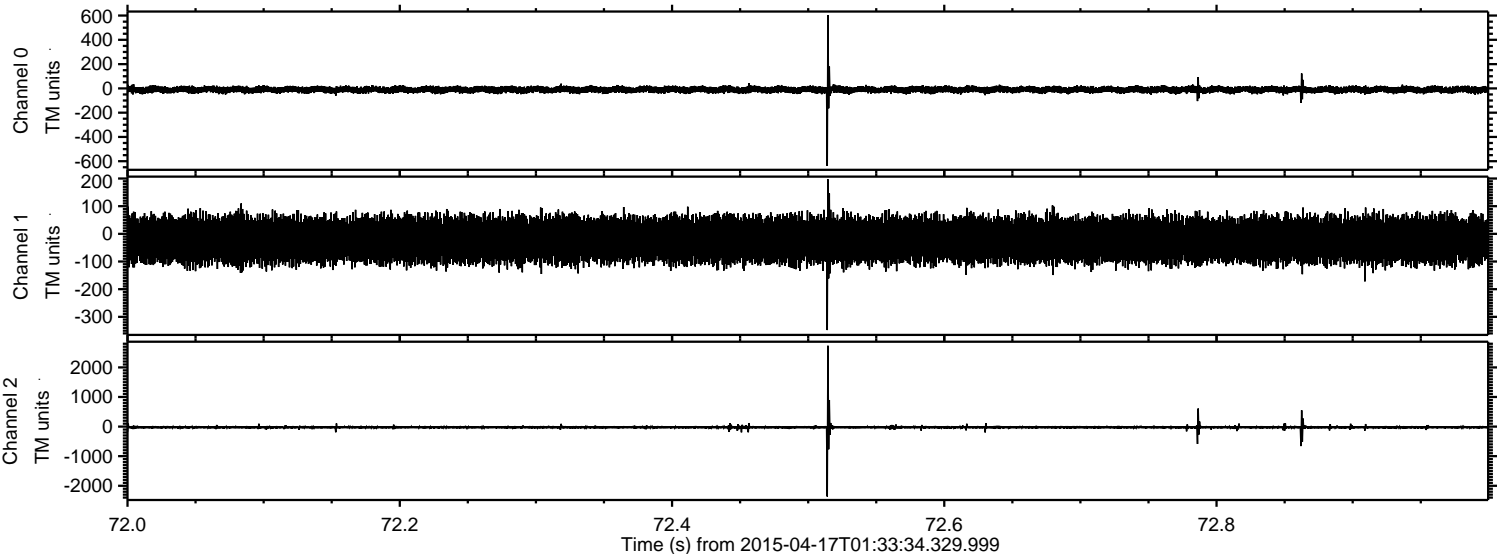
Channel 0
mn: -1397
mx: 906
 μ : -10.5
 σ : 16.4

Channel 1
mn: -2618
mx: 2874
 μ : -22.1
 σ : 52.8

Channel 2
mn: -1989
mx: 2094
 μ : -24.3
 σ : 31.3

ELMAVAN 3D WAVEFORMS (Measured data sampled at 50 kHz) 49785 packets of 144 samples from 2015-04-17T01:33:34.329.999. Part 73/144

Processed Fri Apr 17 03:41:04 2015 by ELM ver.2012-10-06 from 001__elm20150417_013333__dat00.bin



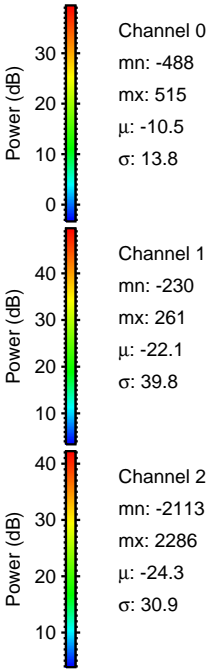
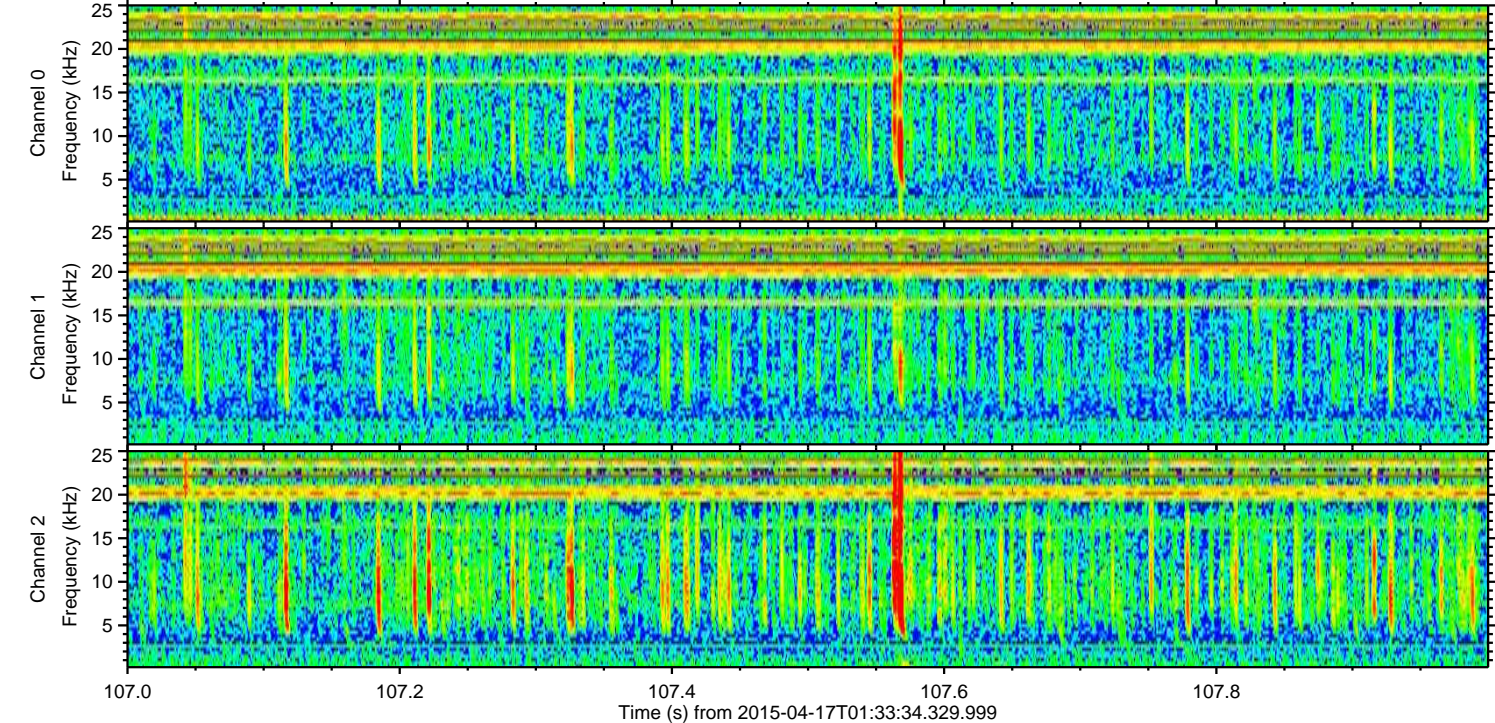
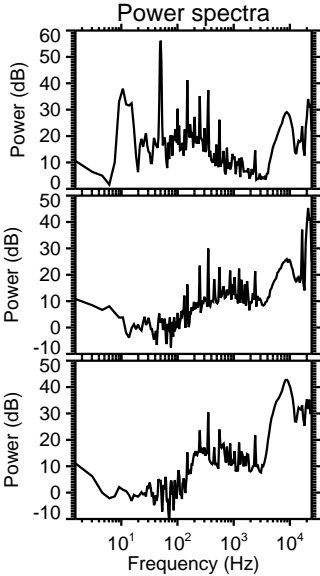
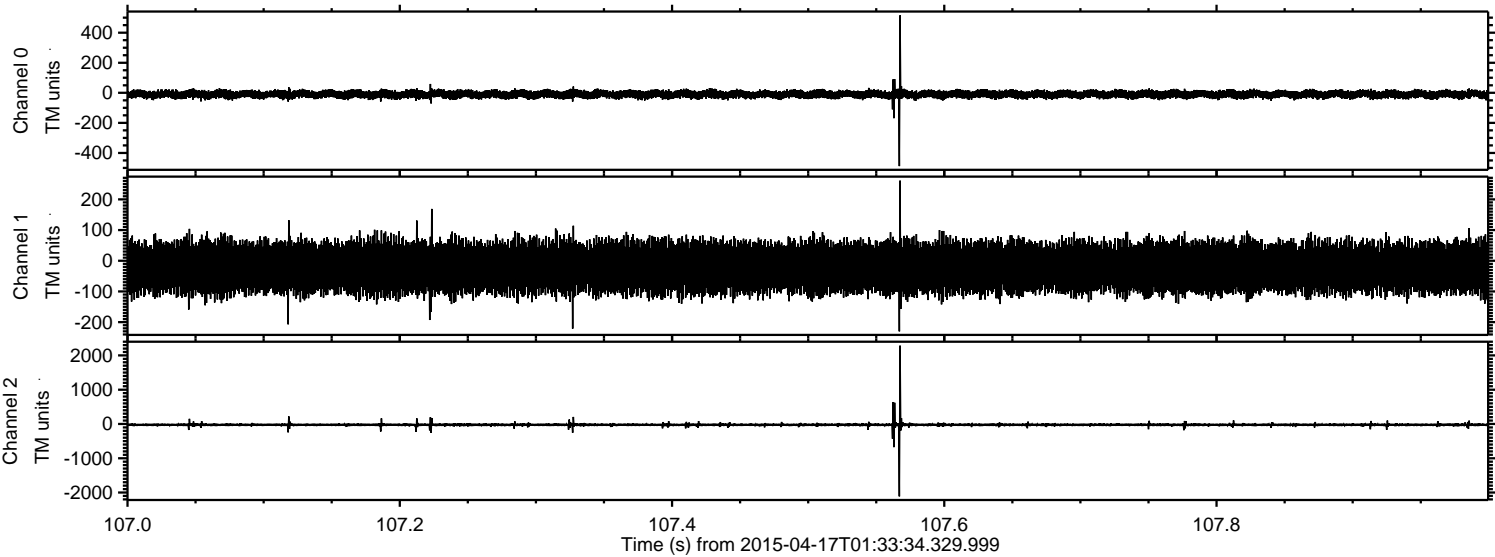
Channel 0
mn: -639
mx: 603
 μ : -10.5
 σ : 14.5

Channel 1
mn: -348
mx: 197
 μ : -22.0
 σ : 39.7

Channel 2
mn: -2363
mx: 2732
 μ : -24.2
 σ : 36.3

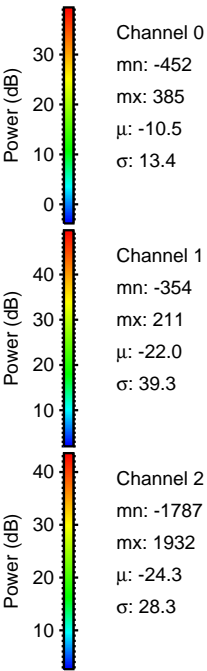
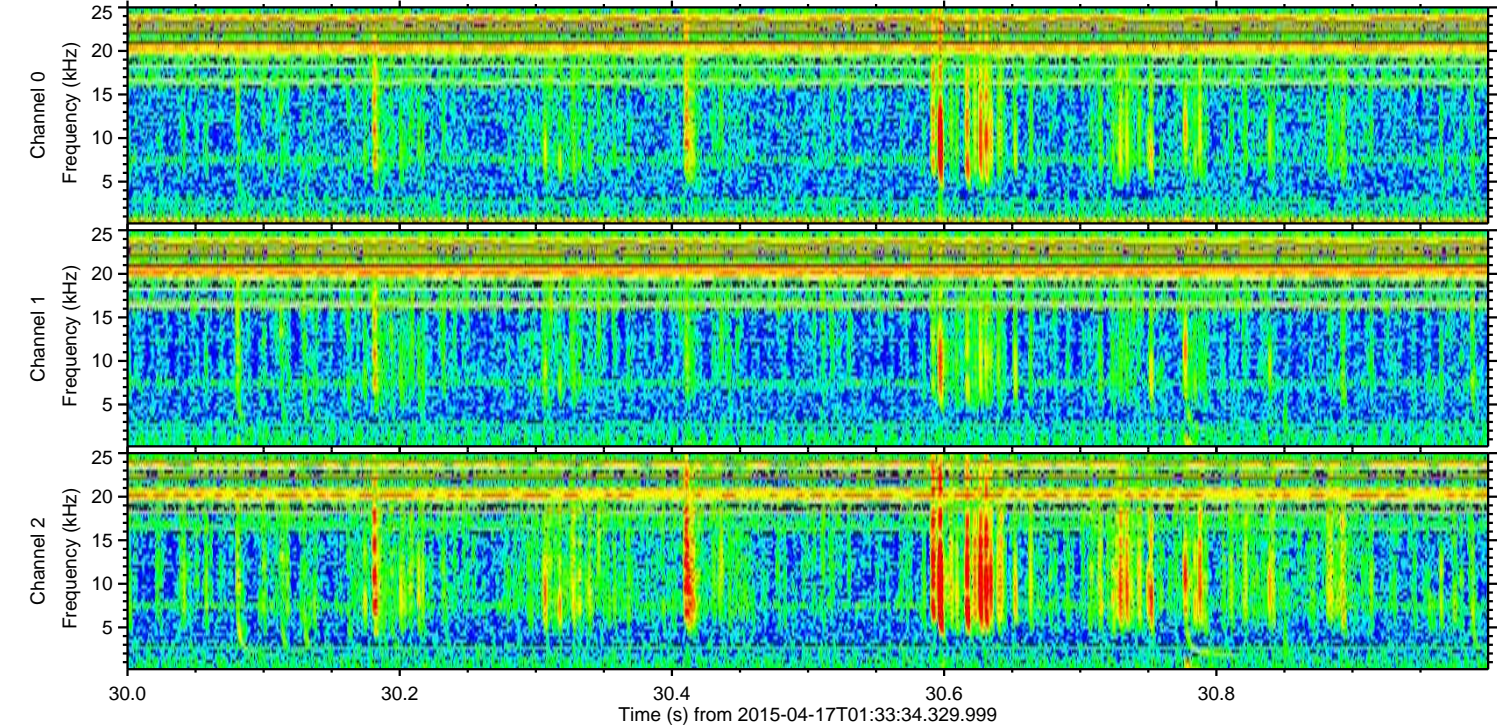
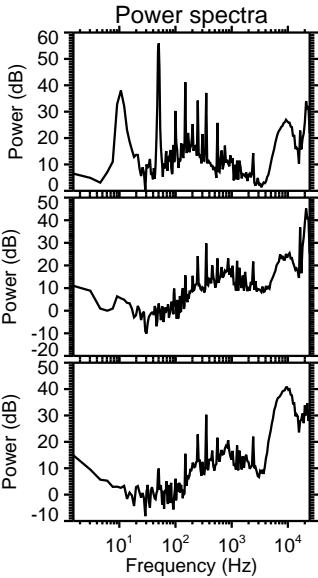
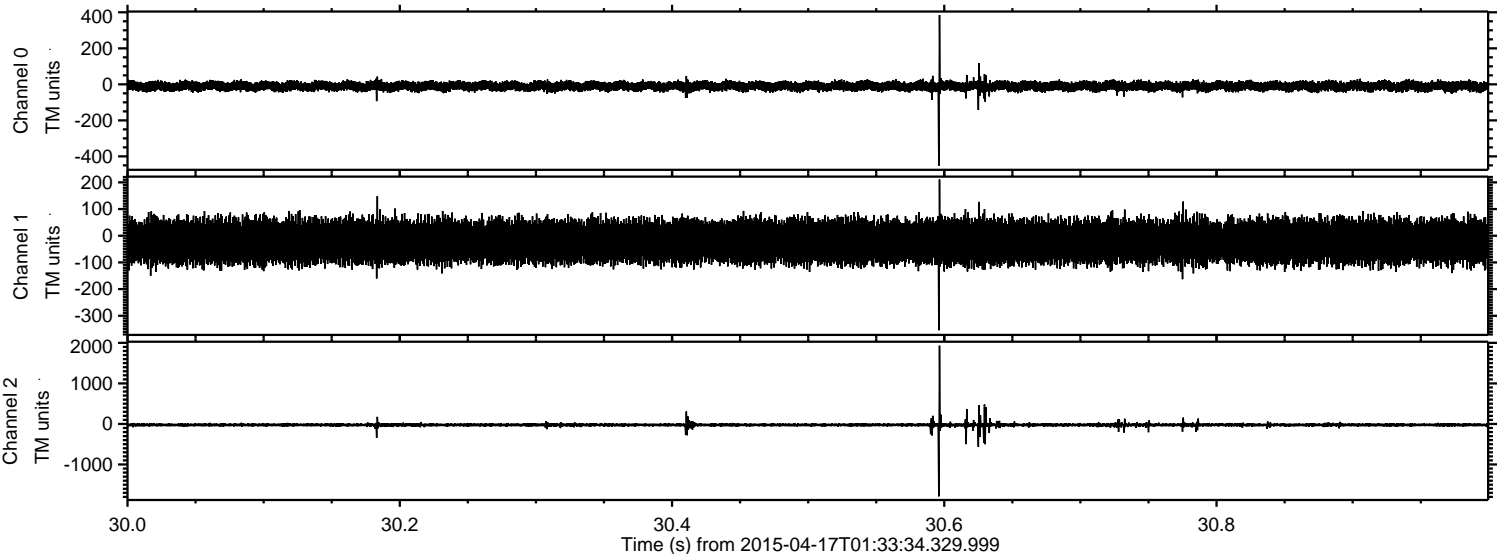
ELMAVAN 3D WAVEFORMS (Measured data sampled at 50 kHz) 49785 packets of 144 samples from 2015-04-17T01:33:34.329.999. Part 108/144

Processed Fri Apr 17 03:41:05 2015 by ELM ver.2012-10-06 from 001__elm20150417_013333__dat00.bin



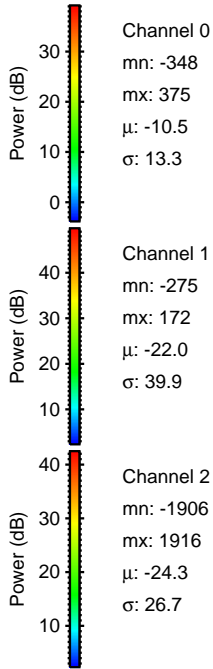
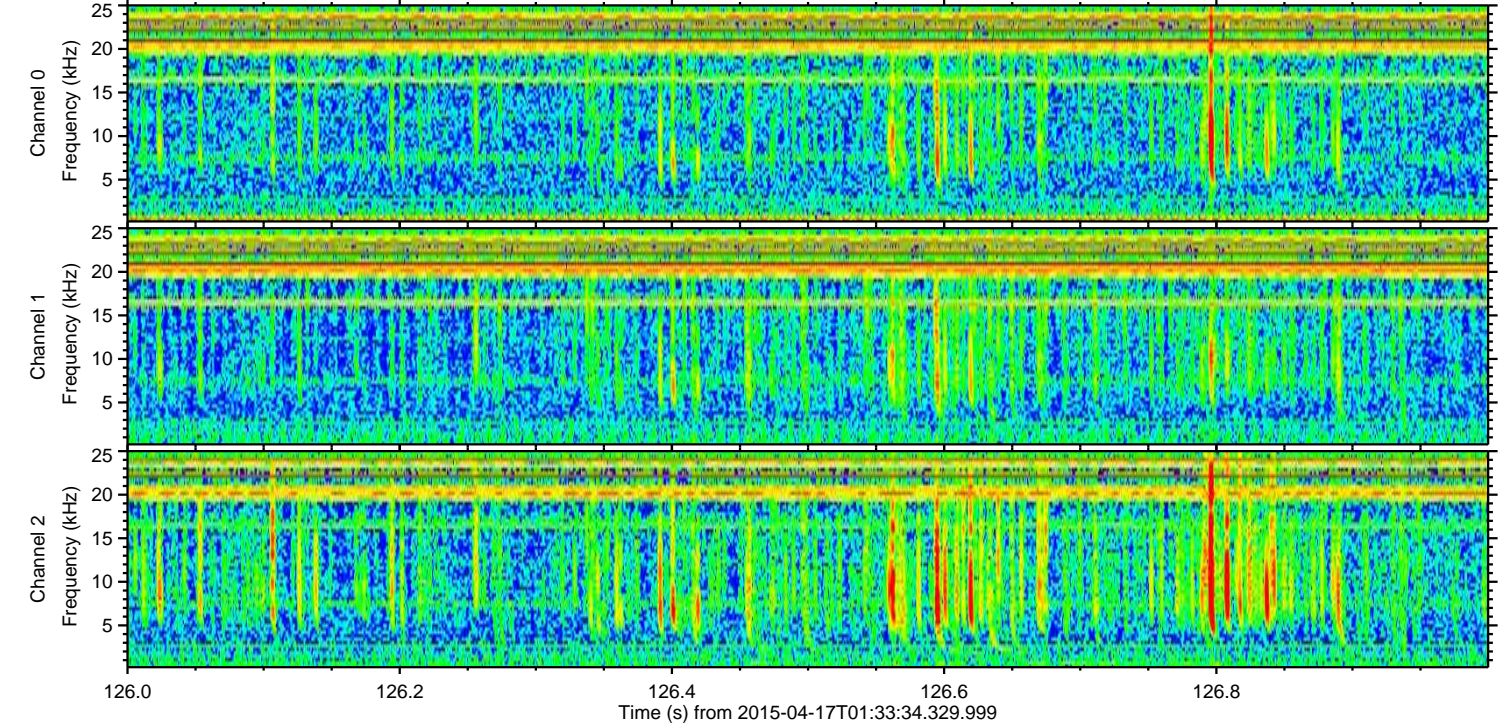
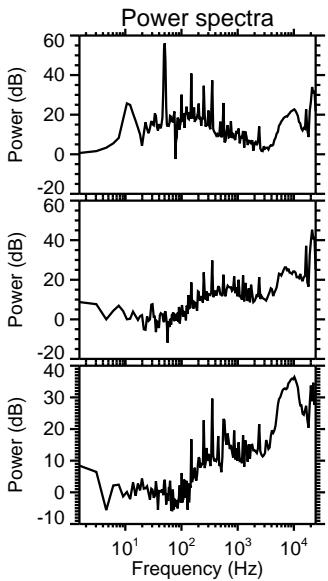
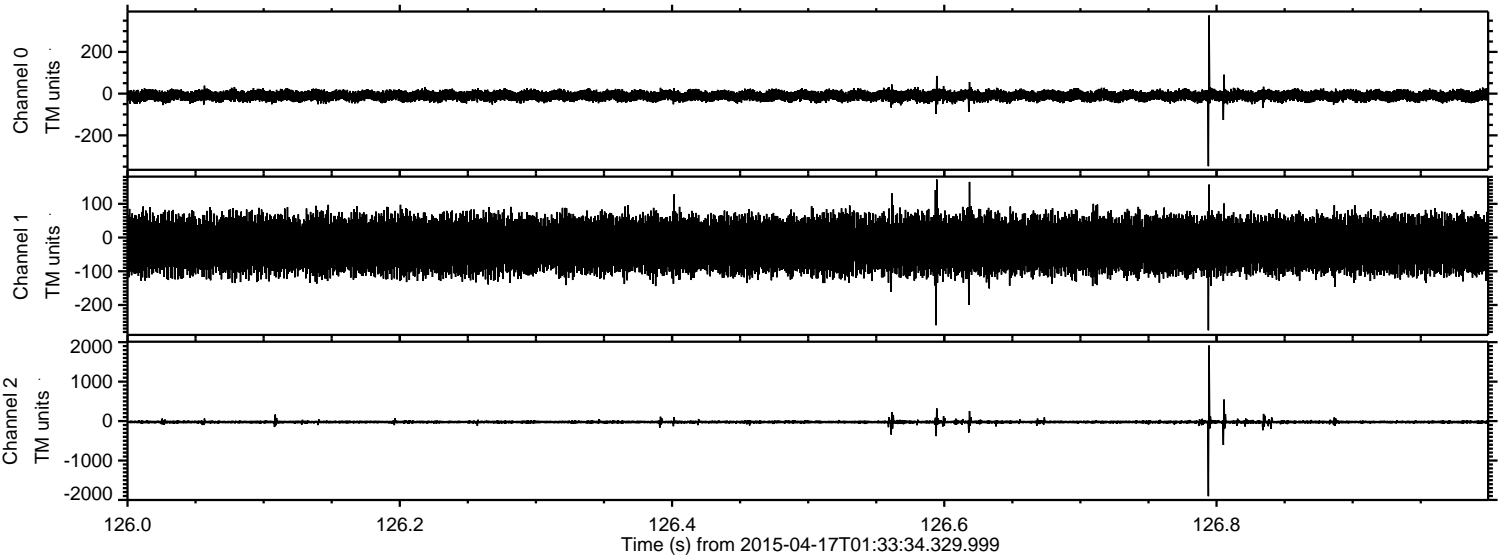
ELMAVAN 3D WAVEFORMS (Measured data sampled at 50 kHz) 49785 packets of 144 samples from 2015-04-17T01:33:34.329.999. Part 31/144

Processed Fri Apr 17 03:41:06 2015 by ELM ver.2012-10-06 from 001__elm20150417_013333__dat00.bin

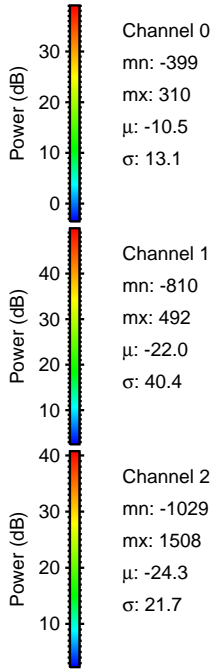
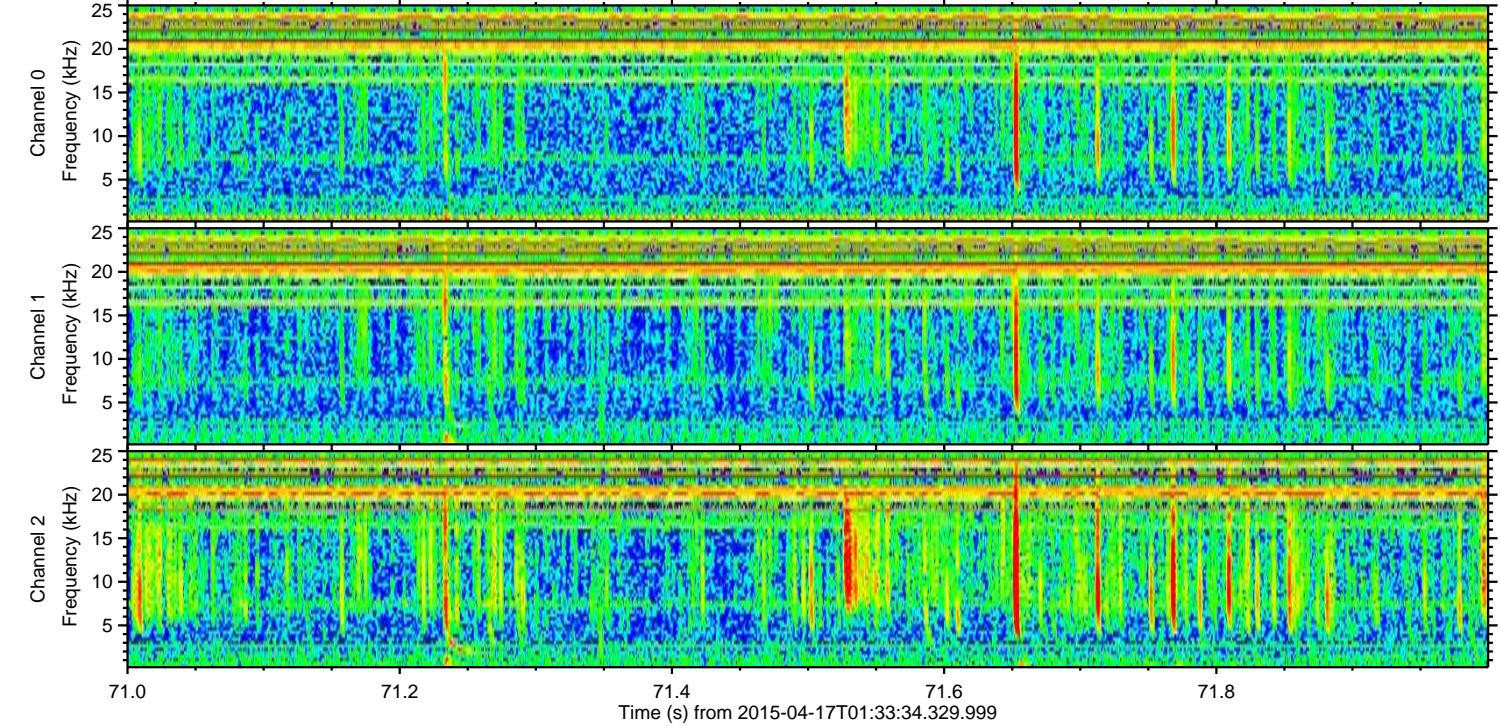
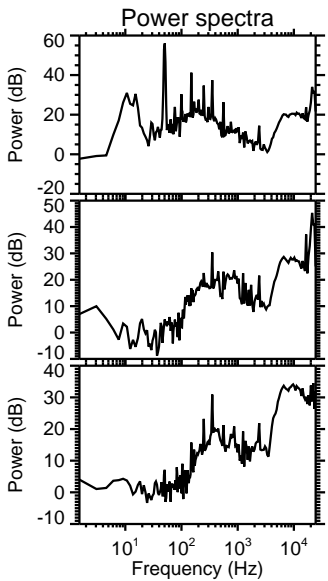
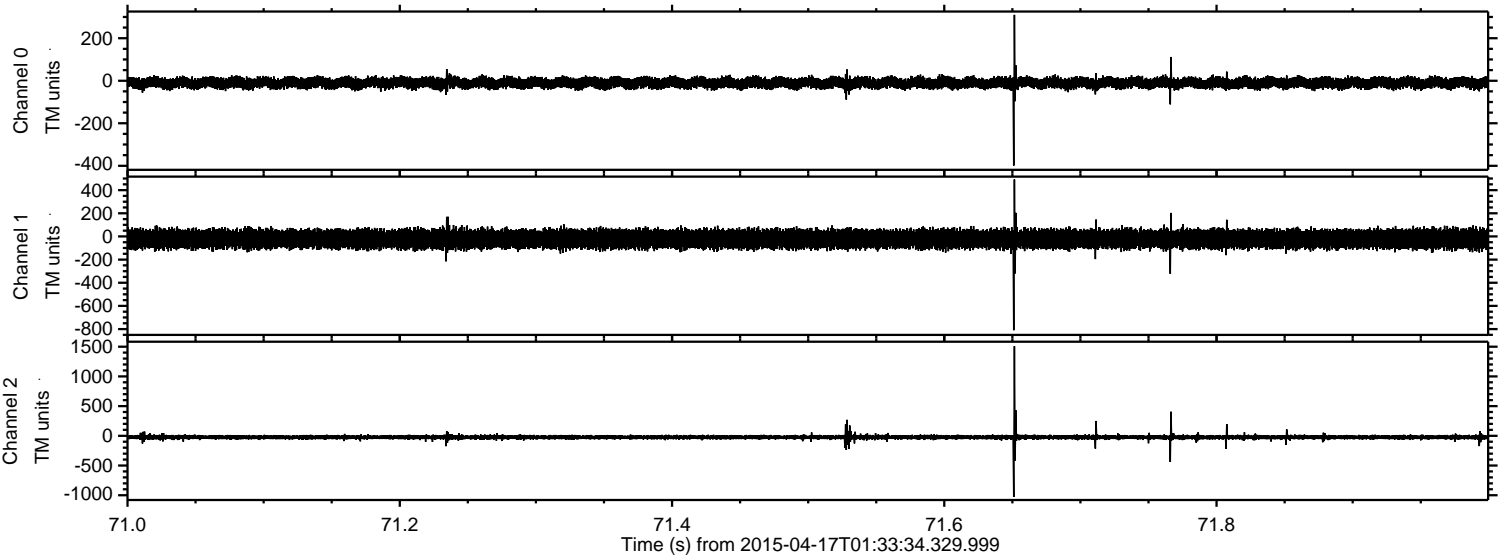


ELMAVAN 3D WAVEFORMS (Measured data sampled at 50 kHz) 49785 packets of 144 samples from 2015-04-17T01:33:34.329.999. Part 127/144

Processed Fri Apr 17 03:41:07 2015 by ELM ver.2012-10-06 from 001__elm20150417_013333__dat00.bin



Processed Fri Apr 17 03:41:08 2015 by ELM ver.2012-10-06 from 001__elm20150417_013333__dat00.bin



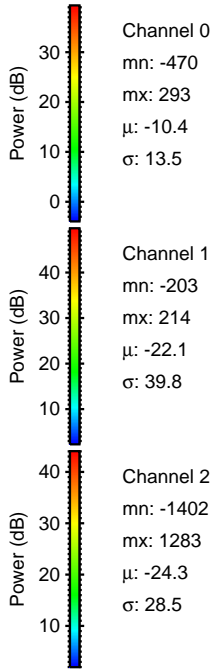
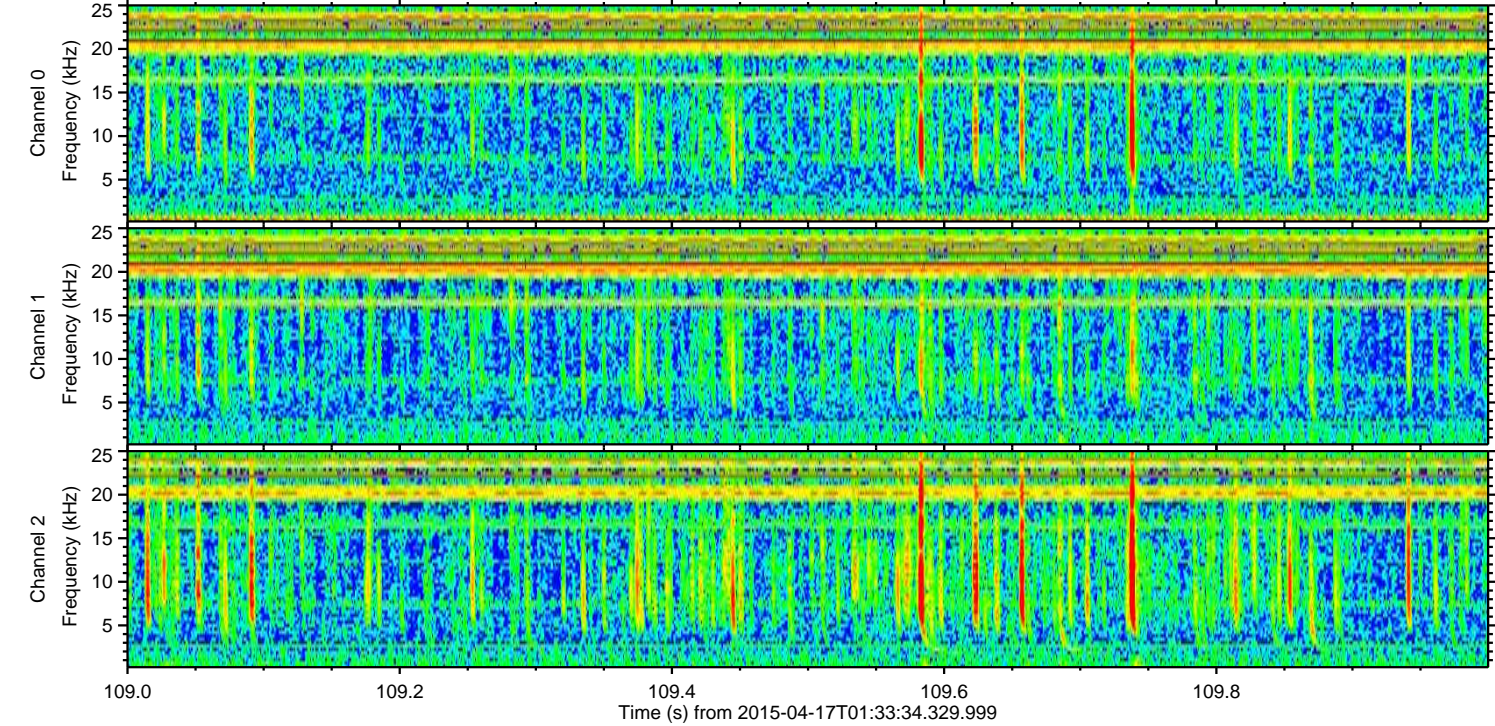
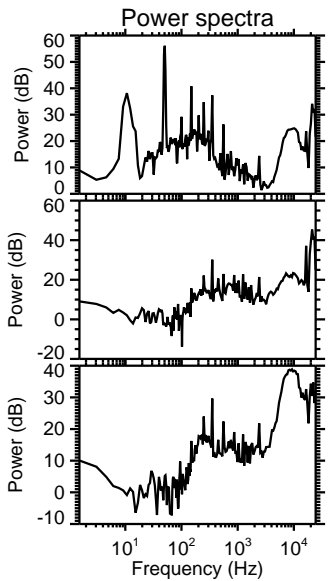
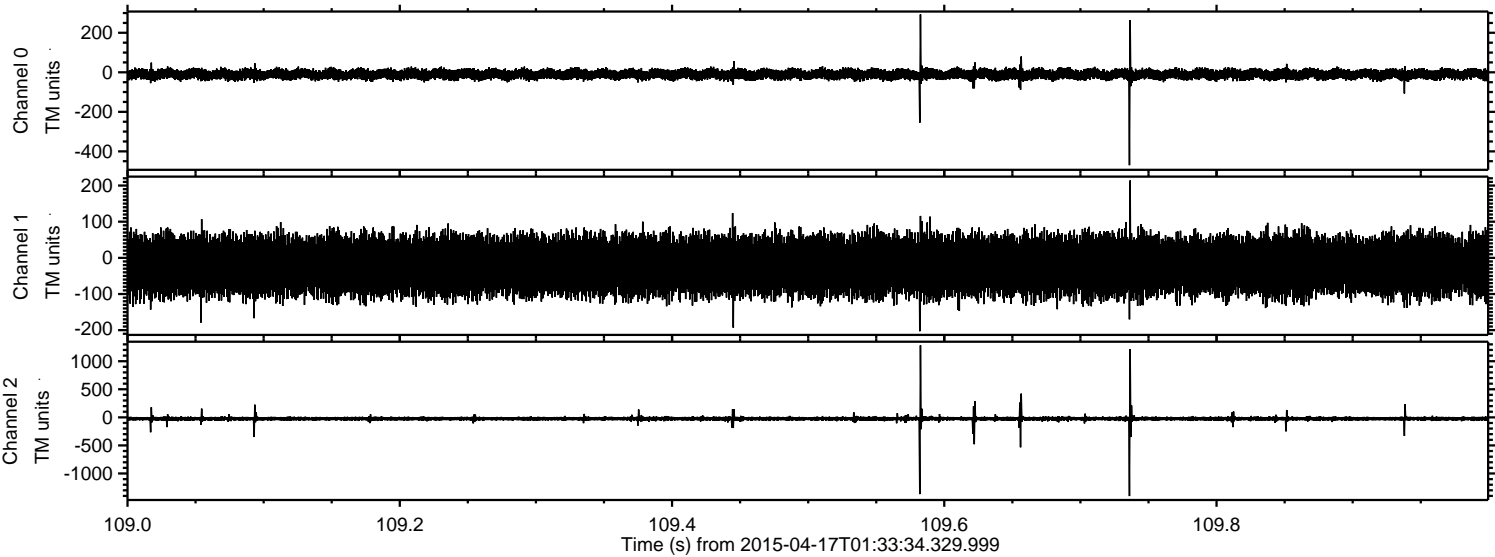
Channel 0
mn: -399
mx: 310
 μ : -10.5
 σ : 13.1

Channel 1
mn: -810
mx: 492
 μ : -22.0
 σ : 40.4

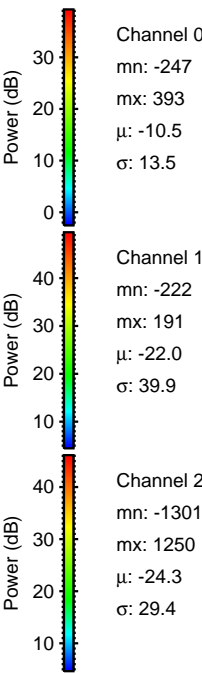
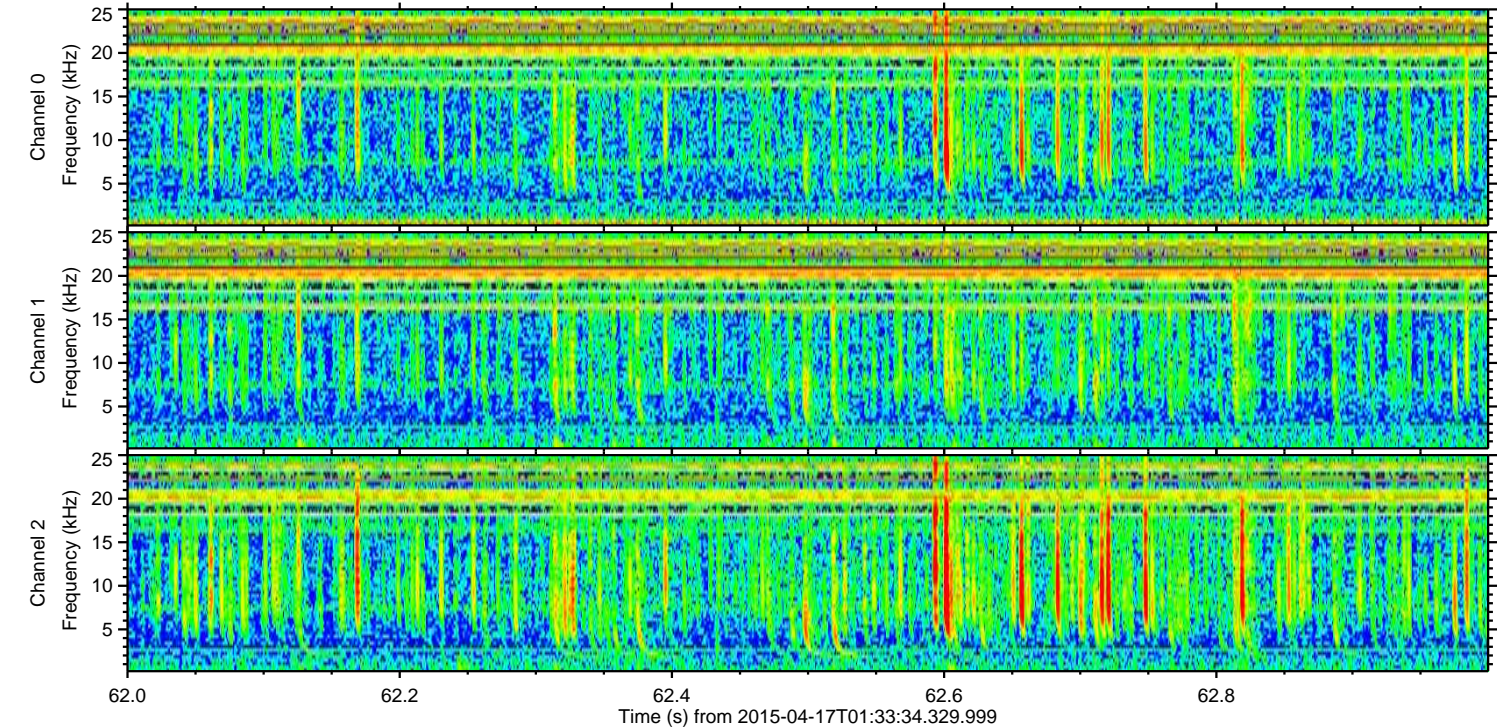
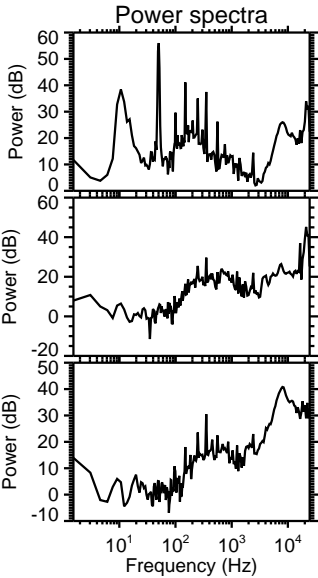
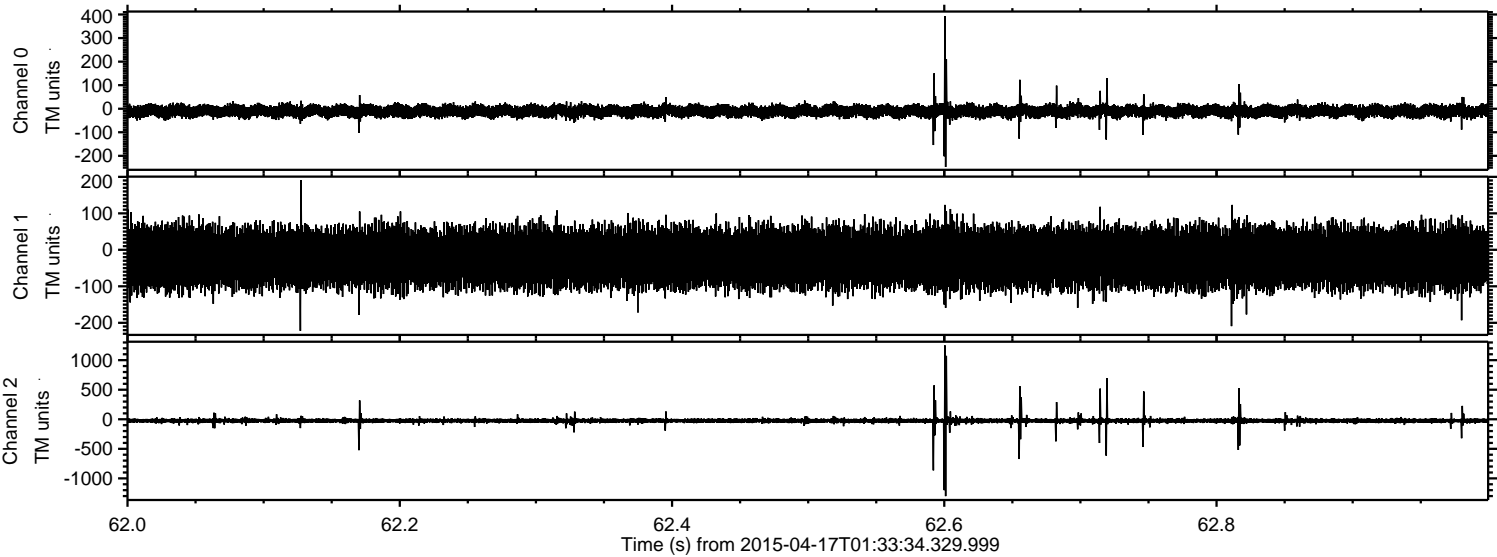
Channel 2
mn: -1029
mx: 1508
 μ : -24.3
 σ : 21.7

ELMAVAN 3D WAVEFORMS (Measured data sampled at 50 kHz) 49785 packets of 144 samples from 2015-04-17T01:33:34.329.999. Part 110/144

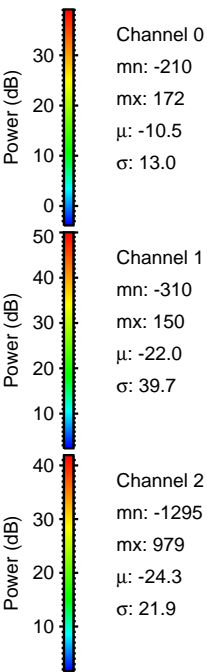
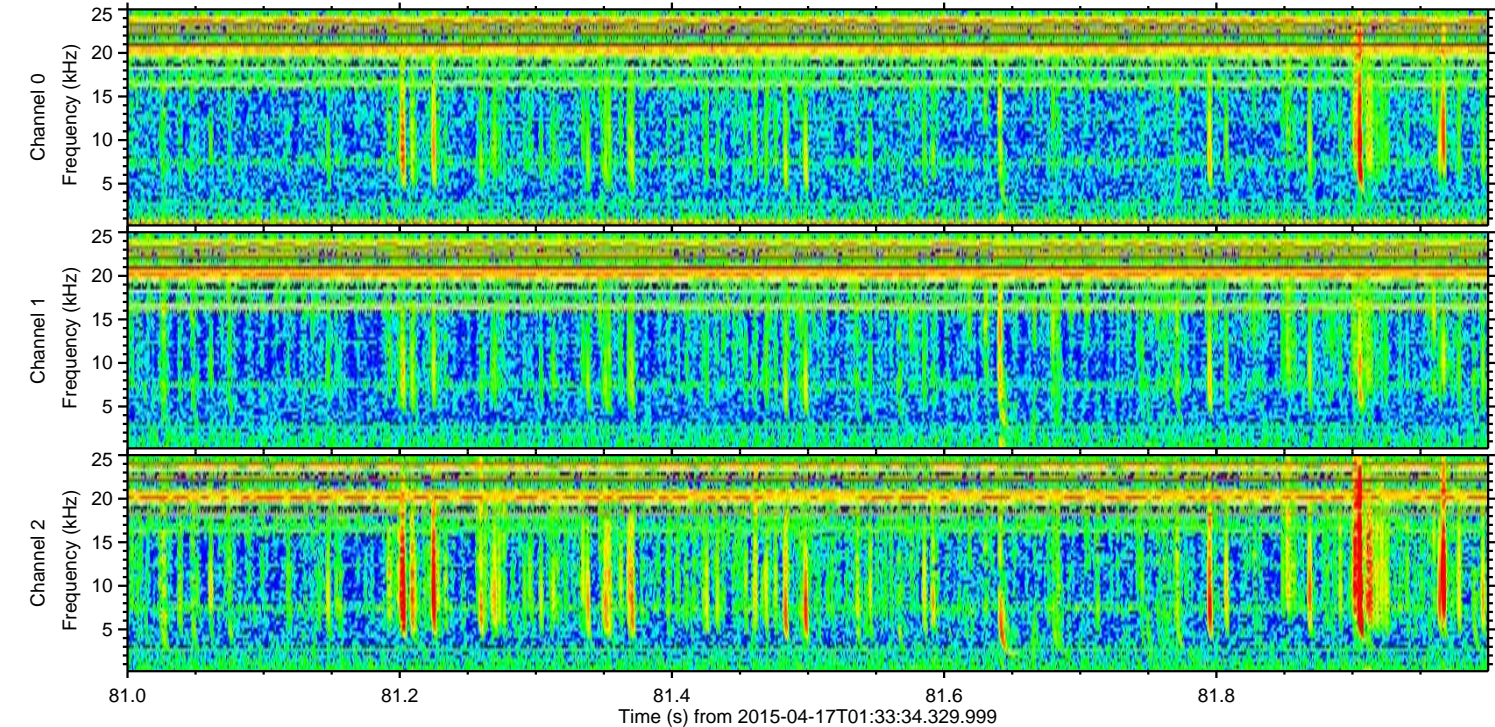
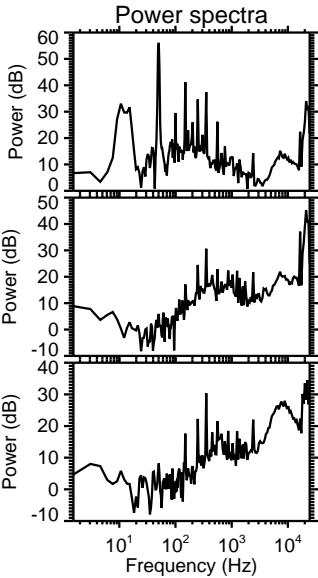
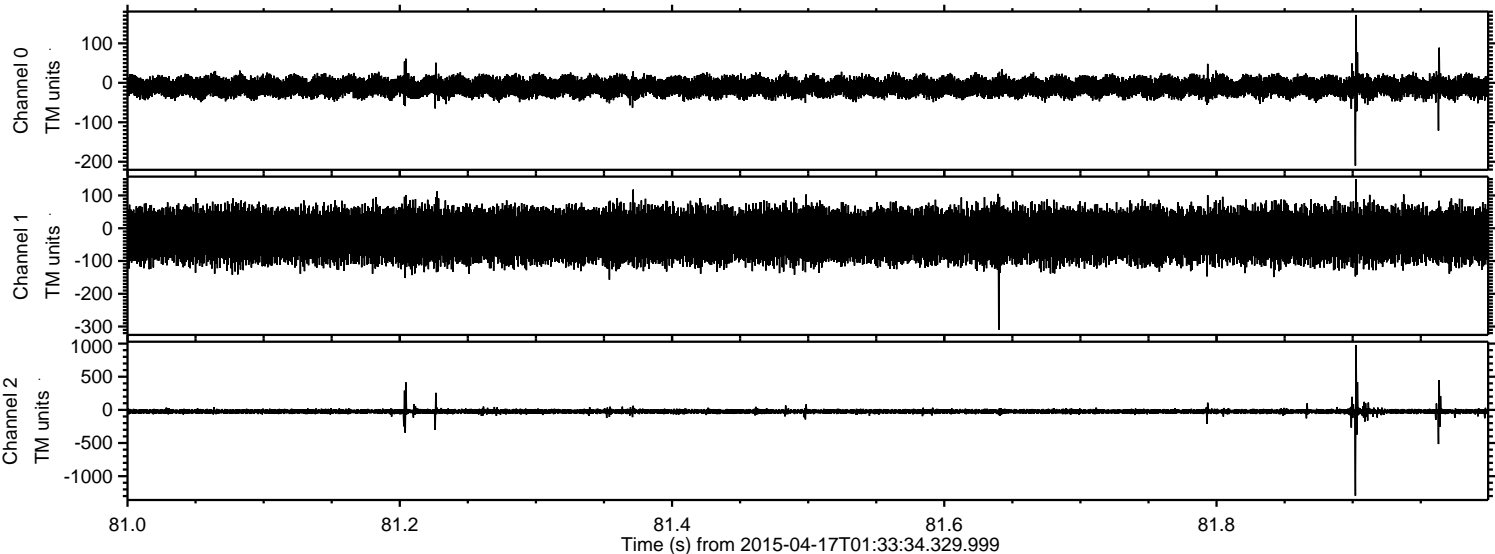
Processed Fri Apr 17 03:41:09 2015 by ELM ver.2012-10-06 from 001__elm20150417_013333__dat00.bin



Processed Fri Apr 17 03:41:10 2015 by ELM ver.2012-10-06 from 001__elm20150417_013333__dat00.bin



Processed Fri Apr 17 03:41:11 2015 by ELM ver.2012-10-06 from 001__elm20150417_013333__dat00.bin



Processed Fri Apr 17 03:41:12 2015 by ELM ver.2012-10-06 from 001__elm20150417_013333__dat00.bin

