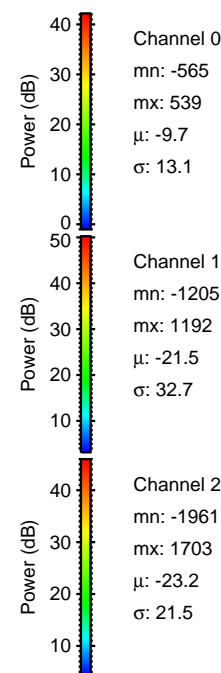
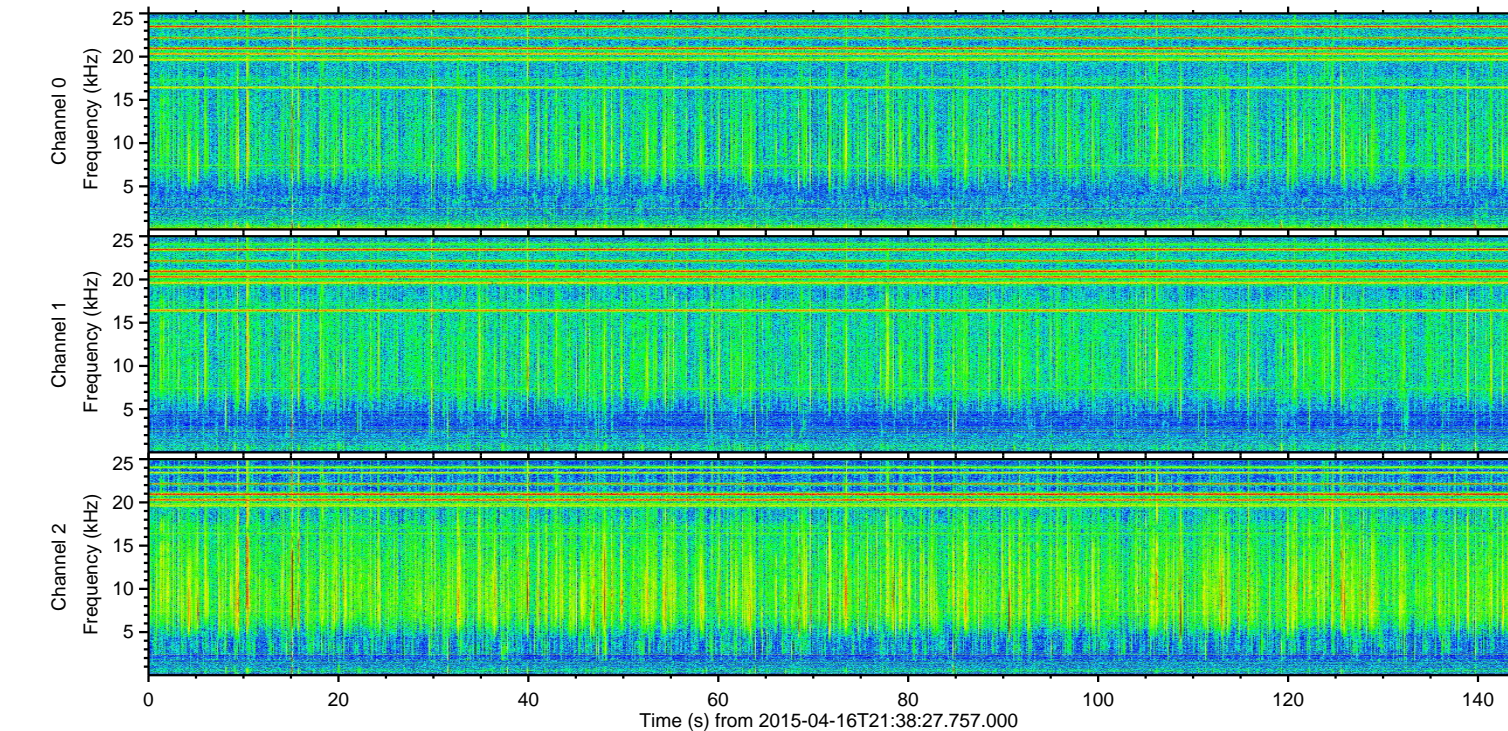
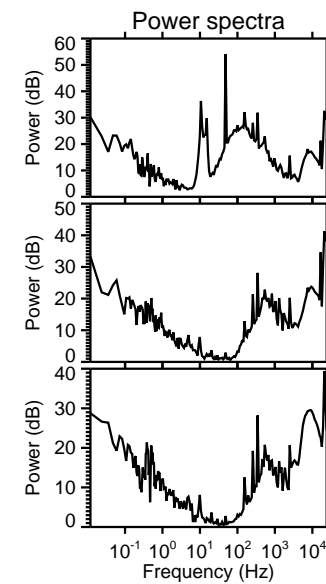
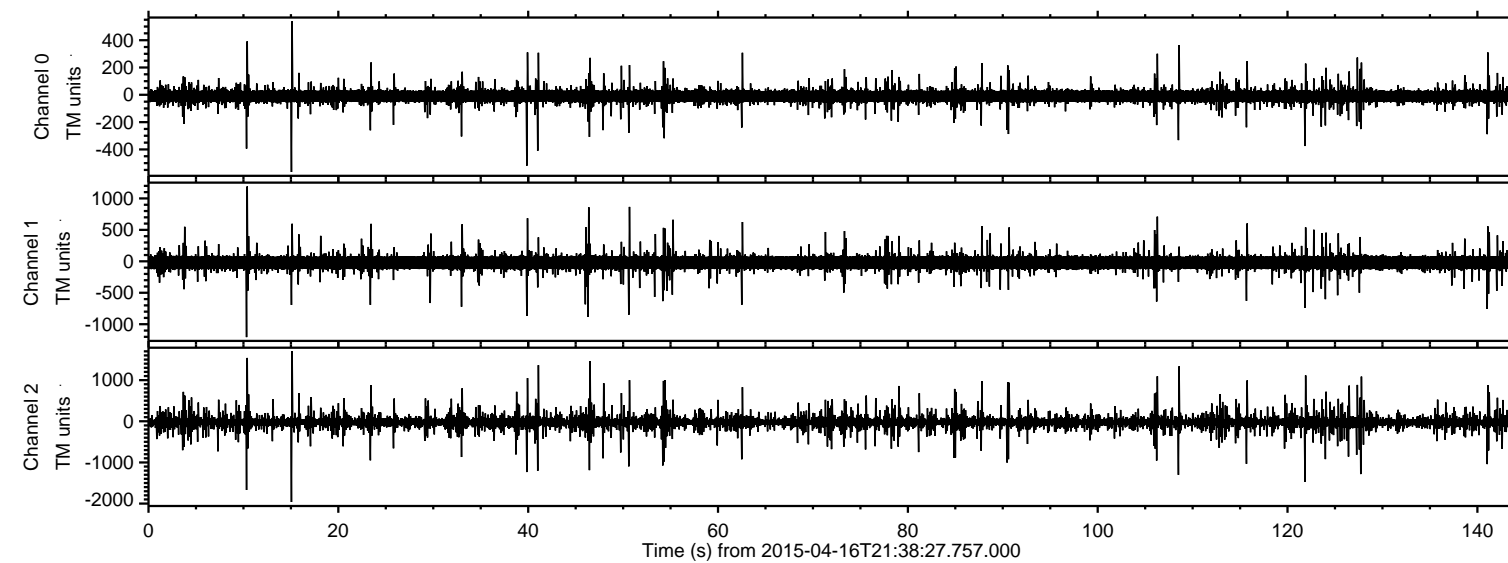
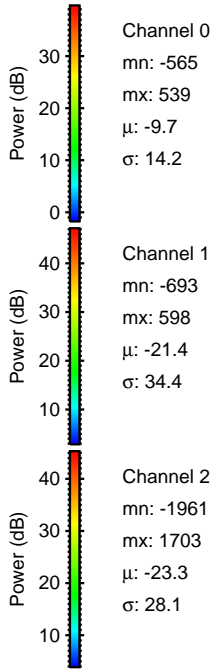
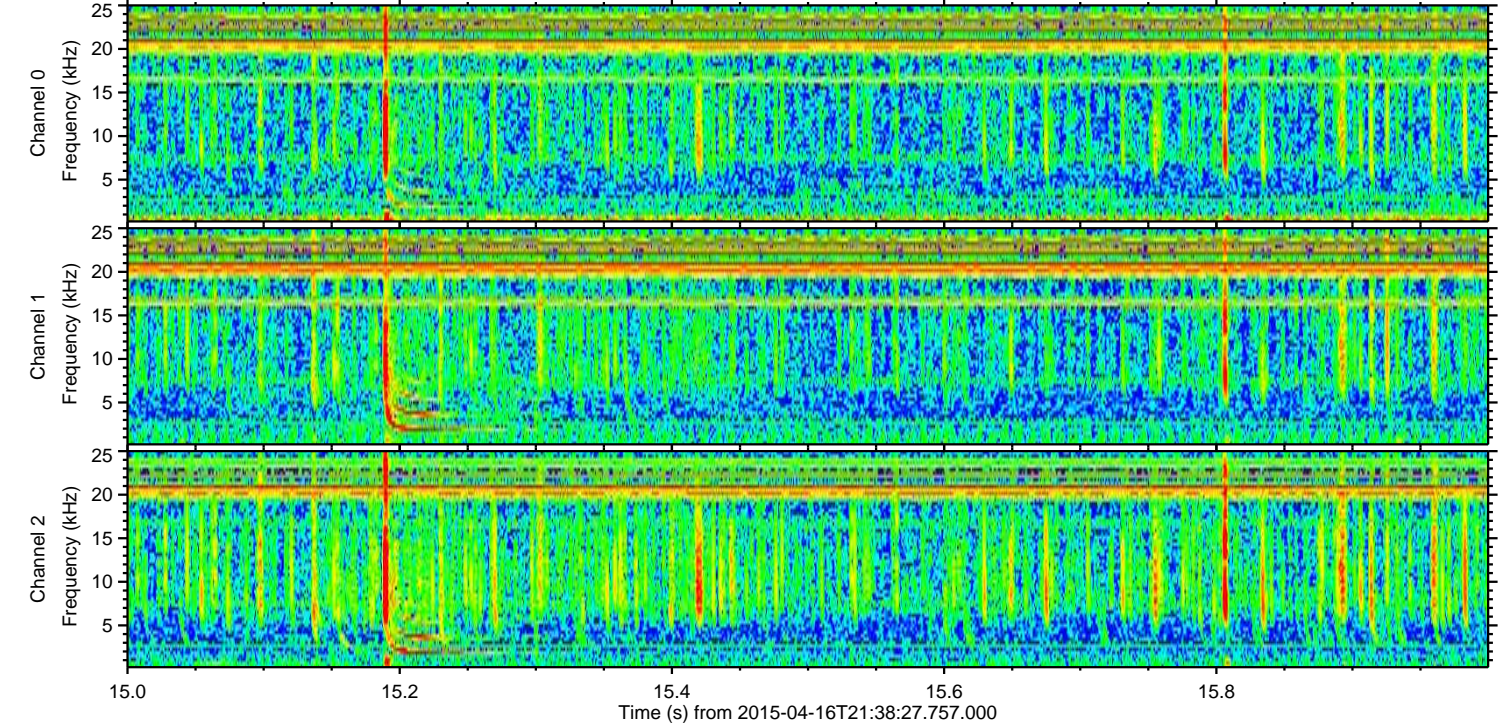
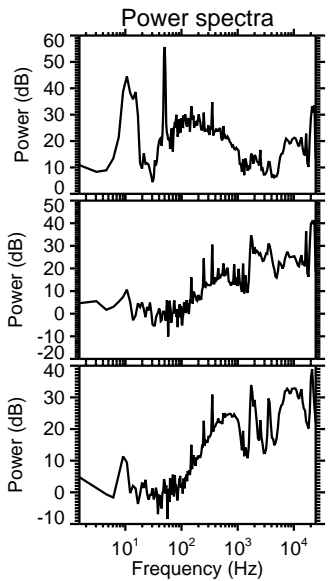
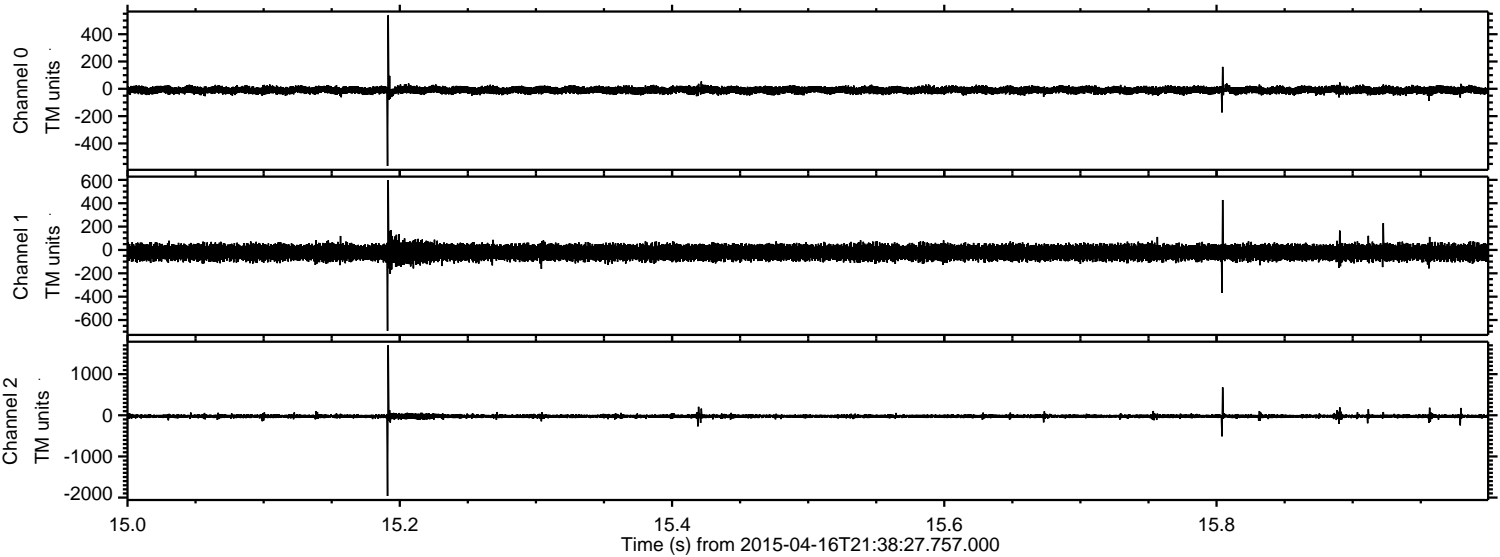


ELMAVAN 3D WAVEFORMS (Measured data sampled at 50 kHz) 49773 packets of 144 samples from 2015-04-16T21:38:27.757.000.

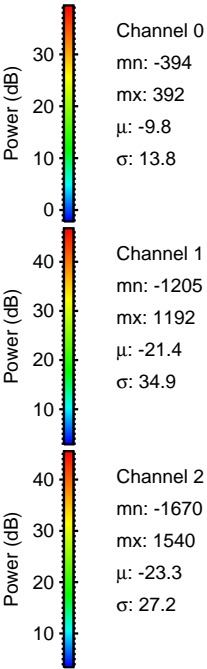
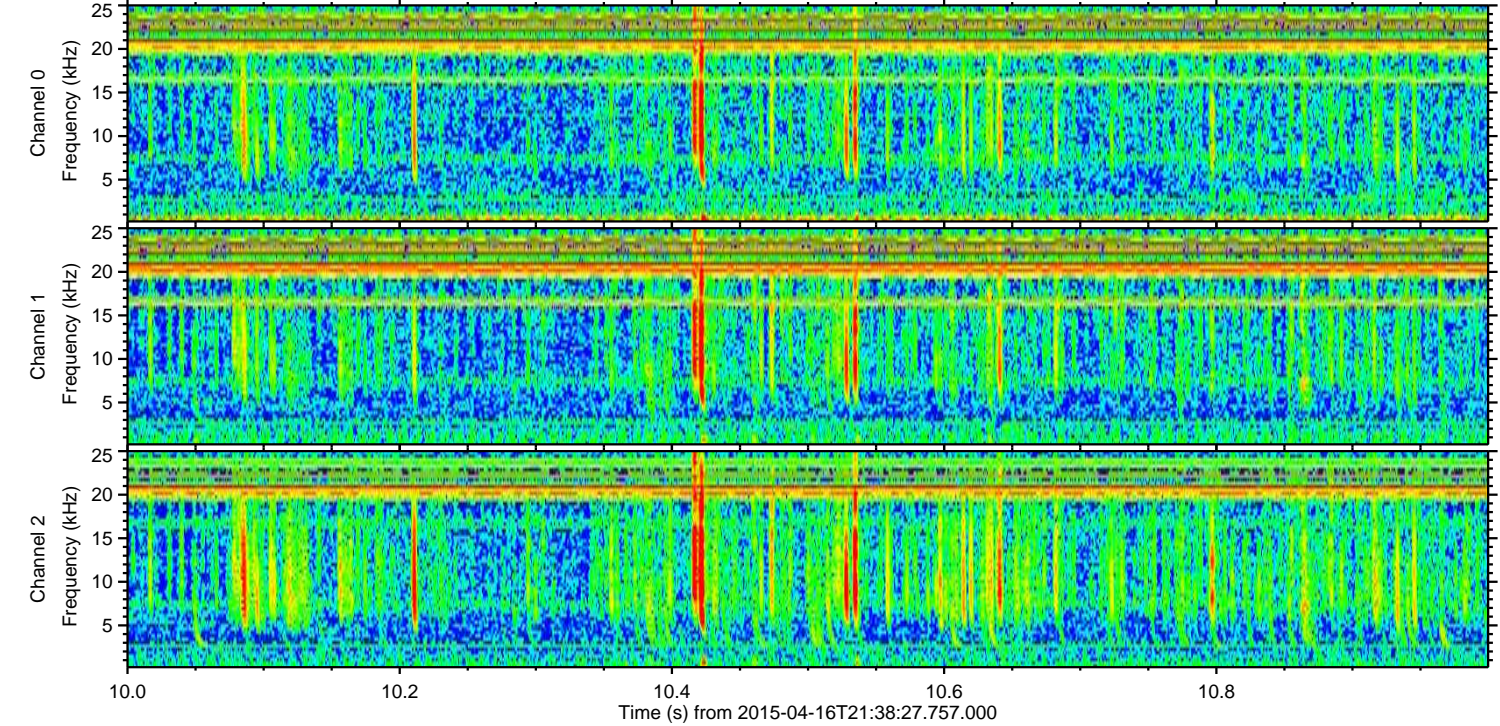
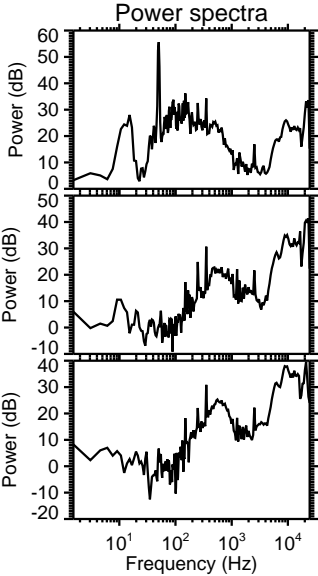
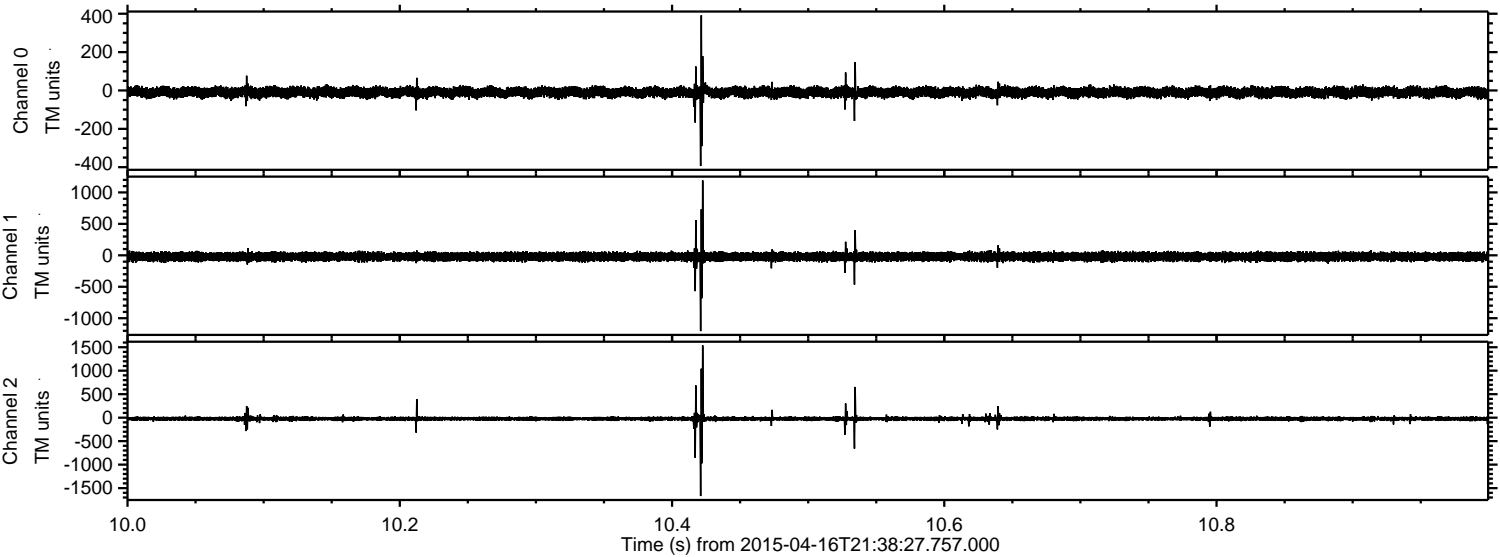
Processed Thu Apr 16 23:45:33 2015 by ELM ver.2012-10-06 from 001__elm20150416_213826__dat00.bin



Processed Thu Apr 16 23:45:44 2015 by ELM ver.2012-10-06 from 001__elm20150416_213826__dat00.bin

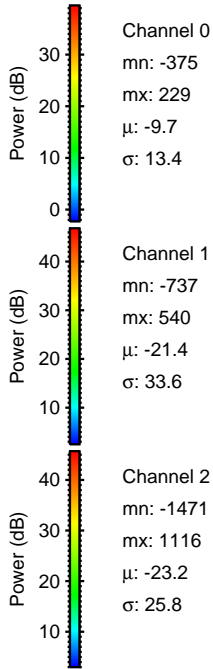
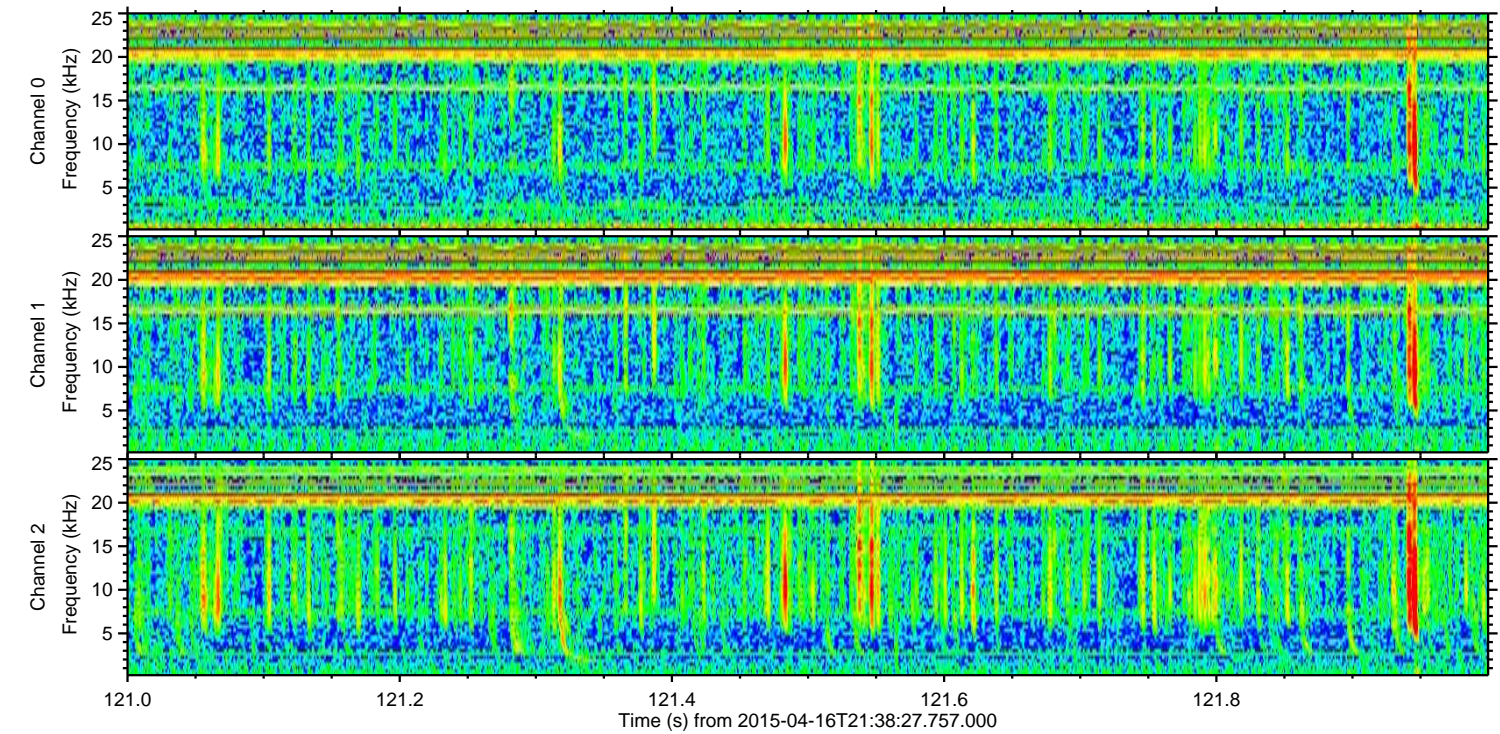
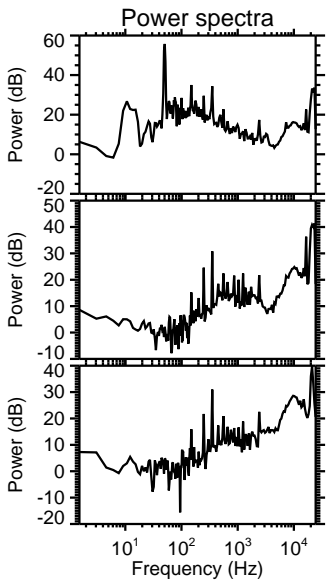
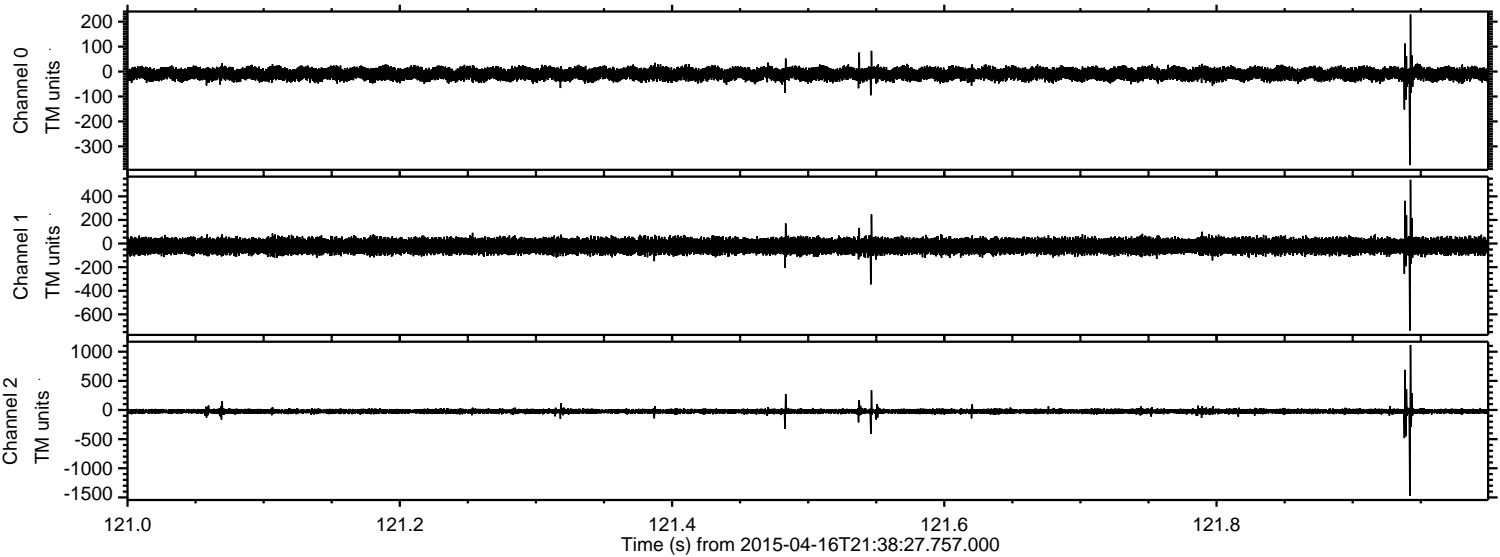


Processed Thu Apr 16 23:45:45 2015 by ELM ver.2012-10-06 from 001__elm20150416_213826__dat00.bin

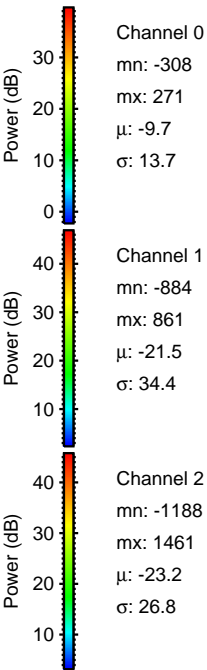
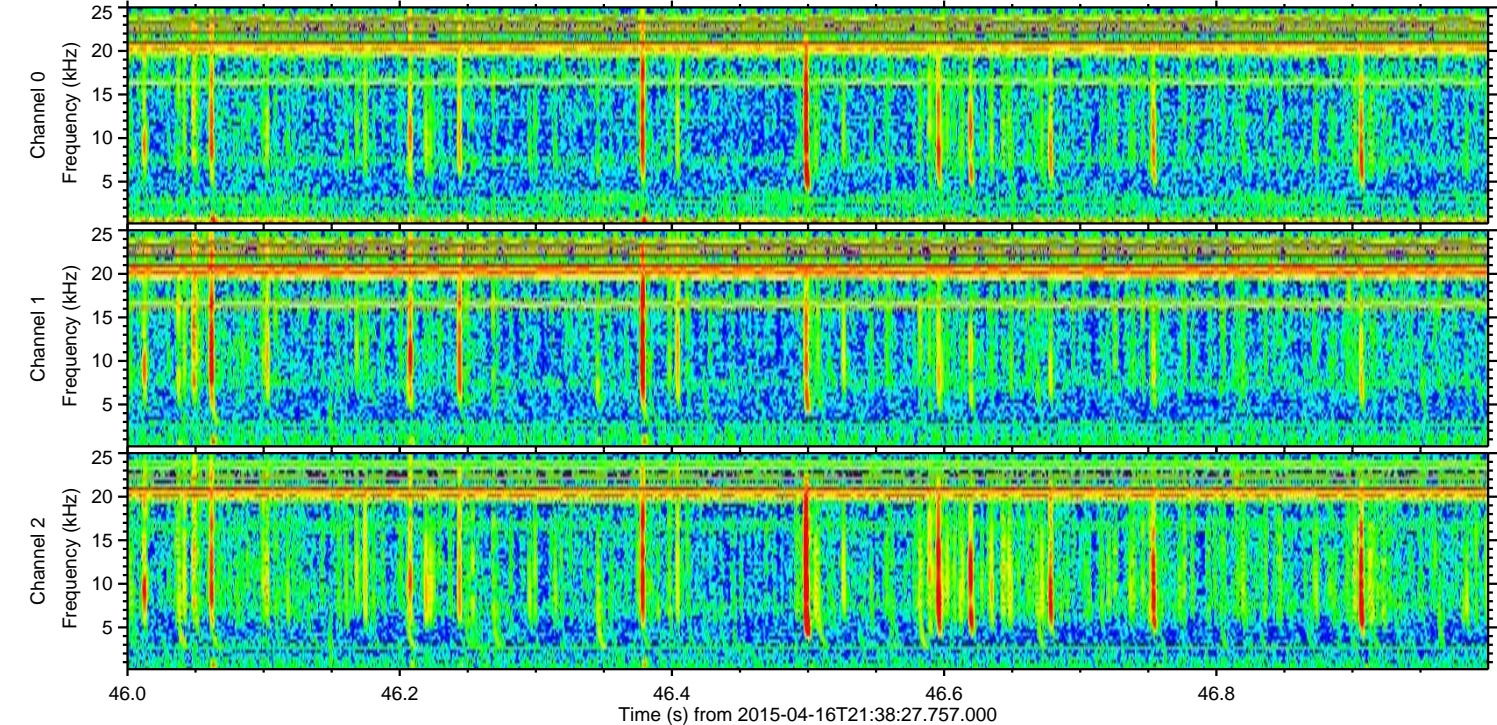
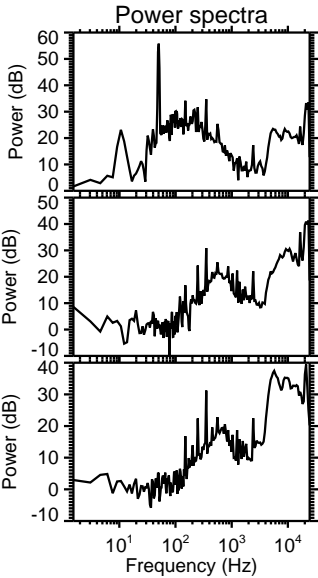
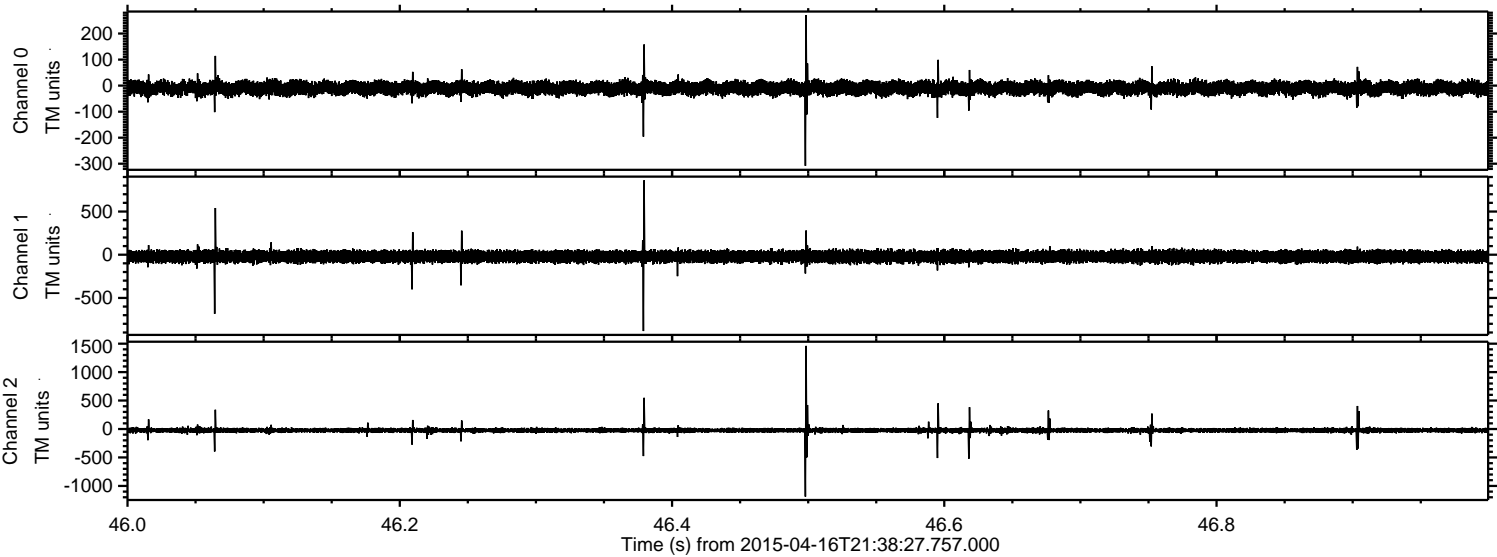


ELMAVAN 3D WAVEFORMS (Measured data sampled at 50 kHz) 49773 packets of 144 samples from 2015-04-16T21:38:27.757.000. Part 122/144

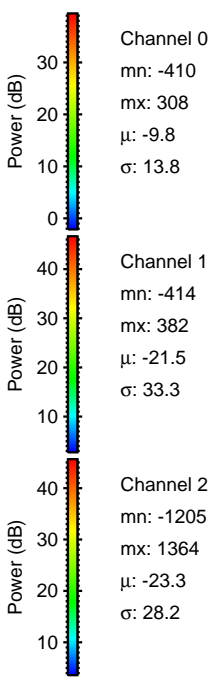
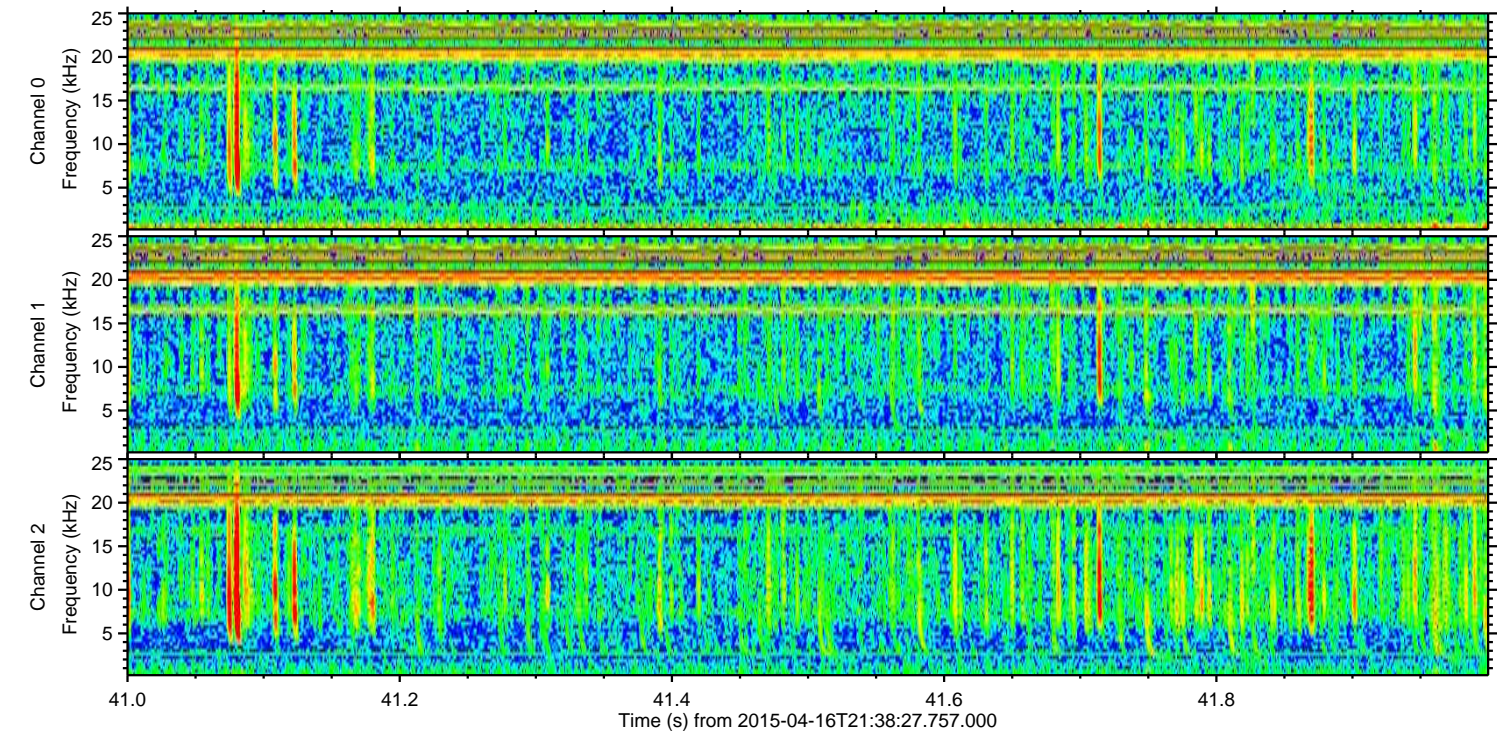
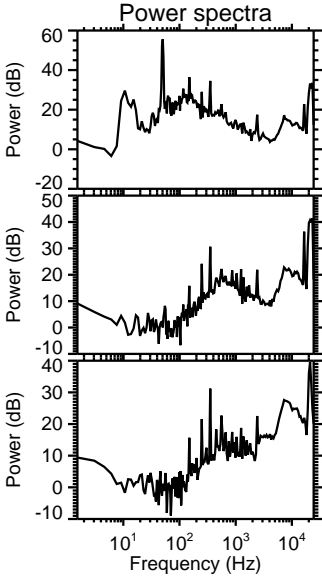
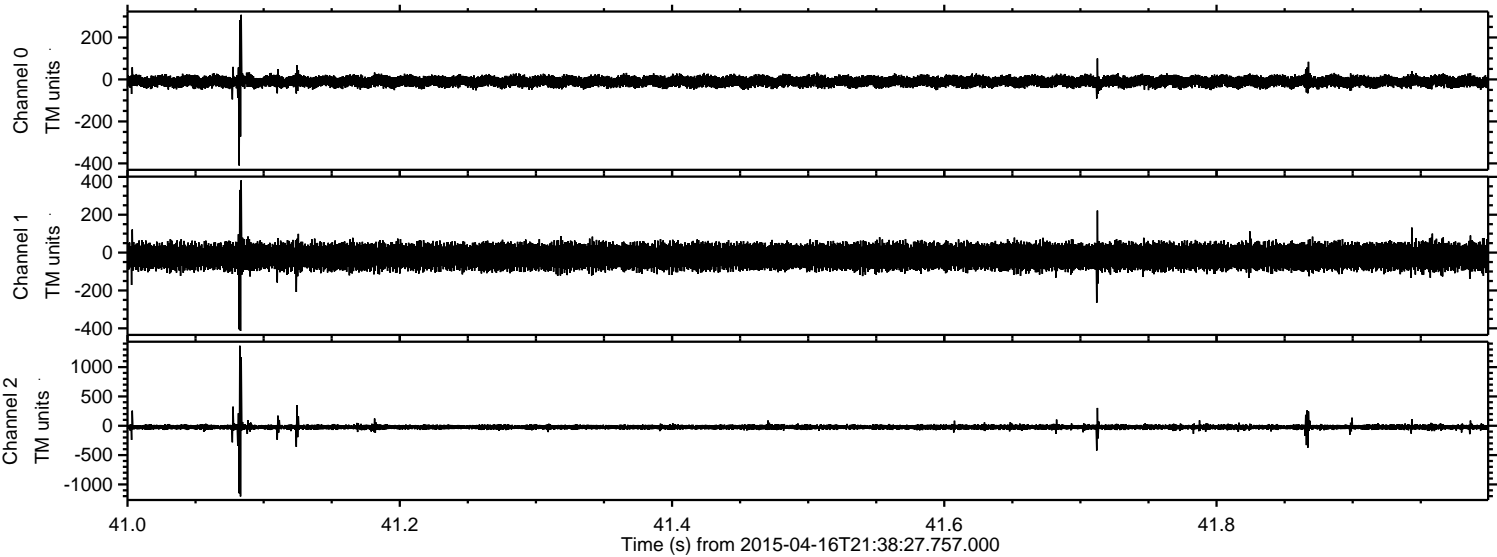
Processed Thu Apr 16 23:45:46 2015 by ELM ver.2012-10-06 from 001__elm20150416_213826__dat00.bin



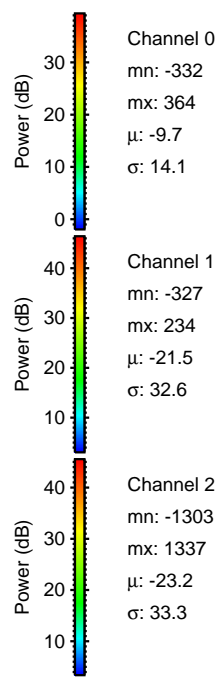
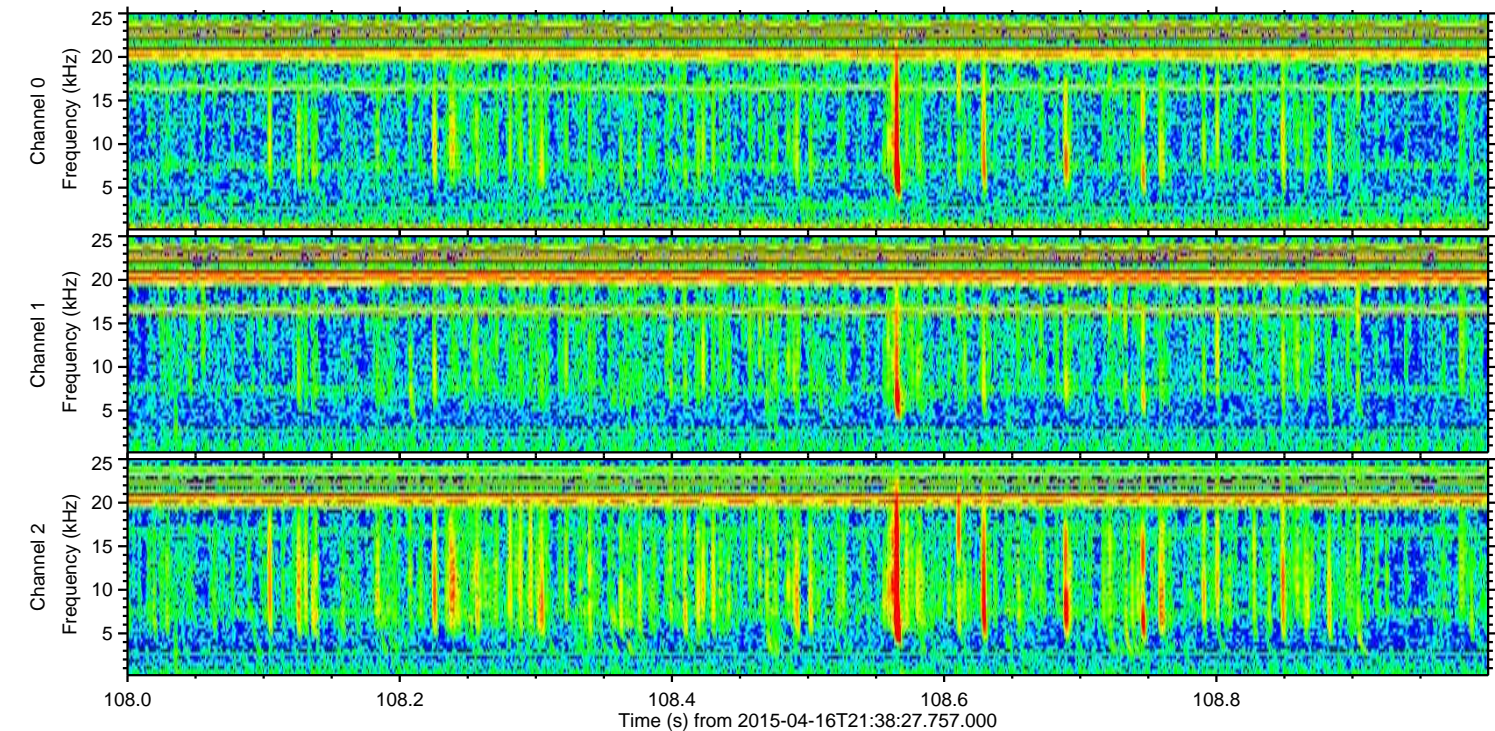
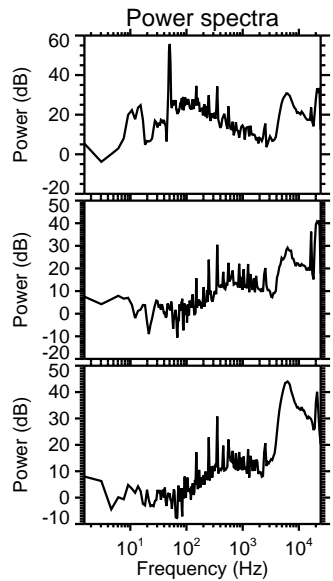
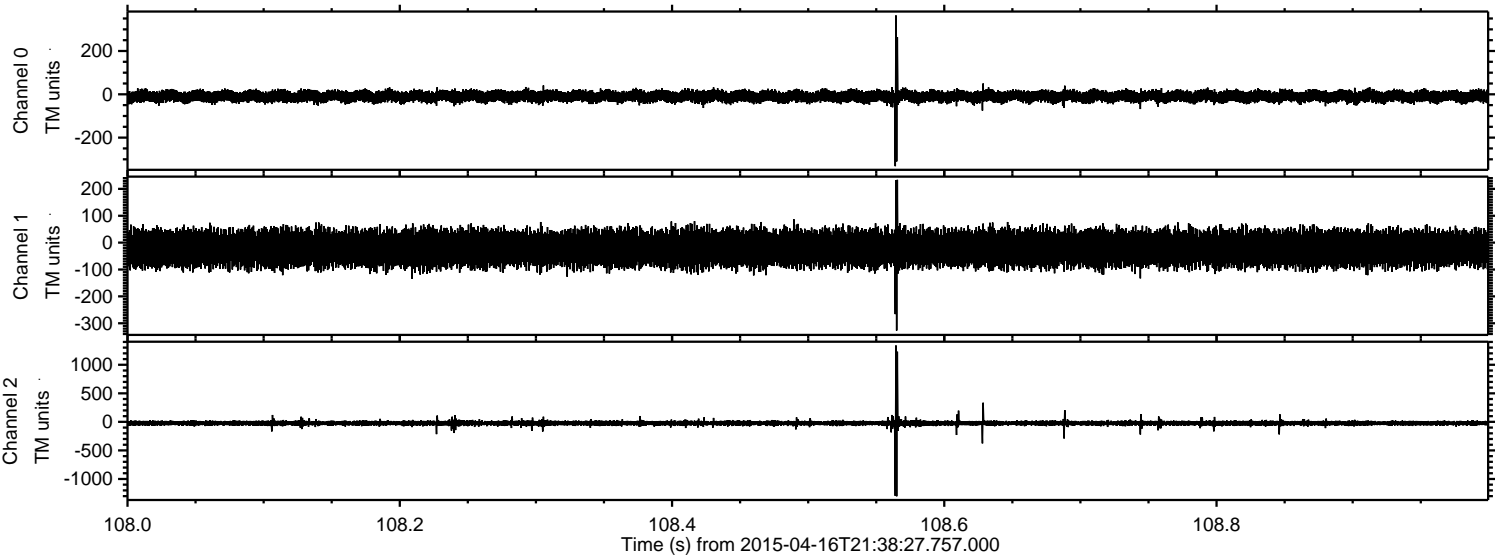
Processed Thu Apr 16 23:45:47 2015 by ELM ver.2012-10-06 from 001__elm20150416_213826__dat00.bin



Processed Thu Apr 16 23:45:48 2015 by ELM ver.2012-10-06 from 001__elm20150416_213826__dat00.bin



Processed Thu Apr 16 23:45:49 2015 by ELM ver.2012-10-06 from 001__elm20150416_213826__dat00.bin



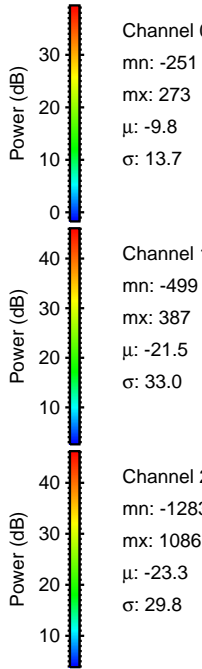
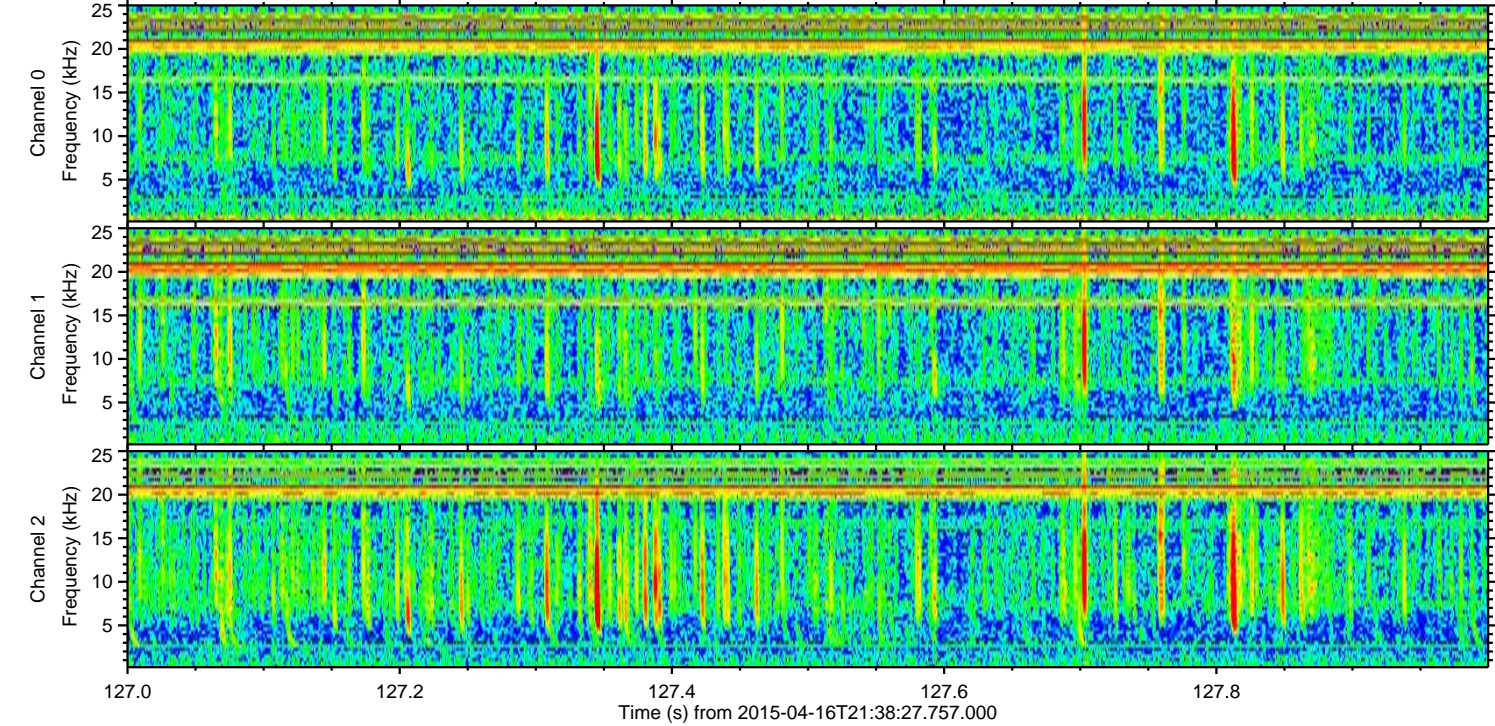
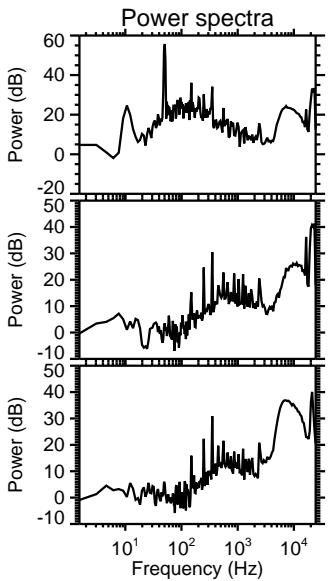
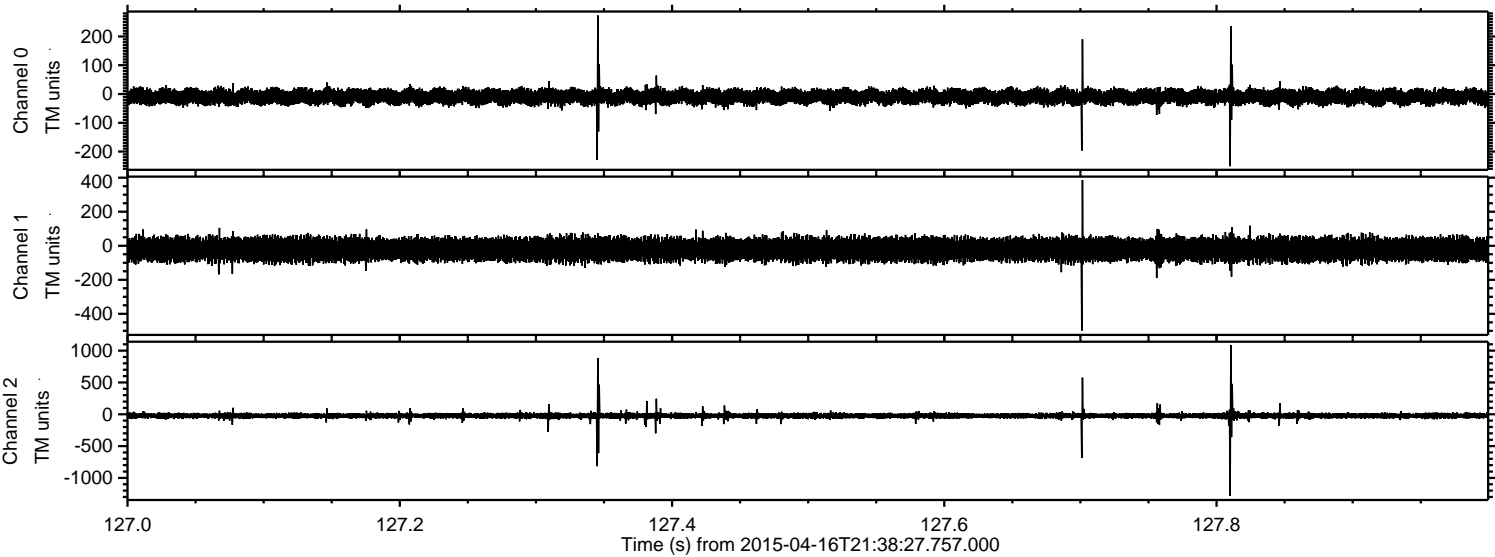
Channel 0
mn: -332
mx: 364
 μ : -9.7
 σ : 14.1

Channel 1
mn: -327
mx: 234
 μ : -21.5
 σ : 32.6

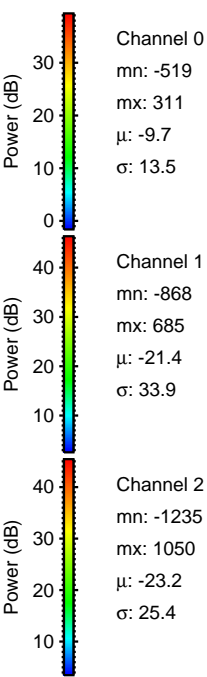
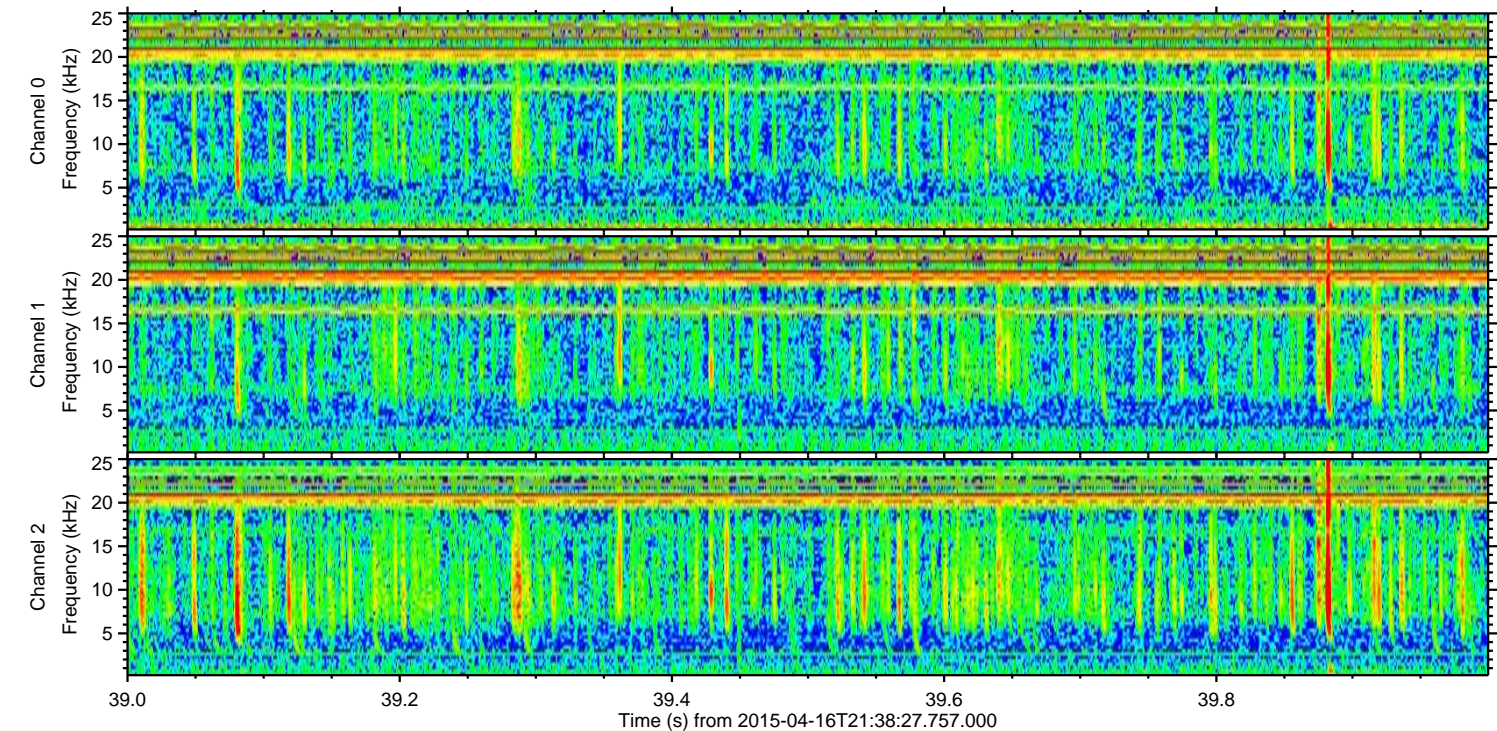
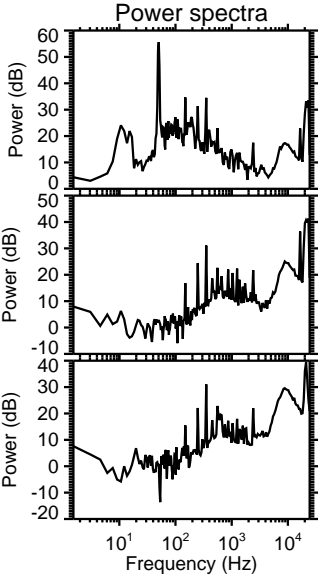
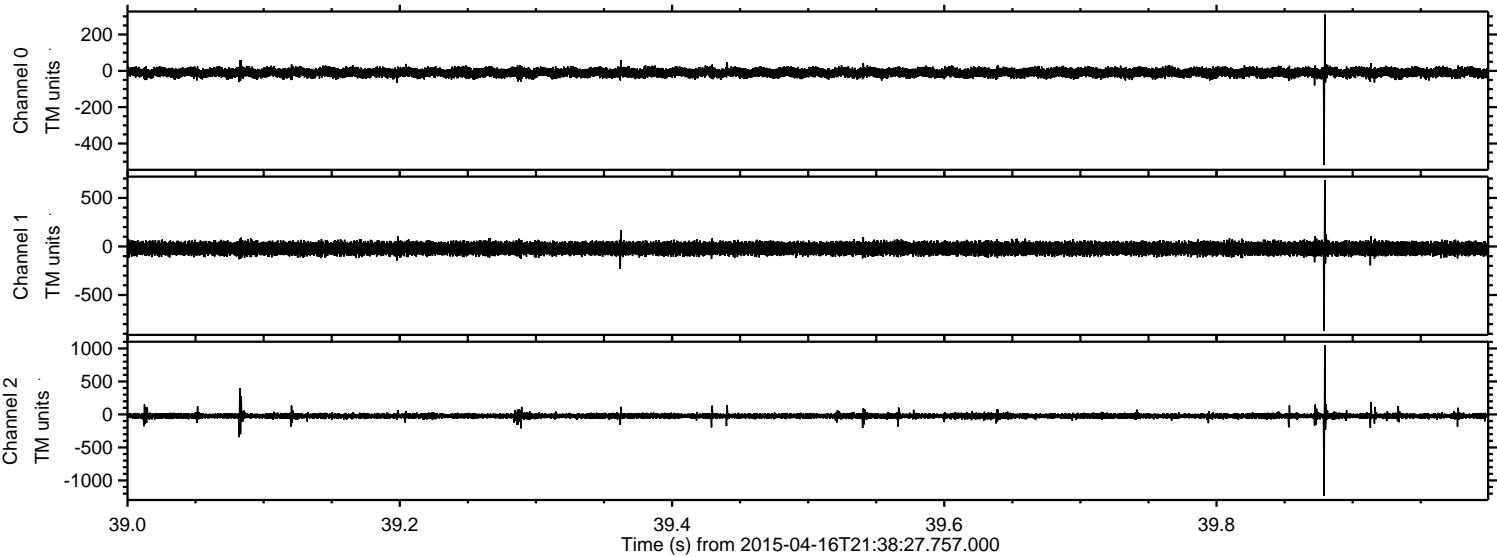
Channel 2
mn: -1303
mx: 1337
 μ : -23.2
 σ : 33.3

ELMAVAN 3D WAVEFORMS (Measured data sampled at 50 kHz) 49773 packets of 144 samples from 2015-04-16T21:38:27.757.000. Part 128/144

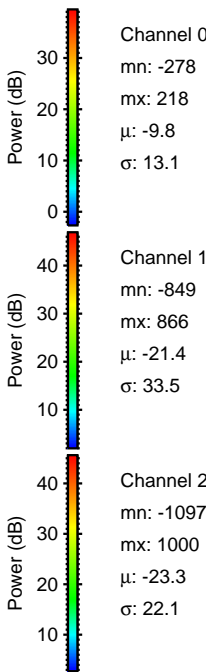
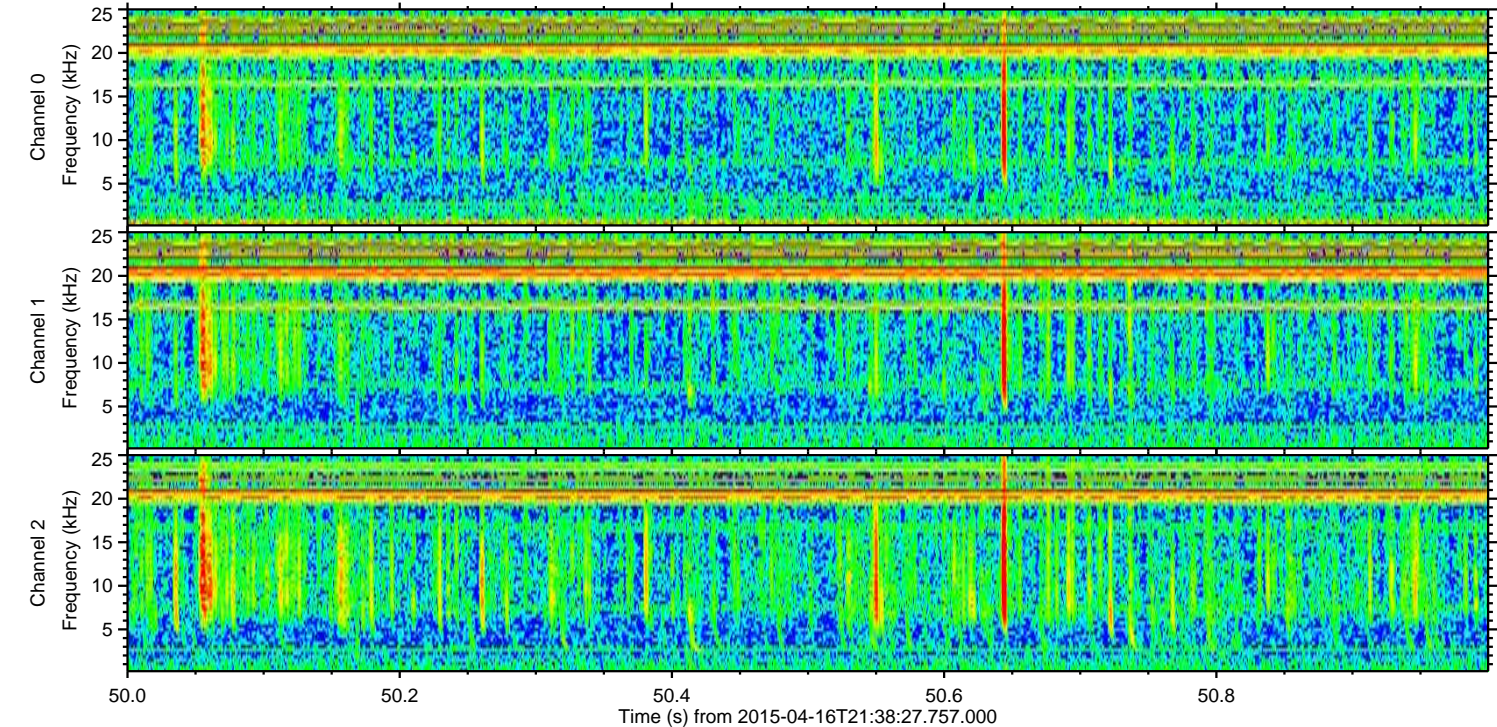
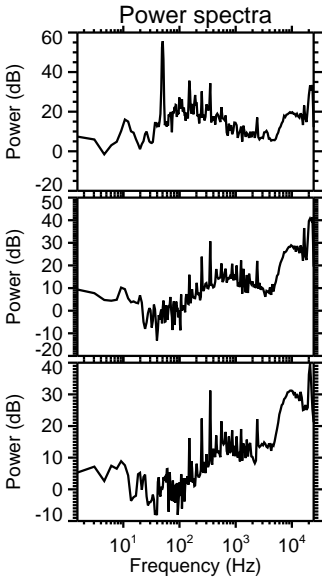
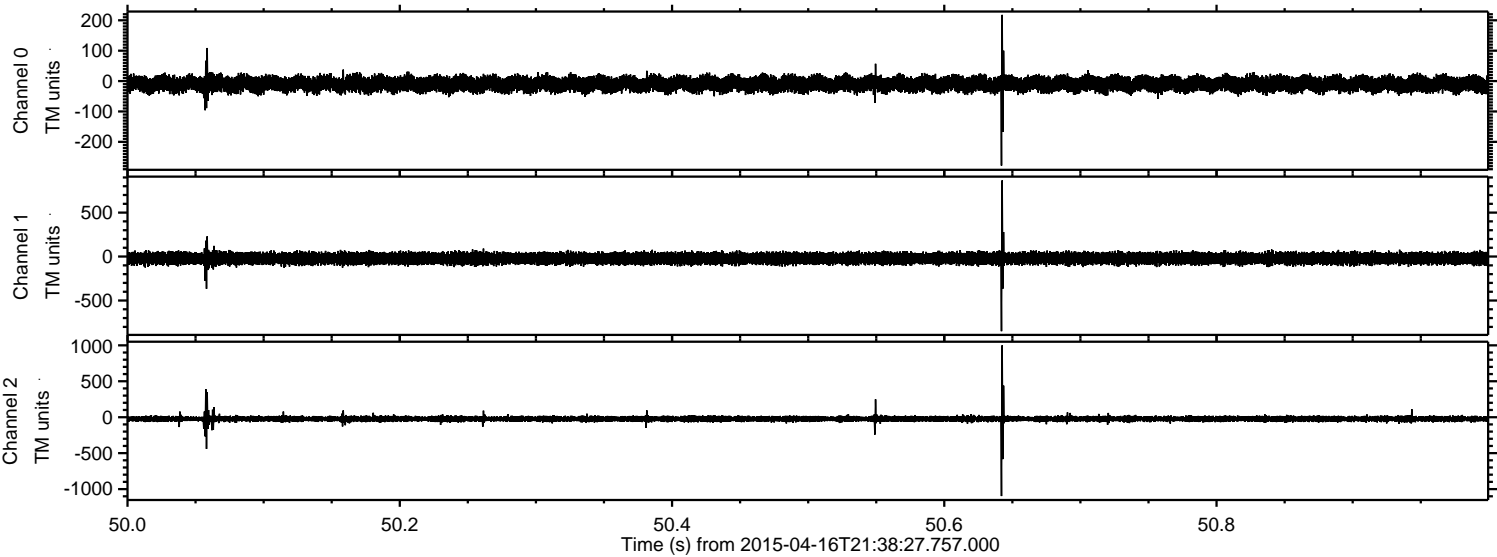
Processed Thu Apr 16 23:45:50 2015 by ELM ver.2012-10-06 from 001__elm20150416_213826__dat00.bin



Processed Thu Apr 16 23:45:51 2015 by ELM ver.2012-10-06 from 001__elm20150416_213826__dat00.bin



Processed Thu Apr 16 23:45:52 2015 by ELM ver.2012-10-06 from 001__elm20150416_213826__dat00.bin



Channel 0
mn: -278
mx: 218
 μ : -9.8
 σ : 13.1

Channel 1
mn: -849
mx: 866
 μ : -21.4
 σ : 33.5

Channel 2
mn: -1097
mx: 1000
 μ : -23.3
 σ : 22.1

Processed Thu Apr 16 23:45:52 2015 by ELM ver.2012-10-06 from 001__elm20150416_213826__dat00.bin

