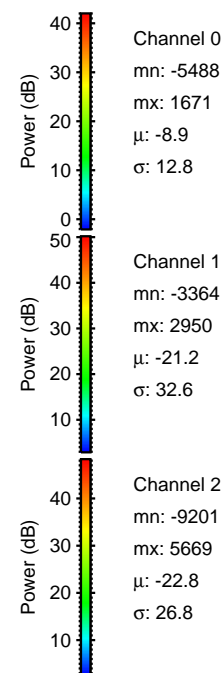
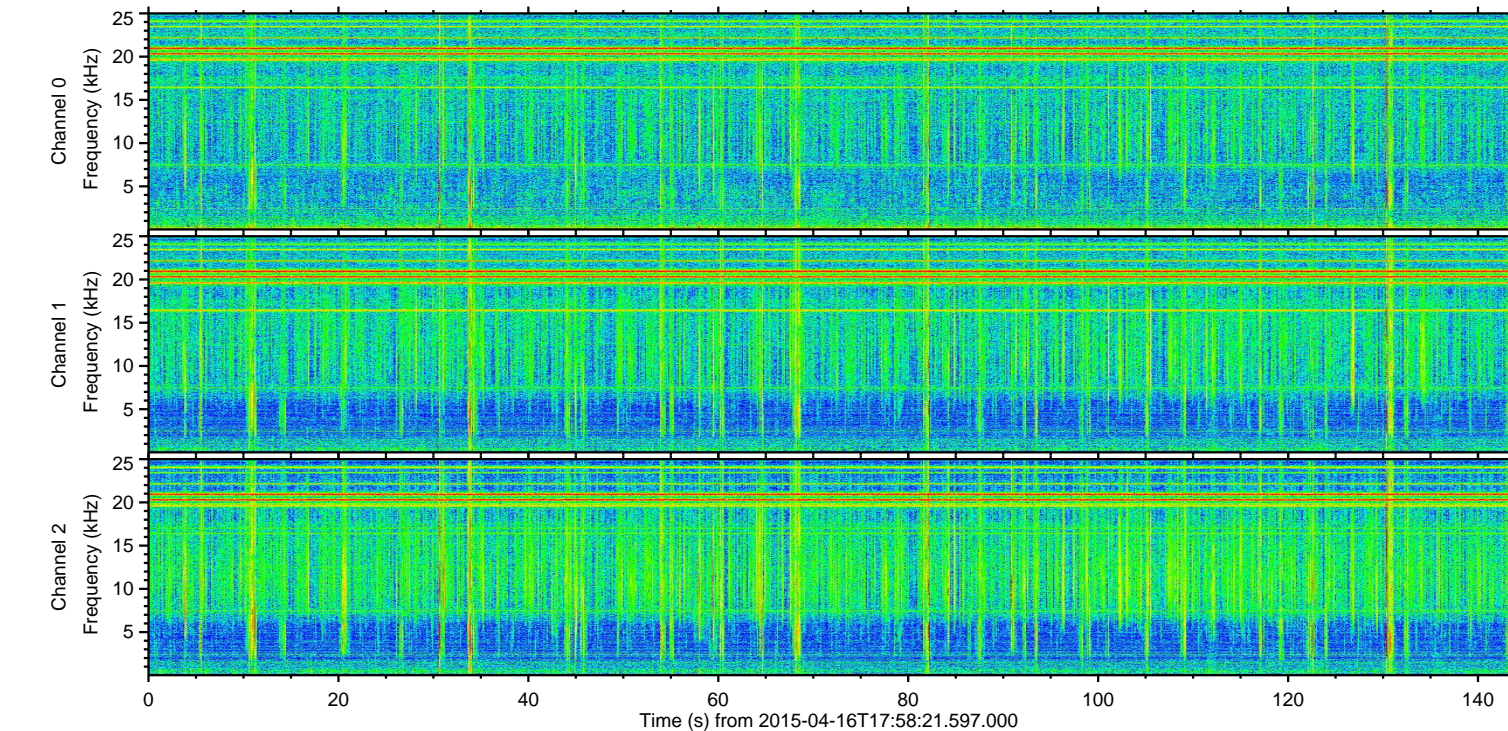
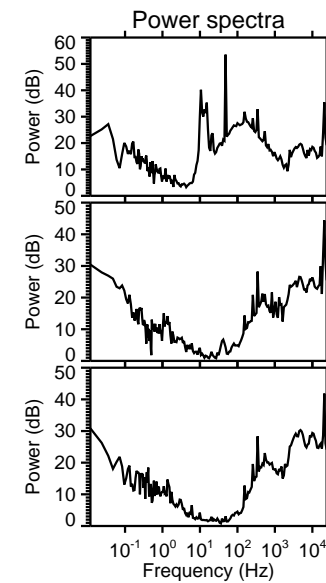
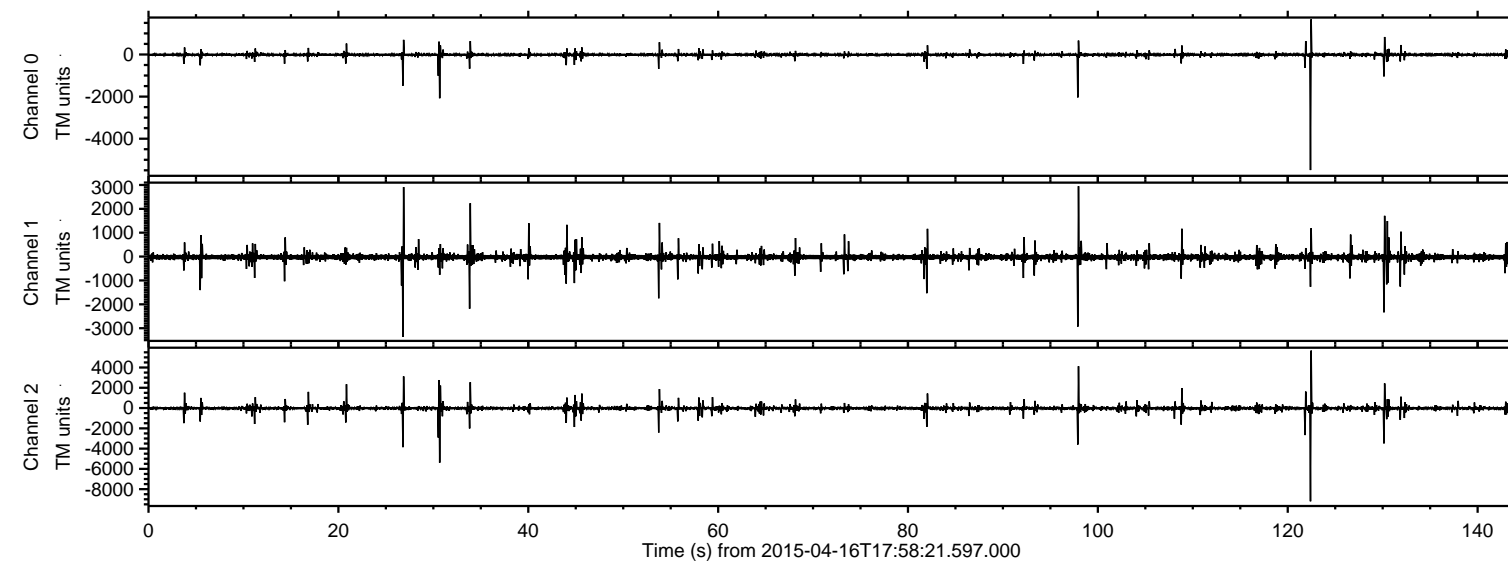
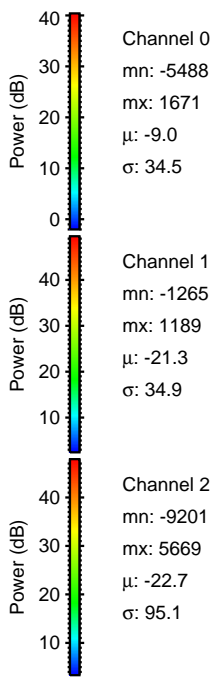
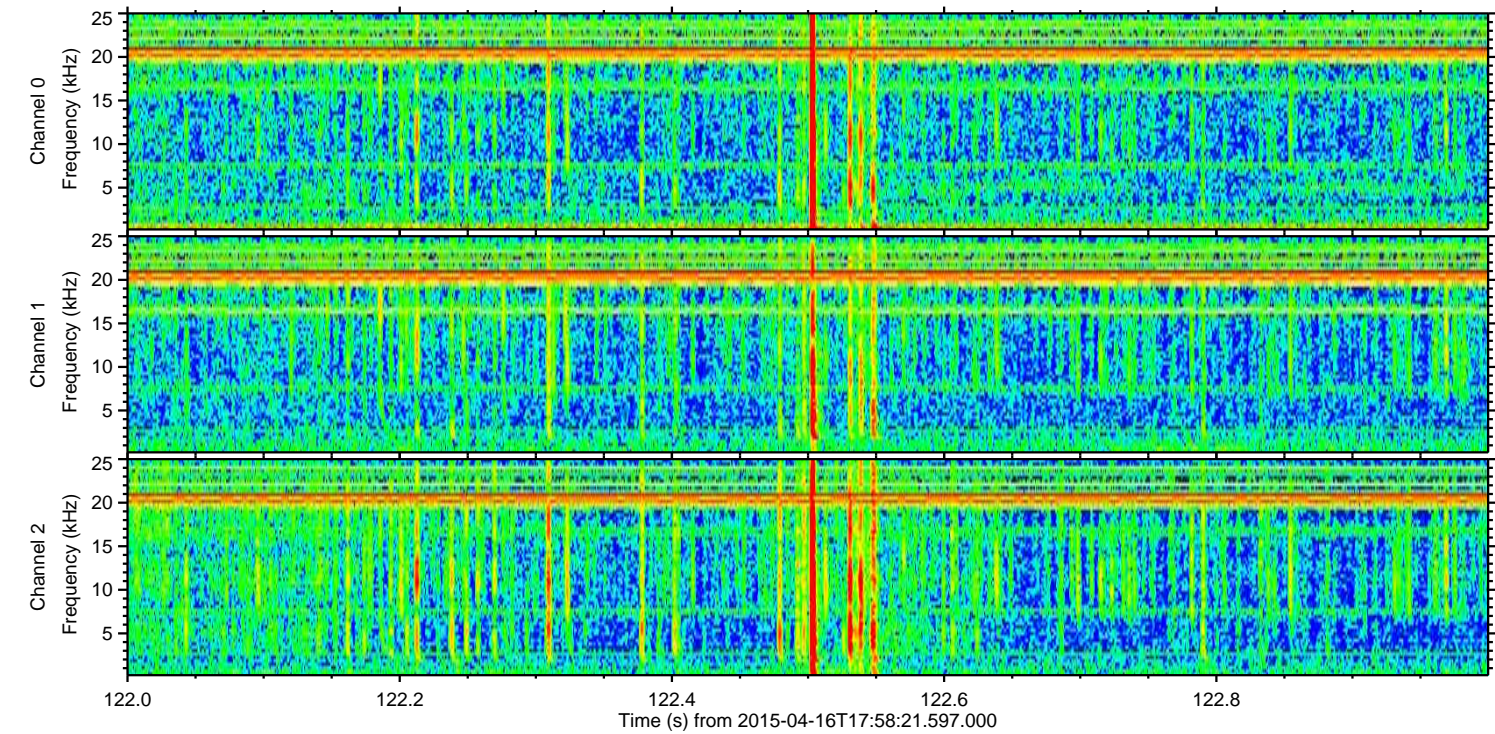
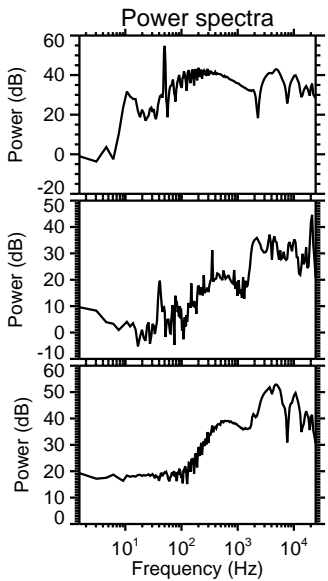
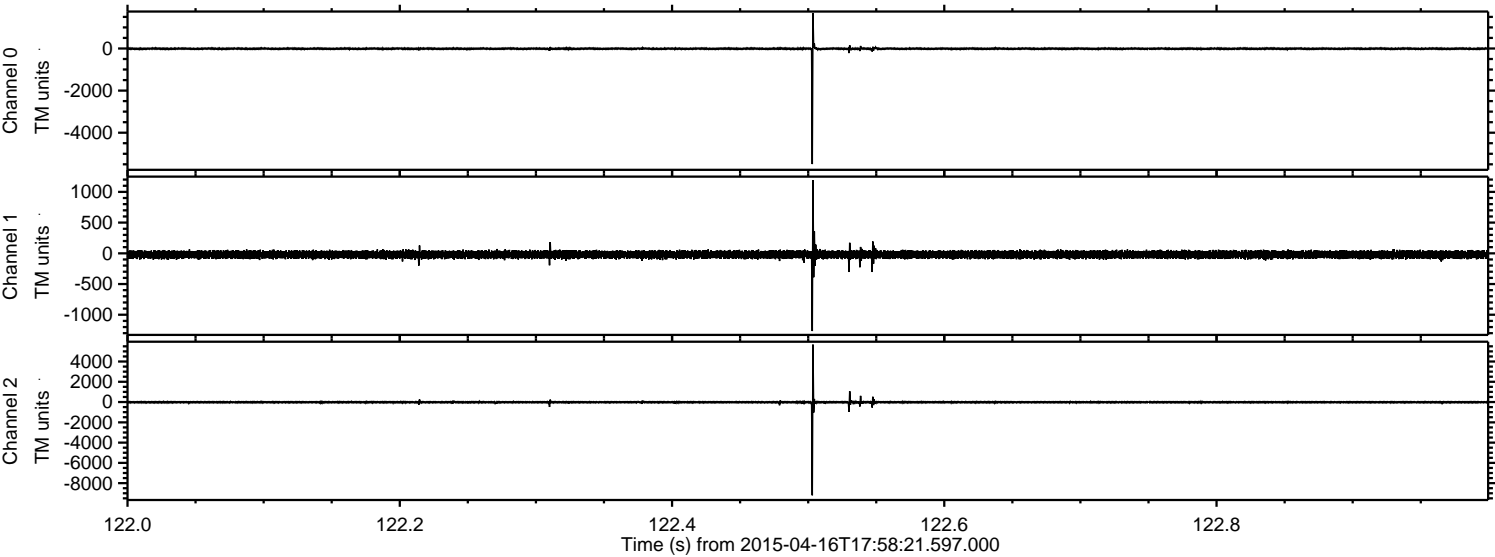


ELMAVAN 3D WAVEFORMS (Measured data sampled at 50 kHz) 49764 packets of 144 samples from 2015-04-16T17:58:21.597.000.

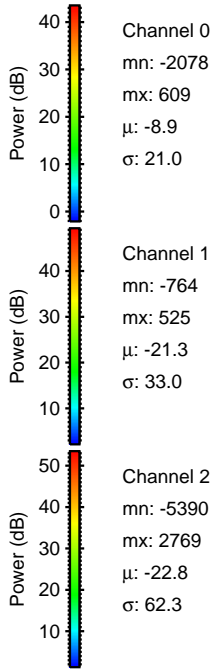
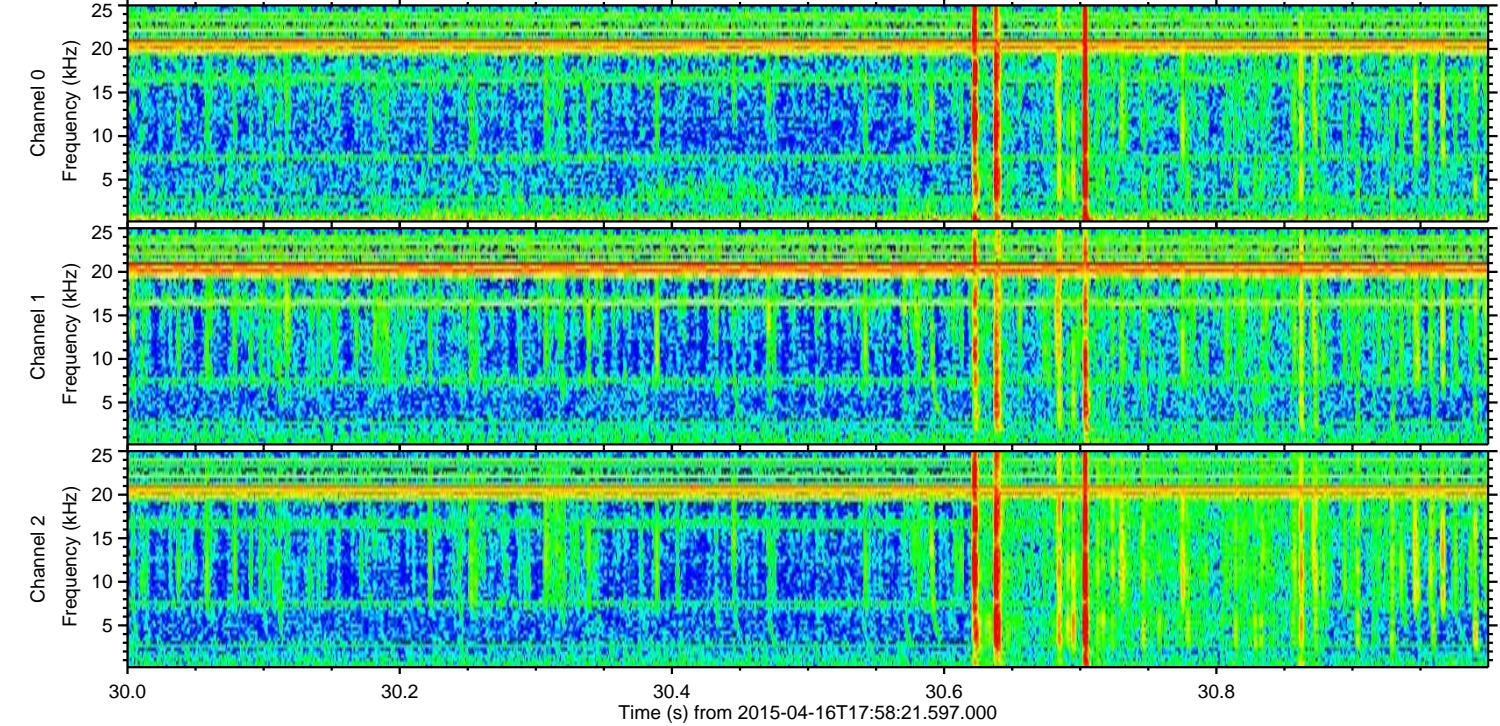
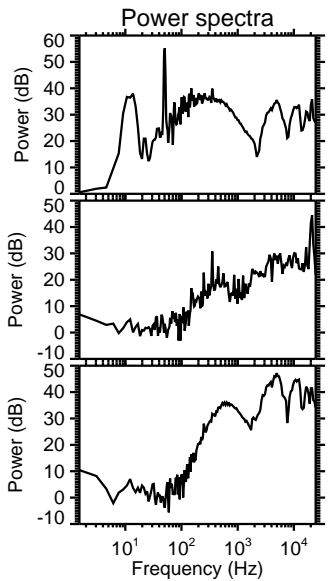
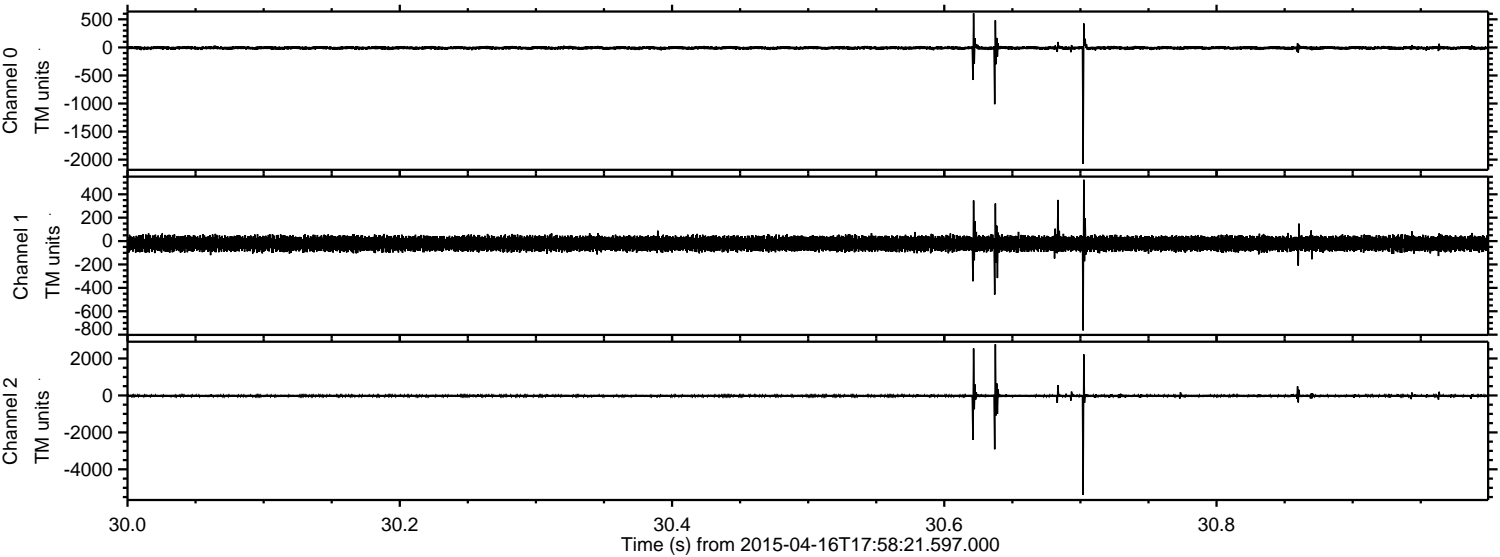
Processed Thu Apr 16 20:05:38 2015 by ELM ver.2012-10-06 from 001__elm20150416_175820__dat00.bin



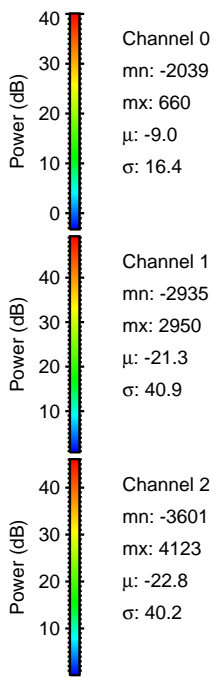
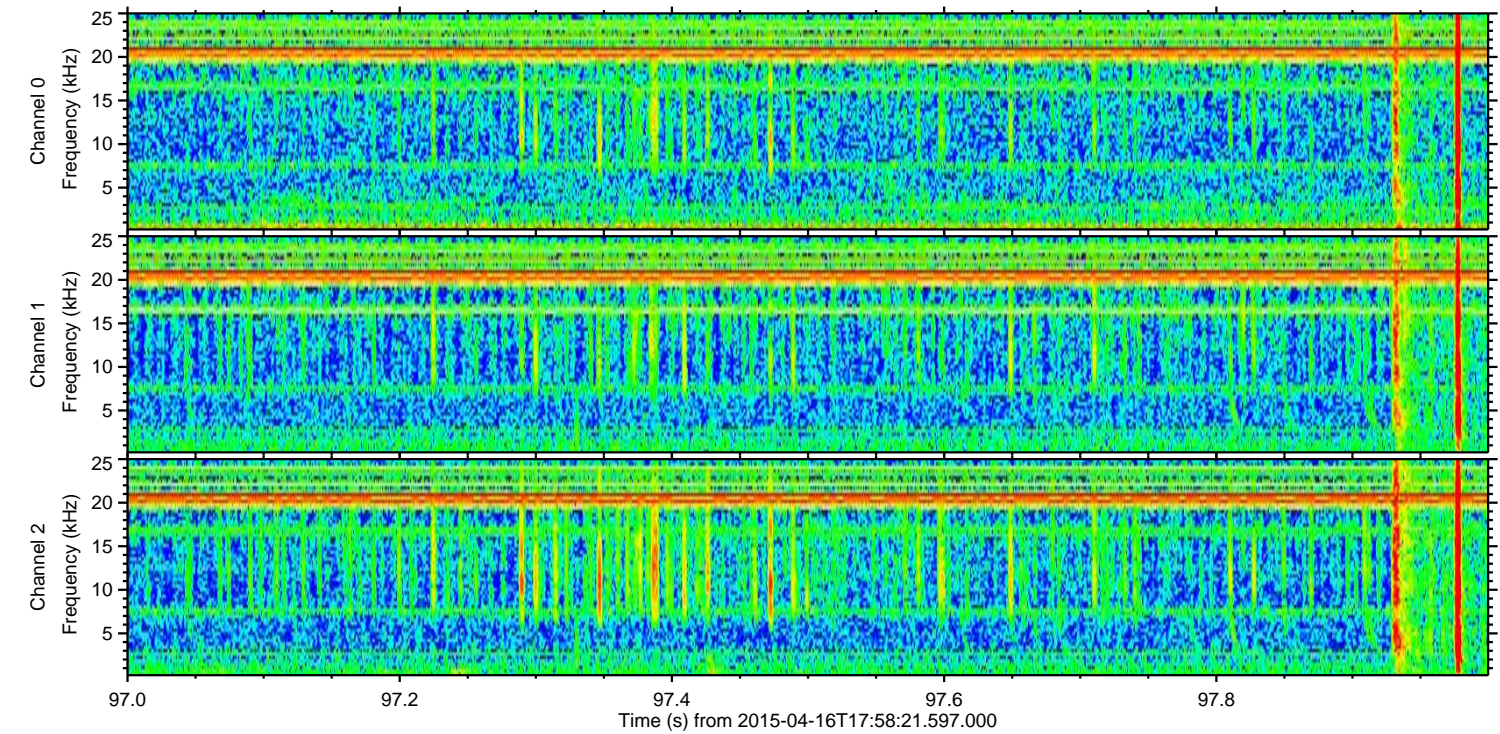
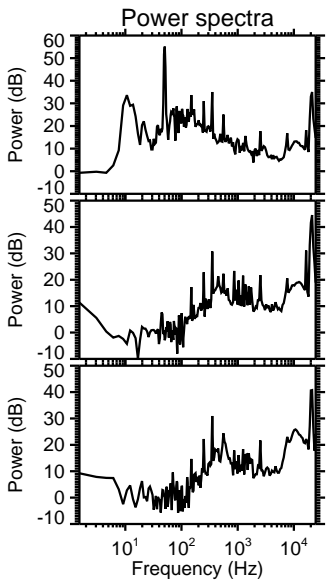
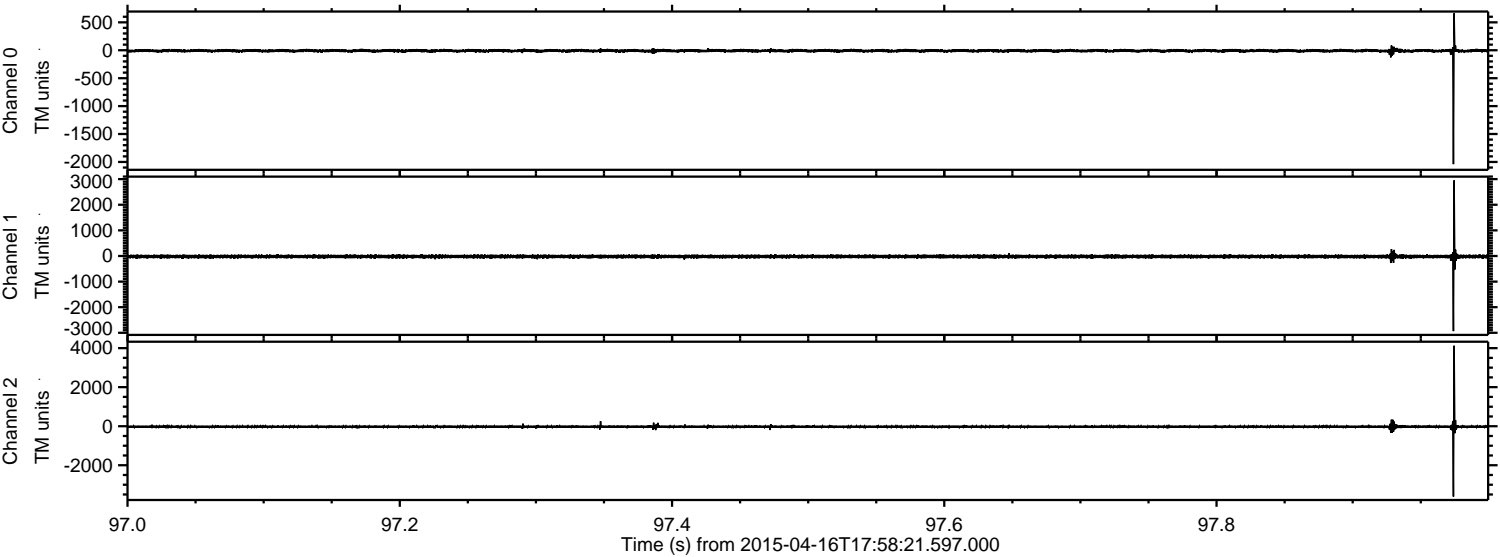
Processed Thu Apr 16 20:05:49 2015 by ELM ver.2012-10-06 from 001__elm20150416_175820__dat00.bin



Processed Thu Apr 16 20:05:50 2015 by ELM ver.2012-10-06 from 001__elm20150416_175820__dat00.bin

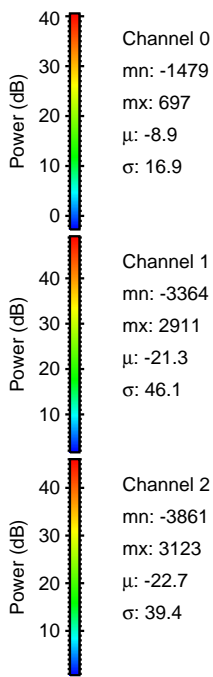
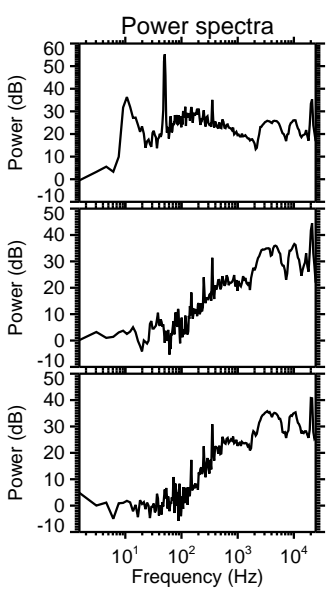
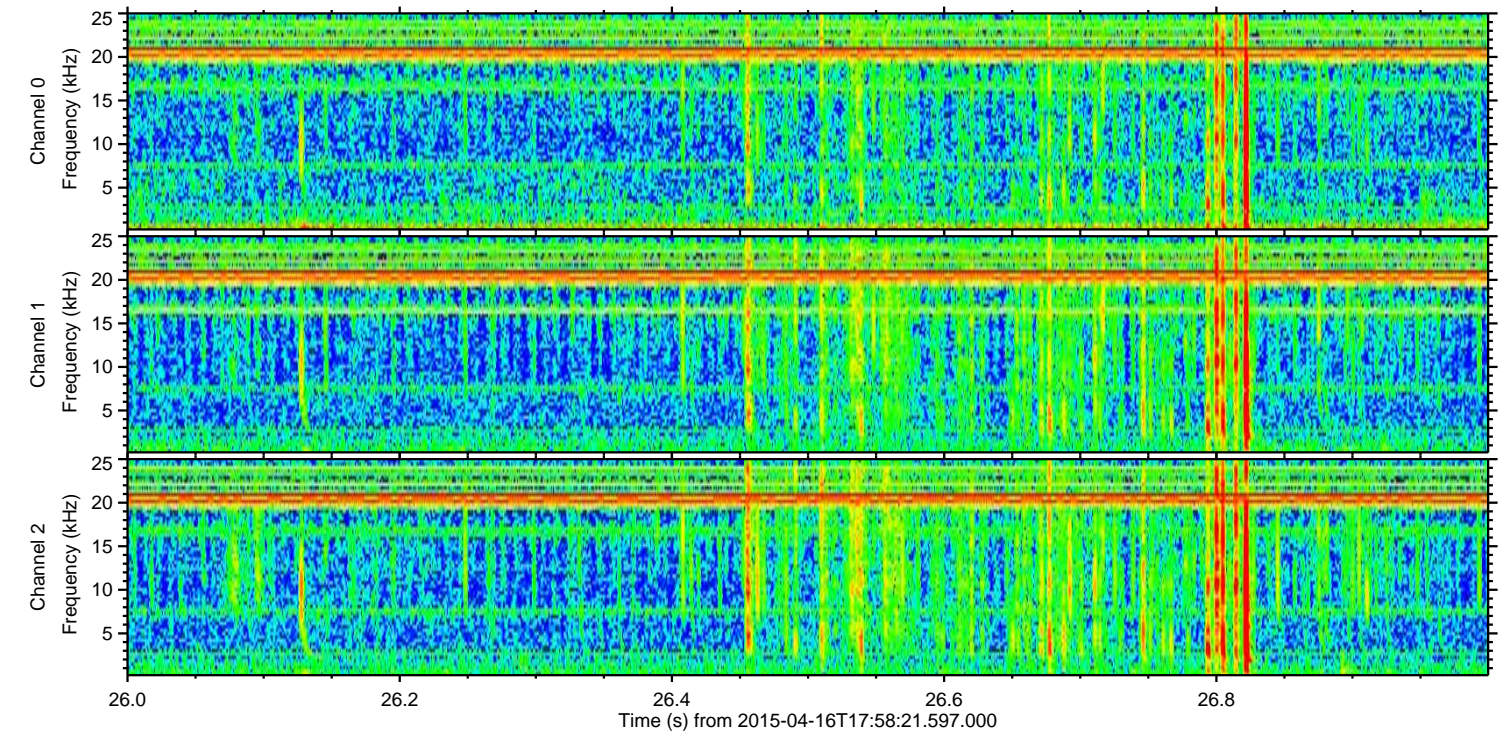
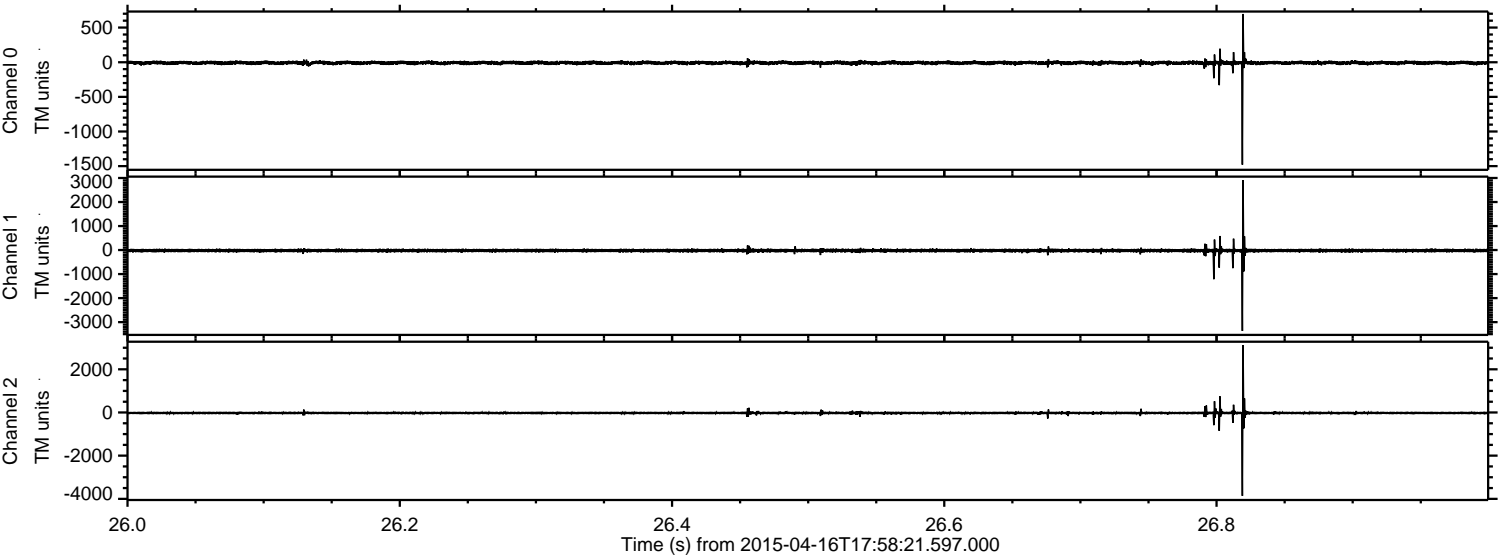


Processed Thu Apr 16 20:05:51 2015 by ELM ver.2012-10-06 from 001__elm20150416_175820__dat00.bin



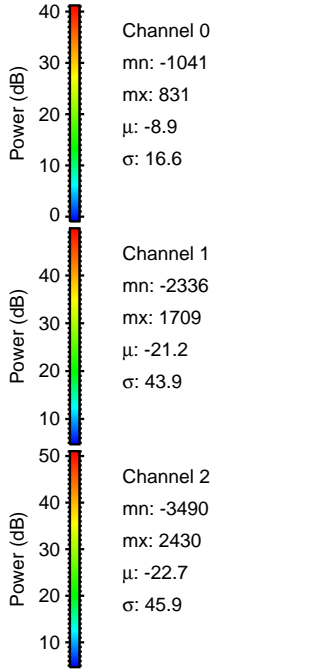
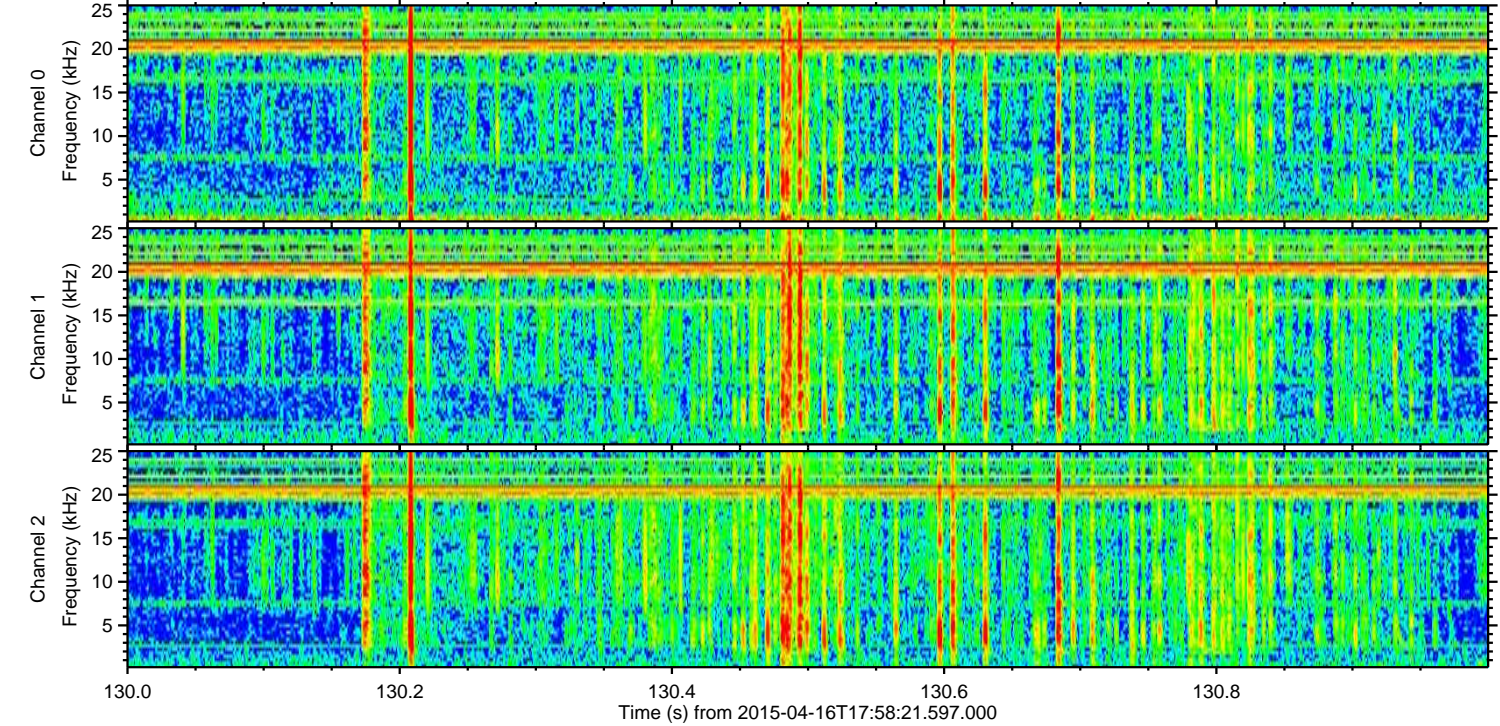
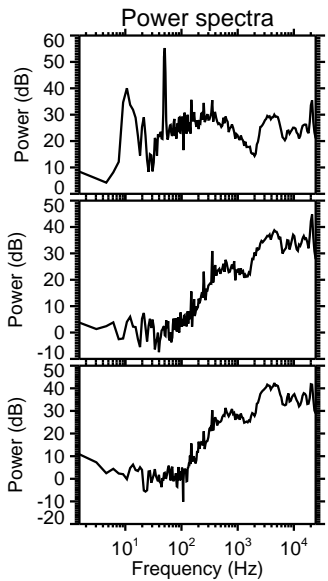
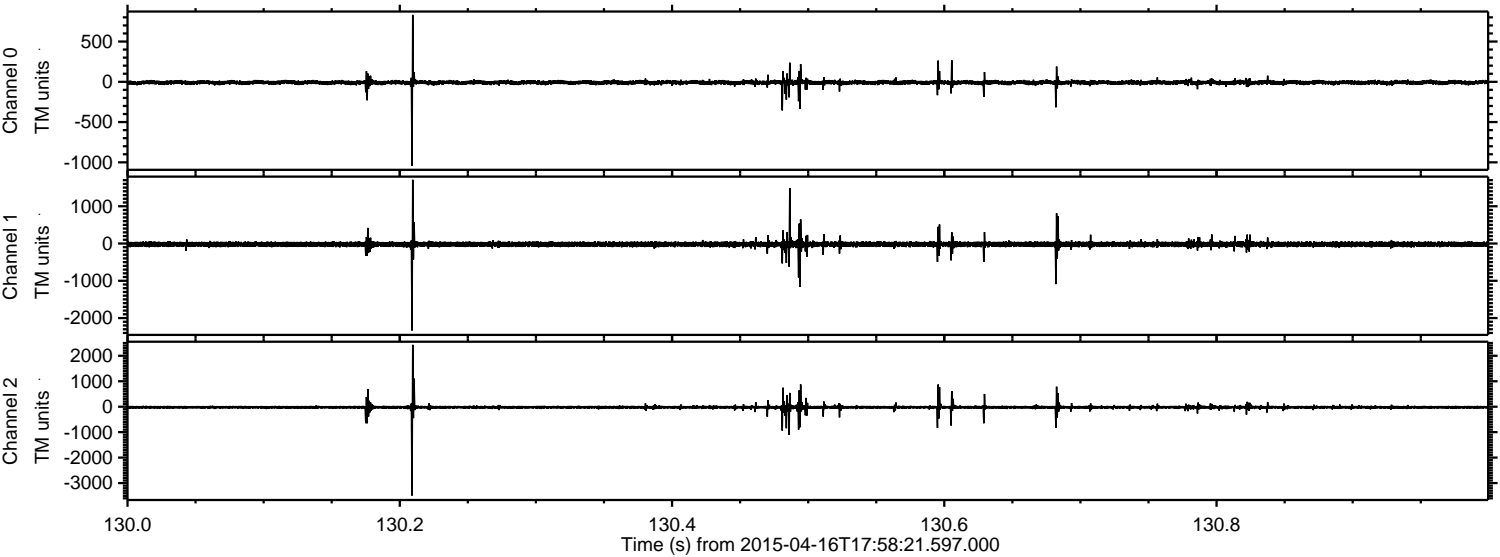
ELMAVAN 3D WAVEFORMS (Measured data sampled at 50 kHz) 49764 packets of 144 samples from 2015-04-16T17:58:21.597.000. Part 27/144

Processed Thu Apr 16 20:05:52 2015 by ELM ver.2012-10-06 from 001__elm20150416_175820__dat00.bin

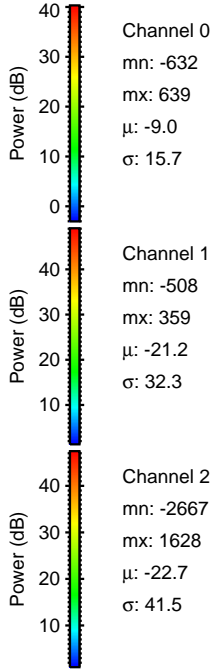
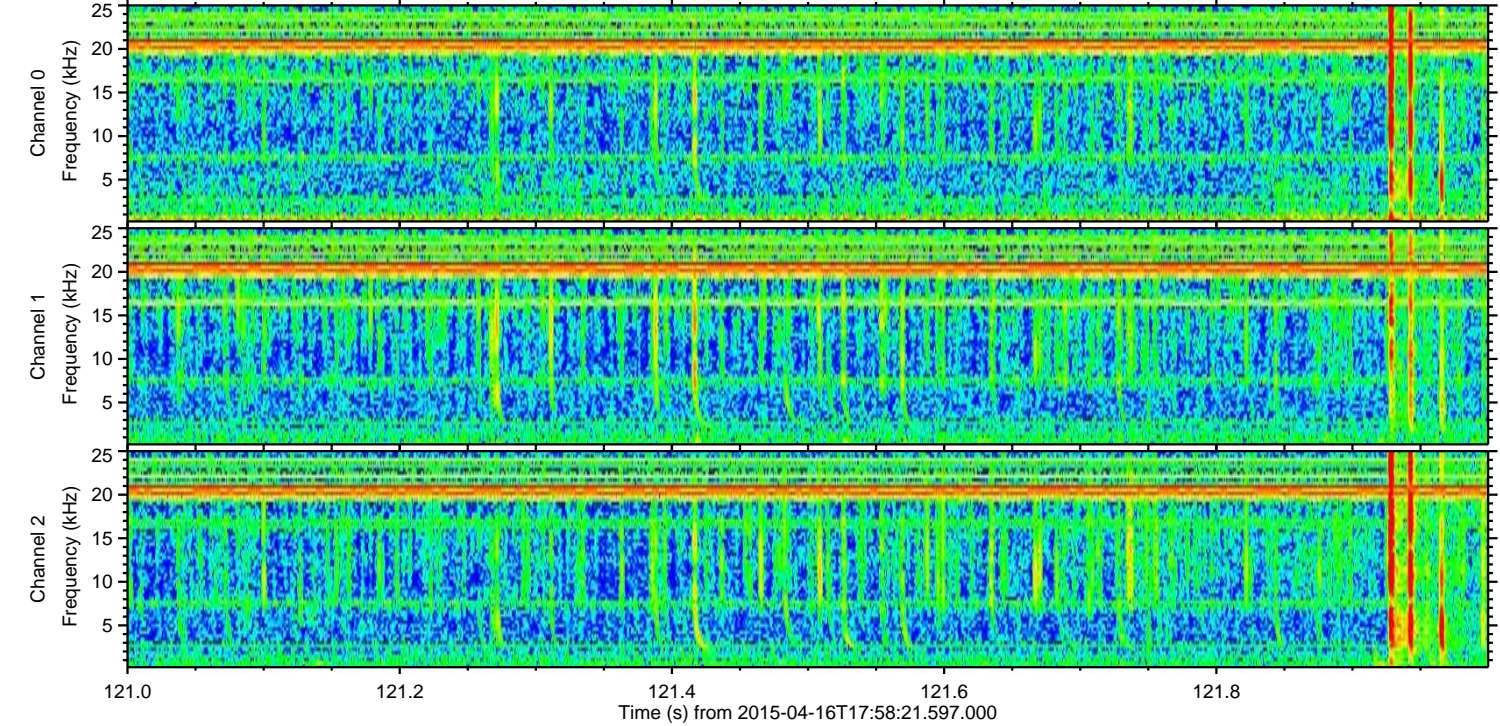
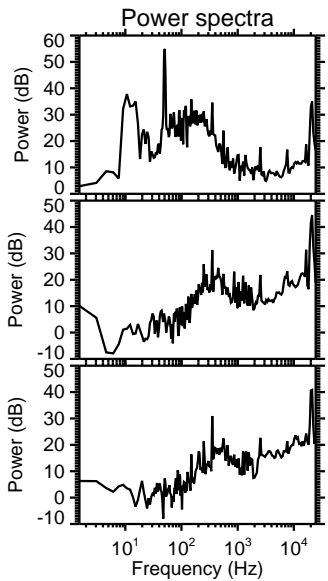
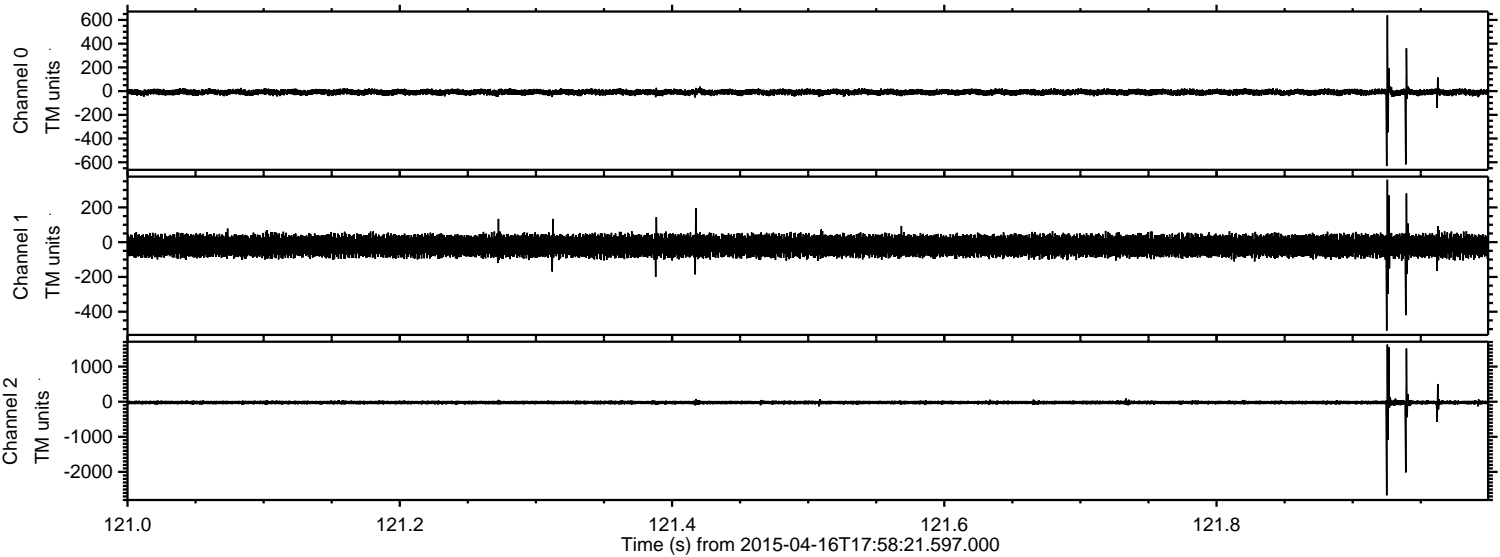


ELMAVAN 3D WAVEFORMS (Measured data sampled at 50 kHz) 49764 packets of 144 samples from 2015-04-16T17:58:21.597.000. Part 131/144

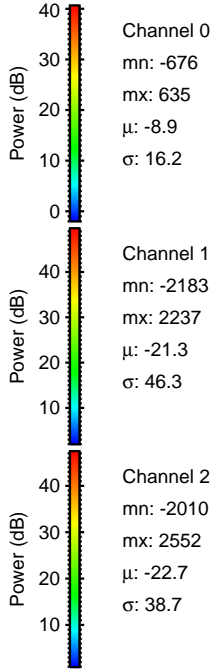
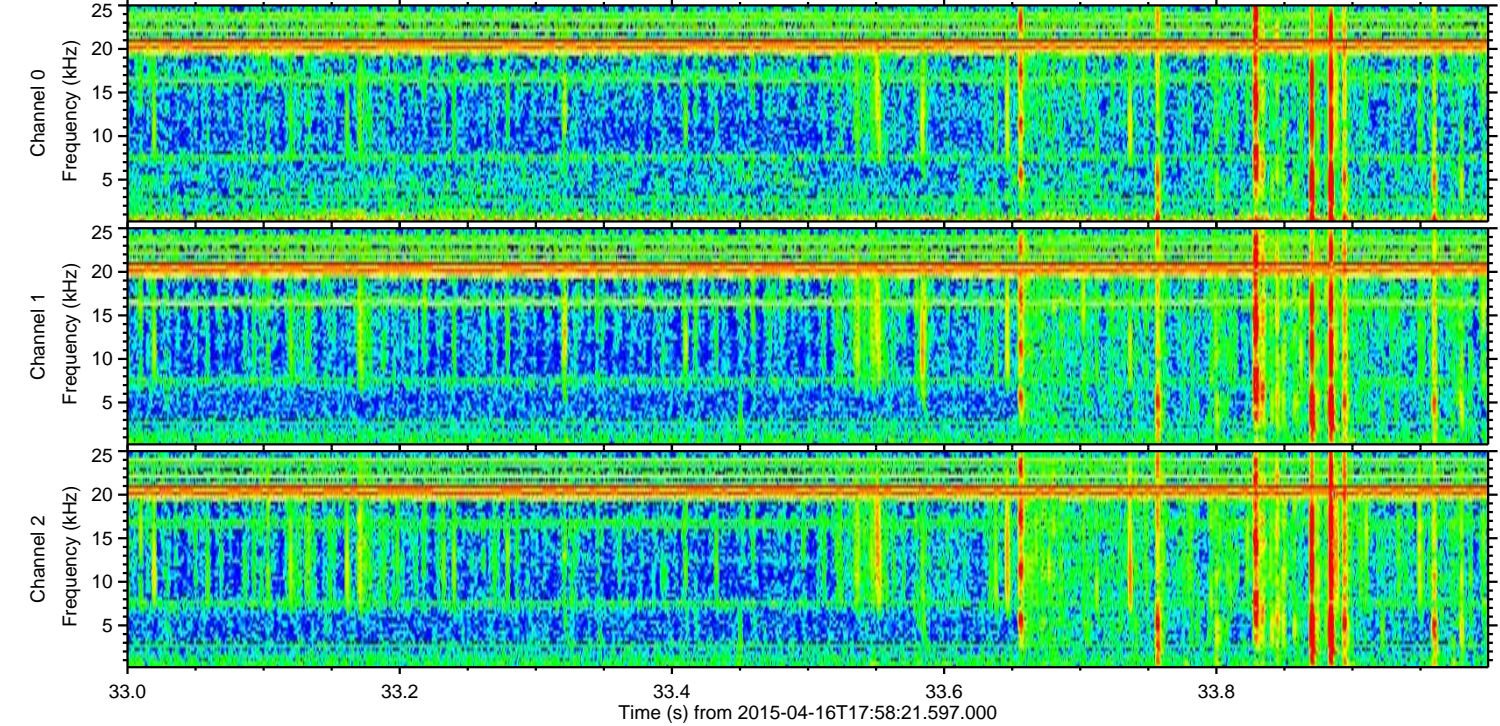
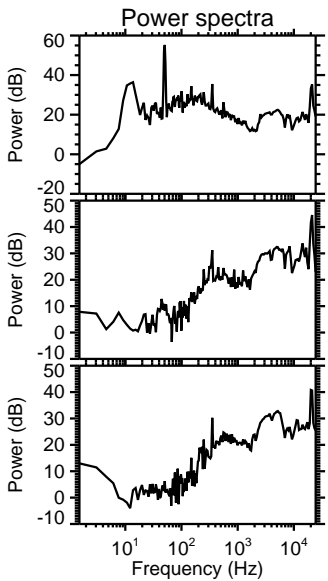
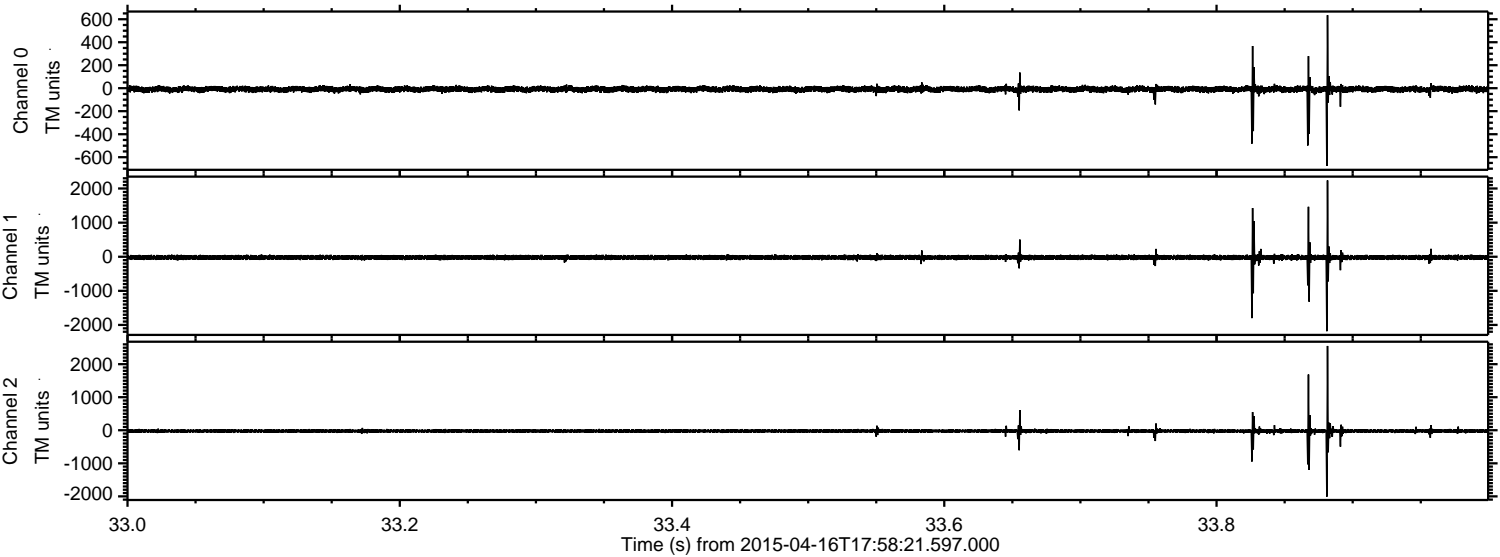
Processed Thu Apr 16 20:05:53 2015 by ELM ver.2012-10-06 from 001__elm20150416_175820__dat00.bin



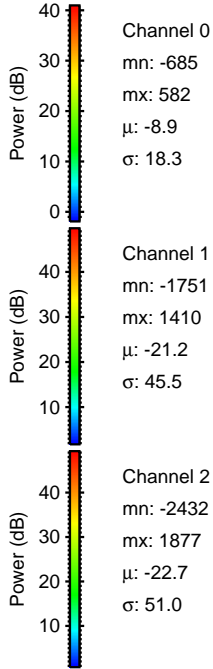
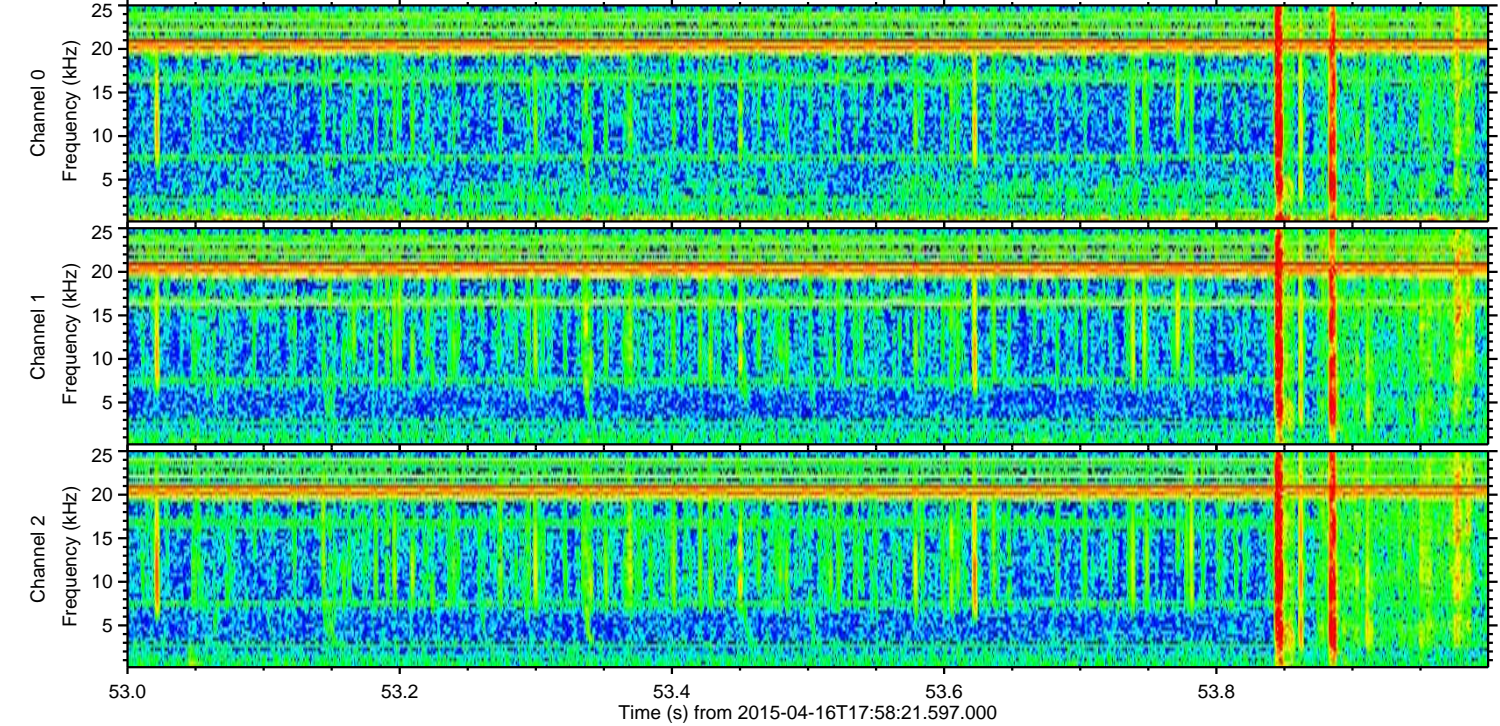
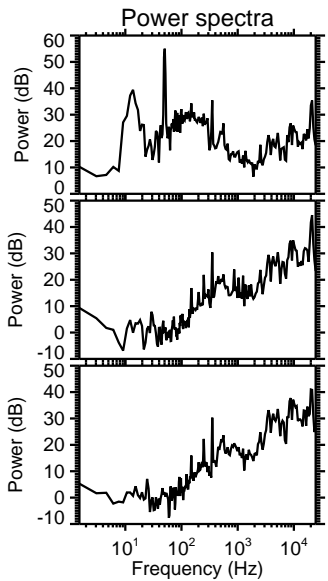
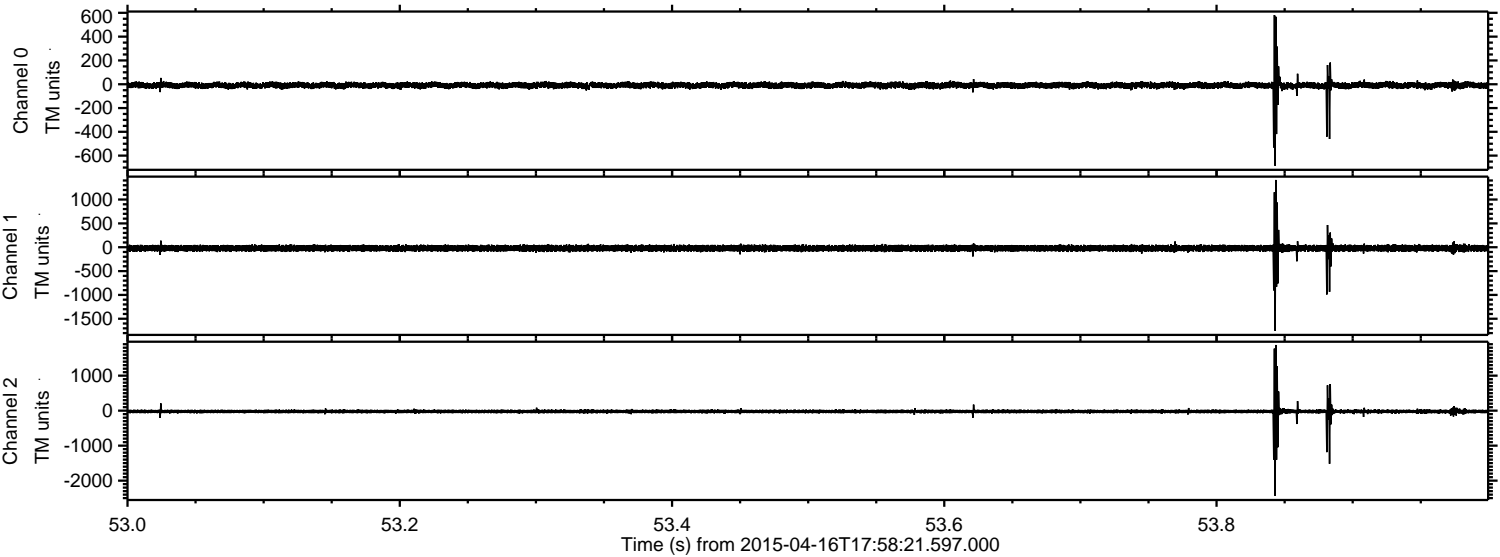
Processed Thu Apr 16 20:05:54 2015 by ELM ver.2012-10-06 from 001__elm20150416_175820__dat00.bin



Processed Thu Apr 16 20:05:55 2015 by ELM ver.2012-10-06 from 001__elm20150416_175820__dat00.bin

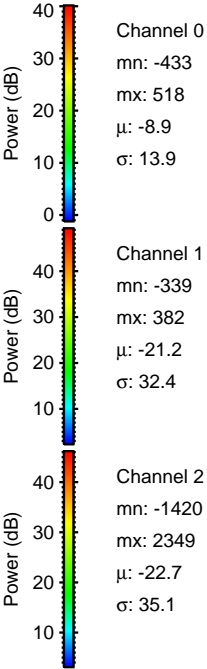
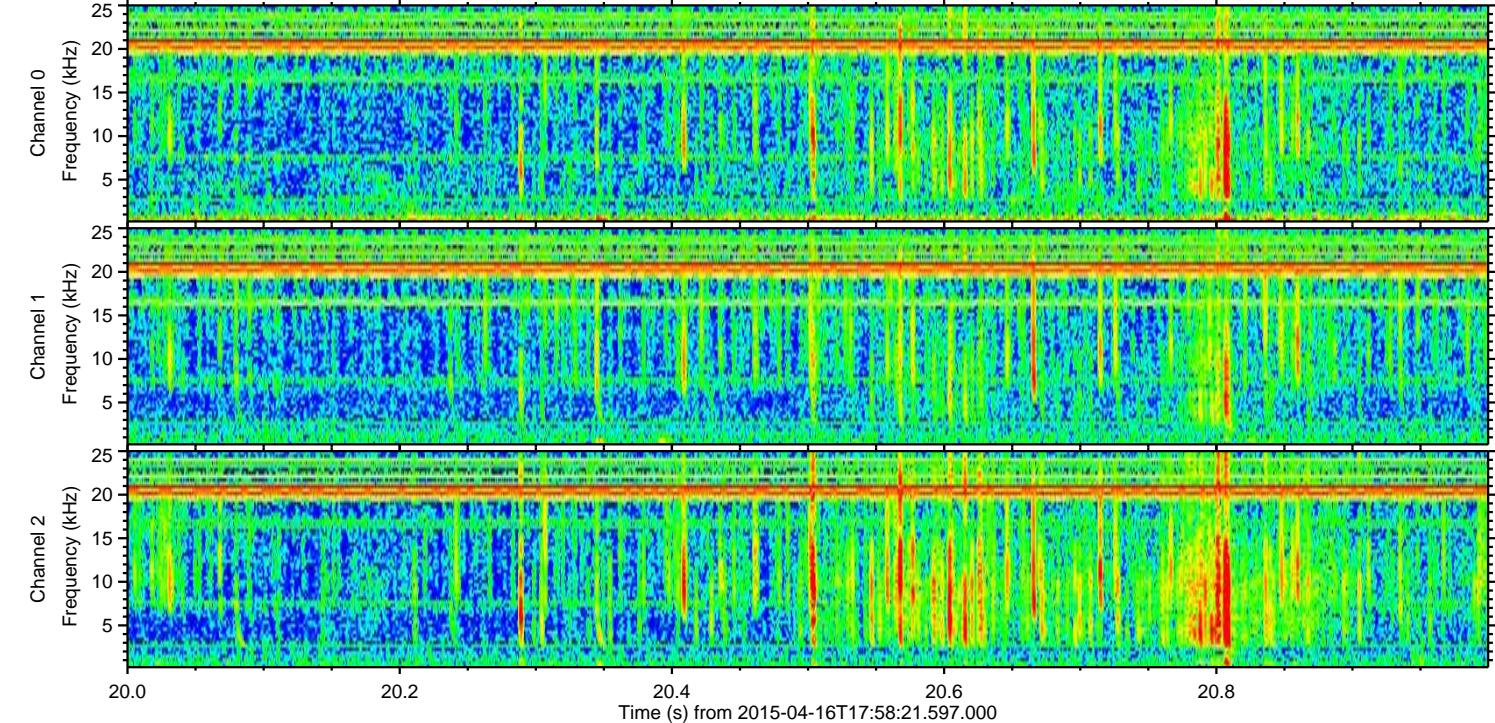
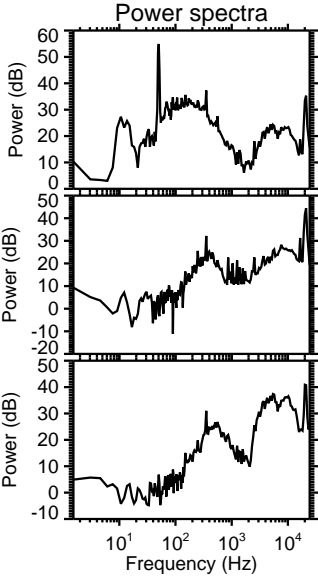
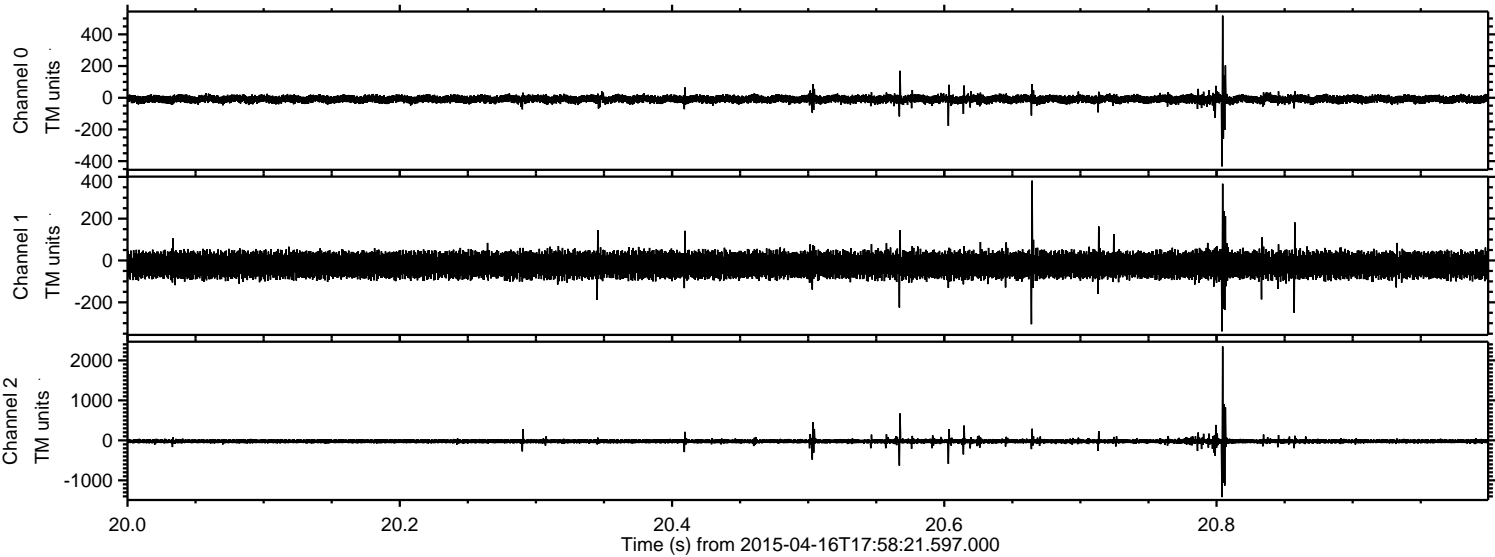


Processed Thu Apr 16 20:05:56 2015 by ELM ver.2012-10-06 from 001__elm20150416_175820__dat00.bin



ELMAVAN 3D WAVEFORMS (Measured data sampled at 50 kHz) 49764 packets of 144 samples from 2015-04-16T17:58:21.597.000. Part 21/144

Processed Thu Apr 16 20:05:57 2015 by ELM ver.2012-10-06 from 001__elm20150416_175820__dat00.bin



Channel 0
mn: -433
mx: 518
 μ : -8.9
 σ : 13.9

Channel 1
mn: -339
mx: 382
 μ : -21.2
 σ : 32.4

Channel 2
mn: -1420
mx: 2349
 μ : -22.7
 σ : 35.1

Processed Thu Apr 16 20:05:58 2015 by ELM ver.2012-10-06 from 001__elm20150416_175820__dat00.bin

