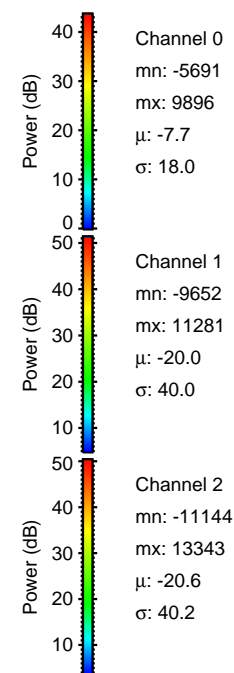
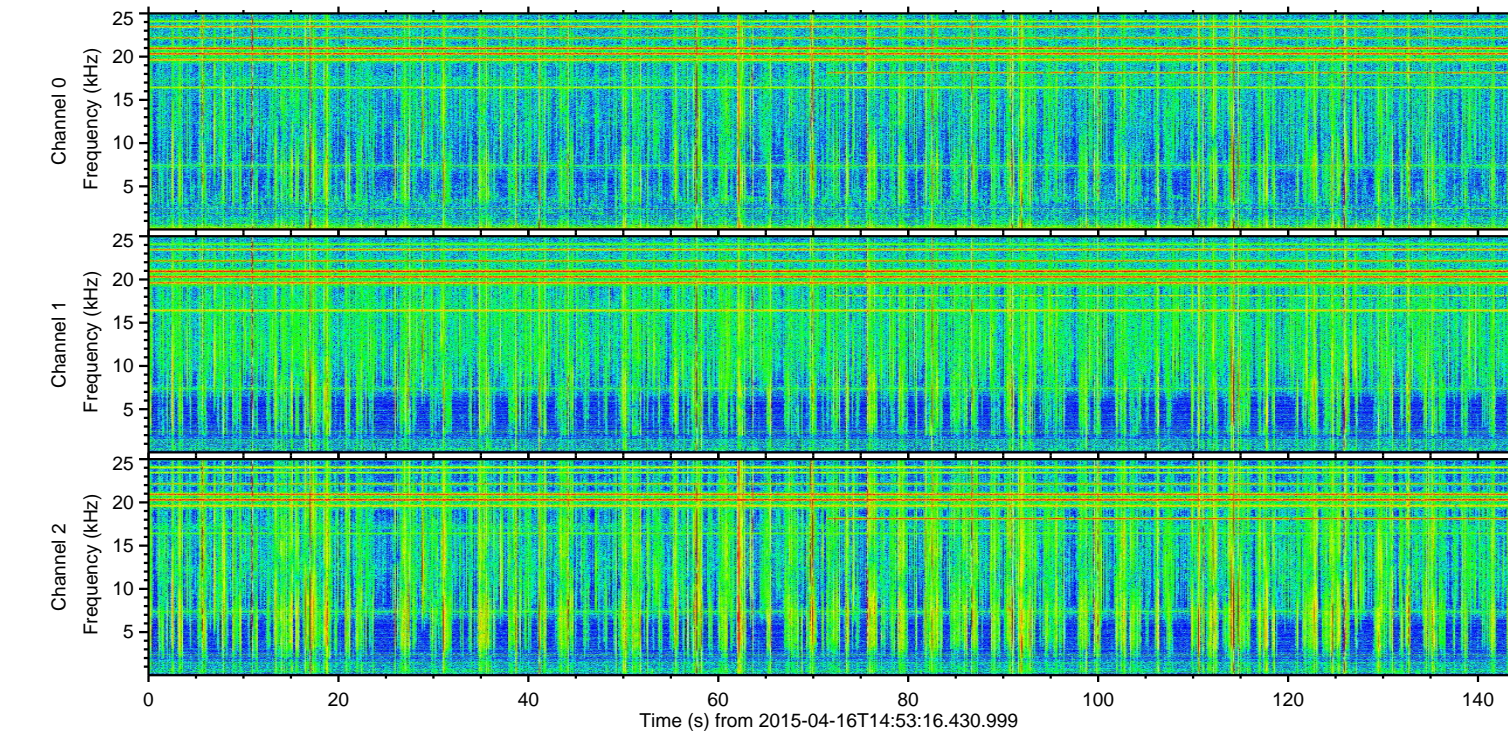
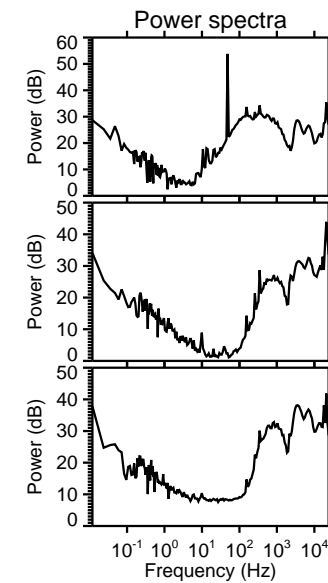
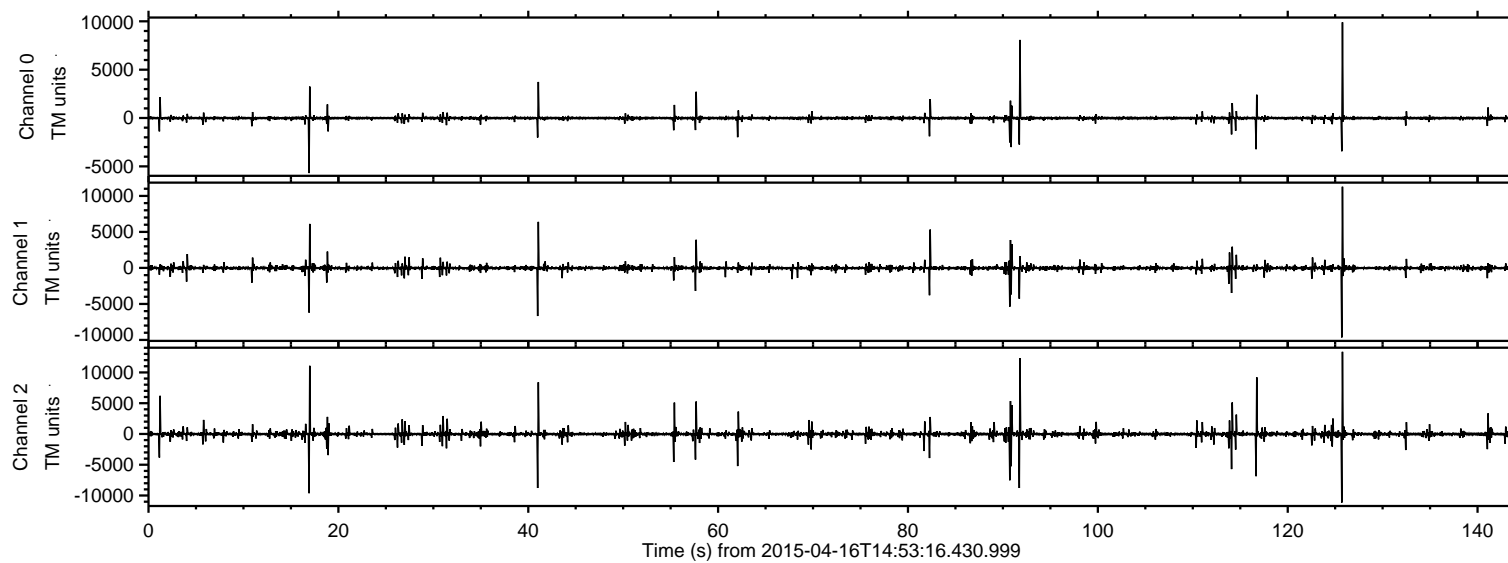


# ELMAVAN 3D WAVEFORMS (Measured data sampled at 50 kHz) 49766 packets of 144 samples from 2015-04-16T14:53:16.430.999.

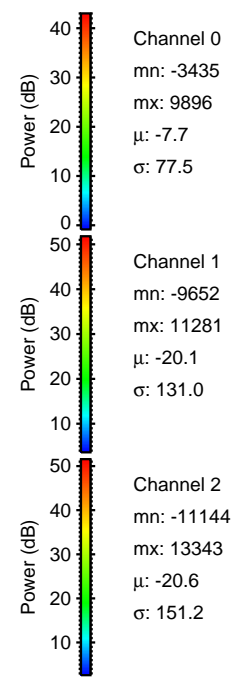
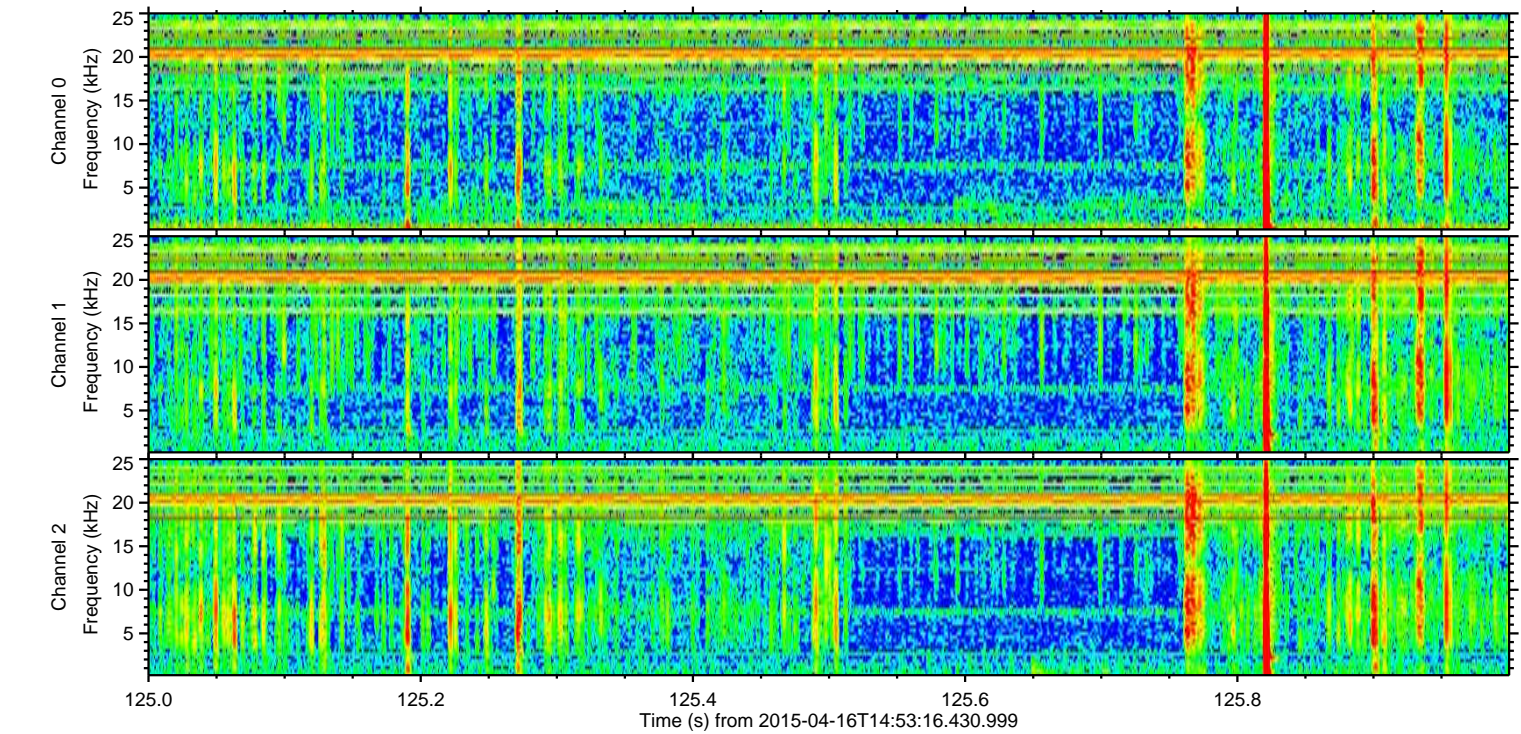
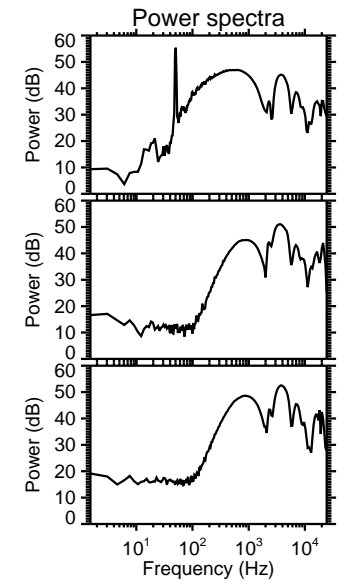
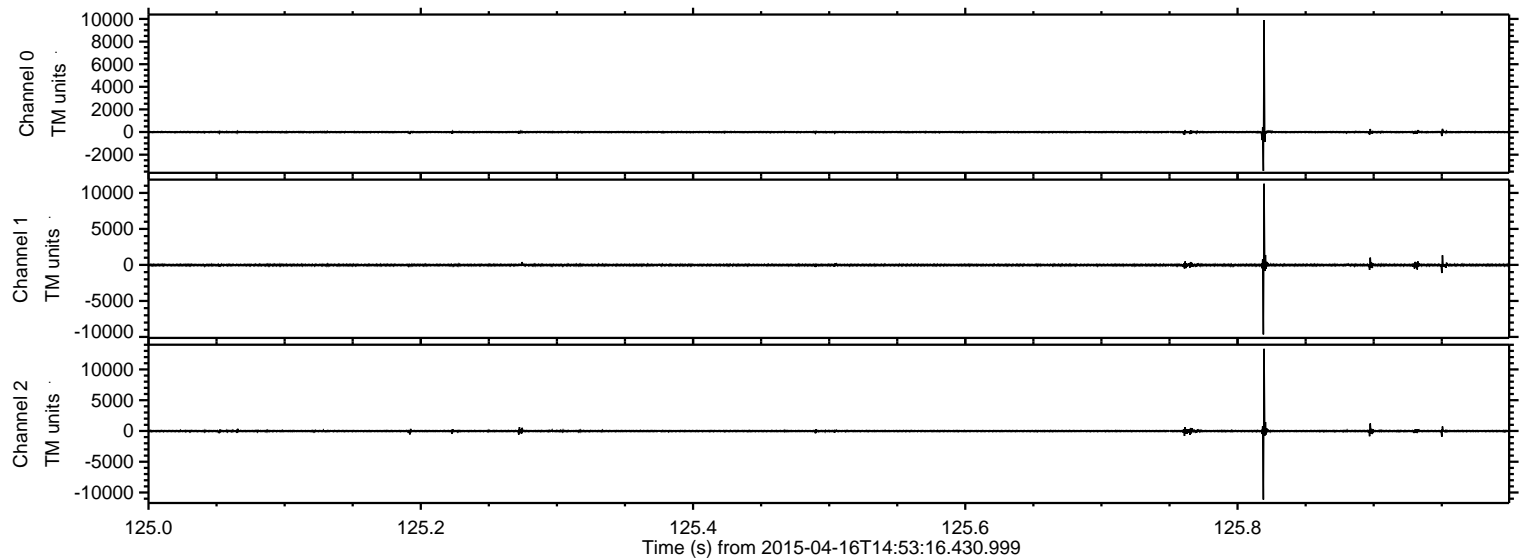
Processed Thu Apr 16 17:00:40 2015 by ELM ver.2012-10-06 from 001\_\_elm20150416\_145315\_\_dat00.bin





ELMAVAN 3D WAVEFORMS (Measured data sampled at 50 kHz) 49766 packets of 144 samples from 2015-04-16T14:53:16.430.999. Part 126/144

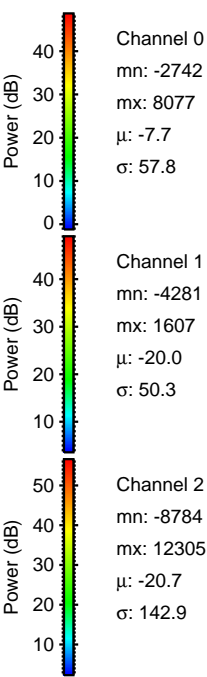
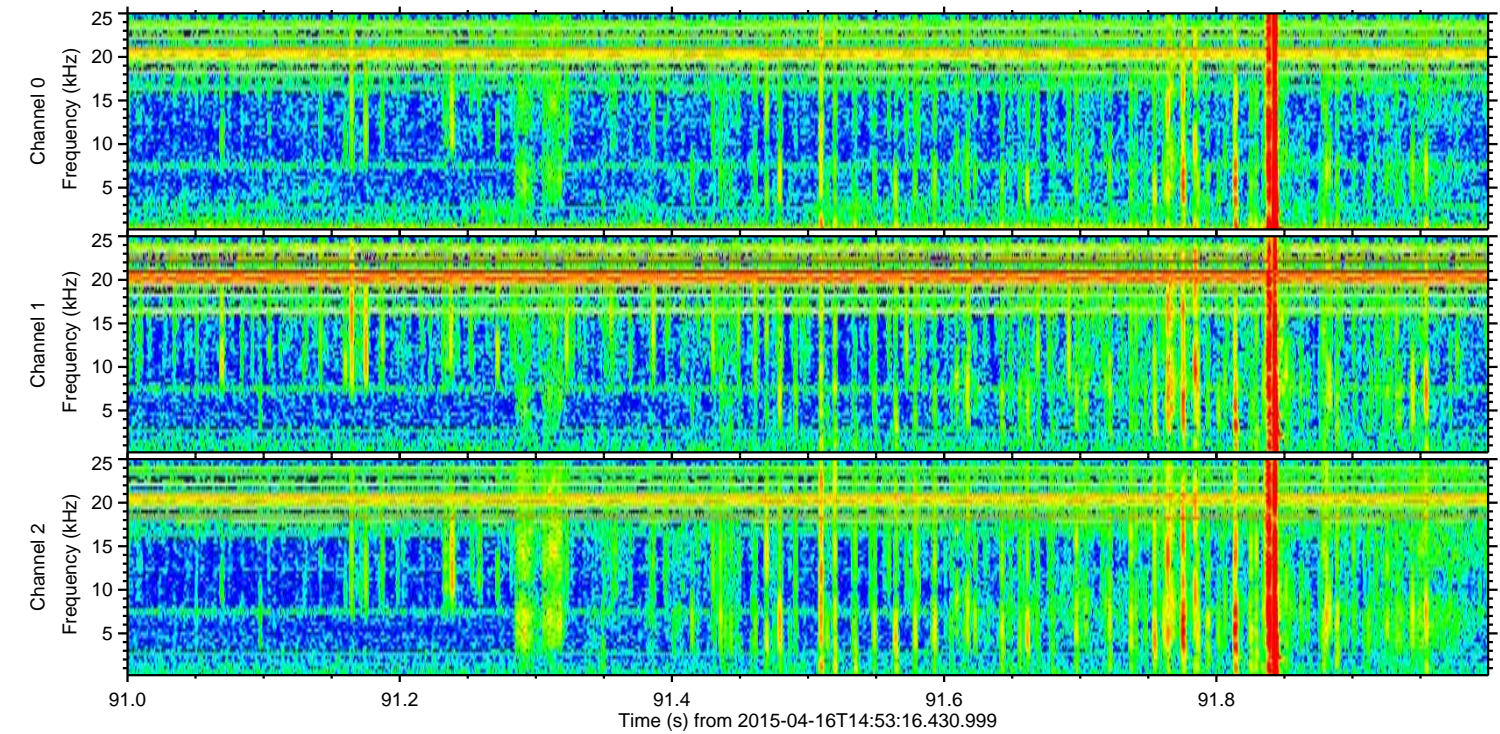
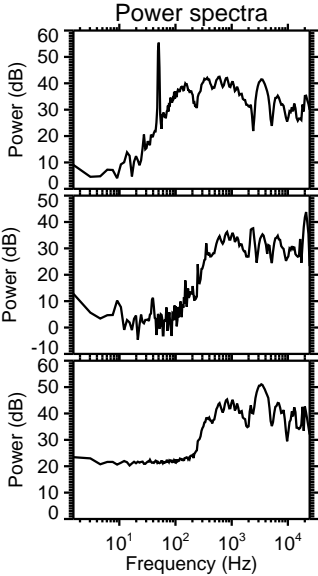
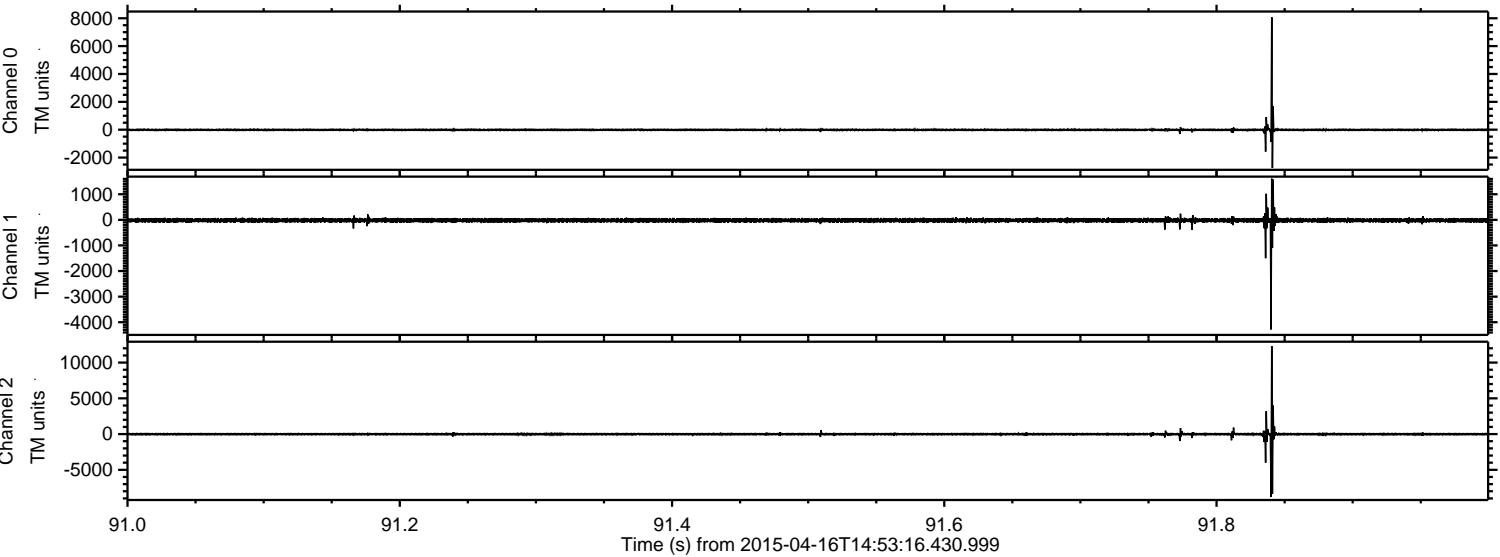
Processed Thu Apr 16 17:00:51 2015 by ELM ver.2012-10-06 from 001\_\_elm20150416\_145315\_\_dat00.bin





ELMAVAN 3D WAVEFORMS (Measured data sampled at 50 kHz) 49766 packets of 144 samples from 2015-04-16T14:53:16.430.999. Part 92/144

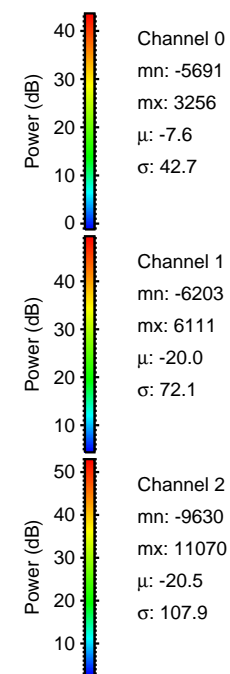
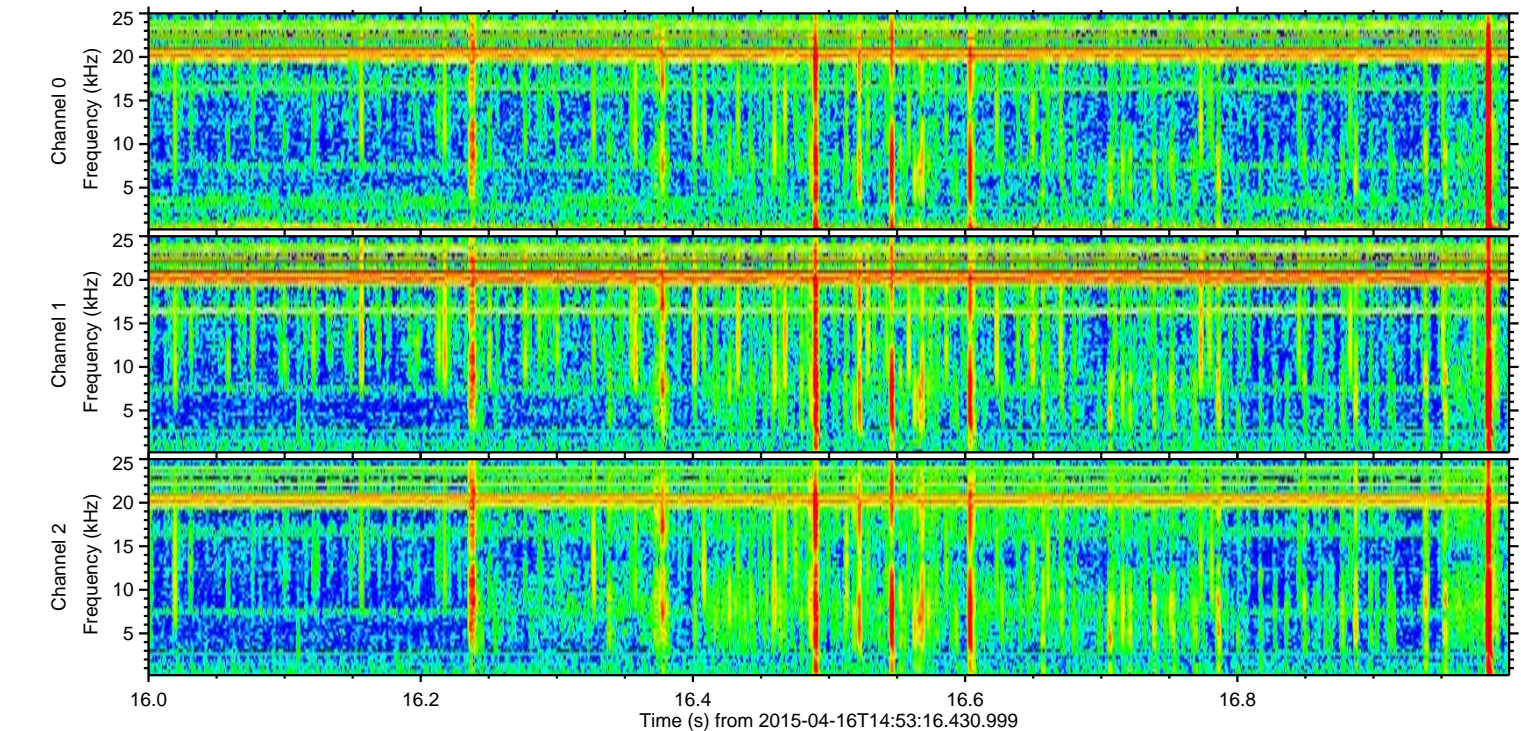
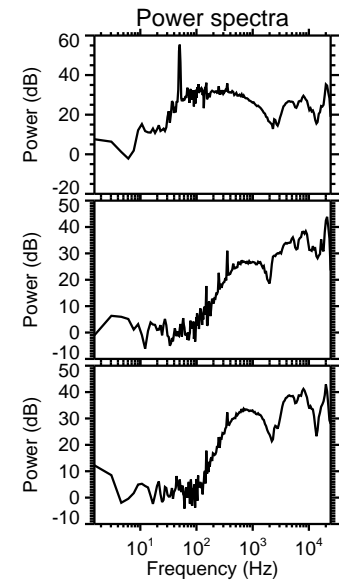
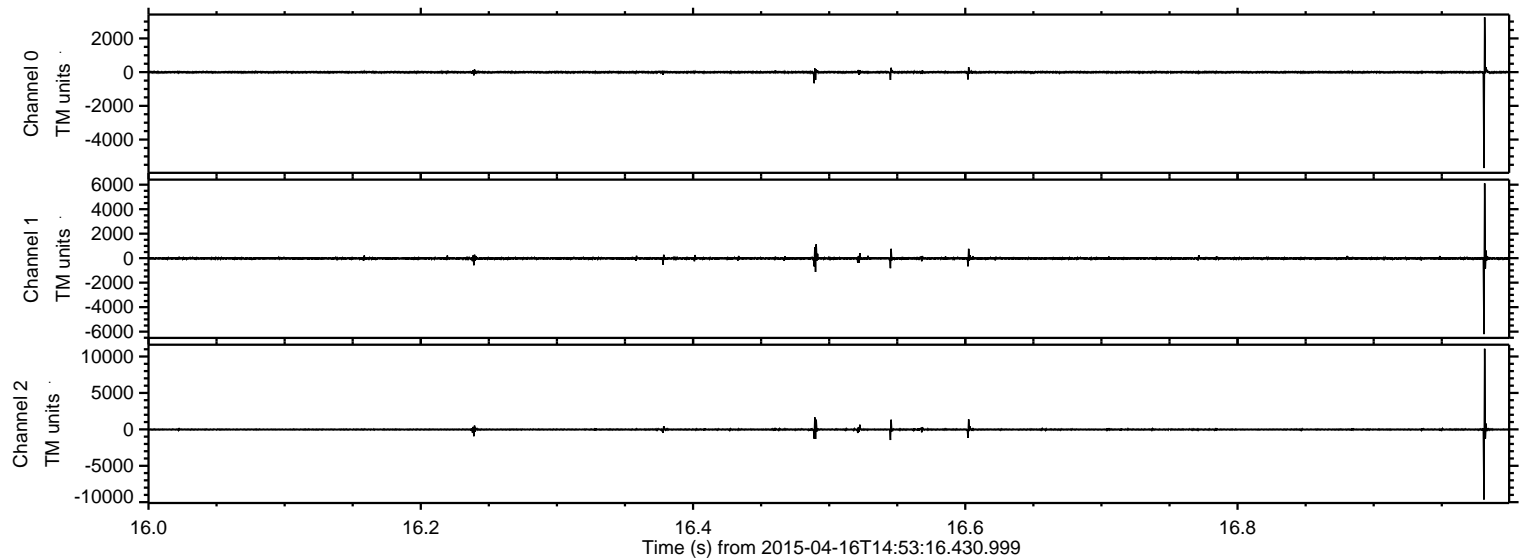
Processed Thu Apr 16 17:00:52 2015 by ELM ver.2012-10-06 from 001\_\_elm20150416\_145315\_\_dat00.bin





ELMAVAN 3D WAVEFORMS (Measured data sampled at 50 kHz) 49766 packets of 144 samples from 2015-04-16T14:53:16.430.999. Part 17/144

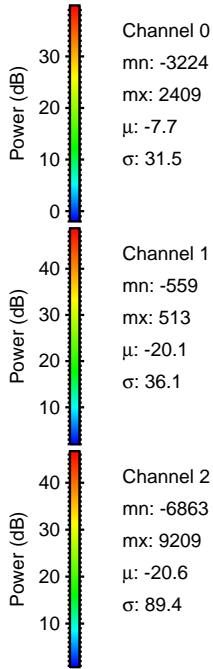
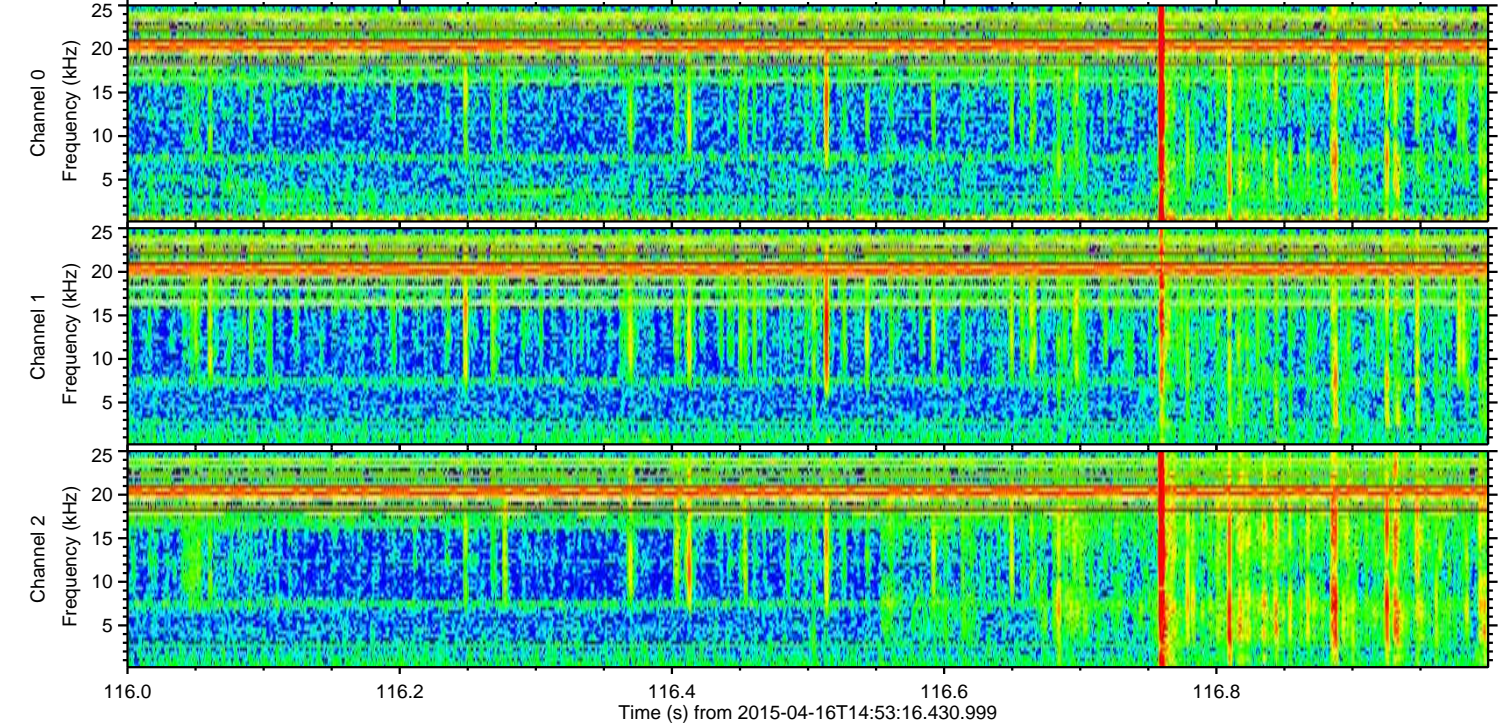
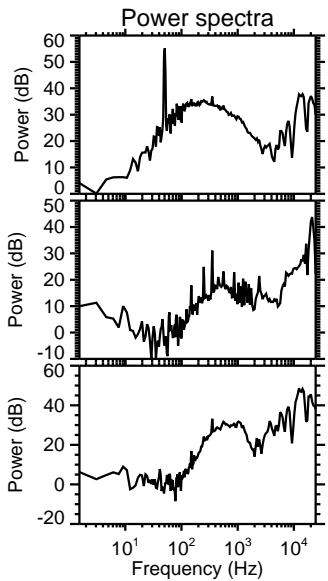
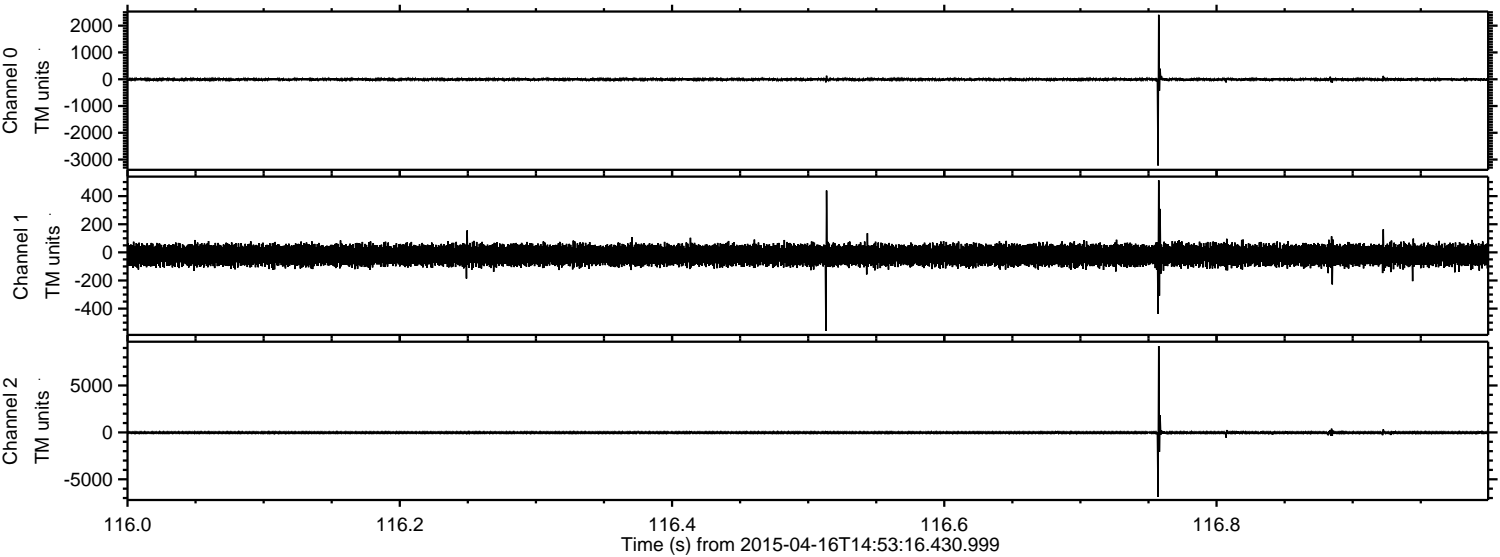
Processed Thu Apr 16 17:00:53 2015 by ELM ver.2012-10-06 from 001\_\_elm20150416\_145315\_\_dat00.bin





ELMAVAN 3D WAVEFORMS (Measured data sampled at 50 kHz) 49766 packets of 144 samples from 2015-04-16T14:53:16.430.999. Part 117/144

Processed Thu Apr 16 17:00:54 2015 by ELM ver.2012-10-06 from 001\_\_elm20150416\_145315\_\_dat00.bin



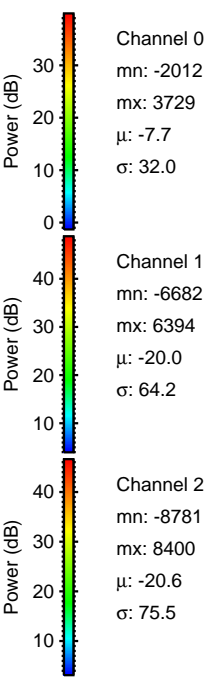
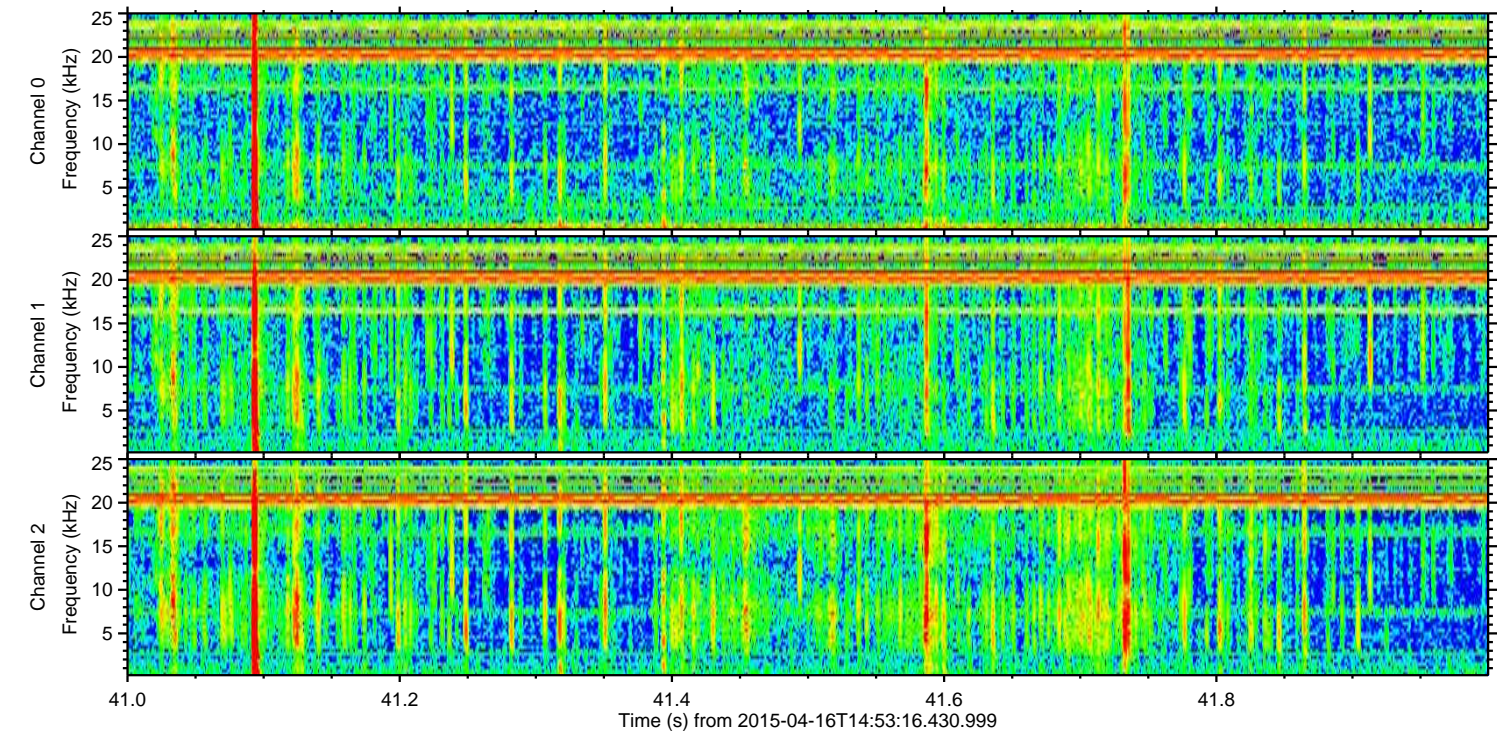
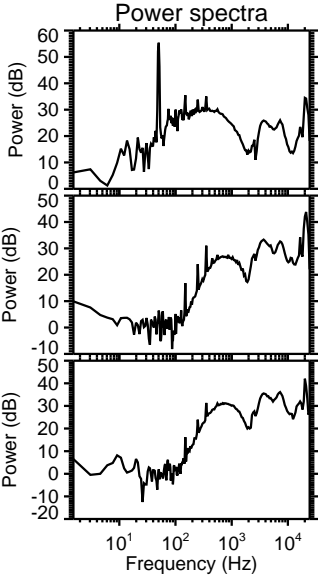
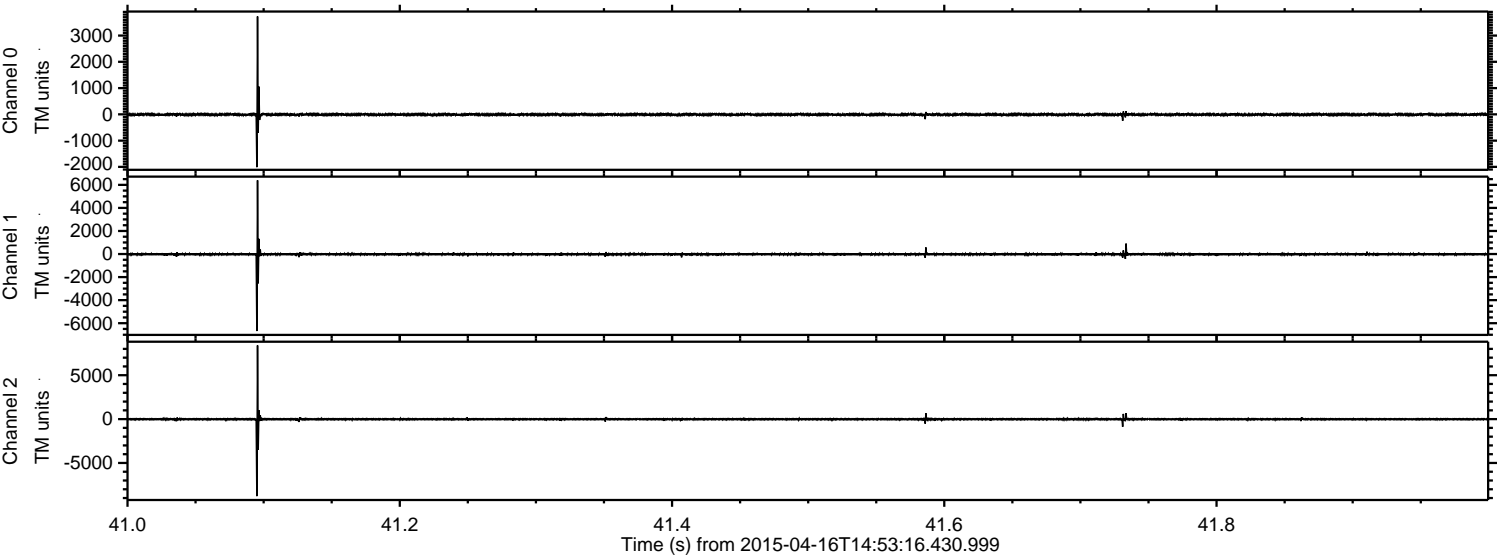
Channel 0  
mn: -3224  
mx: 2409  
 $\mu$ : -7.7  
 $\sigma$ : 31.5

Channel 1  
mn: -559  
mx: 513  
 $\mu$ : -20.1  
 $\sigma$ : 36.1

Channel 2  
mn: -6863  
mx: 9209  
 $\mu$ : -20.6  
 $\sigma$ : 89.4



Processed Thu Apr 16 17:00:55 2015 by ELM ver.2012-10-06 from 001\_\_elm20150416\_145315\_\_dat00.bin



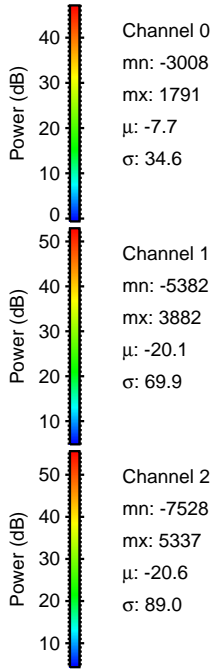
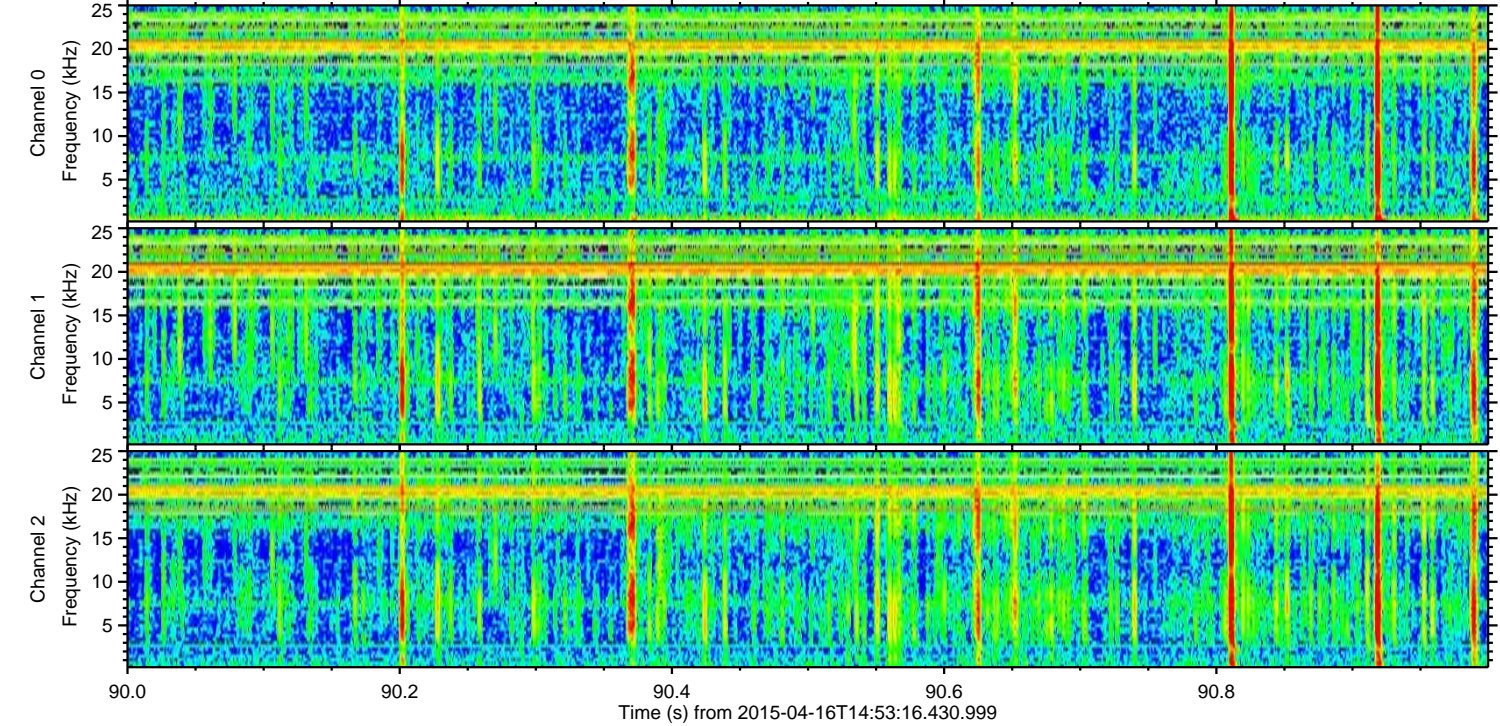
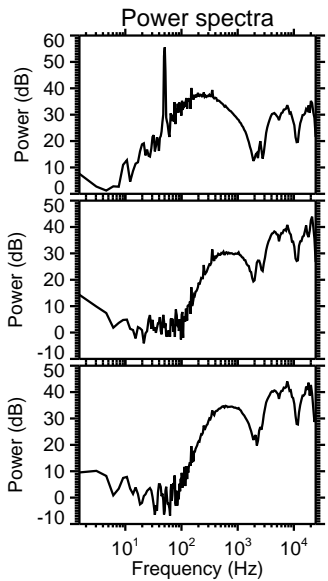
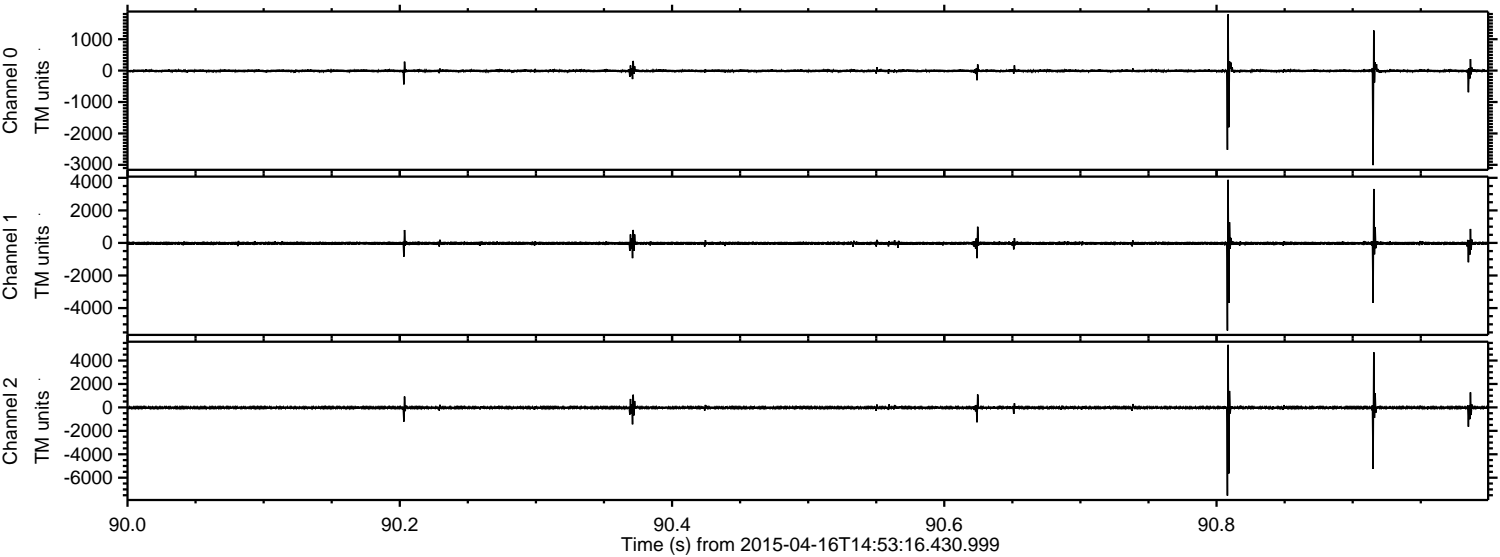
Channel 0  
mn: -2012  
mx: 3729  
 $\mu$ : -7.7  
 $\sigma$ : 32.0

Channel 1  
mn: -6682  
mx: 6394  
 $\mu$ : -20.0  
 $\sigma$ : 64.2

Channel 2  
mn: -8781  
mx: 8400  
 $\mu$ : -20.6  
 $\sigma$ : 75.5

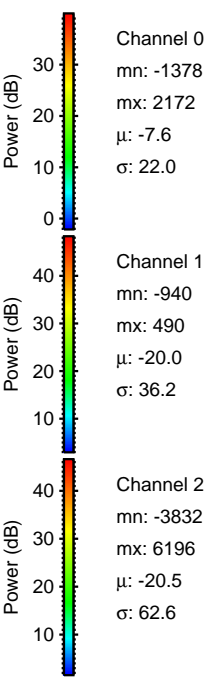
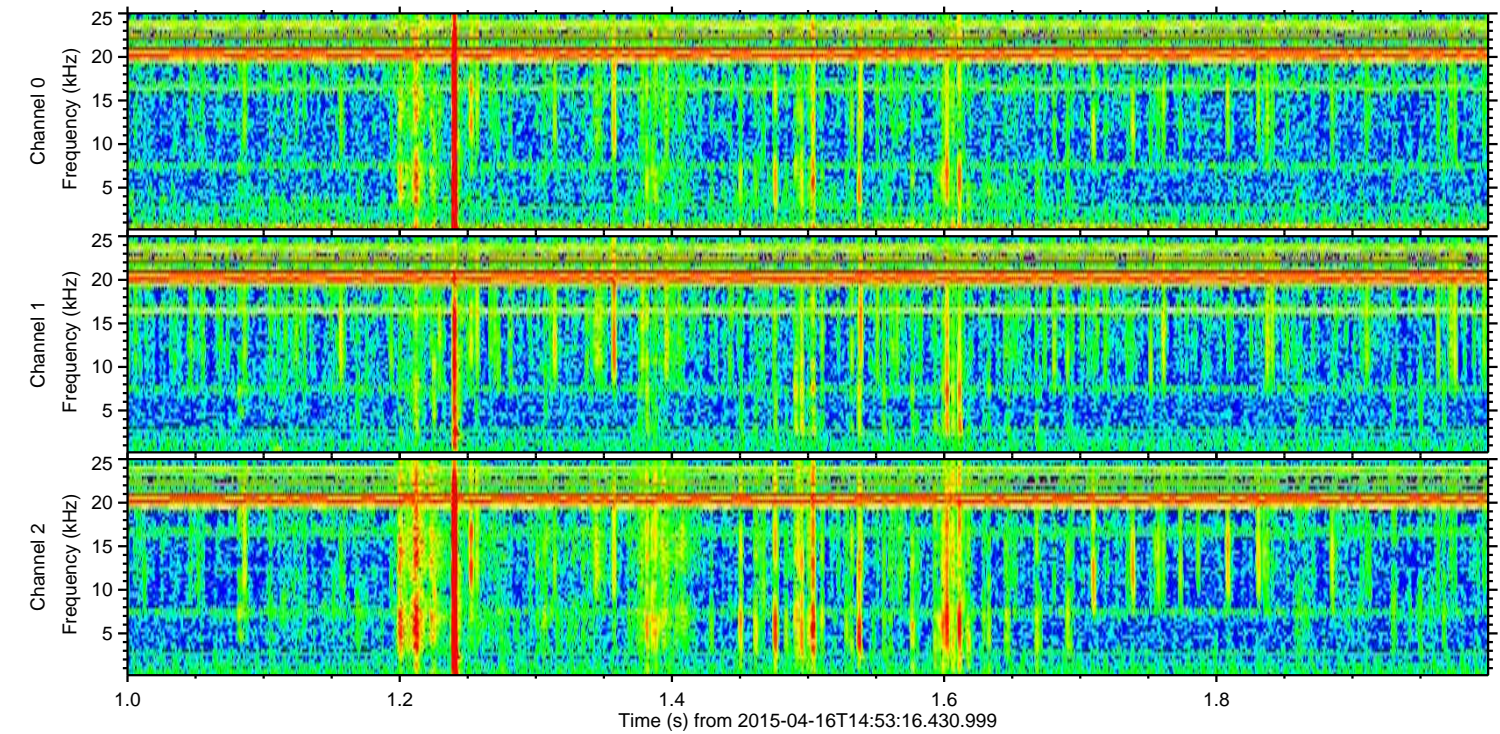
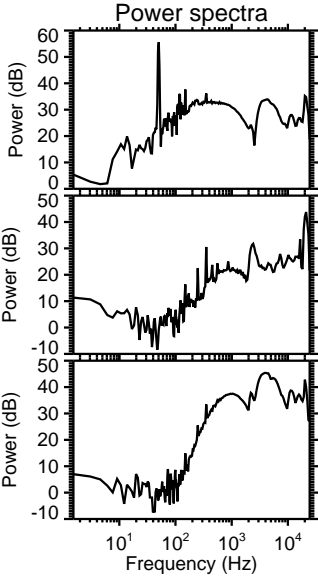
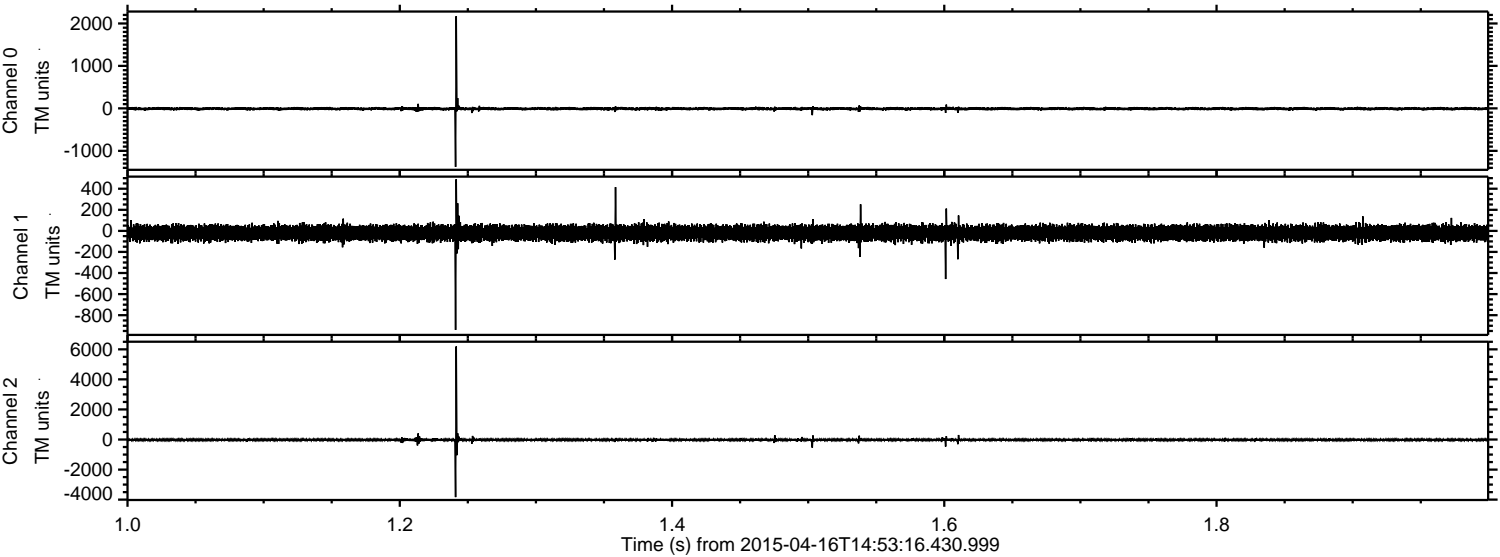


Processed Thu Apr 16 17:00:56 2015 by ELM ver.2012-10-06 from 001\_\_elm20150416\_145315\_\_dat00.bin





Processed Thu Apr 16 17:00:57 2015 by ELM ver.2012-10-06 from 001\_\_elm20150416\_145315\_\_dat00.bin



Channel 0  
mn: -1378  
mx: 2172  
 $\mu$ : -7.6  
 $\sigma$ : 22.0

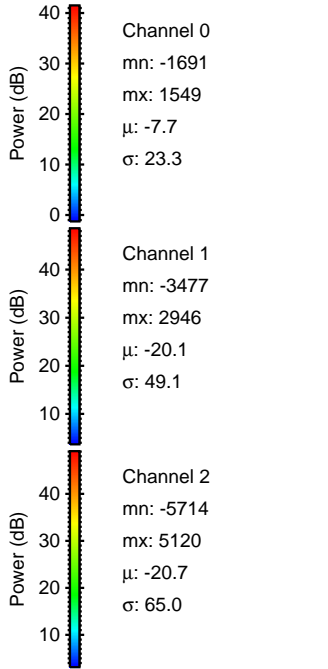
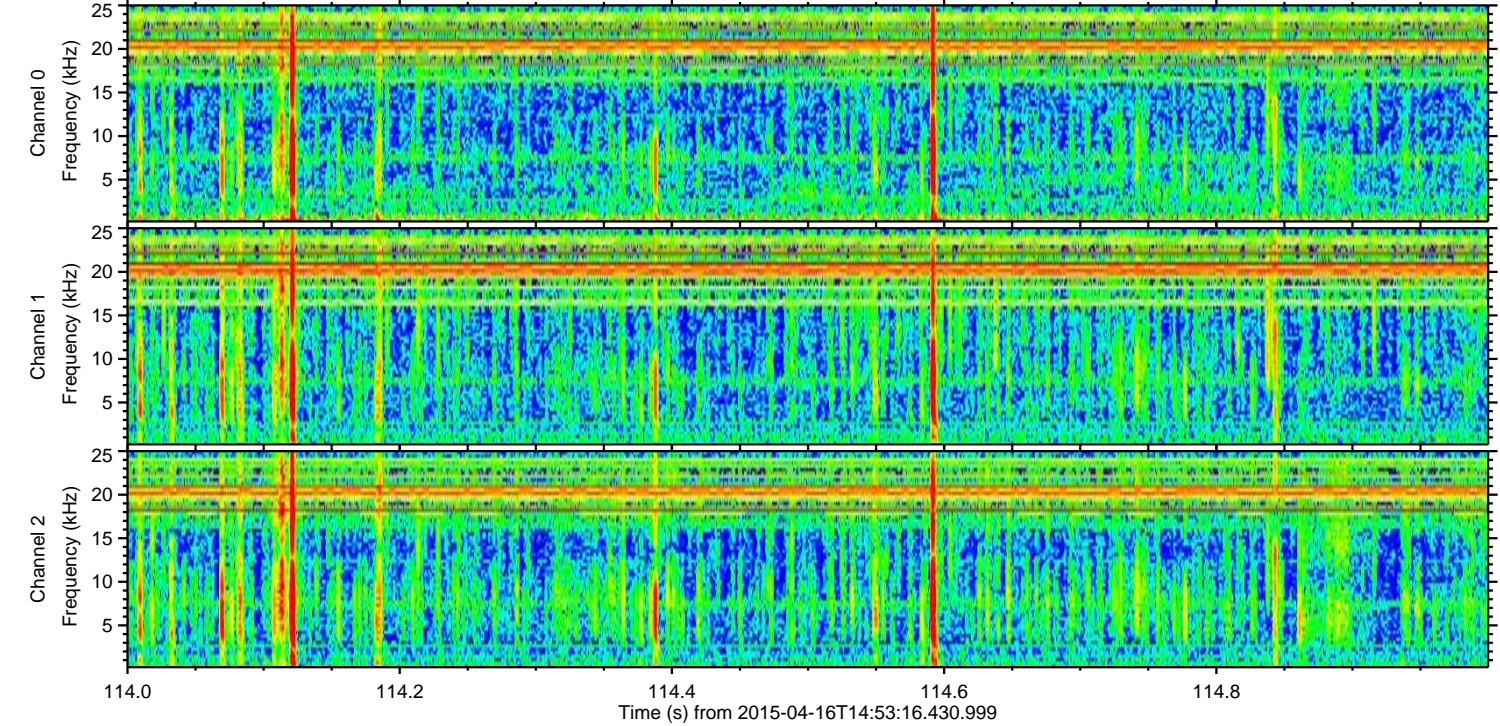
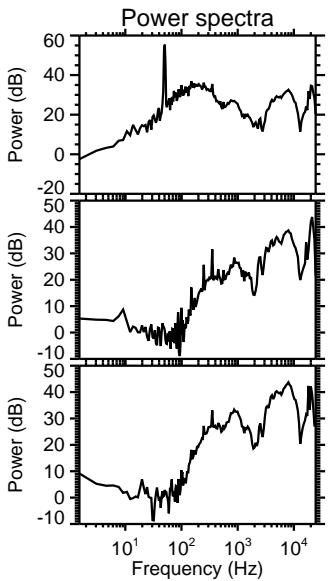
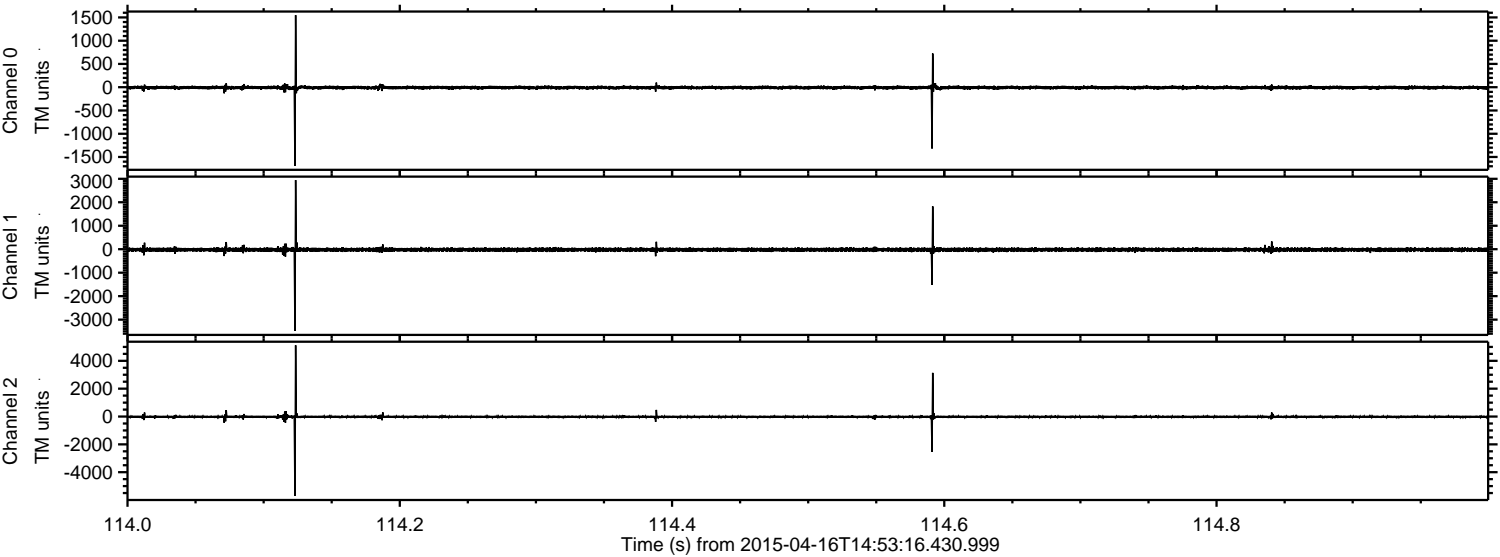
Channel 1  
mn: -940  
mx: 490  
 $\mu$ : -20.0  
 $\sigma$ : 36.2

Channel 2  
mn: -3832  
mx: 6196  
 $\mu$ : -20.5  
 $\sigma$ : 62.6



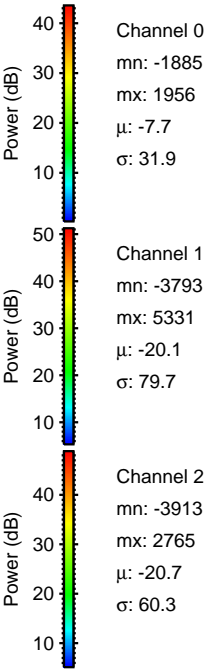
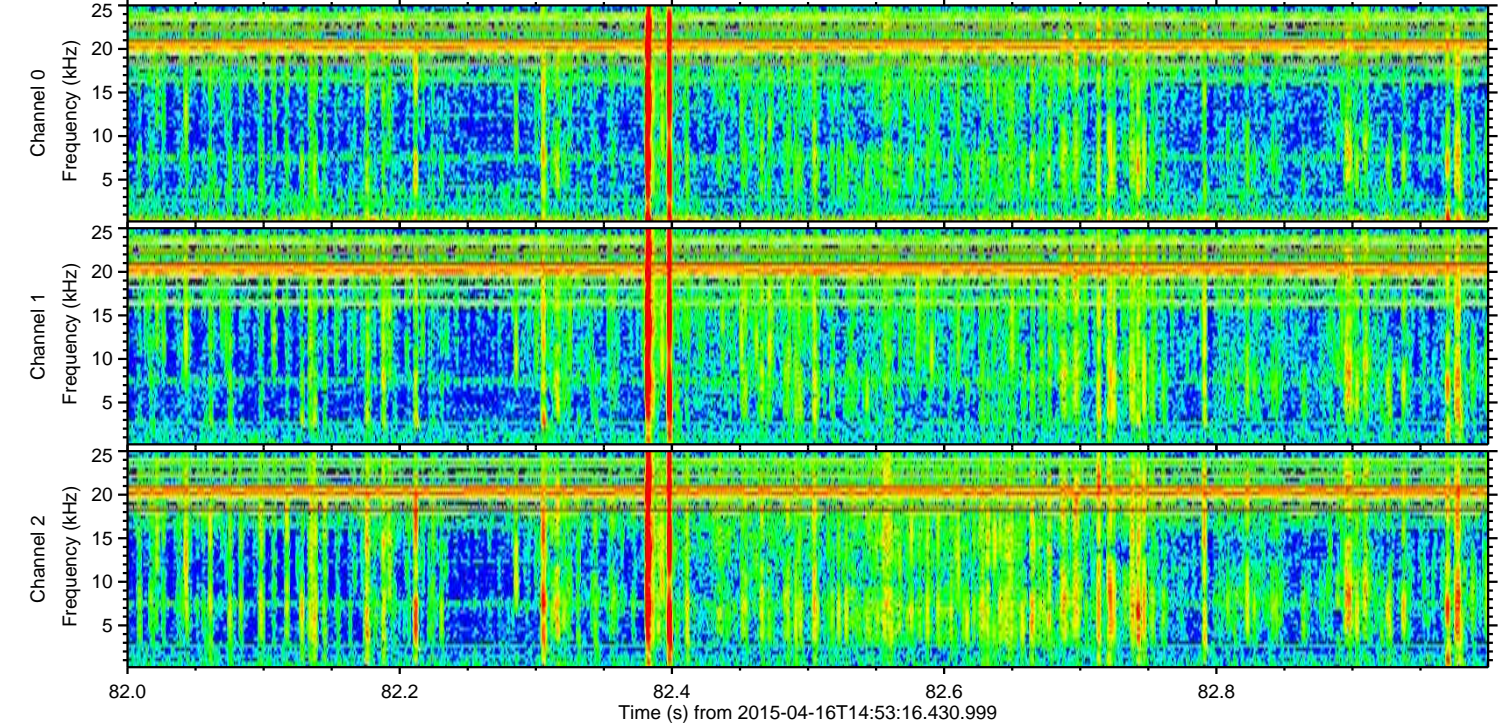
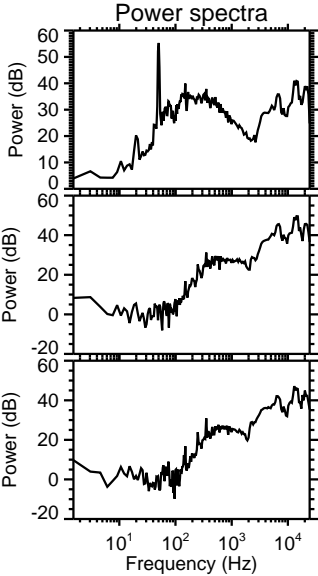
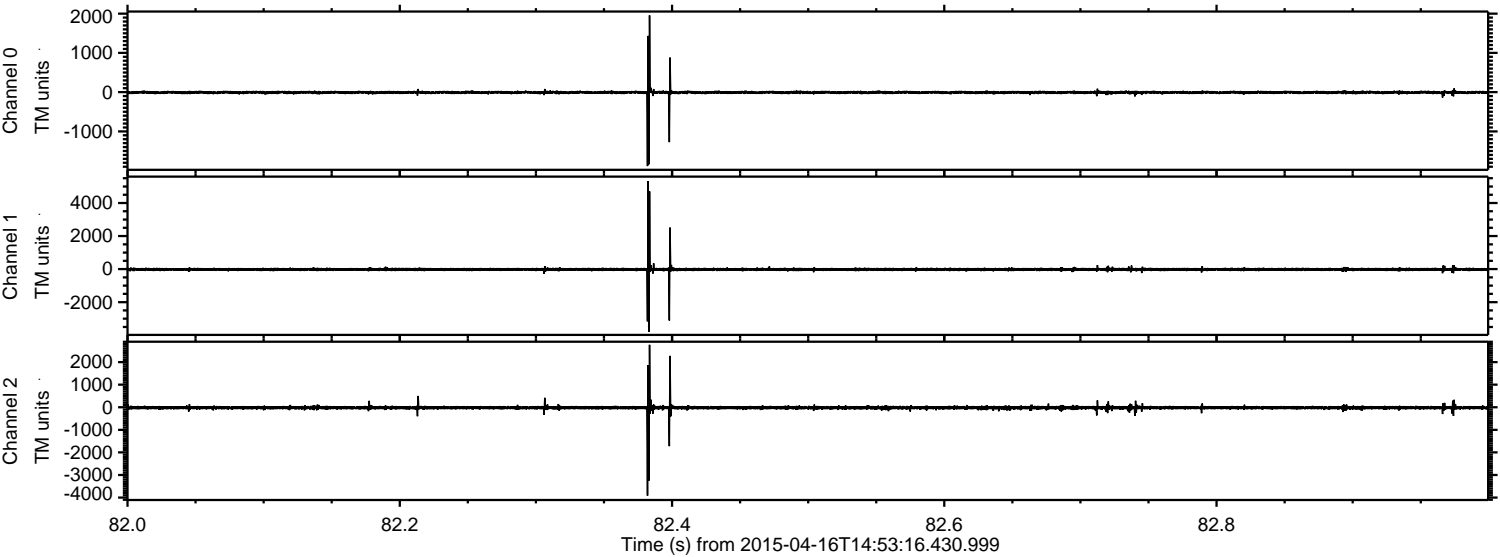
ELMAVAN 3D WAVEFORMS (Measured data sampled at 50 kHz) 49766 packets of 144 samples from 2015-04-16T14:53:16.430.999. Part 115/144

Processed Thu Apr 16 17:00:58 2015 by ELM ver.2012-10-06 from 001\_\_elm20150416\_145315\_\_dat00.bin





Processed Thu Apr 16 17:00:59 2015 by ELM ver.2012-10-06 from 001\_\_elm20150416\_145315\_\_dat00.bin





ELMAVAN 3D WAVEFORMS (Measured data sampled at 50 kHz) 49766 packets of 144 samples from 2015-04-16T14:53:16.430.999. Part 129/144

