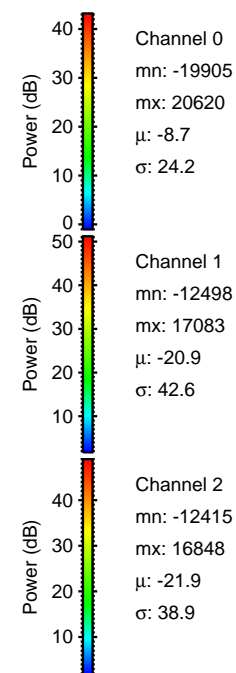
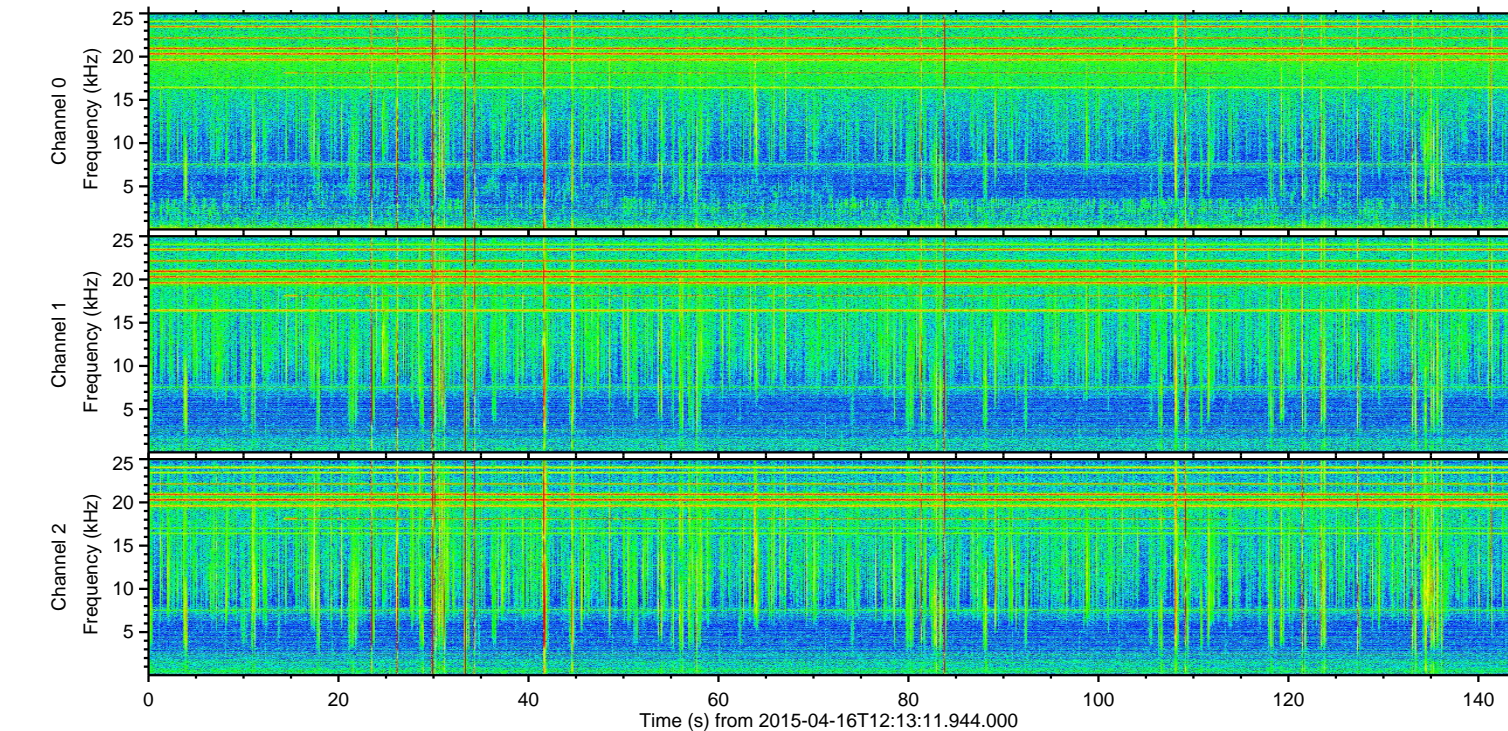
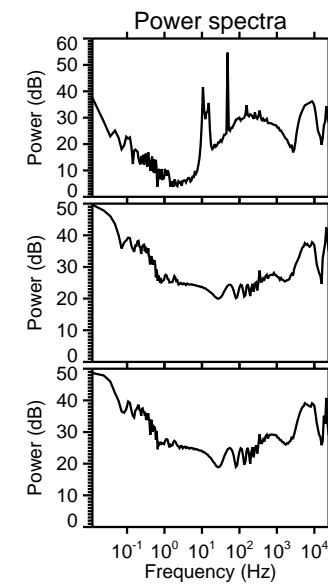
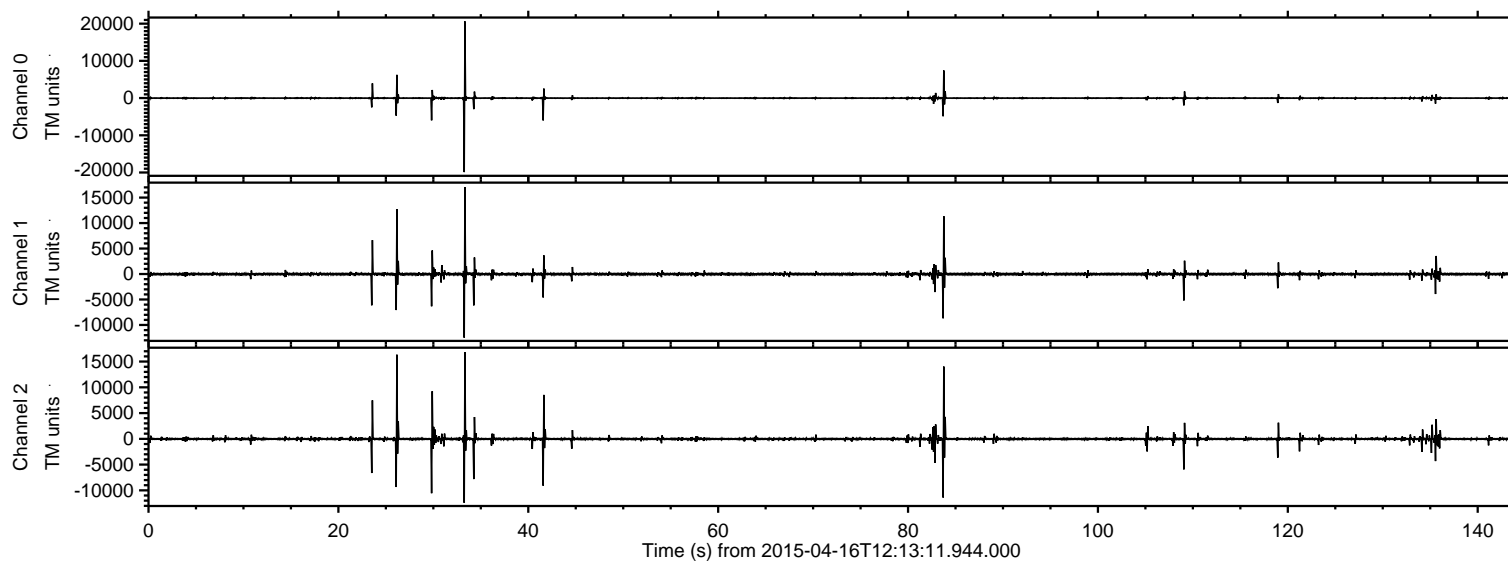


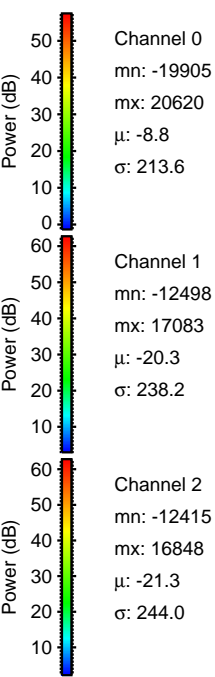
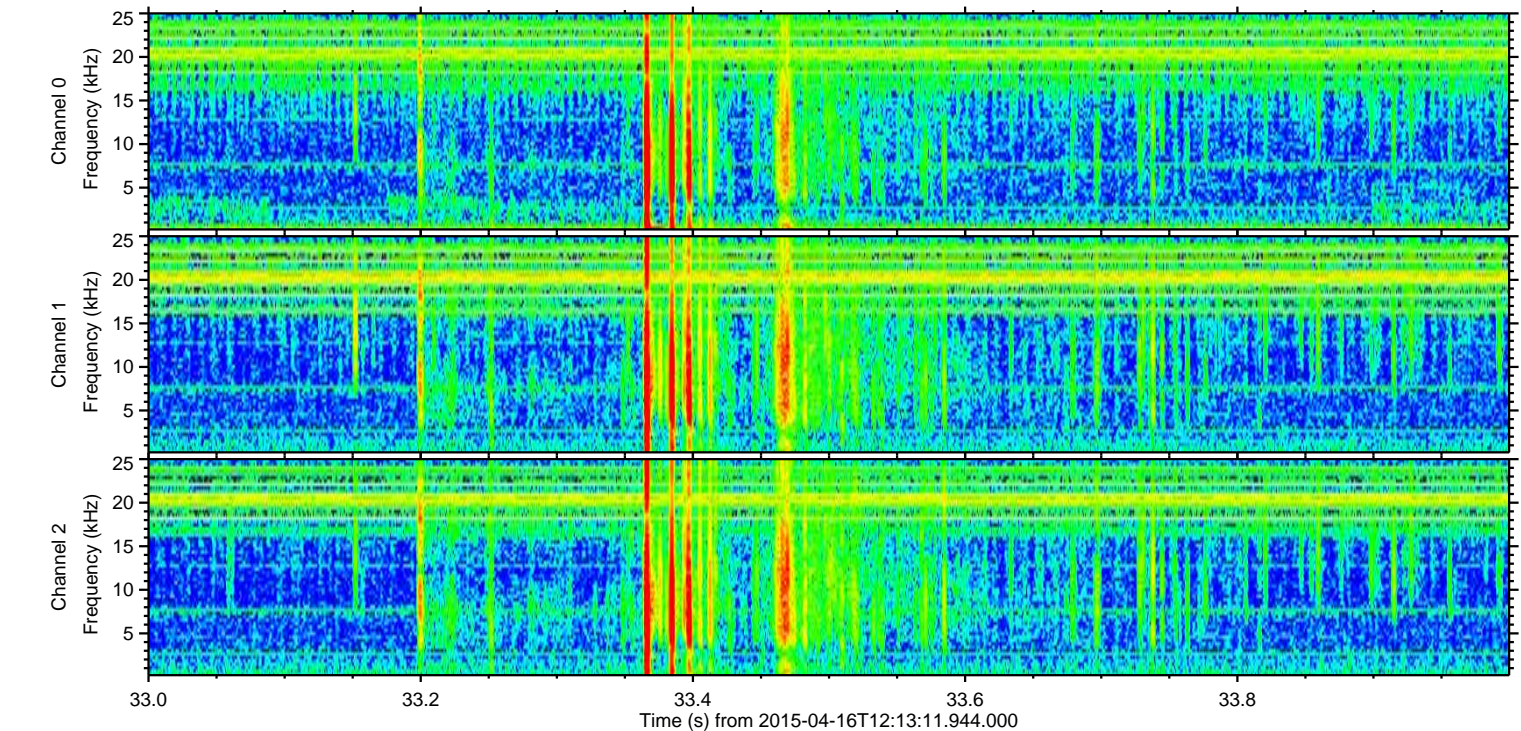
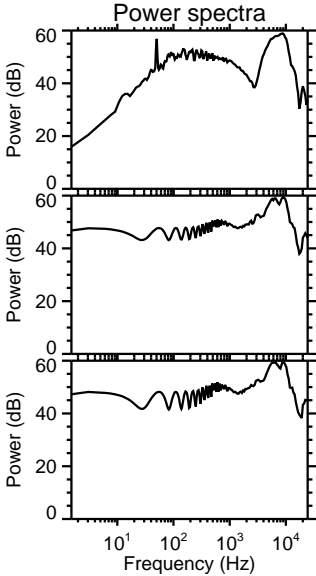
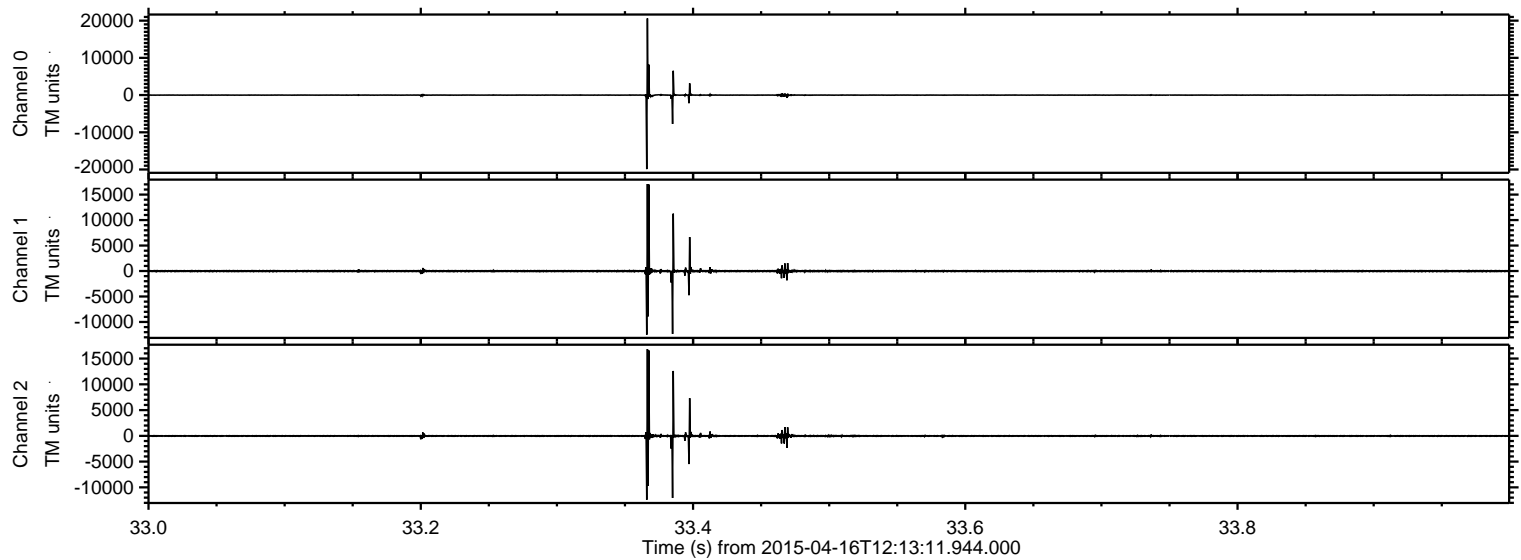
ELMAVAN 3D WAVEFORMS (Measured data sampled at 50 kHz) 49761 packets of 144 samples from 2015-04-16T12:13:11.944.000.

Processed Thu Apr 16 14:20:15 2015 by ELM ver.2012-10-06 from 001__elm20150416_121310__dat00.bin

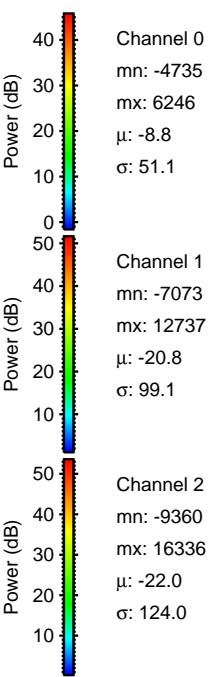
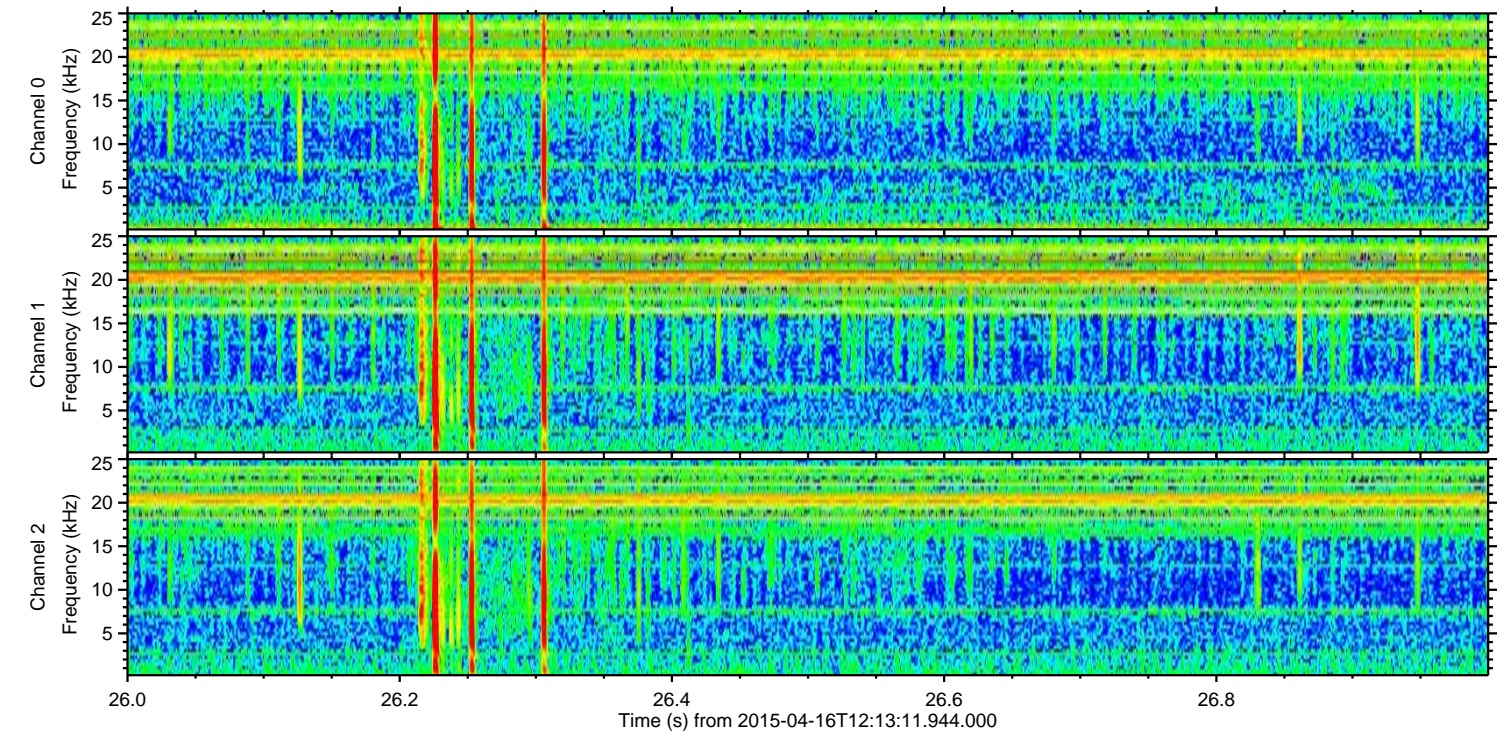
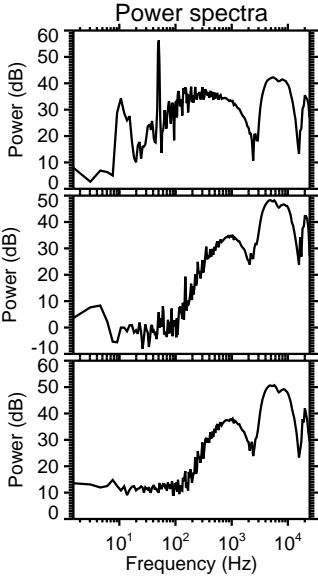
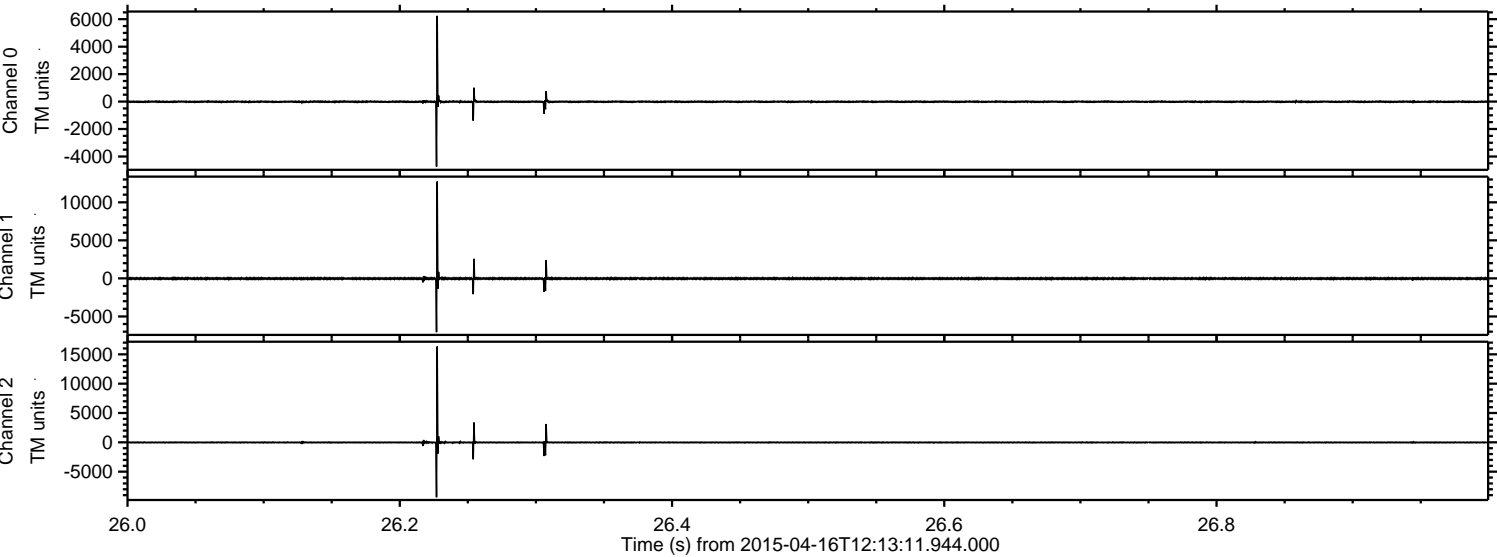


ELMAVAN 3D WAVEFORMS (Measured data sampled at 50 kHz) 49761 packets of 144 samples from 2015-04-16T12:13:11.944.000. Part 34/144

Processed Thu Apr 16 14:20:27 2015 by ELM ver.2012-10-06 from 001__elm20150416_121310__dat00.bin

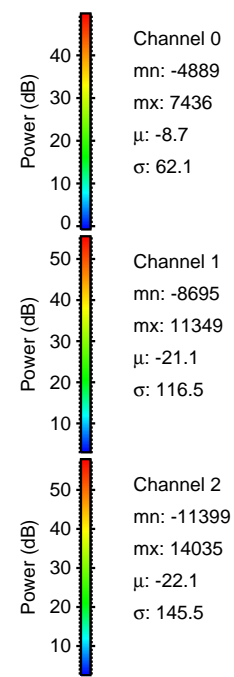
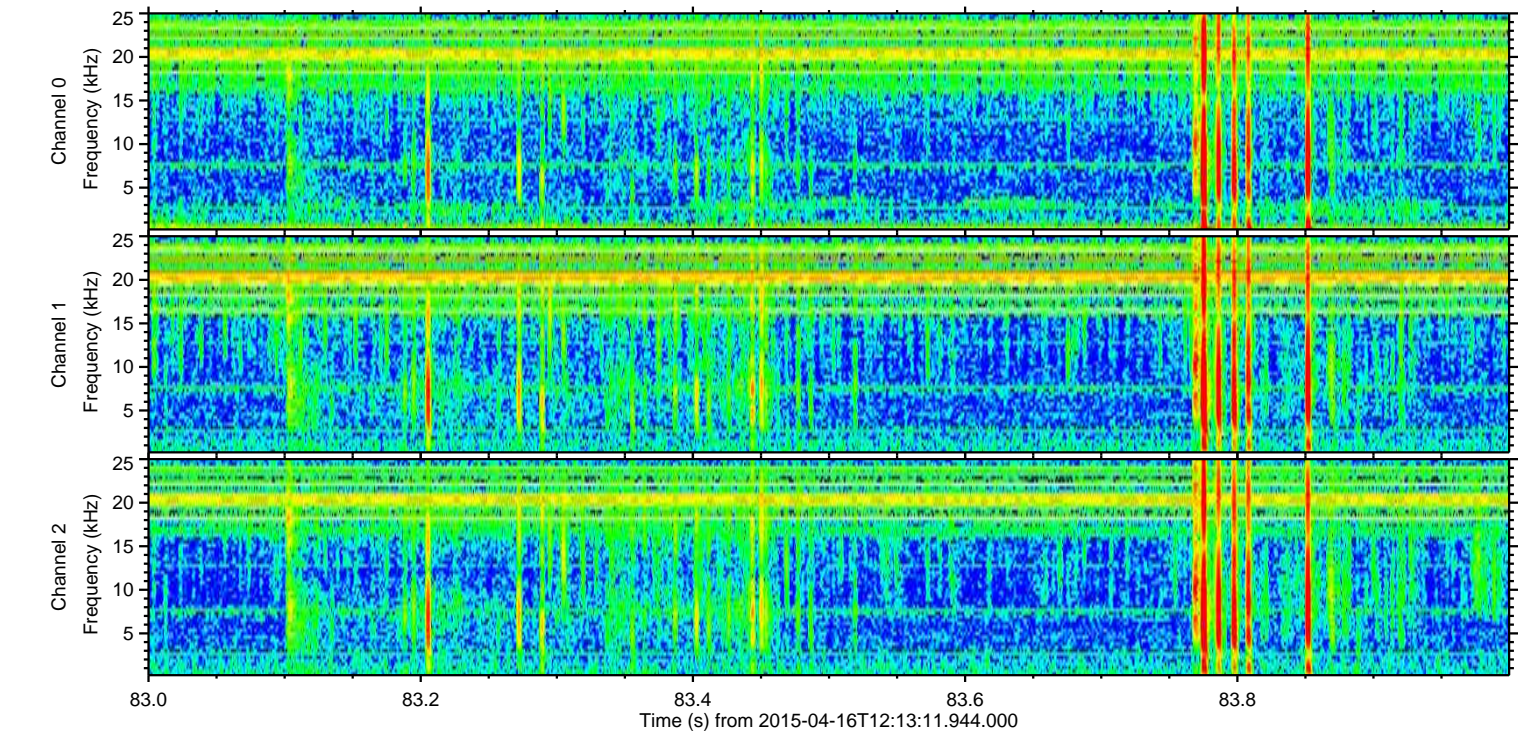
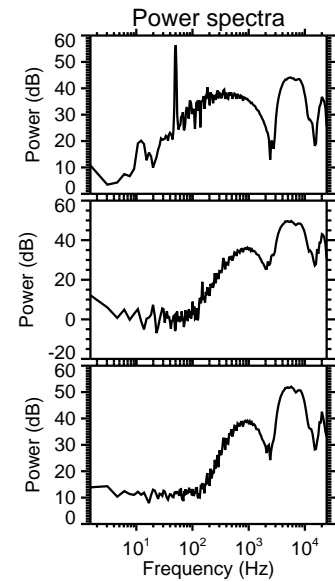
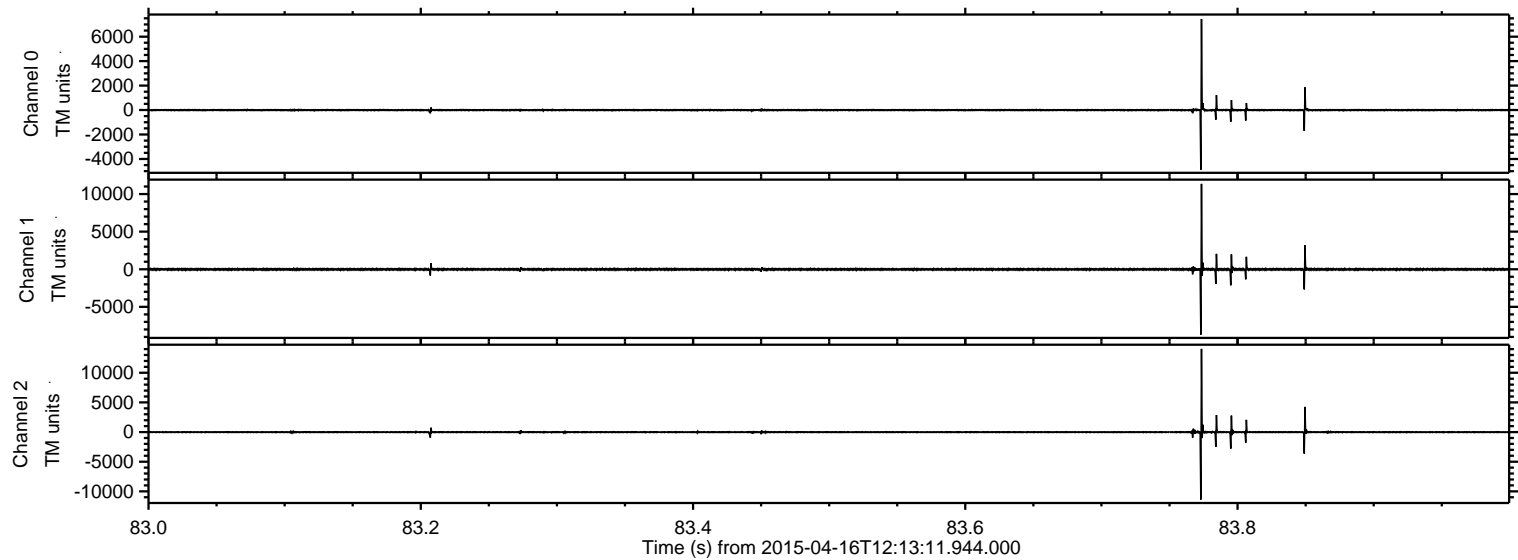


Processed Thu Apr 16 14:20:28 2015 by ELM ver.2012-10-06 from 001__elm20150416_121310__dat00.bin



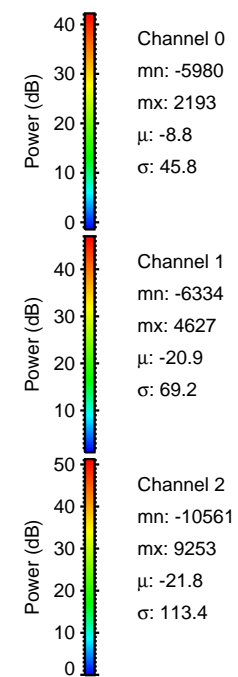
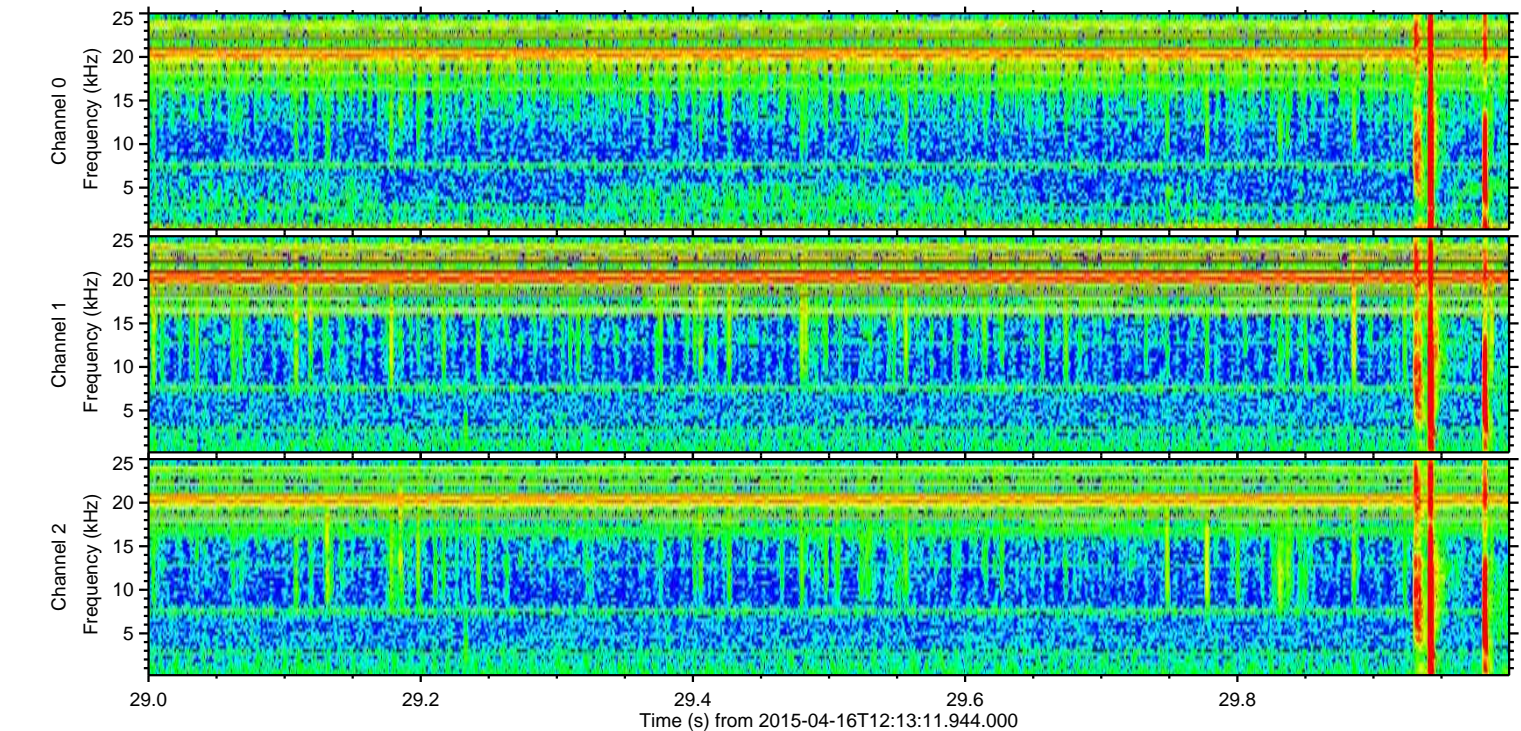
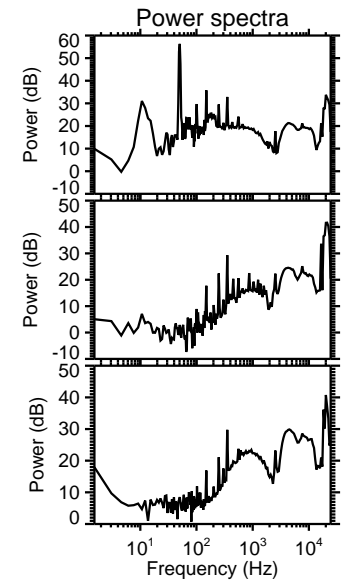
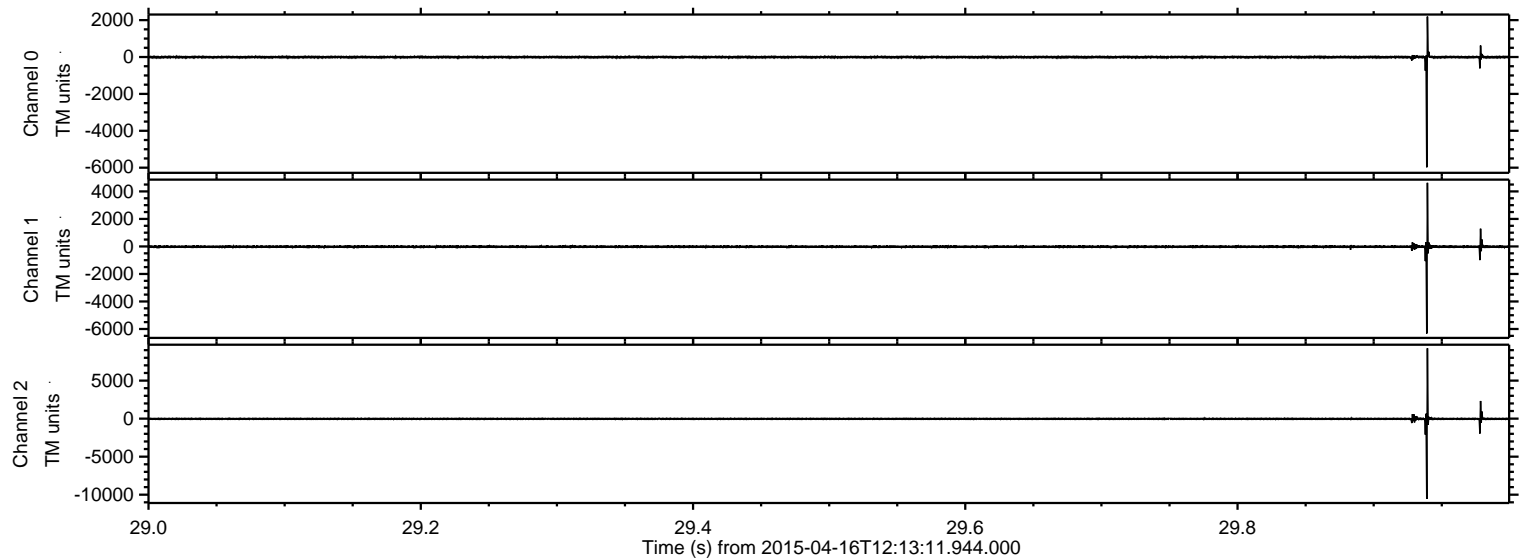
ELMAVAN 3D WAVEFORMS (Measured data sampled at 50 kHz) 49761 packets of 144 samples from 2015-04-16T12:13:11.944.000. Part 84/144

Processed Thu Apr 16 14:20:29 2015 by ELM ver.2012-10-06 from 001__elm20150416_121310__dat00.bin

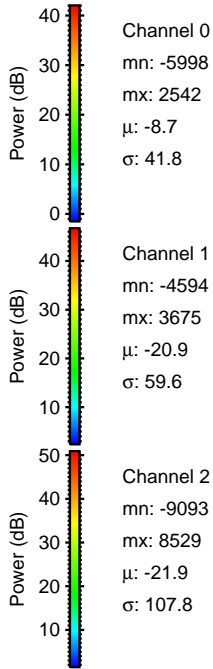
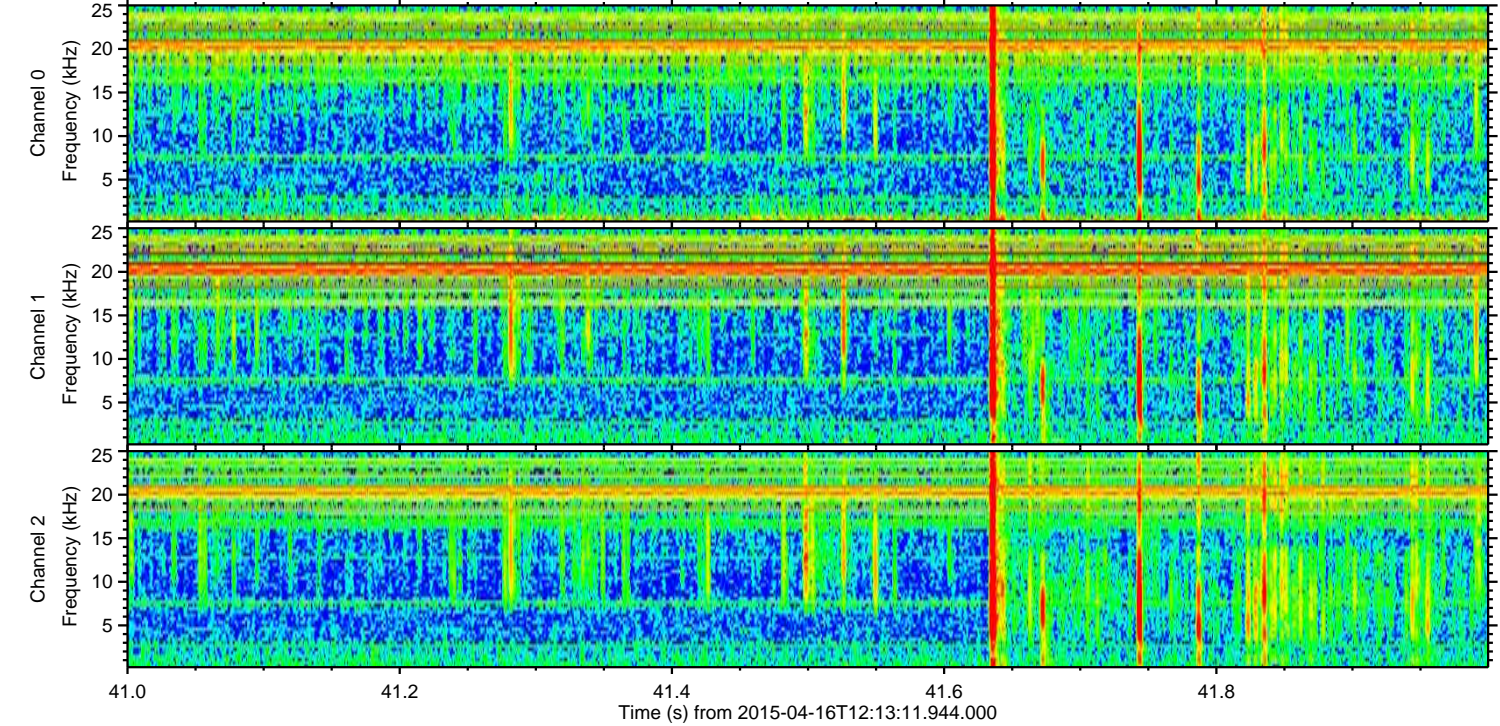
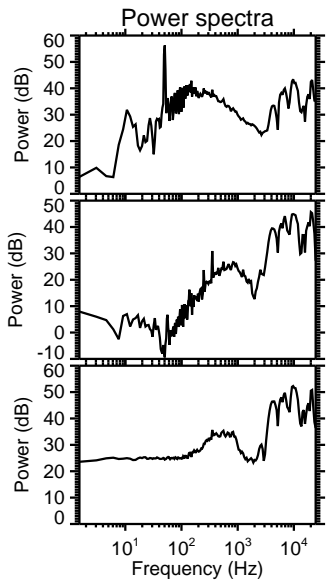
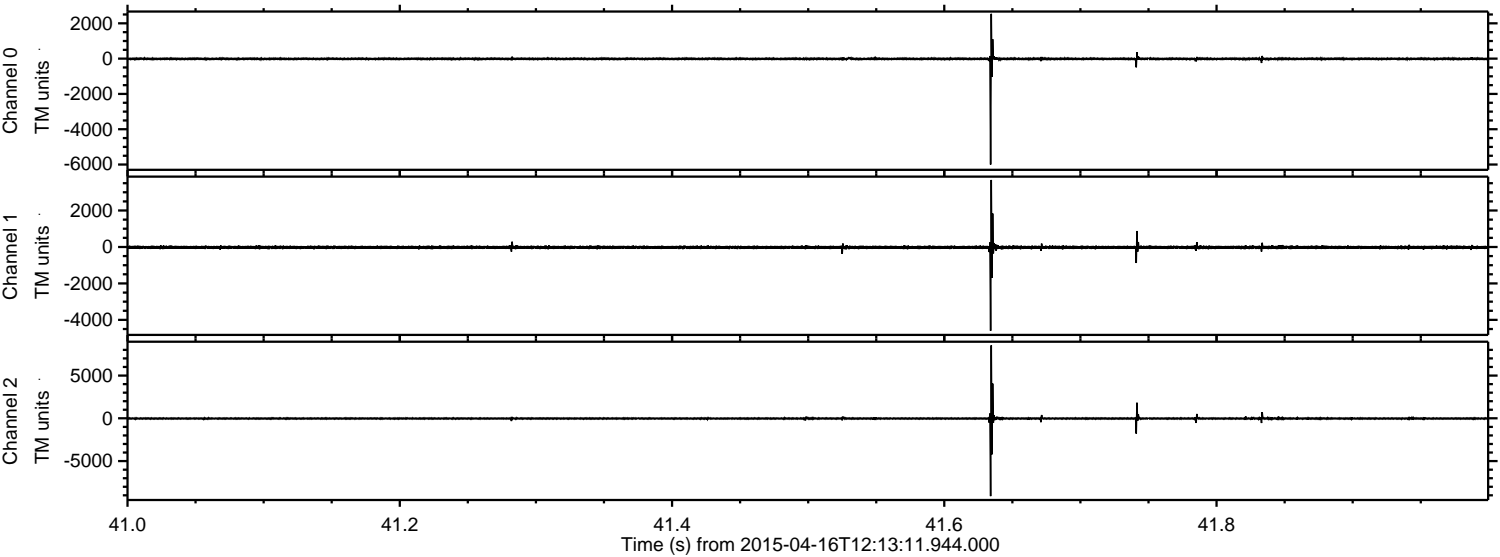


ELMAVAN 3D WAVEFORMS (Measured data sampled at 50 kHz) 49761 packets of 144 samples from 2015-04-16T12:13:11.944.000. Part 30/144

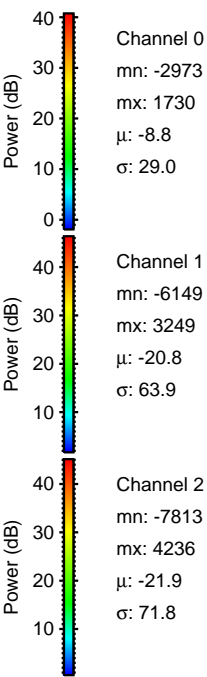
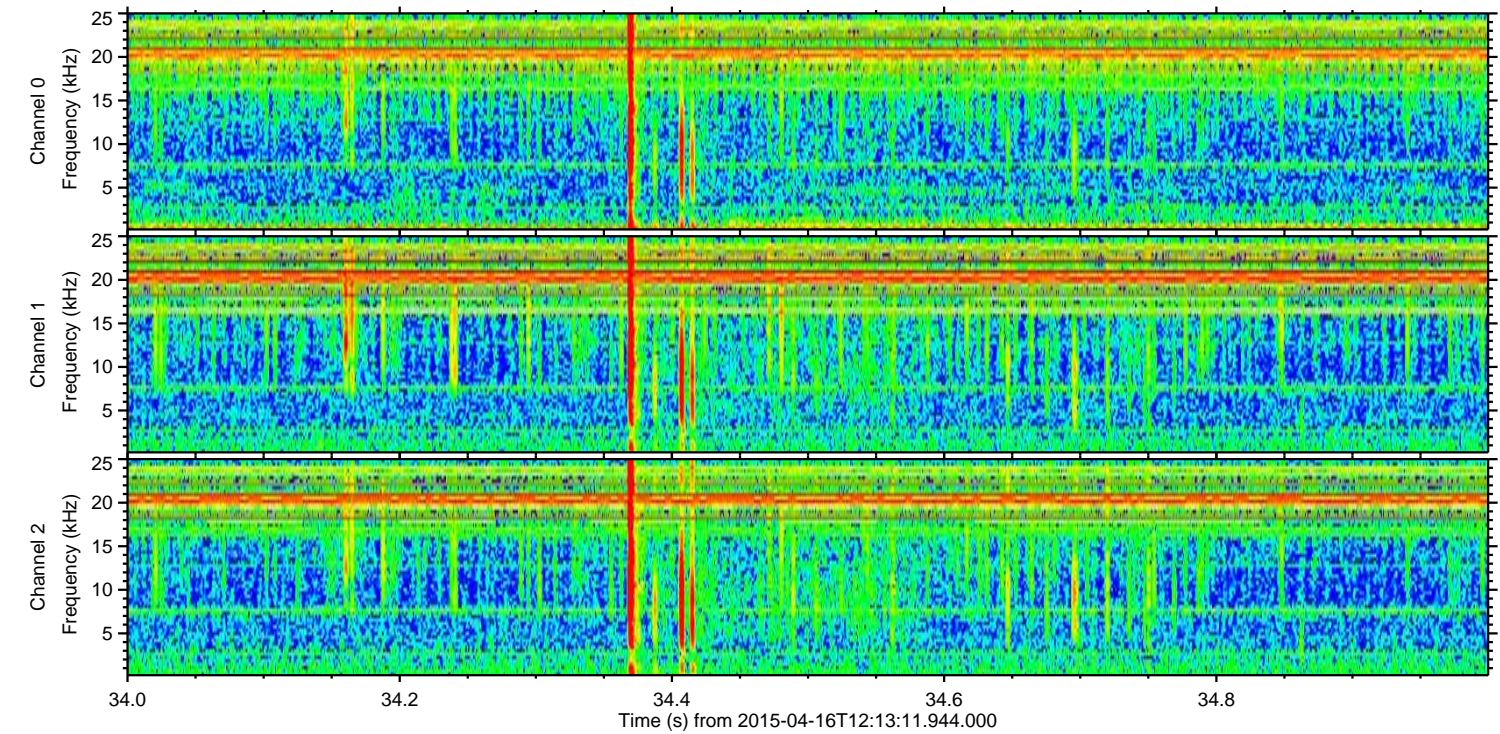
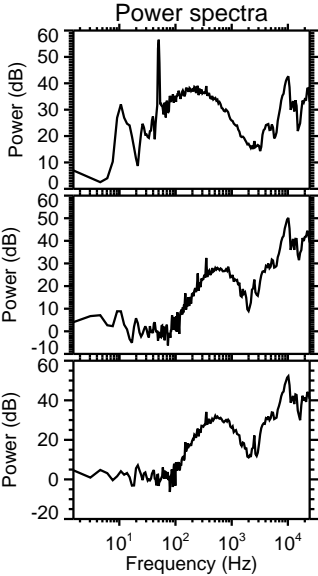
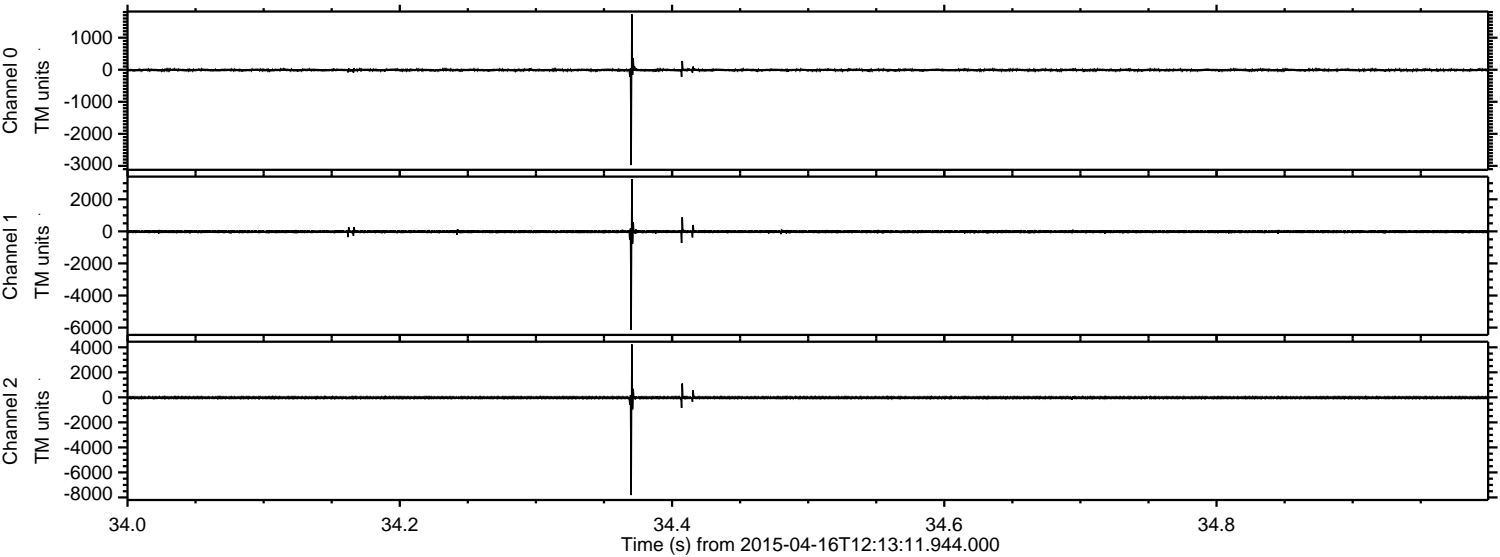
Processed Thu Apr 16 14:20:30 2015 by ELM ver.2012-10-06 from 001__elm20150416_121310__dat00.bin



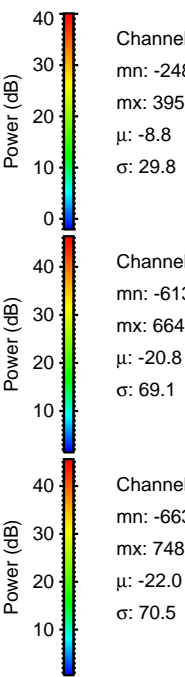
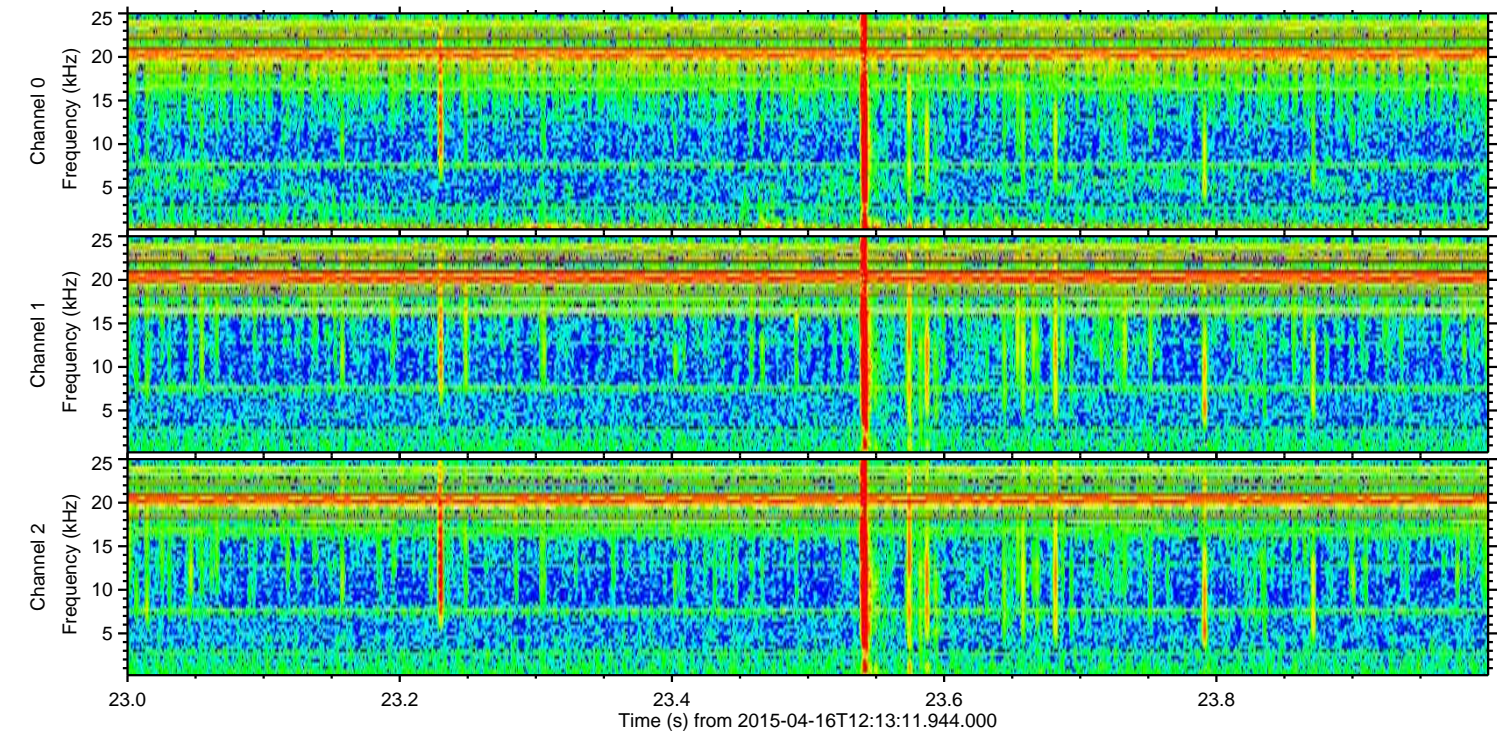
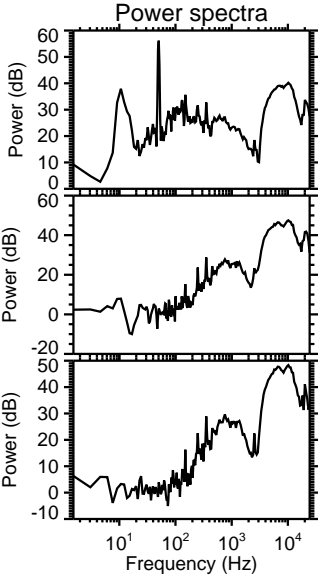
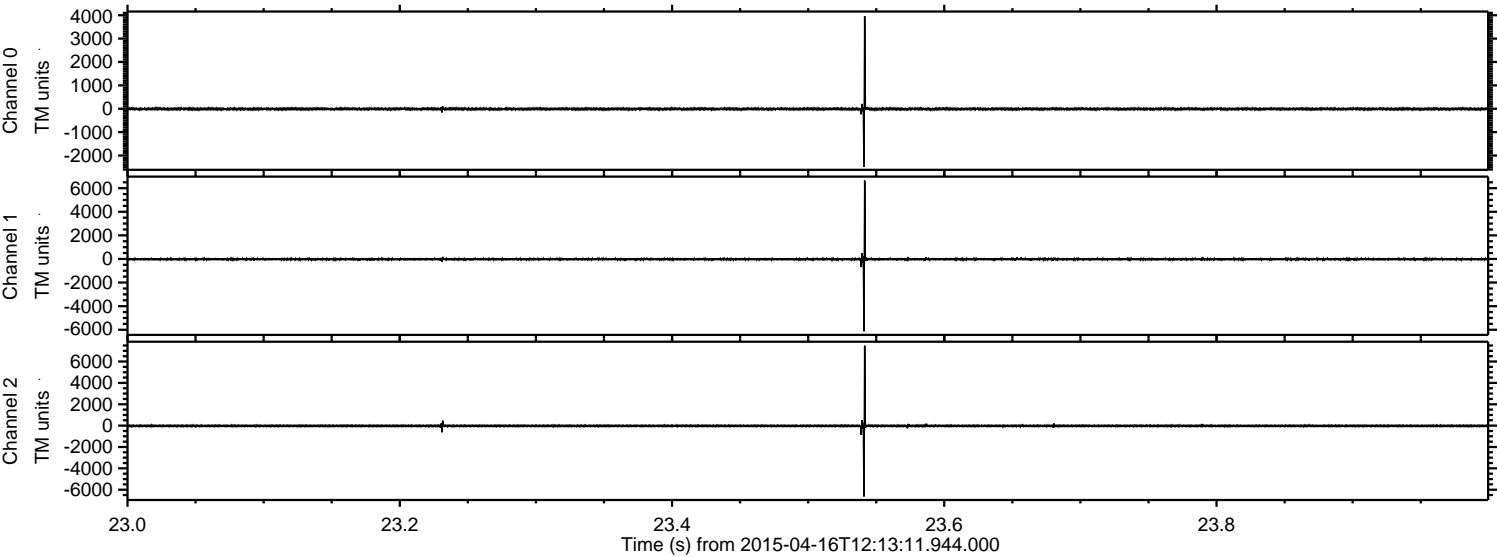
Processed Thu Apr 16 14:20:31 2015 by ELM ver.2012-10-06 from 001__elm20150416_121310__dat00.bin



Processed Thu Apr 16 14:20:31 2015 by ELM ver.2012-10-06 from 001__elm20150416_121310__dat00.bin

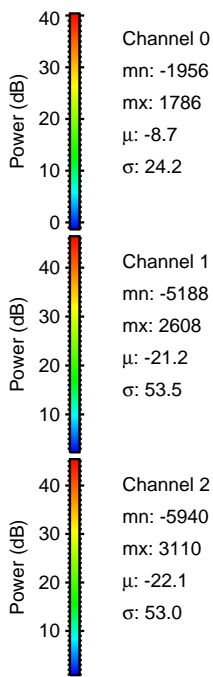
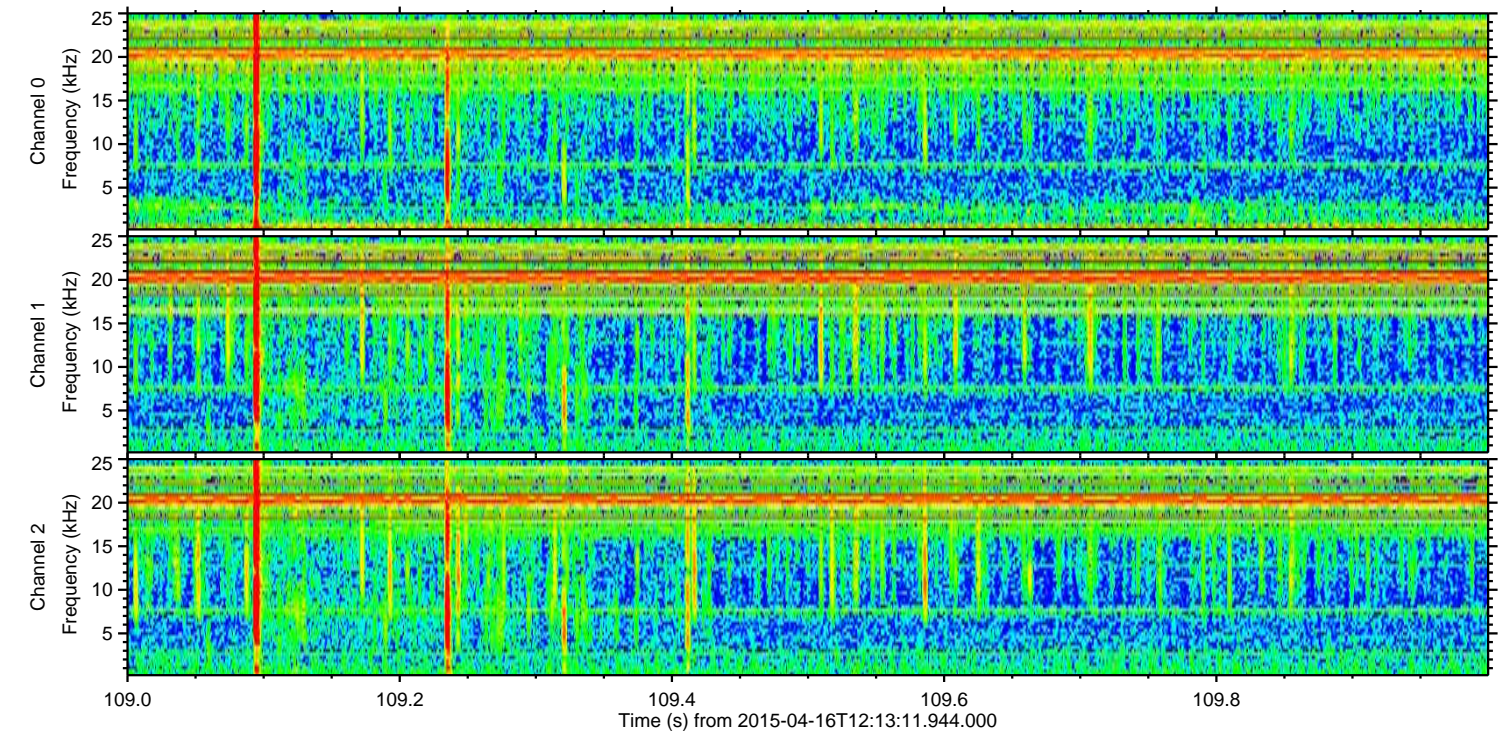
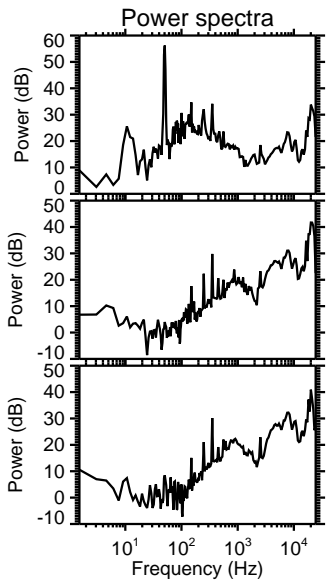
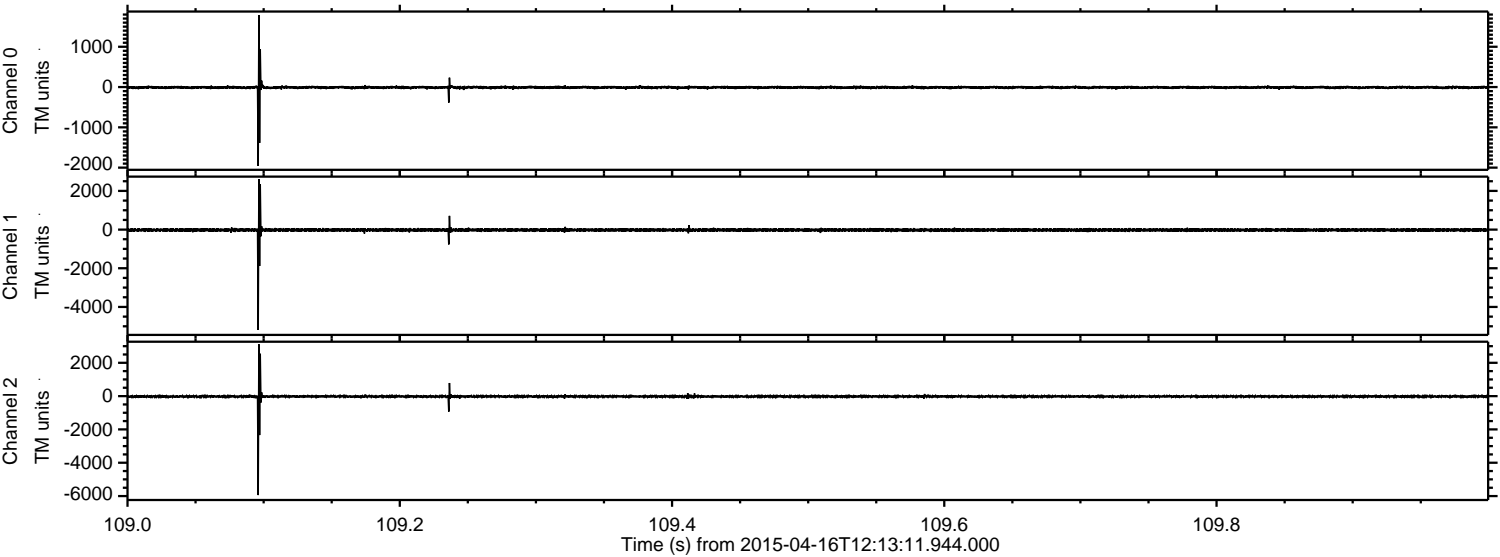


Processed Thu Apr 16 14:20:32 2015 by ELM ver.2012-10-06 from 001__elm20150416_121310__dat00.bin



ELMAVAN 3D WAVEFORMS (Measured data sampled at 50 kHz) 49761 packets of 144 samples from 2015-04-16T12:13:11.944.000. Part 110/144

Processed Thu Apr 16 14:20:33 2015 by ELM ver.2012-10-06 from 001__elm20150416_121310__dat00.bin

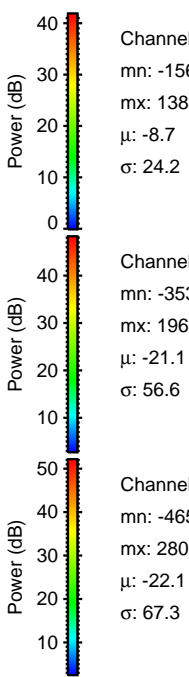
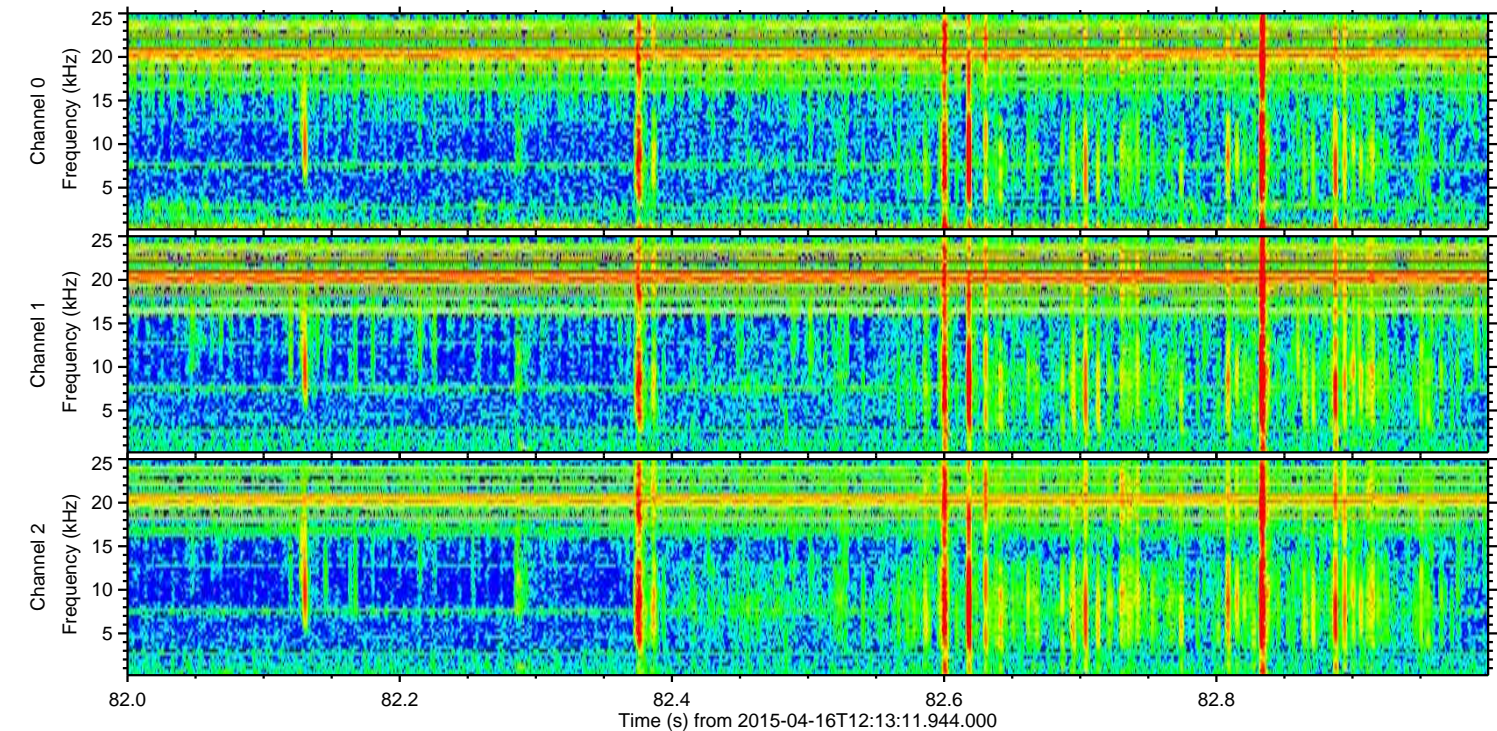
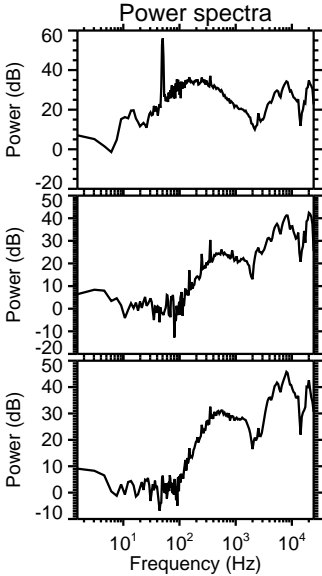
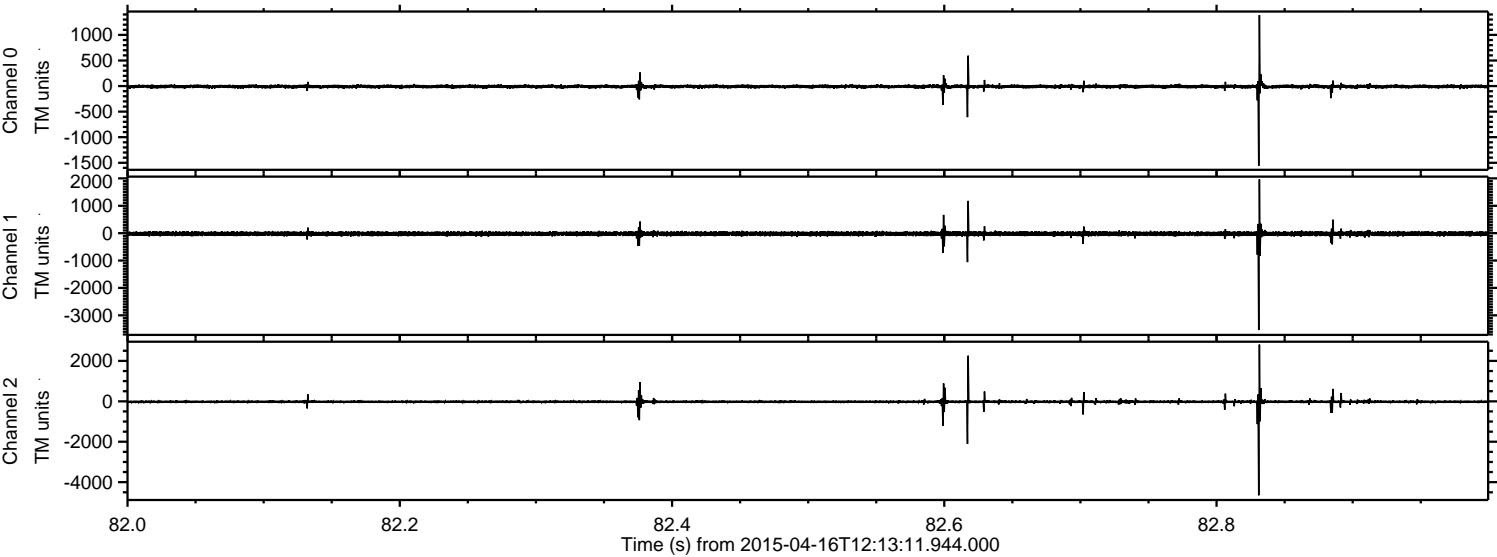


Channel 0
mn: -1956
mx: 1786
 μ : -8.7
 σ : 24.2

Channel 1
mn: -5188
mx: 2608
 μ : -21.2
 σ : 53.5

Channel 2
mn: -5940
mx: 3110
 μ : -22.1
 σ : 53.0

Processed Thu Apr 16 14:20:34 2015 by ELM ver.2012-10-06 from 001__elm20150416_121310__dat00.bin



Channel 0
mn: -1560
mx: 1388
 μ : -8.7
 σ : 24.2

Channel 1
mn: -3539
mx: 1966
 μ : -21.1
 σ : 56.6

Channel 2
mn: -4650
mx: 2809
 μ : -22.1
 σ : 67.3

