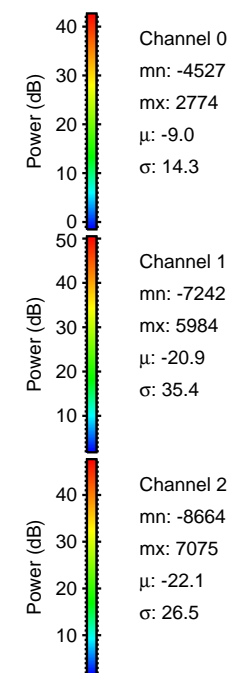
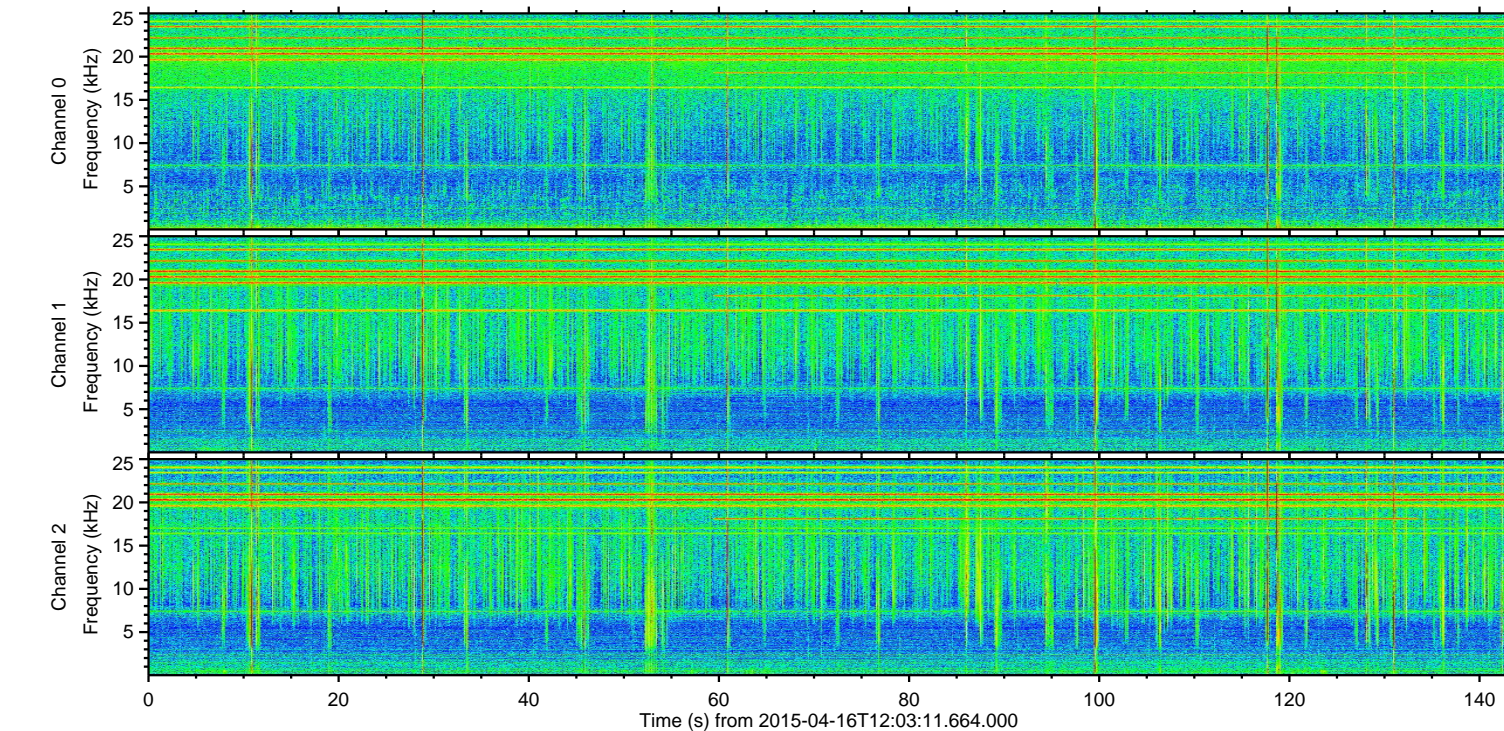
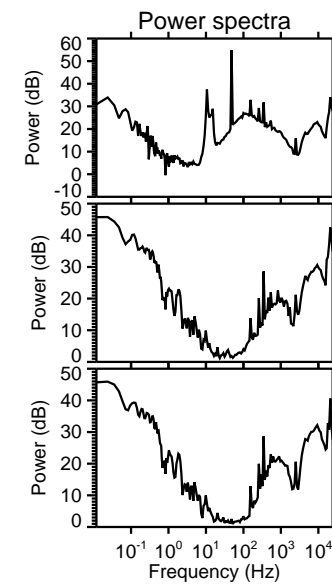
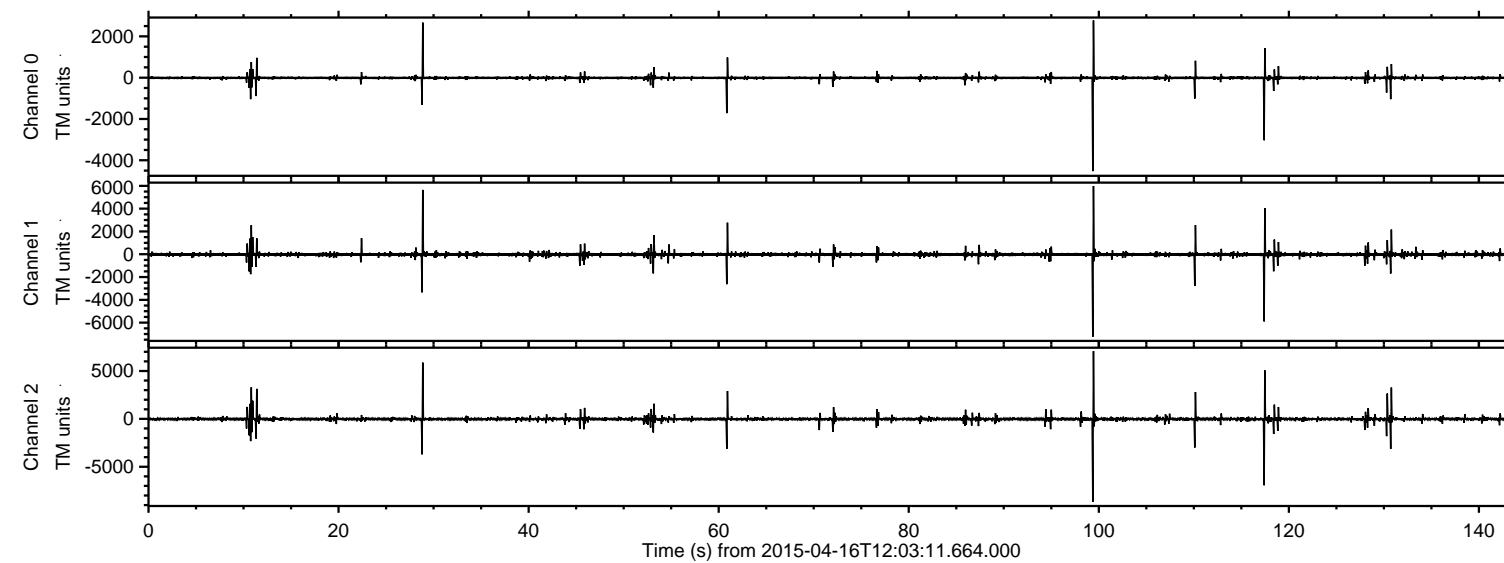


# ELMAVAN 3D WAVEFORMS (Measured data sampled at 50 kHz) 49715 packets of 144 samples from 2015-04-16T12:03:11.664.000.

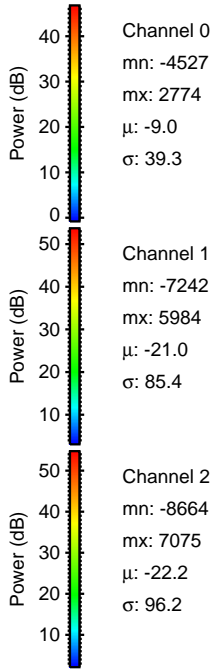
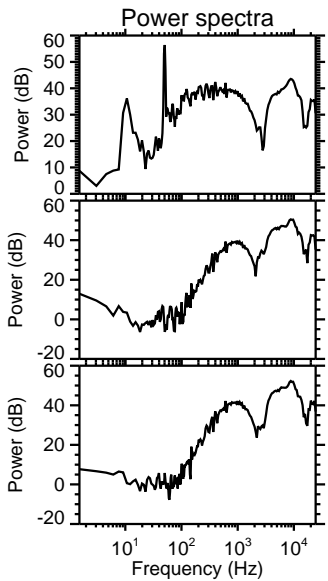
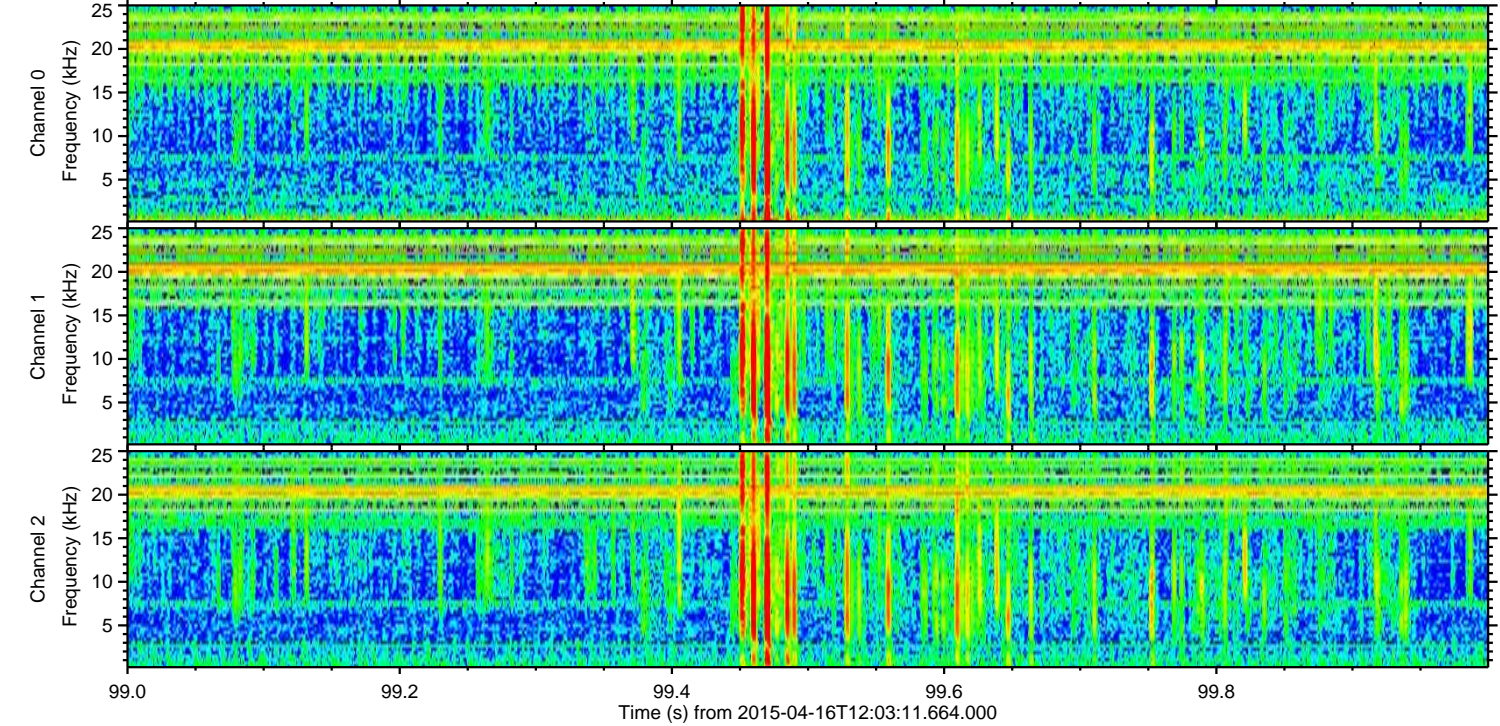
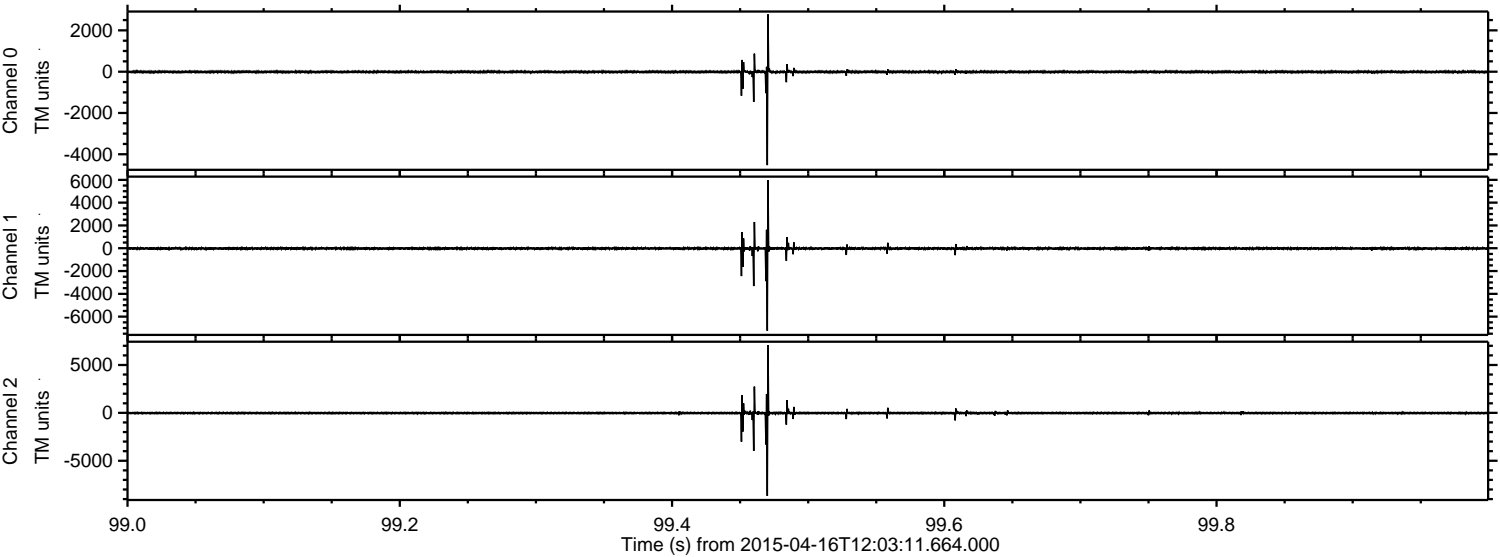
Processed Thu Apr 16 14:10:10 2015 by ELM ver.2012-10-06 from 001\_\_elm20150416\_120310\_\_dat00.bin





ELMAVAN 3D WAVEFORMS (Measured data sampled at 50 kHz) 49715 packets of 144 samples from 2015-04-16T12:03:11.664.000. Part 100/144

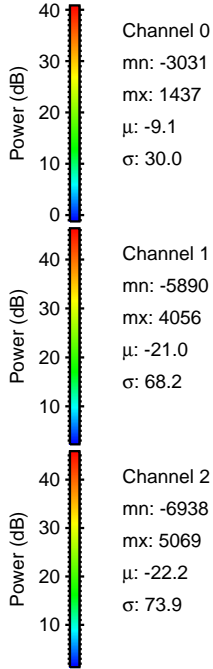
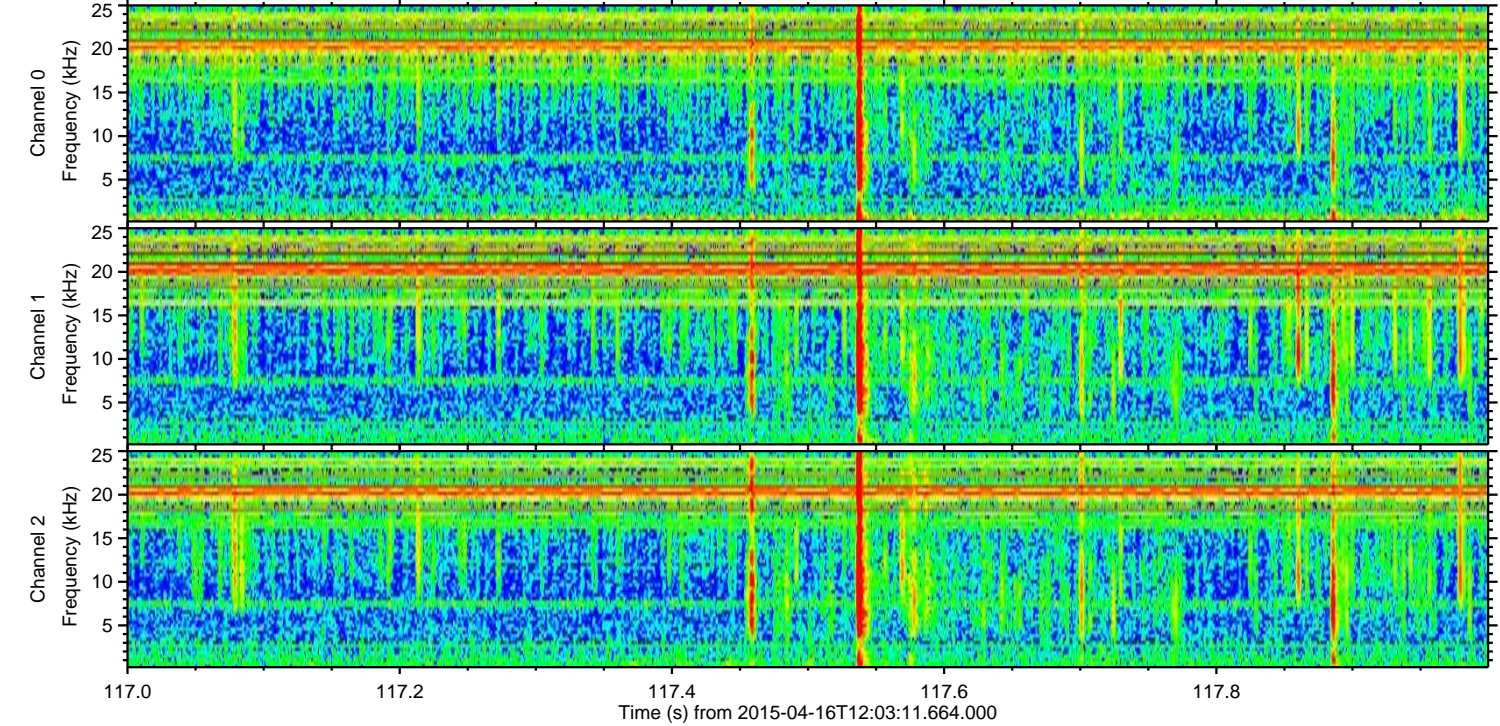
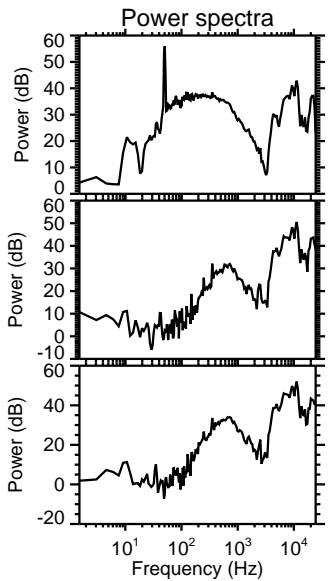
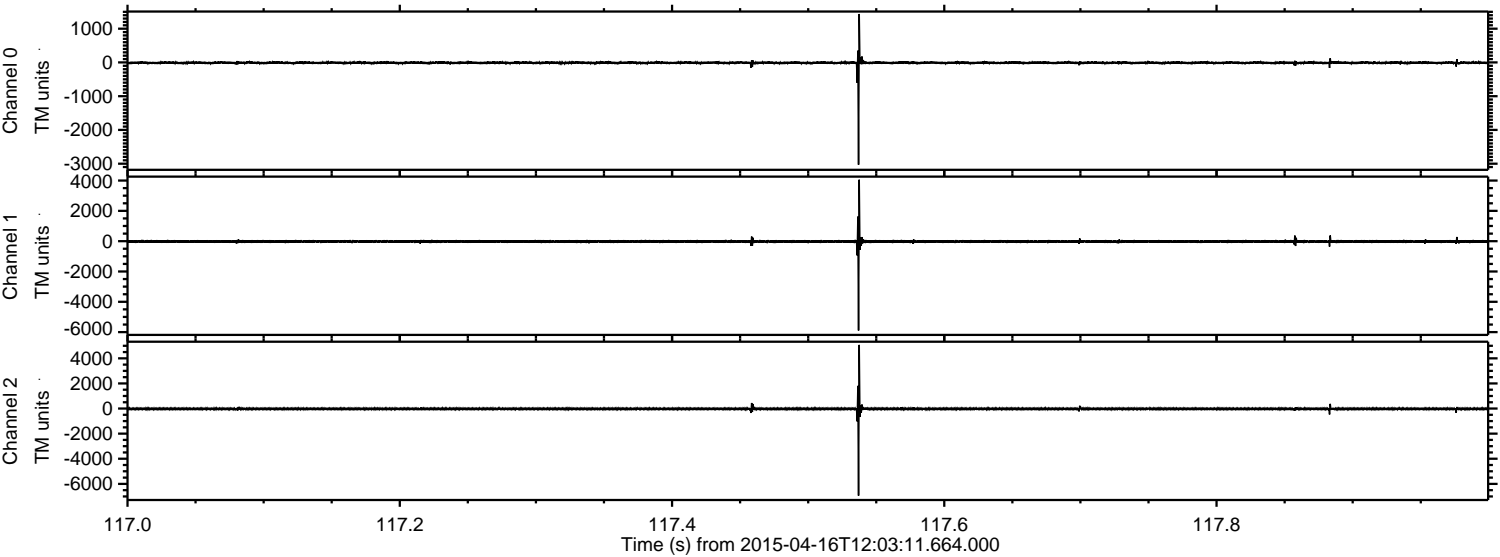
Processed Thu Apr 16 14:10:22 2015 by ELM ver.2012-10-06 from 001\_\_elm20150416\_120310\_\_dat00.bin





ELMAVAN 3D WAVEFORMS (Measured data sampled at 50 kHz) 49715 packets of 144 samples from 2015-04-16T12:03:11.664.000. Part 118/144

Processed Thu Apr 16 14:10:23 2015 by ELM ver.2012-10-06 from 001\_\_elm20150416\_120310\_\_dat00.bin



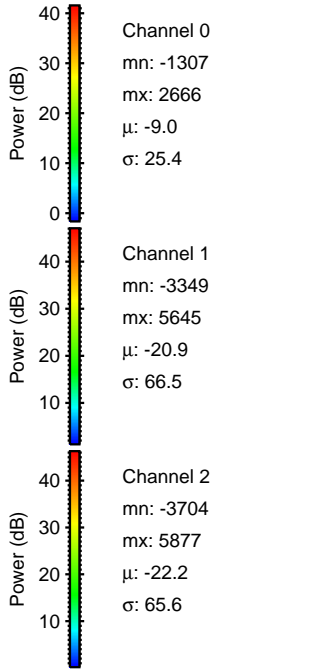
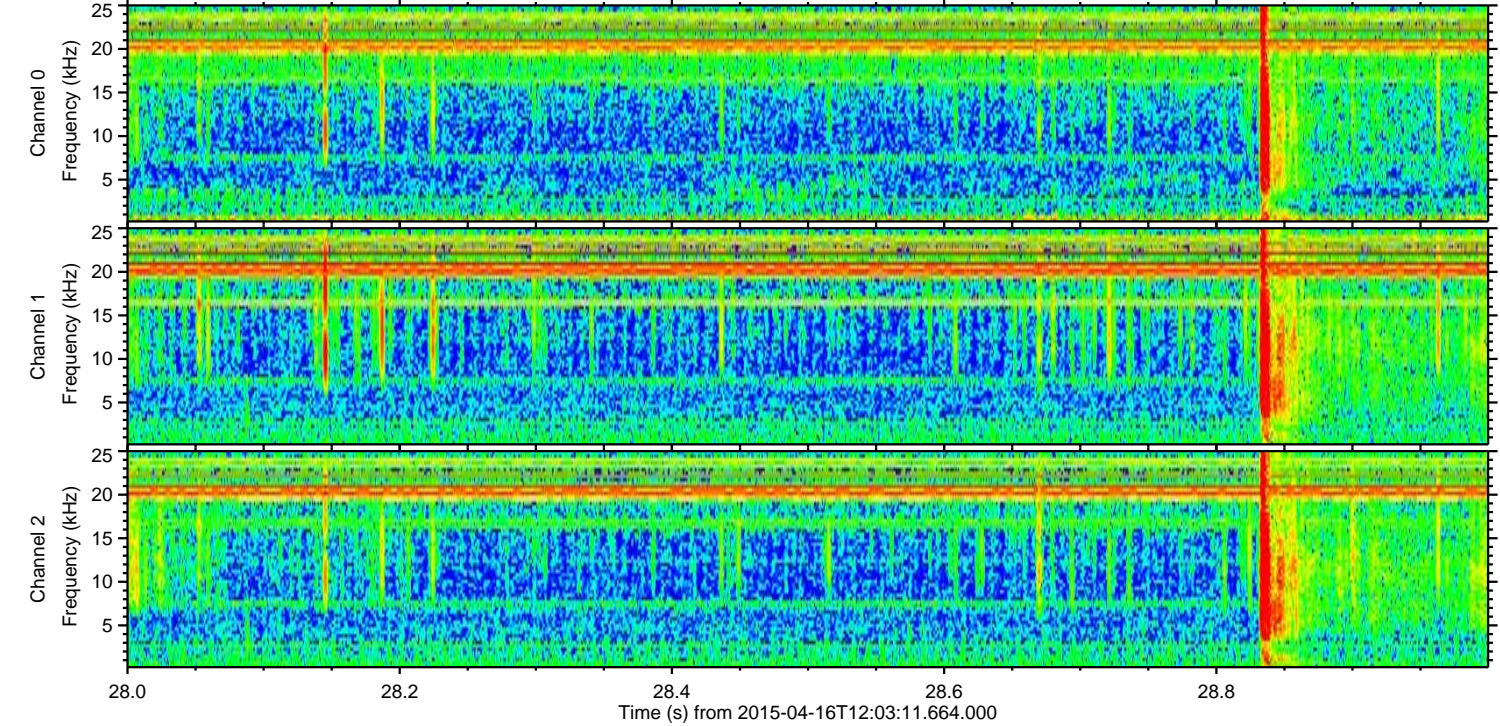
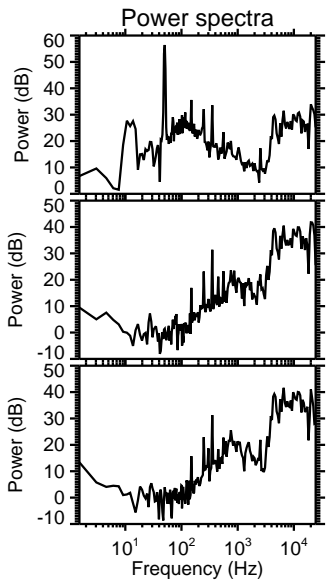
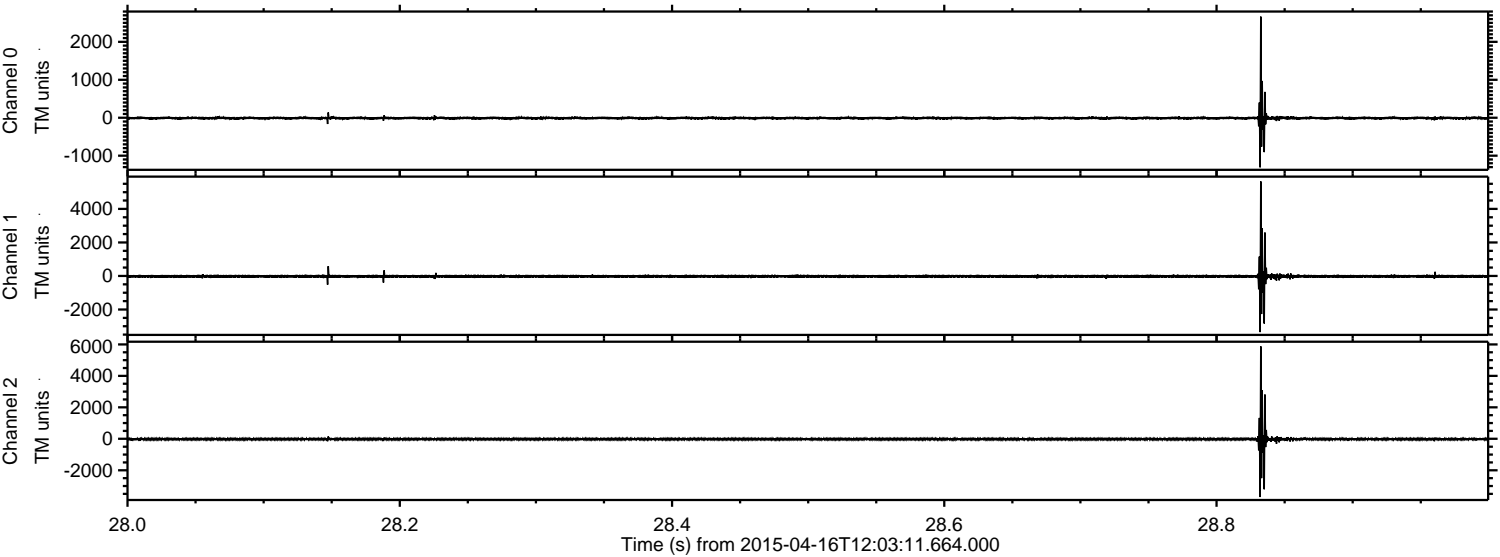
Channel 0  
mn: -3031  
mx: 1437  
 $\mu$ : -9.1  
 $\sigma$ : 30.0

Channel 1  
mn: -5890  
mx: 4056  
 $\mu$ : -21.0  
 $\sigma$ : 68.2

Channel 2  
mn: -6938  
mx: 5069  
 $\mu$ : -22.2  
 $\sigma$ : 73.9



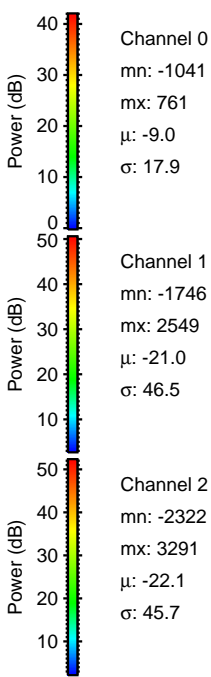
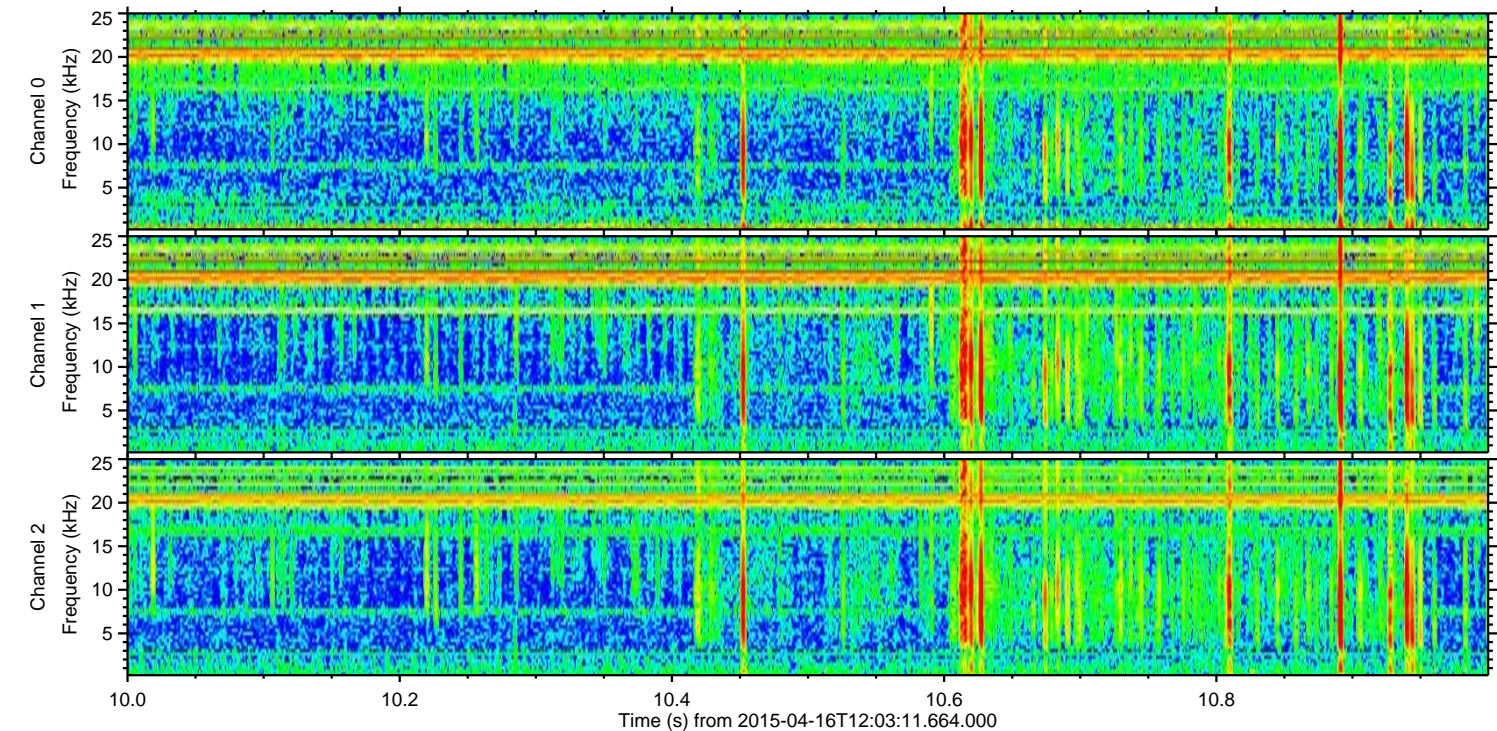
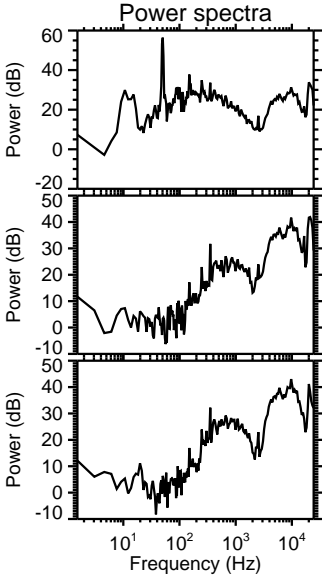
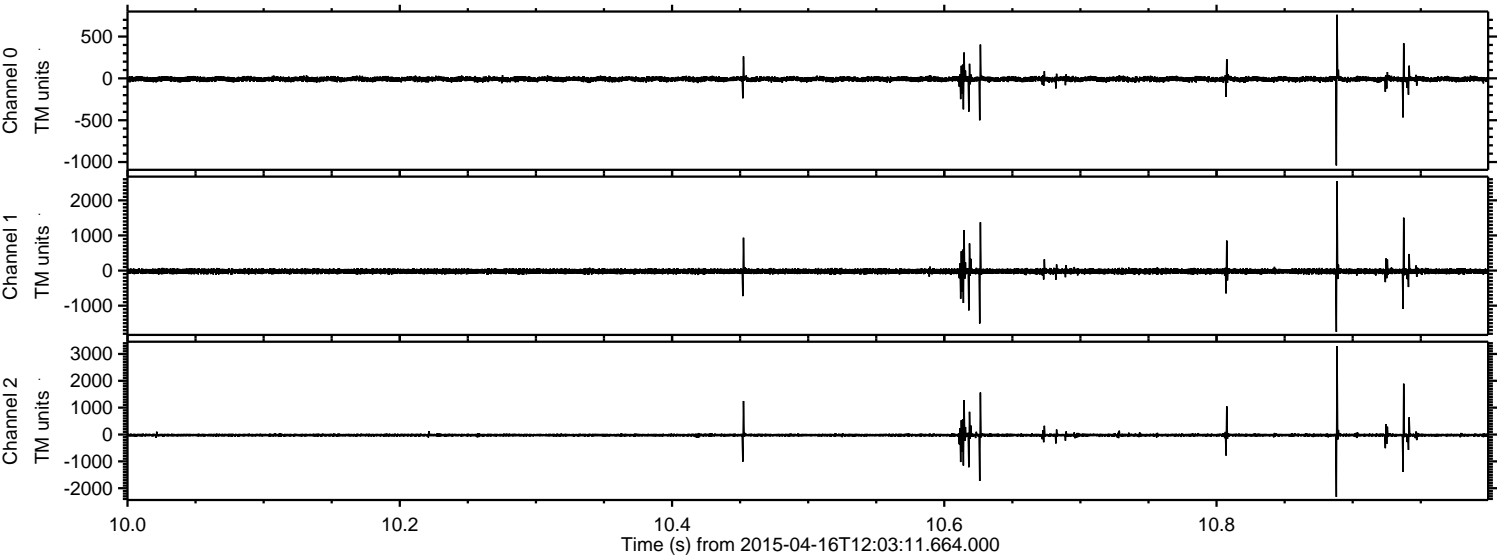
Processed Thu Apr 16 14:10:24 2015 by ELM ver.2012-10-06 from 001\_\_elm20150416\_120310\_\_dat00.bin





ELMAVAN 3D WAVEFORMS (Measured data sampled at 50 kHz) 49715 packets of 144 samples from 2015-04-16T12:03:11.664.000. Part 11/144

Processed Thu Apr 16 14:10:25 2015 by ELM ver.2012-10-06 from 001\_\_elm20150416\_120310\_\_dat00.bin



Channel 0  
mn: -1041  
mx: 761  
 $\mu$ : -9.0  
 $\sigma$ : 17.9

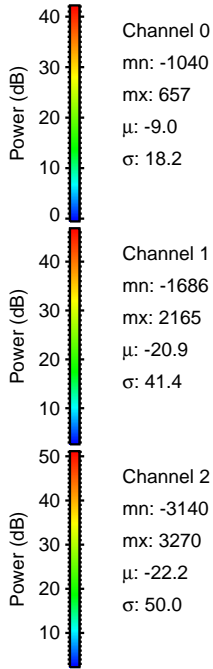
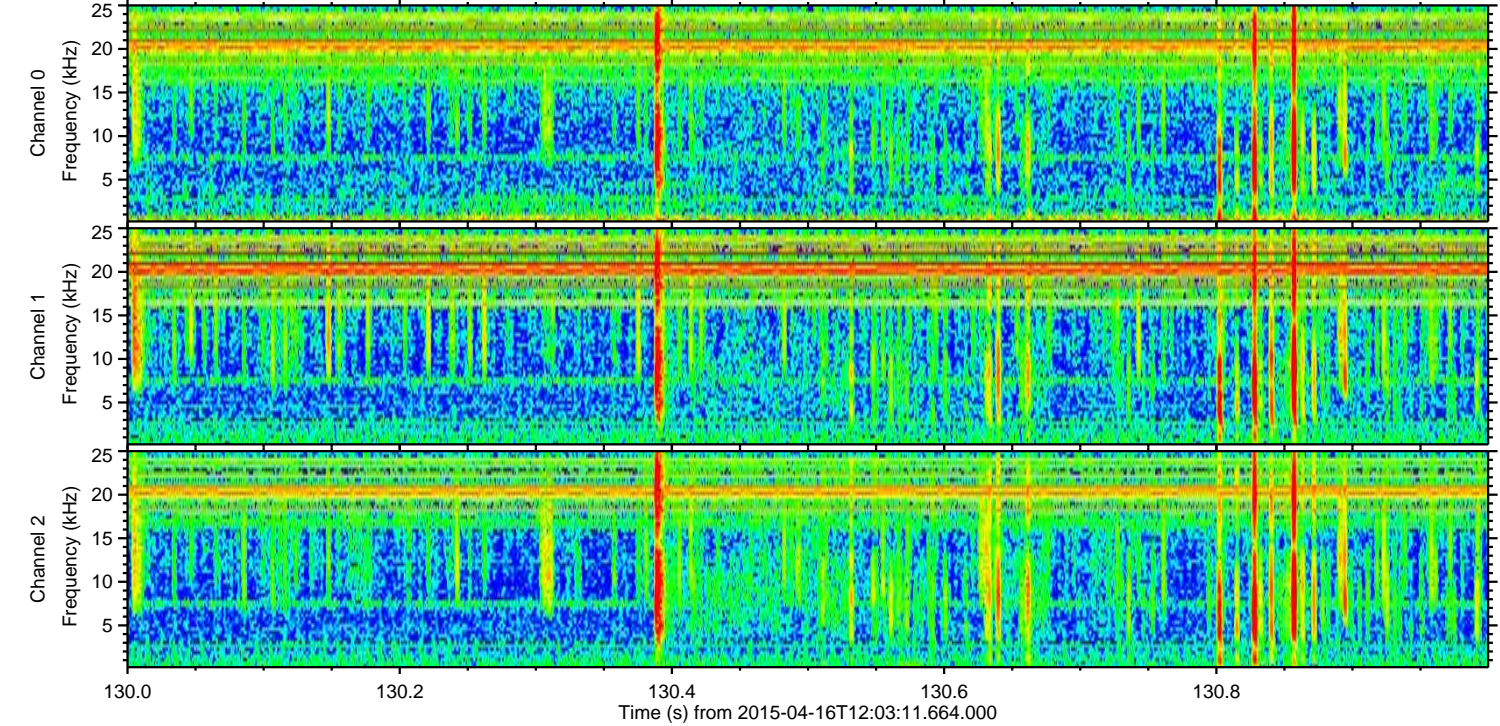
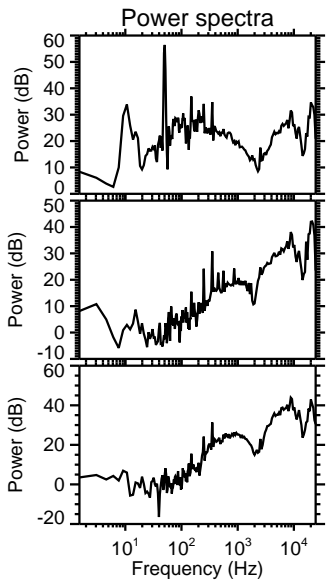
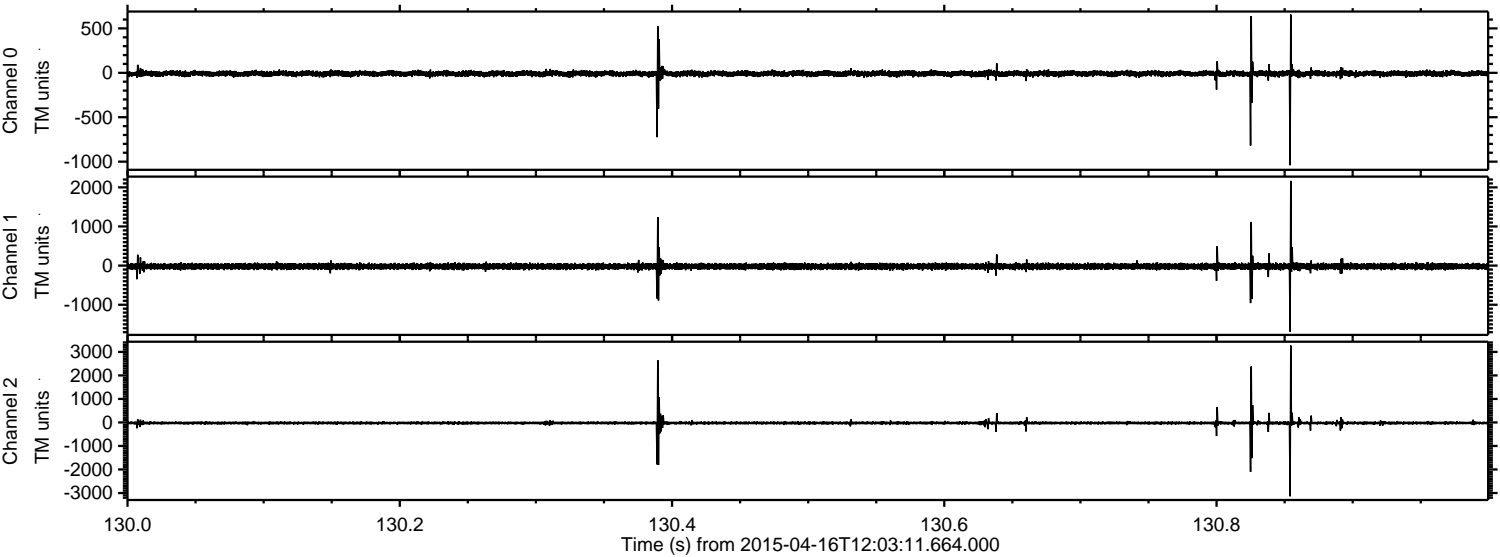
Channel 1  
mn: -1746  
mx: 2549  
 $\mu$ : -21.0  
 $\sigma$ : 46.5

Channel 2  
mn: -2322  
mx: 3291  
 $\mu$ : -22.1  
 $\sigma$ : 45.7



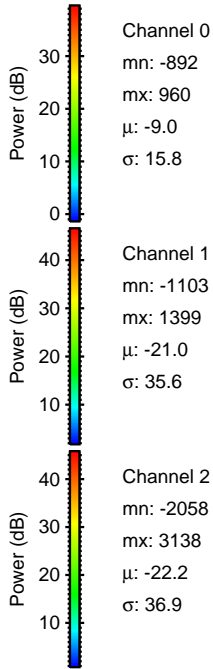
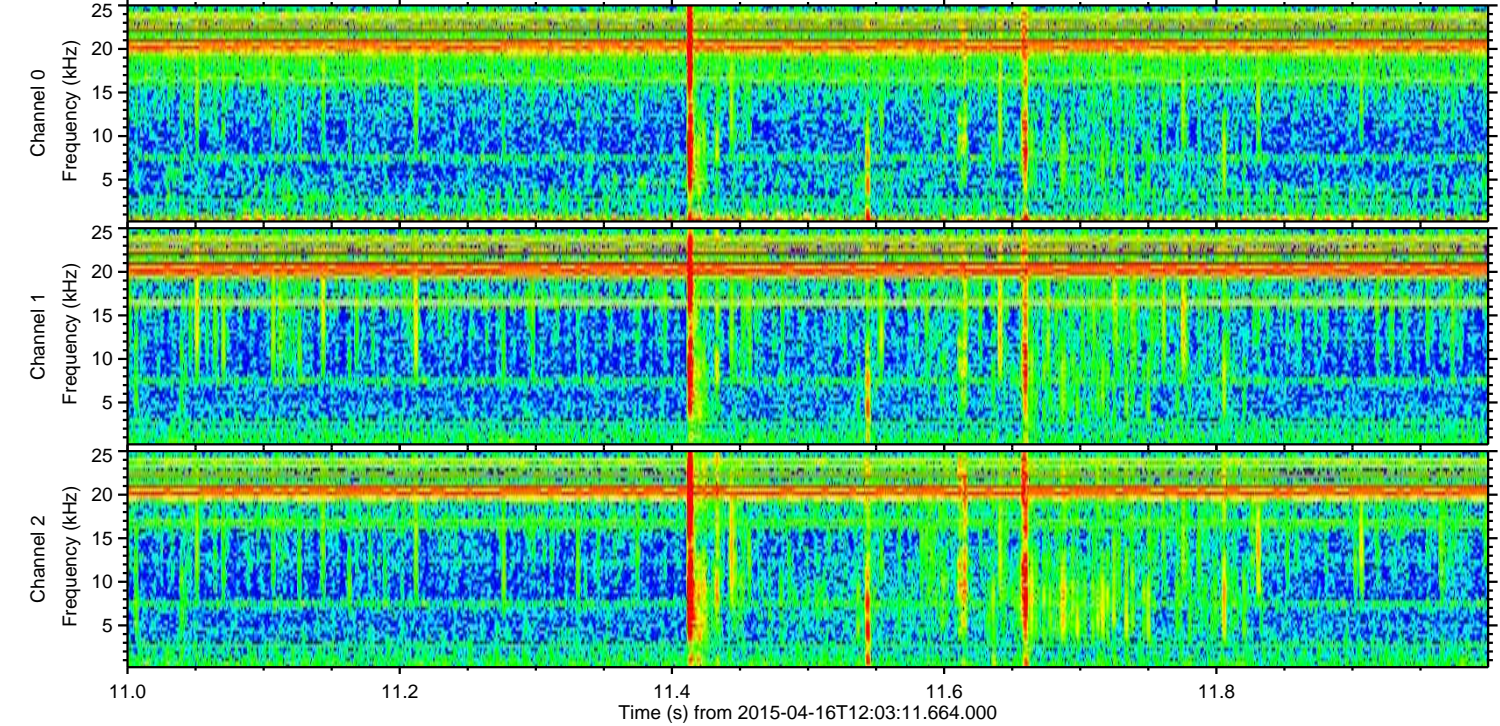
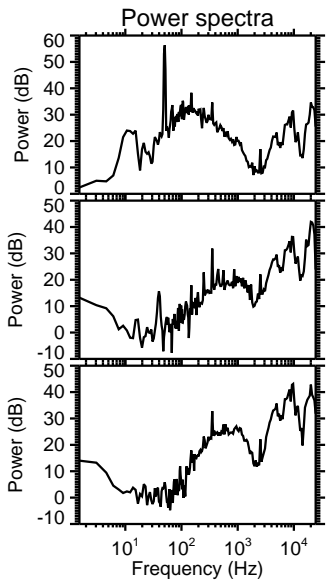
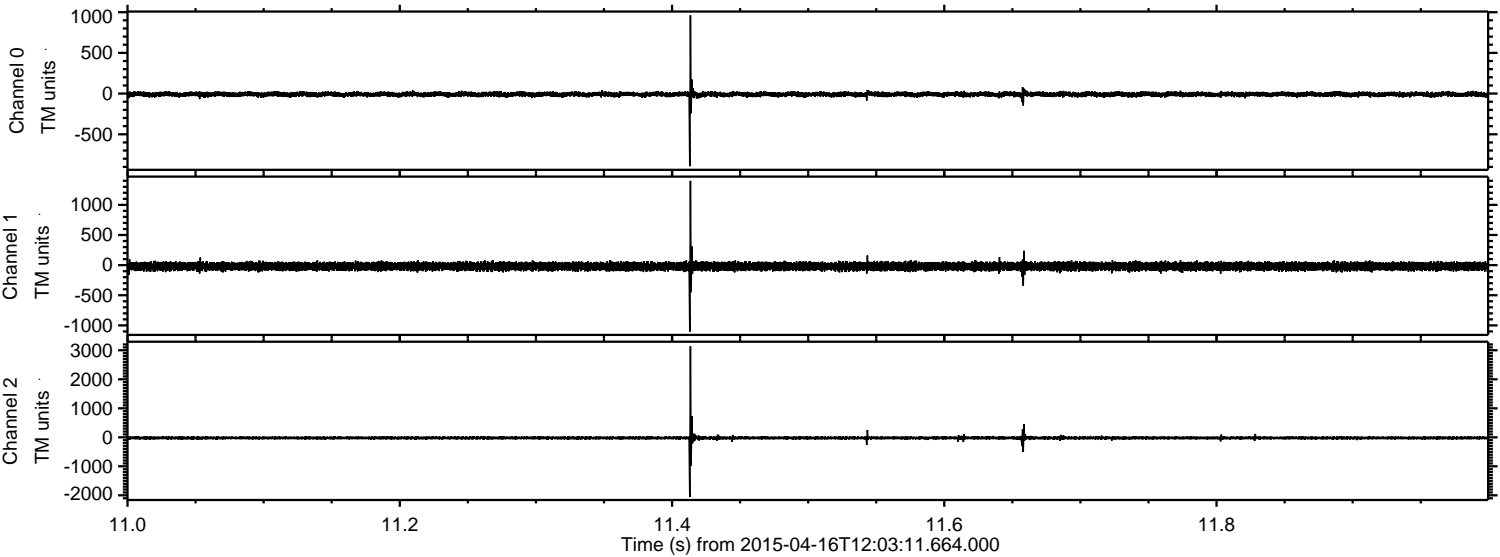
ELMAVAN 3D WAVEFORMS (Measured data sampled at 50 kHz) 49715 packets of 144 samples from 2015-04-16T12:03:11.664.000. Part 131/144

Processed Thu Apr 16 14:10:25 2015 by ELM ver.2012-10-06 from 001\_\_elm20150416\_120310\_\_dat00.bin



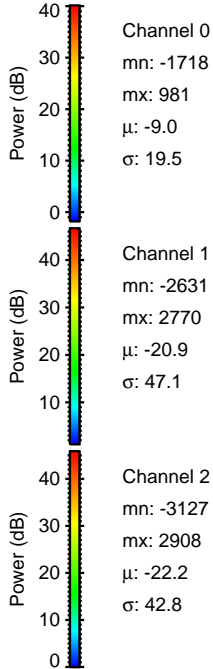
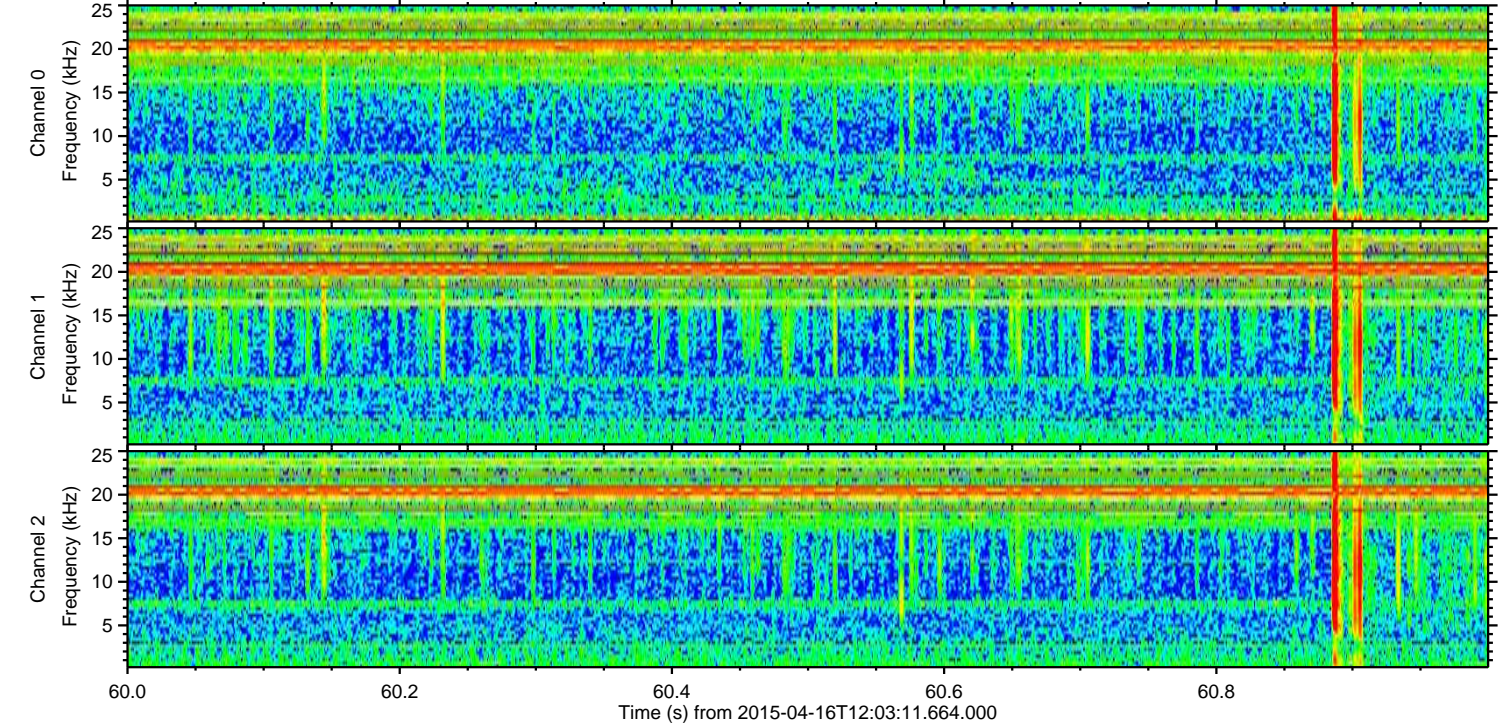
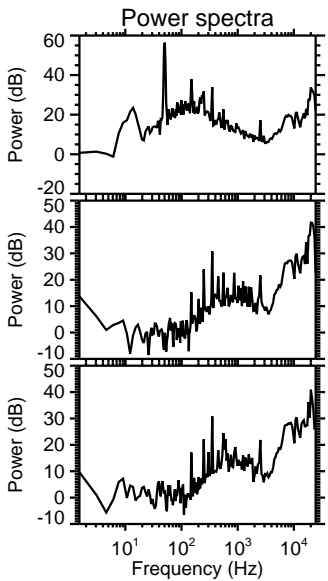
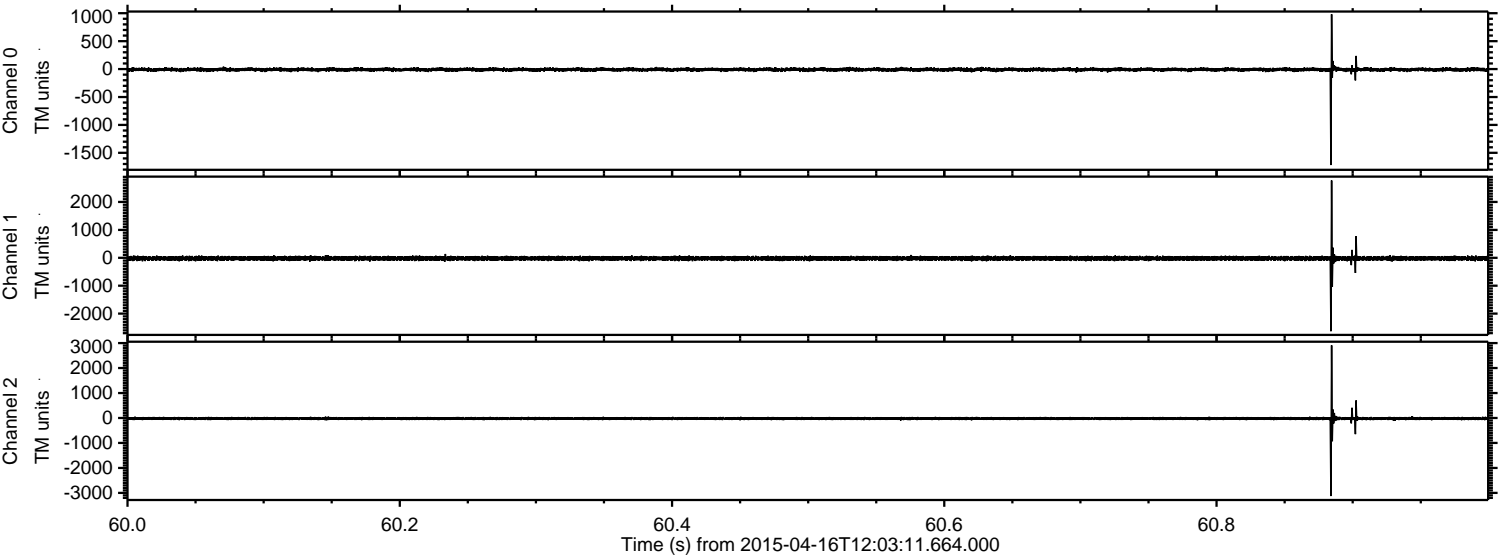


Processed Thu Apr 16 14:10:26 2015 by ELM ver.2012-10-06 from 001\_\_elm20150416\_120310\_\_dat00.bin





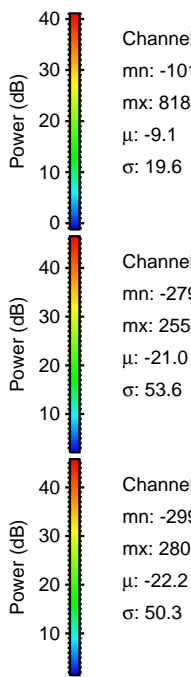
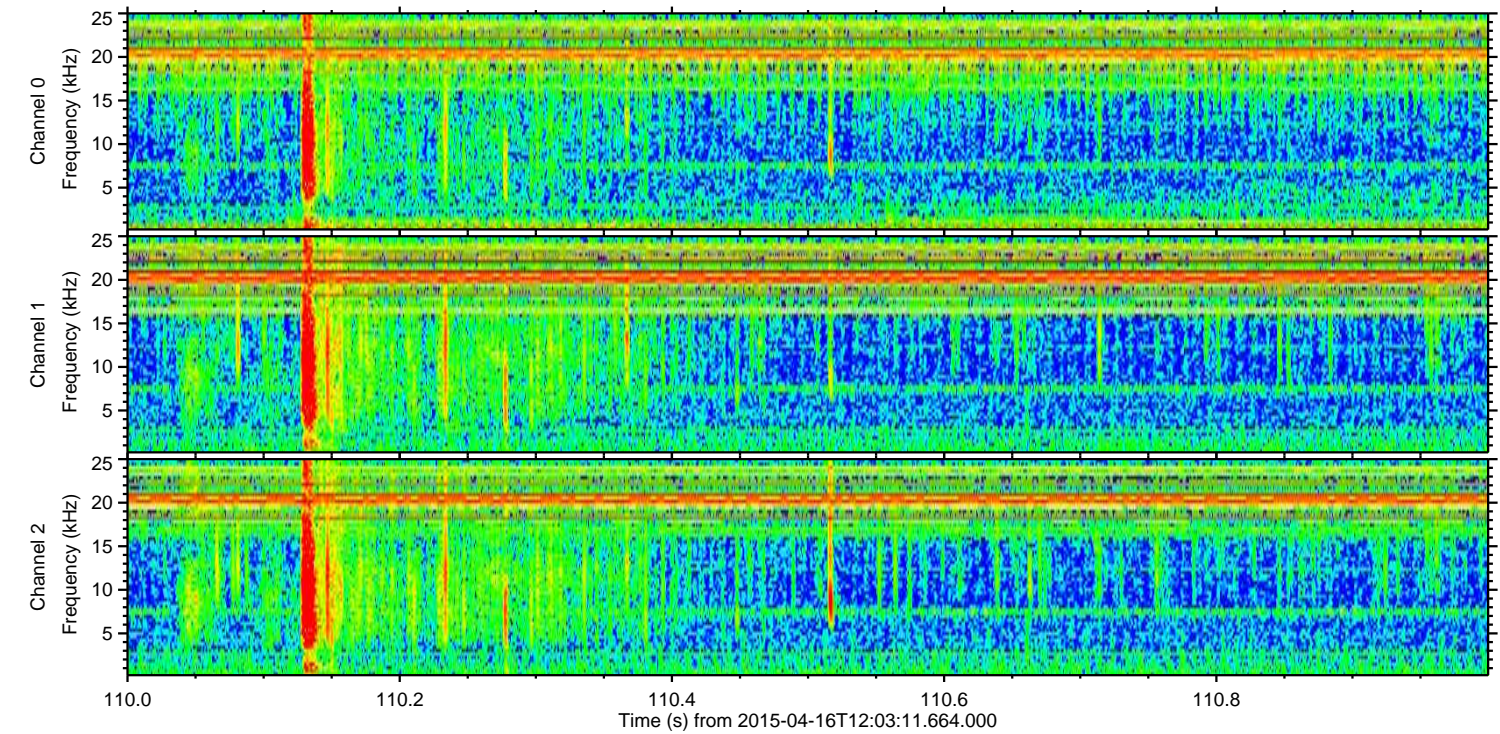
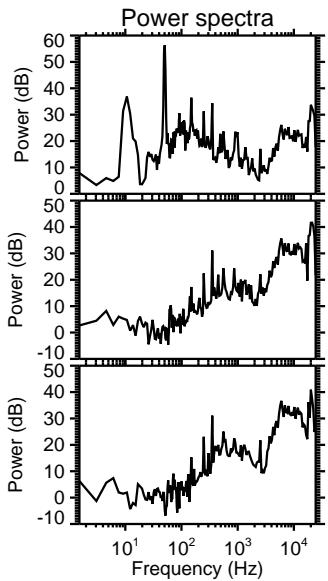
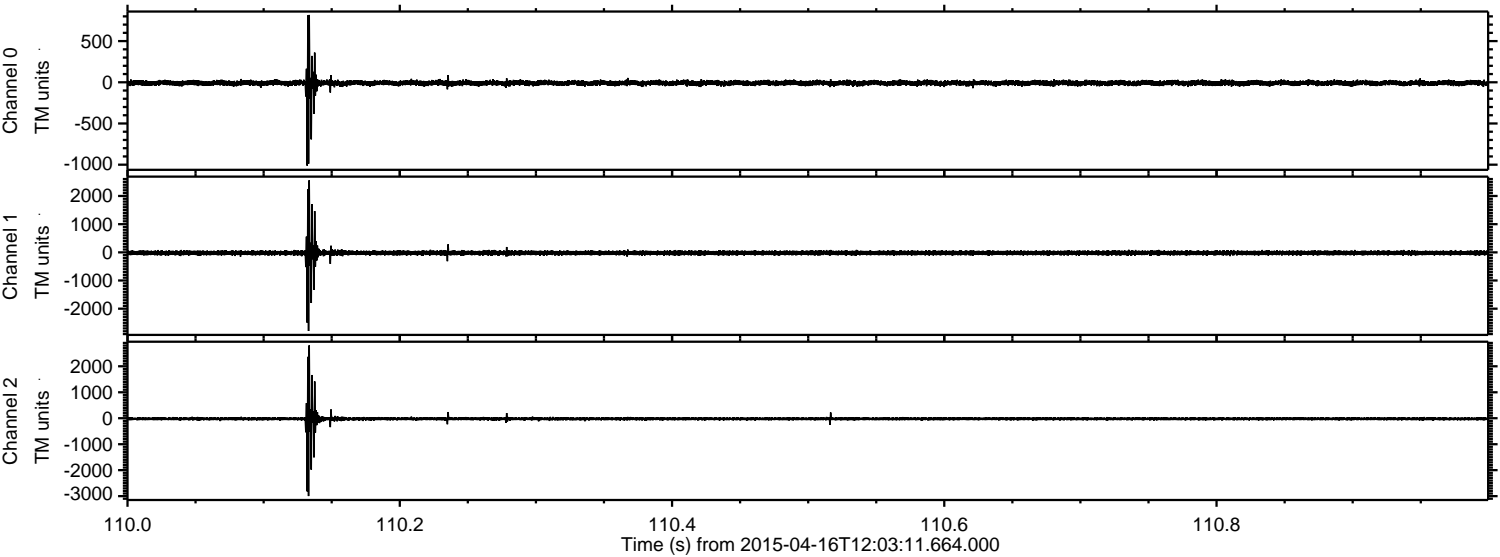
Processed Thu Apr 16 14:10:27 2015 by ELM ver.2012-10-06 from 001\_\_elm20150416\_120310\_\_dat00.bin





ELMAVAN 3D WAVEFORMS (Measured data sampled at 50 kHz) 49715 packets of 144 samples from 2015-04-16T12:03:11.664.000. Part 111/144

Processed Thu Apr 16 14:10:28 2015 by ELM ver.2012-10-06 from 001\_\_elm20150416\_120310\_\_dat00.bin



Channel 0  
mn: -1012  
mx: 818  
 $\mu$ : -9.1  
 $\sigma$ : 19.6

Channel 1  
mn: -2790  
mx: 2558  
 $\mu$ : -21.0  
 $\sigma$ : 53.6

Channel 2  
mn: -2999  
mx: 2807  
 $\mu$ : -22.2  
 $\sigma$ : 50.3



Processed Thu Apr 16 14:10:29 2015 by ELM ver.2012-10-06 from 001\_\_elm20150416\_120310\_\_dat00.bin

