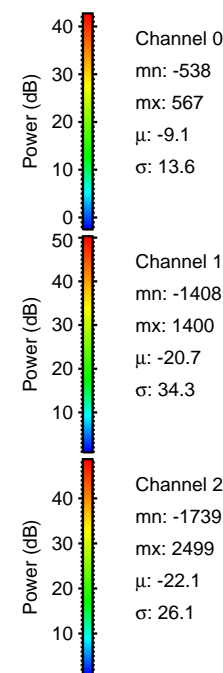
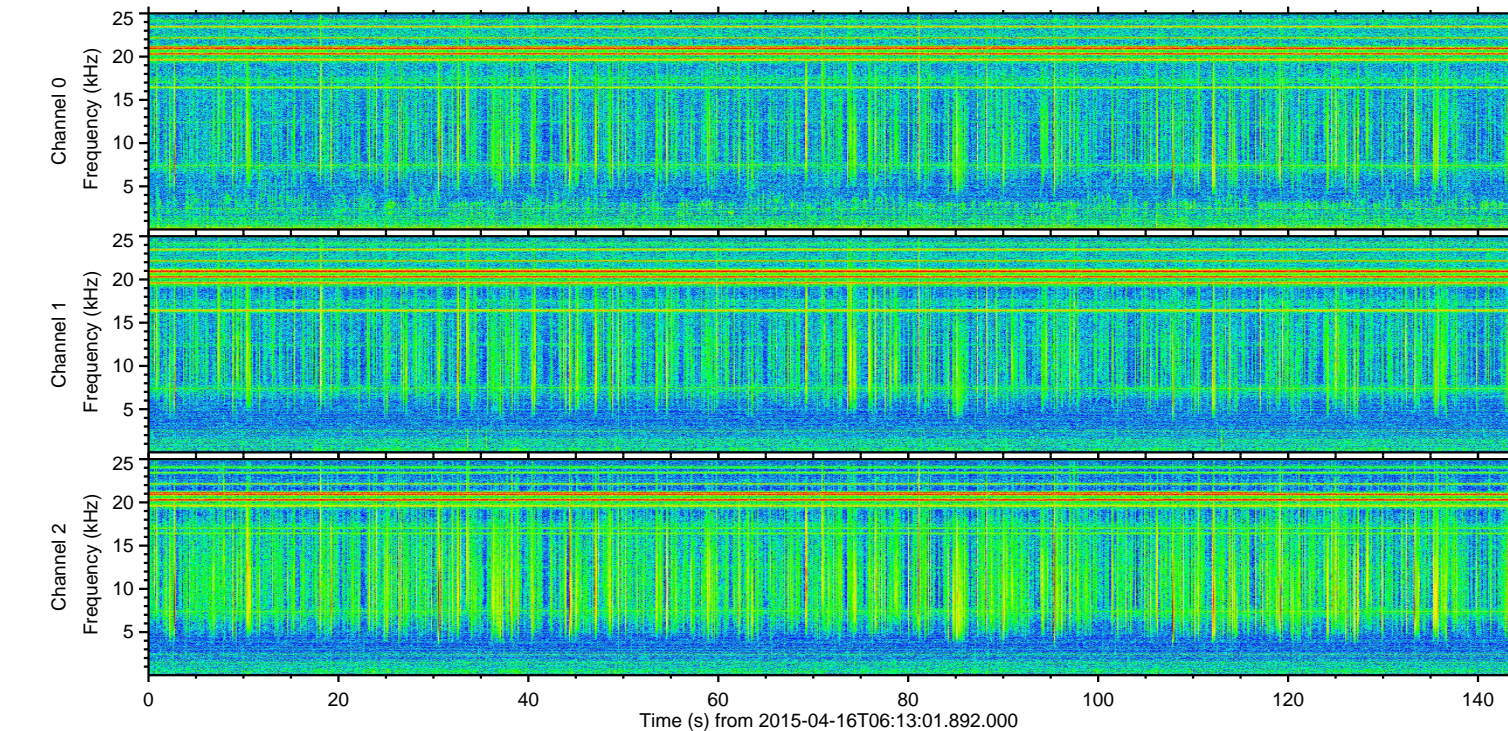
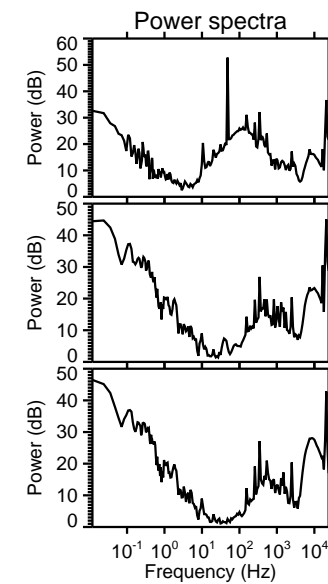
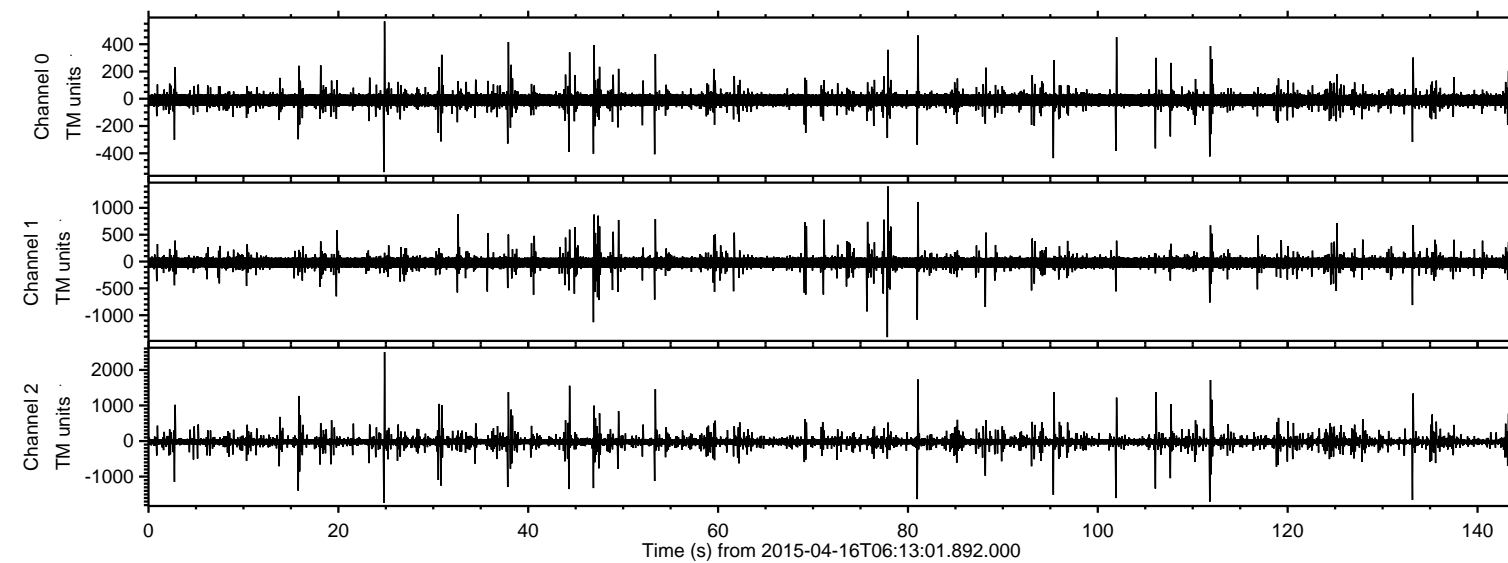
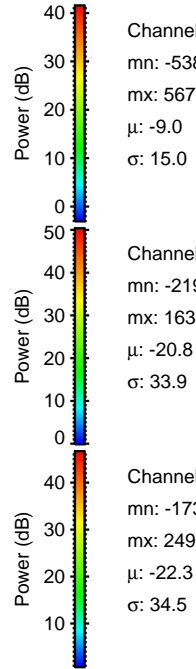
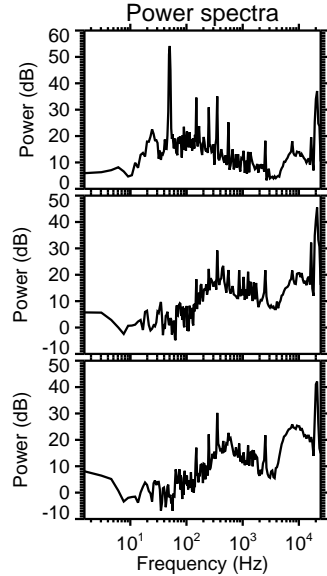
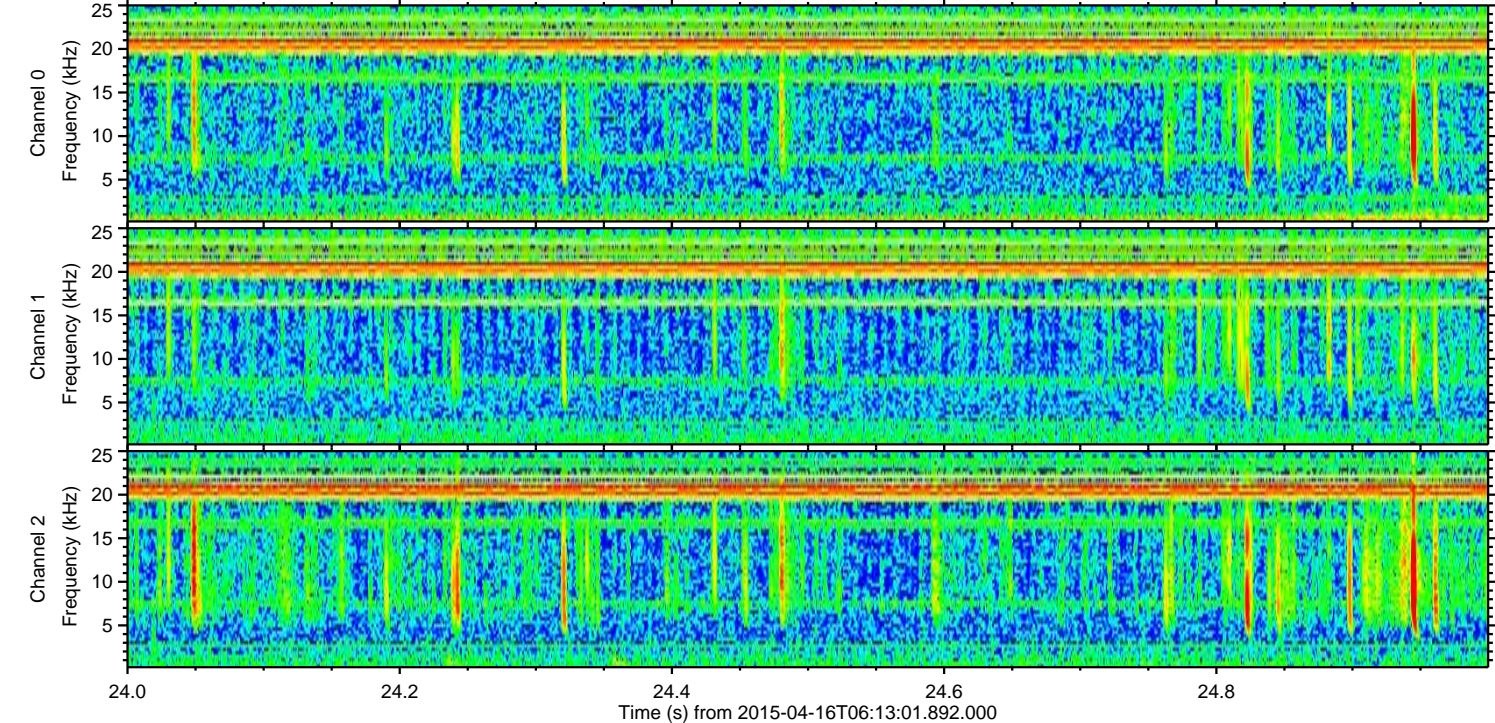
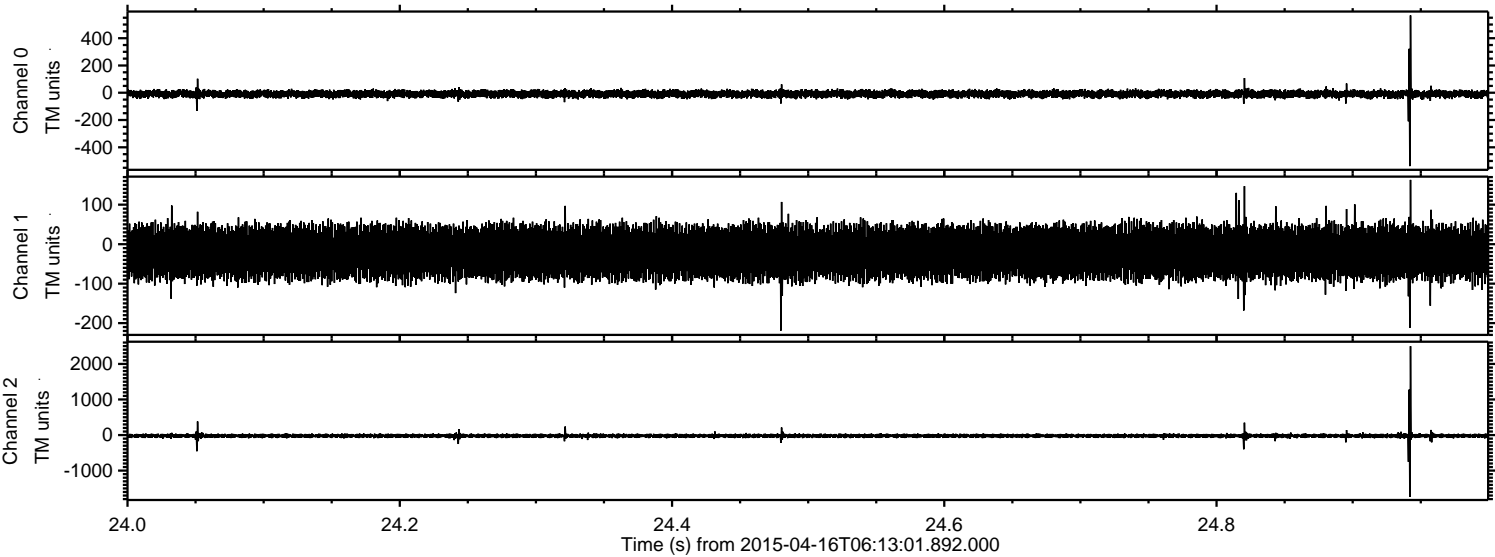


ELMAVAN 3D WAVEFORMS (Measured data sampled at 50 kHz) 49768 packets of 144 samples from 2015-04-16T06:13:01.892.000.

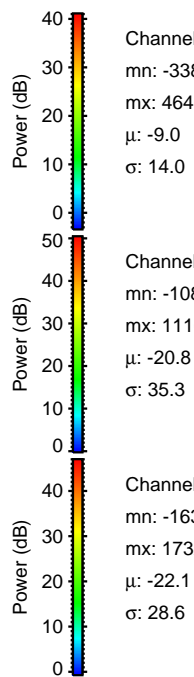
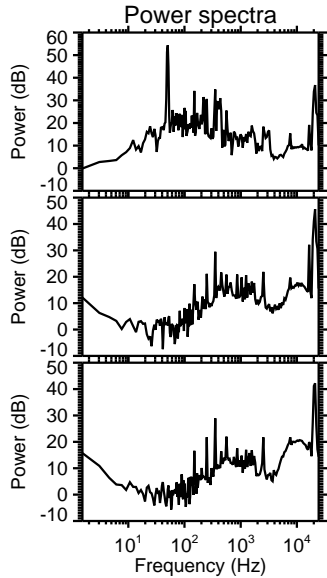
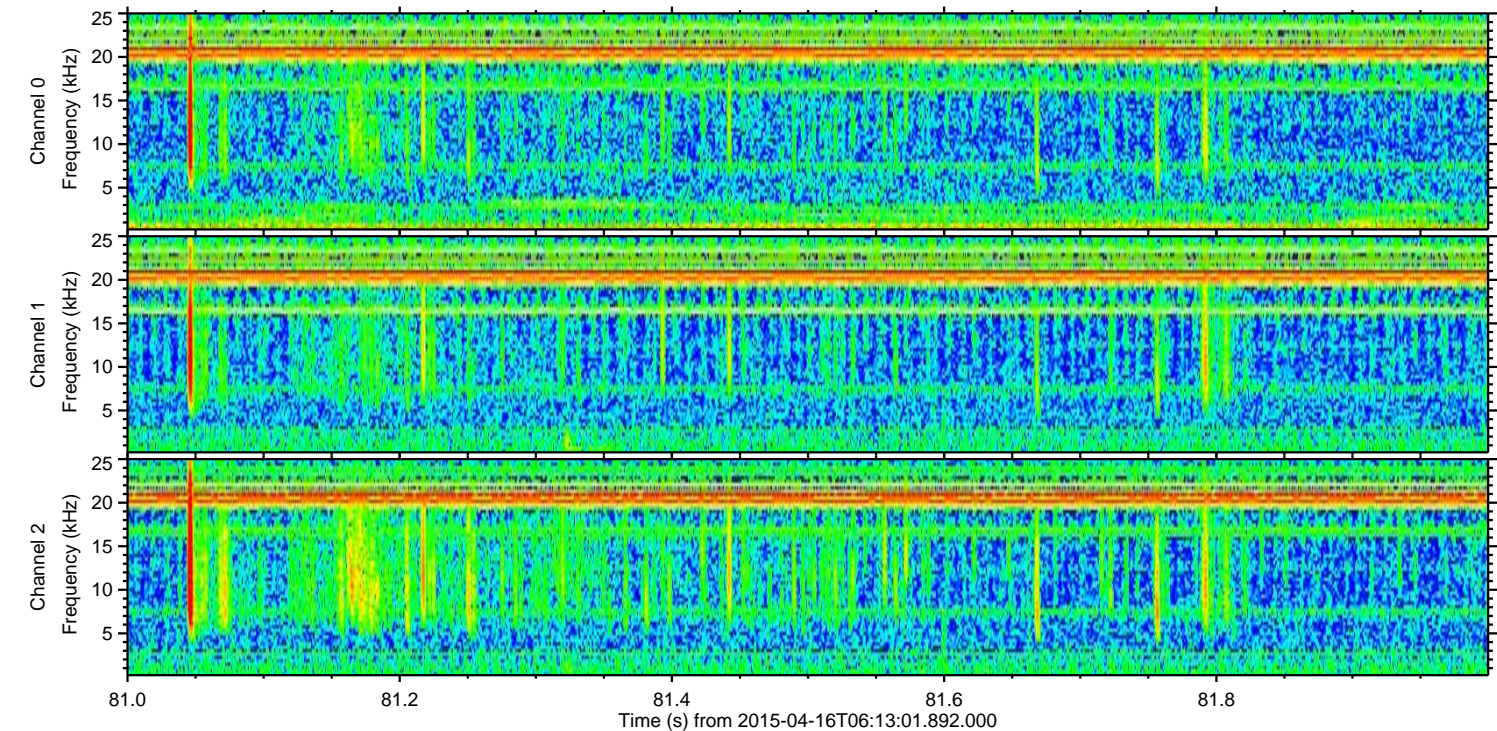
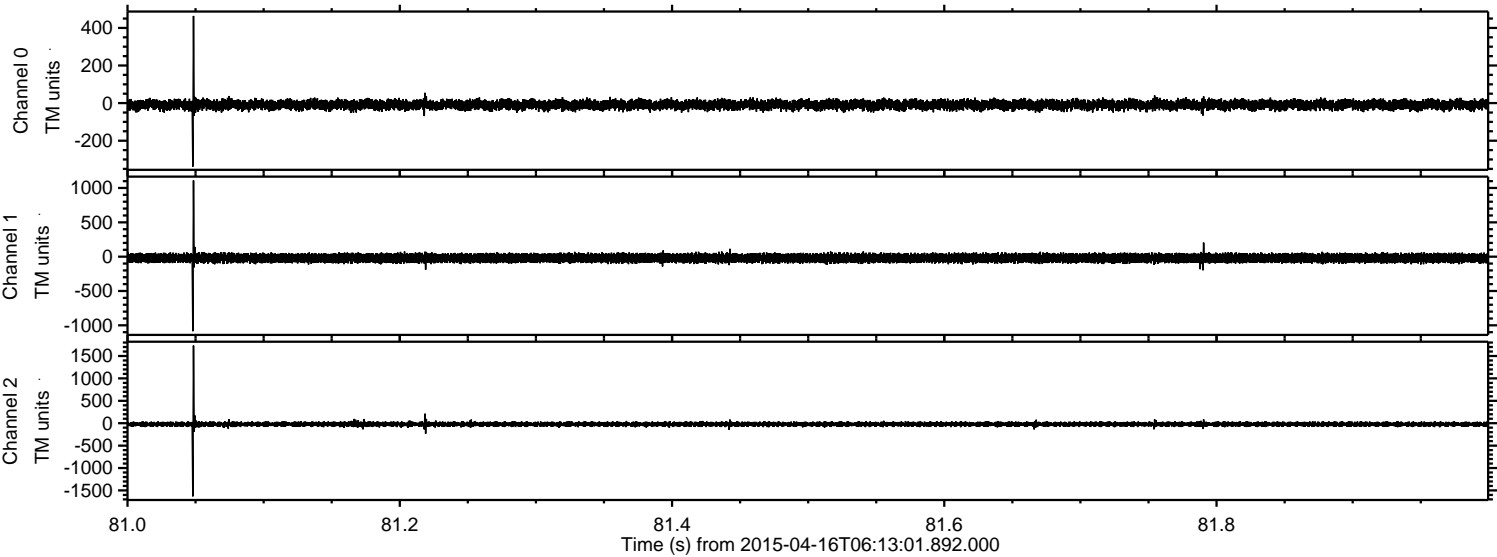
Processed Thu Apr 16 08:20:18 2015 by ELM ver.2012-10-06 from 001__elm20150416_061300__dat00.bin



Processed Thu Apr 16 08:20:29 2015 by ELM ver.2012-10-06 from 001__elm20150416_061300__dat00.bin



Processed Thu Apr 16 08:20:30 2015 by ELM ver.2012-10-06 from 001__elm20150416_061300__dat00.bin



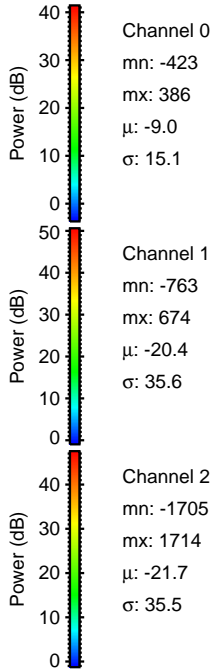
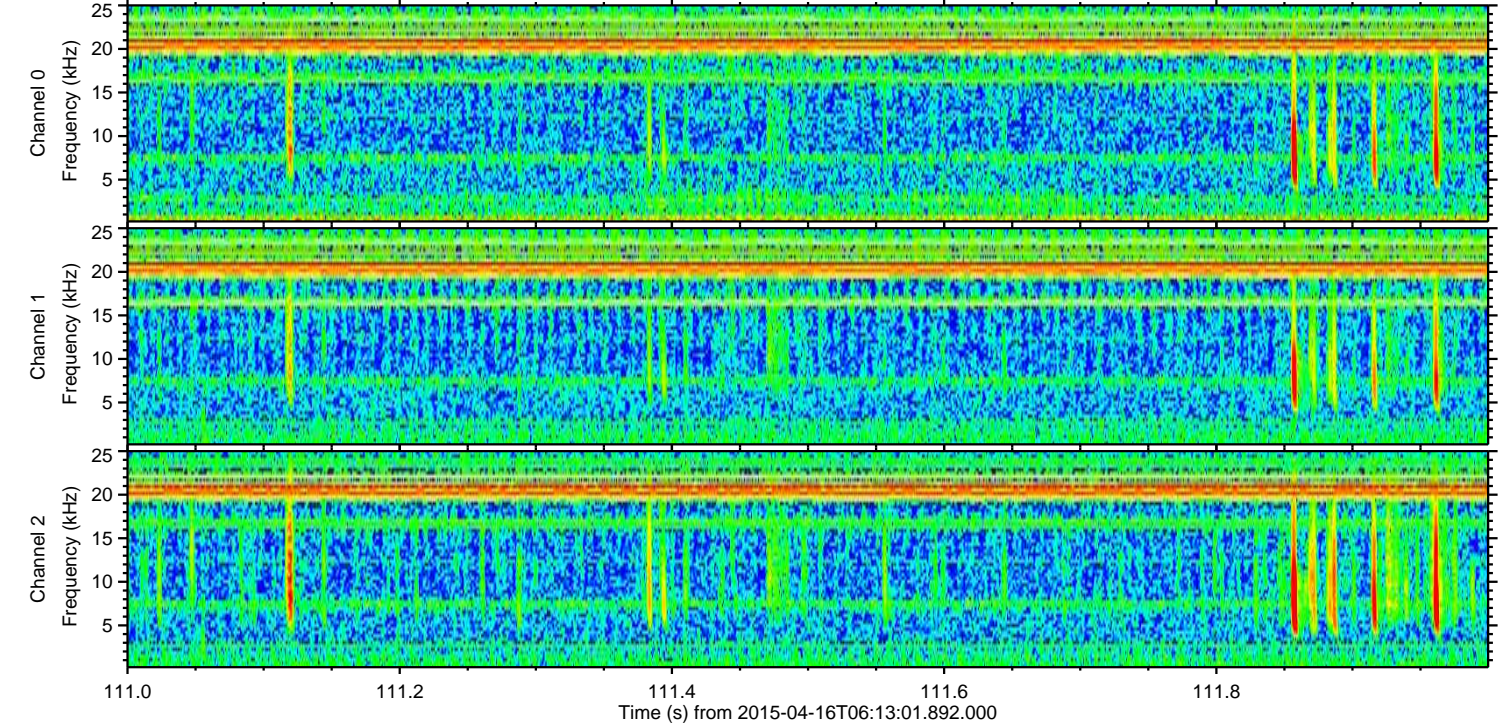
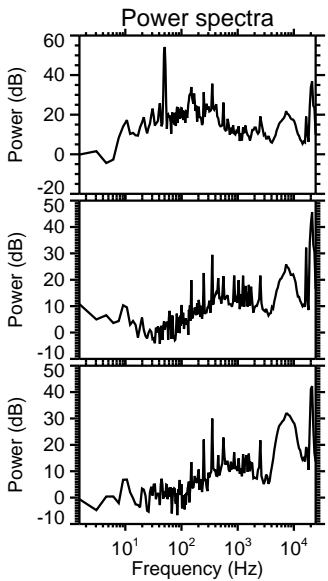
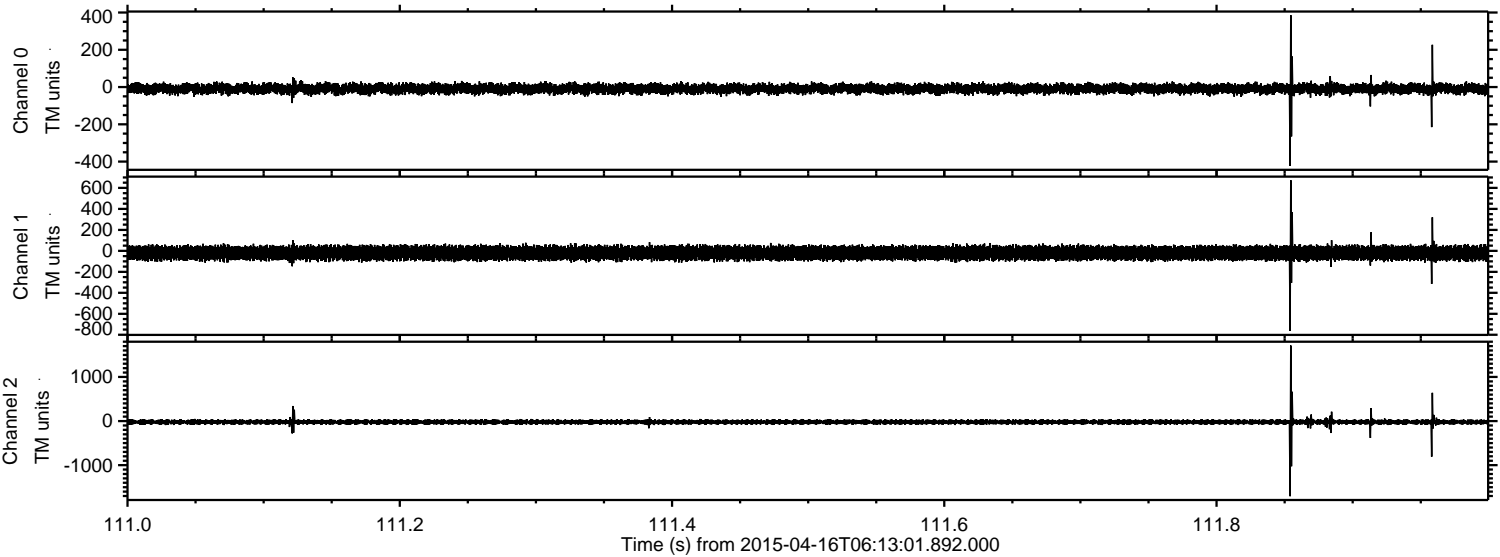
Channel 0
mn: -338
mx: 464
 μ : -9.0
 σ : 14.0

Channel 1
mn: -1085
mx: 1110
 μ : -20.8
 σ : 35.3

Channel 2
mn: -1632
mx: 1732
 μ : -22.1
 σ : 28.6

ELMAVAN 3D WAVEFORMS (Measured data sampled at 50 kHz) 49768 packets of 144 samples from 2015-04-16T06:13:01.892.000. Part 112/144

Processed Thu Apr 16 08:20:31 2015 by ELM ver.2012-10-06 from 001__elm20150416_061300__dat00.bin



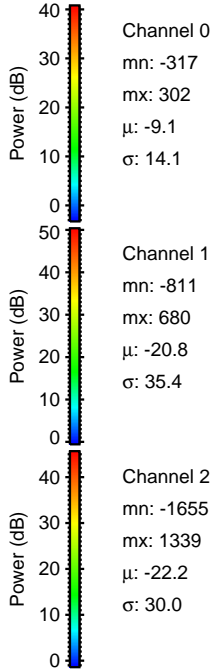
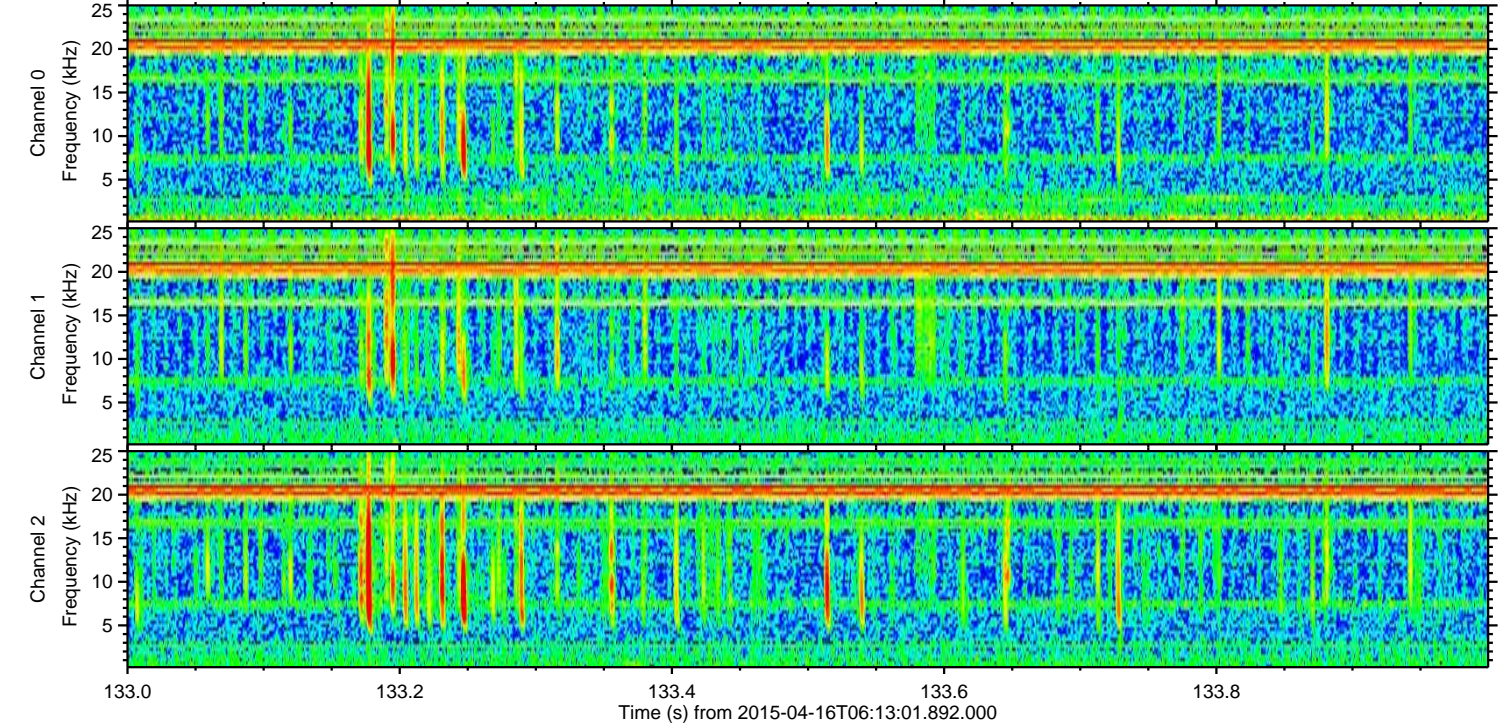
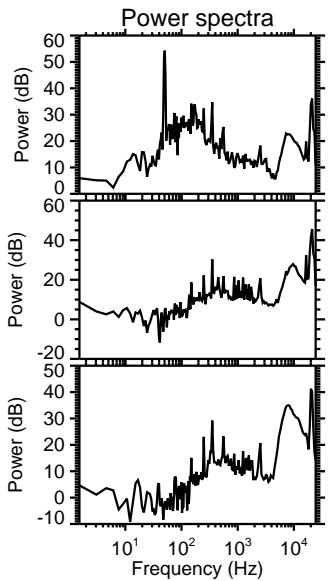
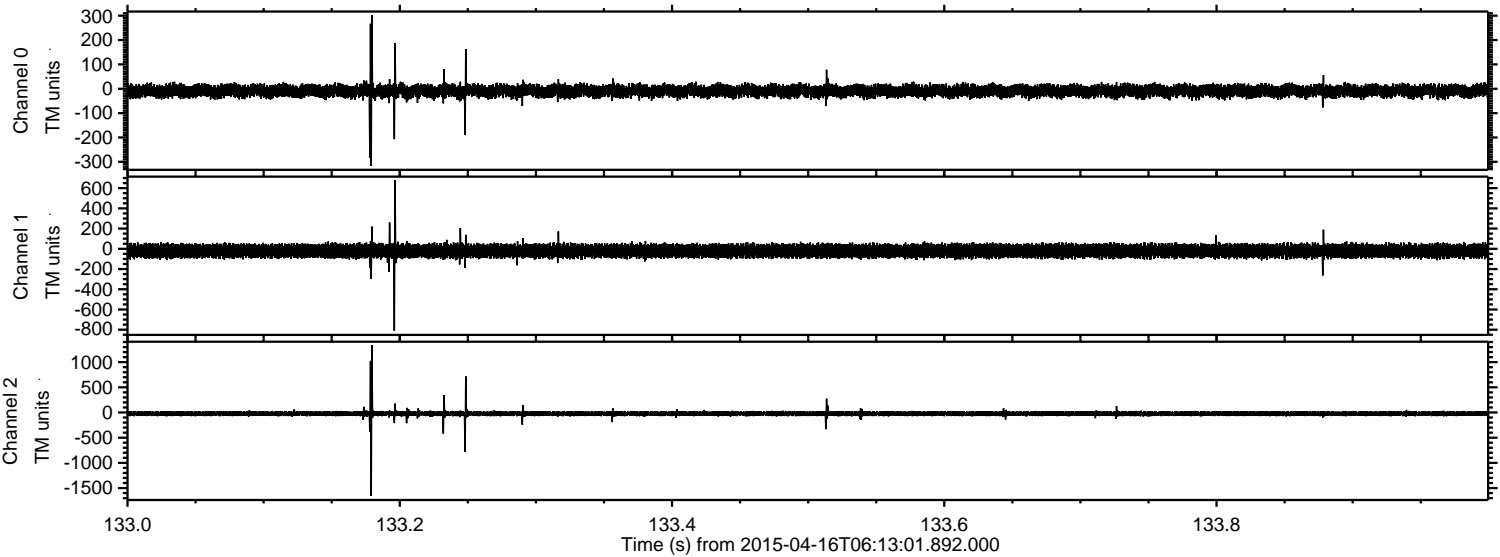
Channel 0
mn: -423
mx: 386
 μ : -9.0
 σ : 15.1

Channel 1
mn: -763
mx: 674
 μ : -20.4
 σ : 35.6

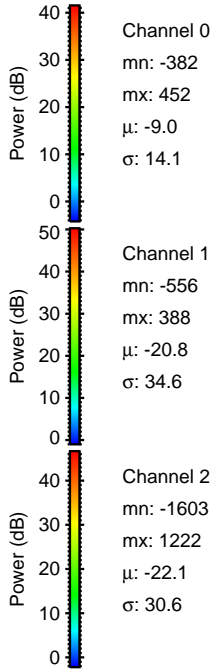
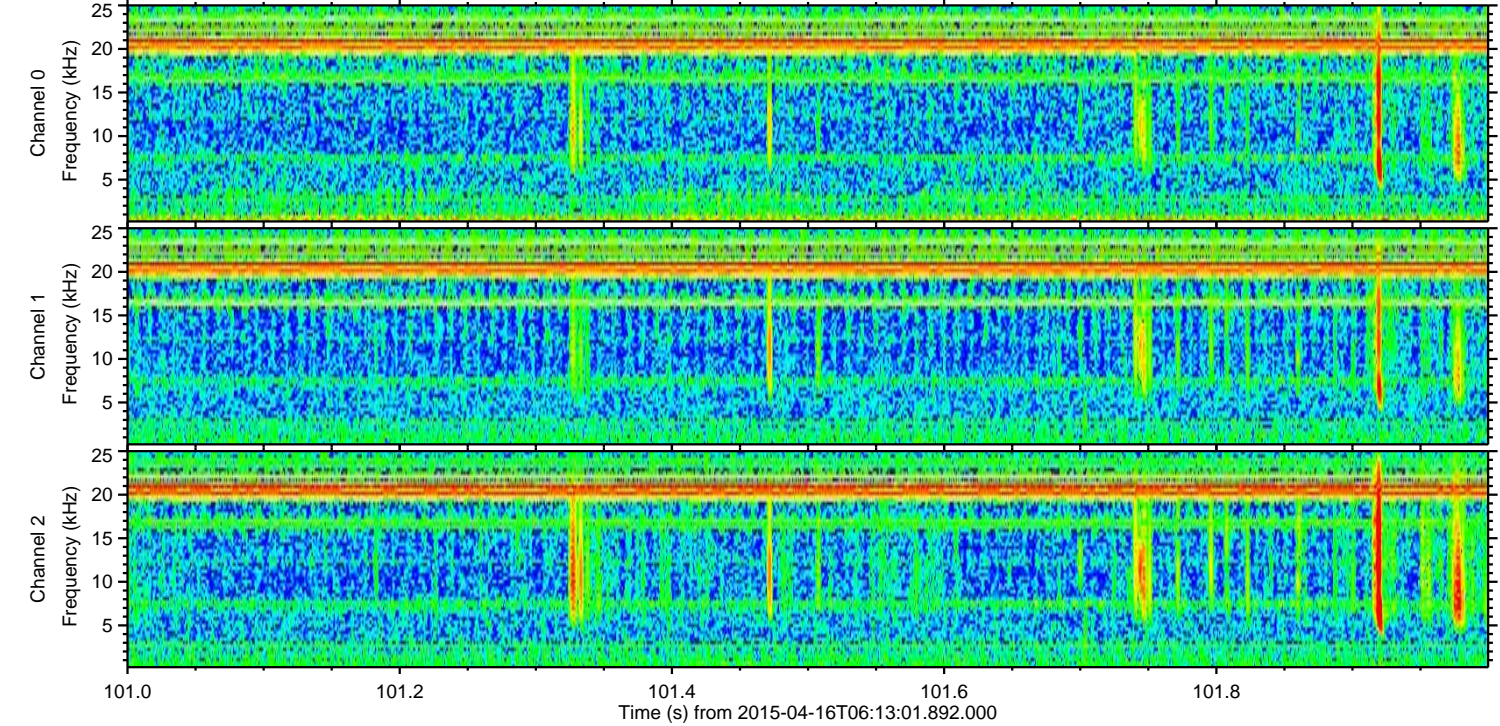
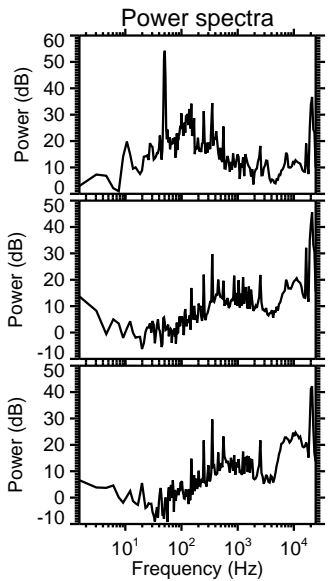
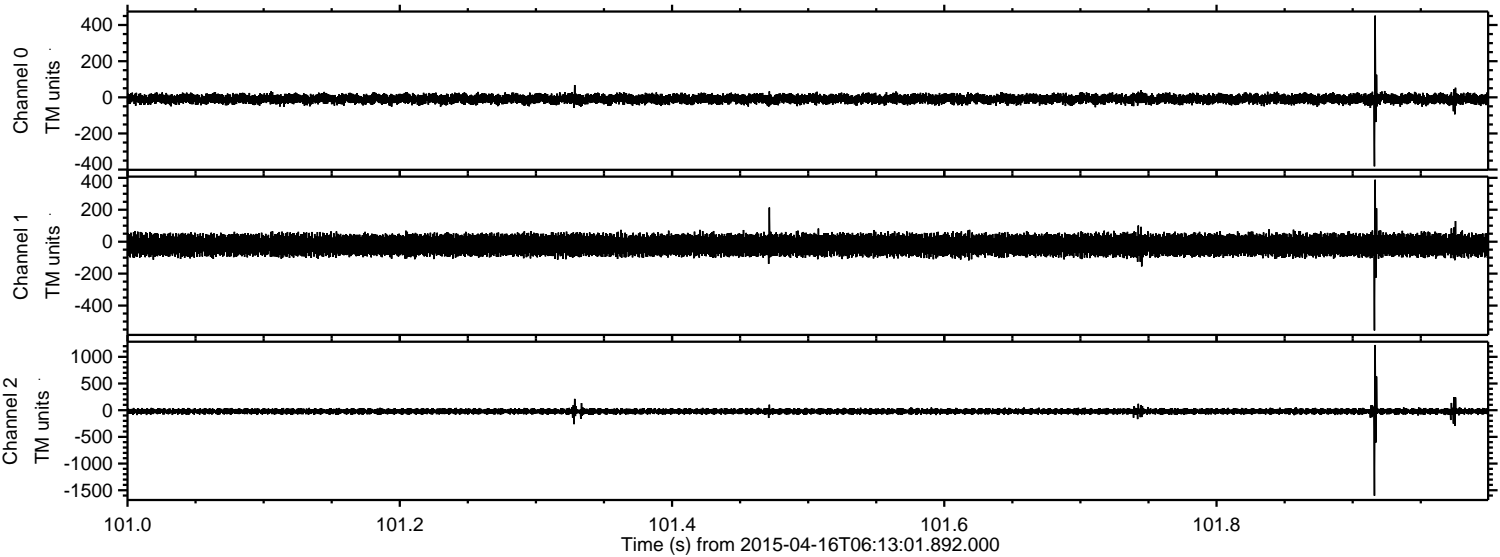
Channel 2
mn: -1705
mx: 1714
 μ : -21.7
 σ : 35.5

ELMAVAN 3D WAVEFORMS (Measured data sampled at 50 kHz) 49768 packets of 144 samples from 2015-04-16T06:13:01.892.000. Part 134/144

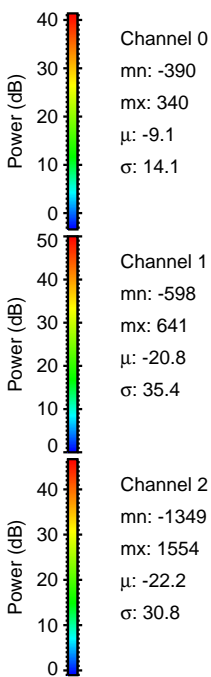
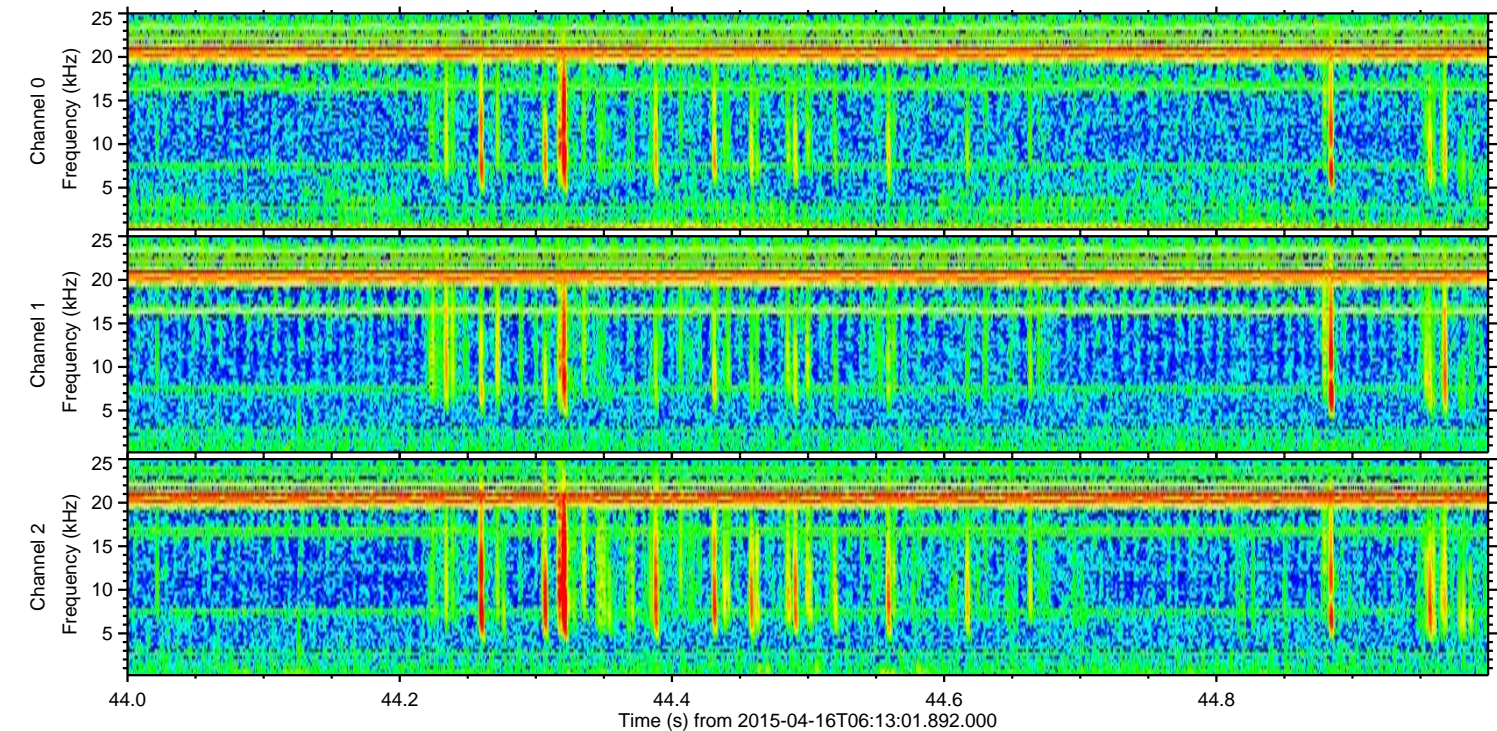
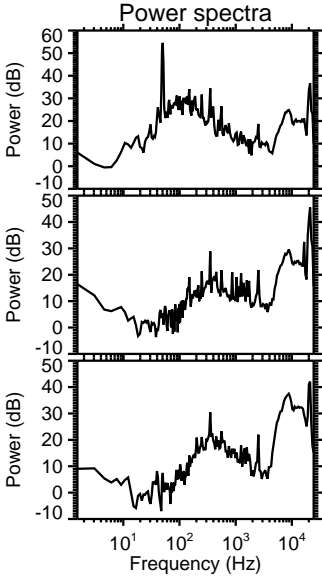
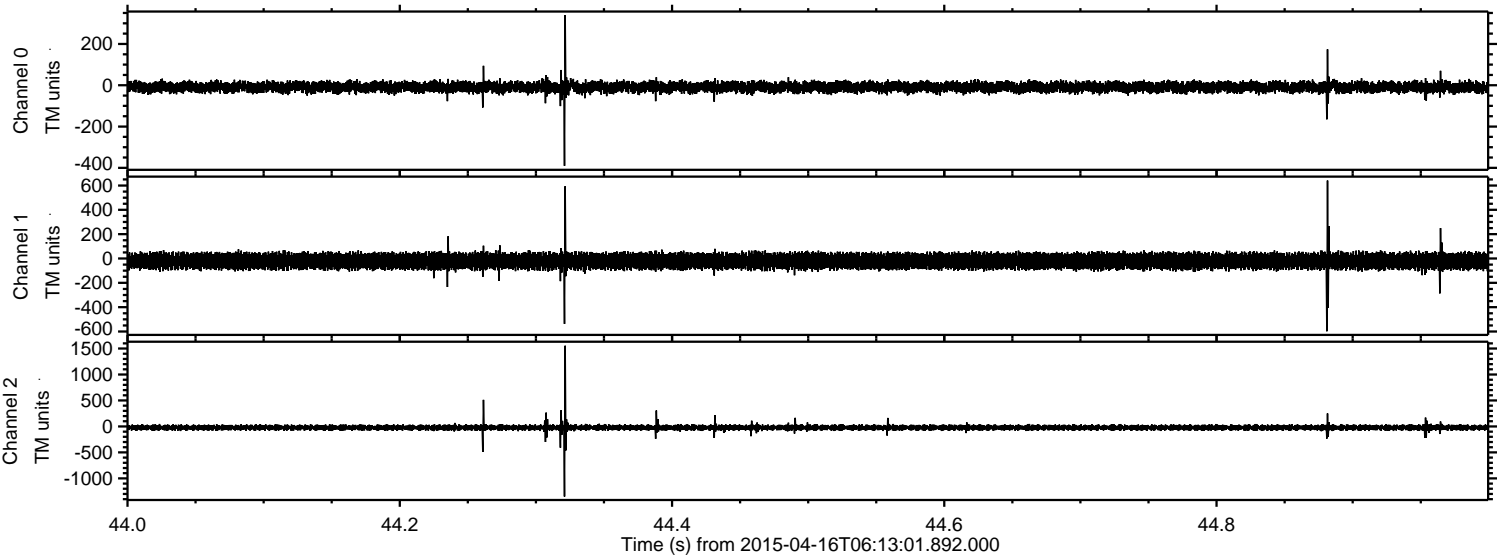
Processed Thu Apr 16 08:20:32 2015 by ELM ver.2012-10-06 from 001__elm20150416_061300__dat00.bin



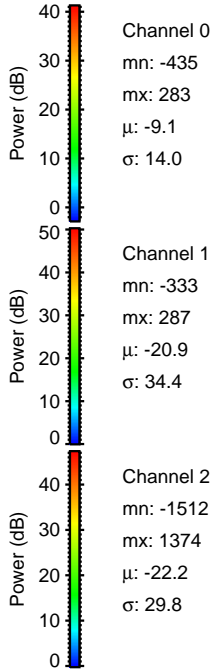
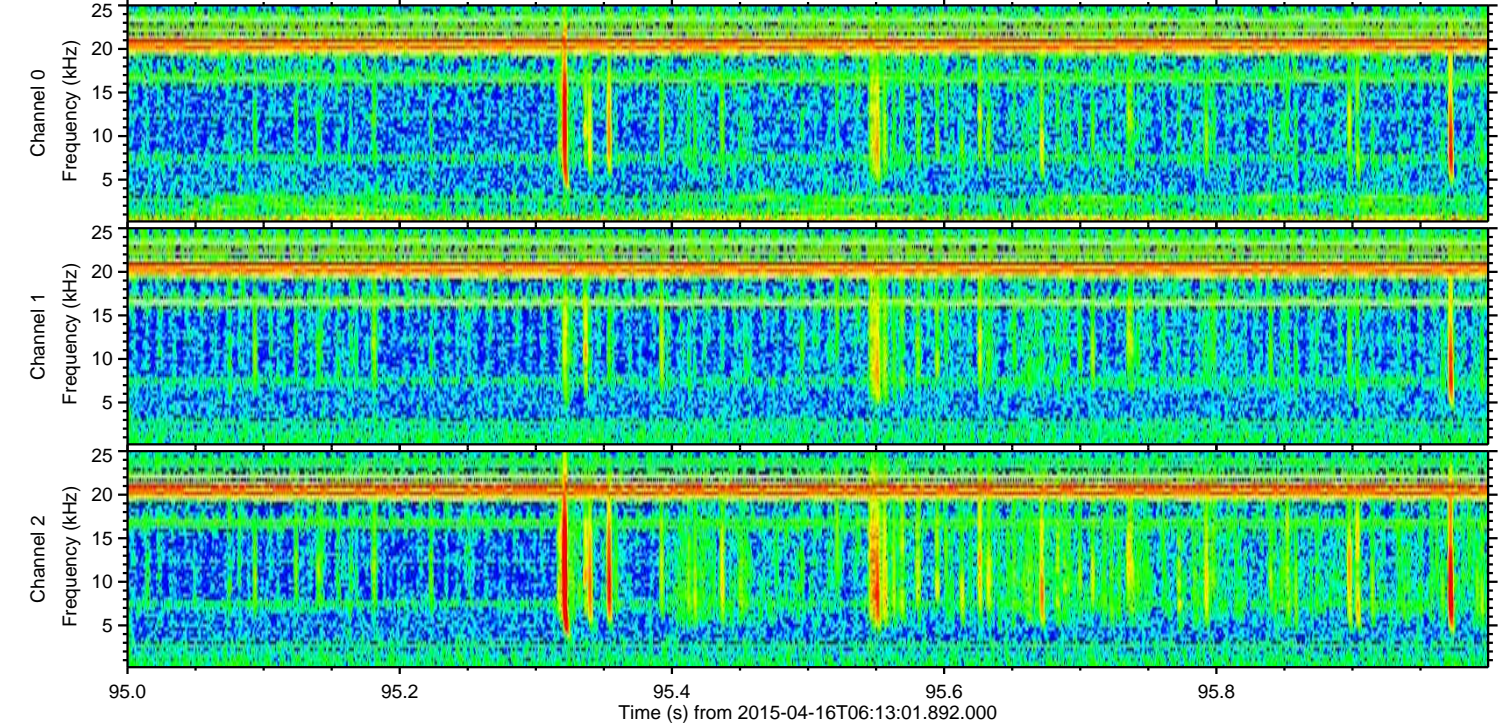
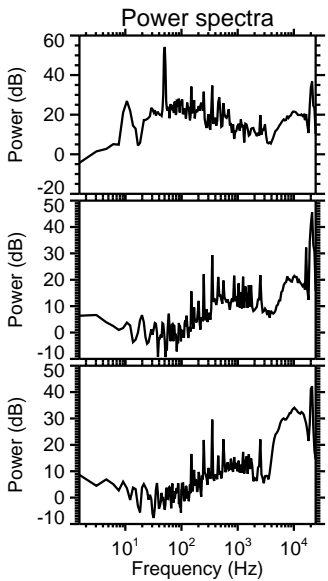
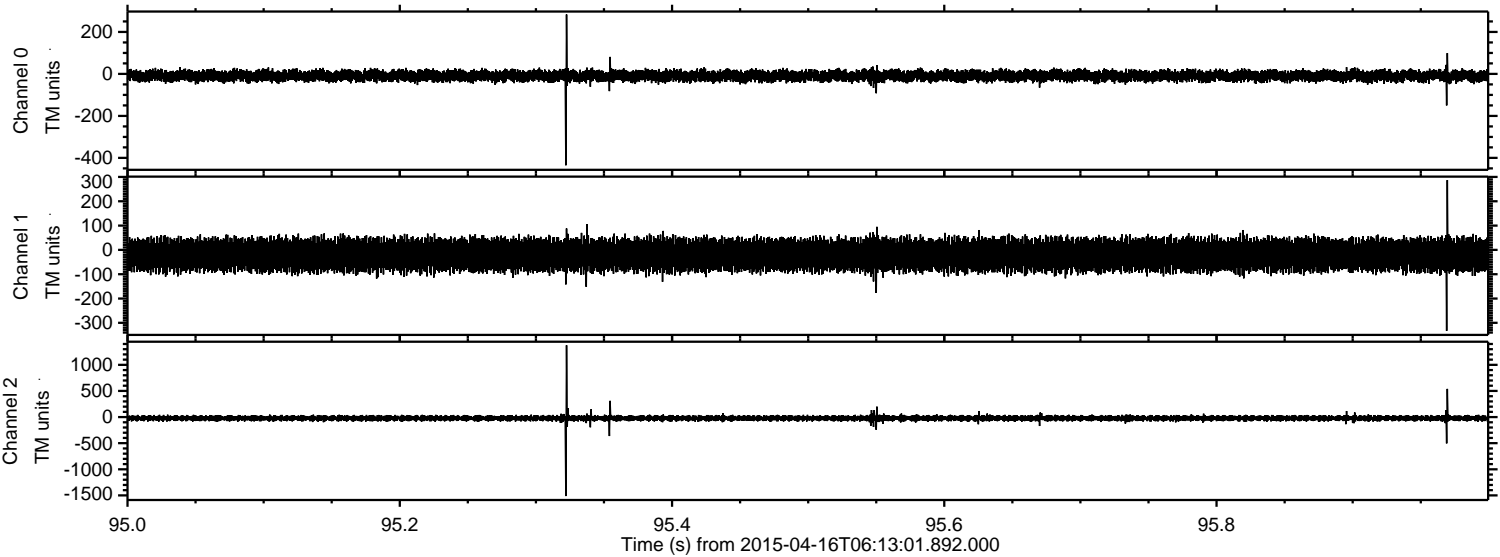
Processed Thu Apr 16 08:20:33 2015 by ELM ver.2012-10-06 from 001__elm20150416_061300__dat00.bin



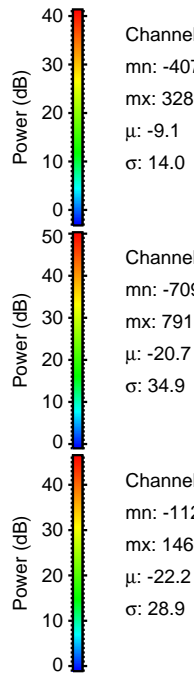
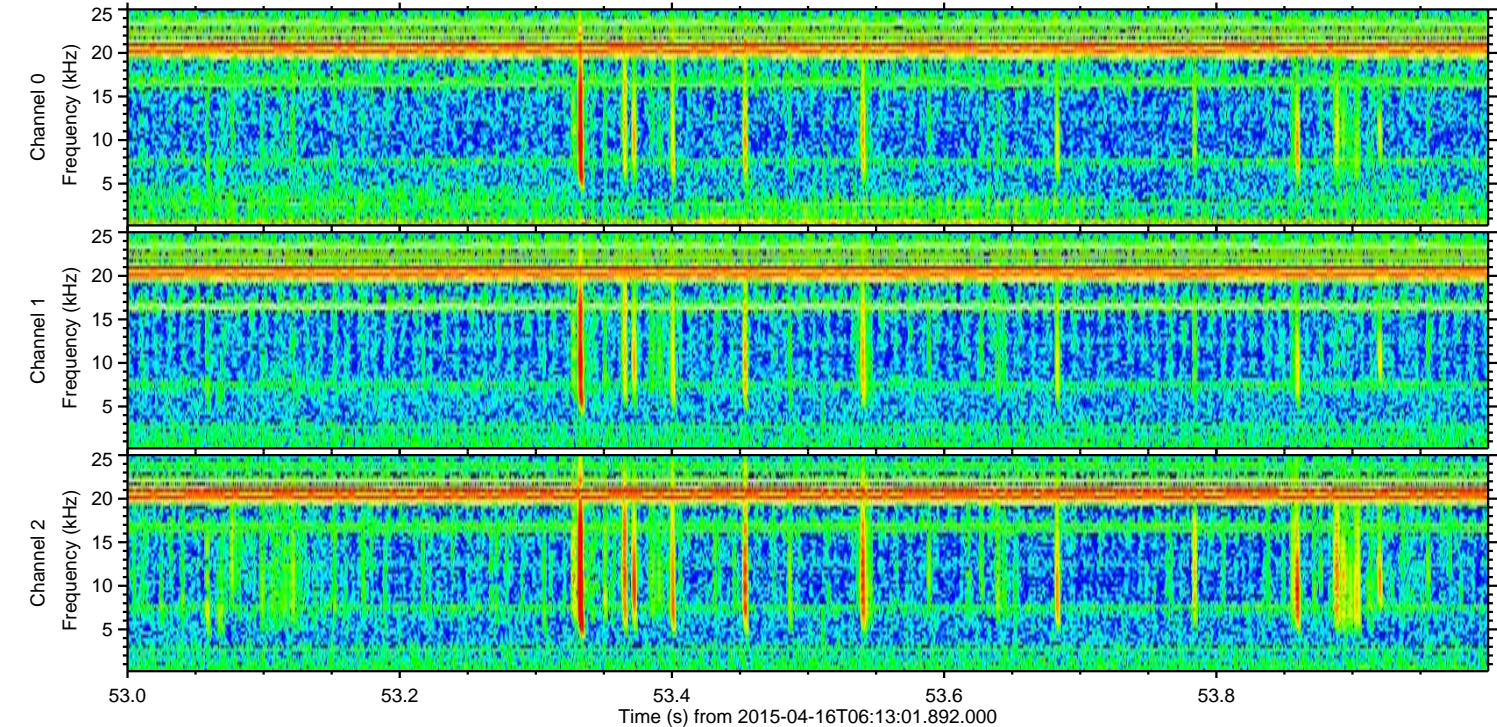
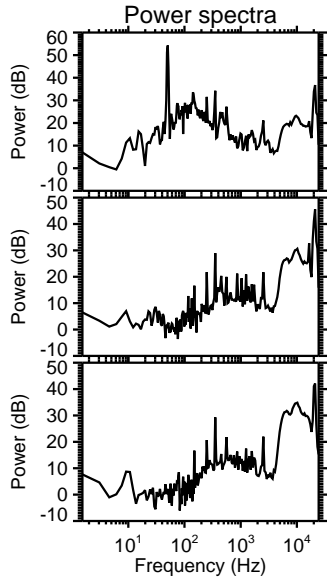
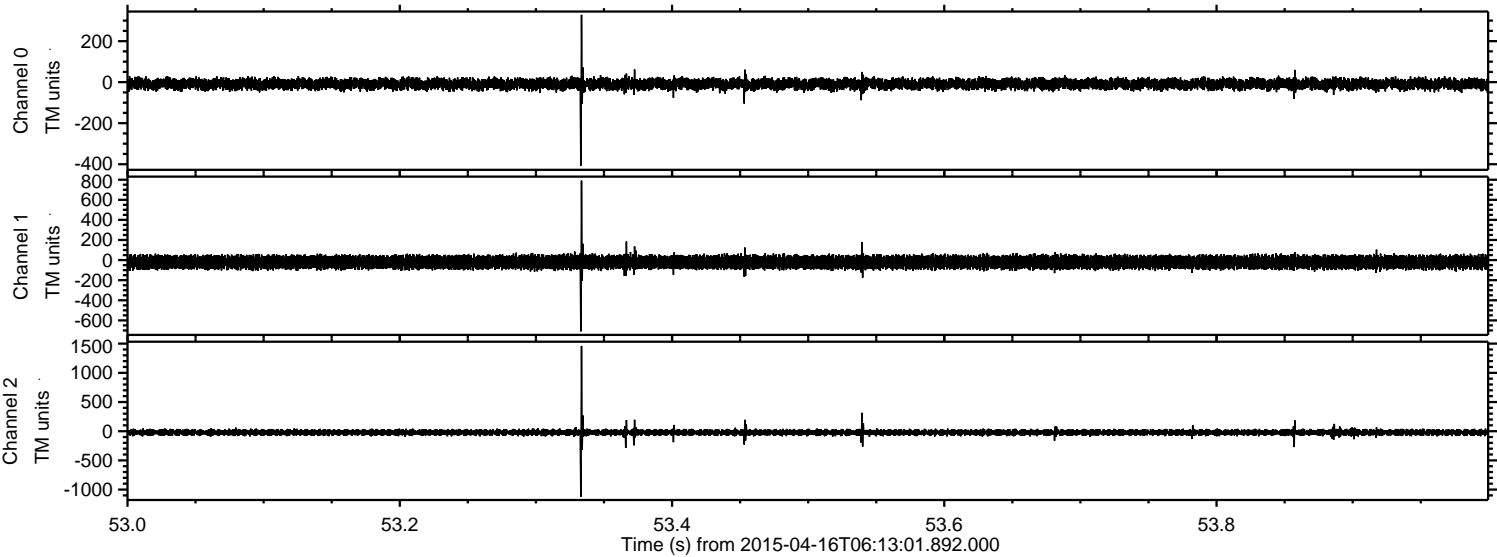
Processed Thu Apr 16 08:20:34 2015 by ELM ver.2012-10-06 from 001__elm20150416_061300__dat00.bin



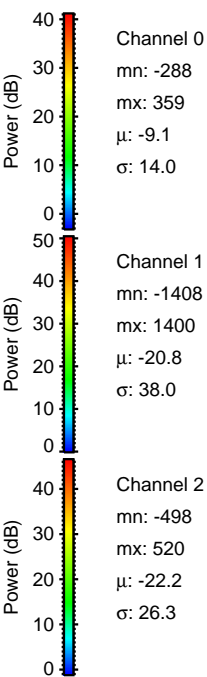
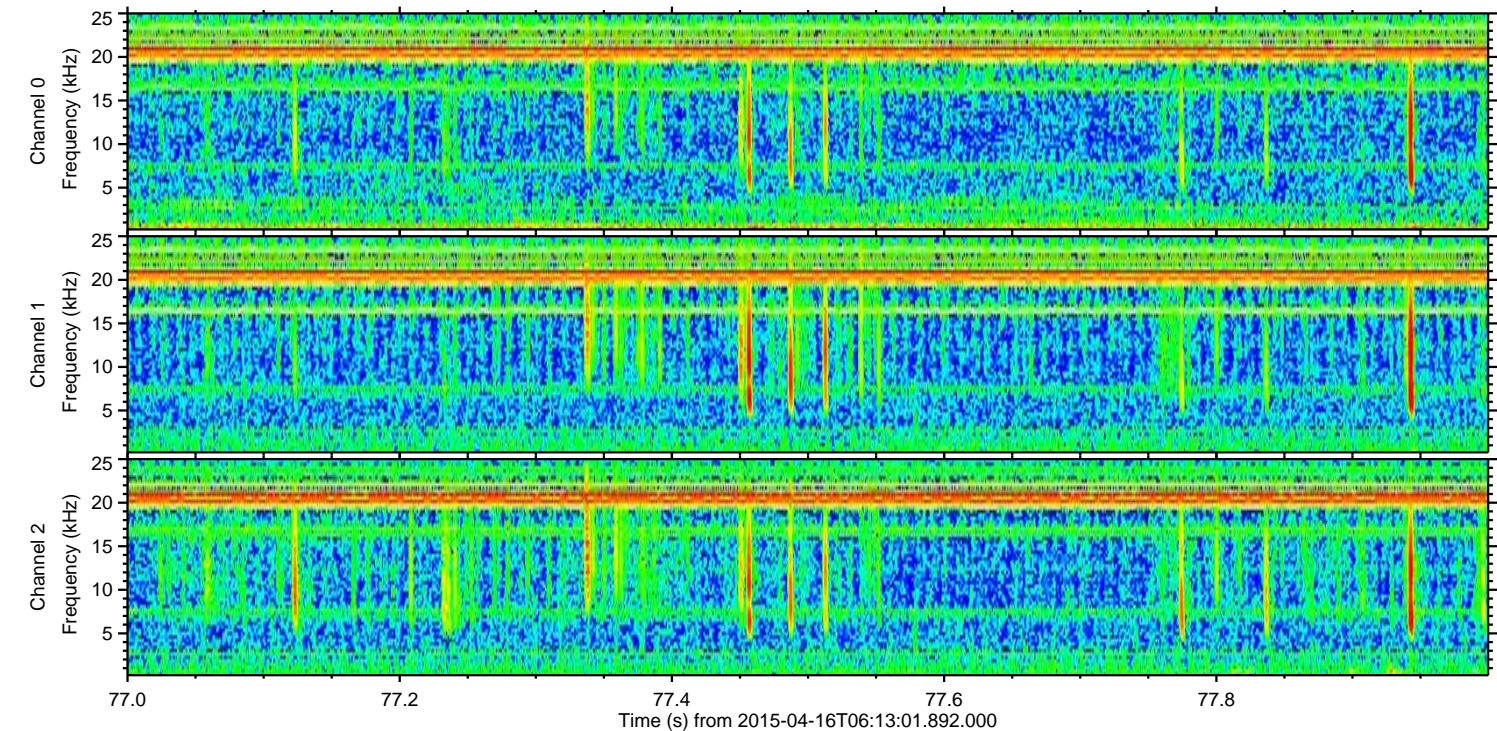
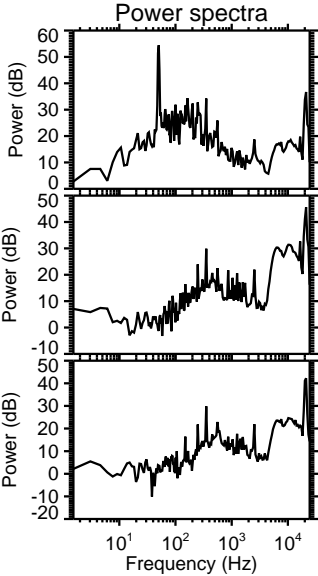
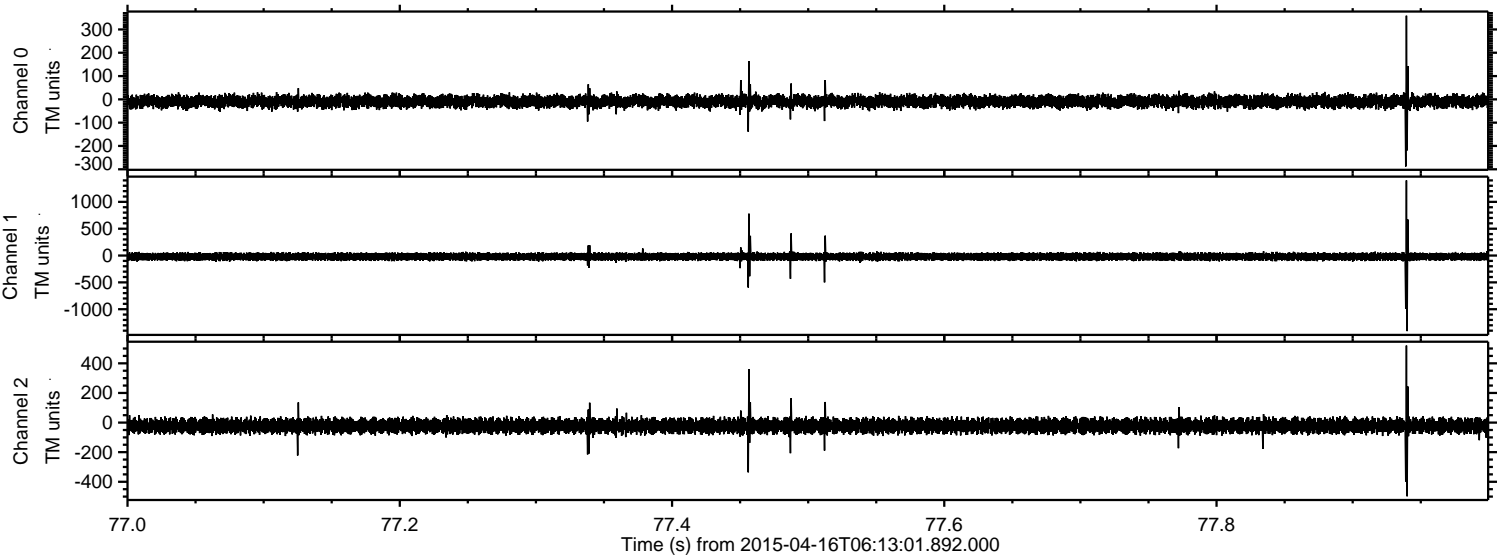
Processed Thu Apr 16 08:20:35 2015 by ELM ver.2012-10-06 from 001__elm20150416_061300__dat00.bin



Processed Thu Apr 16 08:20:36 2015 by ELM ver.2012-10-06 from 001__elm20150416_061300__dat00.bin



Processed Thu Apr 16 08:20:37 2015 by ELM ver.2012-10-06 from 001__elm20150416_061300__dat00.bin



Processed Thu Apr 16 08:20:38 2015 by ELM ver.2012-10-06 from 001__elm20150416_061300__dat00.bin

