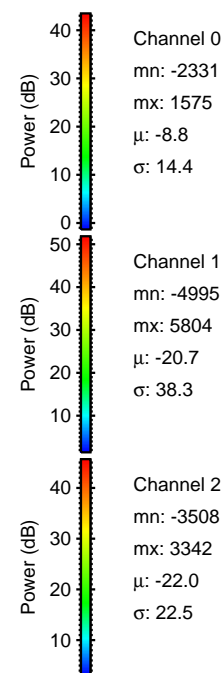
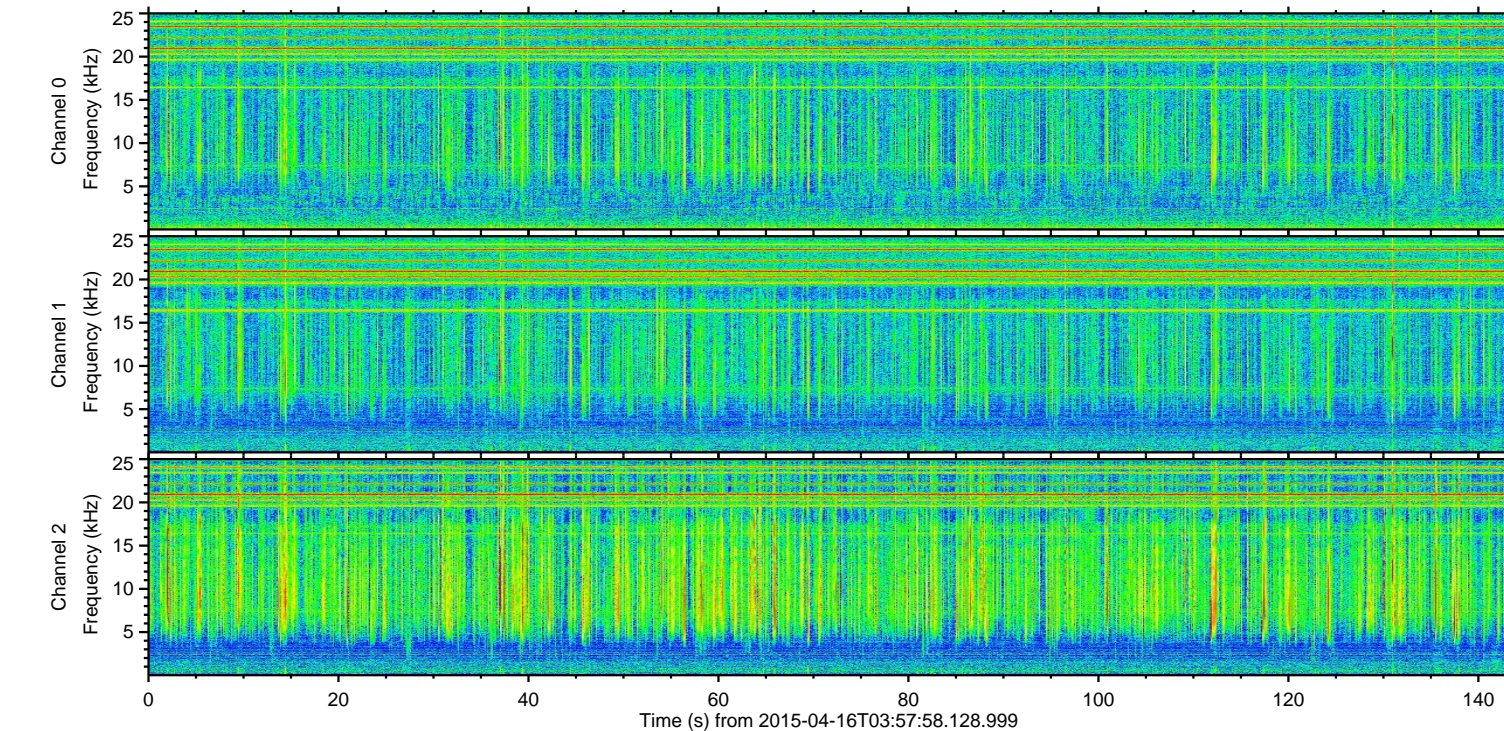
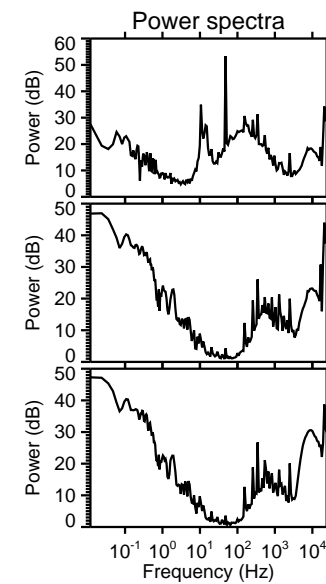
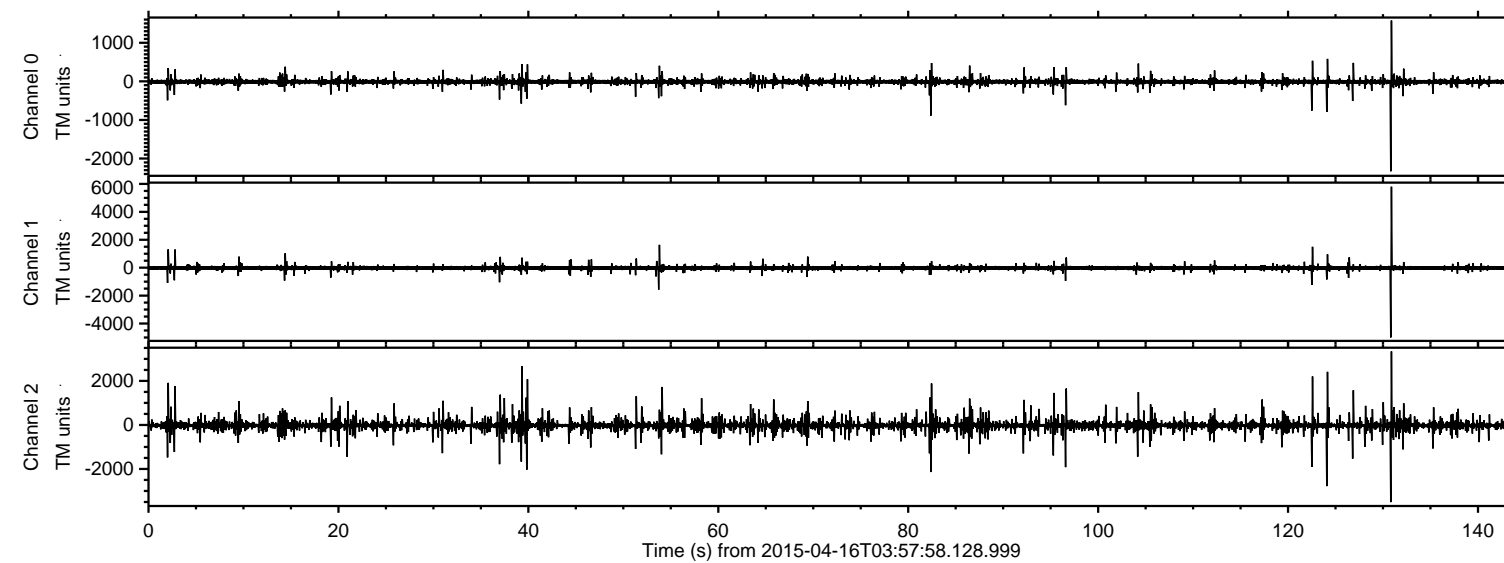


# ELMAVAN 3D WAVEFORMS (Measured data sampled at 50 kHz) 49751 packets of 144 samples from 2015-04-16T03:57:58.128.999.

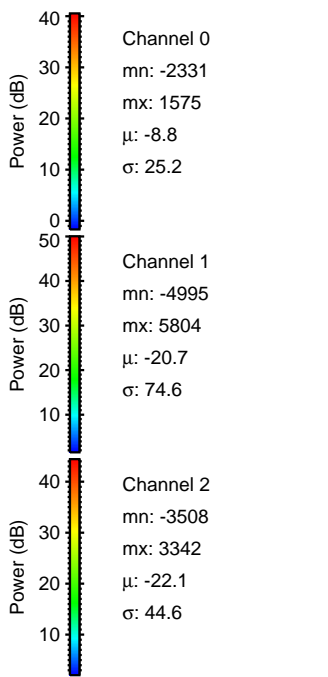
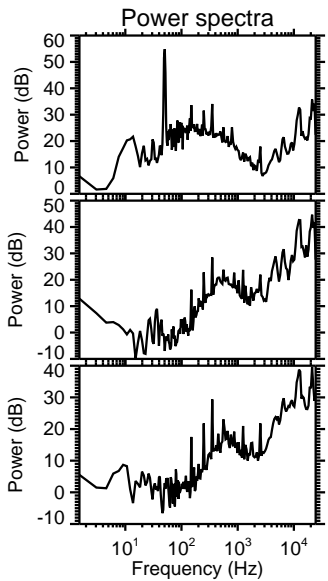
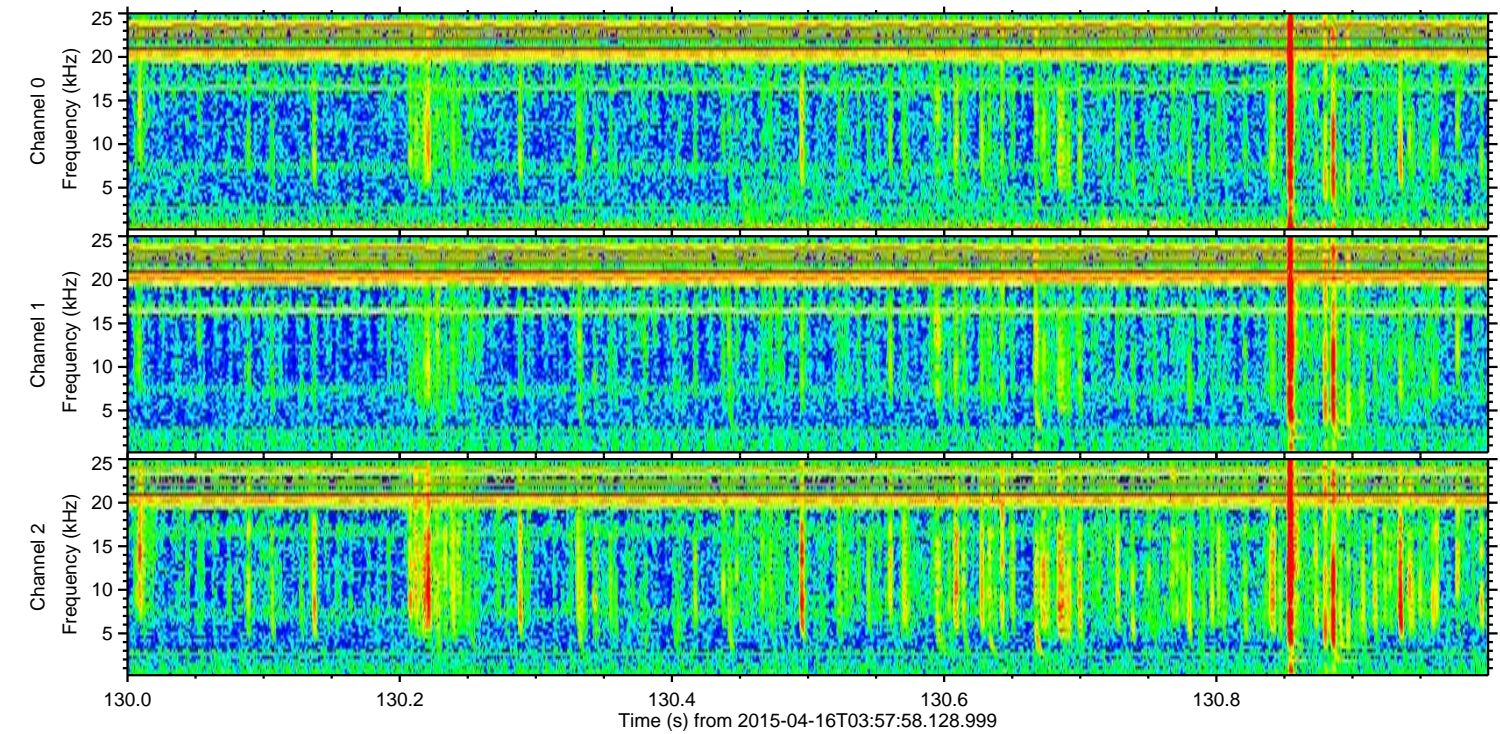
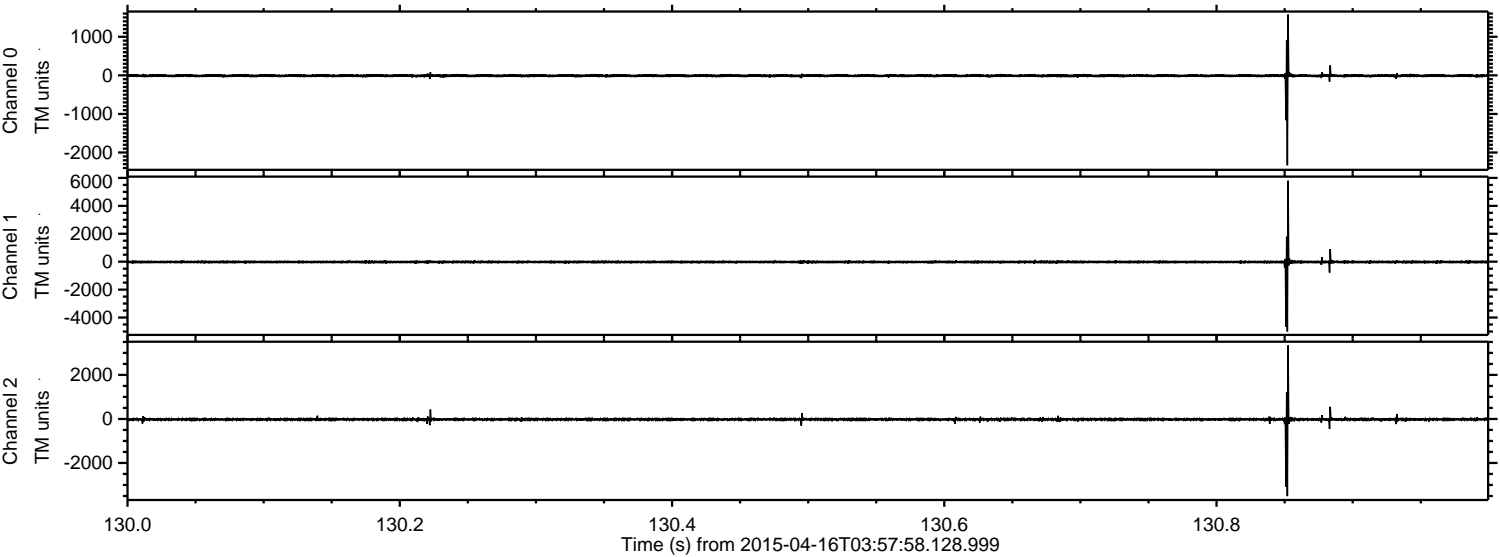
Processed Thu Apr 16 06:05:03 2015 by ELM ver.2012-10-06 from 001\_\_elm20150416\_035757\_\_dat00.bin





ELMAVAN 3D WAVEFORMS (Measured data sampled at 50 kHz) 49751 packets of 144 samples from 2015-04-16T03:57:58.128.999. Part 131/144

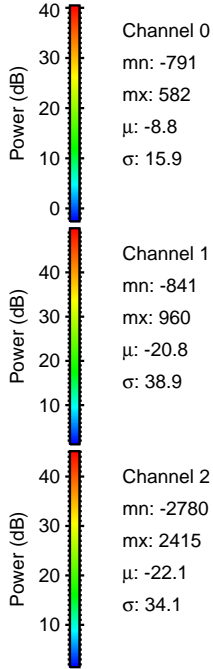
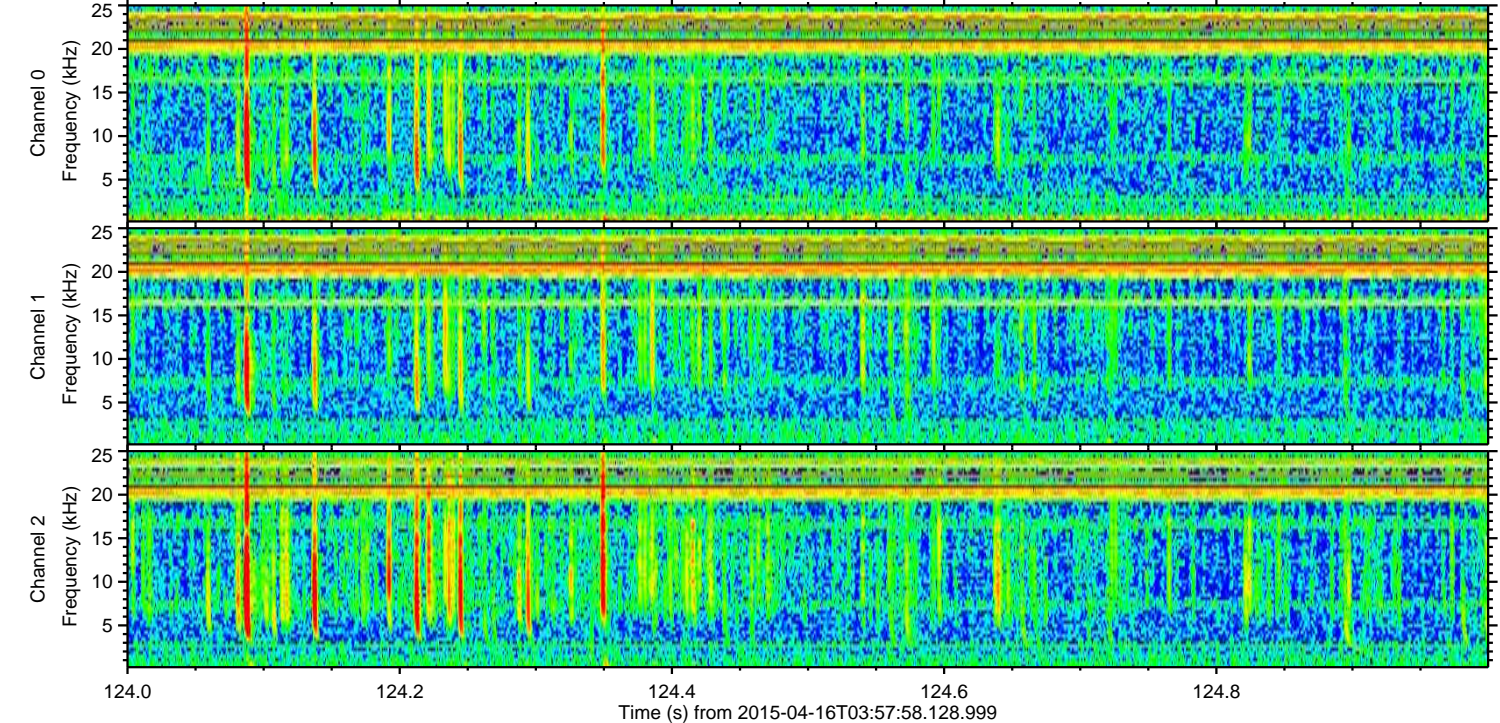
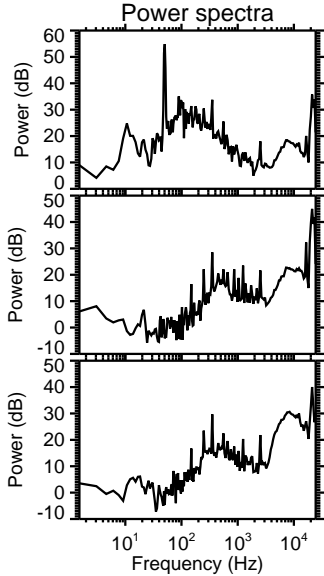
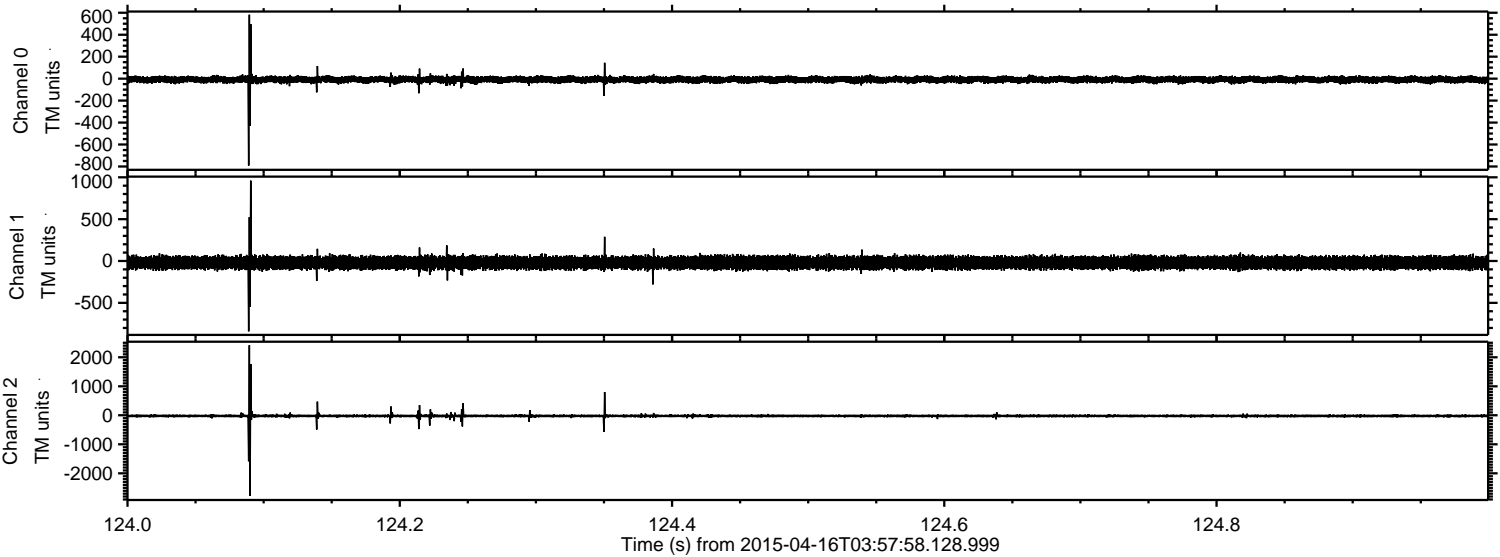
Processed Thu Apr 16 06:05:15 2015 by ELM ver.2012-10-06 from 001\_\_elm20150416\_035757\_\_dat00.bin





ELMAVAN 3D WAVEFORMS (Measured data sampled at 50 kHz) 49751 packets of 144 samples from 2015-04-16T03:57:58.128.999. Part 125/144

Processed Thu Apr 16 06:05:16 2015 by ELM ver.2012-10-06 from 001\_\_elm20150416\_035757\_\_dat00.bin



Channel 0  
mn: -791  
mx: 582  
 $\mu$ : -8.8  
 $\sigma$ : 15.9

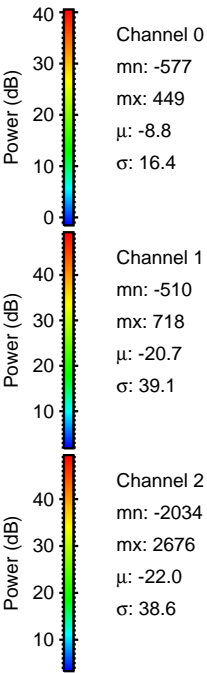
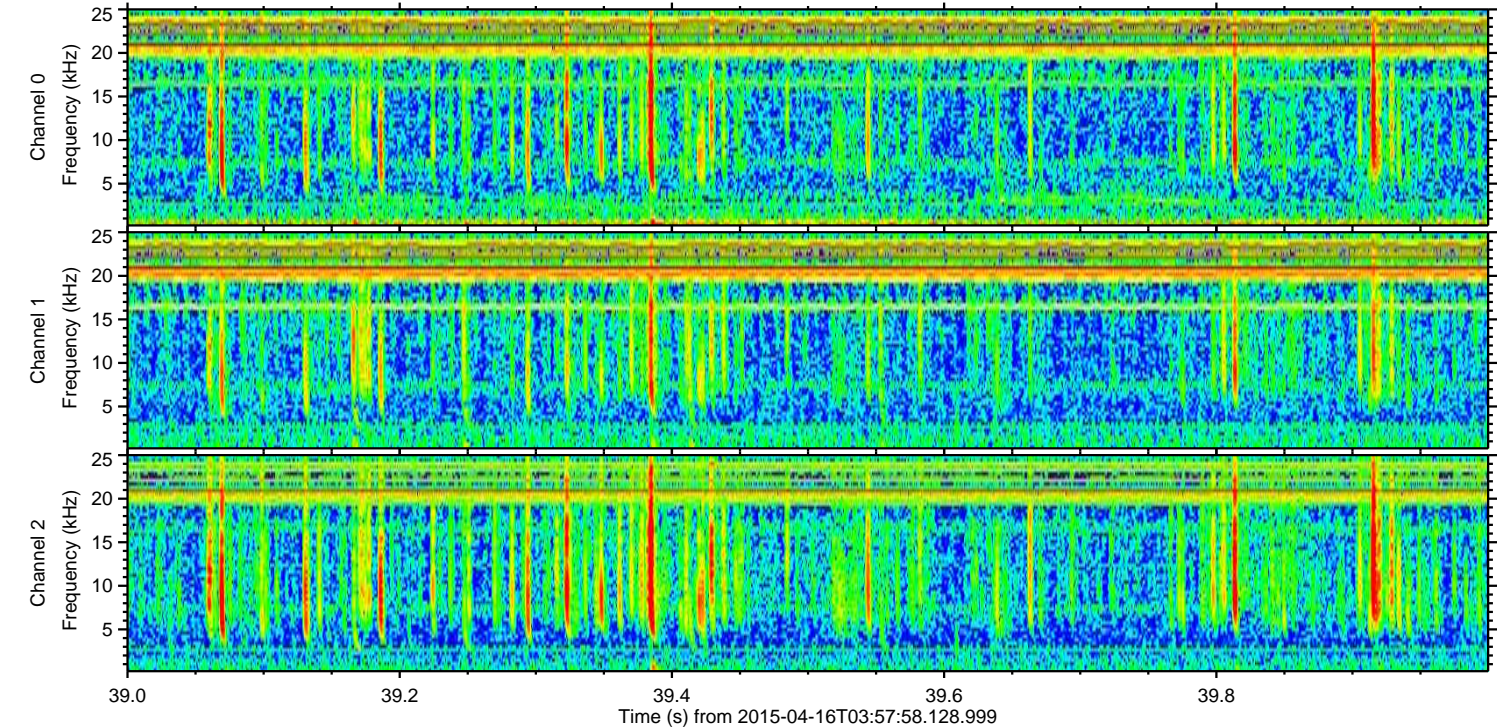
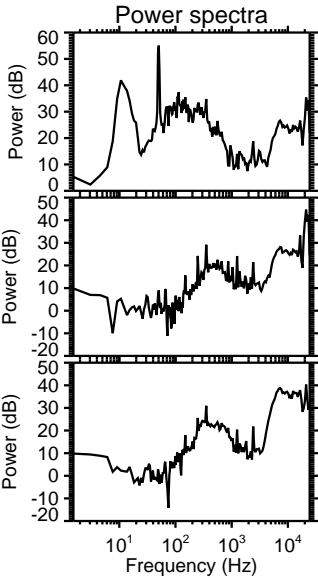
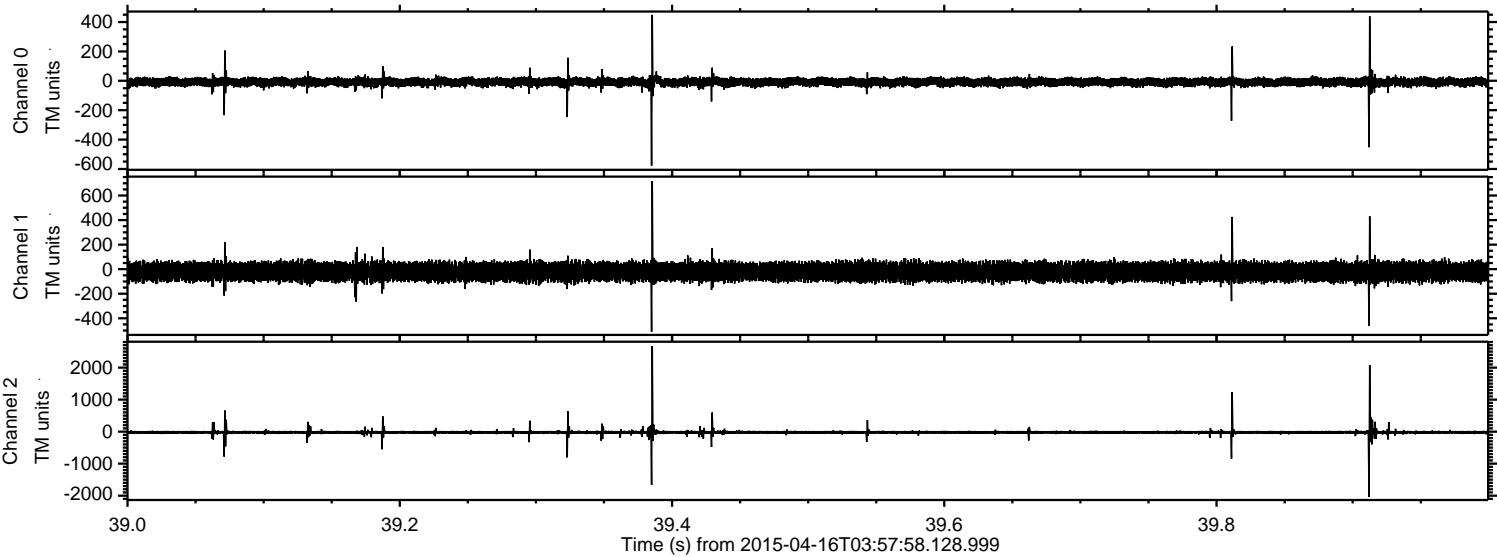
Channel 1  
mn: -841  
mx: 960  
 $\mu$ : -20.8  
 $\sigma$ : 38.9

Channel 2  
mn: -2780  
mx: 2415  
 $\mu$ : -22.1  
 $\sigma$ : 34.1



ELMAVAN 3D WAVEFORMS (Measured data sampled at 50 kHz) 49751 packets of 144 samples from 2015-04-16T03:57:58.128.999. Part 40/144

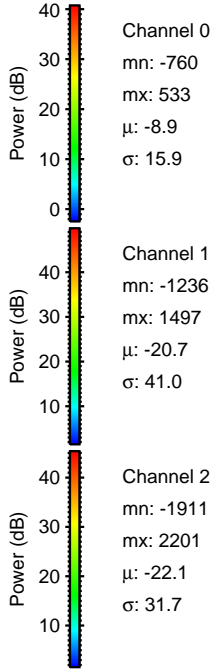
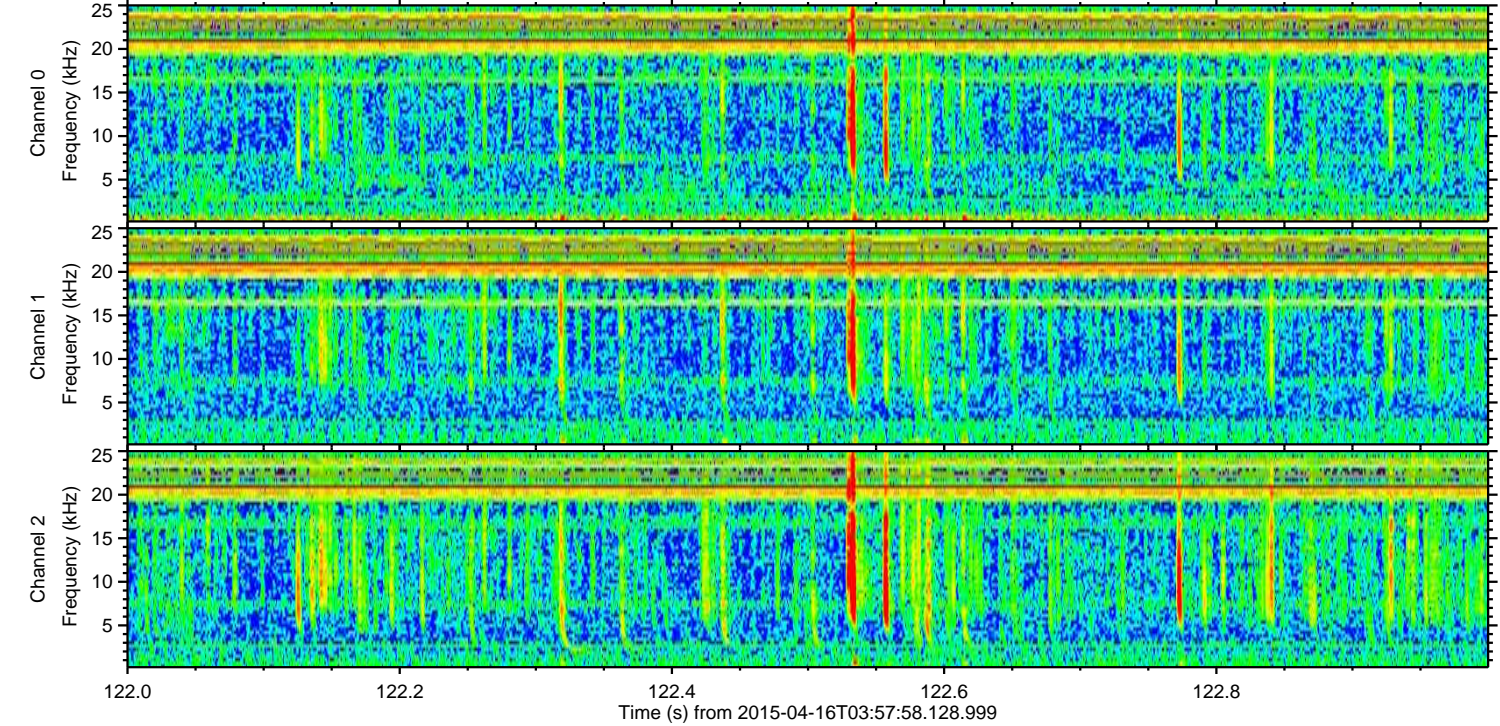
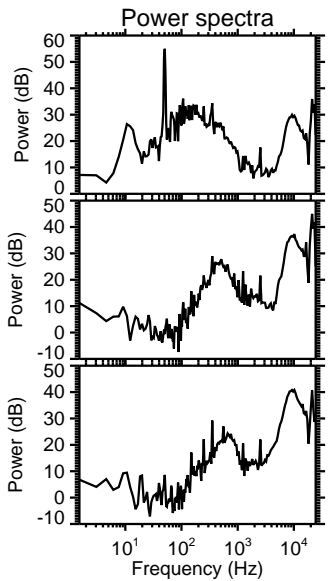
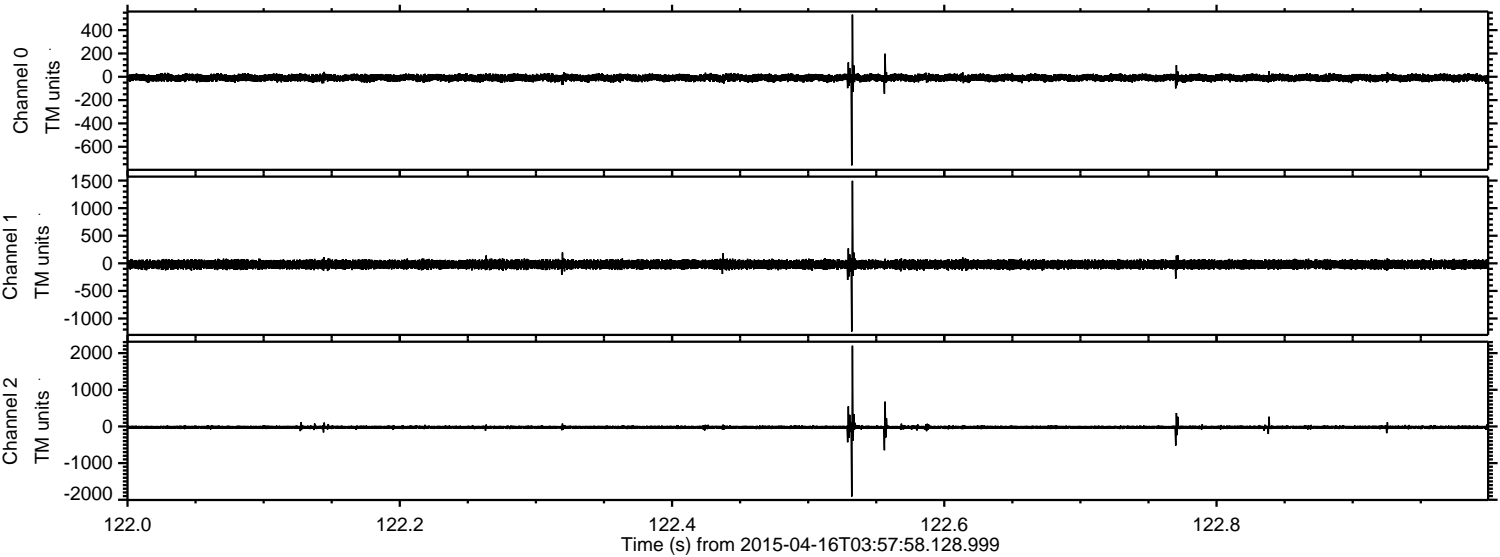
Processed Thu Apr 16 06:05:17 2015 by ELM ver.2012-10-06 from 001\_\_elm20150416\_035757\_\_dat00.bin





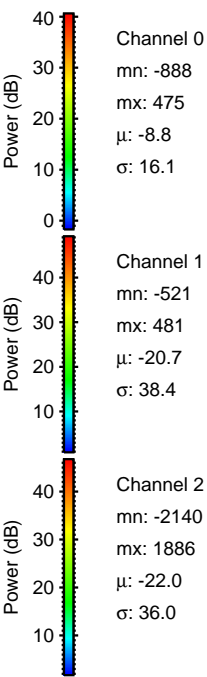
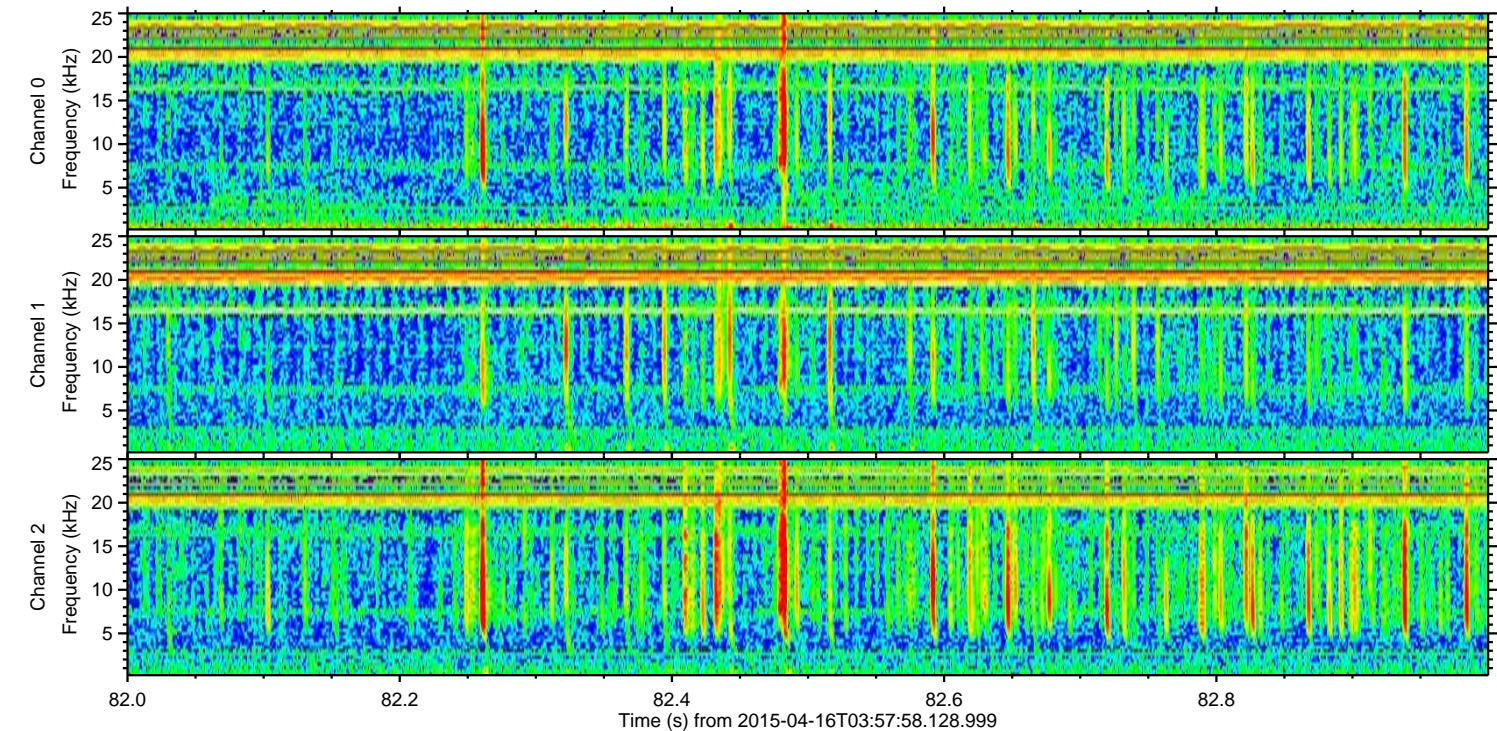
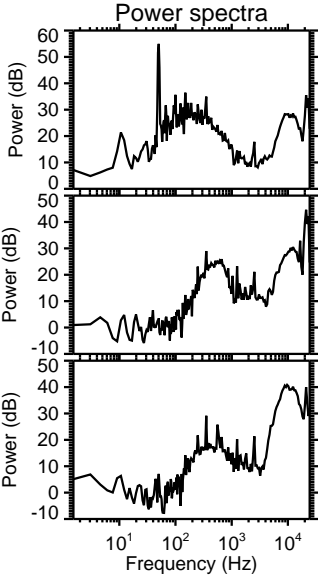
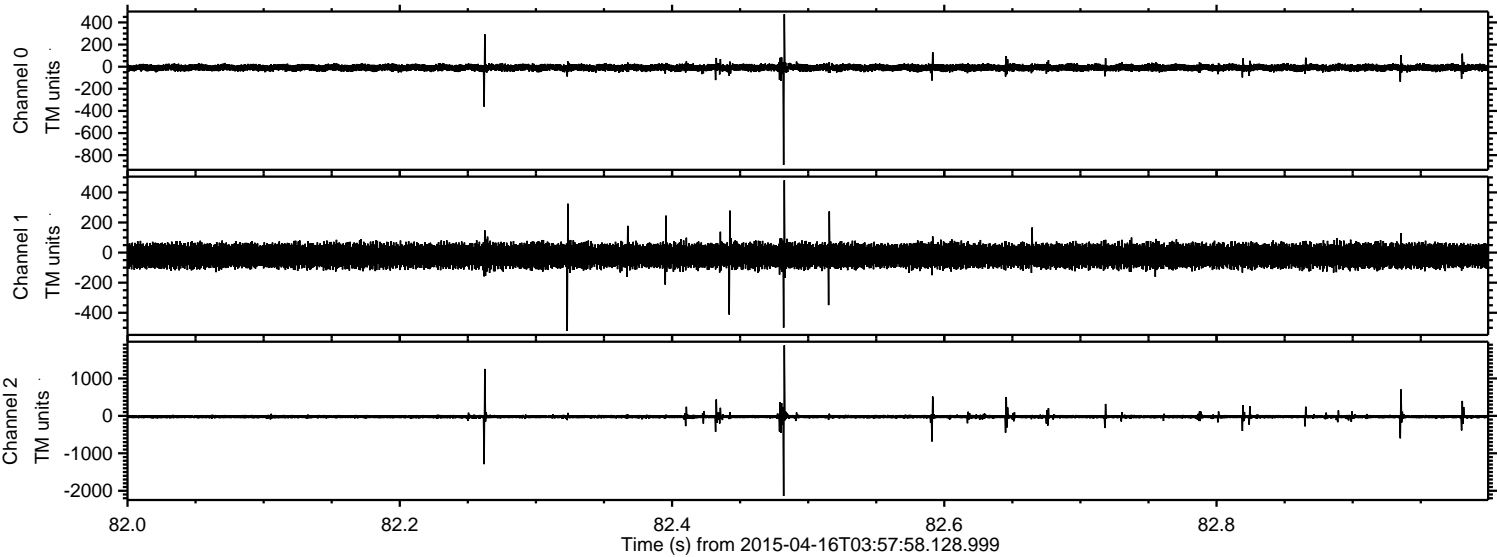
ELMAVAN 3D WAVEFORMS (Measured data sampled at 50 kHz) 49751 packets of 144 samples from 2015-04-16T03:57:58.128.999. Part 123/144

Processed Thu Apr 16 06:05:18 2015 by ELM ver.2012-10-06 from 001\_\_elm20150416\_035757\_\_dat00.bin



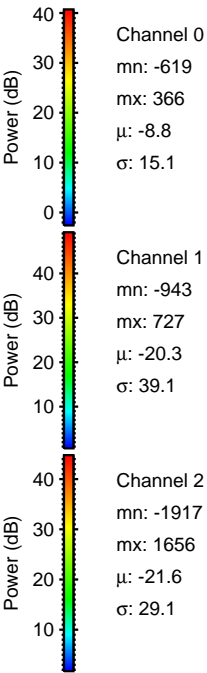
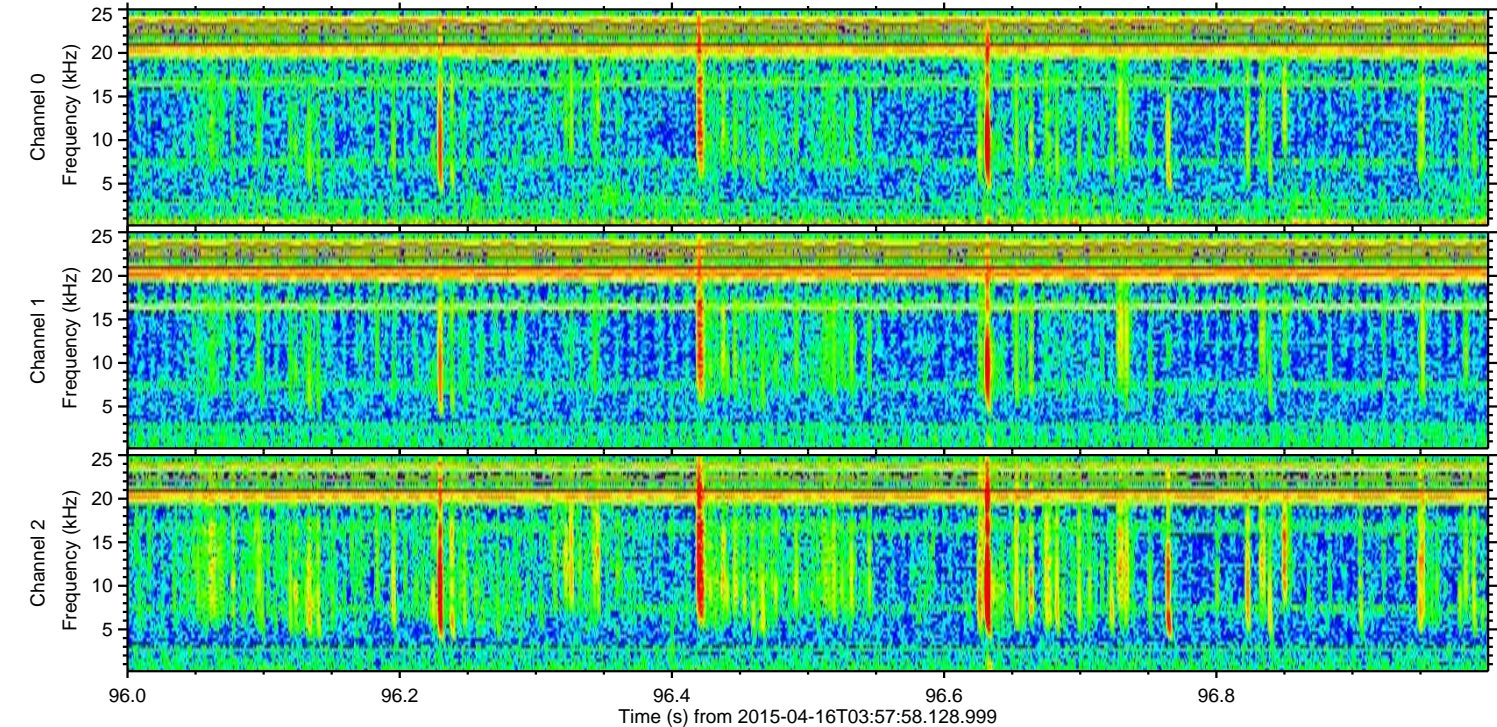
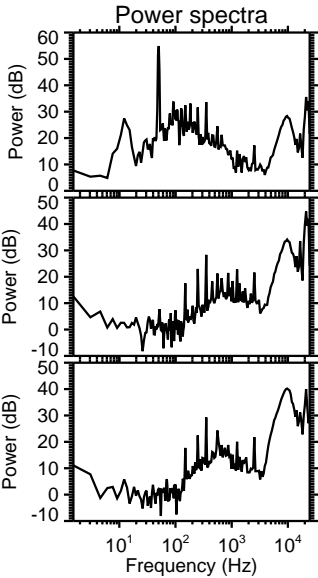
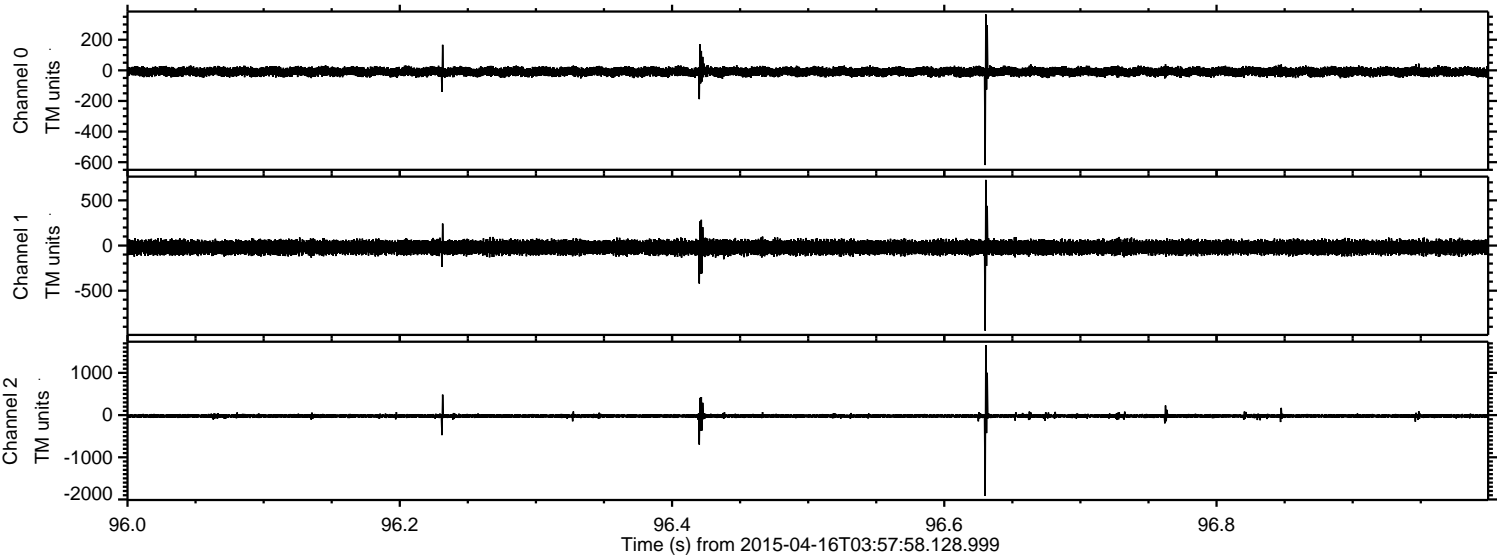


Processed Thu Apr 16 06:05:19 2015 by ELM ver.2012-10-06 from 001\_\_elm20150416\_035757\_\_dat00.bin



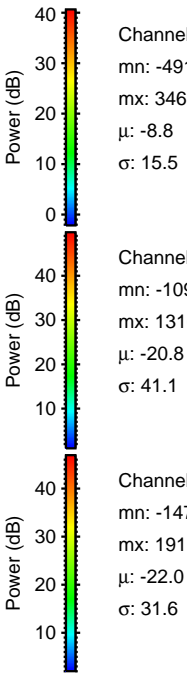
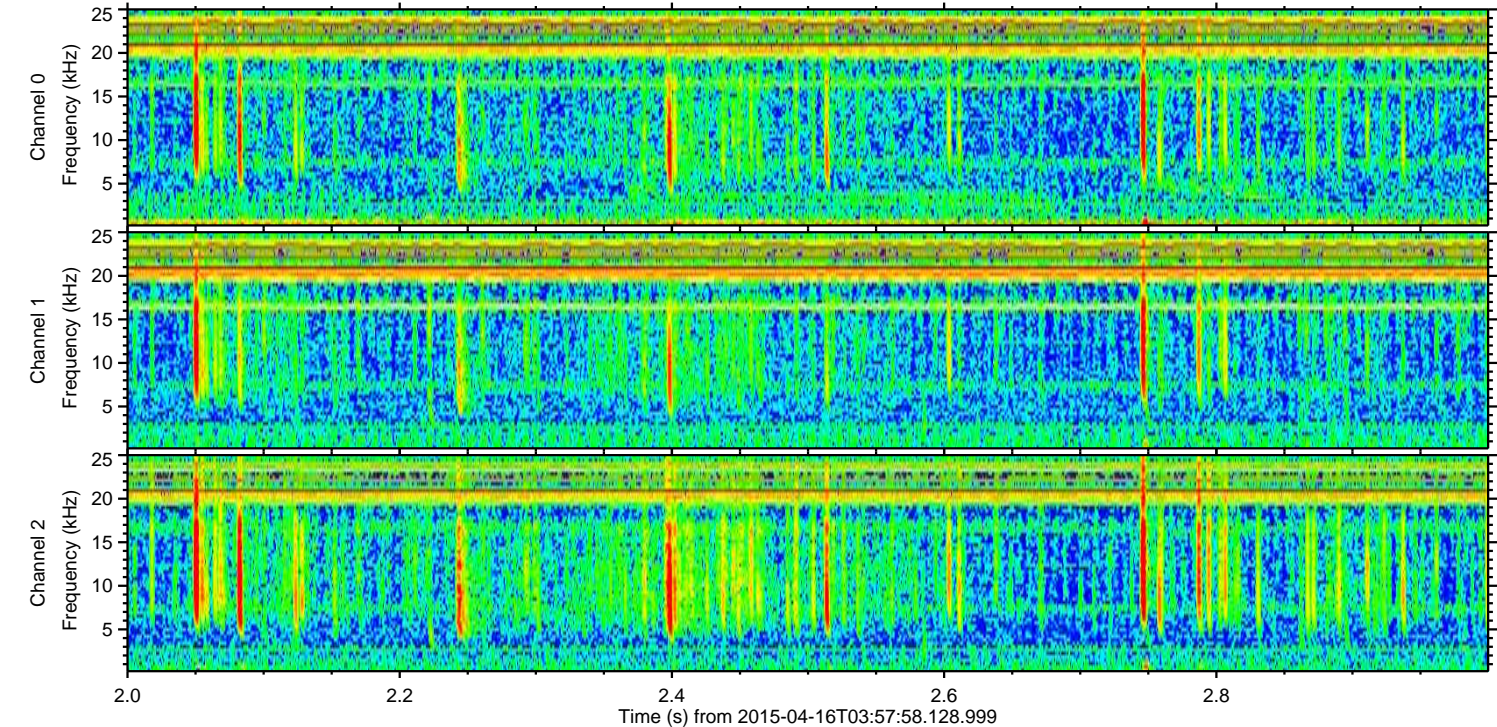
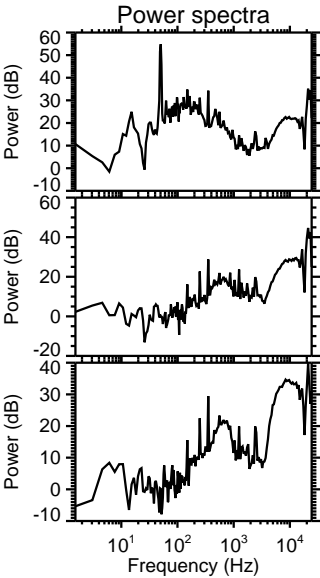
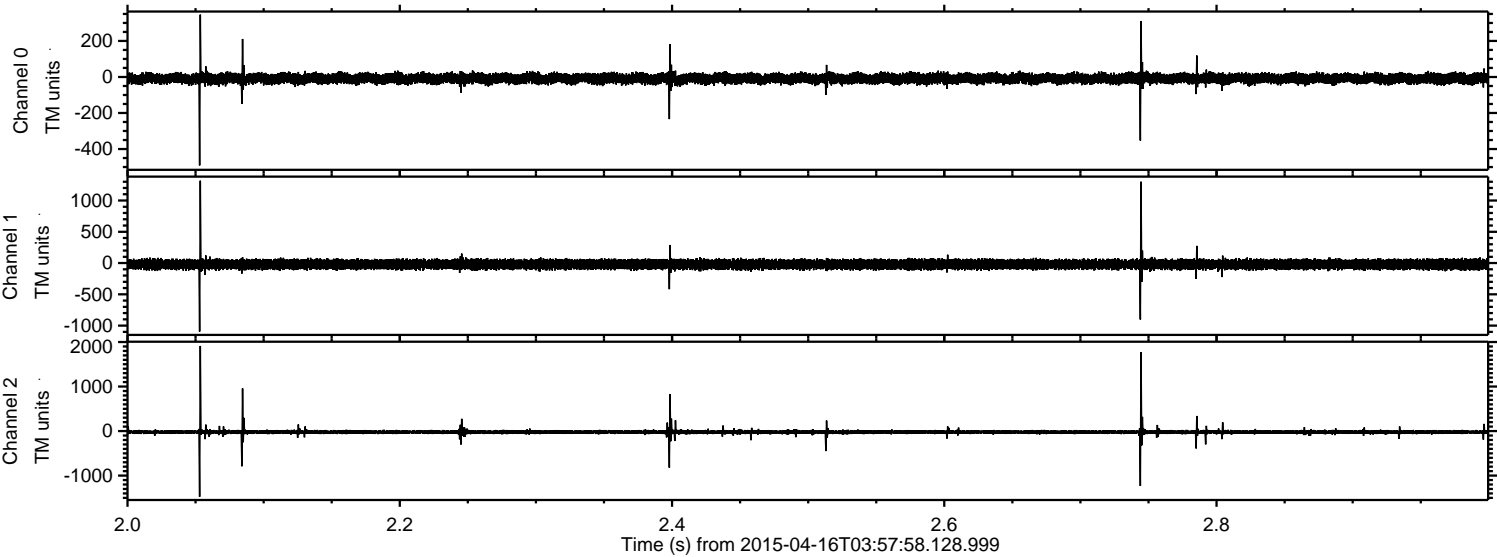


Processed Thu Apr 16 06:05:19 2015 by ELM ver.2012-10-06 from 001\_\_elm20150416\_035757\_\_dat00.bin



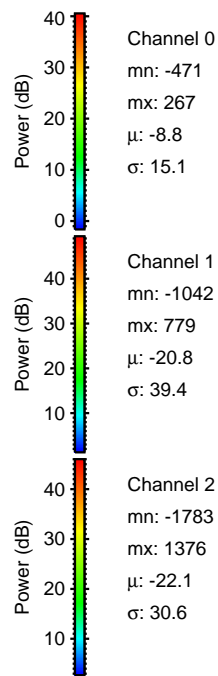
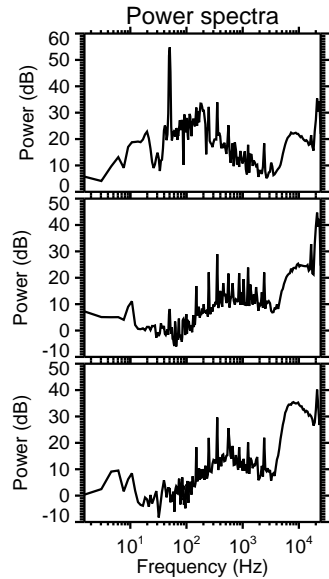
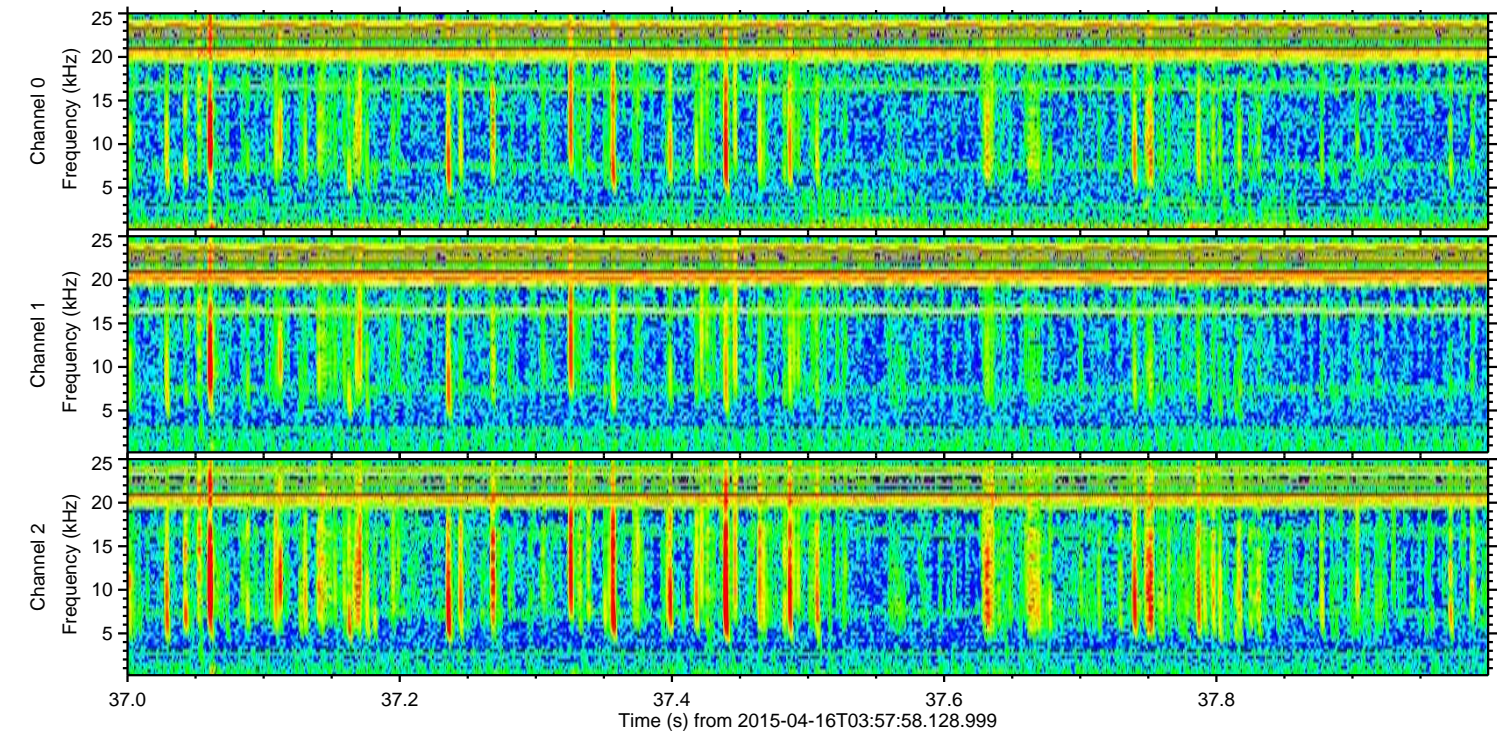
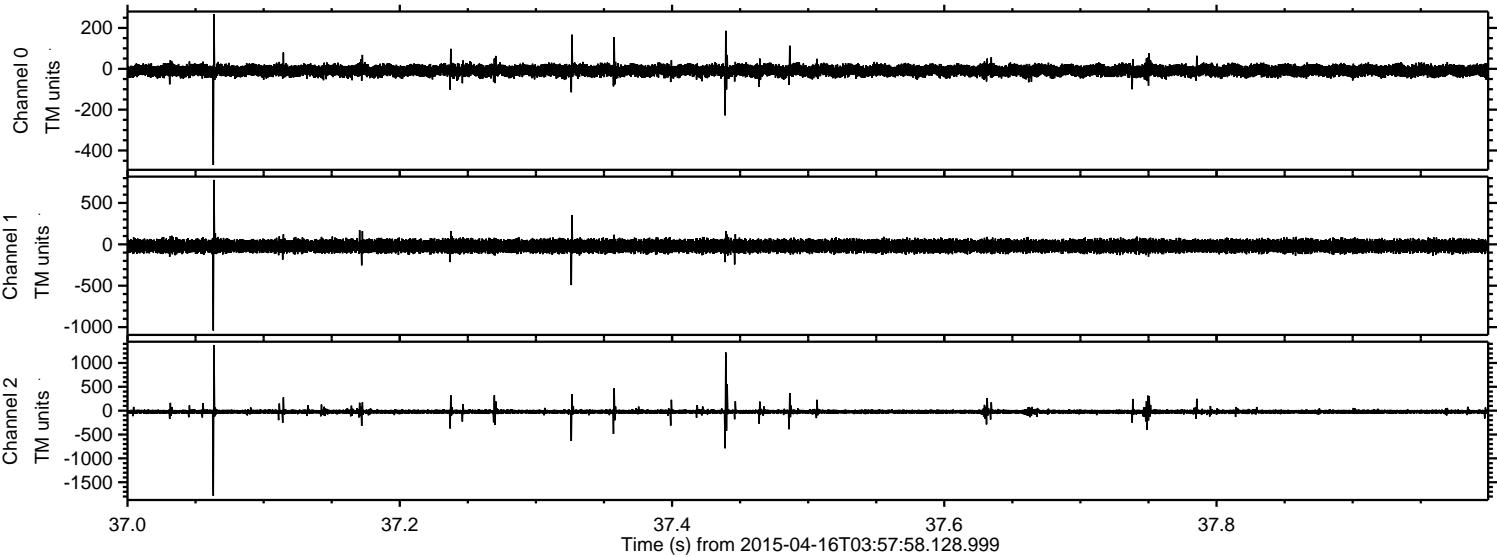


Processed Thu Apr 16 06:05:20 2015 by ELM ver.2012-10-06 from 001\_\_elm20150416\_035757\_\_dat00.bin





Processed Thu Apr 16 06:05:21 2015 by ELM ver.2012-10-06 from 001\_\_elm20150416\_035757\_\_dat00.bin



Channel 0  
mn: -471  
mx: 267  
 $\mu$ : -8.8  
 $\sigma$ : 15.1

Channel 1  
mn: -1042  
mx: 779  
 $\mu$ : -20.8  
 $\sigma$ : 39.4

Channel 2  
mn: -1783  
mx: 1376  
 $\mu$ : -22.1  
 $\sigma$ : 30.6



Processed Thu Apr 16 06:05:22 2015 by ELM ver.2012-10-06 from 001\_\_elm20150416\_035757\_\_dat00.bin

