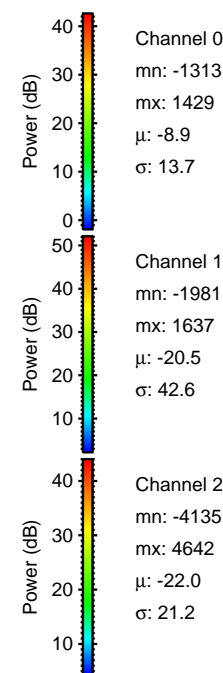
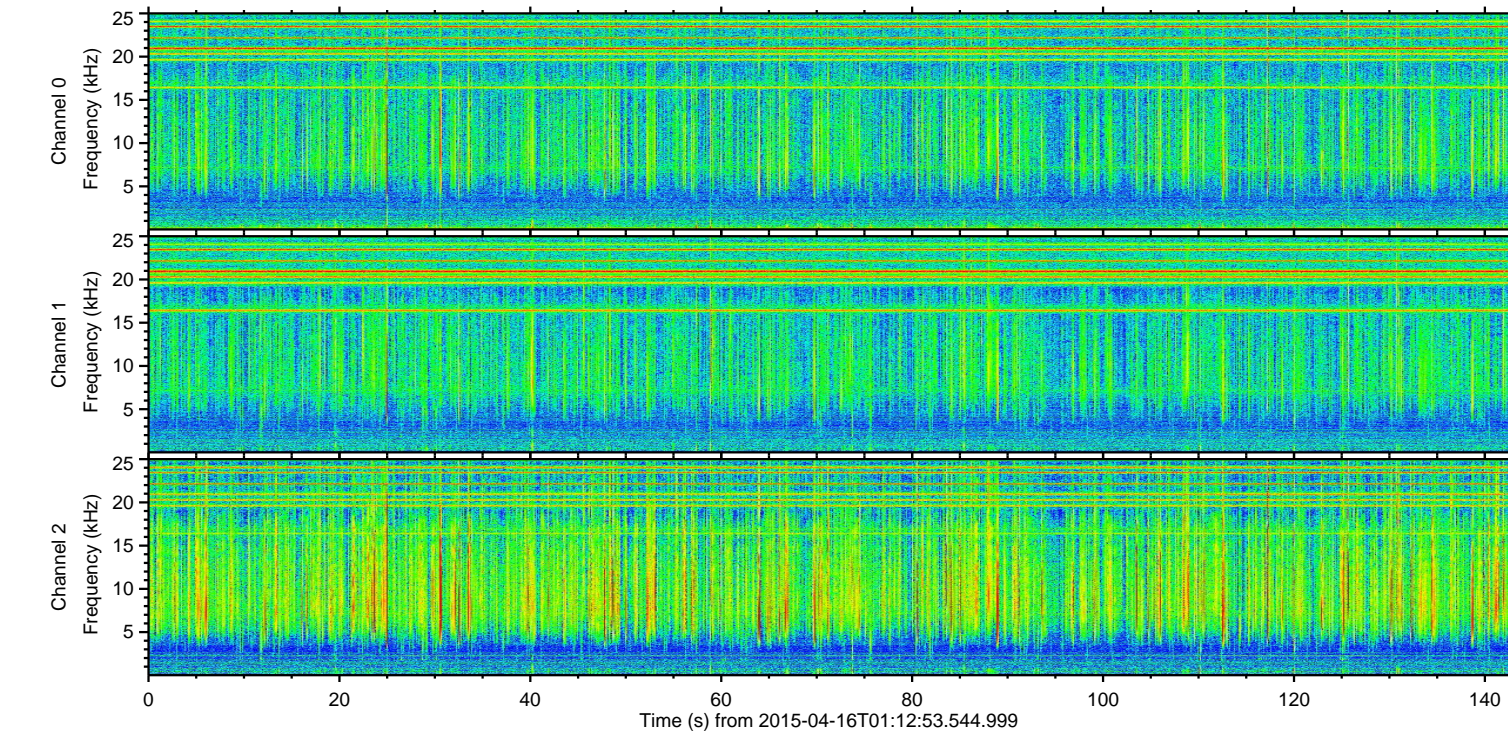
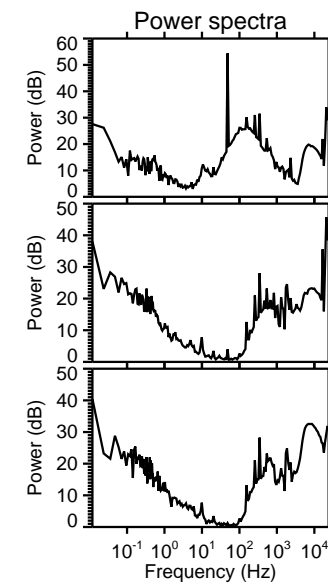
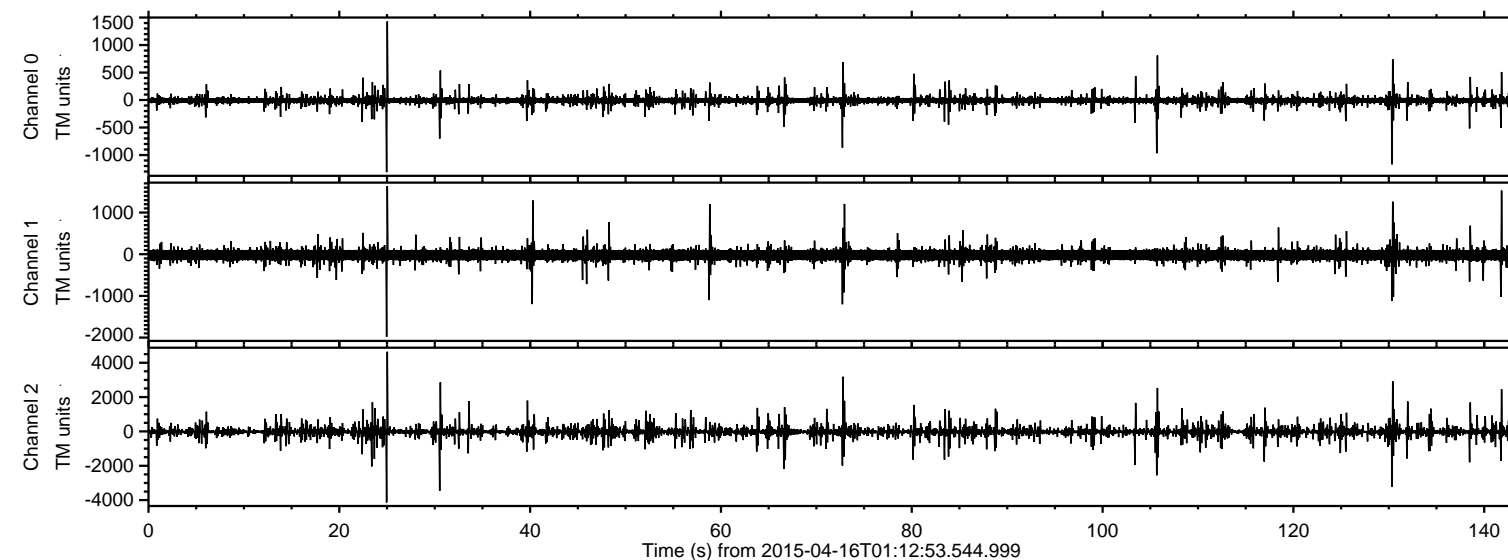
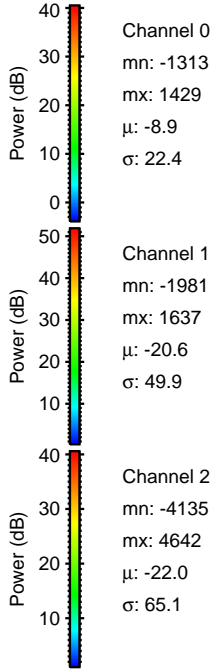
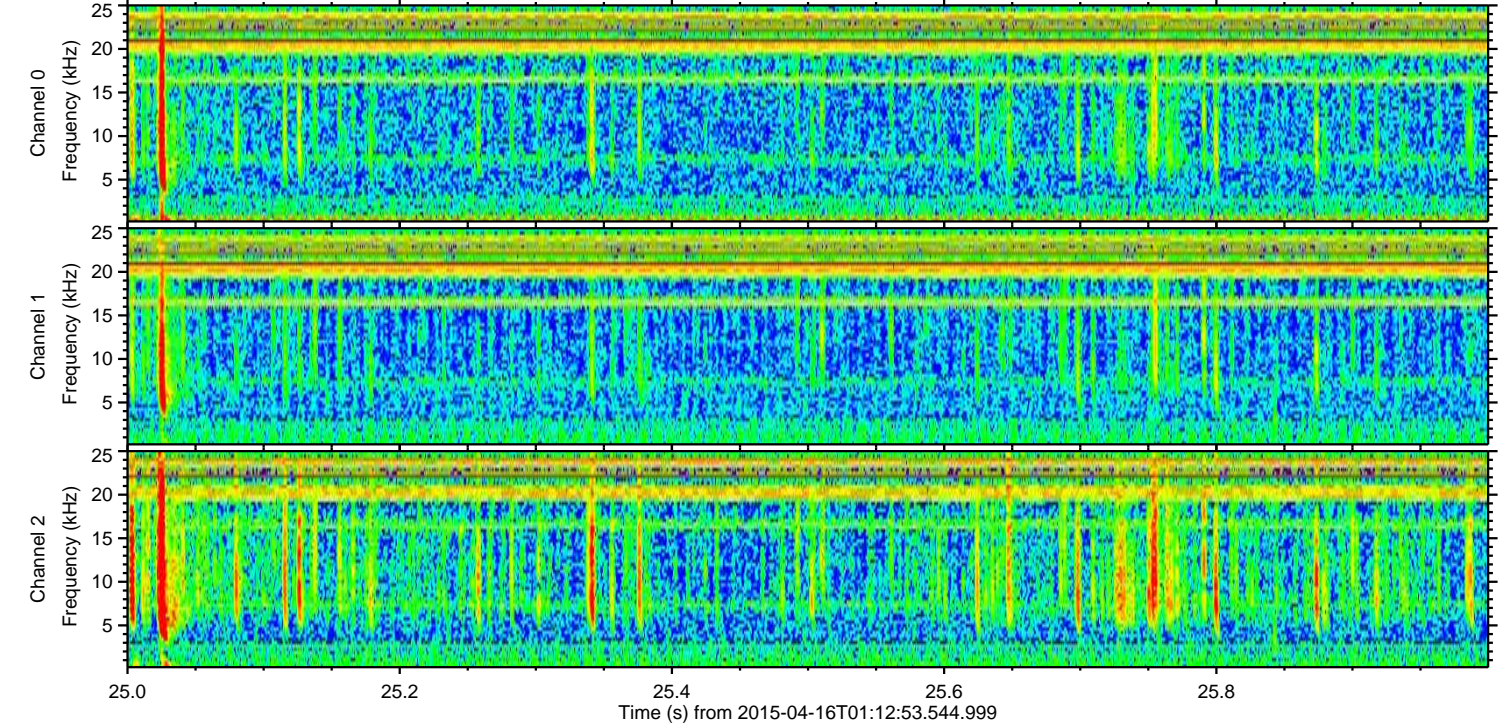
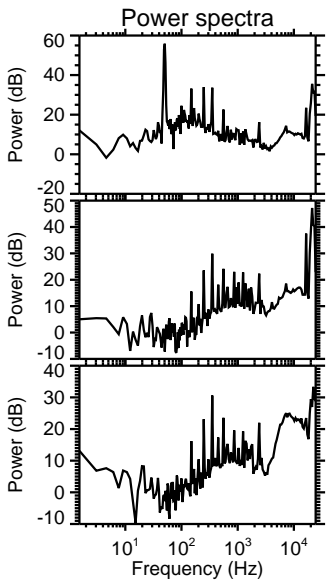
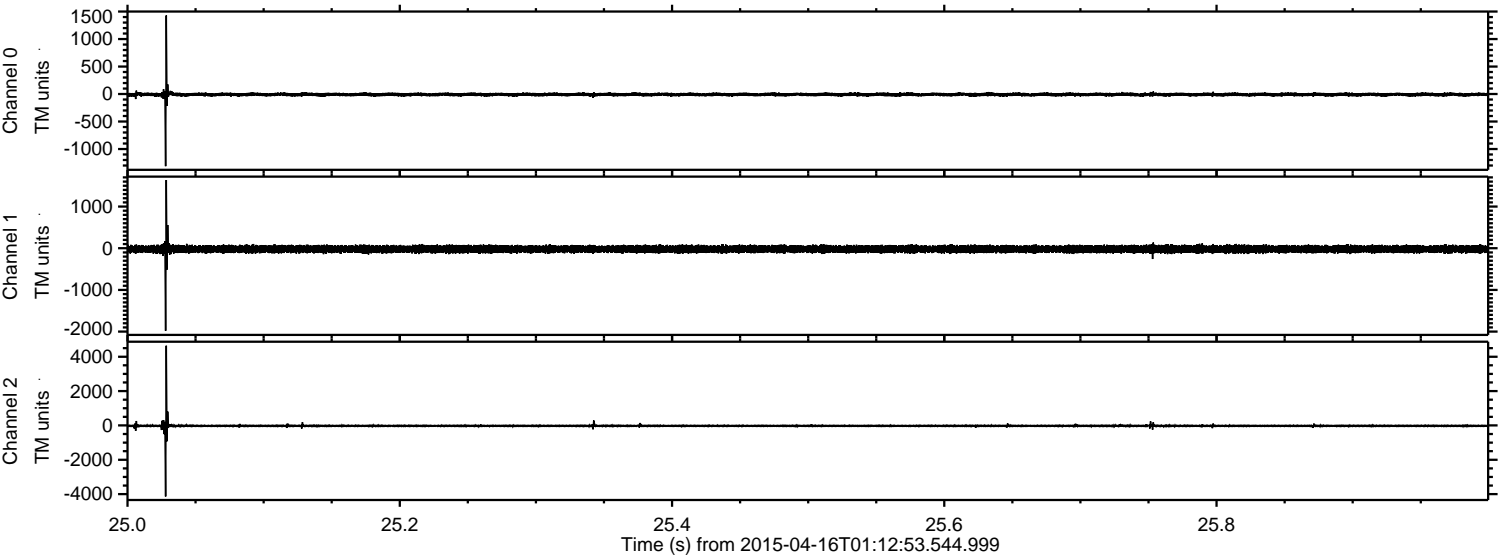


ELMAVAN 3D WAVEFORMS (Measured data sampled at 50 kHz) 49518 packets of 144 samples from 2015-04-16T01:12:53.544.999.

Processed Thu Apr 16 03:20:13 2015 by ELM ver.2012-10-06 from 001__elm20150416_011252__dat00.bin



Processed Thu Apr 16 03:20:28 2015 by ELM ver.2012-10-06 from 001__elm20150416_011252__dat00.bin

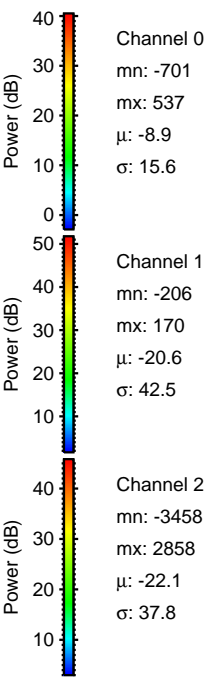
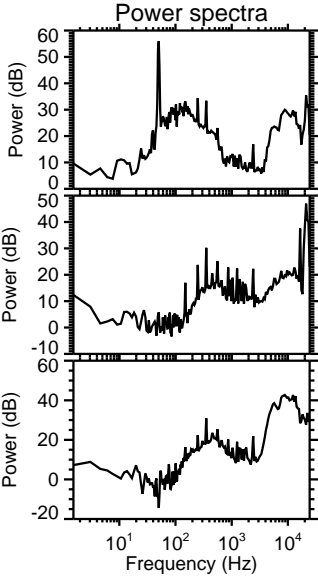
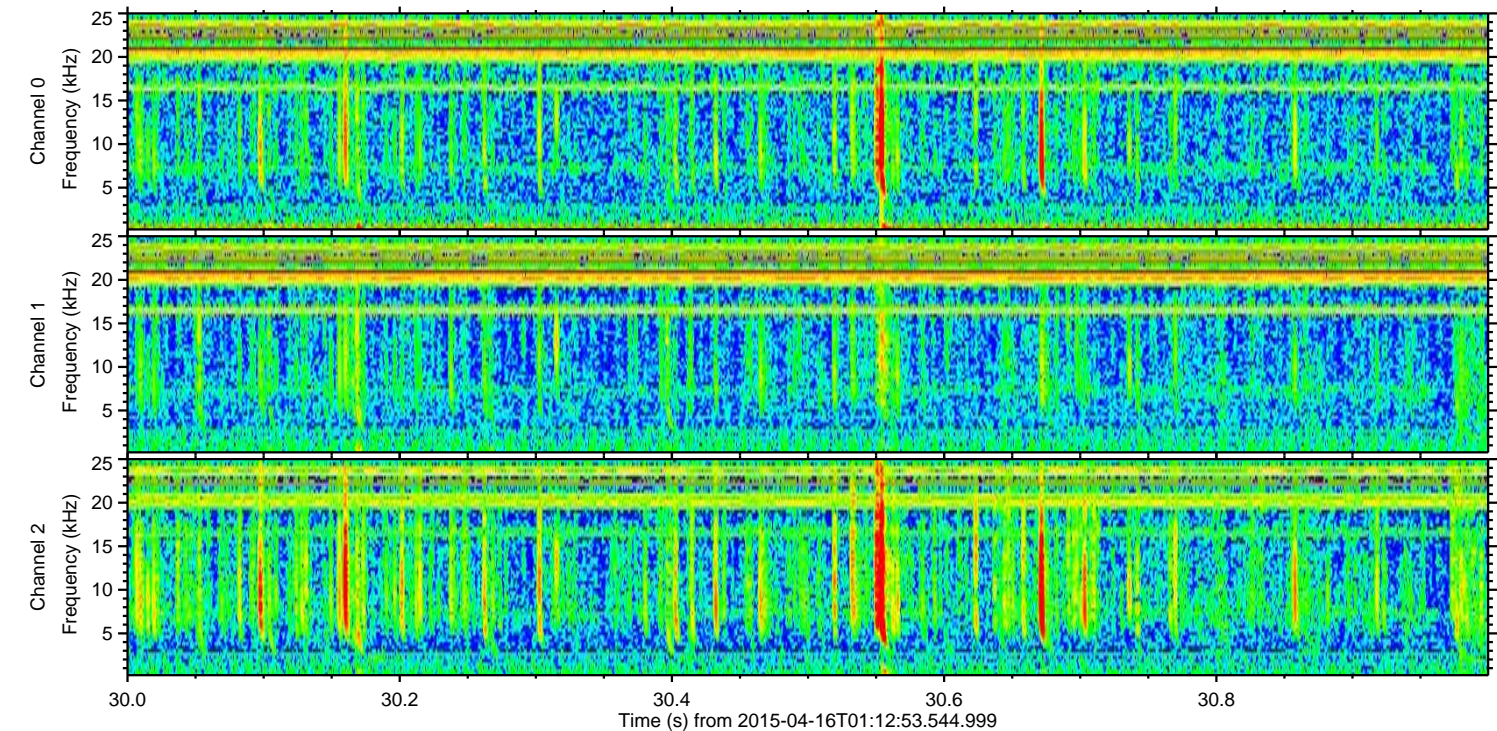
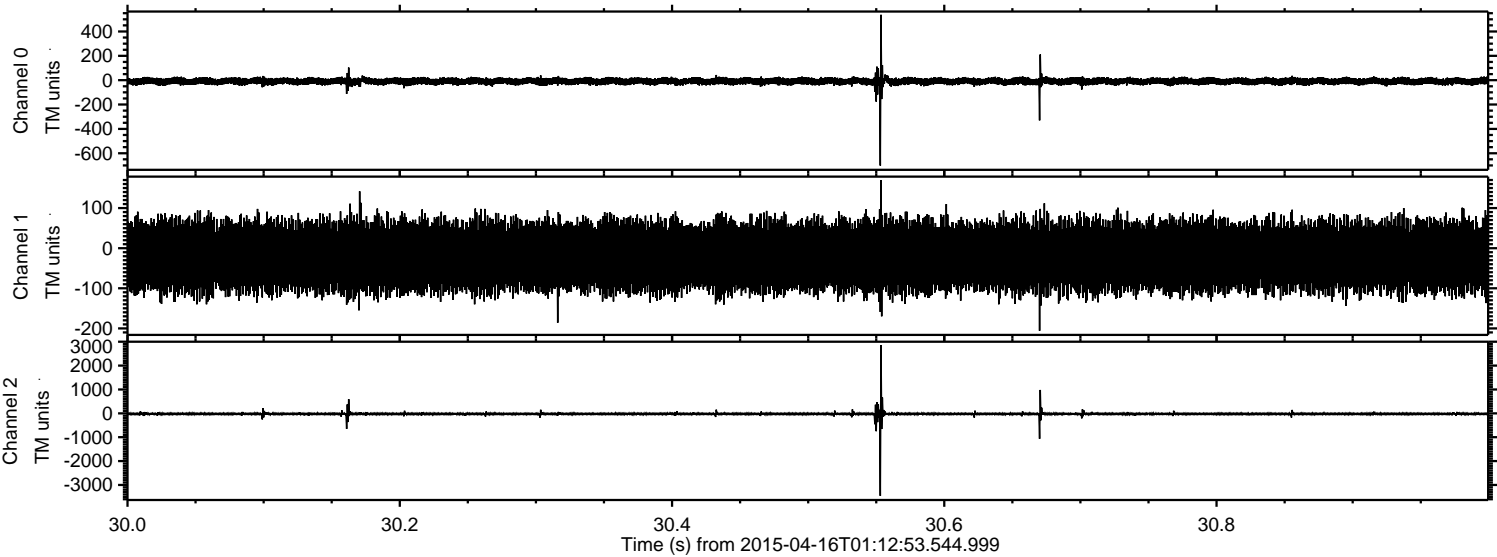


Channel 0
mn: -1313
mx: 1429
 μ : -8.9
 σ : 22.4

Channel 1
mn: -1981
mx: 1637
 μ : -20.6
 σ : 49.9

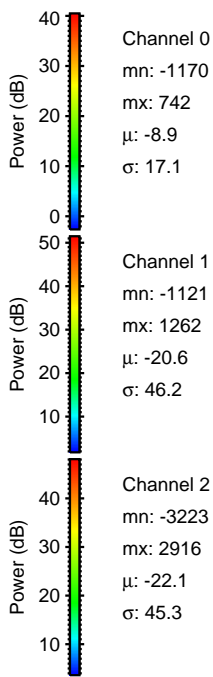
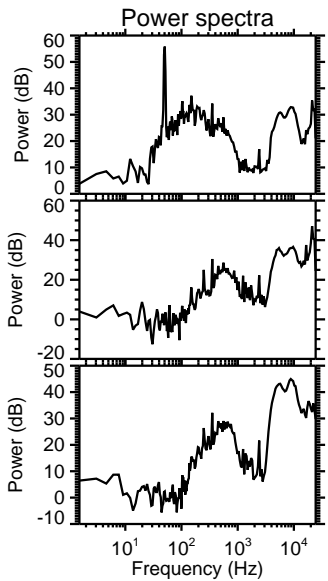
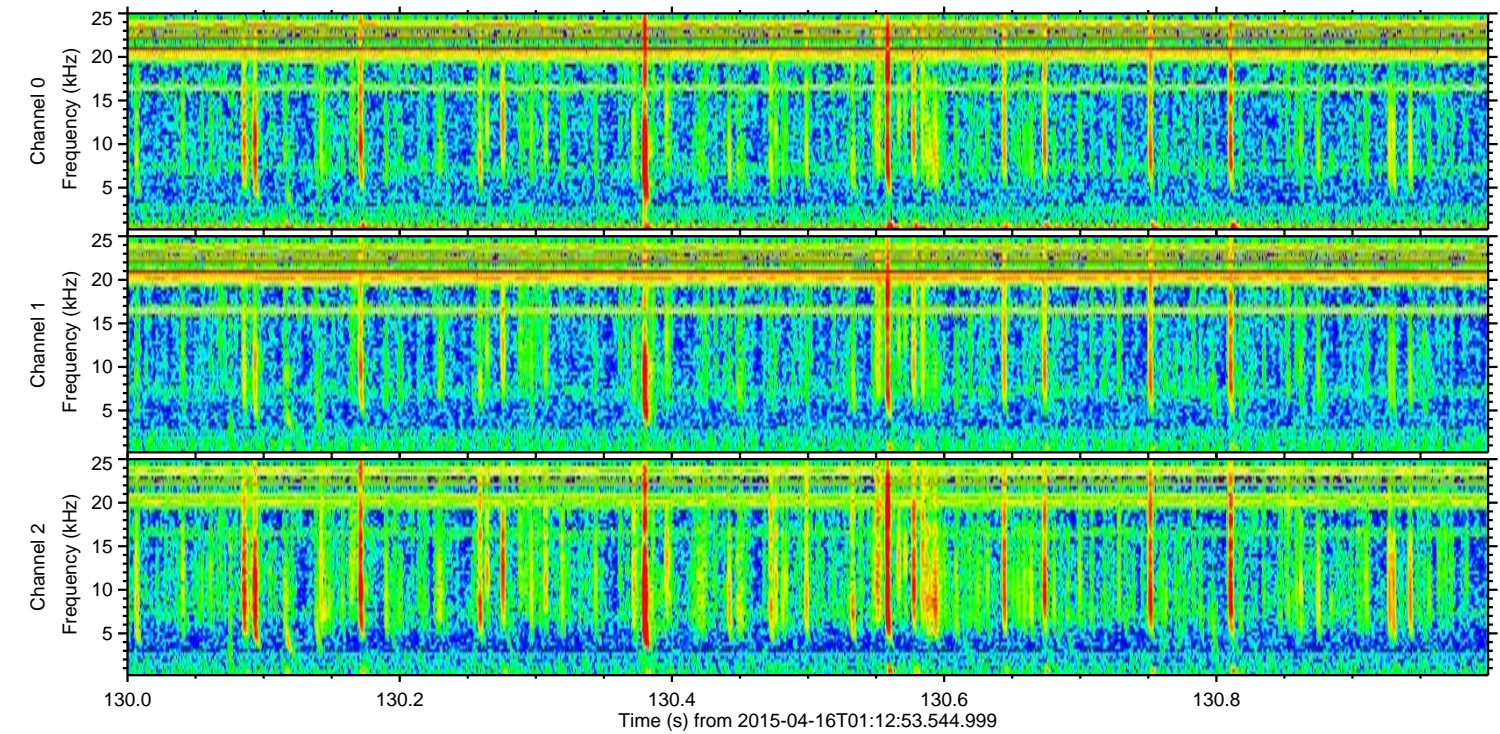
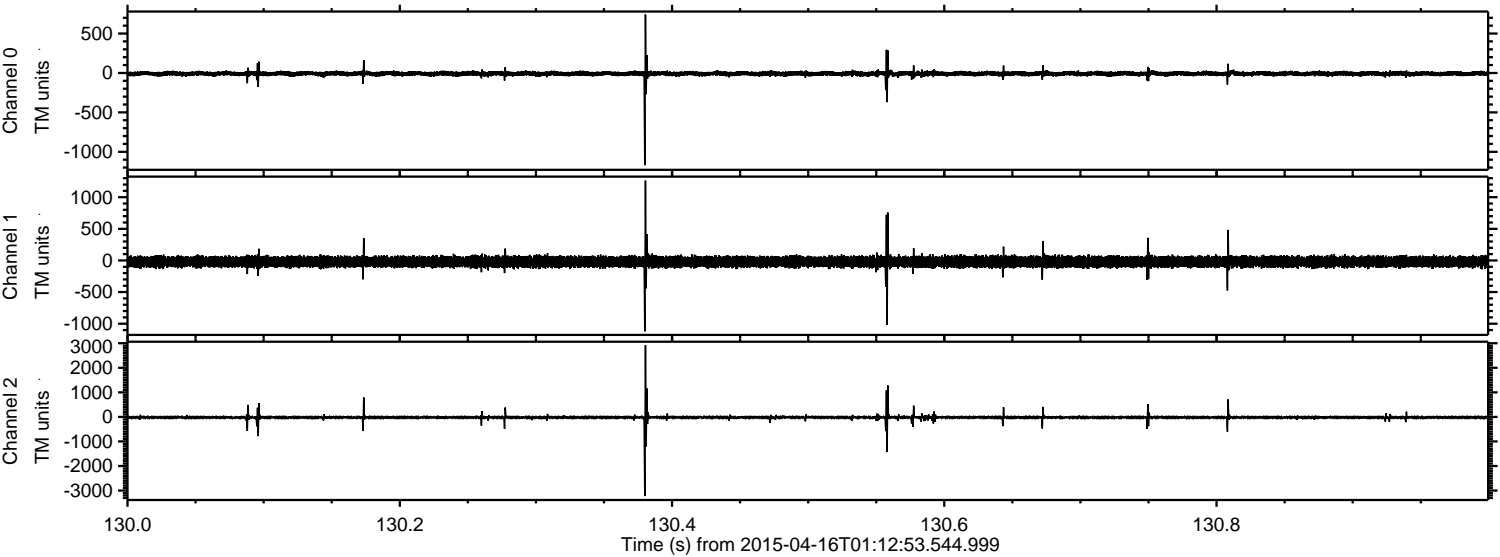
Channel 2
mn: -4135
mx: 4642
 μ : -22.0
 σ : 65.1

Processed Thu Apr 16 03:20:29 2015 by ELM ver.2012-10-06 from 001__elm20150416_011252__dat00.bin



ELMAVAN 3D WAVEFORMS (Measured data sampled at 50 kHz) 49518 packets of 144 samples from 2015-04-16T01:12:53.544.999. Part 131/143

Processed Thu Apr 16 03:20:30 2015 by ELM ver.2012-10-06 from 001__elm20150416_011252__dat00.bin

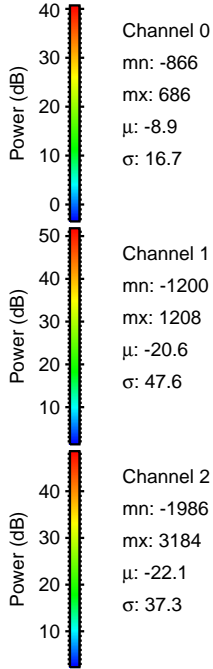
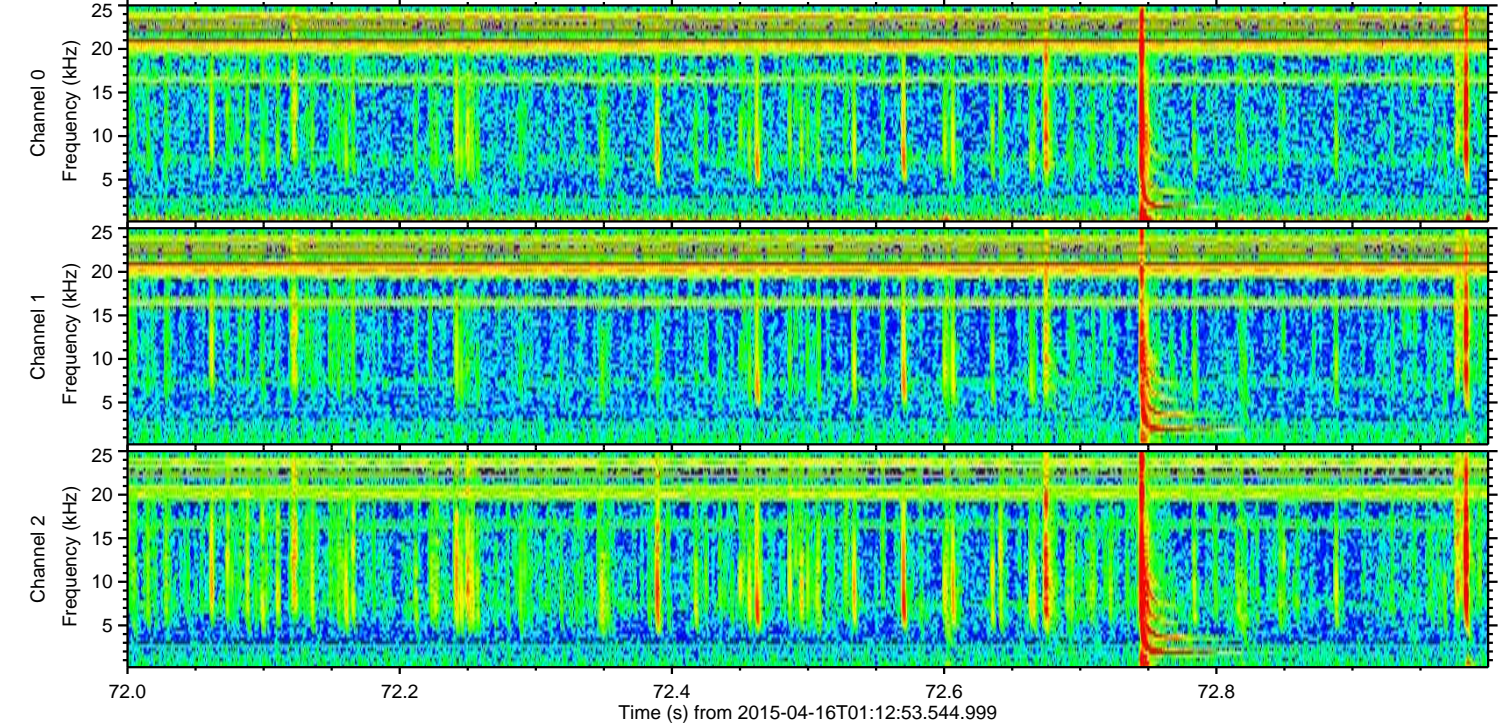
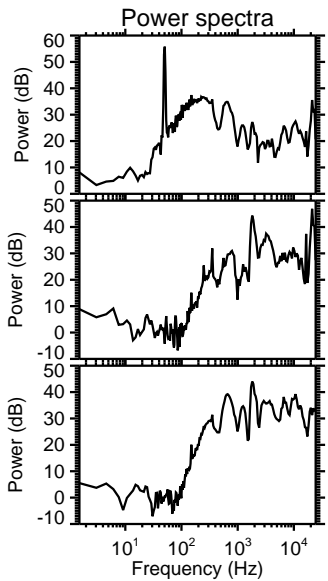
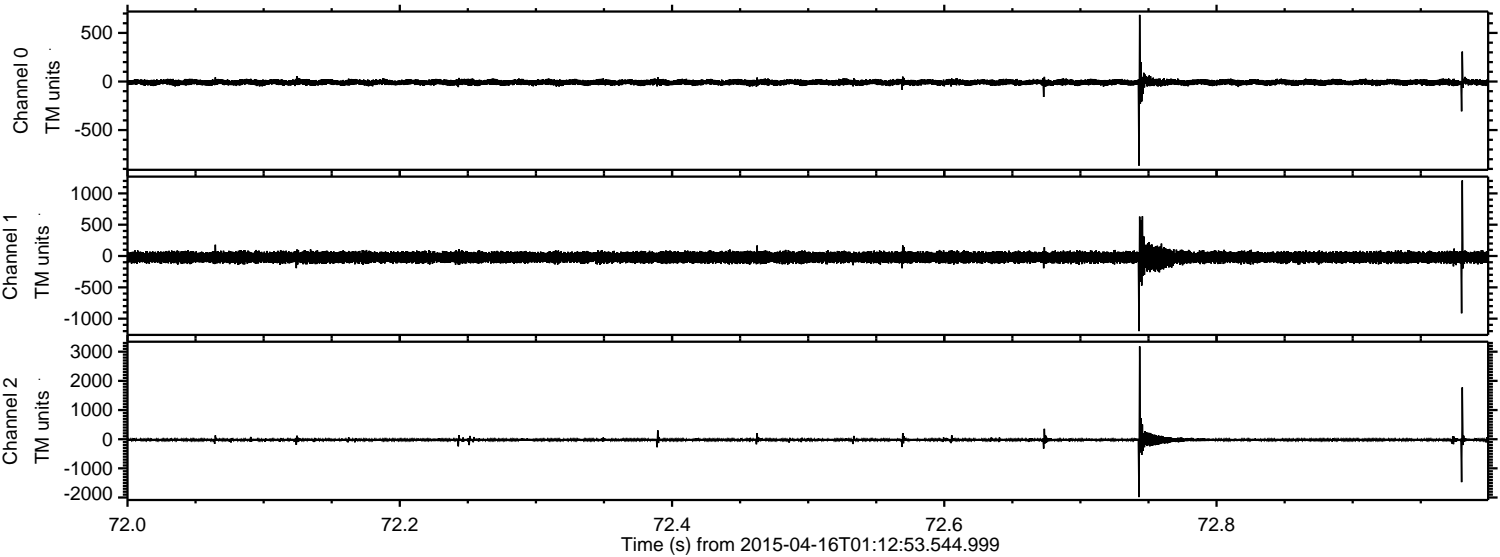


Channel 0
mn: -1170
mx: 742
 μ : -8.9
 σ : 17.1

Channel 1
mn: -1121
mx: 1262
 μ : -20.6
 σ : 46.2

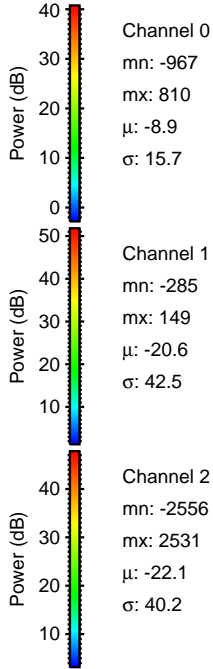
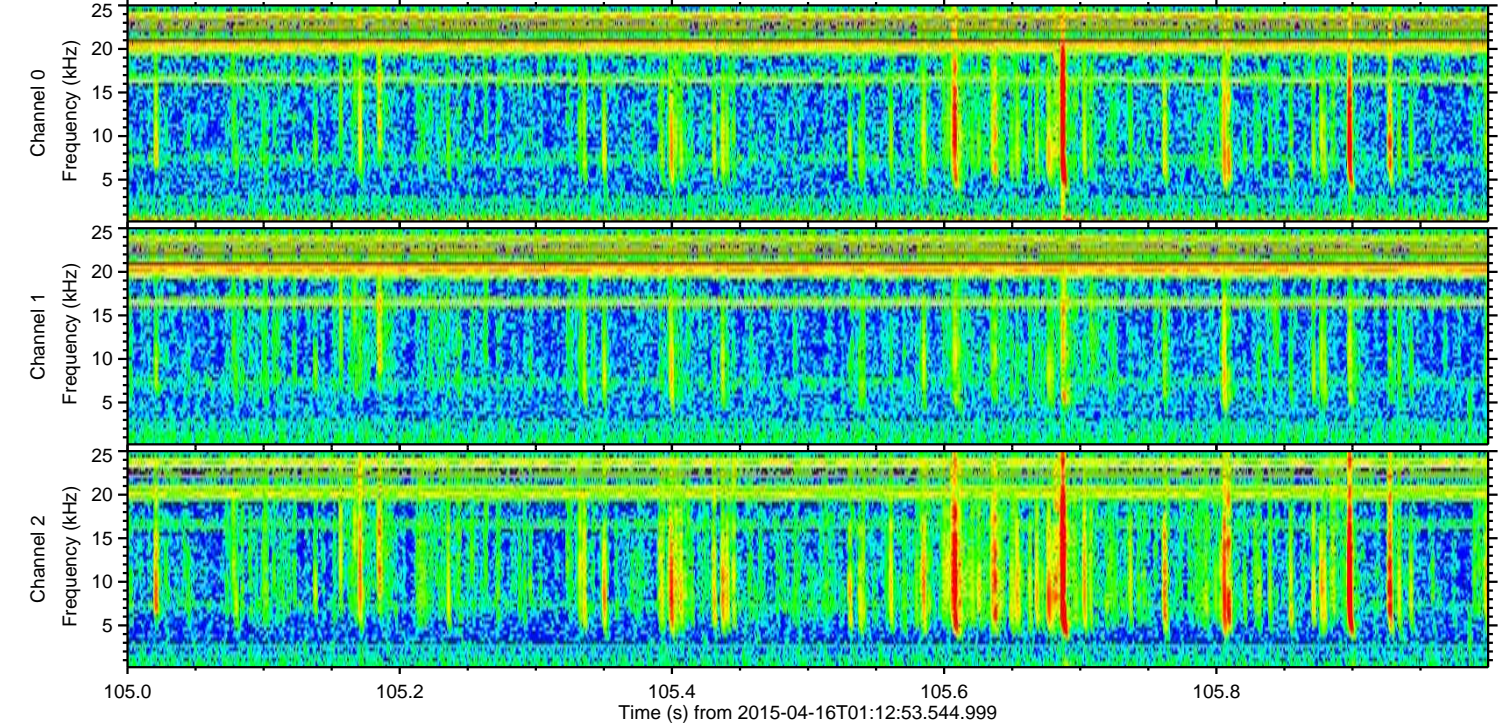
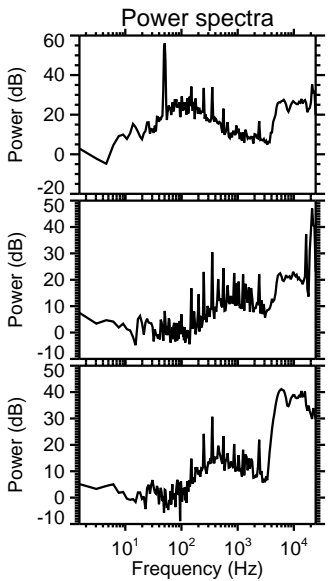
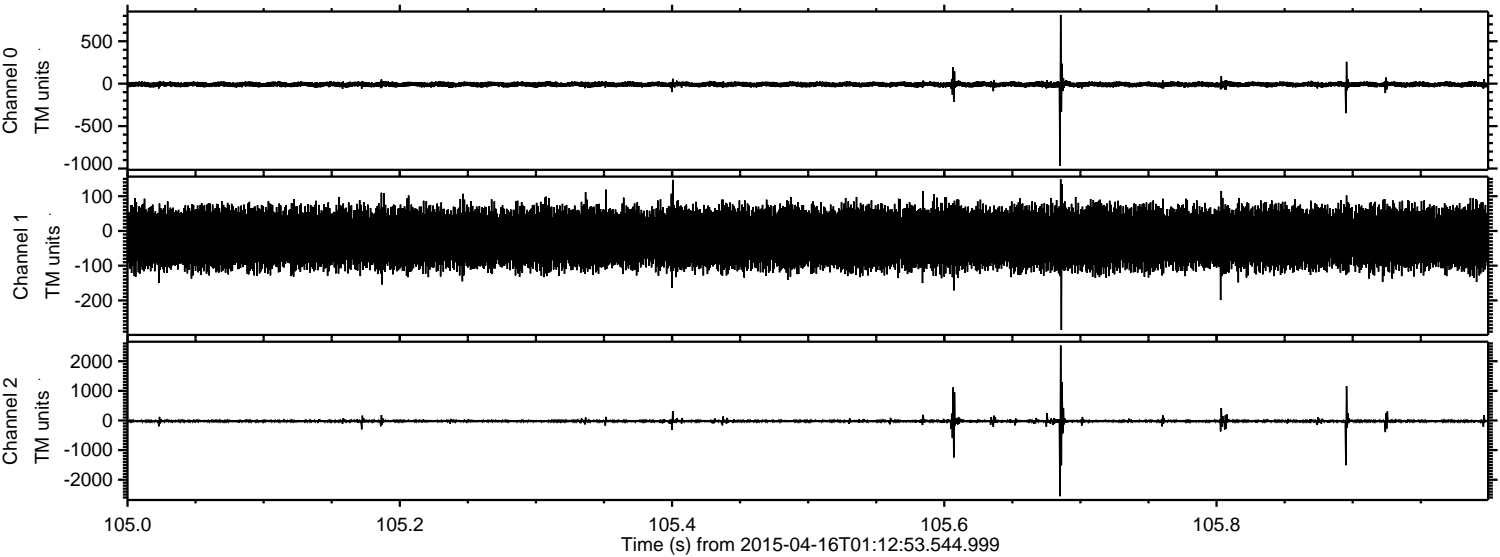
Channel 2
mn: -3223
mx: 2916
 μ : -22.1
 σ : 45.3

Processed Thu Apr 16 03:20:31 2015 by ELM ver.2012-10-06 from 001__elm20150416_011252__dat00.bin



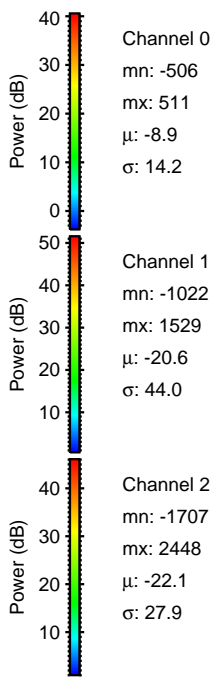
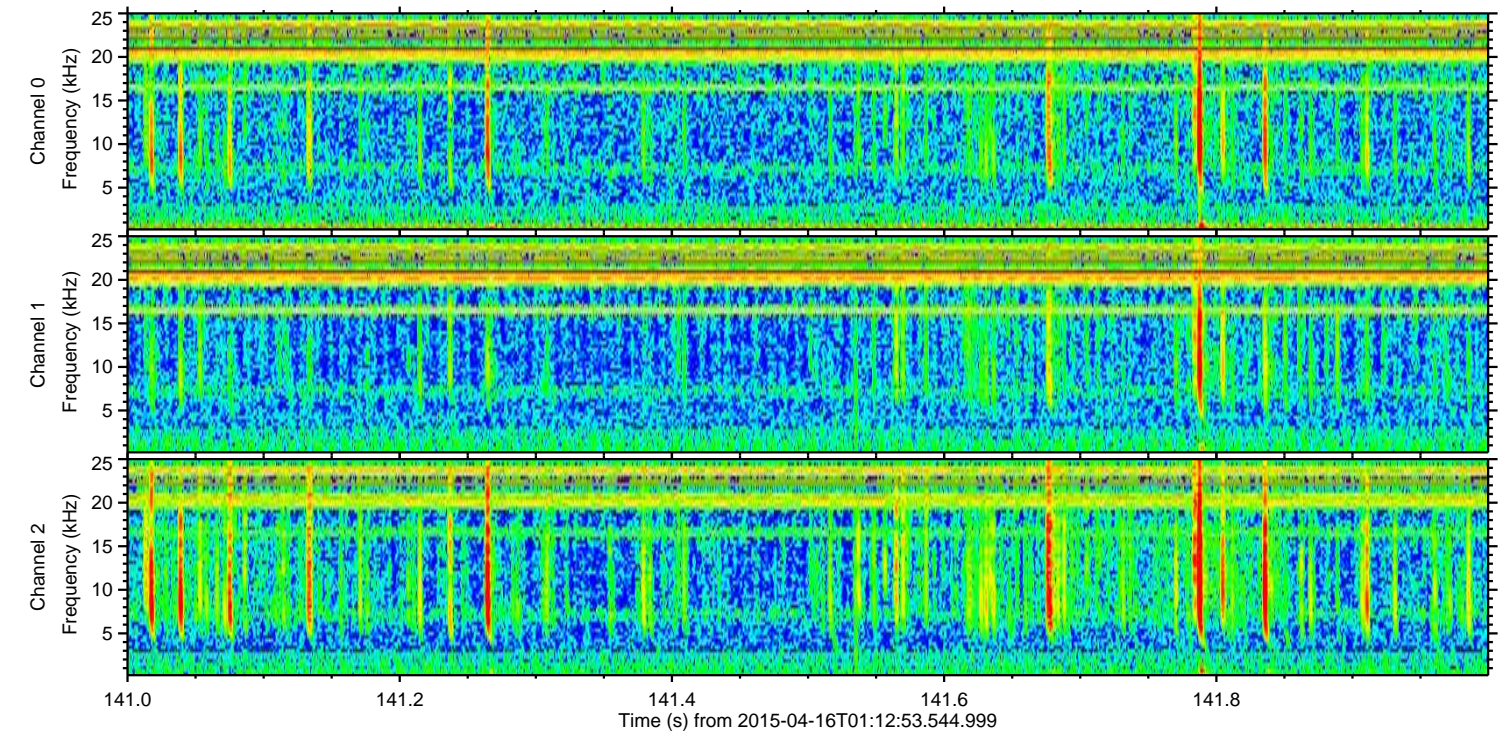
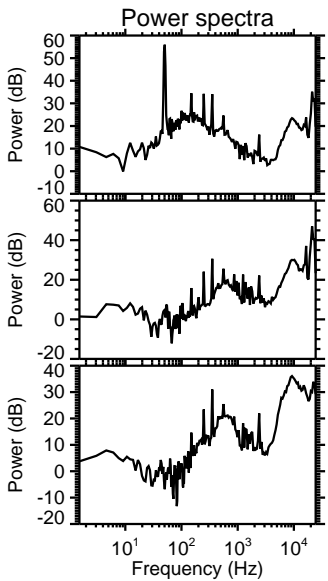
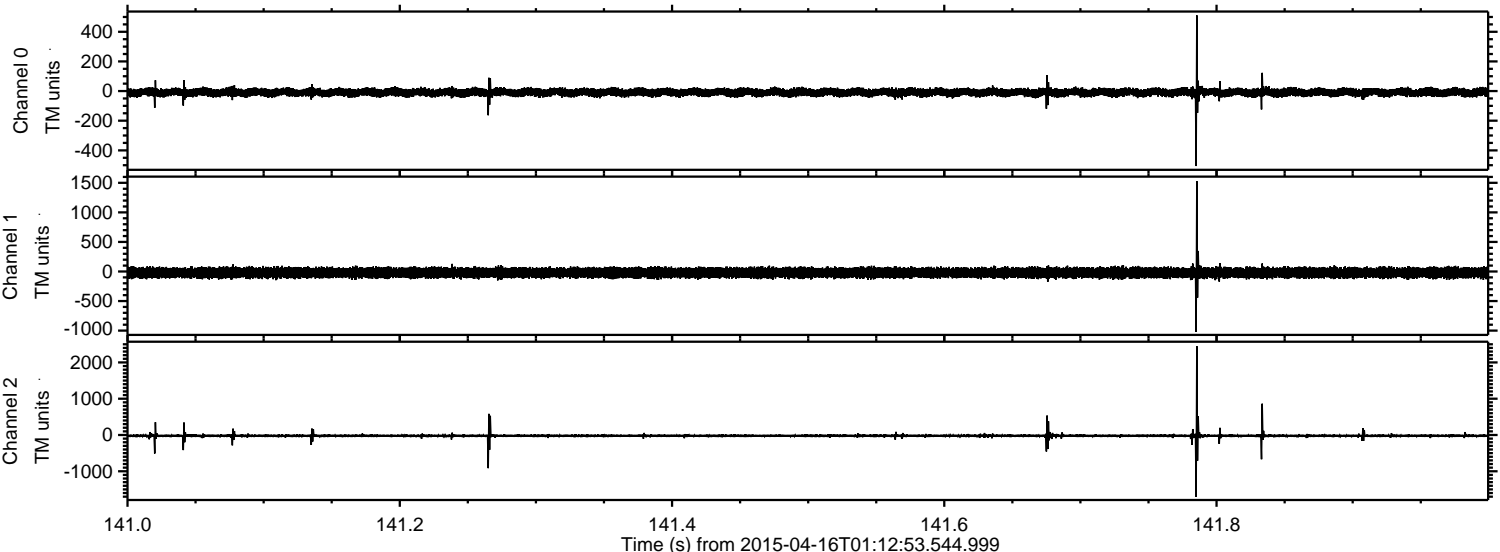
ELMAVAN 3D WAVEFORMS (Measured data sampled at 50 kHz) 49518 packets of 144 samples from 2015-04-16T01:12:53.544.999. Part 106/143

Processed Thu Apr 16 03:20:32 2015 by ELM ver.2012-10-06 from 001__elm20150416_011252__dat00.bin

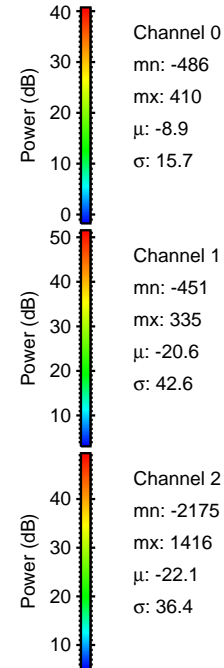
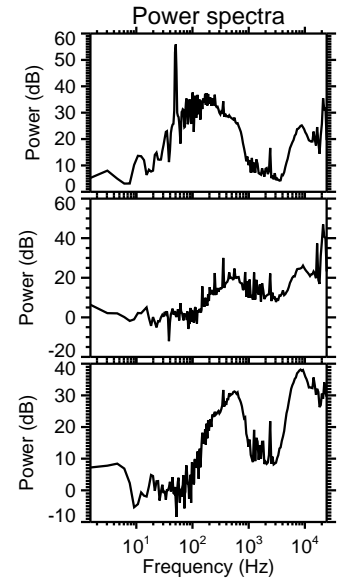
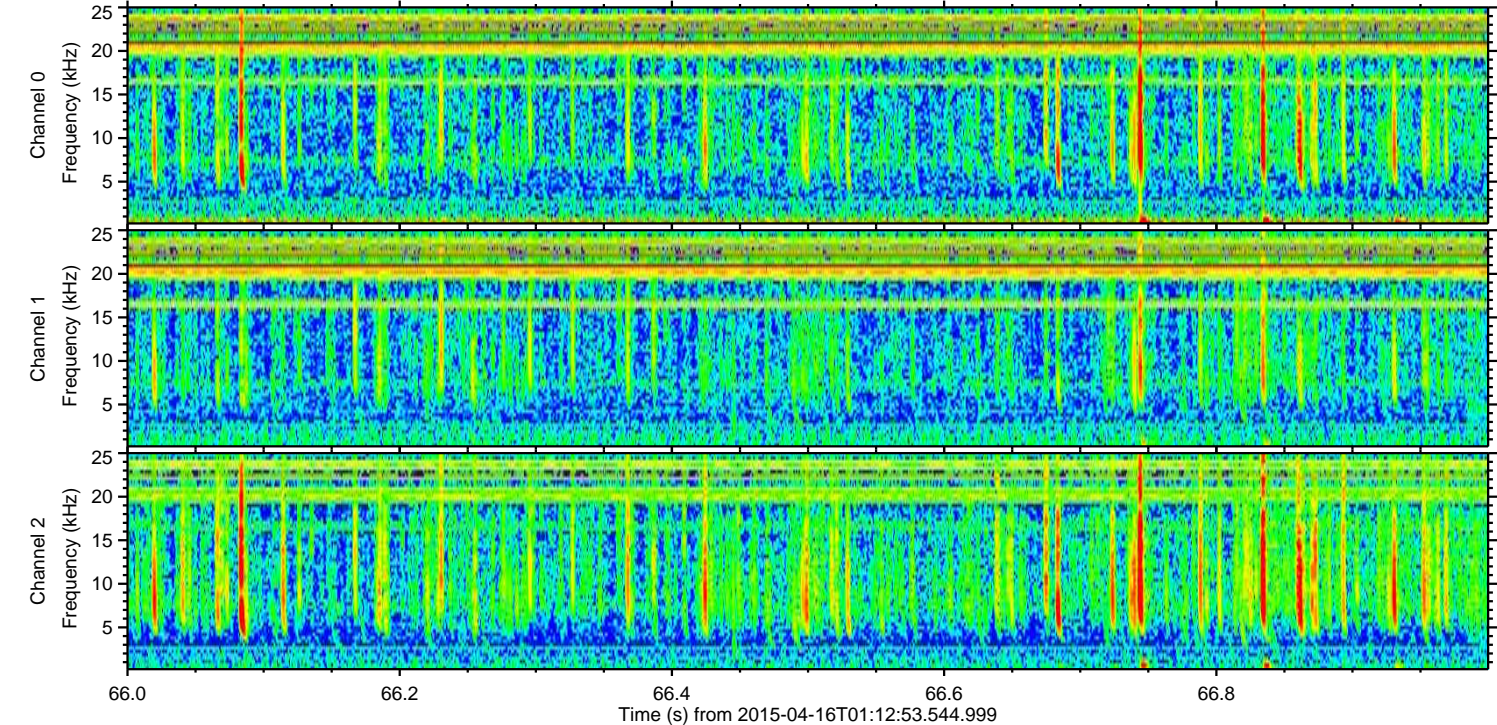
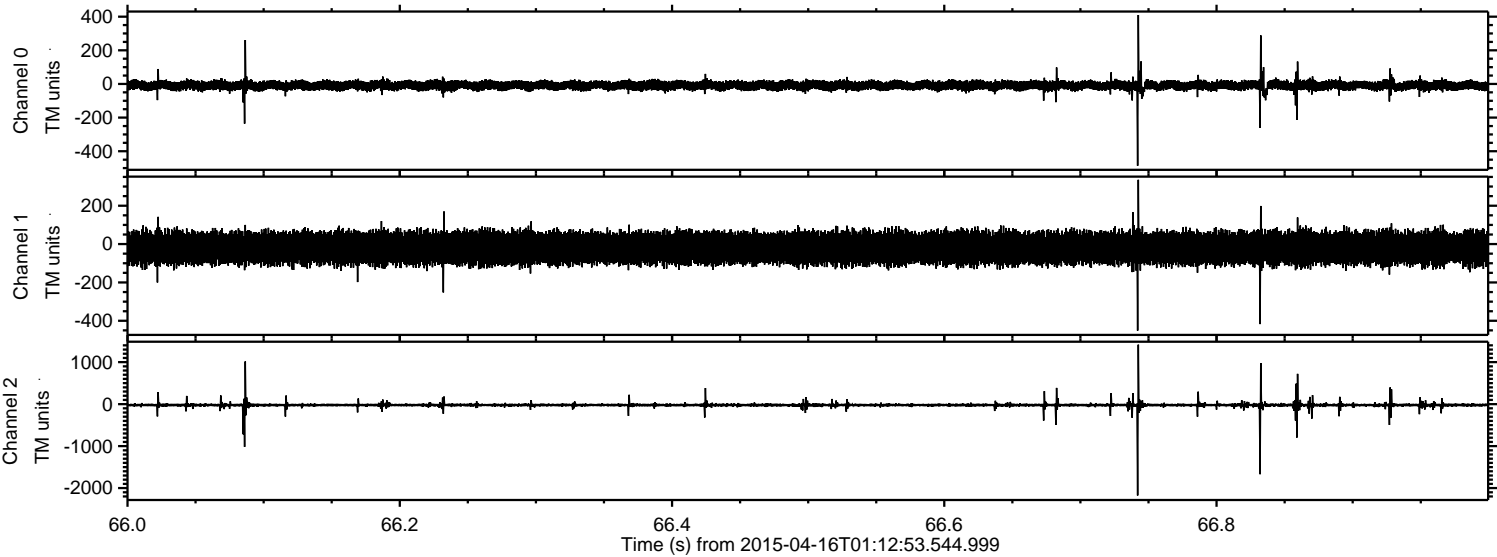


ELMAVAN 3D WAVEFORMS (Measured data sampled at 50 kHz) 49518 packets of 144 samples from 2015-04-16T01:12:53.544.999. Part 142/143

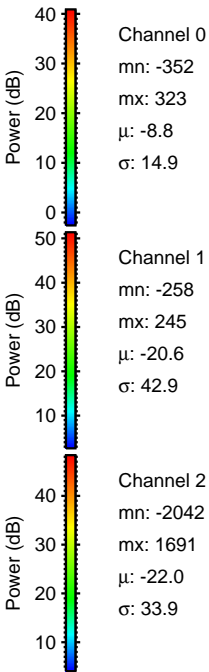
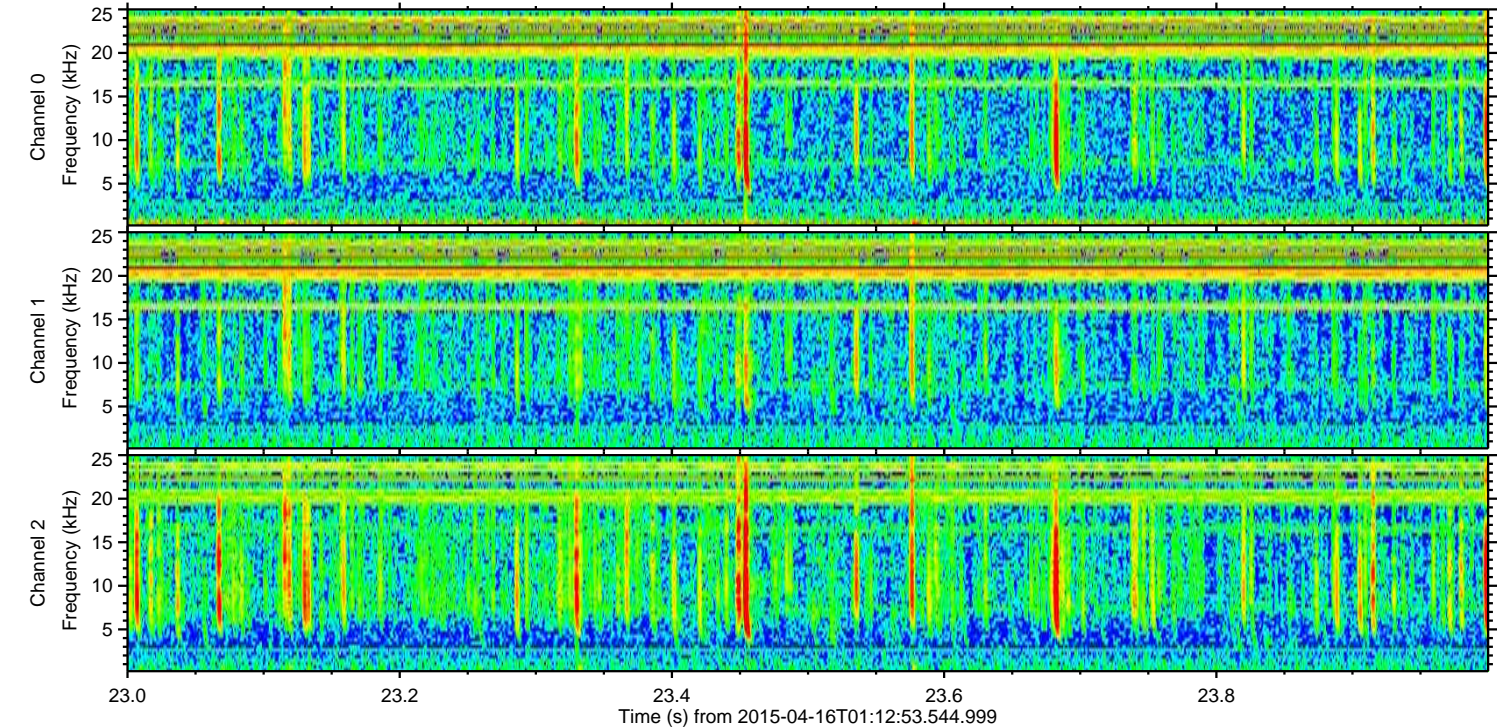
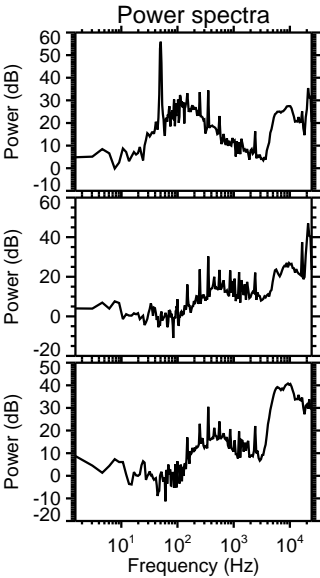
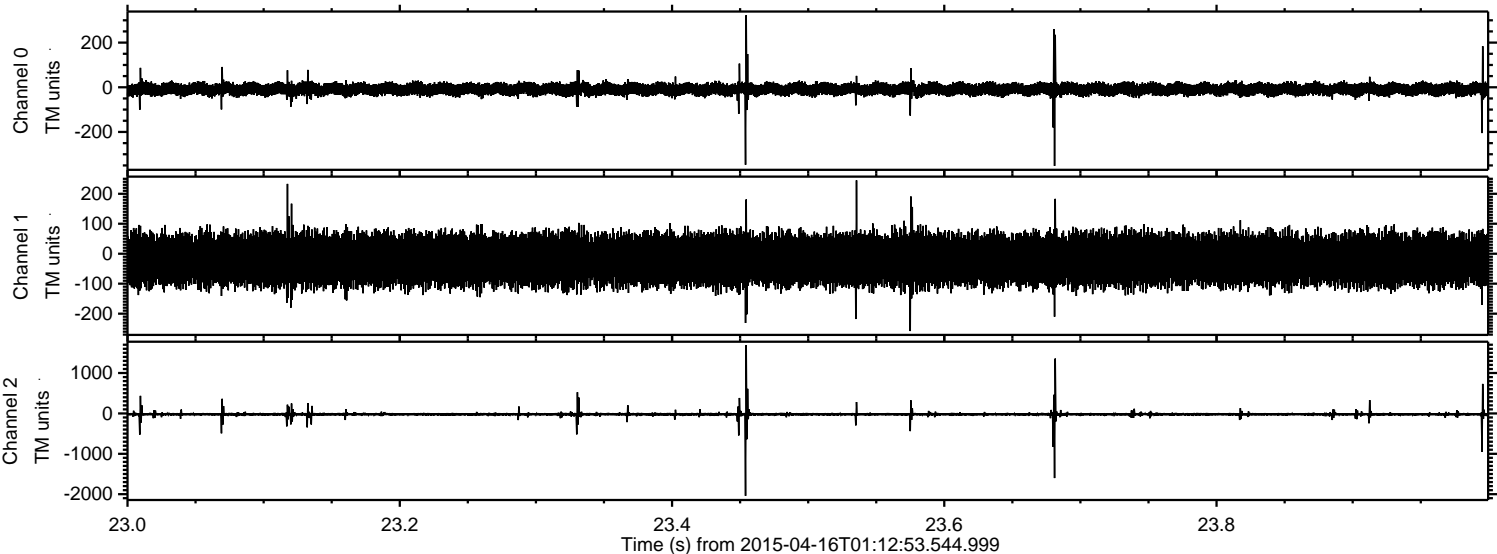
Processed Thu Apr 16 03:20:34 2015 by ELM ver.2012-10-06 from 001__elm20150416_011252__dat00.bin



Processed Thu Apr 16 03:20:35 2015 by ELM ver.2012-10-06 from 001__elm20150416_011252__dat00.bin

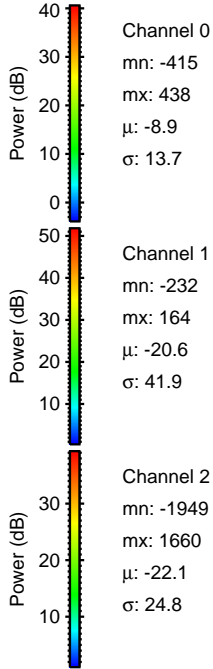
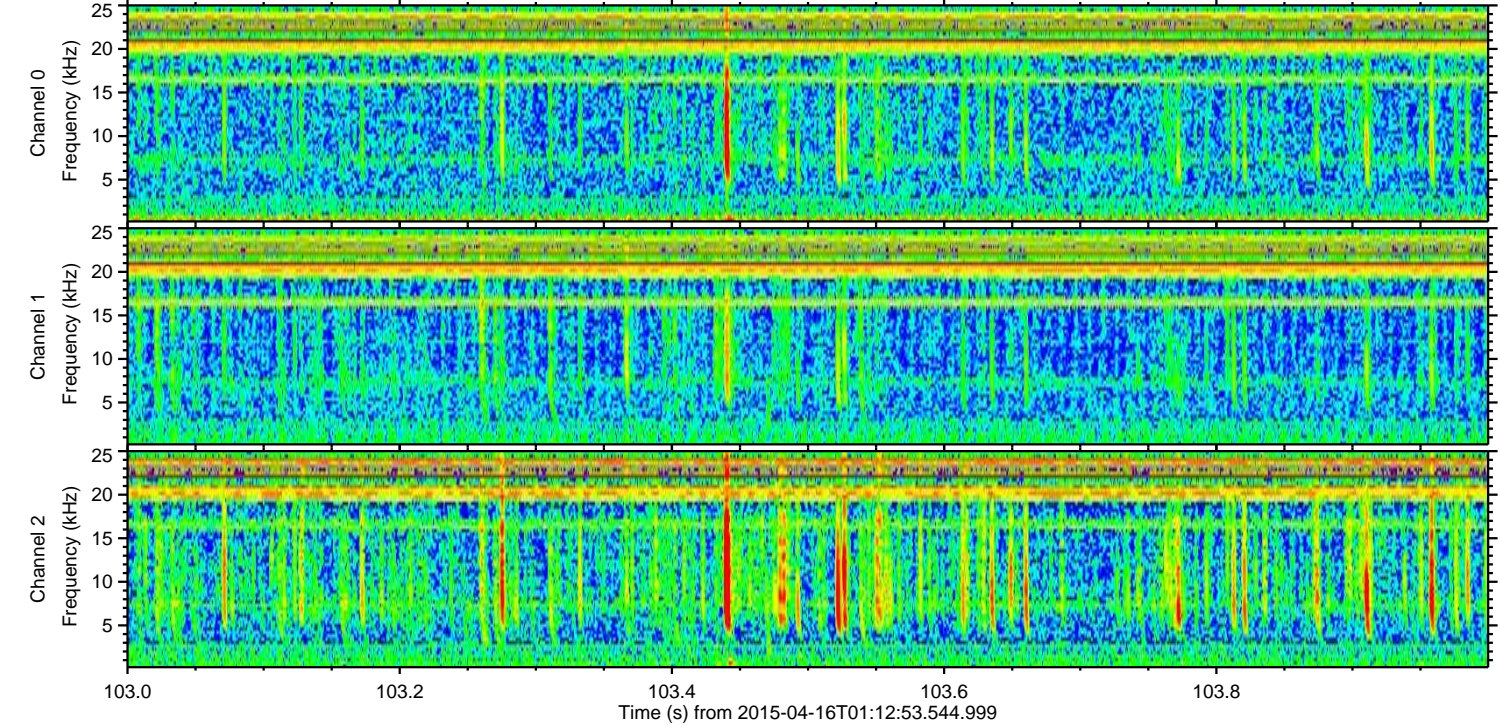
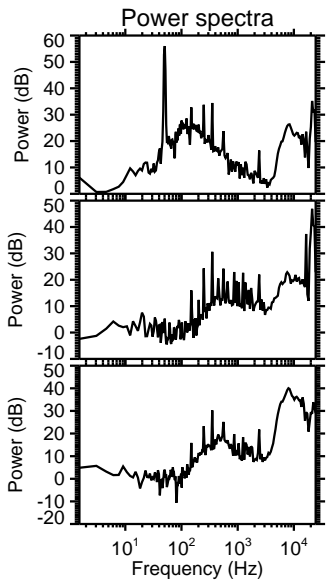
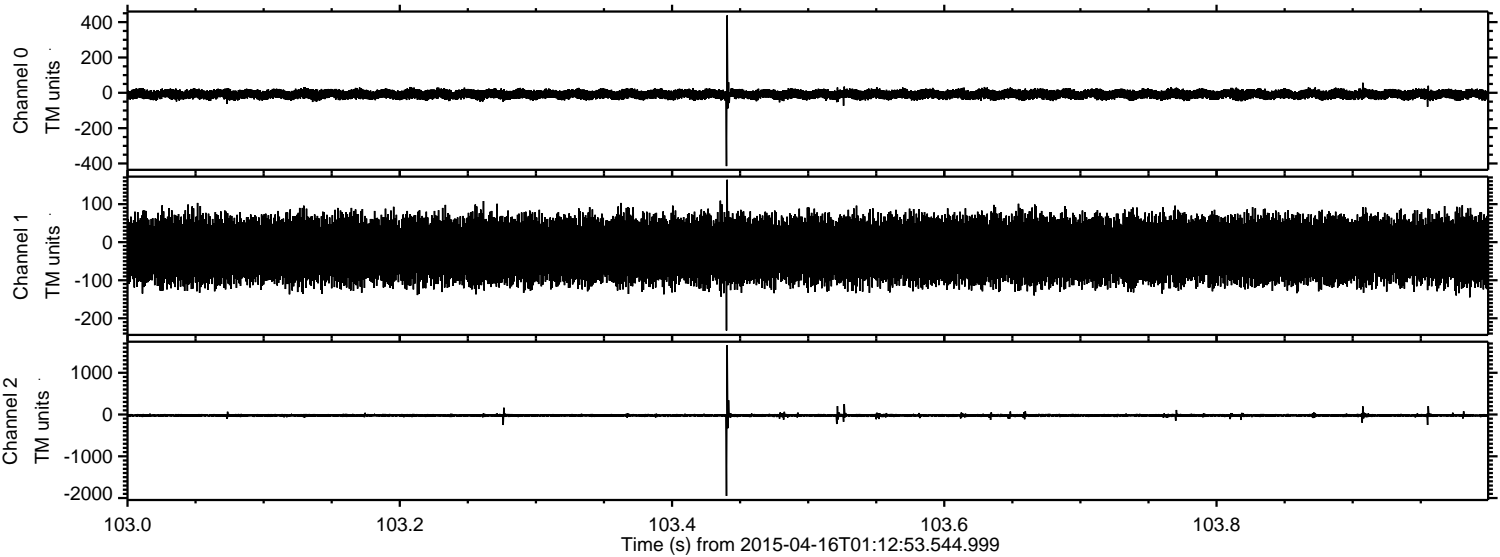


Processed Thu Apr 16 03:20:36 2015 by ELM ver.2012-10-06 from 001__elm20150416_011252__dat00.bin



ELMAVAN 3D WAVEFORMS (Measured data sampled at 50 kHz) 49518 packets of 144 samples from 2015-04-16T01:12:53.544.999. Part 104/143

Processed Thu Apr 16 03:20:37 2015 by ELM ver.2012-10-06 from 001__elm20150416_011252__dat00.bin



Channel 0
mn: -415
mx: 438
 μ : -8.9
 σ : 13.7

Channel 1
mn: -232
mx: 164
 μ : -20.6
 σ : 41.9

Channel 2
mn: -1949
mx: 1660
 μ : -22.1
 σ : 24.8

Processed Thu Apr 16 03:20:38 2015 by ELM ver.2012-10-06 from 001__elm20150416_011252__dat00.bin

