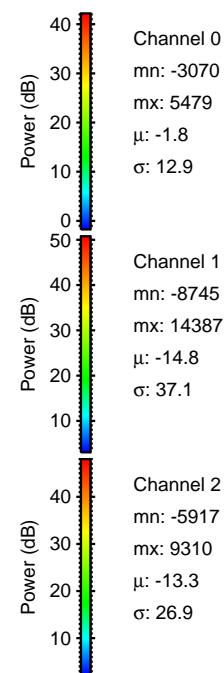
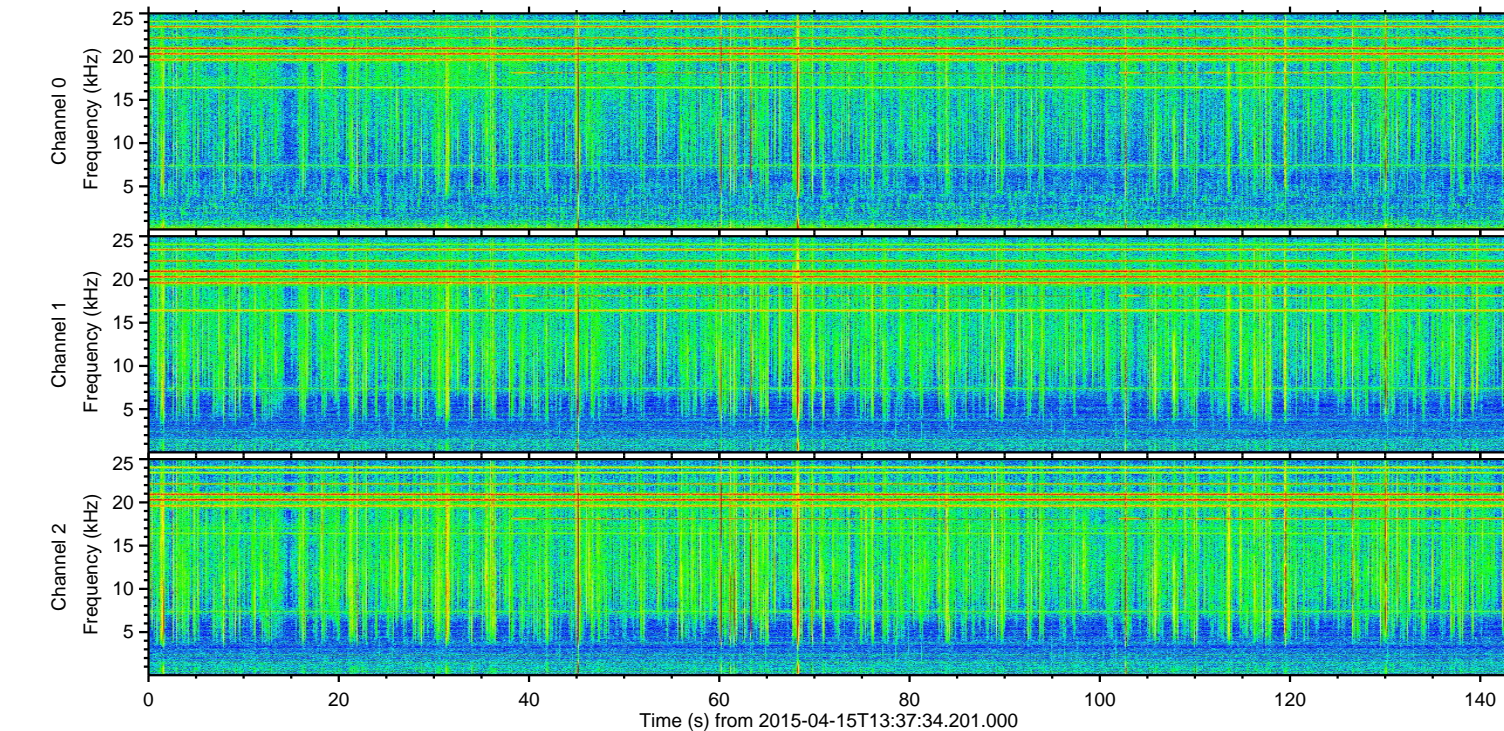
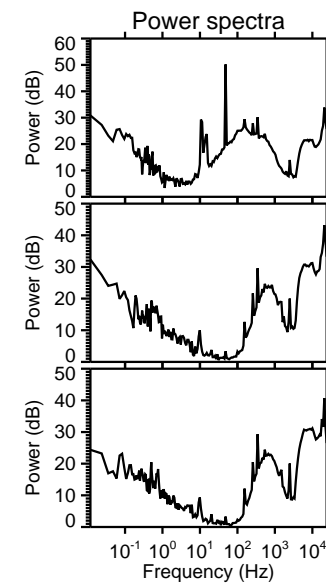
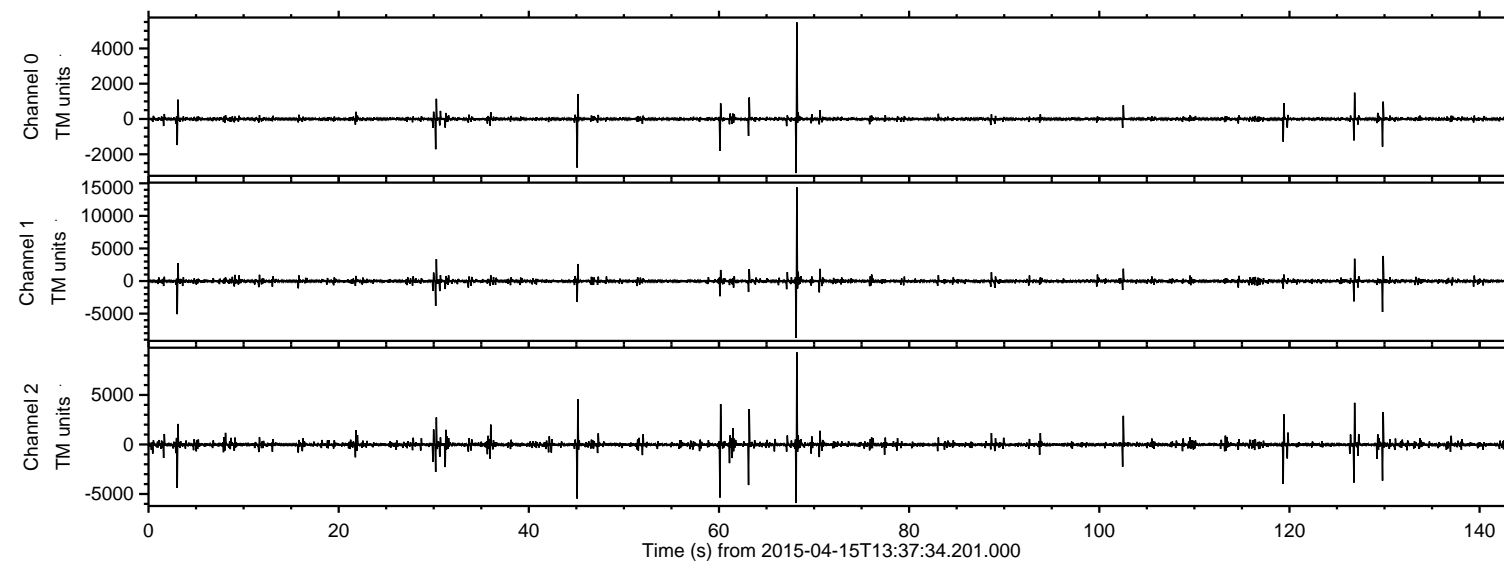
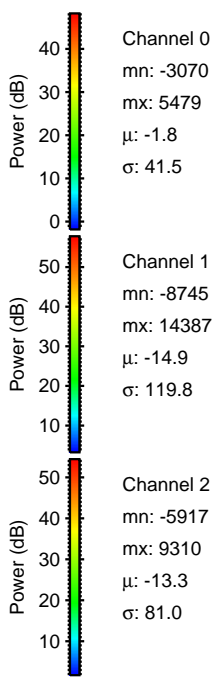
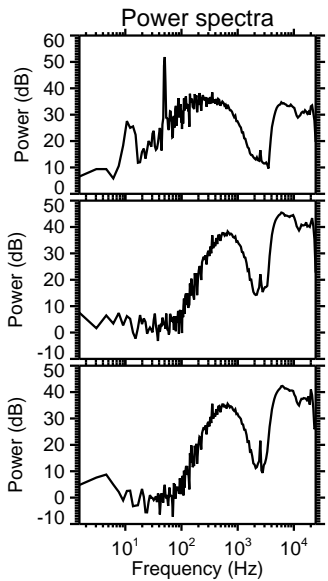
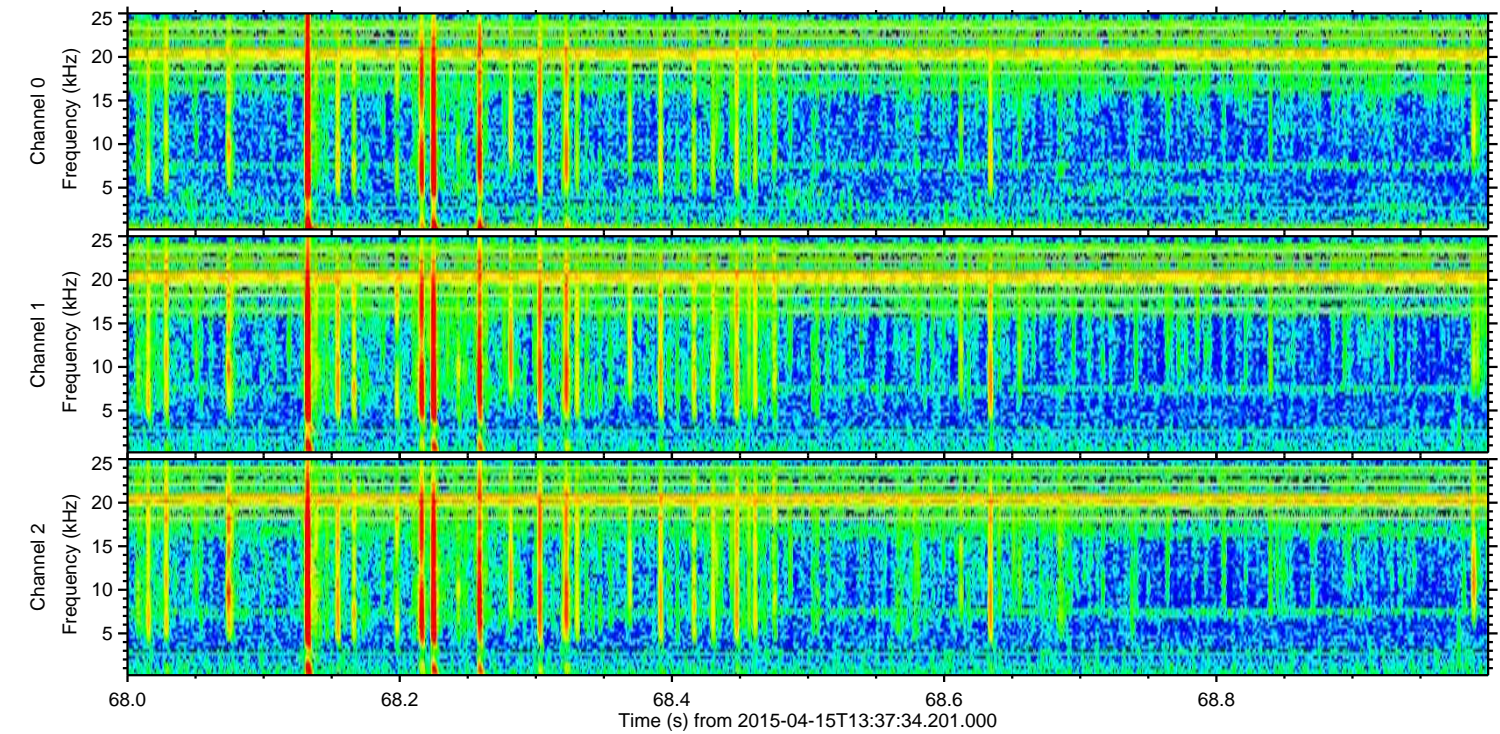
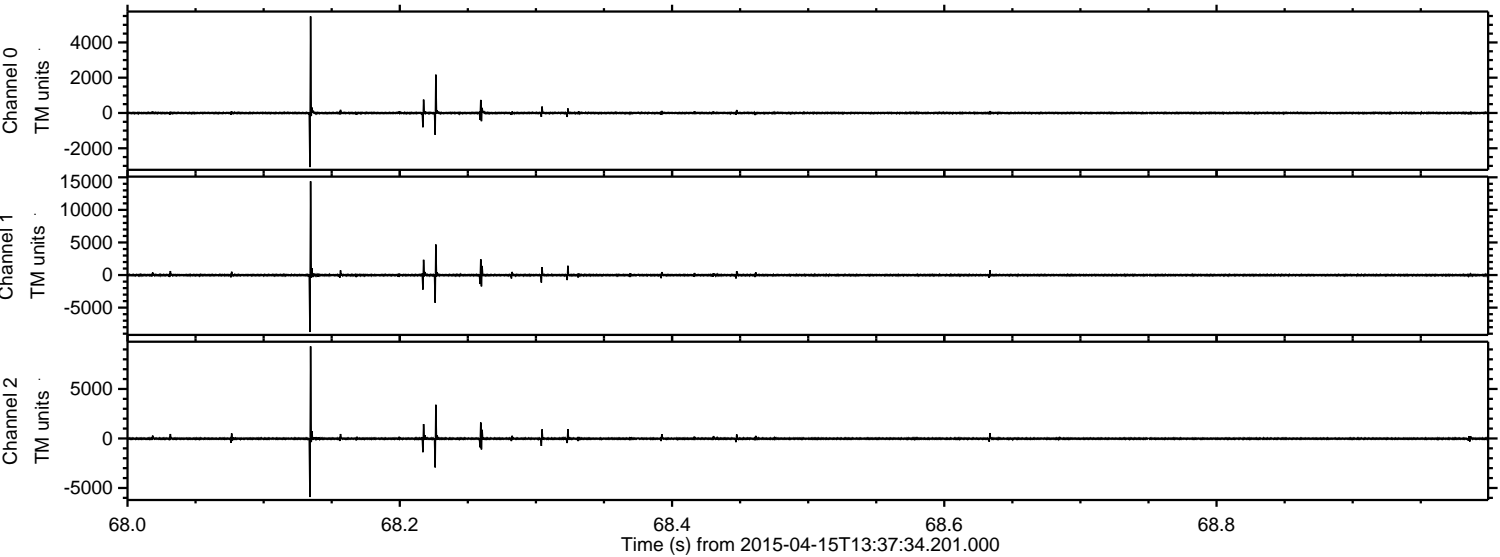


ELMAVAN 3D WAVEFORMS (Measured data sampled at 50 kHz) 49690 packets of 144 samples from 2015-04-15T13:37:34.201.000.

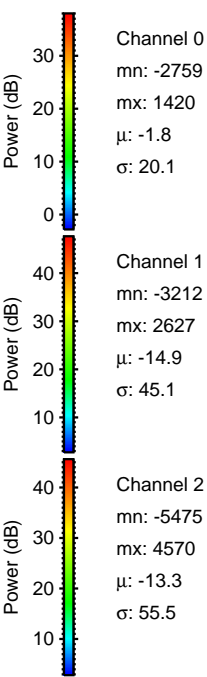
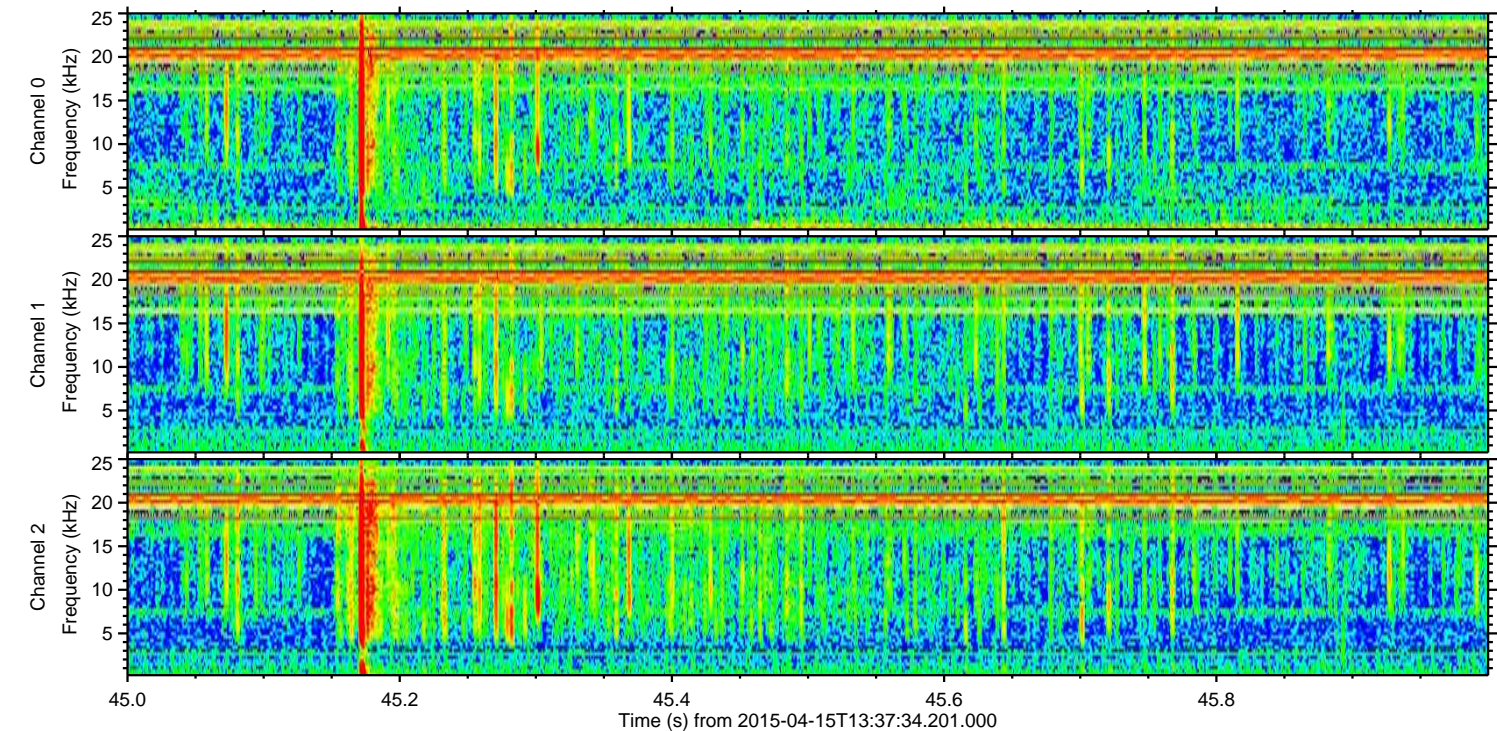
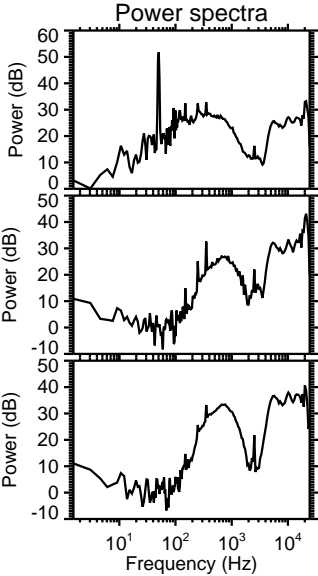
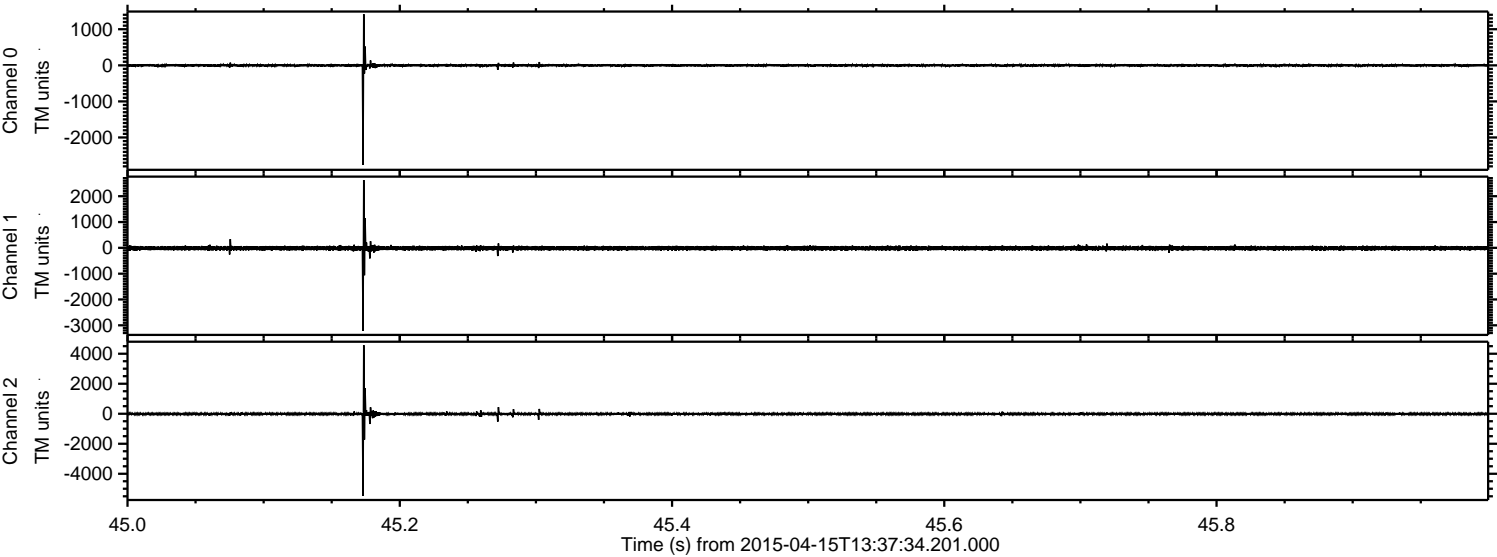
Processed Wed Apr 15 15:44:54 2015 by ELM ver.2012-10-06 from 001__elm20150415_133733__dat00.bin



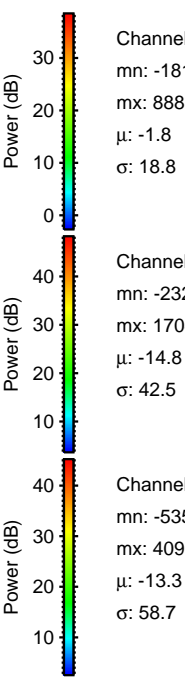
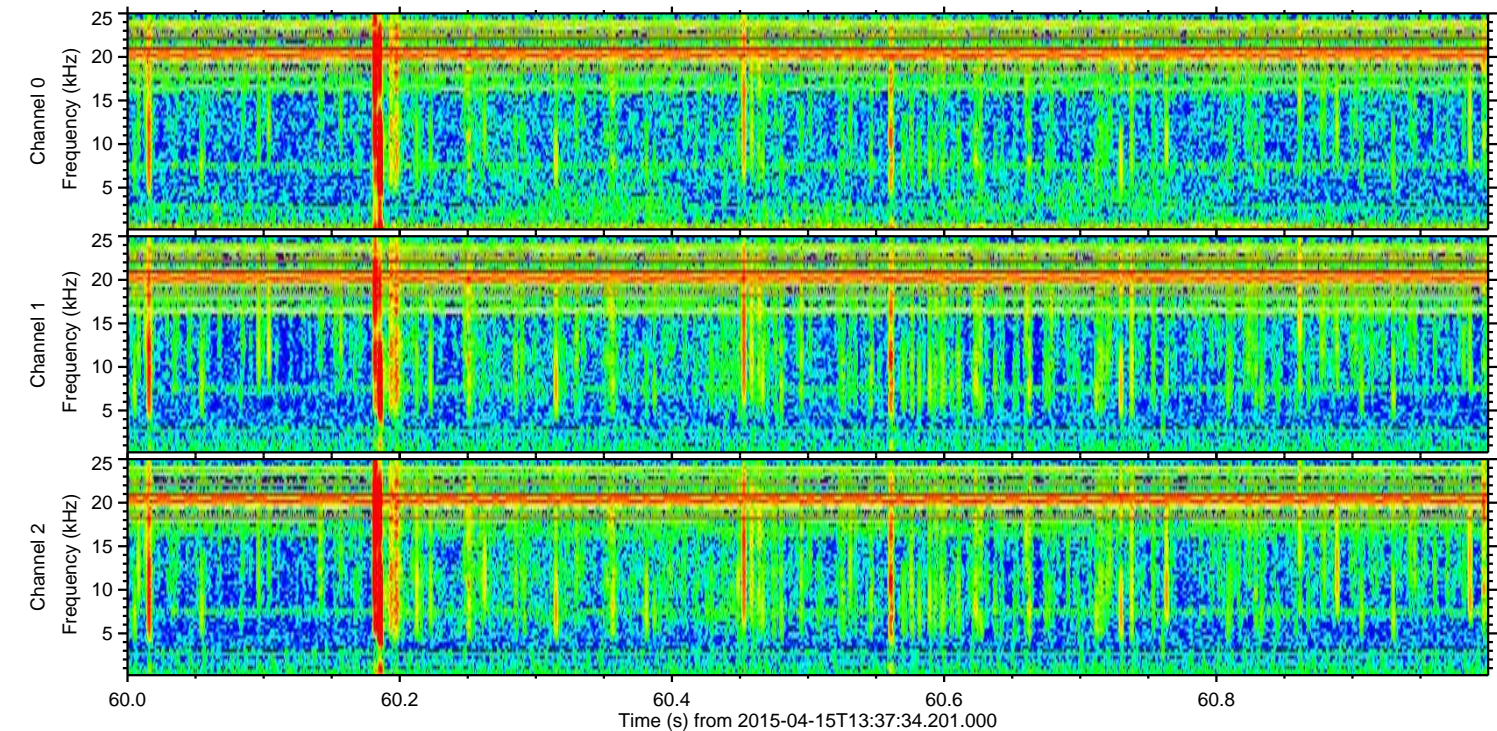
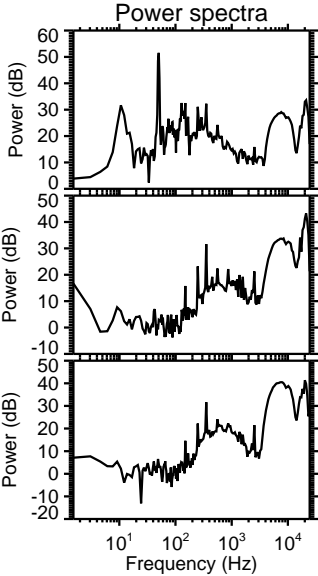
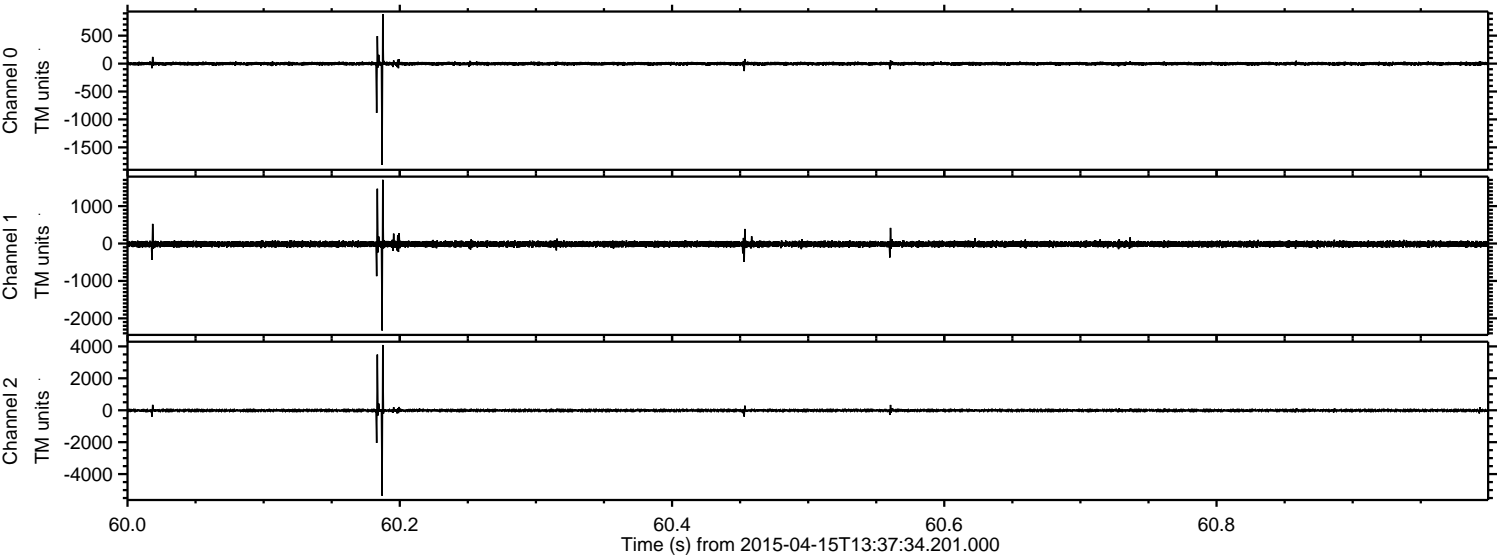
Processed Wed Apr 15 15:45:05 2015 by ELM ver.2012-10-06 from 001__elm20150415_133733__dat00.bin



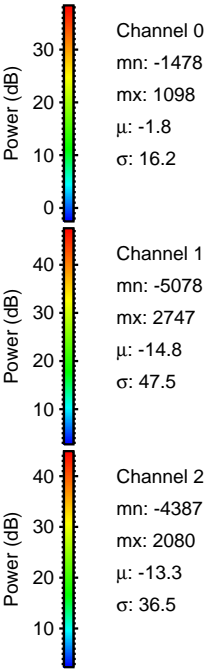
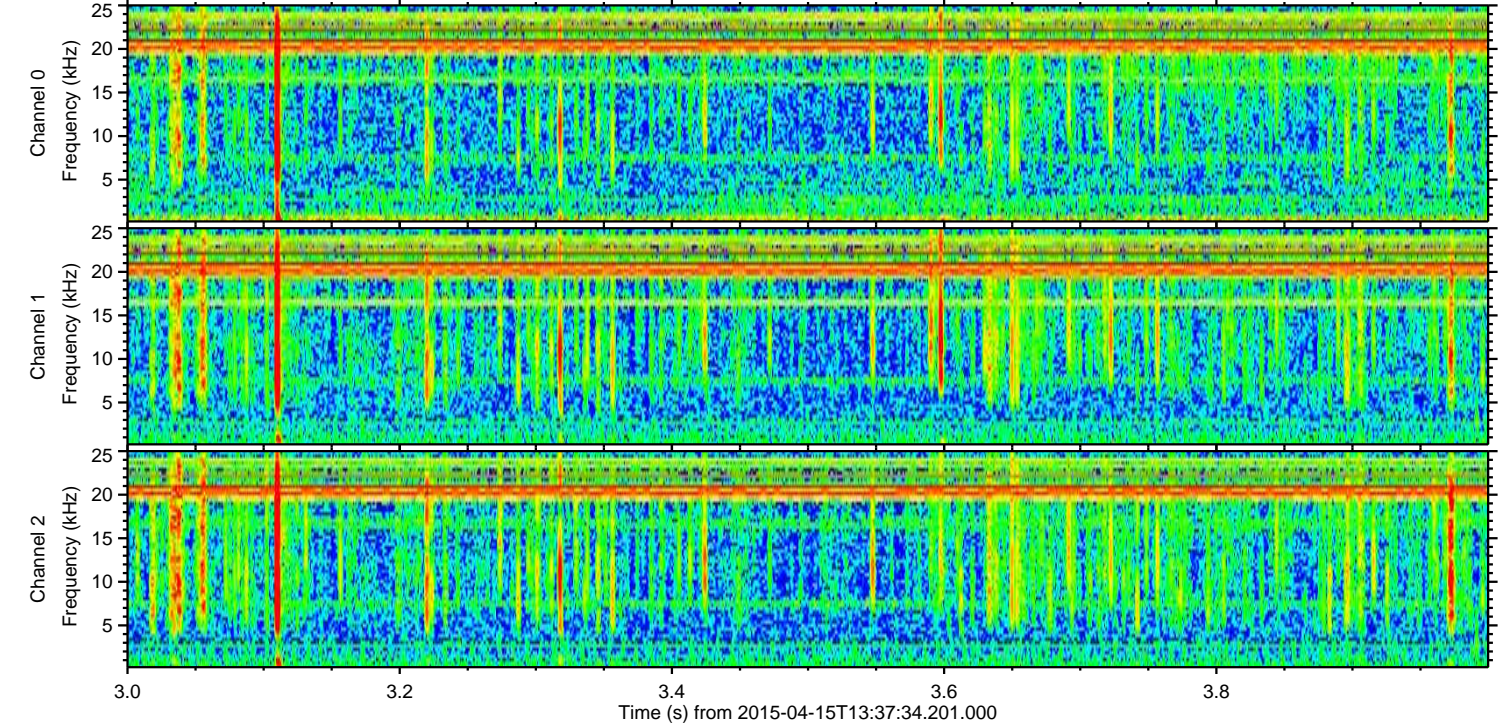
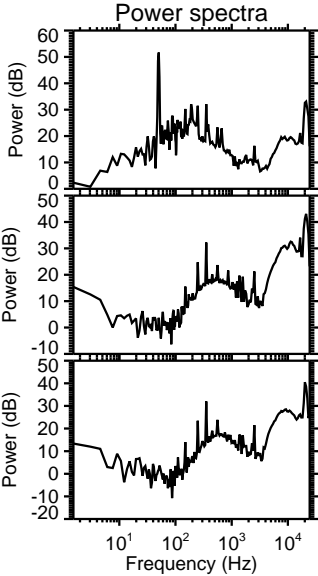
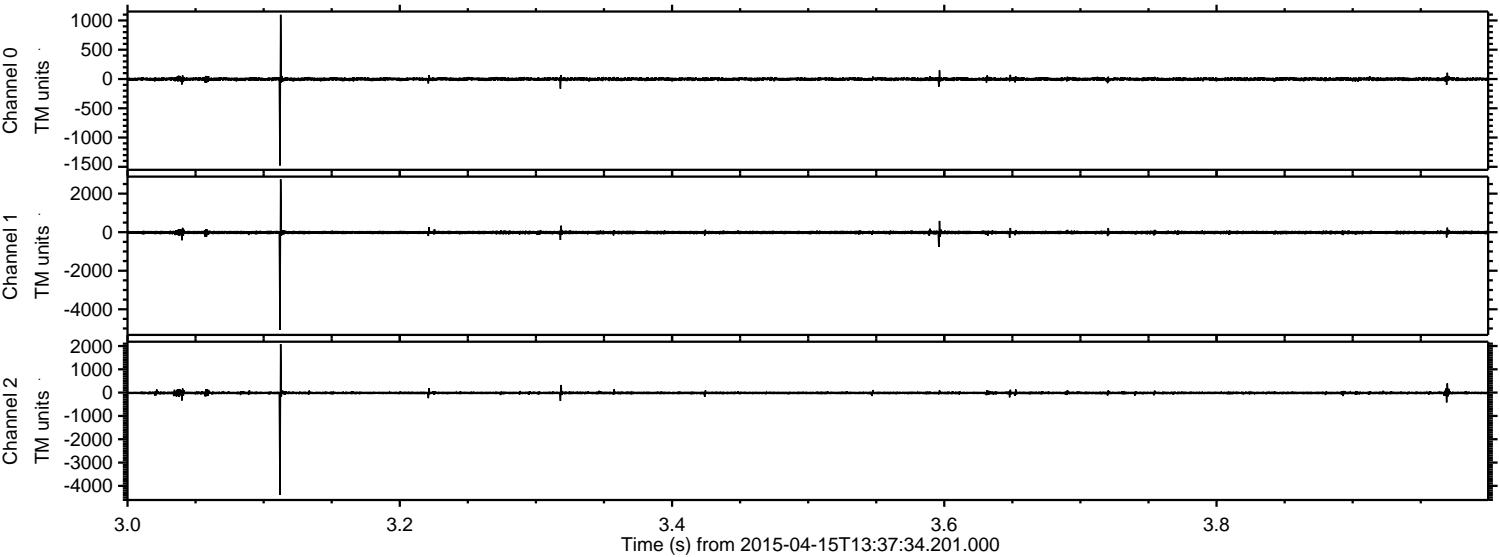
Processed Wed Apr 15 15:45:06 2015 by ELM ver.2012-10-06 from 001__elm20150415_133733__dat00.bin



Processed Wed Apr 15 15:45:07 2015 by ELM ver.2012-10-06 from 001__elm20150415_133733__dat00.bin

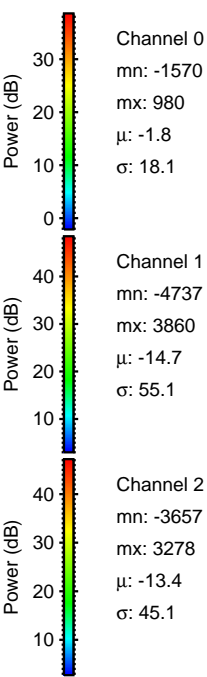
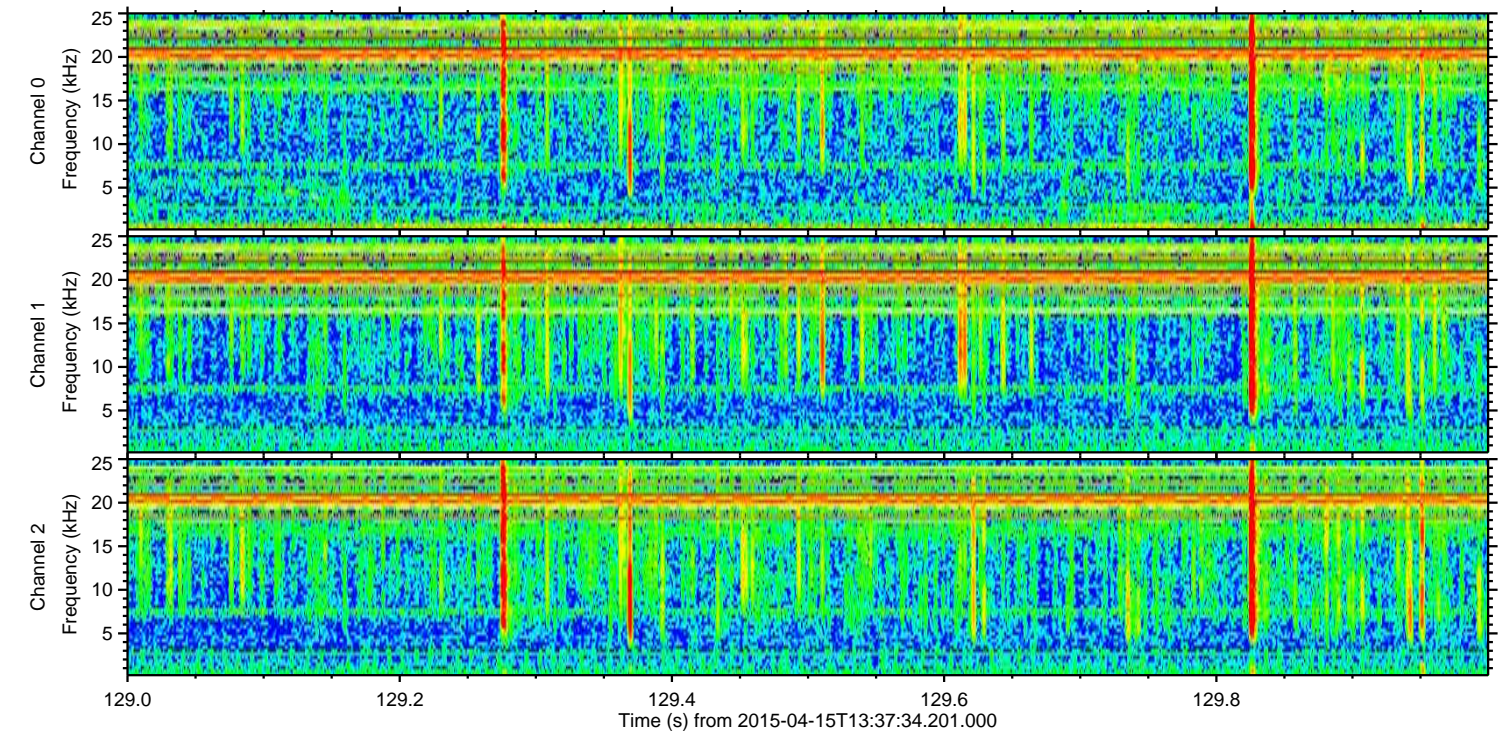
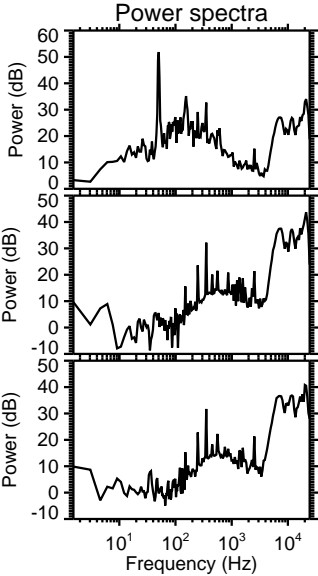
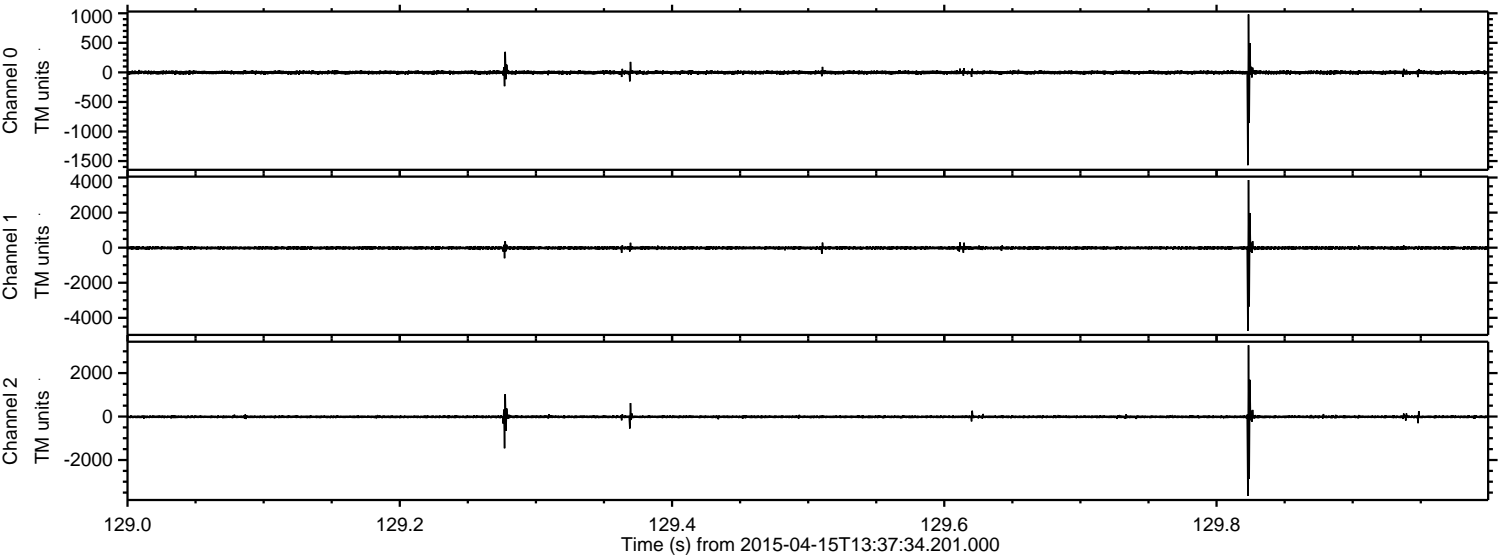


Processed Wed Apr 15 15:45:08 2015 by ELM ver.2012-10-06 from 001__elm20150415_133733__dat00.bin



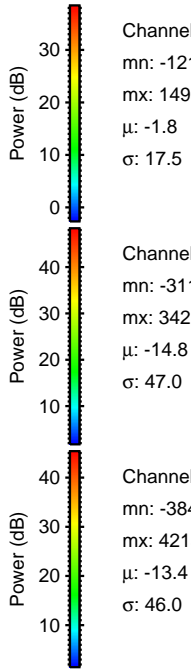
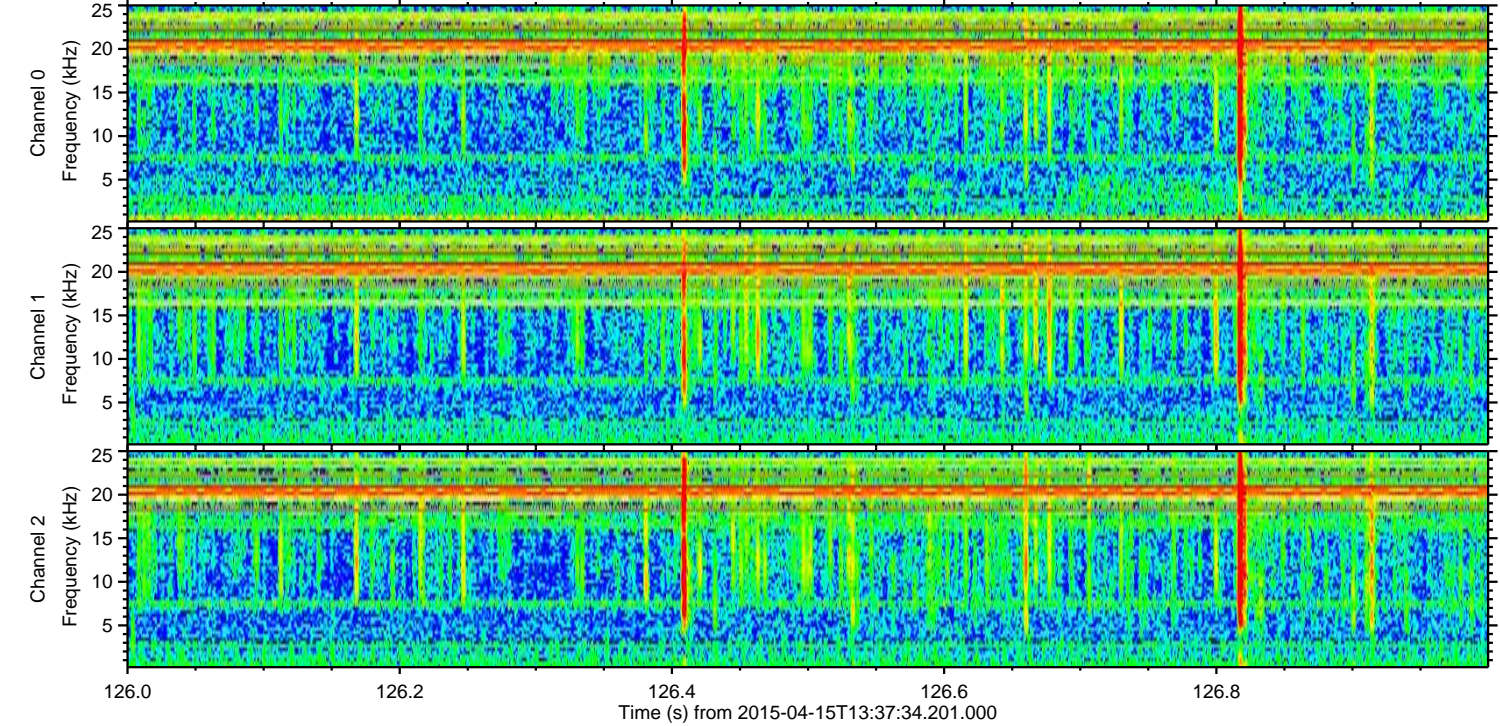
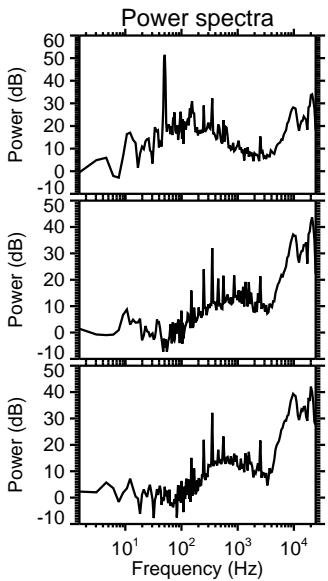
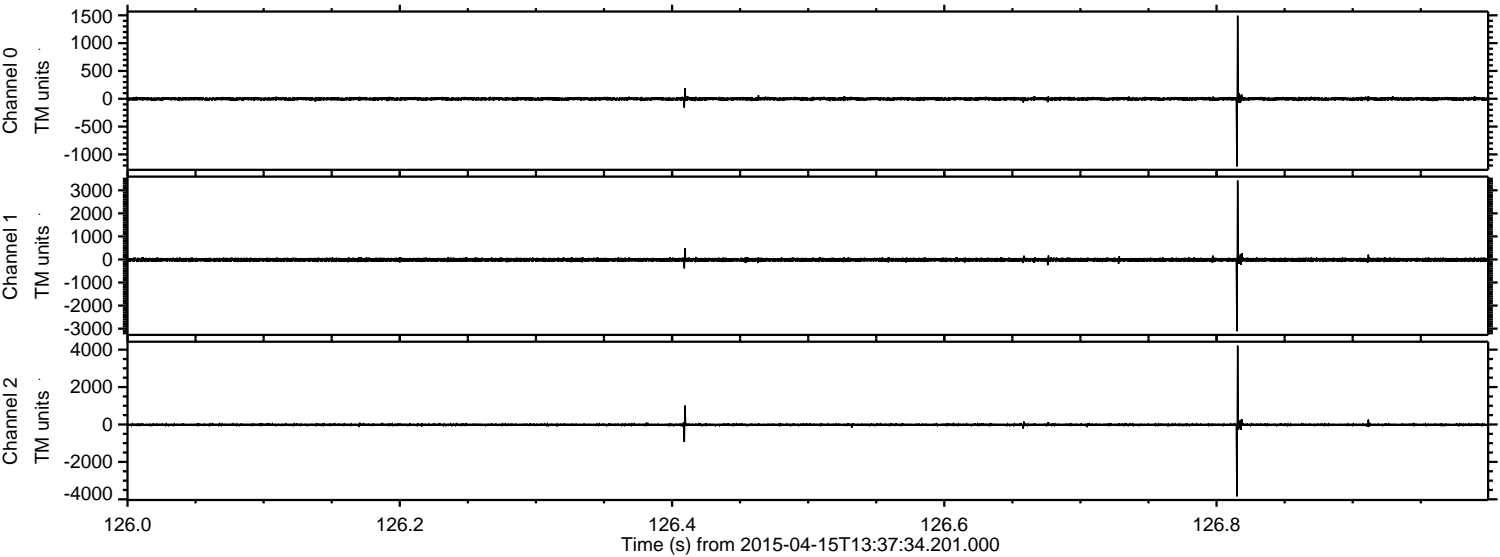
ELMAVAN 3D WAVEFORMS (Measured data sampled at 50 kHz) 49690 packets of 144 samples from 2015-04-15T13:37:34.201.000. Part 130/144

Processed Wed Apr 15 15:45:09 2015 by ELM ver.2012-10-06 from 001__elm20150415_133733__dat00.bin

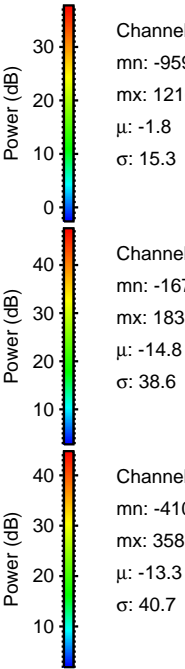
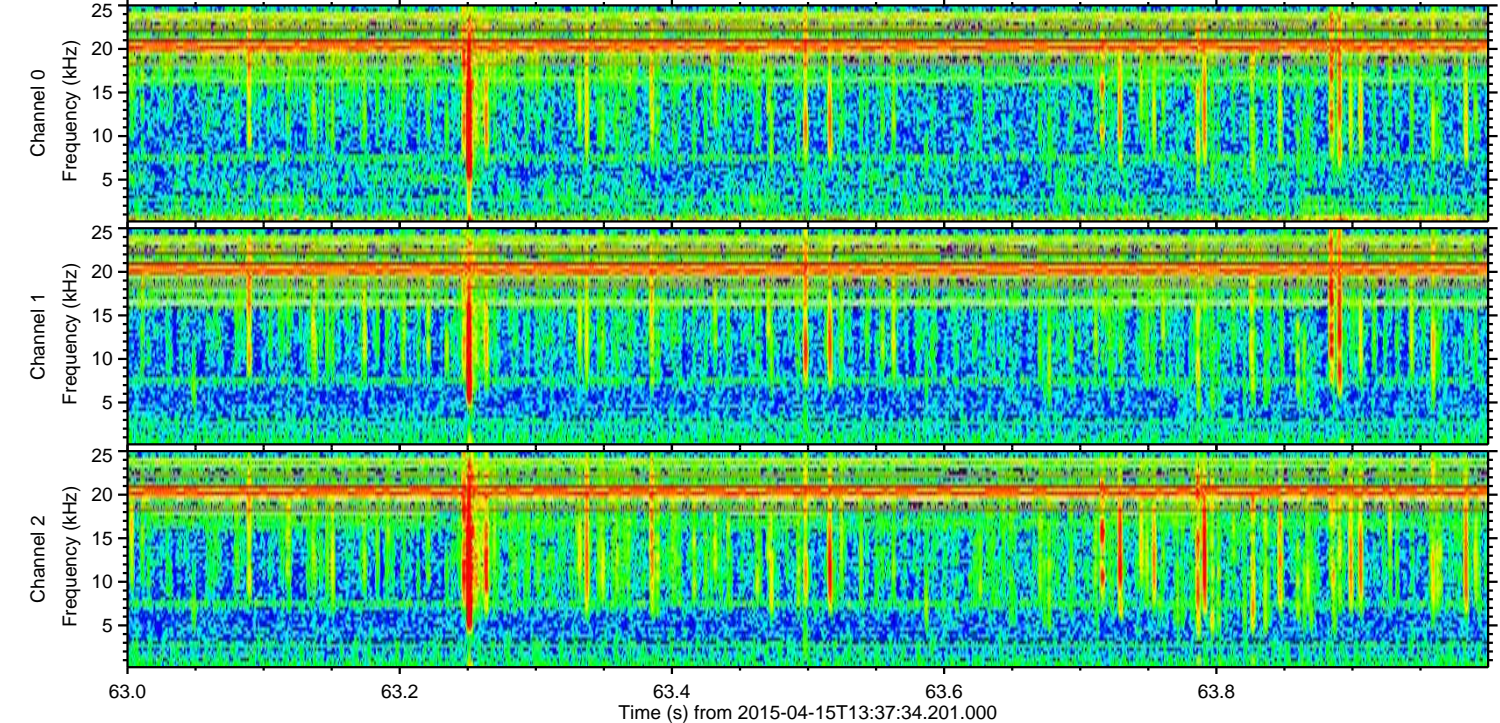
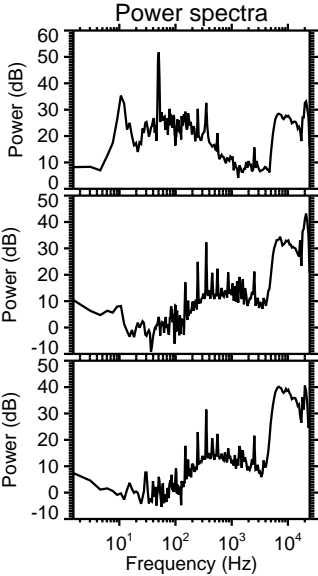
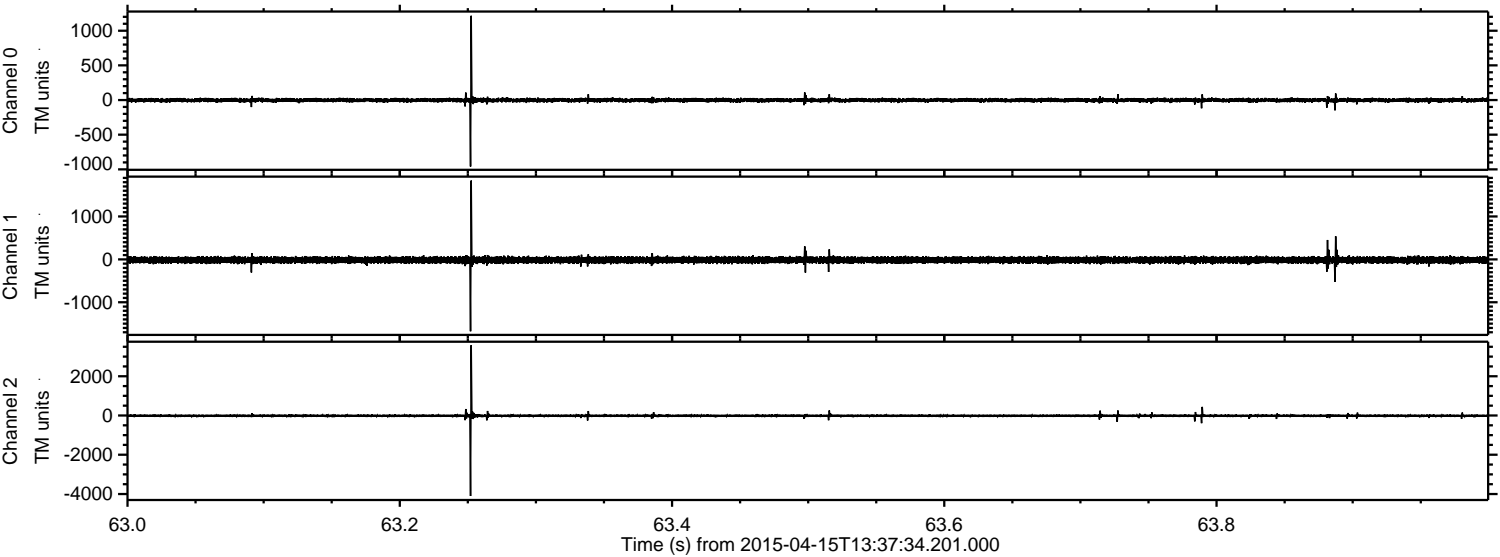


ELMAVAN 3D WAVEFORMS (Measured data sampled at 50 kHz) 49690 packets of 144 samples from 2015-04-15T13:37:34.201.000. Part 127/144

Processed Wed Apr 15 15:45:10 2015 by ELM ver.2012-10-06 from 001__elm20150415_133733__dat00.bin

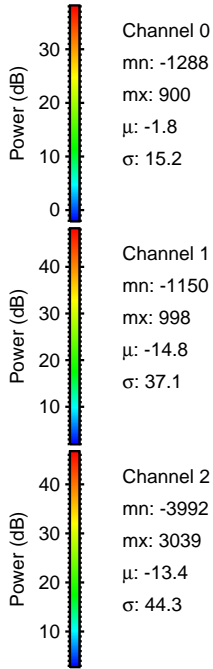
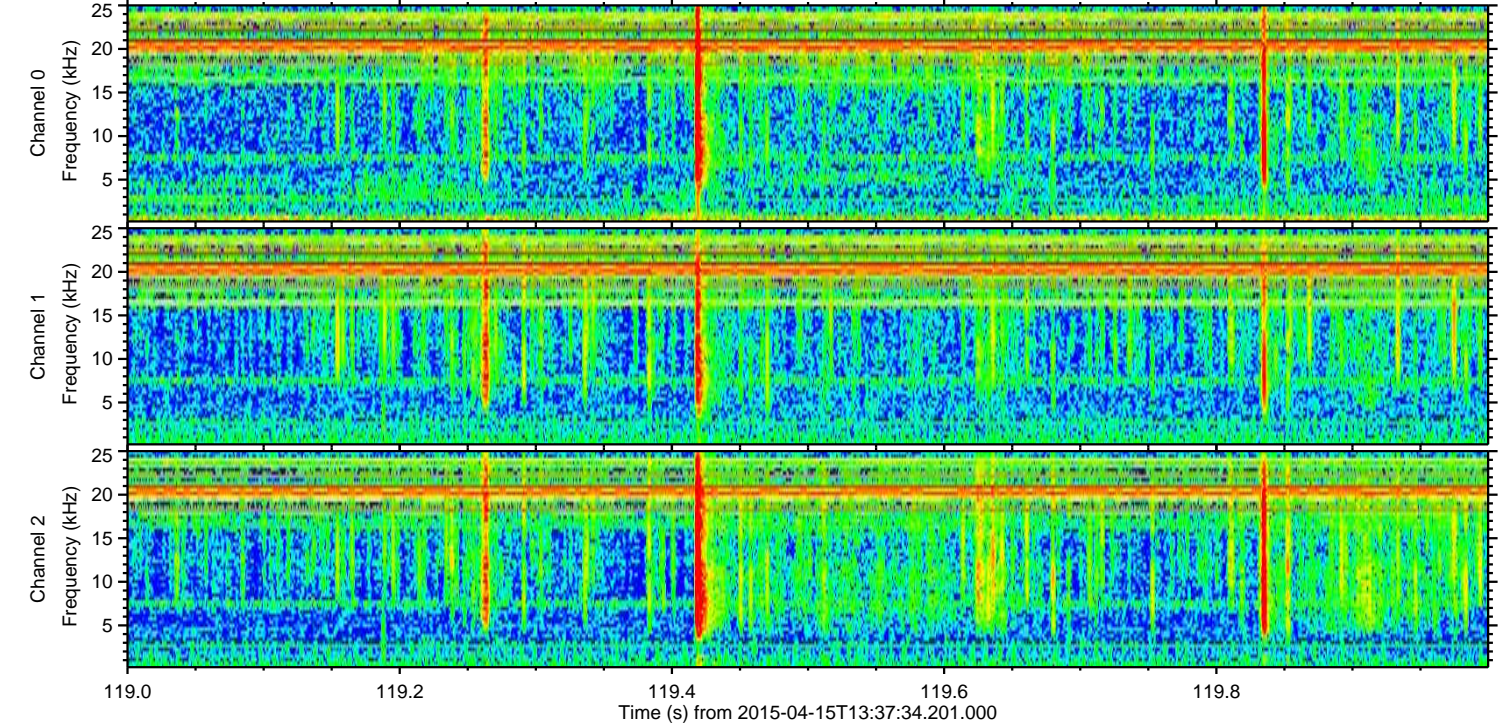
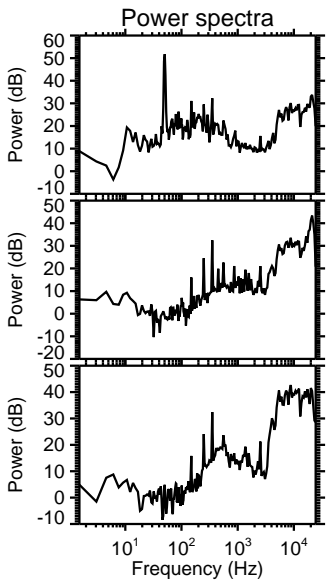
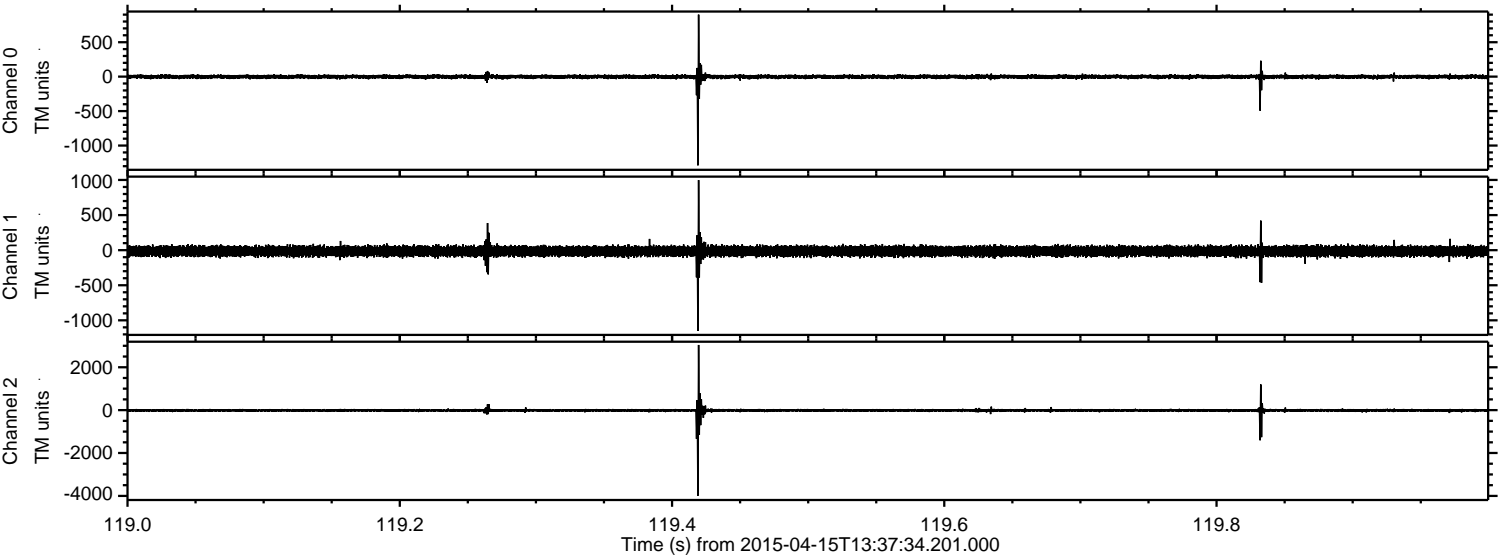


Processed Wed Apr 15 15:45:11 2015 by ELM ver.2012-10-06 from 001__elm20150415_133733__dat00.bin

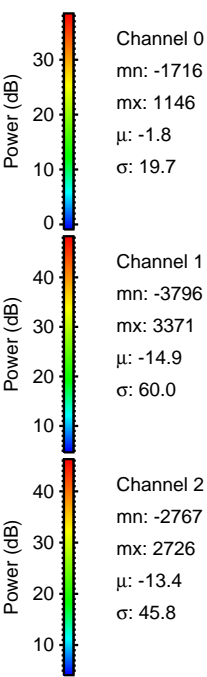
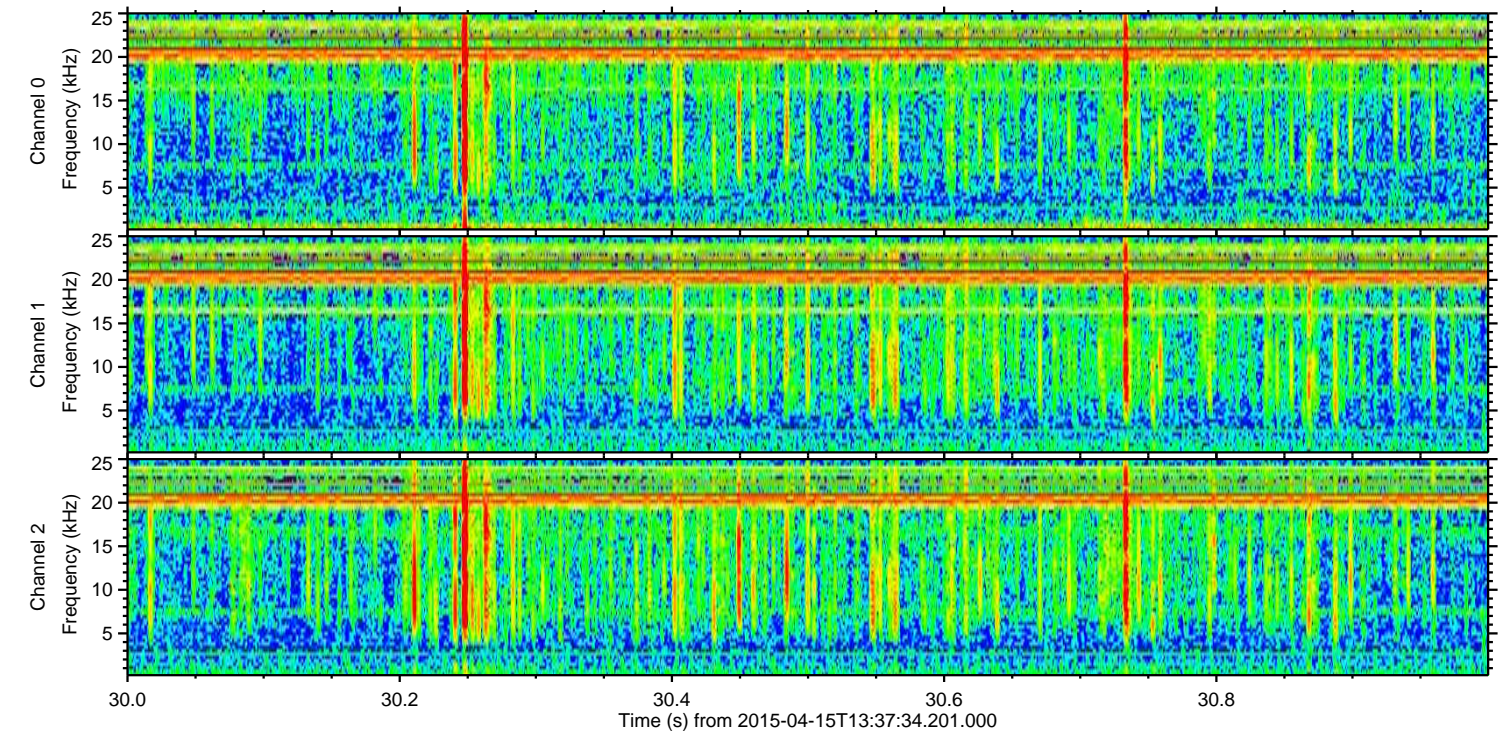
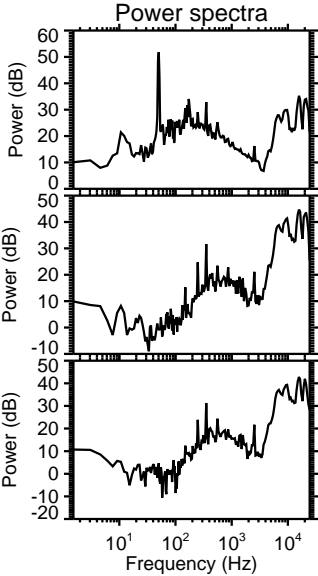
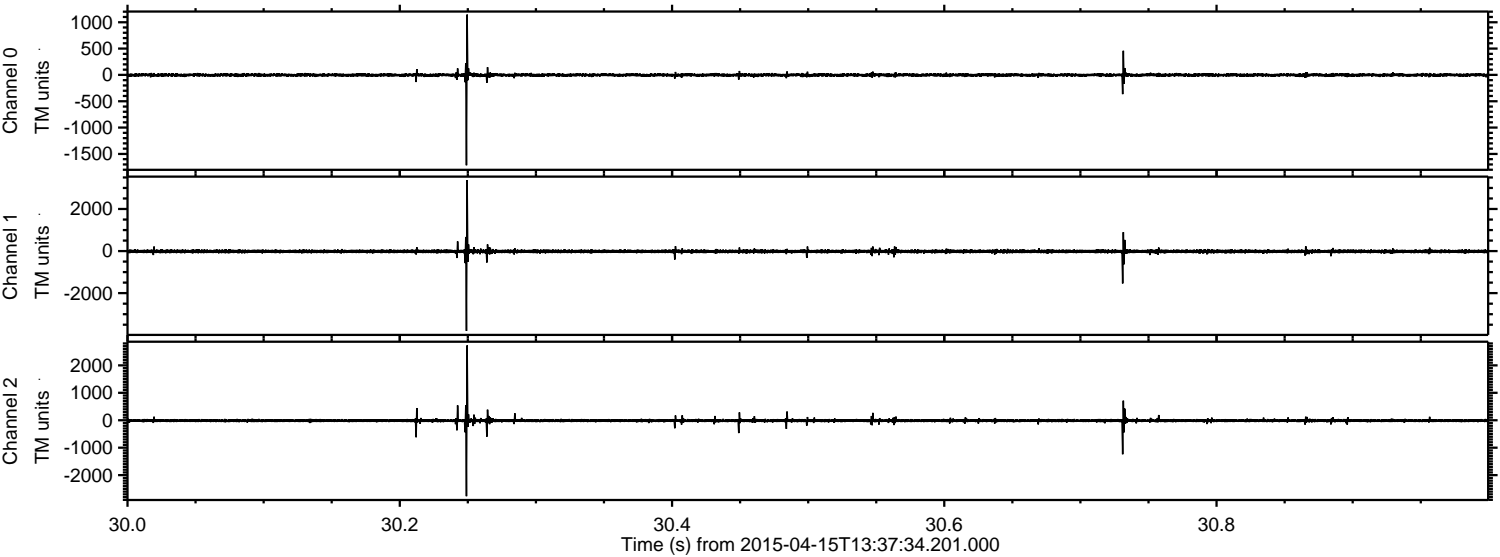


ELMAVAN 3D WAVEFORMS (Measured data sampled at 50 kHz) 49690 packets of 144 samples from 2015-04-15T13:37:34.201.000. Part 120/144

Processed Wed Apr 15 15:45:12 2015 by ELM ver.2012-10-06 from 001__elm20150415_133733__dat00.bin



Processed Wed Apr 15 15:45:13 2015 by ELM ver.2012-10-06 from 001__elm20150415_133733__dat00.bin



Channel 0
mn: -1716
mx: 1146
 μ : -1.8
 σ : 19.7

Channel 1
mn: -3796
mx: 3371
 μ : -14.9
 σ : 60.0

Channel 2
mn: -2767
mx: 2726
 μ : -13.4
 σ : 45.8

Processed Wed Apr 15 15:45:14 2015 by ELM ver.2012-10-06 from 001__elm20150415_133733__dat00.bin

