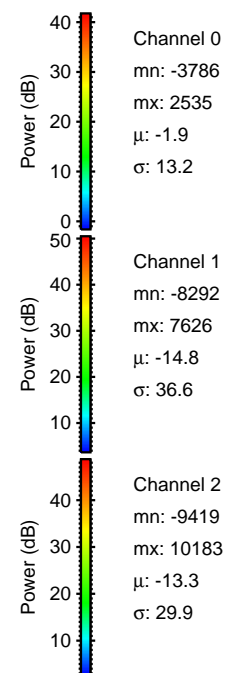
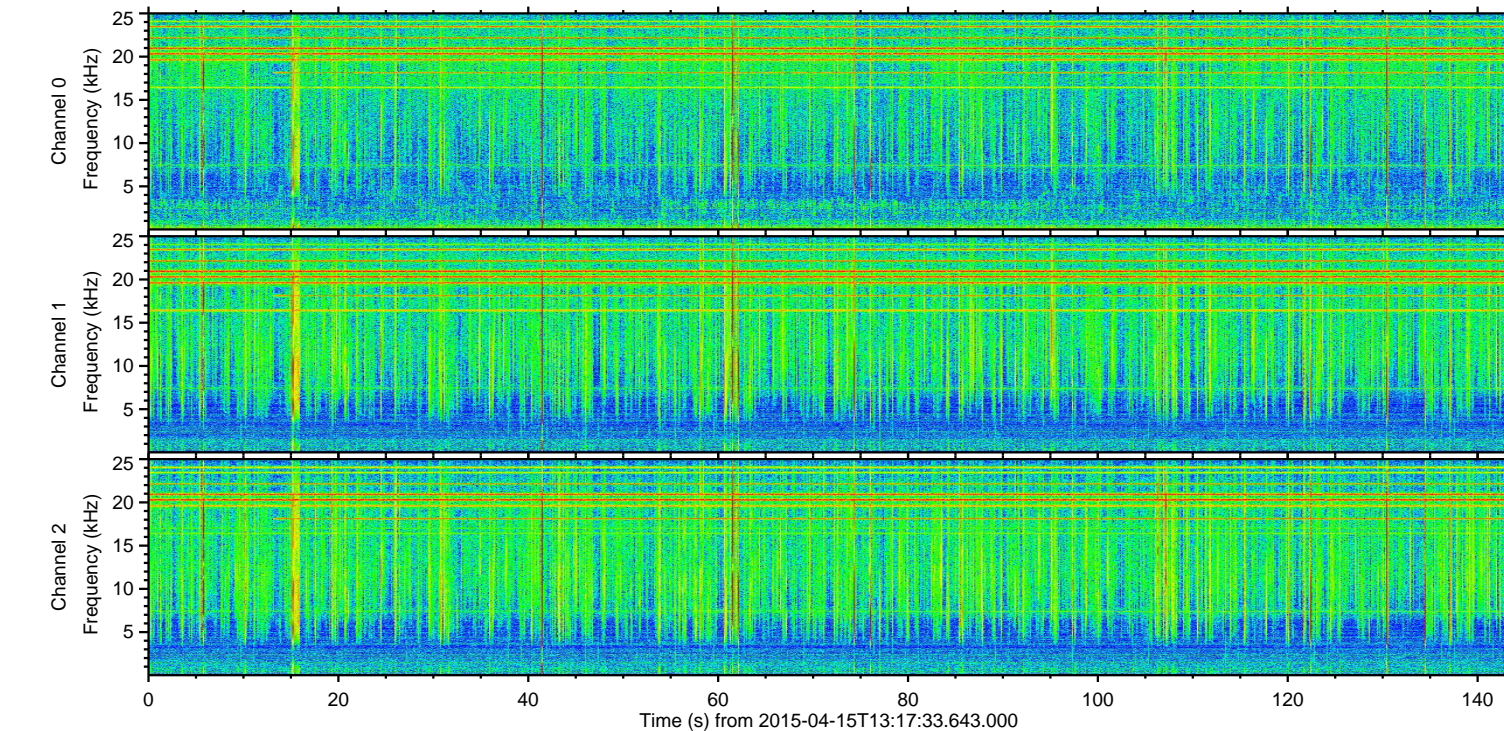
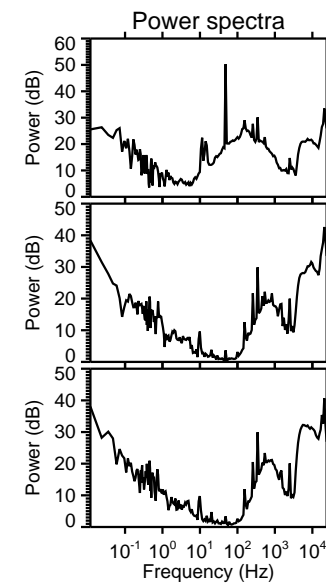
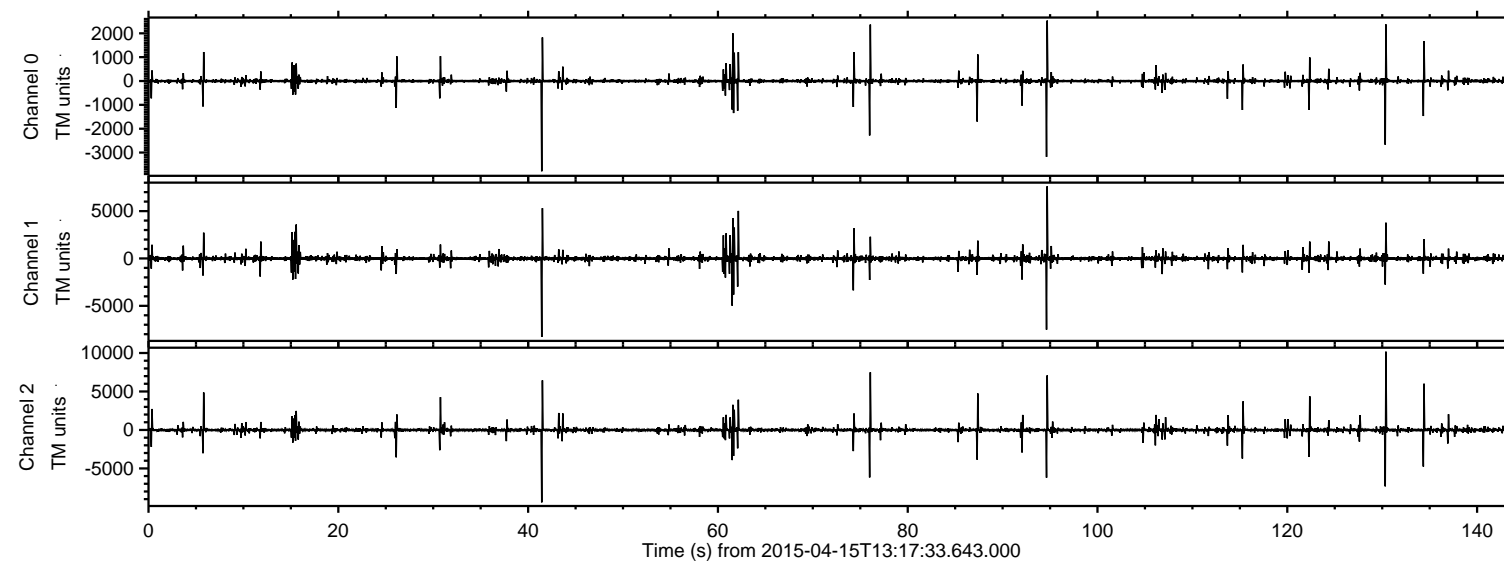


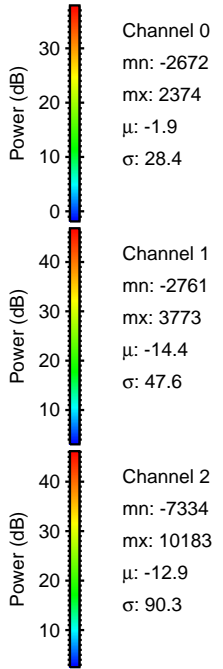
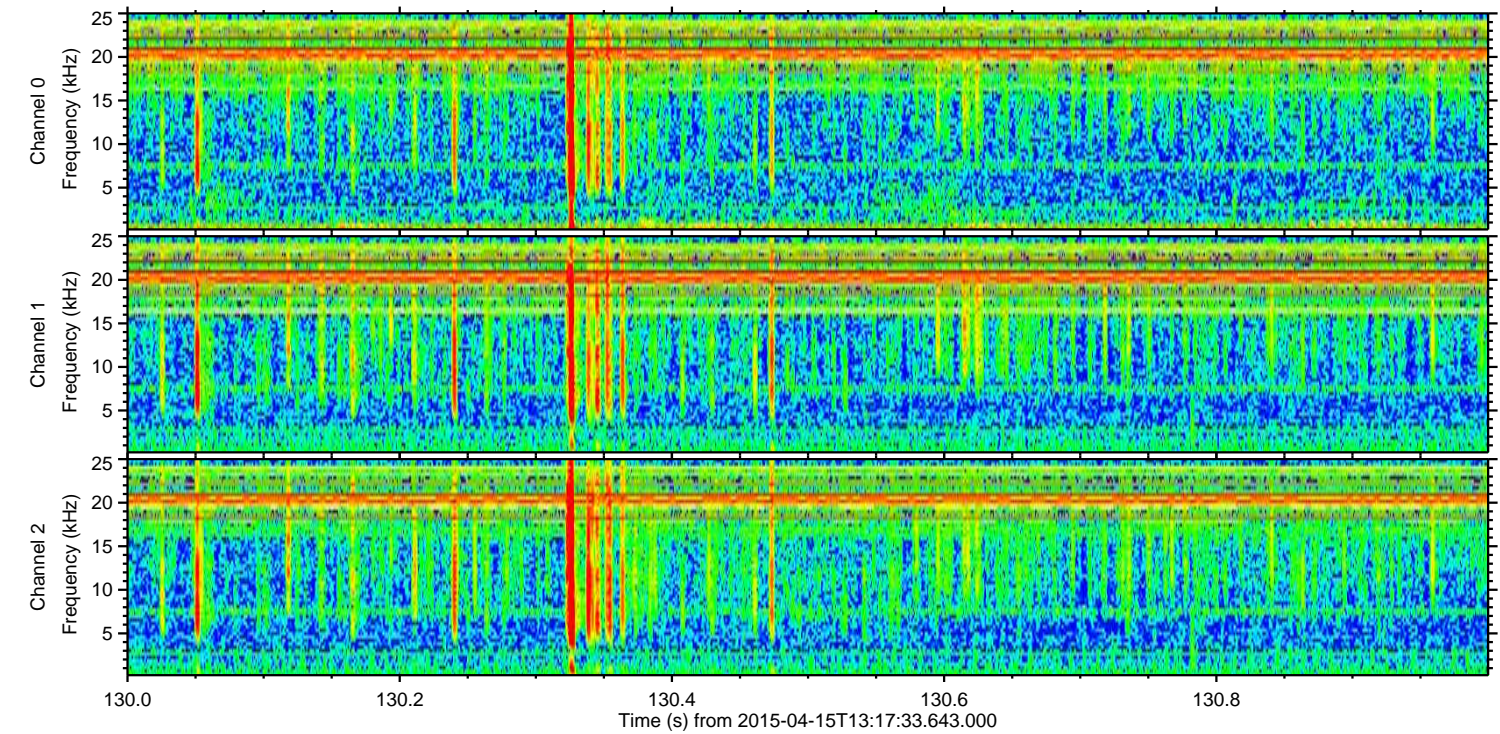
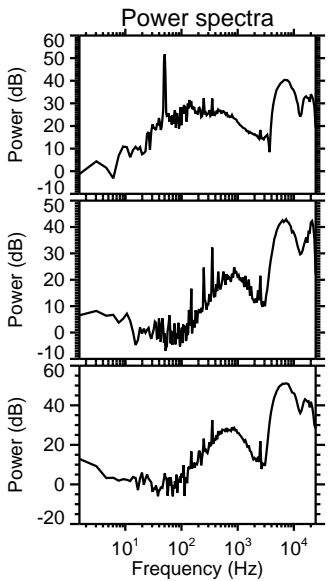
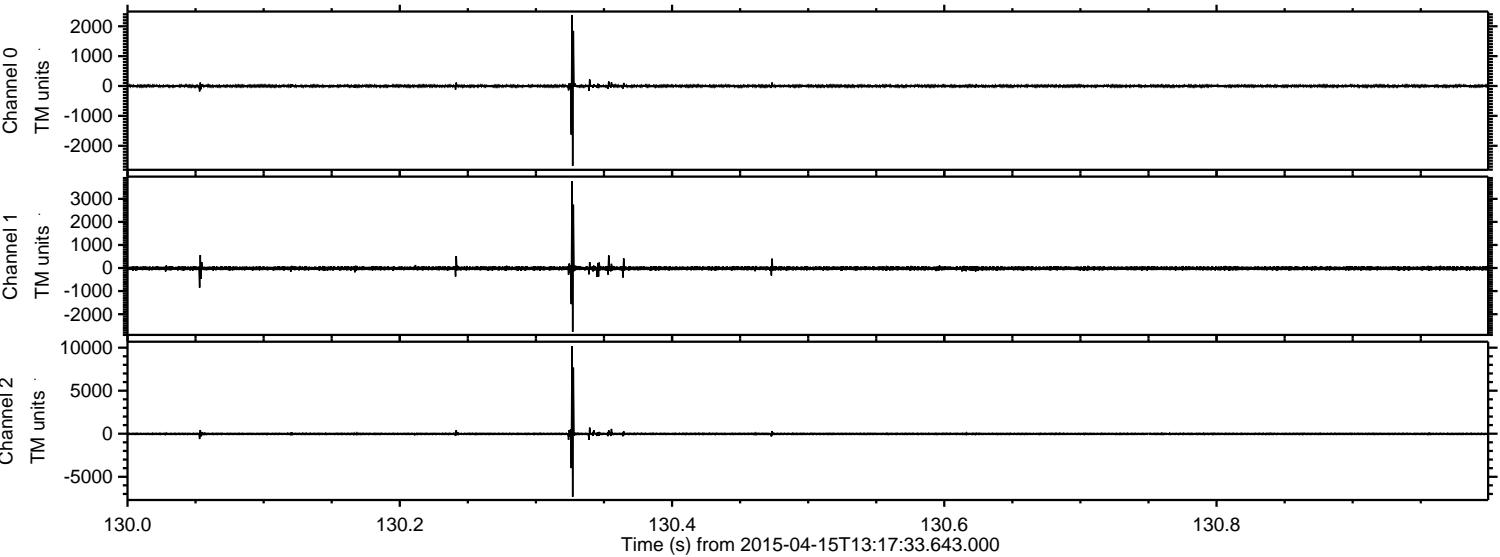
ELMAVAN 3D WAVEFORMS (Measured data sampled at 50 kHz) 49783 packets of 144 samples from 2015-04-15T13:17:33.643.000.

Processed Wed Apr 15 15:24:12 2015 by ELM ver.2012-10-06 from 001__elm20150415_131732__dat00.bin

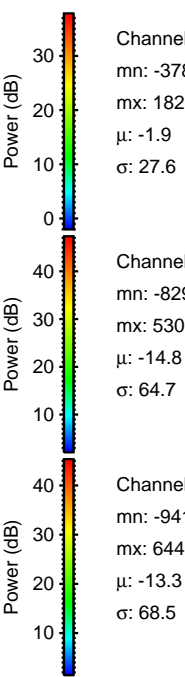
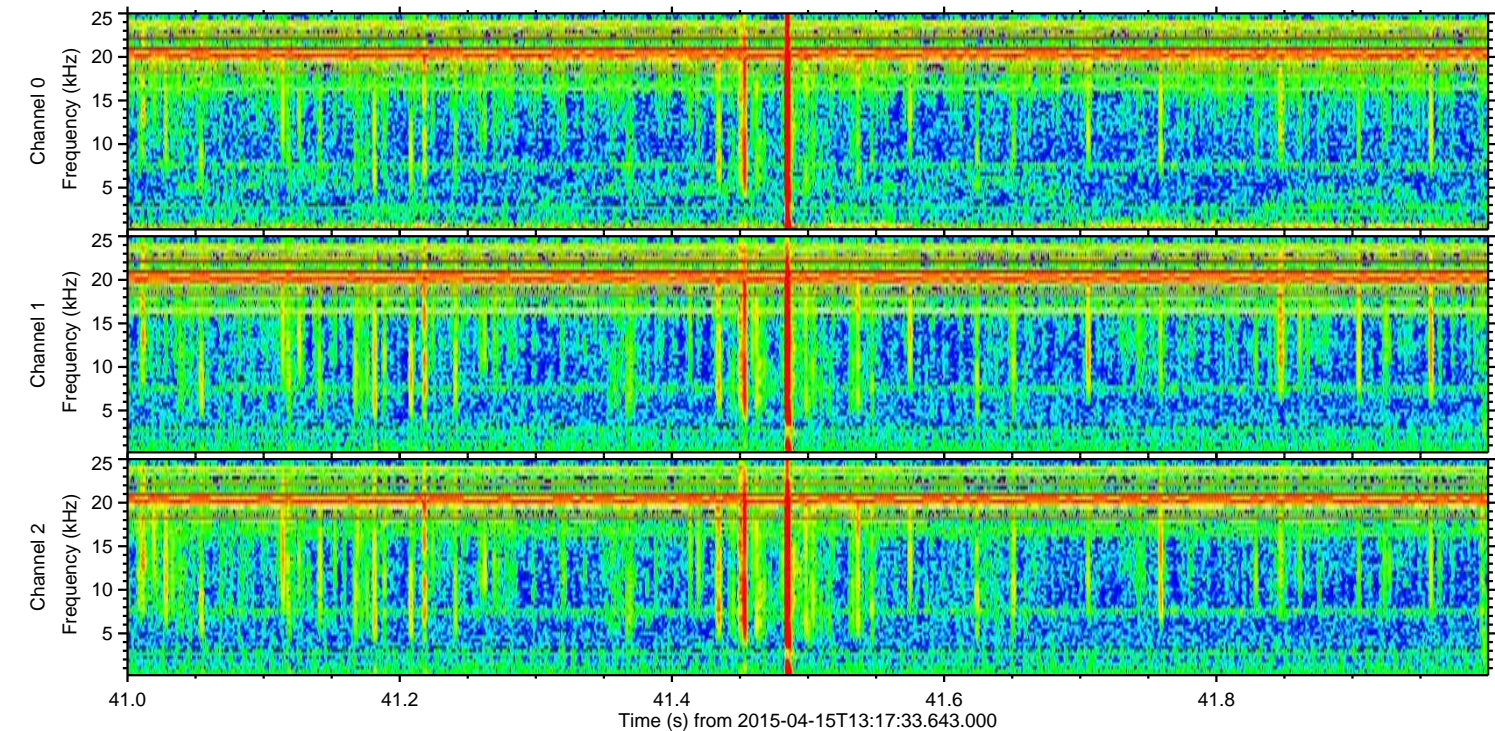
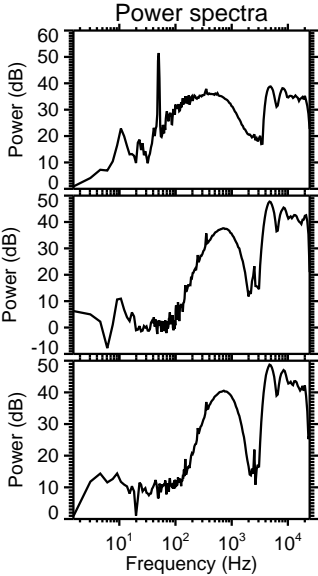
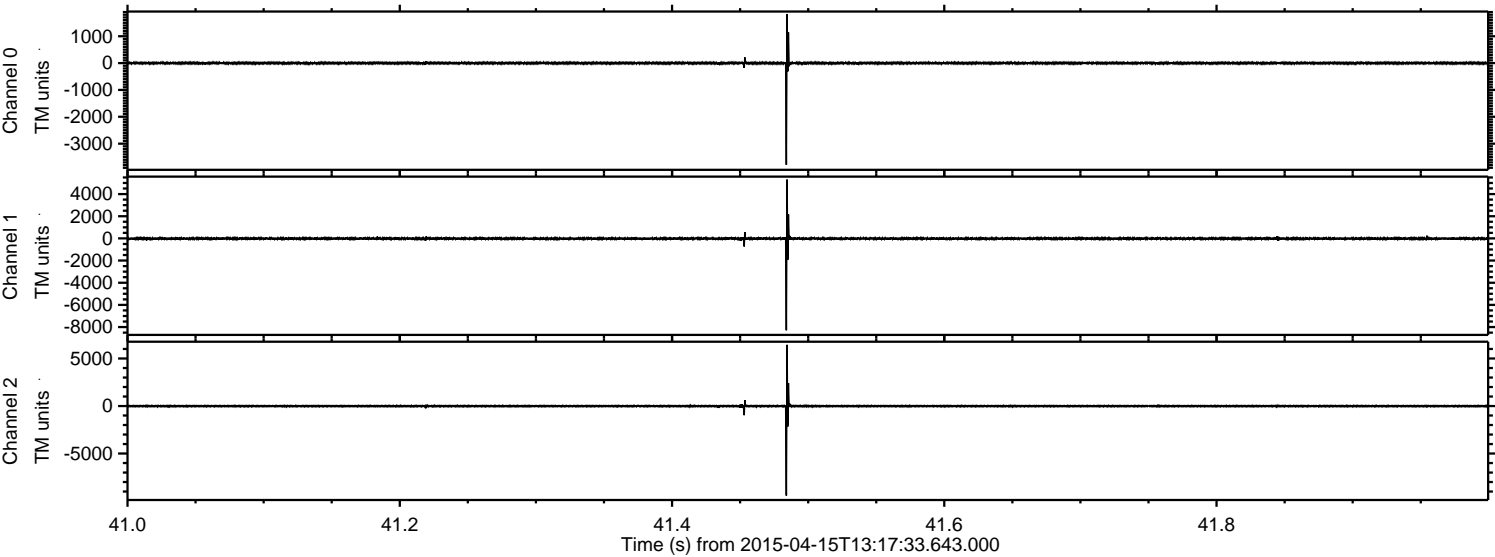


ELMAVAN 3D WAVEFORMS (Measured data sampled at 50 kHz) 49783 packets of 144 samples from 2015-04-15T13:17:33.643.000. Part 131/144

Processed Wed Apr 15 15:24:24 2015 by ELM ver.2012-10-06 from 001__elm20150415_131732__dat00.bin



Processed Wed Apr 15 15:24:25 2015 by ELM ver.2012-10-06 from 001__elm20150415_131732__dat00.bin

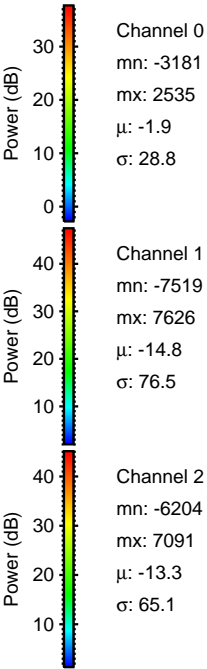
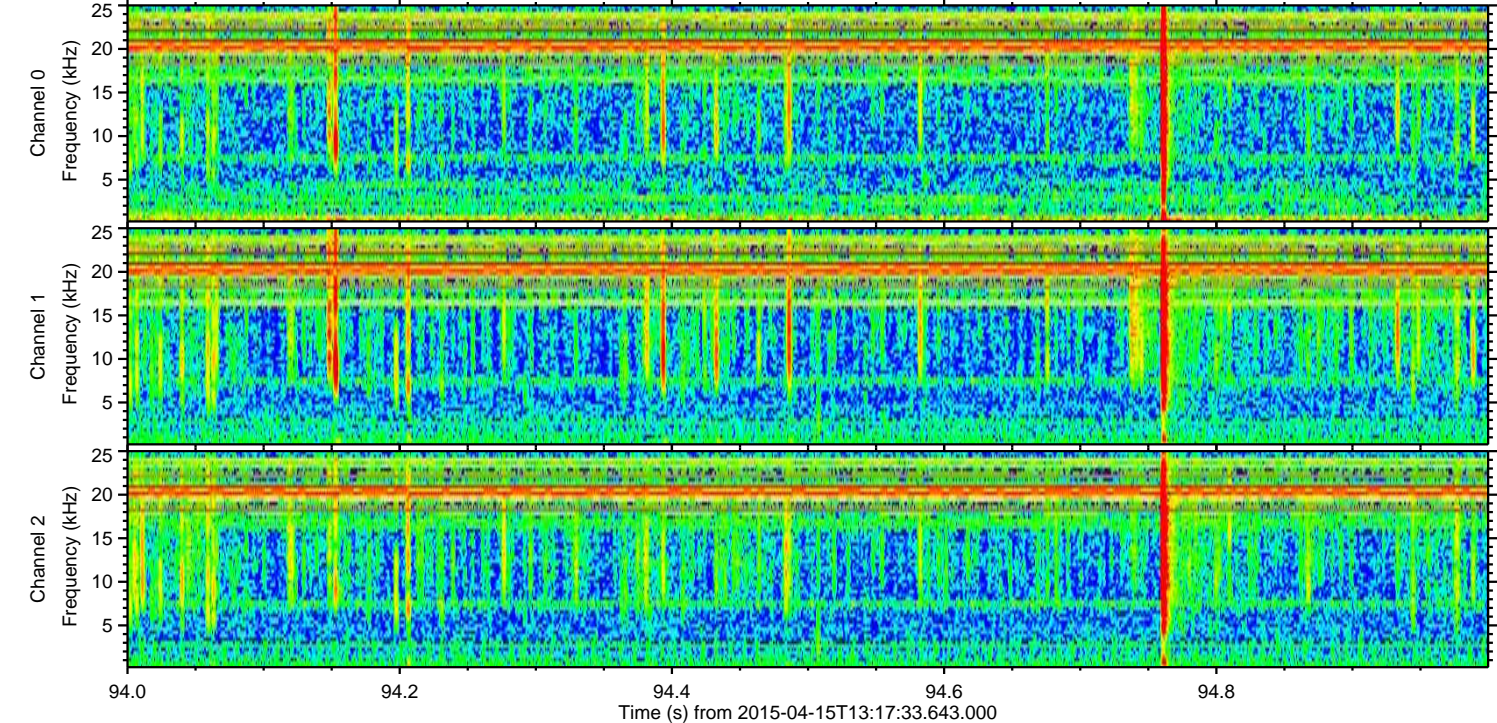
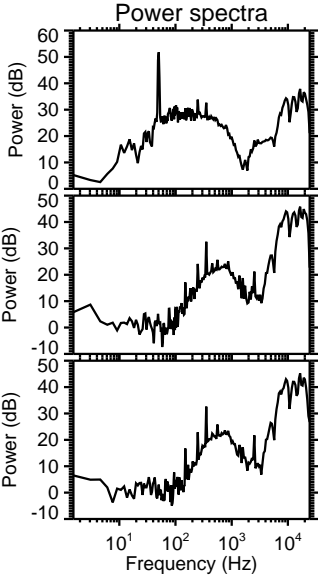
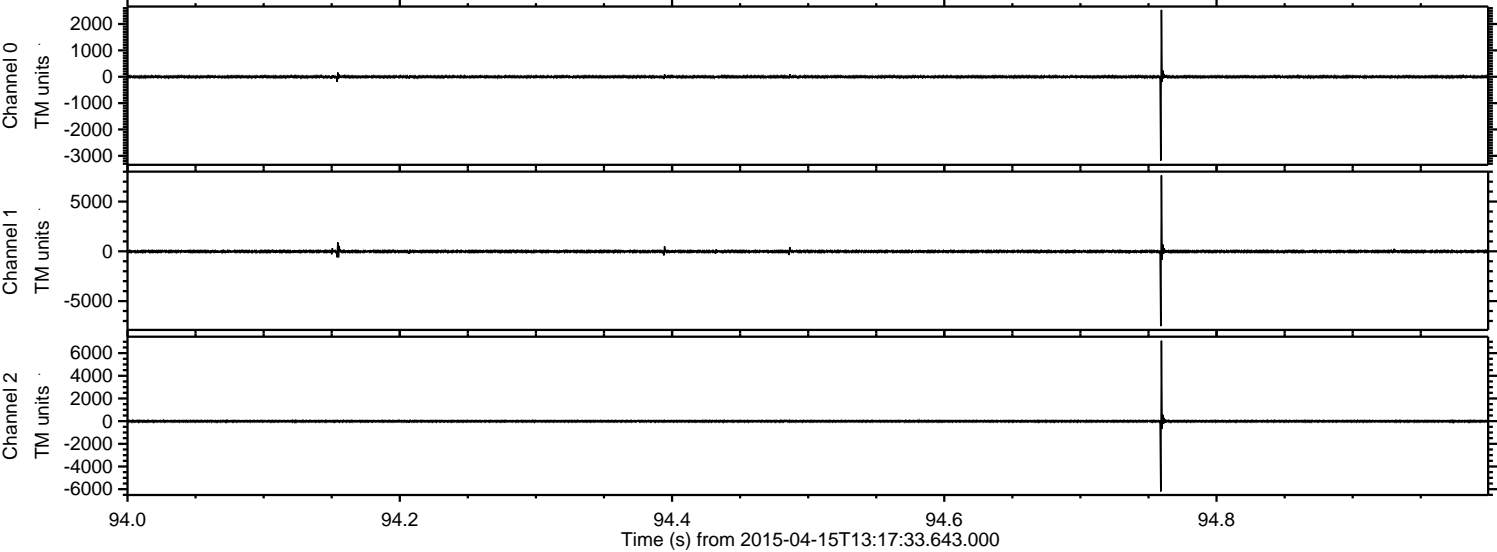


Channel 0
mn: -3786
mx: 1828
 μ : -1.9
 σ : 27.6

Channel 1
mn: -8292
mx: 5307
 μ : -14.8
 σ : 64.7

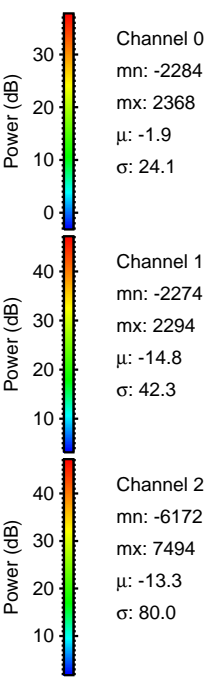
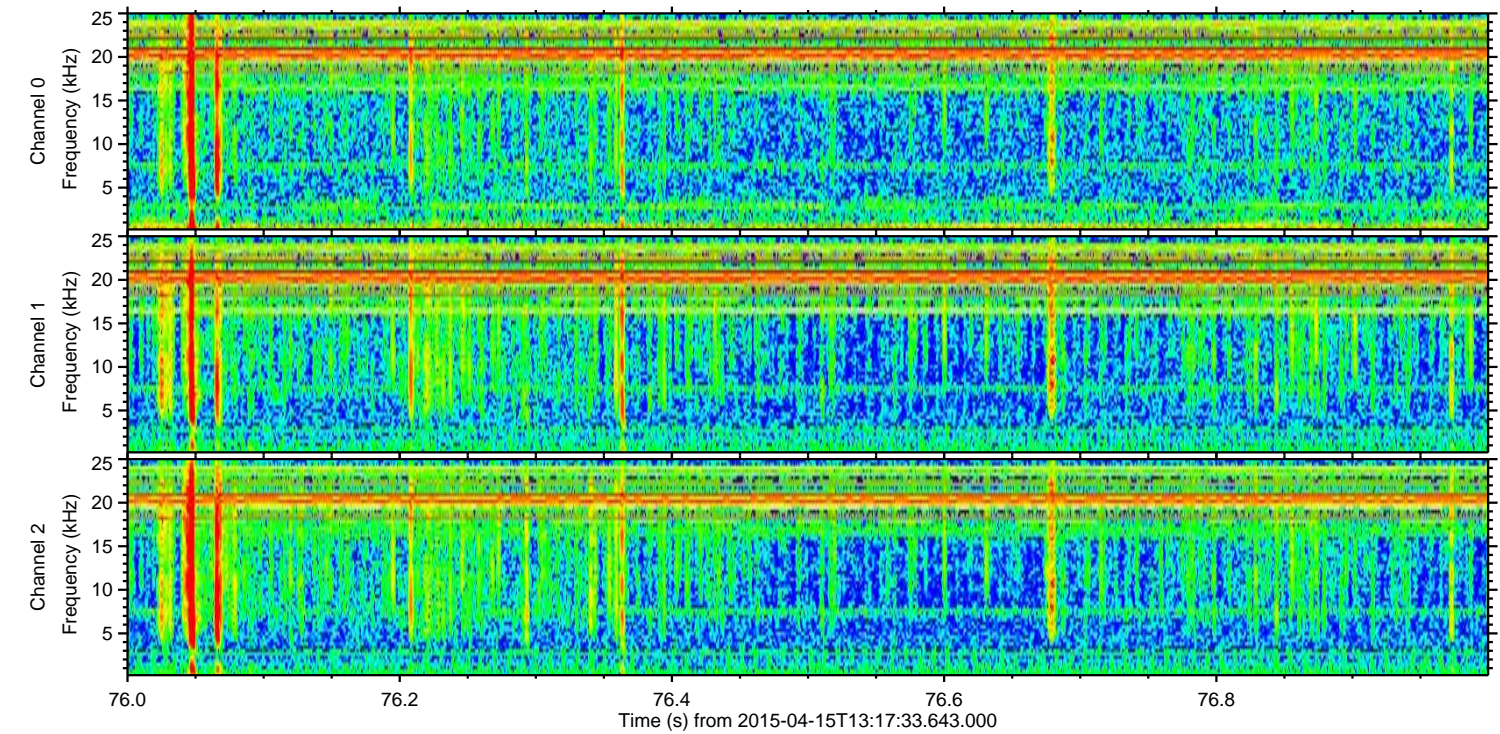
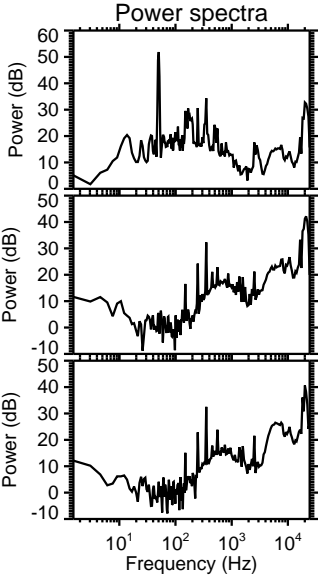
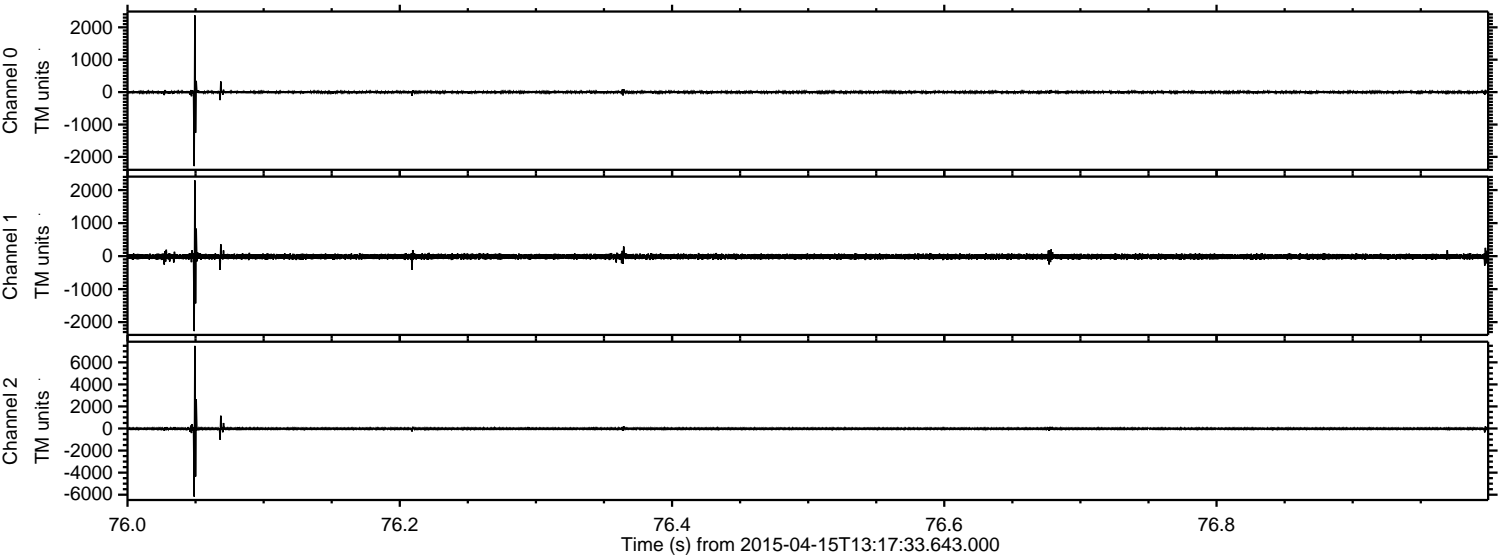
Channel 2
mn: -9419
mx: 6445
 μ : -13.3
 σ : 68.5

Processed Wed Apr 15 15:24:26 2015 by ELM ver.2012-10-06 from 001__elm20150415_131732__dat00.bin

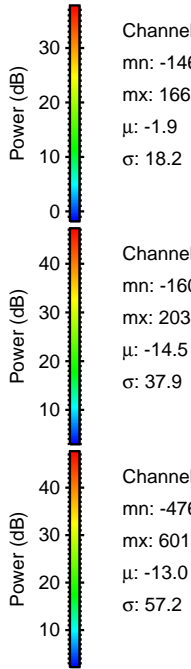
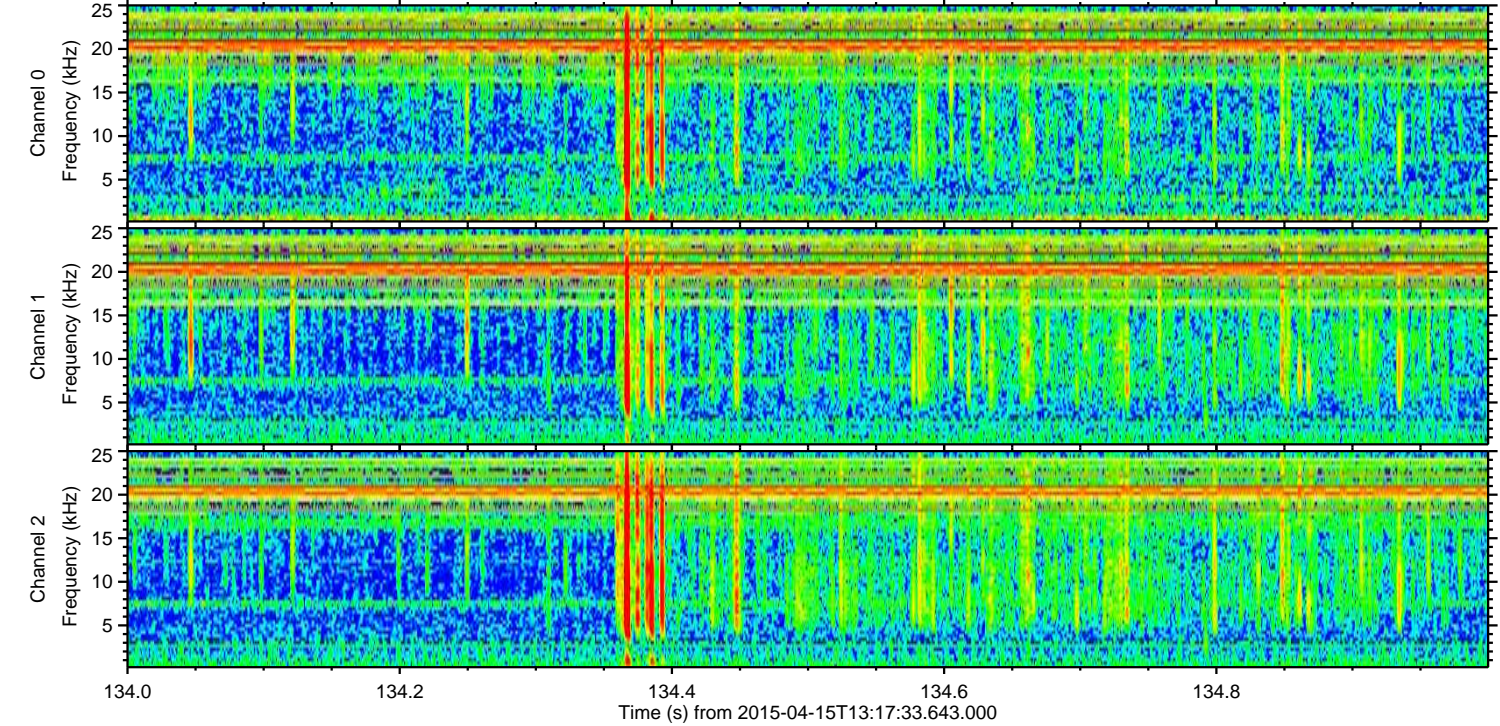
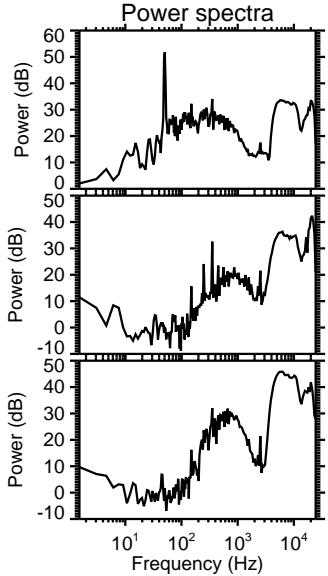
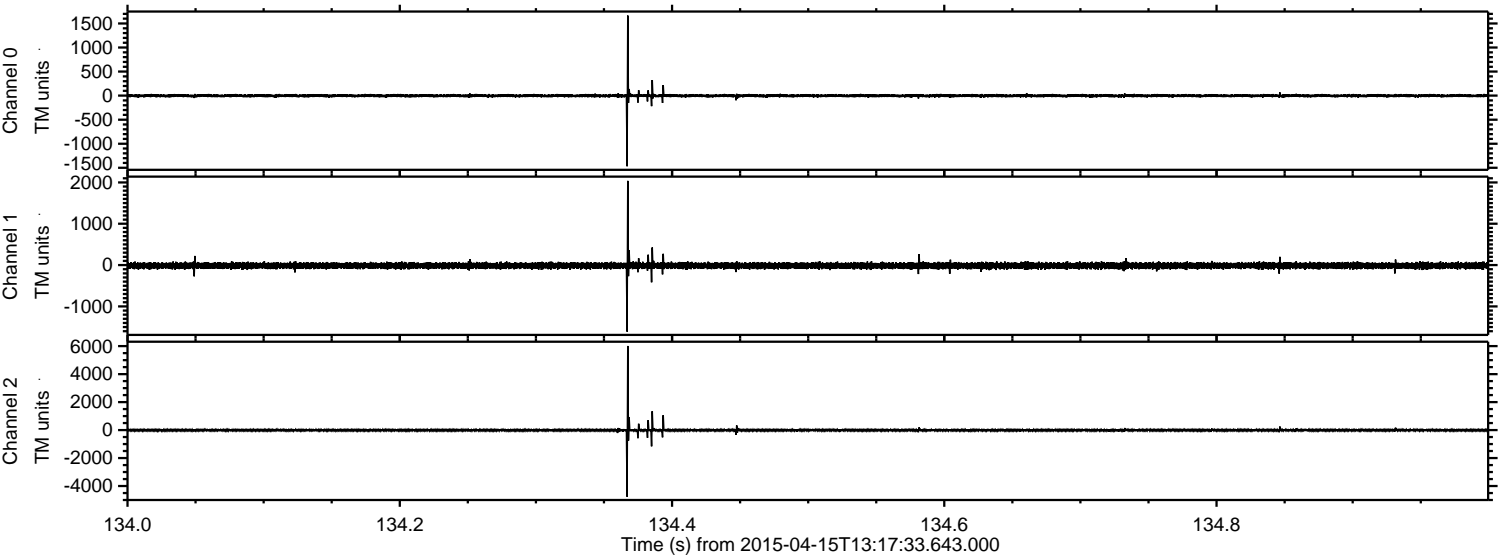


ELMAVAN 3D WAVEFORMS (Measured data sampled at 50 kHz) 49783 packets of 144 samples from 2015-04-15T13:17:33.643.000. Part 77/144

Processed Wed Apr 15 15:24:27 2015 by ELM ver.2012-10-06 from 001__elm20150415_131732__dat00.bin

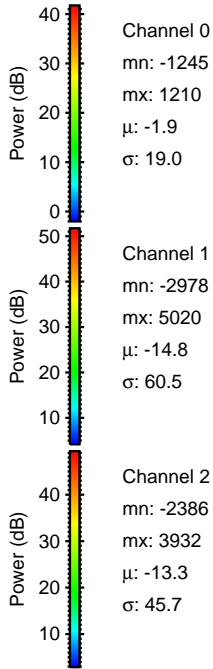
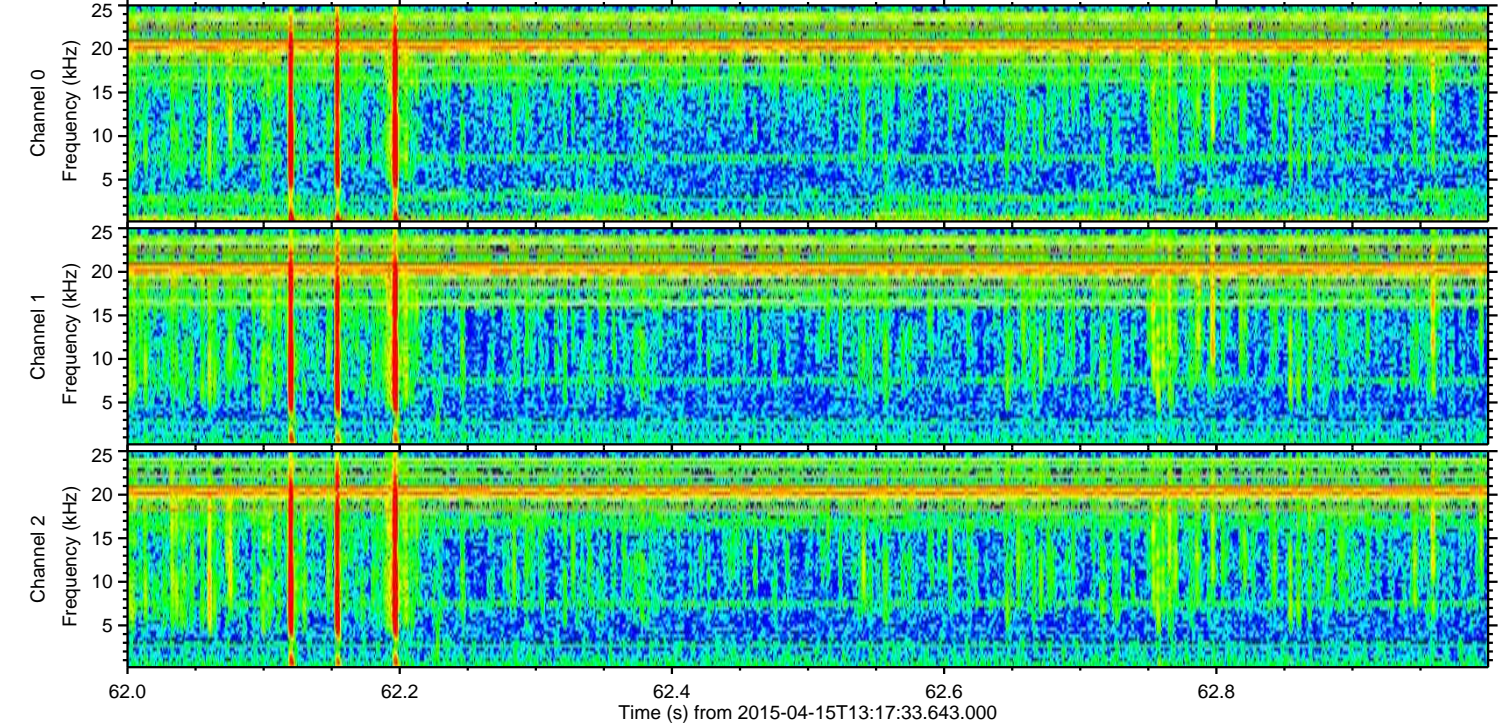
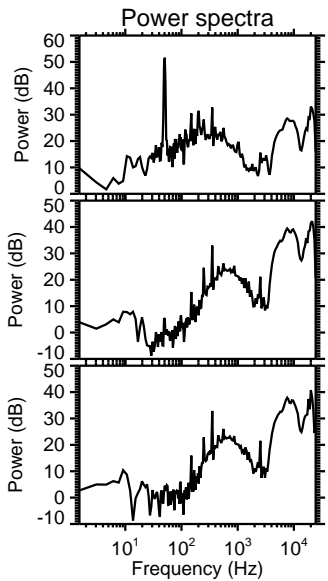
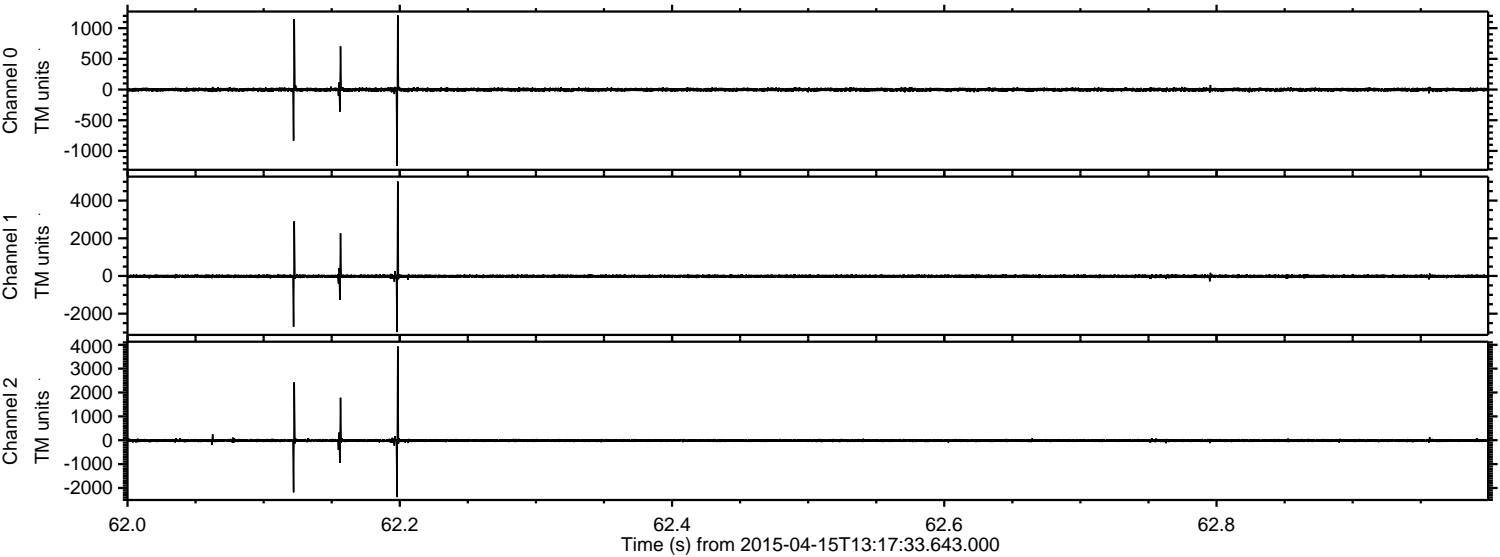


Processed Wed Apr 15 15:24:28 2015 by ELM ver.2012-10-06 from 001__elm20150415_131732__dat00.bin

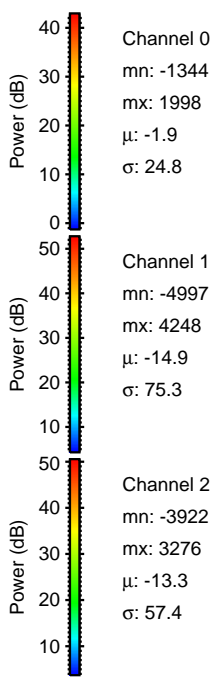
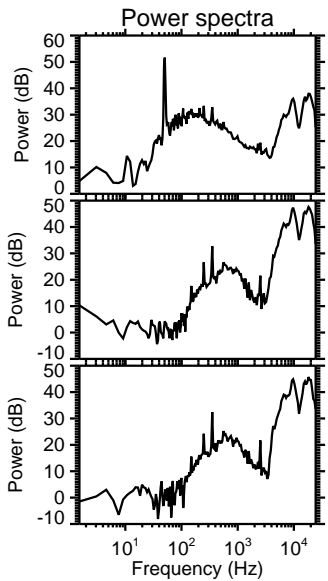
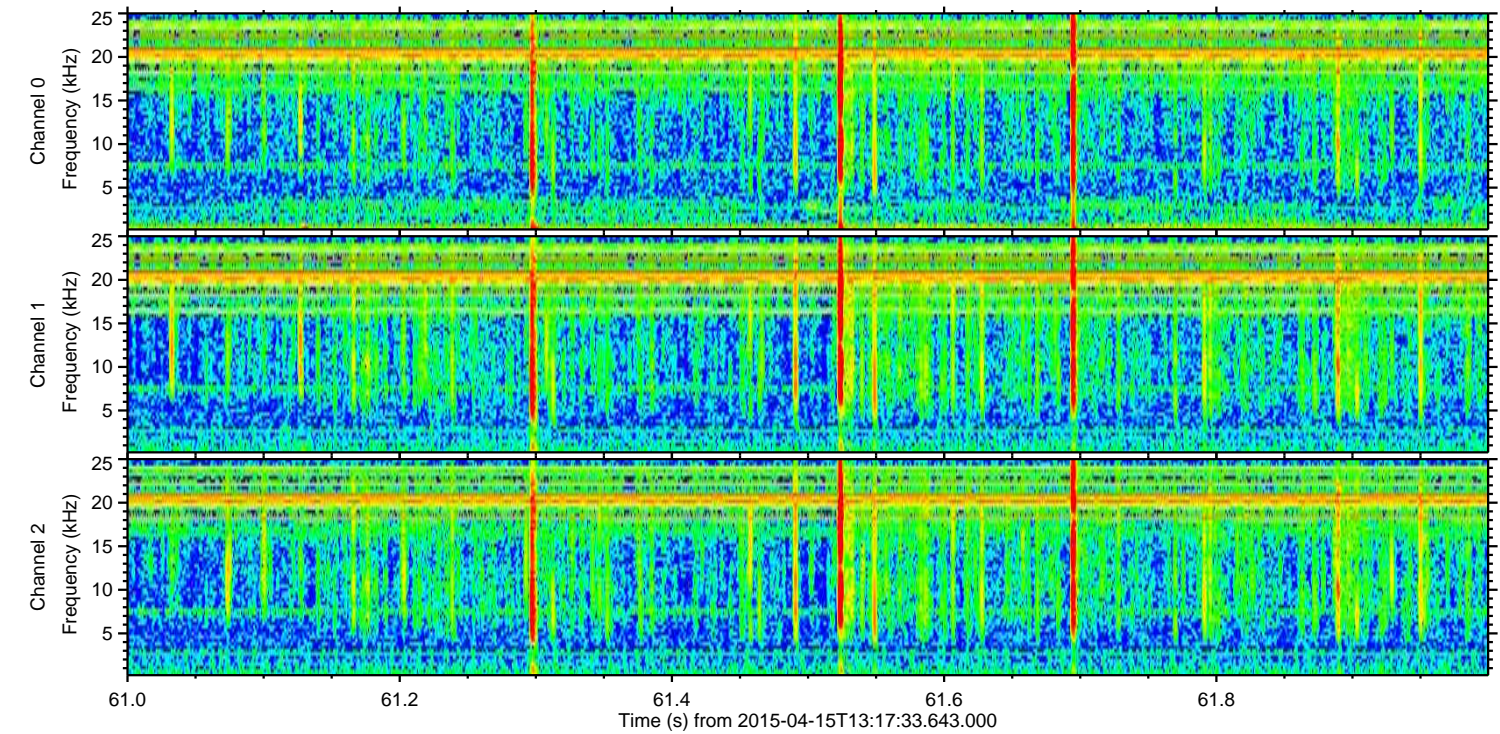
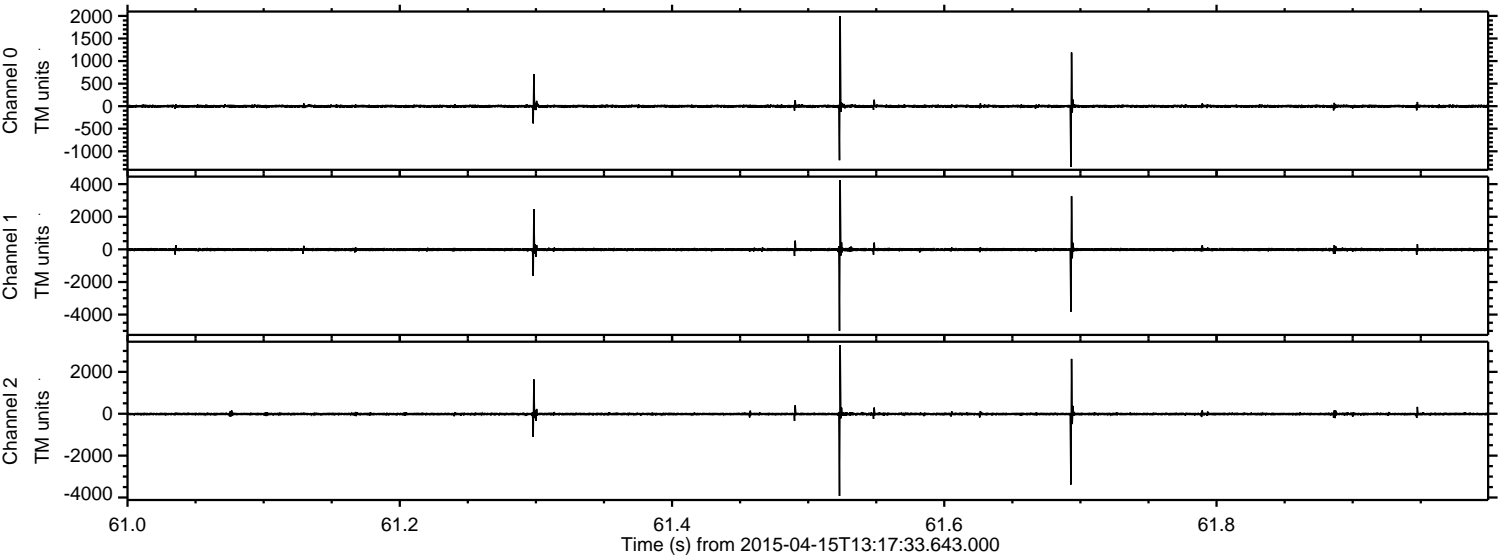


ELMAVAN 3D WAVEFORMS (Measured data sampled at 50 kHz) 49783 packets of 144 samples from 2015-04-15T13:17:33.643.000. Part 63/144

Processed Wed Apr 15 15:24:29 2015 by ELM ver.2012-10-06 from 001__elm20150415_131732__dat00.bin



Processed Wed Apr 15 15:24:29 2015 by ELM ver.2012-10-06 from 001__elm20150415_131732__dat00.bin

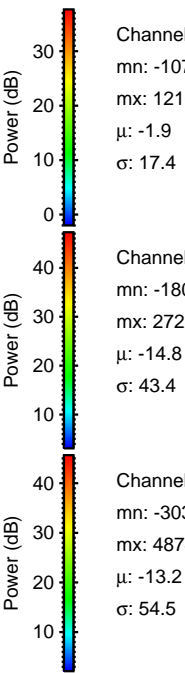
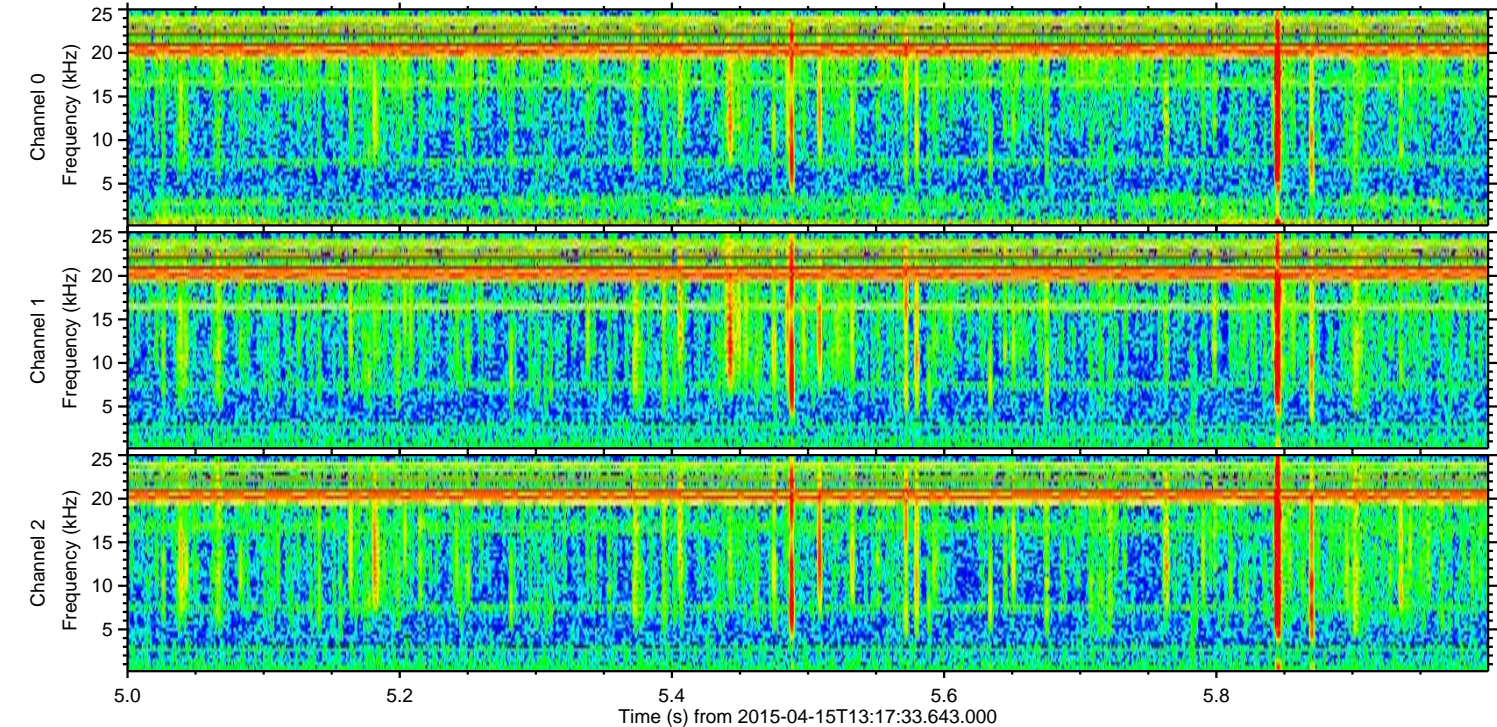
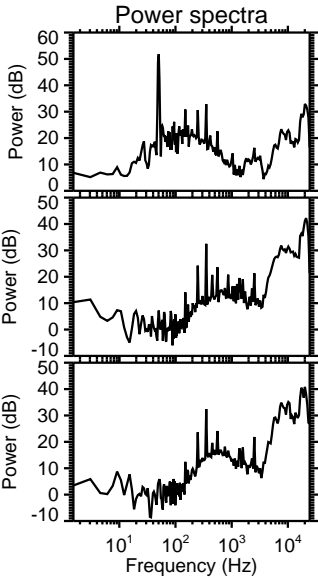
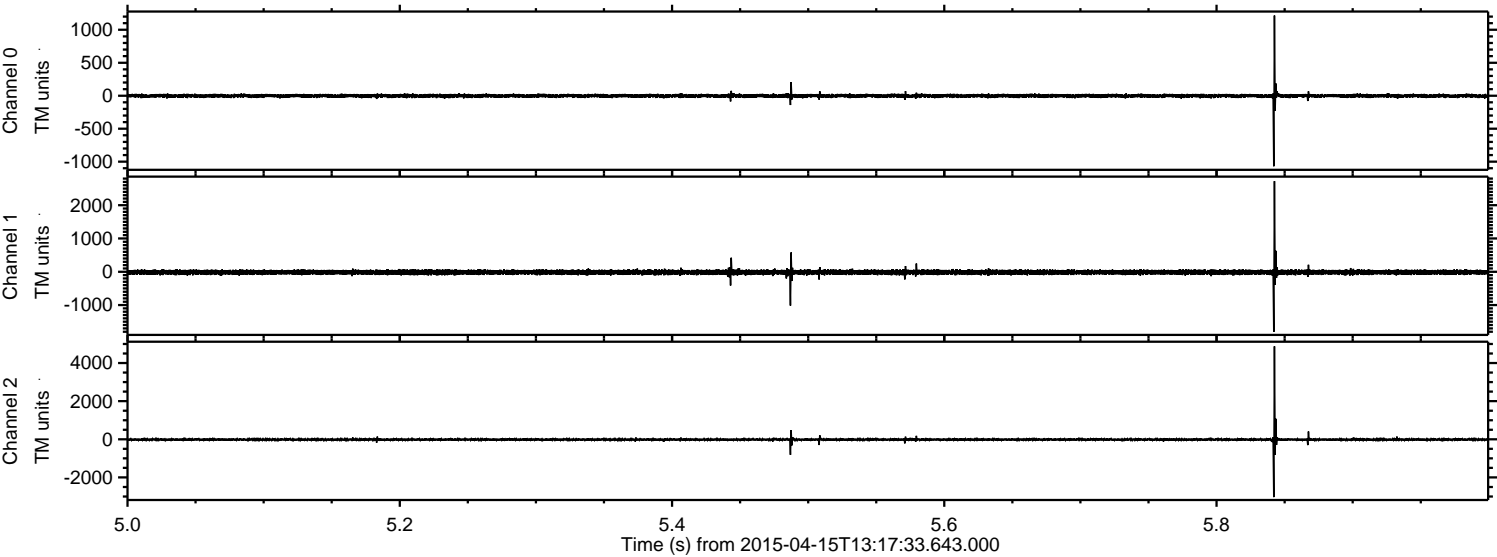


Channel 0
mn: -1344
mx: 1998
 μ : -1.9
 σ : 24.8

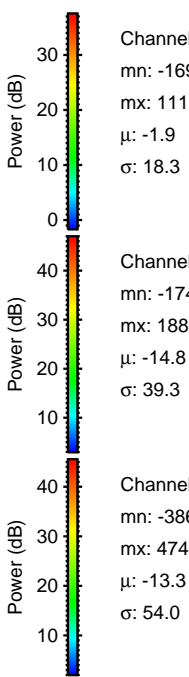
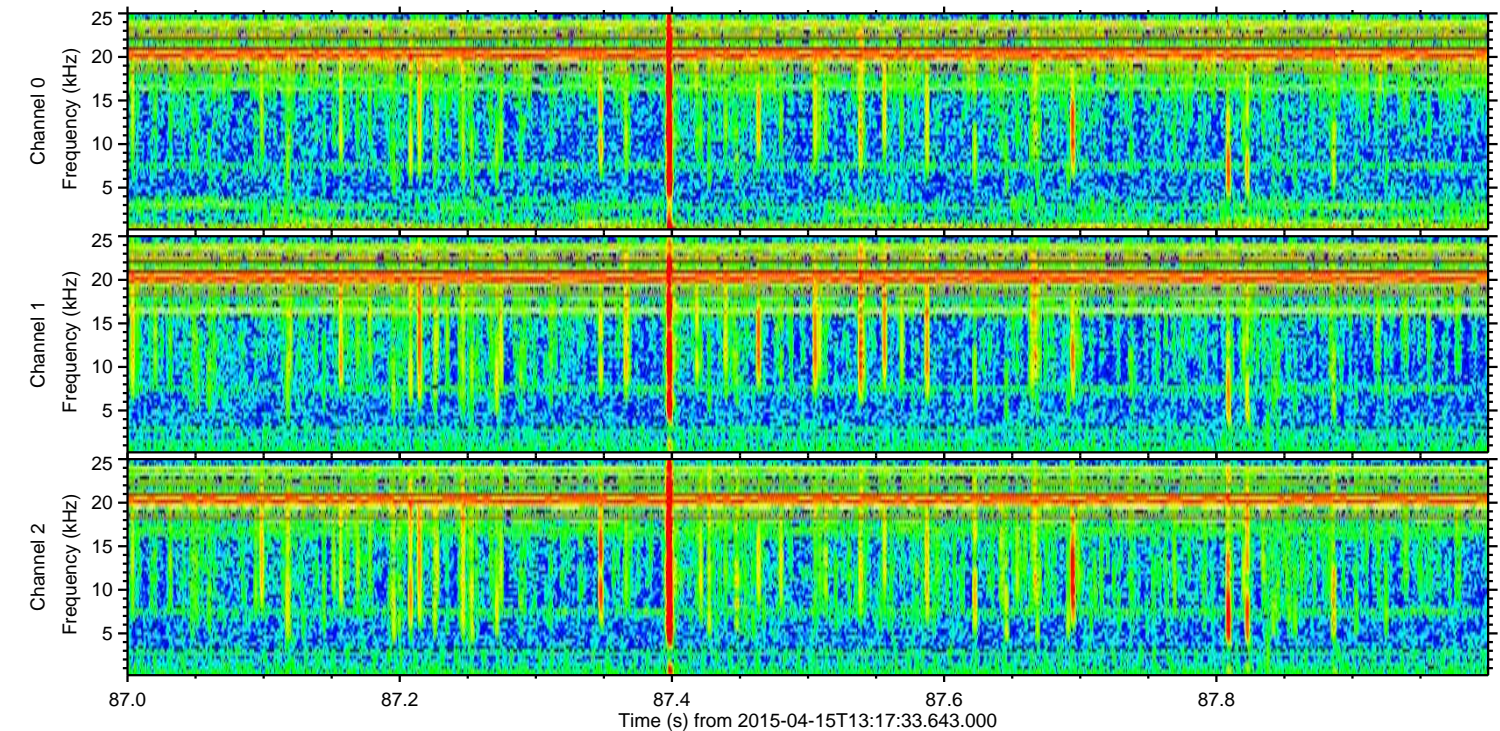
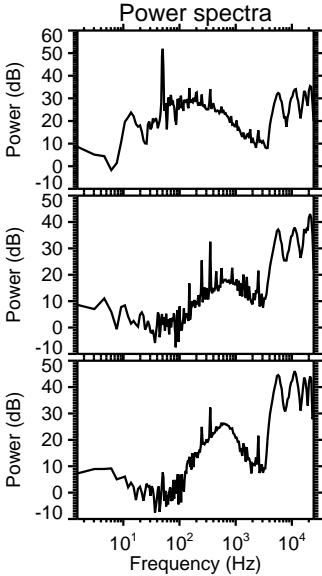
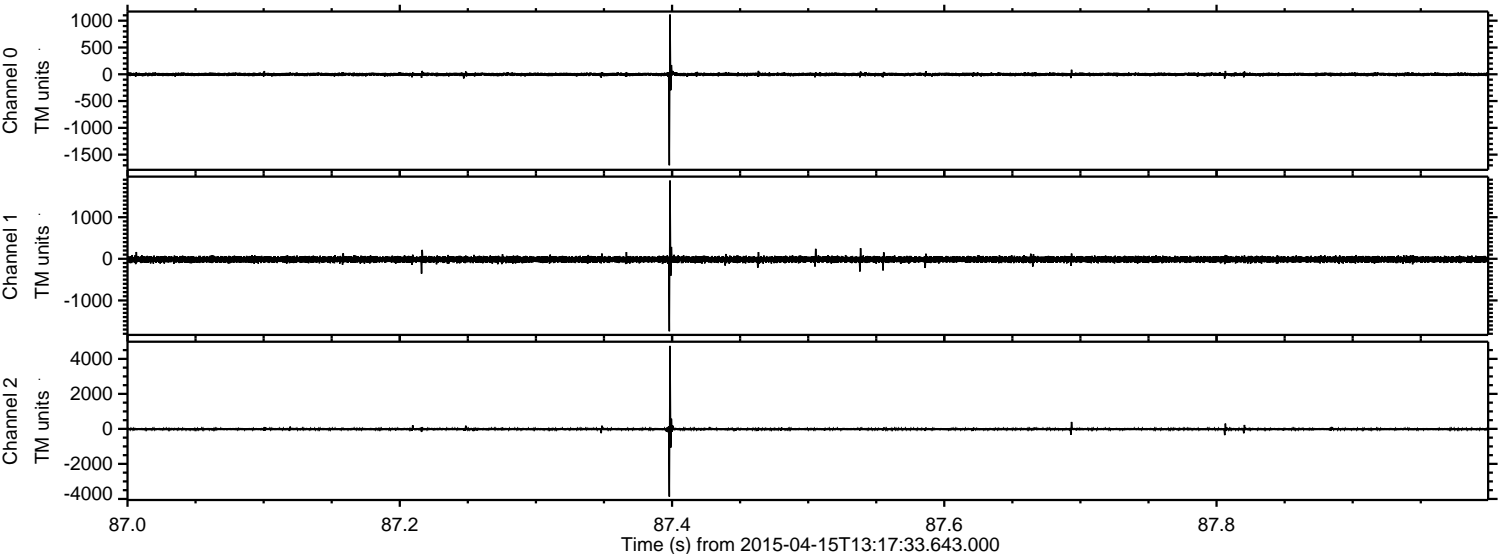
Channel 1
mn: -4997
mx: 4248
 μ : -14.9
 σ : 75.3

Channel 2
mn: -3922
mx: 3276
 μ : -13.3
 σ : 57.4

Processed Wed Apr 15 15:24:30 2015 by ELM ver.2012-10-06 from 001__elm20150415_131732__dat00.bin



Processed Wed Apr 15 15:24:31 2015 by ELM ver.2012-10-06 from 001__elm20150415_131732__dat00.bin



Channel 0
mn: -1698
mx: 1115
 μ : -1.9
 σ : 18.3

Channel 1
mn: -1741
mx: 1881
 μ : -14.8
 σ : 39.3

Channel 2
mn: -3869
mx: 4744
 μ : -13.3
 σ : 54.0

