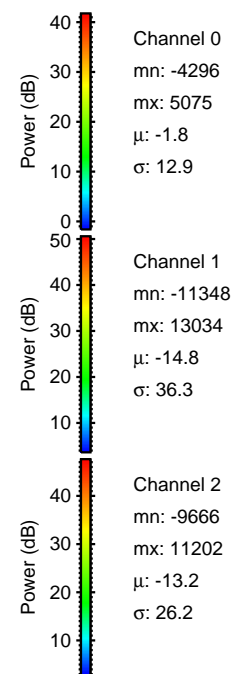
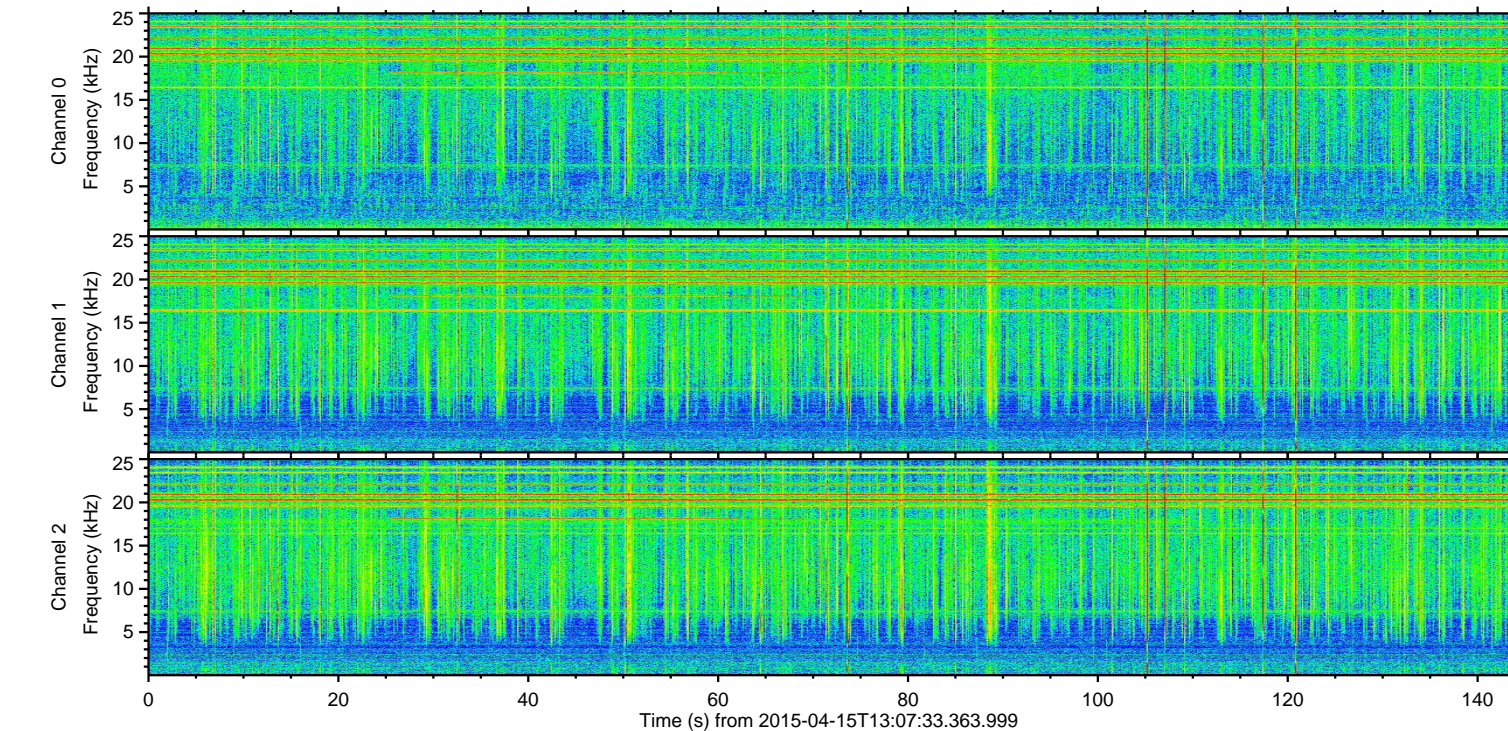
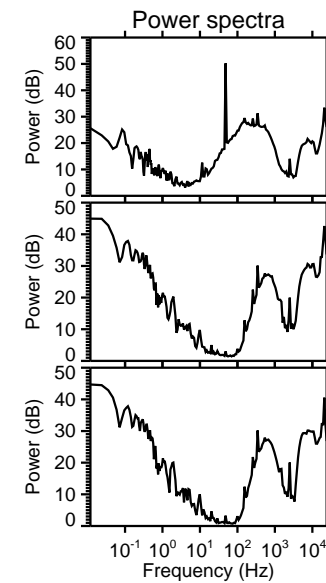
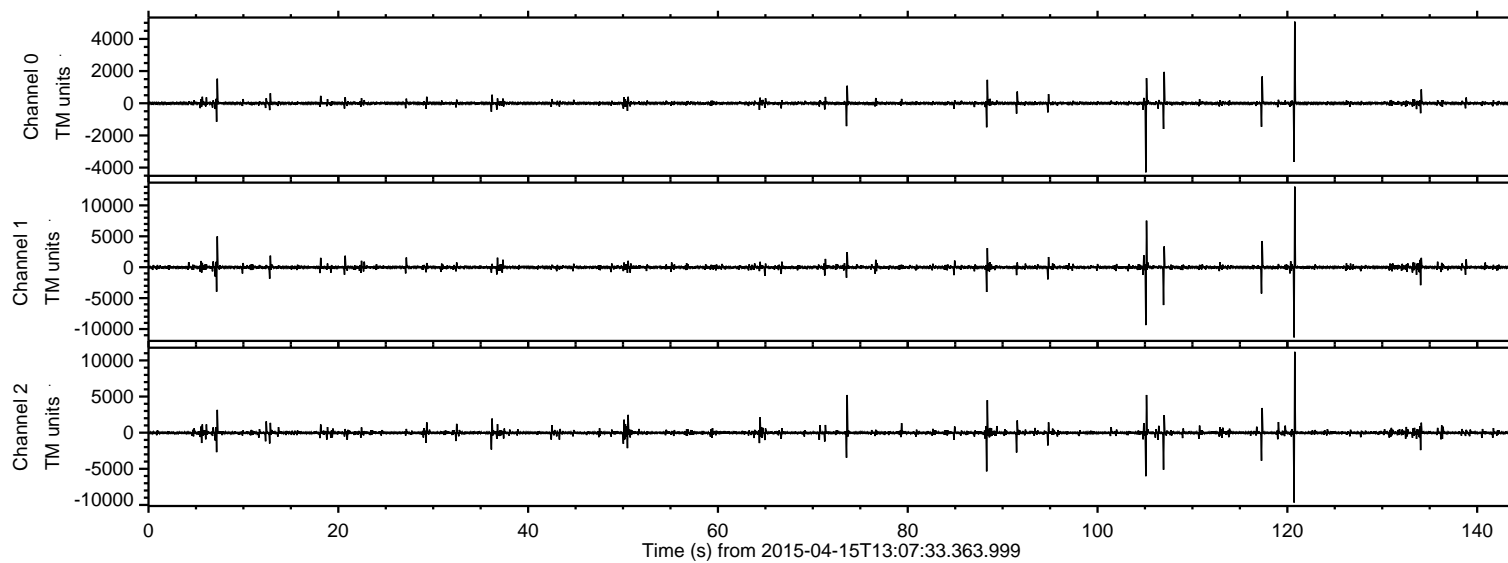
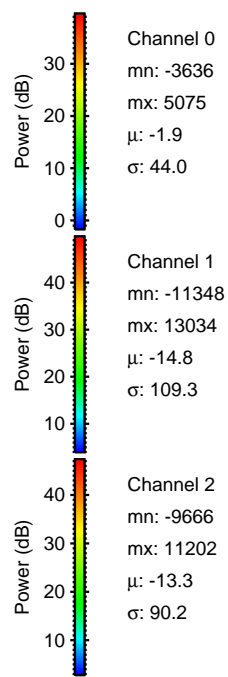
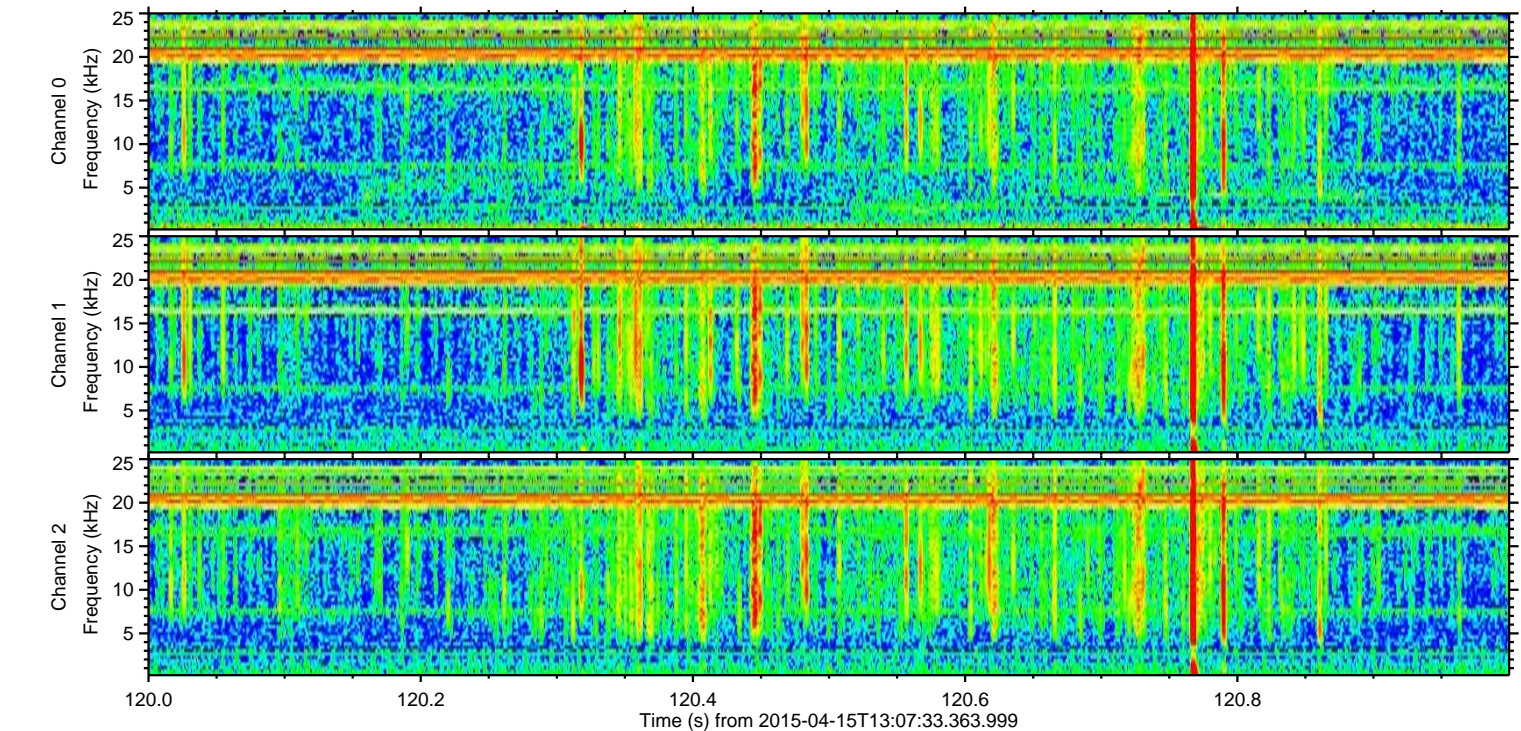
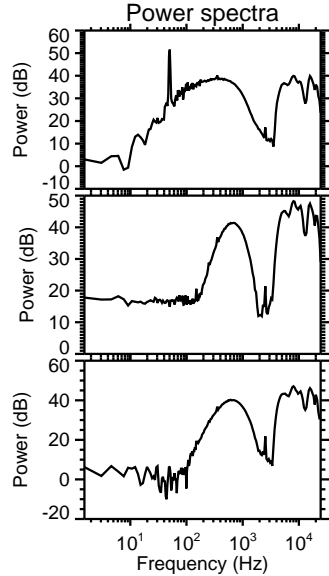
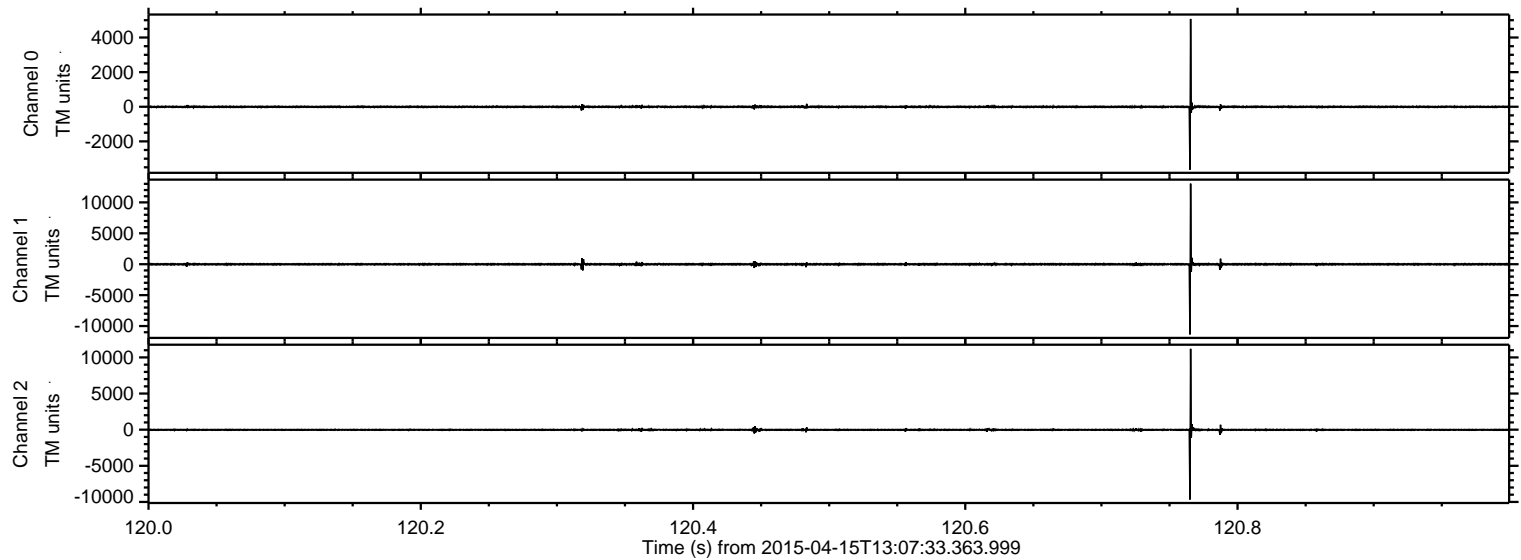


ELMAVAN 3D WAVEFORMS (Measured data sampled at 50 kHz) 49782 packets of 144 samples from 2015-04-15T13:07:33.363.999.

Processed Wed Apr 15 15:14:46 2015 by ELM ver.2012-10-06 from 001__elm20150415_130732__dat00.bin

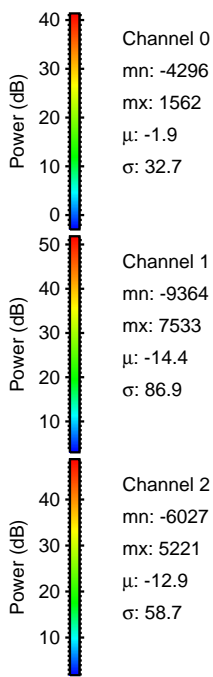
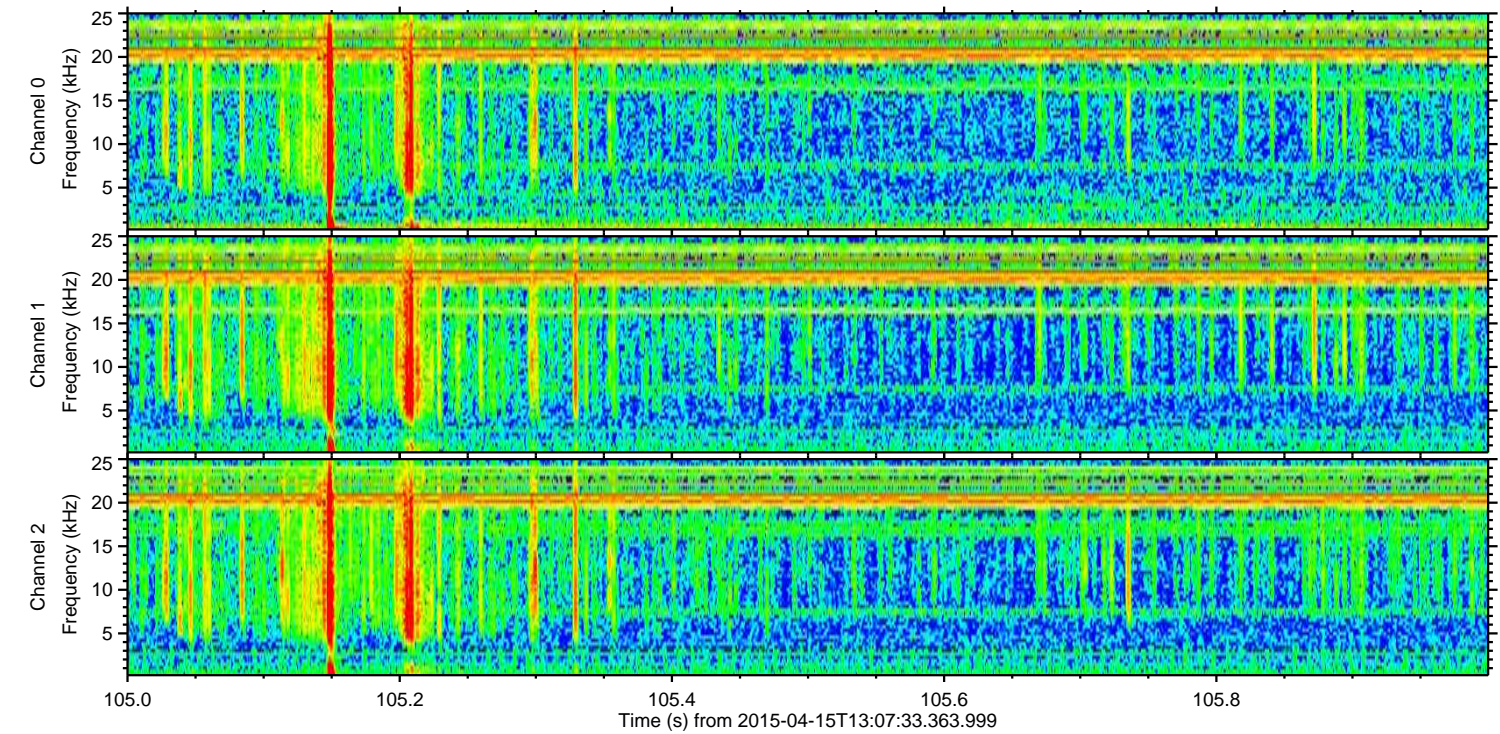
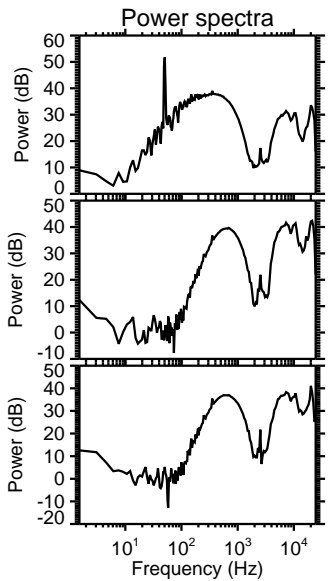
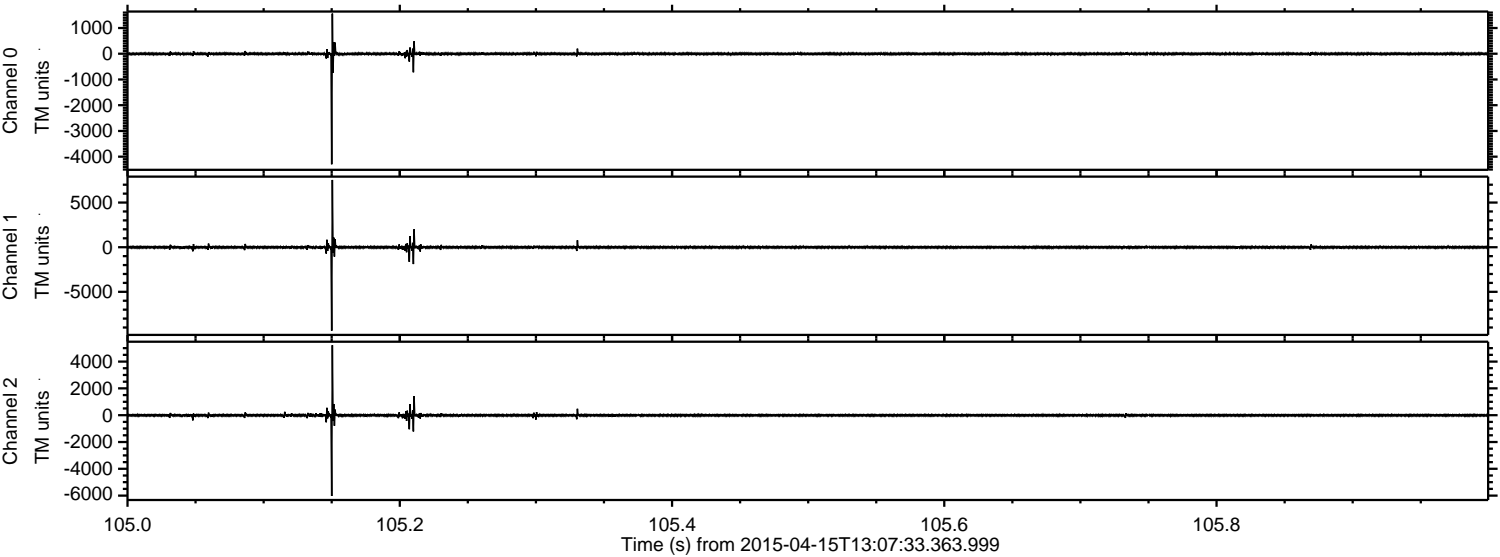


Processed Wed Apr 15 15:14:57 2015 by ELM ver.2012-10-06 from 001__elm20150415_130732__dat00.bin



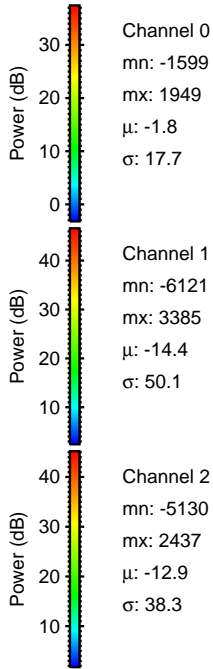
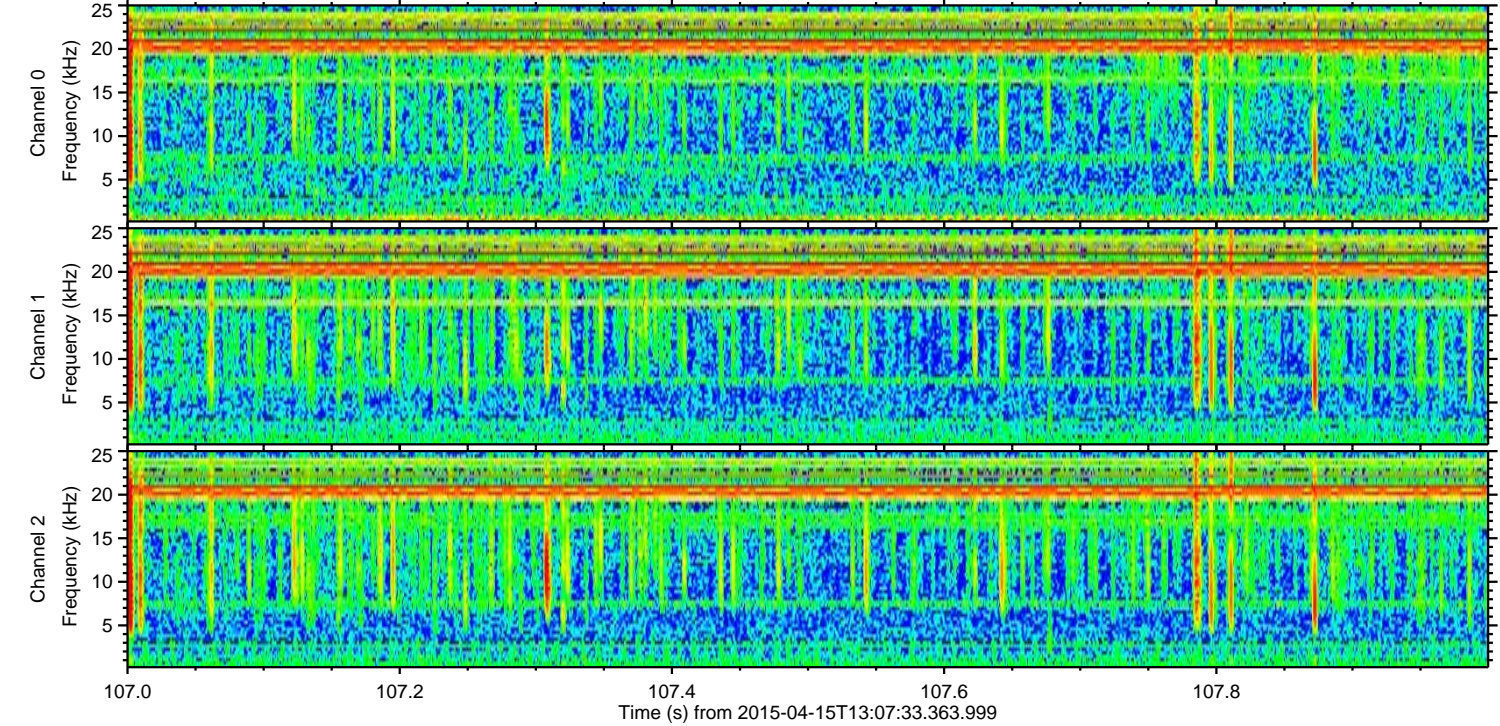
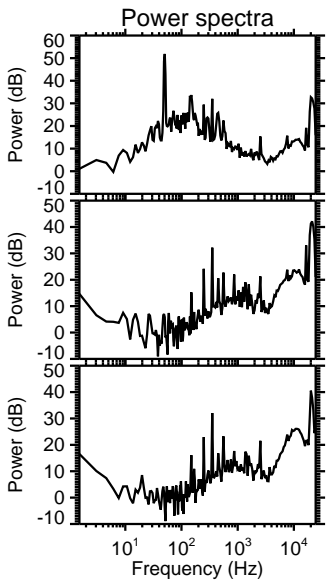
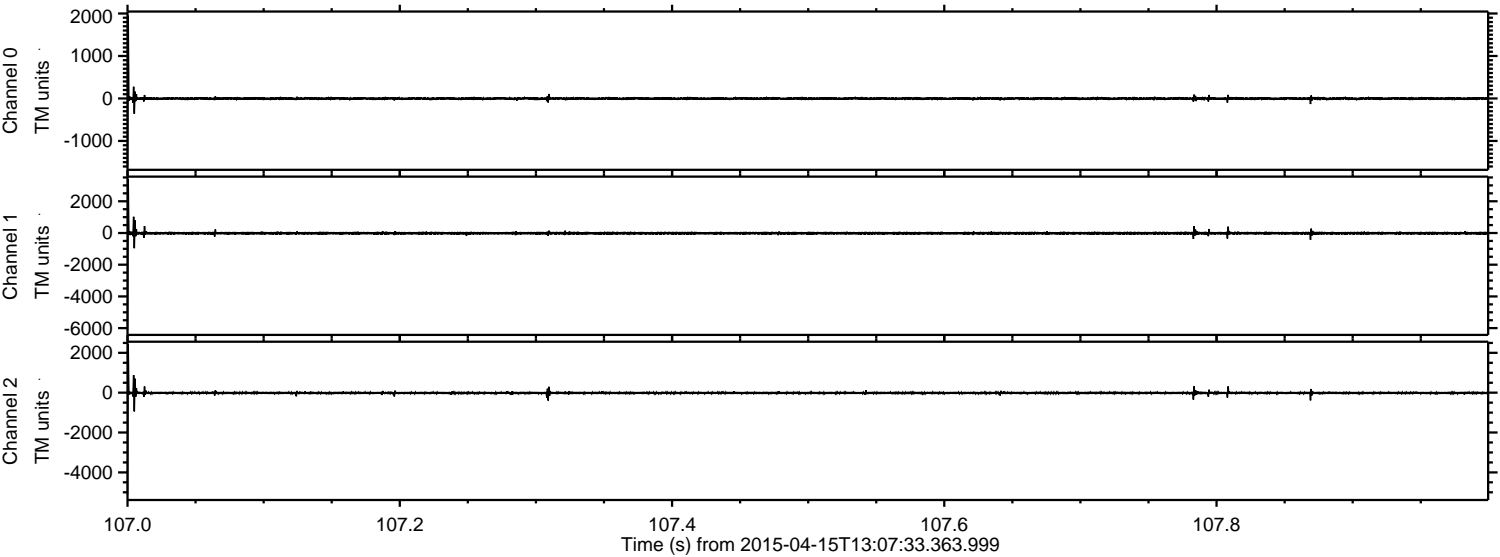
ELMAVAN 3D WAVEFORMS (Measured data sampled at 50 kHz) 49782 packets of 144 samples from 2015-04-15T13:07:33.363.999. Part 106/144

Processed Wed Apr 15 15:14:58 2015 by ELM ver.2012-10-06 from 001__elm20150415_130732__dat00.bin

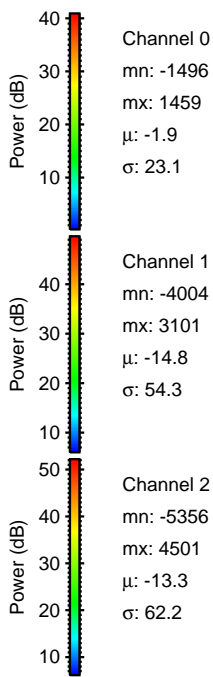
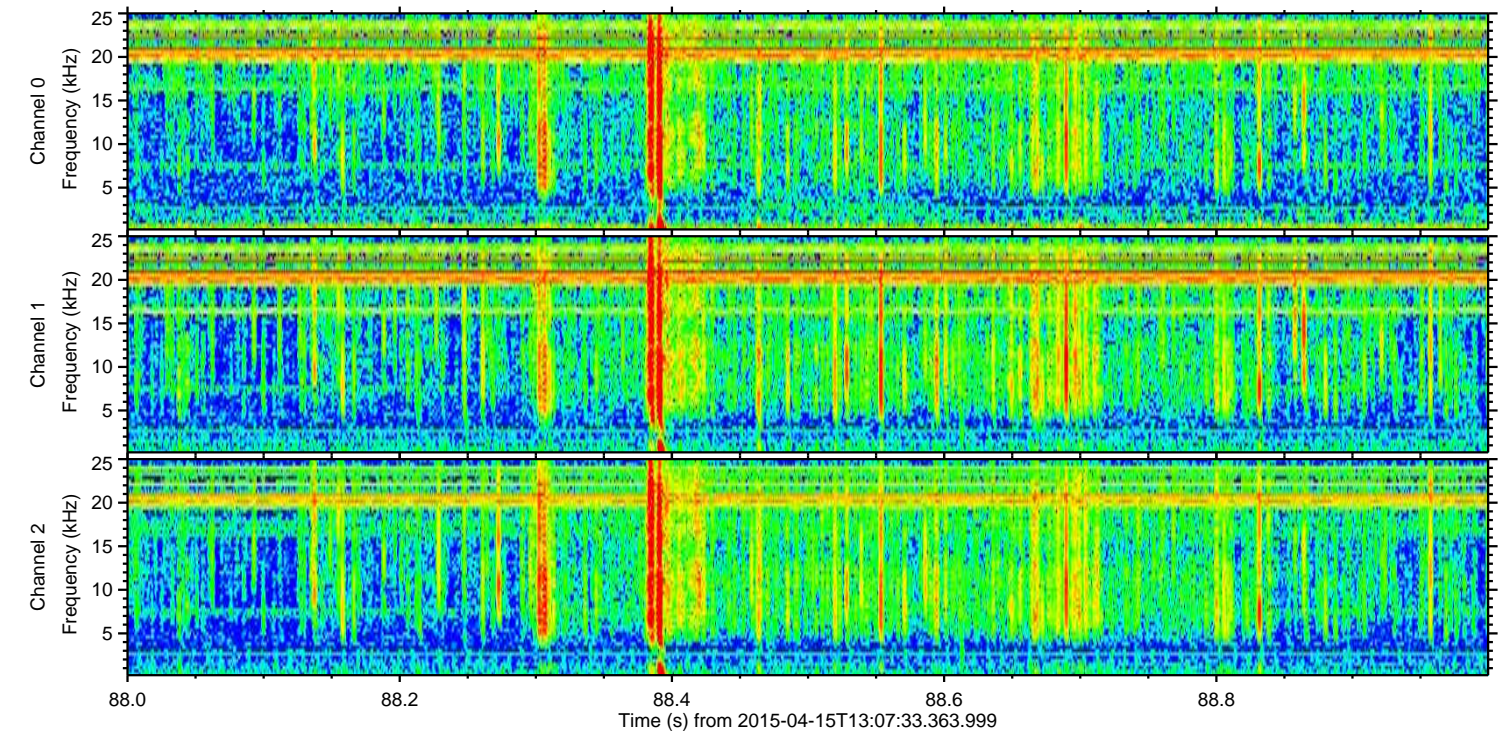
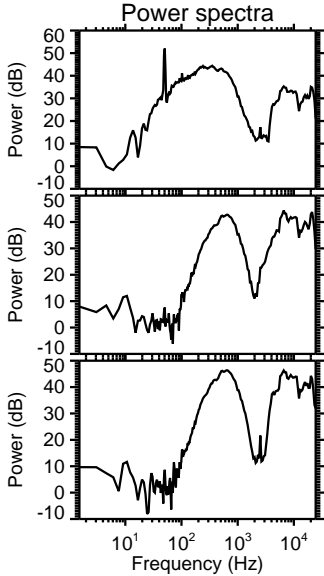
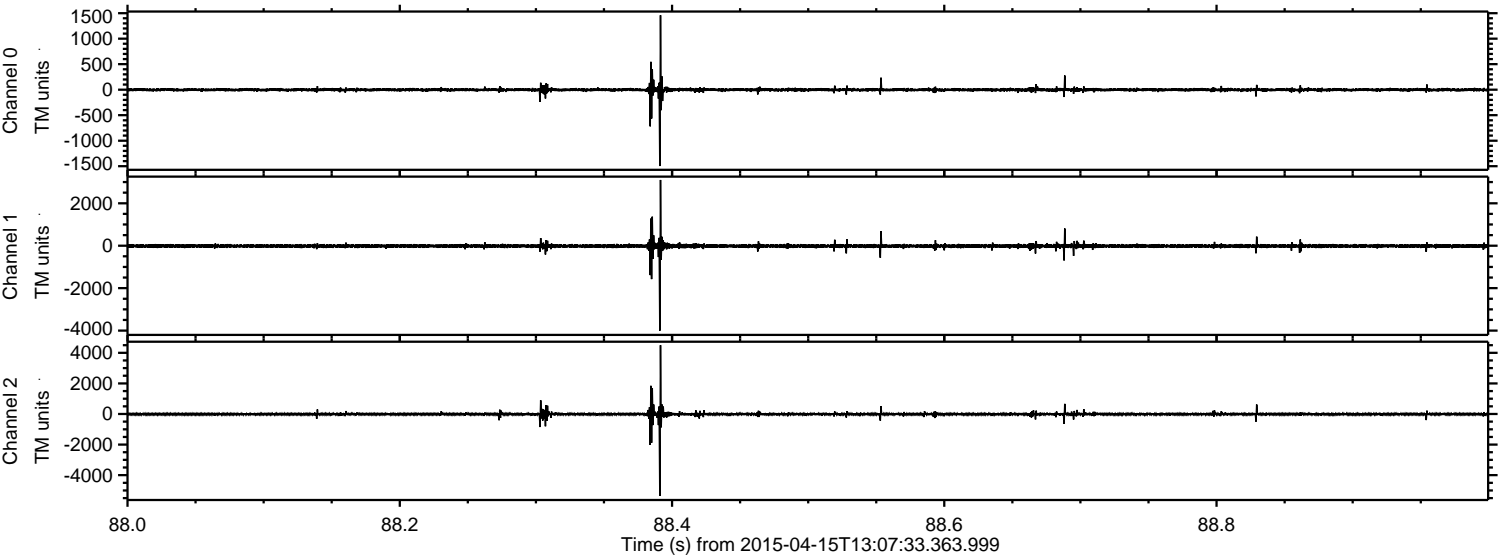


ELMAVAN 3D WAVEFORMS (Measured data sampled at 50 kHz) 49782 packets of 144 samples from 2015-04-15T13:07:33.363.999. Part 108/144

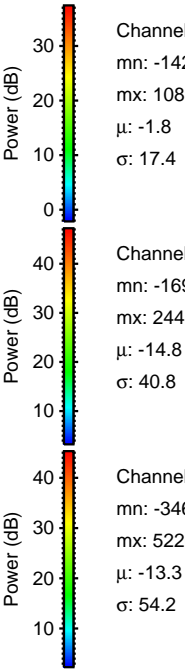
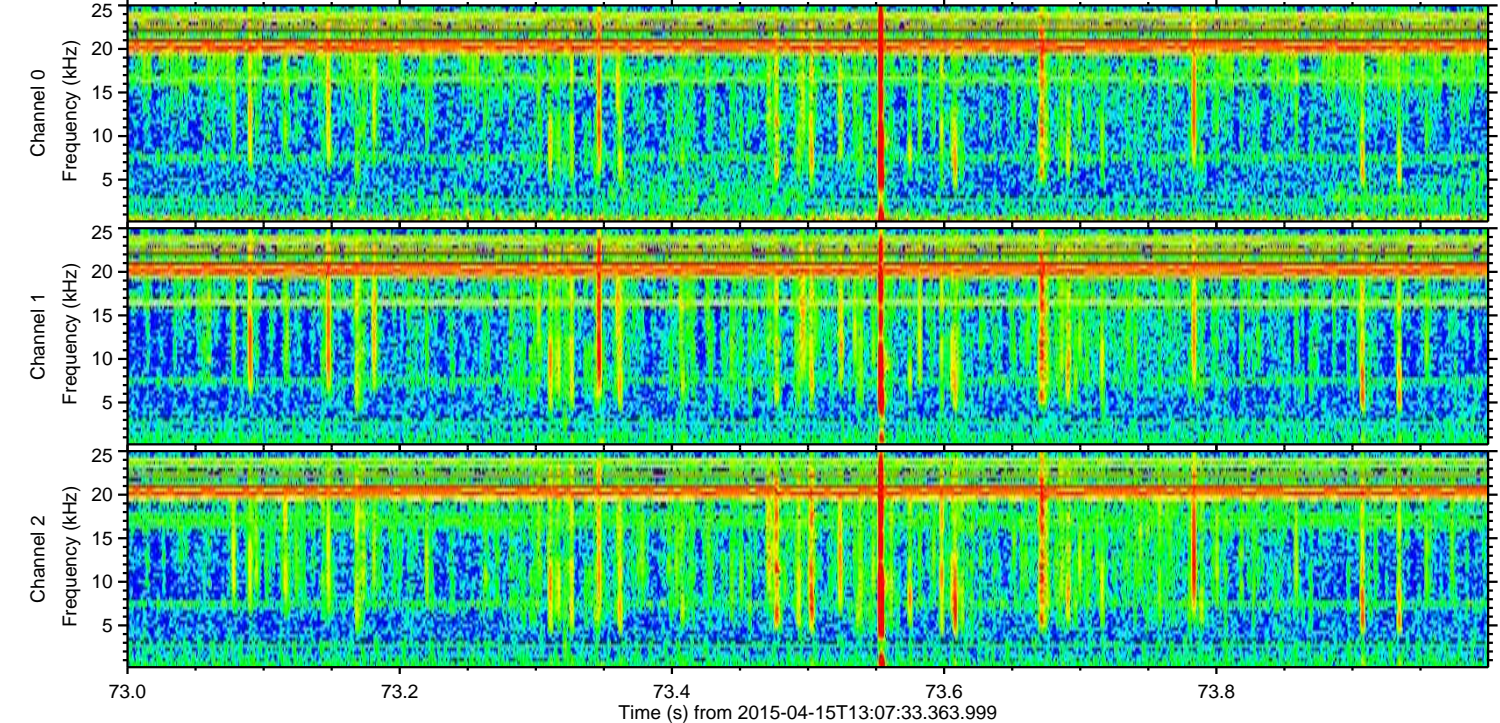
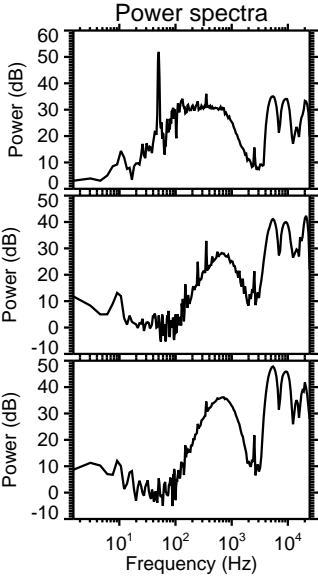
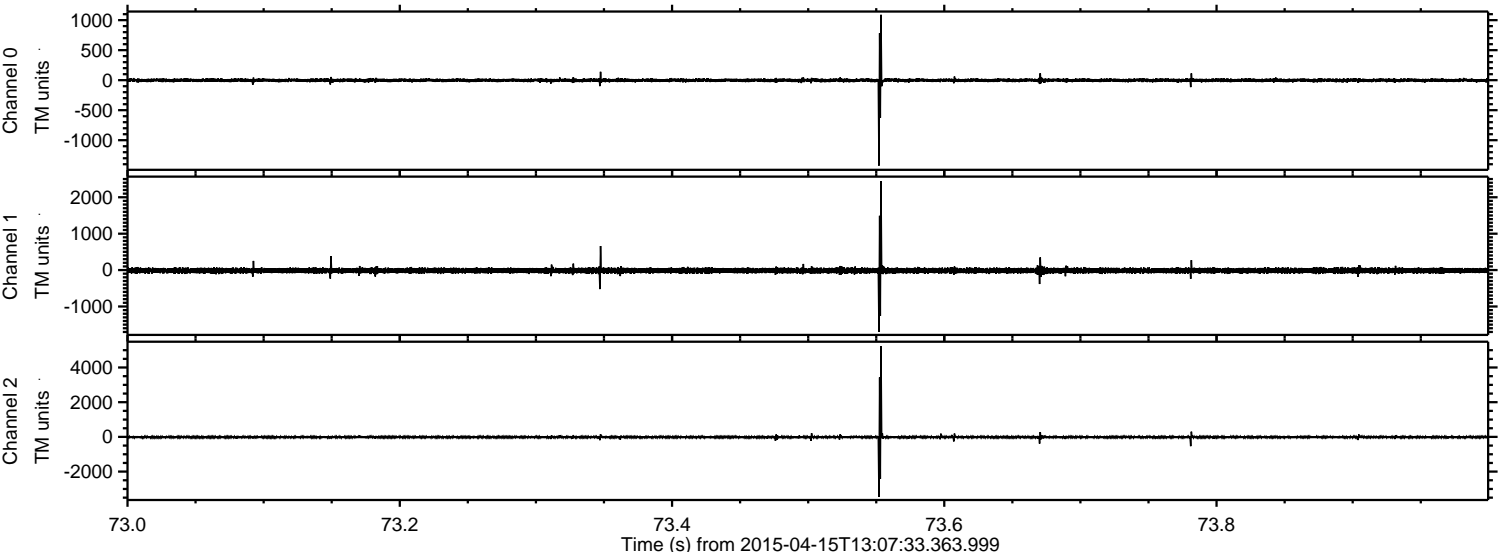
Processed Wed Apr 15 15:14:59 2015 by ELM ver.2012-10-06 from 001__elm20150415_130732__dat00.bin



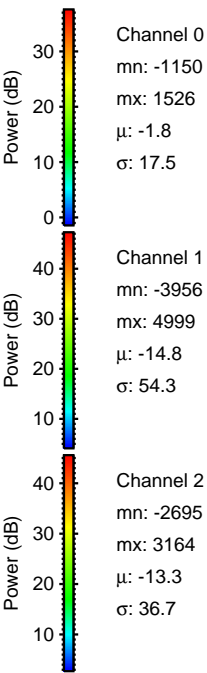
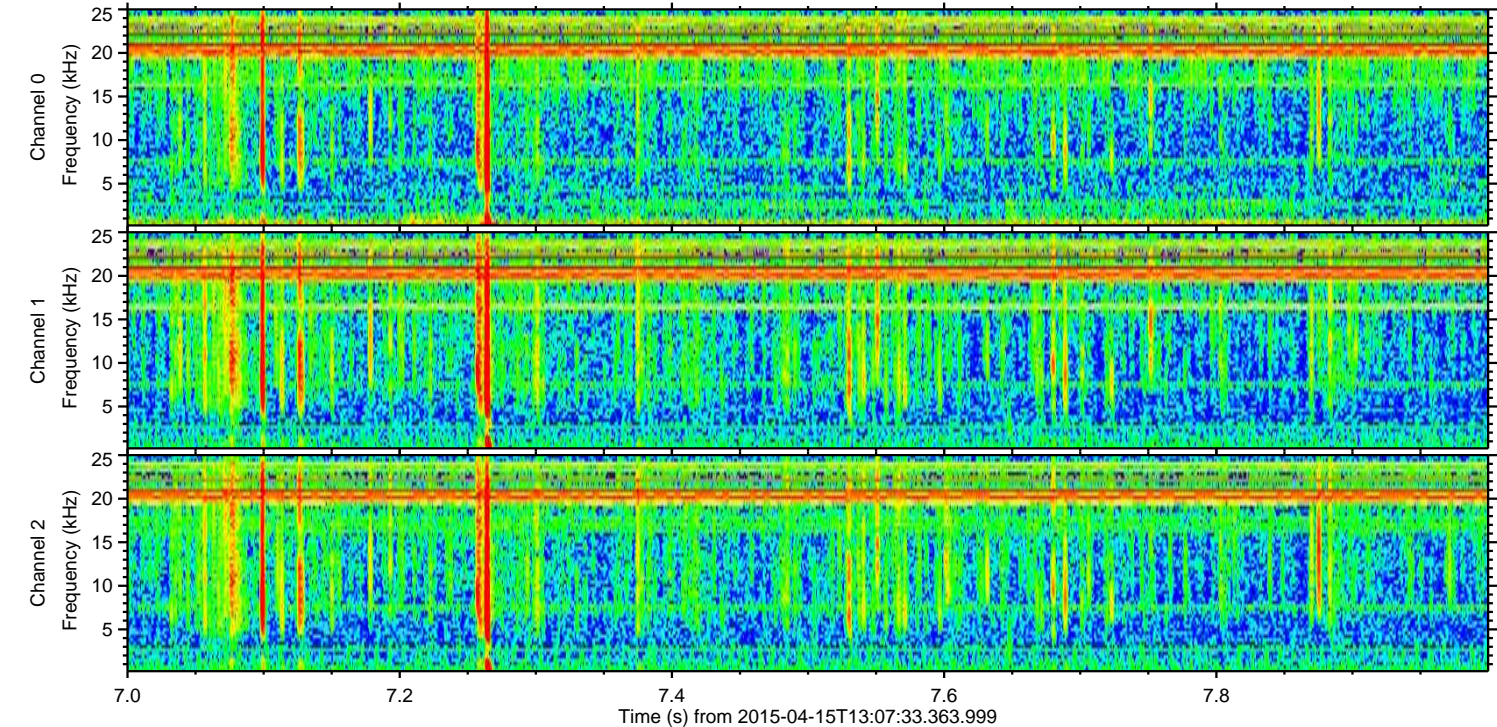
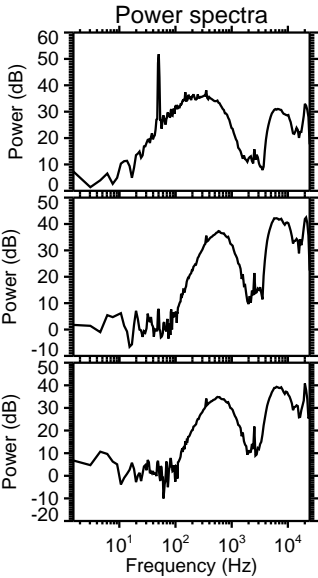
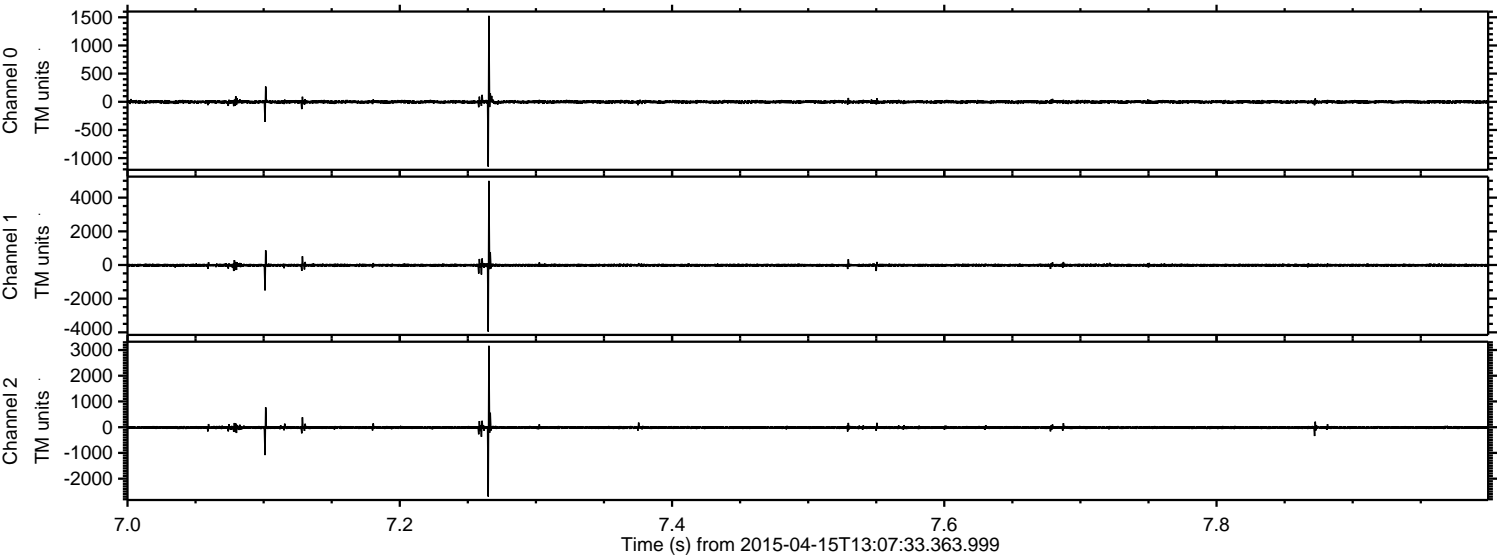
Processed Wed Apr 15 15:15:00 2015 by ELM ver.2012-10-06 from 001__elm20150415_130732__dat00.bin



Processed Wed Apr 15 15:15:01 2015 by ELM ver.2012-10-06 from 001__elm20150415_130732__dat00.bin

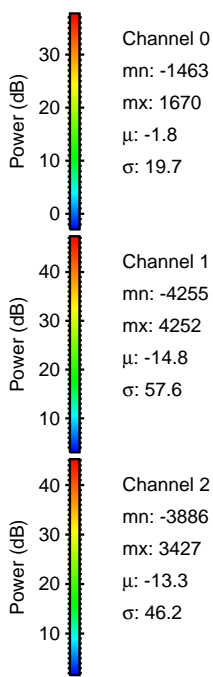
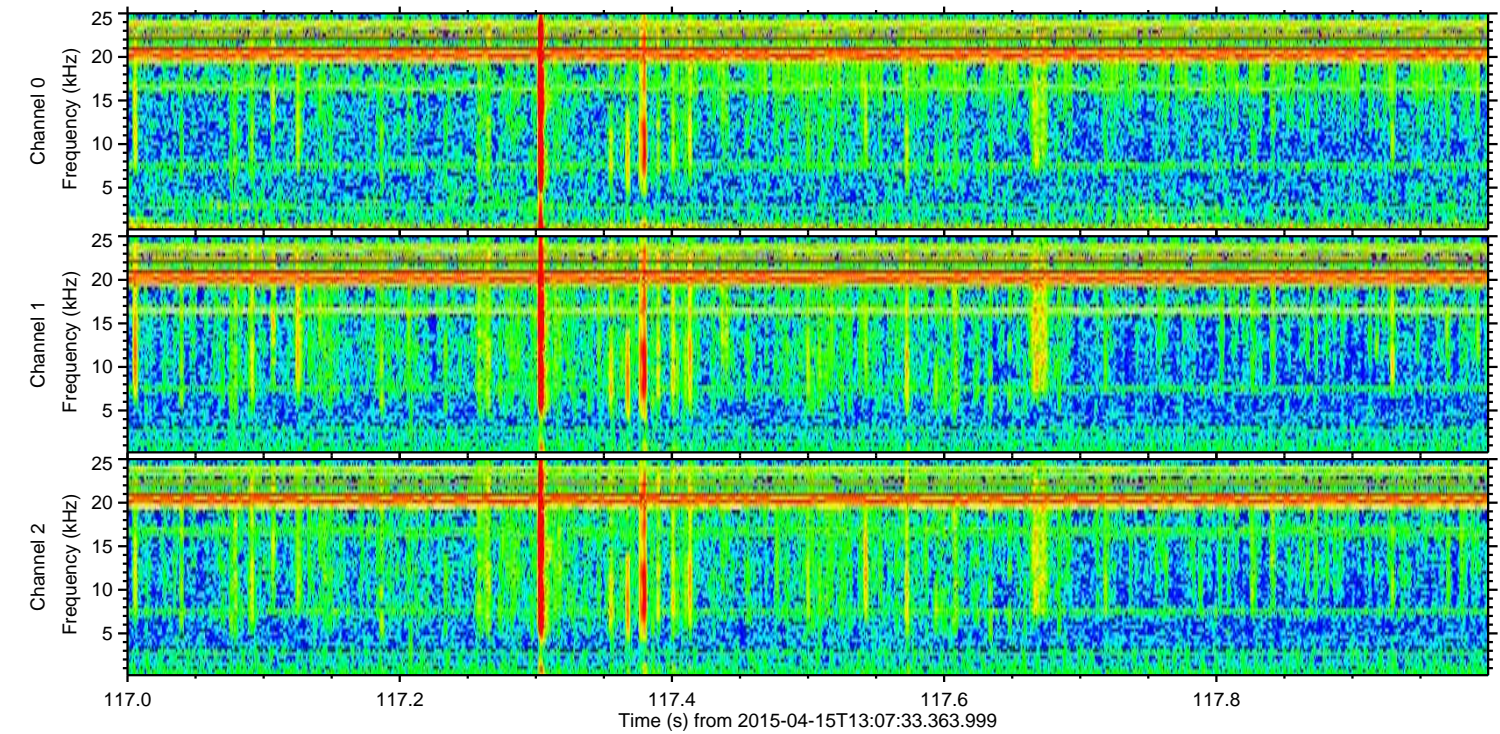
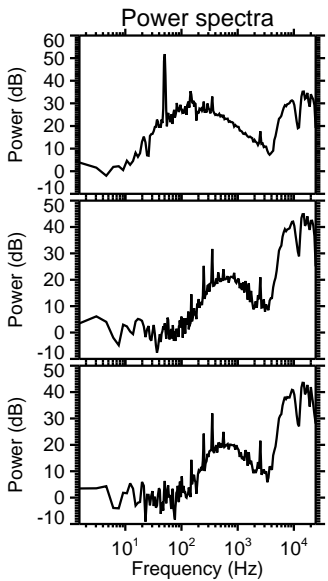
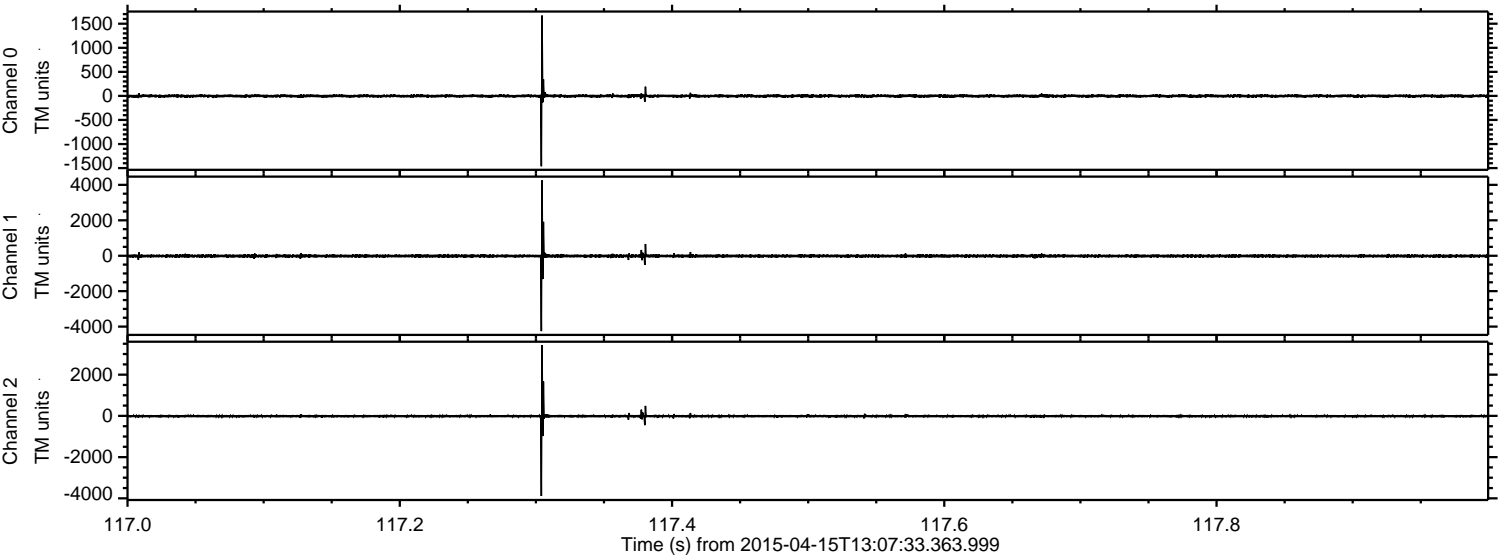


Processed Wed Apr 15 15:15:02 2015 by ELM ver.2012-10-06 from 001__elm20150415_130732__dat00.bin



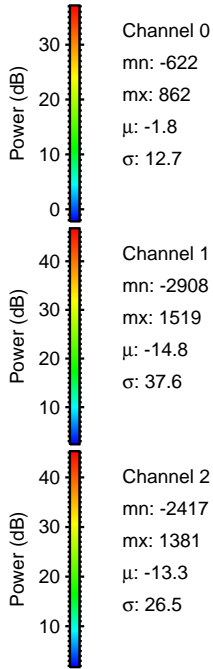
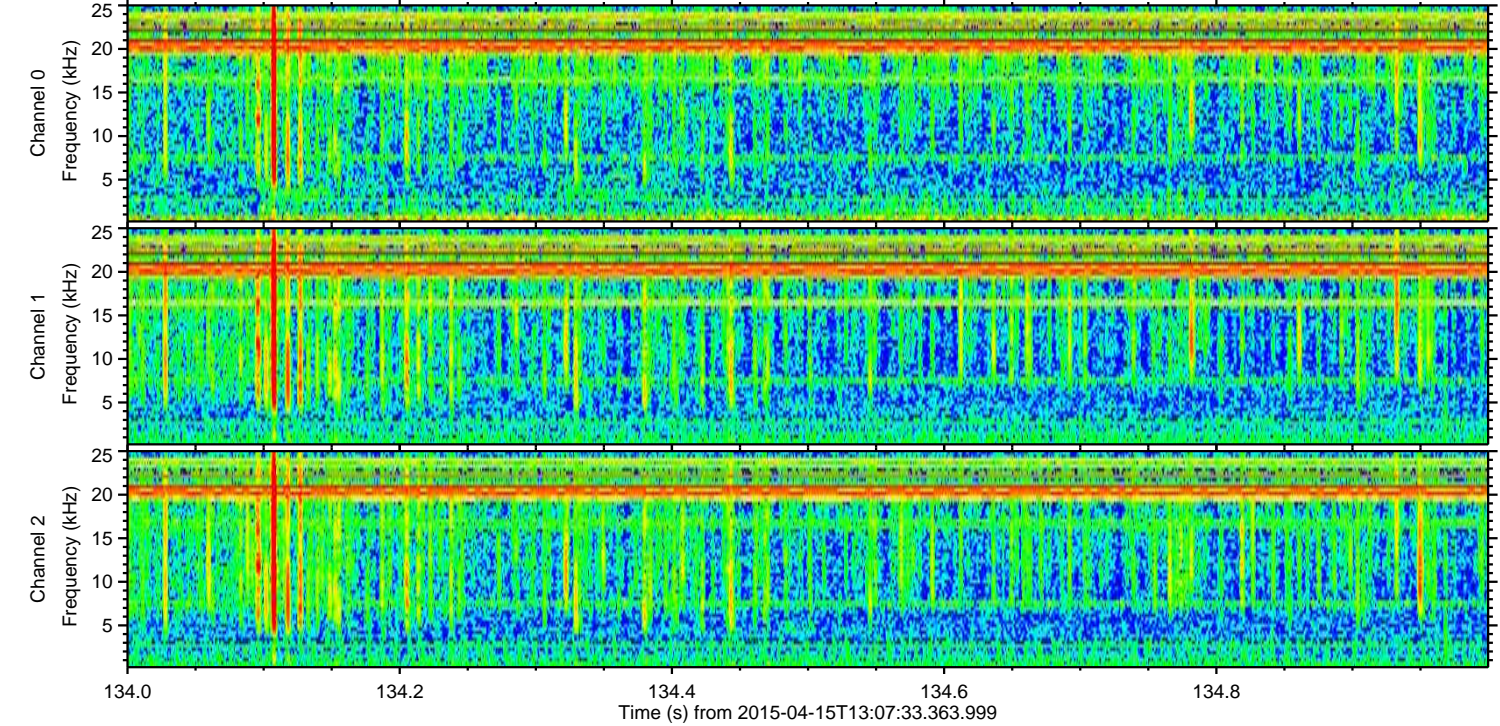
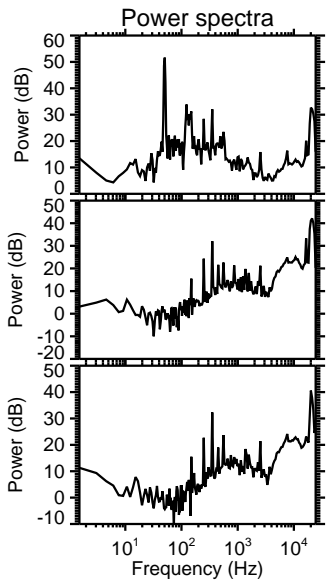
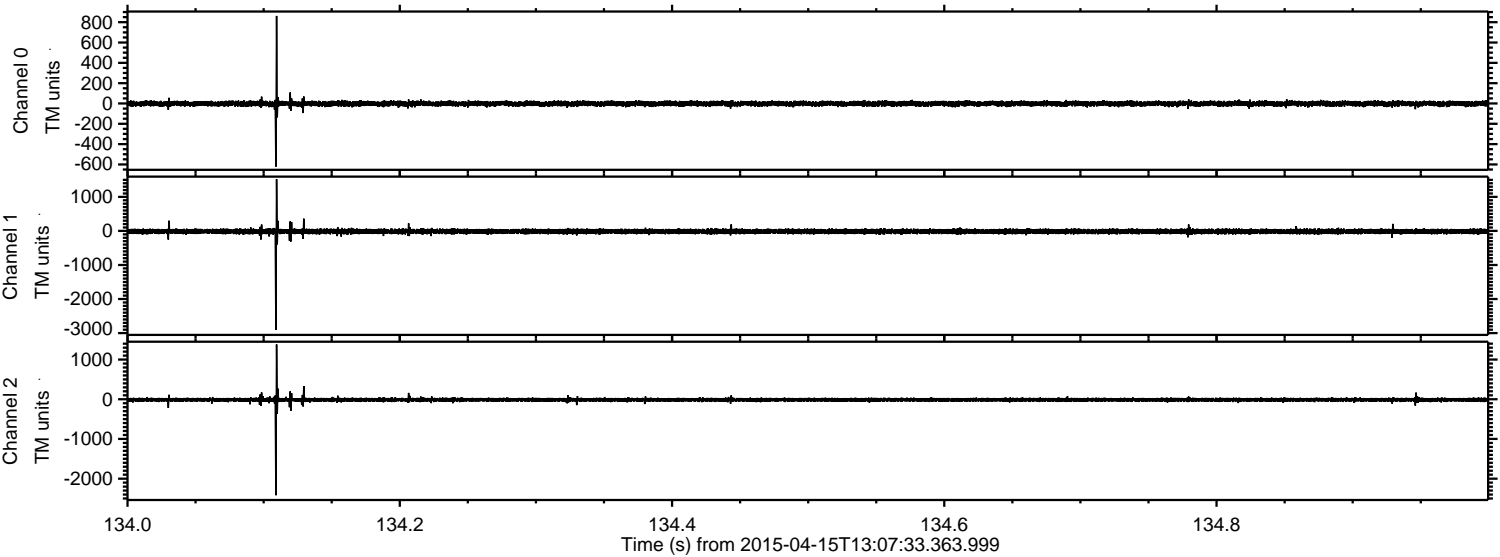
ELMAVAN 3D WAVEFORMS (Measured data sampled at 50 kHz) 49782 packets of 144 samples from 2015-04-15T13:07:33.363.999. Part 118/144

Processed Wed Apr 15 15:15:03 2015 by ELM ver.2012-10-06 from 001__elm20150415_130732__dat00.bin



ELMAVAN 3D WAVEFORMS (Measured data sampled at 50 kHz) 49782 packets of 144 samples from 2015-04-15T13:07:33.363.999. Part 135/144

Processed Wed Apr 15 15:15:04 2015 by ELM ver.2012-10-06 from 001__elm20150415_130732__dat00.bin

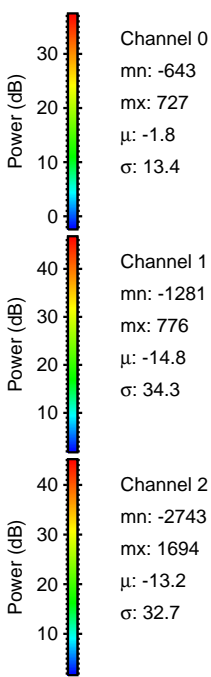
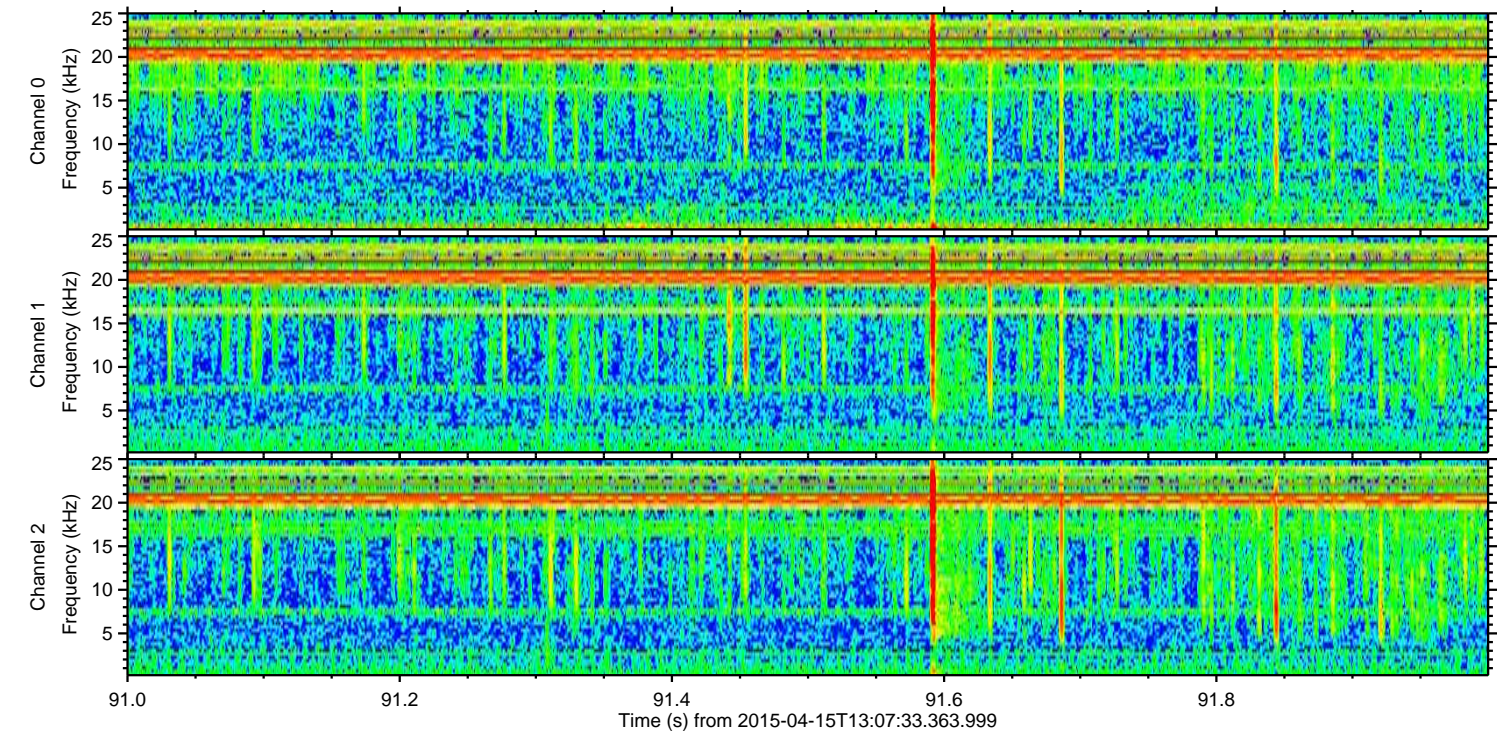
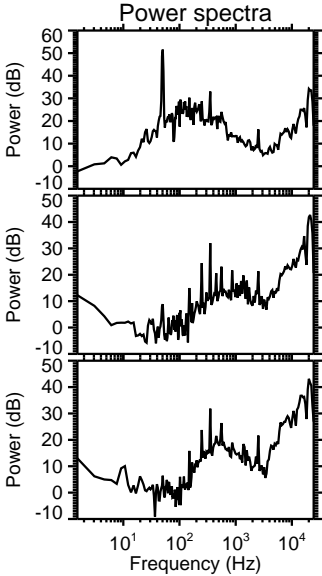
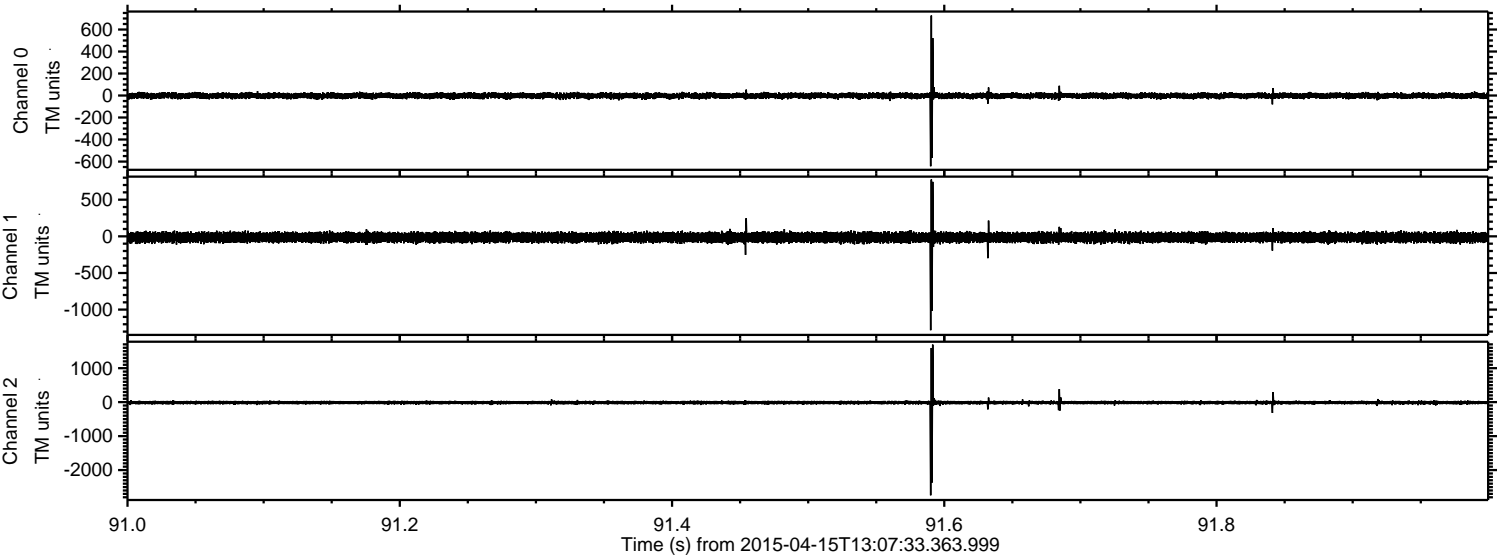


Channel 0
mn: -622
mx: 862
 μ : -1.8
 σ : 12.7

Channel 1
mn: -2908
mx: 1519
 μ : -14.8
 σ : 37.6

Channel 2
mn: -2417
mx: 1381
 μ : -13.3
 σ : 26.5

Processed Wed Apr 15 15:15:05 2015 by ELM ver.2012-10-06 from 001__elm20150415_130732__dat00.bin



Processed Wed Apr 15 15:15:06 2015 by ELM ver.2012-10-06 from 001__elm20150415_130732__dat00.bin

