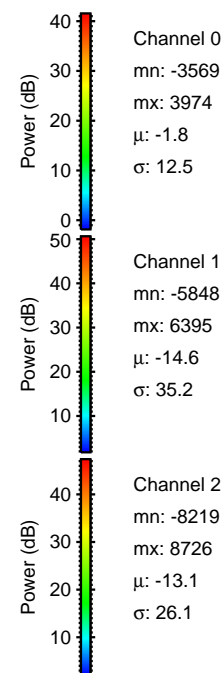
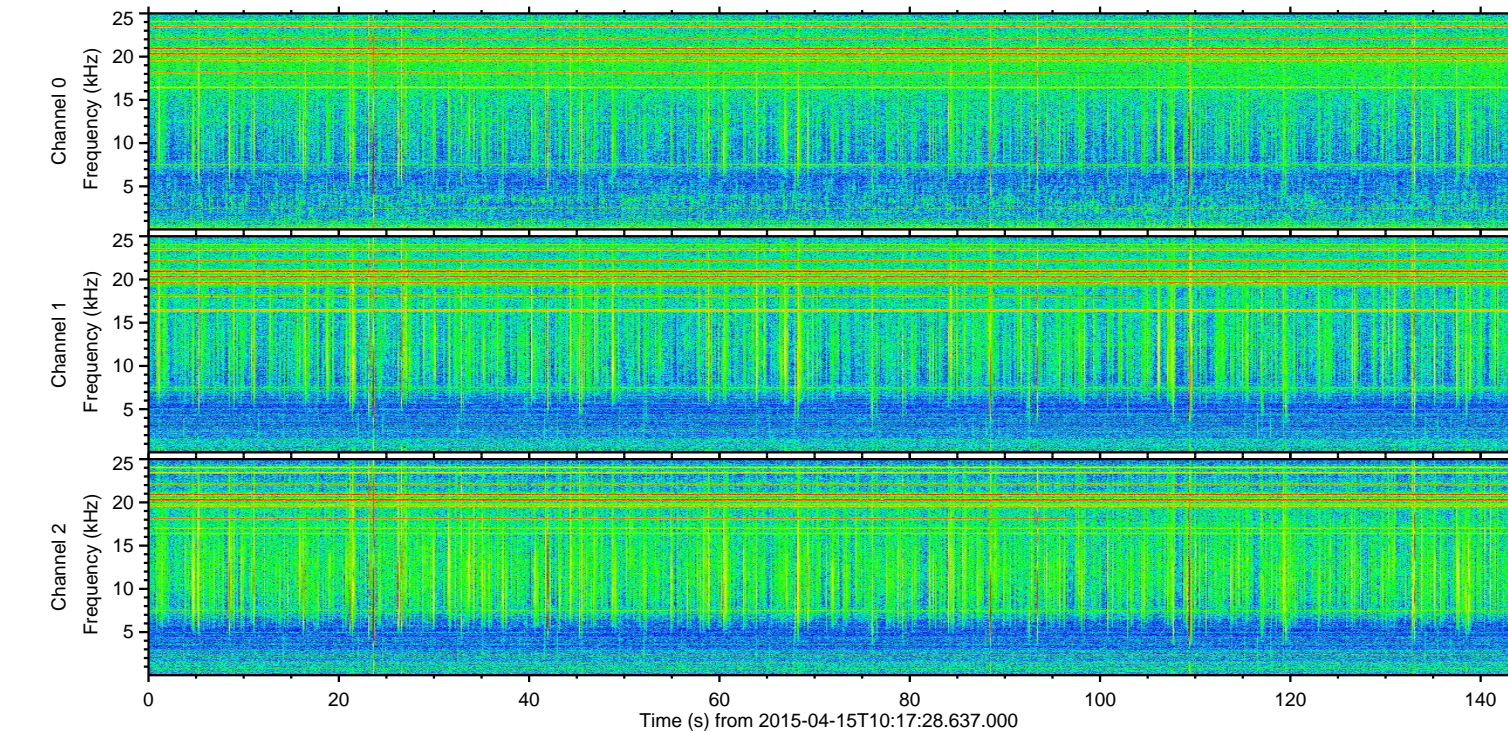
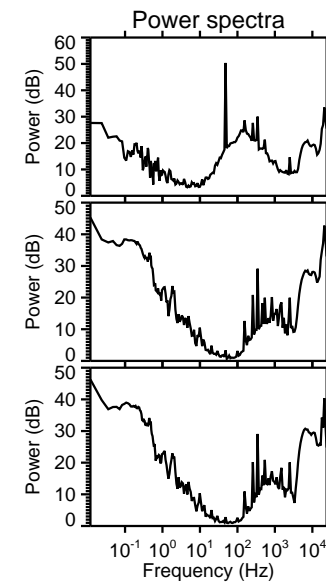
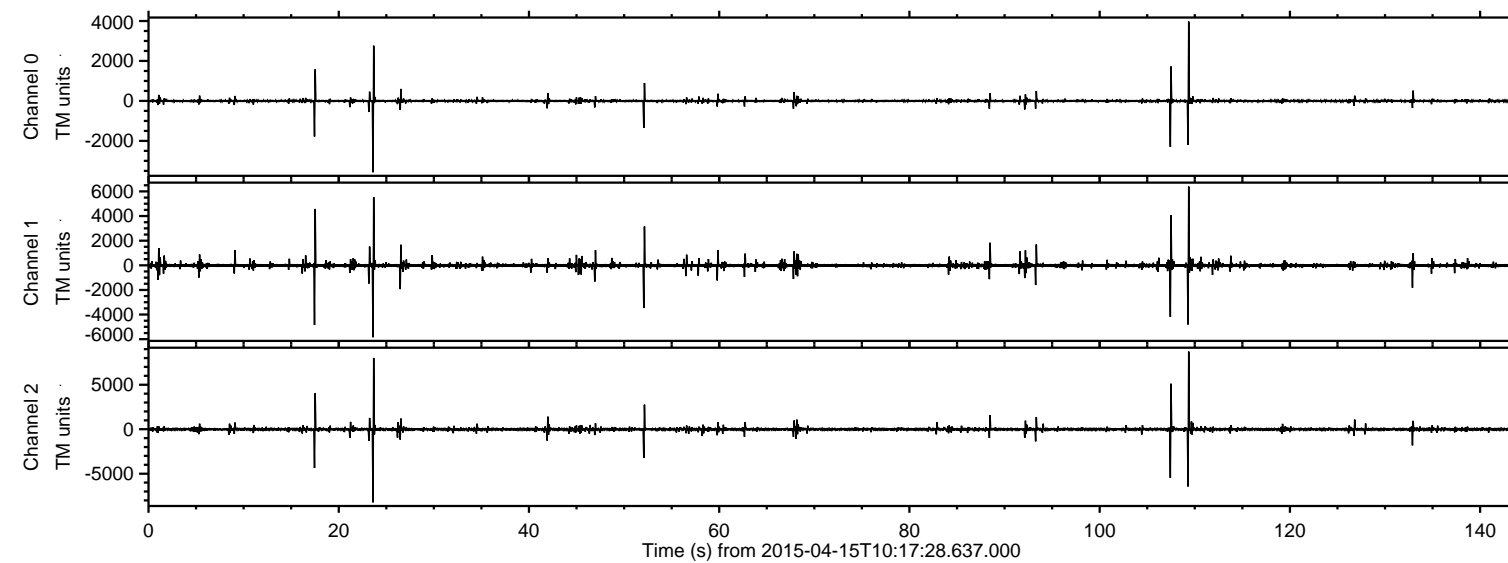


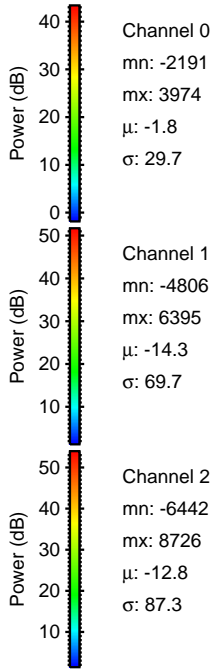
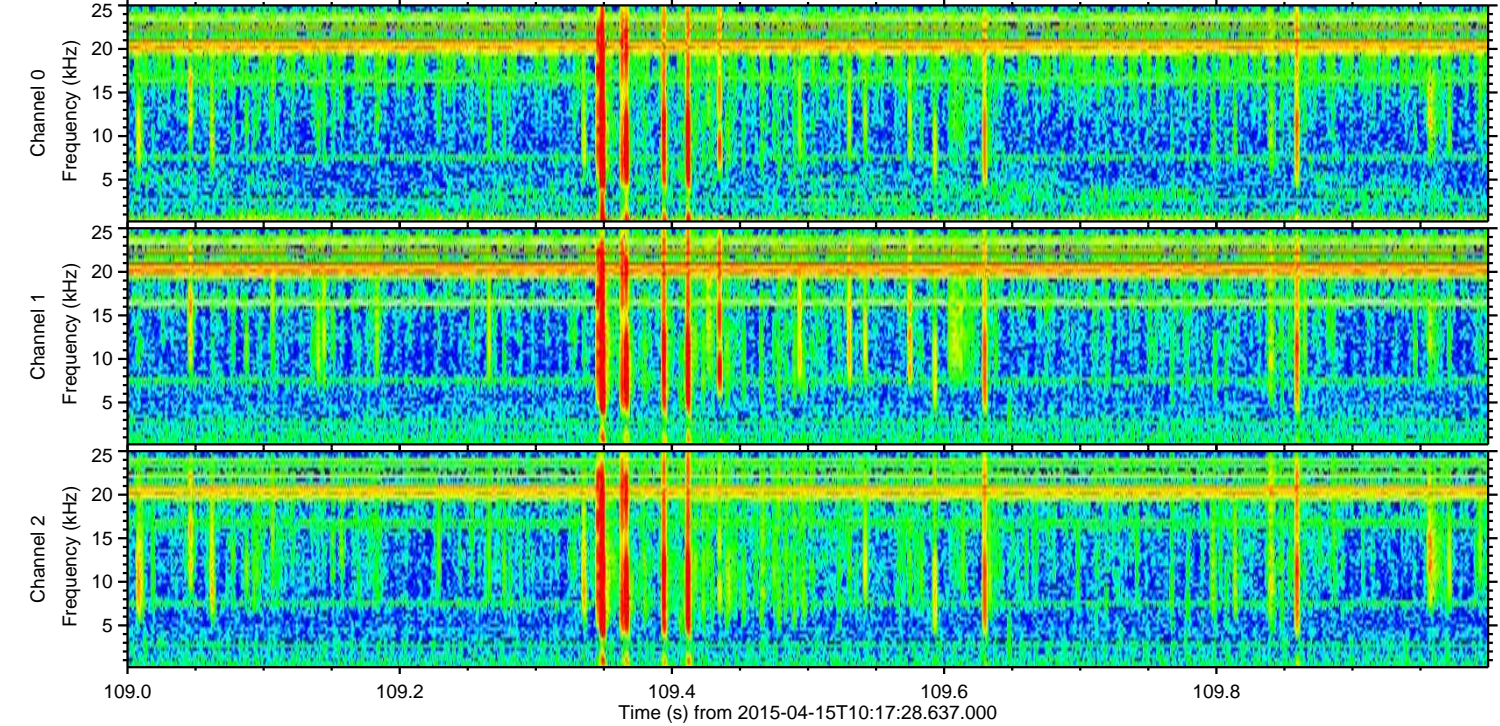
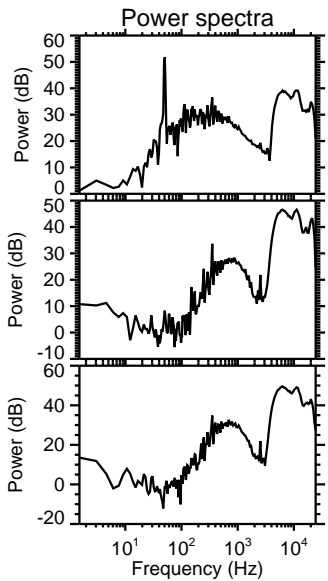
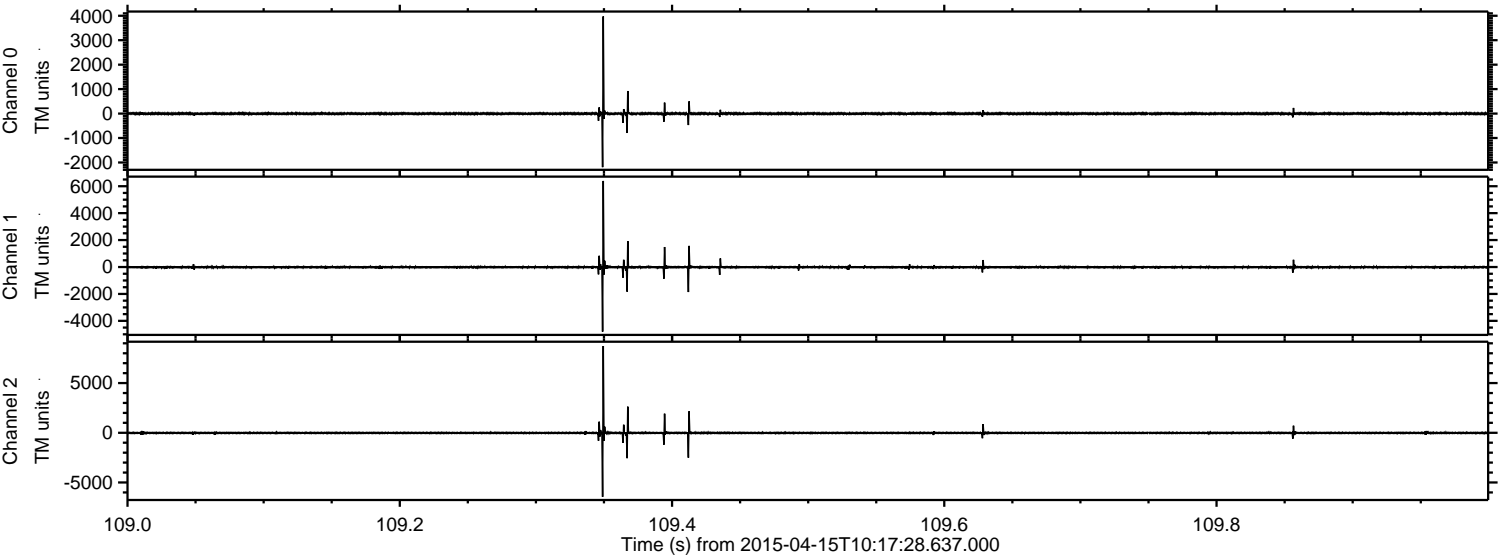
ELMAVAN 3D WAVEFORMS (Measured data sampled at 50 kHz) 49670 packets of 144 samples from 2015-04-15T10:17:28.637.000.

Processed Wed Apr 15 12:24:57 2015 by ELM ver.2012-10-06 from 001__elm20150415_101727__dat00.bin



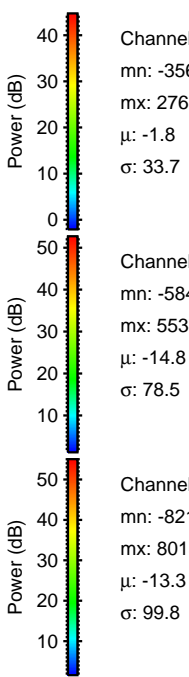
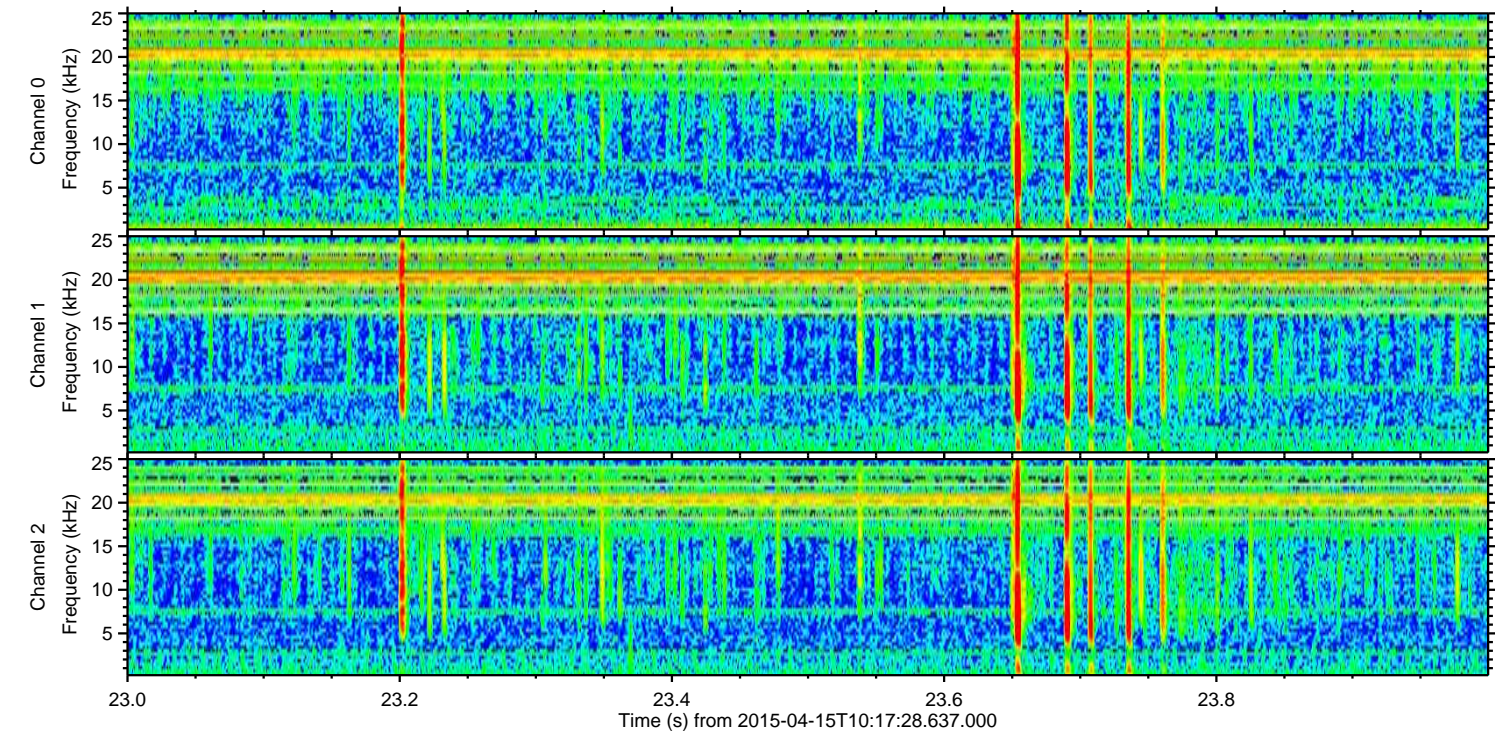
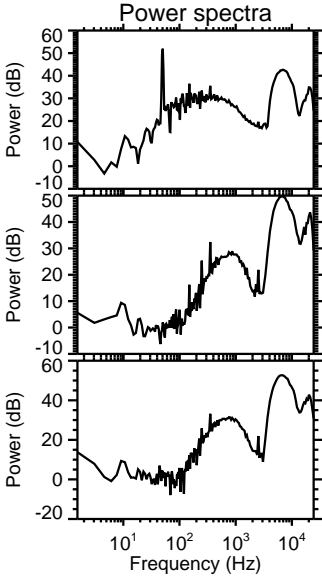
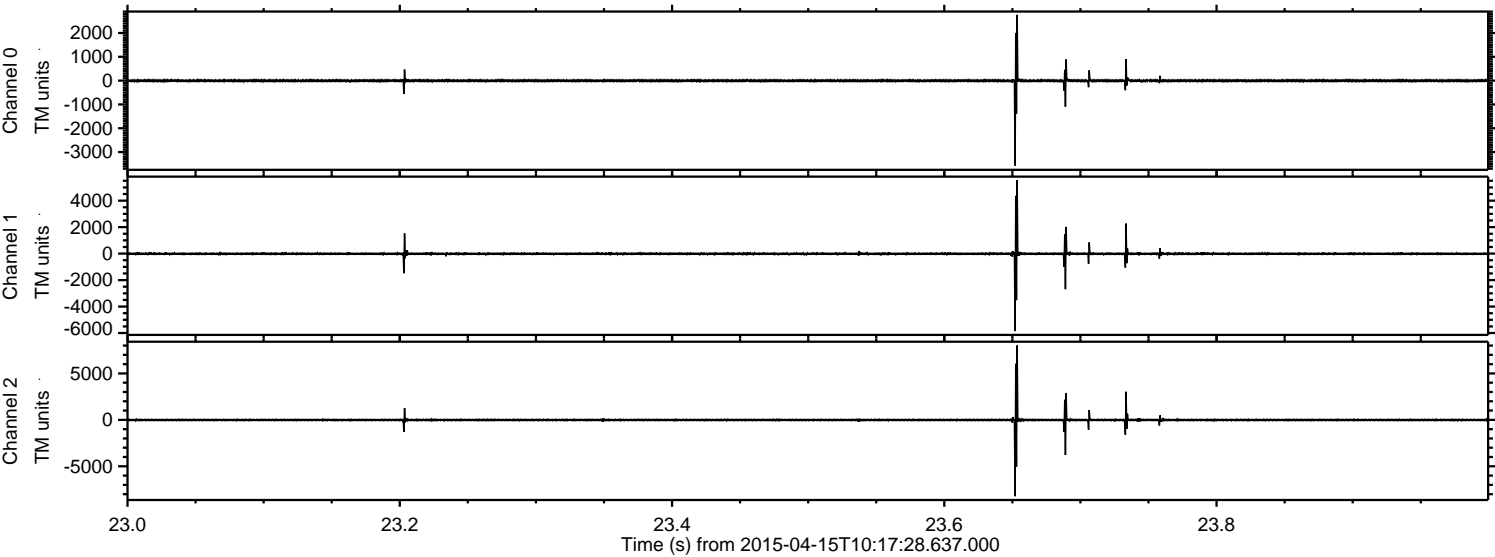
ELMAVAN 3D WAVEFORMS (Measured data sampled at 50 kHz) 49670 packets of 144 samples from 2015-04-15T10:17:28.637.000. Part 110/144

Processed Wed Apr 15 12:25:12 2015 by ELM ver.2012-10-06 from 001__elm20150415_101727__dat00.bin



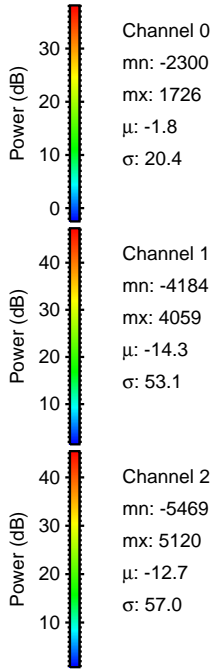
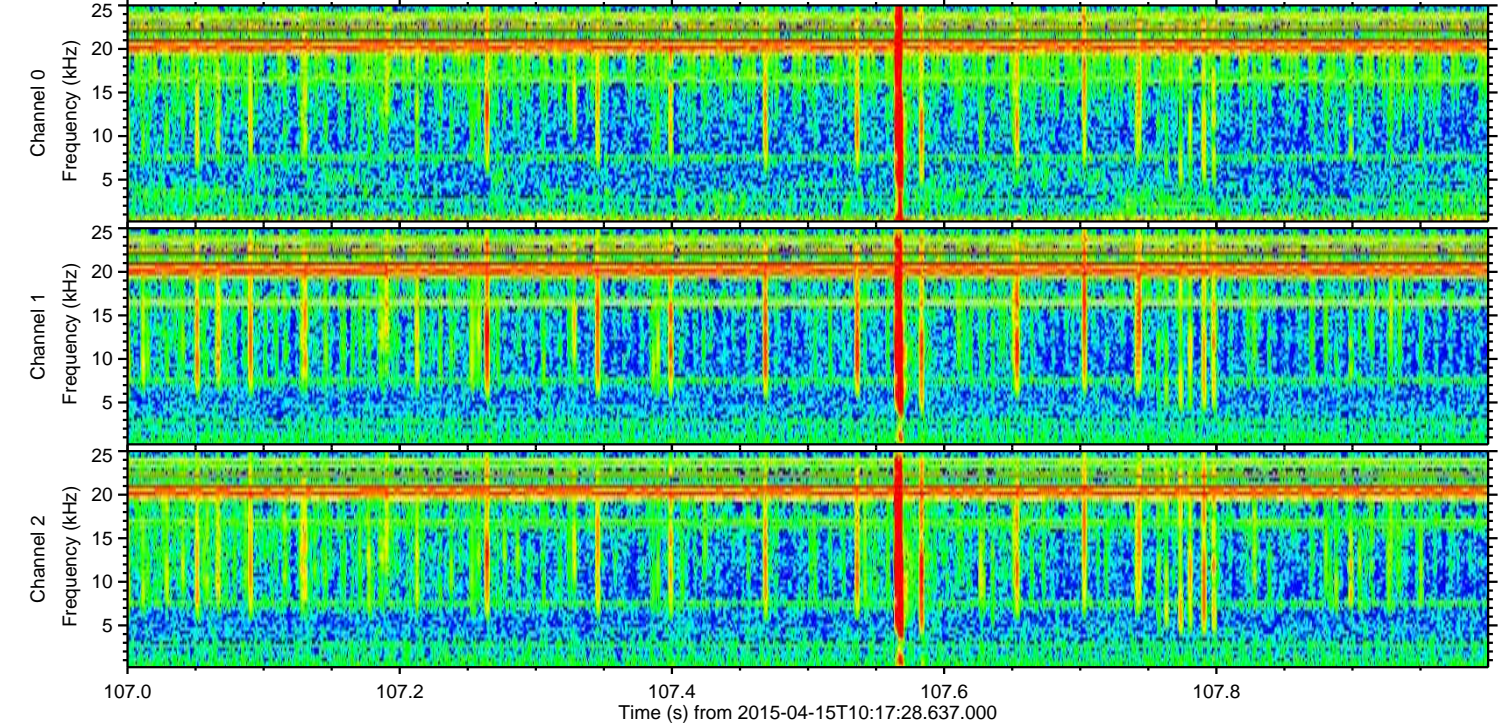
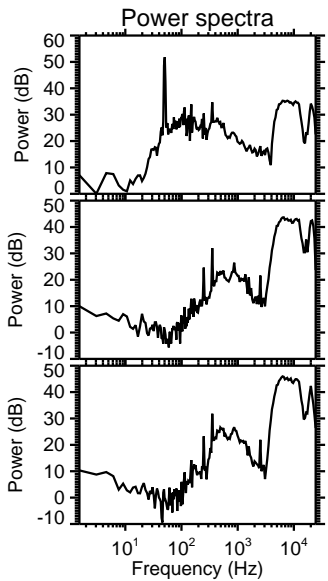
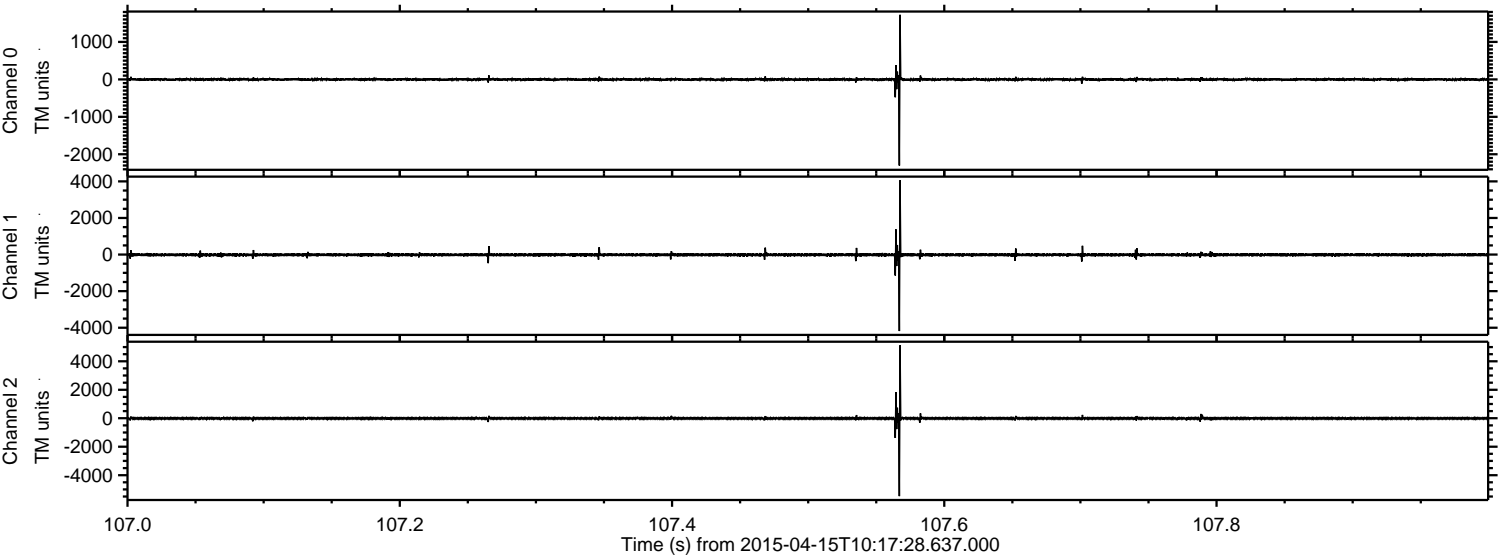
ELMAVAN 3D WAVEFORMS (Measured data sampled at 50 kHz) 49670 packets of 144 samples from 2015-04-15T10:17:28.637.000. Part 24/144

Processed Wed Apr 15 12:25:13 2015 by ELM ver.2012-10-06 from 001__elm20150415_101727__dat00.bin

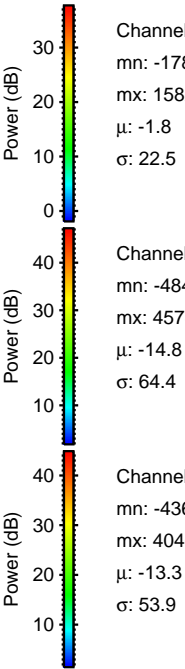
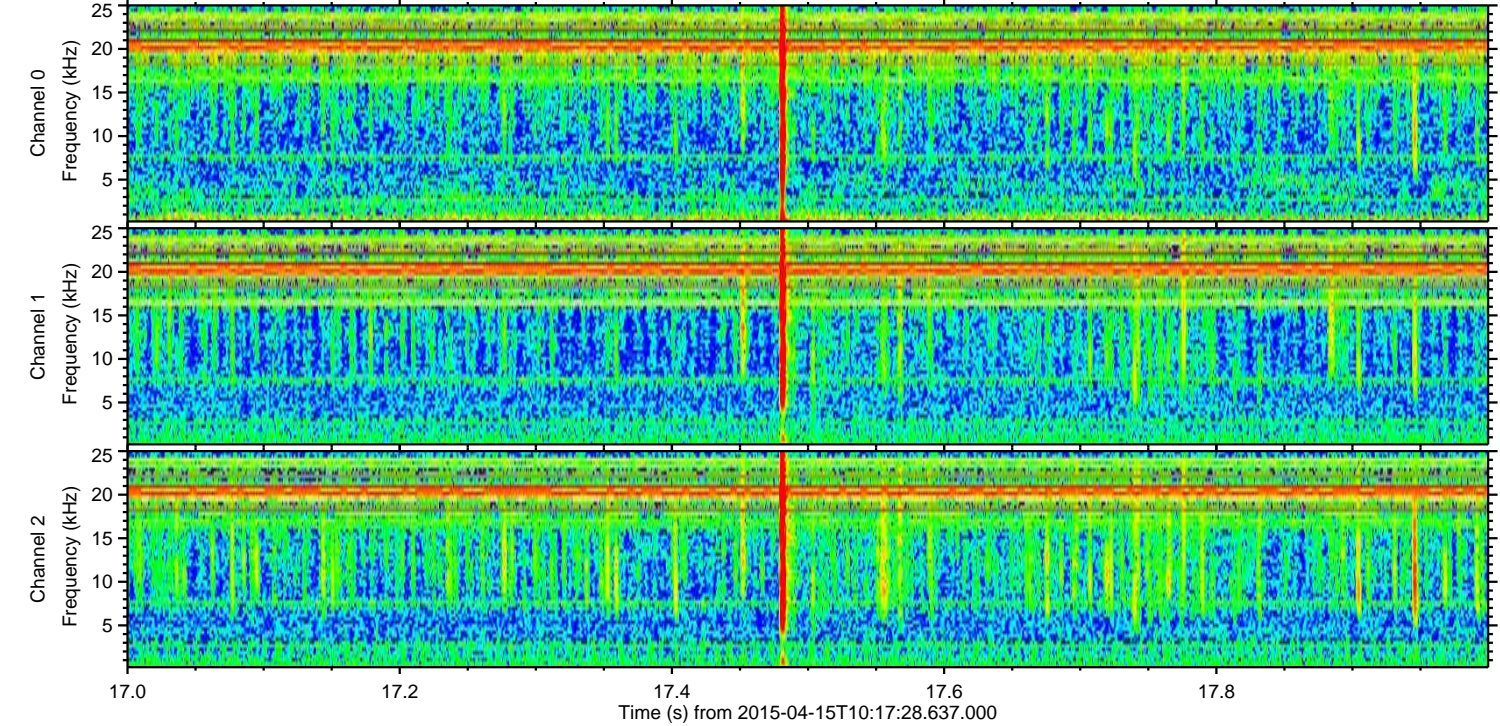
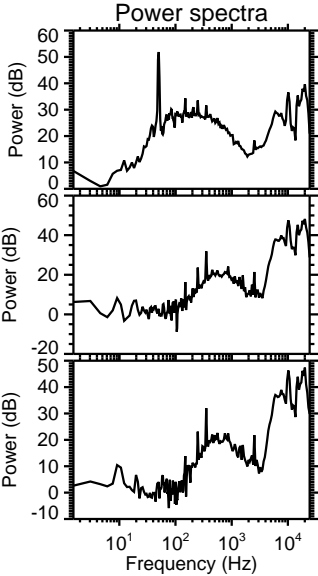
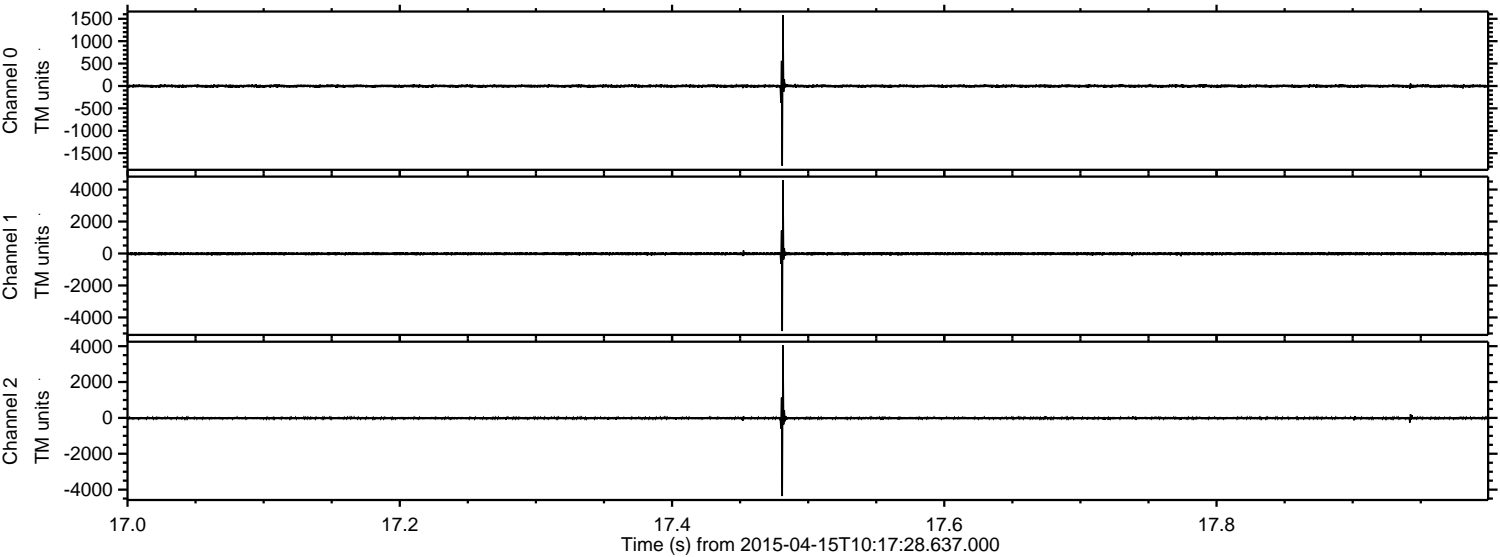


ELMAVAN 3D WAVEFORMS (Measured data sampled at 50 kHz) 49670 packets of 144 samples from 2015-04-15T10:17:28.637.000. Part 108/144

Processed Wed Apr 15 12:25:14 2015 by ELM ver.2012-10-06 from 001__elm20150415_101727__dat00.bin



Processed Wed Apr 15 12:25:15 2015 by ELM ver.2012-10-06 from 001__elm20150415_101727__dat00.bin

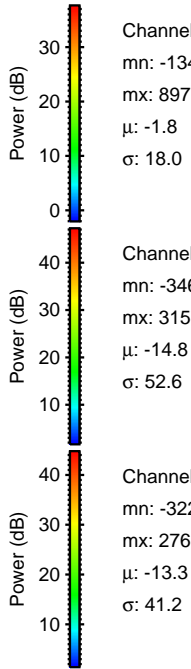
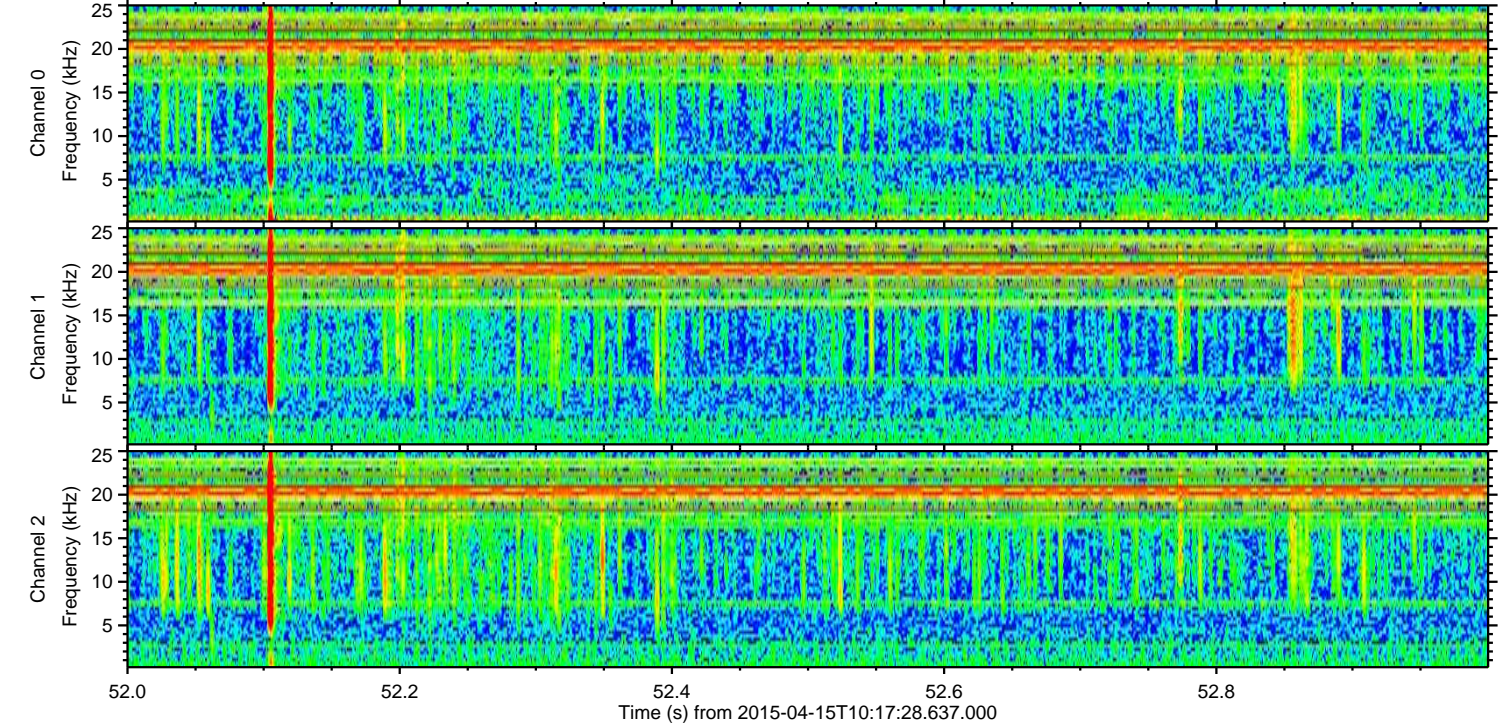
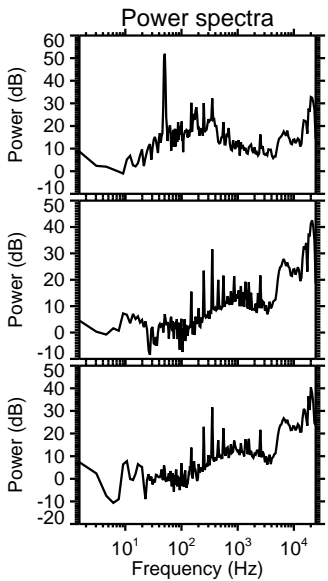
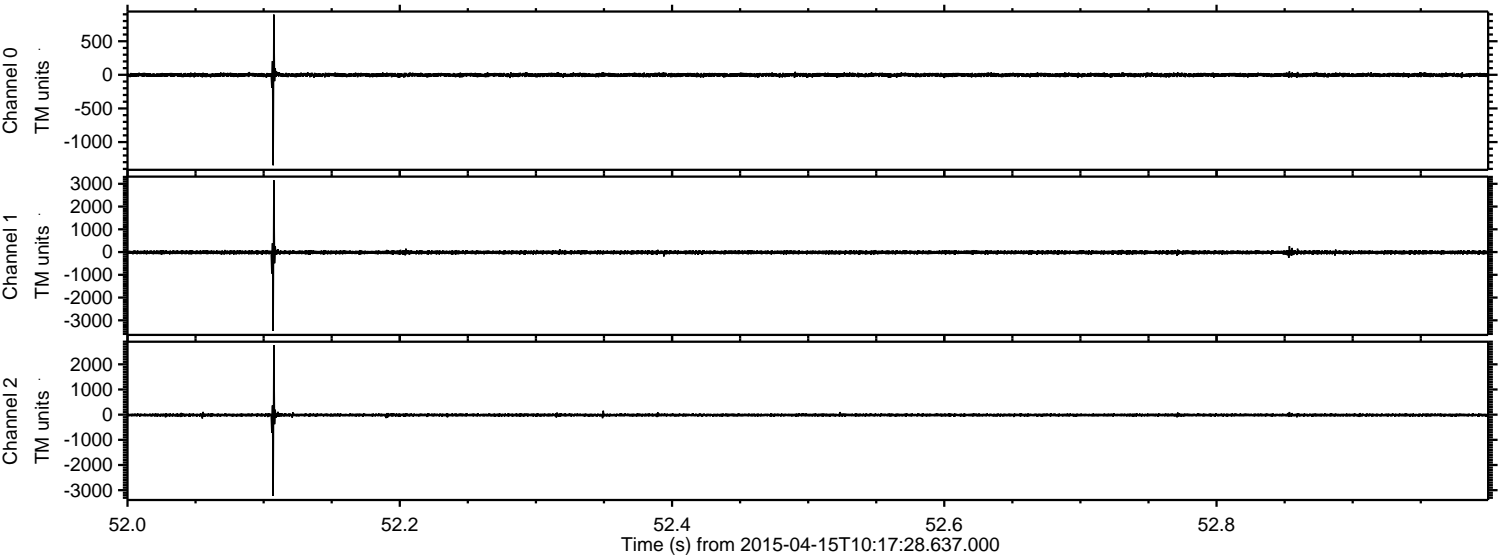


Channel 0
mn: -1782
mx: 1582
 μ : -1.8
 σ : 22.5

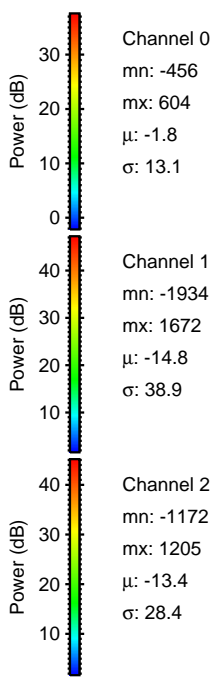
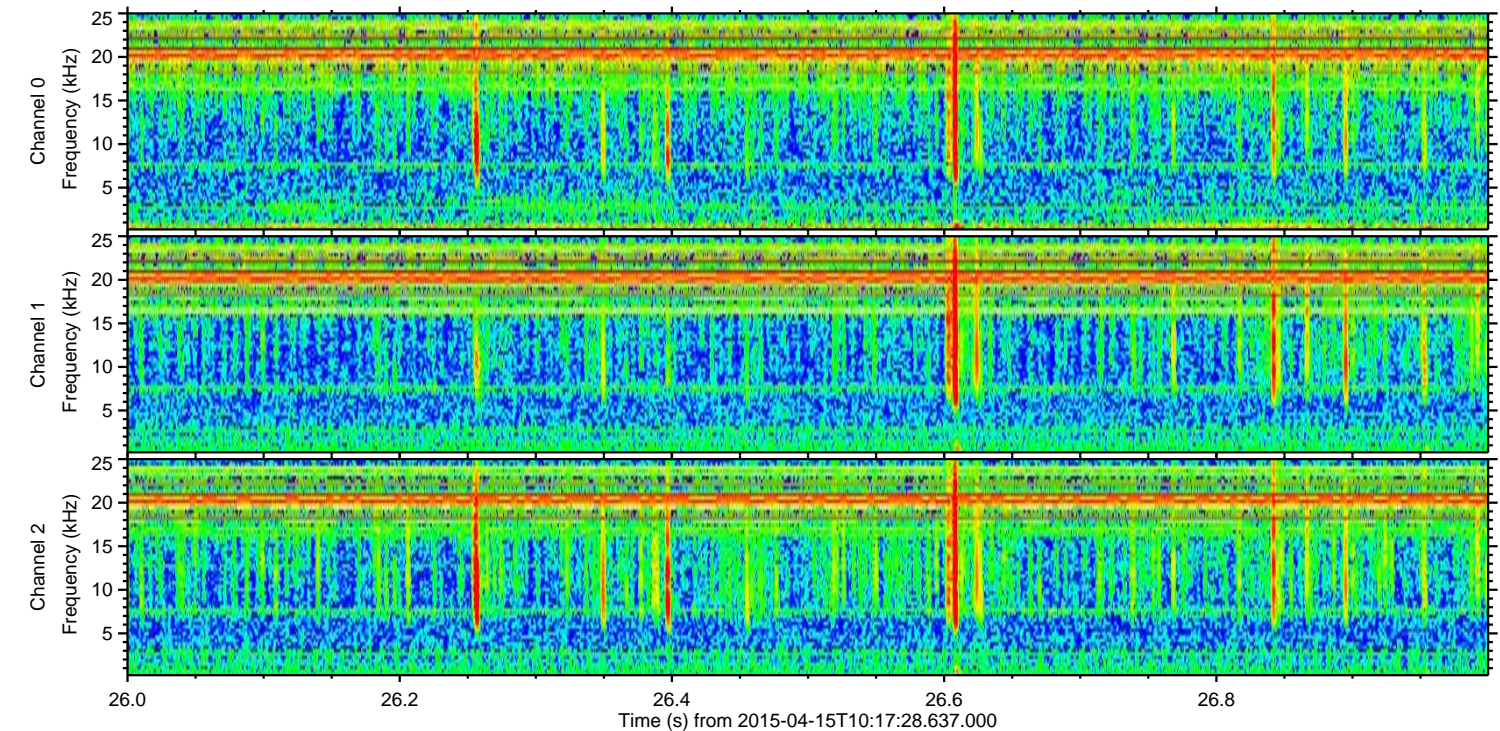
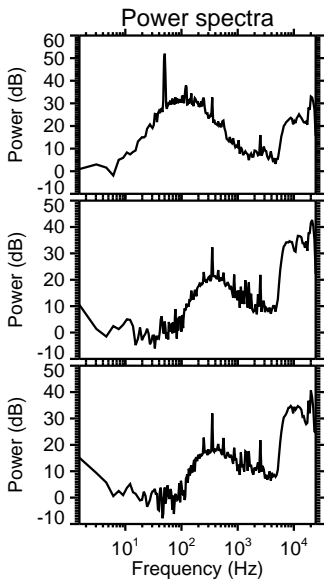
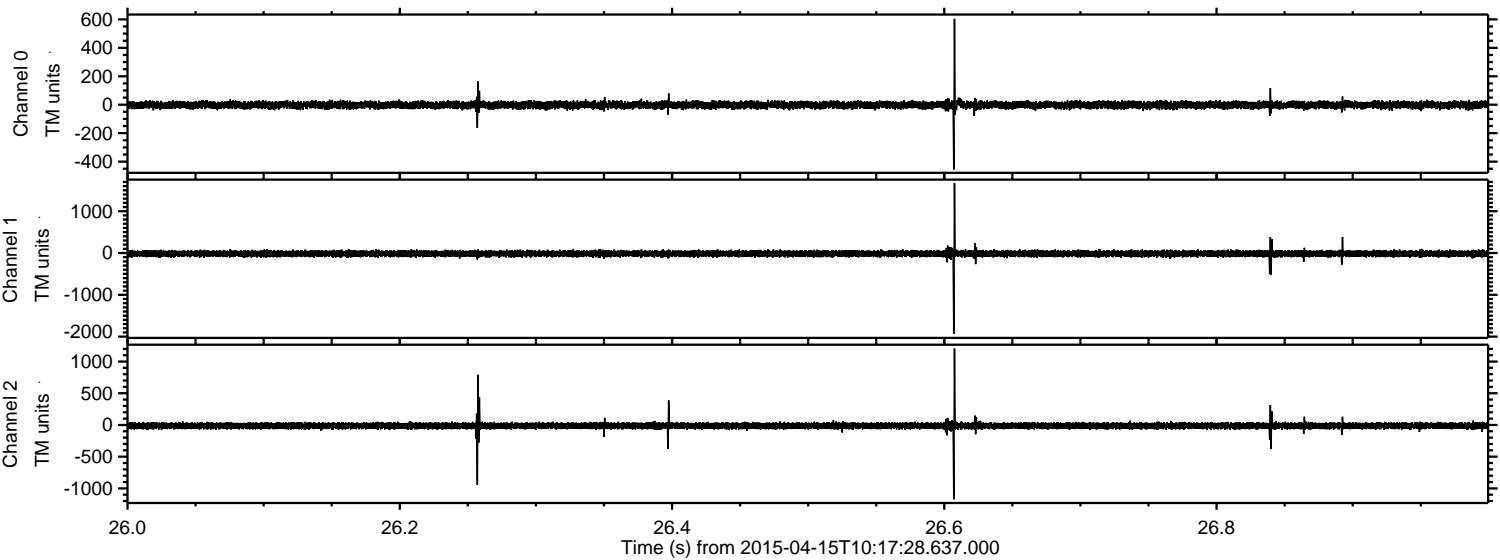
Channel 1
mn: -4847
mx: 4578
 μ : -14.8
 σ : 64.4

Channel 2
mn: -4360
mx: 4046
 μ : -13.3
 σ : 53.9

Processed Wed Apr 15 12:25:16 2015 by ELM ver.2012-10-06 from 001__elm20150415_101727__dat00.bin



Processed Wed Apr 15 12:25:17 2015 by ELM ver.2012-10-06 from 001__elm20150415_101727__dat00.bin

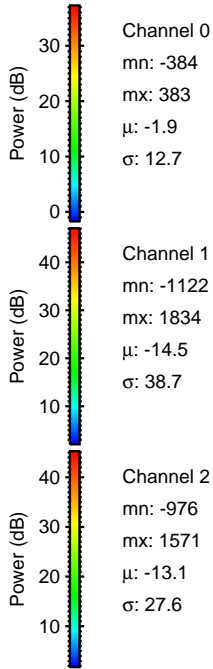
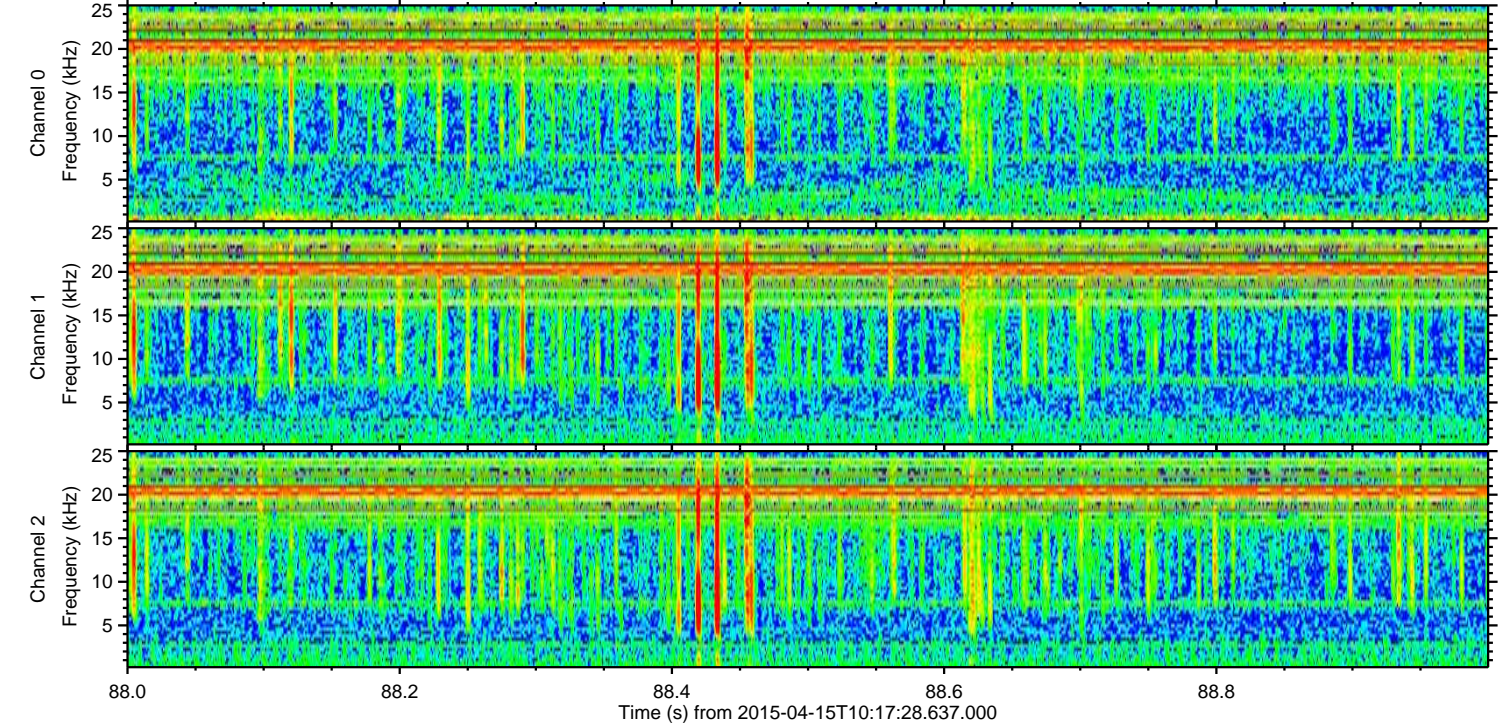
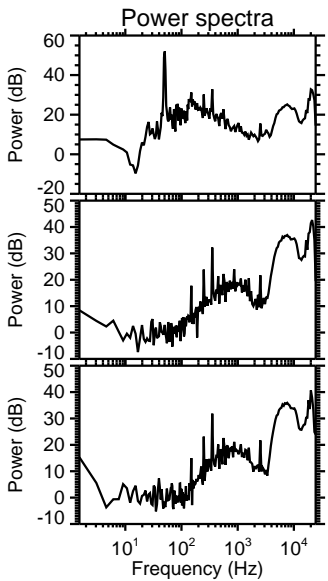
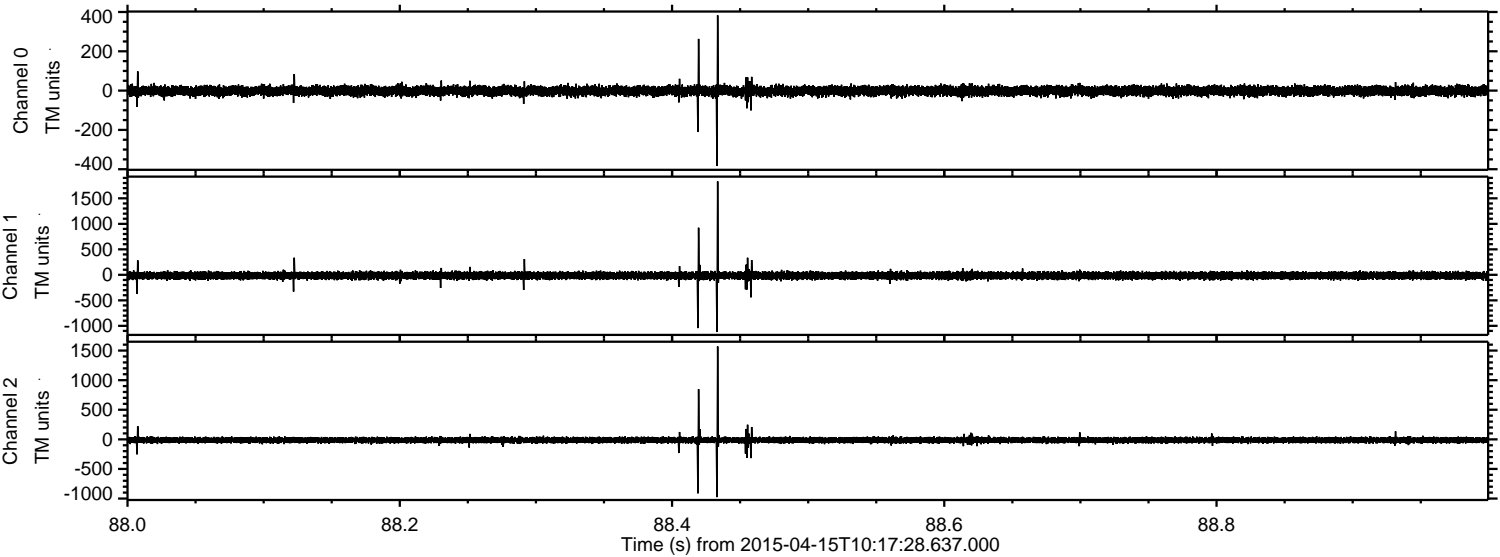


Channel 0
mn: -456
mx: 604
 μ : -1.8
 σ : 13.1

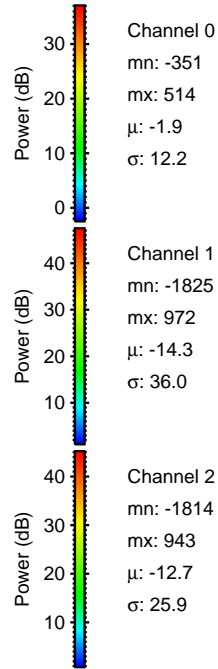
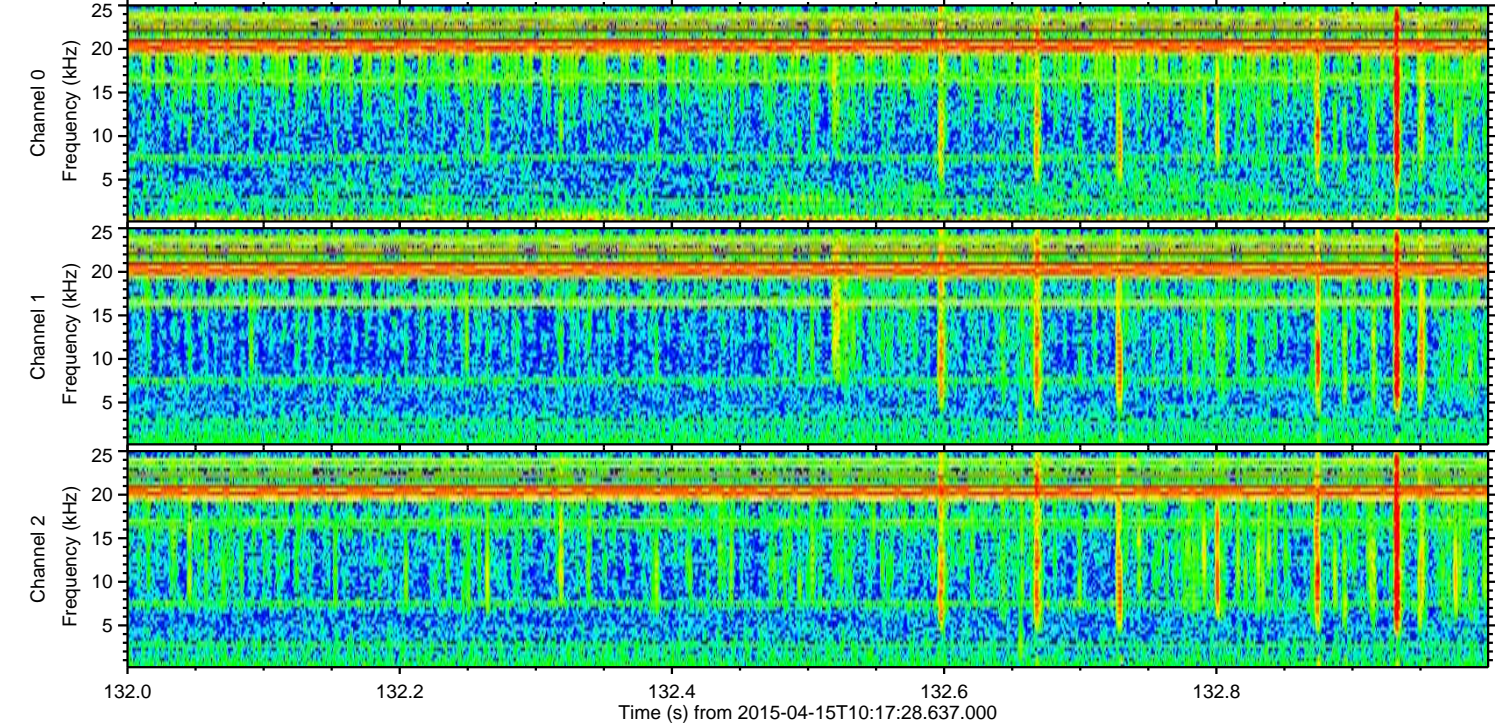
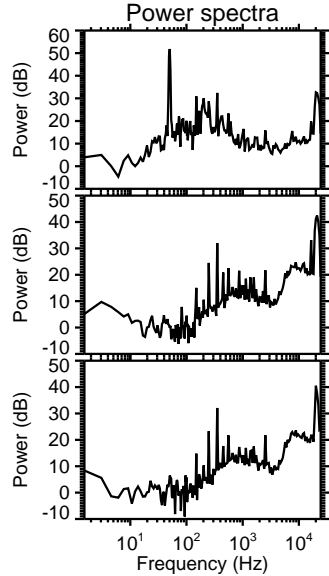
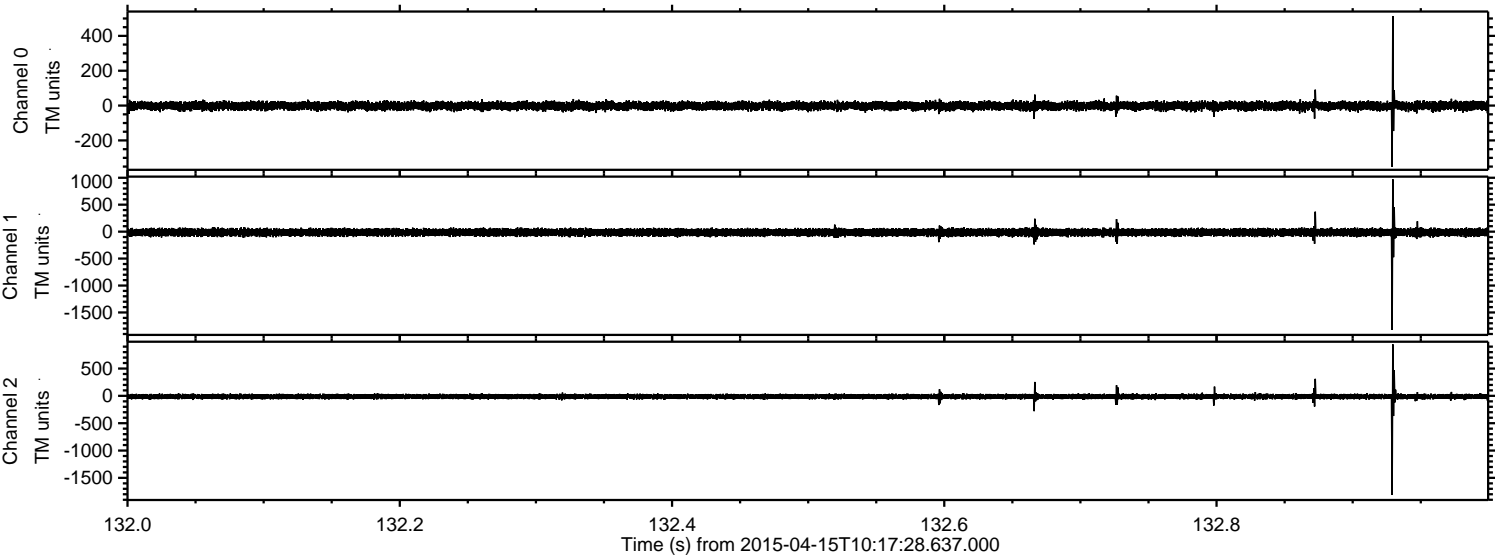
Channel 1
mn: -1934
mx: 1672
 μ : -14.8
 σ : 38.9

Channel 2
mn: -1172
mx: 1205
 μ : -13.4
 σ : 28.4

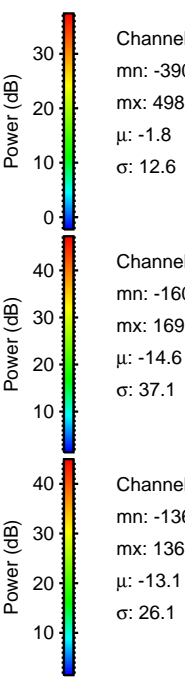
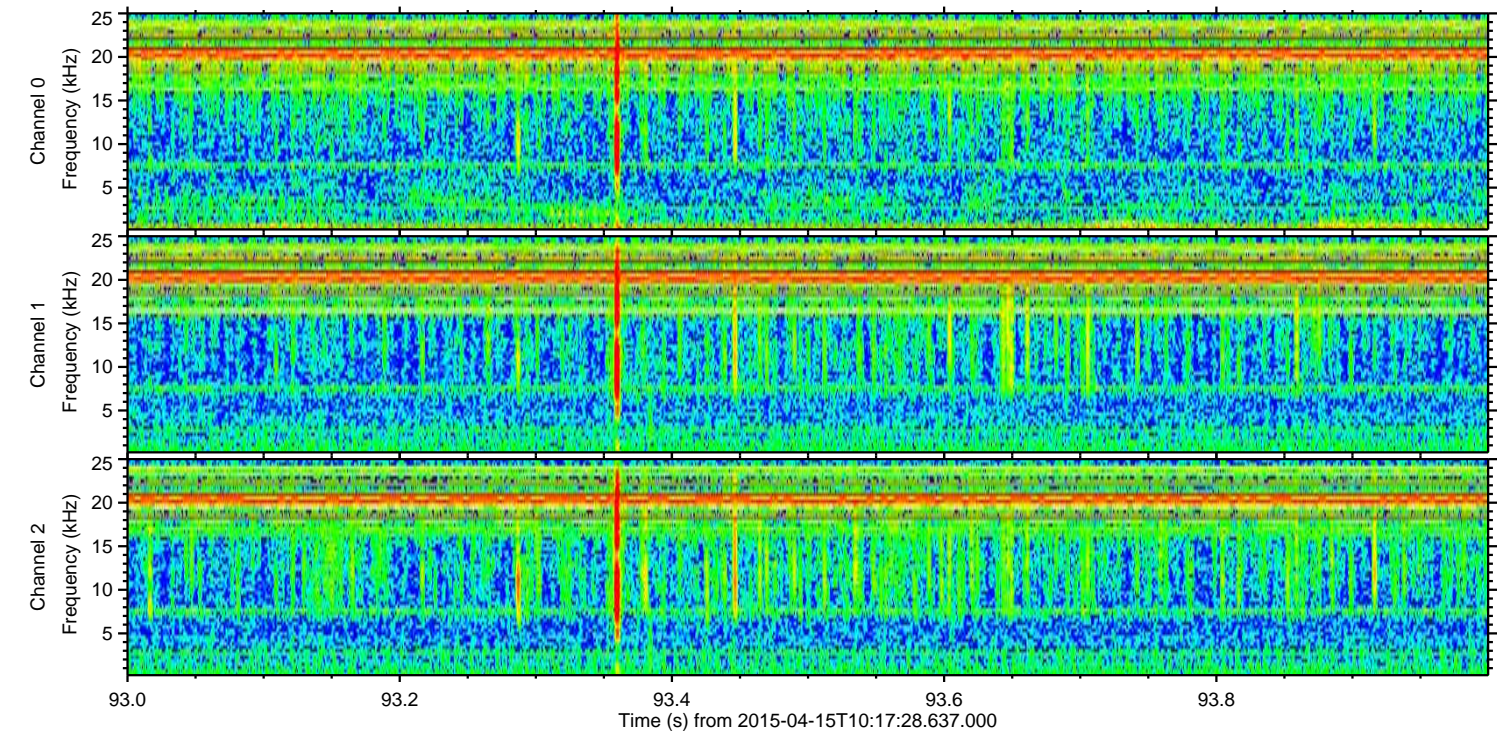
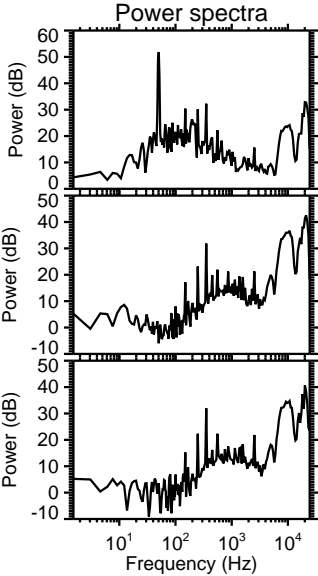
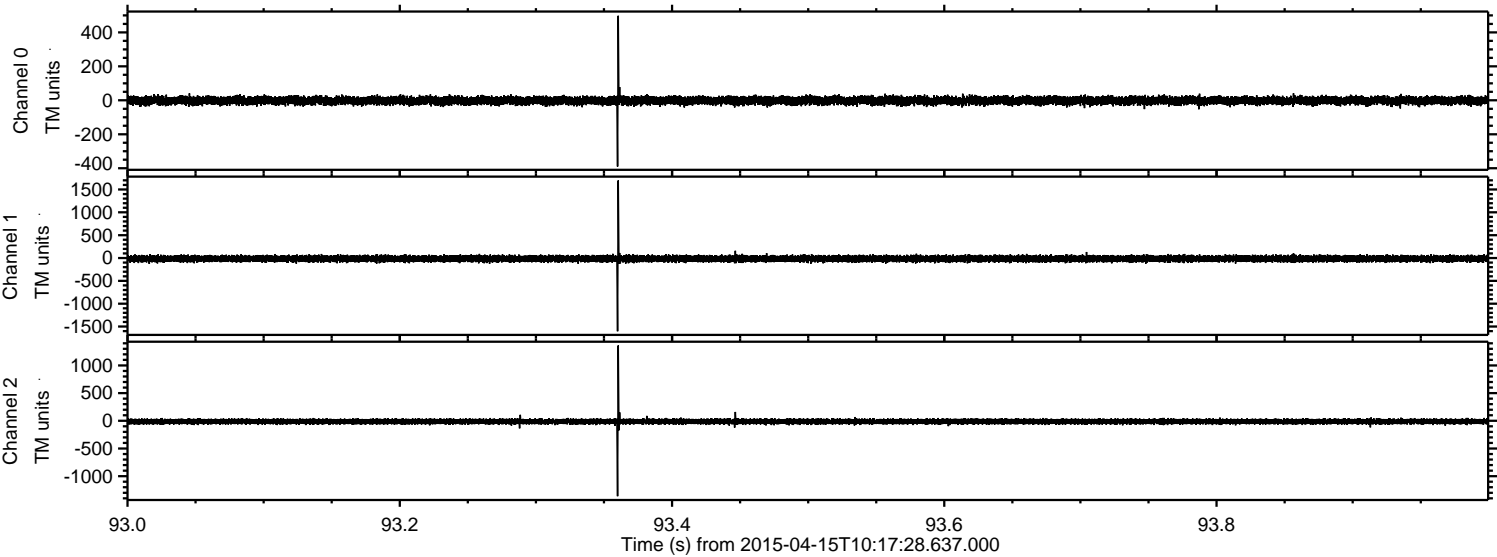
Processed Wed Apr 15 12:25:18 2015 by ELM ver.2012-10-06 from 001__elm20150415_101727__dat00.bin



Processed Wed Apr 15 12:25:19 2015 by ELM ver.2012-10-06 from 001__elm20150415_101727__dat00.bin



Processed Wed Apr 15 12:25:20 2015 by ELM ver.2012-10-06 from 001__elm20150415_101727__dat00.bin



Channel 0
mn: -390
mx: 498
 μ : -1.8
 σ : 12.6

Channel 1
mn: -1603
mx: 1697
 μ : -14.6
 σ : 37.1

Channel 2
mn: -1362
mx: 1360
 μ : -13.1
 σ : 26.1

