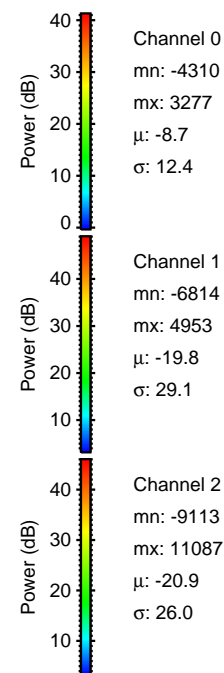
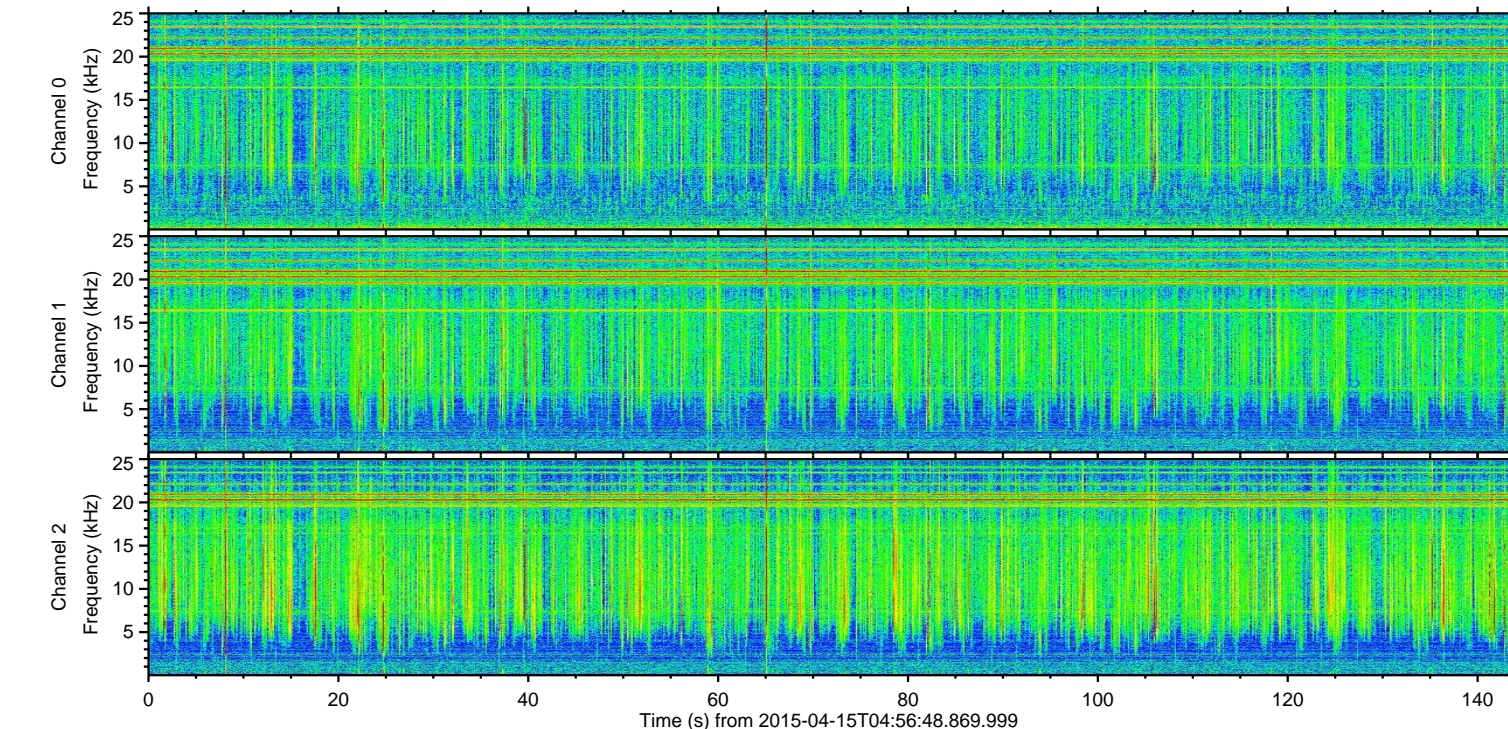
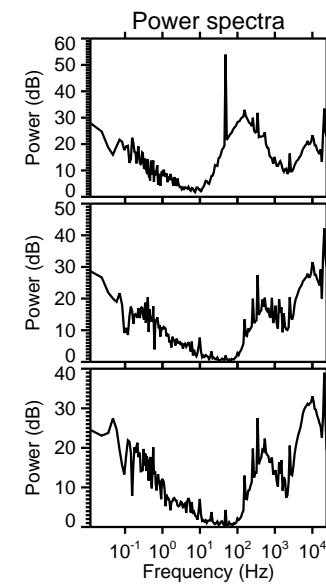
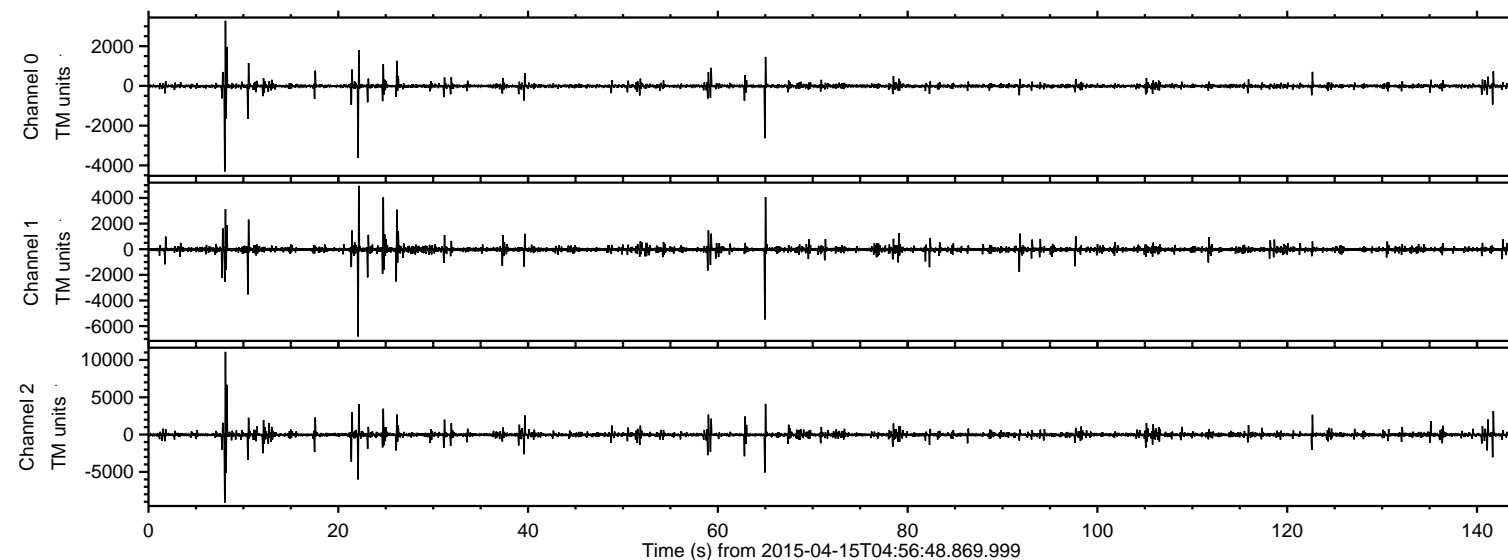
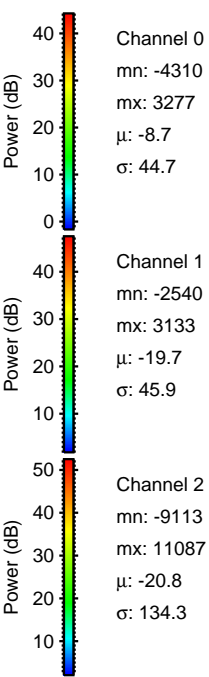
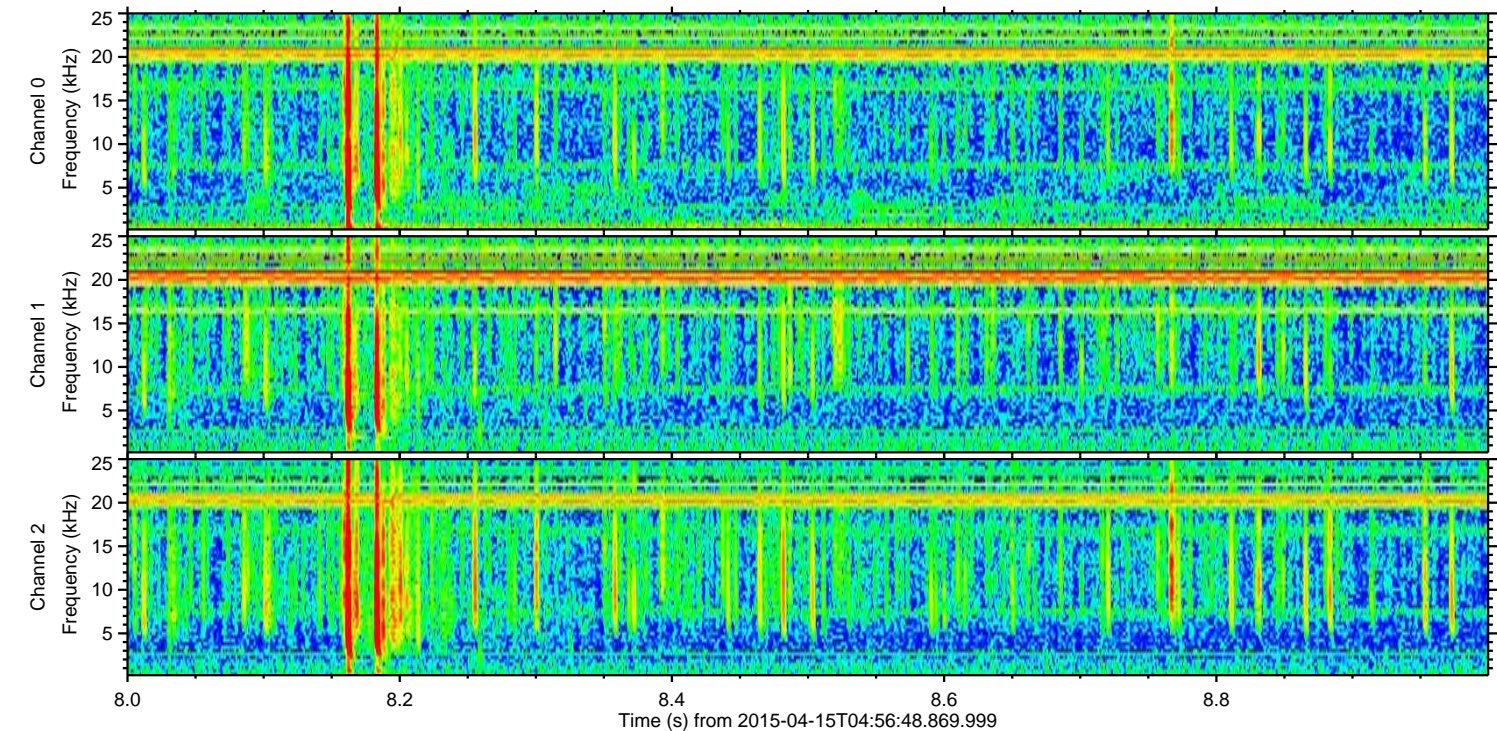
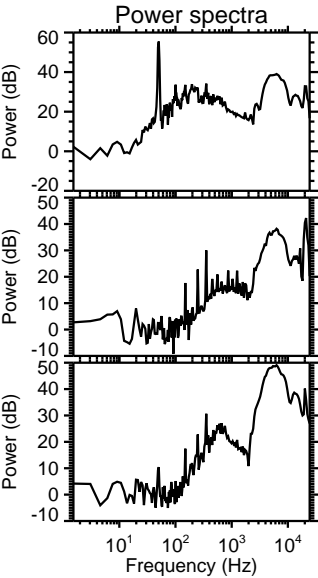
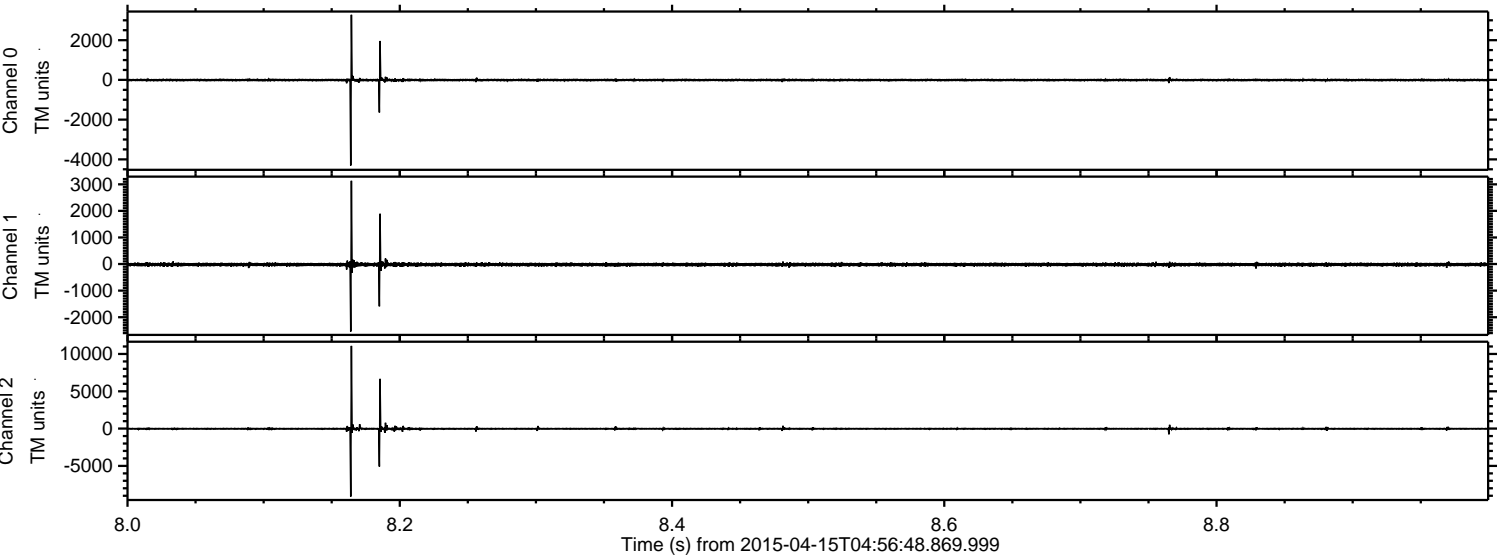


ELMAVAN 3D WAVEFORMS (Measured data sampled at 50 kHz) 49787 packets of 144 samples from 2015-04-15T04:56:48.869.999.

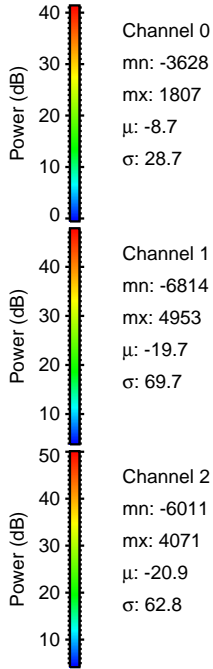
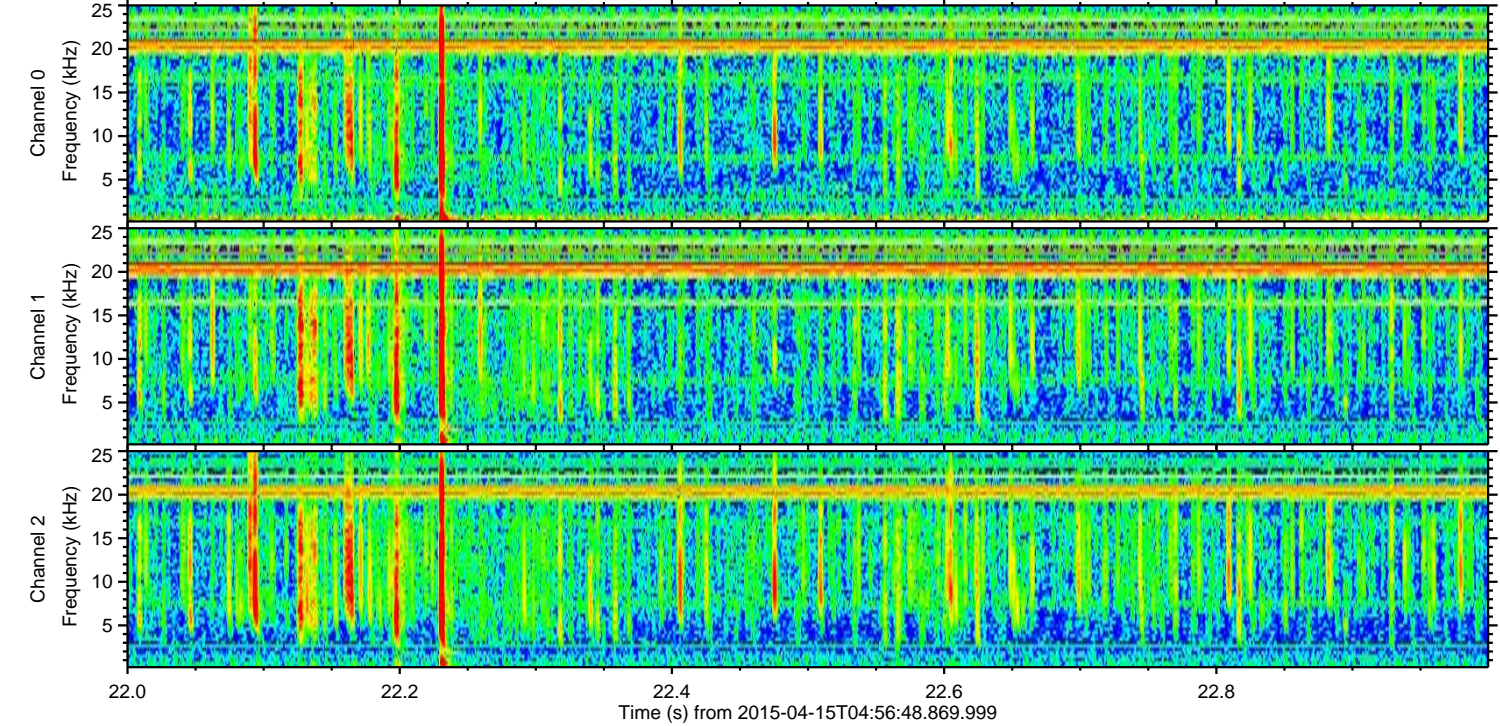
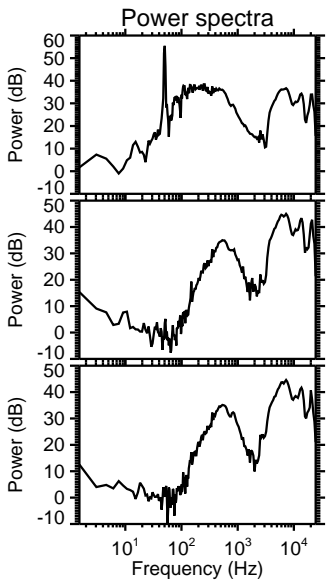
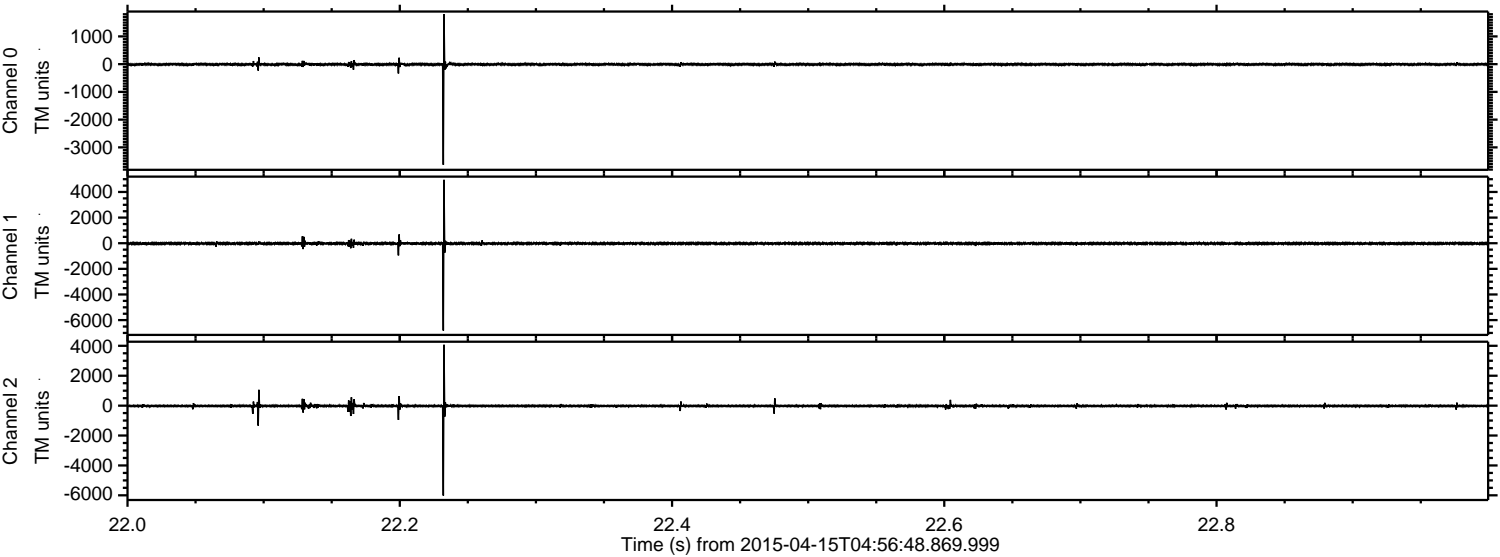
Processed Wed Apr 15 07:03:41 2015 by ELM ver.2012-10-06 from 001__elm20150415_045647__dat00.bin



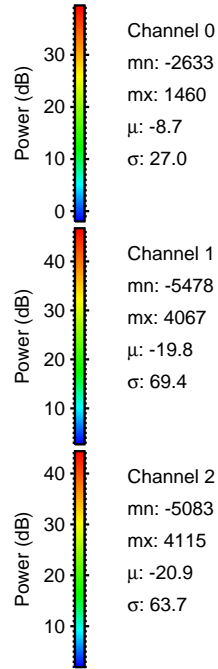
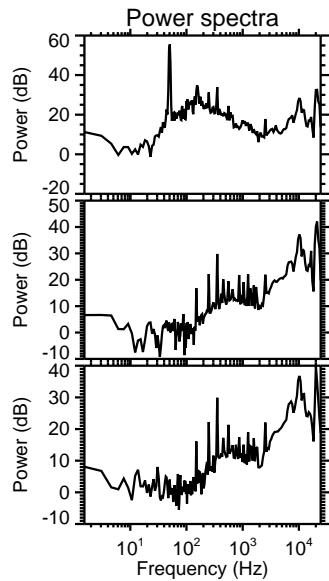
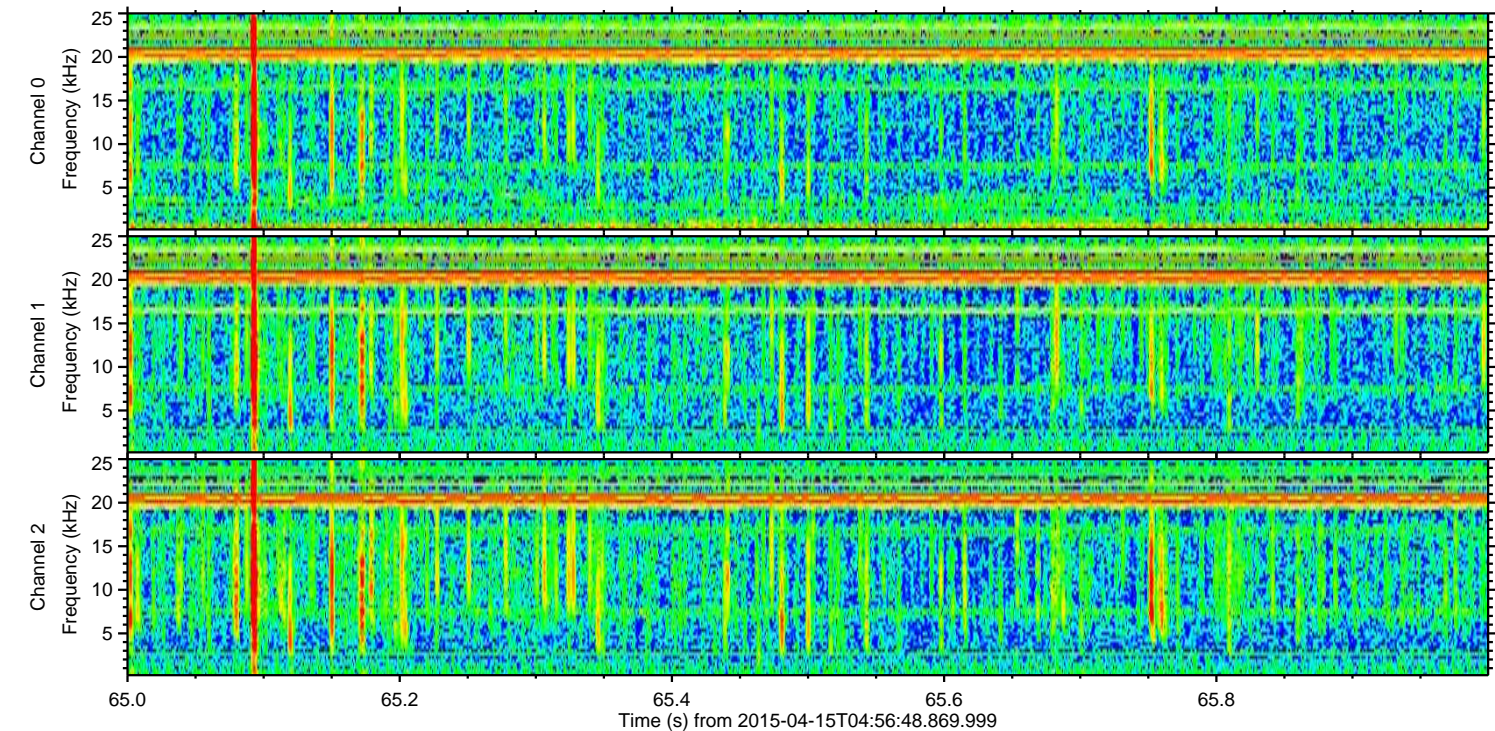
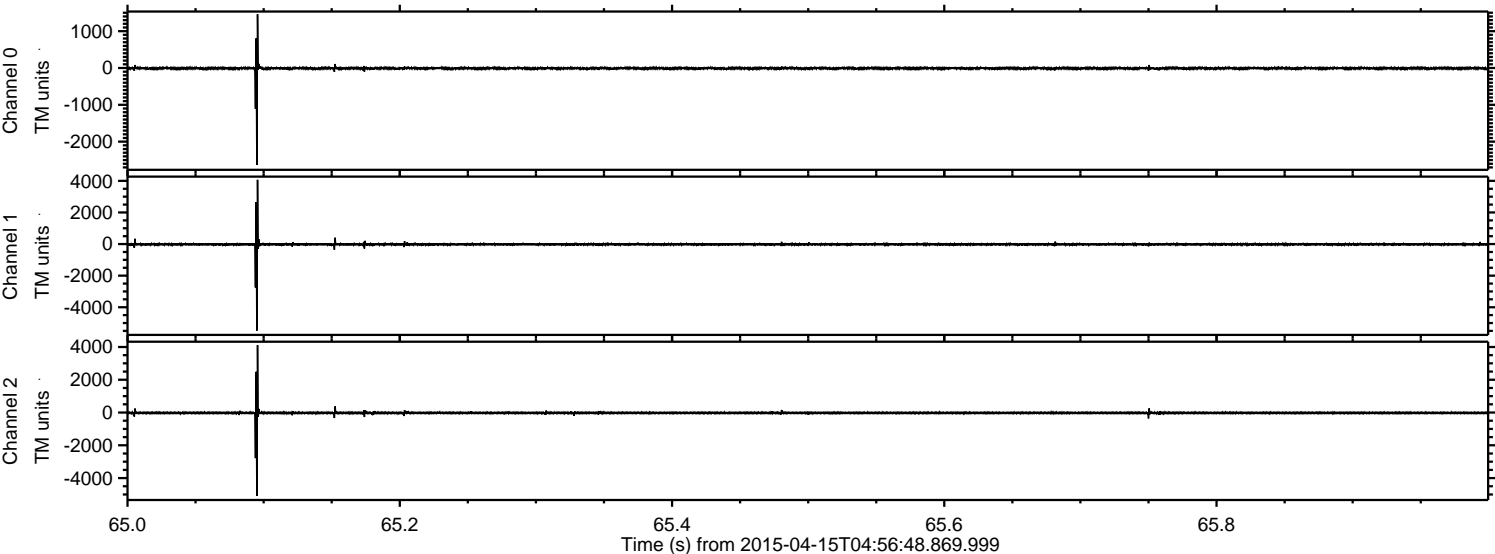
Processed Wed Apr 15 07:03:52 2015 by ELM ver.2012-10-06 from 001__elm20150415_045647__dat00.bin



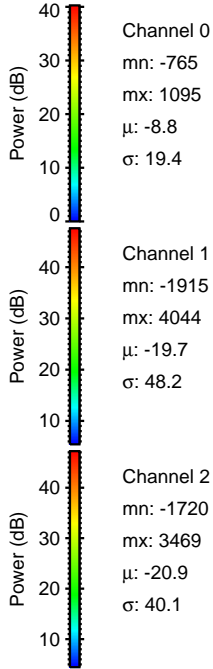
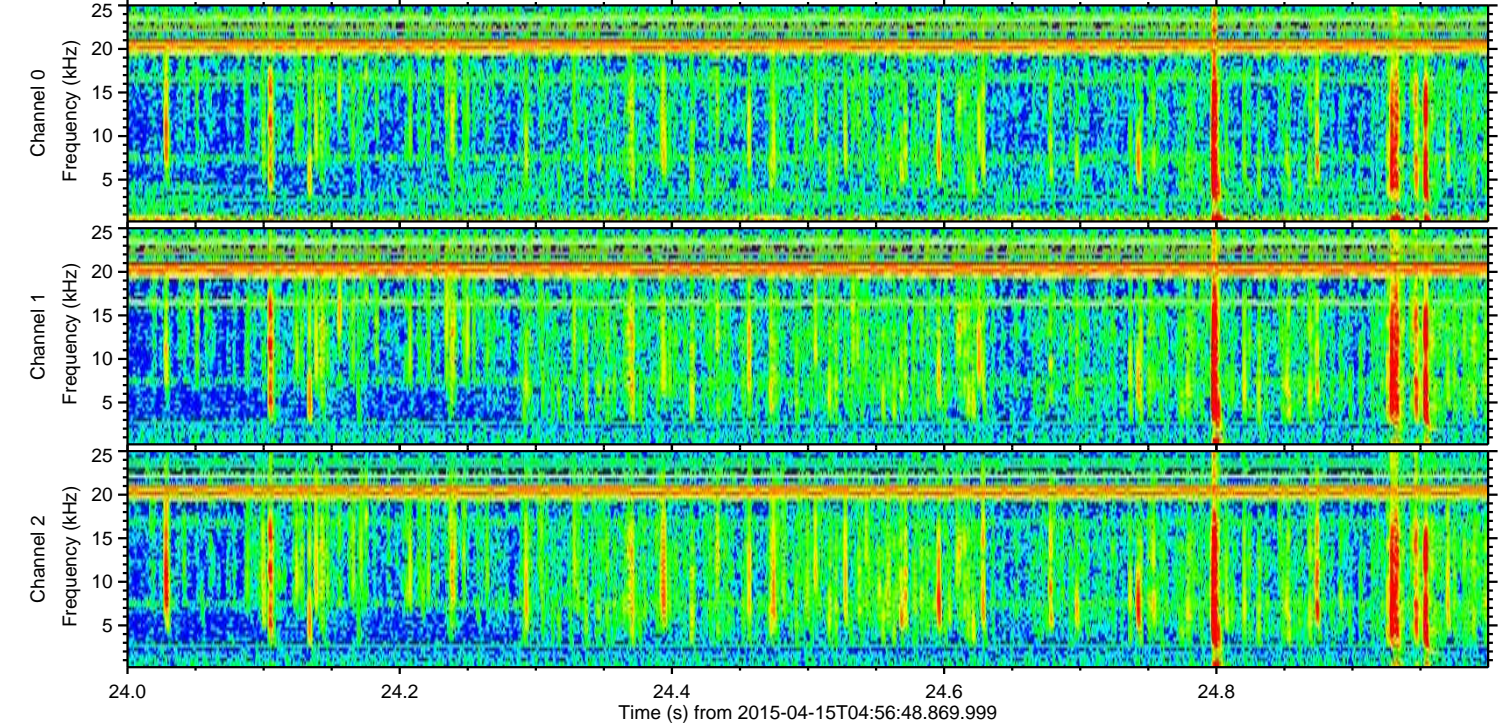
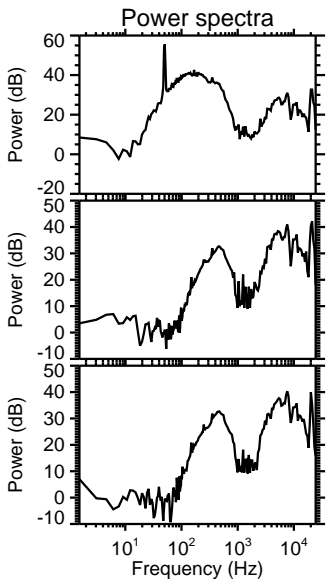
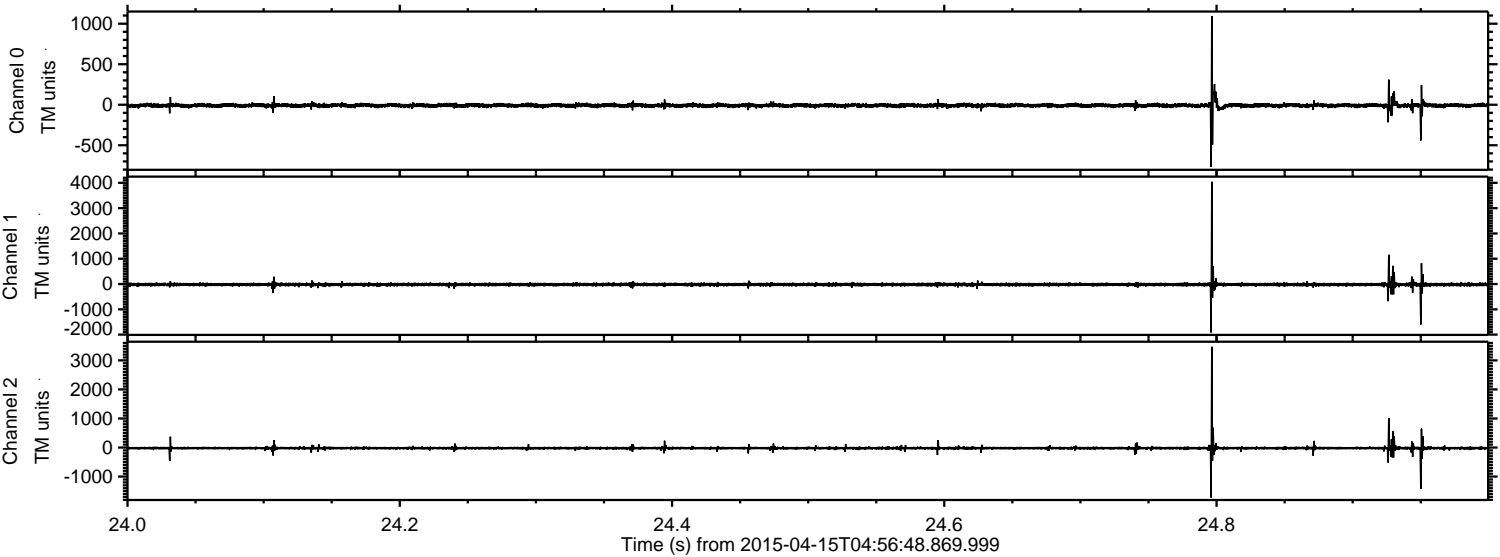
Processed Wed Apr 15 07:03:53 2015 by ELM ver.2012-10-06 from 001__elm20150415_045647__dat00.bin



Processed Wed Apr 15 07:03:54 2015 by ELM ver.2012-10-06 from 001__elm20150415_045647__dat00.bin

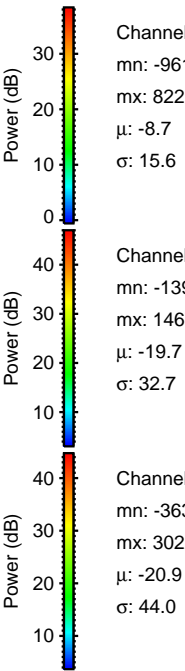
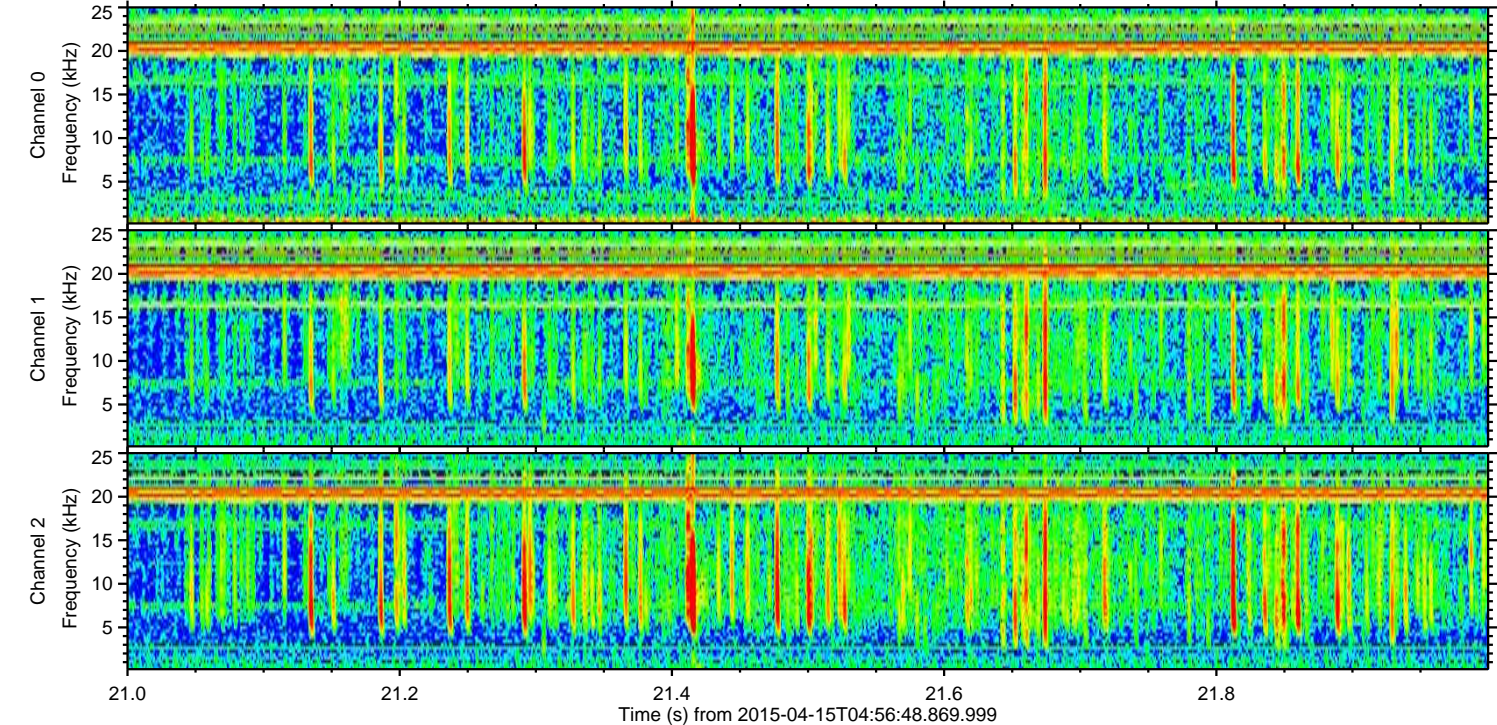
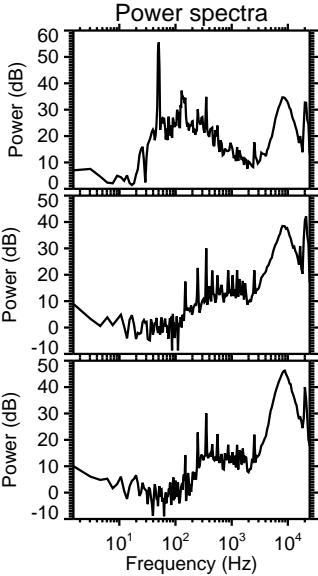
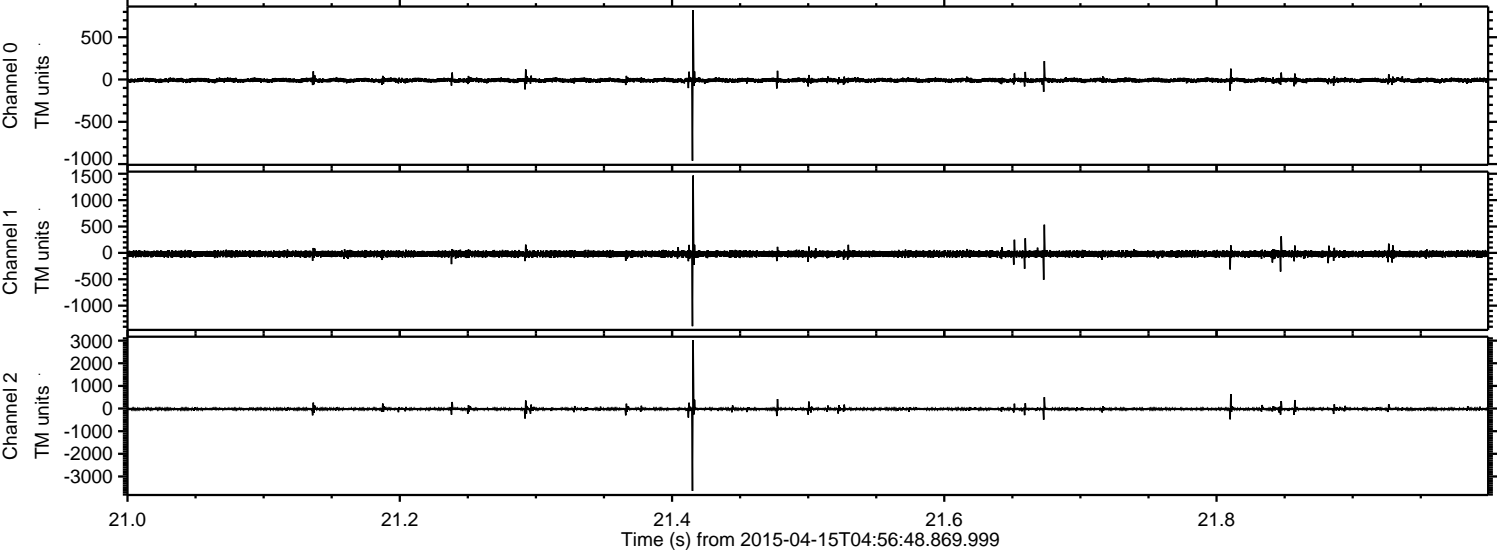


Processed Wed Apr 15 07:03:55 2015 by ELM ver.2012-10-06 from 001__elm20150415_045647__dat00.bin

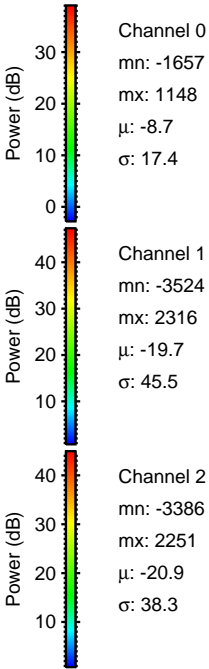
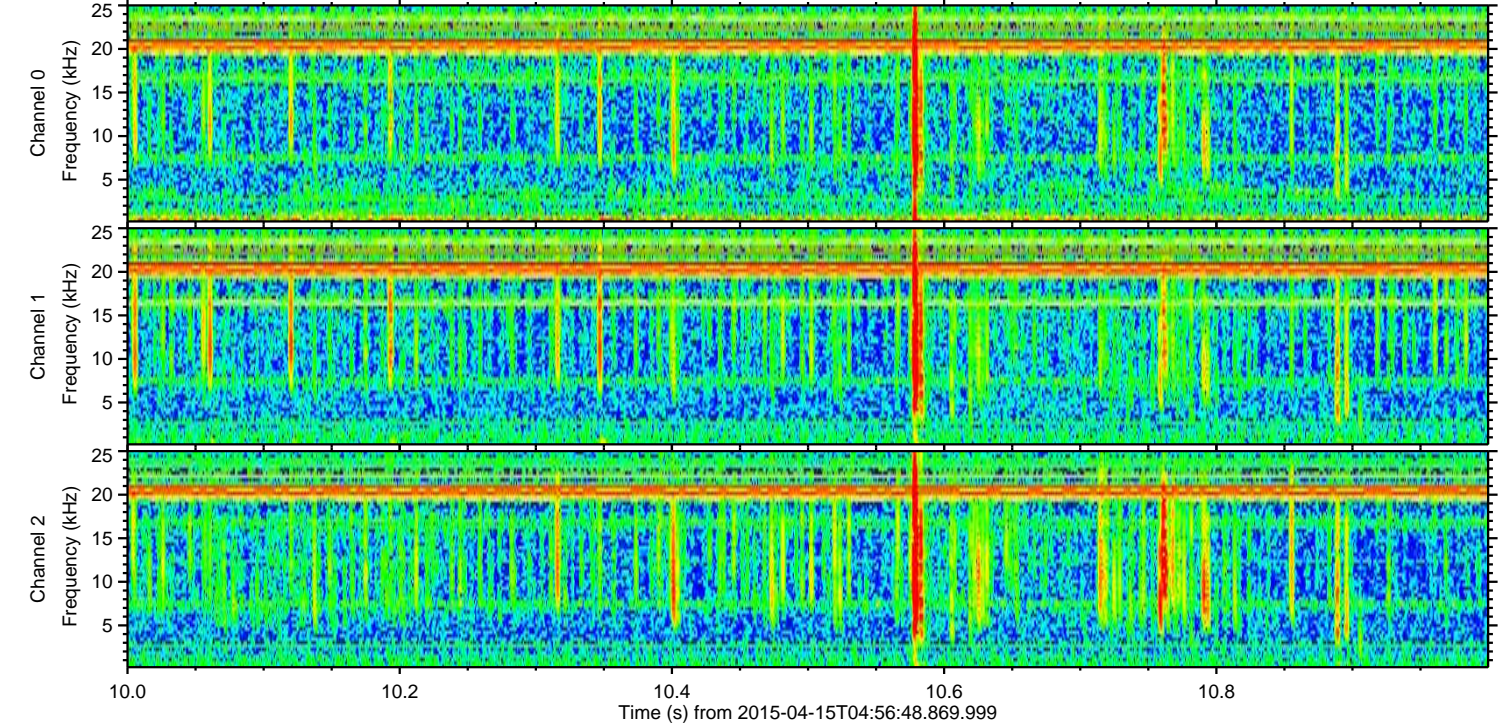
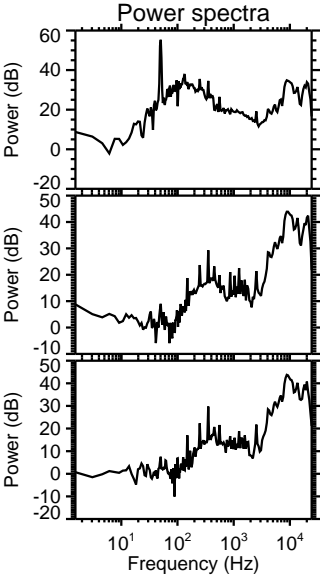
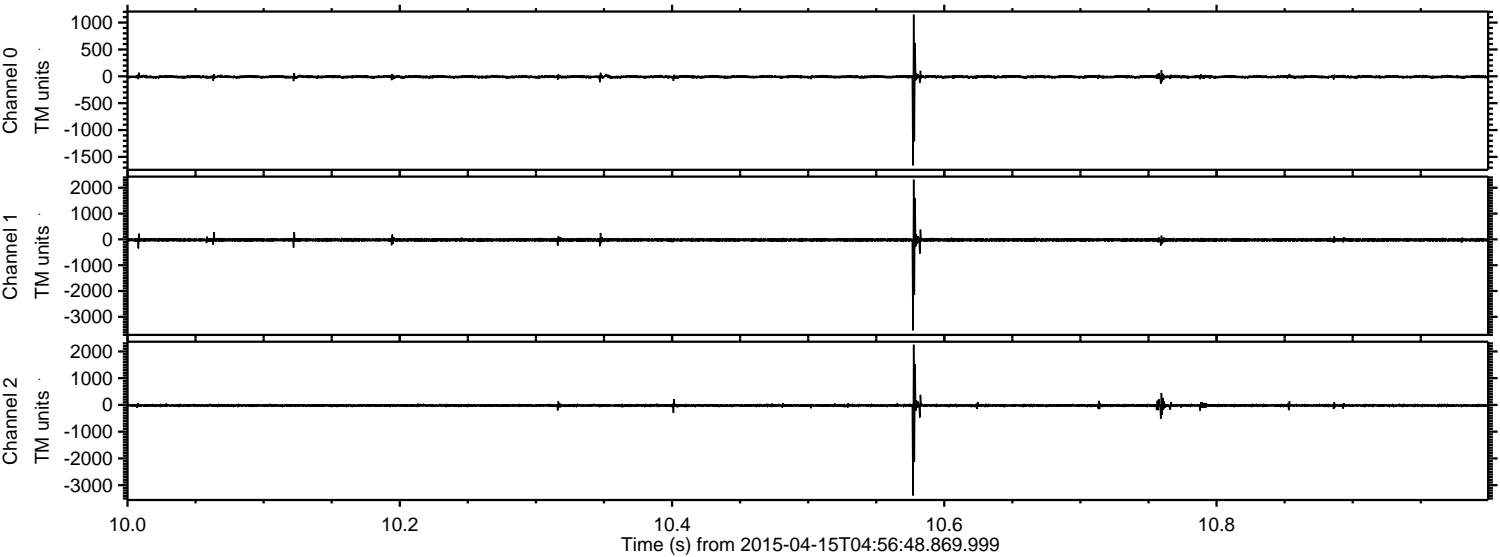


ELMAVAN 3D WAVEFORMS (Measured data sampled at 50 kHz) 49787 packets of 144 samples from 2015-04-15T04:56:48.869.999. Part 22/144

Processed Wed Apr 15 07:03:56 2015 by ELM ver.2012-10-06 from 001__elm20150415_045647__dat00.bin

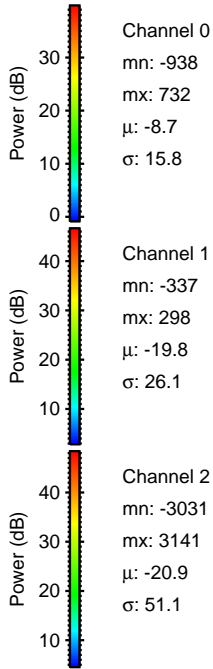
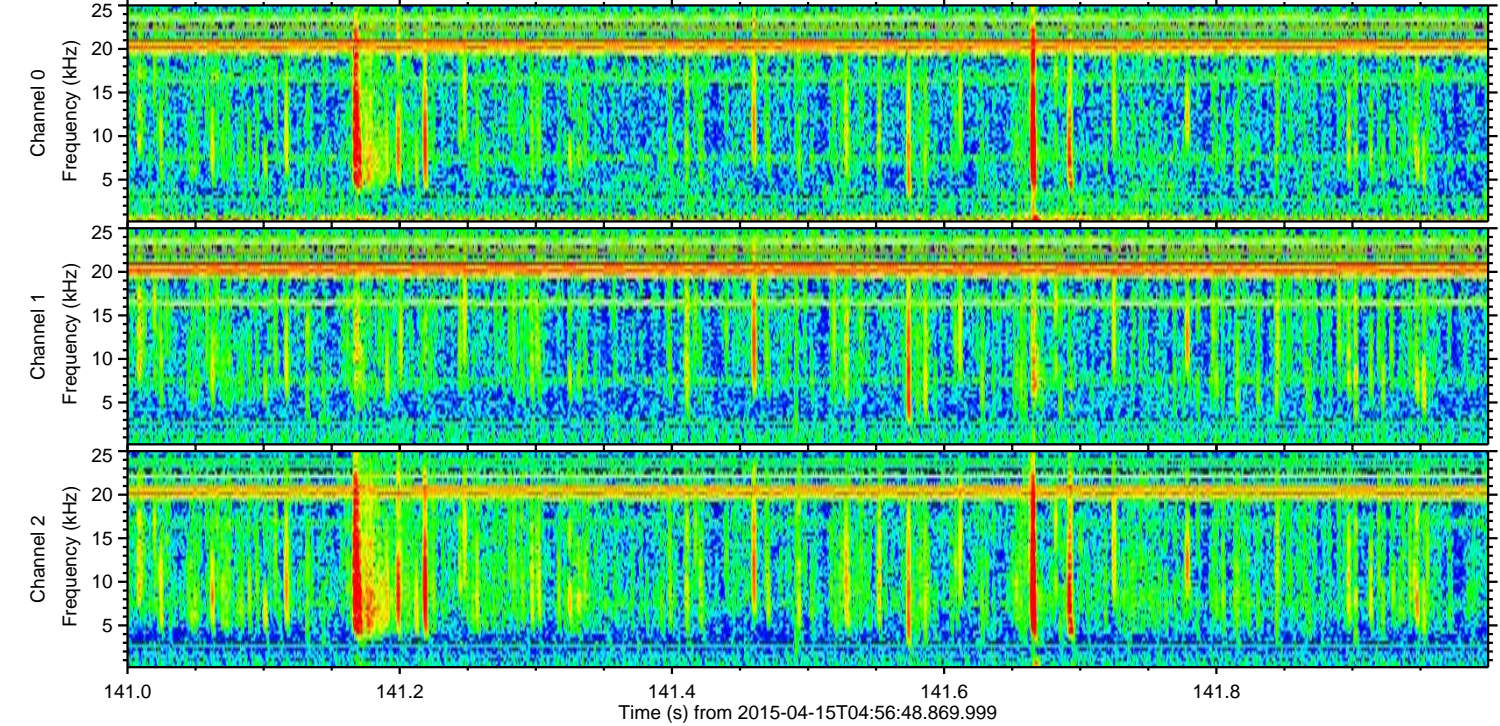
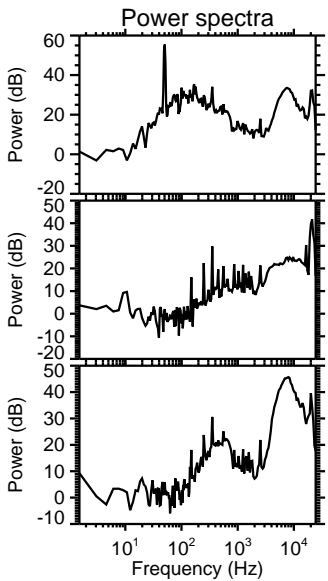
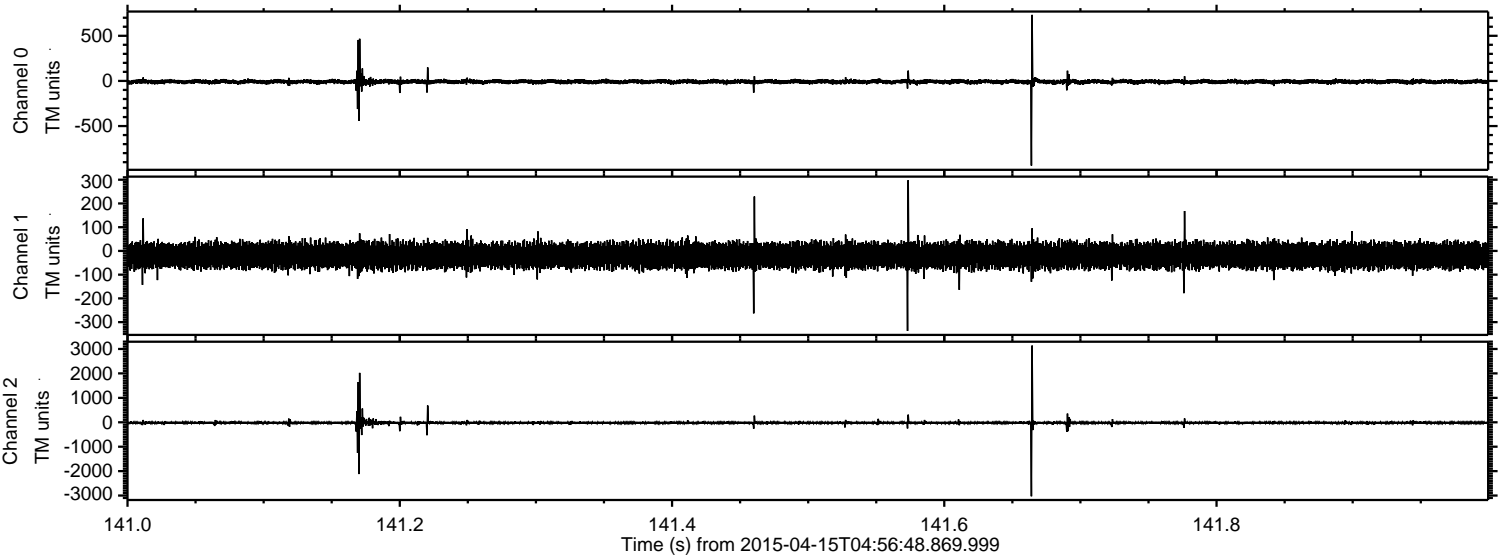


Processed Wed Apr 15 07:03:57 2015 by ELM ver.2012-10-06 from 001__elm20150415_045647__dat00.bin



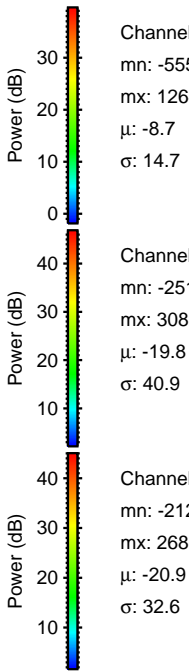
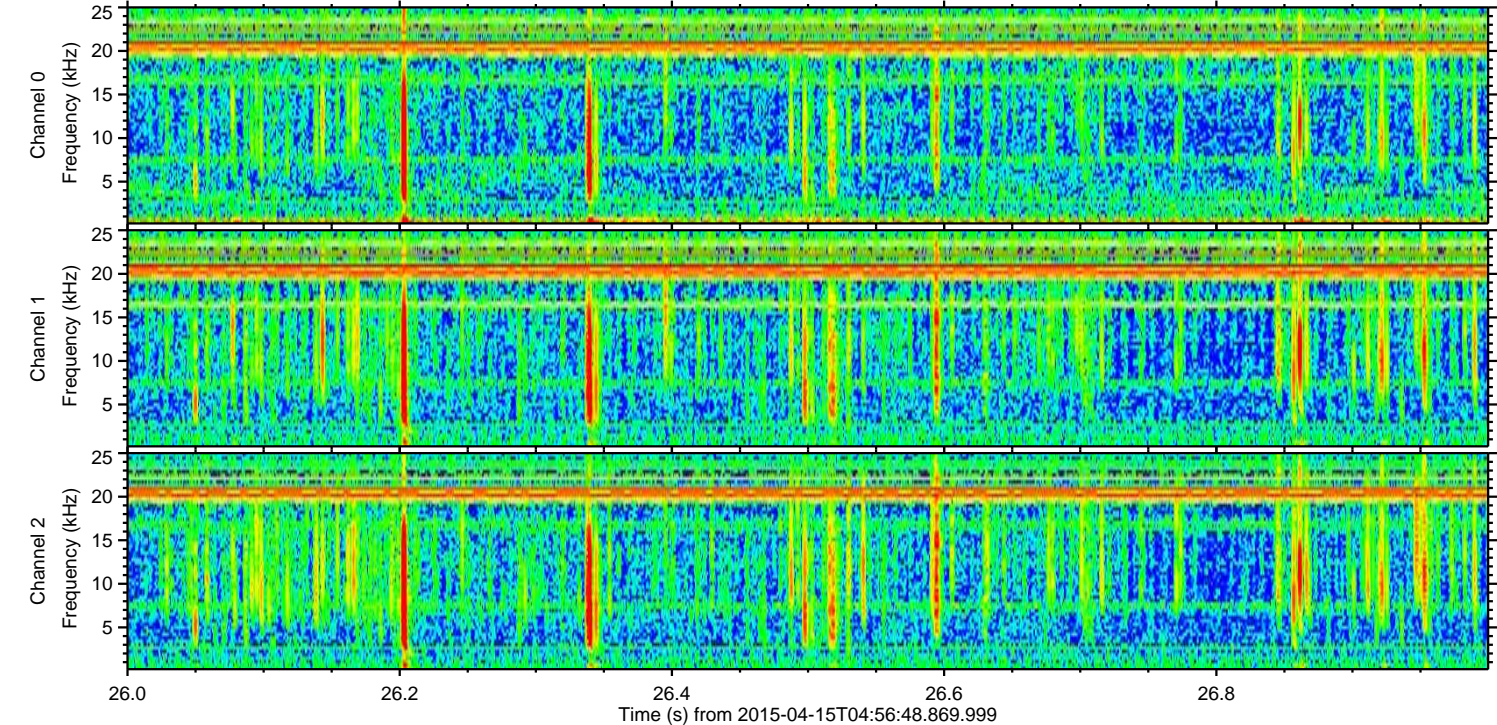
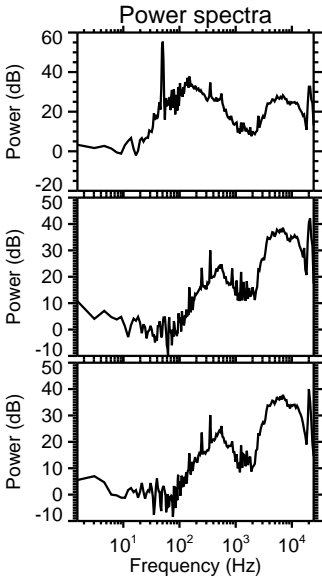
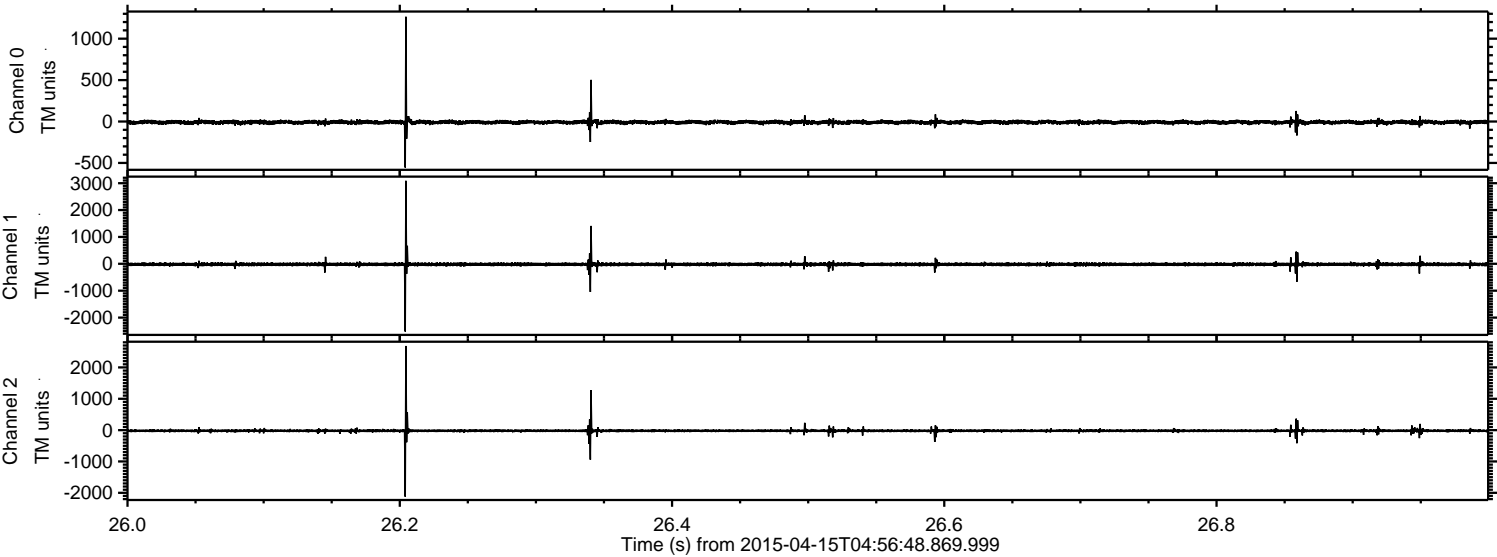
ELMAVAN 3D WAVEFORMS (Measured data sampled at 50 kHz) 49787 packets of 144 samples from 2015-04-15T04:56:48.869.999. Part 142/144

Processed Wed Apr 15 07:03:58 2015 by ELM ver.2012-10-06 from 001__elm20150415_045647__dat00.bin

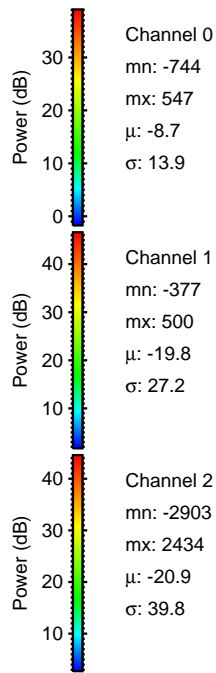
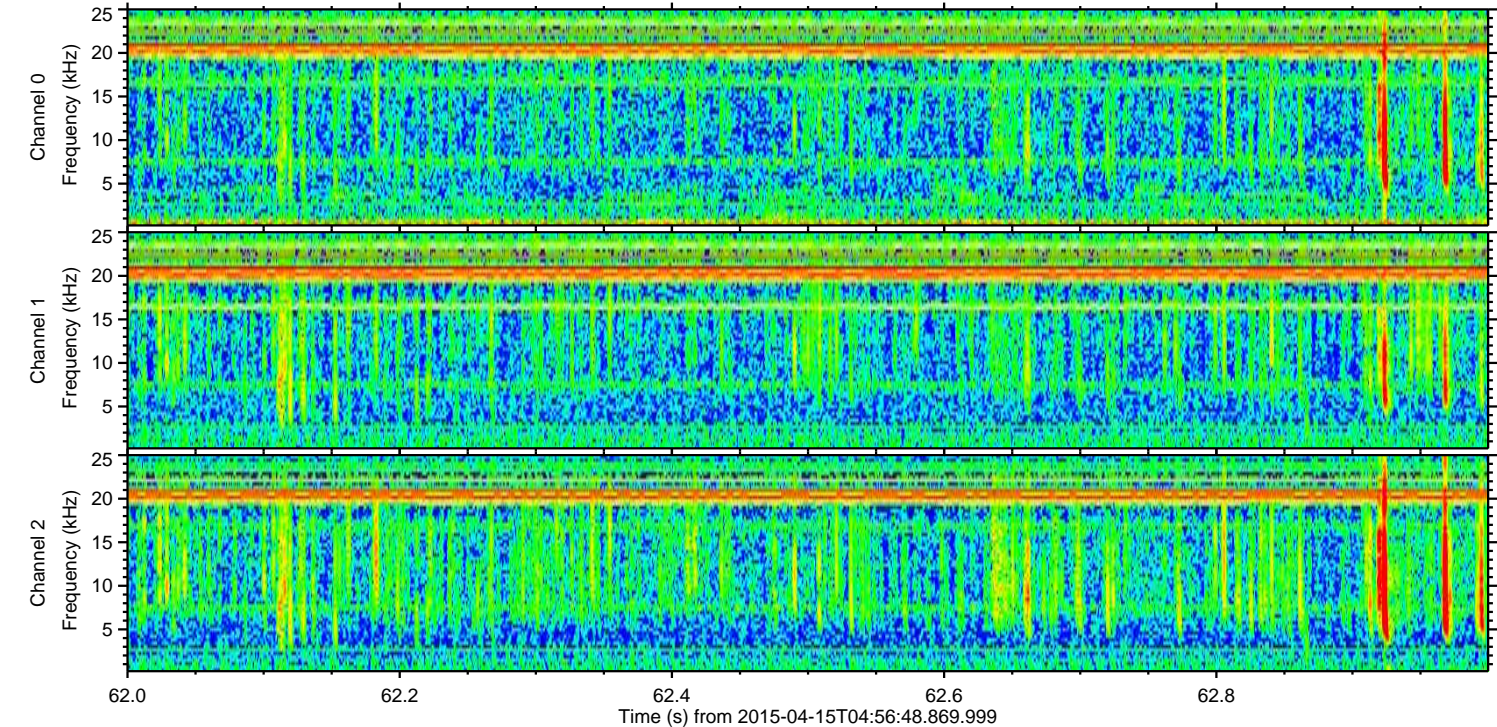
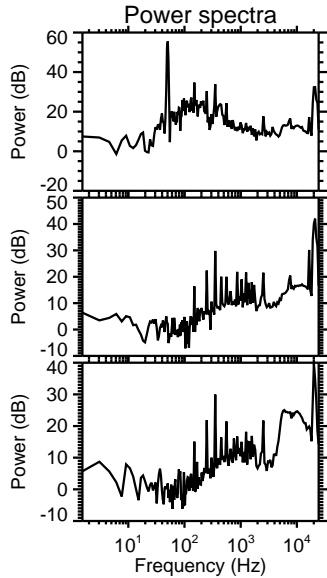
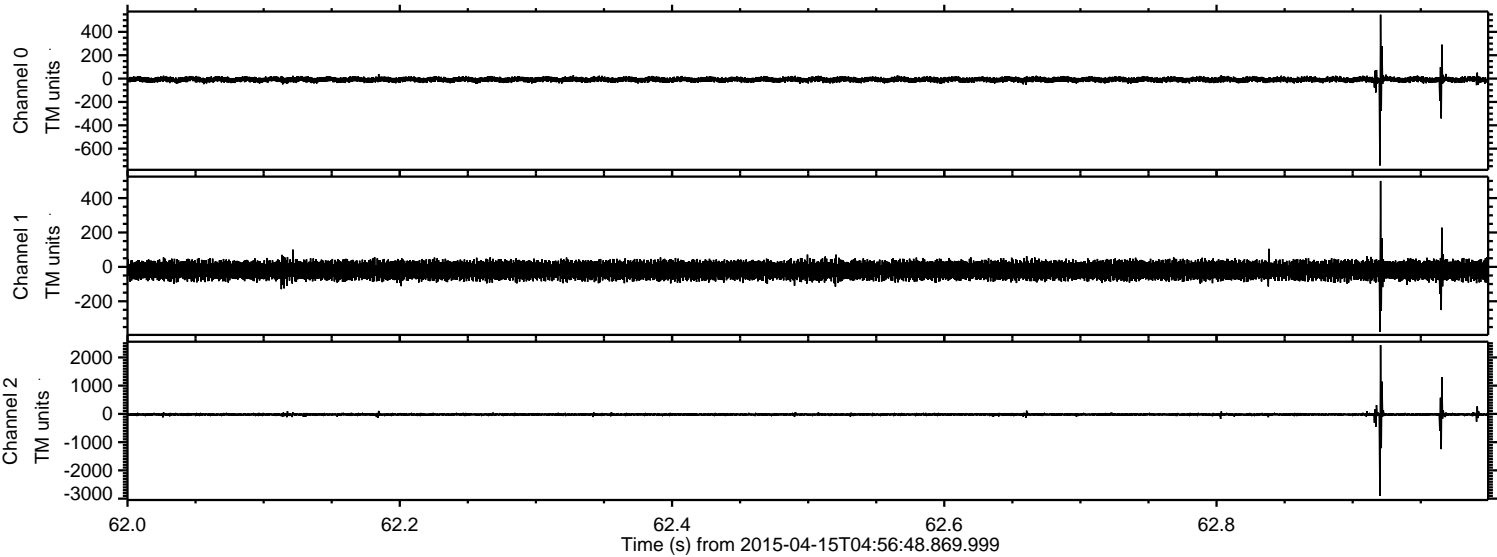


ELMAVAN 3D WAVEFORMS (Measured data sampled at 50 kHz) 49787 packets of 144 samples from 2015-04-15T04:56:48.869.999. Part 27/144

Processed Wed Apr 15 07:03:59 2015 by ELM ver.2012-10-06 from 001__elm20150415_045647__dat00.bin



Processed Wed Apr 15 07:04:00 2015 by ELM ver.2012-10-06 from 001__elm20150415_045647__dat00.bin



Channel 0
mn: -744
mx: 547
 μ : -8.7
 σ : 13.9

Channel 1
mn: -377
mx: 500
 μ : -19.8
 σ : 27.2

Channel 2
mn: -2903
mx: 2434
 μ : -20.9
 σ : 39.8

Processed Wed Apr 15 07:04:01 2015 by ELM ver.2012-10-06 from 001__elm20150415_045647__dat00.bin

