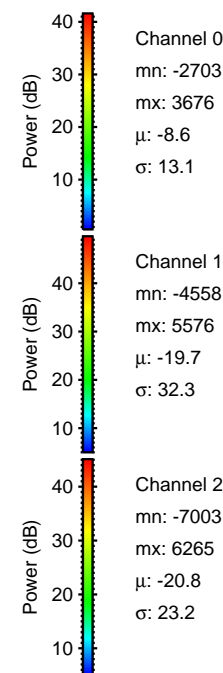
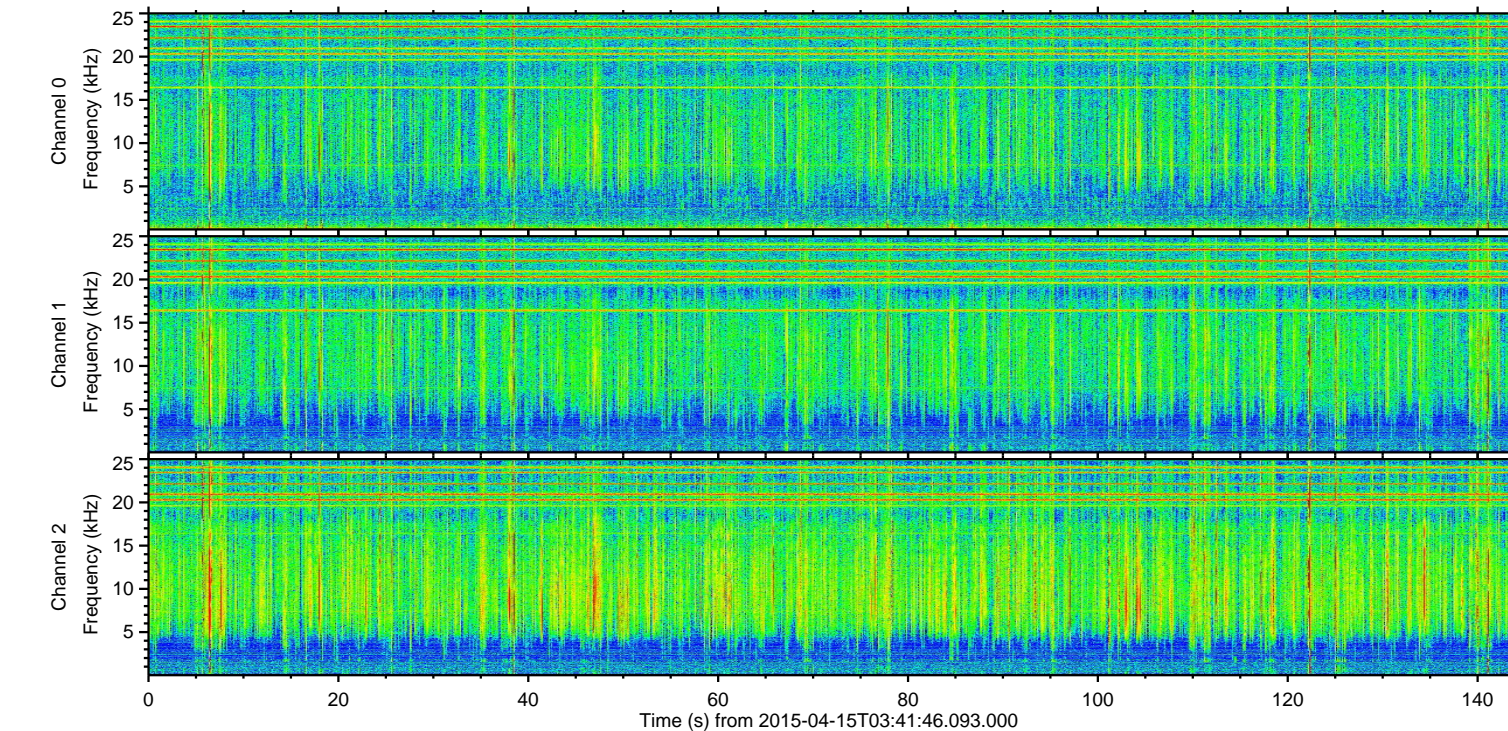
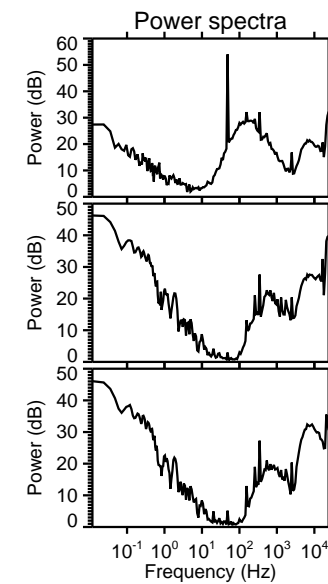
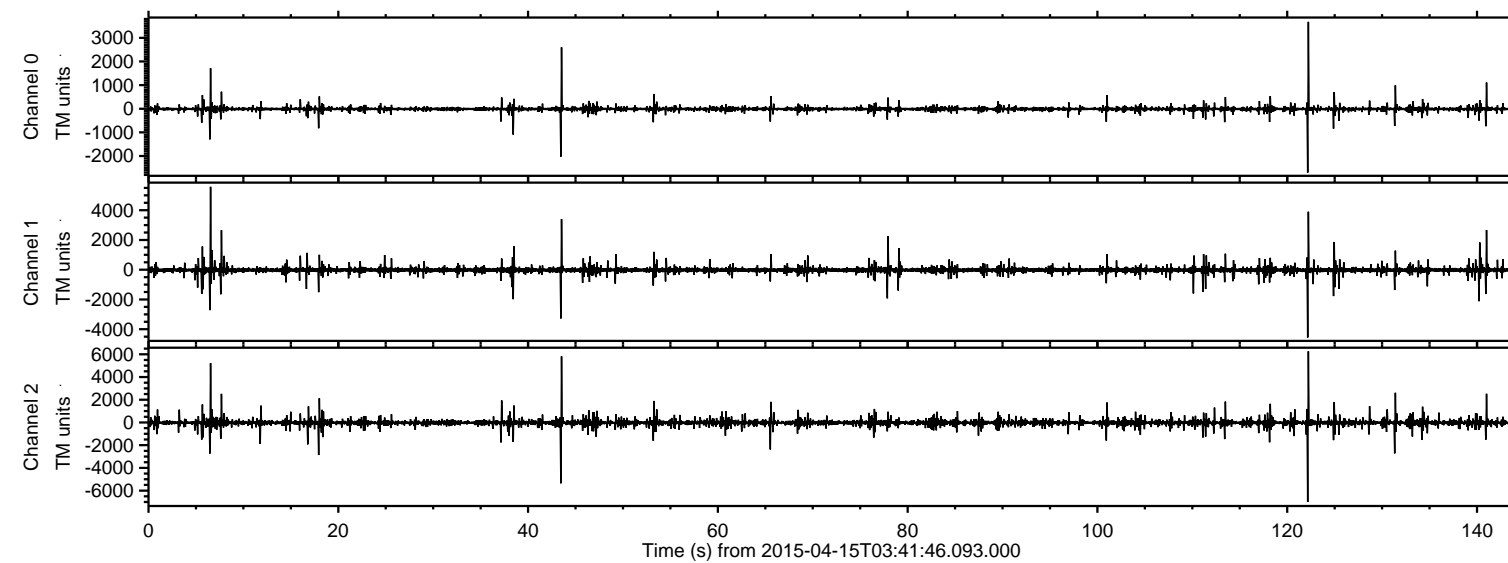
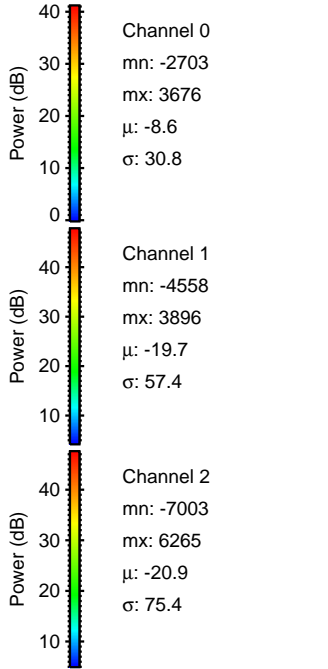
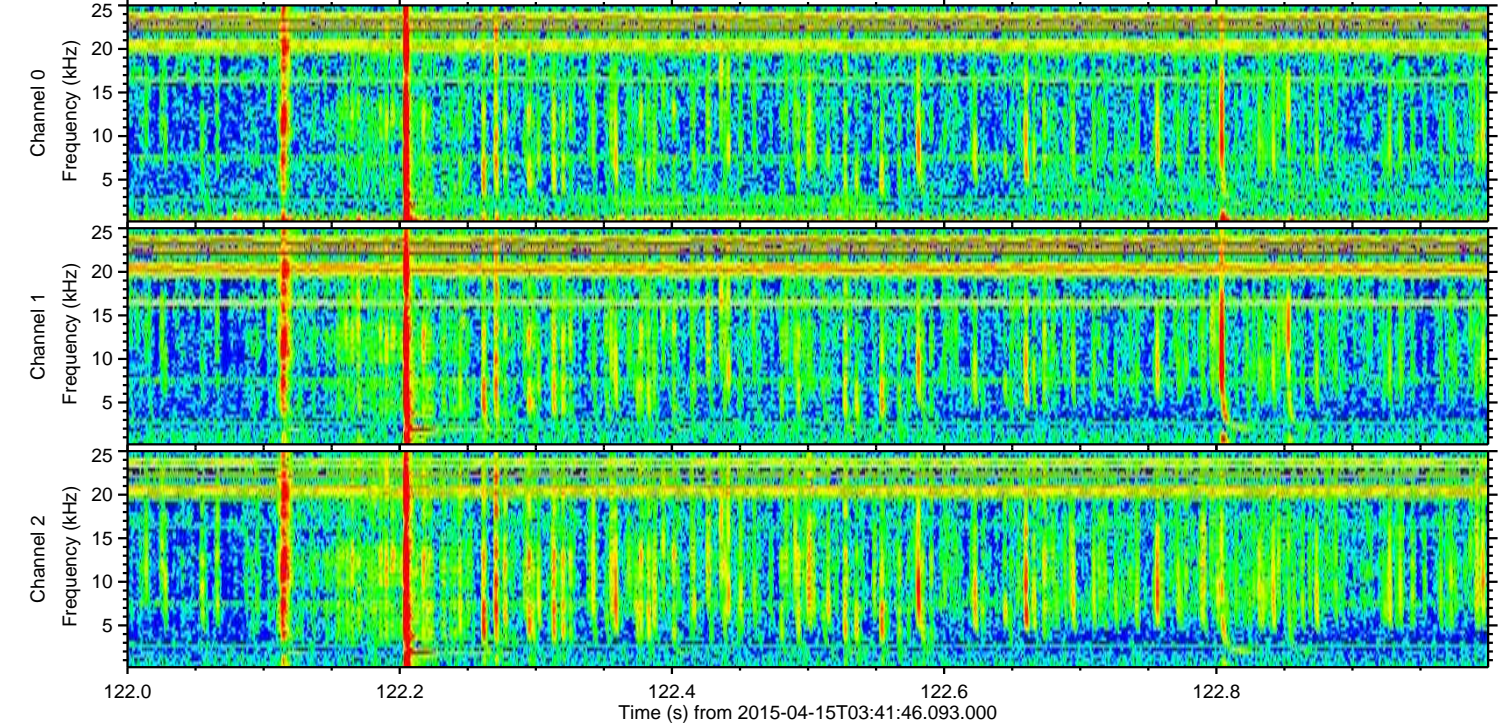
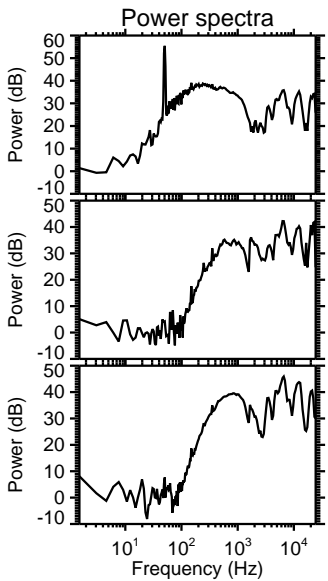
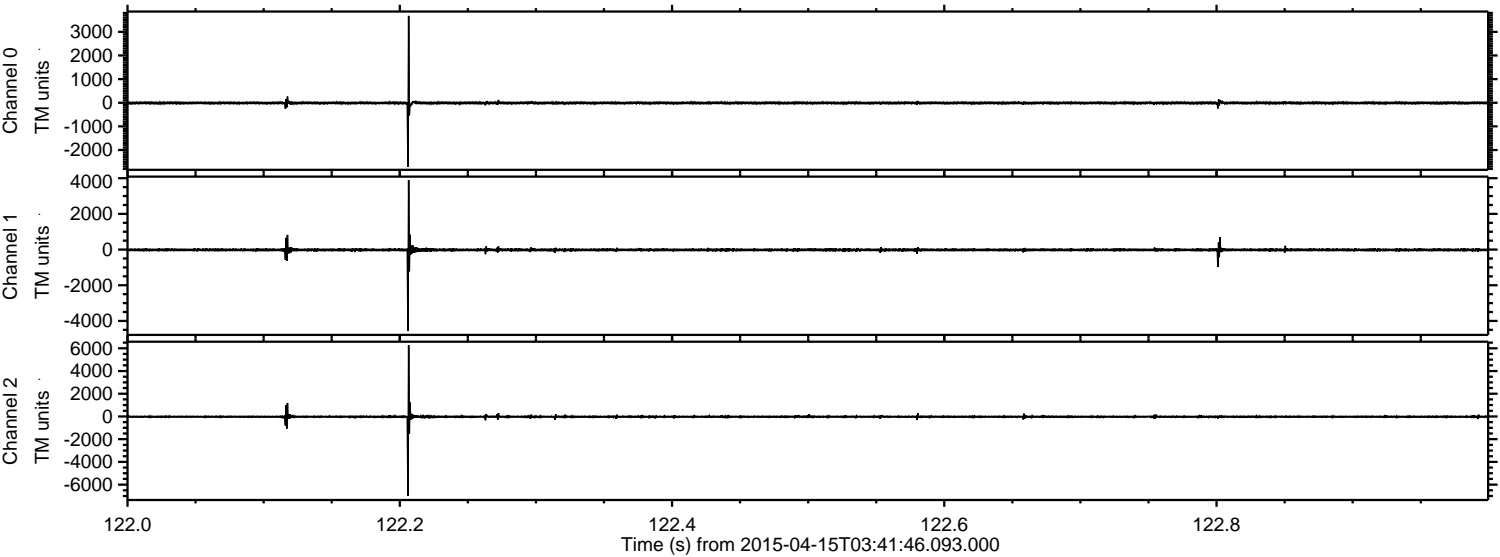


ELMAVAN 3D WAVEFORMS (Measured data sampled at 50 kHz) 49788 packets of 144 samples from 2015-04-15T03:41:46.093.000.

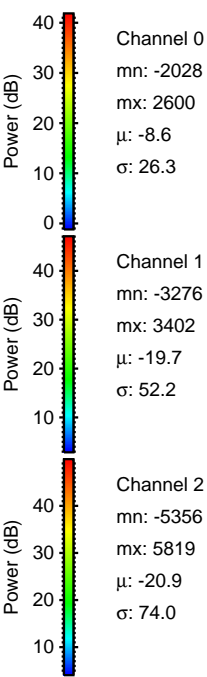
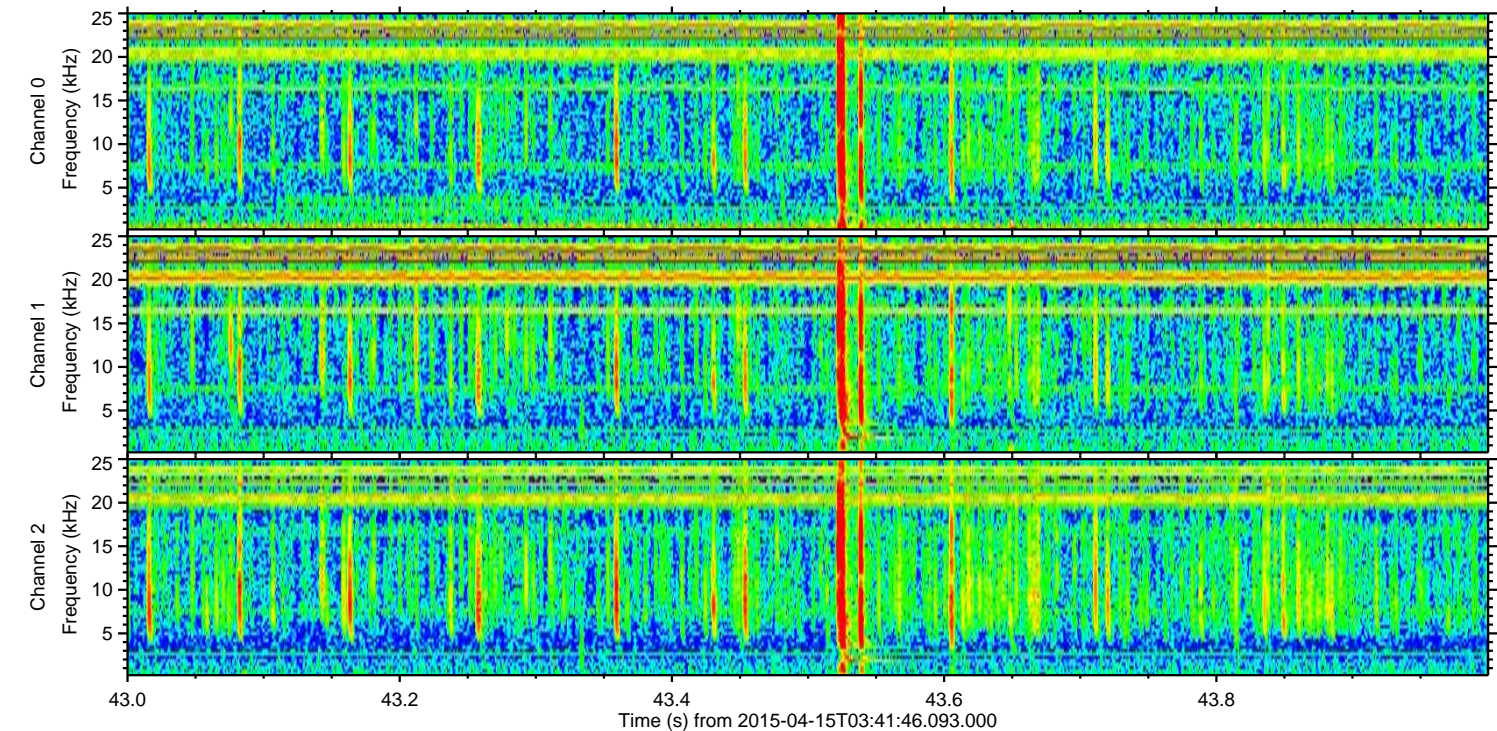
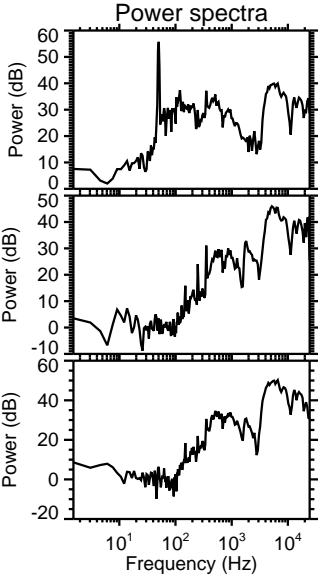
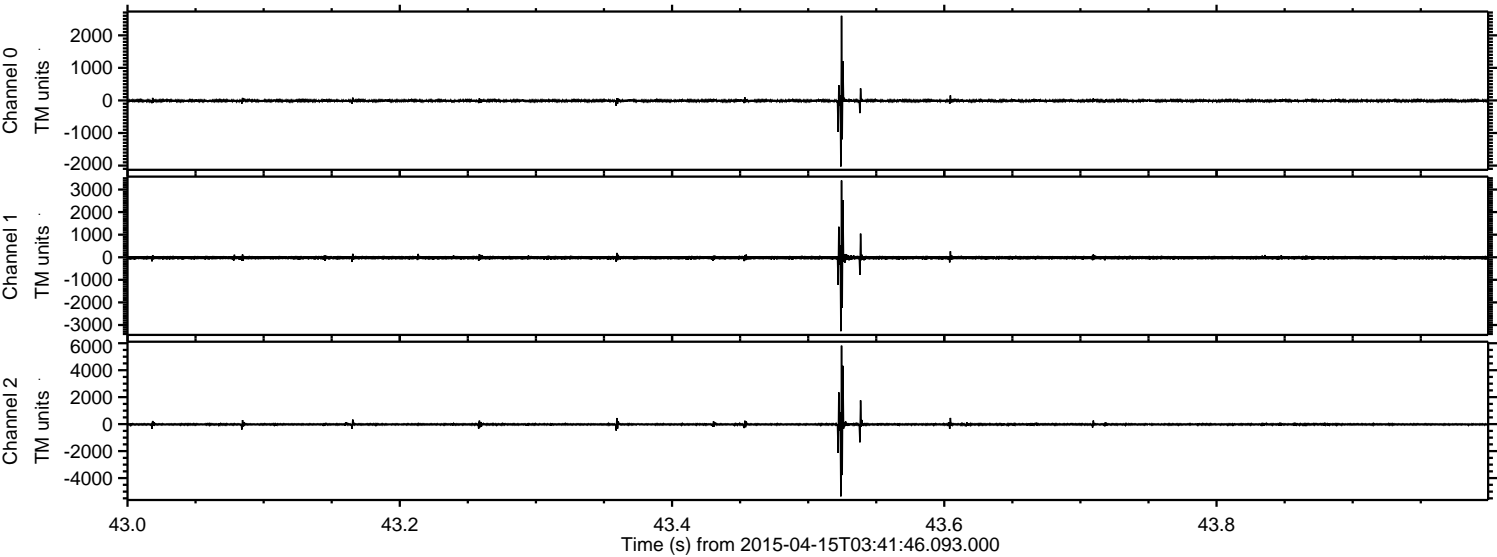
Processed Wed Apr 15 05:48:10 2015 by ELM ver.2012-10-06 from 001__elm20150415_034145__dat00.bin



Processed Wed Apr 15 05:48:21 2015 by ELM ver.2012-10-06 from 001__elm20150415_034145__dat00.bin

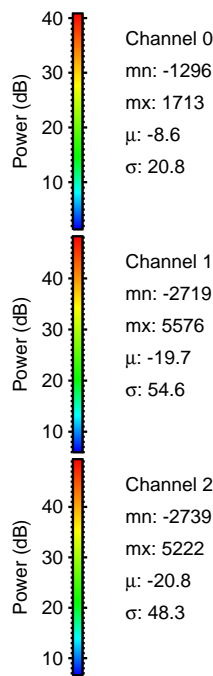
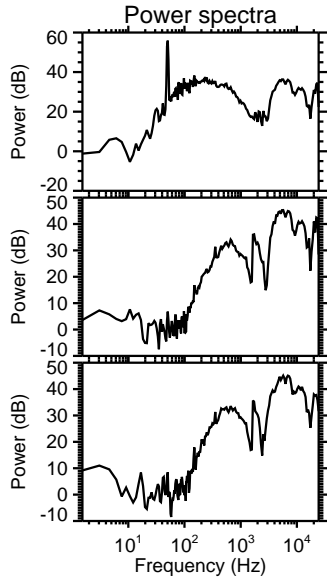
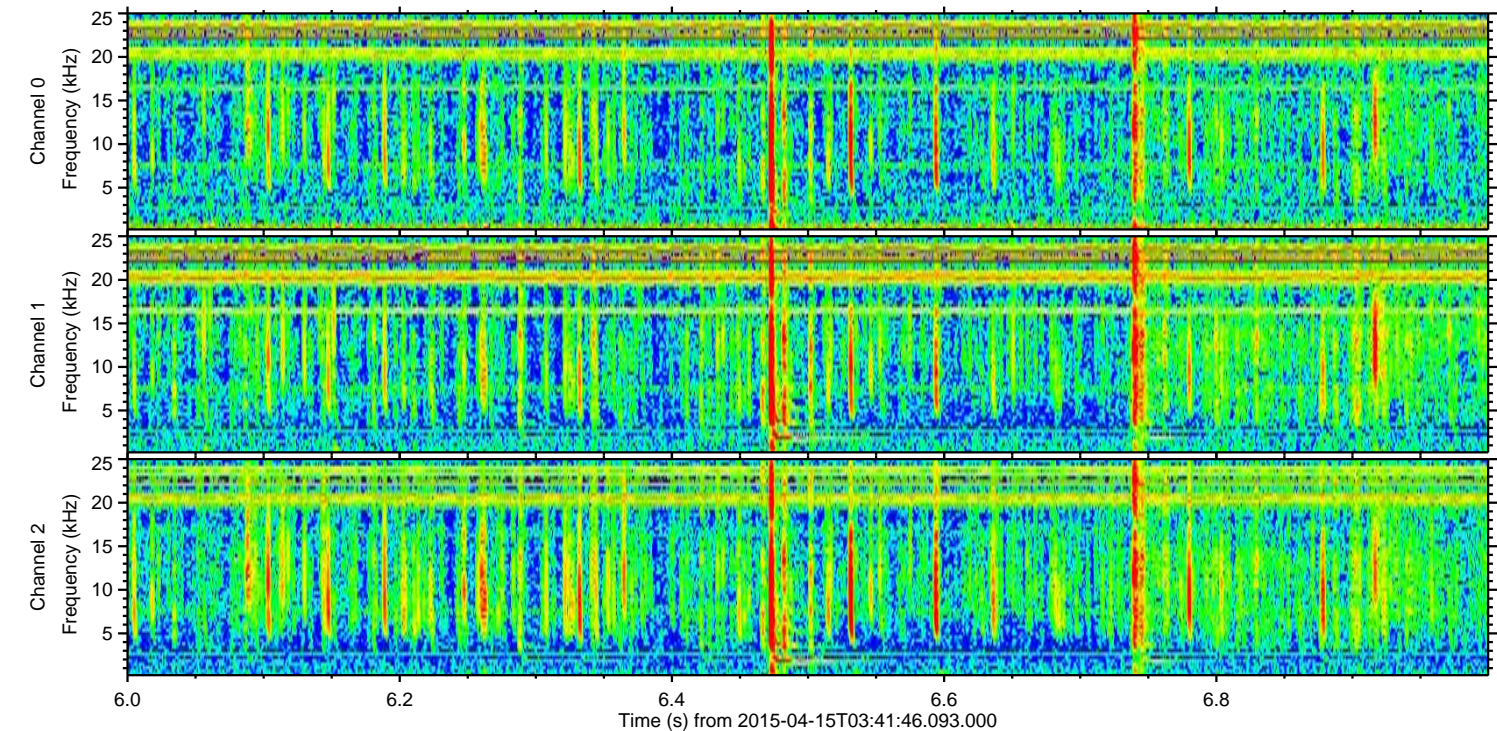
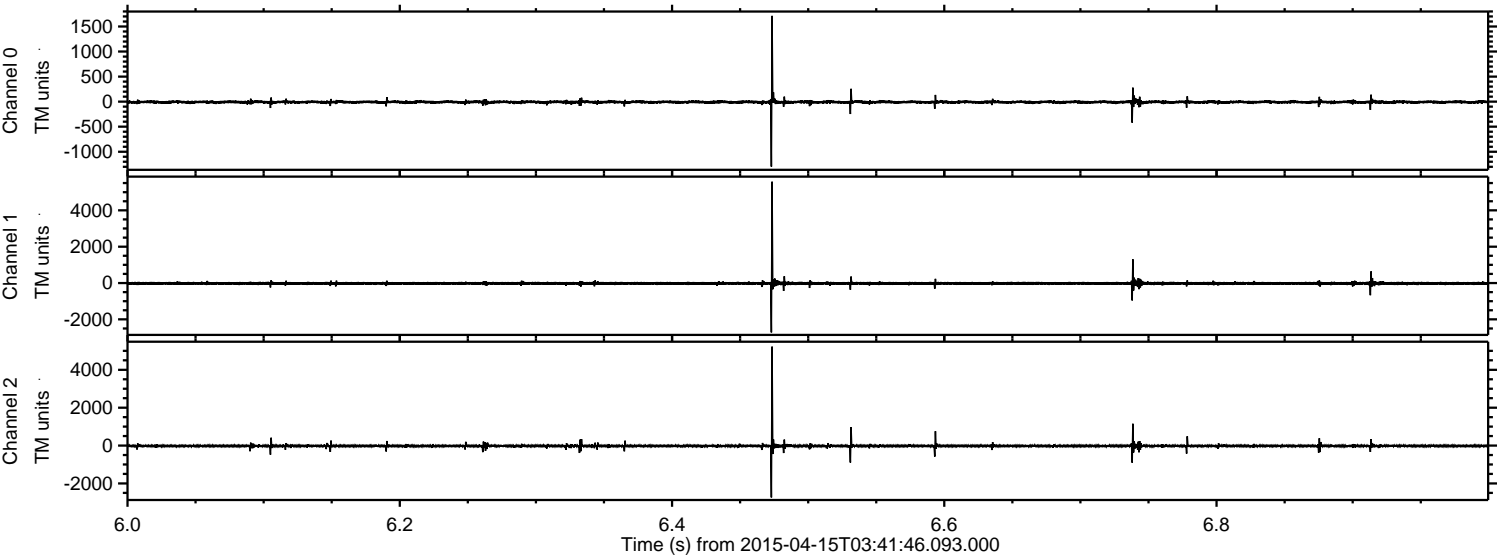


Processed Wed Apr 15 05:48:22 2015 by ELM ver.2012-10-06 from 001__elm20150415_034145__dat00.bin

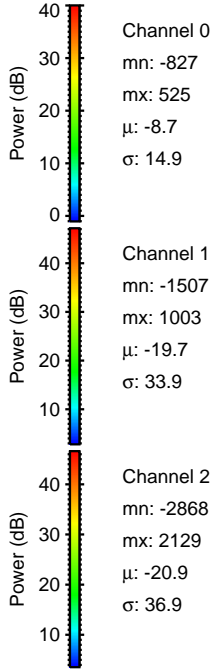
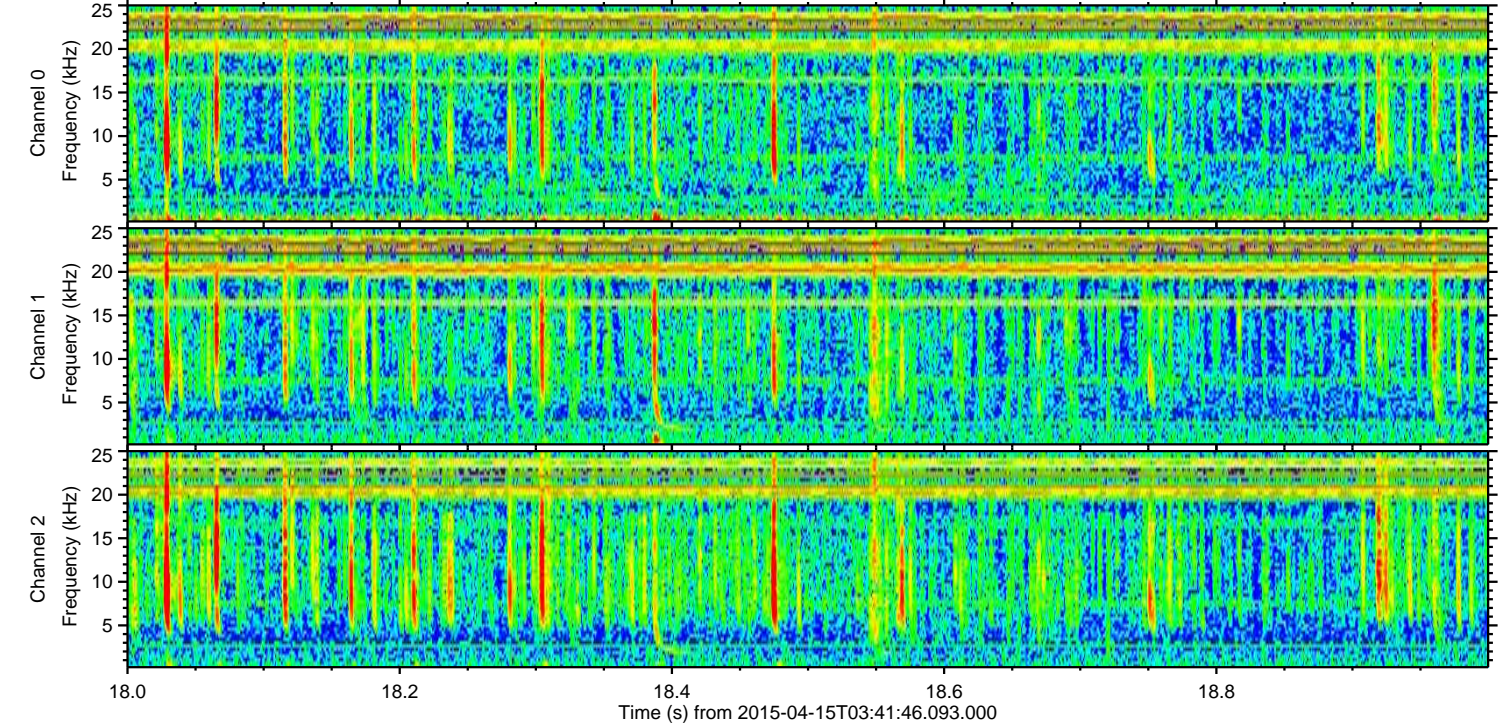
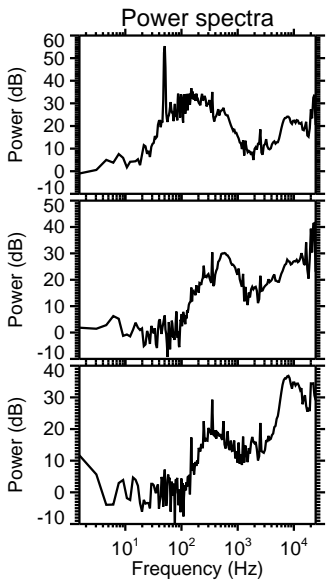
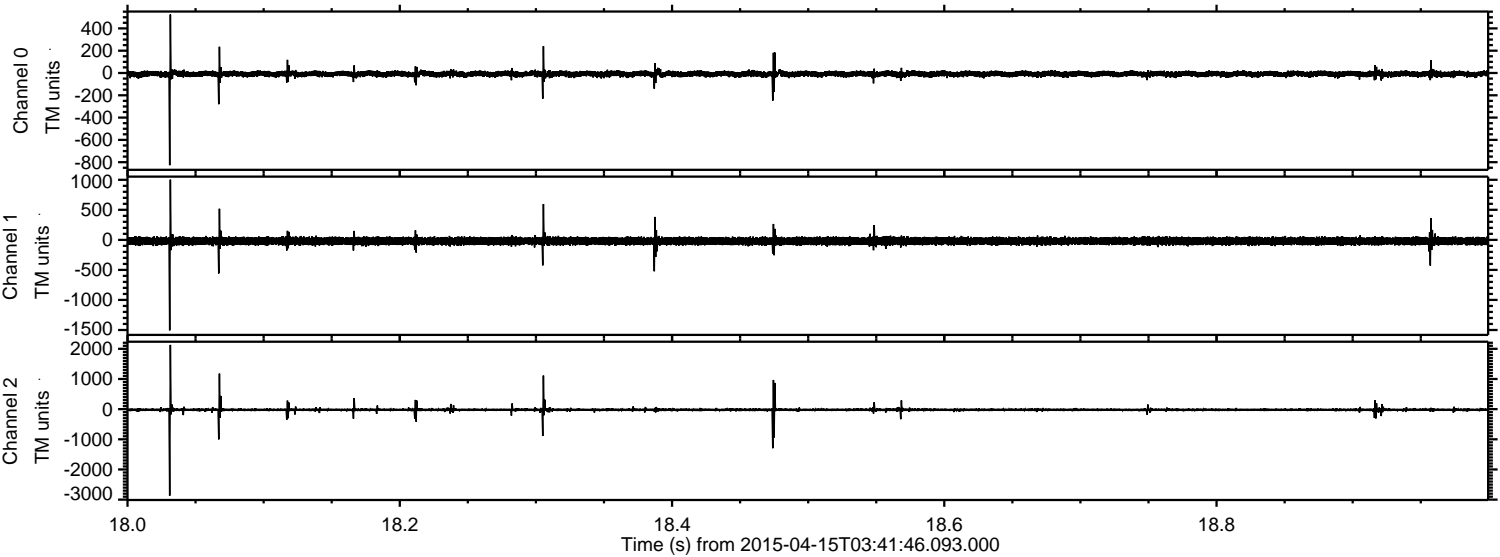


ELMAVAN 3D WAVEFORMS (Measured data sampled at 50 kHz) 49788 packets of 144 samples from 2015-04-15T03:41:46.093.000. Part 7/144

Processed Wed Apr 15 05:48:23 2015 by ELM ver.2012-10-06 from 001__elm20150415_034145__dat00.bin



Processed Wed Apr 15 05:48:24 2015 by ELM ver.2012-10-06 from 001__elm20150415_034145__dat00.bin



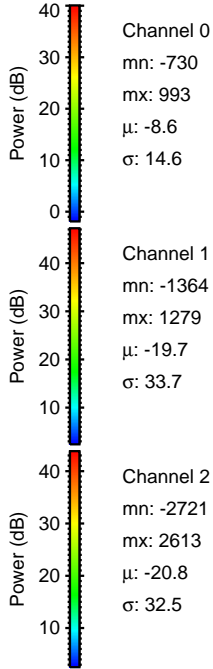
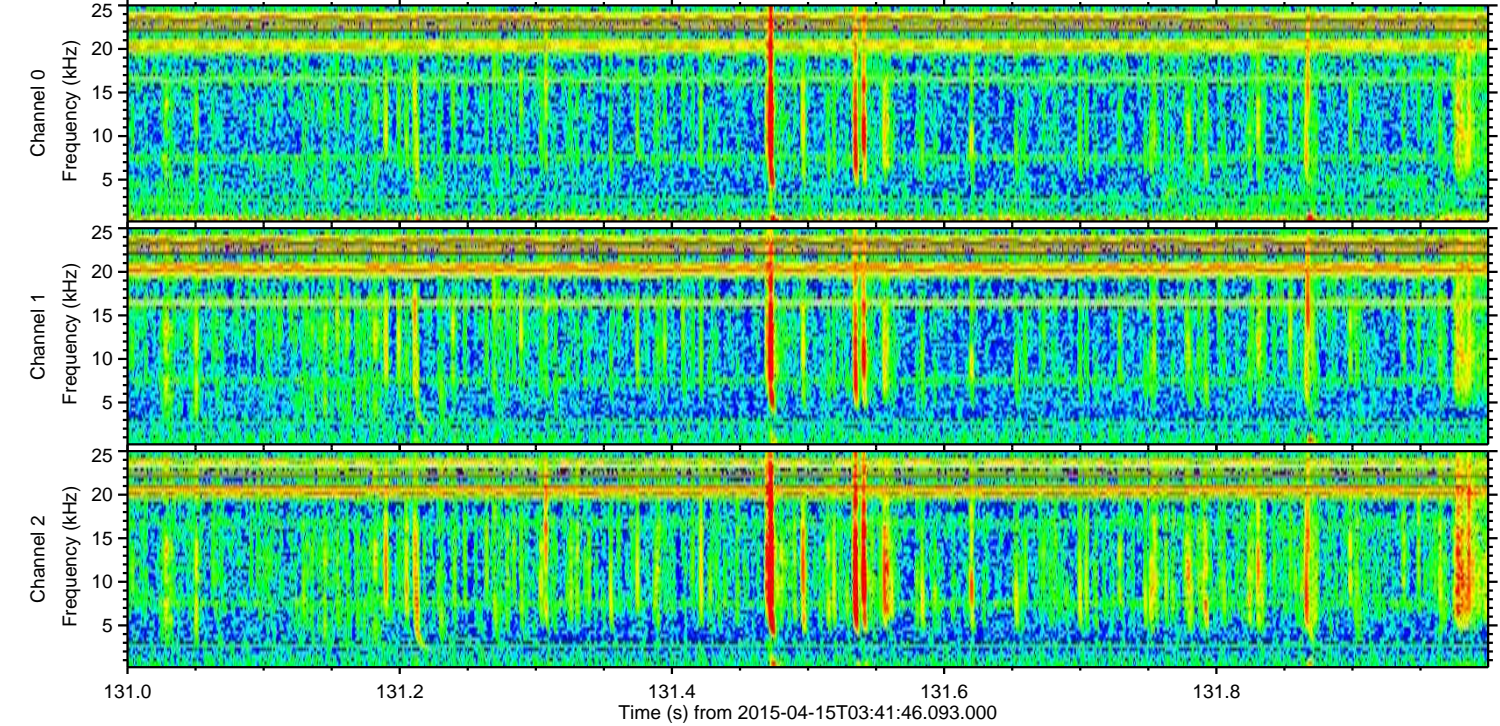
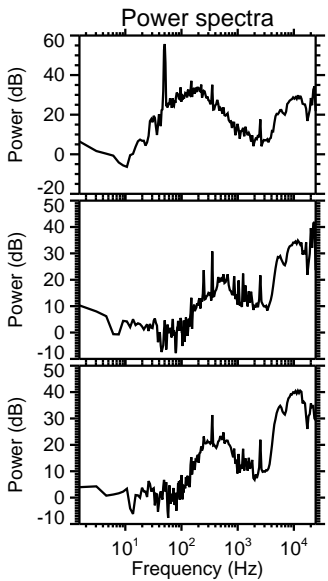
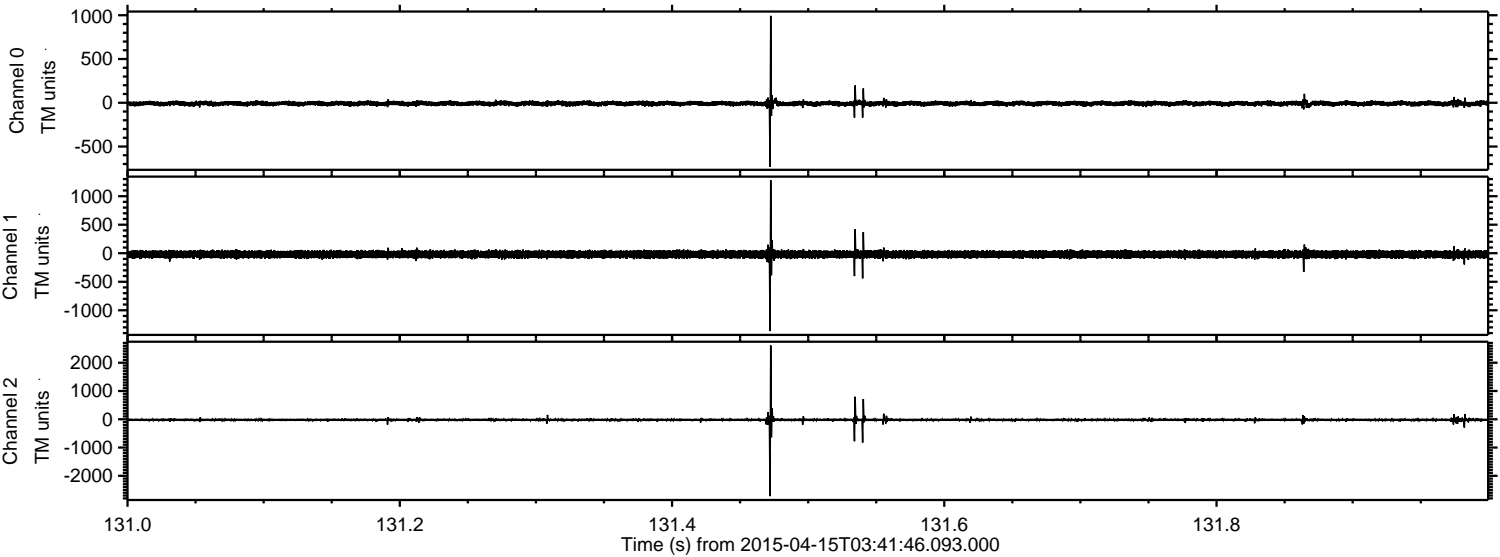
Channel 0
mn: -827
mx: 525
 μ : -8.7
 σ : 14.9

Channel 1
mn: -1507
mx: 1003
 μ : -19.7
 σ : 33.9

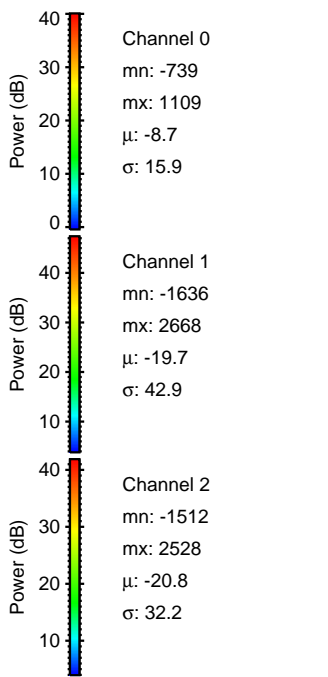
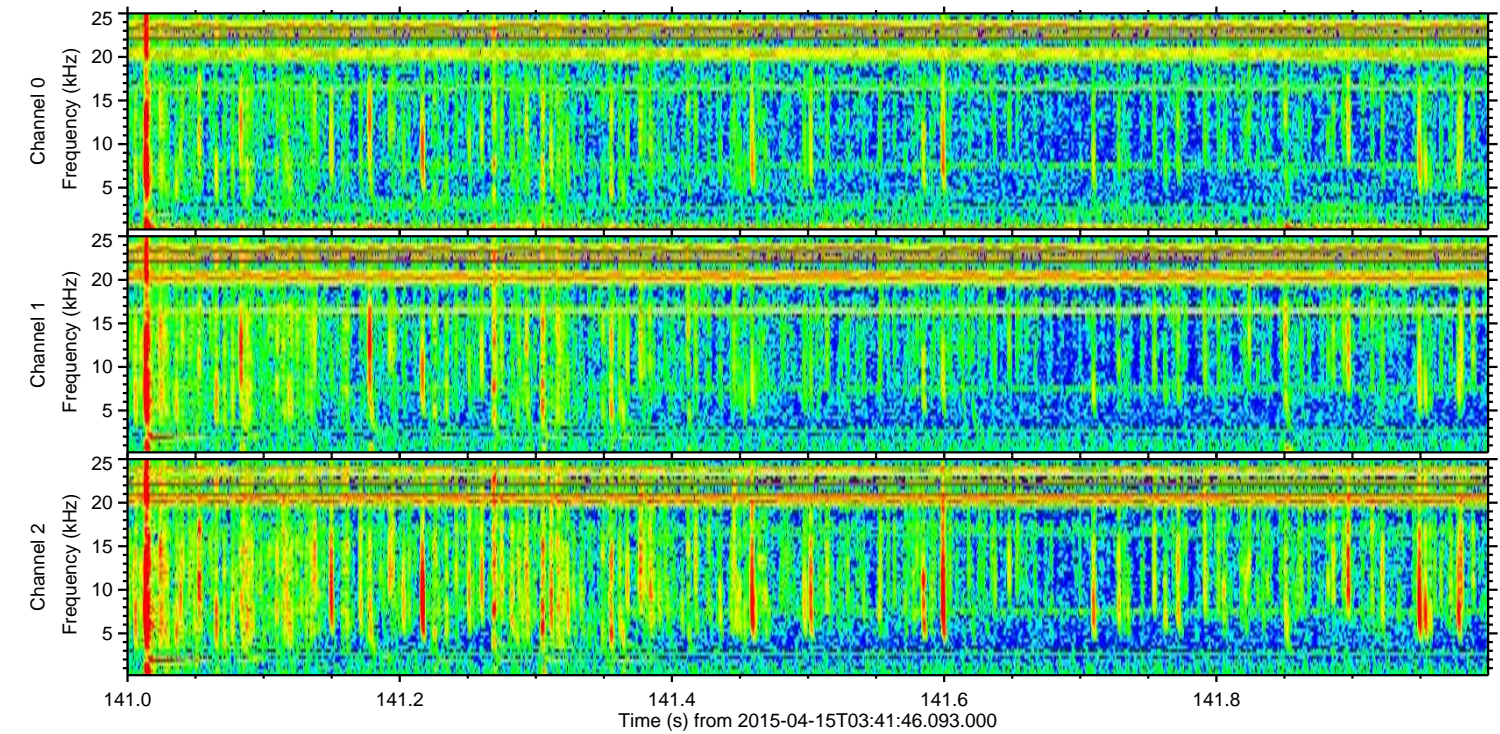
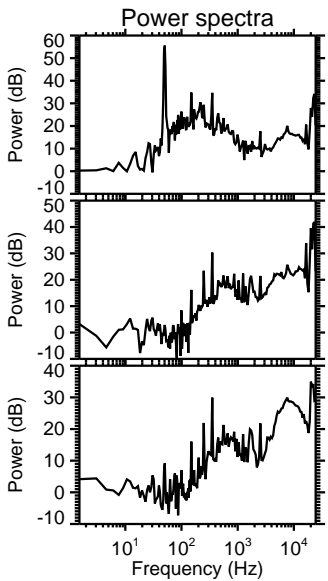
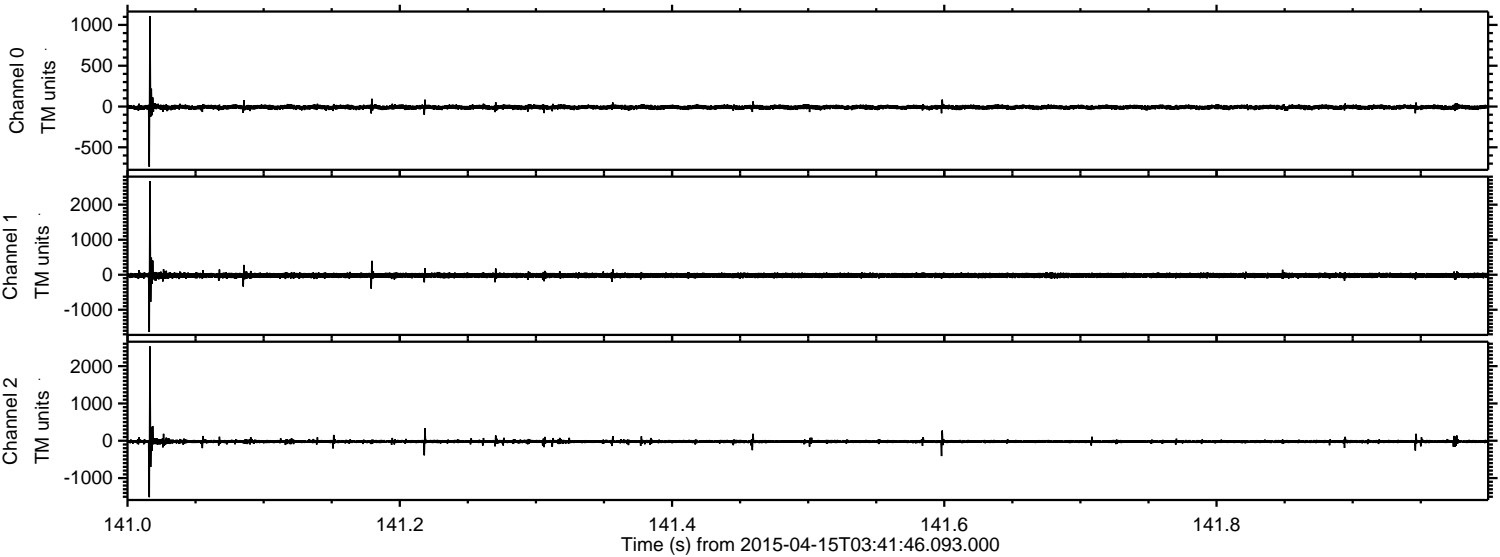
Channel 2
mn: -2868
mx: 2129
 μ : -20.9
 σ : 36.9

ELMAVAN 3D WAVEFORMS (Measured data sampled at 50 kHz) 49788 packets of 144 samples from 2015-04-15T03:41:46.093.000. Part 132/144

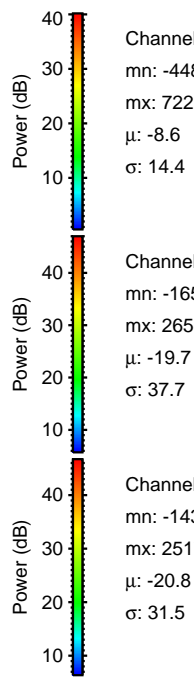
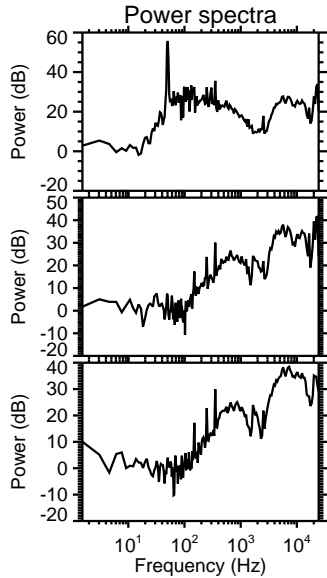
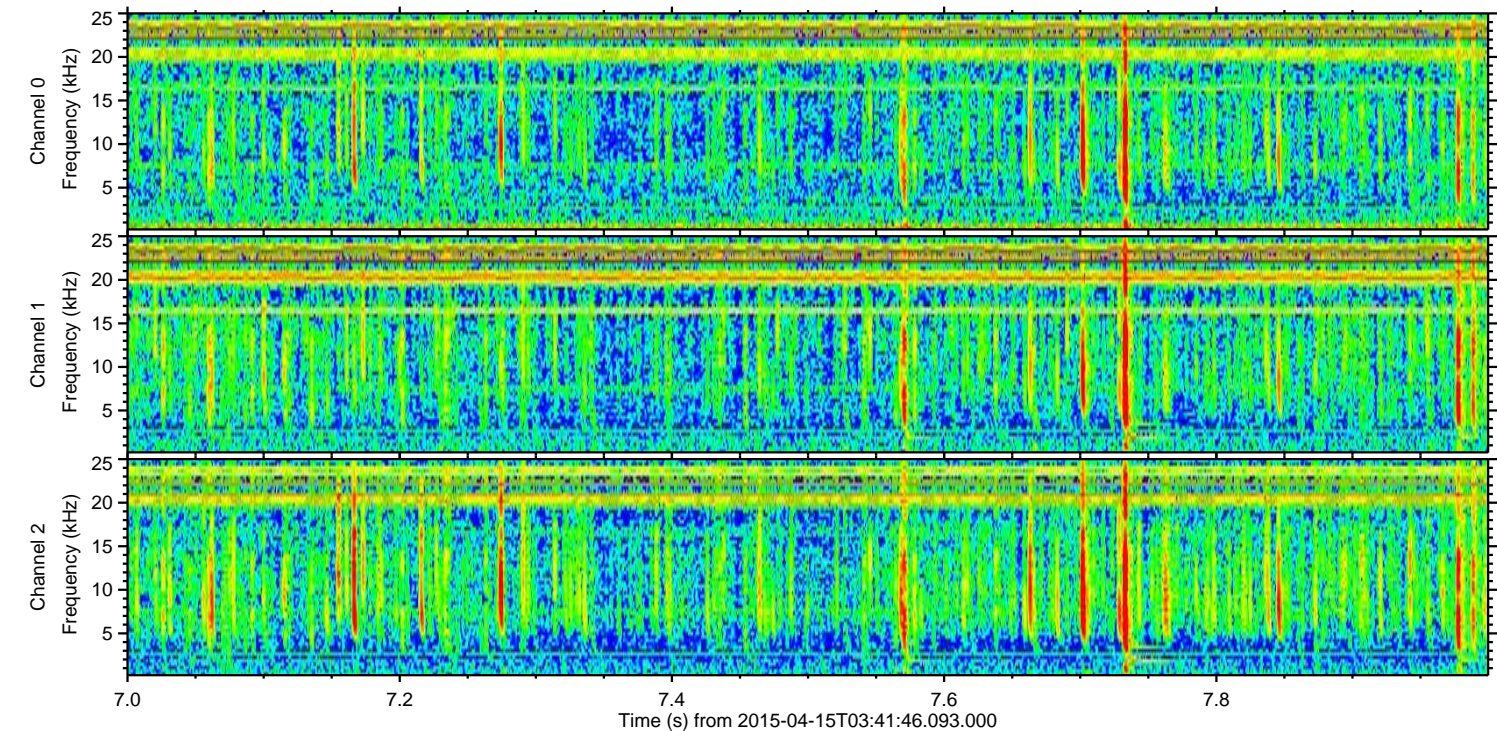
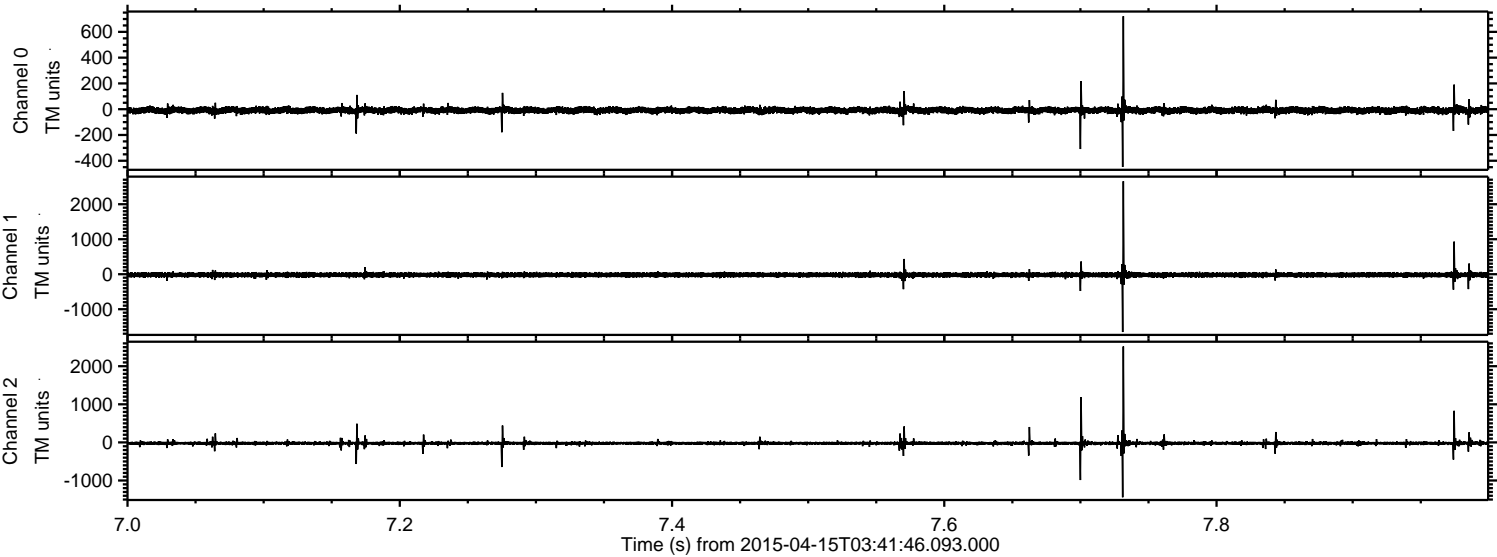
Processed Wed Apr 15 05:48:25 2015 by ELM ver.2012-10-06 from 001__elm20150415_034145__dat00.bin



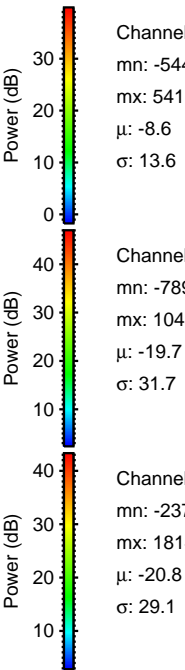
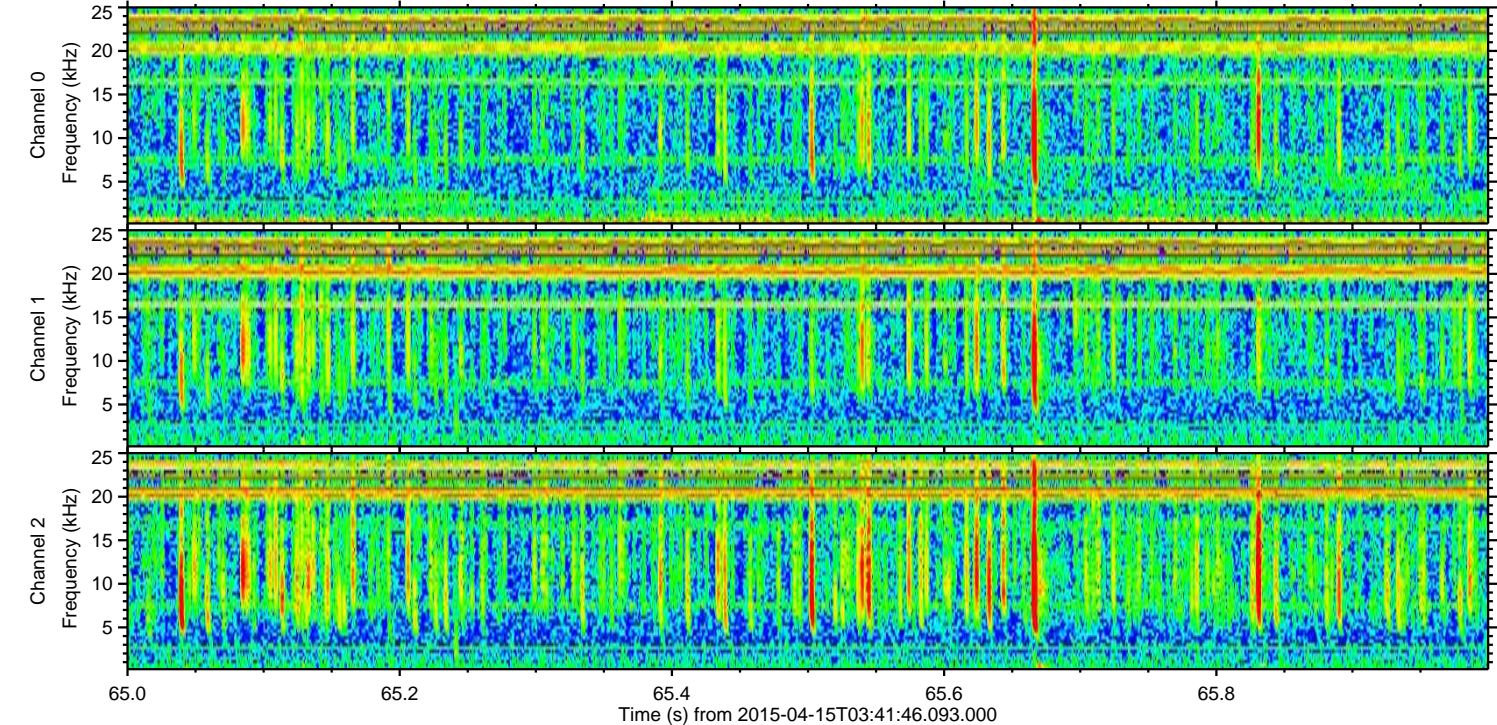
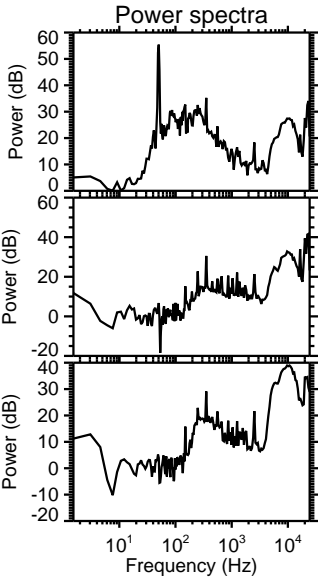
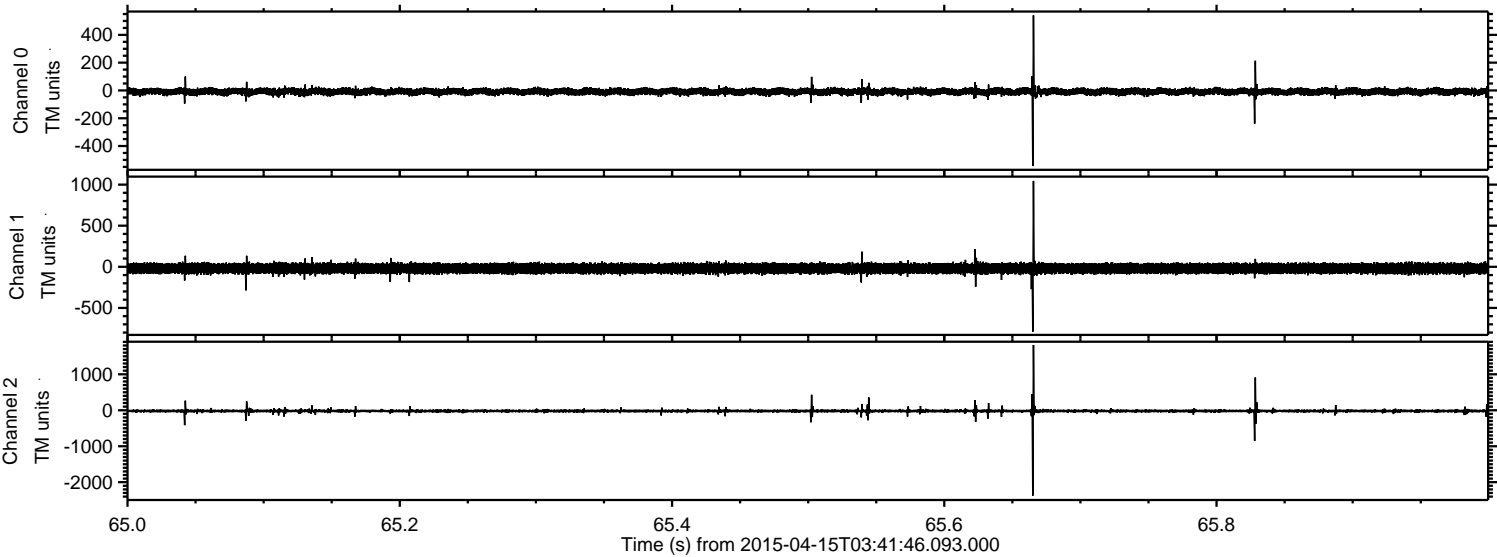
Processed Wed Apr 15 05:48:26 2015 by ELM ver.2012-10-06 from 001__elm20150415_034145__dat00.bin



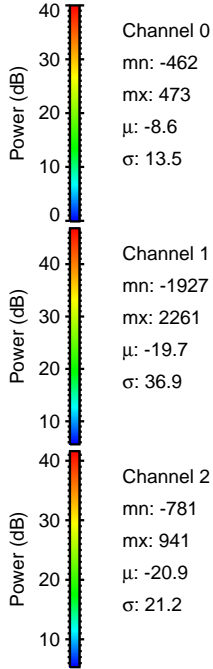
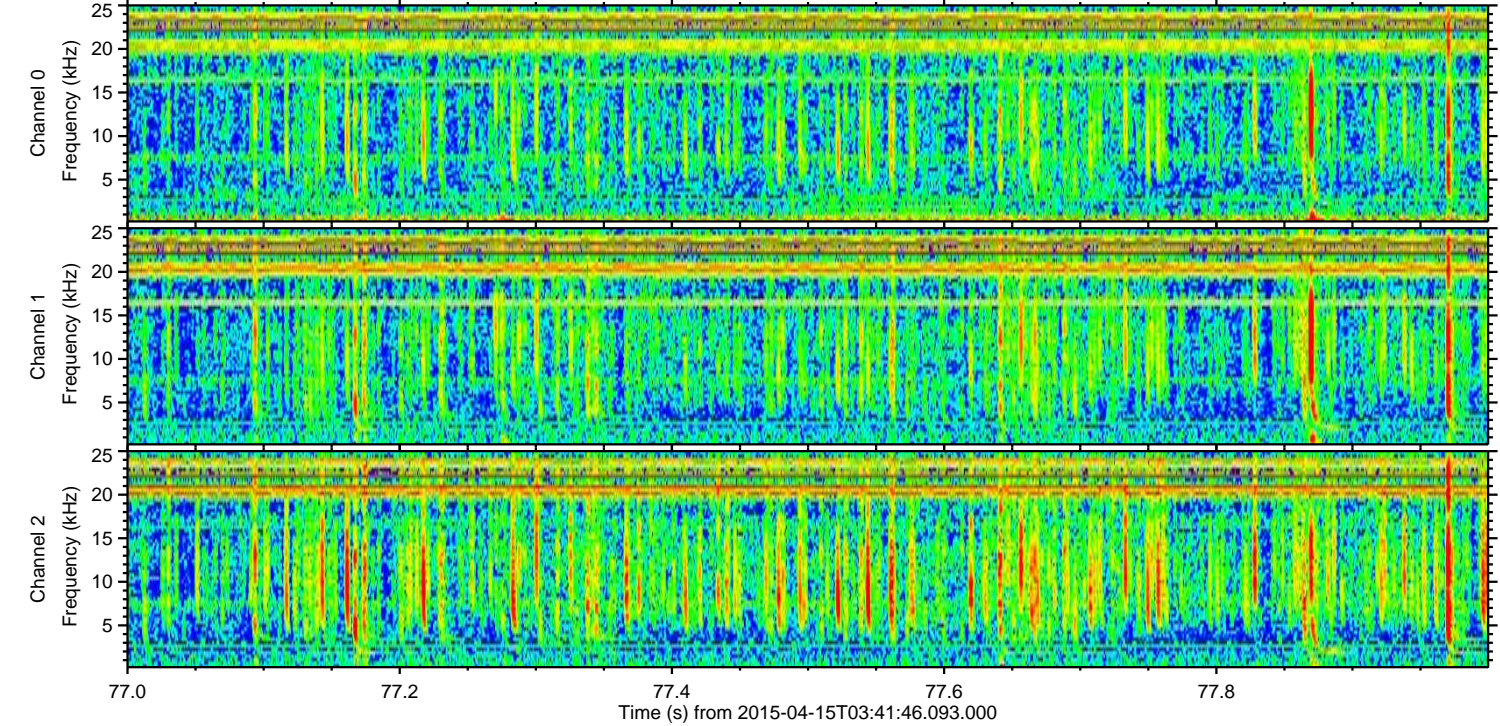
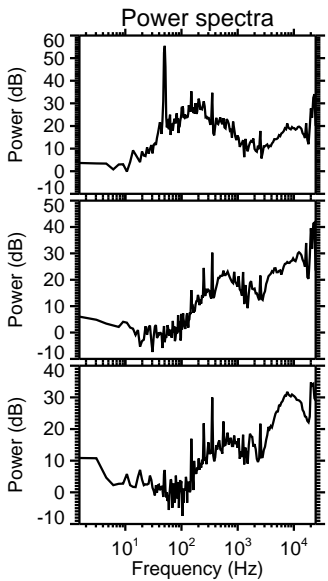
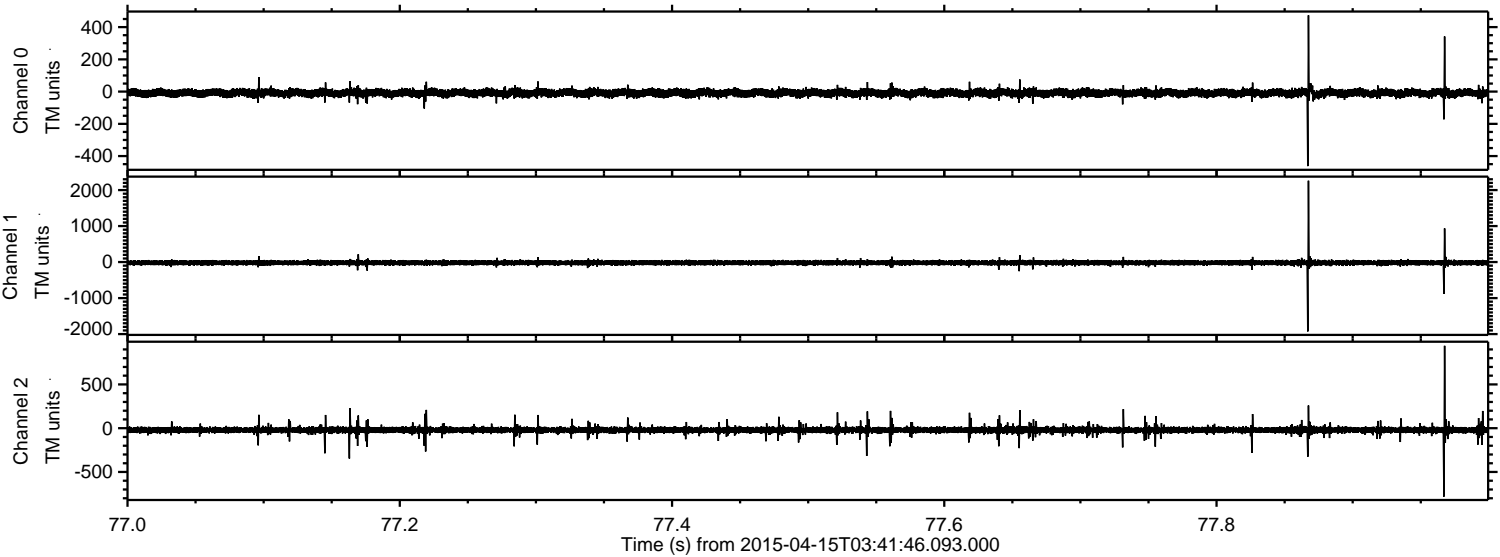
Processed Wed Apr 15 05:48:27 2015 by ELM ver.2012-10-06 from 001__elm20150415_034145__dat00.bin



Processed Wed Apr 15 05:48:28 2015 by ELM ver.2012-10-06 from 001__elm20150415_034145__dat00.bin



Processed Wed Apr 15 05:48:29 2015 by ELM ver.2012-10-06 from 001__elm20150415_034145__dat00.bin



Channel 0
mn: -462
mx: 473
 μ : -8.6
 σ : 13.5

Channel 1
mn: -1927
mx: 2261
 μ : -19.7
 σ : 36.9

Channel 2
mn: -781
mx: 941
 μ : -20.9
 σ : 21.2

Processed Wed Apr 15 05:48:30 2015 by ELM ver.2012-10-06 from 001__elm20150415_034145__dat00.bin

