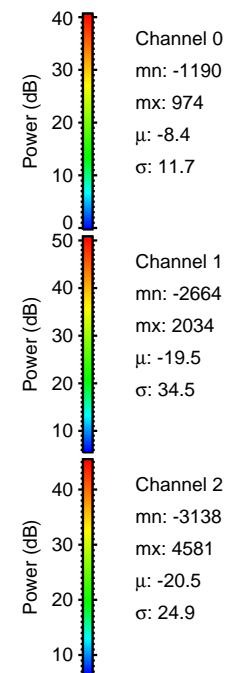
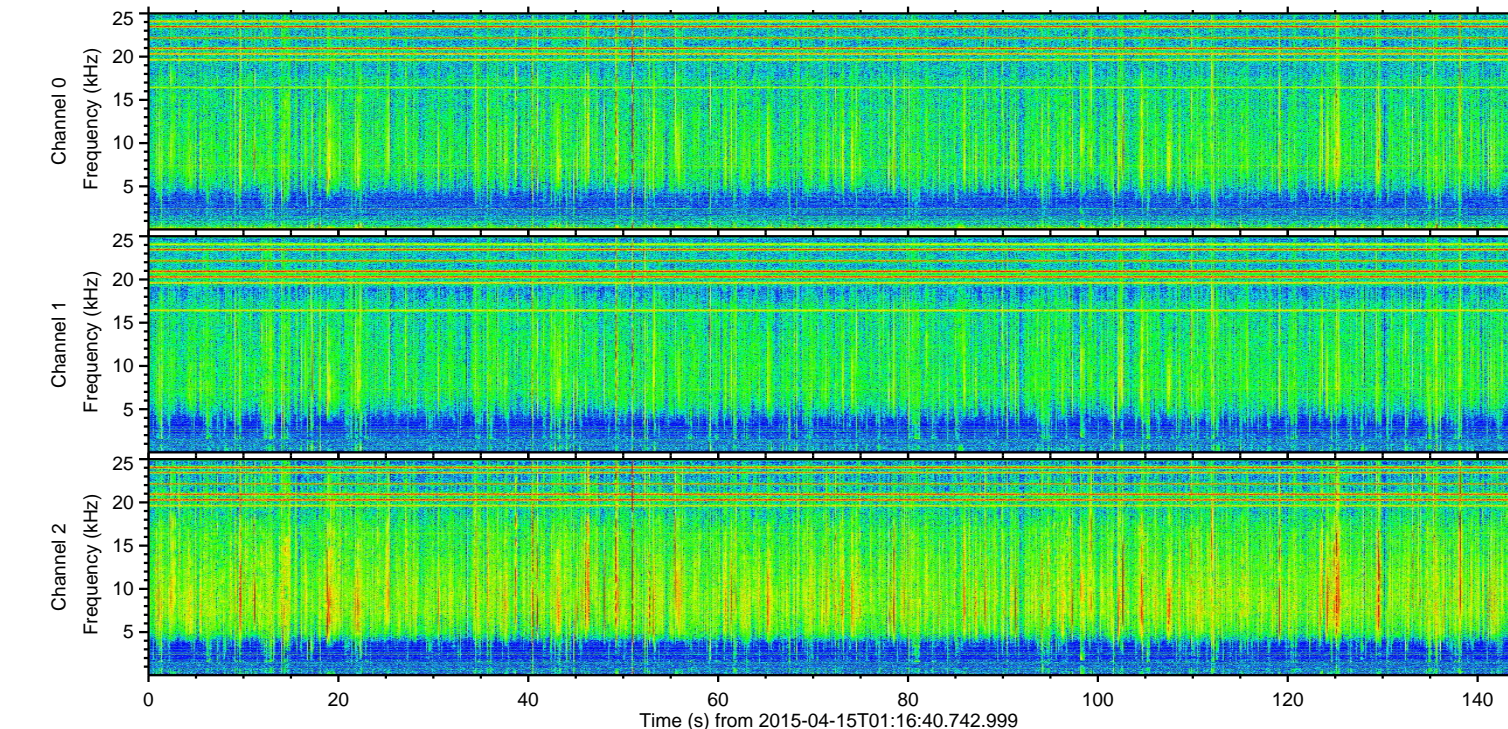
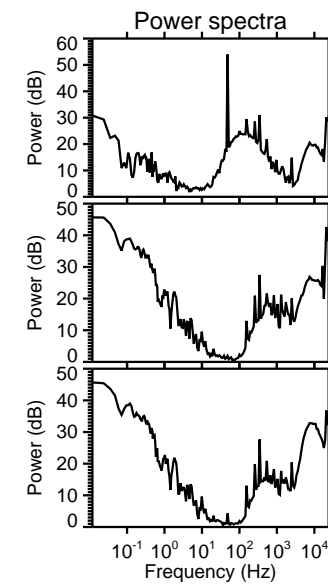
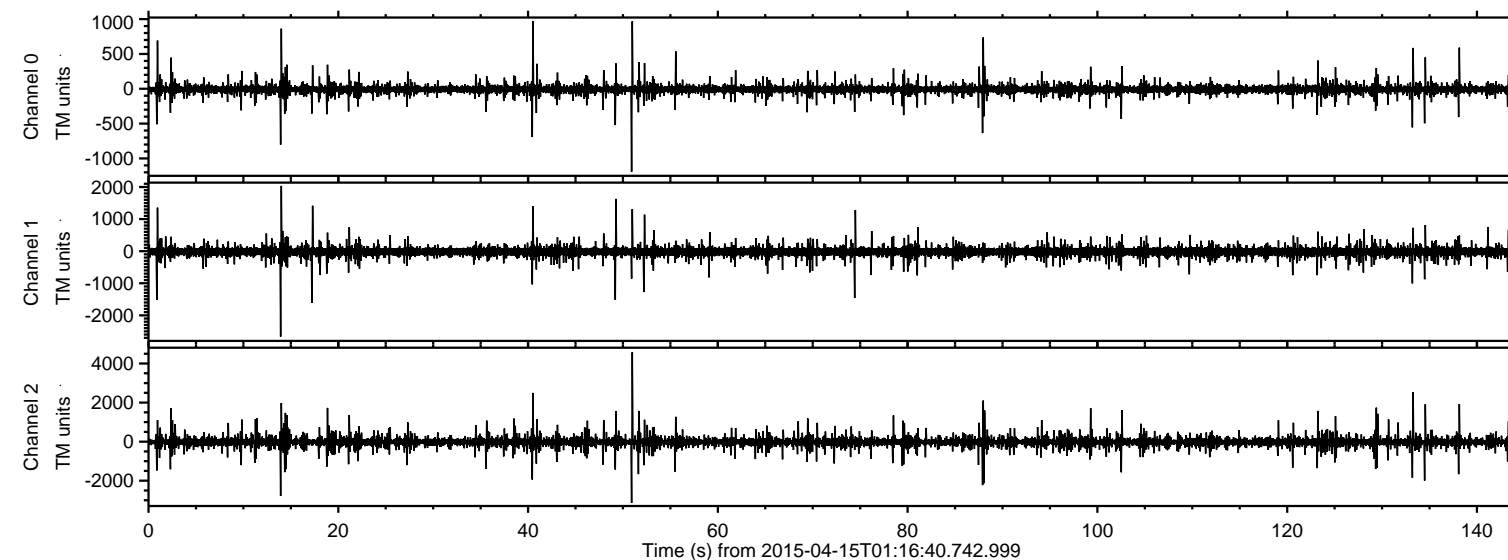
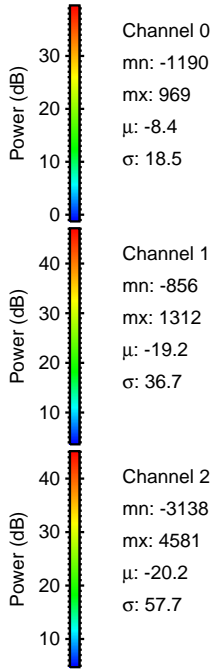
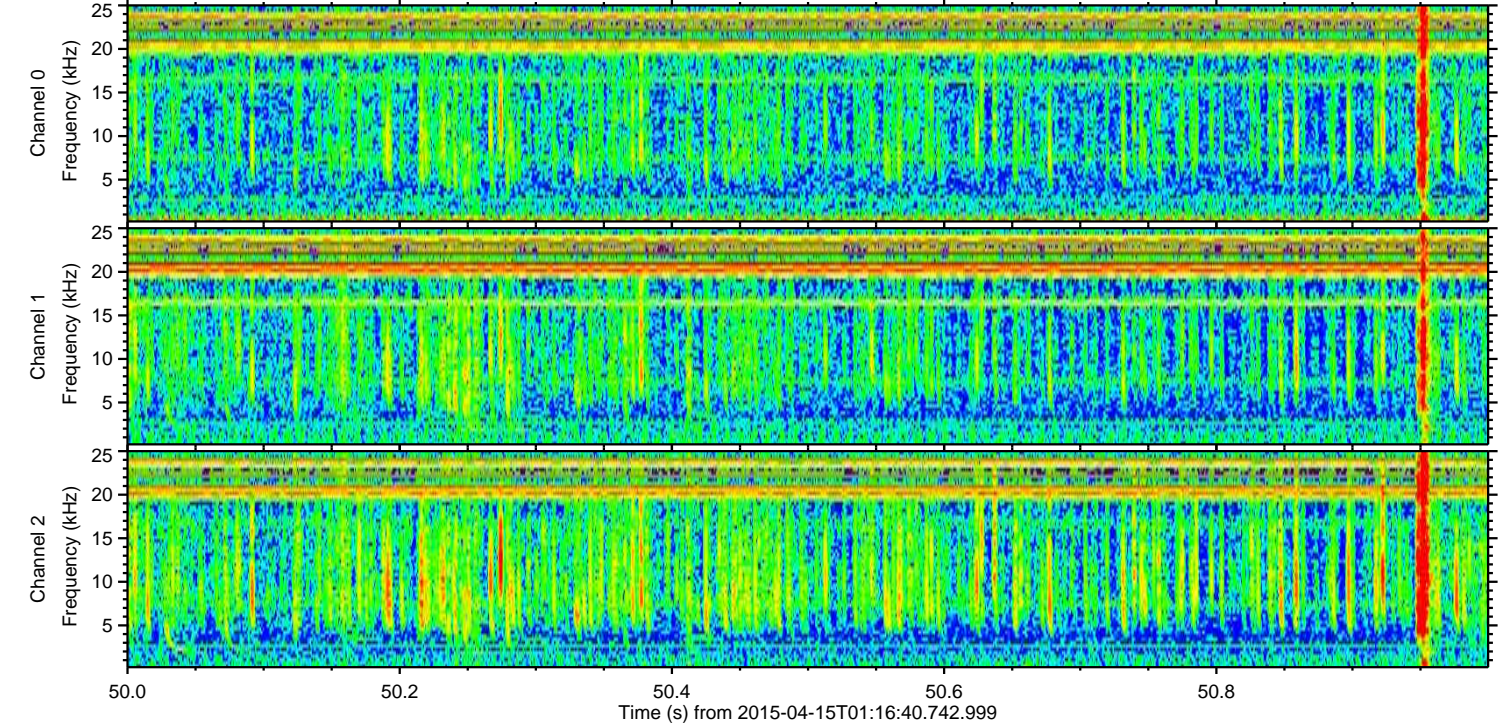
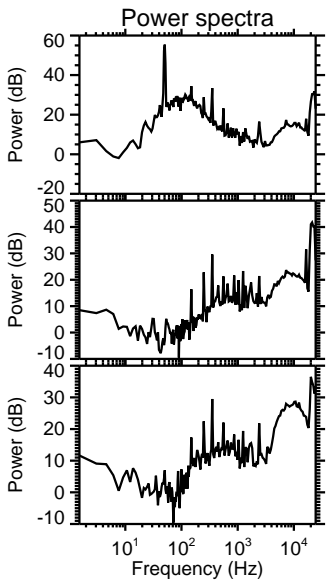
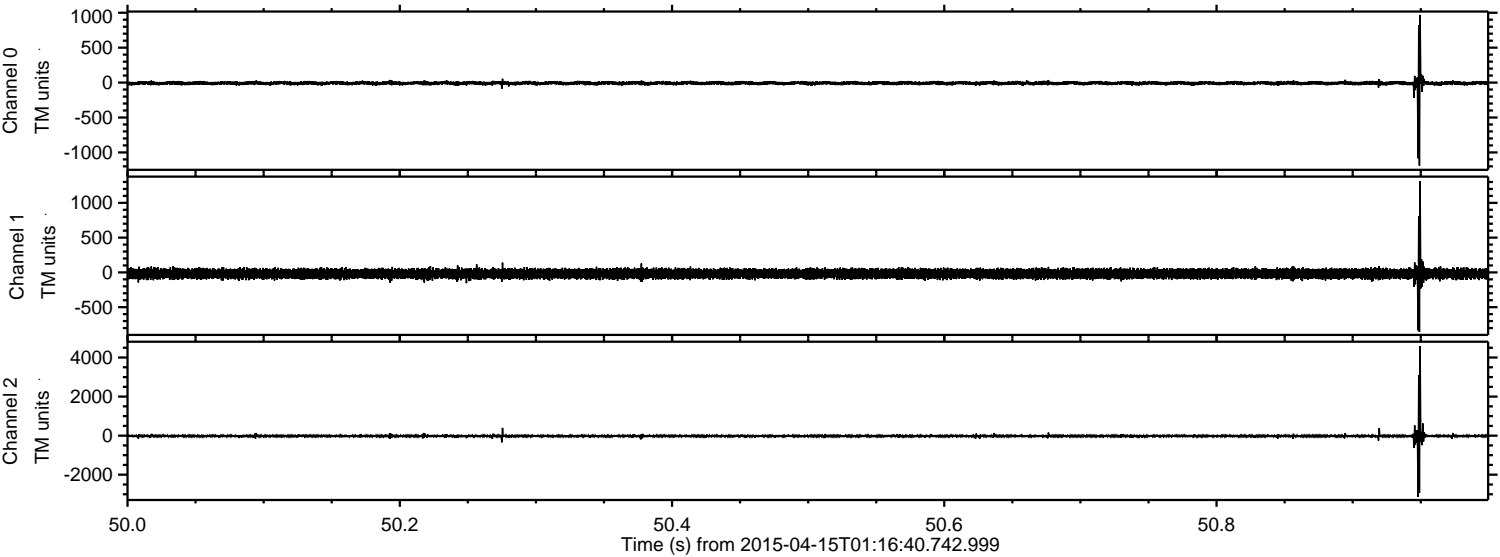


ELMAVAN 3D WAVEFORMS (Measured data sampled at 50 kHz) 49789 packets of 144 samples from 2015-04-15T01:16:40.742.999.

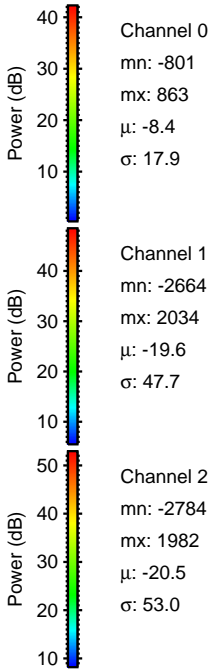
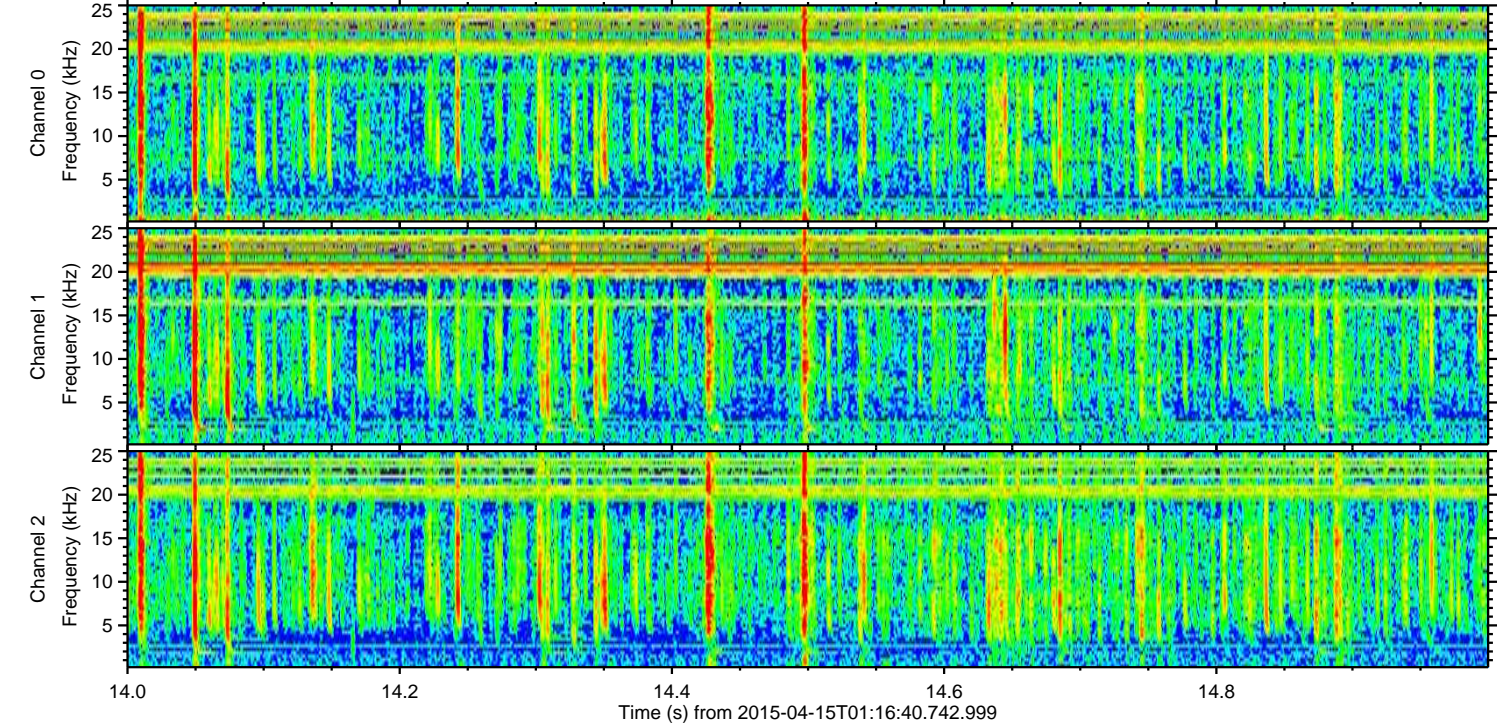
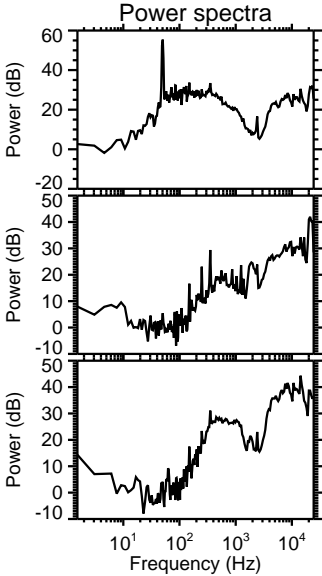
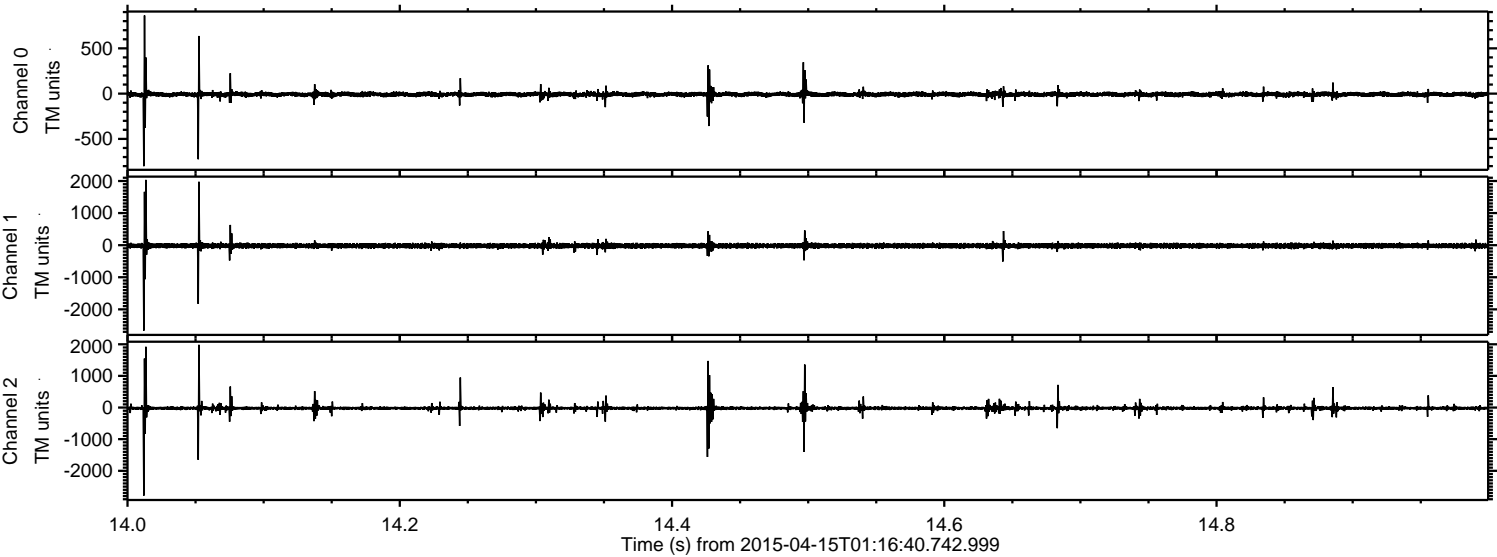
Processed Wed Apr 15 03:23:14 2015 by ELM ver.2012-10-06 from 001__elm20150415_011639__dat00.bin



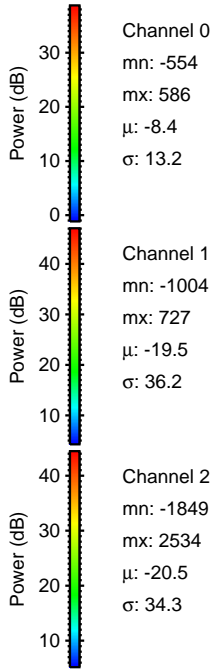
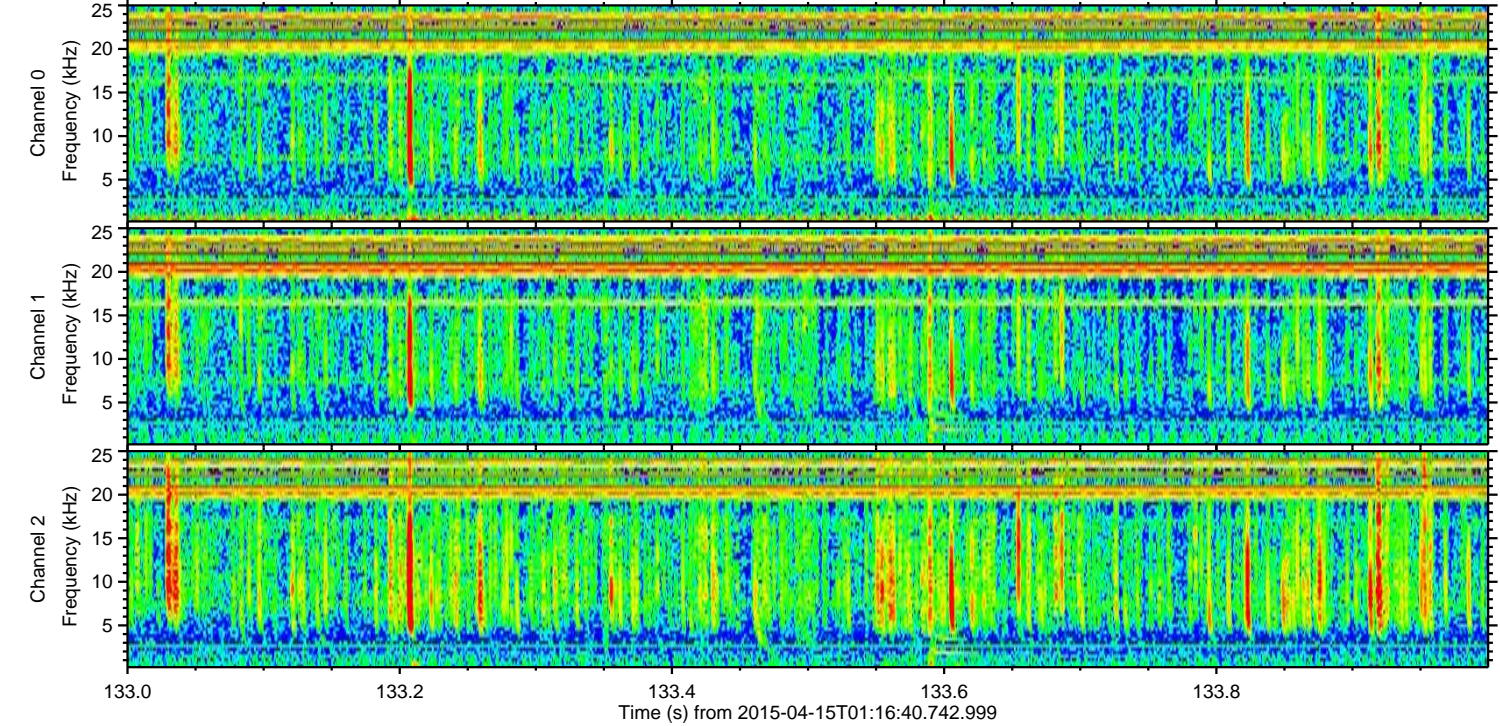
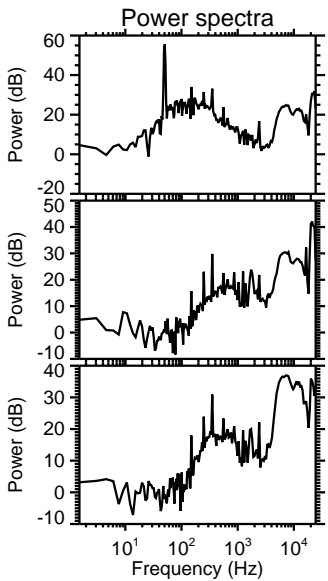
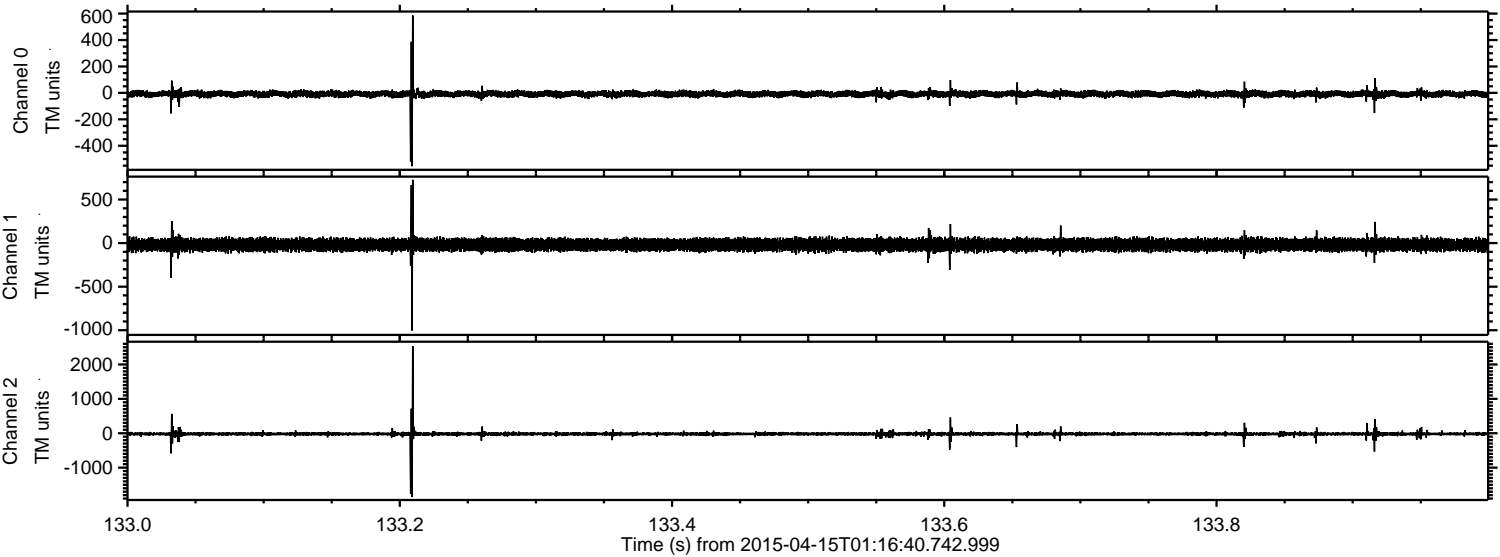
Processed Wed Apr 15 03:23:25 2015 by ELM ver.2012-10-06 from 001__elm20150415_011639__dat00.bin



Processed Wed Apr 15 03:23:26 2015 by ELM ver.2012-10-06 from 001__elm20150415_011639__dat00.bin

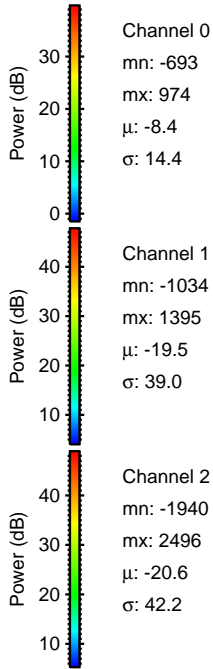
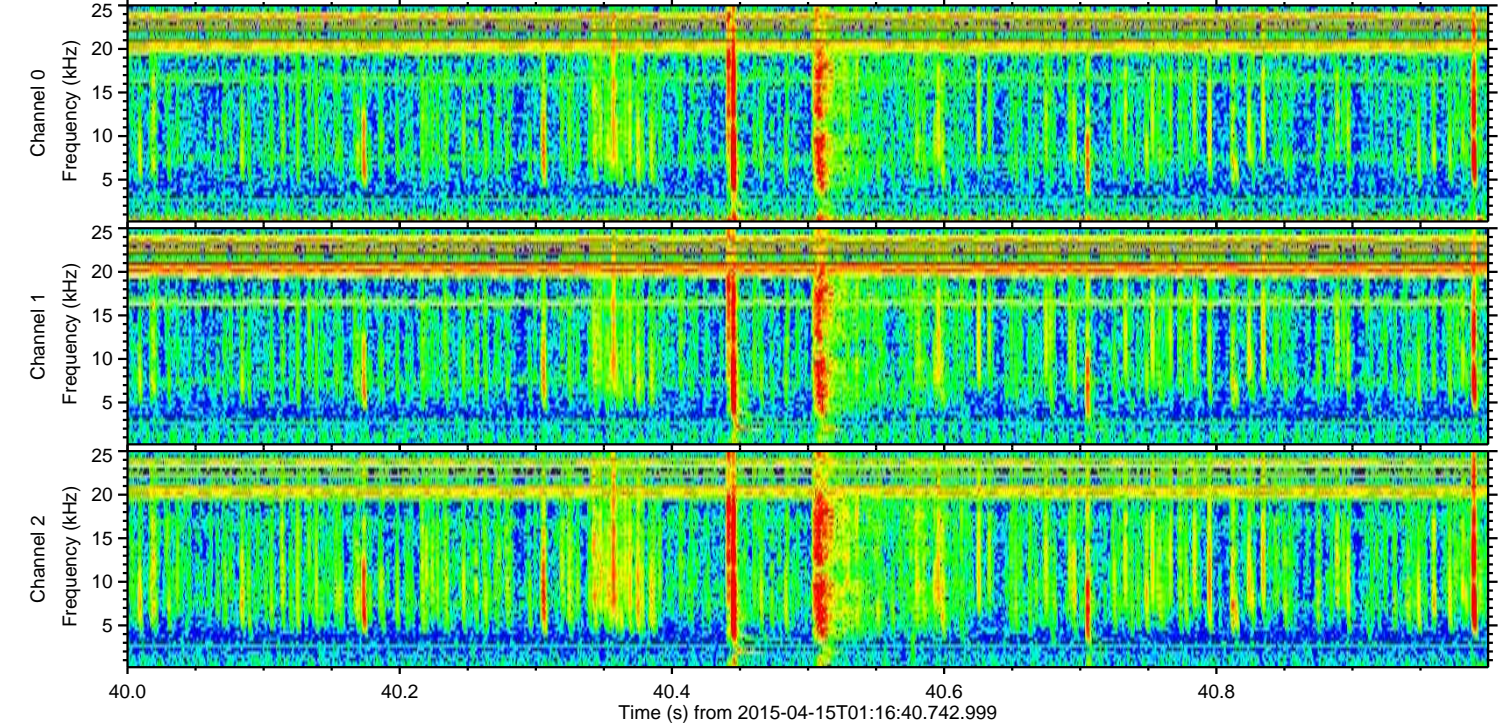
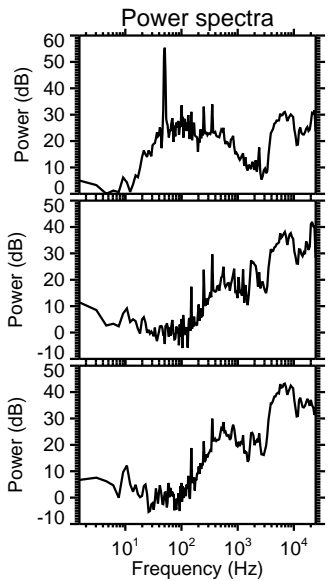
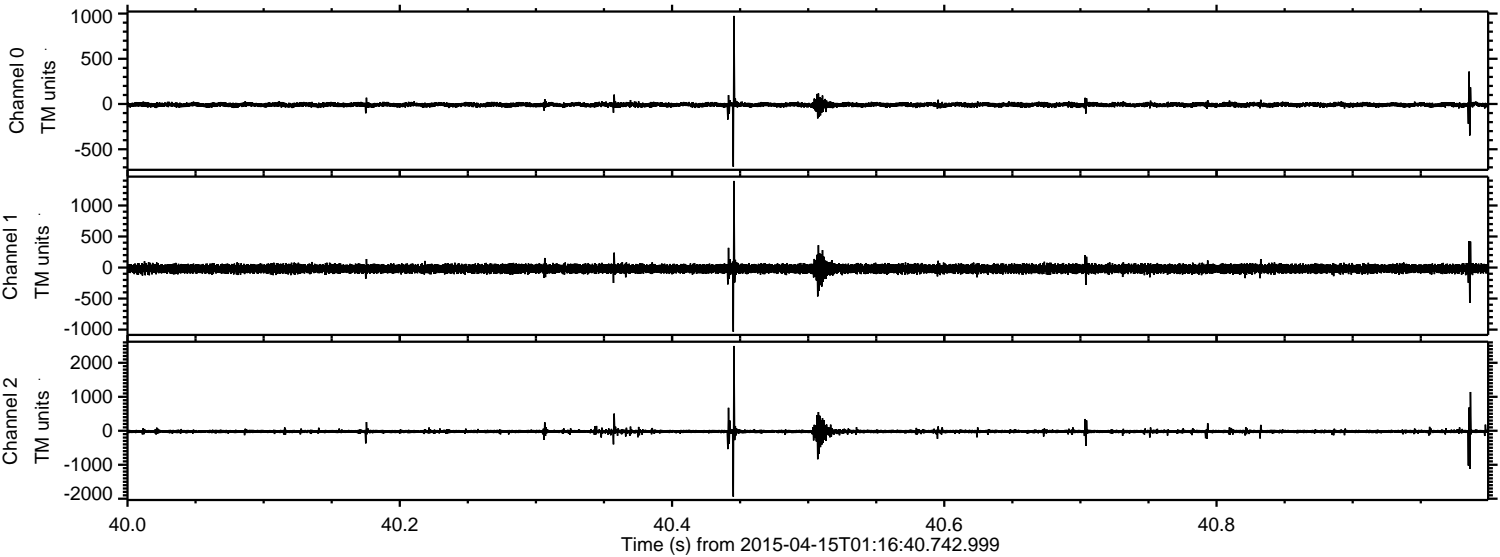


Processed Wed Apr 15 03:23:27 2015 by ELM ver.2012-10-06 from 001__elm20150415_011639__dat00.bin



ELMAVAN 3D WAVEFORMS (Measured data sampled at 50 kHz) 49789 packets of 144 samples from 2015-04-15T01:16:40.742.999. Part 41/144

Processed Wed Apr 15 03:23:28 2015 by ELM ver.2012-10-06 from 001__elm20150415_011639__dat00.bin

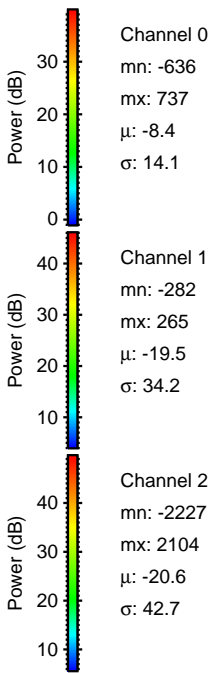
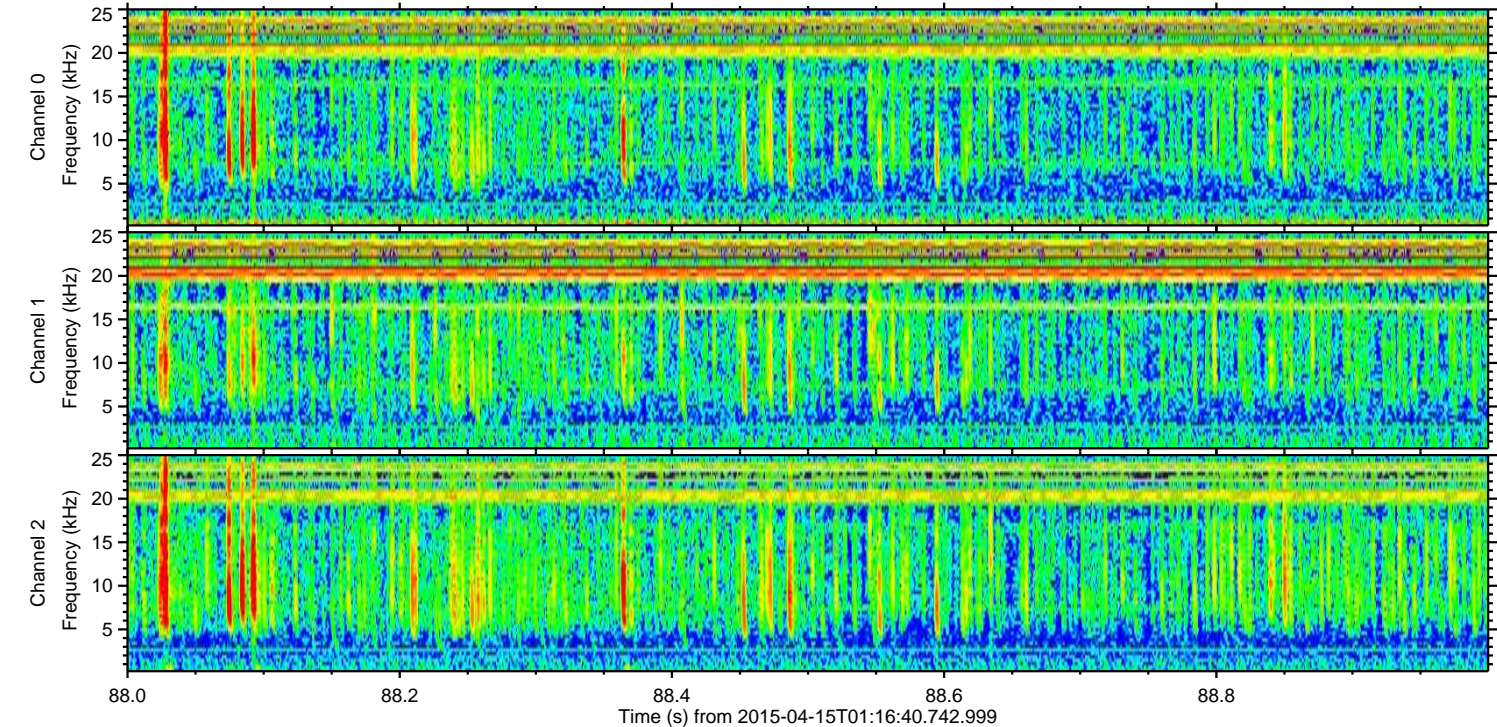
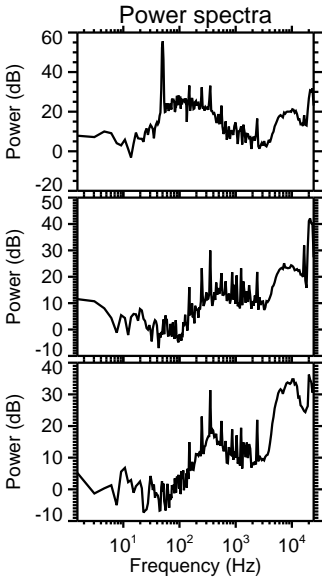
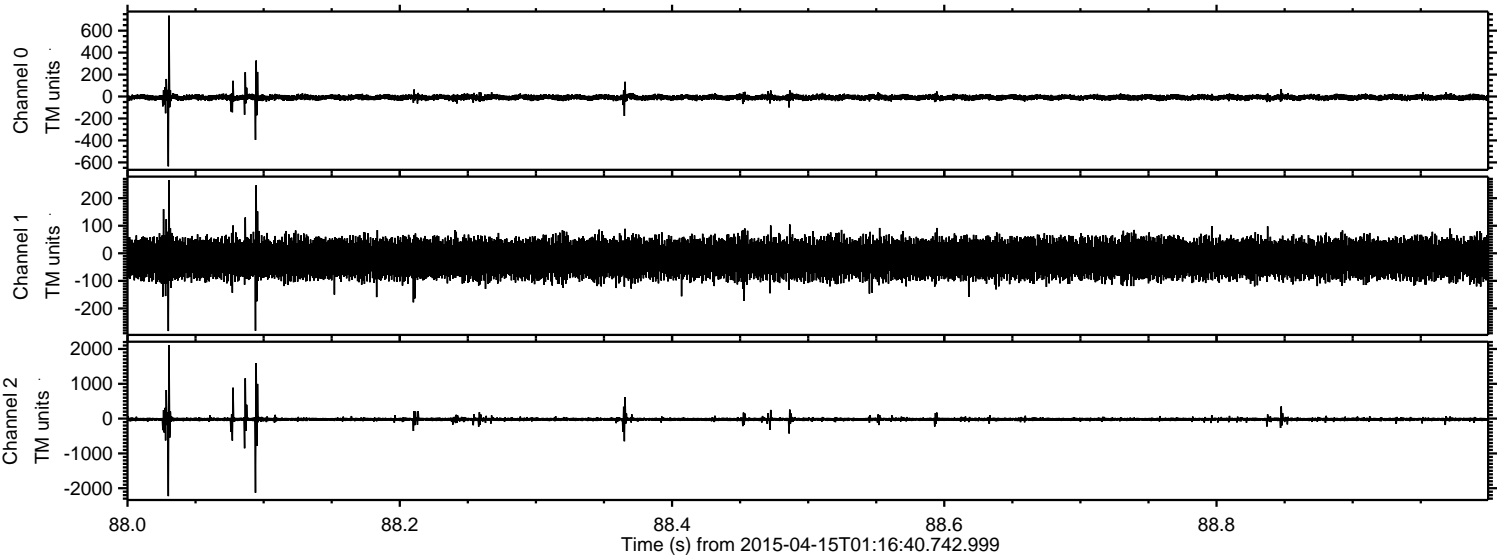


Channel 0
mn: -693
mx: 974
 μ : -8.4
 σ : 14.4

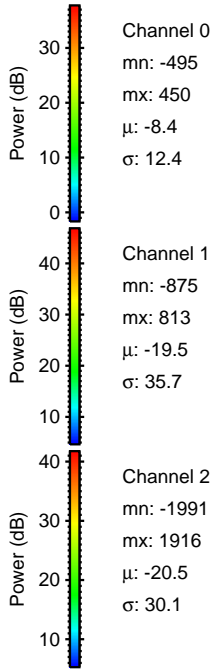
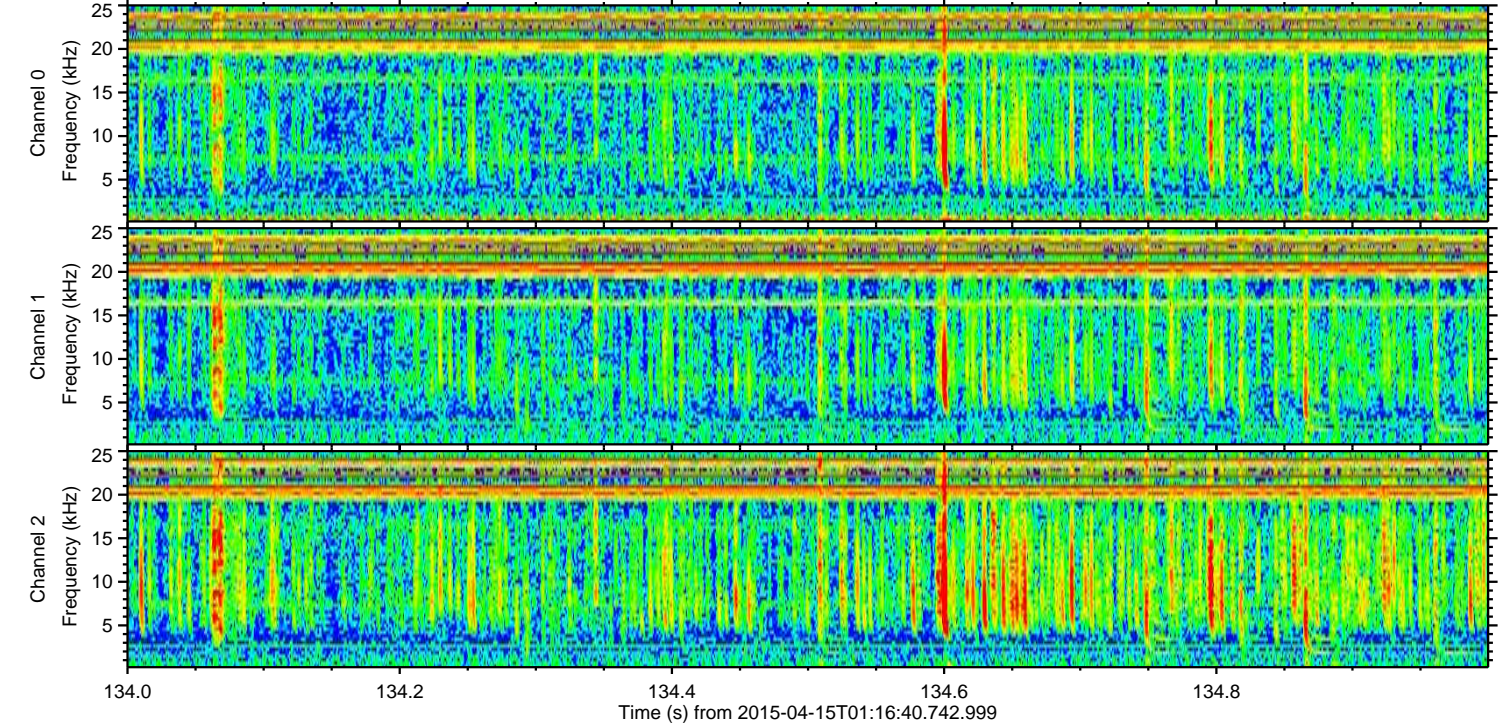
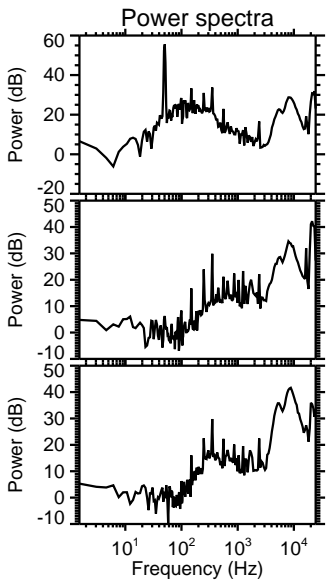
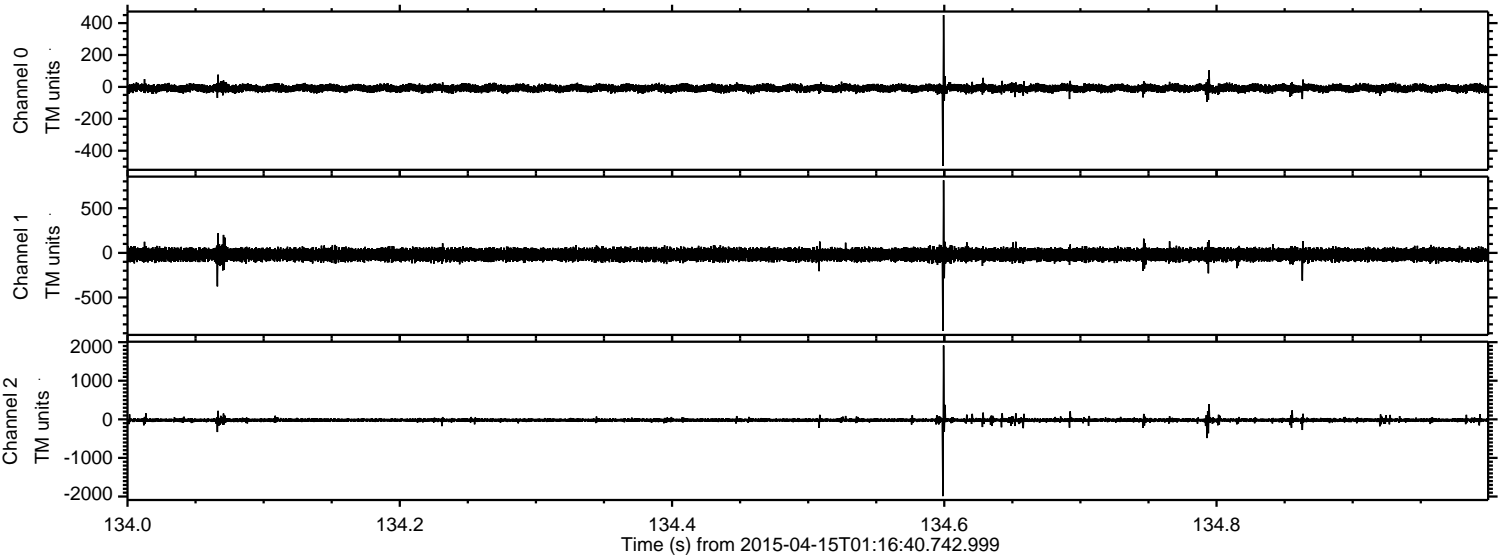
Channel 1
mn: -1034
mx: 1395
 μ : -19.5
 σ : 39.0

Channel 2
mn: -1940
mx: 2496
 μ : -20.6
 σ : 42.2

Processed Wed Apr 15 03:23:29 2015 by ELM ver.2012-10-06 from 001__elm20150415_011639__dat00.bin

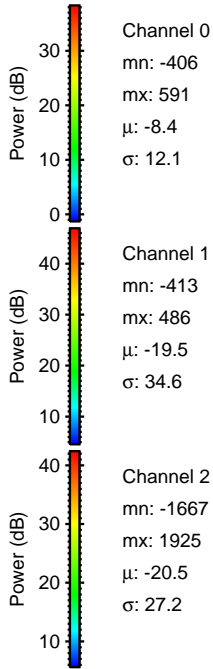
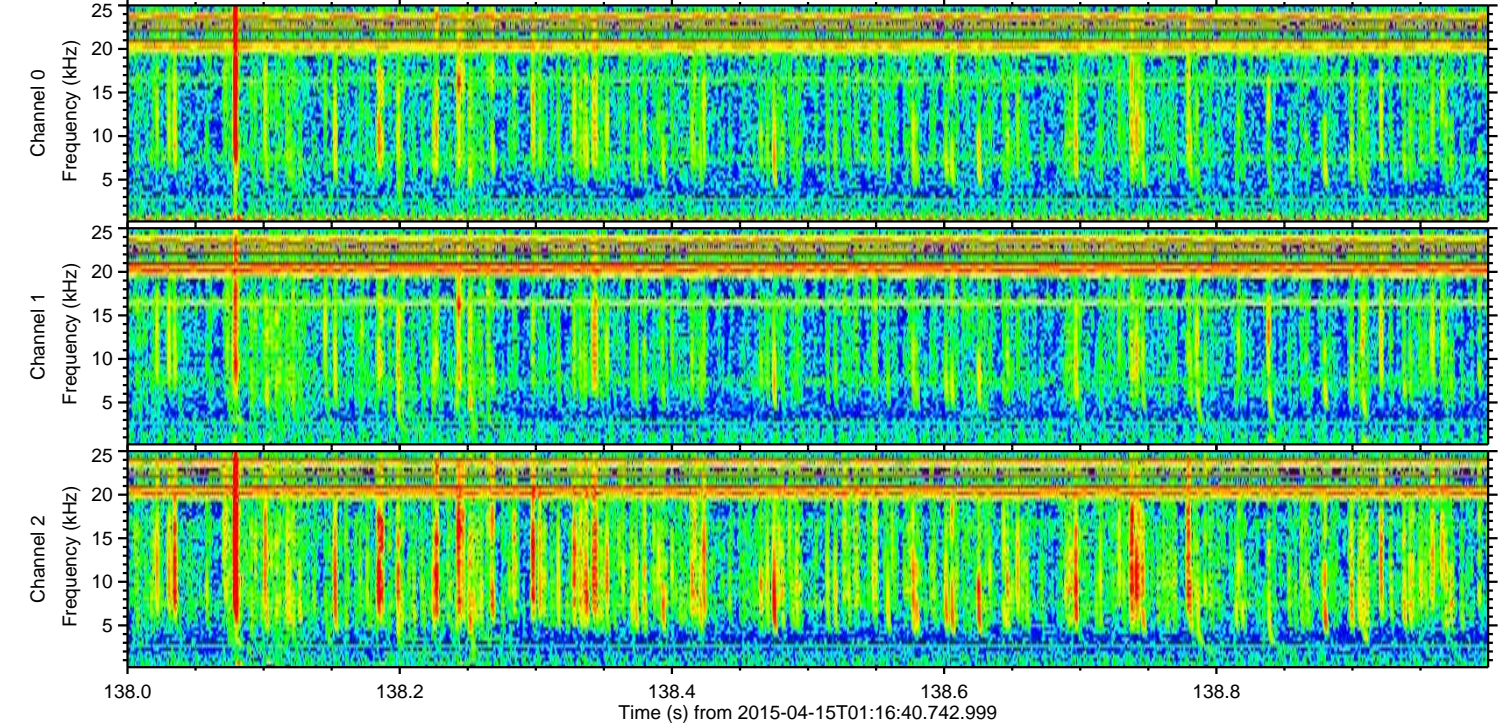
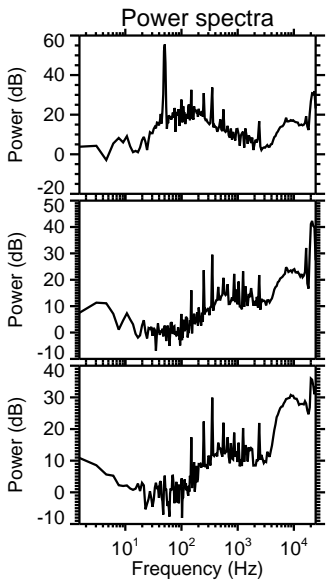
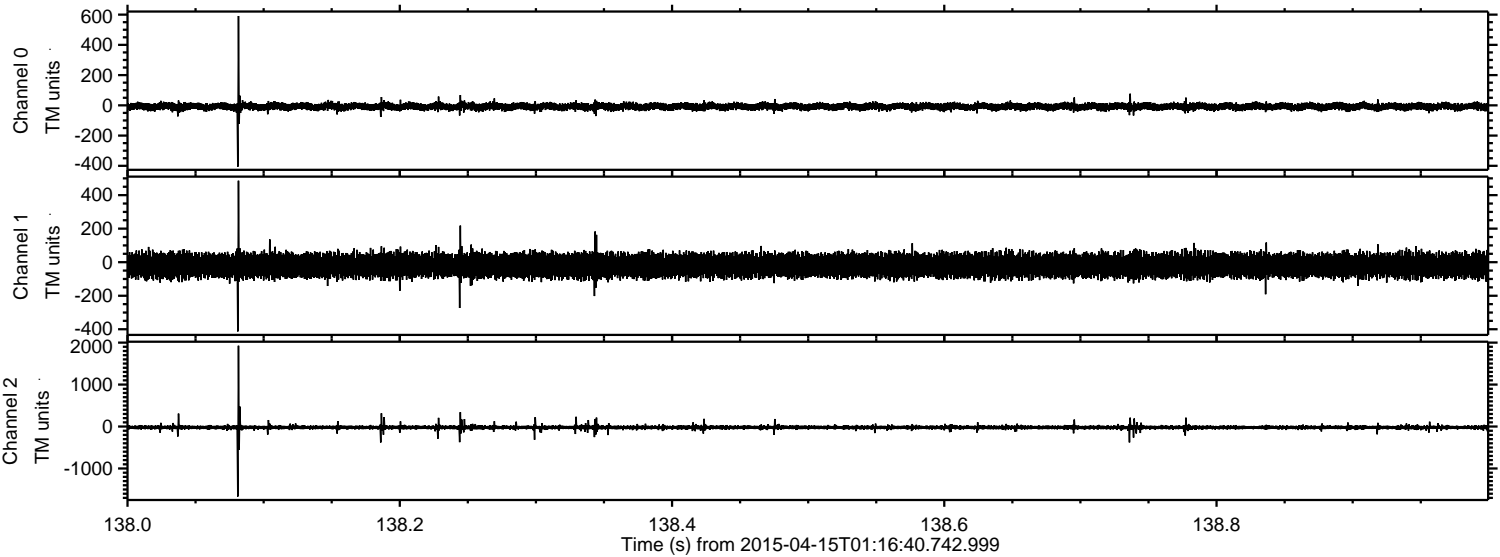


Processed Wed Apr 15 03:23:30 2015 by ELM ver.2012-10-06 from 001__elm20150415_011639__dat00.bin



ELMAVAN 3D WAVEFORMS (Measured data sampled at 50 kHz) 49789 packets of 144 samples from 2015-04-15T01:16:40.742.999. Part 139/144

Processed Wed Apr 15 03:23:31 2015 by ELM ver.2012-10-06 from 001__elm20150415_011639__dat00.bin

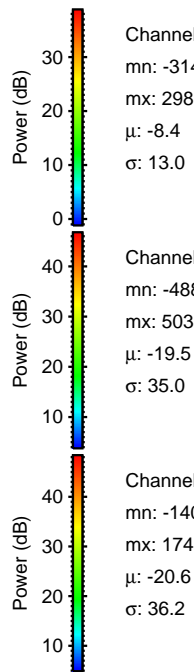
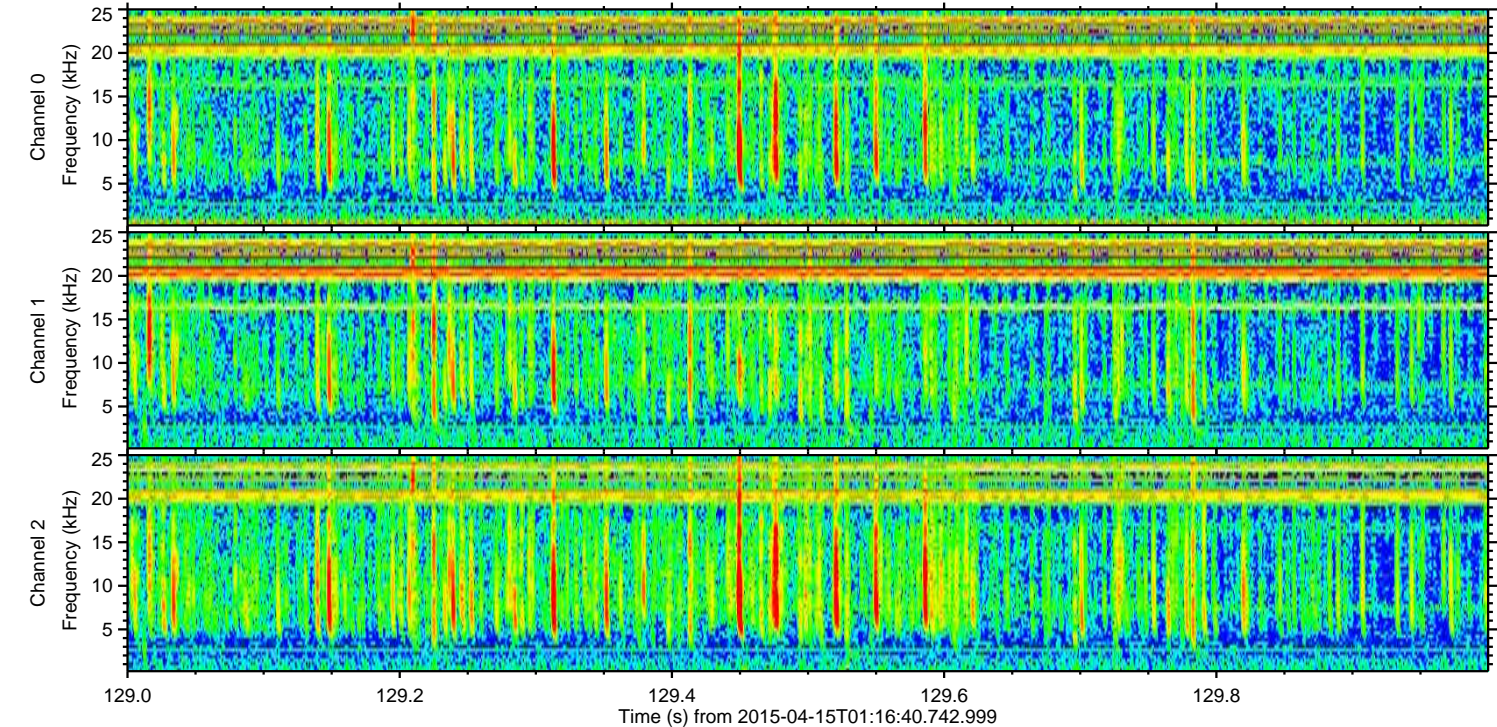
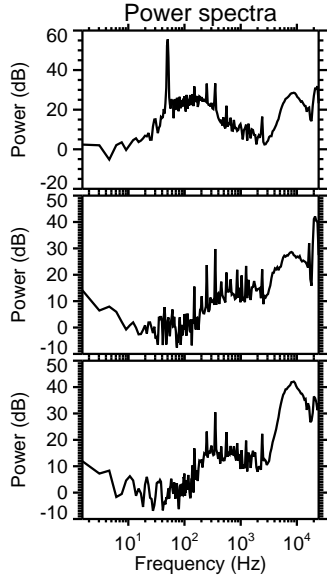
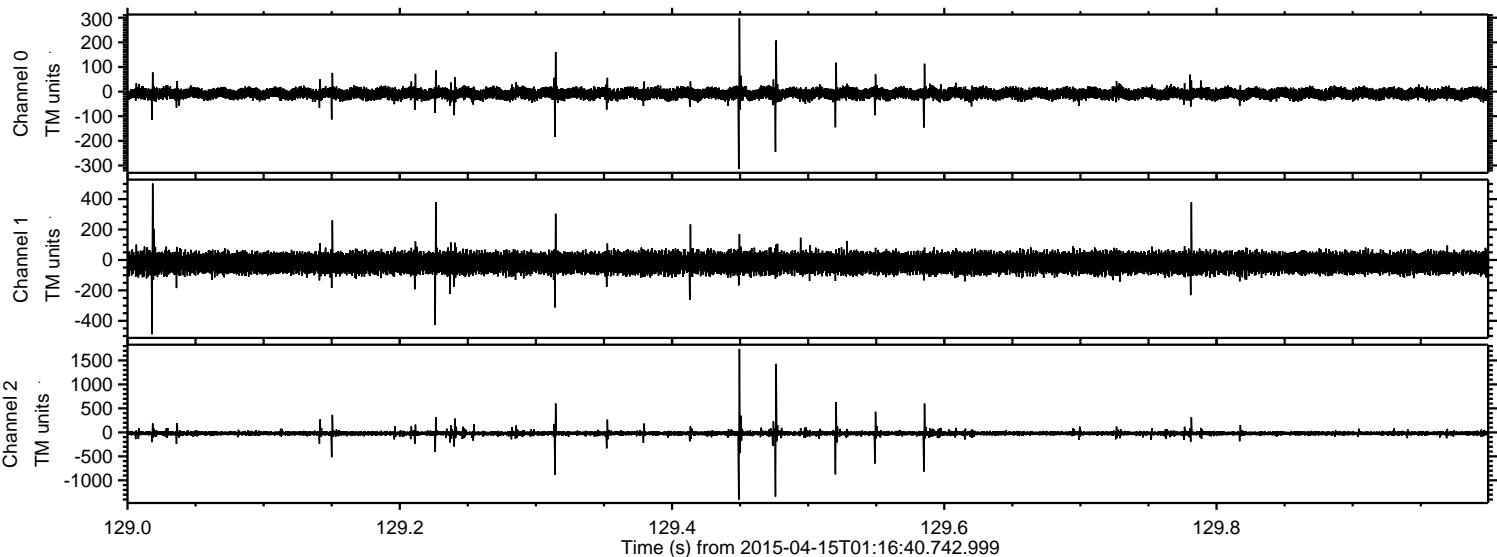


Channel 0
mn: -406
mx: 591
 μ : -8.4
 σ : 12.1

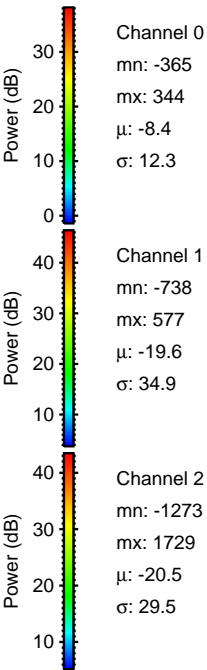
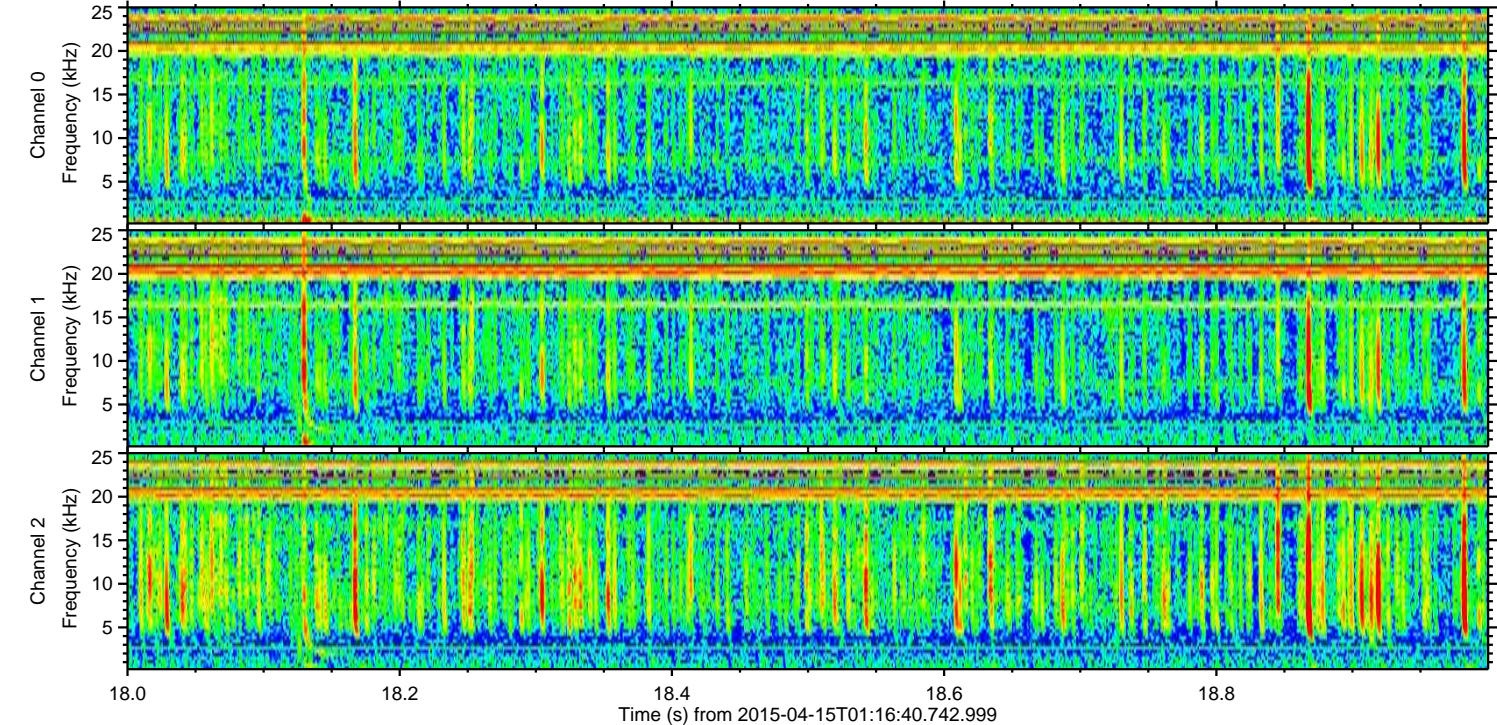
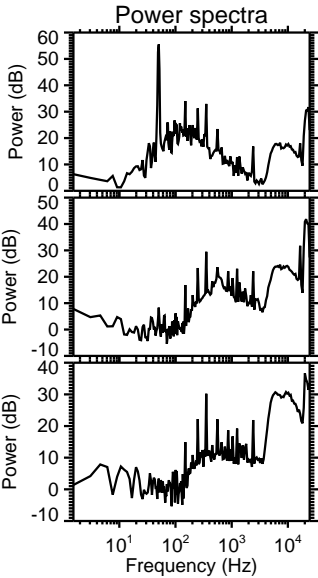
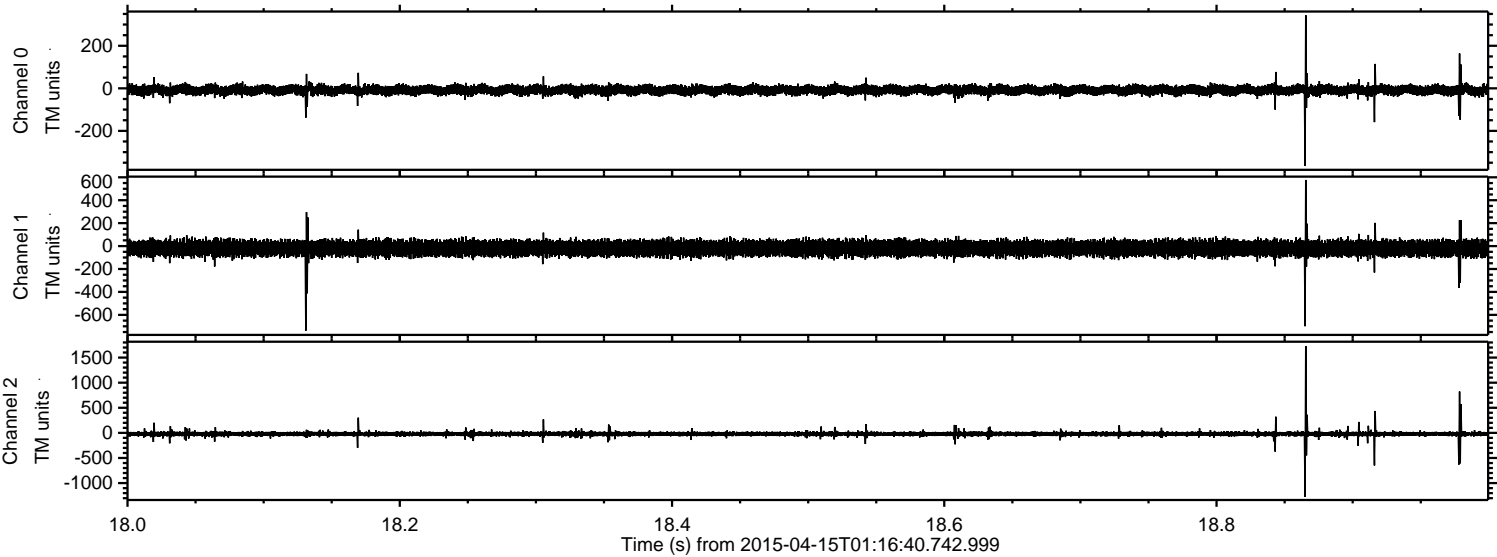
Channel 1
mn: -413
mx: 486
 μ : -19.5
 σ : 34.6

Channel 2
mn: -1667
mx: 1925
 μ : -20.5
 σ : 27.2

Processed Wed Apr 15 03:23:32 2015 by ELM ver.2012-10-06 from 001__elm20150415_011639__dat00.bin



Processed Wed Apr 15 03:23:33 2015 by ELM ver.2012-10-06 from 001__elm20150415_011639__dat00.bin



Channel 0
mn: -365
mx: 344
 μ : -8.4
 σ : 12.3

Channel 1
mn: -738
mx: 577
 μ : -19.6
 σ : 34.9

Channel 2
mn: -1273
mx: 1729
 μ : -20.5
 σ : 29.5

