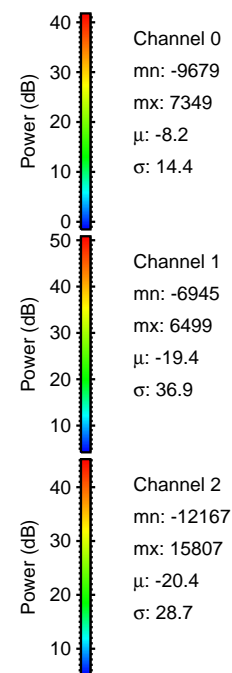
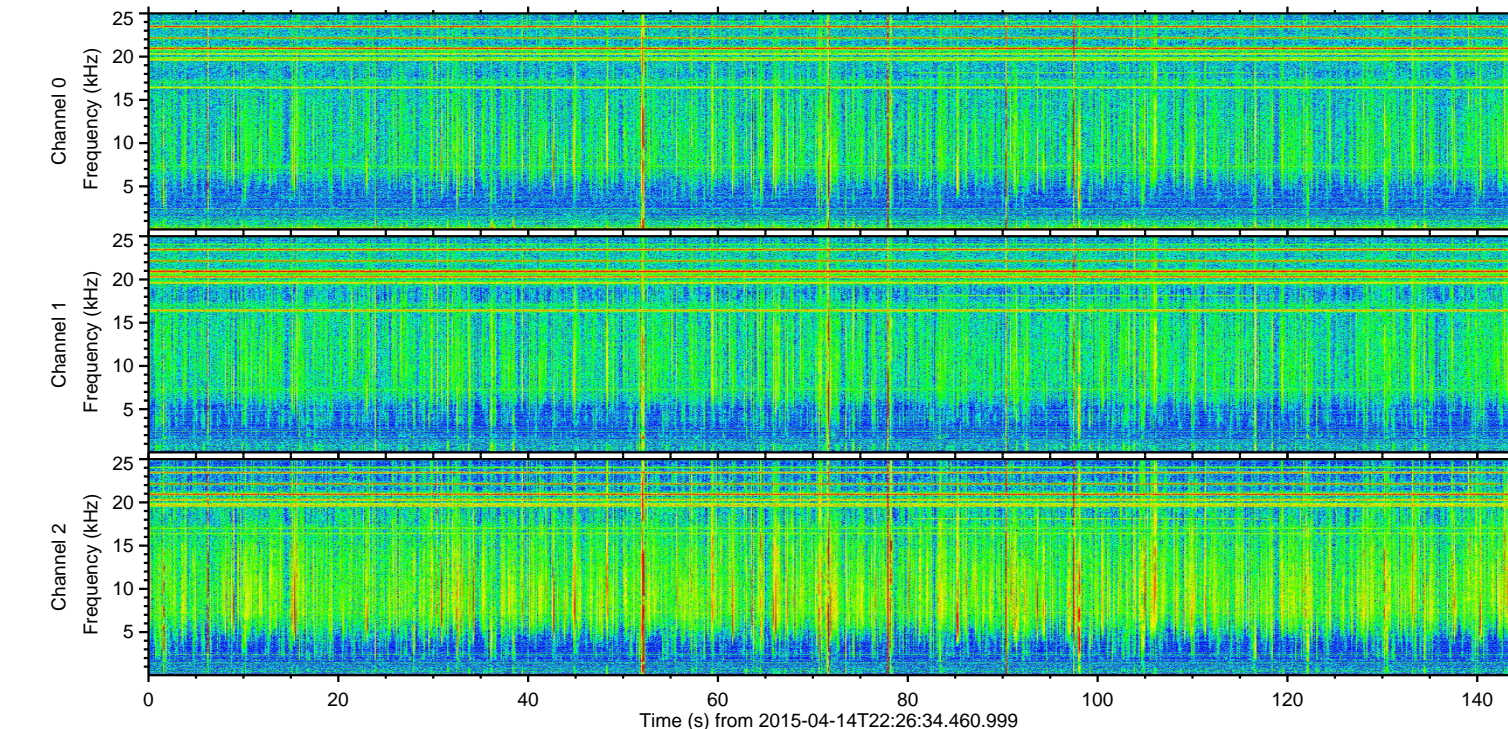
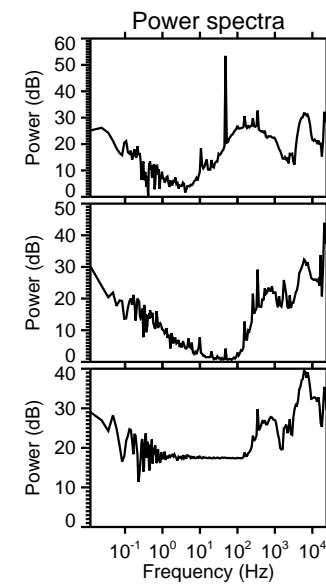
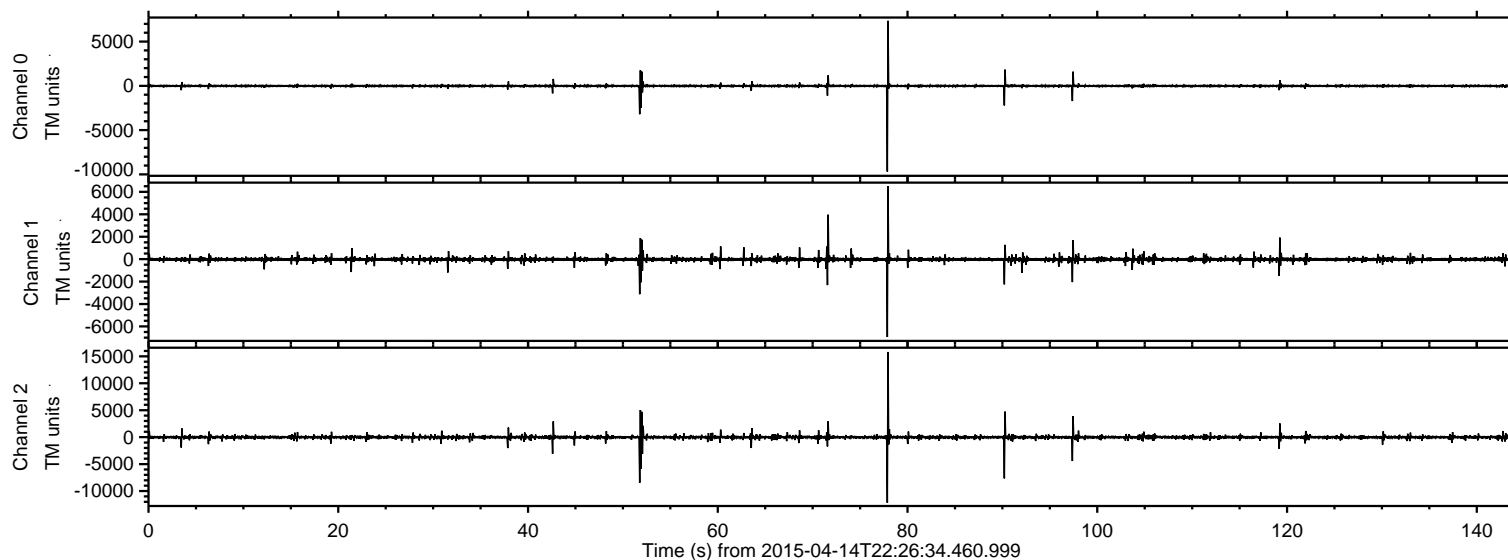
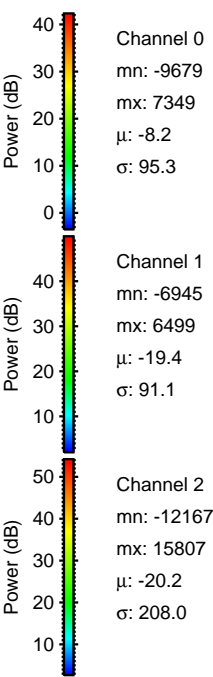
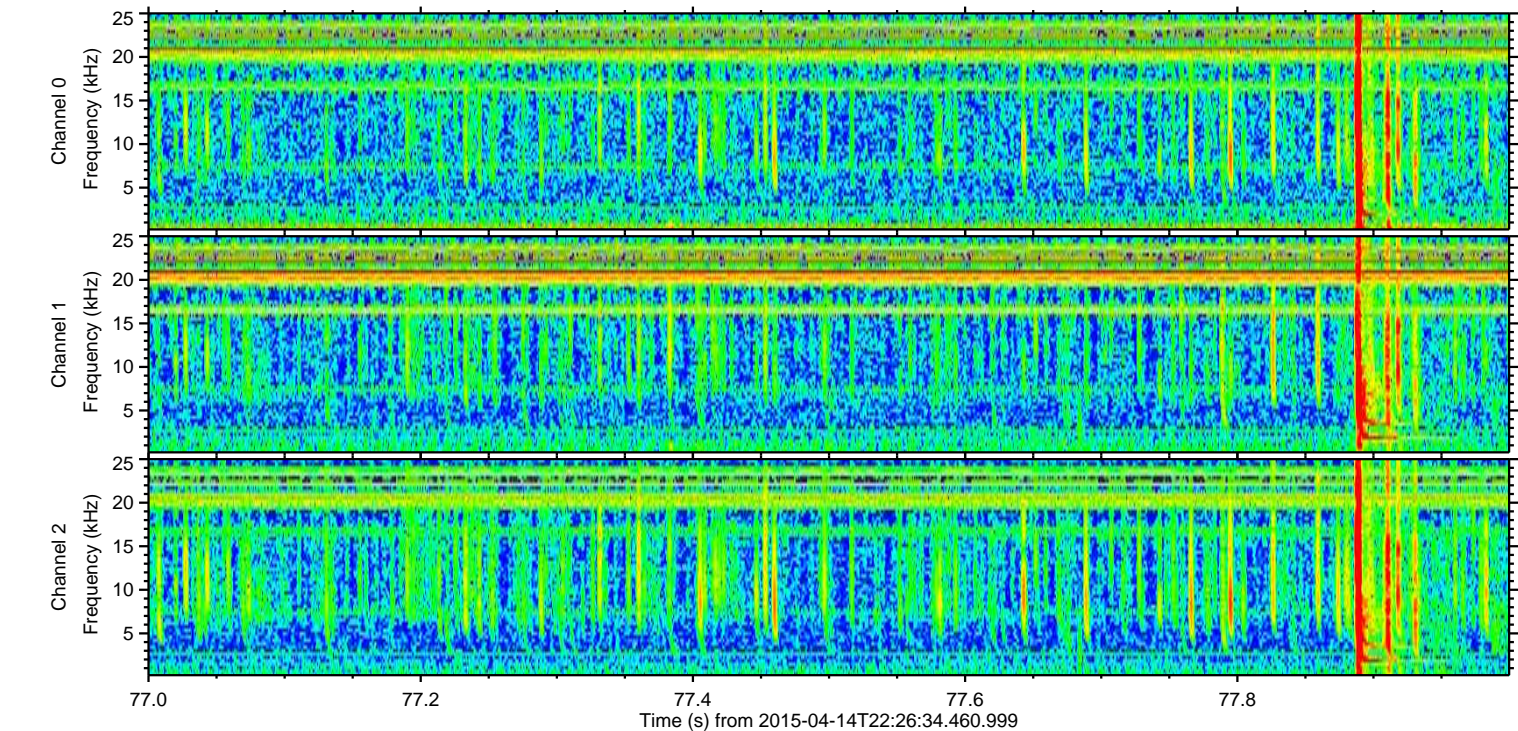
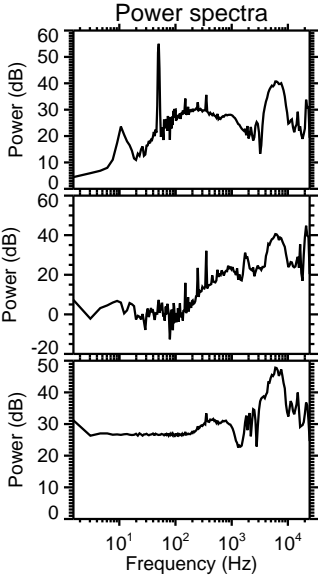
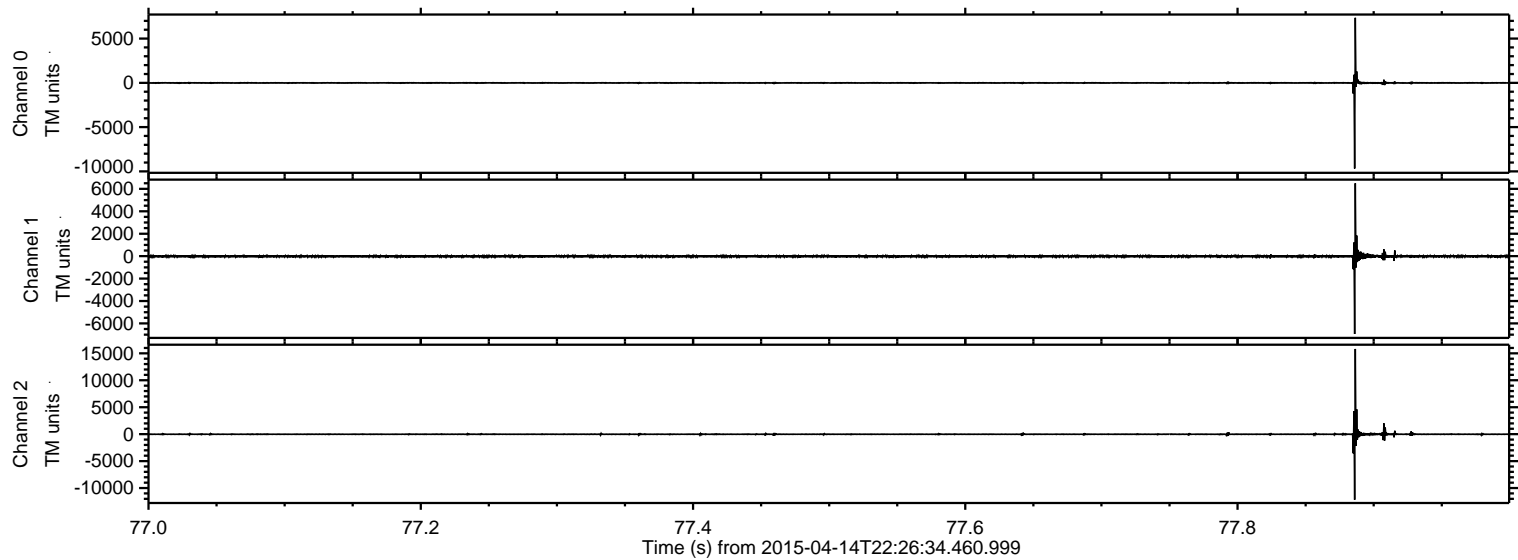


ELMAVAN 3D WAVEFORMS (Measured data sampled at 50 kHz) 49795 packets of 144 samples from 2015-04-14T22:26:34.460.999.

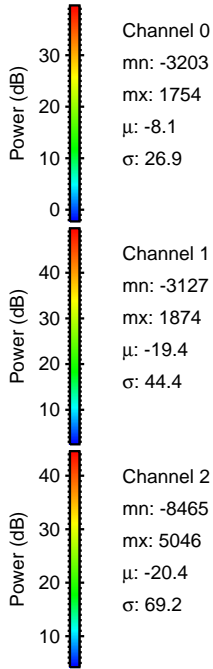
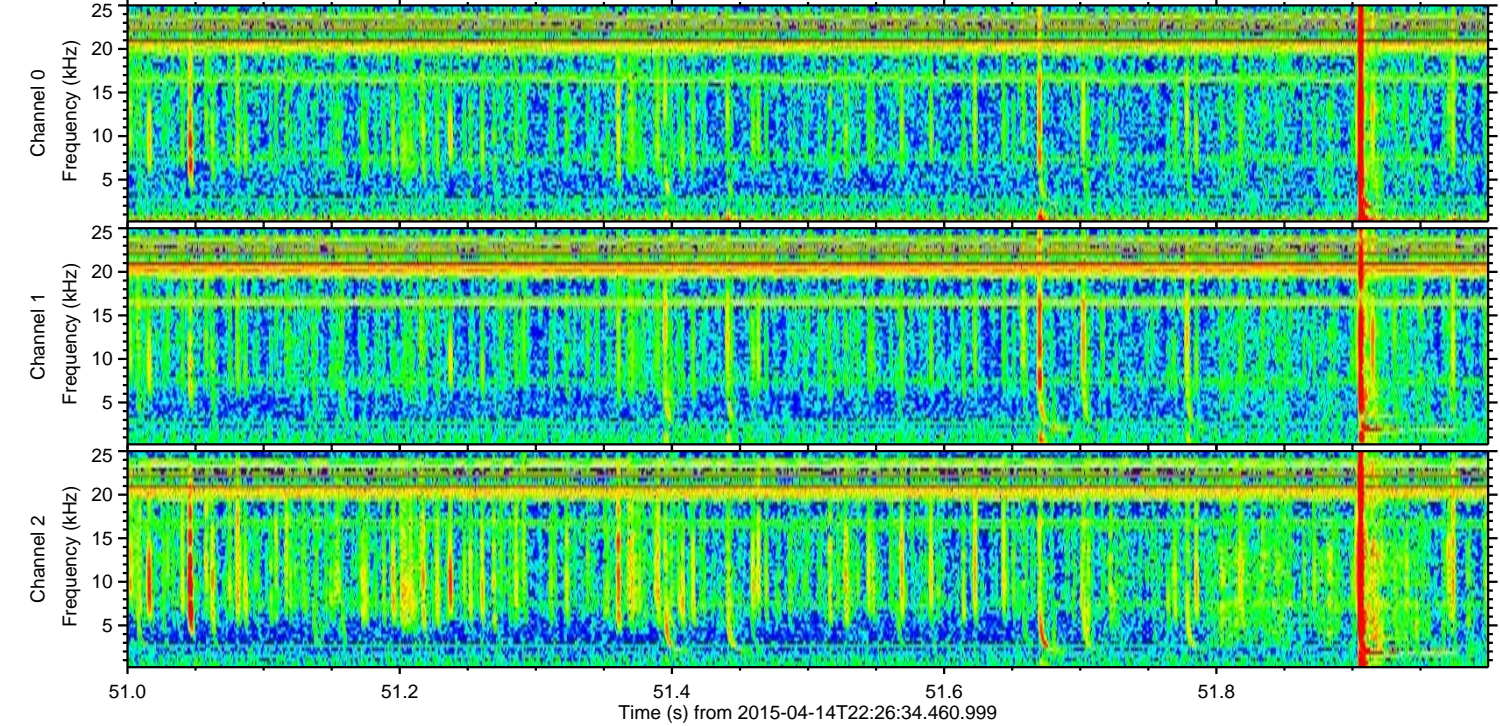
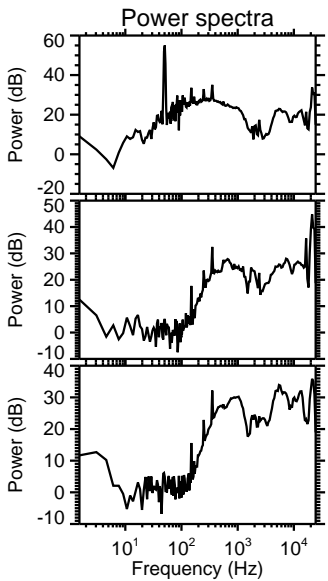
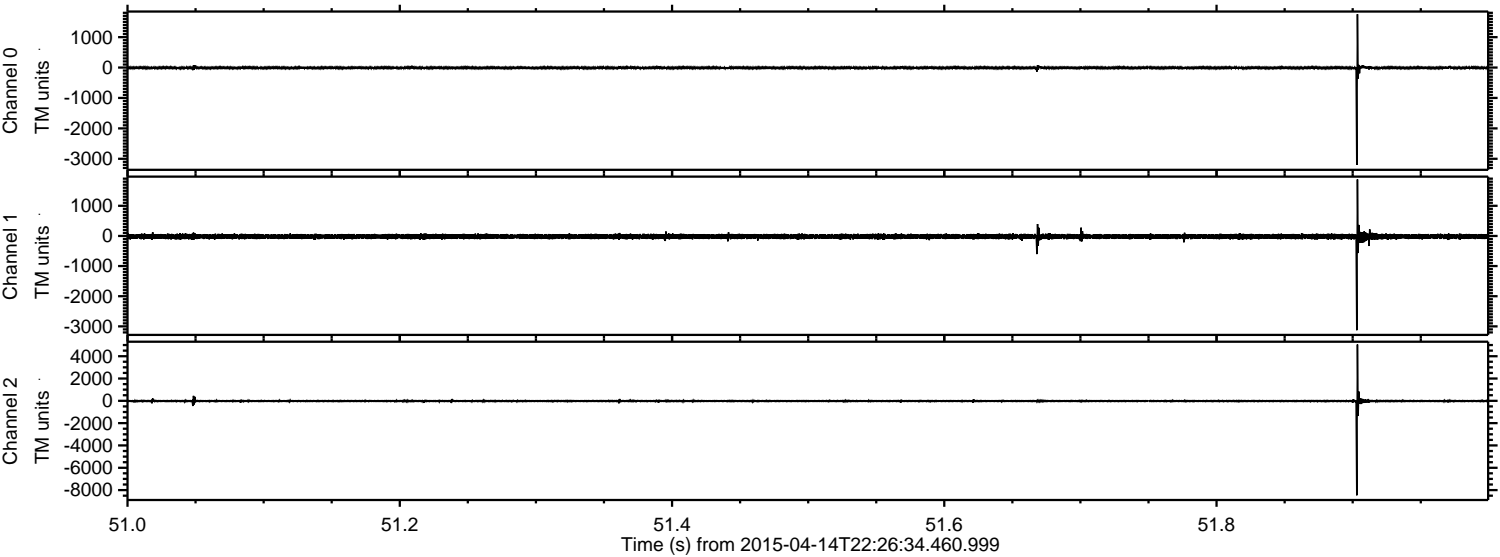
Processed Wed Apr 15 00:32:55 2015 by ELM ver.2012-10-06 from 001__elm20150414_222633__dat00.bin



Processed Wed Apr 15 00:33:07 2015 by ELM ver.2012-10-06 from 001__elm20150414_222633__dat00.bin



Processed Wed Apr 15 00:33:08 2015 by ELM ver.2012-10-06 from 001__elm20150414_222633__dat00.bin

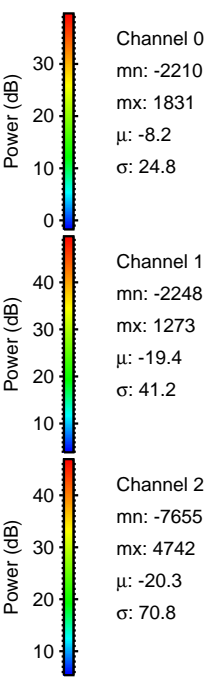
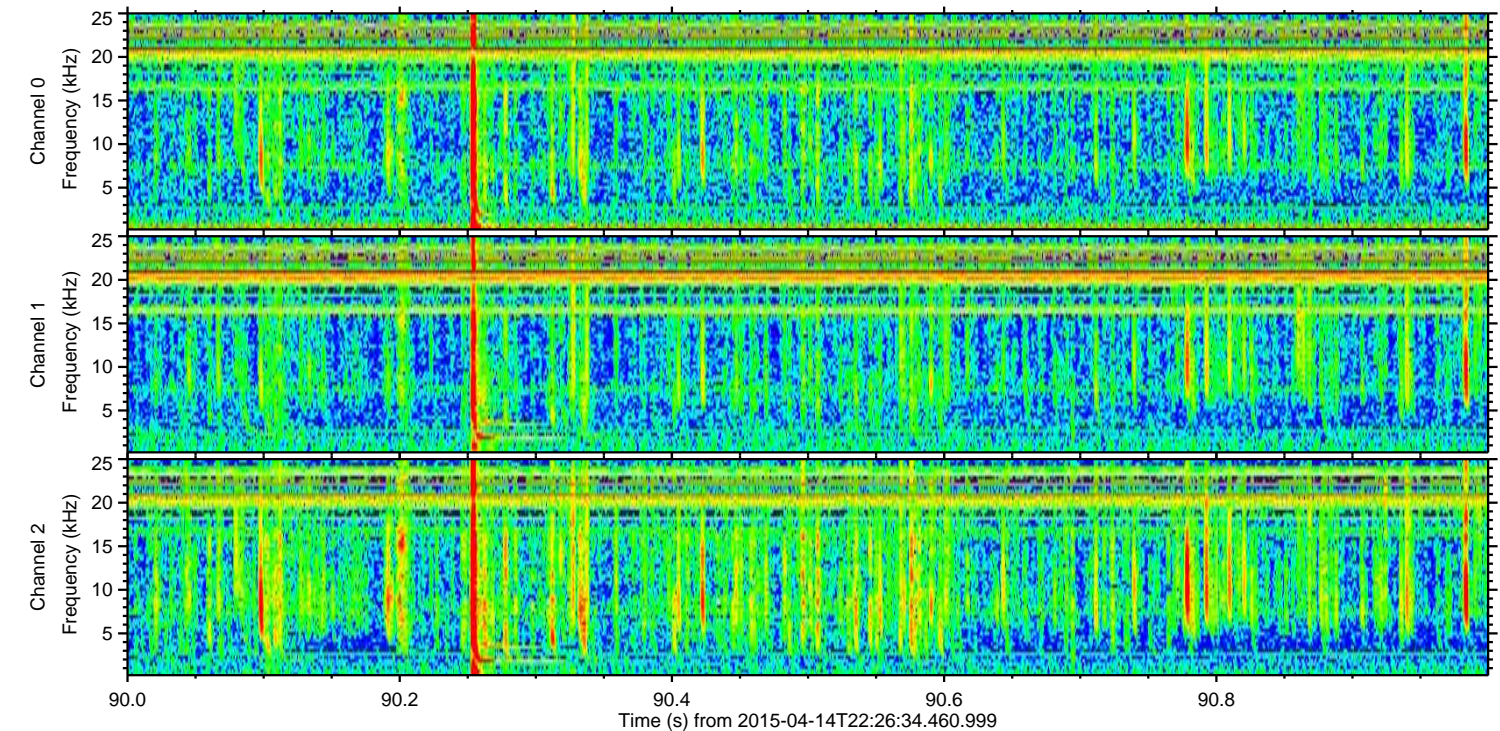
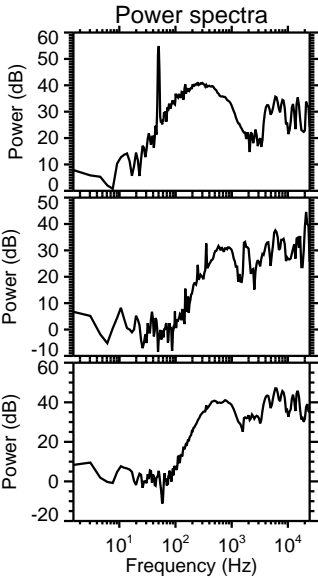
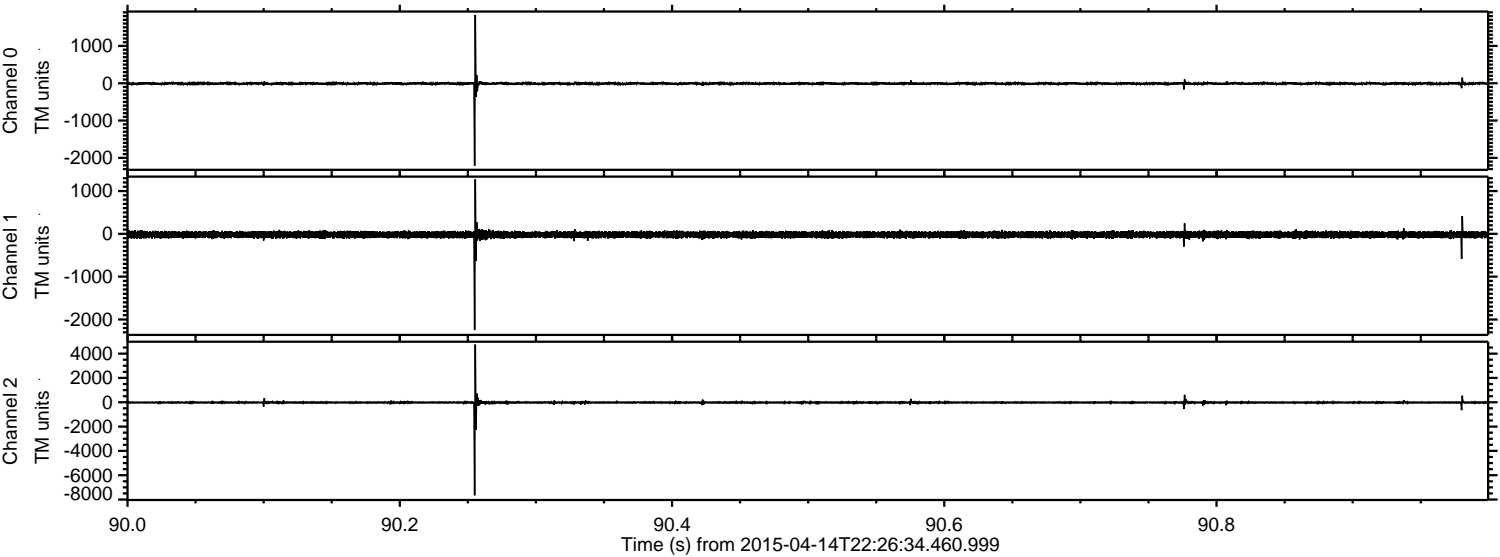


Channel 0
mn: -3203
mx: 1754
 μ : -8.1
 σ : 26.9

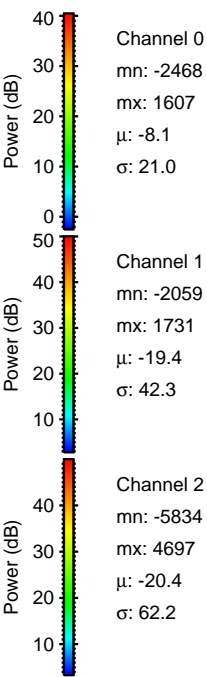
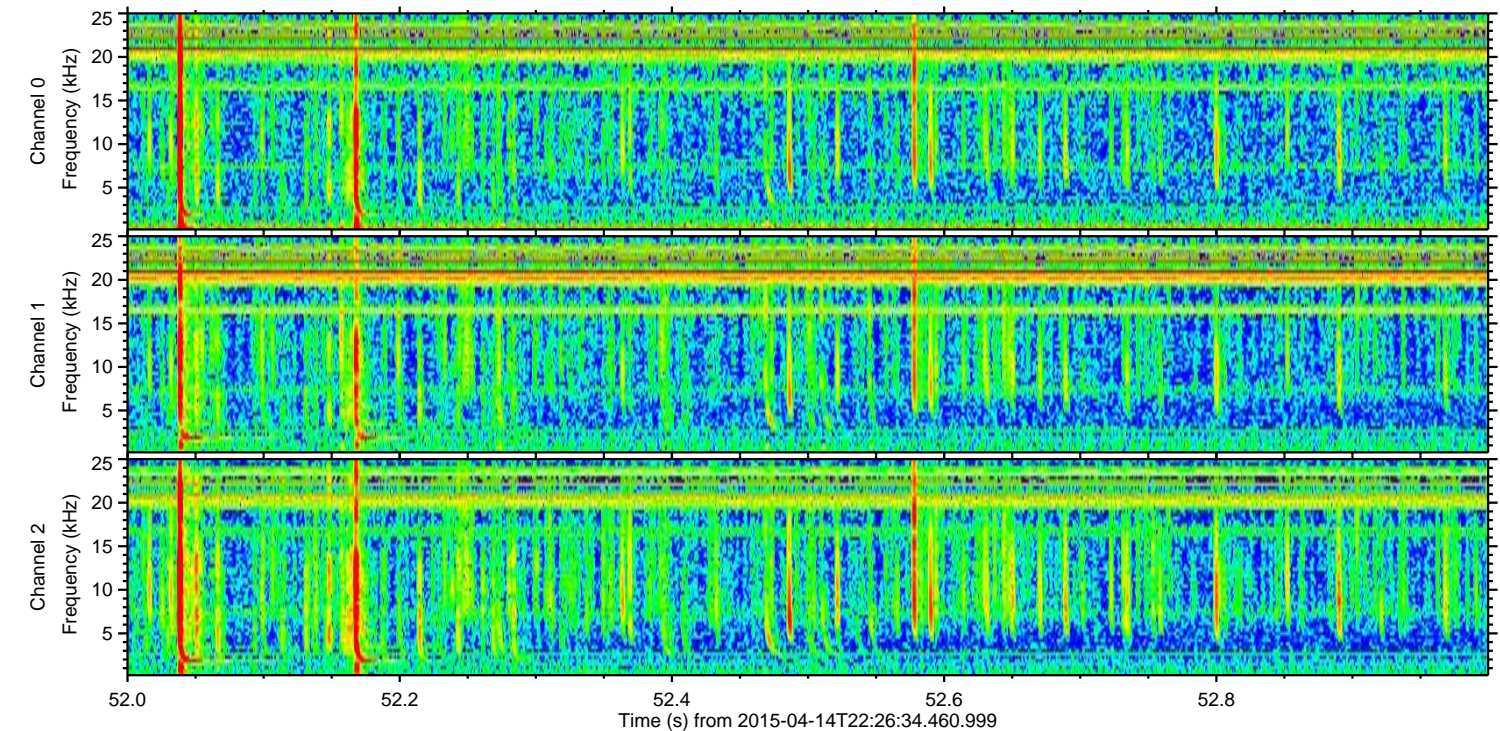
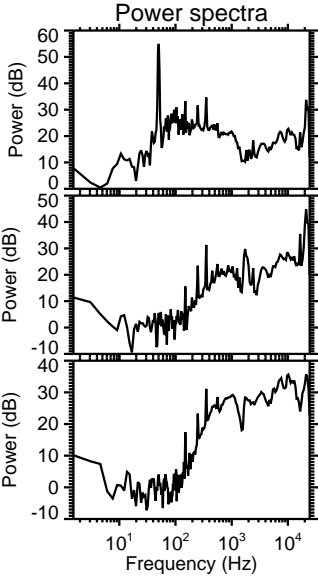
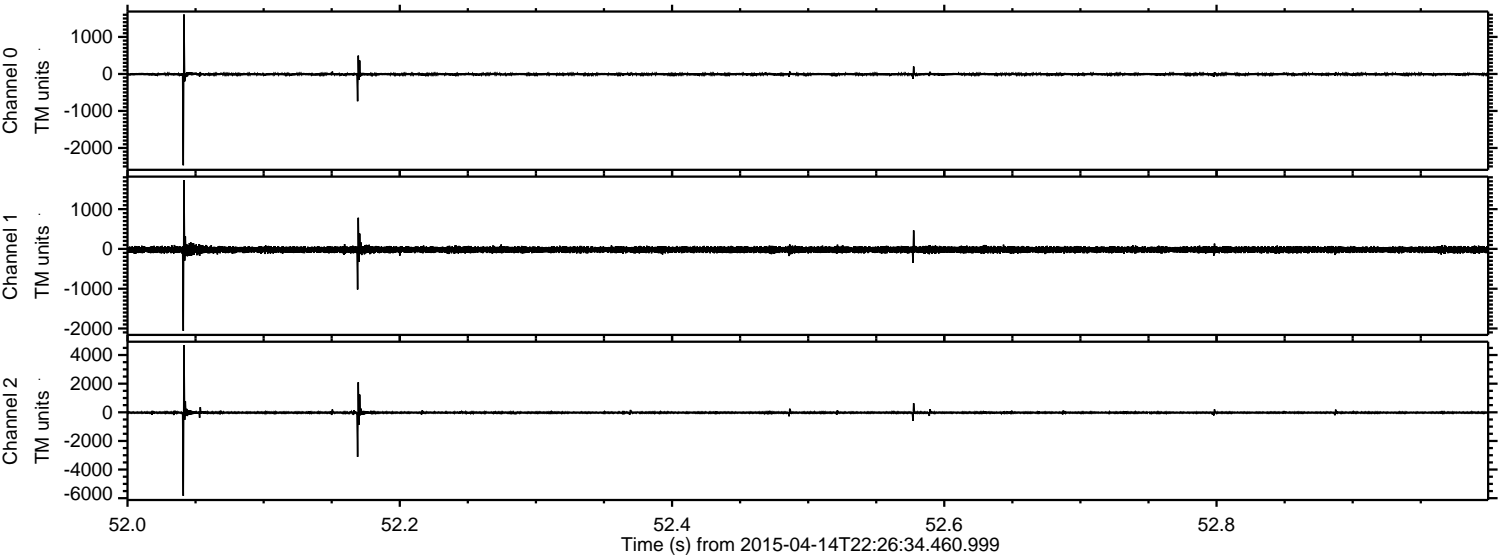
Channel 1
mn: -3127
mx: 1874
 μ : -19.4
 σ : 44.4

Channel 2
mn: -8465
mx: 5046
 μ : -20.4
 σ : 69.2

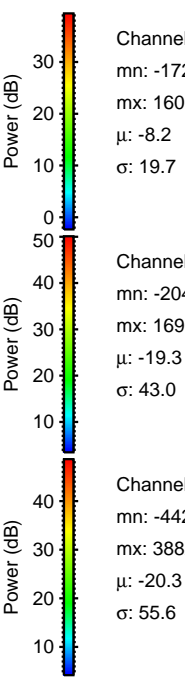
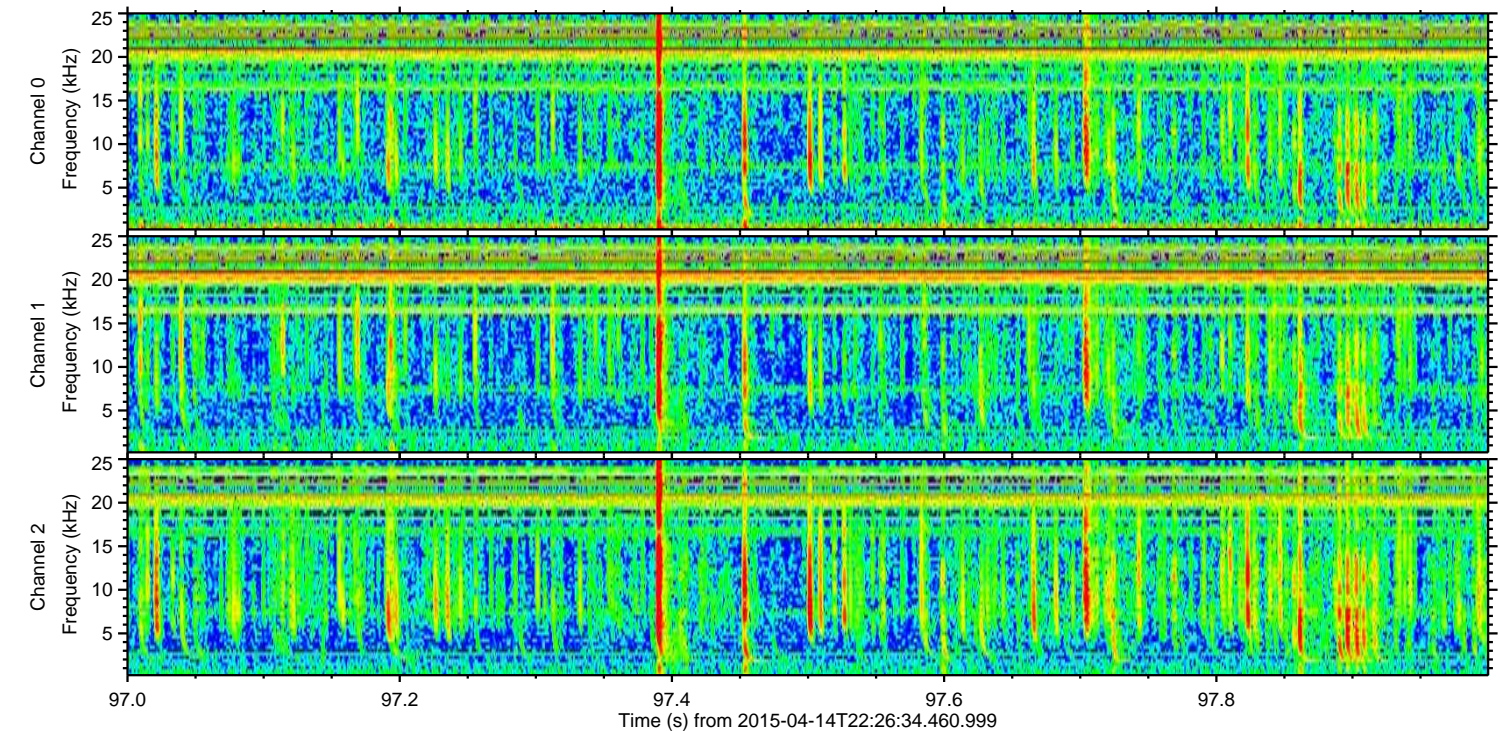
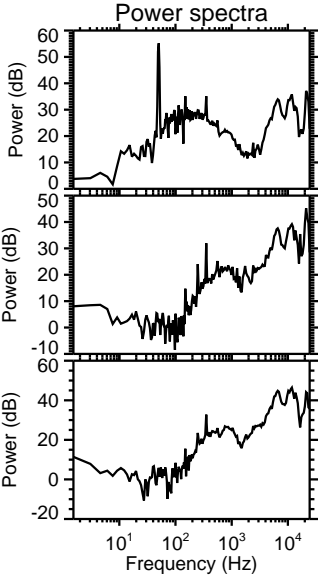
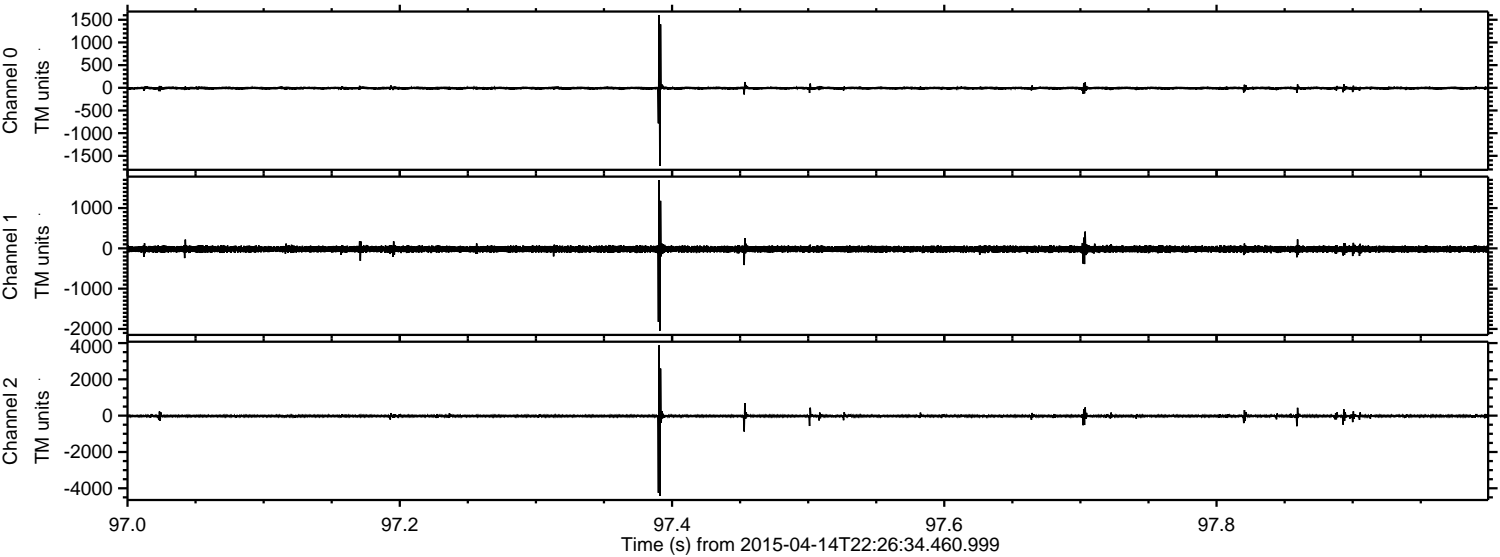
Processed Wed Apr 15 00:33:09 2015 by ELM ver.2012-10-06 from 001__elm20150414_222633__dat00.bin



Processed Wed Apr 15 00:33:09 2015 by ELM ver.2012-10-06 from 001__elm20150414_222633__dat00.bin



Processed Wed Apr 15 00:33:10 2015 by ELM ver.2012-10-06 from 001__elm20150414_222633__dat00.bin



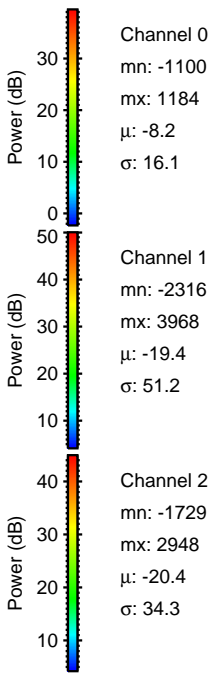
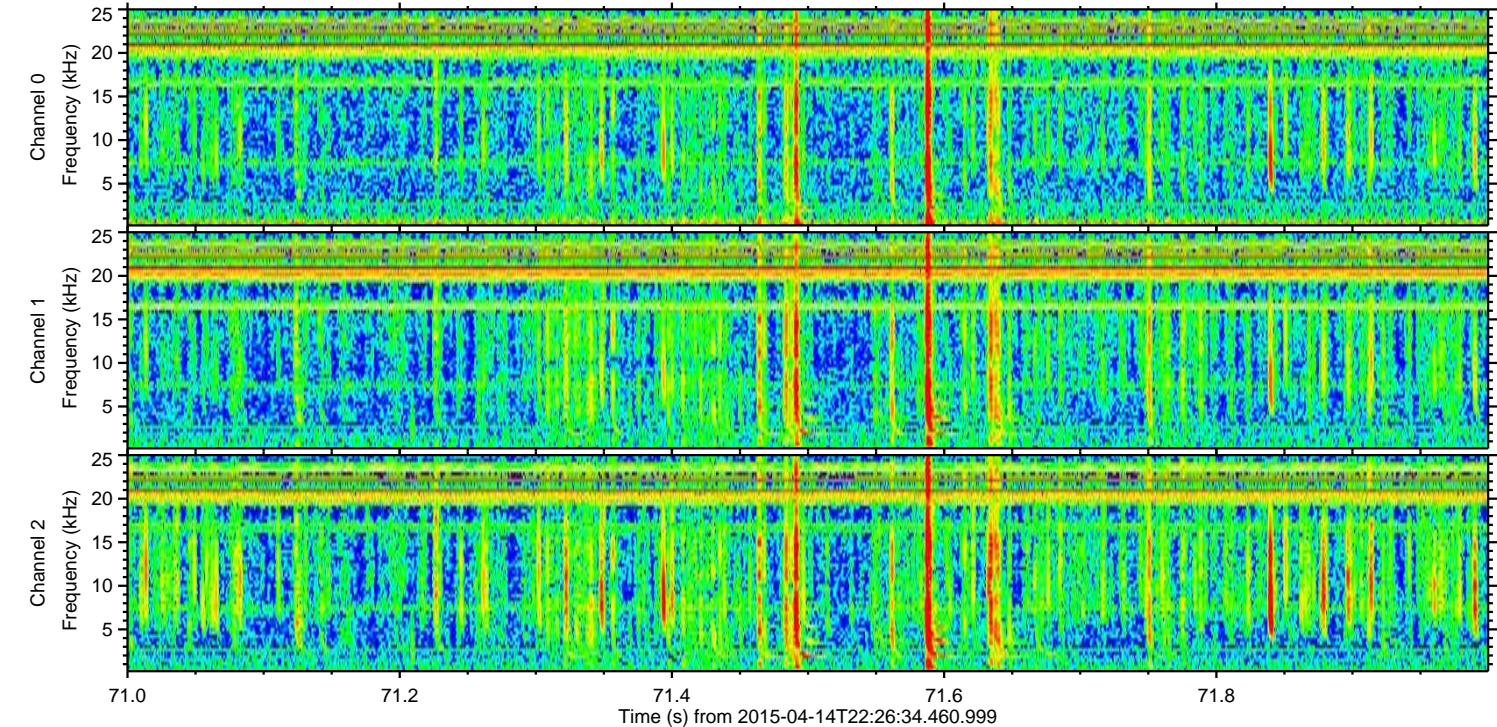
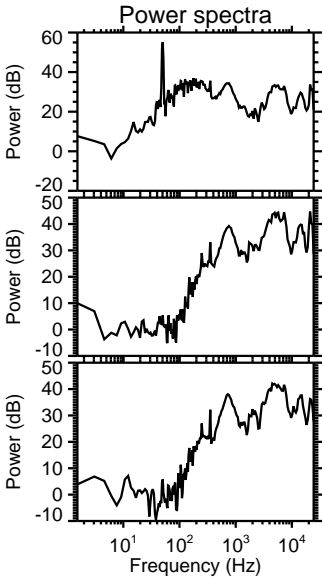
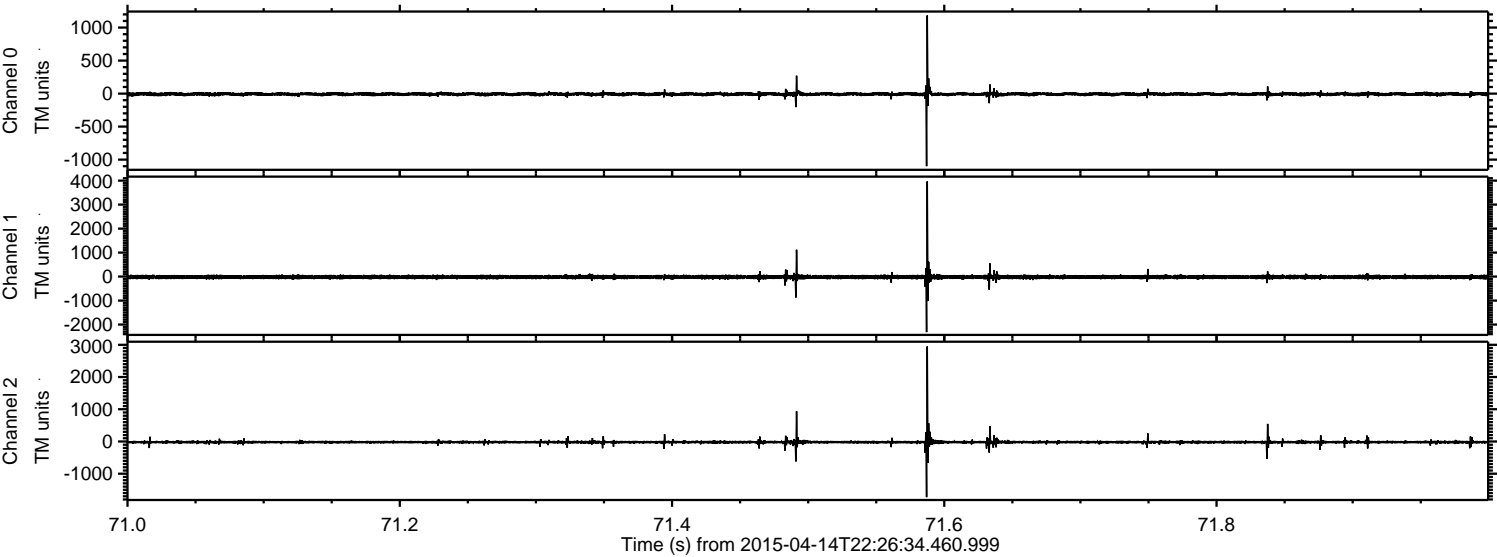
Channel 0
mn: -1722
mx: 1601
 μ : -8.2
 σ : 19.7

Channel 1
mn: -2046
mx: 1696
 μ : -19.3
 σ : 43.0

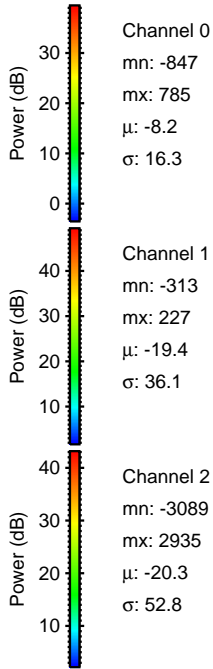
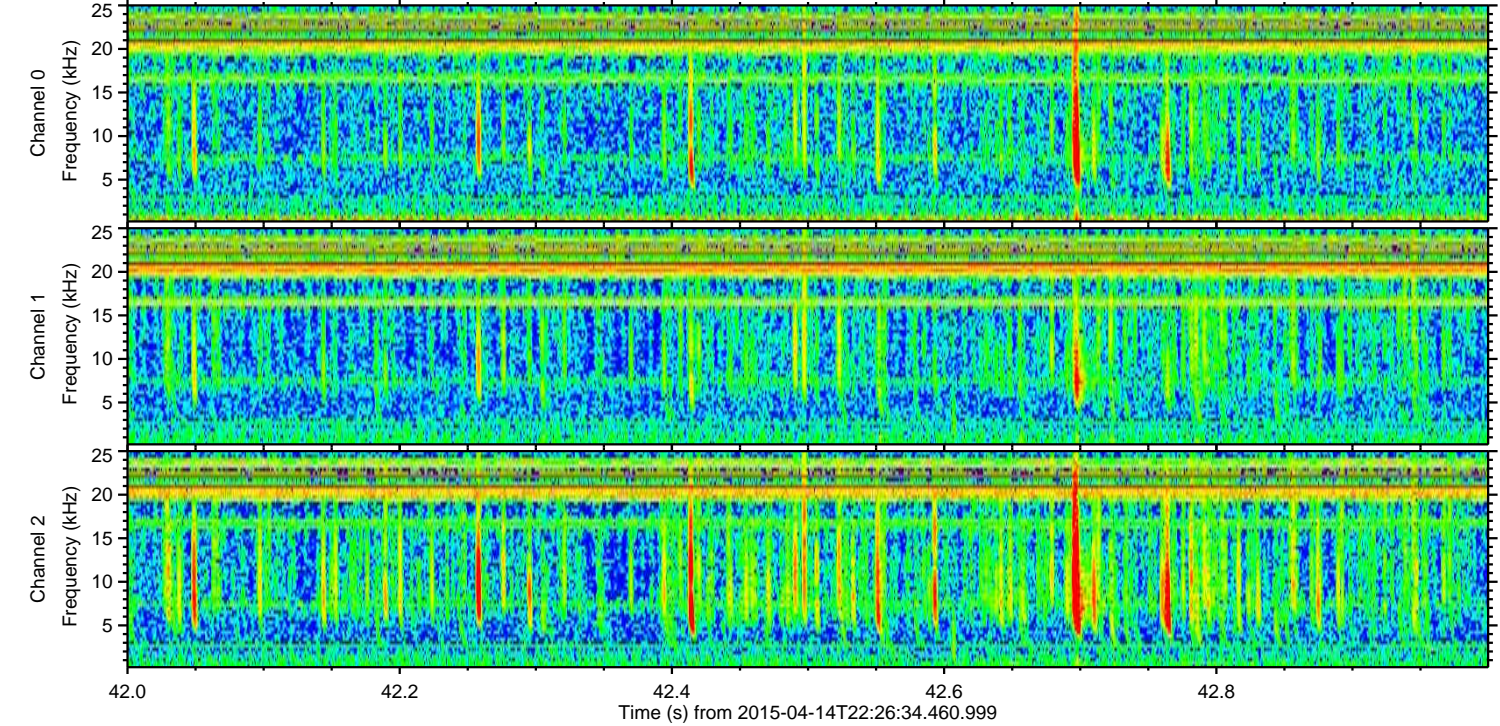
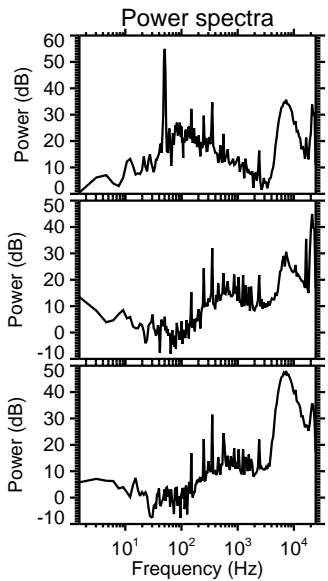
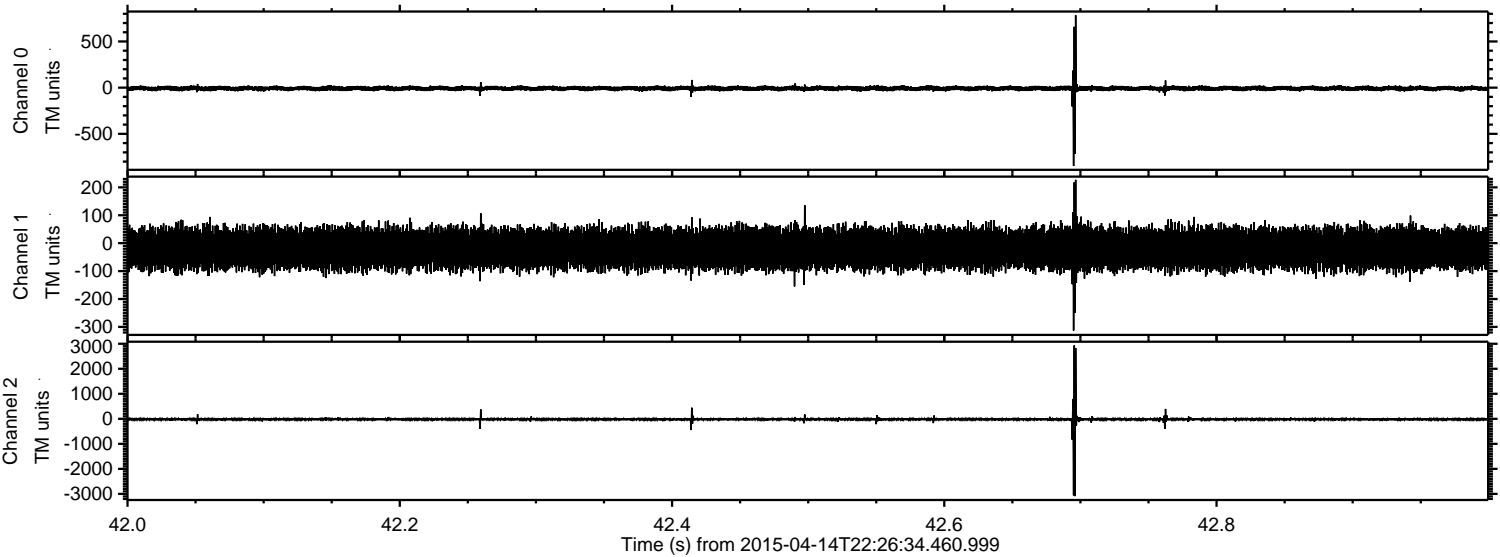
Channel 2
mn: -4426
mx: 3882
 μ : -20.3
 σ : 55.6

ELMAVAN 3D WAVEFORMS (Measured data sampled at 50 kHz) 49795 packets of 144 samples from 2015-04-14T22:26:34.460.999. Part 72/144

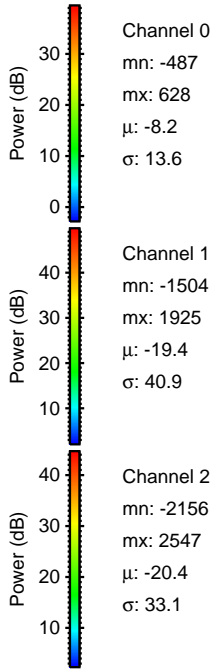
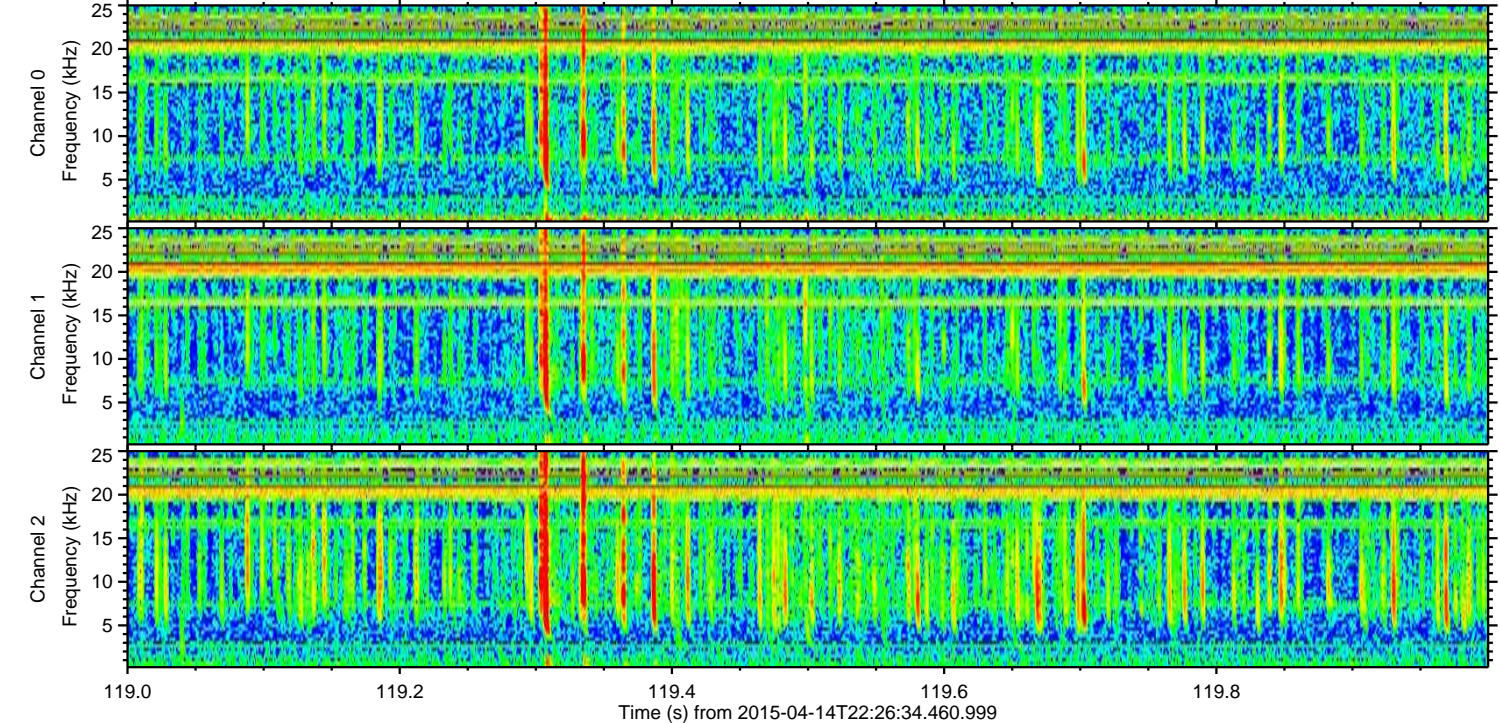
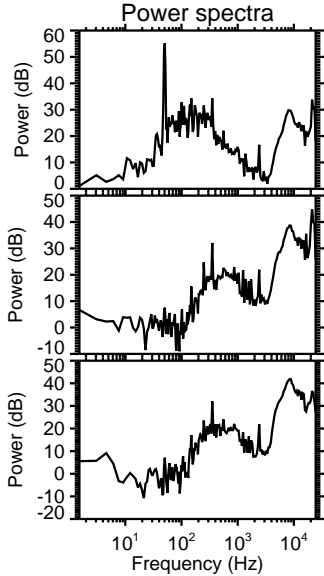
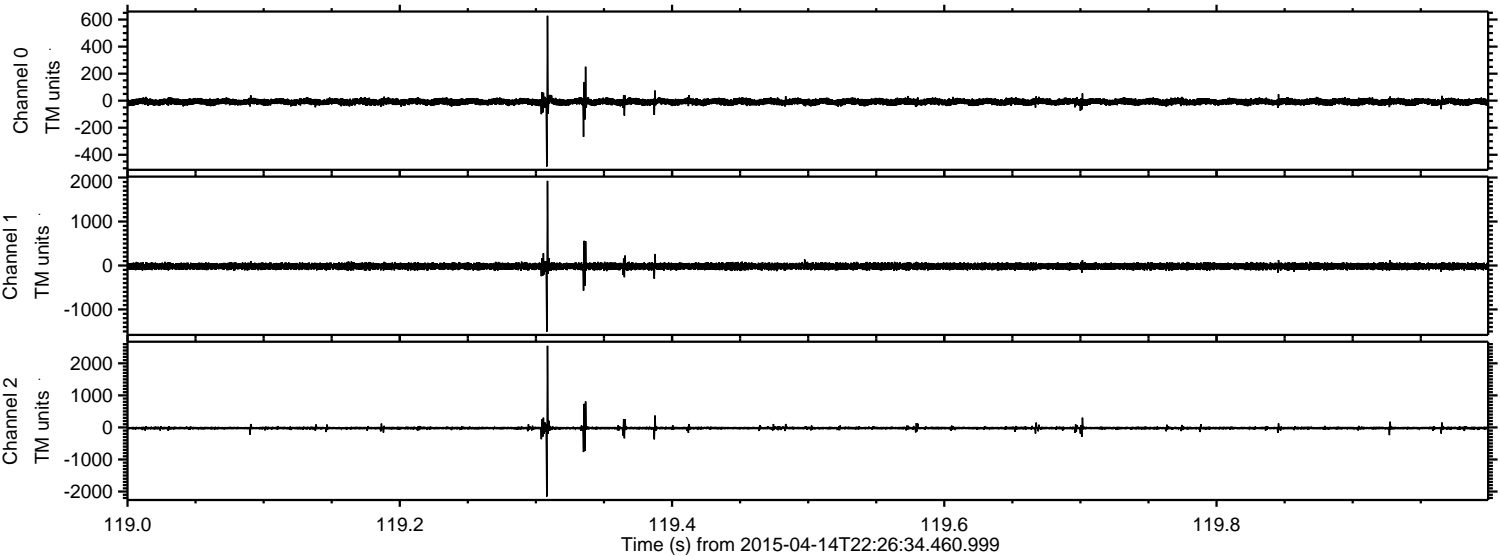
Processed Wed Apr 15 00:33:11 2015 by ELM ver.2012-10-06 from 001__elm20150414_222633__dat00.bin



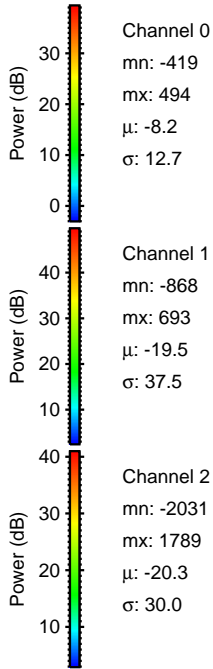
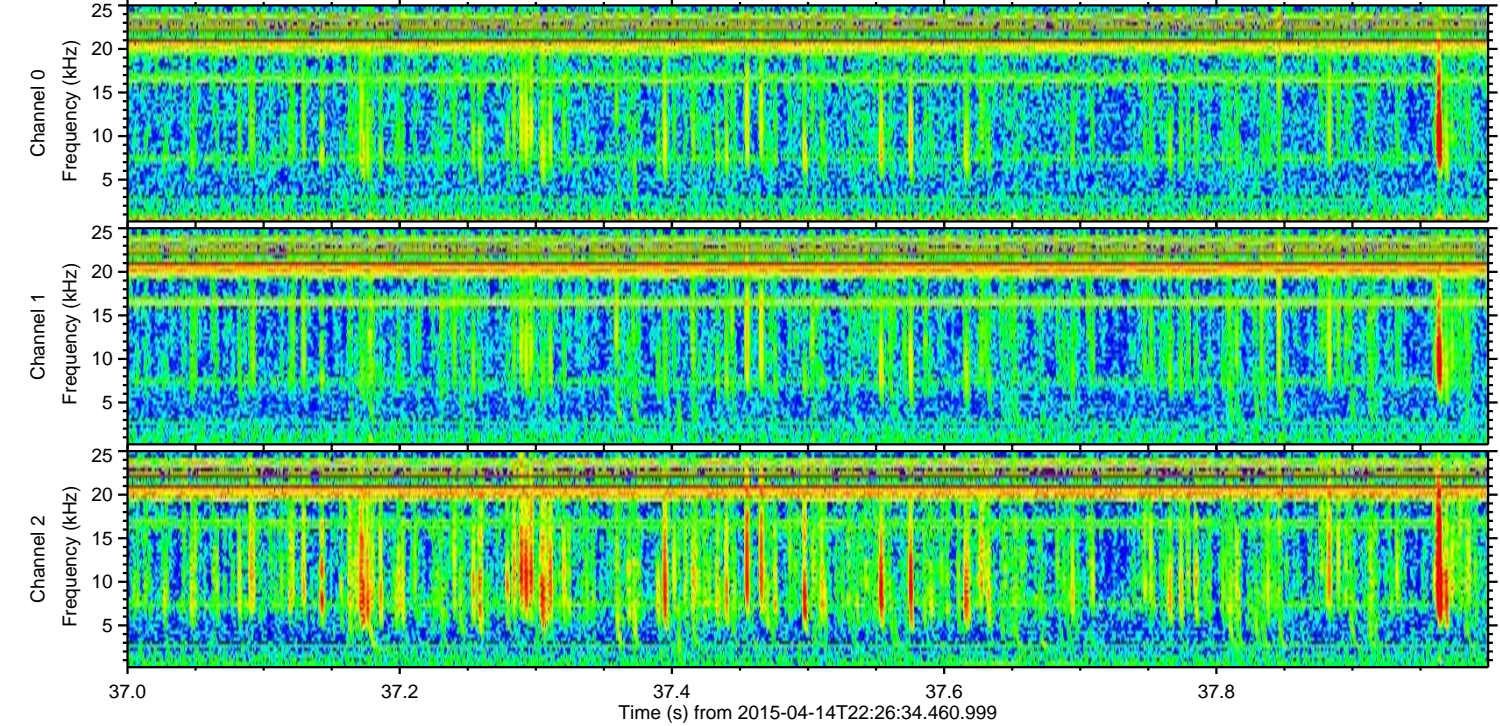
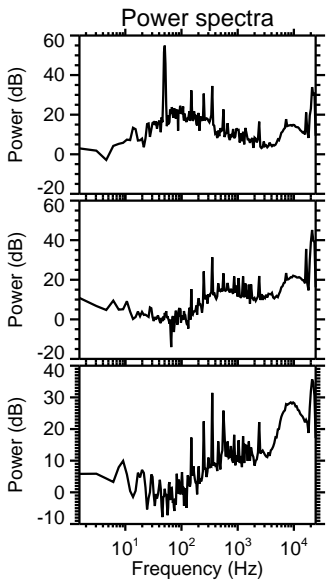
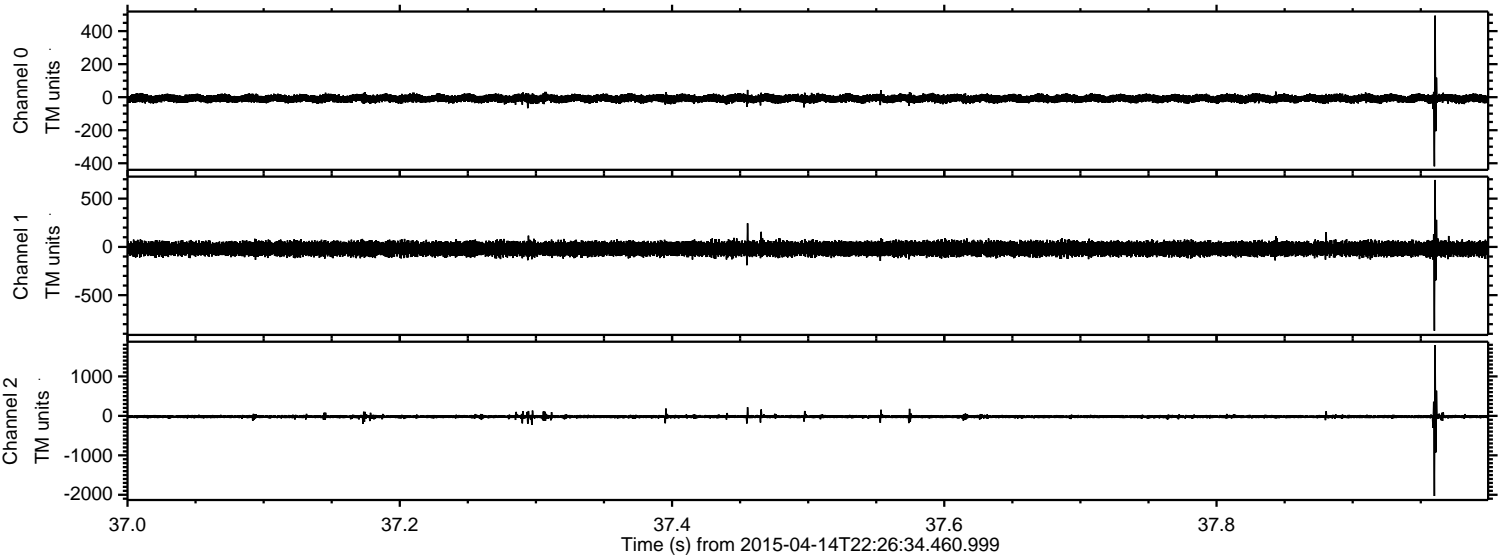
Processed Wed Apr 15 00:33:12 2015 by ELM ver.2012-10-06 from 001__elm20150414_222633__dat00.bin



Processed Wed Apr 15 00:33:13 2015 by ELM ver.2012-10-06 from 001__elm20150414_222633__dat00.bin



Processed Wed Apr 15 00:33:14 2015 by ELM ver.2012-10-06 from 001__elm20150414_222633__dat00.bin



Channel 0
mn: -419
mx: 494
 μ : -8.2
 σ : 12.7

Channel 1
mn: -868
mx: 693
 μ : -19.5
 σ : 37.5

Channel 2
mn: -2031
mx: 1789
 μ : -20.3
 σ : 30.0

Processed Wed Apr 15 00:33:15 2015 by ELM ver.2012-10-06 from 001__elm20150414_222633__dat00.bin

