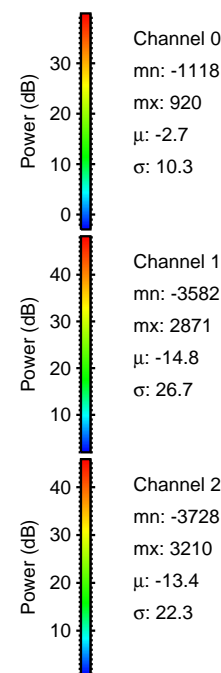
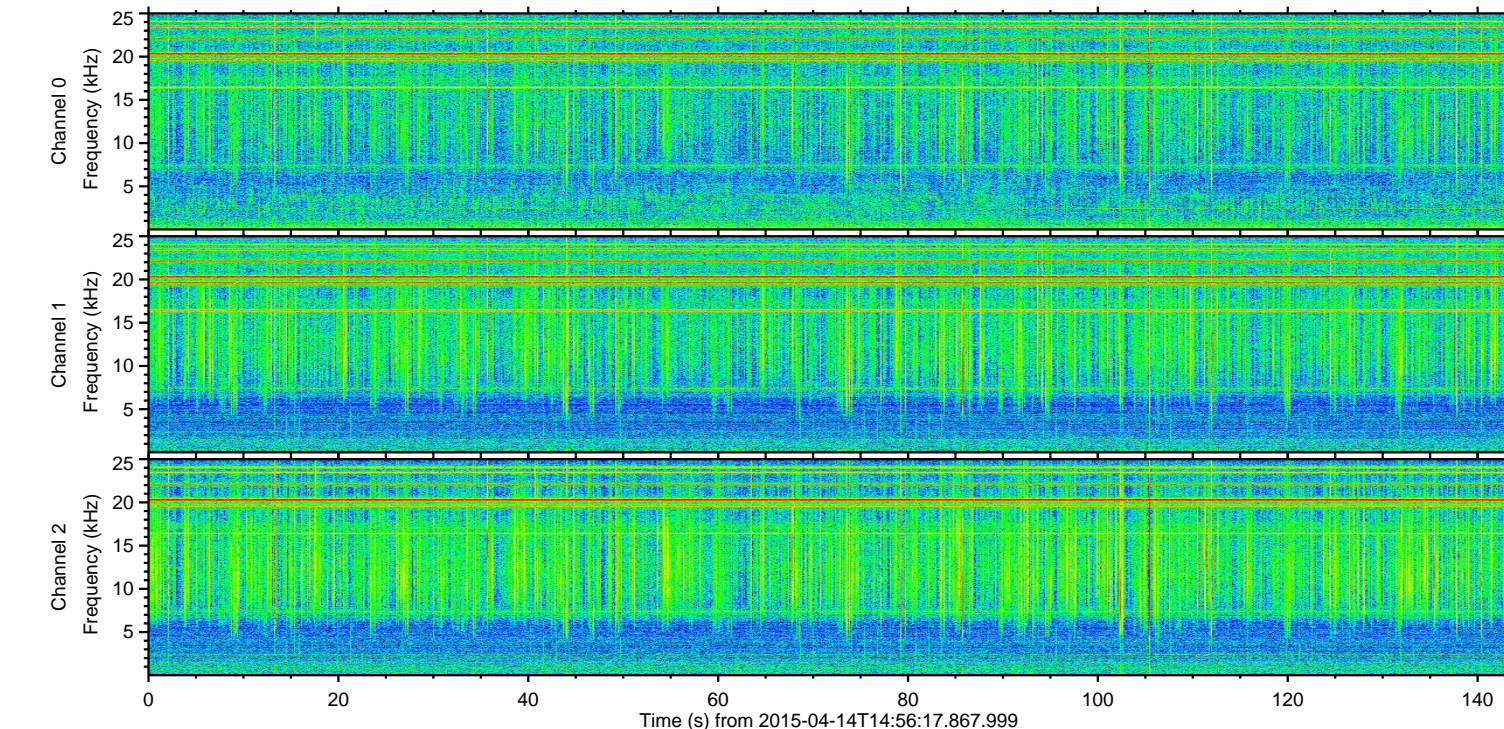
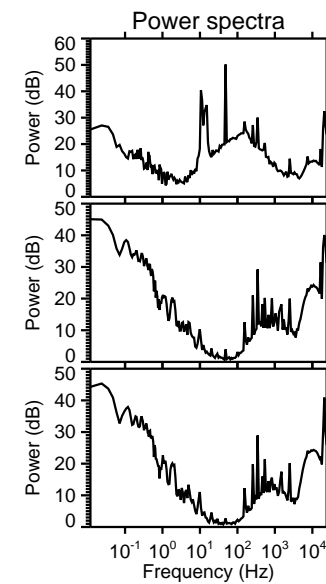
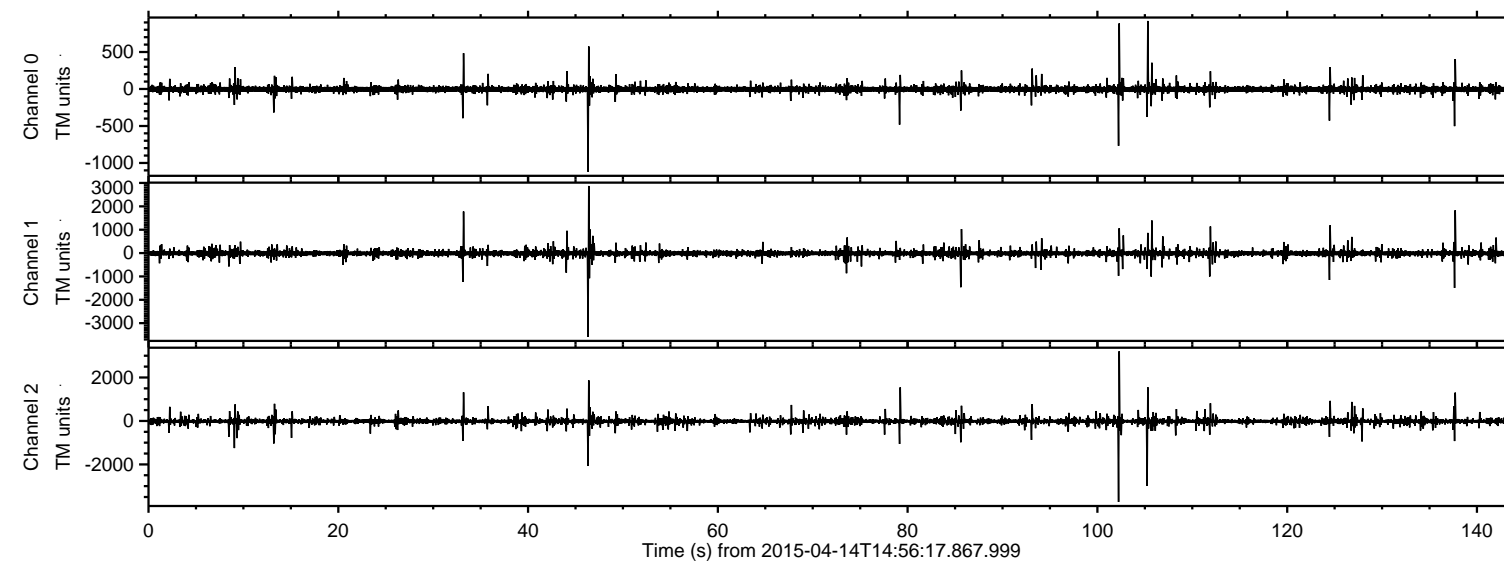


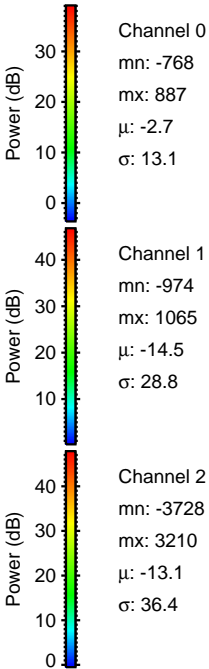
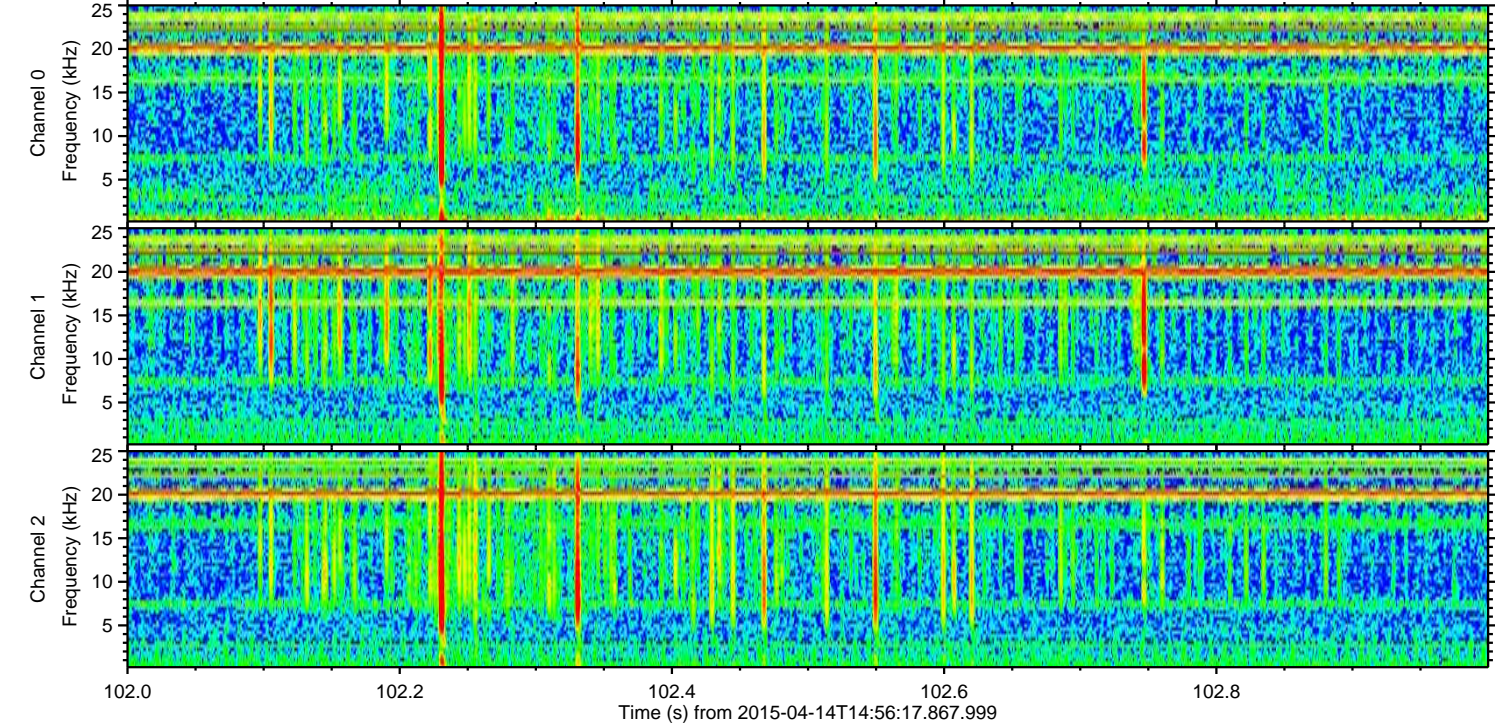
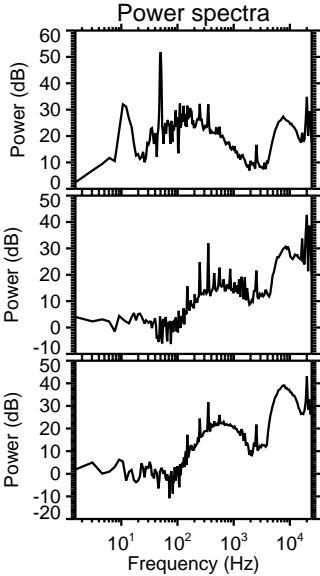
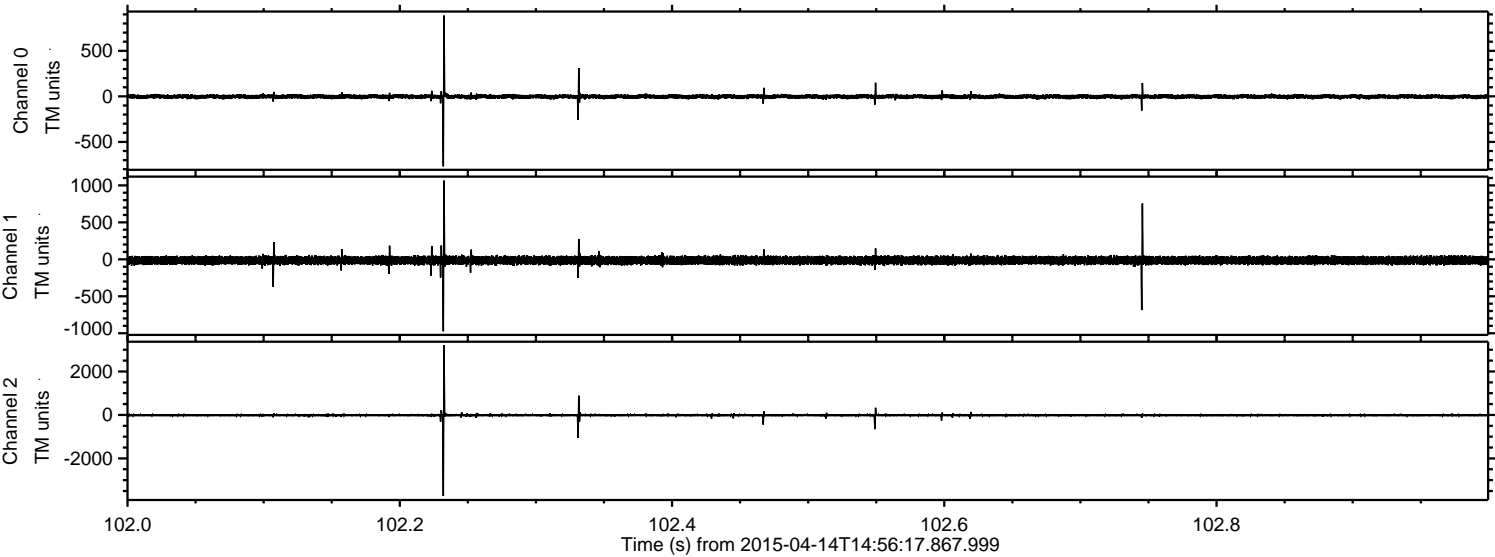
ELMAVAN 3D WAVEFORMS (Measured data sampled at 50 kHz) 49789 packets of 144 samples from 2015-04-14T14:56:17.867.999.

Processed Tue Apr 14 17:02:44 2015 by ELM ver.2012-10-06 from 001__elm20150414_145616__dat00.bin

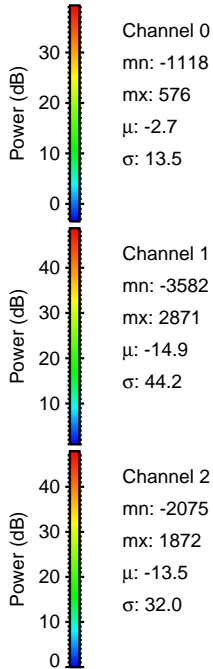
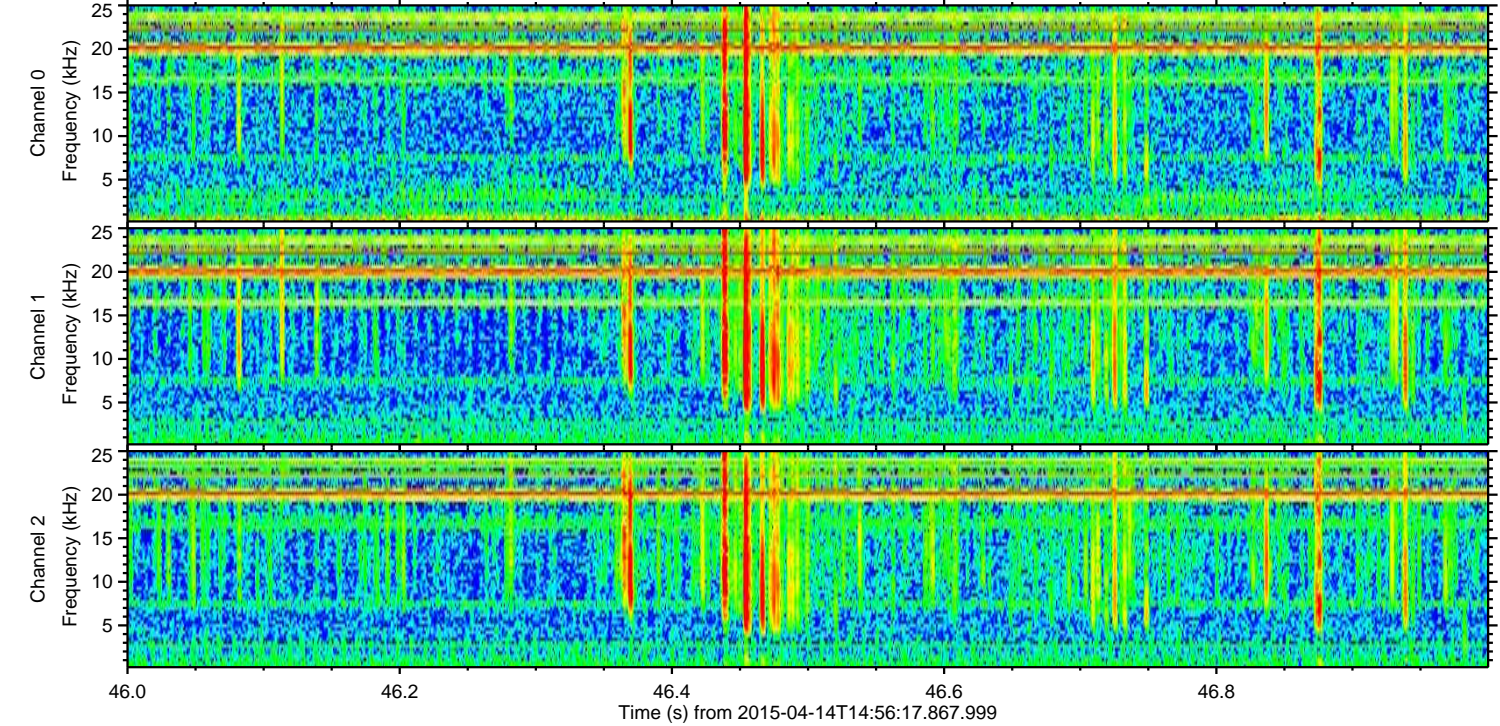
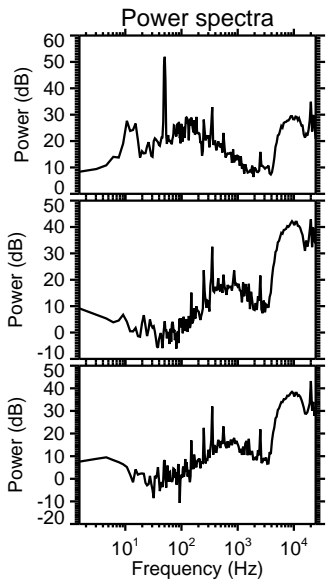
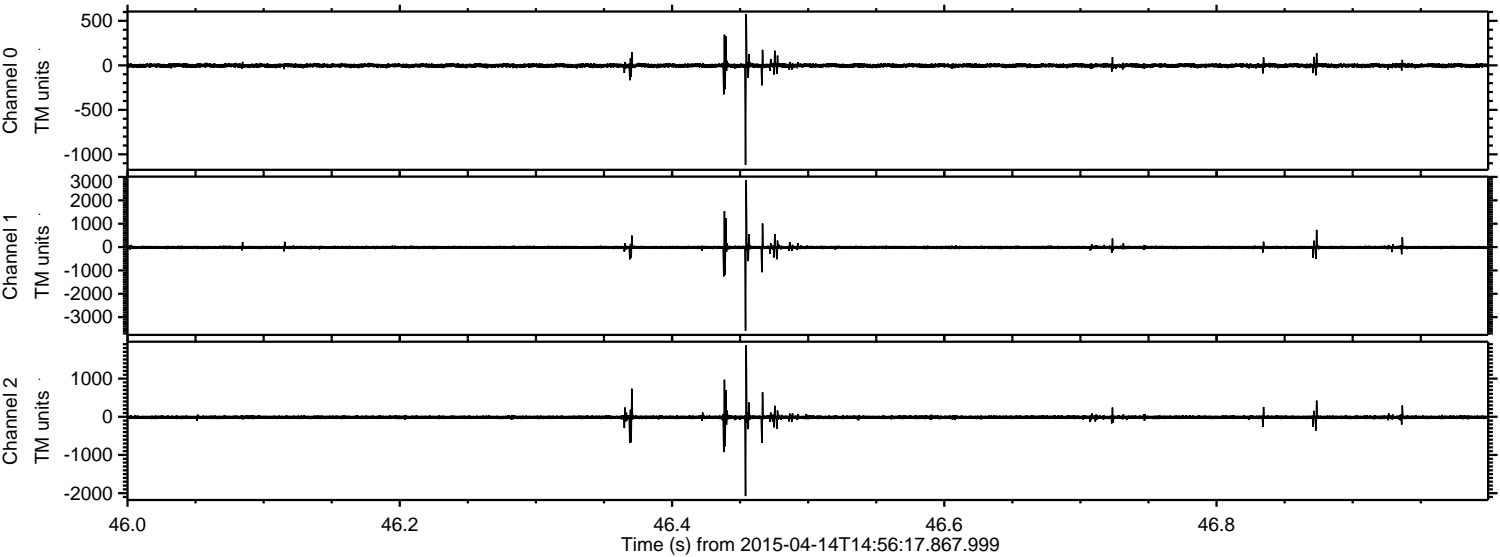


ELMAVAN 3D WAVEFORMS (Measured data sampled at 50 kHz) 49789 packets of 144 samples from 2015-04-14T14:56:17.867.999. Part 103/144

Processed Tue Apr 14 17:02:56 2015 by ELM ver.2012-10-06 from 001__elm20150414_145616__dat00.bin



Processed Tue Apr 14 17:02:57 2015 by ELM ver.2012-10-06 from 001__elm20150414_145616__dat00.bin



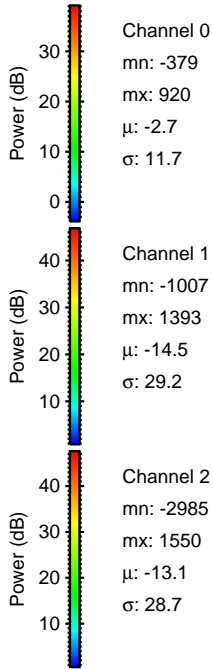
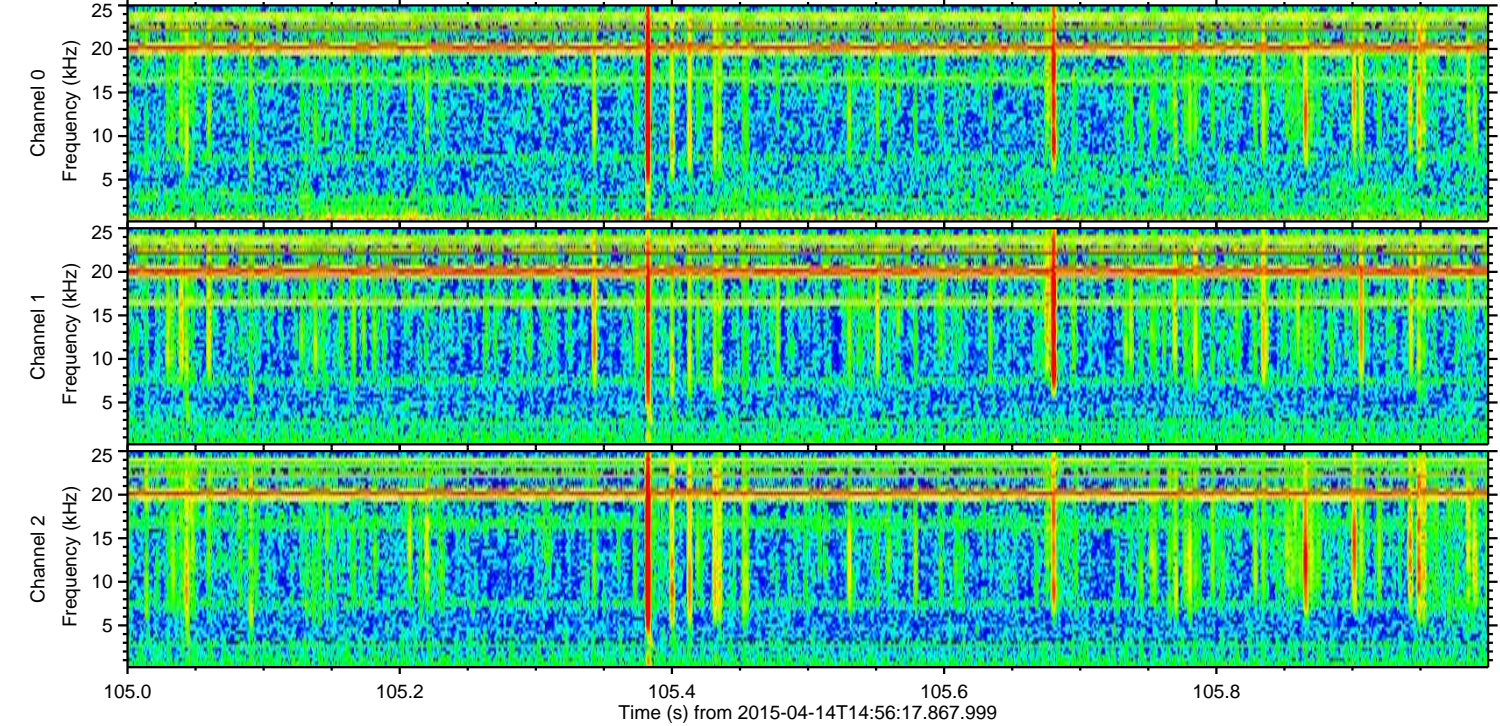
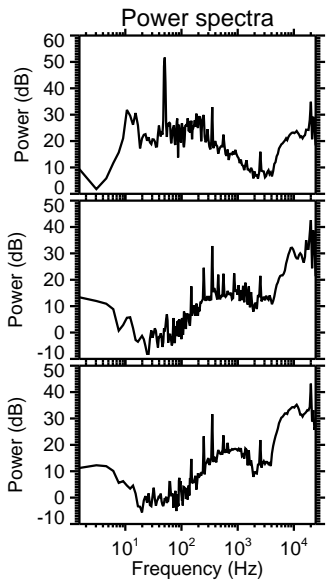
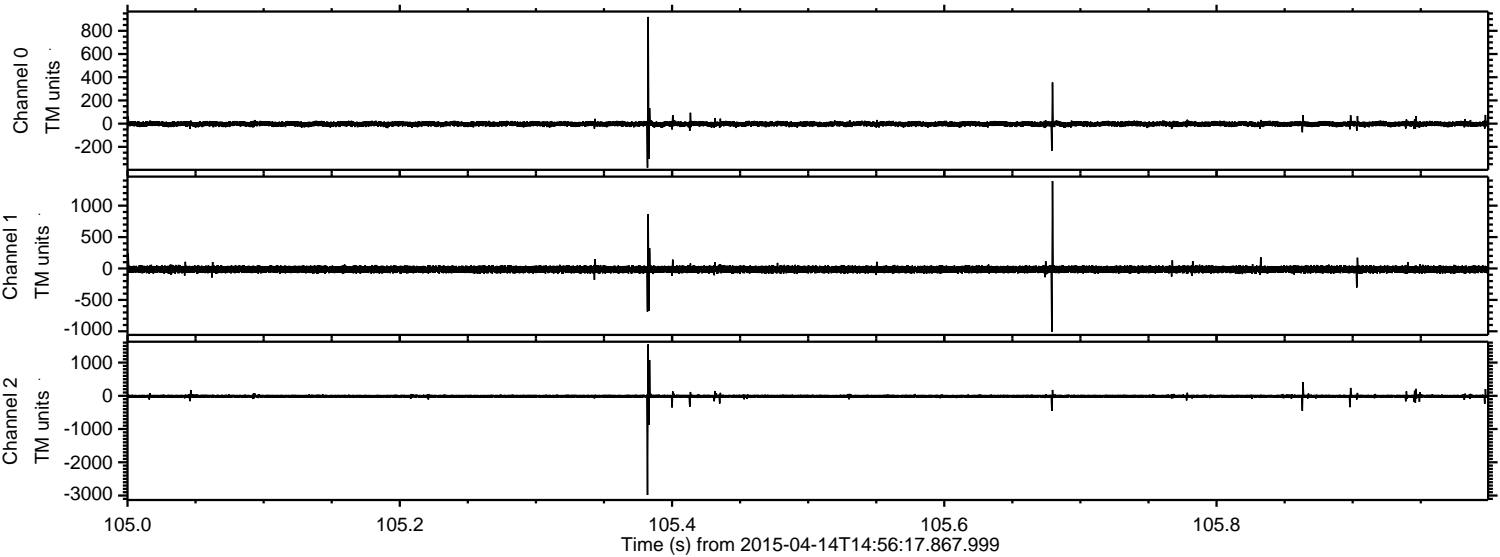
Channel 0
mn: -1118
mx: 576
 μ : -2.7
 σ : 13.5

Channel 1
mn: -3582
mx: 2871
 μ : -14.9
 σ : 44.2

Channel 2
mn: -2075
mx: 1872
 μ : -13.5
 σ : 32.0

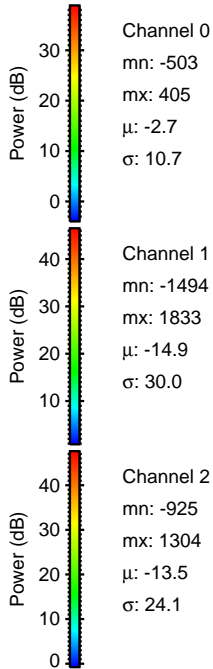
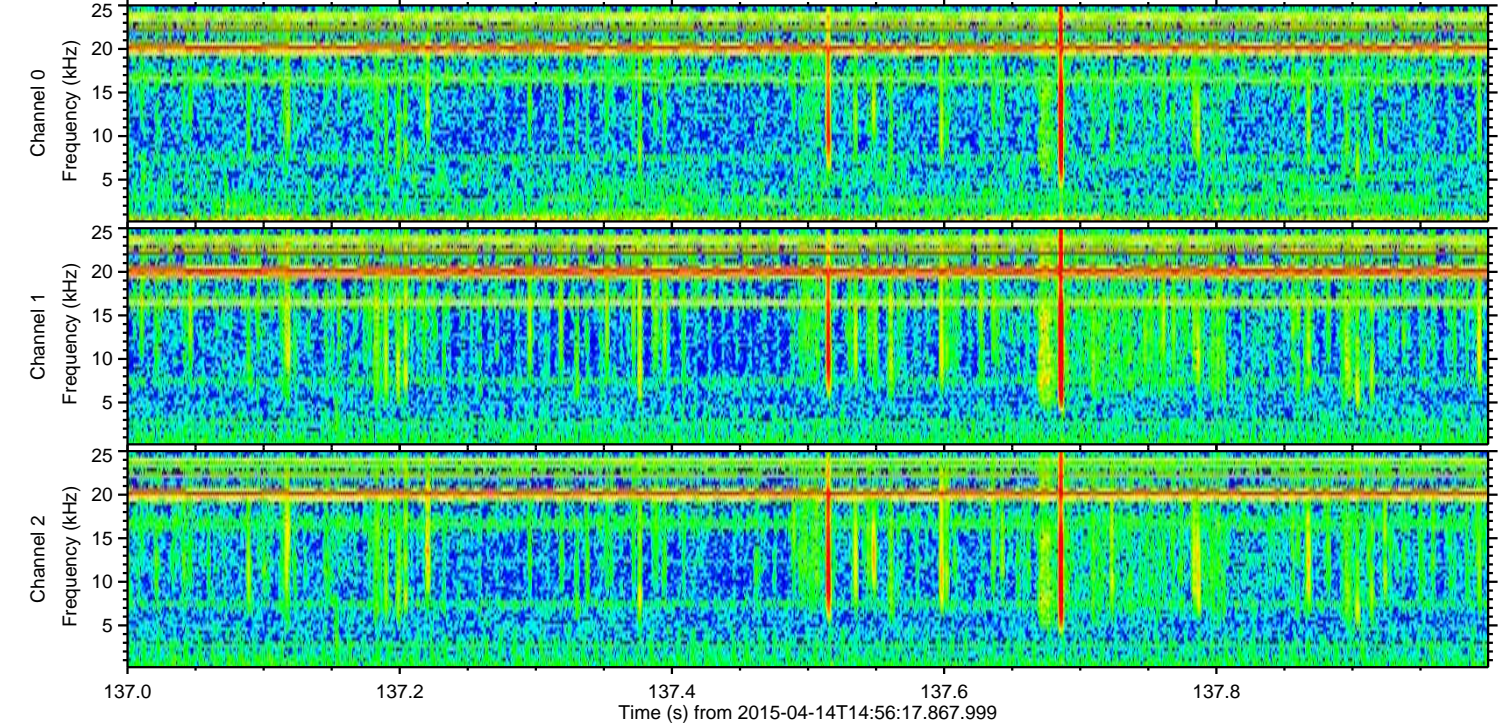
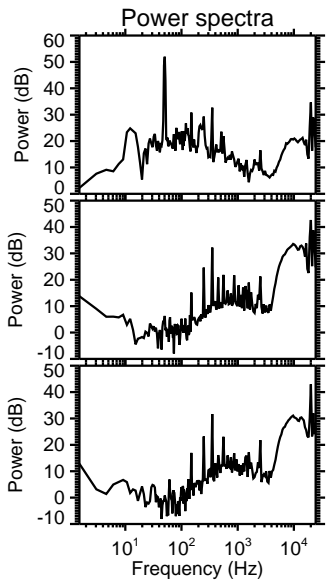
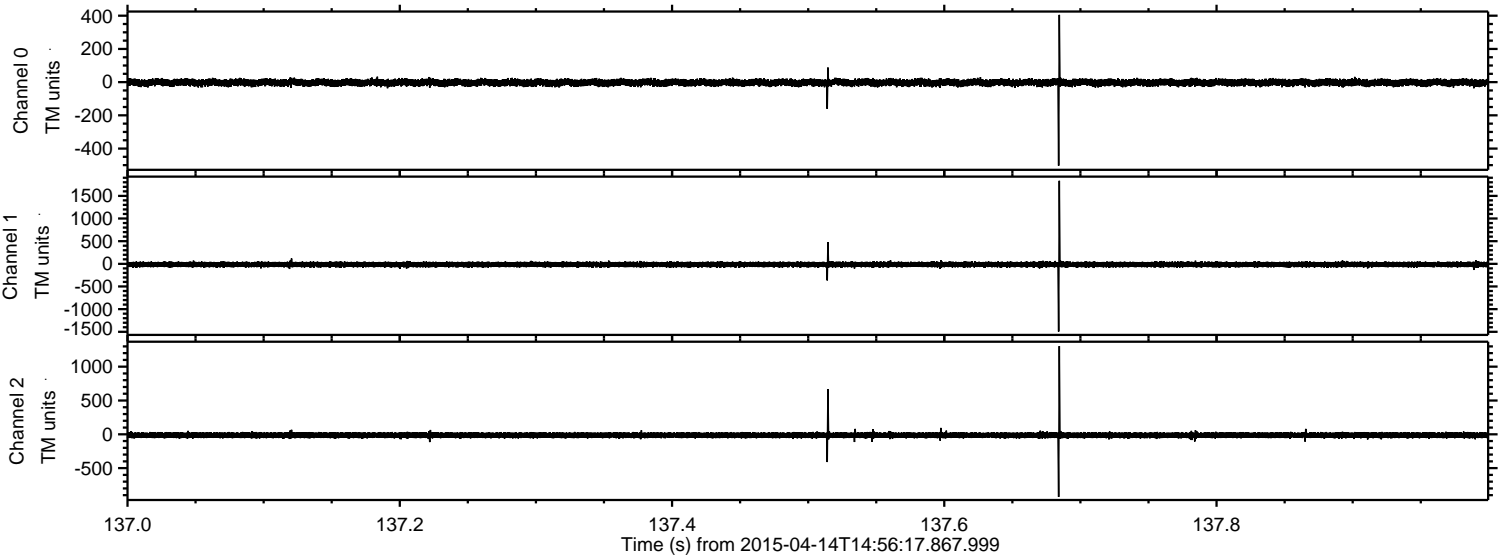
ELMAVAN 3D WAVEFORMS (Measured data sampled at 50 kHz) 49789 packets of 144 samples from 2015-04-14T14:56:17.867.999. Part 106/144

Processed Tue Apr 14 17:02:57 2015 by ELM ver.2012-10-06 from 001__elm20150414_145616__dat00.bin

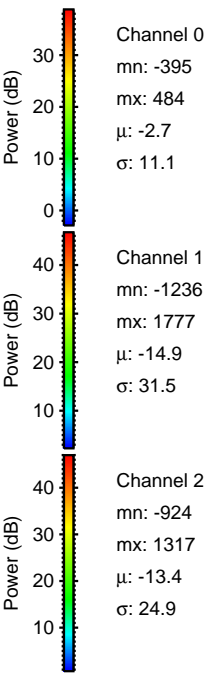
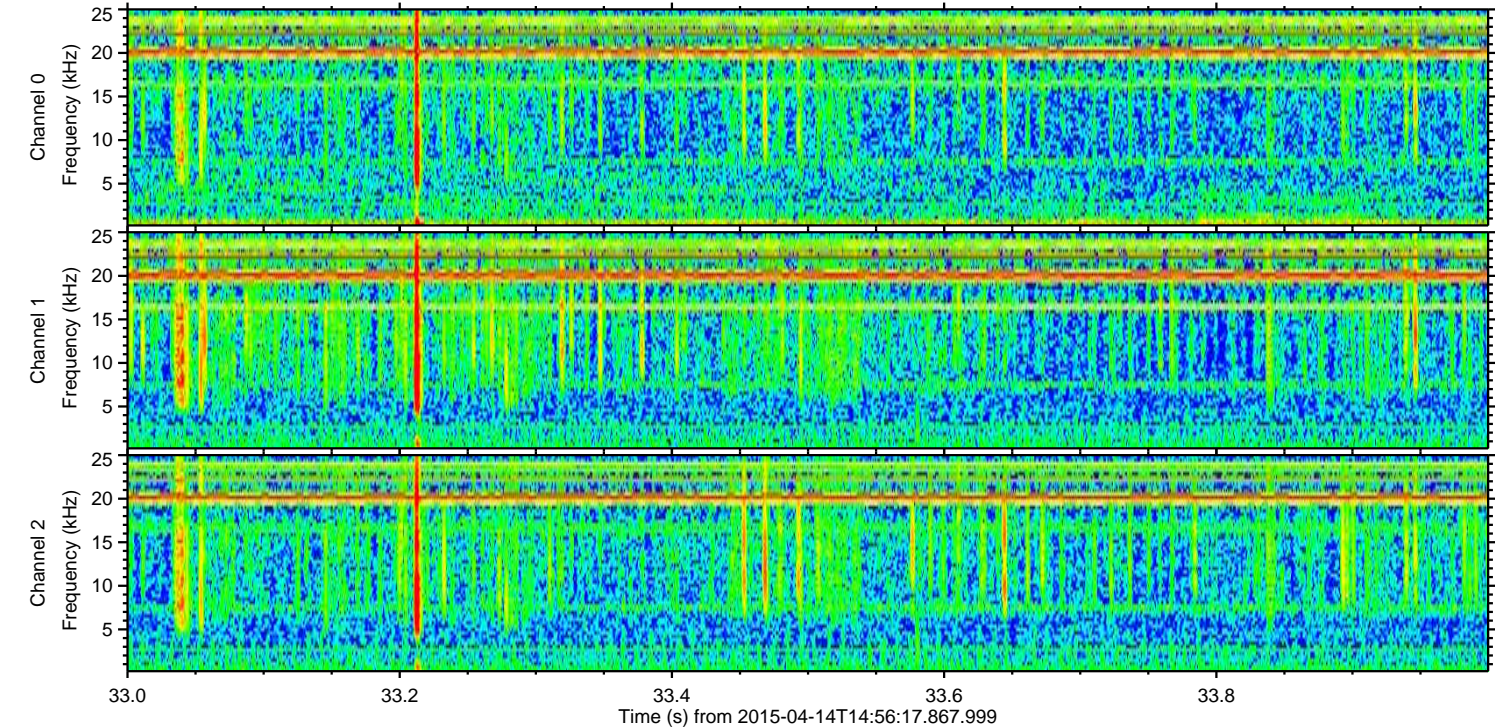
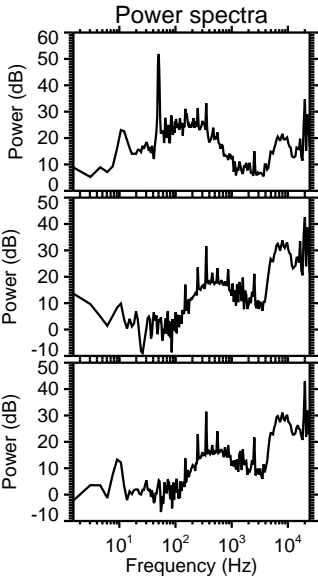
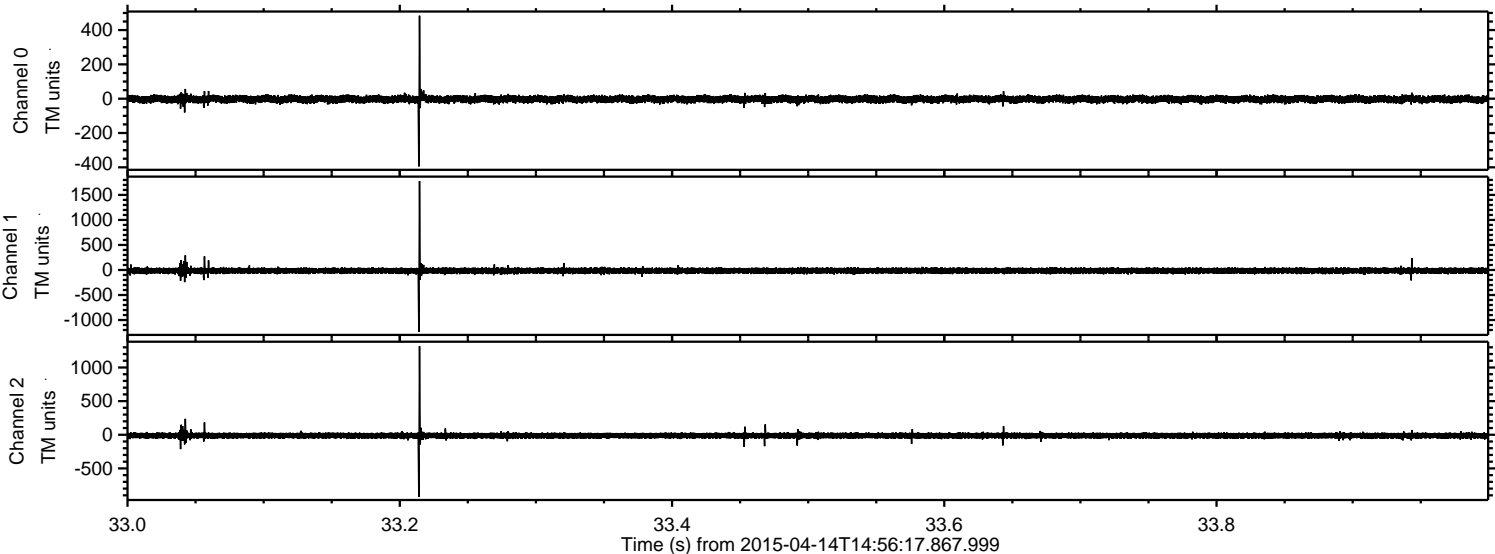


ELMAVAN 3D WAVEFORMS (Measured data sampled at 50 kHz) 49789 packets of 144 samples from 2015-04-14T14:56:17.867.999. Part 138/144

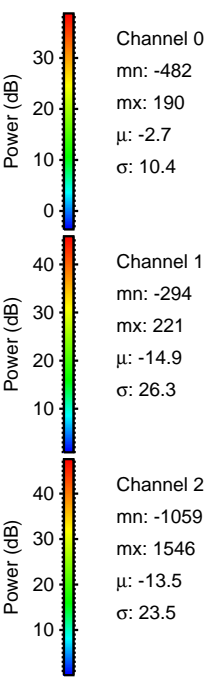
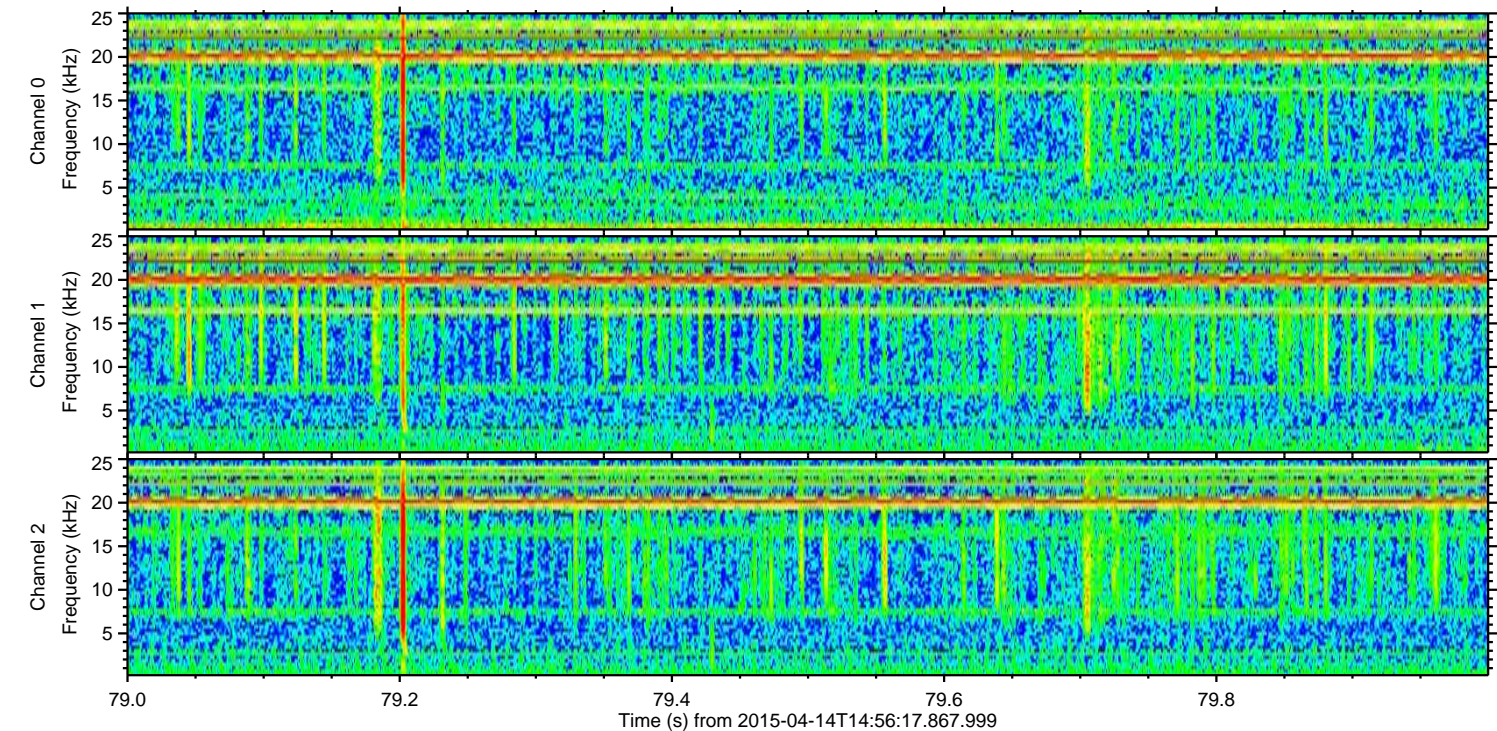
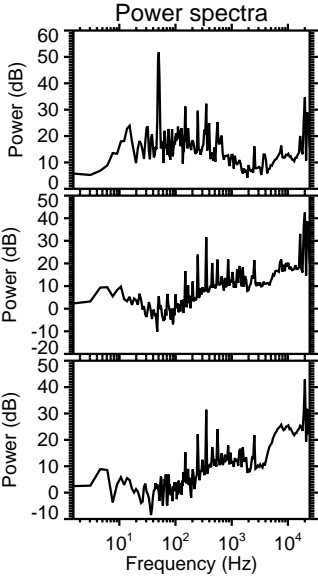
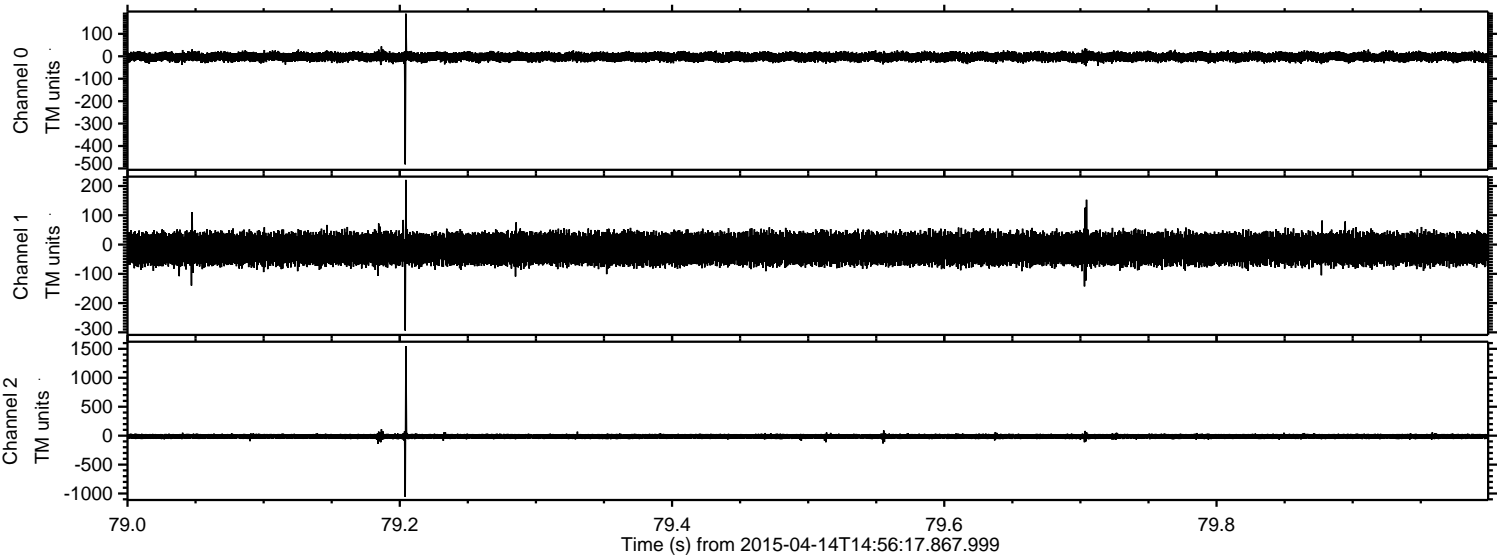
Processed Tue Apr 14 17:02:58 2015 by ELM ver.2012-10-06 from 001__elm20150414_145616__dat00.bin



Processed Tue Apr 14 17:02:59 2015 by ELM ver.2012-10-06 from 001__elm20150414_145616__dat00.bin

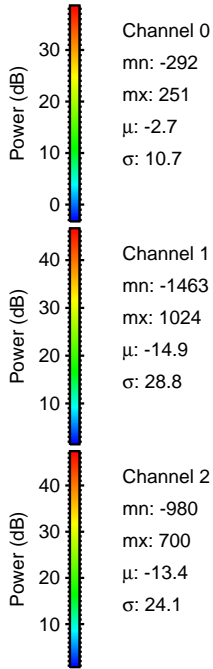
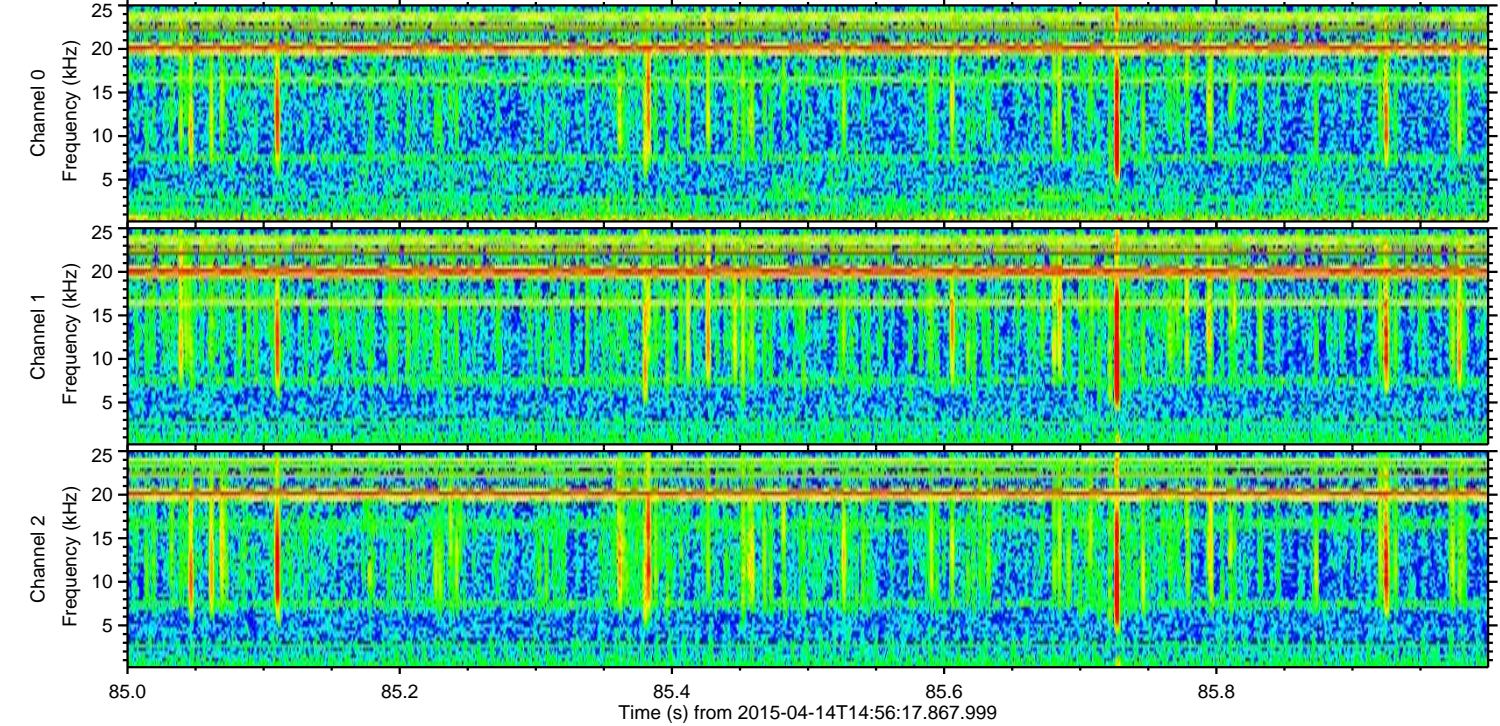
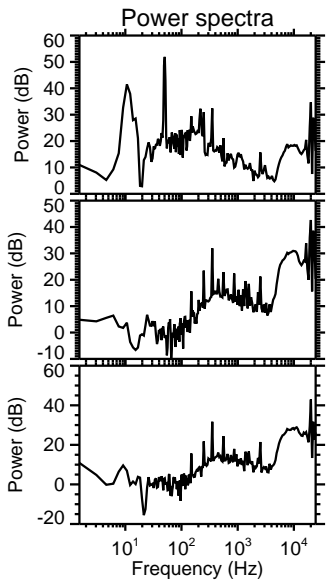
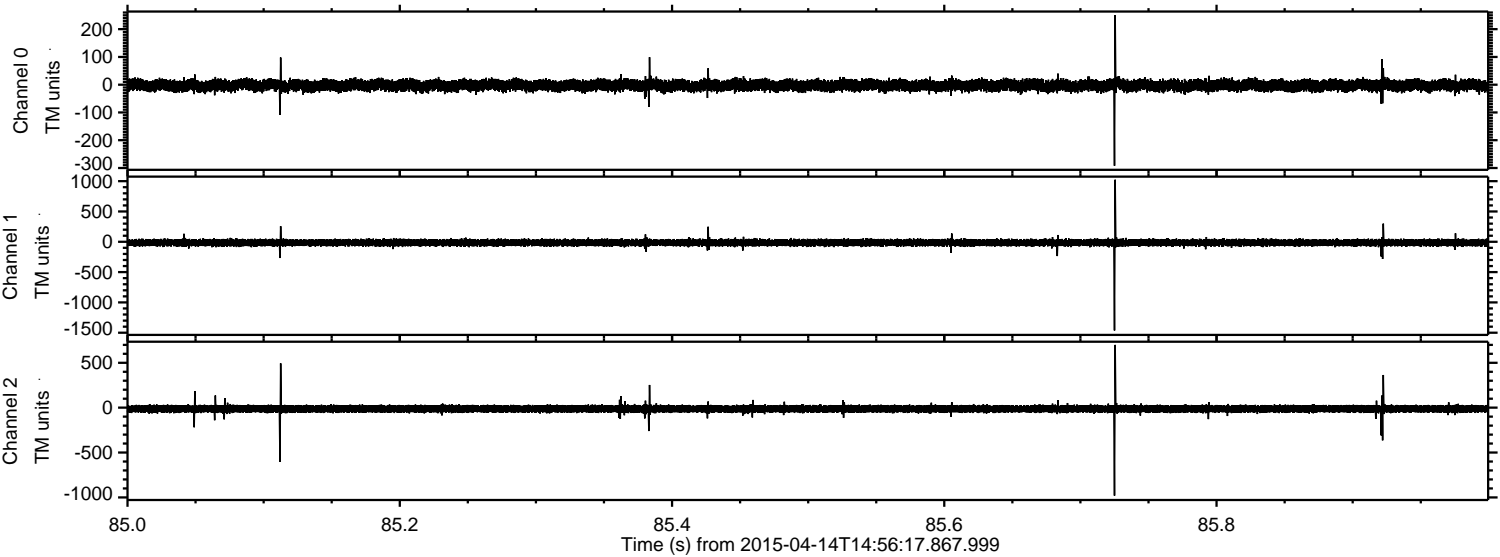


Processed Tue Apr 14 17:03:00 2015 by ELM ver.2012-10-06 from 001__elm20150414_145616__dat00.bin



ELMAVAN 3D WAVEFORMS (Measured data sampled at 50 kHz) 49789 packets of 144 samples from 2015-04-14T14:56:17.867.999. Part 86/144

Processed Tue Apr 14 17:03:01 2015 by ELM ver.2012-10-06 from 001__elm20150414_145616__dat00.bin

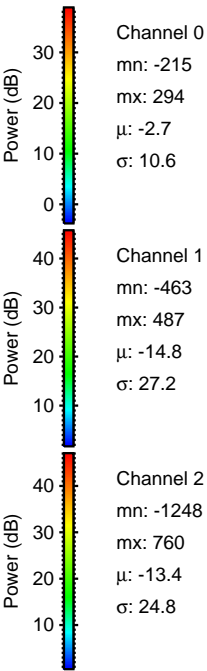
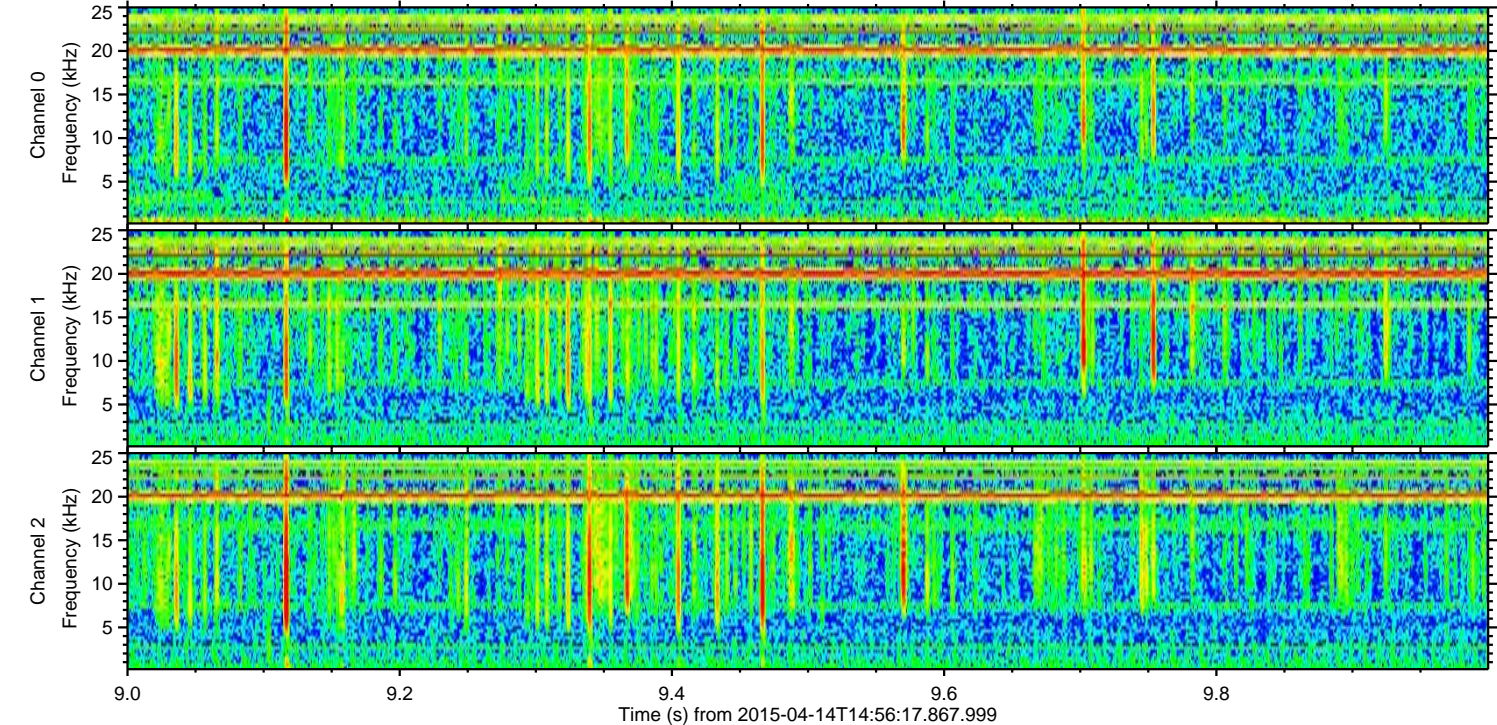
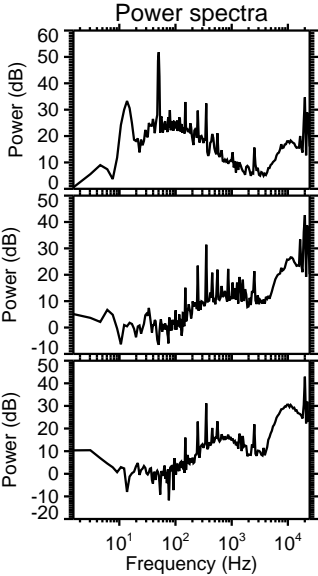
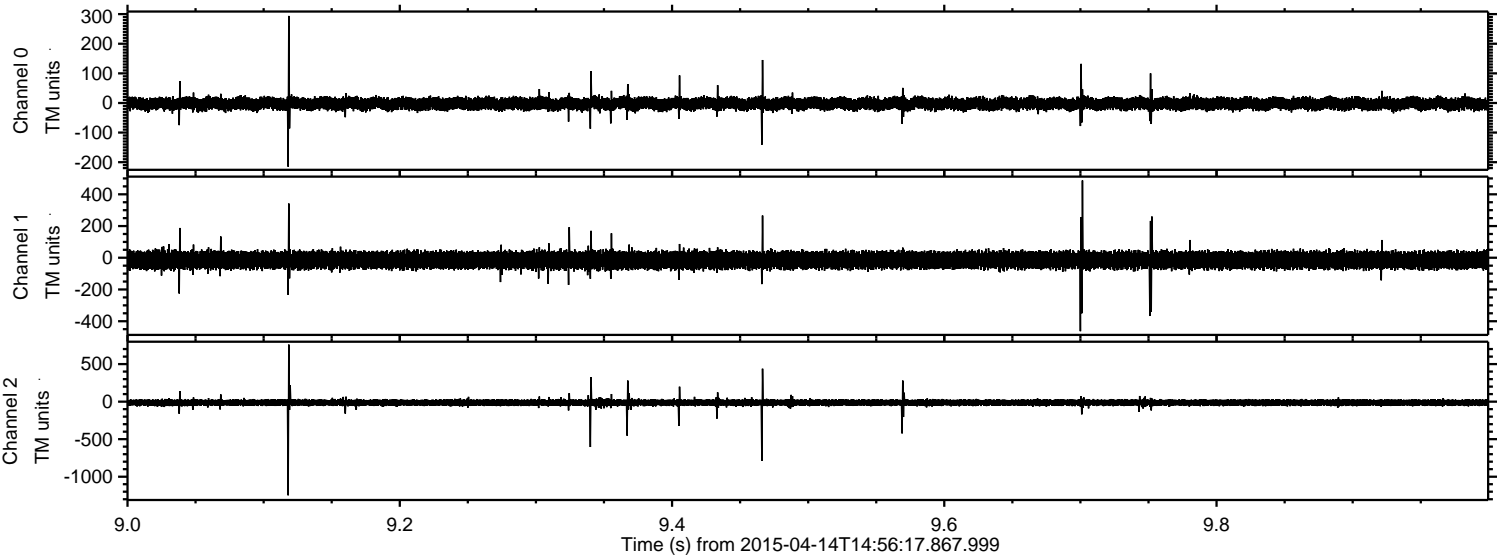


Channel 0
mn: -292
mx: 251
 μ : -2.7
 σ : 10.7

Channel 1
mn: -1463
mx: 1024
 μ : -14.9
 σ : 28.8

Channel 2
mn: -980
mx: 700
 μ : -13.4
 σ : 24.1

Processed Tue Apr 14 17:03:02 2015 by ELM ver.2012-10-06 from 001__elm20150414_145616__dat00.bin



Processed Tue Apr 14 17:03:03 2015 by ELM ver.2012-10-06 from 001__elm20150414_145616__dat00.bin

