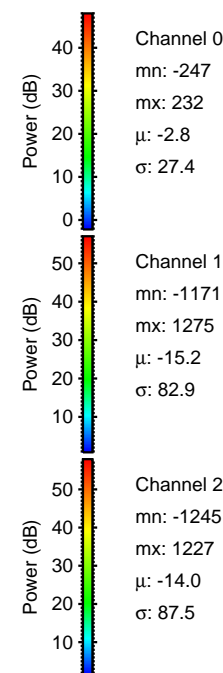
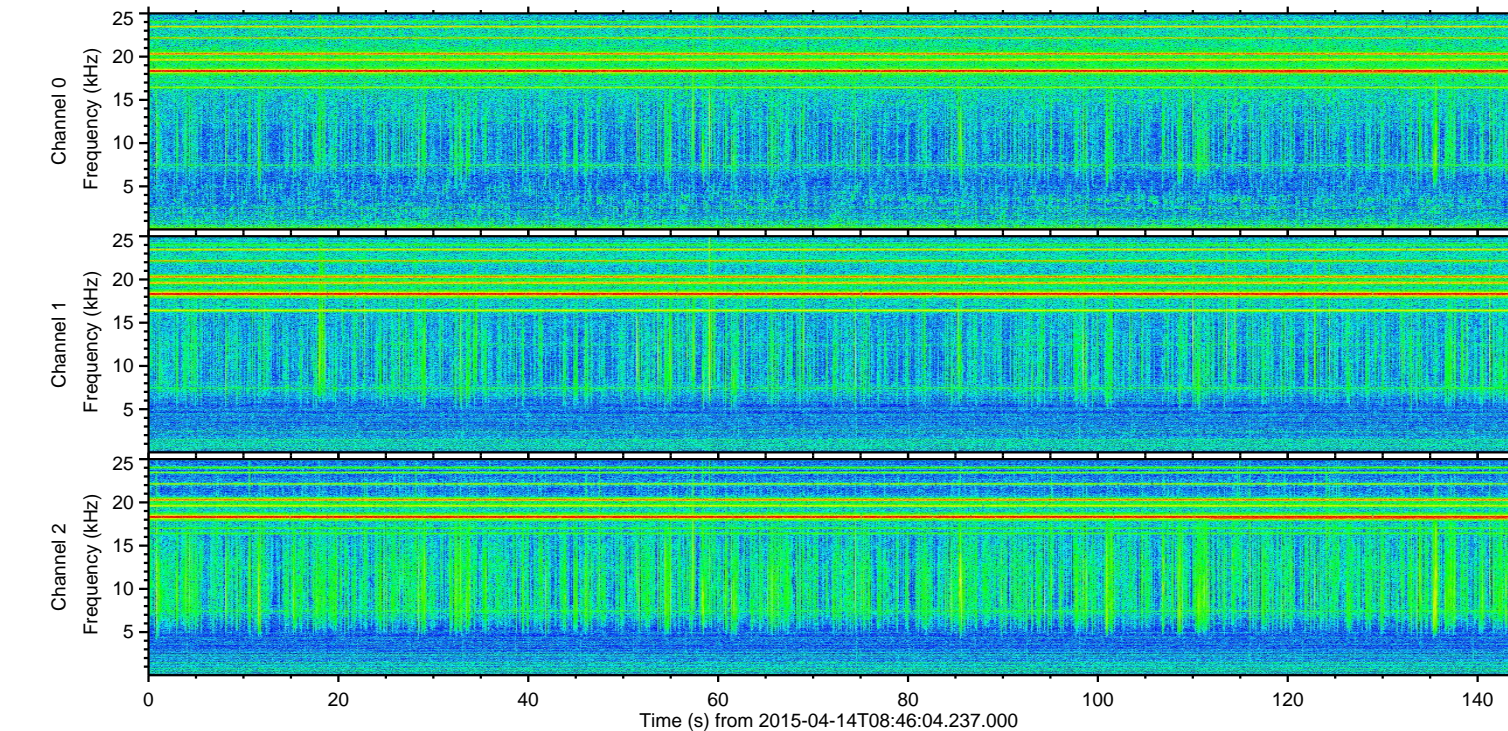
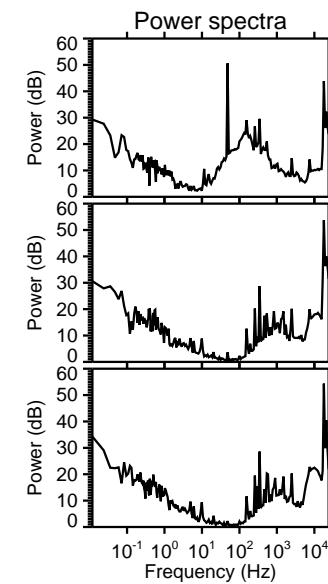
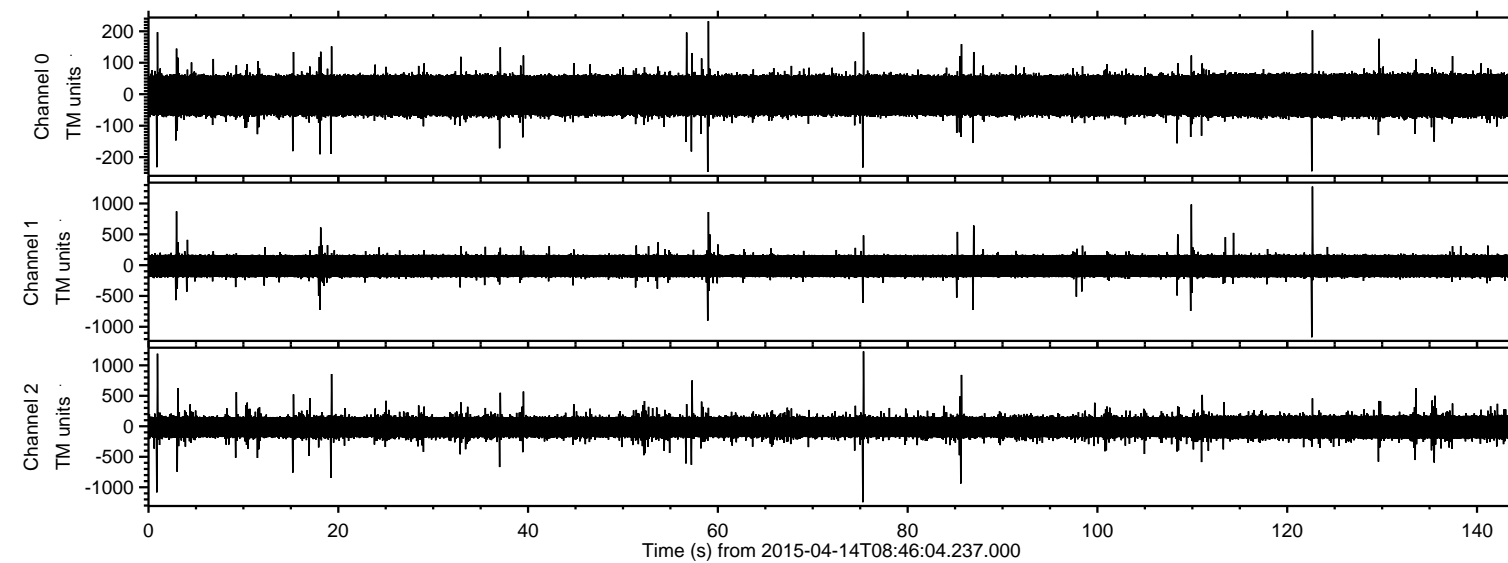


# ELMAVAN 3D WAVEFORMS (Measured data sampled at 50 kHz) 49787 packets of 144 samples from 2015-04-14T08:46:04.237.000.

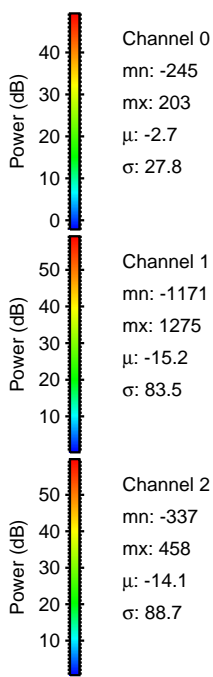
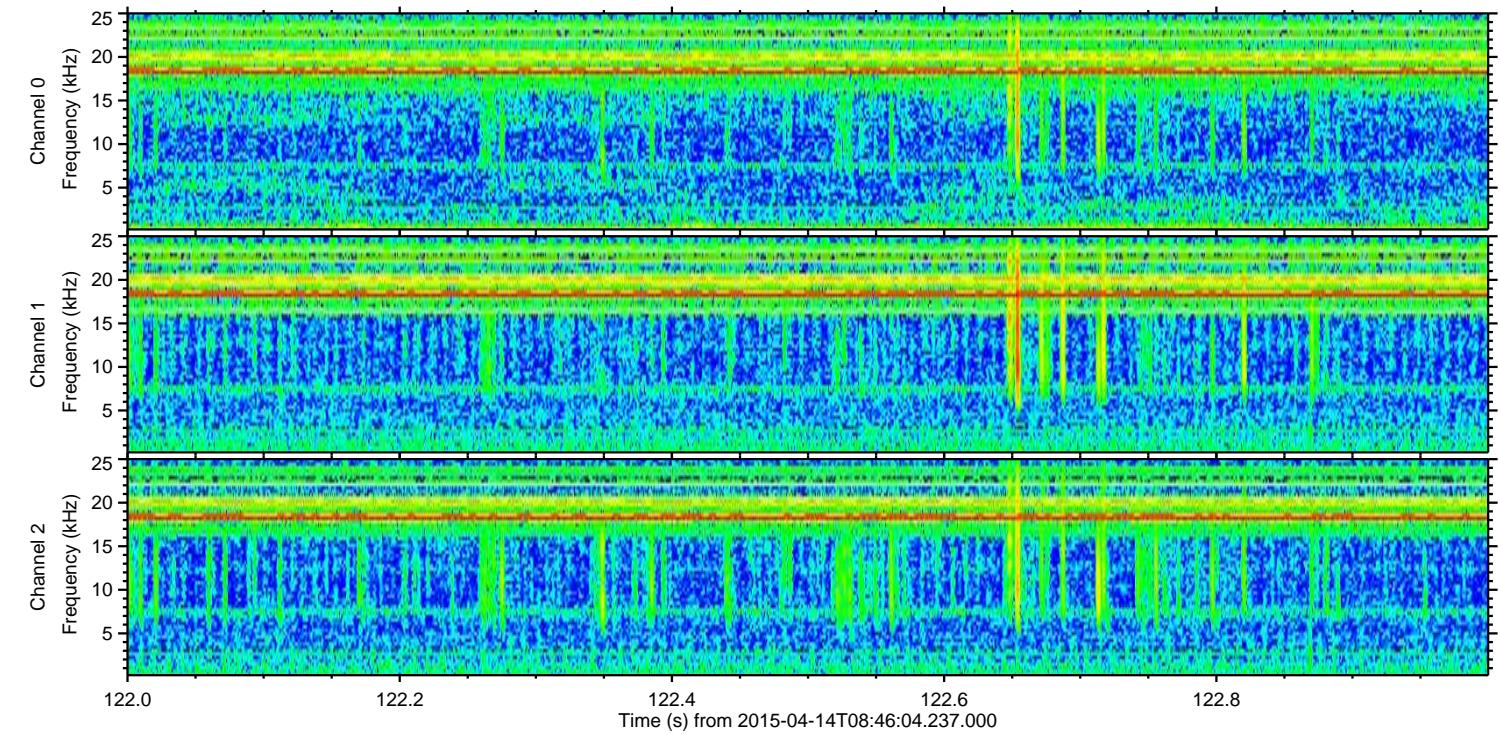
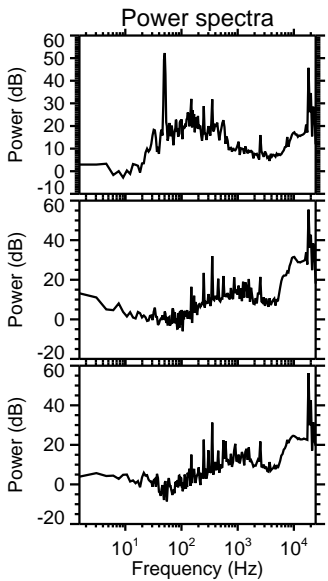
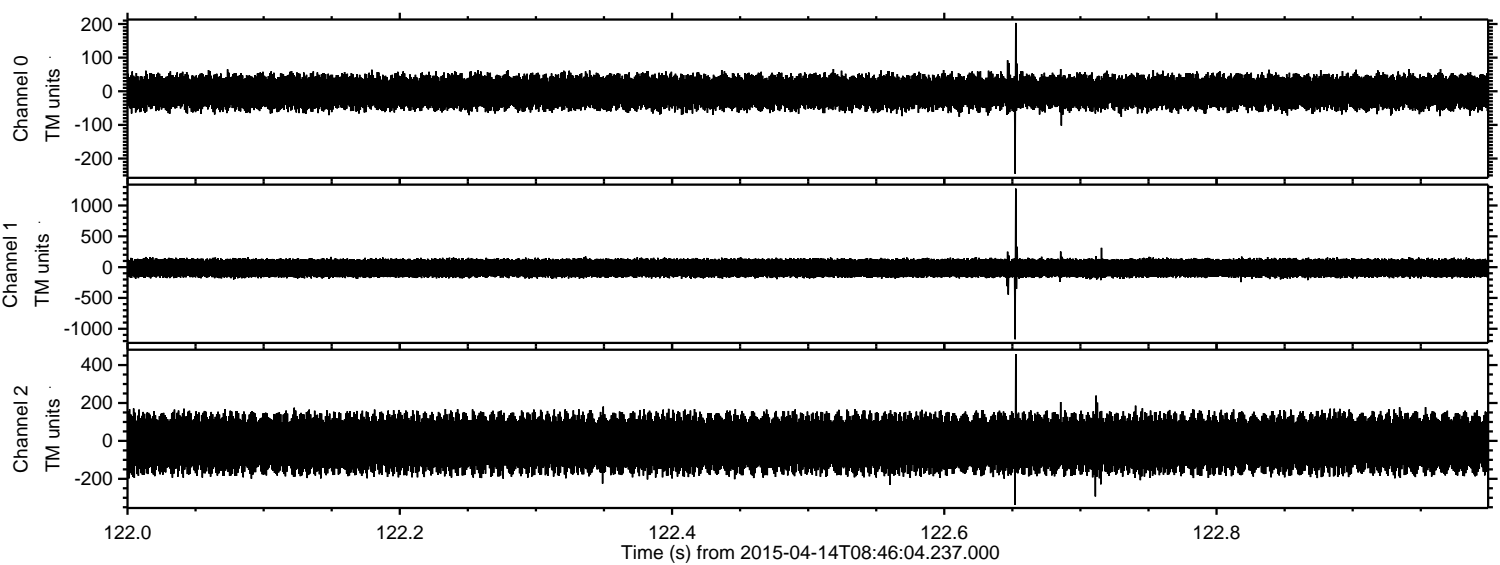
Processed Tue Apr 14 10:52:12 2015 by ELM ver.2012-10-06 from 001\_\_elm20150414\_084603\_\_dat00.bin





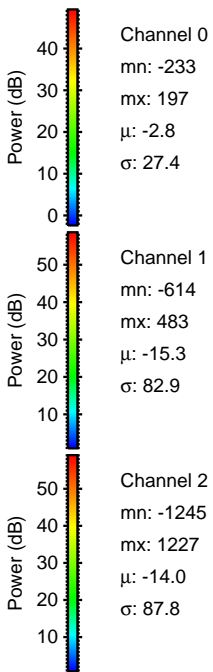
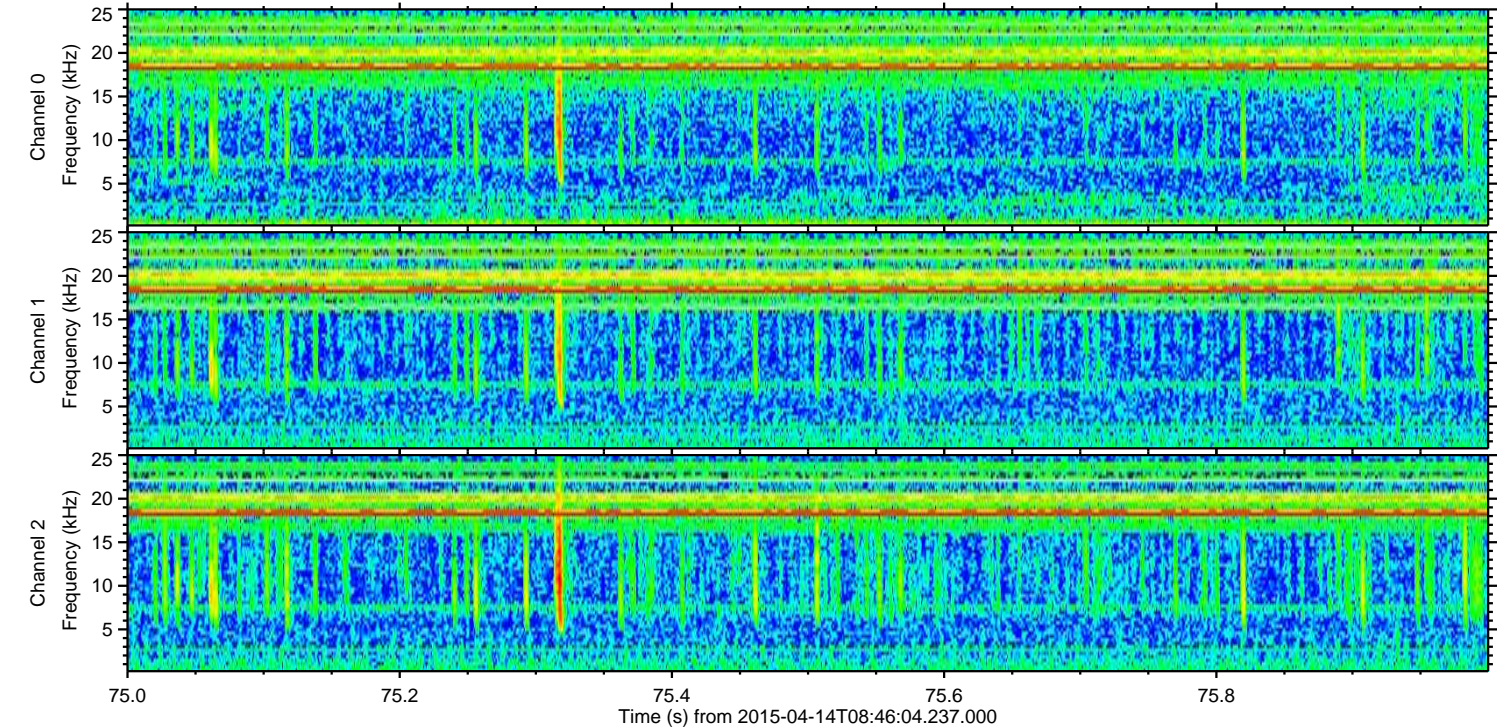
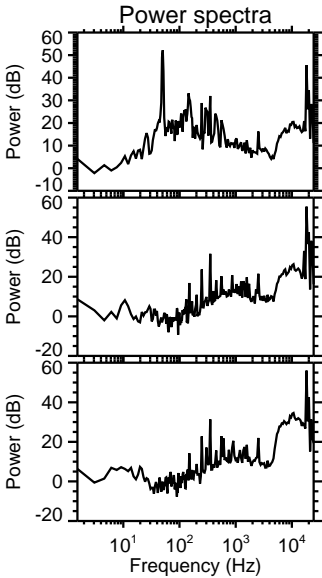
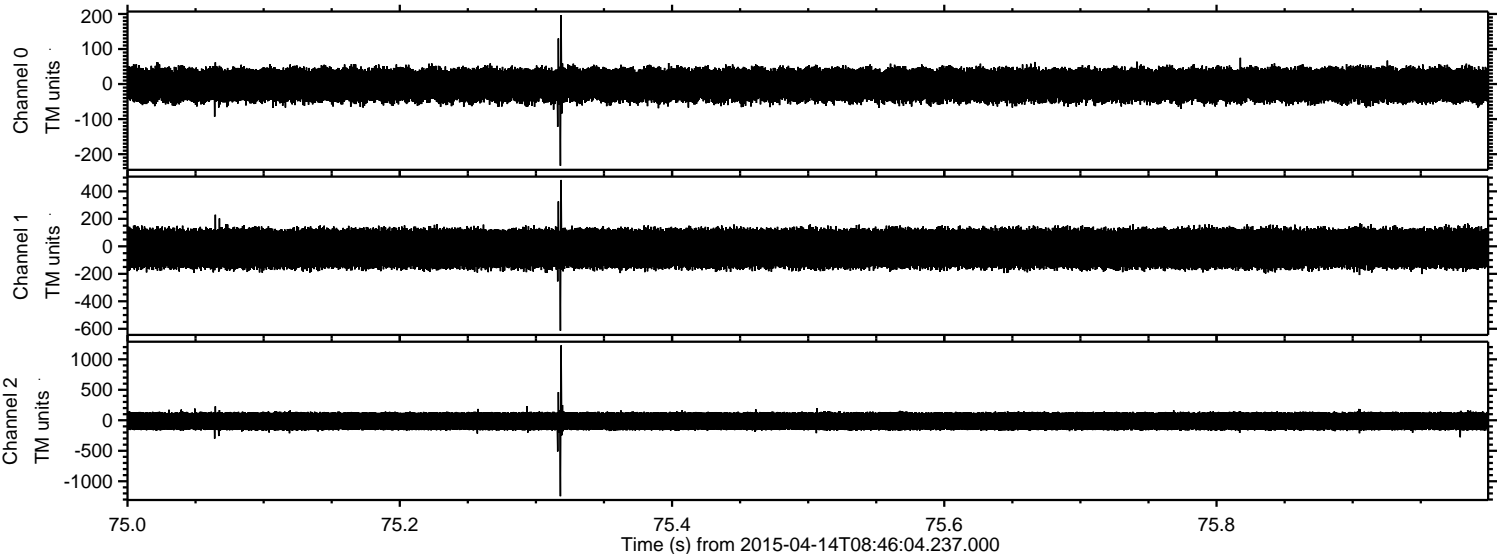
ELMAVAN 3D WAVEFORMS (Measured data sampled at 50 kHz) 49787 packets of 144 samples from 2015-04-14T08:46:04.237.000. Part 123/144

Processed Tue Apr 14 10:52:24 2015 by ELM ver.2012-10-06 from 001\_\_elm20150414\_084603\_\_dat00.bin





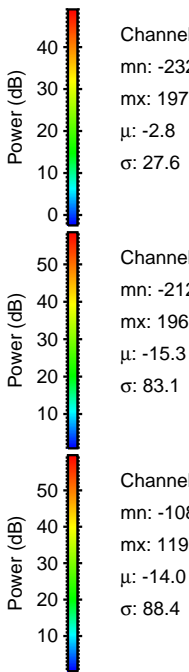
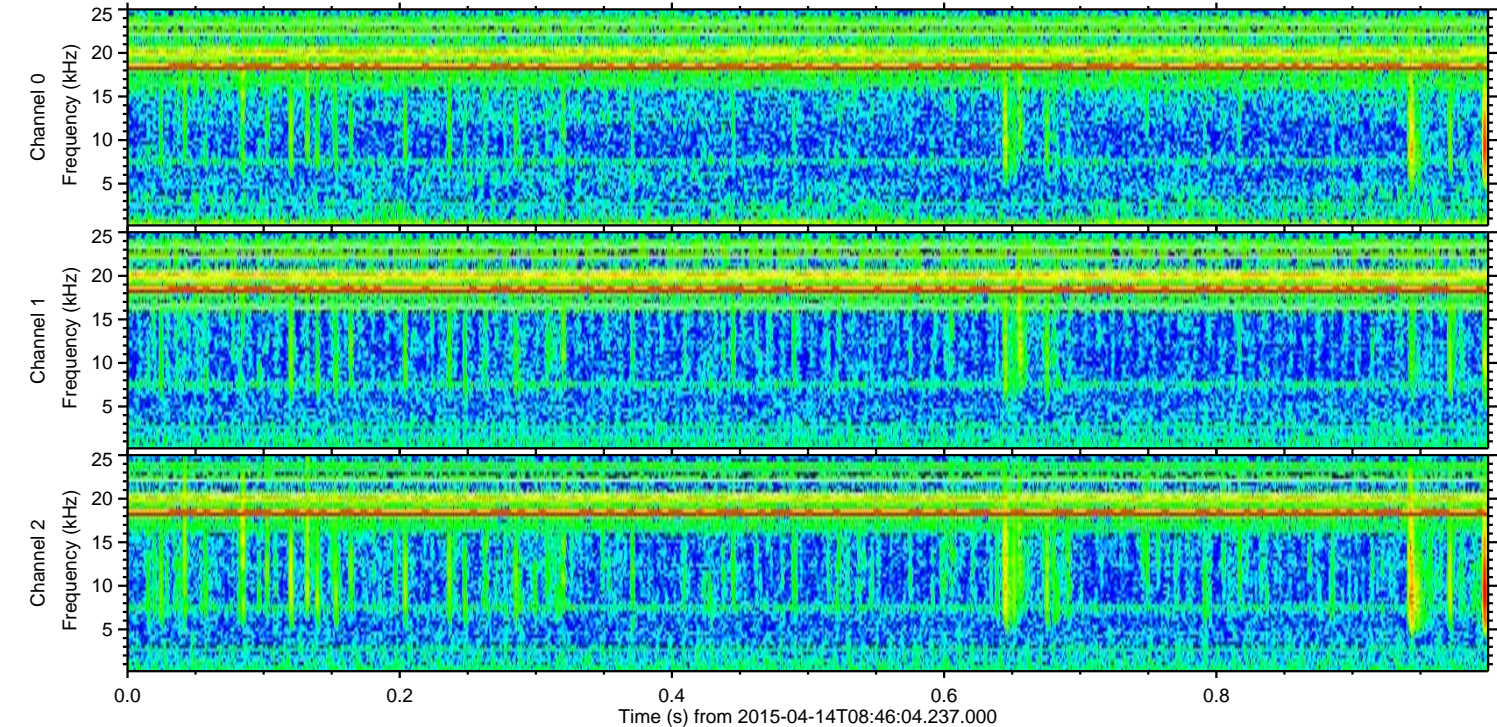
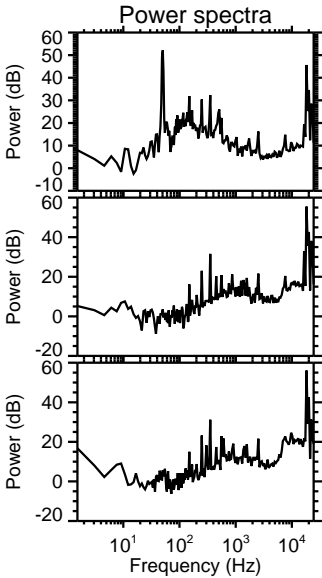
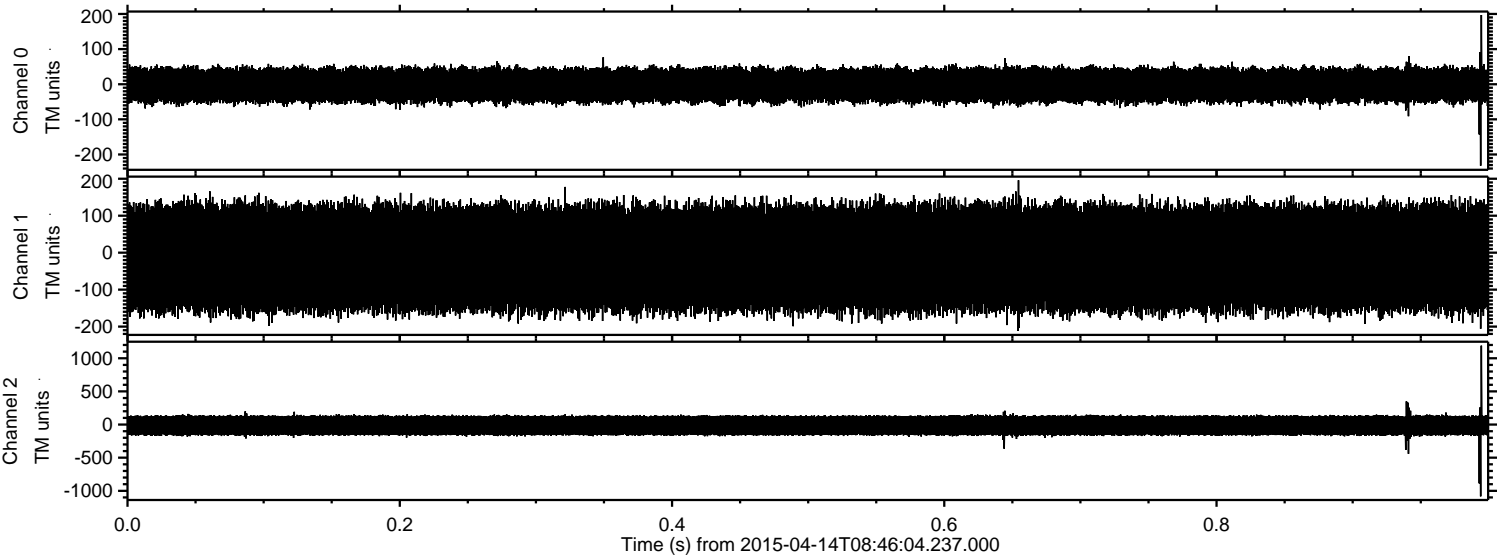
Processed Tue Apr 14 10:52:25 2015 by ELM ver.2012-10-06 from 001\_\_elm20150414\_084603\_\_dat00.bin





ELMAVAN 3D WAVEFORMS (Measured data sampled at 50 kHz) 49787 packets of 144 samples from 2015-04-14T08:46:04.237.000. Part 1/144

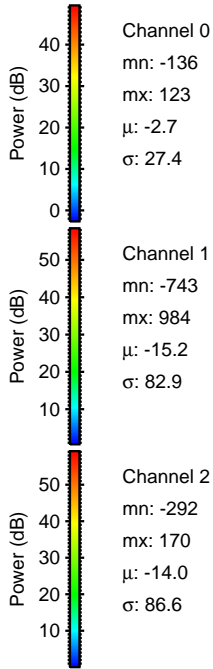
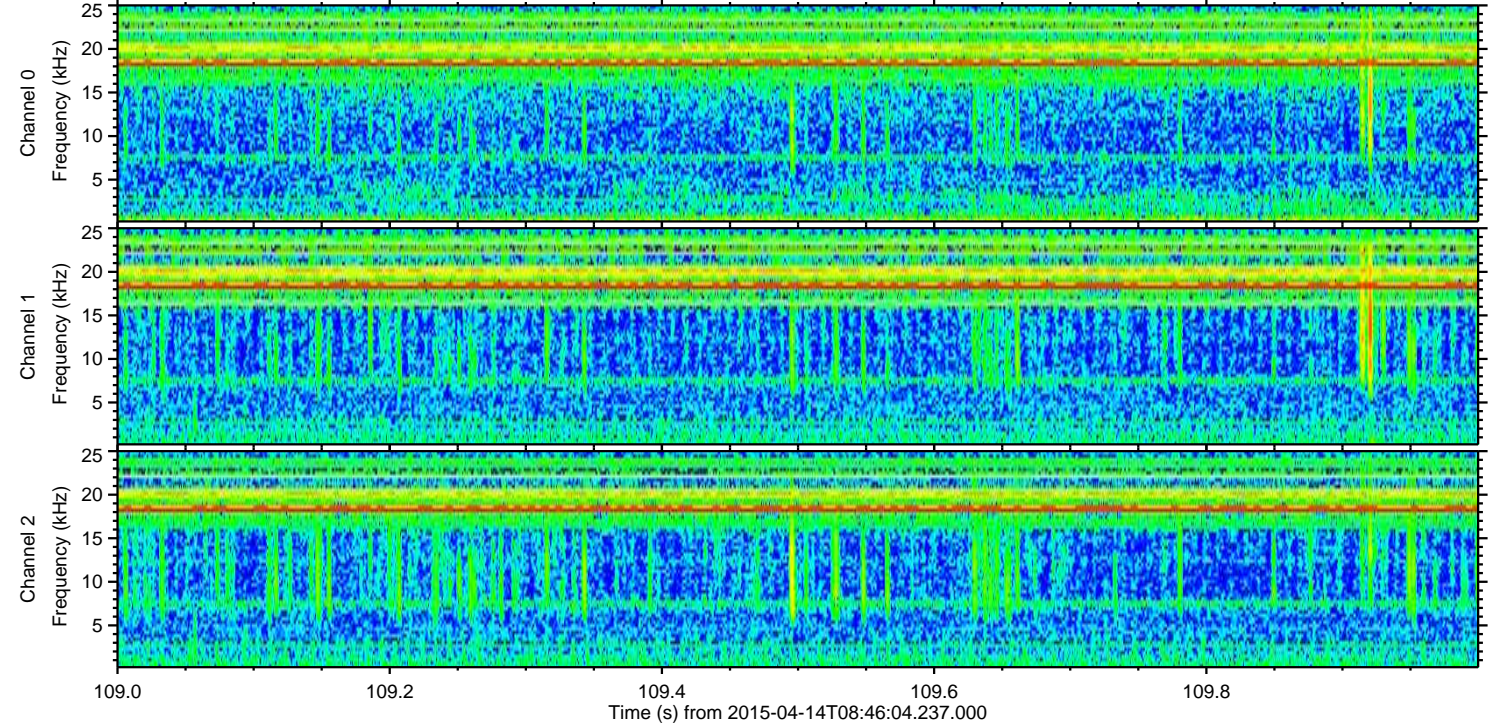
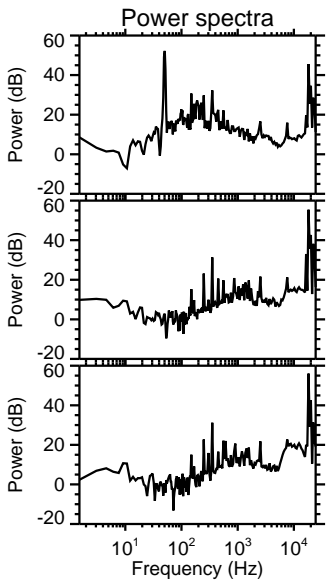
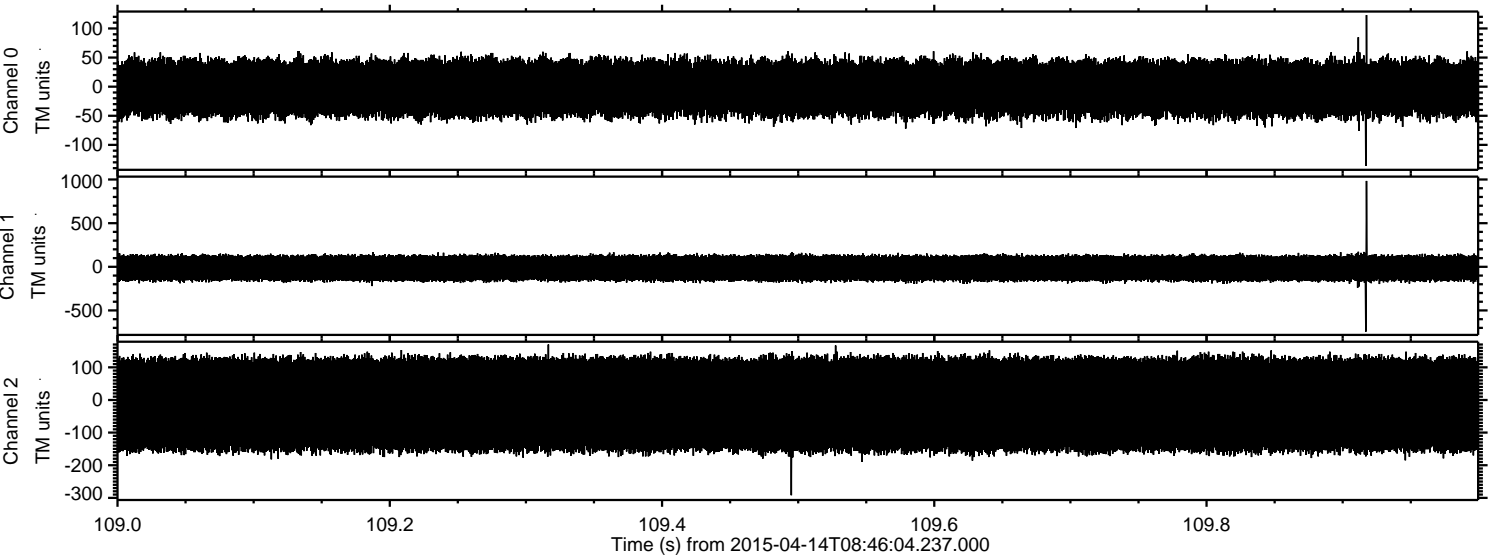
Processed Tue Apr 14 10:52:26 2015 by ELM ver.2012-10-06 from 001\_\_elm20150414\_084603\_\_dat00.bin





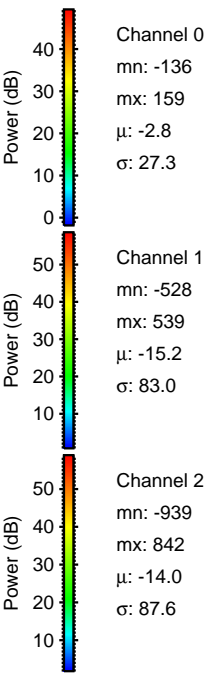
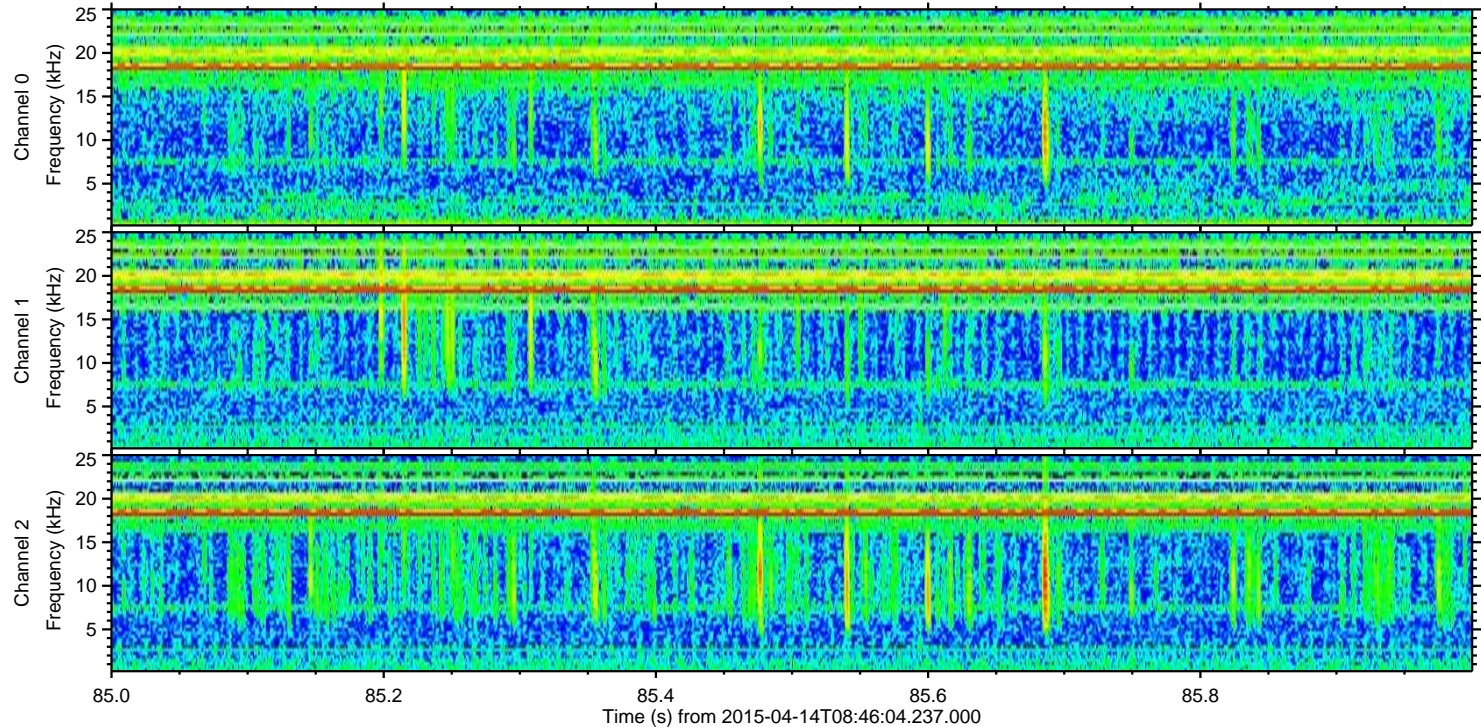
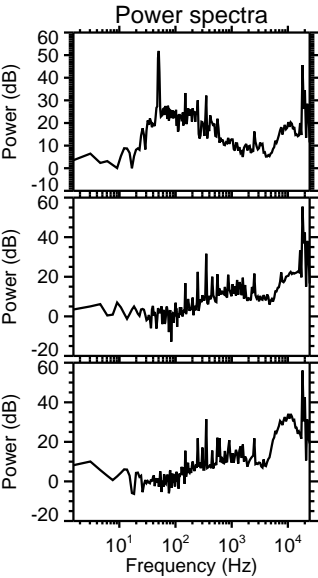
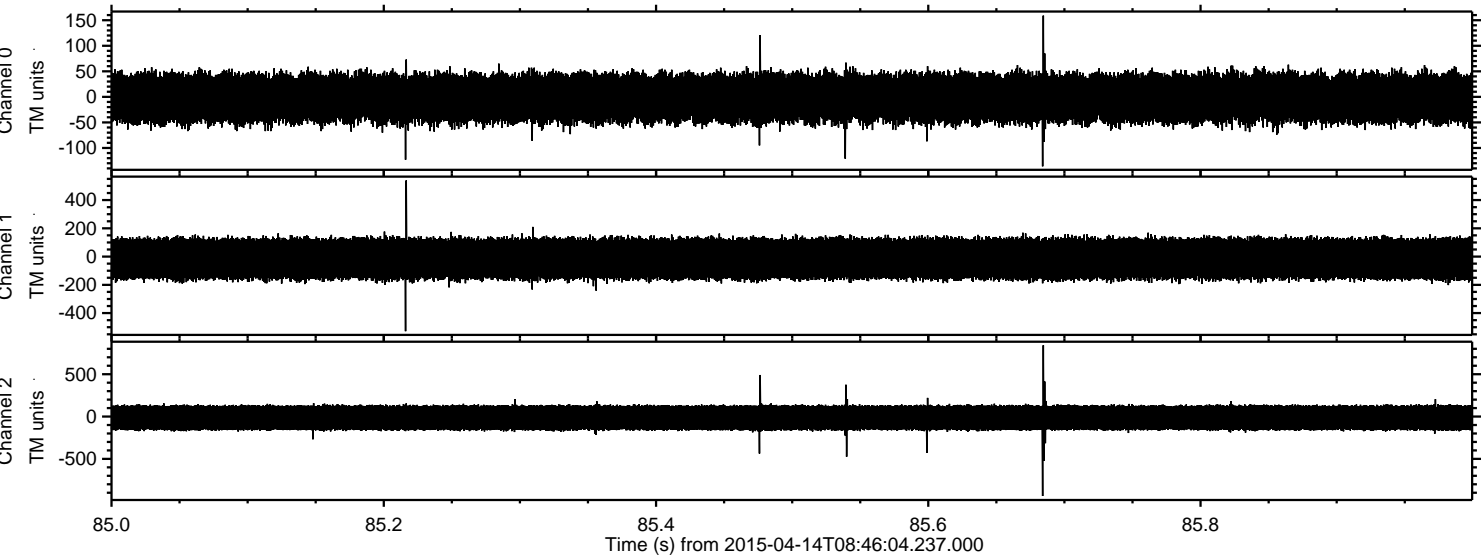
ELMAVAN 3D WAVEFORMS (Measured data sampled at 50 kHz) 49787 packets of 144 samples from 2015-04-14T08:46:04.237.000. Part 110/144

Processed Tue Apr 14 10:52:27 2015 by ELM ver.2012-10-06 from 001\_\_elm20150414\_084603\_\_dat00.bin



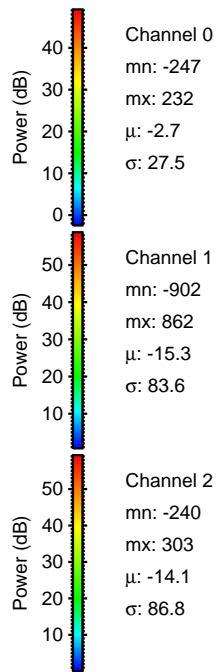
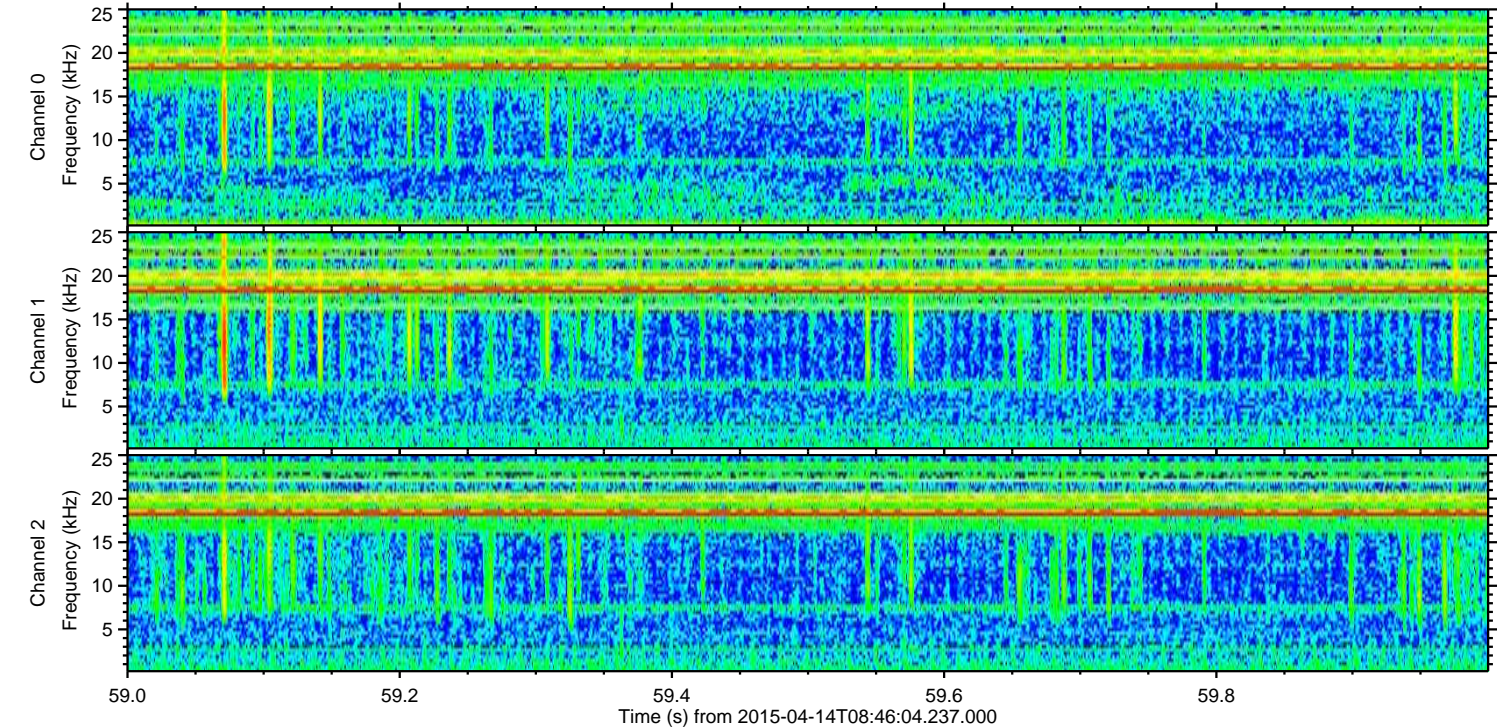
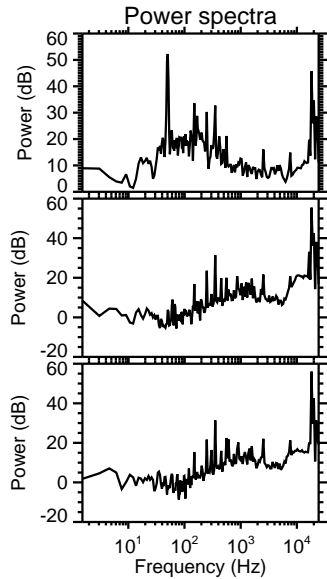
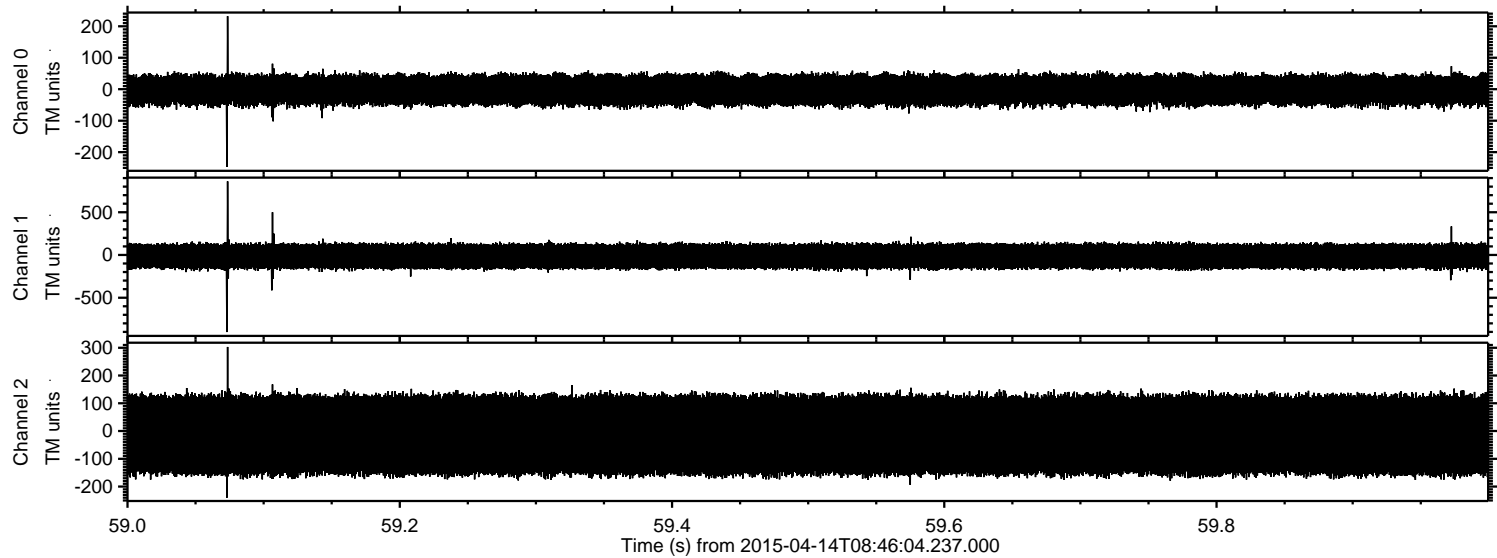


Processed Tue Apr 14 10:52:28 2015 by ELM ver.2012-10-06 from 001\_\_elm20150414\_084603\_\_dat00.bin





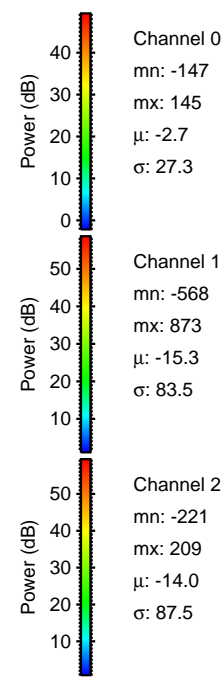
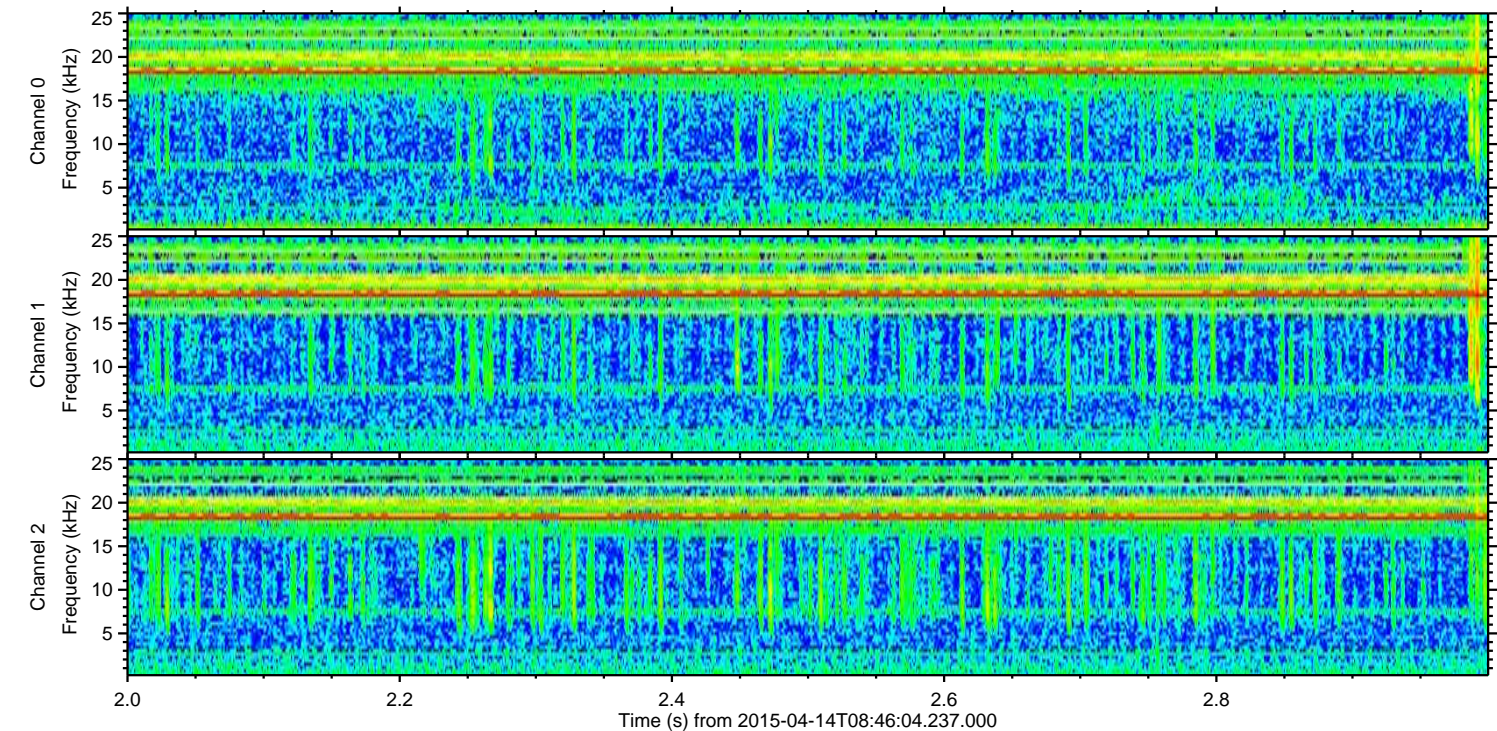
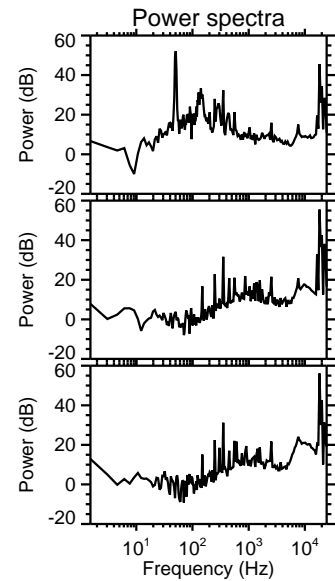
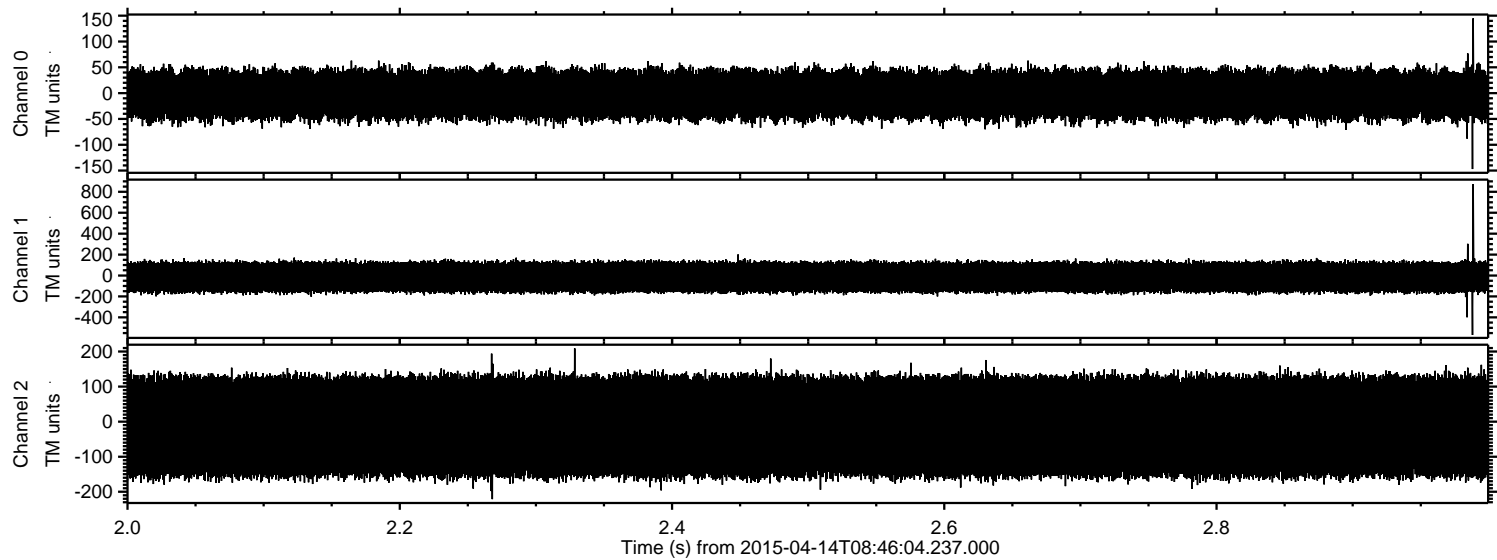
Processed Tue Apr 14 10:52:28 2015 by ELM ver.2012-10-06 from 001\_\_elm20150414\_084603\_\_dat00.bin





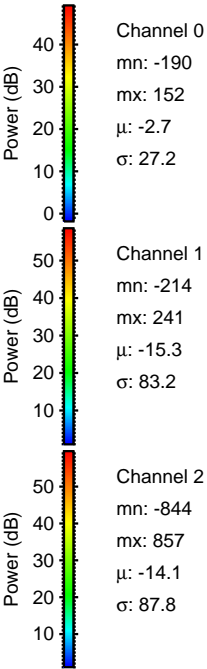
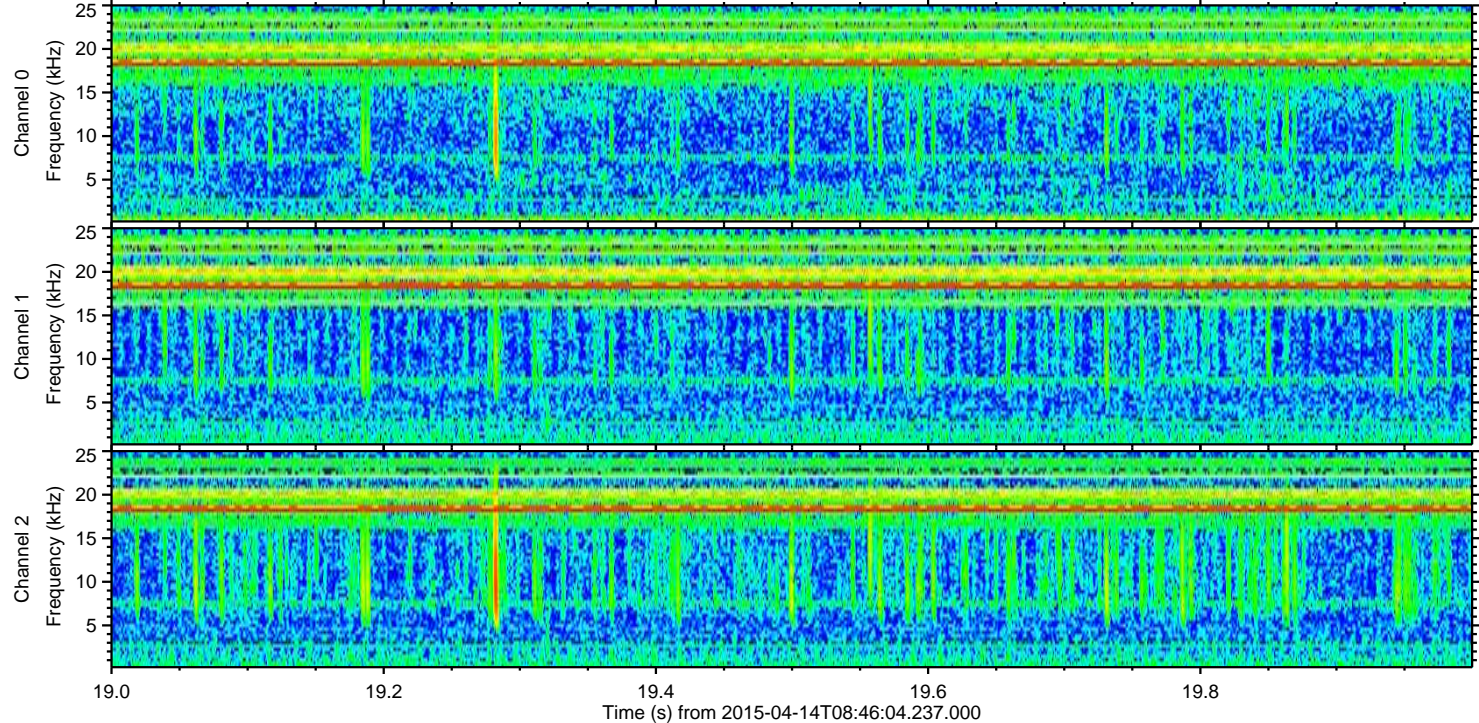
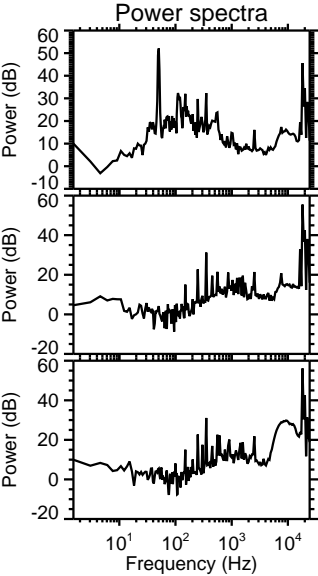
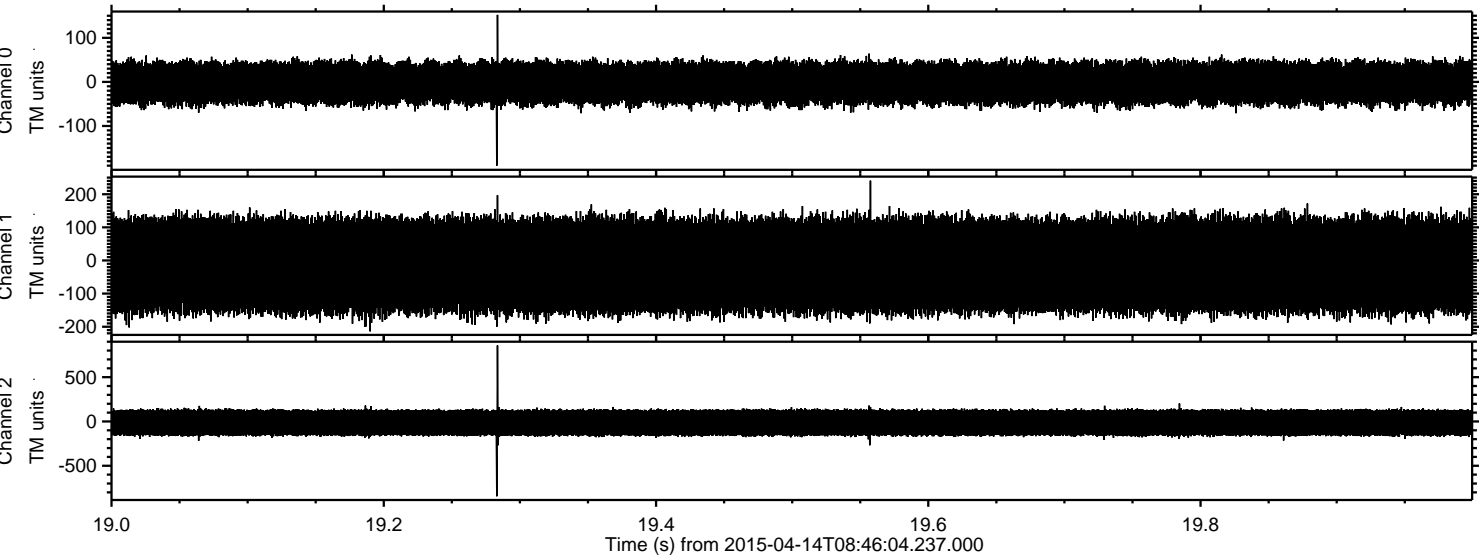
ELMAVAN 3D WAVEFORMS (Measured data sampled at 50 kHz) 49787 packets of 144 samples from 2015-04-14T08:46:04.237.000. Part 3/144

Processed Tue Apr 14 10:52:29 2015 by ELM ver.2012-10-06 from 001\_\_elm20150414\_084603\_\_dat00.bin



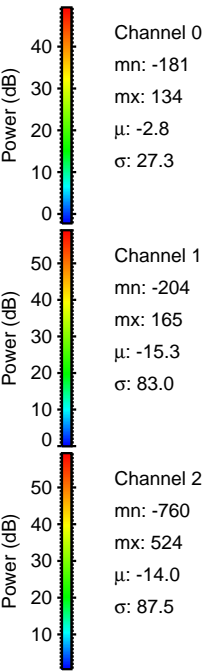
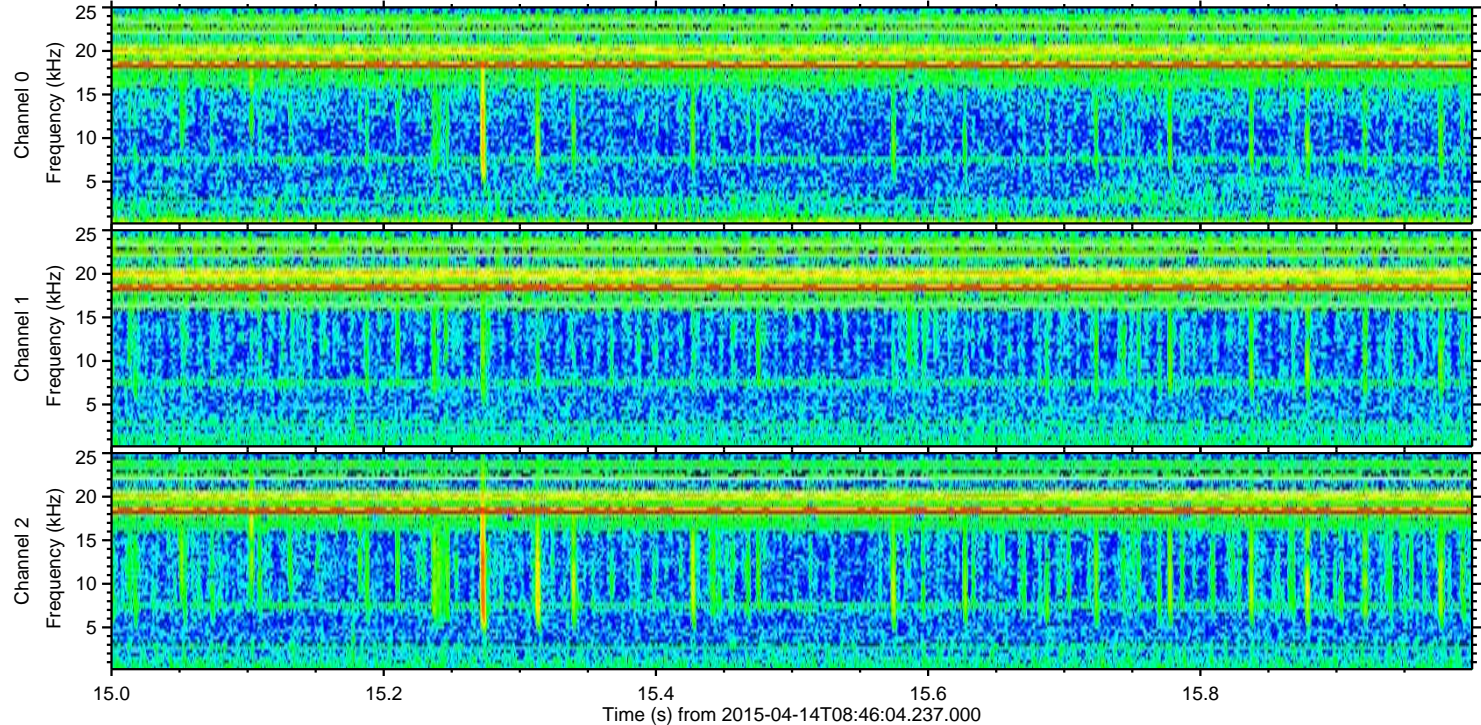
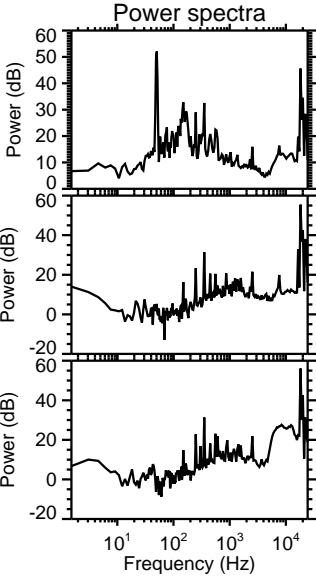
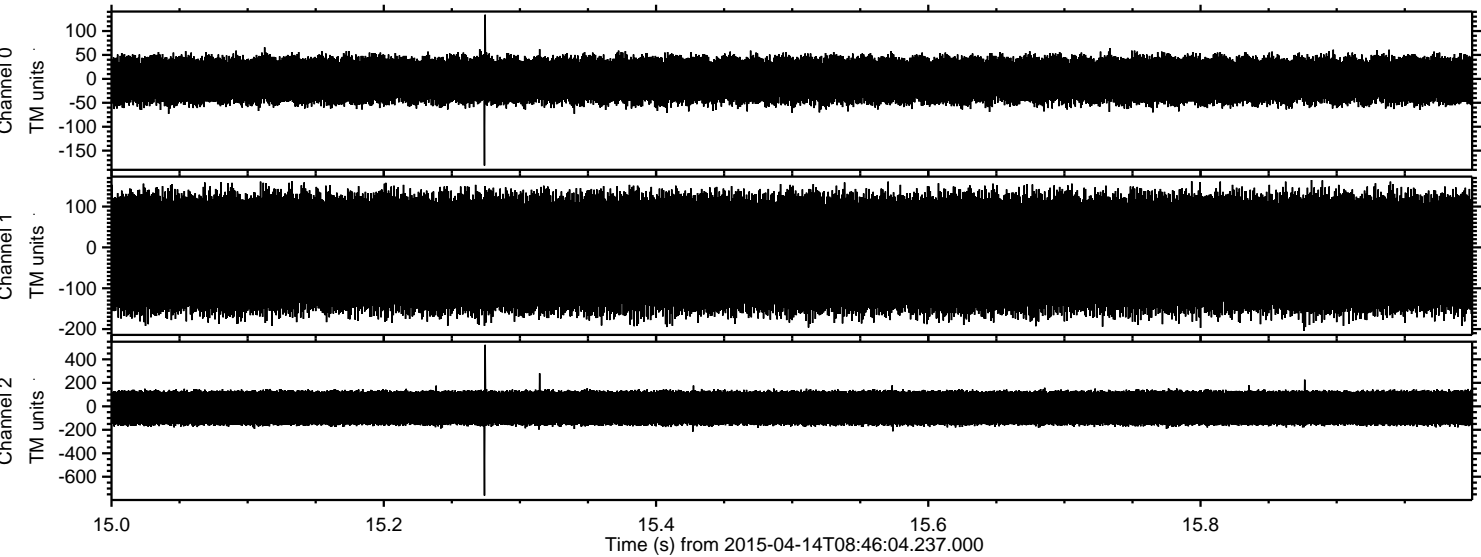


Processed Tue Apr 14 10:52:30 2015 by ELM ver.2012-10-06 from 001\_\_elm20150414\_084603\_\_dat00.bin





Processed Tue Apr 14 10:52:31 2015 by ELM ver.2012-10-06 from 001\_\_elm20150414\_084603\_\_dat00.bin





Processed Tue Apr 14 10:52:32 2015 by ELM ver.2012-10-06 from 001\_\_elm20150414\_084603\_\_dat00.bin

