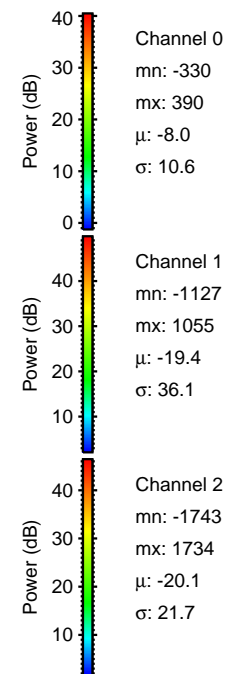
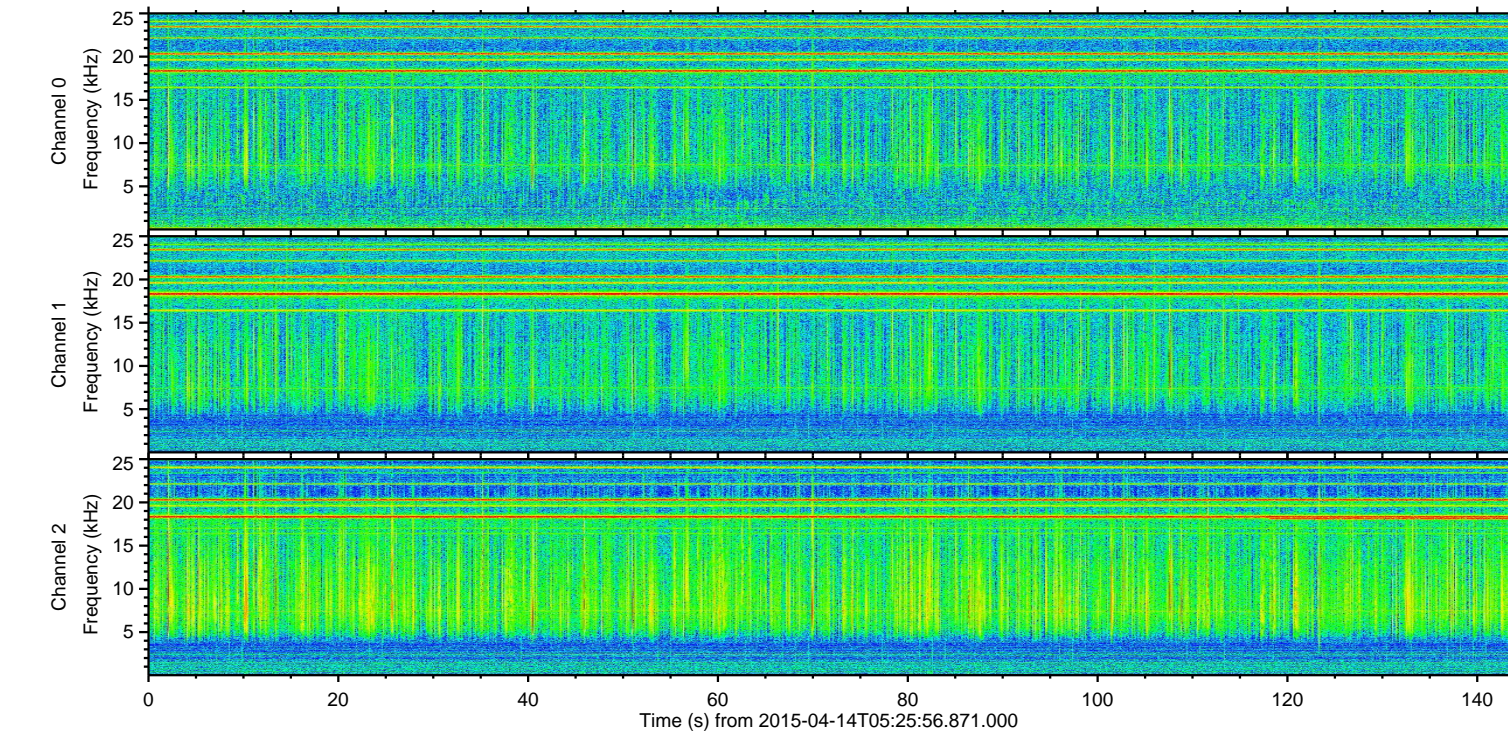
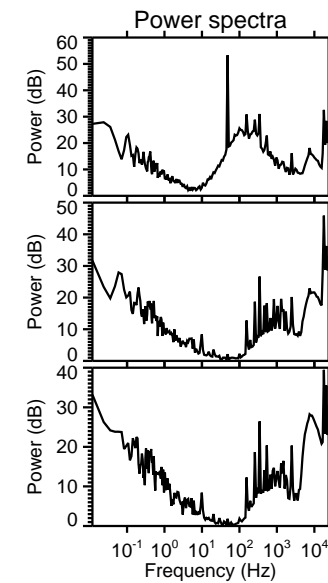
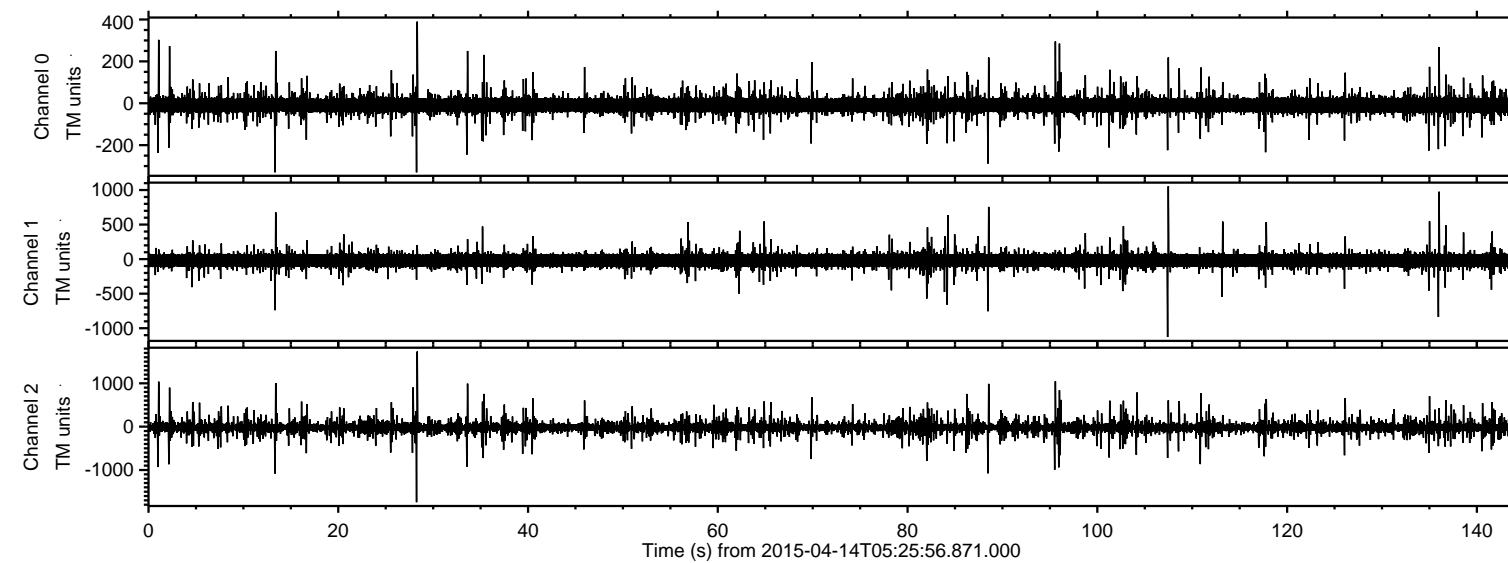
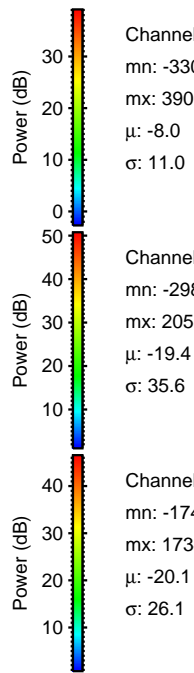
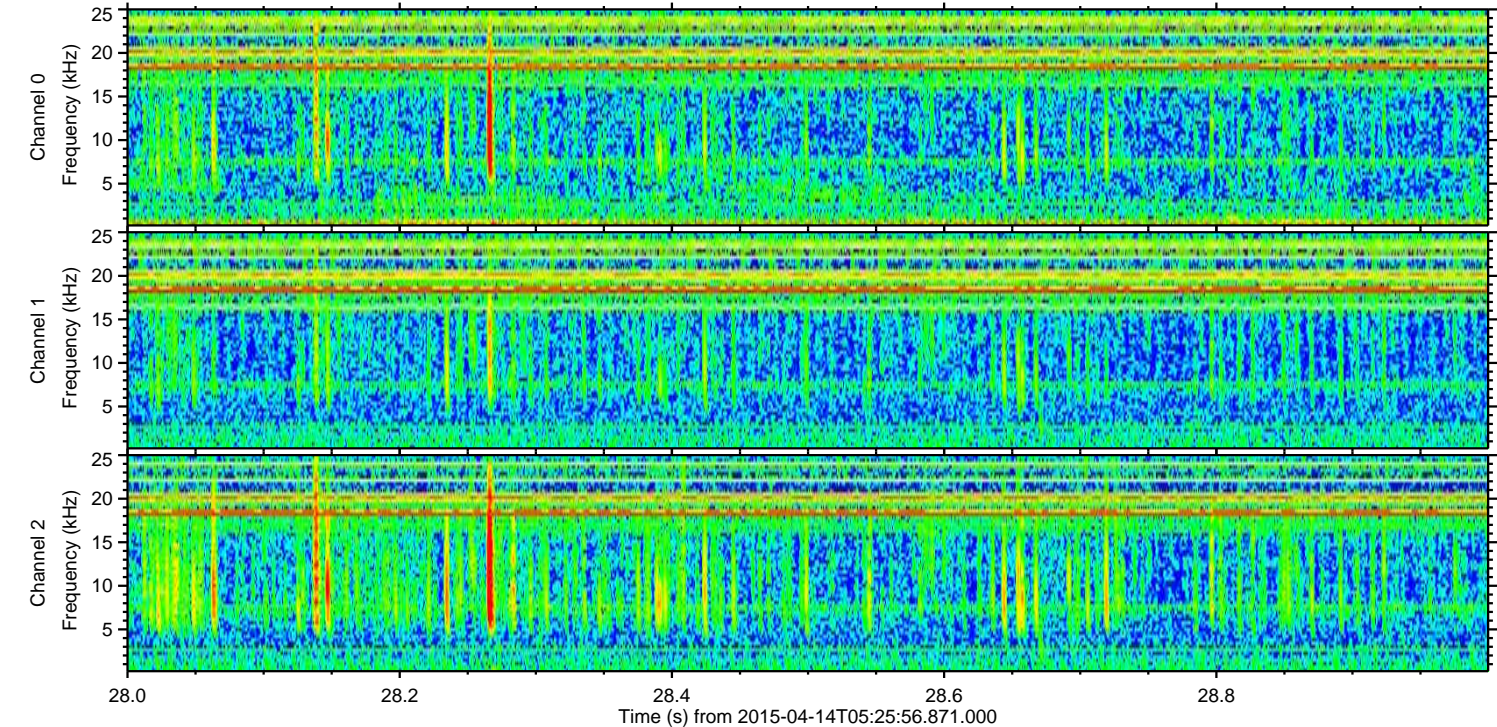
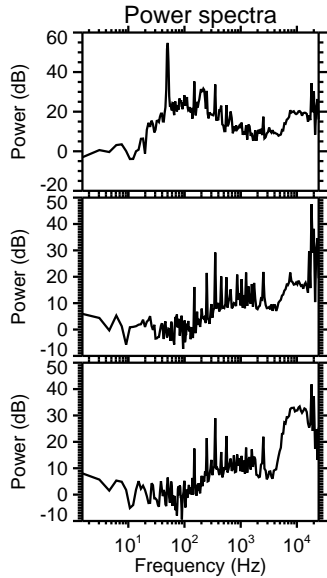
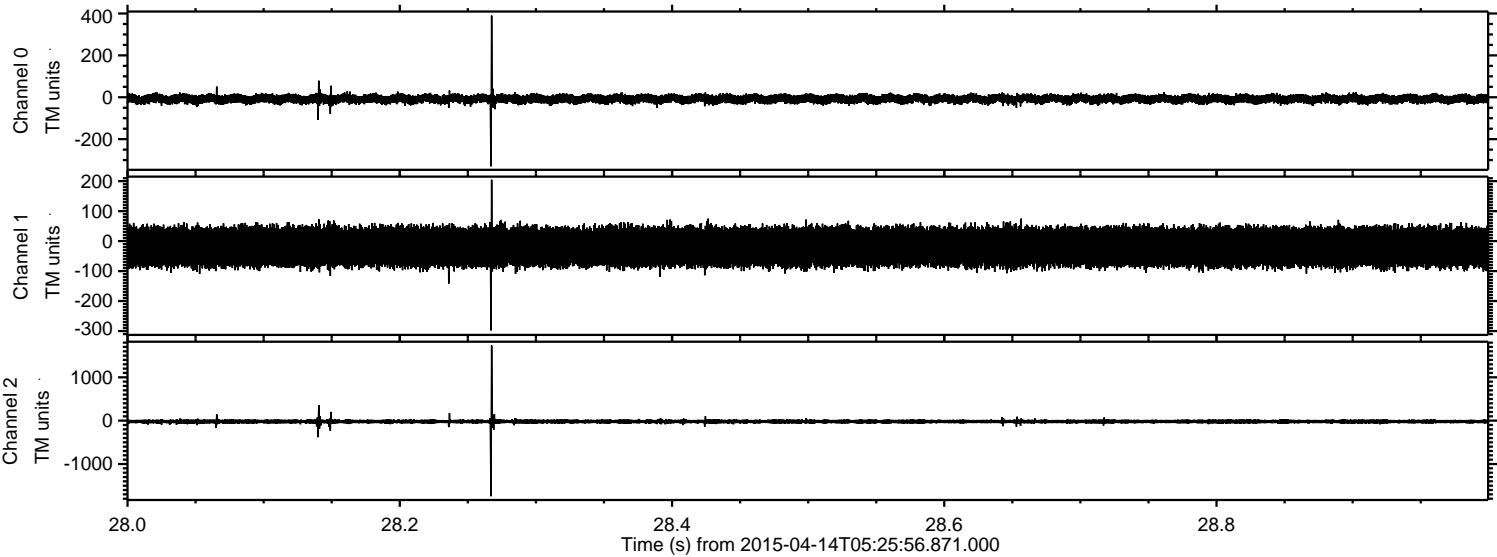


ELMAVAN 3D WAVEFORMS (Measured data sampled at 50 kHz) 49792 packets of 144 samples from 2015-04-14T05:25:56.871.000.

Processed Tue Apr 14 07:32:31 2015 by ELM ver.2012-10-06 from 001__elm20150414_052555__dat00.bin

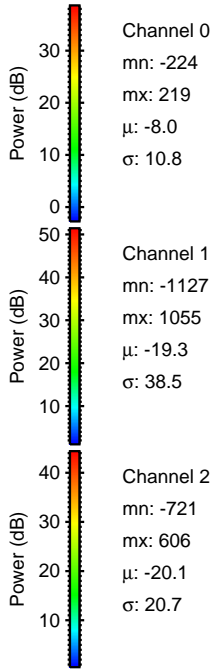
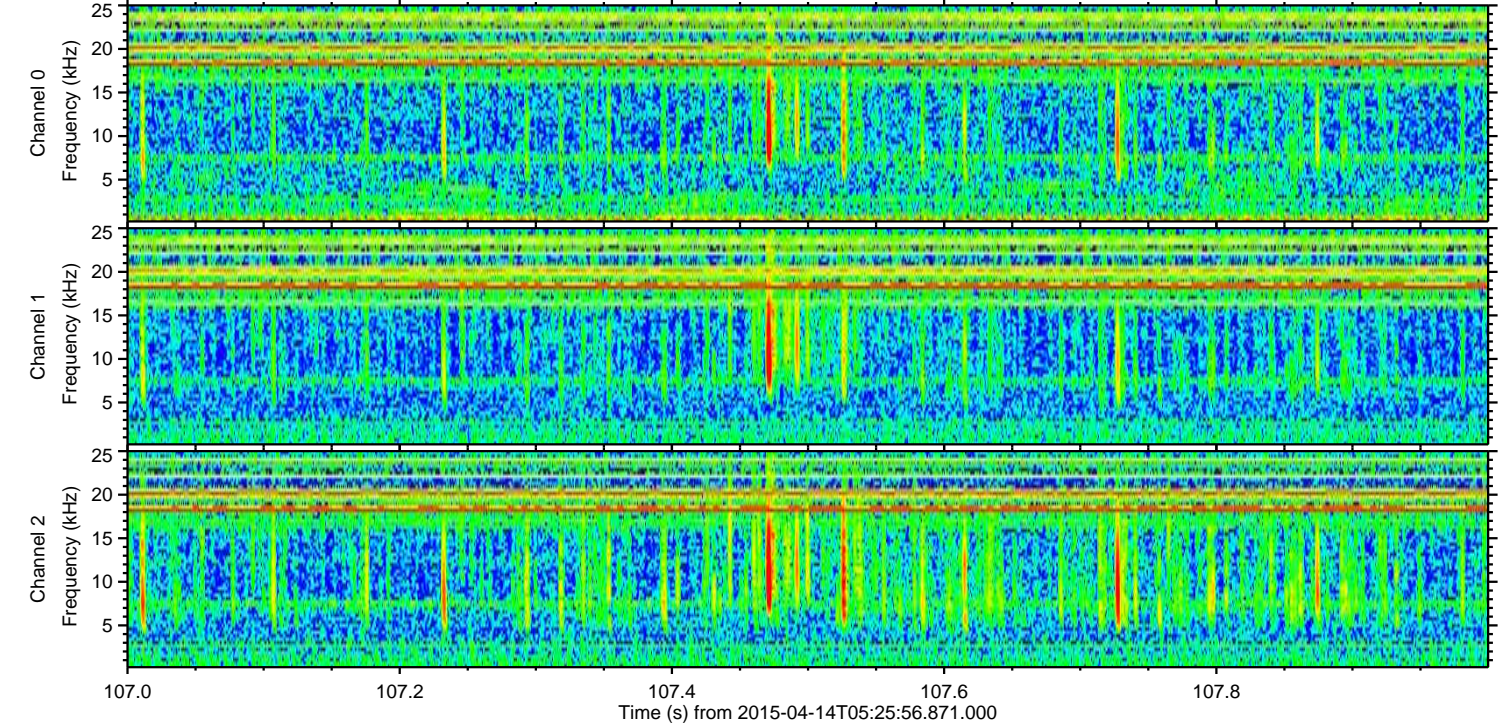
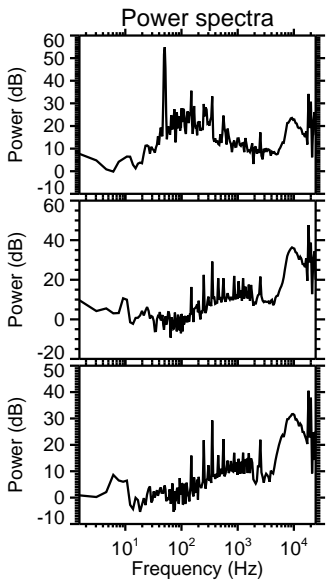
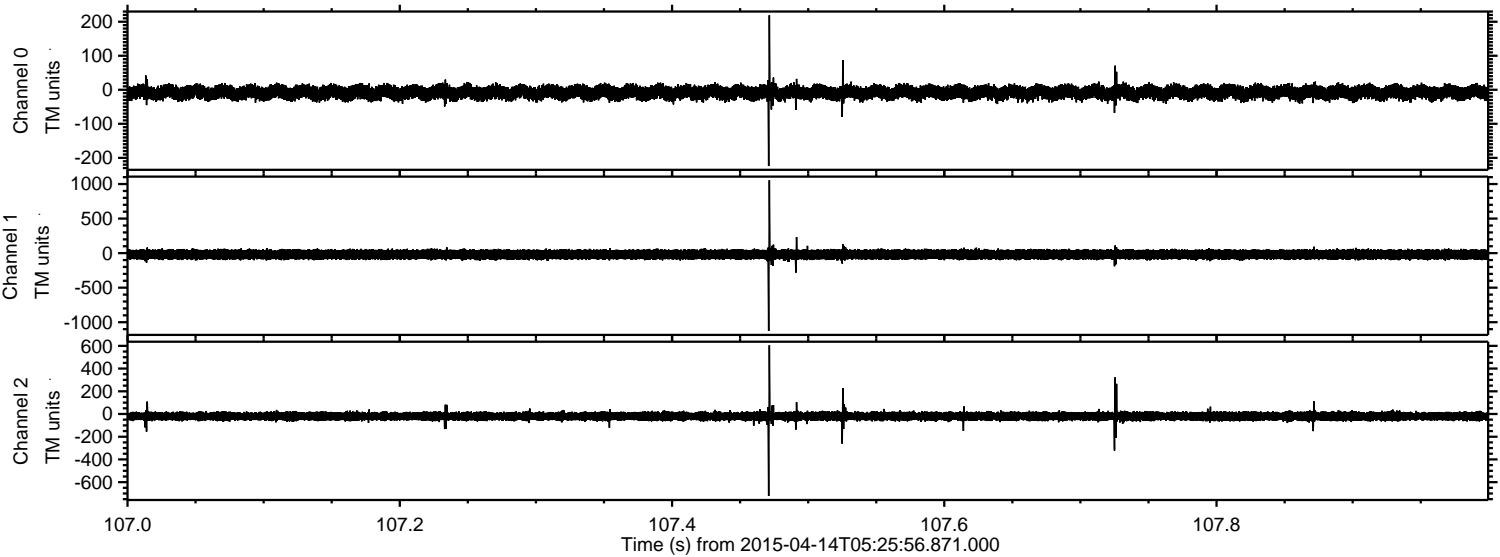


Processed Tue Apr 14 07:32:42 2015 by ELM ver.2012-10-06 from 001__elm20150414_052555__dat00.bin

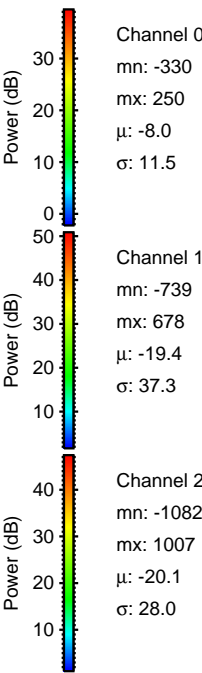
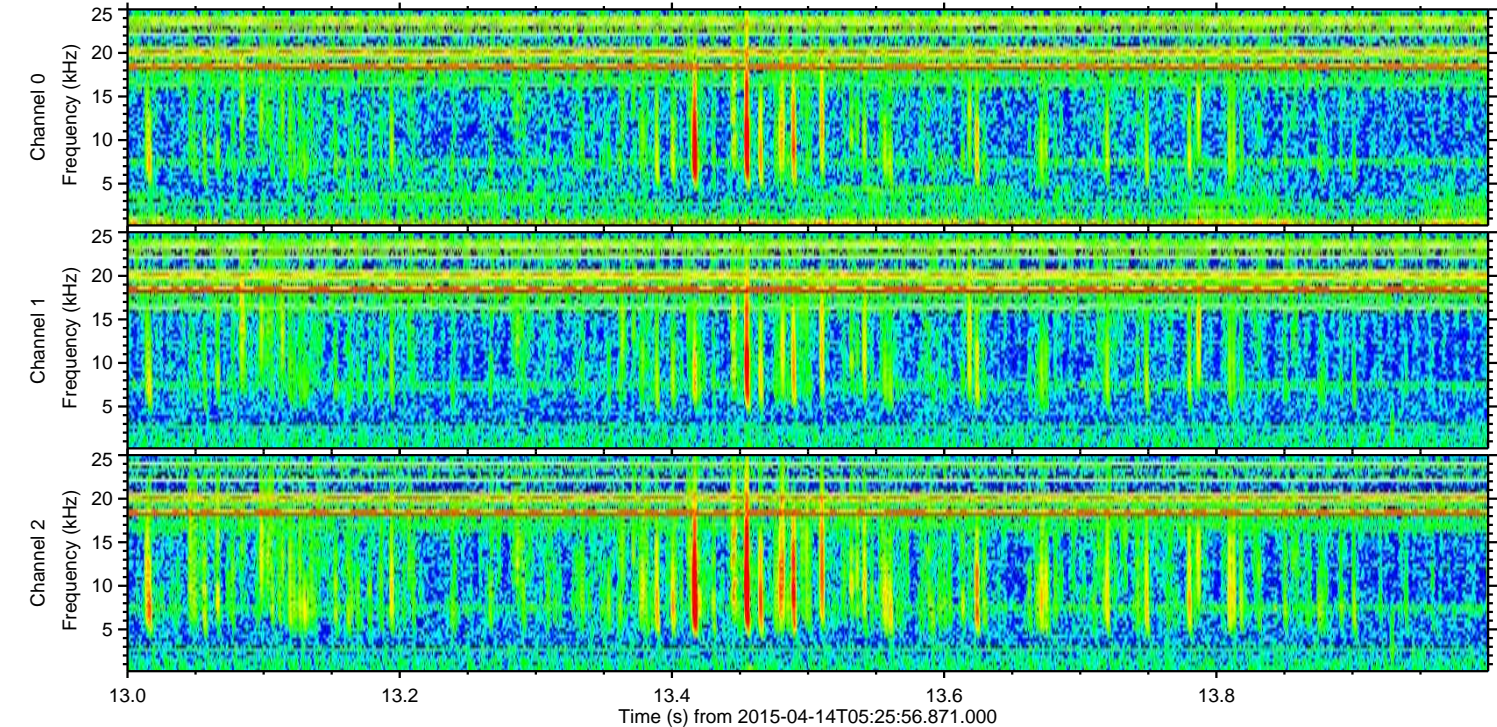
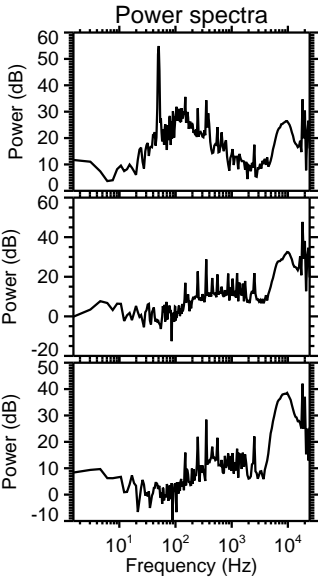
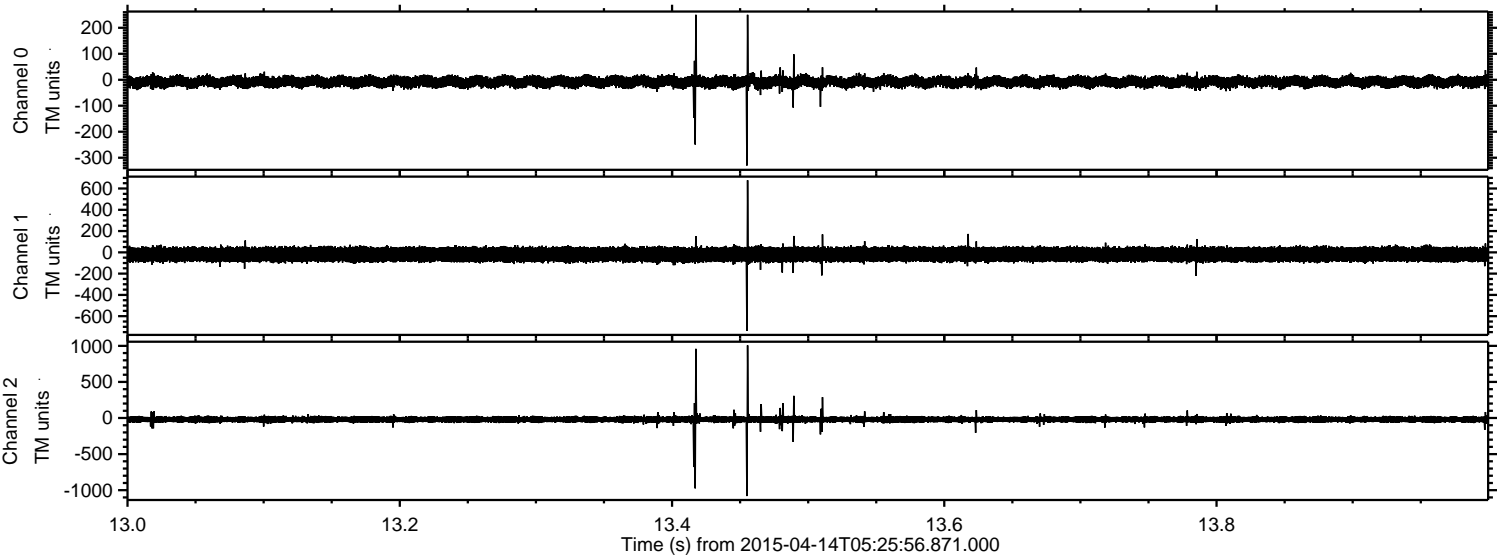


ELMAVAN 3D WAVEFORMS (Measured data sampled at 50 kHz) 49792 packets of 144 samples from 2015-04-14T05:25:56.871.000. Part 108/144

Processed Tue Apr 14 07:32:43 2015 by ELM ver.2012-10-06 from 001__elm20150414_052555__dat00.bin



Processed Tue Apr 14 07:32:44 2015 by ELM ver.2012-10-06 from 001__elm20150414_052555__dat00.bin

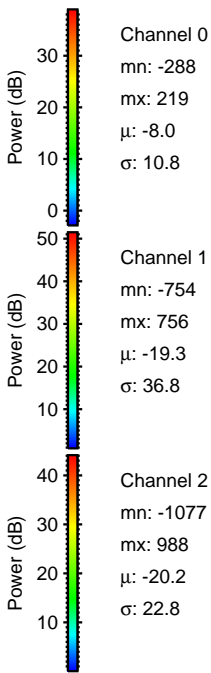
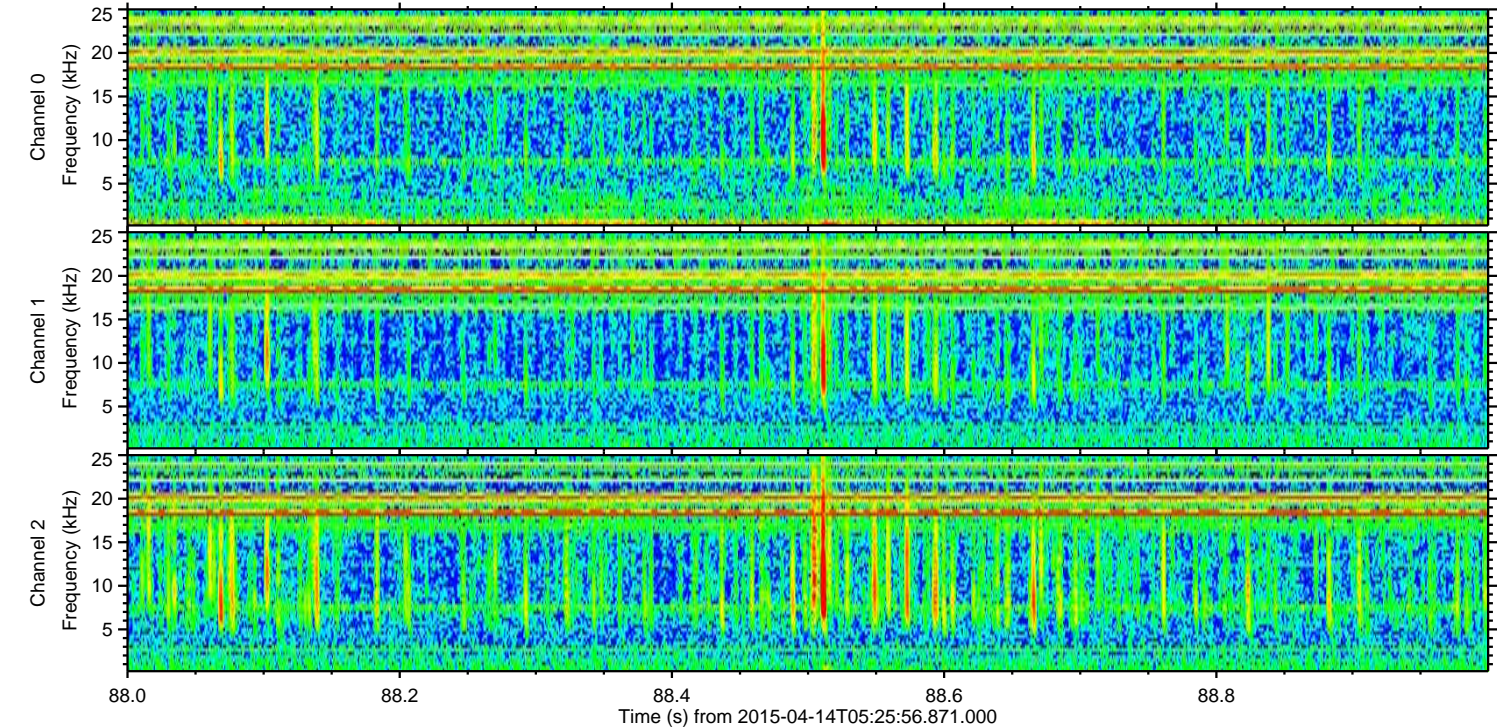
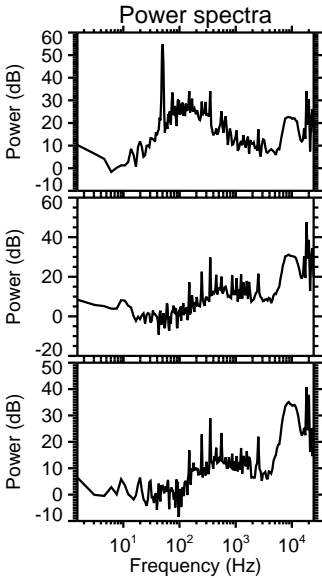
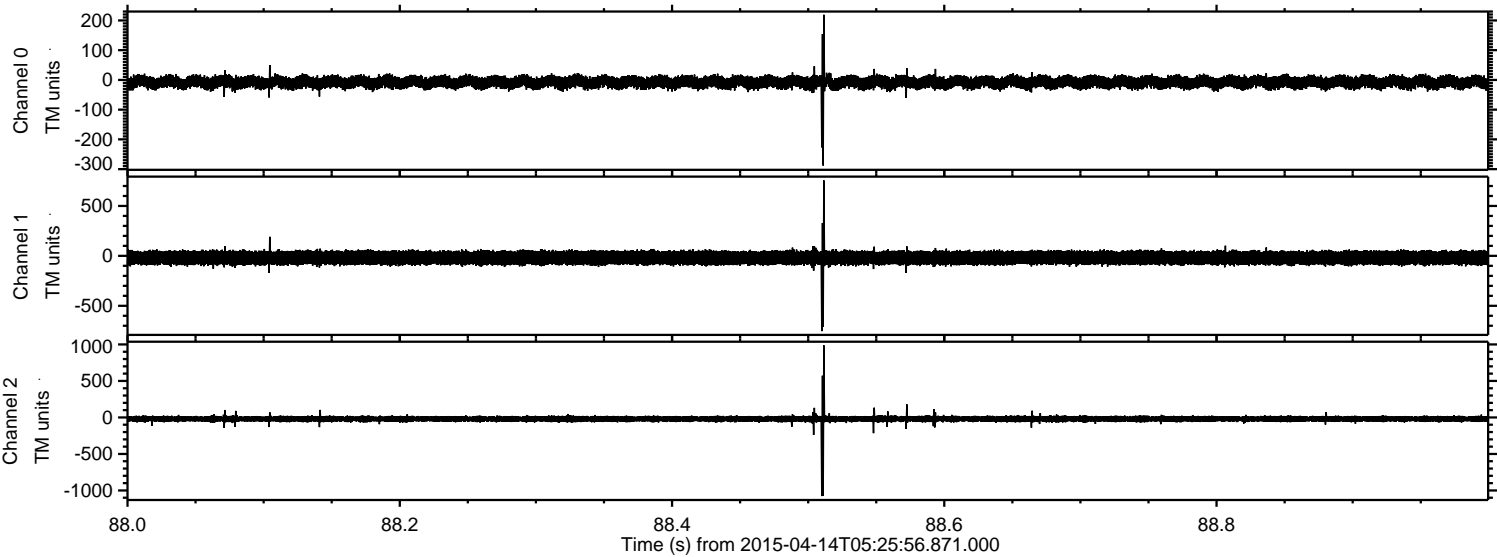


Channel 0
mn: -330
mx: 250
 μ : -8.0
 σ : 11.5

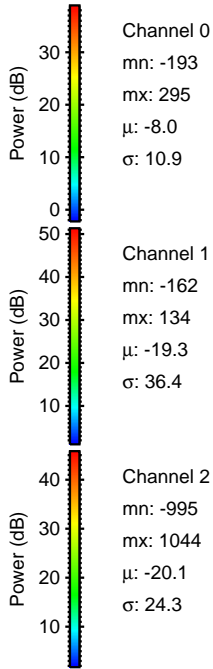
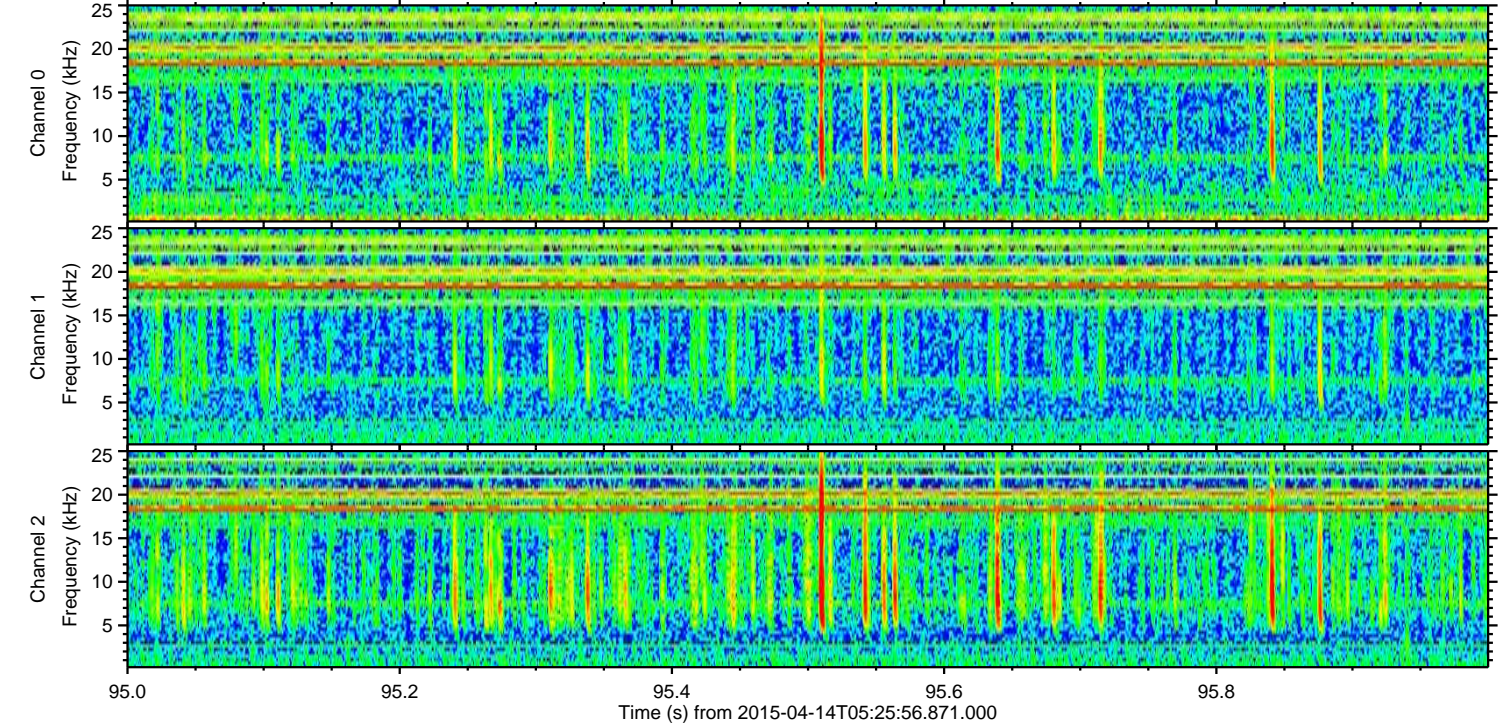
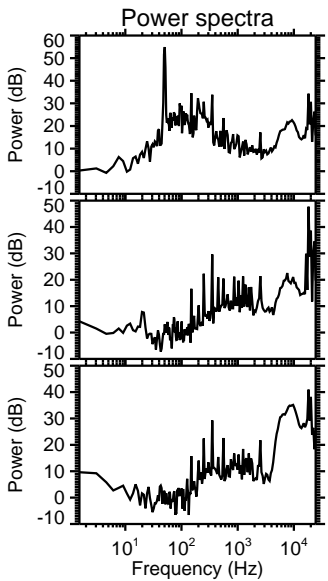
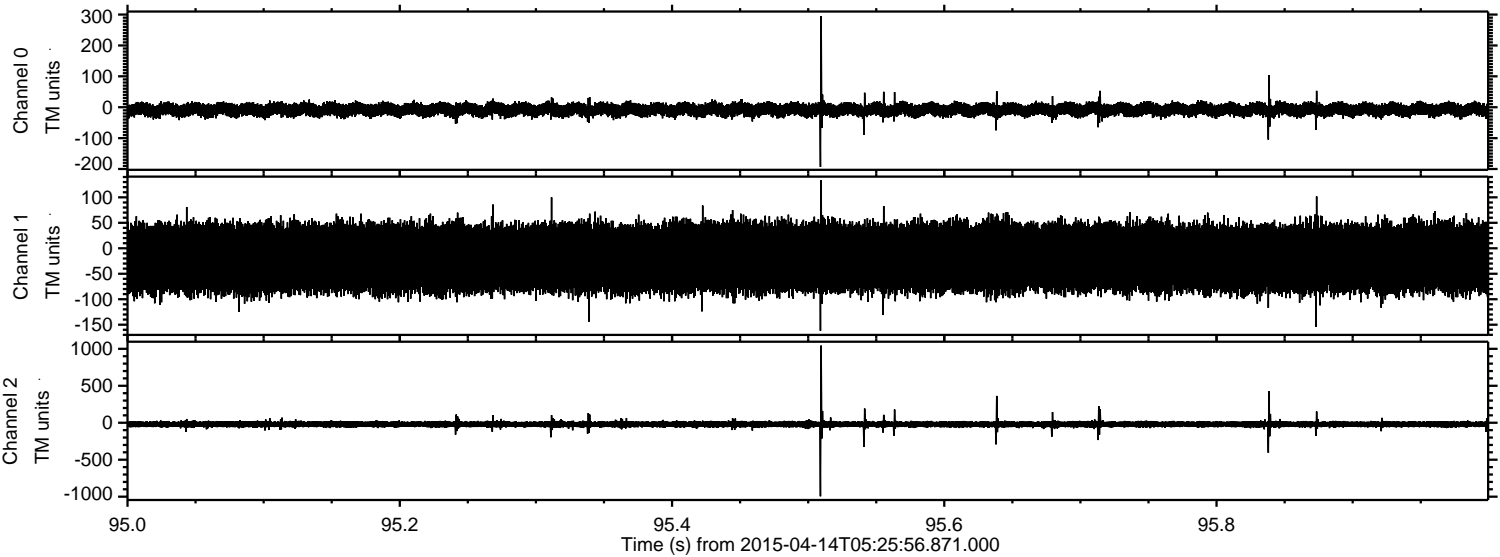
Channel 1
mn: -739
mx: 678
 μ : -19.4
 σ : 37.3

Channel 2
mn: -1082
mx: 1007
 μ : -20.1
 σ : 28.0

Processed Tue Apr 14 07:32:45 2015 by ELM ver.2012-10-06 from 001__elm20150414_052555__dat00.bin

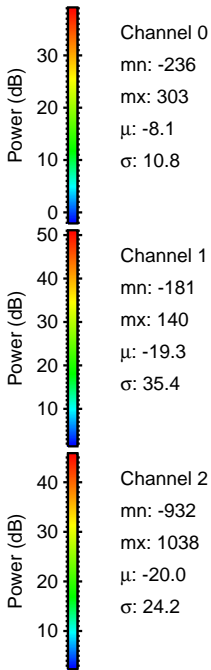
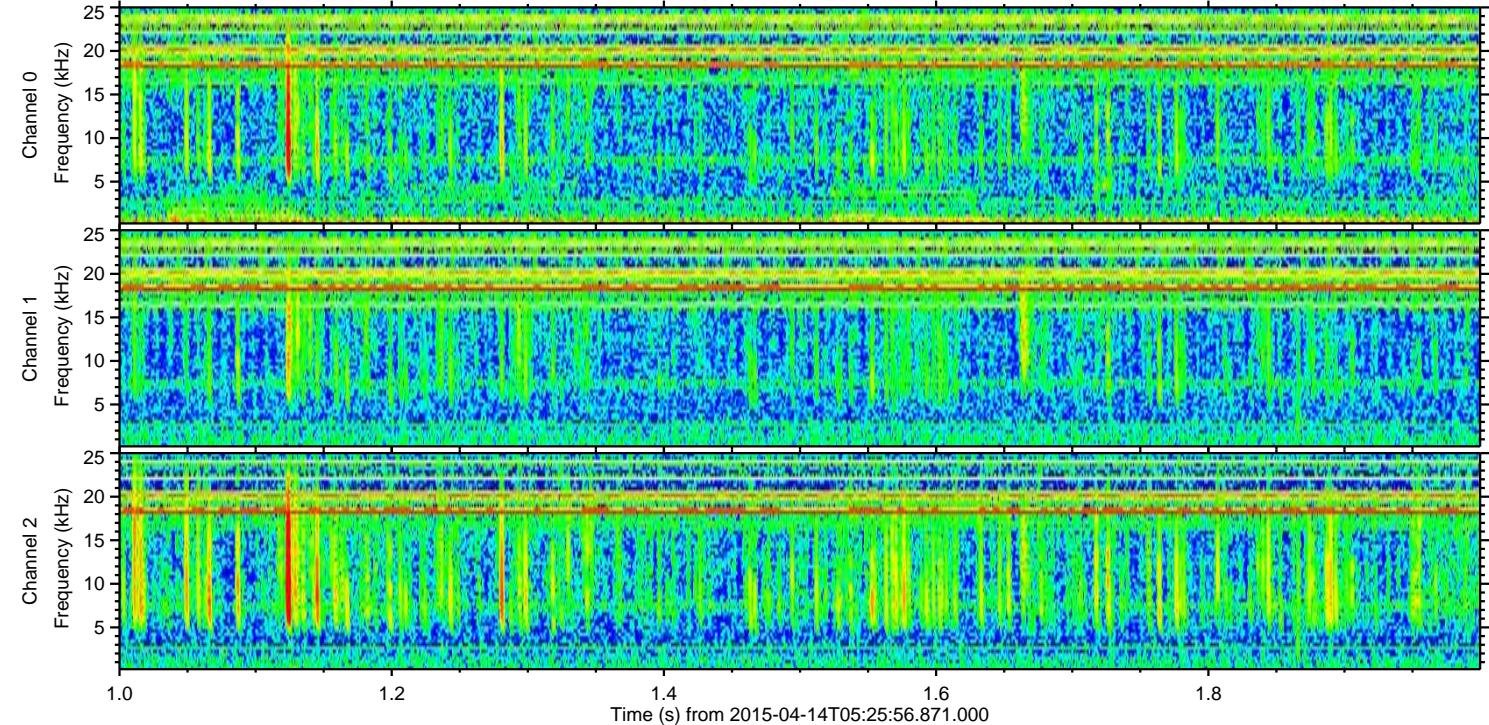
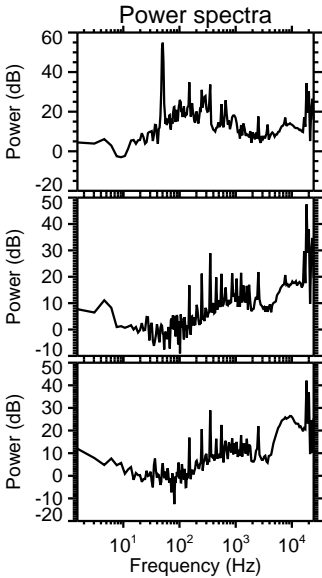
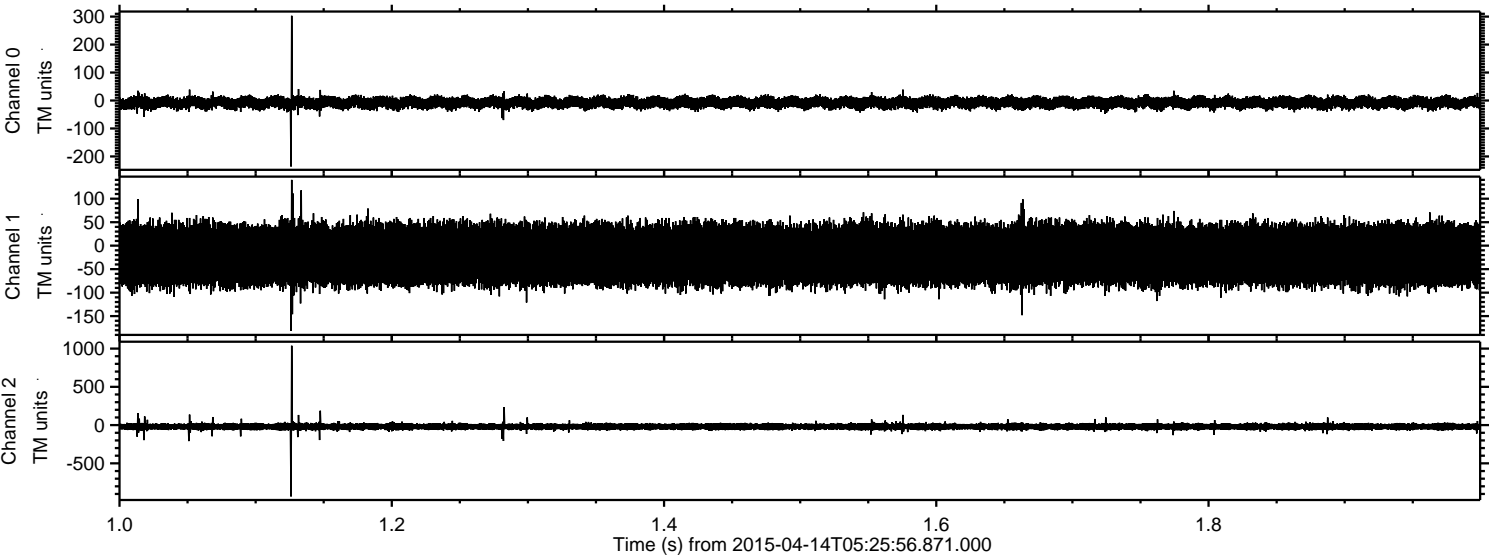


Processed Tue Apr 14 07:32:46 2015 by ELM ver.2012-10-06 from 001__elm20150414_052555__dat00.bin

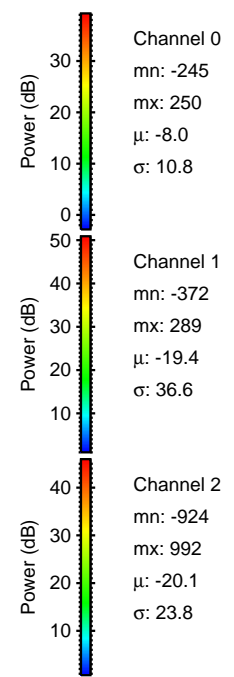
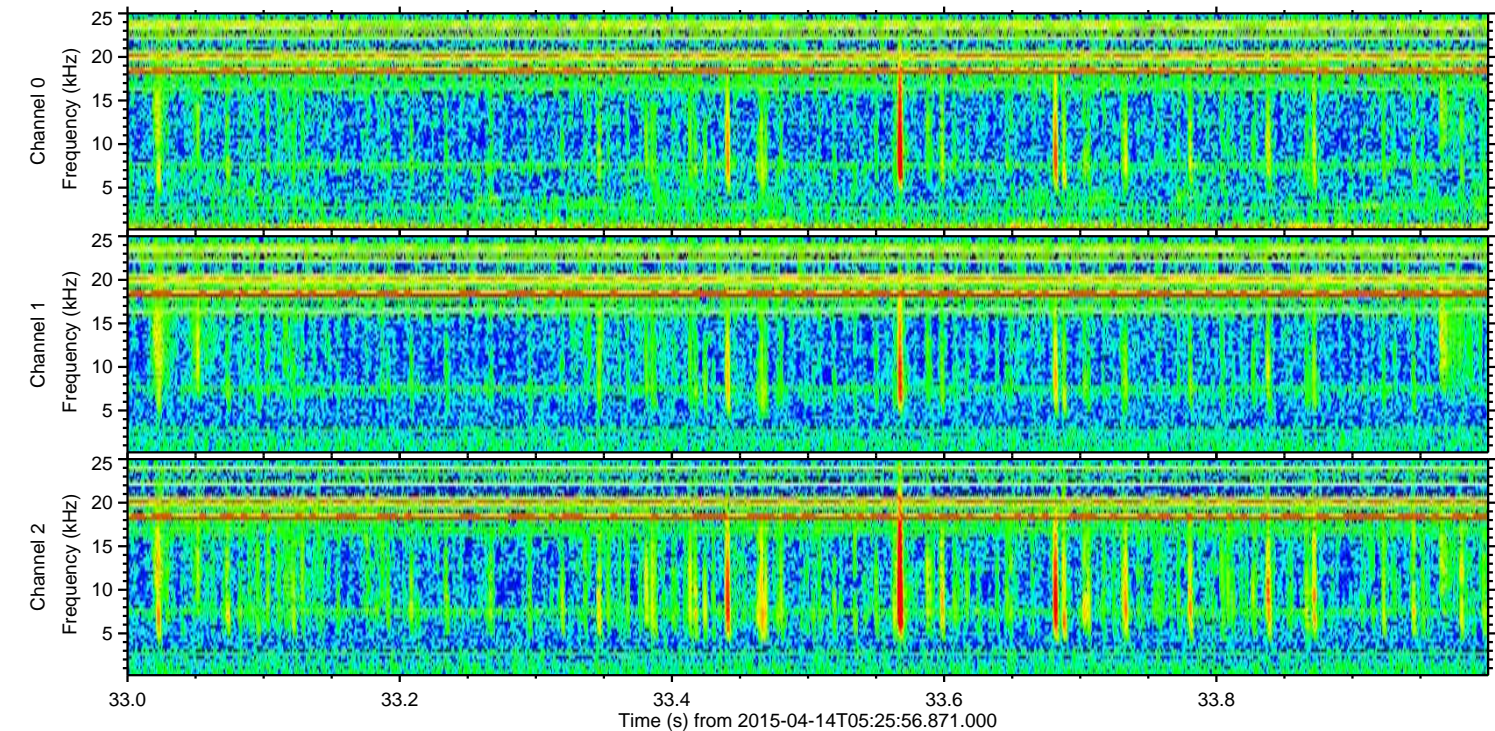
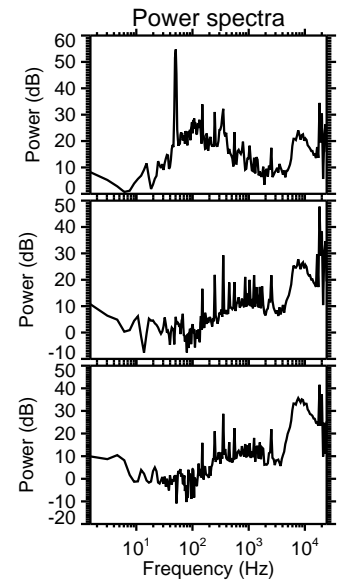
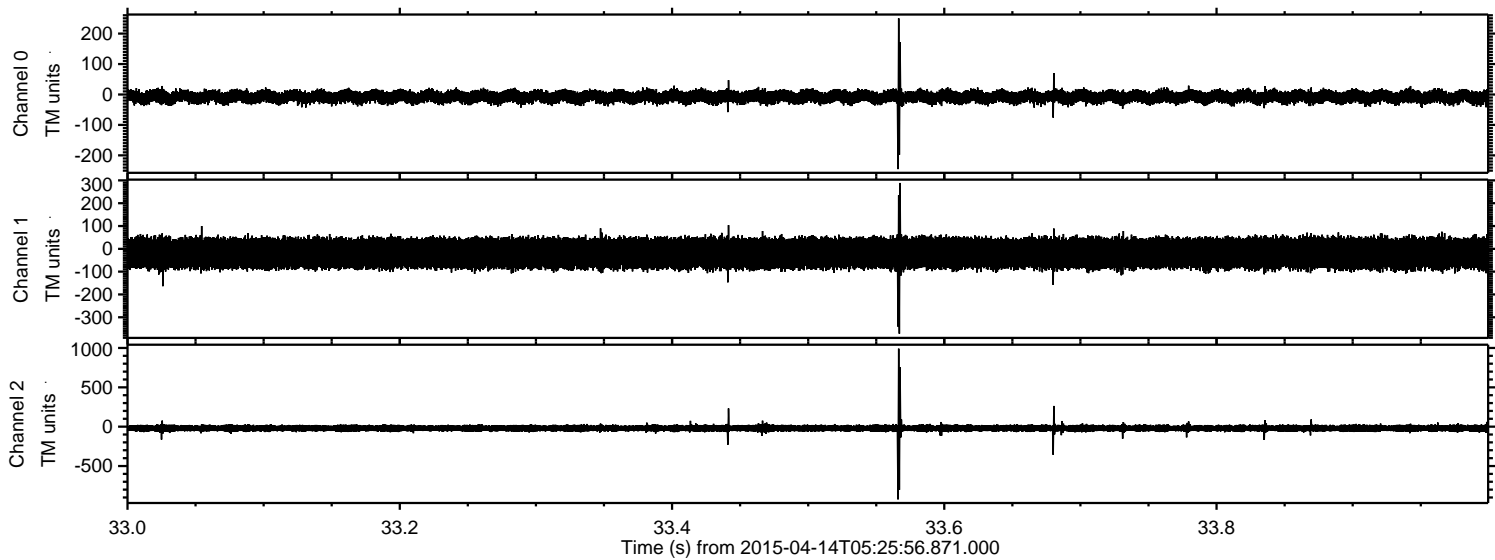


ELMAVAN 3D WAVEFORMS (Measured data sampled at 50 kHz) 49792 packets of 144 samples from 2015-04-14T05:25:56.871.000. Part 2/144

Processed Tue Apr 14 07:32:47 2015 by ELM ver.2012-10-06 from 001__elm20150414_052555__dat00.bin

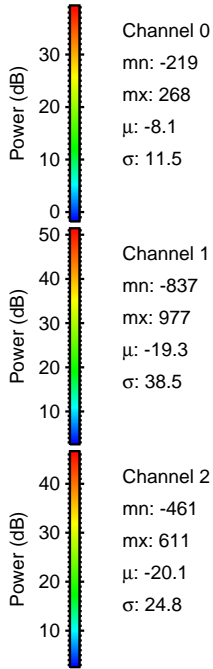
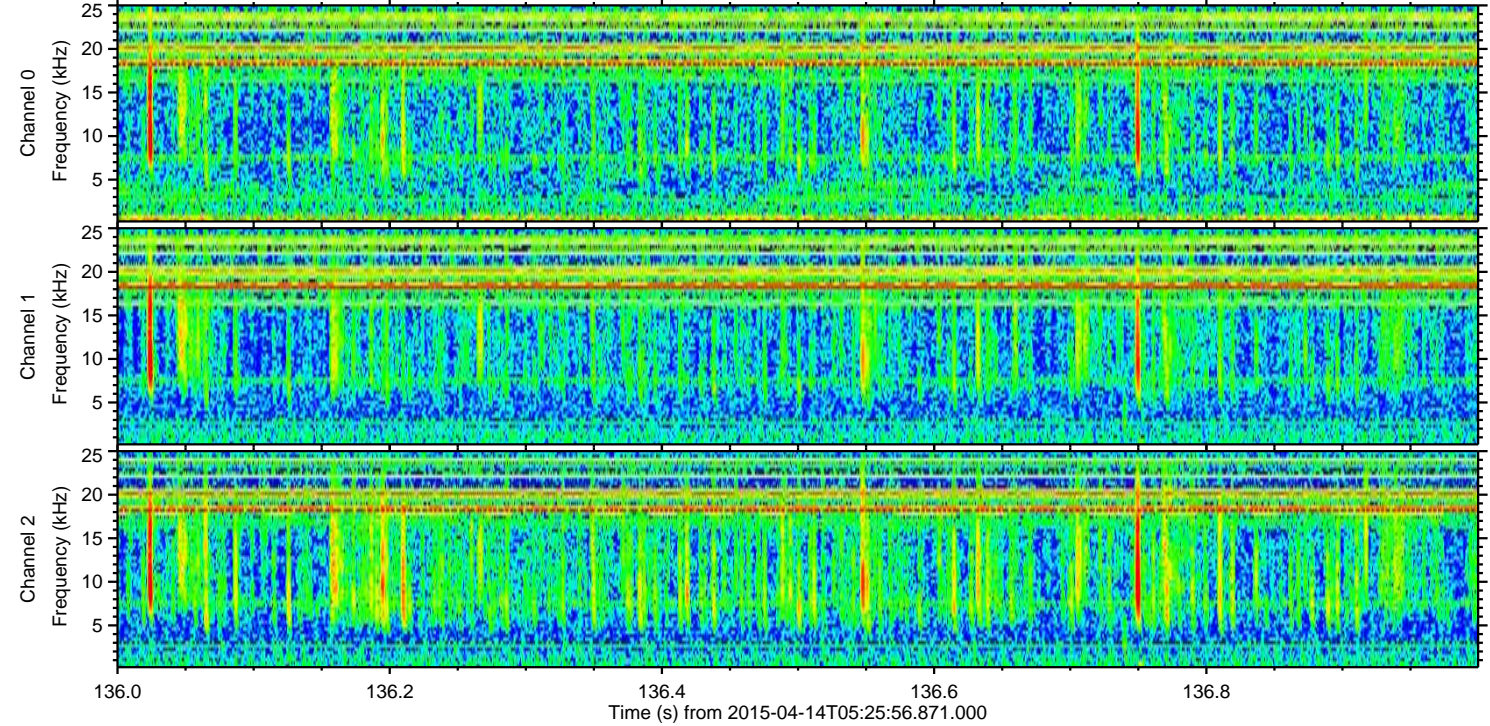
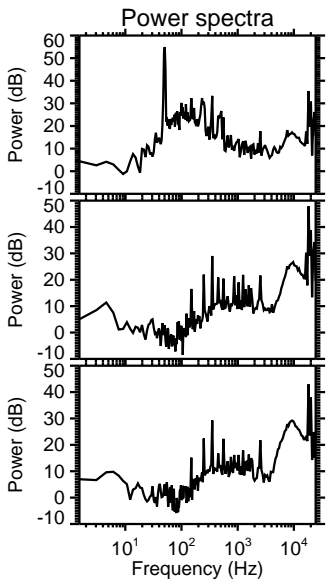
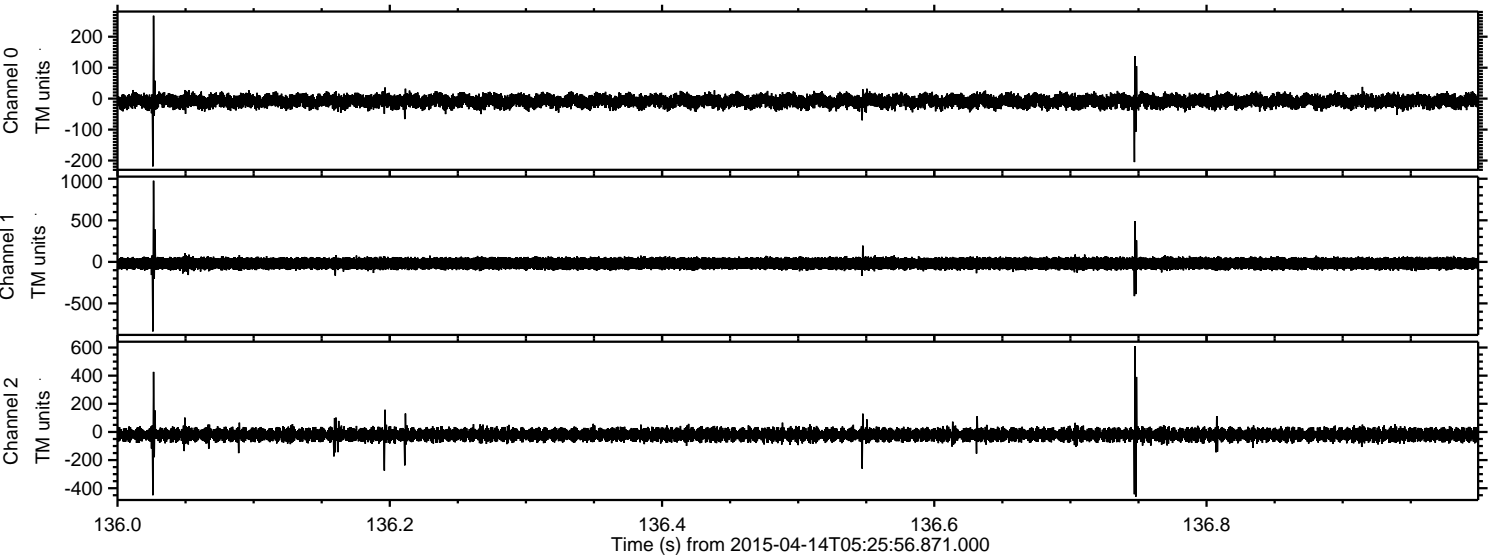


Processed Tue Apr 14 07:32:48 2015 by ELM ver.2012-10-06 from 001__elm20150414_052555__dat00.bin

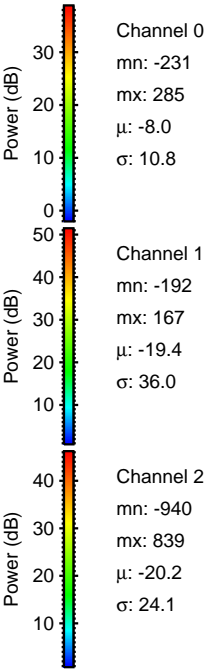
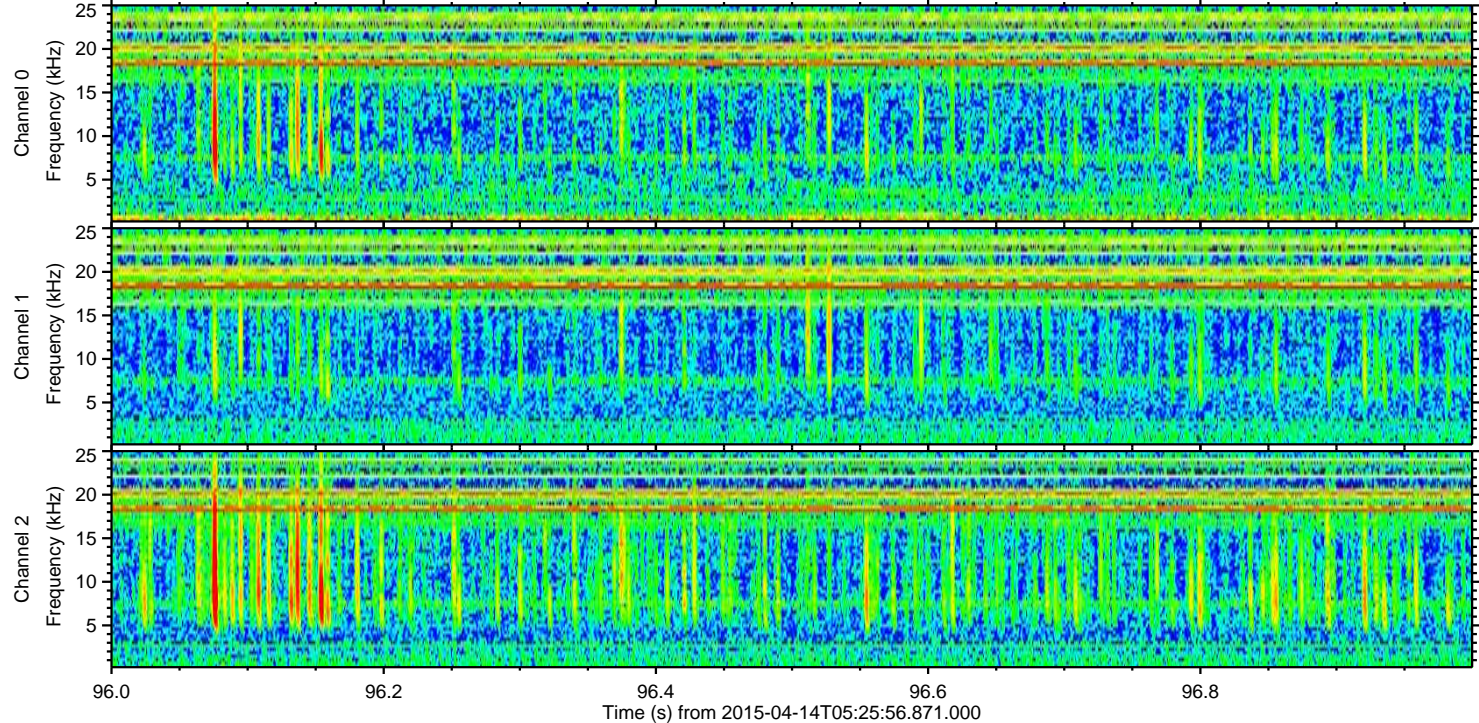
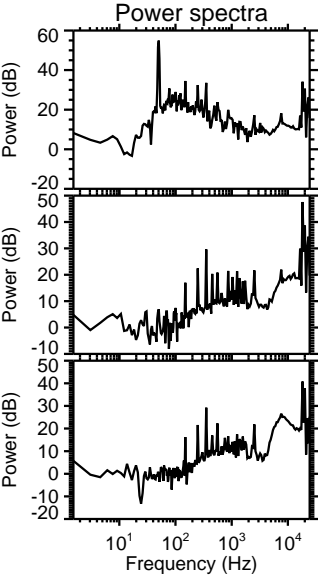
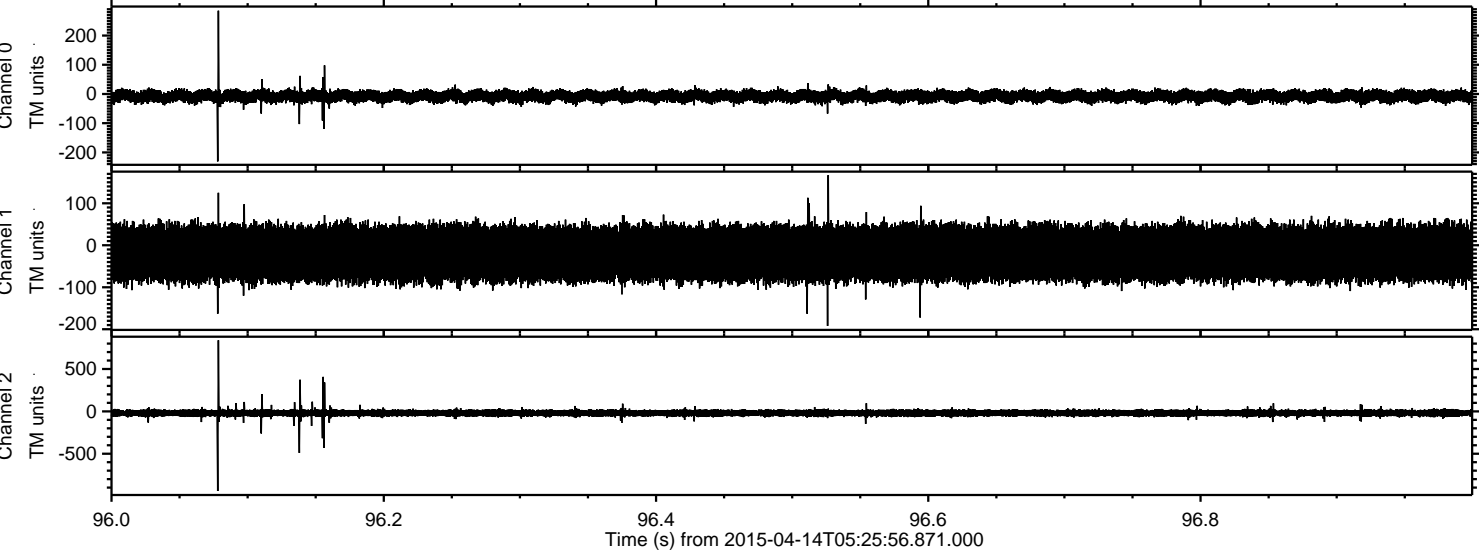


ELMAVAN 3D WAVEFORMS (Measured data sampled at 50 kHz) 49792 packets of 144 samples from 2015-04-14T05:25:56.871.000. Part 137/144

Processed Tue Apr 14 07:32:49 2015 by ELM ver.2012-10-06 from 001__elm20150414_052555__dat00.bin



Processed Tue Apr 14 07:32:50 2015 by ELM ver.2012-10-06 from 001__elm20150414_052555__dat00.bin



Processed Tue Apr 14 07:32:51 2015 by ELM ver.2012-10-06 from 001__elm20150414_052555__dat00.bin

