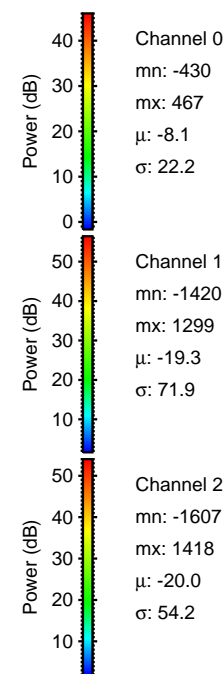
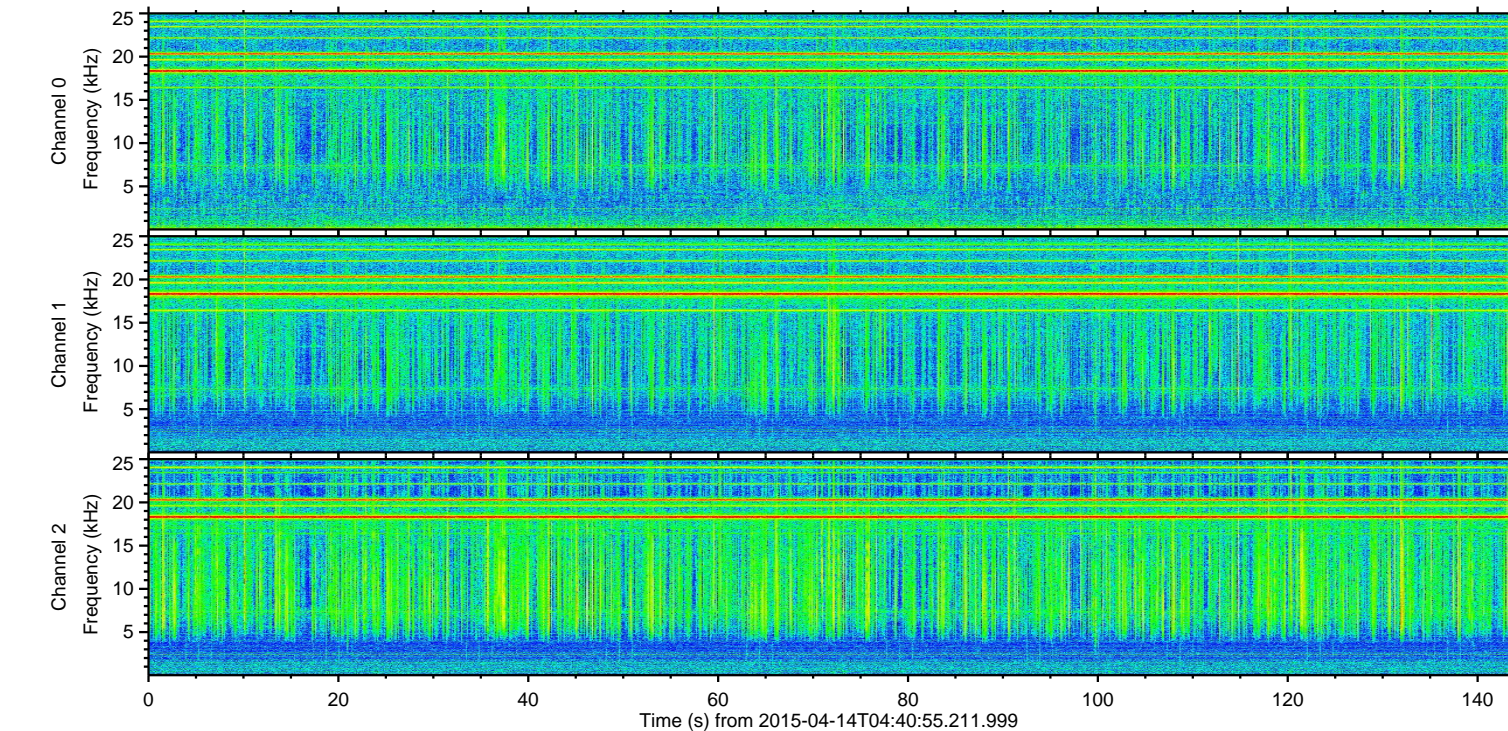
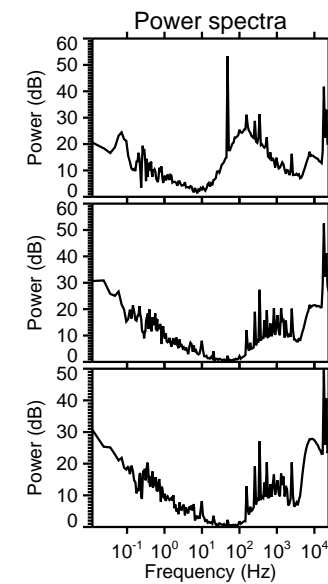
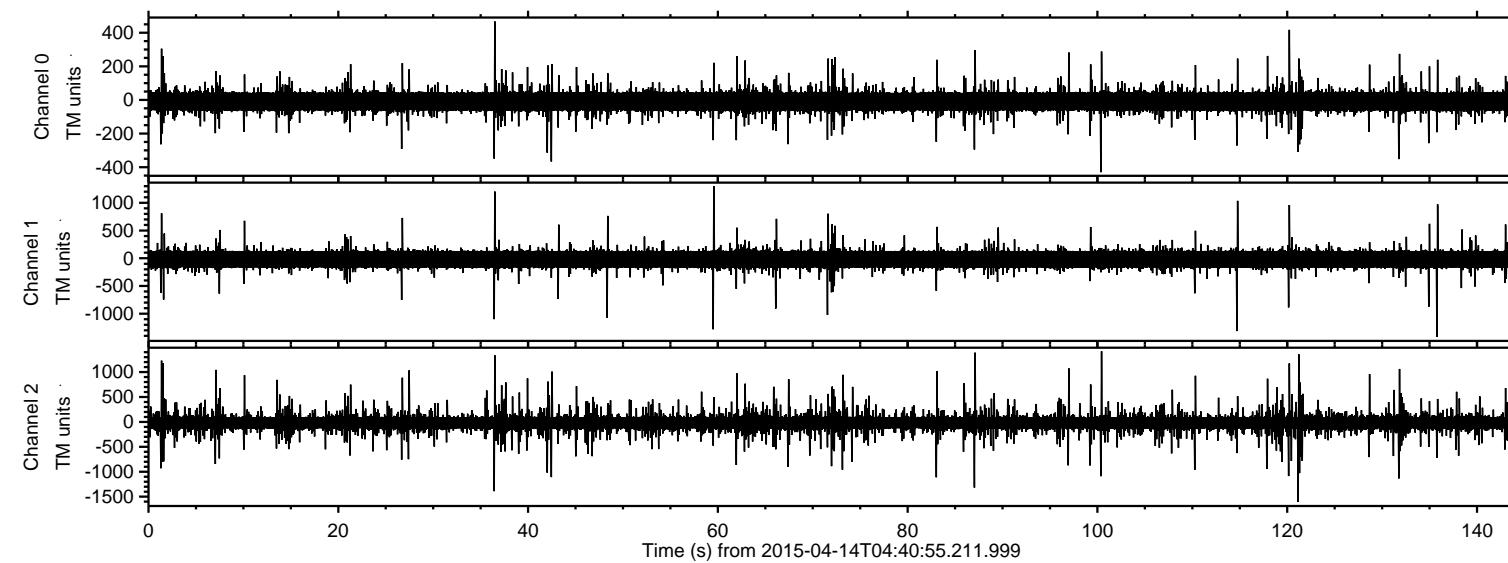


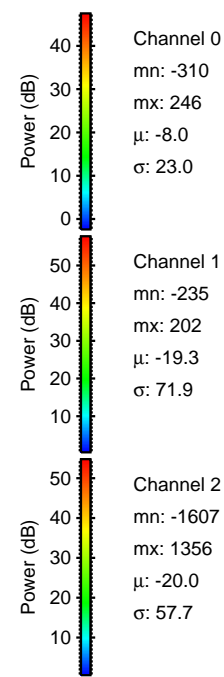
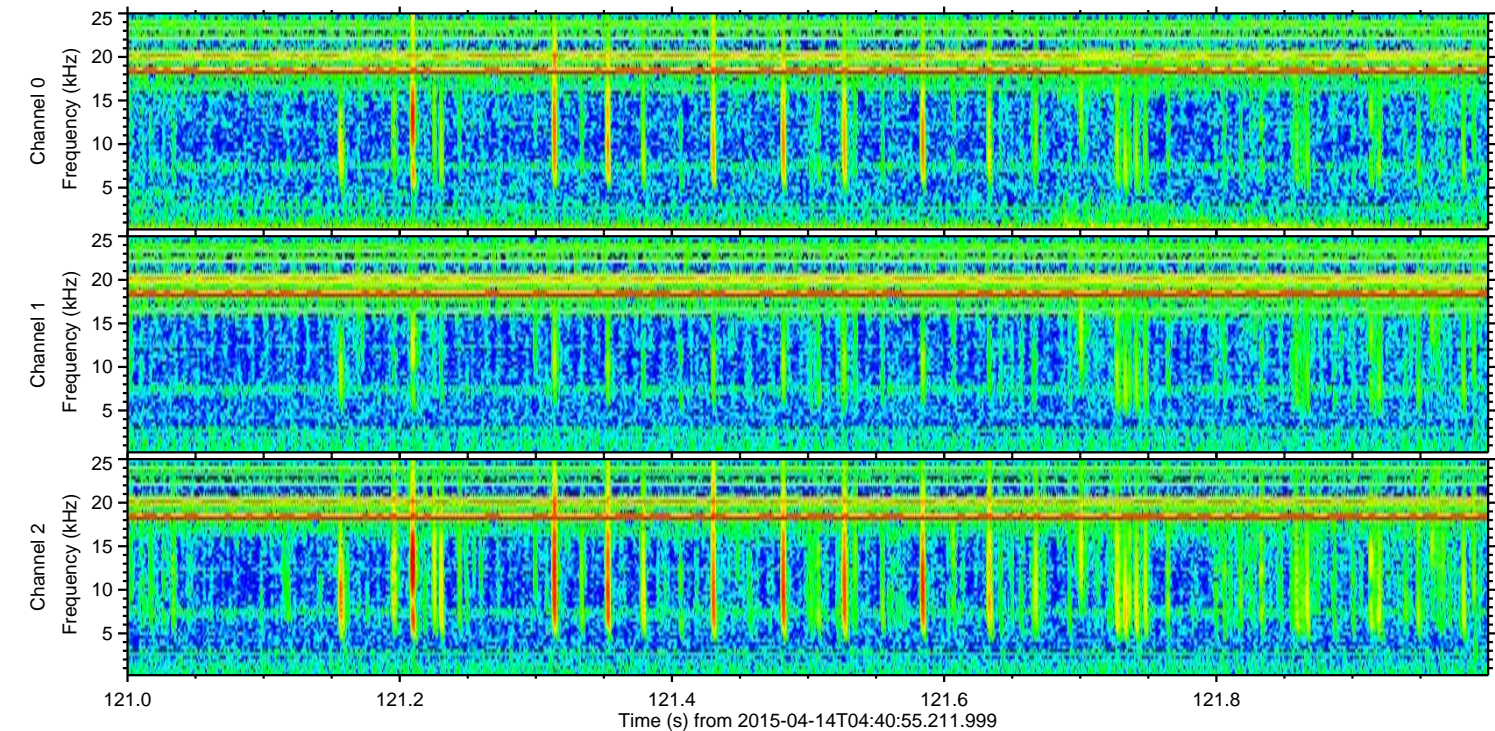
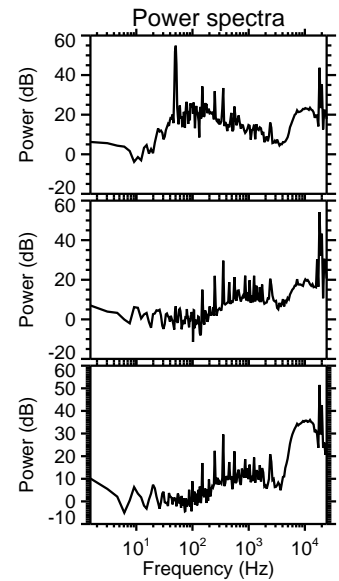
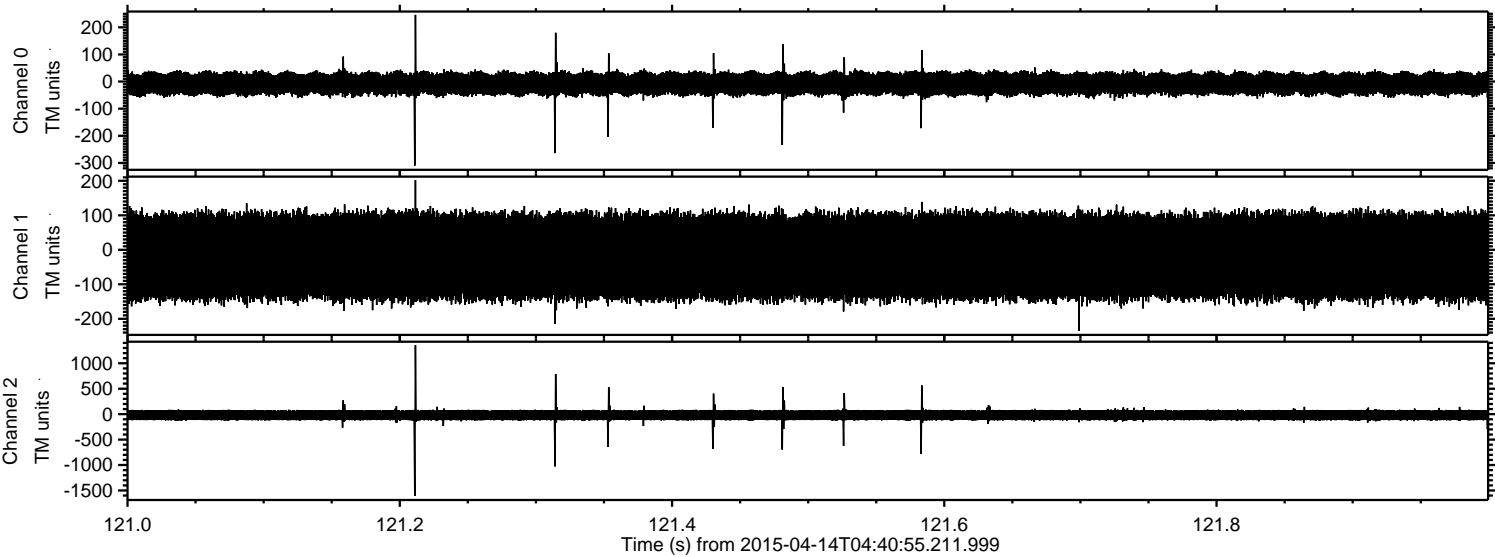
ELMAVAN 3D WAVEFORMS (Measured data sampled at 50 kHz) 49787 packets of 144 samples from 2015-04-14T04:40:55.211.999.

Processed Tue Apr 14 06:47:55 2015 by ELM ver.2012-10-06 from 001__elm20150414_044054__dat00.bin



ELMAVAN 3D WAVEFORMS (Measured data sampled at 50 kHz) 49787 packets of 144 samples from 2015-04-14T04:40:55.211.999. Part 122/144

Processed Tue Apr 14 06:48:06 2015 by ELM ver.2012-10-06 from 001__elm20150414_044054__dat00.bin



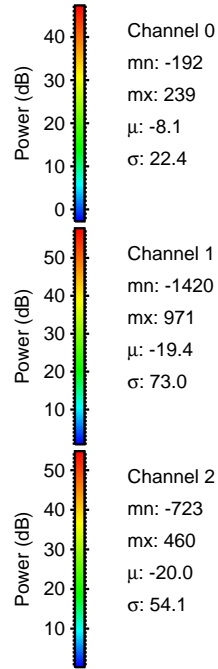
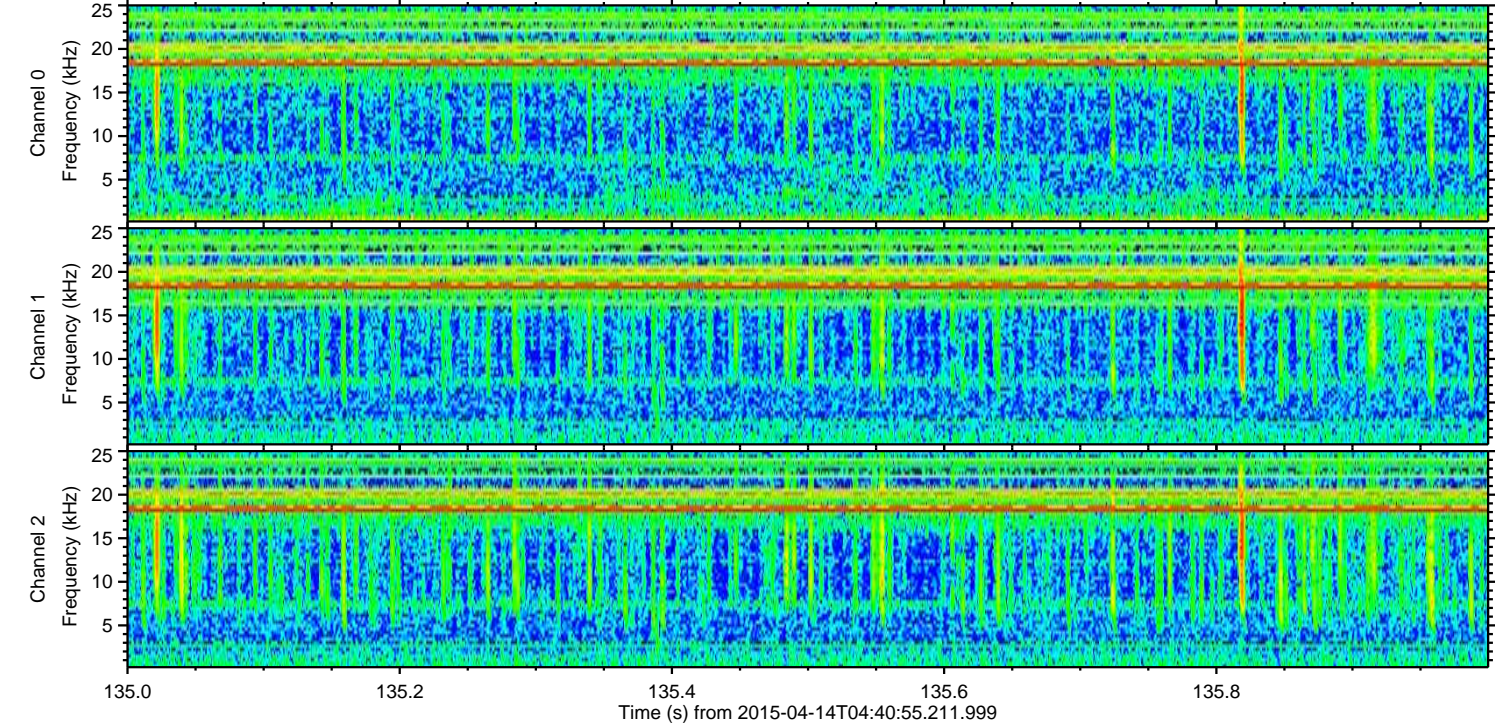
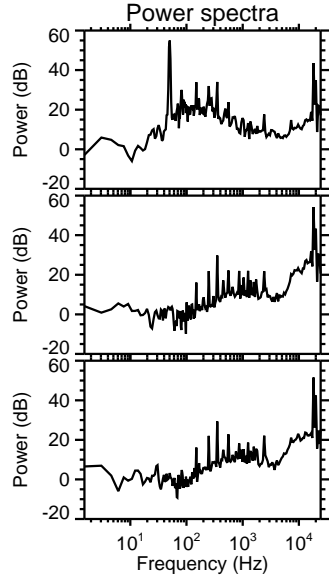
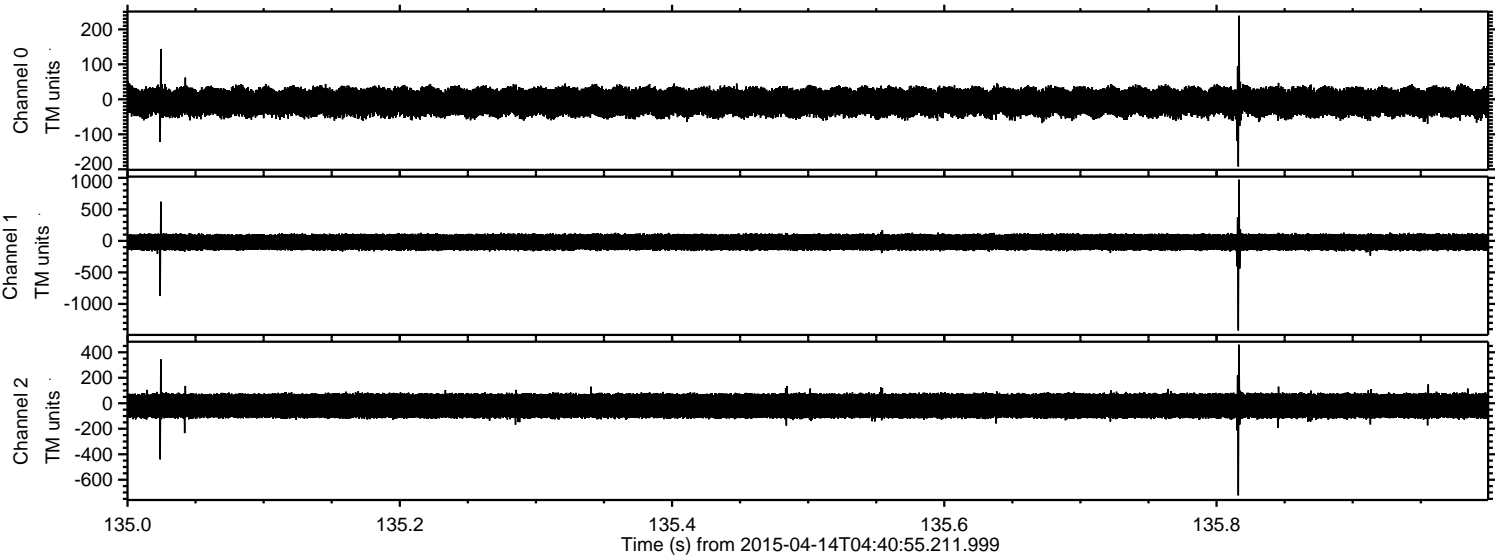
Channel 0
mn: -310
mx: 246
 μ : -8.0
 σ : 23.0

Channel 1
mn: -235
mx: 202
 μ : -19.3
 σ : 71.9

Channel 2
mn: -1607
mx: 1356
 μ : -20.0
 σ : 57.7

ELMAVAN 3D WAVEFORMS (Measured data sampled at 50 kHz) 49787 packets of 144 samples from 2015-04-14T04:40:55.211.999. Part 136/144

Processed Tue Apr 14 06:48:07 2015 by ELM ver.2012-10-06 from 001__elm20150414_044054__dat00.bin



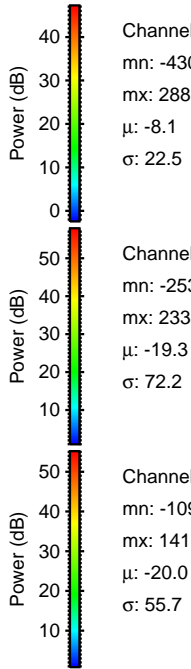
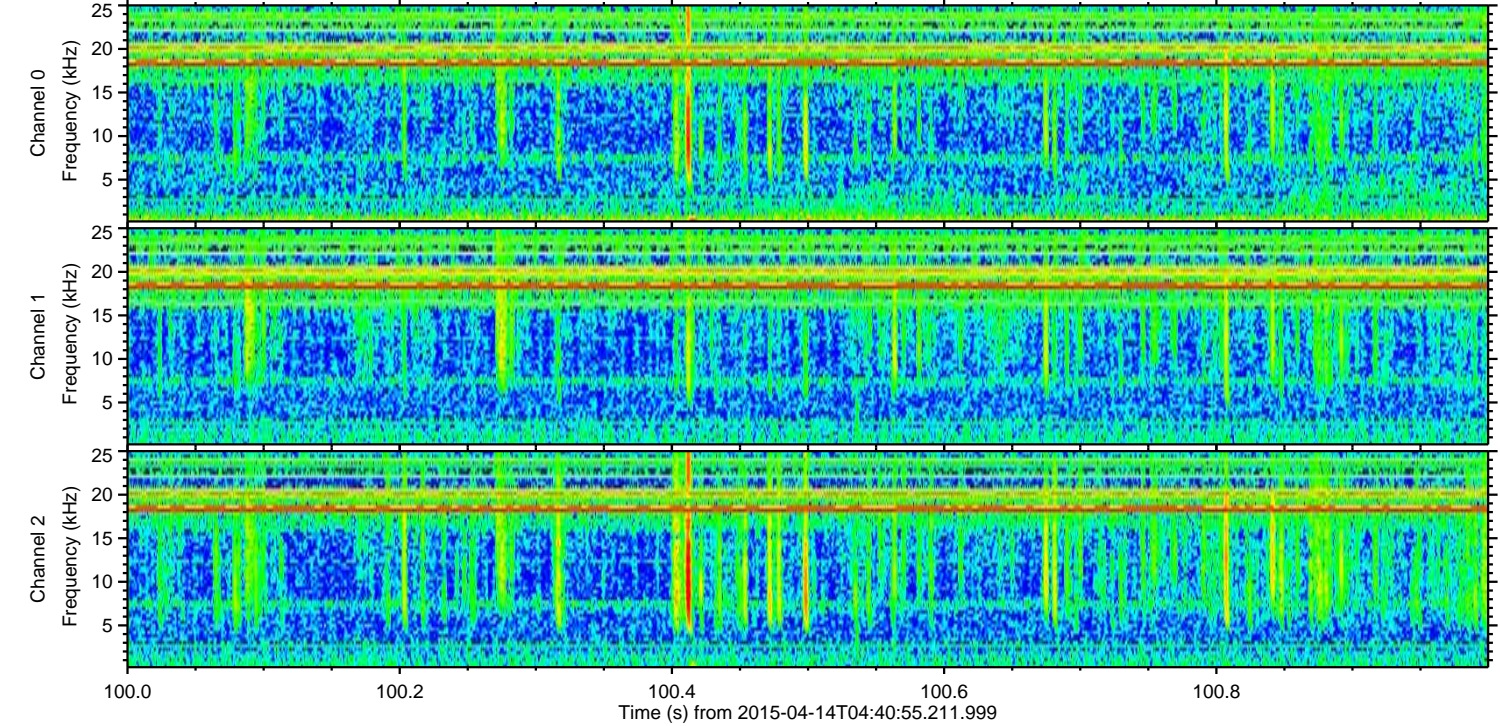
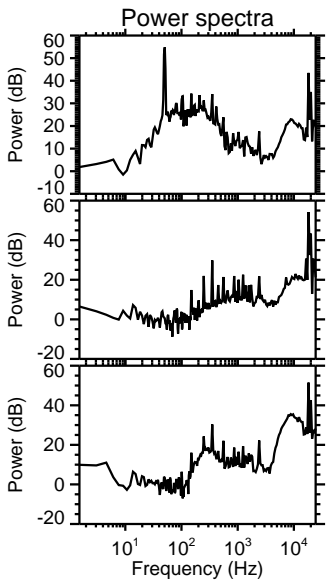
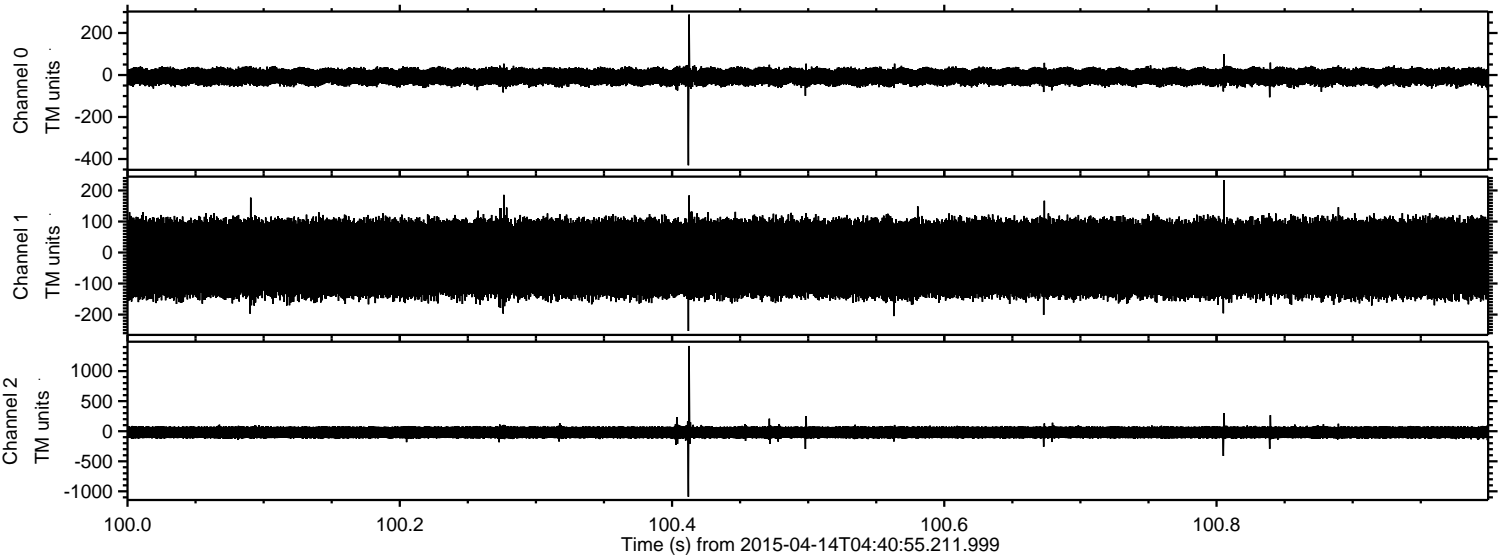
Channel 0
mn: -192
mx: 239
 μ : -8.1
 σ : 22.4

Channel 1
mn: -1420
mx: 971
 μ : -19.4
 σ : 73.0

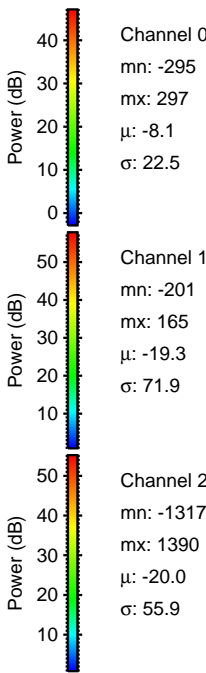
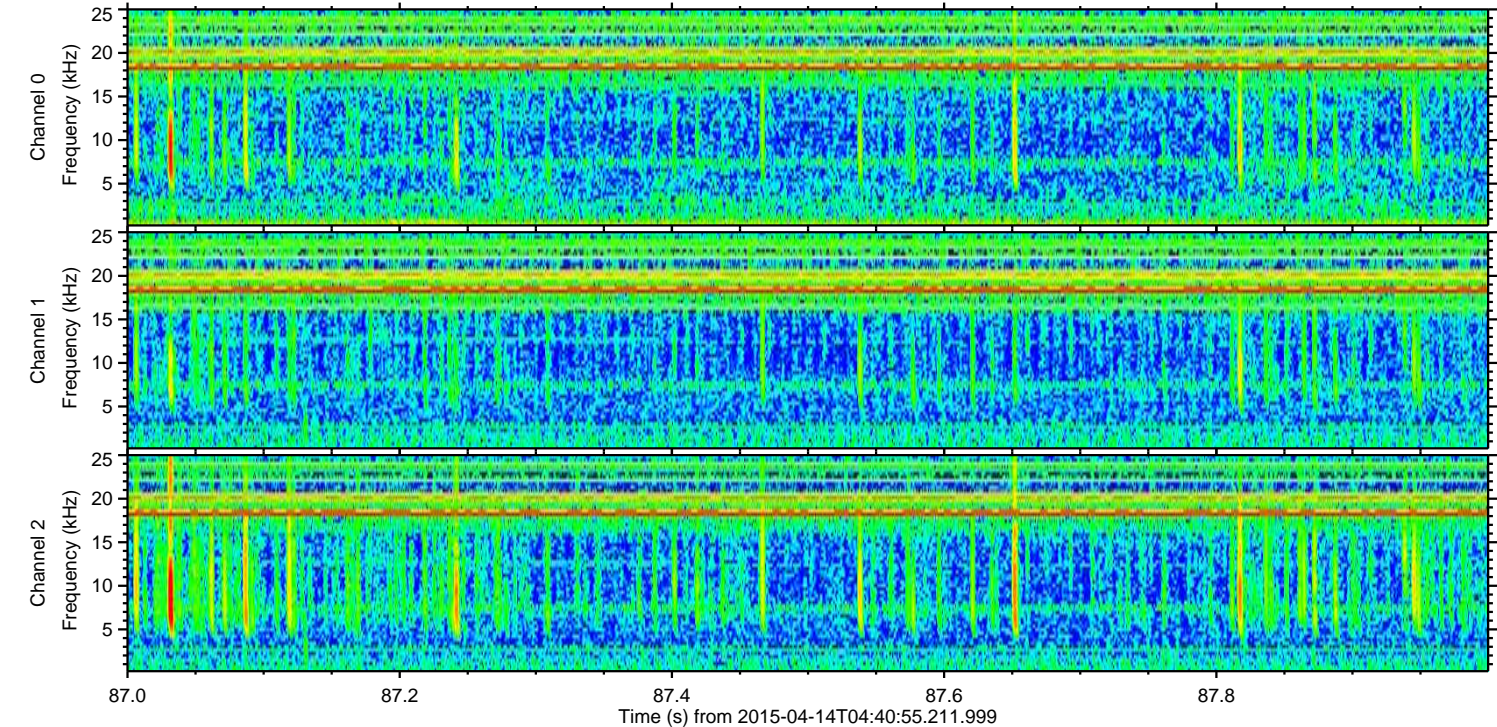
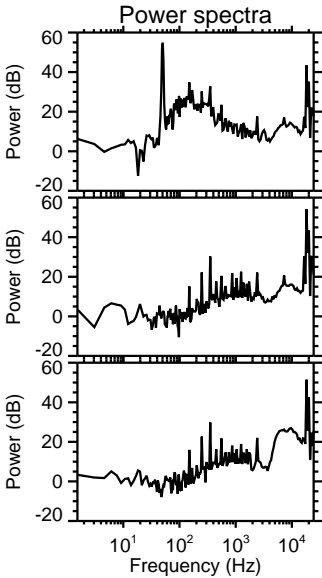
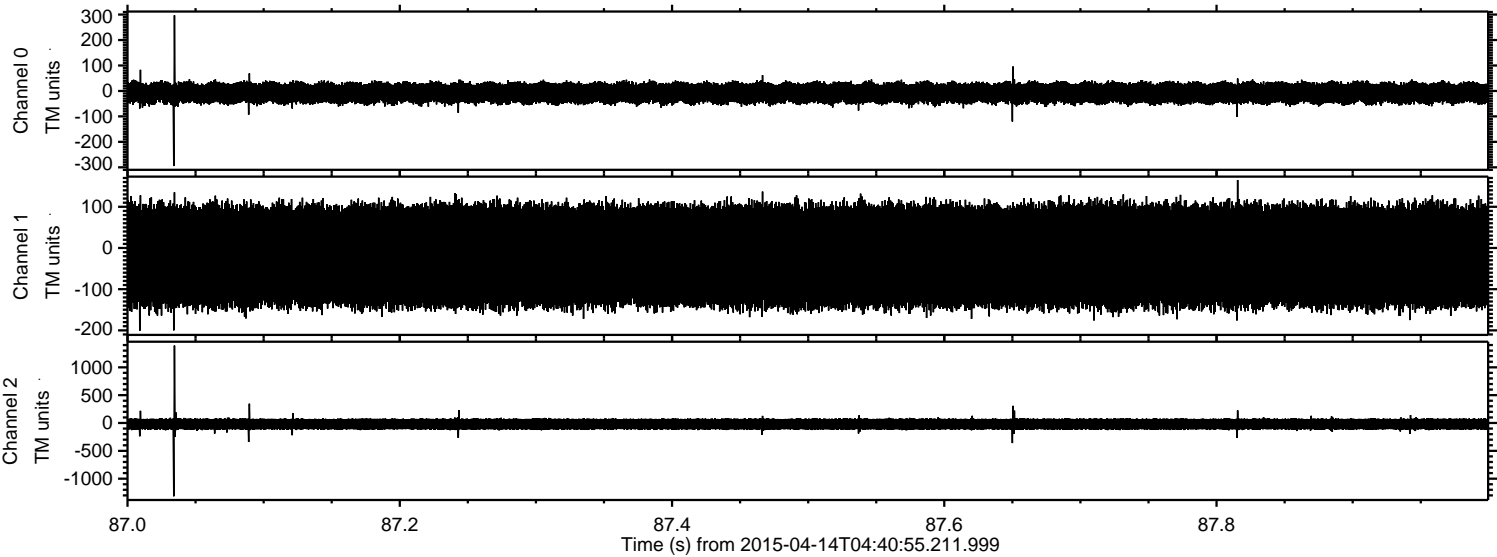
Channel 2
mn: -723
mx: 460
 μ : -20.0
 σ : 54.1

ELMAVAN 3D WAVEFORMS (Measured data sampled at 50 kHz) 49787 packets of 144 samples from 2015-04-14T04:40:55.211.999. Part 101/144

Processed Tue Apr 14 06:48:08 2015 by ELM ver.2012-10-06 from 001__elm20150414_044054__dat00.bin

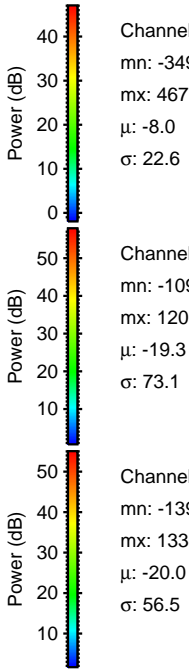
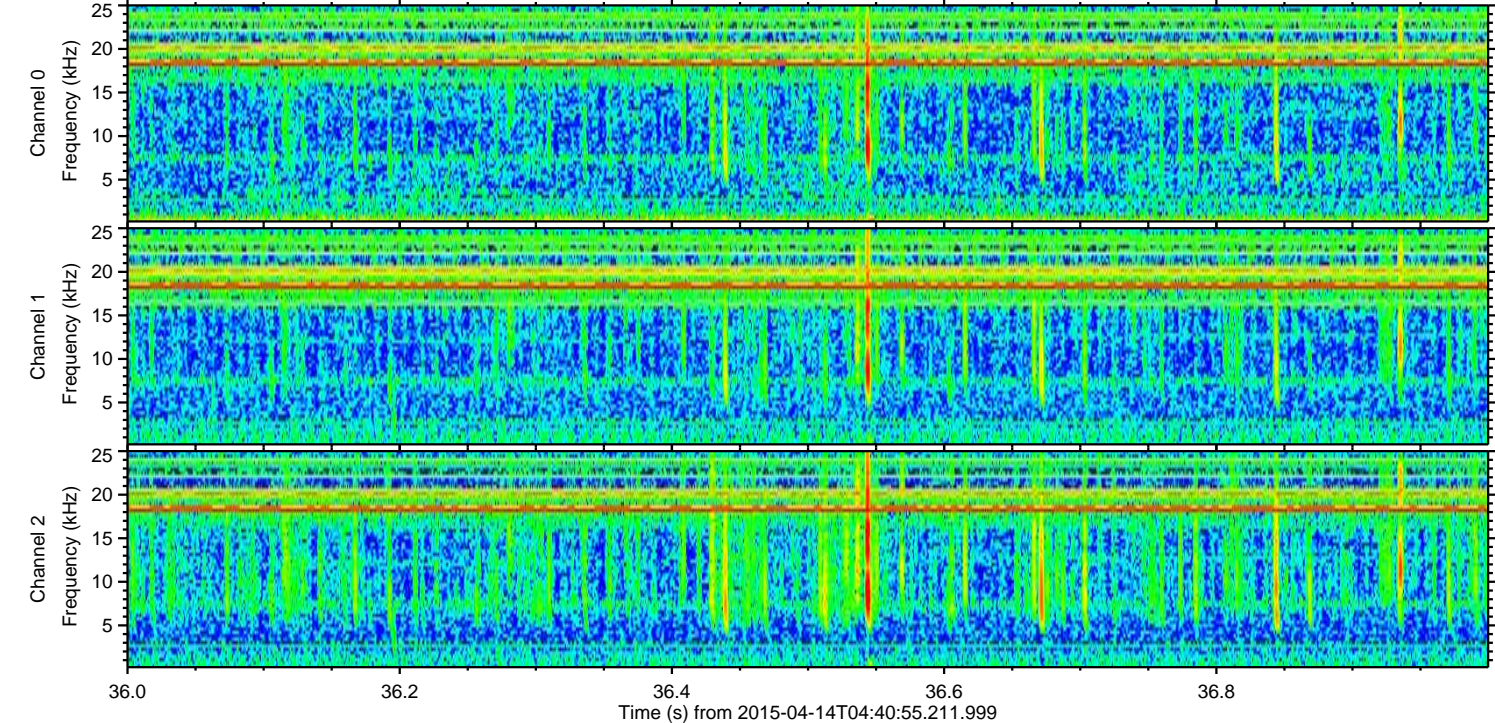
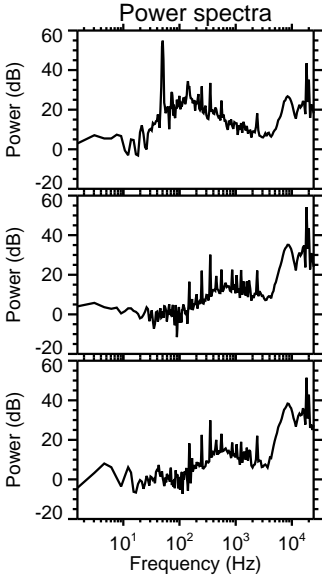
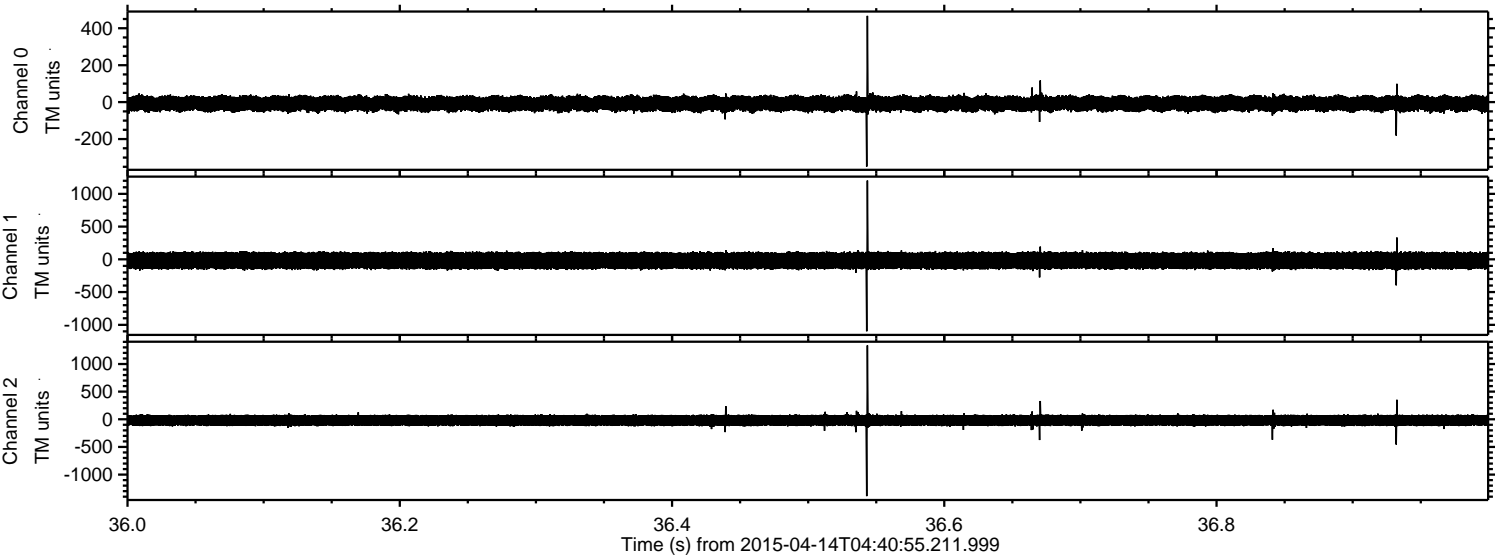


Processed Tue Apr 14 06:48:09 2015 by ELM ver.2012-10-06 from 001__elm20150414_044054__dat00.bin



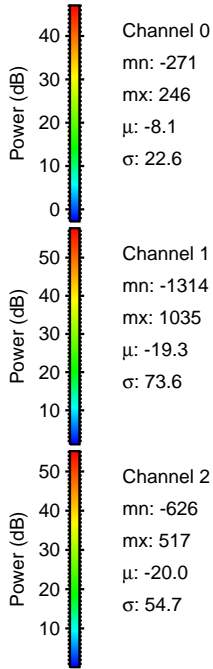
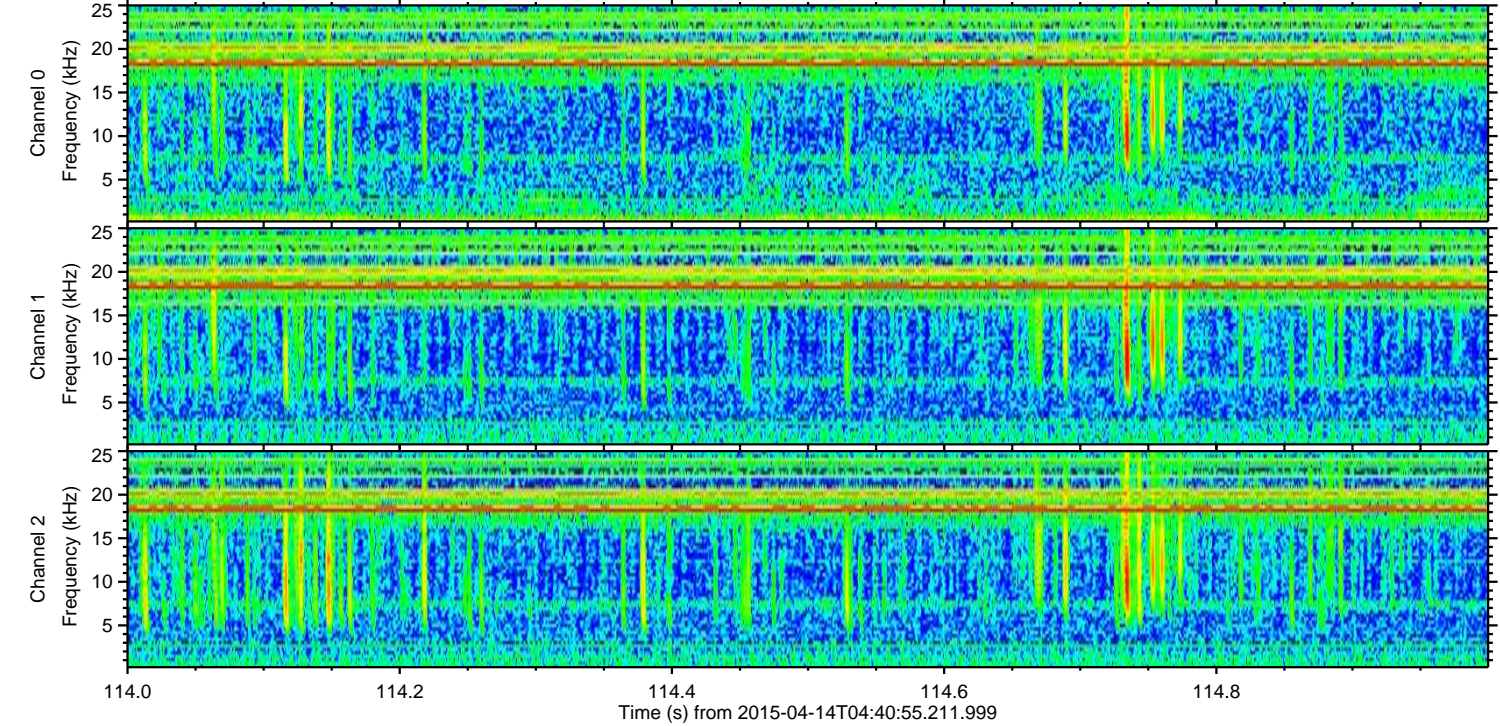
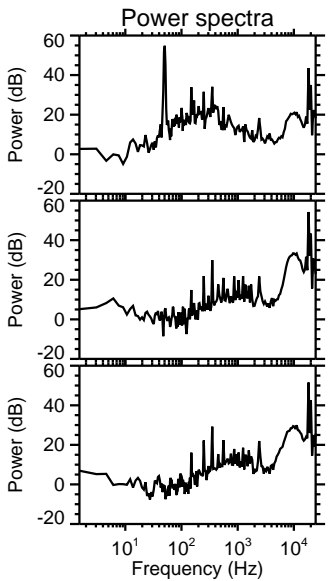
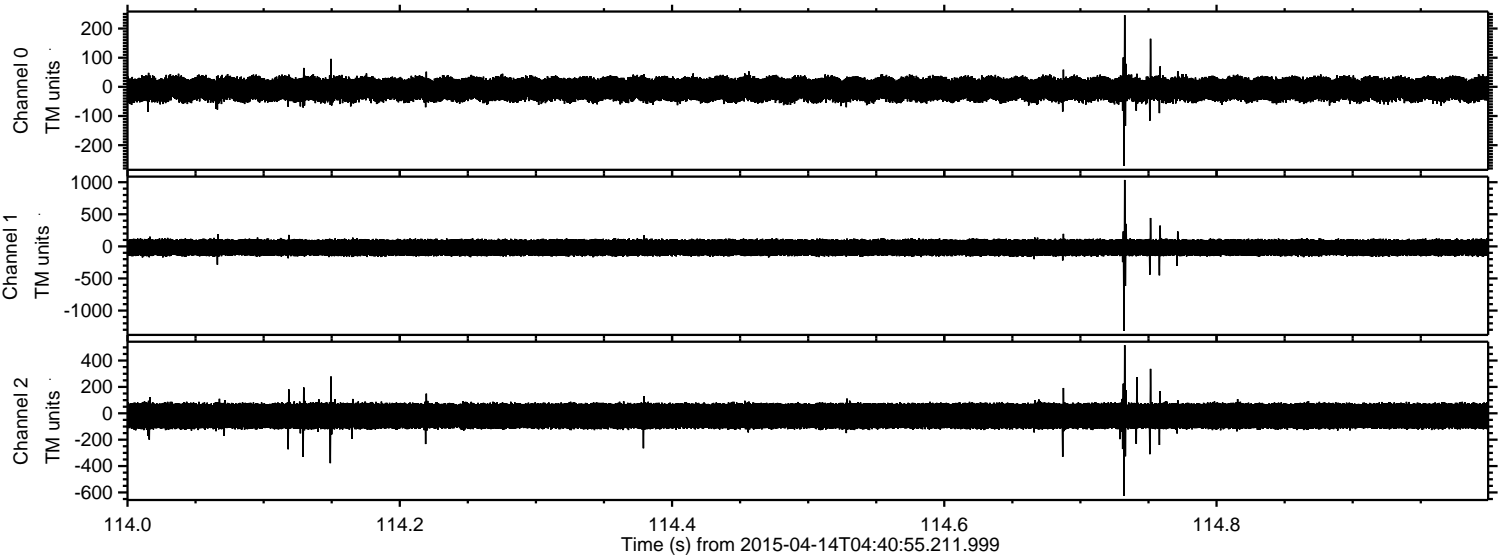
ELMAVAN 3D WAVEFORMS (Measured data sampled at 50 kHz) 49787 packets of 144 samples from 2015-04-14T04:40:55.211.999. Part 37/144

Processed Tue Apr 14 06:48:10 2015 by ELM ver.2012-10-06 from 001__elm20150414_044054__dat00.bin



ELMAVAN 3D WAVEFORMS (Measured data sampled at 50 kHz) 49787 packets of 144 samples from 2015-04-14T04:40:55.211.999. Part 115/144

Processed Tue Apr 14 06:48:11 2015 by ELM ver.2012-10-06 from 001__elm20150414_044054__dat00.bin



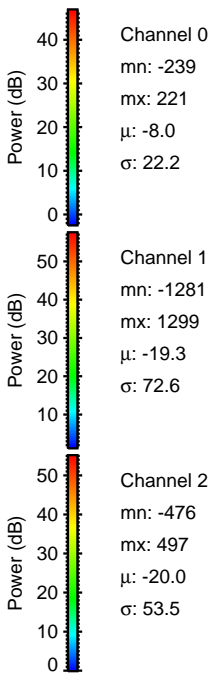
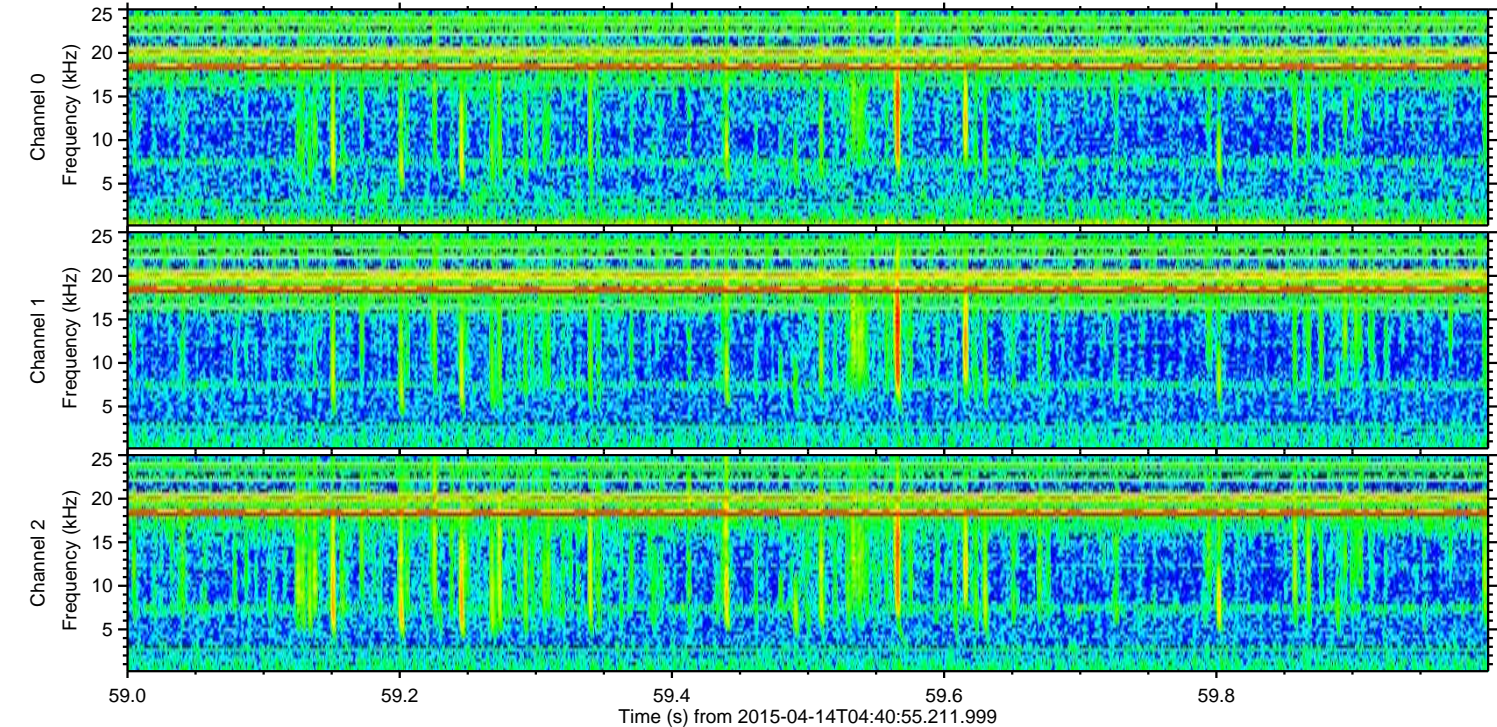
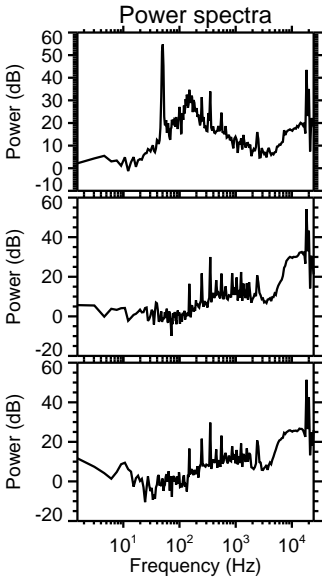
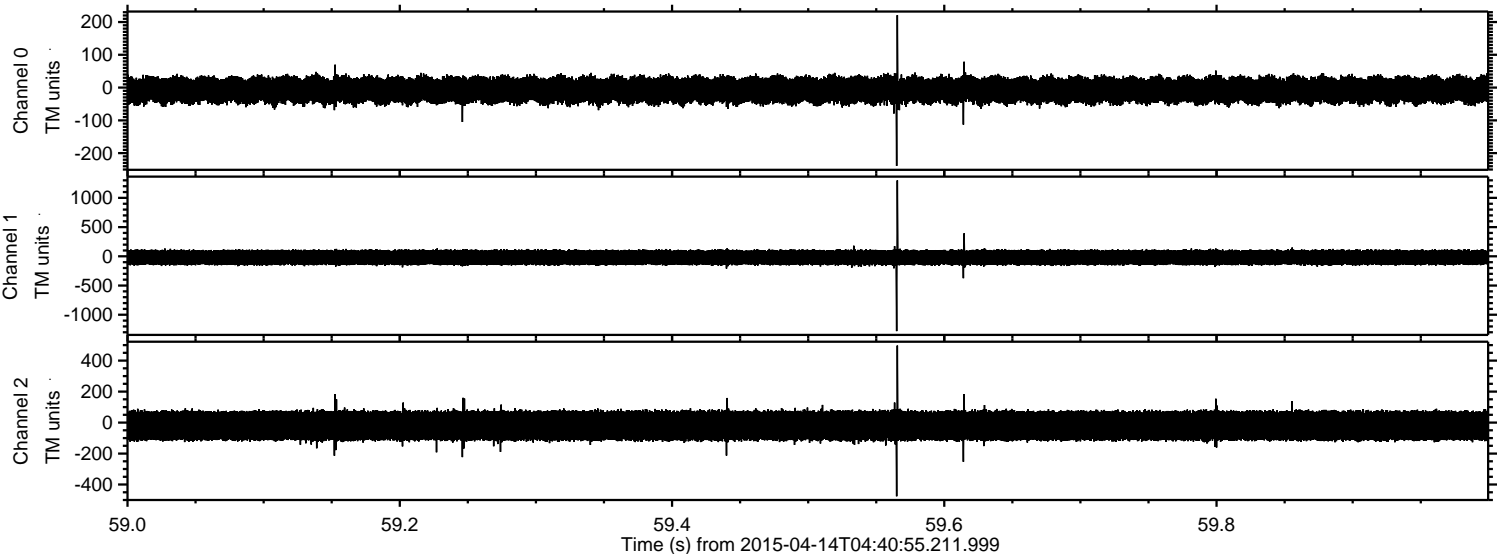
Channel 0
mn: -271
mx: 246
 μ : -8.1
 σ : 22.6

Channel 1
mn: -1314
mx: 1035
 μ : -19.3
 σ : 73.6

Channel 2
mn: -626
mx: 517
 μ : -20.0
 σ : 54.7

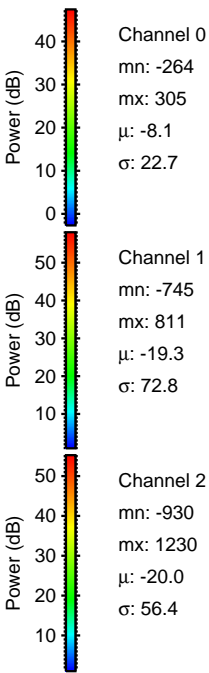
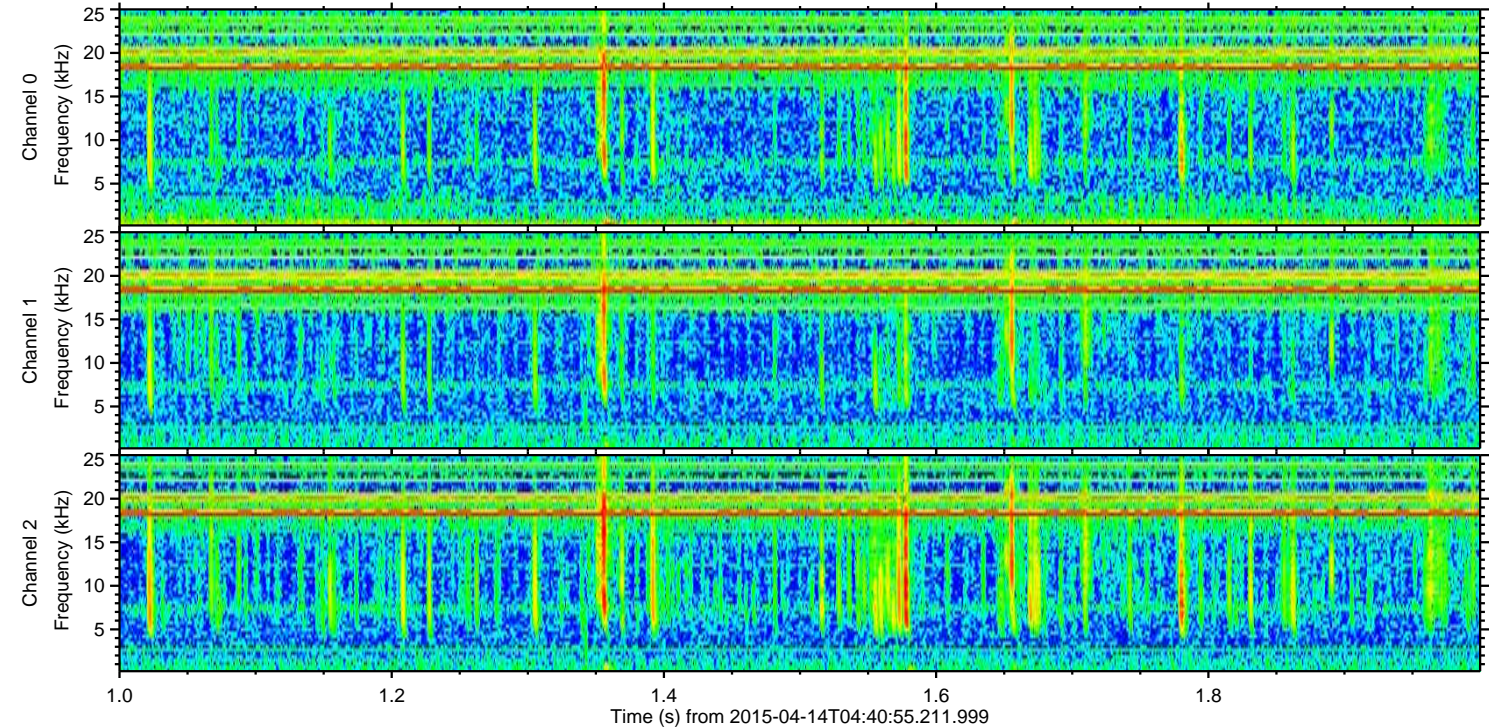
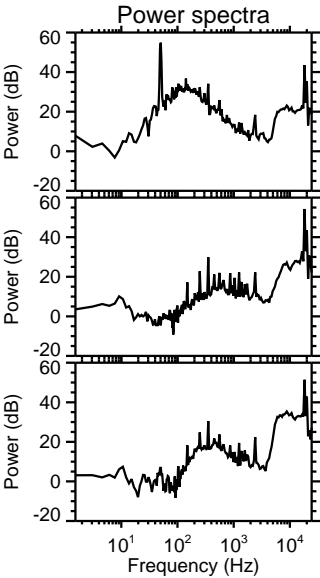
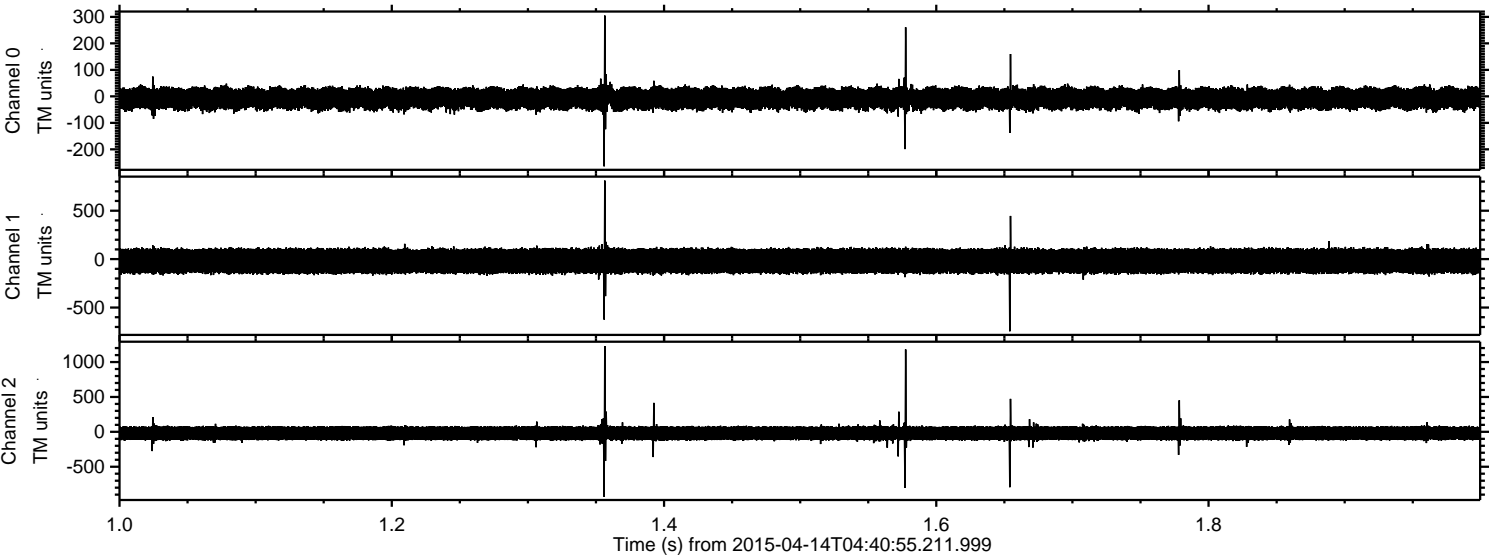
ELMAVAN 3D WAVEFORMS (Measured data sampled at 50 kHz) 49787 packets of 144 samples from 2015-04-14T04:40:55.211.999. Part 60/144

Processed Tue Apr 14 06:48:12 2015 by ELM ver.2012-10-06 from 001__elm20150414_044054__dat00.bin



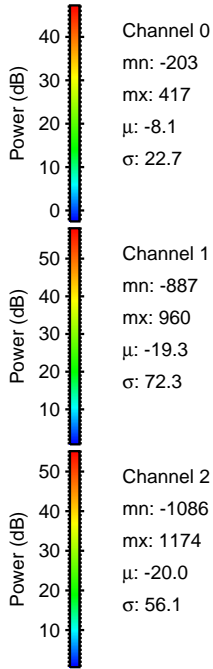
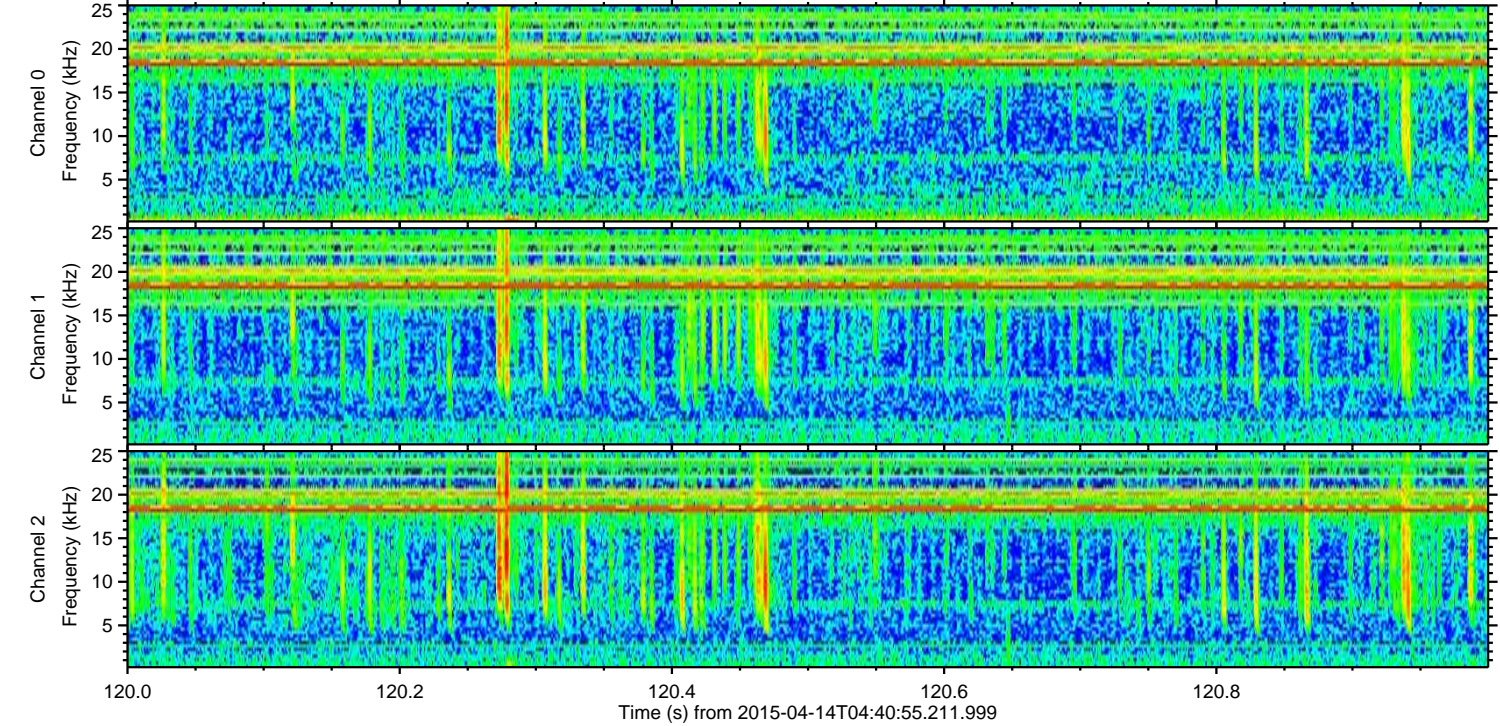
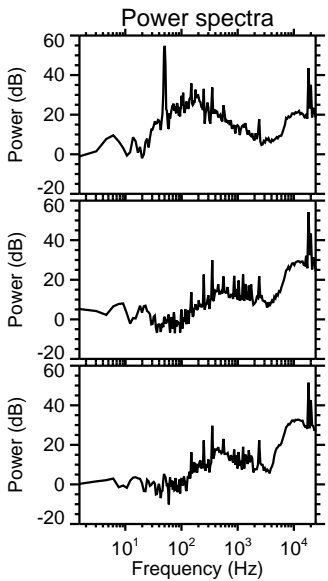
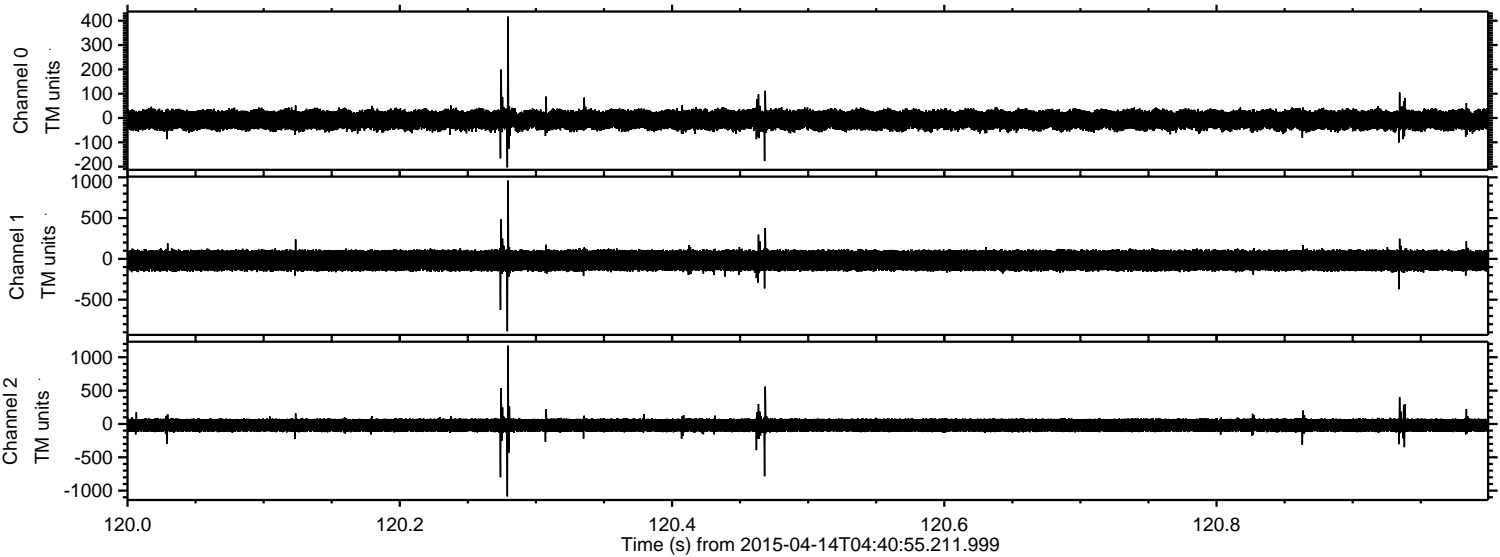
ELMAVAN 3D WAVEFORMS (Measured data sampled at 50 kHz) 49787 packets of 144 samples from 2015-04-14T04:40:55.211.999. Part 2/144

Processed Tue Apr 14 06:48:13 2015 by ELM ver.2012-10-06 from 001__elm20150414_044054__dat00.bin



ELMAVAN 3D WAVEFORMS (Measured data sampled at 50 kHz) 49787 packets of 144 samples from 2015-04-14T04:40:55.211.999. Part 121/144

Processed Tue Apr 14 06:48:14 2015 by ELM ver.2012-10-06 from 001__elm20150414_044054__dat00.bin



ELMAVAN 3D WAVEFORMS (Measured data sampled at 50 kHz) 49787 packets of 144 samples from 2015-04-14T04:40:55.211.999. Part 10/144

Processed Tue Apr 14 06:48:15 2015 by ELM ver.2012-10-06 from 001__elm20150414_044054__dat00.bin

