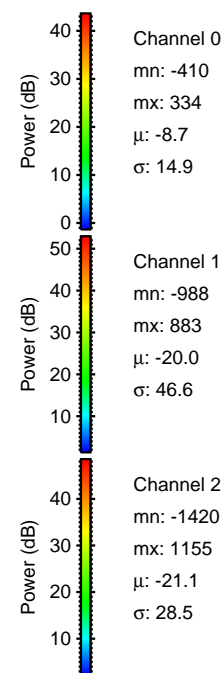
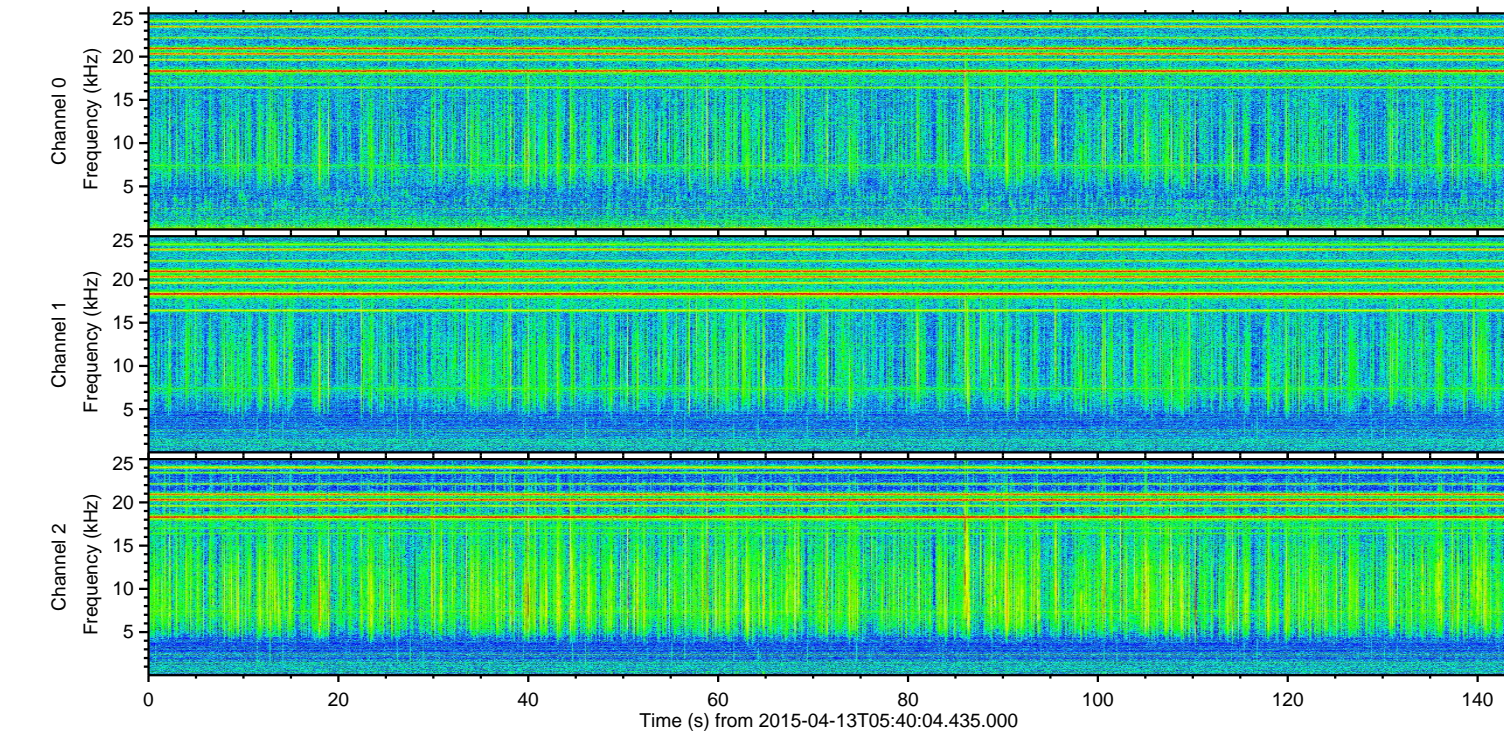
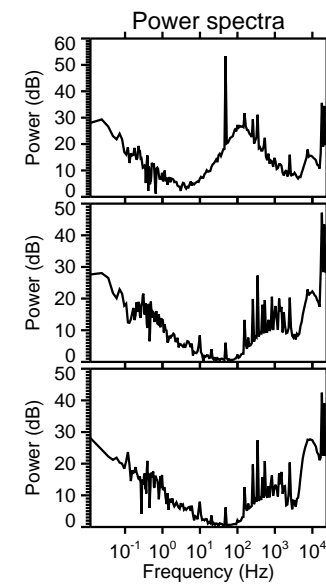
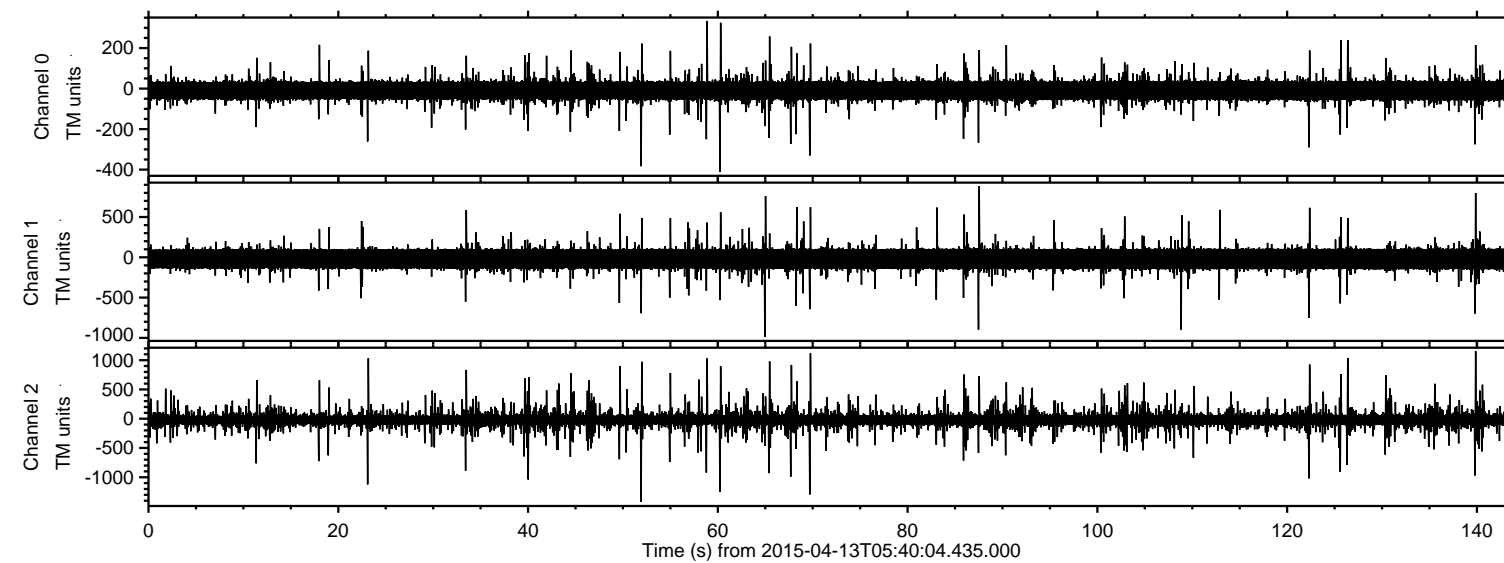
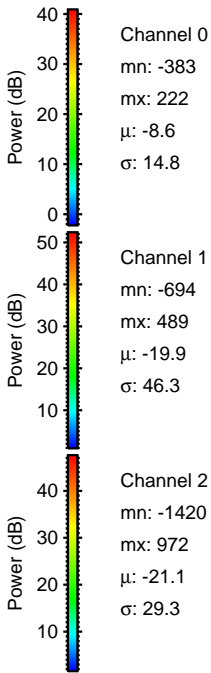
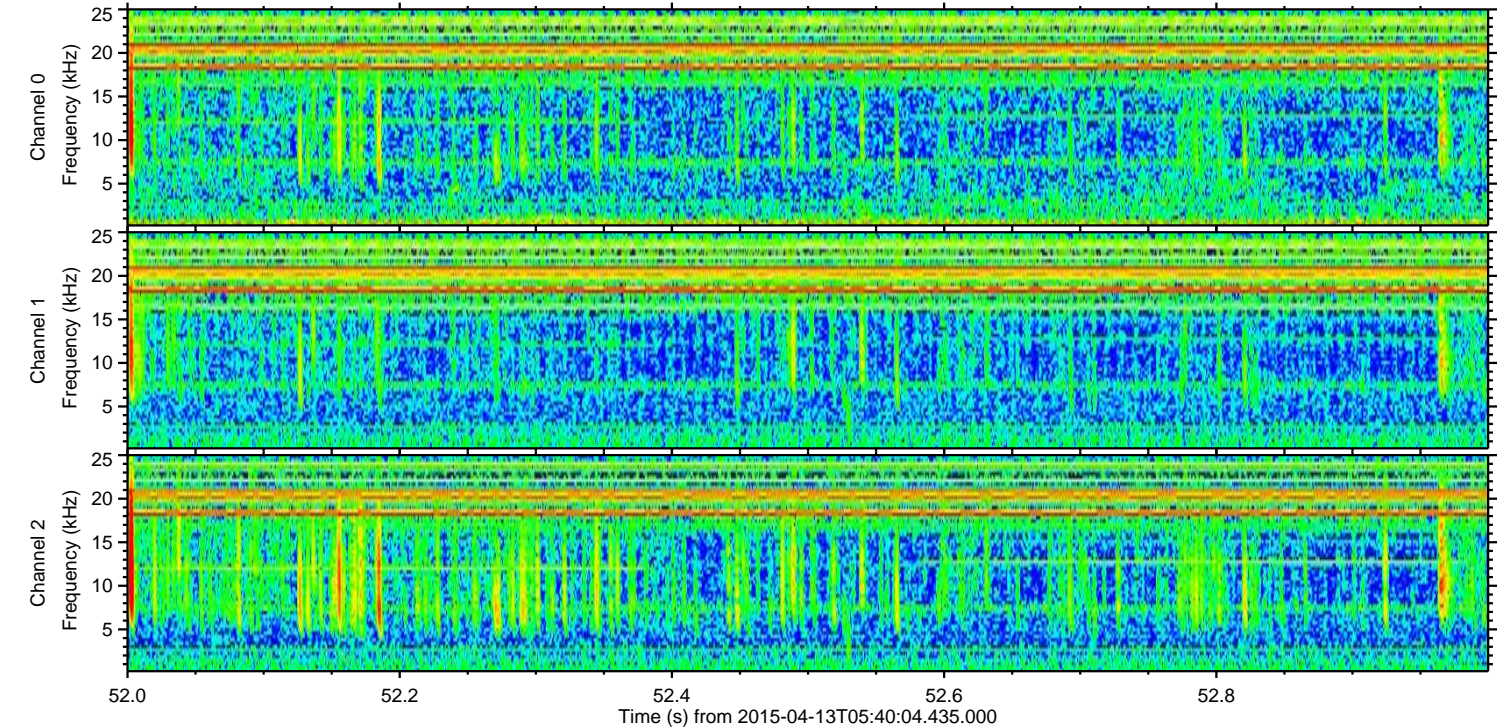
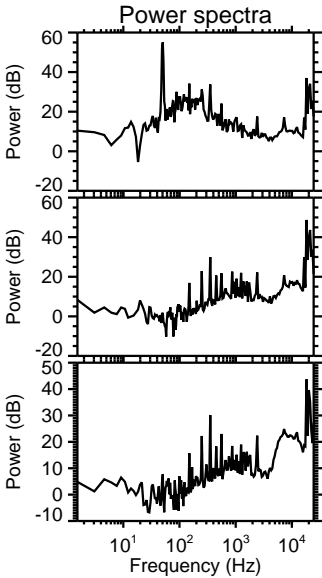
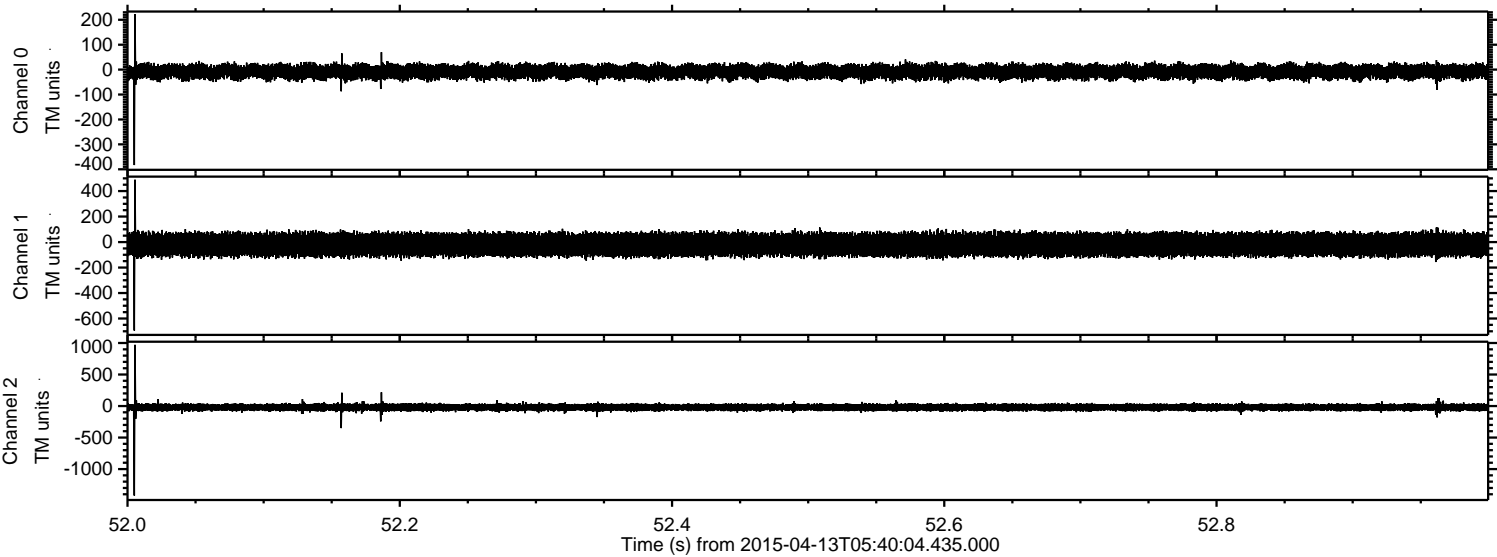


ELMAVAN 3D WAVEFORMS (Measured data sampled at 50 kHz) 49790 packets of 144 samples from 2015-04-13T05:40:04.435.000.

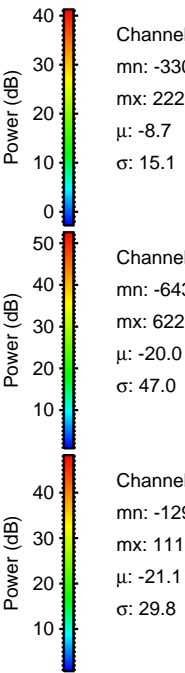
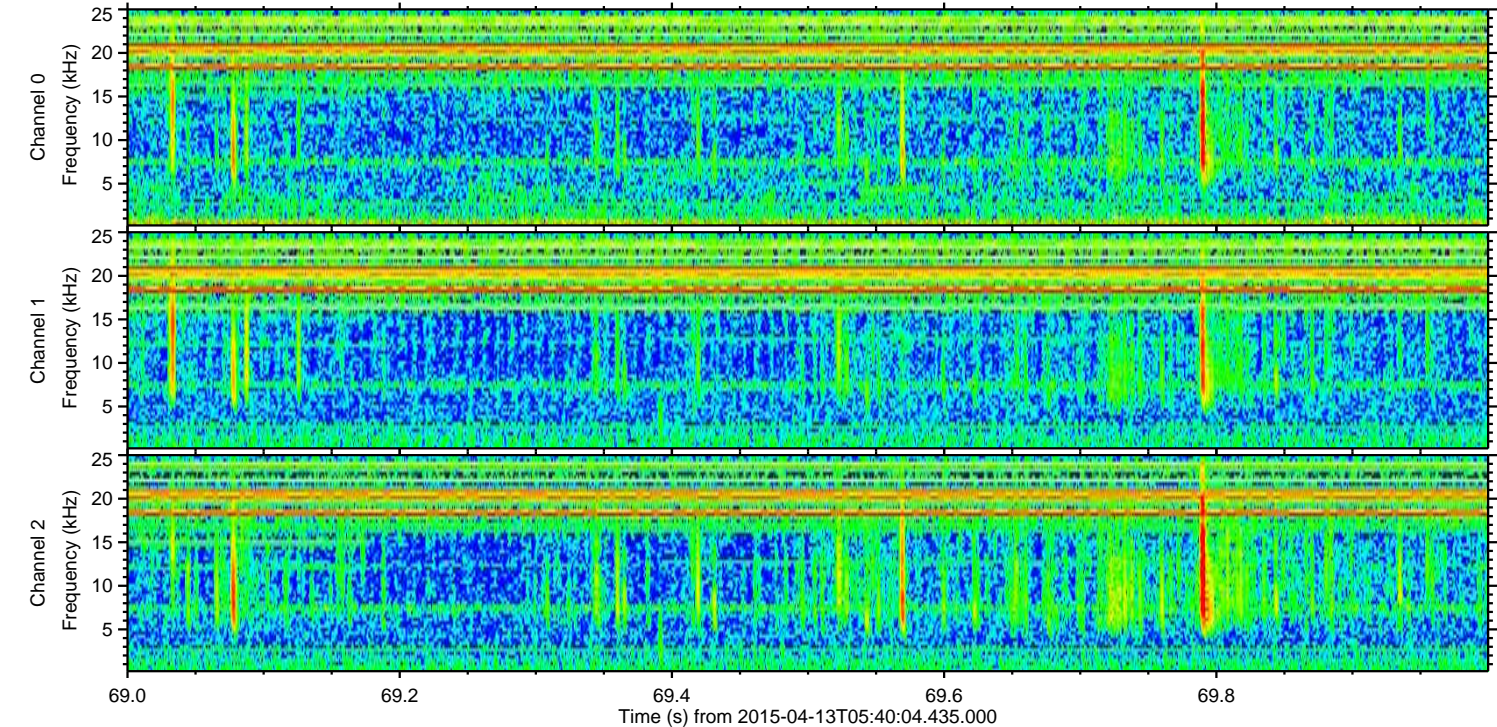
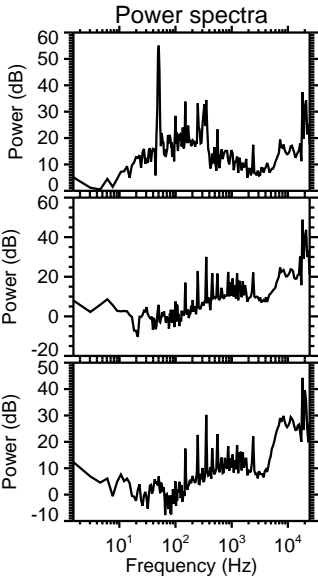
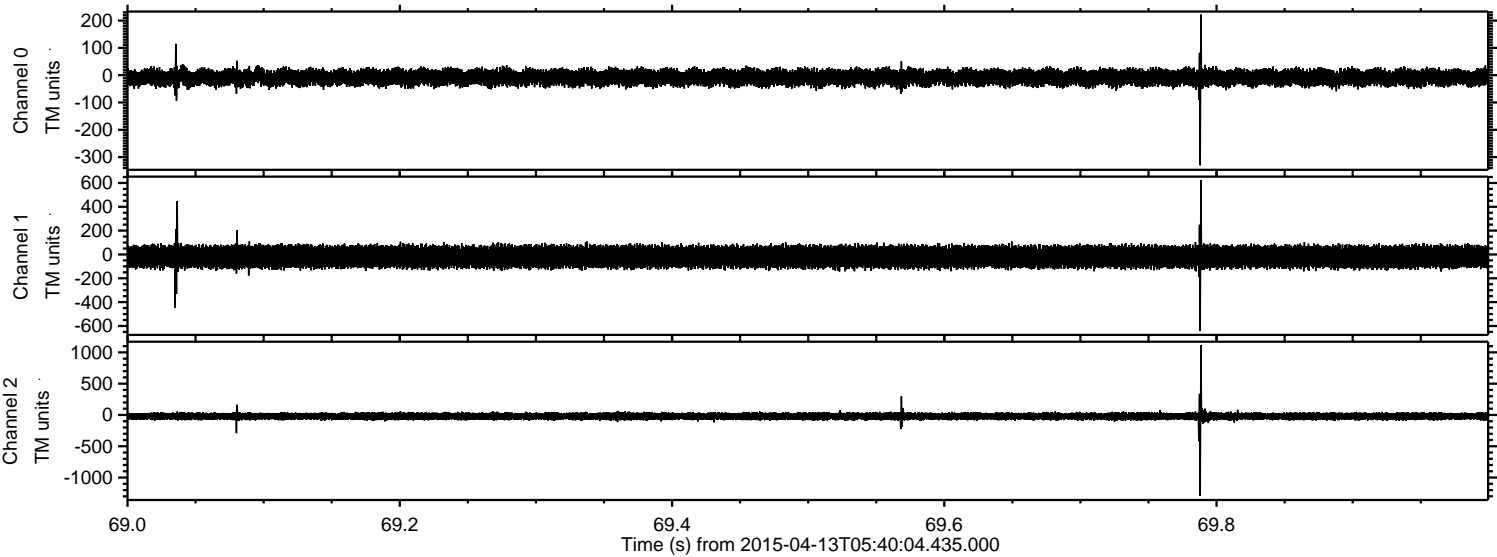
Processed Mon Apr 13 07:46:45 2015 by ELM ver.2012-10-06 from 001__elm20150413_054003__dat00.bin



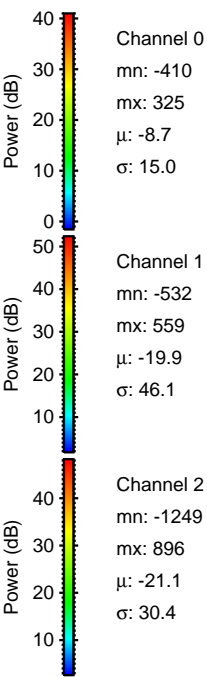
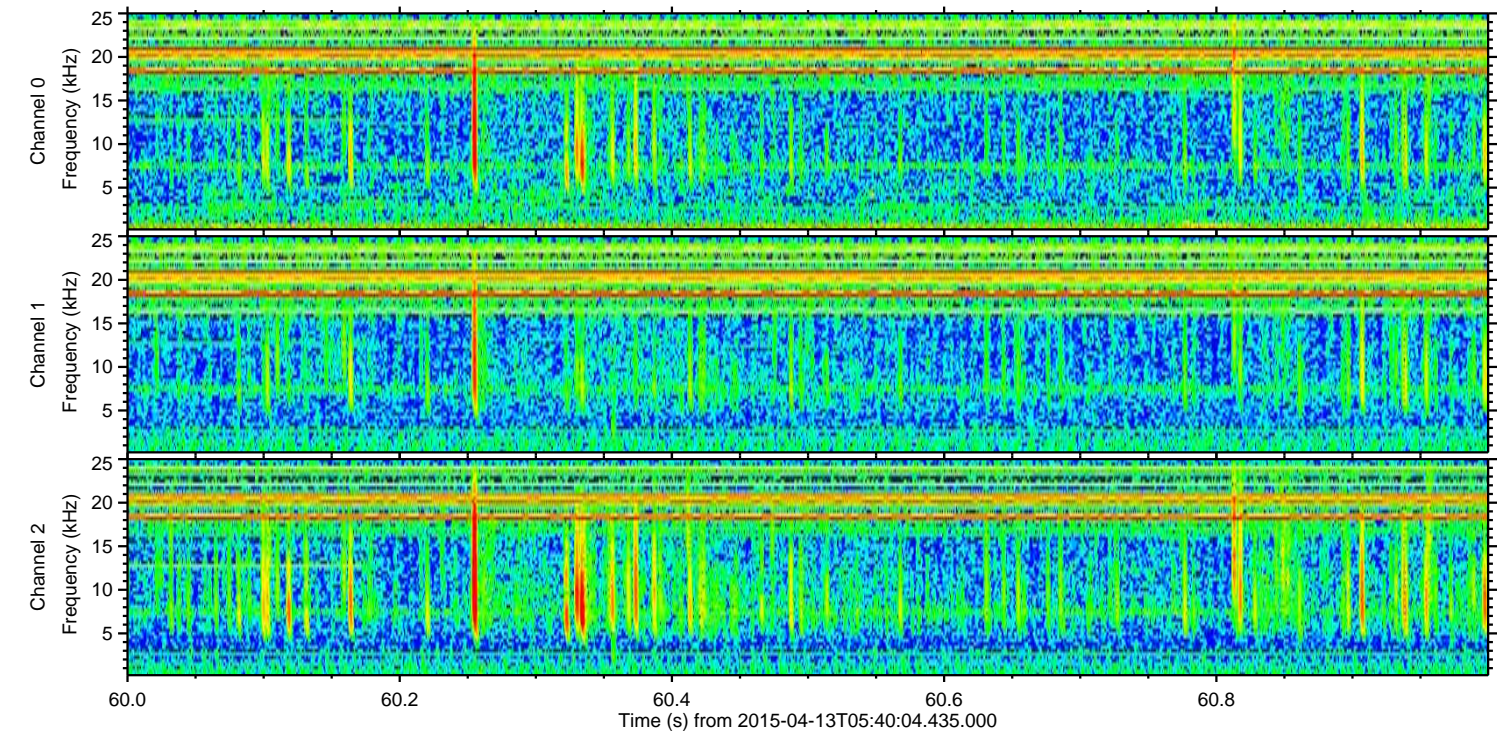
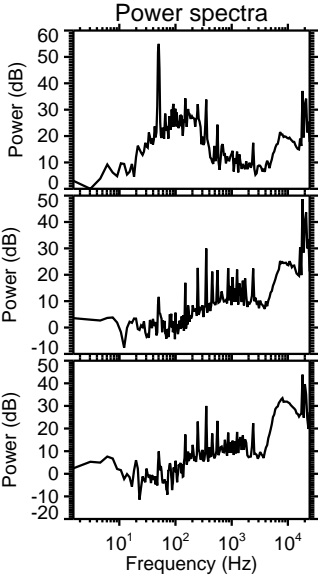
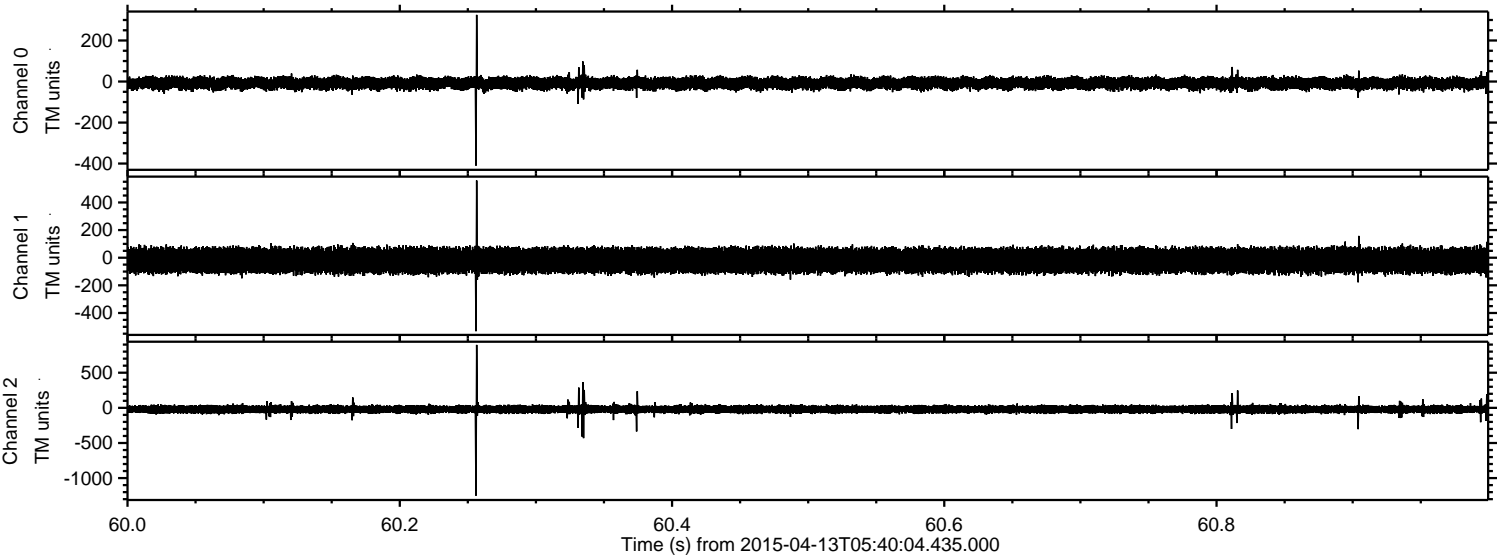
Processed Mon Apr 13 07:46:57 2015 by ELM ver.2012-10-06 from 001__elm20150413_054003__dat00.bin



Processed Mon Apr 13 07:46:58 2015 by ELM ver.2012-10-06 from 001__elm20150413_054003__dat00.bin

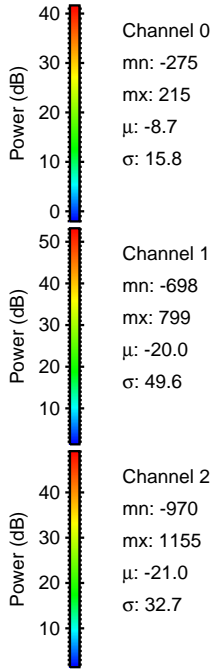
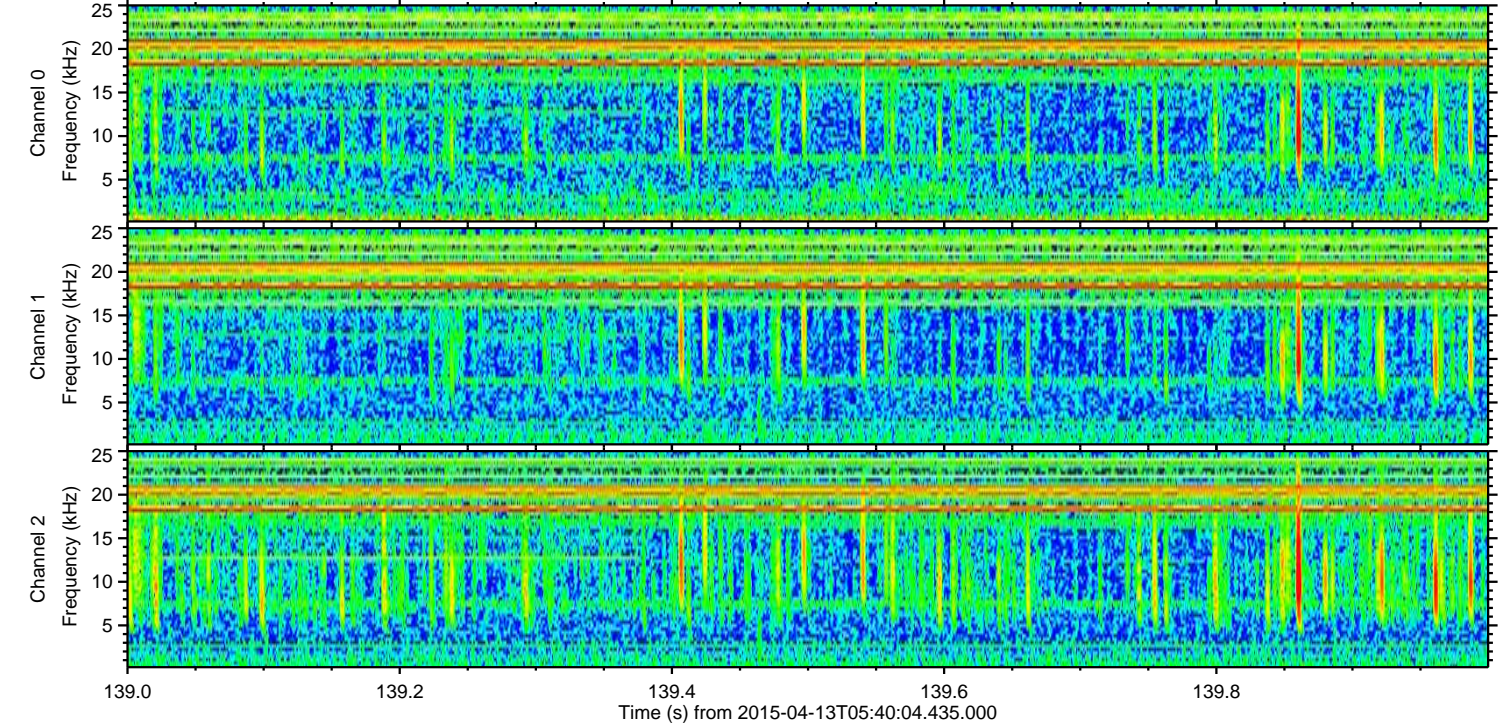
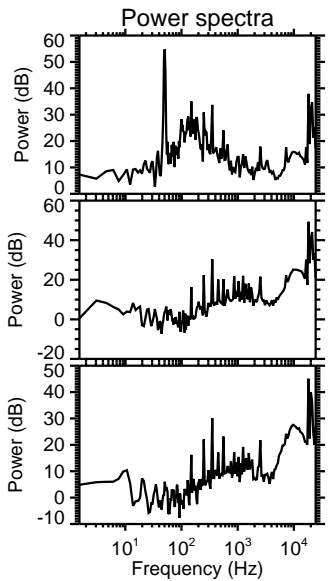
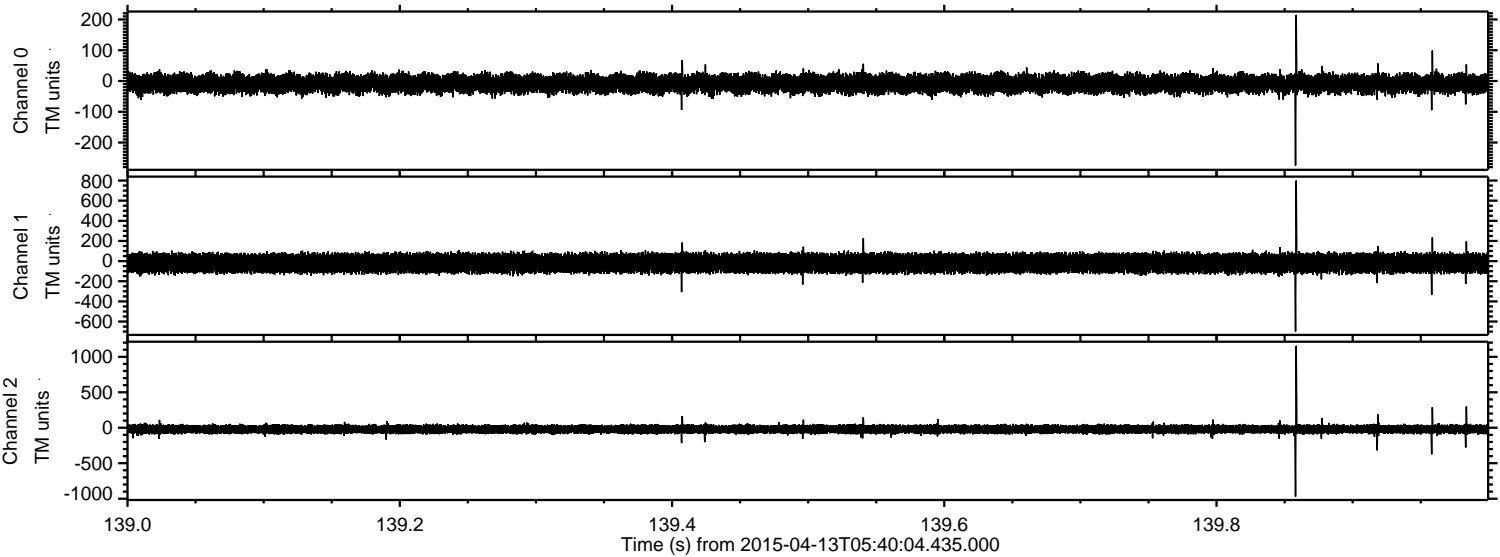


Processed Mon Apr 13 07:46:59 2015 by ELM ver.2012-10-06 from 001__elm20150413_054003__dat00.bin

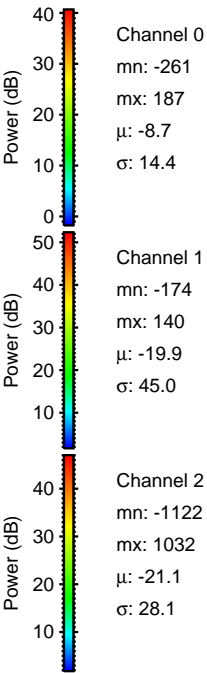
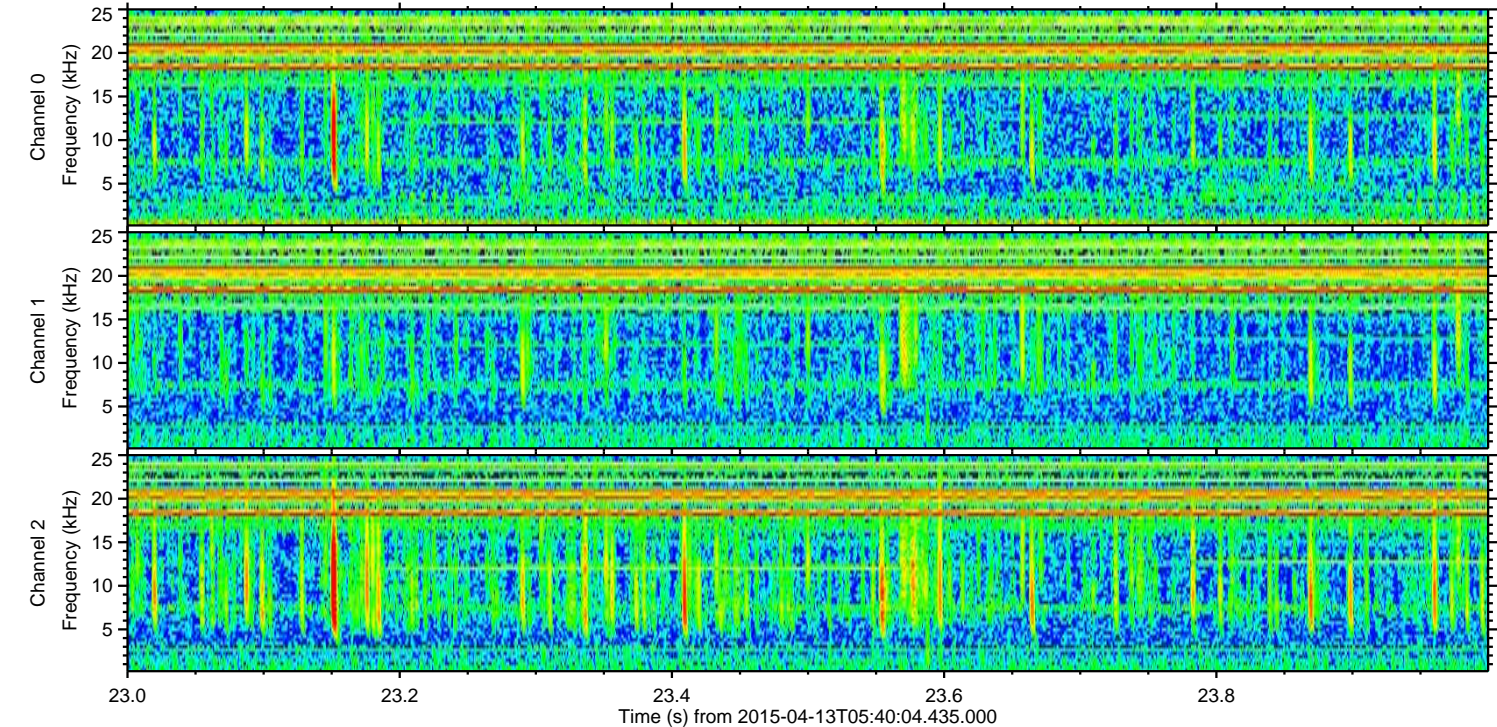
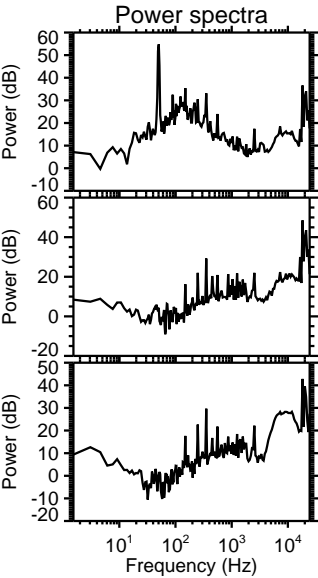
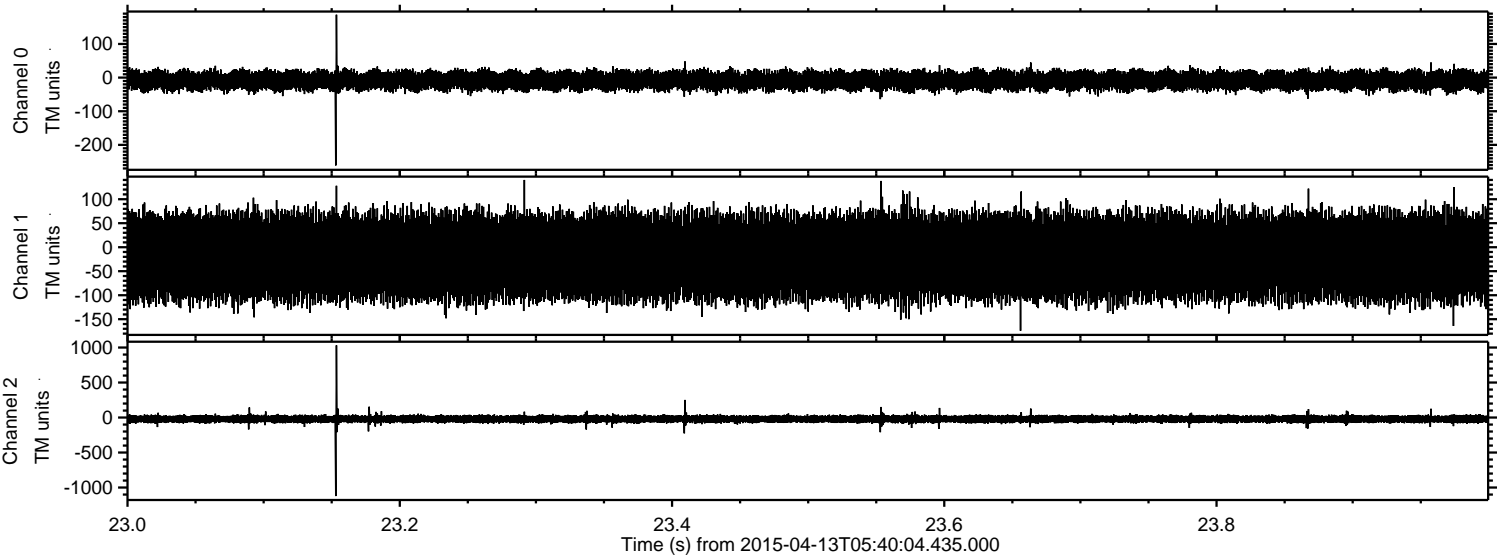


ELMAVAN 3D WAVEFORMS (Measured data sampled at 50 kHz) 49790 packets of 144 samples from 2015-04-13T05:40:04.435.000. Part 140/144

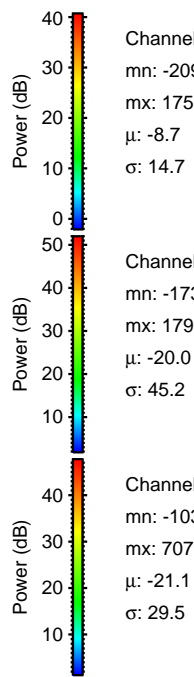
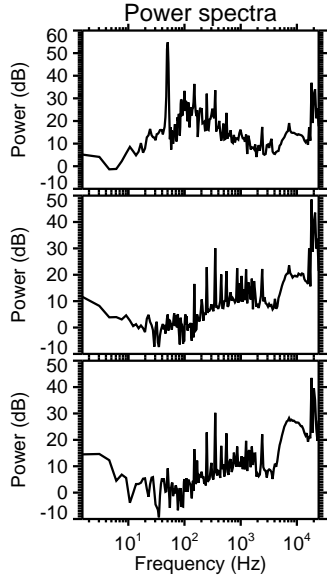
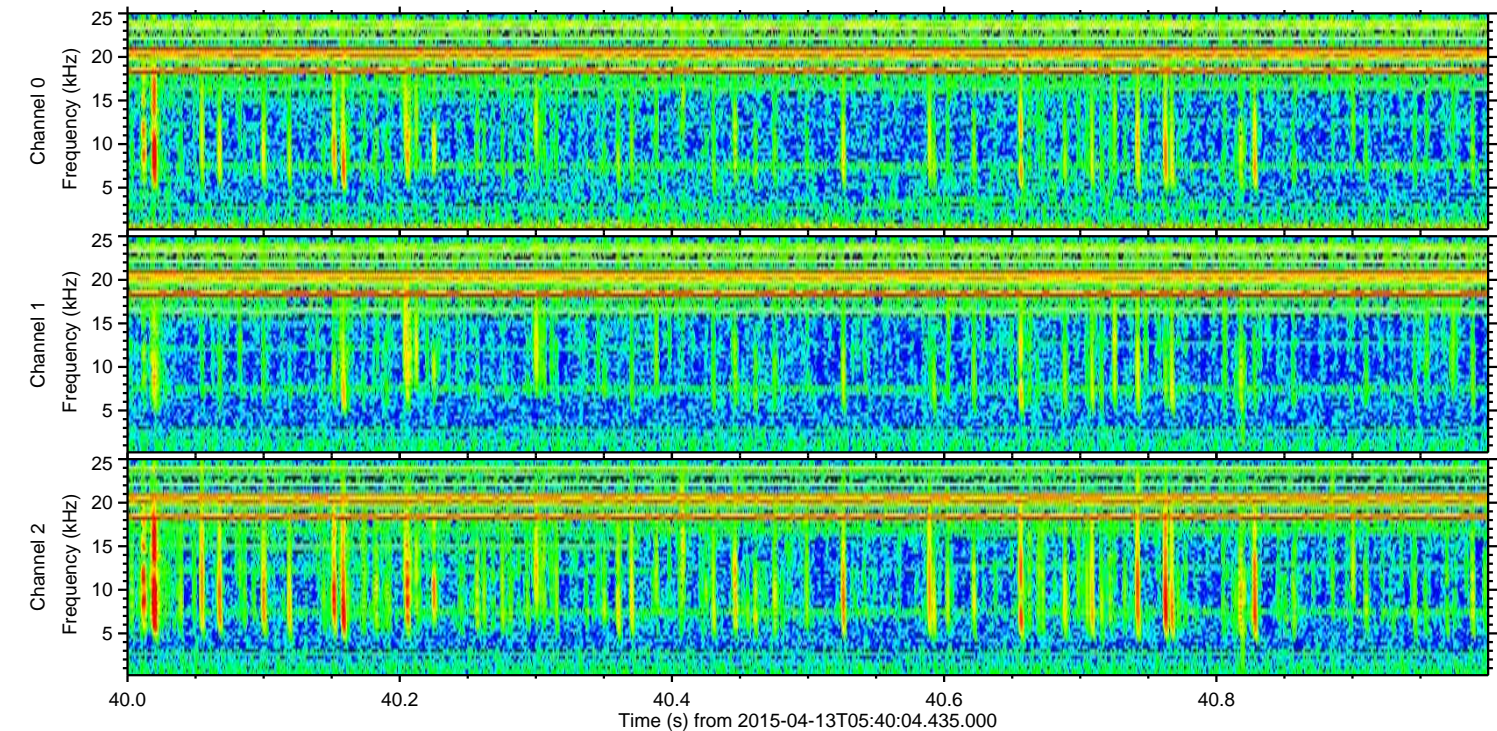
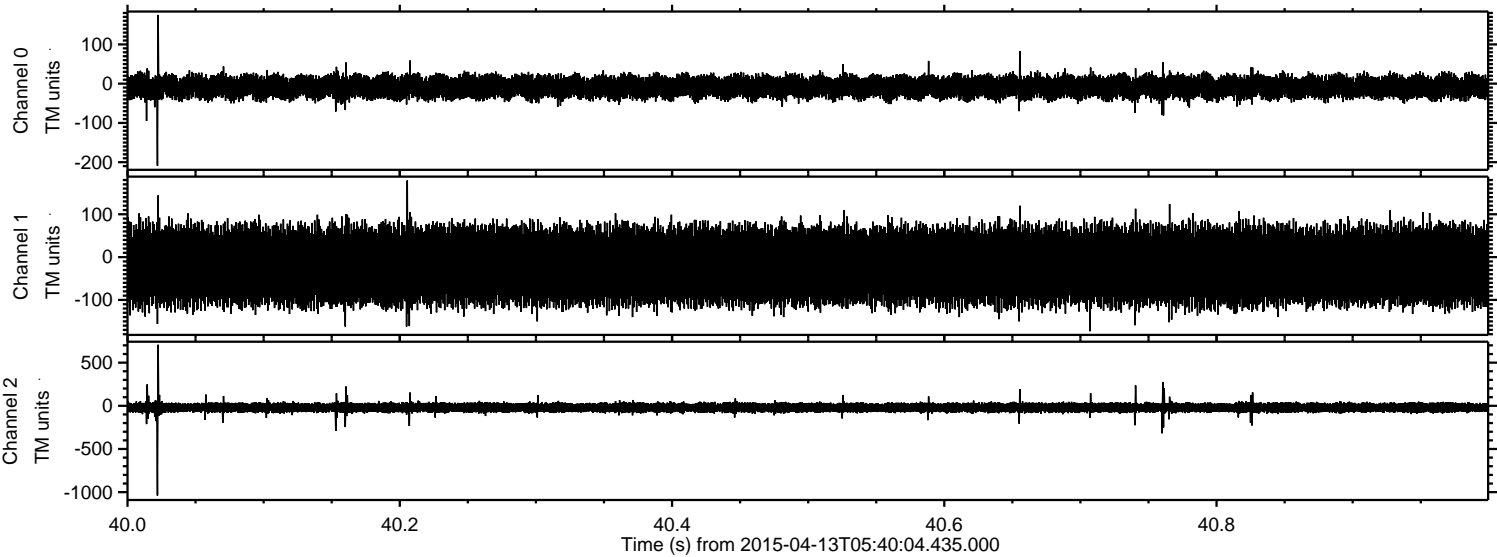
Processed Mon Apr 13 07:47:00 2015 by ELM ver.2012-10-06 from 001__elm20150413_054003__dat00.bin



Processed Mon Apr 13 07:47:01 2015 by ELM ver.2012-10-06 from 001__elm20150413_054003__dat00.bin



Processed Mon Apr 13 07:47:01 2015 by ELM ver.2012-10-06 from 001__elm20150413_054003__dat00.bin



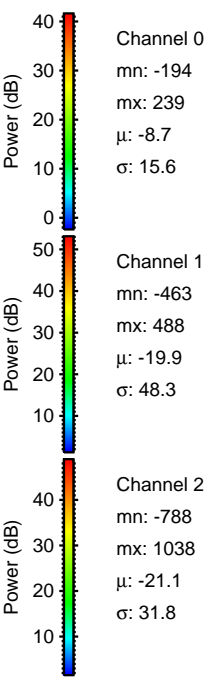
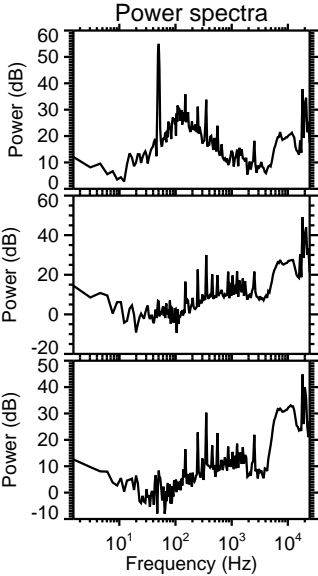
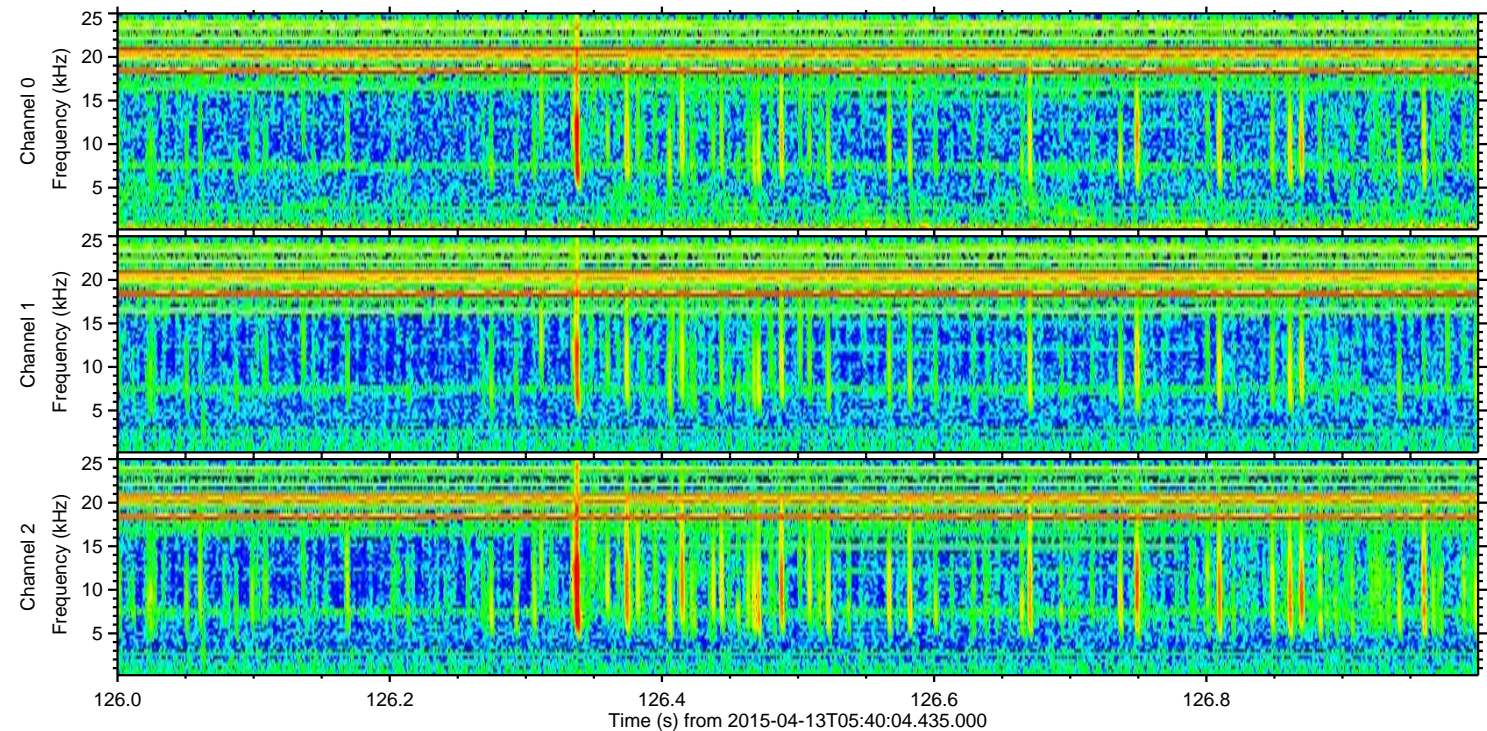
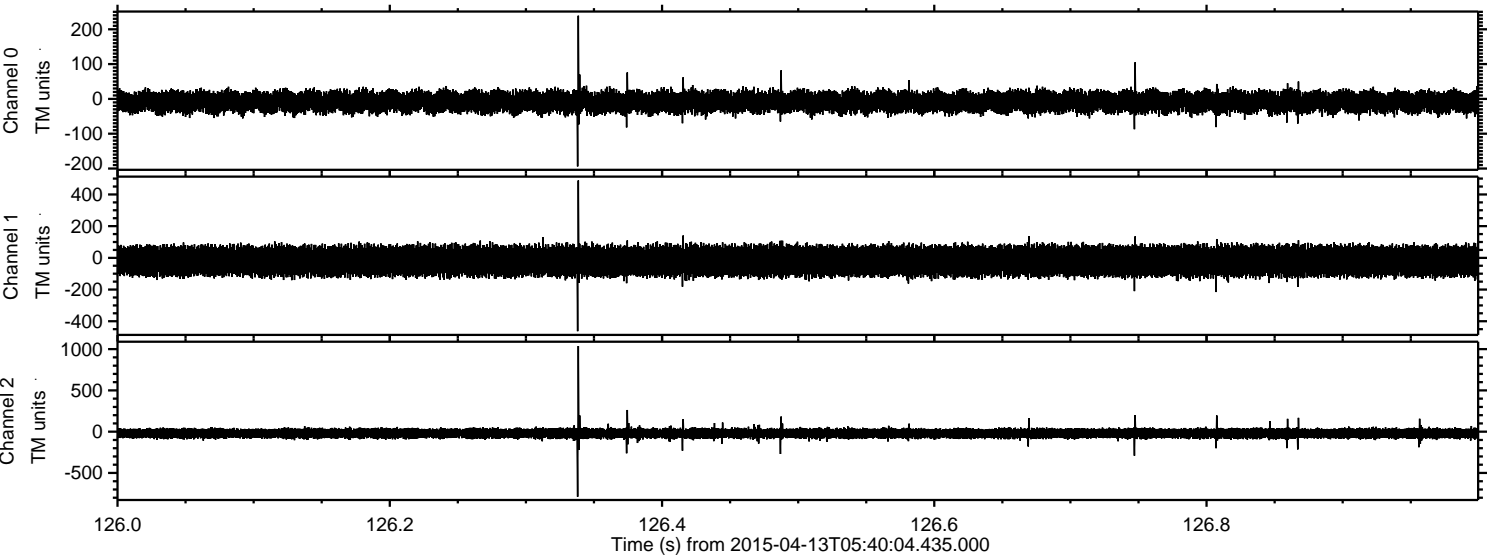
Channel 0
mn: -209
mx: 175
 μ : -8.7
 σ : 14.7

Channel 1
mn: -173
mx: 179
 μ : -20.0
 σ : 45.2

Channel 2
mn: -1039
mx: 707
 μ : -21.1
 σ : 29.5

ELMAVAN 3D WAVEFORMS (Measured data sampled at 50 kHz) 49790 packets of 144 samples from 2015-04-13T05:40:04.435.000. Part 127/144

Processed Mon Apr 13 07:47:02 2015 by ELM ver.2012-10-06 from 001__elm20150413_054003__dat00.bin

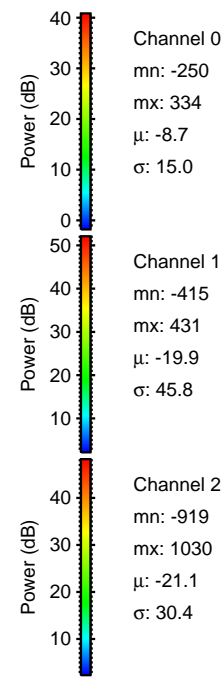
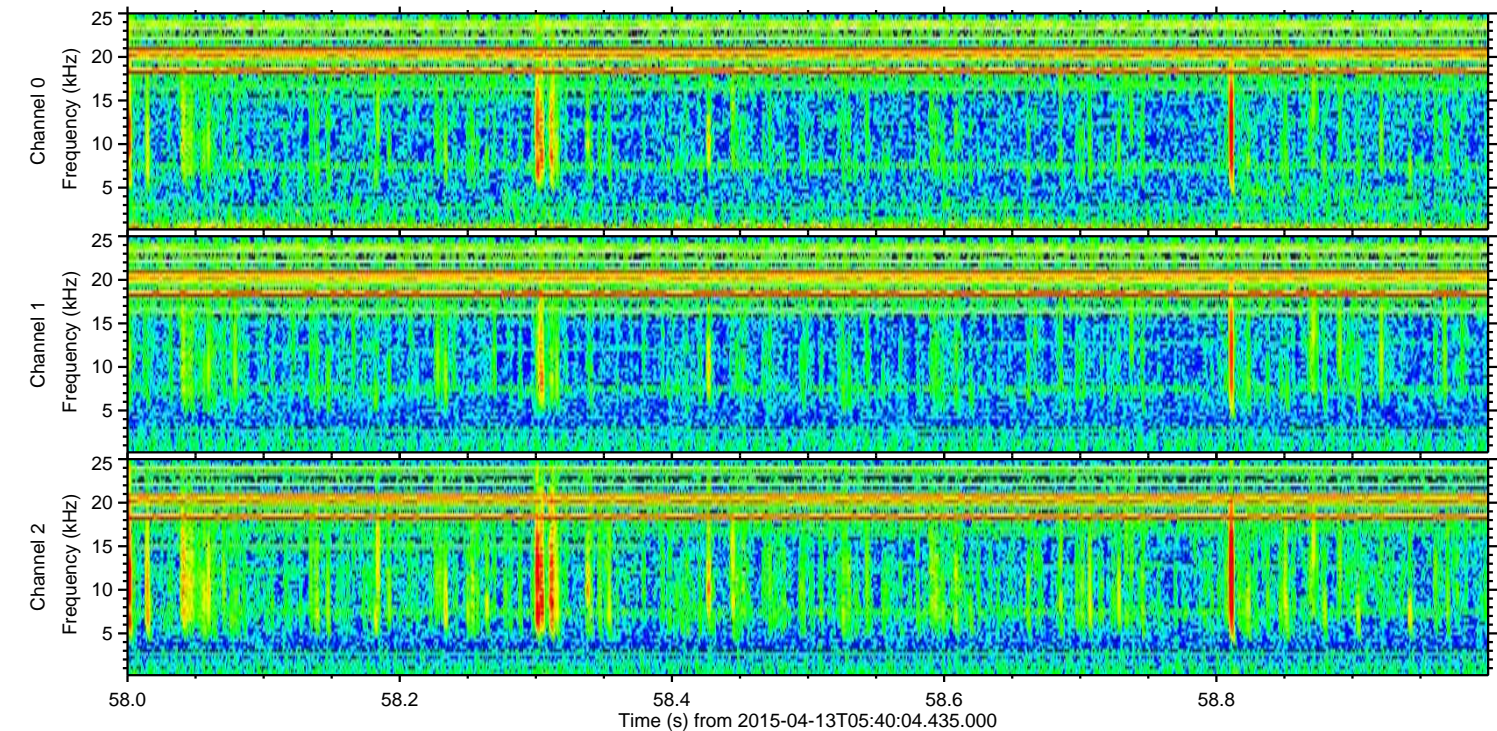
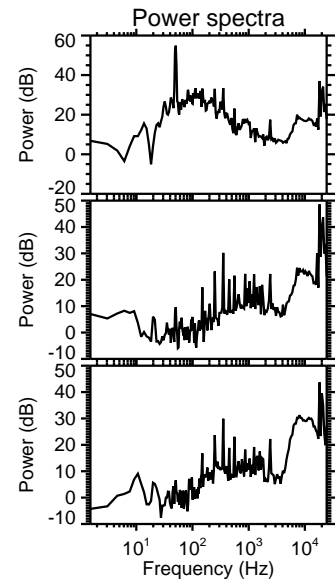
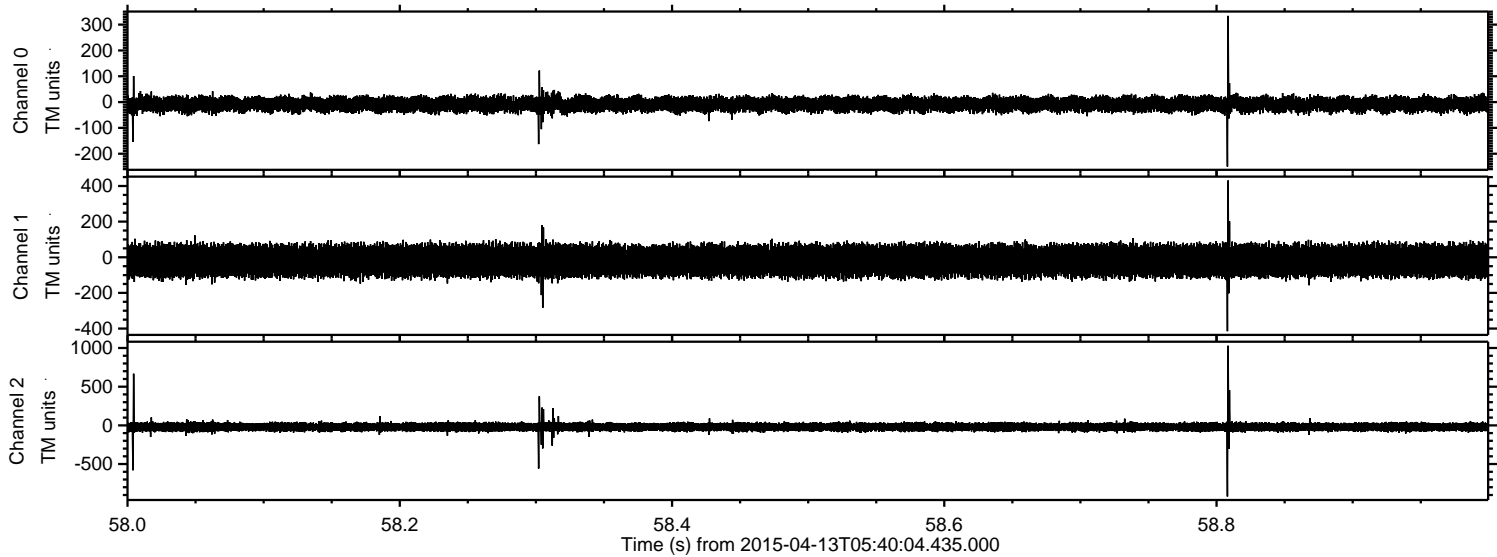


Channel 0
mn: -194
mx: 239
 μ : -8.7
 σ : 15.6

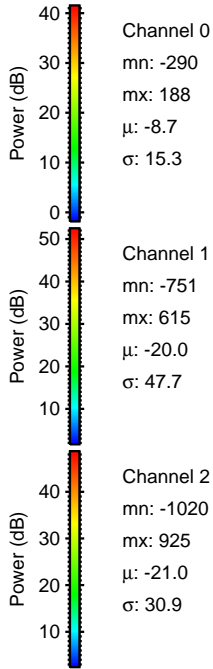
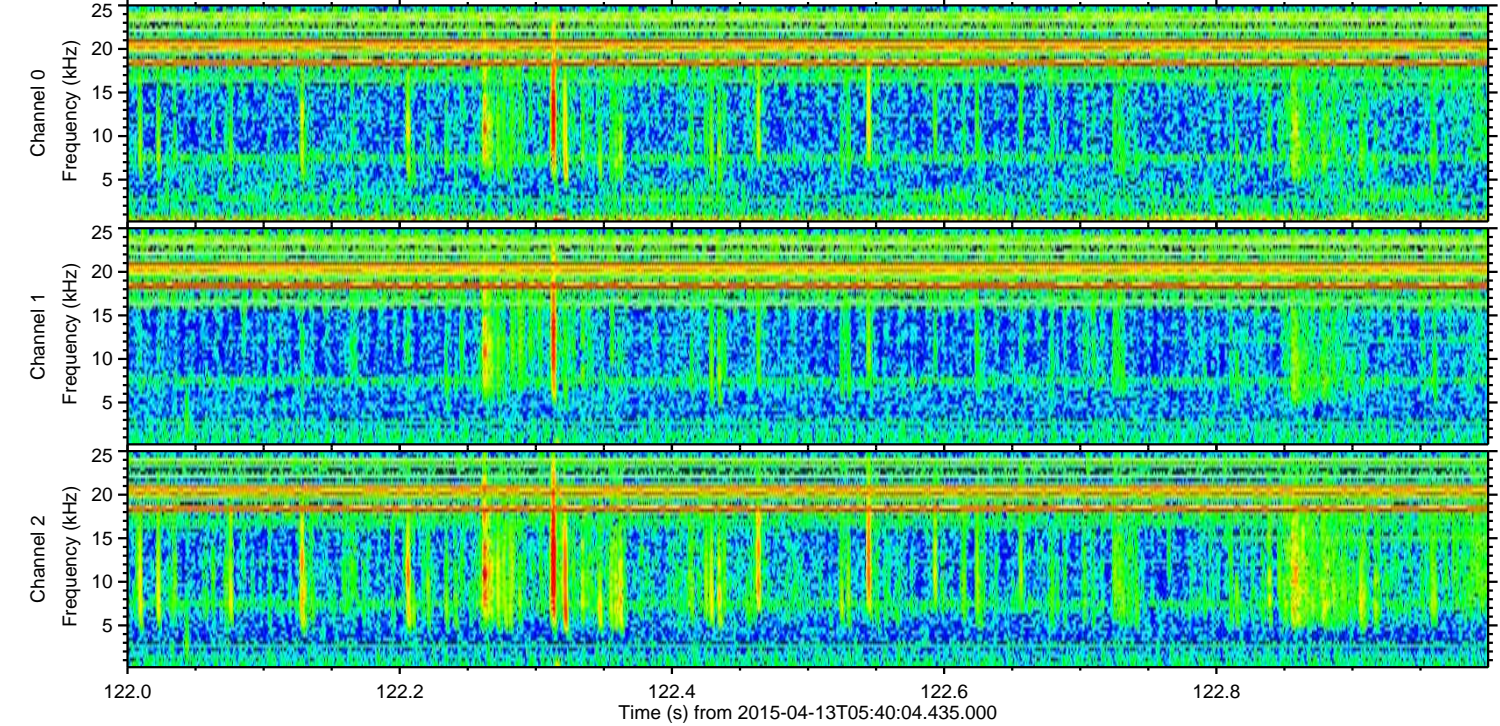
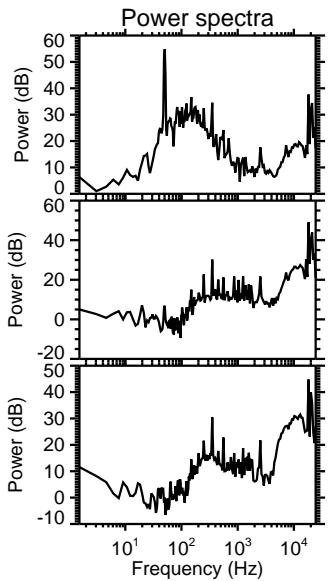
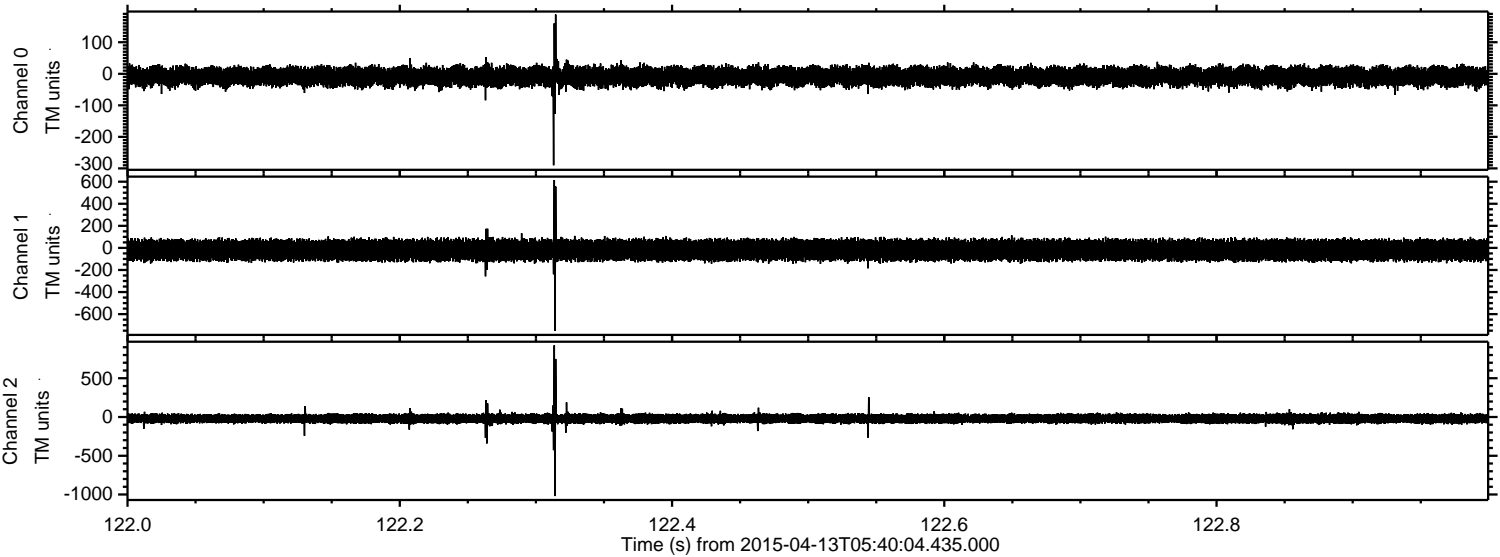
Channel 1
mn: -463
mx: 488
 μ : -19.9
 σ : 48.3

Channel 2
mn: -788
mx: 1038
 μ : -21.1
 σ : 31.8

Processed Mon Apr 13 07:47:03 2015 by ELM ver.2012-10-06 from 001__elm20150413_054003__dat00.bin



Processed Mon Apr 13 07:47:04 2015 by ELM ver.2012-10-06 from 001__elm20150413_054003__dat00.bin



Processed Mon Apr 13 07:47:05 2015 by ELM ver.2012-10-06 from 001__elm20150413_054003__dat00.bin

