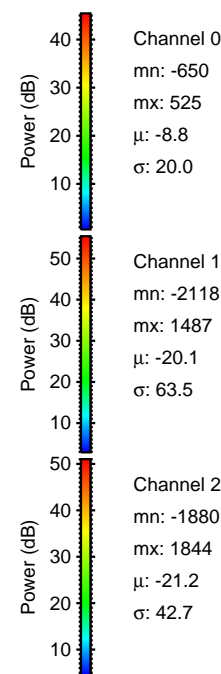
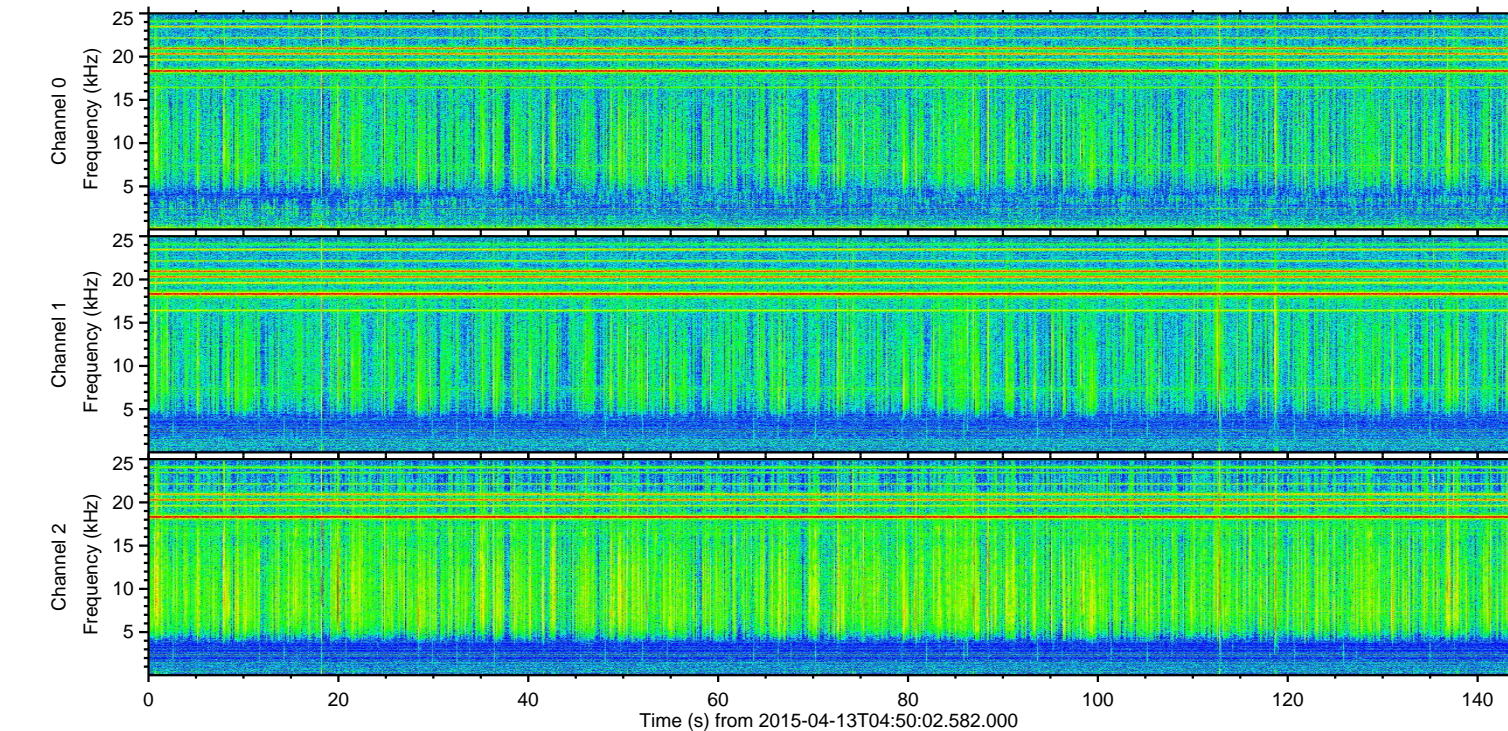
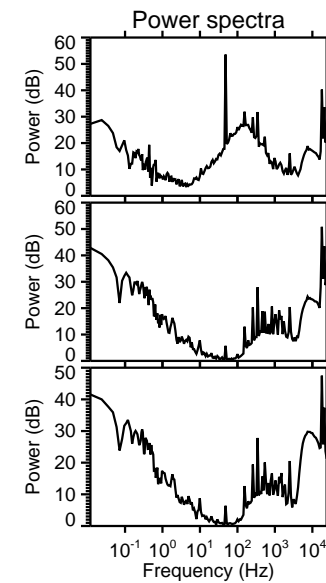
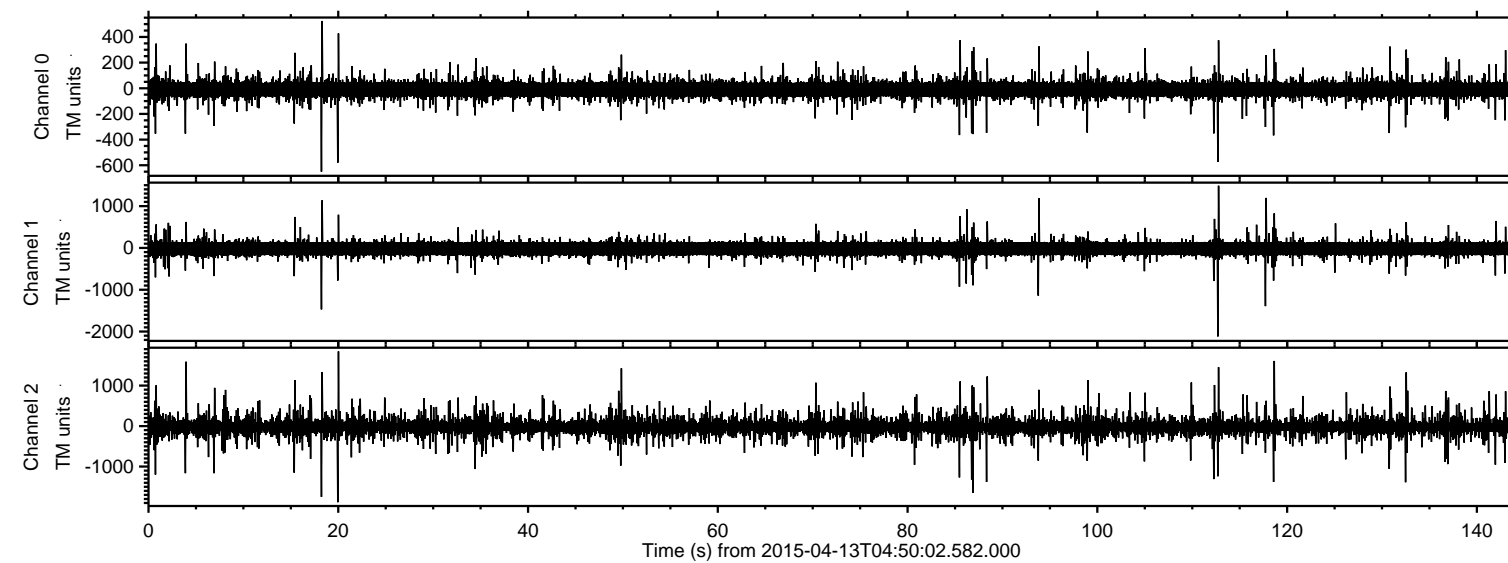


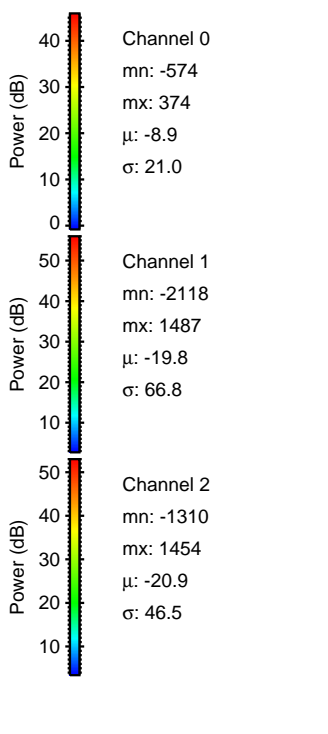
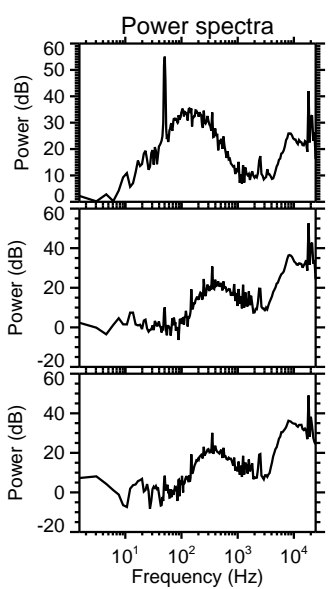
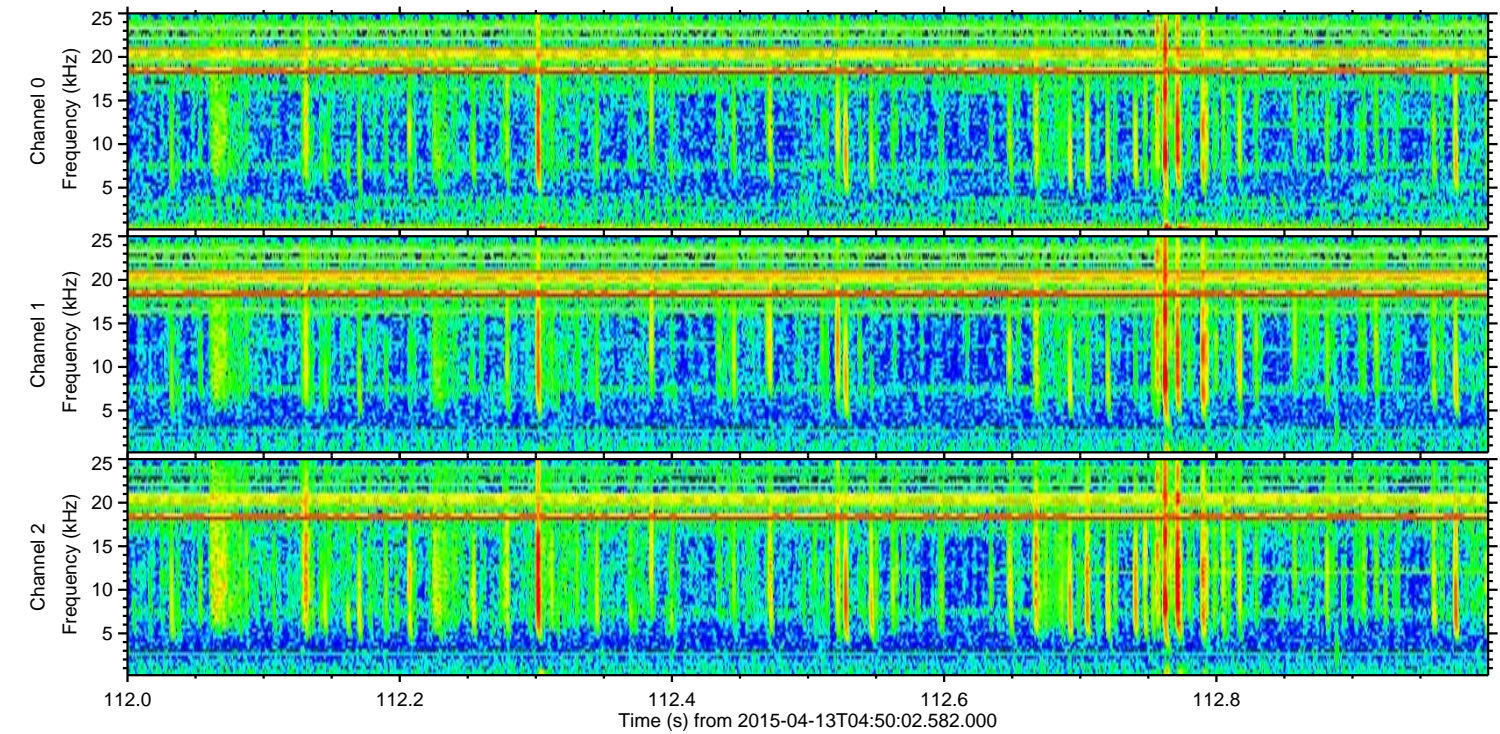
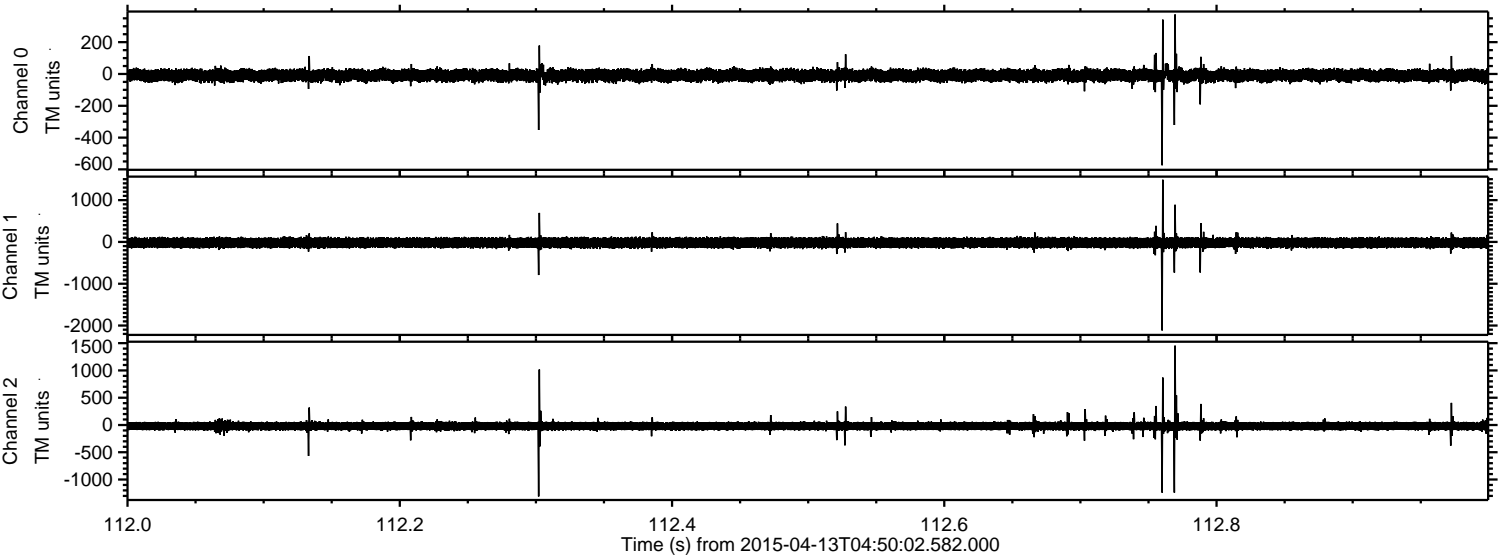
ELMAVAN 3D WAVEFORMS (Measured data sampled at 50 kHz) 49791 packets of 144 samples from 2015-04-13T04:50:02.582.000.

Processed Mon Apr 13 06:56:28 2015 by ELM ver.2012-10-06 from 001__elm20150413_045001__dat00.bin

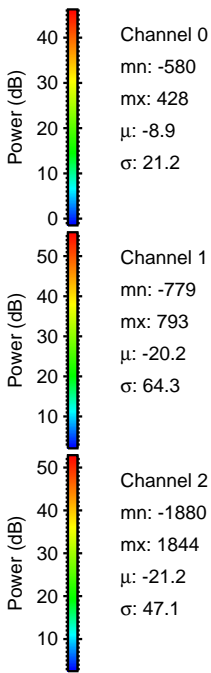
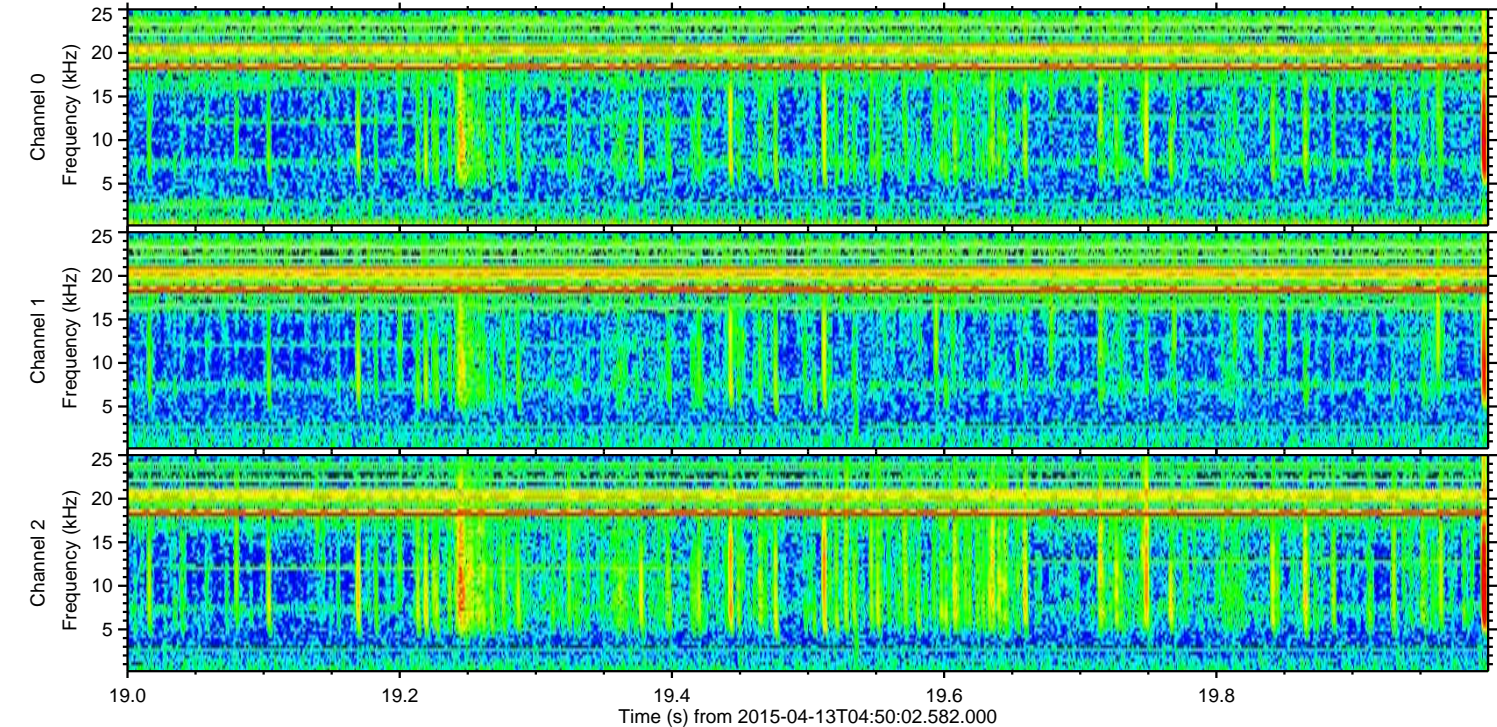
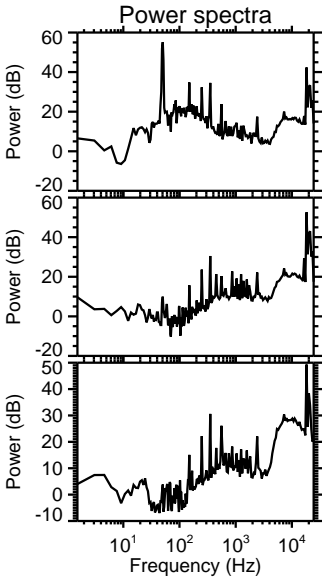
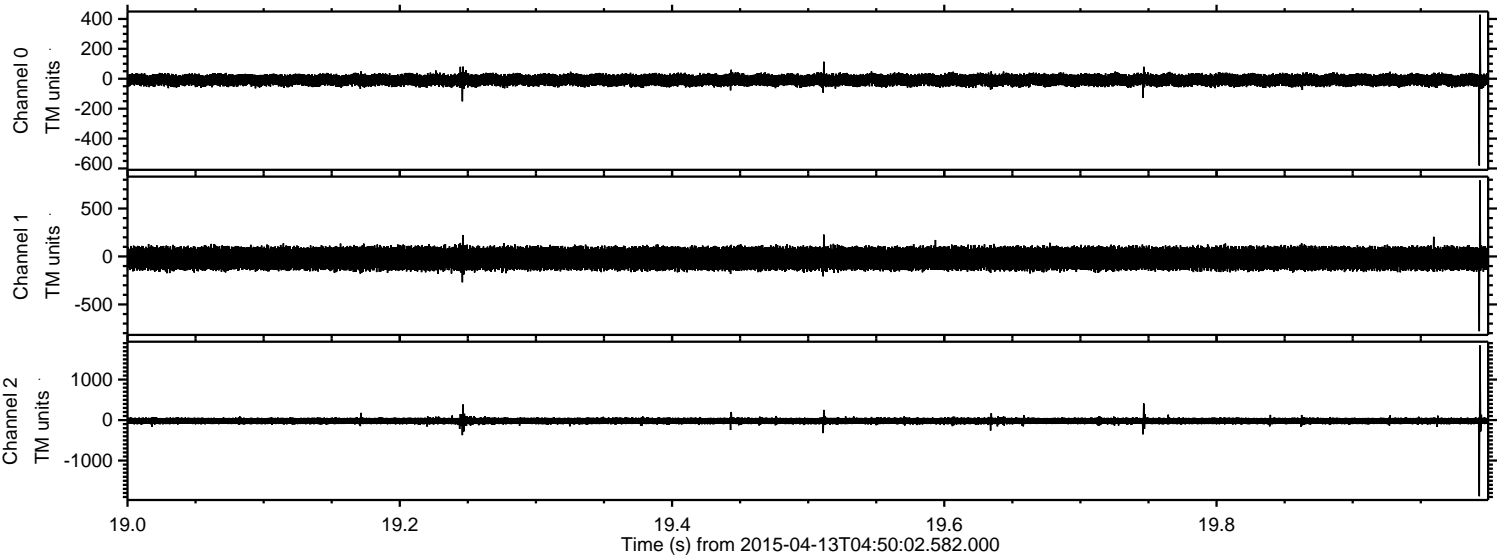


ELMAVAN 3D WAVEFORMS (Measured data sampled at 50 kHz) 49791 packets of 144 samples from 2015-04-13T04:50:02.582.000. Part 113/144

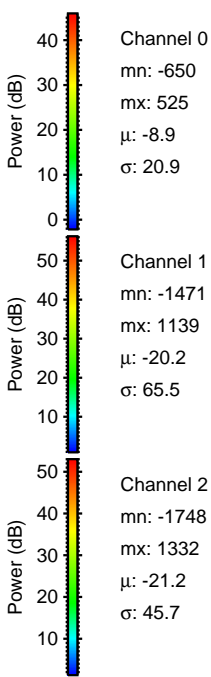
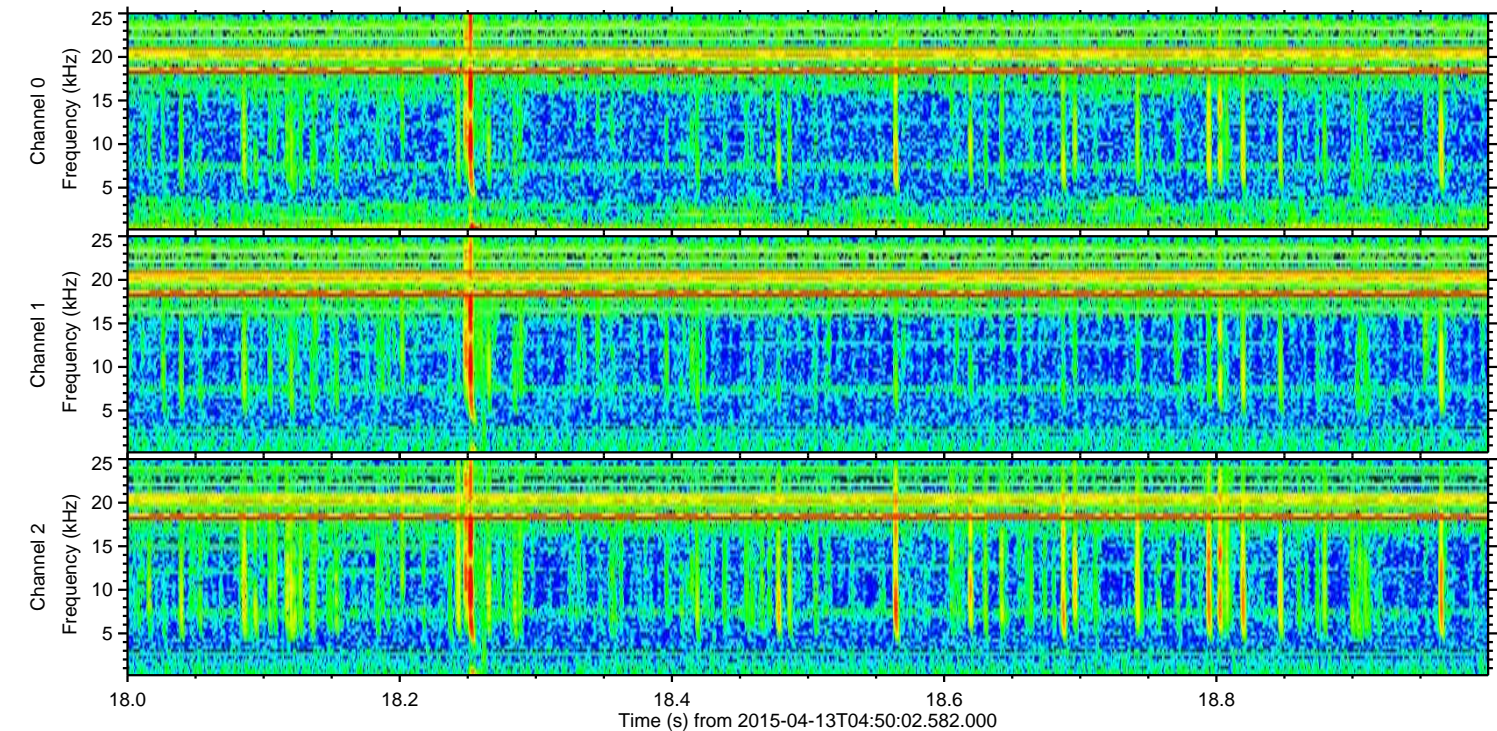
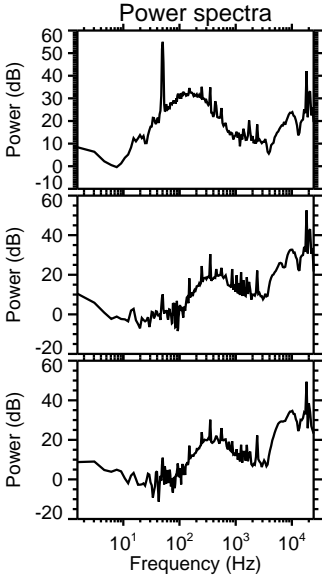
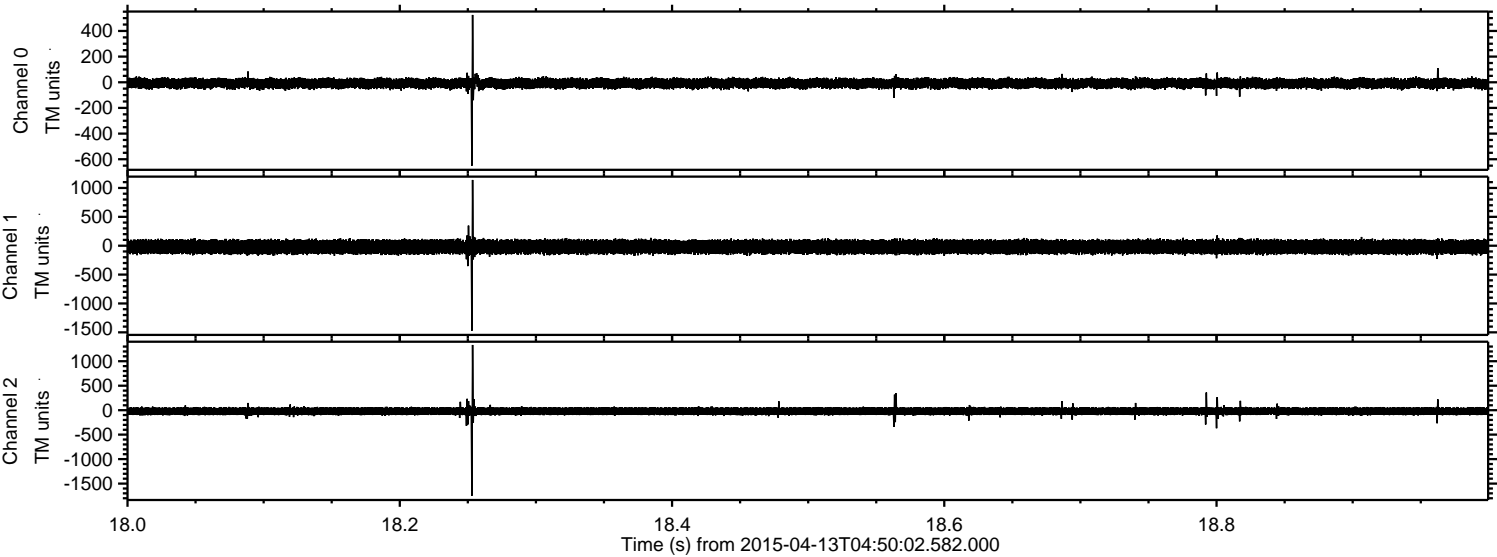
Processed Mon Apr 13 06:56:39 2015 by ELM ver.2012-10-06 from 001__elm20150413_045001__dat00.bin



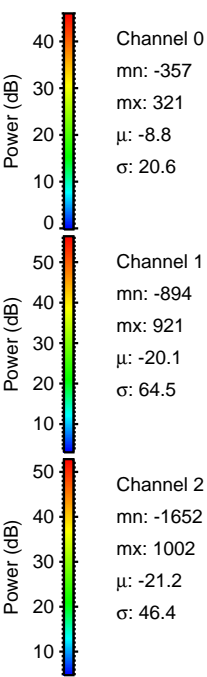
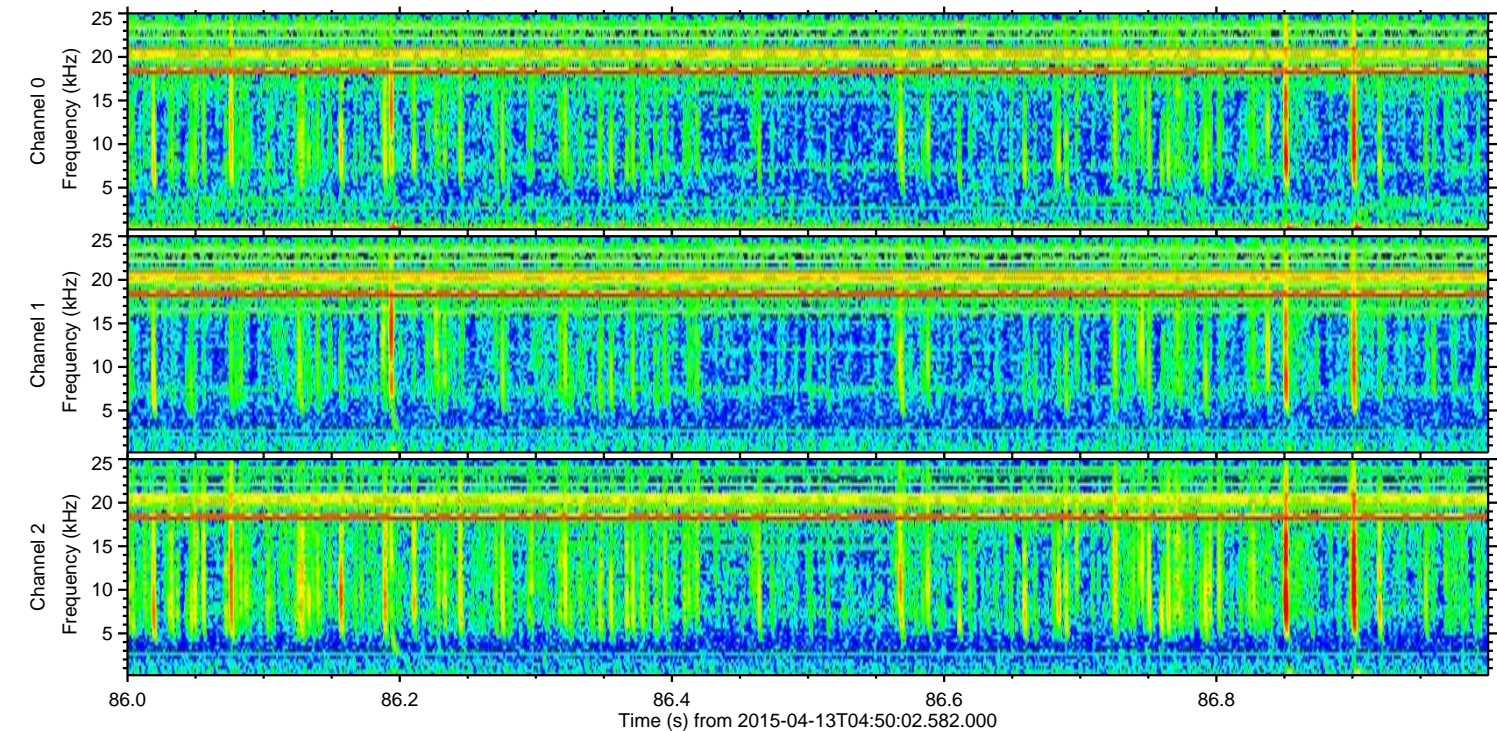
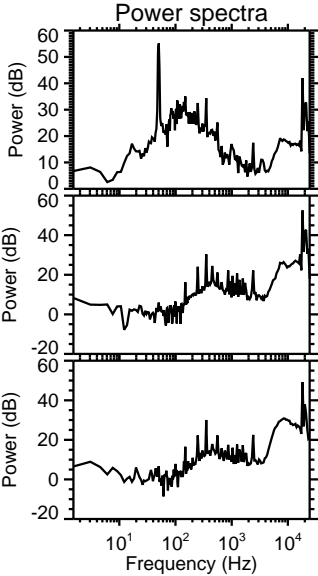
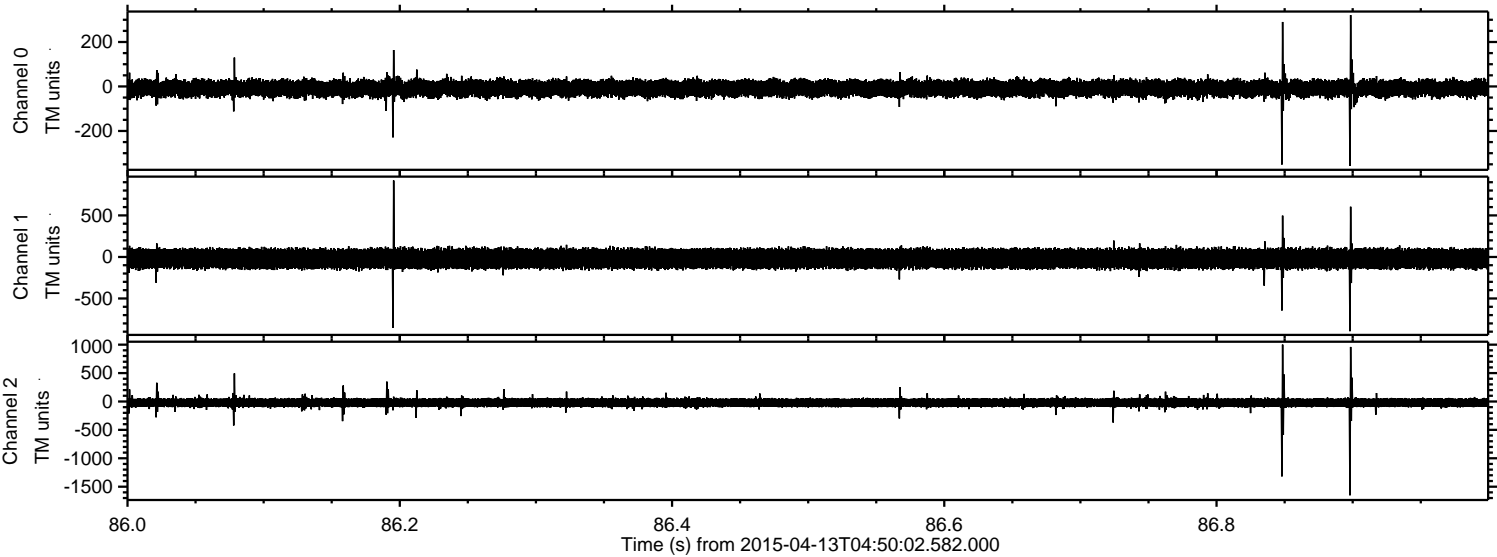
Processed Mon Apr 13 06:56:40 2015 by ELM ver.2012-10-06 from 001__elm20150413_045001__dat00.bin



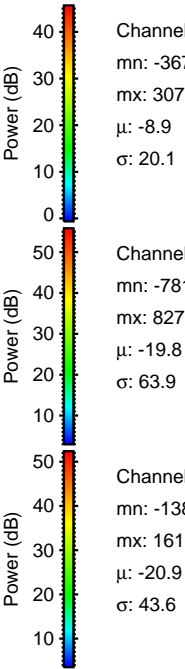
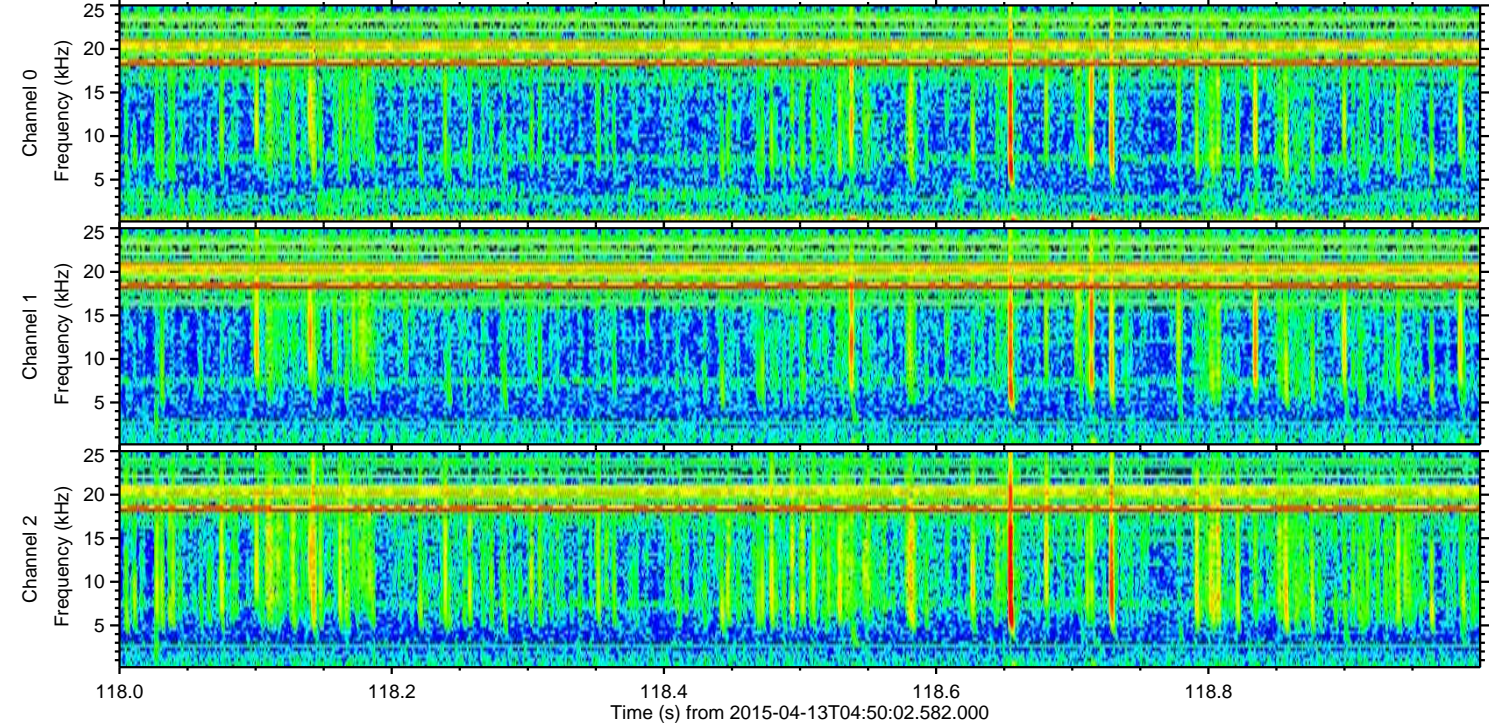
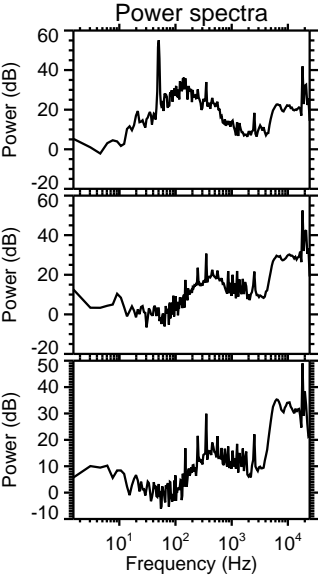
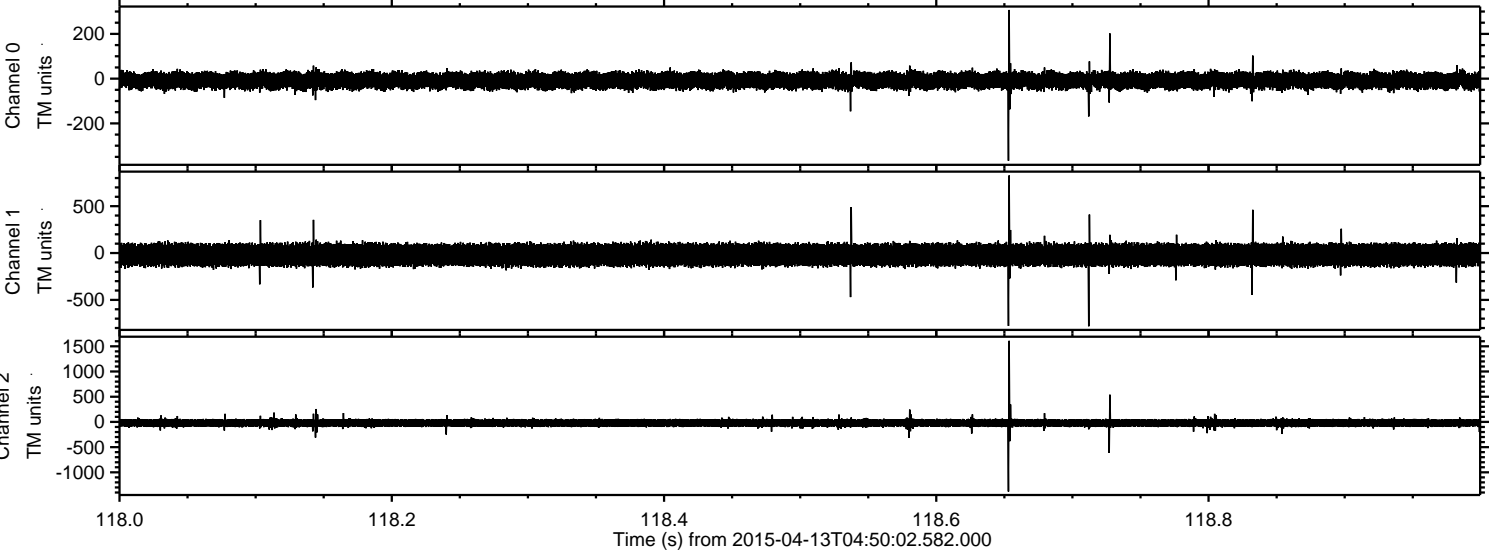
Processed Mon Apr 13 06:56:41 2015 by ELM ver.2012-10-06 from 001__elm20150413_045001__dat00.bin



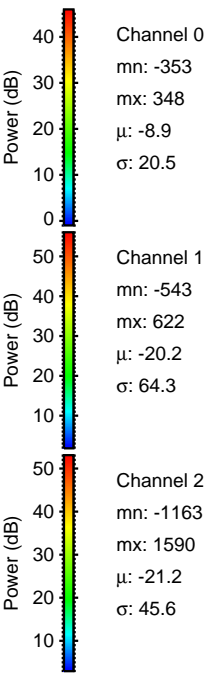
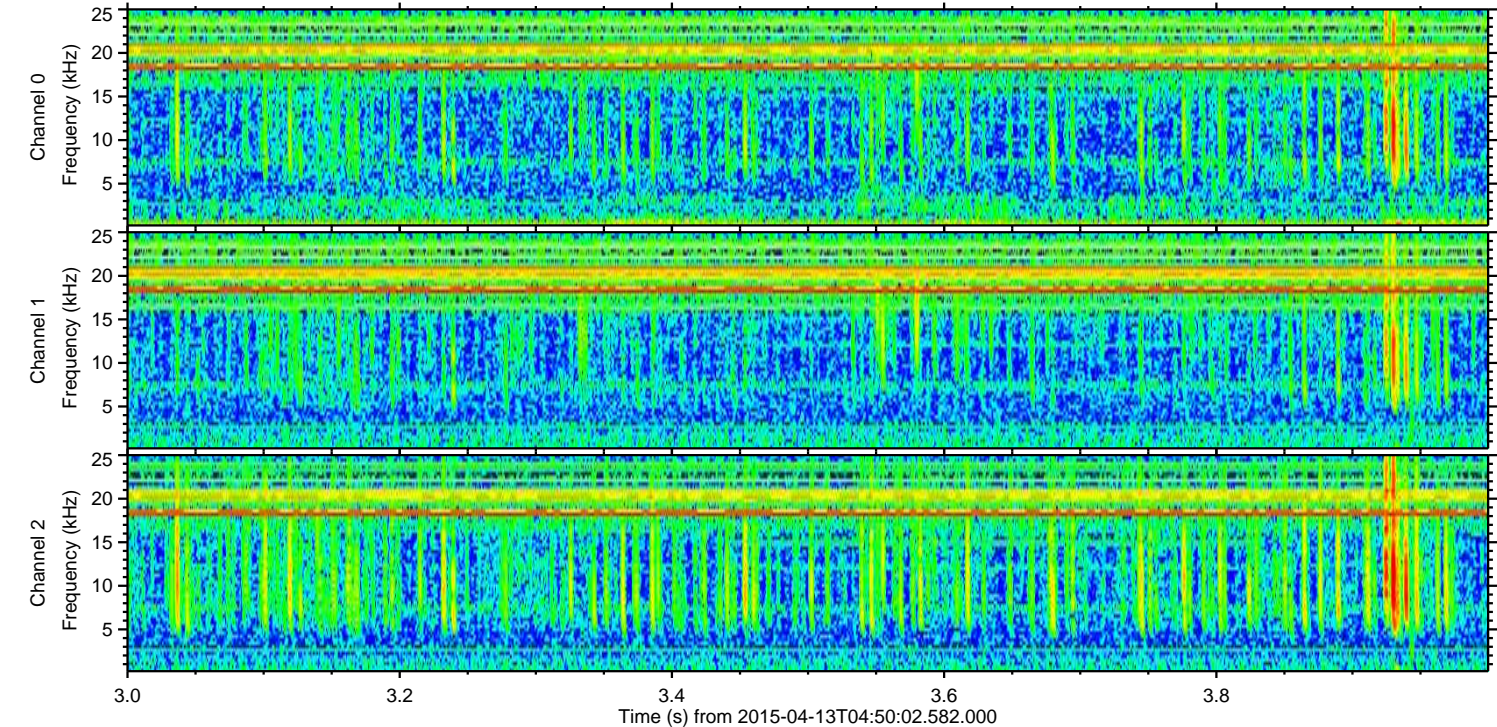
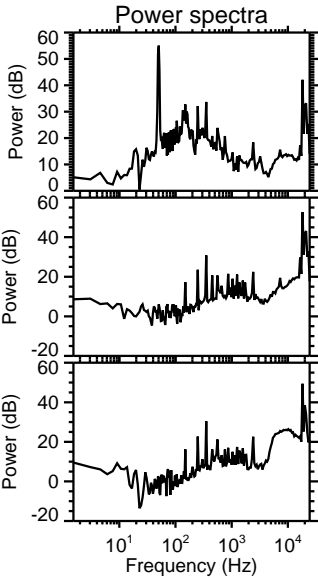
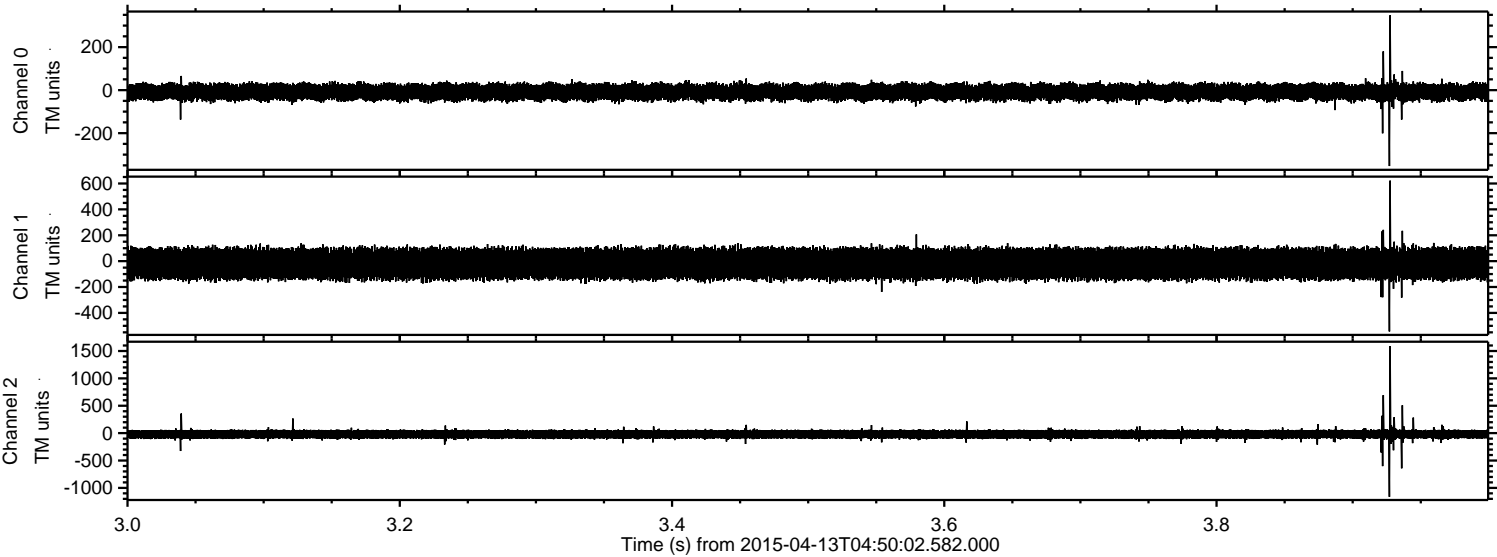
Processed Mon Apr 13 06:56:42 2015 by ELM ver.2012-10-06 from 001__elm20150413_045001__dat00.bin



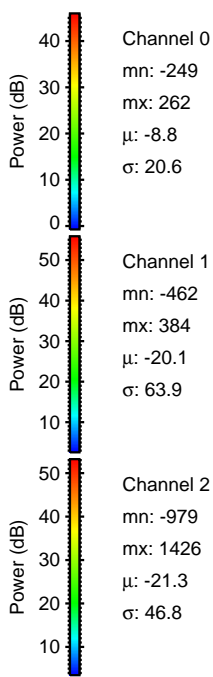
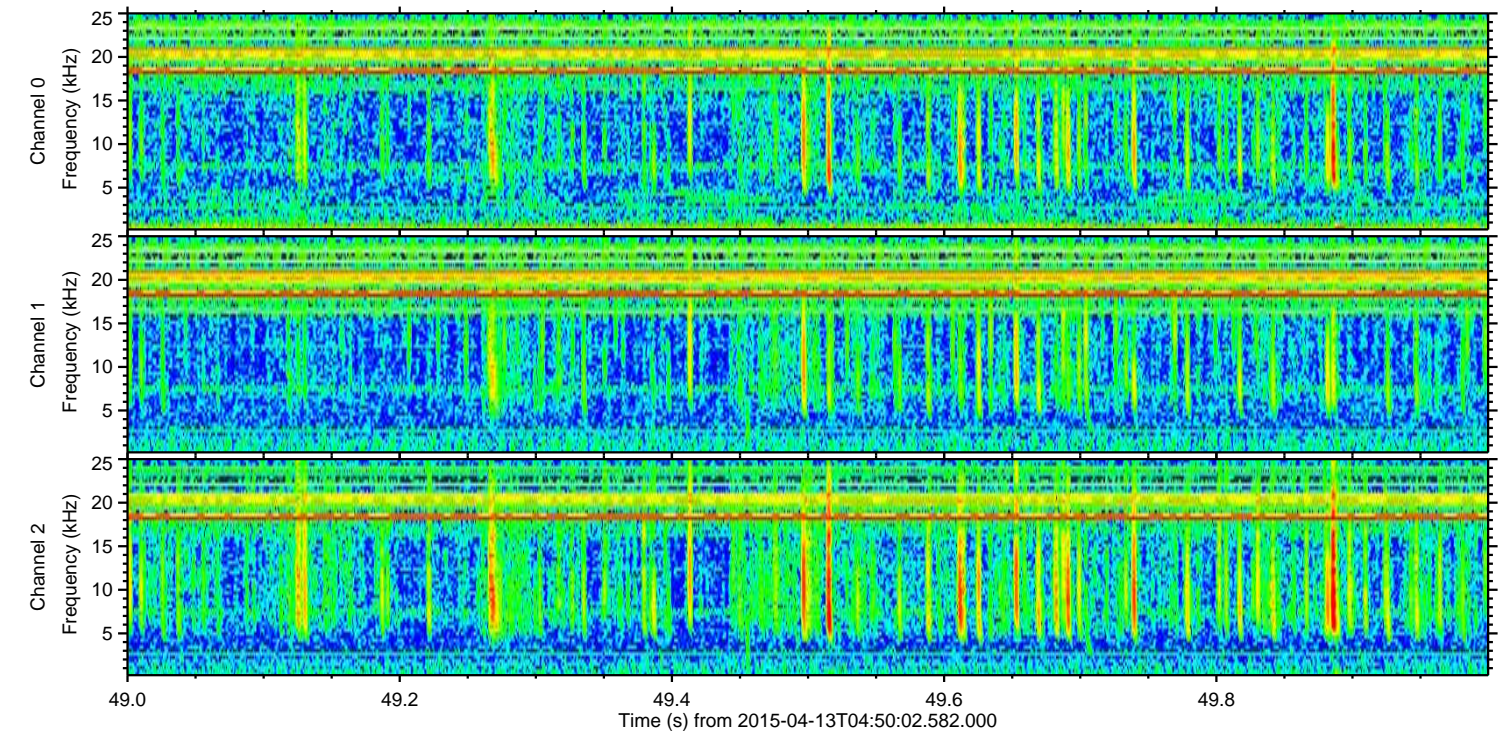
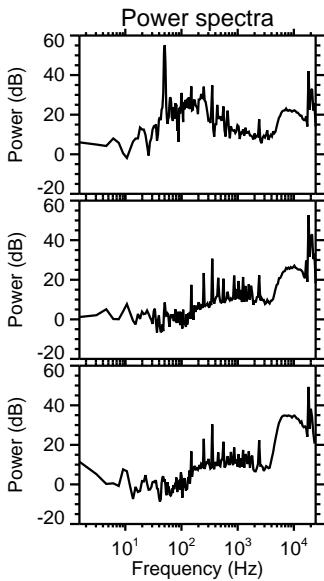
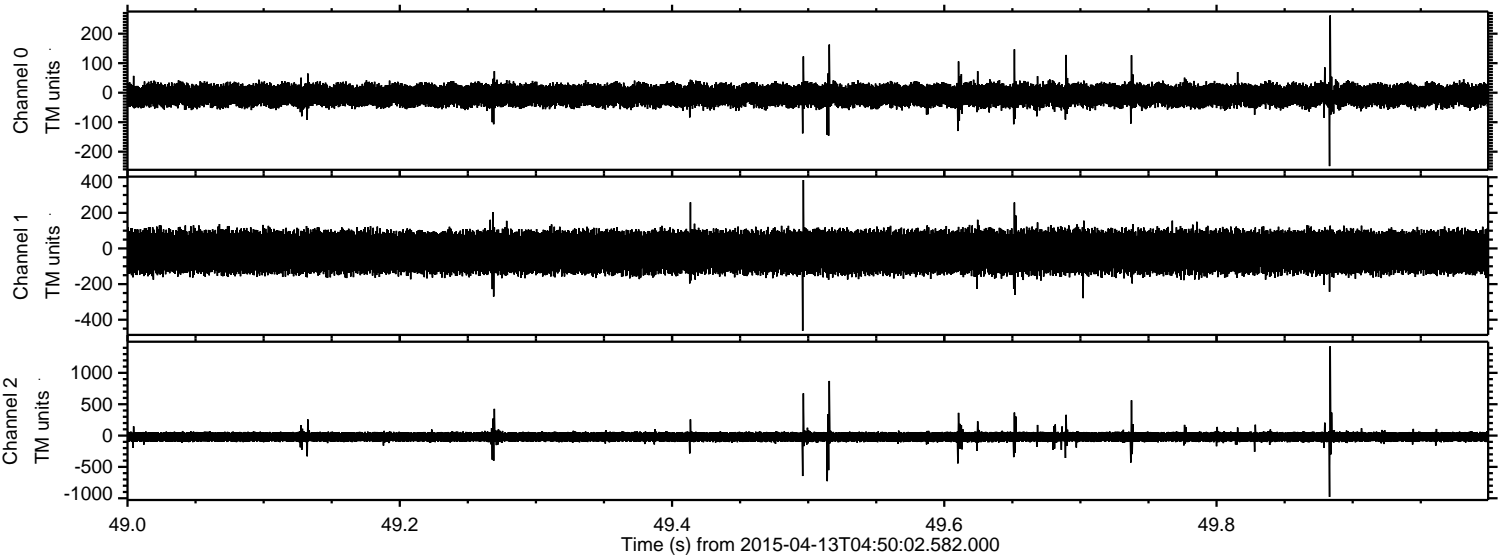
Processed Mon Apr 13 06:56:43 2015 by ELM ver.2012-10-06 from 001__elm20150413_045001__dat00.bin



Processed Mon Apr 13 06:56:44 2015 by ELM ver.2012-10-06 from 001__elm20150413_045001__dat00.bin

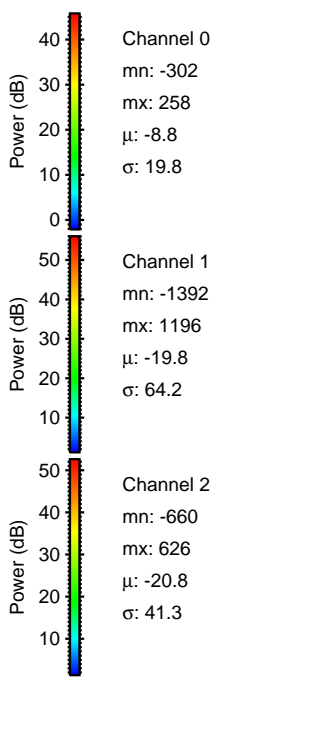
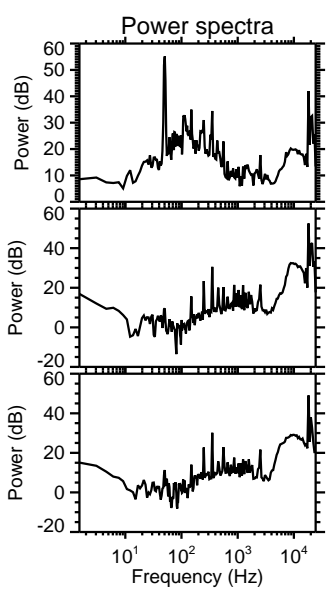
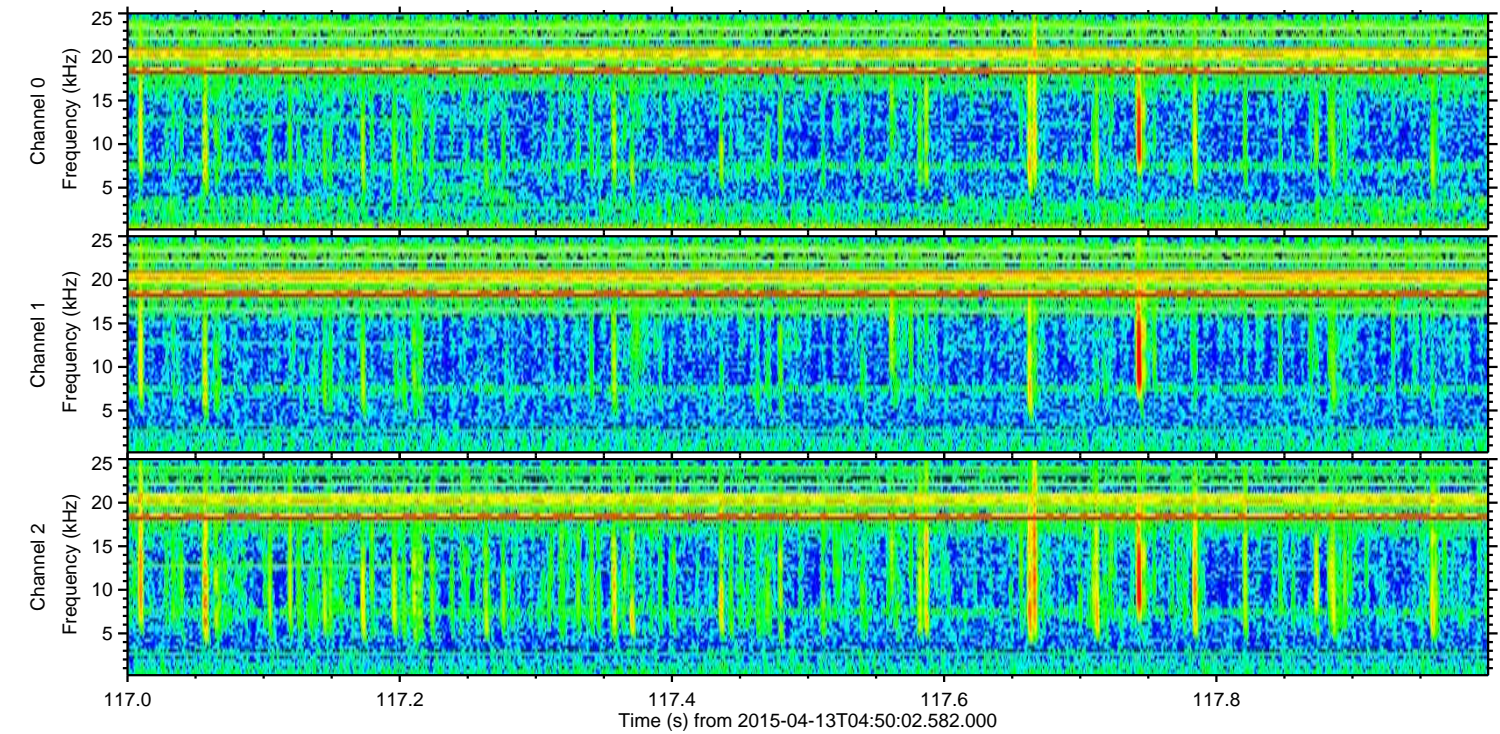
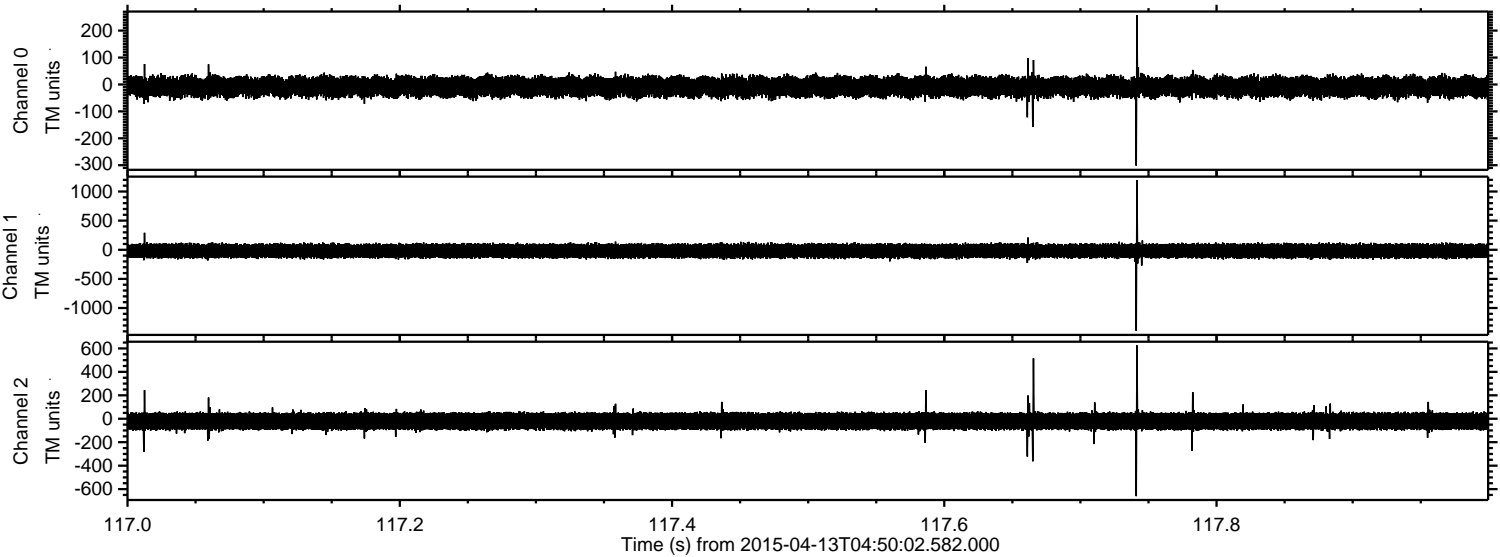


Processed Mon Apr 13 06:56:45 2015 by ELM ver.2012-10-06 from 001__elm20150413_045001__dat00.bin



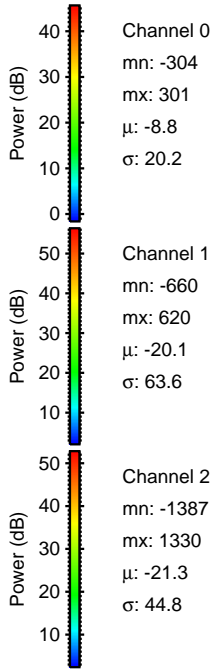
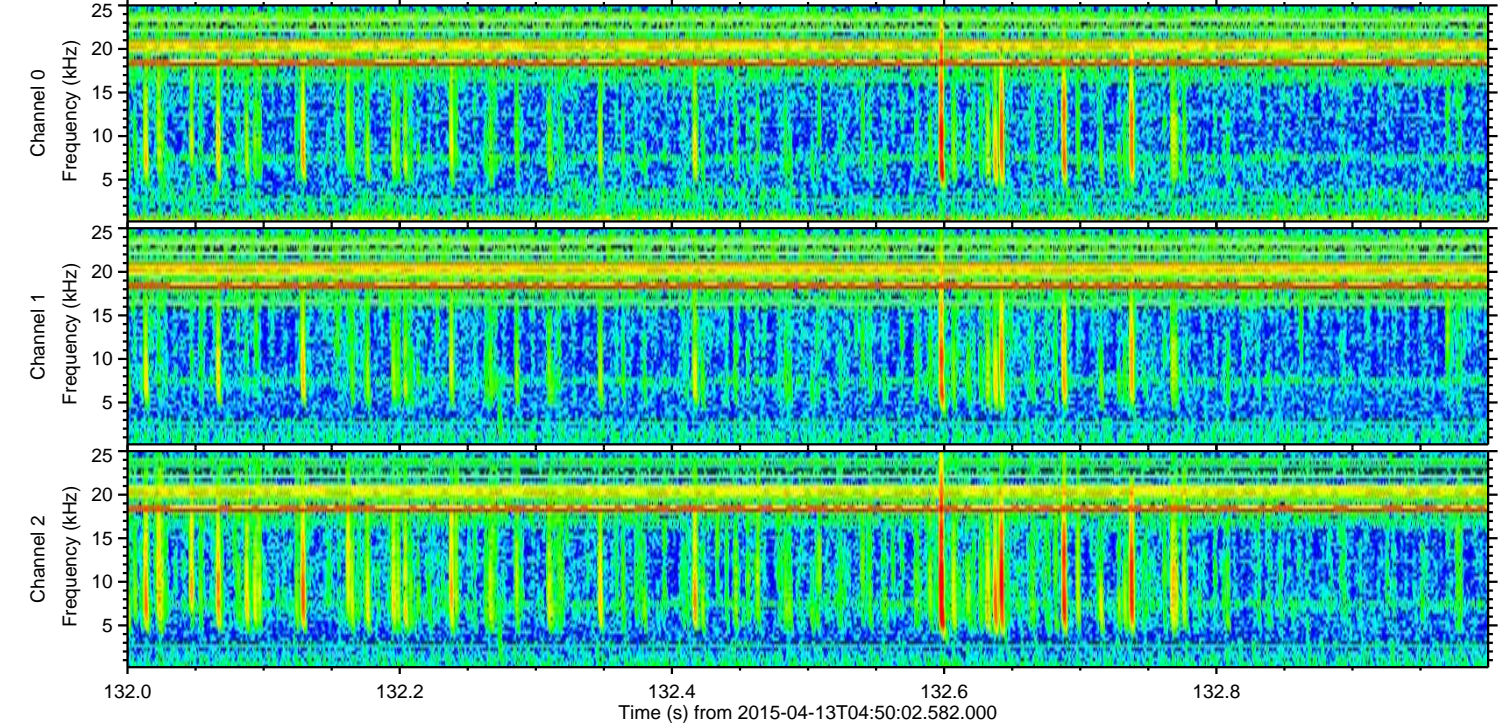
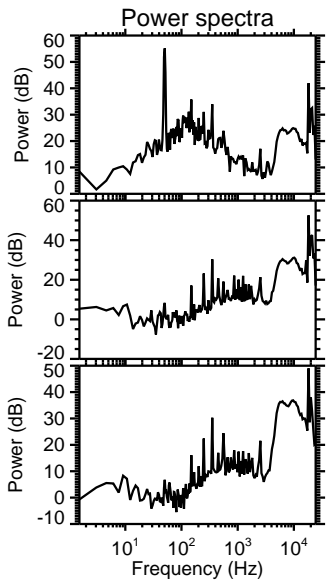
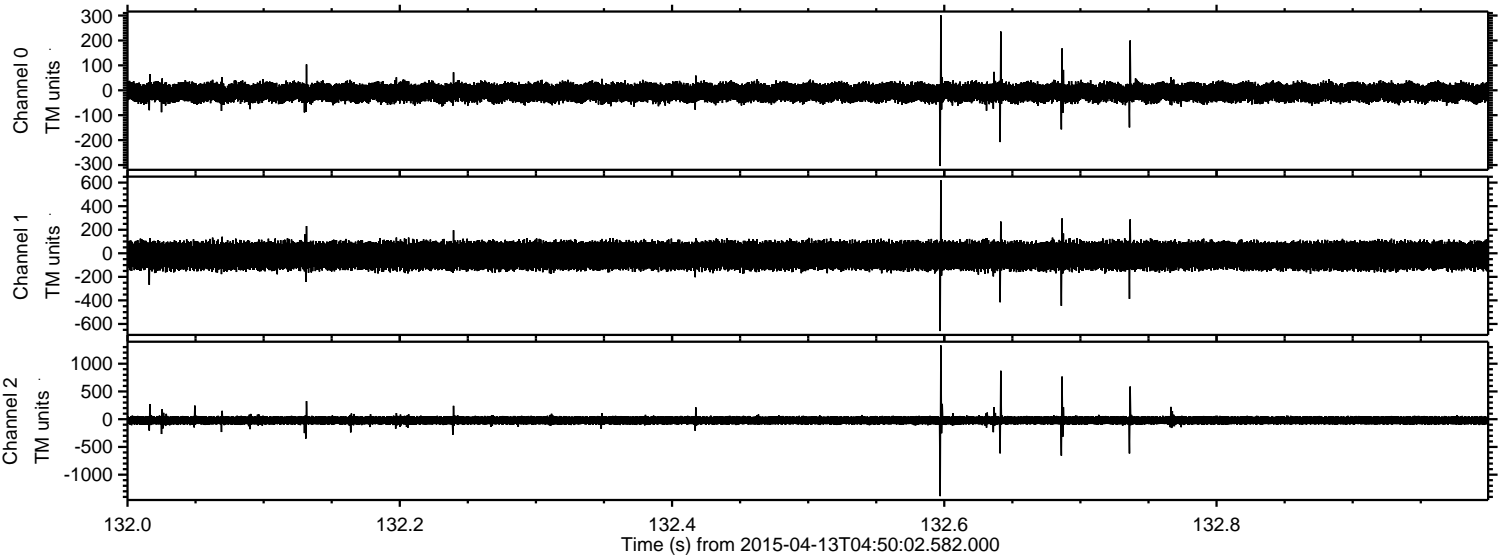
ELMAVAN 3D WAVEFORMS (Measured data sampled at 50 kHz) 49791 packets of 144 samples from 2015-04-13T04:50:02.582.000. Part 118/144

Processed Mon Apr 13 06:56:46 2015 by ELM ver.2012-10-06 from 001__elm20150413_045001__dat00.bin



Channel 0	mn: -302
	mx: 258
	μ : -8.8
	σ : 19.8
Channel 1	mn: -1392
	mx: 1196
	μ : -19.8
	σ : 64.2
Channel 2	mn: -660
	mx: 626
	μ : -20.8
	σ : 41.3

Processed Mon Apr 13 06:56:47 2015 by ELM ver.2012-10-06 from 001__elm20150413_045001__dat00.bin



Processed Mon Apr 13 06:56:48 2015 by ELM ver.2012-10-06 from 001__elm20150413_045001__dat00.bin

