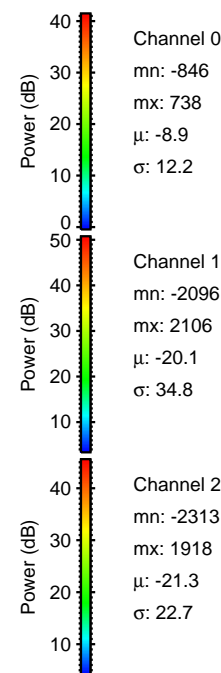
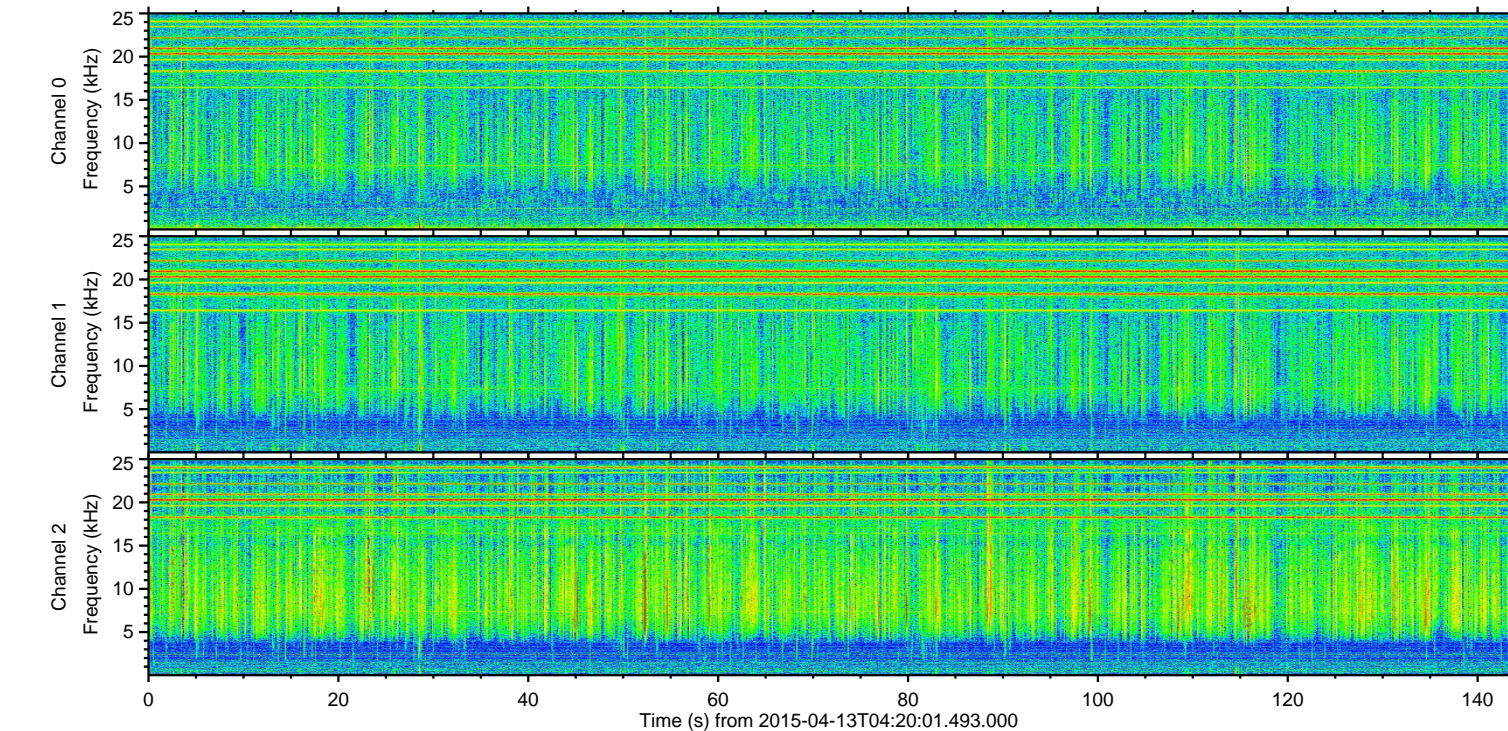
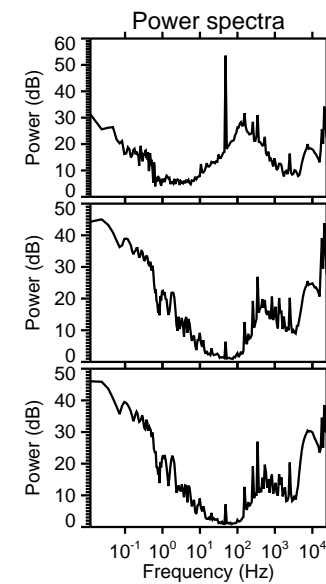
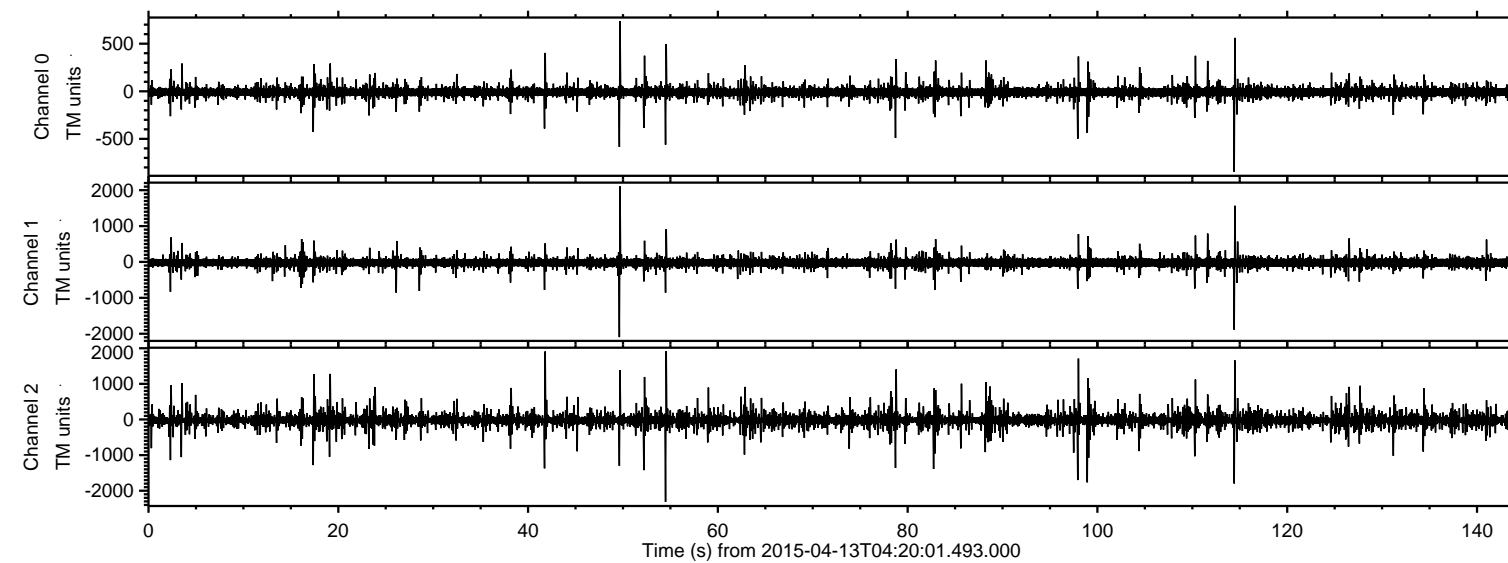


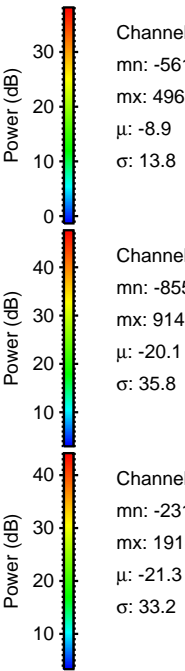
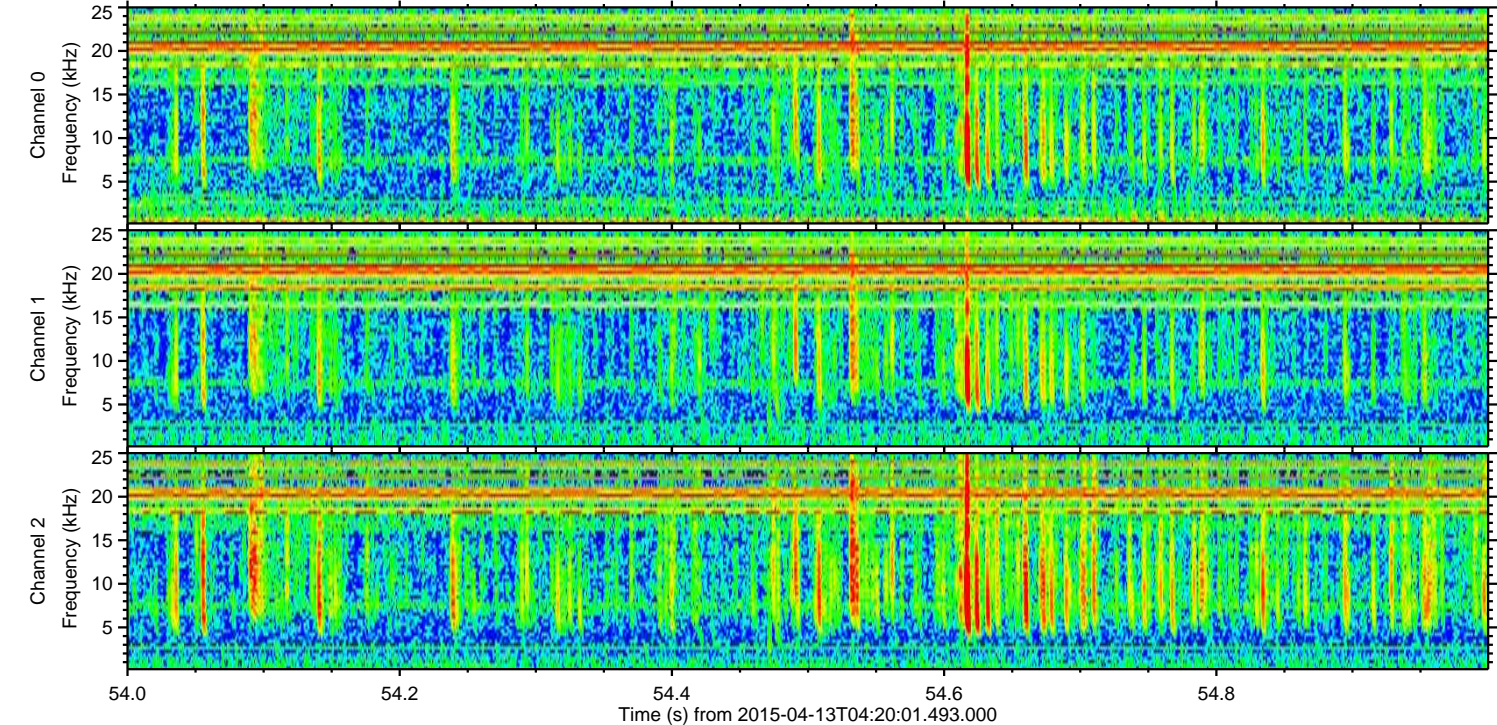
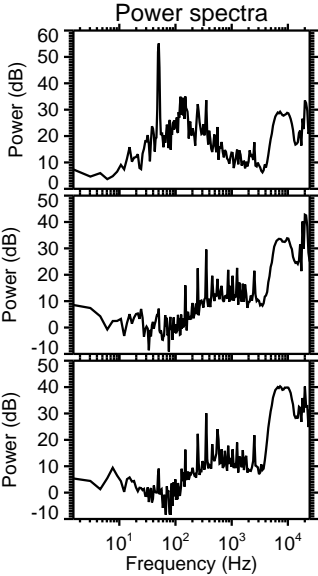
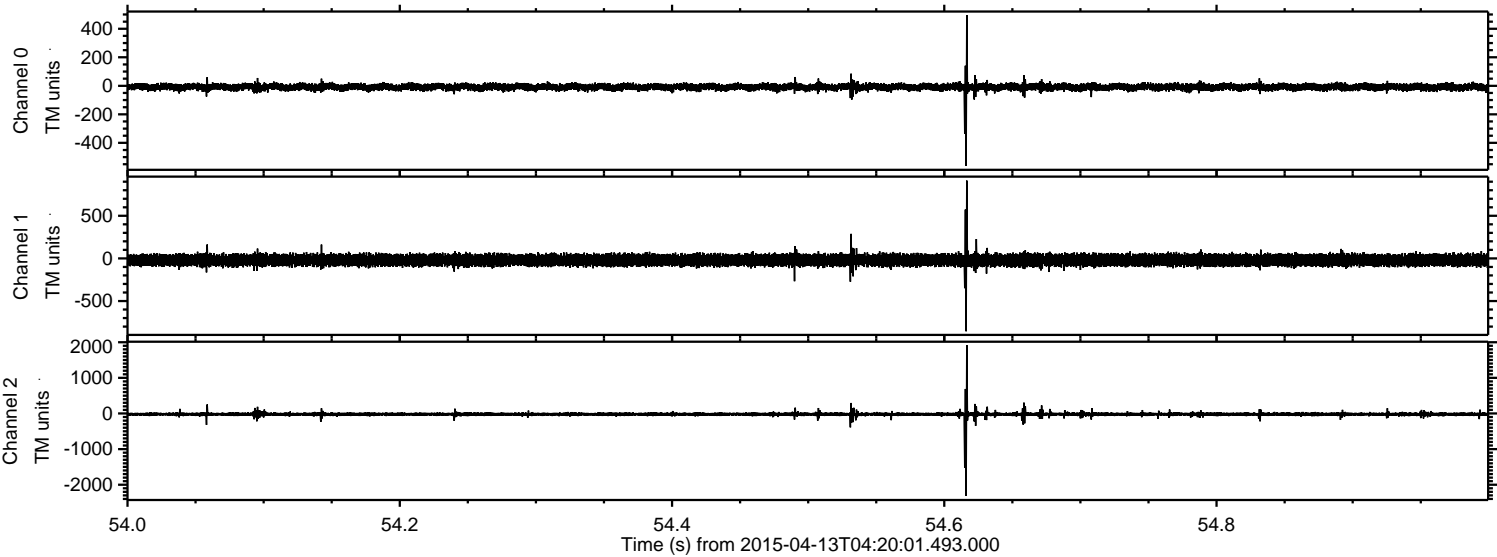
# ELMAVAN 3D WAVEFORMS (Measured data sampled at 50 kHz) 49788 packets of 144 samples from 2015-04-13T04:20:01.493.000.

Processed Mon Apr 13 06:27:10 2015 by ELM ver.2012-10-06 from 001\_\_elm20150413\_042000\_\_dat00.bin



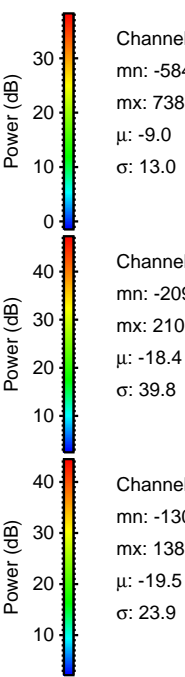
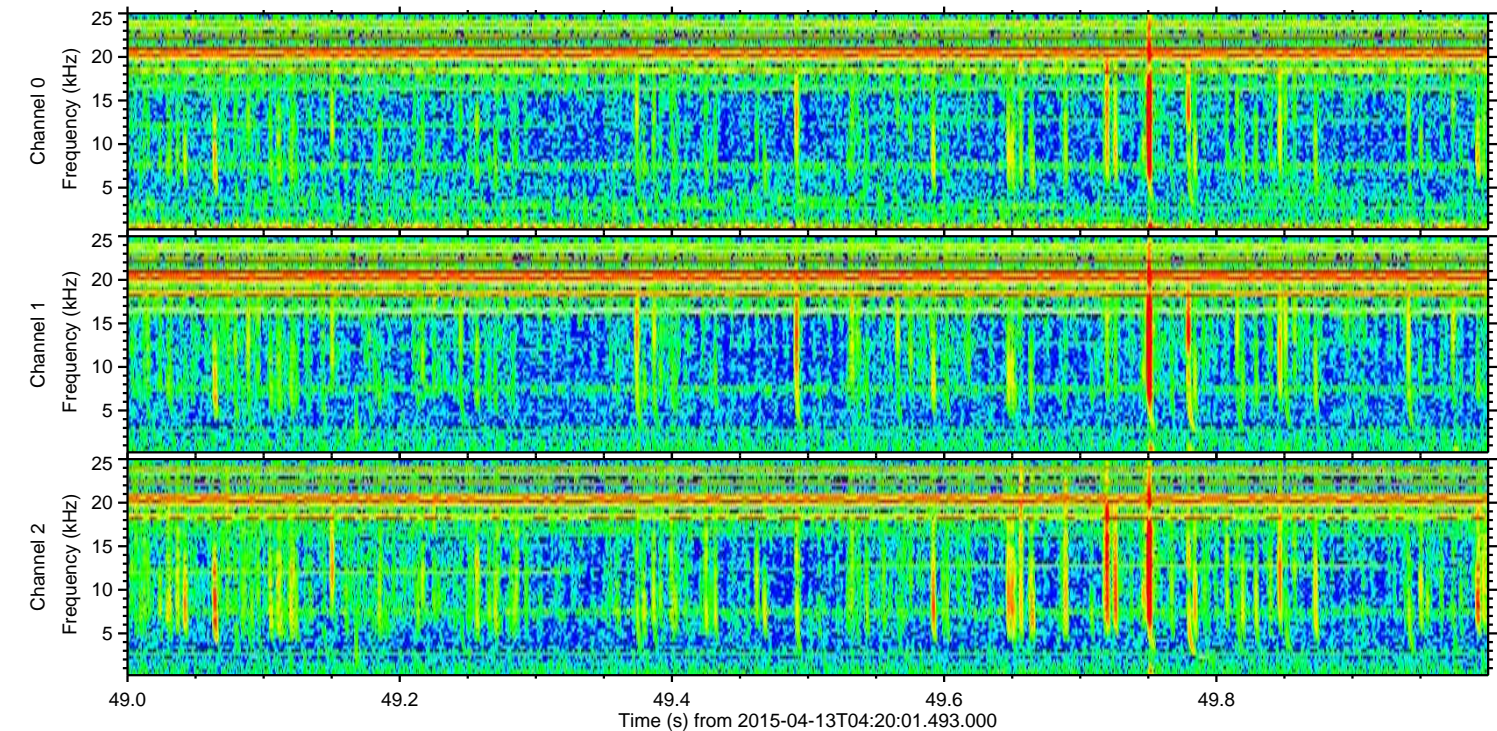
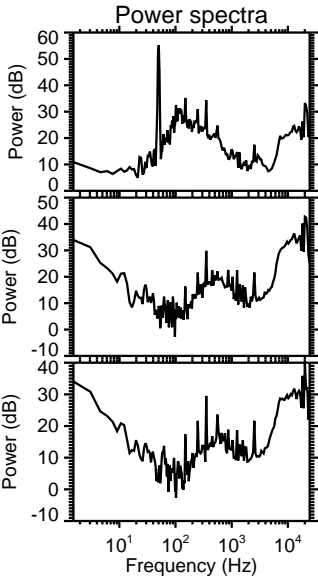
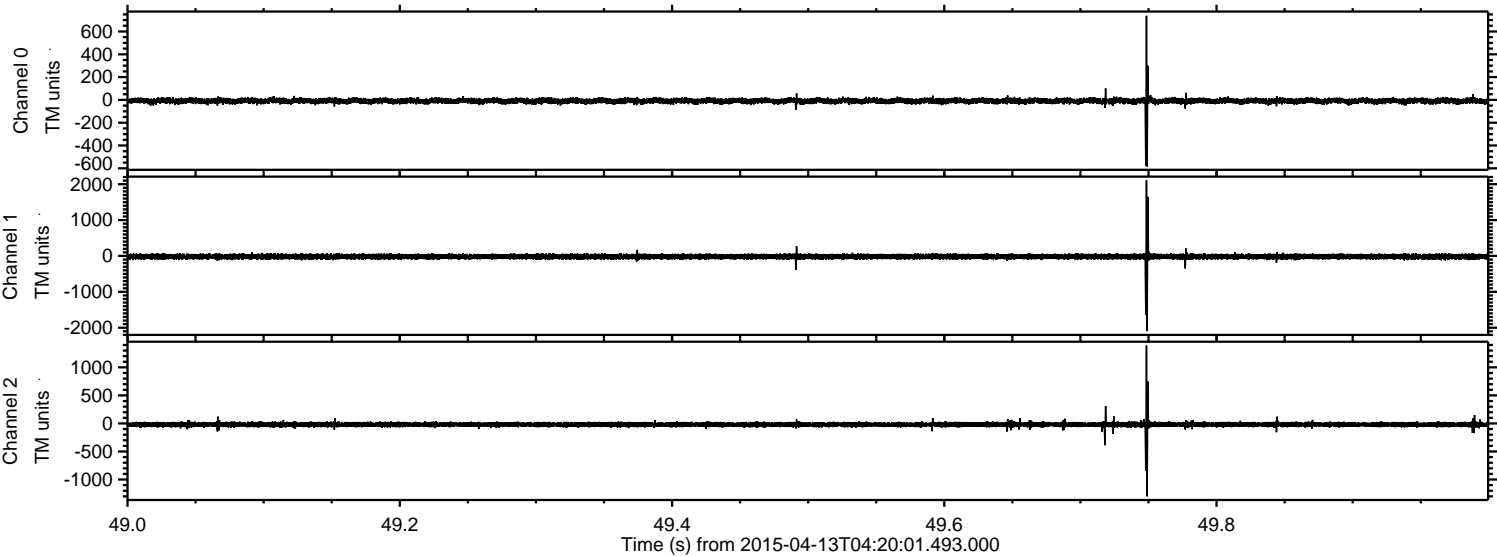


Processed Mon Apr 13 06:27:22 2015 by ELM ver.2012-10-06 from 001\_\_elm20150413\_042000\_\_dat00.bin





Processed Mon Apr 13 06:27:22 2015 by ELM ver.2012-10-06 from 001\_\_elm20150413\_042000\_\_dat00.bin



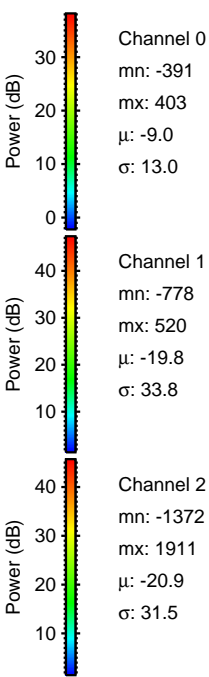
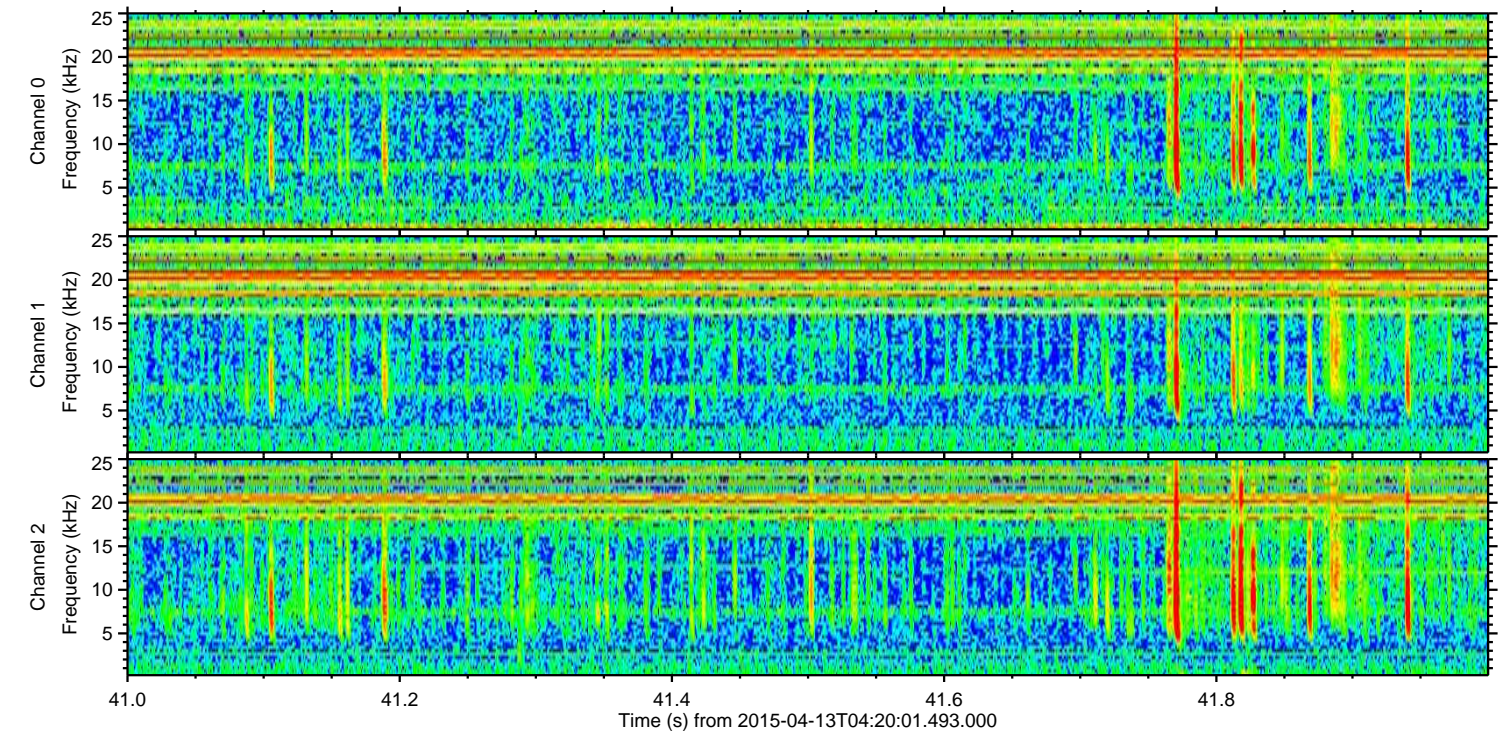
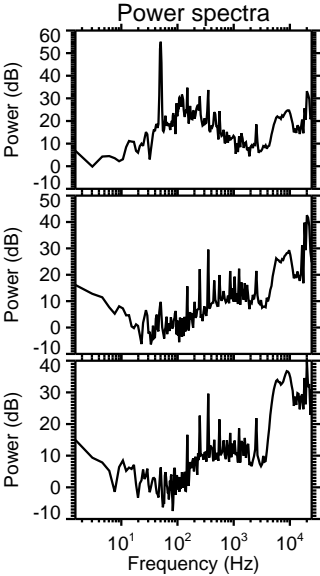
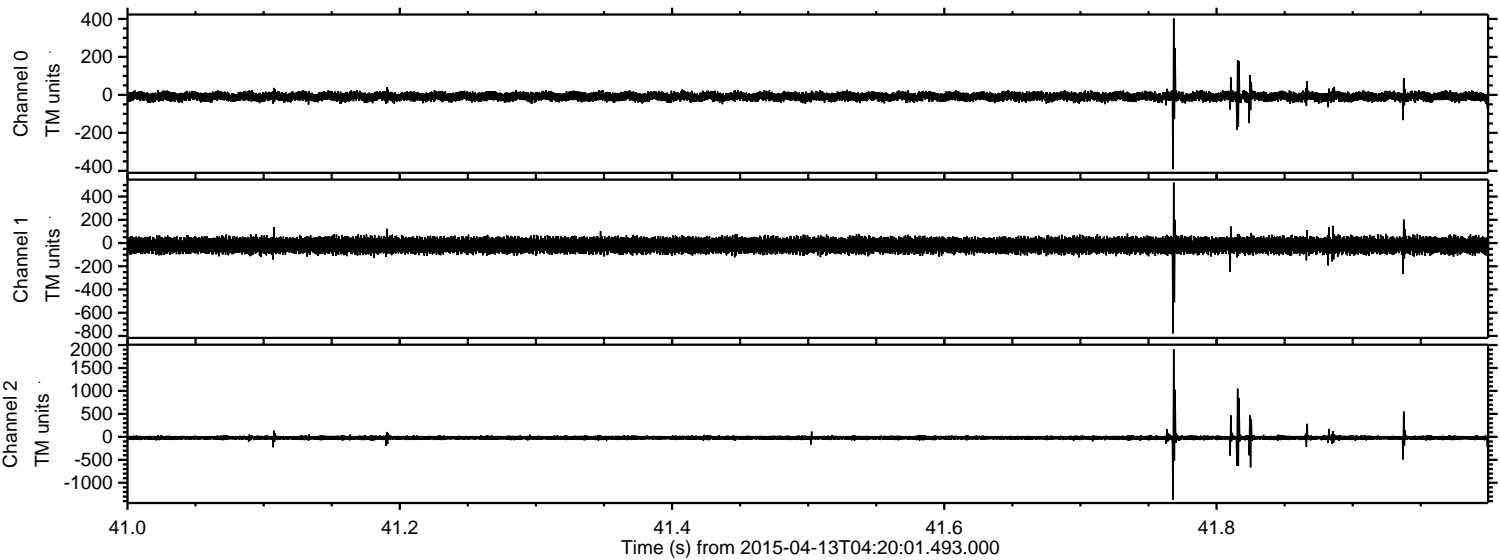
Channel 0  
mn: -584  
mx: 738  
 $\mu$ : -9.0  
 $\sigma$ : 13.0

Channel 1  
mn: -2096  
mx: 2106  
 $\mu$ : -18.4  
 $\sigma$ : 39.8

Channel 2  
mn: -1300  
mx: 1388  
 $\mu$ : -19.5  
 $\sigma$ : 23.9



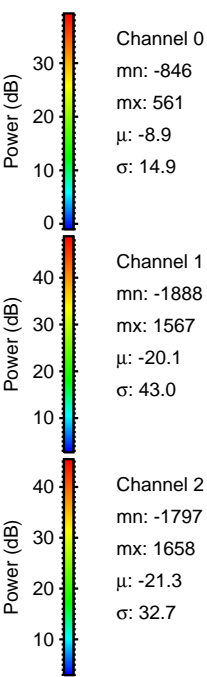
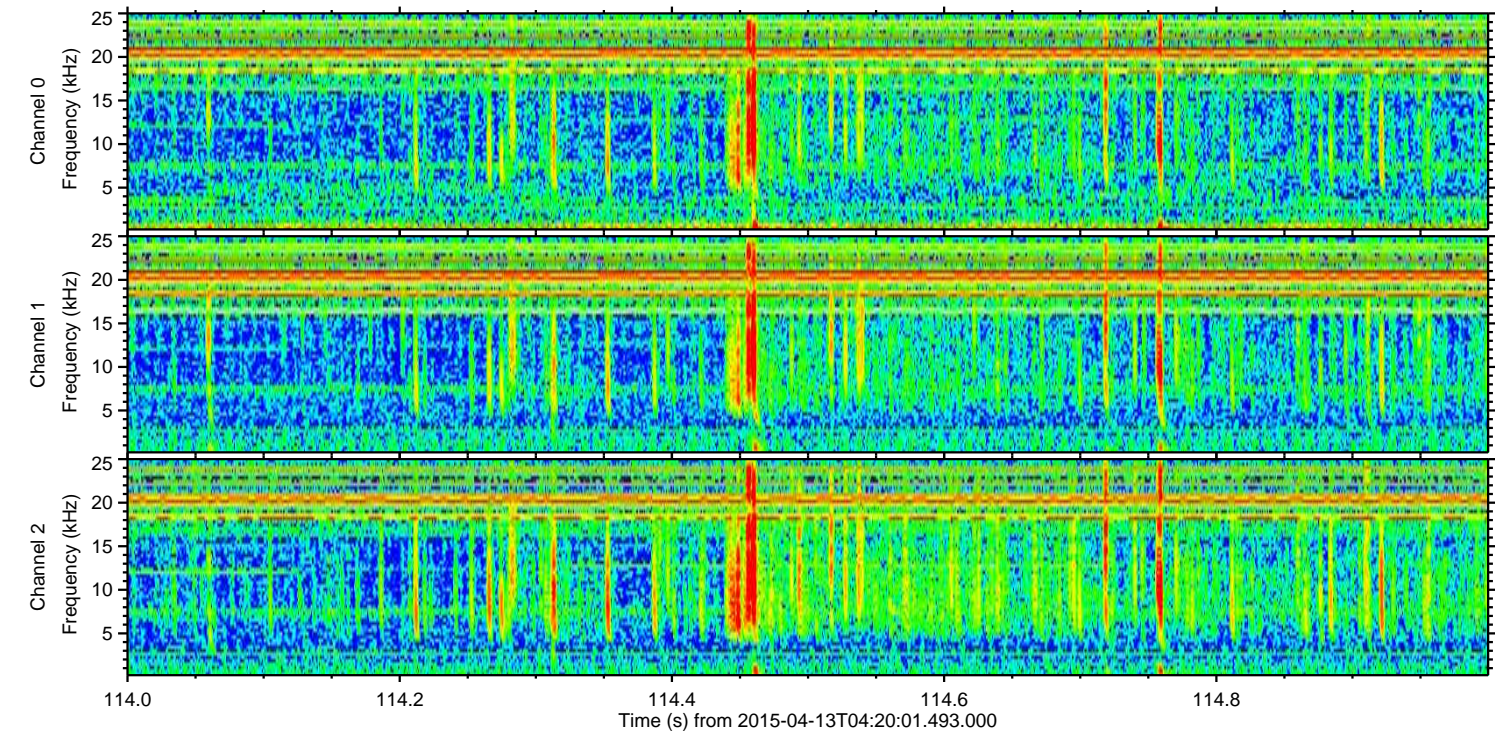
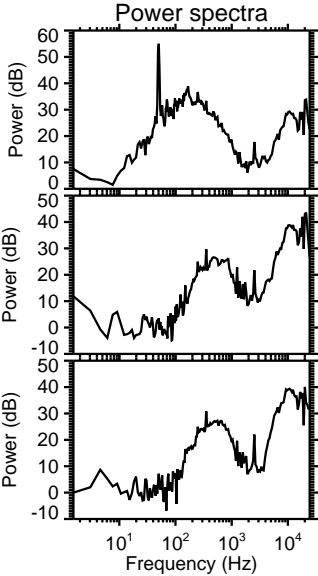
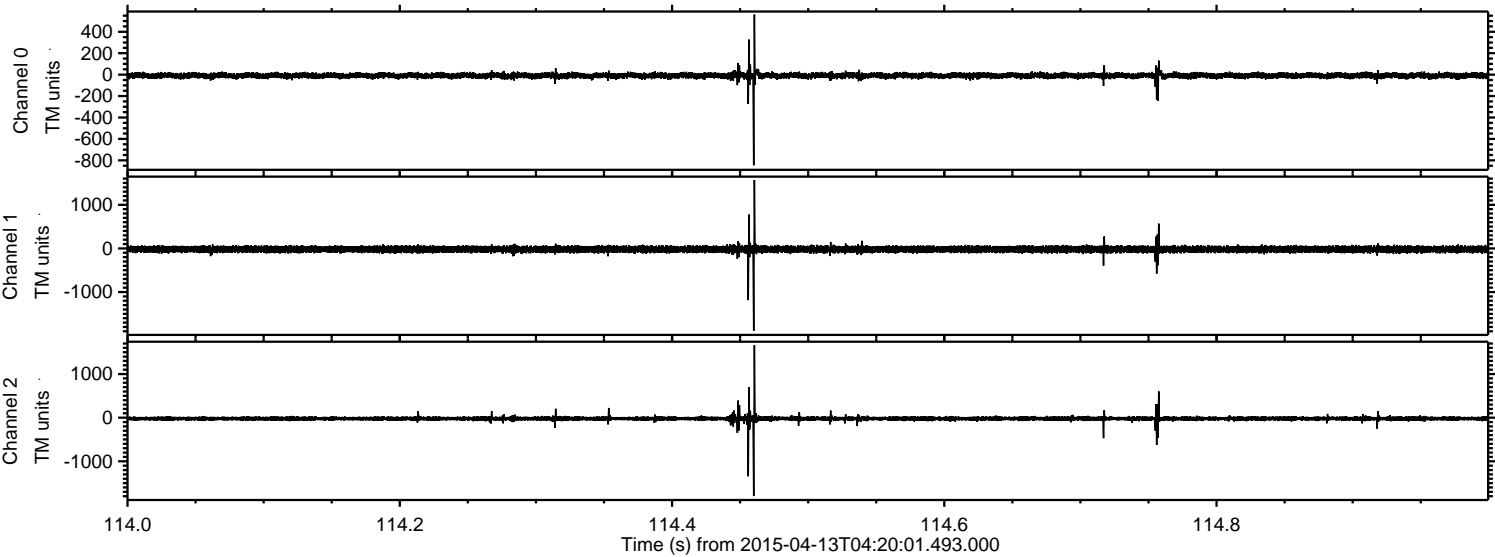
Processed Mon Apr 13 06:27:23 2015 by ELM ver.2012-10-06 from 001\_\_elm20150413\_042000\_\_dat00.bin





ELMAVAN 3D WAVEFORMS (Measured data sampled at 50 kHz) 49788 packets of 144 samples from 2015-04-13T04:20:01.493.000. Part 115/144

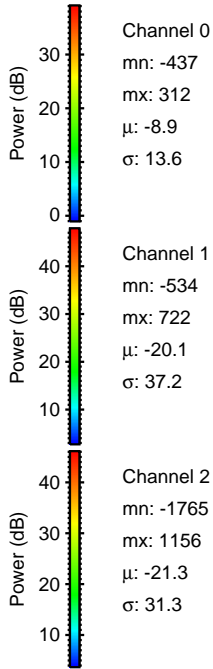
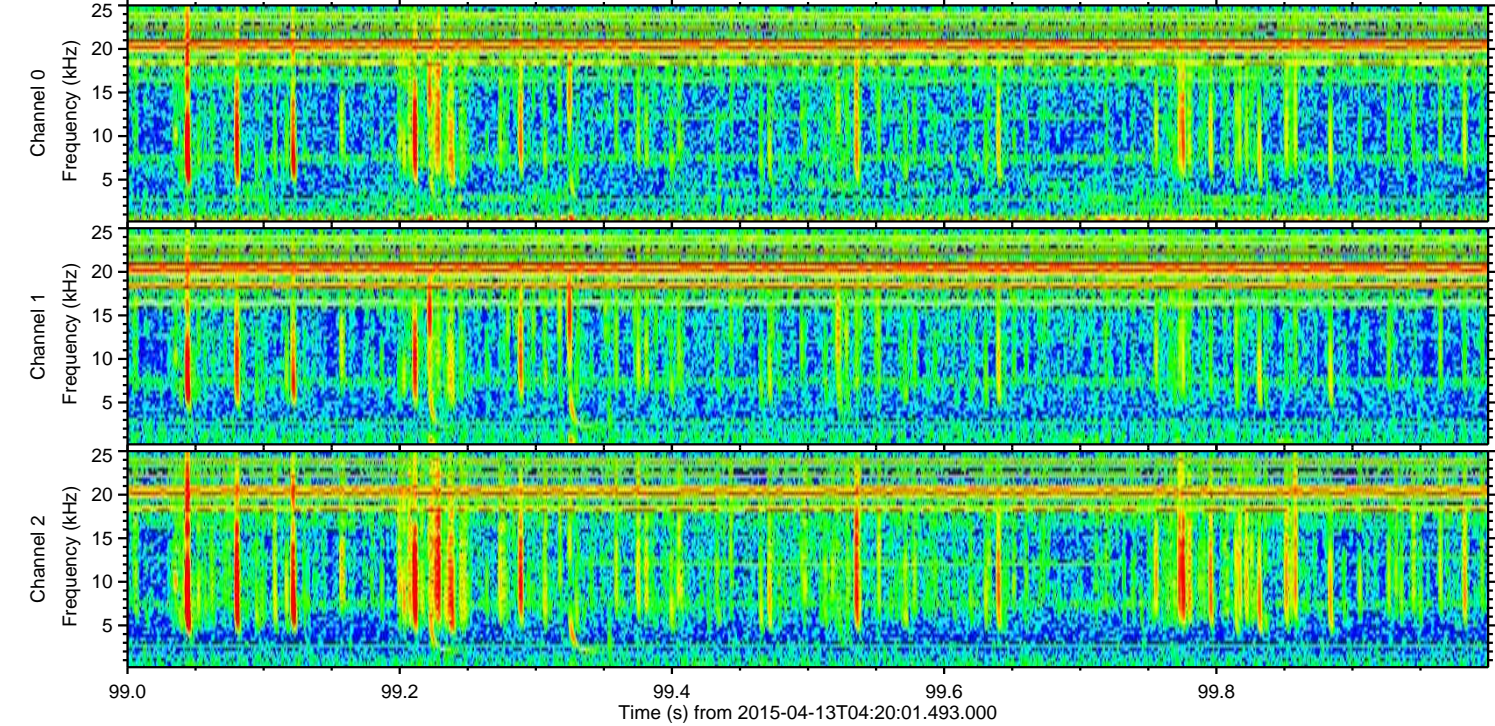
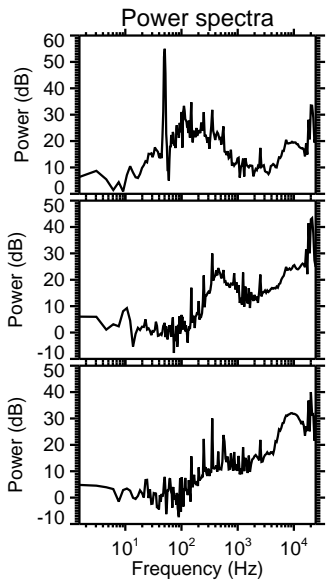
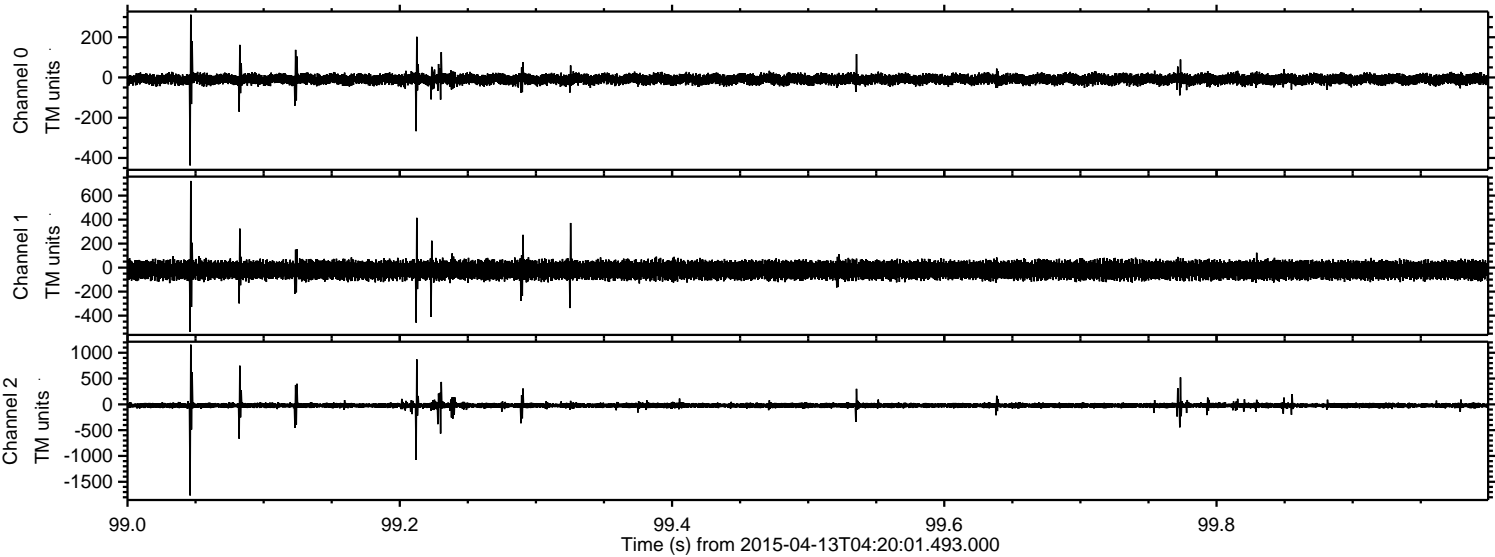
Processed Mon Apr 13 06:27:24 2015 by ELM ver.2012-10-06 from 001\_\_elm20150413\_042000\_\_dat00.bin





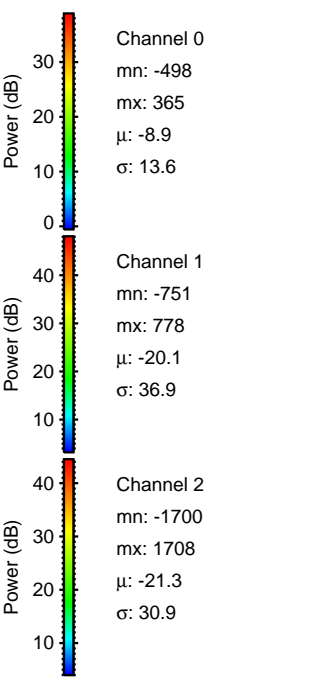
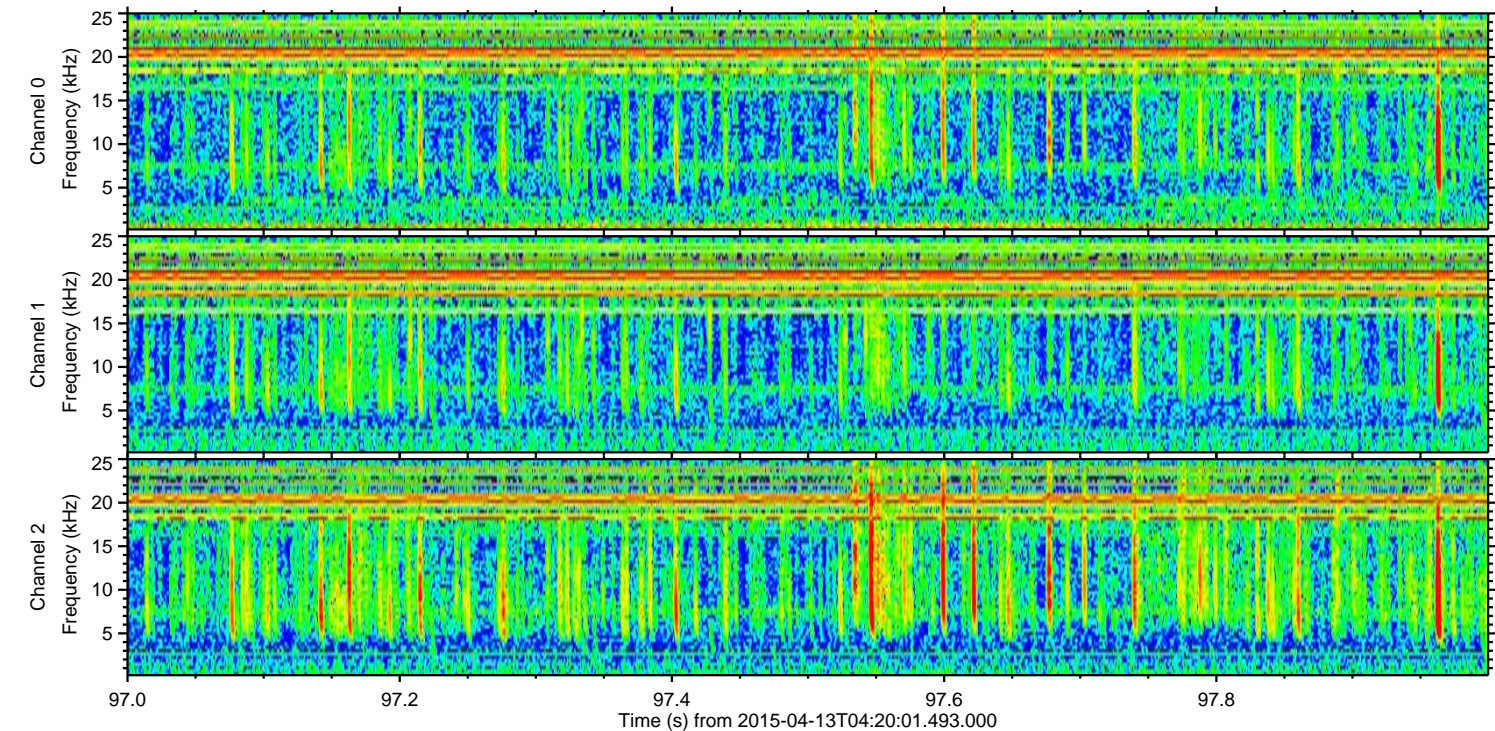
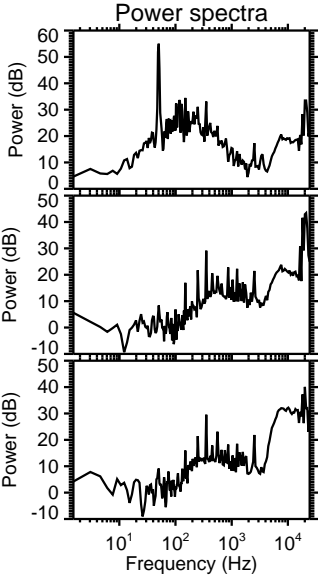
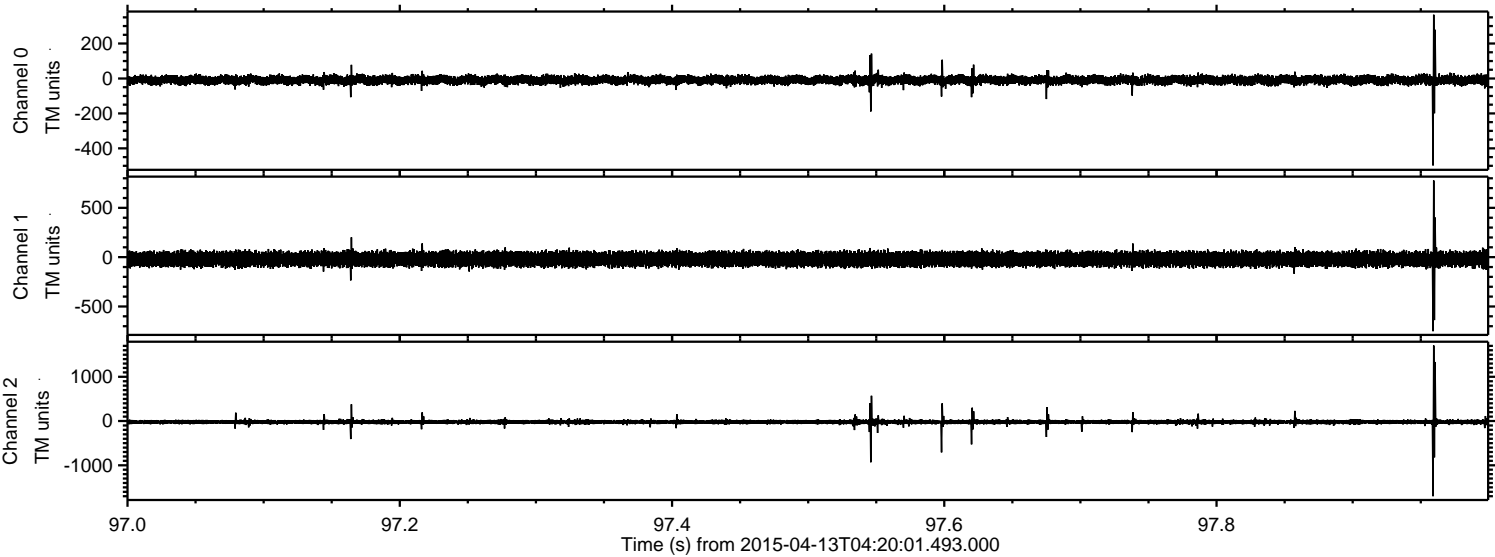
ELMAVAN 3D WAVEFORMS (Measured data sampled at 50 kHz) 49788 packets of 144 samples from 2015-04-13T04:20:01.493.000. Part 100/144

Processed Mon Apr 13 06:27:25 2015 by ELM ver.2012-10-06 from 001\_\_elm20150413\_042000\_\_dat00.bin



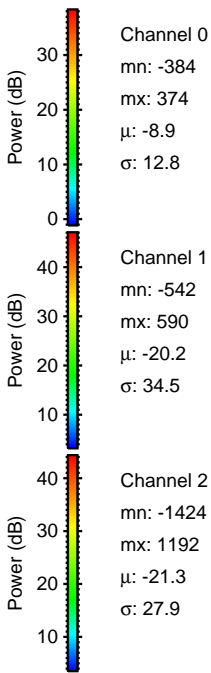
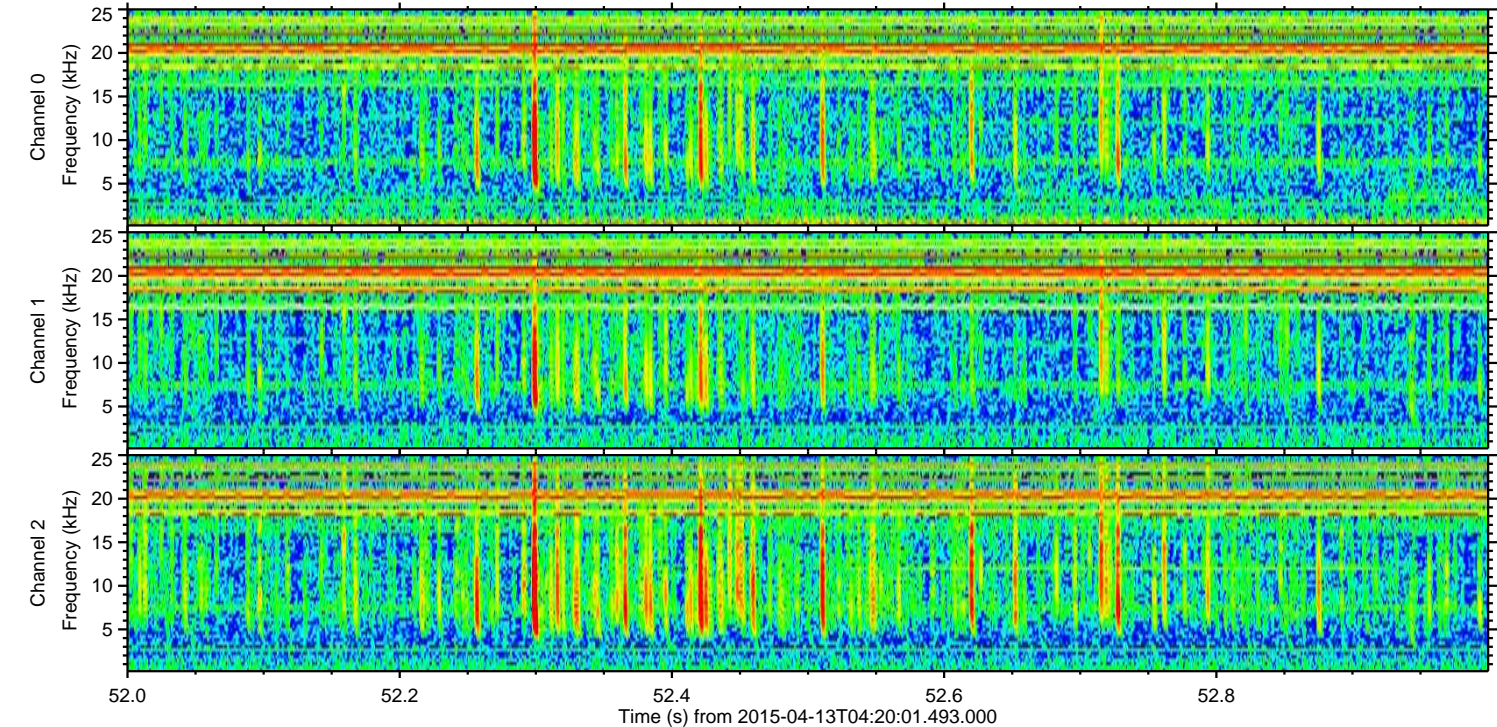
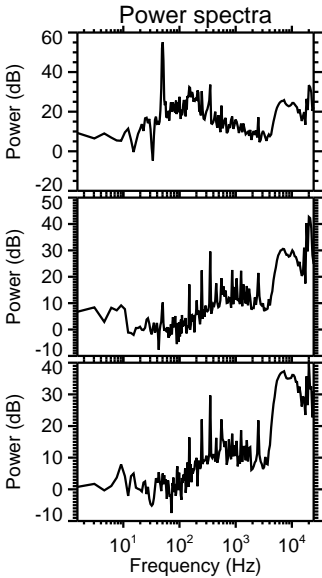
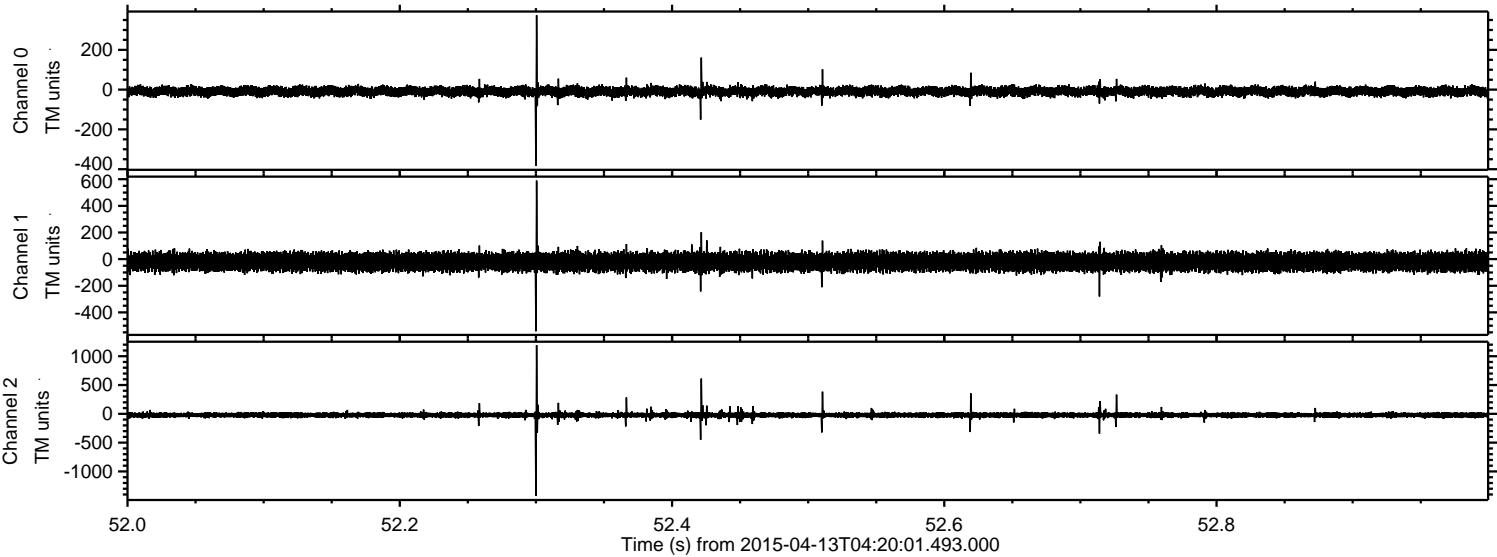


Processed Mon Apr 13 06:27:26 2015 by ELM ver.2012-10-06 from 001\_\_elm20150413\_042000\_\_dat00.bin



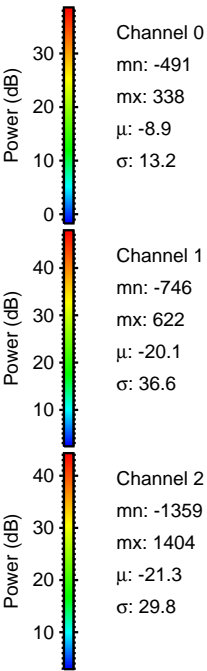
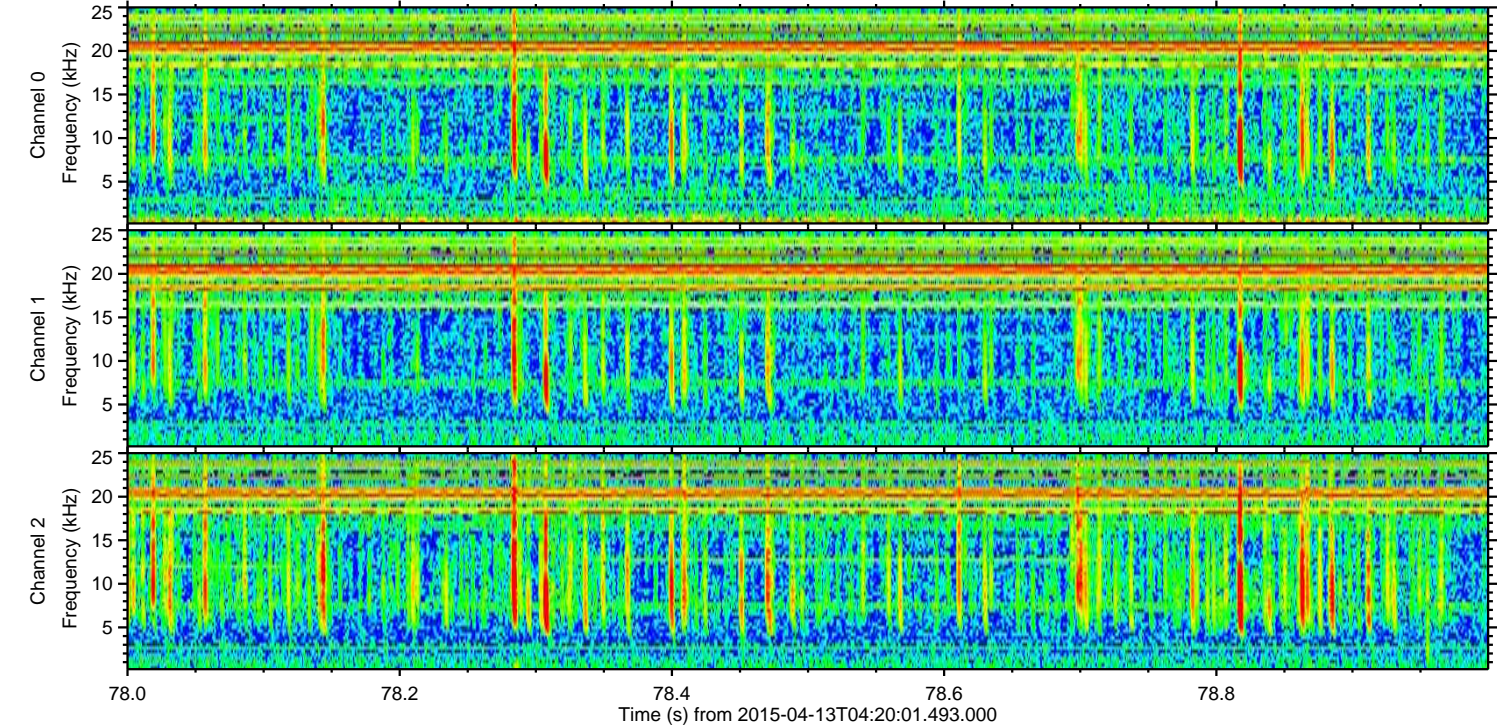
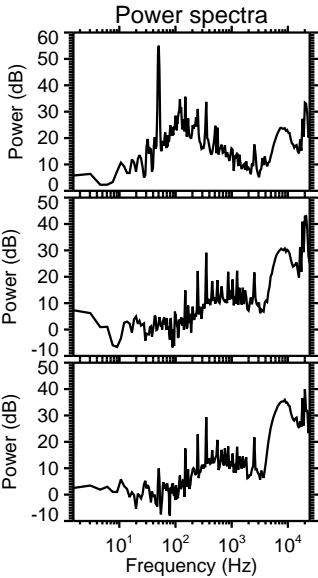
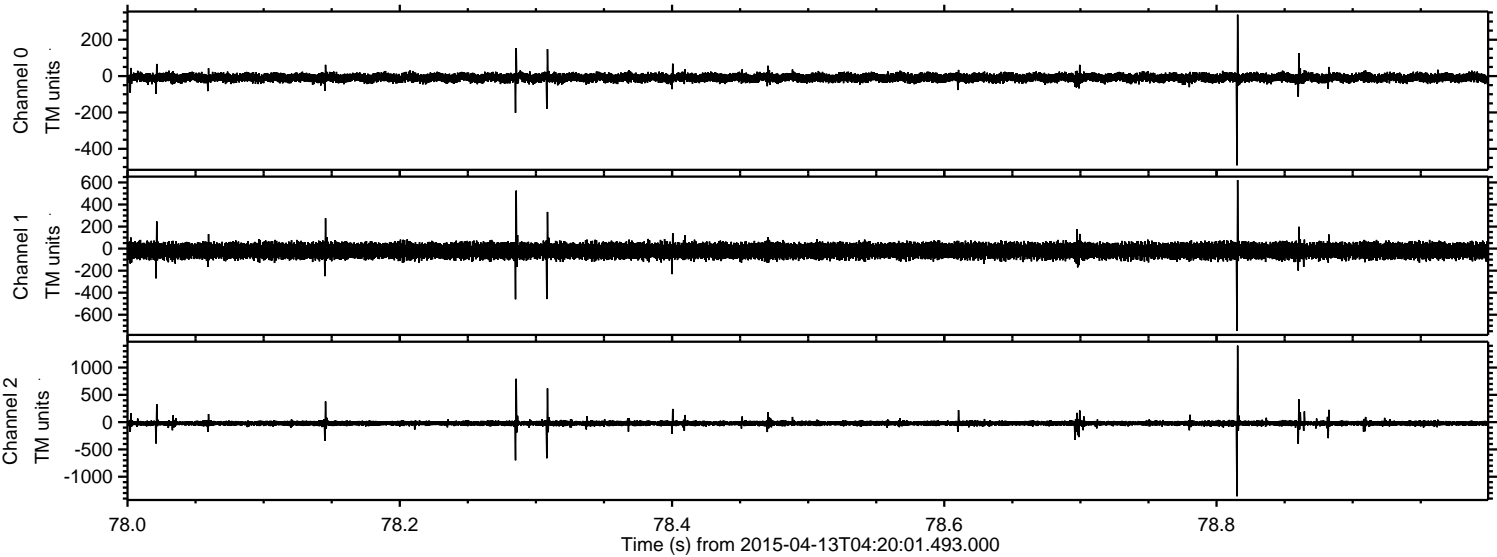


Processed Mon Apr 13 06:27:27 2015 by ELM ver.2012-10-06 from 001\_\_elm20150413\_042000\_\_dat00.bin



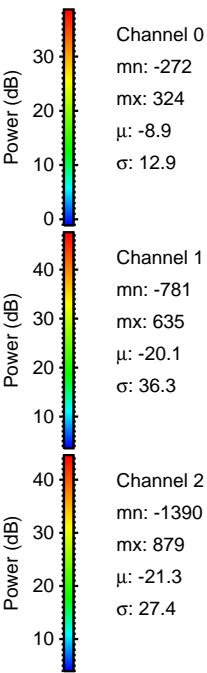
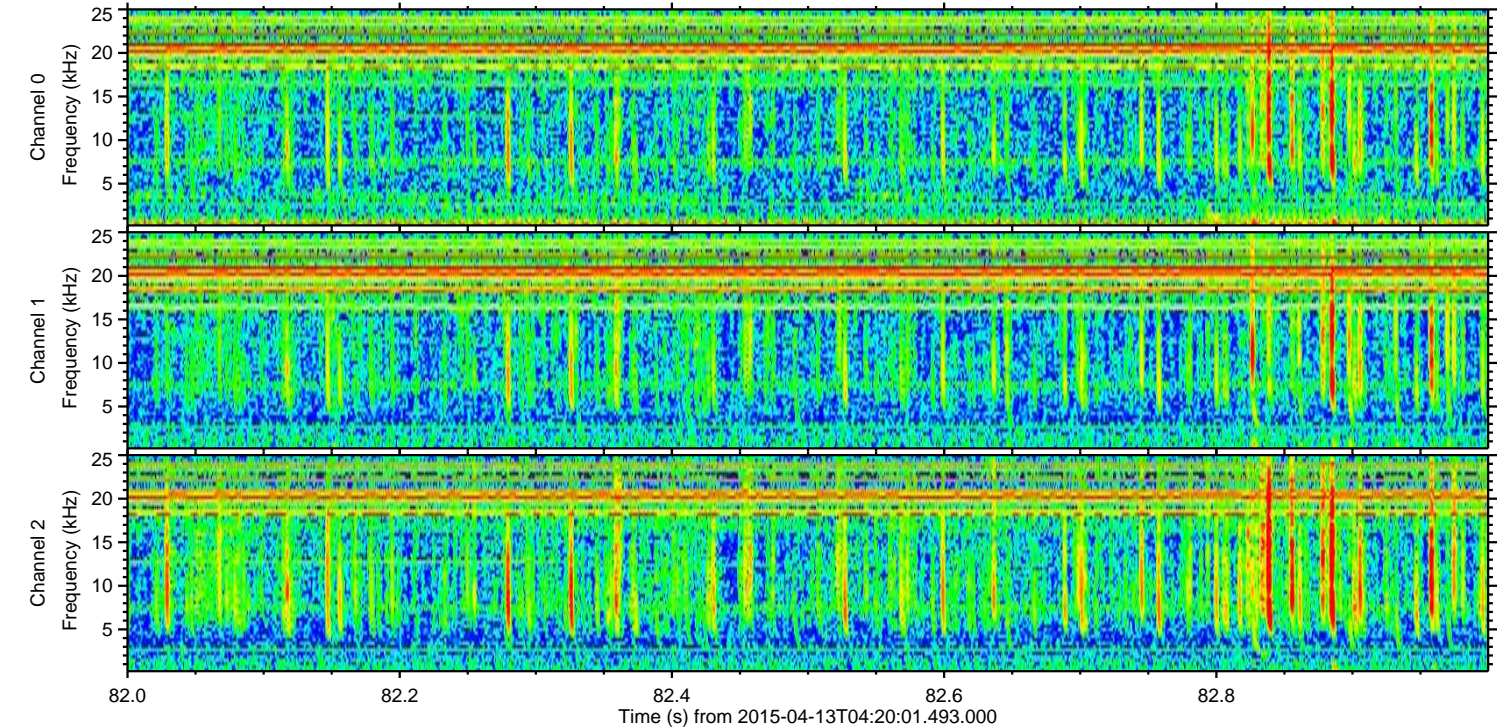
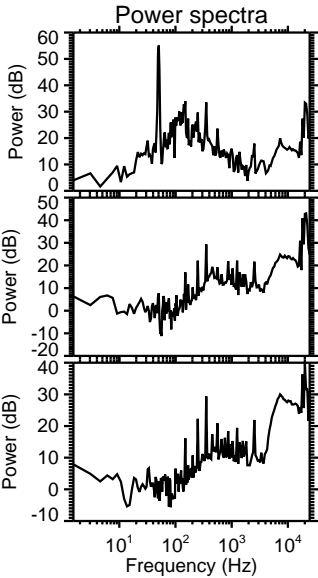
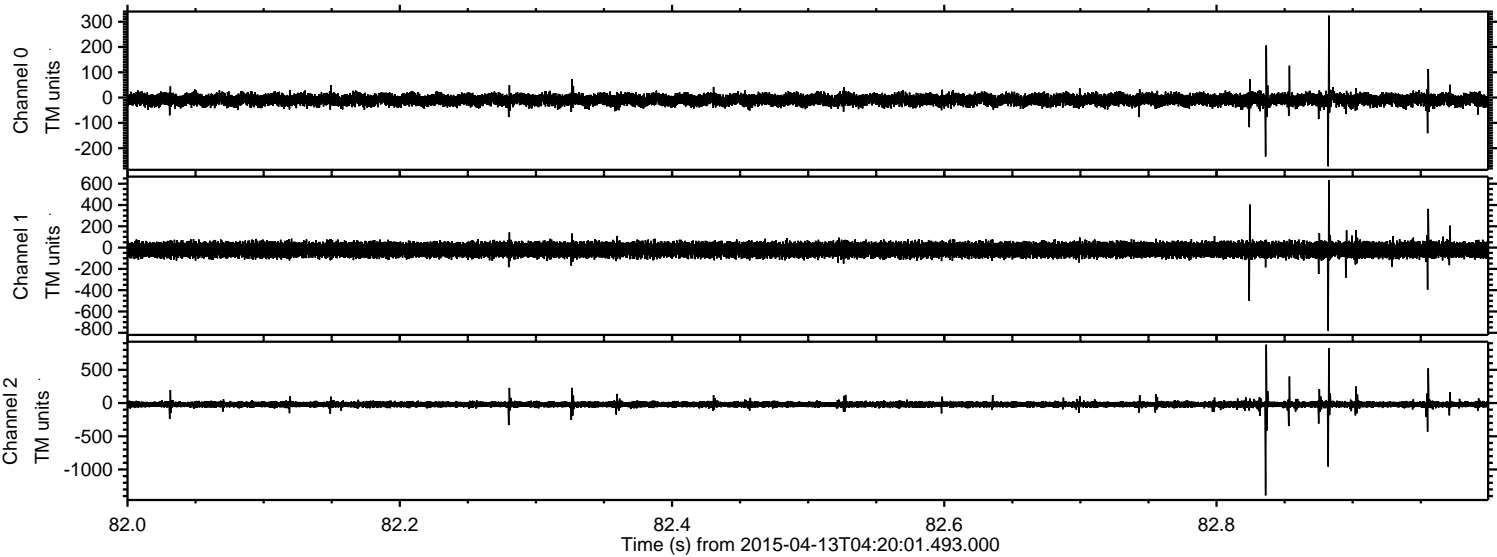


Processed Mon Apr 13 06:27:28 2015 by ELM ver.2012-10-06 from 001\_\_elm20150413\_042000\_\_dat00.bin





Processed Mon Apr 13 06:27:29 2015 by ELM ver.2012-10-06 from 001\_\_elm20150413\_042000\_\_dat00.bin





Processed Mon Apr 13 06:27:30 2015 by ELM ver.2012-10-06 from 001\_\_elm20150413\_042000\_\_dat00.bin

