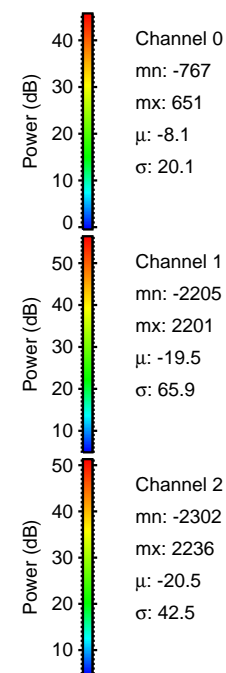
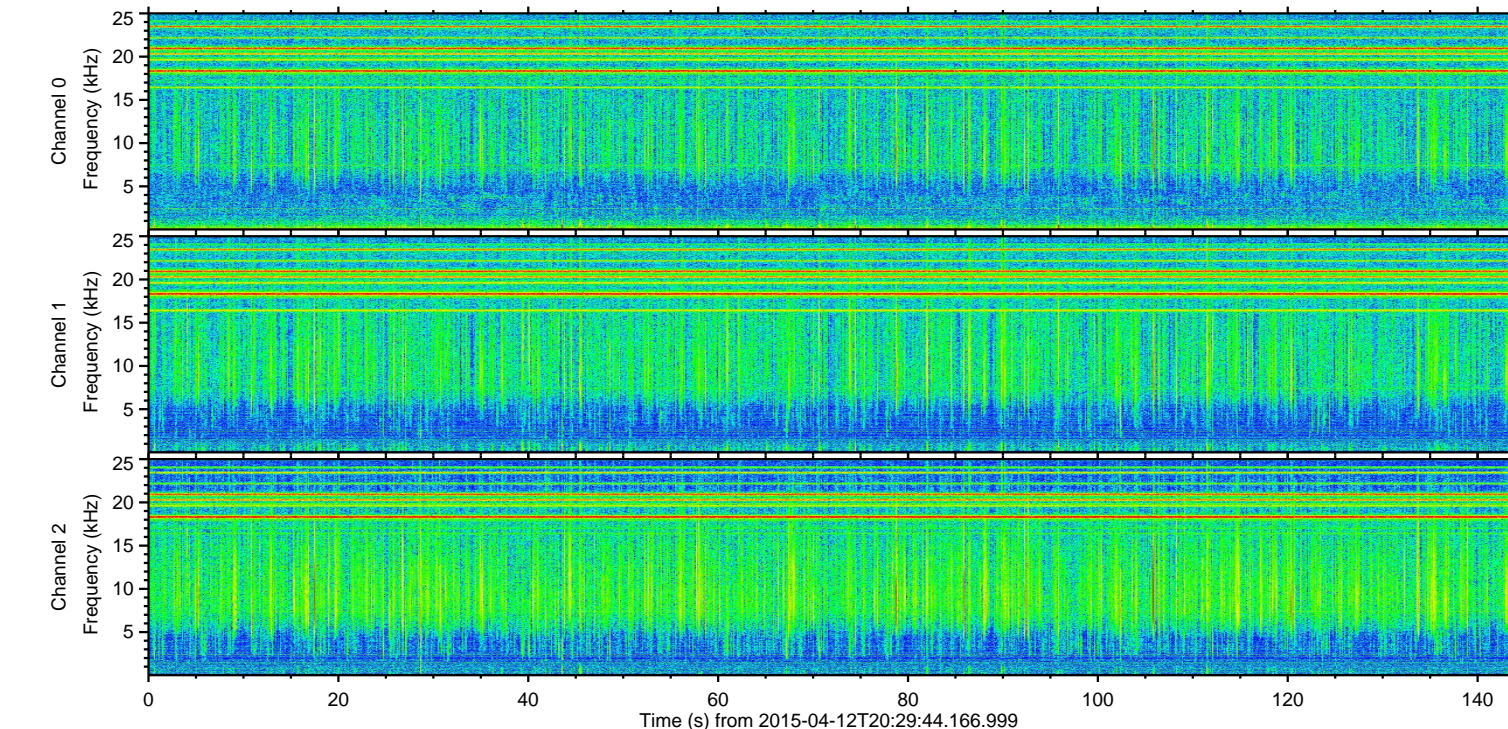
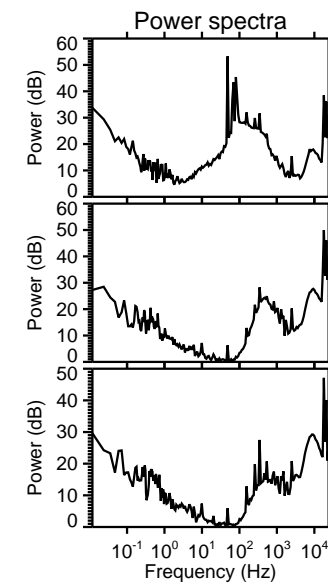
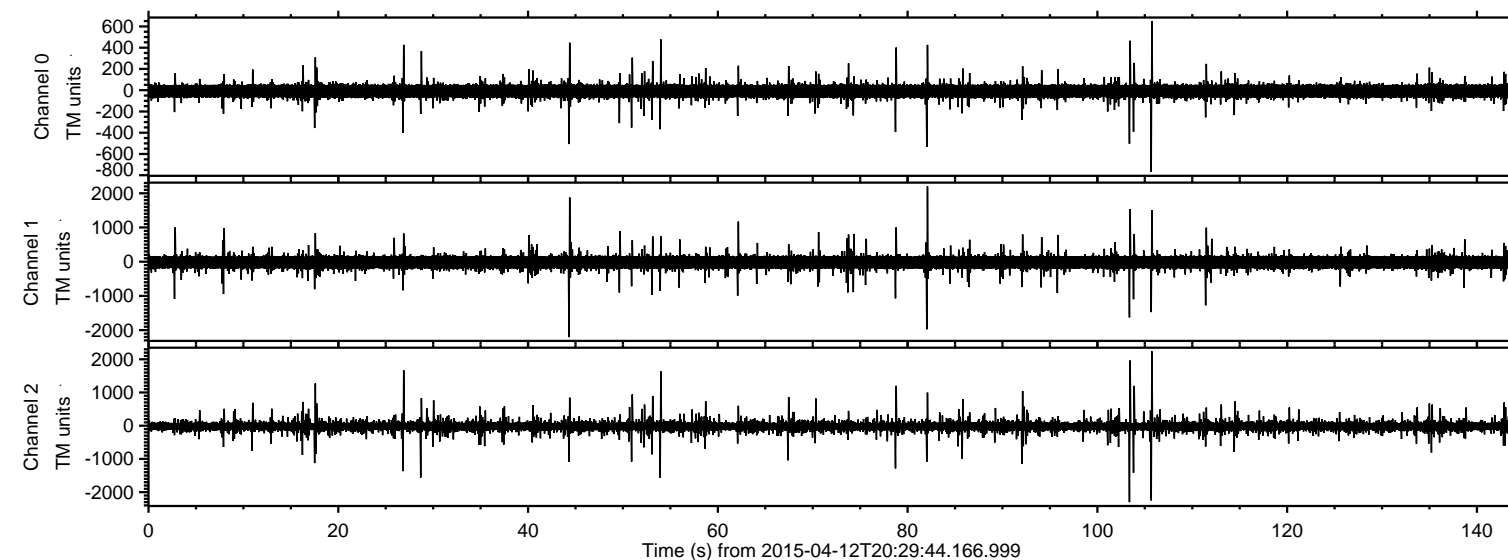


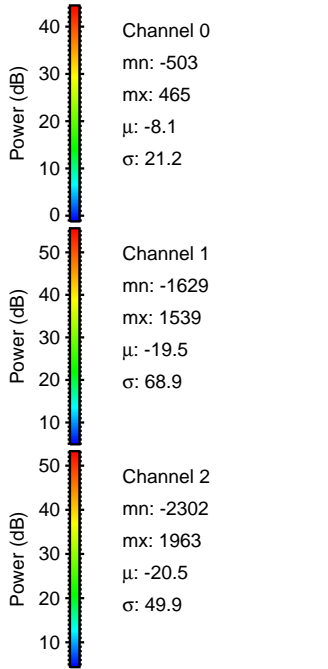
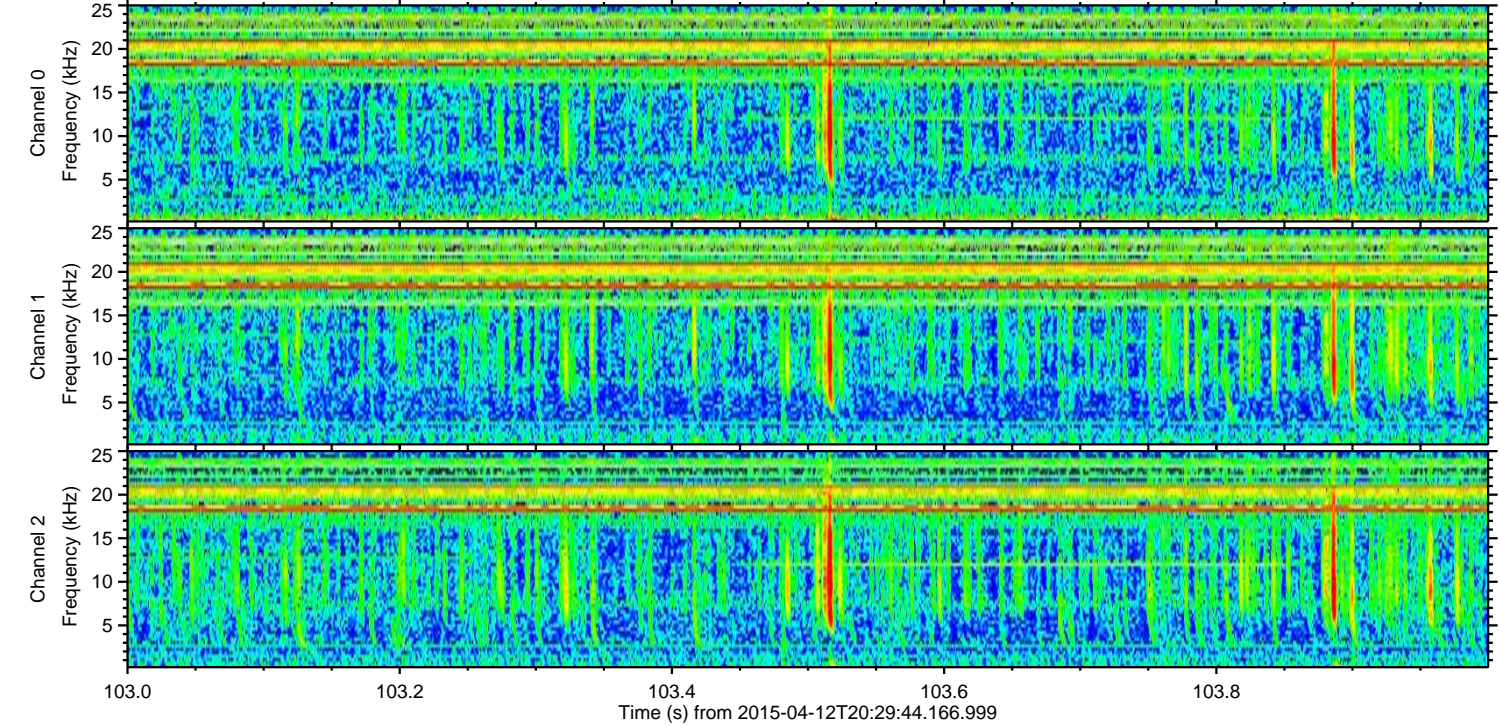
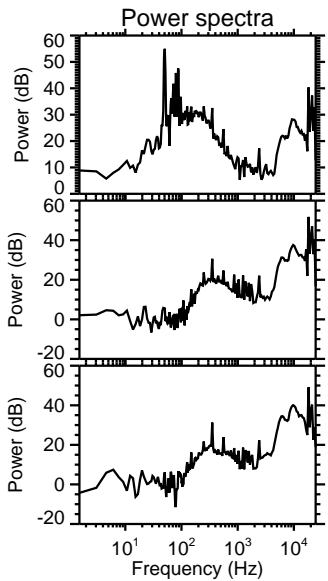
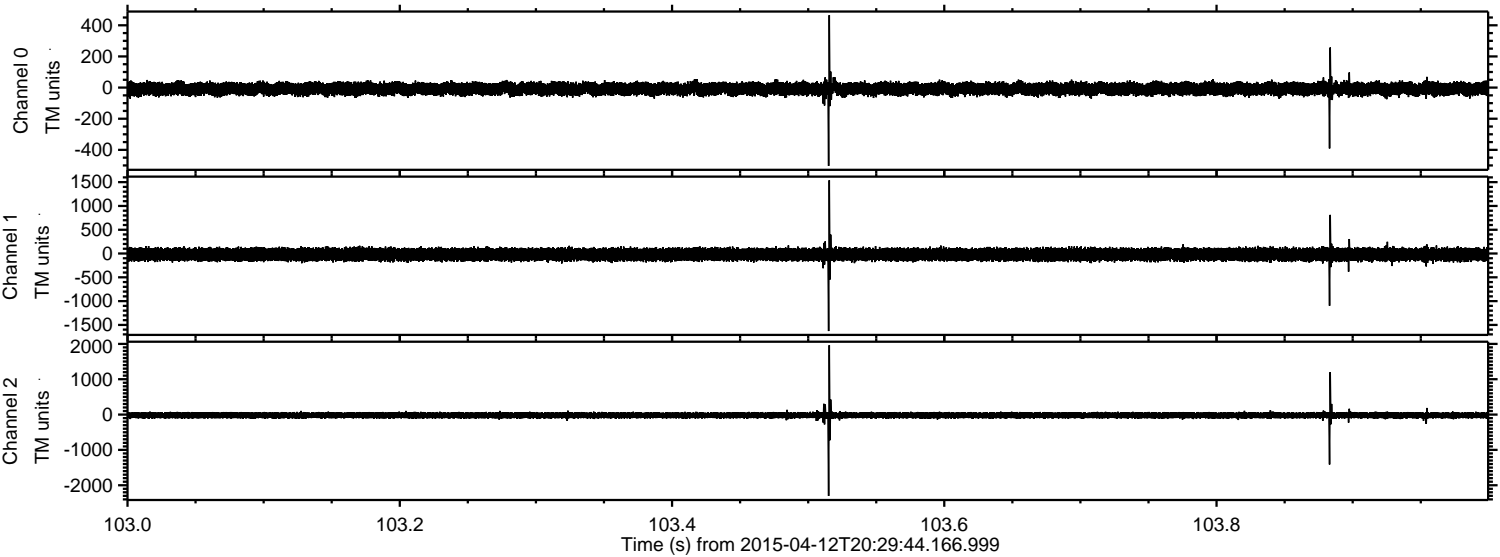
ELMAVAN 3D WAVEFORMS (Measured data sampled at 50 kHz) 49790 packets of 144 samples from 2015-04-12T20:29:44.166.999.

Processed Sun Apr 12 22:36:14 2015 by ELM ver.2012-10-06 from 001__elm20150412_202943__dat00.bin



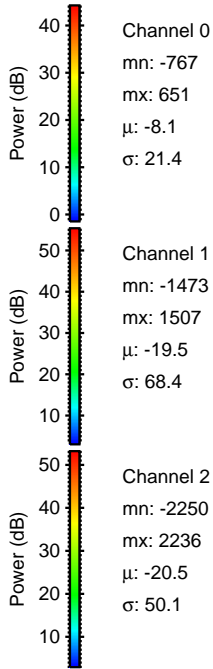
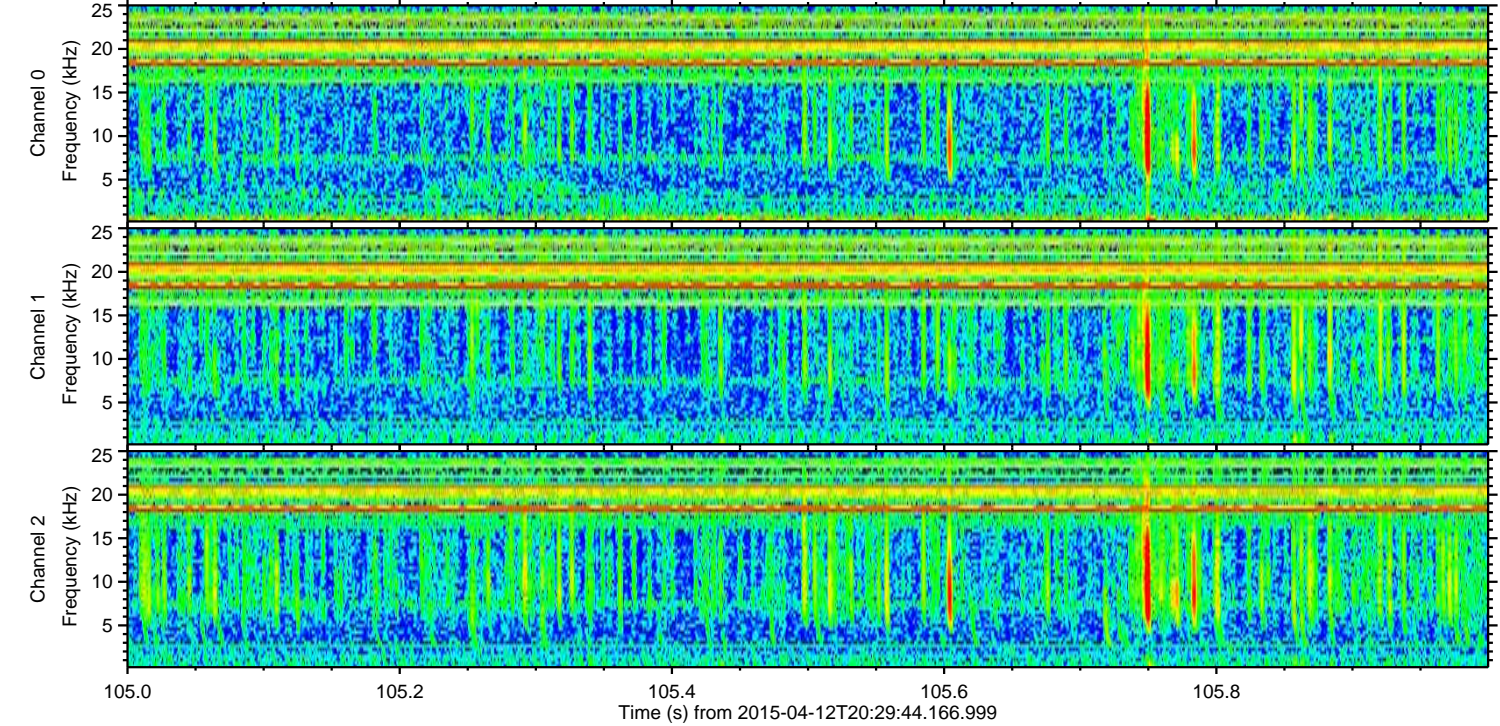
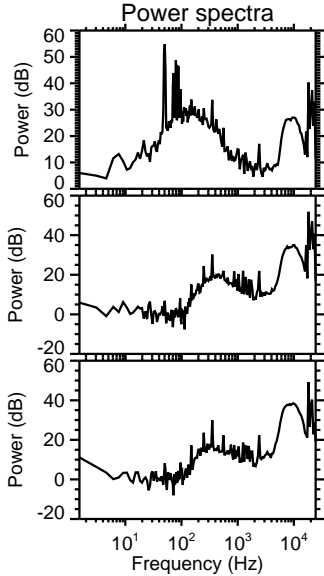
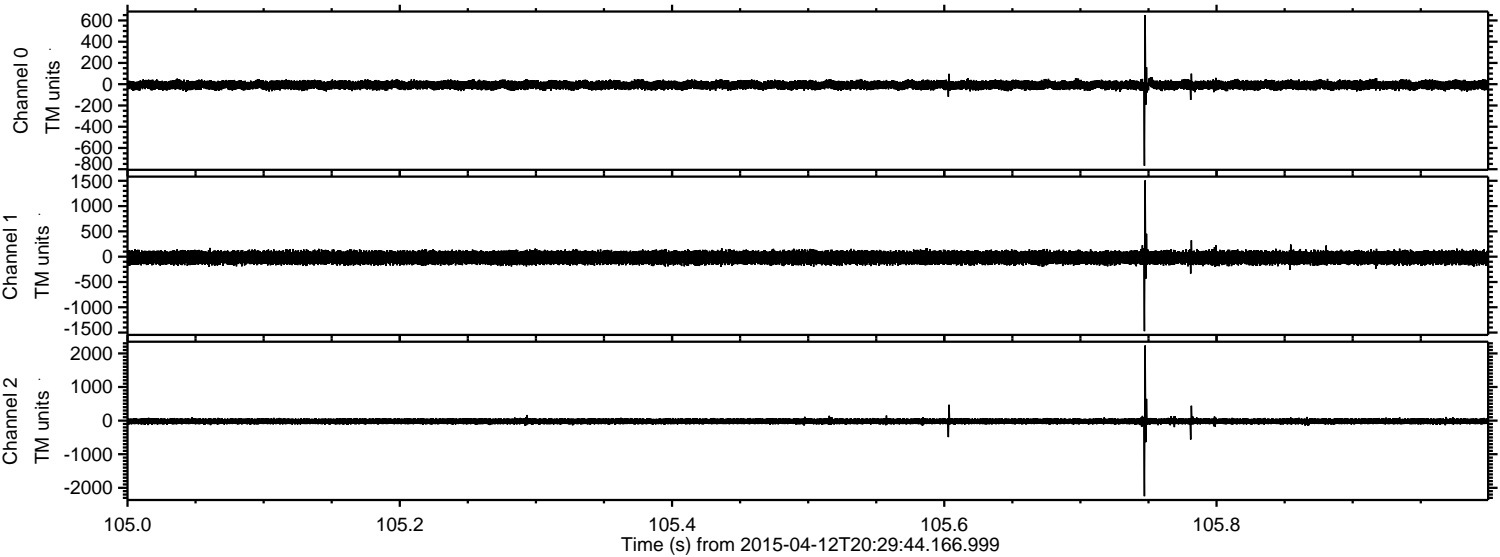
ELMAVAN 3D WAVEFORMS (Measured data sampled at 50 kHz) 49790 packets of 144 samples from 2015-04-12T20:29:44.166.999. Part 104/144

Processed Sun Apr 12 22:36:25 2015 by ELM ver.2012-10-06 from 001__elm20150412_202943__dat00.bin



ELMAVAN 3D WAVEFORMS (Measured data sampled at 50 kHz) 49790 packets of 144 samples from 2015-04-12T20:29:44.166.999. Part 106/144

Processed Sun Apr 12 22:36:26 2015 by ELM ver.2012-10-06 from 001__elm20150412_202943__dat00.bin

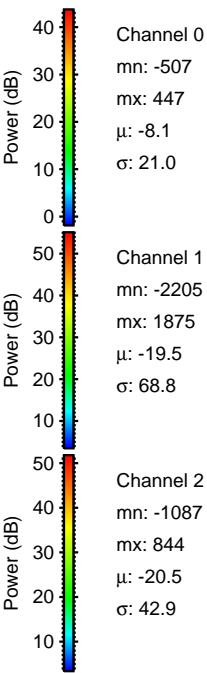
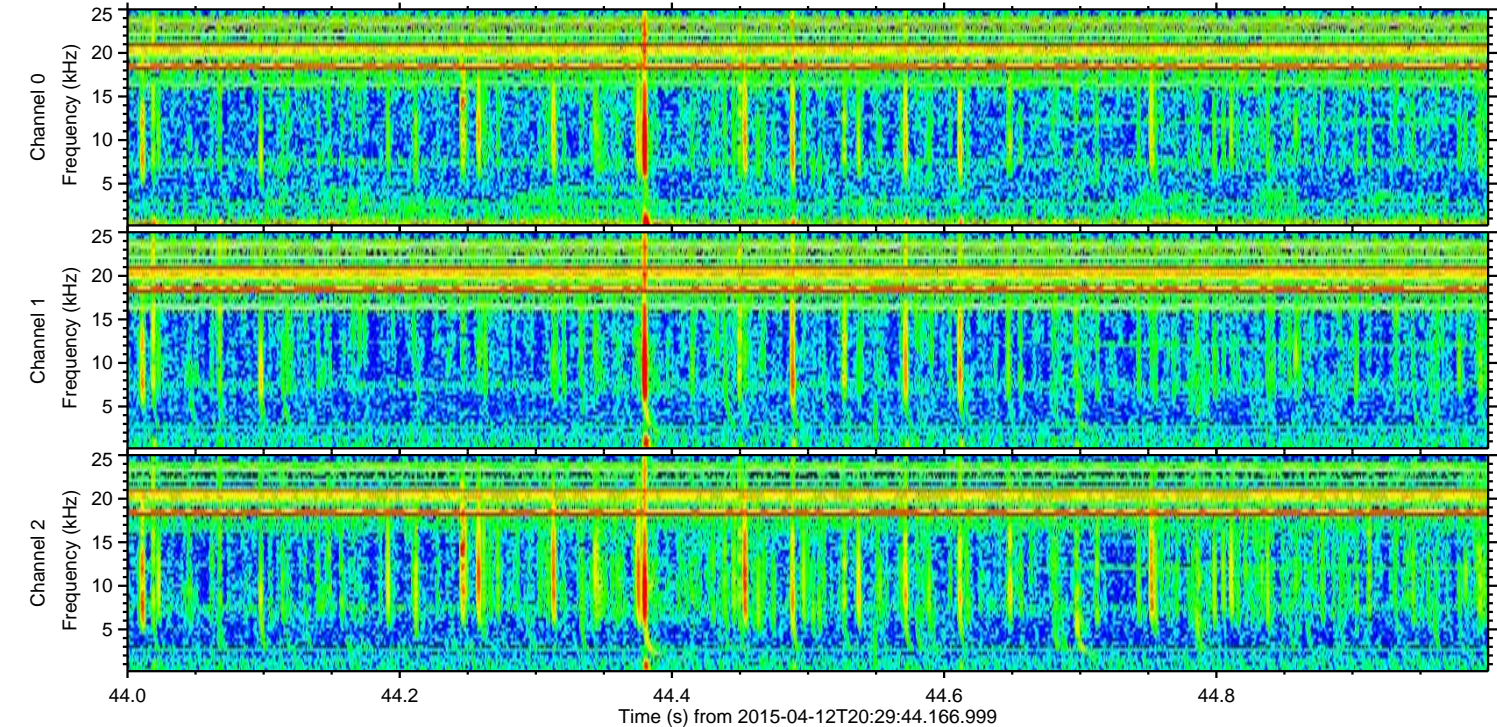
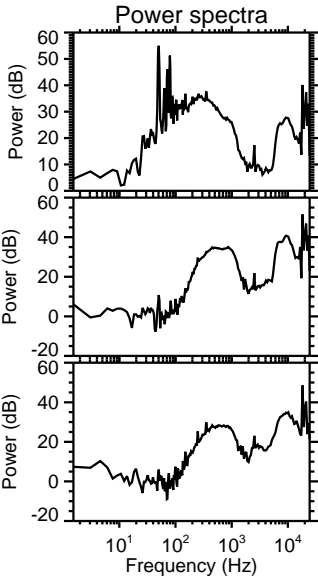
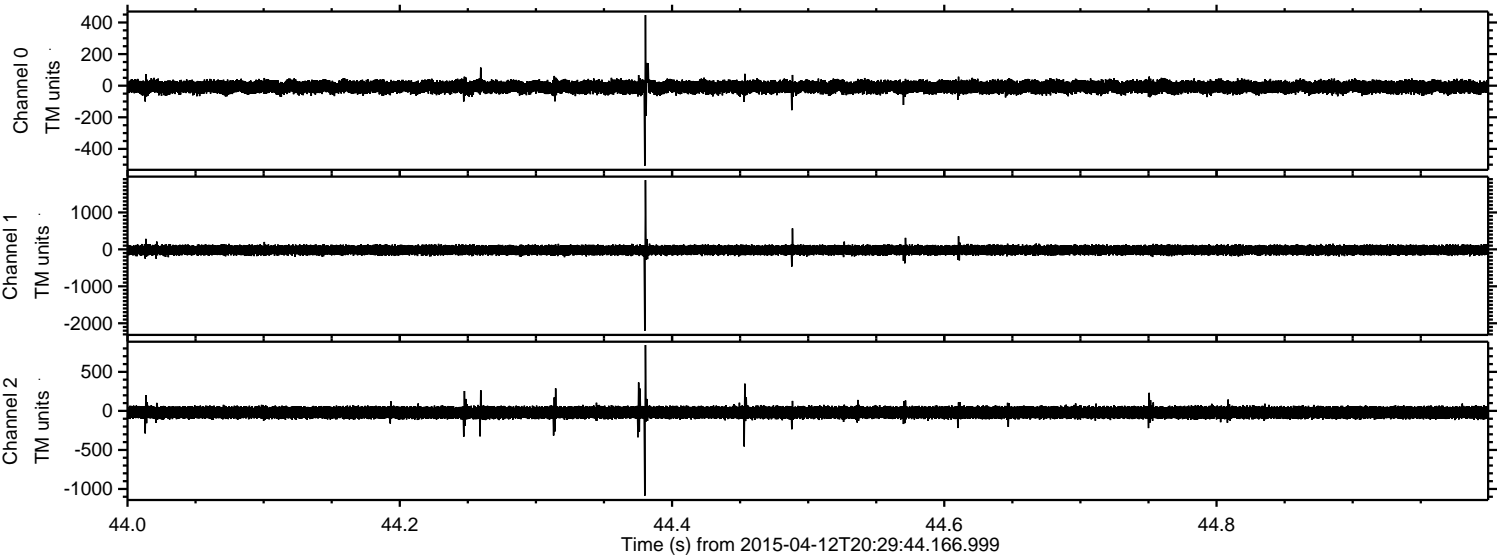


Channel 0
mn: -767
mx: 651
 μ : -8.1
 σ : 21.4

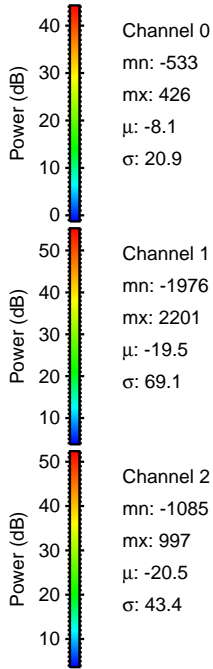
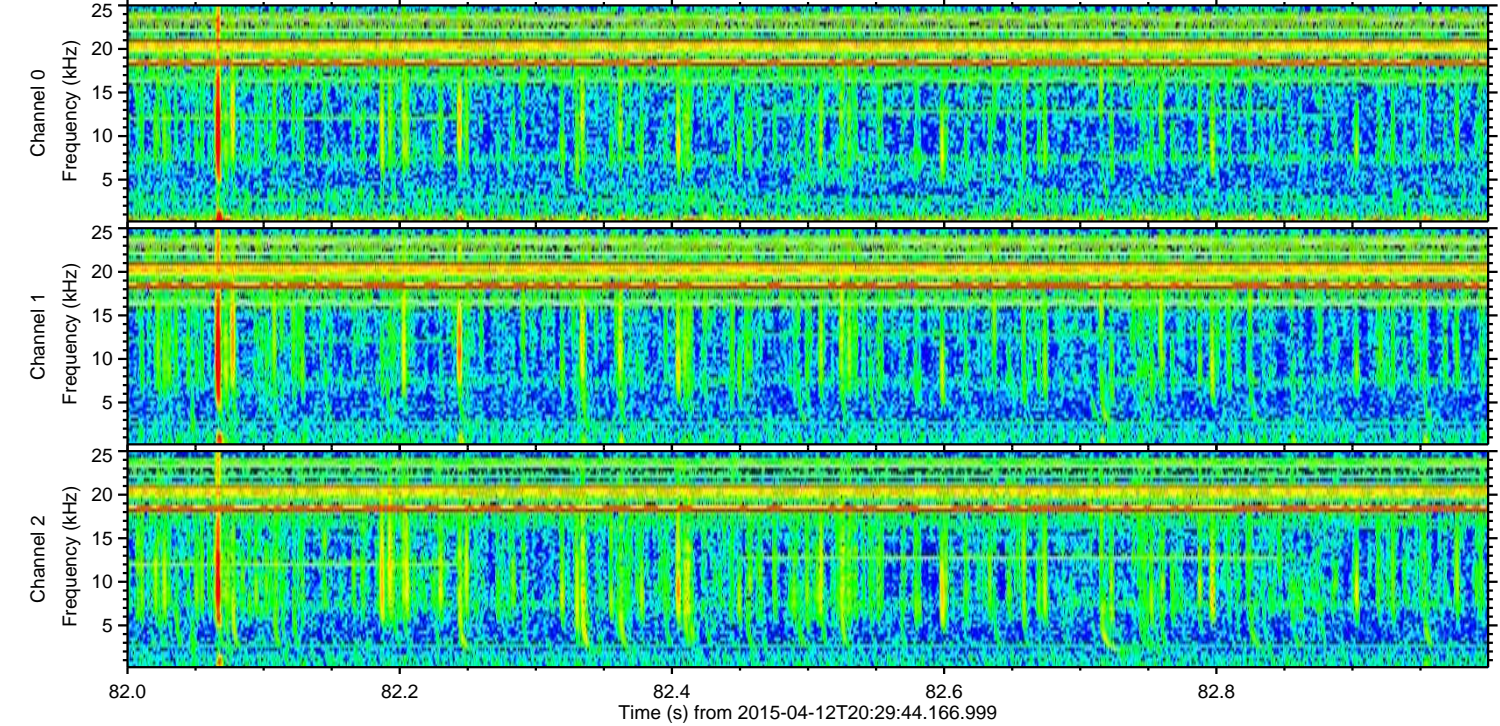
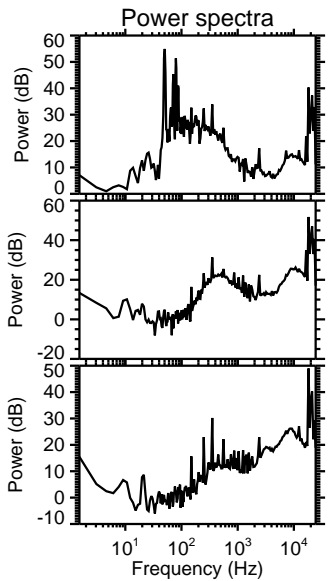
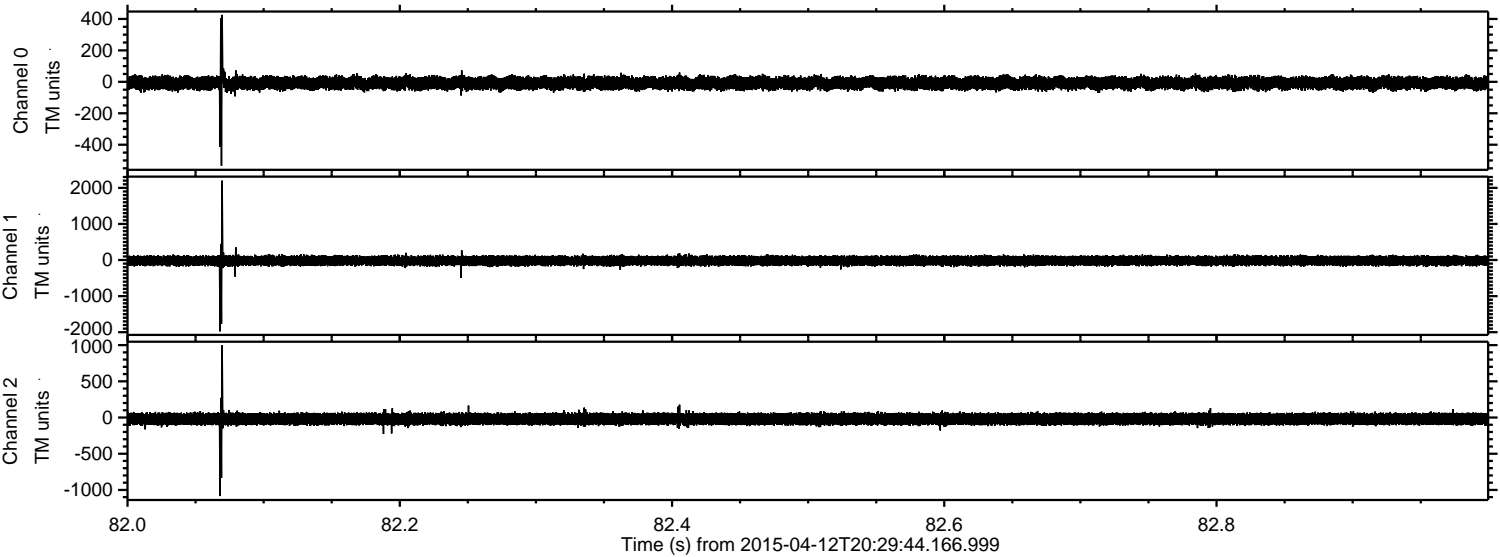
Channel 1
mn: -1473
mx: 1507
 μ : -19.5
 σ : 68.4

Channel 2
mn: -2250
mx: 2236
 μ : -20.5
 σ : 50.1

Processed Sun Apr 12 22:36:27 2015 by ELM ver.2012-10-06 from 001__elm20150412_202943__dat00.bin



Processed Sun Apr 12 22:36:28 2015 by ELM ver.2012-10-06 from 001__elm20150412_202943__dat00.bin



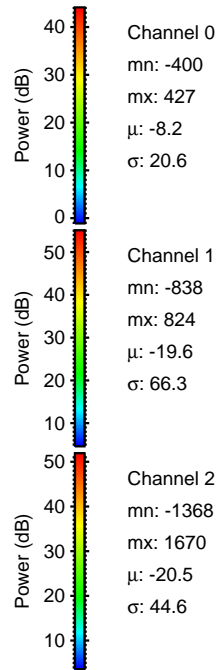
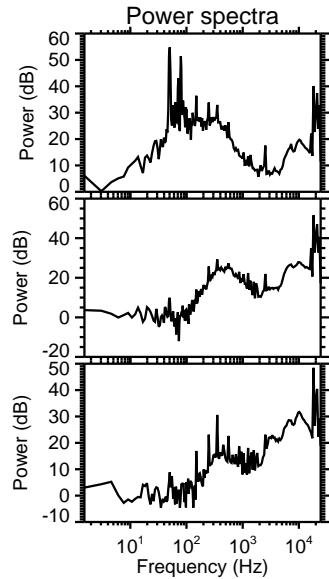
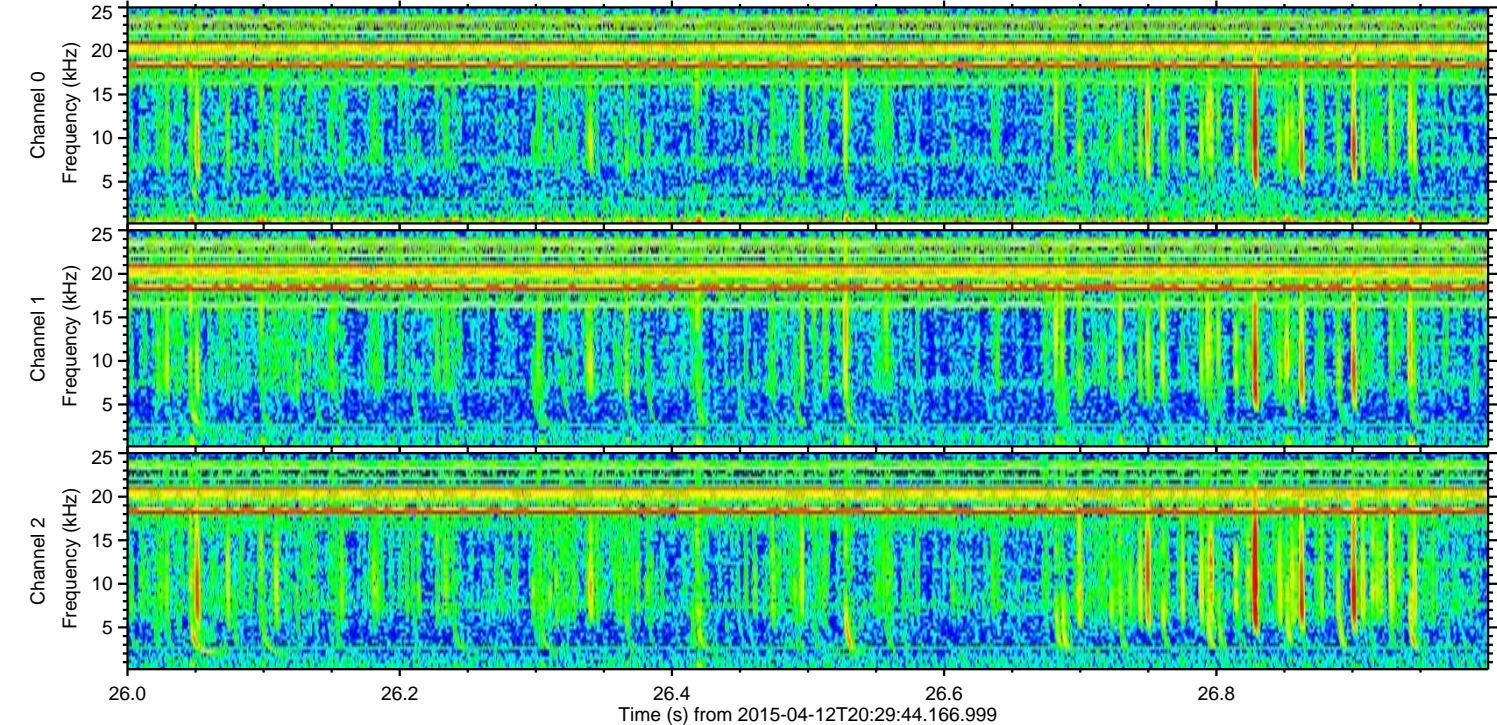
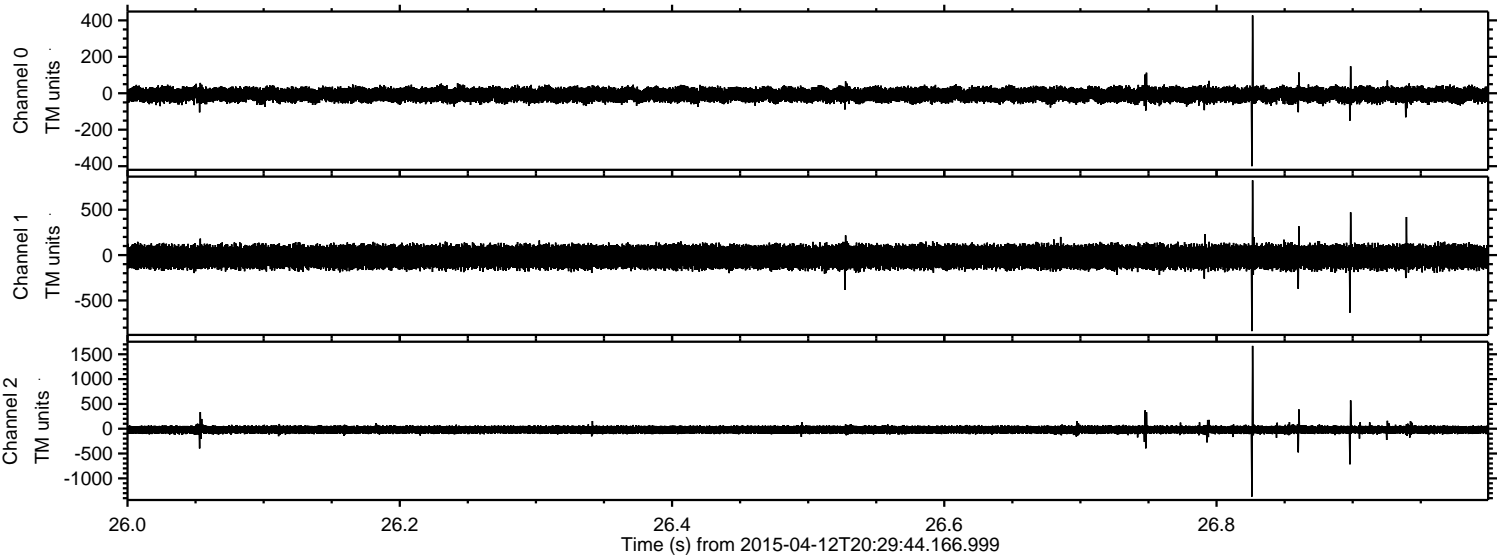
Channel 0
mn: -533
mx: 426
 μ : -8.1
 σ : 20.9

Channel 1
mn: -1976
mx: 2201
 μ : -19.5
 σ : 69.1

Channel 2
mn: -1085
mx: 997
 μ : -20.5
 σ : 43.4

ELMAVAN 3D WAVEFORMS (Measured data sampled at 50 kHz) 49790 packets of 144 samples from 2015-04-12T20:29:44.166.999. Part 27/144

Processed Sun Apr 12 22:36:29 2015 by ELM ver.2012-10-06 from 001__elm20150412_202943__dat00.bin



Power spectra

Channel 0

mn: -400
mx: 427
 μ : -8.2
 σ : 20.6

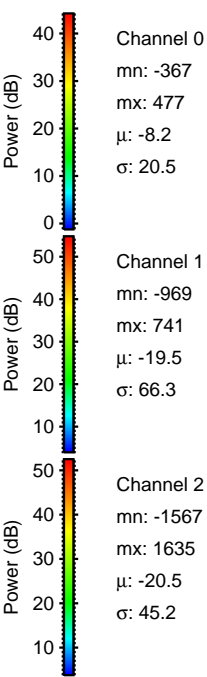
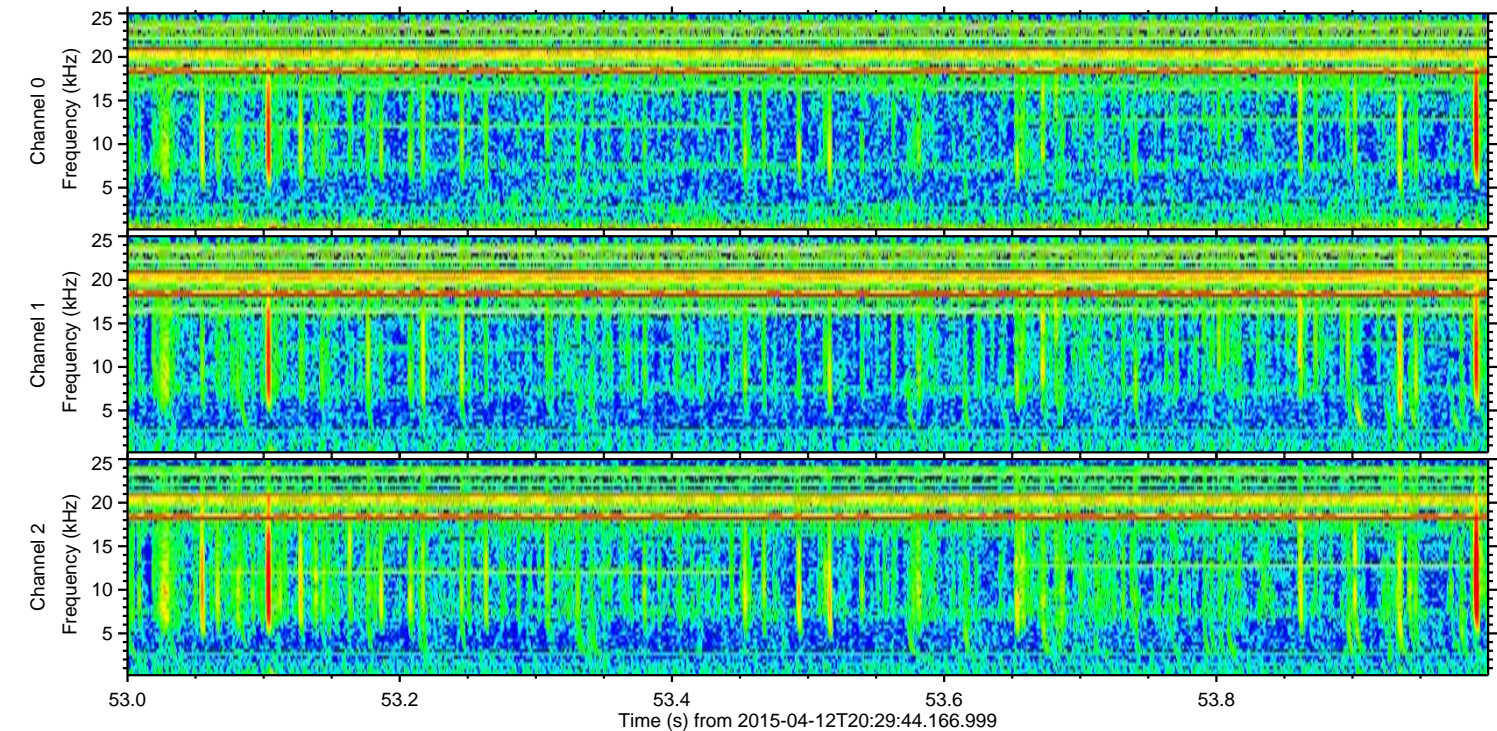
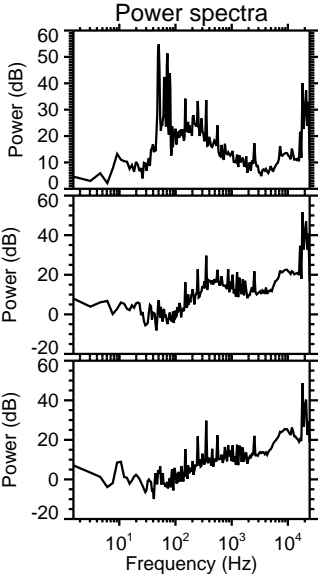
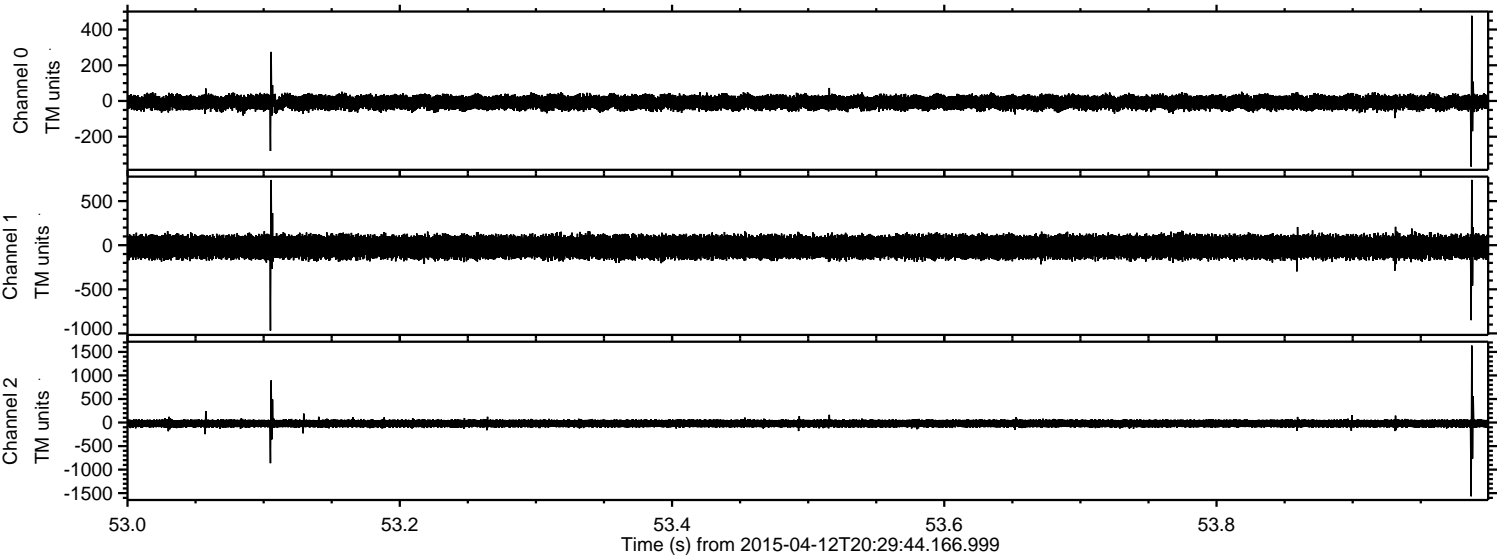
Channel 1

mn: -838
mx: 824
 μ : -19.6
 σ : 66.3

Channel 2

mn: -1368
mx: 1670
 μ : -20.5
 σ : 44.6

Processed Sun Apr 12 22:36:30 2015 by ELM ver.2012-10-06 from 001__elm20150412_202943__dat00.bin

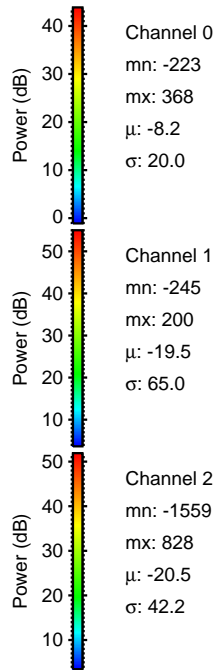
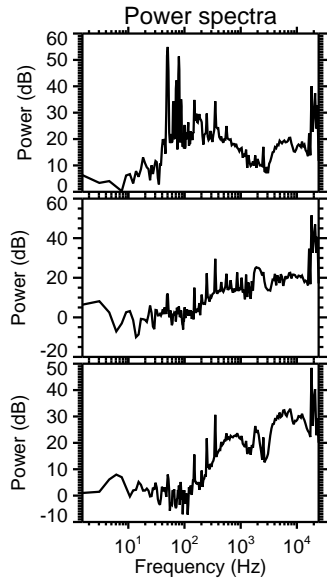
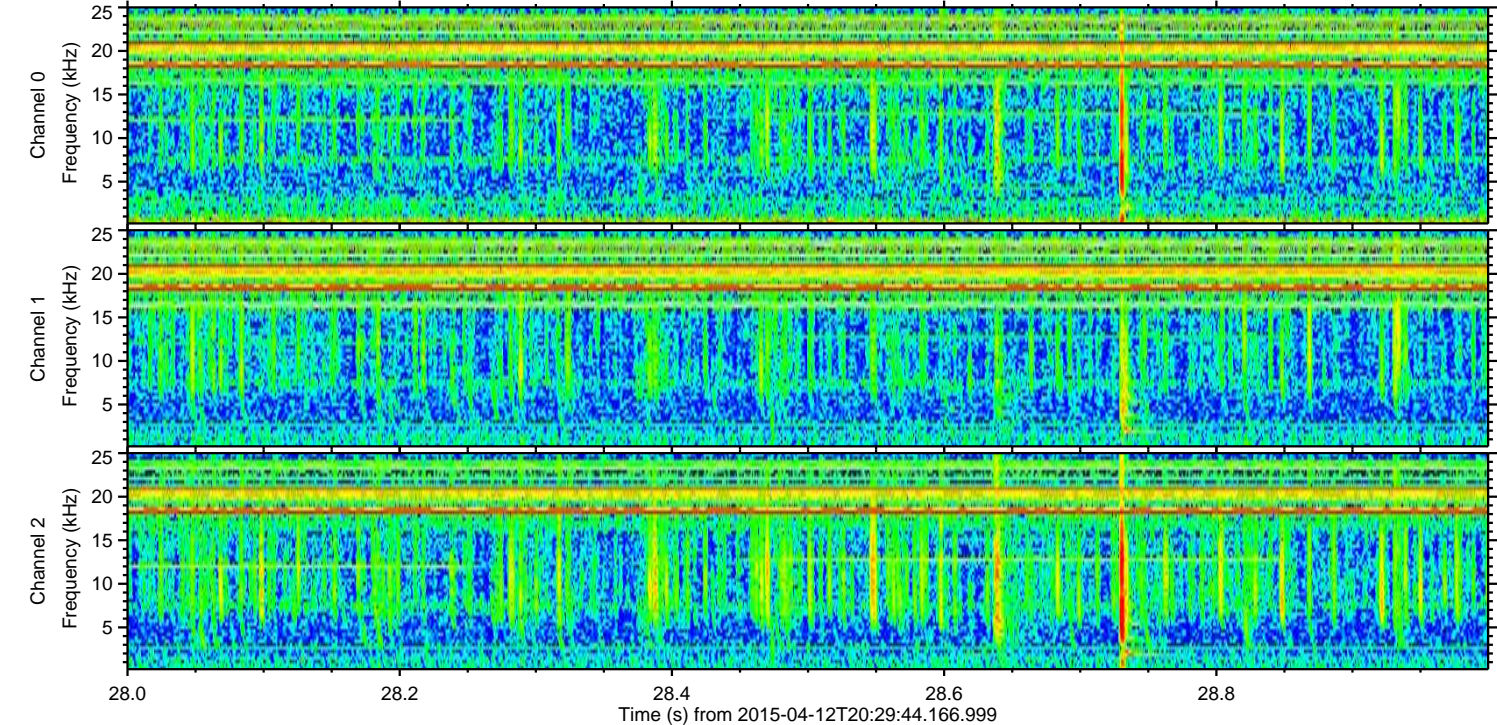
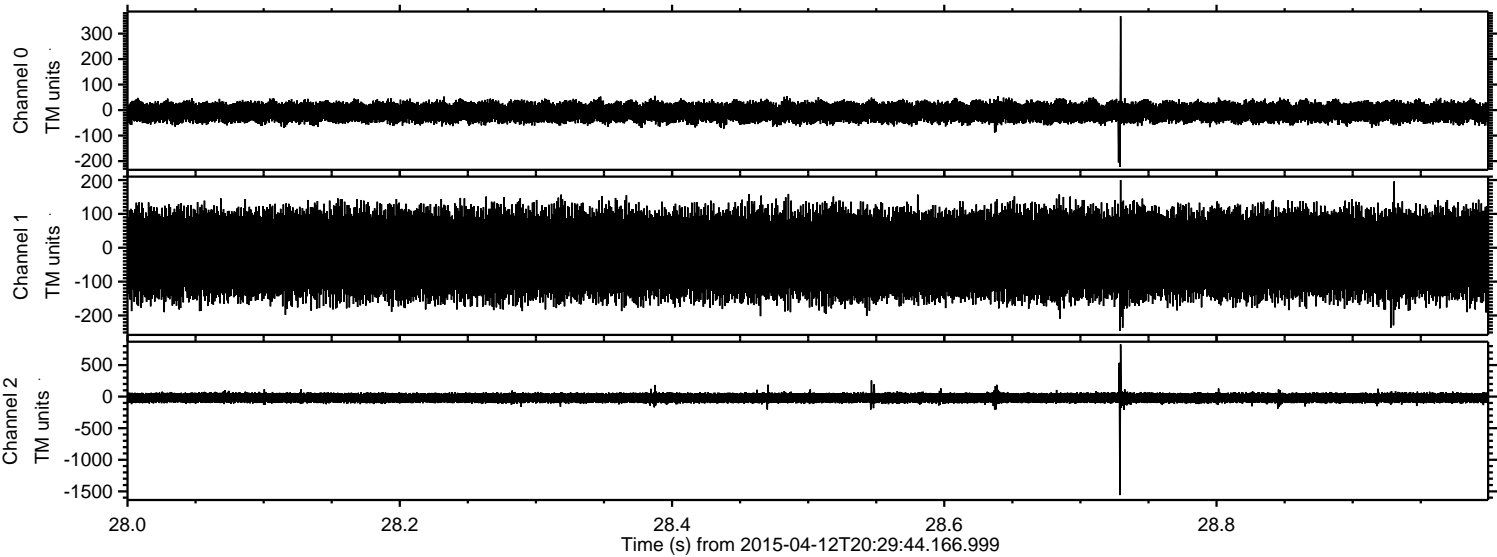


Channel 0
mn: -367
mx: 477
 μ : -8.2
 σ : 20.5

Channel 1
mn: -969
mx: 741
 μ : -19.5
 σ : 66.3

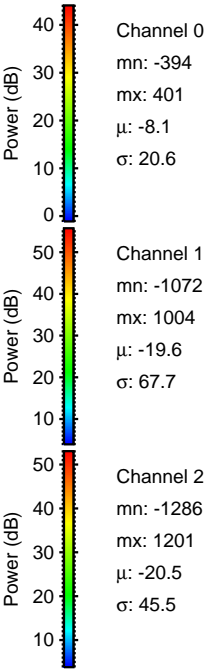
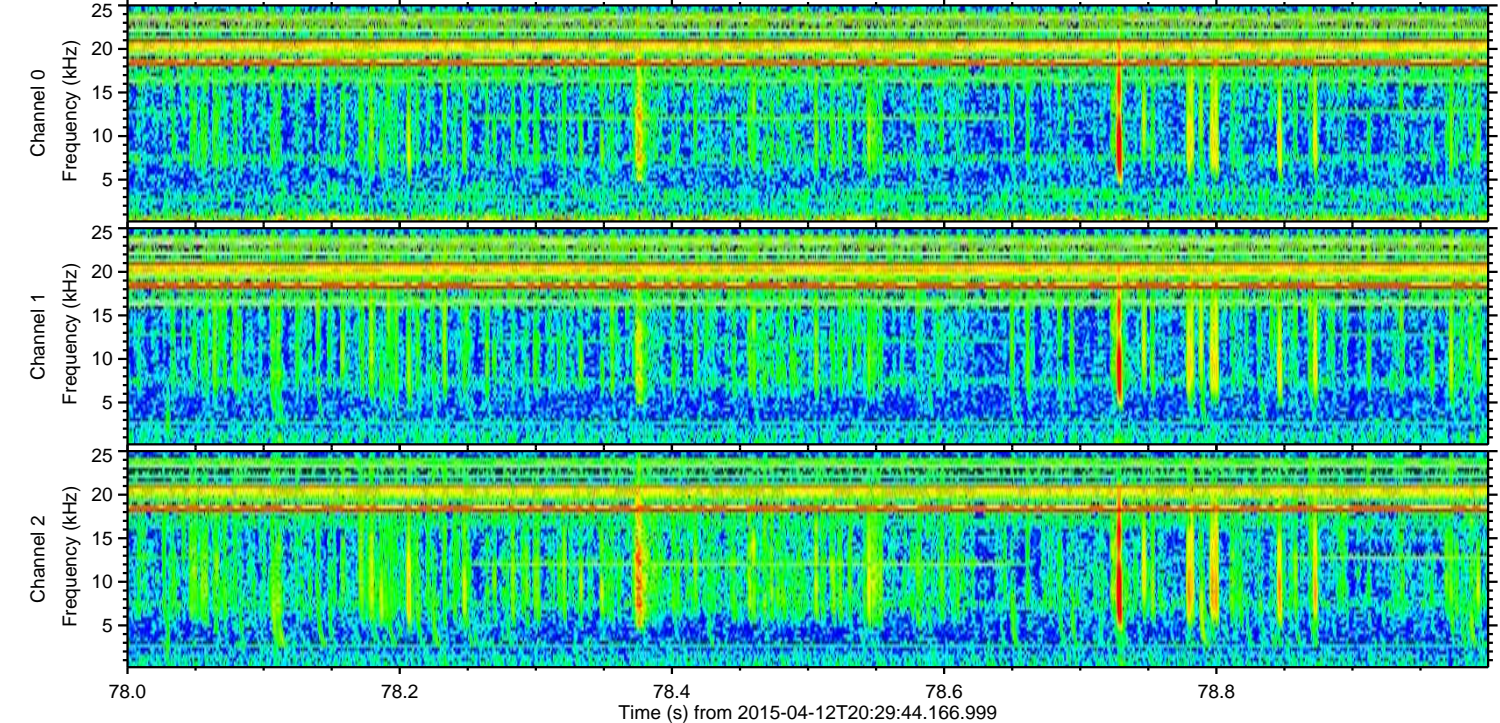
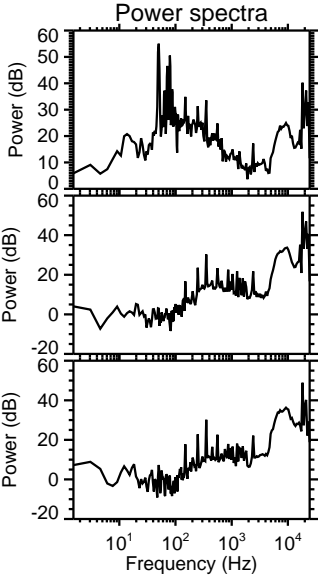
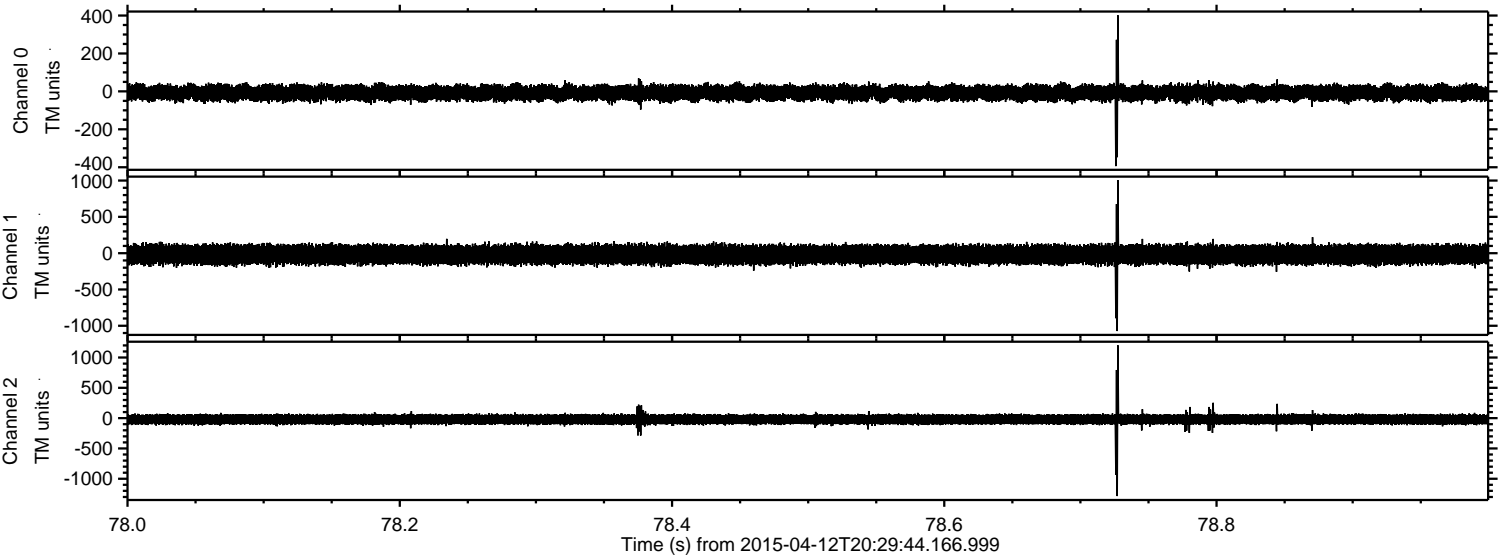
Channel 2
mn: -1567
mx: 1635
 μ : -20.5
 σ : 45.2

Processed Sun Apr 12 22:36:31 2015 by ELM ver.2012-10-06 from 001__elm20150412_202943__dat00.bin



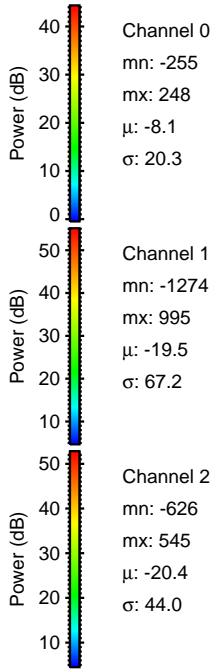
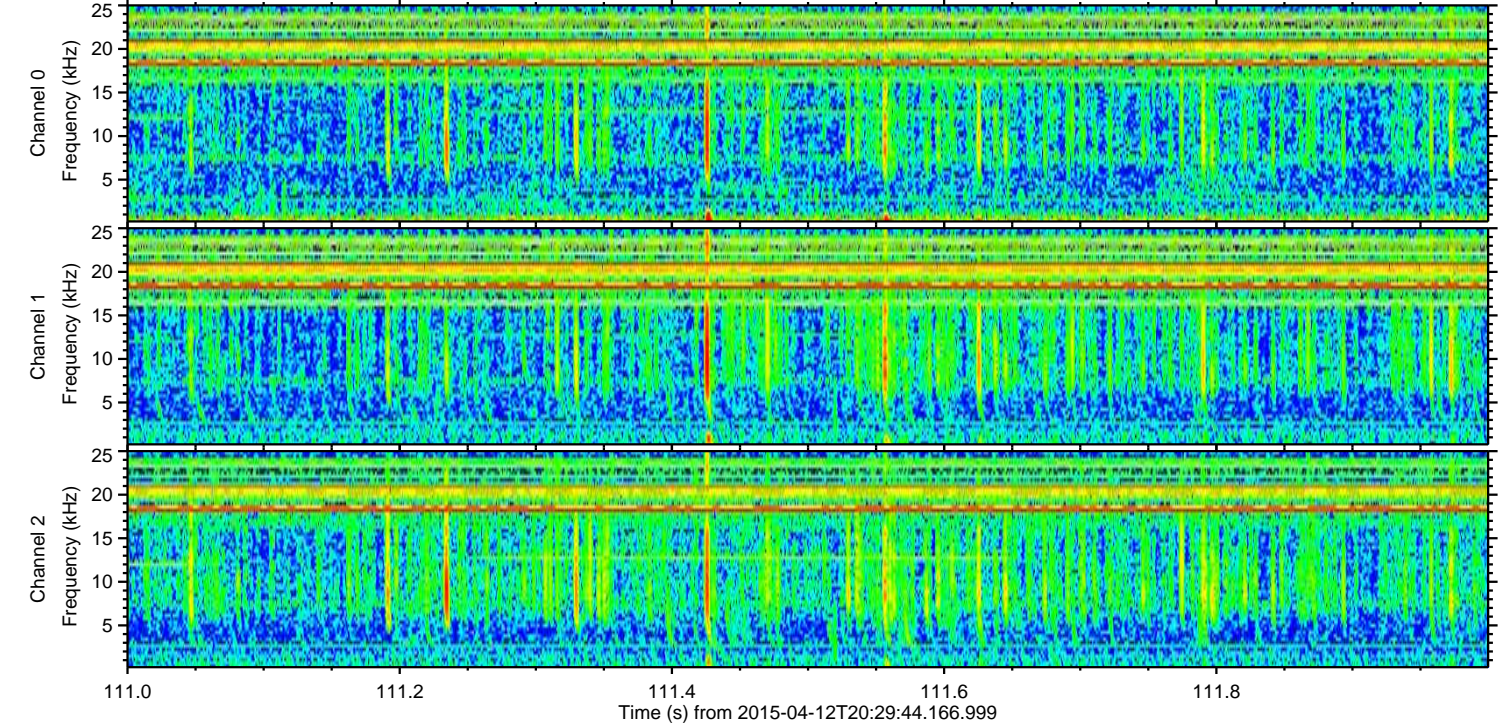
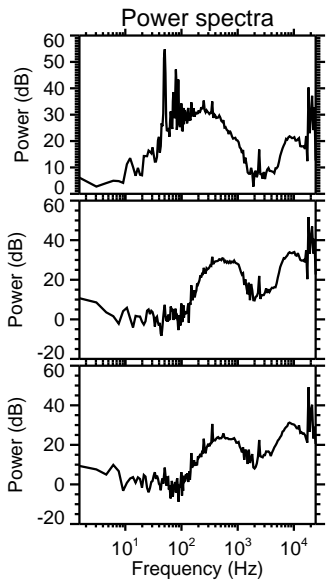
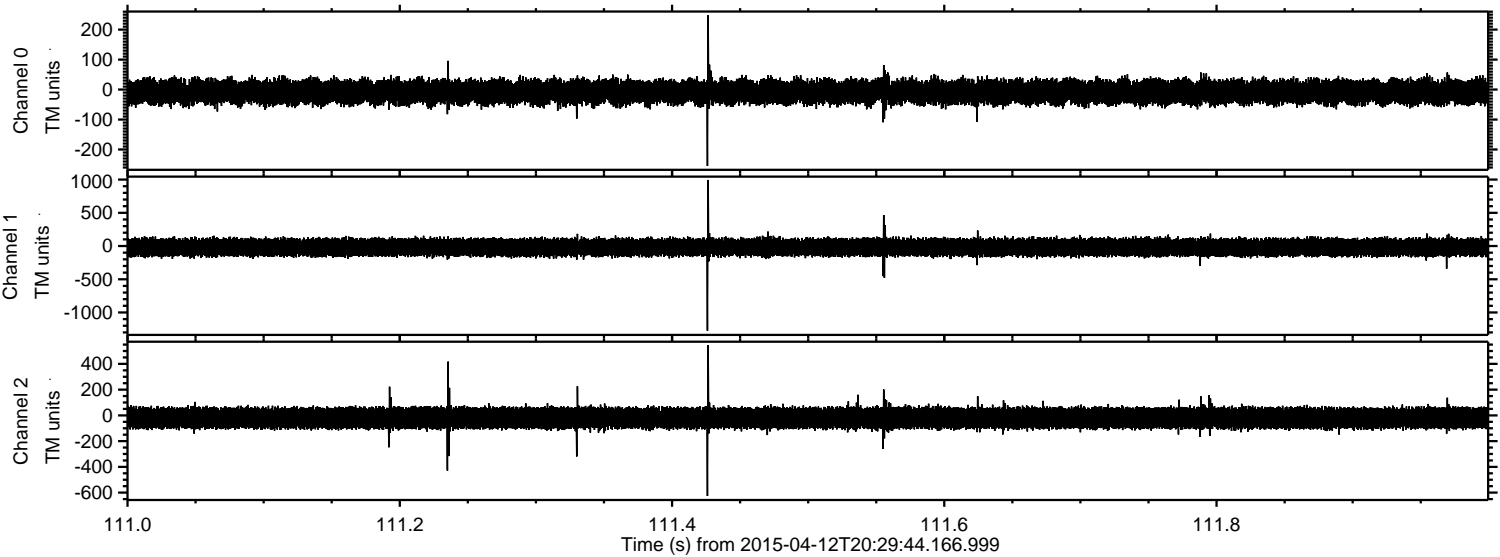
ELMAVAN 3D WAVEFORMS (Measured data sampled at 50 kHz) 49790 packets of 144 samples from 2015-04-12T20:29:44.166.999. Part 79/144

Processed Sun Apr 12 22:36:32 2015 by ELM ver.2012-10-06 from 001__elm20150412_202943__dat00.bin



ELMAVAN 3D WAVEFORMS (Measured data sampled at 50 kHz) 49790 packets of 144 samples from 2015-04-12T20:29:44.166.999. Part 112/144

Processed Sun Apr 12 22:36:33 2015 by ELM ver.2012-10-06 from 001__elm20150412_202943__dat00.bin



ELMAVAN 3D WAVEFORMS (Measured data sampled at 50 kHz) 49790 packets of 144 samples from 2015-04-12T20:29:44.166.999. Part 125/144

