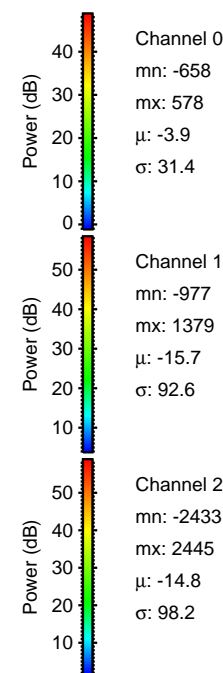
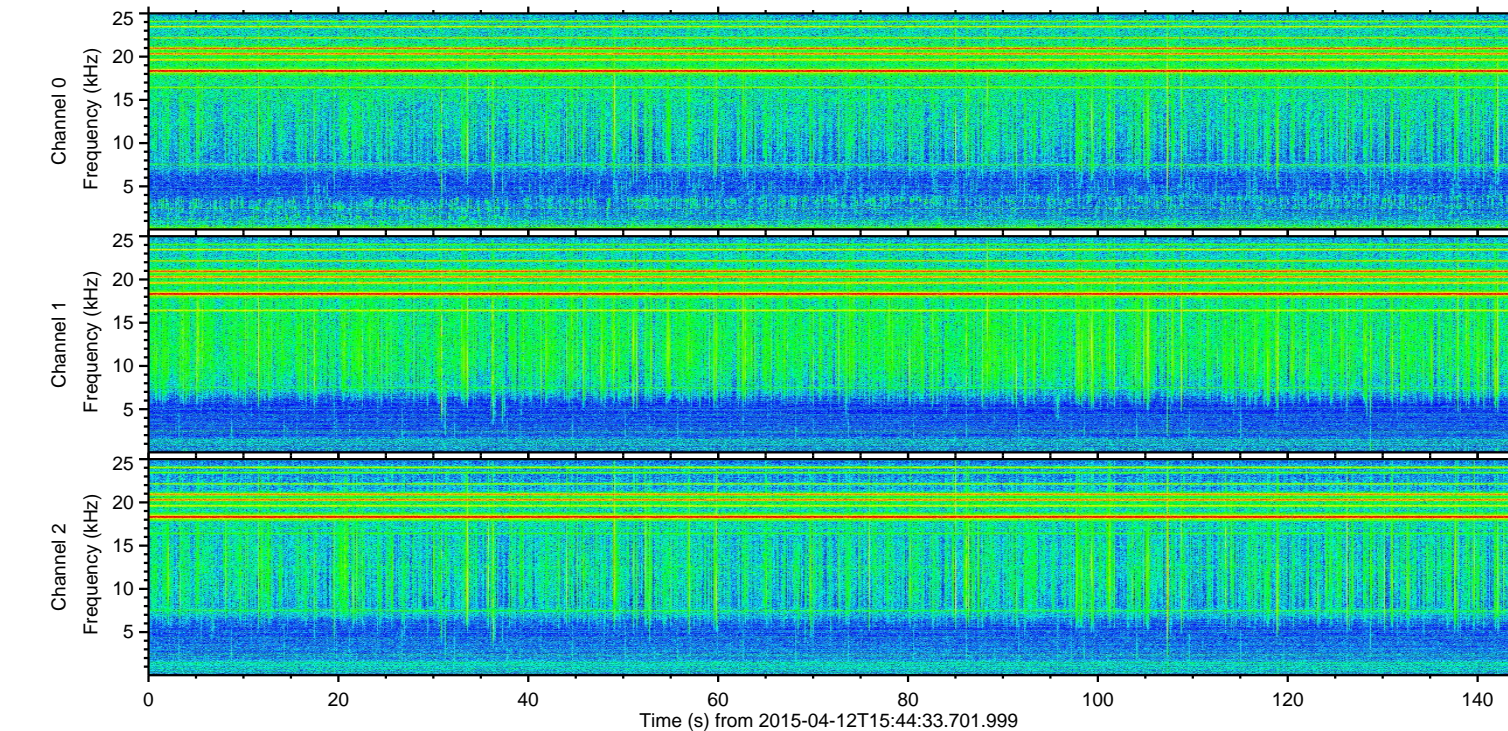
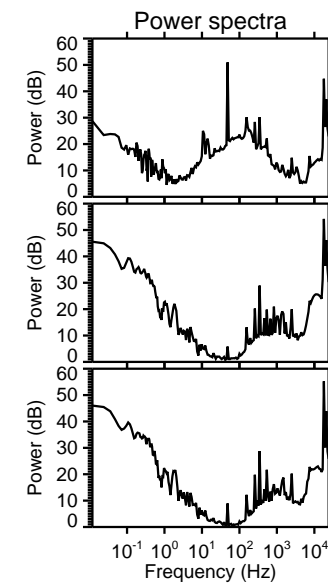
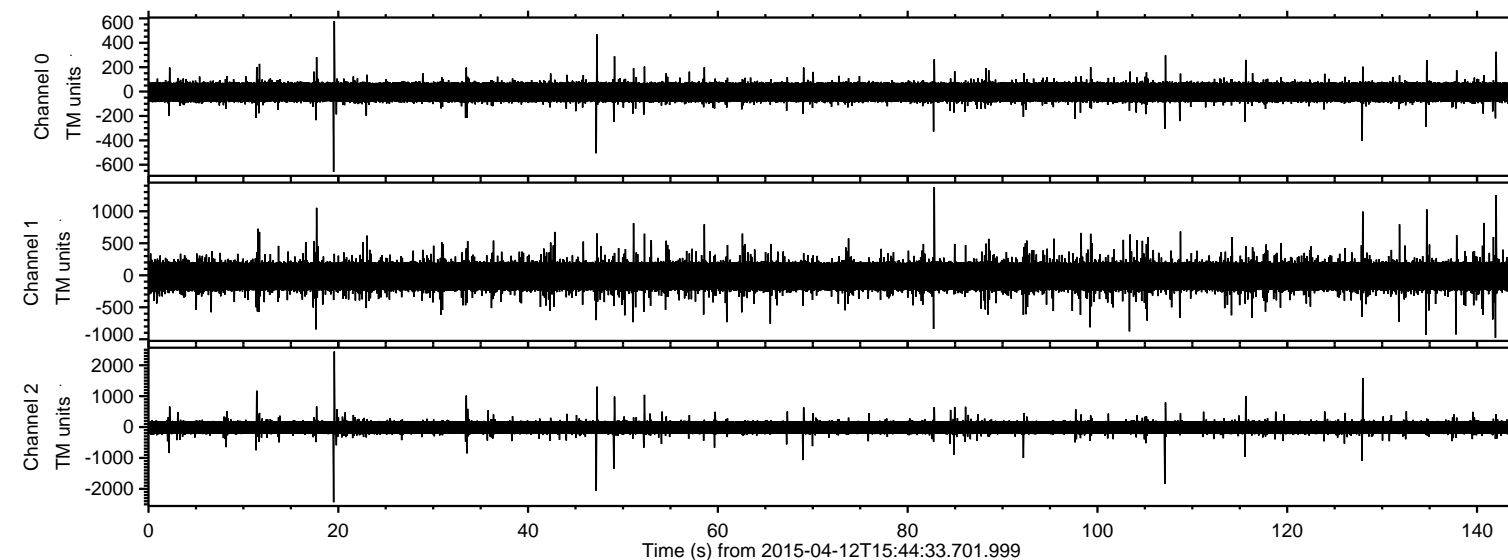


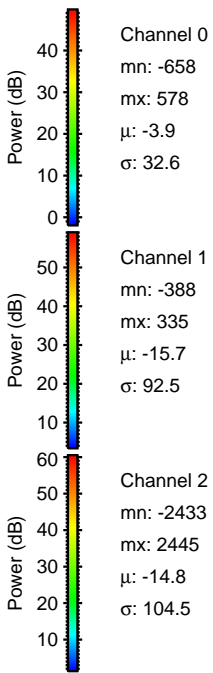
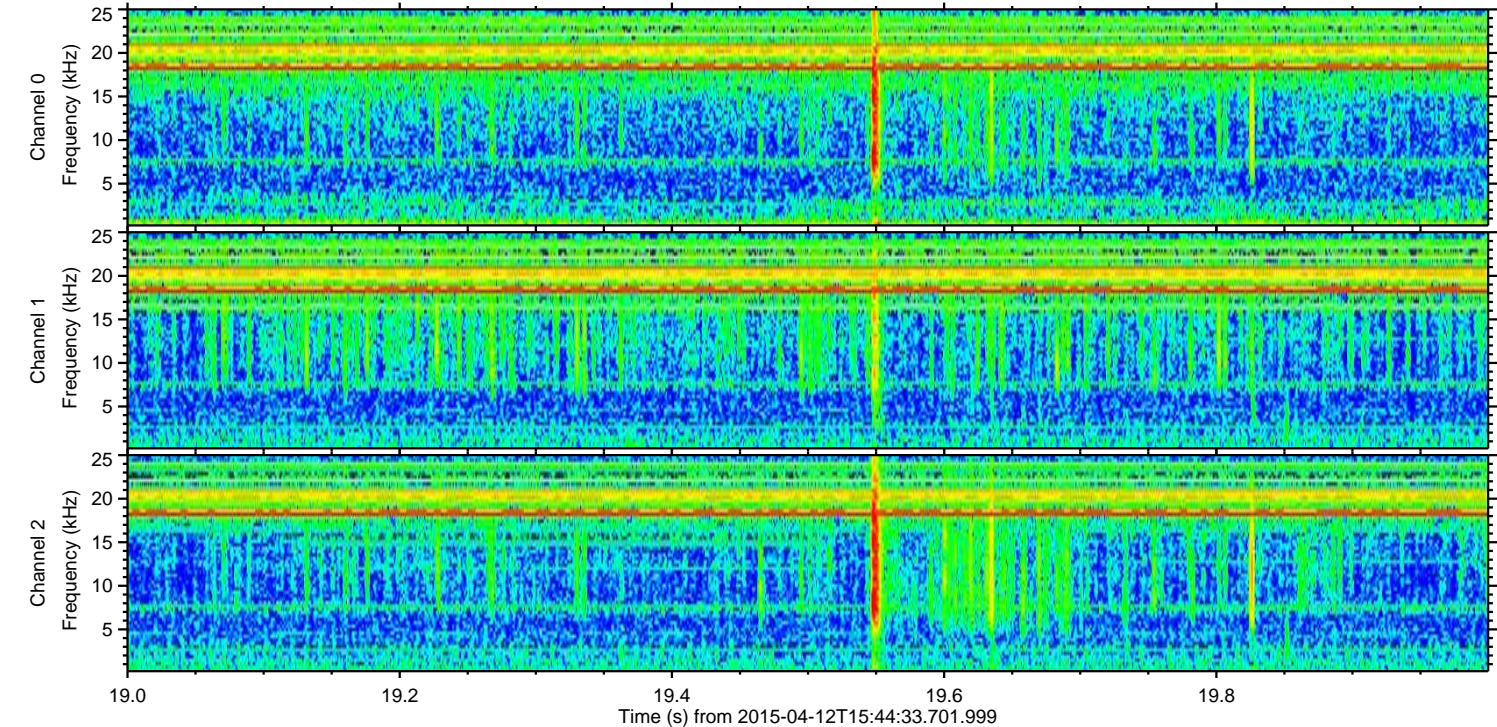
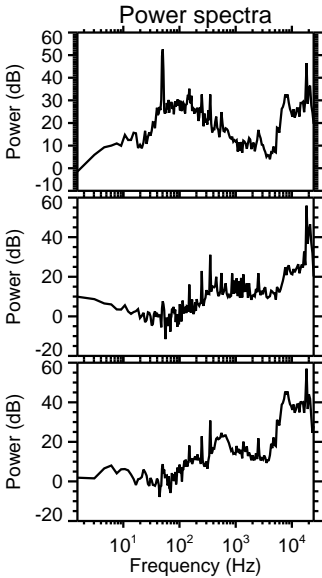
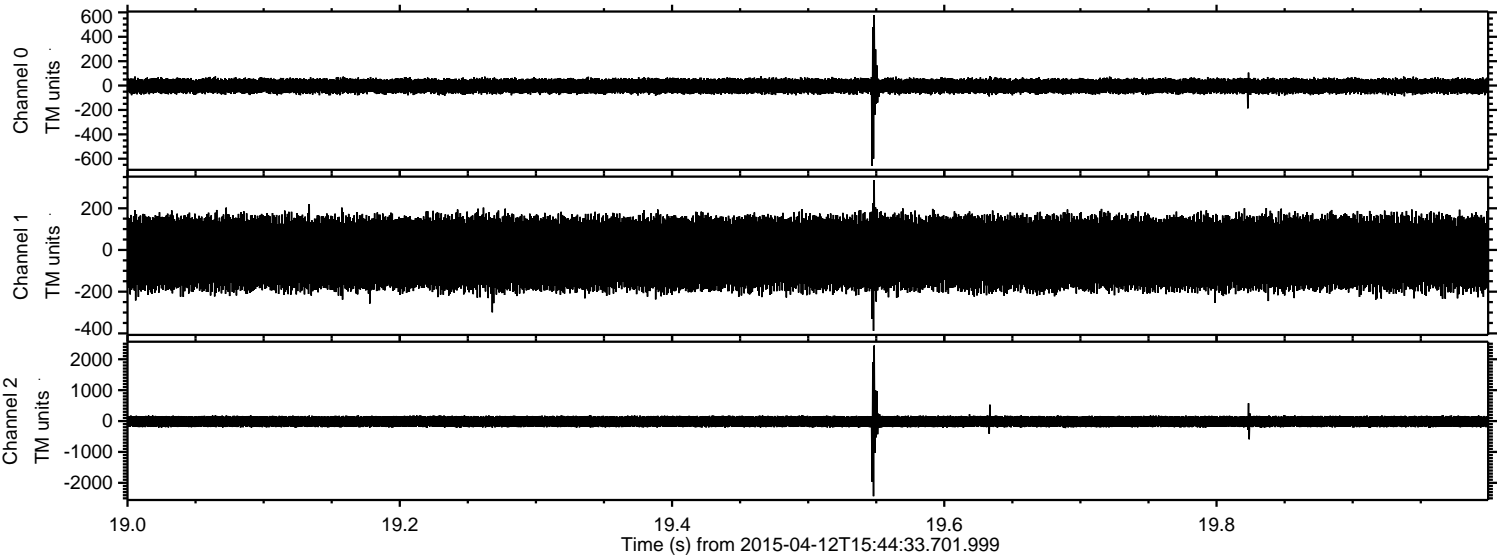
ELMAVAN 3D WAVEFORMS (Measured data sampled at 50 kHz) 49786 packets of 144 samples from 2015-04-12T15:44:33.701.999.

Processed Sun Apr 12 17:51:33 2015 by ELM ver.2012-10-06 from 001__elm20150412_154432__dat00.bin

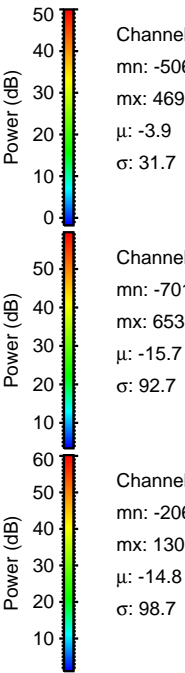
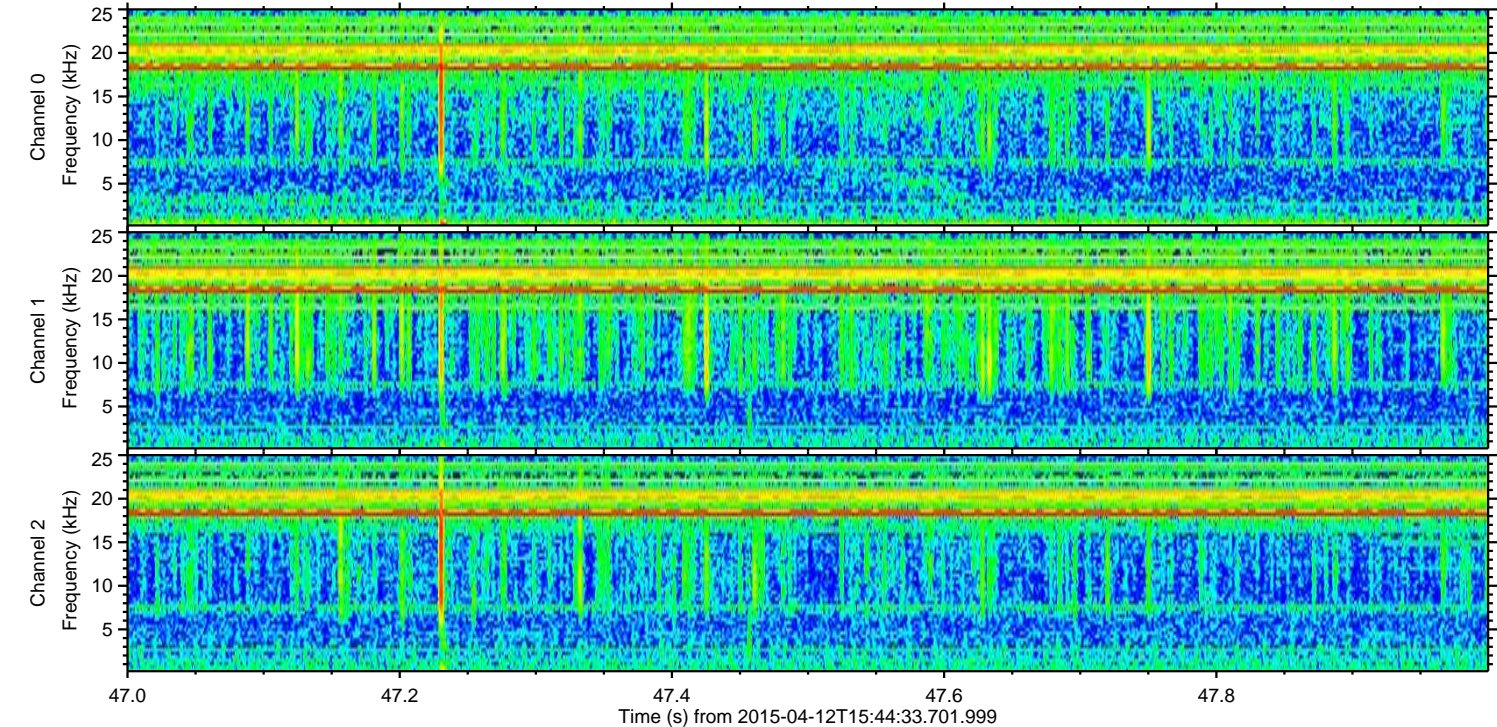
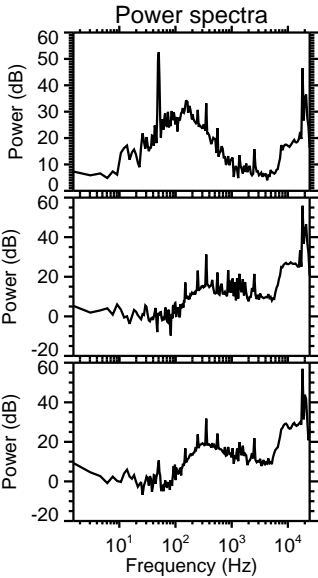
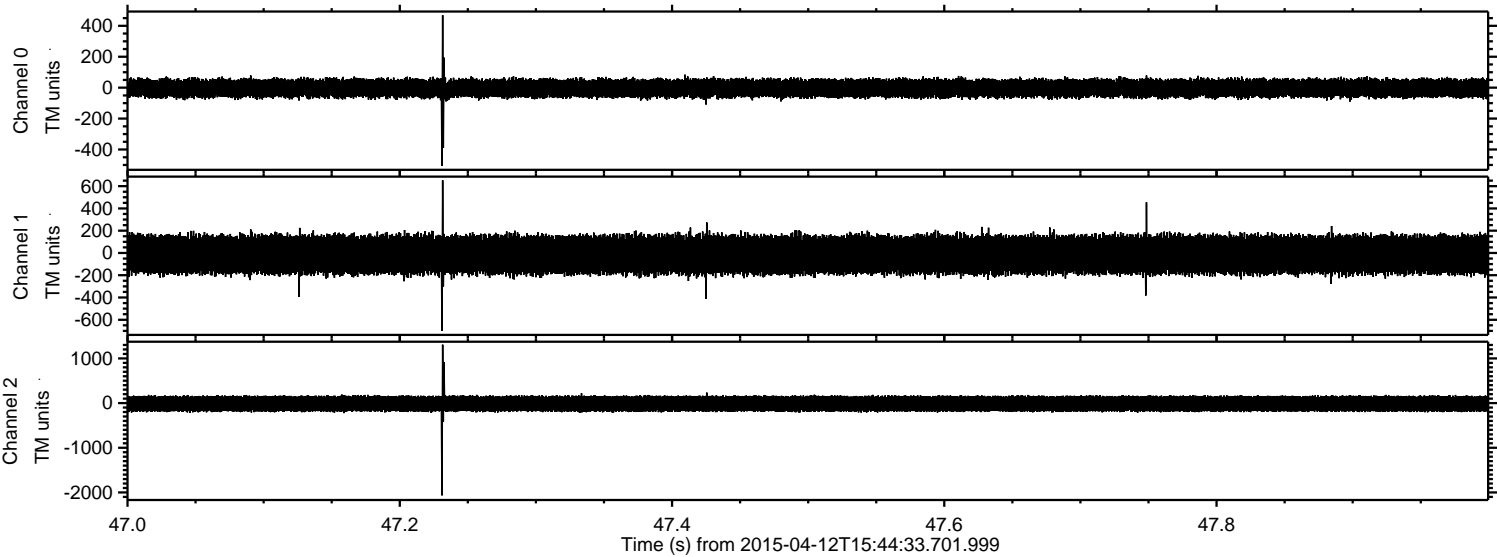


ELMAVAN 3D WAVEFORMS (Measured data sampled at 50 kHz) 49786 packets of 144 samples from 2015-04-12T15:44:33.701.999. Part 20/144

Processed Sun Apr 12 17:51:44 2015 by ELM ver.2012-10-06 from 001__elm20150412_154432__dat00.bin

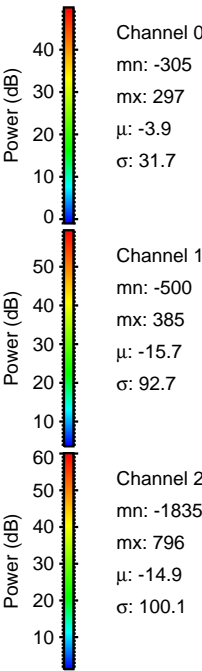
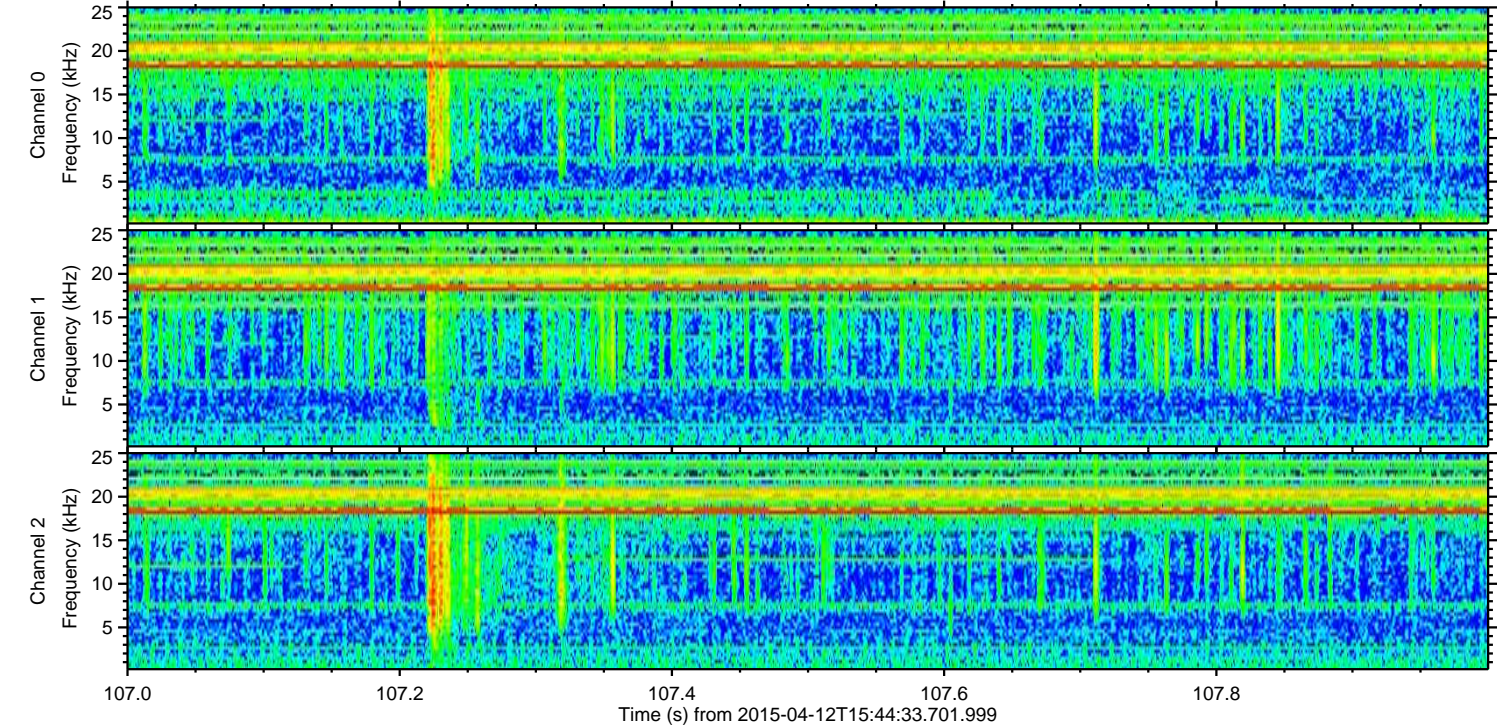
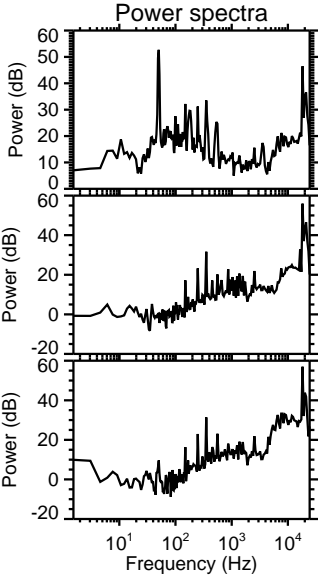
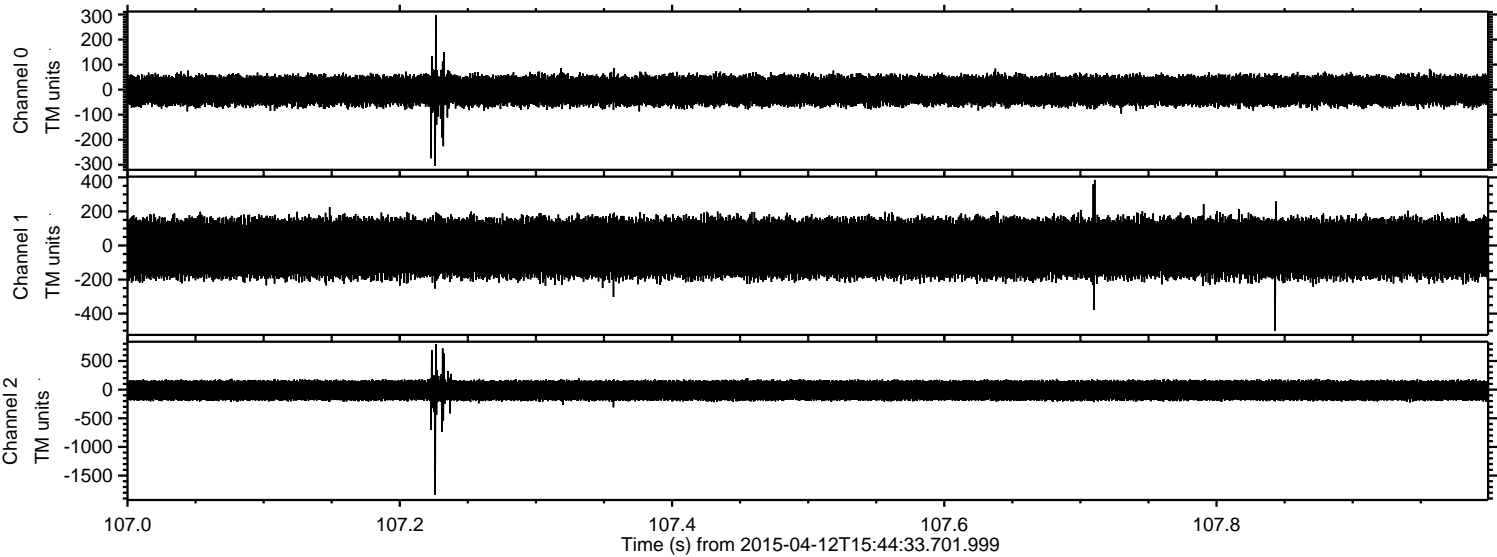


Processed Sun Apr 12 17:51:45 2015 by ELM ver.2012-10-06 from 001__elm20150412_154432__dat00.bin



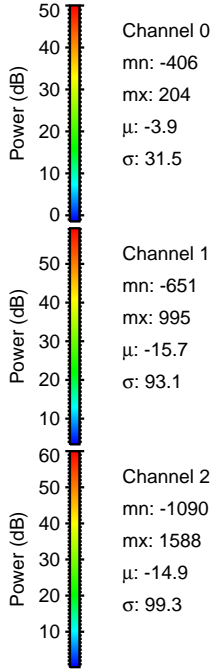
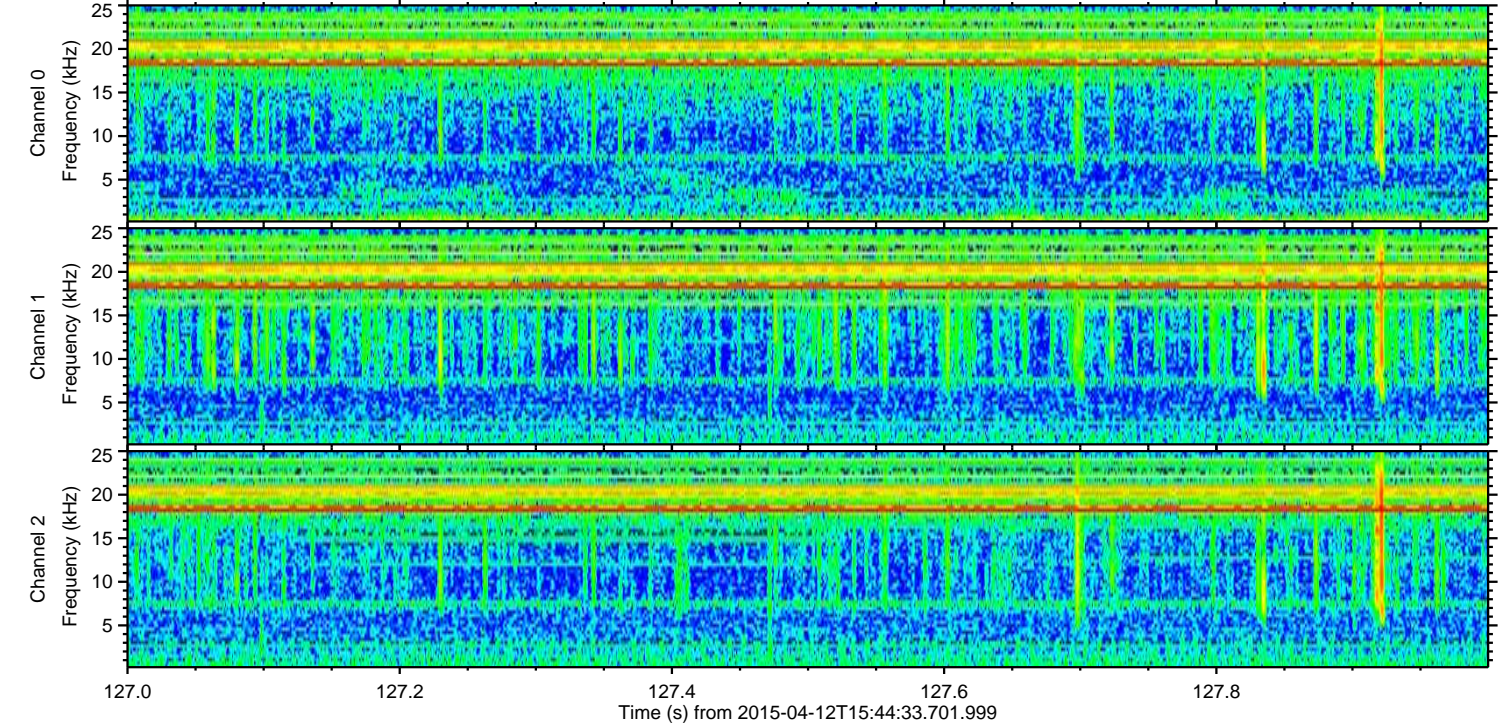
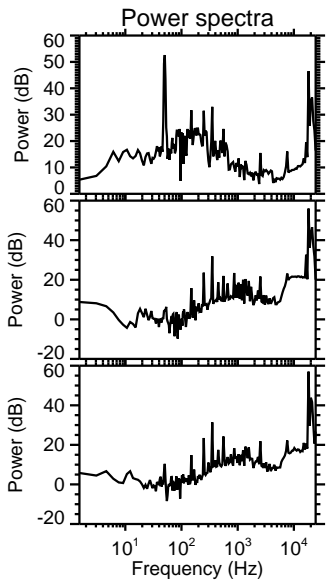
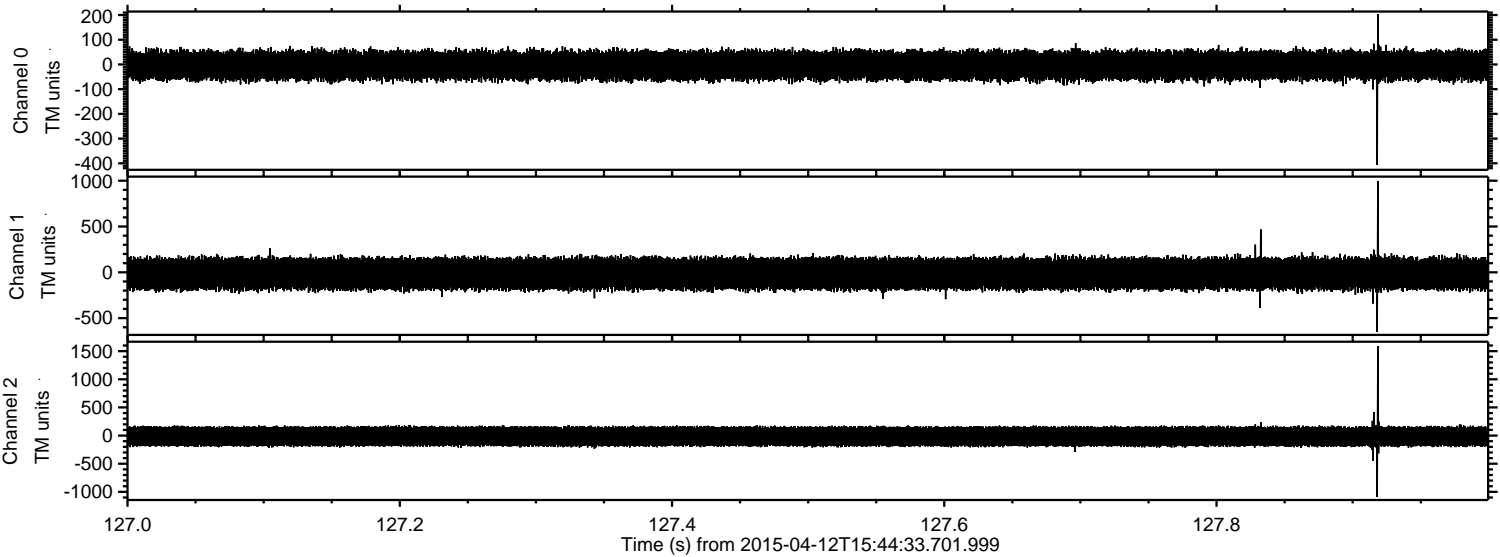
ELMAVAN 3D WAVEFORMS (Measured data sampled at 50 kHz) 49786 packets of 144 samples from 2015-04-12T15:44:33.701.999. Part 108/144

Processed Sun Apr 12 17:51:46 2015 by ELM ver.2012-10-06 from 001__elm20150412_154432__dat00.bin

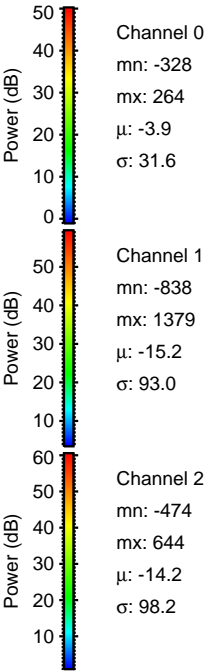
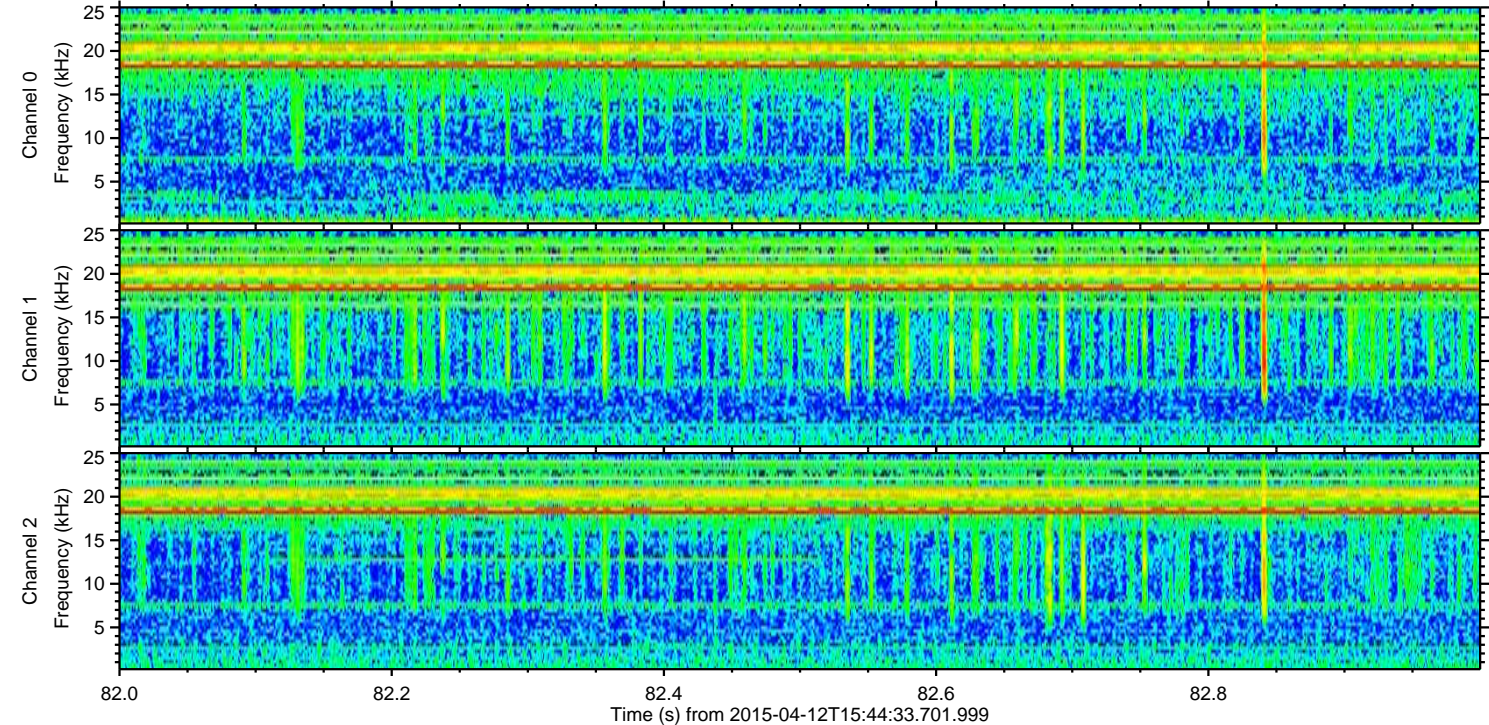
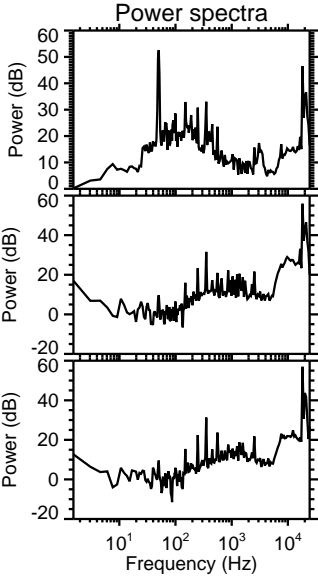
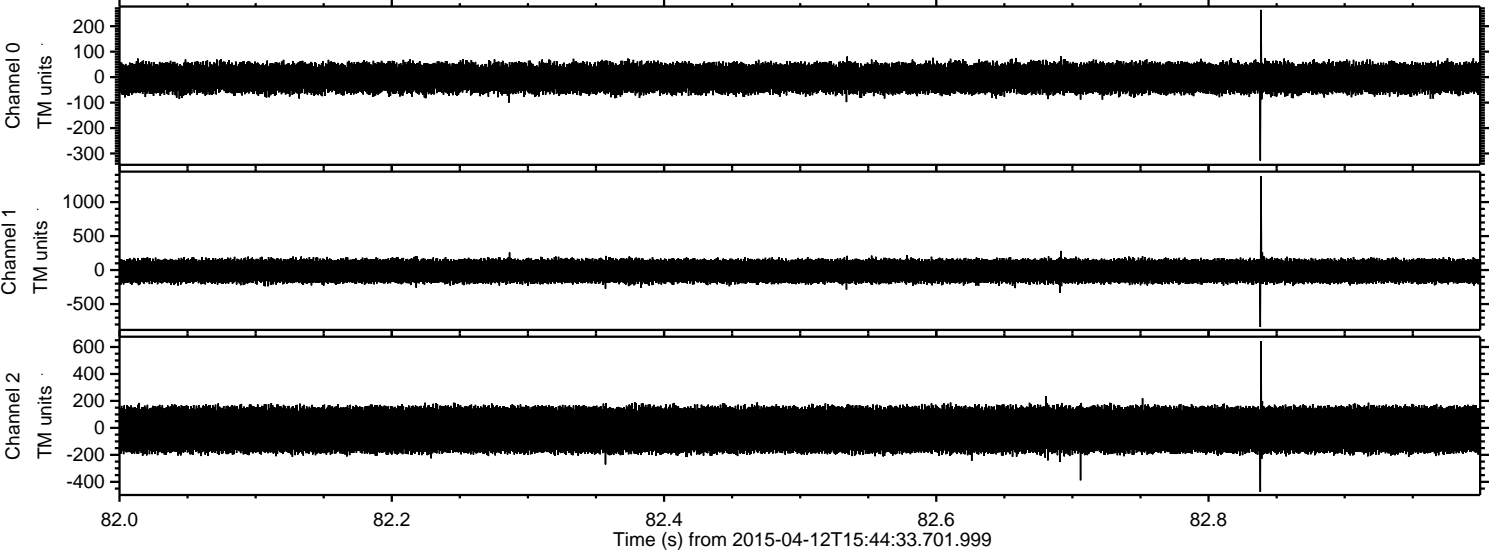


ELMAVAN 3D WAVEFORMS (Measured data sampled at 50 kHz) 49786 packets of 144 samples from 2015-04-12T15:44:33.701.999. Part 128/144

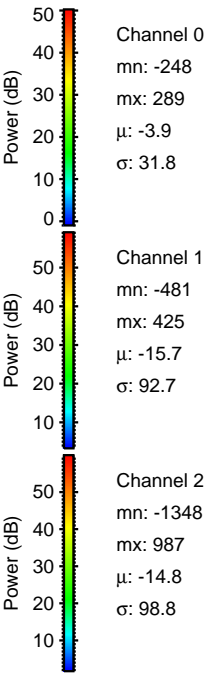
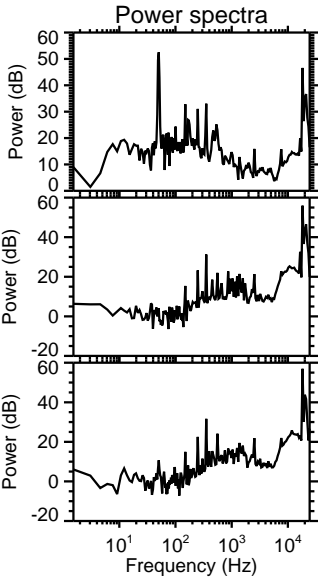
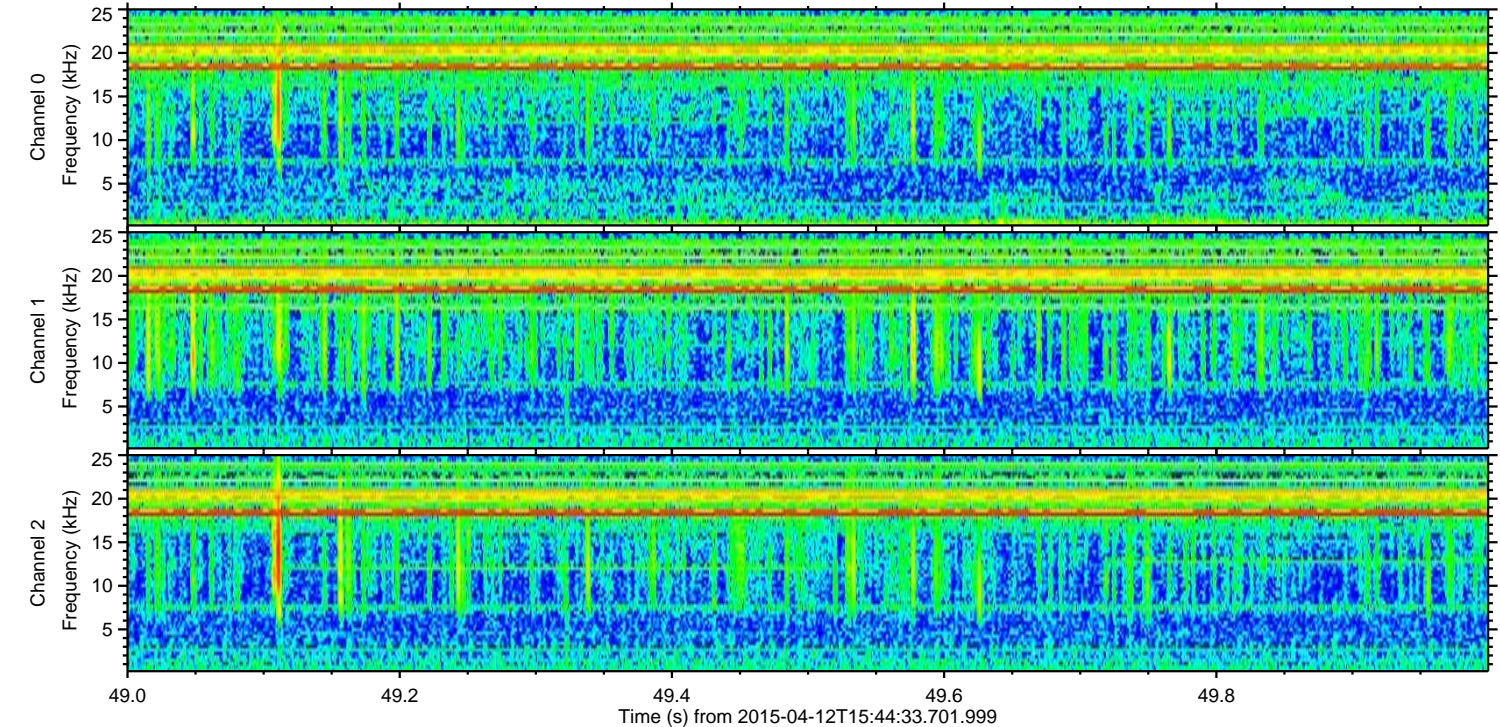
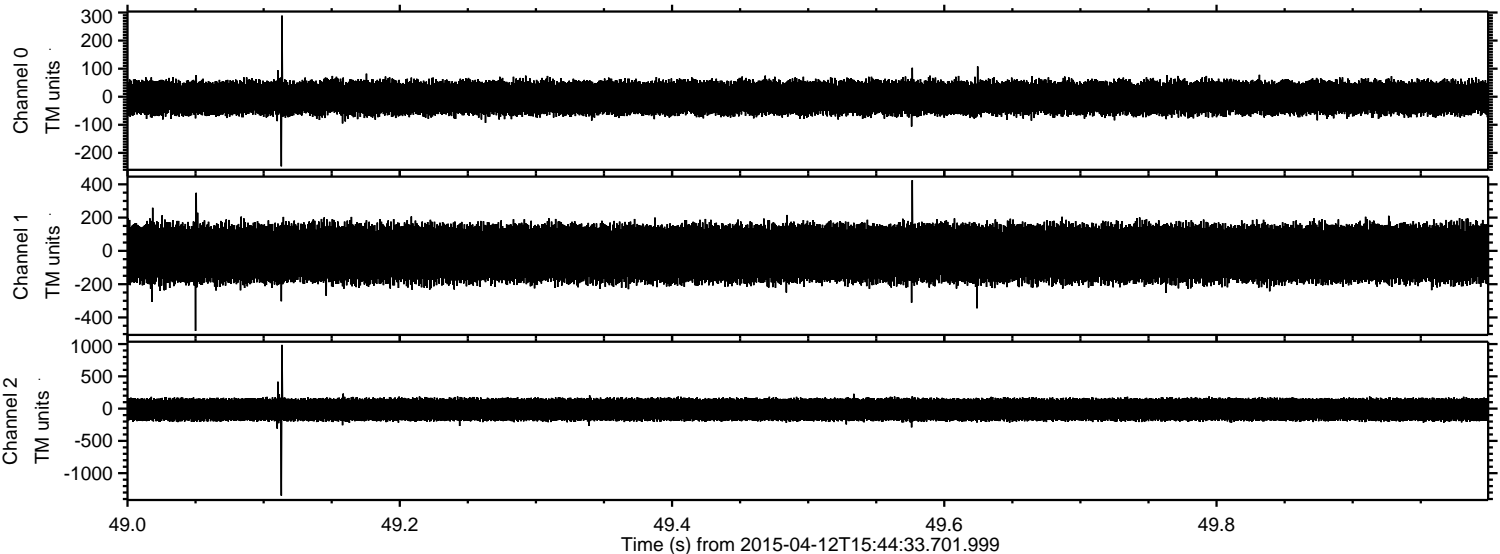
Processed Sun Apr 12 17:51:47 2015 by ELM ver.2012-10-06 from 001__elm20150412_154432__dat00.bin



Processed Sun Apr 12 17:51:48 2015 by ELM ver.2012-10-06 from 001__elm20150412_154432__dat00.bin

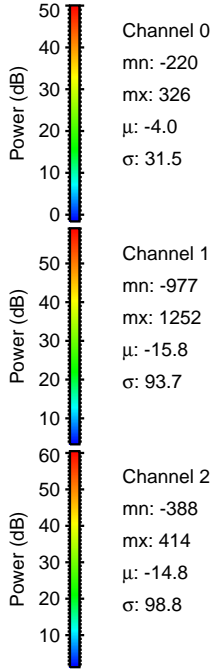
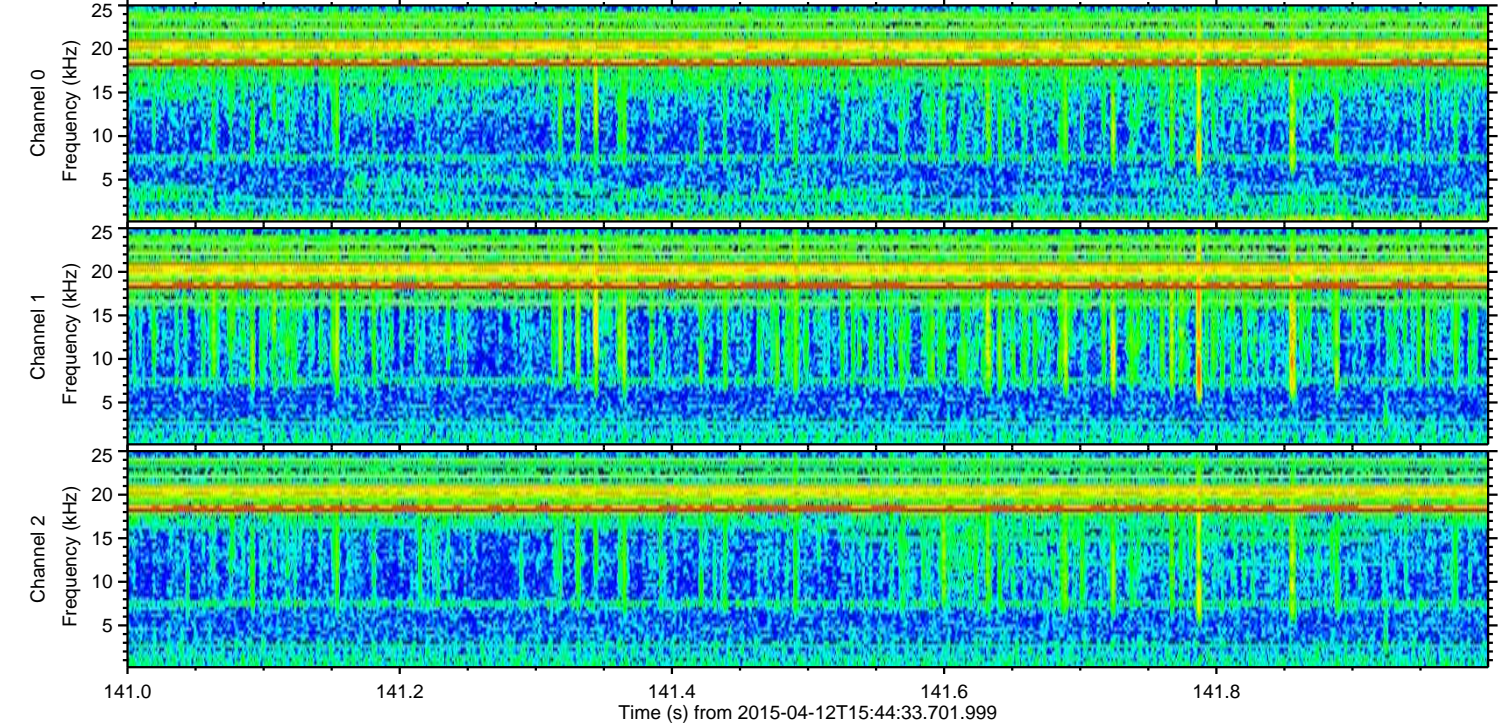
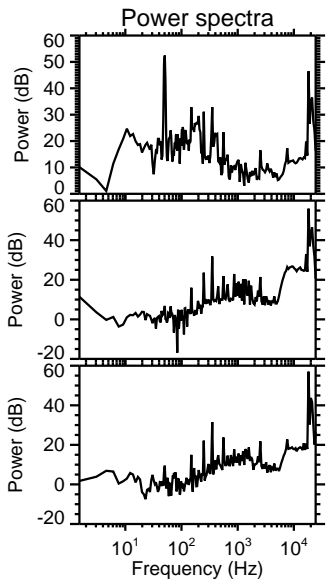
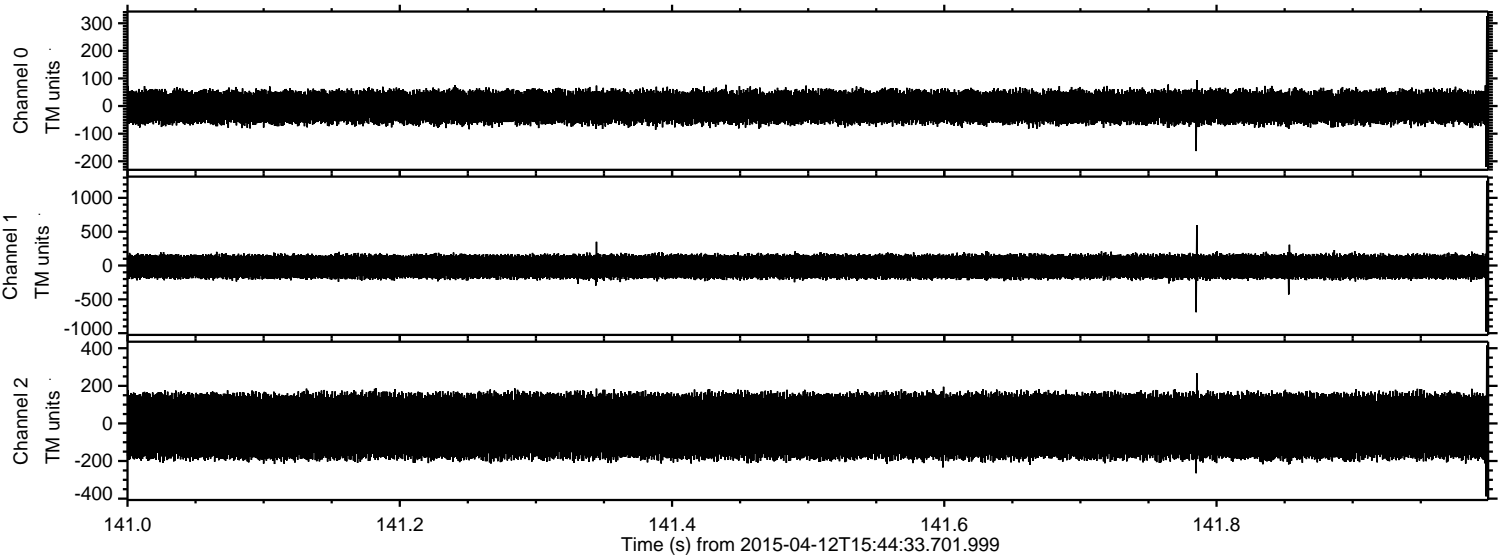


Processed Sun Apr 12 17:51:49 2015 by ELM ver.2012-10-06 from 001__elm20150412_154432__dat00.bin



ELMAVAN 3D WAVEFORMS (Measured data sampled at 50 kHz) 49786 packets of 144 samples from 2015-04-12T15:44:33.701.999. Part 142/144

Processed Sun Apr 12 17:51:50 2015 by ELM ver.2012-10-06 from 001__elm20150412_154432__dat00.bin

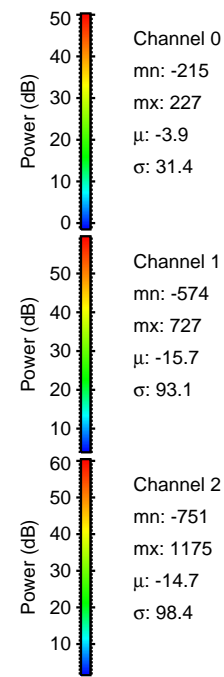
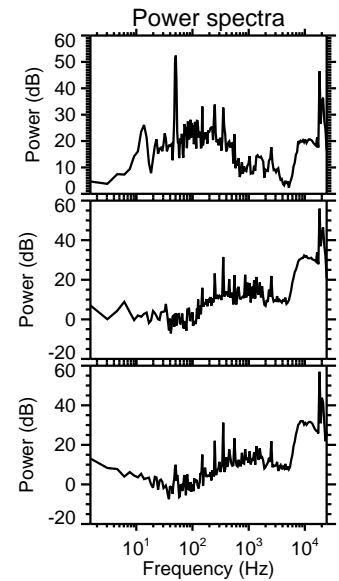
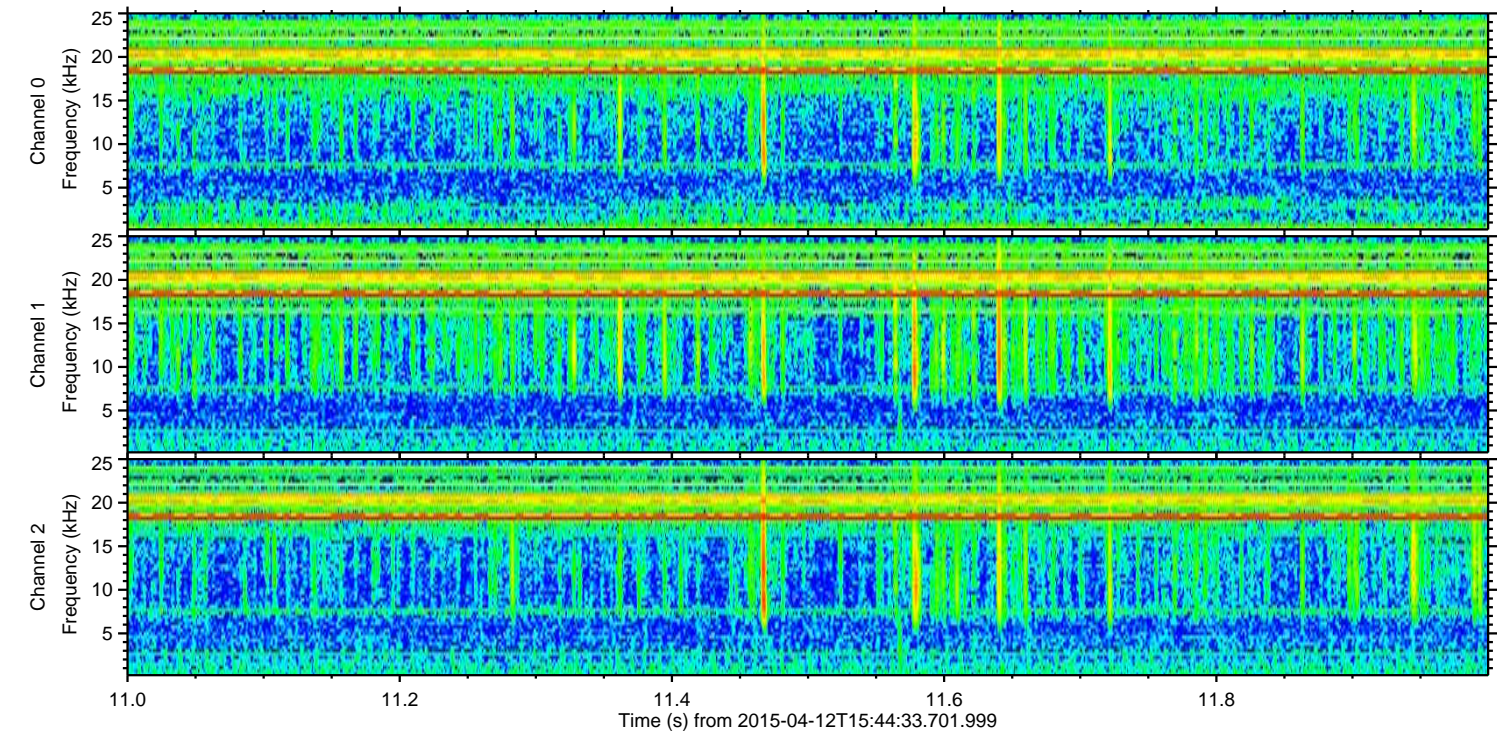
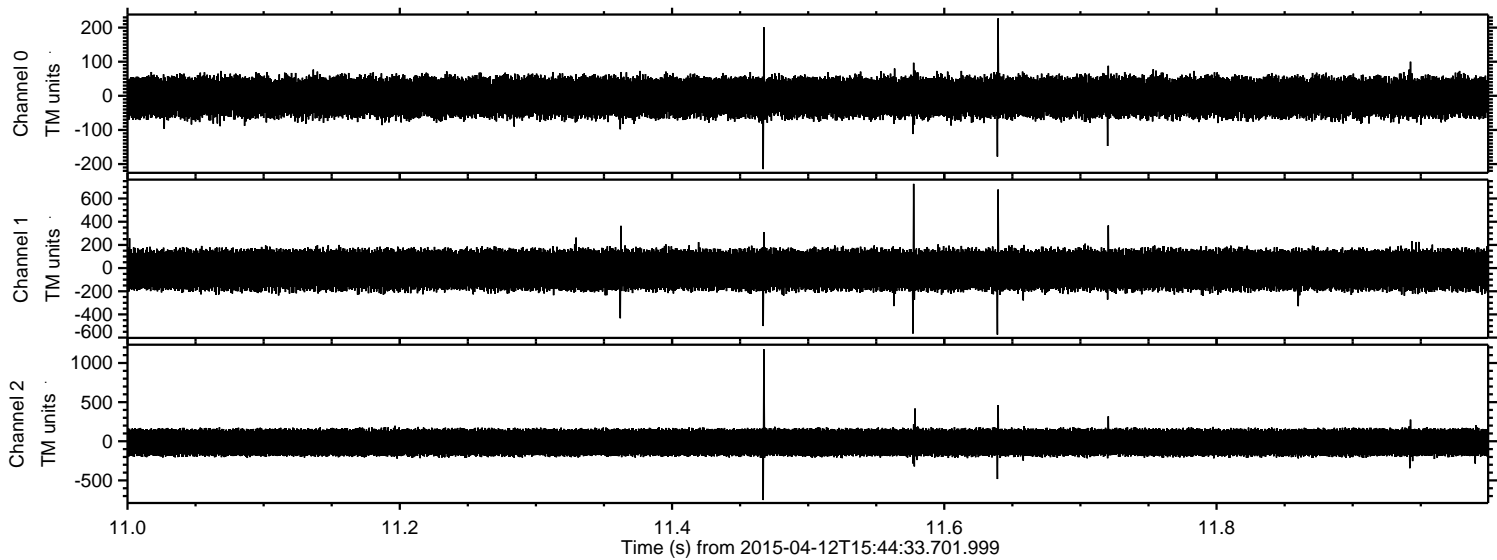


Channel 0
mn: -220
mx: 326
μ: -4.0
σ: 31.5

Channel 1
mn: -977
mx: 1252
μ: -15.8
σ: 93.7

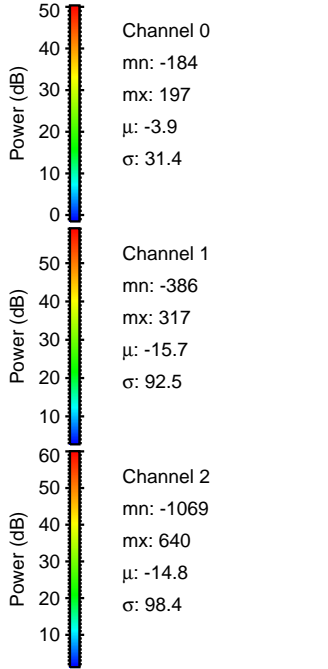
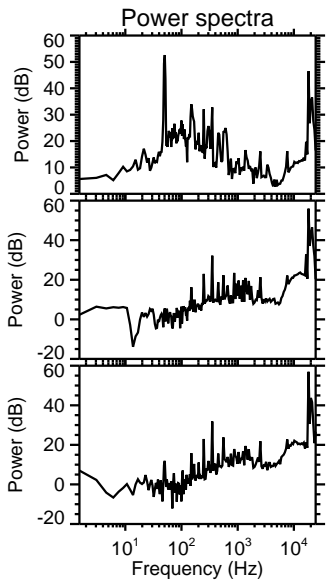
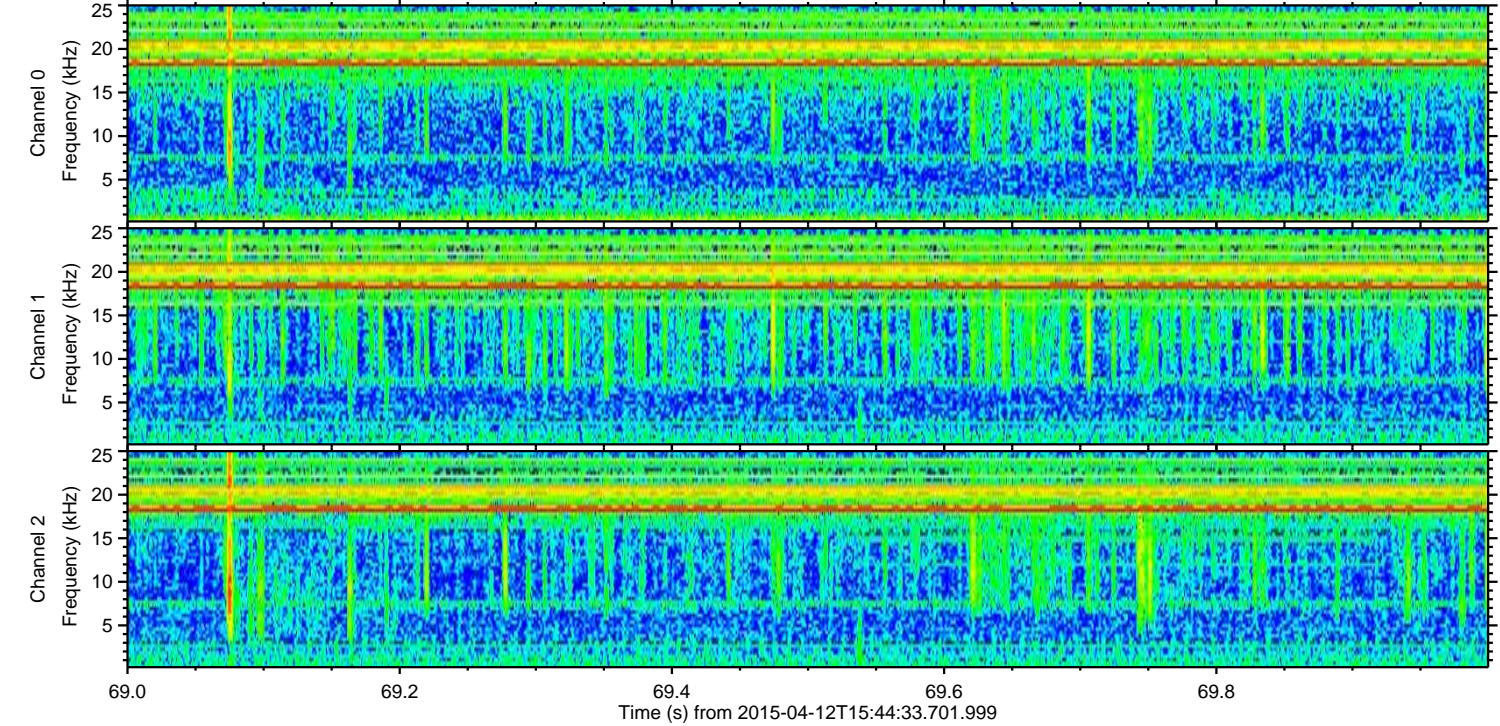
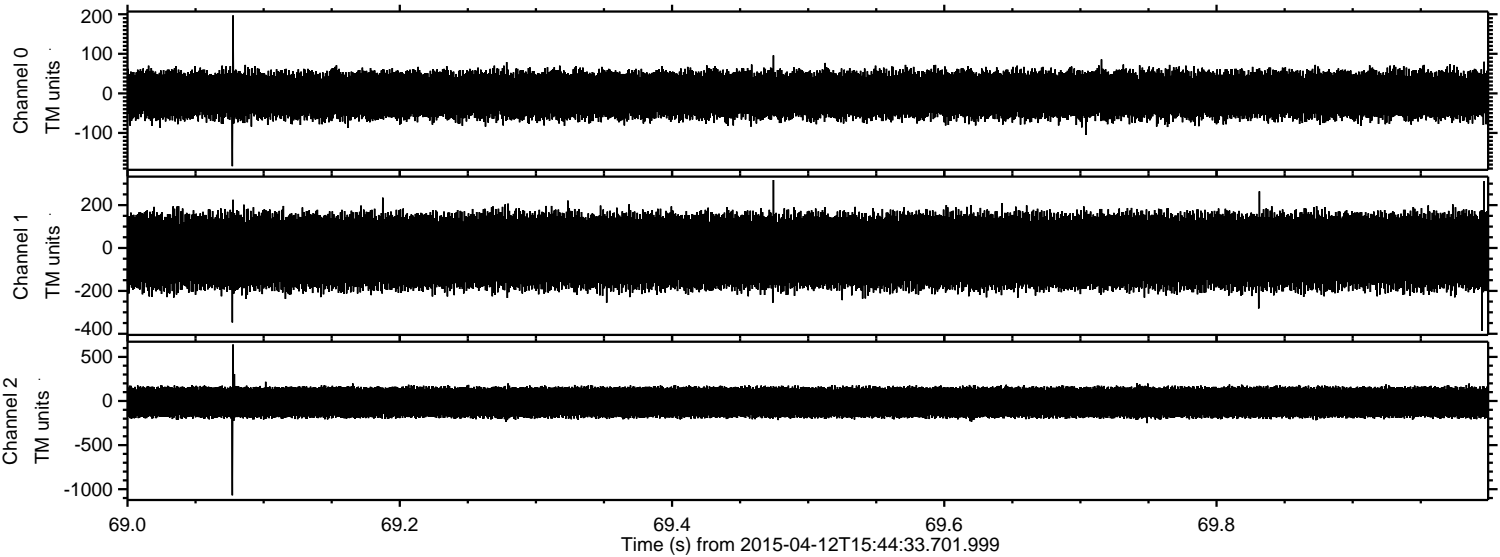
Channel 2
mn: -388
mx: 414
μ: -14.8
σ: 98.8

Processed Sun Apr 12 17:51:51 2015 by ELM ver.2012-10-06 from 001__elm20150412_154432__dat00.bin



ELMAVAN 3D WAVEFORMS (Measured data sampled at 50 kHz) 49786 packets of 144 samples from 2015-04-12T15:44:33.701.999. Part 70/144

Processed Sun Apr 12 17:51:52 2015 by ELM ver.2012-10-06 from 001__elm20150412_154432__dat00.bin



Power spectra

Channel 0
mn: -184
mx: 197
 μ : -3.9
 σ : 31.4

Channel 1
mn: -386
mx: 317
 μ : -15.7
 σ : 92.5

Channel 2
mn: -1069
mx: 640
 μ : -14.8
 σ : 98.4

Processed Sun Apr 12 17:51:53 2015 by ELM ver.2012-10-06 from 001__elm20150412_154432__dat00.bin

