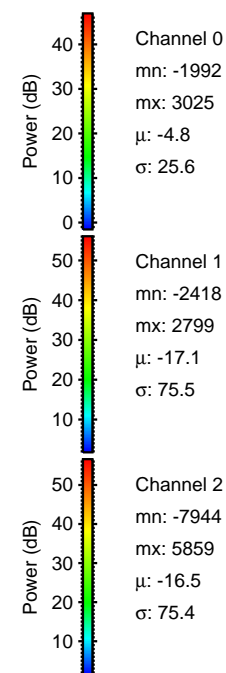
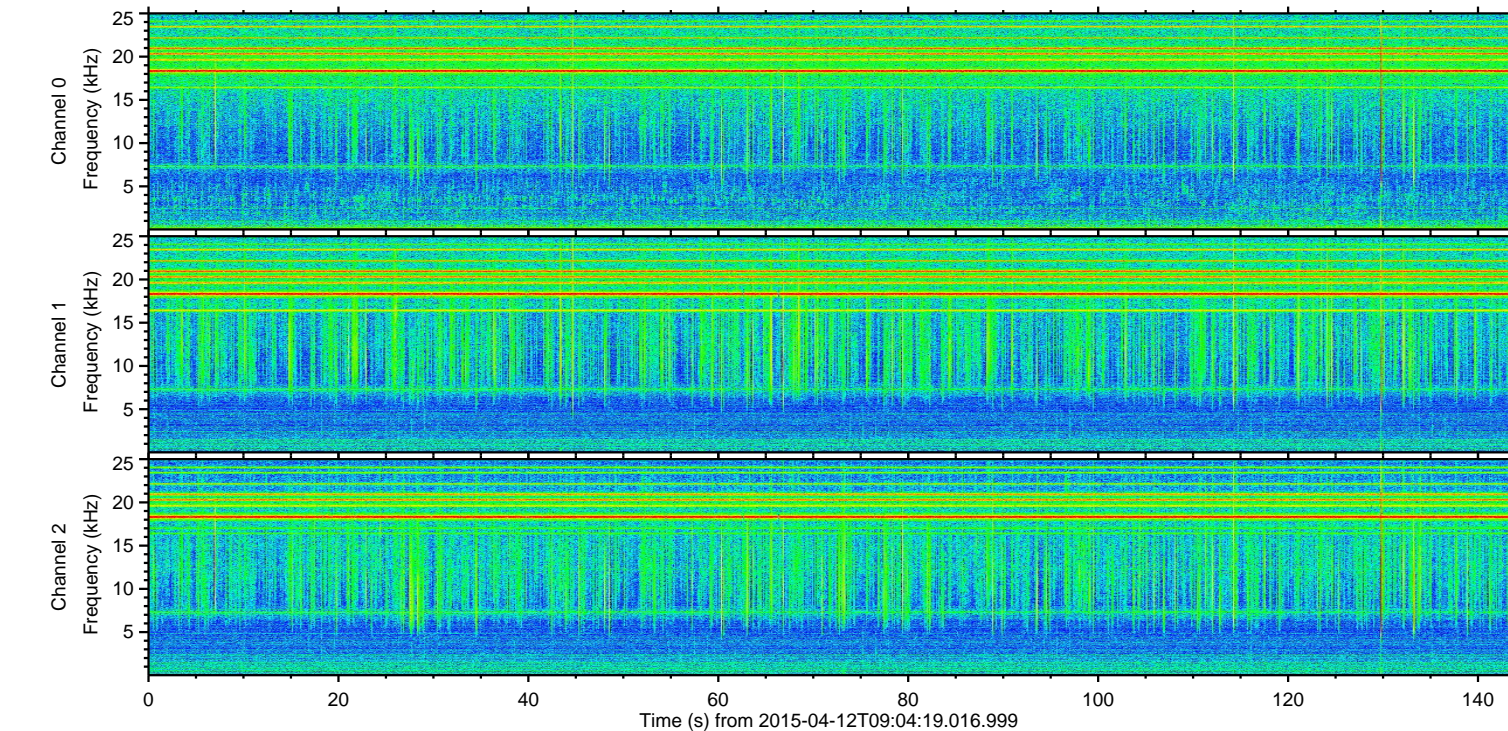
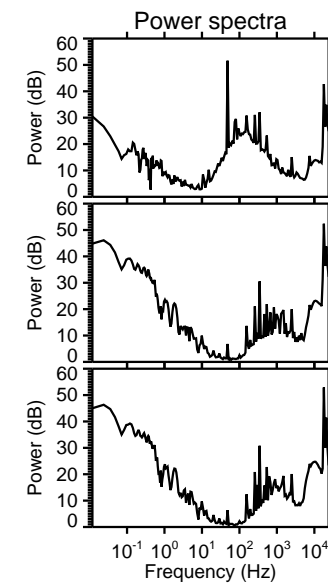
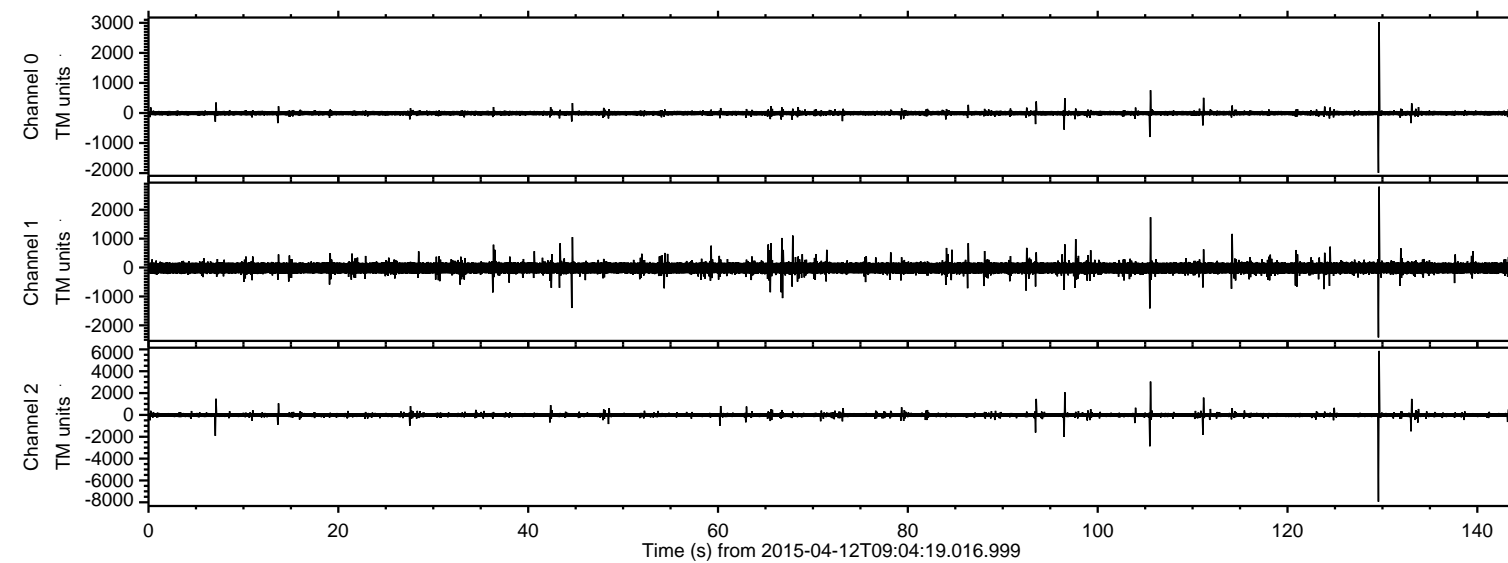


# ELMAVAN 3D WAVEFORMS (Measured data sampled at 50 kHz) 49774 packets of 144 samples from 2015-04-12T09:04:19.016.999.

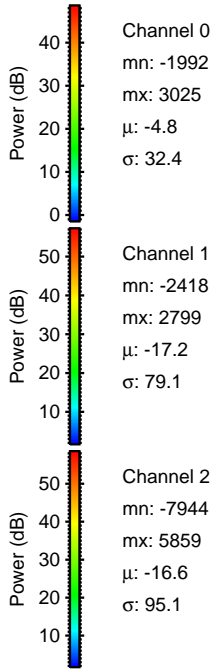
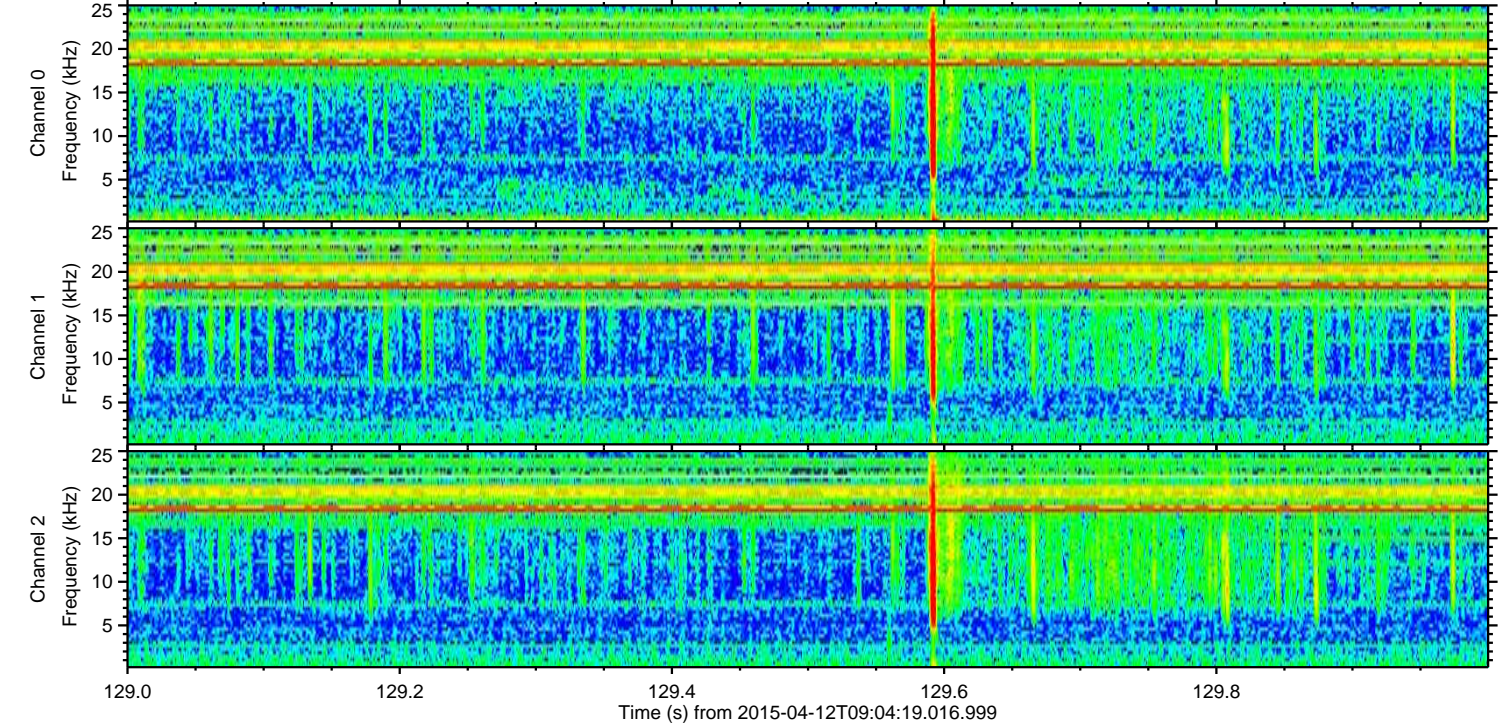
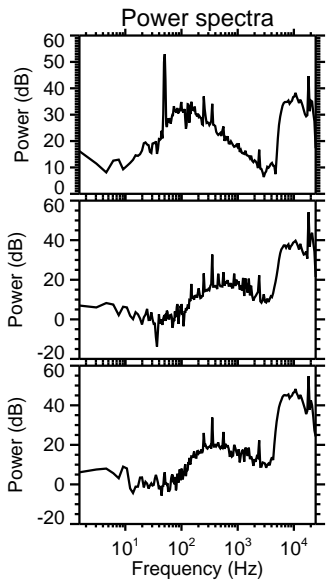
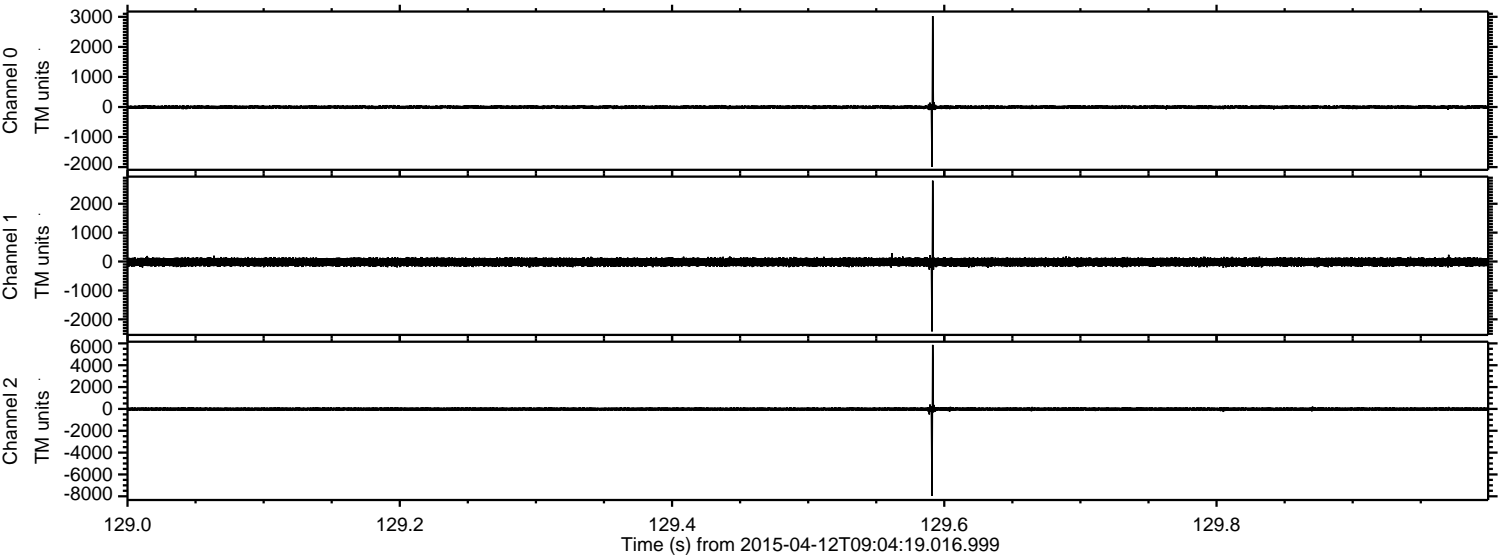
Processed Sun Apr 12 11:11:13 2015 by ELM ver.2012-10-06 from 001\_\_elm20150412\_090418\_\_dat00.bin





ELMAVAN 3D WAVEFORMS (Measured data sampled at 50 kHz) 49774 packets of 144 samples from 2015-04-12T09:04:19.016.999. Part 130/144

Processed Sun Apr 12 11:11:24 2015 by ELM ver.2012-10-06 from 001\_\_elm20150412\_090418\_\_dat00.bin



Channel 0  
mn: -1992  
mx: 3025  
 $\mu$ : -4.8  
 $\sigma$ : 32.4

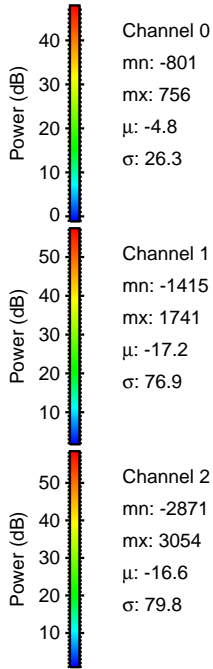
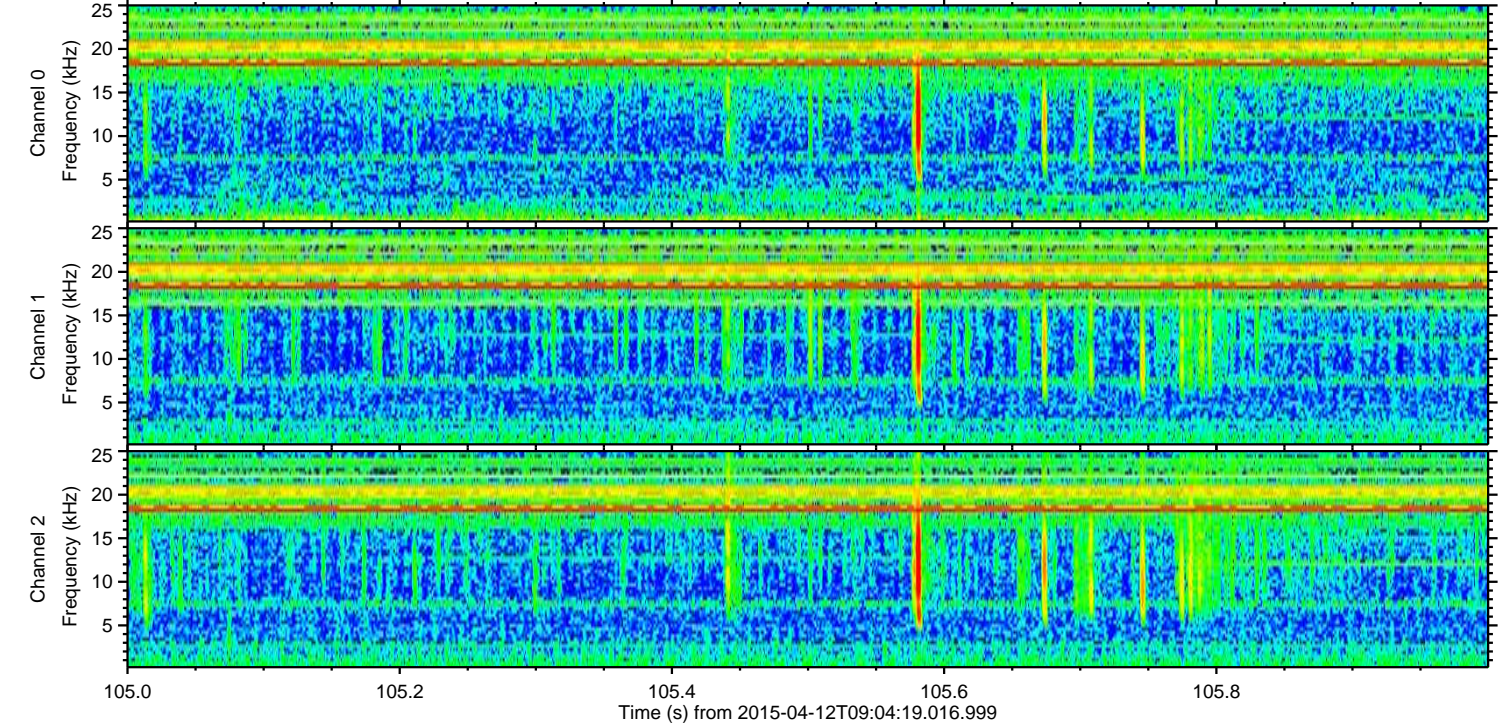
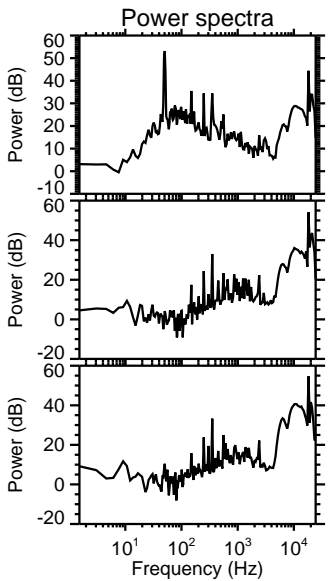
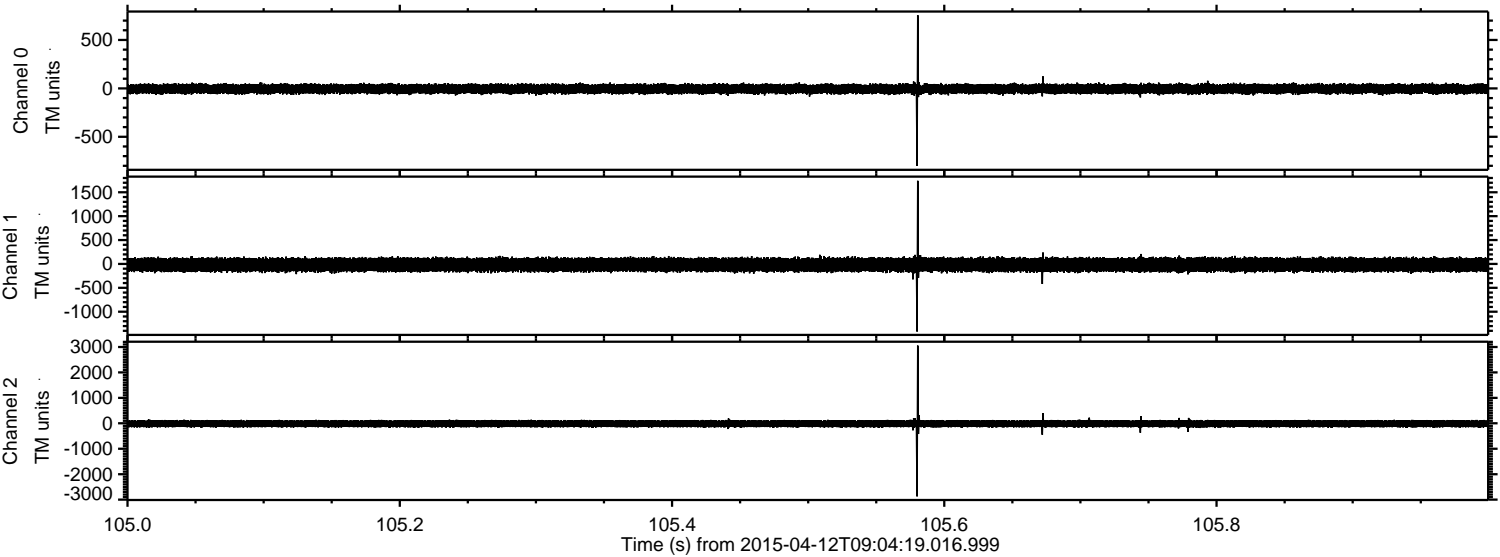
Channel 1  
mn: -2418  
mx: 2799  
 $\mu$ : -17.2  
 $\sigma$ : 79.1

Channel 2  
mn: -7944  
mx: 5859  
 $\mu$ : -16.6  
 $\sigma$ : 95.1



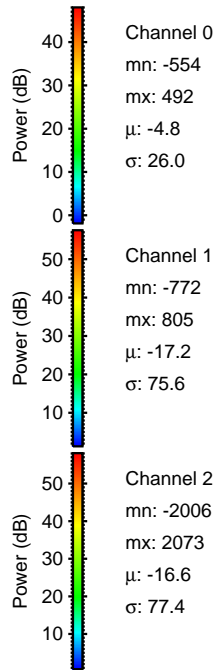
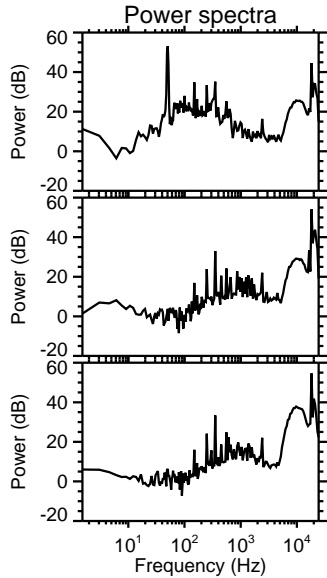
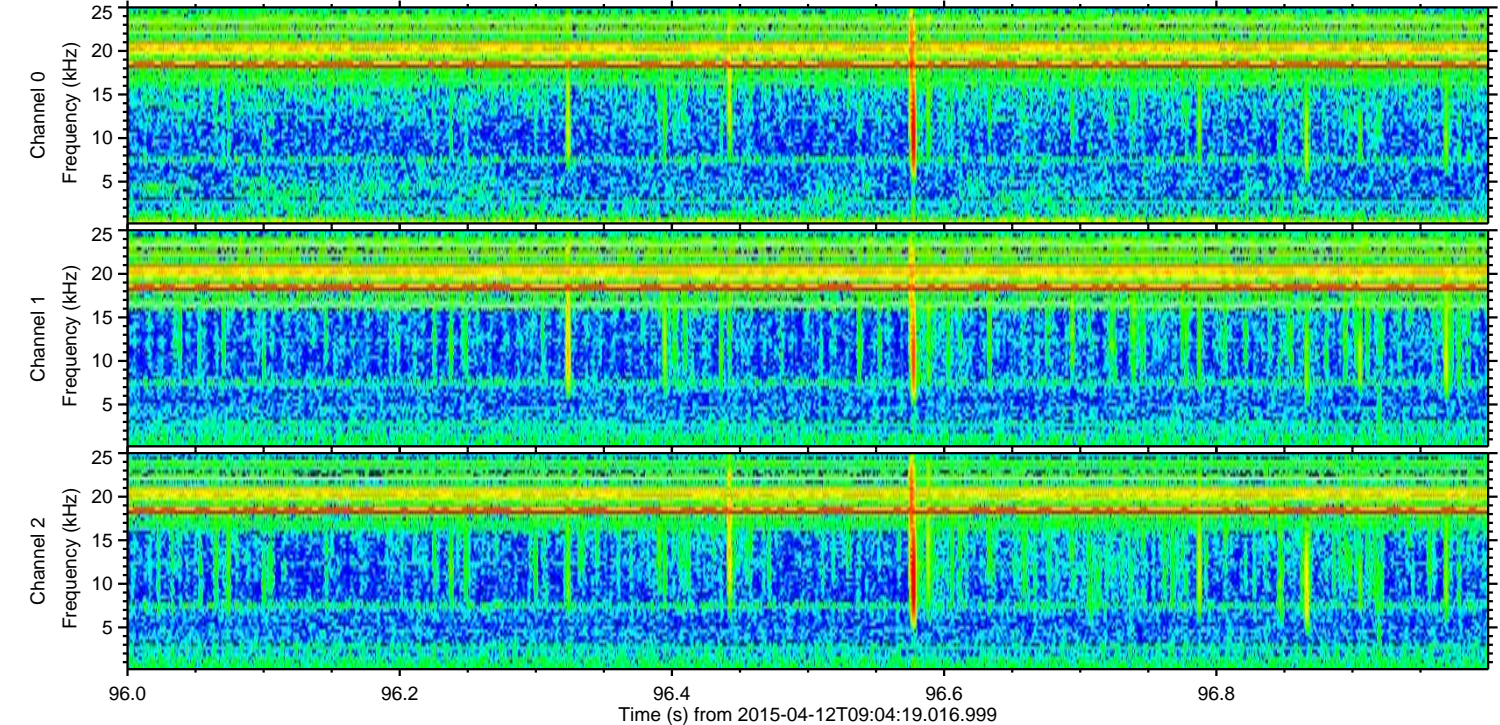
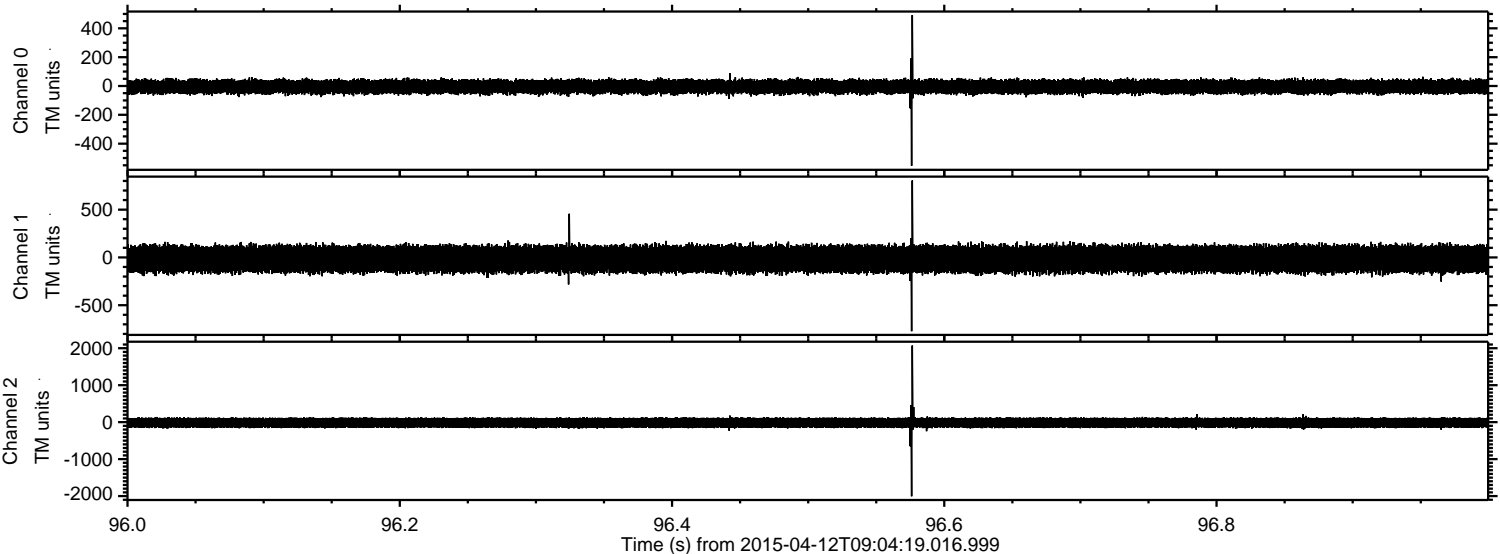
ELMAVAN 3D WAVEFORMS (Measured data sampled at 50 kHz) 49774 packets of 144 samples from 2015-04-12T09:04:19.016.999. Part 106/144

Processed Sun Apr 12 11:11:25 2015 by ELM ver.2012-10-06 from 001\_\_elm20150412\_090418\_\_dat00.bin





Processed Sun Apr 12 11:11:26 2015 by ELM ver.2012-10-06 from 001\_\_elm20150412\_090418\_\_dat00.bin



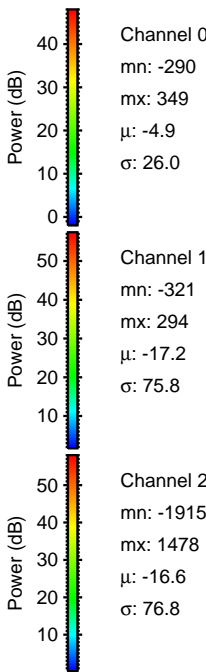
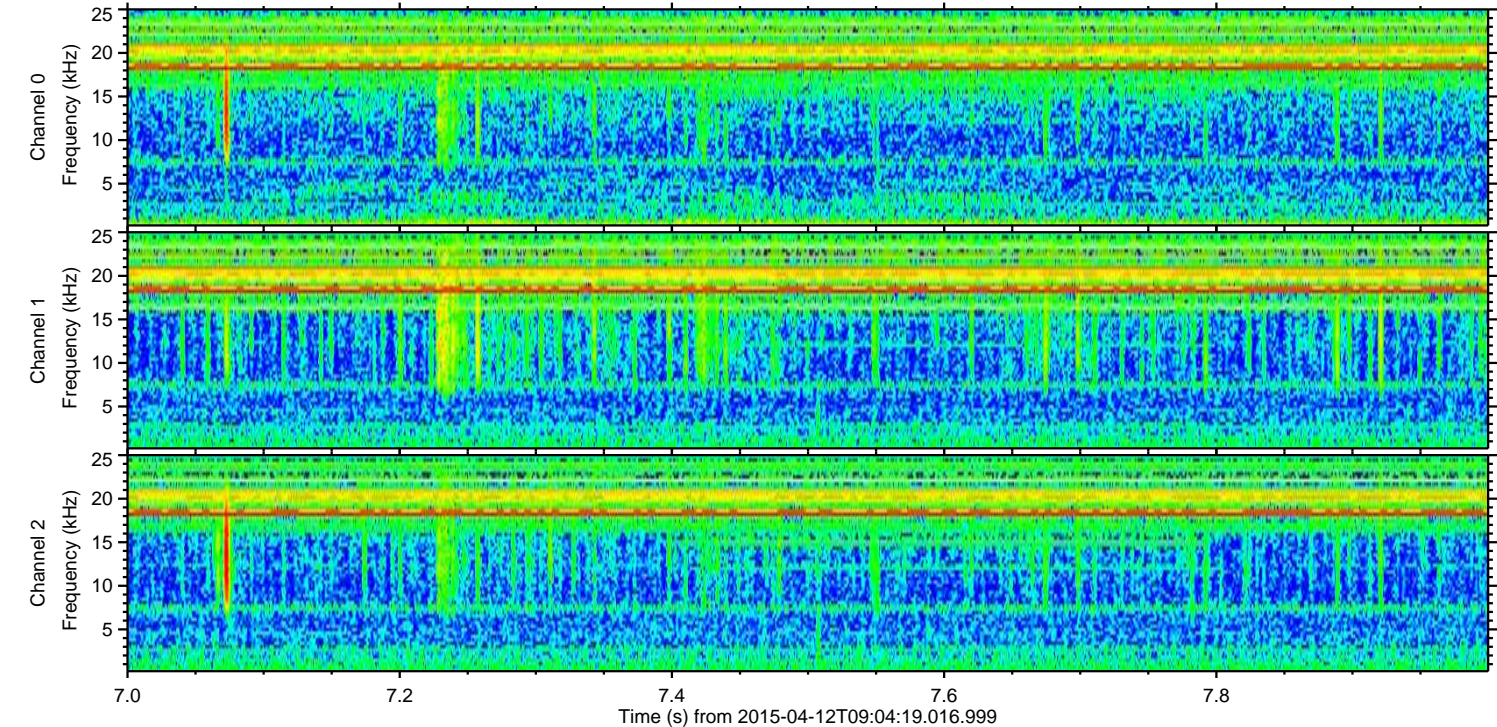
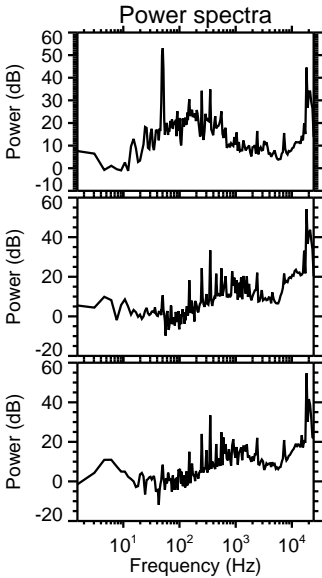
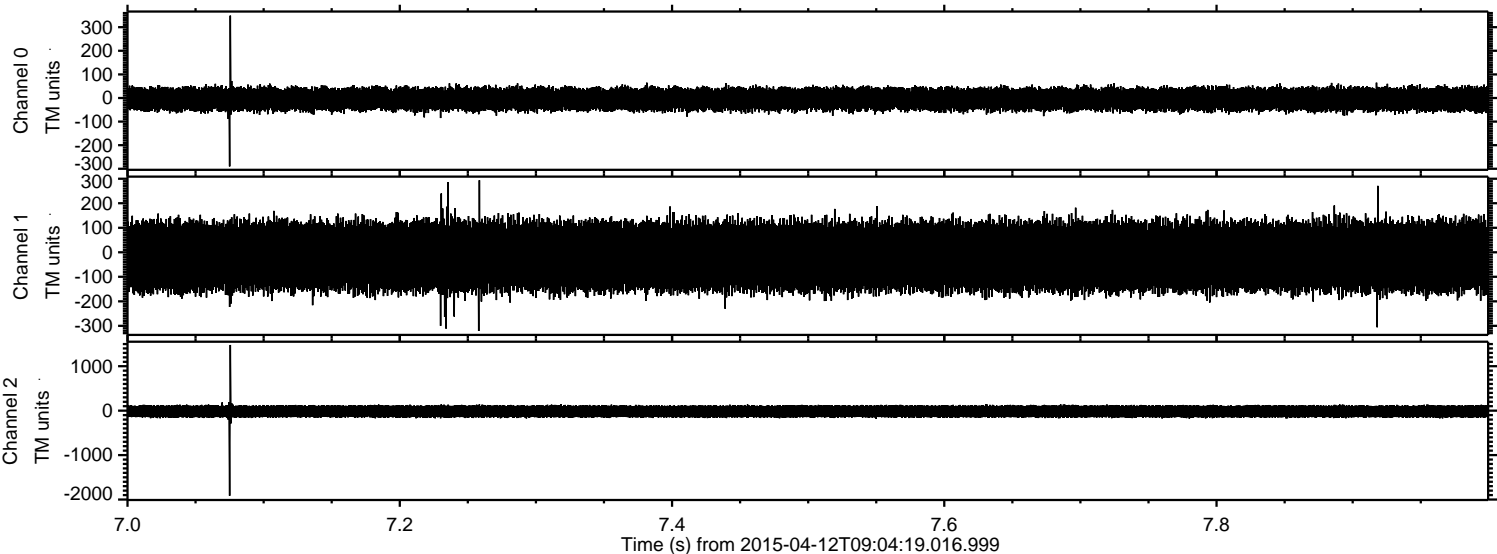
Channel 0  
mn: -554  
mx: 492  
 $\mu$ : -4.8  
 $\sigma$ : 26.0

Channel 1  
mn: -772  
mx: 805  
 $\mu$ : -17.2  
 $\sigma$ : 75.6

Channel 2  
mn: -2006  
mx: 2073  
 $\mu$ : -16.6  
 $\sigma$ : 77.4



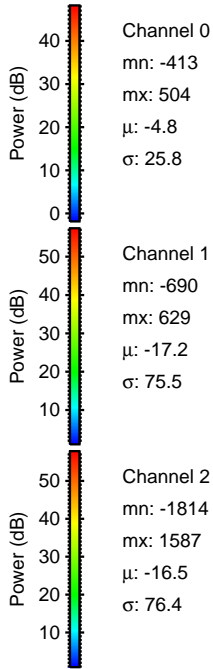
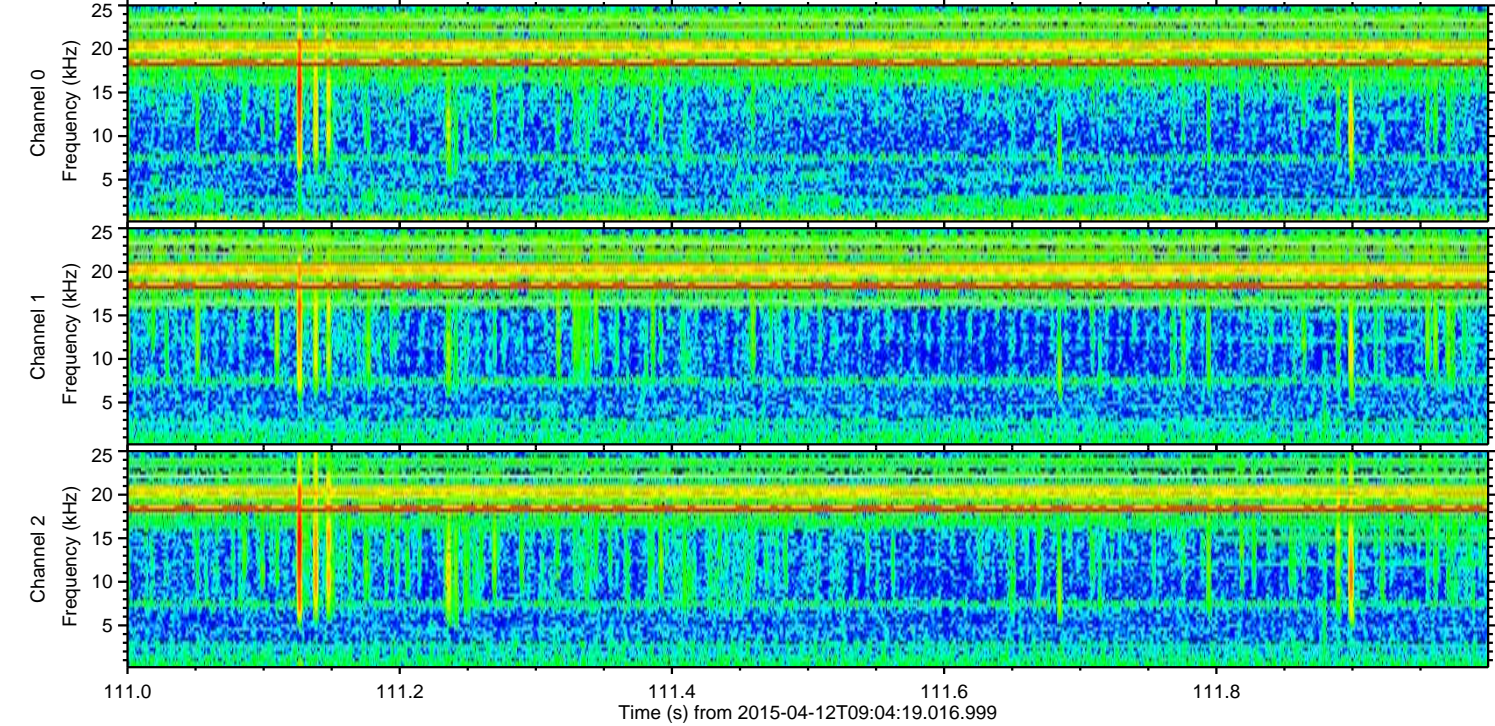
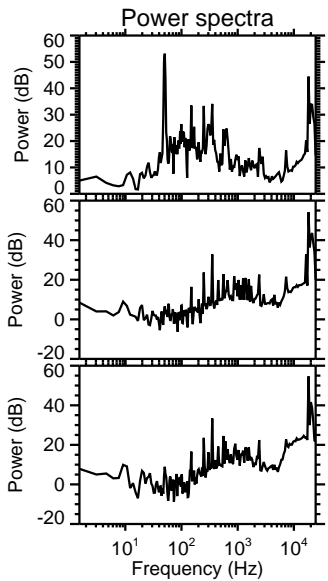
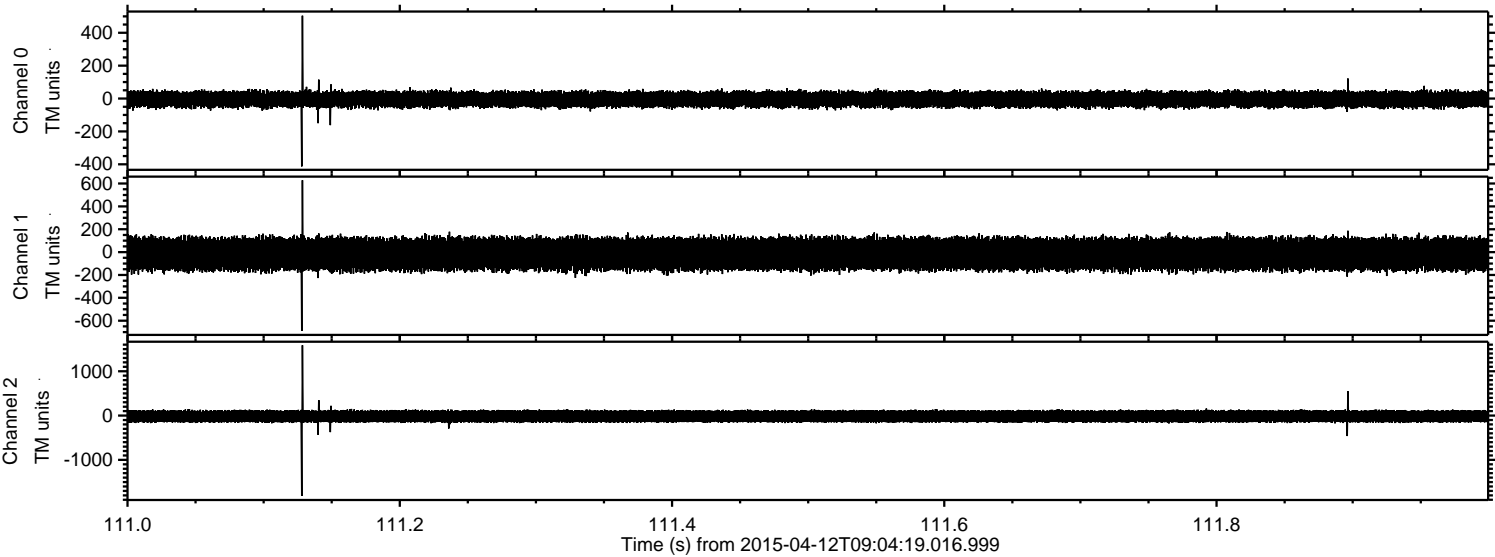
Processed Sun Apr 12 11:11:27 2015 by ELM ver.2012-10-06 from 001\_\_elm20150412\_090418\_\_dat00.bin





ELMAVAN 3D WAVEFORMS (Measured data sampled at 50 kHz) 49774 packets of 144 samples from 2015-04-12T09:04:19.016.999. Part 112/144

Processed Sun Apr 12 11:11:28 2015 by ELM ver.2012-10-06 from 001\_\_elm20150412\_090418\_\_dat00.bin



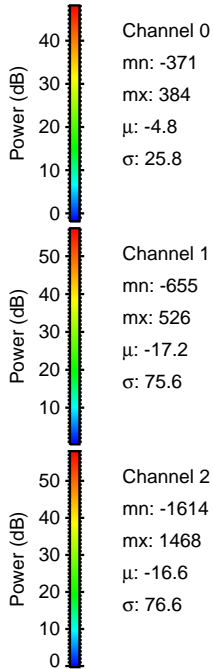
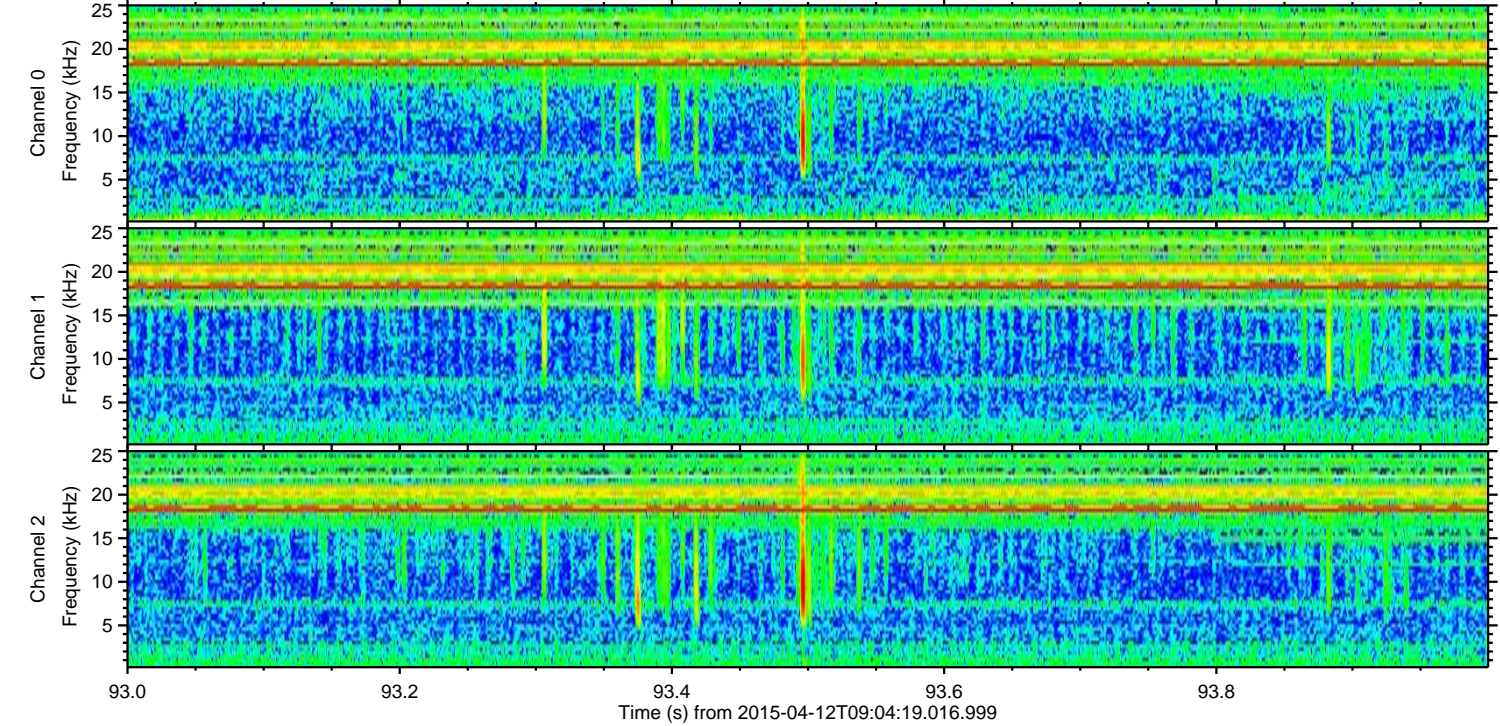
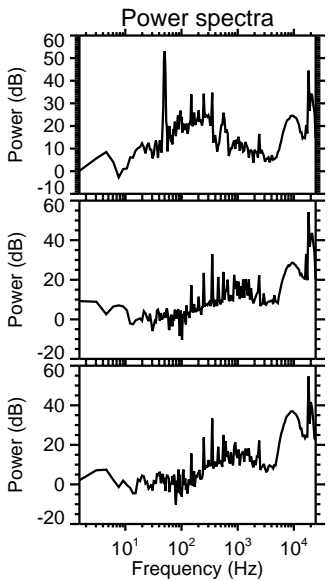
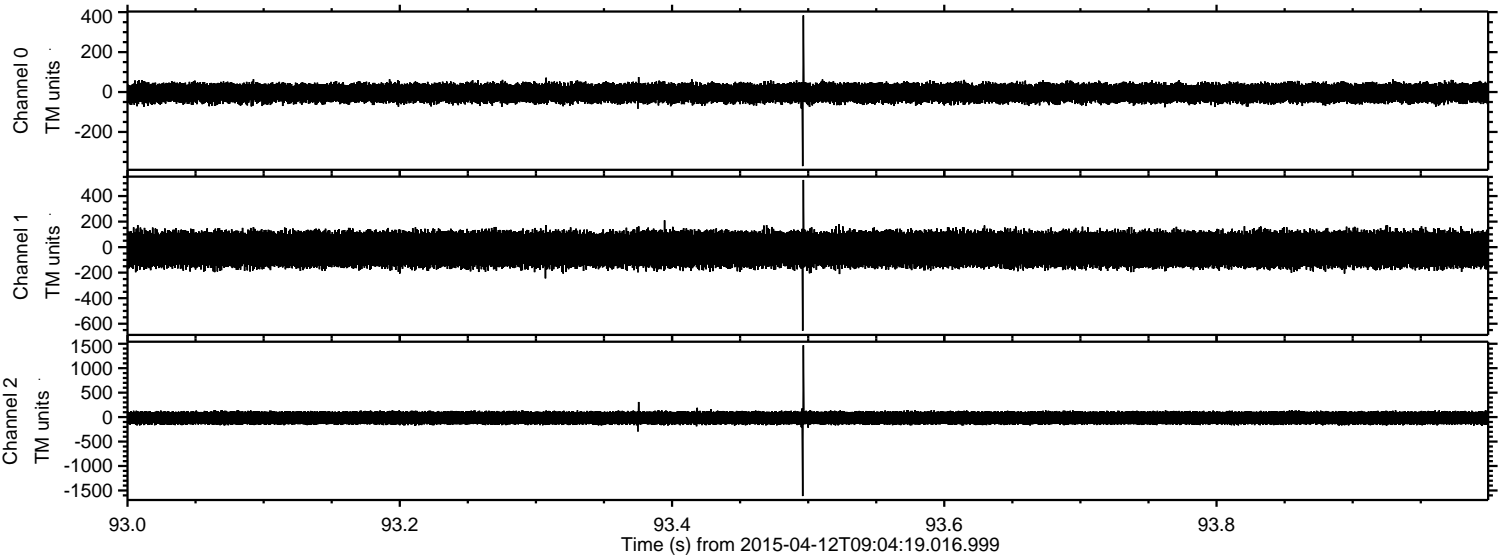
Channel 0  
mn: -413  
mx: 504  
 $\mu$ : -4.8  
 $\sigma$ : 25.8

Channel 1  
mn: -690  
mx: 629  
 $\mu$ : -17.2  
 $\sigma$ : 75.5

Channel 2  
mn: -1814  
mx: 1587  
 $\mu$ : -16.5  
 $\sigma$ : 76.4



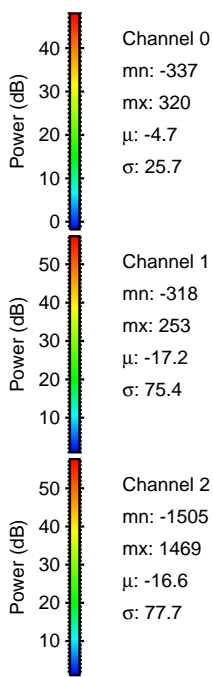
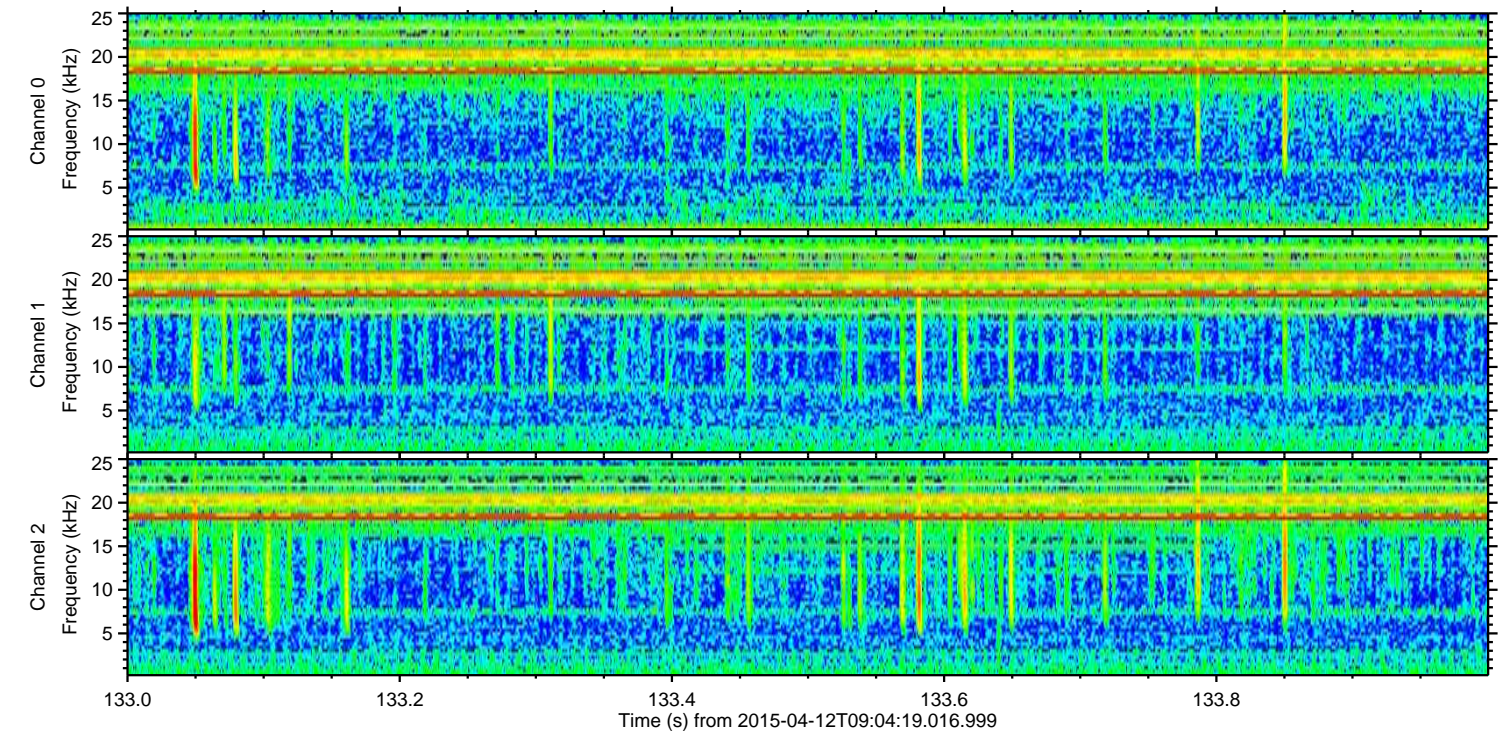
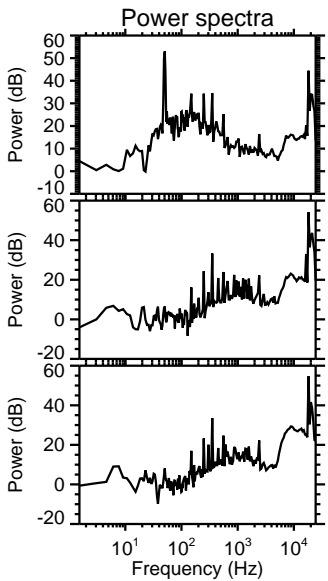
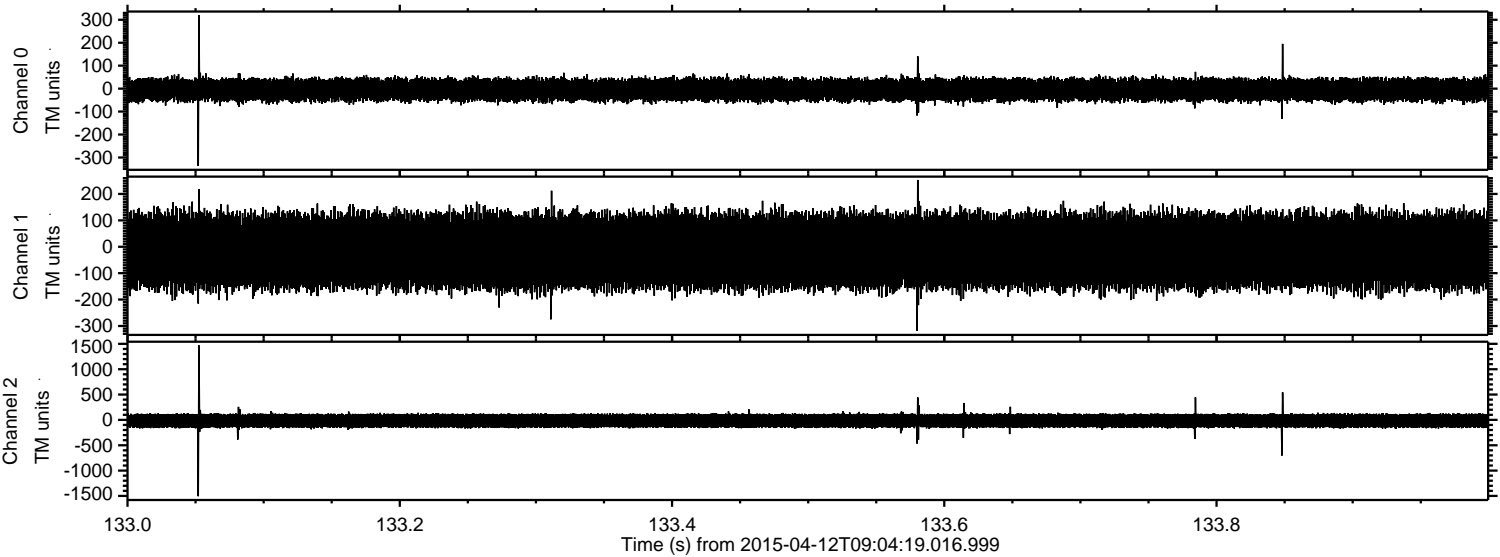
Processed Sun Apr 12 11:11:29 2015 by ELM ver.2012-10-06 from 001\_\_elm20150412\_090418\_\_dat00.bin





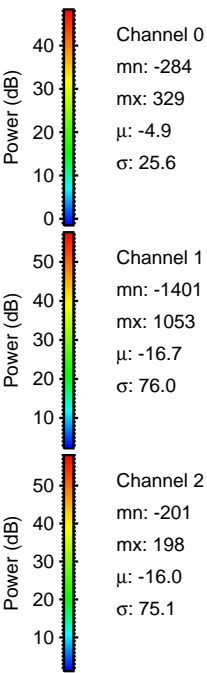
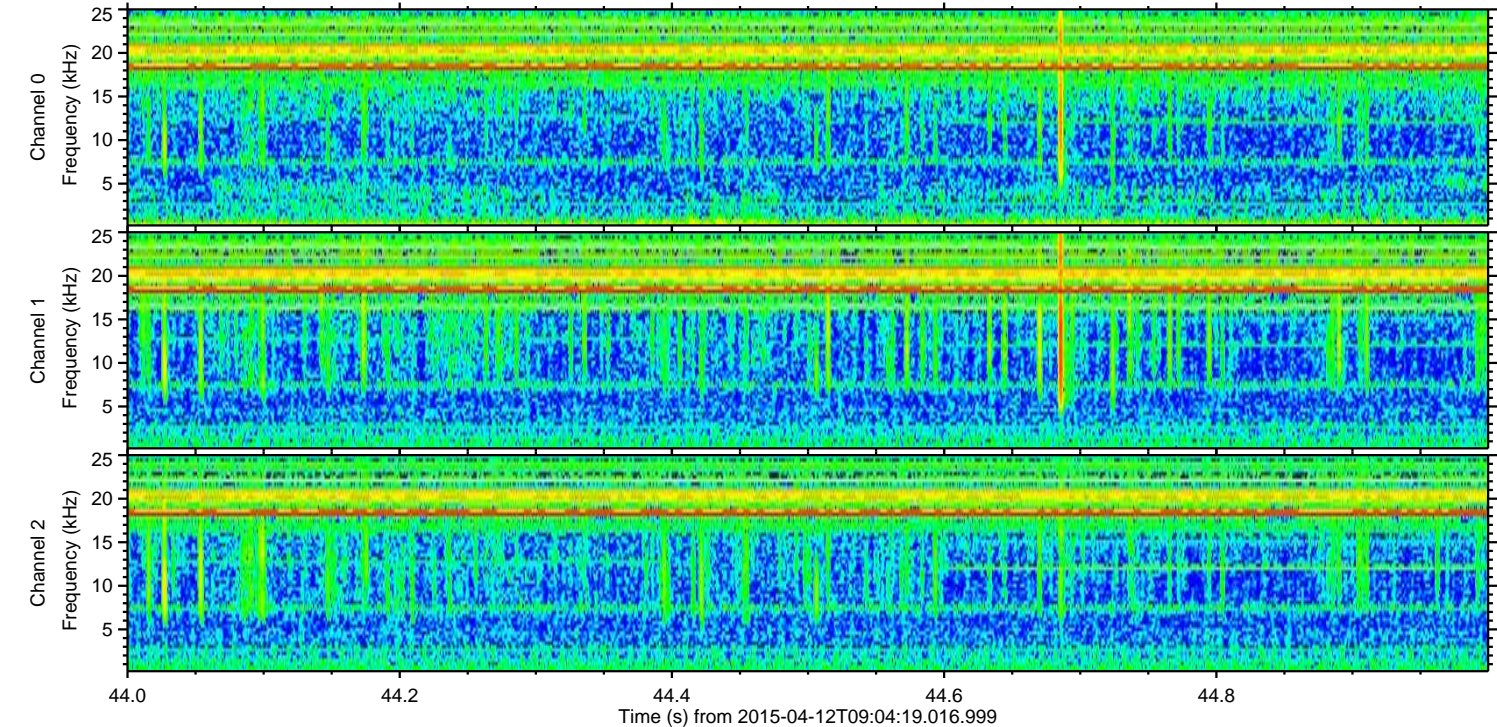
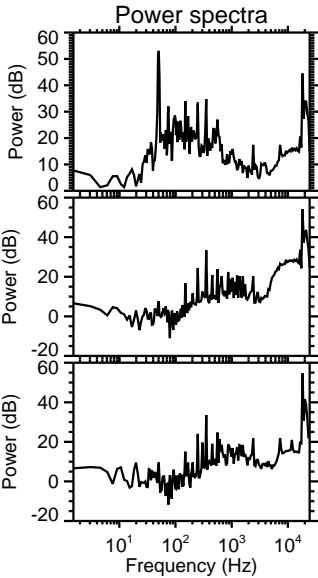
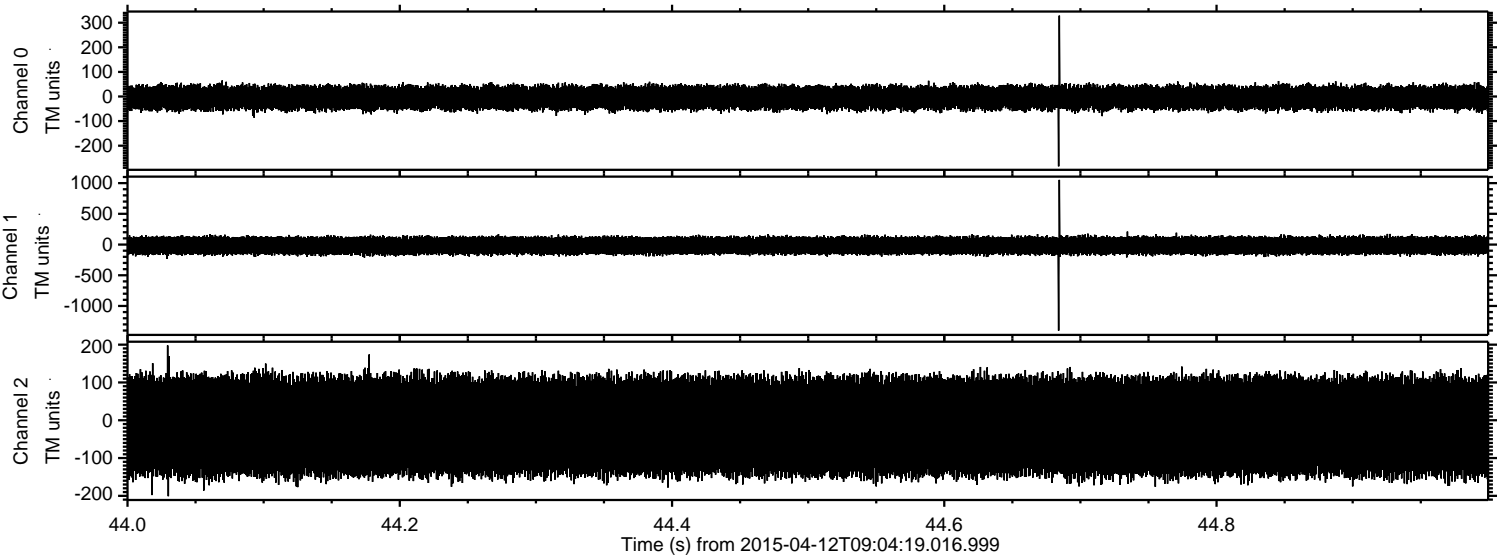
ELMAVAN 3D WAVEFORMS (Measured data sampled at 50 kHz) 49774 packets of 144 samples from 2015-04-12T09:04:19.016.999. Part 134/144

Processed Sun Apr 12 11:11:30 2015 by ELM ver.2012-10-06 from 001\_\_elm20150412\_090418\_\_dat00.bin





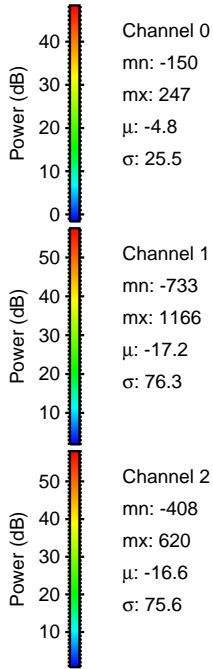
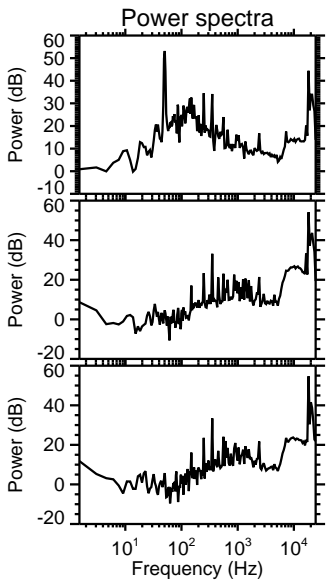
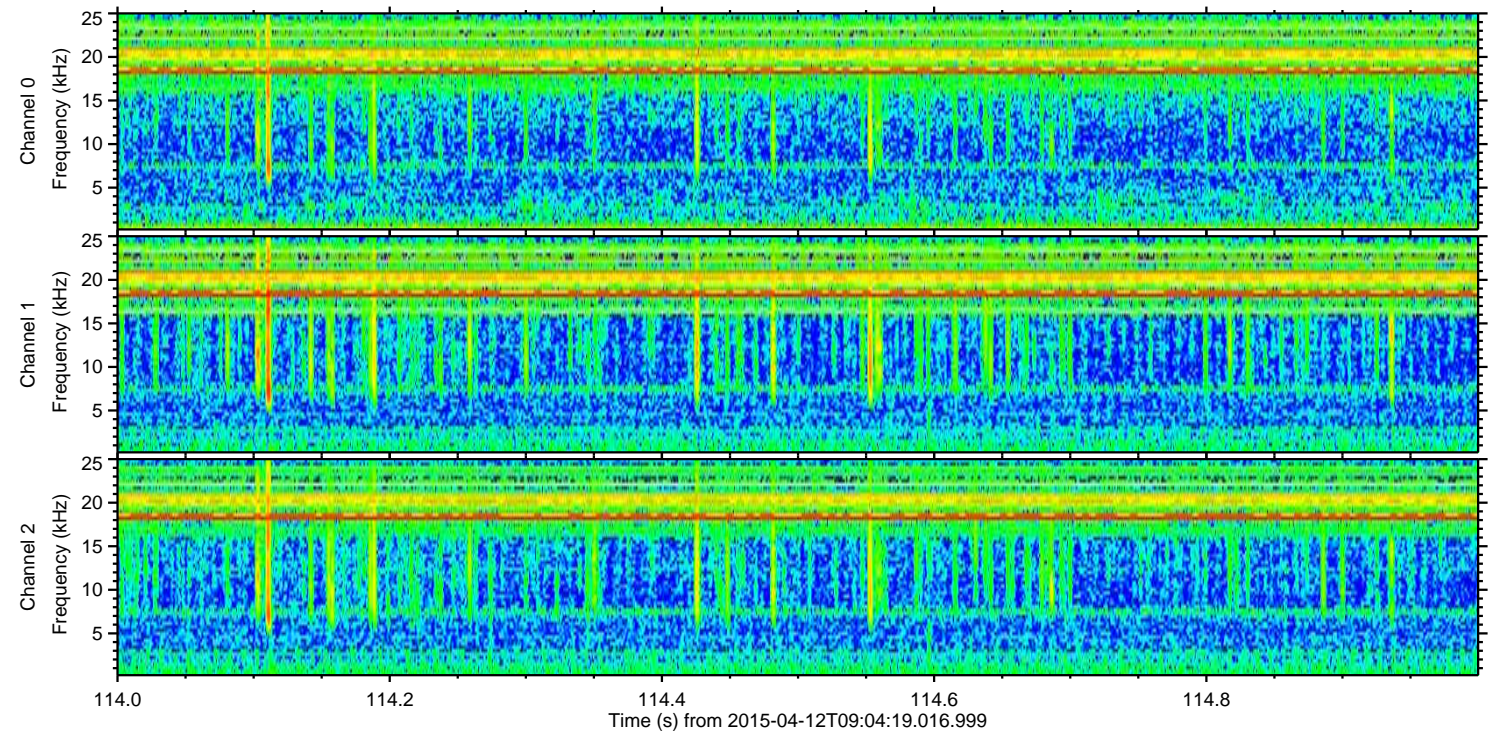
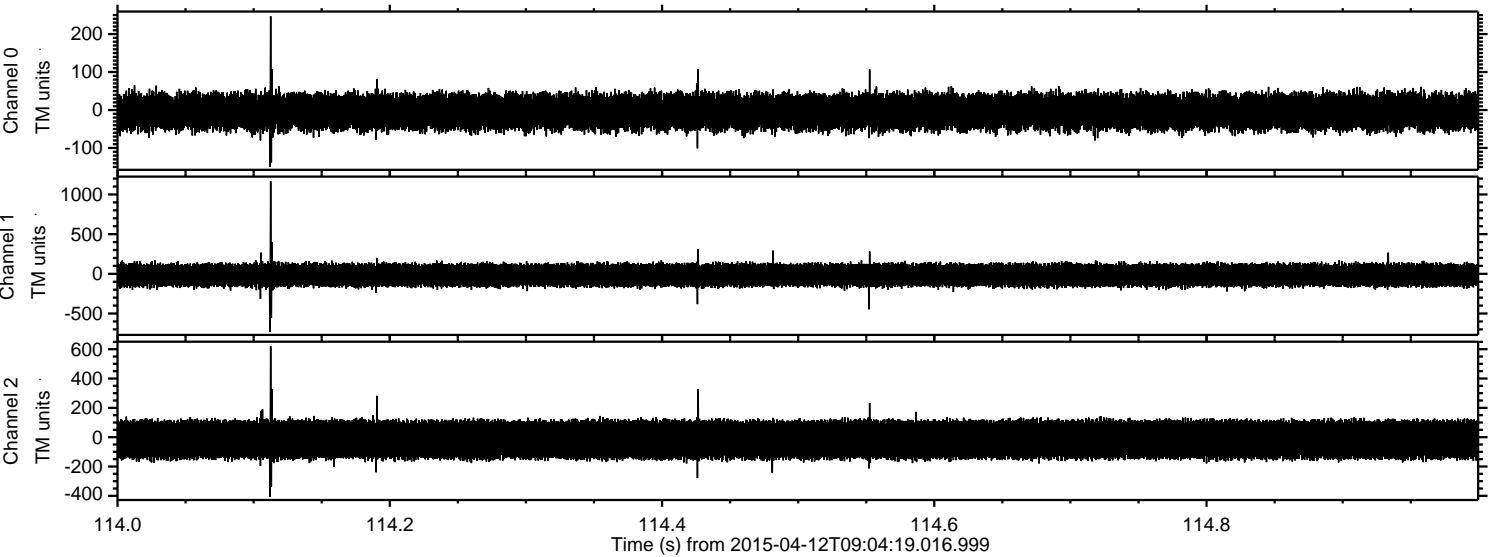
Processed Sun Apr 12 11:11:31 2015 by ELM ver.2012-10-06 from 001\_\_elm20150412\_090418\_\_dat00.bin





ELMAVAN 3D WAVEFORMS (Measured data sampled at 50 kHz) 49774 packets of 144 samples from 2015-04-12T09:04:19.016.999. Part 115/144

Processed Sun Apr 12 11:11:32 2015 by ELM ver.2012-10-06 from 001\_\_elm20150412\_090418\_\_dat00.bin



Channel 0  
mn: -150  
mx: 247  
 $\mu$ : -4.8  
 $\sigma$ : 25.5

Channel 1  
mn: -733  
mx: 1166  
 $\mu$ : -17.2  
 $\sigma$ : 76.3

Channel 2  
mn: -408  
mx: 620  
 $\mu$ : -16.6  
 $\sigma$ : 75.6



Processed Sun Apr 12 11:11:33 2015 by ELM ver.2012-10-06 from 001\_\_elm20150412\_090418\_\_dat00.bin

