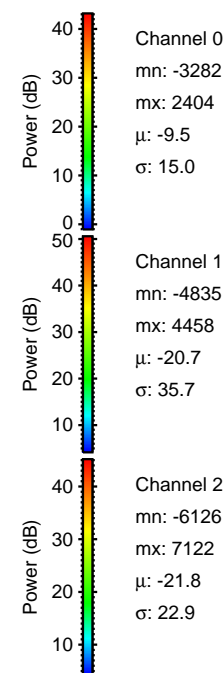
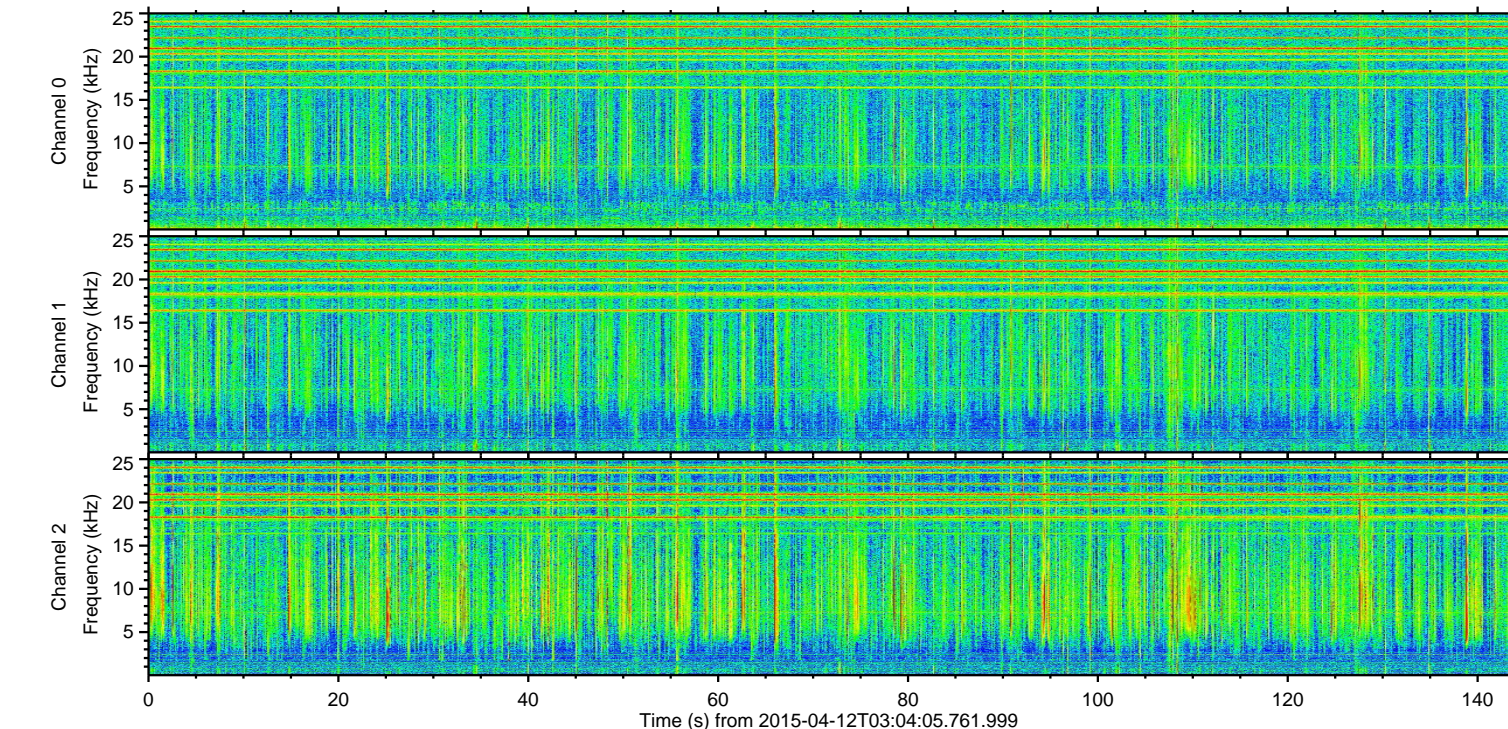
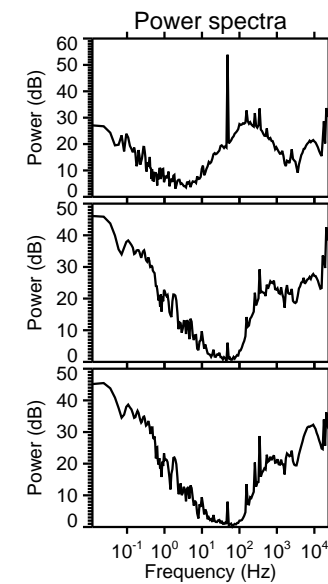
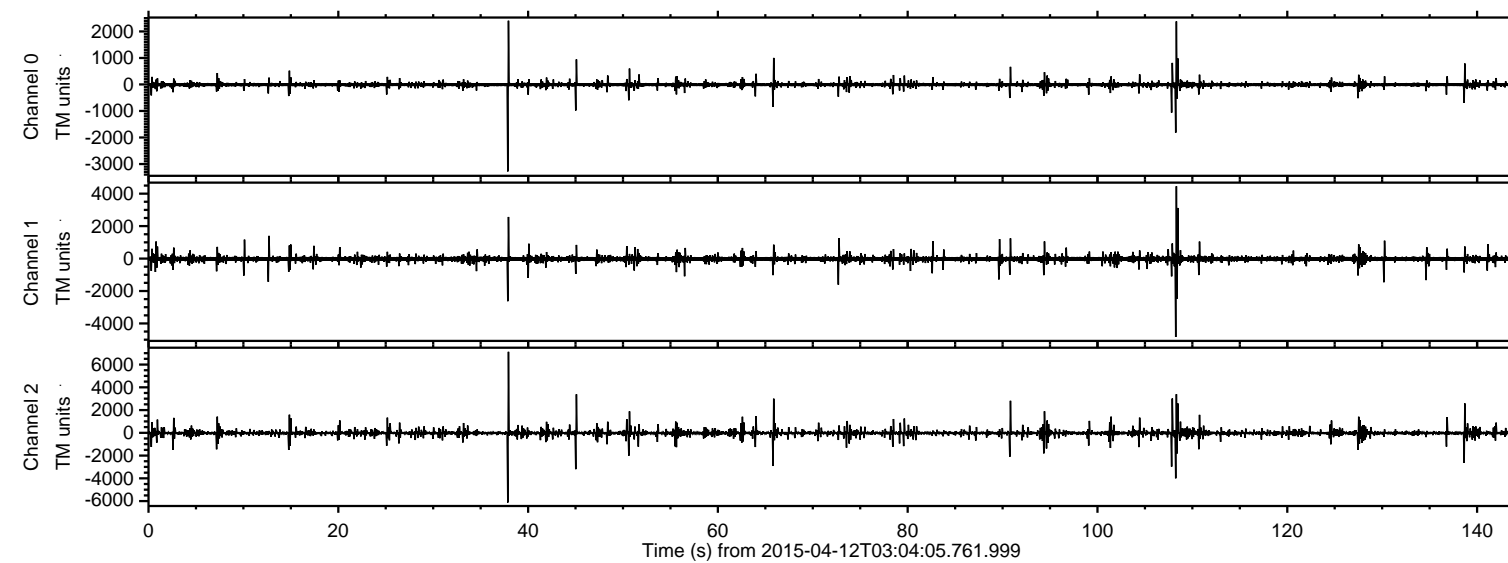


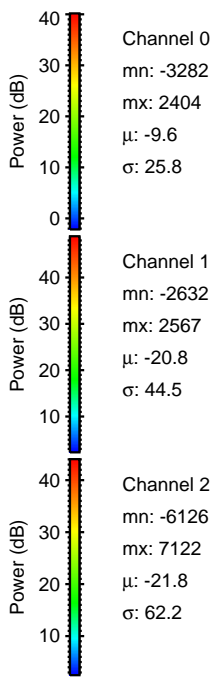
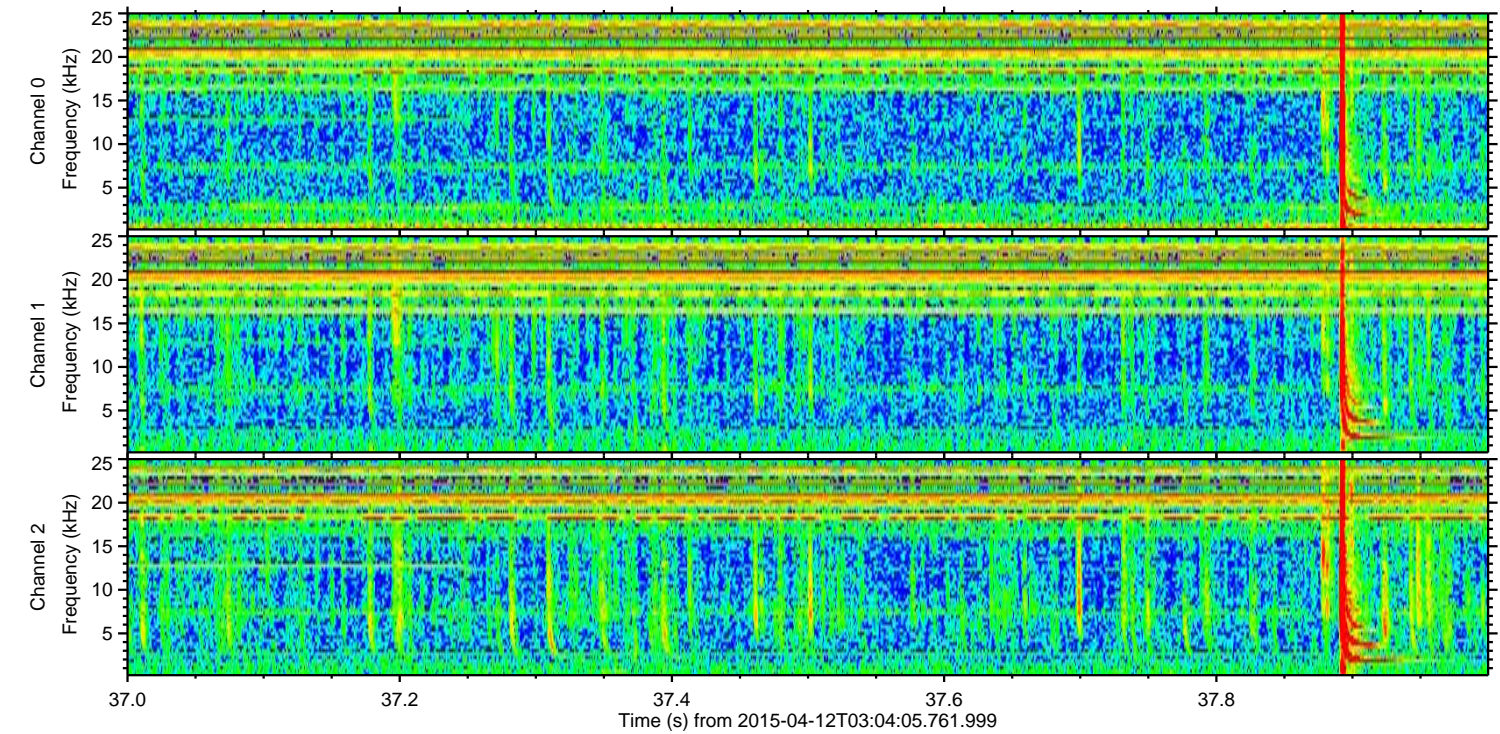
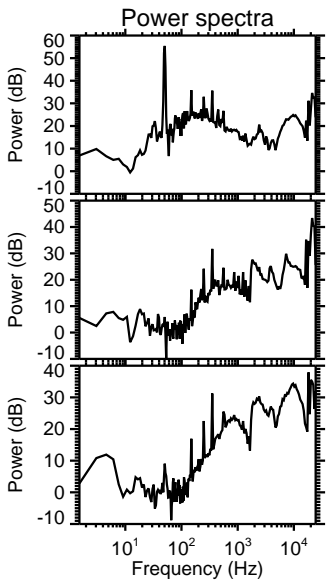
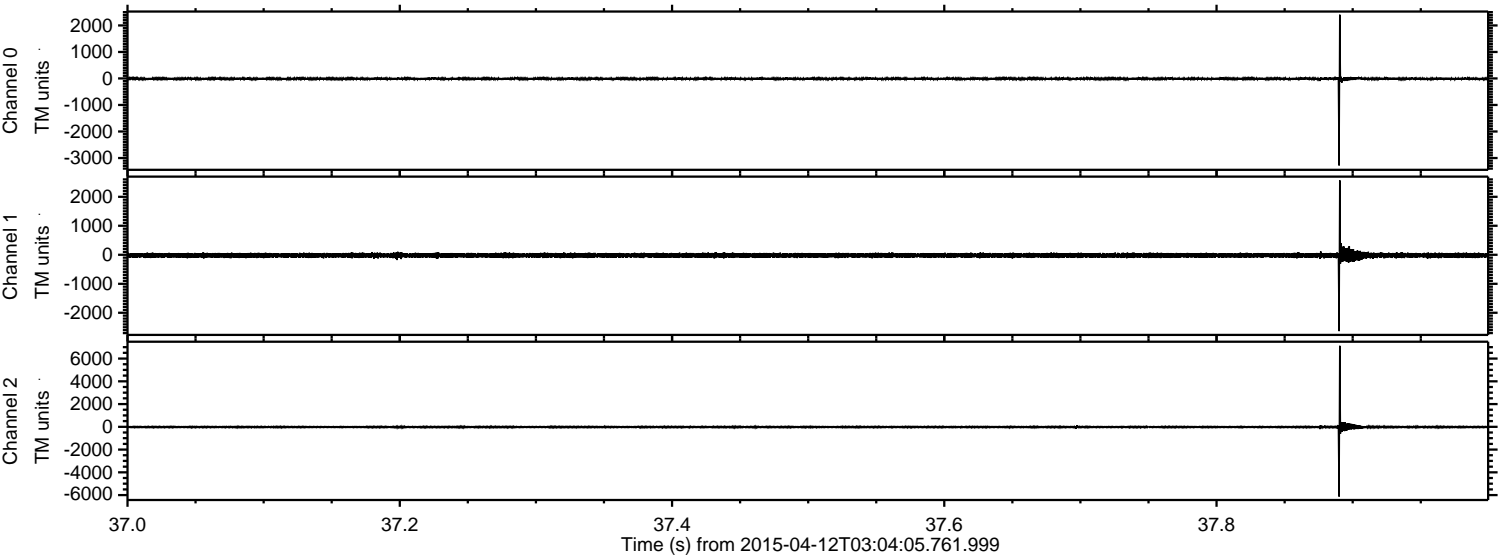
# ELMAVAN 3D WAVEFORMS (Measured data sampled at 50 kHz) 49785 packets of 144 samples from 2015-04-12T03:04:05.761.999.

Processed Sun Apr 12 05:10:43 2015 by ELM ver.2012-10-06 from 001\_\_elm20150412\_030404\_\_dat00.bin





Processed Sun Apr 12 05:10:55 2015 by ELM ver.2012-10-06 from 001\_\_elm20150412\_030404\_\_dat00.bin



Channel 0  
mn: -3282  
mx: 2404  
 $\mu$ : -9.6  
 $\sigma$ : 25.8

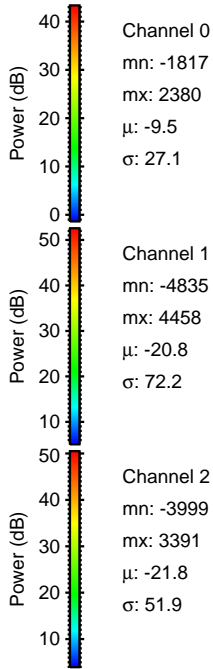
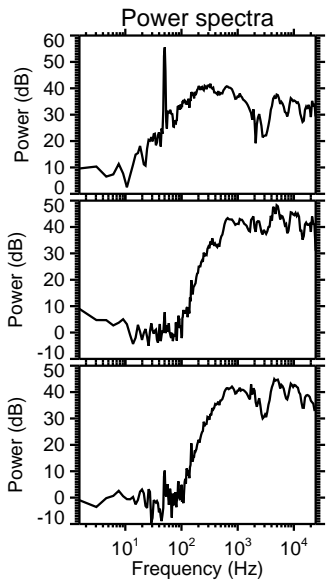
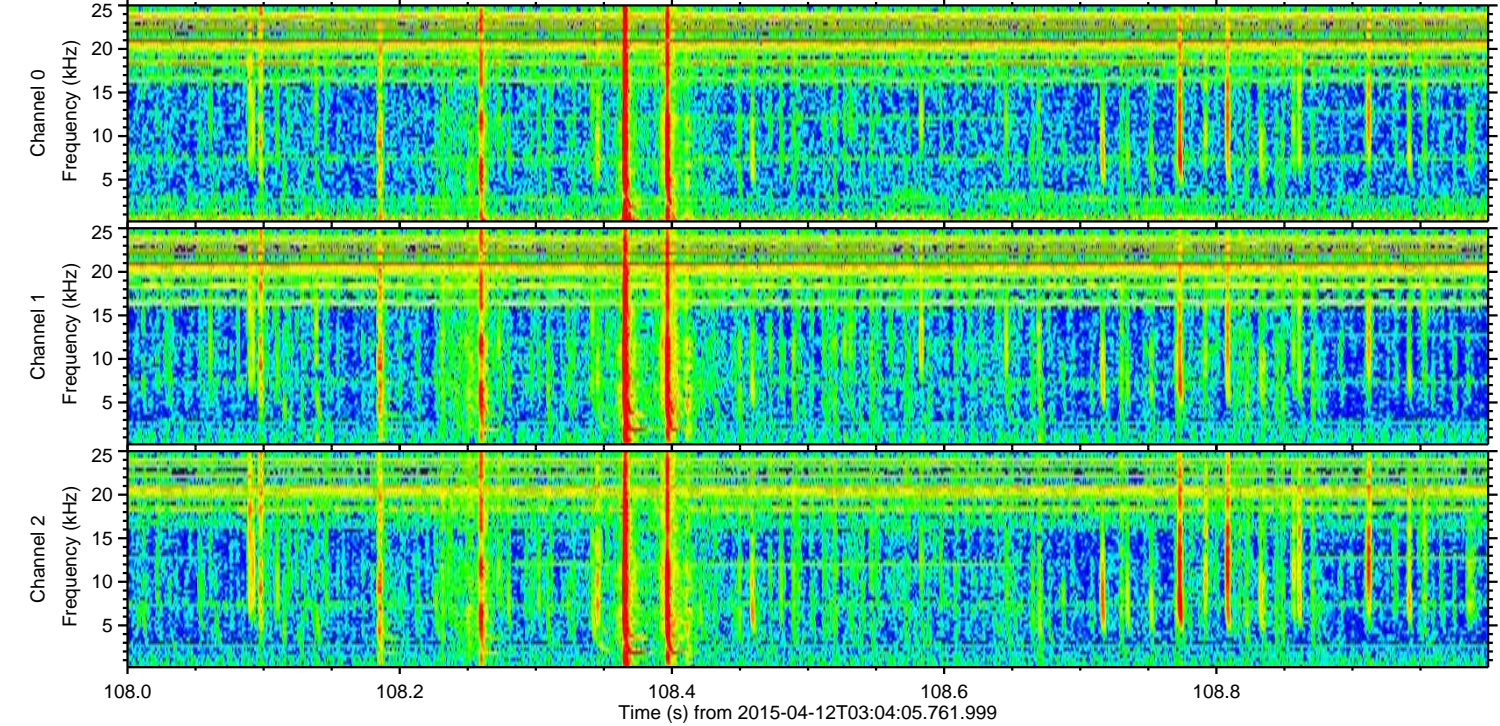
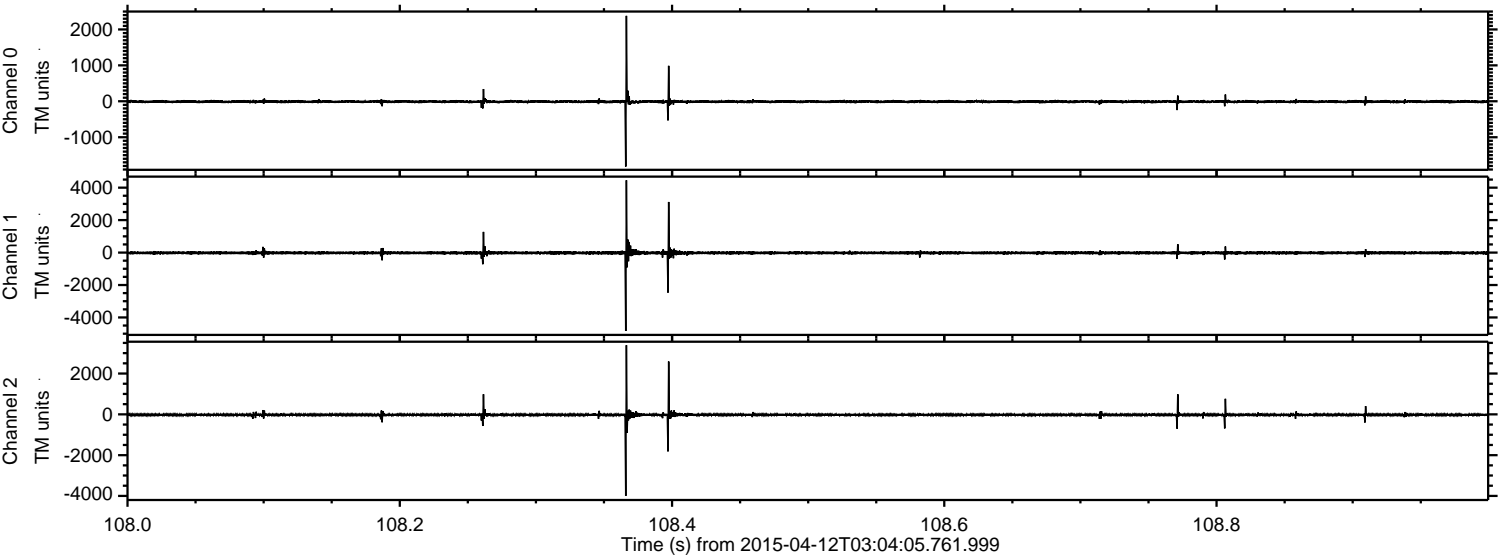
Channel 1  
mn: -2632  
mx: 2567  
 $\mu$ : -20.8  
 $\sigma$ : 44.5

Channel 2  
mn: -6126  
mx: 7122  
 $\mu$ : -21.8  
 $\sigma$ : 62.2



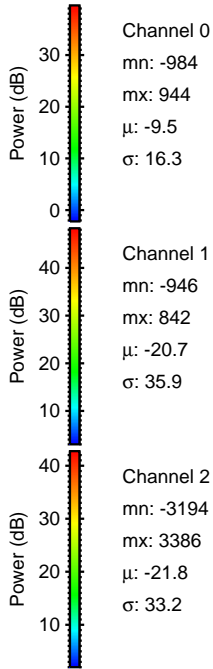
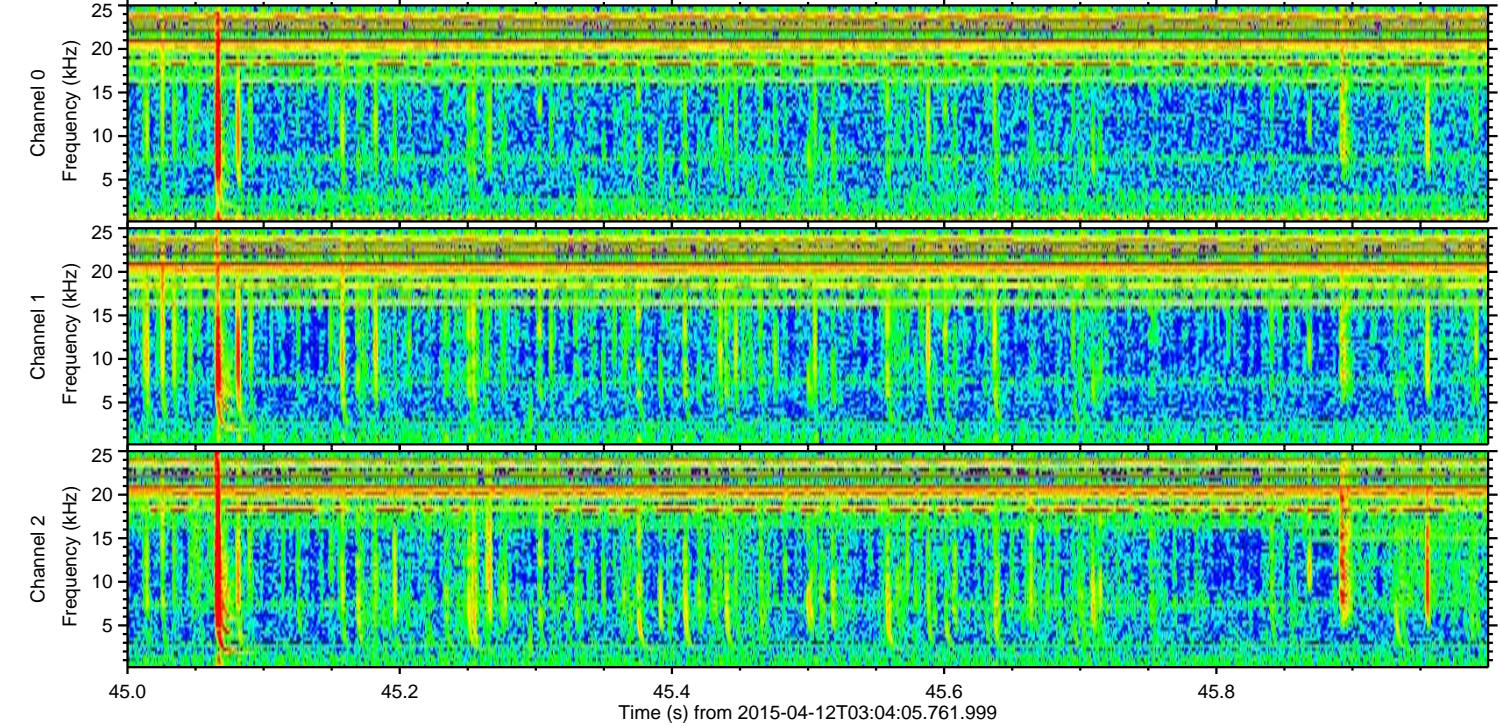
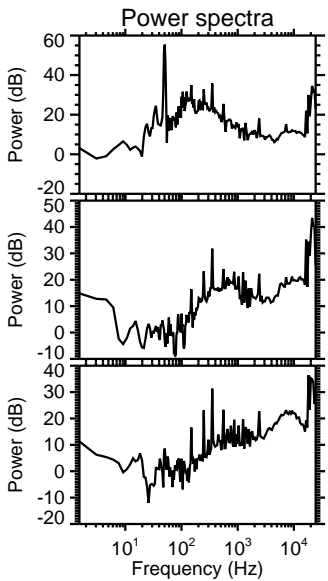
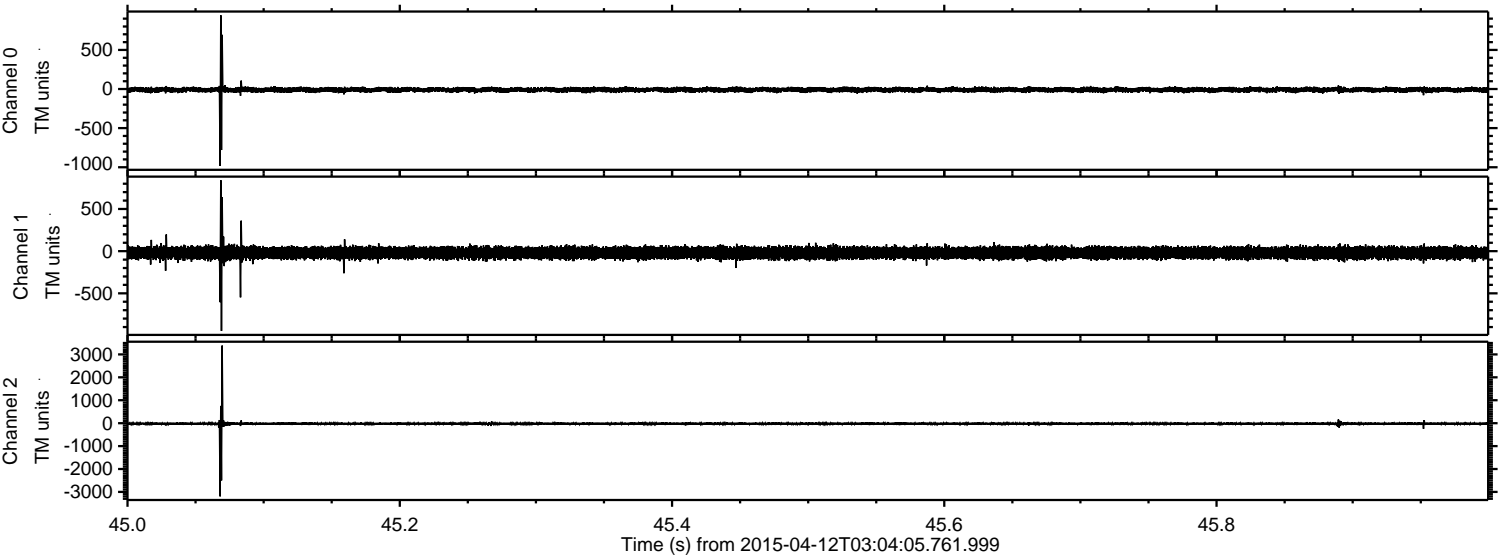
ELMAVAN 3D WAVEFORMS (Measured data sampled at 50 kHz) 49785 packets of 144 samples from 2015-04-12T03:04:05.761.999. Part 109/144

Processed Sun Apr 12 05:10:56 2015 by ELM ver.2012-10-06 from 001\_\_elm20150412\_030404\_\_dat00.bin





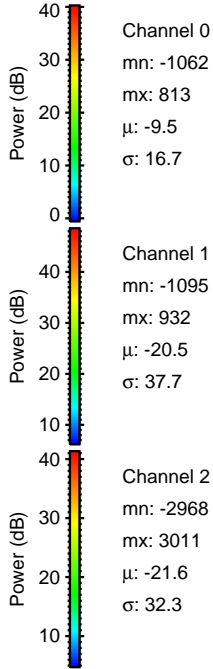
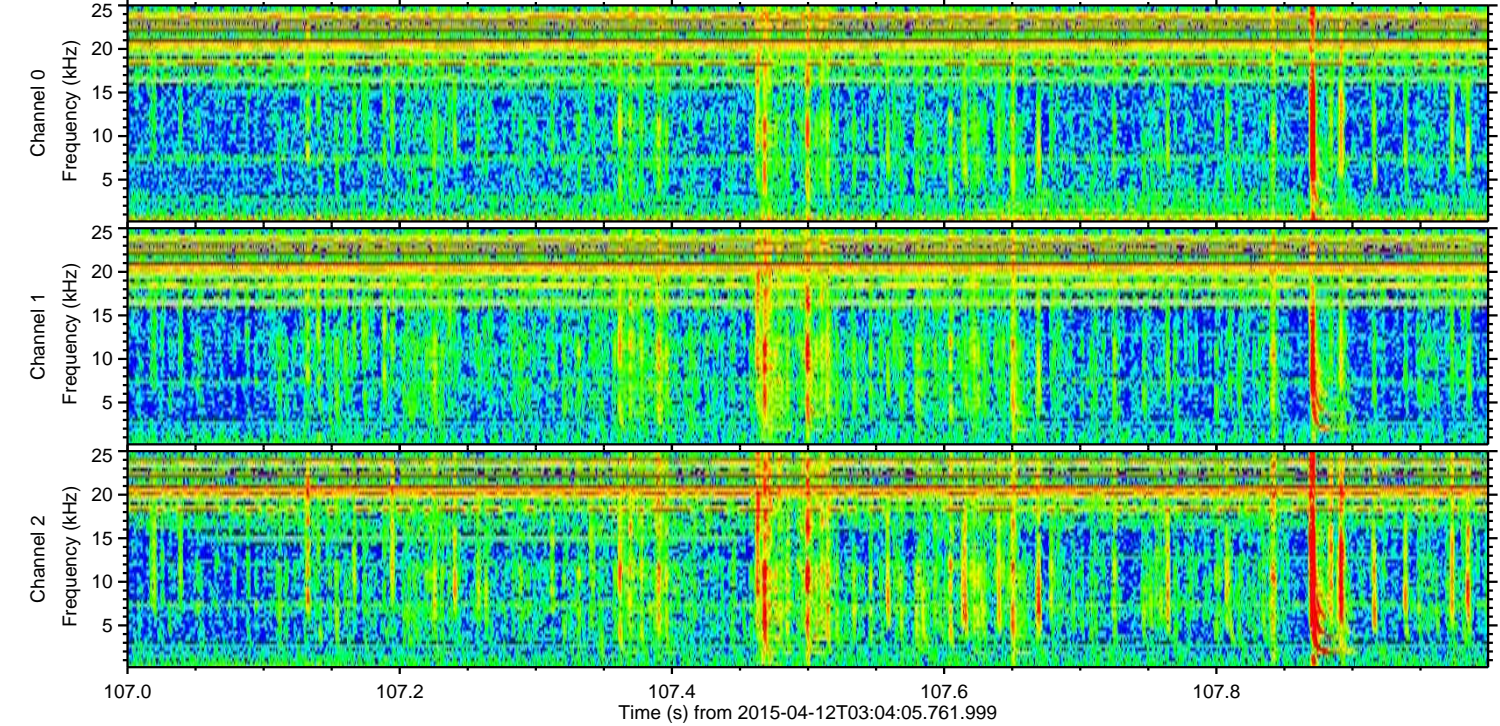
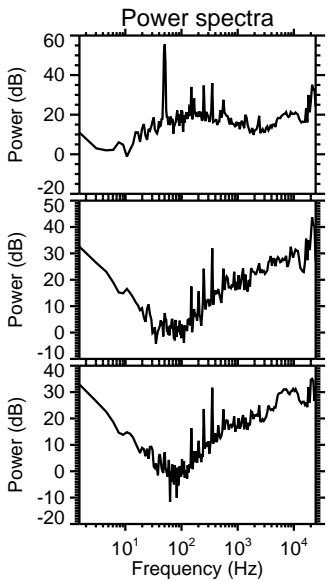
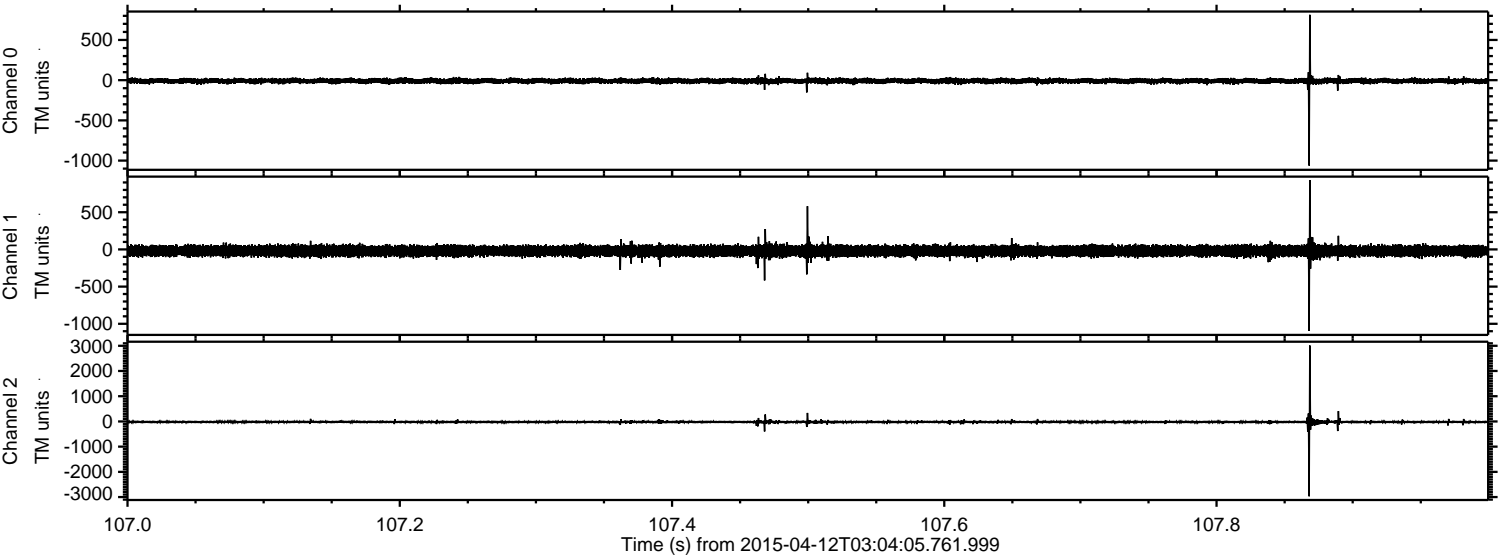
Processed Sun Apr 12 05:10:56 2015 by ELM ver.2012-10-06 from 001\_\_elm20150412\_030404\_\_dat00.bin





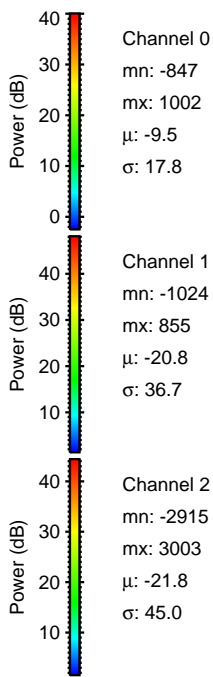
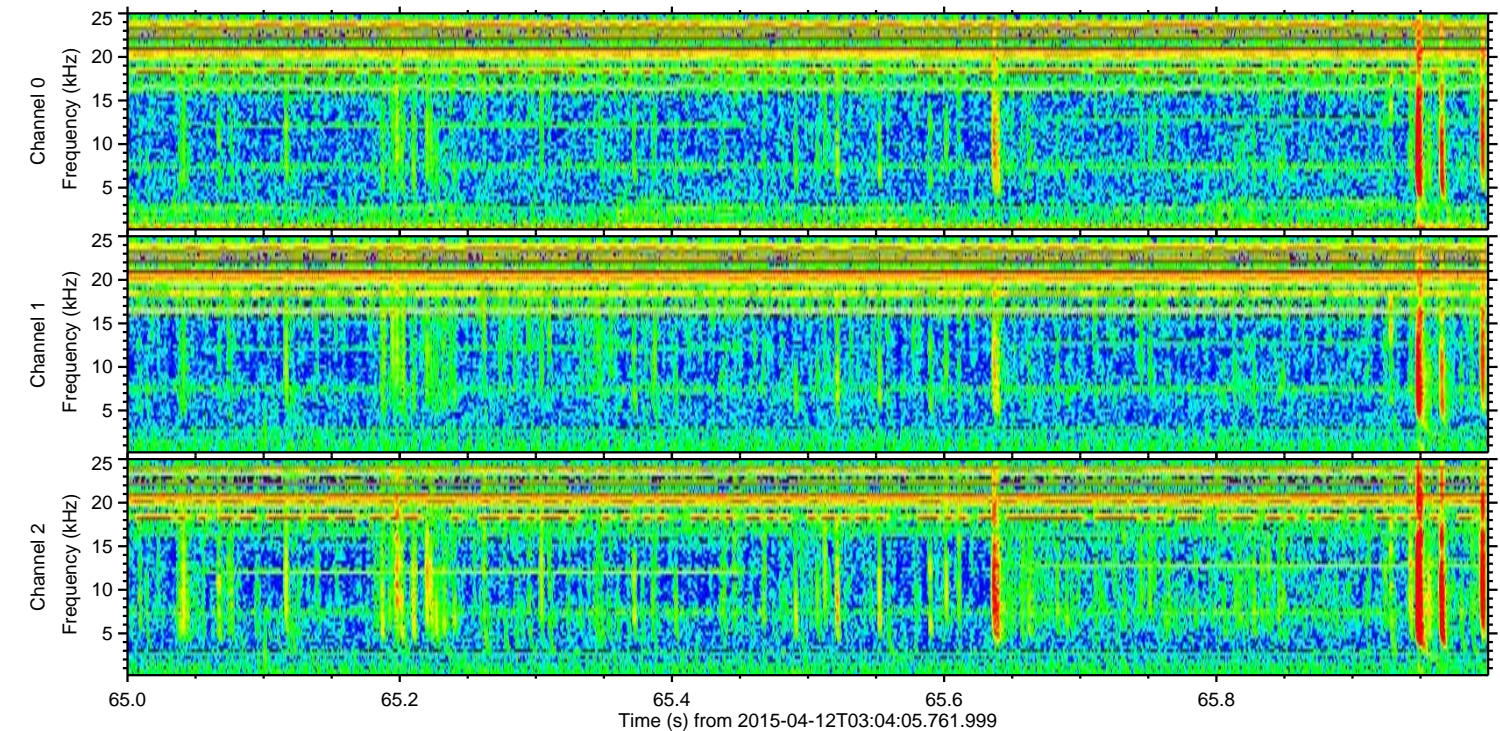
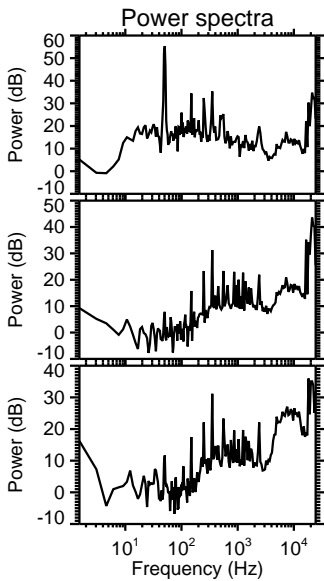
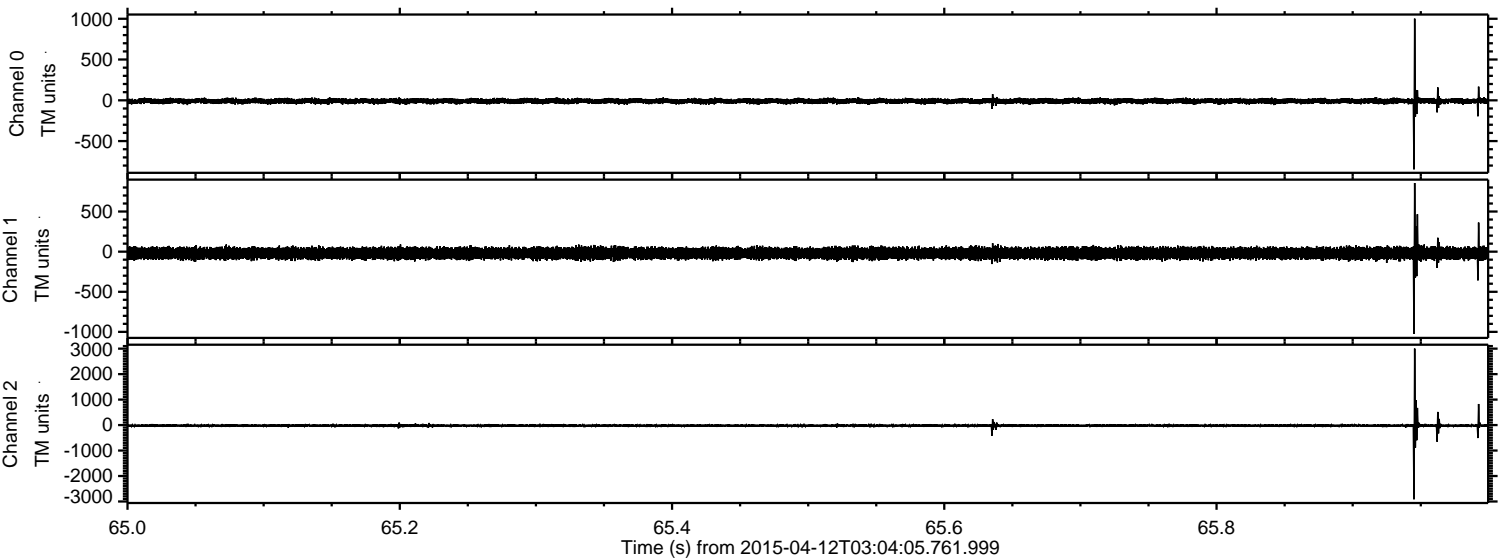
ELMAVAN 3D WAVEFORMS (Measured data sampled at 50 kHz) 49785 packets of 144 samples from 2015-04-12T03:04:05.761.999. Part 108/144

Processed Sun Apr 12 05:10:57 2015 by ELM ver.2012-10-06 from 001\_\_elm20150412\_030404\_\_dat00.bin



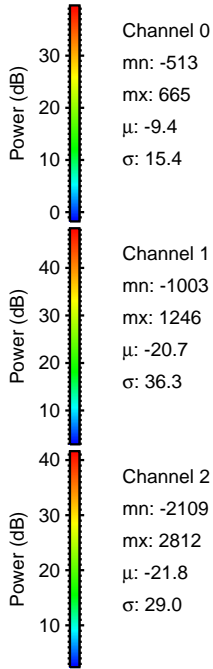
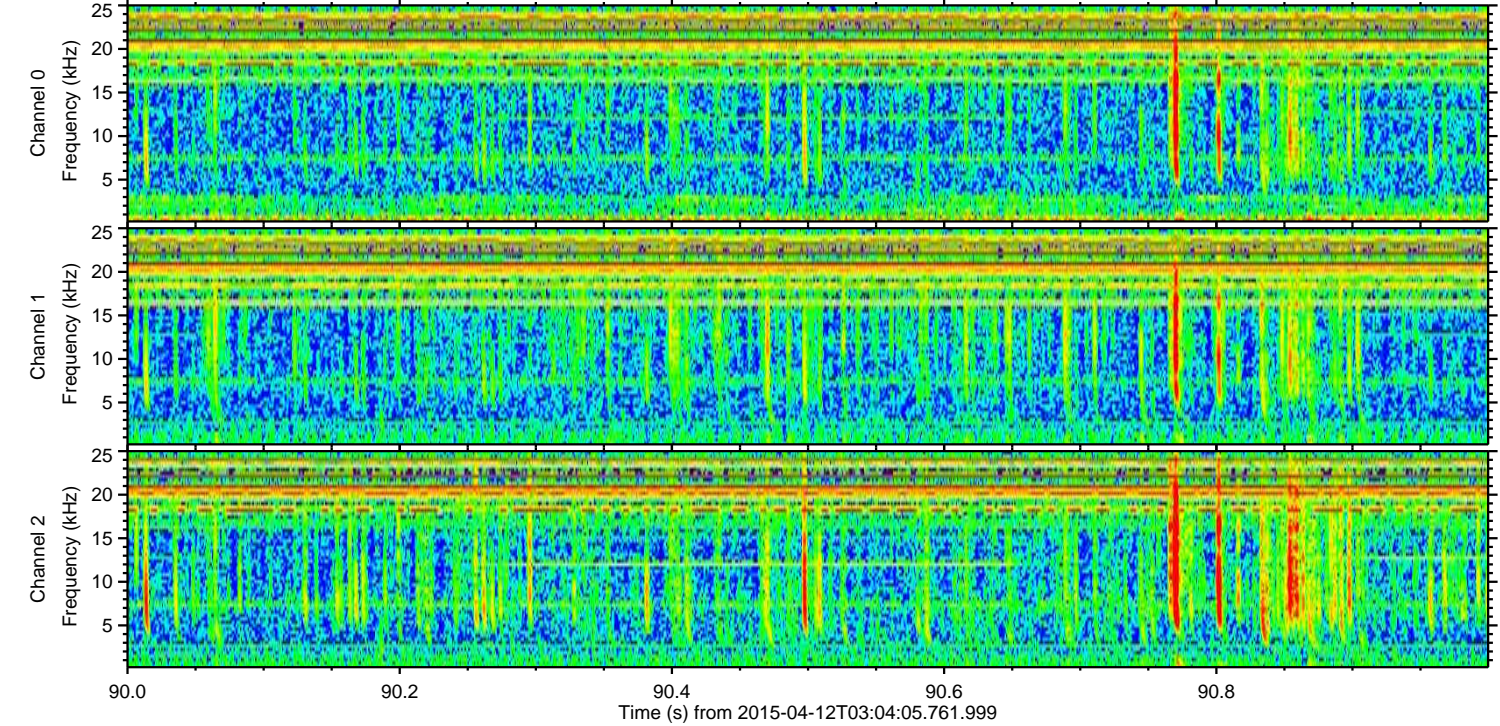
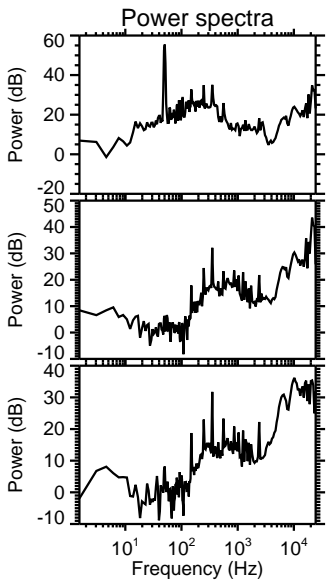
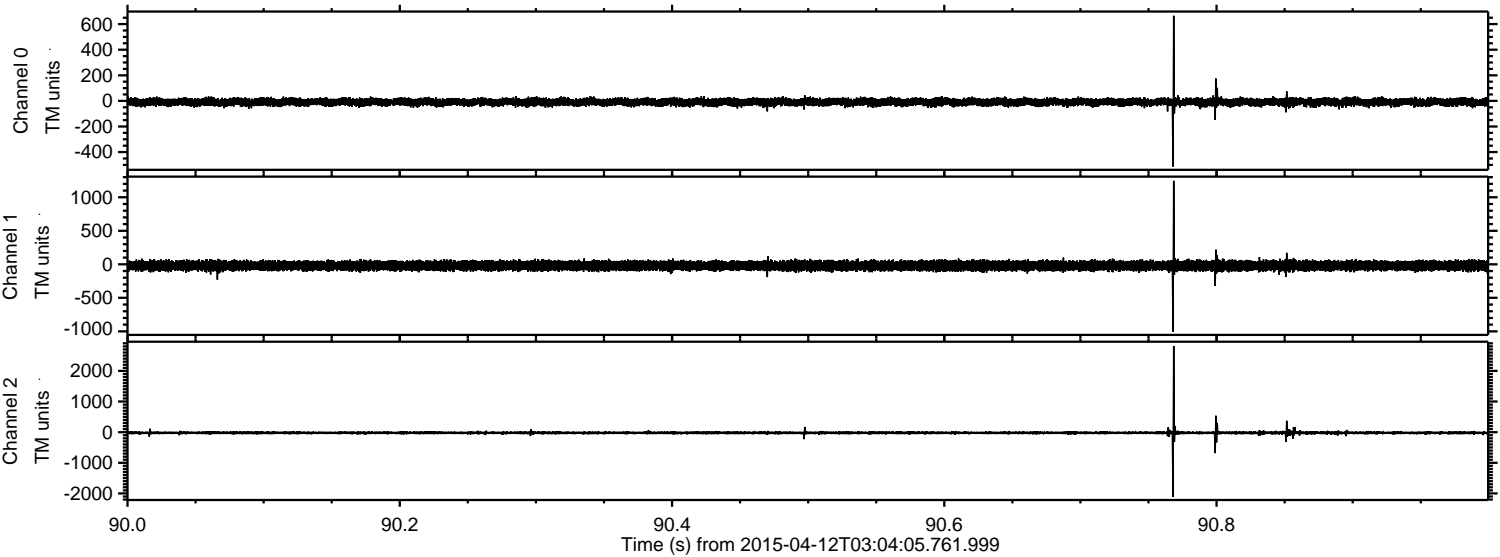


Processed Sun Apr 12 05:10:58 2015 by ELM ver.2012-10-06 from 001\_\_elm20150412\_030404\_\_dat00.bin





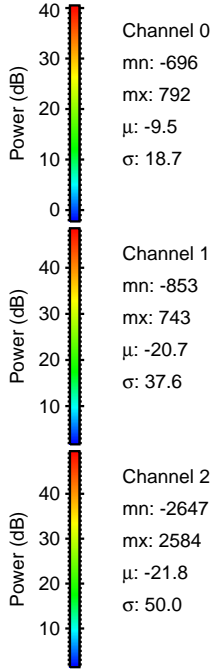
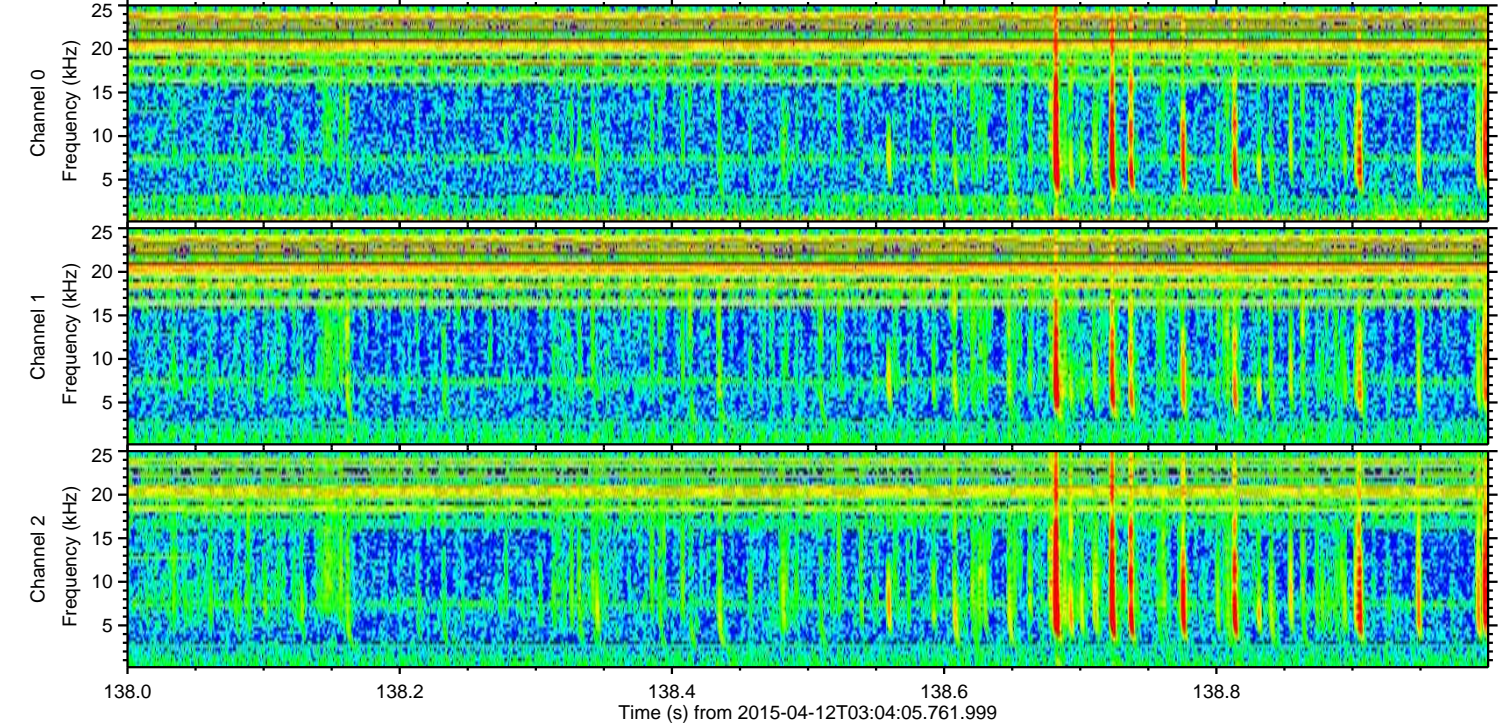
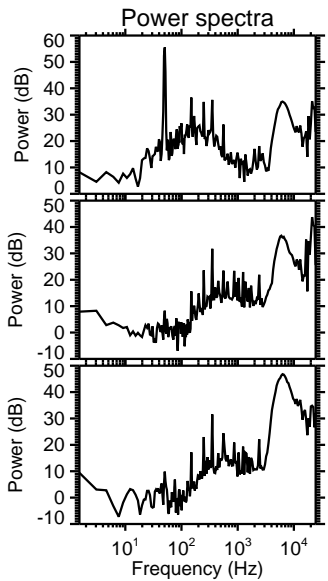
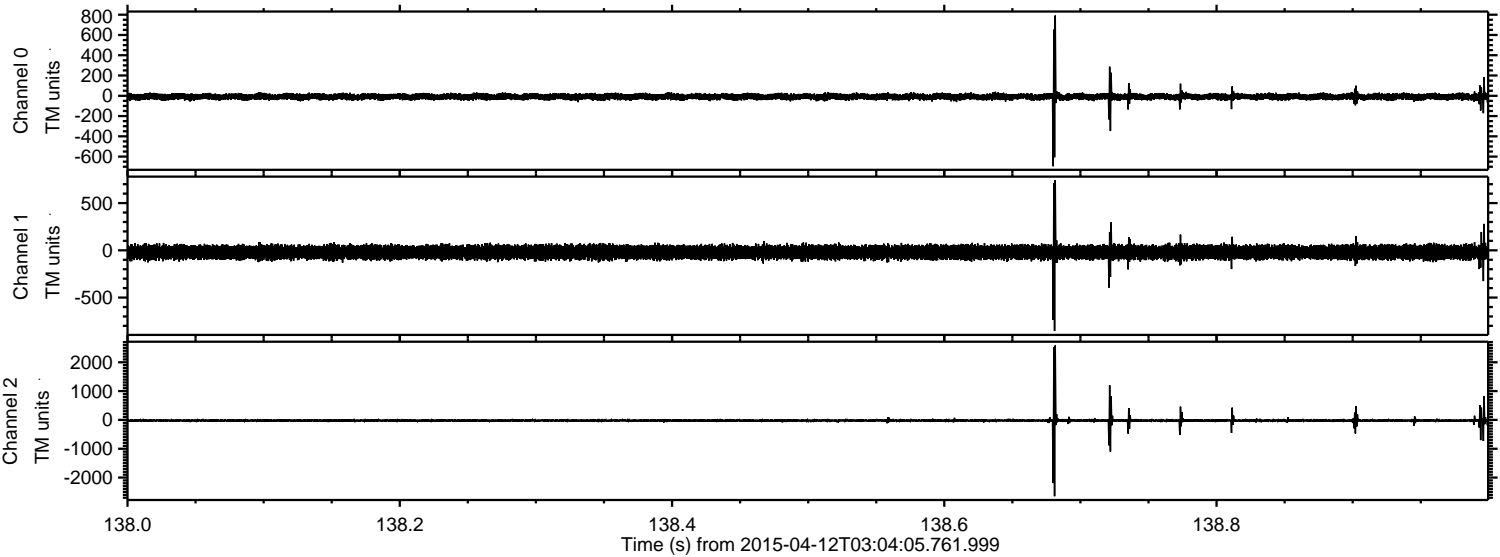
Processed Sun Apr 12 05:10:59 2015 by ELM ver.2012-10-06 from 001\_\_elm20150412\_030404\_\_dat00.bin





ELMAVAN 3D WAVEFORMS (Measured data sampled at 50 kHz) 49785 packets of 144 samples from 2015-04-12T03:04:05.761.999. Part 139/144

Processed Sun Apr 12 05:11:00 2015 by ELM ver.2012-10-06 from 001\_\_elm20150412\_030404\_\_dat00.bin



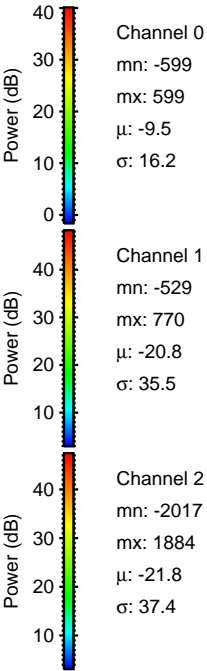
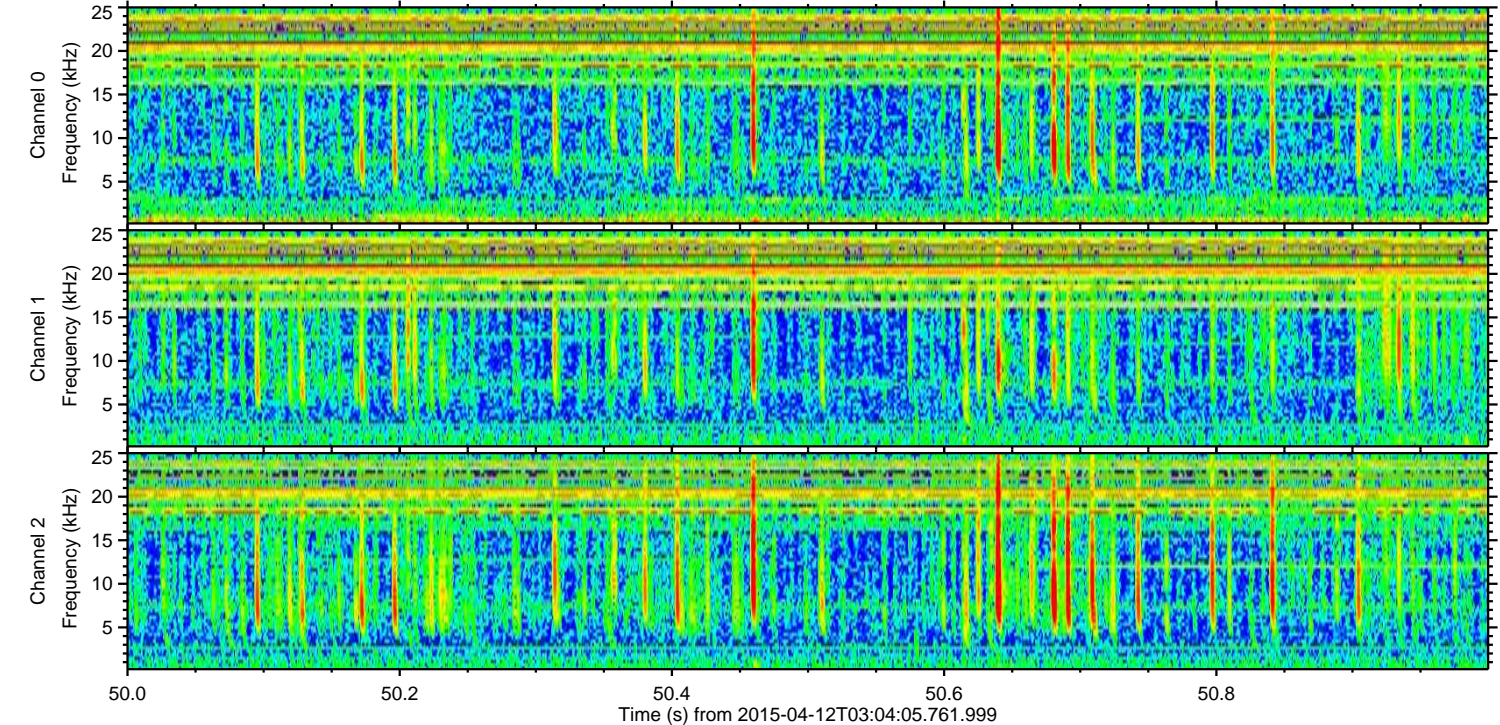
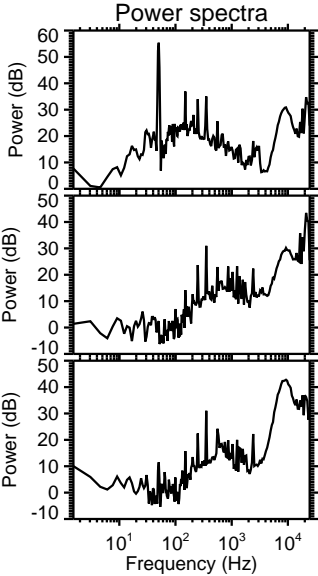
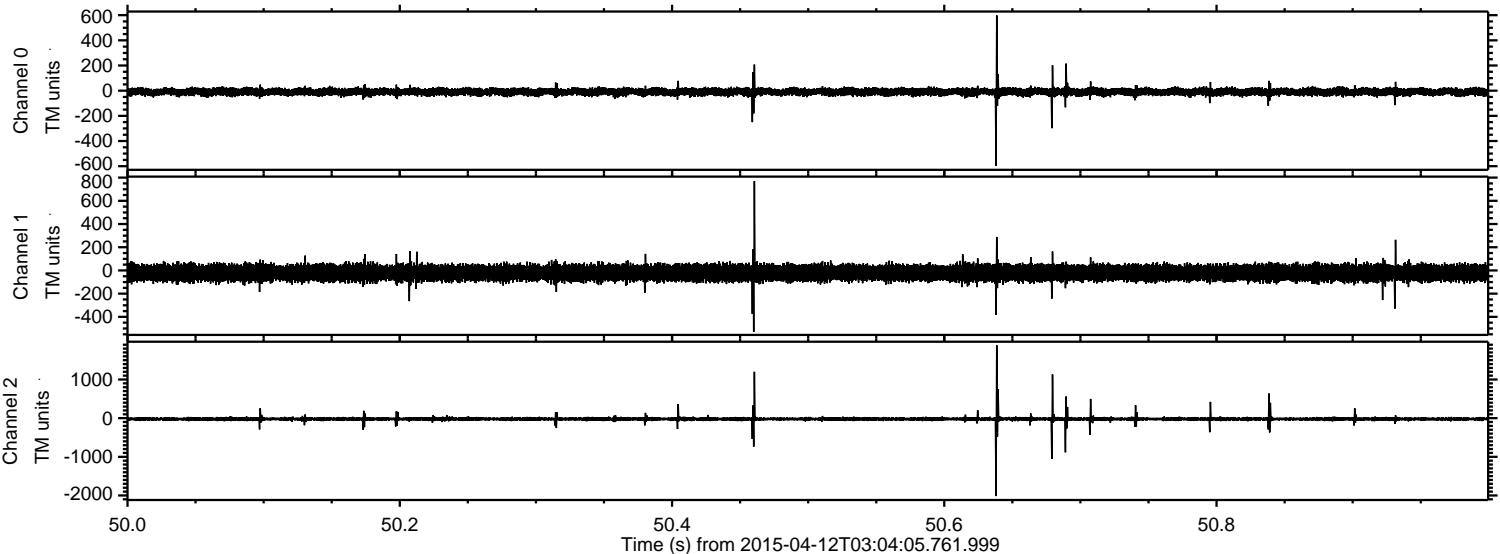
Channel 0  
mn: -696  
mx: 792  
 $\mu$ : -9.5  
 $\sigma$ : 18.7

Channel 1  
mn: -853  
mx: 743  
 $\mu$ : -20.7  
 $\sigma$ : 37.6

Channel 2  
mn: -2647  
mx: 2584  
 $\mu$ : -21.8  
 $\sigma$ : 50.0

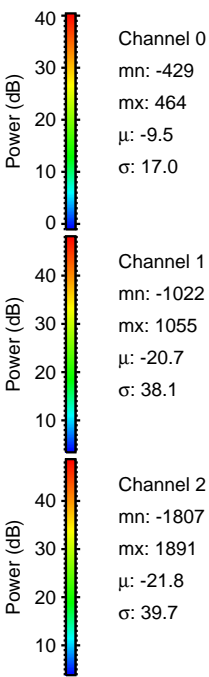
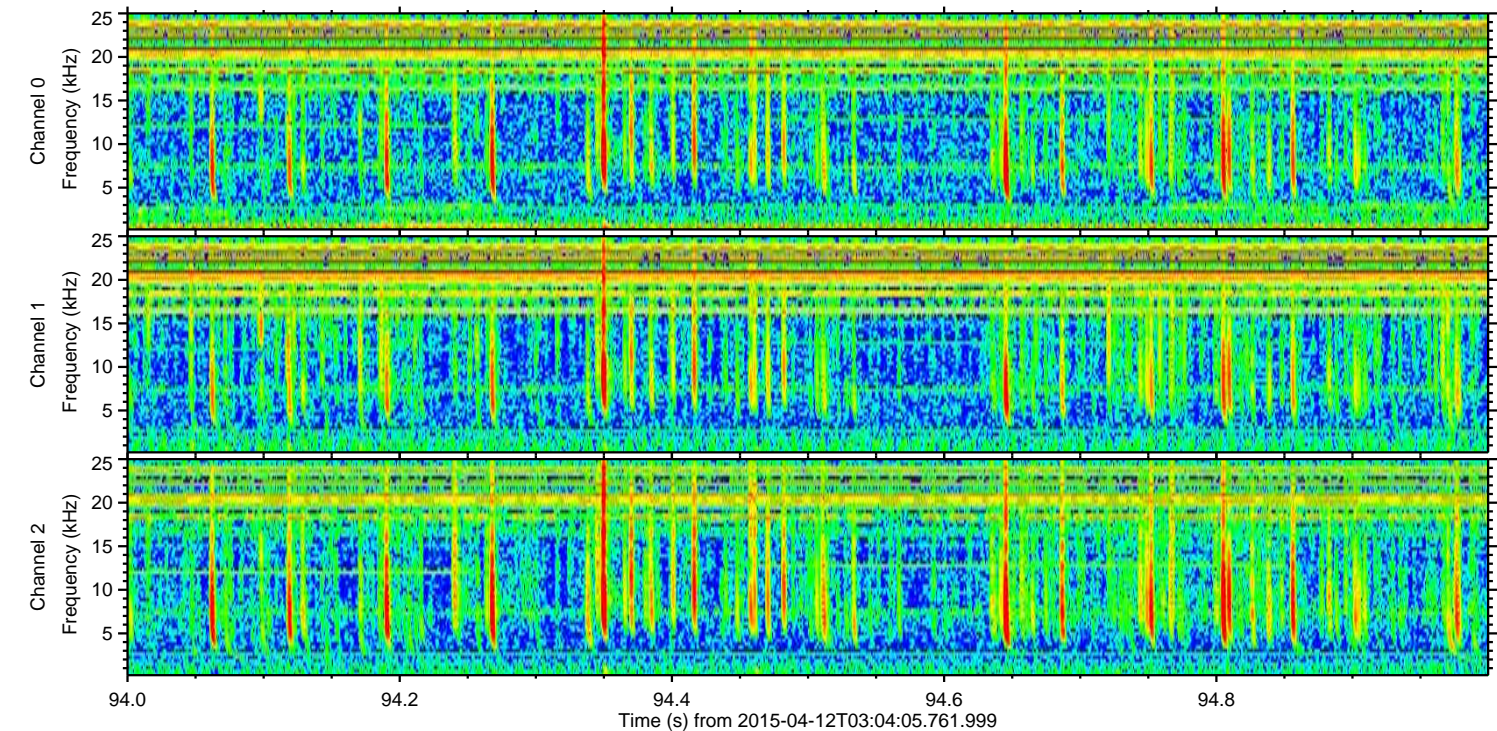
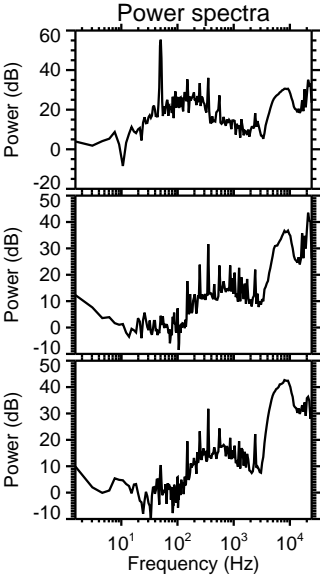
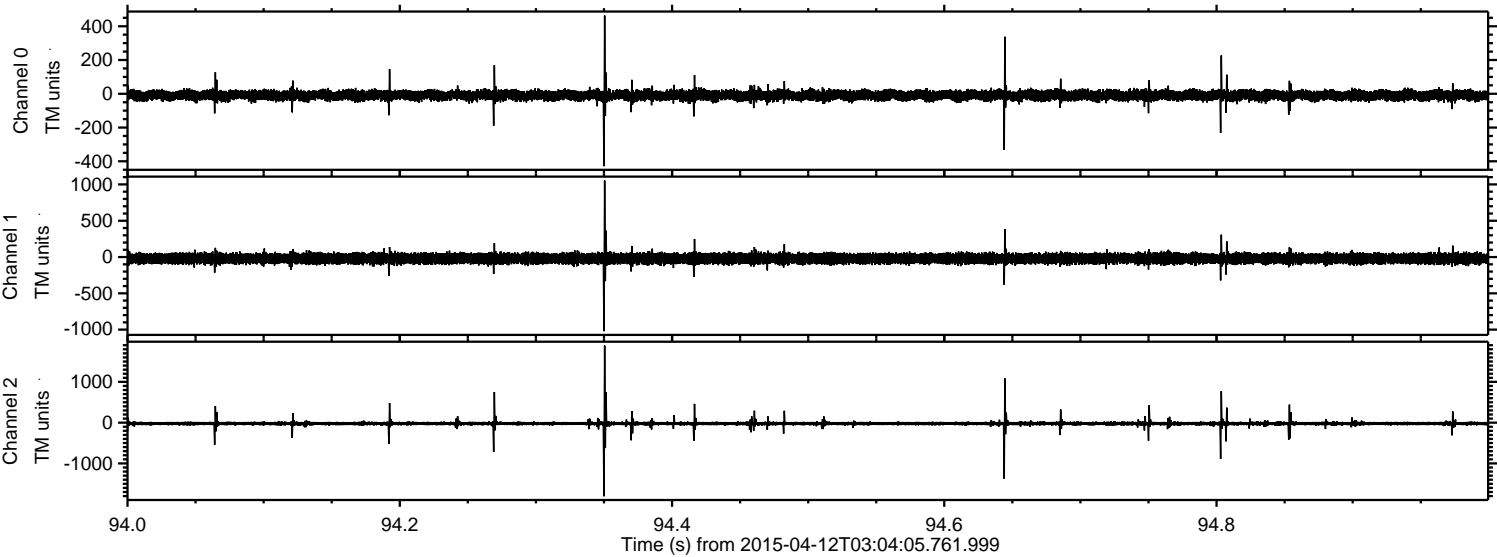


Processed Sun Apr 12 05:11:01 2015 by ELM ver.2012-10-06 from 001\_\_elm20150412\_030404\_\_dat00.bin





Processed Sun Apr 12 05:11:02 2015 by ELM ver.2012-10-06 from 001\_\_elm20150412\_030404\_\_dat00.bin





Processed Sun Apr 12 05:11:03 2015 by ELM ver.2012-10-06 from 001\_\_elm20150412\_030404\_\_dat00.bin

