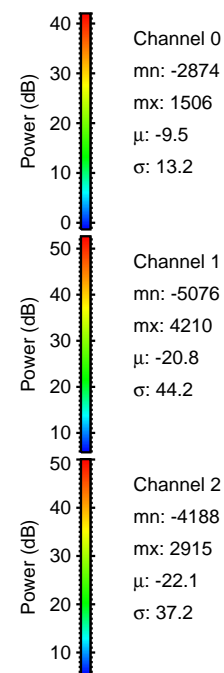
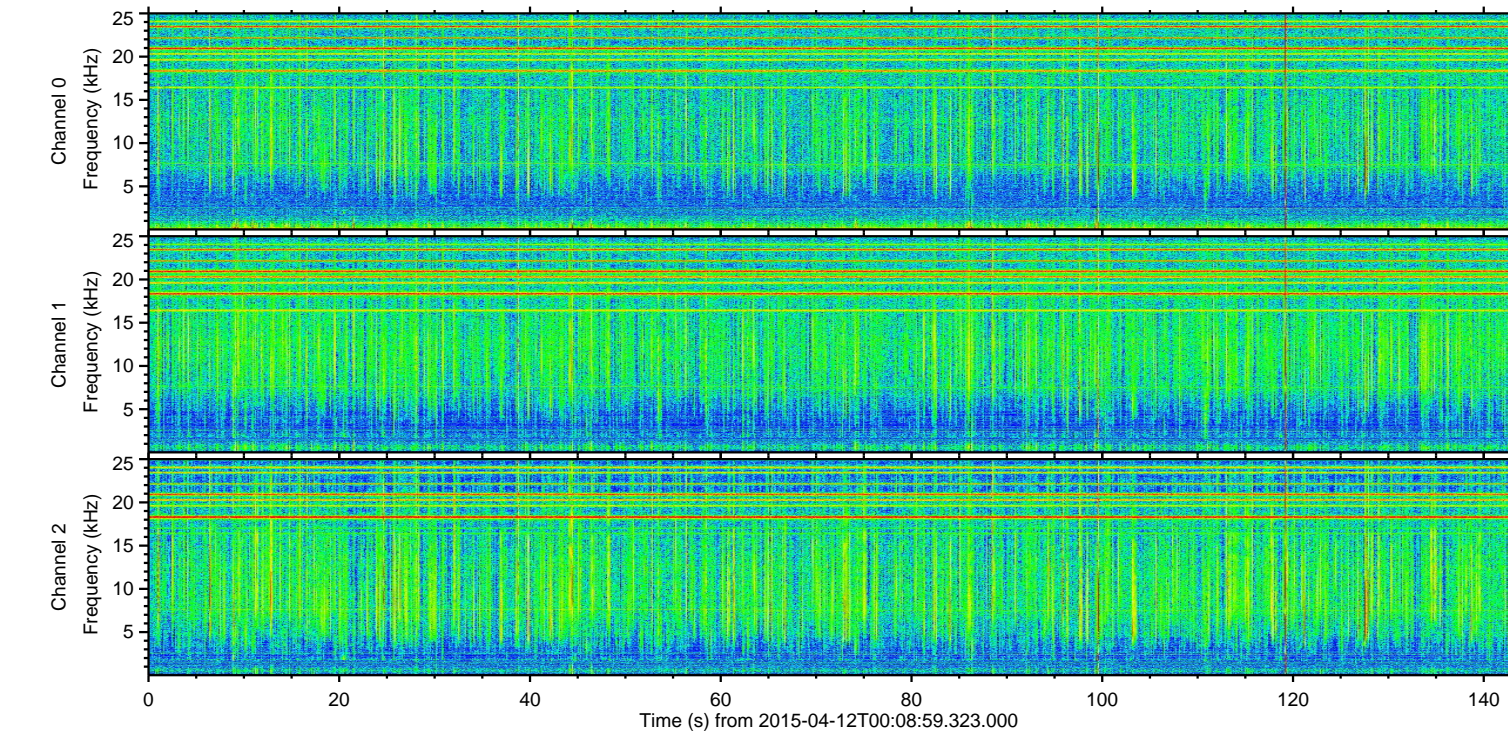
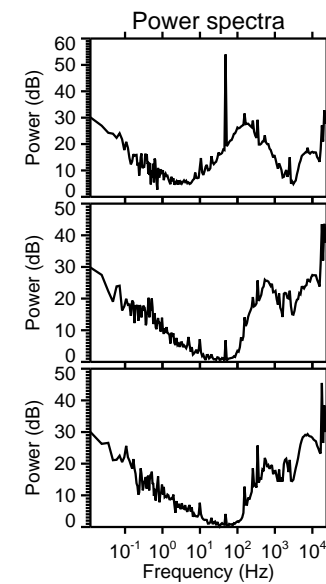
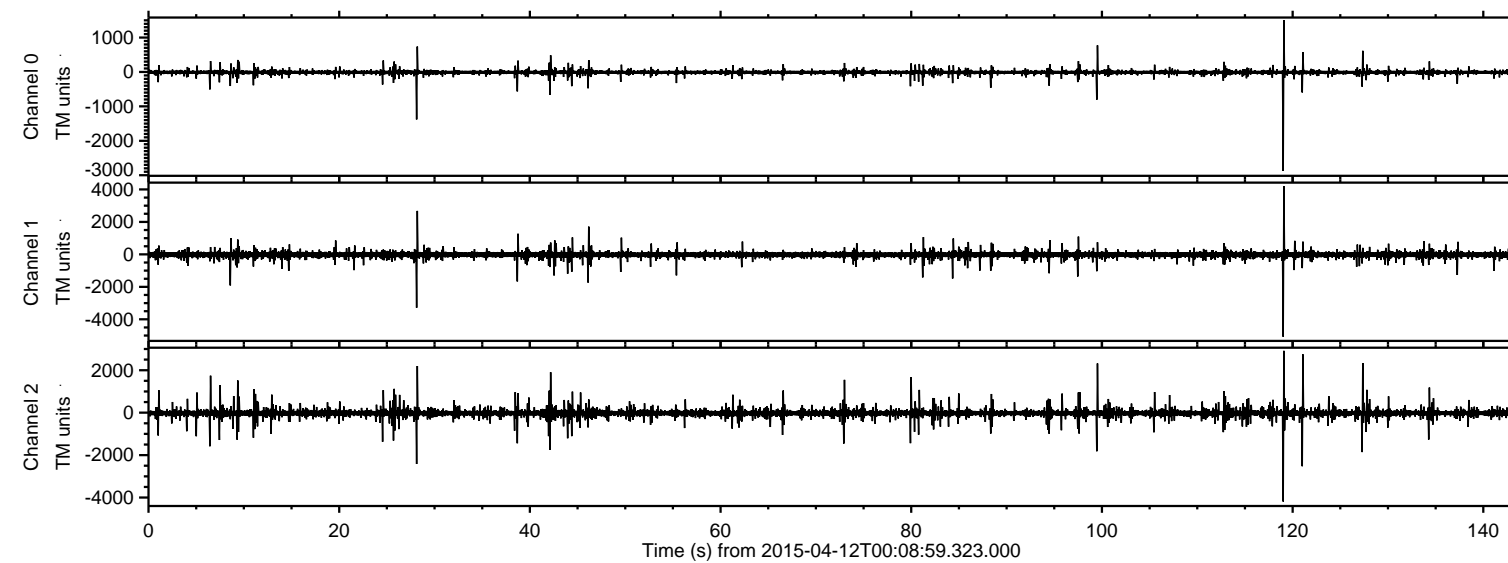


# ELMAVAN 3D WAVEFORMS (Measured data sampled at 50 kHz) 49552 packets of 144 samples from 2015-04-12T00:08:59.323.000.

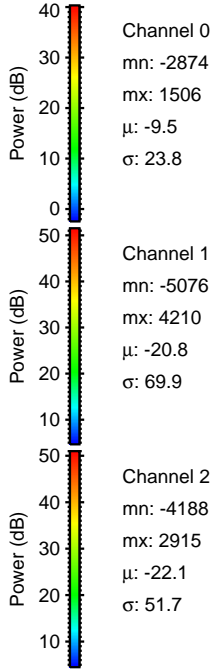
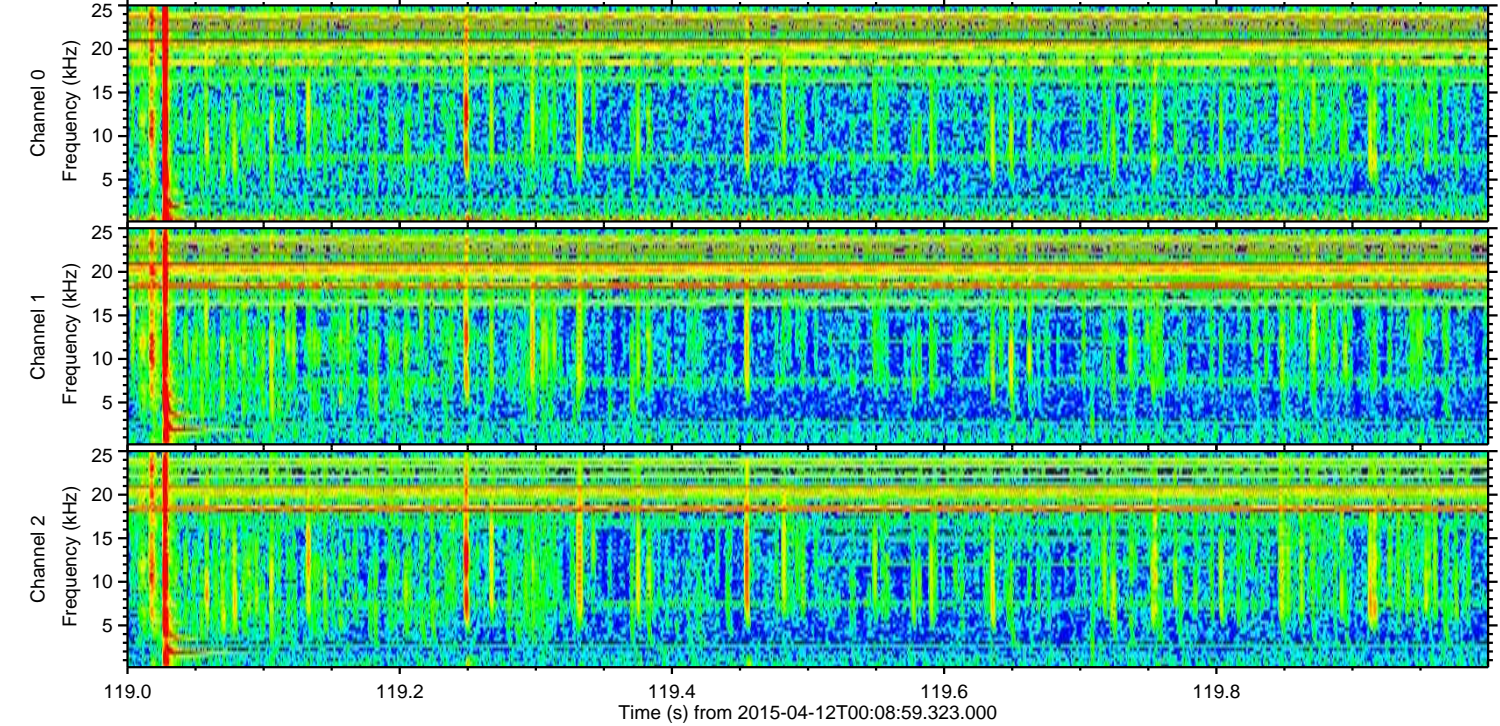
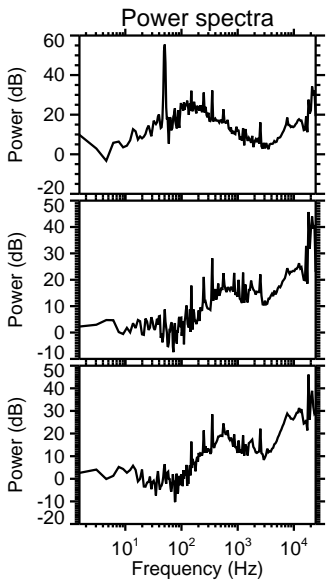
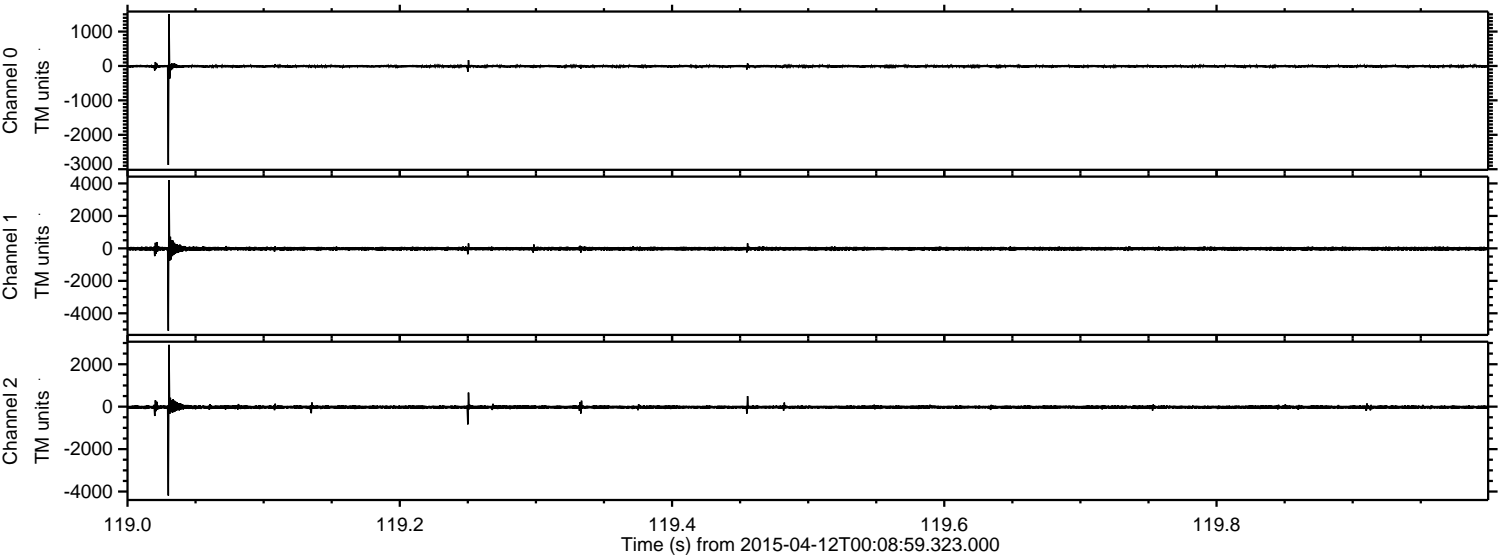
Processed Sun Apr 12 02:16:05 2015 by ELM ver.2012-10-06 from 001\_\_elm20150412\_000858\_\_dat00.bin





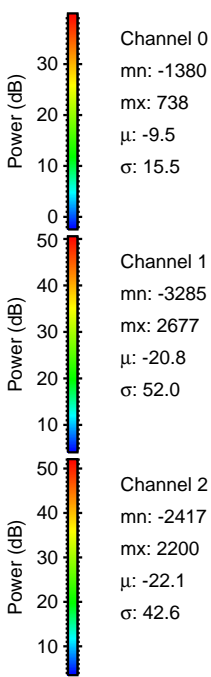
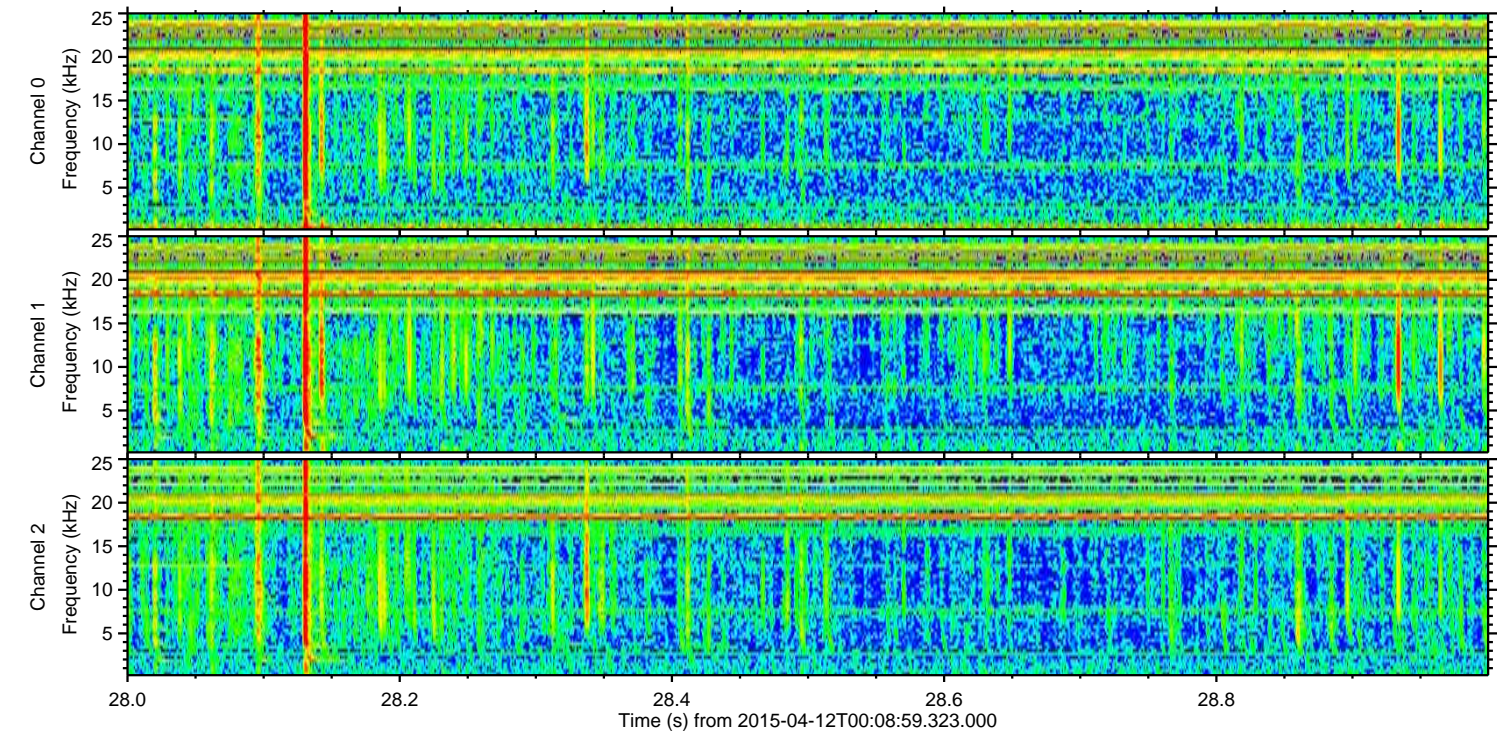
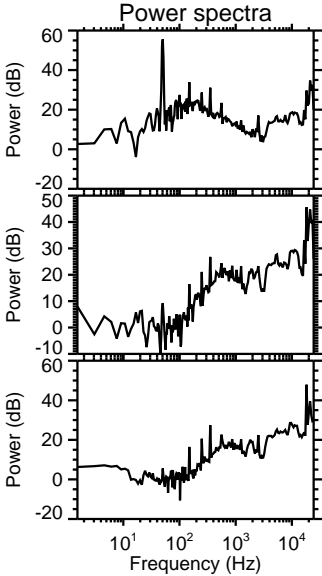
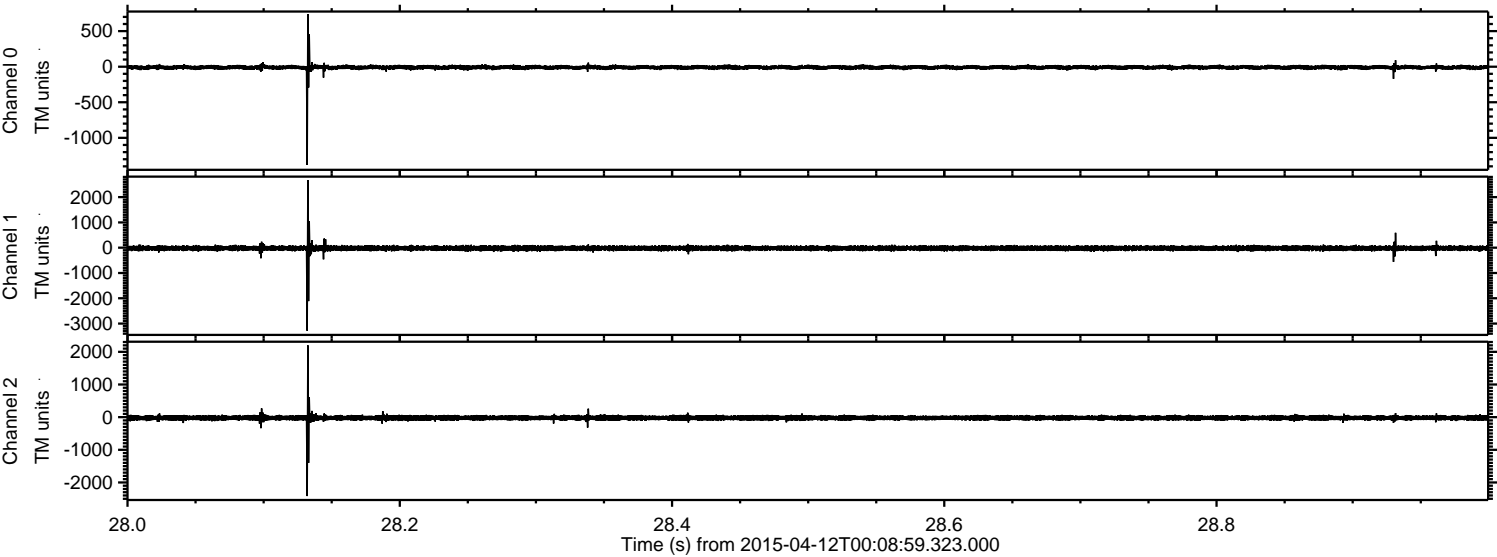
ELMAVAN 3D WAVEFORMS (Measured data sampled at 50 kHz) 49552 packets of 144 samples from 2015-04-12T00:08:59.323.000. Part 120/143

Processed Sun Apr 12 02:16:17 2015 by ELM ver.2012-10-06 from 001\_\_elm20150412\_000858\_\_dat00.bin





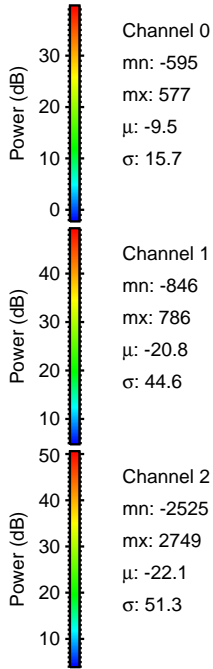
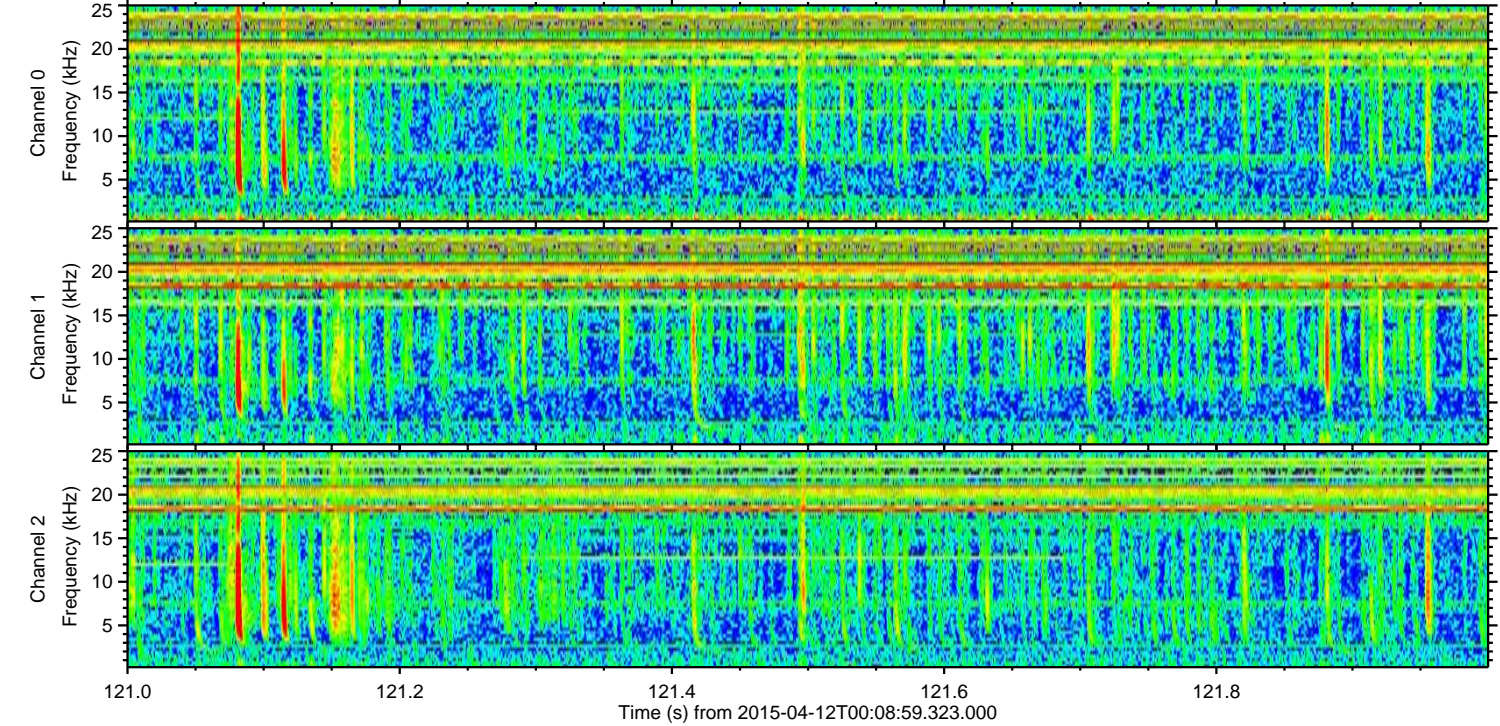
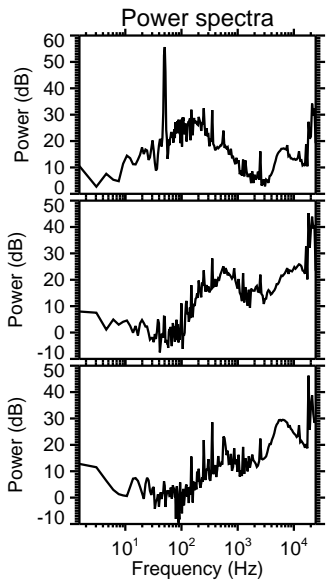
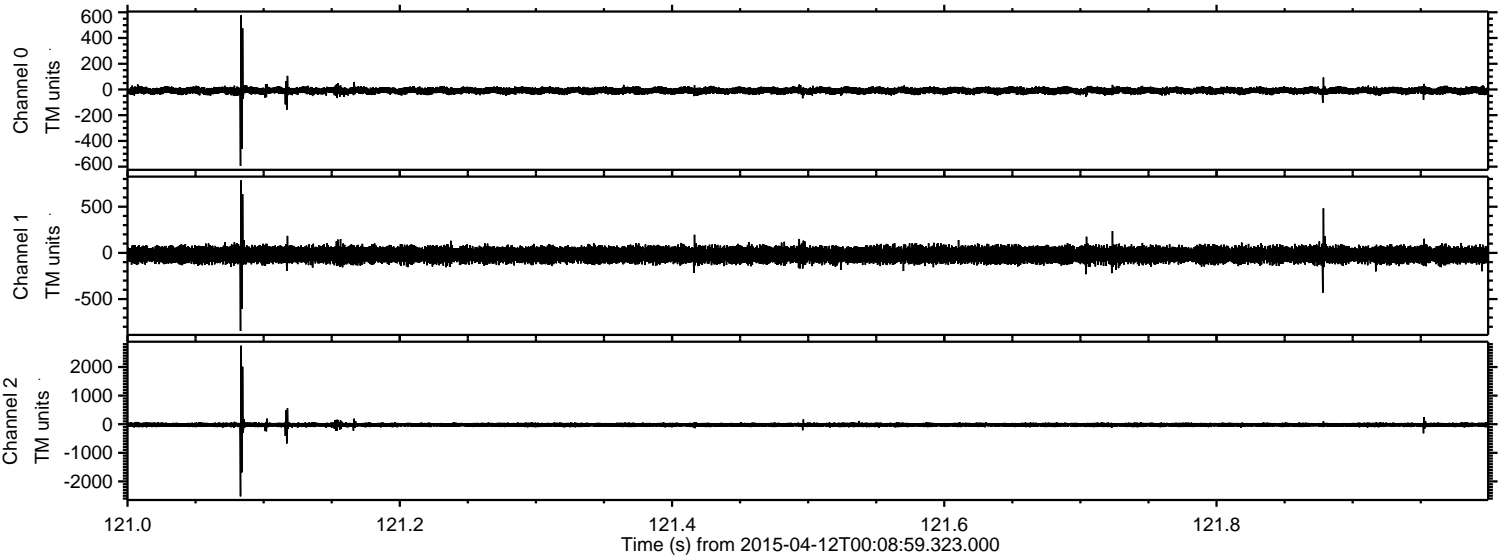
Processed Sun Apr 12 02:16:18 2015 by ELM ver.2012-10-06 from 001\_\_elm20150412\_000858\_\_dat00.bin





ELMAVAN 3D WAVEFORMS (Measured data sampled at 50 kHz) 49552 packets of 144 samples from 2015-04-12T00:08:59.323.000. Part 122/143

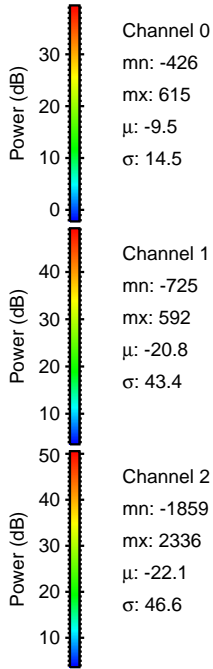
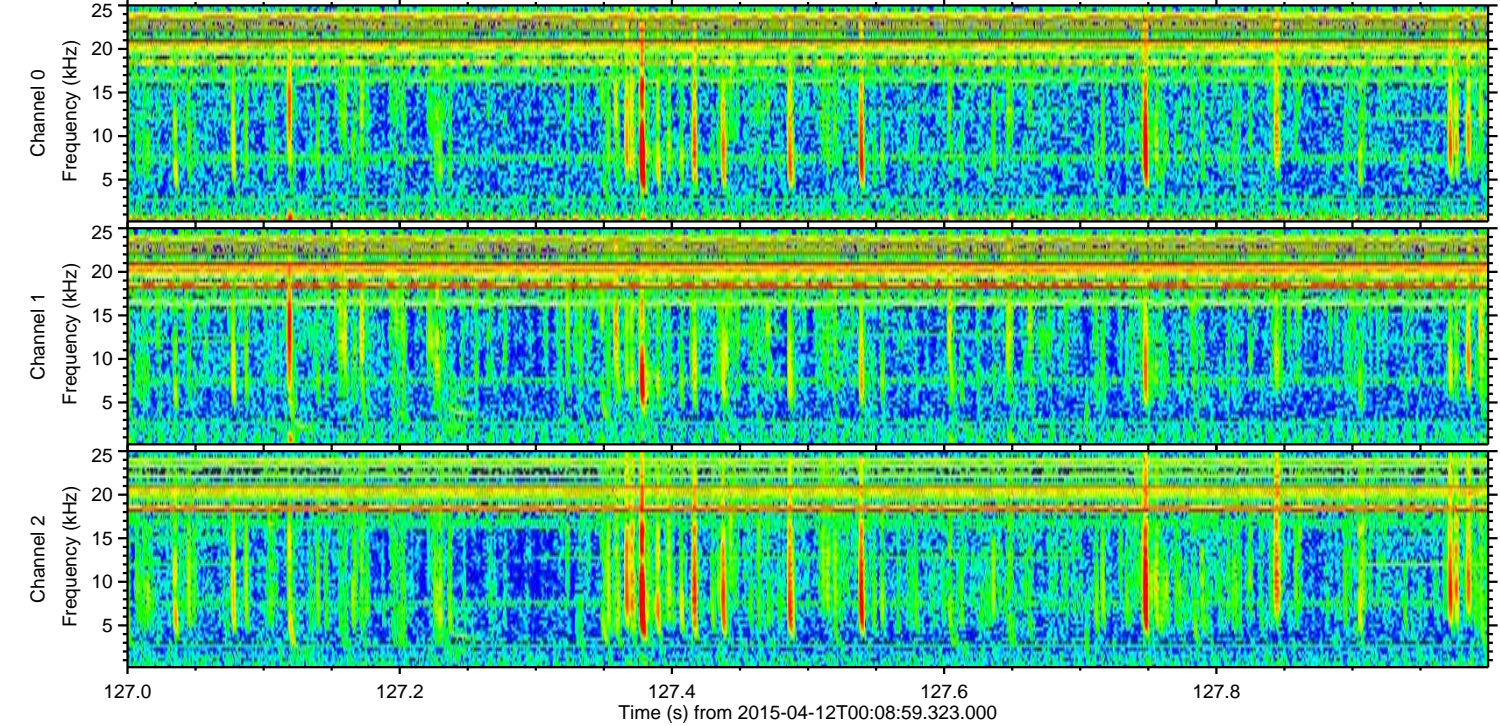
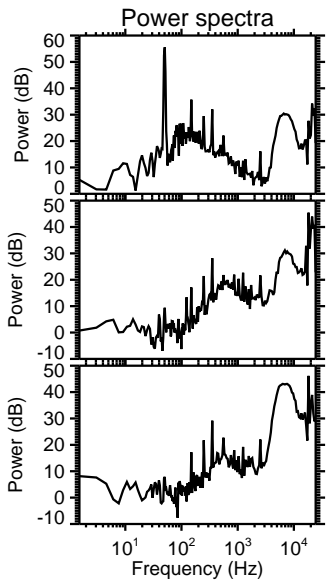
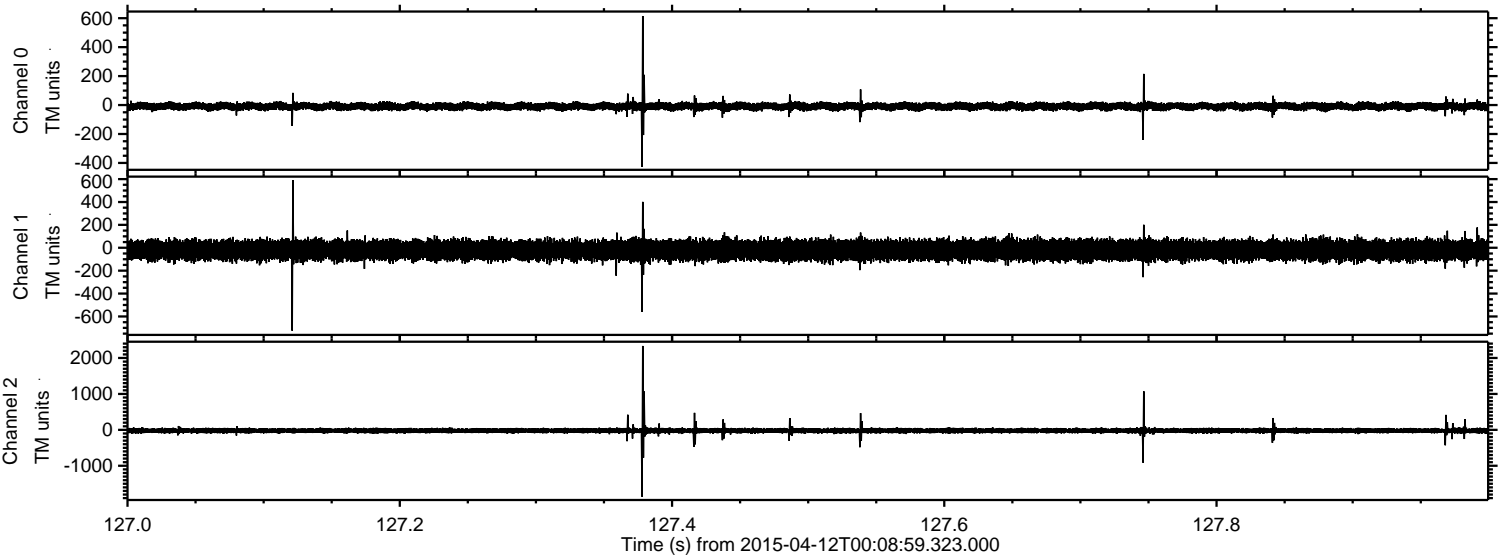
Processed Sun Apr 12 02:16:18 2015 by ELM ver.2012-10-06 from 001\_\_elm20150412\_000858\_\_dat00.bin





ELMAVAN 3D WAVEFORMS (Measured data sampled at 50 kHz) 49552 packets of 144 samples from 2015-04-12T00:08:59.323.000. Part 128/143

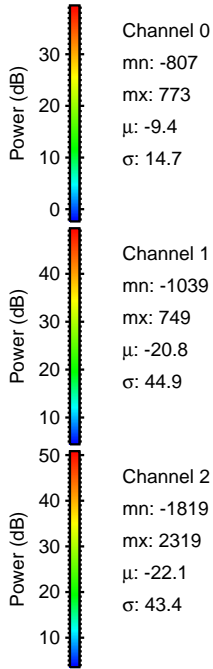
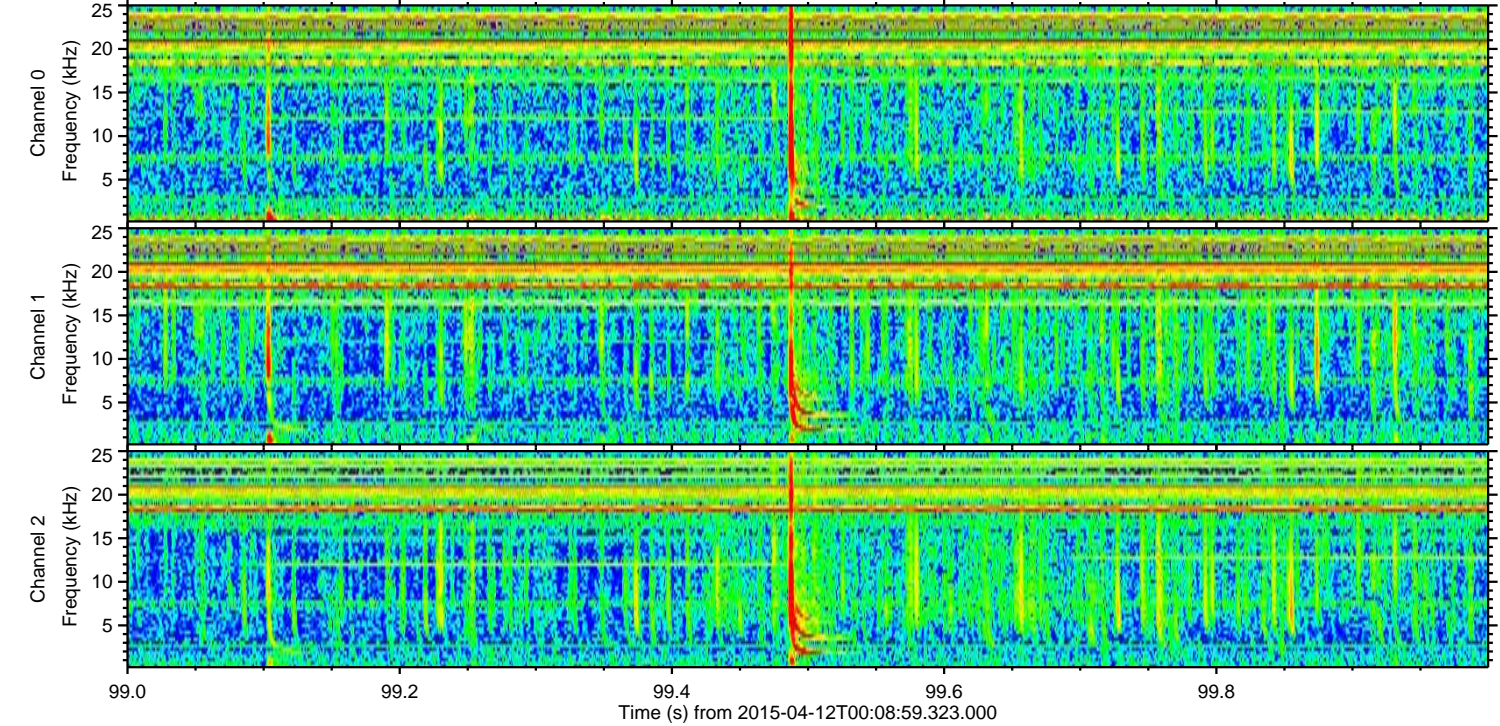
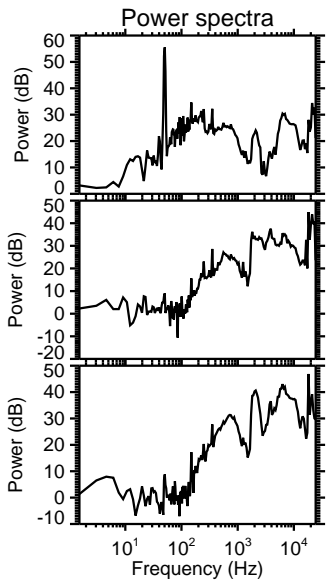
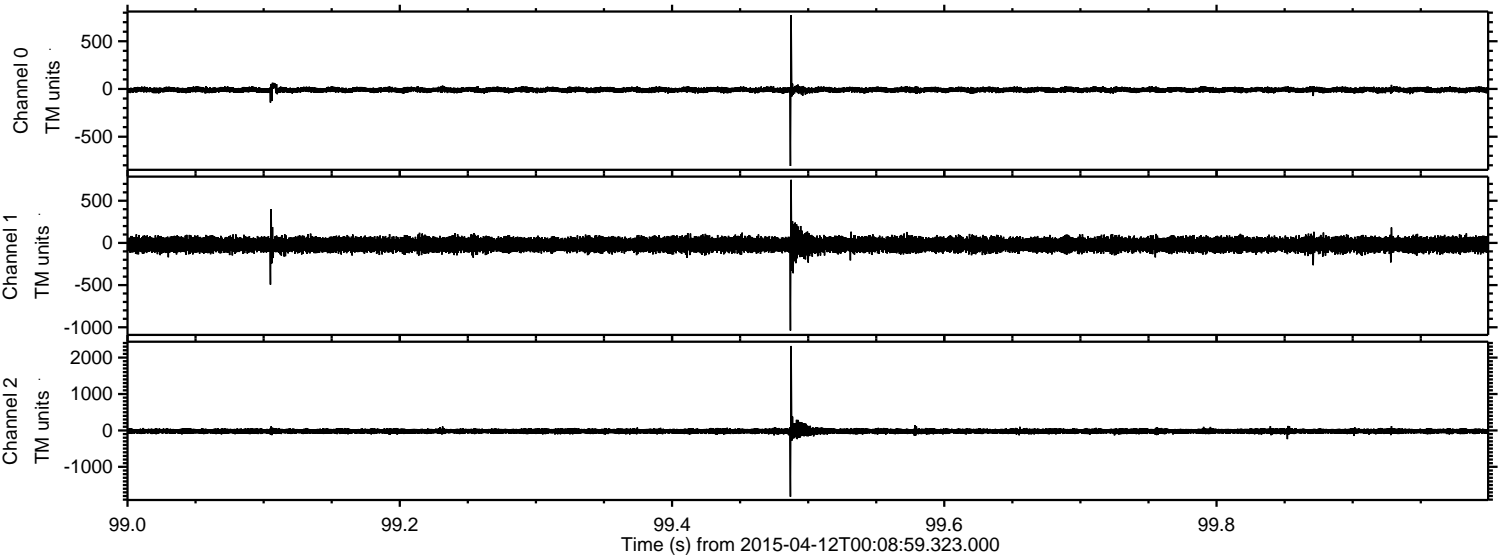
Processed Sun Apr 12 02:16:19 2015 by ELM ver.2012-10-06 from 001\_\_elm20150412\_000858\_\_dat00.bin





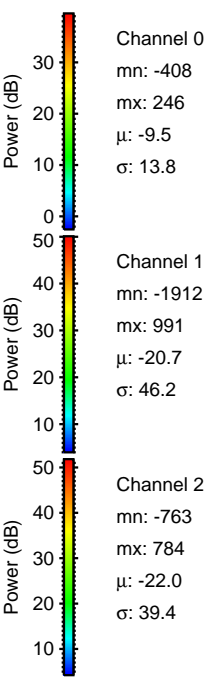
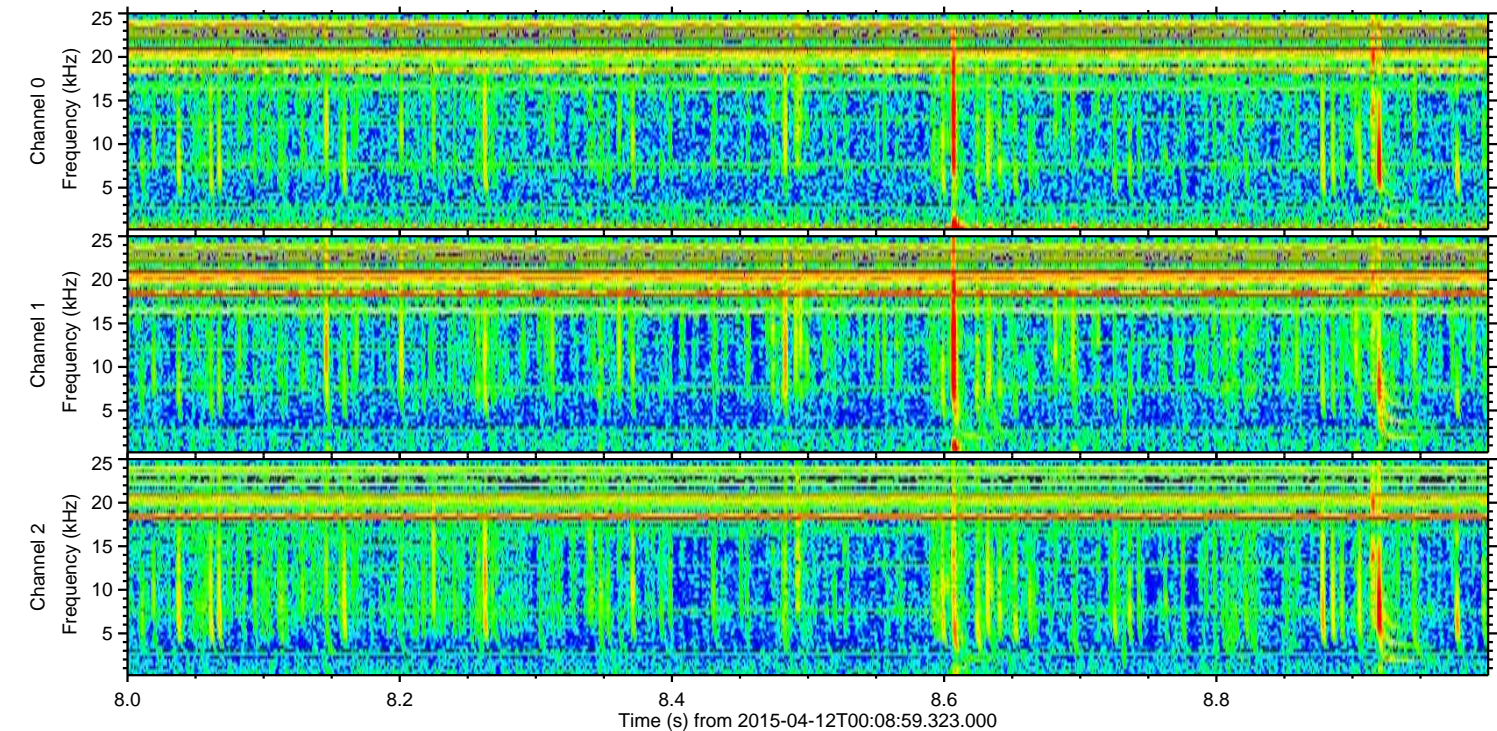
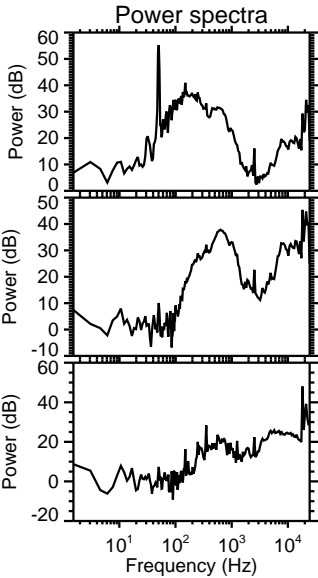
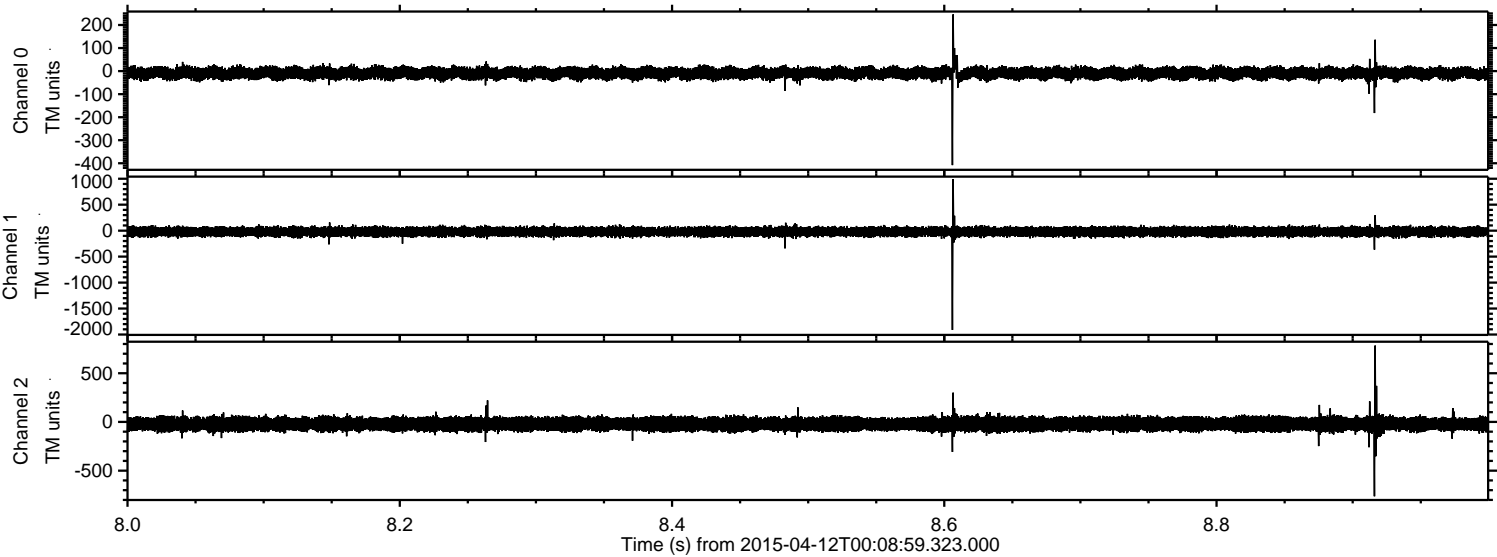
ELMAVAN 3D WAVEFORMS (Measured data sampled at 50 kHz) 49552 packets of 144 samples from 2015-04-12T00:08:59.323.000. Part 100/143

Processed Sun Apr 12 02:16:20 2015 by ELM ver.2012-10-06 from 001\_\_elm20150412\_000858\_\_dat00.bin



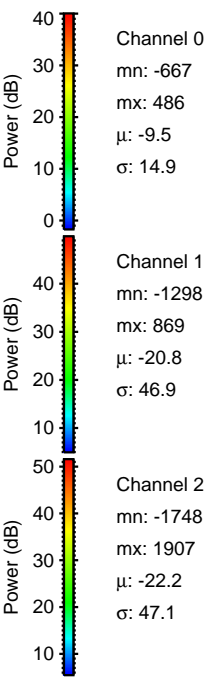
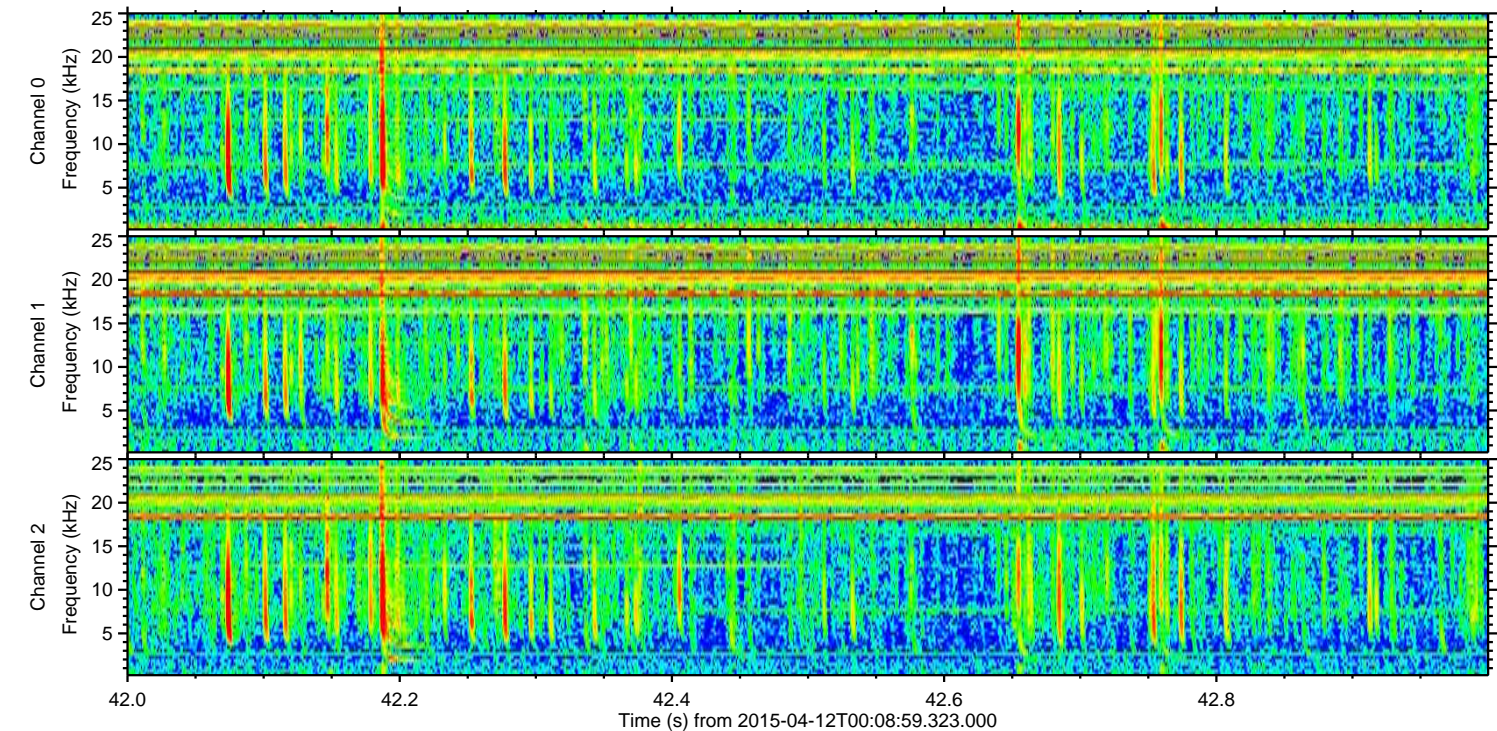
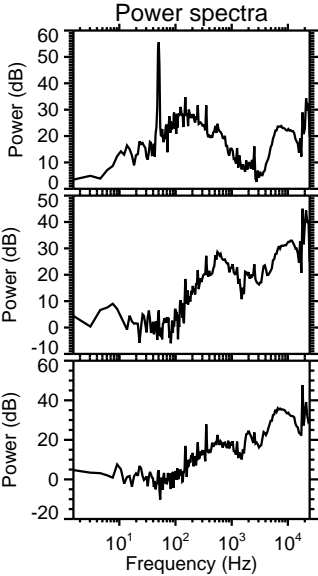
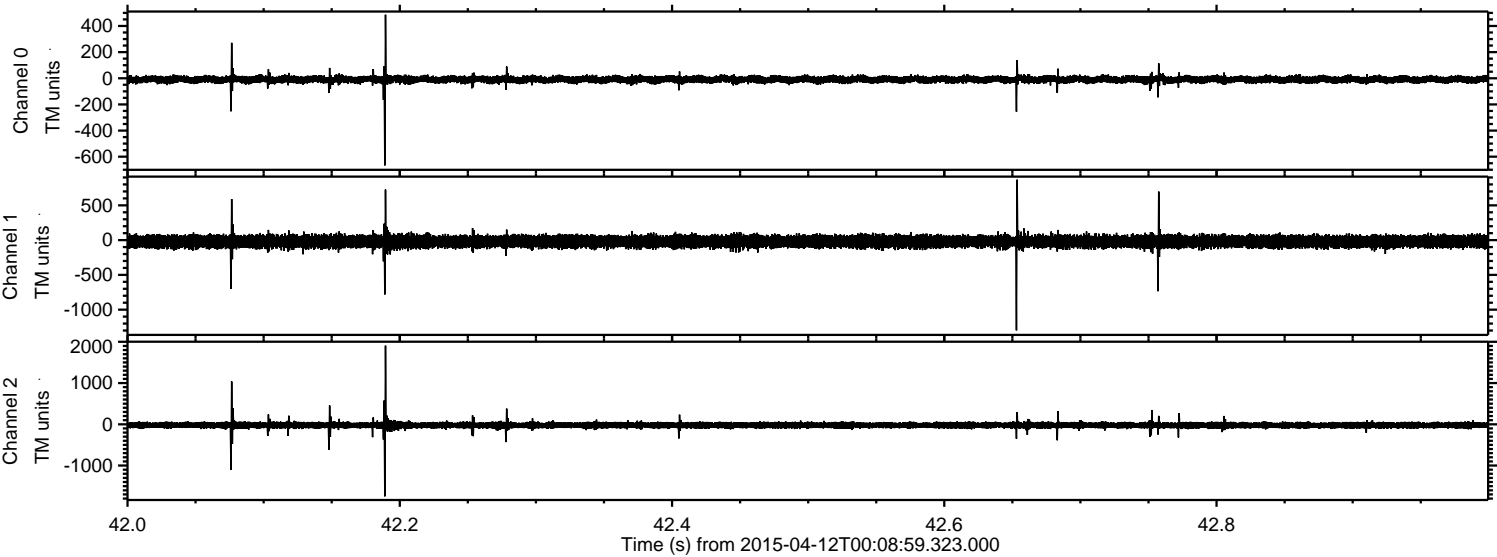


Processed Sun Apr 12 02:16:21 2015 by ELM ver.2012-10-06 from 001\_\_elm20150412\_000858\_\_dat00.bin



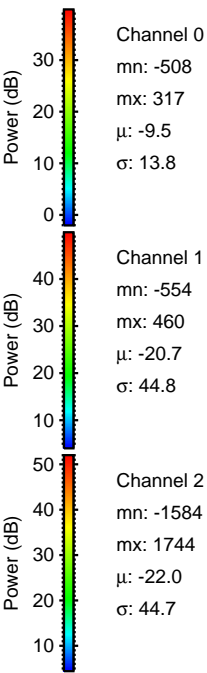
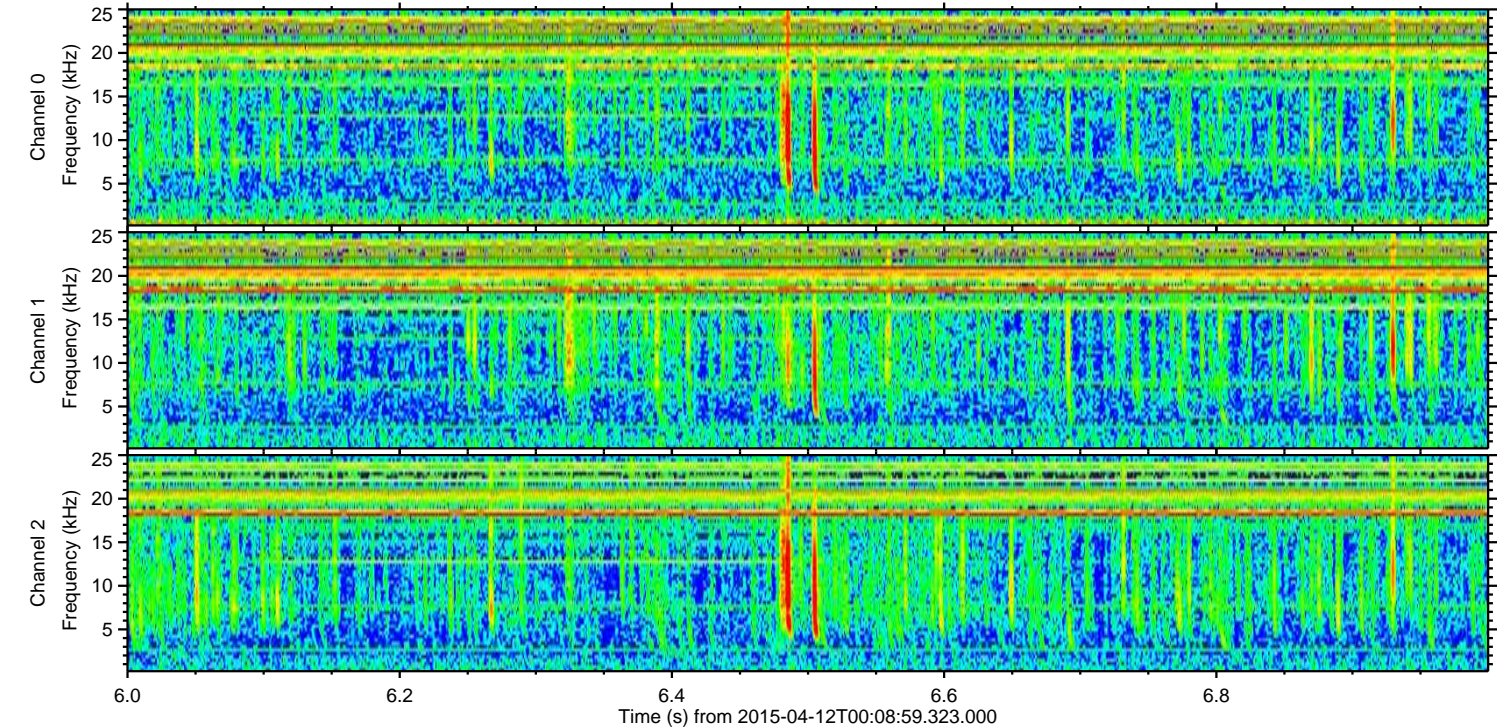
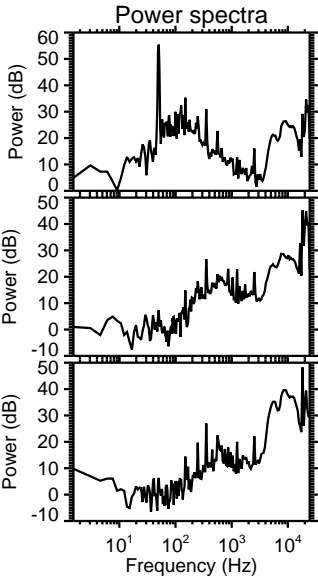
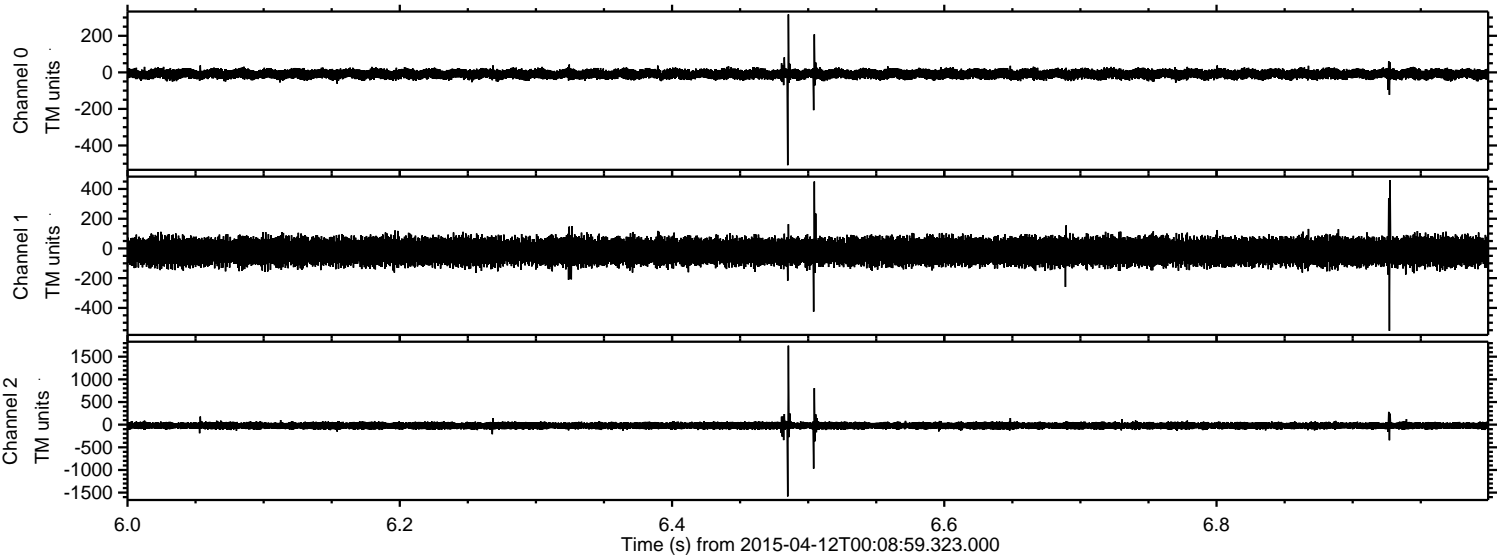


Processed Sun Apr 12 02:16:22 2015 by ELM ver.2012-10-06 from 001\_\_elm20150412\_000858\_\_dat00.bin



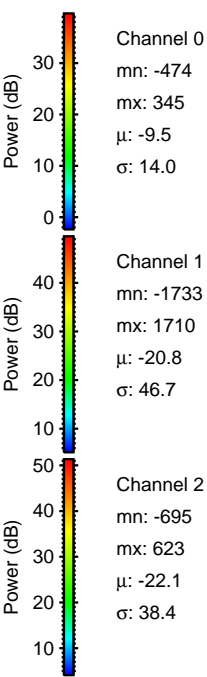
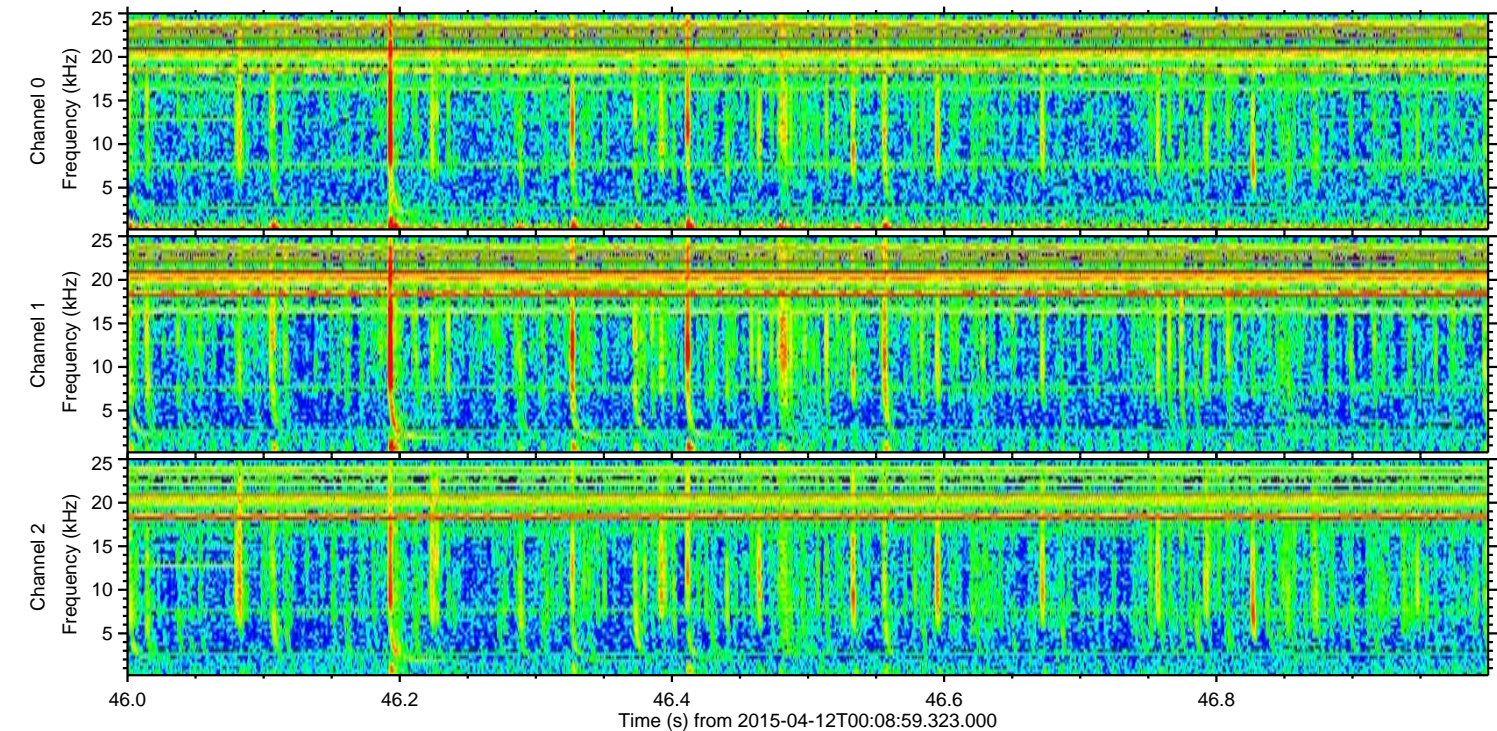
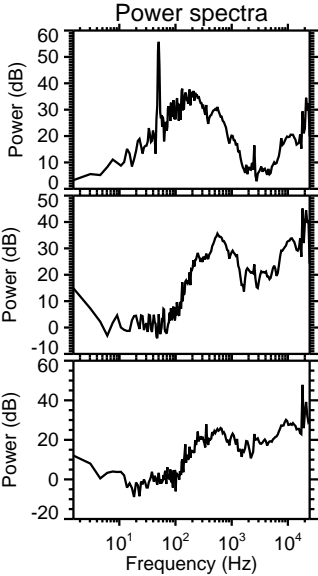
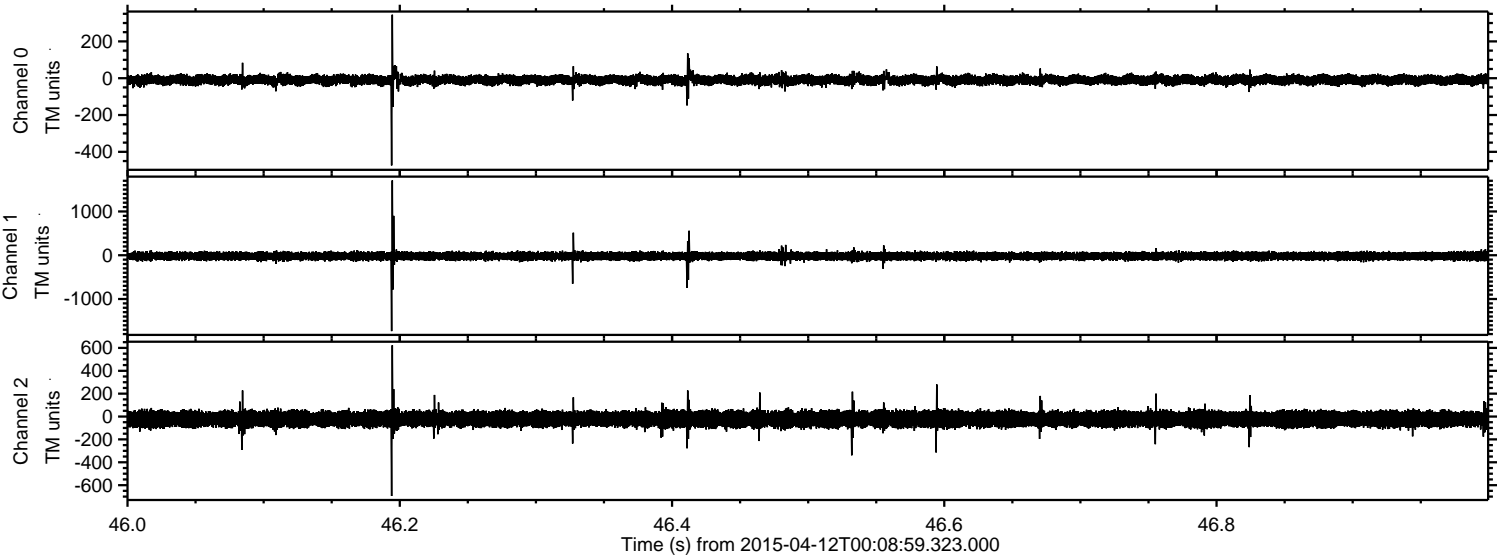


Processed Sun Apr 12 02:16:23 2015 by ELM ver.2012-10-06 from 001\_\_elm20150412\_000858\_\_dat00.bin





Processed Sun Apr 12 02:16:24 2015 by ELM ver.2012-10-06 from 001\_\_elm20150412\_000858\_\_dat00.bin





Processed Sun Apr 12 02:16:25 2015 by ELM ver.2012-10-06 from 001\_\_elm20150412\_000858\_\_dat00.bin

