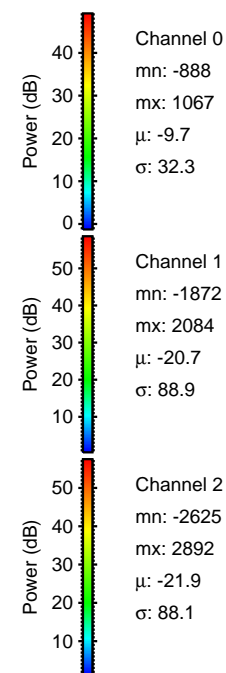
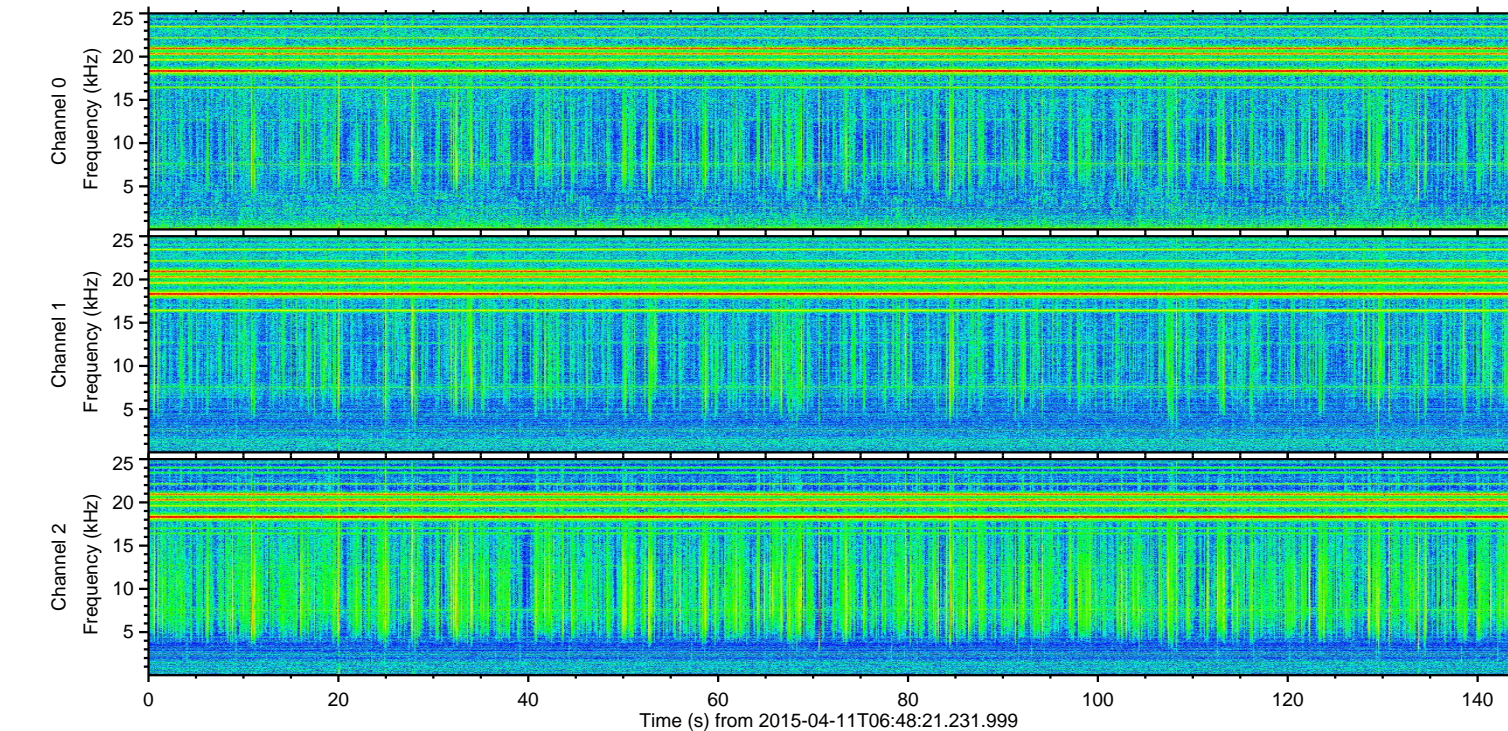
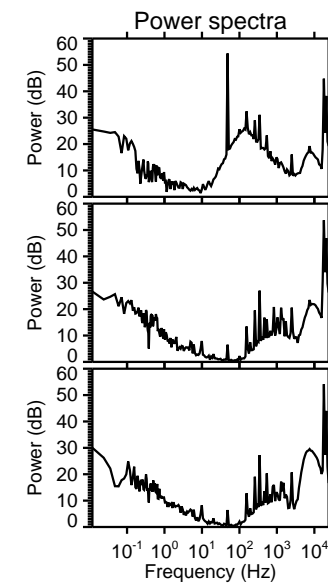
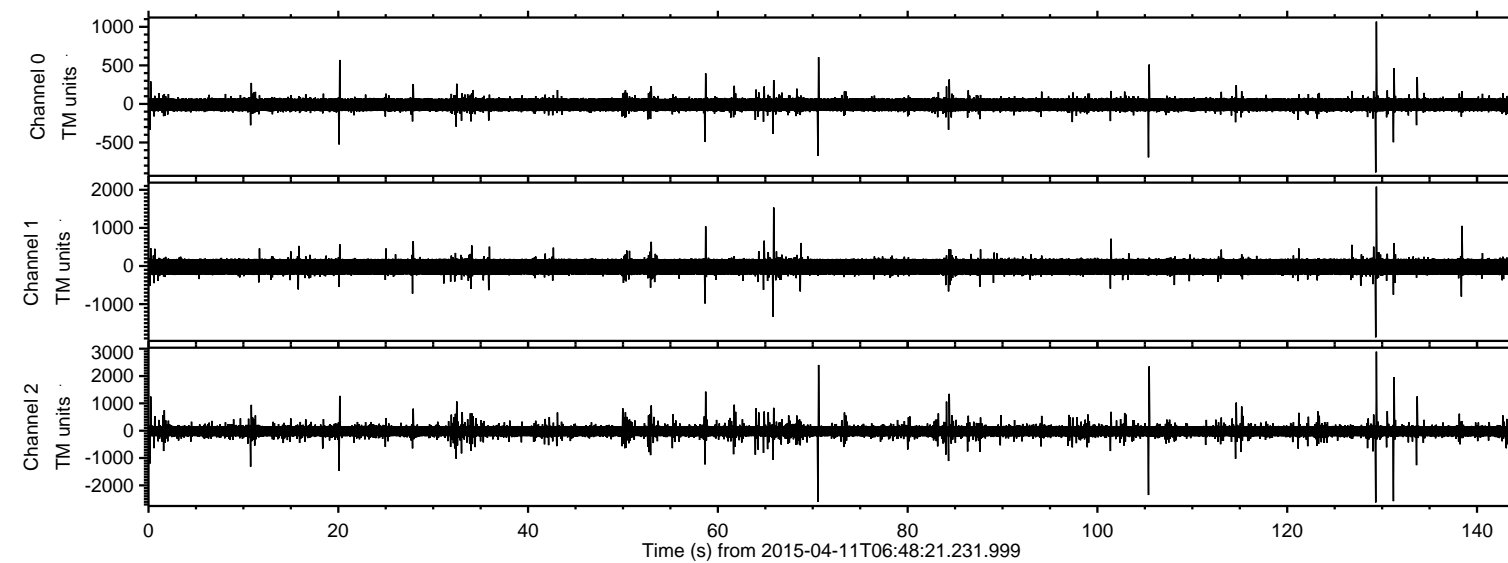


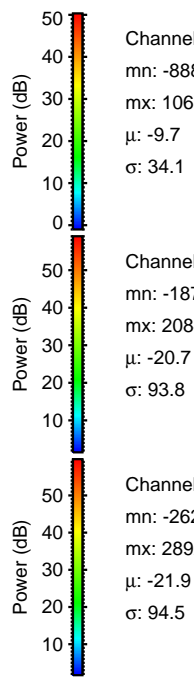
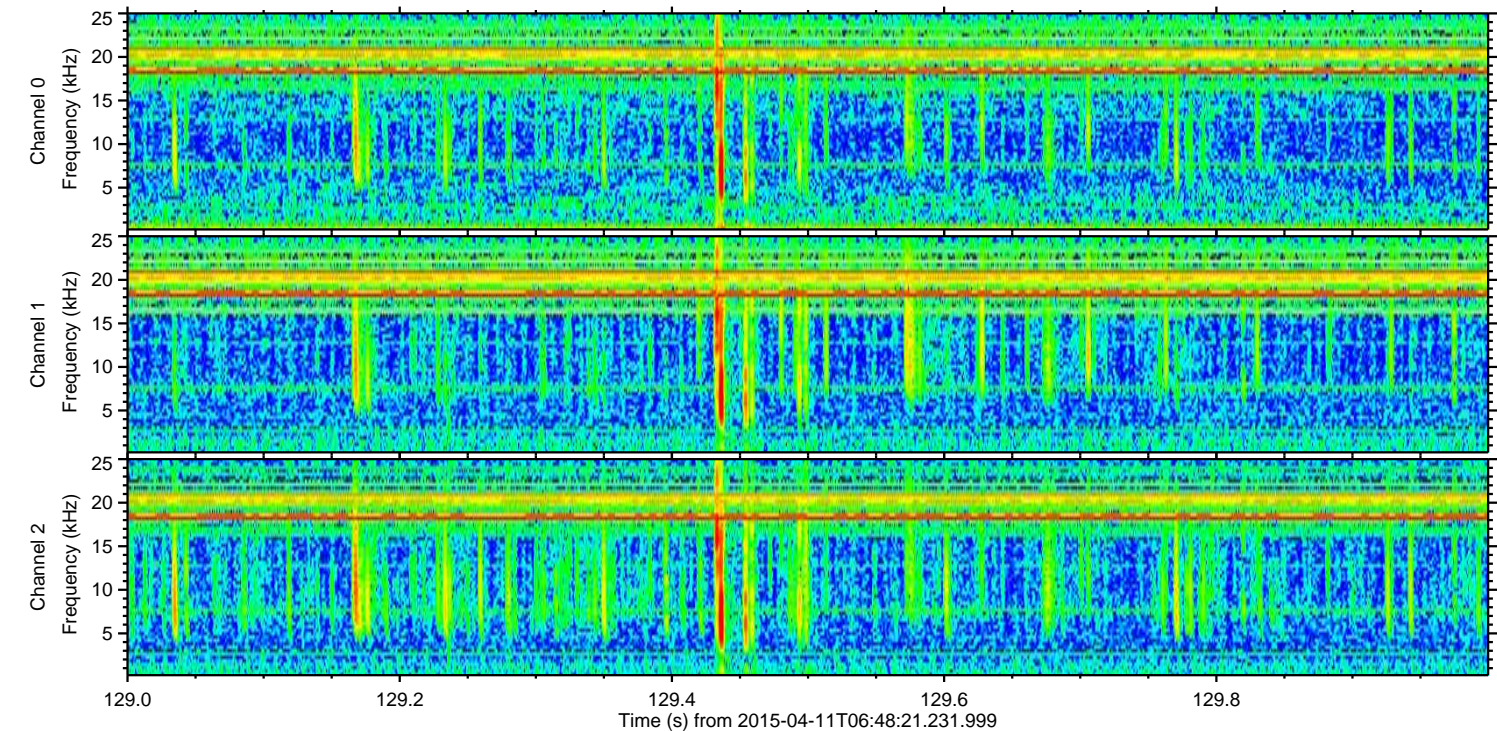
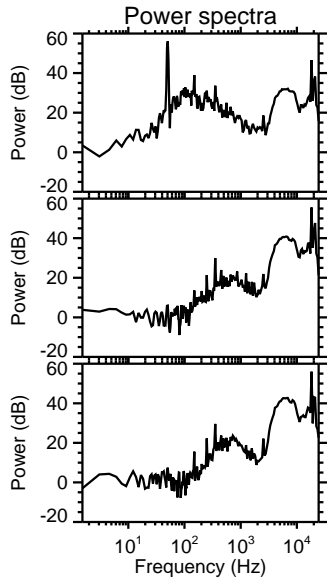
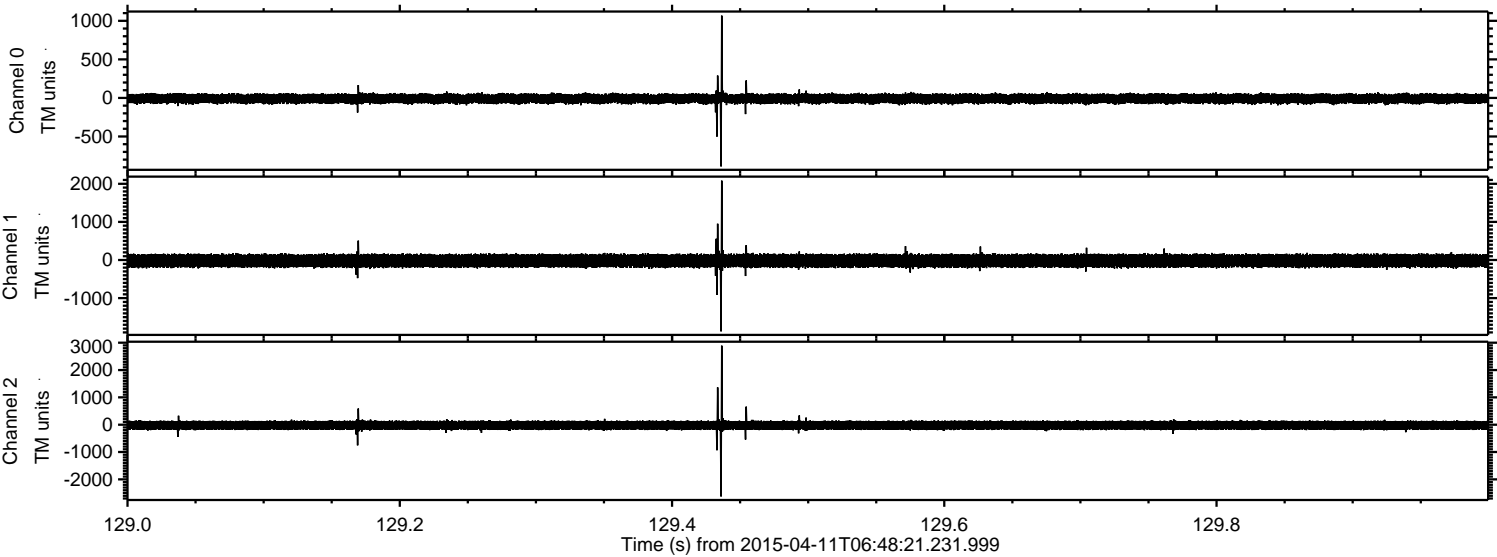
ELMAVAN 3D WAVEFORMS (Measured data sampled at 50 kHz) 49787 packets of 144 samples from 2015-04-11T06:48:21.231.999.

Processed Sat Apr 11 08:55:34 2015 by ELM ver.2012-10-06 from 001__elm20150411_064820__dat00.bin



ELMAVAN 3D WAVEFORMS (Measured data sampled at 50 kHz) 49787 packets of 144 samples from 2015-04-11T06:48:21.231.999. Part 130/144

Processed Sat Apr 11 08:55:46 2015 by ELM ver.2012-10-06 from 001__elm20150411_064820__dat00.bin



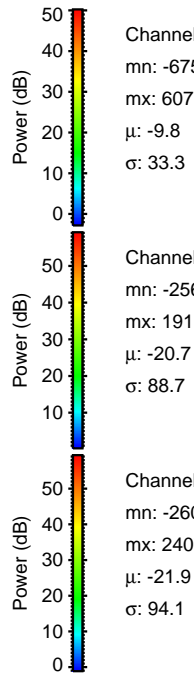
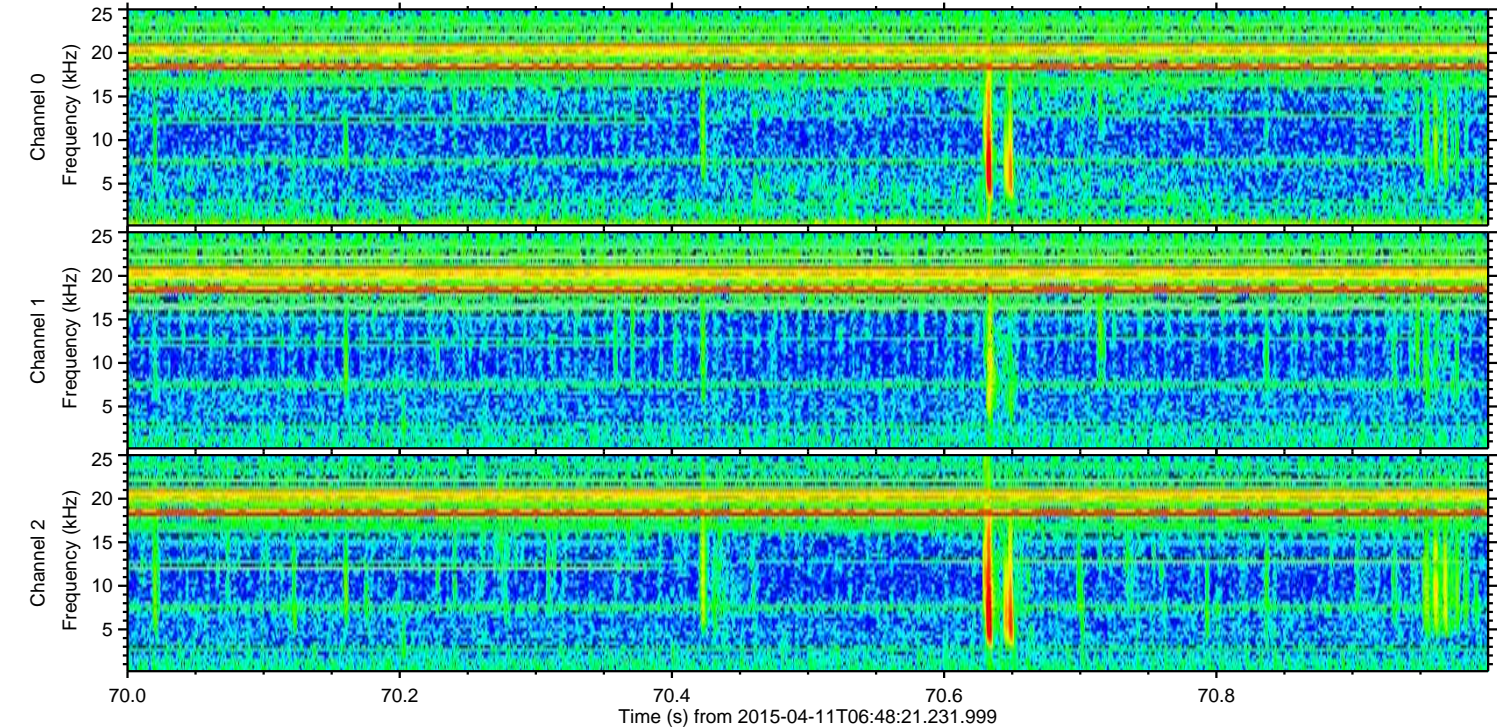
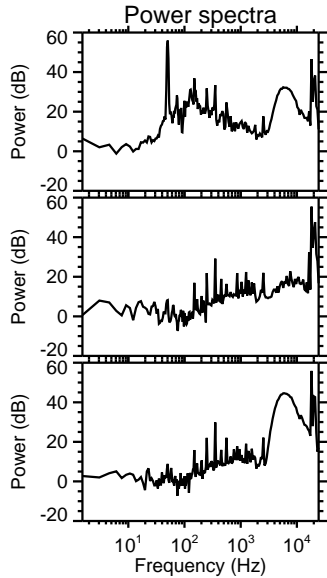
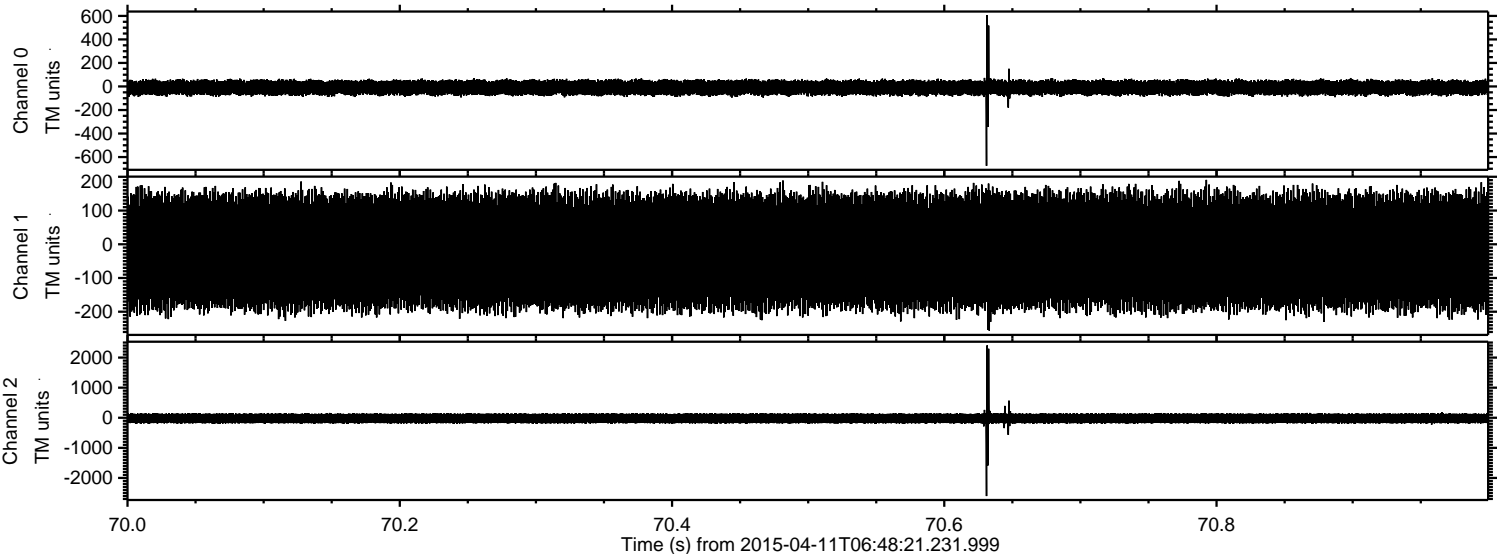
Channel 0
mn: -888
mx: 1067
 μ : -9.7
 σ : 34.1

Channel 1
mn: -1872
mx: 2084
 μ : -20.7
 σ : 93.8

Channel 2
mn: -2625
mx: 2892
 μ : -21.9
 σ : 94.5

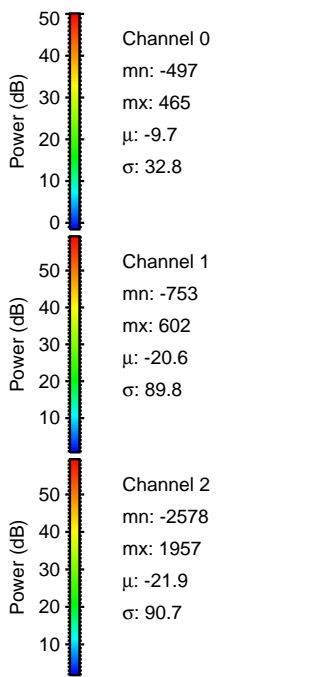
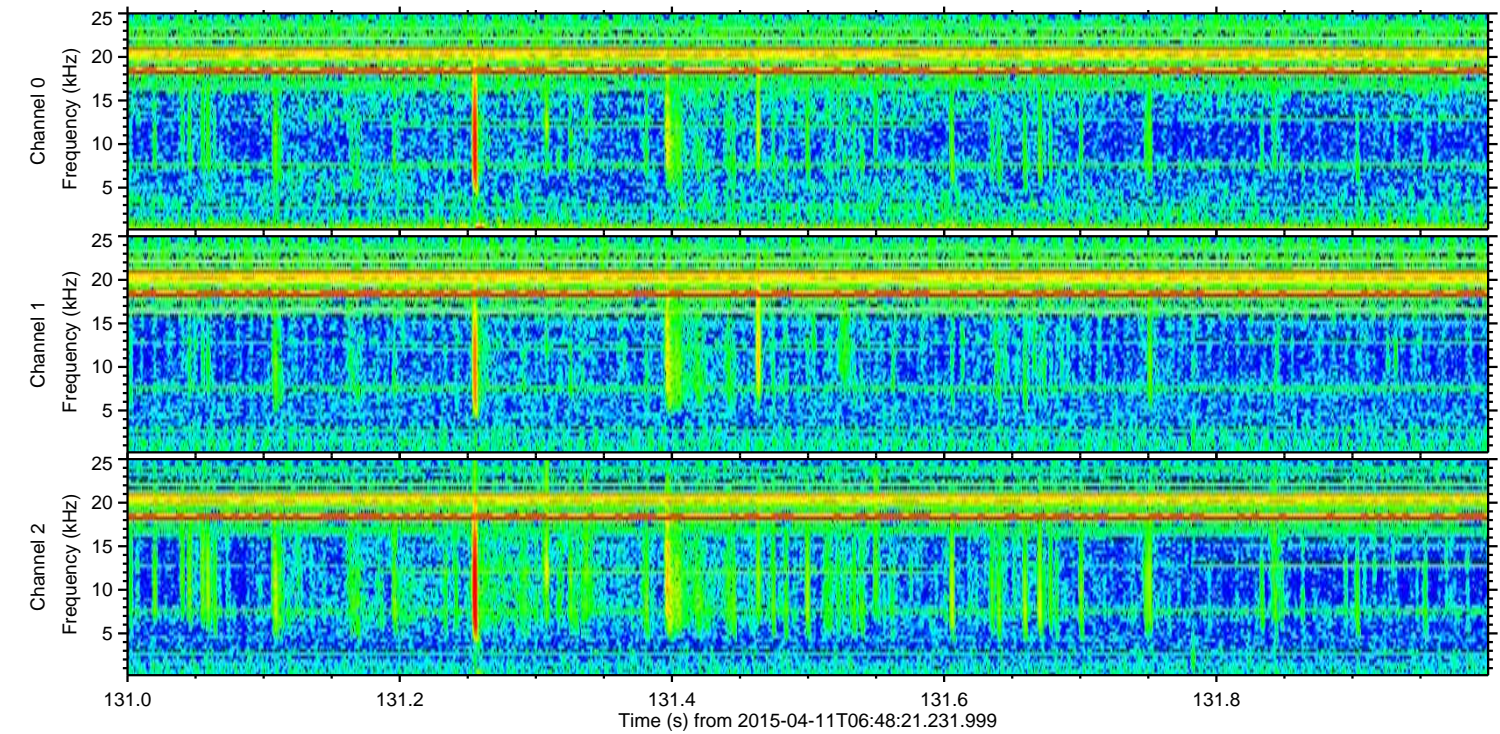
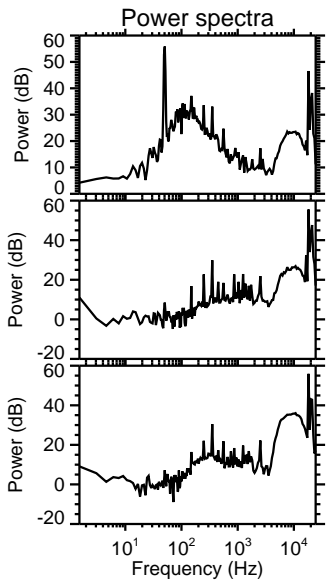
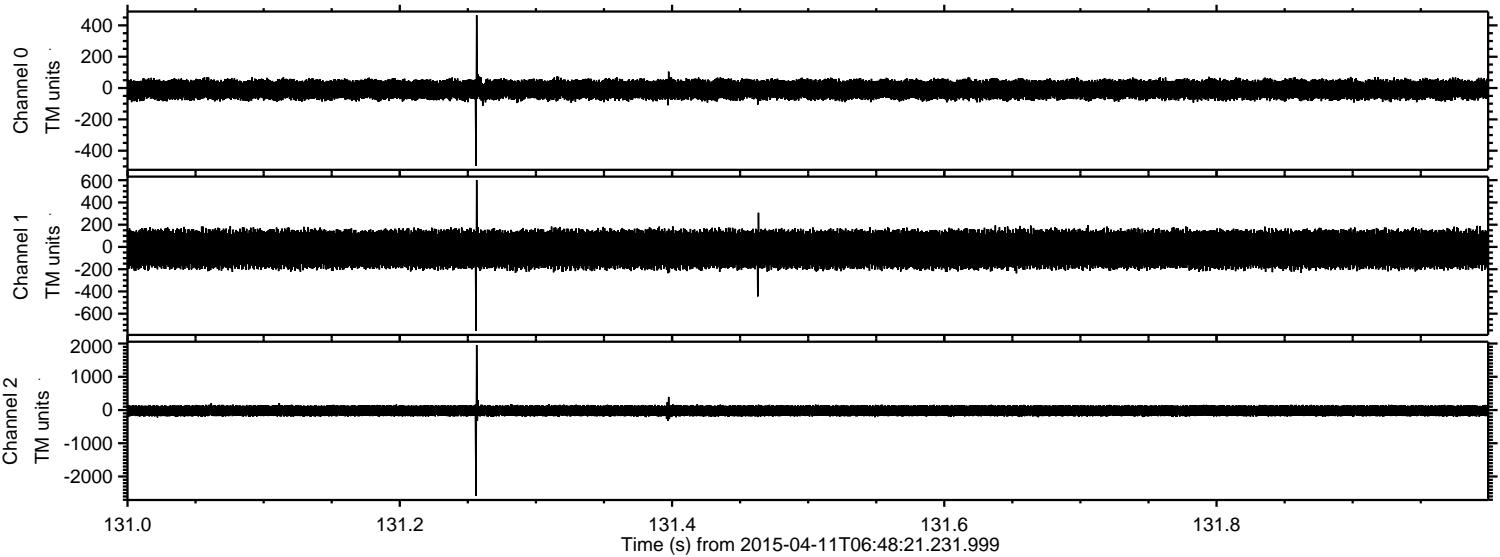
ELMAVAN 3D WAVEFORMS (Measured data sampled at 50 kHz) 49787 packets of 144 samples from 2015-04-11T06:48:21.231.999. Part 71/144

Processed Sat Apr 11 08:55:46 2015 by ELM ver.2012-10-06 from 001__elm20150411_064820__dat00.bin



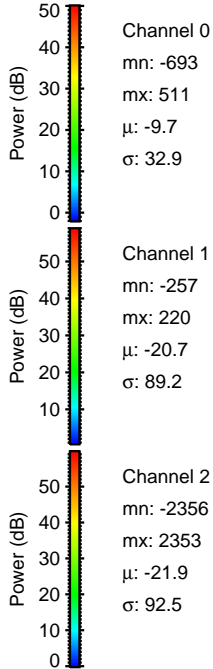
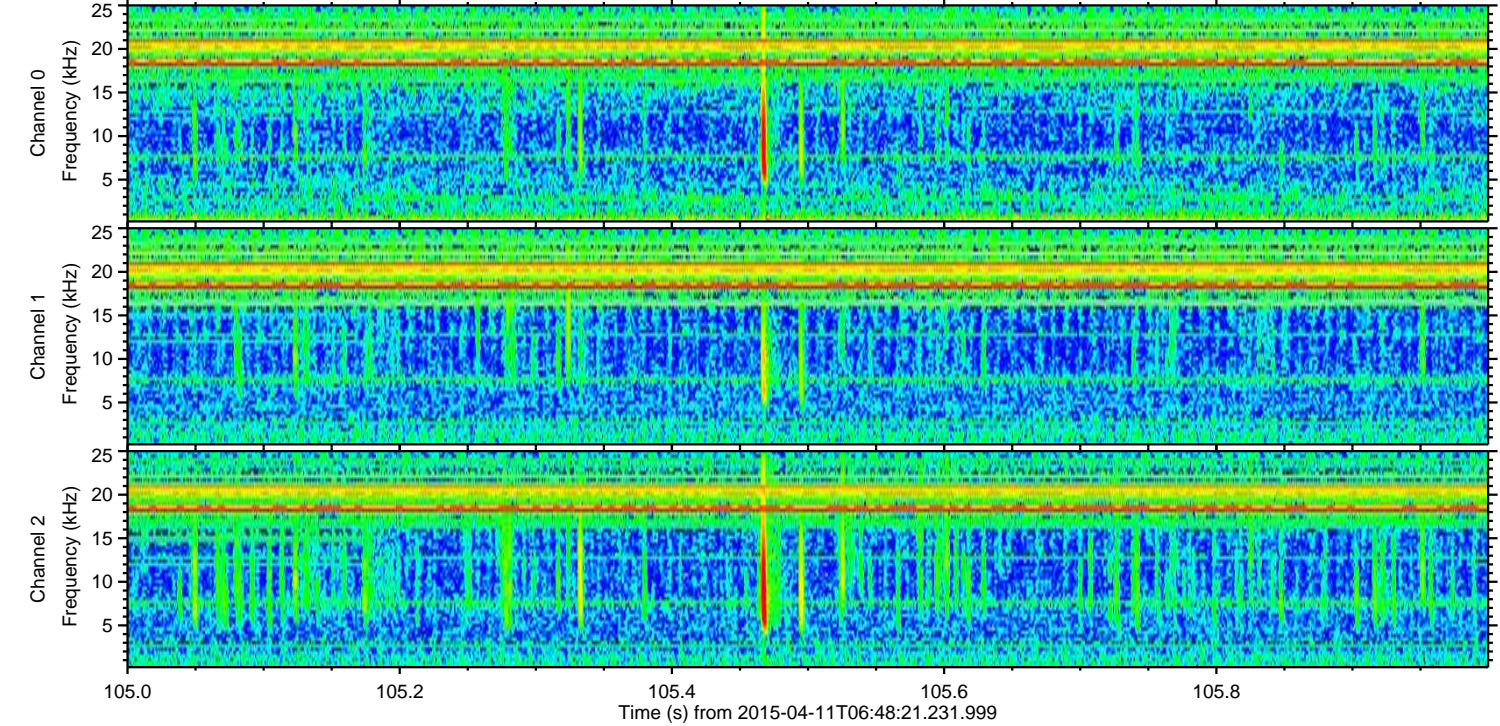
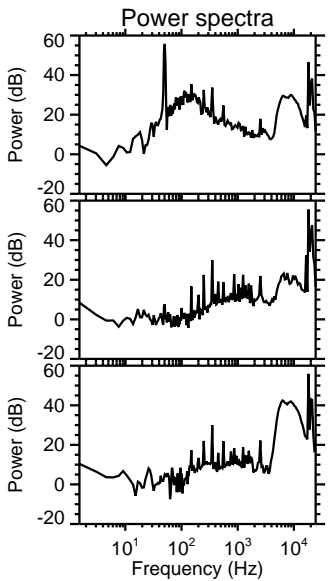
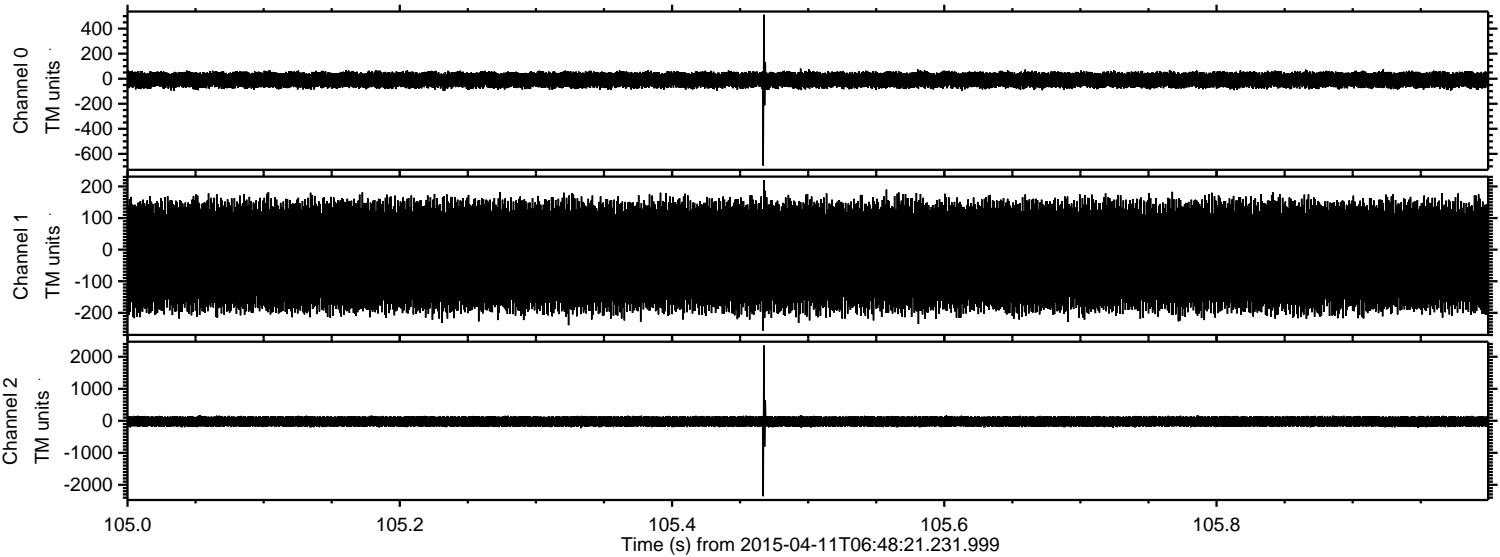
ELMAVAN 3D WAVEFORMS (Measured data sampled at 50 kHz) 49787 packets of 144 samples from 2015-04-11T06:48:21.231.999. Part 132/144

Processed Sat Apr 11 08:55:47 2015 by ELM ver.2012-10-06 from 001__elm20150411_064820__dat00.bin

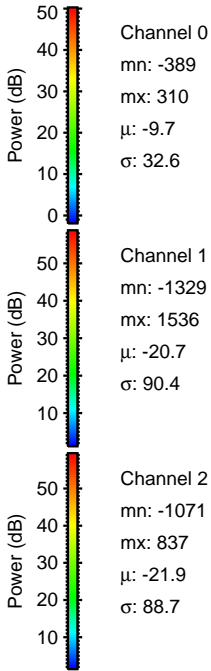
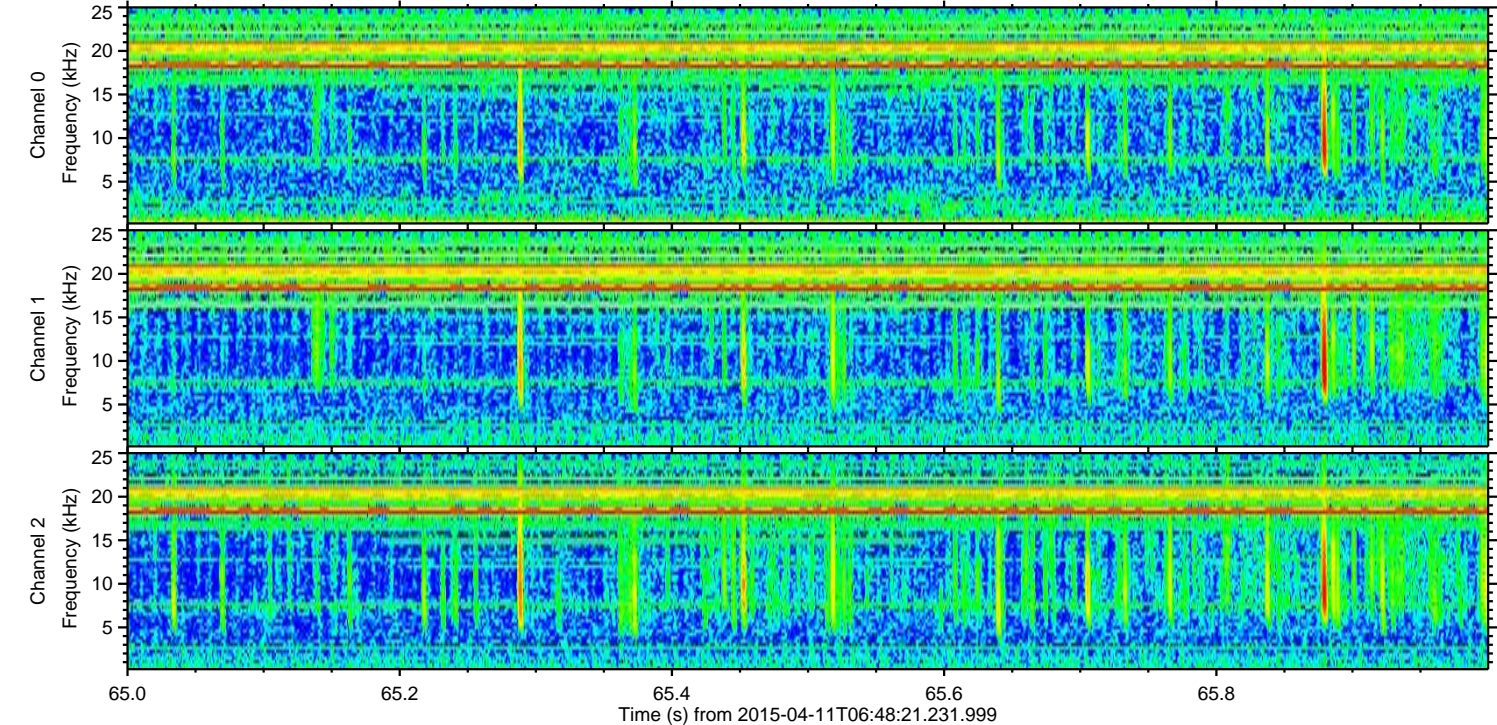
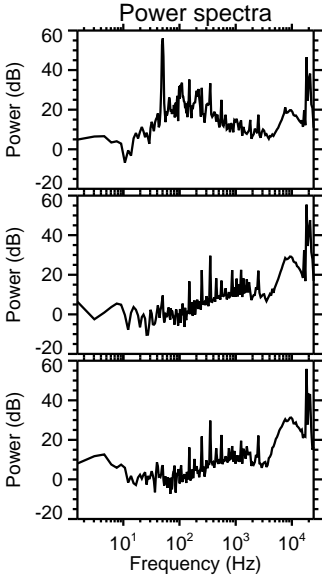
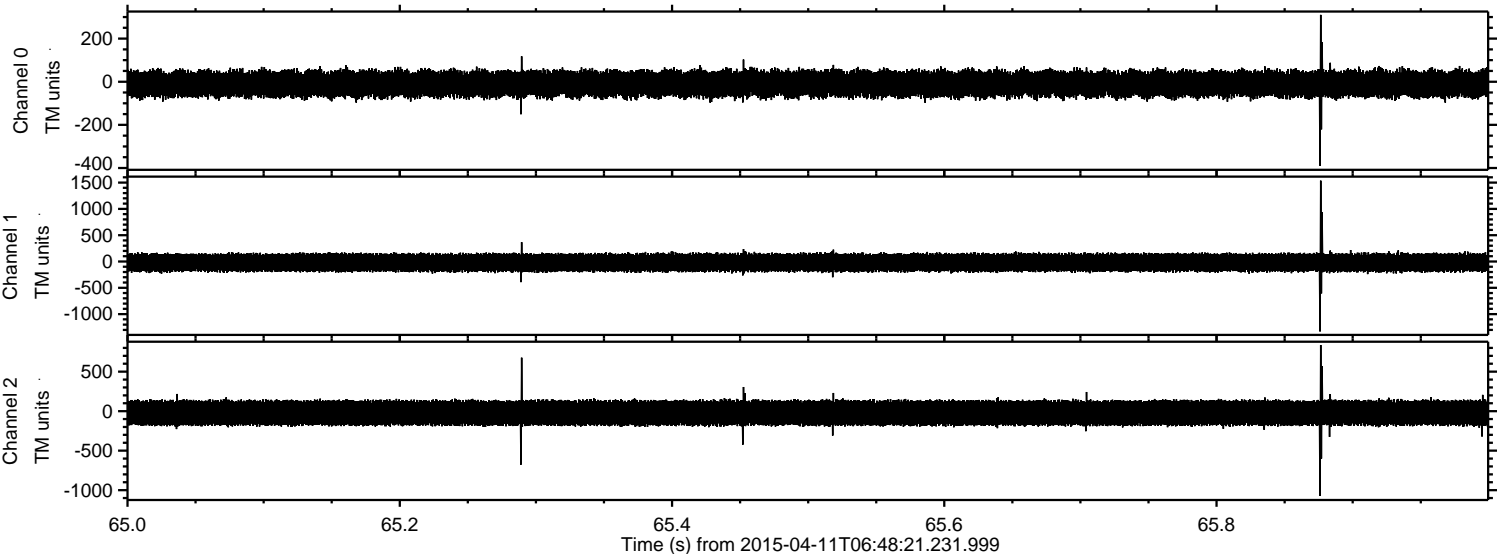


ELMAVAN 3D WAVEFORMS (Measured data sampled at 50 kHz) 49787 packets of 144 samples from 2015-04-11T06:48:21.231.999. Part 106/144

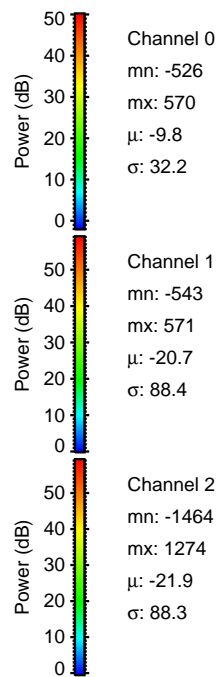
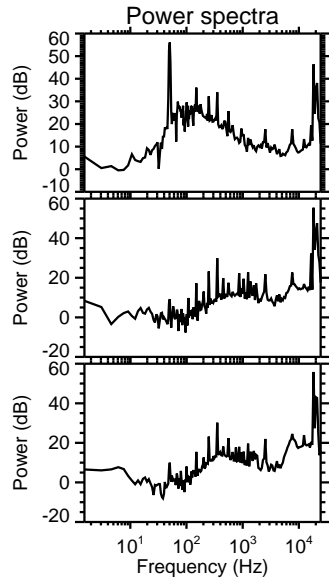
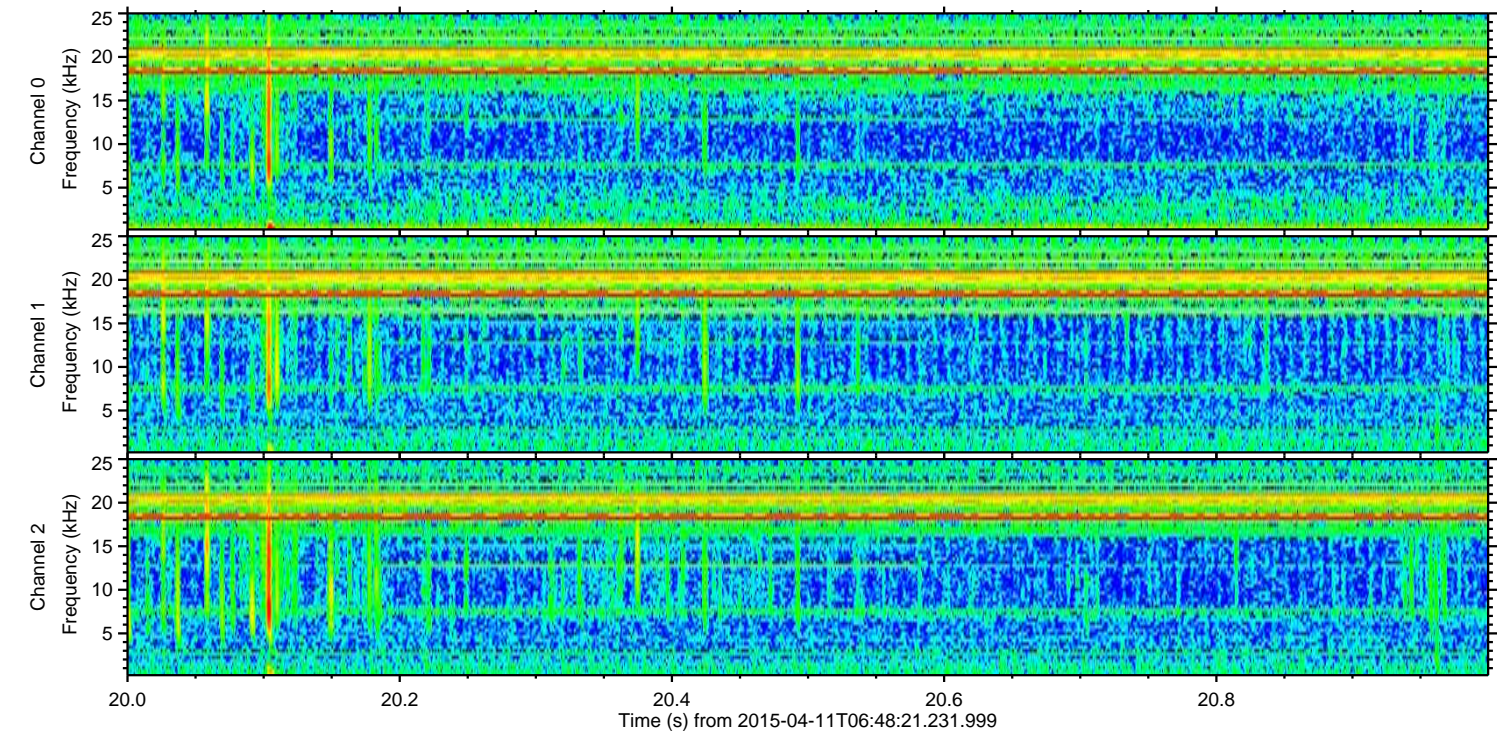
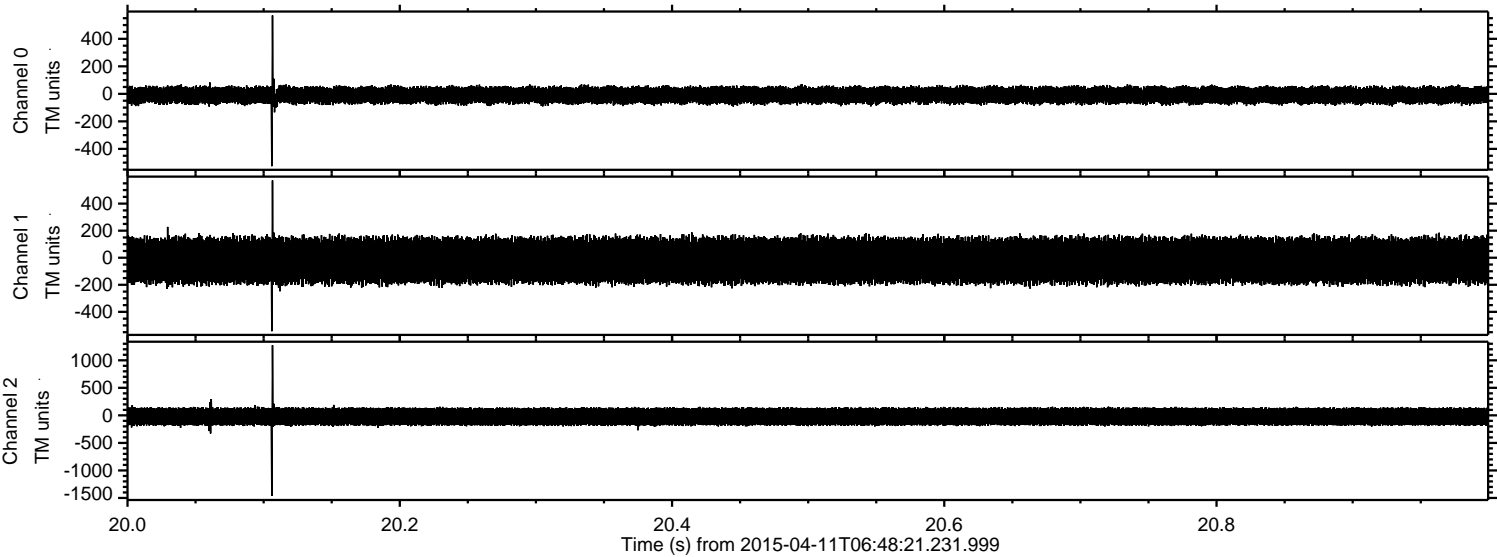
Processed Sat Apr 11 08:55:48 2015 by ELM ver.2012-10-06 from 001__elm20150411_064820__dat00.bin



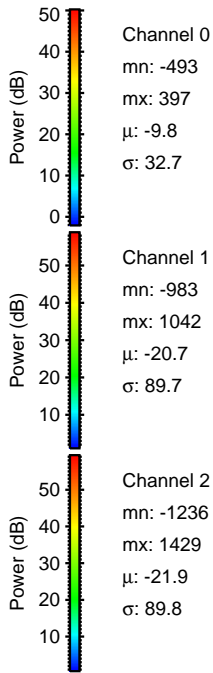
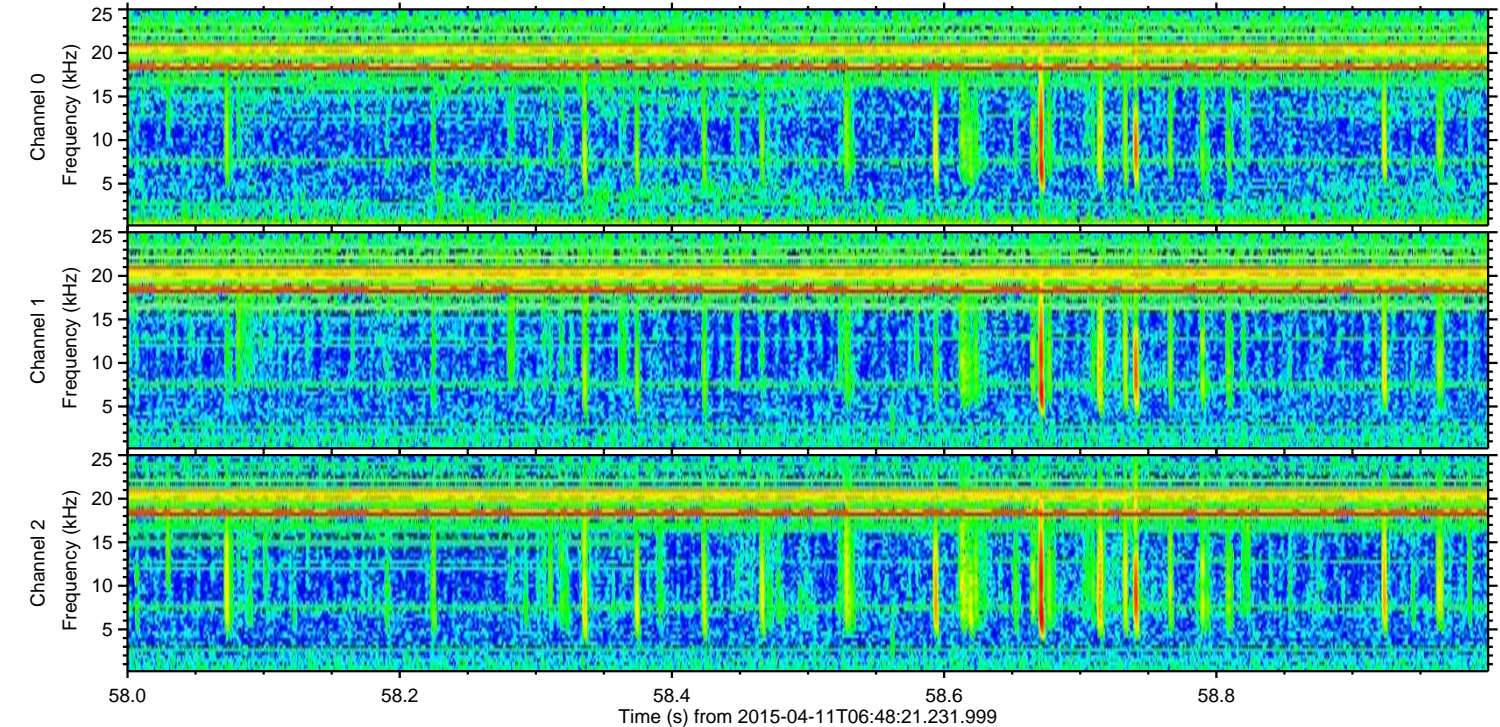
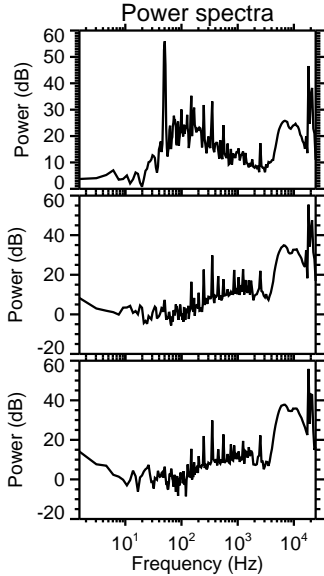
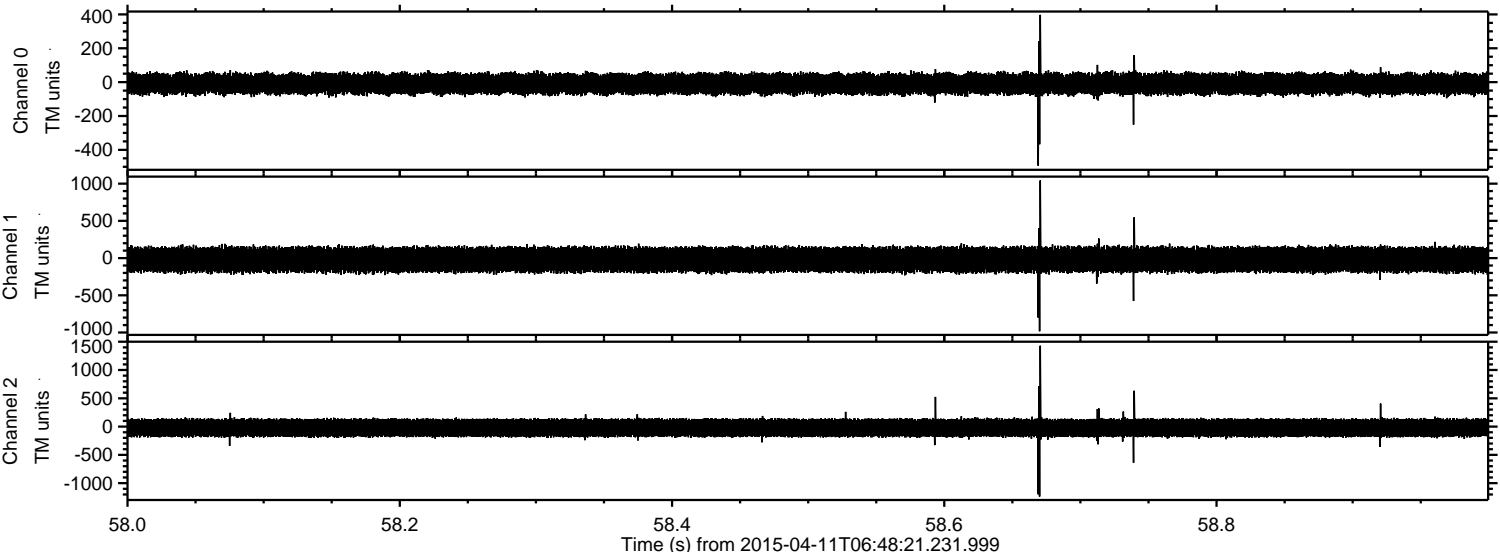
Processed Sat Apr 11 08:55:49 2015 by ELM ver.2012-10-06 from 001__elm20150411_064820__dat00.bin



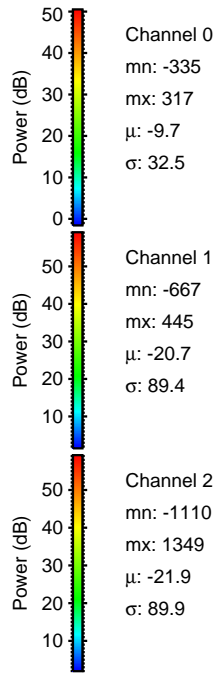
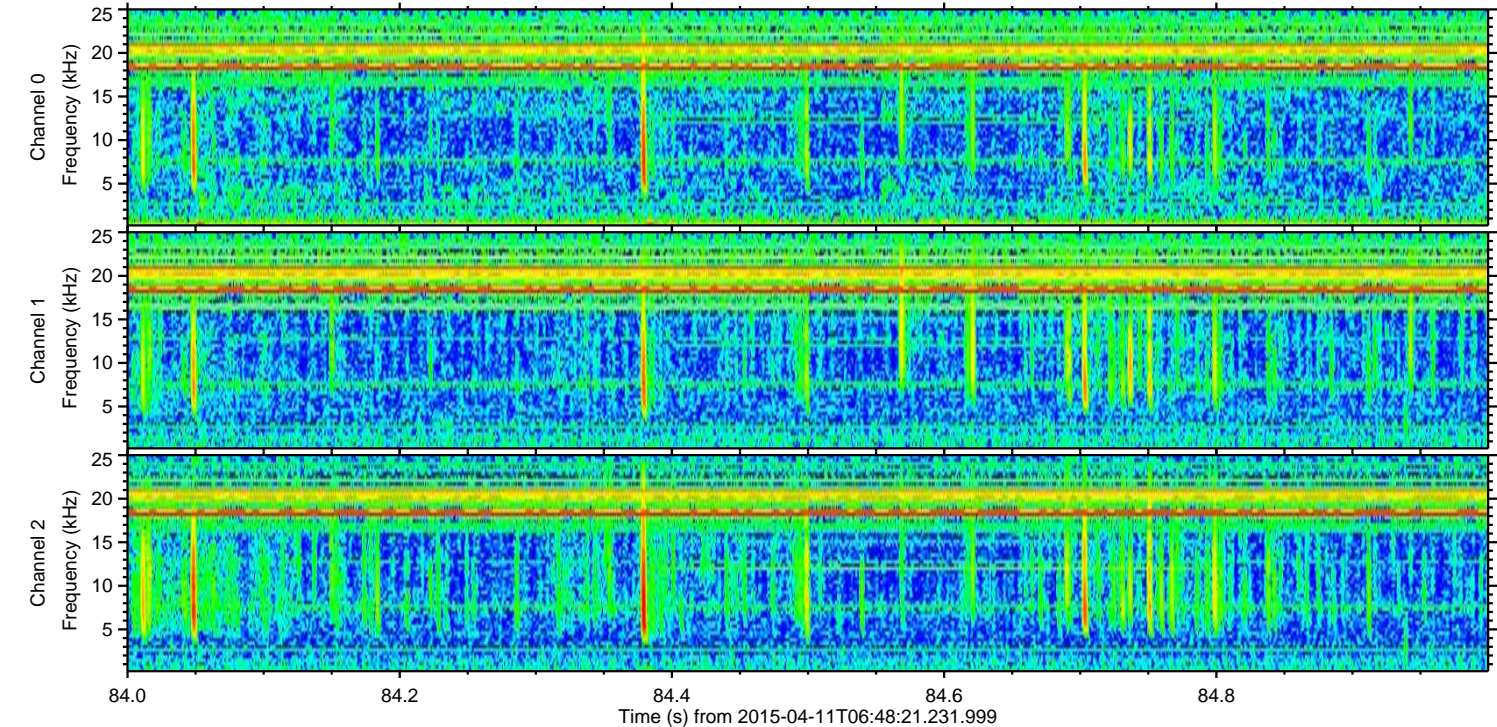
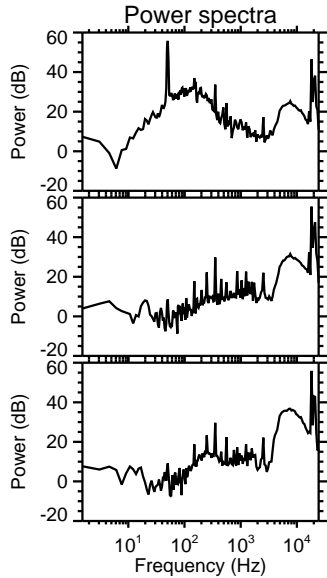
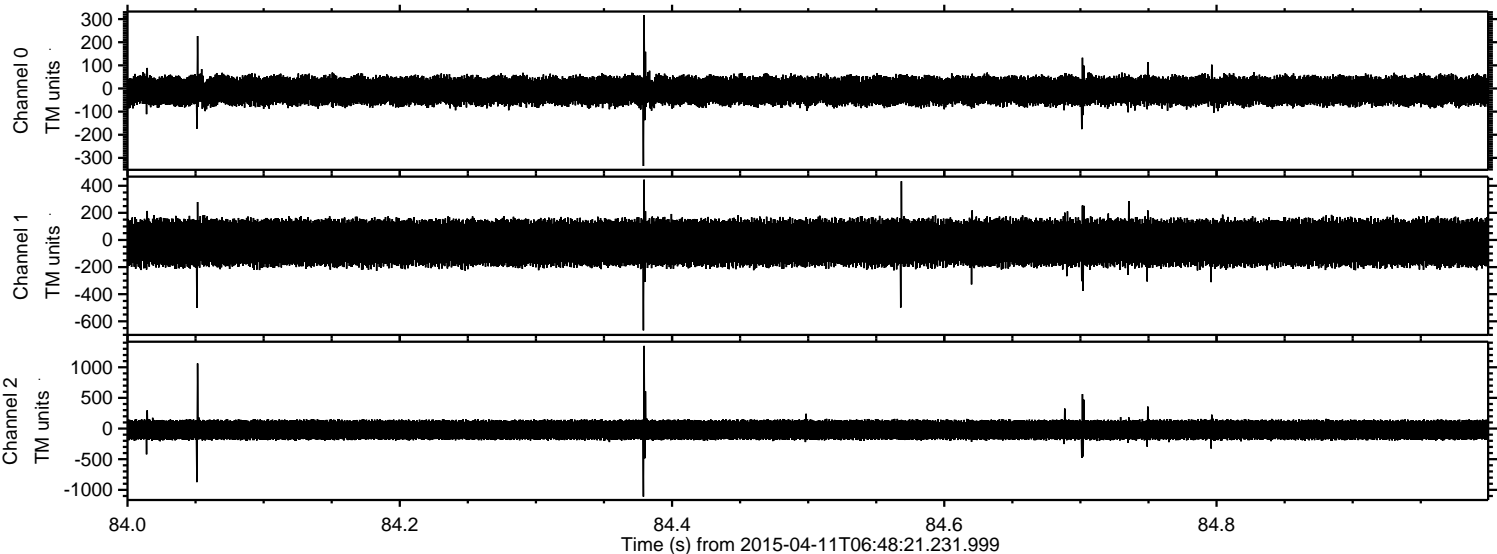
Processed Sat Apr 11 08:55:50 2015 by ELM ver.2012-10-06 from 001__elm20150411_064820__dat00.bin



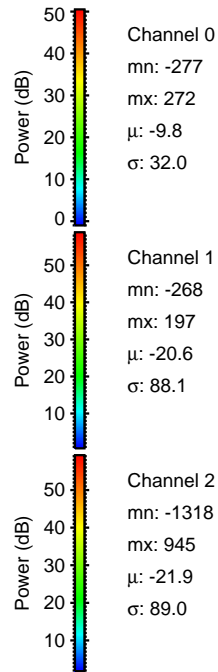
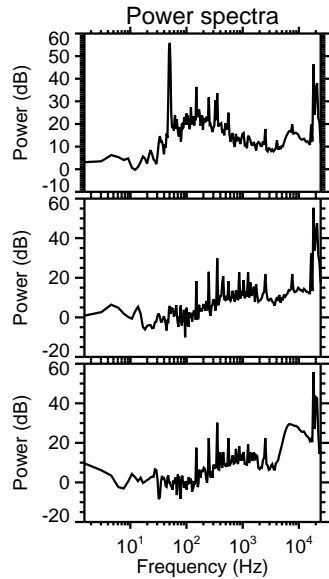
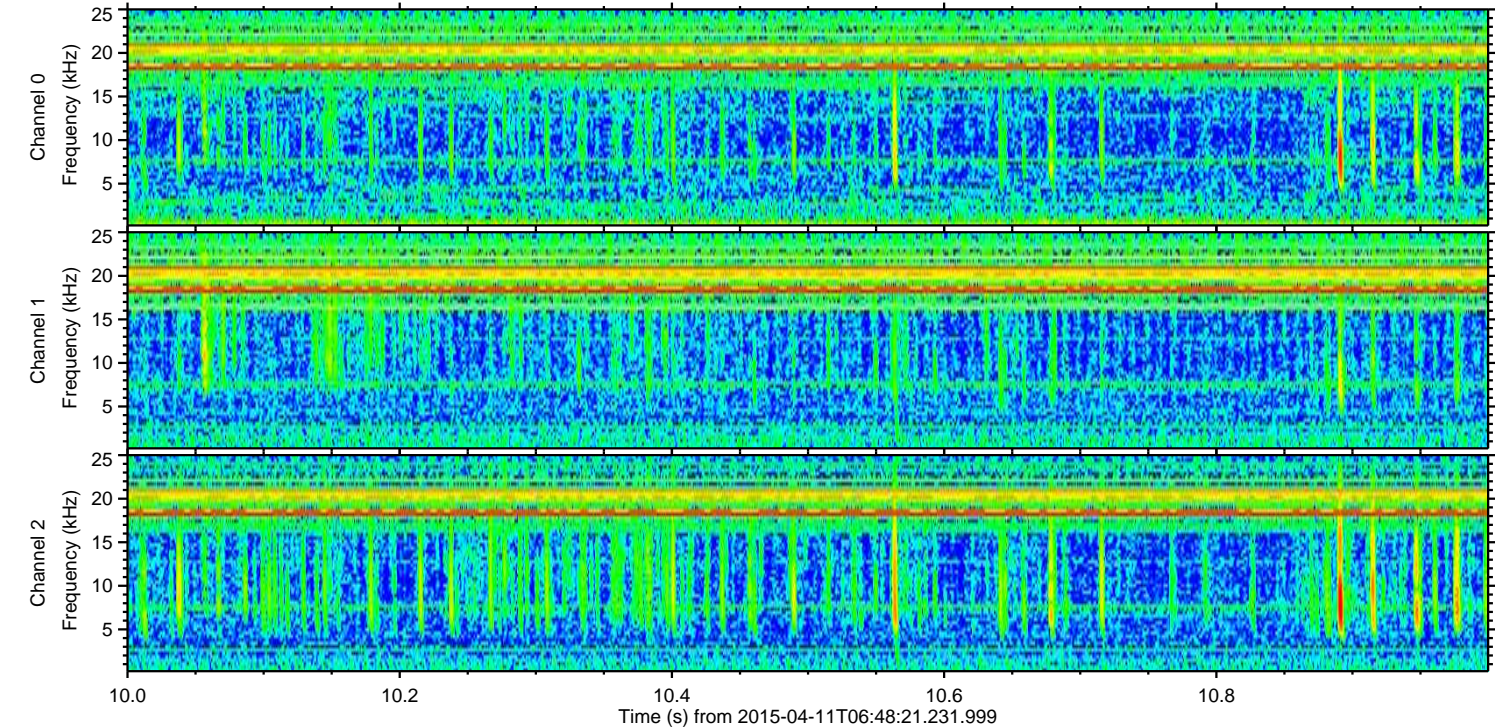
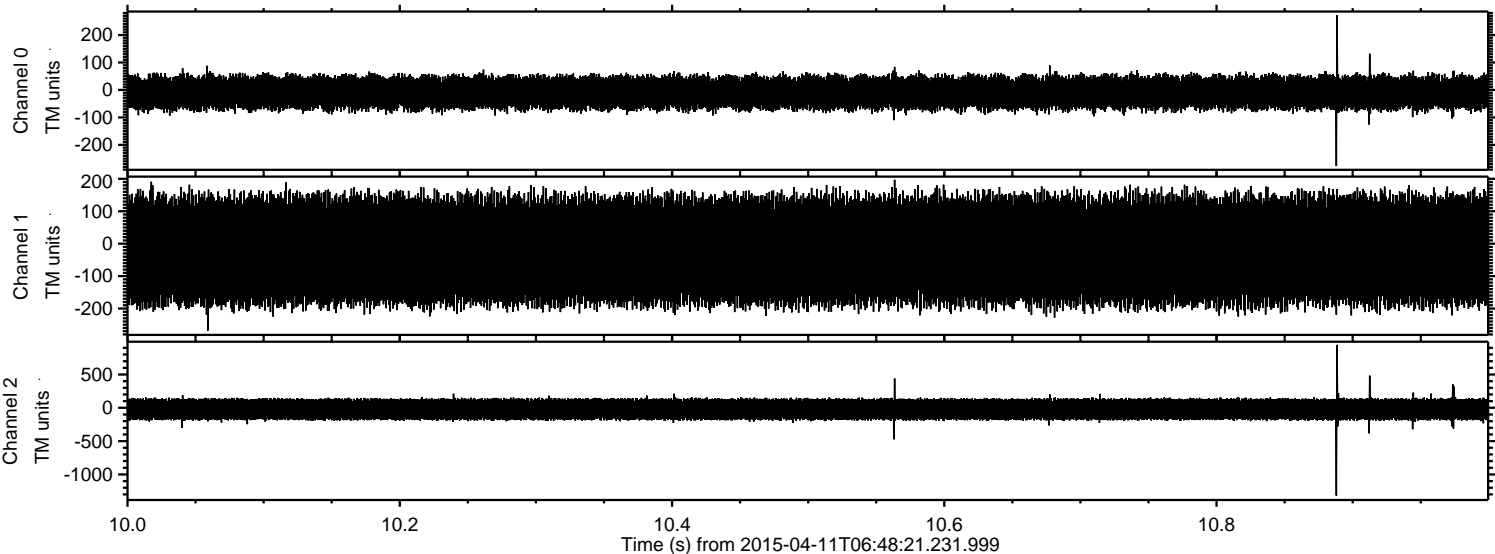
Processed Sat Apr 11 08:55:51 2015 by ELM ver.2012-10-06 from 001__elm20150411_064820__dat00.bin



Processed Sat Apr 11 08:55:52 2015 by ELM ver.2012-10-06 from 001__elm20150411_064820__dat00.bin



Processed Sat Apr 11 08:55:53 2015 by ELM ver.2012-10-06 from 001__elm20150411_064820__dat00.bin



Processed Sat Apr 11 08:55:54 2015 by ELM ver.2012-10-06 from 001__elm20150411_064820__dat00.bin

