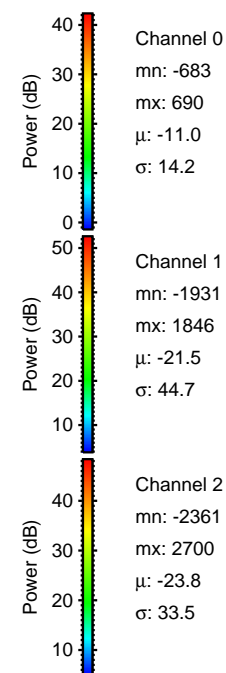
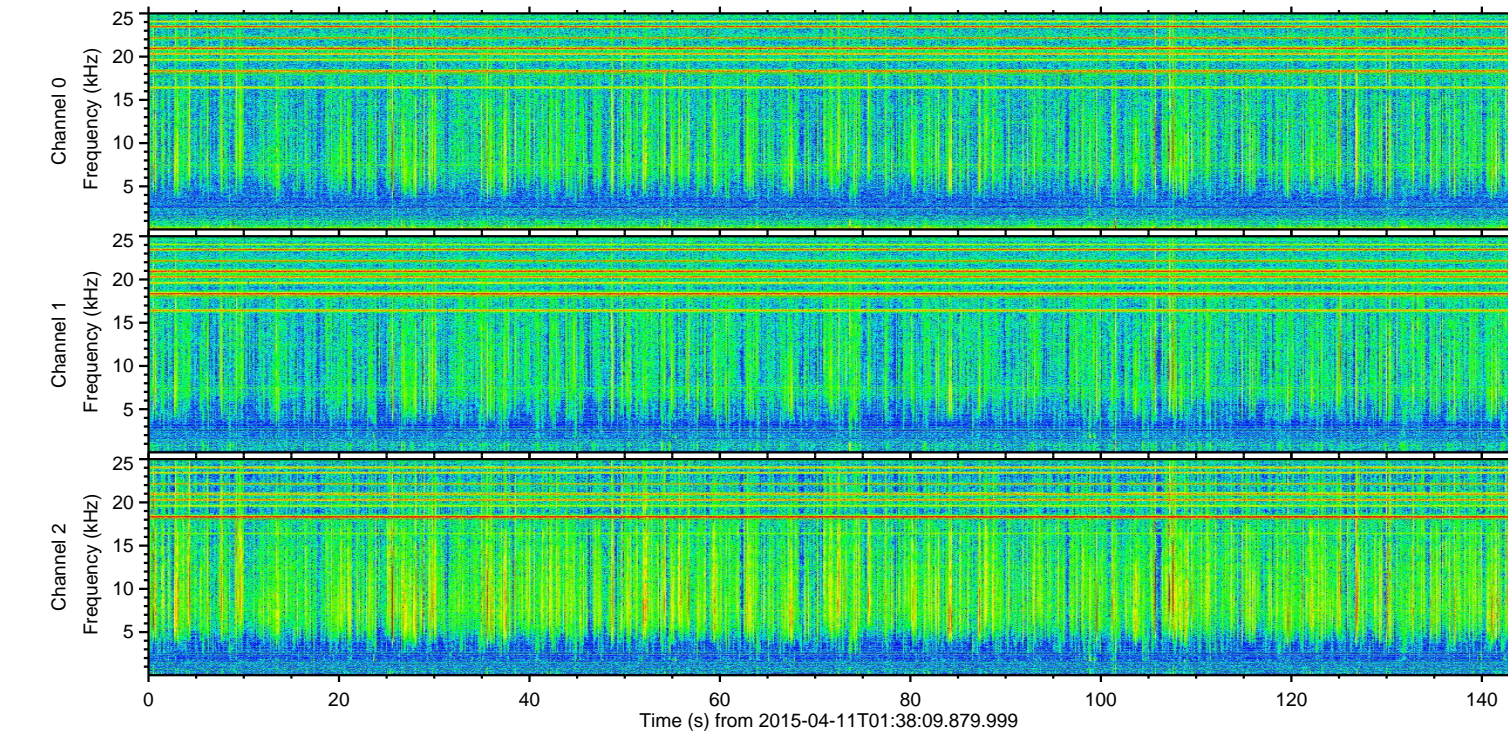
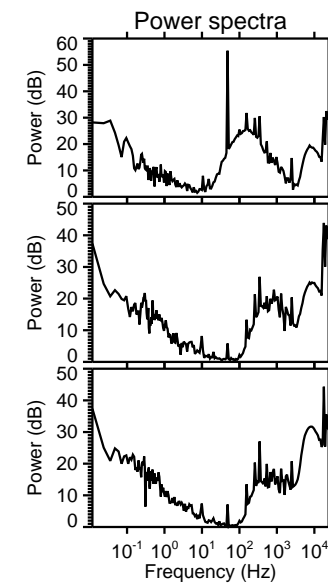
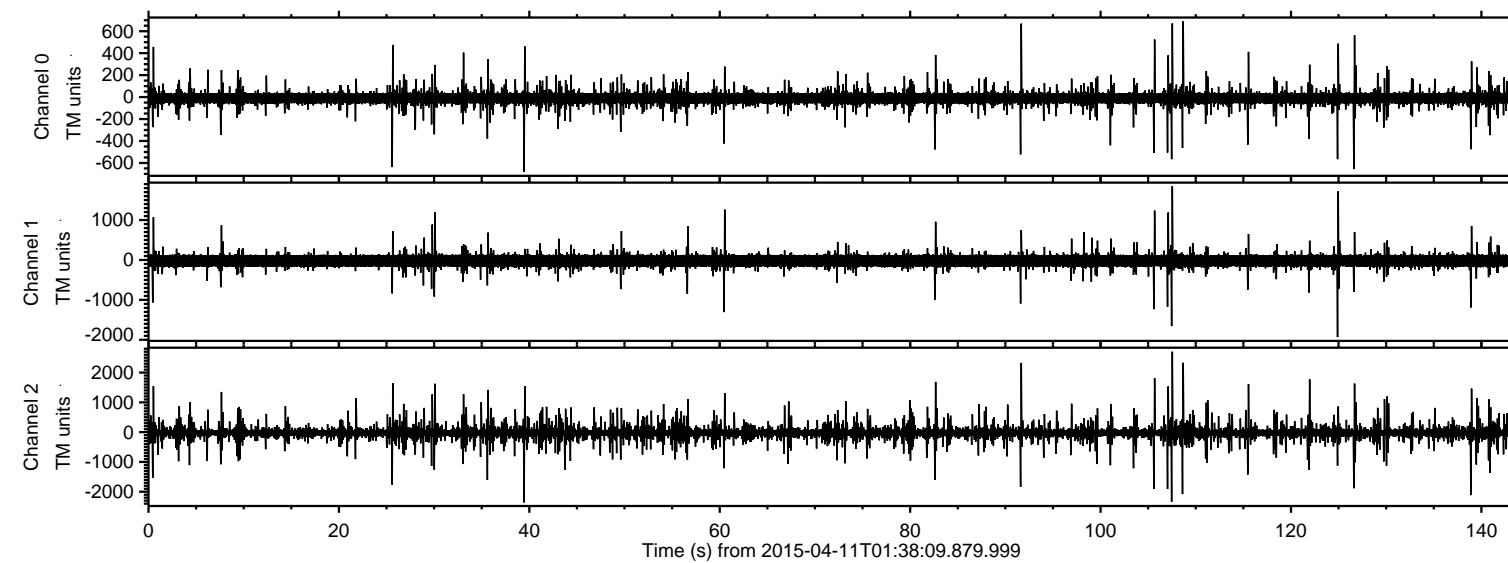


# ELMAVAN 3D WAVEFORMS (Measured data sampled at 50 kHz) 49624 packets of 144 samples from 2015-04-11T01:38:09.879.999.

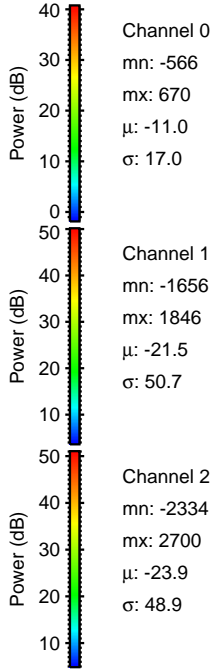
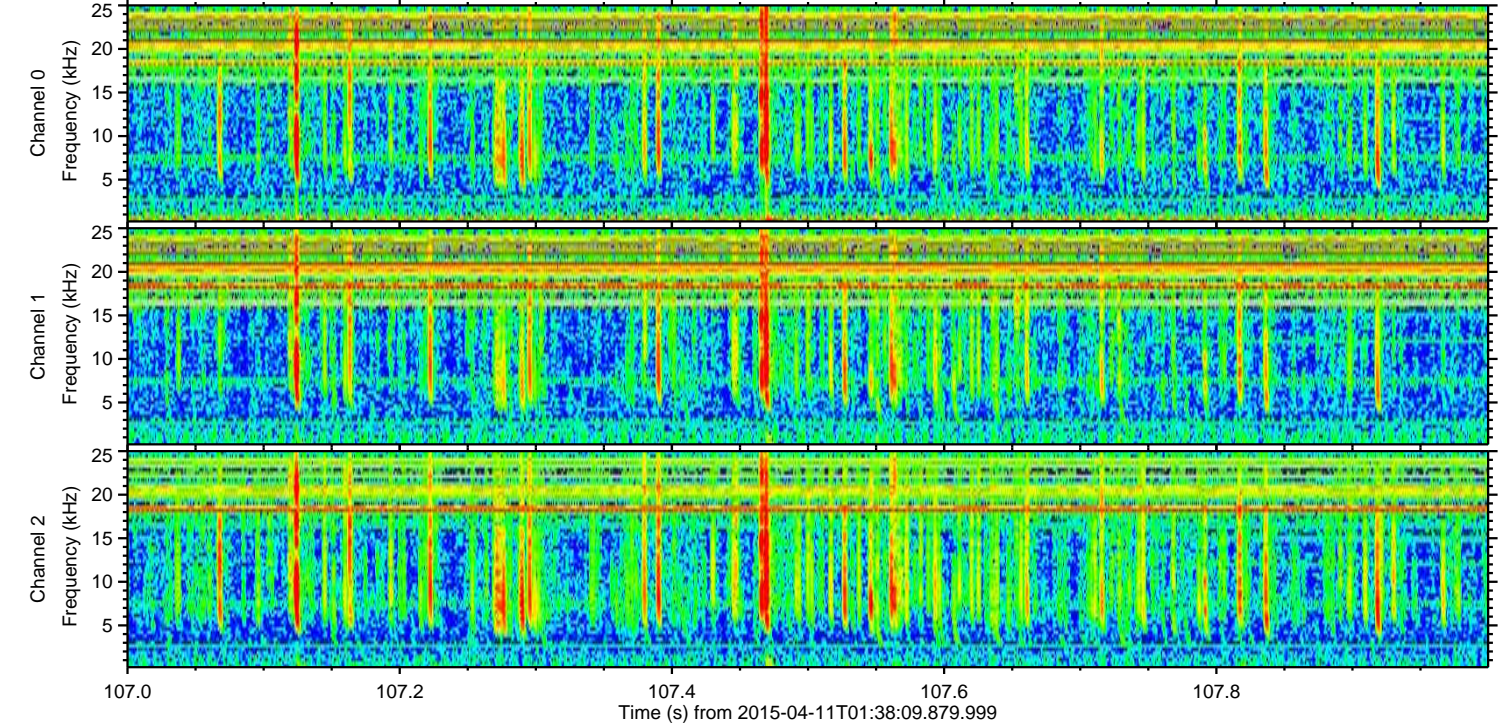
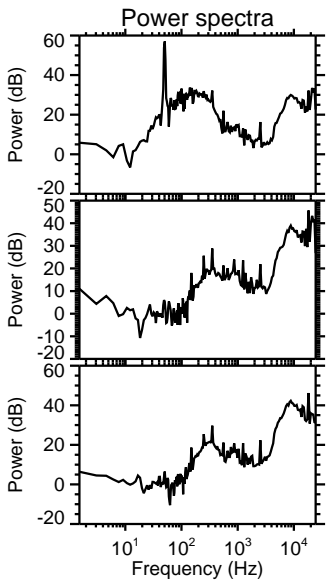
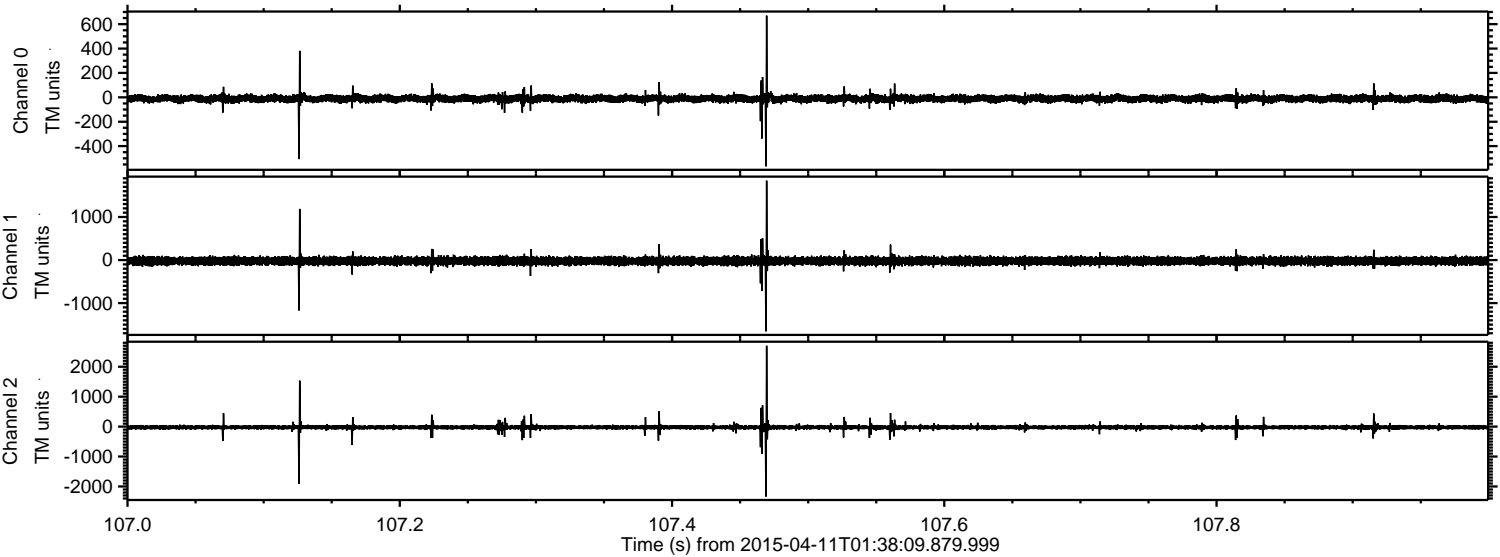
Processed Sat Apr 11 03:45:15 2015 by ELM ver.2012-10-06 from 001\_\_elm20150411\_013808\_\_dat00.bin





ELMAVAN 3D WAVEFORMS (Measured data sampled at 50 kHz) 49624 packets of 144 samples from 2015-04-11T01:38:09.879.999. Part 108/143

Processed Sat Apr 11 03:45:30 2015 by ELM ver.2012-10-06 from 001\_\_elm20150411\_013808\_\_dat00.bin



Channel 0  
mn: -566  
mx: 670  
 $\mu$ : -11.0  
 $\sigma$ : 17.0

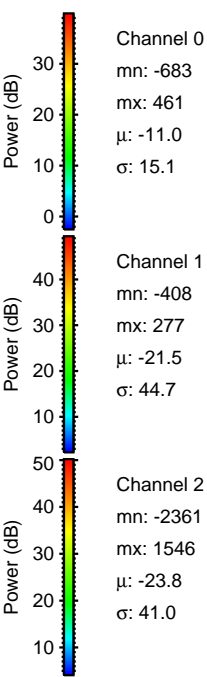
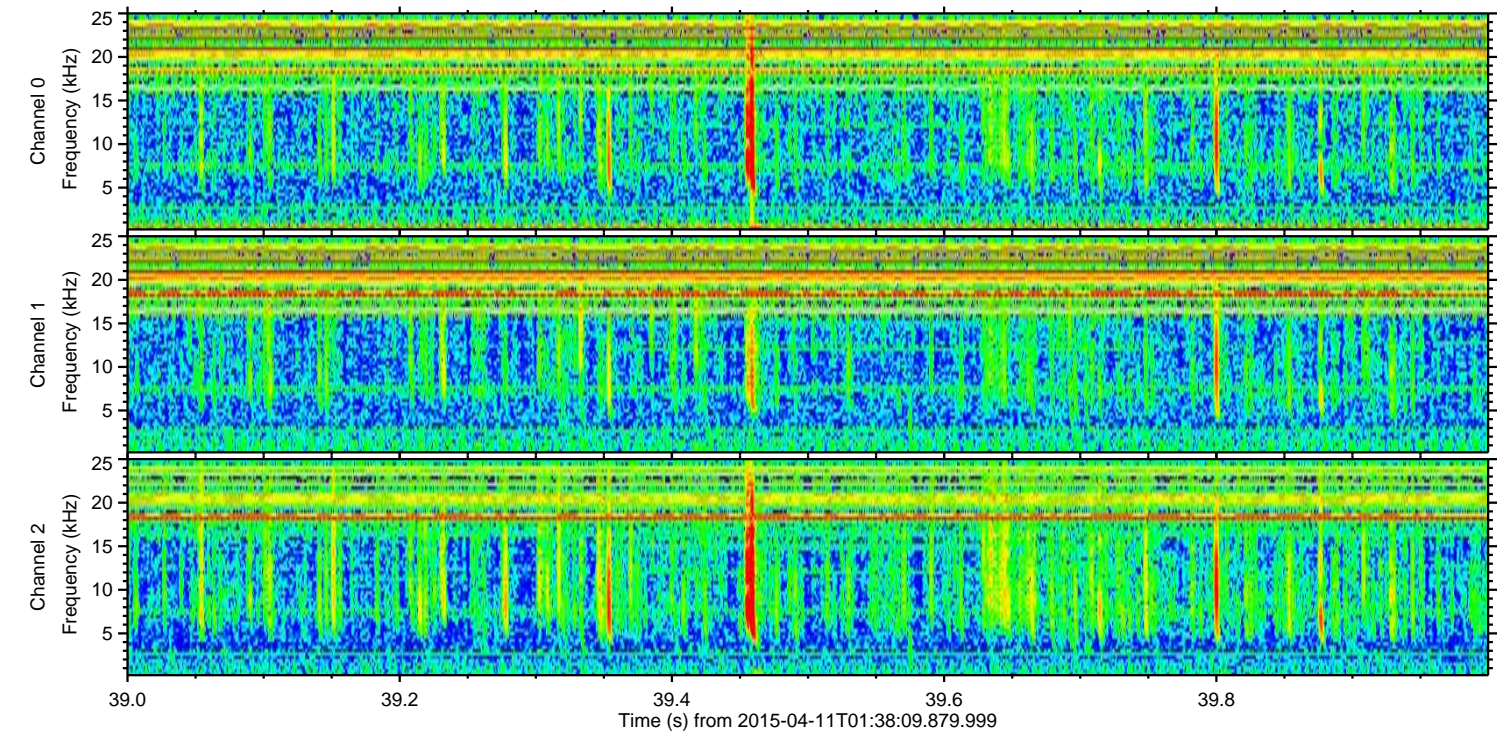
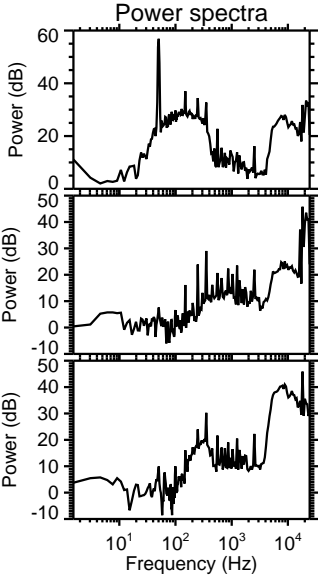
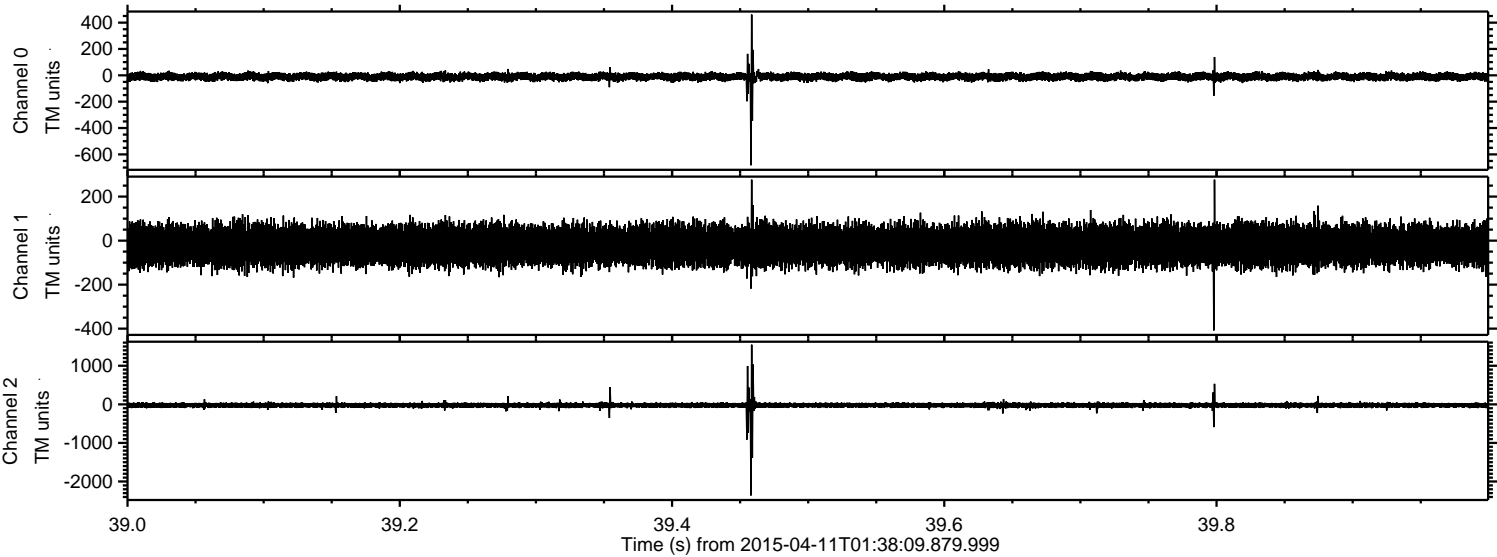
Channel 1  
mn: -1656  
mx: 1846  
 $\mu$ : -21.5  
 $\sigma$ : 50.7

Channel 2  
mn: -2334  
mx: 2700  
 $\mu$ : -23.9  
 $\sigma$ : 48.9



ELMAVAN 3D WAVEFORMS (Measured data sampled at 50 kHz) 49624 packets of 144 samples from 2015-04-11T01:38:09.879.999. Part 40/143

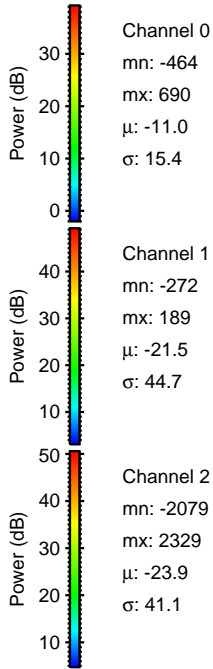
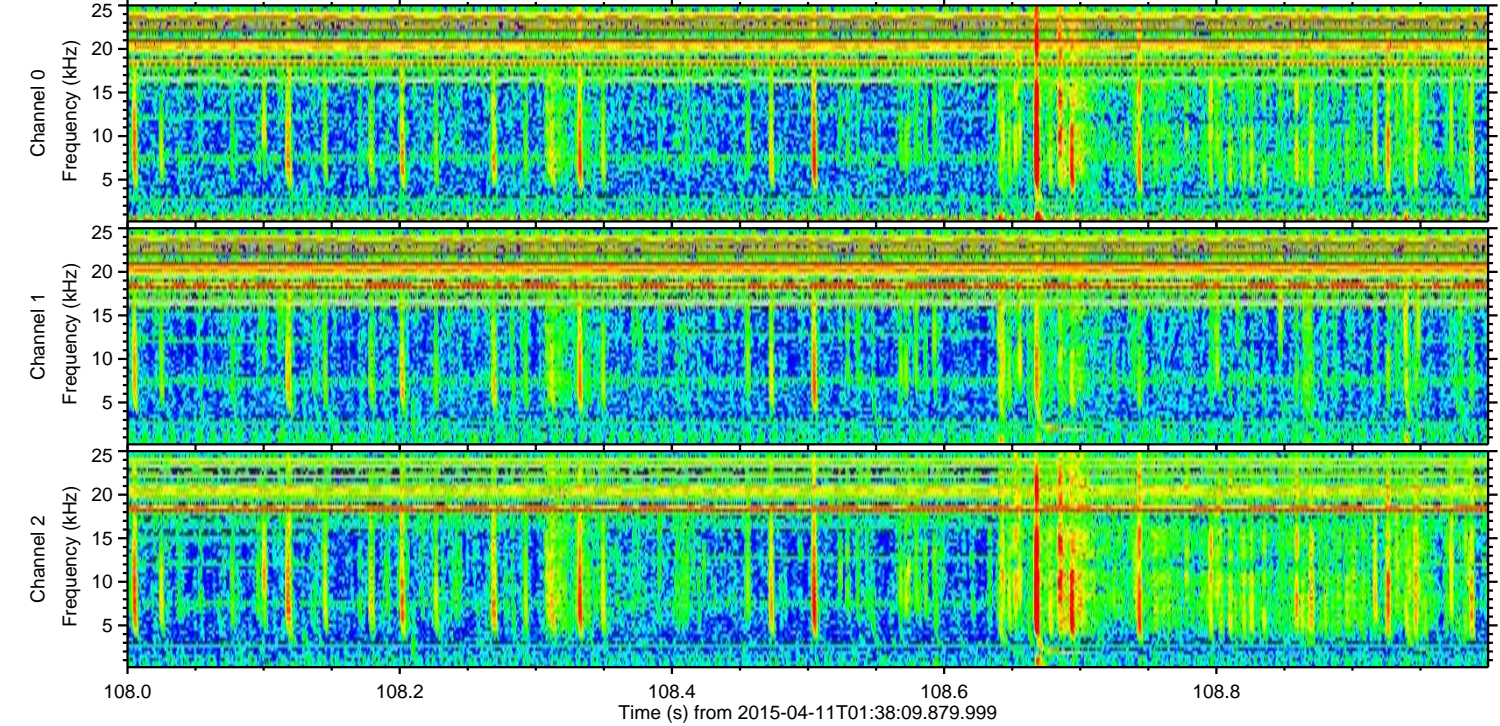
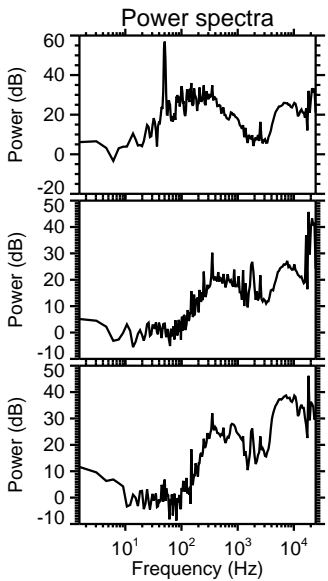
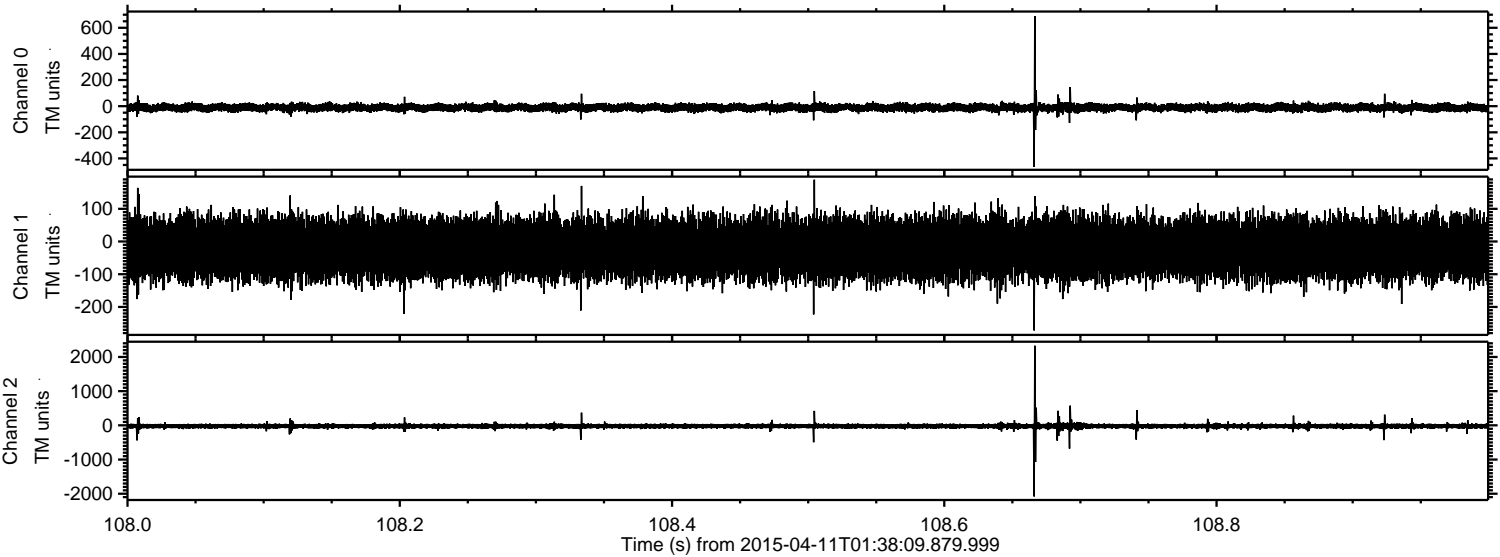
Processed Sat Apr 11 03:45:32 2015 by ELM ver.2012-10-06 from 001\_\_elm20150411\_013808\_\_dat00.bin





ELMAVAN 3D WAVEFORMS (Measured data sampled at 50 kHz) 49624 packets of 144 samples from 2015-04-11T01:38:09.879.999. Part 109/143

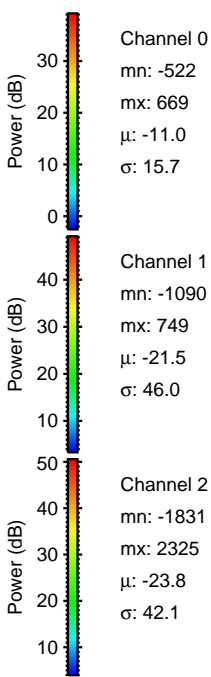
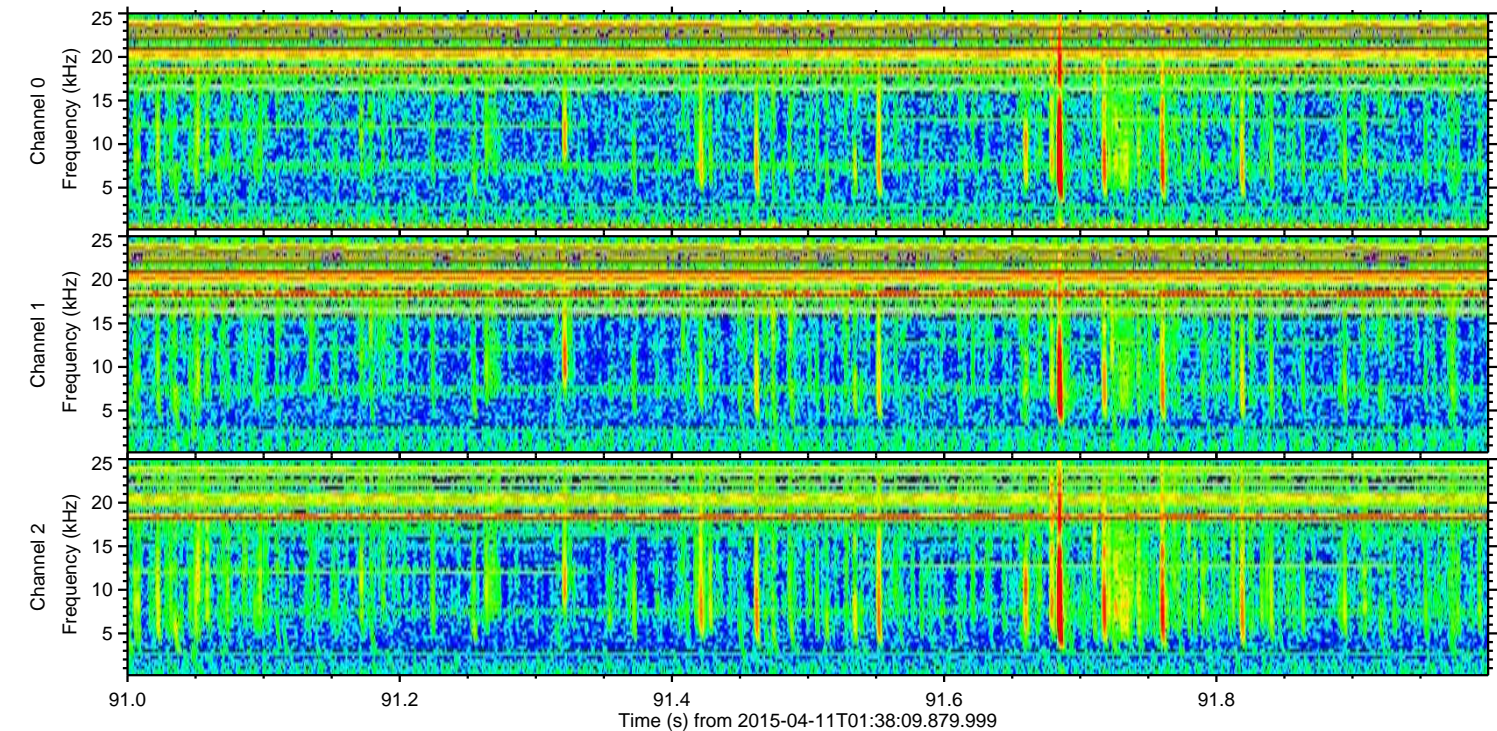
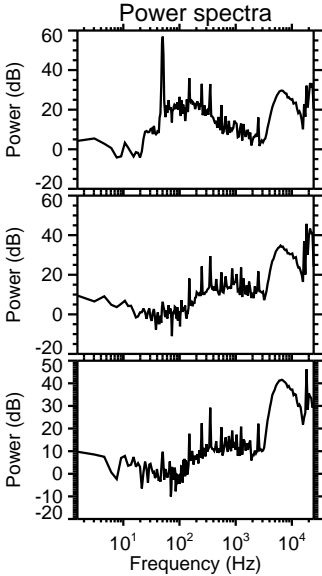
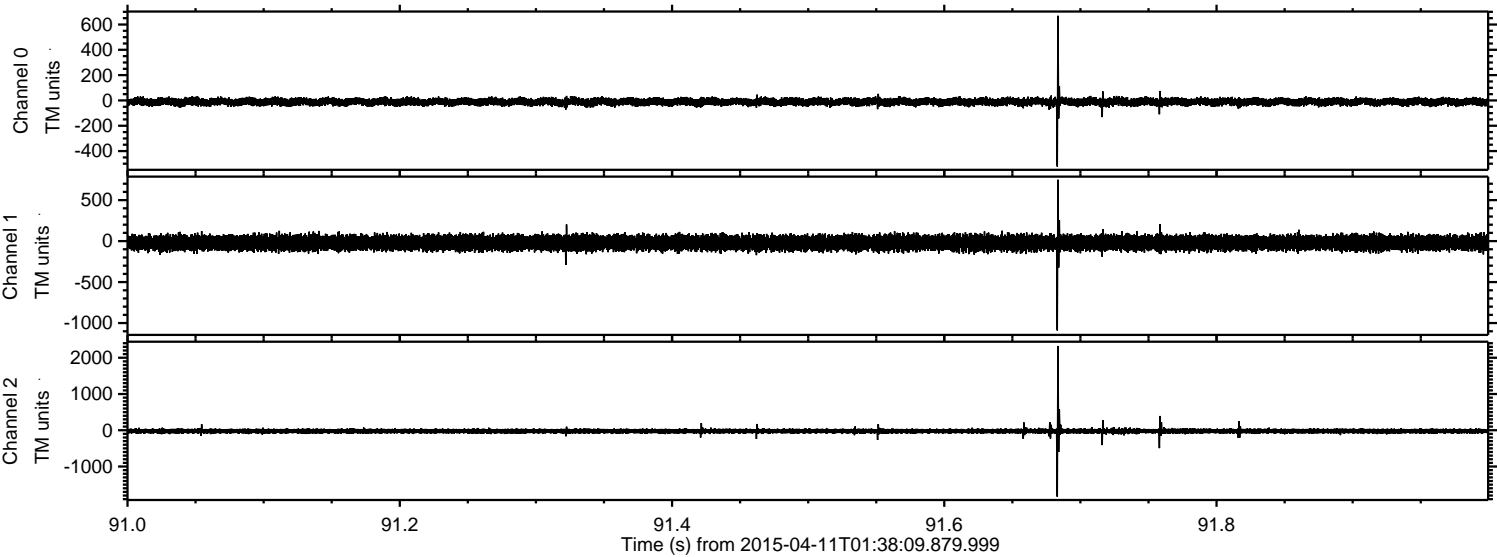
Processed Sat Apr 11 03:45:33 2015 by ELM ver.2012-10-06 from 001\_\_elm20150411\_013808\_\_dat00.bin





ELMAVAN 3D WAVEFORMS (Measured data sampled at 50 kHz) 49624 packets of 144 samples from 2015-04-11T01:38:09.879.999. Part 92/143

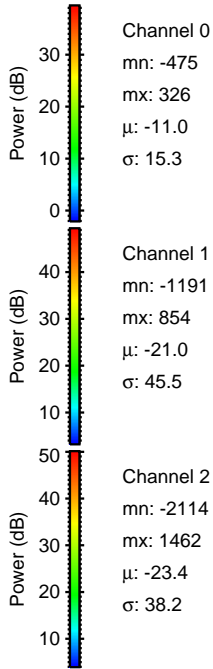
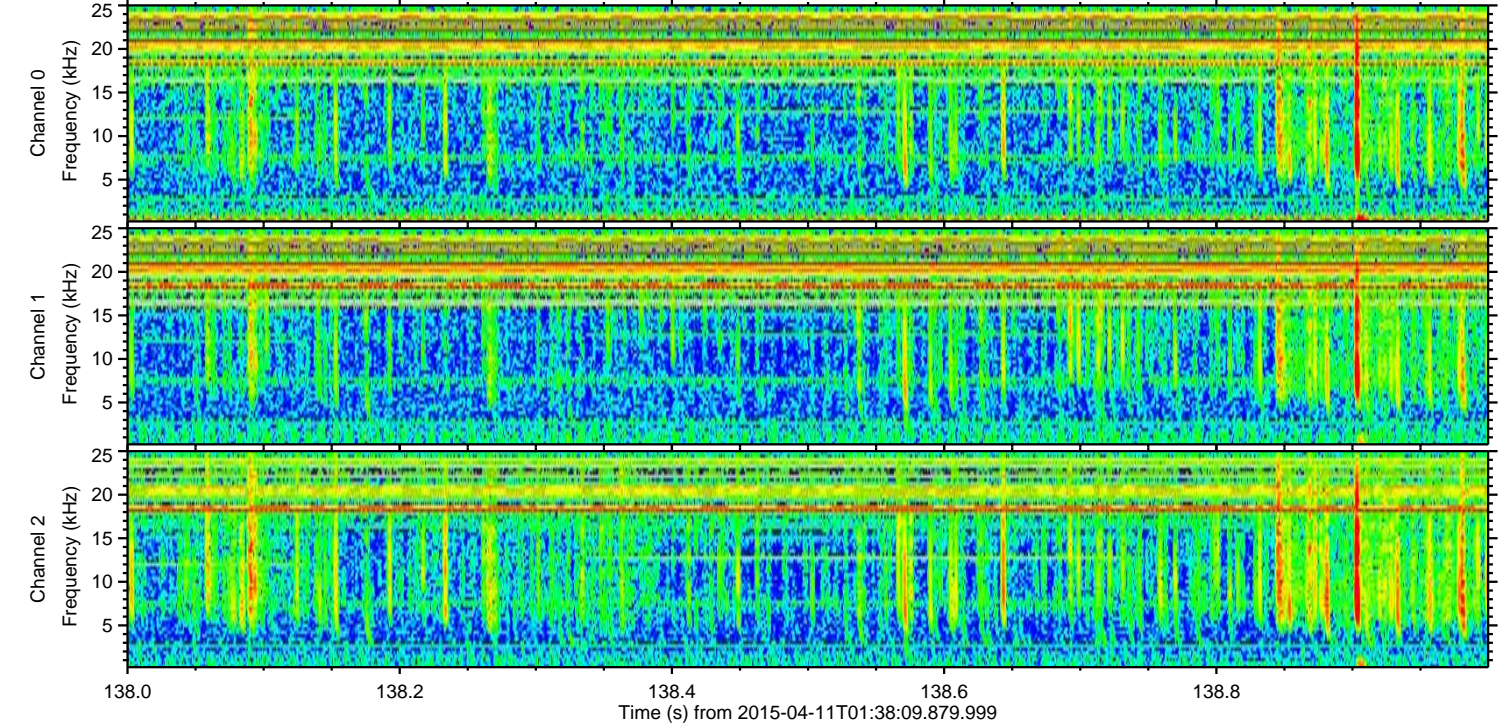
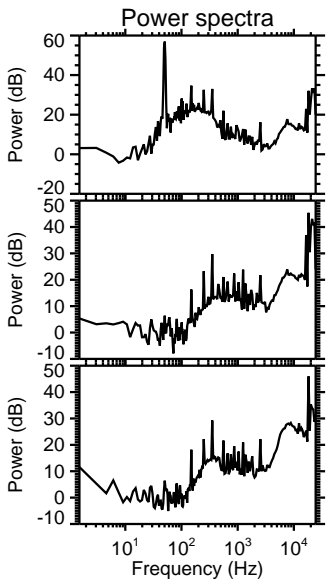
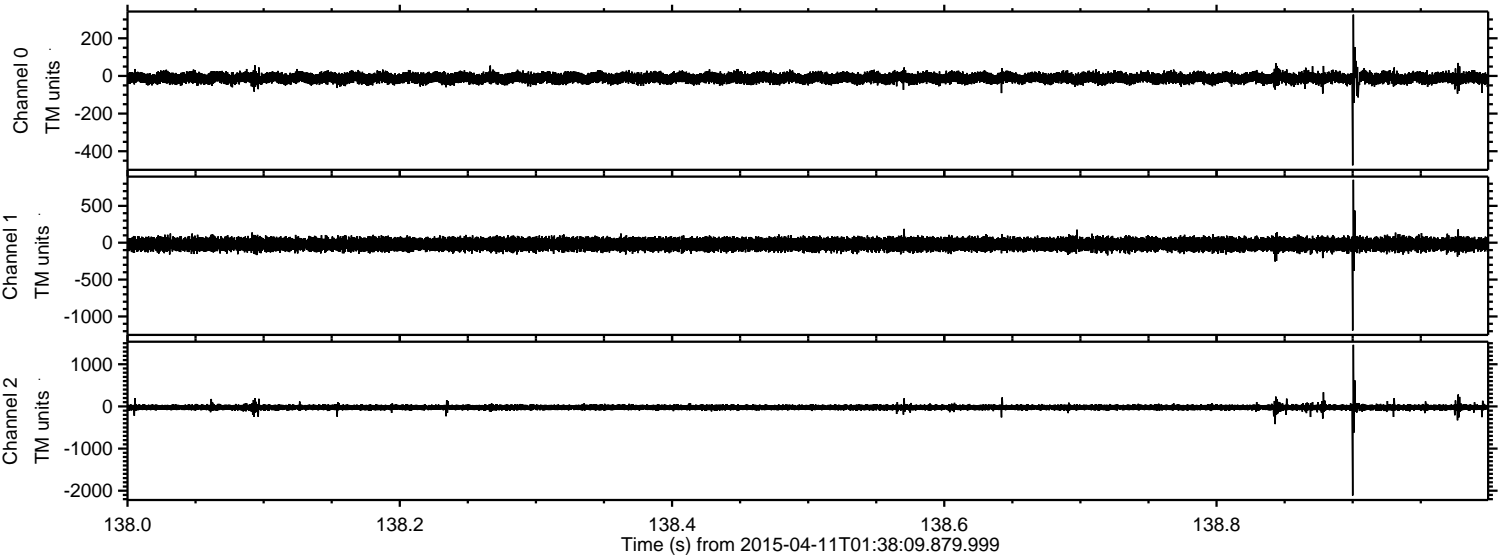
Processed Sat Apr 11 03:45:34 2015 by ELM ver.2012-10-06 from 001\_\_elm20150411\_013808\_\_dat00.bin





ELMAVAN 3D WAVEFORMS (Measured data sampled at 50 kHz) 49624 packets of 144 samples from 2015-04-11T01:38:09.879.999. Part 139/143

Processed Sat Apr 11 03:45:35 2015 by ELM ver.2012-10-06 from 001\_\_elm20150411\_013808\_\_dat00.bin



Channel 0  
mn: -475  
mx: 326  
 $\mu$ : -11.0  
 $\sigma$ : 15.3

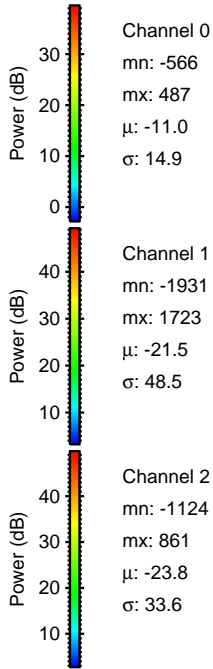
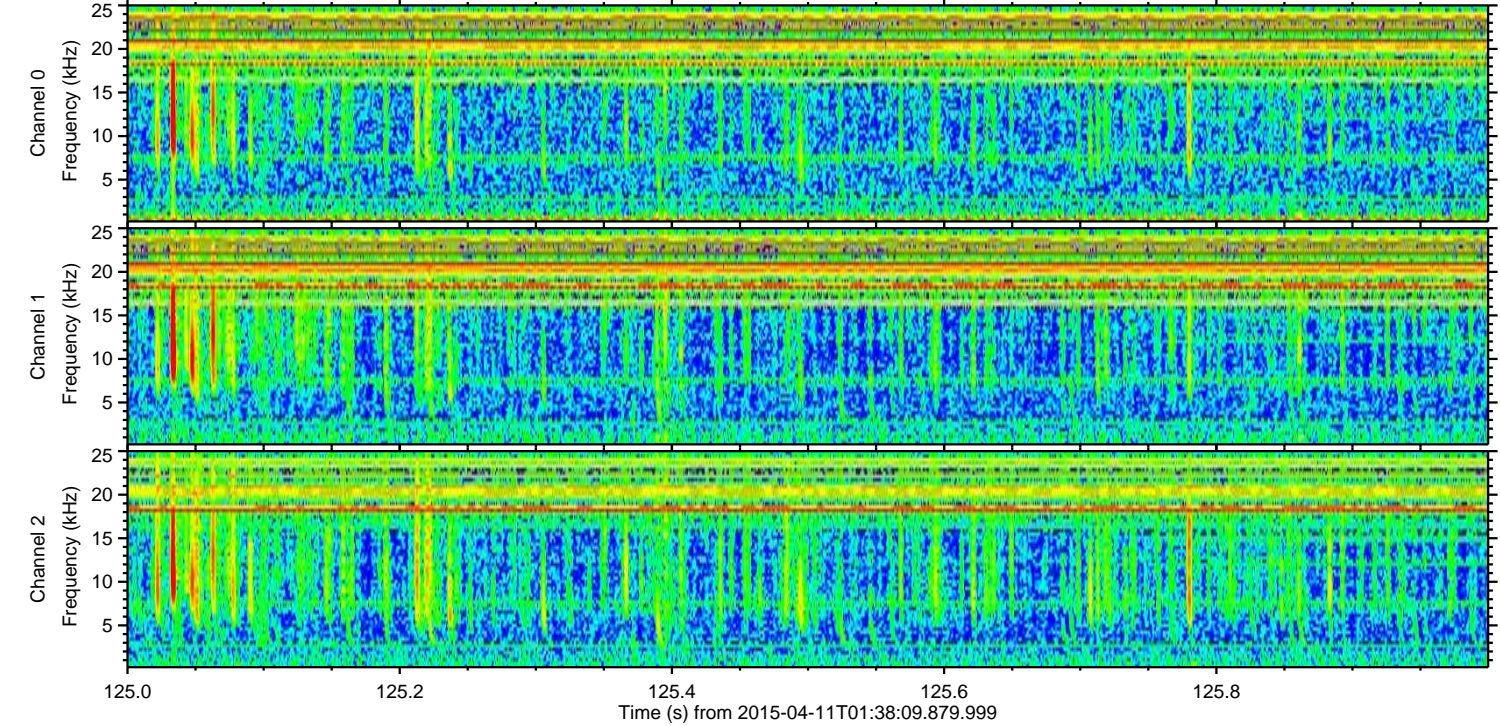
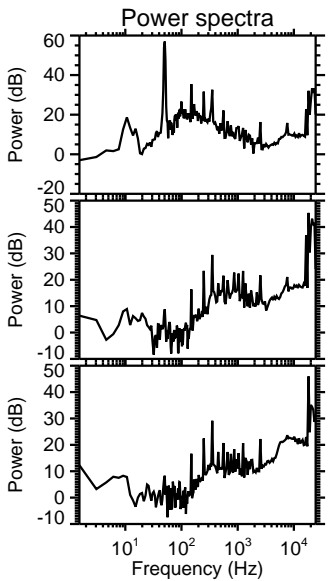
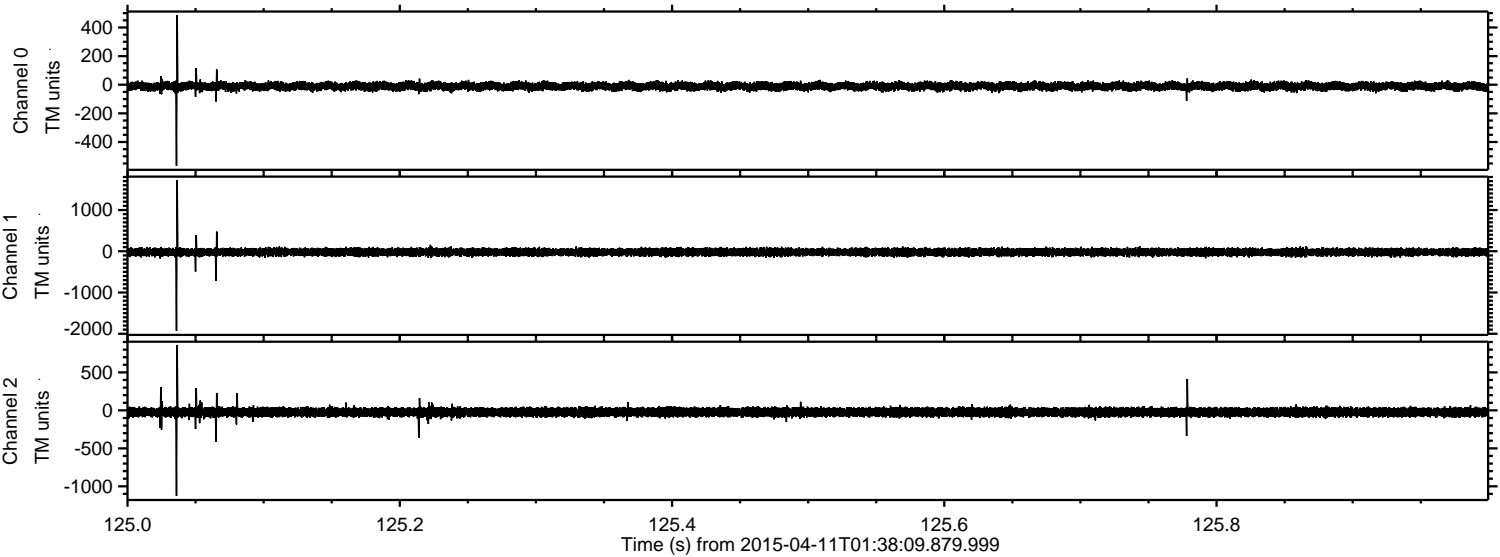
Channel 1  
mn: -1191  
mx: 854  
 $\mu$ : -21.0  
 $\sigma$ : 45.5

Channel 2  
mn: -2114  
mx: 1462  
 $\mu$ : -23.4  
 $\sigma$ : 38.2



ELMAVAN 3D WAVEFORMS (Measured data sampled at 50 kHz) 49624 packets of 144 samples from 2015-04-11T01:38:09.879.999. Part 126/143

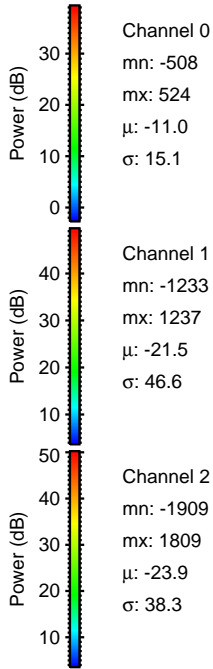
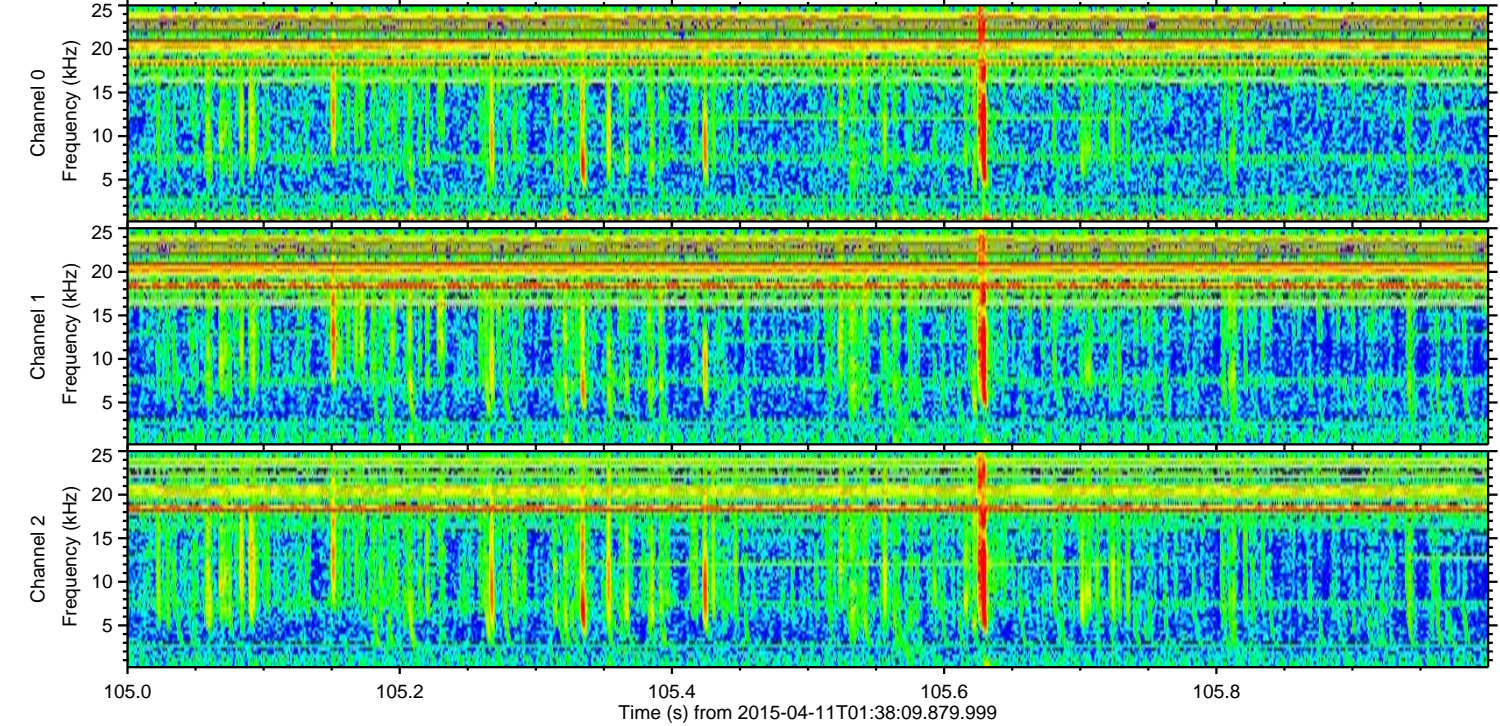
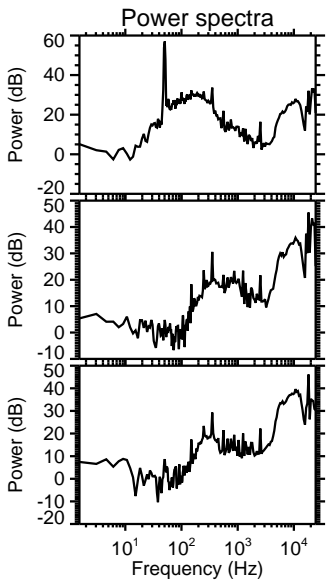
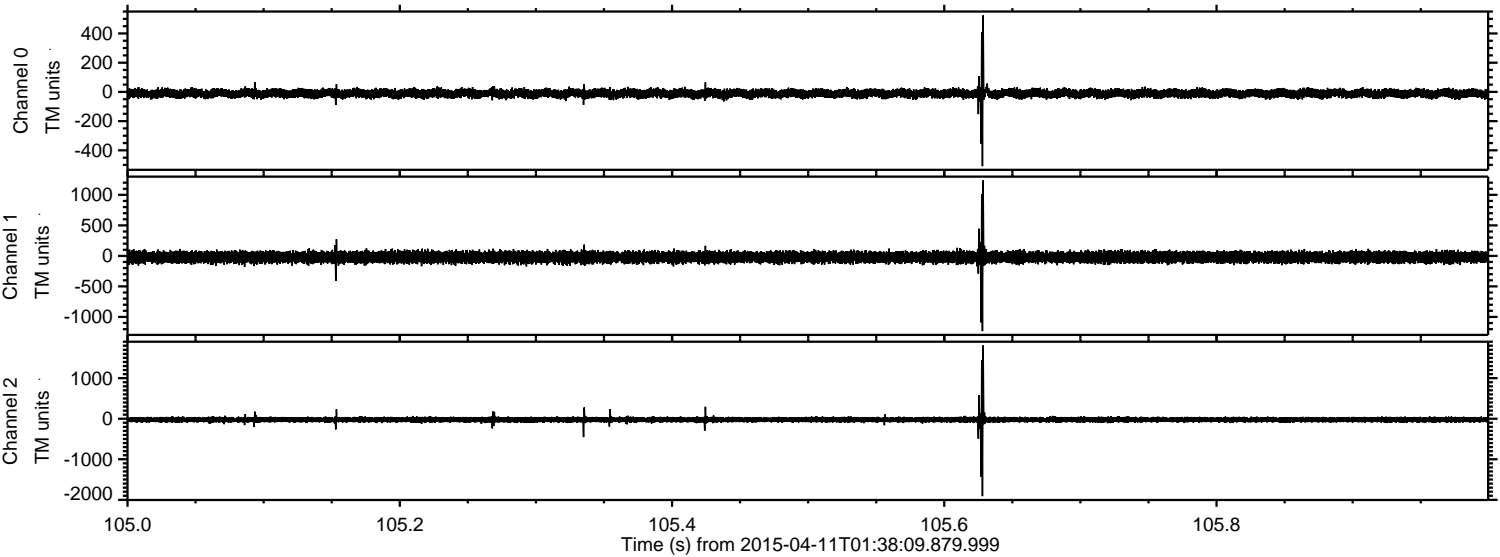
Processed Sat Apr 11 03:45:36 2015 by ELM ver.2012-10-06 from 001\_\_elm20150411\_013808\_\_dat00.bin





ELMAVAN 3D WAVEFORMS (Measured data sampled at 50 kHz) 49624 packets of 144 samples from 2015-04-11T01:38:09.879.999. Part 106/143

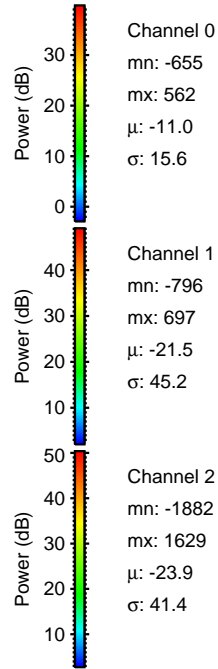
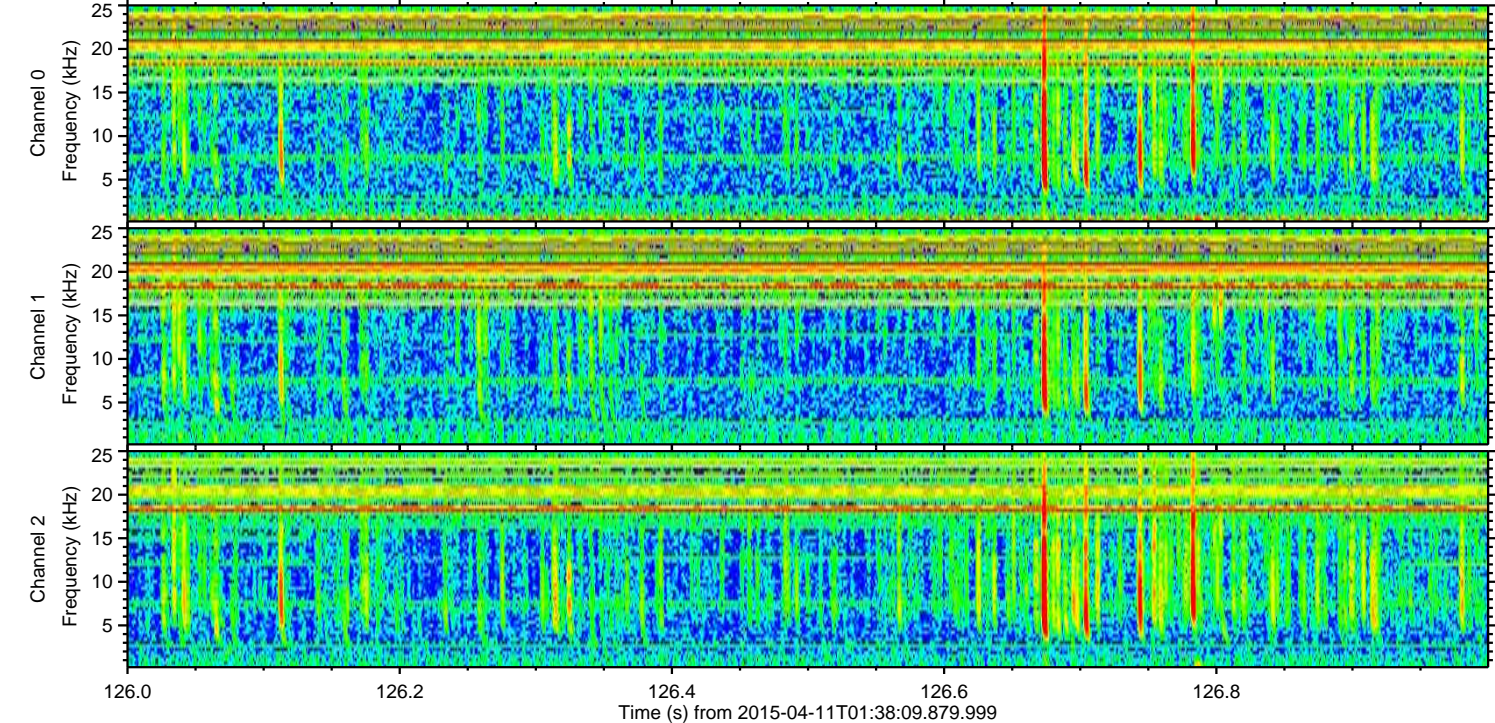
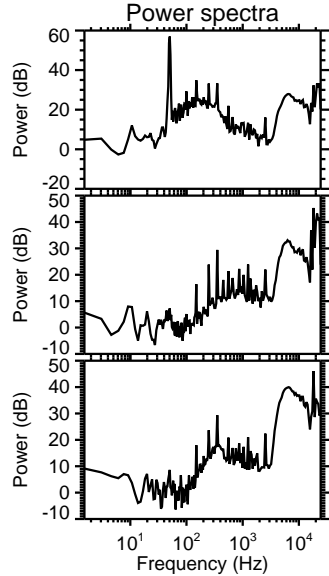
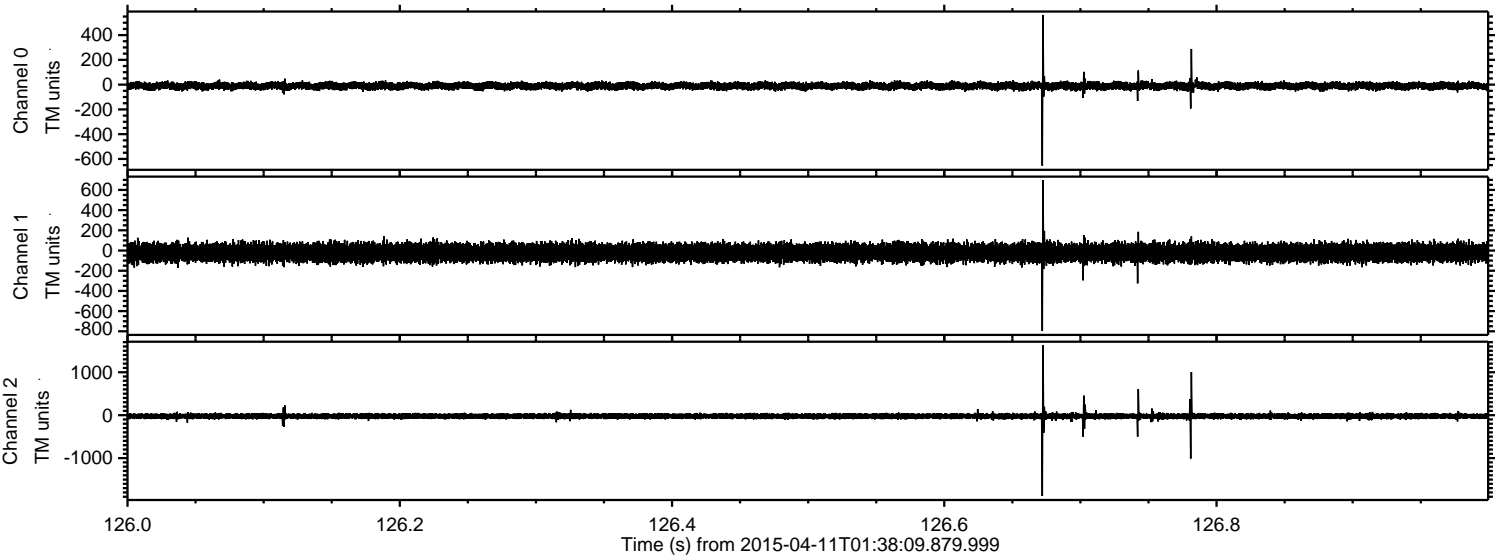
Processed Sat Apr 11 03:45:37 2015 by ELM ver.2012-10-06 from 001\_\_elm20150411\_013808\_\_dat00.bin





ELMAVAN 3D WAVEFORMS (Measured data sampled at 50 kHz) 49624 packets of 144 samples from 2015-04-11T01:38:09.879.999. Part 127/143

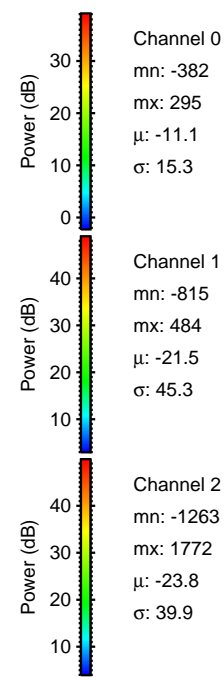
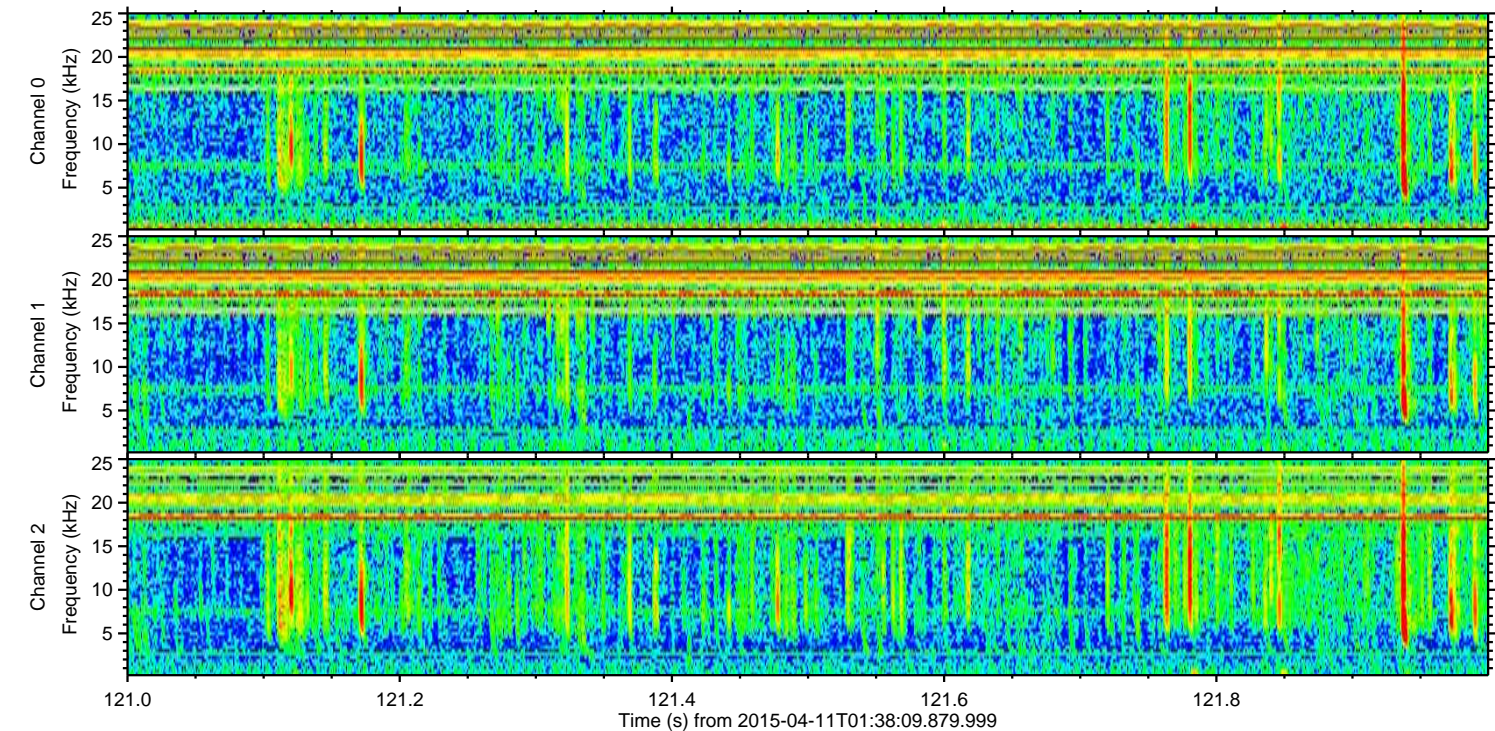
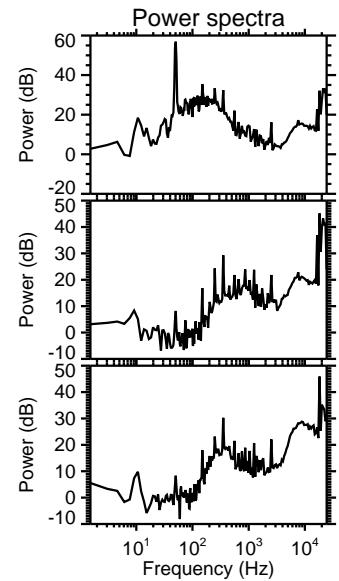
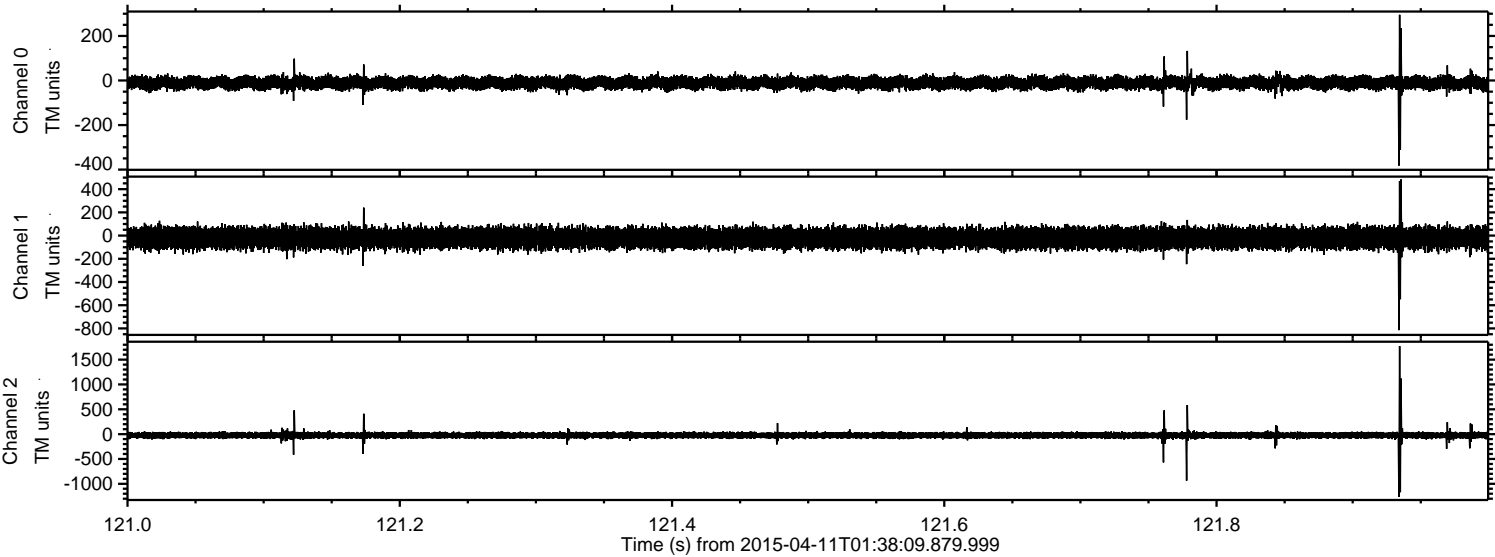
Processed Sat Apr 11 03:45:38 2015 by ELM ver.2012-10-06 from 001\_\_elm20150411\_013808\_\_dat00.bin





ELMAVAN 3D WAVEFORMS (Measured data sampled at 50 kHz) 49624 packets of 144 samples from 2015-04-11T01:38:09.879.999. Part 122/143

Processed Sat Apr 11 03:45:39 2015 by ELM ver.2012-10-06 from 001\_\_elm20150411\_013808\_\_dat00.bin





Processed Sat Apr 11 03:45:40 2015 by ELM ver.2012-10-06 from 001\_\_elm20150411\_013808\_\_dat00.bin

