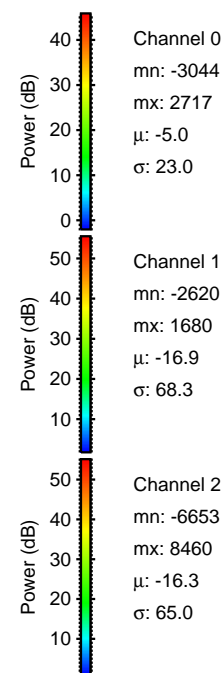
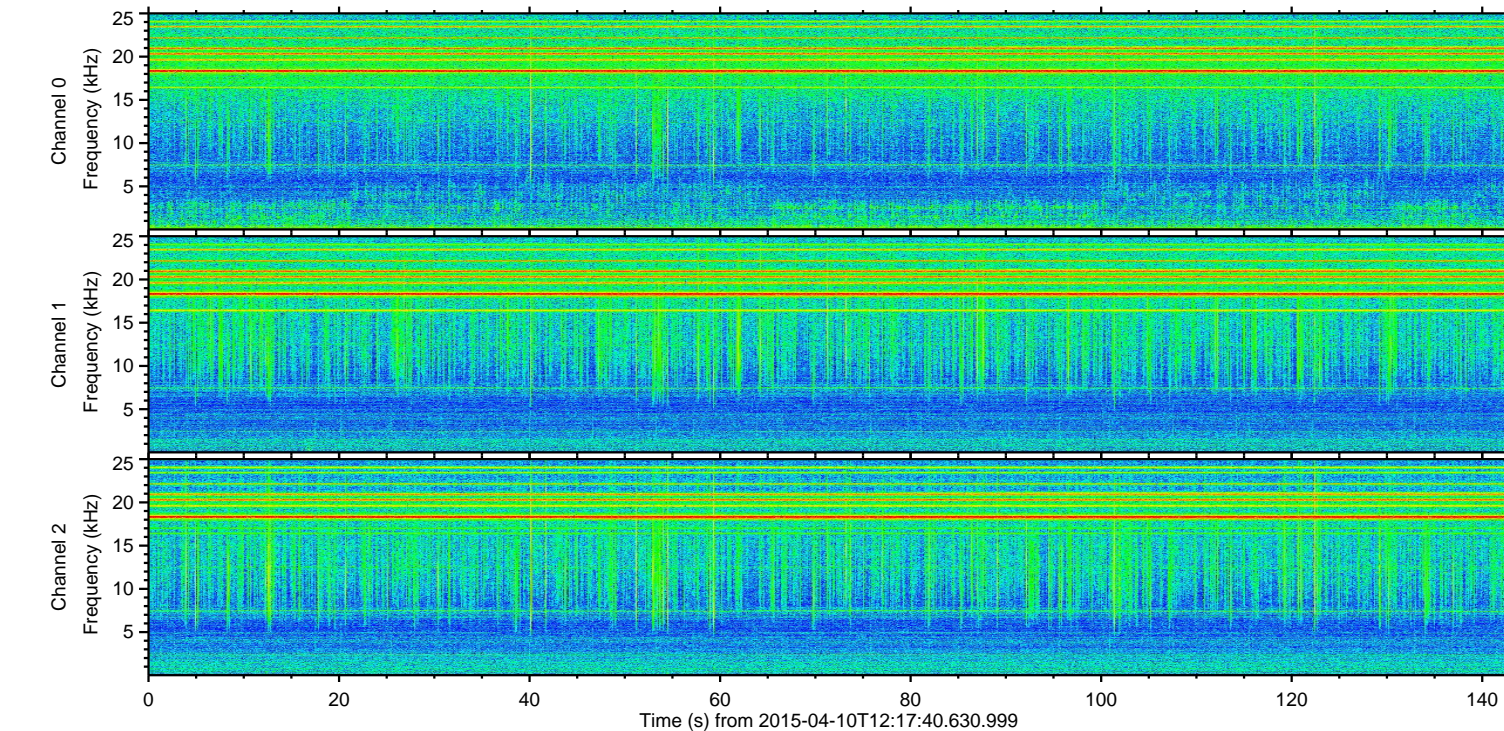
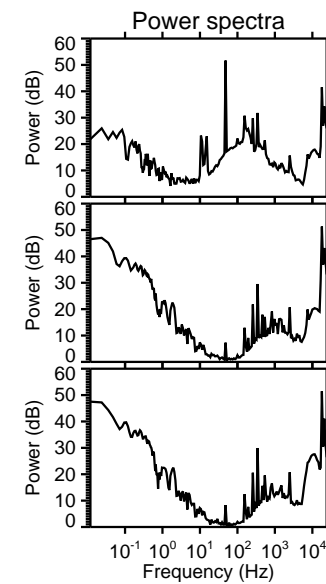
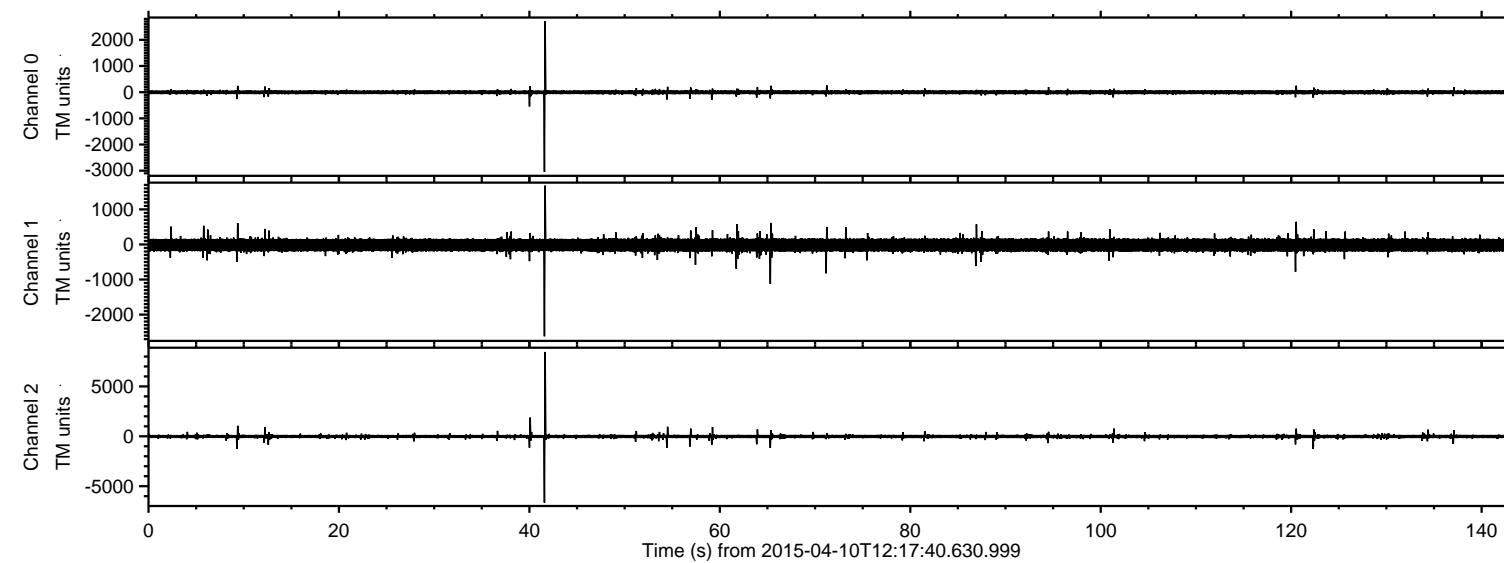
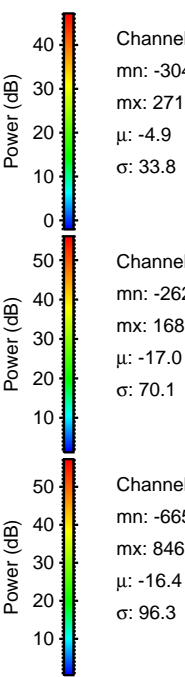
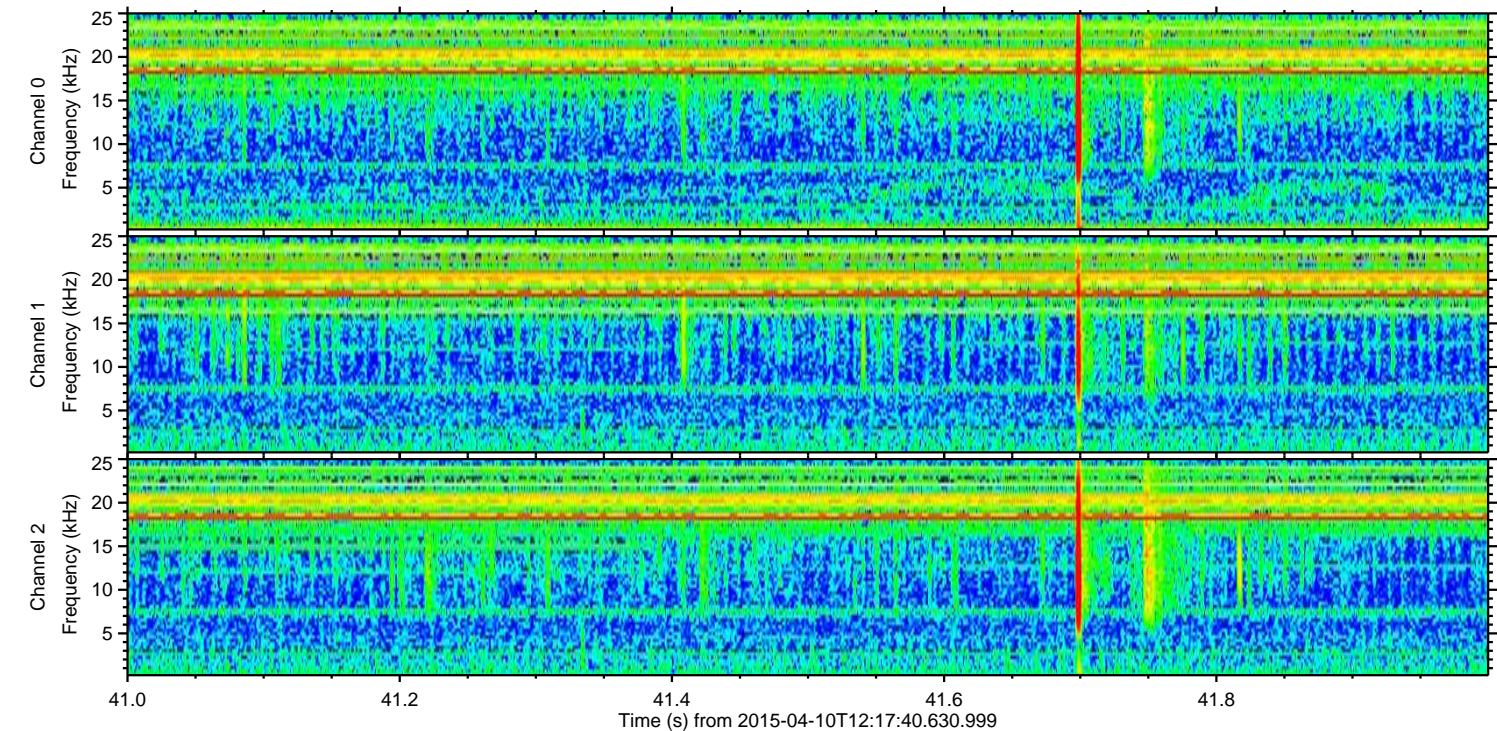
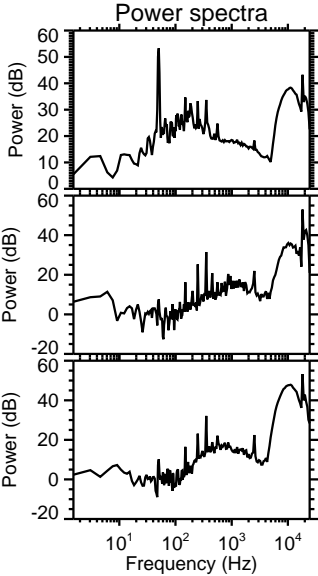
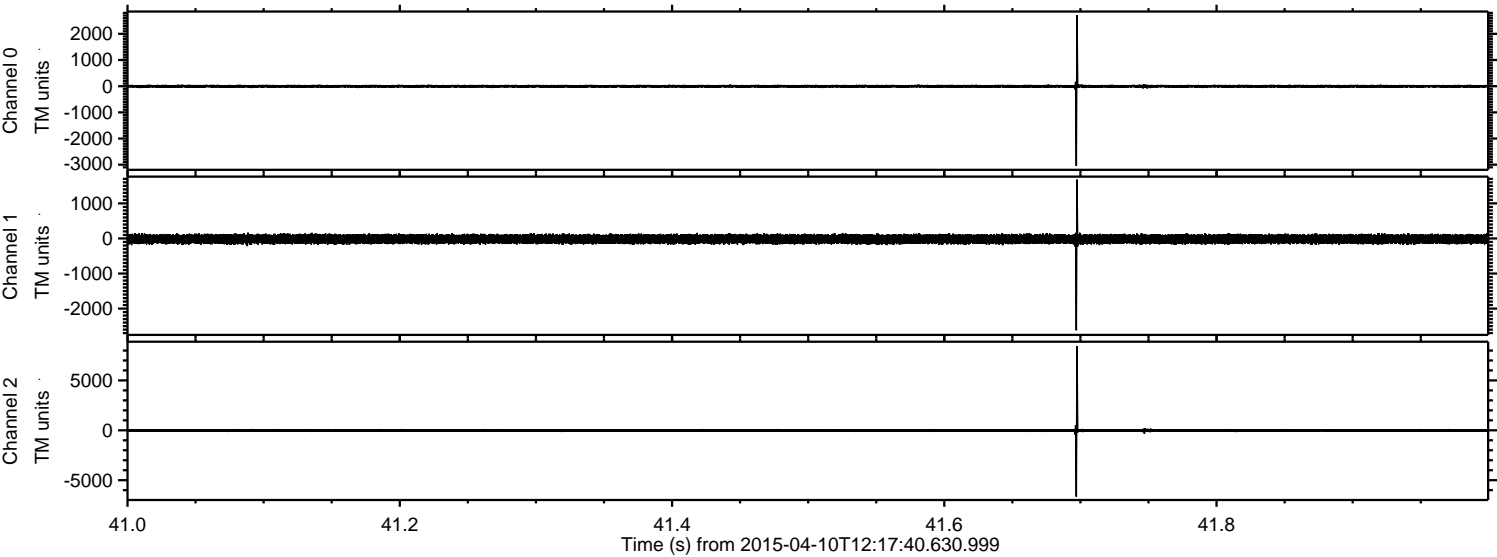


ELMAVAN 3D WAVEFORMS (Measured data sampled at 50 kHz) 49615 packets of 144 samples from 2015-04-10T12:17:40.630.999.

Processed Fri Apr 10 14:24:07 2015 by ELM ver.2012-10-06 from 001__elm20150410_121739__dat00.bin



Processed Fri Apr 10 14:24:24 2015 by ELM ver.2012-10-06 from 001__elm20150410_121739__dat00.bin

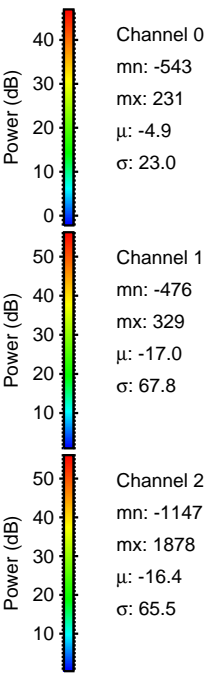
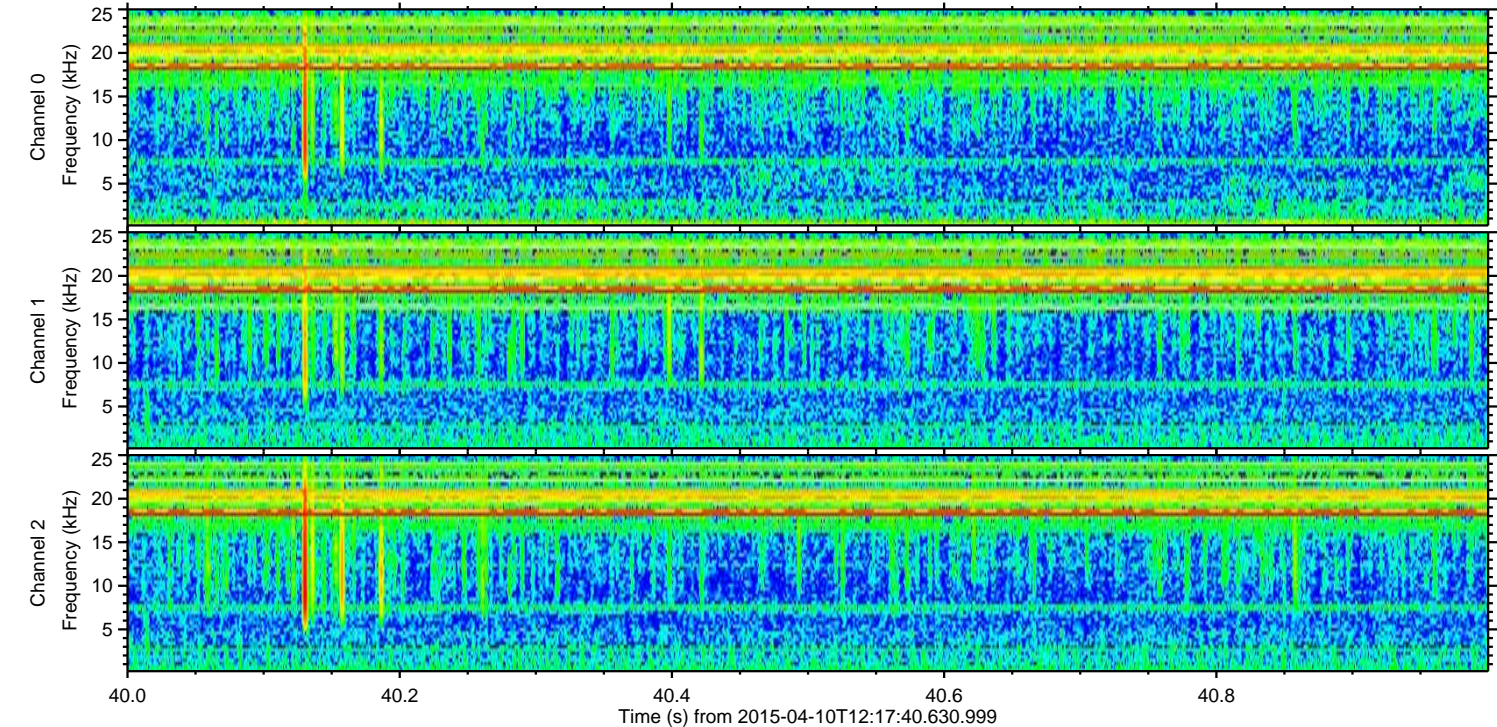
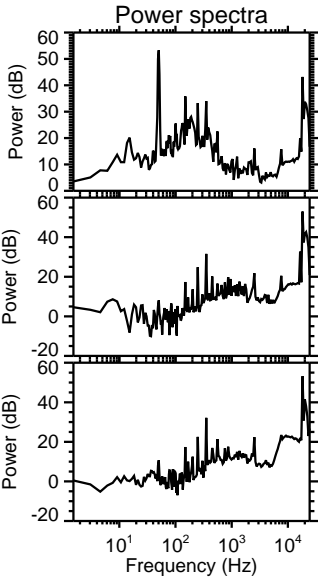
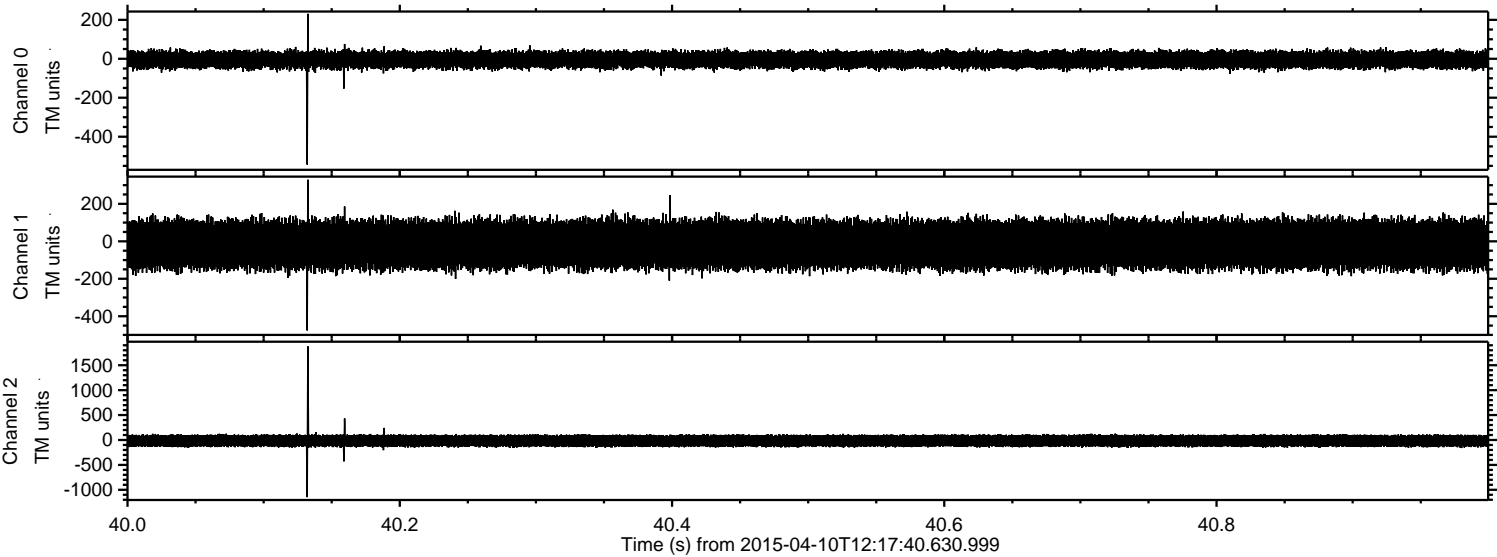


Channel 0
mn: -3044
mx: 2717
 μ : -4.9
 σ : 33.8

Channel 1
mn: -2620
mx: 1680
 μ : -17.0
 σ : 70.1

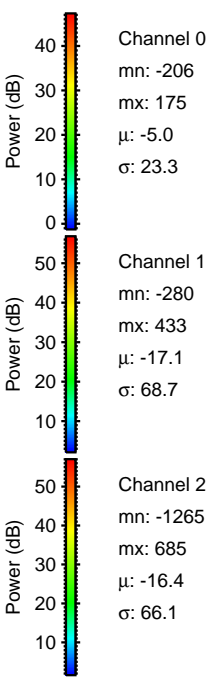
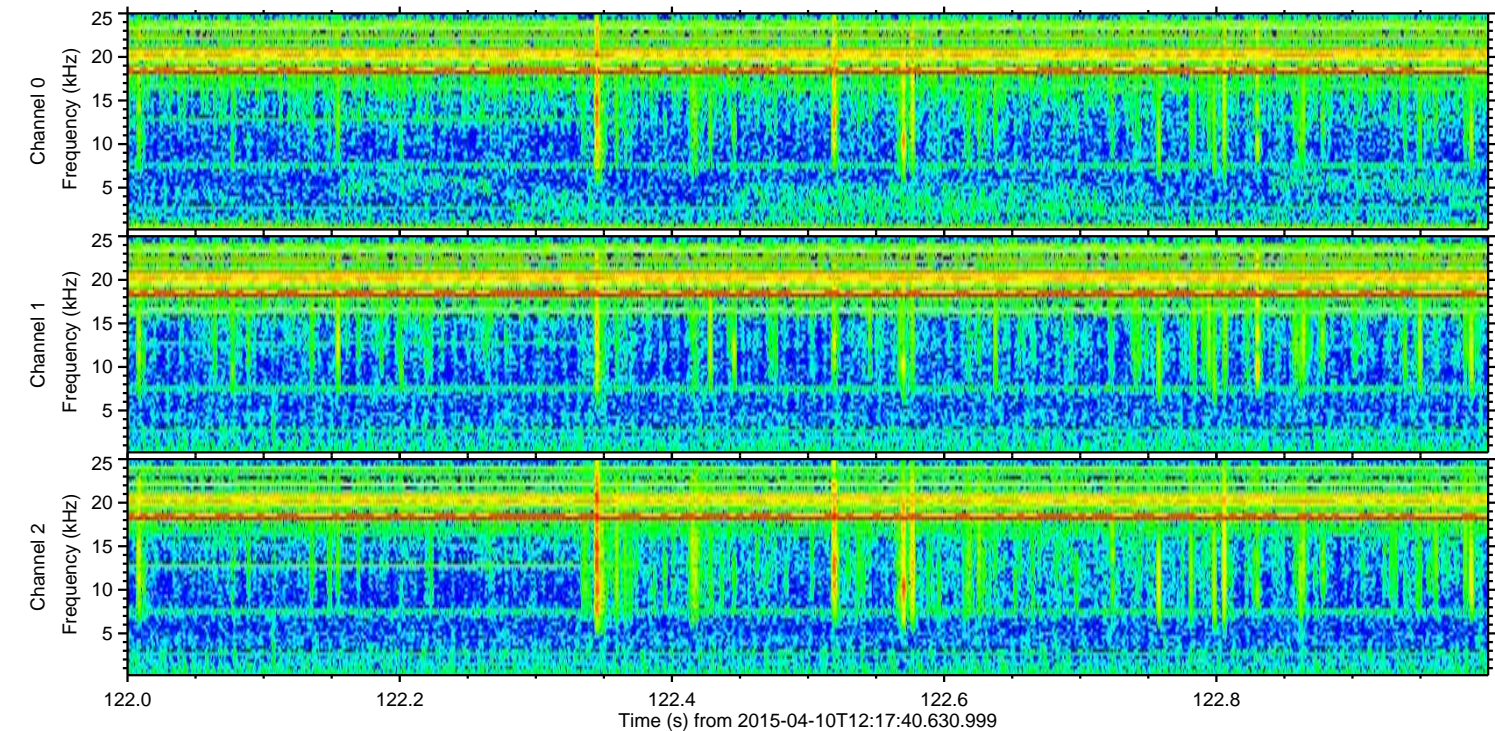
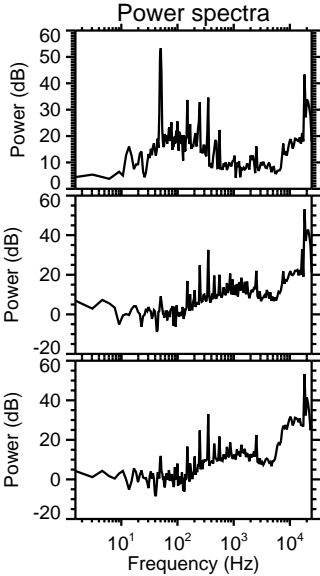
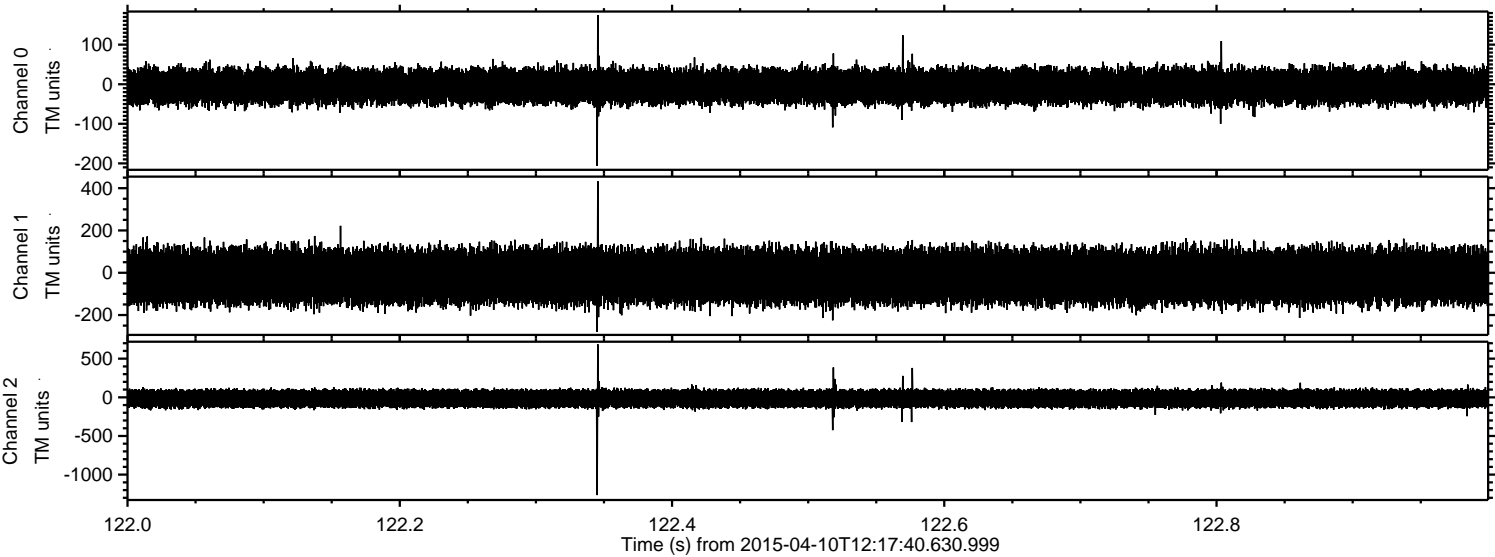
Channel 2
mn: -6653
mx: 8460
 μ : -16.4
 σ : 96.3

Processed Fri Apr 10 14:24:25 2015 by ELM ver.2012-10-06 from 001__elm20150410_121739__dat00.bin

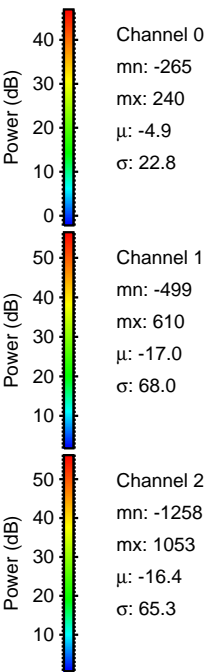
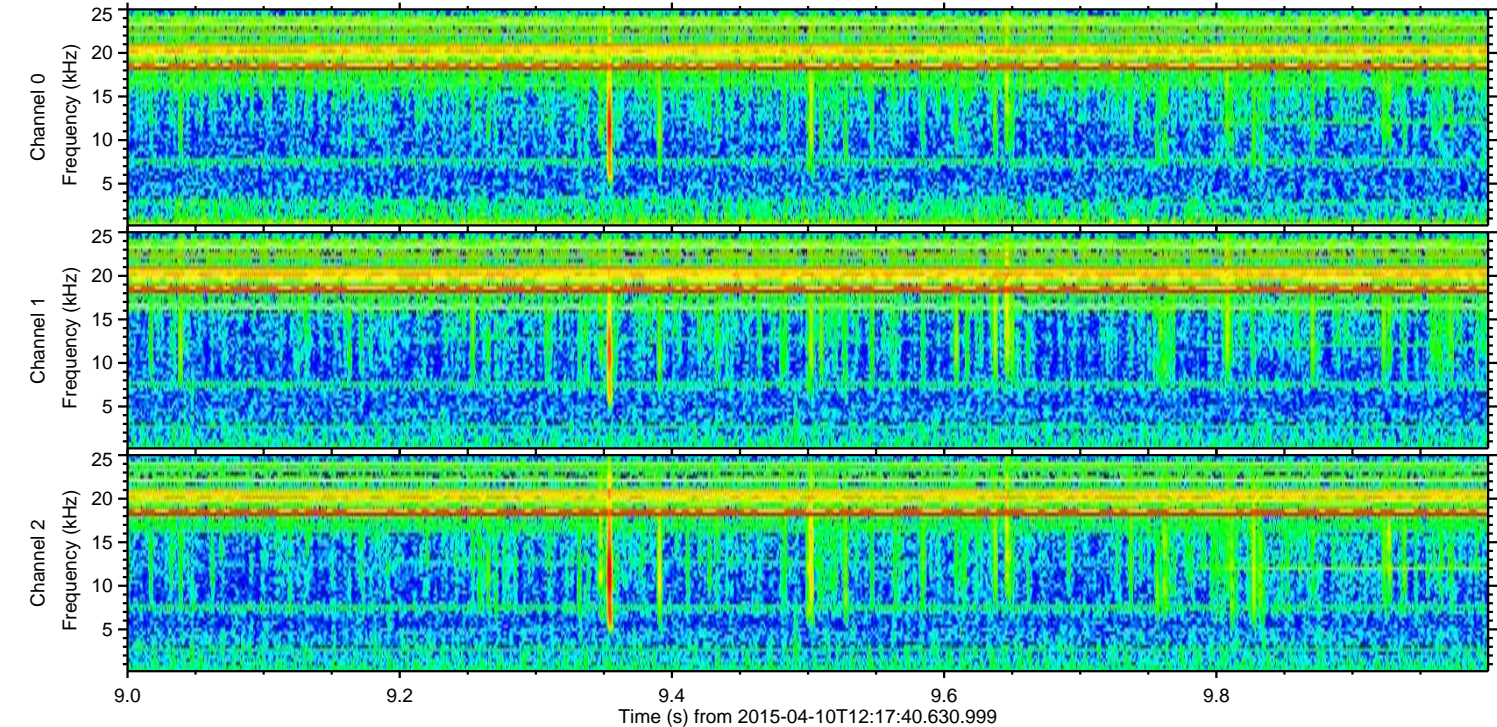
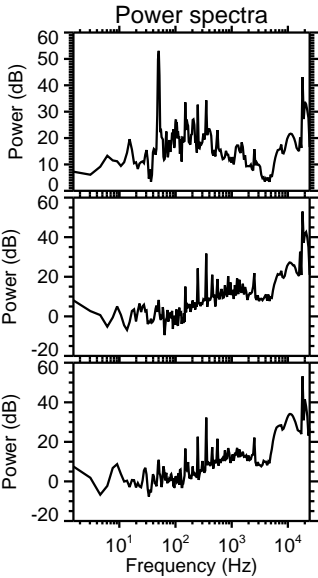
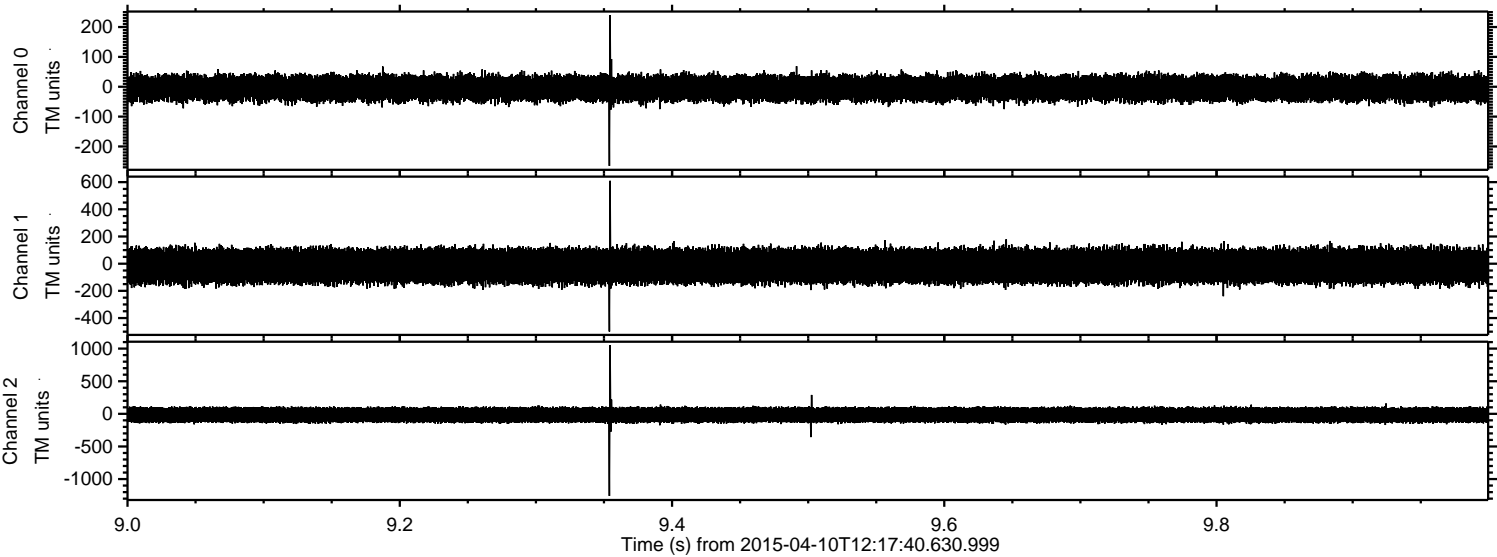


ELMAVAN 3D WAVEFORMS (Measured data sampled at 50 kHz) 49615 packets of 144 samples from 2015-04-10T12:17:40.630.999. Part 123/143

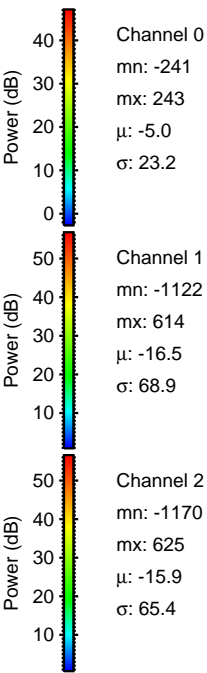
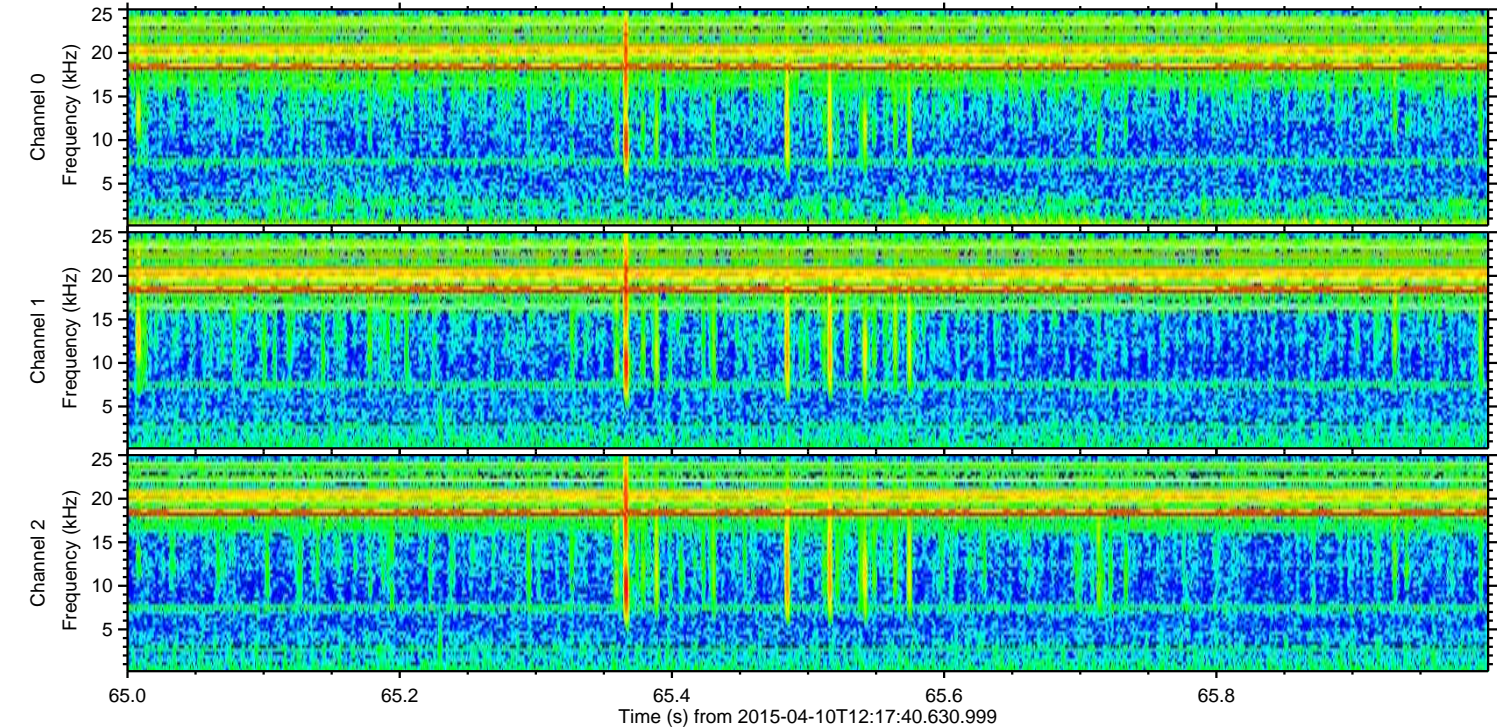
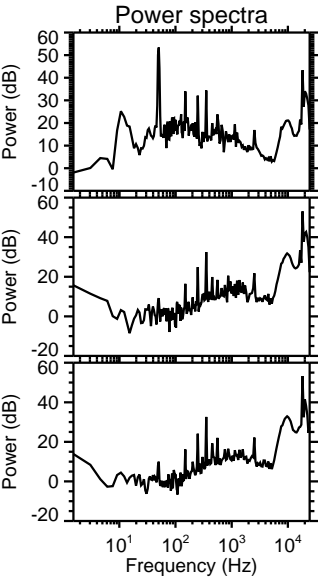
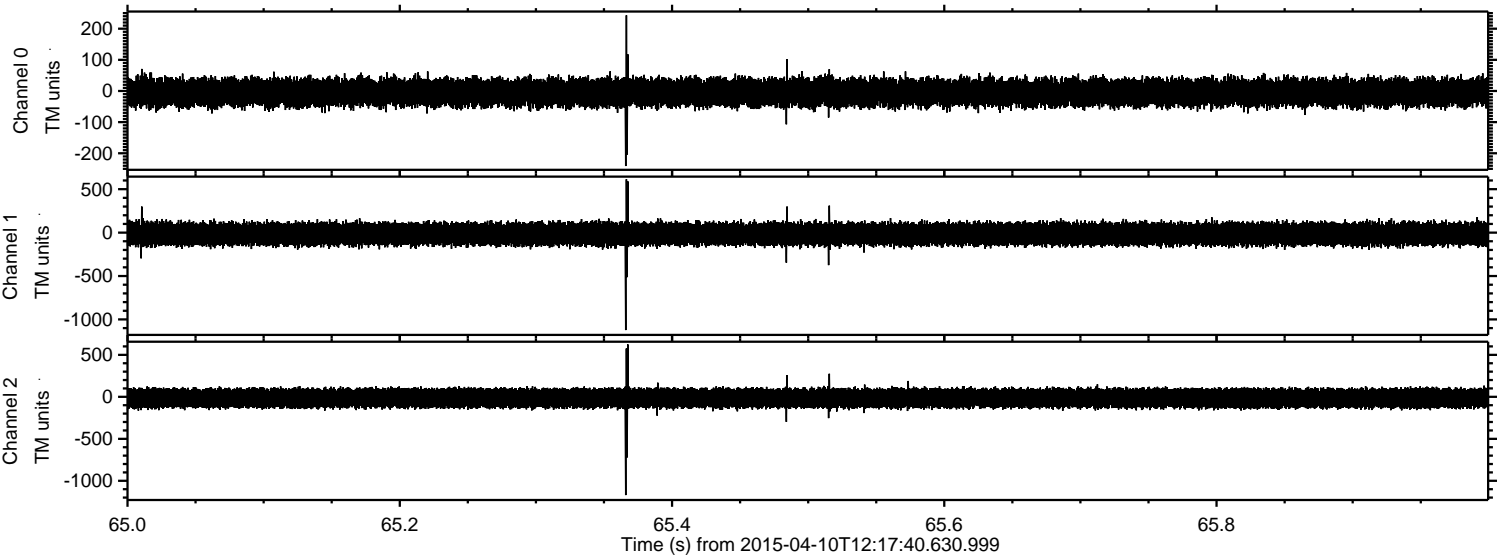
Processed Fri Apr 10 14:24:26 2015 by ELM ver.2012-10-06 from 001__elm20150410_121739__dat00.bin



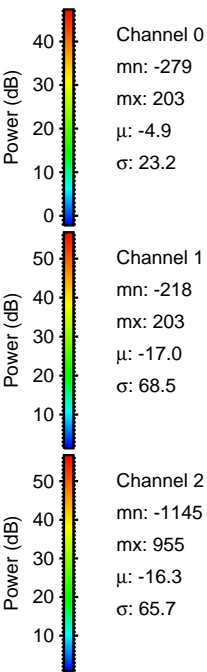
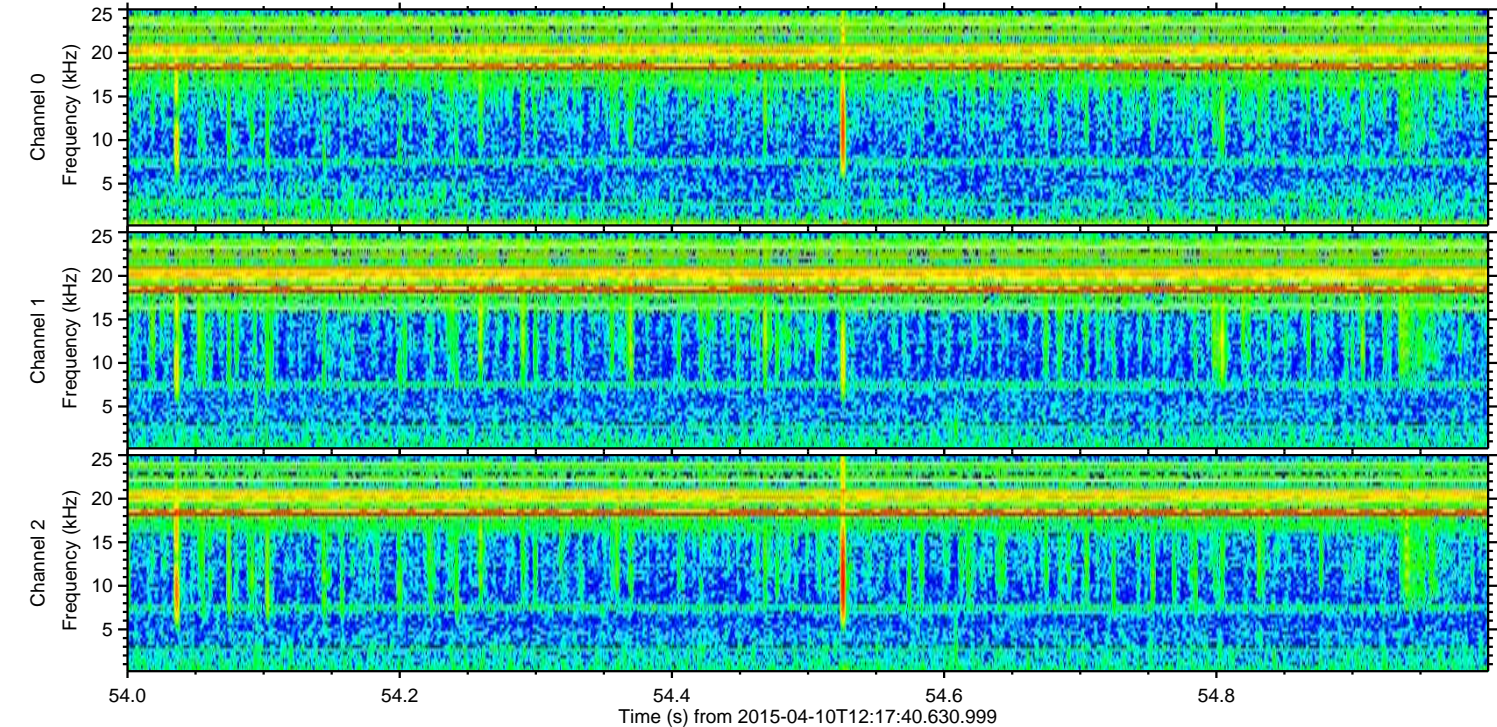
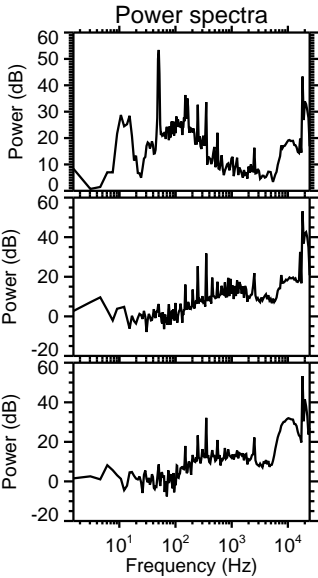
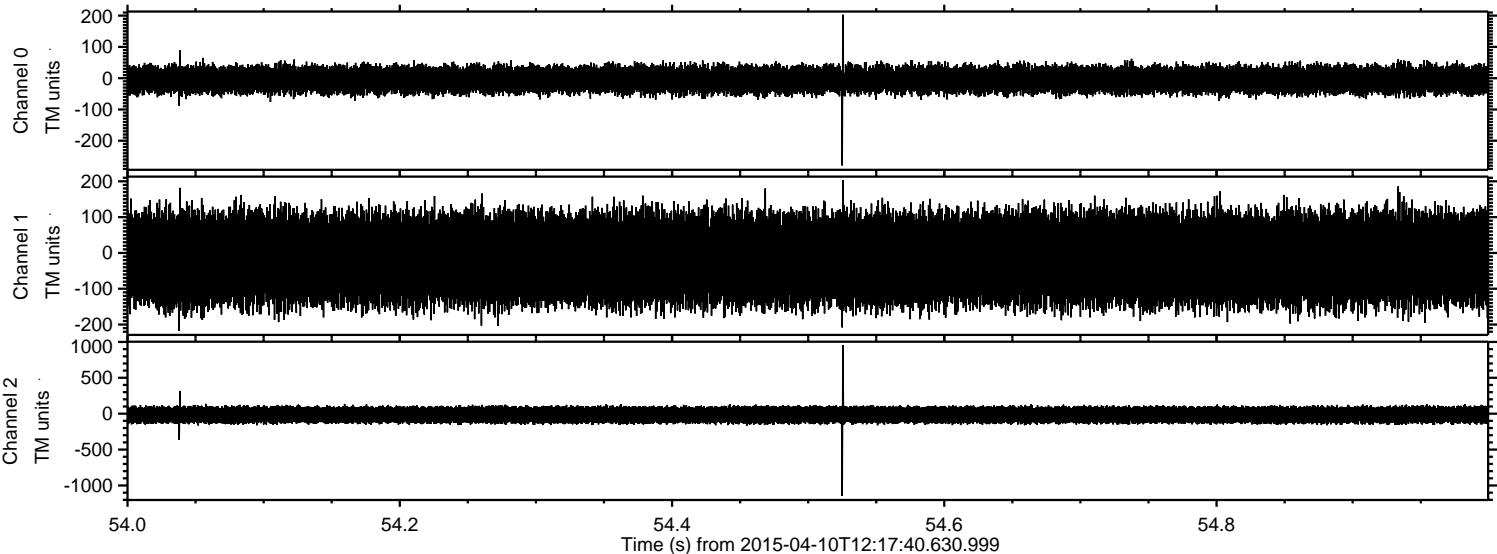
Processed Fri Apr 10 14:24:27 2015 by ELM ver.2012-10-06 from 001__elm20150410_121739__dat00.bin



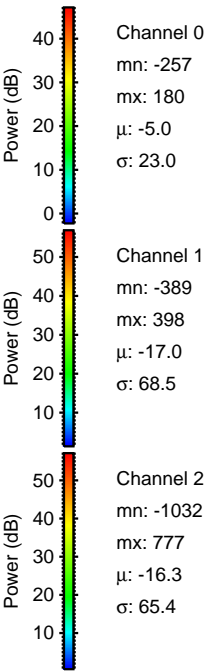
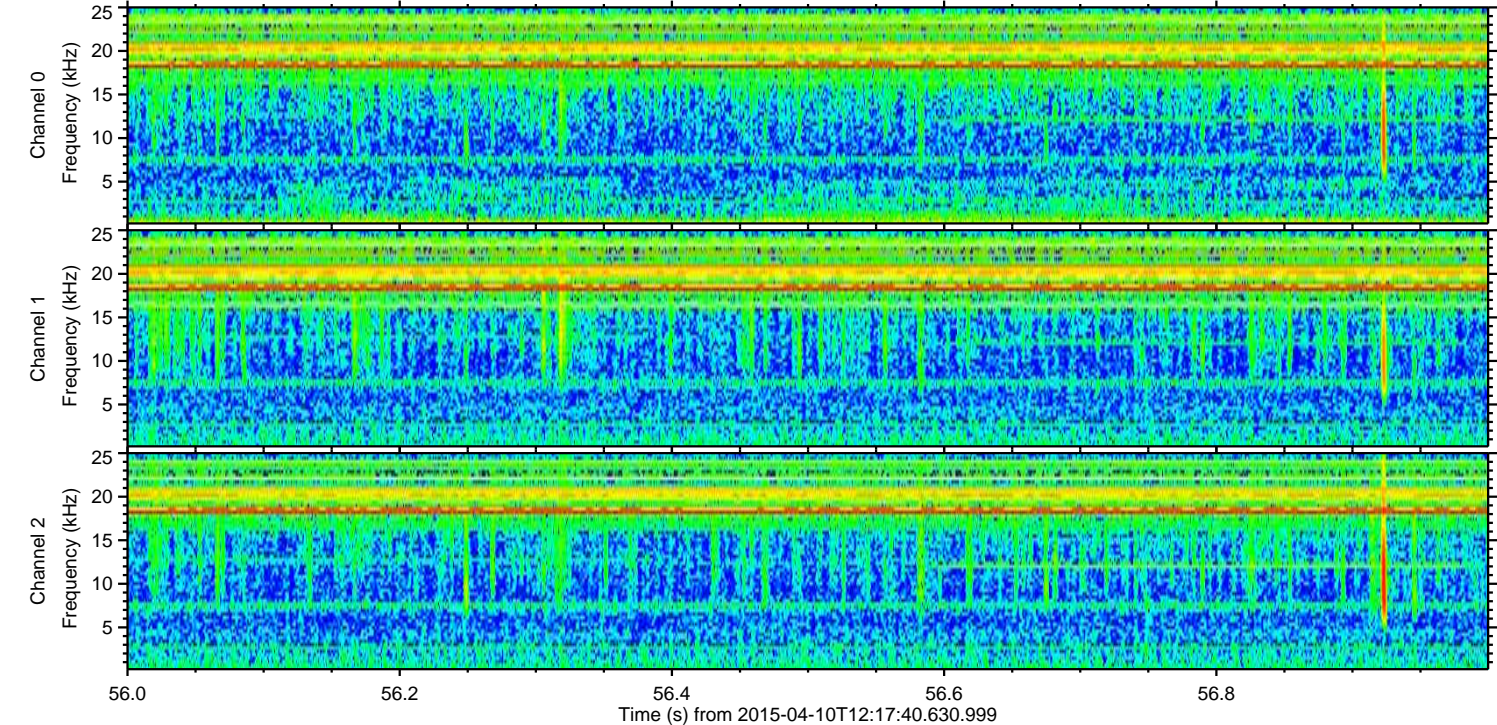
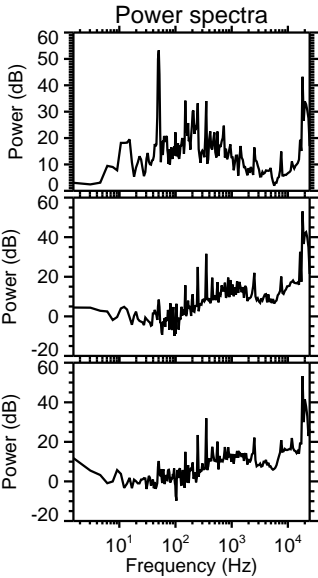
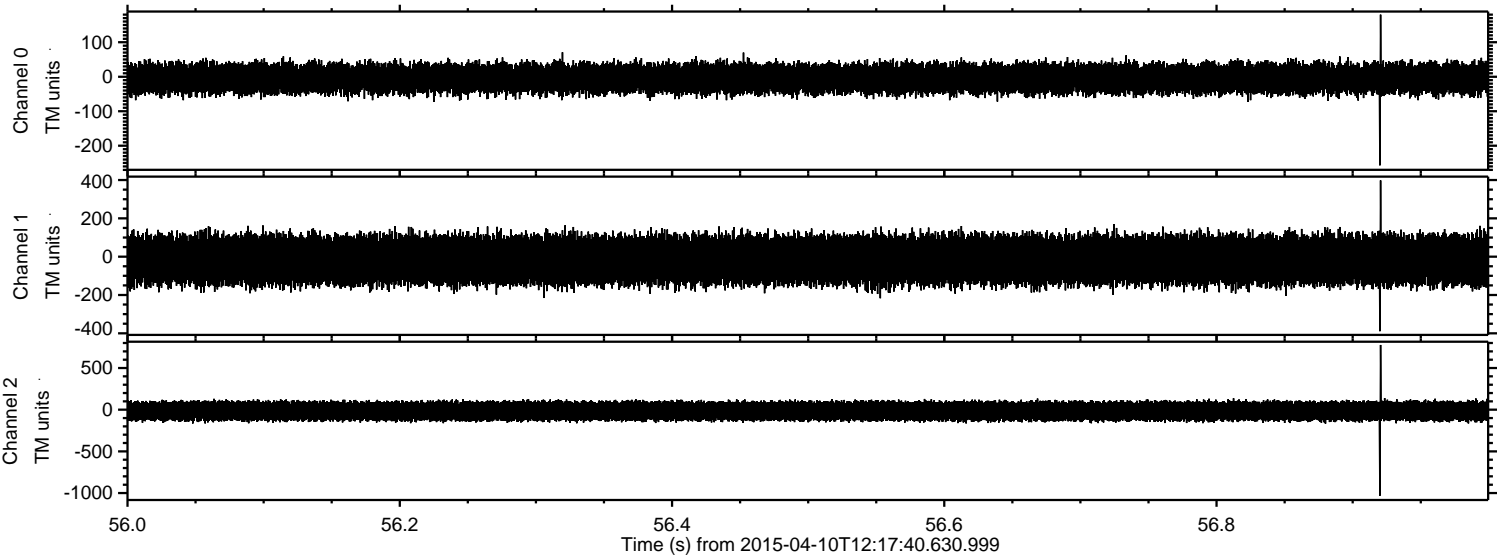
Processed Fri Apr 10 14:24:28 2015 by ELM ver.2012-10-06 from 001__elm20150410_121739__dat00.bin

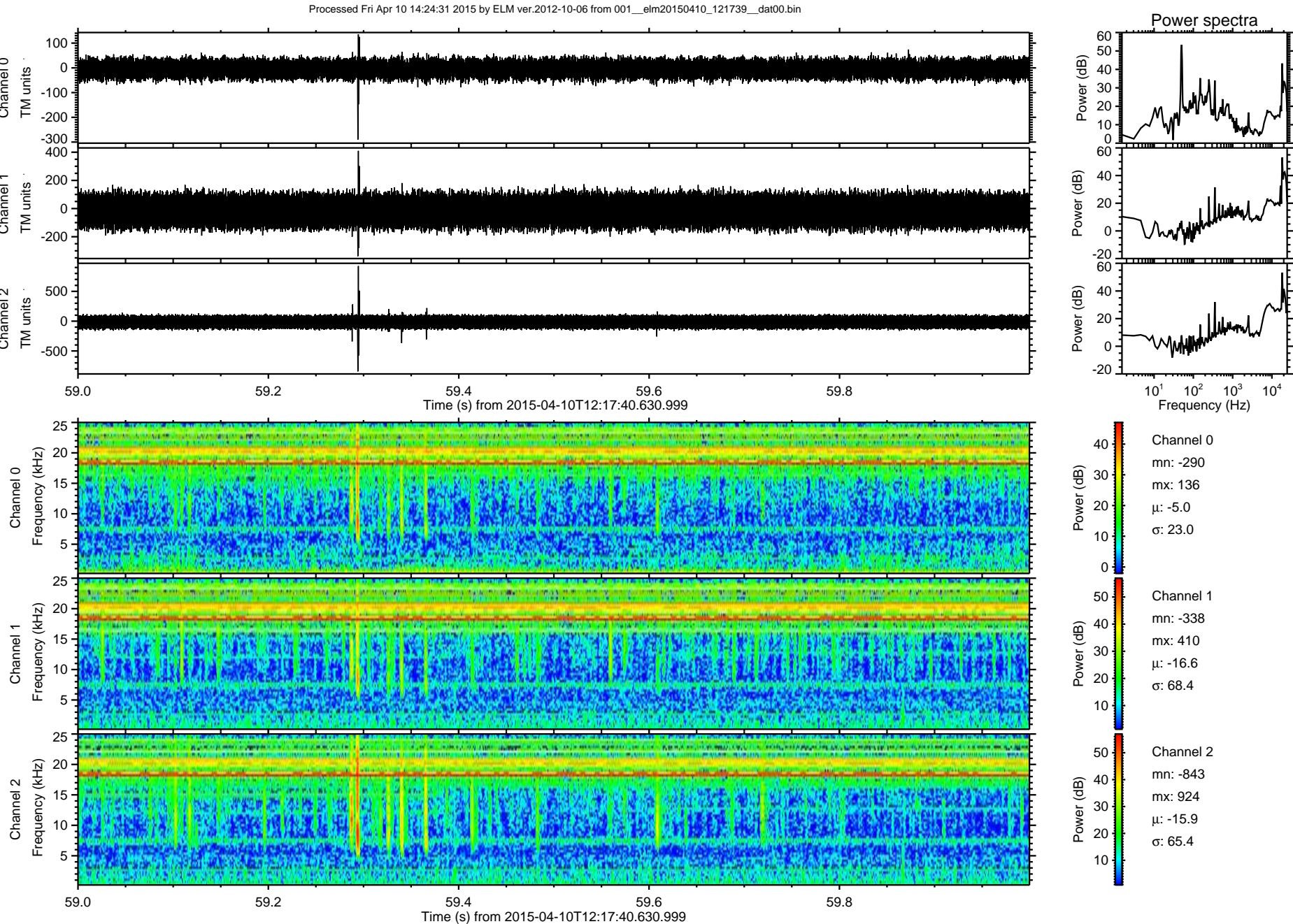


Processed Fri Apr 10 14:24:29 2015 by ELM ver.2012-10-06 from 001__elm20150410_121739__dat00.bin

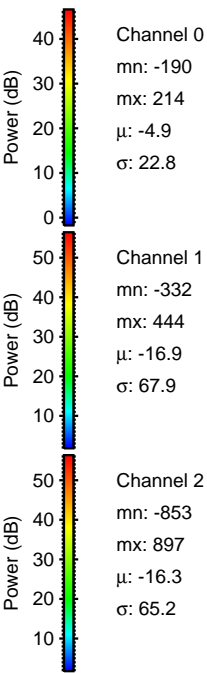
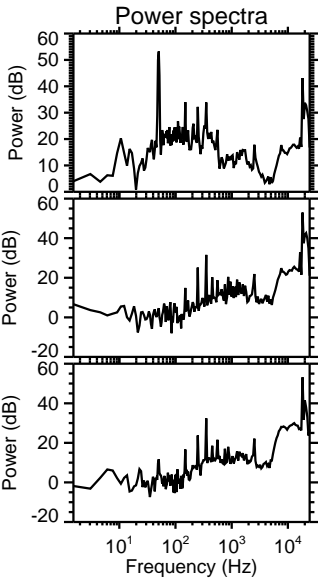
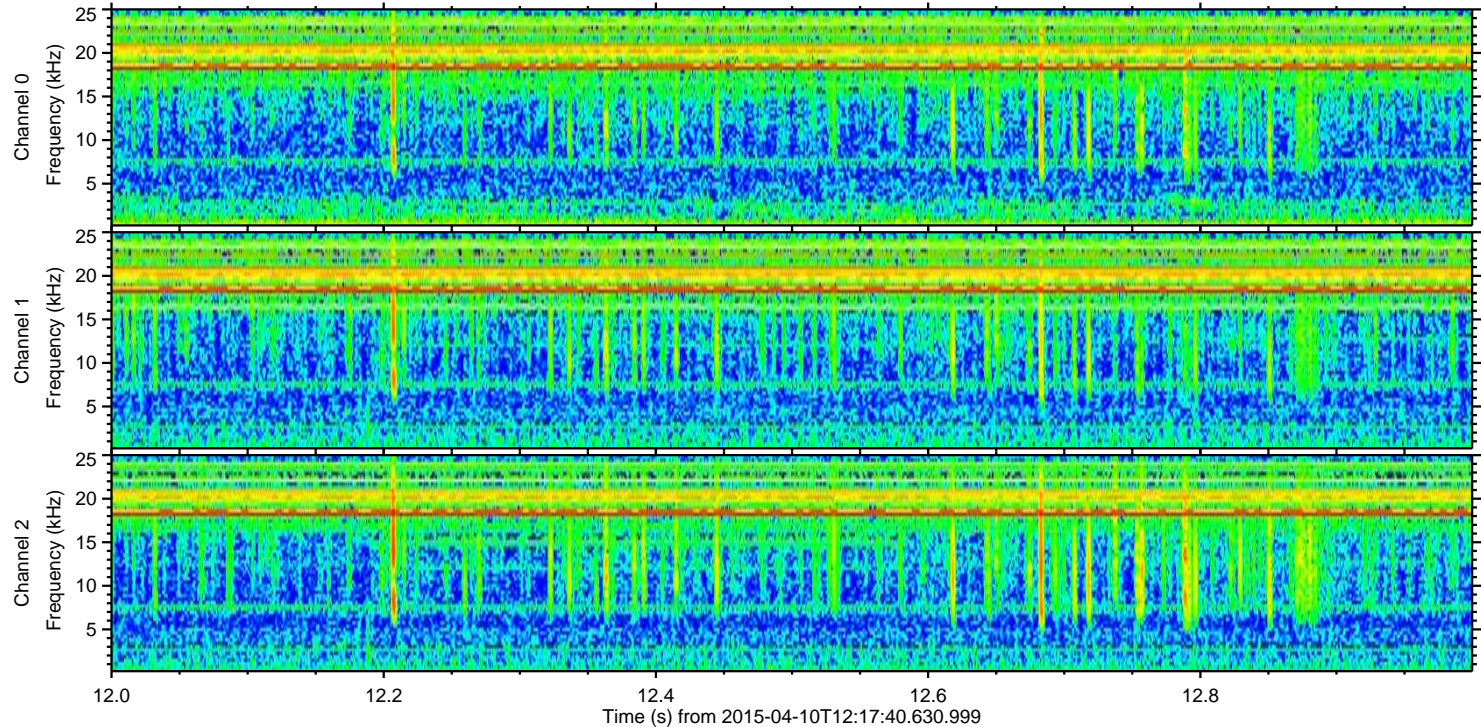
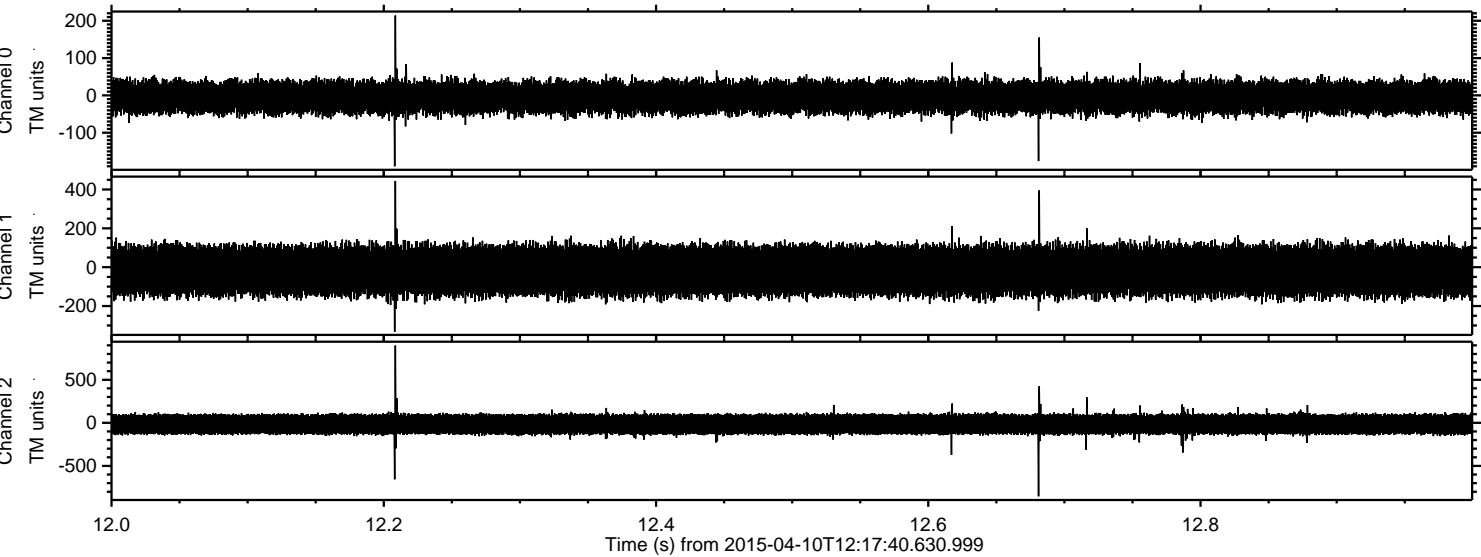


Processed Fri Apr 10 14:24:30 2015 by ELM ver.2012-10-06 from 001__elm20150410_121739__dat00.bin





Processed Fri Apr 10 14:24:32 2015 by ELM ver.2012-10-06 from 001__elm20150410_121739__dat00.bin



Processed Fri Apr 10 14:24:33 2015 by ELM ver.2012-10-06 from 001__elm20150410_121739__dat00.bin

